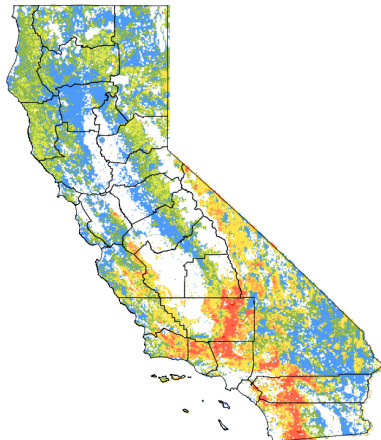


Fire Size Potential & Weather Forecast |

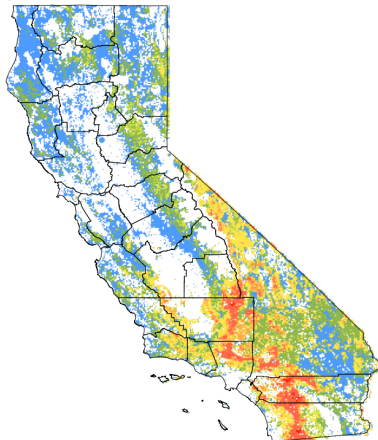
Reporting Period: Wednesday, April 08 to Tuesday, April 14



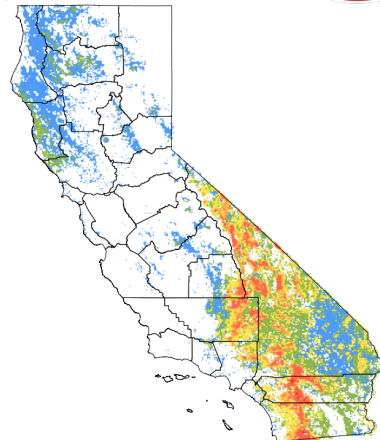
Wed Apr 08, 1200hrs



Thu Apr 09, 1200hrs



Fri Apr 10, 1200hrs

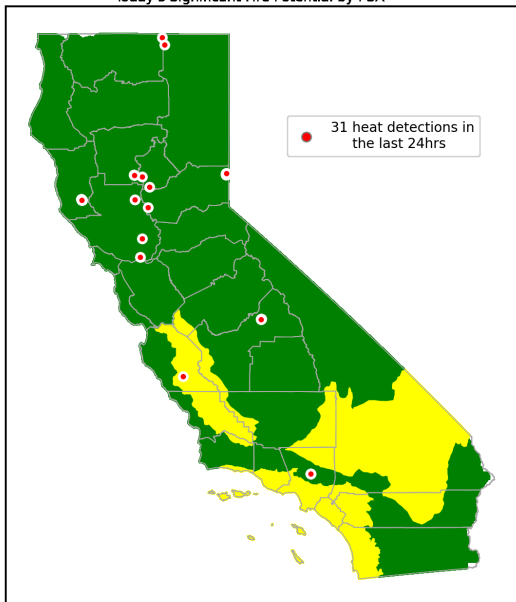


Acres

< 10 **50** **100** **500** **1000** **5000** **10000** **> 10000**

Each map shows the time with the highest wildfire risk potential. Eight-hour simulations are run every three hours of the day to produce a map of wildfire risk potential in acres. The average number of acres in an area should not exceed the associated number in the legend. Risk forecast does not consider suppression efforts. Courtesy of Technosylva. **Latest Updates available at: <https://wfiic.ca.gov>**

Today's Significant Fire Potential by PSA



California Fire Weather Summary

Precipitation chances return for Northern parts of the state today. Heaviest rainfall is forecast for coastal and higher elevations. Precipitation will spread into Central California and Southern coastal areas by the end of the week bringing some welcome rain into parts of Southern California that saw some active fire starts recently. Thunderstorms will be possible each afternoon beginning Thursday through the weekend for Northern and Central parts of the state. Precipitation will linger in the higher elevations and along the coast into the beginning of next week. Gusty winds will remain in the wind prone corridors of Southern California, the higher elevations, and the Mojave Desert slopes through over the next few days. Saturday and Sunday will bring more widespread gusty winds to the state before a gradual downward trend beginning next week.

Northern Region

- Initial attack (IA) potential will continue today due to higher Probability of Ignitions (PIGs) from the recent unusually warm and dry airmass combined with breezy winds. The onset of lightning activity today and tonight could create a few additional ignitions if they occur in receptive fuel beds before increasingly wet shower and thunderstorm activity moistens fuels more substantially Thursday and Friday.
- Dead fuel Energy Release Components (ERCs) currently average near the 60th percentile in most PSAs with some a little above that and others a little below, though all running well above seasonal normals. ERCs will begin decreasing midweek with more substantial drops late week through the weekend.
- Most of the snow that fell last week has melted with patchy snow generally above 6,000 to 7,000 ft. elevation, depending on aspect and exposure. Moisture in the snowpack ranged between 5% and 19% of normal on April 7th with some minor improvements in snowpack likely this weekend.
- Herbaceous vegetation is in a mixed state across the lowest elevations with both green-up and curing in thin soil and most exposed areas, while most low to mid elevations are in an overall green-up state, generally up to 6,000 to 7,000 ft. The live fuels will provide a heat sink or barrier to fire spread.
- Shrubs and tree canopies are experiencing low to mid elevation green-up, generally below 4,500 to 5,500 ft., due to an early start to the growing season. Upper elevation species remain dormant and pine in areas may have entered the spring dip period earlier than normal. Region will be monitoring for any freeze-killed fuels due to recent and anticipated freezing. Mixed flammability exists within this fuel regime.

Southern Region

- A large grass fire will remain possible across the lower elevations in the afternoons through Thursday due to warm and dry conditions, though the lack of significant heat or winds will keep the threat low. Dead fuel moistures will remain on steady or falling trends for the next couple days.
- Showery and cool conditions will bring a substantial increase in the dead fuel moisture and declines in fire activity from late this week through at least all of next week, with the Region likely returning to a state of little or no fire activity for a lengthy period.
- Temperatures will remain around 5 to 10 degrees above average today with widespread highs in the low to mid 80s across much of the lower terrain, except for 90s in the low desert and 70s closer to the coastline.
- Humidity will remain fairly low across inland areas today with widespread minimums around 15% to 30%, except locally lower in the deserts.
- Significant cooling is expected Regionwide Thursday through Sunday. High temperatures will fall below normal with mid to upper 60s common across much of the lower terrain by the weekend, except near 80 in the low desert. Humidity will become much higher everywhere, especially by Friday.

Predictive Service Area (PSA)	Wed 08 Apr	Thu 09 Apr	Fri 10 Apr	Sat 11 Apr	Sun 12 Apr	Mon 13 Apr	Tue 14 Apr
North Coast							
Mid Coast to Mendocino							
Bay Marine							
Diablo-Santa Cruz Mtns							
Northwestern Mtn							
Sac Valley/Foothills							
NE California							
Northern Sierra							
Far Eastside							
Sierra Front-South							
Sierra Front-North							
Eastern Sierra							
Central Sierra							
Southern Sierra							
Sierra Foothills							
Central Valley							
Central Coast Interior							
Central Coast							
South Coast							
Western Mountains							
Eastern Mountains							
Southern Mountains							
Lower Deserts							
Eastern Deserts							
Central Mojave							
Upper Deserts							
Northern Deserts							

■ Minimum Risk ■ Windy & Dry ■ Lightning
■ Low Risk ■ Burn Environment ■ No Data
■ Moderate Risk