



Biomass Utilization

TOOLKIT & RESOURCES

This factsheet is designed to provide information and assist communities with current and future recovery efforts following an incident or disaster through the coordination of available funding resources and technical assistance.

Funding OPPORTUNITIES

Bioenergy Feed in Tariff Program

California Public
Utilities
Commission
(CPUC)

The Bioenergy Feed-in Tariff Program or the Bioenergy Market Adjusting Tariff (BioMAT) is a feed-in tariff program for small bioenergy renewable generators less than 5 MW in size. The BioMAT program offers up to 250 MW to eligible projects through a fixed-price standard contract to export electricity to California's three large investor-owned utilities (IOUs). Electricity generated as part of the BioMAT program counts towards the utilities RPS targets.

Business & Industry Loan

U.S. Department of
Agriculture (USDA)
Rural Development

This program provides loan guarantees to commercial lenders for loans to eligible rural businesses. Examples of guaranteed loan funds uses include business development, growth, modernization, conversion, or repair; buy and develop land, buildings, and associated infrastructure for commercial or industrial use; buy and install machinery and equipment; refinance debt to create cash flow and create jobs; acquire businesses or industries when the loan will maintain operations, and create or save jobs.

Blooming Prairie Foundation

Philanthropic
Grants

The Blooming Prairie Foundation (BPF) is a 501(c)(3) organization that will work to encourage, support, promote and enhance the development of organic and natural products and enhance cooperative development in the natural products industry.



Cliff Family Foundation

Philanthropic
Grants

The Cliff Family Foundation is a 501(c)(3) nonprofit organization that provides grants to applicants that prioritize strengthening our food system, enhance community health outcomes, safeguard our environment and natural resources, and demonstrate strong community ties.



Technical ASSISTANCE

STATEWIDE WOOD ENERGY TEAM

University of California - Agriculture and Natural Resources

- The California Statewide Wood Energy Team (SWET) works directly with wood energy businesses and community-led wood energy projects to provide expertise, technical assistance, and small grants. The team also produces work to effectively develop the California wood energy industry.



CALIFORNIA CONSERVATION CORPS (CCC)

Grants and Funding Opportunities

- The California Conservation Corps awards grants to **Certified Local Conservation Corps** and California Native American tribes to support job skills training and educational opportunities while preserving and protecting the environment.
- The CCC operates 25 locations across California, with year-round training in culinary, emergency response, forestry, habitat restoration, resource conservation, trails, veterans fisheries, and wildland firefighting.

INNOVATIONS IN BIOCHAR

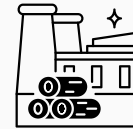
United States Department of Agriculture

- Provides information on a Conservation Innovation Grant project called "On-Farm Production and Use of Biochar for Composting with Manure."

LINKS TO ARTICLES & OTHER RESOURCES



- [UC ANR Woody Biomass Utilization](#)
- [Energy from Biomass: Why Does Transforming Matter?](#)
- [Northern Arizona University: Biomass Disposal Methods](#)
- [Biomass Can Fight Climate Change, But Only If You Do It Right](#)



- [Valley Vision: Biomass & Beyond Regional Event](#)
- [Sustainability Directory: Biomass Utilization](#)
- [CBEA Biomass: Essential for California](#)
- [BLM California Biomass and Bioenergy](#)
- [UC Davis: The Good and Bad Uses of Biomass for California](#)

Prepared by the Cal OES Recovery Support Team 2025