
Sent:

Wednesday, August 20, 2025 1:05 PM

August 2025 Edition



Cal OES
GOVERNOR'S OFFICE
OF EMERGENCY SERVICES

RECOVERY ROUNDTABLE
NEWS · RESOURCES · MORE



Governor Newsom's visit to the Pasadena Joint Field Office for DR-4856 January 2025

Greetings from the Cal OES Recovery Directorate!

Welcome to Summer 2025 edition of the Recovery Roundtable. We hope that this message finds you well. As California communities continue to recover from recent fires, storm events, and other disasters, our goal is to provide information and resources to support recovery efforts at all levels of government.

If you have any suggestions on topics you would like to see addressed, please send those to ircbranchsupport@caloes.ca.gov and don't forget to click the "Subscribe" link in the bulletin so you don't miss out on future editions. Thank you for all you do for California and we appreciate your partnership!

In This Edition

[Recovery Highlights](#)

[Recovery Resources](#)

[Milestones and Deadlines](#)

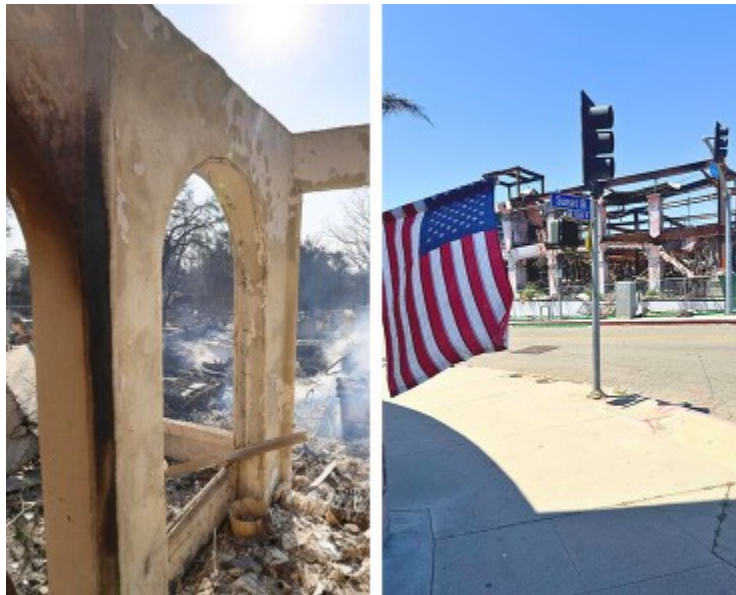
[Career Opportunities](#)



Recovery Highlights

CA Wildfire and Straight Line Winds (DR-4856)

Cal OES Recovery staff continue to support recovery efforts in response to the catastrophic Palisades and Eaton fires in southern CA that began in early January 2025. Below are some of the events and highlights held earlier this year.



Side-by-side images of the fire damage, photos taken during damage surveys for DR-4856 at Eaton Fire on the left and Palisades Fire on the right.



Individual Assistance (IA) Survivor-Focused Field Operations

Highlights:

- With immediate federal support three Disaster Recovery Centers (DRCs) opened near the affected areas in early January. to offer services and resource to affected survivors.
- More than 78,000 households were served in the DRCs from January through May.
- Successfully transitioned to survivor support locations that continue to offer services to survivors.
- Worked with FEMA on California's first Transitional Sheltering Assistance activation under an Individual Assistance Declaration in five years. We collaborated with California Department of Social Services and hotel partners to address housing needs during a period of limited rental availability.
- Supported additional Community Services Programs including Clean and Sanitize Assistance, Disaster Case Management, Disaster SNAP, Disaster Legal Services, and Disaster Unemployment Assistance.
- Received support through the Emergency Management Assistance Compact (EMAC). Personnel from Florida, New York, Ohio, and Washington supported the Voluntary Agency Liaisons who work with Non-Governmental Agencies (NGO). These NGOs provided additional resources for survivors.
- The local NGOs in the Palisades and Eaton fire areas came together with the goal of forming Long-Term Recovery Groups (LTRGs) spanning across multiple

jurisdictions. Cal OES was privileged to attend and offer any guidance and support during this process.



From L to R: Jennifer Roy, Daniel Martinez, and Chris Camacho of the IA VAL team stand together while supporting a community event in Los Angeles County.

Recovery Support Functions/Task Forces

After the January 2025 wildfires in Southern California, all six RSFs were activated to support the transition from immediate response to long-term recovery. Working with state and federal partners under the California Disaster Recovery Framework and the updated National Disaster Recovery Framework, the RSFs contributed several key resources: they partnered with the Recovery Analytics Unit to produce a Community Impact Assessment that informed leadership decisions, created resilience center guidance to assist Los Angeles County's rebuilding efforts, completed a joint Recovery Needs Assessment to identify early recovery priorities, and assembled a wide-ranging collection of recovery strategies developed in collaboration with city, county, state, and federal stakeholders to guide long-term planning.



The Housing Task Force worked with state and federal partners to provide weekly reports with housing-related data to key stakeholders. The Research Data Specialist (RDS) Team supported these efforts through a dashboard tracking FEMA IHP assistance, insurance details, property damage, and nearby rental resources.

Additionally, a broader dashboard based on a California HCD Housing Survey outlined the availability of HCD-funded rental units offered to survivors under Executive Order N-23-25, covering unit types, vacancy rates, income levels, target populations, and subsidies.

To learn more about the critical data to gather when in disaster recovery, please reach out to our RDS Team by emailing longtermrecovery@caloes.ca.gov and stay tuned for a new Data-Guided Decision-Making Fact Sheet coming soon

All of these are key efforts that the RSF Team navigate with state and federal partners to support counties in their recovery process. For more resources, please see the Recovery Resources section below.



Los Angeles Wildfire Partnership Recovery Workshop Brings Together Over 135 Leaders for Day of Collaboration

On July 9th, the Joint State and Federal Interagency Recovery Coordination (IRC) team convened the Los Angeles Wildfire Partnership Recovery Workshop—a rare and meaningful opportunity for in-person collaboration among local, state, federal, and community organization recovery leaders. With representation from 87 agencies and over 135 participants, the workshop was both productive and inspiring, thanks to the active engagement of everyone involved.

A special thank you to Kaiser Permanente for generously hosting the event at the Bernard J. Tyson School of Medicine. The venue provided a fitting backdrop for our collective mission to strengthen community resilience and support long-term recovery.

In just one day, participants achieved significant progress:

- **Engaged all six State/Federal Recovery Support Functions (RSFs)** to explore innovative and integrated approaches to long-term recovery.
- **Shared insight into recovery funding pathways** through the Philanthropy and Funders Collaborative Partnership.
- **Built and renewed critical relationships** to help move from planning to action.



This workshop reflects the power of interagency coordination and community partnerships in driving forward recovery efforts. We look forward to building on this momentum in the months ahead and anticipate offering this sort of workshop for all future disaster recovery operations.

Global Empowerment Mission Offers LA Wildfire Survivors A Place to Rebuild & Rise

Global Empowerment Mission (GEM), known for its efficient disaster response in 71 countries and all 50 U.S. states, hosted its first Rebuild and Rise Job Fair on July 19, 2025, in Pasadena to support long-term recovery for LA County wildfire survivors.

Held on July 19, 2025 at Pasadena Church of the Nazarene, the job fair connected thousands to employment opportunities; the recovery area and distribution site offered emotional support and vital resources.



Highlights include:

- **2,417 households (6,043 individuals)** attended
- **1,035 job applications submitted** to employers like AmeriCorps, CalFIRE, LAX, and more; many hired on-the-spot
- **\$986,073 in in-kind resources distributed** (clothing, shoes, household goods and other important new and un-used donations)
- **Resource Room** offering one-on-one help from FEMA, Operation Hope, Core, and economic development agencies including LA County Economic Development Office (DEO), Workforce Development, Cal OSBA, GO-Biz, SBA, among others
- **Additional Resources:** Disaster Case Managers, Emotional care, Acupuncture care, CPR training courses, job interview prep, resume writing computer lab,
- Free lunch by California Southern Baptists. special guest speakers, family-friendly music, entertainment and kids' activities

Plans are underway to stage the next Job Fair and resource distribution in Mid-October, in Santa Monica to reach Palisades and Malibu wildfire survivors.

Disaster Behavioral Health support for LA Wildfire Survivors



The Administration for Strategic Preparedness and Response – Disaster Behavioral Health (DBH), along with the California Department of Public Health (CDPH), is partnering with the Los Angeles County Department of Mental Health (LACoDMH) to enhance behavioral health support for disaster survivors. This collaboration includes Psychological First Aid “train the trainer” sessions for Community Based Organization professionals and paraprofessionals. Two-day trainings were held in July and DBH will offer ongoing behavioral health training to expand LACoDMH’s capacity to respond to survivors’ needs by strengthening the skills of those delivering care.

CA Severe Storm and Flooding (DR-4758)

Crisis Counseling Program (CCP):

The CCP Regular Services Program was a great success due to our San Diego County partners and the Department of Health Care Services (DHCS). The program concluded on April 19, 2025, having delivered thousands of primary services to the San Diego community. This great partnership contributed to a smooth closeout process.

Los Angeles Civil Unrest - June 2025

Los Angeles City and County with support of the Cal OES Disaster Analysis Unit (DAU) and SBA applied for an Economic Injury Disaster Loan. On June 27, 2025, U.S. Small Business Administration obtained an Economic Injury Disaster Loan declaration.

Safety Assessment Program (SAP)

SAP Field Exercise

The Safety Assessment Program (SAP) utilizes volunteers and mutual aid resources to provide professional engineers, architects, and certified building inspectors to assist local governments in safety evaluation of their built environment in the aftermath of a disaster.

In partnership with the City of Santa Monica, the SAP team executed a two-day catastrophic earthquake simulation training with 50+ trained Evaluators, alongside members from Caltrans, DGS, CALBO, AIA and SEAOSC last fall. The team successfully tested the newest in survey and notification tools in real-world conditions.

Future Collaboration: Recovery and SAP teams will build on the success of the previous exercise by performing a more in-depth simulation in the Fall of 2025. They plan to deepen partnerships with key agencies and volunteer organizations to further strengthen program

support. For more information in how your organization can participate, email by using the button below.

[Contact SAP](#)

SAP Portal Rebranding

Cal OES SAP is proud to introduce **CALSAFE** (Safety Assessment for Field Evaluations), formerly known as *Veoci*. This new branding better reflects our mission and statewide focus on safety, coordination, and rapid support for all participating agencies. All SAP operational functions such as mass notifications, field deployments, and data collection will now operate under CALSAFE. While the system's core functionality remains unchanged, users will experience no disruption in access or capabilities.

Current SAP Evaluators and Trainers can use the button below to access your SAP profile and digital SAP ID Cards.

[CALSAFE Portal](#)



Environmental and Historic-
Preservation
Emergency Regulatory and
Permitting Guidance

Environmental and Historic Preservation (EHP)

EHP continues to work with Local, State, and Federal partners to steer the process to address disaster recovery activities associated with the late 2024 and early 2025 wildfires including, Park, Borel, and the Los Angeles events. EHP compliance requirements were summarized in the 2025 Statewide Wildfire Environmental Protection Plan (EPP) which was completed with state and federal partners in July.

The Cal OES EHP team is available to provide support to our local and state partners with expertise in how to handle recovery projects with complex or sensitive environmental and historic preservation issues whether or not there is a state or federally declared disaster. Please see in the Recovery Resources section below some useful guides for your projects. You can also click the button below to see all EHP resources available on our webpage.

For questions or assistance please feel free to contact us: RecoveryEHP@caloes.ca.gov

[EHP Webpage](#)



To receive future editions:

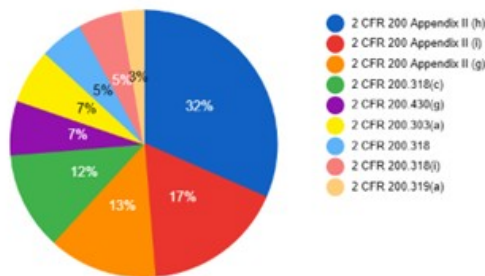
Subscribe to Recovery Roundtable



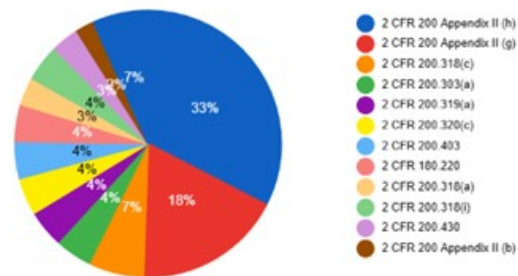
Recovery Resources

Quality Control & Monitoring (QCM)

2. PA Common Findings Count



1. HM Common Findings Count



Quality Control & Monitoring (QCM) conducts compliance assessments on federal funds awarded to California cities, counties, special districts and nonprofits. The majority of those awards are funded via Public Assistance (PA), Hazard Mitigation Grant Program (HMGP) and Fire Management Grant Program (FMAG).

Since 2020, QCM has tracked common findings identified during our compliance assessments. In the last two years we've seen consistent challenges related to contracting, most frequently involving gaps in required contract language. More than sixty percent of all PA findings, and more than fifty percent of HMGP findings result in local corrective action to address missing contract language required by the Code of Federal Regulations (CFR).

FEMA provides a number of [guidance documents](#) to assist in meeting requirements. Specifically, the FEMA Contract Provisions Guide identifies the mandatory contract language, as well as samples of recommended language with links to the relevant CFR citation. Reviewing the relevant program guidance, as well as information provided during applicant briefings and application preparation workshops are the keys to avoid findings, corrective action, and the potential recapture of funds.

Guidance Tools

Contract Provisions Guide

Navigating Appendix II to Part 200—Contract Provisions for Non-Federal Entity Contracts Under Federal Awards

Roadmap to Procurement Compliance

Procurement Disaster Assistance Team (PDAT)

Public Assistance Program and Policy Guide

Hazard Mitigation Assistance Program and Policy Guide

Environmental and Historic Preservation Emergency Regulatory and Permitting Guidance
Governor's Office of Emergency Services
February 2023 v1.4



California Governor's Office of Emergency Services
Storm Debris Removal Quick Guide
Public Assistance Projects

Checklist for Reviewing Procurements Under Grants by Non-Federal Entities (States, local and tribal governments, institutions of Higher Education, Hospitals, and private non-profit organizations) – 2 CFR pt. 200

Purchasing Under a FEMA Award: Common Mistakes to Avoid by Non-State Entities

Purchasing Under a FEMA Award: Socioeconomic Contracting

Purchasing Under a FEMA Award: Exigency or Emergency Circumstances

Grant File Documentation & Recordkeeping

Contract Provisions Quick Reference Guide

Tables A and B are designed to help FEMA grant recipients and subrecipients conduct a quick reference of the applicability of a specific contract provision and whether sample contract language is included within this Guide for incorporation within the recipient's contract.

The Tables are divided between the required contract provisions set forth under 2 C.F.R. Part 200, Appendix B and those that FEMA recommends in addition to those required by 2 C.F.R. Part 200.

Table A: Required Contract Provisions (continued next page)

Provision (Appendix B Section)	Applicability	Sample Contract Language Included
1. Antidiscrimination and nondiscrimination provisions (201.31(a)(1)-(4))	Greater than Temporary Acquisition Personnel (GAP) \$250,000	No. It is based on HRF's provisions.
2. Construction, design and construction (201.31(a)(5))	Greater than \$25,000	No. It is based on HRF's provisions.
3. Health and Environmental Protection (201.31(a)(6))	Construction work	Yes. Exact language from 44 C.F.R. § 601.1.401 is included.
4. Safety Hazards (201.31(a)(7))	Construction work	Yes. See reference to required language at 20 C.F.R. § 5.5. See.
5. Unlawful and Discriminatory Act (201.31(a)(8))	Construction work greater than \$1,000	Yes.
6. Contract Work, Subcontract and Subcontractor (201.31(a)(9))	Greater than \$250,000 or a modification of a contract	Yes. Exact language required from 20 C.F.R. § 5.5. See.
7. Waiver to construction, design and construction or alterations (201.31(a)(10))	Funding agreement	Yes.
8. Waiver to construction, design and construction or alterations (201.31(a)(11))	Greater than \$250,000	Yes.
9. Construction and Construction (201.31(a)(12))	Greater than \$25,000	Yes.
10. Waiver to construction, design and construction or alterations (201.31(a)(13))	Greater than \$250,000 and Certification required for all contracts greater than \$250,000	Yes. Clause and certification.

PRICING GUIDE FOR RECIPIENTS AND SUBRECIPIENTS UNDER THE UNIFORM RULES (2 C.F.R. PT. 200)

FEMA Policy: Public Assistance Simplified Procedures FEMA Policy FP-104-23-001

Current as of 10/28/16



Key Points Regarding Contracting Practices for Local and Tribal Governments, Institutions of Higher Education, Hospitals, and other Non-Profits Receiving FEMA Public Assistance Grant Funds

DHS OIG HIGHLIGHTS
AUDIT TIPS FOR MANAGING
DISASTER-RELATED PROJECT COSTS

PUBLIC ASSISTANCE CONTRACTING GUIDANCE
FOR FEMA-ELIGIBLE PROJECTS, NON-STATE SUBRECIPIENTS

Procurement Disaster Assistance Team (PDAT) Field Manual

Procurement Information for FEMA Award Recipients and Subrecipients

FRINGE BENEFIT RATE SHEET INSTRUCTIONS



Cal OES
GOVERNOR'S OFFICE
OF EMERGENCY SERVICES

Learn more by visiting the

Quality Control Website

Reverse Mortgage and Foreclosure Assistance Workshops

Each disaster can expose different vulnerable communities. The Housing RSF working with the Housing Task Force created a workgroup focused on helping a large population of homeowners understand their reverse mortgage requirements, especially after property damage from recent disasters, by hosting monthly workshops. After a successful May event, the working group has planned additional monthly workshops through 2026 addressing the needs of homeowners impacted by LA Fires.

City of Los Angeles Economic RSF to Host Small Business Summit for Pacific Palisades Businesses

The City of Los Angeles' Economic Recovery Task Force is organizing a **Small Business Summit** in September 2025 to support Pacific Palisades businesses impacted by the wildfire. Designed to spark recovery, growth, and connection, the summit will bring together resources and strategies tailored to the needs of affected businesses.

Mapping Access to Healthcare

The Health and Social Services (HSS) RSF, in partnership with the Administration for Strategic Preparedness and Response and the California Department of Public Health (CDPH), is developing a geospatial recovery mapping tool. This tool is designed to identify gaps in access to both health and behavioral health care for communities where survivors have relocated. Through tracking population movement, the project maps survivors' former and current residences relative to key health and human services—including primary, emergency, and specialty care—to support preparedness and response planning and identify areas experiencing increased demand for these services.

Monthly Long-Term Housing Recovery Meetings and Newsletters

The Housing RSF provides monthly Long Term Housing Recovery meetings and newsletters. Some topics of discussion we have covered in past meetings include Home Hardening presented by Cal OES Hazard Mitigation Grant Program (HMGP) and HCD's Community Block Development Grant-Disaster Recovery (CBDG-DR) program covered by our HCD partners.

Long Term Recovery Planning

As part of DR-4856 efforts, the Community Planning and Capacity Building (CPCB) RSF is working with the FEMA Community Assistance (CA) RSF team to support the City of Malibu's efforts to develop a local RSF structure and long-term recovery plan. This includes providing technical assistance on developing a recovery action plan that aligns with the City's strategic plan and assessing whole community engagement needs in the resilient rebuild process.

Some of the resources being used in this process include the CPCB RSF [Local Disaster Recovery Manager Guidance](#), [Planning for Disaster Recovery Fact Sheet](#), and various Long-Term Recovery Planning Guide and associated resources (under the "Community Planning and Capacity Building Resources" heading on our webpage).

Click the buttons below to contact any of the RSF Teams OR to utilize our RSF webpage for more information regarding updates on any of the above topics, upcoming meetings and newsletters.

Contact Long Term Recovery

RSF Webpage



Supporting Local Governments in Staying Financially Afloat

With CA fires drastically impacting the ability of local companies to recover and maintain operations, FEMA approved the activation of the [Community Disaster Loan \(CDL\) program](#). CDL is a 0% loan program that is offered by FEMA to assist with operational costs for local governments who experience substantial revenue loss after a disaster. An informational CDL webinar was held on June 13th, with potential applicants, FEMA, and the Cal OES RSF team present. For more information:

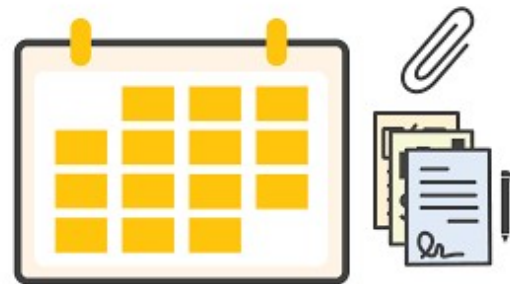
[CDL Program Information](#)

Updated Policy Guides

FEMA provided updated guidelines for the **Individual Assistance Program** and the Preliminary Damage Assessment process in July 2025:

- [Individual Assistance Program and Policy Guide: Updated July 2025](#)
- [Preliminary Damage Assessments Guide: Updated July 2025](#)

Preliminary Damage Assessment tools are being updated by Cal OES's Analytics and IA Units in an effort to streamline and improve future event operations in the coming months.



US EDA Supplemental Grant

U.S. EDA announced a Supplemental Grant Program that provides \$1.45B in disaster recovery funding nationwide for U.S. communities that received major disaster declarations due to hurricanes, wildfires, severe storms and flooding, tornadoes, and other natural disasters occurring in 2023 and 2024. Potential eligibility for certain 2023, 2024 Southern



California winter storm disasters. Preliminary information (with more to come, including applicant webinars):

[EDA Strategic Initiatives:](#)

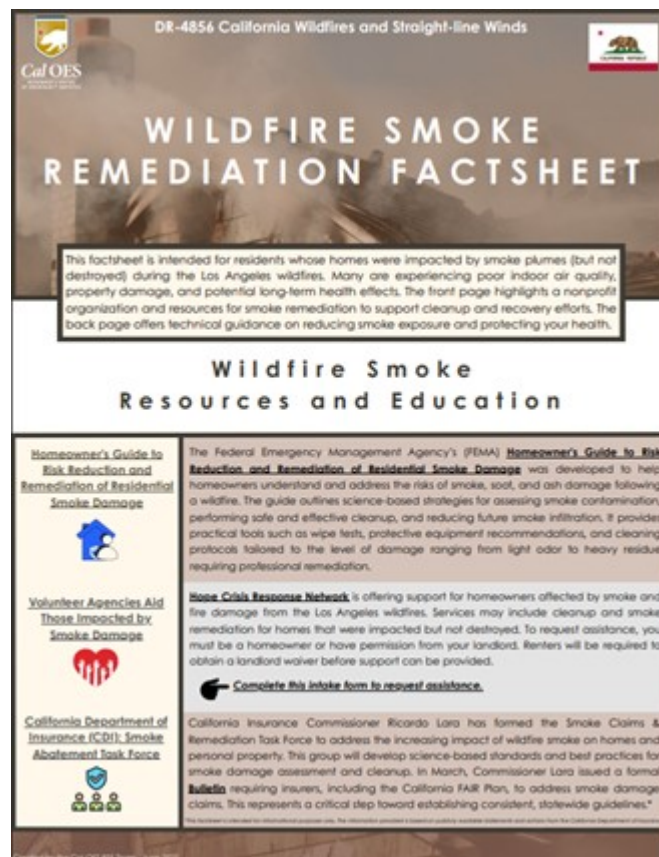
[Disaster Supplemental Fact Sheet](#)

Cross-sector collaboration of five agencies to enhance California's economic resilience, and specifically Los Angeles County: [06.12.25 Outsmart Disaster Press Release PCR](#) .

Wildfire Smoke Remediation

In support of the city of Altadena and the Palisades, the RSF team created smoke abatement resources for residents whose homes were impacted by smoke plumes (but not destroyed) during the Los Angeles wildfires.

Wildfire Smoke Remediation Factsheet





The Safety Assessment Program (SAP) Trainings

The Safety Assessment Program launched a flexible, online self-paced CSTI training to enhance evaluator learning and improve program efficiency. For Engineers, Architects and Building Inspectors interested in post disaster infrastructure evaluations in California or interested in renewing your expired membership click the button below to reach our webpage with information on the latest trainings available:

[SAP Webpage with Upcoming Trainings](#)

Environmental and Historic Preservation (EHP) Resources

The EHP team is available to provide support to our local and state partners with expertise in how to handle recovery projects with complex or sensitive environmental and historic preservation issues. For questions or assistance please email us at RecoveryEHP@caloes.ca.gov.

Please use the links below to get copies of the EHP regulatory and permitting guide, the ArcGIS EHP jurisdictions map, and the permit self-assessment tool that provides recommended agency contacts and potentially required permits based on your individual circumstances.

[EHP Permit Self-Assessment Tool](#)

[EHP Jurisdictions](#)

[Regulatory and Permitting Guide](#)



Milestones and Deadlines

Midsize and Large Drinking Water System Infrastructure Resilience and Sustainability Program

- Type: Financial Assistance
- US EPA

- This program assists medium and large size public water systems with protecting drinking water sources from natural hazards, extreme weather events, and cybersecurity threats.
 - Due October 6, 2025 - [Information Link](#)

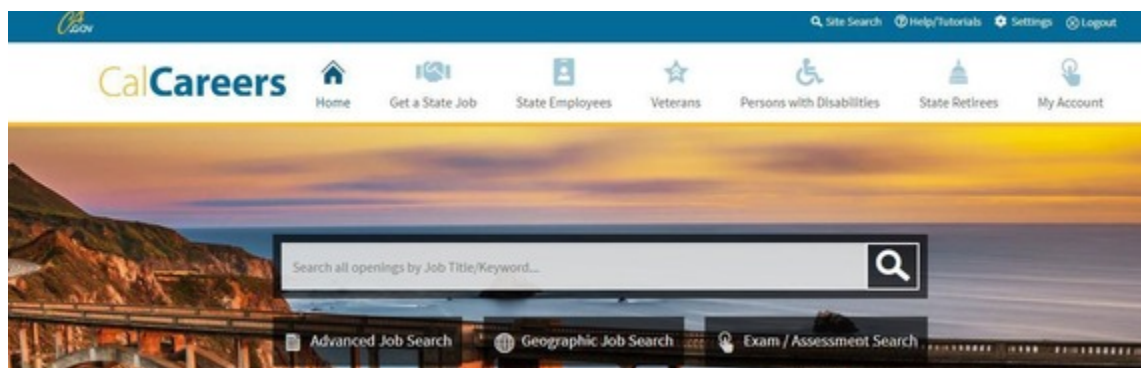
Wildfire Resilience grant by the Sierra Nevada Conservancy

This grant is for local Education Agencies within the 24 county Sierra Cascade Region. Eligible projects must have completed environmental compliance or approval under the EPP; be an implementation project with on-the-ground improvements resulting in a clear, demonstrable, and enduring public benefit; be located within the Sierra-Cascade Region; be consistent with the SNC mission and program areas as defined in the SNC Strategic Plan; be consistent with the requirements of the funding source and budget provisions; and commence on-the-ground work no later than October 15, 2026.

<https://www.grants.ca.gov/grants/2025-wildfire-forest-resilience-directed-grant-program/>



Career Opportunities



Are you looking for an exciting and fast-paced career?

Join the California Governor's Office of Emergency Services (Cal OES) and be part of an organization that serves as a leader in emergency management and homeland security through dedicated service to all. We are looking for enthusiastic and motivated individuals to join our team. If you are interested in a challenging opportunity in a high-energy, team-oriented environment, you are encouraged to apply.

August Opportunities



You're receiving this newsletter because you're in our network of Recovery partners. If you like what you see, opt-in to subscribe to quarterly newsletters!

Subscribe to the Recovery Newsletter!



Cal OES
GOVERNOR'S OFFICE
OF EMERGENCY SERVICES

Stay up-to-date with [Cal OES](#)!

Get updates on [YouTube](#), [Facebook](#), [Twitter](#) & [Instagram](#)

Visit the [Cal OES News Blog](#) to stay connected

Update your subscriptions, modify your password or email address, or stop subscriptions at any time on your [Subscriber Preferences Page](#). You will need to use your email address to log in. If you have questions or problems with the subscription service, please visit subscriberhelp.govdelivery.com.

This service is provided to you at no charge by [California Governor's Office of Emergency Services](#).

WARNING: Do not click links or attachments unless you recognize the sender and know the email is safe.