



**Cal OES**  
GOVERNOR'S OFFICE  
OF EMERGENCY SERVICES

# Interagency Recovery Coordination

*Community Planning and Capacity Building  
Quarterly Webinar*

August 29, 2024

Source: Plumas County



# Housekeeping

- The webinar is being recorded
- Audience microphones are muted
- Ask questions using the Chat feature
- The slide deck will be emailed to attendees
- The slides and recording will be posted on [www.caloes.ca.gov/RSF](http://www.caloes.ca.gov/RSF)

# Agenda

Time	Agenda Item	Responsible Party	Notes
<b>3:00 PM</b>	Introduction and Housekeeping	Sasha Jones	
<b>3:05 PM</b>	California Governor's Office of Emergency Services	JR DeLaRosa	Opening Remarks
<b>3:10 PM</b>	Federal Emergency Management Agency	Rosemarie Bradley Catherine Welker	FEMA National Resilience Guidance
<b>3:25 PM</b>	California Governor's Office of Planning and Research	Sarah Samdin Ankitha Doddanari	OPR Integrated Climate Adaptation and Resilience Program
<b>3:40 PM</b>	City of Santa Cruz	Tiffany Wise-West, PE, PhD	City of Santa Cruz Climate Adaptation Planning
<b>3:55 PM</b>	Q&A	All Speakers	
<b>4:00 PM</b>	Adjourn	Sasha Jones	



**Cal OES**  
GOVERNOR'S OFFICE  
OF EMERGENCY SERVICES



**JR DeLaRosa**

**Cal OES**





**Cal OES**  
GOVERNOR'S OFFICE  
OF EMERGENCY SERVICES



**Rosemarie Bradley**

**FEMA**



**Catherine Welker**

**FEMA**



# National Resilience Guidance

Dr. Rosemarie Bradley, Chief

Cathy Welker, Emergency Management Specialist

Resilience Planning and Analysis Branch

Office of Resilience Strategy

August 29, 2024



FEMA



# Today's Discussion

- Overview of National Resilience Guidance (NRG)
- NRG Implementation Phase

## NRG launch – August 27!

- Please help us spread the word
- Watch the NRG webpage for details of upcoming engagements
- Collaborate with us!



FEMA



## NATIONAL RESILIENCE GUIDANCE

A Collaborative Approach to Building Resilience

AUGUST 2024



FEMA



# National Resilience Guidance Overview

---

- Not just for emergency managers
- Provides a unifying vision across all resilience lenses
- Promotes comprehensive planning for shocks and stressors and their interdependencies
- Emphasizes a systems approach
- Relays the importance of building social trust



**FEMA**



# National Resilience Guidance – Implementation Phase

- Next steps: Operationalize resilience
- Develop supplemental materials
- Integrate NRG resilience concepts into exercises, training, guidance and programs
- Outreach and support to SLTT partners
- Explore emergency and disaster resilience opportunities
- Identify other agencies, organizations', and communities' resilience efforts and needs







[national-  
resilience@fema.dhs.gov](mailto:national-resilience@fema.dhs.gov)



FEMA





**Cal OES**  
GOVERNOR'S OFFICE  
OF EMERGENCY SERVICES



**Sarah Samdin**

**OPR**



**Ankitha Doddanari**

**OPR**





# Integrated Climate Adaptation & Resiliency Program (ICARP)

August 29, 2024



# Agenda

---

- I. ICARP Grant Programs
- II. Plan Alignment Toolkit
- III. Climate Services Portfolio
- IV. Q & A





# Integrated Climate Adaptation and Resiliency Program (ICARP)

*ICARP advances a climate-resilient California for all.*

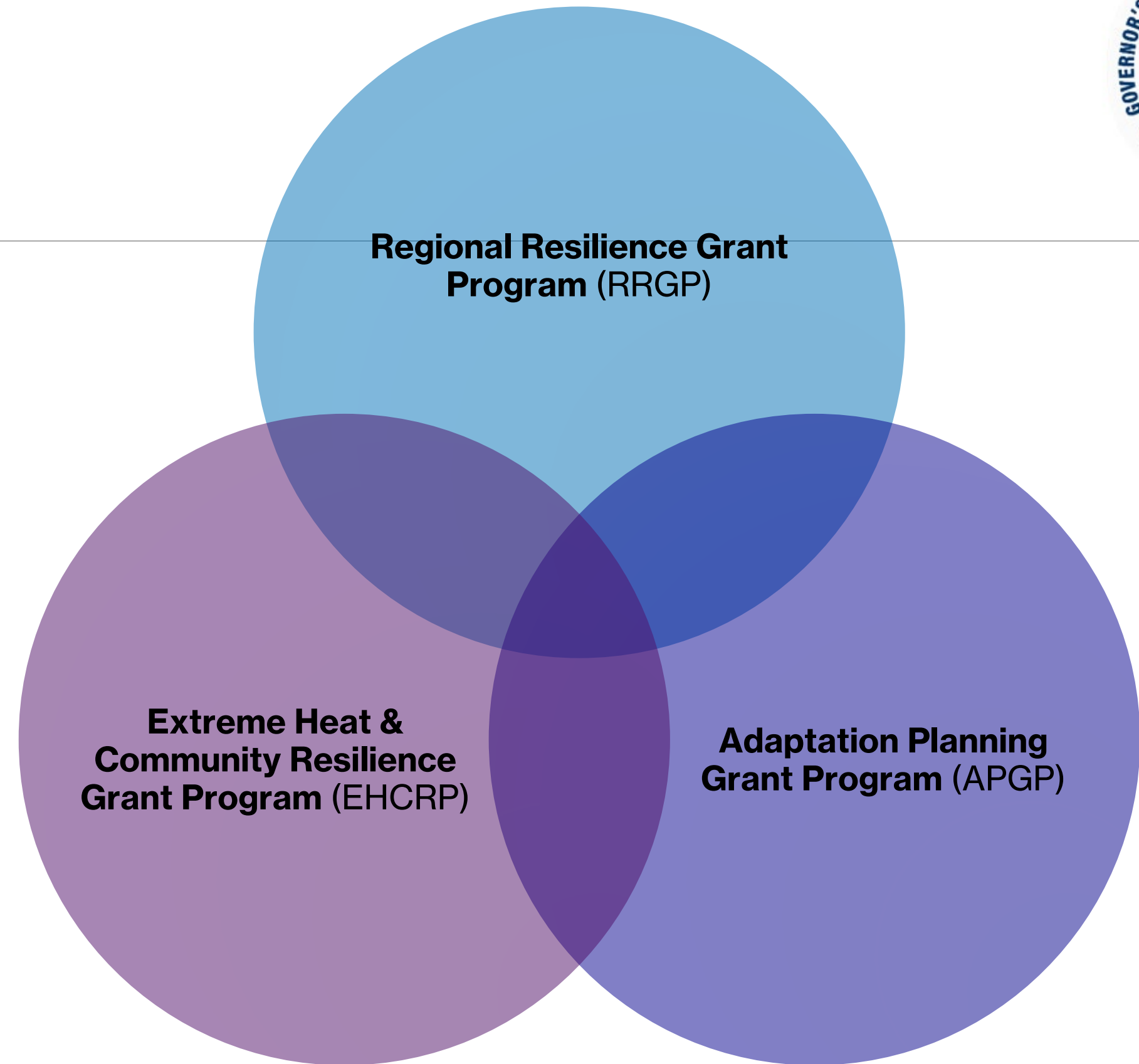
- ❖ **Climate Services and Technical Assistance; FEMA Cooperative Technical Partners program**
- ❖ Technical Advisory Council - Public Forum
- ❖ California Climate Change Research Assessments
- ❖ Adaptation, Regional Resilience, & Extreme Heat Grant Programs





# ICARP Grant Programs

The **2021 & 2022 Budget** authorized ICARP to develop **three new grant programs** to fund local, regional, and tribal climate adaptation and resilience efforts across the state.







# Key Program Priorities

- Support **regional** projects aligned with ICARP priorities that **reduce climate risks** from wildfire, sea level rise, drought, flood, increasing temperatures, and extreme heat events.
- Support projects or actions that address the greatest climate risks in the region, particularly in the most vulnerable communities.





# Key Program Priorities

- Enhance Accessibility and Diversity
- Prioritize Vulnerable Communities-Centric Approach
- Emphasize Integrated Infrastructure Planning
- Build Community Capacity for Resilience
- Elevate Equity in the Planning Process





# Key Program Priorities

- **Equity:** Prioritize resilience resources for communities that have experienced historical and continuing disinvestment, often due to structural racism.
- **Support:** Support the state's efforts to address extreme heat and the urban heat island effect.
- **Health Protection:** Advance change to the environment, policy, and systems that protect and prevent the negative health impacts of extreme heat and the urban heat island effect for heat vulnerable communities.
- **Statewide Capacity Building:** Build statewide capacity to plan for and implement equitable planning strategies.





# Plan Alignment





# What is Plan Alignment?

---

Plan Alignment, in essence, **is based on collaboration.**

It's a **shared understanding, process, and structure, and a suite of aligned plans.**





# What are the benefits?

---

- **Support plan implementation**
- **Community alignment and support**
- **Reduce barriers, duplication, and conflict**
- **Leverage resources**





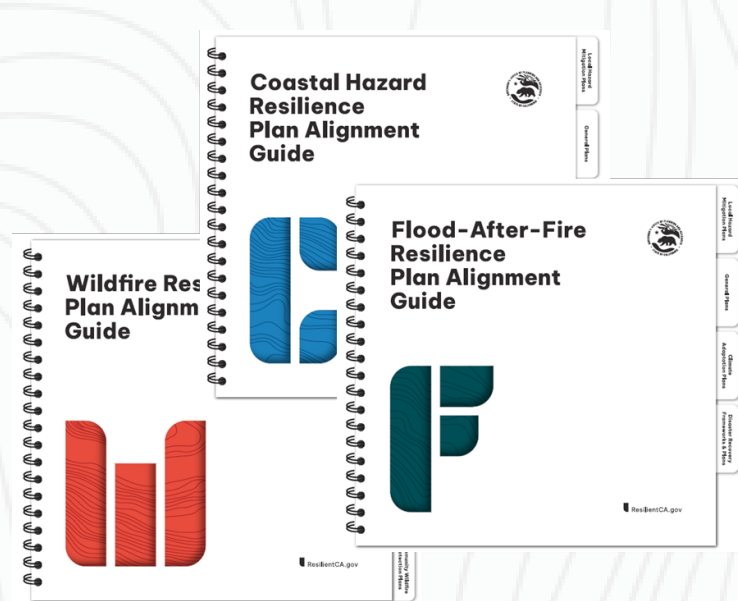
# Why plan alignment for coastal resilience?

**“Rising sea level pays no attention to which jurisdictions are being flooded, who owns or manages the assets flooded, who is impacted, what departments need to be involved, or what authorities are responsible for solutions. The broad reaching impacts of climate change requires interdisciplinary, creative and collaborative approaches to solutions...We cannot solve climate change in one plan, process or project.”**

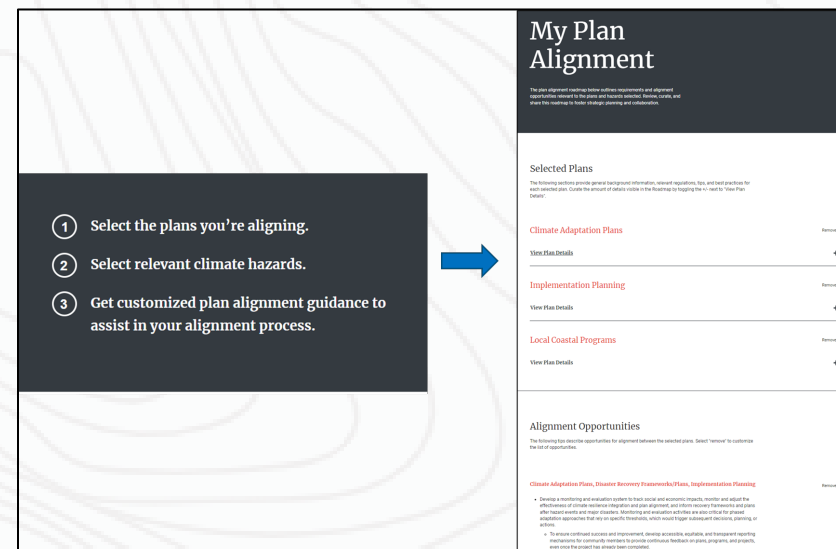
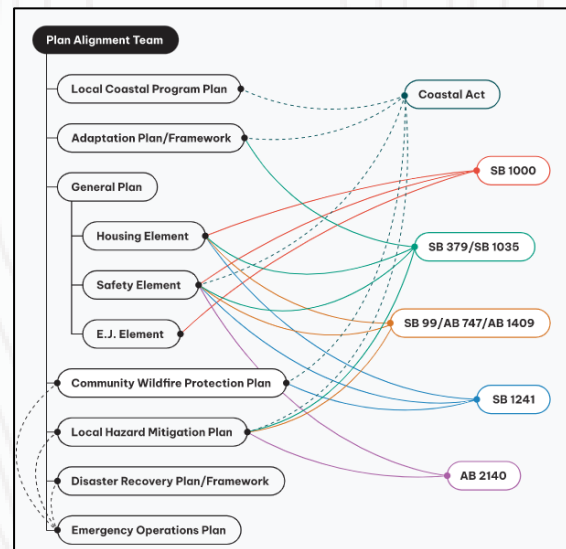
—Adaptation Roadmap, San Francisco Bay Conservation and Development Commission



# The Climate Resilience Plan Alignment Toolkit



- 3 guides, available online, as PDF, and as a booklet
- 3 Case Studies
- Infographics
- Community Engagement Resources
- Online decision support tool
- Introductory information (“Big Ideas” & “Best Practices”)



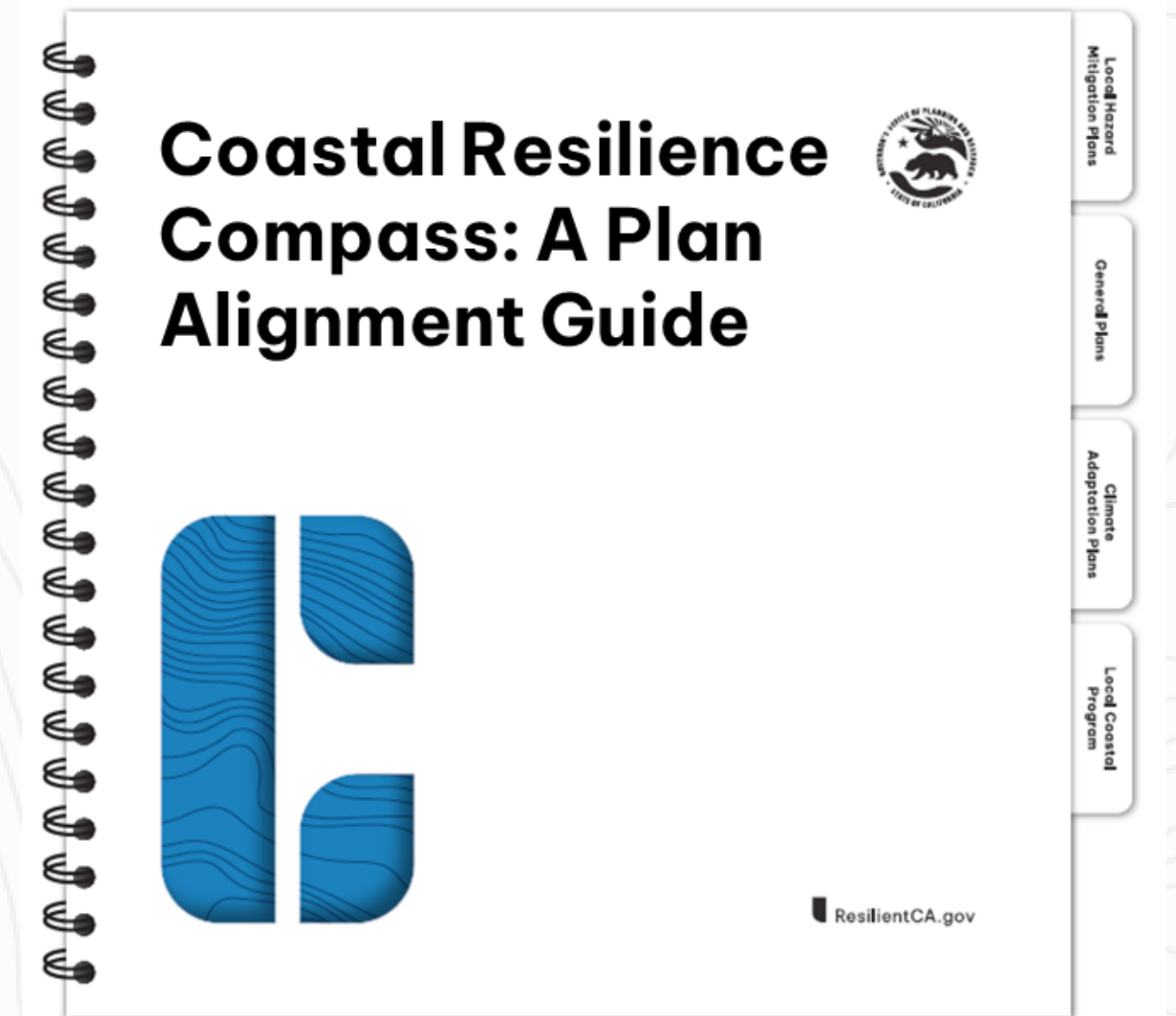
**[ResilientCA.org/plan-alignment](https://ResilientCA.org/plan-alignment)**



# An alignment guide to advance cohesive coastal resilience.

## Designed to help communities...

- meet state & federal planning requirements
- balance multiple local priorities
- conduct risk & vulnerability assessments
- advance equitable outcomes & community engagement
- build capacity to plan & implement solutions





# The guide covers...

---

- why prioritize plan alignment for coastal resilience?
- ideas and best practices for effective alignment
- tips for overcoming challenges
- introduction to phased adaptation / adaptation pathways
- chapters on local coastal programs, hazard mitigation plans, adaptation plans, and general plans
- tips for implementation
- and so much more...



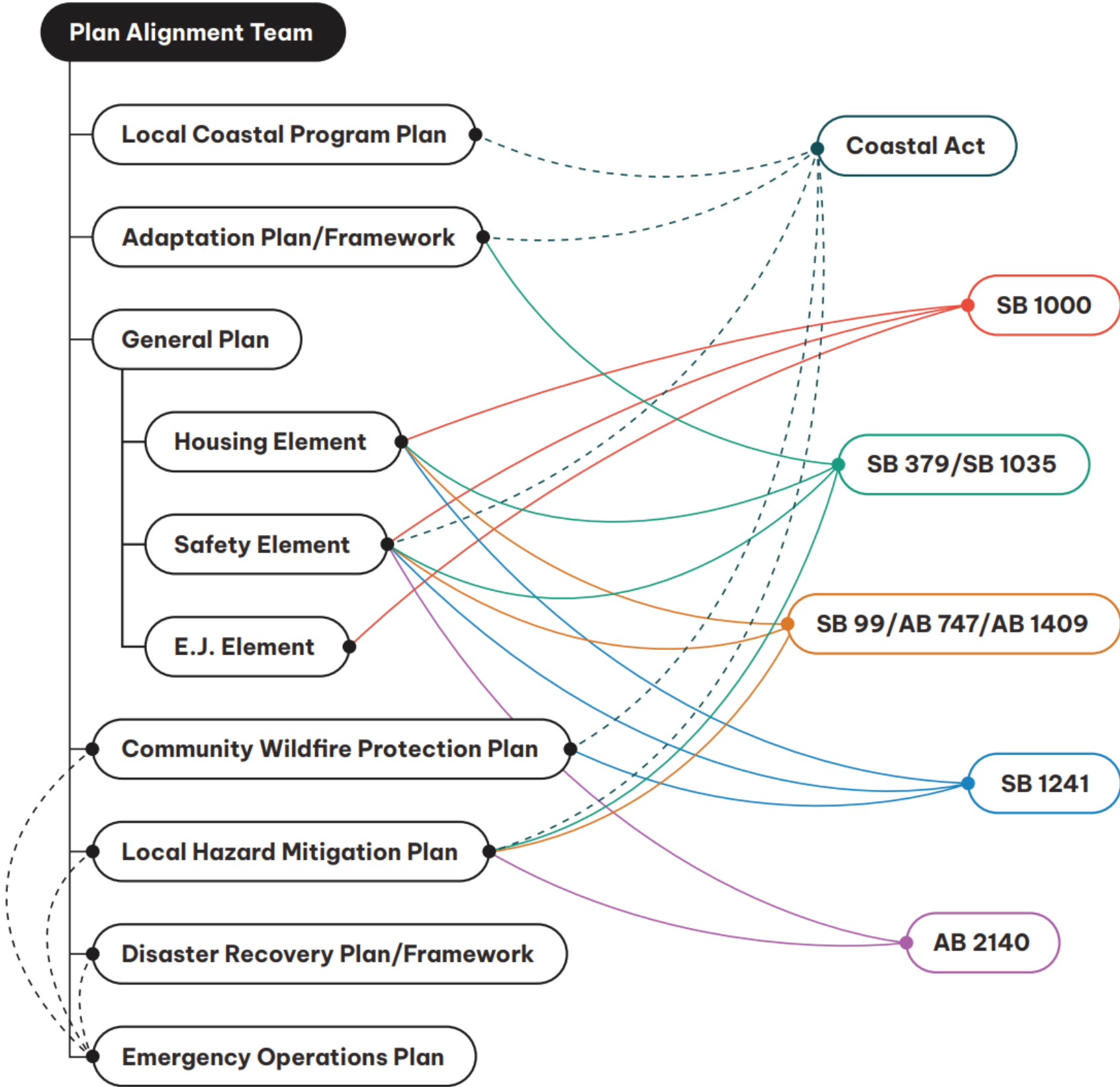
# Local Plans & State Regulations

Visual summary of relationships between common local resilience planning documents in California and key resilience planning regulations.

Note: this graphic reflects both plan relationships reflected in statute, such as relationships between Local Hazard Mitigation Plans and General Plan Safety Elements, as well as plan relationships that are topically relevant, but not legally related, such as relationships between Community Wildfire Protection Plans and General Plan Safety Elements. The Figure does not show all possible connections between plans, and is subject to change as new statutes come into effect.

For additional details and the most up-to-date information on local planning requirements, reference the following corresponding statutes:

- AB 2140 (2006) (Gov. Code §§ 65302.6 and 8685.9);
- SB 379 (2015) and SB 1035 (2018) (Gov. Code, §§ 65302, subd. (g)(4) and (g)(6));
- SB 1241 (2012) (Gov. Code, §§ 65302 and 65302.5);
- SB 1000 (2016) (Gov. Code, § 65302, subd. (h));
- SB 99 (2019) (Gov. Code, § 65302, subd. (g)(5));
- AB 747 (2019) and AB 1409 (2021) (Gov. Code, § 65302.15);
- California Coastal Act (Pub. Resources Code, § 30000 et seq.)





# Phase 1: Explore, Define, and Initiate

- ❖ Develop a shared vision.
- ❖ Become familiar with planning processes and requirements.
- ❖ Treat the process as an outcome.
- ❖ Create an adaptable 5, 10, or 15+year strategy for updating multiple plans/elements over time.





# Adaptation Pathways and Plan Alignment

A planning approach that addresses the uncertainty and challenges of sea level rise and climate change decision-making.

This approach, also called **phased adaptation**, enables consideration of multiple possible futures and more robust analysis of the benefits and downsides of adaptation solutions across those futures.

## Timing Thresholds, Triggers, & Actions

### Phases:

#### Short Term

Lower Sea Levels



#### Mid Term



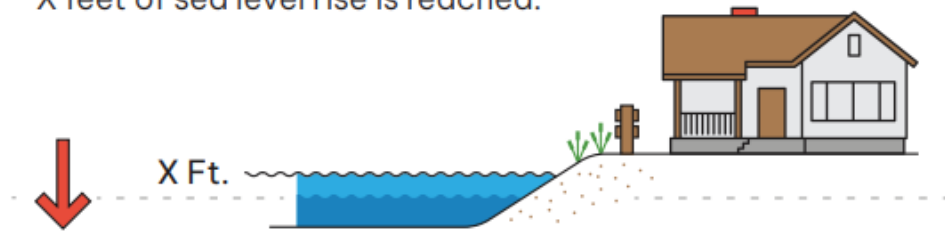
#### Long Term

Higher Sea Levels



**Example 1:** A trigger is used to indicate how close you are to a future threshold and indicates an action is needed.

**Trigger:** A metric indicating action is needed to avoid passing a critical threshold: X feet of sea level rise is reached.

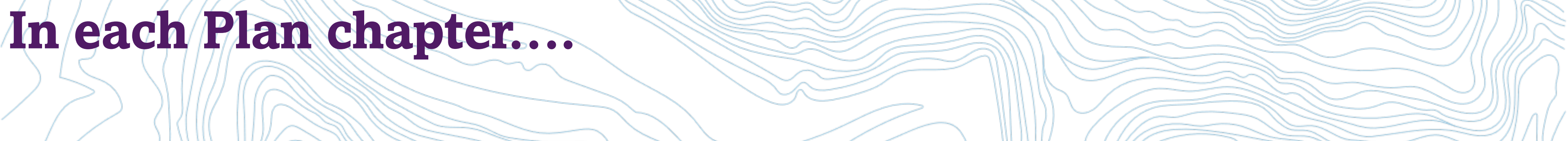


**“Proactive” Action:** Actions triggered well before a critical threshold is passed: Shoreline marshes are restored that can absorb future storm surge.



**“Critical” Threshold:** A threshold, also called a tipping point, that is highly undesirable to cross, after which adaptation is extremely difficult or no longer possible: At 2x feet of sea level rise, shoreline neighborhoods will be permanently flooded.





# In each Plan chapter....

Sections	General Plan Safety Element
Foundational information	<ul style="list-style-type: none"><li>• Requirements for Consultation, Review, &amp; Approval</li><li>• Bills/ Statutes: SB 379, SB 1035, SB 99, AB 747</li><li>• Required Components: Vulnerability Assessment Adaptation Strategies, Implementation Measures</li></ul>
Guidance	<ul style="list-style-type: none"><li>• Adaptation Planning Guide;</li><li>• Adaptation Roadmap;</li><li>• Critical Infrastructure at Risk</li></ul>
Best Practices	When possible, update the Housing Element, Safety Element, and/or local hazard mitigation plan concurrently or sequentially to synchronize long-term integration and meet SB 1035 requirements.



# In each Plan chapter...

Sections	Examples from the General Plan Safety Element Chapter
<b>Tips &amp; Requirements for the Vulnerability Assessment</b>	Consider the effects of sea level rise on fluvial/riverine flooding, shallow groundwater rise, and shoreline erosion/slope instability as well as subsidence and storm surge potential when updating the flood risk information in Safety Elements. Additionally, consider sea level rise impacts to maritime and waterfront facilities (e.g., wharfs, piers) in the vulnerability analysis
<b>Alignment Opportunities</b>	Where transportation infrastructure functions as part of emergency evacuation routes, local governments should coordinate with transportation asset managers and emergency response planners to ensure consistency
<b>Adaptation Pathways</b>	See examples for how the General Plan can adopt an adaptation pathways approach
<b>Alignment Team &amp; Community Engagement</b>	See list of entities to engage or partner with



# Coastal Resilience Planning in Santa Cruz

## *Plan Alignment Case Study*

- *An intersectional, equitable, and holistic approach can result in more effective, place-based adaptation strategies responsive to community needs.*
- *Leveraging academic partnerships is an important way to increase capacity, advance planning and analysis, and create new avenues to acquire funding.*
- *Incorporating adaptation pathways can help communities avoid undesirable planning outcomes. By creating a flexible, phased strategy system, communities can analyze and adopt the adaptation strategies that best fit their needs over time.*

## Catalyzing Coastal Resilience: A Plan Alignment Case Study

*City of Santa Cruz*

### OVERVIEW

#### Region

Central Coast

#### City Population

61,950 (2021 US Census Bureau)

#### Plans Discussed

General Plan  
Local Coastal Program  
Local Hazard Mitigation Plan  
Climate Adaptation Plan and Appendices  
Sea Level Rise Vulnerability Assessment and  
Social Vulnerability to Climate Change Analysis  
Climate Action Plan  
West Cliff Drive Adaptation and  
Management Public Works Plan  
Stormwater Management Plan  
Wharf Master Plan  
Parks Master Plan

#### Lead Agencies

City of Santa Cruz  
City of Santa Cruz, Manager's Office,  
and Planning and Community Development  
Department

#### Coastal Hazards and Climate Impact Areas

Sea Level Rise  
Erosion  
Coastal Storms  
Flooding  
Tsunamis





## Integrated Climate Adaptation and Resiliency Program (ICARP)

# Climate Services

Providing tools, guidance, and technical assistance for adapting to climate change.



Ben McMahan  
Manager, Climate Services

Ankitha Doddanari  
Staff Analyst, Vulnerable  
Communities Platform

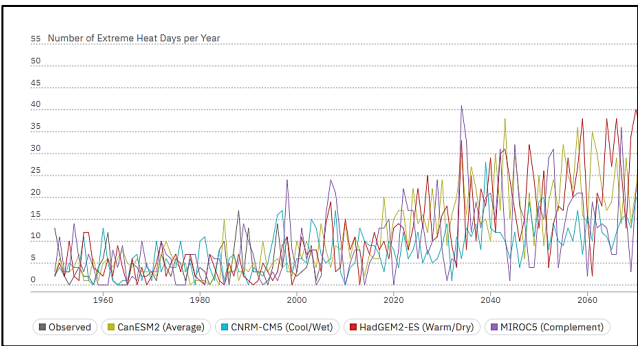


# ICARP Climate Services

Looking for the raw data?



Explore and analyze **climate data** from California's Climate Change Assessments.



Looking to incorporate equity?



**Vulnerable Communities Platform**

Identify **frontline communities** and explore factors contributing to climate vulnerability.

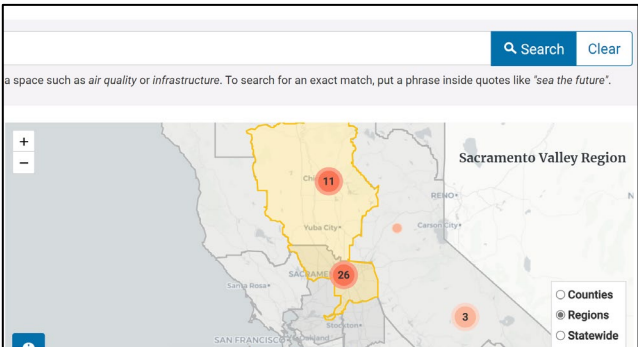


Looking for helpful resources?



**Adaptation Clearinghouse**

Find the **resources** you need to adapt to climate change.



**Need more help?**

Our (in progress) Help Desk provides individual support that can assist general adaptation knowledge, using our tools and data, developing adaptation projects, connecting with specialized topic support, and finding funding sources



# Vulnerable Communities Platform (VCP)



Map climate hazard and social sensitivity data



Compare existing resilience related tools



Provide entry-level primer to resilience resources



Display examples of communities using the VCP to create adaptation plans



# Community Pilot Workplan



1) Develop training curriculum on using the VCP



2) Select trainee cohort of 10-15 CBOs and local government organizations statewide



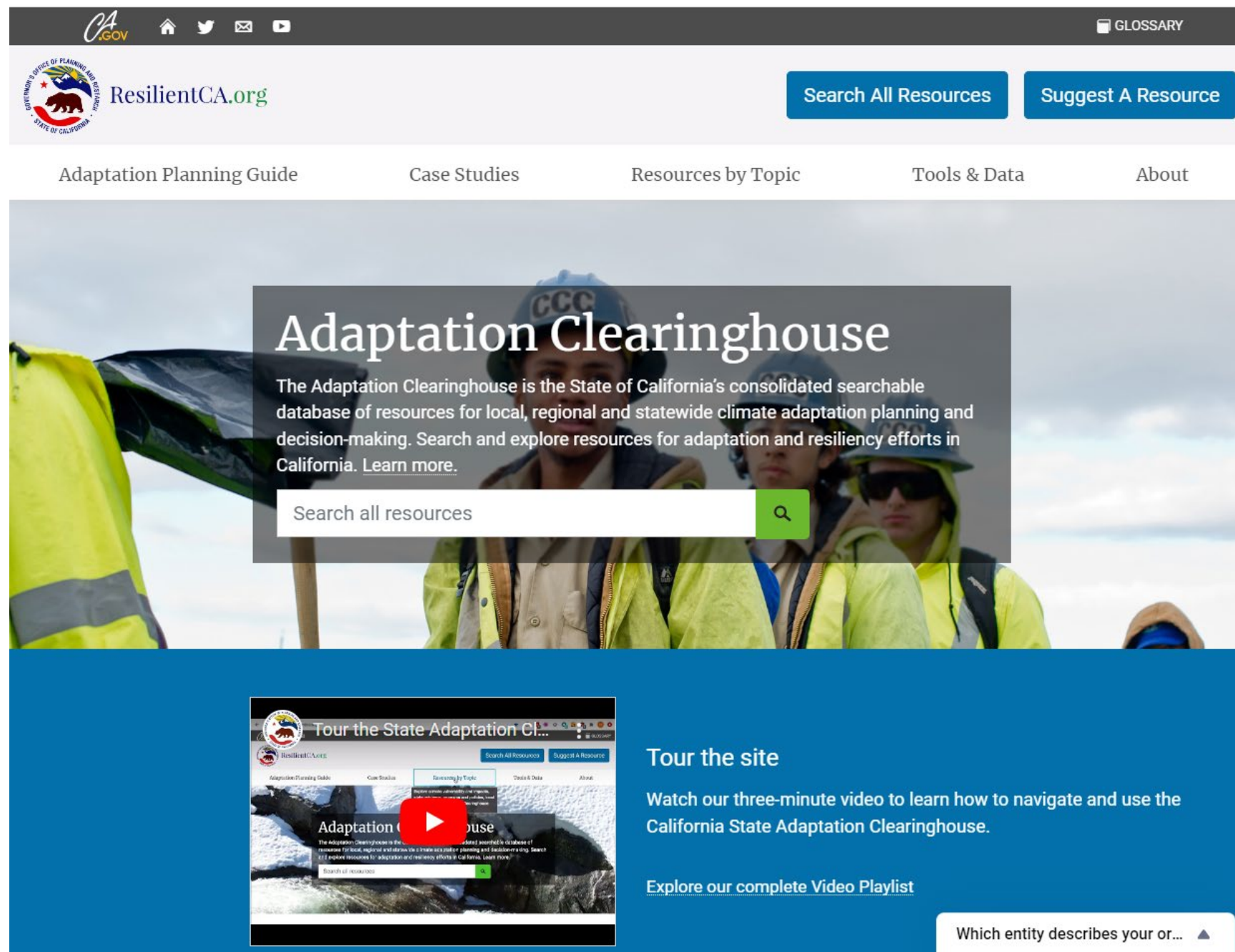
3) Facilitate training classes for cohort



4) Co-host workshops in cohort member communities to develop assessments of climate vulnerability that combine on-the-ground community experiences with data. Assessments will be used as case studies and consolidated into a VCP user guide.



# Adaptation Clearinghouse



**Searchable database of resources for climate adaptation**

Includes planning guidance, case studies, and other resources intended to support decision making.





# Case Studies / Final Report

---

## Challenges & Solutions

View curated ICARP Case Studies organized by solutions that practitioners are finding to a common set of challenges in adaptation. These challenges span the spectrum of community planning to project implementation.

Use our [Suggest A Resource](#) form to recommend an innovative effort for a case study.

Partnering with vulnerable and disadvantaged communities	Developing plans and strategies	Securing funding
Staff expertise	Aligning different plans	Using the right science to inform planning and decisionmaking
Working with many permitting authorities	Scientific research to inform resilience	Working across jurisdictional boundaries
Overcoming legal barriers	Building leadership and champions	Building public support

The ICARP team has written up case studies on past local, regional, and state projects that are organized into the clusters of common challenges in climate adaptation that they tackle.





# Resources by Topic

## All Adaptation Topics



BIODIVERSITY AND HABITAT



EMERGENCY MANAGEMENT



FOOD AND AGRICULTURE



INVESTING IN ADAPTATION



OCEAN AND COAST



PLAN ALIGNMENT



TRANSPORTATION



CLIMATE EQUITY



ENERGY



FORESTS



LAND USE AND COMMUNITY DEVELOPMENT



PARKS AND RECREATION



PUBLIC HEALTH



WATER

One page summaries of major adaptation topic areas along with links to related resources and suggested adaptation strategies.





# Plan Alignment

## Planning for Climate Change Takes a Comprehensive Approach

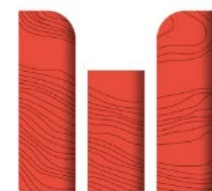
Climate change is here, and it's already impacting the communities, economies, and environments of California.

Unified, inclusive, and strategic planning builds resilience to climate impacts. Plan alignment and integration help protect communities from the threat of climate change such as wildfire, increasing temperatures and extreme heat, sea level rise, drought, and the compounding impacts of flood-after-fire events.

Plan Alignment Tool

Community & Stakeholder Engagement

Wildfire Resilience  
Plan Alignment  
Guide



Coastal Hazard  
Resilience  
Plan Alignment  
Guide



ResilientCA.gov

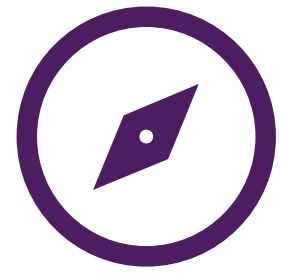
Flood-After-Fire  
Resilience  
Plan Alignment  
Guide



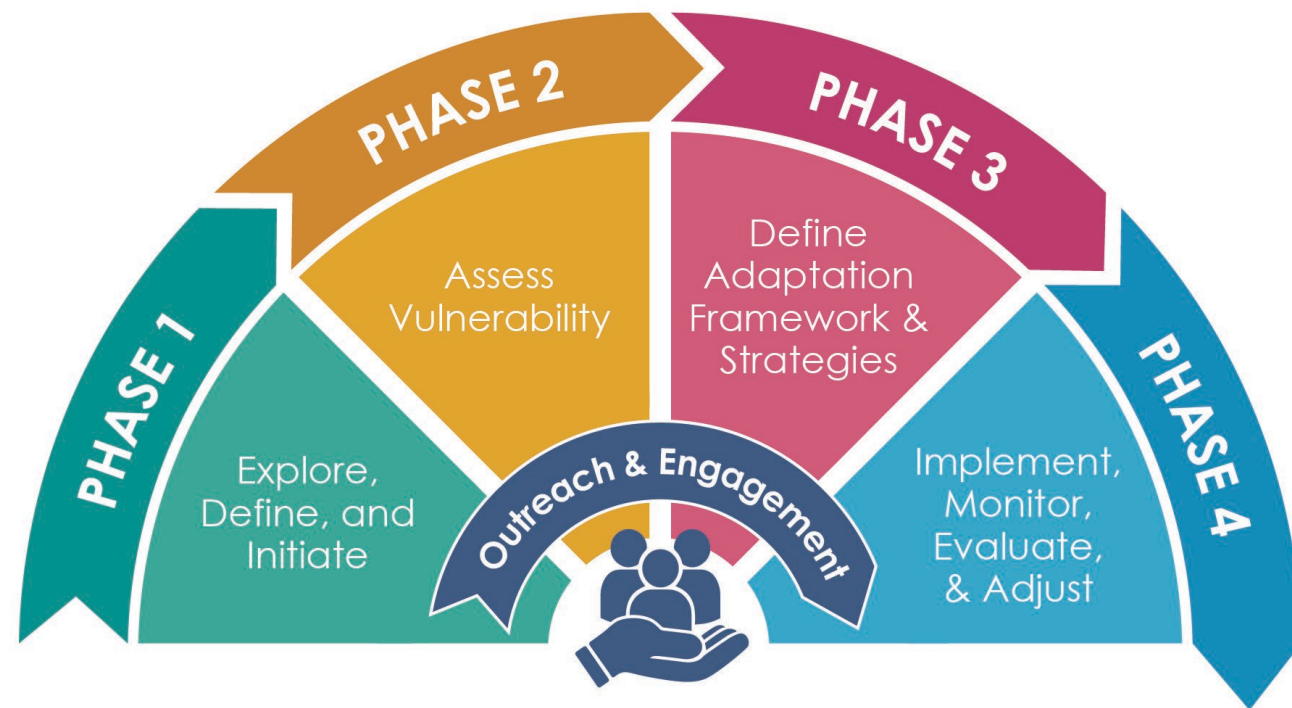
ResilientCA.gov

- ❖ Overview of **state guidance, best practices, and adaptation pathways** as well as an identification of **key community, agency, regional, federal, and private stakeholder groups** for climate adaptation plans, wildfire protection plans, housing elements, local hazard mitigation plans, and many more
- ❖ Identification of **gaps and alignment opportunities** for integrating climate adaptation and resilience strategies into various planning documents and policies





# Adaptation Planning Guide (APG)



- ❖ Step-by-step process for developing adaptation plans, including assessing vulnerabilities, setting goals, identifying actions, and evaluating progress.
- ❖ Resources such as templates, checklists, questionnaires, etc.
- ❖ Guidance on how to integrate equity and community engagement in all steps of the planning process



# Thanks for Joining!

## **Ankitha Doddanari she/her)**

Staff Analyst, Climate Equity  
and Resilience Engagement

[Ankitha.doddanari@opr.ca.gov](mailto:Ankitha.doddanari@opr.ca.gov)

## **Sarah Samdin (she/her)**

Senior Adaptation and  
Resilience Planner

[Sarah.samdin@opr.ca.gov](mailto:Sarah.samdin@opr.ca.gov)







**Cal OES**  
GOVERNOR'S OFFICE  
OF EMERGENCY SERVICES



**Tiffany Wise-West**  
**City of Santa Cruz**



# Local Hazard Mitigation + Climate Adaptation Planning in Santa Cruz

August 29, 2024

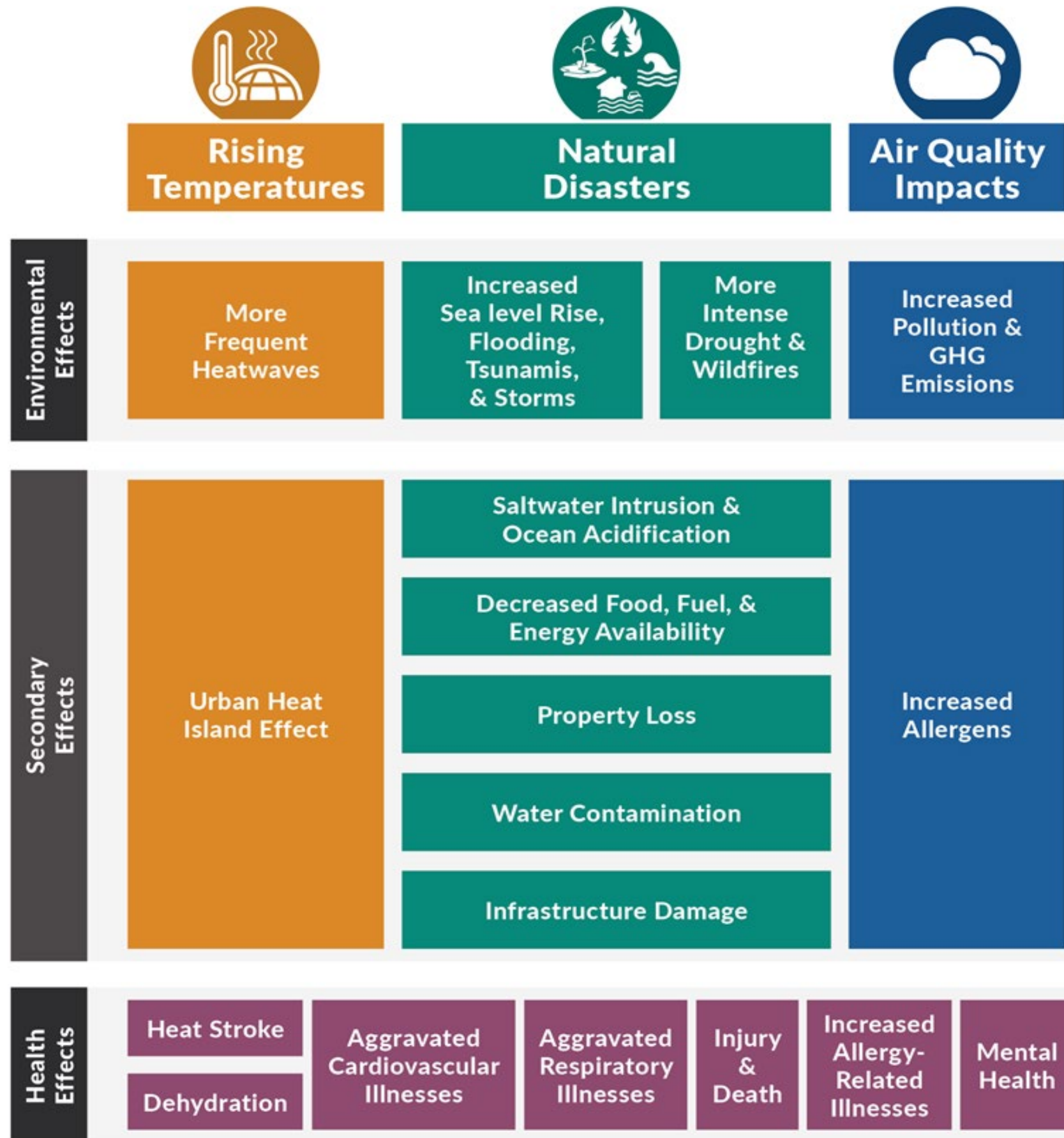


Dr. Tiffany Wise-West, P.E.  
Sustainability and Resiliency Officer  
[twise-west@santacruzca.gov](mailto:twise-west@santacruzca.gov)





# Climate Hazards + Impacts



Considering the social cost of emissions, the City has estimated it experiences  $\geq \$25M$  per year in adverse impacts to the community already due to climate change.



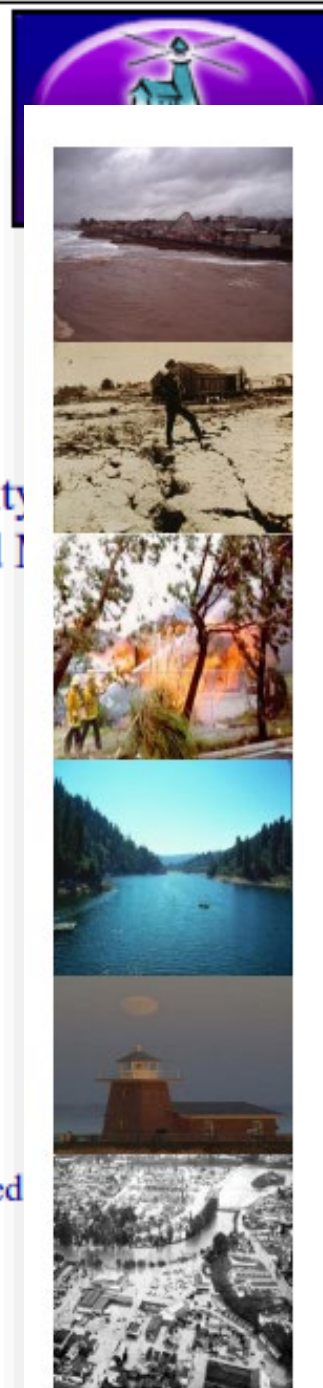


# Background



City of Santa Cruz  
Local Hazard Mitigation Plan

Adopted by the City of Santa Cruz



City of Santa Cruz  
CLIMATE ADAPTATION PLAN

An update to the 2007 Local Hazard Mitigation Plan  
2012 - 2017

2025-2030  
Update &  
Integration  
in Progress



CITY OF SANTA CRUZ  
Local Hazard Mitigation Plan  
Year Update  
2023

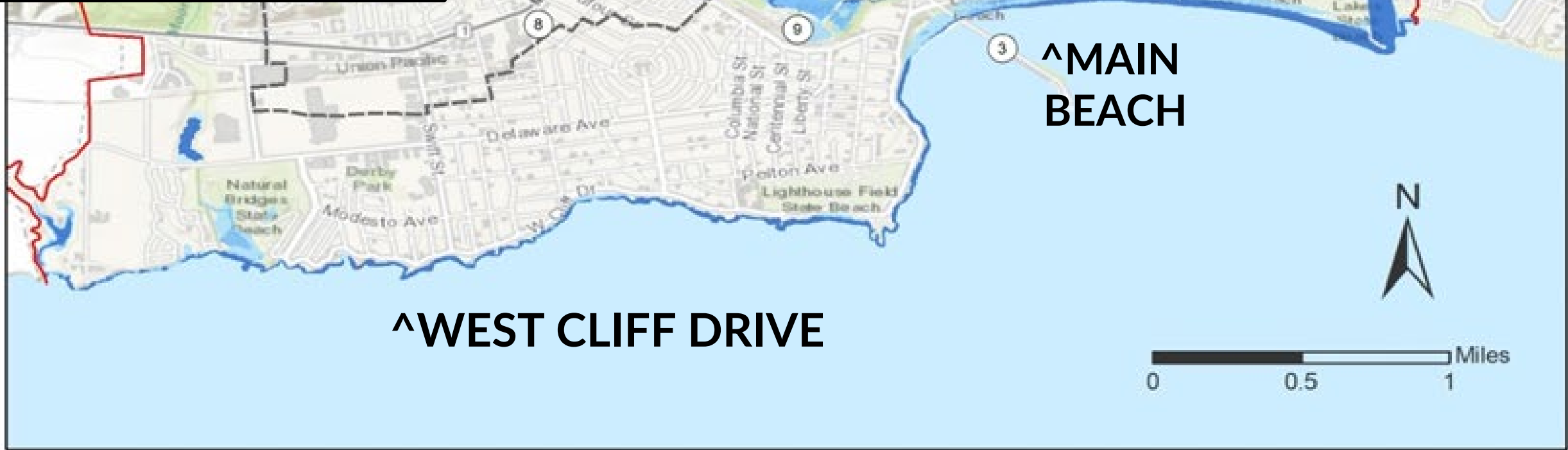
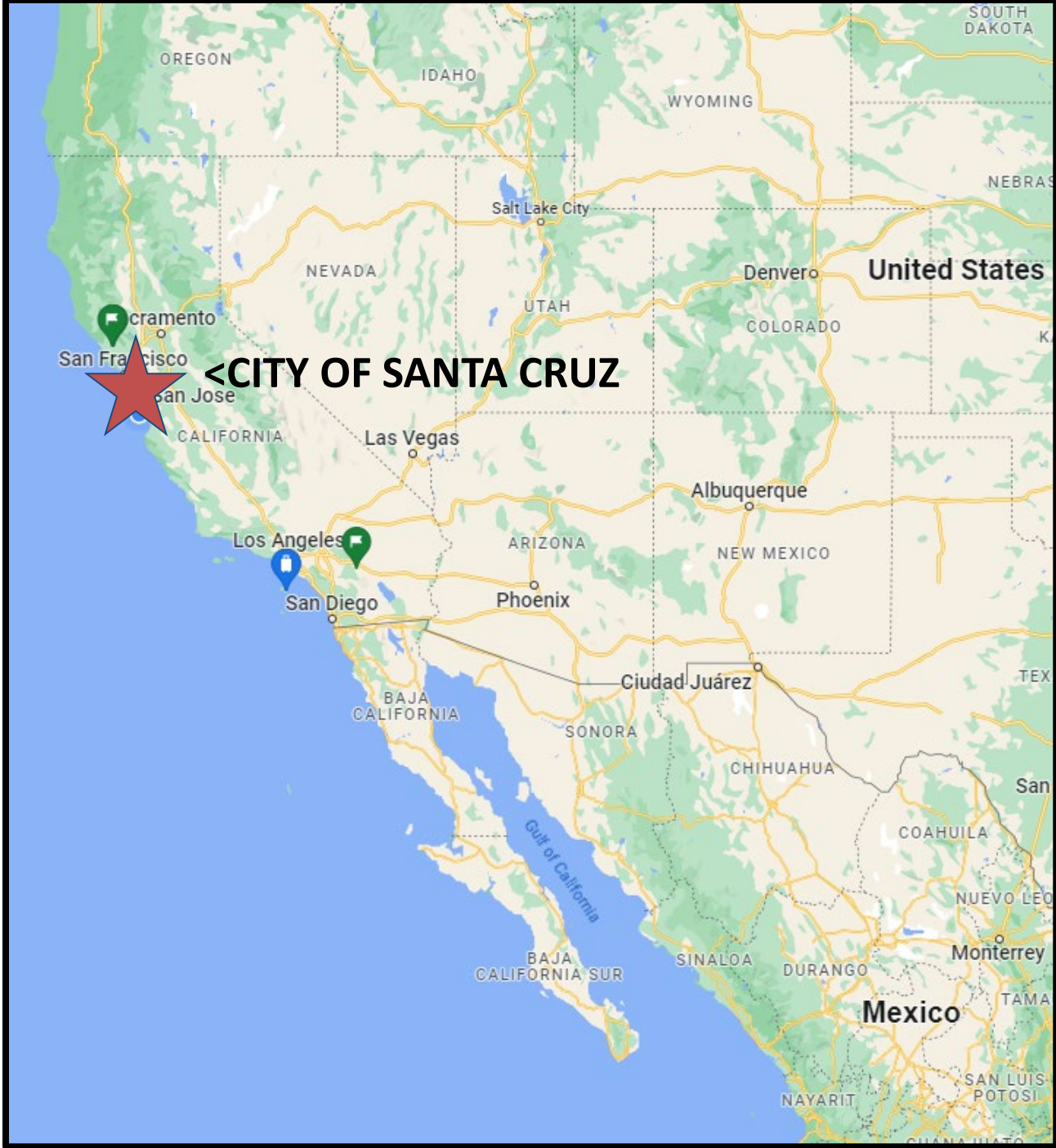
Hazard Mitigation is any action taken to reduce or eliminate the long-term risk to human life and property from hazards.  
~ Title 44 Code of Federal Regulations

Adopted by the City of Santa Cruz  
xxx



AN APPENDIX TO THE 2018-2023 LOCAL HAZARD MITIGATION PLAN





**Boundaries**

- SC City Limit
- - - Coastal Zone Boundary

**Rising Tides Hazard Zones**

- Existing
- 2030 (.3 ft SLR)
- 2060 (2.4 ft SLR)
- 2100 (5.2 ft SLR)

**Critical Facilities**

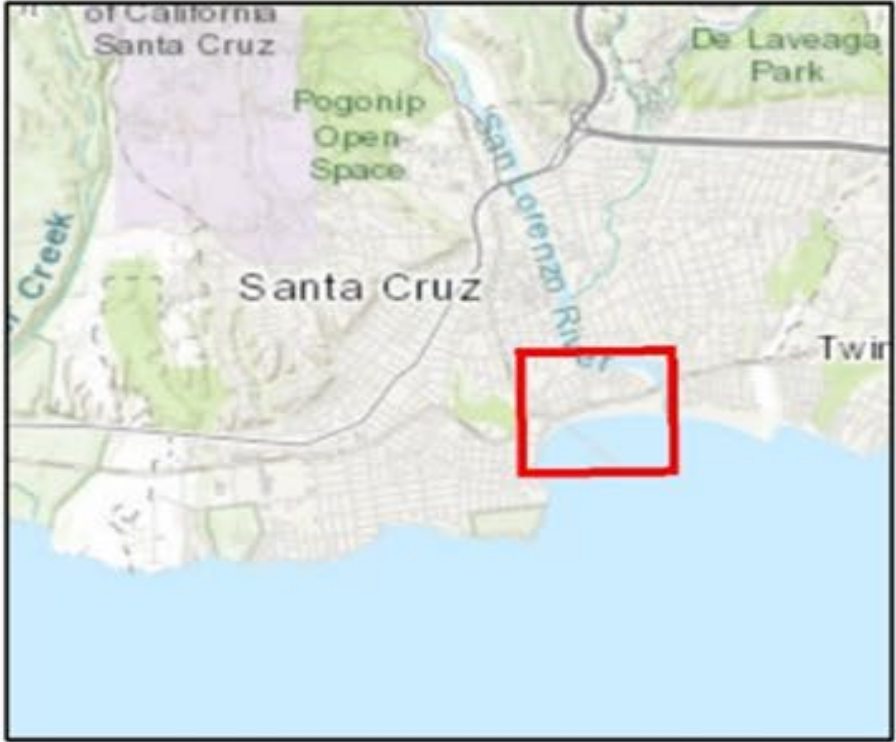
- ① City Hall
- ② County Government Center
- ③ Lifeguard Headquarters
- ④ PG&E Substation
- ⑤ Police Department
- ⑥ Santa Cruz City Fire 1
- ⑦ Santa Cruz City Fire 2
- ⑧ Santa Cruz City Fire 3
- ⑨ Wastewater Plant
- ⑩ Water Treatment

**PROJECTIONS/MAPS:**

- << SEA LEVEL RISE
- + EROSION
- + COASTAL STORMS



# Main & Cowell Beaches



## Legend

- Coastal Access
- ▬ Coastal Armoring

## Rising Tides Hazard Zones

- 2030 (0.3 ft SLR)
- 2060 (2.4 ft SLR)
- 2100 (5.2 ft SLR)



0 250 500 1,000 Feet



# APPENDIX J

## CROSSWALK OF LOCAL HAZARD MITIGATION PLAN AND CLIMATE ADAPTATION PLAN UPDATE

Hazards	LHMP		CAP	
	Impact	Mitigation Strategy	Impact	Adaptation Strategy
Earthquakes and Liquefaction	Ch. 4	Ch. 13	Not Addressed	NA
Wildfires	Ch. 5	Ch. 13	Ch. 3	Ch. 4
Floods and Associated Coastal Storms	Ch. 6	Ch. 13	Ch. 3	Ch. 4
Drought	Ch. 7	Ch. 13	Ch. 3	Ch. 4
Tsunami	Ch. 8	Ch. 13	Not Addressed	
Coastal Erosion	Ch. 9	Ch. 13	Ch. 3, Appendix D	Ch. 4, Appendix G
Dam Failure	Ch. 10	Ch. 13	Not Addressed	Ch. 4,
Landslide	Ch. 11	Ch. 13	Not Addressed	Ch. 4, Appendix A, G
Sea Level Rise	Ch. 6, 9	Not Addressed	Ch. 3	Ch. 4
Severe Storm/Weather Events	Ch. 6,11	Not Addressed	Ch. 3	Ch. 4
Ocean Acidification	Not Addressed		Ch. 3	Ch. 4
Salt Water Intrusion	Not Addressed		Ch. 3	Ch. 4
Increasing Temperature	Not Addressed		Ch. 3	Ch. 4
Food and Fuel Availability	Not Addressed		Ch. 3	Ch. 4
Impacts to Ecosystems	Not Addressed		Ch. 3	Ch. 4



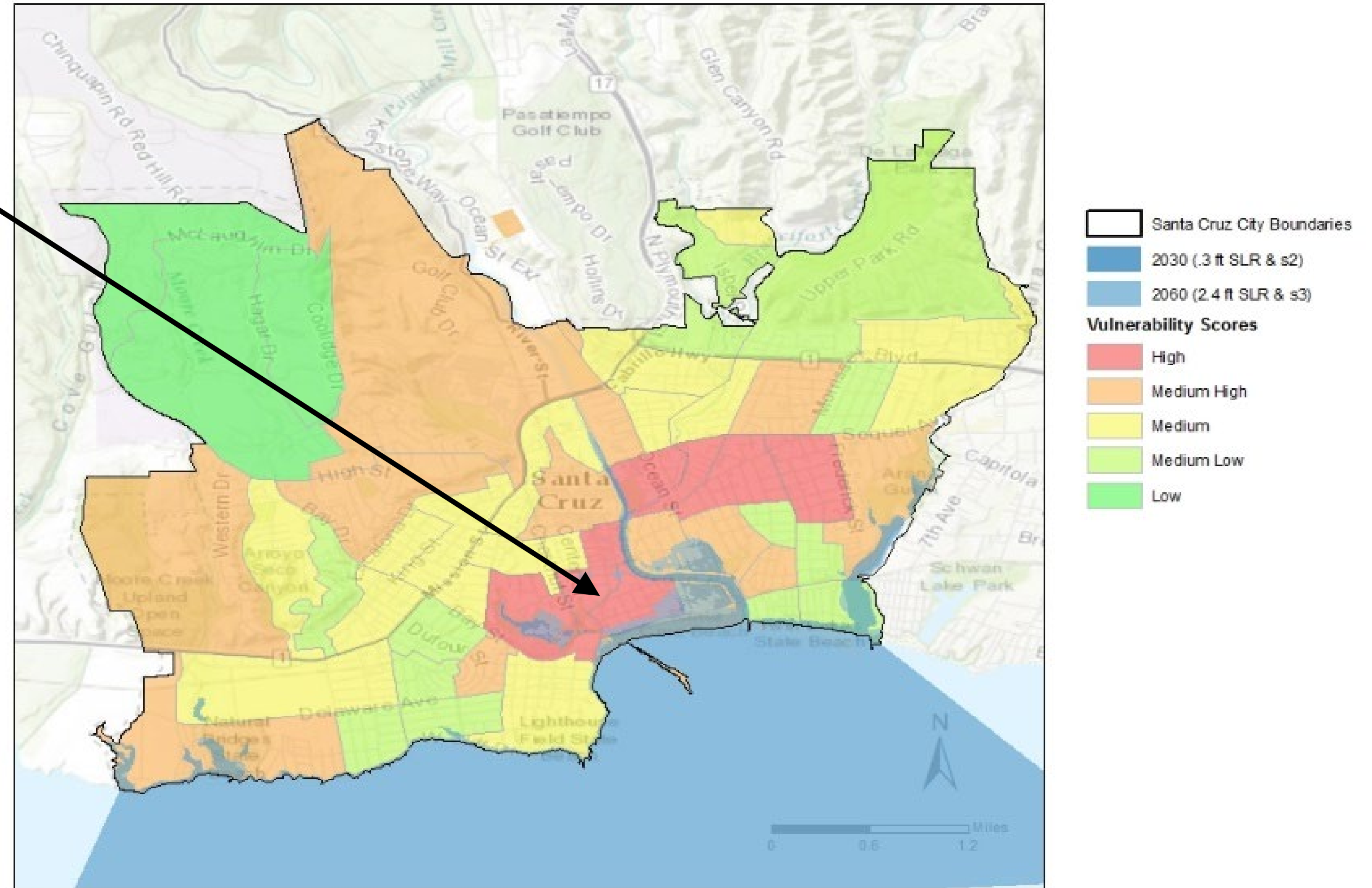
# Social Vulnerability to Coastal Hazards

## High Social Vulnerability:

- Beach Flats
- Downtown/South of Laurel

## Social Vulnerability Score

- Elderly
- Poverty
- Crime incidence
- English is 2<sup>nd</sup> language
- Differently abled






# Experimentation with Robust, Innovative Engagement





Virtual reality (VR)^



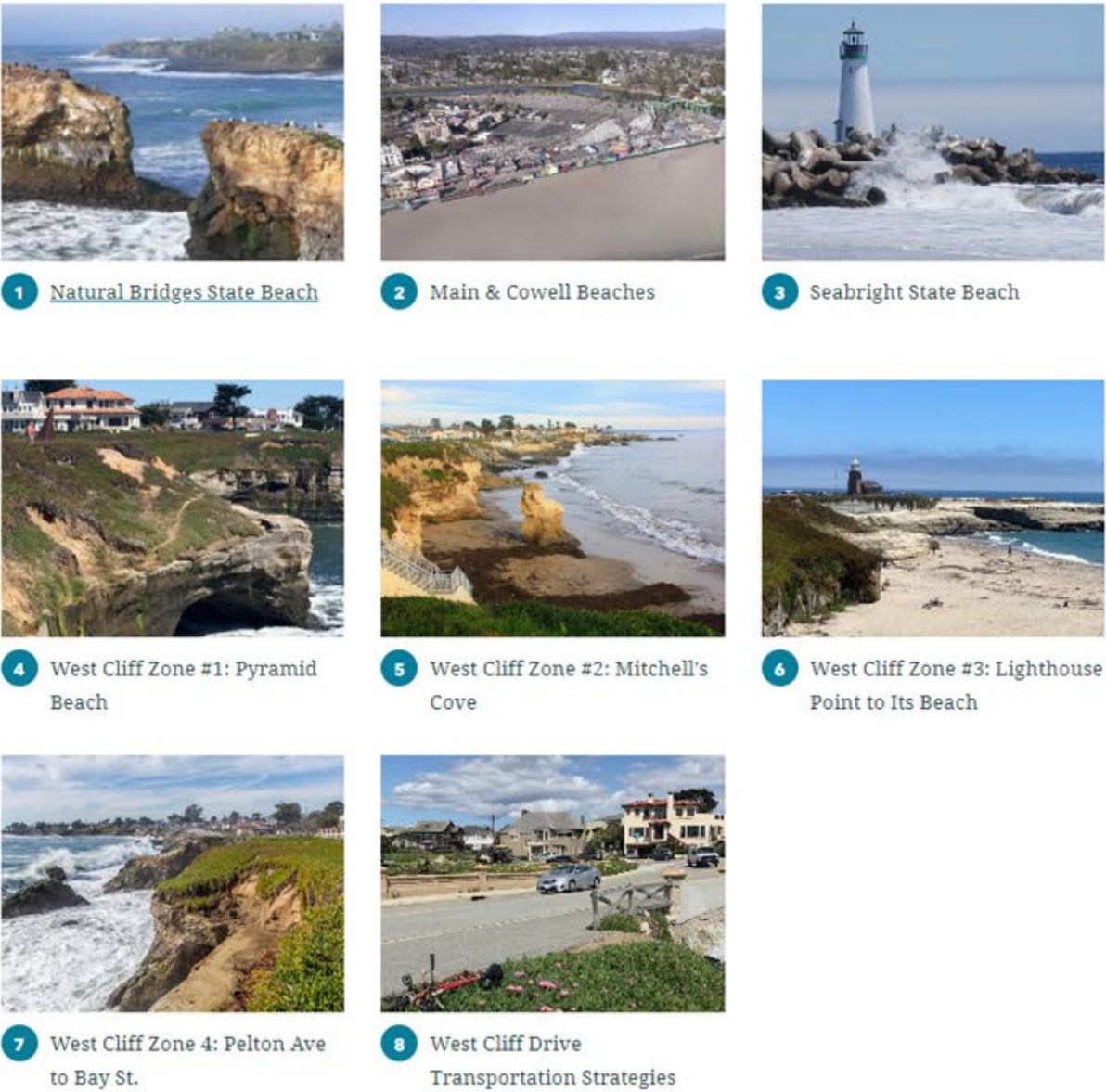
Collection

## Resilient Coast Santa Cruz - Input on Coastal Adaptation

Learn about Santa Cruz's coastal vulnerabilities on adaptation pathways and strategies for West Cliff Drive and adjacent beaches. (Summer 2020) More information at: [cityofsantacruz.com/ResilientCoast](http://cityofsantacruz.com/ResilientCoast)



Gaming ^



ESRI storymaps^





Link to youtube: <https://www.youtube.com/watch?v=VaGazU5pxDM>

Climate Acts Dance Performance at Earth Day ^^



CoastSnap pilot ^^

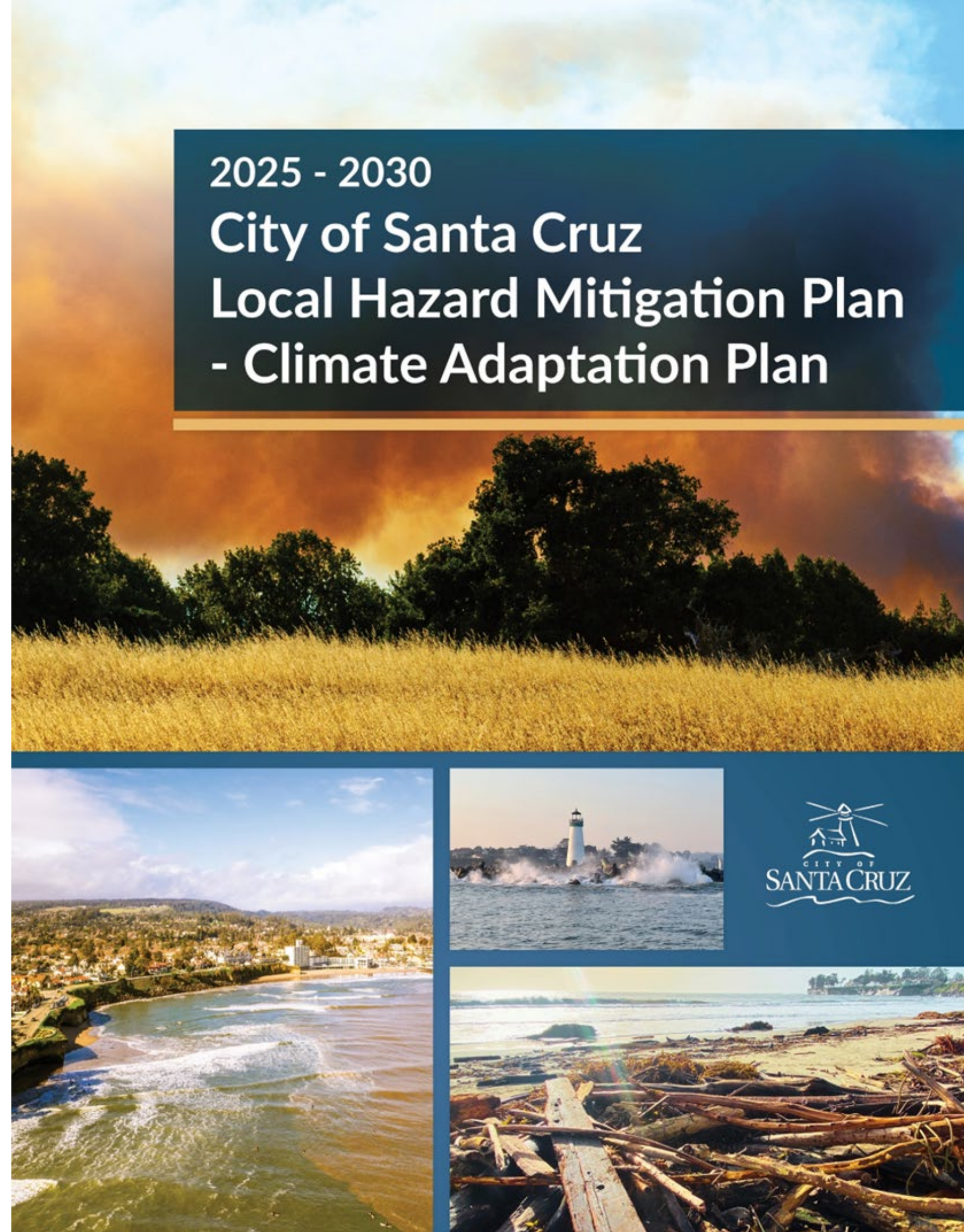


# NEW LHMP + CAdapt Plan:

- Major overhaul
- One integrated document
- Adaptation pathways approach
- Includes extreme heat for the first time
- Will develop NOIs for priority projects
- Will address combinations of hazards
- Complete by spring 2025

2025 - 2030

## City of Santa Cruz Local Hazard Mitigation Plan - Climate Adaptation Plan





# Monterey Bay Regional Climate Project Working Group



**MISSION:** Collaborate among groups and organizations in the Monterey Bay Area region, including Santa Cruz, San Benito, and Monterey Counties, to develop, prioritize, secure funding for, and effectively and equitably advocate for and implement regionally beneficial climate mitigation and adaptation projects and programs.

**UPCOMING:** Monterey Bay Adaptation and Resilience Implementation and Funding Roadmap  
*Funded by Governor's Office of Planning & Research*



# Activating the Community

RESILIENT  
CENTRAL  
COAST

EVERYDAY  
OPPORTUNITIES  
FOR LOCAL  
CLIMATE ACTION



Login 

Join your neighbors in taking action to cut emissions, prepare for climate change and create a safer, healthier future!

[Join the Challenge](#)

[Why Join?](#)



1,000

HOUSEHOLDS BY DECEMBER 2024



500

TONS OF CO2 BY DECEMBER 2024

TOP COMMUNITY GROUP  
**Dayenu Interfaith Climate Action**

TOP TEAM  
**Ms. Gardea's Bio class team**

## Explore Actions to Take

Simple everyday things you can do to reduce CO2E, in addition to saving you money.



Easy Actions



Renter Friendly



Be Energy Smart



Shift Your Ride



Be Water Wise



The Big Actions



# Activating the Community – Resilience Measures

### What is a Circular Economy?

Find out how to Go Circular and make a Big Impact!

★ Easy 500 \$ 0

[Choose](#)

☐ I already do this

### Food & Water Safety

Keep it safe, keep it fresh!

★ Medium 500 \$ 0

[Choose](#)

☐ I already do this

### How to Turn Off Utilities

Know how to shut it down (safely!)

★ Medium 500 \$ 0

[Choose](#)

☐ I already do this

### Air Quality Events

Stay safe during an air quality event

★ Medium 500 \$ 0

[Choose](#)

☐ I already do this

### Earthquakes

How to stay safe during an earthquake

★ Medium 500 \$ 0

[Choose](#)

☐ I already do this

### Extreme Heat

Steps to stay safe in extreme heat

★ Medium 500 \$ 0

[Choose](#)

☐ I already do this

### Floods

Steps to stay safe in a flood

★ Medium 500 \$ 0

[Choose](#)

☐ I already do this

### Home Fires

Steps to stay safe in a home fire

★ Medium 500 \$ 0

[Choose](#)

☐ I already do this

### Hurricanes & Tropical Storms

Steps to stay safe in a hurricane

★ Medium 500 \$ 0

[Choose](#)

☐ I already do this

### Power Outages

Steps to stay safe in a power outage

★ Medium 500 \$ 0

[Choose](#)

☐ I already do this

### Tornadoes

Steps to stay safe in a tornado

★ Medium 500 \$ 0

[Choose](#)

☐ I already do this

### Tsunamis

Steps to stay safe in a tsunami

★ Medium 500 \$ 0

[Choose](#)

☐ I already do this

### Wildfires

Learn more about wildfires, what to do and how to stay safe.

### Winter Storms & Extreme Cold

Steps to stay safe in the winter

### Adopt a Storm Drain & Protect Water

Clean Drains = Safer Street & Healthier Waterways!

### Shop Smart, Buy Less

Shop with a sustainable mindset





**RESILIENT**

**SANTA**

**CRUZ**

**Thank You!**

Learn more about the City's hazard mitigation and resilience planning alignment efforts at the Santa Cruz Case Study prepared by the Governor's Office of Planning and Research:

[https://opr.ca.gov/publications/docs/20230804-ICARP\\_Costal\\_CaseStudy.pdf](https://opr.ca.gov/publications/docs/20230804-ICARP_Costal_CaseStudy.pdf)



# Questions





**Cal OES**  
GOVERNOR'S OFFICE  
OF EMERGENCY SERVICES

# Cal OES Contact

## **Sasha Jones**

Senior Emergency Services Coordinator  
Interagency Recovery Coordination

[Sasha.Jones@CalOES.ca.gov](mailto:Sasha.Jones@CalOES.ca.gov)

Phone: 916-584-4749

Recovery Support Functions

[Longtermrecovery@caloes.ca.gov](mailto:Longtermrecovery@caloes.ca.gov)

[www.caloes.ca.gov/RSF](http://www.caloes.ca.gov/RSF)