

Environmental Directory



**Technical Assistance Program
California Governor's Office of
Emergency Services**

July 2020

TABLE OF CONTENTS

TABLE OF CONTENTS	1
List of Acronyms	2
1.0 INTRODUCTION.....	4
1.1 Directory Updates.....	5
1.2 Questions.....	5
2.0 FLOW CHARTS.....	6
3.0 ENVIRONMENTAL LAWS AND REGULATIONS	12
3.1 Federal Environmental Laws and Executive Orders.....	12
3.2 California Environmental Laws.....	17
4.0 PROJECT ENVIRONMENTAL CHARACTERISTICS.....	23
4.1 Commonly Asked Questions and Answers	25
5.0 ENVIRONMENTAL RESOURCE SUBJECT INDEX	29
5.1 Federal Agency Environmental Resource Subject Index.....	30
5.2 State Agency Environmental Resource Subject Index	35
6.0 FEDERAL AND STATE AGENCY DIRECTORY.....	40
6.1 Federal Agencies	40
6.1.1 Federal Agencies Informational Web Sites and Web-links	42
6.2 State Agencies.....	43
6.2.1 State Agency Informational Web Sites and Web-links.....	45
6.3 Miscellaneous Environmental Web-links.....	46
6.4 Aerial Photo Web-links	47
6.5 GIS Web-links.....	47
6.6 Map Web-links	47
7.0 STATE AND FEDERAL AGENCY DISTRICT AND REGIONAL OFFICES.....	48
7.1 California Air Quality Management and Air Pollution Control Districts	48
7.2 California Coastal Commission.....	50
7.3 Cal Recycle Local Enforcement Agency.....	51
7.4 Department of Conservation.....	55
7.5 Department of Fish and Wildlife.....	57
7.6 Department of Toxic Substances Control.....	58
7.7 Department of Transportation (Caltrans).....	59
7.8 Department of Water Resources	60
7.9 Public Utilities Commission	61
7.10 Regional Water Quality Control Boards.....	62
7.11 Bureau of Land Management	63
7.12 National Marine Fisheries Services.....	64
7.13 United States Army Corps of Engineers.....	65
7.14 United States Environmental Protection Agency	65
7.15 United States Fish and Wildlife Service	66
7.16 United States Forest Service	67
7.17 United States Geological Survey – Biological Disciplines	68
7.18 United States Geological Survey – Other Disciplines	69

List of Acronyms

Advisory Council on Historic Preservation	ACHP
American Indian Religious Freedom Act	AIRFA
Archaeological and Historic Preservation Act	AHPA
Bureau of Indian Affairs	BIA
Bureau Land Management	BLM
California Clean Air Act	CCAA
California Coastal Act of 1976	CCA
California Department of Conservation	DOC
California Department of Fish and Wildlife	CDFW
California Department of Forestry and Fire Protection	CAL FIRE
California Department of Resources Recycling and Recovery	Cal Recycle
California Department of Transportation	Caltrans
California Department of Water Resources	DWR
California Disaster Assistance Act	CDAА
California Endangered Species Act	CESA
California Energy Commission	CEC
California Environmental Protection Agency	Cal EPA
California Environmental Quality Act	CEQA
California Public Utilities Commission	CPUC
California Tahoe Conservancy	CTC
California Wild and Scenic Rivers Act	CWSRA
Categorical Exclusion	CATEX
Central Valley Flood Protection Board	CVFPB
Clean Air Act	CAA
Clean Water Act	CWA
Coastal Barrier Resources Act	CBRA
Coastal Zone Management Act	CZMA
Farmland Protection Act	FPA
Federal Aviation Administration	FAA
Federal Emergency Management Agency	FEMA
Federal Highway Administration	FHWA
Federal Railroad Administration	FRA
Forest Practice Act	FPA
Fish and Wildlife Coordination Act	FWCA
Governor's Office of Emergency Services	Cal OES
Governor's Office of Planning and Research	OPR
National Ambient Air Quality Standards	NAAQS
National Environmental Policy Act	NEPA
National Oceanic and Atmospheric Administration	NOAA
National Park Service	NPS
Native American Graves Protection & Repatriation Act	NAGPRA

Native Plant Protection Act	NPPA
National Historic Preservation Act	NHPA
National Resources Conservation Service	NRCS
Native American Heritage Commission	NAHC
Office of Environmental Health Hazard Assessment	OEHHA
Porter-Cologne Water Quality Control Act (i.e., Porter-Cologne Act)	PCA
Resource Conservation and Recovery Act	RCRA
Regional Water Quality Control Board	RWQCB
Rivers and Harbors Act	RHA
S.F. Bay Conservation and Development Commission	BCDC
State Historic Preservation Office	SHPO
State Lands Commission	SLC
State Water Resources Control Board	SWRCB
Statutory Exclusion	STATEX
Superfund or Comprehensive Environmental Response, Compensation and Liability Act	CERCLA
US Army Corp of Engineers	USACE
US Bureau of Reclamation	USBR
US Coast Guard	USCG
US Environmental Protection Agency	USEPA
US Fish and Wildlife Service	USFWS
US Forest Service	USFS
US Geological Survey	USGS
Watershed and Flood Protection Act	WFPA

1.0 INTRODUCTION

This Environmental Directory (Directory) contains summaries of applicable state and federal laws and regulations for project work associated with Public Assistance (PA) Grant Sub-awards associated with presidentially declared and gubernatorial proclaimed disasters. The purpose of this Directory is to provide an understanding of the environmental compliance requirements of both disaster protocols. The environmental regulations summarized herein are intended to convey a general understanding of their purpose only, for reference purposes. For detailed requirements and a list of regulations applicable to your project, please contact your local, state, or federal lead agency.

The Federal Emergency Management Agency (FEMA) administers the PA Grants that become available to disaster-affected state and local agencies (i.e., "sub-recipients") through an application process that is the responsibility of the California Governor's Office of Emergency Services (Cal OES, i.e., "recipient") to deliver for disaster related emergency and permanent work. The federal Environmental and Historic Preservation (EHP) regulations to which a sub-recipient must comply to receive PA Grant Sub-Awards are contained in Appendix A of the FEMA Public Assistance Policy and Program Guide (PAPPG).

Cal OES administers the California Emergency Services Act (CESA), California Disaster Assistance Act (CDAA), for local or state disasters and are managed in accordance with all applicable environmental laws. Local and state agencies may apply to Cal OES for financial relief to perform disaster related emergency or permanent work through, in accordance with the CDAA. That work must be performed in accordance with the California Environmental Quality Act (CEQA, Public Resources Code 21000 et seq.) through which applicable local, state, and federal environmental laws are identified for the CEQA lead agency to define a project's environmental permitting and compliance requirements.

This Directory was created to better inform Subrecipients of potential environmental compliance requirements associated with the following Handbook section:

Key features of the Directory are:

1. Flow charts that illustrate the Disaster Recovery Process and the applicable Environmental Regulations;
2. Subject Index, which identifies the state and federal regulatory agency(ies) with whom to coordinate by the resource(s) they are responsible for conserving or protecting;
3. Environmental Agency Contact Information, including their addresses, telephone numbers, and internet with hyper-links (blue underlined text);
4. State and Federal Environmental Law and Regulation Summaries;
5. Commonly Asked Questions and Answers.

1.1 Directory Updates

To reflect changes in environmental laws and agency contact information the Directory will be updated, as warranted. If you are working from a printed version of the Directory, please check the electronic version on the Cal OES website for the most recent Directory content. Please note that a printed Directory will not allow you to view additional information that is only available via the internet.

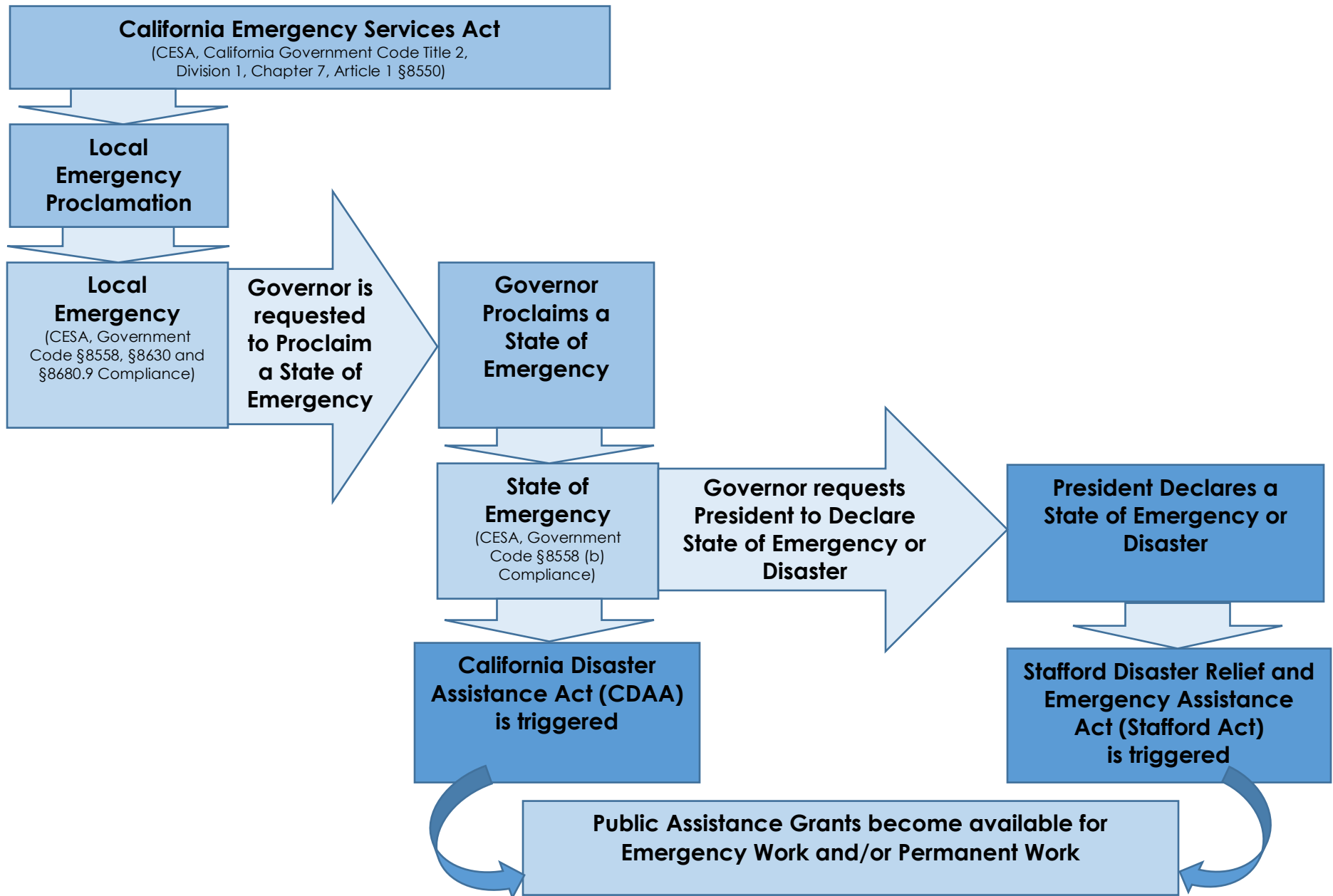
1.2 Questions

If you have any questions, comments or suggestions regarding this Environmental Directory or any environmental questions, please contact Patricia Nelson, Environmental Officer – Recovery Directorate at 916-825-8738 or e-mail at patricia.nelson@caloes.ca.gov.

2.0 FLOW CHARTS

This section contains a set of four flow charts depicting the Disaster Recovery Process and the applicable Environmental Regulations as described below:

- Activation of the California Emergency Services Act for Local Agency- and Gubernatorial-Proclaimed Disasters and when the California Disaster Assistance Act (CDAA) and the federal Stafford Disaster Relief and Emergency Assistance Act (Stafford Act) are triggered;
- Emergency and Permanent Work Categories that are addressed by the CDAA and Stafford Act being triggered;
- Governor's Broad Authorities that may be exercised for Disaster Response and Recovery Projects; and
- Summary of the State Agencies and Environmental Laws that may apply to Disaster Response and Recovery Projects.



**California Disaster Assistance Act,
Activated by Governor's Proclamation**

**Authorizes California Governor's Office of Emergency Services
Director to Administer Disaster Assistance Program**

Governor may Authorize Emergency Work and Permanent Work

Emergency Work
Addresses Immediate Threats to Lives, Public Health, and Improved Public Property:

A - Debris Removal
B - Emergency Protective Measures

Permanent Work
Addresses Restoration of the following:

C - Roads and Bridges
D - Water Control Facilities
E - Public Buildings and Contents
F - Utilities
G - Parks, Recreational, and Other Facilities

When Cal OES Director concurs with a Local Emergency Proclamation, funds to repair, restore, or replace improved public real property damaged or destroyed by a disaster are made available.

**Stafford Act Declarations,
Activated by Governor's Request to President**

Allows for the Governor to Request to the President for Assistance and commits to the Cost-Sharing Requirements of the Stafford Act

Fire Management Assistance Grant Declaration

Fire Management Assistance (e.g., Fire Suppression Activities)

Emergency Declaration

Addresses:

A - Debris Removal
B - Emergency Protective Measures

Major Disaster Declaration

Addresses:

A - Debris Removal
B - Emergency Protective Measures
C - Roads and Bridges
D - Water Control Facilities
E - Public Buildings and Contents
F - Utilities
G - Parks, Recreational, and Other Facilities

(California Government Code §8550 through §8668)

Authorizes Governor to Exercise Broad Powers to Respond to Local or State of Emergency

- May Suspend Statutes, Orders, Rules, or Regulations that hinder or delay mitigation of the effects of emergency

(California Government Code §8571)

- Delegation of Governor's Powers to Cal OES Director to Coordinate the State's Emergency Activities
- Cal OES Director engages, or "Mission Tasks," any State Agency to support Emergency Response and Recovery activities. The example below is for Environmental Mitigation Activities.

(California Government Code §8587)

Relevance

Applicable to:

- Non-Federal Lands
- California Environmental Laws and Regulations until Proclamation or Executive Order is Amended or Rescinded (California Government Code §8567)

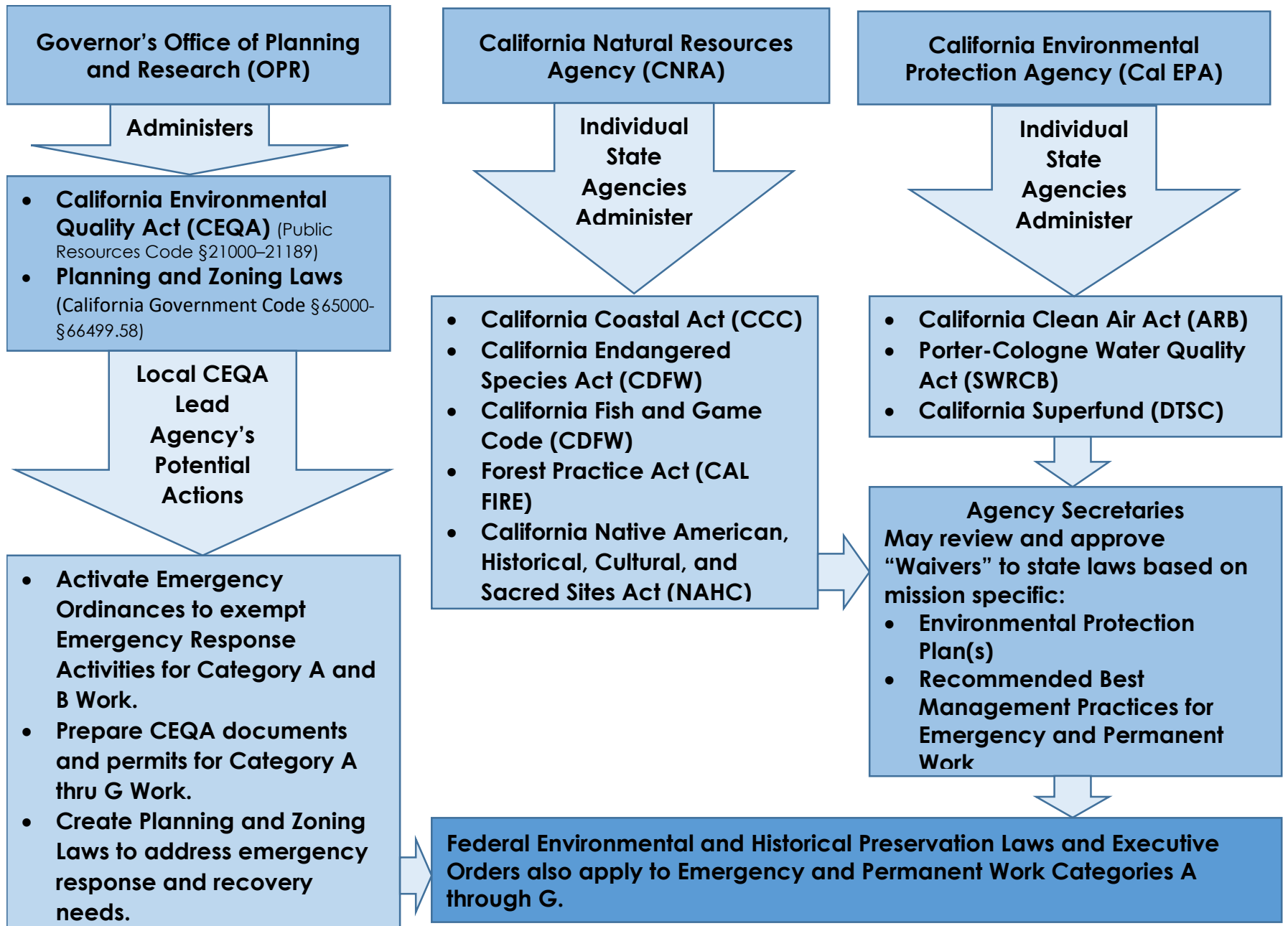
Example for
Suspension of
Environmental
Regulations on
next page.

California Natural Resources Agency (CNRA)

- California Coastal Commission
- California Conservation Corps (CCC)
- California Energy Commission (CEC)
- Department of Conservation (DOC)
- Department of Fish and Wildlife (CDFW)
- Department of Forestry and Fire Protection (CAL FIRE)
- Department of Parks and Recreation (Parks)
- Department of Water Resources (DWR)
- Native American Heritage Commission (NAHC)

California Environmental Protection Agency (Cal EPA)

- Air Resources Board (ARB)
- Department of Pesticide Regulations (DPR)
- Department of Resources, Recycling, and Recovery (Cal Recycle)
- Office of Environmental Health and Hazard Assessment (OEHHA)
- State Water Resources Control Board (SWRCB)



3.0 ENVIRONMENTAL LAWS AND REGULATIONS

3.1 Federal Environmental Laws and Executive Orders

- ☑ **National Environmental Policy Act (NEPA)** – Congress enacted the law (PL91-190) in 1970 to promote the protection and maintenance of the environment. It also established the President's Council on Environmental Quality (CEQ). NEPA establishes procedures for federal agencies to consider the effects of their action that involves federal funding or assistance before deciding to fund and implement a proposed action. Environmental information is made available to other public officials and citizens before deciding to fund and implement a proposed action and may be contained in either Environmental Assessments (EAs) or Environmental Impact Statements (EISs). Source: <https://www.fema.gov/laws-executive-orders>

- ☑ **Clean Air Act (CAA)** – Enacted in 1963 and amended in 1970, this law provides for the regulation of air emissions from stationary and mobile sources. It also authorizes the U.S. Environmental Protection Agency (US EPA) to establish National Ambient Air Quality Standards (NAAQS) to protect public health and environment. The 1990 amendments to the CAA address acid rain, ground-level ozone, and established a national permit system for stationary sources. Sources: <https://www.fema.gov/laws-executive-orders>, https://en.wikipedia.org/wiki/Clean_Air_Act_%28United_States%29

- ☑ **Clean Water Act (CWA)** – The law establishes the basic structure for regulating discharges of pollutants into the “Waters of the U.S. (WOTUS)” and regulating quality standards for surface waters by the U.S. EPA. Enacted in 1948 and called the Federal Water Pollution Control Act. In 1972 the law was reorganized, amended, and became known as the "Clean Water Act" (33 U.S.C. 1344). There are three Sections of the CWA that are commonly addressed in federal actions:
 - Section 401 - regulates the discharge of dredge and fill material into “Waters of the U.S.” and must not violate State water quality standards. A permit from either U.S. EPA, or, a State agency or tribe that has been delegated those responsibilities is required to enable planning and design work to ensure applicable water quality standards are protected. Under Executive Order Nos. 13778 and 13868, respectively, the Waters of the U.S. definition and water quality certification processes for states and tribes under the CWA Section 401 were clarified.

The California State Water Resources Control Board and certain tribes have been delegated responsibility from the U.S. EPA to issue CWA Section 401 certifications and regulates discharges to Waters of the State (e.g., vernal pools) through the 401 program in lieu of, or in addition to issuing waste discharge requirements (WDRs)/ (or waivers thereof) under the state clean

water act, the Porter-Cologne Act, does not preclude the regions from issuing WDRs (or waivers for WDRs) in the absence of a request for 401 certification. Under state law, the duty to file a report of waste discharge is mandatory.

- Section 402 - regulates storm water discharges from developed commercial/industrial properties and those under construction of an acre or more in size. Dischargers must prepare a storm water pollution prevention plan (SWPPP) and obtain a Storm Water General Permit from the U.S.EPA, or, a State agency that has been delegated those responsibilities to ensure applicable water quality standards are protected.
- Section 404 - regulates the discharge of dredge and fill material in “Waters of U.S.” and wetlands. This section requires that to do so a permit from the U.S. Army Corps of Engineers is required. Sources: <https://www.fema.gov/laws-executive-orders>, <https://www.epa.gov/laws-regulations/summary-clean-water-act>

☑ **Endangered Species Act (ESA)** – Ensures that the federal agencies and departments use their authorities to protect endangered and threatened species of fish, wildlife, and plants, and for other purposes. Section 7 of the ESA requires that federal agencies prevent or modify any projects authorized, funded or carried out by agencies that may jeopardize the existence of any federally-listed species or their habitat. Under Sections 9 and 20 of the ESA, non-federal entities, governments and private citizens, even without the involvement of a federal agency, also must avoid adversely affecting threatened or endangered species. Where adverse impacts cannot be avoided, state and local governments and private landowners must develop Habitat Conservation Plans in coordination with the U.S. Fish and Wildlife Service or National Marine Fisheries Services to reduce conflicts between listed species and development activities and these plans must meet the requirements of Section 10 of the ESA. Source: <https://www.fema.gov/laws-executive-orders>

☑ **Migratory Bird Treaty Act (MBTA)** – The law enacted in 1918 makes it illegal to take, possess, import, export, transport, sell, purchase, barter, or offer for sale, purchase, or barter, any migratory bird, or the parts, nests, or eggs of such a bird except under the terms of a valid Federal permit. Some regulatory exceptions apply. Take is defined in regulations as: ‘pursue, hunt, shoot, wound, kill, trap, capture, or collect, or attempt to pursue, hunt, shoot, wound, kill, trap, capture, or collect.’ Migratory bird species protected by the Act are listed in 50 CFR 10.13. <https://www.fws.gov/birds/policies-and-regulations/laws-legislations/migratory-bird-treaty-act.php>

- ☑ **The Bald and Golden Eagle Protection Act (BGEPA)** – Is a federal statute that protects two species of eagle. The bald eagle was chosen as a national emblem of the United States by the Continental Congress of 1782 and was given legal protection by the Bald Eagle Protection Act of 1940. This act was expanded to include the golden eagle in 1962. Source: https://en.wikipedia.org/wiki/Bald_and_Golden_Eagle_Protection_Act

- ☑ **Wild and Scenic Rivers Act (WSRA)** – Enacted in 1968 to preserve the free-flowing state of rivers with outstanding natural, cultural, and recreational values in a free-flowing condition listed in the National Wild and Scenic Rivers System (System) because of their outstanding scenic, recreation, geologic, fish and wildlife, historic, cultural or other similar values. The WSRA established requirements applicable to water resource projects and protects both the river or river segments and the land immediately surrounding them. Source: <https://www.fema.gov/laws-executive-orders>

- ☑ **Fish and Wildlife Coordination Act (FWCA)** – As enacted in 1934 and amended in 1964, is intended to protect fish and wildlife when federal actions result in the control or modification of a natural stream or body of water. The FWCA requires federal agencies to take into consideration the effect that water-related projects would have on fish and wildlife resources and provide for the development or improvement of these resources. Source: <https://www.fema.gov/laws-executive-orders>

- ☑ **Rivers and Harbors Act (RHA)** – The RHA (33 U.S.C. 403) passed in 1899 establishes permit requirements under Section 10 to prevent the creation of any obstruction to the navigable capacity of any of the waters of the U.S. not affirmatively authorized by Congress. Administered by the U.S. Army Corps of Engineers, the law also prevents excavation or fill, in navigable water of the United States without appropriate permits. Actions requiring Section 10 permits include structures (e.g., piers, wharfs, breakwaters, weirs, transmission lines) and works such as dredging or disposal of dredged material or excavation or filling to the navigable Waters of the U.S. Source: <https://www.fema.gov/laws-executive-orders>

- ☑ **Coastal Zone Management Act (CZMA)** – Passed in 1972 to encourage coastal states to develop and implement coastal zone management plans to preserve, protect, develop, and where possible, restore or enhance, the resources of the Nation's coastal zone for this and succeeding generations. Source: https://en.wikipedia.org/wiki/Coastal_Zone_Management_Act

- ☑ **Coastal Barrier Resources Act (CBRA)** – Enacted in 1982 to encourage conservation of hurricane-prone, biologically rich coastal barriers. CBRA prohibits most new federal expenditures that encourage development or modification of coastal barriers thus protecting coastal areas that serve as barriers against wind and tidal forces caused by coastal storms and serve as habitat for aquatic species. Therefore, most new or substantially improved residences, businesses, or other developments in the CBRA are not eligible for certain federal funding and financial assistance. Source: <https://www.fema.gov/media-library/assets/documents/17075>

- ☑ **Farmland Protection Act (FPA)** – Encourages the preservation of prime and important farmlands by minimizing the extent to which federal programs contribute to the conversion of farmland to non-agricultural use. Ensures that federal programs are administered to the extent practicable, in a manner compatible to state, local, and private programs and policies to protect farmland. Source: <https://www.fema.gov/laws-executive-orders>

- ☑ **Archaeological and Historic Preservation Act (AHPA)** – Provides for the preservation of cultural resources that may be damaged by federal or federally authorized construction activities. It also requires that the Secretary of Interior be notified when unanticipated archeological materials are discovered during construction of a federal undertaking. Source: <https://www.fema.gov/laws-executive-orders>

- ☑ **National Historic Preservation Act (NHPA)** – Is intended to preserve historic and archaeological sites in the United States of America and directs federal agencies to take into account the effect of any undertaking (a federally funding or assisted project) on historic properties (a property that is 50 years old or older). The act created the National Register of Historic Places, the list of National Historic Landmarks, and the State Historic Preservation Offices. Section 106 of the National Historic Preservation Act mandates federal agencies undergo a review process for all federally funded and permitted projects that will impact sites listed on, or eligible for listing on, the National Register of Historic Places. Sources: <https://www.fema.gov/laws-executive-orders>, https://en.wikipedia.org/wiki/National_Historic_Preservation_Act_of_1966

- ☑ **Native American Graves Protection & Repatriation Act (NAGPRA)** – This law specifies the requirements for the identification and appropriate disposition of human remains, funerary objects, and sacred objects of cultural patrimony and protection of Native American graves and other cultural items located on federal and tribal land. Source: <https://www.nps.gov/archeology/tools/laws/nagpra.htm>

- ☑ **American Indian Religious Freedom Act (AIRFA)** – Protects the rights of Native Americans to exercise their traditional religion. These rights include, but are not limited to, access to sacred sites, freedom to worship through ceremonial and traditional rites, and use and possession of objects considered sacred. Source: https://en.wikipedia.org/wiki/American_Indian_Religious_Freedom_Act
- ☑ **Watershed and Flood Prevention Act (WFPA)** – This Act, passed in 1954, provided for the Natural Resource Conservation Service at the U.S. Department of Agriculture provides planning assistance and construction funding for projects constructed by local sponsors, often in the form of flood control districts. Source: https://en.wikipedia.org/wiki/Watershed_Protection_and_Flood_Prevention_Act_of_1954
- ☑ **'Superfund' or Comprehensive Environmental Response, Compensation and Liability Act (CERCLA)** – Is a federal law passed in 1980 that established to clean up sites contaminated with hazardous substances and pollutants that are identified by the U.S. Environmental Protection Agency. In addition, the law established public funding through a taxing mechanism on certain industries and to change liability to be able to hold a broader range of parties responsible for clean ups.

In practice, the U.S. EPA has been responsible for establishing a National Priorities List of sites that warrant evaluation and remediation, defining the soil and water clean-up that are protective of human health and environment, laboratory analytical methods to evaluate the concentrations of constituents of concern in soil or water, and hazardous materials collection and disposal programs, among others. Source: <https://www.epa.gov/superfund/superfund-cercla-overview>

- ☑ **Resource Conservation and Recovery Act (RCRA)** – This law gives the US EPA the authority to control hazardous waste from the "cradle-to-grave." This includes the generation, transportation, treatment, storage and disposal of hazardous waste. To achieve this, US EPA develops regulations, guidance and policies that ensure the safe management and cleanup of solid and hazardous waste, and programs that encourage source reduction and beneficial reuse. RCRA establishes the framework for a national system of solid waste control. Subtitle D of the Act is dedicated to non-hazardous solid waste requirements, and Subtitle C focuses on hazardous solid waste. Solid waste includes solids, liquids and gases and must be discarded to be considered waste. Source: <https://www.epa.gov/rcra/resource-conservation-and-recovery-act-rcra-overview#otherrcras>

Executive Orders (Source: <https://www.fema.gov/laws-executive-orders>)

- ☑ **Executive Order 11990, Protection of Wetlands** - Requires federal agencies to assess impact of projects on wetlands and minimize potential damage.

- ☑ **Executive Order 11988, Floodplain Management** - Requires federal agencies to avoid, to the extent possible, the long and short-term adverse impacts associated with the occupancy and modification to floodplains.
- ☑ **Executive Order 12699, Seismic Safety** - Requires that construction projects in seismically sensitive areas meet specific standards to resist the seismic conditions of that area.
- ☑ **Executive Order 12898, Environmental Justice** - Requires federal agencies to assess impact of projects on low income and minority population.

3.2 California Environmental Laws

- ☑ **California Environmental Quality Act (CEQA)** – CEQA institutes a statewide policy of environmental protection that requires State and local agencies to consider environmental protection a mandatory part of their decision making process. Documents associated with CEQA include: Initial Study, Negative Declarations, Mitigated Negative Declarations, and Environmental Impact Reports; the keystones in a city or county entitlement process to enable project development. The 2019 CEQA update has added to the Appendix G Environmental Checklist Form the topics of 'Wildfire' and 'Energy' to be evaluated as “Environmental Factors Potentially Affected” in view of the high number of state and federal disasters that have occurred recently in the State. Source: <http://resources.ca.gov/ceqa/>
- ☑ **California Clean Air Act (CCAA)** – This act, known also as the Mulford-Carrell Act, was enacted by legislature and represented the first State law to address air quality issues with the creation of the California Air Resources Board (CARB) and local air districts. Their purpose is to attain and maintain healthy air quality; protect the public from exposure to toxic air contaminants; and provide innovative approaches for complying with air pollution rules and regulations, including greenhouse gases and climate change which were added in 2006 amendments. Source: <https://ww2.arb.ca.gov/search/site?keys=mullford-carrell+acdt>
- ☑ **Porter-Cologne Water Quality Control Act (also known as the Porter-Cologne Act, PCA)** – This law established the State Water Resources Control Board (State Board) who has the ultimate authority over State water rights, water quality policy, and nine Regional Water Quality Control Boards (Regional Boards). The Regional Boards oversee water quality on a day-to-day basis at the local/regional level. California always has retained authority to regulate discharges of waste into any Waters of the State (e.g., vernal pools) regardless of whether the USACE has concurrent jurisdiction under the federal CWA Section

404. Under state law, the duty to file a report of waste discharge is mandatory. Source:

https://www.waterboards.ca.gov/laws_regulations/docs/portercologne.pdf

- ☑ **California Endangered Species Act (CESA)** – This act is administered by the California Department of Fish and Wildlife (CDFW) and establishes its authority to determine the designation under which wildlife was labeled as “rare” or “endangered” and provided restrictions on the importing and moving of those species except by permit. It also prohibits the “taking” of State-listed species, except as otherwise provided in State law. If a species is listed by both the federal Endangered Species Act (ESA) and (CESA), Fish and Game Code section 2080.1 allows an applicant who has obtained a federal incidental take statement (federal Section 7 consultation) or a federal incidental take permit (federal Section 10(a)(1)(B)), to request that the Director of CDFW find the federal documents consistent with CESA. If the federal documents are found to be consistent with CESA, a consistency determination (CD) is issued and no further authorization or approval is necessary under CESA. Source: http://resources.ca.gov/wetlands/permitting/cesa_summary.html
- ☑ **California Fish and Game Code** – The California Fish and Game Code is written in 13 Divisions, which establish the basis of fish, wildlife, and native plant protections and management in the state. Some important general sections in the Fish and Game Code that concern wildlife are Sections 1801 and 1802 that establish the CDFW and state policy of conservation of native species and gives CDFW the authority to review all “projects” under the California Environmental Quality Act (CEQA), which is the main driver for protection of native species and habitat. Source: <https://fgc.ca.gov/Regulations/Current>
- ☑ **California Migratory Bird Protection Act** – Until January 20, 2025, makes unlawful the taking or possession of any migratory nongame bird designated in the federal act before January 1, 2017, any additional migratory nongame bird that may be designated in the federal act after that date, or any part of those migratory nongame birds, except as provided by rules and regulations adopted by the United States Secretary of the Interior under the federal act before January 1, 2017, or subsequent rules or regulations adopted pursuant to the federal act, unless those rules or regulations are inconsistent with the Fish and Game Code. Source: https://leginfo.legislature.ca.gov/faces/billTextClient.xhtml?bill_id=201920200AB454
- ☑ **Forest Practice Act (FPA)** –The Forest Practice Act was enacted in 1973 to ensure that logging is done in a manner that will preserve and protect our fish, wildlife, forests and streams. The State Board of Forestry and Fire Protection, through

CalFire, enacts and enforces additional rules for review and approval. In January 2019 the Board of Forestry and Fire Protection adopted emergency regulations to restructure, modify and standardize existing, and create new, exemptions from the plan preparation and submission requirements of the FPA to person(s) engaged in specified forest management activities (i.e., demonstrated emergency). Source:

http://www.fire.ca.gov/resource_mgt/resource_mgt_forestpractice

- ☑ **Native Plant Protection Act (NPPA)** – The NPPA was enacted in 1977 and allows the Fish and Game Commission to designate plants as rare or endangered. There are 64 species, subspecies, and varieties of plants that are protected as rare under the NPPA. The NPPA prohibits take of endangered or rare native plants, but includes some exceptions for agricultural and nursery operations; emergencies; and after properly notifying CDFW for vegetation removal from canals, roads, and other sites, changes in land use, and in certain other situations. Source: <https://www.wildlife.ca.gov/Conservation/Plants/Laws>

- ☑ **California Coastal Act of 1976 (CCA)** – This act extended indefinitely the mission of the California Coastal Commission (Commission) which was established in 1972 by passage of Proposition 20, a voter initiative. The agency is tasked with controlling the construction along the state's 1,100 miles of shoreline and protection of coastal resources, including: shoreline public access and recreation, lower cost visitor accommodations, terrestrial and marine habitat protection, visual resources, landform alteration, agricultural lands, commercial fisheries, industrial uses, water quality, offshore oil and gas development, transportation, development design, power plants, ports, and public works. The law allows that once a Local Coastal Plan (LCP) is certified by the Commission as being consistent with the CCA, coastal development authority is delegated to the local government. In 2016, AB 2648 (Jones) authorized a county containing any portion of the coastal zone to petition a superior court of competent jurisdiction to obtain a writ of mandate requiring the authority of the Commission over coastal permitting and exclusive agent for the purpose of enforcing state and federal coastal laws. Sources: <https://www.coastal.ca.gov/coastact.pdf>
https://leginfo.legislature.ca.gov/faces/billTextClient.xhtml?bill_id=201520160AB2648

- ☑ **California Wild and Scenic Rivers Act (CWSRA)** – Enacted in 1972, following the passage of the federal Wild and Scenic Rivers Act by Congress in 1968, to enable identification of California rivers for listing under the federal Wild and Scenic Rivers Act. Today, California's act prohibits construction of dams or diversion facilities, except to serve local needs, on portions of, or on entire rivers

around the state. Sources:

http://leginfo.legislature.ca.gov/faces/codes_displaySection.xhtml?lawCode=PRC§ionNum=5093.50.

<https://www.watereducation.org/aquapedia/california-wild-and-scenic-rivers-act>

- ☑ **California Native American Historical, Cultural and Sacred Sites Act (NAHCSSA)** – This law requires that if upon discovery of human remains during construction activities on state and private lands, the activity ceases and the county coroner is notified. If the remains are of a Native American, the coroner notifies the Native American Heritage Commission (NAHC) that then notifies those persons mostly likely to be descended from the Native American remains. Source: http://www.nathpo.org/State_Laws/California.htm

- ☑ **California Native American Historic Resource Protection Act (NAHRPA)** – This law was amended in 2007 with AB 52 to specify that a project with an effect that may cause a substantial adverse change in the significance of a tribal cultural resource, as defined, is a project that may have a significant effect on the environment under CEQA. It requires that the lead agency consult with a California Native American tribe that is traditionally and culturally affiliated with the geographic area of the proposed project. The Act established a misdemeanor for unlawfully and maliciously excavating upon, removing, destroying, injuring, or defacing a Native American historic, cultural, or sacred site that is listed or may be eligible for listing in the California Register of Historic Resources. Source: https://leginfo.legislature.ca.gov/faces/billNavClient.xhtml?bill_id=201320140AB52

- ☑ **Surface Mining and Reclamation Act (SMARA)** – The Surface Mining and Reclamation Act of 1975 (SMARA, Public Resources Code, Sections 2710-2796) provides a comprehensive surface mining and reclamation policy with the regulation of surface mining operations to assure that adverse environmental impacts are minimized and mined lands are reclaimed to a usable condition. SMARA also encourages the production, conservation, and protection of the state's mineral resources. Public Resources Code Section 2207 provides annual reporting requirements for all mines in the state, under which the State Mining and Geology Board is also granted authority and obligations. Source: <https://www.conservation.ca.gov/dmr/lawsandregulations>

- ☑ **California Superfund** – This law was enacted in 1981 to ensure the cleanup of contaminated hazardous substance sites in the State, in a manner similar to the 1980 federal Superfund law. The California Environmental Protection Agency (Cal EPA), Department of Toxic Substances Control (DTSC) works jointly with the

U.S. EPA to oversee cleanup at the 94 federal National Priority List sites in California. Approximately 4,200 State-listed sites in California are not listed under the federal program are cleaned up under a number of state programs. Also within Cal EPA is the Office of Environmental Health Hazard Assessment (OEHHA) that develops objective scientific evaluation of risks posed by hazardous substances to in compliance with this law that requires site-specific human health and ecological risk assessments to establish site clean-up levels instead of applying "default" clean-up standards for constituents of concern in soil and water. Source: https://lao.ca.gov/1999/011199_superfund_reprint.html

☑ **Other Environmental Laws:**

- **Flood Control** – The recent SB 753 (Steinberg 2013) gave the Central Valley Flood Protection Board (CVFPB) new tools to deal with long-standing illegal encroachments upon, under, and around flood control structures which undermine the integrity and stability of the system. This law may be applied to all Flood Protection Boards in the State that were originally chartered in 1911 as the Reclamation Board, an agency that served as the liaison between the State, its residents, property owners, Central Valley agencies, and the U.S. government, with the mission "to reduce the risk of catastrophic flooding to people and property within the California central valley" while also considering environmental and habitat concerns. Source: http://leginfo.legislature.ca.gov/faces/billNavClient.xhtml?bill_id=201320140SB753
- **Wildfire** – The SB 901, passed on September 21, 2018 and became effective January 1, 2019, makes comprehensive changes to forestry management and fuel reduction under the FPA in order to mitigate the risk of wildfires across the state and address the disposal of the massive amounts of dead wood and brush that fuel wildfires and is associated with the Exemption Emergency Regulations, 2019, summarized above. It would spend \$1 billion over five years on fire prevention. Source: http://leginfo.legislature.ca.gov/faces/billNavClient.xhtml?bill_id=201720180SB901
- **California Planning and Zoning Laws, Government Code Sections 65000 through 66499.58** – provide for municipalities to administer regulations and procedures allowing for the planning and development of lands compliant with State requirements. Recent amendments to Government Code Section 65302:
 - ✓ AB3065 (Kehoe) – requires preparation of a Safety Element to be submitted to the State Board of Forestry and Fire Protection and local agencies that provide fire protection to territory in the city and county (Source:

http://leginfo.legislature.ca.gov/faces/billTextClient.xhtml?bill_id=200320040AB3065); and

- ✓ AB 2140 (Hancock) – authorizes a city or county to adopt with its General Plan Safety Element a federally specified local hazard mitigation plan and limits the state share for projects eligible under the California Disaster Assistance Act unless a local jurisdiction has adopted a local hazard mitigation plan in accordance with the federal Disaster Mitigation Act as part of its General Plan Safety Element. Source: http://leginfo.legislature.ca.gov/faces/billNavClient.xhtml?bill_id=200520060AB2140

Together, with the addition of ‘Wildfire’ and ‘Energy’ to the CEQA Environmental Checklist to be evaluated as “Environmental Factors Potentially Affected,” it is clear that the intention is to create a practice in hazard mitigation planning for the purpose of enhancing and conserving the State’s natural and historical resources.

4.0 PROJECT ENVIRONMENTAL CHARACTERISTICS

There are many types of disaster-related projects associated with earthquakes, fires, floods, hurricanes, and pandemics, among others. The common denominator for each disaster is that it occurs in an area with a unique environment. When addressing your project in an application for either a state CDAA or FEMA Public Assistance Grant, follow the rules of thumb below for a successful project:

- Assume that environmental and historic preservation (EHP) reviews are necessary.
- Prepare a complete and clear scope or statement of work (SOW) for the project, including its location, to prevent delays in the environmental and historic preservation review process.
- Evaluate your project's potential impacts to the environment and historic resources during the project design process to identify alternatives that may reduce potential impacts and costs.
- Develop alternatives to your project because, although there may be benefits to your project, it may also present potentially adverse impacts to environmental or historic resources that may be prevented in a project alternative.
- Prepare to address the Cal OES and FEMA EHP requirements, including but not limited to CEQA and NEPA, even though the project may qualify for either a statutory or categorically exemption under CEQA, or a statutory or categorical exclusion under NEPA.

It is important to know that both CEQA and NEPA are overarching environmental policy laws under which a project's potential impacts are evaluated in accordance with other applicable environmental resource laws (e.g., state and federal Clean Water Acts or Endangered Species Acts). Therefore, although a project may qualify for either a CEQA Exemption or NEPA Exclusion, there may be environmental permit requirements that a Subrecipient is responsible for obtaining to ensure grant funding is released.

For reference, Table 4.1 summarizes key state and federal environmental laws and regulations for which either permits, consultations, or both are required by responsible resource agencies. In addition, Table 4.1 contains a summary of how the regulations may be relevant when developing an SOW for your project. The information in the table is for reference and is not intended to be a complete list of regulations that you may need to consider for the environmental compliance requirements for your project. Please refer to commonly asked questions regarding how and why the applicable regulations need to be addressed.



Table 4.1 – Key State and Federal Environmental Laws

This table summarizes potential federal, state and local environmental permitting and regulatory review requirements related to disaster related emergency and permanent work. For a full list of these laws and regulations, please refer to Chapter 3.0 of the Environmental Directory.

Because CEQA and NEPA are “umbrella policies” for state and federal environmental compliance activities, other local, state, and federal resource specific laws and regulations may apply (e.g., local ordinances, Federal or State Endangered Species Acts, National Historic Preservation Act) and are identified when a project is defined. In addition, whether or not a project may meet the requirements for, respectively, a CEQA or NEPA Statutory or Categorical Exemption or Exclusion is evaluated before initiating an in depth environmental analysis in accordance with either law. Please note that although a project may qualify for either a State Exemption or Federal Exclusion in accordance, respectively, with CEQA and NEPA, other State and Federal environmental permit requirements may be necessary to ensure that Cal OES and FEMA may fully obligate Public Assistance Grant funds for your project. Project Applicants are responsible for complying with all applicable environmental laws and regulations for projects within their respective jurisdictions.

California Environmental Quality Act

CEQA applies to discretionary government activities that are defined as “projects,” or actions that have the potential for resulting in either a direct physical change in the environment or a reasonably foreseeable indirect physical change in the environment (Public Resources Code § 21065; Guidelines § 15378 (a)).

CEQA exemptions may apply to disaster emergency response or recovery projects and include:

- Public Resources Code section 21080(b)(4) (emergency);
- CEQA Guidelines, Title 14, Cal. Code of Regulations; sections
 - 15269 (emergency);
 - 15269 (a) Projects to maintain, repair, restore, demolish, or replace property or facilities damaged or destroyed as a result of a disaster in a disaster stricken area in which a state of emergency has been proclaimed by the Governor pursuant to the California Emergency Services Act.
 - 15269 (b) Emergency repairs to publicly or privately owned service facilities necessary to maintain service essential to the public health, safety or welfare.

- 15269 (c) Specific actions necessary to prevent or mitigate an emergency. This does not include long-term projects undertaken for the purpose of preventing or mitigating a situation that has a low probability of occurrence in the short-term.
 - 15304 Minor alterations to land; and/or
 - 15307 Actions by regulatory entities for resource protection.

National Environmental Policy Act

The National Environmental Policy Act of 1969 (NEPA), as amended (Pub. L. 91-190, 42 U.S.C. 4321-4347, January 1, 1970, as amended by Pub. L. 94-52, July 3, 1975, Pub. L. 94-83, August 9, 1975, and Pub. L. 97-258, § 4(b), Sept. 13, 1982) established a national policy for the environment and provided for the establishment of a Council on Environmental Quality (CEQ). NEPA “established national policy which will encourage productive and enjoyable harmony between man and his environment; to promote efforts which will prevent or eliminate damage to the environment and biosphere and stimulate the health and welfare of man.” The Federal Emergency Management Agency (FEMA) will ensure compliance with the NEPA and other federal laws and regulations.

Federal Laws & Regulations	Lead or Responsible Agency	Summary	Project Activity
National Environmental Policy Act (NEPA)	Federal Emergency Management Agency (FEMA)	Projects conducted or funded by the federal government must comply with NEPA. FEMA guidelines and regulations for NEPA would be applicable for FEMA Public Assistance Grant projects.	Activities with a nexus to other federal environmental laws and regulations (e.g., Endangered Species Act) to determine potential impacts resulting from a proposed action.
Clean Water Act Section (CWA) 404 Rivers and Harbor Act (R&HA) Section 10	U.S. Army Corps of Engineers (USACE)	Applicable to work in or adjacent to water bodies or wetlands. The USACE regulatory program involves the regulating of discharges of dredged or fill material into Waters of the	Activities associated with work in or adjacent to water bodies or wetlands (i.e., Waters of the U.S.). Such activities include placement of temporary bridges, tree removal within the

Table 4.1 – Key State and Federal Environmental Laws

		United States (WOTUS) and structures or work in navigable waters, under Section 404 of the CWA and Section 10 of the Rivers and Harbors Act of 1899. A general permit is issued for structures, work or discharges that will result in only minimal adverse effects.	Watercourse, Lake, Protection Zone (WLPZ) or wetland containing or habitat for protected species.
Clean Water Act (CWA) Section 401	Delegated to State Water Resources Control Board (SWRCB), Regional Water Quality Control Board (RWQCB)	Any applicant for a Federal license or permit (e.g., CWA Section 404 Permit) to conduct any activity including, but not limited to, the construction or operation of facilities, which may result in any discharge into navigable waters, shall provide the licensing or permitting agency a certification from the State in which the discharge originates or will originate. In California, the Section 401 Water Quality Certification is the responsibility of Regional Water Quality Control Board.	The CWA Section 401 is a companion action to the CWA Section 404 action is relevant for the variety of activities associated with potential work in or adjacent to water bodies or wetlands (i.e., WOTUS). Such activities include placement of temporary bridges, tree removal within the Watercourse, Lake, Protection Zone (WLPZ) or wetland containing or habitat for protected species.
Clean Water Act Section 402	Delegated to State Water Resources Control Board (SWRCB), Regional Water Quality Control Board (RWQCB)	Dischargers whose projects disturb one or more acres of soil are required to obtain coverage under the General Permit for Storm Water Discharges Associated with Construction and Land Disturbance Activities (Construction Storm Water General Permit) through the RWQCB.	Project activities that are appropriate to be considered for the CWA Section 402 would include those associated with generating discharges to WOTUS, or, Waters of the State of California (WOTS).

Table 4.1 – Key State and Federal Environmental Laws

		Construction activity subject to this permit includes clearing, grading, grubbing, excavation, or any other activity that results in a land disturbance of equal or greater than one acre. Dischargers obtain coverage under the Construction Storm Water General Permit by enrolling through the California Storm water Multiple Application and Report Tracking System (SMARTS) and submitting all required Permit Registration Documents. The Construction Storm Water General Permit requires the development and implementation of a Storm Water Pollution Prevention Plan (SWPPP).	
U.S. Endangered Species Act (ESA)	U.S. Fish and Wildlife Service (USFWS);	Potential impacts to federally listed threatened and endangered species and/or critical habitat. The U.S. Endangered Species Act directs all Federal agencies to work to conserve threatened and endangered (T&E) species and to use their authorities to further the purposes of the Act. Section 7 of the Act, called "Interagency Cooperation," is the mechanism by which Federal agencies ensure the actions they	Upon completing your Statement of Work (SOW), refer to the California Natural Diversity Data Base (CNDDDB) for those species that may need to be addressed in accordance with the Federal ESA, and, consult with FEMA.

Table 4.1 – Key State and Federal Environmental Laws

		take, including those they fund or authorize, do not jeopardize the existence of any listed species. Consultation may be required because of potential impacts to T&E species, to be determined based on the final SOW.	
U.S. Endangered Species Act (ESA)	National Oceanic and Atmospheric Administration, National Marine Fisheries Service (NMFS)	Potential impacts to federally listed threatened and endangered species and/or critical habitat. The ESA directs all Federal agencies to work to conserve threatened and endangered (T&E) species and to use their authorities to further the purposes of the Act. Section 7 of the Act, called "Interagency Cooperation," is the mechanism by which Federal agencies ensure the actions they take, including those they fund or authorize, do not jeopardize the existence of any listed species. Consultation may be required because of potential impacts to T&E species, to be determined based on the final SOW.	Upon completing your SOW, refer to the CNDDDB for those species that may need to be addressed, in accordance with the Federal ESA, and, consult with FEMA.
Migratory Bird Treaty Act (MBTA)	U.S. Fish and Wildlife Service (USFWS)	Biological monitoring may be required to limit impacts to migratory birds in accordance with the Migratory Bird Treaty Act and will be determined	Upon completing your SOW, refer to the California Natural Diversity Data Base for those species that may need to be addressed in accordance with the

Table 4.1 – Key State and Federal Environmental Laws

		based on SOW details.	Federal ESA, and, consult with FEMA.
National Historic Preservation Act (NHPA)	FEMA Lead with California Natural Resources Agency-State Historic Preservation Officer (SHPO) or local Tribal Historic Preservation Officer (THPO)	Section 106 of the NHPA mandates federal agencies undergo a review process for all federally funded and permitted projects that will impact sites listed on, or eligible for listing on, the National Register of Historic Places. Specifically it requires the federal agency to consider the effect a project may have on historic properties, including sensitive cultural resources to federally recognized Native American Tribes	Potential ground disturbing project activities to impact known or unknown cultural resources during debris or tree removal activities. SHPO or THPO consultation with the potential to affect historic properties in the project area would be led by FEMA for federally declared disasters and Cal OES Tribal Liaisons would be notified in accordance with the Programmatic Agreement between these agencies.
Resource Conservation and Recovery Act (RCRA)	U.S. Environmental Protection Agency (USEPA), Subtitle D; California Environmental Protection Agency (Cal EPA), RCRA Subtitle C.	The USEPA regulates the use, storage and disposal of hazardous and non-hazardous materials from "cradle to grave." Any hazardous materials used during project operations (e.g. petroleum-based fuels) should be managed in accordance with RCRA. Cal EPA, Department of Toxic Substances Control, has USEPA delegated authority to enforce RCRA Subtitle C that establishes standards for the generation, transportation, treatment, storage, and disposal of hazardous waste in Treatment Storage and Disposal Facilities (TSDF). USEPA administers RCRA Subtitle D for Non-	Manifesting debris removed from private property to the end use facility will be required as it is considered a non-hazardous waste. Disposal of BioMass at other end use facilities may require additional record keeping to comply with each facilities' respective permitting compliance requirements.

Table 4.1 – Key State and Federal Environmental Laws

		hazardous waste, such as vegetative debris.	
Executive Order 11988 and 11990 – Floodplain and Wetlands Protection	Federal Emergency Management Agency (FEMA)	FEMA reviews all projects that take place in the floodplain as required by Executive Order 11988. For major projects, this could require the “8-Step” process, which evaluates practicable alternatives and includes public review. Projects with potential to modify a wetland would require USACE CWA permitting in accordance with Executive Order 11990 and the CWA.	Work in or adjacent to water bodies or wetlands (i.e., WOTUS). Such activities include placement of temporary bridges, tree removal within the Watercourse, Lake, Protection Zone (WLPZ) or wetland containing or habitat for protected species.
State Laws & Regulations	Lead or Responsible Agency	Summary	Project Activity
California Environmental Quality Act (CEQA)	Local or State Agency	The California Environmental Quality Act (CEQA) is California's broadest environmental law and statewide policy of environmental protection. CEQA helps to guide the Lead Agency for the issuance of permits and approval of projects. CEQA has been interpreted by the court and its decisions to afford the fullest protection of the environment within the reasonable scope of the statutes and practical planning considerations.	Activities with a nexus to other local, State, or federal environmental laws and regulations (e.g., zoning codes, California Endangered Species Act (CESA) or CWA) to determine potential impacts resulting from a proposed action. Often, with Gubernatorial proclaimed or Presidential declared disasters, the Governor may issue an Executive Order to suspend certain environmental regulations to expedite emergency work (e.g., debris removal). A local agency may also exercise an

Table 4.1 – Key State and Federal Environmental Laws

			Emergency Ordinance to expedite emergency restoration activities and restoration activities using applicable CEQA Exemptions.
Forest Practice Act (FPA)	Department of Forestry and Fire Protection (CAL FIRE)	CAL FIRE reviews Timber Harvest Plans (THPs) for logging projects. Emergency regulations for tree removals were adopted in January 2019 following the Camp Fire in Butte County and was made permanent as the 'Post-Fire Recovery Exemption' in November 2019. This exemption provides for licensed timber operators to complete "Notice of Exemption" forms to CAL FIRE without filing a THP for the harvesting of dead or dying trees of any size within 300 feet from any point of a structure damaged or destroyed by wildfire.	The removal of hazard trees would be addressed by the CAL FIRE 'Post-Fire Recovery Exemption.' However, because trees may be removed from public rights of way (ROW), the THP Exemption for ROW under Forest Practice Act Section 1104.1(b) to provide for operational flexibility for the volume of trees proposed for removal may be applied.
California Endangered Species Act (CESA)	California Department of Fish & Wildlife (CDFW)	Consultation with CDFW is required for protection of California-listed T&E species and other California special status species and habitat.	Upon completing your SOW, refer to the CNDDDB for those species that may need to be addressed in accordance with the State and Federal ESA, and, consult with CDFW, and USFWS, as warranted.
California Fish and Game Code, Section 1600, Lake and Streambed Alteration	California Department of Fish & Wildlife (CDFW)	The CDFW Lake and Streambed Alteration Program reviews projects that would alter any river, stream, or lake and conditions projects to conserve existing fish and wildlife	The variety of activities associated with potential work in or adjacent to Waters of the State, including wetlands include placement of temporary bridges, tree removal within the Watercourse, Lake,

Table 4.1 – Key State and Federal Environmental Laws

Agreement (LSAA)		resources. CDFW must be notified for projects that would change the bed, channel, or bank of any river, stream, or lake. The notification requirement applies to any river, stream, or lake, including those that are dry for periods of time (ephemeral/episodic) as well as those that flow year round (perennial). A Streambed Alteration notification should be prepared for work in or adjacent to streambeds for CDFW review.	Protection Zone (WLPZ) or wetland containing or habitat for protected species. Depending on the presence of state and/or federal listed species in such zones, consultations with other state and federal resource agencies may be required.
Native Plant Protection Act (NPPA)	California Department of Fish and Wildlife (CDFW)	The NPPA prohibits take of endangered or rare native plants, but includes some exceptions for agricultural and nursery operations; emergencies; and after properly notifying CDFW for vegetation removal from canals, roads, and other sites, changes in land use, and in certain other situations.	Upon completing your SOW, refer to the CNDDDB for those species that may need to be addressed in accordance with the State and Federal ESA, and, consult with CDFW.
Porter-Cologne Water Quality Control Act (Porter-Cologne Act)	State Water Resources Control Board (SWRCB), Regional Water Quality Control	The Porter-Cologne Act (Act), also known as the California Water Code, Section 7, governs water quality regulation in California. The Act, supersedes the Dickey Water Pollution	Activities associated with work in or adjacent to water bodies or wetlands (i.e., WOTS and WOTUS). Such activities include placement of temporary bridges, tree removal within the

Table 4.1 – Key State and Federal Environmental Laws

	Boards (RWQCB)	Control Act of 1949 under which the RWQCBs were created and was established to be a program to protect water quality as well as beneficial uses of water. Waste discharges that “could affect the quality of waters of the state” require permits from the State Water Resources Control Board. Some waste discharge requirements also serve as Clean Water Act NPDES permits.	Watercourse, Lake, Protection Zone (WLPZ) or wetland containing or habitat for protected species.
California Clean Air Act (CCA)	California Air Resources Board (CARB)	Regulates emissions from point and non-point sources.	Activities that generate fugitive dust and fumes, such as those associated with debris removal activities, and associated equipment, and vehicle use.
California Native American, Historical, Cultural and Sacred Sites Act	Tribal Historic Preservation Officers	Passage of Assembly Bill 52 modified CEQA Appendix G (Initial Study Checklist) to include questions related to impacts to tribal cultural resources and allows lead CEQA agencies to consult with the State or local Tribal Historic Preservation Officers (SHPO or THPO) for project work with the potential to affect Native American cultural resources or Sacred sites.	Ground disturbing activities with potential to impact to Native American cultural resources or Sacred sites associated.
California Superfund	California Environmental Protection	California Superfund is applied to prevent hazardous material and substance handling from becoming a	Any hazardous materials used during project operations should be managed in accordance with Cal EPA regulations.

Table 4.1 – Key State and Federal Environmental Laws

	Agency (Cal EPA); Office of Environmental Health Hazard Assessment (OEHHA)	hazardous materials site. In addition, the regulation as administered provides for cleanup of hazardous materials and substances that have impacted soils and groundwater to be protective of human health and environment.	
Local Laws & Regulations	Lead or Responsible Agency	Summary	Project Activity
County	County	Responsible for administering California Planning and Zoning Laws, Government Code Sections 65000 through 66499.58 and CEQA	Project activities that are appropriate to be considered for either CEQA and/or over the counter permits.
Incorporated Town or City	Town or City	Responsible for administering California Planning and Zoning Laws, Government Code Sections 65000 through 66499.58 and CEQA	Project activities that are appropriate to be considered for either CEQA and/or over the counter permits.
Special Districts (e.g., Irrigation Districts, Parks and Recreation Districts)	Special District	Responsible for administering applicable regulations for the District.	May become a CEQA lead agency for projects within their District.

For further information or clarification, please contact: Patricia Nelson, Cal OES Environmental Officer, 916-845-8738

If your project is associated with a gubernatorial proclamation and there are certain statutes from which relief is sought from either or both the Secretaries of the Natural Resources Agency and Environmental Protection Agency, be aware that an Environmental Protection Plan to address those statutes is required before a "Waiver" may be authorized by either Agency Secretary.

4.1 Commonly Asked Questions and Answers

1. **Question:** What are the applicable environmental laws for my public assistance grant project (project)?

Answer: *There are many local, state, and federal environmental regulations that are applicable. The principal state law under which other applicable laws are considered is the California Environmental Quality Act (CEQA). The principal federal law under which other applicable laws are considered is the National Environmental Policy Act (NEPA).*

2. **Question:** Do I need to comply with CEQA for a State disaster proclaimed in accordance with the California Disaster Assistance Act (CDAA)?

Answer: *Yes, you must comply with CEQA and other applicable state and federal environmental laws and Executive Orders.*

3. **Question:** Do I need to comply with the NEPA as well as CEQA for a federal disaster proclaimed by the President in accordance with the Stafford Act?

Answer: *Yes. The Federal Emergency Management Agency (FEMA) will assist you to ensure the project's public assistance grant process complies with NEPA and Cal OES will work with you to ensure compliance with CEQA as well as other applicable state and federal laws and Executive Orders.*

4. **Question:** If my project is exempt from the CEQA or qualifies for a NEPA exclusion, is it also exempt from other local, state, or federal environmental laws?

Answer: *To determine whether or not your project is exempt from other local, state, or federal environmental laws, you must evaluate your project to determine its potential impact to all applicable environmental and historic preservation laws and regulations. During this review you may find that there are Statutory and Categorical CEQA exemptions as well as work and categorical exclusions under NEPA that may apply to emergency and restoration work, as well as permanent work.*

However, if you determine that the project impacts trigger application of local, state or federal agency environmental permitting and regulatory requirements, the project may need to be permitted by the appropriate regulatory agency. It is important to supply the environmental and regulatory analyses as part of your public assistance grant application for Cal OES and FEMA review. Often the applicable regulatory requirements that may be addressed therein include those summarized below:

Local

- Local Agency (i.e., County and City) Laws, including: planning and zoning laws, development codes and ordinances, and permit requirements.

State

- Clean Air Act, created the California Air Resources Board (CARB) and local air quality management districts (AQMDs) to attain and maintain healthy air quality and protect the public from exposure to toxic air contaminants.
- California Endangered Species Act, establishes the California Department of Fish and Wildlife (CDFW) authority to determine the designation under which wildlife can be categorized as “rare” or “endangered” and provided restrictions on the importing and moving of those species except by permit.
- California Native American Historic Resource Protection Act, requires that the lead agency to consult with a California Native American tribe that is traditionally and culturally affiliated with the geographic area of the proposed project where ground disturbing activities are expected to occur.
- Porter-Cologne Water Quality Control Act (Porter-Cologne Act), establishes the State Water Resources Control Board as the authority over State water rights and water quality policy and nine Regional Water Quality Control Boards (Water Boards) oversee water quality on a day-to-day basis at the local/regional level. The Water Boards regulate discharges to Waters of the State (e.g., vernal pools) through the federal Clean Water Act Section 401 program in lieu of, or in addition to, issuing waste discharge requirements (WDRs, or waivers thereof) in the absence of a request for federal Clean Water Act 401 certification. Under state law, the duty to file a report of waste discharge is mandatory.

Federal

- Clean Water Act, Section 404, requires the U.S Army Corps of Engineers (USACE) authorization for work involving placement of fill or discharge of dredged materials into any “Waters of the United States”. Section 10 of the Rivers and Harbors Act requires USACE authorization for work or structures in or affecting “navigable waters”. USACE jurisdiction extends up to the ordinary high water line for non-tidal waters and up to the line of high tide (for dredge or fill), or mean high water line (for work or structures) for tidal waters.
- Clean Water Act Section 401, the Clean Water Act Section 401 requires that any person applying for a federal permit or license, which may result in a discharge of pollutants into “Waters of the United States”, must obtain a State water quality Section 401 certification. This will ensure that the activity complies with all (i.e., federal and state) applicable water quality standards, limitations, and restrictions. A federal agency can only issue project licenses or permits after the state issues a Section 401 certification. Under the Porter-

Cologne Act, California has retained authority to regulate discharges of waste into any waters of the state (e.g., isolated waters, or, vernal pools) regardless of whether the USACE has concurrent jurisdiction under the federal CWA Section 404.

- Endangered Species Act, ensures that the federal agencies and departments use their authorities protect endangered and threatened species of fish, wildlife, and plants, and for other purposes. Section 7 of the ESA requires that federal agencies prevent or modify any projects authorized, funded or carried out by agencies that may jeopardize the existence of any federally listed species or their habitat.
- National Historic Preservation Act, is intended to preserve historic and archaeological sites in the U.S. and directs federal agencies to take into account the effect of an undertaking (i.e., a federally funding or assisted project) on historic properties (i.e., a property that is 50 years old or older). Section 106 of the National Historic Preservation Act mandates federal agencies undergo a review process for all federally funded and permitted projects that will impact sites listed on, or eligible for listing on, the National Register of Historic Places.

5. **Question:** The California Department of Fish and Wildlife (CDFW) requires a Lake and Streambed Alteration Agreement (LSAA) when a project activity poses a potential threat to fish and wildlife resources. Does a LSAA allow you to take or harm a special status species?

Answer: No, a separate "Incidental Take Permit" from the CDFW may be required. Such permits are required in accordance with Section 2081 subdivision (b) of the Fish and Game Code. This allows the CDFW to authorize take of a listed endangered, threatened, candidate, or a rare plant species, if the take is incidental to otherwise lawful activities, and, if certain other conditions are met.

6. **Question:** How is CEQA enforced?

Answer: CEQA is a self-executing statute. The public enforces CEQA through litigation or the threat of litigation, referred to as a "citizen lawsuit." Typically, the public sues the local agency and/or the project applicant representing a project. These lawsuits may be elevated to the state Attorney General's office if it involves a state agency.

7. **Question:** What happens if I start work prior to receiving NEPA and CEQA environmental clearances?

Answer: The federal and state funding your agency applied for through the Public Assistance Grant process can be de-obligated for your project. This means that your agency would be responsible for all project costs.

8. **Question:** What are some of the penalties for violating some of the environmental and historical resource laws?

Answer: There are several other environmental laws that impose penalties for violations and those below are just a few examples:

- California Endangered Species Act: [Penalties](#) for violating section 2080 range from \$25,000.00 to \$50,000.00 for each violation, one-year imprisonment, or both fine and imprisonment (Fish & G. Code, § 12008.1).
- Federal Endangered Species Act: [Civil Penalties](#) assessed by the Secretary of Interior of not more than \$25,000.00 for each violation. Criminal violations may be assessed up to \$50,000.00 and/or up to one year of imprisonment.
- Native American Historic Resource Protection Act: a civil penalty not to exceed \$50,000.00 per violation. The district attorney, city attorney, or the Attorney General may bring a civil action upon a complaint by the Native American Heritage Commission. ([California Public Resource Code 5097.994](#)).
- Section 404 Clean Water Act – In administrative enforcement, under Section 309(a), EPA can issue administrative compliance orders requiring a violator to stop any ongoing illegal discharge activity and, where appropriate, to remove the illegal discharge and otherwise restore the site. Under 309(g), EPA can assess administrative civil penalties of up to \$16,000.00 per day of violation, with a maximum cap of \$187,500.00 in any single enforcement action.

9. **Question:** What agencies should I contact for environmental technical assistance before starting a project?

Answer: For locally or state declared disasters, contact your city or county planning departments to determine what local permits may be required and whether or not they would be the lead CEQA agency. Also, contact the Cal OES Recovery Environmental Officer, Patricia Nelson, for assistance at 916-823-1945. For a Presidentially Declared disaster, please also contact the FEMA Region IX Environmental and Historical Preservation Officer, Alessandro Amaglio, at 510-627-7077.

5.0 ENVIRONMENTAL RESOURCE SUBJECT INDEX

The federal and state agencies that are responsible for administering environmental laws and regulations are summarized by the environmental resource subjects they are responsible for overseeing. To use this index, find the resource subject along the top row and look for either an “F” for federal or “S” for state in the subject column. Once in sight, identify the row the letter is in and view left to identify the agency (by acronym) that is responsible for providing you technical assistance or permit application requirements for your project. Federal agencies are contained in pages 29-33 and State agencies are contained on pages 34-38 in alphabetical order. Some agencies have regional and/or district offices that are identified in the Directory.

5.1 Federal Agency Environmental Resource Subject Index

	Federal	Air Quality / Pollution	Airport	Archaeological Sites	Asbestos	Bay/Delta	Beaches	Bridges	Buildings over 50 yrs. old	CEQA	Coastal Zone	Creeks	Cultural Resources	Culverts	CA Endangered Species
ACHP									F						
BIA			F										F		
BLM													F		
FAA		F													
FEMA		F	F			F	F	F	F	F	F		F	F	
FHWA															
FRA								F							
NOAA						F	F				F				F
NPS													F		
NRCS													F		
USACE						F	F	F			F	F		F	
USBR													F		
USCG								F							
US EPA	F				F										
USFWS						F	F	F			F	F		F	F
USFS													F		
USGS															

	Federal	Dams	Debris	Demolition	Detention Basins	Federal Endangered Species	Environmental Justice	Farmland	Fish	Floodplain	Forest	Geology	Grazing	Ground Disturbance (Excavating)
ACHP	F			F										
BIA														F
BLM											F		F	
FAA							F							
FEMA	F	F	F			F	F	F	F	F	F			F
FHWA														
FRA														
NOAA						F		F	F					
NPS														
NRCS							F	F		F				
USACE	F	F												F
USBR	F													
USCG														
US EPA					F									F
USFWS	F	F				F			F		F			
USFS			F								F			
USGS												F		

	Federal	Habitat Conservation Plans	Hazardous Materials	Historic Buildings	Highways	Lakes (construction)	Lake Tahoe	Landfills	Land Use (State Laws)	Landslides	Lead Based Paint	Levees	Low Water Crossing	Mines
ACHP				F										
BIA							F							
BLM														F
FAA														
FEMA				F		F	F	F		F		F	F	
FHWA					F									
FRA														
NOAA						F	F			F		F	F	
NPS														
NRCS														
USACE						F	F			F		F	F	
USBR														
USCG							F							
US EPA			F				F	F			F			
USFWS	F					F	F			F		F	F	
USFS							F					F		
USGS							F			F				

	Federal	Native American	Natural Hazard Zone Maps	Permitting (General Info)	Piers	Power Lines	Railroads	River - Streams	Roads (Washout - Erosion)	San Francisco Bay	Seismic Retrofit	Solid Waste	Streambed Alteration	Timber
ACHP											F			F
BIA	F													
BLM														
FAA						F								
FEMA	F			F	F			F	F	F	F		F	F
FHWA														
FRA							F							
NOAA					F				F	F			F	
NPS											F			
NRCS														
USACE					F			F	F	F			F	
USBR														
USCG										F				
US EPA								F				F		
USFWS					F			F	F	F			F	F
USFS														F
USGS			F											

Federal	Toxic Materials	Utilities	Vegetative Debris (Trees)	Waste	Water Quality	Water Rights	Wetlands	Wild and Scenic River
ACHP								
BIA								
BLM		F						F
FAA								
FEMA	F		F		F		F	F
FHWA								
FRA								
NOAA			F				F	
NPS			F					F
NRCS								
USACE			F				F	F
USBR								
USCG								
US EPA	F		F	F	F	F		
USFWS			F				F	F
USFS			F					F
USGS								

5.2 State Agency Environmental Resource Subject Index

	State	Air Quality / Pollution	Airport	Archaeological Sites	Asbestos	Bay/Delta	Beaches	Bridges	Buildings over 50 yrs. old	CEQA	Coastal Zone	Creeks	Cultural Resources	Culverts	CA Endangered Species
ARB	S			S											
BCDC					S						S				
Cal EPA				S											
CAL FIRE															
Cal Recycle															
Caltrans								S			S				
CCC					S	S					S				
CEC															
CPUC															
CTC					S										
CVFPB										S					
DFW					S	S	S				S	S		S	S
DOC															
DTSC				S											
DWR															
NAHC				S									S		
OEHHA															
OPR										S					
RWQCB							S	S			S	S		S	S
SHPO				S				S	S				S		S
SLC											S				
SWRCB							S				S	S		S	S

	State	Dams	Debris	Demolition	Detention Basins	Federal Endangered Species	Environmental Justice	Farmland	Fish	Floodplain	Forest	Geology	Grazing	Ground Disturbance (Excavating)
ARB			S	S										
BCDC														
Cal EPA			S				S							
CAL FIRE											S			
Cal Recycle			S											
Caltrans														
CCC														
CEC														
CPUC														
CTC														
CVFPB														
DFW		S			S				S		S		S	S
DOC												S		
DTSC														
DWR		S								S				
NAHC														
OEHHA														
OPR														
RWQCB		S		S	S						S			
SHPO				S										S
SLC														
SWRCB					S						S			

	State	Habitat Conservation Plans	Hazardous Materials	Hazard Tree Debris	Historic Buildings	Highways	Lakes (construction)	Lake Tahoe	Landfills	Land Use (State Laws)	Landslides	Lead Based Paint	Levees	Low Water Crossing	Mines
ARB															
BCDC															
Cal EPA			S	S					S			S			S
CAL FIRE				S											
Cal Recycle			S	S					S						
Caltrans						S					S				
CCC															
CEC															
CPUC															
CTC								S							
CVFPB													S		
DFW	S			S			S						S	S	
DOC											S				S
DTSC			S									S			S
DWR													S		
NAHC														S	
OEHHA															
OPR										S					
RWQCB				S			S						S	S	
SHPO				S	S										
SLC															
SWRCB				S			S						S	S	

	State	Native American	Natural Hazard Zone Maps	Permitting (General Info)	Piers	Power Lines	Railroads	River - Streams	Roads (Washout - Erosion)	San Francisco Bay	Seismic Retrofit	Solid Waste	Streambed Alteration	Timber
ARB														
BCDC					S					S				
Cal EPA														
CAL FIRE														S
Cal Recycle												S		
Caltrans							S		S					
CCC					S					S				
CEC						S								
CPUC						S	S							
CTC														
CVFPB														
DFW					S			S	S	S			S	S
DOC			S											
DTSC														
DWR														
NAHC	S													
OEHHA														
OPR				S										
RWQCB					S			S	S	S			S	S
SHPO	S										S			
SLC					S			S		S				
SWRCB					S			S	S	S			S	

	State	Toxic Materials	Utilities (non-FERC)	Waste (non-hazardous)	Water Quality	Water Rights	Wetlands	Wild and Scenic River	Wildlife
ARB									
BCDC									
Cal EPA	S			S					
CAL FIRE									
Cal Recycle				S					
Caltrans									
CCC									
CEC			S						
CPUC			S						
CTC									
CVFPB									
DFW								S	S
DOC									
DTSC	S								
DWR						S			
NAHC									
OEHHA									
OPR									
RWQCB					S	S	S		
SHPO									
SLC									
SWRCB					S	S	S		

6.0 FEDERAL AND STATE AGENCY DIRECTORY

6.1 Federal Agencies

Agency	Acronym	Address	District Office	Permits, Consultations, Assistance
Advisory Council on Historic Preservation	ACHP	1100 Pennsylvania Ave. #809 Old Post Office Bldg. Washington, DC 20004 202-606-8503	No	Section 106 Consultation
Bureau of Indian Affairs Pacific Regional Office	BIA	2800 Cottage Way Sacramento, CA 95825 916-978-6000		
Bureau of Land Management	BLM	2800 Cottage Way #W-1834 Sacramento, CA 95825 916-978-4600	Yes	No
Federal Aviation Administration	FAA	800 Independence Ave. SW #810 Washington, DC 20591 202-366-4000	No	Technical Assistance
Federal Emergency Management Agency Region "9"	FEMA	1111 Broadway St. #1200 Oakland, CA 94607 510-627-7284	No	Consultation
Federal Highway Administration	FHWA	980 Ninth St. #400 Sacramento, CA 95814 916-498-5001	No	No
Federal Railroad Administration	FRA	801 I Street Sacramento, CA 95814 916-498-6540	No	
National Oceanic and Atmospheric Administration's Fisheries Service	NOAA	1315 East West Hwy. 9th Floor Silver Spring, MD 20910 301-713-2334	Yes	Section 7 Consultation ESA
National Park Service	NPS	One Jackson Center #700 Oakland, CA 94607 510-817-1300	No	Historic Properties database search

Agency	Acronym	Address	District Office	Permits, Consultations, Assistance
Natural Resources Conservation Service	NRCS	430 "G" St. #4165 Davis, CA 95616 530-792-5700	No	Technical Resources
US Army Corp of Engineers Southwest Pacific Division Headquarters	USACE	1455 Market Street San Francisco, CA 94103 415-977-8112	Yes	Regulatory Program Links
U S Bureau of Reclamation	USBR	Mid-Pacific Region 2800 Cottage Way Sacramento, CA 95825 916-978-5100	Yes	No
US Coast Guard	USCG	Bldg. 50-6, Coast Guard Island 1800 Dennison Street Alameda, CA 94501	No	Bridges Ports
US EPA Region "IX"	USEPA	75 Hawthorne Street San Francisco, CA 94105 866-EPA-West 415-947-8000		
US Fish and Wildlife	USFWS	Federal Building 2800 Cottage Way Room W-2606 Sacramento, CA 95825	Yes	Permits
US Forest Service	USFS	Pacific Southwest Division, Region 5 1323 Club Dr. Vallejo, CA 94592 707-562-8737	Yes	Special Use Permits
US Geological Survey	USGS	345 Middlefield Rd. Menlo Park, CA 94025 650-853-8300	Yes	No

6.1.1 Federal Agencies Informational Web Sites and Web-links

Name	Web Address
Code of Federal Regulations	https://www.govinfo.gov/app/collection/CFR
Council on Environmental Quality	https://www.whitehouse.gov/ceq/
Environmental Historic Program	https://www.fema.gov/office-environmental-planning-and-historic-preservation
Federal E/HP Laws and Regulations	http://uscode.house.gov
Federally Listed Species in California	https://www.fws.gov/endangered/?ref=topbar
National Fire Maps	https://www.nifc.gov/fireInfo/fireInfo_maps.html
National Fire Plan	https://www.forestsandrangelands.gov/resources/overview/
National Historic Landmarks	https://www.nps.gov/subjects/nationalhistoriclandmarks/list-of-nhls-by-state.htm
National Register Information System	https://www.nps.gov/subjects/nationalregister/databasere-research.htm
NEPANET	https://ceq.doe.gov/
USACE Sacramento District	https://www.spk.usace.army.mil/
USACE San Francisco District	https://www.spn.usace.army.mil/
USACE Los Angeles District	https://www.spl.usace.army.mil/
USFWS Endangered Species Program	http://endangered.fws.gov/
Wild and Scenic Rivers By State	https://rivers.gov/
Data.gov is the federal government open website	https://www.data.gov/open-gov/
USFWS National Inventory Wetlands	https://www.fws.gov/wetlands/
USFWS Species Mapping	https://ecos.fws.gov/ipac/location/index

6.2 State Agencies

Agency	Acronym	Address	District Office	Permits or Consultations
Air Resources Board	ARB	1001 "I" St. Sacramento, CA 95812 800-363-7664	Yes	Authority to Construct Permits
California Coastal Commission	CCC	45 Fremont St. #2000 San Francisco, CA 94105 415-904-5200	Yes	Coastal Development Permit
California Department of Conservation	DOC	801 "K" St. MS24-01 Sacramento, CA 95814 916-322-1080	Yes	No
California Energy Commission	CEC	1516 Ninth St. #MS-29 Sacramento, CA 95814 800-555-7794	No	Power Plant Licensing
California Environmental Protection Agency	Cal EPA	1001 "I" St. #1115-1 Sacramento, CA 95814 916-653-5791	No	General Permit Information
California Department of Fish and Wildlife	DFW	1416 Ninth St. 12 th Floor Sacramento, CA 95814 916-653-7664	Yes	Streambed or Lake Alteration Permit, Incidental Take Permit
California Department of Forestry & Fire Protection	CAL FIRE	1416 9 th St. #1516 Sacramento, CA 95814 916-653-5123	No	Programs
Department of Resources Recycling and Recovery	Cal Recycle	1001 "I" St. Sacramento, CA 95814 916-322-4027	Yes	Solid Waste Facilities Permit Toolbox Local Coordinators
California Public Utilities Commission	CPUC	505 Van Ness Ave. San Francisco, CA 94102 415-703-1584	Yes	Certificate of Convenience And Necessity
California Tahoe Conservancy	CTC	1061 Third Street S. Lake Tahoe, CA 96150 530-542-5580	No	Programs
Central Valley Flood Protection Board	CVFPB	3310 El Camino #170 Sacramento, CA 95821 916-574-0609	No	Permitting

Agency	Acronym	Address	District Office	Permits, Consultations, Assistance
Department of Transportation	Caltrans	1120 "N" St. Sacramento, CA 95814 916-654-2852	Yes	Encroachment Permits, Transportation Permits, Utilities Permit
Department of Water Resources	DWR DSOD	1416 9th St. #1115-1 Sacramento, CA 95814 916-653-5791	Yes	Water Use & Planning Dam Approval
Native American Heritage Commission	NAHC	1550 Harbor Blvd., #100 West Sacramento, CA 95691 916-373-3710	No	Technical Assistance
Office of Environmental Health Hazard Assessment	OEHHA	1001 "I" St. Sacramento, CA 95812 916-324-7572	No	No
Regional Water Quality Control Board	RWQCB	See RWQCB address list	Yes	Waste Discharge Permit, Storm Water (NPDES), 401 Water Quality Cert.
S.F. Bay Conservation and Development Commission	BCDC	50 California St. #2600 San Francisco, CA 94111 415-352-3600	No	Permits
State Historic Preservation Office	SHPO	P O Box 942896 Sacramento, CA 94296 916-653-6624	No	Section 106 Consultation Technical Assistance
State Lands Commission 100 Howe Ave #100 Sacramento CA 95825	SLC	1001 "I" St. Sacramento, CA 95814 916-341-5254	Yes (see RWQCB)	Technical Assistance
State Water Resources Control Board	SWRCB	1001 "I" St. Sacramento, CA 95814 916-341-5254	Yes (see RWQCB)	Technical Assistance

6.2.1 State Agency Informational Web Sites and Web-links

Name	Web Address
California Coastal Conservancy	https://scc.ca.gov/
California Data Exchange Center (water info)	http://cdec.water.ca.gov
California Planning and Land Use Resources	http://opr.ca.gov/planning/
Cal EPA Environmental Informational by Location	https://www.epa.gov/environmental-topics/environmental-information-location
Department of Fish and Wildlife Lake and Streambed Alteration	https://www.wildlife.ca.gov/Conservation/LSA
Department of Fish and Wildlife Fish Passage Database	https://nrm.dfg.ca.gov/PAD/Default.aspx
California Historic Landmarks by County	http://ohp.parks.ca.gov/?page_id=21387
Permit Information (EPA CAL GOLD)	http://www.calgold.ca.gov/
RWQCB, General Information	www.swrcb.ca.gov/rwqcb5/
Wildlife Conservation Board	http://www.wcb.ca.gov/
Biodiversity Council	http://biodiversity.ca.gov/
California Historic Resource Information System	http://ohp.parks.ca.gov/?page_id=1068
CA. Fish and Wildlife Water and Watershed Conservation	https://www.wildlife.ca.gov/Conservation/Watersheds
Conservation Planning Data and Tools	https://www.wildlife.ca.gov/Conservation/Planning/Data-and-Tools
California Environmental Quality Act	http://opr.ca.gov/ceqa/
Cal-Adapt (Climate Change)	https://cal-adapt.org/
Myplan (Cal OES hazard mapping tool)	http://myplan.calema.ca.gov/

Cal OES Myhazards mapping tool	http://myhazards.caloes.ca.gov/
California Climate Change (Energy Commission)	https://www.climatechange.ca.gov/
Department of Toxic Substance Control	https://dtsc.ca.gov/abandoned-mine-lands/

6.3 Miscellaneous Environmental Web-links

Name	Web Address
Cal-Flora	http://www.calflora.org/
California Historical Society	https://californiahistoricalsociety.org/
California Native Plant Society	http://www.cnps.org/
UC Berkeley Design Library	http://www.lib.berkeley.edu/ENVI/environ.html
California Resource Code 5028	http://leginfo.legislature.ca.gov/faces/codes_displaySection.xhtml?lawCode=PRC&sectionNum=5028
DWR Floodplain Mapping	https://water.ca.gov/Programs/Flood-Management/Risk-Assessment-and-Mapping
ECOS Mapping Utilities	https://my.usgs.gov/confluence/display/FEAH/Access+and+Registration+for+Secure+ECOS
FEMA HAZUS Mapping	https://www.fema.gov/hazus
Bureau of Land Management – Mapping Tool	https://www.blm.gov/maps/frequently-requested/california
Foundation for Advancement in Conservation	https://community.culturalheritage.org/home
Adaptation Clearinghouse	https://resilientca.org/
CA. Geographic Information Association	https://cgia.org/cgia-collaboration/gis-data-sharing/cal-atlas-geospatial-clearinghouse/
Drought.gov	https://www.drought.gov/drought/data-gallery/us-drought-monitor
Climate.gov (NOAA)	https://www.climate.gov/
US Drought Monitor	https://droughtmonitor.unl.edu/

6.4 Aerial Photo Web-links

Name	Web Address
Google aerial photography and maps	http://maps.google.com/
TerraServer	https://www.terraserver.com/
USGS	https://www.usgs.gov/products/maps/overview
Google Earth	http://earth.google.com/
US Santa Barbara Library Aerial Photography	https://www.library.ucsb.edu/src/collections-aerial-photography

6.5 GIS Web-links

Name	Web Address
California Geological Survey (Seismic Hazard Mapping)	http://gmw.consrv.ca.gov/shmp/
FGDC Metadata	https://www.fgdc.gov/metadata
Geo-Net	https://community.esri.com/
One Geology	http://www.onegeology.org/home.html
CA Open Data Portal	https://data.ca.gov/
California State Geoportal	https://gis.data.ca.gov/

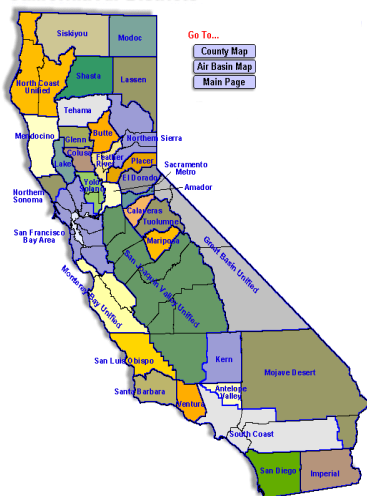
6.6 Map Web-links

Name	Web Address
Google aerial photography and maps	http://maps.google.com/
Mapquest	www.mapquest.com
Rand McNally	http://www.randmcnally.com/
Yahoo Maps	http://maps.yahoo.com/
Bing Maps	https://www.bing.com/maps
Topozone	http://www.topozone.com/
TerraServer USA	https://www.pop.upenn.edu/resource/terraserver-usa

7.0 STATE AND FEDERAL AGENCY DISTRICT AND REGIONAL OFFICES

7.1 California Air Quality Management and Air Pollution Control Districts

California Air Districts



<p>Amador County APCD 665 New York Ranch Road #4 Jackson, CA 95642 209-257-0112</p>	<p>Imperial County APCD 150 South 9th Street El Centro, CA 92243 760-482-4606</p>
<p>Antelope Valley AQMD 43301 Division Street #206 Lancaster, CA 93535-4649 661-723-8070</p>	<p>Kern County APCD 2700 "M" Street #302 Bakersfield, CA 93301 661-862-5250</p>
<p>Bay Area AQMD 939 Ellis Street San Francisco, CA 94109 415-749-5000</p>	<p>Lake County AQMD 885 Lakeport Blvd. Lakeport, CA 95453 707-263-7000</p>
<p>Butte County AQMD 2525 Dominic Drive #J Chico, CA 95928 530-891-2882</p>	<p>Lassen County APCD 175 Russell Avenue Susanville, CA 96130 530-233-6419</p>
<p>Calaveras County APCD 891 Mountain Ranch Road San Andreas, CA 95249 209-754-6504</p>	<p>Mariposa County APCD P O Box 5 Mariposa, CA 95338 209-966-2220</p>
<p>Colusa County APCD 100 Sunrise Blvd. #F Colusa, CA 95932 530-458-0590</p>	<p>Mendocino County AQMD 306 E. Gobbi Street Ukiah, CA 95482 707-463-4354</p>
<p>El Dorado County APCD 330 Fair Lane Placerville, CA 95667 530-621-7501</p>	<p>Modoc County APCD 202 West 4th Street Alturas, CA 96101 530-233-6419</p>
<p>Feather River AQMD 938 14th Street Marysville, CA 95901 530-634-7659</p>	<p>Mojave Desert AQMD 14306 Park Avenue Victorville, CA 92392 760-245-1661</p>
<p>Glenn County APCD 720 N. Colusa Street Willows, CA 95988 530-934-6500</p>	<p>Monterey Bay Unified APCD 24580 Silver Cloud Court Monterey, CA 93940 831-647-9411</p>

Great Basin Unified APCD 157 Short Street #6 Bishop, CA 93514 760-872-8211	North Coast Unified AQMD 707 L Street Eureka, CA 95501 707-443-3093
Northern Sierra AQMD 200 Litton Drive #320 Grass Valley, CA 95945 530-274-9360	Shasta County AQMD 1855 Placer Street #101 Redding, CA 96001 530-225-5674
Northern Sonoma County APCD 150 Matheson Street Healdsburg, CA 95448 707-433-5911	Siskiyou County APCD 525 S. Foothill Drive Yreka, CA 96097 530-841-4029
Placer County APCD 3901 County Center Dr. #240 Auburn, CA 95603 530-745-2330	South Coast AQMD 21865 E. Copley Drive Diamond Bar, CA 91765 909-396-2000
Sacramento Metro AQMD 777 12 th Street 3 rd Floor Sacramento, CA 95824 916-874-4800	Tehama County APCD 1750 Walnut Street Red Bluff, CA 96080 530-527-3717
San Diego County APCD 10124 Old Grove Road San Diego, CA 92123 858-586-2600	Tuolumne County APCD 22365 Airport Columbia, CA 95310 209-533-5693
San Joaquin Valley APCD 1990 E. Gettysburg Fresno, CA 93726 559-230-6000	Ventura County APCD 669 County Square Drive Ventura, CA 93003 805-645-1400
San Luis Obispo County APCD 3433 Robert Court San Luis Obispo, CA 93401 805-781-4147	Yolo-Solano AQMD 1947 Galileo Court #103 Davis, CA 95616 530-757-3650
Santa Barbara County APCD 260N San Antonio Rd Suite A Santa Barbara, CA 93110 805-961-8800	Bakersfield – APCO 2700 “M” Street Suite 275 Bakersfield, CA 93301 661-326-6900
Modesto Office – APCO 4230 Kiernan Avenue #103 Modesto, CA 95356 209-557-6400	

7.2 California Coastal Commission

Offices	Counties
South Coast 200 Oceangate 10 th Floor Long Beach, CA 90802 562-590-5084	Los Angeles and Orange Counties
South Central Coast 89 S. California Street Suite 200 Ventura, CA 93001 805-585-1800	Ventura, Santa Barbara, and Los Angeles counties (Portions of Los Angeles counties: Malibu and Santa Monica Mountains)
Central Coast 825 Front Street #300 Santa Cruz, CA 95060 831-427-4863	San Luis Obispo, Monterey and Santa Cruz counties
North Central Coast 45 Fremont Street #2000 San Francisco, CA 94105 415-904-5260	Sonoma, Marin, San Francisco and San Mateo Counties
San Diego Coast 7575 Metropolitan Drive #103 San Diego, CA 92108 619-767-2370	San Diego County
North Coast District Office 710 E Street Suite 200 Eureka, CA 95501 707-445-7833	Del Norte, Humboldt and Mendocino Counties

7.3 Cal Recycle Local Enforcement Agency

The local enforcement agency (LEA) has the primary responsibility of ensuring that the operation and closure of solid waste facilities and storage and transportation of solid waste comply with state laws, regulation and program requirements. An LEA can also provide information about public and private solid waste and material recycling facilities within the area they have jurisdiction.

<p>Alameda County Environmental Health Department 1131 Harbor Bay Parkway, Ste. 200 Alameda, CA 94502 510-567-6790</p>	<p>City of Berkeley Cal Recycle Enforcement Agency Permitting and Enforcement 1001 "I" Street Sacramento, CA 95814 916-3224027</p>	<p>Alpine County Alpine County Health Department Environmental Health Services 75B Diamond Valley Road Markleeville, CA 96120 530-694-2146</p>
<p>Amador County Environmental Health Department Attn: LEA Solid Waste 810 Court Street Jackson, CA 95642 209-223-6439</p>	<p>Butte County Public Health Department 202 Mira Loma Drive Oroville, CA 95965 530-552-3880</p>	<p>Calaveras County Environmental Mgmt. Agency Environmental Health Department 891 Mountain Ranch Rd. San Andreas, CA 95249 209-754-6399</p>
<p>Contra Costa County, Health Services Department Environmental Health Division 2120 Diamond Blvd. Suite 100 Concord, CA 94520 925-646-5500</p>	<p>City of Pittsburg Environmental Affairs Division Solid Waste / Local Enforcement 665 Civic Avenue Pittsburg, CA 94565 925-252-4114</p>	<p>City of Brentwood Cal Recycle Enforcement Agency Waste Evaluation & Enforcement 1001 "I" Street Sacramento, CA 95814 916-322-4027</p>
<p>Del Norte County Community Development Dept. 981 H Street, Suite 110 Crescent City, CA 95531 707-465-7254</p>	<p>El Dorado County See Placer County for LEA 3901 County Center Dr., Suite 180 Auburn, CA 95603 530-745-2300</p>	<p>Fresno County Department of Public Health Environmental Health Division 1221 Fulton Mall Fresno, CA 93775 559-600-3271</p>

Cal Recycle Local Enforcement Agency

<p>Glenn County Department of Environmental Health 240 North Villa Avenue Willows, CA 95988 530-934-6102</p>	<p>Humboldt County Department of Health and Human Services Environmental Health Division 100 H Street Suite 100 Eureka, CA 95501 707-445-6215</p>	<p>Imperial County Department of Public Health Department Environmental Health Services 797 Main Street Suite B El Centro, CA 92243 442-265-1888</p>
<p>Inyo County Environmental Health Services 168 North Edwards Street Independence, CA 93526 760-878-0261</p>	<p>Kern County Environmental Health Services Department 2700 "M" Street Suite 300 Bakersfield, CA 93301 661-862-8717</p>	<p>Kings County Health Department 330 Campus Drive Hanford, CA 93230 559-584-1411</p>
<p>Lake County Environmental Health 922 Bevins Court Lakeport, CA 95453 707-263-1164</p>	<p>Lassen County Environmental Health Department 1445 B Paul Bunyan Road Susanville, CA 96130 530-251-8183</p>	<p>Los Angeles County Department of Public Health 5050 Commerce Drive Baldwin Park, CA 91706 626-430-5540</p>
<p>City of West Covina Public Works Department 1444 W Garvey Ave #316 West Covina, CA 91790 626-939-8401</p>	<p>City of Los Angeles Building and Safety LEA Program 221 N. Figueroa St., # 1250 Los Angeles, CA 90012 213-252-3939</p>	<p>Sunshine Canyon Landfill Jurisdiction LEA 14747 San Fernando Rd. Sylmar, CA 91342</p>
<p>City of Vernon Health Department 4305 South Santa Fe Avenue Vernon, CA 90058 323-583-8811</p>	<p>Madera County Environmental Health 200 West 4th Street # 3100 Madera, CA 93637 559-675-7823</p>	<p>Marin County Environmental Health 3501 Civic Center Dr. #236 San Rafael, CA 94903 415-499-6907</p>
<p>Mariposa County Health Department P O Box 5 Mariposa, CA 95338 209-966-2220</p>	<p>Mendocino County Public Health Department 860 N. Bush Street Ukiah, CA 95482 707-234-6625</p>	<p>Merced County Environmental Health 260 E. 15th Street Merced, CA 95341 209-381-1100</p>
<p>Modoc County Environmental Health Department 202 West 4th Street Alturas, CA 96101 530-233-6310</p>	<p>Mono County County Health Department 437 Old Mammoth Rd. #Q Mammoth Lakes, CA 93546 760-924-1830</p>	<p>Monterey County County Health Department 1270 Natividad Road Salinas, CA 93906 831-755-4540</p>

Cal Recycle Local Enforcement Agency

<p>Napa County County Administrator 1195 3rd Street Room 310 Napa, CA 94559 707-253-4144</p>	<p>Nevada County Environmental Health 950 Maidu Avenue Nevada City, CA 95959 530-265-1464</p>	<p>Orange County Health Care Agency 1241 East Dyer Rd., #120 Santa Ana, CA 92705 714-433-6270</p>
<p>Placer County Department. of Health & Human Services 3091 County Center Dr., #180 Auburn, CA 95603 530-745-2300</p>	<p>Plumas County Environmental Health Department 270 County Hospital Rd. #127 Quincy, CA 95971 530-283-6355</p>	<p>Riverside County Department. of Environmental Health P.O. Box 7600, Room 105 Riverside, CA 92705-5611 951-955-8980</p>
<p>Sacramento County Environmental Management 10590 Armstrong Ave #A Mather, CA 95655 916-875-8484</p>	<p>San Benito County County Health Department 1001 I Street Sacramento, CA 95814 916-322-4027</p>	<p>San Bernardino County Division of Environmental Health Services 385 North Arrowhead Ave San Bernardino, CA 92415 1-800-442-2283</p>
<p>San Diego County Environmental Health 5500 Overland Way #170 San Diego, CA 92123 858-495-5810</p>	<p>City of San Diego Development Services 9601 Ridgehaven Ct. 2nd Fl. MS 1102-B San Diego, CA 92123 619-533-3688</p>	<p>San Francisco County Environmental Health 1390 Market Street #210 San Francisco, CA 94102 415-252-3800</p>
<p>San Joaquin County Environmental Health 1868 E. Hazelton Ave Stockton, CA 95205-6232 209-468-0332</p>	<p>City of Stockton CIWMB Enforcement 1001 "I" Street Sacramento, CA 95812 916-322-4027</p>	<p>San Luis Obispo CIWMB Enforcement 1001 "I" Street Sacramento, CA 95812 916-322-4027</p>
<p>San Mateo County Environmental Health 2000 Alameda de las Pulgas, Ste.100 San Mateo, CA 9440333 650-372-6200</p>	<p>Santa Barbara County Public Health Department Environmental Health 225 Camino del Remedio Santa Barbara, CA 93110 805-681-4900</p>	<p>Santa Clara County Environmental Health Hazardous Materials 1555 Berger Dr., Suite 300 San Jose, CA 95112-2716 408-918-3400</p>
<p>City of San Jose Department of Code Enforcement 200 E. Santa Clara St., T-4 San Jose, CA 95113 408-535-7770</p>	<p>Santa Cruz County CIWMB Enforcement 1001 "I" Street Sacramento, CA 95812 916-322-4027</p>	<p>Shasta County Department of Resource Management 1855 Placer Street Redding, CA 96001 530-225-5787</p>

Cal Recycle Local Enforcement Agency

<p>Sierra County Environmental Health Department P. O. Box 7 202 Front Street Loyalton, CA 96118 530-993-6716</p>	<p>Siskiyou County Public Health Department 806 South Main Street Yreka, CA 96097 530-841-2100</p>	<p>Solano County Dept. of Environmental Management 601 Texas Street, Ste. 5500 Fairfield, CA 94533 707-784-6765</p>
<p>Sonoma County Dept. of Health Services Environmental Health 625 5th Street Santa Rosa, CA 95404 707-565-6565</p>	<p>Stanislaus County Department of Health Services CIWMB Enforcement Agency 1001 "I" Street Sacramento, CA 95812 916-322-4027</p>	<p>Tehama County Dept. of Environmental Health Courthouse 36 633 Washington Street Red Bluff, CA 96080 530-527-8020</p>
<p>Trinity County 61 Airport Road P. O. Box 476 Weaverville, CA 96093 530-623-1459</p>	<p>Tulare County Department of Health Services 5957 South Mooney Boulevard Visalia, CA 93277 559-624-7400</p>	<p>Tuolumne County County Health Department 2 South Green Street Sonora, CA 95370 209-533-5633</p>
<p>Ventura County County Resource Management Agency 800 South Victoria Avenue Ventura, CA 93009-1730 805-654-2813</p>	<p>Yolo County Department of Community Services Environmental Health Division 292 W. Beamer Street Woodland, CA 95695 530-666-8646</p>	<p>Yuba County Department of Environmental Health 915 8th Street Suite 123 Marysville, CA 95901-5273 530-749-5450</p>

Some of the counties or cities have a Sacramento address for the Local Enforcement Agency. This information is correct; the jurisdiction has been incorporated within the Sacramento office.

7.4 Department of Conservation

Departments and Divisions

DOC Headquarters 801 "K" Street, MS 24-01 Sacramento, CA 95814 916-322-1080	Division of Recycling 801 "K" Street, MS 18-58 Sacramento, CA 95814 1-800-732-9253
---	--

Division of Land Resource Protection

Headquarter Office 801 "K" Street, MS 13-71 Sacramento, CA 95814 916-324-0859	Land Conservation, Williamson Act 916-324-0850	California Farmland Conservancy Program 916-322-9721
Resource Conservation Districts 916-324-9721	Farmland Mapping and Monitoring 916-324-0859	

Office of Mine Reclamation

801 "K" Street, MS 09-06 Sacramento, CA 95814 916-323-9198
--

California Geological Survey

Office of the State Geologist 801 "K" Street, MS 12-30 Sacramento, CA 95814 916-445-1825	Seismic Hazards Mapping Program 801 "K" Street, MS 12-31 Sacramento, CA 95814 916-324-7299	Earthquake Engineering Program (CSMIP) 801 "K" Street, MS 13-35 Sacramento, CA 95814 916-322-3105
Timber Harvesting Plan Enforcement and Watersheds Restoration Program 1027 10 th Street, 4 th Floor Sacramento, CA 95814 916-327-0791	Geological Survey Library 801 "K" Street, MS 14-34 Sacramento, CA 95814 916-327-1850	Geological Survey Publications 801 "K" Street, MS 14-33 Sacramento, CA 95814 916-445-5716

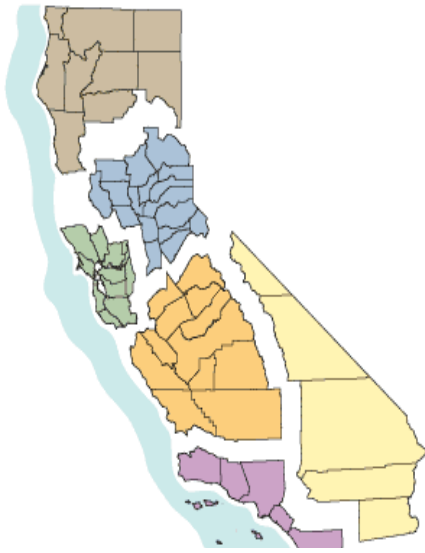
California Geological Survey

<p>Mineral Resources and Mineral Hazard Mapping Program 801 "K" Street, MS 08-38 Sacramento, CA 95814 916-322-6183</p>	<p>Regional Geologic and Hazards Mapping Program 801 "K" Street, MS 12-31 Sacramento, CA 95814 916-324-7324</p>	<p>North Coast Watersheds Assessment Program 1027 10th Street, 4th Floor Sacramento, CA 95814 916-445-7631</p>
<p>Bay Area Regional Office 185 Berry Street, Suite 210 San Francisco, CA 94107 415-904-7707</p>	<p>South California Regional Office 655 South Hope Street, #700 Los Angeles, CA 90017 213-239-0878</p>	

Division of Oil, Gas & Geothermal

<p>Headquarter Office "K" Street, MS 20-20 Sacramento, CA 95814 916-323-1777</p>	<p>Oil and Gas District 4 4800 Stockdale Hgwy. # 417 Bakersfield, CA 93309 661-322-4031</p>	<p>Geothermal District G2 1699 West Main Street, #E El Centro, CA 92243- 2235 619-353-9900</p>
<p>Oil and Gas District 1 5816 Corporate Avenue, # 200 Cypress, CA 90630 714-816-6847</p>	<p>Oil and Gas District 5 466 N. Fifth Street Coalinga, CA 93210 209-935-2941</p>	<p>Geothermal District G3 50 "D" Street, Room 300 Santa Rosa, CA 95404 707-576-2385</p>
<p>Oil and Gas District 2 1000 South Hill Road, suite 116 Ventura, CA 93003-4458 805-654-4761</p>	<p>Oil and Gas District 6 801 "K" Street, MS 20-22 Sacramento, CA 95814 916-322-1110</p>	<p><u>State Mining and Geology Board</u> 801 "K" Street, MS 24-05 Sacramento, CA 95814 916-322-1082</p>
<p>Oil and Gas District 3 5075 S. Bradley Road Suite 221 Santa Maria, CA 93455 805-937-7246</p>	<p>Geothermal District G1 801 "K" Street, MS 20-21 Sacramento, CA 95814 916-323-1786</p>	

7.5 Department of Fish and Wildlife



Region	Counties
<p>Northern Region 601 Locust Street Redding, CA 96001 530-225-2300</p>	<p>Del Norte, Humboldt, Lassen, Modoc, Shasta, Siskiyou, Tehama and Trinity counties</p>
<p>North Central Region 1701 Nimbus Road Rancho Cordova, CA 95670 916-358-2900</p>	<p>Alpine, Amador, Butte, Calaveras, Colusa, El Dorado, Glenn, Nevada, Placer, Plumas, Sacramento, San Joaquin, Sierra, Solano, Sutter, Yolo and Yuba counties</p>
<p>Bay Delta Region 7329 Silverado Trail Napa, CA 94558 707-994-5500</p>	<p>Alameda, Contra Costa, Lake, Marine, Mendocino, Monterey, Napa, San Benito, San Luis Obispo, San Mateo, Santa Clara, Santa Cruz, San Francisco, Sonoma, and Solano counties</p>
<p>Central Region 1234 Shaw Avenue Fresno, CA 93710 559-243-4005 Ext. 151</p>	<p>Fresno, Kern, Kings, Madera, Mariposa, Merced, Stanislaus, Tulare, and Tuolumne counties</p>
<p>South Coast Region 4949 Viewridge Avenue San Diego, CA 92123 858-467-4201</p>	<p>Los Angeles, Orange, San Diego, Santa Barbara, and Ventura counties</p>
<p>Inland Deserts Region 3602 Inland Empire Blvd #C220 Ontario, CA 91764 909-484-0167</p>	<p>Imperial, Inyo, Mono, Riverside, and San Bernardino counties</p>
<p>Marine Region 20 Lower Ragsdale Dr #100 Monterey, CA 93940 831-649-2870</p>	

7.6 Department of Toxic Substances Control

Sacramento Headquarters 1001 "I" Street Sacramento, CA 95814 916-324-1826	Chatsworth Regional Office 9211 Oakdale Avenue Chatsworth, CA 91311 818-717-6500	Clovis Field Office 1515 Tollhouse Road Clovis, CA 93611 559-297-3901
Berkeley Office 700 Heinz Avenue #200 Berkeley, CA 94710 510-540-2122 Environmental Chemistry Laboratory 510-540-3003	Cal Center Office 8800 Cal Center Drive Sacramento, CA 95826 916-255-3545	Imperial County CUPA Office 627 Wake Ave El Centro, CA 92243 760-352-0381
Cypress Office 5796 Corporate Avenue Cypress, CA 90630 714-484-5300	Commerce Regional Office 6119 E. Washington Blvd. #120 Commerce, CA 90040 323-803-2500	San Diego Field Office 2375 Northside Drive #100 San Diego, CA 92108 619-516-1982/1983
	Environmental Chemistry Laboratory 757 South Raymond Avenue #105 Pasadena, CA 91105	

7.7 Department of Transportation (Caltrans)



<p>District 1 1656 Union Street Eureka, CA 95501 707-445-6600</p>	<p>District 7 100 S Main Street Los Angeles, CA 90012 213-897-3656</p>
<p>District 2 1657 Riverside Drive Redding, CA 96001 530-225-3426</p>	<p>District 8 464 West 4th Street San Bernardino, CA 92401 909-383-4631</p>
<p>District 3 703 "B" Street Marysville, CA 95901 530-741-4572</p>	<p>District 9 500 South Main Street Bishop, CA 93514 760-872-0601</p>
<p>District 4 111 Grand Avenue Oakland, CA 94612 510-286-4444</p>	<p>District 10 1976 E. Dr. Martin Luther King Jr. Blvd. Stockton, CA 95205 209-948-7543</p>
<p>District 5 50 Higuera Street San Luis Obispo, CA 93401 805-549-3111</p>	<p>District 11 4050 Taylor Street San Diego, CA 92110 619-688-6699</p>
<p>District 6 1352 Olive Avenue Fresno, CA 93728 559-444-2518</p>	<p>District 12 1750 East 4th St., Suite 100 Santa Ana, CA 92705</p>

7.8 Department of Water Resources



<p>Northern Region Office 2440 Main Street Red Bluff, CA 96080 530-529-7300</p>	<p>North Central Region 3500 Industrial Blvd West Sacramento, CA 95691 530-529-7370</p>
<p>South Central Region 3374 East Shields Avenue Fresno, CA 93726 559-230-3300</p>	<p>Southern Region 77 Fairmont Avenue Glendale, CA 91203 818-500-1645 X 222</p>

7.9 Public Utilities Commission

San Francisco Office 505 Van Ness Ave San Francisco, CA 94102 415-703-2782	Los Angeles Office 320 West 4 th Street #500 Los Angeles, CA 90013 213-576-7000	Sacramento Office 770 "L" Street #1050 Sacramento, CA 95814 916-327-3277
---	--	--

Toll Free Numbers

Utility Companies	1-800-649-7570
Household Goods Complaints	1-800-366-7570
Passenger Carrier Complaints	1-800-894-4444
Rail & Safety Carriers Licensing – General Information	1-800-877-8867

7.10 Regional Water Quality Control Boards



<p>North Coast Region 1 5550 Skylane Boulevard #A Santa Rosa, CA 95403 707-576-2220</p>	<p>Central Valley Region (5F) Fresno Office 1685 E Street Fresno, CA 93706 559-445-5116</p>
<p>San Francisco Bay Region 2 1515 Clay Street #1400 Oakland, CA 94612 510-622-2300</p>	<p>Lahontan Region (6SLT) South Lake Tahoe Office 2501 Lake Tahoe Blvd. South Lake Tahoe, CA 96150 530-542-5400</p>
<p>Central Coast Region 3 895 Aerovista Place Suite 101 San Luis Obispo, CA 93401 805-549-3147</p>	<p>Lahontan Region (6V) Victorville Office 15095 Amargosa Road, Building 2, Suite 210 Victorville, CA 92394 760-241-6583</p>
<p>Los Angeles Region 4 320 West 4th Street #200 Los Angeles, CA 90013 213-576-6600</p>	<p>Colorado River Basin Region 7 73-720 Fred Waring Dr., #100 Palm Desert, CA 92260 760-346-7491</p>
<p>Central Valley Region (5R) Redding Office 415 Knoll Crest Drive Redding, CA 96002 530-224-4845</p>	<p>Santa Ana Region 8 3737 Main Street #500 Riverside, CA 92501 909-782-4130</p>
<p>Central Valley Region Sacramento Office 11020 Sun Center Drive #200 Rancho Cordova, CA 95670 916-255-3015</p>	<p>San Diego Region 9 2375 Northside Dr., Suite 100 San Diego, CA 92108 619-516-1990</p>

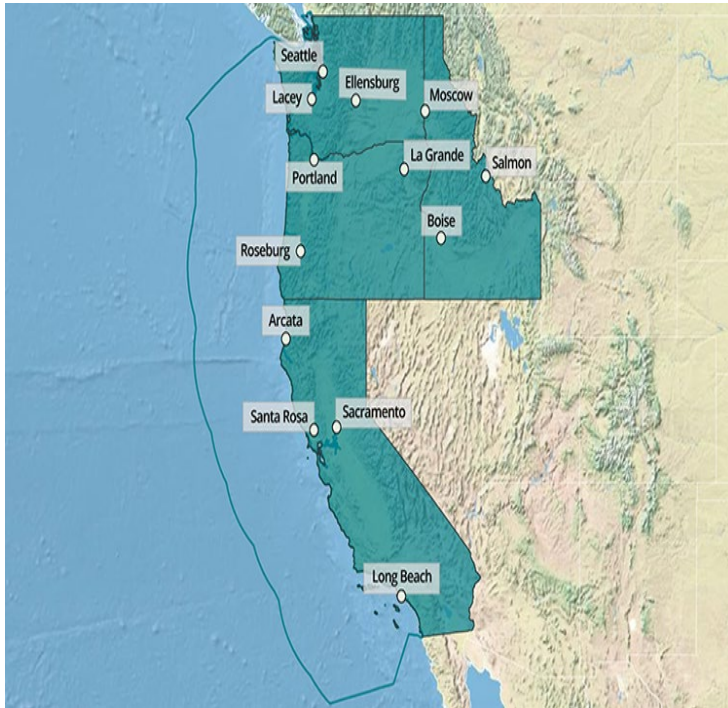
7.11 Bureau of Land Management



Palm Springs South Coast 690 W Garnet Ave Palm Springs, CA 92258 760-251-4800	Bakersfield Field Office 3801 Pegasus Drive Bakersfield, CA 93308 661-391-6000
Needles Field Office 1303 S Hwy 95 Needles, CA 92363 760-326-7000	Ukiah Field Office 2550 North State Street Ukiah, CA 95482 707-468-4000

Applegate Field Office 708 West 12 th Street Alturas, CA 96101 530-233-4666	Northern CA. District Office 6640 Lockheed Drive Redding, CA 96002 530-224-2100
Barstow Field Office 2601 Barstow Road Barstow, CA 92311 760-252-6000	Eagle Lake Field Office 2950 Riverside Drive Susanville, CA 96130 530-257-0456
El Centro Field Office 1661 South Fourth Street El Centro, CA 92243 760-337-4400	Central Coast Field Office 940 2 nd Ave Marina, CA 93933 831-582-2200
Redding Field Office 6640 Lockheed Drive Redding, CA 96002 530-224-2100	California Desert District 22835 Calle San Juan De Lagos Moreno Valley, CA 92553 951-697-5200
Ridgecrest Field Office 300 South Richmond Rd. Ridgecrest, CA 93555 760-384-5400	Mother Lode Field Office 5152 Hillsdale Circle El Dorado Hills, CA 95762 916-985-4474
Arcata Field Office 1695 Heindon Road Arcata, CA 95521 707-825-2300	Bishop Field Office 351 Pacu Lane, Suite 100 Bishop, CA 93514 760-872-5000

7.12 National Marine Fisheries Services



Southwest Regional Office

Long Beach Office

501 West Ocean Boulevard
#4200

Long Beach, CA 90802

560-980-4000

Arcata Office

1655 Heindon Road

Arcata, CA 95221

707-822-7201

Sacramento Office

650 Capital Mall #5-100

Sacramento, CA 95814

916-930-3600

Santa Rosa Office

777 Sonoma Avenue #325

Santa Rosa, CA 95404

707-387-0737

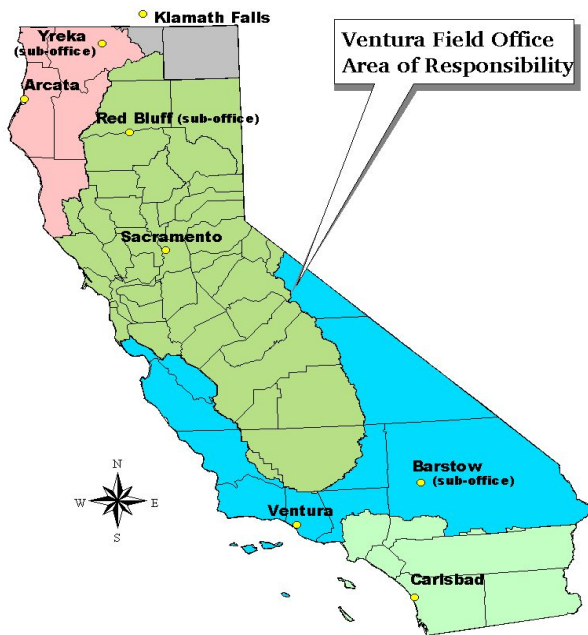
7.13 United States Army Corps of Engineers

<p>Los Angeles District 915 Wilshire Blvd Suite 980 Los Angeles, CA 90017 213-452-3333 www.spl.usace.army.mil/</p>	<p>Sacramento District 1325 "J" Street Sacramento, CA 95814, #1513 916-557-5100 http://www.spk.usace.army.mil/</p>
<p>San Francisco District 450 Golden Gate Ave 4th Floor San Francisco, CA 94105 415-503-6795 http://www.spn.usace.army.mil/</p>	 <p>The map shows California divided into three colored regions: Sacramento District (green), San Francisco District (blue), and Los Angeles District (orange). The Sacramento District covers the northern and central parts of the state, including counties like Del Norte, Siskiyou, Modoc, Shasta, Lassen, Tehama, Plumas, Glenn, Butte, Sierra, Colusa, Yuba, Sutter, Placer, Yolo, El Dorado, Alpine, Tuolumne, San Joaquin, Stanislaus, Merced, Madera, Fresno, Kings, Tulare, Kern, and Inyo. The San Francisco District covers the coastal and bay area, including counties like Humboldt, Trinity, Tehama, Glenn, Butte, Sierra, Colusa, Yuba, Sutter, Placer, Yolo, El Dorado, Alpine, Tuolumne, San Joaquin, Stanislaus, Merced, Madera, Fresno, Kings, Tulare, Kern, and Inyo. The Los Angeles District covers the southern part of the state, including counties like San Luis Obispo, Santa Barbara, Ventura, Los Angeles, San Bernardino, Riverside, San Diego, and Imperial.</p>

7.14 United States Environmental Protection Agency

<p>US EPA, Region IX 75 Hawthorne Street San Francisco, CA 94105 415-947-8000</p>	<p>Southern California Field Office 600 Wilshire Blvd., Suite 40 Los Angeles, CA 90017 213-244-1800</p>
<p>San Diego Border Office 610 West Ash Street Suite 905 San Diego, CA 92101 619-235-4765</p>	

7.15 United States Fish and Wildlife Service



Arcata

1655 Heindon Road

Arcata, CA 95501

707-822-7201

<http://www.fws.gov/cno/arcata/>

Carlsbad

2177 Salk Ave. Suite 250

Carlsbad, CA 92008

760-431-9440

<http://carlsbad.fws.gov/>

Yreka

1829 S Oregon Street

Yreka, CA 96097

530-842-5763

<http://www.fws.gov/yreka/>

Red Bluff

10950 Tyler Road

Red Bluff, CA 96080

530-527-3043

<http://www.fws.gov/redbluff/>

Sacramento

2800 Cottage Way #W-2605

Sacramento, CA 95825

916-414-6600

<http://www.fws.gov/sacramento/>

Ventura

2493 Portola Road #B

Ventura, CA 93003

805-644-1766

<http://ventura.fws.gov/>

USFWS Satellite Offices

Palm Springs – 760-322-2070

Barstow – 760-252-000

Lodi – 209-334-2968

7.16 United States Forest Service

Angeles National Forest 701 North Santa Anita Avenue Arcadia, CA 91006 626-574-1613	Lassen National Forest 2550 Riverside Drive Susanville, CA 96130 530-257-2151	Sequoia National Forest 1839 S Newcomb St Porterville, CA 93257 559-784-1500
Cleveland National Forest 10845 Rancho Bernardo Road Suite 200 Rancho Bernardo, CA 92127 858-673-6180	Los Padres National Forest 6750 Navigator Way Suite 150 Goleta, CA 93117 805-968-6640	Shasta-Trinity National Forest 3644 Avtech Parkway Redding, CA 96002 530-226-2500
El Dorado National Forest 100 Forni Road Placerville, CA 95667 530-622-5061	Mendocino National Forest 825 North Humboldt Ave Willows, CA 95988 530-934-3316	Sierra National Forest 1600 Tollhouse Road Clovis, CA 93611 559-297-0706
Inyo National Forest 351 Pacu Lane Bishop, CA 93514 760-873-2400	Modoc National Forest 225 West 8 th Street Alturas, CA 96101 530-233-5811	Six Rivers National Forest 1330 Bayshore Way Eureka, CA 95501 707-442-1721
Klamath National Forest 1711 South Main Street Yreka, CA 96097 530-842-6131	Plumas National Forest 159 Lawrence Street Quincy, CA 95971 530-283-2050	Stanislaus National Forest 19777 Greenley Road Sonora, CA 95370 209-532-3671
Lake Tahoe Basin Management Unit 35 College Drive South Lake Tahoe, CA 96150 530-543-2600	San Bernardino National Forest 602 S Tippecanoe Ave San Bernardino, CA 92408 909-382-2600	Tahoe National Forest 631 Coyote Street Nevada City, CA 95959 530-265-4531

7.17 United States Geological Survey – Biological Disciplines

The Western Ecological Research Center provides its clients and partners with the research, scientific understanding, and technology needed to support sound management of Pacific Southwestern Ecosystems.

Biological Disciplines

WERC Headquarters 3020 State University Drive Modoc Hall Room 4004 Sacramento, CA 95819 916-278-9485	Santa Cruz Field Station Long Marine Laboratory 100 Shaffer Road Santa Cruz, CA 95060 831-460-7566	San Francisco Bay Estuary Field Station 505 Azuar Drive Vallejo, CA 94592 707-562-2004
Box Springs Field Station 21803 Cactus Ave Suite F Riverside, CA 92518 951-697-5361	Dixon Field Station 800 Business Park Drive Suite D Dixon, CA 95620 707-678-5039	San Diego Field Station 4165 Spruance Road Suite 200 San Diego, CA 92101 619-225-6445
Channel Island Field Station 1901 Spinnaker Drive Ventura, CA 93001 805-658-5796	Point Reyes Field Station Point Reyes National Seashore 1 Bear Valley Road Point Reyes, CA 94956 530-669-5076	Sequoia and Kings Canyon Field Station 47050 Generals Highway Three Rivers, CA 93271 559-670-6885
Davis Field Station 1 Shields Avenue University of California Davis, CA 95616 530-752-5365	Redwood Field Station 1655 Heidon Road Arcata, CA 95221 707-825-5148	Yosemite – Oakhurst Field Station 40298 Junction Drive Suite A Oakhurst, CA 93644 209-379-1885
Santa Barbara Field Station University of CA Santa Barbara Santa Barbara, CA 93106 805-893-8778		

7.18 United States Geological Survey – Other Disciplines

Geographic Disciplines

Western Geographic Science Center 345 Middlefield Road, MS 531 Menlo Park, CA 94025 650-329-5049	USGS Mapping	Field Office 1901 Spinnaker Drive Ventura, CA 93001 805-658-5700 Ext. 5630
---	------------------------------	---

Geologic Disciplines

Regional Geologist 345 Middlefield Road, MS 919 Menlo Park, CA 94025 650-329-5100	Earth Surface Processes 345 Middlefield Road MS 975 Menlo Park, CA 94025 650-329-5430	Earthquake Hazards 345 Middlefield Road, MS 977 Menlo Park, CA 94025 650-329-4760
Geology	Volcano Hazards 2315 Meridian Boulevard Mammoth Lakes, CA 93546 760-924-5919	Coastal & Marine Geology 345 Middlefield Road MS 975 Menlo Park, CA 94025 650-329-5430
Earth Processes Offices Department of Earth Sciences University of California, Riverside Riverside, CA 92521 909-276-6397	Mineral Resource Surveys 345 Middlefield Road MS 914 Menlo Park, CA 94025 650-329-5472	Volcano Hazards 345 Middlefield Road Menlo Park, CA 94025 650-329-5203

Hydrologic Disciplines

Office of District Chief California State University 6000 J Street, Placer Hall Sacramento, CA 95819 916-278-3000	Carnelian Bay Field Office 5229 North Lake Boulevard Carnelian Bay, CA 96140 530-546-0187	Marina Field Office 3239 Imjin Road Marina, CA 93933 831-883-2293
Redding Field Office 11075 Black Marble Way Redding, CA 96003 530-246-5282	Santa Maria Field Office 3130 Skyway Dr #602 Santa Maria, CA 93455 805-934-1319	Apple Valley Satellite Office 13581 John Glenn Road Office C Apple Valley, CA 92307 760-247-1401
Eureka Satellite Office Woodley Island 302 Startare Drive Eureka, CA 95501	Poway Field Office 12110 Tech Center Drive Poway, CA 92064 858-679-4015	Sacramento Field Office 8550 23 rd Ave Sacramento, CA 95826 916-381-0556