

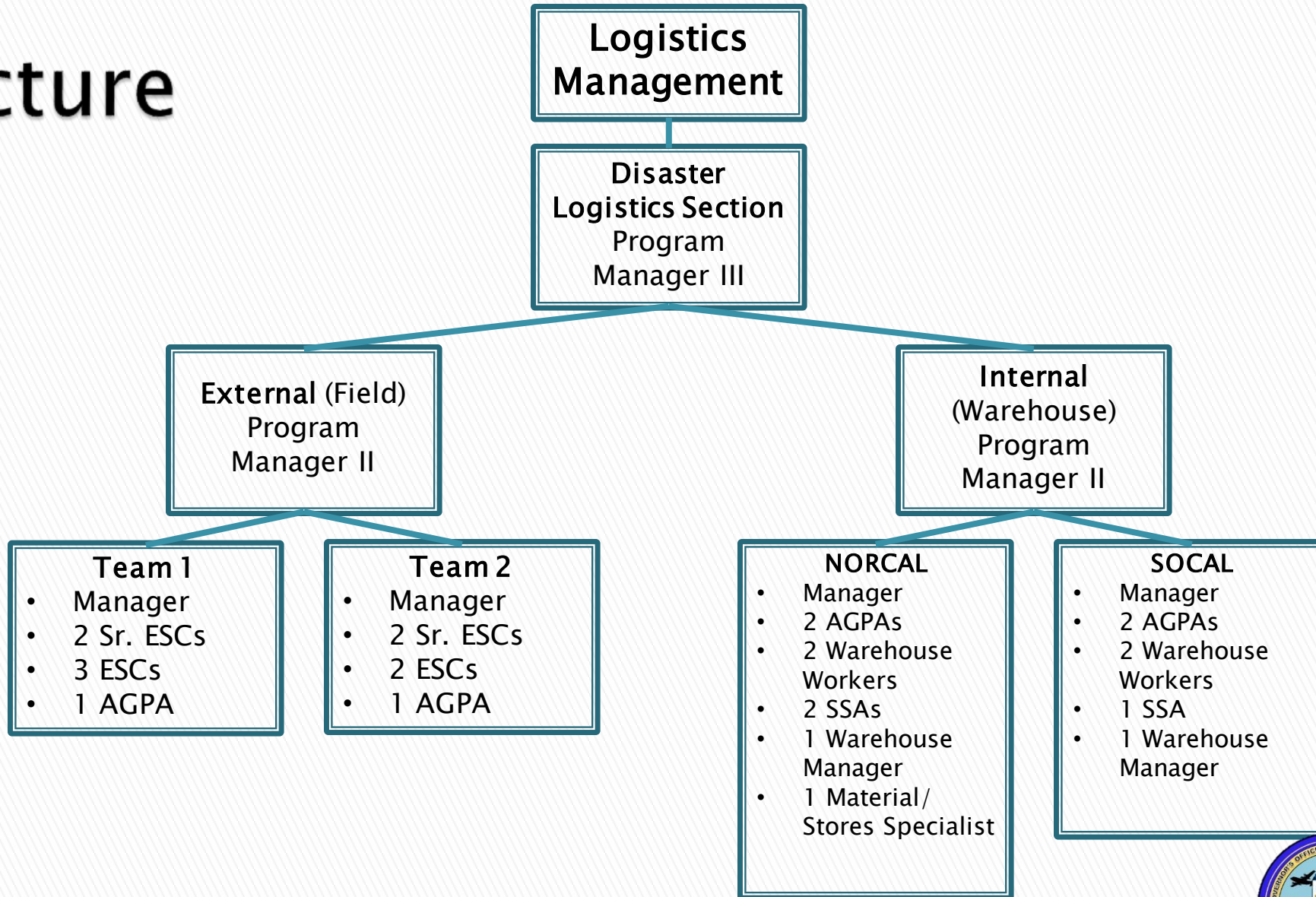


Cal OES Disaster Logistics Section (CA-ESF 7 Partner)

Logistics Management

Date: November 09, 2023

Structure



Mission

Supporting the Cal OES mission by providing logistical services during all five phases of emergency management.

Vision

Building the State's Disaster Logistics capabilities through effective collaboration and unity of effort.



Current Stats

- ▶ 35 Employees
 - Certified in various forklifts, pallet movers, and other heavy equipment
 - Credentialed in Logistics from CSTI
- ▶ 12 Fleet Vehicles (SUVs and Pickups with Code 3 Packages)
- ▶ 2 Box Trucks
- ▶ 1 Mission Command Vehicle
- ▶ 2 Warehouses (NorCal/SoCal)
- ▶ 10 Towable Generators (110kW to 325kW)
- ▶ 11 Towable Light Towers



Growth Over The Last 3 Years

- ▶ Increased staffing by 240%
- ▶ Added over 600,000 square feet of office and warehousing space
- ▶ Increased the fleet of equipment by adding
 - 16 53' trailers (eight are in process),
 - 11 towable generators
 - 11 additional vehicles (in process)
 - 9 towable light towers.



What do we do?

- ▶ *Deployment, management, and recovery of Logistics Staging Areas (LSA) and Basecamps*
- ▶ *Local/Field Disaster Logistics Liaison Support*
 - *Deployment, support, and recovery of Base Camps, Joint Field Office(s) (JFO), and Area Field Office(s) (AFO)*
- ▶ *Commodity management, distribution, and recovery*
- ▶ *Warehousing and inventory management of equipment and commodities*
- ▶ *Transportation of equipment and commodities*



Mission Sets

- *Logistics Support to Evacuations and Isolated Communities*
- *Public Safety Power Shutoff Support*
- *All Hazard Commodities (Sheltering, Food, Water, Fuels)*
- *Medical PPE and Materials Stockpile Distribution*
- *Warehouse and Supply Point Distribution*
- *Logistics Staging Areas*
- *Commodity Points of Distributions*
- *Basecamps*
- *JFO/AFO Logistics Liaison*
- *Regional and County EOC Logistics Liaison*



The Future of Disaster Logistics

- *In development of a statewide disaster logistician curriculum (coming in 2024)*
- *Opening a new warehouse in SoCal to replace the existing one*
- *Hiring warehouse positions*
- *Participation in Port and Rail logistics exercises to build capability*
- *Finalizing our 5-year Strategic Plan*
- ***Prepping for the next disaster!***



Questions or Comments?

Nick Murray, Program Manager I
Disaster Logistics Team 2 (Field)
(916) 845-8753 | Nick.Murray@CalOES.ca.gov



EARTHQUAKE
WARNING
CALIFORNIA



Earthquake Warning California

Emergency Management

November 9, 2023

EARTHQUAKE EARLY WARNING

- MANAGED BY CAL OES, EARTHQUAKE EARLY WARNING USES GROUND MOTION SENSORS STATEWIDE TO DETECT EARTHQUAKES BEFORE HUMANS CAN FEEL THEM AND CAN NOTIFY CALIFORNIANS TO “DROP, COVER AND HOLD ON” IN ADVANCE OF AN EARTHQUAKE.
- CRUCIAL SECONDS TO TAKE COVER BEFORE SHAKING IS FELT: 70% OF CALIFORNIANS ARE AT RISK OF STRONG GROUND SHAKING.
- EEW SEISMIC NETWORK STATIONS ARE 100% FUNDED, WITH 962 OUT OF 1,115 STATIONS BUILT.
- SUCCESS STORIES: [MENLO FIRE DISTRICT](#) | [MYSHAKE](#) | [BART](#) | [SCHOOLS](#)



CEEWS NETWORK GOAL OF 1,115 STATIONS OCTOBER 2023

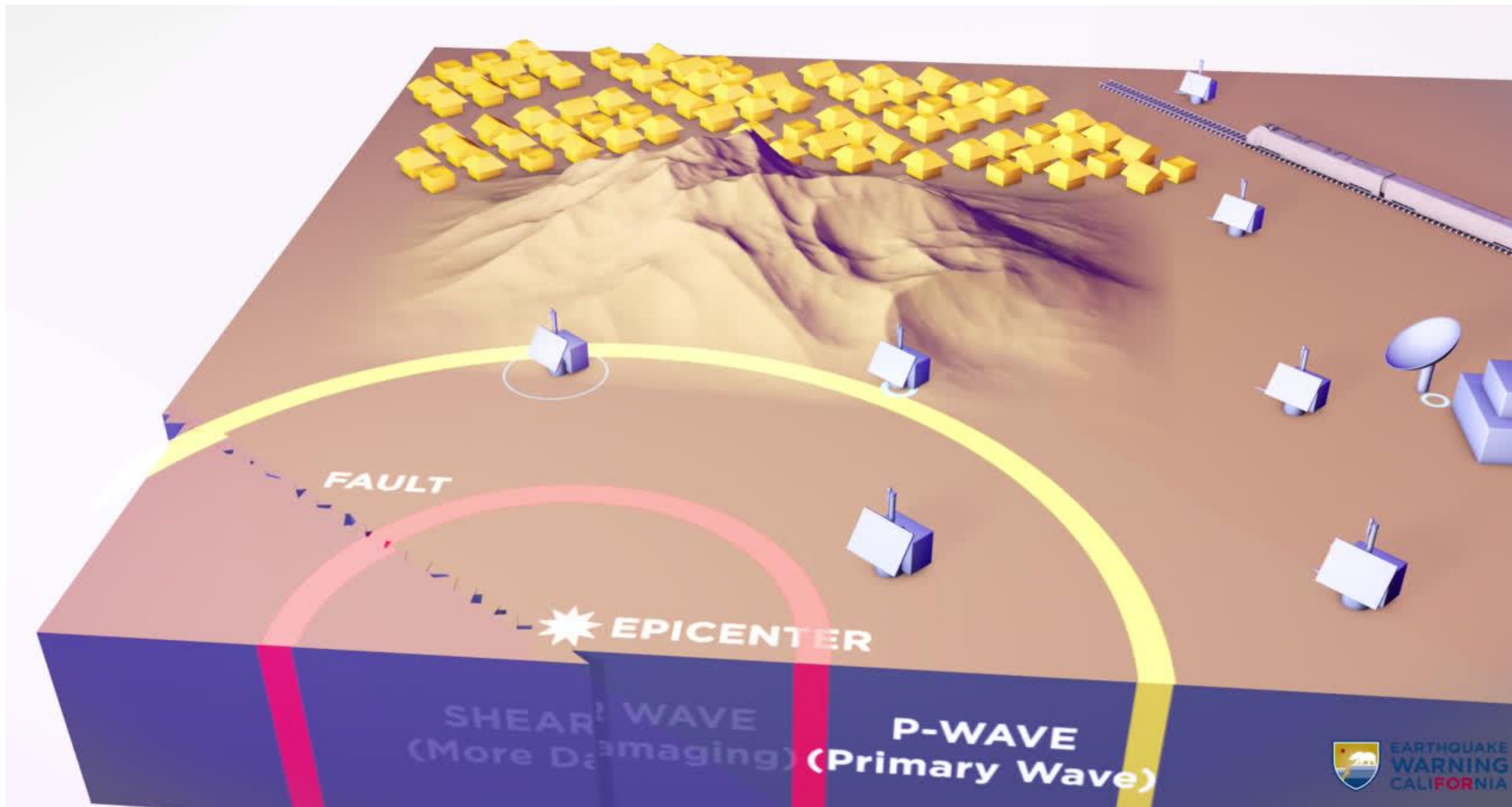


962 stations in CA
contributing to ShakeAlert



153 stations to go!!

HOW IT WORKS



RECENT SUCCESSES OF CEEWS

- [SAN JOSE EARTHQUAKE - OCTOBER 25, 2022](#)
 - 95,272 MYSHAKE DEVICES ALERTED
 - MYSHAKE BECAME THE #1 EDUCATION APP IN THE APPLE STORE
 - 108,000+ APP DOWNLOADS MYSHAKE APP DOWNLOADS
- [FERNDALE EARTHQUAKE - DECEMBER 20, 2022](#)
 - 4.1 BILLION IN AUDIENCE REACH
 - 124,000+ MYSHAKE APP DOWNLOADS
- [LAKE ALMANOR EARTHQUAKE - MAY 12, 2023](#)
 - 81.33 MILLION IN AUDIENCE REACH
 - 16,789 IN MYSHAKE APP DOWNLOADS
- [OJAI EARTHQUAKE - AUGUST 20, 2023](#)
 - 194,000 DEVICES RECEIVED MYSHAKE ALERT
 - 40,000 IN MYSHAKE APP DOWNLOADS



RAPID RESPONSE/AUTOMATED ACTIONS

- EEW PROTOCOLS INSTALLED IN PUBLIC SAFETY FACILITIES SUCH AS EMERGENCY OPERATIONS CENTERS (EOCS) OR FIRE STATIONS CAN REDUCE PROPERTY DAMAGE AND QUICKLY RESTORE OPERATIONS, AND FIRST RESPONDER SAFETY.
- EEW TECHNOLOGY COULD, FOR EXAMPLE, REDUCE THE POTENTIAL FOR HAZMAT AND FIRE ISSUES, AS WELL AS IMPROVE COMMUNICATIONS FOLLOWING AN EARTHQUAKE.
- EEW PROTOCOLS MAY STOP ELEVATORS AND ESCALATORS TO HELP REDUCE THE LIKELIHOOD OF ENTRAPMENT.

EEW AUTOMATED ACTIONS



Time Savings. First responders can react quicker if EEW automated actions are in place.



Warning Alarm. EEW alert activates warning alarm to personnel allowing for protections actions such as Drop, Cover and Hold On and/or avoiding dangerous areas and situations.



Generators and Back-Up Power. Activate back-up power generation during power failure.



Water Control. Automated and manual selected water supply shut-off.



Automatic Shut-Off. Gas valve controls/shut-off.

THE FUTURE OF EEW

- CAL OES EARTHQUAKE EARLY WARNING PROGRAM IS CONTINUOUSLY RESEARCHING, LEARNING, AND DEVELOPING NEW WAYS TO IMPROVE THE SAFETY OF CALIFORNIA RESIDENTS AND VISITORS BEFORE DISASTER STRIKES.
- FIRE STATION PILOT PROJECT
- SAN JOSE EARTHQUAKES + LARGE PUBLIC VENUES
- NETFLIX + GOOGLE

EEW AUTOMATED ACTIONS



Time Savings. First responders can react quicker if EEW automated actions are in place.



Warning Alarm. EEW alert activates warning alarm to personnel allowing for protections actions such as Drop, Cover and Hold On and/or avoiding dangerous areas and situations.



Generators and Back-Up Power. Activate back-up power generation during power failure.



Water Control. Automated and manual selected water supply shut-off.



Automatic Shut-Off. Gas valve controls/shut-off.

MYSHAKE APP



- DEVELOPED IN PARTNERSHIP WITH THE UC BERKELEY SEISMOLOGY LAB
- MYSHAKE APP HAS BEEN A MAJOR SUCCESS IN CALIFORNIA WITH MORE THAN 2.9 MILLION DOWNLOADS. GOAL IS 4 MILLION BY 2026.
- APP PROVIDES ALERTS OF INCOMING GROUND SHAKING AND PROTECTIVE ACTIONS, AS WELL AS TSUNAMI PREPAREDNESS INFORMATION.
- CHROMEBOOK APPLICATION COMING SOON.

WHAT CAN YOU DO

Earthquake Warning California | Sector Implementation

FIRST RESPONDERS



First responders may choose to implement customized warning applications and protocols to protect people, assets, or functions in their own organizations and facilities.

These notifications could provide life-saving seconds of warning and allow to take protective actions in advance of shaking from a significant and potentially damaging earthquake.

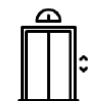
Earthquake Early Warning (EEW) may reduce death and injuries, as well as preserve valuable inventory such as medication, medical supplies, and equipment. Pre-determined protocols and equipment may, for example, reduce the potential for hazmat and fire issues, as well as improve communications following an earthquake.

Of course, the availability of hospitals and other emergency medical facilities is vital in the wake of a natural disaster. By reducing damage to facilities and more quickly restoring their operations, first responders may respond to emergencies more effectively.

EEW AUTOMATED ACTIONS



Warning Alarm. EEW alert activates warning alarm to staff, building, and/or facility occupants and visitors, allowing for protective actions such as Drop, Cover, and Hold On and/or avoiding dangerous areas and situations.



Elevators and Escalators. Elevator recall and escalator stops help reduce likelihood of entrapment.



Automatic Adjustment and Shut-Off. Automated adjustment of gas valves (includes shut-off prior to shaking). Gas flow stopped at specific building sites.



Water Control. Automated and manual selected water supply shut-off.



Back-Up Power and Power Safety. Activate back-up power generation during power failure for critical medical equipment. Automated and manual selected power safety power supply shut-off.

BENEFITS AND OUTCOMES

- Enhance situational awareness.
- Reduce deaths and injury avoidance in the field, offices, or other facilities.
- Improve communications after an earthquake.
- Reduce potential for hazmat or fire issues.
- Preserve valuable inventory such as medication, medical supplies, and equipment.
- Time savings for first responders.

GOALS AND FOCUS AREAS

- Reduce risk to life, property, community lifelines, and the environment through the adoption, implementation, and integration of EEW technology and systems.
- Enable all Californians, industries, and tourists to utilize EEW technology in their everyday life.
- Expand partnerships: engage community-based organizations, nongovernmental organizations, Industry Associations/Sectors, as well as federal, state, tribal, local organizations, and agencies.
- Work with entities and potential partners, in collaboration with USGS, throughout the ShakeAlert Pilot License Agreement (PLA) and License-to-Operate (LTO) partner processes to deploy EEW automations throughout key sectors.



- DOWNLOAD THE MYSHAKE APP ON PERSONAL AND WORK PHONES.
- DISCUSS IMPLEMENTATION OF EEW TECHNOLOGY WITH YOUR GOVERNING BODY.
- TALK TO YOUR STAKEHOLDERS ABOUT WHAT EEW CAN DO FOR THEM.
- VISIT EARTHQUAKE.CA.GOV TO DOWNLOAD MATERIALS.
- UTILIZE CAL OES TOOLKIT.
- SHARE AUTOMATED ACTIONS FACT SHEET.

FUNDING OPPORTUNITIES FOR EEW

- EEW is now an eligible activity under the Building Resilient Infrastructure and Communities (BRIC) and the Hazard Mitigation Grant Program (HMGP)
- The Federal Emergency Management Agency (FEMA) will now consider proposals to fund the purchase and installation of:
 - Seismometers
 - Global Positioning System (GPS) receivers
 - Associated infrastructure
- FEMA will NOT fund:
 - Operations or maintenance costs
 - Ongoing maintenance or subscription fees



CONTACT US

DEREK J. LAMBETH, PROGRAM MANAGER
DEREK.LAMBETH@CALOES.CA.GOV

JON GUDEL, SR. EMERGENCY SERVICES COORDINATOR
JON.GUDEL@CALOES.CA.GOV

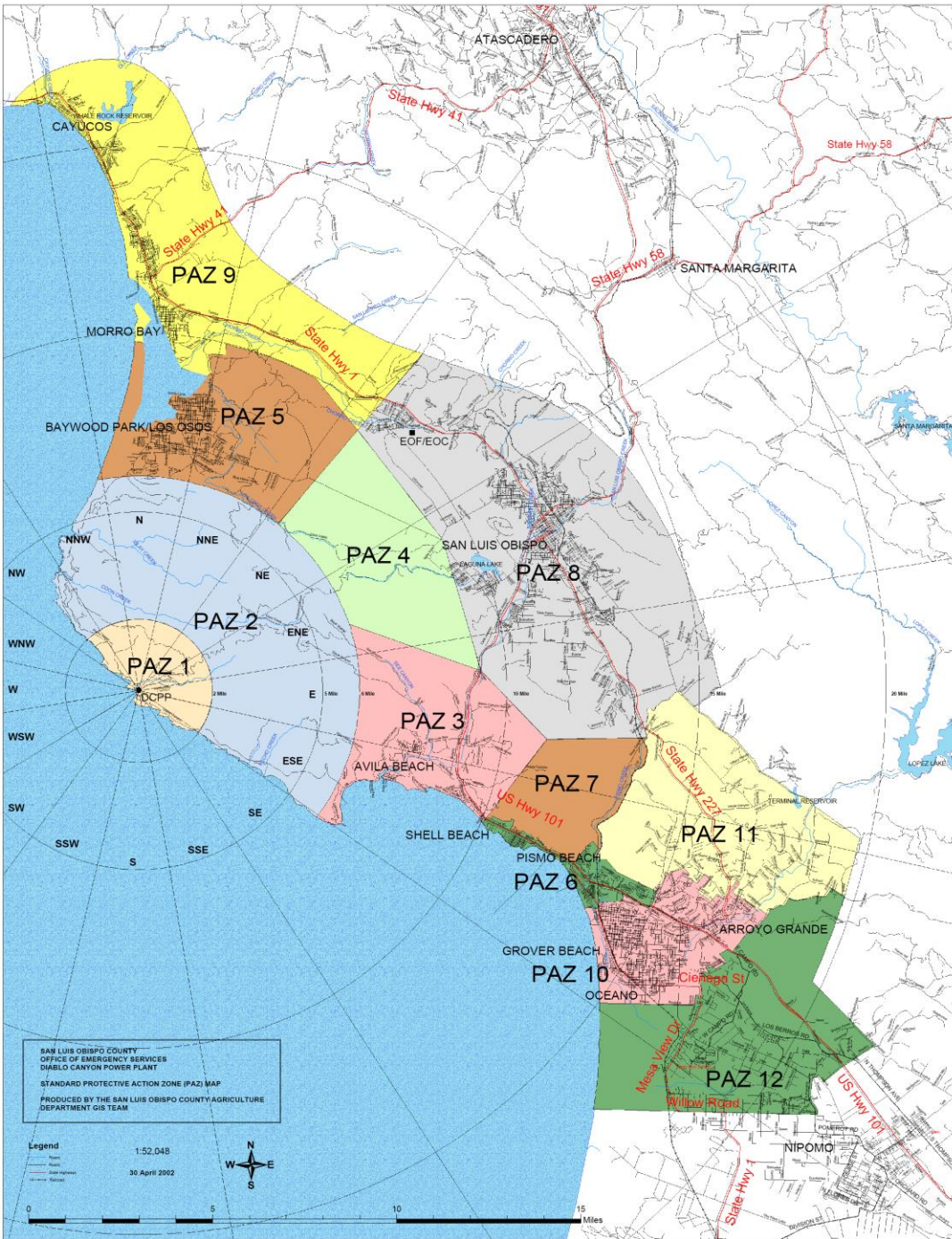


2024 Diablo Canyon Power Plant Ingestion Pathway Exercise

Exercise Purpose

California must demonstrate its capability to provide reasonable assurance for the protection of the public, to FEMA and the NRC, in the unlikely event of a nuclear power plant emergency.

DCPP Emergency Planning Zone (EPZ)



50 Mile Ingestion Pathway Zone

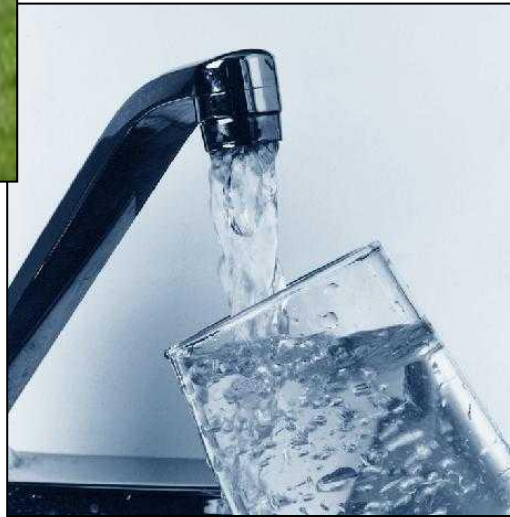
Diablo Canyon Power Plant 50 Mile Zone



Ingestion Exposure Pathway



The principal risk of exposure is from **ingestion** of contaminated food and water



Requirements

- ✳ **Nuclear Regulatory Commission**
Every 2 years - Plume Phase
- ✳ **FEMA**
Every 8 years - Ingestion Phase
- ✳ **Required by both Federal and State Regulations**

Exercise Specifics

6 Events

- ✳ **Plume Phase Exercise**
- ✳ **Advance Party Meeting**
- ✳ **SDAC**
- ✳ **Field Demonstrations**
- ✳ **RICG**
- ✳ **Laboratory**

Exercise Specifics

3 Days

✧ **Day One** **Plume Phase**
Advance Party Meeting

✧ **Day Two** **SDAC**
Field Demonstrations


✧ **Day Three** **RICG**

Out of Sequence - Laboratory

Exercise Specifics

**Performed Twice, Written Twice,
and Two Scenarios**

 **Dress Rehearsal**

 **June 26-28, 2024**

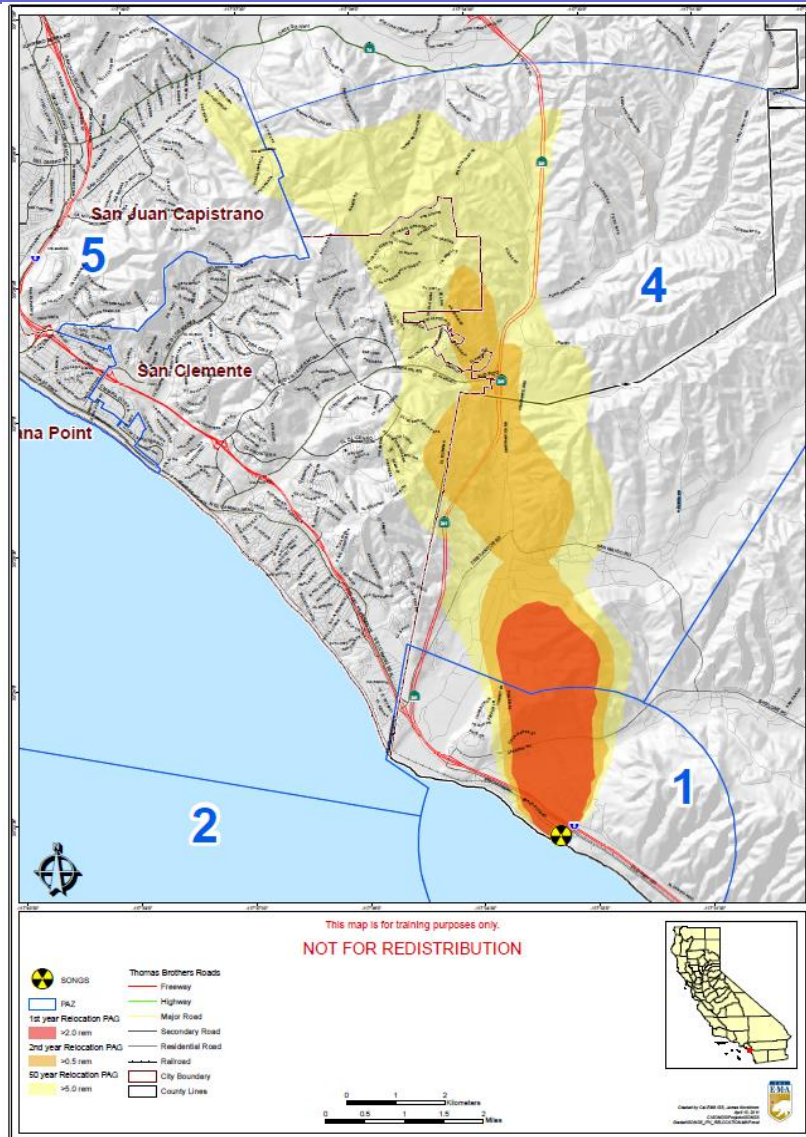
 **Evaluated Exercise**

 **July 31 – August 2, 2024**

Objectives vs Eval Criteria

- ✳ **In FEMA Evaluated Nuclear Power exercises, Objectives are defined by the FEMA Radiological Emergency Preparedness Program Manual.**
- ✳ **The Objectives are defined as Evaluation Criteria.**

Data vs Injects



✦ No Injects

✦ The exercise DATA Package defines the play.

FEMA Evaluation Process

- ✱ Evaluate **Offsite** emergency response organizations' ability to implement plans and procedures to protect the health and safety of the public
- ✱ Determine the adequacy of facilities, equipment and supplies needed in support of a potential emergency at **Diablo Canyon Power Plant**

FEMA Evaluation Process

✧ **16 - 20 Evaluators**

✧ **18 locations**

✧ **175 Assigned Criteria**

- ✧ **Each criteria has 10 to 25 points of review**
- ✧ **Each criteria requires a written narrative**

Exercise Outcomes

FEMA Findings

-  **Plan Issues**

-  **Level 2 Finding**

-  **Level 1 Finding**

Reasonable Assurance

-  **Presented in the FEMA Public Meeting**

-  **After Action Report/Improvement Plan (AAR/IP)**

Questions?



CALIFORNIA DEPARTMENT OF WATER RESOURCES

Preparations for El Nino

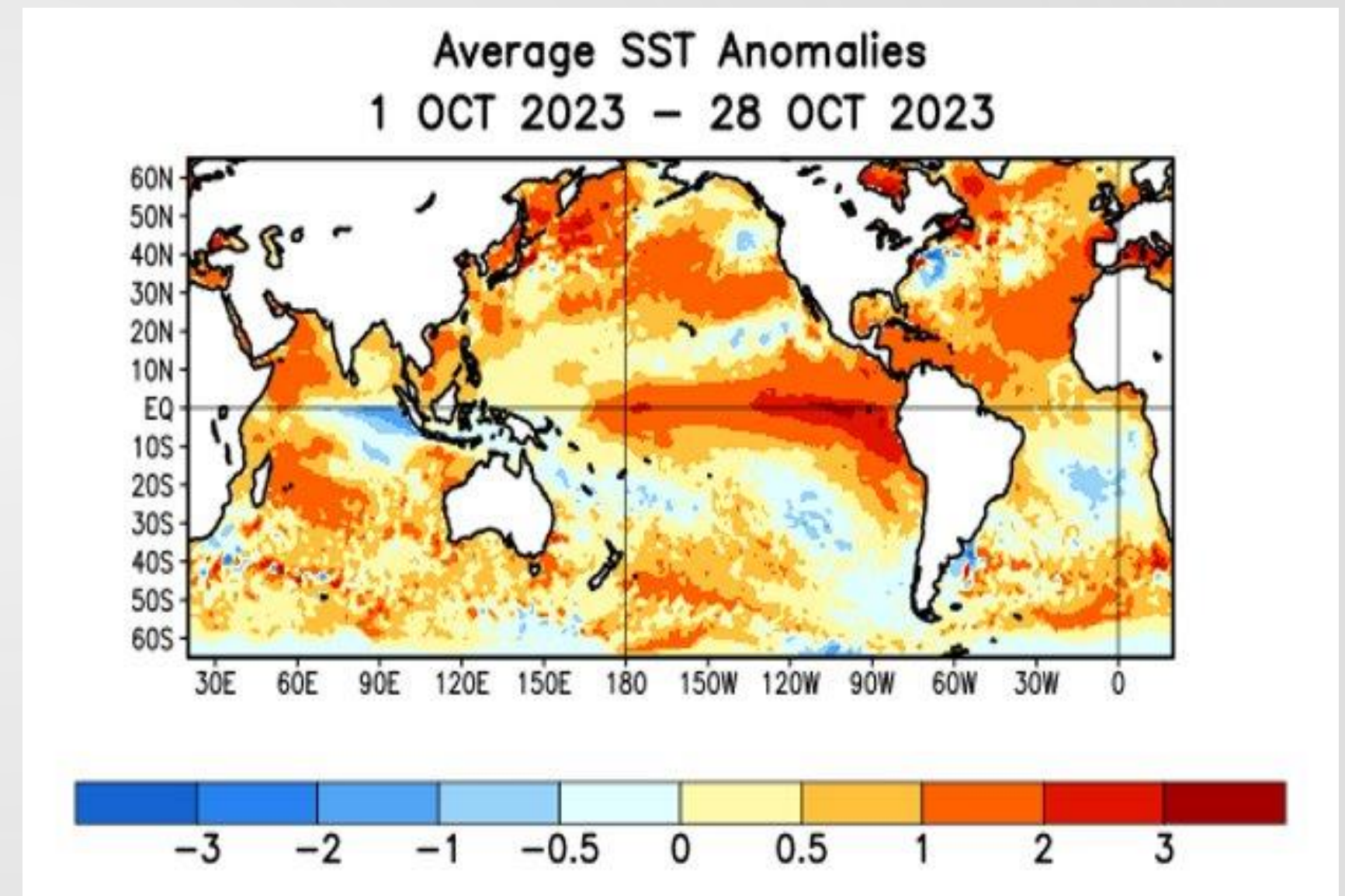
SWEPC, November 14, 2017



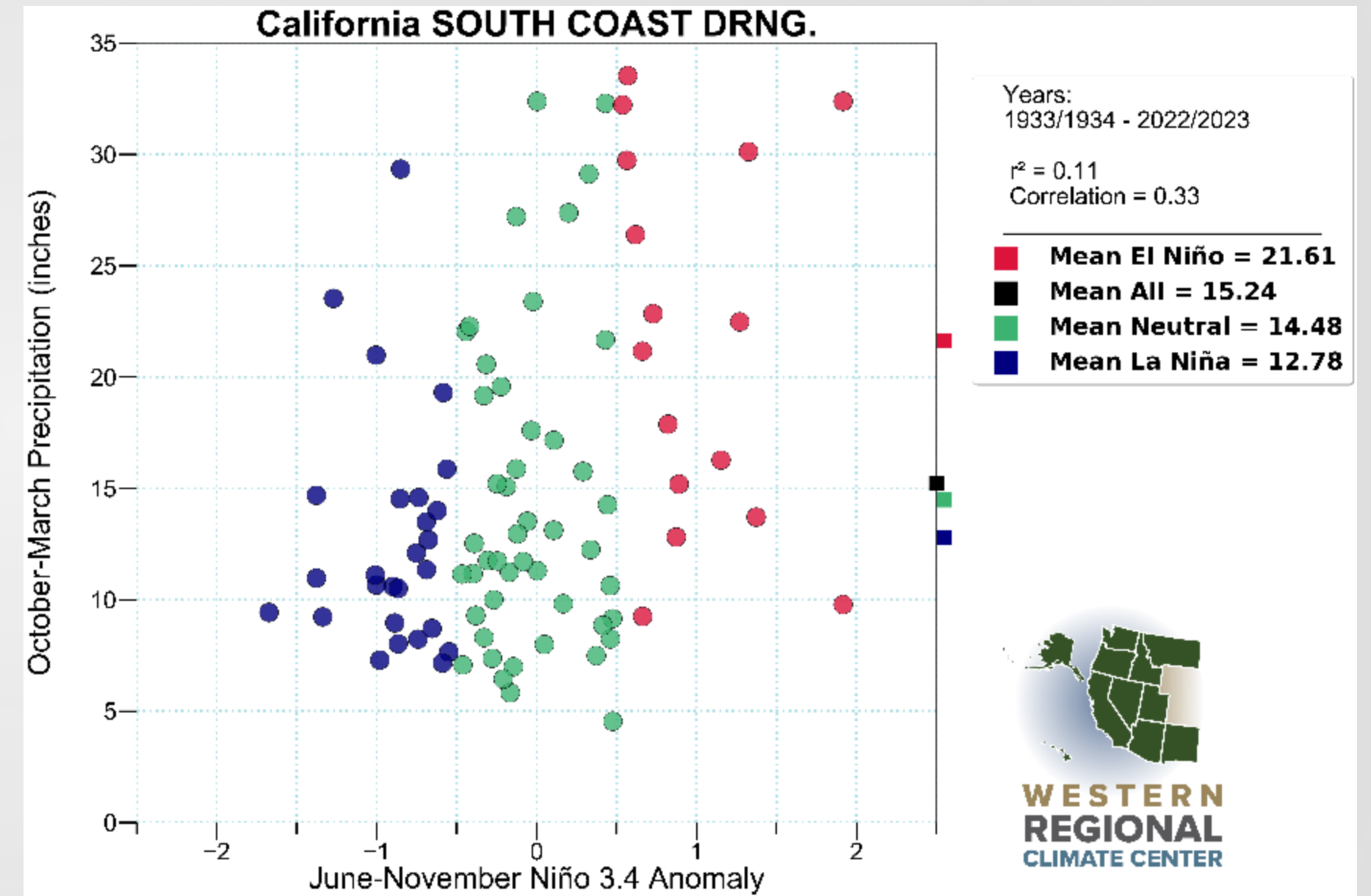
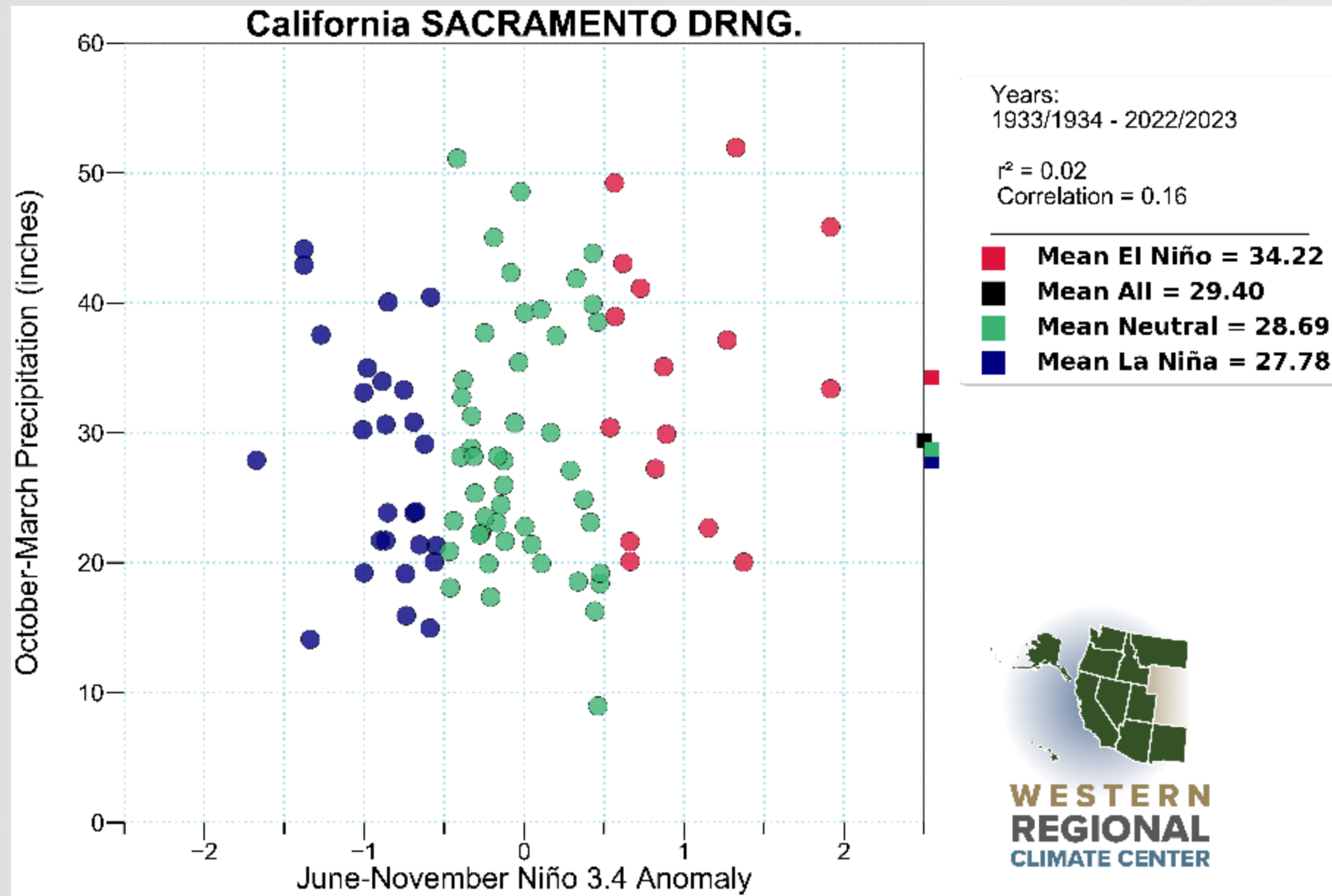
John Paasch, Deputy Director

El Niño Returns to the Eastern Tropical Pacific

- Last El Niño winter was in water year 2019
- 7 events in 21st Century so far
(2 dry, 3 near average, 2 wet)
- This event expected to peak near end of calendar year
- Sub-seasonal climate influences are important



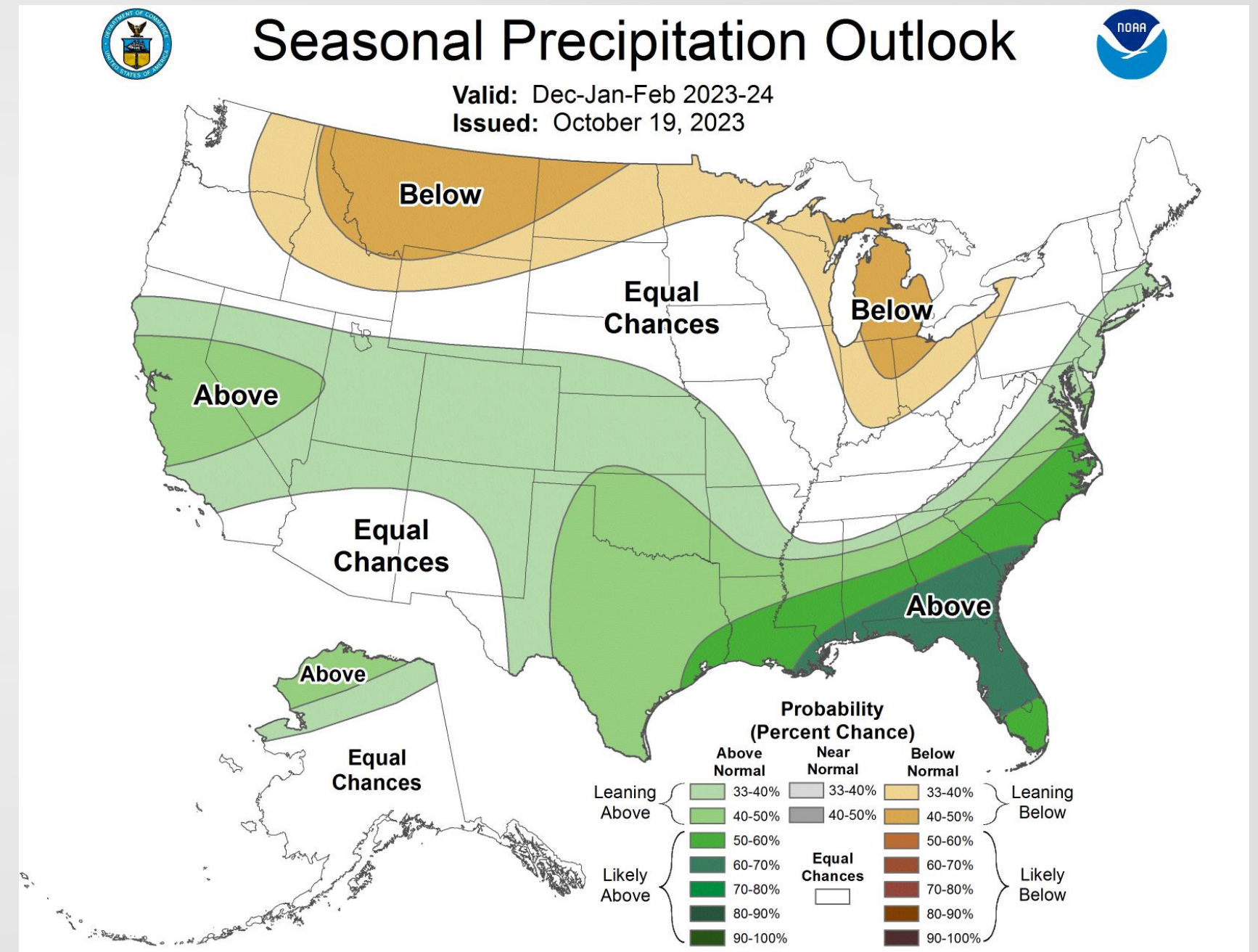
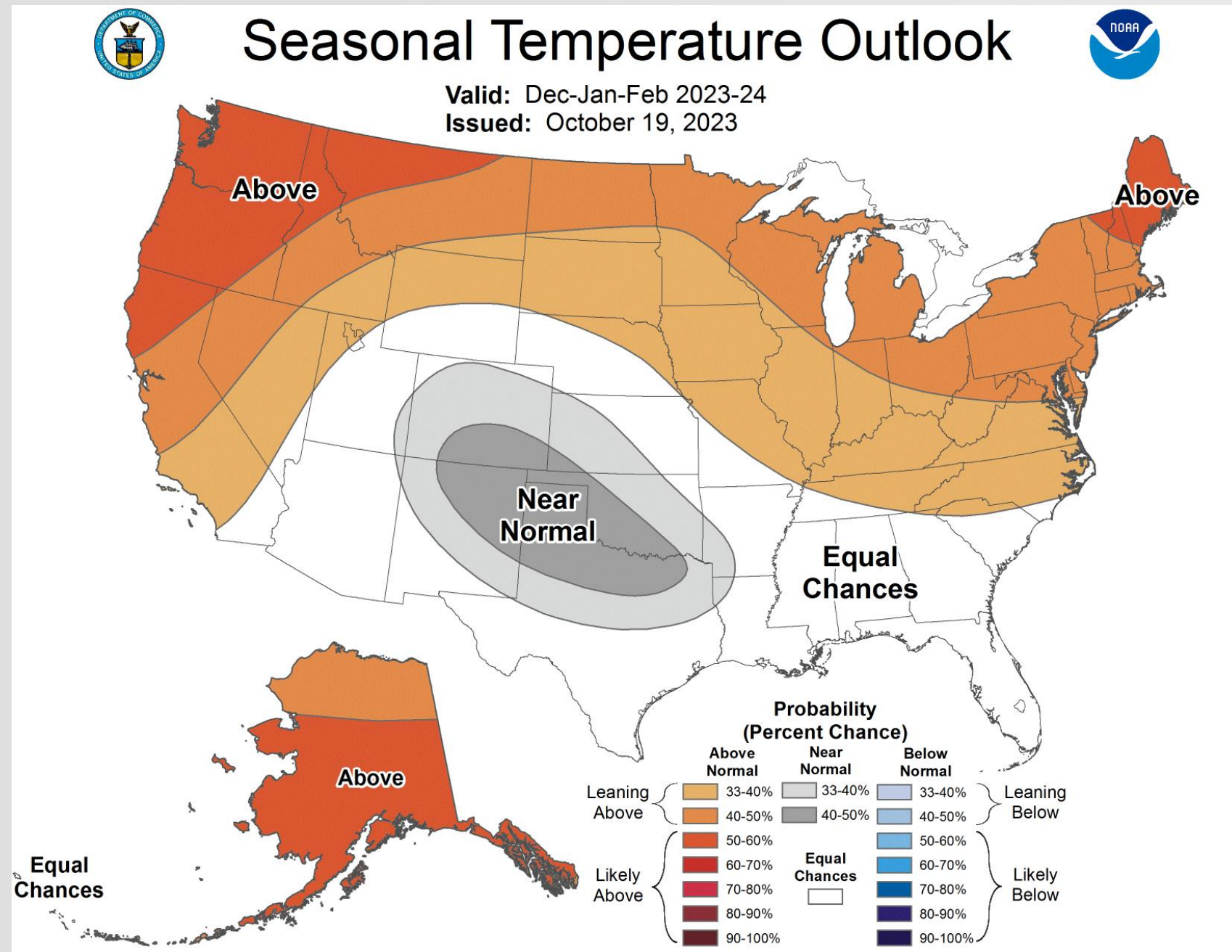
Precipitation Outcomes with ENSO



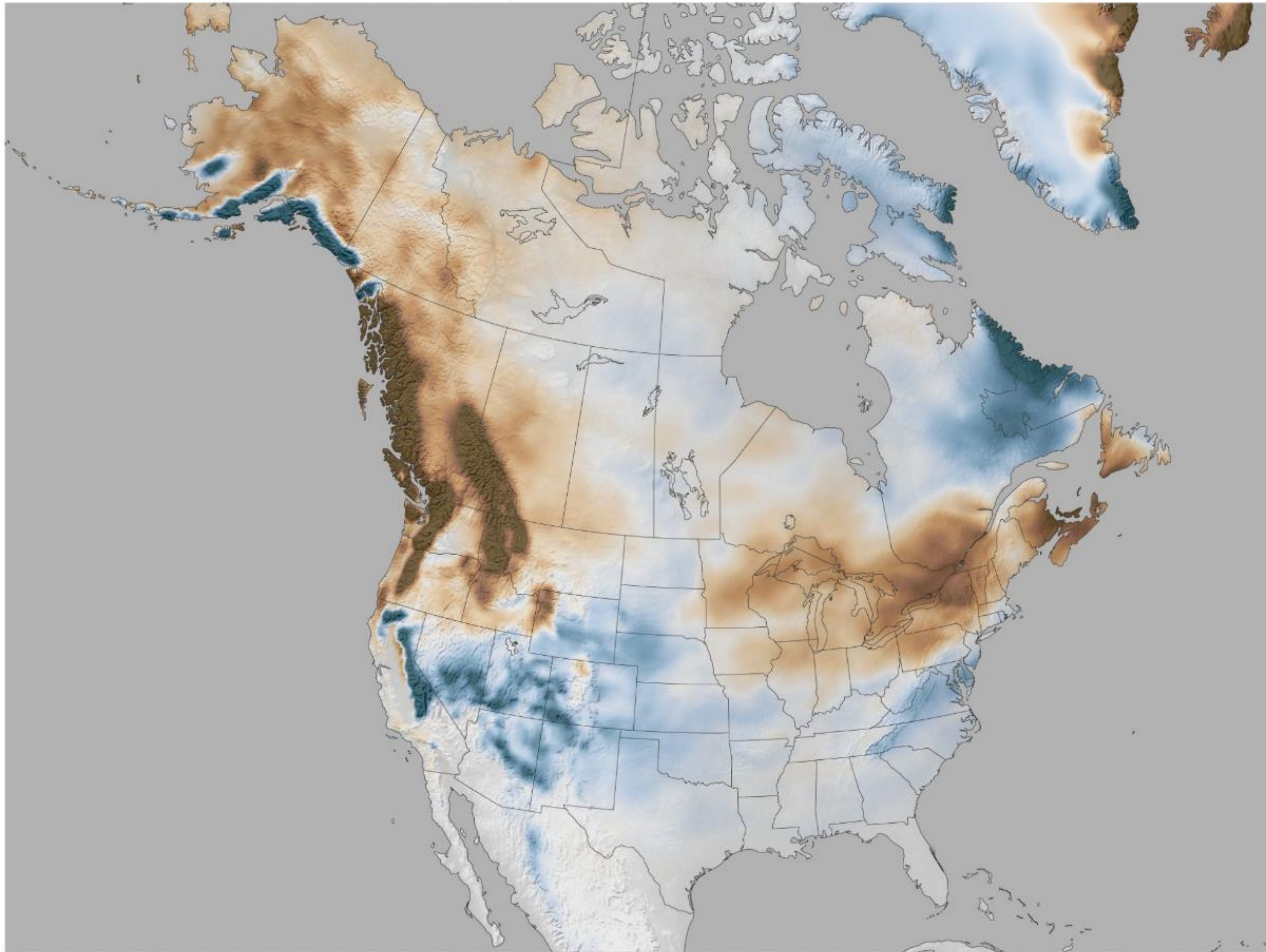
[WRCC: SOI-Precipitation Relationships \(dri.edu\)](http://dri.edu)



NOAA Climate Prediction Center Outlooks

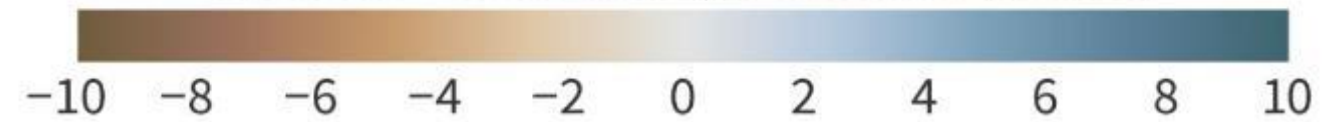


Snowfall during all El Niño winters (Jan-Mar)



El Niño winters (1959-2023)
vs. 1991-2020 average
(detrended)

difference from average snowfall (inches)



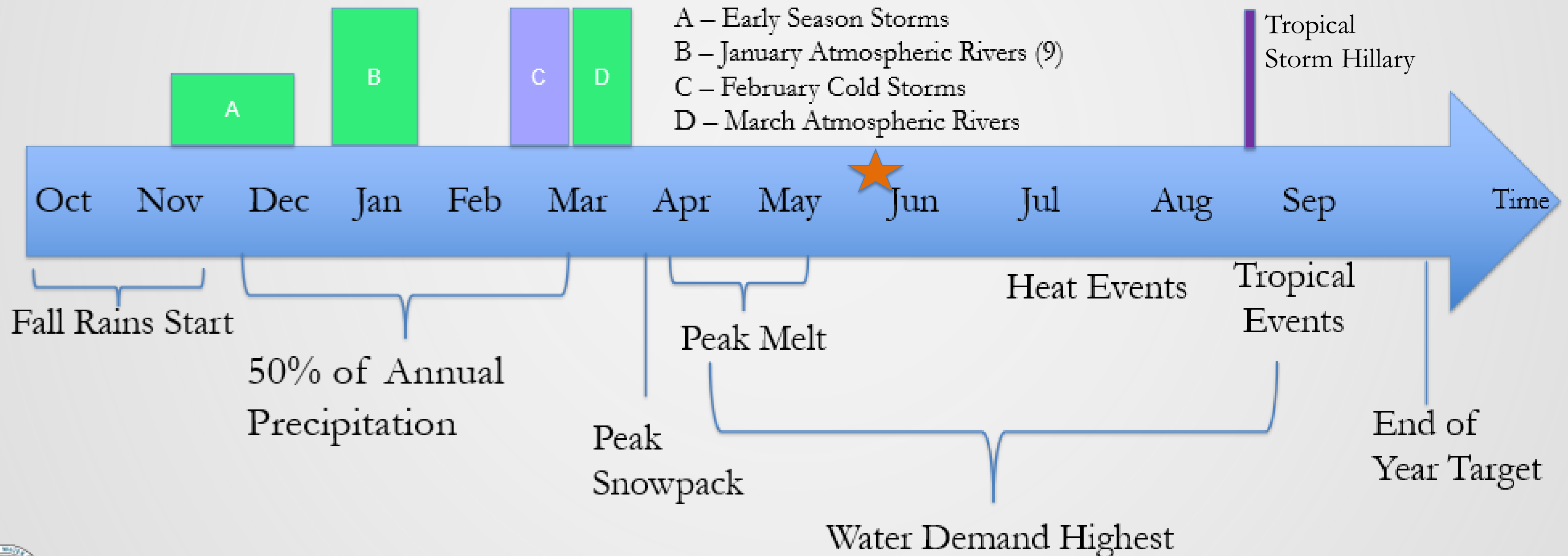
NOAA Climate.gov
Data: ERA5

Building a Water Year 2023

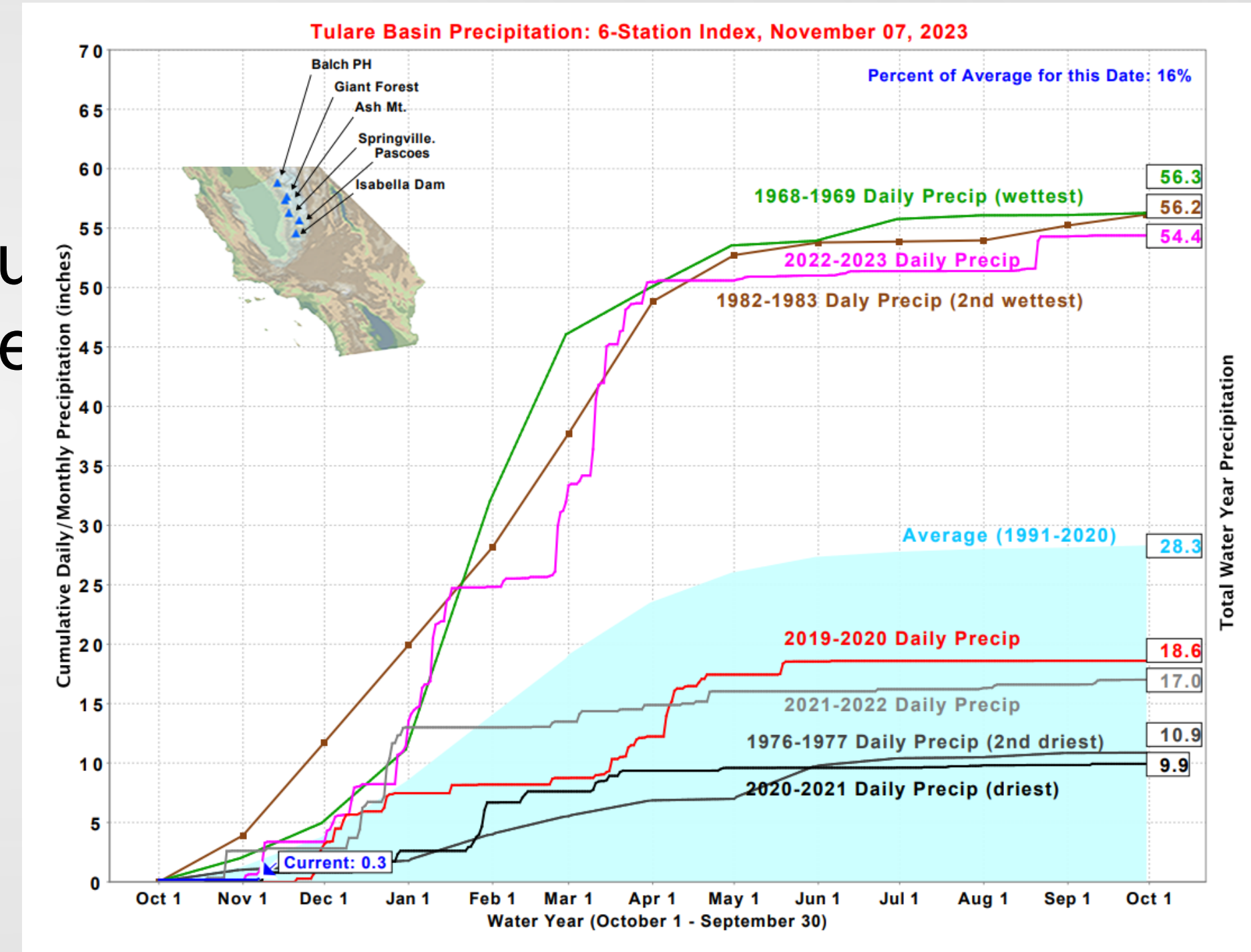
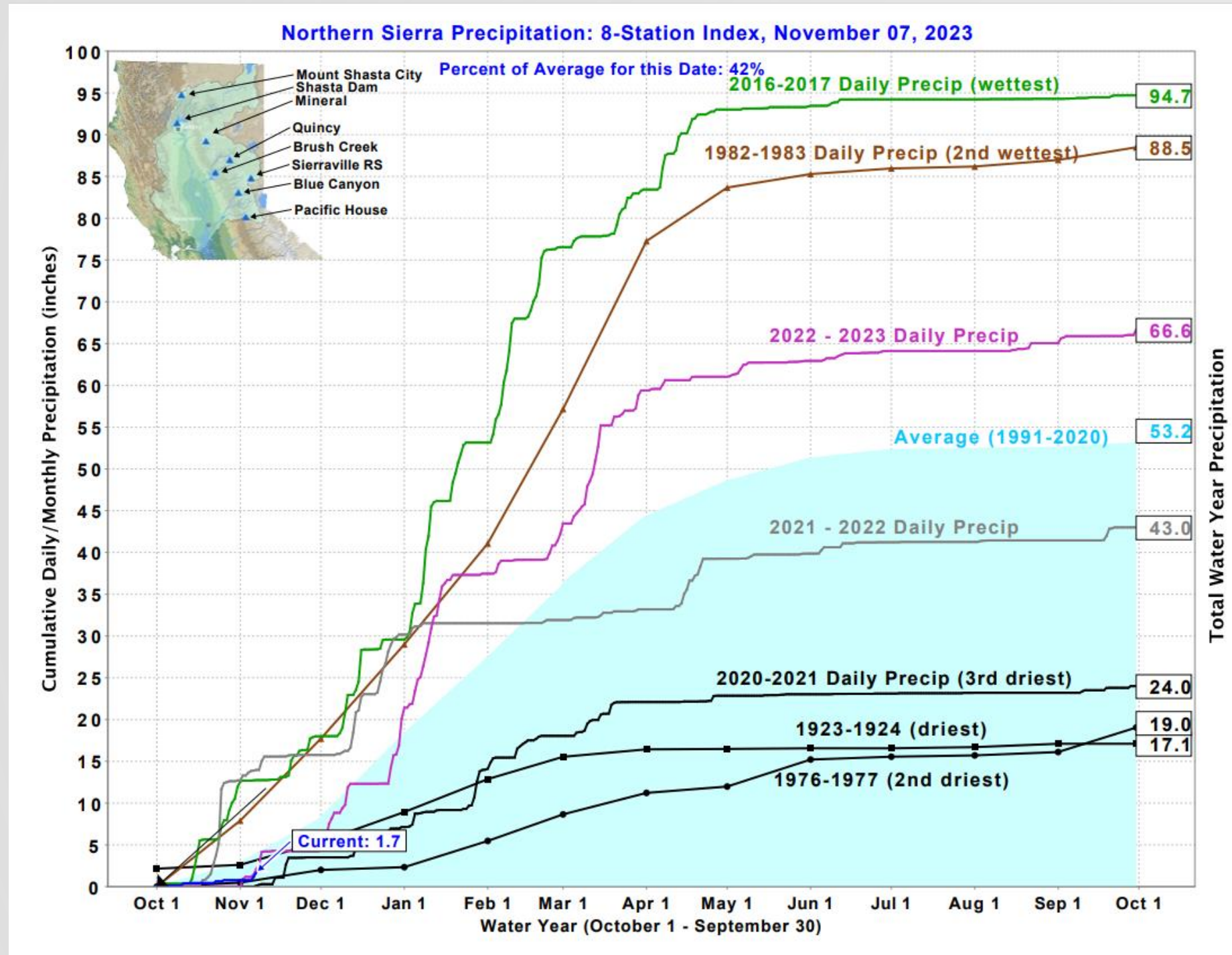
Oct-Mar: 153% of Average Statewide – 6th wettest

Oct-Mar: 199% of Average San Joaquin Climate Division – wettest

April 1 Snowpack: Only 4th year since 1950 with more than 200% of average; 1st since 1983



Forecasting the Water Year



Water Year to Date Precipitation

Precipitation Statistics (period of record: 1981-current)

Statewide as of 11/06/2023

Water Year to Date: **0.8"**

% of Average: **50%**

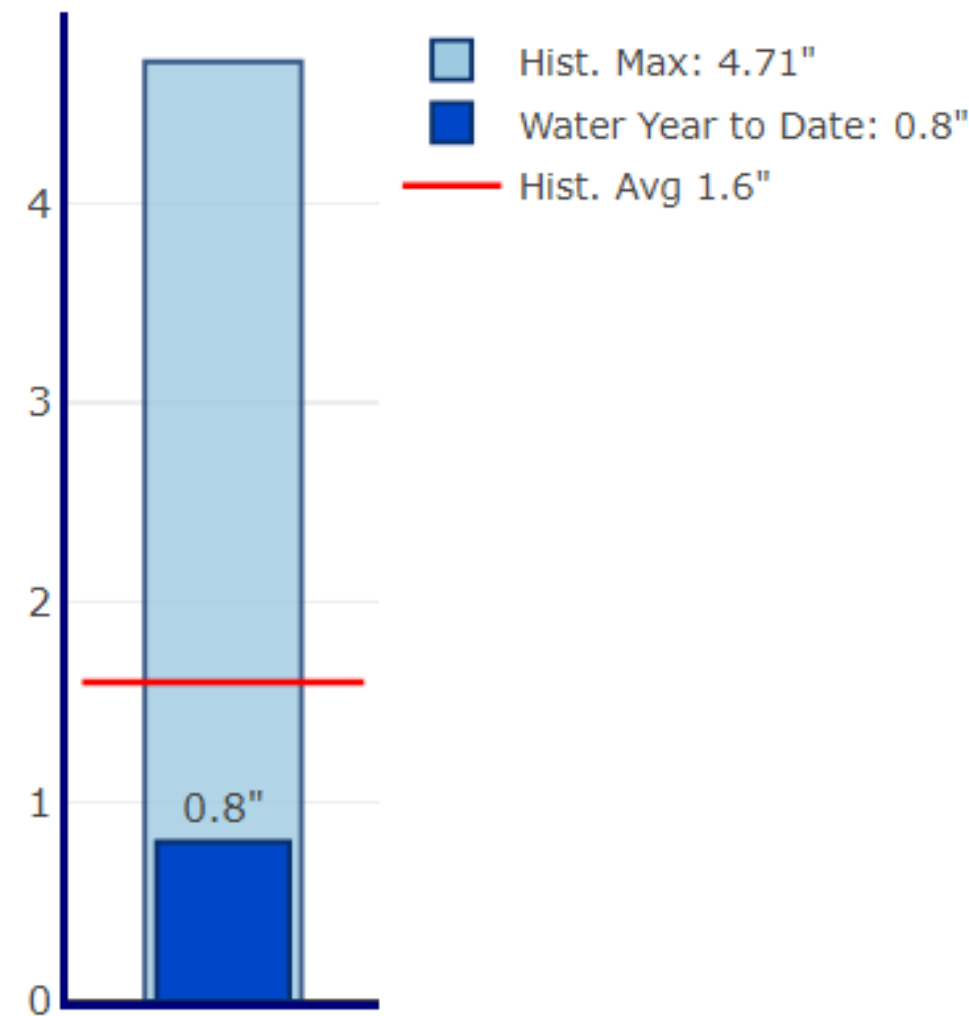
Precipitation % of average for full water year through September 30th: **3%**

Historical Record to Date:

Max: **4.71"**

Mean: **1.6"**

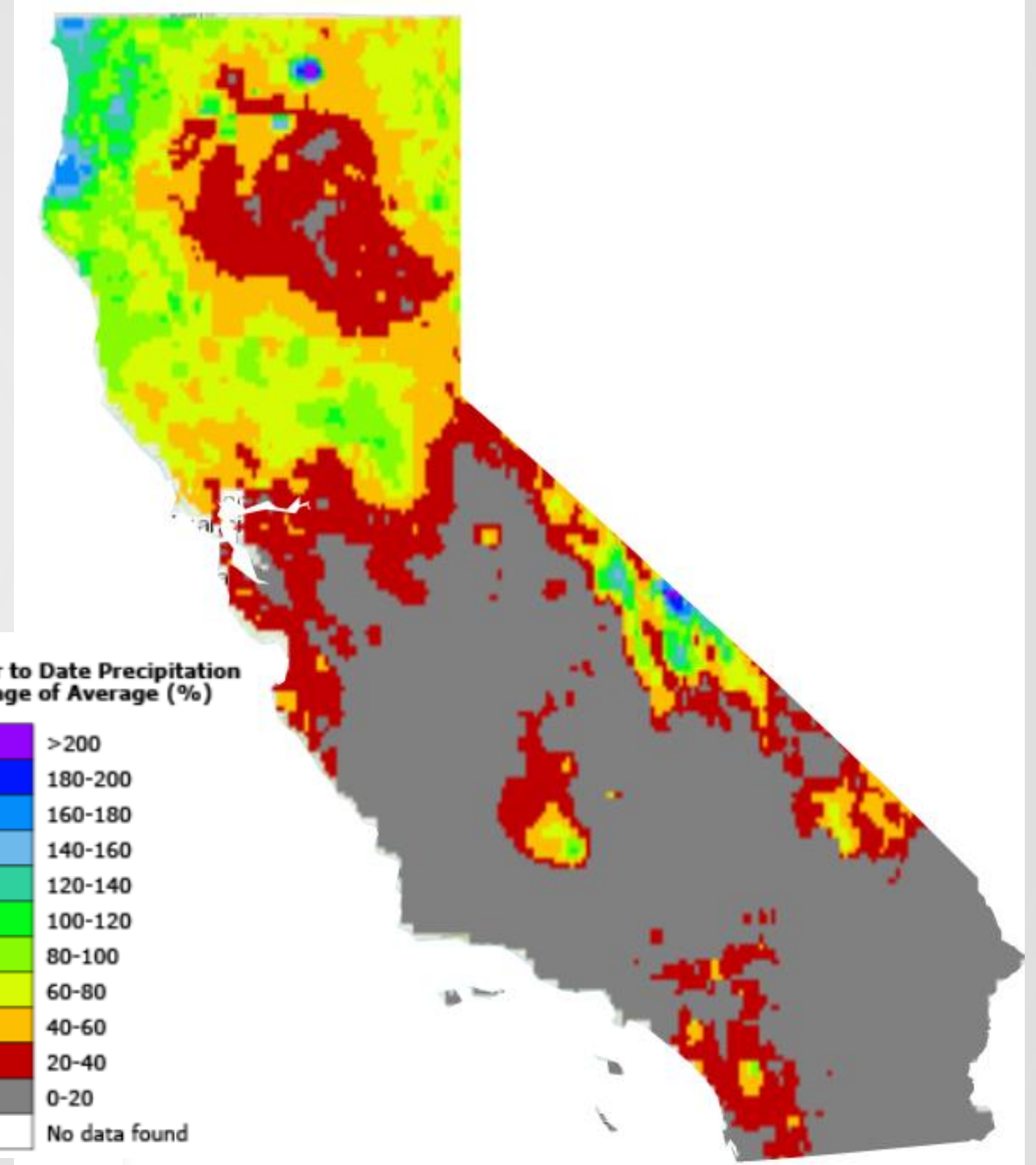
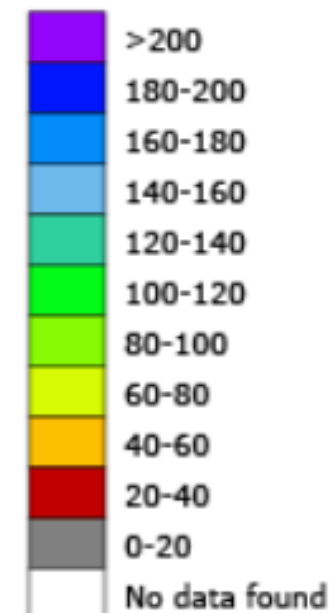
Min: **0.07"**



Precipitation for water year to date is 50% of historical average



Water Year to Date Precipitation Percentage of Average (%)

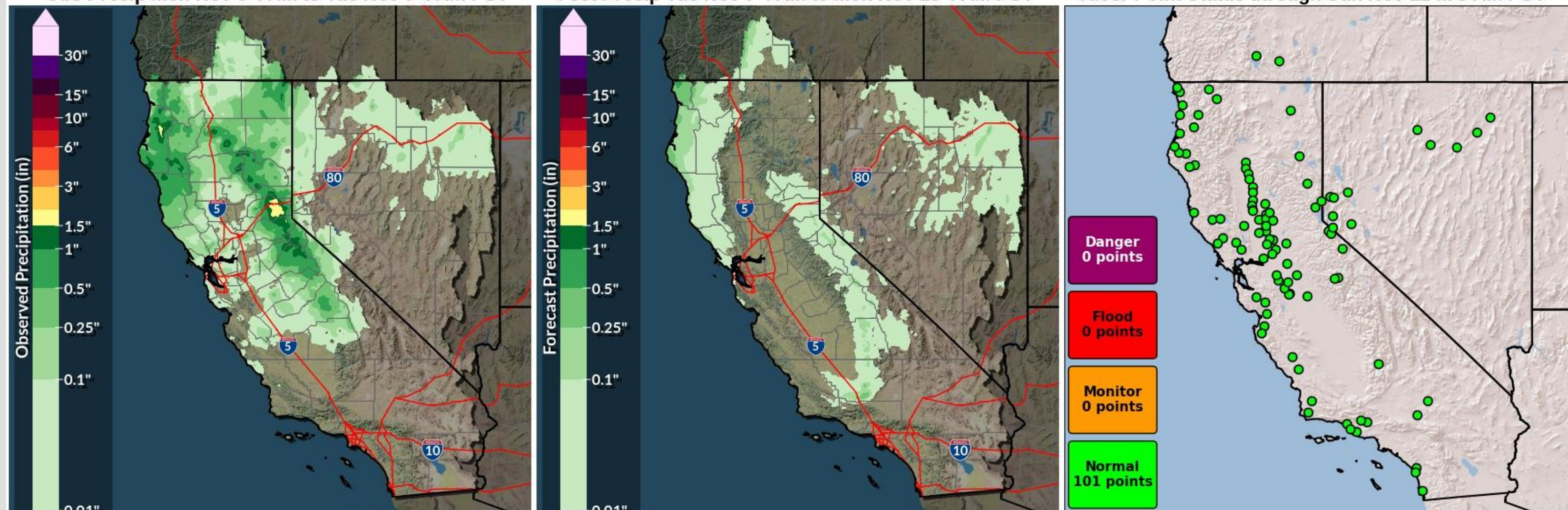


Issued: Tue Nov 07, 2023 8:51 AM PST

Obs Precip Mon Nov 6 4 AM to Tue Nov 7 4 AM PST

Fcst Precip Tue Nov 7 4 AM to Mon Nov 13 4 AM PST

River Point Status through Sun Nov 12 at 8 AM PST



- Light scattered showers across CA/NV today as a trough moves through the region.
- Drier conditions are expected mid-week with a weak system expected late Thu into Fri across northern CA. Additional light showers possible for nw CA and so OR Cascades Sun into Mon.
- Northern CA rivers are expected to recede for the next couple days.
- All river forecast locations are expected to stay below critical stages over the next 5 days.

Confidence: Medium

Staffing Level: Normal

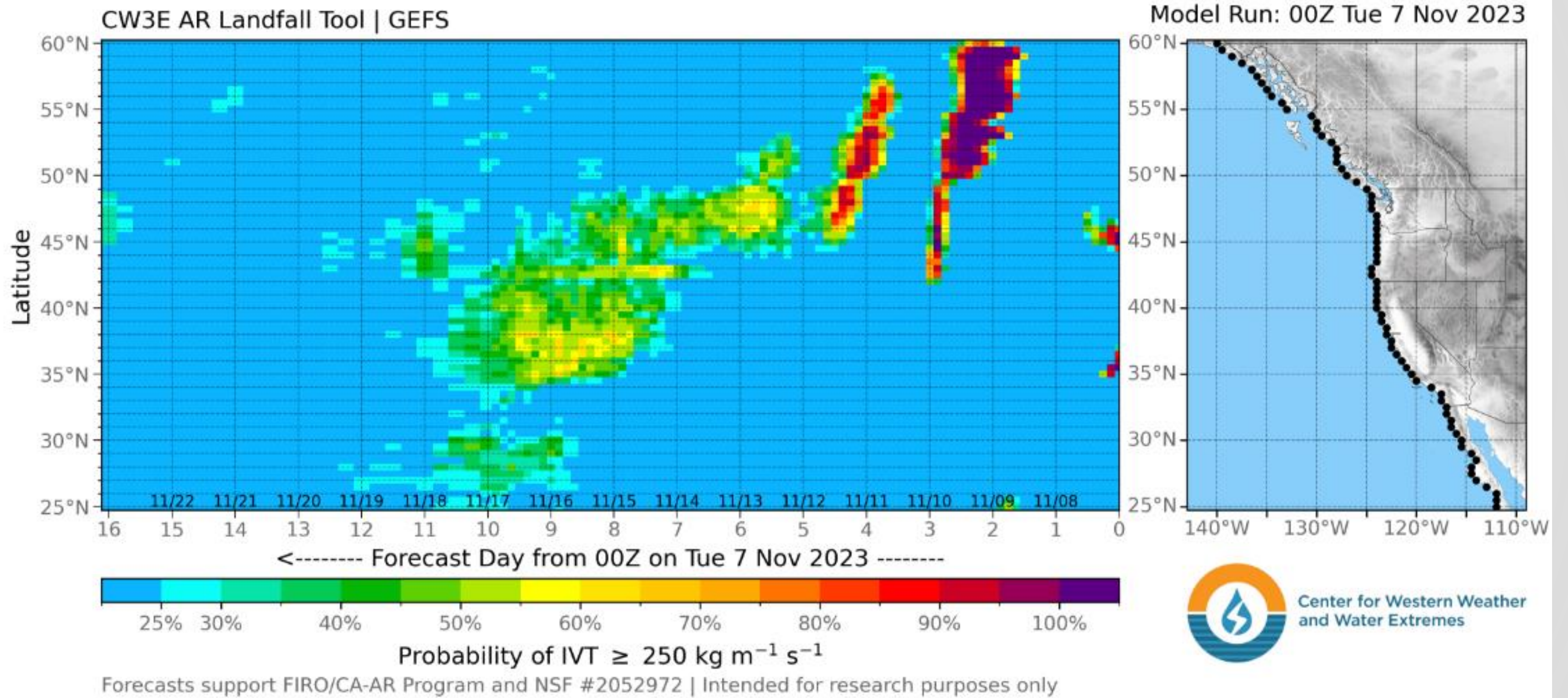
NWSCNRF

Detailed hydrometeorological discussion: cnrfc.noaa.gov/discussion

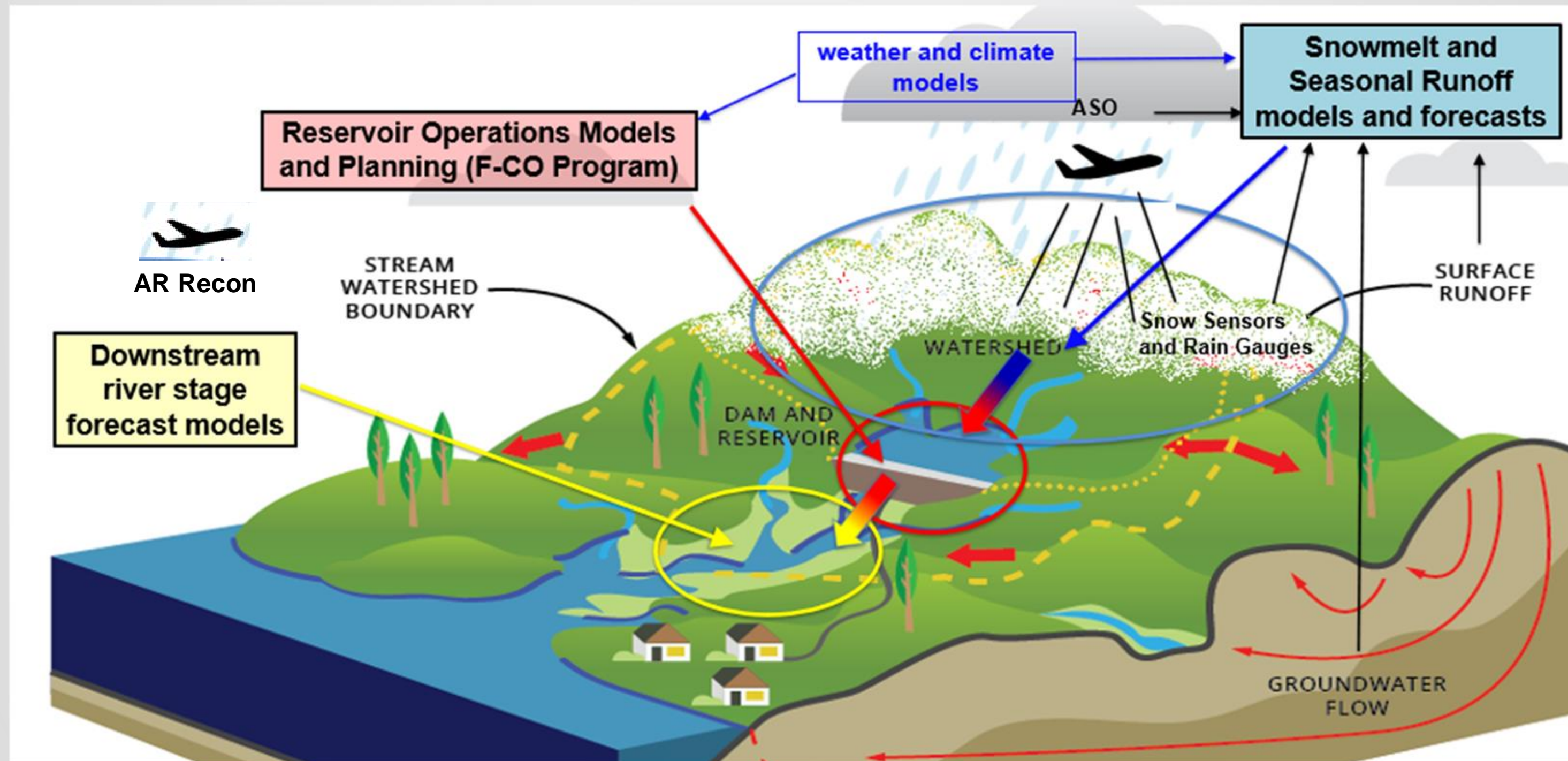
www.cnrfc.noaa.gov



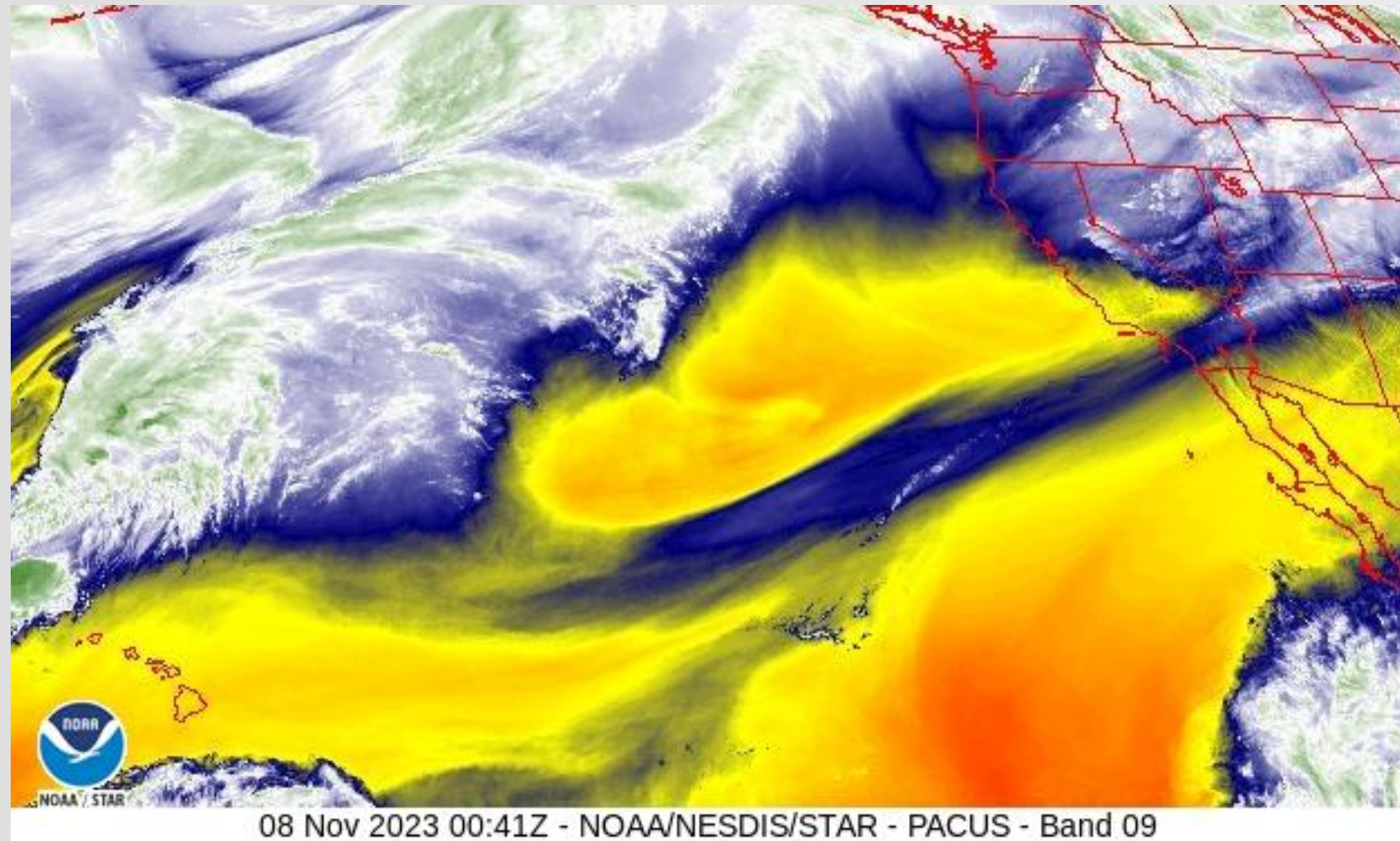
Water Vapor Transport Forecast



Observations and Forecasts Informing Water Management



Forecasting: Final Thoughts



- WY 2023 full of extremes and transitions
- Expect more of the same in WY2024
- The wet days will likely be wetter than usual; greater likelihood of coastal hazards
- Timing, pace and scale of storms will play a key role in impacts and water year outcomes.



CALIFORNIA DEPARTMENT OF WATER RESOURCES

State-Federal Flood Operations Center



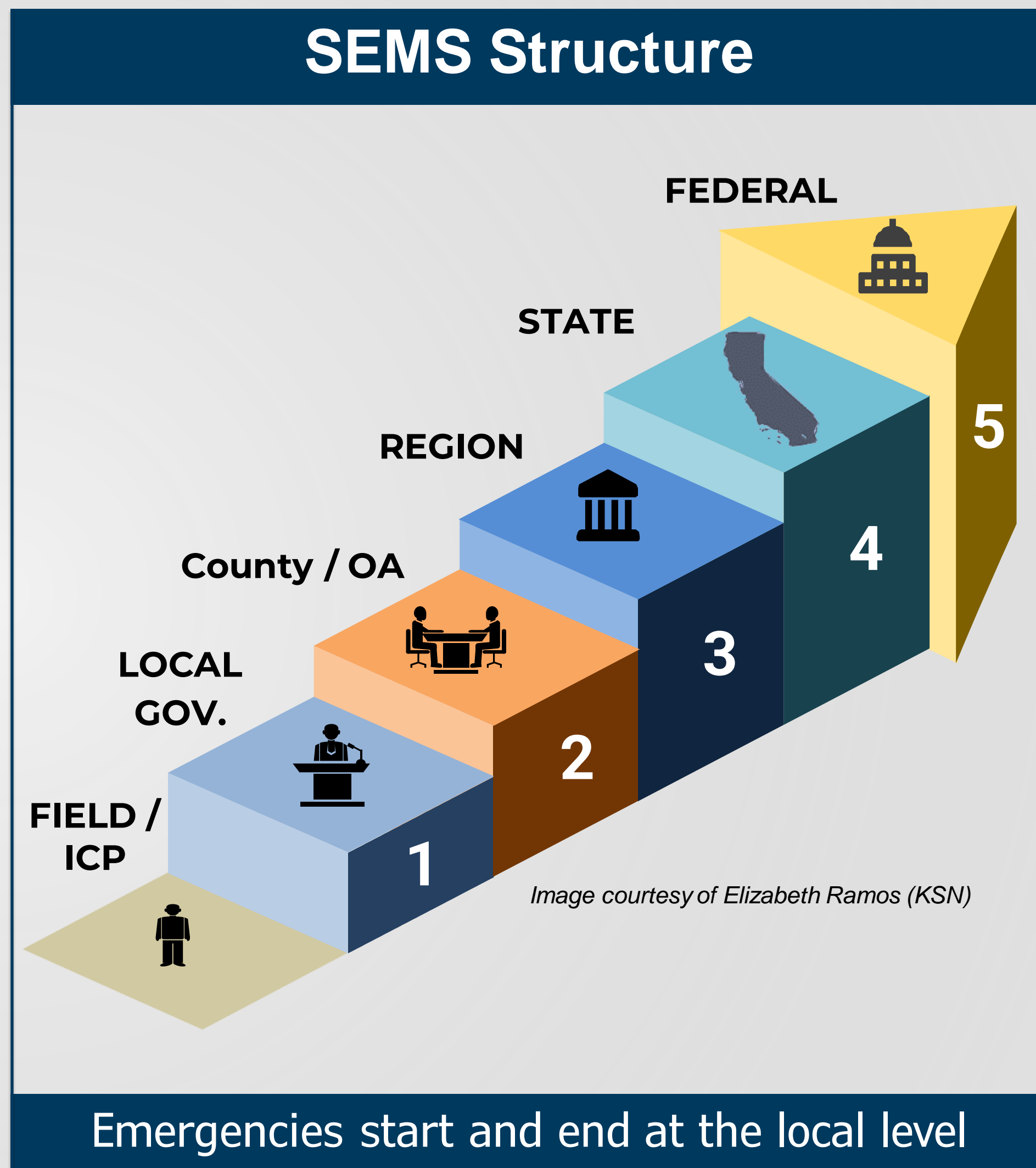
FOC Coordination

Provides:

- Situational awareness
- Technical and direct assistance
- Conduit for federal assistance under Public Law 84-99

Does NOT:

- Declare emergencies
- Order evacuations
- Repair levees



FOC Activation Levels

- **Extended hours:**
 - FOC is not activated
 - Enhanced monitoring of a potential situation
 - Extended hours of operation by Flood Operations Section staff
- **Flood Alert:**
 - FOC is **activated** under SEMS
 - Staffing primarily from FOC Rosters (up to 24/7 hours)
- **Flood Mobilization:**
 - Authorizes DFM to use any DWR personnel (up to 24/7 hours), equipment, material, and finances

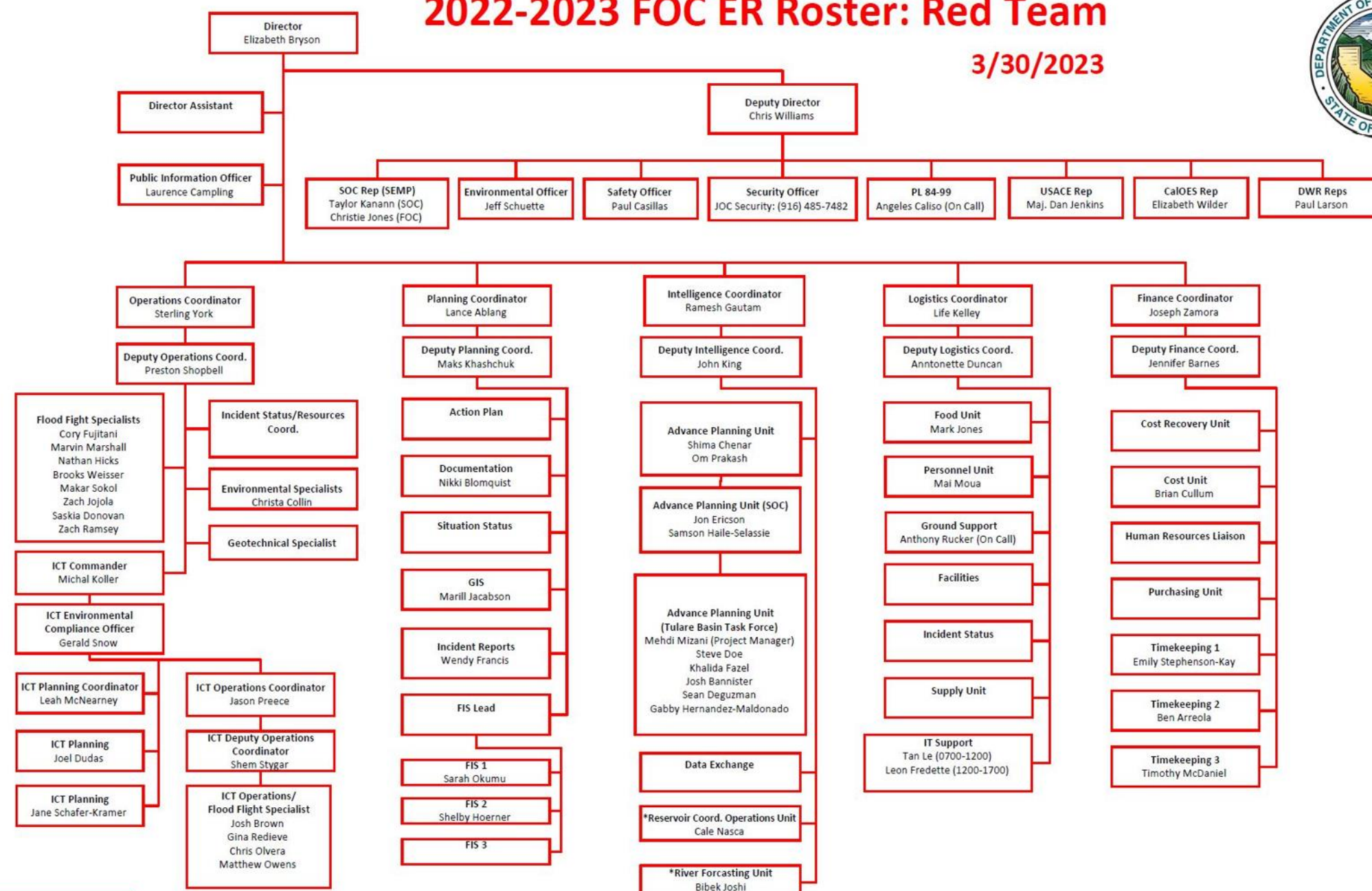


FOC Staffing

- FOC Rosters- 180 staff on 3 teams
- 6 Incident Command Teams- 10-20 staff on each

2022-2023 FOC ER Roster: Red Team

3/30/2023



Incident Command Team #2

Position	Name
Incident Commander	Josh Banister
Deputy Incident Commander	Omar Erekat
Environmental Compliance Officer	Laura Bermudez
Public Information Officer	Pool
Safety Officer	Pool
Operations Section Chief	Andrew Isner
Deputy Operations Chief	Christa Collin
Division Supervisor A	Chris Olvera
Division Supervisor B	Matt Owens
Division Supervisor C	Johnny Caspers
Division Supervisor D	Parveer Gill
Planning Section Chief	Brian Moniz
Field Observer/Documentation	Daniel Burgett
Situation Unit	Nick Teague
Logistics Section Chief	Gabby Hernandez
Communications and IT Units	Pool
Supply Unit	Michael Weil
Finance/Admin Section Chief	Pool

Shift Date: 03/30/2023
Time: 0700 – 1530

Training and Exercises

- SEMS/NIMS/ICS
 - Introduction course (4 Hours)
 - Refresher course (2.5 Hours)
- EOC Credentialing Training
- Functional and Tabletop Exercises



Flood Fight Materials

- Intended use
- Status of current supplies
- Policy discussion with CalOES

	Fall 2022 Quantity	Fall 2023 Quantity
Burlap Sandbags	~ 3.5 Million	~ 3.2 Million
Plastic Sandbags	0	~ 2.7 Million
Total Sandbags	~ 3.5 Million	~ 5.9 Million
2' Tall Muscle Wall	4.1 Miles	4.5 Miles
4' Tall Muscle Wall	0.0 Miles	1.1 Miles
Total Muscle Wall	4.1 Miles	5.6 Miles
# of Locations	49	64



Flood Fight Methods Training

- Offered to local agencies and internal DWR staff
- Identify common levee threats and mitigation
- DWR YouTube videos
- “Just in Time” Training



RECOMMENDED TRAINING BY POSITION

VOLUNTEER	FIELD PERSONNEL	INCIDENT COMMANDER	ELECTED OFFICIALS
			



Flood Preseason Meetings

- Hosted by County OES in partnership with FOC
- Inform local partners of resources and assistance available
- Regional and local updates on annual flood preparedness activities



Weather and Hydrology Briefings

- Held during the winter season and as needed:
 - Joint effort between DWR and NWS California Nevada River Forecast Center
 - Reservoir operators' release change updates
 - Atmospheric River forecast briefings



Flood Emergency Response Grants



Flood Safety Plans



Training and Exercises



Flood Fight Materials



- \$30 million awarded
- 31 contracts
- 188 agencies
- 87 safety plans



- \$20 million awarded
- 59 contracts
- 399 agencies
- 55 flood safety plans
- **\$1.9 million directed funding is available (\$500k for Tulare Basin Counties)**



Vulnerable Locations

Impacted During Last Flood Season

- Atmospheric River driven events:
 - Cosumnes River
 - Bear Creek (Merced)
 - Pajaro River
 - Santa Maria River
 - Tulare Basin
- Snowmelt driven events:
 - San Joaquin Basin
 - Tulare Basin



Storm Damage Emergency Rehab

- Coordination with USACE/CVFPB/LMAs on PL 84-99 requests
- Site assessments
- Contingency Measures for highest priority critical sites
- Contingency Planning for potential flood fighting

10/06/2023 11:19:12 AM

2023 STORM DAMAGE CONTINGENCY ACTION PLAN

Contingency Action Plan

Date Last Updated: 09/29/2023

Site Information:

DWR 2023 SDER Site ID: 23-029
 Submitted for PL84-99 Repair?:
 Local Maintaining Agency (LMA): Maintenance Area 0012
 Waterway: Colusa Basin Drain
 Start Location (Lat/Long): 39.09953, -122.015762
 End Location (Lat/Long): 39.099329, -122.015706
 Site Dimensions: Length (ft): 100.0



Short Description:
 Landslide slip, 75 feet in length. Adjacent to irrigation ditch

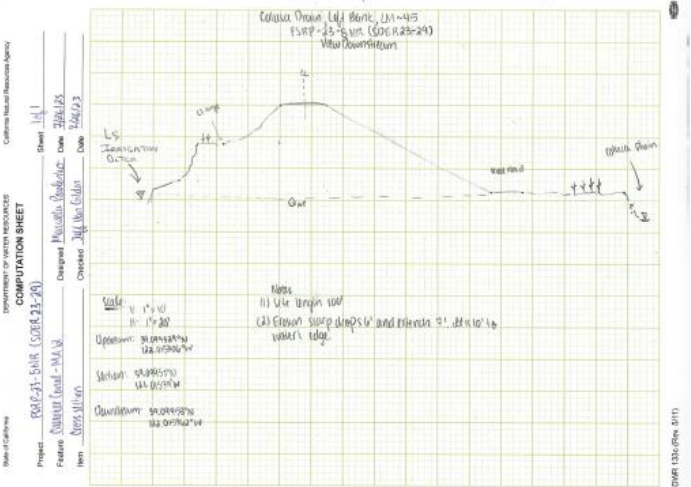
Damage Description:

Damage Type: Erosion
Site Dimensions: Length (ft): 100
Notes:

- Jul 18, Located at LM 4.5. Site length about 100'. Erosion scarp drops 6' and extends 7'. It is water's edge. Placed stake on 8/22/23.

Damage Type: Stability
Site Dimensions: Length (ft): 200

Levee X-Section (optional):
X-Section Notes:



Recommendations:
Issue: Landslide slip **FMO Recommendation:** Landslide Raincoat Slope Protection
Plan: Place monitoring stakes along top of slip. Place safety cones along crown edge to keep vehicles away from slip. Refer to pages 19-22 in the Levee Threat Monitoring Guidelines. Implement raincoat method to protect slope saturation. Refer to page 22 of the Emergency Flood Fighting Methods.
[Levee Threat Monitoring Guidelines](#)
[Flood Threat Mitigation Process](#)

Flood Fight Method:
[State of California, Emergency Flood Fighting Methods](#)
 1 Alternate Flood Fight Method (FFM) may be used or considered during emergency flood fight.

Other:
Notes:

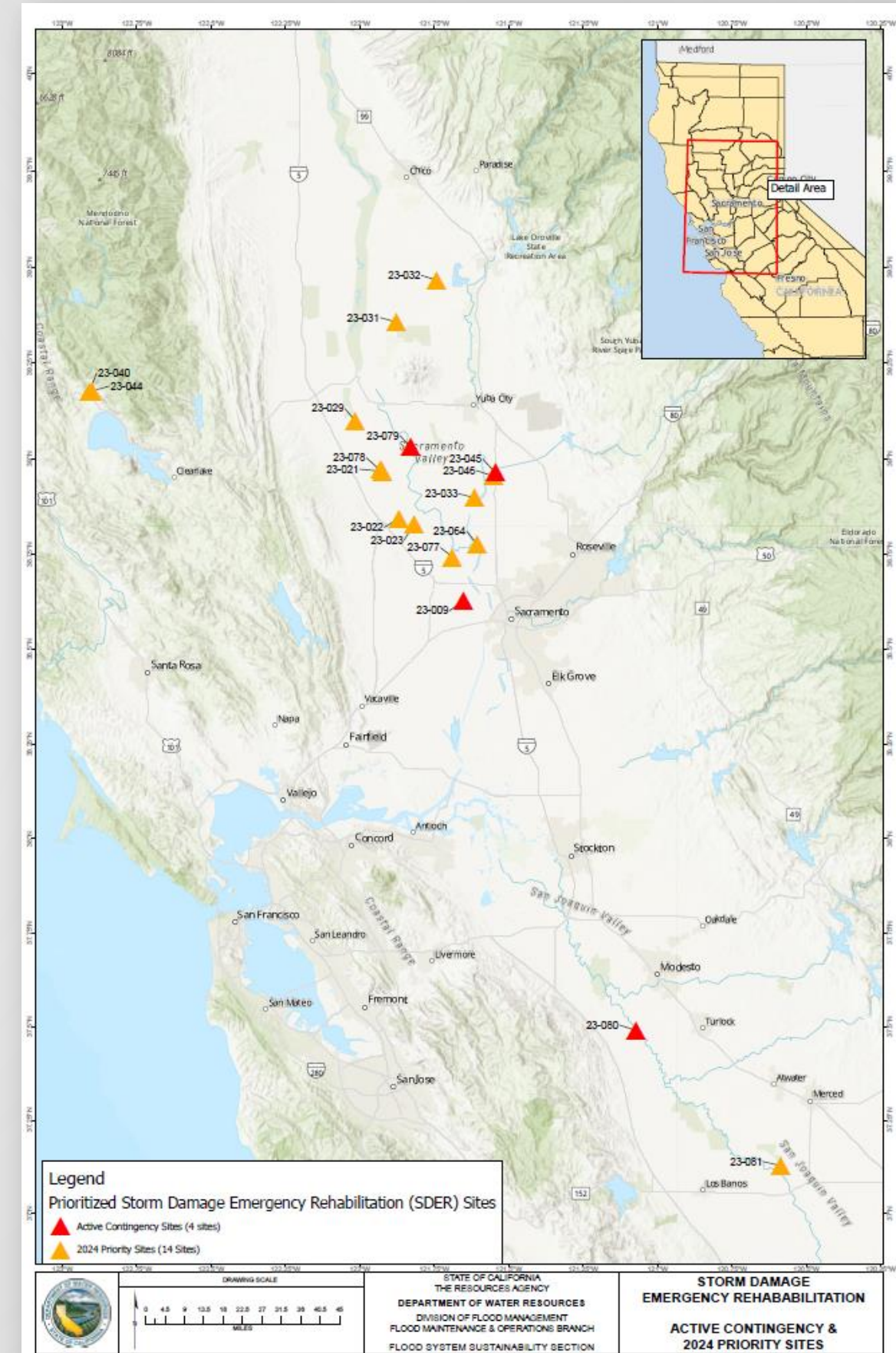
- Sep 29, Eric McGrath coordinated with Joel Farias. Plan is for LMA to apply a raincoat and monitor the site.

Attachments:



Contacts:

Name	Type	Title	Phone Number
Bell, Janice	Colusa County	Emergency Services	Bus Cell: (530) 870-7867 Bus: (530) 458-0218
Office	Colusa County	Emergency Services	Bus: (530) 458-0200 (24HR) Bus: (530) 458-0218 (DAY)
DWR Flood Operation Center (FOC)	FOC	24-hr Emergency Contact	(916) 574-2619 (office)



Lessons Learned from WY 2023

1. Activated staff stepped-up where needed
2. More staffing and training needed for:
 - Advanced Planning
 - Inundation Modeling/Mapping
 - Incident Status Reporting
3. Relationship with CalOES-SOC is vital
4. DREOA funding greatly supported cost recovery



Follow us on social media



CADWR



CA_DWR



calwater



cadepartmentofwaterresources



CDSS Response and Recruitment Unit

VEST, FAST, and CDSS Employee Redirect Programs

CDSS



DISASTER SERVICES BRANCH

November 2023

Team Overview

- 1 Staff Services Manager I
- 4 Associate Governmental Program Analysts
 - Volunteer Emergency Services Team (VEST) Program Coordinator
 - Functional Assessment Service Team (FAST) Program Coordinator
 - CDSS Employee Redirect Program Coordinator
 - Program Support and Volunteer Engagement

Roles and Responsibilities

- Oversee and coordinate disaster volunteer programs, including volunteer recruitment and engagement
- Manage Disaster Volunteer Information Management System
 - DVIMS.dss.ca.gov

Disaster Volunteer Programs



Volunteer Emergency Services Team (VEST)



CDSS Employee Redirect Program



Functional Assessment Service Team (FAST)

Program Comparison Part 1



VEST

- Established in 1985
- State employees
- Support shelters, Disaster Recovery Centers, EOC/DOC/SOC, etc.



FAST

- Established in 2007
- State and county programs
- Assess shelter clients with disabilities and AFN to determine and request needed resources

Program Comparison Part 2



VEST

- Larger program
- 153 volunteers
- Training: 1 day



FAST

- Smaller program
- 60 state volunteers
- 110 county volunteers trained in FY 23-24
- Training: 2 days

VEST

Volunteer Emergency Services Team



VEST Eligibility Criteria

- Current State of California employee
- Complete application via DVIMS
- Current supervisor approval

CA.GOV

DVIMS

Welcome to the Disaster Volunteer Information Management System

Interest Form

Welcome to the Disaster Volunteer Information Management System (DVIMS). The DVIMS is for State of California employees who are interested in joining the Functional Assessment Service Team (FAST) or Volunteer Emergency Services Team (VEST) program. Please complete the interest form to begin the application process. Once your information is reviewed you will be contacted to move forward with your application. The Disaster Services Branch appreciates your interest in volunteering and looks forward to working with you in the future.

First Name * Last Name *

Department/Agency * Work Email *

VEST Orientation

- One 8-hour training
- Virtual classroom
- At least six sessions per year
- Covers emergency management basics and what to expect



FAST

Functional Assessment Service Team



FAST Eligibility Criteria

Similar to VEST requirements, also:

- Minimum 2 years of personal or work experience with AFN community
- DOJ background check
- Completion of FAST certification course



FAST Certification Course

- 16-hour training
 - Additional session for state volunteers
- Subject matter experts
- Virtual classroom
- Up to 10 sessions per year
- Covers emergency management basics and what to expect

FAST Areas of Expertise

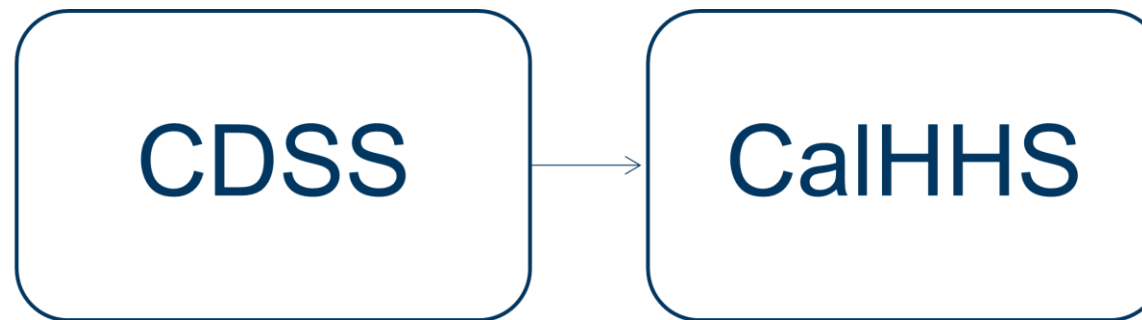
- Aging (services/supports, including dietary needs)
- Chronic health conditions
- Developmental & other cognitive disabilities (i.e., traumatic brain injury, intellectual)
- Hearing loss
- Mental health disabilities
- Physical disabilities
- Substance abuse
- Vision loss

CDSS Employee Redirect Program



Employee Redirect Activation

- Officially sanctioned through California
 - Cal. Gov. Code § 3100-3109
- Utilized if VEST/FAST resources have been exhausted
 - Activated upon DSB request and Executive approval



Employee Redirect Process

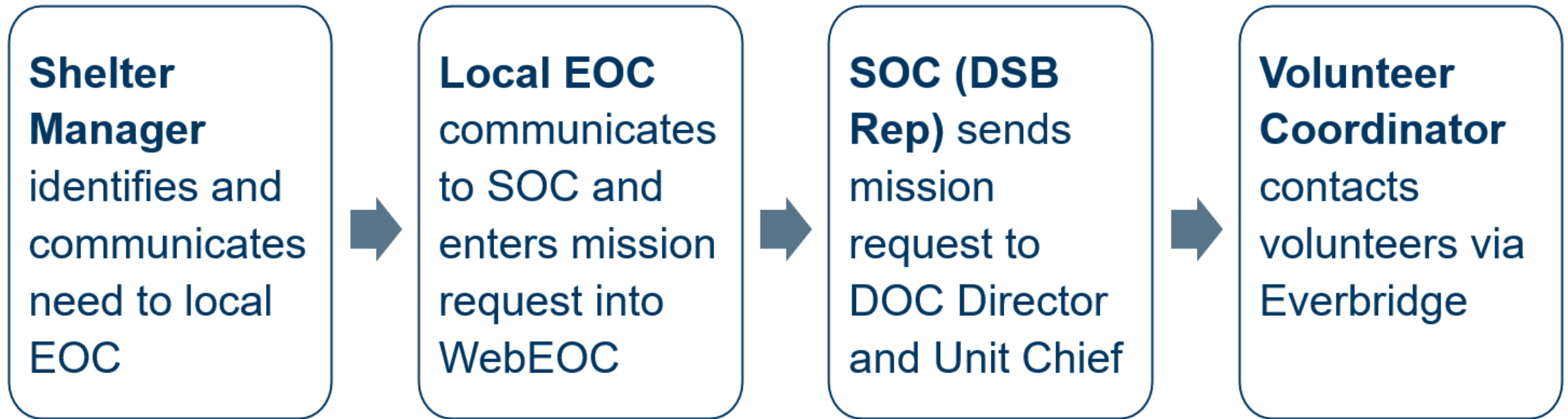
- Must obtain supervisor approval
- Must provide emergency contact information, be willing to deploy on weekends or holidays, and agree to deploy or demobilize immediately
- Just in Time training must be reviewed prior to deployment
- Must complete demobilization paperwork following deployment

Volunteer Activation

From Deployment to Demobilization



Requesting Volunteer Support



Hours and Compensation

- Up to 12-hour shifts, maximum of 14 days
- CDSS reimburses for travel, per diem, and overtime (if eligible)
- Volunteer's home department pays regular 40-hour week



Program Limitations

- Volunteers **cannot** self-deploy.
- During deployment, volunteers are **not**:
 - Shelter Managers
 - Case Managers
 - Behavioral Health Workers
 - Therapists
 - Personal Care Assistants
 - Medical Personnel
- All volunteers shed the duties of their regular job classifications.
- VEST and FAST volunteers are not interchangeable.
 - VEST cannot assess shelter clients.
 - FAST cannot perform general shelter duties.

Volunteer Demobilization

- Required to meet with our staff for:
 - Overtime processing
 - Travel Expense Claim
 - Collection of forms and documents
- Documents due within 10 days of deactivation date
- Forms are forwarded to CDSS Personnel and Travel Units

Contact Information

Beatrice Lavrov

Unit Manager

Beatrice.Lavrov@dss.ca.gov

Jonathan Malicdem

VEST Coordinator

DisasterVEST@dss.ca.gov

Michael Butier

FAST Coordinator

DisasterFAST@dss.ca.gov

Miranda Bettencourt

Employee Redirect Coordinator

Bella Monteverde

Program Support and Volunteer Engagement

DisasterVolunteer@dss.ca.gov

Questions or Comments?



Thank you!

CDSS



DISASTER SERVICES BRANCH