



Gavin Newsom, Governor

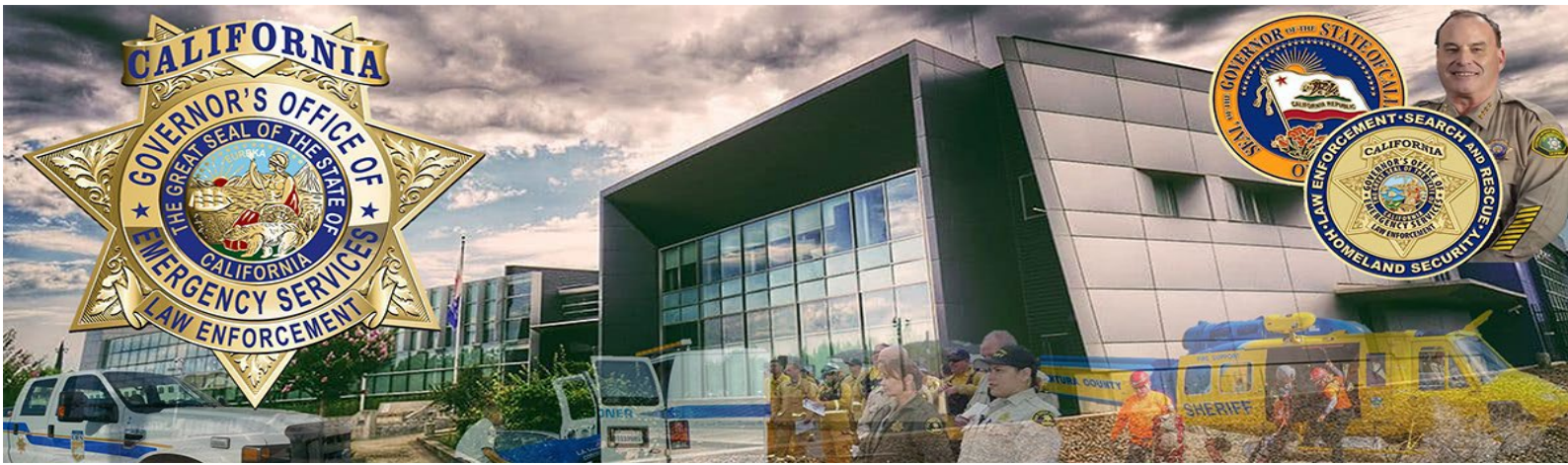


Cal OES
GOVERNOR'S OFFICE
OF EMERGENCY SERVICES

Nancy Ward, Director

Law Enforcement Mutual Aid Assistance Fund

Other SFPD Mutual Aid Request



LEMA ONLINE PORTAL

[*Click Here*](#)

Agency Registration through the On-line Portal

- Receive LEMA Fund Updates
- Track reimbursement and payment progress



CAL OES LEMA WEBPAGE

[*Click Here*](#)

- Get the most updated information on the LEMA webpage
- Access LEMA Reimbursement documents

FOR MORE INFORMATION : CONTACT US

LemaFund@caloes.ca.gov

Jodi Lopez
Division Chief
Law Enforcement Branch
(916) 845-8307

Pooja Randhawa
Staff Services Manager I
Law Enforcement Branch
(916) 845-8743

Taryn Renowden
AGPA, LEMA Program
Law Enforcement Branch
(916) 845-8705

Nancy Talley
AGPA, LEMA Program
Law Enforcement Branch
(916) 845-8706

LEMA INCIDENT PERIOD

6/9/25 - 6/10/25

Eligible Expenses

- Responding Officer overtime
- Backfill for responding Officers
- Lodging (case by case, requires approved justification)
- Per Diem (case by case, requires approved justification)
- Mileage - to & from incident
- Fuel (case by case, requires approved justification)
- Extraordinary Equipment
- ❖ Overtime, backfill, and fuel will be reimbursed at the actual costs
- ❖ Lodging, per diem, and milage will be reimbursed at the State Rate

Eligible Agencies

Sworn members of:

- City Police Departments
- Sheriff's Offices
- Probation
- District Attorney's
- Coroner/ Medical Examiners