



# Incident Management Assistance Team

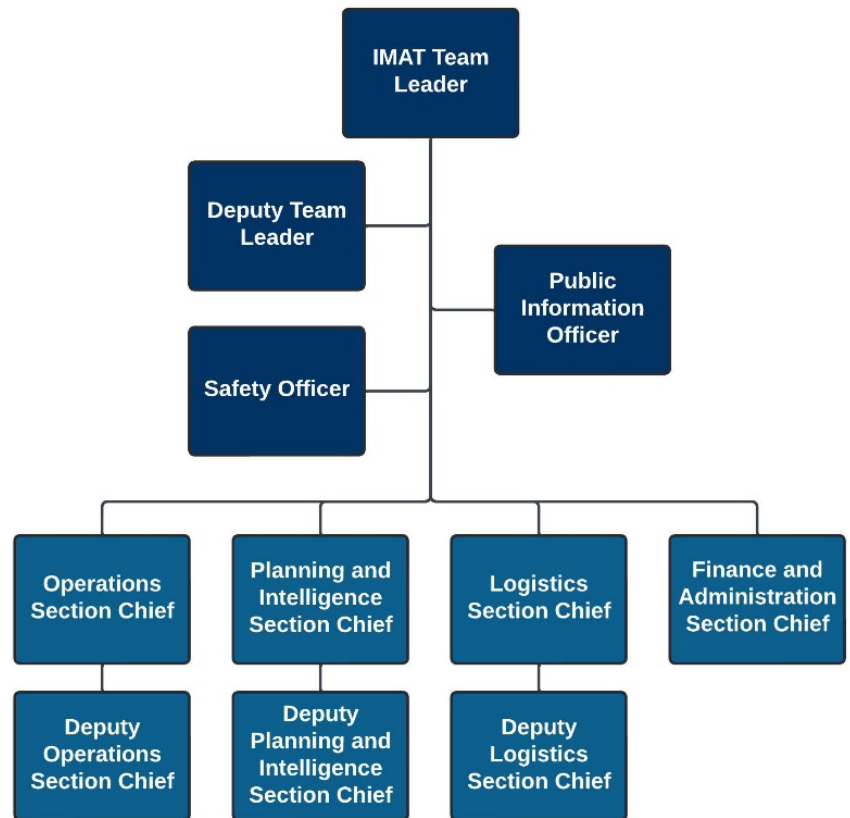
Fact Sheet

## What is the Incident Management Assistance Team (IMAT)?

The California Governor's Office of Emergency Services (Cal OES) Incident Management Assistance Team (IMAT) is a full-time team that deploys in support of local emergency managers and state agencies to help coordinate the response to major emergencies and disasters.

## How can the IMAT assist during a disaster?

The IMAT is primarily designed to support local Emergency Operations Centers (EOCs) during large or complex disasters. The IMAT can deploy to provide expertise, act as a force multiplier, and enhance coordination with the State Operations Center (SOC). The IMAT works in partnership with Cal OES Region staff to provide unified support.



Examples of mission areas the IMAT can assist local emergency managers with include:

- Incident Stabilization
- Public Information
- EOC Safety Support
- EOC Operations
- State Agency Coordination
- EOC Action Plan Development
- Situation Status Reporting
- Resource Requesting and Logistics
- Emergency Contracting and Procurement Support
- Disaster Finance and Cost Recovery
- Technical Assistance
- Recovery Transition Planning
- Lessons Learned from Prior Incidents

The IMAT can be requested through the Standardized Emergency Management System (SEMS) process in coordination with the Cal OES Region Emergency Services Coordinator (ESC). The IMAT can deploy as a full team, partial team, or individual positions as requested. Other states and territories can also request the Cal OES IMAT through the Emergency Management Assistance Compact (EMAC) system.



<https://tinyurl.com/Cal-OES-IMAT>