



Law Enforcement Mutual Aid Quick Reference Guide



Mutual Aid Defined

Mutual aid is the voluntary sharing of personnel and resources when an agency can not deploy, sufficiently, its own resources to respond to an unusual occurrence. Resources are then requested by the affected agency through a recognized system established by the Master Mutual Aid Agreement and Emergency Services Act. This cooperative system may be executed on a local, countywide, regional, statewide, and interstate basis. The state has been divided into seven mutual aid regions to more effectively apply, administer and coordinate mutual aid. Mutual aid can become mandatory at the option of the Governor. Generally, there is no reimbursement for providing mutual aid.

Authorities

The California Law Enforcement Mutual Aid System and Plan derives its authority from the CA Emergency Services Act (Govt.Code §8550, §8569, §8615-8619, §8632, §8668) and the Master Mutual Aid Agreement.

Mutual Aid Process

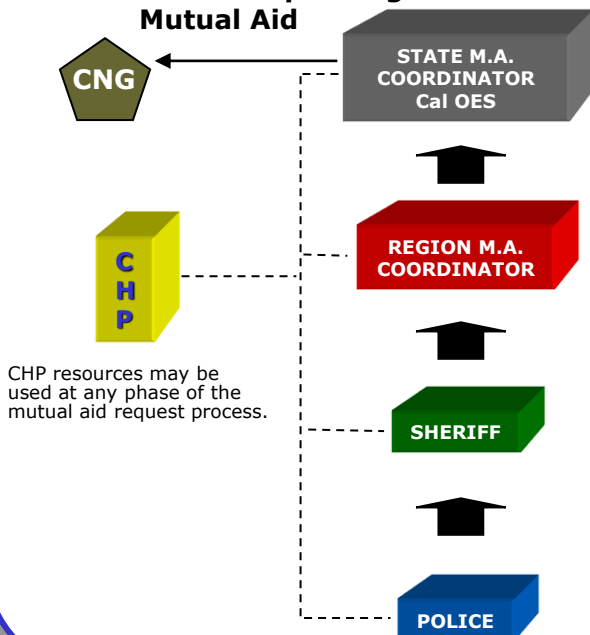
Local – Chief of Police determines unusual event is beyond department resources, requests mutual aid assistance from Sheriff.

County (Operational Area) – If event is beyond the resource capability of Sheriff's Office and other in-county law enforcement resources, the Sheriff requests mutual aid from Regional Mutual Aid Coordinator.

Region – A Sheriff in the region, who is designated as the "Regional Mutual Aid Coordinator" fulfills mutual aid request from other Operational Areas and their respective law enforcement resources.

State – If the law enforcement resources within the impacted region are not sufficient, the M.A. Regional Coordinator requests additional mutual aid assistance from the State Mutual Aid Coordinator. Other mutual aid regions may be called upon to assist.

Channels For Requesting Mutual Aid



Law Enforcement Mutual Aid Regions



Mutual Aid Considerations

- ★ State declaration of emergency not necessary to request and provide mutual aid.
- ★ Use of National Guard resources for law enforcement mutual aid requires an order by the Governor. National Guard resources are to be used *only* when local and state law enforcement resources are committed to maximum.
- ★ No jurisdiction is required to unnecessarily deplete their own personnel, equipment, and capabilities in order to provide mutual aid. It is generally accepted that a reasonable response will consist of up to 50% of available on-duty uniformed officers.
- ★ Agency Receiving mutual aid is responsible for the care, feeding, and shelter of responding mutual aid resources.
- ★ Planned and scheduled community events do not meet the criteria for mutual aid and therefore, should include costs for additional public safety if required. However, mutual aid may be necessary in extraordinary situations.
- ★ Mutual aid reimbursement costs *may* be applicable under state and federal disaster declarations. Otherwise, all mutual aid costs are the responsibility of individual agencies participating.
- ★ Cal OES may assign mission numbers to mutual aid events in order to track and coordinate resources and for Potential liability or financial purposes.
- ★ Out-of state mutual aid is coordinated through Cal OES and the Emergency Management Assistance Compact (EMAC) unless as already specified in interstate agreements and MOUs.
- ★ Other state law enforcement agencies can be tasked to assist in providing mutual aid.

Law Enforcement Mutual Aid Regional Coordinators

Sheriff Kory Honea
Region III - Butte County

Sheriff Jim Cooper
Region IV - Sacramento County

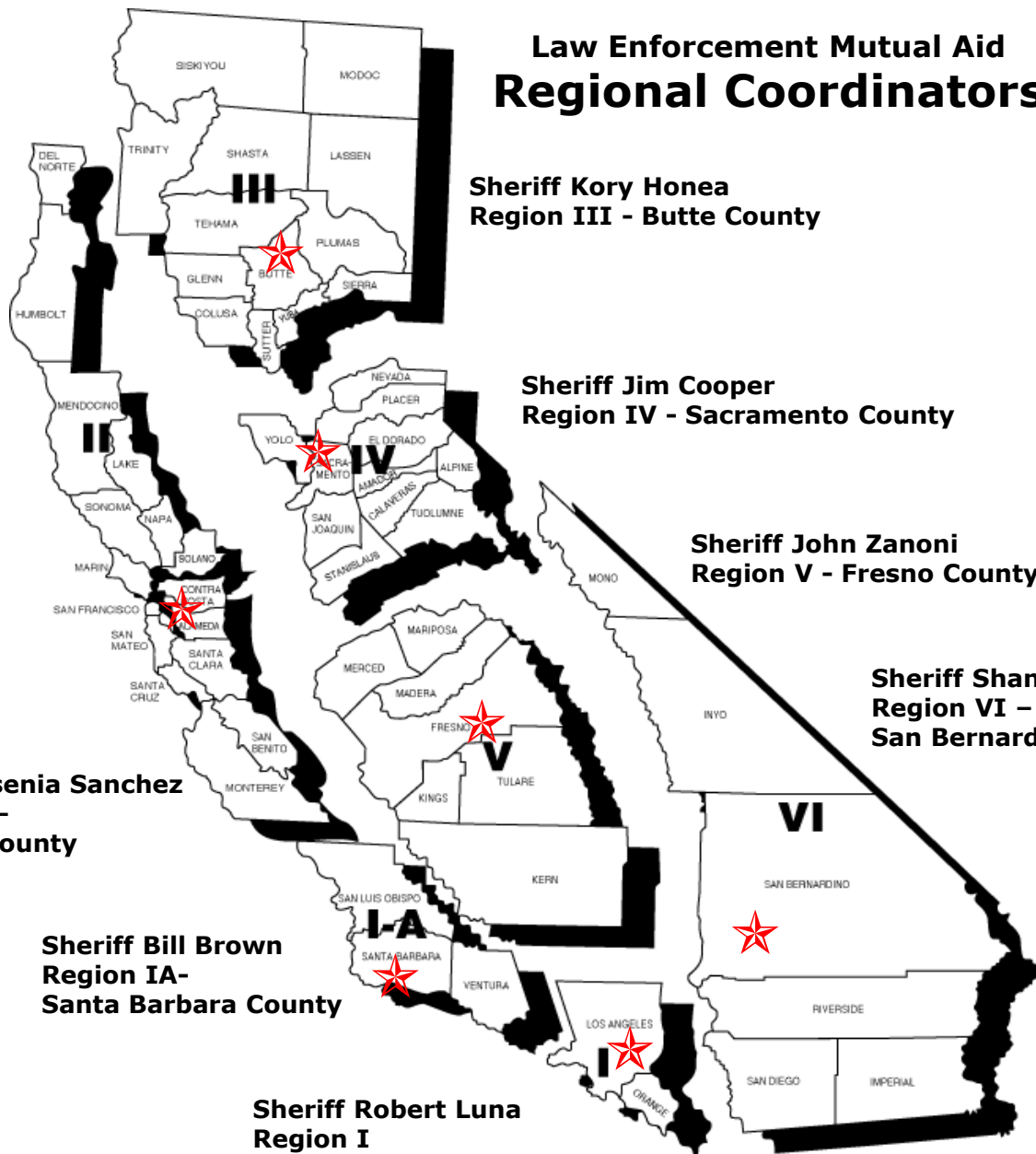
Sheriff John Zanoni
Region V - Fresno County

Sheriff Shannon Dicus
Region VI - San Bernardino County

Sheriff Yesenia Sanchez
Region II - Alameda County





Sheriff Bill Brown
Region IA - Santa Barbara County

Sheriff Robert Luna
Region I - Los Angeles County



Revised August 2023

Key Contacts

	Cal OES State Warning Center	(916) 845-8911
	Cal OES Law Enforcement Branch	(916) 845-8700
	STAC State Threat Assessment Center	(916) 874-1100
	FBI Sacramento Division	(916) 481-9110
	FBI San Francisco Division	(415) 553-7400
	FBI Los Angeles Division	(310) 477-6565
	FBI San Diego Division	(858) 565-1255
	CNG Joint Operations Center (JOC)	(916) 854-3440

Cal OES Law Enforcement Branch

Cal OES Law Enforcement Branch staff are available 24 hours/day to assist your department with law enforcement mutual aid planning and coordination.

California Governor's Office of
Emergency Services
Law Enforcement Branch
3650 Schriever Ave.
Mather, CA 95655
(916) 845-8700
24-hr (916) 845-8911



**FOR IMMEDIATE ASSISTANCE:
STATE WARNING CENTER 24/7: 916-845-8911
ASK FOR THE LAW ENFORCEMENT DUTY CHIEF TO BE PAGED.**