
COLLABORATIVE RESILIENCE

HAZARD MITIGATION SUMMIT 2024

Hearing from a community's experience post-disaster. Discussing the approach to multi-agency strategies for resilience in California. Leveraging multiple funding streams and opportunities to best support communities enhance hazard mitigation projects. A brief overview of PA Mitigation (406) and the role in reinforcing Public Assistance projects post-disaster.

12/10/2024

INTRODUCTIONS

- **Presenter(s):**

- Dezaraye Bagalayos – Allensworth

- **Panelist(s):**

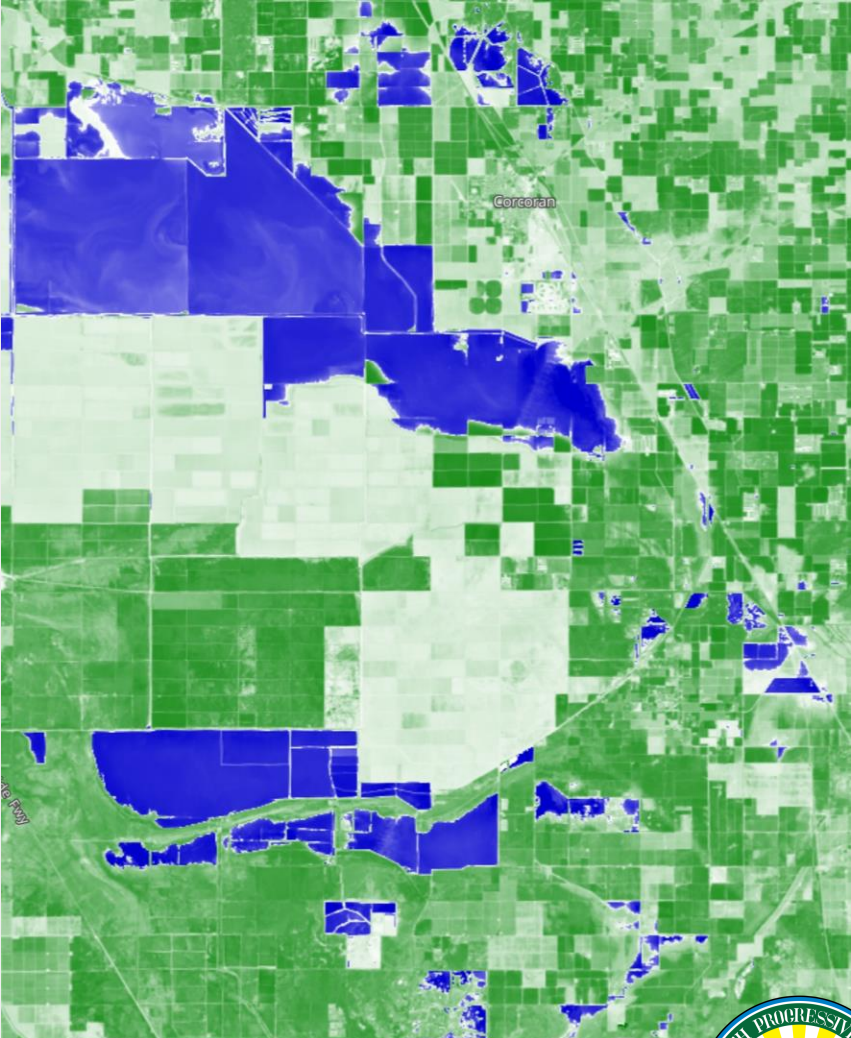
- Ryan Massello, Cal OES
- Deborah Halberstadt, Dol
- Adam Drici, TNC
- Patrice Clemons, HCD
- Abby Edwards, LCI

**THE NEEDS OF
RURAL COMMUNITIES
IN TIMES OF **EMERGENCY**:**

**ALLENSWORTH, CA
TULARE COUNTY**

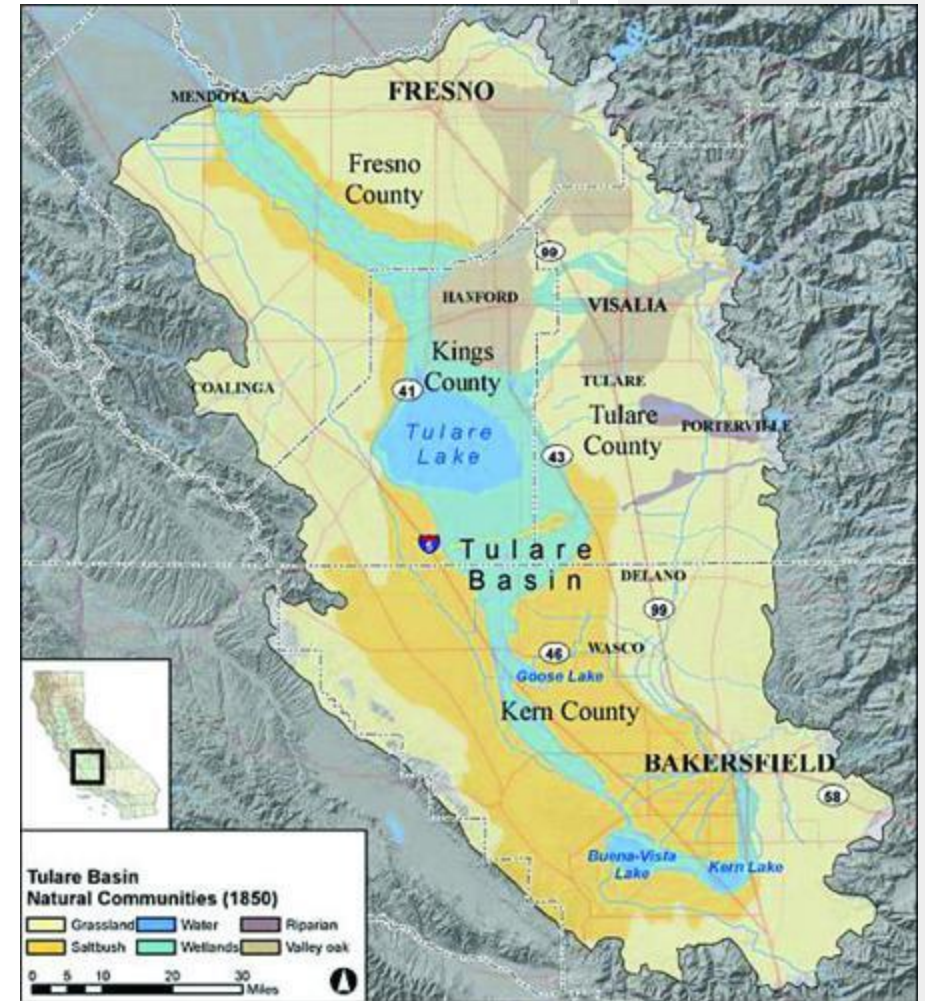
Dezaraye Bagalayos

Assoc Executive Director | Allensworth Progressive Association



Land Acknowledgment

“Tulare Lake, Pa’Ashi, is the center of creation and the ancestral lands of the Yokuts, which today includes the federally recognized Tachi Yokuts Tribe and Tule River Indian Tribe. Allensworth is located on the southeastern shoreline of the lake and is within the traditional territory of the Wowol, the area of the beaver. Chawlowm was a Wowol village near present-day Allensworth that moved with the tides of Tulare Lake.”





ALLENSWORTH, CA

- Founded in 1908 by retired army chaplain Col. Allen Allensworth and Professor William Alexander Payne
- 900-acres on the shoreline of Tulare Lakebed in the southern Central Valley of California
- "Tuskegee of the West"
 - Self-governance
 - Self-sufficiency
 - Community resilience
 - Education



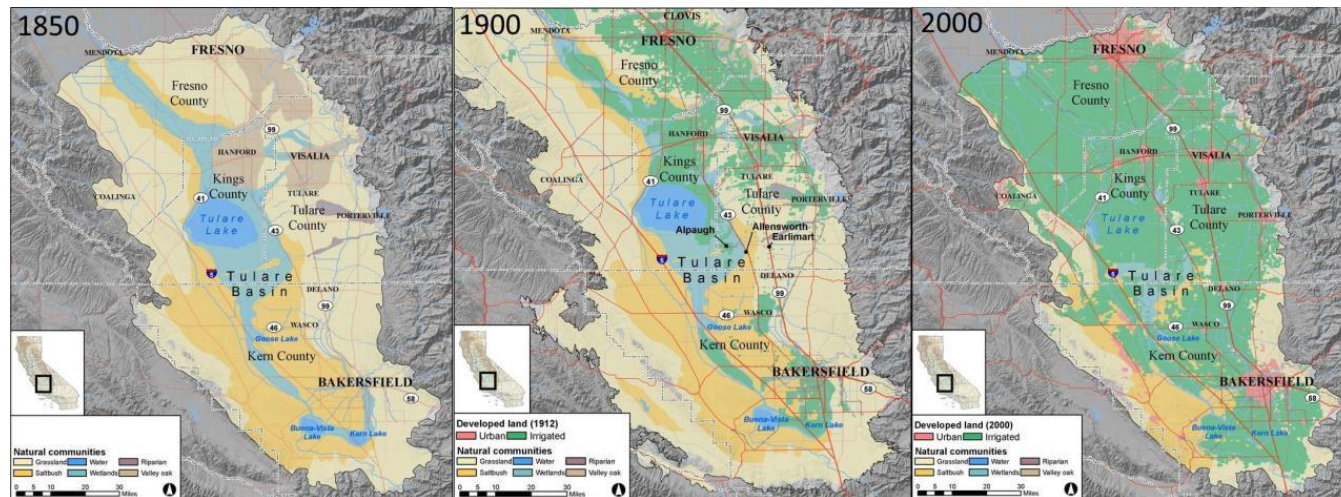
Allensworth Progressive Association



- Original governing body
- Revived in 1997 as a 501(c)3
 - Community health & education programs
- Advancing sustainability, restoration, and revitalization
- In Spring of 2023 the APA became the community **emergency** response team and the Allensworth Community Center became our headquarters

Historic Periodic “Flooding”

- Tulare Lake sustained the largest North American Indigenous population for over 20,000 years
- It took settlers less than 200 years to brutally remove the Yokuts people, capture Tulare Lake’s rivers, starve the lake, and occupy its land
- Though they lost over 98% of their population, some Yokuts survived
- Much like Tulare Lake, who reappears periodically: 1942, 1969, 1983, 1997, 1998, and 2023.





Historical Record

+

Climate Change

=

Longer droughts

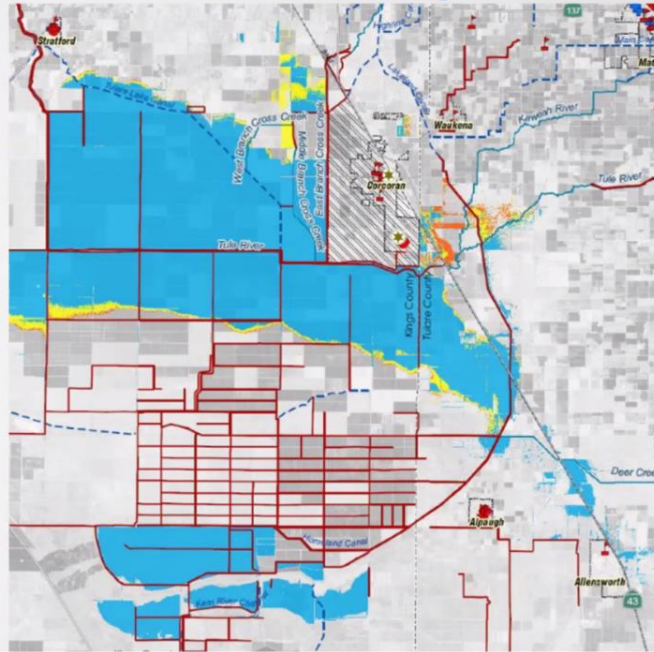
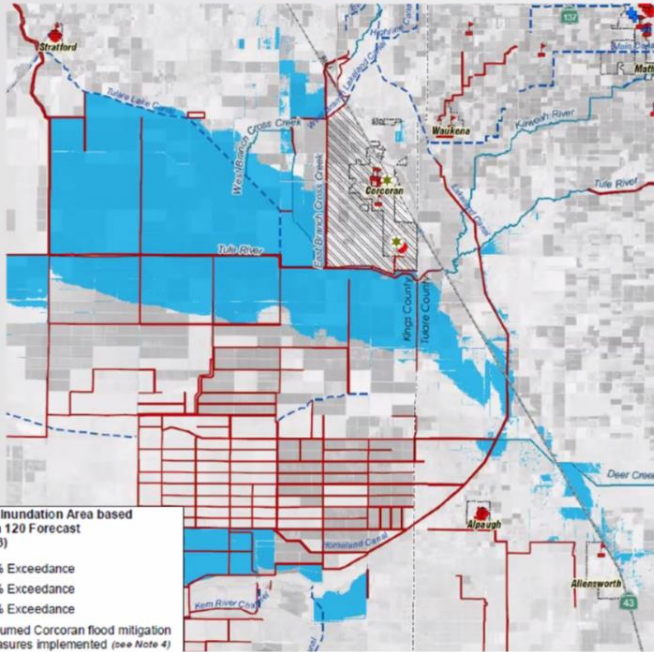
Bigger floods

Higher temps

- The Central Valley has been in a state of environmental crisis for decades
- None are more impacted by environmental exploitation and degradation than rural communities of color
- Climate change is showing that it will greatly exacerbate already existing problems as well as bringing about unforeseen, unmodeled issues
- Rural communities of color already contend with and navigate the reality of county, regional, state, and federal neglect

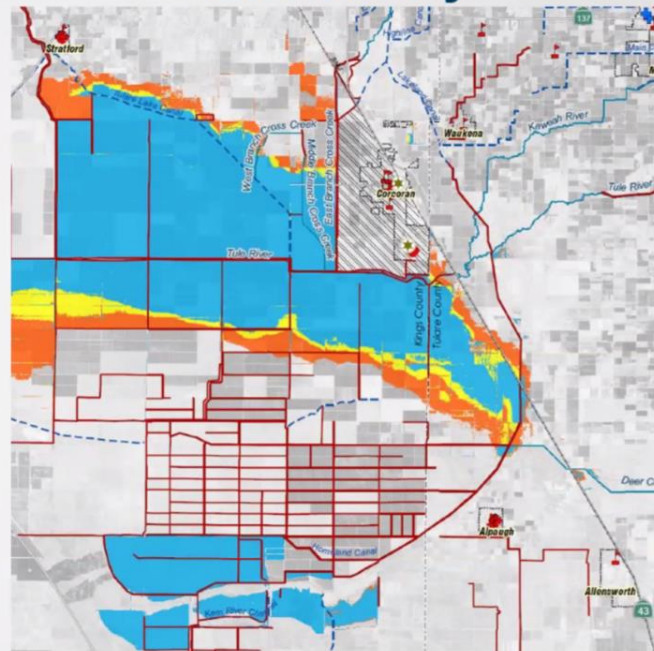
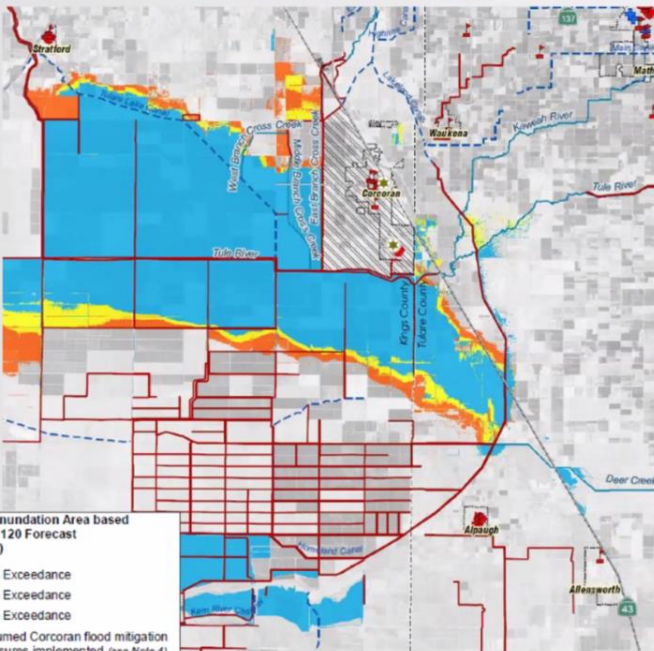
End of April

End of May



End of June

End of July



2023 PA'ASHI RETURNS



Allensworth surrounded

1. Deer Creek along the north
2. White River coming in directly from the east
3. Poso Creek coming up from the south



Community Response & Advocacy



The Long-Term Solutions



- Floodplain restoration
- Riparian restoration
- The permanent return of Pa'Ashi
- Small scale agriculture
- Infrastructure investment
- Regional watershed & climate change curriculum in schools





What can government agencies do?

1. Prioritize relationship building
2. In times of emergency try to say yes as much as you can OR
Some rules are made to be broken OR Be flexible
3. Please do not call the police
4. Remember, you are a visitor and a guest, please do not make assumptions
5. Invite communities to be at the decision-making table
6. Pre-emptive government action >>> Reactive government action

CONTACT

Dezaraye Bagalayos
Assoc Executive Director

dezaraye@allensworthpa.org



allensworthpa.org

