



# Fire Management Assistance Grant



# Purpose

## *The FMAG Program*

Provides supplemental assistance to State, Tribal, and Local governmental entities for the mitigation, management, and control of any fire on public or private forest land or grassland that:

***threatens such destruction as would constitute a major disaster.***



# Application eligibility

- City, County, State
- Tribal (are not authorized to request FMAG declarations direct to FEMA) pg 4
- \* Federal\* (Not Eligible)



# FMAG – Fire and Rescue



## FMAG Applicant's Eligibility

***The fire suppression activities performed must be:***

- The legal responsibility of the applying entity

And

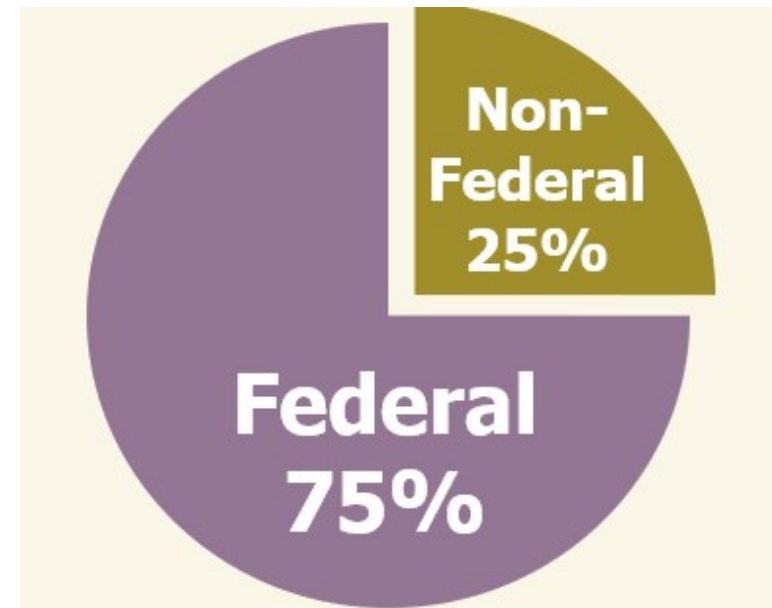
- While the fire is burning uncontrolled

And

- Located within the designated incident area.

# Cost Share

- All FMAGP grants are subject to a cost share.
- The federal cost share for a FMAGP grant is 75 percent.
- The 25 percent non-federal cost share can be provided by the grantee, sub grantee, or a combination of the two.





# Eligible Cost



OVERTIME AND  
CONTRACT LABOR



EQUIPMENT



MATERIALS



REPAIR OF FIRE  
DAMAGED OR LOST  
EQUIPMENT, LESS  
INSURANCE  
RECOVERY



TRAVEL AND PER  
DIEM



REPLACEMENT OF  
EXPANDED SUPPLIES

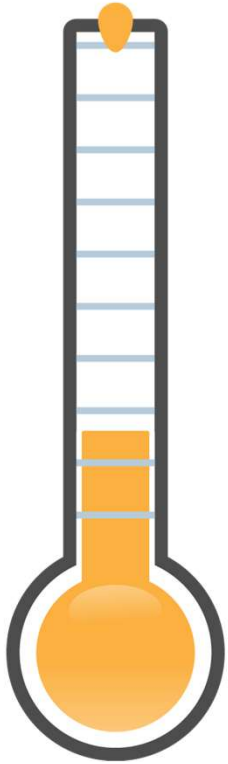


PERSONAL SAFETY  
ITEMS



ESSENTIAL  
ASSISTANCE

Cost  
Threshold



## Fire Cost Threshold

- The State's eligible fire costs must meet either its individual fire cost threshold or cumulative fire cost threshold.
- These thresholds have no basis in the threshold used to determine eligibility for a major disaster declaration.
- The fire cost thresholds are adjusted annually.
- Costs for declared fires within a fire complex are aggregated and treated as one fire when compared to the thresholds.



## 2026 FMAG Threshold

- Individual Fire Cost - \$3,835,208
- Cumulative Fire Cost - \$11,505,623

\*Public Assistance Per Capita Indicator: \$1.94 multiplied by LL1 the 2024 state population of 39,557,045

## Slide 8

---

**LL1** Its 1.89 for major dec so need to explain  
Lopez, Lori@CalOES, 2025-11-07T21:25:52.707



## FMAG Declaration Criteria

Priority order – descending order

1. Threat to lives and improved property, including threats to critical facilities, infrastructure, and critical watershed areas;
2. Availability of State and local firefighting resources;
3. High fire danger conditions, as indicated by nationally accepted indices such as the National Fire Danger Ratings System;
4. Potential major economic impact.



## Information for Declaration Request

**For FEMA, apply the evaluation criteria in 44 CFR § 204.21, the following information, if available, should be included in both the verbal and written requests:**

- Size of the fire(s) in acres or square miles;
- Name, location, and population of community(ies) threatened;
- Number of primary and secondary residences and businesses threatened;
- Distance of fire to nearest communities;



## Information for Declaration Request

- Number of persons evacuated to date, if applicable;
- Current and predicted (24-hour) weather conditions; and
- Degree to which state and local resources are committed to this fire and other fires in federal, state, or local jurisdictions.



## Information for Declaration Request

**To further support a declaration request, the state may append additional documentation to the Request for Fire Management Assistance Declaration, including:**

- Fire severity maps:
- Geographic, topographical, or land assessment maps: or
- Incident status summary report (ICS-209)



- The objective is to submit a complete and comprehensive FMAG package while the fire remains uncontrolled, providing all information required for FEMA to consider an FMAG request. Once the threat has been mitigated or the fire is deemed under control, the submission window closes.



## To Request an FMAG

- Create fire perimeter map with direction (ANY COP PLATFORM)
- Obtain a spot fire weather forecast LINK: [Spot Forecast Monitor](#)
- Complete the Cal OES “A-B-C Online Survey” (REQUEST FOR FIRE MANAGEMENT ASSISTANCE GRANT). LINK: [REQUEST FOR FIRE MANAGEMENT ASSISTANCE GRANT ABC FORM v2.](#)

Click “Submit”

**Contact the Cal OES Warning Center and confirm the FMAG request package was received.**

**916-845-8911**



## REQUEST FOR FIRE MANAGEMENT ASSISTANCE GRANT



- **Cal OES ABC Online Form**
- [REQUEST FOR FIRE MANAGEMENT ASSISTANCE GRANT ABC FORM v2](#)

***Must be factual and accurate!***

***Feel free to attach supplemental pages***

Fire Management Assistance Grants (FMAGs) are available to States, local, and Tribal governments for the mitigation, management, and control of fires on publicly or privately owned forests or grasslands that threaten such destruction as would constitute a major disaster. The entire process is accomplished on an expedited basis, and a FEMA decision is rendered within hours.

Before a grant may be awarded, the Governor's Authorized Representative (Cal OES Director or acting) must demonstrate that a fire threatens such destruction as would constitute a major disaster and exceeds either the individual fire cost threshold, which applies to single fires, or the cumulative fire cost threshold, which recognizes numerous smaller fires burning throughout a state.

FEMA evaluates each request in order of descending priority, focusing on the following threat factors:



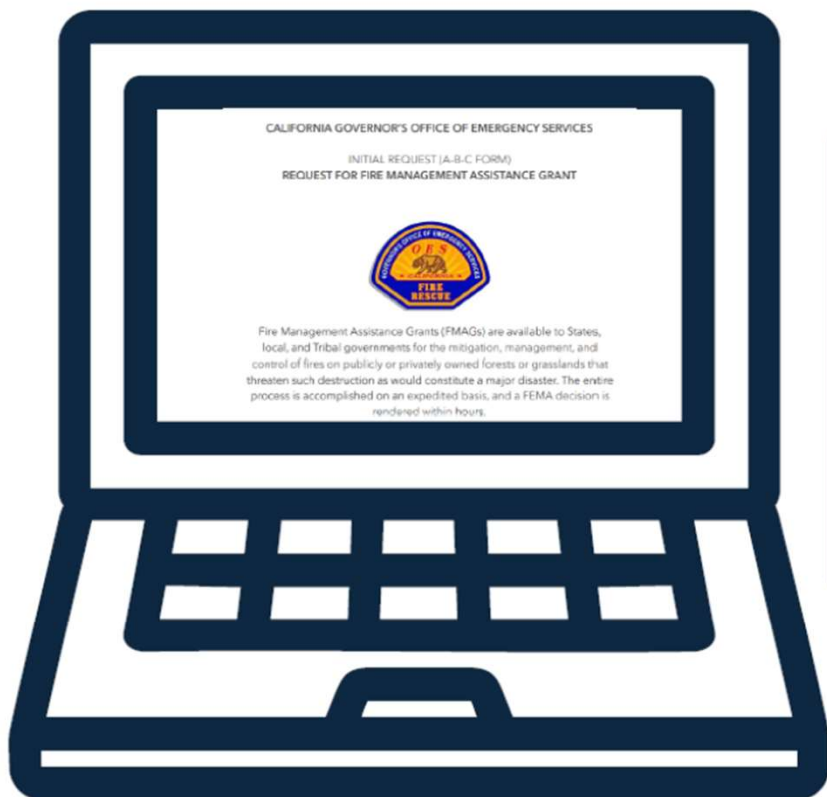
## • Example of Optional Attachments

BEU FMAG ATTACHMENT

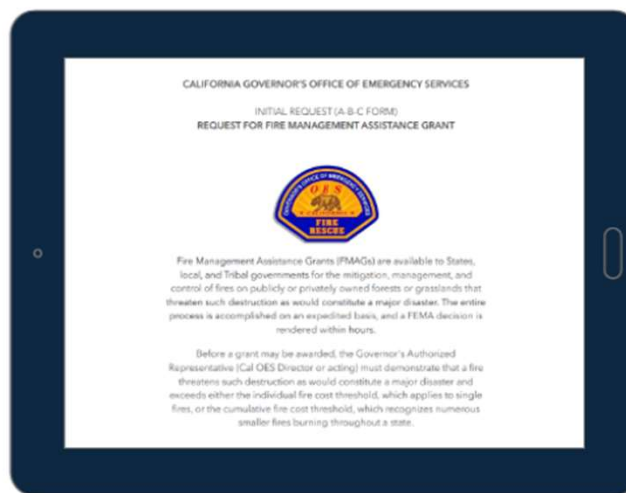
3/25/22

- 12 involved valued at 1.2 million per structure,
- 2000 Homes immediately threatened at 1.2 Million per structure: 2.4 Billion est.
- Buena Vista Middle School: 15 Million est.
- Community Center: 10 Million est.
- Corral de Terra Country Club: 15 Million est.
- Hwy 68 (major artery to the Monterey Peninsula): Millions in commerce and tourism,
- Palo Escrito Peak includes all local TV, radio, cellular and satellite towers. 60KV power lines: 20 million est.
- Toro Peak Communications Tower: 20 Million est.

# ONLINE TOOL FOR COMPUTERS, TABLETS, & PHONES COMMON APPLICATION FORMAT REGARDLESS OF DEVICE TYPE



COMPUTERS



TABLETS



PHONES

## FIRE MANAGEMENT ASSISTANCE GRANT (FMAG) ONLINE TOOL FOR PHONES, TABLETS, & COMPUTERS

### CONCEPT

- Provide an update to the Cal OES FMAG A-B-C Form submittal process.
- Collect all data that is needed for the A-B-C form, the FEMA Regional Watch Center intake process, and the data needed by the Federal Principal Advisor review.
- Have the ability to submit a complete and accurate form within 15 minutes from the field with any common form of electronic communication.

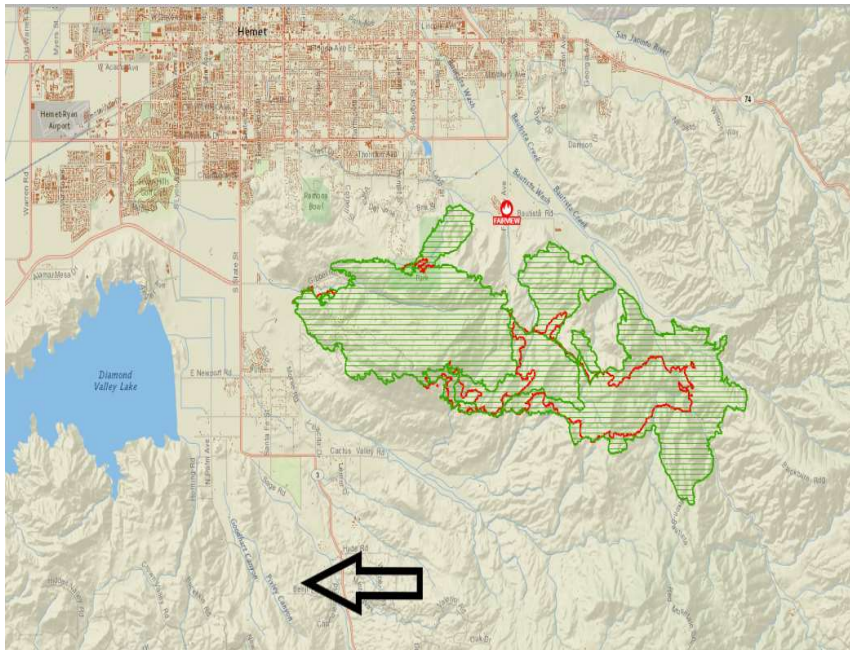
### CAPABILITIES

- Much of the form is **pre-populated** from IRWIN, NIFS, IROC, and the local agency common operation picture systems (COPs) such as NG-SCOUT, Tactical Analyst, Intterra, Tablet Command, or others that conform to recognized national geospatial data standards.
- This process documents and archives all parts of the FMAG application process.
- Data is stored for future use and analysis.



<https://arcg.is/1TuHWP2>

# Generating The Map



**Next Gen SCOUT**



FMAG Analysis

### MONUMENT

8/16/2021, 8:41:01 PM

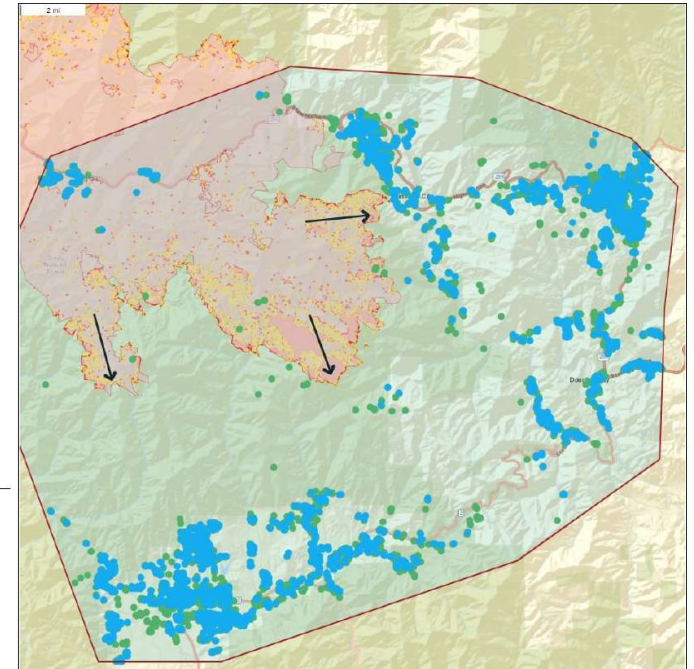
#### Results

- Population: 5524
- Buildings: 5053
- Perimeter: 64.5 mi
- Area: 191416.94 ac

#### Disclaimer

This website and all of the information it contains are provided "as is" without warranty of any kind, whether express or implied. All implied warranties, including, without limitation, implied warranties of merchantability, fitness for a particular purpose, and non-infringement, are hereby expressly disclaimed. Links and references to any other websites are provided for information only and listing shall not be taken as endorsement of any kind.

CAL FIRE is not responsible for the content or reliability of the linked websites and does not endorse the content, products, services, or views expressed within them.



**TA**



### WFTIIC All-Hazards Threat Intelligence and Assessment Briefing Tool

Wildfire Forecast and Threat Intelligence Integration Center



#### LEGEND

##### BUILDING FOOTPRINTS

Microsoft Building Footprints



##### EVACUATIONS

###### California Statewide Evacuation Status

###### Zone Status

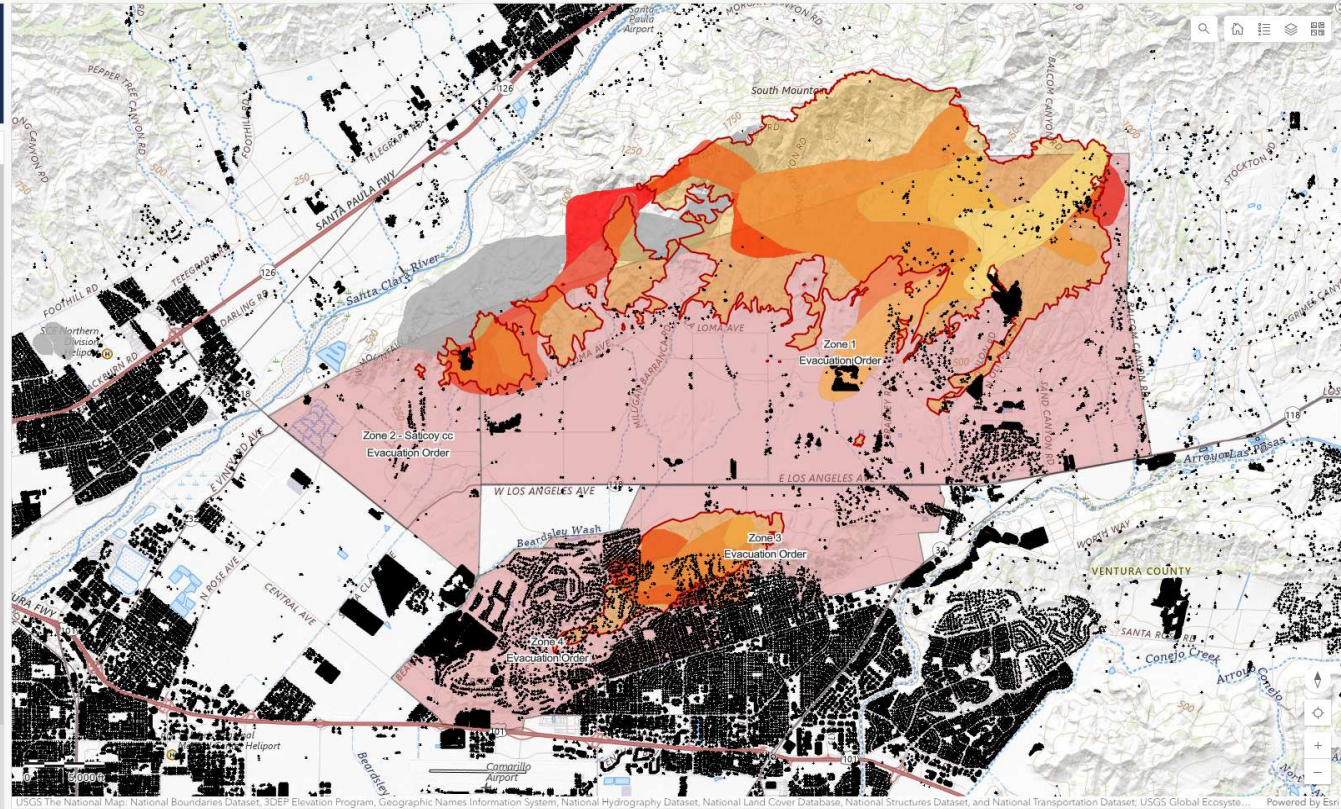
- Evacuation Warning (Yellow square)
- Evacuation Order (Red square)

##### CA\_EVACUATIONS

- Warning (Yellow square)
- Evacuation Order (Red square)
- Shelter In Place (Purple square)
- Clear to Repopulate (Green square)
- Advisory (Blue square)

##### CALIFORNIA EVAC ZONES (CalOES)

- Evacuation Order (Red square)
- Warning (Yellow square)
- Advisory (Light yellow square)





**WFTIC All-Hazards Threat Intelligence and Assessment Briefing Tool**  
Wildfire Forecast and Threat Intelligence Integration Center

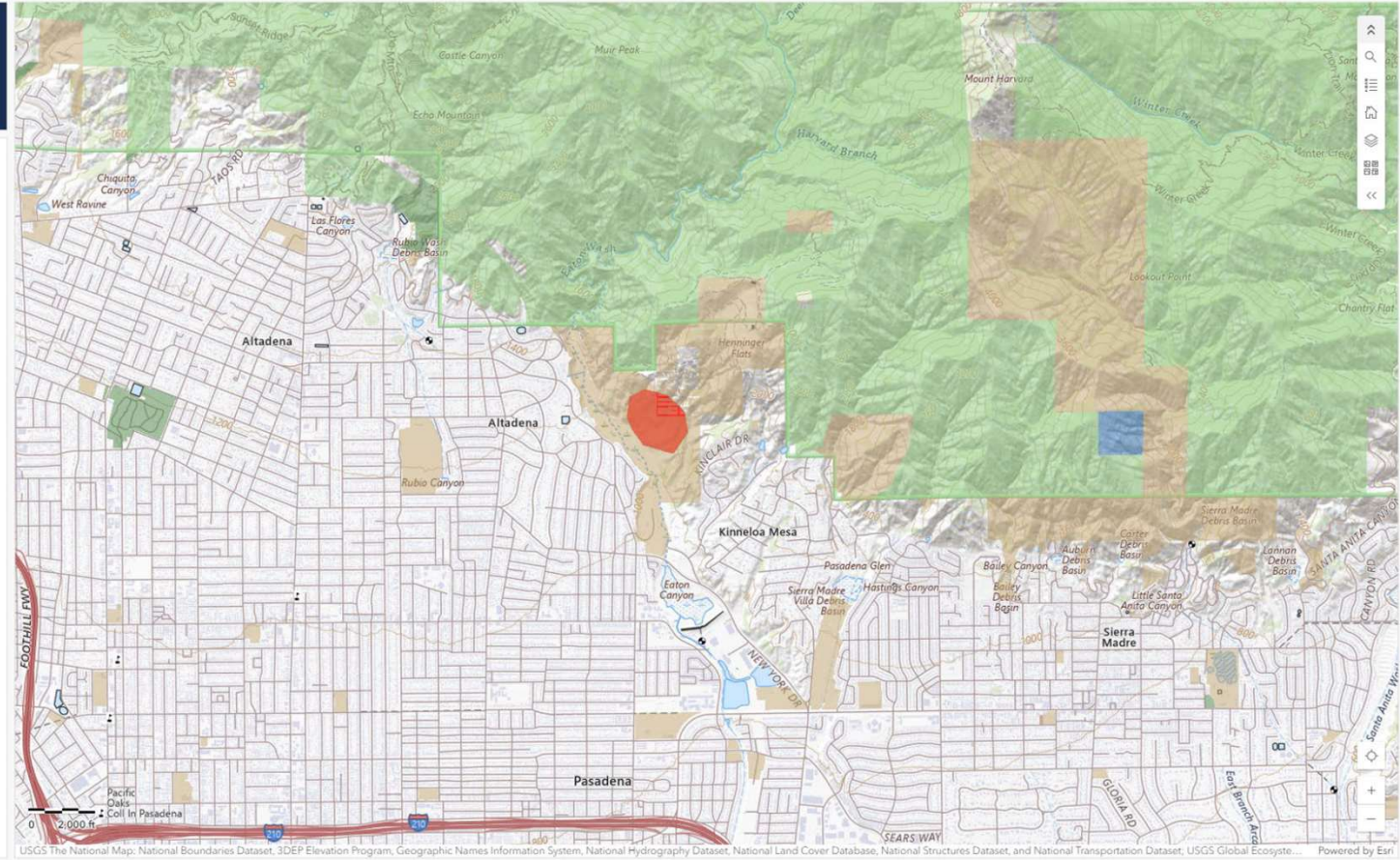


**LEGEND**

**MAP LAYERS**

**California Land Ownership**

- Local Government
- Non Profit Conservancies and Trusts
- CA Dept. of Forestry and Fire Protection
- CA Dept. of Parks and Recreation
- CA Dept. of Fish and Wildlife
- Other State Lands
- National Park Service
- USDA Forest Service
- Bureau of Reclamation
- Bureau of Land Management
- US Fish and Wildlife Service
- Tribal Trust Lands
- Department of Defense
- Other Federal Lands





# WILDFIRE FORECAST and THREAT INTELLIGENCE INTEGRATION CENTER-WFTIIC

For FMAG requests, WFTIIC products are intended to verify and support the documentation needed for the Director's Briefing and/or for submission of the FMAG Request to FEMA Region IX. WFTIIC products typically provide, if relevant, the following information

<https://wftiic.ca.gov>



# WILDFIRE FORECAST and THREAT INTELLIGENCE INTEGRATION CENTER-WFTIIC

## Initial Overview Assessment:

General map showing the location of the incident, Building footprints, Evacuation areas and status, WIFIRE and WFA Fire Spread Simulations, Camera images, Direct Protection Areas (DPAs), Land ownership, Global wildland-urban interface, Electrical and power generation infrastructure, Hospital, nursing homes, and independent living facilities, Communication sites, Oil and natural gas, Watershed and water resources, Wastewater and solid waste, Airports, heliports, and landing strips, Dams and levees, Railroads and rail lines, Land use and agriculture, Fire stations and law enforcement, Detention and correctional facilities, Schools, colleges, and universities, Other facilities or infrastructure, Threatened and endangered species, Zoos and animal care facilities, Historical, cultural, or religious significance,



# WILDFIRE FORECAST and THREAT INTELLIGENCE INTEGRATION CENTER-WFTIIC

## Expanded Overview Assessment:

CEFA observed hourly fire danger, NFDRS burning index (forecasted), NFDRS energy release component (forecasted), U.S. Drought Monitor (drought intensity), Potential control line suitability (PCL), RMRS Severe Fire Potential, Wildfire Suppression Difficulty Index (SDI), Conditional Net Value Change (cNVC) for critical infrastructure, Firefighter Estimated Ground Evacuation Time (GET), National Snag Hazards, Fire history maps (2020 – Present) (2010 – 2020), (2000 – 2010), (1990-2000)

Estimated structures and Infrastructure Within the evacuation order areas are also available.



## The Dialog

Once received by the CAL OES Fire & Rescue FMAG Duty Chief, a **Microsoft Teams** meeting will be scheduled with the agency Representative.

This call will allow the CAL OES Fire & Rescue FMAG Chief and agency representative to virtually dialogue, validate maps, evacuations, values at risk, resources, and weather.





Once the Cal OES Fire & Rescue FMAG Duty Chief has validated the submitted information with the agency representative and Regional Cal OES Chief Officer(s), the official vetting process will take place between Cal OES Fire Rescue and the Director of Cal OES.





Once a decision has been made, the Cal OES Fire & Rescue FMAG Duty Chief will notify the agency representative via email that the FMAG has been submitted to FEMA for approval or is placed on hold.

- If placed on hold a follow up phone call will be made to the agency representative.
- This should occur within 1 to 2 hours of the submittal.
- FEMA Appeal





# FEMA Region IX Watch Office

[FEMA-R9Watchofficer@fema.dhs.gov](mailto:FEMA-R9Watchofficer@fema.dhs.gov)

(510) 627-7802





Official of the Forest Service, U.S. Department of Agriculture, or Bureau of Land Management, U.S. Department of the Interior.

## Principal Advisor

Called upon by FEMA's Regional Office to provide a technical assessment of the fire or fire complex for which a declaration request has been submitted.

Completes [FEMA Form 078-0-2 \(90-32\)](#), the Principal Advisor's Report and submits to the Regional Administrator for inclusion in the declaration request package.



## FEMA Approval

Once approved by FEMA, the Cal OES Fire & Rescue FMAG Duty Chief will email the agency representative the supporting documents from FEMA.

This will include the FEMA approval letter and the FEMA incident designator number. This process usually takes approximately 3-8 hours.

The FEMA letter usually comes before the FEMA incident designator number.



## Incident Period (IP)

- Time interval during which the declared fire occurs.
- Typically, the period from when the FMAG (ABC) Application is received by OES to the point where the threat to life and property has been mitigated.
  - Not necessarily tied to containment.
- Cal OES, FEMA, and the agency that requested the FMAG will coordinate to establish the Incident Period.
- Costs must be incurred during the incident period and must be incident-related to be considered eligible.

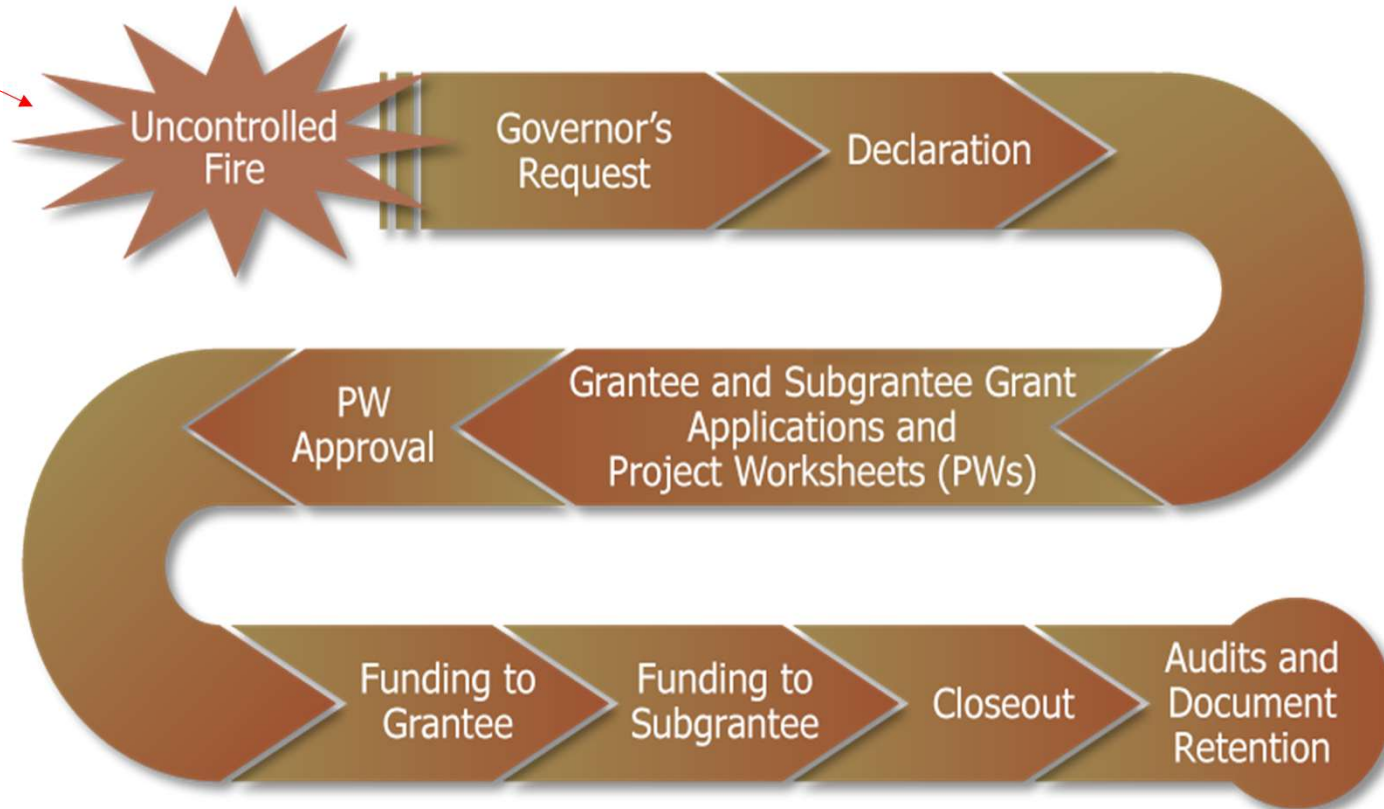


## Incident Period (IP)

- The fire threat to homes/critical public facilities no longer exists
- Evacuation orders have been lifted
- Roadblocks and road closures have been lifted
- Fire suppression resources are demobilizing from the incident
- Transition to lower-level Incident Management Team
- High confidence in security of fire suppression containment lines
- Absence of approaching weather event which may impact fire behavior  
or
- Percent of containment



*Cal OES Discussion*





**For questions, please contact one of the Cal OES FMAG  
Duty Chiefs:**

**Assistant Chief Jon Woody (North)**  
**279-224-0805**  
**[Jon.Woody@caloes.ca.gov](mailto:Jon.Woody@caloes.ca.gov)**

**Assistant Chief Chris Cox (South)**  
**916-296-6927**  
**[Christopher.Cox@caloes.ca.gov](mailto:Christopher.Cox@caloes.ca.gov)**