



Gavin Newsom, Governor

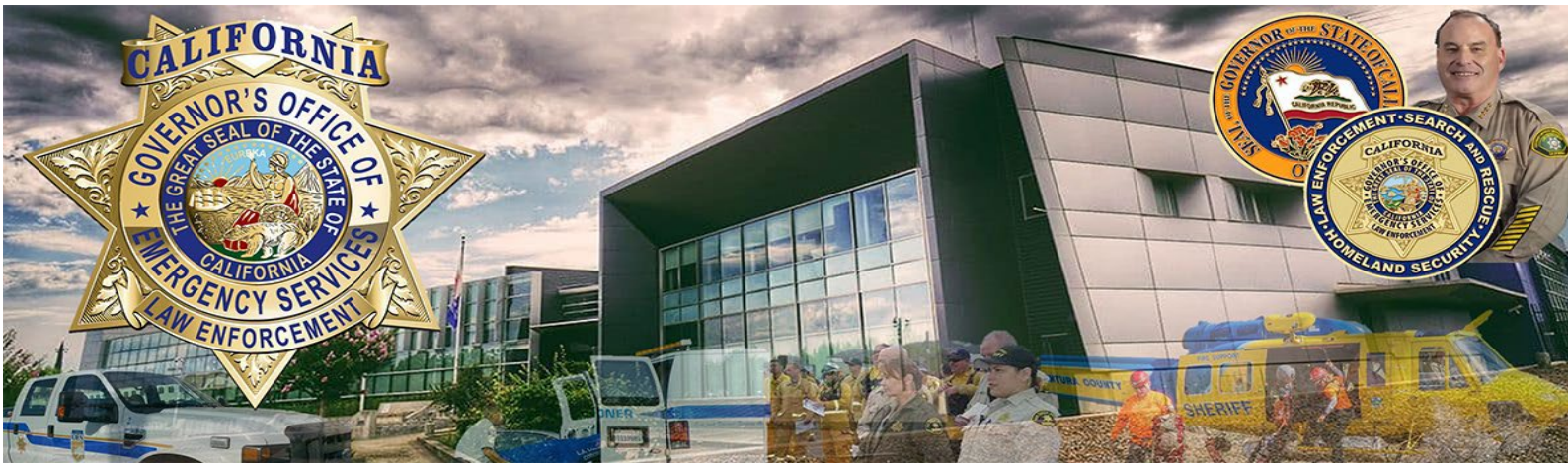


Cal OES  
GOVERNOR'S OFFICE  
OF EMERGENCY SERVICES

Nancy Ward, Director

# Law Enforcement Mutual Aid Assistance Fund

# Park Fire- Tehama County



## LEMA ONLINE PORTAL

[\\*Click Here\\*](#)

Agency Registration through the On-line Portal

- Receive LEMA Fund Updates
- Track reimbursement and payment progress



## CAL OES LEMA WEBPAGE

[\\*Click Here\\*](#)

- Get the most updated information on the LEMA webpage
- Access LEMA Reimbursement documents

**FOR MORE INFORMATION : CONTACT US**

**LemaFund@caloes.ca.gov**

**Jodi Lopez**  
Division Chief  
Law Enforcement Branch  
(916) 845-8307

**Pooja Randhawa**  
Staff Services Manager I  
Law Enforcement Branch  
(916) 845-8743

**Taryn Renowden**  
AGPA, LEMA Program  
Law Enforcement Branch  
(916) 845-8705

**Nancy Talley**  
AGPA, LEMA Program  
Law Enforcement Branch  
(916) 845-8706

## LEMA INCIDENT PERIOD

**7/26/2024 - 8/16/2024**

### Eligible Expenses

- Responding Officer overtime
- Backfill for responding Officers
- Lodging
- Per Diem
- Mileage - to & from incident
- Fuel
- Extraordinary Equipment
- ❖ Overtime, backfill, and fuel will be reimbursed at the actual costs
- ❖ Lodging, per diem, and milage will be reimbursed at the State Rate

### Eligible Agencies

#### **Sworn members of:**

- City Police Departments
- Sheriff's Offices
- Probation
- District Attorney's
- Coroner/ Medical Examiners