
Hazus: Earthquake Global Risk Report

Region Name: ZayanteVergeles

Earthquake Scenario: zayantevergeles2011c_m7p48_se

Print Date: June 27, 2024

Disclaimer:

Totals only reflect data for those census tracts/blocks included in the user's study region.

The estimates of social and economic impacts contained in this report were produced using Hazus loss estimation methodology software which is based on current scientific and engineering knowledge. There are uncertainties inherent in any loss estimation technique. Therefore, there may be significant differences between the modeled results contained in this report and the actual social and economic losses following a specific earthquake. These results can be improved by using enhanced inventory, geotechnical, and observed ground motion data.

Table of Contents

Section	Page #
General Description of the Region	3
Building and Lifeline Inventory	4
Building Inventory	
Critical Facility Inventory	
Transportation and Utility Lifeline Inventory	
Earthquake Scenario Parameters	7
Direct Earthquake Damage	8
Buildings Damage	
Essential Facilities Damage	
Transportation and Utility Lifeline Damage	
Induced Earthquake Damage	14
Fire Following Earthquake	
Debris Generation	
Social Impact	15
Shelter Requirements	
Casualties	
Economic Loss	17
Building Related Losses	
Transportation and Utility Lifeline Losses	
Appendix A: County Listing for the Region	
Appendix B: Regional Population and Building Value Data	

General Description of the Region

Hazus-MH is a regional earthquake loss estimation model that was developed by the Federal Emergency Management Agency (FEMA) and the National Institute of Building Sciences. The primary purpose of Hazus is to provide a methodology and software application to develop multi-hazard losses at a regional scale. These loss estimates would be used primarily by local, state and regional officials to plan and stimulate efforts to reduce risks from multi-hazards and to prepare for emergency response and recovery.

The earthquake loss estimates provided in this report was based on a region that includes 35 county(ies) from the following state(s):

California

Note:

Appendix A contains a complete listing of the counties contained in the region.

The geographical size of the region is 63,724.60 square miles and contains 3,802 census tracts. There are over 5,695 thousand households in the region which has a total population of 16,502,168 people. The distribution of population by Total Region and County is provided in Appendix B.

There are an estimated 5,082 thousand buildings in the region with a total building replacement value (excluding contents) of (millions of dollars). Approximately 90.00 % of the buildings (and % of the building value) are associated with residential housing.

The replacement value of the transportation and utility lifeline systems is estimated to be 262,250 and 201,866 (millions of dollars) , respectively.

Building and Lifeline Inventory

Building Inventory

Hazus estimates that there are 5,082 thousand buildings in the region which have an aggregate total replacement value of (millions of dollars) . Appendix B provides a general distribution of the building value by Total Region and County.

In terms of building construction types found in the region, wood frame construction makes up 87% of the building inventory. The remaining percentage is distributed between the other general building types.

Critical Facility Inventory

Hazus breaks critical facilities into two (2) groups: essential facilities and high potential loss facilities (HPL). Essential facilities include hospitals, medical clinics, schools, fire stations, police stations and emergency operations facilities. High potential loss facilities include dams, levees, military installations, nuclear power plants and hazardous material sites.

For essential facilities, there are 277 hospitals in the region with a total bed capacity of 42,972 beds. There are 6,070 schools, 1,572 fire stations, 543 police stations and 93 emergency operation facilities. With respect to high potential loss facilities (HPL), there are no dams identified within the inventory. The inventory also includes no hazardous material sites, no military installations and no nuclear power plants.

Transportation and Utility Lifeline Inventory

Within Hazus, the lifeline inventory is divided between transportation and utility lifeline systems. There are seven (7) transportation systems that include highways, railways, light rail, bus, ports, ferry and airports. There are six (6) utility systems that include potable water, wastewater, natural gas, crude & refined oil, electric power and communications. The lifeline inventory data are provided in Tables 1 and 2.

The total value of the lifeline inventory is over 464,116.00 (millions of dollars). This inventory includes over 12,030.36 miles of highways, 12,504 bridges, 272,417.12 miles of pipes.

Table 1: Transportation System Lifeline Inventory

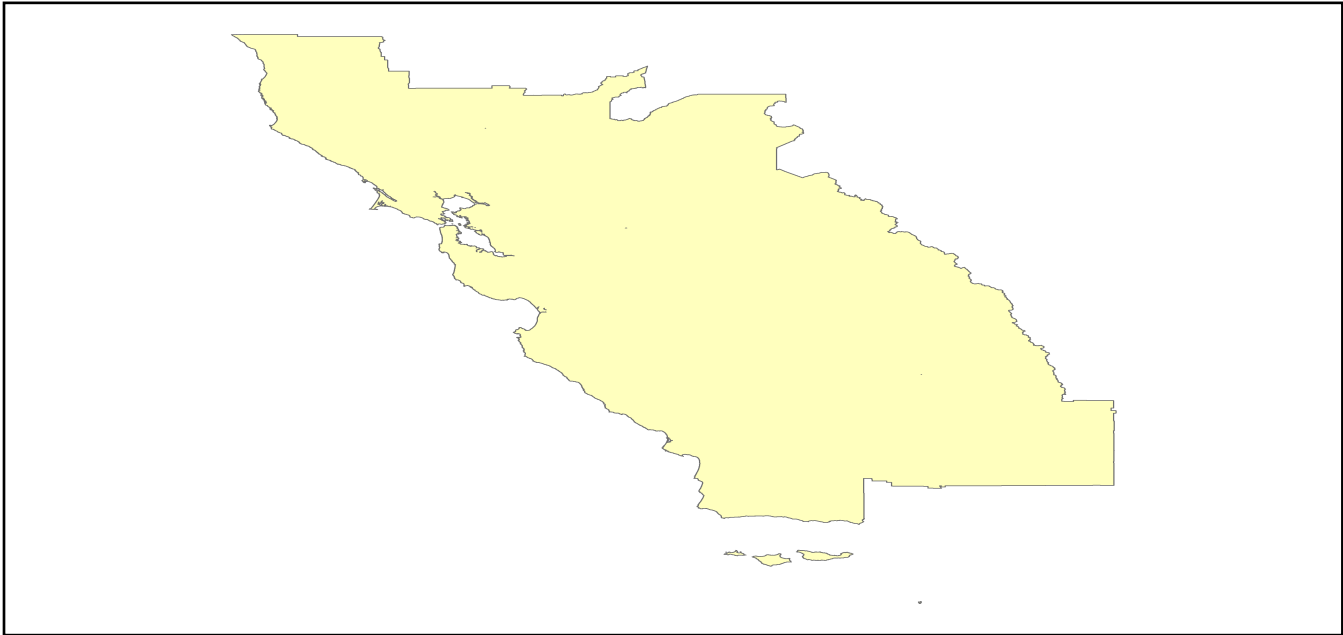
System	Component	# Locations/ # Segments	Replacement value (millions of dollars)
Highway	Bridges	12,504	61026.3366
	Segments	7,841	104323.8742
	Tunnels	50	1006.9400
	Subtotal		166357.1508
Railways	Bridges	1,911	10873.5900
	Facilities	99	263.6370
	Segments	3,473	68686.3802
	Tunnels	3	1.8495
	Subtotal		79825.4567
Light Rail	Bridges	112	15.3529
	Facilities	255	4154.0000
	Segments	15	5403.2756
	Tunnels	0	0.0000
	Subtotal		9572.6285
Bus	Facilities	61	137.0192
	Subtotal		137.0192
Ferry	Facilities	28	37.2680
	Subtotal		37.2680
Port	Facilities	378	1440.8773
	Subtotal		1440.8773
Airport	Facilities	131	3027.5193
	Runways	187	1852.6038
	Subtotal		4880.1231
		Total	262,250.50

Table 2: Utility System Lifeline Inventory

System	Component	# Locations / Segments	Replacement value (millions of dollars)
Potable Water	Distribution Lines	NA	5413.8413
	Facilities	27	1060.9380
	Pipelines	0	0.0000
		Subtotal	6474.7793
Waste Water	Distribution Lines	NA	3248.3048
	Facilities	191	32842.7938
	Pipelines	0	0.0000
		Subtotal	36091.0986
Natural Gas	Distribution Lines	NA	2165.5365
	Facilities	19	746.9647
	Pipelines	987	18690.4727
		Subtotal	21602.9739
Oil Systems	Facilities	34	4.0120
	Pipelines	0	0.0000
		Subtotal	4.0120
Electrical Power	Facilities	541	137627.0688
		Subtotal	137627.0688
Communication	Facilities	560	66.0800
		Subtotal	66.0800
	Total		201,866.00

Earthquake Scenario

Hazus uses the following set of information to define the earthquake parameters used for the earthquake loss estimate provided in this report.



Scenario Name	zayantevergeles2011c_m7p48_se
Type of Earthquake	User-defined
Fault Name	NA
Historical Epicenter ID #	NA
Probabilistic Return Period	NA
Longitude of Epicenter	NA
Latitude of Epicenter	NA
Earthquake Magnitude	7.48
Depth (km)	NA
Rupture Length (Km)	NA
Rupture Orientation (degrees)	NA
Attenuation Function	NA

Direct Earthquake Damage

Building Damage

Hazus estimates that about 90,639 buildings will be at least moderately damaged. This is over 2.00 % of the buildings in the region. There are an estimated 6,812 buildings that will be damaged beyond repair. The definition of the 'damage states' is provided in Volume 1: Chapter 5 of the Hazus technical manual. Table 3 below summarizes the expected damage by general occupancy for the buildings in the region. Table 4 below summarizes the expected damage by general building type.

Damage Categories by General Occupancy Type

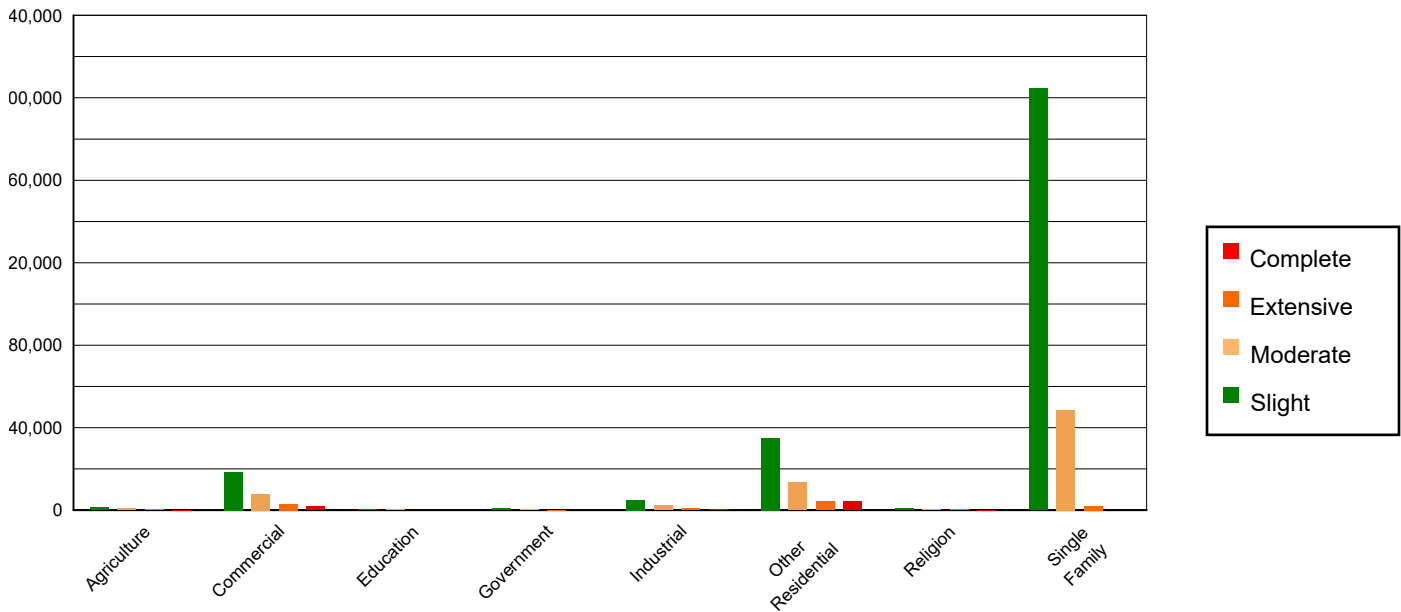


Table 3: Expected Building Damage by Occupancy

	None		Slight		Moderate		Extensive		Complete	
	Count	(%)	Count	(%)	Count	(%)	Count	(%)	Count	(%)
Agriculture	33960.71	0.72	1184.15	0.44	682.31	0.93	289.46	2.73	124.37	1.83
Commercial	294980.98	6.24	18491.41	6.95	7838.15	10.71	3072.95	28.97	1836.51	26.96
Education	9606.17	0.20	368.69	0.14	156.95	0.21	38.62	0.36	13.57	0.20
Government	21938.15	0.46	792.72	0.30	196.08	0.27	69.69	0.66	36.35	0.53
Industrial	82322.39	1.74	4918.95	1.85	2110.83	2.88	847.99	7.99	492.85	7.23
Other Residential	604519.69	12.79	35072.80	13.18	13295.36	18.16	4061.01	38.28	4138.14	60.74
Religion	18089.22	0.38	898.36	0.34	393.88	0.54	196.54	1.85	105.01	1.54
Single Family	3659765.57	77.45	204471.06	76.81	48545.83	66.30	2031.84	19.15	65.70	0.96
Total	4,725,183		266,198		73,219		10,608		6,813	

Table 4: Expected Building Damage by Building Type (All Design Levels)

	None		Slight		Moderate		Extensive		Complete	
	Count	(%)	Count	(%)	Count	(%)	Count	(%)	Count	(%)
Wood	4110402.22	86.99	230651.72	86.65	57222.12	78.15	3002.87	28.31	293.09	4.30
Steel	103967.81	2.20	7180.98	2.70	3767.43	5.15	1597.47	15.06	1047.17	15.37
Concrete	116513.12	2.47	7720.41	2.90	2962.42	4.05	1512.85	14.26	1177.03	17.28
Precast	62774.75	1.33	3984.31	1.50	2048.02	2.80	741.27	6.99	284.19	4.17
RM	180379.35	3.82	6077.70	2.28	2736.87	3.74	1448.41	13.65	400.04	5.87
URM	38072.53	0.81	5858.80	2.20	1510.51	2.06	240.95	2.27	719.39	10.56
MH	113073.09	2.39	4724.21	1.77	2972.00	4.06	2064.28	19.46	2891.61	42.45
Total	4,725,183		266,198		73,219		10,608		6,813	

*Note:

- RM Reinforced Masonry
- URM Unreinforced Masonry
- MH Manufactured Housing

Essential Facility Damage

Before the earthquake, the region had 42,972 hospital beds available for use. On the day of the earthquake, the model estimates that only 39,547 hospital beds (92.00%) are available for use by patients already in the hospital and those injured by the earthquake. After one week, 96.00% of the beds will be back in service. By 30 days, 99.00% will be operational.

Table 5: Expected Damage to Essential Facilities

Classification	Total	# Facilities		
		At Least Moderate Damage > 50%	Complete Damage > 50%	With Functionality > 50% on day 1
Hospitals	277	10	1	263
Schools	6,070	183	32	5,761
EOCs	93	3	0	89
PoliceStations	543	20	2	514
FireStations	1,572	37	8	1,509

Transportation Lifeline Damage

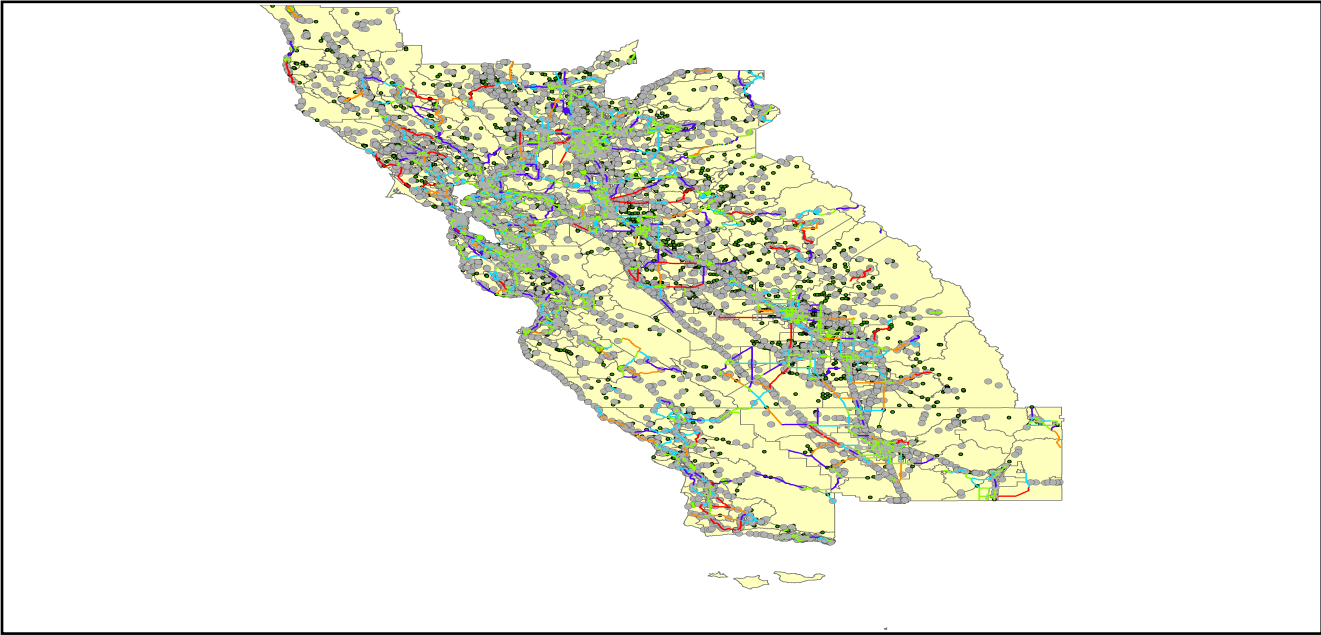


Table 6: Expected Damage to the Transportation Systems

System	Component	Number of Locations_				
		Locations/ Segments	With at Least Mod. Damage	With Complete Damage	With Functionality > 50 %	
					After Day 1	After Day 7
Highway	Segments	7,841	0	0	7,841	7,841
	Bridges	12,504	217	17	12,292	12,432
	Tunnels	50	0	0	50	50
Railways	Segments	3,473	0	0	3,473	3,473
	Bridges	1,911	33	0	1,878	1,911
	Tunnels	3	0	0	3	3
	Facilities	99	1	0	98	99
Light Rail	Segments	15	0	0	15	15
	Bridges	112	0	0	112	112
	Tunnels	0	0	0	0	0
	Facilities	255	0	0	255	255
Bus	Facilities	61	4	0	57	61
Ferry	Facilities	28	0	0	28	28
Port	Facilities	378	1	0	377	378
Airport	Facilities	131	4	0	127	131
	Runways	187	0	0	187	187

Table 6 provides damage estimates for the transportation system.

Note: Roadway segments, railroad tracks and light rail tracks are assumed to be damaged by ground failure only. If ground failure maps are not provided, damage estimates to these components will not be computed.

Tables 7-9 provide information on the damage to the utility lifeline systems. Table 7 provides damage to the utility system facilities. Table 8 provides estimates on the number of leaks and breaks by the pipelines of the utility systems. For electric power and potable water, Hazus performs a simplified system performance analysis. Table 9 provides a summary of the system performance information.

Table 7 : Expected Utility System Facility Damage

System	# of Locations				
	Total #	With at Least Moderate Damage	With Complete Damage	with Functionality > 50 %	
				After Day 1	After Day 7
Potable Water	27	0	0	27	27
Waste Water	191	13	0	176	186
Natural Gas	19	0	0	19	19
Oil Systems	34	0	0	34	34
Electrical Power	541	13	4	535	536
Communication	560	45	0	534	560

Table 8 : Expected Utility System Pipeline Damage (Site Specific)

System	Total Pipelines Length (miles)	Number of Leaks	Number of Breaks
Potable Water	168,200	10228	2557
Waste Water	100,920	5138	1284
Natural Gas	3,297	0	0
Oil	0	0	0

Table 9: Expected Potable Water and Electric Power System Performance

	Total # of Households	Number of Households without Service				
		At Day 1	At Day 3	At Day 7	At Day 30	At Day 90
Potable Water	5,695,197	140,442	125,057	109,098	47,880	0
Electric Power		179,959	146,044	88,335	19,870	206

Induced Earthquake Damage

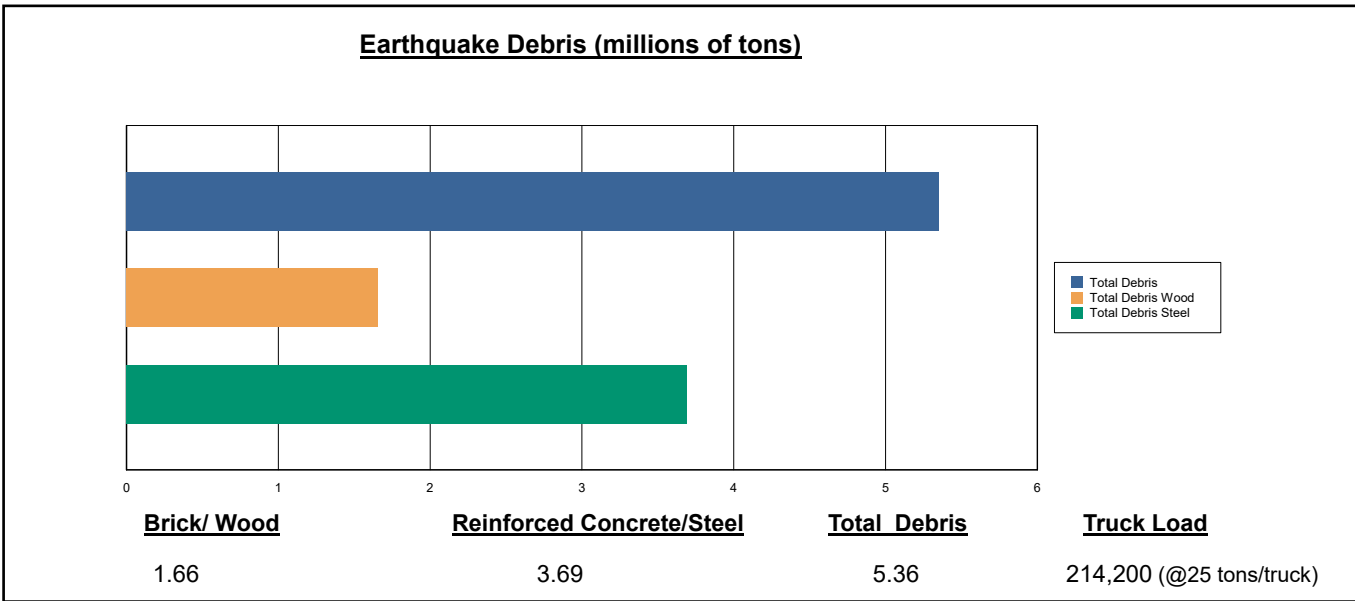
Fire Following Earthquake

Fires often occur after an earthquake. Because of the number of fires and the lack of water to fight the fires, they can often burn out of control. Hazus uses a Monte Carlo simulation model to estimate the number of ignitions and the amount of burnt area. For this scenario, the model estimates that there will be 69 ignitions that will burn about 1.53 sq. mi (0.00 % of the region's total area.) The model also estimates that the fires will displace about 13,850 people and burn about 1,932 (millions of dollars) of building value.

Debris Generation

Hazus estimates the amount of debris that will be generated by the earthquake. The model breaks the debris into two general categories: a) Brick/Wood and b) Reinforced Concrete/Steel. This distinction is made because of the different types of material handling equipment required to handle the debris.

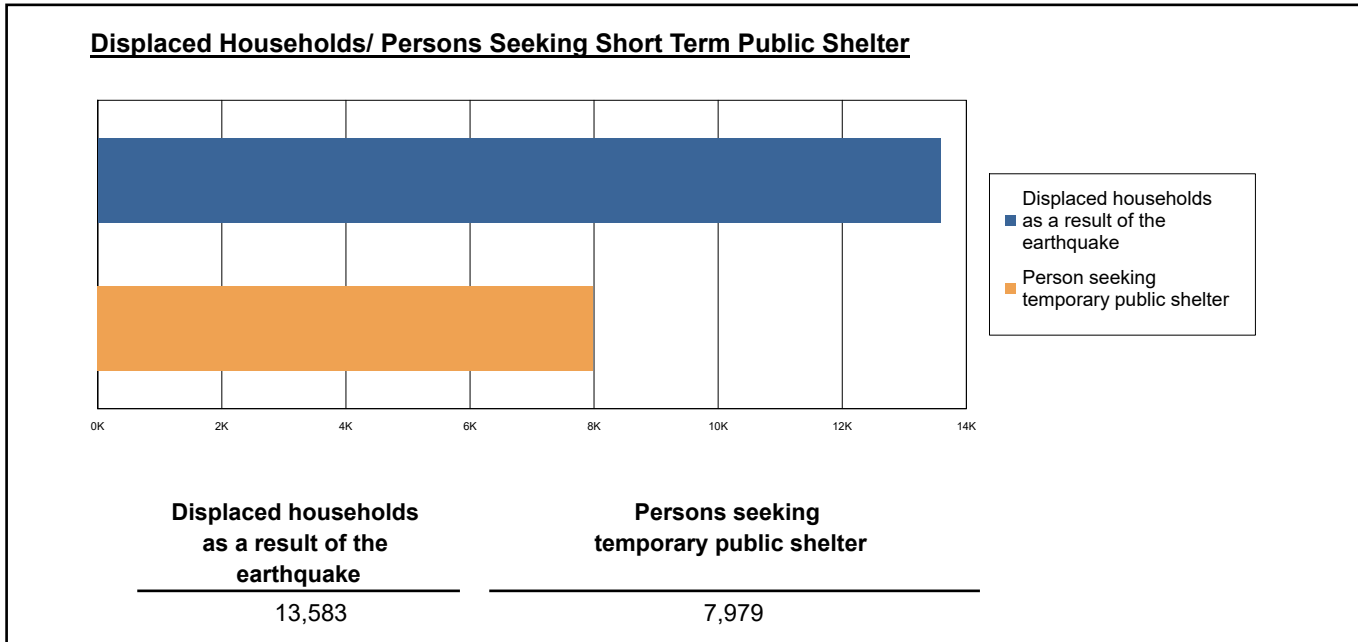
The model estimates that a total of 5,355,000 tons of debris will be generated. Of the total amount, Brick/Wood comprises 31.00% of the total, with the remainder being Reinforced Concrete/Steel. If the debris tonnage is converted to an estimated number of truckloads, it will require 214,200 truckloads (@25 tons/truck) to remove the debris generated by the earthquake.



Social Impact

Shelter Requirement

Hazus estimates the number of households that are expected to be displaced from their homes due to the earthquake and the number of displaced people that will require accommodations in temporary public shelters. The model estimates 13,583 households to be displaced due to the earthquake. Of these, 7,979 people (out of a total population of 16,502,168) will seek temporary shelter in public shelters.



Casualties

Hazus estimates the number of people that will be injured and killed by the earthquake. The casualties are broken down into four (4) severity levels that describe the extent of the injuries. The levels are described as follows;

- Severity Level 1: Injuries will require medical attention but hospitalization is not needed.
- Severity Level 2: Injuries will require hospitalization but are not considered life-threatening
- Severity Level 3: Injuries will require hospitalization and can become life threatening if not promptly treated.
- Severity Level 4: Victims are killed by the earthquake.

The casualty estimates are provided for three (3) times of day: 2:00 AM, 2:00 PM and 5:00 PM. These times represent the periods of the day that different sectors of the community are at their peak occupancy loads. The 2:00 AM estimate considers that the residential occupancy load is maximum, the 2:00 PM estimate considers that the educational, commercial and industrial sector loads are maximum and 5:00 PM represents peak commute time.

Table 10 provides a summary of the casualties estimated for this earthquake

Table 10: Casualty Estimates

		Level 1	Level 2	Level 3	Level 4
2 AM	Commercial	55.74	15.19	2.43	4.80
	Commuting	0.66	0.90	1.49	0.29
	Educational	0.00	0.00	0.00	0.00
	Hotels	2.11	0.45	0.06	0.12
	Industrial	60.47	15.87	2.42	4.75
	Other-Residential	1884.42	445.17	53.50	102.44
	Single Family	724.24	51.63	0.42	0.71
	Total	2,728	529	60	113
	2 PM	Commercial	3728.06	1012.87	161.91
Commuting		5.92	8.14	13.45	2.62
Educational		1217.09	297.21	43.81	85.22
Hotels		0.41	0.09	0.01	0.02
Industrial		445.02	116.78	17.85	34.77
Other-Residential		579.68	137.28	17.07	31.63
Single Family		212.82	15.79	0.17	0.24
Total		6,189	1,588	254	472
5 PM		Commercial	2579.05	698.76	111.89
	Commuting	116.65	160.37	264.92	51.59
	Educational	277.60	68.25	10.19	19.79
	Hotels	0.63	0.13	0.02	0.04
	Industrial	278.14	72.99	11.16	21.73
	Other-Residential	713.60	170.16	21.21	39.31
	Single Family	270.36	19.81	0.21	0.30
	Total	4,236	1,190	420	349

Economic Loss

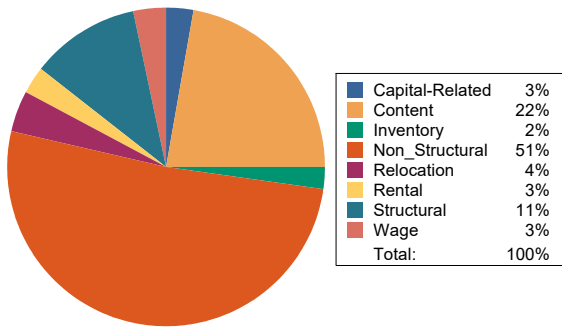
The total economic loss estimated for the earthquake is 42,291.89 (millions of dollars), which includes building and lifeline related losses based on the region's available inventory. The following three sections provide more detailed information about these losses.

Building-Related Losses

The building losses are broken into two categories: direct building losses and business interruption losses. The direct building losses are the estimated costs to repair or replace the damage caused to the building and its contents. The business interruption losses are the losses associated with inability to operate a business because of the damage sustained during the earthquake. Business interruption losses also include the temporary living expenses for those people displaced from their homes because of the earthquake.

The total building-related losses were 36,907.23 (millions of dollars); 13 % of the estimated losses were related to the business interruption of the region. By far, the largest loss was sustained by the residential occupancies which made up over 43 % of the total loss. Table 11 below provides a summary of the losses associated with the building damage.

Earthquake Losses by Loss Type (\$ millions)



Earthquake Losses by Occupancy Type (\$ millions)

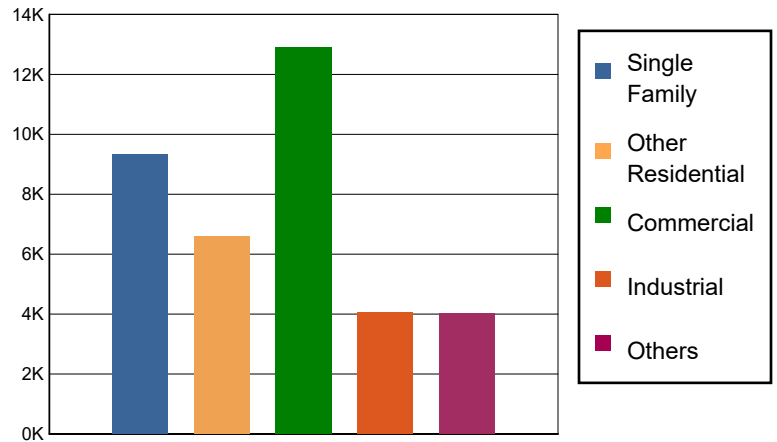


Table 11: Building-Related Economic Loss Estimates
(Millions of dollars)

Category	Area	Single Family	Other Residential	Commercial	Industrial	Others	Total
Income Losses							
	Wage	0.0000	197.9493	936.8181	38.9750	92.0574	1,265.7998
	Capital-Related	0.0000	84.1810	839.8009	23.1286	27.4056	974.5161
	Rental	97.3914	348.1356	440.8085	20.3263	45.8492	952.5110
	Relocation	344.1569	215.9750	623.0653	92.1955	350.8714	1,626.2641
	Subtotal	441.5483	846.2409	2840.4928	174.6254	516.1836	4819.0910
Capital Stock Losses							
	Structural	924.4654	656.5113	1545.1262	433.5243	533.3581	4,092.9853
	Non_Structural	5780.2445	4064.9846	5223.6496	1938.5241	1873.3210	18,880.7238
	Content	2173.0956	1031.0421	2726.6428	1311.0888	964.4310	8,206.3003
	Inventory	0.0000	0.0000	581.0493	204.7575	122.3250	908.1318
	Subtotal	8877.8055	5752.5380	10076.4679	3887.8947	3493.4351	32088.1412
	Total	9319.35	6598.78	12916.96	4062.52	4009.62	36907.23

Transportation and Utility Lifeline Losses

For the transportation and utility lifeline systems, Hazus computes the direct repair cost for each component only. There are no losses computed by Hazus for business interruption due to lifeline outages. Tables 12 & 13 provide a detailed breakdown in the expected lifeline losses.

Table 12: Transportation System Economic Losses
(Millions of dollars)

System	Component	Inventory Value	Economic Loss	Loss Ratio (%)
Highway	Segments	104323.8742	0.0000	0.00
	Bridges	61026.3366	301.2438	0.49
	Tunnels	1006.9400	0.5040	0.05
	Subtotal	166357.1508	301.7478	
Railways	Segments	68686.3802	0.0000	0.00
	Bridges	10873.5900	75.8869	0.70
	Tunnels	1.8495	0.0001	0.01
	Facilities	263.6370	7.5770	2.87
	Subtotal	79825.4567	83.4640	
Light Rail	Segments	5403.2756	0.0000	0.00
	Bridges	15.3529	0.0096	0.06
	Tunnels	0.0000	0.0000	0.00
	Facilities	4154.0000	211.7326	5.10
	Subtotal	9572.6285	211.7422	
Bus	Facilities	137.0192	9.4855	6.92
	Subtotal	137.0192	9.4855	
Ferry	Facilities	37.2680	1.2059	3.24
	Subtotal	37.2680	1.2059	
Port	Facilities	1440.8773	55.9254	3.88
	Subtotal	1440.8773	55.9254	
Airport	Facilities	3027.5193	184.6011	6.10
	Runways	1852.6038	0.0000	0.00
	Subtotal	4880.1231	184.6011	
Total		262,250.52	848.17	

Table 13: Utility System Economic Losses

(Millions of dollars)

System	Component	Inventory Value	Economic Loss	Loss Ratio (%)
Potable Water	Pipelines	0.0000	0.0000	0.00
	Facilities	1060.9380	7.8468	0.74
	Distribution Lines	5413.8413	46.0273	0.85
	Subtotal	6474.7793	53.8741	
Waste Water	Pipelines	0.0000	0.0000	0.00
	Facilities	32842.7938	1102.3022	3.36
	Distribution Lines	3248.3048	23.1207	0.71
	Subtotal	36091.0986	1125.4229	
Natural Gas	Pipelines	18690.4727	0.0000	0.00
	Facilities	746.9647	0.1853	0.02
	Distribution Lines	2165.5365	7.9210	0.37
	Subtotal	21602.9739	8.1063	
Oil Systems	Pipelines	0.0000	0.0000	0.00
	Facilities	4.0120	0.0064	0.16
	Subtotal	4.0120	0.0064	
Electrical Power	Facilities	137627.0688	3345.1889	2.43
	Subtotal	137627.0688	3345.1889	
Communication	Facilities	66.0800	3.8907	5.89
	Subtotal	66.0800	3.8907	
	Total	201,866.01	4,536.49	

Appendix A: County Listing for the Region

- Alameda,CA
- Amador,CA
- Calaveras,CA
- Colusa,CA
- Contra Costa,CA
- El Dorado,CA
- Fresno,CA
- Kern,CA
- Kings,CA
- Lake,CA
- Madera,CA
- Marin,CA
- Mariposa,CA
- Mendocino,CA
- Merced,CA
- Monterey,CA
- Napa,CA
- Placer,CA
- Sacramento,CA
- San Benito,CA
- San Francisco,CA
- San Joaquin,CA
- San Luis Obispo,CA
- San Mateo,CA
- Santa Barbara,CA
- Santa Clara,CA
- Santa Cruz,CA
- Solano,CA
- Sonoma,CA

Stanislaus,CA

Sutter,CA

Tulare,CA

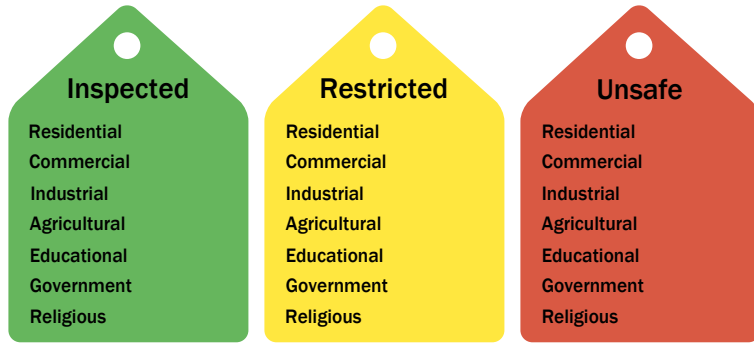
Tuolumne,CA

Yolo,CA

Yuba,CA

Appendix B: Regional Population and Building Value Data

State	County Name	Population	Building Value (millions of dollars)		
			Residential	Non-Residential	Total
California	Alameda	1,682,353	209,951	122,639	332,590
	Amador	40,474	5,608	2,517	8,125
	Calaveras	45,292	8,305	4,893	13,199
	Colusa	21,839	2,244	2,024	4,268
	Contra Costa	1,165,927	158,118	60,339	218,458
	El Dorado	191,185	34,907	9,704	44,611
	Fresno	1,008,654	98,532	61,772	160,304
	Kern	909,235	87,567	59,168	146,736
	Kings	152,486	13,719	7,861	21,581
	Lake	68,163	9,699	4,530	14,229
	Madera	156,255	18,025	9,641	27,667
	Marin	262,321	47,738	15,030	62,769
	Mariposa	17,131	3,299	1,141	4,441
	Mendocino	91,601	14,237	8,510	22,748
	Merced	281,202	25,194	26,098	51,292
	Monterey	439,035	47,655	28,750	76,405
	Napa	138,019	20,517	13,045	33,563
	Placer	404,739	69,985	24,193	94,179
	Sacramento	1,585,055	179,811	83,911	263,723
	San Benito	64,209	9,440	3,799	13,239
	San Francisco	873,965	108,848	46,020	154,869
	San Joaquin	779,233	82,706	56,882	139,589
	San Luis Obispo	282,424	41,720	20,896	62,616
	San Mateo	764,442	110,372	44,995	155,368
	Santa Barbara	448,229	49,971	28,481	78,452
	Santa Clara	1,936,259	261,111	120,471	381,582
	Santa Cruz	270,861	36,147	18,805	54,952
	Solano	453,491	55,802	26,393	82,195
	Sonoma	488,863	68,827	35,781	104,609
	Stanislaus	552,878	62,937	37,511	100,449
	Sutter	99,633	10,618	6,448	17,066
	Tulare	473,117	43,262	31,210	74,472
	Tuolumne	55,620	8,964	3,507	12,471
Yolo	216,403	24,130	18,343	42,473	
Yuba	81,575	8,161	4,677	12,839	
Total Region		16,502,168	2,038,127	1,049,985	3,088,129

Building Inspection Tagging (Counts)

Total Economic Loss
Total:

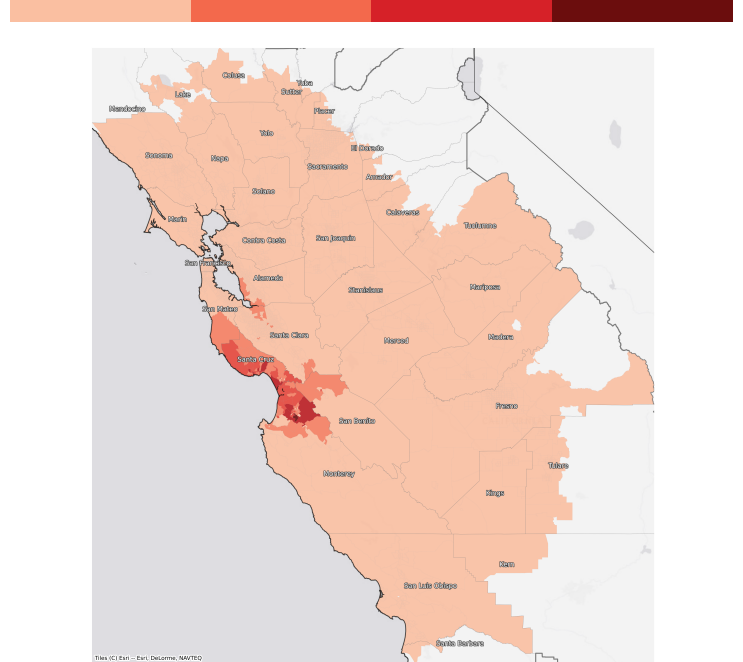
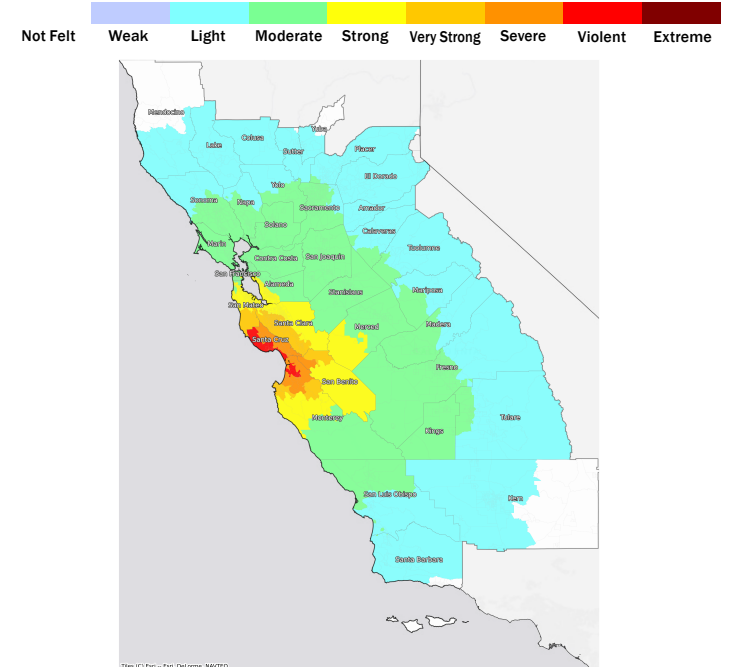
Top Counties	State	Total

Injuries & Fatalities
**Total Day:
Total Night:**

Top Counties	State	Injuries (day/night)	Fatalities (day/night)

Displaced Households & Short-Term Shelter Needs
**Total Displaced:
Total Needing Shelter:**

Top Counties	State	Displaced	Needing Shelter

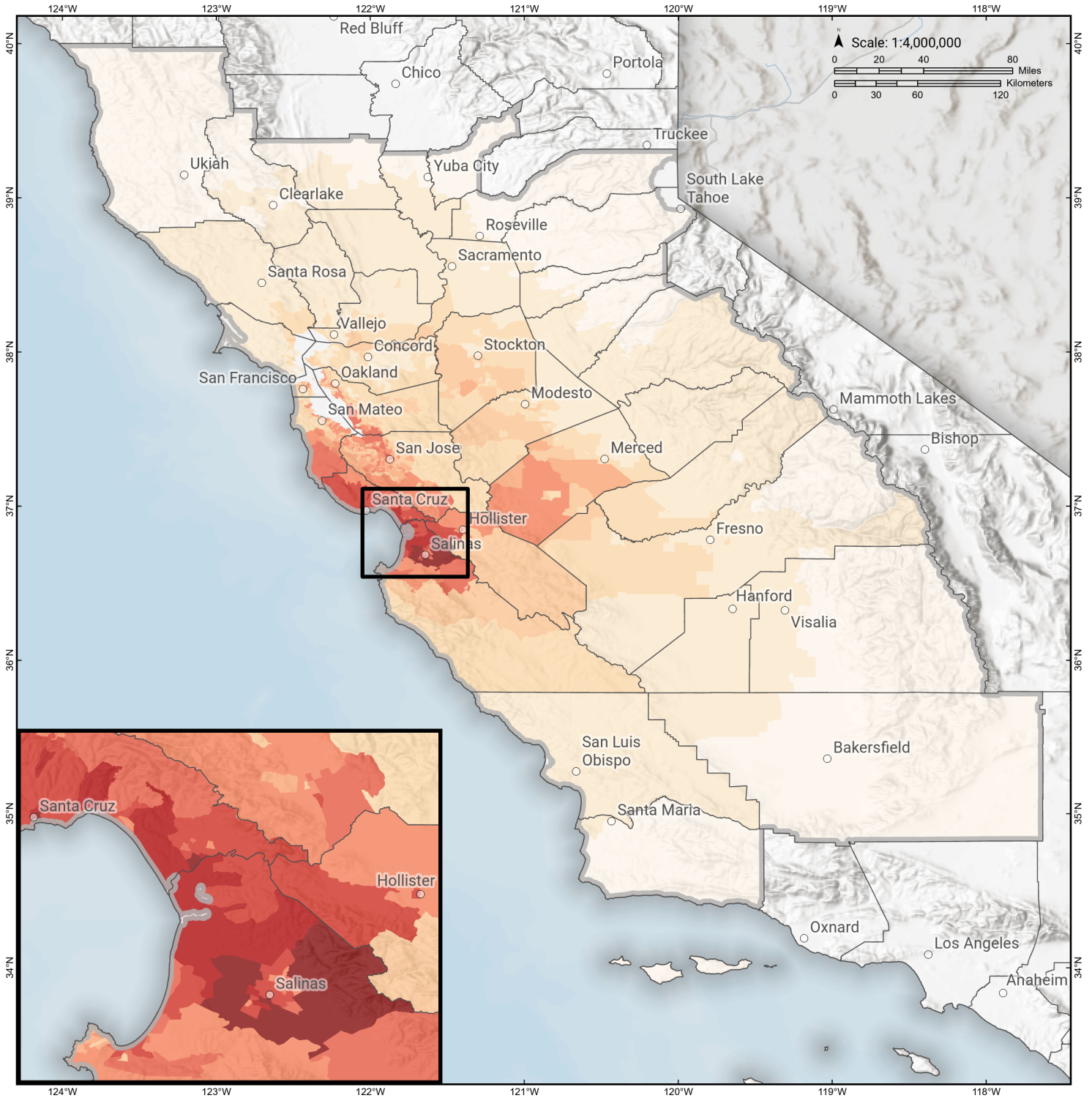
Economic Impacts by Census Tract

Ground Shaking

Debris
**Total Tons:
Total Truckloads:**

Type	Tons

The estimates of social and economic impacts contained in this report were produced using Hazus loss estimation methodology software which is based on current scientific and engineering knowledge. There are uncertainties inherent in any loss estimation technique. Therefore, there may be significant differences between the modeled results contained in this report and the actual social and economic losses following a specific earthquake.

Zayante-Vergeles

Debris Generated by Census Tract



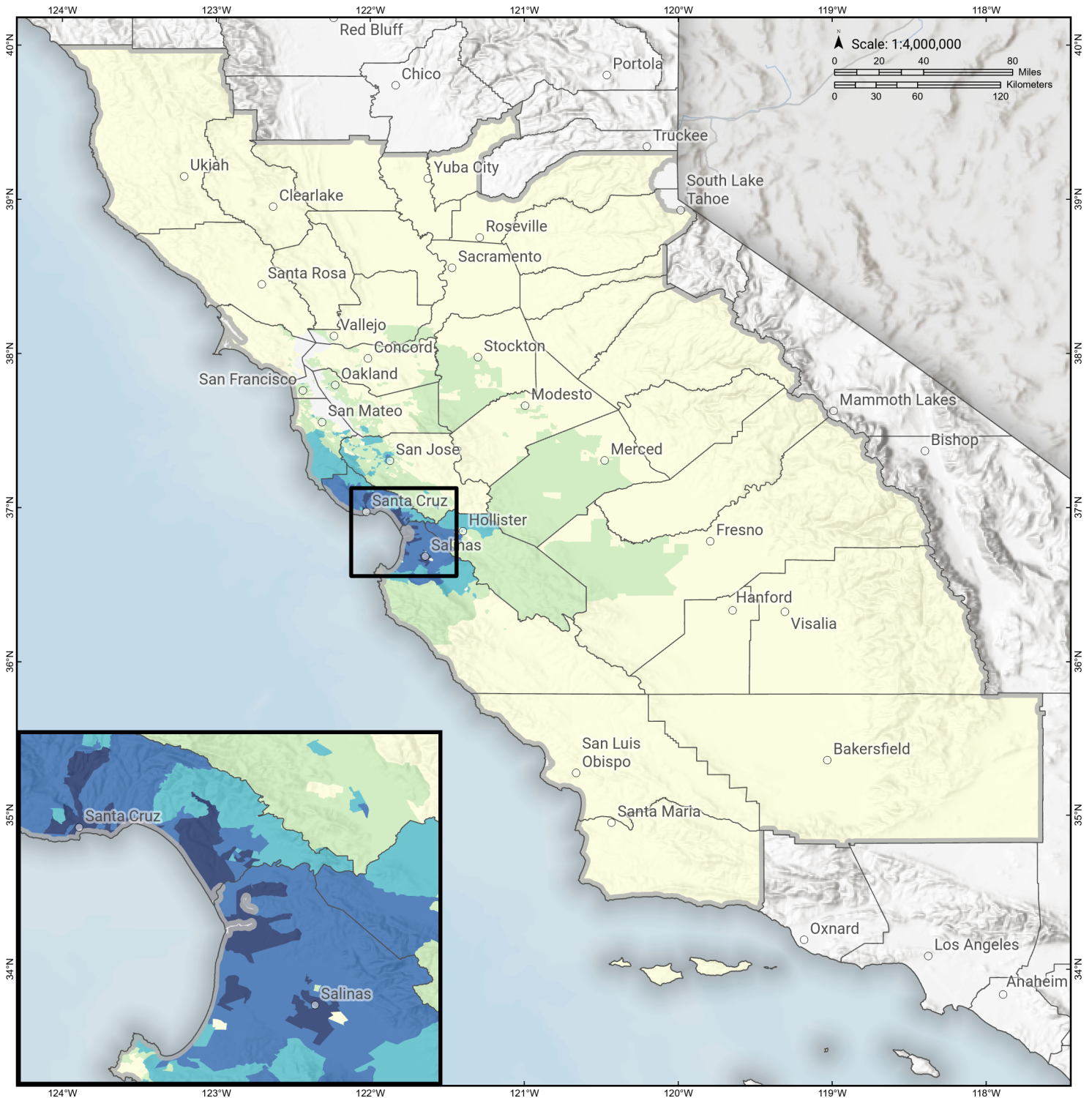
Study Region: Zayante-Vergeles
Scenario: zayantevergeles2011c_m7p48_se

Debris Generated (in tons)



Zayante-Vergeles

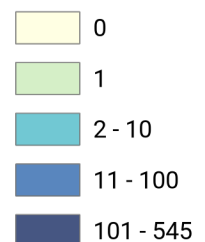
Displaced Households by Census Tract



Study Region: Zayante-Vergeles
Scenario: zayantevergeles2011c_m7p48_se

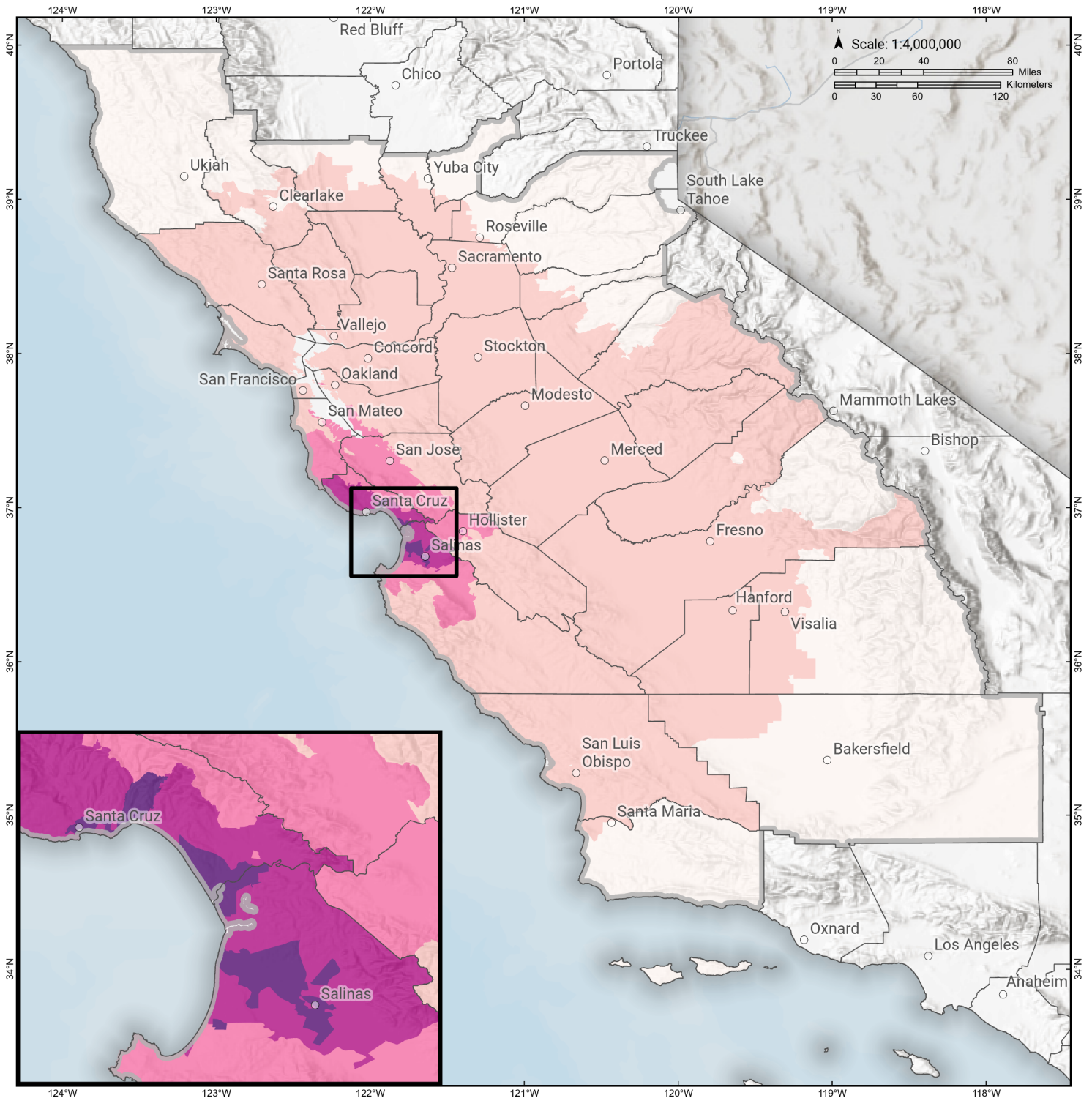


Displaced Households



Zayante-Vergeles

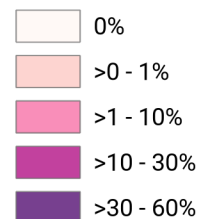
Loss Ratio by Census Tract



Study Region: Zayante-Vergeles
Scenario: zayantevergeles2011c_m7p48_se

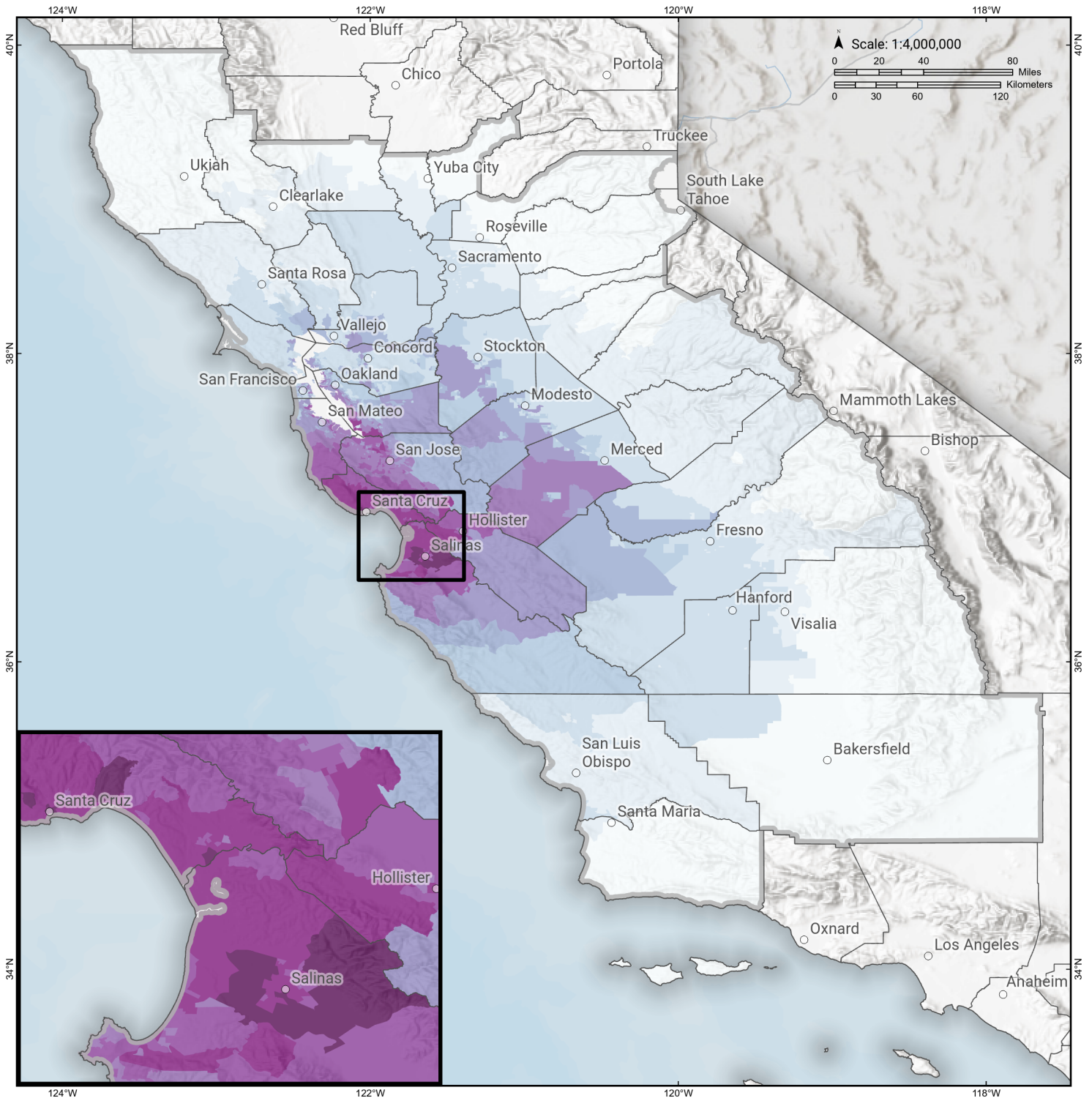


Loss Ratio (ratio of building related economic loss to exposed value of buildings)



Zayante-Vergeles

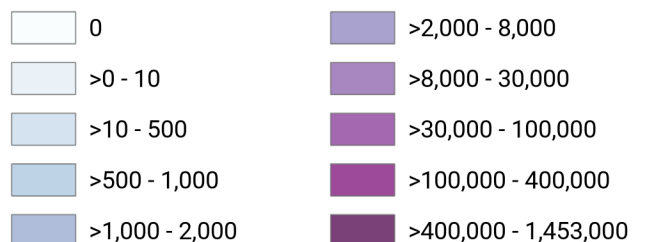
Total Building Related Economic Loss by Census Tract



Study Region: Zayante-Vergeles
Scenario: zayantevergeles2011c_m7p48_se



Economic Loss (in thousands of USD \$)



Building Damage by Count by General Occupancy

June 27, 2024

	# of Buildings					Total
	None	Slight	Moderate	Extensive	Complete	
California						
Alameda						
<i>Government</i>	10,014	463	50	1	0	10,528
<i>Agriculture</i>	390	27	5	0	0	422
<i>Commercial</i>	29,636	2,060	286	6	0	31,989
<i>Religion</i>	1,849	119	18	0	0	1,986
<i>Single Family</i>	333,061	11,028	84	0	0	344,173
<i>Other Residential</i>	58,402	2,687	300	7	0	61,396
<i>Education</i>	1,081	31	5	0	0	1,117
<i>Industrial</i>	9,239	827	135	5	0	10,205
Amador						
<i>Industrial</i>	235	0	0	0	0	235
<i>Single Family</i>	14,962	0	0	0	0	14,962
<i>Other Residential</i>	1,037	0	0	0	0	1,037
<i>Education</i>	23	0	0	0	0	23
<i>Government</i>	32	0	0	0	0	32
<i>Agriculture</i>	44	0	0	0	0	44
<i>Religion</i>	45	0	0	0	0	45
<i>Commercial</i>	1,368	0	0	0	0	1,368
Calaveras						

	# of Buildings					Total
	None	Slight	Moderate	Extensive	Complete	
<i>Government</i>	84	0	0	0	0	84
<i>Other Residential</i>	2,559	0	0	0	0	2,559
<i>Education</i>	35	0	0	0	0	35
<i>Religion</i>	130	0	0	0	0	130
<i>Agriculture</i>	2,207	0	0	0	0	2,207
<i>Commercial</i>	1,413	0	0	0	0	1,413
<i>Industrial</i>	466	0	0	0	0	466
<i>Single Family</i>	22,148	0	0	0	0	22,148
Colusa						
<i>Agriculture</i>	142	0	0	0	0	142
<i>Religion</i>	58	0	0	0	0	58
<i>Commercial</i>	794	0	0	0	0	794
<i>Industrial</i>	113	0	0	0	0	113
<i>Other Residential</i>	954	0	0	0	0	954
<i>Single Family</i>	5,954	0	0	0	0	5,954
<i>Government</i>	32	0	0	0	0	32
<i>Education</i>	33	0	0	0	0	33
Contra Costa						
<i>Commercial</i>	17,791	185	15	0	0	17,991
<i>Agriculture</i>	738	10	1	0	0	749
<i>Religion</i>	1,207	17	2	0	0	1,226
<i>Single Family</i>	280,866	1,069	0	0	0	281,935
<i>Other Residential</i>	28,771	333	20	0	0	29,124
<i>Industrial</i>	4,670	72	7	0	0	4,749
<i>Government</i>	4,969	51	4	0	0	5,024

	# of Buildings					Total
	None	Slight	Moderate	Extensive	Complete	
<i>Education</i>	651	2	0	0	0	653
EI Dorado						
<i>Other Residential</i>	10,420	0	0	0	0	10,420
<i>Industrial</i>	1,199	0	0	0	0	1,199
<i>Education</i>	128	0	0	0	0	128
<i>Single Family</i>	71,424	0	0	0	0	71,424
<i>Commercial</i>	4,768	0	0	0	0	4,768
<i>Government</i>	100	0	0	0	0	100
<i>Religion</i>	180	0	0	0	0	180
<i>Agriculture</i>	161	0	0	0	0	161
Fresno						
<i>Commercial</i>	21,031	21	2	0	0	21,054
<i>Religion</i>	1,504	3	0	0	0	1,507
<i>Agriculture</i>	3,413	8	0	0	0	3,421
<i>Industrial</i>	5,340	7	0	0	0	5,348
<i>Government</i>	290	1	0	0	0	291
<i>Other Residential</i>	40,909	60	4	0	0	40,973
<i>Single Family</i>	226,391	34	0	0	0	226,425
<i>Education</i>	602	0	0	0	0	602
Kern						
<i>Single Family</i>	205,139	0	0	0	0	205,139
<i>Other Residential</i>	54,520	0	0	0	0	54,520
<i>Industrial</i>	6,047	0	0	0	0	6,047
<i>Education</i>	462	0	0	0	0	462
<i>Government</i>	443	0	0	0	0	443

		# of Buildings					
		None	Slight	Moderate	Extensive	Complete	Total
Kings	<i>Religion</i>	1,524	0	0	0	0	1,524
	<i>Agriculture</i>	4,645	0	0	0	0	4,645
	<i>Commercial</i>	15,567	0	0	0	0	15,567
	<i>Commercial</i>	2,317	1	0	0	0	2,318
	<i>Religion</i>	210	0	0	0	0	210
	<i>Agriculture</i>	306	0	0	0	0	306
	<i>Government</i>	72	0	0	0	0	72
	<i>Industrial</i>	555	0	0	0	0	555
	<i>Single Family</i>	36,245	0	0	0	0	36,245
Lake	<i>Other Residential</i>	4,340	2	0	0	0	4,342
	<i>Education</i>	103	0	0	0	0	103
	<i>Agriculture</i>	161	0	0	0	0	161
	<i>Single Family</i>	21,633	0	0	0	0	21,633
	<i>Other Residential</i>	14,601	0	0	0	0	14,601
	<i>Education</i>	68	0	0	0	0	68
	<i>Industrial</i>	354	0	0	0	0	354
	<i>Commercial</i>	2,091	0	0	0	0	2,091
	<i>Religion</i>	140	0	0	0	0	140
Madera	<i>Government</i>	78	0	0	0	0	78
	<i>Commercial</i>	2,899	6	0	0	0	2,905
	<i>Religion</i>	119	0	0	0	0	119
	<i>Government</i>	111	0	0	0	0	111

	# of Buildings					Total
	None	Slight	Moderate	Extensive	Complete	
<i>Agriculture</i>	629	5	1	0	0	634
<i>Other Residential</i>	6,615	19	1	0	0	6,635
<i>Single Family</i>	38,891	21	0	0	0	38,912
<i>Education</i>	115	0	0	0	0	115
<i>Industrial</i>	901	2	0	0	0	903
Marin						
<i>Other Residential</i>	7,845	42	3	0	0	7,890
<i>Government</i>	142	1	0	0	0	143
<i>Education</i>	274	0	0	0	0	274
<i>Commercial</i>	8,209	57	4	0	0	8,270
<i>Religion</i>	318	1	0	0	0	319
<i>Agriculture</i>	188	2	0	0	0	190
<i>Single Family</i>	76,621	103	0	0	0	76,724
<i>Industrial</i>	1,513	21	2	0	0	1,535
Mariposa						
<i>Single Family</i>	8,084	0	0	0	0	8,084
<i>Other Residential</i>	307	0	0	0	0	307
<i>Education</i>	27	0	0	0	0	27
<i>Industrial</i>	94	0	0	0	0	94
<i>Commercial</i>	689	0	0	0	0	689
<i>Agriculture</i>	29	0	0	0	0	29
<i>Religion</i>	36	0	0	0	0	36
<i>Government</i>	33	0	0	0	0	33
Mendocino						
<i>Commercial</i>	3,436	0	0	0	0	3,436

	# of Buildings					Total
	None	Slight	Moderate	Extensive	Complete	
<i>Religion</i>	216	0	0	0	0	216
<i>Agriculture</i>	184	0	0	0	0	184
<i>Single Family</i>	25,969	0	0	0	0	25,969
<i>Other Residential</i>	7,060	0	0	0	0	7,060
<i>Government</i>	83	0	0	0	0	83
<i>Education</i>	101	0	0	0	0	101
<i>Industrial</i>	869	0	0	0	0	869
Merced						
<i>Education</i>	162	1	0	0	0	163
<i>Government</i>	169	2	0	0	0	171
<i>Commercial</i>	4,651	95	8	0	0	4,754
<i>Agriculture</i>	7,229	334	86	4	0	7,653
<i>Religion</i>	338	6	1	0	0	345
<i>Industrial</i>	1,001	19	2	0	0	1,022
<i>Single Family</i>	62,920	676	2	0	0	63,598
<i>Other Residential</i>	10,496	262	29	0	0	10,787
Monterey						
<i>Single Family</i>	34,848	38,138	17,172	694	24	90,876
<i>Industrial</i>	544	403	447	276	180	1,850
<i>Other Residential</i>	6,564	6,115	3,708	1,583	1,840	19,809
<i>Education</i>	120	68	38	10	3	239
<i>Government</i>	65	43	43	24	10	185
<i>Agriculture</i>	1,395	196	142	61	21	1,815
<i>Commercial</i>	2,851	2,364	2,141	1,134	756	9,246

		# of Buildings					
		None	Slight	Moderate	Extensive	Complete	Total
Napa	<i>Religion</i>	201	131	119	81	48	580
	<i>Commercial</i>	4,014	7	0	0	0	4,021
	<i>Agriculture</i>	349	0	0	0	0	349
	<i>Religion</i>	148	0	0	0	0	148
	<i>Single Family</i>	38,749	12	0	0	0	38,761
	<i>Other Residential</i>	6,963	14	1	0	0	6,978
	<i>Government</i>	103	0	0	0	0	103
	<i>Education</i>	132	0	0	0	0	132
Placer	<i>Industrial</i>	1,364	3	0	0	0	1,367
	<i>Education</i>	231	0	0	0	0	231
	<i>Commercial</i>	8,538	0	0	0	0	8,538
	<i>Government</i>	377	0	0	0	0	377
	<i>Agriculture</i>	258	0	0	0	0	258
	<i>Religion</i>	382	0	0	0	0	382
	<i>Industrial</i>	2,703	0	0	0	0	2,703
	<i>Other Residential</i>	14,843	0	0	0	0	14,843
Sacramento	<i>Single Family</i>	134,719	0	0	0	0	134,719
	<i>Single Family</i>	386,831	9	0	0	0	386,840
	<i>Industrial</i>	6,754	2	0	0	0	6,756
	<i>Other Residential</i>	56,383	28	2	0	0	56,413
	<i>Education</i>	829	0	0	0	0	829
<i>Agriculture</i>	621	0	0	0	0	621	

	# of Buildings					Total
	None	Slight	Moderate	Extensive	Complete	
<i>Religion</i>	1,701	1	0	0	0	1,702
<i>Government</i>	618	1	0	0	0	619
<i>Commercial</i>	26,279	14	1	0	0	26,295
San Benito						
<i>Other Residential</i>	439	580	227	118	10	1,375
<i>Single Family</i>	6,360	7,604	759	3	0	14,726
<i>Industrial</i>	154	104	53	11	4	326
<i>Education</i>	24	13	3	1	1	42
<i>Government</i>	22	11	6	4	2	45
<i>Commercial</i>	426	363	185	72	34	1,080
<i>Religion</i>	22	24	10	5	3	64
<i>Agriculture</i>	166	60	22	4	1	253
San Francisco						
<i>Single Family</i>	147,706	2,797	195	4	0	150,703
<i>Other Residential</i>	41,570	2,575	378	5	0	44,529
<i>Government</i>	249	34	6	0	0	289
<i>Education</i>	546	23	4	0	0	572
<i>Industrial</i>	3,549	263	47	1	0	3,860
<i>Commercial</i>	19,258	1,783	297	6	0	21,344
<i>Religion</i>	1,259	75	11	0	0	1,345
<i>Agriculture</i>	152	8	1	0	0	162
San Joaquin						
<i>Commercial</i>	12,761	96	7	0	0	12,864
<i>Agriculture</i>	746	6	1	0	0	753
<i>Religion</i>	870	7	1	0	0	877

	# of Buildings					Total
	None	Slight	Moderate	Extensive	Complete	
<i>Government</i>	301	3	0	0	0	304
<i>Single Family</i>	187,244	1,545	132	2	0	188,922
<i>Other Residential</i>	21,544	240	21	0	0	21,805
<i>Education</i>	394	1	0	0	0	395
<i>Industrial</i>	4,885	40	3	0	0	4,928
San Luis Obispo						
<i>Religion</i>	360	0	0	0	0	360
<i>Agriculture</i>	421	0	0	0	0	421
<i>Government</i>	185	0	0	0	0	185
<i>Commercial</i>	9,374	1	0	0	0	9,375
<i>Single Family</i>	85,639	0	0	0	0	85,639
<i>Industrial</i>	2,556	0	0	0	0	2,556
<i>Other Residential</i>	20,209	7	0	0	0	20,216
<i>Education</i>	182	0	0	0	0	182
San Mateo						
<i>Religion</i>	629	88	18	1	0	736
<i>Agriculture</i>	366	103	58	12	1	539
<i>Government</i>	256	36	7	0	0	299
<i>Commercial</i>	12,272	1,731	366	25	1	14,395
<i>Industrial</i>	3,730	587	145	9	0	4,472
<i>Other Residential</i>	19,491	2,533	395	33	1	22,453
<i>Single Family</i>	146,949	12,635	346	1	0	159,931
<i>Education</i>	462	23	4	0	0	489
Santa Barbara						
<i>Government</i>	239	0	0	0	0	239

	# of Buildings					Total
	None	Slight	Moderate	Extensive	Complete	
<i>Other Residential</i>	24,111	0	0	0	0	24,111
<i>Education</i>	299	0	0	0	0	299
<i>Religion</i>	621	0	0	0	0	621
<i>Commercial</i>	9,820	0	0	0	0	9,820
<i>Agriculture</i>	464	0	0	0	0	464
<i>Single Family</i>	98,982	0	0	0	0	98,982
<i>Industrial</i>	2,840	0	0	0	0	2,840
Santa Clara						
<i>Other Residential</i>	41,304	14,308	3,274	266	7	59,160
<i>Single Family</i>	331,471	92,495	3,242	11	0	427,219
<i>Government</i>	339	116	42	5	0	502
<i>Education</i>	1,025	124	22	3	0	1,173
<i>Industrial</i>	6,574	2,146	641	69	3	9,433
<i>Commercial</i>	24,999	8,077	2,159	225	9	35,469
<i>Religion</i>	1,092	350	91	7	0	1,540
<i>Agriculture</i>	613	207	66	9	0	895
Santa Cruz						
<i>Religion</i>	12	68	123	102	53	359
<i>Agriculture</i>	44	199	297	200	100	840
<i>Single Family</i>	5,268	35,631	26,612	1,317	42	68,870
<i>Other Residential</i>	661	4,988	4,915	2,048	2,280	14,892
<i>Industrial</i>	57	356	624	476	306	1,819
<i>Education</i>	28	81	80	25	10	225
<i>Commercial</i>	231	1,467	2,355	1,605	1,036	6,694
<i>Government</i>	6	24	37	36	24	127

	# of Buildings					Total
	None	Slight	Moderate	Extensive	Complete	
Solano						
<i>Religion</i>	451	2	0	0	0	454
<i>Agriculture</i>	244	1	0	0	0	245
<i>Government</i>	151	1	0	0	0	152
<i>Commercial</i>	7,230	36	3	0	0	7,268
<i>Single Family</i>	120,847	121	0	0	0	120,968
<i>Industrial</i>	2,082	18	1	0	0	2,101
<i>Other Residential</i>	12,251	62	4	0	0	12,317
<i>Education</i>	225	0	0	0	0	225
Sonoma						
<i>Other Residential</i>	25,011	21	1	0	0	25,033
<i>Government</i>	319	0	0	0	0	319
<i>Education</i>	367	0	0	0	0	367
<i>Religion</i>	576	0	0	0	0	576
<i>Commercial</i>	12,099	11	1	0	0	12,110
<i>Agriculture</i>	1,301	3	0	0	0	1,304
<i>Single Family</i>	142,016	12	0	0	0	142,028
<i>Industrial</i>	3,821	4	0	0	0	3,825
Stanislaus						
<i>Other Residential</i>	19,364	192	13	0	0	19,569
<i>Single Family</i>	142,183	540	0	0	0	142,724
<i>Education</i>	307	0	0	0	0	307
<i>Government</i>	674	6	0	0	0	680
<i>Industrial</i>	3,427	44	4	0	0	3,475
<i>Commercial</i>	10,248	112	9	0	0	10,369

		# of Buildings					
		None	Slight	Moderate	Extensive	Complete	Total
Sutter	<i>Religion</i>	451	5	0	0	0	456
	<i>Agriculture</i>	1,223	14	2	0	0	1,239
	<i>Other Residential</i>	3,113	0	0	0	0	3,113
	<i>Industrial</i>	636	0	0	0	0	636
	<i>Education</i>	62	0	0	0	0	62
	<i>Government</i>	77	0	0	0	0	77
	<i>Single Family</i>	24,512	0	0	0	0	24,512
	<i>Commercial</i>	2,052	0	0	0	0	2,052
	<i>Agriculture</i>	1,125	0	0	0	0	1,125
Tulare	<i>Religion</i>	154	0	0	0	0	154
	<i>Commercial</i>	8,873	0	0	0	0	8,873
	<i>Agriculture</i>	3,555	0	0	0	0	3,555
	<i>Religion</i>	827	0	0	0	0	827
	<i>Government</i>	461	0	0	0	0	461
	<i>Single Family</i>	112,034	0	0	0	0	112,034
	<i>Other Residential</i>	20,021	1	0	0	0	20,022
	<i>Industrial</i>	2,148	0	0	0	0	2,148
	<i>Education</i>	269	0	0	0	0	269
Tuolumne	<i>Education</i>	57	0	0	0	0	57
	<i>Government</i>	143	0	0	0	0	143
	<i>Commercial</i>	1,576	0	0	0	0	1,576
	<i>Religion</i>	121	0	0	0	0	121

		# of Buildings					
		None	Slight	Moderate	Extensive	Complete	Total
Yolo	<i>Agriculture</i>	82	0	0	0	0	82
	<i>Industrial</i>	383	0	0	0	0	383
	<i>Other Residential</i>	4,962	0	0	0	0	4,962
	<i>Single Family</i>	21,645	0	0	0	0	21,645
	<i>Industrial</i>	1,117	0	0	0	0	1,117
	<i>Other Residential</i>	9,859	2	0	0	0	9,861
	<i>Education</i>	131	0	0	0	0	131
	<i>Government</i>	111	0	0	0	0	111
	<i>Single Family</i>	42,589	0	0	0	0	42,589
	<i>Commercial</i>	4,224	1	0	0	0	4,225
Yuba	<i>Agriculture</i>	281	0	0	0	0	281
	<i>Religion</i>	242	0	0	0	0	242
	<i>Government</i>	591	0	0	0	0	591
	<i>Education</i>	54	0	0	0	0	54
	<i>Other Residential</i>	7,021	0	0	0	0	7,021
	<i>Religion</i>	98	0	0	0	0	98
	<i>Commercial</i>	1,199	0	0	0	0	1,199
	<i>Agriculture</i>	92	0	0	0	0	92
	<i>Single Family</i>	18,867	0	0	0	0	18,867
	<i>Industrial</i>	404	0	0	0	0	404
Total		4,725,183	266,198	73,219	10,608	6,813	5,082,021

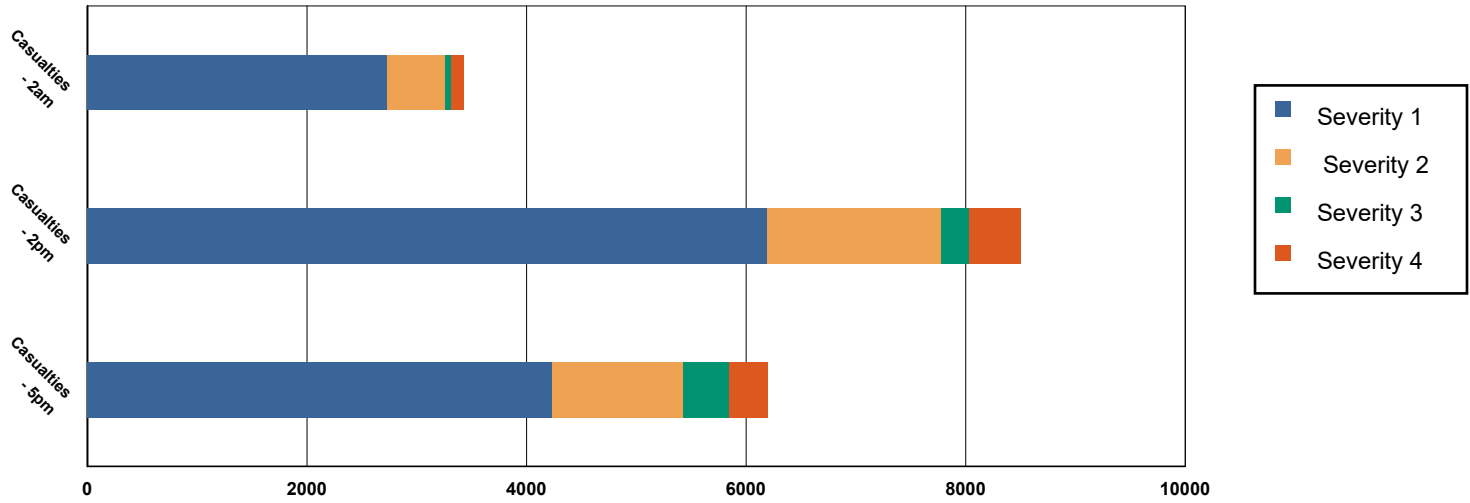
	# of Buildings					Total
	None	Slight	Moderate	Extensive	Complete	
Region Total	4,725,183	266,198	73,219	10,608	6,813	5,082,021

Totals only reflect data for those census tracts/blocks included in the user's study region and will reflect the entire county/state only if all of the census blocks for that county/states were selected at the time of study region creation.

Casualties Summary Report

June 27, 2024

Region Total Casualties



Injury Severity Level

Severity 1	Severity 2	Severity 3	Severity 4	Total
------------	------------	------------	------------	-------

California

Alameda

Casualties - 2am

	Severity 1	Severity 2	Severity 3	Severity 4	Total
Single Family	18	0	0	0	18
Hotels	0	0	0	0	0
Commuting	0	0	0	0	0
Educational	0	0	0	0	0
Industrial	1	0	0	0	1
Commercial	1	0	0	0	1
Other-Residential	19	1	0	0	20
Total Casualties - 2am	39	1	0	0	40

Casualties - 2pm

Industrial	7	0	0	0	8
Educational	7	0	0	0	7
Other-Residential	6	0	0	0	6
Single Family	5	0	0	0	5
Hotels	0	0	0	0	0
Commuting	0	0	0	0	0
Commercial	46	2	0	0	48

	Injury Severity Level				Total
	Severity 1	Severity 2	Severity 3	Severity 4	
California					
Alameda					
Total Casualties - 2pm	70	3	0	0	74
Casualties - 5pm					
Commuting	0	0	0	0	1
Single Family	6	0	0	0	6
Commercial	31	2	0	0	33
Hotels	0	0	0	0	0
Educational	1	0	0	0	1
Industrial	5	0	0	0	5
Other-Residential	7	0	0	0	7
Total Casualties - 5pm	50	2	0	0	53
Amador					
Casualties - 2am					
Commercial	0	0	0	0	0
Other-Residential	0	0	0	0	0
Commuting	0	0	0	0	0
Educational	0	0	0	0	0
Single Family	0	0	0	0	0
Hotels	0	0	0	0	0
Industrial	0	0	0	0	0
Total Casualties - 2am	0	0	0	0	0
Casualties - 2pm					
Single Family	0	0	0	0	0
Hotels	0	0	0	0	0
Educational	0	0	0	0	0
Commuting	0	0	0	0	0
Commercial	0	0	0	0	0
Other-Residential	0	0	0	0	0
Industrial	0	0	0	0	0
Total Casualties - 2pm	0	0	0	0	0
Casualties - 5pm					
Commercial	0	0	0	0	0
Commuting	0	0	0	0	0
Other-Residential	0	0	0	0	0
Single Family	0	0	0	0	0
Educational	0	0	0	0	0
Hotels	0	0	0	0	0
Industrial	0	0	0	0	0
Total Casualties - 5pm	0	0	0	0	0
Calaveras					
Casualties - 2am					
Other-Residential	0	0	0	0	0

	Injury Severity Level				Total
	Severity 1	Severity 2	Severity 3	Severity 4	
California					
Calaveras					
Casualties - 2am					
<i>Commuting</i>	0	0	0	0	0
<i>Commercial</i>	0	0	0	0	0
<i>Single Family</i>	0	0	0	0	0
<i>Hotels</i>	0	0	0	0	0
<i>Educational</i>	0	0	0	0	0
<i>Industrial</i>	0	0	0	0	0
Total Casualties - 2am	0	0	0	0	0
Casualties - 2pm					
<i>Hotels</i>	0	0	0	0	0
<i>Single Family</i>	0	0	0	0	0
<i>Educational</i>	0	0	0	0	0
<i>Commuting</i>	0	0	0	0	0
<i>Commercial</i>	0	0	0	0	0
<i>Industrial</i>	0	0	0	0	0
<i>Other-Residential</i>	0	0	0	0	0
Total Casualties - 2pm	0	0	0	0	0
Casualties - 5pm					
<i>Industrial</i>	0	0	0	0	0
<i>Commercial</i>	0	0	0	0	0
<i>Other-Residential</i>	0	0	0	0	0
<i>Educational</i>	0	0	0	0	0
<i>Hotels</i>	0	0	0	0	0
<i>Commuting</i>	0	0	0	0	0
<i>Single Family</i>	0	0	0	0	0
Total Casualties - 5pm	0	0	0	0	0
Colusa					
Casualties - 2am					
<i>Other-Residential</i>	0	0	0	0	0
<i>Industrial</i>	0	0	0	0	0
<i>Single Family</i>	0	0	0	0	0
<i>Commercial</i>	0	0	0	0	0
<i>Educational</i>	0	0	0	0	0
<i>Commuting</i>	0	0	0	0	0
<i>Hotels</i>	0	0	0	0	0
Total Casualties - 2am	0	0	0	0	0
Casualties - 2pm					
<i>Hotels</i>	0	0	0	0	0
<i>Single Family</i>	0	0	0	0	0
<i>Educational</i>	0	0	0	0	0
<i>Commercial</i>	0	0	0	0	0
<i>Commuting</i>	0	0	0	0	0

	Injury Severity Level				Total
	Severity 1	Severity 2	Severity 3	Severity 4	
California					
Colusa					
Casualties - 2pm					
Other-Residential	0	0	0	0	0
Industrial	0	0	0	0	0
Total Casualties - 2pm	0	0	0	0	0
Casualties - 5pm					
Industrial	0	0	0	0	0
Commercial	0	0	0	0	0
Other-Residential	0	0	0	0	0
Commuting	0	0	0	0	0
Single Family	0	0	0	0	0
Educational	0	0	0	0	0
Hotels	0	0	0	0	0
Total Casualties - 5pm	0	0	0	0	0
Contra Costa					
Casualties - 2am					
Educational	0	0	0	0	0
Hotels	0	0	0	0	0
Industrial	0	0	0	0	0
Other-Residential	1	0	0	0	1
Single Family	2	0	0	0	2
Commercial	0	0	0	0	0
Commuting	0	0	0	0	0
Total Casualties - 2am	3	0	0	0	3
Casualties - 2pm					
Other-Residential	0	0	0	0	0
Industrial	0	0	0	0	0
Hotels	0	0	0	0	0
Single Family	0	0	0	0	0
Educational	0	0	0	0	0
Commuting	0	0	0	0	0
Commercial	3	0	0	0	3
Total Casualties - 2pm	5	0	0	0	5
Casualties - 5pm					
Educational	0	0	0	0	0
Commuting	0	0	0	0	0
Single Family	1	0	0	0	1
Hotels	0	0	0	0	0
Industrial	0	0	0	0	0
Other-Residential	0	0	0	0	0
Commercial	2	0	0	0	2
Total Casualties - 5pm	4	0	0	0	4

	Injury Severity Level				Total
	Severity 1	Severity 2	Severity 3	Severity 4	
California					
El Dorado					
Casualties - 2am					
<i>Commuting</i>	0	0	0	0	0
<i>Educational</i>	0	0	0	0	0
<i>Single Family</i>	0	0	0	0	0
<i>Hotels</i>	0	0	0	0	0
<i>Other-Residential</i>	0	0	0	0	0
<i>Industrial</i>	0	0	0	0	0
<i>Commercial</i>	0	0	0	0	0
Total Casualties - 2am	0	0	0	0	0
Casualties - 2pm					
<i>Industrial</i>	0	0	0	0	0
<i>Other-Residential</i>	0	0	0	0	0
<i>Single Family</i>	0	0	0	0	0
<i>Hotels</i>	0	0	0	0	0
<i>Educational</i>	0	0	0	0	0
<i>Commuting</i>	0	0	0	0	0
<i>Commercial</i>	0	0	0	0	0
Total Casualties - 2pm	0	0	0	0	0
Casualties - 5pm					
<i>Commercial</i>	0	0	0	0	0
<i>Commuting</i>	0	0	0	0	0
<i>Single Family</i>	0	0	0	0	0
<i>Educational</i>	0	0	0	0	0
<i>Hotels</i>	0	0	0	0	0
<i>Industrial</i>	0	0	0	0	0
<i>Other-Residential</i>	0	0	0	0	0
Total Casualties - 5pm	0	0	0	0	0
Fresno					
Casualties - 2am					
<i>Hotels</i>	0	0	0	0	0
<i>Educational</i>	0	0	0	0	0
<i>Industrial</i>	0	0	0	0	0
<i>Commercial</i>	0	0	0	0	0
<i>Other-Residential</i>	0	0	0	0	0
<i>Single Family</i>	0	0	0	0	0
<i>Commuting</i>	0	0	0	0	0
Total Casualties - 2am	0	0	0	0	0
Casualties - 2pm					
<i>Commercial</i>	0	0	0	0	0
<i>Other-Residential</i>	0	0	0	0	0
<i>Industrial</i>	0	0	0	0	0
<i>Single Family</i>	0	0	0	0	0

	Injury Severity Level				Total
	Severity 1	Severity 2	Severity 3	Severity 4	
California					
Fresno					
Casualties - 2pm					
<i>Hotels</i>	0	0	0	0	0
<i>Commuting</i>	0	0	0	0	0
<i>Educational</i>	0	0	0	0	0
Total Casualties - 2pm	0	0	0	0	1
Casualties - 5pm					
<i>Educational</i>	0	0	0	0	0
<i>Commuting</i>	0	0	0	0	0
<i>Hotels</i>	0	0	0	0	0
<i>Industrial</i>	0	0	0	0	0
<i>Single Family</i>	0	0	0	0	0
<i>Other-Residential</i>	0	0	0	0	0
<i>Commercial</i>	0	0	0	0	0
Total Casualties - 5pm	0	0	0	0	0
Kern					
Casualties - 2am					
<i>Commercial</i>	0	0	0	0	0
<i>Commuting</i>	0	0	0	0	0
<i>Educational</i>	0	0	0	0	0
<i>Single Family</i>	0	0	0	0	0
<i>Other-Residential</i>	0	0	0	0	0
<i>Hotels</i>	0	0	0	0	0
<i>Industrial</i>	0	0	0	0	0
Total Casualties - 2am	0	0	0	0	0
Casualties - 2pm					
<i>Educational</i>	0	0	0	0	0
<i>Commuting</i>	0	0	0	0	0
<i>Single Family</i>	0	0	0	0	0
<i>Hotels</i>	0	0	0	0	0
<i>Other-Residential</i>	0	0	0	0	0
<i>Commercial</i>	0	0	0	0	0
<i>Industrial</i>	0	0	0	0	0
Total Casualties - 2pm	0	0	0	0	0
Casualties - 5pm					
<i>Single Family</i>	0	0	0	0	0
<i>Commercial</i>	0	0	0	0	0
<i>Other-Residential</i>	0	0	0	0	0
<i>Commuting</i>	0	0	0	0	0
<i>Educational</i>	0	0	0	0	0
<i>Hotels</i>	0	0	0	0	0
<i>Industrial</i>	0	0	0	0	0

	Injury Severity Level				Total
	Severity 1	Severity 2	Severity 3	Severity 4	
California					
Kern					
Total Casualties - 5pm	0	0	0	0	0
Kings					
Casualties - 2am					
<i>Industrial</i>	0	0	0	0	0
<i>Other-Residential</i>	0	0	0	0	0
<i>Educational</i>	0	0	0	0	0
<i>Commuting</i>	0	0	0	0	0
<i>Commercial</i>	0	0	0	0	0
<i>Single Family</i>	0	0	0	0	0
<i>Hotels</i>	0	0	0	0	0
Total Casualties - 2am	0	0	0	0	0
Casualties - 2pm					
<i>Single Family</i>	0	0	0	0	0
<i>Other-Residential</i>	0	0	0	0	0
<i>Commercial</i>	0	0	0	0	0
<i>Educational</i>	0	0	0	0	0
<i>Commuting</i>	0	0	0	0	0
<i>Hotels</i>	0	0	0	0	0
<i>Industrial</i>	0	0	0	0	0
Total Casualties - 2pm	0	0	0	0	0
Casualties - 5pm					
<i>Single Family</i>	0	0	0	0	0
<i>Commercial</i>	0	0	0	0	0
<i>Commuting</i>	0	0	0	0	0
<i>Other-Residential</i>	0	0	0	0	0
<i>Educational</i>	0	0	0	0	0
<i>Hotels</i>	0	0	0	0	0
<i>Industrial</i>	0	0	0	0	0
Total Casualties - 5pm	0	0	0	0	0
Lake					
Casualties - 2am					
<i>Hotels</i>	0	0	0	0	0
<i>Industrial</i>	0	0	0	0	0
<i>Other-Residential</i>	0	0	0	0	0
<i>Commuting</i>	0	0	0	0	0
<i>Educational</i>	0	0	0	0	0
<i>Single Family</i>	0	0	0	0	0
<i>Commercial</i>	0	0	0	0	0
Total Casualties - 2am	0	0	0	0	0
Casualties - 2pm					
<i>Industrial</i>	0	0	0	0	0

	Injury Severity Level				Total
	Severity 1	Severity 2	Severity 3	Severity 4	
California					
Lake					
Casualties - 2pm					
Single Family	0	0	0	0	0
Commercial	0	0	0	0	0
Other-Residential	0	0	0	0	0
Hotels	0	0	0	0	0
Educational	0	0	0	0	0
Commuting	0	0	0	0	0
Total Casualties - 2pm	0	0	0	0	0
Casualties - 5pm					
Other-Residential	0	0	0	0	0
Industrial	0	0	0	0	0
Commercial	0	0	0	0	0
Educational	0	0	0	0	0
Commuting	0	0	0	0	0
Single Family	0	0	0	0	0
Hotels	0	0	0	0	0
Total Casualties - 5pm	0	0	0	0	0
Madera					
Casualties - 2am					
Hotels	0	0	0	0	0
Educational	0	0	0	0	0
Single Family	0	0	0	0	0
Commuting	0	0	0	0	0
Industrial	0	0	0	0	0
Commercial	0	0	0	0	0
Other-Residential	0	0	0	0	0
Total Casualties - 2am	0	0	0	0	0
Casualties - 2pm					
Industrial	0	0	0	0	0
Commercial	0	0	0	0	0
Other-Residential	0	0	0	0	0
Commuting	0	0	0	0	0
Single Family	0	0	0	0	0
Hotels	0	0	0	0	0
Educational	0	0	0	0	0
Total Casualties - 2pm	0	0	0	0	0
Casualties - 5pm					
Industrial	0	0	0	0	0
Commercial	0	0	0	0	0
Single Family	0	0	0	0	0
Educational	0	0	0	0	0
Other-Residential	0	0	0	0	0

	Injury Severity Level				Total
	Severity 1	Severity 2	Severity 3	Severity 4	
California					
Madera					
Casualties - 5pm					
Commuting	0	0	0	0	0
Hotels	0	0	0	0	0
Total Casualties - 5pm	0	0	0	0	0
Marin					
Casualties - 2am					
Commercial	0	0	0	0	0
Commuting	0	0	0	0	0
Other-Residential	0	0	0	0	0
Educational	0	0	0	0	0
Single Family	0	0	0	0	0
Hotels	0	0	0	0	0
Industrial	0	0	0	0	0
Total Casualties - 2am	0	0	0	0	0
Casualties - 2pm					
Hotels	0	0	0	0	0
Commuting	0	0	0	0	0
Educational	0	0	0	0	0
Industrial	0	0	0	0	0
Other-Residential	0	0	0	0	0
Commercial	0	0	0	0	0
Single Family	0	0	0	0	0
Total Casualties - 2pm	1	0	0	0	1
Casualties - 5pm					
Commuting	0	0	0	0	0
Commercial	0	0	0	0	0
Other-Residential	0	0	0	0	0
Single Family	0	0	0	0	0
Industrial	0	0	0	0	0
Educational	0	0	0	0	0
Hotels	0	0	0	0	0
Total Casualties - 5pm	0	0	0	0	0
Mariposa					
Casualties - 2am					
Commuting	0	0	0	0	0
Single Family	0	0	0	0	0
Commercial	0	0	0	0	0
Hotels	0	0	0	0	0
Educational	0	0	0	0	0
Industrial	0	0	0	0	0
Other-Residential	0	0	0	0	0

	Injury Severity Level				Total
	Severity 1	Severity 2	Severity 3	Severity 4	
California					
Mariposa					
Total Casualties - 2am	0	0	0	0	0
Casualties - 2pm					
<i>Hotels</i>	0	0	0	0	0
<i>Industrial</i>	0	0	0	0	0
<i>Commercial</i>	0	0	0	0	0
<i>Other-Residential</i>	0	0	0	0	0
<i>Educational</i>	0	0	0	0	0
<i>Commuting</i>	0	0	0	0	0
<i>Single Family</i>	0	0	0	0	0
Total Casualties - 2pm	0	0	0	0	0
Casualties - 5pm					
<i>Other-Residential</i>	0	0	0	0	0
<i>Educational</i>	0	0	0	0	0
<i>Commuting</i>	0	0	0	0	0
<i>Hotels</i>	0	0	0	0	0
<i>Single Family</i>	0	0	0	0	0
<i>Commercial</i>	0	0	0	0	0
<i>Industrial</i>	0	0	0	0	0
Total Casualties - 5pm	0	0	0	0	0
Mendocino					
Casualties - 2am					
<i>Educational</i>	0	0	0	0	0
<i>Hotels</i>	0	0	0	0	0
<i>Commuting</i>	0	0	0	0	0
<i>Industrial</i>	0	0	0	0	0
<i>Other-Residential</i>	0	0	0	0	0
<i>Single Family</i>	0	0	0	0	0
<i>Commercial</i>	0	0	0	0	0
Total Casualties - 2am	0	0	0	0	0
Casualties - 2pm					
<i>Industrial</i>	0	0	0	0	0
<i>Other-Residential</i>	0	0	0	0	0
<i>Commercial</i>	0	0	0	0	0
<i>Single Family</i>	0	0	0	0	0
<i>Commuting</i>	0	0	0	0	0
<i>Hotels</i>	0	0	0	0	0
<i>Educational</i>	0	0	0	0	0
Total Casualties - 2pm	0	0	0	0	0
Casualties - 5pm					
<i>Hotels</i>	0	0	0	0	0
<i>Single Family</i>	0	0	0	0	0

	Injury Severity Level				Total
	Severity 1	Severity 2	Severity 3	Severity 4	
California					
Mendocino					
Casualties - 5pm					
<i>Educational</i>	0	0	0	0	0
<i>Commuting</i>	0	0	0	0	0
<i>Commercial</i>	0	0	0	0	0
<i>Other-Residential</i>	0	0	0	0	0
<i>Industrial</i>	0	0	0	0	0
Total Casualties - 5pm	0	0	0	0	0
Merced					
Casualties - 2am					
<i>Hotels</i>	0	0	0	0	0
<i>Industrial</i>	0	0	0	0	0
<i>Commercial</i>	0	0	0	0	0
<i>Single Family</i>	1	0	0	0	1
<i>Other-Residential</i>	1	0	0	0	1
<i>Educational</i>	0	0	0	0	0
<i>Commuting</i>	0	0	0	0	0
Total Casualties - 2am	2	0	0	0	2
Casualties - 2pm					
<i>Other-Residential</i>	0	0	0	0	0
<i>Industrial</i>	0	0	0	0	0
<i>Commercial</i>	5	0	0	0	5
<i>Commuting</i>	0	0	0	0	0
<i>Hotels</i>	0	0	0	0	0
<i>Educational</i>	0	0	0	0	0
<i>Single Family</i>	0	0	0	0	0
Total Casualties - 2pm	6	0	0	0	7
Casualties - 5pm					
<i>Industrial</i>	0	0	0	0	0
<i>Hotels</i>	0	0	0	0	0
<i>Educational</i>	0	0	0	0	0
<i>Commuting</i>	0	0	0	0	0
<i>Single Family</i>	0	0	0	0	0
<i>Commercial</i>	4	0	0	0	4
<i>Other-Residential</i>	0	0	0	0	0
Total Casualties - 5pm	5	0	0	0	5
Monterey					
Casualties - 2am					
<i>Other-Residential</i>	825	208	24	46	1,103
<i>Commuting</i>	0	0	1	0	1
<i>Commercial</i>	17	5	1	2	24
<i>Single Family</i>	239	22	0	0	262
<i>Hotels</i>	0	0	0	0	1

	Injury Severity Level				Total
	Severity 1	Severity 2	Severity 3	Severity 4	
California					
Monterey					
Casualties - 2am					
<i>Educational</i>	0	0	0	0	0
<i>Industrial</i>	20	6	1	2	29
Total Casualties - 2am	1,102	242	27	50	1,420
Casualties - 2pm					
<i>Commuting</i>	3	3	6	1	13
<i>Commercial</i>	1,221	353	57	113	1,744
<i>Single Family</i>	68	6	0	0	75
<i>Hotels</i>	0	0	0	0	0
<i>Educational</i>	559	143	22	42	766
<i>Industrial</i>	148	44	7	14	212
<i>Other-Residential</i>	240	61	7	14	322
Total Casualties - 2pm	2,239	610	99	183	3,131
Casualties - 5pm					
<i>Commercial</i>	906	261	43	82	1,292
<i>Other-Residential</i>	311	79	10	18	417
<i>Industrial</i>	93	27	4	8	133
<i>Hotels</i>	0	0	0	0	0
<i>Educational</i>	151	40	6	12	209
<i>Commuting</i>	47	66	108	21	242
<i>Single Family</i>	91	9	0	0	99
Total Casualties - 5pm	1,599	481	171	142	2,392
Napa					
Casualties - 2am					
<i>Commercial</i>	0	0	0	0	0
<i>Other-Residential</i>	0	0	0	0	0
<i>Educational</i>	0	0	0	0	0
<i>Single Family</i>	0	0	0	0	0
<i>Commuting</i>	0	0	0	0	0
<i>Hotels</i>	0	0	0	0	0
<i>Industrial</i>	0	0	0	0	0
Total Casualties - 2am	0	0	0	0	0
Casualties - 2pm					
<i>Educational</i>	0	0	0	0	0
<i>Hotels</i>	0	0	0	0	0
<i>Commuting</i>	0	0	0	0	0
<i>Industrial</i>	0	0	0	0	0
<i>Other-Residential</i>	0	0	0	0	0
<i>Single Family</i>	0	0	0	0	0
<i>Commercial</i>	0	0	0	0	0
Total Casualties - 2pm	0	0	0	0	0

	Injury Severity Level				Total
	Severity 1	Severity 2	Severity 3	Severity 4	
California					
Napa					
Casualties - 5pm					
Commercial	0	0	0	0	0
Single Family	0	0	0	0	0
Other-Residential	0	0	0	0	0
Commuting	0	0	0	0	0
Industrial	0	0	0	0	0
Educational	0	0	0	0	0
Hotels	0	0	0	0	0
Total Casualties - 5pm	0	0	0	0	0
Placer					
Casualties - 2am					
Hotels	0	0	0	0	0
Educational	0	0	0	0	0
Industrial	0	0	0	0	0
Other-Residential	0	0	0	0	0
Commercial	0	0	0	0	0
Single Family	0	0	0	0	0
Commuting	0	0	0	0	0
Total Casualties - 2am	0	0	0	0	0
Casualties - 2pm					
Other-Residential	0	0	0	0	0
Industrial	0	0	0	0	0
Commercial	0	0	0	0	0
Single Family	0	0	0	0	0
Educational	0	0	0	0	0
Commuting	0	0	0	0	0
Hotels	0	0	0	0	0
Total Casualties - 2pm	0	0	0	0	0
Casualties - 5pm					
Single Family	0	0	0	0	0
Hotels	0	0	0	0	0
Commuting	0	0	0	0	0
Educational	0	0	0	0	0
Commercial	0	0	0	0	0
Industrial	0	0	0	0	0
Other-Residential	0	0	0	0	0
Total Casualties - 5pm	0	0	0	0	0
Sacramento					
Casualties - 2am					
Industrial	0	0	0	0	0
Other-Residential	0	0	0	0	0
Commercial	0	0	0	0	0

	Injury Severity Level				Total
	Severity 1	Severity 2	Severity 3	Severity 4	
California					
Sacramento					
Casualties - 2am					
Single Family	0	0	0	0	0
Hotels	0	0	0	0	0
Commuting	0	0	0	0	0
Educational	0	0	0	0	0
Total Casualties - 2am	0	0	0	0	0
Casualties - 2pm					
Other-Residential	0	0	0	0	0
Commuting	0	0	0	0	0
Single Family	0	0	0	0	0
Commercial	0	0	0	0	0
Hotels	0	0	0	0	0
Educational	0	0	0	0	0
Industrial	0	0	0	0	0
Total Casualties - 2pm	0	0	0	0	0
Casualties - 5pm					
Industrial	0	0	0	0	0
Educational	0	0	0	0	0
Hotels	0	0	0	0	0
Commercial	0	0	0	0	0
Commuting	0	0	0	0	0
Other-Residential	0	0	0	0	0
Single Family	0	0	0	0	0
Total Casualties - 5pm	0	0	0	0	0
San Benito					
Casualties - 2am					
Other-Residential	10	1	0	0	12
Commercial	1	0	0	0	1
Commuting	0	0	0	0	0
Hotels	0	0	0	0	0
Educational	0	0	0	0	0
Single Family	20	1	0	0	20
Industrial	1	0	0	0	1
Total Casualties - 2am	31	3	0	0	34
Casualties - 2pm					
Hotels	0	0	0	0	0
Educational	40	11	2	3	55
Industrial	4	1	0	0	5
Other-Residential	3	0	0	0	3
Commercial	52	13	2	4	69
Commuting	0	0	0	0	0
Single Family	6	0	0	0	6

	Injury Severity Level				Total
	Severity 1	Severity 2	Severity 3	Severity 4	
California					
San Benito					
Total Casualties - 2pm	104	25	4	7	139
Casualties - 5pm					
<i>Commuting</i>	1	1	2	0	5
<i>Commercial</i>	38	9	1	3	52
<i>Other-Residential</i>	4	1	0	0	4
<i>Single Family</i>	7	0	0	0	7
<i>Industrial</i>	2	0	0	0	3
<i>Educational</i>	5	1	0	0	7
<i>Hotels</i>	0	0	0	0	0
Total Casualties - 5pm	58	14	4	4	79
San Francisco					
Casualties - 2am					
<i>Industrial</i>	0	0	0	0	0
<i>Hotels</i>	0	0	0	0	0
<i>Commercial</i>	1	0	0	0	1
<i>Other-Residential</i>	33	2	0	0	35
<i>Commuting</i>	0	0	0	0	0
<i>Educational</i>	0	0	0	0	0
<i>Single Family</i>	6	0	0	0	6
Total Casualties - 2am	40	2	0	0	42
Casualties - 2pm					
<i>Commercial</i>	47	3	0	0	50
<i>Industrial</i>	2	0	0	0	3
<i>Other-Residential</i>	10	1	0	0	11
<i>Single Family</i>	2	0	0	0	2
<i>Hotels</i>	0	0	0	0	0
<i>Commuting</i>	0	0	0	0	0
<i>Educational</i>	7	0	0	0	7
Total Casualties - 2pm	69	4	0	0	73
Casualties - 5pm					
<i>Educational</i>	3	0	0	0	3
<i>Hotels</i>	0	0	0	0	0
<i>Industrial</i>	2	0	0	0	2
<i>Commuting</i>	0	0	0	0	0
<i>Commercial</i>	27	2	0	0	28
<i>Other-Residential</i>	13	1	0	0	13
<i>Single Family</i>	2	0	0	0	2
Total Casualties - 5pm	46	3	0	0	49
San Joaquin					
Casualties - 2am					
<i>Educational</i>	0	0	0	0	0

	Injury Severity Level				Total
	Severity 1	Severity 2	Severity 3	Severity 4	
California					
San Joaquin					
Casualties - 2am					
<i>Commuting</i>	0	0	0	0	0
<i>Hotels</i>	0	0	0	0	0
<i>Commercial</i>	0	0	0	0	0
<i>Single Family</i>	4	0	0	0	4
<i>Industrial</i>	0	0	0	0	0
<i>Other-Residential</i>	1	0	0	0	1
Total Casualties - 2am	5	0	0	0	5
Casualties - 2pm					
<i>Industrial</i>	0	0	0	0	0
<i>Other-Residential</i>	0	0	0	0	0
<i>Educational</i>	0	0	0	0	0
<i>Single Family</i>	1	0	0	0	1
<i>Hotels</i>	0	0	0	0	0
<i>Commuting</i>	0	0	0	0	0
<i>Commercial</i>	2	0	0	0	2
Total Casualties - 2pm	4	0	0	0	4
Casualties - 5pm					
<i>Commuting</i>	0	0	0	0	0
<i>Single Family</i>	2	0	0	0	2
<i>Educational</i>	0	0	0	0	0
<i>Hotels</i>	0	0	0	0	0
<i>Industrial</i>	0	0	0	0	0
<i>Commercial</i>	1	0	0	0	1
<i>Other-Residential</i>	0	0	0	0	0
Total Casualties - 5pm	3	0	0	0	3
San Luis Obispo					
Casualties - 2am					
<i>Commercial</i>	0	0	0	0	0
<i>Other-Residential</i>	0	0	0	0	0
<i>Industrial</i>	0	0	0	0	0
<i>Single Family</i>	0	0	0	0	0
<i>Commuting</i>	0	0	0	0	0
<i>Educational</i>	0	0	0	0	0
<i>Hotels</i>	0	0	0	0	0
Total Casualties - 2am	0	0	0	0	0
Casualties - 2pm					
<i>Single Family</i>	0	0	0	0	0
<i>Educational</i>	0	0	0	0	0
<i>Other-Residential</i>	0	0	0	0	0
<i>Hotels</i>	0	0	0	0	0
<i>Commuting</i>	0	0	0	0	0

	Injury Severity Level				Total
	Severity 1	Severity 2	Severity 3	Severity 4	
California					
San Luis Obispo					
Casualties - 2pm					
<i>Commercial</i>	0	0	0	0	0
<i>Industrial</i>	0	0	0	0	0
Total Casualties - 2pm	0	0	0	0	0
Casualties - 5pm					
<i>Industrial</i>	0	0	0	0	0
<i>Other-Residential</i>	0	0	0	0	0
<i>Commuting</i>	0	0	0	0	0
<i>Single Family</i>	0	0	0	0	0
<i>Commercial</i>	0	0	0	0	0
<i>Hotels</i>	0	0	0	0	0
<i>Educational</i>	0	0	0	0	0
Total Casualties - 5pm	0	0	0	0	0
San Mateo					
Casualties - 2am					
<i>Industrial</i>	1	0	0	0	1
<i>Other-Residential</i>	21	1	0	0	22
<i>Single Family</i>	22	0	0	0	22
<i>Commercial</i>	1	0	0	0	1
<i>Educational</i>	0	0	0	0	0
<i>Commuting</i>	0	0	0	0	0
<i>Hotels</i>	0	0	0	0	0
Total Casualties - 2am	45	2	0	0	46
Casualties - 2pm					
<i>Other-Residential</i>	6	0	0	0	7
<i>Single Family</i>	6	0	0	0	6
<i>Commuting</i>	0	0	0	0	0
<i>Commercial</i>	48	4	0	0	52
<i>Educational</i>	6	0	0	0	7
<i>Hotels</i>	0	0	0	0	0
<i>Industrial</i>	6	0	0	0	6
Total Casualties - 2pm	72	5	0	0	78
Casualties - 5pm					
<i>Commercial</i>	31	3	0	0	34
<i>Industrial</i>	4	0	0	0	4
<i>Other-Residential</i>	8	0	0	0	8
<i>Single Family</i>	8	0	0	0	8
<i>Educational</i>	1	0	0	0	1
<i>Commuting</i>	1	1	2	0	5
<i>Hotels</i>	0	0	0	0	0
Total Casualties - 5pm	52	5	2	1	60

	Injury Severity Level				Total
	Severity 1	Severity 2	Severity 3	Severity 4	
California					
Santa Barbara					
Casualties - 2am					
<i>Industrial</i>	0	0	0	0	0
<i>Commercial</i>	0	0	0	0	0
<i>Other-Residential</i>	0	0	0	0	0
<i>Commuting</i>	0	0	0	0	0
<i>Educational</i>	0	0	0	0	0
<i>Single Family</i>	0	0	0	0	0
<i>Hotels</i>	0	0	0	0	0
Total Casualties - 2am	0	0	0	0	0
Casualties - 2pm					
<i>Commercial</i>	0	0	0	0	0
<i>Single Family</i>	0	0	0	0	0
<i>Other-Residential</i>	0	0	0	0	0
<i>Commuting</i>	0	0	0	0	0
<i>Educational</i>	0	0	0	0	0
<i>Hotels</i>	0	0	0	0	0
<i>Industrial</i>	0	0	0	0	0
Total Casualties - 2pm	0	0	0	0	0
Casualties - 5pm					
<i>Other-Residential</i>	0	0	0	0	0
<i>Single Family</i>	0	0	0	0	0
<i>Commercial</i>	0	0	0	0	0
<i>Commuting</i>	0	0	0	0	0
<i>Educational</i>	0	0	0	0	0
<i>Industrial</i>	0	0	0	0	0
<i>Hotels</i>	0	0	0	0	0
Total Casualties - 5pm	0	0	0	0	0
Santa Clara					
Casualties - 2am					
<i>Commuting</i>	0	0	0	0	0
<i>Educational</i>	0	0	0	0	0
<i>Single Family</i>	165	3	0	0	168
<i>Hotels</i>	0	0	0	0	0
<i>Industrial</i>	5	0	0	0	6
<i>Commercial</i>	3	0	0	0	4
<i>Other-Residential</i>	124	9	0	1	133
Total Casualties - 2am	298	13	0	1	311
Casualties - 2pm					
<i>Industrial</i>	38	3	0	0	41
<i>Commercial</i>	222	20	1	2	244
<i>Single Family</i>	44	1	0	0	45
<i>Commuting</i>	0	0	1	0	1

Injury Severity Level

Severity 1 Severity 2 Severity 3 Severity 4 Total

California

Santa Clara

Casualties - 2pm

<i>Hotels</i>	0	0	0	0	0
<i>Other-Residential</i>	37	3	0	0	40
<i>Educational</i>	56	4	0	0	60
Total Casualties - 2pm	398	31	2	2	432

Casualties - 5pm

<i>Industrial</i>	24	2	0	0	26
<i>Hotels</i>	0	0	0	0	0
<i>Other-Residential</i>	46	3	0	0	49
<i>Commercial</i>	151	13	1	1	166
<i>Commuting</i>	5	6	11	2	23
<i>Single Family</i>	59	1	0	0	60
<i>Educational</i>	9	0	0	0	10
Total Casualties - 5pm	293	26	11	3	335

Santa Cruz

Casualties - 2am

<i>Hotels</i>	1	0	0	0	2
<i>Educational</i>	0	0	0	0	0
<i>Industrial</i>	32	9	1	3	46
<i>Other-Residential</i>	849	223	29	55	1,156
<i>Single Family</i>	247	25	0	0	272
<i>Commercial</i>	32	10	2	3	46
<i>Commuting</i>	0	0	1	0	2
Total Casualties - 2am	1,162	267	33	62	1,524

Casualties - 2pm

<i>Industrial</i>	238	68	11	21	338
<i>Other-Residential</i>	275	72	9	18	374
<i>Commercial</i>	2,080	618	102	199	2,999
<i>Commuting</i>	3	4	7	1	16
<i>Educational</i>	541	139	20	40	740
<i>Single Family</i>	80	8	0	0	88
<i>Hotels</i>	0	0	0	0	0
Total Casualties - 2pm	3,218	910	149	279	4,555

Casualties - 5pm

<i>Industrial</i>	149	43	7	13	211
<i>Other-Residential</i>	324	86	11	21	443
<i>Commercial</i>	1,385	409	67	130	1,992
<i>Commuting</i>	62	85	141	28	317
<i>Single Family</i>	94	9	0	0	104
<i>Hotels</i>	0	0	0	0	0
<i>Educational</i>	108	26	4	7	145

	Injury Severity Level				Total
	Severity 1	Severity 2	Severity 3	Severity 4	
California					
Santa Cruz					
Total Casualties - 5pm	2,123	659	231	200	3,213
Solano					
Casualties - 2am					
<i>Industrial</i>	0	0	0	0	0
<i>Other-Residential</i>	0	0	0	0	0
<i>Commercial</i>	0	0	0	0	0
<i>Educational</i>	0	0	0	0	0
<i>Commuting</i>	0	0	0	0	0
<i>Single Family</i>	0	0	0	0	0
<i>Hotels</i>	0	0	0	0	0
Total Casualties - 2am	0	0	0	0	0
Casualties - 2pm					
<i>Single Family</i>	0	0	0	0	0
<i>Other-Residential</i>	0	0	0	0	0
<i>Commercial</i>	0	0	0	0	0
<i>Educational</i>	0	0	0	0	0
<i>Commuting</i>	0	0	0	0	0
<i>Hotels</i>	0	0	0	0	0
<i>Industrial</i>	0	0	0	0	0
Total Casualties - 2pm	1	0	0	0	1
Casualties - 5pm					
<i>Commercial</i>	0	0	0	0	0
<i>Other-Residential</i>	0	0	0	0	0
<i>Single Family</i>	0	0	0	0	0
<i>Educational</i>	0	0	0	0	0
<i>Commuting</i>	0	0	0	0	0
<i>Hotels</i>	0	0	0	0	0
<i>Industrial</i>	0	0	0	0	0
Total Casualties - 5pm	0	0	0	0	0
Sonoma					
Casualties - 2am					
<i>Single Family</i>	0	0	0	0	0
<i>Other-Residential</i>	0	0	0	0	0
<i>Commercial</i>	0	0	0	0	0
<i>Commuting</i>	0	0	0	0	0
<i>Hotels</i>	0	0	0	0	0
<i>Educational</i>	0	0	0	0	0
<i>Industrial</i>	0	0	0	0	0
Total Casualties - 2am	0	0	0	0	0
Casualties - 2pm					
<i>Single Family</i>	0	0	0	0	0

	Injury Severity Level				Total
	Severity 1	Severity 2	Severity 3	Severity 4	
California					
Sonoma					
Casualties - 2pm					
<i>Commuting</i>	0	0	0	0	0
<i>Educational</i>	0	0	0	0	0
<i>Hotels</i>	0	0	0	0	0
<i>Industrial</i>	0	0	0	0	0
<i>Other-Residential</i>	0	0	0	0	0
<i>Commercial</i>	0	0	0	0	0
Total Casualties - 2pm	0	0	0	0	0
Casualties - 5pm					
<i>Single Family</i>	0	0	0	0	0
<i>Commercial</i>	0	0	0	0	0
<i>Commuting</i>	0	0	0	0	0
<i>Hotels</i>	0	0	0	0	0
<i>Educational</i>	0	0	0	0	0
<i>Industrial</i>	0	0	0	0	0
<i>Other-Residential</i>	0	0	0	0	0
Total Casualties - 5pm	0	0	0	0	0
Stanislaus					
Casualties - 2am					
<i>Hotels</i>	0	0	0	0	0
<i>Industrial</i>	0	0	0	0	0
<i>Commercial</i>	0	0	0	0	0
<i>Single Family</i>	1	0	0	0	1
<i>Other-Residential</i>	1	0	0	0	1
<i>Commuting</i>	0	0	0	0	0
<i>Educational</i>	0	0	0	0	0
Total Casualties - 2am	1	0	0	0	2
Casualties - 2pm					
<i>Industrial</i>	0	0	0	0	0
<i>Other-Residential</i>	0	0	0	0	0
<i>Commercial</i>	1	0	0	0	1
<i>Commuting</i>	0	0	0	0	0
<i>Educational</i>	0	0	0	0	0
<i>Single Family</i>	0	0	0	0	0
<i>Hotels</i>	0	0	0	0	0
Total Casualties - 2pm	2	0	0	0	2
Casualties - 5pm					
<i>Industrial</i>	0	0	0	0	0
<i>Other-Residential</i>	0	0	0	0	0
<i>Commuting</i>	0	0	0	0	0
<i>Single Family</i>	0	0	0	0	0
<i>Commercial</i>	1	0	0	0	1

	Injury Severity Level				Total
	Severity 1	Severity 2	Severity 3	Severity 4	
California					
Stanislaus					
Casualties - 5pm					
<i>Hotels</i>	0	0	0	0	0
<i>Educational</i>	0	0	0	0	0
Total Casualties - 5pm	2	0	0	0	2
Sutter					
Casualties - 2am					
<i>Educational</i>	0	0	0	0	0
<i>Commuting</i>	0	0	0	0	0
<i>Hotels</i>	0	0	0	0	0
<i>Industrial</i>	0	0	0	0	0
<i>Other-Residential</i>	0	0	0	0	0
<i>Single Family</i>	0	0	0	0	0
<i>Commercial</i>	0	0	0	0	0
Total Casualties - 2am	0	0	0	0	0
Casualties - 2pm					
<i>Industrial</i>	0	0	0	0	0
<i>Commuting</i>	0	0	0	0	0
<i>Other-Residential</i>	0	0	0	0	0
<i>Single Family</i>	0	0	0	0	0
<i>Commercial</i>	0	0	0	0	0
<i>Hotels</i>	0	0	0	0	0
<i>Educational</i>	0	0	0	0	0
Total Casualties - 2pm	0	0	0	0	0
Casualties - 5pm					
<i>Commuting</i>	0	0	0	0	0
<i>Commercial</i>	0	0	0	0	0
<i>Educational</i>	0	0	0	0	0
<i>Single Family</i>	0	0	0	0	0
<i>Hotels</i>	0	0	0	0	0
<i>Industrial</i>	0	0	0	0	0
<i>Other-Residential</i>	0	0	0	0	0
Total Casualties - 5pm	0	0	0	0	0
Tulare					
Casualties - 2am					
<i>Commercial</i>	0	0	0	0	0
<i>Commuting</i>	0	0	0	0	0
<i>Single Family</i>	0	0	0	0	0
<i>Educational</i>	0	0	0	0	0
<i>Hotels</i>	0	0	0	0	0
<i>Industrial</i>	0	0	0	0	0
<i>Other-Residential</i>	0	0	0	0	0

	Injury Severity Level				Total
	Severity 1	Severity 2	Severity 3	Severity 4	
California					
Tulare					
Total Casualties - 2am	0	0	0	0	0
Casualties - 2pm					
<i>Industrial</i>	0	0	0	0	0
<i>Hotels</i>	0	0	0	0	0
<i>Commercial</i>	0	0	0	0	0
<i>Other-Residential</i>	0	0	0	0	0
<i>Educational</i>	0	0	0	0	0
<i>Commuting</i>	0	0	0	0	0
<i>Single Family</i>	0	0	0	0	0
Total Casualties - 2pm	0	0	0	0	0
Casualties - 5pm					
<i>Other-Residential</i>	0	0	0	0	0
<i>Commercial</i>	0	0	0	0	0
<i>Single Family</i>	0	0	0	0	0
<i>Hotels</i>	0	0	0	0	0
<i>Commuting</i>	0	0	0	0	0
<i>Educational</i>	0	0	0	0	0
<i>Industrial</i>	0	0	0	0	0
Total Casualties - 5pm	0	0	0	0	0
Tuolumne					
Casualties - 2am					
<i>Other-Residential</i>	0	0	0	0	0
<i>Industrial</i>	0	0	0	0	0
<i>Commercial</i>	0	0	0	0	0
<i>Commuting</i>	0	0	0	0	0
<i>Single Family</i>	0	0	0	0	0
<i>Educational</i>	0	0	0	0	0
<i>Hotels</i>	0	0	0	0	0
Total Casualties - 2am	0	0	0	0	0
Casualties - 2pm					
<i>Other-Residential</i>	0	0	0	0	0
<i>Commercial</i>	0	0	0	0	0
<i>Single Family</i>	0	0	0	0	0
<i>Educational</i>	0	0	0	0	0
<i>Commuting</i>	0	0	0	0	0
<i>Industrial</i>	0	0	0	0	0
<i>Hotels</i>	0	0	0	0	0
Total Casualties - 2pm	0	0	0	0	0
Casualties - 5pm					
<i>Industrial</i>	0	0	0	0	0
<i>Other-Residential</i>	0	0	0	0	0

	Injury Severity Level				Total
	Severity 1	Severity 2	Severity 3	Severity 4	
California					
Tuolumne					
Casualties - 5pm					
Commercial	0	0	0	0	0
Hotels	0	0	0	0	0
Commuting	0	0	0	0	0
Educational	0	0	0	0	0
Single Family	0	0	0	0	0
Total Casualties - 5pm	0	0	0	0	0
Yolo					
Casualties - 2am					
Single Family	0	0	0	0	0
Other-Residential	0	0	0	0	0
Commercial	0	0	0	0	0
Educational	0	0	0	0	0
Commuting	0	0	0	0	0
Hotels	0	0	0	0	0
Industrial	0	0	0	0	0
Total Casualties - 2am	0	0	0	0	0
Casualties - 2pm					
Industrial	0	0	0	0	0
Hotels	0	0	0	0	0
Educational	0	0	0	0	0
Commuting	0	0	0	0	0
Commercial	0	0	0	0	0
Other-Residential	0	0	0	0	0
Single Family	0	0	0	0	0
Total Casualties - 2pm	0	0	0	0	0
Casualties - 5pm					
Other-Residential	0	0	0	0	0
Single Family	0	0	0	0	0
Commuting	0	0	0	0	0
Commercial	0	0	0	0	0
Hotels	0	0	0	0	0
Educational	0	0	0	0	0
Industrial	0	0	0	0	0
Total Casualties - 5pm	0	0	0	0	0
Yuba					
Casualties - 2am					
Industrial	0	0	0	0	0
Other-Residential	0	0	0	0	0
Commercial	0	0	0	0	0
Educational	0	0	0	0	0
Single Family	0	0	0	0	0

	Injury Severity Level				Total
	Severity 1	Severity 2	Severity 3	Severity 4	
California					
Yuba					
Casualties - 2am					
Commuting	0	0	0	0	0
Hotels	0	0	0	0	0
Total Casualties - 2am	0	0	0	0	0
Casualties - 2pm					
Commercial	0	0	0	0	0
Commuting	0	0	0	0	0
Single Family	0	0	0	0	0
Other-Residential	0	0	0	0	0
Industrial	0	0	0	0	0
Hotels	0	0	0	0	0
Educational	0	0	0	0	0
Total Casualties - 2pm	0	0	0	0	0
Casualties - 5pm					
Hotels	0	0	0	0	0
Educational	0	0	0	0	0
Industrial	0	0	0	0	0
Other-Residential	0	0	0	0	0
Single Family	0	0	0	0	0
Commercial	0	0	0	0	0
Commuting	0	0	0	0	0
Total Casualties - 5pm	0	0	0	0	0
Region Total	NA	NA	NA	NA	NA

Totals only reflect data for those census tracts/blocks included in the user's study region and will reflect the entire county/state only if all of the census blocks for that county/states were selected at the time of study region creation.

Debris Summary Report

June 27, 2024

All values are in thousands of tons.

	Brick, Wood & Others	Concrete & Steel	Total
California			
Fresno	1	0	1
Alameda	46	46	92
Solano	1	0	1
San Mateo	36	44	80
Tuolumne	0	0	0
Kings	0	0	0
San Joaquin	8	2	10
San Luis Obispo	0	0	0
Madera	0	0	0
Tulare	0	0	0
Colusa	0	0	0
Napa	0	0	0
Mendocino	0	0	0
Contra Costa	4	2	6
El Dorado	0	0	0
Kern	0	0	0
Amador	0	0	0
Santa Cruz	678	1,752	2,430
Lake	0	0	0

	Brick, Wood & Others	Concrete & Steel	Total
Monterey	545	1,507	2,051
Sacramento	0	0	0
Mariposa	0	0	0
Yolo	0	0	0
Calaveras	0	0	0
Yuba	0	0	0
Stanislaus	3	2	4
Sonoma	0	0	0
Santa Barbara	0	0	0
Santa Clara	226	261	487
San Benito	32	60	92
San Francisco	69	22	91
Merced	4	4	8
Placer	0	0	0
Marin	1	0	1
Sutter	0	0	0
Total	1,654	3,702	5,356
Region Total	1,654	3,702	5,356

Totals only reflect data for those census tracts/blocks included in the user's study region and will reflect the entire county/state only if all of the census blocks for that county/states were selected at the time of study region creation.

Direct Economic Losses For Buildings

June 27, 2024

All values are in thousands of dollars

	Capital Stock Losses				Loss Ratio %	Income Losses				Total Loss
	Cost Structural Damage	Cost Non-struct. Damage	Cost Contents Damage	Inventory Loss		Relocation Loss	Capital Related Loss	Wages Losses	Rental Income Loss	
California										
Contra Costa	6,345	96,748	52,654	4,572	0.05	901	901	1,320	1,203	164,644
Mendocino	0	0	0	0	0.00	0	0	0	0	0
Napa	174	2,660	1,469	194	0.01	19	29	33	37	4,613
Colusa	0	2	1	0	0.00	0	0	0	0	4
Alameda	90,700	711,633	377,279	37,305	0.24	21,080	16,063	22,558	20,234	1,296,851
San Joaquin	6,389	52,616	29,815	3,798	0.04	1,417	561	762	1,043	96,401
Tuolumne	0	11	8	1	0.00	0	0	0	0	20
Tulare	5	346	252	67	0.00	0	0	0	1	672
Madera	296	3,302	1,882	422	0.01	28	20	22	38	6,010

	Capital Stock Losses				Loss Ratio %	Income Losses				Total Loss
	Cost Structural Damage	Cost Non-struct. Damage	Cost Contents Damage	Inventory Loss		Relocation Loss	Capital Related Loss	Wages Losses	Rental Income Loss	
Fresno	626	9,278	5,747	1,101	0.01	96	110	125	135	17,218
Kings	16	615	404	56	0.00	2	4	4	4	1,105
San Luis Obispo	15	489	293	30	0.00	2	4	3	5	841
Solano	971	13,033	7,343	931	0.02	135	149	185	195	22,942
San Mateo	102,650	734,263	354,114	26,563	0.54	23,813	20,838	23,885	23,235	1,309,361
Yolo	26	1,216	846	109	0.00	2	5	7	7	2,219
San Benito	83,627	410,477	178,253	16,563	3.73	30,101	18,096	21,410	13,175	771,702
San Francisco	63,757	198,957	106,416	6,057	0.17	20,436	13,533	15,807	25,932	450,896
Stanislaus	3,807	49,035	28,515	4,049	0.05	582	468	525	722	87,703
Sutter	1	12	9	3	0.00	0	0	0	0	25
Santa Clara	602,065	3,888,604	1,852,878	121,880	1.18	154,392	127,555	146,558	122,860	7,016,792
Sonoma	257	3,862	2,090	329	0.00	35	47	67	49	6,735
Calaveras	1	41	32	11	0.00	0	0	0	0	86
Yuba	0	0	0	0	0.00	0	0	0	0	0
Merced	11,524	47,257	29,216	11,132	0.11	1,485	726	654	656	102,649
Santa Barbara	0	5	4	1	0.00	0	0	0	0	10
Placer	0	20	15	1	0.00	0	0	0	0	36
Marin	890	13,100	7,248	656	0.02	122	190	195	215	22,615

	Capital Stock Losses				Loss Ratio %	Income Losses				Total Loss
	Cost Structural Damage	Cost Non-struct. Damage	Cost Contents Damage	Inventory Loss		Relocation Loss	Capital Related Loss	Wages Losses	Rental Income Loss	
Kern	0	7	5	2	0.00	0	0	0	0	13
El Dorado	0	0	0	0	0.00	0	0	0	0	1
Lake	0	2	1	0	0.00	0	0	0	0	3
Santa Cruz	1,738,590	7,121,832	2,841,339	330,134	16.12	743,870	475,133	644,756	417,334	14,312,987
Mariposa	0	8	6	0	0.00	0	0	0	0	15
Amador	0	6	4	1	0.00	0	0	0	0	11
Sacramento	228	5,360	3,392	354	0.00	45	66	90	83	9,617
Monterey	1,380,026	5,515,930	2,324,773	341,810	9.03	627,703	300,018	386,832	325,347	11,202,438
Total	4,092,986	18,880,724	8,206,301	908,132	0.90	1,626,264	974,516	1,265,800	952,511	36,907,234
Region Total	4,092,986	18,880,724	8,206,301	908,132	0.90	1,626,264	974,516	1,265,800	952,511	36,907,234

Totals only reflect data for those census tracts/blocks included in the user's study region and will reflect the entire county/state only if all of the census blocks for that county/states were selected at the time of study region creation.

Direct Economic Loss For Transportation

June 27, 2024

All values are in thousands of dollars

	Highway	Railway	Light Rail	Bus Facility	Ports	Ferries	Airport	Total
California								
Alameda								
Segments	0	0	0					0
Bridges	2,569	228	1					2,798
Tunnels	9	0	0					9
Facilities		2,224	0	95	9,059	255	27,511	39,145
Total	2,578	2,452	1	95	9,059	255	27,511	41,952
Amador								
Segments	0	0	0					0
Bridges	0	0	0					0
Tunnels	0	0	0					0
Facilities		0	0	0	0	0	6	6
Total	0	0	0	0	0	0	6	6
Calaveras								
Segments	0	0	0					0
Bridges	0	0	0					0
Tunnels	0	0	0					0
Facilities		0	0	0	0	0	11	11

	Highway	Railway	Light Rail	Bus Facility	Ports	Ferries	Airport	Total
Total	0	0	0	0	0	0	11	11
Colusa								
Segments	0	0	0					0
Bridges	0	0	0					0
Tunnels	0	0	0					0
Facilities		0	0	0	0	0	6	6
Total	0	0	0	0	0	0	6	6
Contra Costa								
Segments	0	0	0					0
Bridges	470	16	0					486
Tunnels	3	0	0					3
Facilities		842	165	0	10,006	218	983	12,213
Total	473	857	165	0	10,006	218	983	12,702
El Dorado								
Segments	0	0	0					0
Bridges	0	0	0					0
Tunnels	0	0	0					0
Facilities		0	0	7	0	0	31	38
Total	0	0	0	7	0	0	31	38
Fresno								
Segments	0	0	0					0
Bridges	280	2	0					282
Tunnels	0	0	0					0
Facilities		231	0	21	0	0	1,473	1,724

	Highway	Railway	Light Rail	Bus Facility	Ports	Ferries	Airport	Total
Total	280	232	0	21	0	0	1,473	2,006
Kern								
Segments	0	0	0					0
Bridges	1	0	0					1
Tunnels	0	0	0					0
Facilities		20	0	7	0	0	75	102
Total	1	20	0	7	0	0	75	103
Kings								
Segments	0	0	0					0
Bridges	6	0	0					6
Tunnels	0	0	0					0
Facilities		128	0	41	0	0	359	529
Total	6	128	0	41	0	0	359	535
Lake								
Segments	0	0	0					0
Bridges	0	0	0					0
Tunnels	0	0	0					0
Facilities		0	0	0	0	0	6	6
Total	0	0	0	0	0	0	6	6
Madera								
Segments	0	0	0					0
Bridges	36	0	0					36
Tunnels	0	0	0					0
Facilities		26	0	21	0	0	102	149

	Highway	Railway	Light Rail	Bus Facility	Ports	Ferries	Airport	Total
Total	36	26	0	21	0	0	102	184
Marin								
Segments	0	0	0					0
Bridges	410	0	0					410
Tunnels	0	0	0					0
Facilities		0	0	242	2,556	231	217	3,246
Total	410	0	0	242	2,556	231	217	3,656
Mariposa								
Segments	0	0	0					0
Bridges	0	0	0					0
Tunnels	0	0	0					0
Facilities		0	0	10	0	0	51	61
Total	0	0	0	10	0	0	51	61
Mendocino								
Segments	0	0	0					0
Bridges	0	0	0					0
Tunnels	0	0	0					0
Facilities		0	0	5	0	0	11	16
Total	0	0	0	5	0	0	11	16
Merced								
Segments	0	0	0					0
Bridges	733	18	0					751
Tunnels	0	0	0					0
Facilities		51	0	21	0	0	1,345	1,417

	Highway	Railway	Light Rail	Bus Facility	Ports	Ferries	Airport	Total
Total	733	70	0	21	0	0	1,345	2,168
Monterey								
<i>Segments</i>	0	0	0					0
<i>Bridges</i>	114,315	23,932	0					138,246
<i>Tunnels</i>	343	0	0					343
<i>Facilities</i>		1,440	0	4,979	2,588	0	14,730	23,736
Total	114,658	25,372	0	4,979	2,588	0	14,730	162,326
Napa								
<i>Segments</i>	0	0	0					0
<i>Bridges</i>	3	3	0					6
<i>Tunnels</i>	0	0	0					0
<i>Facilities</i>		0	0	22	230	0	180	431
Total	3	3	0	22	230	0	180	437
Placer								
<i>Segments</i>	0	0	0					0
<i>Bridges</i>	0	0	0					0
<i>Tunnels</i>	0	0	0					0
<i>Facilities</i>		11	0	2	0	0	17	31
Total	0	11	0	2	0	0	17	31
Sacramento								
<i>Segments</i>	0	0	0					0
<i>Bridges</i>	93	0	0					93
<i>Tunnels</i>	0	0	0					0
<i>Facilities</i>		26	3,024	43	2,060	13	4,198	9,363

	Highway	Railway	Light Rail	Bus Facility	Ports	Ferries	Airport	Total
Total	93	26	3,024	43	2,060	13	4,198	9,456
San Benito								
Segments	0	0	0					0
Bridges	9,306	910	0					10,216
Tunnels	0	0	0					0
Facilities		0	0	0	0	0	2,819	2,819
Total	9,306	910	0	0	0	0	2,819	13,035
San Francisco								
Segments	0	0	0					0
Bridges	4,535	4	0					4,539
Tunnels	8	0	0					8
Facilities		0	134,039	207	9,388	218	1,313	145,165
Total	4,544	4	134,039	207	9,388	218	1,313	149,713
San Joaquin								
Segments	0	0	0					0
Bridges	359	4	0					363
Tunnels	0	0	0					0
Facilities		494	0	21	3,732	218	1,170	5,636
Total	359	498	0	21	3,732	218	1,170	5,999
San Luis Obispo								
Segments	0	0	0					0
Bridges	8	0	0					8
Tunnels	0	0	0					0
Facilities		54	0	23	261	0	406	744

	Highway	Railway	Light Rail	Bus Facility	Ports	Ferries	Airport	Total
Total	8	54	0	23	261	0	406	753
San Mateo								
Segments	0	0	0					0
Bridges	22,655	88	0					22,744
Tunnels	88	0	0					88
Facilities		0	0	0	6,654	0	69,340	75,994
Total	22,744	88	0	0	6,654	0	69,340	98,826
Santa Barbara								
Segments	0	0	0					0
Bridges	1	0	0					1
Tunnels	0	0	0					0
Facilities		28	0	9	0	0	28	66
Total	1	28	0	9	0	0	28	66
Santa Clara								
Segments	0	0	0					0
Bridges	39,612	1,929	9					41,550
Tunnels	52	0	0					52
Facilities		1,476	74,504	808	2,109	0	42,283	121,180
Total	39,665	3,405	74,513	808	2,109	0	42,283	162,783
Santa Cruz								
Segments	0	0	0					0
Bridges	105,073	48,730	0					153,803
Tunnels	0	0	0					0
Facilities		0	0	2,582	2,163	0	14,065	18,810

	Highway	Railway	Light Rail	Bus Facility	Ports	Ferries	Airport	Total
Total	105,073	48,730	0	2,582	2,163	0	14,065	172,613
Solano								
<i>Segments</i>	0	0	0					0
<i>Bridges</i>	169	15	0					183
<i>Tunnels</i>	0	0	0					0
<i>Facilities</i>		161	0	65	4,120	51	231	4,627
Total	169	175	0	65	4,120	51	231	4,811
Sonoma								
<i>Segments</i>	0	0	0					0
<i>Bridges</i>	60	4	0					64
<i>Tunnels</i>	0	0	0					0
<i>Facilities</i>		0	0	23	377	0	414	813
Total	60	4	0	23	377	0	414	877
Stanislaus								
<i>Segments</i>	0	0	0					0
<i>Bridges</i>	253	4	0					257
<i>Tunnels</i>	0	0	0					0
<i>Facilities</i>		237	0	183	0	0	816	1,237
Total	253	241	0	183	0	0	816	1,493
Sutter								
<i>Segments</i>	0	0	0					0
<i>Bridges</i>	0	0	0					0
<i>Tunnels</i>	0	0	0					0
<i>Facilities</i>		0	0	0	0	0	14	14

	Highway	Railway	Light Rail	Bus Facility	Ports	Ferries	Airport	Total
Total	0	0	0	0	0	0	14	15
Tulare								
Segments	0	0	0					0
Bridges	1	0	0					1
Tunnels	0	0	0					0
Facilities		0	0	46	0	0	164	210
Total	1	0	0	46	0	0	164	211
Tuolumne								
Segments	0	0	0					0
Bridges	0	0	0					0
Tunnels	0	0	0					0
Facilities		0	0	0	0	0	62	62
Total	0	0	0	0	0	0	62	62
Yolo								
Segments	0	0	0					0
Bridges	294	0	0					294
Tunnels	0	0	0					0
Facilities		128	0	0	624	0	153	905
Total	294	128	0	0	624	0	153	1,199
Yuba								
Segments	0	0	0					0
Bridges	0	0	0					0
Tunnels	0	0	0					0
Facilities		0	0	2	0	0	11	14

	Highway	Railway	Light Rail	Bus Facility	Ports	Ferries	Airport	Total
Total	0	0	0	2	0	0	11	14
Total	301,748	83,464	211,742	9,486	55,925	1,206	184,601	848,172
Region Total	301,748	83,464	211,742	9,486	55,925	1,206	184,601	848,172

Totals only reflect data for those census tracts/blocks included in the user's study region and will reflect the entire county/state only if all of the census blocks for that county/states were selected at the time of study region creation.

Direct Economic Loss For Utilities

June 27, 2024

All values are in thousands of dollars

	Potable Water	Waste Water	Oil Systems	Natural Gas	Electric Power	Communication	Total
California							
Alameda							
<i>Facilities</i>	1,706	31,537	0	0	169,958	108	203,308
<i>Pipelines</i>	893	449	0	0			1,342
Total	2,599	31,985	0	0	169,958	108	204,650
Amador							
<i>Facilities</i>	0	3	0	0	618	0	621
<i>Pipelines</i>	14	7	0	0			21
Total	14	9	0	0	618	0	642
Calaveras							
<i>Facilities</i>	28	251	0	0	14,243	0	14,523
<i>Pipelines</i>	32	16	0	0			48
Total	60	267	0	0	14,243	0	14,571
Colusa							
<i>Facilities</i>	0	3	0	0	6	0	9

	Potable Water	Waste Water	Oil Systems	Natural Gas	Electric Power	Communication	Total
<i>Pipelines</i>	28	14	0	0			42
Total	28	17	0	0	6	0	50
Contra Costa							
<i>Facilities</i>	2,090	12,932	5	0	226,228	13	241,268
<i>Pipelines</i>	398	200	0	0			598
Total	2,488	13,132	5	0	226,228	13	241,866
El Dorado							
<i>Facilities</i>	1	10	0	0	1,510	0	1,521
<i>Pipelines</i>	24	12	0	0			36
Total	25	22	0	0	1,510	0	1,557
Fresno							
<i>Facilities</i>	0	492	0	13	105,991	4	106,499
<i>Pipelines</i>	426	214	0	0			640
Total	426	706	0	13	105,991	4	107,139
Kern							
<i>Facilities</i>	1	3	0	38	3,565	0	3,607
<i>Pipelines</i>	176	89	0	0			265
Total	178	91	0	38	3,565	0	3,872
Kings							
<i>Facilities</i>	0	0	0	134	6,360	1	6,495
<i>Pipelines</i>	78	39	0	0			117

	Potable Water	Waste Water	Oil Systems	Natural Gas	Electric Power	Communication	Total
Total	78	39	0	134	6,360	1	6,612
Lake							
<i>Facilities</i>	1	0	0	0	252	0	253
<i>Pipelines</i>	35	18	0	0			53
Total	36	18	0	0	252	0	306
Madera							
<i>Facilities</i>	0	0	0	0	1,347	0	1,347
<i>Pipelines</i>	154	77	0	0			231
Total	154	77	0	0	1,347	0	1,578
Marin							
<i>Facilities</i>	28	7,991	0	0	56	6	8,080
<i>Pipelines</i>	60	30	0	0			91
Total	88	8,021	0	0	56	6	8,171
Mariposa							
<i>Facilities</i>	0	131	0	0	2,808	2	2,940
<i>Pipelines</i>	41	20	0	0			61
Total	41	151	0	0	2,808	2	3,001
Mendocino							
<i>Facilities</i>	0	5	0	0	1	0	7
<i>Pipelines</i>	26	13	0	0			40
Total	26	18	0	0	1	0	46

	Potable Water	Waste Water	Oil Systems	Natural Gas	Electric Power	Communication	Total
Merced							
<i>Facilities</i>	0	4,819	0	0	374,812	22	379,653
<i>Pipelines</i>	455	228	0	0			683
Total	455	5,047	0	0	374,812	22	380,336
Monterey							
<i>Facilities</i>	0	559,754	0	0	1,627,272	2,110	2,189,136
<i>Pipelines</i>	13,660	6,862	0	0			20,521
Total	13,660	566,615	0	0	1,627,272	2,110	2,209,657
Napa							
<i>Facilities</i>	0	492	0	0	312	0	804
<i>Pipelines</i>	26	13	0	0			39
Total	26	505	0	0	312	0	843
Placer							
<i>Facilities</i>	0	267	0	0	1,792	0	2,059
<i>Pipelines</i>	37	19	0	0			56
Total	37	285	0	0	1,792	0	2,115
Sacramento							
<i>Facilities</i>	0	1,229	0	0	11,389	5	12,623
<i>Pipelines</i>	128	64	0	0			192
Total	128	1,294	0	0	11,389	5	12,815
San Benito							

	Potable Water	Waste Water	Oil Systems	Natural Gas	Electric Power	Communication	Total
<i>Facilities</i>	0	66,209	0	0	0	129	66,338
<i>Pipelines</i>	2,475	1,243	0	0			3,718
Total	2,475	67,452	0	0	0	129	70,056
San Francisco							
<i>Facilities</i>	0	13,561	0	0	1,493	55	15,109
<i>Pipelines</i>	106	53	0	0			159
Total	106	13,614	0	0	1,493	55	15,269
San Joaquin							
<i>Facilities</i>	140	7,868	1	0	41,329	11	49,349
<i>Pipelines</i>	306	154	0	0			459
Total	446	8,021	1	0	41,329	11	49,809
San Luis Obispo							
<i>Facilities</i>	28	984	0	0	21,705	5	22,722
<i>Pipelines</i>	135	68	0	0			203
Total	163	1,052	0	0	21,705	5	22,925
San Mateo							
<i>Facilities</i>	0	63,281	0	0	18,760	97	82,138
<i>Pipelines</i>	1,389	698	0	0			2,087
Total	1,389	63,979	0	0	18,760	97	84,225
Santa Barbara							
<i>Facilities</i>	0	5	0	0	8	0	14

	Potable Water	Waste Water	Oil Systems	Natural Gas	Electric Power	Communication	Total
<i>Pipelines</i>	58	29	0	0			88
Total	58	34	0	0	8	0	101
Santa Clara							
<i>Facilities</i>	3,795	24,913	0	0	596,765	658	626,131
<i>Pipelines</i>	4,156	2,088	0	0			6,244
Total	7,951	27,001	0	0	596,765	658	632,375
Santa Cruz							
<i>Facilities</i>	0	293,816	0	0	17,010	628	311,454
<i>Pipelines</i>	19,987	10,040	0	0			30,027
Total	19,987	303,856	0	0	17,010	628	341,481
Solano							
<i>Facilities</i>	0	2,262	0	0	25,044	3	27,309
<i>Pipelines</i>	140	70	0	0			210
Total	140	2,332	0	0	25,044	3	27,519
Sonoma							
<i>Facilities</i>	0	2,633	0	0	2,202	2	4,838
<i>Pipelines</i>	110	55	0	0			166
Total	110	2,689	0	0	2,202	2	5,004
Stanislaus							
<i>Facilities</i>	0	6,097	0	0	56,305	30	62,432
<i>Pipelines</i>	237	119	0	0			356

	Potable Water	Waste Water	Oil Systems	Natural Gas	Electric Power	Communication	Total
Total	237	6,216	0	0	56,305	30	62,788
Sutter							
<i>Facilities</i>	0	3	0	0	317	0	320
<i>Pipelines</i>	29	15	0	0			44
Total	29	17	0	0	317	0	364
Tulare							
<i>Facilities</i>	28	128	0	0	1,254	1	1,411
<i>Pipelines</i>	109	55	0	0			164
Total	138	183	0	0	1,254	1	1,575
Tuolumne							
<i>Facilities</i>	0	123	0	0	13,974	0	14,097
<i>Pipelines</i>	43	22	0	0			65
Total	43	145	0	0	13,974	0	14,163
Yolo							
<i>Facilities</i>	0	492	0	0	502	1	995
<i>Pipelines</i>	37	19	0	0			56
Total	37	511	0	0	502	1	1,051
Yuba							
<i>Facilities</i>	0	10	0	0	1	0	11
<i>Pipelines</i>	18	9	0	0			27
Total	18	19	0	0	1	0	38

	Potable Water	Waste Water	Oil Systems	Natural Gas	Electric Power	Communication	Total
Total	53,874	1,125,423	6	185	3,345,189	3,891	4,528,568
Region Total	53,874	1,125,423	6	185	3,345,189	3,891	4,528,568

Totals only reflect data for those census tracts/blocks included in the user's study region and will reflect the entire county/state only if all of the census blocks for that county/states were selected at the time of study region creation.

Hazus Quick Assessment Report

Estimated Economic Loss (\$ Billions)

Category	Description	Range
General Building Stock	Building Damage	11.50 - 45.90
	Building Contents	1.70 - 6.70
	Business Interruption	2.40 - 9.60
Infrastructure	Lifelines Damage	
Total		18.50 - 73.80

Preliminary Damage Assessment (PDA) Estimates

Description	Residential	Commercial	Other	Total
Affected	239,500	18,500	7,700	265,700
Minor	61,800	7,800	3,400	73,000
Major	6,100	3,100	1,400	10,600
Destroyed	4,200	1,800	770	6,770
Total	311,600	31,200	13,270	356,070

Estimated Casualties : Night Time

Severity Level	Description	# Persons
Level 1	Medical Aid	1,400 - 5,000
Level 2	Hospital Care	300 - 1,100
Level 3	Life-threatening	30 - 120
Level 4	Fatalities	60 - 200

Estimated Shelter Needs

Type	Households	People
Displaced Households	7,000 - 27,000	17,500 - 67,500
Public Shelter	3,190	7,980

Comments :

**Hazus damage estimates are presented using FEMA Preliminary Damage Assessment (PDA) categories. These estimates should be used for planning purposes and may not reflect actual observed damages from the PDA process.*

Disclaimer:

The estimates of social and economic impacts contained in this report were produced using HAZUS loss estimation methodology software which is based on current scientific and engineering knowledge. There are uncertainties inherent in any loss estimation technique. Therefore, there may be significant differences between the modeled results contained in this report and the actual social and economic losses following a specific earthquake. These results can be improved by using enhanced inventory, geotechnical, and observed ground motion data.

Earthquake Information

Location :

Origin Time:

Magnitude : 7.48

Epicenter Latitude/Longitude :
/

Depth & Type : /U

Name :
NA

Ground Motion /Attenuation :

Maximum PGA: 1.00

Information Sources:

Comments :

Population and Building Exposure

Population: 16,502,168

Building Exposure : (\$ Millions)

Residential	2,038,145
Commercial	553,815
Other	496,188
Total	3,088,148

Counties : See Appendix

Major Metro Area :

Hazus Quick Assessment Report

Estimated Economic Loss (\$ Billions)

Category	Description	Range
General Building Stock	Building Damage	11.50 - 45.90
	Building Contents	1.70 - 6.70
	Business Interruption	2.40 - 9.60
Infrastructure	Lifelines Damage	
Total		18.50 - 73.80

Preliminary Damage Assessment (PDA) Estimates

Description	Residential	Commercial	Other	Total
Affected	239,500	18,500	7,700	265,700
Minor	61,800	7,800	3,400	73,000
Major	6,100	3,100	1,400	10,600
Destroyed	4,200	1,800	770	6,770
Total	311,600	31,200	13,270	356,070

Estimated Casualties : Day Time

Severity Level	Description	# Persons
Level 1	Medical Aid	3,000 - 12,000
Level 2	Hospital Care	800 - 3,000
Level 3	Life-threatening	130 - 500
Level 4	Fatalities	200 - 900

Estimated Shelter Needs

Type	Households	People
Displaced Households	7,000 - 27,000	17,500 - 67,500
Public Shelter	3,190	7,980

Comments :

*Hazus damage estimates are presented using FEMA Preliminary Damage Assessment (PDA) categories. These estimates should be used for planning purposes and may not reflect actual observed damages from the PDA process.

Disclaimer:

The estimates of social and economic impacts contained in this report were produced using HAZUS loss estimation methodology software which is based on current scientific and engineering knowledge. There are uncertainties inherent in any loss estimation technique. Therefore, there may be significant differences between the modeled results contained in this report and the actual social and economic losses following a specific earthquake. These results can be improved by using enhanced inventory, geotechnical, and observed ground motion data.

Earthquake Information

Location :

Origin Time:

Magnitude : 7.48

Epicenter Latitude/Longitude :
/

Depth & Type : /U

Name :
NA

Ground Motion /Attenuation :

Maximum PGA: 1.00

Information Sources:

Comments :

Population and Building Exposure

Population: 16,502,168

Building Exposure : (\$ Millions)

Residential	2,038,145
Commercial	553,815
Other	496,188
Total	3,088,148

Counties : See Appendix

Major Metro Area :

Hazus Quick Assessment Report

Estimated Economic Loss (\$ Billions)

Category	Description	Range
General Building Stock	Building Damage	11.50 - 45.90
	Building Contents	1.70 - 6.70
	Business Interruption	2.40 - 9.60
Infrastructure	Lifelines Damage	
Total		18.50 - 73.80

Preliminary Damage Assessment (PDA) Estimates

Description	Residential	Commercial	Other	Total
Affected	239,500	18,500	7,700	265,700
Minor	61,800	7,800	3,400	73,000
Major	6,100	3,100	1,400	10,600
Destroyed	4,200	1,800	770	6,770
Total	311,600	31,200	13,270	356,070

Estimated Casualties : Commute Time

Severity Level	Description	# Persons
Level 1	Medical Aid	2,000 - 8,000
Level 2	Hospital Care	600 - 2,000
Level 3	Life-threatening	200 - 800
Level 4	Fatalities	170 - 700

Estimated Shelter Needs

Type	Households	People
Displaced Households	7,000 - 27,000	17,500 - 67,500
Public Shelter	3,190	7,980

Comments :

*Hazus damage estimates are presented using FEMA Preliminary Damage Assessment (PDA) categories. These estimates should be used for planning purposes and may not reflect actual observed damages from the PDA process.

Disclaimer:

The estimates of social and economic impacts contained in this report were produced using HAZUS loss estimation methodology software which is based on current scientific and engineering knowledge. There are uncertainties inherent in any loss estimation technique. Therefore, there may be significant differences between the modeled results contained in this report and the actual social and economic losses following a specific earthquake. These results can be improved by using enhanced inventory, geotechnical, and observed ground motion data.

Earthquake Information

Location :

Origin Time:

Magnitude : 7.48

Epicenter Latitude/Longitude :
/

Depth & Type : /U

Name :
NA

Ground Motion /Attenuation :

Maximum PGA: 1.00

Information Sources:

Comments :

Population and Building Exposure

Population: 16,502,168

Building Exposure : (\$ Millions)

Residential	2,038,145
Commercial	553,815
Other	496,188
Total	3,088,148

Counties : See Appendix

Major Metro Area :

Shelter Summary Report

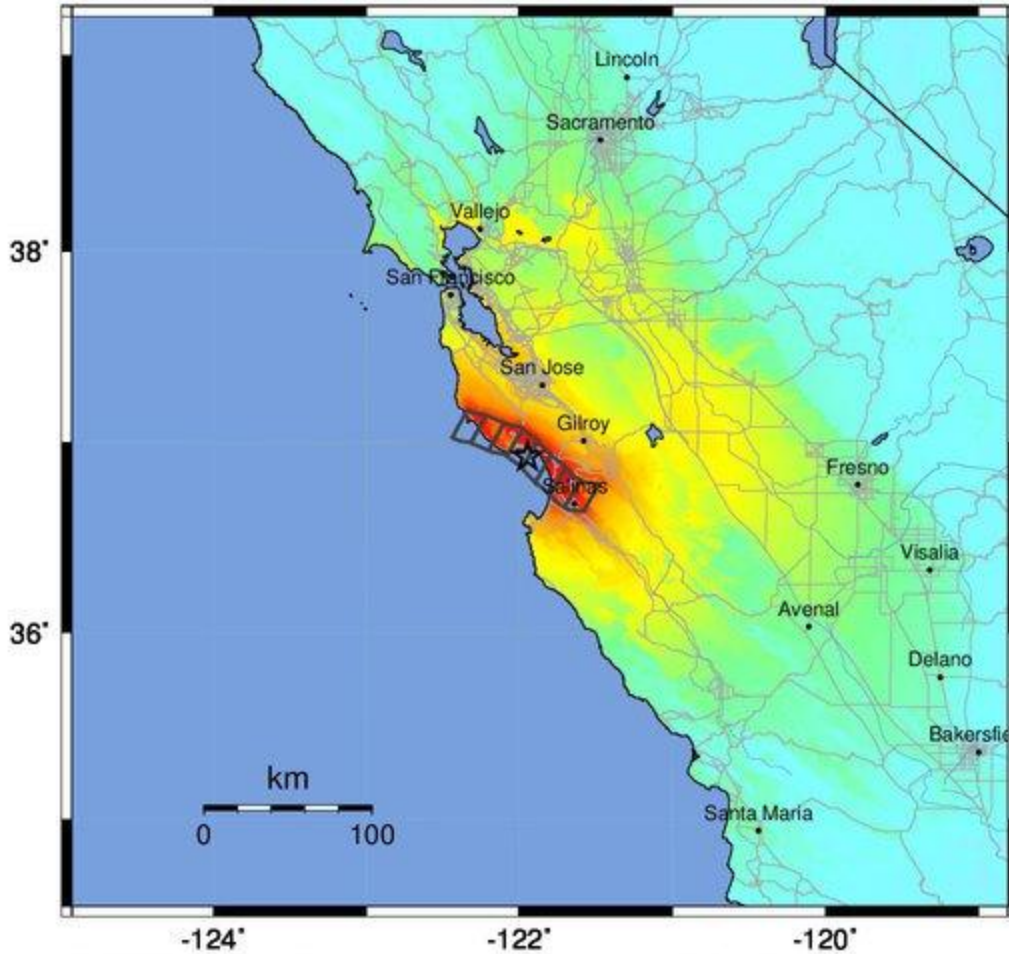
June 27, 2024

	# of Displaced Households	# of People Needing Short Term Shelter
California		
Fresno	0	0
Alameda	26	13
Solano	0	0
San Mateo	61	30
Tuolumne	0	0
Kings	0	0
San Joaquin	1	0
San Luis Obispo	0	0
Madera	0	0
Tulare	0	0
Colusa	0	0
Napa	0	0
Mendocino	0	0
Contra Costa	0	0
El Dorado	0	0
Kern	0	0
Amador	0	0
Santa Cruz	7,694	4,092
Lake	0	0
Monterey	5,330	3,595
Sacramento	0	0
Mariposa	0	0
Yolo	0	0
Calaveras	0	0
Yuba	0	0
Stanislaus	0	0
Sonoma	0	0
Santa Barbara	0	0
Santa Clara	375	200
San Benito	43	24
San Francisco	53	24
Merced	0	0

	# of Displaced Households	# of People Needing Short Term Shelter
Placer	0	0
Marin	0	0
Sutter	0	0
Total	13,584	7,979
Region Total	13,584	7,979

Totals only reflect data for those census tracts/blocks included in the user's study region and will reflect the entire county/state only if all of the census blocks for that county/states were selected at the time of study region creation.

-- Earthquake Planning Scenario --
ShakeMap for Zayante-Vergeles - Median ground motions Scenario
 Scenario Date: May 16, 2017 08:32:09 AM MDT M 7.5 N36.93 W121.95 Depth: 7.6km



PLANNING SCENARIO ONLY -- Map Version 14 Processed 2017-05-17 12:32:36 PM MDT

PERCEIVED SHAKING	Not felt	Weak	Light	Moderate	Strong	Very strong	Severe	Violent	Extreme
POTENTIAL DAMAGE	none	none	none	Very light	Light	Moderate	Mod./Heavy	Heavy	Very Heavy
PEAK ACC.(%g)	<0.05	0.3	2.8	6.2	12	22	40	75	>139
PEAK VEL.(cm/s)	<0.02	0.1	1.4	4.7	9.6	20	41	86	>178
INSTRUMENTAL INTENSITY	I	II-III	IV	V	VI	VII	VIII	IX	X+

Scale based upon Worden et al. (2012)