

---

## Hazus: Earthquake Global Risk Report

---

**Region Name:** WestNapa

**Earthquake Scenario:** westnapa2011cfmellbg\_m6p97\_se

**Print Date:** June 26, 2024

**Disclaimer:**

*Totals only reflect data for those census tracts/blocks included in the user's study region.*

*The estimates of social and economic impacts contained in this report were produced using Hazus loss estimation methodology software which is based on current scientific and engineering knowledge. There are uncertainties inherent in any loss estimation technique. Therefore, there may be significant differences between the modeled results contained in this report and the actual social and economic losses following a specific earthquake. These results can be improved by using enhanced inventory, geotechnical, and observed ground motion data.*

## Table of Contents

<b>Section</b>	<b>Page #</b>
<b>General Description of the Region</b>	<b>3</b>
<b>Building and Lifeline Inventory</b>	<b>4</b>
Building Inventory	
Critical Facility Inventory	
Transportation and Utility Lifeline Inventory	
<b>Earthquake Scenario Parameters</b>	<b>7</b>
<b>Direct Earthquake Damage</b>	<b>8</b>
Buildings Damage	
Essential Facilities Damage	
Transportation and Utility Lifeline Damage	
<b>Induced Earthquake Damage</b>	<b>14</b>
Fire Following Earthquake	
Debris Generation	
<b>Social Impact</b>	<b>15</b>
Shelter Requirements	
Casualties	
<b>Economic Loss</b>	<b>17</b>
Building Related Losses	
Transportation and Utility Lifeline Losses	
<b>Appendix A: County Listing for the Region</b>	
<b>Appendix B: Regional Population and Building Value Data</b>	

## General Description of the Region

Hazus-MH is a regional earthquake loss estimation model that was developed by the Federal Emergency Management Agency (FEMA) and the National Institute of Building Sciences. The primary purpose of Hazus is to provide a methodology and software application to develop multi-hazard losses at a regional scale. These loss estimates would be used primarily by local, state and regional officials to plan and stimulate efforts to reduce risks from multi-hazards and to prepare for emergency response and recovery.

The earthquake loss estimates provided in this report was based on a region that includes 30 county(ies) from the following state(s):

California

Note:

Appendix A contains a complete listing of the counties contained in the region.

The geographical size of the region is 38,313.30 square miles and contains 3,074 census tracts. There are over 4,737 thousand households in the region which has a total population of 13,407,636 people. The distribution of population by Total Region and County is provided in Appendix B.

There are an estimated 4,131 thousand buildings in the region with a total building replacement value (excluding contents) of (millions of dollars). Approximately 90.00 % of the buildings (and % of the building value) are associated with residential housing.

The replacement value of the transportation and utility lifeline systems is estimated to be 213,166 and 131,801 (millions of dollars) , respectively.

## Building and Lifeline Inventory

### Building Inventory

Hazus estimates that there are 4,131 thousand buildings in the region which have an aggregate total replacement value of (millions of dollars) . Appendix B provides a general distribution of the building value by Total Region and County.

In terms of building construction types found in the region, wood frame construction makes up 87% of the building inventory. The remaining percentage is distributed between the other general building types.

### Critical Facility Inventory

Hazus breaks critical facilities into two (2) groups: essential facilities and high potential loss facilities (HPL). Essential facilities include hospitals, medical clinics, schools, fire stations, police stations and emergency operations facilities. High potential loss facilities include dams, levees, military installations, nuclear power plants and hazardous material sites.

For essential facilities, there are 223 hospitals in the region with a total bed capacity of 32,685 beds. There are 4,893 schools, 1,309 fire stations, 438 police stations and 77 emergency operation facilities. With respect to high potential loss facilities (HPL), there are no dams identified within the inventory. The inventory also includes no hazardous material sites, no military installations and no nuclear power plants.

### Transportation and Utility Lifeline Inventory

Within Hazus, the lifeline inventory is divided between transportation and utility lifeline systems. There are seven (7) transportation systems that include highways, railways, light rail, bus, ports, ferry and airports. There are six (6) utility systems that include potable water, wastewater, natural gas, crude & refined oil, electric power and communications. The lifeline inventory data are provided in Tables 1 and 2.

The total value of the lifeline inventory is over 344,967.00 (millions of dollars). This inventory includes over 8,391.62 miles of highways, 10,149 bridges, 185,538.27 miles of pipes.

**Table 1: Transportation System Lifeline Inventory**

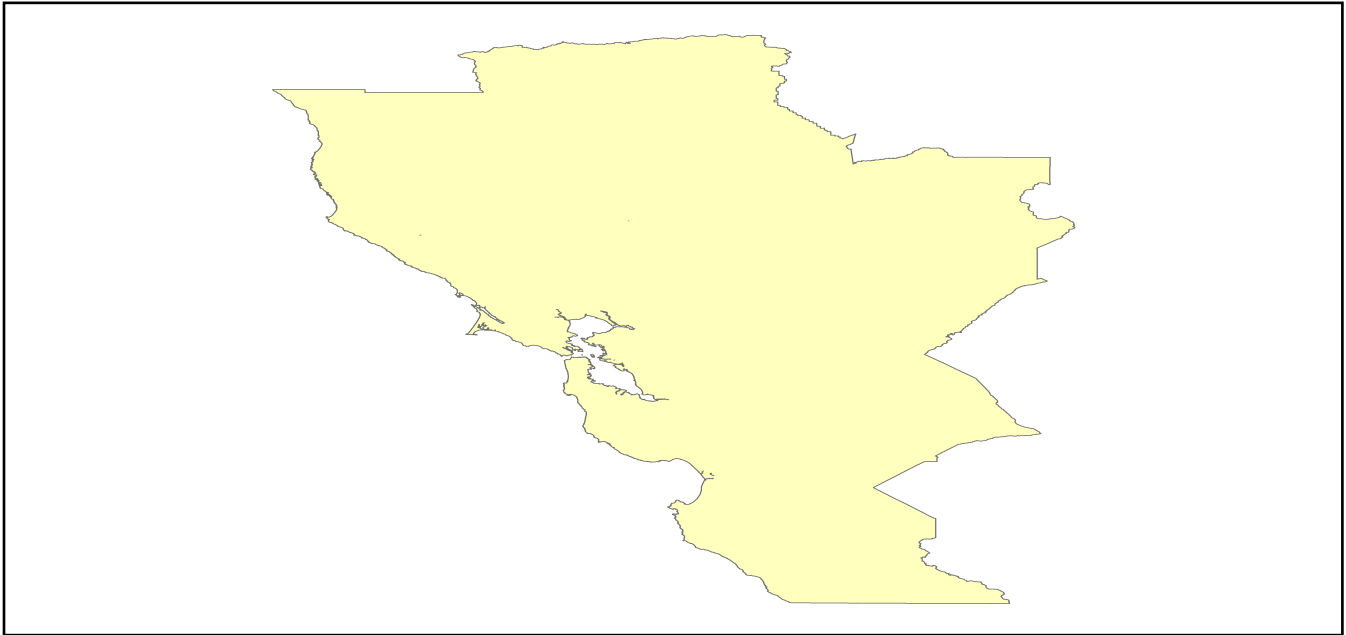
System	Component	# Locations/ # Segments	Replacement value (millions of dollars)
<b>Highway</b>	Bridges	10,149	54295.8891
	Segments	6,293	75645.7673
	Tunnels	43	883.7658
	<b>Subtotal</b>		<b>130825.4222</b>
<b>Railways</b>	Bridges	1,507	8574.8300
	Facilities	71	189.0730
	Segments	2,811	58657.3803
	Tunnels	3	1.8495
	<b>Subtotal</b>		<b>67423.1328</b>
<b>Light Rail</b>	Bridges	112	15.3529
	Facilities	255	4154.0000
	Segments	15	5403.2756
	Tunnels	0	0.0000
	<b>Subtotal</b>		<b>9572.6285</b>
<b>Bus</b>	Facilities	39	89.4607
	<b>Subtotal</b>		<b>89.4607</b>
<b>Ferry</b>	Facilities	25	33.2750
	<b>Subtotal</b>		<b>33.2750</b>
<b>Port</b>	Facilities	362	1379.8878
	<b>Subtotal</b>		<b>1379.8878</b>
<b>Airport</b>	Facilities	90	2643.9340
	Runways	129	1198.8704
	<b>Subtotal</b>		<b>3842.8044</b>
		<b>Total</b>	<b>213,166.60</b>

**Table 2: Utility System Lifeline Inventory**

System	Component	# Locations / Segments	Replacement value (millions of dollars)
<b>Potable Water</b>	Distribution Lines	NA	3684.9918
	Facilities	22	864.4680
	Pipelines	0	0.0000
		<b>Subtotal</b>	<b>4549.4598</b>
<b>Waste Water</b>	Distribution Lines	NA	2210.9951
	Facilities	176	30263.5168
	Pipelines	0	0.0000
		<b>Subtotal</b>	<b>32474.5119</b>
<b>Natural Gas</b>	Distribution Lines	NA	1473.9967
	Facilities	2	82.4870
	Pipelines	934	13368.8843
		<b>Subtotal</b>	<b>14925.3680</b>
<b>Oil Systems</b>	Facilities	16	1.8880
	Pipelines	0	0.0000
		<b>Subtotal</b>	<b>1.8880</b>
<b>Electrical Power</b>	Facilities	263	79809.0219
		<b>Subtotal</b>	<b>79809.0219</b>
<b>Communication</b>	Facilities	351	41.4180
		<b>Subtotal</b>	<b>41.4180</b>
	<b>Total</b>		<b>131,801.70</b>

## Earthquake Scenario

Hazus uses the following set of information to define the earthquake parameters used for the earthquake loss estimate provided in this report.



<b>Scenario Name</b>	westnapa2011cfmellbg_m6p97_se
<b>Type of Earthquake</b>	User-defined
<b>Fault Name</b>	NA
<b>Historical Epicenter ID #</b>	NA
<b>Probabilistic Return Period</b>	NA
<b>Longitude of Epicenter</b>	NA
<b>Latitude of Epicenter</b>	NA
<b>Earthquake Magnitude</b>	6.97
<b>Depth (km)</b>	NA
<b>Rupture Length (Km)</b>	NA
<b>Rupture Orientation (degrees)</b>	NA
<b>Attenuation Function</b>	NA

## Direct Earthquake Damage

### Building Damage

Hazus estimates that about 26,022 buildings will be at least moderately damaged. This is over 1.00 % of the buildings in the region. There are an estimated 875 buildings that will be damaged beyond repair. The definition of the 'damage states' is provided in Volume 1: Chapter 5 of the Hazus technical manual. Table 3 below summarizes the expected damage by general occupancy for the buildings in the region. Table 4 below summarizes the expected damage by general building type.

### Damage Categories by General Occupancy Type

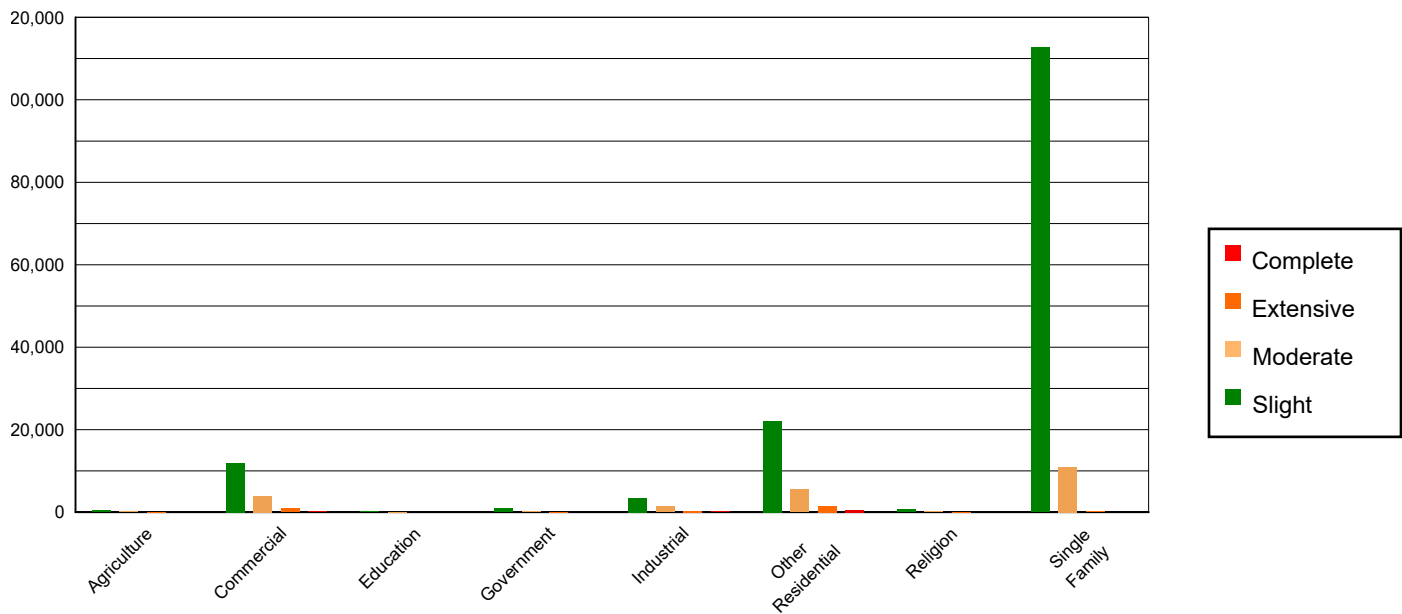


Table 3: Expected Building Damage by Occupancy

	None		Slight		Moderate		Extensive		Complete	
	Count	(%)	Count	(%)	Count	(%)	Count	(%)	Count	(%)
<b>Agriculture</b>	24277.71	0.61	469.80	0.31	184.76	0.83	45.48	1.62	12.25	1.40
<b>Commercial</b>	248478.49	6.29	11957.93	7.84	3911.10	17.51	820.12	29.16	250.36	28.60
<b>Education</b>	8149.79	0.21	214.02	0.14	61.68	0.28	8.72	0.31	5.79	0.66
<b>Government</b>	20185.92	0.51	962.42	0.63	221.80	0.99	35.17	1.25	5.69	0.65
<b>Industrial</b>	68228.80	1.73	3431.81	2.25	1304.74	5.84	270.22	9.61	72.44	8.27
<b>Other Residential</b>	489433.98	12.38	22149.92	14.53	5458.63	24.44	1468.85	52.23	512.63	58.56
<b>Religion</b>	14336.62	0.36	649.91	0.43	226.53	1.01	50.32	1.79	13.62	1.56
<b>Single Family</b>	3080266.36	77.92	112629.37	73.87	10965.23	49.10	113.39	4.03	2.64	0.30
<b>Total</b>	<b>3,953,358</b>		<b>152,465</b>		<b>22,334</b>		<b>2,812</b>		<b>875</b>	

**Table 4: Expected Building Damage by Building Type (All Design Levels)**

	None		Slight		Moderate		Extensive		Complete	
	Count	(%)	Count	(%)	Count	(%)	Count	(%)	Count	(%)
<b>Wood</b>	3442410.93	87.08	126193.03	82.77	12500.20	55.97	174.78	6.22	10.08	1.15
<b>Steel</b>	86116.71	2.18	5266.92	3.45	2225.51	9.96	540.38	19.22	154.29	17.63
<b>Concrete</b>	98341.01	2.49	5522.83	3.62	1840.63	8.24	500.13	17.78	177.34	20.26
<b>Precast</b>	50459.81	1.28	2476.45	1.62	969.14	4.34	145.77	5.18	16.20	1.85
<b>RM</b>	157841.02	3.99	3272.26	2.15	1150.04	5.15	169.34	6.02	3.98	0.45
<b>URM</b>	36875.10	0.93	5837.79	3.83	1517.42	6.79	254.53	9.05	158.34	18.09
<b>MH</b>	81313.09	2.06	3895.92	2.56	2131.53	9.54	1027.33	36.53	355.19	40.57
<b>Total</b>	<b>3,953,358</b>		<b>152,465</b>		<b>22,334</b>		<b>2,812</b>		<b>875</b>	

\*Note:

- RM Reinforced Masonry
- URM Unreinforced Masonry
- MH Manufactured Housing

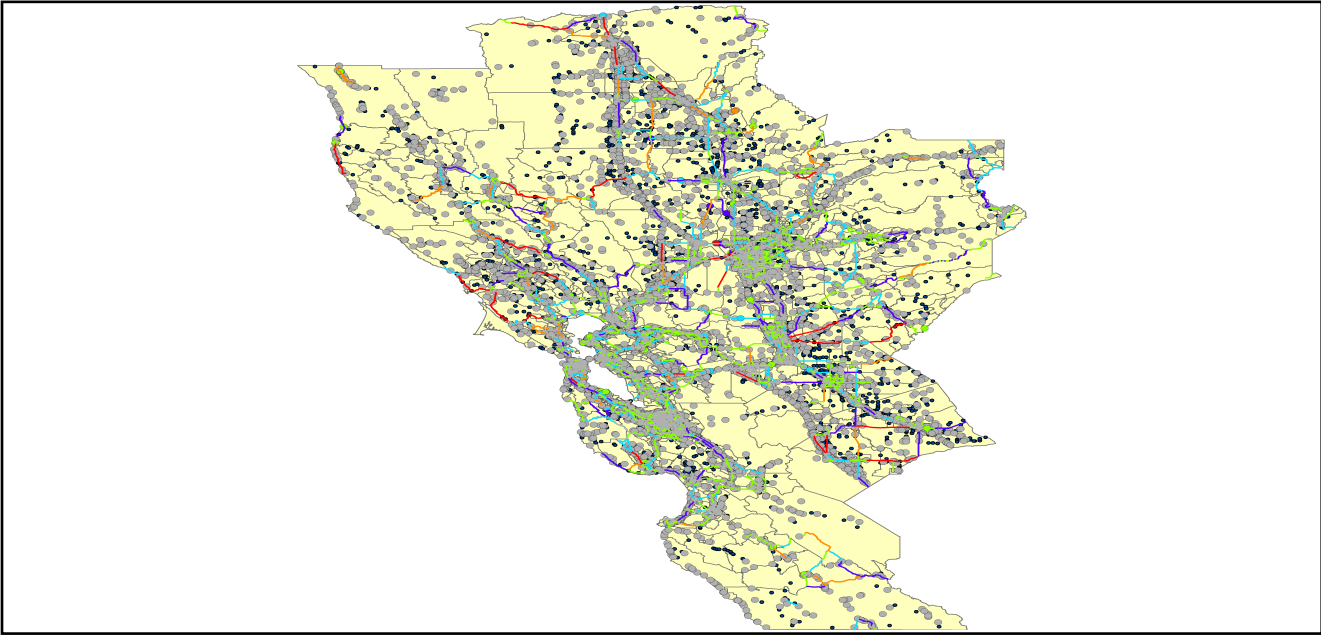
## Essential Facility Damage

Before the earthquake, the region had 32,685 hospital beds available for use. On the day of the earthquake, the model estimates that only 30,450 hospital beds (93.00%) are available for use by patients already in the hospital and those injured by the earthquake. After one week, 98.00% of the beds will be back in service. By 30 days, 99.00% will be operational.

**Table 5: Expected Damage to Essential Facilities**

Classification	Total	# Facilities		
		At Least Moderate Damage > 50%	Complete Damage > 50%	With Functionality > 50% on day 1
Hospitals	223	2	0	212
Schools	4,893	45	0	4,774
EOCs	77	3	0	71
PoliceStations	438	5	0	418
FireStations	1,309	10	0	1,268

Transportation Lifeline Damage



**Table 6: Expected Damage to the Transportation Systems**

System	Component	Number of Locations_				
		Locations/ Segments	With at Least Mod. Damage	With Complete Damage	With Functionality > 50 %	
					After Day 1	After Day 7
Highway	Segments	6,293	0	0	6,293	6,293
	Bridges	10,149	4	0	10,140	10,147
	Tunnels	43	0	0	43	43
Railways	Segments	2,811	0	0	2,811	2,811
	Bridges	1,507	0	0	1,507	1,507
	Tunnels	3	0	0	3	3
	Facilities	71	0	0	71	71
Light Rail	Segments	15	0	0	15	15
	Bridges	112	0	0	112	112
	Tunnels	0	0	0	0	0
	Facilities	255	0	0	255	255
Bus	Facilities	39	2	0	39	39
Ferry	Facilities	25	0	0	25	25
Port	Facilities	362	3	0	362	362
Airport	Facilities	90	1	0	90	90
	Runways	129	0	0	129	129

Table 6 provides damage estimates for the transportation system.

Note: Roadway segments, railroad tracks and light rail tracks are assumed to be damaged by ground failure only. If ground failure maps are not provided, damage estimates to these components will not be computed.

Tables 7-9 provide information on the damage to the utility lifeline systems. Table 7 provides damage to the utility system facilities. Table 8 provides estimates on the number of leaks and breaks by the pipelines of the utility systems. For electric power and potable water, Hazus performs a simplified system performance analysis. Table 9 provides a summary of the system performance information.

**Table 7 : Expected Utility System Facility Damage**

System	# of Locations				
	Total #	With at Least Moderate Damage	With Complete Damage	with Functionality > 50 %	
				After Day 1	After Day 7
Potable Water	22	0	0	22	22
Waste Water	176	5	0	163	176
Natural Gas	2	0	0	2	2
Oil Systems	16	0	0	16	16
Electrical Power	263	7	0	259	263
Communication	351	3	0	349	351

**Table 8 : Expected Utility System Pipeline Damage (Site Specific)**

System	Total Pipelines Length (miles)	Number of Leaks	Number of Breaks
Potable Water	114,487	2541	635
Waste Water	68,692	1276	319
Natural Gas	2,359	0	0
Oil	0	0	0

**Table 9: Expected Potable Water and Electric Power System Performance**

	Total # of Households	Number of Households without Service				
		At Day 1	At Day 3	At Day 7	At Day 30	At Day 90
Potable Water	4,737,605	32,549	20,661	1,786	0	0
Electric Power		75,433	51,284	23,102	2,552	97

## Induced Earthquake Damage

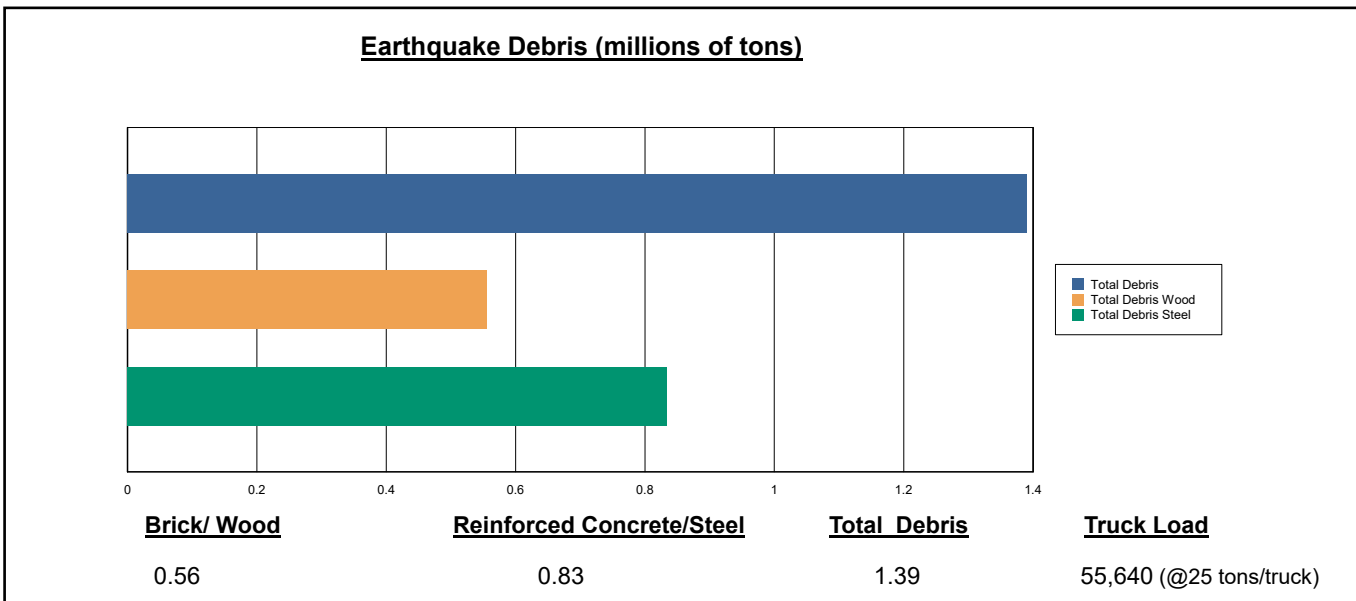
### Fire Following Earthquake

Fires often occur after an earthquake. Because of the number of fires and the lack of water to fight the fires, they can often burn out of control. Hazus uses a Monte Carlo simulation model to estimate the number of ignitions and the amount of burnt area. For this scenario, the model estimates that there will be 32 ignitions that will burn about 0.41 sq. mi (0.00 % of the region's total area.) The model also estimates that the fires will displace about 3,749 people and burn about 497 (millions of dollars) of building value.

### Debris Generation

Hazus estimates the amount of debris that will be generated by the earthquake. The model breaks the debris into two general categories: a) Brick/Wood and b) Reinforced Concrete/Steel. This distinction is made because of the different types of material handling equipment required to handle the debris.

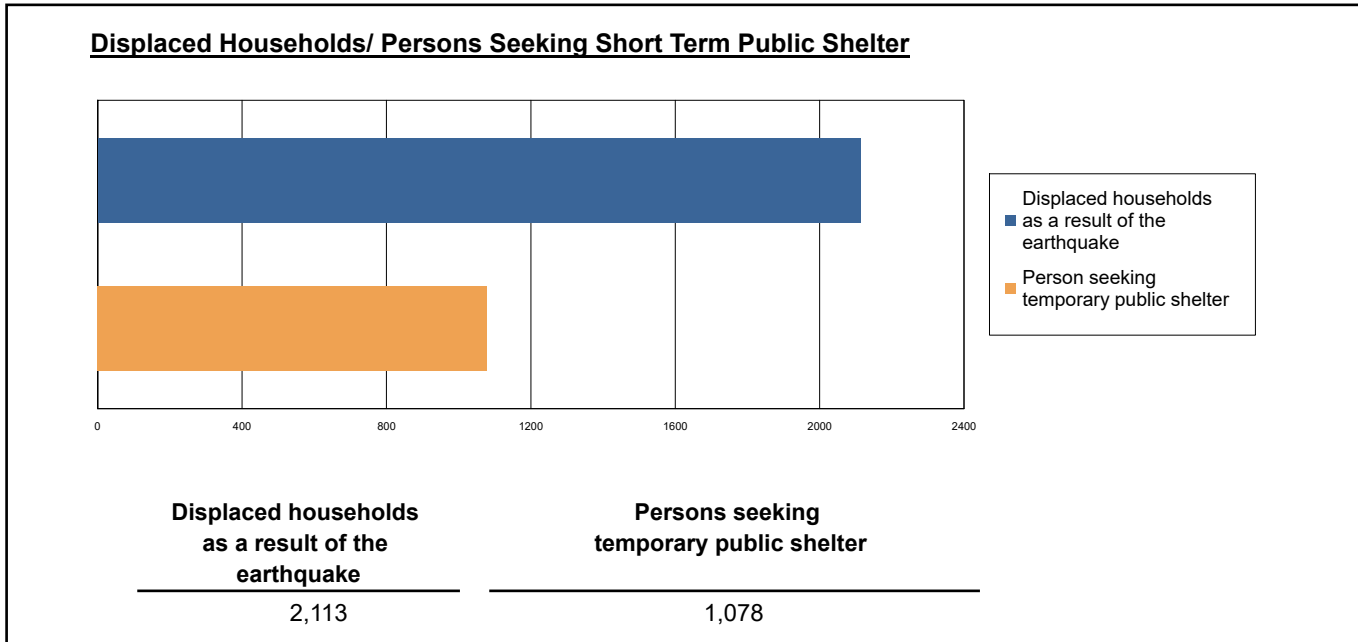
The model estimates that a total of 1,391,000 tons of debris will be generated. Of the total amount, Brick/Wood comprises 40.00% of the total, with the remainder being Reinforced Concrete/Steel. If the debris tonnage is converted to an estimated number of truckloads, it will require 55,640 truckloads (@25 tons/truck) to remove the debris generated by the earthquake.



## Social Impact

### Shelter Requirement

Hazus estimates the number of households that are expected to be displaced from their homes due to the earthquake and the number of displaced people that will require accommodations in temporary public shelters. The model estimates 2,113 households to be displaced due to the earthquake. Of these, 1,078 people (out of a total population of 13,407,636) will seek temporary shelter in public shelters.



### Casualties

Hazus estimates the number of people that will be injured and killed by the earthquake. The casualties are broken down into four (4) severity levels that describe the extent of the injuries. The levels are described as follows;

- Severity Level 1: Injuries will require medical attention but hospitalization is not needed.
- Severity Level 2: Injuries will require hospitalization but are not considered life-threatening
- Severity Level 3: Injuries will require hospitalization and can become life threatening if not promptly treated.
- Severity Level 4: Victims are killed by the earthquake.

The casualty estimates are provided for three (3) times of day: 2:00 AM, 2:00 PM and 5:00 PM. These times represent the periods of the day that different sectors of the community are at their peak occupancy loads. The 2:00 AM estimate considers that the residential occupancy load is maximum, the 2:00 PM estimate considers that the educational, commercial and industrial sector loads are maximum and 5:00 PM represents peak commute time.

Table 10 provides a summary of the casualties estimated for this earthquake

**Table 10: Casualty Estimates**

		Level 1	Level 2	Level 3	Level 4
<b>2 AM</b>	Commercial	12.34	2.45	0.33	0.65
	Commuting	0.13	0.18	0.31	0.06
	Educational	0.00	0.00	0.00	0.00
	Hotels	1.10	0.20	0.03	0.05
	Industrial	14.30	2.81	0.36	0.71
	Other-Residential	362.43	59.75	6.12	11.64
	Single Family	229.70	9.35	0.05	0.08
	<b>Total</b>	<b>620</b>	<b>75</b>	<b>7</b>	<b>13</b>
<b>2 PM</b>	Commercial	774.78	152.12	20.45	39.93
	Commuting	1.21	1.66	2.75	0.53
	Educational	188.64	38.06	5.22	10.17
	Hotels	0.21	0.04	0.01	0.01
	Industrial	105.19	20.77	2.71	5.27
	Other-Residential	111.13	18.50	1.96	3.62
	Single Family	65.36	2.72	0.02	0.03
	<b>Total</b>	<b>1,247</b>	<b>234</b>	<b>33</b>	<b>60</b>
<b>5 PM</b>	Commercial	515.92	101.21	13.64	26.28
	Commuting	24.64	33.63	55.85	10.86
	Educational	12.17	0.96	0.07	0.13
	Hotels	0.33	0.06	0.01	0.02
	Industrial	65.75	12.98	1.69	3.29
	Other-Residential	135.76	22.91	2.45	4.54
	Single Family	83.80	3.57	0.03	0.04
	<b>Total</b>	<b>838</b>	<b>175</b>	<b>74</b>	<b>45</b>

## Economic Loss

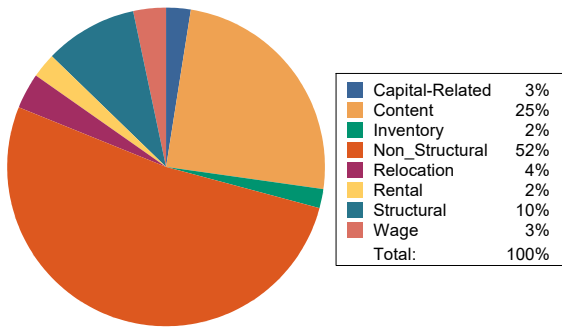
The total economic loss estimated for the earthquake is 14,825.44 (millions of dollars), which includes building and lifeline related losses based on the region's available inventory. The following three sections provide more detailed information about these losses.

## Building-Related Losses

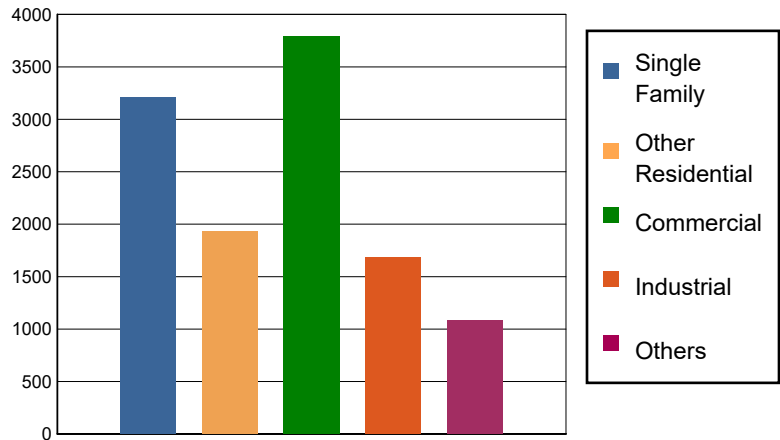
The building losses are broken into two categories: direct building losses and business interruption losses. The direct building losses are the estimated costs to repair or replace the damage caused to the building and its contents. The business interruption losses are the losses associated with inability to operate a business because of the damage sustained during the earthquake. Business interruption losses also include the temporary living expenses for those people displaced from their homes because of the earthquake.

The total building-related losses were 11,705.24 (millions of dollars); 12 % of the estimated losses were related to the business interruption of the region. By far, the largest loss was sustained by the residential occupancies which made up over 44 % of the total loss. Table 11 below provides a summary of the losses associated with the building damage.

Earthquake Losses by Loss Type (\$ millions)



Earthquake Losses by Occupancy Type (\$ millions)



**Table 11: Building-Related Economic Loss Estimates**  
(Millions of dollars)

Category	Area	Single Family	Other Residential	Commercial	Industrial	Others	Total
<b>Income Losses</b>							
	Wage	0.0000	45.4630	291.5080	14.8666	29.6131	381.4507
	Capital-Related	0.0000	19.3181	269.0373	8.8840	5.4513	302.6907
	Rental	24.4015	101.0120	136.0261	8.3975	13.1620	282.9991
	Relocation	71.6733	56.9332	175.3328	43.4629	71.1746	418.5768
	<b>Subtotal</b>	<b>96.0748</b>	<b>222.7263</b>	<b>871.9042</b>	<b>75.6110</b>	<b>119.4010</b>	<b>1385.7173</b>
<b>Capital Stock Losses</b>							
	Structural	299.7063	175.7969	363.3374	163.4707	116.5404	1,118.8517
	Non_Structural	2028.3468	1192.7440	1532.7851	792.6755	532.0655	6,078.6169
	Content	788.3304	344.4729	886.5317	560.7891	292.1093	2,872.2334
	Inventory	0.0000	0.0000	138.8219	92.3438	18.6569	249.8226
	<b>Subtotal</b>	<b>3116.3835</b>	<b>1713.0138</b>	<b>2921.4761</b>	<b>1609.2791</b>	<b>959.3721</b>	<b>10319.5246</b>
	<b>Total</b>	<b>3212.46</b>	<b>1935.74</b>	<b>3793.38</b>	<b>1684.89</b>	<b>1078.77</b>	<b>11705.24</b>

### Transportation and Utility Lifeline Losses

For the transportation and utility lifeline systems, Hazus computes the direct repair cost for each component only. There are no losses computed by Hazus for business interruption due to lifeline outages. Tables 12 & 13 provide a detailed breakdown in the expected lifeline losses.

**Table 12: Transportation System Economic Losses**  
(Millions of dollars)

System	Component	Inventory Value	Economic Loss	Loss Ratio (%)
Highway	Segments	75645.7673	0.0000	0.00
	Bridges	54295.8891	115.0607	0.21
	Tunnels	883.7658	0.2149	0.02
	<b>Subtotal</b>	<b>130825.4222</b>	<b>115.2756</b>	
Railways	Segments	58657.3803	0.0000	0.00
	Bridges	8574.8300	25.2094	0.29
	Tunnels	1.8495	0.0011	0.06
	Facilities	189.0730	8.0963	4.28
	<b>Subtotal</b>	<b>67423.1328</b>	<b>33.3068</b>	
Light Rail	Segments	5403.2756	0.0000	0.00
	Bridges	15.3529	0.0020	0.01
	Tunnels	0.0000	0.0000	0.00
	Facilities	4154.0000	151.9581	3.66
	<b>Subtotal</b>	<b>9572.6285</b>	<b>151.9601</b>	
Bus	Facilities	89.4607	3.8943	4.35
	<b>Subtotal</b>	<b>89.4607</b>	<b>3.8943</b>	
Ferry	Facilities	33.2750	2.1765	6.54
	<b>Subtotal</b>	<b>33.2750</b>	<b>2.1765</b>	
Port	Facilities	1379.8878	102.5444	7.43
	<b>Subtotal</b>	<b>1379.8878</b>	<b>102.5444</b>	
Airport	Facilities	2643.9340	80.7508	3.05
	Runways	1198.8704	0.0000	0.00
	<b>Subtotal</b>	<b>3842.8044</b>	<b>80.7508</b>	
<b>Total</b>		<b>213,166.61</b>	<b>489.91</b>	

**Table 13: Utility System Economic Losses**

(Millions of dollars)

System	Component	Inventory Value	Economic Loss	Loss Ratio (%)
Potable Water	Pipelines	0.0000	0.0000	0.00
	Facilities	864.4680	11.6888	1.35
	Distribution Lines	3684.9918	11.4343	0.31
	<b>Subtotal</b>	<b>4549.4598</b>	<b>23.1231</b>	
Waste Water	Pipelines	0.0000	0.0000	0.00
	Facilities	30263.5168	621.8181	2.05
	Distribution Lines	2210.9951	5.7437	0.26
	<b>Subtotal</b>	<b>32474.5119</b>	<b>627.5618</b>	
Natural Gas	Pipelines	13368.8843	0.0000	0.00
	Facilities	82.4870	0.0749	0.09
	Distribution Lines	1473.9967	1.9678	0.13
	<b>Subtotal</b>	<b>14925.3680</b>	<b>2.0427</b>	
Oil Systems	Pipelines	0.0000	0.0000	0.00
	Facilities	1.8880	0.1147	6.08
	<b>Subtotal</b>	<b>1.8880</b>	<b>0.1147</b>	
Electrical Power	Facilities	79809.0219	1976.7685	2.48
	<b>Subtotal</b>	<b>79809.0219</b>	<b>1976.7685</b>	
Communication	Facilities	41.4180	0.6846	1.65
	<b>Subtotal</b>	<b>41.4180</b>	<b>0.6846</b>	
	<b>Total</b>	<b>131,801.67</b>	<b>2,630.30</b>	

---

## Appendix A: County Listing for the Region

Alameda,CA  
Amador,CA  
Butte,CA  
Calaveras,CA  
Colusa,CA  
Contra Costa,CA  
El Dorado,CA  
Glenn,CA  
Lake,CA  
Marin,CA  
Mendocino,CA  
Merced,CA  
Monterey,CA  
Napa,CA  
Nevada,CA  
Placer,CA  
Sacramento,CA  
San Benito,CA  
San Francisco,CA  
San Joaquin,CA  
San Mateo,CA  
Santa Clara,CA  
Santa Cruz,CA  
Solano,CA  
Sonoma,CA  
Stanislaus,CA  
Sutter,CA  
Tehama,CA  
Yolo,CA



---

Yuba, CA

## Appendix B: Regional Population and Building Value Data

State	County Name	Population	Building Value (millions of dollars)		
			Residential	Non-Residential	Total
California	Alameda	1,682,353	209,951	122,639	332,590
	Amador	40,474	5,608	2,517	8,125
	Butte	211,632	25,875	16,639	42,514
	Calaveras	45,292	8,305	4,893	13,199
	Colusa	21,839	2,244	2,024	4,268
	Contra Costa	1,165,927	158,118	60,339	218,458
	El Dorado	191,185	34,907	9,704	44,611
	Glenn	28,917	2,791	3,717	6,508
	Lake	68,163	9,699	4,530	14,229
	Marin	262,321	47,738	15,030	62,769
	Mendocino	91,601	14,237	8,510	22,748
	Merced	281,202	25,194	26,098	51,292
	Monterey	439,035	47,655	28,750	76,405
	Napa	138,019	20,517	13,045	33,563
	Nevada	102,241	17,908	6,108	24,016
	Placer	404,739	69,985	24,193	94,179
	Sacramento	1,585,055	179,811	83,911	263,723
	San Benito	64,209	9,440	3,799	13,239
	San Francisco	873,965	108,848	46,020	154,869
	San Joaquin	779,233	82,706	56,882	139,589
	San Mateo	764,442	110,372	44,995	155,368
	Santa Clara	1,936,259	261,111	120,471	381,582
	Santa Cruz	270,861	36,147	18,805	54,952
	Solano	453,491	55,802	26,393	82,195
	Sonoma	488,863	68,827	35,781	104,609
	Stanislaus	552,878	62,937	37,511	100,449
	Sutter	99,633	10,618	6,448	17,066
	Tehama	65,829	7,705	5,113	12,818
	Yolo	216,403	24,130	18,343	42,473
	Yuba	81,575	8,161	4,677	12,839
<b>Total Region</b>		<b>13,407,636</b>	<b>1,727,347</b>	<b>857,885</b>	<b>2,585,245</b>

### Building Inspection Tagging (Counts)

<b>Inspected</b> Residential Commercial Industrial Agricultural Educational Government Religious	<b>Restricted</b> Residential Commercial Industrial Agricultural Educational Government Religious	<b>Unsafe</b> Residential Commercial Industrial Agricultural Educational Government Religious
---	--	--

### Total Economic Loss

Total:

Top Counties	State	Total

### Injuries & Fatalities

Total Day:  
Total Night:

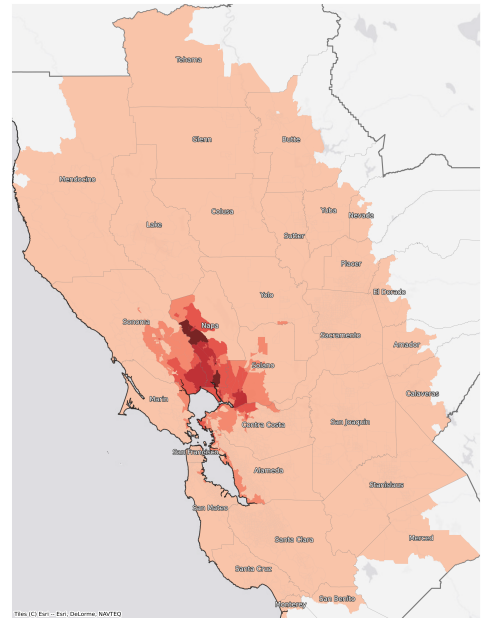
Top Counties	State	Injuries (day/night)	Fatalities (day/night)

### Displaced Households & Short-Term Shelter Needs

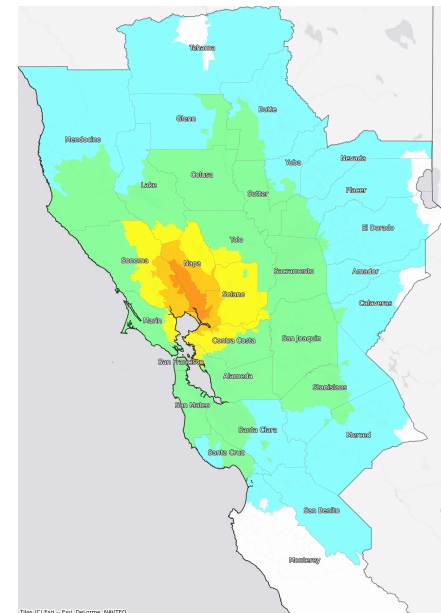
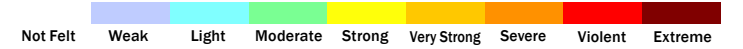
Total Displaced:  
Total Needing Shelter:

Top Counties	State	Displaced	Needing Shelter

### Economic Impacts by Census Tract



### Ground Shaking



### Debris

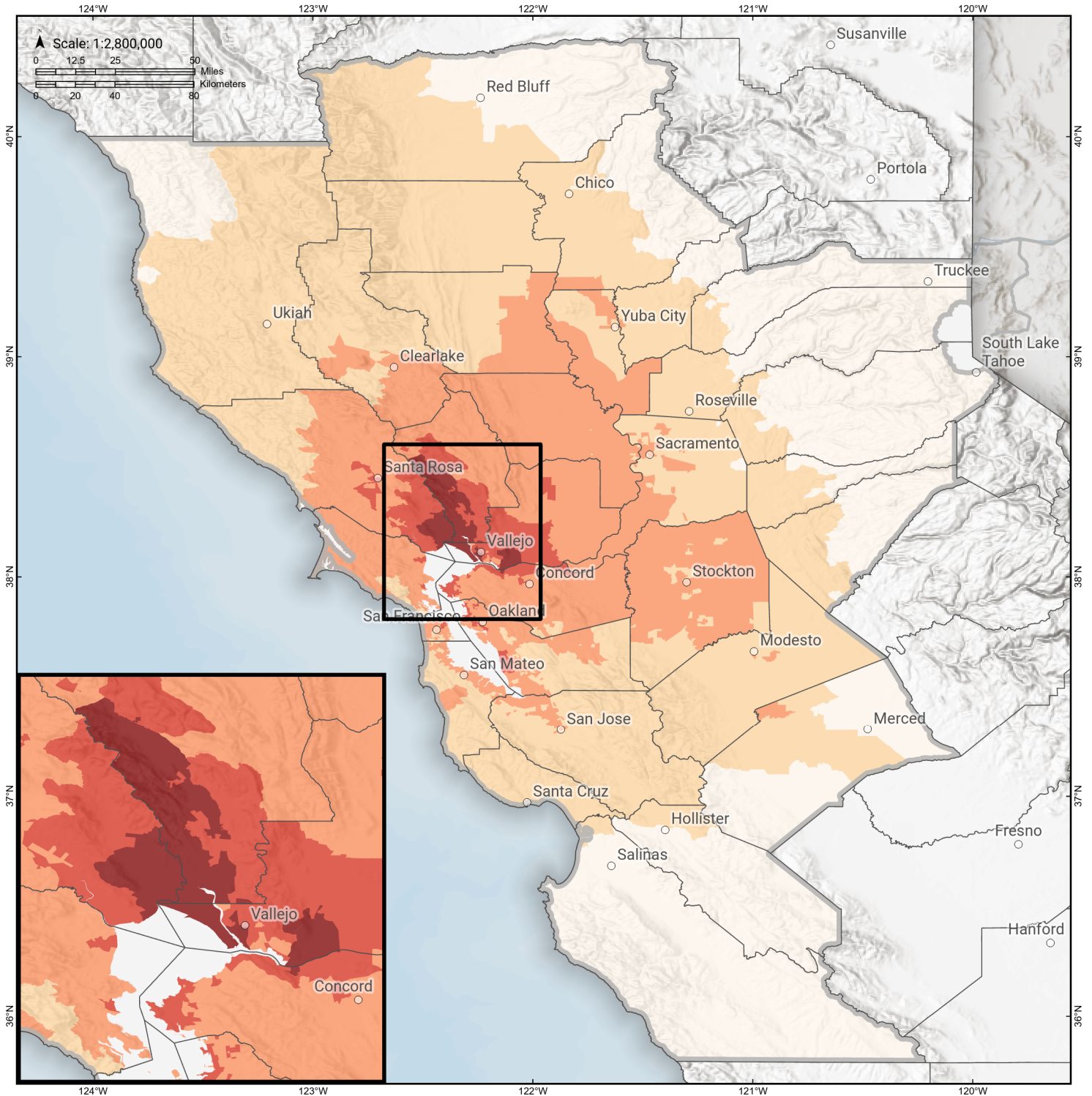
Total Tons:  
Total Truckloads:

Type	Tons

The estimates of social and economic impacts contained in this report were produced using Hazus loss estimation methodology software which is based on current scientific and engineering knowledge. There are uncertainties inherent in any loss estimation technique. Therefore, there may be significant differences between the modeled results contained in this report and the actual social and economic losses following a specific earthquake.

# West Napa

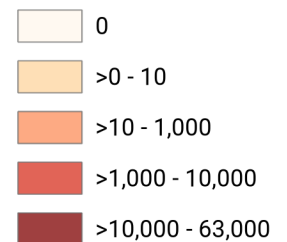
## Debris Generated by Census Tract



**Study Region:** West Napa  
**Scenario:** westnapa2011cfmellbg\_m6p97\_se

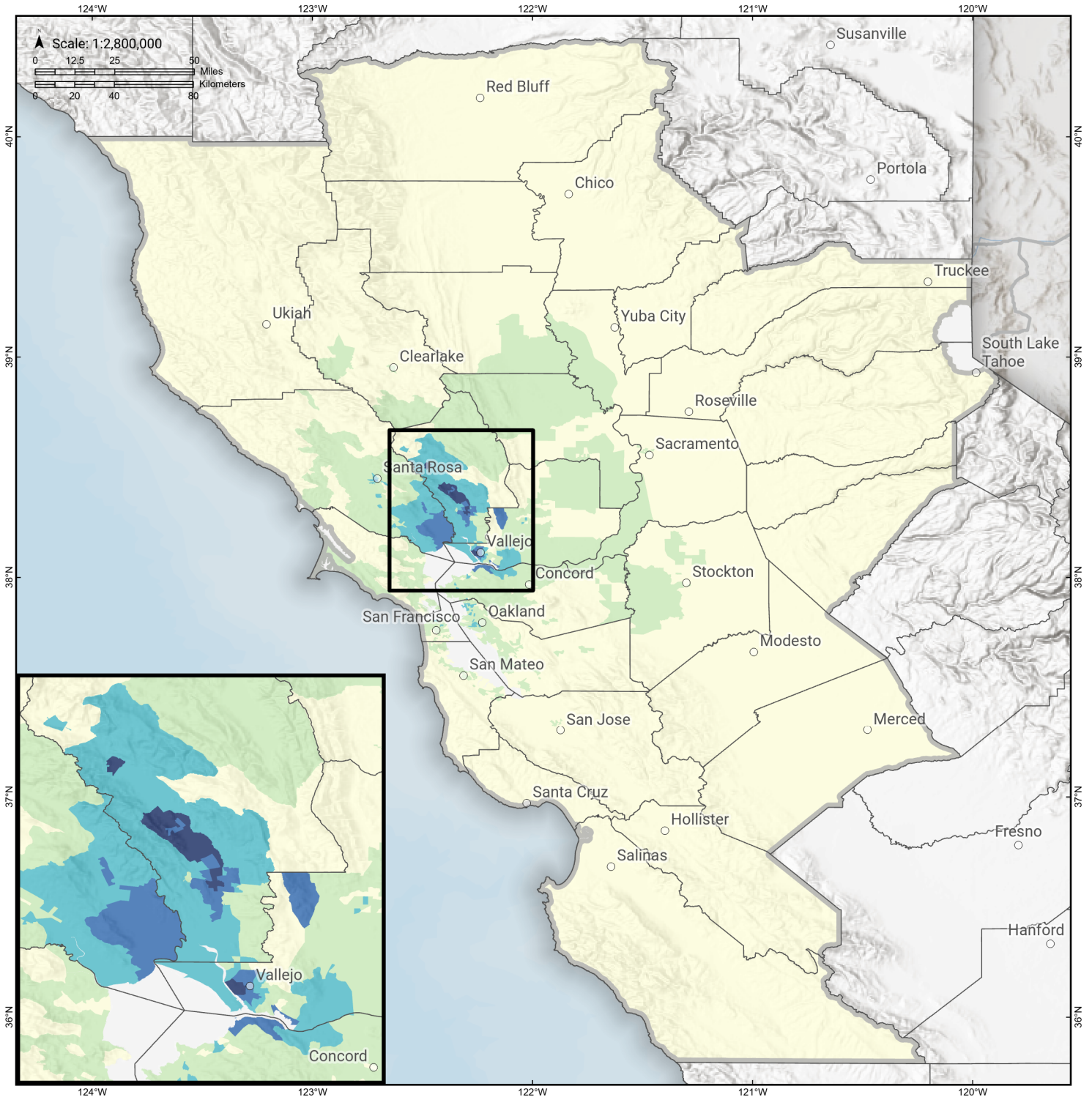


**Debris Generated (in tons)**



# West Napa

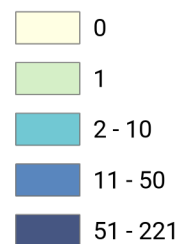
## Displaced Households by Census Tract



Study Region: West Napa  
Scenario: westnapa2011cfmellbg\_m6p97\_se

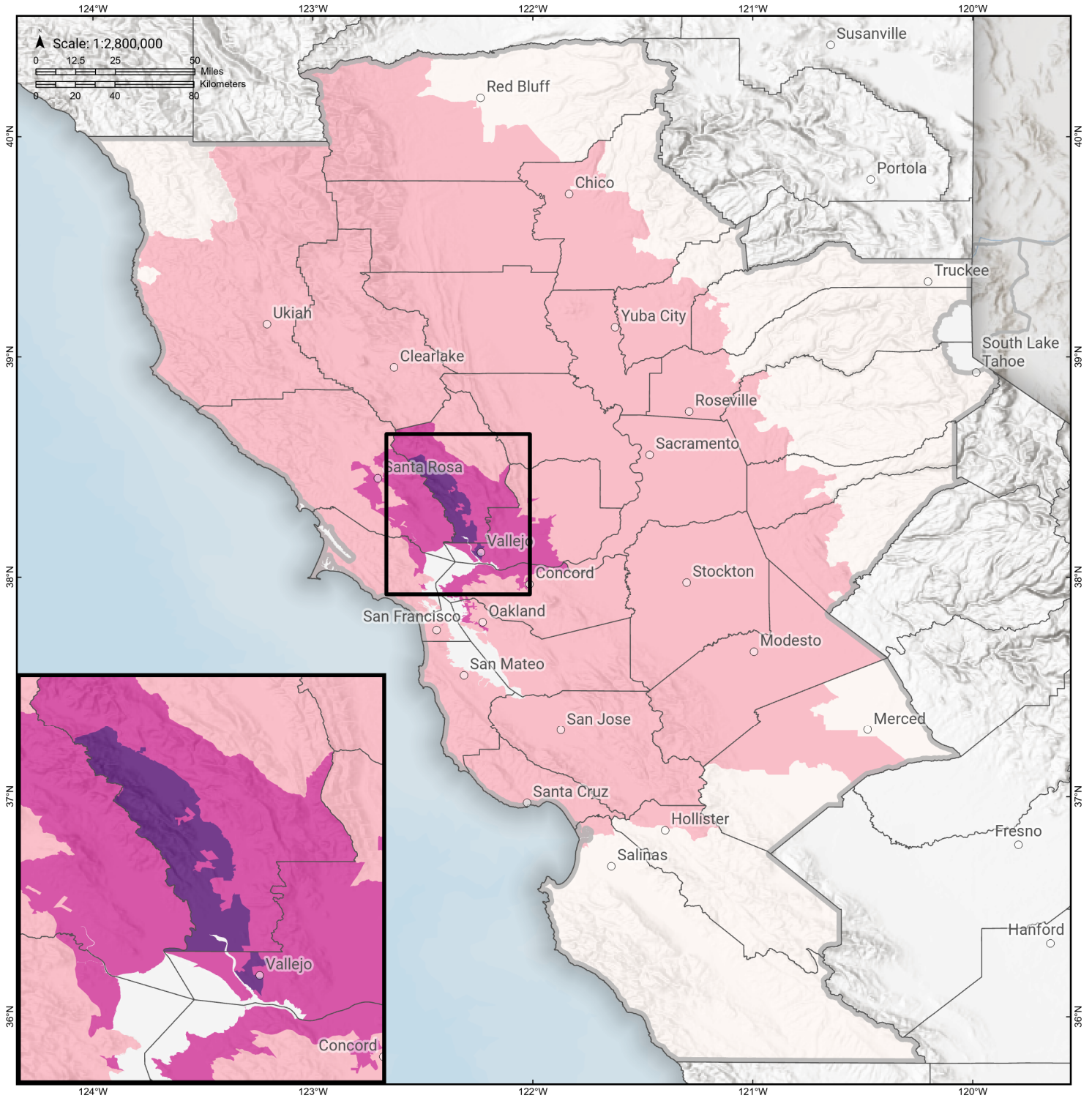


### Displaced Households



# West Napa

## Loss Ratio by Census Tract



**Study Region:** West Napa  
**Scenario:** westnapa2011cfmellbg\_m6p97\_se

**Loss Ratio** (ratio of building related economic loss to exposed value of buildings)





## Building Damage by Count by General Occupancy

June 26, 2024

	# of Buildings					Total
	None	Slight	Moderate	Extensive	Complete	
<b>California</b>						
<b>Alameda</b>						
<i>Government</i>	10,103	367	56	2	0	10,528
<i>Agriculture</i>	390	22	8	1	0	422
<i>Commercial</i>	29,289	2,168	509	23	0	31,989
<i>Religion</i>	1,814	140	30	1	0	1,986
<i>Single Family</i>	338,139	5,978	56	0	0	344,173
<i>Other Residential</i>	57,971	3,009	400	16	0	61,396
<i>Education</i>	1,059	45	13	1	0	1,117
<i>Industrial</i>	9,408	626	161	9	0	10,205
<b>Amador</b>						
<i>Industrial</i>	235	0	0	0	0	235
<i>Single Family</i>	14,962	0	0	0	0	14,962
<i>Other Residential</i>	1,037	0	0	0	0	1,037
<i>Education</i>	23	0	0	0	0	23
<i>Government</i>	32	0	0	0	0	32
<i>Agriculture</i>	44	0	0	0	0	44
<i>Religion</i>	45	0	0	0	0	45
<i>Commercial</i>	1,368	0	0	0	0	1,368
<b>Butte</b>						

	# of Buildings					Total
	None	Slight	Moderate	Extensive	Complete	
<i>Government</i>	147	0	0	0	0	147
<i>Religion</i>	531	0	0	0	0	531
<i>Agriculture</i>	510	0	0	0	0	510
<i>Commercial</i>	6,384	1	0	0	0	6,385
<i>Industrial</i>	1,522	0	0	0	0	1,522
<i>Single Family</i>	50,283	0	0	0	0	50,283
<i>Other Residential</i>	21,493	5	0	0	0	21,498
<i>Education</i>	172	0	0	0	0	172
<b>Calaveras</b>						
<i>Government</i>	84	0	0	0	0	84
<i>Other Residential</i>	2,559	0	0	0	0	2,559
<i>Education</i>	35	0	0	0	0	35
<i>Religion</i>	130	0	0	0	0	130
<i>Agriculture</i>	2,207	0	0	0	0	2,207
<i>Commercial</i>	1,413	0	0	0	0	1,413
<i>Industrial</i>	466	0	0	0	0	466
<i>Single Family</i>	22,148	0	0	0	0	22,148
<b>Colusa</b>						
<i>Agriculture</i>	141	1	0	0	0	142
<i>Religion</i>	57	1	0	0	0	58
<i>Commercial</i>	788	5	0	0	0	794
<i>Industrial</i>	112	1	0	0	0	113
<i>Other Residential</i>	947	7	0	0	0	954
<i>Single Family</i>	5,941	13	0	0	0	5,954
<i>Government</i>	32	0	0	0	0	32

	# of Buildings					Total
	None	Slight	Moderate	Extensive	Complete	
<i>Education</i>	33	0	0	0	0	33
<b>Contra Costa</b>						
<i>Commercial</i>	15,855	1,709	379	46	3	17,991
<i>Agriculture</i>	669	62	15	2	0	749
<i>Religion</i>	1,038	143	40	5	0	1,226
<i>Single Family</i>	261,044	20,492	397	1	0	281,935
<i>Other Residential</i>	25,109	3,384	595	34	1	29,124
<i>Industrial</i>	3,933	622	173	19	2	4,749
<i>Government</i>	4,474	437	100	12	1	5,024
<i>Education</i>	626	23	4	0	0	653
<b>El Dorado</b>						
<i>Other Residential</i>	10,420	0	0	0	0	10,420
<i>Industrial</i>	1,199	0	0	0	0	1,199
<i>Education</i>	128	0	0	0	0	128
<i>Single Family</i>	71,424	0	0	0	0	71,424
<i>Commercial</i>	4,768	0	0	0	0	4,768
<i>Government</i>	100	0	0	0	0	100
<i>Religion</i>	180	0	0	0	0	180
<i>Agriculture</i>	161	0	0	0	0	161
<b>Glenn</b>						
<i>Other Residential</i>	2,149	3	0	0	0	2,152
<i>Government</i>	99	0	0	0	0	99
<i>Education</i>	35	0	0	0	0	35
<i>Industrial</i>	254	0	0	0	0	254
<i>Single Family</i>	7,417	0	0	0	0	7,417

		# of Buildings					
		None	Slight	Moderate	Extensive	Complete	Total
<b>Lake</b>	<i>Commercial</i>	884	1	0	0	0	885
	<i>Agriculture</i>	1,364	1	0	0	0	1,365
	<i>Religion</i>	89	0	0	0	0	89
	<i>Agriculture</i>	160	1	0	0	0	161
	<i>Single Family</i>	21,555	78	0	0	0	21,633
	<i>Other Residential</i>	14,274	304	23	0	0	14,601
	<i>Education</i>	68	0	0	0	0	68
	<i>Industrial</i>	351	3	0	0	0	354
	<i>Commercial</i>	2,074	16	1	0	0	2,091
<b>Marin</b>	<i>Religion</i>	139	1	0	0	0	140
	<i>Government</i>	78	0	0	0	0	78
	<i>Other Residential</i>	7,435	380	74	2	0	7,890
	<i>Government</i>	134	8	1	0	0	143
	<i>Education</i>	268	5	0	0	0	274
	<i>Commercial</i>	7,651	540	76	2	0	8,270
	<i>Religion</i>	301	17	2	0	0	319
	<i>Agriculture</i>	173	13	3	1	0	190
	<i>Single Family</i>	74,091	2,604	29	0	0	76,724
<b>Mendocino</b>	<i>Industrial</i>	1,329	169	36	1	0	1,535
	<i>Commercial</i>	3,436	0	0	0	0	3,436
	<i>Religion</i>	216	0	0	0	0	216
	<i>Agriculture</i>	184	0	0	0	0	184

	# of Buildings					Total
	None	Slight	Moderate	Extensive	Complete	
<i>Single Family</i>	25,969	0	0	0	0	25,969
<i>Other Residential</i>	7,058	2	0	0	0	7,060
<i>Government</i>	83	0	0	0	0	83
<i>Education</i>	101	0	0	0	0	101
<i>Industrial</i>	869	0	0	0	0	869
<b>Merced</b>						
<i>Education</i>	163	0	0	0	0	163
<i>Government</i>	171	0	0	0	0	171
<i>Commercial</i>	4,754	0	0	0	0	4,754
<i>Agriculture</i>	7,650	3	0	0	0	7,653
<i>Religion</i>	345	0	0	0	0	345
<i>Industrial</i>	1,022	0	0	0	0	1,022
<i>Single Family</i>	63,598	0	0	0	0	63,598
<i>Other Residential</i>	10,786	1	0	0	0	10,787
<b>Monterey</b>						
<i>Single Family</i>	90,876	0	0	0	0	90,876
<i>Industrial</i>	1,850	0	0	0	0	1,850
<i>Other Residential</i>	19,809	0	0	0	0	19,809
<i>Education</i>	239	0	0	0	0	239
<i>Government</i>	185	0	0	0	0	185
<i>Agriculture</i>	1,815	0	0	0	0	1,815
<i>Commercial</i>	9,246	0	0	0	0	9,246
<i>Religion</i>	580	0	0	0	0	580
<b>Napa</b>						
<i>Commercial</i>	837	1,419	1,188	415	162	4,021

	# of Buildings					Total
	None	Slight	Moderate	Extensive	Complete	
<i>Agriculture</i>	127	112	77	25	8	349
<i>Religion</i>	27	47	48	19	7	148
<i>Single Family</i>	11,130	21,864	5,690	77	1	38,761
<i>Other Residential</i>	1,340	2,868	1,535	851	384	6,978
<i>Government</i>	23	29	31	16	4	103
<i>Education</i>	47	50	24	5	5	132
<i>Industrial</i>	291	436	437	156	48	1,367
<b>Nevada</b>						
<i>Commercial</i>	2,835	0	0	0	0	2,835
<i>Religion</i>	189	0	0	0	0	189
<i>Government</i>	60	0	0	0	0	60
<i>Agriculture</i>	132	0	0	0	0	132
<i>Single Family</i>	43,280	0	0	0	0	43,280
<i>Other Residential</i>	6,384	0	0	0	0	6,384
<i>Education</i>	108	0	0	0	0	108
<i>Industrial</i>	1,161	0	0	0	0	1,161
<b>Placer</b>						
<i>Education</i>	231	0	0	0	0	231
<i>Commercial</i>	8,537	1	0	0	0	8,538
<i>Government</i>	377	0	0	0	0	377
<i>Agriculture</i>	258	0	0	0	0	258
<i>Religion</i>	382	0	0	0	0	382
<i>Industrial</i>	2,703	0	0	0	0	2,703
<i>Other Residential</i>	14,841	2	0	0	0	14,843

	# of Buildings					Total
	None	Slight	Moderate	Extensive	Complete	
<i>Single Family</i>	134,718	1	0	0	0	134,719
<b>Sacramento</b>						
<i>Single Family</i>	386,448	389	3	0	0	386,840
<i>Industrial</i>	6,732	22	2	0	0	6,756
<i>Other Residential</i>	56,196	200	17	0	0	56,413
<i>Education</i>	828	1	0	0	0	829
<i>Agriculture</i>	618	2	0	0	0	621
<i>Religion</i>	1,691	10	1	0	0	1,702
<i>Government</i>	609	9	1	0	0	619
<i>Commercial</i>	26,147	132	15	0	0	26,295
<b>San Benito</b>						
<i>Other Residential</i>	1,375	0	0	0	0	1,375
<i>Single Family</i>	14,726	0	0	0	0	14,726
<i>Industrial</i>	326	0	0	0	0	326
<i>Education</i>	42	0	0	0	0	42
<i>Government</i>	45	0	0	0	0	45
<i>Commercial</i>	1,080	0	0	0	0	1,080
<i>Religion</i>	64	0	0	0	0	64
<i>Agriculture</i>	253	0	0	0	0	253
<b>San Francisco</b>						
<i>Single Family</i>	147,616	2,816	265	6	0	150,703
<i>Other Residential</i>	41,539	2,581	403	7	0	44,529
<i>Government</i>	248	34	7	0	0	289
<i>Education</i>	544	24	4	0	0	572
<i>Industrial</i>	3,548	262	49	1	0	3,860

	# of Buildings					Total
	None	Slight	Moderate	Extensive	Complete	
<i>Commercial</i>	19,139	1,860	339	7	0	21,344
<i>Religion</i>	1,265	70	10	0	0	1,345
<i>Agriculture</i>	153	8	1	0	0	162
<b>San Joaquin</b>						
<i>Commercial</i>	12,805	56	3	0	0	12,864
<i>Agriculture</i>	748	4	0	0	0	753
<i>Religion</i>	873	4	0	0	0	877
<i>Government</i>	302	2	0	0	0	304
<i>Single Family</i>	187,966	891	64	0	0	188,922
<i>Other Residential</i>	21,633	161	11	0	0	21,805
<i>Education</i>	395	0	0	0	0	395
<i>Industrial</i>	4,907	20	1	0	0	4,928
<b>San Mateo</b>						
<i>Religion</i>	727	9	1	0	0	736
<i>Agriculture</i>	533	5	1	0	0	539
<i>Government</i>	295	4	0	0	0	299
<i>Commercial</i>	14,206	178	12	0	0	14,395
<i>Industrial</i>	4,397	69	6	0	0	4,472
<i>Other Residential</i>	22,193	244	16	0	0	22,453
<i>Single Family</i>	159,261	669	1	0	0	159,931
<i>Education</i>	488	1	0	0	0	489
<b>Santa Clara</b>						
<i>Other Residential</i>	59,010	143	7	0	0	59,160
<i>Single Family</i>	427,088	130	1	0	0	427,219
<i>Government</i>	498	4	0	0	0	502

	# of Buildings					Total
	None	Slight	Moderate	Extensive	Complete	
<i>Education</i>	1,172	1	0	0	0	1,173
<i>Industrial</i>	9,410	22	1	0	0	9,433
<i>Commercial</i>	35,371	93	5	0	0	35,469
<i>Religion</i>	1,536	4	0	0	0	1,540
<i>Agriculture</i>	893	2	0	0	0	895
<b>Santa Cruz</b>						
<i>Religion</i>	359	0	0	0	0	359
<i>Agriculture</i>	840	0	0	0	0	840
<i>Single Family</i>	68,870	0	0	0	0	68,870
<i>Other Residential</i>	14,888	4	0	0	0	14,892
<i>Industrial</i>	1,818	1	0	0	0	1,819
<i>Education</i>	225	0	0	0	0	225
<i>Commercial</i>	6,692	2	0	0	0	6,694
<i>Government</i>	127	0	0	0	0	127
<b>Solano</b>						
<i>Religion</i>	249	110	67	22	6	454
<i>Agriculture</i>	187	39	13	3	2	245
<i>Government</i>	106	30	13	2	0	152
<i>Commercial</i>	4,519	1,658	781	235	75	7,268
<i>Single Family</i>	82,812	34,487	3,640	27	2	120,968
<i>Industrial</i>	1,285	511	233	53	19	2,101
<i>Other Residential</i>	6,943	3,667	1,145	443	120	12,317
<i>Education</i>	178	33	10	2	1	225
<b>Sonoma</b>						
<i>Other Residential</i>	18,680	5,007	1,223	115	8	25,033

	# of Buildings					Total
	None	Slight	Moderate	Extensive	Complete	
<i>Government</i>	267	36	12	3	1	319
<i>Education</i>	332	29	5	0	0	367
<i>Religion</i>	455	90	27	3	0	576
<i>Commercial</i>	9,383	2,030	595	91	10	12,110
<i>Agriculture</i>	1,044	182	63	14	2	1,304
<i>Single Family</i>	119,435	21,773	819	1	0	142,028
<i>Industrial</i>	2,945	642	203	31	4	3,825
<b>Stanislaus</b>						
<i>Other Residential</i>	19,561	8	0	0	0	19,569
<i>Single Family</i>	142,724	0	0	0	0	142,724
<i>Education</i>	307	0	0	0	0	307
<i>Government</i>	680	0	0	0	0	680
<i>Industrial</i>	3,474	1	0	0	0	3,475
<i>Commercial</i>	10,364	5	0	0	0	10,369
<i>Religion</i>	456	0	0	0	0	456
<i>Agriculture</i>	1,239	0	0	0	0	1,239
<b>Sutter</b>						
<i>Other Residential</i>	3,099	14	1	0	0	3,113
<i>Industrial</i>	634	2	0	0	0	636
<i>Education</i>	62	0	0	0	0	62
<i>Government</i>	77	0	0	0	0	77
<i>Single Family</i>	24,497	15	0	0	0	24,512
<i>Commercial</i>	2,047	4	0	0	0	2,052
<i>Agriculture</i>	1,119	5	1	0	0	1,125
<i>Religion</i>	154	0	0	0	0	154

	# of Buildings					Total
	None	Slight	Moderate	Extensive	Complete	
<b>Tehama</b>						
<i>Religion</i>	110	0	0	0	0	110
<i>Agriculture</i>	299	0	0	0	0	299
<i>Industrial</i>	552	0	0	0	0	552
<i>Other Residential</i>	3,991	0	0	0	0	3,991
<i>Single Family</i>	21,222	0	0	0	0	21,222
<i>Education</i>	57	0	0	0	0	57
<i>Commercial</i>	1,270	0	0	0	0	1,270
<i>Government</i>	50	0	0	0	0	50
<b>Yolo</b>						
<i>Industrial</i>	1,092	23	2	0	0	1,117
<i>Other Residential</i>	9,699	154	9	0	0	9,861
<i>Education</i>	130	1	0	0	0	131
<i>Government</i>	109	2	0	0	0	111
<i>Single Family</i>	42,161	427	1	0	0	42,589
<i>Commercial</i>	4,140	78	7	0	0	4,225
<i>Agriculture</i>	275	6	1	0	0	281
<i>Religion</i>	237	4	0	0	0	242
<b>Yuba</b>						
<i>Government</i>	591	0	0	0	0	591
<i>Education</i>	54	0	0	0	0	54
<i>Other Residential</i>	7,016	5	0	0	0	7,021
<i>Religion</i>	98	0	0	0	0	98
<i>Commercial</i>	1,198	1	0	0	0	1,199
<i>Agriculture</i>	92	0	0	0	0	92

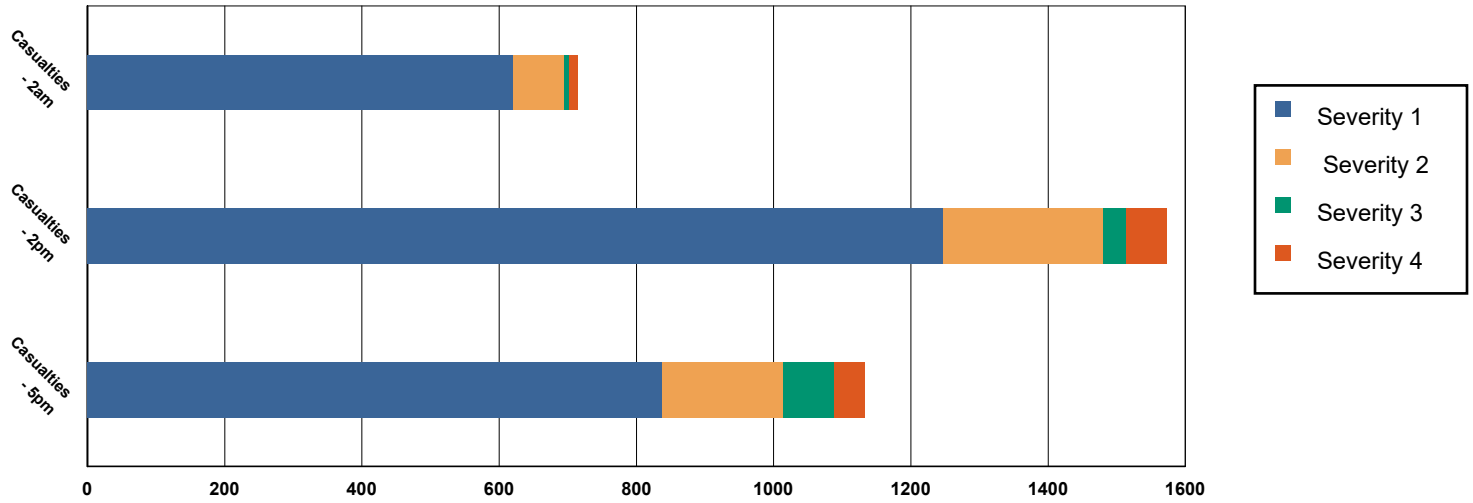
	# of Buildings					Total
	None	Slight	Moderate	Extensive	Complete	
<i>Single Family</i>	18,866	1	0	0	0	18,867
<i>Industrial</i>	404	0	0	0	0	404
<b>Total</b>	<b>3,953,358</b>	<b>152,465</b>	<b>22,334</b>	<b>2,812</b>	<b>875</b>	<b>4,131,845</b>
<b>Region Total</b>	<b>3,953,358</b>	<b>152,465</b>	<b>22,334</b>	<b>2,812</b>	<b>875</b>	<b>4,131,845</b>

Totals only reflect data for those census tracts/blocks included in the user's study region and will reflect the entire county/state only if all of the census blocks for that county/states were selected at the time of study region creation.

### Casualties Summary Report

June 26, 2024

### Region Total Casualties



### Injury Severity Level

Severity 1	Severity 2	Severity 3	Severity 4	Total
------------	------------	------------	------------	-------

#### California

##### Alameda

##### Casualties - 2am

	Severity 1	Severity 2	Severity 3	Severity 4	Total
Single Family	9	0	0	0	9
Hotels	0	0	0	0	0
Commuting	0	0	0	0	0
Educational	0	0	0	0	0
Industrial	1	0	0	0	1
Commercial	1	0	0	0	1
Other-Residential	29	2	0	0	30
<b>Total Casualties - 2am</b>	<b>39</b>	<b>2</b>	<b>0</b>	<b>0</b>	<b>41</b>

##### Casualties - 2pm

Industrial	6	0	0	0	7
Educational	12	1	0	0	13
Other-Residential	10	1	0	0	10
Single Family	2	0	0	0	3
Hotels	0	0	0	0	0
Commuting	0	0	0	0	0
Commercial	56	4	0	0	60

	Injury Severity Level				Total
	Severity 1	Severity 2	Severity 3	Severity 4	
<b>California</b>					
<b>Alameda</b>					
<b>Total Casualties - 2pm</b>	<b>87</b>	<b>5</b>	<b>0</b>	<b>0</b>	<b>92</b>
<b>Casualties - 5pm</b>					
<i>Commuting</i>	0	0	0	0	0
<i>Single Family</i>	3	0	0	0	3
<i>Commercial</i>	37	2	0	0	39
<i>Hotels</i>	0	0	0	0	0
<i>Educational</i>	2	0	0	0	2
<i>Industrial</i>	4	0	0	0	4
<i>Other-Residential</i>	11	1	0	0	11
<b>Total Casualties - 5pm</b>	<b>57</b>	<b>3</b>	<b>0</b>	<b>0</b>	<b>60</b>
<b>Amador</b>					
<b>Casualties - 2am</b>					
<i>Commercial</i>	0	0	0	0	0
<i>Other-Residential</i>	0	0	0	0	0
<i>Commuting</i>	0	0	0	0	0
<i>Educational</i>	0	0	0	0	0
<i>Single Family</i>	0	0	0	0	0
<i>Hotels</i>	0	0	0	0	0
<i>Industrial</i>	0	0	0	0	0
<b>Total Casualties - 2am</b>	<b>0</b>	<b>0</b>	<b>0</b>	<b>0</b>	<b>0</b>
<b>Casualties - 2pm</b>					
<i>Single Family</i>	0	0	0	0	0
<i>Hotels</i>	0	0	0	0	0
<i>Educational</i>	0	0	0	0	0
<i>Commuting</i>	0	0	0	0	0
<i>Commercial</i>	0	0	0	0	0
<i>Other-Residential</i>	0	0	0	0	0
<i>Industrial</i>	0	0	0	0	0
<b>Total Casualties - 2pm</b>	<b>0</b>	<b>0</b>	<b>0</b>	<b>0</b>	<b>0</b>
<b>Casualties - 5pm</b>					
<i>Commercial</i>	0	0	0	0	0
<i>Commuting</i>	0	0	0	0	0
<i>Other-Residential</i>	0	0	0	0	0
<i>Single Family</i>	0	0	0	0	0
<i>Educational</i>	0	0	0	0	0
<i>Hotels</i>	0	0	0	0	0
<i>Industrial</i>	0	0	0	0	0
<b>Total Casualties - 5pm</b>	<b>0</b>	<b>0</b>	<b>0</b>	<b>0</b>	<b>0</b>
<b>Butte</b>					
<b>Casualties - 2am</b>					
<i>Industrial</i>	0	0	0	0	0

## Injury Severity Level

Severity 1      Severity 2      Severity 3      Severity 4      Total

### California

#### Butte

##### Casualties - 2am

Commercial	0	0	0	0	0
Other-Residential	0	0	0	0	0
Single Family	0	0	0	0	0
Commuting	0	0	0	0	0
Educational	0	0	0	0	0
Hotels	0	0	0	0	0
<b>Total Casualties - 2am</b>	<b>0</b>	<b>0</b>	<b>0</b>	<b>0</b>	<b>0</b>

##### Casualties - 2pm

Single Family	0	0	0	0	0
Educational	0	0	0	0	0
Commuting	0	0	0	0	0
Other-Residential	0	0	0	0	0
Hotels	0	0	0	0	0
Commercial	0	0	0	0	0
Industrial	0	0	0	0	0
<b>Total Casualties - 2pm</b>	<b>0</b>	<b>0</b>	<b>0</b>	<b>0</b>	<b>0</b>

##### Casualties - 5pm

Industrial	0	0	0	0	0
Other-Residential	0	0	0	0	0
Single Family	0	0	0	0	0
Commercial	0	0	0	0	0
Commuting	0	0	0	0	0
Hotels	0	0	0	0	0
Educational	0	0	0	0	0
<b>Total Casualties - 5pm</b>	<b>0</b>	<b>0</b>	<b>0</b>	<b>0</b>	<b>0</b>

#### Calaveras

##### Casualties - 2am

Other-Residential	0	0	0	0	0
Commuting	0	0	0	0	0
Commercial	0	0	0	0	0
Single Family	0	0	0	0	0
Hotels	0	0	0	0	0
Educational	0	0	0	0	0
Industrial	0	0	0	0	0
<b>Total Casualties - 2am</b>	<b>0</b>	<b>0</b>	<b>0</b>	<b>0</b>	<b>0</b>

##### Casualties - 2pm

Hotels	0	0	0	0	0
Single Family	0	0	0	0	0
Educational	0	0	0	0	0
Commuting	0	0	0	0	0
Commercial	0	0	0	0	0

	Injury Severity Level				Total
	Severity 1	Severity 2	Severity 3	Severity 4	
<b>California</b>					
<b>Calaveras</b>					
<b>Casualties - 2pm</b>					
<i>Industrial</i>	0	0	0	0	0
<i>Other-Residential</i>	0	0	0	0	0
<b>Total Casualties - 2pm</b>	<b>0</b>	<b>0</b>	<b>0</b>	<b>0</b>	<b>0</b>
<b>Casualties - 5pm</b>					
<i>Industrial</i>	0	0	0	0	0
<i>Commercial</i>	0	0	0	0	0
<i>Other-Residential</i>	0	0	0	0	0
<i>Educational</i>	0	0	0	0	0
<i>Hotels</i>	0	0	0	0	0
<i>Commuting</i>	0	0	0	0	0
<i>Single Family</i>	0	0	0	0	0
<b>Total Casualties - 5pm</b>	<b>0</b>	<b>0</b>	<b>0</b>	<b>0</b>	<b>0</b>
<b>Colusa</b>					
<b>Casualties - 2am</b>					
<i>Other-Residential</i>	0	0	0	0	0
<i>Industrial</i>	0	0	0	0	0
<i>Single Family</i>	0	0	0	0	0
<i>Commercial</i>	0	0	0	0	0
<i>Educational</i>	0	0	0	0	0
<i>Commuting</i>	0	0	0	0	0
<i>Hotels</i>	0	0	0	0	0
<b>Total Casualties - 2am</b>	<b>0</b>	<b>0</b>	<b>0</b>	<b>0</b>	<b>0</b>
<b>Casualties - 2pm</b>					
<i>Hotels</i>	0	0	0	0	0
<i>Single Family</i>	0	0	0	0	0
<i>Educational</i>	0	0	0	0	0
<i>Commercial</i>	0	0	0	0	0
<i>Commuting</i>	0	0	0	0	0
<i>Other-Residential</i>	0	0	0	0	0
<i>Industrial</i>	0	0	0	0	0
<b>Total Casualties - 2pm</b>	<b>0</b>	<b>0</b>	<b>0</b>	<b>0</b>	<b>0</b>
<b>Casualties - 5pm</b>					
<i>Industrial</i>	0	0	0	0	0
<i>Commercial</i>	0	0	0	0	0
<i>Other-Residential</i>	0	0	0	0	0
<i>Commuting</i>	0	0	0	0	0
<i>Single Family</i>	0	0	0	0	0
<i>Educational</i>	0	0	0	0	0
<i>Hotels</i>	0	0	0	0	0
<b>Total Casualties - 5pm</b>	<b>0</b>	<b>0</b>	<b>0</b>	<b>0</b>	<b>0</b>

	Injury Severity Level				Total
	Severity 1	Severity 2	Severity 3	Severity 4	
<b>California</b>					
<b>Contra Costa</b>					
<b>Casualties - 2am</b>					
<i>Educational</i>	0	0	0	0	0
<i>Hotels</i>	0	0	0	0	0
<i>Industrial</i>	1	0	0	0	1
<i>Other-Residential</i>	21	1	0	0	23
<i>Single Family</i>	35	0	0	0	35
<i>Commercial</i>	1	0	0	0	1
<i>Commuting</i>	0	0	0	0	0
<b>Total Casualties - 2am</b>	<b>58</b>	<b>2</b>	<b>0</b>	<b>0</b>	<b>60</b>
<b>Casualties - 2pm</b>					
<i>Other-Residential</i>	6	0	0	0	7
<i>Industrial</i>	8	1	0	0	9
<i>Hotels</i>	0	0	0	0	0
<i>Single Family</i>	10	0	0	0	10
<i>Educational</i>	9	1	0	0	10
<i>Commuting</i>	0	0	0	0	0
<i>Commercial</i>	64	7	0	1	72
<b>Total Casualties - 2pm</b>	<b>97</b>	<b>8</b>	<b>1</b>	<b>1</b>	<b>107</b>
<b>Casualties - 5pm</b>					
<i>Educational</i>	1	0	0	0	1
<i>Commuting</i>	1	1	2	0	4
<i>Single Family</i>	12	0	0	0	12
<i>Hotels</i>	0	0	0	0	0
<i>Industrial</i>	5	0	0	0	5
<i>Other-Residential</i>	8	0	0	0	8
<i>Commercial</i>	43	4	0	1	48
<b>Total Casualties - 5pm</b>	<b>70</b>	<b>6</b>	<b>2</b>	<b>1</b>	<b>79</b>
<b>El Dorado</b>					
<b>Casualties - 2am</b>					
<i>Commuting</i>	0	0	0	0	0
<i>Educational</i>	0	0	0	0	0
<i>Single Family</i>	0	0	0	0	0
<i>Hotels</i>	0	0	0	0	0
<i>Other-Residential</i>	0	0	0	0	0
<i>Industrial</i>	0	0	0	0	0
<i>Commercial</i>	0	0	0	0	0
<b>Total Casualties - 2am</b>	<b>0</b>	<b>0</b>	<b>0</b>	<b>0</b>	<b>0</b>
<b>Casualties - 2pm</b>					
<i>Industrial</i>	0	0	0	0	0
<i>Other-Residential</i>	0	0	0	0	0
<i>Single Family</i>	0	0	0	0	0
<i>Hotels</i>	0	0	0	0	0

	Injury Severity Level				Total
	Severity 1	Severity 2	Severity 3	Severity 4	
<b>California</b>					
<b>El Dorado</b>					
<b>Casualties - 2pm</b>					
<i>Educational</i>	0	0	0	0	0
<i>Commuting</i>	0	0	0	0	0
<i>Commercial</i>	0	0	0	0	0
<b>Total Casualties - 2pm</b>	<b>0</b>	<b>0</b>	<b>0</b>	<b>0</b>	<b>0</b>
<b>Casualties - 5pm</b>					
<i>Commercial</i>	0	0	0	0	0
<i>Commuting</i>	0	0	0	0	0
<i>Single Family</i>	0	0	0	0	0
<i>Educational</i>	0	0	0	0	0
<i>Hotels</i>	0	0	0	0	0
<i>Industrial</i>	0	0	0	0	0
<i>Other-Residential</i>	0	0	0	0	0
<b>Total Casualties - 5pm</b>	<b>0</b>	<b>0</b>	<b>0</b>	<b>0</b>	<b>0</b>
<b>Glenn</b>					
<b>Casualties - 2am</b>					
<i>Hotels</i>	0	0	0	0	0
<i>Educational</i>	0	0	0	0	0
<i>Industrial</i>	0	0	0	0	0
<i>Other-Residential</i>	0	0	0	0	0
<i>Commercial</i>	0	0	0	0	0
<i>Commuting</i>	0	0	0	0	0
<i>Single Family</i>	0	0	0	0	0
<b>Total Casualties - 2am</b>	<b>0</b>	<b>0</b>	<b>0</b>	<b>0</b>	<b>0</b>
<b>Casualties - 2pm</b>					
<i>Industrial</i>	0	0	0	0	0
<i>Other-Residential</i>	0	0	0	0	0
<i>Commuting</i>	0	0	0	0	0
<i>Commercial</i>	0	0	0	0	0
<i>Hotels</i>	0	0	0	0	0
<i>Single Family</i>	0	0	0	0	0
<i>Educational</i>	0	0	0	0	0
<b>Total Casualties - 2pm</b>	<b>0</b>	<b>0</b>	<b>0</b>	<b>0</b>	<b>0</b>
<b>Casualties - 5pm</b>					
<i>Educational</i>	0	0	0	0	0
<i>Commuting</i>	0	0	0	0	0
<i>Hotels</i>	0	0	0	0	0
<i>Single Family</i>	0	0	0	0	0
<i>Industrial</i>	0	0	0	0	0
<i>Commercial</i>	0	0	0	0	0
<i>Other-Residential</i>	0	0	0	0	0

	Injury Severity Level				Total
	Severity 1	Severity 2	Severity 3	Severity 4	
<b>California</b>					
<b>Glenn</b>					
<b>Total Casualties - 5pm</b>	<b>0</b>	<b>0</b>	<b>0</b>	<b>0</b>	<b>0</b>
<b>Lake</b>					
<b>Casualties - 2am</b>					
<i>Hotels</i>	0	0	0	0	0
<i>Industrial</i>	0	0	0	0	0
<i>Other-Residential</i>	0	0	0	0	0
<i>Commuting</i>	0	0	0	0	0
<i>Educational</i>	0	0	0	0	0
<i>Single Family</i>	0	0	0	0	0
<i>Commercial</i>	0	0	0	0	0
<b>Total Casualties - 2am</b>	<b>0</b>	<b>0</b>	<b>0</b>	<b>0</b>	<b>0</b>
<b>Casualties - 2pm</b>					
<i>Industrial</i>	0	0	0	0	0
<i>Single Family</i>	0	0	0	0	0
<i>Commercial</i>	0	0	0	0	0
<i>Other-Residential</i>	0	0	0	0	0
<i>Hotels</i>	0	0	0	0	0
<i>Educational</i>	0	0	0	0	0
<i>Commuting</i>	0	0	0	0	0
<b>Total Casualties - 2pm</b>	<b>0</b>	<b>0</b>	<b>0</b>	<b>0</b>	<b>0</b>
<b>Casualties - 5pm</b>					
<i>Other-Residential</i>	0	0	0	0	0
<i>Industrial</i>	0	0	0	0	0
<i>Commercial</i>	0	0	0	0	0
<i>Educational</i>	0	0	0	0	0
<i>Commuting</i>	0	0	0	0	0
<i>Single Family</i>	0	0	0	0	0
<i>Hotels</i>	0	0	0	0	0
<b>Total Casualties - 5pm</b>	<b>0</b>	<b>0</b>	<b>0</b>	<b>0</b>	<b>0</b>
<b>Marin</b>					
<b>Casualties - 2am</b>					
<i>Commercial</i>	0	0	0	0	0
<i>Commuting</i>	0	0	0	0	0
<i>Other-Residential</i>	2	0	0	0	2
<i>Educational</i>	0	0	0	0	0
<i>Single Family</i>	4	0	0	0	4
<i>Hotels</i>	0	0	0	0	0
<i>Industrial</i>	0	0	0	0	0
<b>Total Casualties - 2am</b>	<b>6</b>	<b>0</b>	<b>0</b>	<b>0</b>	<b>6</b>
<b>Casualties - 2pm</b>					
<i>Hotels</i>	0	0	0	0	0

	Injury Severity Level				Total
	Severity 1	Severity 2	Severity 3	Severity 4	
<b>California</b>					
<b>Marin</b>					
<b>Casualties - 2pm</b>					
<i>Commuting</i>	0	0	0	0	0
<i>Educational</i>	1	0	0	0	1
<i>Industrial</i>	1	0	0	0	1
<i>Other-Residential</i>	1	0	0	0	1
<i>Commercial</i>	6	0	0	0	6
<i>Single Family</i>	1	0	0	0	1
<b>Total Casualties - 2pm</b>	<b>9</b>	<b>0</b>	<b>0</b>	<b>0</b>	<b>10</b>
<b>Casualties - 5pm</b>					
<i>Commuting</i>	0	0	0	0	0
<i>Commercial</i>	4	0	0	0	4
<i>Other-Residential</i>	1	0	0	0	1
<i>Single Family</i>	1	0	0	0	1
<i>Industrial</i>	1	0	0	0	1
<i>Educational</i>	0	0	0	0	0
<i>Hotels</i>	0	0	0	0	0
<b>Total Casualties - 5pm</b>	<b>6</b>	<b>0</b>	<b>0</b>	<b>0</b>	<b>7</b>
<b>Mendocino</b>					
<b>Casualties - 2am</b>					
<i>Educational</i>	0	0	0	0	0
<i>Hotels</i>	0	0	0	0	0
<i>Commuting</i>	0	0	0	0	0
<i>Industrial</i>	0	0	0	0	0
<i>Other-Residential</i>	0	0	0	0	0
<i>Single Family</i>	0	0	0	0	0
<i>Commercial</i>	0	0	0	0	0
<b>Total Casualties - 2am</b>	<b>0</b>	<b>0</b>	<b>0</b>	<b>0</b>	<b>0</b>
<b>Casualties - 2pm</b>					
<i>Industrial</i>	0	0	0	0	0
<i>Other-Residential</i>	0	0	0	0	0
<i>Commercial</i>	0	0	0	0	0
<i>Single Family</i>	0	0	0	0	0
<i>Commuting</i>	0	0	0	0	0
<i>Hotels</i>	0	0	0	0	0
<i>Educational</i>	0	0	0	0	0
<b>Total Casualties - 2pm</b>	<b>0</b>	<b>0</b>	<b>0</b>	<b>0</b>	<b>0</b>
<b>Casualties - 5pm</b>					
<i>Hotels</i>	0	0	0	0	0
<i>Single Family</i>	0	0	0	0	0
<i>Educational</i>	0	0	0	0	0
<i>Commuting</i>	0	0	0	0	0
<i>Commercial</i>	0	0	0	0	0

	Injury Severity Level				Total
	Severity 1	Severity 2	Severity 3	Severity 4	
<b>California</b>					
<b>Mendocino</b>					
<b>Casualties - 5pm</b>					
<i>Other-Residential</i>	0	0	0	0	0
<i>Industrial</i>	0	0	0	0	0
<b>Total Casualties - 5pm</b>	<b>0</b>	<b>0</b>	<b>0</b>	<b>0</b>	<b>0</b>
<b>Merced</b>					
<b>Casualties - 2am</b>					
<i>Hotels</i>	0	0	0	0	0
<i>Industrial</i>	0	0	0	0	0
<i>Commercial</i>	0	0	0	0	0
<i>Single Family</i>	0	0	0	0	0
<i>Other-Residential</i>	0	0	0	0	0
<i>Educational</i>	0	0	0	0	0
<i>Commuting</i>	0	0	0	0	0
<b>Total Casualties - 2am</b>	<b>0</b>	<b>0</b>	<b>0</b>	<b>0</b>	<b>0</b>
<b>Casualties - 2pm</b>					
<i>Other-Residential</i>	0	0	0	0	0
<i>Industrial</i>	0	0	0	0	0
<i>Commercial</i>	0	0	0	0	0
<i>Commuting</i>	0	0	0	0	0
<i>Hotels</i>	0	0	0	0	0
<i>Educational</i>	0	0	0	0	0
<i>Single Family</i>	0	0	0	0	0
<b>Total Casualties - 2pm</b>	<b>0</b>	<b>0</b>	<b>0</b>	<b>0</b>	<b>0</b>
<b>Casualties - 5pm</b>					
<i>Industrial</i>	0	0	0	0	0
<i>Hotels</i>	0	0	0	0	0
<i>Educational</i>	0	0	0	0	0
<i>Commuting</i>	0	0	0	0	0
<i>Single Family</i>	0	0	0	0	0
<i>Commercial</i>	0	0	0	0	0
<i>Other-Residential</i>	0	0	0	0	0
<b>Total Casualties - 5pm</b>	<b>0</b>	<b>0</b>	<b>0</b>	<b>0</b>	<b>0</b>
<b>Monterey</b>					
<b>Casualties - 2am</b>					
<i>Other-Residential</i>	0	0	0	0	0
<i>Commuting</i>	0	0	0	0	0
<i>Commercial</i>	0	0	0	0	0
<i>Single Family</i>	0	0	0	0	0
<i>Hotels</i>	0	0	0	0	0
<i>Educational</i>	0	0	0	0	0
<i>Industrial</i>	0	0	0	0	0

	Injury Severity Level				Total
	Severity 1	Severity 2	Severity 3	Severity 4	
<b>California</b>					
<b>Monterey</b>					
<b>Total Casualties - 2am</b>	<b>0</b>	<b>0</b>	<b>0</b>	<b>0</b>	<b>0</b>
<b>Casualties - 2pm</b>					
Commuting	0	0	0	0	0
Commercial	0	0	0	0	0
Single Family	0	0	0	0	0
Hotels	0	0	0	0	0
Educational	0	0	0	0	0
Industrial	0	0	0	0	0
Other-Residential	0	0	0	0	0
<b>Total Casualties - 2pm</b>	<b>0</b>	<b>0</b>	<b>0</b>	<b>0</b>	<b>0</b>
<b>Casualties - 5pm</b>					
Commercial	0	0	0	0	0
Other-Residential	0	0	0	0	0
Industrial	0	0	0	0	0
Hotels	0	0	0	0	0
Educational	0	0	0	0	0
Commuting	0	0	0	0	0
Single Family	0	0	0	0	0
<b>Total Casualties - 5pm</b>	<b>0</b>	<b>0</b>	<b>0</b>	<b>0</b>	<b>0</b>
<b>Napa</b>					
<b>Casualties - 2am</b>					
Commercial	6	2	0	0	9
Other-Residential	142	31	3	6	182
Educational	0	0	0	0	0
Single Family	68	5	0	0	73
Commuting	0	0	0	0	0
Hotels	1	0	0	0	1
Industrial	8	2	0	1	10
<b>Total Casualties - 2am</b>	<b>224</b>	<b>39</b>	<b>4</b>	<b>7</b>	<b>274</b>
<b>Casualties - 2pm</b>					
Educational	112	29	4	9	154
Hotels	0	0	0	0	0
Commuting	1	1	2	0	4
Industrial	57	14	2	4	76
Other-Residential	40	9	1	2	52
Single Family	18	1	0	0	20
Commercial	359	93	14	27	493
<b>Total Casualties - 2pm</b>	<b>587</b>	<b>147</b>	<b>23</b>	<b>42</b>	<b>799</b>
<b>Casualties - 5pm</b>					
Commercial	229	58	9	17	313
Single Family	25	2	0	0	27

	Injury Severity Level				Total
	Severity 1	Severity 2	Severity 3	Severity 4	
<b>California</b>					
<b>Napa</b>					
<b>Casualties - 5pm</b>					
<i>Other-Residential</i>	53	12	1	2	68
<i>Commuting</i>	14	21	33	7	75
<i>Industrial</i>	36	9	1	2	48
<i>Educational</i>	2	0	0	0	2
<i>Hotels</i>	0	0	0	0	0
<b>Total Casualties - 5pm</b>	<b>359</b>	<b>101</b>	<b>44</b>	<b>28</b>	<b>532</b>
<b>Nevada</b>					
<b>Casualties - 2am</b>					
<i>Single Family</i>	0	0	0	0	0
<i>Commercial</i>	0	0	0	0	0
<i>Commuting</i>	0	0	0	0	0
<i>Hotels</i>	0	0	0	0	0
<i>Educational</i>	0	0	0	0	0
<i>Industrial</i>	0	0	0	0	0
<i>Other-Residential</i>	0	0	0	0	0
<b>Total Casualties - 2am</b>	<b>0</b>	<b>0</b>	<b>0</b>	<b>0</b>	<b>0</b>
<b>Casualties - 2pm</b>					
<i>Hotels</i>	0	0	0	0	0
<i>Industrial</i>	0	0	0	0	0
<i>Commercial</i>	0	0	0	0	0
<i>Single Family</i>	0	0	0	0	0
<i>Other-Residential</i>	0	0	0	0	0
<i>Educational</i>	0	0	0	0	0
<i>Commuting</i>	0	0	0	0	0
<b>Total Casualties - 2pm</b>	<b>0</b>	<b>0</b>	<b>0</b>	<b>0</b>	<b>0</b>
<b>Casualties - 5pm</b>					
<i>Commuting</i>	0	0	0	0	0
<i>Hotels</i>	0	0	0	0	0
<i>Other-Residential</i>	0	0	0	0	0
<i>Educational</i>	0	0	0	0	0
<i>Single Family</i>	0	0	0	0	0
<i>Commercial</i>	0	0	0	0	0
<i>Industrial</i>	0	0	0	0	0
<b>Total Casualties - 5pm</b>	<b>0</b>	<b>0</b>	<b>0</b>	<b>0</b>	<b>0</b>
<b>Placer</b>					
<b>Casualties - 2am</b>					
<i>Hotels</i>	0	0	0	0	0
<i>Educational</i>	0	0	0	0	0
<i>Industrial</i>	0	0	0	0	0
<i>Other-Residential</i>	0	0	0	0	0
<i>Commercial</i>	0	0	0	0	0

	Injury Severity Level				Total
	Severity 1	Severity 2	Severity 3	Severity 4	
<b>California</b>					
<b>Placer</b>					
<b>Casualties - 2am</b>					
Single Family	0	0	0	0	0
Commuting	0	0	0	0	0
<b>Total Casualties - 2am</b>	<b>0</b>	<b>0</b>	<b>0</b>	<b>0</b>	<b>0</b>
<b>Casualties - 2pm</b>					
Other-Residential	0	0	0	0	0
Industrial	0	0	0	0	0
Commercial	0	0	0	0	0
Single Family	0	0	0	0	0
Educational	0	0	0	0	0
Commuting	0	0	0	0	0
Hotels	0	0	0	0	0
<b>Total Casualties - 2pm</b>	<b>0</b>	<b>0</b>	<b>0</b>	<b>0</b>	<b>0</b>
<b>Casualties - 5pm</b>					
Single Family	0	0	0	0	0
Hotels	0	0	0	0	0
Commuting	0	0	0	0	0
Educational	0	0	0	0	0
Commercial	0	0	0	0	0
Industrial	0	0	0	0	0
Other-Residential	0	0	0	0	0
<b>Total Casualties - 5pm</b>	<b>0</b>	<b>0</b>	<b>0</b>	<b>0</b>	<b>0</b>
<b>Sacramento</b>					
<b>Casualties - 2am</b>					
Industrial	0	0	0	0	0
Other-Residential	1	0	0	0	1
Commercial	0	0	0	0	0
Single Family	1	0	0	0	1
Hotels	0	0	0	0	0
Commuting	0	0	0	0	0
Educational	0	0	0	0	0
<b>Total Casualties - 2am</b>	<b>1</b>	<b>0</b>	<b>0</b>	<b>0</b>	<b>2</b>
<b>Casualties - 2pm</b>					
Other-Residential	0	0	0	0	0
Commuting	0	0	0	0	0
Single Family	0	0	0	0	0
Commercial	4	0	0	0	4
Hotels	0	0	0	0	0
Educational	0	0	0	0	0
Industrial	0	0	0	0	0
<b>Total Casualties - 2pm</b>	<b>5</b>	<b>0</b>	<b>0</b>	<b>0</b>	<b>5</b>

## Injury Severity Level

Severity 1      Severity 2      Severity 3      Severity 4      Total

### California

#### Sacramento

##### Casualties - 5pm

<i>Industrial</i>	0	0	0	0	0
<i>Educational</i>	0	0	0	0	0
<i>Hotels</i>	0	0	0	0	0
<i>Commercial</i>	2	0	0	0	2
<i>Commuting</i>	0	0	0	0	0
<i>Other-Residential</i>	0	0	0	0	0
<i>Single Family</i>	0	0	0	0	0
<b>Total Casualties - 5pm</b>	<b>3</b>	<b>0</b>	<b>0</b>	<b>0</b>	<b>3</b>

#### San Benito

##### Casualties - 2am

<i>Other-Residential</i>	0	0	0	0	0
<i>Commercial</i>	0	0	0	0	0
<i>Commuting</i>	0	0	0	0	0
<i>Hotels</i>	0	0	0	0	0
<i>Educational</i>	0	0	0	0	0
<i>Single Family</i>	0	0	0	0	0
<i>Industrial</i>	0	0	0	0	0
<b>Total Casualties - 2am</b>	<b>0</b>	<b>0</b>	<b>0</b>	<b>0</b>	<b>0</b>

##### Casualties - 2pm

<i>Hotels</i>	0	0	0	0	0
<i>Educational</i>	0	0	0	0	0
<i>Industrial</i>	0	0	0	0	0
<i>Other-Residential</i>	0	0	0	0	0
<i>Commercial</i>	0	0	0	0	0
<i>Commuting</i>	0	0	0	0	0
<i>Single Family</i>	0	0	0	0	0
<b>Total Casualties - 2pm</b>	<b>0</b>	<b>0</b>	<b>0</b>	<b>0</b>	<b>0</b>

##### Casualties - 5pm

<i>Commuting</i>	0	0	0	0	0
<i>Commercial</i>	0	0	0	0	0
<i>Other-Residential</i>	0	0	0	0	0
<i>Single Family</i>	0	0	0	0	0
<i>Industrial</i>	0	0	0	0	0
<i>Educational</i>	0	0	0	0	0
<i>Hotels</i>	0	0	0	0	0
<b>Total Casualties - 5pm</b>	<b>0</b>	<b>0</b>	<b>0</b>	<b>0</b>	<b>0</b>

#### San Francisco

##### Casualties - 2am

<i>Industrial</i>	0	0	0	0	0
<i>Hotels</i>	0	0	0	0	0
<i>Commercial</i>	1	0	0	0	1

	Injury Severity Level				Total
	Severity 1	Severity 2	Severity 3	Severity 4	
<b>California</b>					
<b>San Francisco</b>					
<b>Casualties - 2am</b>					
<i>Other-Residential</i>	36	2	0	0	38
<i>Commuting</i>	0	0	0	0	0
<i>Educational</i>	0	0	0	0	0
<i>Single Family</i>	6	0	0	0	6
<b>Total Casualties - 2am</b>	<b>43</b>	<b>3</b>	<b>0</b>	<b>0</b>	<b>46</b>
<b>Casualties - 2pm</b>					
<i>Commercial</i>	53	3	0	0	56
<i>Industrial</i>	3	0	0	0	3
<i>Other-Residential</i>	11	1	0	0	12
<i>Single Family</i>	2	0	0	0	2
<i>Hotels</i>	0	0	0	0	0
<i>Commuting</i>	0	0	0	0	0
<i>Educational</i>	5	0	0	0	6
<b>Total Casualties - 2pm</b>	<b>74</b>	<b>5</b>	<b>0</b>	<b>0</b>	<b>78</b>
<b>Casualties - 5pm</b>					
<i>Educational</i>	2	0	0	0	2
<i>Hotels</i>	0	0	0	0	0
<i>Industrial</i>	2	0	0	0	2
<i>Commuting</i>	0	0	0	0	0
<i>Commercial</i>	30	2	0	0	32
<i>Other-Residential</i>	14	1	0	0	15
<i>Single Family</i>	2	0	0	0	2
<b>Total Casualties - 5pm</b>	<b>49</b>	<b>3</b>	<b>0</b>	<b>0</b>	<b>53</b>
<b>San Joaquin</b>					
<b>Casualties - 2am</b>					
<i>Educational</i>	0	0	0	0	0
<i>Commuting</i>	0	0	0	0	0
<i>Hotels</i>	0	0	0	0	0
<i>Commercial</i>	0	0	0	0	0
<i>Single Family</i>	2	0	0	0	2
<i>Industrial</i>	0	0	0	0	0
<i>Other-Residential</i>	1	0	0	0	1
<b>Total Casualties - 2am</b>	<b>3</b>	<b>0</b>	<b>0</b>	<b>0</b>	<b>3</b>
<b>Casualties - 2pm</b>					
<i>Industrial</i>	0	0	0	0	0
<i>Other-Residential</i>	0	0	0	0	0
<i>Educational</i>	0	0	0	0	0
<i>Single Family</i>	1	0	0	0	1
<i>Hotels</i>	0	0	0	0	0
<i>Commuting</i>	0	0	0	0	0
<i>Commercial</i>	1	0	0	0	1

	Injury Severity Level				Total
	Severity 1	Severity 2	Severity 3	Severity 4	
<b>California</b>					
<b>San Joaquin</b>					
<b>Total Casualties - 2pm</b>	<b>2</b>	<b>0</b>	<b>0</b>	<b>0</b>	<b>2</b>
<b>Casualties - 5pm</b>					
<i>Commuting</i>	0	0	0	0	0
<i>Single Family</i>	1	0	0	0	1
<i>Educational</i>	0	0	0	0	0
<i>Hotels</i>	0	0	0	0	0
<i>Industrial</i>	0	0	0	0	0
<i>Commercial</i>	1	0	0	0	1
<i>Other-Residential</i>	0	0	0	0	0
<b>Total Casualties - 5pm</b>	<b>2</b>	<b>0</b>	<b>0</b>	<b>0</b>	<b>2</b>
<b>San Mateo</b>					
<b>Casualties - 2am</b>					
<i>Industrial</i>	0	0	0	0	0
<i>Other-Residential</i>	1	0	0	0	1
<i>Single Family</i>	1	0	0	0	1
<i>Commercial</i>	0	0	0	0	0
<i>Educational</i>	0	0	0	0	0
<i>Commuting</i>	0	0	0	0	0
<i>Hotels</i>	0	0	0	0	0
<b>Total Casualties - 2am</b>	<b>2</b>	<b>0</b>	<b>0</b>	<b>0</b>	<b>3</b>
<b>Casualties - 2pm</b>					
<i>Other-Residential</i>	0	0	0	0	0
<i>Single Family</i>	0	0	0	0	0
<i>Commuting</i>	0	0	0	0	0
<i>Commercial</i>	3	0	0	0	4
<i>Educational</i>	0	0	0	0	0
<i>Hotels</i>	0	0	0	0	0
<i>Industrial</i>	0	0	0	0	0
<b>Total Casualties - 2pm</b>	<b>5</b>	<b>0</b>	<b>0</b>	<b>0</b>	<b>5</b>
<b>Casualties - 5pm</b>					
<i>Commercial</i>	2	0	0	0	2
<i>Industrial</i>	0	0	0	0	0
<i>Other-Residential</i>	0	0	0	0	0
<i>Single Family</i>	0	0	0	0	0
<i>Educational</i>	0	0	0	0	0
<i>Commuting</i>	0	0	0	0	0
<i>Hotels</i>	0	0	0	0	0
<b>Total Casualties - 5pm</b>	<b>3</b>	<b>0</b>	<b>0</b>	<b>0</b>	<b>3</b>
<b>Santa Clara</b>					
<b>Casualties - 2am</b>					
<i>Commuting</i>	0	0	0	0	0

	Injury Severity Level				Total
	Severity 1	Severity 2	Severity 3	Severity 4	
<b>California</b>					
<b>Santa Clara</b>					
<b>Casualties - 2am</b>					
<i>Educational</i>	0	0	0	0	0
<i>Single Family</i>	0	0	0	0	0
<i>Hotels</i>	0	0	0	0	0
<i>Industrial</i>	0	0	0	0	0
<i>Commercial</i>	0	0	0	0	0
<i>Other-Residential</i>	1	0	0	0	1
<b>Total Casualties - 2am</b>	<b>1</b>	<b>0</b>	<b>0</b>	<b>0</b>	<b>1</b>
<b>Casualties - 2pm</b>					
<i>Industrial</i>	0	0	0	0	0
<i>Commercial</i>	1	0	0	0	1
<i>Single Family</i>	0	0	0	0	0
<i>Commuting</i>	0	0	0	0	0
<i>Hotels</i>	0	0	0	0	0
<i>Other-Residential</i>	0	0	0	0	0
<i>Educational</i>	0	0	0	0	0
<b>Total Casualties - 2pm</b>	<b>2</b>	<b>0</b>	<b>0</b>	<b>0</b>	<b>2</b>
<b>Casualties - 5pm</b>					
<i>Industrial</i>	0	0	0	0	0
<i>Hotels</i>	0	0	0	0	0
<i>Other-Residential</i>	0	0	0	0	0
<i>Commercial</i>	1	0	0	0	1
<i>Commuting</i>	0	0	0	0	0
<i>Single Family</i>	0	0	0	0	0
<i>Educational</i>	0	0	0	0	0
<b>Total Casualties - 5pm</b>	<b>1</b>	<b>0</b>	<b>0</b>	<b>0</b>	<b>1</b>
<b>Santa Cruz</b>					
<b>Casualties - 2am</b>					
<i>Hotels</i>	0	0	0	0	0
<i>Educational</i>	0	0	0	0	0
<i>Industrial</i>	0	0	0	0	0
<i>Other-Residential</i>	0	0	0	0	0
<i>Single Family</i>	0	0	0	0	0
<i>Commercial</i>	0	0	0	0	0
<i>Commuting</i>	0	0	0	0	0
<b>Total Casualties - 2am</b>	<b>0</b>	<b>0</b>	<b>0</b>	<b>0</b>	<b>0</b>
<b>Casualties - 2pm</b>					
<i>Industrial</i>	0	0	0	0	0
<i>Other-Residential</i>	0	0	0	0	0
<i>Commercial</i>	0	0	0	0	0
<i>Commuting</i>	0	0	0	0	0
<i>Educational</i>	0	0	0	0	0

	Injury Severity Level				Total
	Severity 1	Severity 2	Severity 3	Severity 4	
<b>California</b>					
<b>Santa Cruz</b>					
<b>Casualties - 2pm</b>					
Single Family	0	0	0	0	0
Hotels	0	0	0	0	0
<b>Total Casualties - 2pm</b>	<b>0</b>	<b>0</b>	<b>0</b>	<b>0</b>	<b>0</b>
<b>Casualties - 5pm</b>					
Industrial	0	0	0	0	0
Other-Residential	0	0	0	0	0
Commercial	0	0	0	0	0
Commuting	0	0	0	0	0
Single Family	0	0	0	0	0
Hotels	0	0	0	0	0
Educational	0	0	0	0	0
<b>Total Casualties - 5pm</b>	<b>0</b>	<b>0</b>	<b>0</b>	<b>0</b>	<b>0</b>
<b>Solano</b>					
<b>Casualties - 2am</b>					
Industrial	3	1	0	0	3
Other-Residential	97	21	3	5	126
Commercial	2	0	0	0	3
Educational	0	0	0	0	0
Commuting	0	0	0	0	0
Single Family	74	3	0	0	77
Hotels	0	0	0	0	0
<b>Total Casualties - 2am</b>	<b>176</b>	<b>25</b>	<b>3</b>	<b>6</b>	<b>210</b>
<b>Casualties - 2pm</b>					
Single Family	21	1	0	0	22
Other-Residential	32	7	1	2	41
Commercial	168	38	5	10	221
Educational	35	6	1	2	43
Commuting	0	1	1	0	2
Hotels	0	0	0	0	0
Industrial	19	4	1	1	24
<b>Total Casualties - 2pm</b>	<b>274</b>	<b>56</b>	<b>9</b>	<b>15</b>	<b>354</b>
<b>Casualties - 5pm</b>					
Commercial	129	29	4	8	170
Other-Residential	37	8	1	2	49
Single Family	27	1	0	0	28
Educational	2	0	0	0	3
Commuting	8	10	18	4	41
Hotels	0	0	0	0	0
Industrial	12	3	0	1	15
<b>Total Casualties - 5pm</b>	<b>215</b>	<b>52</b>	<b>24</b>	<b>15</b>	<b>306</b>

	Injury Severity Level				Total
	Severity 1	Severity 2	Severity 3	Severity 4	
<b>California</b>					
<b>Sonoma</b>					
<b>Casualties - 2am</b>					
Single Family	31	1	0	0	31
Other-Residential	31	3	0	0	35
Commercial	1	0	0	0	1
Commuting	0	0	0	0	0
Hotels	0	0	0	0	0
Educational	0	0	0	0	0
Industrial	1	0	0	0	2
<b>Total Casualties - 2am</b>	<b>64</b>	<b>4</b>	<b>0</b>	<b>0</b>	<b>69</b>
<b>Casualties - 2pm</b>					
Single Family	10	0	0	0	10
Commuting	0	0	0	0	0
Educational	14	1	0	0	15
Hotels	0	0	0	0	0
Industrial	11	2	0	0	13
Other-Residential	10	1	0	0	11
Commercial	58	7	1	1	67
<b>Total Casualties - 2pm</b>	<b>101</b>	<b>11</b>	<b>1</b>	<b>2</b>	<b>115</b>
<b>Casualties - 5pm</b>					
Single Family	11	0	0	0	11
Commercial	38	5	0	1	45
Commuting	1	1	2	0	5
Hotels	0	0	0	0	0
Educational	3	0	0	0	3
Industrial	7	1	0	0	8
Other-Residential	11	1	0	0	13
<b>Total Casualties - 5pm</b>	<b>71</b>	<b>9</b>	<b>3</b>	<b>2</b>	<b>84</b>
<b>Stanislaus</b>					
<b>Casualties - 2am</b>					
Hotels	0	0	0	0	0
Industrial	0	0	0	0	0
Commercial	0	0	0	0	0
Single Family	0	0	0	0	0
Other-Residential	0	0	0	0	0
Commuting	0	0	0	0	0
Educational	0	0	0	0	0
<b>Total Casualties - 2am</b>	<b>0</b>	<b>0</b>	<b>0</b>	<b>0</b>	<b>0</b>
<b>Casualties - 2pm</b>					
Industrial	0	0	0	0	0
Other-Residential	0	0	0	0	0
Commercial	0	0	0	0	0
Commuting	0	0	0	0	0

	Injury Severity Level				Total
	Severity 1	Severity 2	Severity 3	Severity 4	
<b>California</b>					
<b>Stanislaus</b>					
<b>Casualties - 2pm</b>					
<i>Educational</i>	0	0	0	0	0
<i>Single Family</i>	0	0	0	0	0
<i>Hotels</i>	0	0	0	0	0
<b>Total Casualties - 2pm</b>	<b>0</b>	<b>0</b>	<b>0</b>	<b>0</b>	<b>0</b>
<b>Casualties - 5pm</b>					
<i>Industrial</i>	0	0	0	0	0
<i>Other-Residential</i>	0	0	0	0	0
<i>Commuting</i>	0	0	0	0	0
<i>Single Family</i>	0	0	0	0	0
<i>Commercial</i>	0	0	0	0	0
<i>Hotels</i>	0	0	0	0	0
<i>Educational</i>	0	0	0	0	0
<b>Total Casualties - 5pm</b>	<b>0</b>	<b>0</b>	<b>0</b>	<b>0</b>	<b>0</b>
<b>Sutter</b>					
<b>Casualties - 2am</b>					
<i>Educational</i>	0	0	0	0	0
<i>Commuting</i>	0	0	0	0	0
<i>Hotels</i>	0	0	0	0	0
<i>Industrial</i>	0	0	0	0	0
<i>Other-Residential</i>	0	0	0	0	0
<i>Single Family</i>	0	0	0	0	0
<i>Commercial</i>	0	0	0	0	0
<b>Total Casualties - 2am</b>	<b>0</b>	<b>0</b>	<b>0</b>	<b>0</b>	<b>0</b>
<b>Casualties - 2pm</b>					
<i>Industrial</i>	0	0	0	0	0
<i>Commuting</i>	0	0	0	0	0
<i>Other-Residential</i>	0	0	0	0	0
<i>Single Family</i>	0	0	0	0	0
<i>Commercial</i>	0	0	0	0	0
<i>Hotels</i>	0	0	0	0	0
<i>Educational</i>	0	0	0	0	0
<b>Total Casualties - 2pm</b>	<b>0</b>	<b>0</b>	<b>0</b>	<b>0</b>	<b>0</b>
<b>Casualties - 5pm</b>					
<i>Commuting</i>	0	0	0	0	0
<i>Commercial</i>	0	0	0	0	0
<i>Educational</i>	0	0	0	0	0
<i>Single Family</i>	0	0	0	0	0
<i>Hotels</i>	0	0	0	0	0
<i>Industrial</i>	0	0	0	0	0
<i>Other-Residential</i>	0	0	0	0	0

	Injury Severity Level				Total
	Severity 1	Severity 2	Severity 3	Severity 4	
<b>California</b>					
<b>Sutter</b>					
<b>Total Casualties - 5pm</b>	<b>0</b>	<b>0</b>	<b>0</b>	<b>0</b>	<b>0</b>
<b>Tehama</b>					
<b>Casualties - 2am</b>					
<i>Hotels</i>	0	0	0	0	0
<i>Industrial</i>	0	0	0	0	0
<i>Commercial</i>	0	0	0	0	0
<i>Other-Residential</i>	0	0	0	0	0
<i>Educational</i>	0	0	0	0	0
<i>Commuting</i>	0	0	0	0	0
<i>Single Family</i>	0	0	0	0	0
<b>Total Casualties - 2am</b>	<b>0</b>	<b>0</b>	<b>0</b>	<b>0</b>	<b>0</b>
<b>Casualties - 2pm</b>					
<i>Other-Residential</i>	0	0	0	0	0
<i>Commercial</i>	0	0	0	0	0
<i>Industrial</i>	0	0	0	0	0
<i>Single Family</i>	0	0	0	0	0
<i>Educational</i>	0	0	0	0	0
<i>Commuting</i>	0	0	0	0	0
<i>Hotels</i>	0	0	0	0	0
<b>Total Casualties - 2pm</b>	<b>0</b>	<b>0</b>	<b>0</b>	<b>0</b>	<b>0</b>
<b>Casualties - 5pm</b>					
<i>Hotels</i>	0	0	0	0	0
<i>Educational</i>	0	0	0	0	0
<i>Industrial</i>	0	0	0	0	0
<i>Single Family</i>	0	0	0	0	0
<i>Commercial</i>	0	0	0	0	0
<i>Commuting</i>	0	0	0	0	0
<i>Other-Residential</i>	0	0	0	0	0
<b>Total Casualties - 5pm</b>	<b>0</b>	<b>0</b>	<b>0</b>	<b>0</b>	<b>0</b>
<b>Yolo</b>					
<b>Casualties - 2am</b>					
<i>Single Family</i>	1	0	0	0	1
<i>Other-Residential</i>	1	0	0	0	1
<i>Commercial</i>	0	0	0	0	0
<i>Educational</i>	0	0	0	0	0
<i>Commuting</i>	0	0	0	0	0
<i>Hotels</i>	0	0	0	0	0
<i>Industrial</i>	0	0	0	0	0
<b>Total Casualties - 2am</b>	<b>1</b>	<b>0</b>	<b>0</b>	<b>0</b>	<b>1</b>
<b>Casualties - 2pm</b>					
<i>Industrial</i>	0	0	0	0	0

	Injury Severity Level				Total
	Severity 1	Severity 2	Severity 3	Severity 4	
<b>California</b>					
<b>Yolo</b>					
<b>Casualties - 2pm</b>					
<i>Hotels</i>	0	0	0	0	0
<i>Educational</i>	0	0	0	0	0
<i>Commuting</i>	0	0	0	0	0
<i>Commercial</i>	1	0	0	0	1
<i>Other-Residential</i>	0	0	0	0	0
<i>Single Family</i>	0	0	0	0	0
<b>Total Casualties - 2pm</b>	<b>2</b>	<b>0</b>	<b>0</b>	<b>0</b>	<b>2</b>
<b>Casualties - 5pm</b>					
<i>Other-Residential</i>	0	0	0	0	0
<i>Single Family</i>	0	0	0	0	0
<i>Commuting</i>	0	0	0	0	0
<i>Commercial</i>	1	0	0	0	1
<i>Hotels</i>	0	0	0	0	0
<i>Educational</i>	0	0	0	0	0
<i>Industrial</i>	0	0	0	0	0
<b>Total Casualties - 5pm</b>	<b>1</b>	<b>0</b>	<b>0</b>	<b>0</b>	<b>1</b>
<b>Yuba</b>					
<b>Casualties - 2am</b>					
<i>Industrial</i>	0	0	0	0	0
<i>Other-Residential</i>	0	0	0	0	0
<i>Commercial</i>	0	0	0	0	0
<i>Educational</i>	0	0	0	0	0
<i>Single Family</i>	0	0	0	0	0
<i>Commuting</i>	0	0	0	0	0
<i>Hotels</i>	0	0	0	0	0
<b>Total Casualties - 2am</b>	<b>0</b>	<b>0</b>	<b>0</b>	<b>0</b>	<b>0</b>
<b>Casualties - 2pm</b>					
<i>Commercial</i>	0	0	0	0	0
<i>Commuting</i>	0	0	0	0	0
<i>Single Family</i>	0	0	0	0	0
<i>Other-Residential</i>	0	0	0	0	0
<i>Industrial</i>	0	0	0	0	0
<i>Hotels</i>	0	0	0	0	0
<i>Educational</i>	0	0	0	0	0
<b>Total Casualties - 2pm</b>	<b>0</b>	<b>0</b>	<b>0</b>	<b>0</b>	<b>0</b>
<b>Casualties - 5pm</b>					
<i>Hotels</i>	0	0	0	0	0
<i>Educational</i>	0	0	0	0	0
<i>Industrial</i>	0	0	0	0	0
<i>Other-Residential</i>	0	0	0	0	0
<i>Single Family</i>	0	0	0	0	0

	Injury Severity Level				Total
	Severity 1	Severity 2	Severity 3	Severity 4	
<b>California</b>					
<b>Yuba</b>					
<b>Casualties - 5pm</b>					
<i>Commercial</i>	0	0	0	0	0
<i>Commuting</i>	0	0	0	0	0
<b>Total Casualties - 5pm</b>	<b>0</b>	<b>0</b>	<b>0</b>	<b>0</b>	<b>0</b>
<b>Region Total</b>	NA	NA	NA	NA	NA

Totals only reflect data for those census tracts/blocks included in the user's study region and will reflect the entire county/state only if all of the census blocks for that county/states were selected at the time of study region creation.

## Debris Summary Report

June 26, 2024

All values are in thousands of tons.

	Brick, Wood & Others	Concrete & Steel	Total
<b>California</b>			
Butte	0	0	0
Alameda	58	52	110
Solano	116	194	311
San Mateo	3	2	5
San Joaquin	5	1	5
Nevada	0	0	0
Colusa	0	0	0
Napa	174	391	565
Mendocino	0	0	0
Contra Costa	48	66	114
Tehama	0	0	0
El Dorado	0	0	0
Amador	0	0	0
Santa Cruz	0	0	0
Lake	1	0	1
Monterey	0	0	0
Sacramento	3	1	4
Yolo	2	1	3
Calaveras	0	0	0

	Brick, Wood & Others	Concrete & Steel	Total
Yuba	0	0	0
Glenn	0	0	0
Stanislaus	0	0	0
Sonoma	64	94	157
Santa Clara	2	1	2
San Benito	0	0	0
San Francisco	80	22	102
Merced	0	0	0
Placer	0	0	0
Marin	7	6	12
Sutter	0	0	0
<b>Total</b>	<b>560</b>	<b>831</b>	<b>1,391</b>
<b>Region Total</b>	<b>560</b>	<b>831</b>	<b>1,391</b>

*Totals only reflect data for those census tracts/blocks included in the user's study region and will reflect the entire county/state only if all of the census blocks for that county/states were selected at the time of study region creation.*

## Direct Economic Losses For Buildings

June 26, 2024

All values are in thousands of dollars

	Capital Stock Losses				Loss Ratio %	Income Losses				Total Loss
	Cost Structural Damage	Cost Non-struct. Damage	Cost Contents Damage	Inventory Loss		Relocation Loss	Capital Related Loss	Wages Losses	Rental Income Loss	
<b>California</b>										
Colusa	103	1,208	711	134	0.03	18	31	35	28	2,268
Contra Costa	114,437	813,975	401,854	33,253	0.42	31,552	20,809	28,227	22,521	1,466,629
Mendocino	4	280	175	24	0.00	0	1	1	1	485
Napa	418,095	1,911,114	864,312	83,791	6.94	180,437	128,362	161,100	105,069	3,852,279
Tehama	0	9	6	1	0.00	0	0	0	0	16
Alameda	85,693	548,611	291,592	21,796	0.19	30,459	25,165	33,571	25,294	1,062,182
Butte	24	358	251	41	0.00	3	2	3	4	685
Nevada	0	0	0	0	0.00	0	0	0	0	1
San Joaquin	3,096	24,454	13,092	1,619	0.02	647	315	397	540	44,158

	Capital Stock Losses				Loss Ratio %	Income Losses				Total Loss
	Cost Structural Damage	Cost Non-struct. Damage	Cost Contents Damage	Inventory Loss		Relocation Loss	Capital Related Loss	Wages Losses	Rental Income Loss	
<b>Solano</b>	252,683	1,381,113	606,757	48,417	1.99	103,052	68,682	88,318	62,014	2,611,035
<b>San Mateo</b>	6,030	75,336	39,704	3,395	0.05	733	914	1,044	1,706	128,862
<b>Yolo</b>	2,796	42,052	25,645	2,641	0.11	431	581	677	583	75,406
<b>Calaveras</b>	0	13	10	4	0.00	0	0	0	0	28
<b>Yuba</b>	16	418	250	34	0.00	2	4	4	4	731
<b>Glenn</b>	19	228	160	51	0.00	2	2	2	2	466
<b>San Benito</b>	0	1	1	0	0.00	0	0	0	0	1
<b>San Francisco</b>	68,299	205,432	108,749	6,430	0.18	22,675	15,078	17,173	28,207	472,043
<b>Merced</b>	42	187	151	99	0.00	2	1	0	1	484
<b>Stanislaus</b>	83	2,734	1,820	258	0.00	8	12	11	23	4,948
<b>Sutter</b>	153	1,898	1,055	234	0.01	15	11	13	19	3,399
<b>Santa Clara</b>	2,223	26,493	14,745	1,352	0.01	289	448	566	708	46,825
<b>Sonoma</b>	145,976	858,350	406,549	39,265	0.96	44,467	38,474	45,930	31,989	1,611,000
<b>Placer</b>	18	1,186	786	83	0.00	2	4	4	6	2,090
<b>Marin</b>	15,212	141,055	72,027	4,833	0.25	2,941	2,773	3,075	3,100	245,016
<b>El Dorado</b>	0	32	24	1	0.00	0	0	0	0	57
<b>Amador</b>	0	18	12	2	0.00	0	0	0	0	32
<b>Sacramento</b>	3,333	35,503	18,541	1,787	0.01	749	951	1,231	1,085	63,181

	Capital Stock Losses				Loss Ratio %	Income Losses				Total Loss
	Cost Structural Damage	Cost Non-struct. Damage	Cost Contents Damage	Inventory Loss		Relocation Loss	Capital Related Loss	Wages Losses	Rental Income Loss	
Lake	485	5,852	2,783	215	0.04	87	66	60	87	9,637
Monterey	0	6	4	1	0.00	0	0	0	0	11
Santa Cruz	29	703	465	63	0.00	4	8	9	9	1,290
<b>Total</b>	<b>1,118,852</b>	<b>6,078,617</b>	<b>2,872,234</b>	<b>249,823</b>	<b>0.37</b>	<b>418,577</b>	<b>302,691</b>	<b>381,451</b>	<b>282,999</b>	<b>11,705,244</b>
<b>Region Total</b>	<b>1,118,852</b>	<b>6,078,617</b>	<b>2,872,234</b>	<b>249,823</b>	<b>0.37</b>	<b>418,577</b>	<b>302,691</b>	<b>381,451</b>	<b>282,999</b>	<b>11,705,244</b>

Totals only reflect data for those census tracts/blocks included in the user's study region and will reflect the entire county/state only if all of the census blocks for that county/states were selected at the time of study region creation.

## Direct Economic Loss For Transportation

June 26, 2024

All values are in thousands of dollars

	Highway	Railway	Light Rail	Bus Facility	Ports	Ferries	Airport	Total
<b>California</b>								
<b>Alameda</b>								
Segments	0	0	0					0
Bridges	3,078	48	1					3,126
Tunnels	121	0	0					121
Facilities		2,782	0	176	12,731	301	15,304	31,295
<b>Total</b>	<b>3,199</b>	<b>2,830</b>	<b>1</b>	<b>176</b>	<b>12,731</b>	<b>301</b>	<b>15,304</b>	<b>34,542</b>
<b>Amador</b>								
Segments	0	0	0					0
Bridges	0	0	0					0
Tunnels	0	0	0					0
Facilities		0	0	0	0	0	6	6
<b>Total</b>	<b>0</b>	<b>0</b>	<b>0</b>	<b>0</b>	<b>0</b>	<b>0</b>	<b>6</b>	<b>6</b>
<b>Butte</b>								
Segments	0	0	0					0
Bridges	1	0	0					1
Tunnels	0	0	0					0
Facilities		26	0	0	0	0	26	51

	Highway	Railway	Light Rail	Bus Facility	Ports	Ferries	Airport	Total
<b>Total</b>	<b>1</b>	<b>26</b>	<b>0</b>	<b>0</b>	<b>0</b>	<b>0</b>	<b>26</b>	<b>52</b>
<b>Calaveras</b>								
Segments	0	0	0					0
Bridges	0	0	0					0
Tunnels	0	0	0					0
Facilities		0	0	0	0	0	11	11
<b>Total</b>	<b>0</b>	<b>0</b>	<b>0</b>	<b>0</b>	<b>0</b>	<b>0</b>	<b>11</b>	<b>11</b>
<b>Colusa</b>								
Segments	0	0	0					0
Bridges	14	0	0					14
Tunnels	0	0	0					0
Facilities		0	0	0	0	0	51	51
<b>Total</b>	<b>14</b>	<b>0</b>	<b>0</b>	<b>0</b>	<b>0</b>	<b>0</b>	<b>51</b>	<b>65</b>
<b>Contra Costa</b>								
Segments	0	0	0					0
Bridges	19,932	998	2					20,932
Tunnels	81	1	0					82
Facilities		2,577	1,096	0	30,776	311	2,282	37,043
<b>Total</b>	<b>20,013</b>	<b>3,576</b>	<b>1,097</b>	<b>0</b>	<b>30,776</b>	<b>311</b>	<b>2,282</b>	<b>58,056</b>
<b>El Dorado</b>								
Segments	0	0	0					0
Bridges	0	0	0					0
Tunnels	0	0	0					0
Facilities		0	0	2	0	0	26	28

	Highway	Railway	Light Rail	Bus Facility	Ports	Ferries	Airport	Total
<b>Total</b>	<b>0</b>	<b>0</b>	<b>0</b>	<b>2</b>	<b>0</b>	<b>0</b>	<b>26</b>	<b>28</b>
<b>Glenn</b>								
Segments	0	0	0					0
Bridges	0	0	0					0
Tunnels	0	0	0					0
Facilities		0	0	0	37	0	102	139
<b>Total</b>	<b>0</b>	<b>0</b>	<b>0</b>	<b>0</b>	<b>37</b>	<b>0</b>	<b>102</b>	<b>139</b>
<b>Lake</b>								
Segments	0	0	0					0
Bridges	6	0	0					6
Tunnels	0	0	0					0
Facilities		0	0	0	0	0	268	268
<b>Total</b>	<b>6</b>	<b>0</b>	<b>0</b>	<b>0</b>	<b>0</b>	<b>0</b>	<b>268</b>	<b>274</b>
<b>Marin</b>								
Segments	0	0	0					0
Bridges	5,243	2	0					5,245
Tunnels	3	0	0					3
Facilities		0	0	640	7,770	365	587	9,361
<b>Total</b>	<b>5,247</b>	<b>2</b>	<b>0</b>	<b>640</b>	<b>7,770</b>	<b>365</b>	<b>587</b>	<b>14,610</b>
<b>Mendocino</b>								
Segments	0	0	0					0
Bridges	1	0	0					1
Tunnels	0	0	0					0
Facilities		0	0	68	4	0	164	236

	Highway	Railway	Light Rail	Bus Facility	Ports	Ferries	Airport	Total
<b>Total</b>	<b>1</b>	<b>0</b>	<b>0</b>	<b>68</b>	<b>4</b>	<b>0</b>	<b>164</b>	<b>237</b>
<b>Merced</b>								
<i>Segments</i>	0	0	0					0
<i>Bridges</i>	1	0	0					1
<i>Tunnels</i>	0	0	0					0
<i>Facilities</i>		3	0	2	0	0	91	96
<b>Total</b>	<b>1</b>	<b>3</b>	<b>0</b>	<b>2</b>	<b>0</b>	<b>0</b>	<b>91</b>	<b>97</b>
<b>Monterey</b>								
<i>Segments</i>	0	0	0					0
<i>Bridges</i>	0	0	0					0
<i>Tunnels</i>	0	0	0					0
<i>Facilities</i>		0	0	0	0	0	0	0
<b>Total</b>	<b>0</b>	<b>0</b>	<b>0</b>	<b>0</b>	<b>0</b>	<b>0</b>	<b>0</b>	<b>0</b>
<b>Napa</b>								
<i>Segments</i>	0	0	0					0
<i>Bridges</i>	33,193	16,864	0					50,057
<i>Tunnels</i>	0	0	0					0
<i>Facilities</i>		0	0	864	4,069	0	7,385	12,317
<b>Total</b>	<b>33,193</b>	<b>16,864</b>	<b>0</b>	<b>864</b>	<b>4,069</b>	<b>0</b>	<b>7,385</b>	<b>62,374</b>
<b>Nevada</b>								
<i>Segments</i>	0	0	0					0
<i>Bridges</i>	0	0	0					0
<i>Tunnels</i>	0	0	0					0
<i>Facilities</i>		0	0	0	0	0	6	6

	Highway	Railway	Light Rail	Bus Facility	Ports	Ferries	Airport	Total
<b>Total</b>	<b>0</b>	<b>0</b>	<b>0</b>	<b>0</b>	<b>0</b>	<b>0</b>	<b>6</b>	<b>6</b>
<b>Placer</b>								
Segments	0	0	0					0
Bridges	0	0	0					0
Tunnels	0	0	0					0
Facilities		57	0	2	0	0	68	127
<b>Total</b>	<b>0</b>	<b>57</b>	<b>0</b>	<b>2</b>	<b>0</b>	<b>0</b>	<b>68</b>	<b>128</b>
<b>Sacramento</b>								
Segments	0	0	0					0
Bridges	313	0	0					313
Tunnels	0	0	0					0
Facilities		26	3,024	43	3,743	55	4,198	11,088
<b>Total</b>	<b>313</b>	<b>26</b>	<b>3,024</b>	<b>43</b>	<b>3,743</b>	<b>55</b>	<b>4,198</b>	<b>11,401</b>
<b>San Benito</b>								
Segments	0	0	0					0
Bridges	0	0	0					0
Tunnels	0	0	0					0
Facilities		0	0	0	0	0	11	11
<b>Total</b>	<b>0</b>	<b>0</b>	<b>0</b>	<b>0</b>	<b>0</b>	<b>0</b>	<b>11</b>	<b>11</b>
<b>San Francisco</b>								
Segments	0	0	0					0
Bridges	3,077	2	0					3,078
Tunnels	8	0	0					8
Facilities		0	142,399	207	13,589	356	1,773	158,324

	Highway	Railway	Light Rail	Bus Facility	Ports	Ferries	Airport	Total
<b>Total</b>	<b>3,085</b>	<b>2</b>	<b>142,399</b>	<b>207</b>	<b>13,589</b>	<b>356</b>	<b>1,773</b>	<b>161,410</b>
<b>San Joaquin</b>								
Segments	0	0	0					0
Bridges	208	2	0					210
Tunnels	0	0	0					0
Facilities		410	0	21	3,852	218	584	5,086
<b>Total</b>	<b>208</b>	<b>413</b>	<b>0</b>	<b>21</b>	<b>3,852</b>	<b>218</b>	<b>584</b>	<b>5,296</b>
<b>San Mateo</b>								
Segments	0	0	0					0
Bridges	1,468	1	0					1,469
Tunnels	1	0	0					1
Facilities		0	0	0	2,695	0	37,271	39,966
<b>Total</b>	<b>1,470</b>	<b>1</b>	<b>0</b>	<b>0</b>	<b>2,695</b>	<b>0</b>	<b>37,271</b>	<b>41,436</b>
<b>Santa Clara</b>								
Segments	0	0	0					0
Bridges	125	0	0					125
Tunnels	0	0	0					0
Facilities		103	5,439	47	782	0	4,012	10,382
<b>Total</b>	<b>125</b>	<b>103</b>	<b>5,439</b>	<b>47</b>	<b>782</b>	<b>0</b>	<b>4,012</b>	<b>10,507</b>
<b>Santa Cruz</b>								
Segments	0	0	0					0
Bridges	0	0	0					0
Tunnels	0	0	0					0
Facilities		0	0	45	37	0	257	339

	Highway	Railway	Light Rail	Bus Facility	Ports	Ferries	Airport	Total
<b>Total</b>	<b>0</b>	<b>0</b>	<b>0</b>	<b>45</b>	<b>37</b>	<b>0</b>	<b>257</b>	<b>339</b>
<b>Solano</b>								
<i>Segments</i>	0	0	0					0
<i>Bridges</i>	42,255	3,278	0					45,533
<i>Tunnels</i>	0	0	0					0
<i>Facilities</i>		1,496	0	1,365	19,229	571	1,625	24,286
<b>Total</b>	<b>42,255</b>	<b>4,774</b>	<b>0</b>	<b>1,365</b>	<b>19,229</b>	<b>571</b>	<b>1,625</b>	<b>69,819</b>
<b>Sonoma</b>								
<i>Segments</i>	0	0	0					0
<i>Bridges</i>	5,792	4,014	0					9,806
<i>Tunnels</i>	0	0	0					0
<i>Facilities</i>		0	0	348	1,649	0	3,529	5,527
<b>Total</b>	<b>5,792</b>	<b>4,014</b>	<b>0</b>	<b>348</b>	<b>1,649</b>	<b>0</b>	<b>3,529</b>	<b>15,332</b>
<b>Stanislaus</b>								
<i>Segments</i>	0	0	0					0
<i>Bridges</i>	1	0	0					1
<i>Tunnels</i>	0	0	0					0
<i>Facilities</i>		154	0	43	0	0	231	427
<b>Total</b>	<b>1</b>	<b>154</b>	<b>0</b>	<b>43</b>	<b>0</b>	<b>0</b>	<b>231</b>	<b>429</b>
<b>Sutter</b>								
<i>Segments</i>	0	0	0					0
<i>Bridges</i>	23	0	0					23
<i>Tunnels</i>	0	0	0					0
<i>Facilities</i>		0	0	0	0	0	129	129

	Highway	Railway	Light Rail	Bus Facility	Ports	Ferries	Airport	Total
<b>Total</b>	<b>23</b>	<b>0</b>	<b>0</b>	<b>0</b>	<b>0</b>	<b>0</b>	<b>129</b>	<b>152</b>
<b>Tehama</b>								
Segments	0	0	0					0
Bridges	0	0	0					0
Tunnels	0	0	0					0
Facilities		0	0	0	0	0	0	0
<b>Total</b>	<b>0</b>	<b>0</b>	<b>0</b>	<b>0</b>	<b>0</b>	<b>0</b>	<b>0</b>	<b>0</b>
<b>Yolo</b>								
Segments	0	0	0					0
Bridges	331	1	0					331
Tunnels	0	0	0					0
Facilities		463	0	0	1,581	0	652	2,696
<b>Total</b>	<b>331</b>	<b>463</b>	<b>0</b>	<b>0</b>	<b>1,581</b>	<b>0</b>	<b>652</b>	<b>3,027</b>
<b>Yuba</b>								
Segments	0	0	0					0
Bridges	0	0	0					0
Tunnels	0	0	0					0
Facilities		0	0	22	0	0	102	124
<b>Total</b>	<b>0</b>	<b>0</b>	<b>0</b>	<b>22</b>	<b>0</b>	<b>0</b>	<b>102</b>	<b>124</b>
<b>Total</b>	<b>115,276</b>	<b>33,307</b>	<b>151,960</b>	<b>3,894</b>	<b>102,544</b>	<b>2,177</b>	<b>80,751</b>	<b>489,909</b>
<b>Region Total</b>	<b>115,276</b>	<b>33,307</b>	<b>151,960</b>	<b>3,894</b>	<b>102,544</b>	<b>2,177</b>	<b>80,751</b>	<b>489,909</b>

Totals only reflect data for those census tracts/blocks included in the user's study region and will reflect the entire county/state only if all of the census blocks for that county/states were selected at the time of study region creation.

## Direct Economic Loss For Utilities

June 26, 2024

All values are in thousands of dollars

	Potable Water	Waste Water	Oil Systems	Natural Gas	Electric Power	Communication	Total
<b>California</b>							
<b>Alameda</b>							
<i>Facilities</i>	1,385	48,880	0	0	102,583	78	152,926
<i>Pipelines</i>	407	204	0	0			612
<b>Total</b>	<b>1,792</b>	<b>49,084</b>	<b>0</b>	<b>0</b>	<b>102,583</b>	<b>78</b>	<b>153,538</b>
<b>Amador</b>							
<i>Facilities</i>	0	0	0	0	601	0	601
<i>Pipelines</i>	7	4	0	0			11
<b>Total</b>	<b>7</b>	<b>4</b>	<b>0</b>	<b>0</b>	<b>601</b>	<b>0</b>	<b>612</b>
<b>Butte</b>							
<i>Facilities</i>	1	492	0	0	2,633	0	3,126
<i>Pipelines</i>	41	21	0	0			61
<b>Total</b>	<b>42</b>	<b>512</b>	<b>0</b>	<b>0</b>	<b>2,633</b>	<b>0</b>	<b>3,187</b>
<b>Calaveras</b>							
<i>Facilities</i>	1	10	0	0	739	0	749

	Potable Water	Waste Water	Oil Systems	Natural Gas	Electric Power	Communication	Total
<i>Pipelines</i>	11	5	0	0			16
<b>Total</b>	11	16	0	0	739	0	766
<b>Colusa</b>							
<i>Facilities</i>	0	369	0	75	6,525	0	6,969
<i>Pipelines</i>	42	21	0	0			63
<b>Total</b>	42	390	0	75	6,525	0	7,032
<b>Contra Costa</b>							
<i>Facilities</i>	7,831	113,118	81	0	955,170	57	1,076,258
<i>Pipelines</i>	1,090	547	0	0			1,637
<b>Total</b>	8,921	113,666	81	0	955,170	57	1,077,895
<b>El Dorado</b>							
<i>Facilities</i>	1	251	0	0	1,487	0	1,739
<i>Pipelines</i>	16	8	0	0			25
<b>Total</b>	17	259	0	0	1,487	0	1,763
<b>Glenn</b>							
<i>Facilities</i>	0	123	0	0	136	0	259
<i>Pipelines</i>	33	16	0	0			49
<b>Total</b>	33	139	0	0	136	0	308
<b>Lake</b>							
<i>Facilities</i>	56	0	0	0	42,369	4	42,429
<i>Pipelines</i>	100	50	0	0			151

	Potable Water	Waste Water	Oil Systems	Natural Gas	Electric Power	Communication	Total
<b>Total</b>	157	50	0	0	42,369	4	42,580
<b>Marin</b>							
<i>Facilities</i>	1,898	35,426	0	0	3,507	53	40,883
<i>Pipelines</i>	186	93	0	0			279
<b>Total</b>	2,083	35,519	0	0	3,507	53	41,162
<b>Mendocino</b>							
<i>Facilities</i>	0	497	0	0	350	2	849
<i>Pipelines</i>	79	40	0	0			119
<b>Total</b>	79	537	0	0	350	2	968
<b>Merced</b>							
<i>Facilities</i>	0	131	0	0	1,142	0	1,272
<i>Pipelines</i>	64	32	0	0			96
<b>Total</b>	64	163	0	0	1,142	0	1,369
<b>Monterey</b>							
<i>Facilities</i>	0	0	0	0	653	0	654
<i>Pipelines</i>	10	5	0	0			16
<b>Total</b>	10	5	0	0	653	0	669
<b>Napa</b>							
<i>Facilities</i>	0	219,263	0	0	11,727	127	231,117
<i>Pipelines</i>	3,863	1,941	0	0			5,804
<b>Total</b>	3,863	221,203	0	0	11,727	127	236,921

	Potable Water	Waste Water	Oil Systems	Natural Gas	Electric Power	Communication	Total
<b>Nevada</b>							
<i>Facilities</i>	0	15	0	0	44	0	60
<i>Pipelines</i>	14	7	0	0			20
<b>Total</b>	14	22	0	0	44	0	80
<b>Placer</b>							
<i>Facilities</i>	0	989	0	0	3,359	1	4,349
<i>Pipelines</i>	37	19	0	0			56
<b>Total</b>	37	1,007	0	0	3,359	1	4,405
<b>Sacramento</b>							
<i>Facilities</i>	0	2,631	0	0	19,865	26	22,521
<i>Pipelines</i>	140	70	0	0			210
<b>Total</b>	140	2,701	0	0	19,865	26	22,731
<b>San Benito</b>							
<i>Facilities</i>	0	126	0	0	0	0	126
<i>Pipelines</i>	14	7	0	0			22
<b>Total</b>	14	133	0	0	0	0	147
<b>San Francisco</b>							
<i>Facilities</i>	0	19,342	0	0	1,493	50	20,886
<i>Pipelines</i>	79	40	0	0			118
<b>Total</b>	79	19,382	0	0	1,493	50	21,004
<b>San Joaquin</b>							

	Potable Water	Waste Water	Oil Systems	Natural Gas	Electric Power	Communication	Total
<i>Facilities</i>	140	861	0	0	9,393	2	10,396
<i>Pipelines</i>	101	51	0	0			152
<b>Total</b>	242	912	0	0	9,393	2	10,549
<b>San Mateo</b>							
<i>Facilities</i>	0	17,014	0	0	362	12	17,387
<i>Pipelines</i>	87	44	0	0			131
<b>Total</b>	87	17,058	0	0	362	12	17,518
<b>Santa Clara</b>							
<i>Facilities</i>	376	1,770	0	0	14,490	5	16,641
<i>Pipelines</i>	125	63	0	0			188
<b>Total</b>	501	1,833	0	0	14,490	5	16,829
<b>Santa Cruz</b>							
<i>Facilities</i>	0	492	0	0	42	1	535
<i>Pipelines</i>	40	20	0	0			60
<b>Total</b>	40	512	0	0	42	1	595
<b>Solano</b>							
<i>Facilities</i>	0	78,708	34	0	480,379	79	559,201
<i>Pipelines</i>	3,015	1,515	0	0			4,530
<b>Total</b>	3,015	80,223	34	0	480,379	79	563,730
<b>Sonoma</b>							
<i>Facilities</i>	0	75,507	0	0	294,479	168	370,154

	Potable Water	Waste Water	Oil Systems	Natural Gas	Electric Power	Communication	Total
<i>Pipelines</i>	1,566	786	0	0			2,352
<b>Total</b>	1,566	76,293	0	0	294,479	168	372,506
<b>Stanislaus</b>							
<i>Facilities</i>	0	492	0	0	8,652	3	9,147
<i>Pipelines</i>	57	28	0	0			85
<b>Total</b>	57	520	0	0	8,652	3	9,232
<b>Sutter</b>							
<i>Facilities</i>	0	246	0	0	6,808	1	7,055
<i>Pipelines</i>	30	15	0	0			45
<b>Total</b>	30	261	0	0	6,808	1	7,100
<b>Tehama</b>							
<i>Facilities</i>	0	0	0	0	2	0	3
<i>Pipelines</i>	29	15	0	0			44
<b>Total</b>	29	15	0	0	2	0	47
<b>Yolo</b>							
<i>Facilities</i>	0	4,696	0	0	6,937	14	11,648
<i>Pipelines</i>	129	65	0	0			194
<b>Total</b>	129	4,761	0	0	6,937	14	11,841
<b>Yuba</b>							
<i>Facilities</i>	0	371	0	0	840	0	1,212
<i>Pipelines</i>	21	11	0	0			32

	Potable Water	Waste Water	Oil Systems	Natural Gas	Electric Power	Communication	Total
<b>Total</b>	21	382	0	0	840	0	1,244
<b>Total</b>	<b>23,123</b>	<b>627,562</b>	<b>115</b>	<b>75</b>	<b>1,976,769</b>	<b>685</b>	<b>2,628,328</b>
<b>Region Total</b>	<b>23,123</b>	<b>627,562</b>	<b>115</b>	<b>75</b>	<b>1,976,769</b>	<b>685</b>	<b>2,628,328</b>

*Totals only reflect data for those census tracts/blocks included in the user's study region and will reflect the entire county/state only if all of the census blocks for that county/states were selected at the time of study region creation.*

## Hazus Quick Assessment Report

### Estimated Economic Loss (\$ Billions)

Category	Description	Range
General Building Stock	Building Damage	3.60 - 14.40
	Building Contents	0.50 - 2.10
	Business Interruption	0.70 - 2.80
Infrastructure	Lifelines Damage	
<b>Total</b>		5.90 - 23.40

### Preliminary Damage Assessment (PDA) Estimates

Description	Residential	Commercial	Other	Total
Affected	134,800	12,000	5,300	152,100
Minor	16,400	3,900	1,800	22,100
Major	1,600	820	410	2,830
Destroyed	520	250	110	880
<b>Total</b>	153,320	16,970	7,620	177,910

### Estimated Casualties : Night Time

Severity Level	Description	# Persons
Level 1	Medical Aid	300 - 1,200
Level 2	Hospital Care	40 - 150
Level 3	Life-threatening	< 10
Level 4	Fatalities	10 - 30

### Estimated Shelter Needs

Type	Households	People
Displaced Households	1,100 - 4,000	2,750 - 10,000
Public Shelter	430	1,080

Comments :

*\*Hazus damage estimates are presented using FEMA Preliminary Damage Assessment (PDA) categories. These estimates should be used for planning purposes and may not reflect actual observed damages from the PDA process.*

**Disclaimer:**

*The estimates of social and economic impacts contained in this report were produced using HAZUS loss estimation methodology software which is based on current scientific and engineering knowledge. There are uncertainties inherent in any loss estimation technique. Therefore, there may be significant differences between the modeled results contained in this report and the actual social and economic losses following a specific earthquake. These results can be improved by using enhanced inventory, geotechnical, and observed ground motion data.*

### Earthquake Information

Location :

Origin Time:

Magnitude : 6.97

Epicenter Latitude/Longitude :  
/

Depth & Type : /U

Name :  
NA

Ground Motion /Attenuation :

Maximum PGA: 1.00

Information Sources:

Comments :

### Population and Building Exposure

Population: 13,407,636

### Building Exposure : (\$ Millions)

Residential	1,727,362
Commercial	459,298
Other	398,600
<b>Total</b>	<b>2,585,260</b>

Counties : See Appendix

Major Metro Area :

## Hazus Quick Assessment Report

### Estimated Economic Loss (\$ Billions)

Category	Description	Range
General Building Stock	Building Damage	3.60 - 14.40
	Building Contents	0.50 - 2.10
	Business Interruption	0.70 - 2.80
Infrastructure	Lifelines Damage	
<b>Total</b>		5.90 - 23.40

### Preliminary Damage Assessment (PDA) Estimates

Description	Residential	Commercial	Other	Total
Affected	134,800	12,000	5,300	152,100
Minor	16,400	3,900	1,800	22,100
Major	1,600	820	410	2,830
Destroyed	520	250	110	880
<b>Total</b>	153,320	16,970	7,620	177,910

### Estimated Casualties : Day Time

Severity Level	Description	# Persons
Level 1	Medical Aid	600 - 2,000
Level 2	Hospital Care	120 - 500
Level 3	Life-threatening	20 - 70
Level 4	Fatalities	30 - 120

### Estimated Shelter Needs

Type	Households	People
Displaced Households	1,100 - 4,000	2,750 - 10,000
Public Shelter	430	1,080

Comments :

\*Hazus damage estimates are presented using FEMA Preliminary Damage Assessment (PDA) categories. These estimates should be used for planning purposes and may not reflect actual observed damages from the PDA process.

**Disclaimer:**

The estimates of social and economic impacts contained in this report were produced using HAZUS loss estimation methodology software which is based on current scientific and engineering knowledge. There are uncertainties inherent in any loss estimation technique. Therefore, there may be significant differences between the modeled results contained in this report and the actual social and economic losses following a specific earthquake. These results can be improved by using enhanced inventory, geotechnical, and observed ground motion data.

### Earthquake Information

Location :

Origin Time:

Magnitude : 6.97

Epicenter Latitude/Longitude :  
/

Depth & Type : /U

Name :  
NA

Ground Motion /Attenuation :

Maximum PGA: 1.00

Information Sources:

Comments :

### Population and Building Exposure

Population: 13,407,636

### Building Exposure : (\$ Millions)

Residential	1,727,362
Commercial	459,298
Other	398,600
<b>Total</b>	<b>2,585,260</b>

Counties : See Appendix

Major Metro Area :

## Hazus Quick Assessment Report

### Estimated Economic Loss (\$ Billions)

Category	Description	Range
General Building Stock	Building Damage	3.60 - 14.40
	Building Contents	0.50 - 2.10
	Business Interruption	0.70 - 2.80
Infrastructure	Lifelines Damage	
<b>Total</b>		5.90 - 23.40

### Preliminary Damage Assessment (PDA) Estimates

Description	Residential	Commercial	Other	Total
Affected	134,800	12,000	5,300	152,100
Minor	16,400	3,900	1,800	22,100
Major	1,600	820	410	2,830
Destroyed	520	250	110	880
<b>Total</b>	153,320	16,970	7,620	177,910

### Estimated Casualties : Commute Time

Severity Level	Description	# Persons
Level 1	Medical Aid	400 - 1,700
Level 2	Hospital Care	90 - 400
Level 3	Life-threatening	40 - 150
Level 4	Fatalities	20 - 90

### Estimated Shelter Needs

Type	Households	People
Displaced Households	1,100 - 4,000	2,750 - 10,000
Public Shelter	430	1,080

Comments :

\*Hazus damage estimates are presented using FEMA Preliminary Damage Assessment (PDA) categories. These estimates should be used for planning purposes and may not reflect actual observed damages from the PDA process.

**Disclaimer:**

The estimates of social and economic impacts contained in this report were produced using HAZUS loss estimation methodology software which is based on current scientific and engineering knowledge. There are uncertainties inherent in any loss estimation technique. Therefore, there may be significant differences between the modeled results contained in this report and the actual social and economic losses following a specific earthquake. These results can be improved by using enhanced inventory, geotechnical, and observed ground motion data.

### Earthquake Information

Location :

Origin Time:

Magnitude : 6.97

Epicenter Latitude/Longitude :  
/

Depth & Type : /U

Name :  
NA

Ground Motion /Attenuation :

Maximum PGA: 1.00

Information Sources:

Comments :

### Population and Building Exposure

Population: 13,407,636

### Building Exposure : (\$ Millions)

Residential	1,727,362
Commercial	459,298
Other	398,600
<b>Total</b>	<b>2,585,260</b>

Counties : See Appendix

Major Metro Area :

## Shelter Summary Report

June 26, 2024

	# of Displaced Households	# of People Needing Short Term Shelter
<b>California</b>		
Butte	0	0
Alameda	71	36
Solano	750	417
San Mateo	0	0
San Joaquin	0	0
Nevada	0	0
Colusa	0	0
Napa	996	483
Mendocino	0	0
Contra Costa	85	48
Tehama	0	0
El Dorado	0	0
Amador	0	0
Santa Cruz	0	0
Lake	0	0
Monterey	0	0
Sacramento	0	0
Yolo	0	0
Calaveras	0	0
Yuba	0	0
Glenn	0	0
Stanislaus	0	0
Sonoma	142	63
Santa Clara	0	0
San Benito	0	0
San Francisco	66	29
Merced	0	0
Placer	0	0
Marin	2	1
Sutter	0	0

---

---

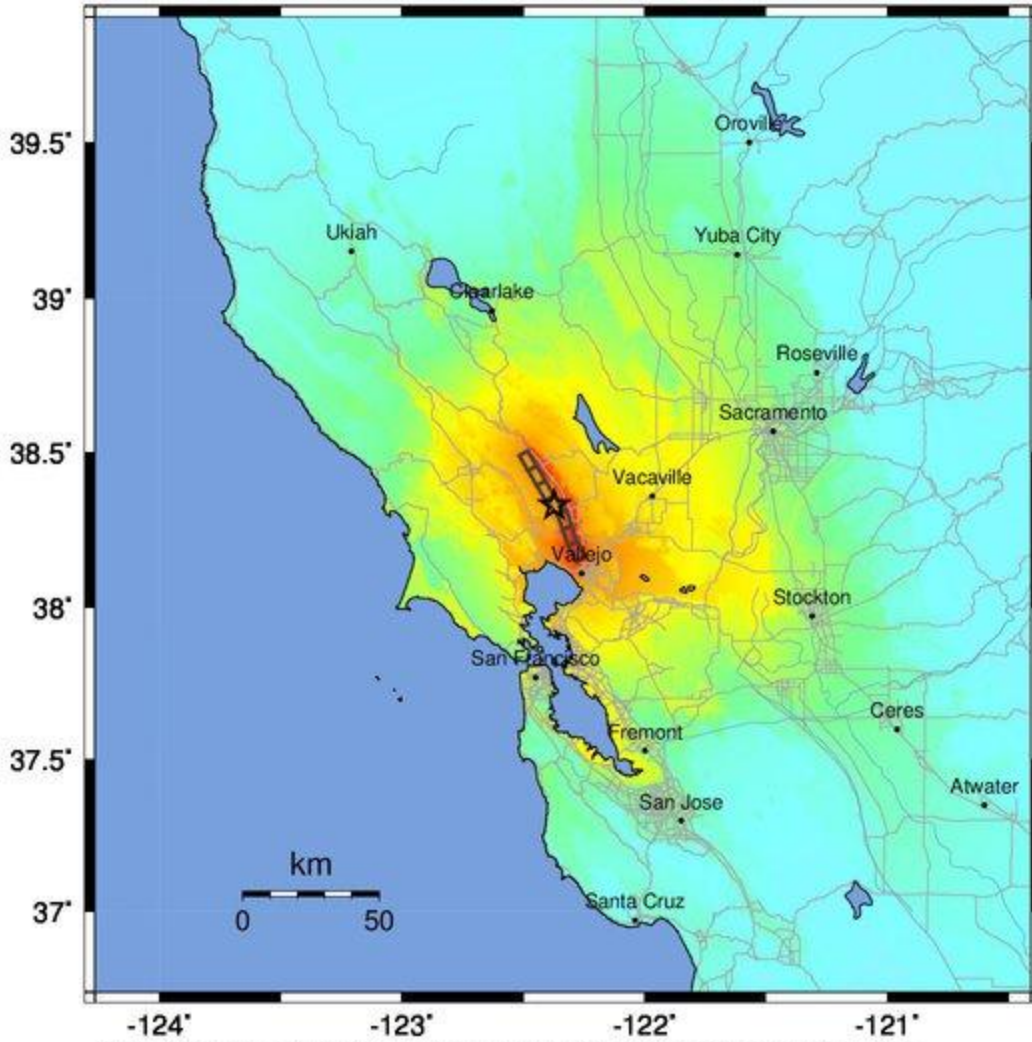
	# of Displaced Households	# of People Needing Short Term Shelter
<b>Total</b>	<b>2,113</b>	<b>1,078</b>
<b>Region Total</b>	<b>2,113</b>	<b>1,078</b>

---

---

*Totals only reflect data for those census tracts/blocks included in the user's study region and will reflect the entire county/state only if all of the census blocks for that county/states were selected at the time of study region creation.*

-- Earthquake Planning Scenario --  
**ShakeMap for West Napa - Median ground motions Scenario**  
 Scenario Date: May 16, 2017 08:32:06 AM MDT M 7.0 N38.33 W122.37 Depth: 8.1km



-124°      -123°      -122°      -121°  
 PLANNING SCENARIO ONLY -- Map Version 14 Processed 2017-05-17 12:15:23 PM MDT

PERCEIVED SHAKING	Not felt	Weak	Light	Moderate	Strong	Very strong	Severe	Violent	Extreme
POTENTIAL DAMAGE	none	none	none	Very light	Light	Moderate	Mod./Heavy	Heavy	Very Heavy
PEAK ACC.(%g)	<0.05	0.3	2.8	6.2	12	22	40	75	>139
PEAK VEL.(cm/s)	<0.02	0.1	1.4	4.7	9.6	20	41	86	>178
INSTRUMENTAL INTENSITY	I	II-III	IV	V	VI	VII	VIII	IX	X+

Scale based upon Worden et al. (2012)