
Hazus: Earthquake Global Risk Report

Region Name: SmithValleyfault

Earthquake Scenario: 1291abc_m7p37_se

Print Date: June 25, 2024

Disclaimer:

Totals only reflect data for those census tracts/blocks included in the user's study region.

The estimates of social and economic impacts contained in this report were produced using Hazus loss estimation methodology software which is based on current scientific and engineering knowledge. There are uncertainties inherent in any loss estimation technique. Therefore, there may be significant differences between the modeled results contained in this report and the actual social and economic losses following a specific earthquake. These results can be improved by using enhanced inventory, geotechnical, and observed ground motion data.

Table of Contents

Section	Page #
General Description of the Region	3
Building and Lifeline Inventory	4
Building Inventory	
Critical Facility Inventory	
Transportation and Utility Lifeline Inventory	
Earthquake Scenario Parameters	7
Direct Earthquake Damage	8
Buildings Damage	
Essential Facilities Damage	
Transportation and Utility Lifeline Damage	
Induced Earthquake Damage	14
Fire Following Earthquake	
Debris Generation	
Social Impact	15
Shelter Requirements	
Casualties	
Economic Loss	17
Building Related Losses	
Transportation and Utility Lifeline Losses	
Appendix A: County Listing for the Region	
Appendix B: Regional Population and Building Value Data	

General Description of the Region

Hazus-MH is a regional earthquake loss estimation model that was developed by the Federal Emergency Management Agency (FEMA) and the National Institute of Building Sciences. The primary purpose of Hazus is to provide a methodology and software application to develop multi-hazard losses at a regional scale. These loss estimates would be used primarily by local, state and regional officials to plan and stimulate efforts to reduce risks from multi-hazards and to prepare for emergency response and recovery.

The earthquake loss estimates provided in this report was based on a region that includes 25 county(ies) from the following state(s):

California

Note:

Appendix A contains a complete listing of the counties contained in the region.

The geographical size of the region is 51,626.88 square miles and contains 1,706 census tracts. There are over 2,582 thousand households in the region which has a total population of 7,537,791 people. The distribution of population by Total Region and County is provided in Appendix B.

There are an estimated 2,455 thousand buildings in the region with a total building replacement value (excluding contents) of 1,385,244 (millions of dollars). Approximately 91.00 % of the buildings (and 66.00% of the building value) are associated with residential housing.

The replacement value of the transportation and utility lifeline systems is estimated to be 128,867 and 139,347 (millions of dollars) , respectively.

Building and Lifeline Inventory

Building Inventory

Hazus estimates that there are 2,455 thousand buildings in the region which have an aggregate total replacement value of 1,385,244 (millions of dollars) . Appendix B provides a general distribution of the building value by Total Region and County.

In terms of building construction types found in the region, wood frame construction makes up 87% of the building inventory. The remaining percentage is distributed between the other general building types.

Critical Facility Inventory

Hazus breaks critical facilities into two (2) groups: essential facilities and high potential loss facilities (HPL). Essential facilities include hospitals, medical clinics, schools, fire stations, police stations and emergency operations facilities. High potential loss facilities include dams, levees, military installations, nuclear power plants and hazardous material sites.

For essential facilities, there are 130 hospitals in the region with a total bed capacity of 15,732 beds. There are 2,884 schools, 899 fire stations, 258 police stations and 47 emergency operation facilities. With respect to high potential loss facilities (HPL), there are no dams identified within the inventory. The inventory also includes no hazardous material sites, no military installations and no nuclear power plants.

Transportation and Utility Lifeline Inventory

Within Hazus, the lifeline inventory is divided between transportation and utility lifeline systems. There are seven (7) transportation systems that include highways, railways, light rail, bus, ports, ferry and airports. There are six (6) utility systems that include potable water, wastewater, natural gas, crude & refined oil, electric power and communications. The lifeline inventory data are provided in Tables 1 and 2.

The total value of the lifeline inventory is over 268,214.00 (millions of dollars). This inventory includes over 7,506.78 miles of highways, 6,894 bridges, 165,832.74 miles of pipes.

Table 1: Transportation System Lifeline Inventory

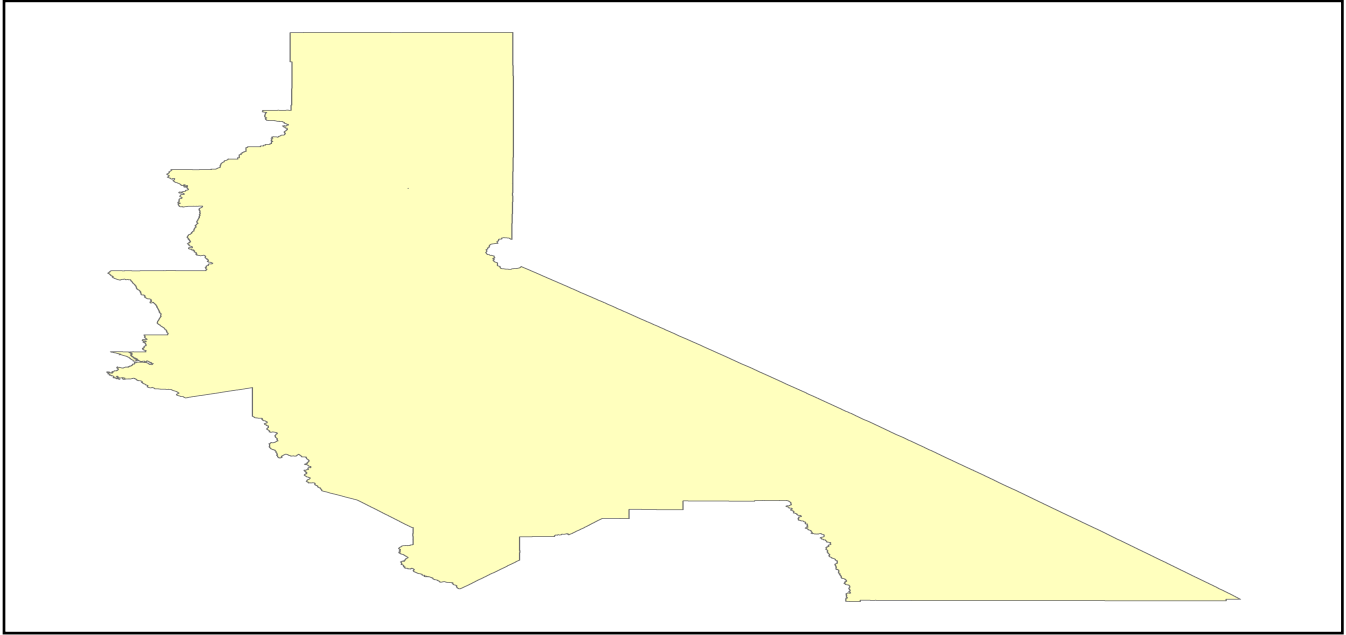
System	Component	# Locations/ # Segments	Replacement value (millions of dollars)
Highway	Bridges	6,894	27417.9024
	Segments	3,899	60242.1449
	Tunnels	17	236.8357
	Subtotal		87896.8830
Railways	Bridges	1,138	6475.2200
	Facilities	59	157.1170
	Segments	2,353	29597.7611
	Tunnels	2	1.7557
	Subtotal		36231.8538
Light Rail	Bridges	26	3.3240
	Facilities	58	331.1800
	Segments	4	1771.6066
	Tunnels	0	0.0000
	Subtotal		2106.1106
Bus	Facilities	22	48.6349
	Subtotal		48.6349
Ferry	Facilities	13	17.3030
	Subtotal		17.3030
Port	Facilities	188	716.6268
	Subtotal		716.6268
Airport	Facilities	87	1033.0833
	Runways	112	817.4659
	Subtotal		1850.5492
		Total	128,868.00

Table 2: Utility System Lifeline Inventory

System	Component	# Locations / Segments	Replacement value (millions of dollars)
Potable Water	Distribution Lines	NA	3303.0709
	Facilities	15	589.4100
	Pipelines	0	0.0000
		Subtotal	3892.4809
Waste Water	Distribution Lines	NA	1981.8425
	Facilities	102	17539.0836
	Pipelines	0	0.0000
		Subtotal	19520.9261
Natural Gas	Distribution Lines	NA	1321.2283
	Facilities	1	18.2016
	Pipelines	692	9285.9015
		Subtotal	10625.3314
Oil Systems	Facilities	17	2.0060
	Pipelines	0	0.0000
		Subtotal	2.0060
Electrical Power	Facilities	307	105279.7825
		Subtotal	105279.7825
Communication	Facilities	227	26.7860
		Subtotal	26.7860
	Total		139,347.30

Earthquake Scenario

Hazus uses the following set of information to define the earthquake parameters used for the earthquake loss estimate provided in this report.



Scenario Name	1291abc_m7p37_se
Type of Earthquake	User-defined
Fault Name	NA
Historical Epicenter ID #	NA
Probabilistic Return Period	NA
Longitude of Epicenter	NA
Latitude of Epicenter	NA
Earthquake Magnitude	7.37
Depth (km)	NA
Rupture Length (Km)	NA
Rupture Orientation (degrees)	NA
Attenuation Function	NA

Direct Earthquake Damage

Building Damage

Hazus estimates that about 31 buildings will be at least moderately damaged. This is over 0.00 % of the buildings in the region. There are an estimated 0 buildings that will be damaged beyond repair. The definition of the 'damage states' is provided in Volume 1: Chapter 5 of the Hazus technical manual. Table 3 below summarizes the expected damage by general occupancy for the buildings in the region. Table 4 below summarizes the expected damage by general building type.

Damage Categories by General Occupancy Type

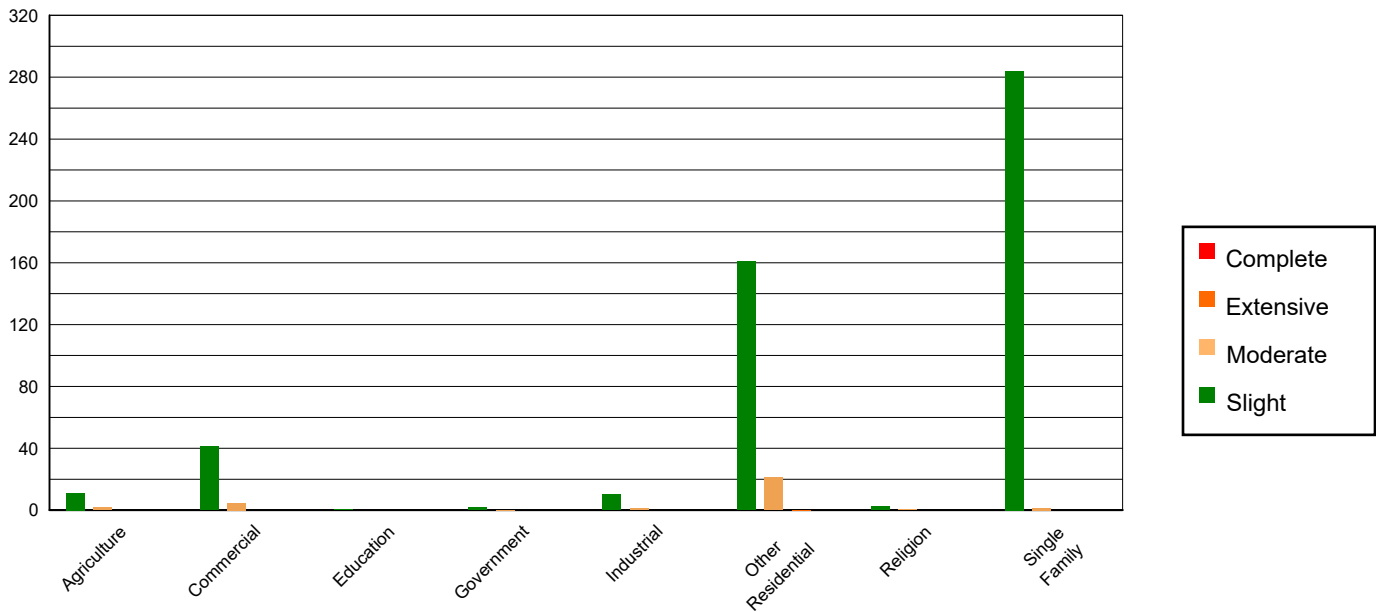


Table 3: Expected Building Damage by Occupancy

	None		Slight		Moderate		Extensive		Complete	
	Count	(%)	Count	(%)	Count	(%)	Count	(%)	Count	(%)
Agriculture	20528.02	0.84	11.04	2.16	1.86	6.06	0.08	24.45	0.00	100.00
Commercial	142193.89	5.79	41.40	8.08	4.64	15.08	0.06	19.03	0.00	0.00
Education	4463.46	0.18	0.49	0.10	0.05	0.15	0.00	0.03	0.00	0.00
Government	9311.05	0.38	1.81	0.35	0.14	0.47	0.00	0.03	0.00	0.00
Industrial	39959.56	1.63	10.27	2.01	1.16	3.76	0.01	3.03	0.00	0.00
Other Residential	293163.59	11.94	160.94	31.42	21.30	69.20	0.17	52.68	0.00	0.00
Religion	8994.40	0.37	2.32	0.45	0.28	0.92	0.00	0.75	0.00	0.00
Single Family	1936840.68	78.88	283.98	55.44	1.34	4.36	0.00	0.00	0.00	0.00
Total	2,455,455		512		31		0		0	

Table 4: Expected Building Damage by Building Type (All Design Levels)

	None		Slight		Moderate		Extensive		Complete	
	Count	(%)	Count	(%)	Count	(%)	Count	(%)	Count	(%)
Wood	2148090.13	87.48	324.83	63.41	1.62	5.27	0.00	0.00	0.00	0.00
Steel	48678.78	1.98	24.80	4.84	3.91	12.70	0.08	22.88	0.00	100.00
Concrete	51504.90	2.10	16.37	3.19	2.13	6.92	0.05	16.35	0.00	0.00
Precast	32625.93	1.33	13.88	2.71	1.77	5.76	0.01	1.99	0.00	0.00
RM	91069.35	3.71	8.94	1.75	0.81	2.62	0.00	0.00	0.00	0.00
URM	20489.36	0.83	12.01	2.34	1.76	5.71	0.07	21.56	0.00	0.00
MH	62996.19	2.57	111.43	21.75	18.78	61.03	0.12	37.22	0.00	0.00
Total	2,455,455		512		31		0		0	

*Note:

- RM Reinforced Masonry
- URM Unreinforced Masonry
- MH Manufactured Housing

Essential Facility Damage

Before the earthquake, the region had 15,732 hospital beds available for use. On the day of the earthquake, the model estimates that only 15,704 hospital beds (100.00%) are available for use by patients already in the hospital and those injured by the earthquake. After one week, 100.00% of the beds will be back in service. By 30 days, 100.00% will be operational.

Table 5: Expected Damage to Essential Facilities

Classification	Total	# Facilities		
		At Least Moderate Damage > 50%	Complete Damage > 50%	With Functionality > 50% on day 1
Hospitals	130	0	0	130
Schools	2,884	0	0	2,884
EOCs	47	0	0	47
PoliceStations	258	0	0	258
FireStations	899	0	0	899

Transportation Lifeline Damage

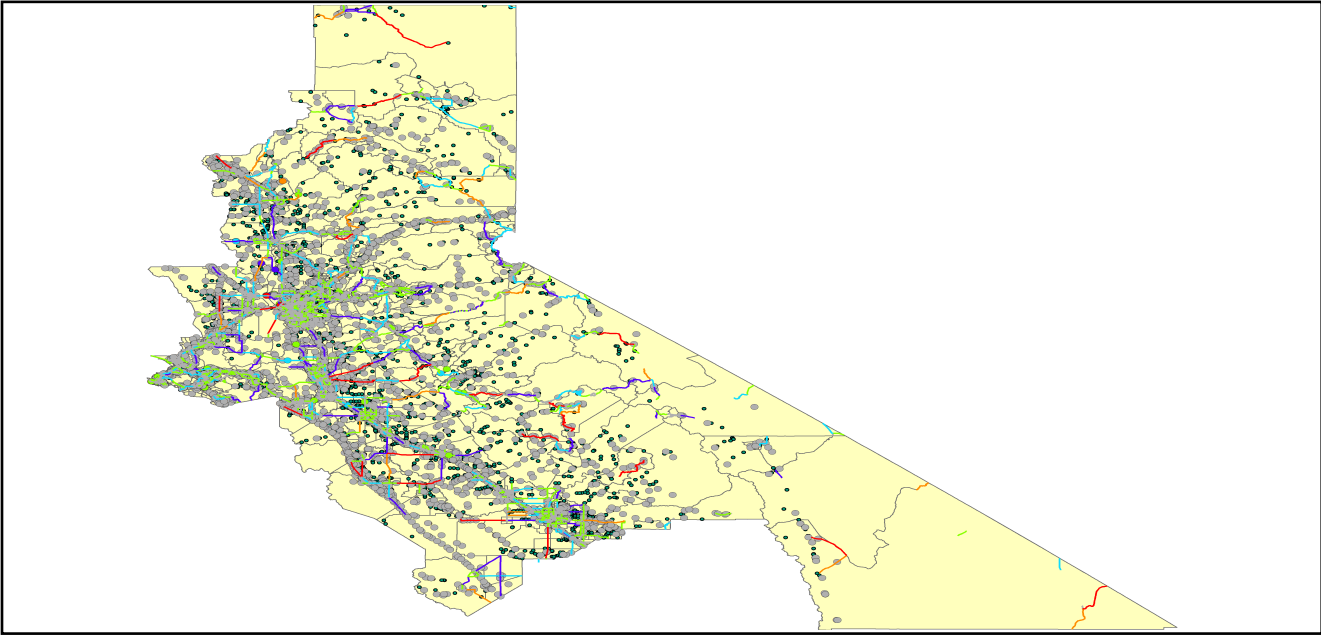


Table 6: Expected Damage to the Transportation Systems

System	Component	Number of Locations_				
		Locations/ Segments	With at Least Mod. Damage	With Complete Damage	With Functionality > 50 %	
					After Day 1	After Day 7
Highway	Segments	3,899	0	0	3,899	3,899
	Bridges	6,894	0	0	6,894	6,894
	Tunnels	17	0	0	17	17
Railways	Segments	2,353	0	0	2,353	2,353
	Bridges	1,138	0	0	1,138	1,138
	Tunnels	2	0	0	2	2
	Facilities	59	0	0	59	59
Light Rail	Segments	4	0	0	4	4
	Bridges	26	0	0	26	26
	Tunnels	0	0	0	0	0
	Facilities	58	0	0	58	58
Bus	Facilities	22	0	0	22	22
Ferry	Facilities	13	0	0	13	13
Port	Facilities	188	0	0	188	188
Airport	Facilities	87	0	0	87	87
	Runways	112	0	0	112	112

Table 6 provides damage estimates for the transportation system.

Note: Roadway segments, railroad tracks and light rail tracks are assumed to be damaged by ground failure only. If ground failure maps are not provided, damage estimates to these components will not be computed.

Tables 7-9 provide information on the damage to the utility lifeline systems. Table 7 provides damage to the utility system facilities. Table 8 provides estimates on the number of leaks and breaks by the pipelines of the utility systems. For electric power and potable water, Hazus performs a simplified system performance analysis. Table 9 provides a summary of the system performance information.

Table 7 : Expected Utility System Facility Damage

System	# of Locations				
	Total #	With at Least Moderate Damage	With Complete Damage	with Functionality > 50 %	
				After Day 1	After Day 7
Potable Water	15	0	0	15	15
Waste Water	102	0	0	102	102
Natural Gas	1	0	0	1	1
Oil Systems	17	0	0	17	17
Electrical Power	307	0	0	307	307
Communication	227	0	0	227	227

Table 8 : Expected Utility System Pipeline Damage (Site Specific)

System	Total Pipelines Length (miles)	Number of Leaks	Number of Breaks
Potable Water	102,622	359	90
Waste Water	61,573	180	45
Natural Gas	1,638	0	0
Oil	0	0	0

Table 9: Expected Potable Water and Electric Power System Performance

	Total # of Households	Number of Households without Service				
		At Day 1	At Day 3	At Day 7	At Day 30	At Day 90
Potable Water	2,582,878	0	0	0	0	0
Electric Power		0	0	0	0	0

Induced Earthquake Damage

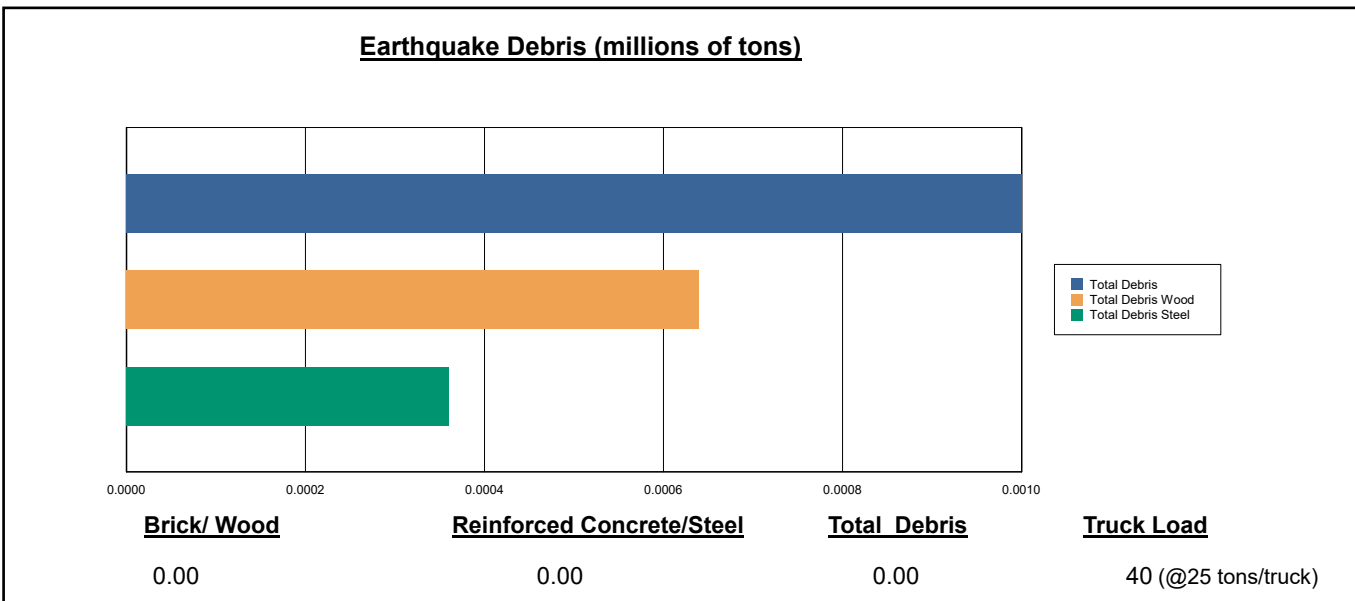
Fire Following Earthquake

Fires often occur after an earthquake. Because of the number of fires and the lack of water to fight the fires, they can often burn out of control. Hazus uses a Monte Carlo simulation model to estimate the number of ignitions and the amount of burnt area. For this scenario, the model estimates that there will be 0 ignitions that will burn about 0.00 sq. mi 0.00 % of the region's total area.) The model also estimates that the fires will displace about 0 people and burn about 0 (millions of dollars) of building value.

Debris Generation

Hazus estimates the amount of debris that will be generated by the earthquake. The model breaks the debris into two general categories: a) Brick/Wood and b) Reinforced Concrete/Steel. This distinction is made because of the different types of material handling equipment required to handle the debris.

The model estimates that a total of 1,000 tons of debris will be generated. Of the total amount, Brick/Wood comprises 64.00% of the total, with the remainder being Reinforced Concrete/Steel. If the debris tonnage is converted to an estimated number of truckloads, it will require 40 truckloads (@25 tons/truck) to remove the debris generated by the earthquake.



Social Impact

Shelter Requirement

Hazus estimates the number of households that are expected to be displaced from their homes due to the earthquake and the number of displaced people that will require accommodations in temporary public shelters. The model estimates 0 households to be displaced due to the earthquake. Of these, 0 people (out of a total population of 7,537,791) will seek temporary shelter in public shelters.

<u>Displaced Households/ Persons Seeking Short Term Public Shelter</u>	
<u>Displaced households as a result of the earthquake</u>	<u>Persons seeking temporary public shelter</u>
0	0

Casualties

Hazus estimates the number of people that will be injured and killed by the earthquake. The casualties are broken down into four (4) severity levels that describe the extent of the injuries. The levels are described as follows;

- Severity Level 1: Injuries will require medical attention but hospitalization is not needed.
- Severity Level 2: Injuries will require hospitalization but are not considered life-threatening
- Severity Level 3: Injuries will require hospitalization and can become life threatening if not promptly treated.
- Severity Level 4: Victims are killed by the earthquake.

The casualty estimates are provided for three (3) times of day: 2:00 AM, 2:00 PM and 5:00 PM. These times represent the periods of the day that different sectors of the community are at their peak occupancy loads. The 2:00 AM estimate considers that the residential occupancy load is maximum, the 2:00 PM estimate considers that the educational, commercial and industrial sector loads are maximum and 5:00 PM represents peak commute time.

Table 10 provides a summary of the casualties estimated for this earthquake

Table 10: Casualty Estimates

		Level 1	Level 2	Level 3	Level 4
2 AM	Commercial	0.01	0.00	0.00	0.00
	Commuting	0.00	0.00	0.00	0.00
	Educational	0.00	0.00	0.00	0.00
	Hotels	0.00	0.00	0.00	0.00
	Industrial	0.01	0.00	0.00	0.00
	Other-Residential	0.31	0.01	0.00	0.00
	Single Family	0.20	0.00	0.00	0.00
	Total	1	0	0	0
	2 PM	Commercial	0.44	0.02	0.00
Commuting		0.00	0.00	0.00	0.00
Educational		0.08	0.00	0.00	0.00
Hotels		0.00	0.00	0.00	0.00
Industrial		0.05	0.00	0.00	0.00
Other-Residential		0.10	0.00	0.00	0.00
Single Family		0.06	0.00	0.00	0.00
Total		1	0	0	0
5 PM		Commercial	0.28	0.01	0.00
	Commuting	0.00	0.01	0.01	0.00
	Educational	0.01	0.00	0.00	0.00
	Hotels	0.00	0.00	0.00	0.00
	Industrial	0.03	0.00	0.00	0.00
	Other-Residential	0.11	0.00	0.00	0.00
	Single Family	0.07	0.00	0.00	0.00
	Total	1	0	0	0

Economic Loss

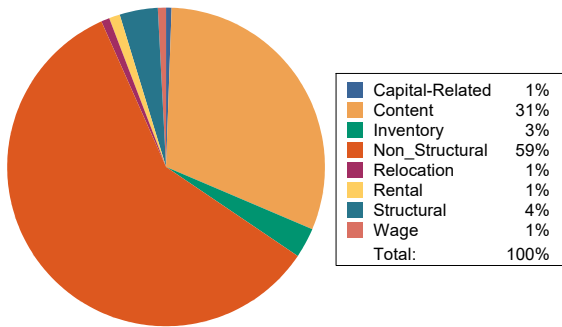
The total economic loss estimated for the earthquake is 195.16 (millions of dollars), which includes building and lifeline related losses based on the region's available inventory. The following three sections provide more detailed information about these losses.

Building-Related Losses

The building losses are broken into two categories: direct building losses and business interruption losses. The direct building losses are the estimated costs to repair or replace the damage caused to the building and its contents. The business interruption losses are the losses associated with inability to operate a business because of the damage sustained during the earthquake. Business interruption losses also include the temporary living expenses for those people displaced from their homes because of the earthquake.

The total building-related losses were 30.14 (millions of dollars); 3 % of the estimated losses were related to the business interruption of the region. By far, the largest loss was sustained by the residential occupancies which made up over 54 % of the total loss. Table 11 below provides a summary of the losses associated with the building damage.

Earthquake Losses by Loss Type (\$ millions)



Earthquake Losses by Occupancy Type (\$ millions)

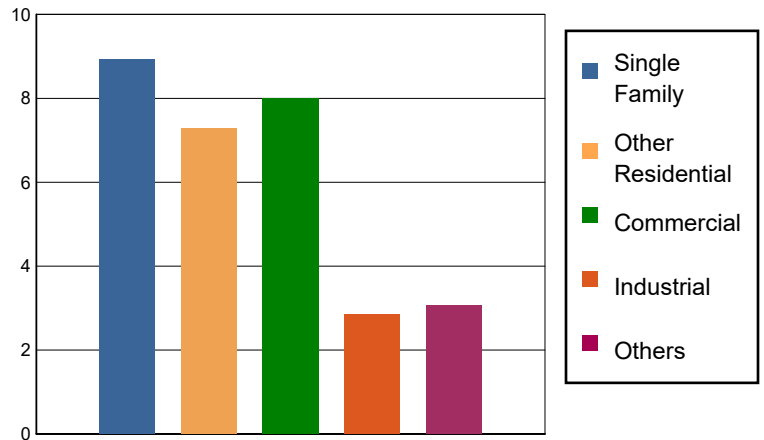


Table 11: Building-Related Economic Loss Estimates
(Millions of dollars)

Category	Area	Single Family	Other Residential	Commercial	Industrial	Others	Total
Income Losses							
	Wage	0.0000	0.0281	0.1561	0.0047	0.0260	0.2149
	Capital-Related	0.0000	0.0119	0.1803	0.0027	0.0046	0.1995
	Rental	0.0196	0.1569	0.1348	0.0038	0.0073	0.3224
	Relocation	0.0081	0.0686	0.0900	0.0169	0.0368	0.2204
	Subtotal	0.0277	0.2655	0.5612	0.0281	0.0747	0.9572
Capital Stock Losses							
	Structural	0.4385	0.2775	0.2594	0.0715	0.2011	1.2480
	Non_Structural	5.7299	5.0255	4.0459	1.5311	1.4223	17.7547
	Content	2.7323	1.7120	2.7460	1.0683	1.0270	9.2856
	Inventory	0.0000	0.0000	0.3927	0.1599	0.3402	0.8928
	Subtotal	8.9007	7.0150	7.4440	2.8308	2.9906	29.1811
	Total	8.93	7.28	8.01	2.86	3.07	30.14

Transportation and Utility Lifeline Losses

For the transportation and utility lifeline systems, Hazus computes the direct repair cost for each component only. There are no losses computed by Hazus for business interruption due to lifeline outages. Tables 12 & 13 provide a detailed breakdown in the expected lifeline losses.

Table 12: Transportation System Economic Losses
(Millions of dollars)

System	Component	Inventory Value	Economic Loss	Loss Ratio (%)
Highway	Segments	60242.1449	0.0000	0.00
	Bridges	27417.9024	0.1630	0.00
	Tunnels	236.8357	0.0001	0.00
	Subtotal	87896.8830	0.1631	
Railways	Segments	29597.7611	0.0000	0.00
	Bridges	6475.2200	0.0000	0.00
	Tunnels	1.7557	0.0000	0.00
	Facilities	157.1170	0.4455	0.28
	Subtotal	36231.8538	0.4455	
Light Rail	Segments	1771.6066	0.0000	0.00
	Bridges	3.3240	0.0000	0.00
	Tunnels	0.0000	0.0000	0.00
	Facilities	331.1800	0.6354	0.19
	Subtotal	2106.1106	0.6354	
Bus	Facilities	48.6349	0.4787	0.98
	Subtotal	48.6349	0.4787	
Ferry	Facilities	17.3030	0.0157	0.09
	Subtotal	17.3030	0.0157	
Port	Facilities	716.6268	0.4446	0.06
	Subtotal	716.6268	0.4446	
Airport	Facilities	1033.0833	5.4103	0.52
	Runways	817.4659	0.0000	0.00
	Subtotal	1850.5492	5.4103	
	Total	128,867.96	7.59	

Table 13: Utility System Economic Losses
(Millions of dollars)

System	Component	Inventory Value	Economic Loss	Loss Ratio (%)
Potable Water	Pipelines	0.0000	0.0000	0.00
	Facilities	589.4100	0.0603	0.01
	Distribution Lines	3303.0709	1.6167	0.05
	Subtotal	3892.4809	1.6770	
Waste Water	Pipelines	0.0000	0.0000	0.00
	Facilities	17539.0836	2.7469	0.02
	Distribution Lines	1981.8425	0.8121	0.04
	Subtotal	19520.9261	3.5590	
Natural Gas	Pipelines	9285.9015	0.0000	0.00
	Facilities	18.2016	0.0000	0.00
	Distribution Lines	1321.2283	0.2782	0.02
	Subtotal	10625.3314	0.2782	
Oil Systems	Pipelines	0.0000	0.0000	0.00
	Facilities	2.0060	0.0000	0.00
	Subtotal	2.0060	0.0000	
Electrical Power	Facilities	105279.7825	151.8991	0.14
	Subtotal	105279.7825	151.8991	
Communication	Facilities	26.7860	0.0135	0.05
	Subtotal	26.7860	0.0135	
	Total	139,347.31	157.43	

Appendix A: County Listing for the Region

Alpine,CA
Amador,CA
Butte,CA
Calaveras,CA
Contra Costa,CA
El Dorado,CA
Fresno,CA
Inyo,CA
Lassen,CA
Madera,CA
Mariposa,CA
Merced,CA
Mono,CA
Nevada,CA
Placer,CA
Plumas,CA
Sacramento,CA
San Joaquin,CA
Sierra,CA
Solano,CA
Stanislaus,CA
Sutter,CA
Tuolumne,CA
Yolo,CA
Yuba,CA

Appendix B: Regional Population and Building Value Data

State	County Name	Population	Building Value (millions of dollars)		
			Residential	Non-Residential	Total
California	Alpine	1,204	721	139	861
	Amador	40,474	5,608	2,517	8,125
	Butte	211,632	25,875	16,639	42,514
	Calaveras	45,292	8,305	4,893	13,199
	Contra Costa	1,165,927	158,118	60,339	218,458
	El Dorado	191,185	34,907	9,704	44,611
	Fresno	1,008,654	98,532	61,772	160,304
	Inyo	19,016	2,951	1,970	4,921
	Lassen	32,730	4,033	2,008	6,042
	Madera	156,255	18,025	9,641	27,667
	Mariposa	17,131	3,299	1,141	4,441
	Merced	281,202	25,194	26,098	51,292
	Mono	13,195	3,293	1,083	4,377
	Nevada	102,241	17,908	6,108	24,016
	Placer	404,739	69,985	24,193	94,179
	Plumas	19,790	6,128	2,276	8,405
	Sacramento	1,585,055	179,811	83,911	263,723
	San Joaquin	779,233	82,706	56,882	139,589
	Sierra	3,236	596	419	1,015
	Solano	453,491	55,802	26,393	82,195
Stanislaus	552,878	62,937	37,511	100,449	
Sutter	99,633	10,618	6,448	17,066	
Tuolumne	55,620	8,964	3,507	12,471	
Yolo	216,403	24,130	18,343	42,473	
Yuba	81,575	8,161	4,677	12,839	
Total Region		7,537,791	916,607	468,612	1,385,232

Building Inspection Tagging (Counts)

Total Economic Loss
Total:

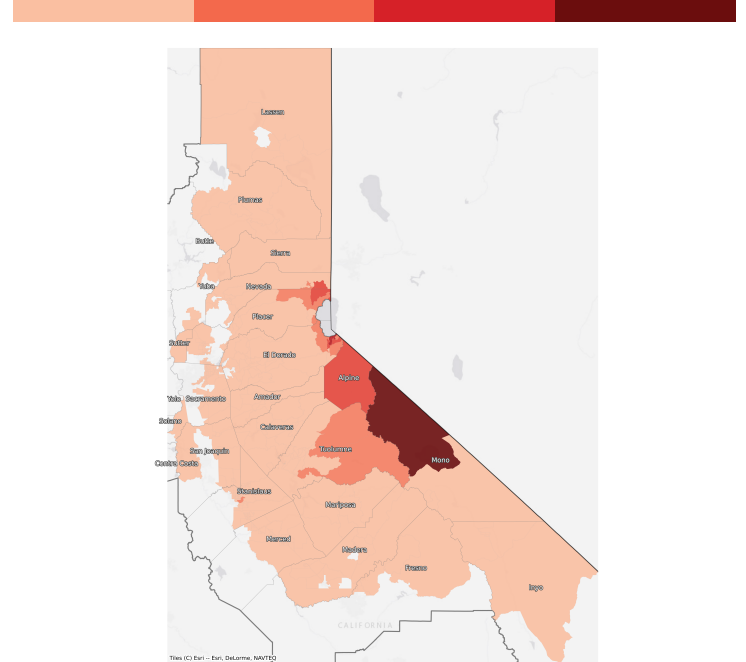
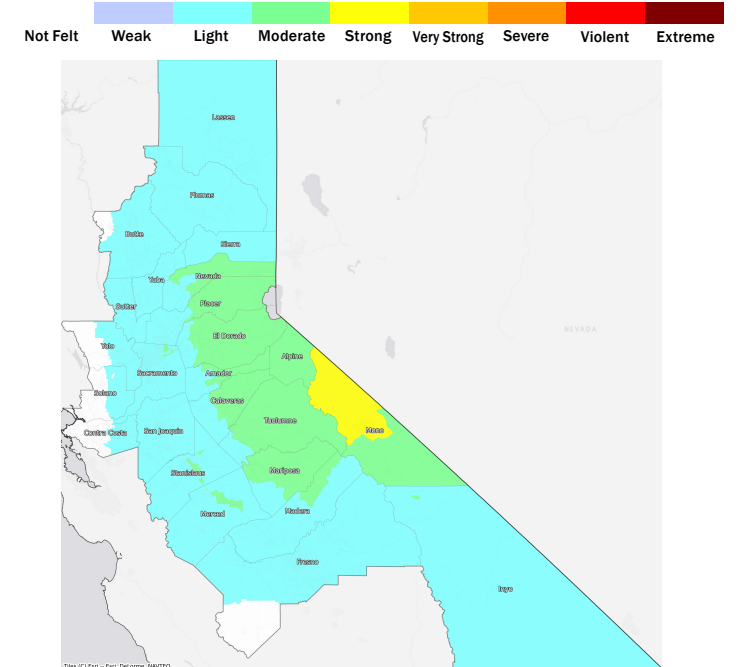
Top Counties	State	Total

Injuries & Fatalities
**Total Day:
Total Night:**

Top Counties	State	Injuries (day/night)	Fatalities (day/night)

Displaced Households & Short-Term Shelter Needs
**Total Displaced:
Total Needing Shelter:**

Top Counties	State	Displaced	Needing Shelter

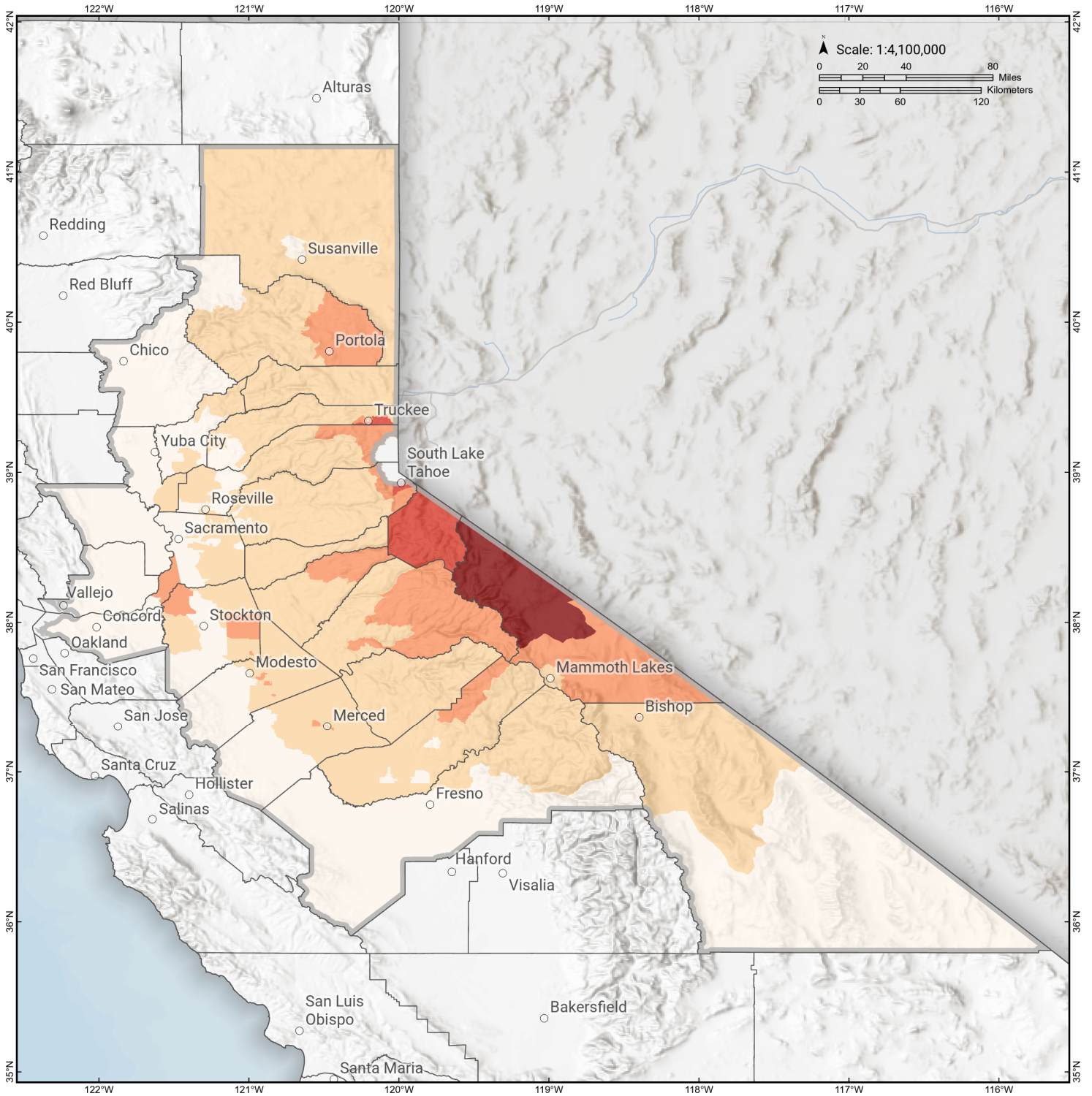
Economic Impacts by Census Tract

Ground Shaking

Debris
**Total Tons:
Total Truckloads:**

Type	Tons

The estimates of social and economic impacts contained in this report were produced using Hazus loss estimation methodology software which is based on current scientific and engineering knowledge. There are uncertainties inherent in any loss estimation technique. Therefore, there may be significant differences between the modeled results contained in this report and the actual social and economic losses following a specific earthquake.

Smith Valley fault

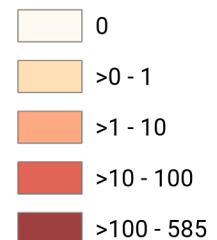
Debris Generated by Census Tract



Study Region: Smith Valley fault
Scenario: 1291abc_m7p37_se



Debris Generated (in tons)



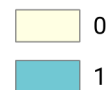
Smith Valley fault

Displaced Households by Census Tract



Study Region: Smith Valley fault
Scenario: 1291abc_m7p37_se

Displaced Households



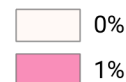
Smith Valley fault

Loss Ratio by Census Tract



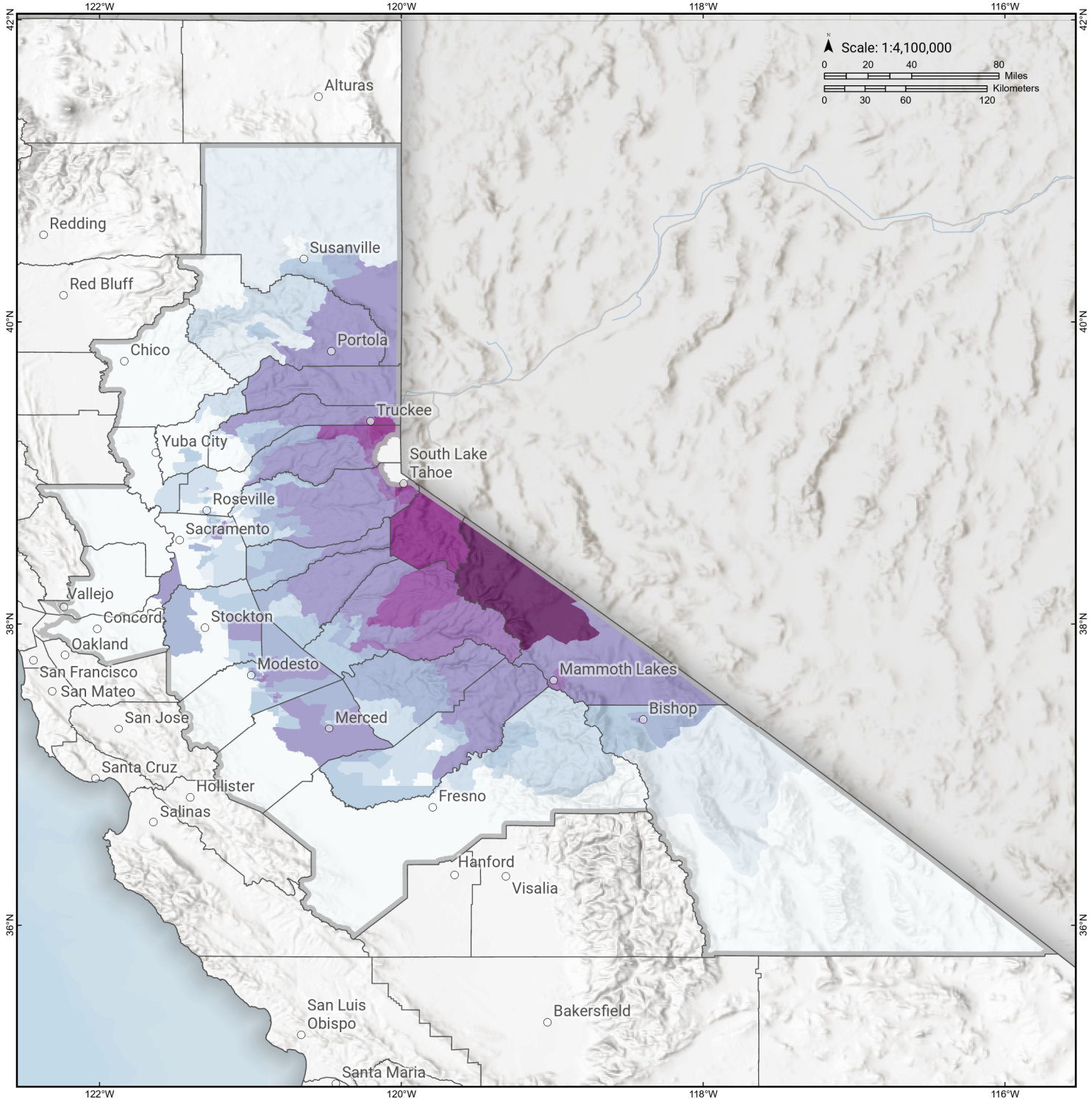
Study Region: Smith Valley fault
Scenario: 1291abc_m7p37_se

Loss Ratio (ratio of building related economic loss to exposed value of buildings)



Smith Valley fault

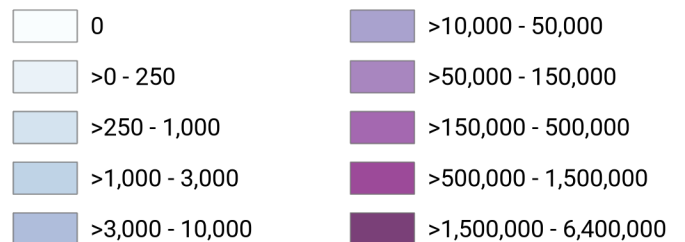
Total Building Related Economic Loss by Census Tract



Study Region: Smith Valley fault
Scenario: 1291abc_m7p37_se



Economic Loss (in USD \$)



Building Damage by Count by General Occupancy

June 25, 2024

	# of Buildings					Total
	None	Slight	Moderate	Extensive	Complete	
California						
Alpine						
<i>Agriculture</i>	0	0	0	0	0	0
<i>Commercial</i>	48	0	0	0	0	48
<i>Education</i>	5	0	0	0	0	5
<i>Government</i>	4	0	0	0	0	4
<i>Industrial</i>	14	0	0	0	0	14
<i>Religion</i>	1	0	0	0	0	1
<i>Other Residential</i>	95	2	0	0	0	97
<i>Single Family</i>	838	4	0	0	0	842
Amador						
<i>Agriculture</i>	44	0	0	0	0	44
<i>Commercial</i>	1,368	0	0	0	0	1,368
<i>Education</i>	23	0	0	0	0	23
<i>Government</i>	32	0	0	0	0	32
<i>Industrial</i>	235	0	0	0	0	235
<i>Religion</i>	45	0	0	0	0	45
<i>Other Residential</i>	1,037	0	0	0	0	1,037
<i>Single Family</i>	14,962	0	0	0	0	14,962
Butte						

	# of Buildings					Total
	None	Slight	Moderate	Extensive	Complete	
<i>Agriculture</i>	510	0	0	0	0	510
<i>Commercial</i>	6,385	0	0	0	0	6,385
<i>Education</i>	172	0	0	0	0	172
<i>Government</i>	147	0	0	0	0	147
<i>Industrial</i>	1,522	0	0	0	0	1,522
<i>Religion</i>	531	0	0	0	0	531
<i>Other Residential</i>	21,498	0	0	0	0	21,498
<i>Single Family</i>	50,283	0	0	0	0	50,283
Calaveras						
<i>Agriculture</i>	2,207	0	0	0	0	2,207
<i>Commercial</i>	1,413	0	0	0	0	1,413
<i>Education</i>	35	0	0	0	0	35
<i>Government</i>	84	0	0	0	0	84
<i>Industrial</i>	466	0	0	0	0	466
<i>Religion</i>	130	0	0	0	0	130
<i>Other Residential</i>	2,559	0	0	0	0	2,559
<i>Single Family</i>	22,148	0	0	0	0	22,148
Contra Costa						
<i>Agriculture</i>	749	0	0	0	0	749
<i>Commercial</i>	17,991	0	0	0	0	17,991
<i>Education</i>	653	0	0	0	0	653
<i>Government</i>	5,024	0	0	0	0	5,024
<i>Industrial</i>	4,749	0	0	0	0	4,749
<i>Religion</i>	1,226	0	0	0	0	1,226
<i>Other Residential</i>	29,124	0	0	0	0	29,124

	# of Buildings					Total
	None	Slight	Moderate	Extensive	Complete	
<i>Single Family</i>	281,935	0	0	0	0	281,935
El Dorado						
<i>Agriculture</i>	160	0	0	0	0	161
<i>Commercial</i>	4,745	21	2	0	0	4,768
<i>Education</i>	128	0	0	0	0	128
<i>Government</i>	99	1	0	0	0	100
<i>Industrial</i>	1,193	6	1	0	0	1,199
<i>Religion</i>	179	1	0	0	0	180
<i>Other Residential</i>	10,371	47	3	0	0	10,420
<i>Single Family</i>	71,234	190	1	0	0	71,424
Fresno						
<i>Agriculture</i>	3,421	0	0	0	0	3,421
<i>Commercial</i>	21,054	0	0	0	0	21,054
<i>Education</i>	602	0	0	0	0	602
<i>Government</i>	291	0	0	0	0	291
<i>Industrial</i>	5,348	0	0	0	0	5,348
<i>Religion</i>	1,507	0	0	0	0	1,507
<i>Other Residential</i>	40,973	0	0	0	0	40,973
<i>Single Family</i>	226,425	0	0	0	0	226,425
Inyo						
<i>Agriculture</i>	32	0	0	0	0	32
<i>Commercial</i>	721	0	0	0	0	721
<i>Education</i>	41	0	0	0	0	41
<i>Government</i>	101	0	0	0	0	101
<i>Industrial</i>	257	0	0	0	0	257

	# of Buildings					Total
	None	Slight	Moderate	Extensive	Complete	
<i>Religion</i>	57	0	0	0	0	57
<i>Other Residential</i>	4,049	1	0	0	0	4,050
<i>Single Family</i>	4,446	0	0	0	0	4,446
Lassen						
<i>Agriculture</i>	37	0	0	0	0	37
<i>Commercial</i>	913	0	0	0	0	913
<i>Education</i>	40	0	0	0	0	40
<i>Government</i>	22	0	0	0	0	22
<i>Industrial</i>	140	0	0	0	0	140
<i>Religion</i>	71	0	0	0	0	71
<i>Other Residential</i>	2,627	0	0	0	0	2,627
<i>Single Family</i>	9,562	0	0	0	0	9,562
Madera						
<i>Agriculture</i>	634	0	0	0	0	634
<i>Commercial</i>	2,905	0	0	0	0	2,905
<i>Education</i>	115	0	0	0	0	115
<i>Government</i>	111	0	0	0	0	111
<i>Industrial</i>	903	0	0	0	0	903
<i>Religion</i>	119	0	0	0	0	119
<i>Other Residential</i>	6,635	0	0	0	0	6,635
<i>Single Family</i>	38,912	0	0	0	0	38,912
Mariposa						
<i>Agriculture</i>	29	0	0	0	0	29
<i>Commercial</i>	689	0	0	0	0	689
<i>Education</i>	27	0	0	0	0	27

	# of Buildings					Total
	None	Slight	Moderate	Extensive	Complete	
<i>Government</i>	33	0	0	0	0	33
<i>Industrial</i>	94	0	0	0	0	94
<i>Religion</i>	36	0	0	0	0	36
<i>Other Residential</i>	307	0	0	0	0	307
<i>Single Family</i>	8,084	0	0	0	0	8,084
Merced						
<i>Agriculture</i>	7,652	1	0	0	0	7,653
<i>Commercial</i>	4,753	1	0	0	0	4,754
<i>Education</i>	163	0	0	0	0	163
<i>Government</i>	171	0	0	0	0	171
<i>Industrial</i>	1,022	0	0	0	0	1,022
<i>Religion</i>	345	0	0	0	0	345
<i>Other Residential</i>	10,785	2	0	0	0	10,787
<i>Single Family</i>	63,598	0	0	0	0	63,598
Mono						
<i>Agriculture</i>	134	9	2	0	0	145
<i>Commercial</i>	639	12	2	0	0	654
<i>Education</i>	21	0	0	0	0	21
<i>Government</i>	18	0	0	0	0	18
<i>Industrial</i>	106	2	0	0	0	108
<i>Religion</i>	30	1	0	0	0	32
<i>Other Residential</i>	1,647	94	18	0	0	1,759
<i>Single Family</i>	7,641	63	1	0	0	7,704
Nevada						
<i>Agriculture</i>	132	0	0	0	0	132

	# of Buildings					Total
	None	Slight	Moderate	Extensive	Complete	
<i>Commercial</i>	2,832	3	0	0	0	2,835
<i>Education</i>	108	0	0	0	0	108
<i>Government</i>	60	0	0	0	0	60
<i>Industrial</i>	1,160	1	0	0	0	1,161
<i>Religion</i>	189	0	0	0	0	189
<i>Other Residential</i>	6,375	8	0	0	0	6,384
<i>Single Family</i>	43,267	13	0	0	0	43,280
Placer						
<i>Agriculture</i>	258	0	0	0	0	258
<i>Commercial</i>	8,535	3	0	0	0	8,538
<i>Education</i>	231	0	0	0	0	231
<i>Government</i>	377	0	0	0	0	377
<i>Industrial</i>	2,702	1	0	0	0	2,703
<i>Religion</i>	382	0	0	0	0	382
<i>Other Residential</i>	14,839	4	0	0	0	14,843
<i>Single Family</i>	134,707	12	0	0	0	134,719
Plumas						
<i>Agriculture</i>	84	0	0	0	0	84
<i>Commercial</i>	1,215	0	0	0	0	1,215
<i>Education</i>	26	0	0	0	0	26
<i>Government</i>	45	0	0	0	0	45
<i>Industrial</i>	184	0	0	0	0	184
<i>Religion</i>	30	0	0	0	0	30
<i>Other Residential</i>	5,032	0	0	0	0	5,032

	# of Buildings					Total
	None	Slight	Moderate	Extensive	Complete	
<i>Single Family</i>	9,877	0	0	0	0	9,877
Sacramento						
<i>Agriculture</i>	621	0	0	0	0	621
<i>Commercial</i>	26,295	0	0	0	0	26,295
<i>Education</i>	829	0	0	0	0	829
<i>Government</i>	619	0	0	0	0	619
<i>Industrial</i>	6,756	0	0	0	0	6,756
<i>Religion</i>	1,702	0	0	0	0	1,702
<i>Other Residential</i>	56,413	0	0	0	0	56,413
<i>Single Family</i>	386,840	0	0	0	0	386,840
San Joaquin						
<i>Agriculture</i>	753	0	0	0	0	753
<i>Commercial</i>	12,864	0	0	0	0	12,864
<i>Education</i>	395	0	0	0	0	395
<i>Government</i>	304	0	0	0	0	304
<i>Industrial</i>	4,928	0	0	0	0	4,928
<i>Religion</i>	877	0	0	0	0	877
<i>Other Residential</i>	21,805	0	0	0	0	21,805
<i>Single Family</i>	188,920	2	0	0	0	188,922
Sierra						
<i>Agriculture</i>	7	0	0	0	0	7
<i>Commercial</i>	141	0	0	0	0	141
<i>Education</i>	14	0	0	0	0	14
<i>Government</i>	16	0	0	0	0	16
<i>Industrial</i>	66	0	0	0	0	66

	# of Buildings					Total
	None	Slight	Moderate	Extensive	Complete	
<i>Religion</i>	12	0	0	0	0	12
<i>Other Residential</i>	153	0	0	0	0	153
<i>Single Family</i>	1,858	0	0	0	0	1,858
Solano						
<i>Agriculture</i>	245	0	0	0	0	245
<i>Commercial</i>	7,268	0	0	0	0	7,268
<i>Education</i>	225	0	0	0	0	225
<i>Government</i>	152	0	0	0	0	152
<i>Industrial</i>	2,101	0	0	0	0	2,101
<i>Religion</i>	454	0	0	0	0	454
<i>Other Residential</i>	12,317	0	0	0	0	12,317
<i>Single Family</i>	120,968	0	0	0	0	120,968
Stanislaus						
<i>Agriculture</i>	1,239	0	0	0	0	1,239
<i>Commercial</i>	10,368	1	0	0	0	10,369
<i>Education</i>	307	0	0	0	0	307
<i>Government</i>	680	0	0	0	0	680
<i>Industrial</i>	3,475	0	0	0	0	3,475
<i>Religion</i>	456	0	0	0	0	456
<i>Other Residential</i>	19,569	0	0	0	0	19,569
<i>Single Family</i>	142,724	0	0	0	0	142,724
Sutter						
<i>Agriculture</i>	1,125	0	0	0	0	1,125
<i>Commercial</i>	2,052	0	0	0	0	2,052
<i>Education</i>	62	0	0	0	0	62

	# of Buildings					Total
	None	Slight	Moderate	Extensive	Complete	
<i>Government</i>	77	0	0	0	0	77
<i>Industrial</i>	636	0	0	0	0	636
<i>Religion</i>	154	0	0	0	0	154
<i>Other Residential</i>	3,113	0	0	0	0	3,113
<i>Single Family</i>	24,512	0	0	0	0	24,512
Tuolumne						
<i>Agriculture</i>	82	0	0	0	0	82
<i>Commercial</i>	1,576	0	0	0	0	1,576
<i>Education</i>	57	0	0	0	0	57
<i>Government</i>	143	0	0	0	0	143
<i>Industrial</i>	383	0	0	0	0	383
<i>Religion</i>	121	0	0	0	0	121
<i>Other Residential</i>	4,961	1	0	0	0	4,962
<i>Single Family</i>	21,644	1	0	0	0	21,645
Yolo						
<i>Agriculture</i>	281	0	0	0	0	281
<i>Commercial</i>	4,225	0	0	0	0	4,225
<i>Education</i>	131	0	0	0	0	131
<i>Government</i>	111	0	0	0	0	111
<i>Industrial</i>	1,117	0	0	0	0	1,117
<i>Religion</i>	242	0	0	0	0	242
<i>Other Residential</i>	9,861	0	0	0	0	9,861
<i>Single Family</i>	42,589	0	0	0	0	42,589
Yuba						
<i>Agriculture</i>	92	0	0	0	0	92

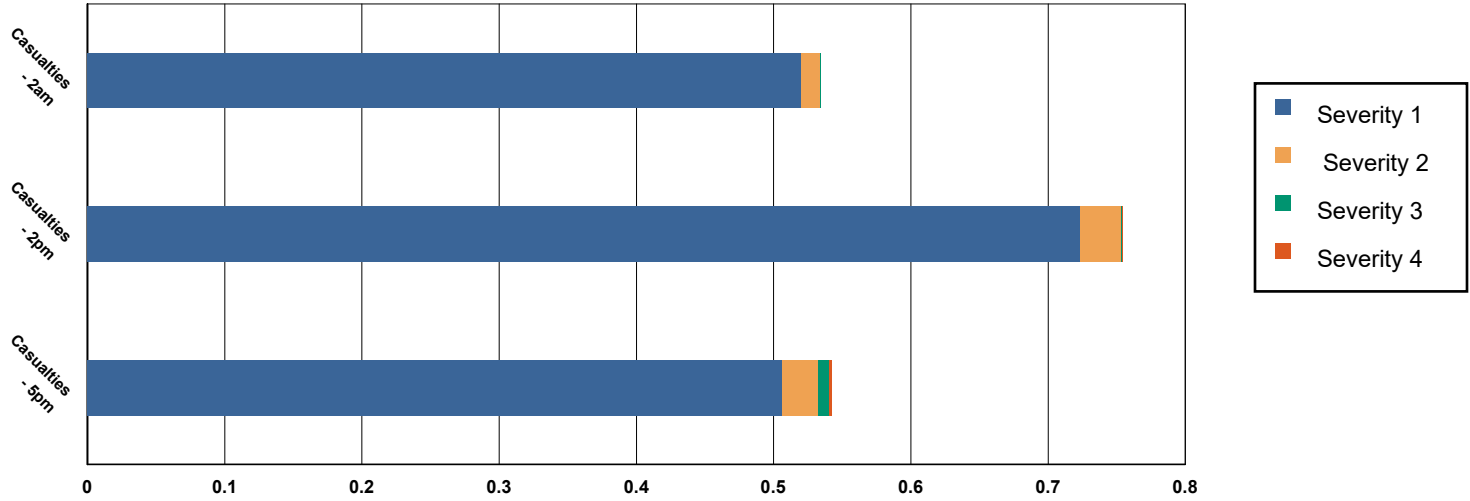
	# of Buildings					Total
	None	Slight	Moderate	Extensive	Complete	
<i>Commercial</i>	1,199	0	0	0	0	1,199
<i>Education</i>	54	0	0	0	0	54
<i>Government</i>	591	0	0	0	0	591
<i>Industrial</i>	404	0	0	0	0	404
<i>Religion</i>	98	0	0	0	0	98
<i>Other Residential</i>	7,021	0	0	0	0	7,021
<i>Single Family</i>	18,867	0	0	0	0	18,867
Total	2,455,455	512	31	0	0	2,455,998
Region Total	2,455,455	512	31	0	0	2,455,998

Totals only reflect data for those census tracts/blocks included in the user's study region and will reflect the entire county/state only if all of the census blocks for that county/states were selected at the time of study region creation.

Casualties Summary Report

June 25, 2024

Region Total Casualties



Injury Severity Level

Severity 1	Severity 2	Severity 3	Severity 4	Total
------------	------------	------------	------------	-------

California

Alpine

Casualties - 2am

	Severity 1	Severity 2	Severity 3	Severity 4	Total
Commuting	0	0	0	0	0
Commercial	0	0	0	0	0
Educational	0	0	0	0	0
Hotels	0	0	0	0	0
Industrial	0	0	0	0	0
Other-Residential	0	0	0	0	0
Single Family	0	0	0	0	0

Total Casualties - 2am

0	0	0	0	0
---	---	---	---	---

Casualties - 2pm

	Severity 1	Severity 2	Severity 3	Severity 4	Total
Commuting	0	0	0	0	0
Commercial	0	0	0	0	0
Educational	0	0	0	0	0
Hotels	0	0	0	0	0
Industrial	0	0	0	0	0
Other-Residential	0	0	0	0	0
Single Family	0	0	0	0	0

	Injury Severity Level				Total
	Severity 1	Severity 2	Severity 3	Severity 4	
California					
Alpine					
Total Casualties - 2pm	0	0	0	0	0
Casualties - 5pm					
<i>Commuting</i>	0	0	0	0	0
<i>Commercial</i>	0	0	0	0	0
<i>Educational</i>	0	0	0	0	0
<i>Hotels</i>	0	0	0	0	0
<i>Industrial</i>	0	0	0	0	0
<i>Other-Residential</i>	0	0	0	0	0
<i>Single Family</i>	0	0	0	0	0
Total Casualties - 5pm	0	0	0	0	0
Amador					
Casualties - 2am					
<i>Commuting</i>	0	0	0	0	0
<i>Commercial</i>	0	0	0	0	0
<i>Educational</i>	0	0	0	0	0
<i>Hotels</i>	0	0	0	0	0
<i>Industrial</i>	0	0	0	0	0
<i>Other-Residential</i>	0	0	0	0	0
<i>Single Family</i>	0	0	0	0	0
Total Casualties - 2am	0	0	0	0	0
Casualties - 2pm					
<i>Commuting</i>	0	0	0	0	0
<i>Commercial</i>	0	0	0	0	0
<i>Educational</i>	0	0	0	0	0
<i>Hotels</i>	0	0	0	0	0
<i>Industrial</i>	0	0	0	0	0
<i>Other-Residential</i>	0	0	0	0	0
<i>Single Family</i>	0	0	0	0	0
Total Casualties - 2pm	0	0	0	0	0
Casualties - 5pm					
<i>Commuting</i>	0	0	0	0	0
<i>Commercial</i>	0	0	0	0	0
<i>Educational</i>	0	0	0	0	0
<i>Hotels</i>	0	0	0	0	0
<i>Industrial</i>	0	0	0	0	0
<i>Other-Residential</i>	0	0	0	0	0
<i>Single Family</i>	0	0	0	0	0
Total Casualties - 5pm	0	0	0	0	0
Butte					
Casualties - 2am					
<i>Commuting</i>	0	0	0	0	0

	Injury Severity Level				Total
	Severity 1	Severity 2	Severity 3	Severity 4	
California					
Butte					
Casualties - 2am					
Commercial	0	0	0	0	0
Educational	0	0	0	0	0
Hotels	0	0	0	0	0
Industrial	0	0	0	0	0
Other-Residential	0	0	0	0	0
Single Family	0	0	0	0	0
Total Casualties - 2am	0	0	0	0	0
Casualties - 2pm					
Commuting	0	0	0	0	0
Commercial	0	0	0	0	0
Educational	0	0	0	0	0
Hotels	0	0	0	0	0
Industrial	0	0	0	0	0
Other-Residential	0	0	0	0	0
Single Family	0	0	0	0	0
Total Casualties - 2pm	0	0	0	0	0
Casualties - 5pm					
Commuting	0	0	0	0	0
Commercial	0	0	0	0	0
Educational	0	0	0	0	0
Hotels	0	0	0	0	0
Industrial	0	0	0	0	0
Other-Residential	0	0	0	0	0
Single Family	0	0	0	0	0
Total Casualties - 5pm	0	0	0	0	0
Calaveras					
Casualties - 2am					
Commuting	0	0	0	0	0
Commercial	0	0	0	0	0
Educational	0	0	0	0	0
Hotels	0	0	0	0	0
Industrial	0	0	0	0	0
Other-Residential	0	0	0	0	0
Single Family	0	0	0	0	0
Total Casualties - 2am	0	0	0	0	0
Casualties - 2pm					
Commuting	0	0	0	0	0
Commercial	0	0	0	0	0
Educational	0	0	0	0	0
Hotels	0	0	0	0	0
Industrial	0	0	0	0	0

	Injury Severity Level				Total
	Severity 1	Severity 2	Severity 3	Severity 4	
California					
Calaveras					
Casualties - 2pm					
Other-Residential	0	0	0	0	0
Single Family	0	0	0	0	0
Total Casualties - 2pm	0	0	0	0	0
Casualties - 5pm					
Commuting	0	0	0	0	0
Commercial	0	0	0	0	0
Educational	0	0	0	0	0
Hotels	0	0	0	0	0
Industrial	0	0	0	0	0
Other-Residential	0	0	0	0	0
Single Family	0	0	0	0	0
Total Casualties - 5pm	0	0	0	0	0
Contra Costa					
Casualties - 2am					
Commuting	0	0	0	0	0
Commercial	0	0	0	0	0
Educational	0	0	0	0	0
Hotels	0	0	0	0	0
Industrial	0	0	0	0	0
Other-Residential	0	0	0	0	0
Single Family	0	0	0	0	0
Total Casualties - 2am	0	0	0	0	0
Casualties - 2pm					
Commuting	0	0	0	0	0
Commercial	0	0	0	0	0
Educational	0	0	0	0	0
Hotels	0	0	0	0	0
Industrial	0	0	0	0	0
Other-Residential	0	0	0	0	0
Single Family	0	0	0	0	0
Total Casualties - 2pm	0	0	0	0	0
Casualties - 5pm					
Commuting	0	0	0	0	0
Commercial	0	0	0	0	0
Educational	0	0	0	0	0
Hotels	0	0	0	0	0
Industrial	0	0	0	0	0
Other-Residential	0	0	0	0	0
Single Family	0	0	0	0	0
Total Casualties - 5pm	0	0	0	0	0

	Injury Severity Level				Total
	Severity 1	Severity 2	Severity 3	Severity 4	
California					
El Dorado					
Casualties - 2am					
<i>Commuting</i>	0	0	0	0	0
<i>Commercial</i>	0	0	0	0	0
<i>Educational</i>	0	0	0	0	0
<i>Hotels</i>	0	0	0	0	0
<i>Industrial</i>	0	0	0	0	0
<i>Other-Residential</i>	0	0	0	0	0
<i>Single Family</i>	0	0	0	0	0
Total Casualties - 2am	0	0	0	0	0
Casualties - 2pm					
<i>Commuting</i>	0	0	0	0	0
<i>Commercial</i>	0	0	0	0	0
<i>Educational</i>	0	0	0	0	0
<i>Hotels</i>	0	0	0	0	0
<i>Industrial</i>	0	0	0	0	0
<i>Other-Residential</i>	0	0	0	0	0
<i>Single Family</i>	0	0	0	0	0
Total Casualties - 2pm	0	0	0	0	0
Casualties - 5pm					
<i>Commuting</i>	0	0	0	0	0
<i>Commercial</i>	0	0	0	0	0
<i>Educational</i>	0	0	0	0	0
<i>Hotels</i>	0	0	0	0	0
<i>Industrial</i>	0	0	0	0	0
<i>Other-Residential</i>	0	0	0	0	0
<i>Single Family</i>	0	0	0	0	0
Total Casualties - 5pm	0	0	0	0	0
Fresno					
Casualties - 2am					
<i>Commuting</i>	0	0	0	0	0
<i>Commercial</i>	0	0	0	0	0
<i>Educational</i>	0	0	0	0	0
<i>Hotels</i>	0	0	0	0	0
<i>Industrial</i>	0	0	0	0	0
<i>Other-Residential</i>	0	0	0	0	0
<i>Single Family</i>	0	0	0	0	0
Total Casualties - 2am	0	0	0	0	0
Casualties - 2pm					
<i>Commuting</i>	0	0	0	0	0
<i>Commercial</i>	0	0	0	0	0
<i>Educational</i>	0	0	0	0	0
<i>Hotels</i>	0	0	0	0	0

	Injury Severity Level				Total
	Severity 1	Severity 2	Severity 3	Severity 4	
California					
Fresno					
Casualties - 2pm					
<i>Industrial</i>	0	0	0	0	0
<i>Other-Residential</i>	0	0	0	0	0
<i>Single Family</i>	0	0	0	0	0
Total Casualties - 2pm	0	0	0	0	0
Casualties - 5pm					
<i>Commuting</i>	0	0	0	0	0
<i>Commercial</i>	0	0	0	0	0
<i>Educational</i>	0	0	0	0	0
<i>Hotels</i>	0	0	0	0	0
<i>Industrial</i>	0	0	0	0	0
<i>Other-Residential</i>	0	0	0	0	0
<i>Single Family</i>	0	0	0	0	0
Total Casualties - 5pm	0	0	0	0	0
Inyo					
Casualties - 2am					
<i>Commuting</i>	0	0	0	0	0
<i>Commercial</i>	0	0	0	0	0
<i>Educational</i>	0	0	0	0	0
<i>Hotels</i>	0	0	0	0	0
<i>Industrial</i>	0	0	0	0	0
<i>Other-Residential</i>	0	0	0	0	0
<i>Single Family</i>	0	0	0	0	0
Total Casualties - 2am	0	0	0	0	0
Casualties - 2pm					
<i>Commuting</i>	0	0	0	0	0
<i>Commercial</i>	0	0	0	0	0
<i>Educational</i>	0	0	0	0	0
<i>Hotels</i>	0	0	0	0	0
<i>Industrial</i>	0	0	0	0	0
<i>Other-Residential</i>	0	0	0	0	0
<i>Single Family</i>	0	0	0	0	0
Total Casualties - 2pm	0	0	0	0	0
Casualties - 5pm					
<i>Commuting</i>	0	0	0	0	0
<i>Commercial</i>	0	0	0	0	0
<i>Educational</i>	0	0	0	0	0
<i>Hotels</i>	0	0	0	0	0
<i>Industrial</i>	0	0	0	0	0
<i>Other-Residential</i>	0	0	0	0	0
<i>Single Family</i>	0	0	0	0	0

	Injury Severity Level				Total
	Severity 1	Severity 2	Severity 3	Severity 4	
California					
Inyo					
Total Casualties - 5pm	0	0	0	0	0
Lassen					
Casualties - 2am					
<i>Commuting</i>	0	0	0	0	0
<i>Commercial</i>	0	0	0	0	0
<i>Educational</i>	0	0	0	0	0
<i>Hotels</i>	0	0	0	0	0
<i>Industrial</i>	0	0	0	0	0
<i>Other-Residential</i>	0	0	0	0	0
<i>Single Family</i>	0	0	0	0	0
Total Casualties - 2am	0	0	0	0	0
Casualties - 2pm					
<i>Commuting</i>	0	0	0	0	0
<i>Commercial</i>	0	0	0	0	0
<i>Educational</i>	0	0	0	0	0
<i>Hotels</i>	0	0	0	0	0
<i>Industrial</i>	0	0	0	0	0
<i>Other-Residential</i>	0	0	0	0	0
<i>Single Family</i>	0	0	0	0	0
Total Casualties - 2pm	0	0	0	0	0
Casualties - 5pm					
<i>Commuting</i>	0	0	0	0	0
<i>Commercial</i>	0	0	0	0	0
<i>Educational</i>	0	0	0	0	0
<i>Hotels</i>	0	0	0	0	0
<i>Industrial</i>	0	0	0	0	0
<i>Other-Residential</i>	0	0	0	0	0
<i>Single Family</i>	0	0	0	0	0
Total Casualties - 5pm	0	0	0	0	0
Madera					
Casualties - 2am					
<i>Commuting</i>	0	0	0	0	0
<i>Commercial</i>	0	0	0	0	0
<i>Educational</i>	0	0	0	0	0
<i>Hotels</i>	0	0	0	0	0
<i>Industrial</i>	0	0	0	0	0
<i>Other-Residential</i>	0	0	0	0	0
<i>Single Family</i>	0	0	0	0	0
Total Casualties - 2am	0	0	0	0	0
Casualties - 2pm					
<i>Commuting</i>	0	0	0	0	0

	Injury Severity Level				Total
	Severity 1	Severity 2	Severity 3	Severity 4	
California					
Madera					
Casualties - 2pm					
Commercial	0	0	0	0	0
Educational	0	0	0	0	0
Hotels	0	0	0	0	0
Industrial	0	0	0	0	0
Other-Residential	0	0	0	0	0
Single Family	0	0	0	0	0
Total Casualties - 2pm	0	0	0	0	0
Casualties - 5pm					
Commuting	0	0	0	0	0
Commercial	0	0	0	0	0
Educational	0	0	0	0	0
Hotels	0	0	0	0	0
Industrial	0	0	0	0	0
Other-Residential	0	0	0	0	0
Single Family	0	0	0	0	0
Total Casualties - 5pm	0	0	0	0	0
Mariposa					
Casualties - 2am					
Commuting	0	0	0	0	0
Commercial	0	0	0	0	0
Educational	0	0	0	0	0
Hotels	0	0	0	0	0
Industrial	0	0	0	0	0
Other-Residential	0	0	0	0	0
Single Family	0	0	0	0	0
Total Casualties - 2am	0	0	0	0	0
Casualties - 2pm					
Commuting	0	0	0	0	0
Commercial	0	0	0	0	0
Educational	0	0	0	0	0
Hotels	0	0	0	0	0
Industrial	0	0	0	0	0
Other-Residential	0	0	0	0	0
Single Family	0	0	0	0	0
Total Casualties - 2pm	0	0	0	0	0
Casualties - 5pm					
Commuting	0	0	0	0	0
Commercial	0	0	0	0	0
Educational	0	0	0	0	0
Hotels	0	0	0	0	0
Industrial	0	0	0	0	0

	Injury Severity Level				Total
	Severity 1	Severity 2	Severity 3	Severity 4	
California					
Mariposa					
Casualties - 5pm					
Other-Residential	0	0	0	0	0
Single Family	0	0	0	0	0
Total Casualties - 5pm	0	0	0	0	0
Merced					
Casualties - 2am					
Commuting	0	0	0	0	0
Commercial	0	0	0	0	0
Educational	0	0	0	0	0
Hotels	0	0	0	0	0
Industrial	0	0	0	0	0
Other-Residential	0	0	0	0	0
Single Family	0	0	0	0	0
Total Casualties - 2am	0	0	0	0	0
Casualties - 2pm					
Commuting	0	0	0	0	0
Commercial	0	0	0	0	0
Educational	0	0	0	0	0
Hotels	0	0	0	0	0
Industrial	0	0	0	0	0
Other-Residential	0	0	0	0	0
Single Family	0	0	0	0	0
Total Casualties - 2pm	0	0	0	0	0
Casualties - 5pm					
Commuting	0	0	0	0	0
Commercial	0	0	0	0	0
Educational	0	0	0	0	0
Hotels	0	0	0	0	0
Industrial	0	0	0	0	0
Other-Residential	0	0	0	0	0
Single Family	0	0	0	0	0
Total Casualties - 5pm	0	0	0	0	0
Mono					
Casualties - 2am					
Commuting	0	0	0	0	0
Commercial	0	0	0	0	0
Educational	0	0	0	0	0
Hotels	0	0	0	0	0
Industrial	0	0	0	0	0
Other-Residential	0	0	0	0	0
Single Family	0	0	0	0	0

	Injury Severity Level				Total
	Severity 1	Severity 2	Severity 3	Severity 4	
California					
Mono					
Total Casualties - 2am	0	0	0	0	0
Casualties - 2pm					
<i>Commuting</i>	0	0	0	0	0
<i>Commercial</i>	0	0	0	0	0
<i>Educational</i>	0	0	0	0	0
<i>Hotels</i>	0	0	0	0	0
<i>Industrial</i>	0	0	0	0	0
<i>Other-Residential</i>	0	0	0	0	0
<i>Single Family</i>	0	0	0	0	0
Total Casualties - 2pm	0	0	0	0	0
Casualties - 5pm					
<i>Commuting</i>	0	0	0	0	0
<i>Commercial</i>	0	0	0	0	0
<i>Educational</i>	0	0	0	0	0
<i>Hotels</i>	0	0	0	0	0
<i>Industrial</i>	0	0	0	0	0
<i>Other-Residential</i>	0	0	0	0	0
<i>Single Family</i>	0	0	0	0	0
Total Casualties - 5pm	0	0	0	0	0
Nevada					
Casualties - 2am					
<i>Commuting</i>	0	0	0	0	0
<i>Commercial</i>	0	0	0	0	0
<i>Educational</i>	0	0	0	0	0
<i>Hotels</i>	0	0	0	0	0
<i>Industrial</i>	0	0	0	0	0
<i>Other-Residential</i>	0	0	0	0	0
<i>Single Family</i>	0	0	0	0	0
Total Casualties - 2am	0	0	0	0	0
Casualties - 2pm					
<i>Commuting</i>	0	0	0	0	0
<i>Commercial</i>	0	0	0	0	0
<i>Educational</i>	0	0	0	0	0
<i>Hotels</i>	0	0	0	0	0
<i>Industrial</i>	0	0	0	0	0
<i>Other-Residential</i>	0	0	0	0	0
<i>Single Family</i>	0	0	0	0	0
Total Casualties - 2pm	0	0	0	0	0
Casualties - 5pm					
<i>Commuting</i>	0	0	0	0	0
<i>Commercial</i>	0	0	0	0	0

	Injury Severity Level				Total
	Severity 1	Severity 2	Severity 3	Severity 4	
California					
Nevada					
Casualties - 5pm					
<i>Educational</i>	0	0	0	0	0
<i>Hotels</i>	0	0	0	0	0
<i>Industrial</i>	0	0	0	0	0
<i>Other-Residential</i>	0	0	0	0	0
<i>Single Family</i>	0	0	0	0	0
Total Casualties - 5pm	0	0	0	0	0
Placer					
Casualties - 2am					
<i>Commuting</i>	0	0	0	0	0
<i>Commercial</i>	0	0	0	0	0
<i>Educational</i>	0	0	0	0	0
<i>Hotels</i>	0	0	0	0	0
<i>Industrial</i>	0	0	0	0	0
<i>Other-Residential</i>	0	0	0	0	0
<i>Single Family</i>	0	0	0	0	0
Total Casualties - 2am	0	0	0	0	0
Casualties - 2pm					
<i>Commuting</i>	0	0	0	0	0
<i>Commercial</i>	0	0	0	0	0
<i>Educational</i>	0	0	0	0	0
<i>Hotels</i>	0	0	0	0	0
<i>Industrial</i>	0	0	0	0	0
<i>Other-Residential</i>	0	0	0	0	0
<i>Single Family</i>	0	0	0	0	0
Total Casualties - 2pm	0	0	0	0	0
Casualties - 5pm					
<i>Commuting</i>	0	0	0	0	0
<i>Commercial</i>	0	0	0	0	0
<i>Educational</i>	0	0	0	0	0
<i>Hotels</i>	0	0	0	0	0
<i>Industrial</i>	0	0	0	0	0
<i>Other-Residential</i>	0	0	0	0	0
<i>Single Family</i>	0	0	0	0	0
Total Casualties - 5pm	0	0	0	0	0
Plumas					
Casualties - 2am					
<i>Commuting</i>	0	0	0	0	0
<i>Commercial</i>	0	0	0	0	0
<i>Educational</i>	0	0	0	0	0
<i>Hotels</i>	0	0	0	0	0
<i>Industrial</i>	0	0	0	0	0

	Injury Severity Level				Total
	Severity 1	Severity 2	Severity 3	Severity 4	
California					
Plumas					
Casualties - 2am					
Other-Residential	0	0	0	0	0
Single Family	0	0	0	0	0
Total Casualties - 2am	0	0	0	0	0
Casualties - 2pm					
Commuting	0	0	0	0	0
Commercial	0	0	0	0	0
Educational	0	0	0	0	0
Hotels	0	0	0	0	0
Industrial	0	0	0	0	0
Other-Residential	0	0	0	0	0
Single Family	0	0	0	0	0
Total Casualties - 2pm	0	0	0	0	0
Casualties - 5pm					
Commuting	0	0	0	0	0
Commercial	0	0	0	0	0
Educational	0	0	0	0	0
Hotels	0	0	0	0	0
Industrial	0	0	0	0	0
Other-Residential	0	0	0	0	0
Single Family	0	0	0	0	0
Total Casualties - 5pm	0	0	0	0	0
Sacramento					
Casualties - 2am					
Commuting	0	0	0	0	0
Commercial	0	0	0	0	0
Educational	0	0	0	0	0
Hotels	0	0	0	0	0
Industrial	0	0	0	0	0
Other-Residential	0	0	0	0	0
Single Family	0	0	0	0	0
Total Casualties - 2am	0	0	0	0	0
Casualties - 2pm					
Commuting	0	0	0	0	0
Commercial	0	0	0	0	0
Educational	0	0	0	0	0
Hotels	0	0	0	0	0
Industrial	0	0	0	0	0
Other-Residential	0	0	0	0	0
Single Family	0	0	0	0	0
Total Casualties - 2pm	0	0	0	0	0

	Injury Severity Level				Total
	Severity 1	Severity 2	Severity 3	Severity 4	
California					
Sacramento					
Casualties - 5pm					
<i>Commuting</i>	0	0	0	0	0
<i>Commercial</i>	0	0	0	0	0
<i>Educational</i>	0	0	0	0	0
<i>Hotels</i>	0	0	0	0	0
<i>Industrial</i>	0	0	0	0	0
<i>Other-Residential</i>	0	0	0	0	0
<i>Single Family</i>	0	0	0	0	0
Total Casualties - 5pm	0	0	0	0	0
San Joaquin					
Casualties - 2am					
<i>Commuting</i>	0	0	0	0	0
<i>Commercial</i>	0	0	0	0	0
<i>Educational</i>	0	0	0	0	0
<i>Hotels</i>	0	0	0	0	0
<i>Industrial</i>	0	0	0	0	0
<i>Other-Residential</i>	0	0	0	0	0
<i>Single Family</i>	0	0	0	0	0
Total Casualties - 2am	0	0	0	0	0
Casualties - 2pm					
<i>Commuting</i>	0	0	0	0	0
<i>Commercial</i>	0	0	0	0	0
<i>Educational</i>	0	0	0	0	0
<i>Hotels</i>	0	0	0	0	0
<i>Industrial</i>	0	0	0	0	0
<i>Other-Residential</i>	0	0	0	0	0
<i>Single Family</i>	0	0	0	0	0
Total Casualties - 2pm	0	0	0	0	0
Casualties - 5pm					
<i>Commuting</i>	0	0	0	0	0
<i>Commercial</i>	0	0	0	0	0
<i>Educational</i>	0	0	0	0	0
<i>Hotels</i>	0	0	0	0	0
<i>Industrial</i>	0	0	0	0	0
<i>Other-Residential</i>	0	0	0	0	0
<i>Single Family</i>	0	0	0	0	0
Total Casualties - 5pm	0	0	0	0	0
Sierra					
Casualties - 2am					
<i>Commuting</i>	0	0	0	0	0
<i>Commercial</i>	0	0	0	0	0
<i>Educational</i>	0	0	0	0	0

	Injury Severity Level				Total
	Severity 1	Severity 2	Severity 3	Severity 4	
California					
Sierra					
Casualties - 2am					
<i>Hotels</i>	0	0	0	0	0
<i>Industrial</i>	0	0	0	0	0
<i>Other-Residential</i>	0	0	0	0	0
<i>Single Family</i>	0	0	0	0	0
Total Casualties - 2am	0	0	0	0	0
Casualties - 2pm					
<i>Commuting</i>	0	0	0	0	0
<i>Commercial</i>	0	0	0	0	0
<i>Educational</i>	0	0	0	0	0
<i>Hotels</i>	0	0	0	0	0
<i>Industrial</i>	0	0	0	0	0
<i>Other-Residential</i>	0	0	0	0	0
<i>Single Family</i>	0	0	0	0	0
Total Casualties - 2pm	0	0	0	0	0
Casualties - 5pm					
<i>Commuting</i>	0	0	0	0	0
<i>Commercial</i>	0	0	0	0	0
<i>Educational</i>	0	0	0	0	0
<i>Hotels</i>	0	0	0	0	0
<i>Industrial</i>	0	0	0	0	0
<i>Other-Residential</i>	0	0	0	0	0
<i>Single Family</i>	0	0	0	0	0
Total Casualties - 5pm	0	0	0	0	0
Solano					
Casualties - 2am					
<i>Commuting</i>	0	0	0	0	0
<i>Commercial</i>	0	0	0	0	0
<i>Educational</i>	0	0	0	0	0
<i>Hotels</i>	0	0	0	0	0
<i>Industrial</i>	0	0	0	0	0
<i>Other-Residential</i>	0	0	0	0	0
<i>Single Family</i>	0	0	0	0	0
Total Casualties - 2am	0	0	0	0	0
Casualties - 2pm					
<i>Commuting</i>	0	0	0	0	0
<i>Commercial</i>	0	0	0	0	0
<i>Educational</i>	0	0	0	0	0
<i>Hotels</i>	0	0	0	0	0
<i>Industrial</i>	0	0	0	0	0
<i>Other-Residential</i>	0	0	0	0	0
<i>Single Family</i>	0	0	0	0	0

	Injury Severity Level				Total
	Severity 1	Severity 2	Severity 3	Severity 4	
California					
Solano					
Total Casualties - 2pm	0	0	0	0	0
Casualties - 5pm					
<i>Commuting</i>	0	0	0	0	0
<i>Commercial</i>	0	0	0	0	0
<i>Educational</i>	0	0	0	0	0
<i>Hotels</i>	0	0	0	0	0
<i>Industrial</i>	0	0	0	0	0
<i>Other-Residential</i>	0	0	0	0	0
<i>Single Family</i>	0	0	0	0	0
Total Casualties - 5pm	0	0	0	0	0
Stanislaus					
Casualties - 2am					
<i>Commuting</i>	0	0	0	0	0
<i>Commercial</i>	0	0	0	0	0
<i>Educational</i>	0	0	0	0	0
<i>Hotels</i>	0	0	0	0	0
<i>Industrial</i>	0	0	0	0	0
<i>Other-Residential</i>	0	0	0	0	0
<i>Single Family</i>	0	0	0	0	0
Total Casualties - 2am	0	0	0	0	0
Casualties - 2pm					
<i>Commuting</i>	0	0	0	0	0
<i>Commercial</i>	0	0	0	0	0
<i>Educational</i>	0	0	0	0	0
<i>Hotels</i>	0	0	0	0	0
<i>Industrial</i>	0	0	0	0	0
<i>Other-Residential</i>	0	0	0	0	0
<i>Single Family</i>	0	0	0	0	0
Total Casualties - 2pm	0	0	0	0	0
Casualties - 5pm					
<i>Commuting</i>	0	0	0	0	0
<i>Commercial</i>	0	0	0	0	0
<i>Educational</i>	0	0	0	0	0
<i>Hotels</i>	0	0	0	0	0
<i>Industrial</i>	0	0	0	0	0
<i>Other-Residential</i>	0	0	0	0	0
<i>Single Family</i>	0	0	0	0	0
Total Casualties - 5pm	0	0	0	0	0
Sutter					
Casualties - 2am					
<i>Commuting</i>	0	0	0	0	0

	Injury Severity Level				Total
	Severity 1	Severity 2	Severity 3	Severity 4	
California					
Sutter					
Casualties - 2am					
Commercial	0	0	0	0	0
Educational	0	0	0	0	0
Hotels	0	0	0	0	0
Industrial	0	0	0	0	0
Other-Residential	0	0	0	0	0
Single Family	0	0	0	0	0
Total Casualties - 2am	0	0	0	0	0
Casualties - 2pm					
Commuting	0	0	0	0	0
Commercial	0	0	0	0	0
Educational	0	0	0	0	0
Hotels	0	0	0	0	0
Industrial	0	0	0	0	0
Other-Residential	0	0	0	0	0
Single Family	0	0	0	0	0
Total Casualties - 2pm	0	0	0	0	0
Casualties - 5pm					
Commuting	0	0	0	0	0
Commercial	0	0	0	0	0
Educational	0	0	0	0	0
Hotels	0	0	0	0	0
Industrial	0	0	0	0	0
Other-Residential	0	0	0	0	0
Single Family	0	0	0	0	0
Total Casualties - 5pm	0	0	0	0	0
Tuolumne					
Casualties - 2am					
Commuting	0	0	0	0	0
Commercial	0	0	0	0	0
Educational	0	0	0	0	0
Hotels	0	0	0	0	0
Industrial	0	0	0	0	0
Other-Residential	0	0	0	0	0
Single Family	0	0	0	0	0
Total Casualties - 2am	0	0	0	0	0
Casualties - 2pm					
Commuting	0	0	0	0	0
Commercial	0	0	0	0	0
Educational	0	0	0	0	0
Hotels	0	0	0	0	0
Industrial	0	0	0	0	0

	Injury Severity Level				Total
	Severity 1	Severity 2	Severity 3	Severity 4	
California					
Tuolumne					
Casualties - 2pm					
Other-Residential	0	0	0	0	0
Single Family	0	0	0	0	0
Total Casualties - 2pm	0	0	0	0	0
Casualties - 5pm					
Commuting	0	0	0	0	0
Commercial	0	0	0	0	0
Educational	0	0	0	0	0
Hotels	0	0	0	0	0
Industrial	0	0	0	0	0
Other-Residential	0	0	0	0	0
Single Family	0	0	0	0	0
Total Casualties - 5pm	0	0	0	0	0
Yolo					
Casualties - 2am					
Commuting	0	0	0	0	0
Commercial	0	0	0	0	0
Educational	0	0	0	0	0
Hotels	0	0	0	0	0
Industrial	0	0	0	0	0
Other-Residential	0	0	0	0	0
Single Family	0	0	0	0	0
Total Casualties - 2am	0	0	0	0	0
Casualties - 2pm					
Commuting	0	0	0	0	0
Commercial	0	0	0	0	0
Educational	0	0	0	0	0
Hotels	0	0	0	0	0
Industrial	0	0	0	0	0
Other-Residential	0	0	0	0	0
Single Family	0	0	0	0	0
Total Casualties - 2pm	0	0	0	0	0
Casualties - 5pm					
Commuting	0	0	0	0	0
Commercial	0	0	0	0	0
Educational	0	0	0	0	0
Hotels	0	0	0	0	0
Industrial	0	0	0	0	0
Other-Residential	0	0	0	0	0
Single Family	0	0	0	0	0
Total Casualties - 5pm	0	0	0	0	0

	Injury Severity Level				Total
	Severity 1	Severity 2	Severity 3	Severity 4	
California					
Yuba					
Casualties - 2am					
<i>Commuting</i>	0	0	0	0	0
<i>Commercial</i>	0	0	0	0	0
<i>Educational</i>	0	0	0	0	0
<i>Hotels</i>	0	0	0	0	0
<i>Industrial</i>	0	0	0	0	0
<i>Other-Residential</i>	0	0	0	0	0
<i>Single Family</i>	0	0	0	0	0
Total Casualties - 2am	0	0	0	0	0
Casualties - 2pm					
<i>Commuting</i>	0	0	0	0	0
<i>Commercial</i>	0	0	0	0	0
<i>Educational</i>	0	0	0	0	0
<i>Hotels</i>	0	0	0	0	0
<i>Industrial</i>	0	0	0	0	0
<i>Other-Residential</i>	0	0	0	0	0
<i>Single Family</i>	0	0	0	0	0
Total Casualties - 2pm	0	0	0	0	0
Casualties - 5pm					
<i>Commuting</i>	0	0	0	0	0
<i>Commercial</i>	0	0	0	0	0
<i>Educational</i>	0	0	0	0	0
<i>Hotels</i>	0	0	0	0	0
<i>Industrial</i>	0	0	0	0	0
<i>Other-Residential</i>	0	0	0	0	0
<i>Single Family</i>	0	0	0	0	0
Total Casualties - 5pm	0	0	0	0	0
Region Total	NA	NA	NA	NA	NA

Totals only reflect data for those census tracts/blocks included in the user's study region and will reflect the entire county/state only if all of the census blocks for that county/states were selected at the time of study region creation.

Debris Summary Report

June 25, 2024

All values are in thousands of tons.

	Brick, Wood & Others	Concrete & Steel	Total
California			
Fresno	0	0	0
Butte	0	0	0
Solano	0	0	0
Tuolumne	0	0	0
San Joaquin	0	0	0
Nevada	0	0	0
Madera	0	0	0
Inyo	0	0	0
Plumas	0	0	0
Contra Costa	0	0	0
El Dorado	0	0	0
Amador	0	0	0
Sierra	0	0	0
Sacramento	0	0	0
Mariposa	0	0	0
Yolo	0	0	0
Calaveras	0	0	0
Yuba	0	0	0
Alpine	0	0	0

	Brick, Wood & Others	Concrete & Steel	Total
Stanislaus	0	0	0
Merced	0	0	0
Placer	0	0	0
Mono	0	0	1
Lassen	0	0	0
Sutter	0	0	0
Total	1	0	1
Region Total	1	0	1

Totals only reflect data for those census tracts/blocks included in the user's study region and will reflect the entire county/state only if all of the census blocks for that county/states were selected at the time of study region creation.

Direct Economic Losses For Buildings

June 25, 2024

All values are in thousands of dollars

	Capital Stock Losses				Loss Ratio %	Income Losses				Total Loss
	Cost Structural Damage	Cost Non-struct. Damage	Cost Contents Damage	Inventory Loss		Relocation Loss	Capital Related Loss	Wages Losses	Rental Income Loss	
California										
Inyo	2	53	32	5	0.00	0	1	1	1	94
Contra Costa	0	0	0	0	0.00	0	0	0	0	0
Plumas	1	38	24	2	0.00	0	0	0	0	66
Butte	0	0	0	0	0.00	0	0	0	0	0
Fresno	0	2	1	0	0.00	0	0	0	0	3
Nevada	54	1,317	757	61	0.01	5	6	7	9	2,215
San Joaquin	5	30	20	3	0.00	0	0	0	0	59
Tuolumne	5	276	168	9	0.00	1	0	1	1	461
Solano	0	0	0	0	0.00	0	0	0	0	0

	Capital Stock Losses					Income Losses				Total Loss
	Cost Structural Damage	Cost Non-struct. Damage	Cost Contents Damage	Inventory Loss	Loss Ratio %	Relocation Loss	Capital Related Loss	Wages Losses	Rental Income Loss	
Madera	2	58	35	4	0.00	0	0	0	0	101
Yolo	0	0	0	0	0.00	0	0	0	0	0
Calaveras	4	103	76	16	0.00	0	1	1	1	201
Yuba	0	1	1	0	0.00	0	0	0	0	2
Alpine	22	683	308	15	0.08	2	4	7	18	1,060
Lassen	0	18	10	1	0.00	0	0	0	0	29
Merced	18	538	375	71	0.00	1	2	2	3	1,010
Stanislaus	7	420	285	31	0.00	1	1	1	2	748
Sutter	0	0	0	0	0.00	0	0	0	0	1
Mono	506	3,520	1,787	369	0.09	138	52	59	111	6,542
Placer	57	1,637	916	56	0.00	6	9	11	22	2,712
El Dorado	563	8,817	4,323	233	0.02	67	123	125	154	14,404
Amador	0	39	27	2	0.00	0	0	0	0	68
Sacramento	1	159	112	13	0.00	0	0	0	0	287
Sierra	0	20	13	1	0.00	0	0	0	0	35
Mariposa	0	26	15	1	0.00	0	0	0	0	42
Total	1,248	17,755	9,286	893	0.01	221	200	215	323	30,140

	Capital Stock Losses				Loss Ratio %	Income Losses				Total Loss
	Cost Structural Damage	Cost Non-struct. Damage	Cost Contents Damage	Inventory Loss		Relocation Loss	Capital Related Loss	Wages Losses	Rental Income Loss	
Region Total	1,248	17,755	9,286	893	0.01	221	200	215	323	30,140

Totals only reflect data for those census tracts/blocks included in the user's study region and will reflect the entire county/state only if all of the census blocks for that county/states were selected at the time of study region creation.

Direct Economic Loss For Transportation

June 25, 2024

All values are in thousands of dollars

	Highway	Railway	Light Rail	Bus Facility	Ports	Ferries	Airport	Total
California								
Alpine								
Segments	0	0	0					0
Bridges	2	0	0					2
Tunnels	0	0	0					0
Facilities		0	0	0	0	0	400	400
Total	2	0	0	0	0	0	400	402
Amador								
Segments	0	0	0					0
Bridges	0	0	0					0
Tunnels	0	0	0					0
Facilities		0	0	0	0	0	51	51
Total	0	0	0	0	0	0	51	51
Butte								
Segments	0	0	0					0
Bridges	0	0	0					0
Tunnels	0	0	0					0
Facilities		0	0	0	0	0	11	11

	Highway	Railway	Light Rail	Bus Facility	Ports	Ferries	Airport	Total
Total	0	0	0	0	0	0	11	12
Calaveras								
Segments	0	0	0					0
Bridges	0	0	0					0
Tunnels	0	0	0					0
Facilities		0	0	0	0	0	102	102
Total	0	0	0	0	0	0	102	102
Contra Costa								
Segments	0	0	0					0
Bridges	0	0	0					0
Tunnels	0	0	0					0
Facilities		6	6	0	49	4	6	71
Total	0	6	6	0	49	4	6	71
El Dorado								
Segments	0	0	0					0
Bridges	5	0	0					5
Tunnels	0	0	0					0
Facilities		0	0	202	0	0	334	536
Total	5	0	0	202	0	0	334	541
Fresno								
Segments	0	0	0					0
Bridges	2	0	0					2
Tunnels	0	0	0					0
Facilities		26	0	2	0	0	121	149

	Highway	Railway	Light Rail	Bus Facility	Ports	Ferries	Airport	Total
Total	2	26	0	2	0	0	121	151
Inyo								
Segments	0	0	0					0
Bridges	0	0	0					0
Tunnels	0	0	0					0
Facilities		0	0	0	0	0	119	119
Total	0	0	0	0	0	0	119	119
Lassen								
Segments	0	0	0					0
Bridges	0	0	0					0
Tunnels	0	0	0					0
Facilities		0	0	0	0	0	164	164
Total	0	0	0	0	0	0	164	164
Madera								
Segments	0	0	0					0
Bridges	0	0	0					0
Tunnels	0	0	0					0
Facilities		3	0	2	0	0	11	17
Total	0	3	0	2	0	0	11	17
Mariposa								
Segments	0	0	0					0
Bridges	2	0	0					2
Tunnels	0	0	0					0
Facilities		0	0	86	0	0	51	137

	Highway	Railway	Light Rail	Bus Facility	Ports	Ferries	Airport	Total
Total	2	0	0	86	0	0	51	139
Merced								
Segments	0	0	0					0
Bridges	1	0	0					1
Tunnels	0	0	0					0
Facilities		51	0	21	0	0	320	392
Total	1	51	0	21	0	0	320	393
Mono								
Segments	0	0	0					0
Bridges	123	0	0					123
Tunnels	0	0	0					0
Facilities		0	0	108	0	0	2,422	2,530
Total	123	0	0	108	0	0	2,422	2,654
Nevada								
Segments	0	0	0					0
Bridges	2	0	0					2
Tunnels	0	0	0					0
Facilities		109	0	0	0	0	268	378
Total	2	109	0	0	0	0	268	380
Placer								
Segments	0	0	0					0
Bridges	2	0	0					2
Tunnels	0	0	0					0
Facilities		57	0	21	0	0	68	146

	Highway	Railway	Light Rail	Bus Facility	Ports	Ferries	Airport	Total
Total	2	57	0	21	0	0	68	148
Plumas								
Segments	0	0	0					0
Bridges	5	0	0					5
Tunnels	0	0	0					0
Facilities		0	0	0	0	0	130	130
Total	5	0	0	0	0	0	130	135
Sacramento								
Segments	0	0	0					0
Bridges	9	0	0					9
Tunnels	0	0	0					0
Facilities		3	629	5	69	1	466	1,174
Total	9	3	629	5	69	1	466	1,183
San Joaquin								
Segments	0	0	0					0
Bridges	2	0	0					2
Tunnels	0	0	0					0
Facilities		46	0	2	208	6	46	308
Total	2	46	0	2	208	6	46	310
Sierra								
Segments	0	0	0					0
Bridges	0	0	0					0
Tunnels	0	0	0					0
Facilities		0	0	0	0	0	51	51

	Highway	Railway	Light Rail	Bus Facility	Ports	Ferries	Airport	Total
Total	0	0	0	0	0	0	51	51
Solano								
Segments	0	0	0					0
Bridges	0	0	0					0
Tunnels	0	0	0					0
Facilities		0	0	2	49	4	6	61
Total	0	0	0	2	49	4	6	61
Stanislaus								
Segments	0	0	0					0
Bridges	1	0	0					1
Tunnels	0	0	0					0
Facilities		131	0	24	0	0	71	226
Total	1	131	0	24	0	0	71	227
Sutter								
Segments	0	0	0					0
Bridges	0	0	0					0
Tunnels	0	0	0					0
Facilities		0	0	0	0	0	14	14
Total	0	0	0	0	0	0	14	15
Tuolumne								
Segments	0	0	0					0
Bridges	1	0	0					1
Tunnels	0	0	0					0
Facilities		0	0	0	0	0	153	153

	Highway	Railway	Light Rail	Bus Facility	Ports	Ferries	Airport	Total
Total	1	0	0	0	0	0	153	154
Yolo								
Segments	0	0	0					0
Bridges	5	0	0					5
Tunnels	0	0	0					0
Facilities		14	0	0	69	0	11	95
Total	5	14	0	0	69	0	11	100
Yuba								
Segments	0	0	0					0
Bridges	0	0	0					0
Tunnels	0	0	0					0
Facilities		0	0	2	0	0	11	14
Total	0	0	0	2	0	0	11	14
Total	163	445	635	479	445	16	5,410	7,593
Region Total	163	445	635	479	445	16	5,410	7,593

Totals only reflect data for those census tracts/blocks included in the user's study region and will reflect the entire county/state only if all of the census blocks for that county/states were selected at the time of study region creation.

Direct Economic Loss For Utilities

June 25, 2024

All values are in thousands of dollars

	Potable Water	Waste Water	Oil Systems	Natural Gas	Electric Power	Communication	Total
California							
Alpine							
Facilities	0	123	0	0	0	0	123
Pipelines	21	10	0	0			31
Total	21	133	0	0	0	0	154
Amador							
Facilities	0	123	0	0	7,873	0	7,996
Pipelines	24	12	0	0			36
Total	24	135	0	0	7,873	0	8,033
Butte							
Facilities	1	8	0	0	2,316	0	2,324
Pipelines	31	16	0	0			47
Total	32	23	0	0	2,316	0	2,371
Calaveras							
Facilities	1	492	0	0	25,057	0	25,550

	Potable Water	Waste Water	Oil Systems	Natural Gas	Electric Power	Communication	Total
<i>Pipelines</i>	52	26	0	0			78
Total	53	518	0	0	25,057	0	25,628
Contra Costa							
<i>Facilities</i>	0	8	0	0	1,006	0	1,014
<i>Pipelines</i>	22	11	0	0			33
Total	22	19	0	0	1,006	0	1,047
El Dorado							
<i>Facilities</i>	28	251	0	0	31,277	5	31,562
<i>Pipelines</i>	97	49	0	0			145
Total	125	300	0	0	31,277	5	31,707
Fresno							
<i>Facilities</i>	0	10	0	0	5,959	0	5,970
<i>Pipelines</i>	171	86	0	0			257
Total	171	96	0	0	5,959	0	6,227
Inyo							
<i>Facilities</i>	0	0	0	0	1,876	0	1,876
<i>Pipelines</i>	39	20	0	0			59
Total	39	20	0	0	1,876	0	1,935
Lassen							
<i>Facilities</i>	0	3	0	0	520	0	522
<i>Pipelines</i>	54	27	0	0			81

	Potable Water	Waste Water	Oil Systems	Natural Gas	Electric Power	Communication	Total
Total	54	30	0	0	520	0	604
Madera							
<i>Facilities</i>	0	0	0	0	9,113	0	9,114
<i>Pipelines</i>	77	39	0	0			116
Total	77	39	0	0	9,113	0	9,229
Mariposa							
<i>Facilities</i>	0	492	0	0	2,567	2	3,061
<i>Pipelines</i>	40	20	0	0			61
Total	40	512	0	0	2,567	2	3,121
Merced							
<i>Facilities</i>	0	254	0	0	1,405	0	1,659
<i>Pipelines</i>	78	39	0	0			116
Total	78	293	0	0	1,405	0	1,776
Mono							
<i>Facilities</i>	0	0	0	0	8,579	0	8,579
<i>Pipelines</i>	256	129	0	0			385
Total	256	129	0	0	8,579	0	8,964
Nevada							
<i>Facilities</i>	0	259	0	0	2,654	1	2,914
<i>Pipelines</i>	56	28	0	0			84
Total	56	287	0	0	2,654	1	2,998

	Potable Water	Waste Water	Oil Systems	Natural Gas	Electric Power	Communication	Total
Placer							
<i>Facilities</i>	0	146	0	0	13,591	0	13,737
<i>Pipelines</i>	75	38	0	0			113
Total	75	184	0	0	13,591	0	13,850
Plumas							
<i>Facilities</i>	28	371	0	0	1,357	0	1,757
<i>Pipelines</i>	53	27	0	0			80
Total	82	398	0	0	1,357	0	1,838
Sacramento							
<i>Facilities</i>	0	26	0	0	1,117	1	1,144
<i>Pipelines</i>	114	57	0	0			171
Total	114	83	0	0	1,117	1	1,315
San Joaquin							
<i>Facilities</i>	3	18	0	0	682	0	703
<i>Pipelines</i>	87	44	0	0			131
Total	90	62	0	0	682	0	834
Sierra							
<i>Facilities</i>	0	0	0	0	647	0	647
<i>Pipelines</i>	37	19	0	0			56
Total	37	19	0	0	647	0	703
Solano							

	Potable Water	Waste Water	Oil Systems	Natural Gas	Electric Power	Communication	Total
<i>Facilities</i>	0	5	0	0	239	0	244
<i>Pipelines</i>	22	11	0	0			33
Total	22	16	0	0	239	0	278
Stanislaus							
<i>Facilities</i>	0	10	0	0	2,115	1	2,126
<i>Pipelines</i>	59	30	0	0			89
Total	59	40	0	0	2,115	1	2,216
Sutter							
<i>Facilities</i>	0	5	0	0	317	0	323
<i>Pipelines</i>	28	14	0	0			42
Total	28	19	0	0	317	0	365
Tuolumne							
<i>Facilities</i>	0	123	0	0	30,829	1	30,953
<i>Pipelines</i>	71	36	0	0			107
Total	71	159	0	0	30,829	1	31,060
Yolo							
<i>Facilities</i>	0	10	0	0	8	0	18
<i>Pipelines</i>	29	15	0	0			44
Total	29	25	0	0	8	0	62
Yuba							
<i>Facilities</i>	0	10	0	0	793	0	803

	Potable Water	Waste Water	Oil Systems	Natural Gas	Electric Power	Communication	Total
<i>Pipelines</i>	21	11	0	0			32
Total	21	21	0	0	793	0	835
Total	1,677	3,559	0	0	151,899	14	157,149
Region Total	1,677	3,559	0	0	151,899	14	157,149

Totals only reflect data for those census tracts/blocks included in the user's study region and will reflect the entire county/state only if all of the census blocks for that county/states were selected at the time of study region creation.

Hazus Quick Assessment Report

Estimated Economic Loss (\$ Billions)

Category	Description	Range
General Building Stock	Building Damage	< 0.1
	Building Contents	< 0.1
	Business Interruption	< 0.1
Infrastructure	Lifelines Damage	
Total		0.00 - 0.10

Preliminary Damage Assessment (PDA) Estimates

Description	Residential	Commercial	Other	Total
Affected	440	40	30	510
Minor	20	< 10	< 10	20
Major	0	0	0	0
Destroyed	0	0	0	0
Total	460	40	30	530

Estimated Casualties : Night Time

Severity Level	Description	# Persons
Level 1	Medical Aid	< 10
Level 2	Hospital Care	< 10
Level 3	Life-threatening	< 10
Level 4	Fatalities	< 10

Estimated Shelter Needs

Type	Households	People
Displaced Households	< 1.0	< 1.0
Public Shelter	0	0

Comments :

*Hazus damage estimates are presented using FEMA Preliminary Damage Assessment (PDA) categories. These estimates should be used for planning purposes and may not reflect actual observed damages from the PDA process.

Disclaimer:

The estimates of social and economic impacts contained in this report were produced using HAZUS loss estimation methodology software which is based on current scientific and engineering knowledge. There are uncertainties inherent in any loss estimation technique. Therefore, there may be significant differences between the modeled results contained in this report and the actual social and economic losses following a specific earthquake. These results can be improved by using enhanced inventory, geotechnical, and observed ground motion data.

Earthquake Information

Location :

Origin Time:

Magnitude : 7.37

Epicenter Latitude/Longitude :
/

Depth & Type : /U

Name :
NA

Ground Motion /Attenuation :

Maximum PGA: 0.00

Information Sources:

Comments :

Population and Building Exposure

Population: 7,537,791

Building Exposure : (\$ Millions)

Residential	916,620
Commercial	241,470
Other	227,153
Total	1,385,243

Counties : See Appendix

Major Metro Area :

Hazus Quick Assessment Report

Estimated Economic Loss (\$ Billions)

Category	Description	Range
General Building Stock	Building Damage	< 0.1
	Building Contents	< 0.1
	Business Interruption	< 0.1
Infrastructure	Lifelines Damage	
Total		0.00 - 0.10

Preliminary Damage Assessment (PDA) Estimates

Description	Residential	Commercial	Other	Total
Affected	440	40	30	510
Minor	20	< 10	< 10	20
Major	0	0	0	0
Destroyed	0	0	0	0
Total	460	40	30	530

Estimated Casualties : Day Time

Severity Level	Description	# Persons
Level 1	Medical Aid	< 10
Level 2	Hospital Care	< 10
Level 3	Life-threatening	< 10
Level 4	Fatalities	< 10

Estimated Shelter Needs

Type	Households	People
Displaced Households	< 1.0	< 1.0
Public Shelter	0	0

Comments :

*Hazus damage estimates are presented using FEMA Preliminary Damage Assessment (PDA) categories. These estimates should be used for planning purposes and may not reflect actual observed damages from the PDA process.

Disclaimer:

The estimates of social and economic impacts contained in this report were produced using HAZUS loss estimation methodology software which is based on current scientific and engineering knowledge. There are uncertainties inherent in any loss estimation technique. Therefore, there may be significant differences between the modeled results contained in this report and the actual social and economic losses following a specific earthquake. These results can be improved by using enhanced inventory, geotechnical, and observed ground motion data.

Earthquake Information

Location :

Origin Time:

Magnitude : 7.37

Epicenter Latitude/Longitude :
/

Depth & Type : /U

Name :
NA

Ground Motion /Attenuation :

Maximum PGA: 0.00

Information Sources:

Comments :

Population and Building Exposure

Population: 7,537,791

Building Exposure : (\$ Millions)

Residential	916,620
Commercial	241,470
Other	227,153
Total	1,385,243

Counties : See Appendix

Major Metro Area :

Hazus Quick Assessment Report

Estimated Economic Loss (\$ Billions)

Category	Description	Range
General Building Stock	Building Damage	< 0.1
	Building Contents	< 0.1
	Business Interruption	< 0.1
Infrastructure	Lifelines Damage	
Total		0.00 - 0.10

Preliminary Damage Assessment (PDA) Estimates

Description	Residential	Commercial	Other	Total
Affected	440	40	30	510
Minor	20	< 10	< 10	20
Major	0	0	0	0
Destroyed	0	0	0	0
Total	460	40	30	530

Estimated Casualties : Commute Time

Severity Level	Description	# Persons
Level 1	Medical Aid	< 10
Level 2	Hospital Care	< 10
Level 3	Life-threatening	< 10
Level 4	Fatalities	< 10

Estimated Shelter Needs

Type	Households	People
Displaced Households	< 1.0	< 1.0
Public Shelter	0	0

Earthquake Information

Location :

Origin Time:

Magnitude : 7.37

Epicenter Latitude/Longitude :
/

Depth & Type : /U

Name :
NA

Ground Motion /Attenuation :

Maximum PGA: 0.00

Information Sources:

Comments :

Population and Building Exposure

Population: 7,537,791

Building Exposure : (\$ Millions)

Residential	916,620
Commercial	241,470
Other	227,153
Total	1,385,243

Counties : See Appendix

Major Metro Area :

Comments :

**Hazus damage estimates are presented using FEMA Preliminary Damage Assessment (PDA) categories. These estimates should be used for planning purposes and may not reflect actual observed damages from the PDA process.*

Disclaimer:

The estimates of social and economic impacts contained in this report were produced using HAZUS loss estimation methodology software which is based on current scientific and engineering knowledge. There are uncertainties inherent in any loss estimation technique. Therefore, there may be significant differences between the modeled results contained in this report and the actual social and economic losses following a specific earthquake. These results can be improved by using enhanced inventory, geotechnical, and observed ground motion data.

Shelter Summary Report

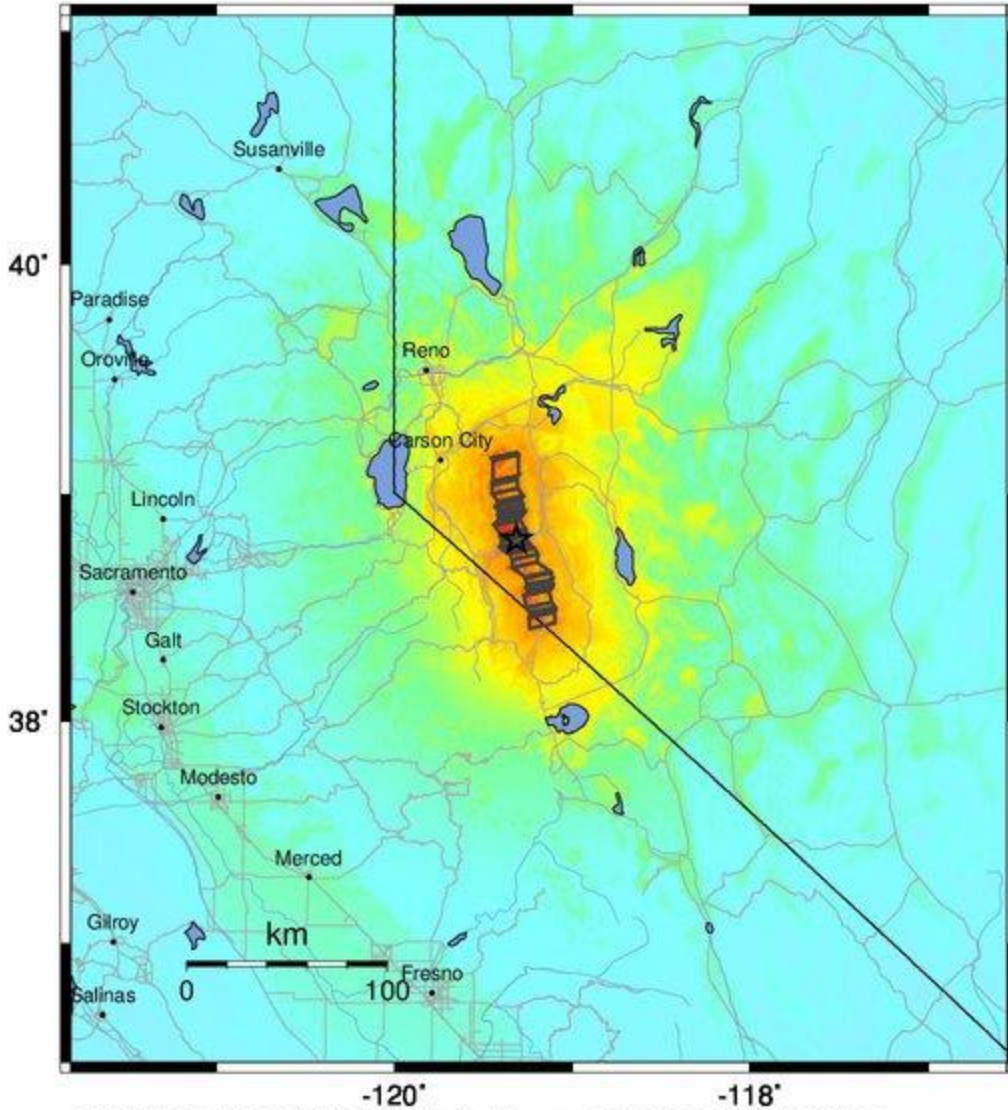
June 25, 2024

	# of Displaced Households	# of People Needing Short Term Shelter
California		
Fresno	0	0
Butte	0	0
Solano	0	0
Tuolumne	0	0
San Joaquin	0	0
Nevada	0	0
Madera	0	0
Inyo	0	0
Plumas	0	0
Contra Costa	0	0
El Dorado	0	0
Amador	0	0
Sierra	0	0
Sacramento	0	0
Mariposa	0	0
Yolo	0	0
Calaveras	0	0
Yuba	0	0
Alpine	0	0
Stanislaus	0	0
Merced	0	0
Placer	0	0
Mono	0	0
Lassen	0	0
Sutter	0	0
Total	0	0
Region Total	0	0

# of Displaced Households	# of People Needing Short Term Shelter
------------------------------	---

Totals only reflect data for those census tracts/blocks included in the user's study region and will reflect the entire county/state only if all of the census blocks for that county/states were selected at the time of study region creation.

-- Earthquake Planning Scenario --
ShakeMap for Smith Valley fault - Median ground motions Scenario
 Scenario Date: May 12, 2017 02:14:11 PM MDT M 7.4 N38.80 W119.31 Depth: 9.0km



PLANNING SCENARIO ONLY -- Map Version 3 Processed 2017-05-15 01:15:08 PM MDT

PERCEIVED SHAKING	Not felt	Weak	Light	Moderate	Strong	Very strong	Severe	Violent	Extreme
POTENTIAL DAMAGE	none	none	none	Very light	Light	Moderate	Mod./Heavy	Heavy	Very Heavy
PEAK ACC. (%g)	<0.05	0.3	2.8	6.2	12	22	40	75	>139
PEAK VEL. (cm/s)	<0.02	0.1	1.4	4.7	9.6	20	41	86	>178
INSTRUMENTAL INTENSITY	I	II-III	IV	V	VI	VII	VIII	IX	X+

Scale based upon Worden et al. (2012)