

Hazus: Earthquake Global Risk Report

Region Name: SanLuisRange

Earthquake Scenario: sanluisrangesomargin_m7p49_se

Print Date: June 25, 2024

Disclaimer:

Totals only reflect data for those census tracts/blocks included in the user's study region.

The estimates of social and economic impacts contained in this report were produced using Hazus loss estimation methodology software which is based on current scientific and engineering knowledge. There are uncertainties inherent in any loss estimation technique. Therefore, there may be significant differences between the modeled results contained in this report and the actual social and economic losses following a specific earthquake. These results can be improved by using enhanced inventory, geotechnical, and observed ground motion data.

Table of Contents

Section	Page #
General Description of the Region	3
Building and Lifeline Inventory	4
Building Inventory	
Critical Facility Inventory	
Transportation and Utility Lifeline Inventory	
Earthquake Scenario Parameters	7
Direct Earthquake Damage	8
Buildings Damage	
Essential Facilities Damage	
Transportation and Utility Lifeline Damage	
Induced Earthquake Damage	14
Fire Following Earthquake	
Debris Generation	
Social Impact	15
Shelter Requirements	
Casualties	
Economic Loss	17
Building Related Losses	
Transportation and Utility Lifeline Losses	
Appendix A: County Listing for the Region	
Appendix B: Regional Population and Building Value Data	

General Description of the Region

Hazus-MH is a regional earthquake loss estimation model that was developed by the Federal Emergency Management Agency (FEMA) and the National Institute of Building Sciences. The primary purpose of Hazus is to provide a methodology and software application to develop multi-hazard losses at a regional scale. These loss estimates would be used primarily by local, state and regional officials to plan and stimulate efforts to reduce risks from multi-hazards and to prepare for emergency response and recovery.

The earthquake loss estimates provided in this report was based on a region that includes 18 county(ies) from the following state(s):

California

Note:

Appendix A contains a complete listing of the counties contained in the region.

The geographical size of the region is 81,429.68 square miles and contains 5,748 census tracts. There are over 8,289 thousand households in the region which has a total population of 25,085,662 people. The distribution of population by Total Region and County is provided in Appendix B.

There are an estimated 7,118 thousand buildings in the region with a total building replacement value (excluding contents) of (millions of dollars). Approximately 90.00 % of the buildings (and % of the building value) are associated with residential housing.

The replacement value of the transportation and utility lifeline systems is estimated to be 308,318 and 214,199 (millions of dollars) , respectively.

Building and Lifeline Inventory

Building Inventory

Hazus estimates that there are 7,118 thousand buildings in the region which have an aggregate total replacement value of (millions of dollars) . Appendix B provides a general distribution of the building value by Total Region and County.

In terms of building construction types found in the region, wood frame construction makes up 87% of the building inventory. The remaining percentage is distributed between the other general building types.

Critical Facility Inventory

Hazus breaks critical facilities into two (2) groups: essential facilities and high potential loss facilities (HPL). Essential facilities include hospitals, medical clinics, schools, fire stations, police stations and emergency operations facilities. High potential loss facilities include dams, levees, military installations, nuclear power plants and hazardous material sites.

For essential facilities, there are 358 hospitals in the region with a total bed capacity of 65,287 beds. There are 8,273 schools, 1,472 fire stations, 522 police stations and 128 emergency operation facilities. With respect to high potential loss facilities (HPL), there are no dams identified within the inventory. The inventory also includes no hazardous material sites, no military installations and no nuclear power plants.

Transportation and Utility Lifeline Inventory

Within Hazus, the lifeline inventory is divided between transportation and utility lifeline systems. There are seven (7) transportation systems that include highways, railways, light rail, bus, ports, ferry and airports. There are six (6) utility systems that include potable water, wastewater, natural gas, crude & refined oil, electric power and communications. The lifeline inventory data are provided in Tables 1 and 2.

The total value of the lifeline inventory is over 522,517.00 (millions of dollars). This inventory includes over 13,993.27 miles of highways, 13,333 bridges, 302,239.20 miles of pipes.

Table 1: Transportation System Lifeline Inventory

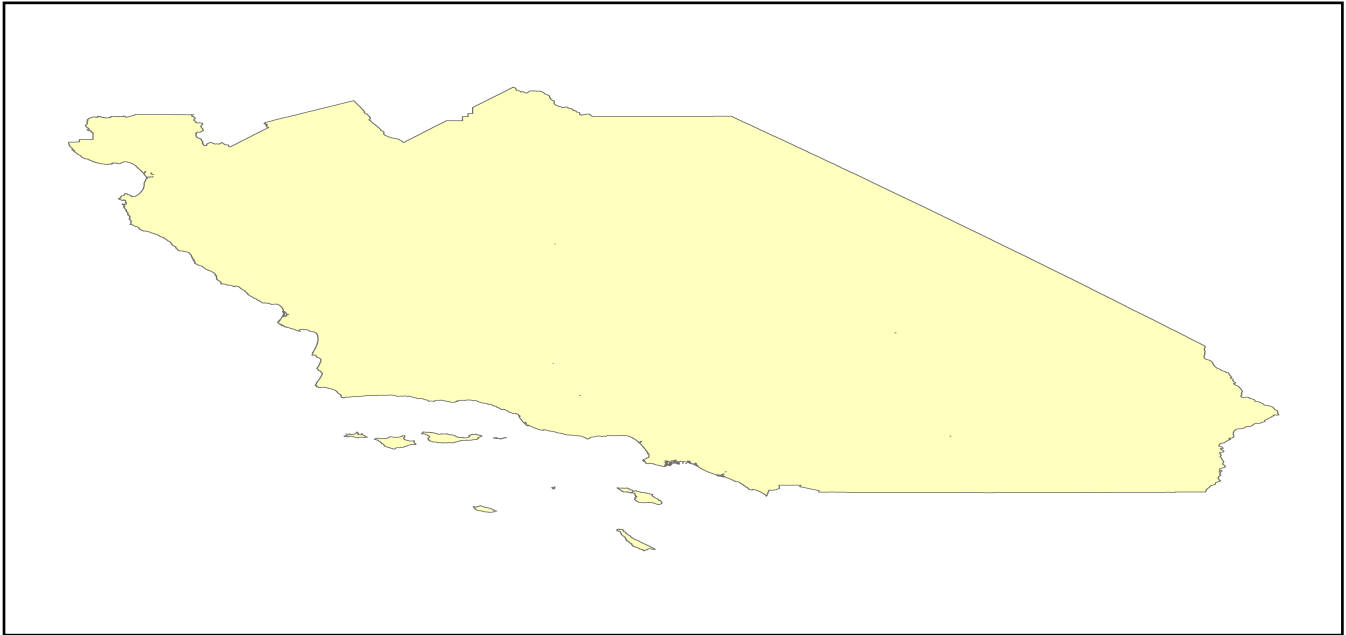
System	Component	# Locations/ # Segments	Replacement value (millions of dollars)
Highway	Bridges	13,333	68217.6018
	Segments	10,957	138247.1883
	Tunnels	59	556.4698
	Subtotal		207021.2599
Railways	Bridges	2,031	11556.3900
	Facilities	122	324.8860
	Segments	2,213	74379.5027
	Tunnels	0	0.0000
	Subtotal		86260.7787
Light Rail	Bridges	40	8.4287
	Facilities	141	2858.2700
	Segments	7	4365.3859
	Tunnels	0	0.0000
	Subtotal		7232.0846
Bus	Facilities	60	131.4142
	Subtotal		131.4142
Ferry	Facilities	19	25.2890
	Subtotal		25.2890
Port	Facilities	263	1002.5151
	Subtotal		1002.5151
Airport	Facilities	173	4553.3735
	Runways	192	2092.0358
	Subtotal		6645.4093
		Total	308,318.80

Table 2: Utility System Lifeline Inventory

System	Component	# Locations / Segments	Replacement value (millions of dollars)
Potable Water	Distribution Lines	NA	6004.1243
	Facilities	51	2003.9940
	Pipelines	0	0.0000
		Subtotal	8008.1183
Waste Water	Distribution Lines	NA	3602.4746
	Facilities	122	20978.1196
	Pipelines	0	0.0000
		Subtotal	24580.5942
Natural Gas	Distribution Lines	NA	2401.6497
	Facilities	44	1576.2838
	Pipelines	498	21406.8958
		Subtotal	25384.8293
Oil Systems	Facilities	68	8.0240
	Pipelines	0	0.0000
		Subtotal	8.0240
Electrical Power	Facilities	634	156151.5704
		Subtotal	156151.5704
Communication	Facilities	563	66.4340
		Subtotal	66.4340
	Total		214,199.60

Earthquake Scenario

Hazus uses the following set of information to define the earthquake parameters used for the earthquake loss estimate provided in this report.



Scenario Name	sanluisrangesomargin_m7p49_se
Type of Earthquake	User-defined
Fault Name	NA
Historical Epicenter ID #	NA
Probabilistic Return Period	NA
Longitude of Epicenter	NA
Latitude of Epicenter	NA
Earthquake Magnitude	7.49
Depth (km)	NA
Rupture Length (Km)	NA
Rupture Orientation (degrees)	NA
Attenuation Function	NA

Direct Earthquake Damage

Building Damage

Hazus estimates that about 34,044 buildings will be at least moderately damaged. This is over 0.00 % of the buildings in the region. There are an estimated 2,089 buildings that will be damaged beyond repair. The definition of the 'damage states' is provided in Volume 1: Chapter 5 of the Hazus technical manual. Table 3 below summarizes the expected damage by general occupancy for the buildings in the region. Table 4 below summarizes the expected damage by general building type.

Damage Categories by General Occupancy Type

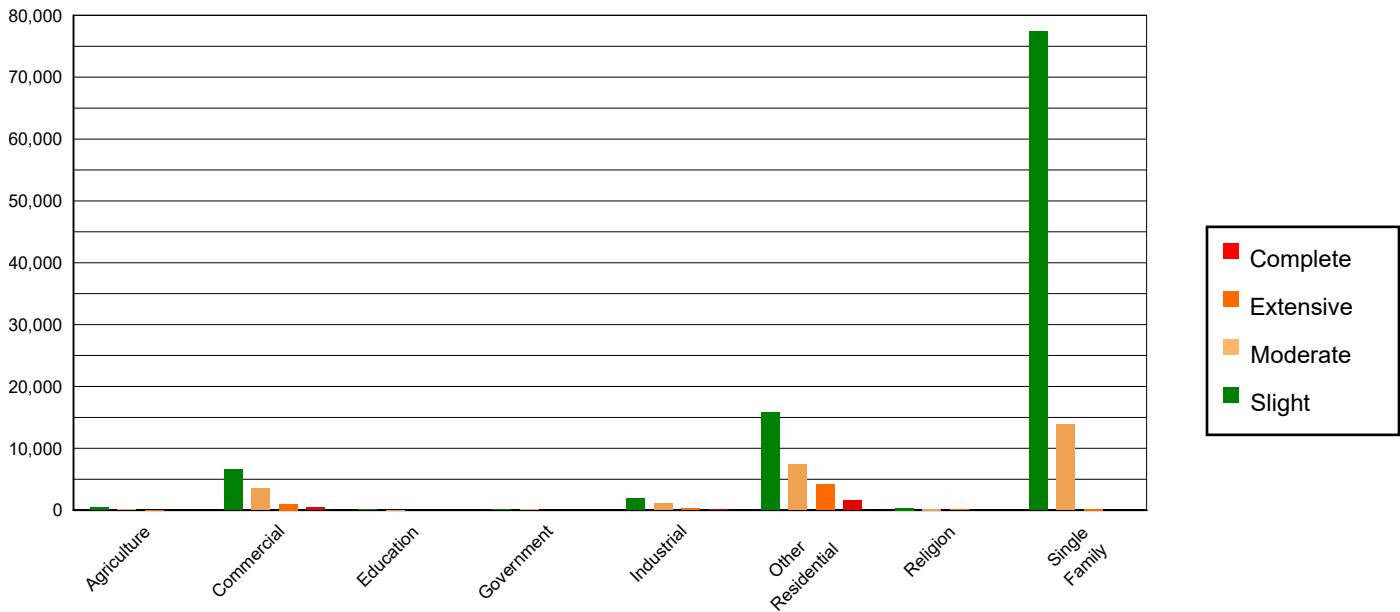


Table 3: Expected Building Damage by Occupancy

	None		Slight		Moderate		Extensive		Complete	
	Count	(%)	Count	(%)	Count	(%)	Count	(%)	Count	(%)
Agriculture	31644.12	0.45	373.75	0.36	161.78	0.62	36.56	0.64	10.77	0.52
Commercial	477051.68	6.83	6543.09	6.37	3450.89	13.17	1000.97	17.42	381.37	18.25
Education	13592.01	0.19	123.67	0.12	42.50	0.16	3.77	0.07	1.04	0.05
Government	15792.07	0.23	151.60	0.15	65.26	0.25	15.04	0.26	4.03	0.19
Industrial	125616.22	1.80	1954.07	1.90	1094.02	4.17	269.60	4.69	71.09	3.40
Other Residential	1067071.33	15.28	15801.35	15.38	7414.70	28.29	4175.32	72.68	1601.30	76.65
Religion	25049.25	0.36	349.09	0.34	185.26	0.71	47.94	0.83	15.46	0.74
Single Family	5225841.87	74.85	77415.24	75.37	13796.42	52.64	195.42	3.40	4.05	0.19
Total	6,981,659		102,712		26,211		5,745		2,089	

Table 4: Expected Building Damage by Building Type (All Design Levels)

	None		Slight		Moderate		Extensive		Complete	
	Count	(%)	Count	(%)	Count	(%)	Count	(%)	Count	(%)
Wood	6111412.22	87.54	90202.19	87.82	16583.17	63.27	305.27	5.31	21.18	1.01
Steel	134979.20	1.93	2107.79	2.05	1555.82	5.94	591.23	10.29	209.11	10.01
Concrete	136523.61	1.96	2348.01	2.29	1277.58	4.87	465.79	8.11	231.53	11.08
Precast	69847.55	1.00	1493.32	1.45	1162.43	4.43	247.71	4.31	33.66	1.61
RM	298287.78	4.27	2177.14	2.12	1420.79	5.42	342.99	5.97	20.37	0.97
URM	32994.99	0.47	633.88	0.62	178.06	0.68	126.86	2.21	178.14	8.53
MH	197613.20	2.83	3749.53	3.65	4032.99	15.39	3664.77	63.79	1395.11	66.78
Total	6,981,659		102,712		26,211		5,745		2,089	

*Note:

- RM Reinforced Masonry
- URM Unreinforced Masonry
- MH Manufactured Housing

Essential Facility Damage

Before the earthquake, the region had 65,287 hospital beds available for use. On the day of the earthquake, the model estimates that only 63,772 hospital beds (98.00%) are available for use by patients already in the hospital and those injured by the earthquake. After one week, 99.00% of the beds will be back in service. By 30 days, 100.00% will be operational.

Table 5: Expected Damage to Essential Facilities

Classification	Total	# Facilities		
		At Least Moderate Damage > 50%	Complete Damage > 50%	With Functionality > 50% on day 1
Hospitals	358	3	0	352
Schools	8,273	41	2	8,135
EOCs	128	1	0	126
PoliceStations	522	6	0	505
FireStations	1,472	8	0	1,440

Transportation Lifeline Damage

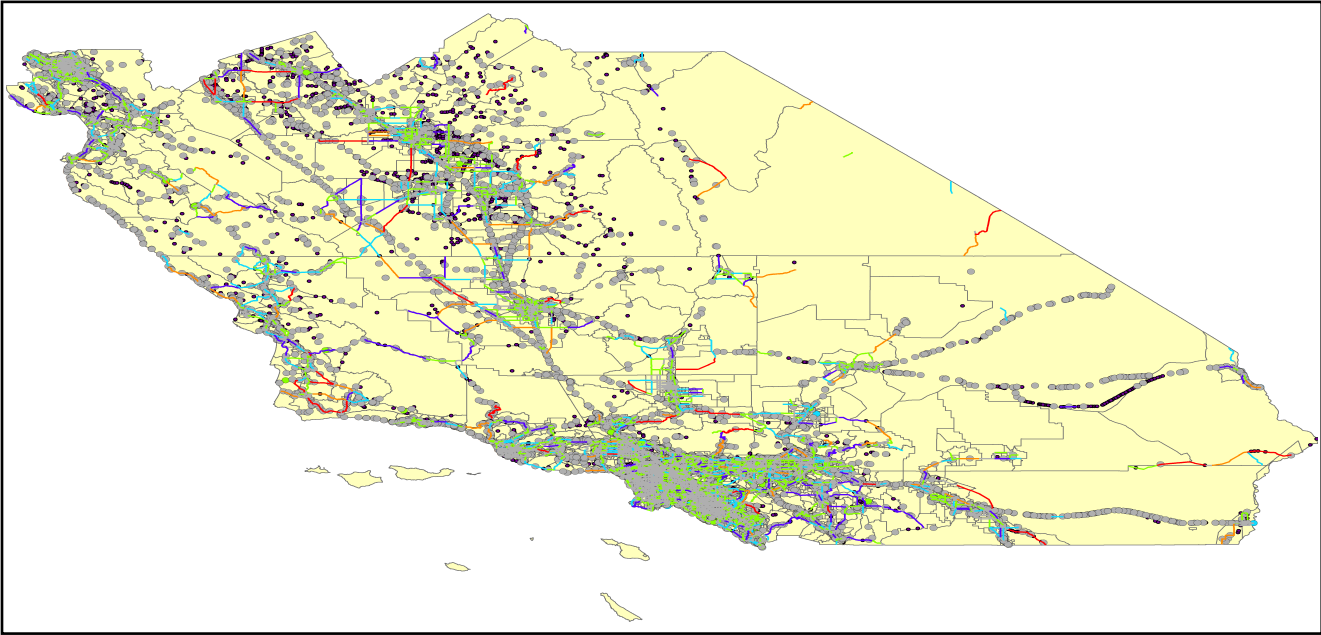


Table 6: Expected Damage to the Transportation Systems

System	Component	Number of Locations_				
		Locations/ Segments	With at Least Mod. Damage	With Complete Damage	With Functionality > 50 %	
					After Day 1	After Day 7
Highway	Segments	10,957	0	0	10,957	10,957
	Bridges	13,333	44	4	13,294	13,322
	Tunnels	59	0	0	59	59
Railways	Segments	2,213	0	0	2,213	2,213
	Bridges	2,031	0	0	2,031	2,031
	Tunnels	0	0	0	0	0
	Facilities	122	2	0	121	122
Light Rail	Segments	7	0	0	7	7
	Bridges	40	0	0	40	40
	Tunnels	0	0	0	0	0
	Facilities	141	0	0	141	141
Bus	Facilities	60	2	0	59	60
Ferry	Facilities	19	0	0	19	19
Port	Facilities	263	2	0	262	263
Airport	Facilities	173	2	0	172	173
	Runways	192	0	0	192	192

Table 6 provides damage estimates for the transportation system.

Note: Roadway segments, railroad tracks and light rail tracks are assumed to be damaged by ground failure only. If ground failure maps are not provided, damage estimates to these components will not be computed.

Tables 7-9 provide information on the damage to the utility lifeline systems. Table 7 provides damage to the utility system facilities. Table 8 provides estimates on the number of leaks and breaks by the pipelines of the utility systems. For electric power and potable water, Hazus performs a simplified system performance analysis. Table 9 provides a summary of the system performance information.

Table 7 : Expected Utility System Facility Damage

System	# of Locations				
	Total #	With at Least Moderate Damage	With Complete Damage	with Functionality > 50 %	
				After Day 1	After Day 7
Potable Water	51	0	0	51	51
Waste Water	122	5	0	111	120
Natural Gas	44	1	0	43	44
Oil Systems	68	3	0	65	68
Electrical Power	634	8	0	630	634
Communication	563	47	0	547	563

Table 8 : Expected Utility System Pipeline Damage (Site Specific)

System	Total Pipelines Length (miles)	Number of Leaks	Number of Breaks
Potable Water	186,539	6427	1607
Waste Water	111,924	3228	807
Natural Gas	3,777	0	0
Oil	0	0	0

Table 9: Expected Potable Water and Electric Power System Performance

	Total # of Households	Number of Households without Service				
		At Day 1	At Day 3	At Day 7	At Day 30	At Day 90
Potable Water	8,289,312	89,550	81,362	64,119	0	0
Electric Power		94,339	66,812	32,262	4,328	118

Induced Earthquake Damage

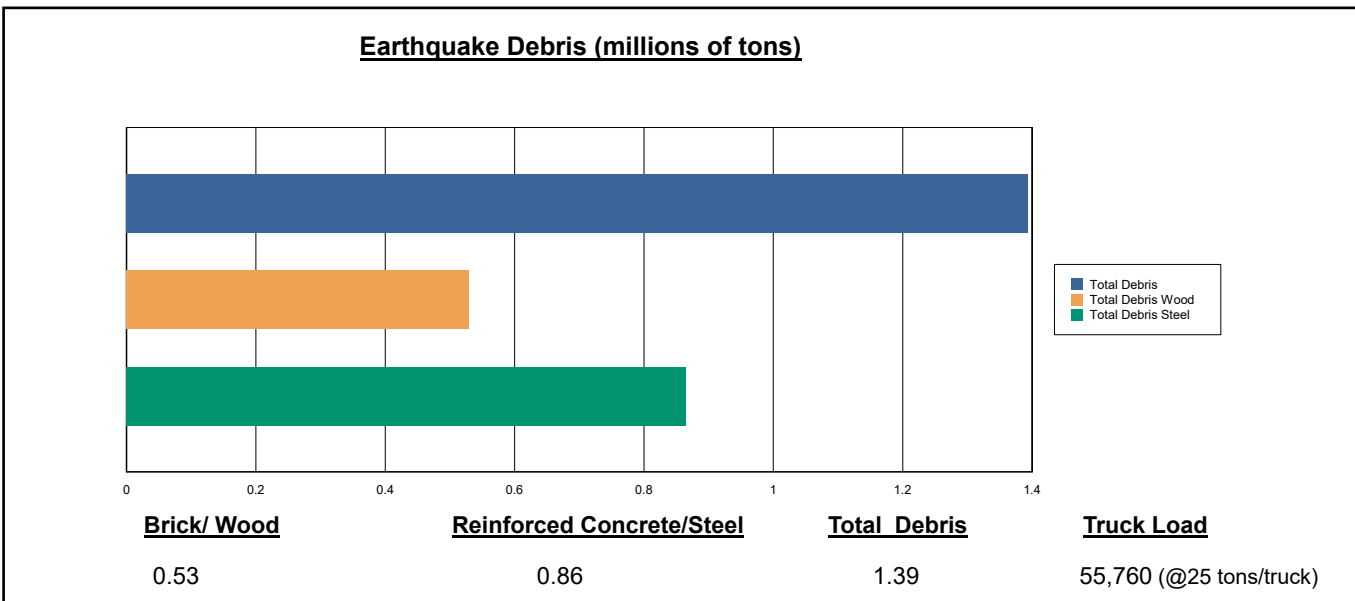
Fire Following Earthquake

Fires often occur after an earthquake. Because of the number of fires and the lack of water to fight the fires, they can often burn out of control. Hazus uses a Monte Carlo simulation model to estimate the number of ignitions and the amount of burnt area. For this scenario, the model estimates that there will be 7 ignitions that will burn about 0.19 sq. mi (0.00 % of the region's total area.) The model also estimates that the fires will displace about 765 people and burn about 167 (millions of dollars) of building value.

Debris Generation

Hazus estimates the amount of debris that will be generated by the earthquake. The model breaks the debris into two general categories: a) Brick/Wood and b) Reinforced Concrete/Steel. This distinction is made because of the different types of material handling equipment required to handle the debris.

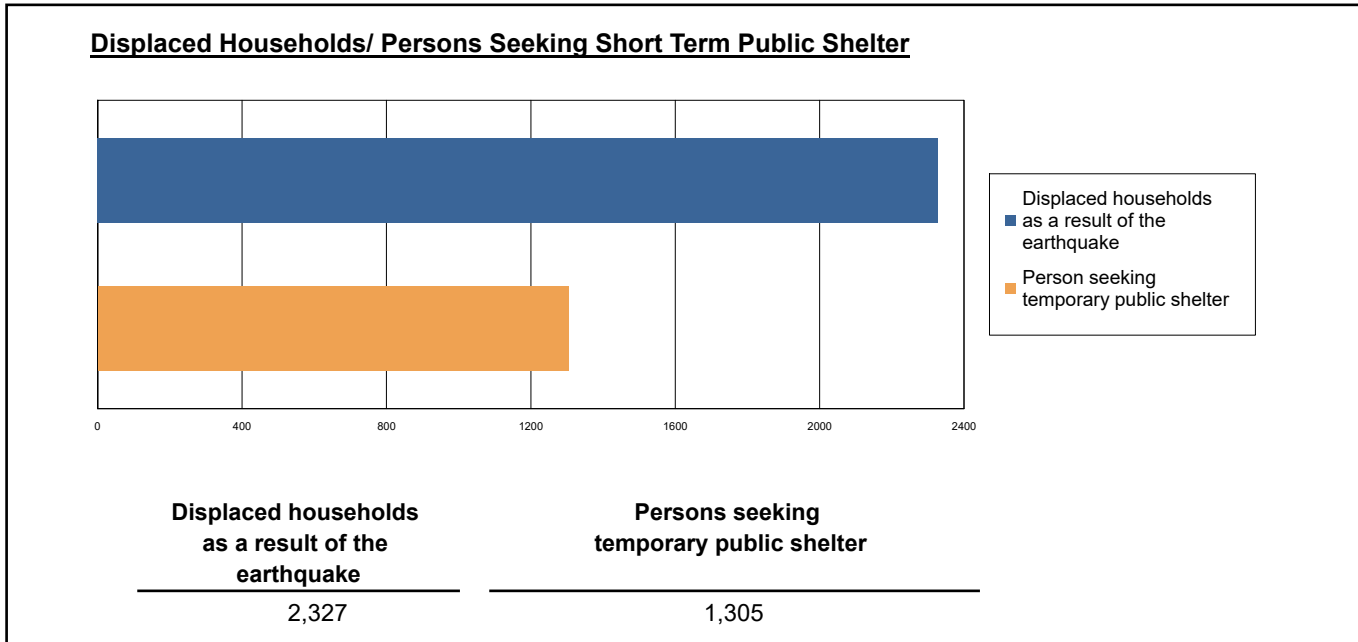
The model estimates that a total of 1,394,000 tons of debris will be generated. Of the total amount, Brick/Wood comprises 38.00% of the total, with the remainder being Reinforced Concrete/Steel. If the debris tonnage is converted to an estimated number of truckloads, it will require 55,760 truckloads (@25 tons/truck) to remove the debris generated by the earthquake.



Social Impact

Shelter Requirement

Hazus estimates the number of households that are expected to be displaced from their homes due to the earthquake and the number of displaced people that will require accommodations in temporary public shelters. The model estimates 2,327 households to be displaced due to the earthquake. Of these, 1,305 people (out of a total population of 25,085,662) will seek temporary shelter in public shelters.



Casualties

Hazus estimates the number of people that will be injured and killed by the earthquake. The casualties are broken down into four (4) severity levels that describe the extent of the injuries. The levels are described as follows;

- Severity Level 1: Injuries will require medical attention but hospitalization is not needed.
- Severity Level 2: Injuries will require hospitalization but are not considered life-threatening
- Severity Level 3: Injuries will require hospitalization and can become life threatening if not promptly treated.
- Severity Level 4: Victims are killed by the earthquake.

The casualty estimates are provided for three (3) times of day: 2:00 AM, 2:00 PM and 5:00 PM. These times represent the periods of the day that different sectors of the community are at their peak occupancy loads. The 2:00 AM estimate considers that the residential occupancy load is maximum, the 2:00 PM estimate considers that the educational, commercial and industrial sector loads are maximum and 5:00 PM represents peak commute time.

Table 10 provides a summary of the casualties estimated for this earthquake

Table 10: Casualty Estimates

		Level 1	Level 2	Level 3	Level 4
2 AM	Commercial	10.92	2.59	0.37	0.74
	Commuting	0.19	0.28	0.43	0.09
	Educational	0.00	0.00	0.00	0.00
	Hotels	0.95	0.22	0.03	0.06
	Industrial	9.39	1.92	0.24	0.47
	Other-Residential	575.05	117.94	10.61	19.50
	Single Family	199.70	11.88	0.08	0.14
	Total	796	135	12	21
2 PM	Commercial	728.15	170.86	24.53	47.96
	Commuting	1.67	2.49	3.88	0.77
	Educational	172.62	28.13	3.13	6.08
	Hotels	0.18	0.04	0.01	0.01
	Industrial	68.96	14.11	1.79	3.48
	Other-Residential	179.16	37.11	3.57	6.48
	Single Family	62.86	3.92	0.03	0.06
	Total	1,214	257	37	65
5 PM	Commercial	483.36	112.35	16.07	31.06
	Commuting	30.82	46.32	71.88	14.24
	Educational	36.77	4.87	0.43	0.84
	Hotels	0.28	0.07	0.01	0.02
	Industrial	43.10	8.82	1.12	2.17
	Other-Residential	210.94	43.80	4.13	7.47
	Single Family	73.74	4.53	0.04	0.06
	Total	879	221	94	56

Economic Loss

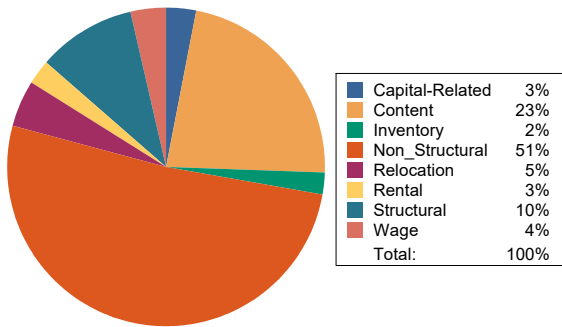
The total economic loss estimated for the earthquake is 12,653.77 (millions of dollars), which includes building and lifeline related losses based on the region's available inventory. The following three sections provide more detailed information about these losses.

Building-Related Losses

The building losses are broken into two categories: direct building losses and business interruption losses. The direct building losses are the estimated costs to repair or replace the damage caused to the building and its contents. The business interruption losses are the losses associated with inability to operate a business because of the damage sustained during the earthquake. Business interruption losses also include the temporary living expenses for those people displaced from their homes because of the earthquake.

The total building-related losses were 10,012.42 (millions of dollars); 14 % of the estimated losses were related to the business interruption of the region. By far, the largest loss was sustained by the residential occupancies which made up over 46 % of the total loss. Table 11 below provides a summary of the losses associated with the building damage.

Earthquake Losses by Loss Type (\$ millions)



Earthquake Losses by Occupancy Type (\$ millions)

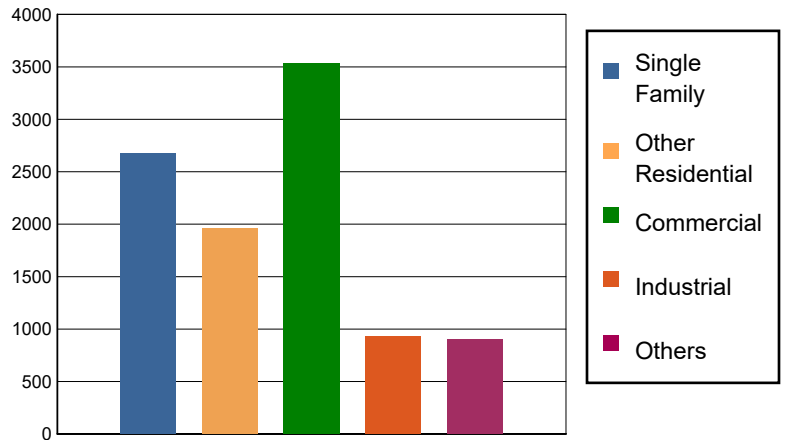


Table 11: Building-Related Economic Loss Estimates
(Millions of dollars)

Category	Area	Single Family	Other Residential	Commercial	Industrial	Others	Total
Income Losses							
	Wage	0.0000	44.7950	295.3905	9.0060	18.0863	367.2778
	Capital-Related	0.0000	19.0308	272.0781	5.5437	5.5009	302.1535
	Rental	29.4969	92.5402	131.5567	5.2546	8.6099	267.4583
	Relocation	100.7710	82.5856	188.7716	27.9515	65.7675	465.8472
	Subtotal	130.2679	238.9516	887.7969	47.7558	97.9646	1402.7368
Capital Stock Losses							
	Structural	258.5365	209.4194	348.2876	89.8270	83.4494	989.5199
	Non_Structural	1662.5526	1209.1570	1398.1182	436.1665	439.1070	5,145.1013
	Content	626.6133	306.1602	763.6659	307.1928	259.2316	2,262.8638
	Inventory	0.0000	0.0000	138.8645	48.2927	25.0402	212.1974
	Subtotal	2547.7024	1724.7366	2648.9362	881.4790	806.8282	8609.6824
	Total	2677.97	1963.69	3536.73	929.23	904.79	10012.42

Transportation and Utility Lifeline Losses

For the transportation and utility lifeline systems, Hazus computes the direct repair cost for each component only. There are no losses computed by Hazus for business interruption due to lifeline outages. Tables 12 & 13 provide a detailed breakdown in the expected lifeline losses.

Table 12: Transportation System Economic Losses
(Millions of dollars)

System	Component	Inventory Value	Economic Loss	Loss Ratio (%)
Highway	Segments	138247.1883	0.0000	0.00
	Bridges	68217.6018	103.5308	0.15
	Tunnels	556.4698	0.0159	0.00
	Subtotal	207021.2599	103.5467	
Railways	Segments	74379.5027	0.0000	0.00
	Bridges	11556.3900	16.0201	0.14
	Tunnels	0.0000	0.0000	0.00
	Facilities	324.8860	8.1321	2.50
	Subtotal	86260.7787	24.1522	
Light Rail	Segments	4365.3859	0.0000	0.00
	Bridges	8.4287	0.0000	0.00
	Tunnels	0.0000	0.0000	0.00
	Facilities	2858.2700	22.3458	0.78
	Subtotal	7232.0846	22.3458	
Bus	Facilities	131.4142	4.5359	3.45
	Subtotal	131.4142	4.5359	
Ferry	Facilities	25.2890	0.4527	1.79
	Subtotal	25.2890	0.4527	
Port	Facilities	1002.5151	24.7861	2.47
	Subtotal	1002.5151	24.7861	
Airport	Facilities	4553.3735	65.9702	1.45
	Runways	2092.0358	0.0000	0.00
	Subtotal	6645.4093	65.9702	
Total		308,318.75	245.79	

Table 13: Utility System Economic Losses

(Millions of dollars)

System	Component	Inventory Value	Economic Loss	Loss Ratio (%)
Potable Water	Pipelines	0.0000	0.0000	0.00
	Facilities	2003.9940	6.0248	0.30
	Distribution Lines	6004.1243	28.9200	0.48
	Subtotal	8008.1183	34.9448	
Waste Water	Pipelines	0.0000	0.0000	0.00
	Facilities	20978.1196	461.1954	2.20
	Distribution Lines	3602.4746	14.5273	0.40
	Subtotal	24580.5942	475.7227	
Natural Gas	Pipelines	21406.8958	0.0000	0.00
	Facilities	1576.2838	20.0983	1.28
	Distribution Lines	2401.6497	4.9769	0.21
	Subtotal	25384.8293	25.0752	
Oil Systems	Pipelines	0.0000	0.0000	0.00
	Facilities	8.0240	0.1077	1.34
	Subtotal	8.0240	0.1077	
Electrical Power	Facilities	156151.5704	1856.4221	1.19
	Subtotal	156151.5704	1856.4221	
Communication	Facilities	66.4340	3.2858	4.95
	Subtotal	66.4340	3.2858	
	Total	214,199.57	2,395.56	

Appendix A: County Listing for the Region

Fresno,CA

Inyo,CA

Kern,CA

Kings,CA

Los Angeles,CA

Madera,CA

Merced,CA

Monterey,CA

Orange,CA

Riverside,CA

San Benito,CA

San Bernardino,CA

San Luis Obispo,CA

Santa Barbara,CA

Santa Clara,CA

Santa Cruz,CA

Tulare,CA

Ventura,CA

Appendix B: Regional Population and Building Value Data

State	County Name	Population	Building Value (millions of dollars)		
			Residential	Non-Residential	Total
California	Fresno	1,008,654	98,532	61,772	160,304
	Inyo	19,016	2,951	1,970	4,921
	Kern	909,235	87,567	59,168	146,736
	Kings	152,486	13,719	7,861	21,581
	Los Angeles	10,014,009	950,697	566,995	1,517,692
	Madera	156,255	18,025	9,641	27,667
	Merced	281,202	25,194	26,098	51,292
	Monterey	439,035	47,655	28,750	76,405
	Orange	3,186,989	363,381	176,806	540,188
	Riverside	2,418,185	281,482	137,249	418,731
	San Benito	64,209	9,440	3,799	13,239
	San Bernardino	2,181,654	225,045	152,557	377,602
	San Luis Obispo	282,424	41,720	20,896	62,616
	Santa Barbara	448,229	49,971	28,481	78,452
	Santa Clara	1,936,259	261,111	120,471	381,582
	Santa Cruz	270,861	36,147	18,805	54,952
	Tulare	473,117	43,262	31,210	74,472
Ventura	843,843	99,299	52,072	151,371	
Total Region		25,085,662	2,655,198	1,504,601	4,159,803

Building Inspection Tagging (Counts)

Total Economic Loss
Total:

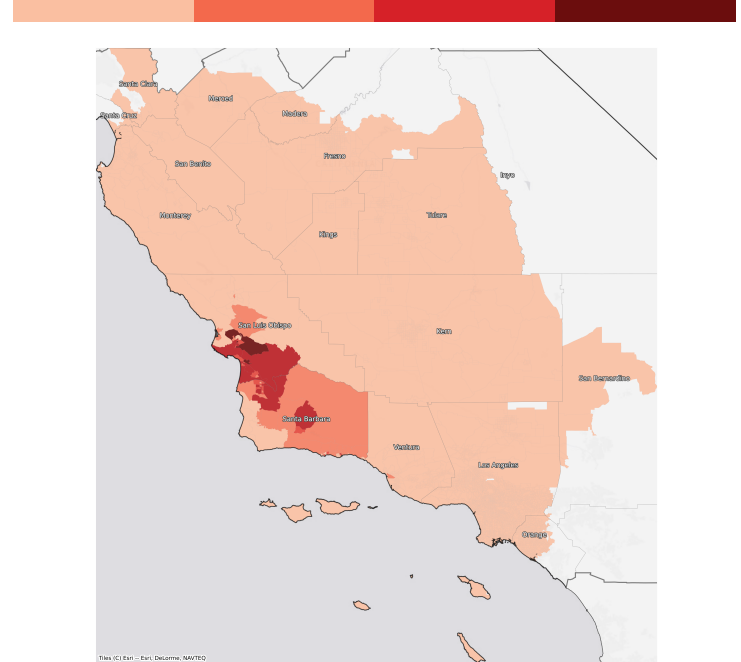
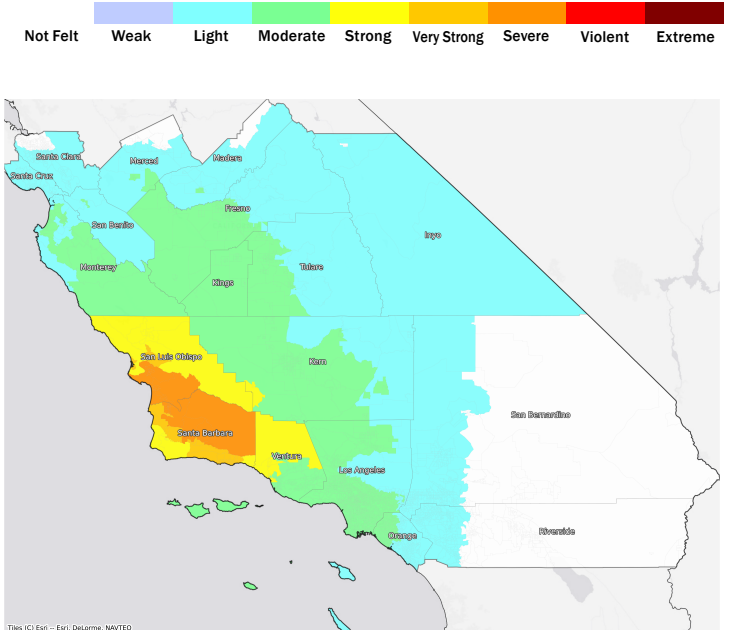
Top Counties	State	Total

Injuries & Fatalities
**Total Day:
Total Night:**

Top Counties	State	Injuries (day/night)	Fatalities (day/night)

Displaced Households & Short-Term Shelter Needs
**Total Displaced:
Total Needing Shelter:**

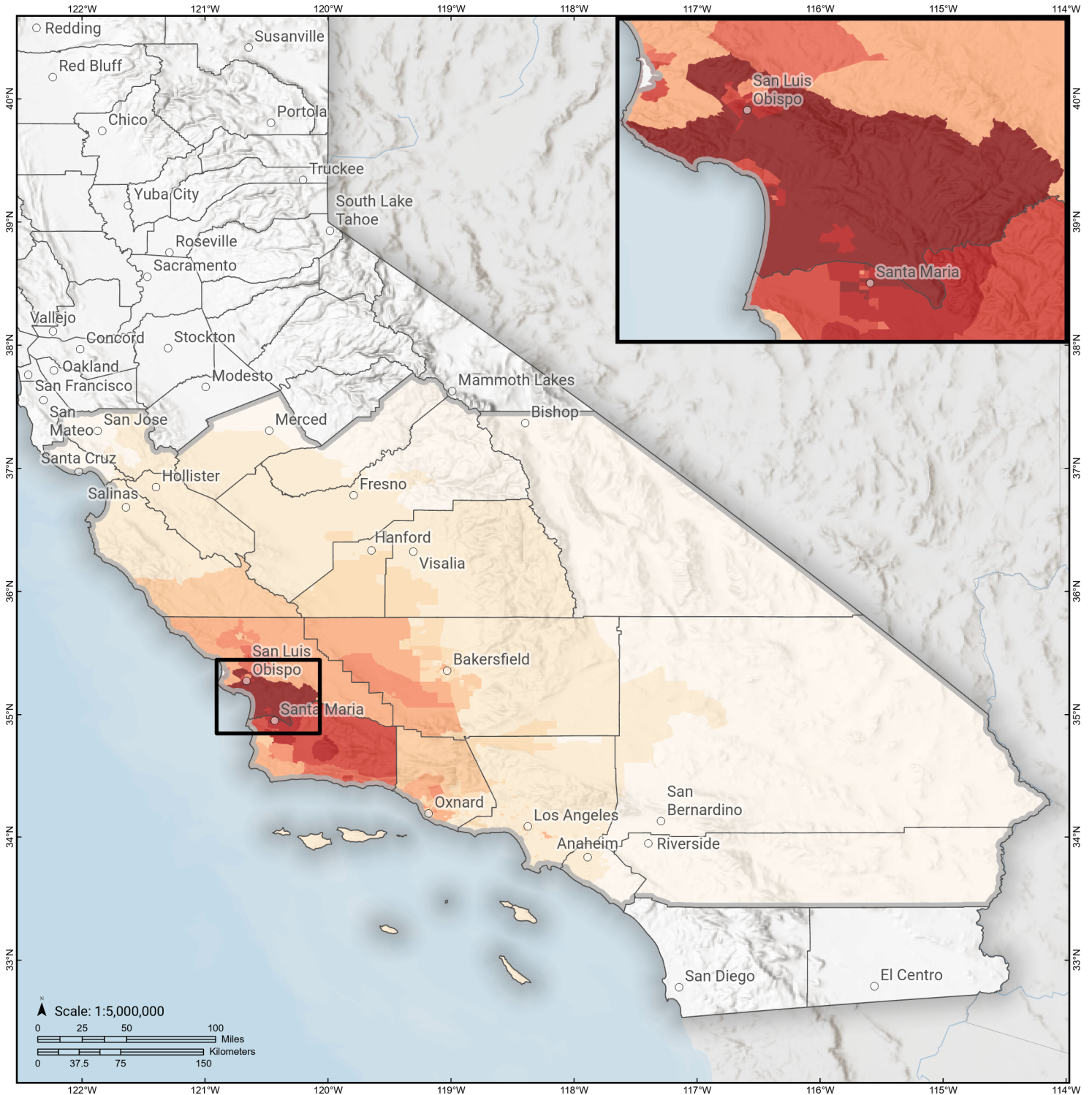
Top Counties	State	Displaced	Needing Shelter

Economic Impacts by Census Tract

Ground Shaking

Debris
**Total Tons:
Total Truckloads:**

Type	Tons

The estimates of social and economic impacts contained in this report were produced using Hazus loss estimation methodology software which is based on current scientific and engineering knowledge. There are uncertainties inherent in any loss estimation technique. Therefore, there may be significant differences between the modeled results contained in this report and the actual social and economic losses following a specific earthquake.

San Luis Range (So Margin) Debris Generated by Census Tract

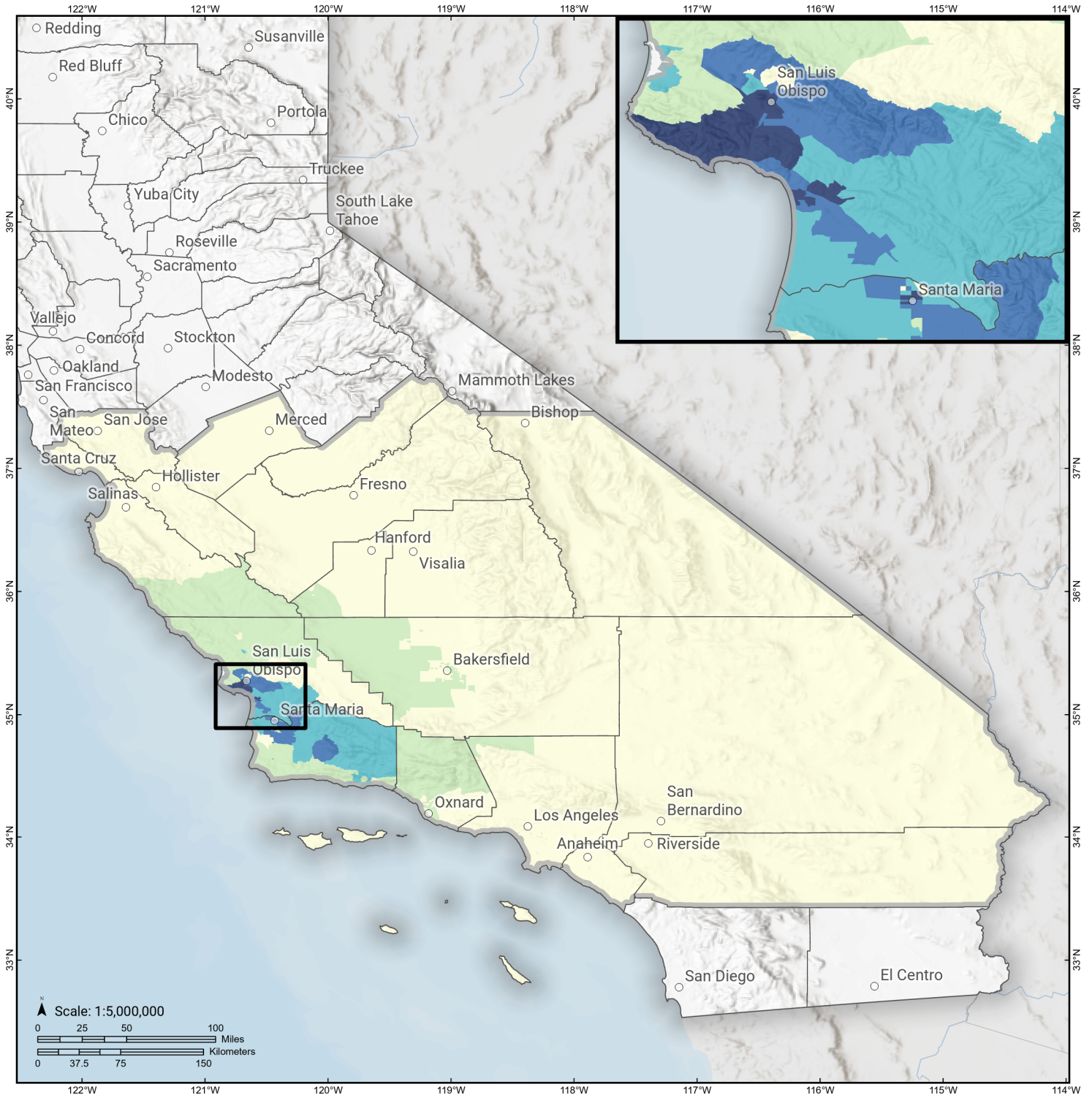


Study Region: San Luis Range (So Margin)
Scenario: sanluisrangesomargin_m7p49_se

Debris Generated (in tons)



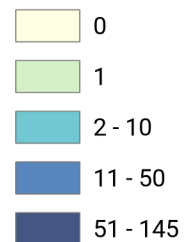
San Luis Range (So Margin) Displaced Households by Census Tract



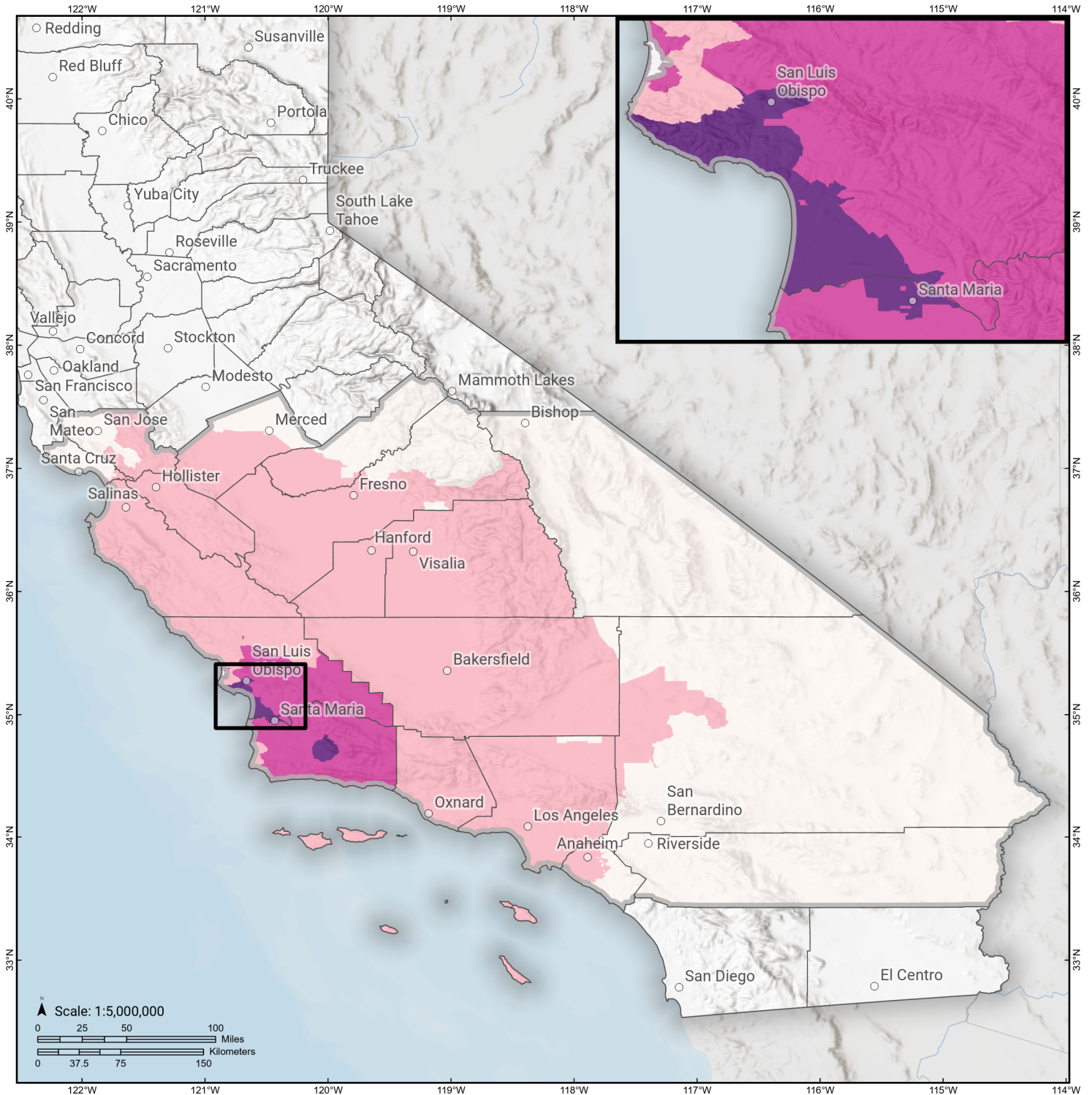
Study Region: San Luis Range (So Margin)
Scenario: sanluisrangesomargin_m7p49_se



Displaced Households

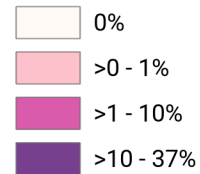


San Luis Range (So Margin) Loss Ratio by Census Tract



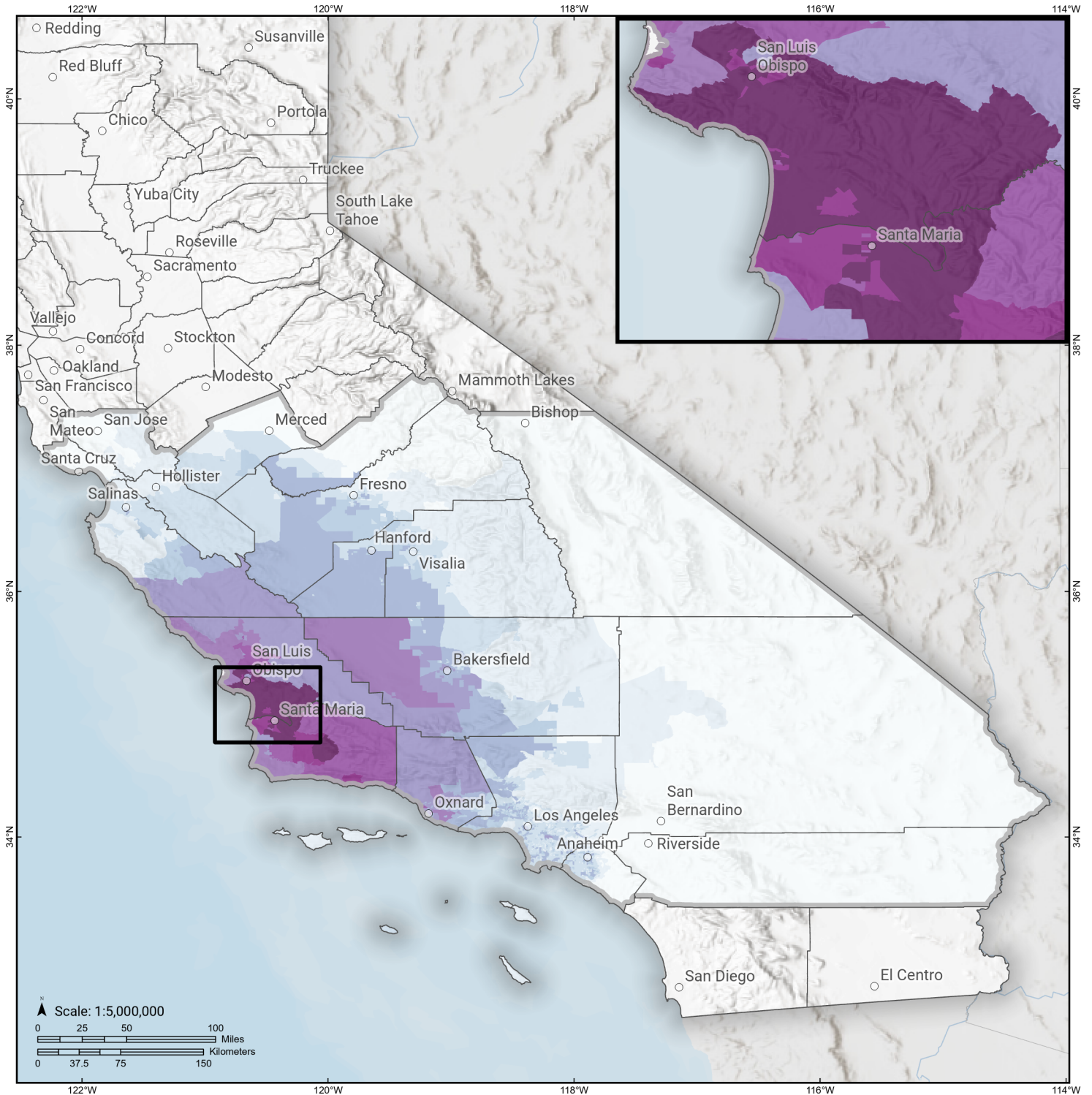
Study Region: San Luis Range (So Margin)
Scenario: sanluisrangesomargin_m7p49_se

Loss Ratio (ratio of building related economic loss to exposed value of buildings)



San Luis Range (So Margin)

Total Building Related Economic Loss by Census Tract



Study Region: San Luis Range (So Margin)
Scenario: sanluisrangesomargin_m7p49_se



Economic Loss (in thousands of USD \$)

0	>1,000 - 5,000
>0 - 10	>5,000 - 10,000
>10 - 50	>10,000 - 30,000
>50 - 100	>30,000 - 100,000
>100 - 1,000	>100,000 - 437,000

Building Damage by Count by General Occupancy

June 25, 2024

	# of Buildings					Total
	None	Slight	Moderate	Extensive	Complete	
California						
Fresno						
<i>Agriculture</i>	3,418	3	0	0	0	3,421
<i>Commercial</i>	21,046	8	0	0	0	21,054
<i>Education</i>	602	0	0	0	0	602
<i>Government</i>	291	0	0	0	0	291
<i>Industrial</i>	5,346	2	0	0	0	5,348
<i>Religion</i>	1,506	1	0	0	0	1,507
<i>Other Residential</i>	40,954	18	1	0	0	40,973
<i>Single Family</i>	226,422	3	0	0	0	226,425
Inyo						
<i>Agriculture</i>	32	0	0	0	0	32
<i>Commercial</i>	721	0	0	0	0	721
<i>Education</i>	41	0	0	0	0	41
<i>Government</i>	101	0	0	0	0	101
<i>Industrial</i>	257	0	0	0	0	257
<i>Religion</i>	57	0	0	0	0	57
<i>Other Residential</i>	4,050	0	0	0	0	4,050
<i>Single Family</i>	4,446	0	0	0	0	4,446
Kern						

	# of Buildings					Total
	None	Slight	Moderate	Extensive	Complete	
<i>Agriculture</i>	4,571	68	7	0	0	4,645
<i>Commercial</i>	15,407	148	12	0	0	15,567
<i>Education</i>	461	1	0	0	0	462
<i>Government</i>	439	3	0	0	0	443
<i>Industrial</i>	5,965	76	6	0	0	6,047
<i>Religion</i>	1,505	17	2	0	0	1,524
<i>Other Residential</i>	53,801	659	60	0	0	54,520
<i>Single Family</i>	204,236	902	1	0	0	205,139
Kings						
<i>Agriculture</i>	305	1	0	0	0	306
<i>Commercial</i>	2,310	8	0	0	0	2,318
<i>Education</i>	103	0	0	0	0	103
<i>Government</i>	72	0	0	0	0	72
<i>Industrial</i>	553	2	0	0	0	555
<i>Religion</i>	209	1	0	0	0	210
<i>Other Residential</i>	4,322	19	1	0	0	4,342
<i>Single Family</i>	36,223	22	0	0	0	36,245
Los Angeles						
<i>Agriculture</i>	2,029	3	0	0	0	2,032
<i>Commercial</i>	190,507	340	15	0	0	190,861
<i>Education</i>	5,483	3	0	0	0	5,486
<i>Government</i>	3,024	7	0	0	0	3,031
<i>Industrial</i>	53,065	59	3	0	0	53,126
<i>Religion</i>	10,634	16	1	0	0	10,651
<i>Other Residential</i>	481,404	258	9	0	0	481,671

	# of Buildings					Total
	None	Slight	Moderate	Extensive	Complete	
Madera						
Single Family	1,802,893	243	4	0	0	1,803,140
Agriculture	634	0	0	0	0	634
Commercial	2,905	0	0	0	0	2,905
Education	115	0	0	0	0	115
Government	111	0	0	0	0	111
Industrial	903	0	0	0	0	903
Religion	119	0	0	0	0	119
Other Residential	6,634	1	0	0	0	6,635
Single Family	38,912	0	0	0	0	38,912
Merced						
Agriculture	7,652	1	0	0	0	7,653
Commercial	4,754	0	0	0	0	4,754
Education	163	0	0	0	0	163
Government	171	0	0	0	0	171
Industrial	1,022	0	0	0	0	1,022
Religion	345	0	0	0	0	345
Other Residential	10,786	1	0	0	0	10,787
Single Family	63,598	0	0	0	0	63,598
Monterey						
Agriculture	1,805	9	1	0	0	1,815
Commercial	9,238	7	1	0	0	9,246
Education	239	0	0	0	0	239
Government	185	0	0	0	0	185
Industrial	1,848	2	0	0	0	1,850

	# of Buildings					Total
	None	Slight	Moderate	Extensive	Complete	
<i>Religion</i>	579	1	0	0	0	580
<i>Other Residential</i>	19,781	27	2	0	0	19,809
<i>Single Family</i>	90,869	7	0	0	0	90,876
Orange						
<i>Agriculture</i>	1,135	0	0	0	0	1,135
<i>Commercial</i>	68,317	22	1	0	0	68,340
<i>Education</i>	1,890	0	0	0	0	1,890
<i>Government</i>	649	1	0	0	0	650
<i>Industrial</i>	18,791	4	0	0	0	18,795
<i>Religion</i>	2,056	1	0	0	0	2,057
<i>Other Residential</i>	85,682	36	0	0	0	85,718
<i>Single Family</i>	706,208	4	0	0	0	706,212
Riverside						
<i>Agriculture</i>	1,713	0	0	0	0	1,713
<i>Commercial</i>	46,357	0	0	0	0	46,357
<i>Education</i>	990	0	0	0	0	990
<i>Government</i>	7,175	0	0	0	0	7,175
<i>Industrial</i>	6,409	0	0	0	0	6,409
<i>Religion</i>	1,319	0	0	0	0	1,319
<i>Other Residential</i>	122,799	0	0	0	0	122,799
<i>Single Family</i>	605,455	0	0	0	0	605,455
San Benito						
<i>Agriculture</i>	253	0	0	0	0	253
<i>Commercial</i>	1,080	0	0	0	0	1,080
<i>Education</i>	42	0	0	0	0	42

	# of Buildings					Total
	None	Slight	Moderate	Extensive	Complete	
<i>Government</i>	45	0	0	0	0	45
<i>Industrial</i>	326	0	0	0	0	326
<i>Religion</i>	64	0	0	0	0	64
<i>Other Residential</i>	1,375	0	0	0	0	1,375
<i>Single Family</i>	14,726	0	0	0	0	14,726
San Bernardino						
<i>Agriculture</i>	1,815	0	0	0	0	1,815
<i>Commercial</i>	40,041	0	0	0	0	40,041
<i>Education</i>	985	0	0	0	0	985
<i>Government</i>	1,238	0	0	0	0	1,238
<i>Industrial</i>	9,474	0	0	0	0	9,474
<i>Religion</i>	2,320	0	0	0	0	2,320
<i>Other Residential</i>	98,821	0	0	0	0	98,821
<i>Single Family</i>	525,367	0	0	0	0	525,367
San Luis Obispo						
<i>Agriculture</i>	223	105	65	20	7	421
<i>Commercial</i>	4,013	2,467	1,877	700	318	9,375
<i>Education</i>	109	49	22	2	1	182
<i>Government</i>	95	43	33	10	3	185
<i>Industrial</i>	1,139	679	529	163	46	2,556
<i>Religion</i>	160	93	74	23	10	360
<i>Other Residential</i>	7,881	6,279	3,204	2,015	837	20,216
<i>Single Family</i>	44,818	32,139	8,527	152	2	85,639
Santa Barbara						
<i>Agriculture</i>	194	164	87	16	3	464

	# of Buildings					Total
	None	Slight	Moderate	Extensive	Complete	
<i>Commercial</i>	4,805	3,148	1,504	300	64	9,820
<i>Education</i>	209	67	20	2	0	299
<i>Government</i>	134	71	29	5	1	239
<i>Industrial</i>	1,235	938	535	106	25	2,840
<i>Religion</i>	292	193	105	25	5	621
<i>Other Residential</i>	9,868	7,304	4,016	2,159	764	24,111
<i>Single Family</i>	52,183	41,498	5,256	43	2	98,982
Santa Clara						
<i>Agriculture</i>	895	0	0	0	0	895
<i>Commercial</i>	35,469	0	0	0	0	35,469
<i>Education</i>	1,173	0	0	0	0	1,173
<i>Government</i>	502	0	0	0	0	502
<i>Industrial</i>	9,433	0	0	0	0	9,433
<i>Religion</i>	1,540	0	0	0	0	1,540
<i>Other Residential</i>	59,160	0	0	0	0	59,160
<i>Single Family</i>	427,219	0	0	0	0	427,219
Santa Cruz						
<i>Agriculture</i>	840	0	0	0	0	840
<i>Commercial</i>	6,694	0	0	0	0	6,694
<i>Education</i>	225	0	0	0	0	225
<i>Government</i>	127	0	0	0	0	127
<i>Industrial</i>	1,819	0	0	0	0	1,819
<i>Religion</i>	359	0	0	0	0	359
<i>Other Residential</i>	14,892	0	0	0	0	14,892

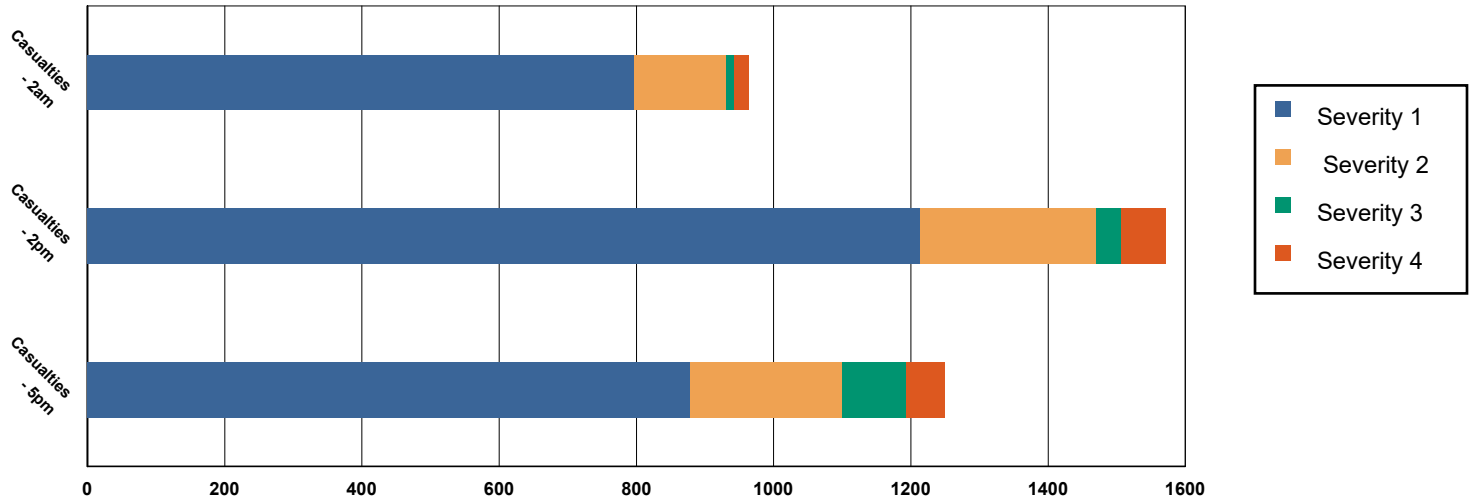
	# of Buildings					Total
	None	Slight	Moderate	Extensive	Complete	
Tulare						
<i>Single Family</i>	68,870	0	0	0	0	68,870
<i>Agriculture</i>	3,552	3	0	0	0	3,555
<i>Commercial</i>	8,869	4	0	0	0	8,873
<i>Education</i>	269	0	0	0	0	269
<i>Government</i>	461	0	0	0	0	461
<i>Industrial</i>	2,147	1	0	0	0	2,148
<i>Religion</i>	827	0	0	0	0	827
<i>Other Residential</i>	20,000	21	1	0	0	20,022
<i>Single Family</i>	112,032	2	0	0	0	112,034
Ventura						
<i>Agriculture</i>	580	16	2	0	0	598
<i>Commercial</i>	14,519	392	41	1	0	14,953
<i>Education</i>	492	4	0	0	0	497
<i>Government</i>	973	26	2	0	0	1,001
<i>Industrial</i>	5,885	191	21	0	0	6,097
<i>Religion</i>	1,158	26	3	0	0	1,187
<i>Other Residential</i>	24,861	1,179	121	1	0	26,163
<i>Single Family</i>	201,365	2,595	9	0	0	203,968
Total	6,981,659	102,712	26,211	5,745	2,089	7,118,415
Region Total	6,981,659	102,712	26,211	5,745	2,089	7,118,415

Totals only reflect data for those census tracts/blocks included in the user's study region and will reflect the entire county/state only if all of the census blocks for that county/states were selected at the time of study region creation.

Casualties Summary Report

June 25, 2024

Region Total Casualties



Injury Severity Level

Severity 1	Severity 2	Severity 3	Severity 4	Total
------------	------------	------------	------------	-------

California

Fresno

Casualties - 2am

	Severity 1	Severity 2	Severity 3	Severity 4	Total
<i>Hotels</i>	0	0	0	0	0
<i>Educational</i>	0	0	0	0	0
<i>Industrial</i>	0	0	0	0	0
<i>Commercial</i>	0	0	0	0	0
<i>Other-Residential</i>	0	0	0	0	0
<i>Single Family</i>	0	0	0	0	0
<i>Commuting</i>	0	0	0	0	0
Total Casualties - 2am	0	0	0	0	0

Casualties - 2pm

<i>Commercial</i>	0	0	0	0	0
<i>Other-Residential</i>	0	0	0	0	0
<i>Industrial</i>	0	0	0	0	0
<i>Single Family</i>	0	0	0	0	0
<i>Hotels</i>	0	0	0	0	0
<i>Commuting</i>	0	0	0	0	0
<i>Educational</i>	0	0	0	0	0

	Injury Severity Level				Total
	Severity 1	Severity 2	Severity 3	Severity 4	
California					
Fresno					
Total Casualties - 2pm	0	0	0	0	0
Casualties - 5pm					
<i>Educational</i>	0	0	0	0	0
<i>Commuting</i>	0	0	0	0	0
<i>Hotels</i>	0	0	0	0	0
<i>Industrial</i>	0	0	0	0	0
<i>Single Family</i>	0	0	0	0	0
<i>Other-Residential</i>	0	0	0	0	0
<i>Commercial</i>	0	0	0	0	0
Total Casualties - 5pm	0	0	0	0	0
Inyo					
Casualties - 2am					
<i>Single Family</i>	0	0	0	0	0
<i>Commercial</i>	0	0	0	0	0
<i>Commuting</i>	0	0	0	0	0
<i>Educational</i>	0	0	0	0	0
<i>Hotels</i>	0	0	0	0	0
<i>Other-Residential</i>	0	0	0	0	0
<i>Industrial</i>	0	0	0	0	0
Total Casualties - 2am	0	0	0	0	0
Casualties - 2pm					
<i>Industrial</i>	0	0	0	0	0
<i>Hotels</i>	0	0	0	0	0
<i>Commercial</i>	0	0	0	0	0
<i>Other-Residential</i>	0	0	0	0	0
<i>Single Family</i>	0	0	0	0	0
<i>Commuting</i>	0	0	0	0	0
<i>Educational</i>	0	0	0	0	0
Total Casualties - 2pm	0	0	0	0	0
Casualties - 5pm					
<i>Other-Residential</i>	0	0	0	0	0
<i>Single Family</i>	0	0	0	0	0
<i>Commercial</i>	0	0	0	0	0
<i>Educational</i>	0	0	0	0	0
<i>Hotels</i>	0	0	0	0	0
<i>Commuting</i>	0	0	0	0	0
<i>Industrial</i>	0	0	0	0	0
Total Casualties - 5pm	0	0	0	0	0
Kern					
Casualties - 2am					
<i>Commercial</i>	0	0	0	0	0

	Injury Severity Level				Total
	Severity 1	Severity 2	Severity 3	Severity 4	
California					
Kern					
Casualties - 2am					
<i>Commuting</i>	0	0	0	0	0
<i>Educational</i>	0	0	0	0	0
<i>Single Family</i>	1	0	0	0	1
<i>Other-Residential</i>	2	0	0	0	2
<i>Hotels</i>	0	0	0	0	0
<i>Industrial</i>	0	0	0	0	0
Total Casualties - 2am	3	0	0	0	3
Casualties - 2pm					
<i>Educational</i>	1	0	0	0	1
<i>Commuting</i>	0	0	0	0	0
<i>Single Family</i>	0	0	0	0	0
<i>Hotels</i>	0	0	0	0	0
<i>Other-Residential</i>	0	0	0	0	1
<i>Commercial</i>	2	0	0	0	2
<i>Industrial</i>	0	0	0	0	0
Total Casualties - 2pm	4	0	0	0	4
Casualties - 5pm					
<i>Single Family</i>	0	0	0	0	0
<i>Commercial</i>	2	0	0	0	2
<i>Other-Residential</i>	1	0	0	0	1
<i>Commuting</i>	0	0	0	0	0
<i>Educational</i>	0	0	0	0	0
<i>Hotels</i>	0	0	0	0	0
<i>Industrial</i>	0	0	0	0	0
Total Casualties - 5pm	3	0	0	0	3
Kings					
Casualties - 2am					
<i>Industrial</i>	0	0	0	0	0
<i>Other-Residential</i>	0	0	0	0	0
<i>Educational</i>	0	0	0	0	0
<i>Commuting</i>	0	0	0	0	0
<i>Commercial</i>	0	0	0	0	0
<i>Single Family</i>	0	0	0	0	0
<i>Hotels</i>	0	0	0	0	0
Total Casualties - 2am	0	0	0	0	0
Casualties - 2pm					
<i>Single Family</i>	0	0	0	0	0
<i>Other-Residential</i>	0	0	0	0	0
<i>Commercial</i>	0	0	0	0	0
<i>Educational</i>	0	0	0	0	0
<i>Commuting</i>	0	0	0	0	0

	Injury Severity Level				Total
	Severity 1	Severity 2	Severity 3	Severity 4	
California					
Kings					
Casualties - 2pm					
<i>Hotels</i>	0	0	0	0	0
<i>Industrial</i>	0	0	0	0	0
Total Casualties - 2pm	0	0	0	0	0
Casualties - 5pm					
<i>Single Family</i>	0	0	0	0	0
<i>Commercial</i>	0	0	0	0	0
<i>Commuting</i>	0	0	0	0	0
<i>Other-Residential</i>	0	0	0	0	0
<i>Educational</i>	0	0	0	0	0
<i>Hotels</i>	0	0	0	0	0
<i>Industrial</i>	0	0	0	0	0
Total Casualties - 5pm	0	0	0	0	0
Los Angeles					
Casualties - 2am					
<i>Hotels</i>	0	0	0	0	0
<i>Industrial</i>	0	0	0	0	0
<i>Educational</i>	0	0	0	0	0
<i>Single Family</i>	0	0	0	0	0
<i>Commuting</i>	0	0	0	0	0
<i>Other-Residential</i>	2	0	0	0	2
<i>Commercial</i>	0	0	0	0	0
Total Casualties - 2am	3	0	0	0	3
Casualties - 2pm					
<i>Industrial</i>	0	0	0	0	0
<i>Other-Residential</i>	1	0	0	0	1
<i>Commercial</i>	4	0	0	0	4
<i>Commuting</i>	0	0	0	0	0
<i>Educational</i>	1	0	0	0	1
<i>Single Family</i>	0	0	0	0	0
<i>Hotels</i>	0	0	0	0	0
Total Casualties - 2pm	6	0	0	0	6
Casualties - 5pm					
<i>Other-Residential</i>	1	0	0	0	1
<i>Industrial</i>	0	0	0	0	0
<i>Commuting</i>	0	0	0	0	0
<i>Single Family</i>	0	0	0	0	0
<i>Commercial</i>	3	0	0	0	3
<i>Hotels</i>	0	0	0	0	0
<i>Educational</i>	0	0	0	0	0
Total Casualties - 5pm	4	0	0	0	4

	Injury Severity Level				Total
	Severity 1	Severity 2	Severity 3	Severity 4	
California					
Madera					
Casualties - 2am					
<i>Hotels</i>	0	0	0	0	0
<i>Educational</i>	0	0	0	0	0
<i>Single Family</i>	0	0	0	0	0
<i>Commuting</i>	0	0	0	0	0
<i>Industrial</i>	0	0	0	0	0
<i>Commercial</i>	0	0	0	0	0
<i>Other-Residential</i>	0	0	0	0	0
Total Casualties - 2am	0	0	0	0	0
Casualties - 2pm					
<i>Industrial</i>	0	0	0	0	0
<i>Commercial</i>	0	0	0	0	0
<i>Other-Residential</i>	0	0	0	0	0
<i>Commuting</i>	0	0	0	0	0
<i>Single Family</i>	0	0	0	0	0
<i>Hotels</i>	0	0	0	0	0
<i>Educational</i>	0	0	0	0	0
Total Casualties - 2pm	0	0	0	0	0
Casualties - 5pm					
<i>Industrial</i>	0	0	0	0	0
<i>Commercial</i>	0	0	0	0	0
<i>Single Family</i>	0	0	0	0	0
<i>Educational</i>	0	0	0	0	0
<i>Other-Residential</i>	0	0	0	0	0
<i>Commuting</i>	0	0	0	0	0
<i>Hotels</i>	0	0	0	0	0
Total Casualties - 5pm	0	0	0	0	0
Merced					
Casualties - 2am					
<i>Hotels</i>	0	0	0	0	0
<i>Industrial</i>	0	0	0	0	0
<i>Commercial</i>	0	0	0	0	0
<i>Single Family</i>	0	0	0	0	0
<i>Other-Residential</i>	0	0	0	0	0
<i>Educational</i>	0	0	0	0	0
<i>Commuting</i>	0	0	0	0	0
Total Casualties - 2am	0	0	0	0	0
Casualties - 2pm					
<i>Other-Residential</i>	0	0	0	0	0
<i>Industrial</i>	0	0	0	0	0
<i>Commercial</i>	0	0	0	0	0
<i>Commuting</i>	0	0	0	0	0

	Injury Severity Level				Total
	Severity 1	Severity 2	Severity 3	Severity 4	
California					
Merced					
Casualties - 2pm					
<i>Hotels</i>	0	0	0	0	0
<i>Educational</i>	0	0	0	0	0
<i>Single Family</i>	0	0	0	0	0
Total Casualties - 2pm	0	0	0	0	0
Casualties - 5pm					
<i>Industrial</i>	0	0	0	0	0
<i>Hotels</i>	0	0	0	0	0
<i>Educational</i>	0	0	0	0	0
<i>Commuting</i>	0	0	0	0	0
<i>Single Family</i>	0	0	0	0	0
<i>Commercial</i>	0	0	0	0	0
<i>Other-Residential</i>	0	0	0	0	0
Total Casualties - 5pm	0	0	0	0	0
Monterey					
Casualties - 2am					
<i>Other-Residential</i>	0	0	0	0	0
<i>Commuting</i>	0	0	0	0	0
<i>Commercial</i>	0	0	0	0	0
<i>Single Family</i>	0	0	0	0	0
<i>Hotels</i>	0	0	0	0	0
<i>Educational</i>	0	0	0	0	0
<i>Industrial</i>	0	0	0	0	0
Total Casualties - 2am	0	0	0	0	0
Casualties - 2pm					
<i>Commuting</i>	0	0	0	0	0
<i>Commercial</i>	0	0	0	0	0
<i>Single Family</i>	0	0	0	0	0
<i>Hotels</i>	0	0	0	0	0
<i>Educational</i>	0	0	0	0	0
<i>Industrial</i>	0	0	0	0	0
<i>Other-Residential</i>	0	0	0	0	0
Total Casualties - 2pm	0	0	0	0	0
Casualties - 5pm					
<i>Commercial</i>	0	0	0	0	0
<i>Other-Residential</i>	0	0	0	0	0
<i>Industrial</i>	0	0	0	0	0
<i>Hotels</i>	0	0	0	0	0
<i>Educational</i>	0	0	0	0	0
<i>Commuting</i>	0	0	0	0	0
<i>Single Family</i>	0	0	0	0	0

	Injury Severity Level				Total
	Severity 1	Severity 2	Severity 3	Severity 4	
California					
Monterey					
Total Casualties - 5pm	0	0	0	0	0
Orange					
Casualties - 2am					
<i>Hotels</i>	0	0	0	0	0
<i>Commuting</i>	0	0	0	0	0
<i>Educational</i>	0	0	0	0	0
<i>Industrial</i>	0	0	0	0	0
<i>Other-Residential</i>	0	0	0	0	0
<i>Commercial</i>	0	0	0	0	0
<i>Single Family</i>	0	0	0	0	0
Total Casualties - 2am	0	0	0	0	0
Casualties - 2pm					
<i>Industrial</i>	0	0	0	0	0
<i>Other-Residential</i>	0	0	0	0	0
<i>Commuting</i>	0	0	0	0	0
<i>Commercial</i>	0	0	0	0	0
<i>Single Family</i>	0	0	0	0	0
<i>Hotels</i>	0	0	0	0	0
<i>Educational</i>	0	0	0	0	0
Total Casualties - 2pm	0	0	0	0	0
Casualties - 5pm					
<i>Hotels</i>	0	0	0	0	0
<i>Educational</i>	0	0	0	0	0
<i>Commuting</i>	0	0	0	0	0
<i>Single Family</i>	0	0	0	0	0
<i>Commercial</i>	0	0	0	0	0
<i>Other-Residential</i>	0	0	0	0	0
<i>Industrial</i>	0	0	0	0	0
Total Casualties - 5pm	0	0	0	0	0
Riverside					
Casualties - 2am					
<i>Industrial</i>	0	0	0	0	0
<i>Commercial</i>	0	0	0	0	0
<i>Other-Residential</i>	0	0	0	0	0
<i>Educational</i>	0	0	0	0	0
<i>Commuting</i>	0	0	0	0	0
<i>Single Family</i>	0	0	0	0	0
<i>Hotels</i>	0	0	0	0	0
Total Casualties - 2am	0	0	0	0	0
Casualties - 2pm					
<i>Commercial</i>	0	0	0	0	0

	Injury Severity Level				Total
	Severity 1	Severity 2	Severity 3	Severity 4	
California					
Riverside					
Casualties - 2pm					
<i>Other-Residential</i>	0	0	0	0	0
<i>Educational</i>	0	0	0	0	0
<i>Single Family</i>	0	0	0	0	0
<i>Commuting</i>	0	0	0	0	0
<i>Hotels</i>	0	0	0	0	0
<i>Industrial</i>	0	0	0	0	0
Total Casualties - 2pm	0	0	0	0	0
Casualties - 5pm					
<i>Industrial</i>	0	0	0	0	0
<i>Other-Residential</i>	0	0	0	0	0
<i>Educational</i>	0	0	0	0	0
<i>Single Family</i>	0	0	0	0	0
<i>Hotels</i>	0	0	0	0	0
<i>Commercial</i>	0	0	0	0	0
<i>Commuting</i>	0	0	0	0	0
Total Casualties - 5pm	0	0	0	0	0
San Benito					
Casualties - 2am					
<i>Other-Residential</i>	0	0	0	0	0
<i>Commercial</i>	0	0	0	0	0
<i>Commuting</i>	0	0	0	0	0
<i>Hotels</i>	0	0	0	0	0
<i>Educational</i>	0	0	0	0	0
<i>Single Family</i>	0	0	0	0	0
<i>Industrial</i>	0	0	0	0	0
Total Casualties - 2am	0	0	0	0	0
Casualties - 2pm					
<i>Hotels</i>	0	0	0	0	0
<i>Educational</i>	0	0	0	0	0
<i>Industrial</i>	0	0	0	0	0
<i>Other-Residential</i>	0	0	0	0	0
<i>Commercial</i>	0	0	0	0	0
<i>Commuting</i>	0	0	0	0	0
<i>Single Family</i>	0	0	0	0	0
Total Casualties - 2pm	0	0	0	0	0
Casualties - 5pm					
<i>Commuting</i>	0	0	0	0	0
<i>Commercial</i>	0	0	0	0	0
<i>Other-Residential</i>	0	0	0	0	0
<i>Single Family</i>	0	0	0	0	0
<i>Industrial</i>	0	0	0	0	0

	Injury Severity Level				Total
	Severity 1	Severity 2	Severity 3	Severity 4	
California					
San Benito					
Casualties - 5pm					
<i>Educational</i>	0	0	0	0	0
<i>Hotels</i>	0	0	0	0	0
Total Casualties - 5pm	0	0	0	0	0
San Bernardino					
Casualties - 2am					
<i>Hotels</i>	0	0	0	0	0
<i>Single Family</i>	0	0	0	0	0
<i>Commercial</i>	0	0	0	0	0
<i>Commuting</i>	0	0	0	0	0
<i>Educational</i>	0	0	0	0	0
<i>Other-Residential</i>	0	0	0	0	0
<i>Industrial</i>	0	0	0	0	0
Total Casualties - 2am	0	0	0	0	0
Casualties - 2pm					
<i>Industrial</i>	0	0	0	0	0
<i>Hotels</i>	0	0	0	0	0
<i>Commuting</i>	0	0	0	0	0
<i>Other-Residential</i>	0	0	0	0	0
<i>Educational</i>	0	0	0	0	0
<i>Single Family</i>	0	0	0	0	0
<i>Commercial</i>	0	0	0	0	0
Total Casualties - 2pm	0	0	0	0	0
Casualties - 5pm					
<i>Other-Residential</i>	0	0	0	0	0
<i>Commercial</i>	0	0	0	0	0
<i>Single Family</i>	0	0	0	0	0
<i>Educational</i>	0	0	0	0	0
<i>Hotels</i>	0	0	0	0	0
<i>Commuting</i>	0	0	0	0	0
<i>Industrial</i>	0	0	0	0	0
Total Casualties - 5pm	0	0	0	0	0
San Luis Obispo					
Casualties - 2am					
<i>Commercial</i>	8	2	0	1	11
<i>Other-Residential</i>	256	56	6	10	328
<i>Industrial</i>	6	1	0	0	8
<i>Single Family</i>	91	7	0	0	98
<i>Commuting</i>	0	0	0	0	1
<i>Educational</i>	0	0	0	0	0
<i>Hotels</i>	1	0	0	0	1

	Injury Severity Level				Total
	Severity 1	Severity 2	Severity 3	Severity 4	
California					
San Luis Obispo					
Total Casualties - 2am	362	66	6	12	446
Casualties - 2pm					
Single Family	30	2	0	0	33
Educational	78	14	2	3	97
Other-Residential	85	19	2	4	109
Hotels	0	0	0	0	0
Commuting	1	1	2	0	5
Commercial	498	130	20	39	687
Industrial	42	10	1	3	57
Total Casualties - 2pm	734	177	27	49	987
Casualties - 5pm					
Industrial	27	6	1	2	35
Other-Residential	95	21	2	4	122
Commuting	17	24	39	8	88
Single Family	34	3	0	0	37
Commercial	313	82	13	24	432
Hotels	0	0	0	0	0
Educational	14	1	0	0	16
Total Casualties - 5pm	500	137	55	38	729
Santa Barbara					
Casualties - 2am					
Industrial	3	1	0	0	4
Commercial	3	1	0	0	4
Other-Residential	311	62	5	9	387
Commuting	0	0	0	0	0
Educational	0	0	0	0	0
Single Family	103	5	0	0	108
Hotels	0	0	0	0	0
Total Casualties - 2am	420	68	5	9	503
Casualties - 2pm					
Commercial	218	40	5	9	272
Single Family	31	2	0	0	33
Other-Residential	92	18	2	3	115
Commuting	1	1	2	0	4
Educational	92	14	1	3	110
Hotels	0	0	0	0	0
Industrial	25	4	0	1	30
Total Casualties - 2pm	458	79	10	16	563
Casualties - 5pm					
Other-Residential	113	23	2	3	141
Single Family	38	2	0	0	40

	Injury Severity Level				Total
	Severity 1	Severity 2	Severity 3	Severity 4	
California					
Santa Barbara					
Casualties - 5pm					
<i>Commercial</i>	161	30	4	7	202
<i>Commuting</i>	14	22	33	7	75
<i>Educational</i>	22	3	0	1	27
<i>Industrial</i>	16	3	0	0	19
<i>Hotels</i>	0	0	0	0	0
Total Casualties - 5pm	364	83	39	18	504
Santa Clara					
Casualties - 2am					
<i>Commuting</i>	0	0	0	0	0
<i>Educational</i>	0	0	0	0	0
<i>Single Family</i>	0	0	0	0	0
<i>Hotels</i>	0	0	0	0	0
<i>Industrial</i>	0	0	0	0	0
<i>Commercial</i>	0	0	0	0	0
<i>Other-Residential</i>	0	0	0	0	0
Total Casualties - 2am	0	0	0	0	0
Casualties - 2pm					
<i>Industrial</i>	0	0	0	0	0
<i>Commercial</i>	0	0	0	0	0
<i>Single Family</i>	0	0	0	0	0
<i>Commuting</i>	0	0	0	0	0
<i>Hotels</i>	0	0	0	0	0
<i>Other-Residential</i>	0	0	0	0	0
<i>Educational</i>	0	0	0	0	0
Total Casualties - 2pm	0	0	0	0	0
Casualties - 5pm					
<i>Industrial</i>	0	0	0	0	0
<i>Hotels</i>	0	0	0	0	0
<i>Other-Residential</i>	0	0	0	0	0
<i>Commercial</i>	0	0	0	0	0
<i>Commuting</i>	0	0	0	0	0
<i>Single Family</i>	0	0	0	0	0
<i>Educational</i>	0	0	0	0	0
Total Casualties - 5pm	0	0	0	0	0
Santa Cruz					
Casualties - 2am					
<i>Hotels</i>	0	0	0	0	0
<i>Educational</i>	0	0	0	0	0
<i>Industrial</i>	0	0	0	0	0
<i>Other-Residential</i>	0	0	0	0	0
<i>Single Family</i>	0	0	0	0	0

	Injury Severity Level				Total
	Severity 1	Severity 2	Severity 3	Severity 4	
California					
Santa Cruz					
Casualties - 2am					
Commercial	0	0	0	0	0
Commuting	0	0	0	0	0
Total Casualties - 2am	0	0	0	0	0
Casualties - 2pm					
Industrial	0	0	0	0	0
Other-Residential	0	0	0	0	0
Commercial	0	0	0	0	0
Commuting	0	0	0	0	0
Educational	0	0	0	0	0
Single Family	0	0	0	0	0
Hotels	0	0	0	0	0
Total Casualties - 2pm	0	0	0	0	0
Casualties - 5pm					
Industrial	0	0	0	0	0
Other-Residential	0	0	0	0	0
Commercial	0	0	0	0	0
Commuting	0	0	0	0	0
Single Family	0	0	0	0	0
Hotels	0	0	0	0	0
Educational	0	0	0	0	0
Total Casualties - 5pm	0	0	0	0	0
Tulare					
Casualties - 2am					
Commercial	0	0	0	0	0
Commuting	0	0	0	0	0
Single Family	0	0	0	0	0
Educational	0	0	0	0	0
Hotels	0	0	0	0	0
Industrial	0	0	0	0	0
Other-Residential	0	0	0	0	0
Total Casualties - 2am	0	0	0	0	0
Casualties - 2pm					
Industrial	0	0	0	0	0
Hotels	0	0	0	0	0
Commercial	0	0	0	0	0
Other-Residential	0	0	0	0	0
Educational	0	0	0	0	0
Commuting	0	0	0	0	0
Single Family	0	0	0	0	0
Total Casualties - 2pm	0	0	0	0	0

	Injury Severity Level				Total
	Severity 1	Severity 2	Severity 3	Severity 4	
California					
Tulare					
Casualties - 5pm					
<i>Other-Residential</i>	0	0	0	0	0
<i>Commercial</i>	0	0	0	0	0
<i>Single Family</i>	0	0	0	0	0
<i>Hotels</i>	0	0	0	0	0
<i>Commuting</i>	0	0	0	0	0
<i>Educational</i>	0	0	0	0	0
<i>Industrial</i>	0	0	0	0	0
Total Casualties - 5pm	0	0	0	0	0
Ventura					
Casualties - 2am					
<i>Educational</i>	0	0	0	0	0
<i>Commuting</i>	0	0	0	0	0
<i>Single Family</i>	4	0	0	0	4
<i>Hotels</i>	0	0	0	0	0
<i>Industrial</i>	0	0	0	0	0
<i>Commercial</i>	0	0	0	0	0
<i>Other-Residential</i>	4	0	0	0	4
Total Casualties - 2am	8	0	0	0	9
Casualties - 2pm					
<i>Industrial</i>	1	0	0	0	1
<i>Educational</i>	2	0	0	0	2
<i>Commuting</i>	0	0	0	0	0
<i>Hotels</i>	0	0	0	0	0
<i>Other-Residential</i>	1	0	0	0	1
<i>Commercial</i>	5	0	0	0	6
<i>Single Family</i>	1	0	0	0	1
Total Casualties - 2pm	10	0	0	0	11
Casualties - 5pm					
<i>Commuting</i>	0	0	0	0	0
<i>Other-Residential</i>	1	0	0	0	1
<i>Commercial</i>	4	0	0	0	4
<i>Hotels</i>	0	0	0	0	0
<i>Educational</i>	0	0	0	0	0
<i>Single Family</i>	1	0	0	0	2
<i>Industrial</i>	1	0	0	0	1
Total Casualties - 5pm	8	0	0	0	8
Region Total	NA	NA	NA	NA	NA

Injury Severity Level

Severity 1

Severity 2

Severity 3

Severity 4

Total

Totals only reflect data for those census tracts/blocks included in the user's study region and will reflect the entire county/state only if all of the census blocks for that county/states were selected at the time of study region creation.

Debris Summary Report

June 25, 2024

All values are in thousands of tons.

	Brick, Wood & Others	Concrete & Steel	Total
California			
Fresno	0	0	0
Inyo	0	0	0
Kern	4	2	6
Kings	0	0	0
Los Angeles	6	1	8
Madera	0	0	0
Merced	0	0	0
Monterey	0	0	0
Orange	0	0	0
Riverside	0	0	0
San Benito	0	0	0
San Bernardino	0	0	0
San Luis Obispo	294	517	811
Santa Barbara	221	334	555
Santa Clara	0	0	0
Santa Cruz	0	0	0
Tulare	0	0	0
Ventura	8	6	14

	Brick, Wood & Others	Concrete & Steel	Total
Total	534	861	1,395
Region Total	534	861	1,395

Totals only reflect data for those census tracts/blocks included in the user's study region and will reflect the entire county/state only if all of the census blocks for that county/states were selected at the time of study region creation.

Direct Economic Losses For Buildings

June 25, 2024

All values are in thousands of dollars

	Capital Stock Losses				Loss Ratio %	Income Losses				Total Loss
	Cost Structural Damage	Cost Non-struct. Damage	Cost Contents Damage	Inventory Loss		Relocation Loss	Capital Related Loss	Wages Losses	Rental Income Loss	
California										
Inyo	0	0	0	0	0.00	0	0	0	0	0
San Bernardino	0	1	0	0	0.00	0	0	0	0	1
Riverside	0	0	0	0	0.00	0	0	0	0	0
Fresno	150	3,773	2,543	507	0.00	15	20	22	32	7,060
Kings	167	2,652	1,494	217	0.01	23	31	37	34	4,654
San Luis Obispo	539,513	2,678,422	1,155,769	98,085	5.14	267,303	187,121	218,152	159,004	5,303,369
Tulare	102	2,434	1,614	427	0.00	8	9	11	14	4,619
Madera	8	288	195	36	0.00	0	0	1	1	530
San Benito	1	68	47	6	0.00	0	0	0	0	123

	Capital Stock Losses				Loss Ratio %	Income Losses				Total Loss
	Cost Structural Damage	Cost Non-struct. Damage	Cost Contents Damage	Inventory Loss		Relocation Loss	Capital Related Loss	Wages Losses	Rental Income Loss	
Merced	11	166	116	35	0.00	1	0	0	1	330
Santa Barbara	423,478	2,179,237	950,106	92,083	3.32	194,287	110,432	143,614	102,312	4,195,550
Santa Clara	0	4	3	1	0.00	0	0	0	0	8
Kern	6,234	68,776	39,069	7,216	0.05	869	805	910	950	124,828
Ventura	13,771	140,556	71,633	9,137	0.10	2,526	2,508	3,071	2,858	246,060
Monterey	207	2,187	1,418	439	0.00	27	20	19	30	4,349
Orange	310	7,742	5,063	585	0.00	37	69	90	144	14,040
Santa Cruz	1	11	8	2	0.00	0	0	0	0	22
Los Angeles	5,567	58,783	33,787	3,423	0.00	751	1,137	1,352	2,078	106,878
Total	989,520	5,145,101	2,262,864	212,198	0.48	465,848	302,154	367,278	267,458	10,012,421
Region Total	989,520	5,145,101	2,262,864	212,198	0.48	465,848	302,154	367,278	267,458	10,012,421

Totals only reflect data for those census tracts/blocks included in the user's study region and will reflect the entire county/state only if all of the census blocks for that county/states were selected at the time of study region creation.

Direct Economic Loss For Transportation

June 25, 2024

All values are in thousands of dollars

	Highway	Railway	Light Rail	Bus Facility	Ports	Ferries	Airport	Total
California								
Fresno								
Segments	0	0	0					0
Bridges	31	0	0					31
Tunnels	0	0	0					0
Facilities		231	0	21	0	0	1,140	1,392
Total	31	231	0	21	0	0	1,140	1,423
Inyo								
Segments	0	0	0					0
Bridges	0	0	0					0
Tunnels	0	0	0					0
Facilities		0	0	0	0	0	23	23
Total	0	0	0	0	0	0	23	23
Kern								
Segments	0	0	0					0
Bridges	316	4	0					320
Tunnels	0	0	0					0
Facilities		681	0	150	0	0	2,139	2,970

	Highway	Railway	Light Rail	Bus Facility	Ports	Ferries	Airport	Total
Total	316	685	0	150	0	0	2,139	3,290
Kings								
Segments	0	0	0					0
Bridges	13	0	0					13
Tunnels	0	0	0					0
Facilities		128	0	41	0	0	359	529
Total	13	128	0	41	0	0	359	542
Los Angeles								
Segments	0	0	0					0
Bridges	1,039	0	0					1,039
Tunnels	0	0	0					0
Facilities		1,205	22,087	297	7,317	94	24,808	55,808
Total	1,039	1,205	22,087	297	7,317	94	24,808	56,846
Madera								
Segments	0	0	0					0
Bridges	3	0	0					3
Tunnels	0	0	0					0
Facilities		26	0	21	0	0	57	103
Total	3	26	0	21	0	0	57	106
Merced								
Segments	0	0	0					0
Bridges	1	0	0					1
Tunnels	0	0	0					0
Facilities		6	0	2	0	0	71	79

	Highway	Railway	Light Rail	Bus Facility	Ports	Ferries	Airport	Total
Total	1	6	0	2	0	0	71	80
Monterey								
Segments	0	0	0					0
Bridges	61	1	0					62
Tunnels	0	0	0					0
Facilities		26	0	208	12	0	821	1,067
Total	61	27	0	208	12	0	821	1,129
Orange								
Segments	0	0	0					0
Bridges	80	0	0					80
Tunnels	0	0	0					0
Facilities		137	0	0	424	40	3,988	4,589
Total	80	137	0	0	424	40	3,988	4,670
Riverside								
Segments	0	0	0					0
Bridges	1	0	0					1
Tunnels	0	0	0					0
Facilities		11	0	9	0	0	54	75
Total	1	11	0	9	0	0	54	76
San Benito								
Segments	0	0	0					0
Bridges	0	0	0					0
Tunnels	0	0	0					0
Facilities		0	0	0	0	0	102	102

	Highway	Railway	Light Rail	Bus Facility	Ports	Ferries	Airport	Total
Total	0	0	0	0	0	0	102	102
San Bernardino								
Segments	0	0	0					0
Bridges	3	0	0					3
Tunnels	0	0	0					0
Facilities		46	0	5	0	0	292	343
Total	3	46	0	5	0	0	292	346
San Luis Obispo								
Segments	0	0	0					0
Bridges	69,293	13,214	0					82,507
Tunnels	0	0	0					0
Facilities		2,684	0	1,419	8,421	0	17,031	29,555
Total	69,293	15,898	0	1,419	8,421	0	17,031	112,062
Santa Barbara								
Segments	0	0	0					0
Bridges	31,783	2,779	0					34,561
Tunnels	13	0	0					13
Facilities		2,397	0	2,184	4,706	164	12,963	22,415
Total	31,796	5,176	0	2,184	4,706	164	12,963	56,989
Santa Clara								
Segments	0	0	0					0
Bridges	1	0	0					1
Tunnels	0	0	0					0
Facilities		0	259	3	0	0	14	276

	Highway	Railway	Light Rail	Bus Facility	Ports	Ferries	Airport	Total
Total	1	0	259	3	0	0	14	277
Santa Cruz								
Segments	0	0	0					0
Bridges	0	0	0					0
Tunnels	0	0	0					0
Facilities		0	0	5	4	0	29	38
Total	0	0	0	5	4	0	29	38
Tulare								
Segments	0	0	0					0
Bridges	26	0	0					26
Tunnels	0	0	0					0
Facilities		0	0	83	0	0	255	338
Total	26	0	0	83	0	0	255	364
Ventura								
Segments	0	0	0					0
Bridges	879	23	0					902
Tunnels	3	0	0					3
Facilities		554	0	89	3,901	155	1,823	6,523
Total	882	577	0	89	3,901	155	1,823	7,427
Total	103,547	24,152	22,346	4,536	24,786	453	65,970	245,790
Region Total	103,547	24,152	22,346	4,536	24,786	453	65,970	245,790

Totals only reflect data for those census tracts/blocks included in the user's study region and will reflect the entire county/state only if all of the census blocks for that county/states were selected at the time of study region creation.

Direct Economic Loss For Utilities

June 25, 2024

All values are in thousands of dollars

	Potable Water	Waste Water	Oil Systems	Natural Gas	Electric Power	Communication	Total
California							
Fresno							
<i>Facilities</i>	0	371	0	13	22,273	4	22,661
<i>Pipelines</i>	248	124	0	0			372
Total	248	496	0	13	22,273	4	23,033
Inyo							
<i>Facilities</i>	0	0	0	0	72	0	72
<i>Pipelines</i>	40	20	0	0			61
Total	40	20	0	0	72	0	133
Kern							
<i>Facilities</i>	1,413	4,661	11	3,601	502,332	61	512,078
<i>Pipelines</i>	1,076	541	0	0			1,617
Total	2,490	5,201	11	3,601	502,332	61	513,695
Kings							
<i>Facilities</i>	0	0	0	134	13,072	1	13,207

	Potable Water	Waste Water	Oil Systems	Natural Gas	Electric Power	Communication	Total
<i>Pipelines</i>	210	106	0	0			316
Total	210	106	0	134	13,072	1	13,523
Los Angeles							
<i>Facilities</i>	421	2,339	4	427	217,063	8	220,262
<i>Pipelines</i>	603	303	0	0			905
Total	1,024	2,641	4	427	217,063	8	221,167
Madera							
<i>Facilities</i>	0	0	0	0	897	0	897
<i>Pipelines</i>	59	29	0	0			88
Total	59	29	0	0	897	0	986
Merced							
<i>Facilities</i>	0	8	0	0	1,337	0	1,345
<i>Pipelines</i>	67	34	0	0			100
Total	67	41	0	0	1,337	0	1,445
Monterey							
<i>Facilities</i>	0	1,107	0	0	21,108	10	22,225
<i>Pipelines</i>	248	125	0	0			373
Total	248	1,231	0	0	21,108	10	22,597
Orange							
<i>Facilities</i>	84	745	0	62	7,505	1	8,398
<i>Pipelines</i>	181	91	0	0			271

	Potable Water	Waste Water	Oil Systems	Natural Gas	Electric Power	Communication	Total
Total	265	836	0	62	7,505	1	8,669
Riverside							
<i>Facilities</i>	4	28	0	0	496	0	528
<i>Pipelines</i>	86	43	0	0			129
Total	90	72	0	0	496	0	658
San Benito							
<i>Facilities</i>	0	126	0	0	0	1	126
<i>Pipelines</i>	44	22	0	0			66
Total	44	148	0	0	0	1	192
San Bernardino							
<i>Facilities</i>	2	26	0	5	3,907	0	3,940
<i>Pipelines</i>	246	124	0	0			370
Total	248	149	0	5	3,907	0	4,310
San Luis Obispo							
<i>Facilities</i>	1,009	331,123	58	0	803,238	1,578	1,137,005
<i>Pipelines</i>	12,374	6,216	0	0			18,590
Total	13,383	337,339	58	0	803,238	1,578	1,155,596
Santa Barbara							
<i>Facilities</i>	0	97,245	29	14,005	110,091	1,522	222,892
<i>Pipelines</i>	12,666	6,362	0	0			19,028
Total	12,666	103,607	29	14,005	110,091	1,522	241,920

	Potable Water	Waste Water	Oil Systems	Natural Gas	Electric Power	Communication	Total
Santa Clara							
<i>Facilities</i>	0	0	0	0	427	0	427
<i>Pipelines</i>	54	27	0	0			80
Total	54	27	0	0	427	0	507
Santa Cruz							
<i>Facilities</i>	0	131	0	0	1	0	132
<i>Pipelines</i>	34	17	0	0			50
Total	34	148	0	0	1	0	182
Tulare							
<i>Facilities</i>	28	369	0	0	3,167	2	3,566
<i>Pipelines</i>	128	64	0	0			192
Total	156	433	0	0	3,167	2	3,759
Ventura							
<i>Facilities</i>	3,063	22,918	6	1,851	149,437	97	177,371
<i>Pipelines</i>	558	280	0	0			838
Total	3,621	23,198	6	1,851	149,437	97	178,209
Total	34,945	475,723	108	20,098	1,856,422	3,286	2,390,581
Region Total	34,945	475,723	108	20,098	1,856,422	3,286	2,390,581

Totals only reflect data for those census tracts/blocks included in the user's study region and will reflect the entire county/state only if all of the census blocks for that county/states were selected at the time of study region creation.

Hazus Quick Assessment Report

Estimated Economic Loss (\$ Billions)

Category	Description	Range
General Building Stock	Building Damage	3.10 - 12.30
	Building Contents	0.40 - 1.50
	Business Interruption	0.70 - 2.80
Infrastructure	Lifelines Damage	
Total		5.00 - 20.00

Preliminary Damage Assessment (PDA) Estimates

Description	Residential	Commercial	Other	Total
Affected	93,200	6,500	2,800	102,500
Minor	21,200	3,500	1,500	26,200
Major	4,400	1,000	370	5,770
Destroyed	1,600	380	100	2,080
Total	120,400	11,380	4,770	136,550

Estimated Casualties : Night Time

Severity Level	Description	# Persons
Level 1	Medical Aid	400 - 1,600
Level 2	Hospital Care	70 - 300
Level 3	Life-threatening	10 - 20
Level 4	Fatalities	10 - 40

Estimated Shelter Needs

Type	Households	People
Displaced Households	1,200 - 5,000	3,000 - 12,500
Public Shelter	520	1,310

Comments :

*Hazus damage estimates are presented using FEMA Preliminary Damage Assessment (PDA) categories. These estimates should be used for planning purposes and may not reflect actual observed damages from the PDA process.

Disclaimer:

The estimates of social and economic impacts contained in this report were produced using HAZUS loss estimation methodology software which is based on current scientific and engineering knowledge. There are uncertainties inherent in any loss estimation technique. Therefore, there may be significant differences between the modeled results contained in this report and the actual social and economic losses following a specific earthquake. These results can be improved by using enhanced inventory, geotechnical, and observed ground motion data.

Earthquake Information

Location :

Origin Time:

Magnitude : 7.49

Epicenter Latitude/Longitude :
/

Depth & Type : /U

Name :
NA

Ground Motion /Attenuation :

Maximum PGA: 1.00

Information Sources:

Comments :

Population and Building Exposure

Population: 25,085,662

Building Exposure : (\$ Millions)

Residential	
Commercial	866,307
Other	638,301
Total	

Counties : See Appendix

Major Metro Area :

Hazus Quick Assessment Report

Estimated Economic Loss (\$ Billions)

Category	Description	Range
General Building Stock	Building Damage	3.10 - 12.30
	Building Contents	0.40 - 1.50
	Business Interruption	0.70 - 2.80
Infrastructure	Lifelines Damage	
Total		5.00 - 20.00

Preliminary Damage Assessment (PDA) Estimates

Description	Residential	Commercial	Other	Total
Affected	93,200	6,500	2,800	102,500
Minor	21,200	3,500	1,500	26,200
Major	4,400	1,000	370	5,770
Destroyed	1,600	380	100	2,080
Total	120,400	11,380	4,770	136,550

Estimated Casualties : Day Time

Severity Level	Description	# Persons
Level 1	Medical Aid	600 - 2,000
Level 2	Hospital Care	130 - 500
Level 3	Life-threatening	20 - 70
Level 4	Fatalities	30 - 130

Estimated Shelter Needs

Type	Households	People
Displaced Households	1,200 - 5,000	3,000 - 12,500
Public Shelter	520	1,310

Comments :

**Hazus damage estimates are presented using FEMA Preliminary Damage Assessment (PDA) categories. These estimates should be used for planning purposes and may not reflect actual observed damages from the PDA process.*

Disclaimer:

The estimates of social and economic impacts contained in this report were produced using HAZUS loss estimation methodology software which is based on current scientific and engineering knowledge. There are uncertainties inherent in any loss estimation technique. Therefore, there may be significant differences between the modeled results contained in this report and the actual social and economic losses following a specific earthquake. These results can be improved by using enhanced inventory, geotechnical, and observed ground motion data.

Earthquake Information

Location :

Origin Time:

Magnitude : 7.49

Epicenter Latitude/Longitude :
/

Depth & Type : /U

Name :
NA

Ground Motion /Attenuation :

Maximum PGA: 1.00

Information Sources:

Comments :

Population and Building Exposure

Population: 25,085,662

Building Exposure : (\$ Millions)

Residential	
Commercial	866,307
Other	638,301
Total	

Counties : See Appendix

Major Metro Area :

Hazus Quick Assessment Report

Estimated Economic Loss (\$ Billions)

Category	Description	Range
General Building Stock	Building Damage	3.10 - 12.30
	Building Contents	0.40 - 1.50
	Business Interruption	0.70 - 2.80
Infrastructure	Lifelines Damage	
Total		5.00 - 20.00

Preliminary Damage Assessment (PDA) Estimates

Description	Residential	Commercial	Other	Total
Affected	93,200	6,500	2,800	102,500
Minor	21,200	3,500	1,500	26,200
Major	4,400	1,000	370	5,770
Destroyed	1,600	380	100	2,080
Total	120,400	11,380	4,770	136,550

Estimated Casualties : Commute Time

Severity Level	Description	# Persons
Level 1	Medical Aid	400 - 1,800
Level 2	Hospital Care	110 - 400
Level 3	Life-threatening	50 - 190
Level 4	Fatalities	30 - 110

Estimated Shelter Needs

Type	Households	People
Displaced Households	1,200 - 5,000	3,000 - 12,500
Public Shelter	520	1,310

Comments :

**Hazus damage estimates are presented using FEMA Preliminary Damage Assessment (PDA) categories. These estimates should be used for planning purposes and may not reflect actual observed damages from the PDA process.*

Disclaimer:

The estimates of social and economic impacts contained in this report were produced using HAZUS loss estimation methodology software which is based on current scientific and engineering knowledge. There are uncertainties inherent in any loss estimation technique. Therefore, there may be significant differences between the modeled results contained in this report and the actual social and economic losses following a specific earthquake. These results can be improved by using enhanced inventory, geotechnical, and observed ground motion data.

Earthquake Information

Location :

Origin Time:

Magnitude : 7.49

Epicenter Latitude/Longitude :
/

Depth & Type : /U

Name :
NA

Ground Motion /Attenuation :

Maximum PGA: 1.00

Information Sources:

Comments :

Population and Building Exposure

Population: 25,085,662

Building Exposure : (\$ Millions)

Residential	
Commercial	866,307
Other	638,301
Total	

Counties : See Appendix

Major Metro Area :

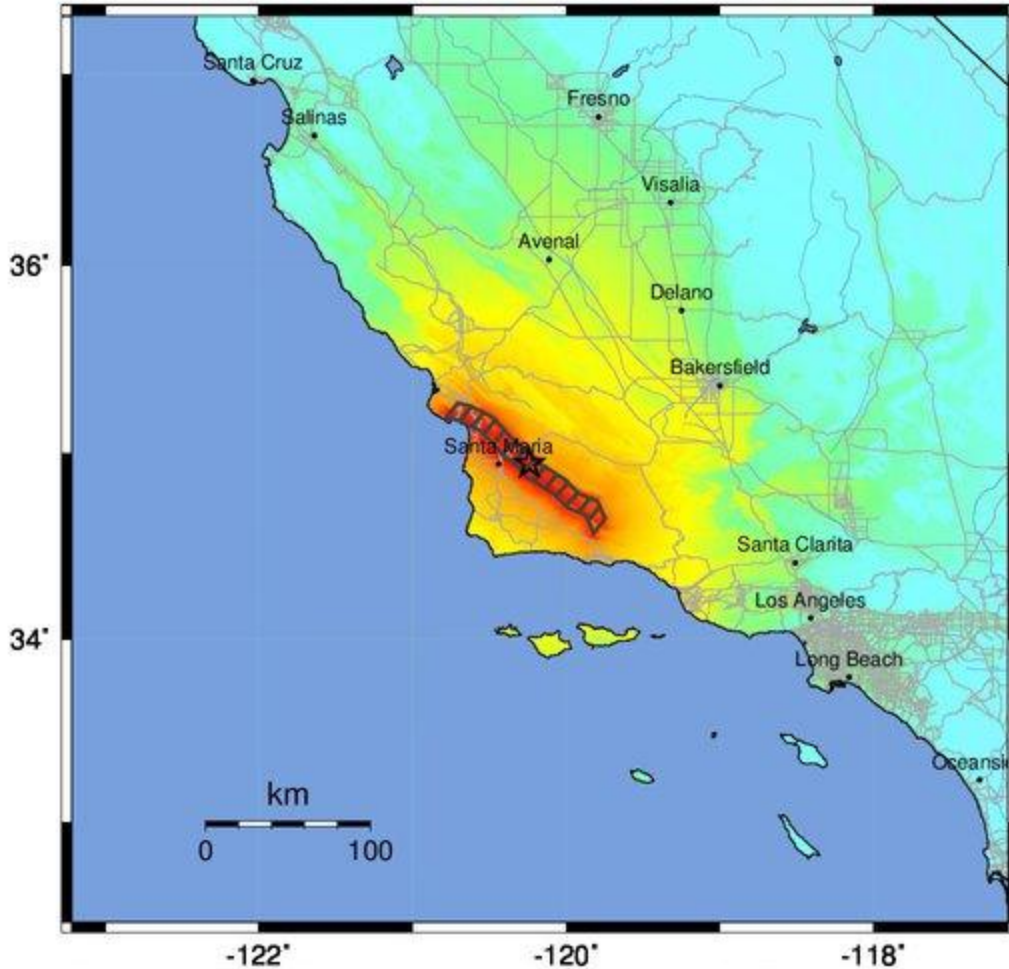
Shelter Summary Report

June 25, 2024

	# of Displaced Households	# of People Needing Short Term Shelter
California		
Fresno	0	0
Inyo	0	0
Kern	0	0
Kings	0	0
Los Angeles	0	0
Madera	0	0
Merced	0	0
Monterey	0	0
Orange	0	0
Riverside	0	0
San Benito	0	0
San Bernardino	0	0
San Luis Obispo	1,554	754
Santa Barbara	771	550
Santa Clara	0	0
Santa Cruz	0	0
Tulare	0	0
Ventura	2	1
Total	2,327	1,306
Region Total	2,327	1,306

Totals only reflect data for those census tracts/blocks included in the user's study region and will reflect the entire county/state only if all of the census blocks for that county/states were selected at the time of study region creation.

-- Earthquake Planning Scenario --
ShakeMap for San Luis Range (So Margin) - Median ground motions Scenario
 Scenario Date: May 16, 2017 08:31:51 AM MDT M 7.5 N34.94 W120.24 Depth: 7.7km



-122° -120° -118°
 PLANNING SCENARIO ONLY -- Map Version 10 Processed 2017-05-17 04:55:03 AM MDT

PERCEIVED SHAKING	Not felt	Weak	Light	Moderate	Strong	Very strong	Severe	Violent	Extreme
POTENTIAL DAMAGE	none	none	none	Very light	Light	Moderate	Mod./Heavy	Heavy	Very Heavy
PEAK ACC.(%g)	<0.05	0.3	2.8	6.2	12	22	40	75	>139
PEAK VEL.(cm/s)	<0.02	0.1	1.4	4.7	9.6	20	41	86	>178
INSTRUMENTAL INTENSITY	I	II-III	IV	V	VI	VII	VIII	IX	X+

Scale based upon Worden et al. (2012)