
Hazus: Earthquake Global Risk Report

Region Name: SanGregorioSouth

Earthquake Scenario: sangregoriosouth2011_m7p24_se

Print Date: June 21, 2024

Disclaimer:

Totals only reflect data for those census tracts/blocks included in the user's study region.

The estimates of social and economic impacts contained in this report were produced using Hazus loss estimation methodology software which is based on current scientific and engineering knowledge. There are uncertainties inherent in any loss estimation technique. Therefore, there may be significant differences between the modeled results contained in this report and the actual social and economic losses following a specific earthquake. These results can be improved by using enhanced inventory, geotechnical, and observed ground motion data.

Table of Contents

Section	Page #
General Description of the Region	3
Building and Lifeline Inventory	4
Building Inventory	
Critical Facility Inventory	
Transportation and Utility Lifeline Inventory	
Earthquake Scenario Parameters	7
Direct Earthquake Damage	8
Buildings Damage	
Essential Facilities Damage	
Transportation and Utility Lifeline Damage	
Induced Earthquake Damage	14
Fire Following Earthquake	
Debris Generation	
Social Impact	15
Shelter Requirements	
Casualties	
Economic Loss	17
Building Related Losses	
Transportation and Utility Lifeline Losses	
Appendix A: County Listing for the Region	
Appendix B: Regional Population and Building Value Data	

General Description of the Region

Hazus-MH is a regional earthquake loss estimation model that was developed by the Federal Emergency Management Agency (FEMA) and the National Institute of Building Sciences. The primary purpose of Hazus is to provide a methodology and software application to develop multi-hazard losses at a regional scale. These loss estimates would be used primarily by local, state and regional officials to plan and stimulate efforts to reduce risks from multi-hazards and to prepare for emergency response and recovery.

The earthquake loss estimates provided in this report was based on a region that includes 26 county(ies) from the following state(s):

California

Note:

Appendix A contains a complete listing of the counties contained in the region.

The geographical size of the region is 50,382.38 square miles and contains 3,539 census tracts. There are over 5,298 thousand households in the region which has a total population of 15,447,339 people. The distribution of population by Total Region and County is provided in Appendix B.

There are an estimated 4,639 thousand buildings in the region with a total building replacement value (excluding contents) of (millions of dollars). Approximately 90.00 % of the buildings (and % of the building value) are associated with residential housing.

The replacement value of the transportation and utility lifeline systems is estimated to be 240,077 and 165,783 (millions of dollars) , respectively.

Building and Lifeline Inventory

Building Inventory

Hazus estimates that there are 4,639 thousand buildings in the region which have an aggregate total replacement value of (millions of dollars) . Appendix B provides a general distribution of the building value by Total Region and County.

In terms of building construction types found in the region, wood frame construction makes up 87% of the building inventory. The remaining percentage is distributed between the other general building types.

Critical Facility Inventory

Hazus breaks critical facilities into two (2) groups: essential facilities and high potential loss facilities (HPL). Essential facilities include hospitals, medical clinics, schools, fire stations, police stations and emergency operations facilities. High potential loss facilities include dams, levees, military installations, nuclear power plants and hazardous material sites.

For essential facilities, there are 252 hospitals in the region with a total bed capacity of 41,310 beds. There are 5,558 schools, 1,291 fire stations, 486 police stations and 82 emergency operation facilities. With respect to high potential loss facilities (HPL), there are no dams identified within the inventory. The inventory also includes no hazardous material sites, no military installations and no nuclear power plants.

Transportation and Utility Lifeline Inventory

Within Hazus, the lifeline inventory is divided between transportation and utility lifeline systems. There are seven (7) transportation systems that include highways, railways, light rail, bus, ports, ferry and airports. There are six (6) utility systems that include potable water, wastewater, natural gas, crude & refined oil, electric power and communications. The lifeline inventory data are provided in Tables 1 and 2.

The total value of the lifeline inventory is over 405,860.00 (millions of dollars). This inventory includes over 10,037.01 miles of highways, 10,873 bridges, 222,960.96 miles of pipes.

Table 1: Transportation System Lifeline Inventory

System	Component	# Locations/ # Segments	Replacement value (millions of dollars)
Highway	Bridges	10,873	56399.2601
	Segments	7,288	91145.0045
	Tunnels	47	987.1159
	Subtotal		148531.3805
Railways	Bridges	1,596	9081.2400
	Facilities	95	252.9850
	Segments	3,258	66518.0724
	Tunnels	3	1.8495
	Subtotal		75854.1469
Light Rail	Bridges	112	15.3529
	Facilities	255	4154.0000
	Segments	15	5403.2756
	Tunnels	0	0.0000
	Subtotal		9572.6285
Bus	Facilities	53	118.9169
	Subtotal		118.9169
Ferry	Facilities	28	37.2680
	Subtotal		37.2680
Port	Facilities	368	1402.7588
	Subtotal		1402.7588
Airport	Facilities	108	2889.5073
	Runways	162	1670.4945
	Subtotal		4560.0018
		Total	240,077.10

Table 2: Utility System Lifeline Inventory

System	Component	# Locations / Segments	Replacement value (millions of dollars)
Potable Water	Distribution Lines	NA	4427.0063
	Facilities	24	943.0560
	Pipelines	0	0.0000
		Subtotal	5370.0623
Waste Water	Distribution Lines	NA	2656.2038
	Facilities	160	27512.2880
	Pipelines	0	0.0000
		Subtotal	30168.4918
Natural Gas	Distribution Lines	NA	1770.8025
	Facilities	18	705.7212
	Pipelines	789	16414.8838
		Subtotal	18891.4075
Oil Systems	Facilities	34	4.0120
	Pipelines	0	0.0000
		Subtotal	4.0120
Electrical Power	Facilities	478	111289.6605
		Subtotal	111289.6605
Communication	Facilities	507	59.8260
		Subtotal	59.8260
	Total		165,783.50

Earthquake Scenario

Hazus uses the following set of information to define the earthquake parameters used for the earthquake loss estimate provided in this report.



Scenario Name	sangregoriosouth2011_m7p24_se
Type of Earthquake	User-defined
Fault Name	NA
Historical Epicenter ID #	NA
Probabilistic Return Period	NA
Longitude of Epicenter	NA
Latitude of Epicenter	NA
Earthquake Magnitude	7.24
Depth (km)	NA
Rupture Length (Km)	NA
Rupture Orientation (degrees)	NA
Attenuation Function	NA

Direct Earthquake Damage

Building Damage

Hazus estimates that about 7,036 buildings will be at least moderately damaged. This is over 0.00 % of the buildings in the region. There are an estimated 49 buildings that will be damaged beyond repair. The definition of the 'damage states' is provided in Volume 1: Chapter 5 of the Hazus technical manual. Table 3 below summarizes the expected damage by general occupancy for the buildings in the region. Table 4 below summarizes the expected damage by general building type.

Damage Categories by General Occupancy Type

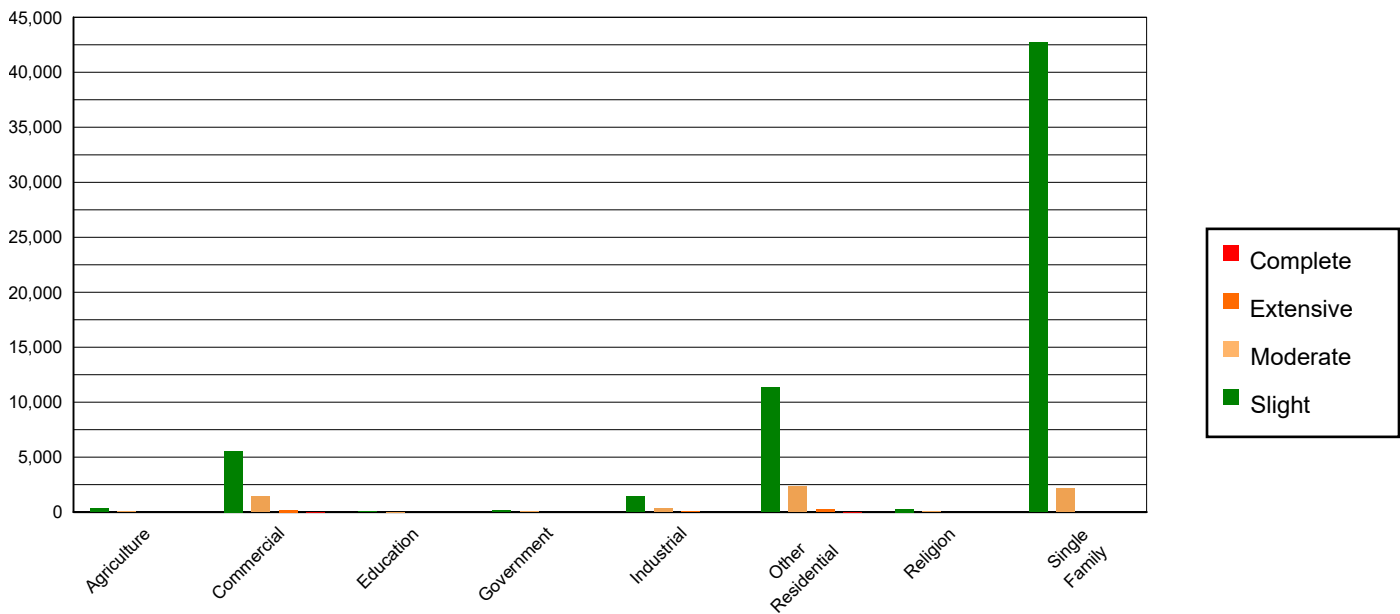


Table 3: Expected Building Damage by Occupancy

	None		Slight		Moderate		Extensive		Complete	
	Count	(%)	Count	(%)	Count	(%)	Count	(%)	Count	(%)
Agriculture	33580.53	0.73	327.82	0.53	77.83	1.20	5.73	1.15	0.10	0.19
Commercial	293182.64	6.41	5548.92	8.97	1445.49	22.28	198.44	39.85	22.51	45.10
Education	9340.33	0.20	70.86	0.11	14.15	0.22	1.57	0.32	0.09	0.18
Government	21325.69	0.47	162.25	0.26	29.60	0.46	2.38	0.48	0.07	0.15
Industrial	82021.43	1.79	1393.04	2.25	343.70	5.30	36.42	7.31	2.42	4.86
Other Residential	583116.17	12.76	11364.28	18.38	2337.24	36.02	234.46	47.09	23.84	47.78
Religion	17900.28	0.39	296.04	0.48	83.30	1.28	8.78	1.76	0.61	1.22
Single Family	3530353.17	77.24	42674.53	69.01	2156.89	33.24	10.16	2.04	0.26	0.51
Total	4,570,820		61,838		6,488		498		50	

Table 4: Expected Building Damage by Building Type (All Design Levels)

	None		Slight		Moderate		Extensive		Complete	
	Count	(%)	Count	(%)	Count	(%)	Count	(%)	Count	(%)
Wood	3971874.89	86.90	49780.92	80.50	2587.18	39.88	18.77	3.77	0.62	1.24
Steel	105797.76	2.31	2389.59	3.86	864.21	13.32	125.02	25.11	11.15	22.34
Concrete	117879.11	2.58	2291.27	3.71	700.82	10.80	134.92	27.10	13.45	26.94
Precast	62171.56	1.36	1265.36	2.05	323.85	4.99	17.58	3.53	1.20	2.41
RM	178109.80	3.90	1436.89	2.32	330.48	5.09	12.29	2.47	0.03	0.06
URM	43562.64	0.95	1634.38	2.64	435.24	6.71	103.14	20.71	21.72	43.52
MH	91424.47	2.00	3039.33	4.92	1246.43	19.21	86.22	17.31	1.74	3.49
Total	4,570,820		61,838		6,488		498		50	

*Note:

- RM Reinforced Masonry
- URM Unreinforced Masonry
- MH Manufactured Housing

Essential Facility Damage

Before the earthquake, the region had 41,310 hospital beds available for use. On the day of the earthquake, the model estimates that only 40,613 hospital beds (98.00%) are available for use by patients already in the hospital and those injured by the earthquake. After one week, 99.00% of the beds will be back in service. By 30 days, 100.00% will be operational.

Table 5: Expected Damage to Essential Facilities

Classification	Total	# Facilities		
		At Least Moderate Damage > 50%	Complete Damage > 50%	With Functionality > 50% on day 1
Hospitals	252	1	0	251
Schools	5,558	16	0	5,535
EOCs	82	0	0	82
PoliceStations	486	5	0	480
FireStations	1,291	5	0	1,279

Transportation Lifeline Damage

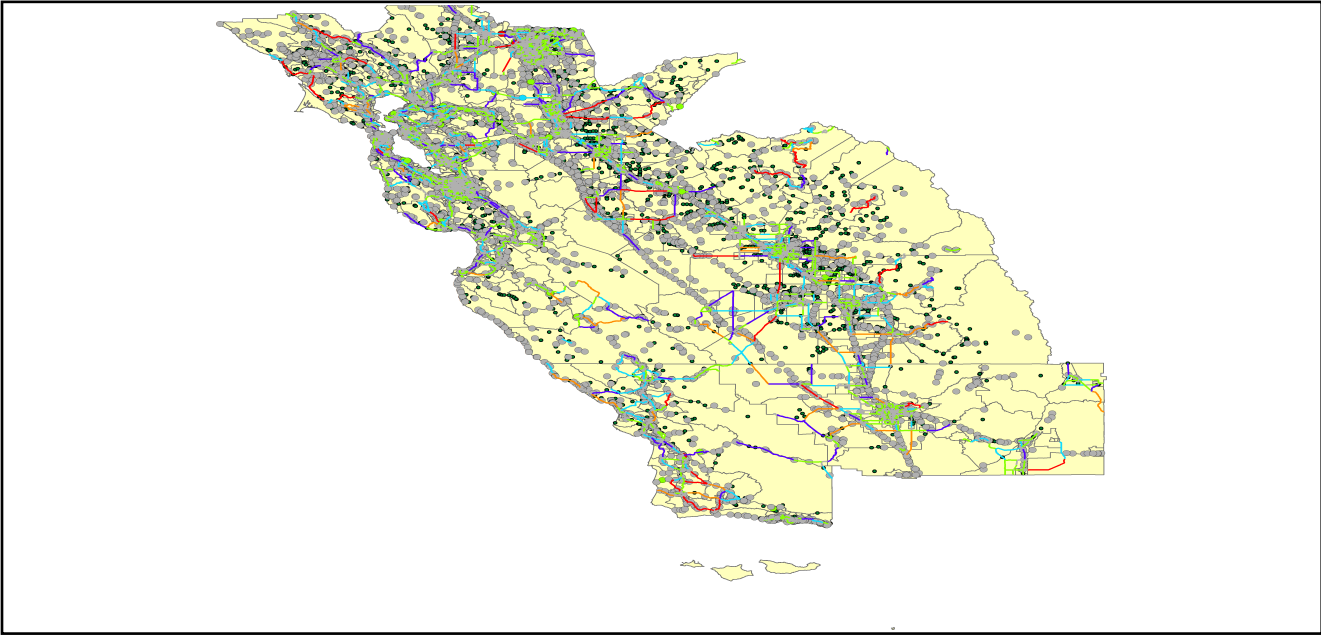


Table 6: Expected Damage to the Transportation Systems

System	Component	Number of Locations_				
		Locations/ Segments	With at Least Mod. Damage	With Complete Damage	With Functionality > 50 %	
					After Day 1	After Day 7
Highway	Segments	7,288	0	0	7,288	7,288
	Bridges	10,873	0	0	10,873	10,873
	Tunnels	47	0	0	47	47
Railways	Segments	3,258	0	0	3,258	3,258
	Bridges	1,596	0	0	1,596	1,596
	Tunnels	3	0	0	3	3
	Facilities	95	0	0	95	95
Light Rail	Segments	15	0	0	15	15
	Bridges	112	0	0	112	112
	Tunnels	0	0	0	0	0
	Facilities	255	0	0	255	255
Bus	Facilities	53	0	0	53	53
Ferry	Facilities	28	0	0	28	28
Port	Facilities	368	0	0	368	368
Airport	Facilities	108	0	0	108	108
	Runways	162	0	0	162	162

Table 6 provides damage estimates for the transportation system.

Note: Roadway segments, railroad tracks and light rail tracks are assumed to be damaged by ground failure only. If ground failure maps are not provided, damage estimates to these components will not be computed.

Tables 7-9 provide information on the damage to the utility lifeline systems. Table 7 provides damage to the utility system facilities. Table 8 provides estimates on the number of leaks and breaks by the pipelines of the utility systems. For electric power and potable water, Hazus performs a simplified system performance analysis. Table 9 provides a summary of the system performance information.

Table 7 : Expected Utility System Facility Damage

System	# of Locations				
	Total #	With at Least Moderate Damage	With Complete Damage	with Functionality > 50 %	
				After Day 1	After Day 7
Potable Water	24	0	0	24	24
Waste Water	160	1	0	150	160
Natural Gas	18	0	0	18	18
Oil Systems	34	0	0	34	34
Electrical Power	478	1	0	478	478
Communication	507	4	0	506	507

Table 8 : Expected Utility System Pipeline Damage (Site Specific)

System	Total Pipelines Length (miles)	Number of Leaks	Number of Breaks
Potable Water	137,541	1206	302
Waste Water	82,524	606	151
Natural Gas	2,896	0	0
Oil	0	0	0

Table 9: Expected Potable Water and Electric Power System Performance

	Total # of Households	Number of Households without Service				
		At Day 1	At Day 3	At Day 7	At Day 30	At Day 90
Potable Water	5,298,188	276	27	0	0	0
Electric Power		9,942	5,691	1,968	121	14

Induced Earthquake Damage

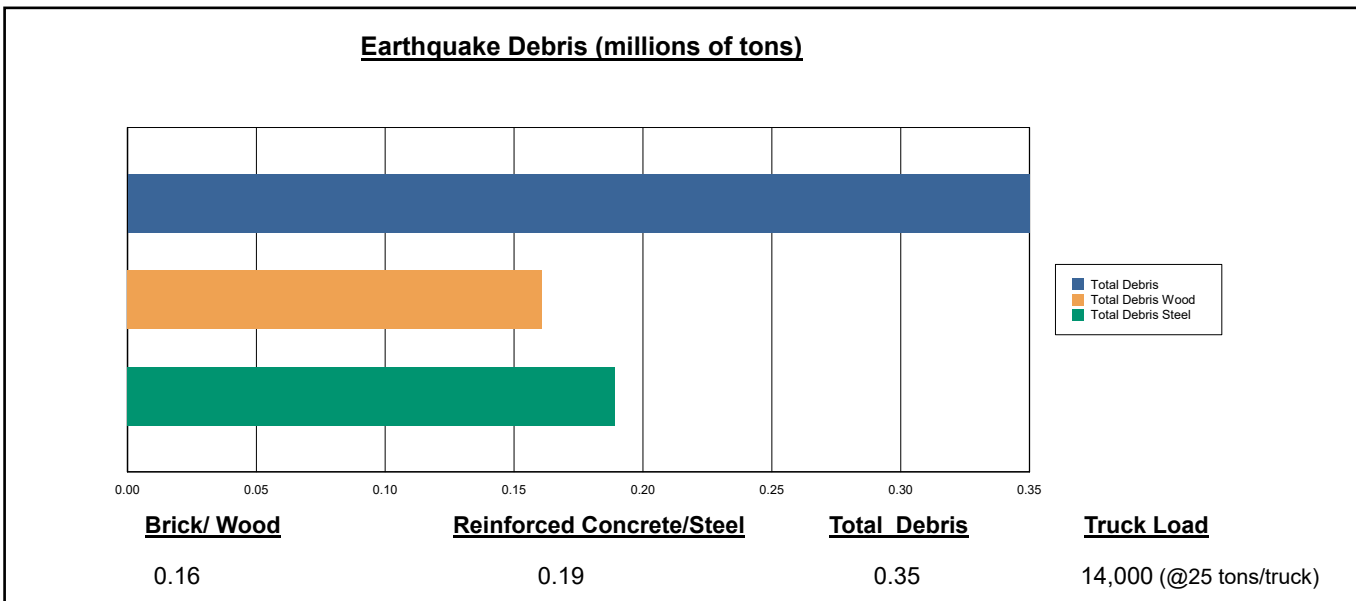
Fire Following Earthquake

Fires often occur after an earthquake. Because of the number of fires and the lack of water to fight the fires, they can often burn out of control. Hazus uses a Monte Carlo simulation model to estimate the number of ignitions and the amount of burnt area. For this scenario, the model estimates that there will be 29 ignitions that will burn about 0.45 sq. mi (0.00 % of the region's total area.) The model also estimates that the fires will displace about 4,599 people and burn about 648 (millions of dollars) of building value.

Debris Generation

Hazus estimates the amount of debris that will be generated by the earthquake. The model breaks the debris into two general categories: a) Brick/Wood and b) Reinforced Concrete/Steel. This distinction is made because of the different types of material handling equipment required to handle the debris.

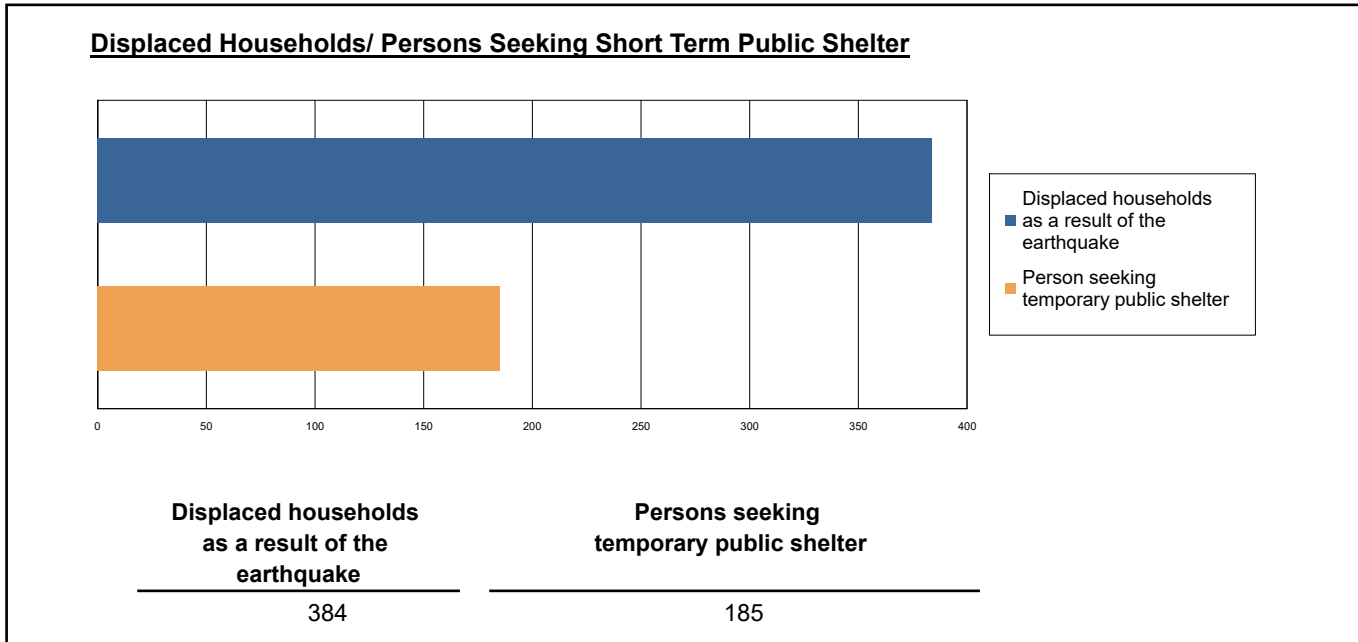
The model estimates that a total of 350,000 tons of debris will be generated. Of the total amount, Brick/Wood comprises 46.00% of the total, with the remainder being Reinforced Concrete/Steel. If the debris tonnage is converted to an estimated number of truckloads, it will require 14,000 truckloads (@25 tons/truck) to remove the debris generated by the earthquake.



Social Impact

Shelter Requirement

Hazus estimates the number of households that are expected to be displaced from their homes due to the earthquake and the number of displaced people that will require accommodations in temporary public shelters. The model estimates 384 households to be displaced due to the earthquake. Of these, 185 people (out of a total population of 15,447,339) will seek temporary shelter in public shelters.



Casualties

Hazus estimates the number of people that will be injured and killed by the earthquake. The casualties are broken down into four (4) severity levels that describe the extent of the injuries. The levels are described as follows;

- Severity Level 1: Injuries will require medical attention but hospitalization is not needed.
- Severity Level 2: Injuries will require hospitalization but are not considered life-threatening
- Severity Level 3: Injuries will require hospitalization and can become life threatening if not promptly treated.
- Severity Level 4: Victims are killed by the earthquake.

The casualty estimates are provided for three (3) times of day: 2:00 AM, 2:00 PM and 5:00 PM. These times represent the periods of the day that different sectors of the community are at their peak occupancy loads. The 2:00 AM estimate considers that the residential occupancy load is maximum, the 2:00 PM estimate considers that the educational, commercial and industrial sector loads are maximum and 5:00 PM represents peak commute time.

Table 10 provides a summary of the casualties estimated for this earthquake

Table 10: Casualty Estimates

		Level 1	Level 2	Level 3	Level 4
2 AM	Commercial	2.48	0.28	0.02	0.04
	Commuting	0.01	0.01	0.02	0.00
	Educational	0.00	0.00	0.00	0.00
	Hotels	0.31	0.05	0.01	0.01
	Industrial	2.32	0.23	0.02	0.03
	Other-Residential	78.18	6.67	0.46	0.88
	Single Family	65.26	1.32	0.00	0.00
	Total	149	9	1	1
2 PM	Commercial	163.88	19.10	1.62	3.12
	Commuting	0.09	0.12	0.21	0.04
	Educational	37.90	3.13	0.10	0.18
	Hotels	0.06	0.01	0.00	0.00
	Industrial	16.90	1.66	0.12	0.22
	Other-Residential	26.11	2.46	0.19	0.36
	Single Family	20.46	0.49	0.00	0.00
	Total	265	27	2	4
5 PM	Commercial	105.52	12.19	1.03	1.96
	Commuting	1.92	2.41	4.26	0.82
	Educational	9.65	0.77	0.01	0.01
	Hotels	0.09	0.01	0.00	0.00
	Industrial	10.56	1.04	0.07	0.14
	Other-Residential	28.89	2.58	0.19	0.35
	Single Family	23.44	0.50	0.00	0.00
	Total	180	20	6	3

Economic Loss

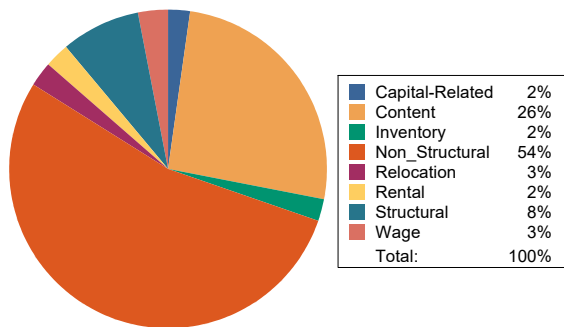
The total economic loss estimated for the earthquake is 5,230.07 (millions of dollars), which includes building and lifeline related losses based on the region's available inventory. The following three sections provide more detailed information about these losses.

Building-Related Losses

The building losses are broken into two categories: direct building losses and business interruption losses. The direct building losses are the estimated costs to repair or replace the damage caused to the building and its contents. The business interruption losses are the losses associated with inability to operate a business because of the damage sustained during the earthquake. Business interruption losses also include the temporary living expenses for those people displaced from their homes because of the earthquake.

The total building-related losses were 4,130.35 (millions of dollars); 10 % of the estimated losses were related to the business interruption of the region. By far, the largest loss was sustained by the residential occupancies which made up over 49 % of the total loss. Table 11 below provides a summary of the losses associated with the building damage.

Earthquake Losses by Loss Type (\$ millions)



Earthquake Losses by Occupancy Type (\$ millions)

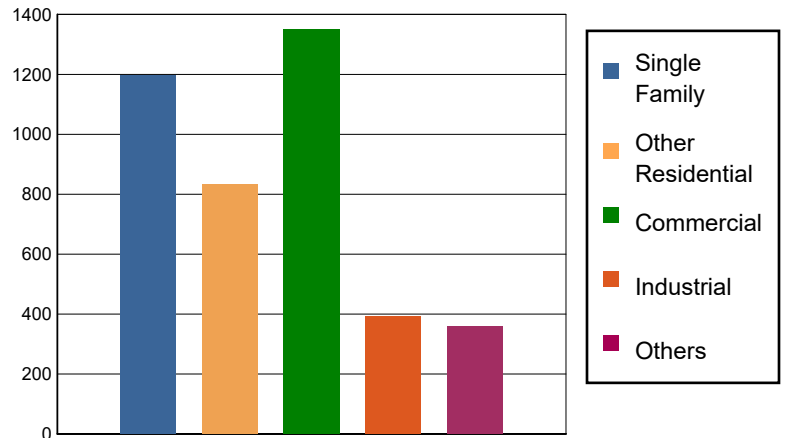


Table 11: Building-Related Economic Loss Estimates
(Millions of dollars)

Category	Area	Single Family	Other Residential	Commercial	Industrial	Others	Total
Income Losses							
	Wage	0.0000	27.5118	86.3256	2.1991	7.4257	123.4622
	Capital-Related	0.0000	11.6827	81.9397	1.3073	1.8454	96.7751
	Rental	6.5891	46.2190	44.0099	1.4245	2.7790	101.0215
	Relocation	15.7547	15.9521	50.7857	6.6771	18.1954	107.3650
	Subtotal	22.3438	101.3656	263.0609	11.6080	30.2455	428.6238
Capital Stock Losses							
	Structural	104.1187	61.7331	112.3873	26.0312	28.3885	332.6588
	Non_Structural	763.0701	515.5500	564.6601	196.8613	173.2320	2,213.3735
	Content	307.0437	154.7604	347.9271	137.5393	114.7002	1,061.9707
	Inventory	0.0000	0.0000	61.8428	20.5948	11.2839	93.7215
	Subtotal	1174.2325	732.0435	1086.8173	381.0266	327.6046	3701.7245
	Total	1196.58	833.41	1349.88	392.63	357.85	4130.35

Transportation and Utility Lifeline Losses

For the transportation and utility lifeline systems, Hazus computes the direct repair cost for each component only. There are no losses computed by Hazus for business interruption due to lifeline outages. Tables 12 & 13 provide a detailed breakdown in the expected lifeline losses.

Table 12: Transportation System Economic Losses
(Millions of dollars)

System	Component	Inventory Value	Economic Loss	Loss Ratio (%)
Highway	Segments	91145.0045	0.0000	0.00
	Bridges	56399.2601	16.5187	0.03
	Tunnels	987.1159	0.5868	0.06
	Subtotal	148531.3805	17.1055	
Railways	Segments	66518.0724	0.0000	0.00
	Bridges	9081.2400	0.8546	0.01
	Tunnels	1.8495	0.0000	0.00
	Facilities	252.9850	2.6341	1.04
	Subtotal	75854.1469	3.4887	
Light Rail	Segments	5403.2756	0.0000	0.00
	Bridges	15.3529	0.0000	0.00
	Tunnels	0.0000	0.0000	0.00
	Facilities	4154.0000	58.1785	1.40
	Subtotal	9572.6285	58.1785	
Bus	Facilities	118.9169	4.3741	3.68
	Subtotal	118.9169	4.3741	
Ferry	Facilities	37.2680	0.3204	0.86
	Subtotal	37.2680	0.3204	
Port	Facilities	1402.7588	18.2579	1.30
	Subtotal	1402.7588	18.2579	
Airport	Facilities	2889.5073	69.7298	2.41
	Runways	1670.4945	0.0000	0.00
	Subtotal	4560.0018	69.7298	
Total		240,077.10	171.45	

Table 13: Utility System Economic Losses

(Millions of dollars)

System	Component	Inventory Value	Economic Loss	Loss Ratio (%)
Potable Water	Pipelines	0.0000	0.0000	0.00
	Facilities	943.0560	1.4401	0.15
	Distribution Lines	4427.0063	5.4273	0.12
	Subtotal	5370.0623	6.8674	
Waste Water	Pipelines	0.0000	0.0000	0.00
	Facilities	27512.2880	215.2561	0.78
	Distribution Lines	2656.2038	2.7263	0.10
	Subtotal	30168.4918	217.9824	
Natural Gas	Pipelines	16414.8838	0.0000	0.00
	Facilities	705.7212	0.1557	0.02
	Distribution Lines	1770.8025	0.9340	0.05
	Subtotal	18891.4075	1.0897	
Oil Systems	Pipelines	0.0000	0.0000	0.00
	Facilities	4.0120	0.0015	0.04
	Subtotal	4.0120	0.0015	
Electrical Power	Facilities	111289.6605	701.5012	0.63
	Subtotal	111289.6605	701.5012	
Communication	Facilities	59.8260	0.8268	1.38
	Subtotal	59.8260	0.8268	
	Total	165,783.46	928.27	

Appendix A: County Listing for the Region

Alameda,CA
Calaveras,CA
Contra Costa,CA
Fresno,CA
Kern,CA
Kings,CA
Madera,CA
Marin,CA
Mariposa,CA
Merced,CA
Monterey,CA
Napa,CA
Sacramento,CA
San Benito,CA
San Francisco,CA
San Joaquin,CA
San Luis Obispo,CA
San Mateo,CA
Santa Barbara,CA
Santa Clara,CA
Santa Cruz,CA
Solano,CA
Sonoma,CA
Stanislaus,CA
Tulare,CA
Yolo,CA

Appendix B: Regional Population and Building Value Data

State	County Name	Population	Building Value (millions of dollars)		
			Residential	Non-Residential	Total
California	Alameda	1,682,353	209,951	122,639	332,590
	Calaveras	45,292	8,305	4,893	13,199
	Contra Costa	1,165,927	158,118	60,339	218,458
	Fresno	1,008,654	98,532	61,772	160,304
	Kern	909,235	87,567	59,168	146,736
	Kings	152,486	13,719	7,861	21,581
	Madera	156,255	18,025	9,641	27,667
	Marin	262,321	47,738	15,030	62,769
	Mariposa	17,131	3,299	1,141	4,441
	Merced	281,202	25,194	26,098	51,292
	Monterey	439,035	47,655	28,750	76,405
	Napa	138,019	20,517	13,045	33,563
	Sacramento	1,585,055	179,811	83,911	263,723
	San Benito	64,209	9,440	3,799	13,239
	San Francisco	873,965	108,848	46,020	154,869
	San Joaquin	779,233	82,706	56,882	139,589
	San Luis Obispo	282,424	41,720	20,896	62,616
	San Mateo	764,442	110,372	44,995	155,368
	Santa Barbara	448,229	49,971	28,481	78,452
	Santa Clara	1,936,259	261,111	120,471	381,582
Santa Cruz	270,861	36,147	18,805	54,952	
Solano	453,491	55,802	26,393	82,195	
Sonoma	488,863	68,827	35,781	104,609	
Stanislaus	552,878	62,937	37,511	100,449	
Tulare	473,117	43,262	31,210	74,472	
Yolo	216,403	24,130	18,343	42,473	
Total Region		15,447,339	1,873,704	983,875	2,857,593

Building Inspection Tagging (Counts)

Total Economic Loss
Total:

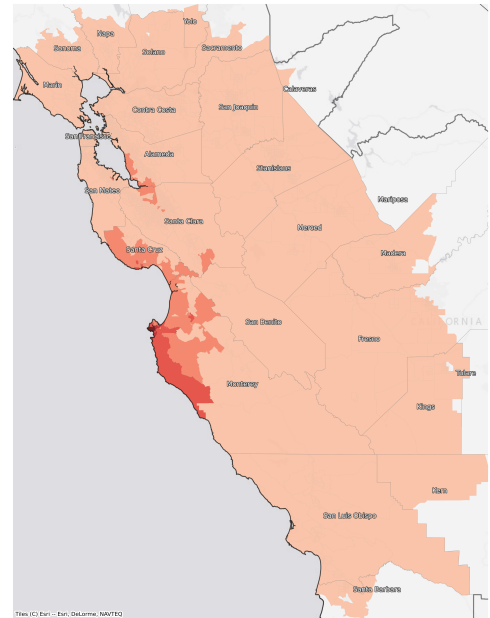
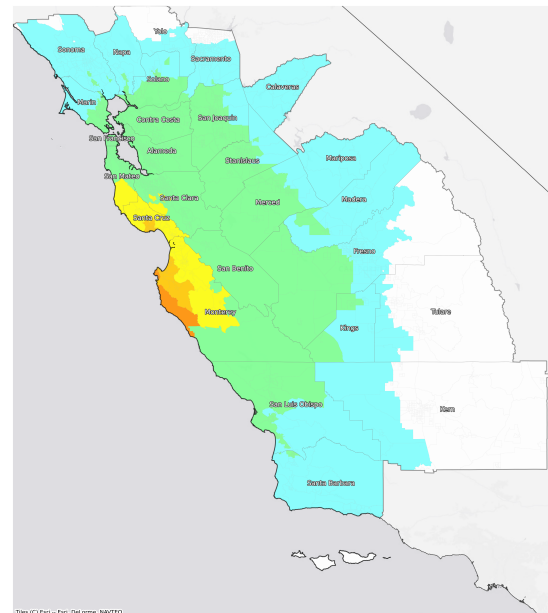
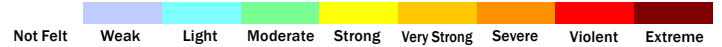
Top Counties	State	Total

Injuries & Fatalities
**Total Day:
Total Night:**

Top Counties	State	Injuries (day/night)	Fatalities (day/night)

Displaced Households & Short-Term Shelter Needs
**Total Displaced:
Total Needing Shelter:**

Top Counties	State	Displaced	Needing Shelter

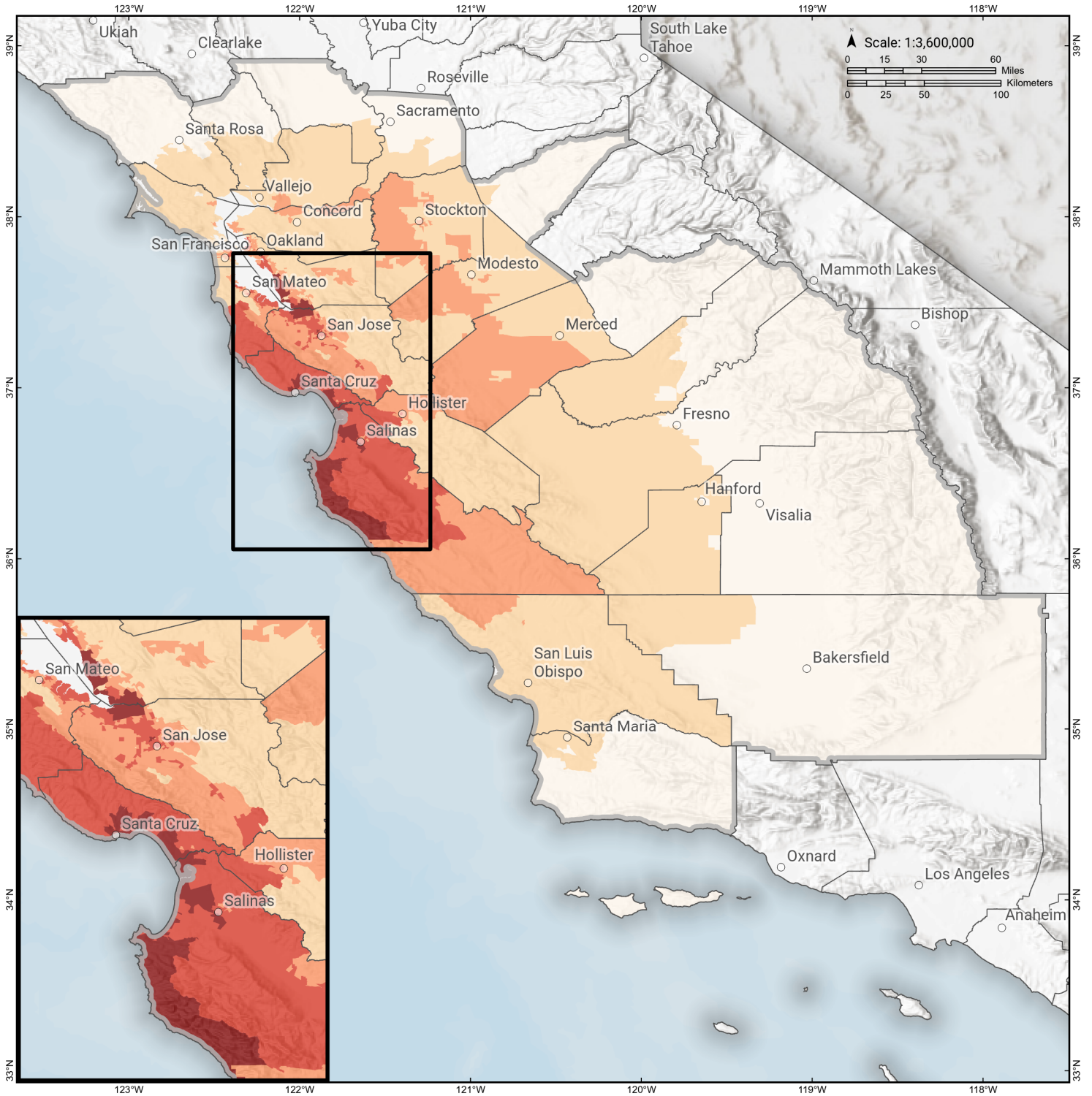
Economic Impacts by Census Tract

Ground Shaking

Debris
**Total Tons:
Total Truckloads:**

Type	Tons

The estimates of social and economic impacts contained in this report were produced using Hazus loss estimation methodology software which is based on current scientific and engineering knowledge. There are uncertainties inherent in any loss estimation technique. Therefore, there may be significant differences between the modeled results contained in this report and the actual social and economic losses following a specific earthquake.

San Gregorio (South)

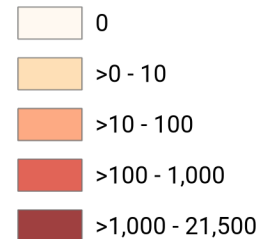
Debris Generated by Census Tract



Study Region: San Gregorio (South)
Scenario: sangregoriosouth2011_m7p24_se

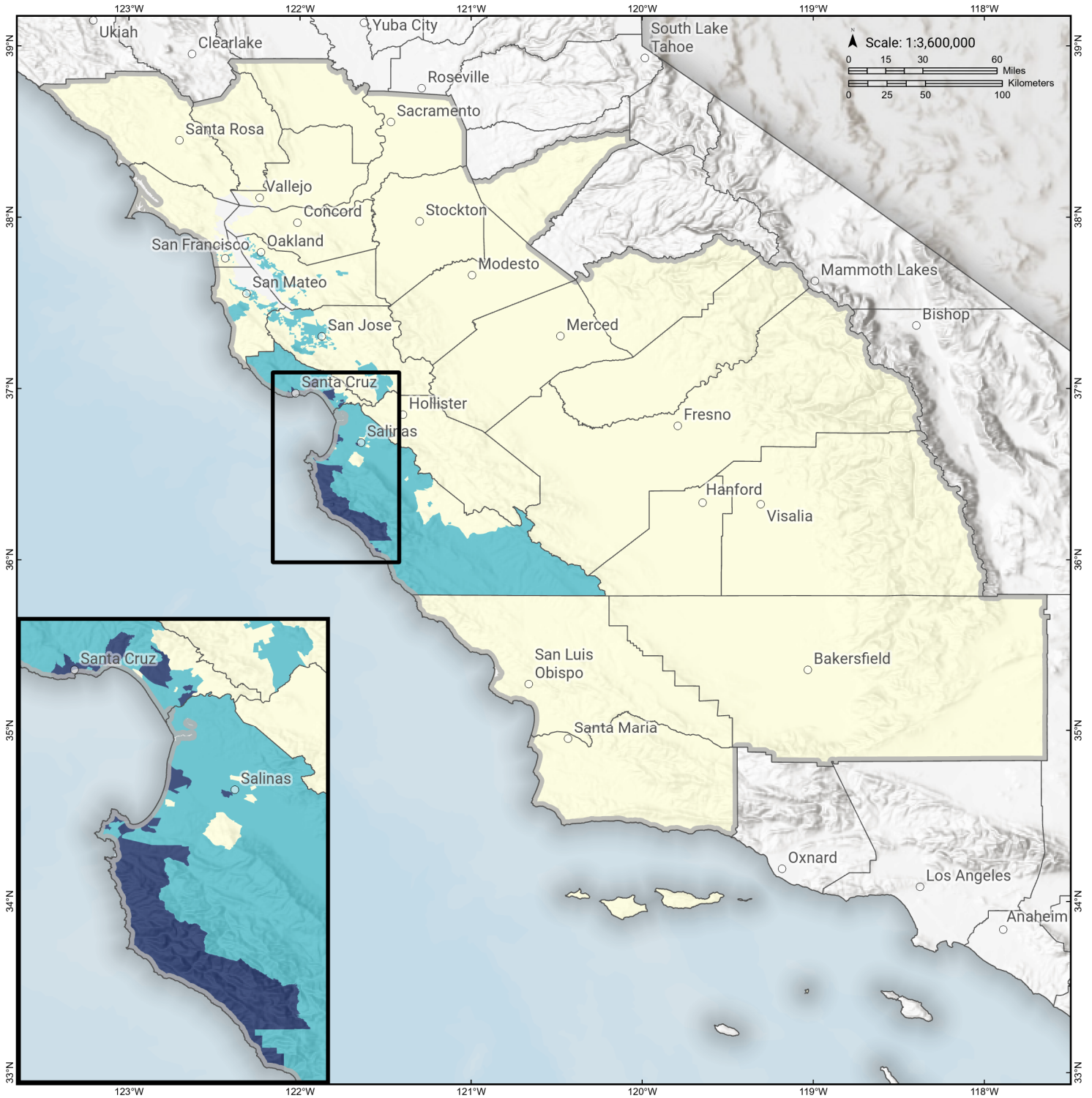


Debris Generated (in tons)



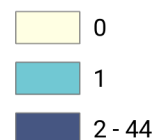
San Gregorio (South)

Displaced Households by Census Tract



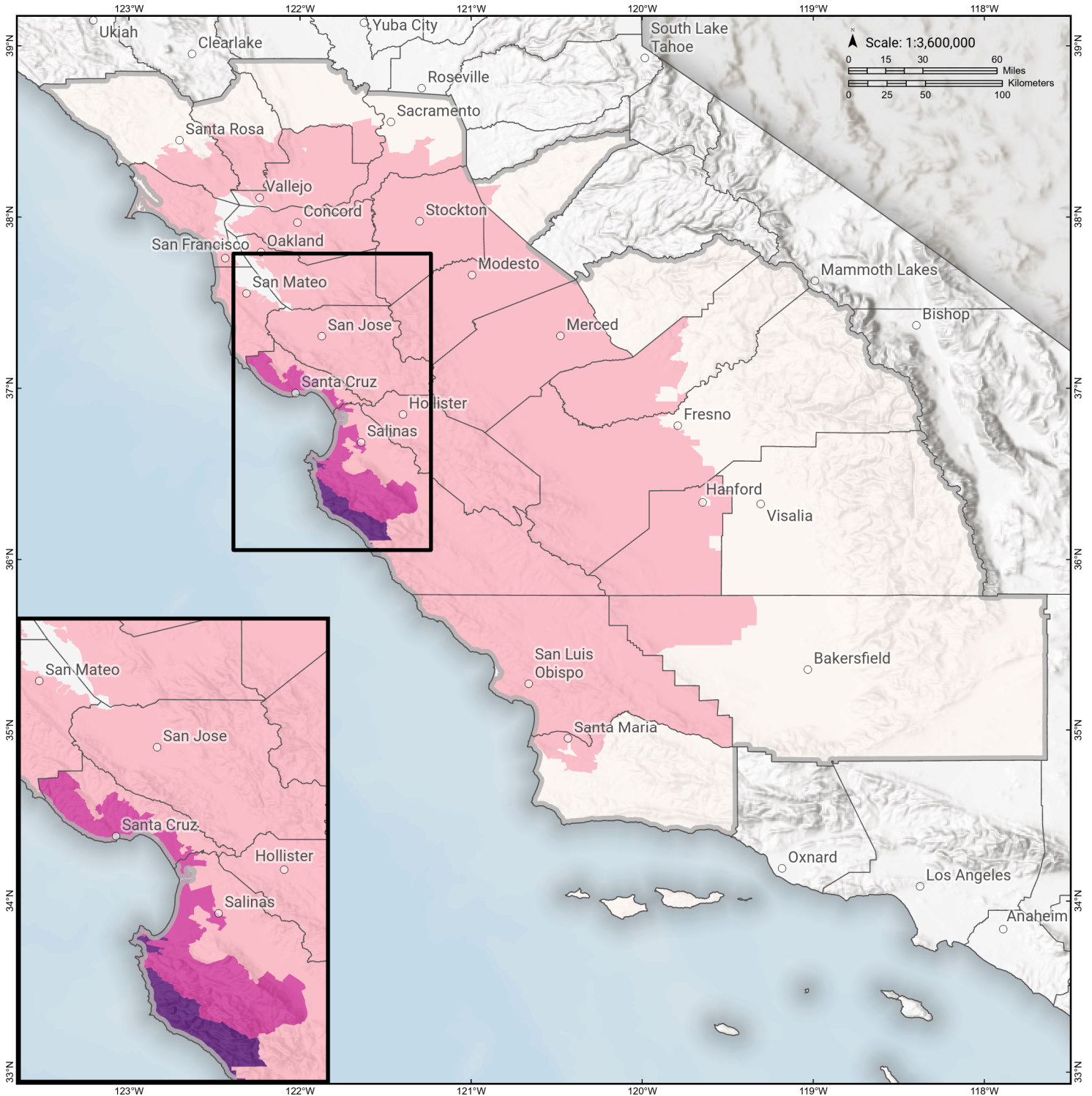
Study Region: San Gregorio (South)
Scenario: sangregoriosouth2011_m7p24_se

Displaced Households



San Gregorio (South)

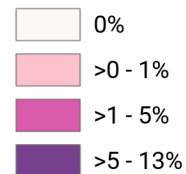
Loss Ratio by Census Tract



Study Region: San Gregorio (South)
Scenario: sangregoriosouth2011_m7p24_se

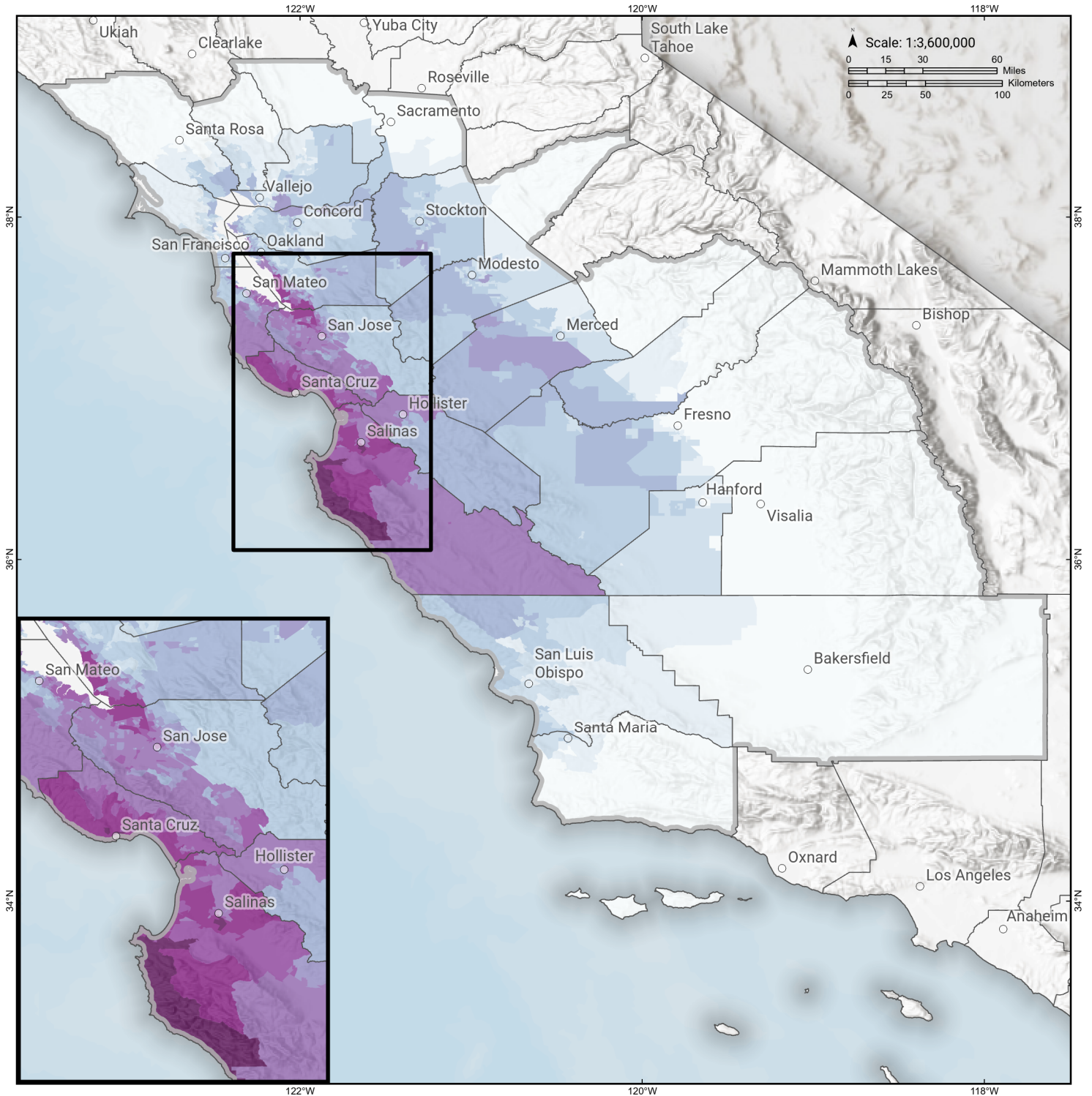


Loss Ratio (ratio of building related economic loss to exposed value of buildings)



San Gregorio (South)

Total Building Related Economic Loss by Census Tract



Study Region: San Gregorio (South)
Scenario: sangregoriosouth2011_m7p24_se



Economic Loss (in thousands of USD \$)



Building Damage by Count by General Occupancy

June 21, 2024

	# of Buildings					Total
	None	Slight	Moderate	Extensive	Complete	
California						
Alameda						
<i>Government</i>	10,466	59	3	0	0	10,528
<i>Agriculture</i>	417	4	0	0	0	422
<i>Commercial</i>	31,665	303	21	0	0	31,989
<i>Religion</i>	1,969	16	1	0	0	1,986
<i>Single Family</i>	343,239	933	0	0	0	344,173
<i>Other Residential</i>	61,029	346	21	0	0	61,396
<i>Education</i>	1,112	4	0	0	0	1,117
<i>Industrial</i>	10,064	131	10	0	0	10,205
Calaveras						
<i>Government</i>	84	0	0	0	0	84
<i>Other Residential</i>	2,559	0	0	0	0	2,559
<i>Education</i>	35	0	0	0	0	35
<i>Religion</i>	130	0	0	0	0	130
<i>Agriculture</i>	2,207	0	0	0	0	2,207
<i>Commercial</i>	1,413	0	0	0	0	1,413
<i>Industrial</i>	466	0	0	0	0	466
<i>Single Family</i>	22,148	0	0	0	0	22,148
Contra Costa						

	# of Buildings					Total
	None	Slight	Moderate	Extensive	Complete	
<i>Commercial</i>	17,973	17	1	0	0	17,991
<i>Agriculture</i>	748	1	0	0	0	749
<i>Religion</i>	1,224	2	0	0	0	1,226
<i>Single Family</i>	281,908	27	0	0	0	281,935
<i>Other Residential</i>	29,092	31	1	0	0	29,124
<i>Industrial</i>	4,742	7	0	0	0	4,749
<i>Government</i>	5,019	4	0	0	0	5,024
<i>Education</i>	653	0	0	0	0	653
Fresno						
<i>Commercial</i>	21,053	1	0	0	0	21,054
<i>Religion</i>	1,507	0	0	0	0	1,507
<i>Agriculture</i>	3,420	1	0	0	0	3,421
<i>Industrial</i>	5,348	0	0	0	0	5,348
<i>Government</i>	291	0	0	0	0	291
<i>Other Residential</i>	40,968	5	0	0	0	40,973
<i>Single Family</i>	226,425	0	0	0	0	226,425
<i>Education</i>	602	0	0	0	0	602
Kern						
<i>Single Family</i>	205,139	0	0	0	0	205,139
<i>Other Residential</i>	54,520	0	0	0	0	54,520
<i>Industrial</i>	6,047	0	0	0	0	6,047
<i>Education</i>	462	0	0	0	0	462
<i>Government</i>	443	0	0	0	0	443
<i>Religion</i>	1,524	0	0	0	0	1,524
<i>Agriculture</i>	4,645	0	0	0	0	4,645

		# of Buildings					
		None	Slight	Moderate	Extensive	Complete	Total
Kings	<i>Commercial</i>	15,567	0	0	0	0	15,567
	<i>Commercial</i>	2,318	0	0	0	0	2,318
	<i>Religion</i>	210	0	0	0	0	210
	<i>Agriculture</i>	306	0	0	0	0	306
	<i>Government</i>	72	0	0	0	0	72
	<i>Industrial</i>	555	0	0	0	0	555
	<i>Single Family</i>	36,245	0	0	0	0	36,245
	<i>Other Residential</i>	4,342	0	0	0	0	4,342
	<i>Education</i>	103	0	0	0	0	103
Madera	<i>Commercial</i>	2,905	0	0	0	0	2,905
	<i>Religion</i>	119	0	0	0	0	119
	<i>Government</i>	111	0	0	0	0	111
	<i>Agriculture</i>	634	0	0	0	0	634
	<i>Other Residential</i>	6,634	1	0	0	0	6,635
	<i>Single Family</i>	38,912	0	0	0	0	38,912
	<i>Education</i>	115	0	0	0	0	115
	<i>Industrial</i>	903	0	0	0	0	903
Marin	<i>Other Residential</i>	7,885	4	0	0	0	7,890
	<i>Government</i>	143	0	0	0	0	143
	<i>Education</i>	274	0	0	0	0	274
	<i>Commercial</i>	8,266	4	0	0	0	8,270
	<i>Religion</i>	319	0	0	0	0	319

	# of Buildings					Total
	None	Slight	Moderate	Extensive	Complete	
<i>Agriculture</i>	190	0	0	0	0	190
<i>Single Family</i>	76,721	3	0	0	0	76,724
<i>Industrial</i>	1,533	2	0	0	0	1,535
Mariposa						
<i>Single Family</i>	8,084	0	0	0	0	8,084
<i>Other Residential</i>	307	0	0	0	0	307
<i>Education</i>	27	0	0	0	0	27
<i>Industrial</i>	94	0	0	0	0	94
<i>Commercial</i>	689	0	0	0	0	689
<i>Agriculture</i>	29	0	0	0	0	29
<i>Religion</i>	36	0	0	0	0	36
<i>Government</i>	33	0	0	0	0	33
Merced						
<i>Education</i>	163	0	0	0	0	163
<i>Government</i>	171	0	0	0	0	171
<i>Commercial</i>	4,750	4	0	0	0	4,754
<i>Agriculture</i>	7,625	26	3	0	0	7,653
<i>Religion</i>	345	0	0	0	0	345
<i>Industrial</i>	1,021	1	0	0	0	1,022
<i>Single Family</i>	63,589	9	0	0	0	63,598
<i>Other Residential</i>	10,773	14	1	0	0	10,787
Monterey						
<i>Single Family</i>	69,377	19,823	1,666	10	0	90,876
<i>Industrial</i>	1,326	364	143	16	1	1,850
<i>Other Residential</i>	14,167	4,454	1,030	138	20	19,809

		# of Buildings					
		None	Slight	Moderate	Extensive	Complete	Total
	<i>Education</i>	207	25	6	0	0	239
	<i>Government</i>	137	35	12	1	0	185
	<i>Agriculture</i>	1,670	115	28	2	0	1,815
	<i>Commercial</i>	6,281	2,009	811	126	18	9,246
	<i>Religion</i>	386	135	53	5	0	580
Napa							
	<i>Commercial</i>	4,020	1	0	0	0	4,021
	<i>Agriculture</i>	349	0	0	0	0	349
	<i>Religion</i>	148	0	0	0	0	148
	<i>Single Family</i>	38,761	0	0	0	0	38,761
	<i>Other Residential</i>	6,977	1	0	0	0	6,978
	<i>Government</i>	103	0	0	0	0	103
	<i>Education</i>	132	0	0	0	0	132
	<i>Industrial</i>	1,367	0	0	0	0	1,367
Sacramento							
	<i>Single Family</i>	386,840	0	0	0	0	386,840
	<i>Industrial</i>	6,756	0	0	0	0	6,756
	<i>Other Residential</i>	56,409	4	0	0	0	56,413
	<i>Education</i>	829	0	0	0	0	829
	<i>Agriculture</i>	621	0	0	0	0	621
	<i>Religion</i>	1,702	0	0	0	0	1,702
	<i>Government</i>	619	0	0	0	0	619
	<i>Commercial</i>	26,293	1	0	0	0	26,295
San Benito							
	<i>Other Residential</i>	1,337	36	2	0	0	1,375

	# of Buildings					Total
	None	Slight	Moderate	Extensive	Complete	
<i>Single Family</i>	14,589	137	0	0	0	14,726
<i>Industrial</i>	319	6	1	0	0	326
<i>Education</i>	42	0	0	0	0	42
<i>Government</i>	44	1	0	0	0	45
<i>Commercial</i>	1,053	24	3	0	0	1,080
<i>Religion</i>	62	2	0	0	0	64
<i>Agriculture</i>	250	2	0	0	0	253
San Francisco						
<i>Single Family</i>	150,462	227	14	0	0	150,703
<i>Other Residential</i>	44,200	313	17	0	0	44,529
<i>Government</i>	283	6	0	0	0	289
<i>Education</i>	569	3	0	0	0	572
<i>Industrial</i>	3,826	32	2	0	0	3,860
<i>Commercial</i>	21,074	254	16	0	0	21,344
<i>Religion</i>	1,338	7	0	0	0	1,345
<i>Agriculture</i>	161	1	0	0	0	162
San Joaquin						
<i>Commercial</i>	12,855	9	0	0	0	12,864
<i>Agriculture</i>	752	1	0	0	0	753
<i>Religion</i>	876	1	0	0	0	877
<i>Government</i>	304	0	0	0	0	304
<i>Single Family</i>	188,709	202	11	0	0	188,922
<i>Other Residential</i>	21,772	32	2	0	0	21,805
<i>Education</i>	395	0	0	0	0	395

	# of Buildings					Total
	None	Slight	Moderate	Extensive	Complete	
<i>Industrial</i>	4,924	3	0	0	0	4,928
San Luis Obispo						
<i>Religion</i>	360	0	0	0	0	360
<i>Agriculture</i>	421	0	0	0	0	421
<i>Government</i>	185	0	0	0	0	185
<i>Commercial</i>	9,371	3	0	0	0	9,375
<i>Single Family</i>	85,638	1	0	0	0	85,639
<i>Industrial</i>	2,555	1	0	0	0	2,556
<i>Other Residential</i>	20,197	19	1	0	0	20,216
<i>Education</i>	182	0	0	0	0	182
San Mateo						
<i>Religion</i>	723	12	1	0	0	736
<i>Agriculture</i>	522	15	3	0	0	539
<i>Government</i>	292	6	0	0	0	299
<i>Commercial</i>	14,122	253	20	0	0	14,395
<i>Industrial</i>	4,363	99	10	0	0	4,472
<i>Other Residential</i>	22,087	340	25	0	0	22,453
<i>Single Family</i>	158,956	972	2	0	0	159,931
<i>Education</i>	487	2	0	0	0	489
Santa Barbara						
<i>Government</i>	239	0	0	0	0	239
<i>Other Residential</i>	24,108	3	0	0	0	24,111
<i>Education</i>	299	0	0	0	0	299
<i>Religion</i>	621	0	0	0	0	621
<i>Commercial</i>	9,820	0	0	0	0	9,820

	# of Buildings					Total
	None	Slight	Moderate	Extensive	Complete	
<i>Agriculture</i>	464	0	0	0	0	464
<i>Single Family</i>	98,982	0	0	0	0	98,982
<i>Industrial</i>	2,840	0	0	0	0	2,840
Santa Clara						
<i>Other Residential</i>	56,829	2,138	192	1	0	59,160
<i>Single Family</i>	419,629	7,560	29	0	0	427,219
<i>Government</i>	473	25	3	0	0	502
<i>Education</i>	1,161	11	1	0	0	1,173
<i>Industrial</i>	9,025	365	42	1	0	9,433
<i>Commercial</i>	34,095	1,246	126	2	0	35,469
<i>Religion</i>	1,484	51	5	0	0	1,540
<i>Agriculture</i>	859	31	5	0	0	895
Santa Cruz						
<i>Religion</i>	264	69	22	3	0	359
<i>Agriculture</i>	668	130	39	4	0	840
<i>Single Family</i>	55,667	12,770	434	0	0	68,870
<i>Other Residential</i>	10,143	3,605	1,045	95	4	14,892
<i>Industrial</i>	1,286	377	135	20	1	1,819
<i>Education</i>	193	24	6	1	0	225
<i>Commercial</i>	4,768	1,405	447	70	4	6,694
<i>Government</i>	91	25	10	1	0	127
Solano						
<i>Religion</i>	454	0	0	0	0	454
<i>Agriculture</i>	245	0	0	0	0	245
<i>Government</i>	152	0	0	0	0	152

	# of Buildings					Total
	None	Slight	Moderate	Extensive	Complete	
<i>Commercial</i>	7,264	4	0	0	0	7,268
<i>Single Family</i>	120,966	2	0	0	0	120,968
<i>Industrial</i>	2,099	2	0	0	0	2,101
<i>Other Residential</i>	12,311	6	0	0	0	12,317
<i>Education</i>	225	0	0	0	0	225
Sonoma						
<i>Other Residential</i>	25,032	1	0	0	0	25,033
<i>Government</i>	319	0	0	0	0	319
<i>Education</i>	367	0	0	0	0	367
<i>Religion</i>	576	0	0	0	0	576
<i>Commercial</i>	12,110	0	0	0	0	12,110
<i>Agriculture</i>	1,304	0	0	0	0	1,304
<i>Single Family</i>	142,028	0	0	0	0	142,028
<i>Industrial</i>	3,825	0	0	0	0	3,825
Stanislaus						
<i>Other Residential</i>	19,557	12	0	0	0	19,569
<i>Single Family</i>	142,717	7	0	0	0	142,724
<i>Education</i>	307	0	0	0	0	307
<i>Government</i>	680	0	0	0	0	680
<i>Industrial</i>	3,472	3	0	0	0	3,475
<i>Commercial</i>	10,360	8	0	0	0	10,369
<i>Religion</i>	456	0	0	0	0	456
<i>Agriculture</i>	1,238	1	0	0	0	1,239
Tulare						
<i>Commercial</i>	8,873	0	0	0	0	8,873

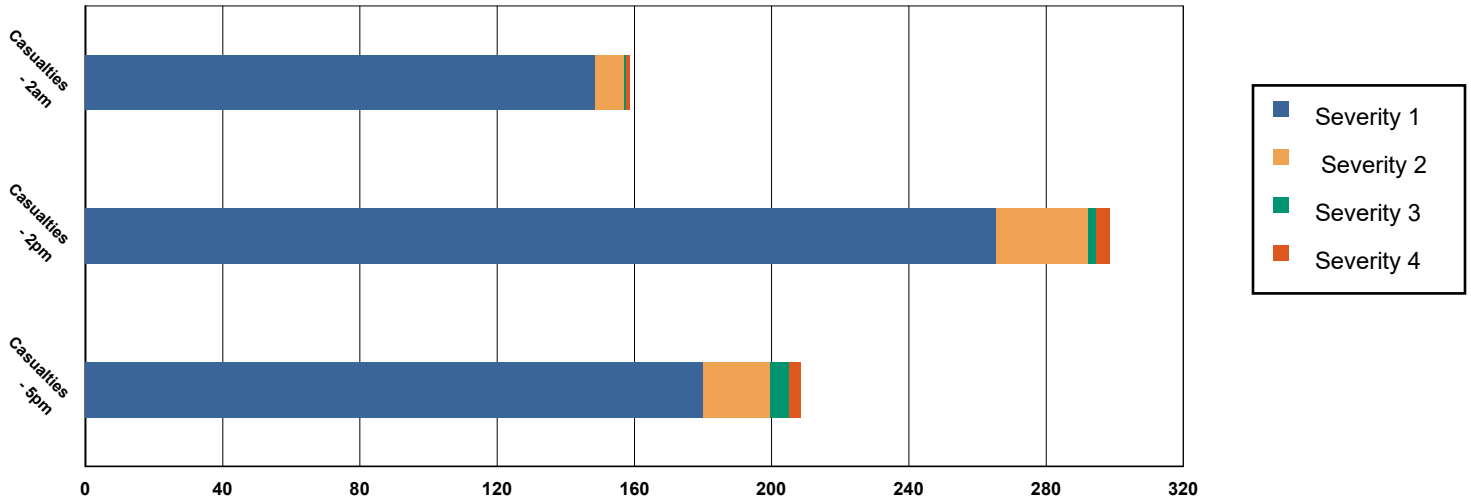
	# of Buildings					Total
	None	Slight	Moderate	Extensive	Complete	
<i>Agriculture</i>	3,555	0	0	0	0	3,555
<i>Religion</i>	827	0	0	0	0	827
<i>Government</i>	461	0	0	0	0	461
<i>Single Family</i>	112,034	0	0	0	0	112,034
<i>Other Residential</i>	20,022	0	0	0	0	20,022
<i>Industrial</i>	2,148	0	0	0	0	2,148
<i>Education</i>	269	0	0	0	0	269
Yolo						
<i>Industrial</i>	1,117	0	0	0	0	1,117
<i>Other Residential</i>	9,861	0	0	0	0	9,861
<i>Education</i>	131	0	0	0	0	131
<i>Government</i>	111	0	0	0	0	111
<i>Single Family</i>	42,589	0	0	0	0	42,589
<i>Commercial</i>	4,225	0	0	0	0	4,225
<i>Agriculture</i>	281	0	0	0	0	281
<i>Religion</i>	242	0	0	0	0	242
Total	4,570,820	61,838	6,488	498	50	4,639,694
Region Total	4,570,820	61,838	6,488	498	50	4,639,694

Totals only reflect data for those census tracts/blocks included in the user's study region and will reflect the entire county/state only if all of the census blocks for that county/states were selected at the time of study region creation.

Casualties Summary Report

June 21, 2024

Region Total Casualties



Injury Severity Level

Severity 1	Severity 2	Severity 3	Severity 4	Total
------------	------------	------------	------------	-------

California

Alameda

Casualties - 2am

	Severity 1	Severity 2	Severity 3	Severity 4	Total
Single Family	1	0	0	0	1
Hotels	0	0	0	0	0
Commuting	0	0	0	0	0
Educational	0	0	0	0	0
Industrial	0	0	0	0	0
Commercial	0	0	0	0	0
Other-Residential	2	0	0	0	2
Total Casualties - 2am	4	0	0	0	4

Casualties - 2pm

Industrial	1	0	0	0	1
Educational	1	0	0	0	1
Other-Residential	1	0	0	0	1
Single Family	0	0	0	0	0
Hotels	0	0	0	0	0
Commuting	0	0	0	0	0
Commercial	5	0	0	0	5

	Injury Severity Level				Total
	Severity 1	Severity 2	Severity 3	Severity 4	
California					
Alameda					
Total Casualties - 2pm	7	0	0	0	8
Casualties - 5pm					
<i>Commuting</i>	0	0	0	0	0
<i>Single Family</i>	1	0	0	0	1
<i>Commercial</i>	3	0	0	0	3
<i>Hotels</i>	0	0	0	0	0
<i>Educational</i>	0	0	0	0	0
<i>Industrial</i>	1	0	0	0	1
<i>Other-Residential</i>	1	0	0	0	1
Total Casualties - 5pm	5	0	0	0	5
Calaveras					
Casualties - 2am					
<i>Other-Residential</i>	0	0	0	0	0
<i>Commuting</i>	0	0	0	0	0
<i>Commercial</i>	0	0	0	0	0
<i>Single Family</i>	0	0	0	0	0
<i>Hotels</i>	0	0	0	0	0
<i>Educational</i>	0	0	0	0	0
<i>Industrial</i>	0	0	0	0	0
Total Casualties - 2am	0	0	0	0	0
Casualties - 2pm					
<i>Hotels</i>	0	0	0	0	0
<i>Single Family</i>	0	0	0	0	0
<i>Educational</i>	0	0	0	0	0
<i>Commuting</i>	0	0	0	0	0
<i>Commercial</i>	0	0	0	0	0
<i>Industrial</i>	0	0	0	0	0
<i>Other-Residential</i>	0	0	0	0	0
Total Casualties - 2pm	0	0	0	0	0
Casualties - 5pm					
<i>Industrial</i>	0	0	0	0	0
<i>Commercial</i>	0	0	0	0	0
<i>Other-Residential</i>	0	0	0	0	0
<i>Educational</i>	0	0	0	0	0
<i>Hotels</i>	0	0	0	0	0
<i>Commuting</i>	0	0	0	0	0
<i>Single Family</i>	0	0	0	0	0
Total Casualties - 5pm	0	0	0	0	0
Contra Costa					
Casualties - 2am					
<i>Educational</i>	0	0	0	0	0

	Injury Severity Level				Total
	Severity 1	Severity 2	Severity 3	Severity 4	
California					
Contra Costa					
Casualties - 2am					
<i>Hotels</i>	0	0	0	0	0
<i>Industrial</i>	0	0	0	0	0
<i>Other-Residential</i>	0	0	0	0	0
<i>Single Family</i>	0	0	0	0	0
<i>Commercial</i>	0	0	0	0	0
<i>Commuting</i>	0	0	0	0	0
Total Casualties - 2am	0	0	0	0	0
Casualties - 2pm					
<i>Other-Residential</i>	0	0	0	0	0
<i>Industrial</i>	0	0	0	0	0
<i>Hotels</i>	0	0	0	0	0
<i>Single Family</i>	0	0	0	0	0
<i>Educational</i>	0	0	0	0	0
<i>Commuting</i>	0	0	0	0	0
<i>Commercial</i>	0	0	0	0	0
Total Casualties - 2pm	0	0	0	0	0
Casualties - 5pm					
<i>Educational</i>	0	0	0	0	0
<i>Commuting</i>	0	0	0	0	0
<i>Single Family</i>	0	0	0	0	0
<i>Hotels</i>	0	0	0	0	0
<i>Industrial</i>	0	0	0	0	0
<i>Other-Residential</i>	0	0	0	0	0
<i>Commercial</i>	0	0	0	0	0
Total Casualties - 5pm	0	0	0	0	0
Fresno					
Casualties - 2am					
<i>Hotels</i>	0	0	0	0	0
<i>Educational</i>	0	0	0	0	0
<i>Industrial</i>	0	0	0	0	0
<i>Commercial</i>	0	0	0	0	0
<i>Other-Residential</i>	0	0	0	0	0
<i>Single Family</i>	0	0	0	0	0
<i>Commuting</i>	0	0	0	0	0
Total Casualties - 2am	0	0	0	0	0
Casualties - 2pm					
<i>Commercial</i>	0	0	0	0	0
<i>Other-Residential</i>	0	0	0	0	0
<i>Industrial</i>	0	0	0	0	0
<i>Single Family</i>	0	0	0	0	0
<i>Hotels</i>	0	0	0	0	0

	Injury Severity Level				Total
	Severity 1	Severity 2	Severity 3	Severity 4	
California					
Fresno					
Casualties - 2pm					
Commuting	0	0	0	0	0
Educational	0	0	0	0	0
Total Casualties - 2pm	0	0	0	0	0
Casualties - 5pm					
Educational	0	0	0	0	0
Commuting	0	0	0	0	0
Hotels	0	0	0	0	0
Industrial	0	0	0	0	0
Single Family	0	0	0	0	0
Other-Residential	0	0	0	0	0
Commercial	0	0	0	0	0
Total Casualties - 5pm	0	0	0	0	0
Kern					
Casualties - 2am					
Commercial	0	0	0	0	0
Commuting	0	0	0	0	0
Educational	0	0	0	0	0
Single Family	0	0	0	0	0
Other-Residential	0	0	0	0	0
Hotels	0	0	0	0	0
Industrial	0	0	0	0	0
Total Casualties - 2am	0	0	0	0	0
Casualties - 2pm					
Educational	0	0	0	0	0
Commuting	0	0	0	0	0
Single Family	0	0	0	0	0
Hotels	0	0	0	0	0
Other-Residential	0	0	0	0	0
Commercial	0	0	0	0	0
Industrial	0	0	0	0	0
Total Casualties - 2pm	0	0	0	0	0
Casualties - 5pm					
Single Family	0	0	0	0	0
Commercial	0	0	0	0	0
Other-Residential	0	0	0	0	0
Commuting	0	0	0	0	0
Educational	0	0	0	0	0
Hotels	0	0	0	0	0
Industrial	0	0	0	0	0
Total Casualties - 5pm	0	0	0	0	0

	Injury Severity Level				Total
	Severity 1	Severity 2	Severity 3	Severity 4	
California					
Kings					
Casualties - 2am					
Industrial	0	0	0	0	0
Other-Residential	0	0	0	0	0
Educational	0	0	0	0	0
Commuting	0	0	0	0	0
Commercial	0	0	0	0	0
Single Family	0	0	0	0	0
Hotels	0	0	0	0	0
Total Casualties - 2am	0	0	0	0	0
Casualties - 2pm					
Single Family	0	0	0	0	0
Other-Residential	0	0	0	0	0
Commercial	0	0	0	0	0
Educational	0	0	0	0	0
Commuting	0	0	0	0	0
Hotels	0	0	0	0	0
Industrial	0	0	0	0	0
Total Casualties - 2pm	0	0	0	0	0
Casualties - 5pm					
Single Family	0	0	0	0	0
Commercial	0	0	0	0	0
Commuting	0	0	0	0	0
Other-Residential	0	0	0	0	0
Educational	0	0	0	0	0
Hotels	0	0	0	0	0
Industrial	0	0	0	0	0
Total Casualties - 5pm	0	0	0	0	0
Madera					
Casualties - 2am					
Hotels	0	0	0	0	0
Educational	0	0	0	0	0
Single Family	0	0	0	0	0
Commuting	0	0	0	0	0
Industrial	0	0	0	0	0
Commercial	0	0	0	0	0
Other-Residential	0	0	0	0	0
Total Casualties - 2am	0	0	0	0	0
Casualties - 2pm					
Industrial	0	0	0	0	0
Commercial	0	0	0	0	0
Other-Residential	0	0	0	0	0
Commuting	0	0	0	0	0

	Injury Severity Level				Total
	Severity 1	Severity 2	Severity 3	Severity 4	
California					
Madera					
Casualties - 2pm					
Single Family	0	0	0	0	0
Hotels	0	0	0	0	0
Educational	0	0	0	0	0
Total Casualties - 2pm	0	0	0	0	0
Casualties - 5pm					
Industrial	0	0	0	0	0
Commercial	0	0	0	0	0
Single Family	0	0	0	0	0
Educational	0	0	0	0	0
Other-Residential	0	0	0	0	0
Commuting	0	0	0	0	0
Hotels	0	0	0	0	0
Total Casualties - 5pm	0	0	0	0	0
Marin					
Casualties - 2am					
Commercial	0	0	0	0	0
Commuting	0	0	0	0	0
Other-Residential	0	0	0	0	0
Educational	0	0	0	0	0
Single Family	0	0	0	0	0
Hotels	0	0	0	0	0
Industrial	0	0	0	0	0
Total Casualties - 2am	0	0	0	0	0
Casualties - 2pm					
Hotels	0	0	0	0	0
Commuting	0	0	0	0	0
Educational	0	0	0	0	0
Industrial	0	0	0	0	0
Other-Residential	0	0	0	0	0
Commercial	0	0	0	0	0
Single Family	0	0	0	0	0
Total Casualties - 2pm	0	0	0	0	0
Casualties - 5pm					
Commuting	0	0	0	0	0
Commercial	0	0	0	0	0
Other-Residential	0	0	0	0	0
Single Family	0	0	0	0	0
Industrial	0	0	0	0	0
Educational	0	0	0	0	0
Hotels	0	0	0	0	0

	Injury Severity Level				Total
	Severity 1	Severity 2	Severity 3	Severity 4	
California					
Marin					
Total Casualties - 5pm	0	0	0	0	0
Mariposa					
Casualties - 2am					
<i>Commuting</i>	0	0	0	0	0
<i>Single Family</i>	0	0	0	0	0
<i>Commercial</i>	0	0	0	0	0
<i>Hotels</i>	0	0	0	0	0
<i>Educational</i>	0	0	0	0	0
<i>Industrial</i>	0	0	0	0	0
<i>Other-Residential</i>	0	0	0	0	0
Total Casualties - 2am	0	0	0	0	0
Casualties - 2pm					
<i>Hotels</i>	0	0	0	0	0
<i>Industrial</i>	0	0	0	0	0
<i>Commercial</i>	0	0	0	0	0
<i>Other-Residential</i>	0	0	0	0	0
<i>Educational</i>	0	0	0	0	0
<i>Commuting</i>	0	0	0	0	0
<i>Single Family</i>	0	0	0	0	0
Total Casualties - 2pm	0	0	0	0	0
Casualties - 5pm					
<i>Other-Residential</i>	0	0	0	0	0
<i>Educational</i>	0	0	0	0	0
<i>Commuting</i>	0	0	0	0	0
<i>Hotels</i>	0	0	0	0	0
<i>Single Family</i>	0	0	0	0	0
<i>Commercial</i>	0	0	0	0	0
<i>Industrial</i>	0	0	0	0	0
Total Casualties - 5pm	0	0	0	0	0
Merced					
Casualties - 2am					
<i>Hotels</i>	0	0	0	0	0
<i>Industrial</i>	0	0	0	0	0
<i>Commercial</i>	0	0	0	0	0
<i>Single Family</i>	0	0	0	0	0
<i>Other-Residential</i>	0	0	0	0	0
<i>Educational</i>	0	0	0	0	0
<i>Commuting</i>	0	0	0	0	0
Total Casualties - 2am	0	0	0	0	0
Casualties - 2pm					
<i>Other-Residential</i>	0	0	0	0	0

	Injury Severity Level				Total
	Severity 1	Severity 2	Severity 3	Severity 4	
California					
Merced					
Casualties - 2pm					
<i>Industrial</i>	0	0	0	0	0
<i>Commercial</i>	0	0	0	0	0
<i>Commuting</i>	0	0	0	0	0
<i>Hotels</i>	0	0	0	0	0
<i>Educational</i>	0	0	0	0	0
<i>Single Family</i>	0	0	0	0	0
Total Casualties - 2pm	0	0	0	0	0
Casualties - 5pm					
<i>Industrial</i>	0	0	0	0	0
<i>Hotels</i>	0	0	0	0	0
<i>Educational</i>	0	0	0	0	0
<i>Commuting</i>	0	0	0	0	0
<i>Single Family</i>	0	0	0	0	0
<i>Commercial</i>	0	0	0	0	0
<i>Other-Residential</i>	0	0	0	0	0
Total Casualties - 5pm	0	0	0	0	0
Monterey					
Casualties - 2am					
<i>Other-Residential</i>	36	4	0	1	41
<i>Commuting</i>	0	0	0	0	0
<i>Commercial</i>	1	0	0	0	1
<i>Single Family</i>	31	1	0	0	32
<i>Hotels</i>	0	0	0	0	0
<i>Educational</i>	0	0	0	0	0
<i>Industrial</i>	1	0	0	0	1
Total Casualties - 2am	69	5	0	1	76
Casualties - 2pm					
<i>Commuting</i>	0	0	0	0	0
<i>Commercial</i>	78	12	1	2	94
<i>Single Family</i>	11	0	0	0	11
<i>Hotels</i>	0	0	0	0	0
<i>Educational</i>	23	2	0	0	25
<i>Industrial</i>	6	1	0	0	7
<i>Other-Residential</i>	13	2	0	0	15
Total Casualties - 2pm	131	17	2	3	152
Casualties - 5pm					
<i>Commercial</i>	51	8	1	1	61
<i>Other-Residential</i>	13	1	0	0	15
<i>Industrial</i>	4	1	0	0	5
<i>Hotels</i>	0	0	0	0	0
<i>Educational</i>	7	1	0	0	8

	Injury Severity Level				Total
	Severity 1	Severity 2	Severity 3	Severity 4	
California					
Monterey					
Casualties - 5pm					
<i>Commuting</i>	1	1	2	0	4
<i>Single Family</i>	11	0	0	0	12
Total Casualties - 5pm	87	12	3	2	104
Napa					
Casualties - 2am					
<i>Commercial</i>	0	0	0	0	0
<i>Other-Residential</i>	0	0	0	0	0
<i>Educational</i>	0	0	0	0	0
<i>Single Family</i>	0	0	0	0	0
<i>Commuting</i>	0	0	0	0	0
<i>Hotels</i>	0	0	0	0	0
<i>Industrial</i>	0	0	0	0	0
Total Casualties - 2am	0	0	0	0	0
Casualties - 2pm					
<i>Educational</i>	0	0	0	0	0
<i>Hotels</i>	0	0	0	0	0
<i>Commuting</i>	0	0	0	0	0
<i>Industrial</i>	0	0	0	0	0
<i>Other-Residential</i>	0	0	0	0	0
<i>Single Family</i>	0	0	0	0	0
<i>Commercial</i>	0	0	0	0	0
Total Casualties - 2pm	0	0	0	0	0
Casualties - 5pm					
<i>Commercial</i>	0	0	0	0	0
<i>Single Family</i>	0	0	0	0	0
<i>Other-Residential</i>	0	0	0	0	0
<i>Commuting</i>	0	0	0	0	0
<i>Industrial</i>	0	0	0	0	0
<i>Educational</i>	0	0	0	0	0
<i>Hotels</i>	0	0	0	0	0
Total Casualties - 5pm	0	0	0	0	0
Sacramento					
Casualties - 2am					
<i>Industrial</i>	0	0	0	0	0
<i>Other-Residential</i>	0	0	0	0	0
<i>Commercial</i>	0	0	0	0	0
<i>Single Family</i>	0	0	0	0	0
<i>Hotels</i>	0	0	0	0	0
<i>Commuting</i>	0	0	0	0	0
<i>Educational</i>	0	0	0	0	0

	Injury Severity Level				Total
	Severity 1	Severity 2	Severity 3	Severity 4	
California					
Sacramento					
Total Casualties - 2am	0	0	0	0	0
Casualties - 2pm					
<i>Other-Residential</i>	0	0	0	0	0
<i>Commuting</i>	0	0	0	0	0
<i>Single Family</i>	0	0	0	0	0
<i>Commercial</i>	0	0	0	0	0
<i>Hotels</i>	0	0	0	0	0
<i>Educational</i>	0	0	0	0	0
<i>Industrial</i>	0	0	0	0	0
Total Casualties - 2pm	0	0	0	0	0
Casualties - 5pm					
<i>Industrial</i>	0	0	0	0	0
<i>Educational</i>	0	0	0	0	0
<i>Hotels</i>	0	0	0	0	0
<i>Commercial</i>	0	0	0	0	0
<i>Commuting</i>	0	0	0	0	0
<i>Other-Residential</i>	0	0	0	0	0
<i>Single Family</i>	0	0	0	0	0
Total Casualties - 5pm	0	0	0	0	0
San Benito					
Casualties - 2am					
<i>Other-Residential</i>	0	0	0	0	0
<i>Commercial</i>	0	0	0	0	0
<i>Commuting</i>	0	0	0	0	0
<i>Hotels</i>	0	0	0	0	0
<i>Educational</i>	0	0	0	0	0
<i>Single Family</i>	0	0	0	0	0
<i>Industrial</i>	0	0	0	0	0
Total Casualties - 2am	0	0	0	0	0
Casualties - 2pm					
<i>Hotels</i>	0	0	0	0	0
<i>Educational</i>	0	0	0	0	0
<i>Industrial</i>	0	0	0	0	0
<i>Other-Residential</i>	0	0	0	0	0
<i>Commercial</i>	0	0	0	0	0
<i>Commuting</i>	0	0	0	0	0
<i>Single Family</i>	0	0	0	0	0
Total Casualties - 2pm	0	0	0	0	0
Casualties - 5pm					
<i>Commuting</i>	0	0	0	0	0
<i>Commercial</i>	0	0	0	0	0

	Injury Severity Level				Total
	Severity 1	Severity 2	Severity 3	Severity 4	
California					
San Benito					
Casualties - 5pm					
<i>Other-Residential</i>	0	0	0	0	0
<i>Single Family</i>	0	0	0	0	0
<i>Industrial</i>	0	0	0	0	0
<i>Educational</i>	0	0	0	0	0
<i>Hotels</i>	0	0	0	0	0
Total Casualties - 5pm	0	0	0	0	0
San Francisco					
Casualties - 2am					
<i>Industrial</i>	0	0	0	0	0
<i>Hotels</i>	0	0	0	0	0
<i>Commercial</i>	0	0	0	0	0
<i>Other-Residential</i>	3	0	0	0	3
<i>Commuting</i>	0	0	0	0	0
<i>Educational</i>	0	0	0	0	0
<i>Single Family</i>	0	0	0	0	0
Total Casualties - 2am	4	0	0	0	4
Casualties - 2pm					
<i>Commercial</i>	5	0	0	0	5
<i>Industrial</i>	0	0	0	0	0
<i>Other-Residential</i>	1	0	0	0	1
<i>Single Family</i>	0	0	0	0	0
<i>Hotels</i>	0	0	0	0	0
<i>Commuting</i>	0	0	0	0	0
<i>Educational</i>	1	0	0	0	1
Total Casualties - 2pm	7	0	0	0	7
Casualties - 5pm					
<i>Educational</i>	0	0	0	0	0
<i>Hotels</i>	0	0	0	0	0
<i>Industrial</i>	0	0	0	0	0
<i>Commuting</i>	0	0	0	0	0
<i>Commercial</i>	3	0	0	0	3
<i>Other-Residential</i>	1	0	0	0	1
<i>Single Family</i>	0	0	0	0	0
Total Casualties - 5pm	5	0	0	0	5
San Joaquin					
Casualties - 2am					
<i>Educational</i>	0	0	0	0	0
<i>Commuting</i>	0	0	0	0	0
<i>Hotels</i>	0	0	0	0	0
<i>Commercial</i>	0	0	0	0	0
<i>Single Family</i>	0	0	0	0	0

	Injury Severity Level				Total
	Severity 1	Severity 2	Severity 3	Severity 4	
California					
San Joaquin					
Casualties - 2am					
<i>Industrial</i>	0	0	0	0	0
<i>Other-Residential</i>	0	0	0	0	0
Total Casualties - 2am	1	0	0	0	1
Casualties - 2pm					
<i>Industrial</i>	0	0	0	0	0
<i>Other-Residential</i>	0	0	0	0	0
<i>Educational</i>	0	0	0	0	0
<i>Single Family</i>	0	0	0	0	0
<i>Hotels</i>	0	0	0	0	0
<i>Commuting</i>	0	0	0	0	0
<i>Commercial</i>	0	0	0	0	0
Total Casualties - 2pm	0	0	0	0	0
Casualties - 5pm					
<i>Commuting</i>	0	0	0	0	0
<i>Single Family</i>	0	0	0	0	0
<i>Educational</i>	0	0	0	0	0
<i>Hotels</i>	0	0	0	0	0
<i>Industrial</i>	0	0	0	0	0
<i>Commercial</i>	0	0	0	0	0
<i>Other-Residential</i>	0	0	0	0	0
Total Casualties - 5pm	0	0	0	0	0
San Luis Obispo					
Casualties - 2am					
<i>Commercial</i>	0	0	0	0	0
<i>Other-Residential</i>	0	0	0	0	0
<i>Industrial</i>	0	0	0	0	0
<i>Single Family</i>	0	0	0	0	0
<i>Commuting</i>	0	0	0	0	0
<i>Educational</i>	0	0	0	0	0
<i>Hotels</i>	0	0	0	0	0
Total Casualties - 2am	0	0	0	0	0
Casualties - 2pm					
<i>Single Family</i>	0	0	0	0	0
<i>Educational</i>	0	0	0	0	0
<i>Other-Residential</i>	0	0	0	0	0
<i>Hotels</i>	0	0	0	0	0
<i>Commuting</i>	0	0	0	0	0
<i>Commercial</i>	0	0	0	0	0
<i>Industrial</i>	0	0	0	0	0
Total Casualties - 2pm	0	0	0	0	0

Injury Severity Level

Severity 1 Severity 2 Severity 3 Severity 4 Total

California

San Luis Obispo

Casualties - 5pm

<i>Industrial</i>	0	0	0	0	0
<i>Other-Residential</i>	0	0	0	0	0
<i>Commuting</i>	0	0	0	0	0
<i>Single Family</i>	0	0	0	0	0
<i>Commercial</i>	0	0	0	0	0
<i>Hotels</i>	0	0	0	0	0
<i>Educational</i>	0	0	0	0	0
Total Casualties - 5pm	0	0	0	0	0

San Mateo

Casualties - 2am

<i>Industrial</i>	0	0	0	0	0
<i>Other-Residential</i>	2	0	0	0	2
<i>Single Family</i>	2	0	0	0	2
<i>Commercial</i>	0	0	0	0	0
<i>Educational</i>	0	0	0	0	0
<i>Commuting</i>	0	0	0	0	0
<i>Hotels</i>	0	0	0	0	0
Total Casualties - 2am	4	0	0	0	4

Casualties - 2pm

<i>Other-Residential</i>	1	0	0	0	1
<i>Single Family</i>	0	0	0	0	0
<i>Commuting</i>	0	0	0	0	0
<i>Commercial</i>	5	0	0	0	5
<i>Educational</i>	0	0	0	0	0
<i>Hotels</i>	0	0	0	0	0
<i>Industrial</i>	1	0	0	0	1
Total Casualties - 2pm	7	0	0	0	7

Casualties - 5pm

<i>Commercial</i>	3	0	0	0	3
<i>Industrial</i>	0	0	0	0	0
<i>Other-Residential</i>	1	0	0	0	1
<i>Single Family</i>	1	0	0	0	1
<i>Educational</i>	0	0	0	0	0
<i>Commuting</i>	0	0	0	0	0
<i>Hotels</i>	0	0	0	0	0
Total Casualties - 5pm	5	0	0	0	5

Santa Barbara

Casualties - 2am

<i>Industrial</i>	0	0	0	0	0
<i>Commercial</i>	0	0	0	0	0
<i>Other-Residential</i>	0	0	0	0	0

	Injury Severity Level				Total
	Severity 1	Severity 2	Severity 3	Severity 4	
California					
Santa Barbara					
Casualties - 2am					
<i>Commuting</i>	0	0	0	0	0
<i>Educational</i>	0	0	0	0	0
<i>Single Family</i>	0	0	0	0	0
<i>Hotels</i>	0	0	0	0	0
Total Casualties - 2am	0	0	0	0	0
Casualties - 2pm					
<i>Commercial</i>	0	0	0	0	0
<i>Single Family</i>	0	0	0	0	0
<i>Other-Residential</i>	0	0	0	0	0
<i>Commuting</i>	0	0	0	0	0
<i>Educational</i>	0	0	0	0	0
<i>Hotels</i>	0	0	0	0	0
<i>Industrial</i>	0	0	0	0	0
Total Casualties - 2pm	0	0	0	0	0
Casualties - 5pm					
<i>Other-Residential</i>	0	0	0	0	0
<i>Single Family</i>	0	0	0	0	0
<i>Commercial</i>	0	0	0	0	0
<i>Commuting</i>	0	0	0	0	0
<i>Educational</i>	0	0	0	0	0
<i>Industrial</i>	0	0	0	0	0
<i>Hotels</i>	0	0	0	0	0
Total Casualties - 5pm	0	0	0	0	0
Santa Clara					
Casualties - 2am					
<i>Commuting</i>	0	0	0	0	0
<i>Educational</i>	0	0	0	0	0
<i>Single Family</i>	12	0	0	0	12
<i>Hotels</i>	0	0	0	0	0
<i>Industrial</i>	0	0	0	0	0
<i>Commercial</i>	0	0	0	0	0
<i>Other-Residential</i>	10	0	0	0	11
Total Casualties - 2am	23	0	0	0	23
Casualties - 2pm					
<i>Industrial</i>	3	0	0	0	4
<i>Commercial</i>	18	1	0	0	19
<i>Single Family</i>	3	0	0	0	3
<i>Commuting</i>	0	0	0	0	0
<i>Hotels</i>	0	0	0	0	0
<i>Other-Residential</i>	3	0	0	0	3
<i>Educational</i>	3	0	0	0	3

Injury Severity Level

Severity 1 Severity 2 Severity 3 Severity 4 Total

California

Santa Clara

	Severity 1	Severity 2	Severity 3	Severity 4	Total
Total Casualties - 2pm	31	1	0	0	32
Casualties - 5pm					
<i>Industrial</i>	2	0	0	0	2
<i>Hotels</i>	0	0	0	0	0
<i>Other-Residential</i>	4	0	0	0	4
<i>Commercial</i>	12	0	0	0	12
<i>Commuting</i>	0	0	0	0	0
<i>Single Family</i>	4	0	0	0	4
<i>Educational</i>	1	0	0	0	1
Total Casualties - 5pm	22	1	0	0	23

Santa Cruz

	Severity 1	Severity 2	Severity 3	Severity 4	Total
Casualties - 2am					
<i>Hotels</i>	0	0	0	0	0
<i>Educational</i>	0	0	0	0	0
<i>Industrial</i>	1	0	0	0	1
<i>Other-Residential</i>	25	2	0	0	27
<i>Single Family</i>	18	0	0	0	18
<i>Commercial</i>	1	0	0	0	1
<i>Commuting</i>	0	0	0	0	0
Total Casualties - 2am	44	3	0	0	47

	Severity 1	Severity 2	Severity 3	Severity 4	Total
Casualties - 2pm					
<i>Industrial</i>	5	1	0	0	6
<i>Other-Residential</i>	8	1	0	0	9
<i>Commercial</i>	51	6	0	1	59
<i>Commuting</i>	0	0	0	0	0
<i>Educational</i>	10	1	0	0	11
<i>Single Family</i>	6	0	0	0	6
<i>Hotels</i>	0	0	0	0	0
Total Casualties - 2pm	80	8	1	1	90

	Severity 1	Severity 2	Severity 3	Severity 4	Total
Casualties - 5pm					
<i>Industrial</i>	3	0	0	0	4
<i>Other-Residential</i>	9	1	0	0	10
<i>Commercial</i>	33	4	0	0	37
<i>Commuting</i>	1	1	2	0	5
<i>Single Family</i>	6	0	0	0	7
<i>Hotels</i>	0	0	0	0	0
<i>Educational</i>	2	0	0	0	2
Total Casualties - 5pm	54	7	3	1	65

Solano

	Severity 1	Severity 2	Severity 3	Severity 4	Total
Casualties - 2am					
<i>Industrial</i>	0	0	0	0	0

	Injury Severity Level				Total
	Severity 1	Severity 2	Severity 3	Severity 4	
California					
Solano					
Casualties - 2am					
Other-Residential	0	0	0	0	0
Commercial	0	0	0	0	0
Educational	0	0	0	0	0
Commuting	0	0	0	0	0
Single Family	0	0	0	0	0
Hotels	0	0	0	0	0
Total Casualties - 2am	0	0	0	0	0
Casualties - 2pm					
Single Family	0	0	0	0	0
Other-Residential	0	0	0	0	0
Commercial	0	0	0	0	0
Educational	0	0	0	0	0
Commuting	0	0	0	0	0
Hotels	0	0	0	0	0
Industrial	0	0	0	0	0
Total Casualties - 2pm	0	0	0	0	0
Casualties - 5pm					
Commercial	0	0	0	0	0
Other-Residential	0	0	0	0	0
Single Family	0	0	0	0	0
Educational	0	0	0	0	0
Commuting	0	0	0	0	0
Hotels	0	0	0	0	0
Industrial	0	0	0	0	0
Total Casualties - 5pm	0	0	0	0	0
Sonoma					
Casualties - 2am					
Single Family	0	0	0	0	0
Other-Residential	0	0	0	0	0
Commercial	0	0	0	0	0
Commuting	0	0	0	0	0
Hotels	0	0	0	0	0
Educational	0	0	0	0	0
Industrial	0	0	0	0	0
Total Casualties - 2am	0	0	0	0	0
Casualties - 2pm					
Single Family	0	0	0	0	0
Commuting	0	0	0	0	0
Educational	0	0	0	0	0
Hotels	0	0	0	0	0
Industrial	0	0	0	0	0

	Injury Severity Level				Total
	Severity 1	Severity 2	Severity 3	Severity 4	
California					
Sonoma					
Casualties - 2pm					
Other-Residential	0	0	0	0	0
Commercial	0	0	0	0	0
Total Casualties - 2pm	0	0	0	0	0
Casualties - 5pm					
Single Family	0	0	0	0	0
Commercial	0	0	0	0	0
Commuting	0	0	0	0	0
Hotels	0	0	0	0	0
Educational	0	0	0	0	0
Industrial	0	0	0	0	0
Other-Residential	0	0	0	0	0
Total Casualties - 5pm	0	0	0	0	0
Stanislaus					
Casualties - 2am					
Hotels	0	0	0	0	0
Industrial	0	0	0	0	0
Commercial	0	0	0	0	0
Single Family	0	0	0	0	0
Other-Residential	0	0	0	0	0
Commuting	0	0	0	0	0
Educational	0	0	0	0	0
Total Casualties - 2am	0	0	0	0	0
Casualties - 2pm					
Industrial	0	0	0	0	0
Other-Residential	0	0	0	0	0
Commercial	0	0	0	0	0
Commuting	0	0	0	0	0
Educational	0	0	0	0	0
Single Family	0	0	0	0	0
Hotels	0	0	0	0	0
Total Casualties - 2pm	0	0	0	0	0
Casualties - 5pm					
Industrial	0	0	0	0	0
Other-Residential	0	0	0	0	0
Commuting	0	0	0	0	0
Single Family	0	0	0	0	0
Commercial	0	0	0	0	0
Hotels	0	0	0	0	0
Educational	0	0	0	0	0
Total Casualties - 5pm	0	0	0	0	0

	Injury Severity Level				Total
	Severity 1	Severity 2	Severity 3	Severity 4	
California					
Tulare					
Casualties - 2am					
Commercial	0	0	0	0	0
Commuting	0	0	0	0	0
Single Family	0	0	0	0	0
Educational	0	0	0	0	0
Hotels	0	0	0	0	0
Industrial	0	0	0	0	0
Other-Residential	0	0	0	0	0
Total Casualties - 2am	0	0	0	0	0
Casualties - 2pm					
Industrial	0	0	0	0	0
Hotels	0	0	0	0	0
Commercial	0	0	0	0	0
Other-Residential	0	0	0	0	0
Educational	0	0	0	0	0
Commuting	0	0	0	0	0
Single Family	0	0	0	0	0
Total Casualties - 2pm	0	0	0	0	0
Casualties - 5pm					
Other-Residential	0	0	0	0	0
Commercial	0	0	0	0	0
Single Family	0	0	0	0	0
Hotels	0	0	0	0	0
Commuting	0	0	0	0	0
Educational	0	0	0	0	0
Industrial	0	0	0	0	0
Total Casualties - 5pm	0	0	0	0	0
Yolo					
Casualties - 2am					
Single Family	0	0	0	0	0
Other-Residential	0	0	0	0	0
Commercial	0	0	0	0	0
Educational	0	0	0	0	0
Commuting	0	0	0	0	0
Hotels	0	0	0	0	0
Industrial	0	0	0	0	0
Total Casualties - 2am	0	0	0	0	0
Casualties - 2pm					
Industrial	0	0	0	0	0
Hotels	0	0	0	0	0
Educational	0	0	0	0	0
Commuting	0	0	0	0	0

	Injury Severity Level				Total
	Severity 1	Severity 2	Severity 3	Severity 4	
California					
Yolo					
Casualties - 2pm					
<i>Commercial</i>	0	0	0	0	0
<i>Other-Residential</i>	0	0	0	0	0
<i>Single Family</i>	0	0	0	0	0
Total Casualties - 2pm	0	0	0	0	0
Casualties - 5pm					
<i>Other-Residential</i>	0	0	0	0	0
<i>Single Family</i>	0	0	0	0	0
<i>Commuting</i>	0	0	0	0	0
<i>Commercial</i>	0	0	0	0	0
<i>Hotels</i>	0	0	0	0	0
<i>Educational</i>	0	0	0	0	0
<i>Industrial</i>	0	0	0	0	0
Total Casualties - 5pm	0	0	0	0	0
Region Total	NA	NA	NA	NA	NA

Totals only reflect data for those census tracts/blocks included in the user's study region and will reflect the entire county/state only if all of the census blocks for that county/states were selected at the time of study region creation.

Debris Summary Report

June 21, 2024

All values are in thousands of tons.

	Brick, Wood & Others	Concrete & Steel	Total
California			
Fresno	0	0	0
Alameda	6	4	10
Solano	0	0	0
San Mateo	4	3	7
Kings	0	0	0
San Joaquin	1	0	1
San Luis Obispo	0	0	0
Madera	0	0	0
Tulare	0	0	0
Napa	0	0	0
Contra Costa	0	0	1
Kern	0	0	0
Santa Cruz	43	57	100
Monterey	75	108	183
Sacramento	0	0	0
Mariposa	0	0	0
Yolo	0	0	0
Calaveras	0	0	0
Stanislaus	0	0	0

	Brick, Wood & Others	Concrete & Steel	Total
Sonoma	0	0	0
Santa Barbara	0	0	0
Santa Clara	22	15	37
San Benito	0	0	1
San Francisco	8	1	9
Merced	0	0	0
Marin	0	0	0
Total	161	190	351
Region Total	161	190	351

Totals only reflect data for those census tracts/blocks included in the user's study region and will reflect the entire county/state only if all of the census blocks for that county/states were selected at the time of study region creation.

Direct Economic Losses For Buildings

June 21, 2024

All values are in thousands of dollars

	Capital Stock Losses				Loss Ratio %	Income Losses				Total Loss
	Cost Structural Damage	Cost Non-struct. Damage	Cost Contents Damage	Inventory Loss		Relocation Loss	Capital Related Loss	Wages Losses	Rental Income Loss	
California										
Contra Costa	366	7,886	4,571	477	0.00	50	61	99	87	13,596
Napa	12	356	228	28	0.00	1	3	3	3	634
Alameda	9,601	104,311	57,569	6,503	0.03	1,387	1,384	2,005	2,086	184,846
Fresno	33	731	492	149	0.00	3	3	4	6	1,421
San Joaquin	622	6,339	3,876	507	0.00	96	31	44	87	11,602
Kings	3	171	112	13	0.00	0	1	1	1	303
San Luis Obispo	41	1,041	593	61	0.00	5	12	10	14	1,777
Solano	65	1,657	1,051	130	0.00	7	12	14	16	2,953
San Mateo	8,697	92,970	47,441	3,964	0.07	1,188	1,327	1,535	2,252	159,373

	Capital Stock Losses				Loss Ratio %	Income Losses				Total Loss
	Cost Structural Damage	Cost Non-struct. Damage	Cost Contents Damage	Inventory Loss		Relocation Loss	Capital Related Loss	Wages Losses	Rental Income Loss	
Tulare	0	0	0	0	0.00	0	0	0	0	0
Madera	13	382	253	47	0.00	1	1	1	2	701
Yolo	0	4	3	0	0.00	0	0	0	0	7
Calaveras	0	1	0	0	0.00	0	0	0	0	1
San Benito	815	8,236	4,049	458	0.07	112	110	126	115	14,021
San Francisco	6,319	17,011	9,340	624	0.02	1,116	1,023	1,117	2,452	39,003
Merced	441	2,449	1,680	749	0.01	35	14	12	18	5,400
Santa Barbara	5	246	164	24	0.00	1	1	2	2	444
Stanislaus	181	3,654	2,340	364	0.00	22	24	24	40	6,650
Santa Clara	45,595	451,572	228,401	17,930	0.13	6,547	7,869	9,169	9,597	776,679
Sonoma	8	206	130	21	0.00	0	1	1	1	368
Marin	51	1,123	665	67	0.00	5	10	9	13	1,942
Kern	0	2	1	0	0.00	0	0	0	0	4
Sacramento	14	150	78	14	0.00	3	4	4	5	272
Monterey	167,936	977,104	443,591	36,651	1.50	65,902	55,832	74,698	60,998	1,882,713
Santa Cruz	91,840	535,772	255,341	24,940	1.14	30,882	29,054	34,585	23,227	1,025,641
Mariposa	0	0	0	0	0.00	0	0	0	0	0

	Capital Stock Losses				Loss Ratio %	Income Losses				Total Loss
	Cost Structural Damage	Cost Non-struct. Damage	Cost Contents Damage	Inventory Loss		Relocation Loss	Capital Related Loss	Wages Losses	Rental Income Loss	
Total	332,659	2,213,374	1,061,971	93,722	0.11	107,365	96,775	123,462	101,022	4,130,350
Region Total	332,659	2,213,374	1,061,971	93,722	0.11	107,365	96,775	123,462	101,022	4,130,350

Totals only reflect data for those census tracts/blocks included in the user's study region and will reflect the entire county/state only if all of the census blocks for that county/states were selected at the time of study region creation.

Direct Economic Loss For Transportation

June 21, 2024

All values are in thousands of dollars

	Highway	Railway	Light Rail	Bus Facility	Ports	Ferries	Airport	Total
California								
Alameda								
Segments	0	0	0					0
Bridges	134	4	0					138
Tunnels	0	0	0					0
Facilities		603	0	22	2,324	38	4,012	7,000
Total	134	607	0	22	2,324	38	4,012	7,137
Calaveras								
Segments	0	0	0					0
Bridges	0	0	0					0
Tunnels	0	0	0					0
Facilities		0	0	0	0	0	11	11
Total	0	0	0	0	0	0	11	11
Contra Costa								
Segments	0	0	0					0
Bridges	50	1	0					51
Tunnels	0	0	0					0
Facilities		256	165	0	2,827	51	231	3,530

	Highway	Railway	Light Rail	Bus Facility	Ports	Ferries	Airport	Total
Total	50	257	165	0	2,827	51	231	3,581
Fresno								
Segments	0	0	0					0
Bridges	36	0	0					36
Tunnels	0	0	0					0
Facilities		162	0	21	0	0	371	555
Total	36	162	0	21	0	0	371	590
Kern								
Segments	0	0	0					0
Bridges	0	0	0					0
Tunnels	0	0	0					0
Facilities		0	0	0	0	0	6	6
Total	0	0	0	0	0	0	6	6
Kings								
Segments	0	0	0					0
Bridges	0	0	0					0
Tunnels	0	0	0					0
Facilities		37	0	41	0	0	200	278
Total	0	37	0	41	0	0	200	278
Madera								
Segments	0	0	0					0
Bridges	3	0	0					3
Tunnels	0	0	0					0
Facilities		26	0	21	0	0	102	149

	Highway	Railway	Light Rail	Bus Facility	Ports	Ferries	Airport	Total
Total	3	26	0	21	0	0	102	152
Marin								
Segments	0	0	0					0
Bridges	56	0	0					56
Tunnels	0	0	0					0
Facilities		0	0	92	848	64	51	1,055
Total	56	0	0	92	848	64	51	1,111
Mariposa								
Segments	0	0	0					0
Bridges	0	0	0					0
Tunnels	0	0	0					0
Facilities		0	0	10	0	0	6	15
Total	0	0	0	10	0	0	6	15
Merced								
Segments	0	0	0					0
Bridges	28	0	0					28
Tunnels	0	0	0					0
Facilities		51	0	21	0	0	410	483
Total	28	51	0	21	0	0	410	511
Monterey								
Segments	0	0	0					0
Bridges	8,701	78	0					8,779
Tunnels	586	0	0					586
Facilities		295	0	2,876	2,740	0	6,122	12,033

	Highway	Railway	Light Rail	Bus Facility	Ports	Ferries	Airport	Total
Total	9,288	373	0	2,876	2,740	0	6,122	21,399
Napa								
Segments	0	0	0					0
Bridges	0	0	0					0
Tunnels	0	0	0					0
Facilities		0	0	22	110	0	134	266
Total	0	0	0	22	110	0	134	266
Sacramento								
Segments	0	0	0					0
Bridges	8	0	0					8
Tunnels	0	0	0					0
Facilities		3	232	2	489	13	71	811
Total	8	3	232	2	489	13	71	819
San Benito								
Segments	0	0	0					0
Bridges	42	1	0					43
Tunnels	0	0	0					0
Facilities		0	0	0	0	0	435	435
Total	42	1	0	0	0	0	435	478
San Francisco								
Segments	0	0	0					0
Bridges	262	0	0					262
Tunnels	0	0	0					0
Facilities		0	31,375	49	2,019	51	308	33,802

	Highway	Railway	Light Rail	Bus Facility	Ports	Ferries	Airport	Total
Total	262	0	31,375	49	2,019	51	308	34,064
San Joaquin								
Segments	0	0	0					0
Bridges	38	0	0					38
Tunnels	0	0	0					0
Facilities		410	0	21	1,578	51	418	2,479
Total	38	411	0	21	1,578	51	418	2,517
San Luis Obispo								
Segments	0	0	0					0
Bridges	3	0	0					3
Tunnels	0	0	0					0
Facilities		77	0	41	294	0	451	863
Total	3	77	0	41	294	0	451	866
San Mateo								
Segments	0	0	0					0
Bridges	2,163	1	0					2,164
Tunnels	0	0	0					0
Facilities		0	0	0	2,097	0	37,437	39,534
Total	2,163	1	0	0	2,097	0	37,437	41,698
Santa Barbara								
Segments	0	0	0					0
Bridges	1	0	0					1
Tunnels	0	0	0					0
Facilities		37	0	46	29	0	71	182

	Highway	Railway	Light Rail	Bus Facility	Ports	Ferries	Airport	Total
Total	1	37	0	46	29	0	71	183
Santa Clara								
<i>Segments</i>	0	0	0					0
<i>Bridges</i>	1,616	14	0					1,630
<i>Tunnels</i>	0	0	0					0
<i>Facilities</i>		437	26,406	198	782	0	15,304	43,127
Total	1,616	451	26,406	198	782	0	15,304	44,757
Santa Cruz								
<i>Segments</i>	0	0	0					0
<i>Bridges</i>	3,292	755	0					4,047
<i>Tunnels</i>	0	0	0					0
<i>Facilities</i>		0	0	779	711	0	2,956	4,447
Total	3,292	755	0	779	711	0	2,956	8,494
Solano								
<i>Segments</i>	0	0	0					0
<i>Bridges</i>	13	1	0					13
<i>Tunnels</i>	0	0	0					0
<i>Facilities</i>		77	0	65	1,248	51	231	1,672
Total	13	77	0	65	1,248	51	231	1,685
Sonoma								
<i>Segments</i>	0	0	0					0
<i>Bridges</i>	15	0	0					16
<i>Tunnels</i>	0	0	0					0
<i>Facilities</i>		0	0	3	61	0	149	213

	Highway	Railway	Light Rail	Bus Facility	Ports	Ferries	Airport	Total
Total	15	0	0	3	61	0	149	228
Stanislaus								
Segments	0	0	0					0
Bridges	55	0	0					55
Tunnels	0	0	0					0
Facilities		154	0	43	0	0	231	427
Total	55	154	0	43	0	0	231	482
Tulare								
Segments	0	0	0					0
Bridges	0	0	0					0
Tunnels	0	0	0					0
Facilities		0	0	0	0	0	0	0
Total	0	0	0	0	0	0	0	0
Yolo								
Segments	0	0	0					0
Bridges	5	0	0					5
Tunnels	0	0	0					0
Facilities		9	0	0	102	0	11	122
Total	5	9	0	0	102	0	11	127
Total	17,106	3,489	58,179	4,374	18,258	320	69,730	171,455
Region Total	17,106	3,489	58,179	4,374	18,258	320	69,730	171,455

Totals only reflect data for those census tracts/blocks included in the user's study region and will reflect the entire county/state only if all of the census blocks for that county/states were selected at the time of study region creation.

Direct Economic Loss For Utilities

June 21, 2024

All values are in thousands of dollars

	Potable Water	Waste Water	Oil Systems	Natural Gas	Electric Power	Communication	Total
California							
Alameda							
<i>Facilities</i>	405	3,246	0	0	48,909	13	52,571
<i>Pipelines</i>	243	122	0	0			365
Total	648	3,368	0	0	48,909	13	52,937
Calaveras							
<i>Facilities</i>	1	10	0	0	1,359	0	1,370
<i>Pipelines</i>	12	6	0	0			18
Total	13	16	0	0	1,359	0	1,388
Contra Costa							
<i>Facilities</i>	169	1,721	1	0	51,571	2	53,463
<i>Pipelines</i>	126	63	0	0			189
Total	294	1,784	1	0	51,571	2	53,652
Fresno							
<i>Facilities</i>	0	131	0	13	16,661	2	16,807

	Potable Water	Waste Water	Oil Systems	Natural Gas	Electric Power	Communication	Total
<i>Pipelines</i>	219	110	0	0			329
Total	219	241	0	13	16,661	2	17,136
Kern							
<i>Facilities</i>	1	0	0	4	1,638	0	1,643
<i>Pipelines</i>	58	29	0	0			88
Total	59	29	0	4	1,638	0	1,731
Kings							
<i>Facilities</i>	0	0	0	134	5,319	0	5,453
<i>Pipelines</i>	78	39	0	0			117
Total	78	39	0	134	5,319	0	5,570
Madera							
<i>Facilities</i>	0	0	0	0	881	0	881
<i>Pipelines</i>	59	30	0	0			89
Total	59	30	0	0	881	0	970
Marin							
<i>Facilities</i>	28	984	0	0	56	1	1,069
<i>Pipelines</i>	33	16	0	0			49
Total	61	1,000	0	0	56	1	1,118
Mariposa							
<i>Facilities</i>	0	10	0	0	42	0	53
<i>Pipelines</i>	9	5	0	0			14

	Potable Water	Waste Water	Oil Systems	Natural Gas	Electric Power	Communication	Total
Total	9	15	0	0	42	0	67
Merced							
<i>Facilities</i>	0	494	0	0	21,856	2	22,352
<i>Pipelines</i>	90	45	0	0			135
Total	90	540	0	0	21,856	2	22,487
Monterey							
<i>Facilities</i>	0	140,772	0	0	356,590	533	497,895
<i>Pipelines</i>	2,292	1,152	0	0			3,444
Total	2,292	141,923	0	0	356,590	533	501,339
Napa							
<i>Facilities</i>	0	371	0	0	5	0	376
<i>Pipelines</i>	13	7	0	0			20
Total	13	378	0	0	5	0	396
Sacramento							
<i>Facilities</i>	0	502	0	0	519	2	1,023
<i>Pipelines</i>	63	31	0	0			94
Total	63	534	0	0	519	2	1,117
San Benito							
<i>Facilities</i>	0	3,049	0	0	0	7	3,056
<i>Pipelines</i>	98	49	0	0			147
Total	98	3,098	0	0	0	7	3,203

	Potable Water	Waste Water	Oil Systems	Natural Gas	Electric Power	Communication	Total
San Francisco							
<i>Facilities</i>	0	861	0	0	108	4	972
<i>Pipelines</i>	24	12	0	0			36
Total	24	873	0	0	108	4	1,008
San Joaquin							
<i>Facilities</i>	113	861	0	0	9,044	2	10,020
<i>Pipelines</i>	89	45	0	0			134
Total	202	906	0	0	9,044	2	10,154
San Luis Obispo							
<i>Facilities</i>	28	984	0	0	21,743	6	22,760
<i>Pipelines</i>	127	64	0	0			191
Total	155	1,048	0	0	21,743	6	22,952
San Mateo							
<i>Facilities</i>	0	11,408	0	0	2,968	12	14,388
<i>Pipelines</i>	161	81	0	0			242
Total	161	11,489	0	0	2,968	12	14,630
Santa Barbara							
<i>Facilities</i>	0	18	0	4	18	1	41
<i>Pipelines</i>	52	26	0	0			79
Total	52	44	0	4	18	1	120
Santa Clara							

	Potable Water	Waste Water	Oil Systems	Natural Gas	Electric Power	Communication	Total
<i>Facilities</i>	697	4,573	0	0	124,106	94	129,469
<i>Pipelines</i>	554	278	0	0			833
Total	1,251	4,851	0	0	124,106	94	130,302
Santa Cruz							
<i>Facilities</i>	0	43,761	0	0	4,598	143	48,503
<i>Pipelines</i>	774	389	0	0			1,163
Total	774	44,150	0	0	4,598	143	49,666
Solano							
<i>Facilities</i>	0	740	0	0	24,992	1	25,733
<i>Pipelines</i>	81	41	0	0			121
Total	81	781	0	0	24,992	1	25,854
Sonoma							
<i>Facilities</i>	0	261	0	0	2	0	264
<i>Pipelines</i>	55	27	0	0			82
Total	55	289	0	0	2	0	346
Stanislaus							
<i>Facilities</i>	0	492	0	0	8,510	3	9,005
<i>Pipelines</i>	64	32	0	0			96
Total	64	524	0	0	8,510	3	9,102
Tulare							
<i>Facilities</i>	0	0	0	0	6	0	6

	Potable Water	Waste Water	Oil Systems	Natural Gas	Electric Power	Communication	Total
<i>Pipelines</i>	31	15	0	0			46
Total	31	15	0	0	6	0	52
Yolo							
<i>Facilities</i>	0	8	0	0	2	0	9
<i>Pipelines</i>	21	10	0	0			31
Total	21	18	0	0	2	0	41
Total	6,867	217,982	2	156	701,501	827	927,335
Region Total	6,867	217,982	2	156	701,501	827	927,335

Totals only reflect data for those census tracts/blocks included in the user's study region and will reflect the entire county/state only if all of the census blocks for that county/states were selected at the time of study region creation.

Hazus Quick Assessment Report

Estimated Economic Loss (\$ Billions)

Category	Description	Range
General Building Stock	Building Damage	1.30 - 5.10
	Building Contents	0.20 - 0.70
	Business Interruption	0.20 - 0.90
Infrastructure	Lifelines Damage	
Total		2.10 - 8.30

Preliminary Damage Assessment (PDA) Estimates

Description	Residential	Commercial	Other	Total
Affected	54,000	5,500	2,100	61,600
Minor	4,500	1,400	520	6,420
Major	240	200	50	490
Destroyed	20	20	< 10	40
Total	58,760	7,120	2,670	68,550

Estimated Casualties : Night Time

Severity Level	Description	# Persons
Level 1	Medical Aid	70 - 300
Level 2	Hospital Care	0 - 20
Level 3	Life-threatening	< 10
Level 4	Fatalities	< 10

Estimated Shelter Needs

Type	Households	People
Displaced Households	190 - 800	475 - 2,000
Public Shelter	70	190

Comments :

*Hazus damage estimates are presented using FEMA Preliminary Damage Assessment (PDA) categories. These estimates should be used for planning purposes and may not reflect actual observed damages from the PDA process.

Disclaimer:

The estimates of social and economic impacts contained in this report were produced using HAZUS loss estimation methodology software which is based on current scientific and engineering knowledge. There are uncertainties inherent in any loss estimation technique. Therefore, there may be significant differences between the modeled results contained in this report and the actual social and economic losses following a specific earthquake. These results can be improved by using enhanced inventory, geotechnical, and observed ground motion data.

Earthquake Information

Location :

Origin Time:

Magnitude : 7.24

Epicenter Latitude/Longitude :
/

Depth & Type : /U

Name :
NA

Ground Motion /Attenuation :

Maximum PGA: 0.00

Information Sources:

Comments :

Population and Building Exposure

Population: 15,447,339

Building Exposure : (\$ Millions)

Residential	1,873,717
Commercial	516,728
Other	467,161
Total	2,857,606

Counties : See Appendix

Major Metro Area :

Hazus Quick Assessment Report

Estimated Economic Loss (\$ Billions)

Category	Description	Range
General Building Stock	Building Damage	1.30 - 5.10
	Building Contents	0.20 - 0.70
	Business Interruption	0.20 - 0.90
Infrastructure	Lifelines Damage	
Total		2.10 - 8.30

Preliminary Damage Assessment (PDA) Estimates

Description	Residential	Commercial	Other	Total
Affected	54,000	5,500	2,100	61,600
Minor	4,500	1,400	520	6,420
Major	240	200	50	490
Destroyed	20	20	< 10	40
Total	58,760	7,120	2,670	68,550

Estimated Casualties : Day Time

Severity Level	Description	# Persons
Level 1	Medical Aid	130 - 500
Level 2	Hospital Care	10 - 50
Level 3	Life-threatening	< 10
Level 4	Fatalities	< 10

Estimated Shelter Needs

Type	Households	People
Displaced Households	190 - 800	475 - 2,000
Public Shelter	70	190

Comments :

*Hazus damage estimates are presented using FEMA Preliminary Damage Assessment (PDA) categories. These estimates should be used for planning purposes and may not reflect actual observed damages from the PDA process.

Disclaimer:

The estimates of social and economic impacts contained in this report were produced using HAZUS loss estimation methodology software which is based on current scientific and engineering knowledge. There are uncertainties inherent in any loss estimation technique. Therefore, there may be significant differences between the modeled results contained in this report and the actual social and economic losses following a specific earthquake. These results can be improved by using enhanced inventory, geotechnical, and observed ground motion data.

Earthquake Information

Location :

Origin Time:

Magnitude : 7.24

Epicenter Latitude/Longitude :
/

Depth & Type : /U

Name :
NA

Ground Motion /Attenuation :

Maximum PGA: 0.00

Information Sources:

Comments :

Population and Building Exposure

Population: 15,447,339

Building Exposure : (\$ Millions)

Residential	1,873,717
Commercial	516,728
Other	467,161
Total	2,857,606

Counties : See Appendix

Major Metro Area :

Hazus Quick Assessment Report

Estimated Economic Loss (\$ Billions)

Category	Description	Range
General Building Stock	Building Damage	1.30 - 5.10
	Building Contents	0.20 - 0.70
	Business Interruption	0.20 - 0.90
Infrastructure	Lifelines Damage	
Total		2.10 - 8.30

Preliminary Damage Assessment (PDA) Estimates

Description	Residential	Commercial	Other	Total
Affected	54,000	5,500	2,100	61,600
Minor	4,500	1,400	520	6,420
Major	240	200	50	490
Destroyed	20	20	< 10	40
Total	58,760	7,120	2,670	68,550

Estimated Casualties : Commute Time

Severity Level	Description	# Persons
Level 1	Medical Aid	90 - 400
Level 2	Hospital Care	10 - 40
Level 3	Life-threatening	< 10
Level 4	Fatalities	< 10

Estimated Shelter Needs

Type	Households	People
Displaced Households	190 - 800	475 - 2,000
Public Shelter	70	190

Comments :

*Hazus damage estimates are presented using FEMA Preliminary Damage Assessment (PDA) categories. These estimates should be used for planning purposes and may not reflect actual observed damages from the PDA process.

Disclaimer:

The estimates of social and economic impacts contained in this report were produced using HAZUS loss estimation methodology software which is based on current scientific and engineering knowledge. There are uncertainties inherent in any loss estimation technique. Therefore, there may be significant differences between the modeled results contained in this report and the actual social and economic losses following a specific earthquake. These results can be improved by using enhanced inventory, geotechnical, and observed ground motion data.

Earthquake Information

Location :

Origin Time:

Magnitude : 7.24

Epicenter Latitude/Longitude :
/

Depth & Type : /U

Name :
NA

Ground Motion /Attenuation :

Maximum PGA: 0.00

Information Sources:

Comments :

Population and Building Exposure

Population: 15,447,339

Building Exposure : (\$ Millions)

Residential	1,873,717
Commercial	516,728
Other	467,161
Total	2,857,606

Counties : See Appendix

Major Metro Area :

Shelter Summary Report

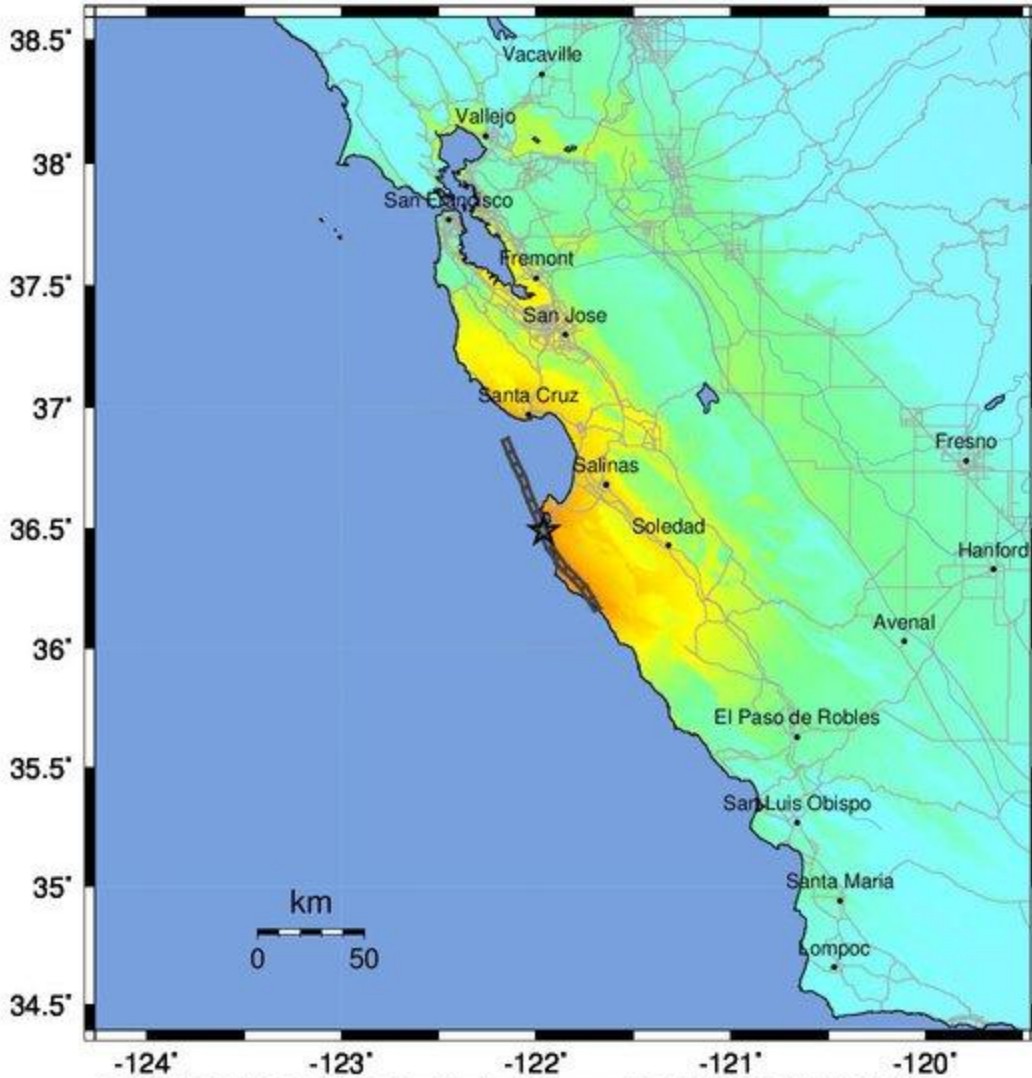
June 21, 2024

	# of Displaced Households	# of People Needing Short Term Shelter
California		
Fresno	0	0
Alameda	0	0
Solano	0	0
San Mateo	1	0
Kings	0	0
San Joaquin	0	0
San Luis Obispo	0	0
Madera	0	0
Tulare	0	0
Napa	0	0
Contra Costa	0	0
Kern	0	0
Santa Cruz	165	93
Monterey	214	90
Sacramento	0	0
Mariposa	0	0
Yolo	0	0
Calaveras	0	0
Stanislaus	0	0
Sonoma	0	0
Santa Barbara	0	0
Santa Clara	4	2
San Benito	0	0
San Francisco	1	0
Merced	0	0
Marin	0	0
Total	384	186
Region Total	384	186

# of Displaced Households	# of People Needing Short Term Shelter
------------------------------	---

Totals only reflect data for those census tracts/blocks included in the user's study region and will reflect the entire county/state only if all of the census blocks for that county/states were selected at the time of study region creation.

-- Earthquake Planning Scenario --
ShakeMap for San Gregorio (South) - Median ground motions Scenario
 Scenario Date: May 16, 2017 08:32:06 AM MDT M 7.2 N36.49 W121.96 Depth: 7.4km



PLANNING SCENARIO ONLY -- Map Version 14 Processed 2017-05-17 02:46:20 AM MDT

PERCEIVED SHAKING	Not felt	Weak	Light	Moderate	Strong	Very strong	Severe	Violent	Extreme
POTENTIAL DAMAGE	none	none	none	Very light	Light	Moderate	Mod./Heavy	Heavy	Very Heavy
PEAK ACC.(%g)	<0.05	0.3	2.8	6.2	12	22	40	75	>139
PEAK VEL.(cm/s)	<0.02	0.1	1.4	4.7	9.6	20	41	86	>178
INSTRUMENTAL INTENSITY	I	II-III	IV	V	VI	VII	VIII	IX	X+

Scale based upon Worden et al. (2012)