
Hazus: Earthquake Global Risk Report

Region Name: SanGregorionorth

Earthquake Scenario: sangregorionorth2011_m7p44_se

Print Date: April 19, 2024

Disclaimer:

Totals only reflect data for those census tracts/blocks included in the user's study region.

The estimates of social and economic impacts contained in this report were produced using Hazus loss estimation methodology software which is based on current scientific and engineering knowledge. There are uncertainties inherent in any loss estimation technique. Therefore, there may be significant differences between the modeled results contained in this report and the actual social and economic losses following a specific earthquake. These results can be improved by using enhanced inventory, geotechnical, and observed ground motion data.

Table of Contents

Section	Page #
General Description of the Region	3
Building and Lifeline Inventory	4
Building Inventory	
Critical Facility Inventory	
Transportation and Utility Lifeline Inventory	
Earthquake Scenario Parameters	7
Direct Earthquake Damage	8
Buildings Damage	
Essential Facilities Damage	
Transportation and Utility Lifeline Damage	
Induced Earthquake Damage	14
Fire Following Earthquake	
Debris Generation	
Social Impact	15
Shelter Requirements	
Casualties	
Economic Loss	17
Building Related Losses	
Transportation and Utility Lifeline Losses	
Appendix A: County Listing for the Region	
Appendix B: Regional Population and Building Value Data	

General Description of the Region

Hazus-MH is a regional earthquake loss estimation model that was developed by the Federal Emergency Management Agency (FEMA) and the National Institute of Building Sciences. The primary purpose of Hazus is to provide a methodology and software application to develop multi-hazard losses at a regional scale. These loss estimates would be used primarily by local, state and regional officials to plan and stimulate efforts to reduce risks from multi-hazards and to prepare for emergency response and recovery.

The earthquake loss estimates provided in this report was based on a region that includes 36 county(ies) from the following state(s):

California

Note:

Appendix A contains a complete listing of the counties contained in the region.

The geographical size of the region is 52,708.35 square miles and contains 3,444 census tracts. There are over 5,260 thousand households in the region which has a total population of 15,015,581 people. The distribution of population by Total Region and County is provided in Appendix B.

There are an estimated 4,656 thousand buildings in the region with a total building replacement value (excluding contents) of (millions of dollars). Approximately 90.00 % of the buildings (and % of the building value) are associated with residential housing.

The replacement value of the transportation and utility lifeline systems is estimated to be 239,464 and 179,244 (millions of dollars) , respectively.

Building and Lifeline Inventory

Building Inventory

Hazus estimates that there are 4,656 thousand buildings in the region which have an aggregate total replacement value of (millions of dollars) . Appendix B provides a general distribution of the building value by Total Region and County.

In terms of building construction types found in the region, wood frame construction makes up 87% of the building inventory. The remaining percentage is distributed between the other general building types.

Critical Facility Inventory

Hazus breaks critical facilities into two (2) groups: essential facilities and high potential loss facilities (HPL). Essential facilities include hospitals, medical clinics, schools, fire stations, police stations and emergency operations facilities. High potential loss facilities include dams, levees, military installations, nuclear power plants and hazardous material sites.

For essential facilities, there are 255 hospitals in the region with a total bed capacity of 38,751 beds. There are 5,564 schools, 1,504 fire stations, 499 police stations and 91 emergency operation facilities. With respect to high potential loss facilities (HPL), there are no dams identified within the inventory. The inventory also includes no hazardous material sites, no military installations and no nuclear power plants.

Transportation and Utility Lifeline Inventory

Within Hazus, the lifeline inventory is divided between transportation and utility lifeline systems. There are seven (7) transportation systems that include highways, railways, light rail, bus, ports, ferry and airports. There are six (6) utility systems that include potable water, wastewater, natural gas, crude & refined oil, electric power and communications. The lifeline inventory data are provided in Tables 1 and 2.

The total value of the lifeline inventory is over 418,708.00 (millions of dollars). This inventory includes over 10,489.36 miles of highways, 11,667 bridges, 233,912.63 miles of pipes.

Table 1: Transportation System Lifeline Inventory

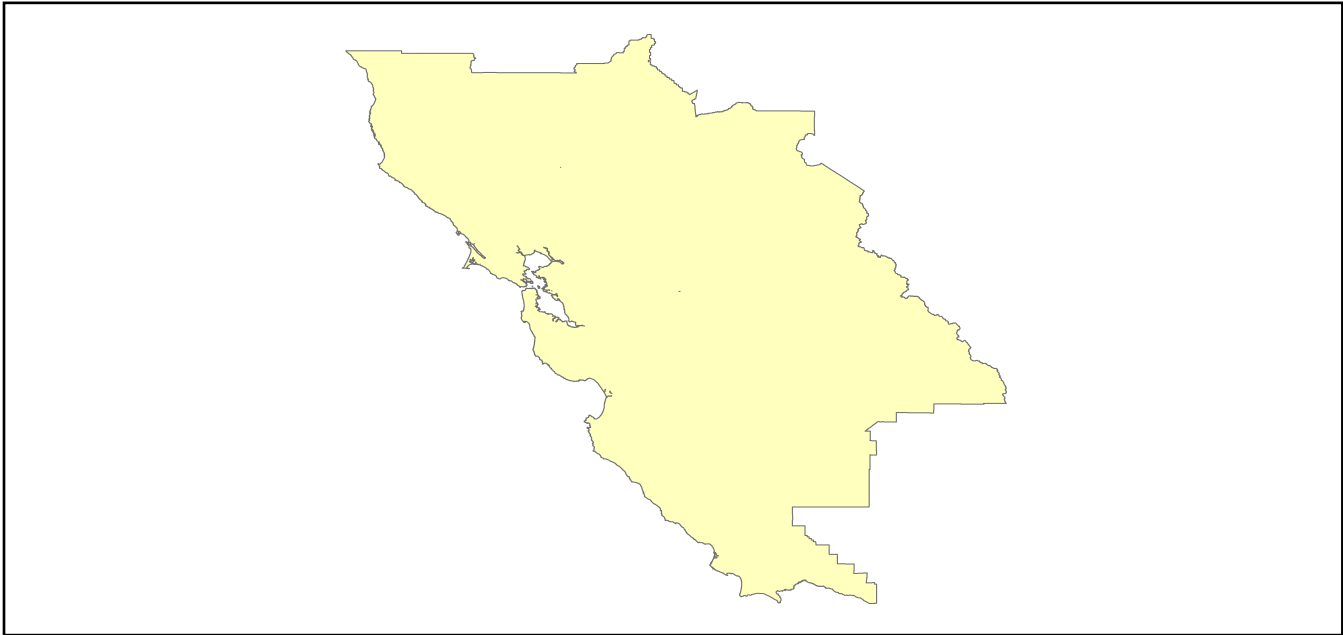
System	Component	# Locations/ # Segments	Replacement value (millions of dollars)
Highway	Bridges	11,667	58497.3802
	Segments	7,131	90918.7123
	Tunnels	47	985.3863
	Subtotal		150401.4788
Railways	Bridges	1,677	9542.1300
	Facilities	89	237.0070
	Segments	2,989	63848.4886
	Tunnels	3	1.8495
	Subtotal		73629.4751
Light Rail	Bridges	112	15.3529
	Facilities	255	4154.0000
	Segments	15	5403.2756
	Tunnels	0	0.0000
	Subtotal		9572.6285
Bus	Facilities	49	111.2872
	Subtotal		111.2872
Ferry	Facilities	25	33.2750
	Subtotal		33.2750
Port	Facilities	370	1410.3825
	Subtotal		1410.3825
Airport	Facilities	112	2872.9833
	Runways	156	1433.4191
	Subtotal		4306.4024
		Total	239,464.90

Table 2: Utility System Lifeline Inventory

System	Component	# Locations / Segments	Replacement value (millions of dollars)
Potable Water	Distribution Lines	NA	4653.2497
	Facilities	23	903.7620
	Pipelines	0	0.0000
		Subtotal	5557.0117
Waste Water	Distribution Lines	NA	2791.9498
	Facilities	191	32842.7938
	Pipelines	0	0.0000
		Subtotal	35634.7436
Natural Gas	Distribution Lines	NA	1861.2999
	Facilities	4	183.7334
	Pipelines	1,003	14744.1139
		Subtotal	16789.1472
Oil Systems	Facilities	20	2.3600
	Pipelines	0	0.0000
		Subtotal	2.3600
Electrical Power	Facilities	372	121208.3510
		Subtotal	121208.3510
Communication	Facilities	448	52.8640
		Subtotal	52.8640
	Total		179,244.50

Earthquake Scenario

Hazus uses the following set of information to define the earthquake parameters used for the earthquake loss estimate provided in this report.



Scenario Name	sangregorionorth2011_m7p44_se
Type of Earthquake	User-defined
Fault Name	NA
Historical Epicenter ID #	NA
Probabilistic Return Period	NA
Longitude of Epicenter	NA
Latitude of Epicenter	NA
Earthquake Magnitude	7.44
Depth (km)	NA
Rupture Length (Km)	NA
Rupture Orientation (degrees)	NA
Attenuation Function	NA

Direct Earthquake Damage

Building Damage

Hazus estimates that about 58,598 buildings will be at least moderately damaged. This is over 1.00 % of the buildings in the region. There are an estimated 763 buildings that will be damaged beyond repair. The definition of the 'damage states' is provided in Volume 1: Chapter 5 of the Hazus technical manual. Table 3 below summarizes the expected damage by general occupancy for the buildings in the region. Table 4 below summarizes the expected damage by general building type.

Damage Categories by General Occupancy Type

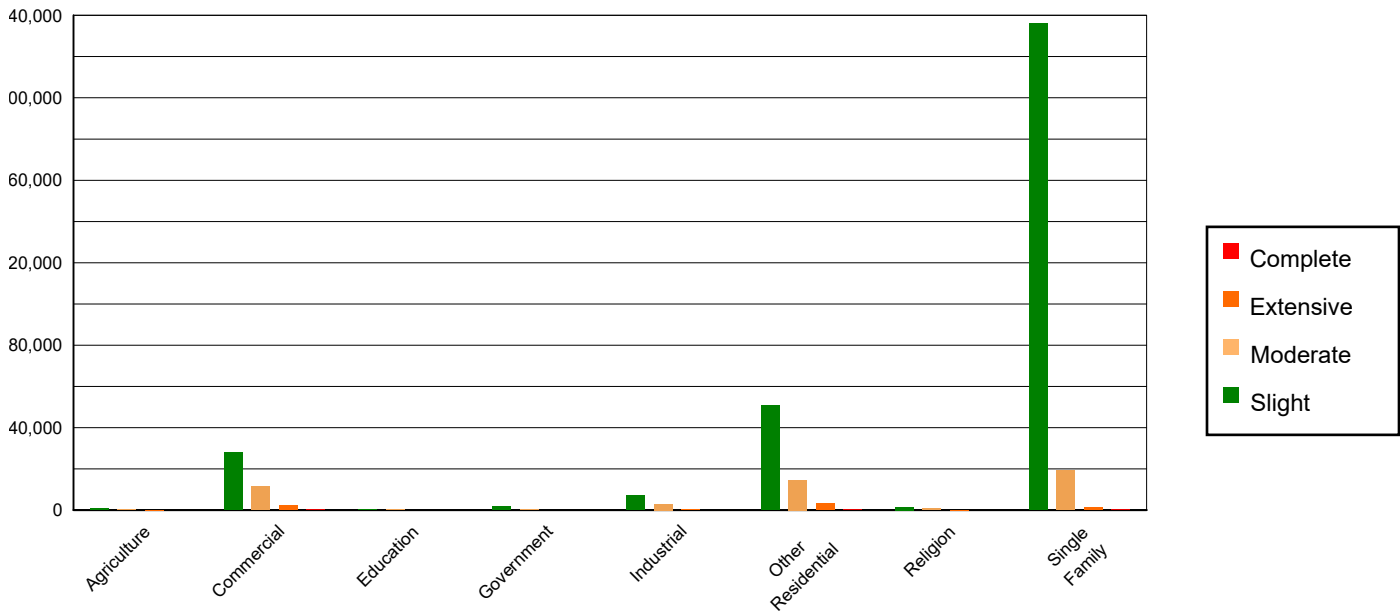


Table 3: Expected Building Damage by Occupancy

	None		Slight		Moderate		Extensive		Complete	
	Count	(%)	Count	(%)	Count	(%)	Count	(%)	Count	(%)
Agriculture	28364.80	0.66	782.06	0.24	344.91	0.68	78.87	1.06	13.37	1.75
Commercial	260266.11	6.09	27861.62	8.53	11682.82	23.19	2125.63	28.55	176.82	23.16
Education	8793.43	0.21	463.03	0.14	170.56	0.34	42.57	0.57	4.41	0.58
Government	19904.75	0.47	1755.65	0.54	485.30	0.96	51.50	0.69	2.80	0.37
Industrial	71905.67	1.68	7217.48	2.21	2963.26	5.88	487.27	6.54	35.33	4.63
Other Residential	523621.24	12.26	50710.70	15.53	14708.42	29.19	3152.73	42.34	371.91	48.72
Religion	15199.14	0.36	1551.53	0.48	655.67	1.30	106.95	1.44	7.72	1.01
Single Family	3343371.15	78.27	236246.12	72.34	19378.29	38.46	1400.39	18.81	151.05	19.79
Total	4,271,426		326,588		50,389		7,446		763	

Table 4: Expected Building Damage by Building Type (All Design Levels)

	None		Slight		Moderate		Extensive		Complete	
	Count	(%)	Count	(%)	Count	(%)	Count	(%)	Count	(%)
Wood	3747258.81	87.73	271222.92	83.05	18088.64	35.90	161.88	2.17	4.25	0.56
Steel	85344.09	2.00	11388.55	3.49	7889.06	15.66	1869.74	25.11	170.63	22.35
Concrete	98047.91	2.30	13157.38	4.03	6950.88	13.79	1409.10	18.92	114.06	14.94
Precast	56110.55	1.31	5106.63	1.56	1662.31	3.30	101.29	1.36	2.98	0.39
RM	162649.93	3.81	11317.17	3.47	3815.95	7.57	219.54	2.95	3.80	0.50
URM	25137.97	0.59	7889.25	2.42	9054.46	17.97	3271.76	43.94	405.82	53.16
MH	96877.04	2.27	6506.28	1.99	2927.92	5.81	412.58	5.54	61.86	8.10
Total	4,271,426		326,588		50,389		7,446		763	

*Note:

- RM Reinforced Masonry
- URM Unreinforced Masonry
- MH Manufactured Housing

Essential Facility Damage

Before the earthquake, the region had 38,751 hospital beds available for use. On the day of the earthquake, the model estimates that only 33,296 hospital beds (86.00%) are available for use by patients already in the hospital and those injured by the earthquake. After one week, 92.00% of the beds will be back in service. By 30 days, 98.00% will be operational.

Table 5: Expected Damage to Essential Facilities

Classification	Total	# Facilities		
		At Least Moderate Damage > 50%	Complete Damage > 50%	With Functionality > 50% on day 1
Hospitals	255	19	0	222
Schools	5,564	284	0	5,118
EOCs	91	6	0	84
PoliceStations	499	28	0	462
FireStations	1,504	51	0	1,411

Transportation Lifeline Damage

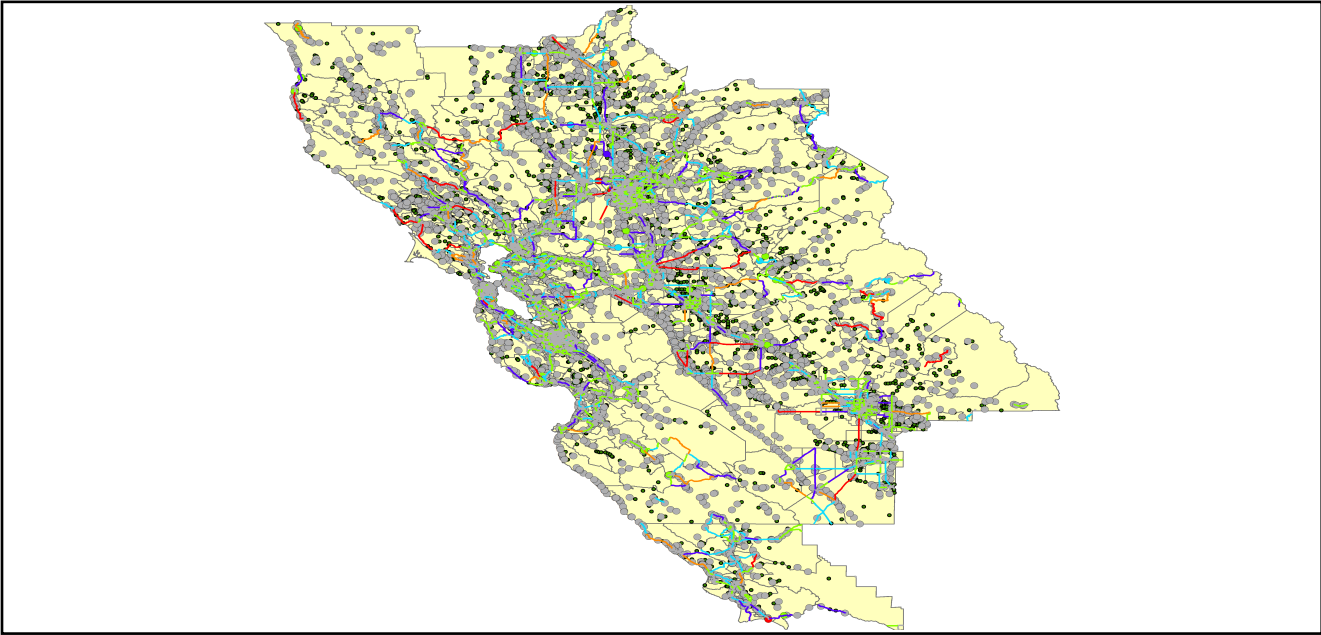


Table 6: Expected Damage to the Transportation Systems

System	Component	Number of Locations_				
		Locations/ Segments	With at Least Mod. Damage	With Complete Damage	With Functionality > 50 %	
					After Day 1	After Day 7
Highway	Segments	7,131	0	0	7,131	7,131
	Bridges	11,667	5	0	11,661	11,664
	Tunnels	47	0	0	47	47
Railways	Segments	2,989	0	0	2,989	2,989
	Bridges	1,677	0	0	1,677	1,677
	Tunnels	3	0	0	3	3
	Facilities	89	0	0	89	89
Light Rail	Segments	15	0	0	15	15
	Bridges	112	0	0	112	112
	Tunnels	0	0	0	0	0
	Facilities	255	0	0	255	255
Bus	Facilities	49	0	0	49	49
Ferry	Facilities	25	0	0	25	25
Port	Facilities	370	1	0	370	370
Airport	Facilities	112	1	0	112	112
	Runways	156	0	0	156	156

Table 6 provides damage estimates for the transportation system.

Note: Roadway segments, railroad tracks and light rail tracks are assumed to be damaged by ground failure only. If ground failure maps are not provided, damage estimates to these components will not be computed.

Tables 7-9 provide information on the damage to the utility lifeline systems. Table 7 provides damage to the utility system facilities. Table 8 provides estimates on the number of leaks and breaks by the pipelines of the utility systems. For electric power and potable water, Hazus performs a simplified system performance analysis. Table 9 provides a summary of the system performance information.

Table 7 : Expected Utility System Facility Damage

System	# of Locations				
	Total #	With at Least Moderate Damage	With Complete Damage	with Functionality > 50 %	
				After Day 1	After Day 7
Potable Water	23	0	0	23	23
Waste Water	191	6	0	158	191
Natural Gas	4	0	0	4	4
Oil Systems	20	0	0	20	20
Electrical Power	372	11	0	368	372
Communication	448	1	0	448	448

Table 8 : Expected Utility System Pipeline Damage (Site Specific)

System	Total Pipelines Length (miles)	Number of Leaks	Number of Breaks
Potable Water	144,570	3994	999
Waste Water	86,742	2006	502
Natural Gas	2,601	0	0
Oil	0	0	0

Table 9: Expected Potable Water and Electric Power System Performance

	Total # of Households	Number of Households without Service				
		At Day 1	At Day 3	At Day 7	At Day 30	At Day 90
Potable Water	5,260,108	121,930	58,770	18,694	0	0
Electric Power		111,943	64,901	22,948	1,528	161

Induced Earthquake Damage

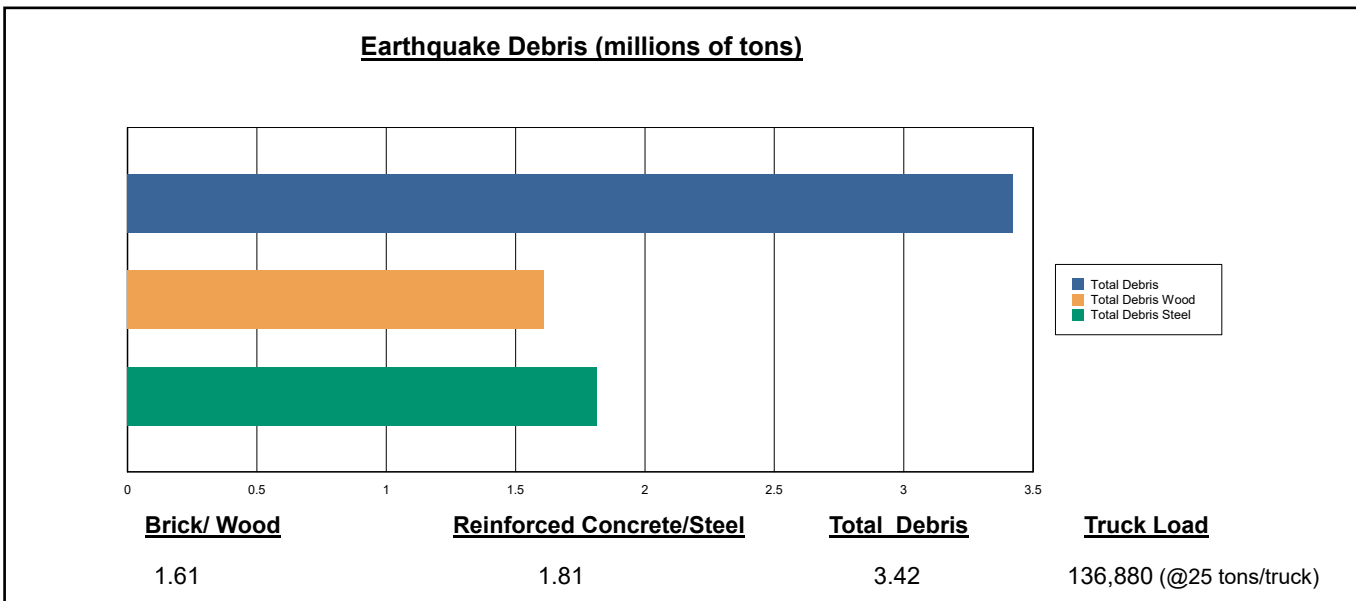
Fire Following Earthquake

Fires often occur after an earthquake. Because of the number of fires and the lack of water to fight the fires, they can often burn out of control. Hazus uses a Monte Carlo simulation model to estimate the number of ignitions and the amount of burnt area. For this scenario, the model estimates that there will be 62 ignitions that will burn about 1.11 sq. mi 0.00 % of the region's total area.) The model also estimates that the fires will displace about 11,574 people and burn about 1,552 (millions of dollars) of building value.

Debris Generation

Hazus estimates the amount of debris that will be generated by the earthquake. The model breaks the debris into two general categories: a) Brick/Wood and b) Reinforced Concrete/Steel. This distinction is made because of the different types of material handling equipment required to handle the debris.

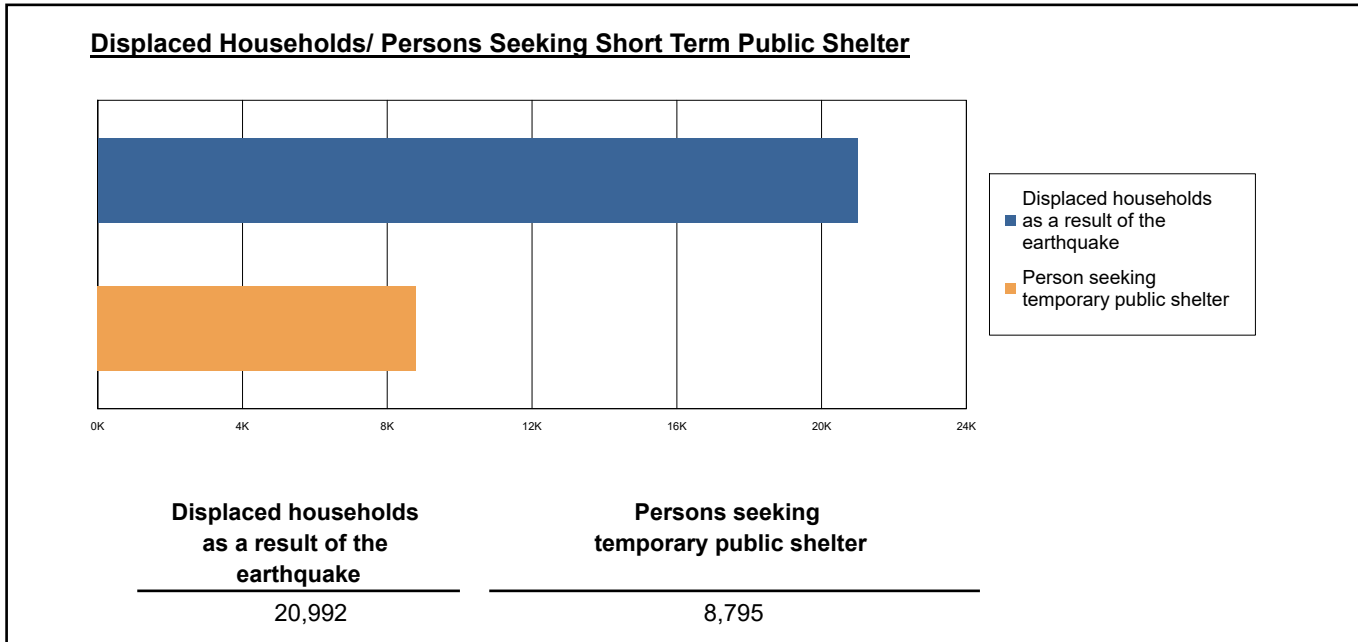
The model estimates that a total of 3,422,000 tons of debris will be generated. Of the total amount, Brick/Wood comprises 47.00% of the total, with the remainder being Reinforced Concrete/Steel. If the debris tonnage is converted to an estimated number of truckloads, it will require 136,880 truckloads (@25 tons/truck) to remove the debris generated by the earthquake.



Social Impact

Shelter Requirement

Hazus estimates the number of households that are expected to be displaced from their homes due to the earthquake and the number of displaced people that will require accommodations in temporary public shelters. The model estimates 20,992 households to be displaced due to the earthquake. Of these, 8,795 people (out of a total population of 15,015,581) will seek temporary shelter in public shelters.



Casualties

Hazus estimates the number of people that will be injured and killed by the earthquake. The casualties are broken down into four (4) severity levels that describe the extent of the injuries. The levels are described as follows;

- Severity Level 1: Injuries will require medical attention but hospitalization is not needed.
- Severity Level 2: Injuries will require hospitalization but are not considered life-threatening
- Severity Level 3: Injuries will require hospitalization and can become life threatening if not promptly treated.
- Severity Level 4: Victims are killed by the earthquake.

The casualty estimates are provided for three (3) times of day: 2:00 AM, 2:00 PM and 5:00 PM. These times represent the periods of the day that different sectors of the community are at their peak occupancy loads. The 2:00 AM estimate considers that the residential occupancy load is maximum, the 2:00 PM estimate considers that the educational, commercial and industrial sector loads are maximum and 5:00 PM represents peak commute time.

Table 10 provides a summary of the casualties estimated for this earthquake

Table 10: Casualty Estimates

		Level 1	Level 2	Level 3	Level 4
2 AM	Commercial	29.75	3.93	0.29	0.55
	Commuting	0.11	0.14	0.24	0.05
	Educational	0.00	0.00	0.00	0.00
	Hotels	4.19	0.56	0.04	0.07
	Industrial	21.81	2.67	0.19	0.37
	Other-Residential	1371.73	199.96	18.69	36.12
	Single Family	602.26	41.37	3.16	6.10
	Total	2,030	249	23	43
	2 PM	Commercial	1813.64	241.30	18.37
Commuting		0.99	1.26	2.20	0.42
Educational		382.72	46.84	3.36	6.38
Hotels		0.81	0.11	0.01	0.01
Industrial		160.24	19.76	1.44	2.73
Other-Residential		436.51	65.22	6.45	11.82
Single Family		176.46	13.13	1.08	1.99
Total		2,971	388	33	58
5 PM		Commercial	1171.99	157.47	12.54
	Commuting	21.31	27.10	47.35	9.09
	Educational	94.78	10.77	0.56	1.05
	Hotels	1.26	0.17	0.01	0.02
	Industrial	100.15	12.35	0.90	1.71
	Other-Residential	536.91	80.76	8.06	14.78
	Single Family	224.19	16.63	1.37	2.53
	Total	2,151	305	71	53

Economic Loss

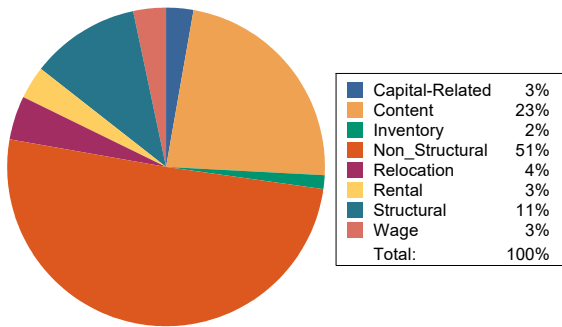
The total economic loss estimated for the earthquake is 30,481.85 (millions of dollars), which includes building and lifeline related losses based on the region's available inventory. The following three sections provide more detailed information about these losses.

Building-Related Losses

The building losses are broken into two categories: direct building losses and business interruption losses. The direct building losses are the estimated costs to repair or replace the damage caused to the building and its contents. The business interruption losses are the losses associated with inability to operate a business because of the damage sustained during the earthquake. Business interruption losses also include the temporary living expenses for those people displaced from their homes because of the earthquake.

The total building-related losses were 26,196.86 (millions of dollars); 14 % of the estimated losses were related to the business interruption of the region. By far, the largest loss was sustained by the residential occupancies which made up over 53 % of the total loss. Table 11 below provides a summary of the losses associated with the building damage.

Earthquake Losses by Loss Type (\$ millions)



Earthquake Losses by Occupancy Type (\$ millions)

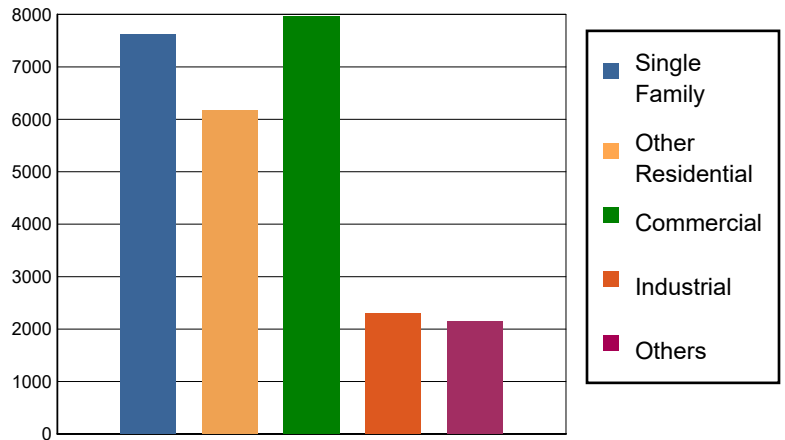


Table 11: Building-Related Economic Loss Estimates
(Millions of dollars)

Category	Area	Single Family	Other Residential	Commercial	Industrial	Others	Total
Income Losses							
	Wage	0.0000	133.2760	647.6699	20.6671	70.8059	872.4189
	Capital-Related	0.0000	56.6090	619.0149	12.4119	14.6527	702.6885
	Rental	51.7831	454.5295	339.8294	13.4260	31.3724	890.9404
	Relocation	148.0062	268.7690	462.8741	65.4299	190.3068	1,135.3860
	Subtotal	199.7893	913.1835	2069.3883	111.9349	307.1378	3601.4338
Capital Stock Losses							
	Structural	782.3671	794.3824	889.8301	221.6554	226.8231	2,915.0581
	Non_Structural	4725.0272	3488.2876	2966.7881	1092.2434	961.1016	13,233.4479
	Content	1911.7135	981.1573	1758.8083	770.2188	620.5965	6,042.4944
	Inventory	0.0000	0.0000	267.9531	108.0314	28.4400	404.4245
	Subtotal	7419.1078	5263.8273	5883.3796	2192.1490	1836.9612	22595.4249
	Total	7618.90	6177.01	7952.77	2304.08	2144.10	26196.86

Transportation and Utility Lifeline Losses

For the transportation and utility lifeline systems, Hazus computes the direct repair cost for each component only. There are no losses computed by Hazus for business interruption due to lifeline outages. Tables 12 & 13 provide a detailed breakdown in the expected lifeline losses.

Table 12: Transportation System Economic Losses
(Millions of dollars)

System	Component	Inventory Value	Economic Loss	Loss Ratio (%)
Highway	Segments	90918.7123	0.0000	0.00
	Bridges	58497.3802	262.8555	0.45
	Tunnels	985.3863	18.7753	1.91
	Subtotal	150401.4788	281.6308	
Railways	Segments	63848.4886	0.0000	0.00
	Bridges	9542.1300	6.1841	0.06
	Tunnels	1.8495	0.0020	0.11
	Facilities	237.0070	10.5191	4.44
	Subtotal	73629.4751	16.7052	
Light Rail	Segments	5403.2756	0.0000	0.00
	Bridges	15.3529	0.0149	0.10
	Tunnels	0.0000	0.0000	0.00
	Facilities	4154.0000	718.9531	17.31
	Subtotal	9572.6285	718.9680	
Bus	Facilities	111.2872	5.8899	5.29
	Subtotal	111.2872	5.8899	
Ferry	Facilities	33.2750	3.4695	10.43
	Subtotal	33.2750	3.4695	
Port	Facilities	1410.3825	133.1966	9.44
	Subtotal	1410.3825	133.1966	
Airport	Facilities	2872.9833	267.8542	9.32
	Runways	1433.4191	0.0000	0.00
	Subtotal	4306.4024	267.8542	
Total		239,464.93	1,427.71	

Table 13: Utility System Economic Losses

(Millions of dollars)

System	Component	Inventory Value	Economic Loss	Loss Ratio (%)
Potable Water	Pipelines	0.0000	0.0000	0.00
	Facilities	903.7620	17.1131	1.89
	Distribution Lines	4653.2497	17.9731	0.39
	Subtotal	5557.0117	35.0862	
Waste Water	Pipelines	0.0000	0.0000	0.00
	Facilities	32842.7938	996.1176	3.03
	Distribution Lines	2791.9498	9.0283	0.32
	Subtotal	35634.7436	1005.1459	
Natural Gas	Pipelines	14744.1139	0.0000	0.00
	Facilities	183.7334	0.0791	0.04
	Distribution Lines	1861.2999	3.0930	0.17
	Subtotal	16789.1472	3.1721	
Oil Systems	Pipelines	0.0000	0.0000	0.00
	Facilities	2.3600	0.0389	1.65
	Subtotal	2.3600	0.0389	
Electrical Power	Facilities	121208.3510	1811.6658	1.49
	Subtotal	121208.3510	1811.6658	
Communication	Facilities	52.8640	2.1668	4.10
	Subtotal	52.8640	2.1668	
	Total	179,244.48	2,857.28	

Appendix A: County Listing for the Region

Alameda,CA
Alpine,CA
Amador,CA
Butte,CA
Calaveras,CA
Colusa,CA
Contra Costa,CA
El Dorado,CA
Fresno,CA
Glenn,CA
Kings,CA
Lake,CA
Madera,CA
Marin,CA
Mariposa,CA
Mendocino,CA
Merced,CA
Monterey,CA
Napa,CA
Nevada,CA
Placer,CA
Sacramento,CA
San Benito,CA
San Francisco,CA
San Joaquin,CA
San Luis Obispo,CA
San Mateo,CA
Santa Clara,CA
Santa Cruz,CA

Solano,CA

Sonoma,CA

Stanislaus,CA

Sutter,CA

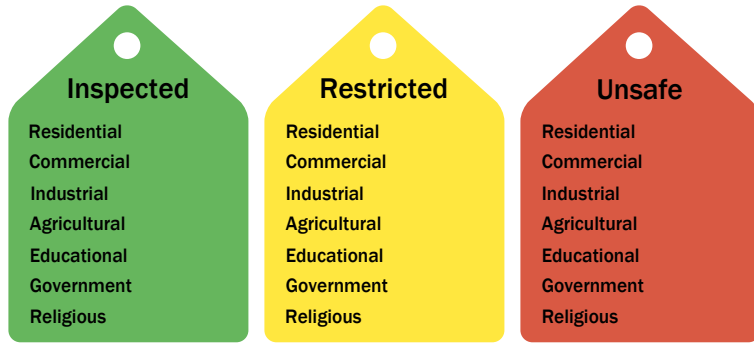
Tuolumne,CA

Yolo,CA

Yuba,CA

Appendix B: Regional Population and Building Value Data

State	County Name	Population	Building Value (millions of dollars)		
			Residential	Non-Residential	Total
California	Alameda	1,682,353	209,951	122,639	332,590
	Alpine	1,204	721	139	861
	Amador	40,474	5,608	2,517	8,125
	Butte	211,632	25,875	16,639	42,514
	Calaveras	45,292	8,305	4,893	13,199
	Colusa	21,839	2,244	2,024	4,268
	Contra Costa	1,165,927	158,118	60,339	218,458
	El Dorado	191,185	34,907	9,704	44,611
	Fresno	1,008,654	98,532	61,772	160,304
	Glenn	28,917	2,791	3,717	6,508
	Kings	152,486	13,719	7,861	21,581
	Lake	68,163	9,699	4,530	14,229
	Madera	156,255	18,025	9,641	27,667
	Marin	262,321	47,738	15,030	62,769
	Mariposa	17,131	3,299	1,141	4,441
	Mendocino	91,601	14,237	8,510	22,748
	Merced	281,202	25,194	26,098	51,292
	Monterey	439,035	47,655	28,750	76,405
	Napa	138,019	20,517	13,045	33,563
	Nevada	102,241	17,908	6,108	24,016
	Placer	404,739	69,985	24,193	94,179
	Sacramento	1,585,055	179,811	83,911	263,723
	San Benito	64,209	9,440	3,799	13,239
	San Francisco	873,965	108,848	46,020	154,869
	San Joaquin	779,233	82,706	56,882	139,589
	San Luis Obispo	282,424	41,720	20,896	62,616
	San Mateo	764,442	110,372	44,995	155,368
	Santa Clara	1,936,259	261,111	120,471	381,582
	Santa Cruz	270,861	36,147	18,805	54,952
	Solano	453,491	55,802	26,393	82,195
	Sonoma	488,863	68,827	35,781	104,609
	Stanislaus	552,878	62,937	37,511	100,449
Sutter	99,633	10,618	6,448	17,066	
Tuolumne	55,620	8,964	3,507	12,471	
Yolo	216,403	24,130	18,343	42,473	
Yuba	81,575	8,161	4,677	12,839	
Total Region		15,015,581	1,904,622	957,729	2,862,368

Building Inspection Tagging (Counts)

Total Economic Loss
Total:

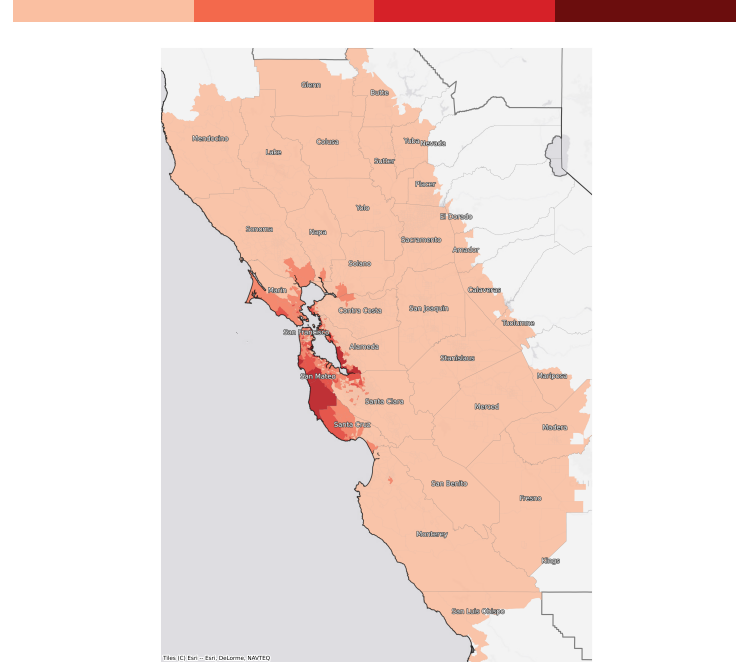
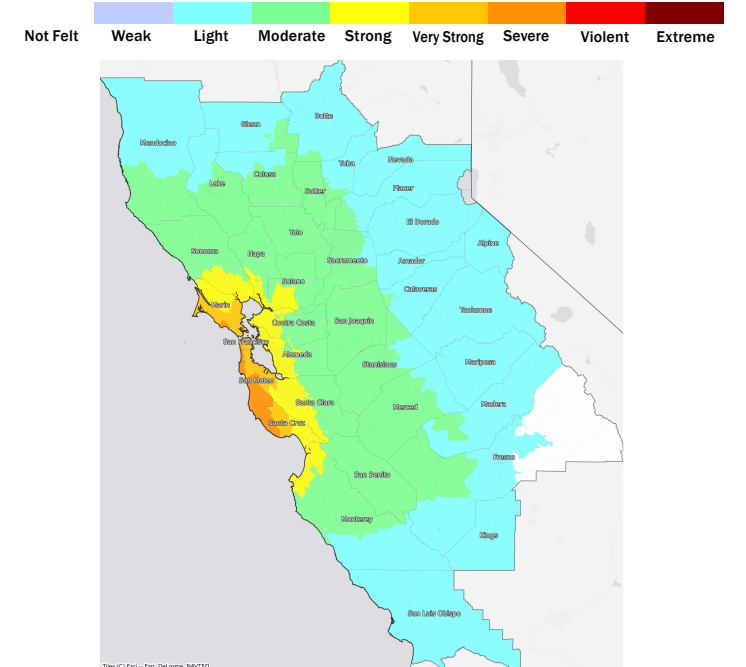
Top Counties	State	Total

Injuries & Fatalities
**Total Day:
Total Night:**

Top Counties	State	Injuries (day/night)	Fatalities (day/night)

Displaced Households & Short-Term Shelter Needs
**Total Displaced:
Total Needing Shelter:**

Top Counties	State	Displaced	Needing Shelter

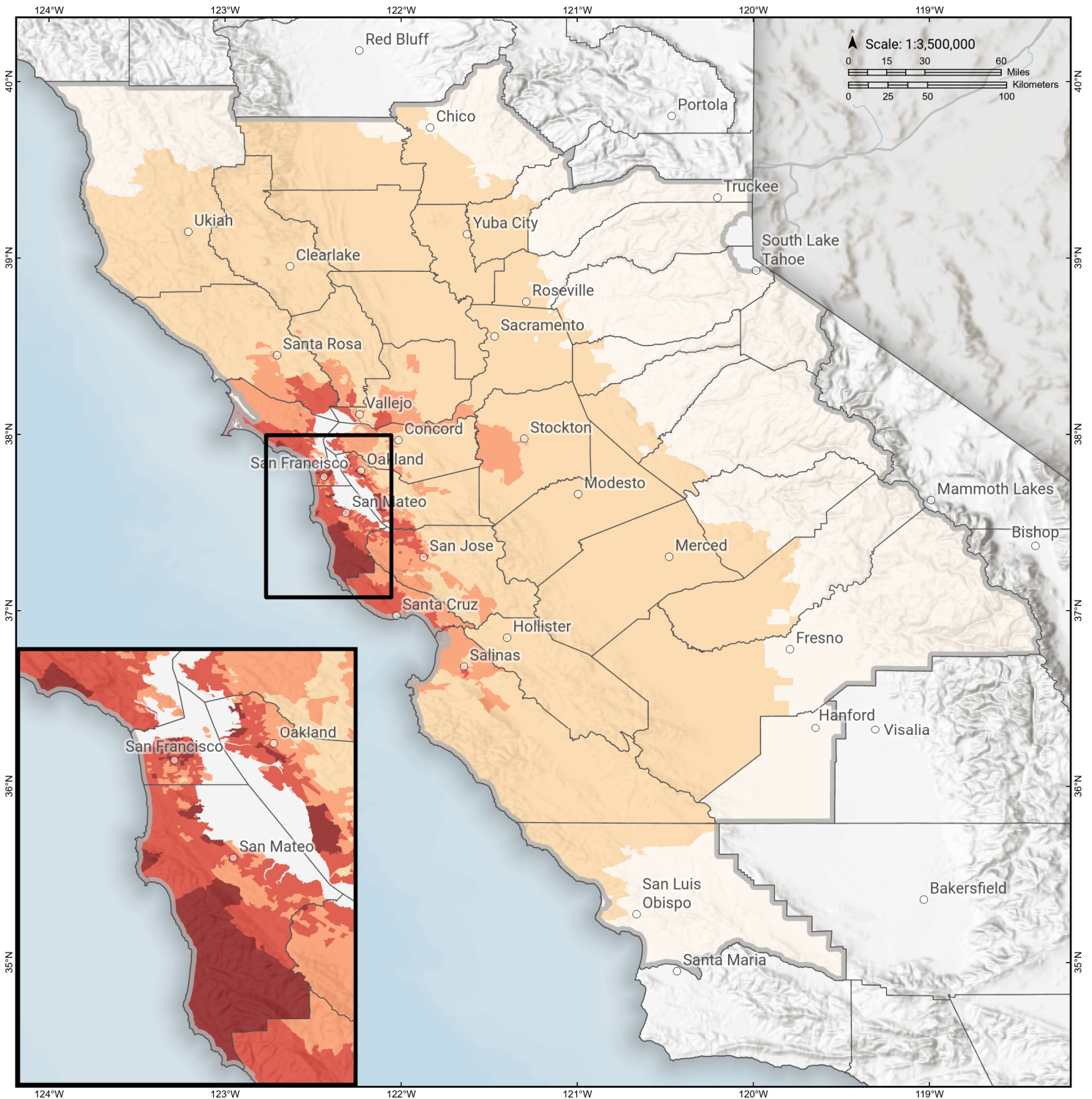
Economic Impacts by Census Tract

Ground Shaking

Debris
**Total Tons:
Total Truckloads:**

Type	Tons

The estimates of social and economic impacts contained in this report were produced using Hazus loss estimation methodology software which is based on current scientific and engineering knowledge. There are uncertainties inherent in any loss estimation technique. Therefore, there may be significant differences between the modeled results contained in this report and the actual social and economic losses following a specific earthquake.

San Gregorio (North)

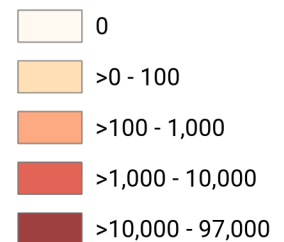
Debris Generated by Census Tract



Study Region: San Gregorio (North)
Scenario: sangregorionorth2011_m7p44_se

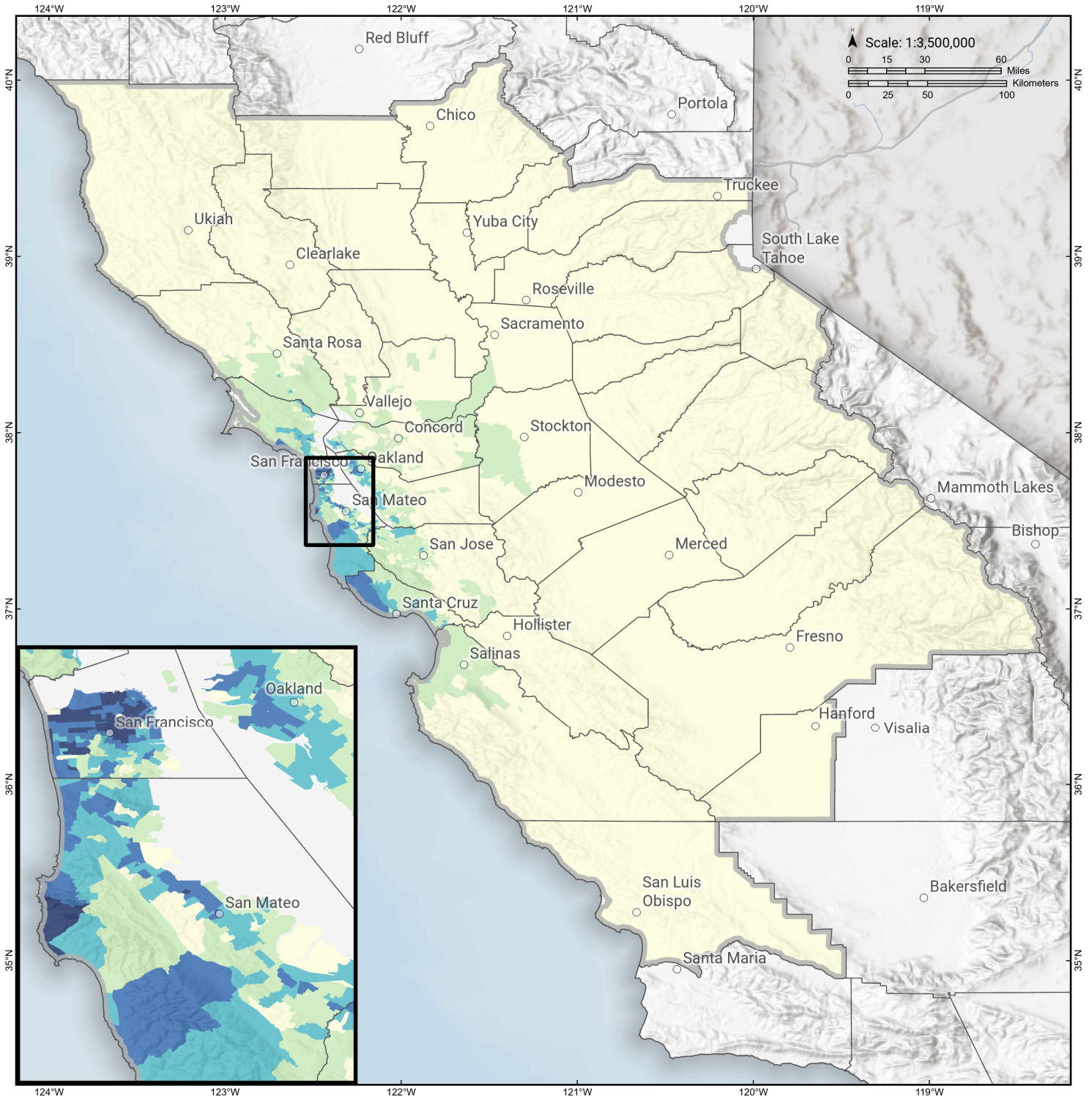


Debris Generated (in tons)



San Gregorio (North)

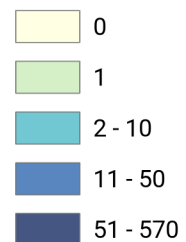
Displaced Households by Census Tract



Study Region: San Gregorio (North)
Scenario: sangregorionorth2011_m7p44_se

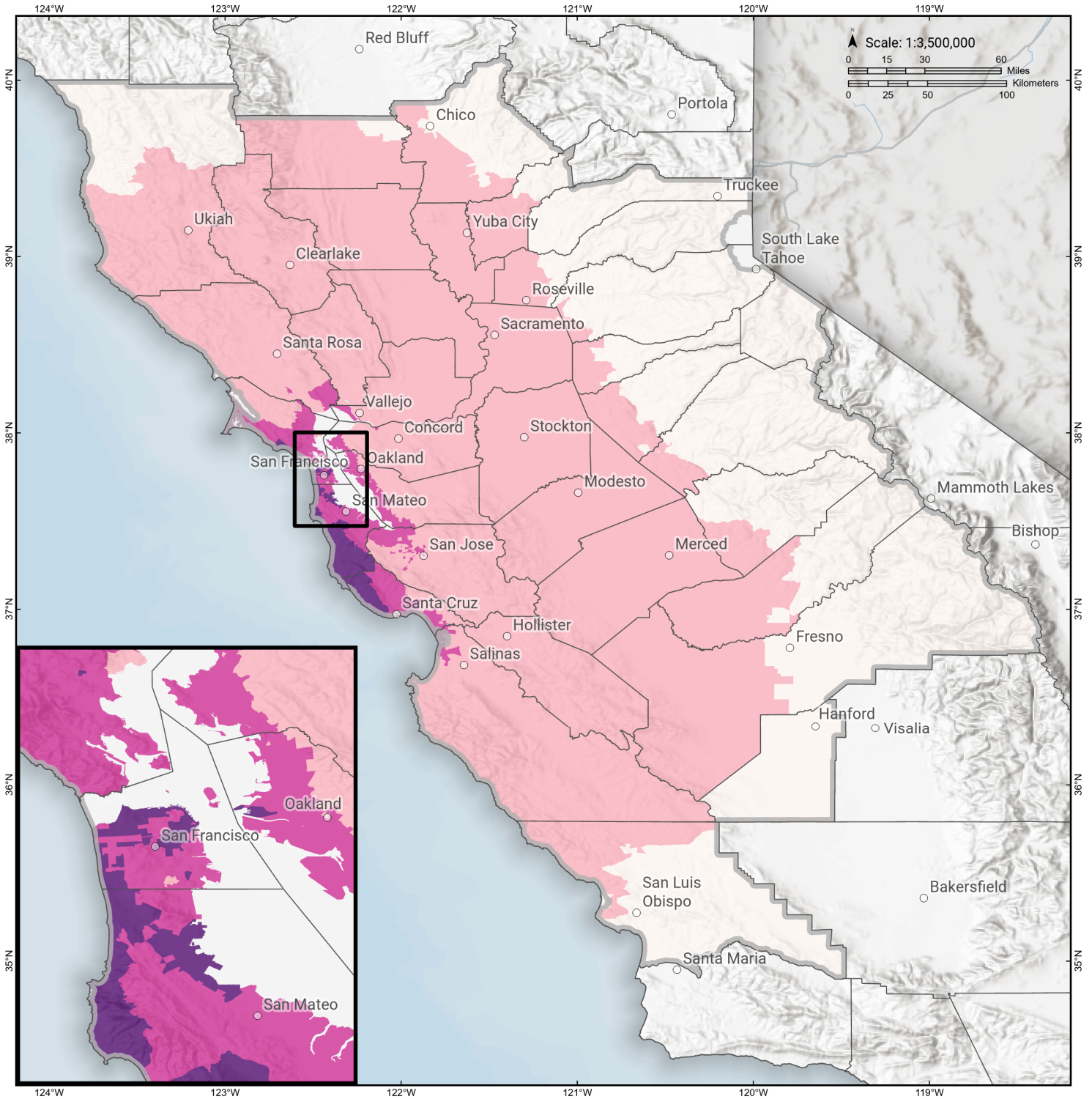


Displaced Households



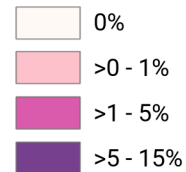
San Gregorio (North)

Loss Ratio by Census Tract



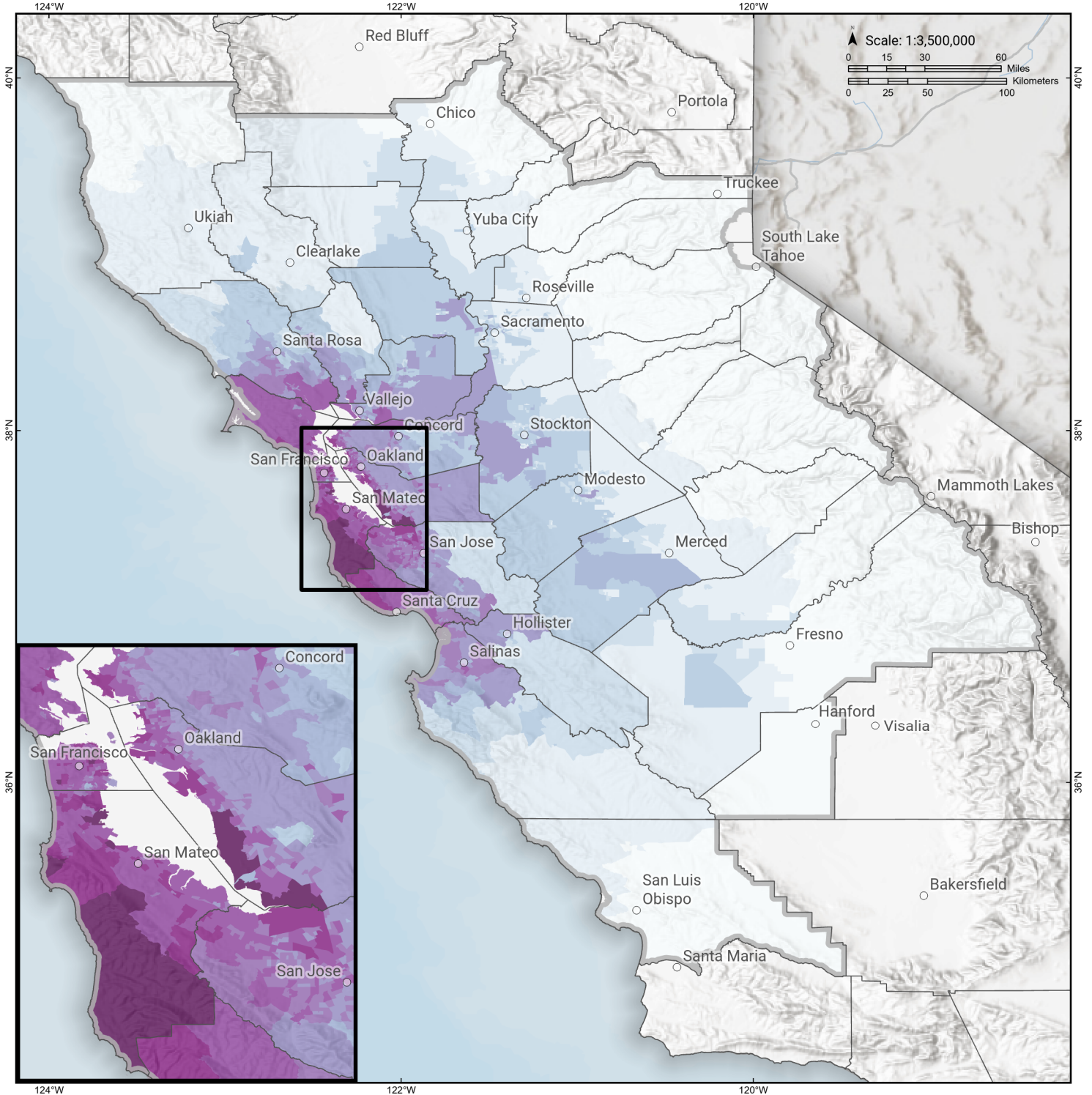
Study Region: San Gregorio (North)
Scenario: sangregorionorth2011_m7p44_se

Loss Ratio (ratio of building related economic loss to exposed value of buildings)



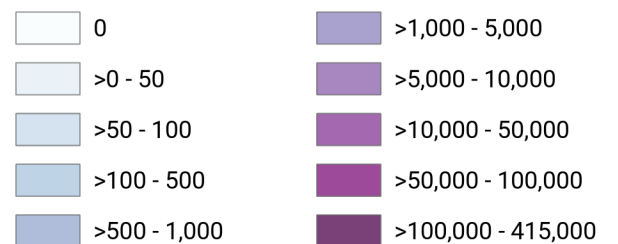
San Gregorio (North)

Total Building Related Economic Loss by Census Tract



Study Region: San Gregorio (North)
Scenario: sangregorionorth2011_m7p44_se

Economic Loss (in thousands of USD \$)



Building Damage by Count by General Occupancy

April 19, 2024

	# of Buildings					Total
	None	Slight	Moderate	Extensive	Complete	
California						
Alameda						
<i>Government</i>	9,144	1,105	257	21	1	10,528
<i>Agriculture</i>	345	53	20	4	0	422
<i>Commercial</i>	25,015	4,887	1,871	211	4	31,989
<i>Religion</i>	1,530	316	126	14	0	1,986
<i>Single Family</i>	316,280	27,388	504	2	0	344,173
<i>Other Residential</i>	51,228	8,294	1,696	174	4	61,396
<i>Education</i>	982	88	41	6	0	1,117
<i>Industrial</i>	7,906	1,587	615	93	3	10,205
Alpine						
<i>Education</i>	5	0	0	0	0	5
<i>Commercial</i>	48	0	0	0	0	48
<i>Government</i>	4	0	0	0	0	4
<i>Agriculture</i>	0	0	0	0	0	0
<i>Religion</i>	1	0	0	0	0	1
<i>Industrial</i>	14	0	0	0	0	14
<i>Single Family</i>	842	0	0	0	0	842
<i>Other Residential</i>	97	0	0	0	0	97
Amador						

	# of Buildings					Total
	None	Slight	Moderate	Extensive	Complete	
<i>Industrial</i>	235	0	0	0	0	235
<i>Single Family</i>	14,962	0	0	0	0	14,962
<i>Other Residential</i>	1,037	0	0	0	0	1,037
<i>Education</i>	23	0	0	0	0	23
<i>Government</i>	32	0	0	0	0	32
<i>Agriculture</i>	44	0	0	0	0	44
<i>Religion</i>	45	0	0	0	0	45
<i>Commercial</i>	1,368	0	0	0	0	1,368
Butte						
<i>Government</i>	147	0	0	0	0	147
<i>Religion</i>	531	0	0	0	0	531
<i>Agriculture</i>	510	0	0	0	0	510
<i>Commercial</i>	6,385	0	0	0	0	6,385
<i>Industrial</i>	1,522	0	0	0	0	1,522
<i>Single Family</i>	50,283	0	0	0	0	50,283
<i>Other Residential</i>	21,496	2	0	0	0	21,498
<i>Education</i>	172	0	0	0	0	172
Calaveras						
<i>Government</i>	84	0	0	0	0	84
<i>Other Residential</i>	2,559	0	0	0	0	2,559
<i>Education</i>	35	0	0	0	0	35
<i>Religion</i>	130	0	0	0	0	130
<i>Agriculture</i>	2,207	0	0	0	0	2,207
<i>Commercial</i>	1,413	0	0	0	0	1,413
<i>Industrial</i>	466	0	0	0	0	466

	# of Buildings					Total
	None	Slight	Moderate	Extensive	Complete	
Colusa						
Single Family	22,148	0	0	0	0	22,148
Agriculture	142	0	0	0	0	142
Religion	58	0	0	0	0	58
Commercial	793	1	0	0	0	794
Industrial	113	0	0	0	0	113
Other Residential	953	1	0	0	0	954
Single Family	5,954	0	0	0	0	5,954
Government	32	0	0	0	0	32
Education	33	0	0	0	0	33
Contra Costa						
Commercial	16,683	1,054	231	23	1	17,991
Agriculture	707	34	7	1	0	749
Religion	1,094	101	28	3	0	1,226
Single Family	270,984	10,777	174	0	0	281,935
Other Residential	26,807	2,064	236	17	1	29,124
Industrial	4,252	386	100	11	0	4,749
Government	4,677	284	58	4	0	5,024
Education	637	14	2	0	0	653
El Dorado						
Other Residential	10,420	0	0	0	0	10,420
Industrial	1,199	0	0	0	0	1,199
Education	128	0	0	0	0	128
Single Family	71,424	0	0	0	0	71,424
Commercial	4,768	0	0	0	0	4,768

	# of Buildings					Total
	None	Slight	Moderate	Extensive	Complete	
<i>Government</i>	100	0	0	0	0	100
<i>Religion</i>	180	0	0	0	0	180
<i>Agriculture</i>	161	0	0	0	0	161
Fresno						
<i>Commercial</i>	21,054	0	0	0	0	21,054
<i>Religion</i>	1,507	0	0	0	0	1,507
<i>Agriculture</i>	3,421	0	0	0	0	3,421
<i>Industrial</i>	5,348	0	0	0	0	5,348
<i>Government</i>	291	0	0	0	0	291
<i>Other Residential</i>	40,972	1	0	0	0	40,973
<i>Single Family</i>	226,425	0	0	0	0	226,425
<i>Education</i>	602	0	0	0	0	602
Glenn						
<i>Other Residential</i>	2,151	1	0	0	0	2,152
<i>Government</i>	99	0	0	0	0	99
<i>Education</i>	35	0	0	0	0	35
<i>Industrial</i>	254	0	0	0	0	254
<i>Single Family</i>	7,417	0	0	0	0	7,417
<i>Commercial</i>	885	0	0	0	0	885
<i>Agriculture</i>	1,365	0	0	0	0	1,365
<i>Religion</i>	89	0	0	0	0	89
Kings						
<i>Commercial</i>	2,318	0	0	0	0	2,318
<i>Religion</i>	210	0	0	0	0	210
<i>Agriculture</i>	306	0	0	0	0	306

		# of Buildings					
		None	Slight	Moderate	Extensive	Complete	Total
Lake	<i>Government</i>	72	0	0	0	0	72
	<i>Industrial</i>	555	0	0	0	0	555
	<i>Single Family</i>	36,245	0	0	0	0	36,245
	<i>Other Residential</i>	4,342	0	0	0	0	4,342
	<i>Education</i>	103	0	0	0	0	103
	<i>Agriculture</i>	161	0	0	0	0	161
	<i>Single Family</i>	21,633	0	0	0	0	21,633
	<i>Other Residential</i>	14,581	20	0	0	0	14,601
	<i>Education</i>	68	0	0	0	0	68
	<i>Industrial</i>	354	0	0	0	0	354
Madera	<i>Commercial</i>	2,090	1	0	0	0	2,091
	<i>Religion</i>	140	0	0	0	0	140
	<i>Government</i>	78	0	0	0	0	78
	<i>Commercial</i>	2,905	0	0	0	0	2,905
	<i>Religion</i>	119	0	0	0	0	119
	<i>Government</i>	111	0	0	0	0	111
	<i>Agriculture</i>	634	0	0	0	0	634
	<i>Other Residential</i>	6,634	1	0	0	0	6,635
	<i>Single Family</i>	38,912	0	0	0	0	38,912
	<i>Education</i>	115	0	0	0	0	115
Marin	<i>Industrial</i>	903	0	0	0	0	903
	<i>Other Residential</i>	5,201	2,143	480	60	6	7,890

	# of Buildings					Total
	None	Slight	Moderate	Extensive	Complete	
<i>Government</i>	99	33	11	1	0	143
<i>Education</i>	226	37	10	1	0	274
<i>Commercial</i>	5,198	2,163	781	117	11	8,270
<i>Religion</i>	208	80	27	4	0	319
<i>Agriculture</i>	113	51	21	4	0	190
<i>Single Family</i>	56,711	19,008	1,001	4	0	76,724
<i>Industrial</i>	899	431	179	24	2	1,535
Mariposa						
<i>Single Family</i>	8,084	0	0	0	0	8,084
<i>Other Residential</i>	307	0	0	0	0	307
<i>Education</i>	27	0	0	0	0	27
<i>Industrial</i>	94	0	0	0	0	94
<i>Commercial</i>	689	0	0	0	0	689
<i>Agriculture</i>	29	0	0	0	0	29
<i>Religion</i>	36	0	0	0	0	36
<i>Government</i>	33	0	0	0	0	33
Mendocino						
<i>Commercial</i>	3,436	0	0	0	0	3,436
<i>Religion</i>	216	0	0	0	0	216
<i>Agriculture</i>	184	0	0	0	0	184
<i>Single Family</i>	25,969	0	0	0	0	25,969
<i>Other Residential</i>	7,059	1	0	0	0	7,060
<i>Government</i>	83	0	0	0	0	83
<i>Education</i>	101	0	0	0	0	101

	# of Buildings					Total
	None	Slight	Moderate	Extensive	Complete	
<i>Industrial</i>	869	0	0	0	0	869
Merced						
<i>Education</i>	163	0	0	0	0	163
<i>Government</i>	171	0	0	0	0	171
<i>Commercial</i>	4,749	5	0	0	0	4,754
<i>Agriculture</i>	7,617	32	3	0	0	7,653
<i>Religion</i>	345	0	0	0	0	345
<i>Industrial</i>	1,021	1	0	0	0	1,022
<i>Single Family</i>	63,587	11	0	0	0	63,598
<i>Other Residential</i>	10,768	18	1	0	0	10,787
Monterey						
<i>Single Family</i>	87,490	3,360	26	0	0	90,876
<i>Industrial</i>	1,691	133	26	1	0	1,850
<i>Other Residential</i>	18,232	1,379	194	4	0	19,809
<i>Education</i>	235	3	0	0	0	239
<i>Government</i>	175	9	1	0	0	185
<i>Agriculture</i>	1,791	21	3	0	0	1,815
<i>Commercial</i>	8,560	588	95	3	0	9,246
<i>Religion</i>	541	34	5	0	0	580
Napa						
<i>Commercial</i>	3,829	171	20	0	0	4,021
<i>Agriculture</i>	337	10	2	0	0	349
<i>Religion</i>	141	7	1	0	0	148
<i>Single Family</i>	37,889	868	4	0	0	38,761
<i>Other Residential</i>	6,592	348	38	0	0	6,978

	# of Buildings					Total
	None	Slight	Moderate	Extensive	Complete	
<i>Government</i>	97	5	1	0	0	103
<i>Education</i>	128	3	1	0	0	132
<i>Industrial</i>	1,293	66	8	0	0	1,367
Nevada						
<i>Commercial</i>	2,835	0	0	0	0	2,835
<i>Religion</i>	189	0	0	0	0	189
<i>Government</i>	60	0	0	0	0	60
<i>Agriculture</i>	132	0	0	0	0	132
<i>Single Family</i>	43,280	0	0	0	0	43,280
<i>Other Residential</i>	6,384	0	0	0	0	6,384
<i>Education</i>	108	0	0	0	0	108
<i>Industrial</i>	1,161	0	0	0	0	1,161
Placer						
<i>Education</i>	231	0	0	0	0	231
<i>Commercial</i>	8,537	1	0	0	0	8,538
<i>Government</i>	377	0	0	0	0	377
<i>Agriculture</i>	258	0	0	0	0	258
<i>Religion</i>	382	0	0	0	0	382
<i>Industrial</i>	2,703	0	0	0	0	2,703
<i>Other Residential</i>	14,841	1	0	0	0	14,843
<i>Single Family</i>	134,719	0	0	0	0	134,719
Sacramento						
<i>Single Family</i>	386,756	83	1	0	0	386,840
<i>Industrial</i>	6,749	7	0	0	0	6,756
<i>Other Residential</i>	56,339	69	5	0	0	56,413

	# of Buildings					Total
	None	Slight	Moderate	Extensive	Complete	
<i>Education</i>	829	0	0	0	0	829
<i>Agriculture</i>	620	1	0	0	0	621
<i>Religion</i>	1,697	5	0	0	0	1,702
<i>Government</i>	611	7	0	0	0	619
<i>Commercial</i>	26,232	58	5	0	0	26,295
San Benito						
<i>Other Residential</i>	1,341	32	2	0	0	1,375
<i>Single Family</i>	14,617	109	0	0	0	14,726
<i>Industrial</i>	320	5	1	0	0	326
<i>Education</i>	42	0	0	0	0	42
<i>Government</i>	44	1	0	0	0	45
<i>Commercial</i>	1,055	22	2	0	0	1,080
<i>Religion</i>	62	2	0	0	0	64
<i>Agriculture</i>	251	2	0	0	0	253
San Francisco						
<i>Single Family</i>	87,174	52,740	9,289	1,349	150	150,703
<i>Other Residential</i>	19,597	15,171	7,344	2,162	255	44,529
<i>Government</i>	92	99	79	18	2	289
<i>Education</i>	348	122	72	28	3	572
<i>Industrial</i>	1,688	1,172	787	197	17	3,860
<i>Commercial</i>	7,925	7,169	4,873	1,265	113	21,344
<i>Religion</i>	556	452	271	61	5	1,345
<i>Agriculture</i>	69	52	33	8	1	162
San Joaquin						
<i>Commercial</i>	12,814	47	3	0	0	12,864

	# of Buildings					Total
	None	Slight	Moderate	Extensive	Complete	
<i>Agriculture</i>	749	4	0	0	0	753
<i>Religion</i>	874	3	0	0	0	877
<i>Government</i>	302	2	0	0	0	304
<i>Single Family</i>	188,040	821	61	0	0	188,922
<i>Other Residential</i>	21,653	141	10	0	0	21,805
<i>Education</i>	395	0	0	0	0	395
<i>Industrial</i>	4,907	19	1	0	0	4,928
San Luis Obispo						
<i>Religion</i>	360	0	0	0	0	360
<i>Agriculture</i>	421	0	0	0	0	421
<i>Government</i>	185	0	0	0	0	185
<i>Commercial</i>	9,375	0	0	0	0	9,375
<i>Single Family</i>	85,639	0	0	0	0	85,639
<i>Industrial</i>	2,556	0	0	0	0	2,556
<i>Other Residential</i>	20,216	0	0	0	0	20,216
<i>Education</i>	182	0	0	0	0	182
San Mateo						
<i>Religion</i>	344	243	130	18	1	736
<i>Agriculture</i>	171	175	136	46	11	539
<i>Government</i>	152	96	46	5	0	299
<i>Commercial</i>	7,013	4,790	2,211	341	40	14,395
<i>Industrial</i>	2,118	1,469	762	113	10	4,472
<i>Other Residential</i>	11,773	7,877	2,147	556	99	22,453
<i>Single Family</i>	91,396	61,616	6,877	41	1	159,931
<i>Education</i>	358	102	24	4	1	489

	# of Buildings					Total
	None	Slight	Moderate	Extensive	Complete	
Santa Clara						
<i>Other Residential</i>	50,800	7,247	1,068	44	1	59,160
<i>Single Family</i>	389,955	36,581	680	3	0	427,219
<i>Government</i>	417	67	17	1	0	502
<i>Education</i>	1,106	56	10	1	0	1,173
<i>Industrial</i>	8,038	1,139	241	15	0	9,433
<i>Commercial</i>	30,125	4,376	901	65	2	35,469
<i>Religion</i>	1,324	180	34	2	0	1,540
<i>Agriculture</i>	796	77	20	2	0	895
Santa Cruz						
<i>Religion</i>	247	80	27	5	0	359
<i>Agriculture</i>	601	160	69	10	1	840
<i>Single Family</i>	51,790	16,356	723	1	0	68,870
<i>Other Residential</i>	9,641	3,886	1,227	130	7	14,892
<i>Industrial</i>	1,156	448	182	31	3	1,819
<i>Education</i>	186	29	8	2	0	225
<i>Commercial</i>	4,477	1,572	543	94	7	6,694
<i>Government</i>	87	27	11	2	0	127
Solano						
<i>Religion</i>	428	22	4	0	0	454
<i>Agriculture</i>	236	7	2	0	0	245
<i>Government</i>	147	5	0	0	0	152
<i>Commercial</i>	6,903	315	48	2	0	7,268
<i>Single Family</i>	118,392	2,563	13	0	0	120,968
<i>Industrial</i>	1,963	117	20	1	0	2,101

	# of Buildings					Total
	None	Slight	Moderate	Extensive	Complete	
<i>Other Residential</i>	11,624	614	77	2	0	12,317
<i>Education</i>	222	3	0	0	0	225
Sonoma						
<i>Other Residential</i>	23,535	1,315	178	4	0	25,033
<i>Government</i>	303	14	3	0	0	319
<i>Education</i>	359	6	1	0	0	367
<i>Religion</i>	548	24	3	0	0	576
<i>Commercial</i>	11,419	591	96	4	0	12,110
<i>Agriculture</i>	1,174	98	29	3	0	1,304
<i>Single Family</i>	138,155	3,847	26	0	0	142,028
<i>Industrial</i>	3,562	222	39	2	0	3,825
Stanislaus						
<i>Other Residential</i>	19,518	49	2	0	0	19,569
<i>Single Family</i>	142,659	65	0	0	0	142,724
<i>Education</i>	307	0	0	0	0	307
<i>Government</i>	679	1	0	0	0	680
<i>Industrial</i>	3,464	11	1	0	0	3,475
<i>Commercial</i>	10,338	30	2	0	0	10,369
<i>Religion</i>	455	1	0	0	0	456
<i>Agriculture</i>	1,236	3	0	0	0	1,239
Sutter						
<i>Other Residential</i>	3,111	2	0	0	0	3,113
<i>Industrial</i>	636	0	0	0	0	636
<i>Education</i>	62	0	0	0	0	62
<i>Government</i>	77	0	0	0	0	77

	# of Buildings					Total
	None	Slight	Moderate	Extensive	Complete	
<i>Single Family</i>	24,512	0	0	0	0	24,512
<i>Commercial</i>	2,051	1	0	0	0	2,052
<i>Agriculture</i>	1,124	1	0	0	0	1,125
<i>Religion</i>	154	0	0	0	0	154
Tuolumne						
<i>Education</i>	57	0	0	0	0	57
<i>Government</i>	143	0	0	0	0	143
<i>Commercial</i>	1,576	0	0	0	0	1,576
<i>Religion</i>	121	0	0	0	0	121
<i>Agriculture</i>	82	0	0	0	0	82
<i>Industrial</i>	383	0	0	0	0	383
<i>Other Residential</i>	4,962	0	0	0	0	4,962
<i>Single Family</i>	21,645	0	0	0	0	21,645
Yolo						
<i>Industrial</i>	1,112	4	0	0	0	1,117
<i>Other Residential</i>	9,831	29	1	0	0	9,861
<i>Education</i>	131	0	0	0	0	131
<i>Government</i>	110	1	0	0	0	111
<i>Single Family</i>	42,538	51	0	0	0	42,589
<i>Commercial</i>	4,207	17	1	0	0	4,225
<i>Agriculture</i>	280	1	0	0	0	281
<i>Religion</i>	241	1	0	0	0	242
Yuba						
<i>Government</i>	591	0	0	0	0	591
<i>Education</i>	54	0	0	0	0	54

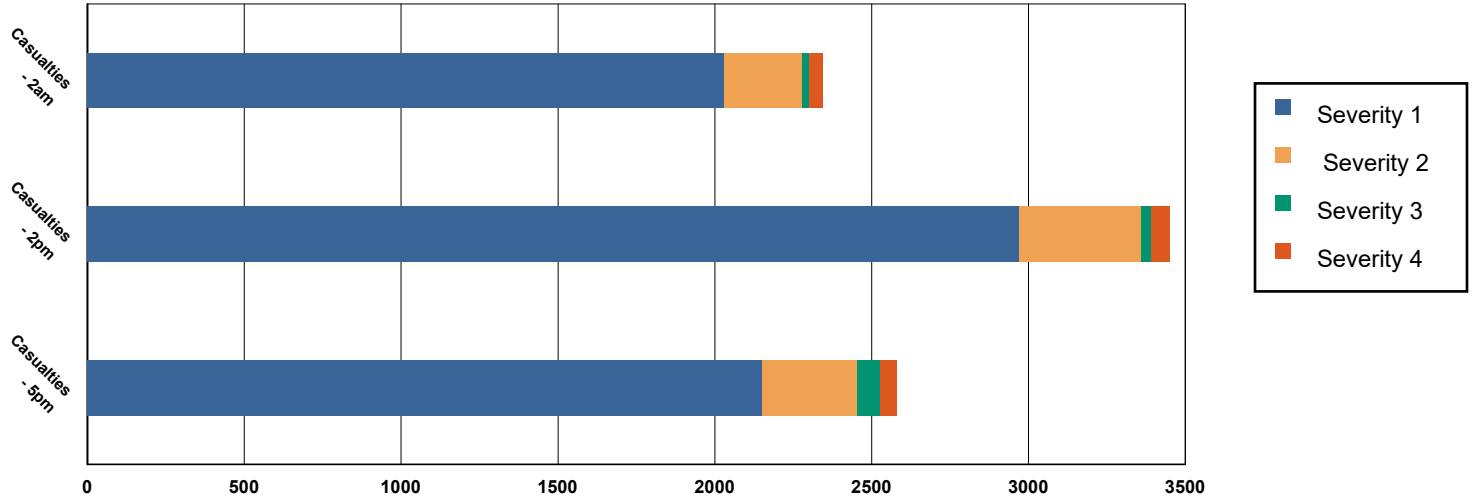
	# of Buildings					Total
	None	Slight	Moderate	Extensive	Complete	
<i>Other Residential</i>	7,018	3	0	0	0	7,021
<i>Religion</i>	98	0	0	0	0	98
<i>Commercial</i>	1,198	1	0	0	0	1,199
<i>Agriculture</i>	92	0	0	0	0	92
<i>Single Family</i>	18,867	0	0	0	0	18,867
<i>Industrial</i>	404	0	0	0	0	404
Total	4,271,426	326,588	50,389	7,446	763	4,656,613
Region Total	4,271,426	326,588	50,389	7,446	763	4,656,613

Totals only reflect data for those census tracts/blocks included in the user's study region and will reflect the entire county/state only if all of the census blocks for that county/states were selected at the time of study region creation.

Casualties Summary Report

April 19, 2024

Region Total Casualties



Injury Severity Level

Severity 1	Severity 2	Severity 3	Severity 4	Total
------------	------------	------------	------------	-------

California

Alameda

Casualties - 2am

	Severity 1	Severity 2	Severity 3	Severity 4	Total
Single Family	45	0	0	0	45
Hotels	0	0	0	0	0
Commuting	0	0	0	0	0
Educational	0	0	0	0	0
Industrial	4	0	0	0	4
Commercial	4	0	0	0	4
Other-Residential	108	9	0	0	118
Total Casualties - 2am	161	10	0	0	171

Casualties - 2pm

Industrial	28	3	0	0	31
Educational	40	3	0	0	44
Other-Residential	35	3	0	0	38
Single Family	12	0	0	0	12
Hotels	0	0	0	0	0
Commuting	0	0	0	0	0
Commercial	225	20	1	1	247

	Injury Severity Level				Total
	Severity 1	Severity 2	Severity 3	Severity 4	
California					
Alameda					
Total Casualties - 2pm	340	29	1	2	372
Casualties - 5pm					
<i>Commuting</i>	1	1	2	0	5
<i>Single Family</i>	16	0	0	0	16
<i>Commercial</i>	148	13	0	1	162
<i>Hotels</i>	0	0	0	0	0
<i>Educational</i>	6	0	0	0	7
<i>Industrial</i>	17	2	0	0	19
<i>Other-Residential</i>	41	3	0	0	45
Total Casualties - 5pm	230	20	3	1	253
Alpine					
Casualties - 2am					
<i>Industrial</i>	0	0	0	0	0
<i>Single Family</i>	0	0	0	0	0
<i>Commercial</i>	0	0	0	0	0
<i>Other-Residential</i>	0	0	0	0	0
<i>Hotels</i>	0	0	0	0	0
<i>Commuting</i>	0	0	0	0	0
<i>Educational</i>	0	0	0	0	0
Total Casualties - 2am	0	0	0	0	0
Casualties - 2pm					
<i>Educational</i>	0	0	0	0	0
<i>Other-Residential</i>	0	0	0	0	0
<i>Single Family</i>	0	0	0	0	0
<i>Hotels</i>	0	0	0	0	0
<i>Commercial</i>	0	0	0	0	0
<i>Commuting</i>	0	0	0	0	0
<i>Industrial</i>	0	0	0	0	0
Total Casualties - 2pm	0	0	0	0	0
Casualties - 5pm					
<i>Industrial</i>	0	0	0	0	0
<i>Other-Residential</i>	0	0	0	0	0
<i>Commuting</i>	0	0	0	0	0
<i>Commercial</i>	0	0	0	0	0
<i>Single Family</i>	0	0	0	0	0
<i>Educational</i>	0	0	0	0	0
<i>Hotels</i>	0	0	0	0	0
Total Casualties - 5pm	0	0	0	0	0
Amador					
Casualties - 2am					
<i>Commercial</i>	0	0	0	0	0

	Injury Severity Level				Total
	Severity 1	Severity 2	Severity 3	Severity 4	
California					
Amador					
Casualties - 2am					
<i>Other-Residential</i>	0	0	0	0	0
<i>Commuting</i>	0	0	0	0	0
<i>Educational</i>	0	0	0	0	0
<i>Single Family</i>	0	0	0	0	0
<i>Hotels</i>	0	0	0	0	0
<i>Industrial</i>	0	0	0	0	0
Total Casualties - 2am	0	0	0	0	0
Casualties - 2pm					
<i>Single Family</i>	0	0	0	0	0
<i>Hotels</i>	0	0	0	0	0
<i>Educational</i>	0	0	0	0	0
<i>Commuting</i>	0	0	0	0	0
<i>Commercial</i>	0	0	0	0	0
<i>Other-Residential</i>	0	0	0	0	0
<i>Industrial</i>	0	0	0	0	0
Total Casualties - 2pm	0	0	0	0	0
Casualties - 5pm					
<i>Commercial</i>	0	0	0	0	0
<i>Commuting</i>	0	0	0	0	0
<i>Other-Residential</i>	0	0	0	0	0
<i>Single Family</i>	0	0	0	0	0
<i>Educational</i>	0	0	0	0	0
<i>Hotels</i>	0	0	0	0	0
<i>Industrial</i>	0	0	0	0	0
Total Casualties - 5pm	0	0	0	0	0
Butte					
Casualties - 2am					
<i>Industrial</i>	0	0	0	0	0
<i>Commercial</i>	0	0	0	0	0
<i>Other-Residential</i>	0	0	0	0	0
<i>Single Family</i>	0	0	0	0	0
<i>Commuting</i>	0	0	0	0	0
<i>Educational</i>	0	0	0	0	0
<i>Hotels</i>	0	0	0	0	0
Total Casualties - 2am	0	0	0	0	0
Casualties - 2pm					
<i>Single Family</i>	0	0	0	0	0
<i>Educational</i>	0	0	0	0	0
<i>Commuting</i>	0	0	0	0	0
<i>Other-Residential</i>	0	0	0	0	0
<i>Hotels</i>	0	0	0	0	0

	Injury Severity Level				Total
	Severity 1	Severity 2	Severity 3	Severity 4	
California					
Butte					
Casualties - 2pm					
Commercial	0	0	0	0	0
Industrial	0	0	0	0	0
Total Casualties - 2pm	0	0	0	0	0
Casualties - 5pm					
Industrial	0	0	0	0	0
Other-Residential	0	0	0	0	0
Single Family	0	0	0	0	0
Commercial	0	0	0	0	0
Commuting	0	0	0	0	0
Hotels	0	0	0	0	0
Educational	0	0	0	0	0
Total Casualties - 5pm	0	0	0	0	0
Calaveras					
Casualties - 2am					
Other-Residential	0	0	0	0	0
Commuting	0	0	0	0	0
Commercial	0	0	0	0	0
Single Family	0	0	0	0	0
Hotels	0	0	0	0	0
Educational	0	0	0	0	0
Industrial	0	0	0	0	0
Total Casualties - 2am	0	0	0	0	0
Casualties - 2pm					
Hotels	0	0	0	0	0
Single Family	0	0	0	0	0
Educational	0	0	0	0	0
Commuting	0	0	0	0	0
Commercial	0	0	0	0	0
Industrial	0	0	0	0	0
Other-Residential	0	0	0	0	0
Total Casualties - 2pm	0	0	0	0	0
Casualties - 5pm					
Industrial	0	0	0	0	0
Commercial	0	0	0	0	0
Other-Residential	0	0	0	0	0
Educational	0	0	0	0	0
Hotels	0	0	0	0	0
Commuting	0	0	0	0	0
Single Family	0	0	0	0	0
Total Casualties - 5pm	0	0	0	0	0

Injury Severity Level

Severity 1 Severity 2 Severity 3 Severity 4 Total

California

Colusa

Casualties - 2am

<i>Other-Residential</i>	0	0	0	0	0
<i>Industrial</i>	0	0	0	0	0
<i>Single Family</i>	0	0	0	0	0
<i>Commercial</i>	0	0	0	0	0
<i>Educational</i>	0	0	0	0	0
<i>Commuting</i>	0	0	0	0	0
<i>Hotels</i>	0	0	0	0	0

Total Casualties - 2am

0 0 0 0 0

Casualties - 2pm

<i>Hotels</i>	0	0	0	0	0
<i>Single Family</i>	0	0	0	0	0
<i>Educational</i>	0	0	0	0	0
<i>Commercial</i>	0	0	0	0	0
<i>Commuting</i>	0	0	0	0	0
<i>Other-Residential</i>	0	0	0	0	0
<i>Industrial</i>	0	0	0	0	0

Total Casualties - 2pm

0 0 0 0 0

Casualties - 5pm

<i>Industrial</i>	0	0	0	0	0
<i>Commercial</i>	0	0	0	0	0
<i>Other-Residential</i>	0	0	0	0	0
<i>Commuting</i>	0	0	0	0	0
<i>Single Family</i>	0	0	0	0	0
<i>Educational</i>	0	0	0	0	0
<i>Hotels</i>	0	0	0	0	0

Total Casualties - 5pm

0 0 0 0 0

Contra Costa

Casualties - 2am

<i>Educational</i>	0	0	0	0	0
<i>Hotels</i>	0	0	0	0	0
<i>Industrial</i>	0	0	0	0	1
<i>Other-Residential</i>	13	1	0	0	13
<i>Single Family</i>	18	0	0	0	18
<i>Commercial</i>	0	0	0	0	1
<i>Commuting</i>	0	0	0	0	0

Total Casualties - 2am

32 1 0 0 33

Casualties - 2pm

<i>Other-Residential</i>	4	0	0	0	4
<i>Industrial</i>	3	0	0	0	4
<i>Hotels</i>	0	0	0	0	0
<i>Single Family</i>	5	0	0	0	5

	Injury Severity Level				Total
	Severity 1	Severity 2	Severity 3	Severity 4	
California					
Contra Costa					
Casualties - 2pm					
<i>Educational</i>	6	0	0	0	6
<i>Commuting</i>	0	0	0	0	0
<i>Commercial</i>	34	3	0	0	37
Total Casualties - 2pm	52	4	0	0	56
Casualties - 5pm					
<i>Educational</i>	1	0	0	0	1
<i>Commuting</i>	1	1	2	0	4
<i>Single Family</i>	6	0	0	0	7
<i>Hotels</i>	0	0	0	0	0
<i>Industrial</i>	2	0	0	0	2
<i>Other-Residential</i>	5	0	0	0	5
<i>Commercial</i>	24	2	0	0	26
Total Casualties - 5pm	39	3	2	0	44
El Dorado					
Casualties - 2am					
<i>Commuting</i>	0	0	0	0	0
<i>Educational</i>	0	0	0	0	0
<i>Single Family</i>	0	0	0	0	0
<i>Hotels</i>	0	0	0	0	0
<i>Other-Residential</i>	0	0	0	0	0
<i>Industrial</i>	0	0	0	0	0
<i>Commercial</i>	0	0	0	0	0
Total Casualties - 2am	0	0	0	0	0
Casualties - 2pm					
<i>Industrial</i>	0	0	0	0	0
<i>Other-Residential</i>	0	0	0	0	0
<i>Single Family</i>	0	0	0	0	0
<i>Hotels</i>	0	0	0	0	0
<i>Educational</i>	0	0	0	0	0
<i>Commuting</i>	0	0	0	0	0
<i>Commercial</i>	0	0	0	0	0
Total Casualties - 2pm	0	0	0	0	0
Casualties - 5pm					
<i>Commercial</i>	0	0	0	0	0
<i>Commuting</i>	0	0	0	0	0
<i>Single Family</i>	0	0	0	0	0
<i>Educational</i>	0	0	0	0	0
<i>Hotels</i>	0	0	0	0	0
<i>Industrial</i>	0	0	0	0	0
<i>Other-Residential</i>	0	0	0	0	0

	Injury Severity Level				Total
	Severity 1	Severity 2	Severity 3	Severity 4	
California					
El Dorado					
Total Casualties - 5pm	0	0	0	0	0
Fresno					
Casualties - 2am					
<i>Hotels</i>	0	0	0	0	0
<i>Educational</i>	0	0	0	0	0
<i>Industrial</i>	0	0	0	0	0
<i>Commercial</i>	0	0	0	0	0
<i>Other-Residential</i>	0	0	0	0	0
<i>Single Family</i>	0	0	0	0	0
<i>Commuting</i>	0	0	0	0	0
Total Casualties - 2am	0	0	0	0	0
Casualties - 2pm					
<i>Commercial</i>	0	0	0	0	0
<i>Other-Residential</i>	0	0	0	0	0
<i>Industrial</i>	0	0	0	0	0
<i>Single Family</i>	0	0	0	0	0
<i>Hotels</i>	0	0	0	0	0
<i>Commuting</i>	0	0	0	0	0
<i>Educational</i>	0	0	0	0	0
Total Casualties - 2pm	0	0	0	0	0
Casualties - 5pm					
<i>Educational</i>	0	0	0	0	0
<i>Commuting</i>	0	0	0	0	0
<i>Hotels</i>	0	0	0	0	0
<i>Industrial</i>	0	0	0	0	0
<i>Single Family</i>	0	0	0	0	0
<i>Other-Residential</i>	0	0	0	0	0
<i>Commercial</i>	0	0	0	0	0
Total Casualties - 5pm	0	0	0	0	0
Glenn					
Casualties - 2am					
<i>Hotels</i>	0	0	0	0	0
<i>Educational</i>	0	0	0	0	0
<i>Industrial</i>	0	0	0	0	0
<i>Other-Residential</i>	0	0	0	0	0
<i>Commercial</i>	0	0	0	0	0
<i>Commuting</i>	0	0	0	0	0
<i>Single Family</i>	0	0	0	0	0
Total Casualties - 2am	0	0	0	0	0
Casualties - 2pm					
<i>Industrial</i>	0	0	0	0	0

	Injury Severity Level				Total
	Severity 1	Severity 2	Severity 3	Severity 4	
California					
Glenn					
Casualties - 2pm					
<i>Other-Residential</i>	0	0	0	0	0
<i>Commuting</i>	0	0	0	0	0
<i>Commercial</i>	0	0	0	0	0
<i>Hotels</i>	0	0	0	0	0
<i>Single Family</i>	0	0	0	0	0
<i>Educational</i>	0	0	0	0	0
Total Casualties - 2pm	0	0	0	0	0
Casualties - 5pm					
<i>Educational</i>	0	0	0	0	0
<i>Commuting</i>	0	0	0	0	0
<i>Hotels</i>	0	0	0	0	0
<i>Single Family</i>	0	0	0	0	0
<i>Industrial</i>	0	0	0	0	0
<i>Commercial</i>	0	0	0	0	0
<i>Other-Residential</i>	0	0	0	0	0
Total Casualties - 5pm	0	0	0	0	0
Kings					
Casualties - 2am					
<i>Industrial</i>	0	0	0	0	0
<i>Other-Residential</i>	0	0	0	0	0
<i>Educational</i>	0	0	0	0	0
<i>Commuting</i>	0	0	0	0	0
<i>Commercial</i>	0	0	0	0	0
<i>Single Family</i>	0	0	0	0	0
<i>Hotels</i>	0	0	0	0	0
Total Casualties - 2am	0	0	0	0	0
Casualties - 2pm					
<i>Single Family</i>	0	0	0	0	0
<i>Other-Residential</i>	0	0	0	0	0
<i>Commercial</i>	0	0	0	0	0
<i>Educational</i>	0	0	0	0	0
<i>Commuting</i>	0	0	0	0	0
<i>Hotels</i>	0	0	0	0	0
<i>Industrial</i>	0	0	0	0	0
Total Casualties - 2pm	0	0	0	0	0
Casualties - 5pm					
<i>Single Family</i>	0	0	0	0	0
<i>Commercial</i>	0	0	0	0	0
<i>Commuting</i>	0	0	0	0	0
<i>Other-Residential</i>	0	0	0	0	0
<i>Educational</i>	0	0	0	0	0

	Injury Severity Level				Total
	Severity 1	Severity 2	Severity 3	Severity 4	
California					
Kings					
Casualties - 5pm					
<i>Hotels</i>	0	0	0	0	0
<i>Industrial</i>	0	0	0	0	0
Total Casualties - 5pm	0	0	0	0	0
Lake					
Casualties - 2am					
<i>Hotels</i>	0	0	0	0	0
<i>Industrial</i>	0	0	0	0	0
<i>Other-Residential</i>	0	0	0	0	0
<i>Commuting</i>	0	0	0	0	0
<i>Educational</i>	0	0	0	0	0
<i>Single Family</i>	0	0	0	0	0
<i>Commercial</i>	0	0	0	0	0
Total Casualties - 2am	0	0	0	0	0
Casualties - 2pm					
<i>Industrial</i>	0	0	0	0	0
<i>Single Family</i>	0	0	0	0	0
<i>Commercial</i>	0	0	0	0	0
<i>Other-Residential</i>	0	0	0	0	0
<i>Hotels</i>	0	0	0	0	0
<i>Educational</i>	0	0	0	0	0
<i>Commuting</i>	0	0	0	0	0
Total Casualties - 2pm	0	0	0	0	0
Casualties - 5pm					
<i>Other-Residential</i>	0	0	0	0	0
<i>Industrial</i>	0	0	0	0	0
<i>Commercial</i>	0	0	0	0	0
<i>Educational</i>	0	0	0	0	0
<i>Commuting</i>	0	0	0	0	0
<i>Single Family</i>	0	0	0	0	0
<i>Hotels</i>	0	0	0	0	0
Total Casualties - 5pm	0	0	0	0	0
Madera					
Casualties - 2am					
<i>Hotels</i>	0	0	0	0	0
<i>Educational</i>	0	0	0	0	0
<i>Single Family</i>	0	0	0	0	0
<i>Commuting</i>	0	0	0	0	0
<i>Industrial</i>	0	0	0	0	0
<i>Commercial</i>	0	0	0	0	0
<i>Other-Residential</i>	0	0	0	0	0

	Injury Severity Level				Total
	Severity 1	Severity 2	Severity 3	Severity 4	
California					
Madera					
Total Casualties - 2am	0	0	0	0	0
Casualties - 2pm					
<i>Industrial</i>	0	0	0	0	0
<i>Commercial</i>	0	0	0	0	0
<i>Other-Residential</i>	0	0	0	0	0
<i>Commuting</i>	0	0	0	0	0
<i>Single Family</i>	0	0	0	0	0
<i>Hotels</i>	0	0	0	0	0
<i>Educational</i>	0	0	0	0	0
Total Casualties - 2pm	0	0	0	0	0
Casualties - 5pm					
<i>Industrial</i>	0	0	0	0	0
<i>Commercial</i>	0	0	0	0	0
<i>Single Family</i>	0	0	0	0	0
<i>Educational</i>	0	0	0	0	0
<i>Other-Residential</i>	0	0	0	0	0
<i>Commuting</i>	0	0	0	0	0
<i>Hotels</i>	0	0	0	0	0
Total Casualties - 5pm	0	0	0	0	0
Marin					
Casualties - 2am					
<i>Commercial</i>	1	0	0	0	1
<i>Commuting</i>	0	0	0	0	0
<i>Other-Residential</i>	17	2	0	0	19
<i>Educational</i>	0	0	0	0	0
<i>Single Family</i>	30	1	0	0	30
<i>Hotels</i>	0	0	0	0	0
<i>Industrial</i>	1	0	0	0	1
Total Casualties - 2am	49	3	0	0	52
Casualties - 2pm					
<i>Hotels</i>	0	0	0	0	0
<i>Commuting</i>	0	0	0	0	0
<i>Educational</i>	9	1	0	0	10
<i>Industrial</i>	8	1	0	0	9
<i>Other-Residential</i>	6	1	0	0	7
<i>Commercial</i>	65	9	1	1	76
<i>Single Family</i>	10	0	0	0	10
Total Casualties - 2pm	97	11	1	2	111
Casualties - 5pm					
<i>Commuting</i>	1	2	3	0	6
<i>Commercial</i>	41	5	0	1	48

	Injury Severity Level				Total
	Severity 1	Severity 2	Severity 3	Severity 4	
California					
Marin					
Casualties - 5pm					
<i>Other-Residential</i>	6	1	0	0	7
<i>Single Family</i>	11	0	0	0	11
<i>Industrial</i>	5	1	0	0	6
<i>Educational</i>	1	0	0	0	1
<i>Hotels</i>	0	0	0	0	0
Total Casualties - 5pm	65	9	3	2	78
Mariposa					
Casualties - 2am					
<i>Commuting</i>	0	0	0	0	0
<i>Single Family</i>	0	0	0	0	0
<i>Commercial</i>	0	0	0	0	0
<i>Hotels</i>	0	0	0	0	0
<i>Educational</i>	0	0	0	0	0
<i>Industrial</i>	0	0	0	0	0
<i>Other-Residential</i>	0	0	0	0	0
Total Casualties - 2am	0	0	0	0	0
Casualties - 2pm					
<i>Hotels</i>	0	0	0	0	0
<i>Industrial</i>	0	0	0	0	0
<i>Commercial</i>	0	0	0	0	0
<i>Other-Residential</i>	0	0	0	0	0
<i>Educational</i>	0	0	0	0	0
<i>Commuting</i>	0	0	0	0	0
<i>Single Family</i>	0	0	0	0	0
Total Casualties - 2pm	0	0	0	0	0
Casualties - 5pm					
<i>Other-Residential</i>	0	0	0	0	0
<i>Educational</i>	0	0	0	0	0
<i>Commuting</i>	0	0	0	0	0
<i>Hotels</i>	0	0	0	0	0
<i>Single Family</i>	0	0	0	0	0
<i>Commercial</i>	0	0	0	0	0
<i>Industrial</i>	0	0	0	0	0
Total Casualties - 5pm	0	0	0	0	0
Mendocino					
Casualties - 2am					
<i>Educational</i>	0	0	0	0	0
<i>Hotels</i>	0	0	0	0	0
<i>Commuting</i>	0	0	0	0	0
<i>Industrial</i>	0	0	0	0	0
<i>Other-Residential</i>	0	0	0	0	0

	Injury Severity Level				Total
	Severity 1	Severity 2	Severity 3	Severity 4	
California					
Mendocino					
Casualties - 2am					
Single Family	0	0	0	0	0
Commercial	0	0	0	0	0
Total Casualties - 2am	0	0	0	0	0
Casualties - 2pm					
Industrial	0	0	0	0	0
Other-Residential	0	0	0	0	0
Commercial	0	0	0	0	0
Single Family	0	0	0	0	0
Commuting	0	0	0	0	0
Hotels	0	0	0	0	0
Educational	0	0	0	0	0
Total Casualties - 2pm	0	0	0	0	0
Casualties - 5pm					
Hotels	0	0	0	0	0
Single Family	0	0	0	0	0
Educational	0	0	0	0	0
Commuting	0	0	0	0	0
Commercial	0	0	0	0	0
Other-Residential	0	0	0	0	0
Industrial	0	0	0	0	0
Total Casualties - 5pm	0	0	0	0	0
Merced					
Casualties - 2am					
Hotels	0	0	0	0	0
Industrial	0	0	0	0	0
Commercial	0	0	0	0	0
Single Family	0	0	0	0	0
Other-Residential	0	0	0	0	0
Educational	0	0	0	0	0
Commuting	0	0	0	0	0
Total Casualties - 2am	0	0	0	0	0
Casualties - 2pm					
Other-Residential	0	0	0	0	0
Industrial	0	0	0	0	0
Commercial	0	0	0	0	0
Commuting	0	0	0	0	0
Hotels	0	0	0	0	0
Educational	0	0	0	0	0
Single Family	0	0	0	0	0
Total Casualties - 2pm	0	0	0	0	0

Injury Severity Level

Severity 1 Severity 2 Severity 3 Severity 4 Total

California

Merced

Casualties - 5pm

	Severity 1	Severity 2	Severity 3	Severity 4	Total
<i>Industrial</i>	0	0	0	0	0
<i>Hotels</i>	0	0	0	0	0
<i>Educational</i>	0	0	0	0	0
<i>Commuting</i>	0	0	0	0	0
<i>Single Family</i>	0	0	0	0	0
<i>Commercial</i>	0	0	0	0	0
<i>Other-Residential</i>	0	0	0	0	0
Total Casualties - 5pm	0	0	0	0	0

Monterey

Casualties - 2am

	Severity 1	Severity 2	Severity 3	Severity 4	Total
<i>Other-Residential</i>	6	0	0	0	6
<i>Commuting</i>	0	0	0	0	0
<i>Commercial</i>	0	0	0	0	0
<i>Single Family</i>	5	0	0	0	5
<i>Hotels</i>	0	0	0	0	0
<i>Educational</i>	0	0	0	0	0
<i>Industrial</i>	0	0	0	0	0
Total Casualties - 2am	11	0	0	0	12

Casualties - 2pm

	Severity 1	Severity 2	Severity 3	Severity 4	Total
<i>Commuting</i>	0	0	0	0	0
<i>Commercial</i>	7	0	0	0	8
<i>Single Family</i>	1	0	0	0	1
<i>Hotels</i>	0	0	0	0	0
<i>Educational</i>	2	0	0	0	2
<i>Industrial</i>	1	0	0	0	1
<i>Other-Residential</i>	2	0	0	0	2
Total Casualties - 2pm	13	1	0	0	14

Casualties - 5pm

	Severity 1	Severity 2	Severity 3	Severity 4	Total
<i>Commercial</i>	5	0	0	0	5
<i>Other-Residential</i>	2	0	0	0	2
<i>Industrial</i>	1	0	0	0	1
<i>Hotels</i>	0	0	0	0	0
<i>Educational</i>	0	0	0	0	0
<i>Commuting</i>	0	0	0	0	0
<i>Single Family</i>	2	0	0	0	2
Total Casualties - 5pm	10	1	0	0	11

Napa

Casualties - 2am

	Severity 1	Severity 2	Severity 3	Severity 4	Total
<i>Commercial</i>	0	0	0	0	0
<i>Other-Residential</i>	1	0	0	0	1
<i>Educational</i>	0	0	0	0	0

	Injury Severity Level				Total
	Severity 1	Severity 2	Severity 3	Severity 4	
California					
Napa					
Casualties - 2am					
Single Family	1	0	0	0	1
Commuting	0	0	0	0	0
Hotels	0	0	0	0	0
Industrial	0	0	0	0	0
Total Casualties - 2am	2	0	0	0	2
Casualties - 2pm					
Educational	1	0	0	0	1
Hotels	0	0	0	0	0
Commuting	0	0	0	0	0
Industrial	0	0	0	0	0
Other-Residential	0	0	0	0	0
Single Family	0	0	0	0	0
Commercial	2	0	0	0	2
Total Casualties - 2pm	4	0	0	0	4
Casualties - 5pm					
Commercial	1	0	0	0	1
Single Family	0	0	0	0	0
Other-Residential	0	0	0	0	0
Commuting	0	0	0	0	0
Industrial	0	0	0	0	0
Educational	0	0	0	0	0
Hotels	0	0	0	0	0
Total Casualties - 5pm	2	0	0	0	3
Nevada					
Casualties - 2am					
Single Family	0	0	0	0	0
Commercial	0	0	0	0	0
Commuting	0	0	0	0	0
Hotels	0	0	0	0	0
Educational	0	0	0	0	0
Industrial	0	0	0	0	0
Other-Residential	0	0	0	0	0
Total Casualties - 2am	0	0	0	0	0
Casualties - 2pm					
Hotels	0	0	0	0	0
Industrial	0	0	0	0	0
Commercial	0	0	0	0	0
Single Family	0	0	0	0	0
Other-Residential	0	0	0	0	0
Educational	0	0	0	0	0
Commuting	0	0	0	0	0

	Injury Severity Level				Total
	Severity 1	Severity 2	Severity 3	Severity 4	
California					
Nevada					
Total Casualties - 2pm	0	0	0	0	0
Casualties - 5pm					
<i>Commuting</i>	0	0	0	0	0
<i>Hotels</i>	0	0	0	0	0
<i>Other-Residential</i>	0	0	0	0	0
<i>Educational</i>	0	0	0	0	0
<i>Single Family</i>	0	0	0	0	0
<i>Commercial</i>	0	0	0	0	0
<i>Industrial</i>	0	0	0	0	0
Total Casualties - 5pm	0	0	0	0	0
Placer					
Casualties - 2am					
<i>Hotels</i>	0	0	0	0	0
<i>Educational</i>	0	0	0	0	0
<i>Industrial</i>	0	0	0	0	0
<i>Other-Residential</i>	0	0	0	0	0
<i>Commercial</i>	0	0	0	0	0
<i>Single Family</i>	0	0	0	0	0
<i>Commuting</i>	0	0	0	0	0
Total Casualties - 2am	0	0	0	0	0
Casualties - 2pm					
<i>Other-Residential</i>	0	0	0	0	0
<i>Industrial</i>	0	0	0	0	0
<i>Commercial</i>	0	0	0	0	0
<i>Single Family</i>	0	0	0	0	0
<i>Educational</i>	0	0	0	0	0
<i>Commuting</i>	0	0	0	0	0
<i>Hotels</i>	0	0	0	0	0
Total Casualties - 2pm	0	0	0	0	0
Casualties - 5pm					
<i>Single Family</i>	0	0	0	0	0
<i>Hotels</i>	0	0	0	0	0
<i>Commuting</i>	0	0	0	0	0
<i>Educational</i>	0	0	0	0	0
<i>Commercial</i>	0	0	0	0	0
<i>Industrial</i>	0	0	0	0	0
<i>Other-Residential</i>	0	0	0	0	0
Total Casualties - 5pm	0	0	0	0	0
Sacramento					
Casualties - 2am					
<i>Industrial</i>	0	0	0	0	0

	Injury Severity Level				Total
	Severity 1	Severity 2	Severity 3	Severity 4	
California					
Sacramento					
Casualties - 2am					
<i>Other-Residential</i>	0	0	0	0	0
<i>Commercial</i>	0	0	0	0	0
<i>Single Family</i>	0	0	0	0	0
<i>Hotels</i>	0	0	0	0	0
<i>Commuting</i>	0	0	0	0	0
<i>Educational</i>	0	0	0	0	0
Total Casualties - 2am	0	0	0	0	0
Casualties - 2pm					
<i>Other-Residential</i>	0	0	0	0	0
<i>Commuting</i>	0	0	0	0	0
<i>Single Family</i>	0	0	0	0	0
<i>Commercial</i>	3	0	0	0	3
<i>Hotels</i>	0	0	0	0	0
<i>Educational</i>	0	0	0	0	0
<i>Industrial</i>	0	0	0	0	0
Total Casualties - 2pm	3	0	0	0	3
Casualties - 5pm					
<i>Industrial</i>	0	0	0	0	0
<i>Educational</i>	0	0	0	0	0
<i>Hotels</i>	0	0	0	0	0
<i>Commercial</i>	1	0	0	0	1
<i>Commuting</i>	0	0	0	0	0
<i>Other-Residential</i>	0	0	0	0	0
<i>Single Family</i>	0	0	0	0	0
Total Casualties - 5pm	2	0	0	0	2
San Benito					
Casualties - 2am					
<i>Other-Residential</i>	0	0	0	0	0
<i>Commercial</i>	0	0	0	0	0
<i>Commuting</i>	0	0	0	0	0
<i>Hotels</i>	0	0	0	0	0
<i>Educational</i>	0	0	0	0	0
<i>Single Family</i>	0	0	0	0	0
<i>Industrial</i>	0	0	0	0	0
Total Casualties - 2am	0	0	0	0	0
Casualties - 2pm					
<i>Hotels</i>	0	0	0	0	0
<i>Educational</i>	0	0	0	0	0
<i>Industrial</i>	0	0	0	0	0
<i>Other-Residential</i>	0	0	0	0	0
<i>Commercial</i>	0	0	0	0	0

	Injury Severity Level				Total
	Severity 1	Severity 2	Severity 3	Severity 4	
California					
San Benito					
Casualties - 2pm					
<i>Commuting</i>	0	0	0	0	0
<i>Single Family</i>	0	0	0	0	0
Total Casualties - 2pm	0	0	0	0	0
Casualties - 5pm					
<i>Commuting</i>	0	0	0	0	0
<i>Commercial</i>	0	0	0	0	0
<i>Other-Residential</i>	0	0	0	0	0
<i>Single Family</i>	0	0	0	0	0
<i>Industrial</i>	0	0	0	0	0
<i>Educational</i>	0	0	0	0	0
<i>Hotels</i>	0	0	0	0	0
Total Casualties - 5pm	0	0	0	0	0
San Francisco					
Casualties - 2am					
<i>Industrial</i>	8	1	0	0	10
<i>Hotels</i>	3	0	0	0	4
<i>Commercial</i>	17	3	0	0	21
<i>Other-Residential</i>	975	161	16	31	1,182
<i>Commuting</i>	0	0	0	0	0
<i>Educational</i>	0	0	0	0	0
<i>Single Family</i>	262	32	3	6	303
Total Casualties - 2am	1,266	198	20	38	1,521
Casualties - 2pm					
<i>Commercial</i>	1,003	150	12	23	1,189
<i>Industrial</i>	63	10	1	2	76
<i>Other-Residential</i>	312	52	6	10	381
<i>Single Family</i>	80	10	1	2	93
<i>Hotels</i>	1	0	0	0	1
<i>Commuting</i>	0	0	0	0	0
<i>Educational</i>	234	34	3	5	277
Total Casualties - 2pm	1,693	258	23	43	2,017
Casualties - 5pm					
<i>Educational</i>	74	9	1	1	85
<i>Hotels</i>	1	0	0	0	1
<i>Industrial</i>	39	6	1	1	47
<i>Commuting</i>	2	3	5	1	11
<i>Commercial</i>	618	94	8	15	735
<i>Other-Residential</i>	388	66	7	13	473
<i>Single Family</i>	101	13	1	3	118
Total Casualties - 5pm	1,224	191	23	34	1,471

	Injury Severity Level				Total
	Severity 1	Severity 2	Severity 3	Severity 4	
California					
San Joaquin					
Casualties - 2am					
<i>Educational</i>	0	0	0	0	0
<i>Commuting</i>	0	0	0	0	0
<i>Hotels</i>	0	0	0	0	0
<i>Commercial</i>	0	0	0	0	0
<i>Single Family</i>	2	0	0	0	2
<i>Industrial</i>	0	0	0	0	0
<i>Other-Residential</i>	1	0	0	0	1
Total Casualties - 2am	3	0	0	0	3
Casualties - 2pm					
<i>Industrial</i>	0	0	0	0	0
<i>Other-Residential</i>	0	0	0	0	0
<i>Educational</i>	0	0	0	0	0
<i>Single Family</i>	1	0	0	0	1
<i>Hotels</i>	0	0	0	0	0
<i>Commuting</i>	0	0	0	0	0
<i>Commercial</i>	1	0	0	0	1
Total Casualties - 2pm	2	0	0	0	2
Casualties - 5pm					
<i>Commuting</i>	0	0	0	0	0
<i>Single Family</i>	1	0	0	0	1
<i>Educational</i>	0	0	0	0	0
<i>Hotels</i>	0	0	0	0	0
<i>Industrial</i>	0	0	0	0	0
<i>Commercial</i>	0	0	0	0	0
<i>Other-Residential</i>	0	0	0	0	0
Total Casualties - 5pm	1	0	0	0	2
San Luis Obispo					
Casualties - 2am					
<i>Commercial</i>	0	0	0	0	0
<i>Other-Residential</i>	0	0	0	0	0
<i>Industrial</i>	0	0	0	0	0
<i>Single Family</i>	0	0	0	0	0
<i>Commuting</i>	0	0	0	0	0
<i>Educational</i>	0	0	0	0	0
<i>Hotels</i>	0	0	0	0	0
Total Casualties - 2am	0	0	0	0	0
Casualties - 2pm					
<i>Single Family</i>	0	0	0	0	0
<i>Educational</i>	0	0	0	0	0
<i>Other-Residential</i>	0	0	0	0	0
<i>Hotels</i>	0	0	0	0	0

	Injury Severity Level				Total
	Severity 1	Severity 2	Severity 3	Severity 4	
California					
San Luis Obispo					
Casualties - 2pm					
<i>Commuting</i>	0	0	0	0	0
<i>Commercial</i>	0	0	0	0	0
<i>Industrial</i>	0	0	0	0	0
Total Casualties - 2pm	0	0	0	0	0
Casualties - 5pm					
<i>Industrial</i>	0	0	0	0	0
<i>Other-Residential</i>	0	0	0	0	0
<i>Commuting</i>	0	0	0	0	0
<i>Single Family</i>	0	0	0	0	0
<i>Commercial</i>	0	0	0	0	0
<i>Hotels</i>	0	0	0	0	0
<i>Educational</i>	0	0	0	0	0
Total Casualties - 5pm	0	0	0	0	0
San Mateo					
Casualties - 2am					
<i>Industrial</i>	4	1	0	0	5
<i>Other-Residential</i>	165	22	2	4	193
<i>Single Family</i>	147	6	0	0	153
<i>Commercial</i>	4	1	0	0	5
<i>Educational</i>	0	0	0	0	0
<i>Commuting</i>	0	0	0	0	0
<i>Hotels</i>	0	0	0	0	1
Total Casualties - 2am	320	30	2	4	356
Casualties - 2pm					
<i>Other-Residential</i>	50	7	1	1	59
<i>Single Family</i>	41	2	0	0	43
<i>Commuting</i>	1	1	1	0	3
<i>Commercial</i>	298	42	4	7	351
<i>Educational</i>	50	5	0	1	56
<i>Hotels</i>	0	0	0	0	0
<i>Industrial</i>	30	4	0	0	35
Total Casualties - 2pm	470	61	6	10	547
Casualties - 5pm					
<i>Commercial</i>	218	32	3	5	257
<i>Industrial</i>	19	2	0	0	22
<i>Other-Residential</i>	62	9	1	2	73
<i>Single Family</i>	54	2	0	0	56
<i>Educational</i>	4	0	0	0	5
<i>Commuting</i>	13	17	29	6	64
<i>Hotels</i>	0	0	0	0	0

	Injury Severity Level				Total
	Severity 1	Severity 2	Severity 3	Severity 4	
California					
San Mateo					
Total Casualties - 5pm	370	62	33	13	477
Santa Clara					
Casualties - 2am					
<i>Commuting</i>	0	0	0	0	0
<i>Educational</i>	0	0	0	0	0
<i>Single Family</i>	60	1	0	0	60
<i>Hotels</i>	0	0	0	0	0
<i>Industrial</i>	2	0	0	0	2
<i>Commercial</i>	2	0	0	0	2
<i>Other-Residential</i>	50	3	0	0	52
Total Casualties - 2am	113	4	0	0	117
Casualties - 2pm					
<i>Industrial</i>	17	1	0	0	18
<i>Commercial</i>	95	7	0	0	102
<i>Single Family</i>	16	0	0	0	17
<i>Commuting</i>	0	0	0	0	0
<i>Hotels</i>	0	0	0	0	0
<i>Other-Residential</i>	15	1	0	0	16
<i>Educational</i>	24	1	0	0	25
Total Casualties - 2pm	167	10	0	0	178
Casualties - 5pm					
<i>Industrial</i>	11	1	0	0	11
<i>Hotels</i>	0	0	0	0	0
<i>Other-Residential</i>	18	1	0	0	19
<i>Commercial</i>	61	4	0	0	66
<i>Commuting</i>	1	1	2	0	5
<i>Single Family</i>	21	0	0	0	21
<i>Educational</i>	5	0	0	0	5
Total Casualties - 5pm	117	8	3	1	128
Santa Cruz					
Casualties - 2am					
<i>Hotels</i>	0	0	0	0	0
<i>Educational</i>	0	0	0	0	0
<i>Industrial</i>	1	0	0	0	1
<i>Other-Residential</i>	30	3	0	0	34
<i>Single Family</i>	24	1	0	0	25
<i>Commercial</i>	1	0	0	0	1
<i>Commuting</i>	0	0	0	0	0
Total Casualties - 2am	56	4	0	0	61
Casualties - 2pm					
<i>Industrial</i>	7	1	0	0	9

Injury Severity Level

Severity 1 Severity 2 Severity 3 Severity 4 Total

California

Santa Cruz

Casualties - 2pm

<i>Other-Residential</i>	10	1	0	0	11
<i>Commercial</i>	68	9	1	1	79
<i>Commuting</i>	0	0	0	0	0
<i>Educational</i>	13	1	0	0	14
<i>Single Family</i>	7	0	0	0	8
<i>Hotels</i>	0	0	0	0	0
Total Casualties - 2pm	106	13	1	2	122

Casualties - 5pm

<i>Industrial</i>	5	1	0	0	5
<i>Other-Residential</i>	11	1	0	0	13
<i>Commercial</i>	45	6	1	1	52
<i>Commuting</i>	2	2	4	1	10
<i>Single Family</i>	9	0	0	0	9
<i>Hotels</i>	0	0	0	0	0
<i>Educational</i>	2	0	0	0	2
Total Casualties - 5pm	73	11	5	2	91

Solano

Casualties - 2am

<i>Industrial</i>	0	0	0	0	0
<i>Other-Residential</i>	2	0	0	0	2
<i>Commercial</i>	0	0	0	0	0
<i>Educational</i>	0	0	0	0	0
<i>Commuting</i>	0	0	0	0	0
<i>Single Family</i>	4	0	0	0	4
<i>Hotels</i>	0	0	0	0	0
Total Casualties - 2am	6	0	0	0	6

Casualties - 2pm

<i>Single Family</i>	1	0	0	0	1
<i>Other-Residential</i>	1	0	0	0	1
<i>Commercial</i>	4	0	0	0	4
<i>Educational</i>	1	0	0	0	1
<i>Commuting</i>	0	0	0	0	0
<i>Hotels</i>	0	0	0	0	0
<i>Industrial</i>	1	0	0	0	1
Total Casualties - 2pm	7	0	0	0	8

Casualties - 5pm

<i>Commercial</i>	3	0	0	0	3
<i>Other-Residential</i>	1	0	0	0	1
<i>Single Family</i>	1	0	0	0	1
<i>Educational</i>	0	0	0	0	0
<i>Commuting</i>	0	0	0	0	0

Injury Severity Level

Severity 1 Severity 2 Severity 3 Severity 4 Total

California

Solano

Casualties - 5pm

<i>Hotels</i>	0	0	0	0	0
<i>Industrial</i>	0	0	0	0	0
Total Casualties - 5pm	6	0	0	0	6

Sonoma

Casualties - 2am

<i>Single Family</i>	5	0	0	0	5
<i>Other-Residential</i>	4	0	0	0	4
<i>Commercial</i>	0	0	0	0	0
<i>Commuting</i>	0	0	0	0	0
<i>Hotels</i>	0	0	0	0	0
<i>Educational</i>	0	0	0	0	0
<i>Industrial</i>	0	0	0	0	0
Total Casualties - 2am	10	0	0	0	10

Casualties - 2pm

<i>Single Family</i>	1	0	0	0	1
<i>Commuting</i>	0	0	0	0	0
<i>Educational</i>	3	0	0	0	3
<i>Hotels</i>	0	0	0	0	0
<i>Industrial</i>	2	0	0	0	2
<i>Other-Residential</i>	1	0	0	0	1
<i>Commercial</i>	8	0	0	0	9
Total Casualties - 2pm	16	1	0	0	16

Casualties - 5pm

<i>Single Family</i>	2	0	0	0	2
<i>Commercial</i>	6	0	0	0	6
<i>Commuting</i>	0	0	0	0	0
<i>Hotels</i>	0	0	0	0	0
<i>Educational</i>	1	0	0	0	1
<i>Industrial</i>	1	0	0	0	1
<i>Other-Residential</i>	2	0	0	0	2
Total Casualties - 5pm	11	1	0	0	11

Stanislaus

Casualties - 2am

<i>Hotels</i>	0	0	0	0	0
<i>Industrial</i>	0	0	0	0	0
<i>Commercial</i>	0	0	0	0	0
<i>Single Family</i>	0	0	0	0	0
<i>Other-Residential</i>	0	0	0	0	0
<i>Commuting</i>	0	0	0	0	0
<i>Educational</i>	0	0	0	0	0

	Injury Severity Level				Total
	Severity 1	Severity 2	Severity 3	Severity 4	
California					
Stanislaus					
Total Casualties - 2am	0	0	0	0	0
Casualties - 2pm					
Industrial	0	0	0	0	0
Other-Residential	0	0	0	0	0
Commercial	0	0	0	0	0
Commuting	0	0	0	0	0
Educational	0	0	0	0	0
Single Family	0	0	0	0	0
Hotels	0	0	0	0	0
Total Casualties - 2pm	0	0	0	0	0
Casualties - 5pm					
Industrial	0	0	0	0	0
Other-Residential	0	0	0	0	0
Commuting	0	0	0	0	0
Single Family	0	0	0	0	0
Commercial	0	0	0	0	0
Hotels	0	0	0	0	0
Educational	0	0	0	0	0
Total Casualties - 5pm	0	0	0	0	0
Sutter					
Casualties - 2am					
Educational	0	0	0	0	0
Commuting	0	0	0	0	0
Hotels	0	0	0	0	0
Industrial	0	0	0	0	0
Other-Residential	0	0	0	0	0
Single Family	0	0	0	0	0
Commercial	0	0	0	0	0
Total Casualties - 2am	0	0	0	0	0
Casualties - 2pm					
Industrial	0	0	0	0	0
Commuting	0	0	0	0	0
Other-Residential	0	0	0	0	0
Single Family	0	0	0	0	0
Commercial	0	0	0	0	0
Hotels	0	0	0	0	0
Educational	0	0	0	0	0
Total Casualties - 2pm	0	0	0	0	0
Casualties - 5pm					
Commuting	0	0	0	0	0
Commercial	0	0	0	0	0

	Injury Severity Level				Total
	Severity 1	Severity 2	Severity 3	Severity 4	
California					
Sutter					
Casualties - 5pm					
<i>Educational</i>	0	0	0	0	0
<i>Single Family</i>	0	0	0	0	0
<i>Hotels</i>	0	0	0	0	0
<i>Industrial</i>	0	0	0	0	0
<i>Other-Residential</i>	0	0	0	0	0
Total Casualties - 5pm	0	0	0	0	0
Tuolumne					
Casualties - 2am					
<i>Other-Residential</i>	0	0	0	0	0
<i>Industrial</i>	0	0	0	0	0
<i>Commercial</i>	0	0	0	0	0
<i>Commuting</i>	0	0	0	0	0
<i>Single Family</i>	0	0	0	0	0
<i>Educational</i>	0	0	0	0	0
<i>Hotels</i>	0	0	0	0	0
Total Casualties - 2am	0	0	0	0	0
Casualties - 2pm					
<i>Other-Residential</i>	0	0	0	0	0
<i>Commercial</i>	0	0	0	0	0
<i>Single Family</i>	0	0	0	0	0
<i>Educational</i>	0	0	0	0	0
<i>Commuting</i>	0	0	0	0	0
<i>Industrial</i>	0	0	0	0	0
<i>Hotels</i>	0	0	0	0	0
Total Casualties - 2pm	0	0	0	0	0
Casualties - 5pm					
<i>Industrial</i>	0	0	0	0	0
<i>Other-Residential</i>	0	0	0	0	0
<i>Commercial</i>	0	0	0	0	0
<i>Hotels</i>	0	0	0	0	0
<i>Commuting</i>	0	0	0	0	0
<i>Educational</i>	0	0	0	0	0
<i>Single Family</i>	0	0	0	0	0
Total Casualties - 5pm	0	0	0	0	0
Yolo					
Casualties - 2am					
<i>Single Family</i>	0	0	0	0	0
<i>Other-Residential</i>	0	0	0	0	0
<i>Commercial</i>	0	0	0	0	0
<i>Educational</i>	0	0	0	0	0
<i>Commuting</i>	0	0	0	0	0

	Injury Severity Level				Total
	Severity 1	Severity 2	Severity 3	Severity 4	
California					
Yolo					
Casualties - 2am					
Hotels	0	0	0	0	0
Industrial	0	0	0	0	0
Total Casualties - 2am	0	0	0	0	0
Casualties - 2pm					
Industrial	0	0	0	0	0
Hotels	0	0	0	0	0
Educational	0	0	0	0	0
Commuting	0	0	0	0	0
Commercial	0	0	0	0	0
Other-Residential	0	0	0	0	0
Single Family	0	0	0	0	0
Total Casualties - 2pm	0	0	0	0	0
Casualties - 5pm					
Other-Residential	0	0	0	0	0
Single Family	0	0	0	0	0
Commuting	0	0	0	0	0
Commercial	0	0	0	0	0
Hotels	0	0	0	0	0
Educational	0	0	0	0	0
Industrial	0	0	0	0	0
Total Casualties - 5pm	0	0	0	0	0
Yuba					
Casualties - 2am					
Industrial	0	0	0	0	0
Other-Residential	0	0	0	0	0
Commercial	0	0	0	0	0
Educational	0	0	0	0	0
Single Family	0	0	0	0	0
Commuting	0	0	0	0	0
Hotels	0	0	0	0	0
Total Casualties - 2am	0	0	0	0	0
Casualties - 2pm					
Commercial	0	0	0	0	0
Commuting	0	0	0	0	0
Single Family	0	0	0	0	0
Other-Residential	0	0	0	0	0
Industrial	0	0	0	0	0
Hotels	0	0	0	0	0
Educational	0	0	0	0	0
Total Casualties - 2pm	0	0	0	0	0

	Injury Severity Level				Total
	Severity 1	Severity 2	Severity 3	Severity 4	
California					
Yuba					
Casualties - 5pm					
<i>Hotels</i>	0	0	0	0	0
<i>Educational</i>	0	0	0	0	0
<i>Industrial</i>	0	0	0	0	0
<i>Other-Residential</i>	0	0	0	0	0
<i>Single Family</i>	0	0	0	0	0
<i>Commercial</i>	0	0	0	0	0
<i>Commuting</i>	0	0	0	0	0
Total Casualties - 5pm	0	0	0	0	0
Region Total	NA	NA	NA	NA	NA

Totals only reflect data for those census tracts/blocks included in the user's study region and will reflect the entire county/state only if all of the census blocks for that county/states were selected at the time of study region creation.

Debris Summary Report

April 19, 2024

All values are in thousands of tons.

	Brick, Wood & Others	Concrete & Steel	Total
California			
Fresno	0	0	0
Butte	0	0	0
Alameda	185	272	457
Solano	7	6	13
San Mateo	202	313	514
Tuolumne	0	0	0
Kings	0	0	0
San Joaquin	4	1	5
San Luis Obispo	0	0	0
Nevada	0	0	0
Madera	0	0	0
Colusa	0	0	0
Napa	3	3	6
Mendocino	0	0	0
Contra Costa	27	37	65
El Dorado	0	0	0
Amador	0	0	0
Santa Cruz	53	74	128
Lake	0	0	0

	Brick, Wood & Others	Concrete & Steel	Total
Monterey	11	10	21
Sacramento	1	0	1
Mariposa	0	0	0
Yolo	0	0	1
Calaveras	0	0	0
Yuba	0	0	0
Glenn	0	0	0
Alpine	0	0	0
Stanislaus	1	0	1
Sonoma	12	13	25
Santa Clara	98	98	196
San Benito	0	0	1
San Francisco	968	910	1,878
Merced	0	0	0
Placer	0	0	0
Marin	52	59	111
Sutter	0	0	0
Total	1,625	1,797	3,422
Region Total	1,625	1,797	3,422

Totals only reflect data for those census tracts/blocks included in the user's study region and will reflect the entire county/state only if all of the census blocks for that county/states were selected at the time of study region creation.

Direct Economic Losses For Buildings

April 19, 2024

All values are in thousands of dollars

	Capital Stock Losses				Loss Ratio %	Income Losses				Total Loss
	Cost Structural Damage	Cost Non-struct. Damage	Cost Contents Damage	Inventory Loss		Relocation Loss	Capital Related Loss	Wages Losses	Rental Income Loss	
California										
Contra Costa	62,549	499,040	254,281	21,704	0.26	17,729	11,040	15,395	12,986	894,723
Mendocino	1	159	104	14	0.00	0	0	0	0	278
Napa	6,071	58,196	31,073	3,419	0.19	1,217	1,039	1,266	1,277	103,557
Colusa	10	180	119	23	0.00	2	4	4	4	345
Alameda	355,469	1,780,987	885,001	73,001	0.64	144,166	99,196	133,048	100,714	3,571,581
Nevada	0	0	0	0	0.00	0	0	0	0	0
San Joaquin	3,049	26,193	15,004	1,911	0.02	614	244	339	492	47,845
Tuolumne	0	0	0	0	0.00	0	0	0	0	0
Madera	13	364	242	45	0.00	1	1	1	2	669

	Capital Stock Losses				Loss Ratio %	Income Losses				Total Loss
	Cost Structural Damage	Cost Non-struct. Damage	Cost Contents Damage	Inventory Loss		Relocation Loss	Capital Related Loss	Wages Losses	Rental Income Loss	
Butte	9	121	84	14	0.00	1	1	1	1	233
Fresno	8	270	176	45	0.00	1	1	1	1	503
Kings	0	0	0	0	0.00	0	0	0	0	0
San Luis Obispo	0	2	1	0	0.00	0	0	0	0	4
Solano	12,472	117,551	60,947	6,054	0.16	2,671	2,217	2,790	2,591	207,293
San Mateo	593,370	3,309,898	1,484,012	98,514	2.51	205,971	139,449	169,179	142,871	6,143,265
Yolo	456	7,590	4,409	481	0.02	52	84	101	103	13,276
Glenn	5	85	60	15	0.00	0	1	1	1	168
San Benito	689	7,223	3,643	406	0.06	104	103	117	103	12,387
San Francisco	1,343,939	3,729,574	1,481,117	64,343	3.28	616,855	317,667	397,892	510,181	8,461,567
Stanislaus	756	10,542	6,112	873	0.01	91	95	101	170	18,740
Sutter	19	476	313	72	0.00	1	1	1	2	886
Santa Clara	242,204	1,797,289	898,519	59,207	0.53	56,663	51,567	60,710	52,554	3,218,712
Sonoma	25,570	191,278	96,729	12,456	0.21	5,927	5,056	5,972	4,706	347,694
Calaveras	0	9	7	3	0.00	0	0	0	0	19
Yuba	7	248	157	19	0.00	1	2	2	2	439
Alpine	0	0	0	0	0.00	0	0	0	0	0
Merced	564	2,891	1,978	910	0.01	47	18	15	24	6,447

	Capital Stock Losses				Loss Ratio %	Income Losses				Total Loss
	Cost Structural Damage	Cost Non-struct. Damage	Cost Contents Damage	Inventory Loss		Relocation Loss	Capital Related Loss	Wages Losses	Rental Income Loss	
Placer	12	735	495	49	0.00	1	3	3	4	1,303
Marin	127,179	828,124	395,824	18,201	1.52	38,257	34,985	37,883	27,711	1,508,164
El Dorado	0	2	1	0	0.00	0	0	0	0	3
Lake	18	400	198	17	0.00	2	3	2	4	644
Santa Cruz	119,321	671,051	318,726	29,884	1.44	39,827	36,149	43,055	29,021	1,287,033
Mariposa	0	0	0	0	0.00	0	0	0	0	0
Amador	0	5	3	0	0.00	0	0	0	0	9
Sacramento	1,287	14,658	8,294	794	0.01	304	350	544	511	26,742
Monterey	20,012	178,305	94,867	11,950	0.26	4,881	3,416	3,995	4,904	322,330
Total	2,915,058	13,233,448	6,042,495	404,425	0.31	1,135,386	702,689	872,419	890,941	26,196,860
Region Total	2,915,058	13,233,448	6,042,495	404,425	0.31	1,135,386	702,689	872,419	890,941	26,196,860

Totals only reflect data for those census tracts/blocks included in the user's study region and will reflect the entire county/state only if all of the census blocks for that county/states were selected at the time of study region creation.

Direct Economic Loss For Transportation

April 19, 2024

All values are in thousands of dollars

	Highway	Railway	Light Rail	Bus Facility	Ports	Ferries	Airport	Total
California								
Alameda								
Segments	0	0	0					0
Bridges	18,538	944	11					19,492
Tunnels	347	0	0					347
Facilities		5,422	0	257	23,089	491	39,991	69,251
Total	18,885	6,366	11	257	23,089	491	39,991	89,090
Alpine								
Segments	0	0	0					0
Bridges	0	0	0					0
Tunnels	0	0	0					0
Facilities		0	0	0	0	0	6	6
Total	0	0	0	0	0	0	6	6
Amador								
Segments	0	0	0					0
Bridges	0	0	0					0
Tunnels	0	0	0					0
Facilities		0	0	0	0	0	6	6

	Highway	Railway	Light Rail	Bus Facility	Ports	Ferries	Airport	Total
Total	0	0	0	0	0	0	6	6
Butte								
Segments	0	0	0					0
Bridges	1	0	0					1
Tunnels	0	0	0					0
Facilities		3	0	0	0	0	26	28
Total	1	3	0	0	0	0	26	29
Calaveras								
Segments	0	0	0					0
Bridges	0	0	0					0
Tunnels	0	0	0					0
Facilities		0	0	0	0	0	11	11
Total	0	0	0	0	0	0	11	11
Colusa								
Segments	0	0	0					0
Bridges	3	0	0					3
Tunnels	0	0	0					0
Facilities		0	0	0	0	0	51	51
Total	3	0	0	0	0	0	51	54
Contra Costa								
Segments	0	0	0					0
Bridges	7,527	410	3					7,940
Tunnels	57	1	0					58
Facilities		2,681	703	0	27,052	361	1,443	32,238

	Highway	Railway	Light Rail	Bus Facility	Ports	Ferries	Airport	Total
Total	7,584	3,091	706	0	27,052	361	1,443	40,236
El Dorado								
<i>Segments</i>	0	0	0					0
<i>Bridges</i>	0	0	0					0
<i>Tunnels</i>	0	0	0					0
<i>Facilities</i>		0	0	7	0	0	31	38
Total	0	0	0	7	0	0	31	38
Fresno								
<i>Segments</i>	0	0	0					0
<i>Bridges</i>	21	0	0					21
<i>Tunnels</i>	0	0	0					0
<i>Facilities</i>		46	0	2	0	0	246	294
Total	21	46	0	2	0	0	246	315
Glenn								
<i>Segments</i>	0	0	0					0
<i>Bridges</i>	0	0	0					0
<i>Tunnels</i>	0	0	0					0
<i>Facilities</i>		0	0	0	37	0	57	93
Total	0	0	0	0	37	0	57	94
Kings								
<i>Segments</i>	0	0	0					0
<i>Bridges</i>	0	0	0					0
<i>Tunnels</i>	0	0	0					0
<i>Facilities</i>		11	0	5	0	0	40	56

	Highway	Railway	Light Rail	Bus Facility	Ports	Ferries	Airport	Total
Total	0	11	0	5	0	0	40	56
Lake								
Segments	0	0	0					0
Bridges	0	0	0					0
Tunnels	0	0	0					0
Facilities		0	0	0	0	0	102	102
Total	0	0	0	0	0	0	102	102
Madera								
Segments	0	0	0					0
Bridges	3	0	0					3
Tunnels	0	0	0					0
Facilities		26	0	21	0	0	102	149
Total	3	26	0	21	0	0	102	152
Marin								
Segments	0	0	0					0
Bridges	21,228	118	0					21,346
Tunnels	1,060	0	0					1,060
Facilities		0	0	1,688	13,309	1,139	784	16,919
Total	22,288	118	0	1,688	13,309	1,139	784	39,325
Mariposa								
Segments	0	0	0					0
Bridges	0	0	0					0
Tunnels	0	0	0					0
Facilities		0	0	10	0	0	6	15

	Highway	Railway	Light Rail	Bus Facility	Ports	Ferries	Airport	Total
Total	0	0	0	10	0	0	6	15
Mendocino								
Segments	0	0	0					0
Bridges	0	0	0					0
Tunnels	0	0	0					0
Facilities		0	0	48	4	0	164	216
Total	0	0	0	48	4	0	164	216
Merced								
Segments	0	0	0					0
Bridges	65	0	0					65
Tunnels	0	0	0					0
Facilities		51	0	21	0	0	410	483
Total	65	51	0	21	0	0	410	548
Monterey								
Segments	0	0	0					0
Bridges	829	29	0					857
Tunnels	16	0	0					16
Facilities		201	0	1,154	863	0	2,782	5,000
Total	844	230	0	1,154	863	0	2,782	5,873
Napa								
Segments	0	0	0					0
Bridges	124	80	0					204
Tunnels	0	0	0					0
Facilities		0	0	171	863	0	1,225	2,259

	Highway	Railway	Light Rail	Bus Facility	Ports	Ferries	Airport	Total
Total	124	80	0	171	863	0	1,225	2,464
Nevada								
Segments	0	0	0					0
Bridges	0	0	0					0
Tunnels	0	0	0					0
Facilities		3	0	0	0	0	11	14
Total	0	3	0	0	0	0	11	14
Placer								
Segments	0	0	0					0
Bridges	0	0	0					0
Tunnels	0	0	0					0
Facilities		34	0	2	0	0	68	105
Total	0	34	0	2	0	0	68	105
Sacramento								
Segments	0	0	0					0
Bridges	302	0	0					302
Tunnels	0	0	0					0
Facilities		26	3,024	43	2,180	55	4,198	9,524
Total	302	26	3,024	43	2,180	55	4,198	9,827
San Benito								
Segments	0	0	0					0
Bridges	42	1	0					42
Tunnels	0	0	0					0
Facilities		0	0	0	0	0	435	435

	Highway	Railway	Light Rail	Bus Facility	Ports	Ferries	Airport	Total
Total	42	1	0	0	0	0	435	477
San Francisco								
<i>Segments</i>	0	0	0					0
<i>Bridges</i>	90,291	336	0					90,627
<i>Tunnels</i>	2,775	0	0					2,775
<i>Facilities</i>		0	669,996	844	36,315	942	7,357	715,454
Total	93,066	336	669,996	844	36,315	942	7,357	808,856
San Joaquin								
<i>Segments</i>	0	0	0					0
<i>Bridges</i>	234	2	0					237
<i>Tunnels</i>	0	0	0					0
<i>Facilities</i>		410	0	21	3,852	218	584	5,086
Total	234	413	0	21	3,852	218	584	5,323
San Luis Obispo								
<i>Segments</i>	0	0	0					0
<i>Bridges</i>	1	0	0					1
<i>Tunnels</i>	0	0	0					0
<i>Facilities</i>		9	0	5	33	0	50	96
Total	1	9	0	5	33	0	50	97
San Mateo								
<i>Segments</i>	0	0	0					0
<i>Bridges</i>	102,755	1,285	0					104,040
<i>Tunnels</i>	14,515	1	0					14,516
<i>Facilities</i>		0	0	0	12,331	0	171,138	183,469

	Highway	Railway	Light Rail	Bus Facility	Ports	Ferries	Airport	Total
Total	117,270	1,286	0	0	12,331	0	171,138	302,024
Santa Clara								
Segments	0	0	0					0
Bridges	11,523	370	1					11,893
Tunnels	5	0	0					5
Facilities		804	45,230	366	2,109	0	29,601	78,110
Total	11,528	1,173	45,231	366	2,109	0	29,601	90,008
Santa Cruz								
Segments	0	0	0					0
Bridges	6,040	2,234	0					8,274
Tunnels	0	0	0					0
Facilities		0	0	779	711	0	2,956	4,447
Total	6,040	2,234	0	779	711	0	2,956	12,721
Solano								
Segments	0	0	0					0
Bridges	1,802	133	0					1,935
Tunnels	0	0	0					0
Facilities		511	0	284	7,679	264	816	9,555
Total	1,802	644	0	284	7,679	264	816	11,491
Sonoma								
Segments	0	0	0					0
Bridges	1,147	243	0					1,390
Tunnels	0	0	0					0
Facilities		0	0	97	2,148	0	2,526	4,770

	Highway	Railway	Light Rail	Bus Facility	Ports	Ferries	Airport	Total
Total	1,147	243	0	97	2,148	0	2,526	6,160
Stanislaus								
Segments	0	0	0					0
Bridges	61	0	0					61
Tunnels	0	0	0					0
Facilities		154	0	43	0	0	231	427
Total	61	154	0	43	0	0	231	488
Sutter								
Segments	0	0	0					0
Bridges	19	0	0					19
Tunnels	0	0	0					0
Facilities		0	0	0	0	0	129	129
Total	19	0	0	0	0	0	129	148
Tuolumne								
Segments	0	0	0					0
Bridges	0	0	0					0
Tunnels	0	0	0					0
Facilities		0	0	0	0	0	17	17
Total	0	0	0	0	0	0	17	17
Yolo								
Segments	0	0	0					0
Bridges	298	0	0					298
Tunnels	0	0	0					0
Facilities		128	0	0	624	0	153	905

	Highway	Railway	Light Rail	Bus Facility	Ports	Ferries	Airport	Total
Total	298	128	0	0	624	0	153	1,204
Yuba								
<i>Segments</i>	0	0	0					0
<i>Bridges</i>	0	0	0					0
<i>Tunnels</i>	0	0	0					0
<i>Facilities</i>		0	0	22	0	0	102	124
Total	0	0	0	22	0	0	102	124
Total	281,631	16,705	718,968	5,890	133,197	3,469	267,854	1,427,714
Region Total	281,631	16,705	718,968	5,890	133,197	3,469	267,854	1,427,714

Totals only reflect data for those census tracts/blocks included in the user's study region and will reflect the entire county/state only if all of the census blocks for that county/states were selected at the time of study region creation.

Direct Economic Loss For Utilities

April 19, 2024

All values are in thousands of dollars

	Potable Water	Waste Water	Oil Systems	Natural Gas	Electric Power	Communication	Total
California							
Alameda							
<i>Facilities</i>	3,915	98,338	0	0	306,559	215	409,028
<i>Pipelines</i>	1,559	783	0	0			2,342
Total	5,475	99,122	0	0	306,559	215	411,371
Alpine							
<i>Facilities</i>	0	3	0	0	0	0	3
<i>Pipelines</i>	1	1	0	0			2
Total	1	3	0	0	0	0	5
Amador							
<i>Facilities</i>	0	3	0	0	618	0	621
<i>Pipelines</i>	11	5	0	0			16
Total	11	8	0	0	618	0	637
Butte							
<i>Facilities</i>	1	251	0	0	2,316	0	2,567

	Potable Water	Waste Water	Oil Systems	Natural Gas	Electric Power	Communication	Total
<i>Pipelines</i>	44	22	0	0			67
Total	45	273	0	0	2,316	0	2,634
Calaveras							
<i>Facilities</i>	1	10	0	0	1,359	0	1,370
<i>Pipelines</i>	17	9	0	0			26
Total	18	19	0	0	1,359	0	1,396
Colusa							
<i>Facilities</i>	0	369	0	75	6,525	0	6,969
<i>Pipelines</i>	35	17	0	0			52
Total	35	386	0	75	6,525	0	7,021
Contra Costa							
<i>Facilities</i>	6,053	72,163	35	0	456,763	54	535,069
<i>Pipelines</i>	907	456	0	0			1,363
Total	6,960	72,619	35	0	456,763	54	536,431
El Dorado							
<i>Facilities</i>	1	10	0	0	1,510	0	1,521
<i>Pipelines</i>	29	14	0	0			43
Total	29	25	0	0	1,510	0	1,564
Fresno							
<i>Facilities</i>	0	8	0	0	14,959	1	14,968
<i>Pipelines</i>	210	106	0	0			316

	Potable Water	Waste Water	Oil Systems	Natural Gas	Electric Power	Communication	Total
Total	210	113	0	0	14,959	1	15,284
Glenn							
<i>Facilities</i>	0	123	0	0	2	0	125
<i>Pipelines</i>	34	17	0	0			52
Total	34	140	0	0	2	0	177
Kings							
<i>Facilities</i>	0	0	0	4	208	0	211
<i>Pipelines</i>	77	39	0	0			116
Total	77	39	0	4	208	0	327
Lake							
<i>Facilities</i>	56	0	0	0	5,226	1	5,284
<i>Pipelines</i>	65	33	0	0			97
Total	121	33	0	0	5,226	1	5,381
Madera							
<i>Facilities</i>	0	0	0	0	628	0	629
<i>Pipelines</i>	60	30	0	0			90
Total	60	30	0	0	628	0	718
Marin							
<i>Facilities</i>	2,955	124,607	0	0	3,507	212	131,281
<i>Pipelines</i>	1,638	823	0	0			2,461
Total	4,593	125,430	0	0	3,507	212	133,742

	Potable Water	Waste Water	Oil Systems	Natural Gas	Electric Power	Communication	Total
Mariposa							
<i>Facilities</i>	0	8	0	0	42	0	50
<i>Pipelines</i>	10	5	0	0			14
Total	10	13	0	0	42	0	65
Mendocino							
<i>Facilities</i>	0	497	0	0	350	1	848
<i>Pipelines</i>	98	49	0	0			147
Total	98	546	0	0	350	1	995
Merced							
<i>Facilities</i>	0	615	0	0	21,856	2	22,473
<i>Pipelines</i>	93	47	0	0			140
Total	93	662	0	0	21,856	2	22,613
Monterey							
<i>Facilities</i>	0	66,961	0	0	330,574	153	397,688
<i>Pipelines</i>	496	249	0	0			744
Total	496	67,210	0	0	330,574	153	398,432
Napa							
<i>Facilities</i>	0	11,878	0	0	312	10	12,200
<i>Pipelines</i>	104	52	0	0			157
Total	104	11,931	0	0	312	10	12,357
Nevada							

	Potable Water	Waste Water	Oil Systems	Natural Gas	Electric Power	Communication	Total
<i>Facilities</i>	0	18	0	0	44	0	62
<i>Pipelines</i>	15	8	0	0			23
Total	15	26	0	0	44	0	85
Placer							
<i>Facilities</i>	0	868	0	0	2,835	1	3,704
<i>Pipelines</i>	44	22	0	0			66
Total	44	890	0	0	2,835	1	3,770
Sacramento							
<i>Facilities</i>	0	1,229	0	0	11,389	12	12,630
<i>Pipelines</i>	136	69	0	0			205
Total	136	1,298	0	0	11,389	12	12,835
San Benito							
<i>Facilities</i>	0	3,049	0	0	0	7	3,056
<i>Pipelines</i>	89	44	0	0			133
Total	89	3,093	0	0	0	7	3,189
San Francisco							
<i>Facilities</i>	0	128,913	0	0	13,193	611	142,717
<i>Pipelines</i>	1,578	792	0	0			2,370
Total	1,578	129,706	0	0	13,193	611	145,087
San Joaquin							
<i>Facilities</i>	140	3,663	1	0	30,945	2	34,752

	Potable Water	Waste Water	Oil Systems	Natural Gas	Electric Power	Communication	Total
<i>Pipelines</i>	171	86	0	0			257
Total	312	3,749	1	0	30,945	2	35,009
San Luis Obispo							
<i>Facilities</i>	28	261	0	0	1,363	0	1,652
<i>Pipelines</i>	96	48	0	0			144
Total	124	309	0	0	1,363	0	1,796
San Mateo							
<i>Facilities</i>	0	342,935	0	0	43,770	470	387,174
<i>Pipelines</i>	5,396	2,711	0	0			8,107
Total	5,396	345,645	0	0	43,770	470	395,282
Santa Clara							
<i>Facilities</i>	3,963	21,024	0	0	292,025	196	317,208
<i>Pipelines</i>	1,714	861	0	0			2,575
Total	5,677	21,885	0	0	292,025	196	319,783
Santa Cruz							
<i>Facilities</i>	0	75,134	0	0	5,090	159	80,383
<i>Pipelines</i>	2,070	1,040	0	0			3,109
Total	2,070	76,174	0	0	5,090	159	83,493
Solano							
<i>Facilities</i>	0	15,050	3	0	194,535	14	209,602
<i>Pipelines</i>	466	234	0	0			700

	Potable Water	Waste Water	Oil Systems	Natural Gas	Electric Power	Communication	Total
Total	466	15,284	3	0	194,535	14	210,302
Sonoma							
<i>Facilities</i>	0	26,526	0	0	44,727	37	71,291
<i>Pipelines</i>	512	257	0	0			770
Total	512	26,783	0	0	44,727	37	72,060
Stanislaus							
<i>Facilities</i>	0	492	0	0	8,858	3	9,353
<i>Pipelines</i>	67	34	0	0			101
Total	67	526	0	0	8,858	3	9,454
Sutter							
<i>Facilities</i>	0	246	0	0	6,808	1	7,055
<i>Pipelines</i>	30	15	0	0			45
Total	30	261	0	0	6,808	1	7,100
Tuolumne							
<i>Facilities</i>	0	3	0	0	1,427	0	1,430
<i>Pipelines</i>	15	7	0	0			22
Total	15	10	0	0	1,427	0	1,452
Yolo							
<i>Facilities</i>	0	492	0	0	502	1	995
<i>Pipelines</i>	64	32	0	0			97
Total	64	524	0	0	502	1	1,091

	Potable Water	Waste Water	Oil Systems	Natural Gas	Electric Power	Communication	Total
Yuba							
<i>Facilities</i>	0	371	0	0	840	0	1,212
<i>Pipelines</i>	22	11	0	0			32
Total	22	382	0	0	840	0	1,245
Total	35,086	1,005,146	39	79	1,811,666	2,167	2,854,183
Region Total	35,086	1,005,146	39	79	1,811,666	2,167	2,854,183

Totals only reflect data for those census tracts/blocks included in the user's study region and will reflect the entire county/state only if all of the census blocks for that county/states were selected at the time of study region creation.

Hazus Quick Assessment Report

Estimated Economic Loss (\$ Billions)

Category	Description	Range
General Building Stock	Building Damage	8.10 - 32.30
	Building Contents	0.80 - 3.40
	Business Interruption	1.80 - 7.20
Infrastructure	Lifelines Damage	
Total		13.10 - 52.40

Preliminary Damage Assessment (PDA) Estimates

Description	Residential	Commercial	Other	Total
Affected	287,000	27,900	11,100	326,000
Minor	34,100	11,700	4,300	50,100
Major	4,600	2,100	770	7,470
Destroyed	520	180	60	760
Total	326,220	41,880	16,230	384,330

Estimated Casualties : Night Time

Severity Level	Description	# Persons
Level 1	Medical Aid	1,000 - 4,000
Level 2	Hospital Care	120 - 500
Level 3	Life-threatening	10 - 50
Level 4	Fatalities	20 - 90

Estimated Shelter Needs

Type	Households	People
Displaced Households	10,000 - 42,000	25,000 - 105,000
Public Shelter	3,520	8,800

Comments :

*Hazus damage estimates are presented using FEMA Preliminary Damage Assessment (PDA) categories. These estimates should be used for planning purposes and may not reflect actual observed damages from the PDA process.

Disclaimer:

The estimates of social and economic impacts contained in this report were produced using HAZUS loss estimation methodology software which is based on current scientific and engineering knowledge. There are uncertainties inherent in any loss estimation technique. Therefore, there may be significant differences between the modeled results contained in this report and the actual social and economic losses following a specific earthquake. These results can be improved by using enhanced inventory, geotechnical, and observed ground motion data.

Earthquake Information

Location :

Origin Time:

Magnitude : 7.44

Epicenter Latitude/Longitude :
/

Depth & Type : /U

Name :
NA

Ground Motion /Attenuation :

Maximum PGA: 1.00

Information Sources:

Comments :

Population and Building Exposure

Population: 15,015,581

Building Exposure : (\$ Millions)

Residential	1,904,640
Commercial	512,833
Other	444,913
Total	2,862,386

Counties : See Appendix

Major Metro Area :

Hazus Quick Assessment Report

Estimated Economic Loss (\$ Billions)

Category	Description	Range
General Building Stock	Building Damage	8.10 - 32.30
	Building Contents	0.80 - 3.40
	Business Interruption	1.80 - 7.20
Infrastructure	Lifelines Damage	
Total		13.10 - 52.40

Preliminary Damage Assessment (PDA) Estimates

Description	Residential	Commercial	Other	Total
Affected	287,000	27,900	11,100	326,000
Minor	34,100	11,700	4,300	50,100
Major	4,600	2,100	770	7,470
Destroyed	520	180	60	760
Total	326,220	41,880	16,230	384,330

Estimated Casualties : Day Time

Severity Level	Description	# Persons
Level 1	Medical Aid	1,500 - 6,000
Level 2	Hospital Care	190 - 800
Level 3	Life-threatening	20 - 70
Level 4	Fatalities	30 - 120

Estimated Shelter Needs

Type	Households	People
Displaced Households	10,000 - 42,000	25,000 - 105,000
Public Shelter	3,520	8,800

Earthquake Information

Location :

Origin Time:

Magnitude : 7.44

Epicenter Latitude/Longitude :
/

Depth & Type : /U

Name :
NA

Ground Motion /Attenuation :

Maximum PGA: 1.00

Information Sources:

Comments :

Population and Building Exposure

Population: 15,015,581

Building Exposure : (\$ Millions)

Residential	1,904,640
Commercial	512,833
Other	444,913
Total	2,862,386

Counties : See Appendix

Comments :

Major Metro Area :

*Hazus damage estimates are presented using FEMA Preliminary Damage Assessment (PDA) categories. These estimates should be used for planning purposes and may not reflect actual observed damages from the PDA process.

Disclaimer:

The estimates of social and economic impacts contained in this report were produced using HAZUS loss estimation methodology software which is based on current scientific and engineering knowledge. There are uncertainties inherent in any loss estimation technique. Therefore, there may be significant differences between the modeled results contained in this report and the actual social and economic losses following a specific earthquake. These results can be improved by using enhanced inventory, geotechnical, and observed ground motion data.

Hazus Quick Assessment Report

Estimated Economic Loss (\$ Billions)

Category	Description	Range
General Building Stock	Building Damage	8.10 - 32.30
	Building Contents	0.80 - 3.40
	Business Interruption	1.80 - 7.20
Infrastructure	Lifelines Damage	
Total		13.10 - 52.40

Preliminary Damage Assessment (PDA) Estimates

Description	Residential	Commercial	Other	Total
Affected	287,000	27,900	11,100	326,000
Minor	34,100	11,700	4,300	50,100
Major	4,600	2,100	770	7,470
Destroyed	520	180	60	760
Total	326,220	41,880	16,230	384,330

Estimated Casualties : Commute Time

Severity Level	Description	# Persons
Level 1	Medical Aid	1,100 - 4,000
Level 2	Hospital Care	150 - 600
Level 3	Life-threatening	40 - 140
Level 4	Fatalities	30 - 110

Estimated Shelter Needs

Type	Households	People
Displaced Households	10,000 - 42,000	25,000 - 105,000
Public Shelter	3,520	8,800

Comments :

*Hazus damage estimates are presented using FEMA Preliminary Damage Assessment (PDA) categories. These estimates should be used for planning purposes and may not reflect actual observed damages from the PDA process.

Disclaimer:

The estimates of social and economic impacts contained in this report were produced using HAZUS loss estimation methodology software which is based on current scientific and engineering knowledge. There are uncertainties inherent in any loss estimation technique. Therefore, there may be significant differences between the modeled results contained in this report and the actual social and economic losses following a specific earthquake. These results can be improved by using enhanced inventory, geotechnical, and observed ground motion data.

Earthquake Information

Location :

Origin Time:

Magnitude : 7.44

Epicenter Latitude/Longitude :
/

Depth & Type : /U

Name :
NA

Ground Motion /Attenuation :

Maximum PGA: 1.00

Information Sources:

Comments :

Population and Building Exposure

Population: 15,015,581

Building Exposure : (\$ Millions)

Residential	1,904,640
Commercial	512,833
Other	444,913
Total	2,862,386

Counties : See Appendix

Major Metro Area :

Shelter Summary Report

April 19, 2024

	# of Displaced Households	# of People Needing Short Term Shelter
California		
Fresno	0	0
Butte	0	0
Alameda	815	418
Solano	4	2
San Mateo	1,340	637
Tuolumne	0	0
Kings	0	0
San Joaquin	0	0
San Luis Obispo	0	0
Nevada	0	0
Madera	0	0
Colusa	0	0
Napa	1	0
Mendocino	0	0
Contra Costa	53	35
El Dorado	0	0
Amador	0	0
Santa Cruz	224	122
Lake	0	0
Monterey	6	4
Sacramento	0	0
Mariposa	0	0
Yolo	0	0
Calaveras	0	0
Yuba	0	0
Glenn	0	0
Alpine	0	0
Stanislaus	0	0
Sonoma	7	3
Santa Clara	122	59
San Benito	0	0
San Francisco	18,278	7,455

	# of Displaced Households	# of People Needing Short Term Shelter
Merced	0	0
Placer	0	0
Marin	142	59
Sutter	0	0
Total	20,992	8,796
Region Total	20,992	8,796

Totals only reflect data for those census tracts/blocks included in the user's study region and will reflect the entire county/state only if all of the census blocks for that county/states were selected at the time of study region creation.