

## Hazus: Earthquake Global Risk Report

---

**Region Name:** SSanAndreasPKtoBG

**Earthquake Scenario:** ssanandreaspkchccbnn\_m8p11\_se

**Print Date:** June 18, 2024

**Disclaimer:**

*Totals only reflect data for those census tracts/blocks included in the user's study region.*

*The estimates of social and economic impacts contained in this report were produced using Hazus loss estimation methodology software which is based on current scientific and engineering knowledge. There are uncertainties inherent in any loss estimation technique. Therefore, there may be significant differences between the modeled results contained in this report and the actual social and economic losses following a specific earthquake. These results can be improved by using enhanced inventory, geotechnical, and observed ground motion data.*

## Table of Contents

<b>Section</b>	<b>Page #</b>
<b>General Description of the Region</b>	<b>3</b>
<b>Building and Lifeline Inventory</b>	<b>4</b>
Building Inventory	
Critical Facility Inventory	
Transportation and Utility Lifeline Inventory	
<b>Earthquake Scenario Parameters</b>	<b>7</b>
<b>Direct Earthquake Damage</b>	<b>8</b>
Buildings Damage	
Essential Facilities Damage	
Transportation and Utility Lifeline Damage	
<b>Induced Earthquake Damage</b>	<b>14</b>
Fire Following Earthquake	
Debris Generation	
<b>Social Impact</b>	<b>15</b>
Shelter Requirements	
Casualties	
<b>Economic Loss</b>	<b>17</b>
Building Related Losses	
Transportation and Utility Lifeline Losses	
<b>Appendix A: County Listing for the Region</b>	
<b>Appendix B: Regional Population and Building Value Data</b>	

## General Description of the Region

Hazus-MH is a regional earthquake loss estimation model that was developed by the Federal Emergency Management Agency (FEMA) and the National Institute of Building Sciences. The primary purpose of Hazus is to provide a methodology and software application to develop multi-hazard losses at a regional scale. These loss estimates would be used primarily by local, state and regional officials to plan and stimulate efforts to reduce risks from multi-hazards and to prepare for emergency response and recovery.

The earthquake loss estimates provided in this report was based on a region that includes 38 county(ies) from the following state(s):

California

Note:

Appendix A contains a complete listing of the counties contained in the region.

The geographical size of the region is 110,620.01 square miles and contains 8,640 census tracts. There are over 12,773 thousand households in the region which has a total population of 37,720,499 people. The distribution of population by Total Region and County is provided in Appendix B.

There are an estimated 10,919 thousand buildings in the region with a total building replacement value (excluding contents) of (millions of dollars). Approximately 90.00 % of the buildings (and % of the building value) are associated with residential housing.

The replacement value of the transportation and utility lifeline systems is estimated to be 501,758 and 326,259 (millions of dollars) , respectively.

## Building and Lifeline Inventory

### Building Inventory

Hazus estimates that there are 10,919 thousand buildings in the region which have an aggregate total replacement value of (millions of dollars) . Appendix B provides a general distribution of the building value by Total Region and County.

In terms of building construction types found in the region, wood frame construction makes up 87% of the building inventory. The remaining percentage is distributed between the other general building types.

### Critical Facility Inventory

Hazus breaks critical facilities into two (2) groups: essential facilities and high potential loss facilities (HPL). Essential facilities include hospitals, medical clinics, schools, fire stations, police stations and emergency operations facilities. High potential loss facilities include dams, levees, military installations, nuclear power plants and hazardous material sites.

For essential facilities, there are 562 hospitals in the region with a total bed capacity of 98,399 beds. There are 12,591 schools, 2,535 fire stations, 877 police stations and 199 emergency operation facilities. With respect to high potential loss facilities (HPL), there are no dams identified within the inventory. The inventory also includes no hazardous material sites, no military installations and no nuclear power plants.

### Transportation and Utility Lifeline Inventory

Within Hazus, the lifeline inventory is divided between transportation and utility lifeline systems. There are seven (7) transportation systems that include highways, railways, light rail, bus, ports, ferry and airports. There are six (6) utility systems that include potable water, wastewater, natural gas, crude & refined oil, electric power and communications. The lifeline inventory data are provided in Tables 1 and 2.

The total value of the lifeline inventory is over 828,017.00 (millions of dollars). This inventory includes over 20,906.65 miles of highways, 21,203 bridges, 431,085.45 miles of pipes.

**Table 1: Transportation System Lifeline Inventory**

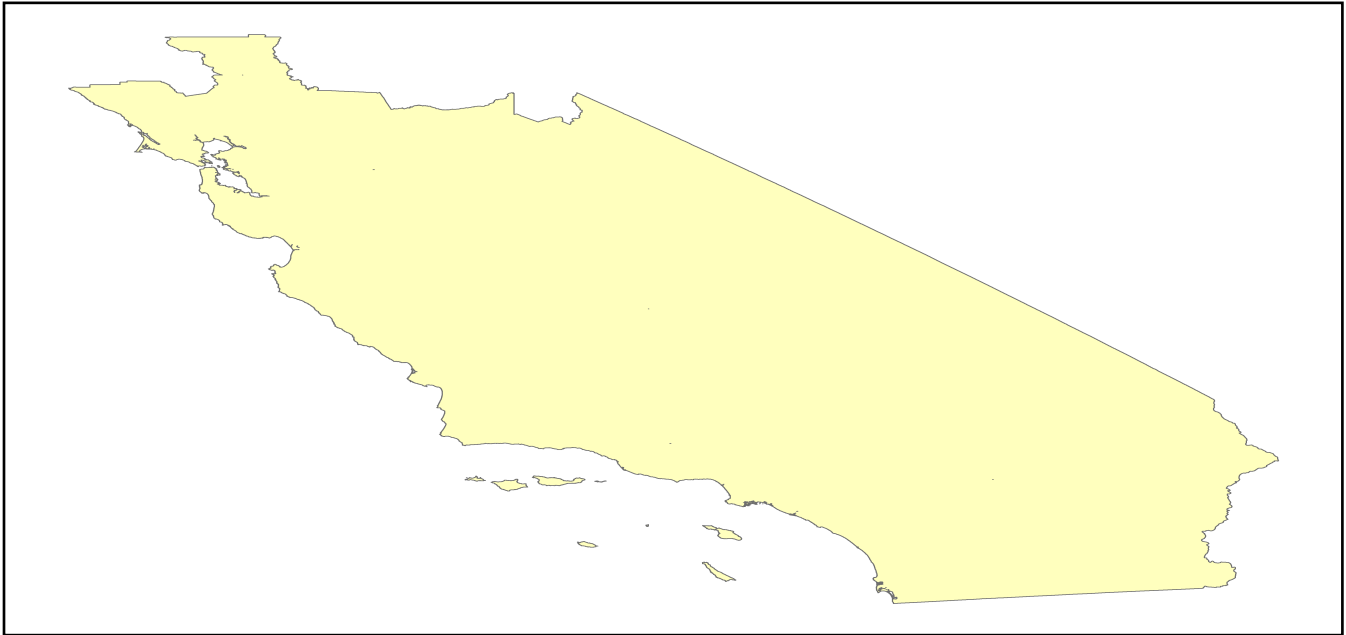
System	Component	# Locations/ # Segments	Replacement value (millions of dollars)
<b>Highway</b>	Bridges	21,203	119547.3548
	Segments	16,313	203837.0836
	Tunnels	105	1516.8013
	<b>Subtotal</b>		<b>324901.2397</b>
<b>Railways</b>	Bridges	3,408	19391.5200
	Facilities	191	508.6330
	Segments	4,720	125150.0885
	Tunnels	3	1.8495
	<b>Subtotal</b>		<b>145052.0910</b>
<b>Light Rail</b>	Bridges	163	28.6279
	Facilities	404	7354.8000
	Segments	23	10802.3803
	Tunnels	0	0.0000
	<b>Subtotal</b>		<b>18185.8082</b>
<b>Bus</b>	Facilities	84	186.1372
	<b>Subtotal</b>		<b>186.1372</b>
<b>Ferry</b>	Facilities	47	62.5570
	<b>Subtotal</b>		<b>62.5570</b>
<b>Port</b>	Facilities	705	2687.3505
	<b>Subtotal</b>		<b>2687.3505</b>
<b>Airport</b>	Facilities	249	7498.0911
	Runways	305	3185.3470
	<b>Subtotal</b>		<b>10683.4381</b>
		<b>Total</b>	<b>501,758.60</b>

**Table 2: Utility System Lifeline Inventory**

System	Component	# Locations / Segments	Replacement value (millions of dollars)
<b>Potable Water</b>	Distribution Lines	NA	8563.4401
	Facilities	71	2789.8740
	Pipelines	0	0.0000
		<b>Subtotal</b>	<b>11353.3141</b>
<b>Waste Water</b>	Distribution Lines	NA	5138.0640
	Facilities	280	48146.5040
	Pipelines	0	0.0000
		<b>Subtotal</b>	<b>53284.5680</b>
<b>Natural Gas</b>	Distribution Lines	NA	3425.3760
	Facilities	46	1658.7709
	Pipelines	1,113	30608.7115
		<b>Subtotal</b>	<b>35692.8584</b>
<b>Oil Systems</b>	Facilities	84	9.9120
	Pipelines	0	0.0000
		<b>Subtotal</b>	<b>9.9120</b>
<b>Electrical Power</b>	Facilities	918	225822.3563
		<b>Subtotal</b>	<b>225822.3563</b>
<b>Communication</b>	Facilities	821	96.8780
		<b>Subtotal</b>	<b>96.8780</b>
	<b>Total</b>		<b>326,259.90</b>

## Earthquake Scenario

Hazus uses the following set of information to define the earthquake parameters used for the earthquake loss estimate provided in this report.



<b>Scenario Name</b>	ssanandreaspkchccbbn_m8p11_se
<b>Type of Earthquake</b>	User-defined
<b>Fault Name</b>	NA
<b>Historical Epicenter ID #</b>	NA
<b>Probabilistic Return Period</b>	NA
<b>Longitude of Epicenter</b>	NA
<b>Latitude of Epicenter</b>	NA
<b>Earthquake Magnitude</b>	8.11
<b>Depth (km)</b>	NA
<b>Rupture Length (Km)</b>	NA
<b>Rupture Orientation (degrees)</b>	NA
<b>Attenuation Function</b>	NA

## Direct Earthquake Damage

### Building Damage

Hazus estimates that about 251,826 buildings will be at least moderately damaged. This is over 2.00 % of the buildings in the region. There are an estimated 17,238 buildings that will be damaged beyond repair. The definition of the 'damage states' is provided in Volume 1: Chapter 5 of the Hazus technical manual. Table 3 below summarizes the expected damage by general occupancy for the buildings in the region. Table 4 below summarizes the expected damage by general building type.

### Damage Categories by General Occupancy Type

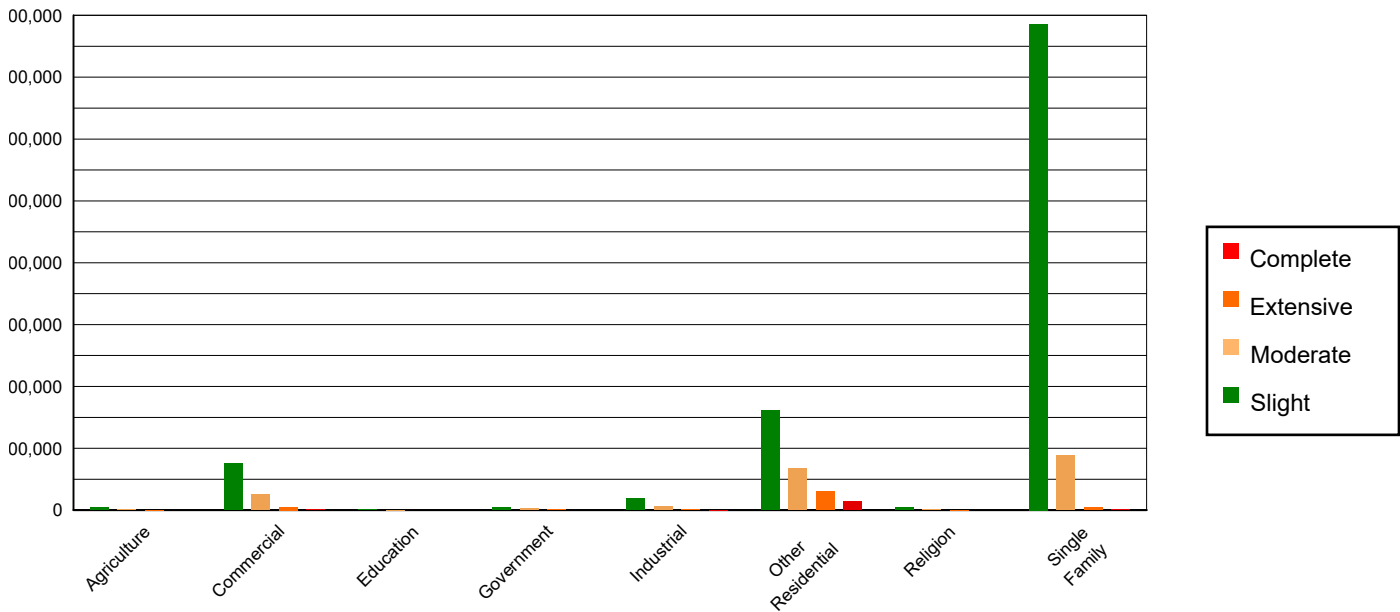


Table 3: Expected Building Damage by Occupancy

	None		Slight		Moderate		Extensive		Complete	
	Count	(%)	Count	(%)	Count	(%)	Count	(%)	Count	(%)
<b>Agriculture</b>	38861.24	0.40	3670.16	0.35	1212.76	0.63	255.69	0.61	58.14	0.34
<b>Commercial</b>	623983.58	6.49	75494.62	7.16	25880.01	13.42	5346.65	12.80	1373.14	7.97
<b>Education</b>	20075.27	0.21	1027.64	0.10	319.15	0.17	52.33	0.13	6.62	0.04
<b>Government</b>	49679.19	0.52	3732.33	0.35	2083.27	1.08	487.86	1.17	84.35	0.49
<b>Industrial</b>	167138.77	1.74	18405.79	1.75	6589.63	3.42	1323.51	3.17	229.29	1.33
<b>Other Residential</b>	1286854.45	13.39	161429.47	15.32	67135.13	34.82	30259.01	72.45	14408.95	83.58
<b>Religion</b>	33351.10	0.35	3954.18	0.38	1660.31	0.86	419.15	1.00	109.26	0.63
<b>Single Family</b>	7393813.32	76.91	786127.21	74.60	87940.64	45.61	3622.58	8.67	969.24	5.62
<b>Total</b>	<b>9,613,757</b>		<b>1,053,841</b>		<b>192,821</b>		<b>41,767</b>		<b>17,239</b>	

**Table 4: Expected Building Damage by Building Type (All Design Levels)**

	None		Slight		Moderate		Extensive		Complete	
	Count	(%)	Count	(%)	Count	(%)	Count	(%)	Count	(%)
<b>Wood</b>	8511139.54	88.53	915587.05	86.88	103246.91	53.55	3007.70	7.20	433.39	2.51
<b>Steel</b>	175576.22	1.83	25387.24	2.41	15504.11	8.04	3959.52	9.48	748.72	4.34
<b>Concrete</b>	197274.84	2.05	21001.42	1.99	9601.79	4.98	2242.45	5.37	267.90	1.55
<b>Precast</b>	99699.81	1.04	9638.32	0.91	3062.00	1.59	405.77	0.97	58.65	0.34
<b>RM</b>	422282.49	4.39	29481.41	2.80	11531.28	5.98	3988.24	9.55	727.11	4.22
<b>URM</b>	55257.46	0.57	10025.42	0.95	6916.86	3.59	1725.55	4.13	1457.50	8.45
<b>MH</b>	152526.57	1.59	42720.56	4.05	42957.98	22.28	26437.56	63.30	13545.70	78.58
<b>Total</b>	<b>9,613,757</b>		<b>1,053,841</b>		<b>192,821</b>		<b>41,767</b>		<b>17,239</b>	

\*Note:

- RM Reinforced Masonry
- URM Unreinforced Masonry
- MH Manufactured Housing

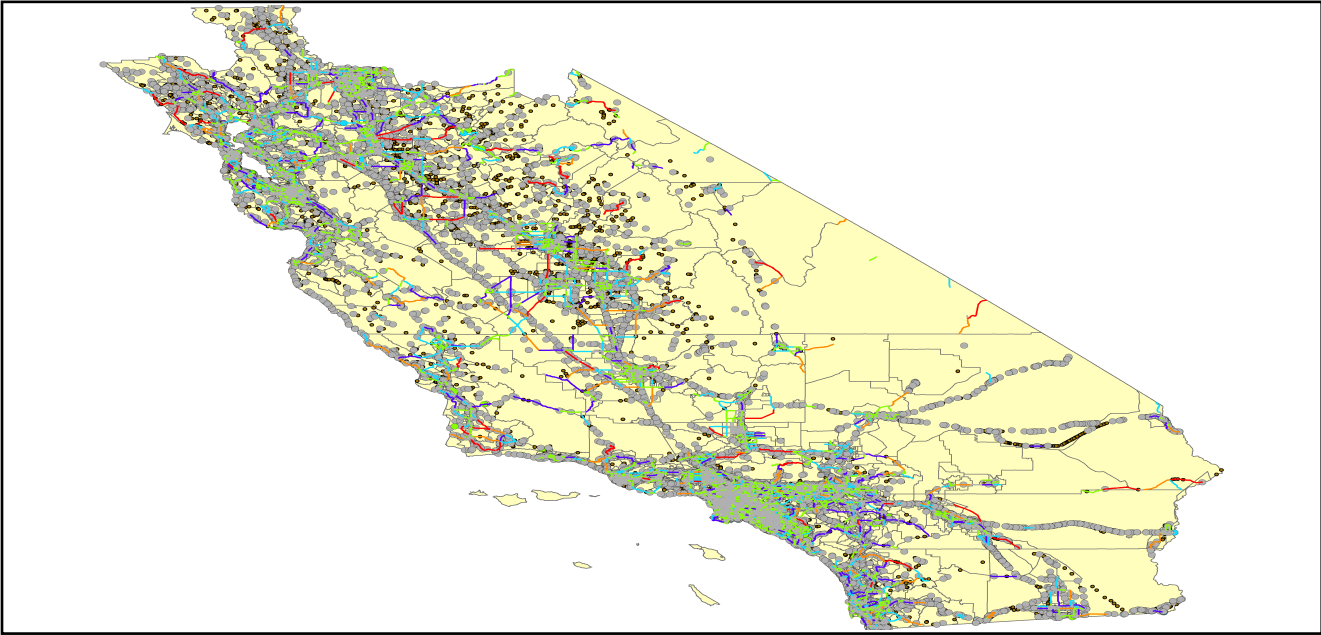
## Essential Facility Damage

Before the earthquake, the region had 98,399 hospital beds available for use. On the day of the earthquake, the model estimates that only 86,132 hospital beds (88.00%) are available for use by patients already in the hospital and those injured by the earthquake. After one week, 95.00% of the beds will be back in service. By 30 days, 99.00% will be operational.

**Table 5: Expected Damage to Essential Facilities**

Classification	Total	# Facilities		
		At Least Moderate Damage > 50%	Complete Damage > 50%	With Functionality > 50% on day 1
Hospitals	562	18	2	514
Schools	12,591	457	38	11,446
EOCs	199	15	1	178
PoliceStations	877	37	4	805
FireStations	2,535	55	5	2,342

Transportation Lifeline Damage



**Table 6: Expected Damage to the Transportation Systems**

System	Component	Number of Locations_				
		Locations/ Segments	With at Least Mod. Damage	With Complete Damage	With Functionality > 50 %	
					After Day 1	After Day 7
Highway	Segments	16,313	0	0	16,313	16,313
	Bridges	21,203	197	12	21,024	21,150
	Tunnels	105	0	0	105	105
Railways	Segments	4,720	0	0	4,720	4,720
	Bridges	3,408	0	0	3,408	3,408
	Tunnels	3	0	0	3	3
	Facilities	191	2	0	190	191
Light Rail	Segments	23	0	0	23	23
	Bridges	163	0	0	163	163
	Tunnels	0	0	0	0	0
	Facilities	404	0	0	404	404
Bus	Facilities	84	2	0	84	84
Ferry	Facilities	47	0	0	47	47
Port	Facilities	705	0	0	705	705
Airport	Facilities	249	4	0	249	249
	Runways	305	0	0	305	305

Table 6 provides damage estimates for the transportation system.

Note: Roadway segments, railroad tracks and light rail tracks are assumed to be damaged by ground failure only. If ground failure maps are not provided, damage estimates to these components will not be computed.

Tables 7-9 provide information on the damage to the utility lifeline systems. Table 7 provides damage to the utility system facilities. Table 8 provides estimates on the number of leaks and breaks by the pipelines of the utility systems. For electric power and potable water, Hazus performs a simplified system performance analysis. Table 9 provides a summary of the system performance information.

**Table 7 : Expected Utility System Facility Damage**

System	# of Locations				
	Total #	With at Least Moderate Damage	With Complete Damage	with Functionality > 50 %	
				After Day 1	After Day 7
Potable Water	71	5	0	64	71
Waste Water	280	10	0	248	280
Natural Gas	46	4	0	38	46
Oil Systems	84	0	0	84	84
Electrical Power	918	234	0	731	862
Communication	821	62	0	780	821

**Table 8 : Expected Utility System Pipeline Damage (Site Specific)**

System	Total Pipelines Length (miles)	Number of Leaks	Number of Breaks
Potable Water	266,054	43274	10818
Waste Water	159,632	21738	5434
Natural Gas	5,400	0	0
Oil	0	0	0

**Table 9: Expected Potable Water and Electric Power System Performance**

	Total # of Households	Number of Households without Service				
		At Day 1	At Day 3	At Day 7	At Day 30	At Day 90
Potable Water	12,773,705	1,191,585	1,138,428	1,049,269	587,323	584
Electric Power		473,971	314,884	137,942	14,875	618

## Induced Earthquake Damage

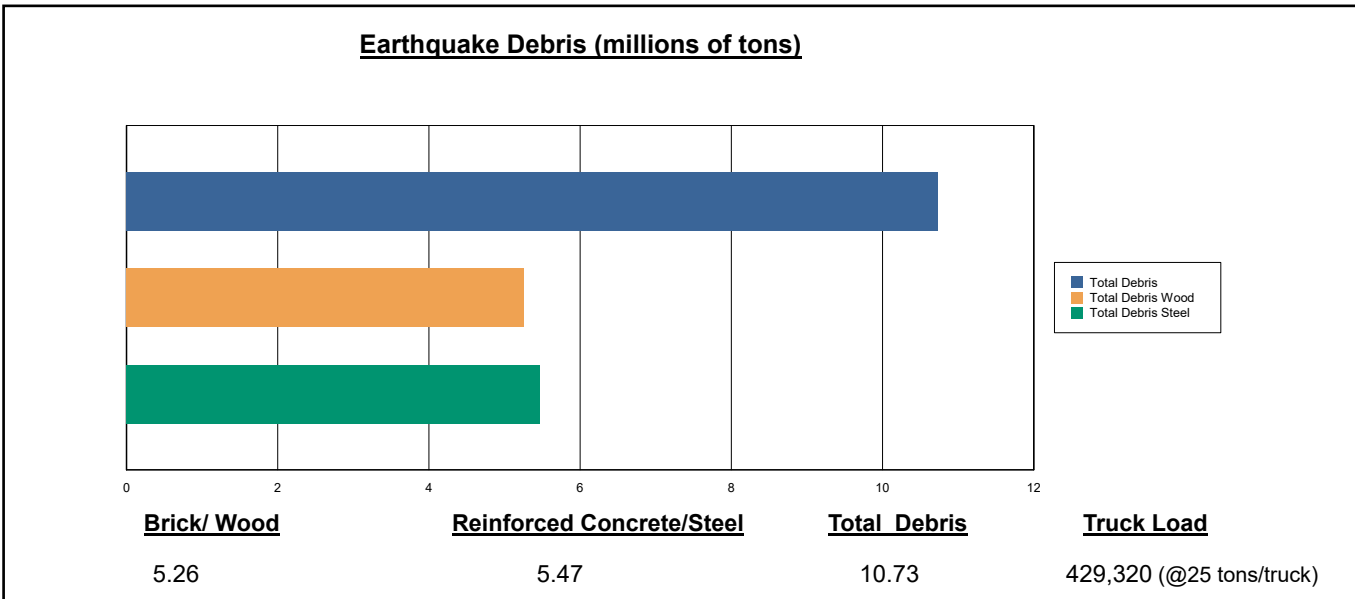
### Fire Following Earthquake

Fires often occur after an earthquake. Because of the number of fires and the lack of water to fight the fires, they can often burn out of control. Hazus uses a Monte Carlo simulation model to estimate the number of ignitions and the amount of burnt area. For this scenario, the model estimates that there will be 97 ignitions that will burn about 0.87 sq. mi (0.00 % of the region's total area.) The model also estimates that the fires will displace about 9,201 people and burn about 964 (millions of dollars) of building value.

### Debris Generation

Hazus estimates the amount of debris that will be generated by the earthquake. The model breaks the debris into two general categories: a) Brick/Wood and b) Reinforced Concrete/Steel. This distinction is made because of the different types of material handling equipment required to handle the debris.

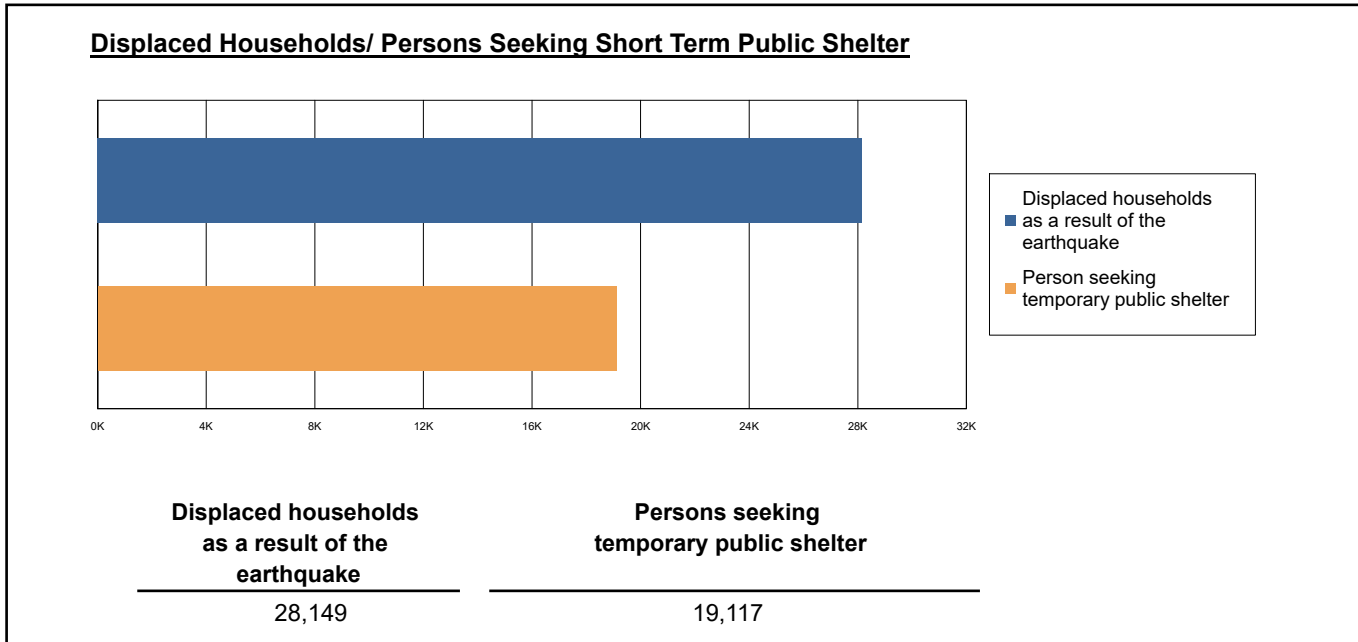
The model estimates that a total of 10,733,000 tons of debris will be generated. Of the total amount, Brick/Wood comprises 49.00% of the total, with the remainder being Reinforced Concrete/Steel. If the debris tonnage is converted to an estimated number of truckloads, it will require 429,320 truckloads (@25 tons/truck) to remove the debris generated by the earthquake.



## Social Impact

### Shelter Requirement

Hazus estimates the number of households that are expected to be displaced from their homes due to the earthquake and the number of displaced people that will require accommodations in temporary public shelters. The model estimates 28,149 households to be displaced due to the earthquake. Of these, 19,117 people (out of a total population of 37,720,499) will seek temporary shelter in public shelters.



### Casualties

Hazus estimates the number of people that will be injured and killed by the earthquake. The casualties are broken down into four (4) severity levels that describe the extent of the injuries. The levels are described as follows;

- Severity Level 1: Injuries will require medical attention but hospitalization is not needed.
- Severity Level 2: Injuries will require hospitalization but are not considered life-threatening
- Severity Level 3: Injuries will require hospitalization and can become life threatening if not promptly treated.
- Severity Level 4: Victims are killed by the earthquake.

The casualty estimates are provided for three (3) times of day: 2:00 AM, 2:00 PM and 5:00 PM. These times represent the periods of the day that different sectors of the community are at their peak occupancy loads. The 2:00 AM estimate considers that the residential occupancy load is maximum, the 2:00 PM estimate considers that the educational, commercial and industrial sector loads are maximum and 5:00 PM represents peak commute time.

Table 10 provides a summary of the casualties estimated for this earthquake

**Table 10: Casualty Estimates**

		Level 1	Level 2	Level 3	Level 4
<b>2 AM</b>	Commercial	65.54	11.58	1.35	2.65
	Commuting	1.06	1.47	2.42	0.47
	Educational	0.00	0.00	0.00	0.00
	Hotels	2.98	0.37	0.03	0.05
	Industrial	59.34	9.88	1.07	2.07
	Other-Residential	5168.14	936.02	66.04	116.60
	Single Family	2271.44	205.68	20.03	39.45
	<b>Total</b>	<b>7,568</b>	<b>1,165</b>	<b>91</b>	<b>161</b>
	<b>2 PM</b>	Commercial	4662.34	849.95	102.61
Commuting		9.57	13.22	21.76	4.24
Educational		1850.06	301.21	32.82	63.08
Hotels		0.57	0.07	0.01	0.01
Industrial		435.54	72.94	7.96	15.30
Other-Residential		1676.82	310.74	22.84	39.69
Single Family		669.77	66.49	6.97	13.11
<b>Total</b>		<b>9,305</b>	<b>1,615</b>	<b>195</b>	<b>334</b>
<b>5 PM</b>		Commercial	3366.55	628.15	77.77
	Commuting	168.84	233.52	384.11	74.89
	Educational	370.29	58.90	6.52	12.49
	Hotels	0.89	0.11	0.01	0.02
	Industrial	272.21	45.59	4.97	9.56
	Other-Residential	1894.91	344.81	25.45	44.29
	Single Family	845.81	82.12	8.52	16.03
	<b>Total</b>	<b>6,920</b>	<b>1,393</b>	<b>507</b>	<b>306</b>

## Economic Loss

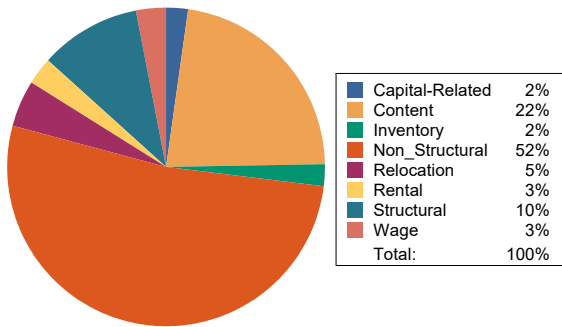
The total economic loss estimated for the earthquake is 113,042.47 (millions of dollars), which includes building and lifeline related losses based on the region's available inventory. The following three sections provide more detailed information about these losses.

## Building-Related Losses

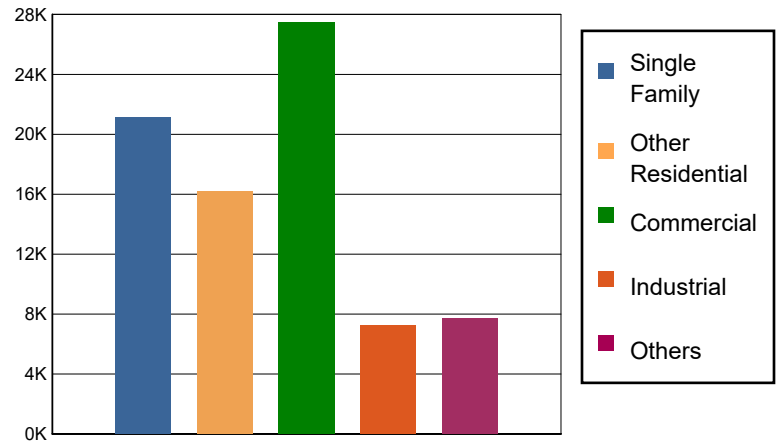
The building losses are broken into two categories: direct building losses and business interruption losses. The direct building losses are the estimated costs to repair or replace the damage caused to the building and its contents. The business interruption losses are the losses associated with inability to operate a business because of the damage sustained during the earthquake. Business interruption losses also include the temporary living expenses for those people displaced from their homes because of the earthquake.

The total building-related losses were 79,737.45 (millions of dollars); 13 % of the estimated losses were related to the business interruption of the region. By far, the largest loss was sustained by the residential occupancies which made up over 47 % of the total loss. Table 11 below provides a summary of the losses associated with the building damage.

Earthquake Losses by Loss Type (\$ millions)



Earthquake Losses by Occupancy Type (\$ millions)



**Table 11: Building-Related Economic Loss Estimates**  
(Millions of dollars)

Category	Area	Single Family	Other Residential	Commercial	Industrial	Others	Total
<b>Income Losses</b>							
	Wage	0.0000	311.4829	1759.5215	77.1784	219.9696	2,368.1524
	Capital-Related	0.0000	132.4583	1586.0714	48.8549	59.8362	1,827.2208
	Rental	212.4897	767.7814	1062.3532	39.3914	109.1963	2,191.2120
	Relocation	649.4187	748.8513	1448.0257	191.6711	763.6631	3,801.6299
	<b>Subtotal</b>	<b>861.9084</b>	<b>1960.5739</b>	<b>5855.9718</b>	<b>357.0958</b>	<b>1152.6652</b>	<b>10188.2151</b>
<b>Capital Stock Losses</b>							
	Structural	2102.8900	1858.0014	2840.3824	691.3832	830.9162	8,323.5732
	Non_Structural	13329.8358	9972.2710	11160.5935	3414.7838	3698.9752	41,576.4593
	Content	4841.0904	2395.5411	6424.4987	2396.6696	1856.6577	17,914.4575
	Inventory	0.0000	0.0000	1215.3189	366.5329	152.8975	1,734.7493
	<b>Subtotal</b>	<b>20273.8162</b>	<b>14225.8135</b>	<b>21640.7935</b>	<b>6869.3695</b>	<b>6539.4466</b>	<b>69549.2393</b>
	<b>Total</b>	<b>21135.72</b>	<b>16186.39</b>	<b>27496.77</b>	<b>7226.47</b>	<b>7692.11</b>	<b>79737.45</b>

### Transportation and Utility Lifeline Losses

For the transportation and utility lifeline systems, Hazus computes the direct repair cost for each component only. There are no losses computed by Hazus for business interruption due to lifeline outages. Tables 12 & 13 provide a detailed breakdown in the expected lifeline losses.

**Table 12: Transportation System Economic Losses**  
(Millions of dollars)

System	Component	Inventory Value	Economic Loss	Loss Ratio (%)
Highway	Segments	203837.0836	0.0000	0.00
	Bridges	119547.3548	927.9479	0.78
	Tunnels	1516.8013	1.7631	0.12
	<b>Subtotal</b>	<b>324901.2397</b>	<b>929.7110</b>	
Railways	Segments	125150.0885	0.0000	0.00
	Bridges	19391.5200	89.1481	0.46
	Tunnels	1.8495	0.0000	0.00
	Facilities	508.6330	38.6133	7.59
	<b>Subtotal</b>	<b>145052.0910</b>	<b>127.7614</b>	
Light Rail	Segments	10802.3803	0.0000	0.00
	Bridges	28.6279	0.0063	0.02
	Tunnels	0.0000	0.0000	0.00
	Facilities	7354.8000	255.5061	3.47
	<b>Subtotal</b>	<b>18185.8082</b>	<b>255.5124</b>	
Bus	Facilities	186.1372	13.9727	7.51
	<b>Subtotal</b>	<b>186.1372</b>	<b>13.9727</b>	
Ferry	Facilities	62.5570	1.6308	2.61
	<b>Subtotal</b>	<b>62.5570</b>	<b>1.6308</b>	
Port	Facilities	2687.3505	80.1678	2.98
	<b>Subtotal</b>	<b>2687.3505</b>	<b>80.1678</b>	
Airport	Facilities	7498.0911	442.7036	5.90
	Runways	3185.3470	0.0000	0.00
	<b>Subtotal</b>	<b>10683.4381</b>	<b>442.7036</b>	
<b>Total</b>		<b>501,758.62</b>	<b>1,851.46</b>	

**Table 13: Utility System Economic Losses**

(Millions of dollars)

System	Component	Inventory Value	Economic Loss	Loss Ratio (%)
Potable Water	Pipelines	0.0000	0.0000	0.00
	Facilities	2789.8740	138.4982	4.96
	Distribution Lines	8563.4401	194.7323	2.27
	<b>Subtotal</b>	<b>11353.3141</b>	<b>333.2305</b>	
Waste Water	Pipelines	0.0000	0.0000	0.00
	Facilities	48146.5040	1084.1896	2.25
	Distribution Lines	5138.0640	97.8190	1.90
	<b>Subtotal</b>	<b>53284.5680</b>	<b>1182.0086</b>	
Natural Gas	Pipelines	30608.7115	0.0000	0.00
	Facilities	1658.7709	114.0970	6.88
	Distribution Lines	3425.3760	33.5121	0.98
	<b>Subtotal</b>	<b>35692.8584</b>	<b>147.6091</b>	
Oil Systems	Pipelines	0.0000	0.0000	0.00
	Facilities	9.9120	0.2750	2.77
	<b>Subtotal</b>	<b>9.9120</b>	<b>0.2750</b>	
Electrical Power	Facilities	225822.3563	29782.8819	13.19
	<b>Subtotal</b>	<b>225822.3563</b>	<b>29782.8819</b>	
Communication	Facilities	96.8780	7.5507	7.79
	<b>Subtotal</b>	<b>96.8780</b>	<b>7.5507</b>	
	<b>Total</b>	<b>326,259.89</b>	<b>31,453.56</b>	

---

## Appendix A: County Listing for the Region

Alameda,CA  
Amador,CA  
Calaveras,CA  
Colusa,CA  
Contra Costa,CA  
Fresno,CA  
Imperial,CA  
Inyo,CA  
Kern,CA  
Kings,CA  
Los Angeles,CA  
Madera,CA  
Marin,CA  
Mariposa,CA  
Merced,CA  
Mono,CA  
Monterey,CA  
Napa,CA  
Orange,CA  
Riverside,CA  
Sacramento,CA  
San Benito,CA  
San Bernardino,CA  
San Diego,CA  
San Francisco,CA  
San Joaquin,CA  
San Luis Obispo,CA  
San Mateo,CA  
Santa Barbara,CA

---

Santa Clara, CA

Santa Cruz, CA

Solano, CA

Sonoma, CA

Stanislaus, CA

Tulare, CA

Tuolumne, CA

Ventura, CA

Yolo, CA

## Appendix B: Regional Population and Building Value Data

State	County Name	Population	Building Value (millions of dollars)			
			Residential	Non-Residential	Total	
California	Alameda	1,682,353	209,951	122,639	332,590	
	Amador	40,474	5,608	2,517	8,125	
	Calaveras	45,292	8,305	4,893	13,199	
	Colusa	21,839	2,244	2,024	4,268	
	Contra Costa	1,165,927	158,118	60,339	218,458	
	Fresno	1,008,654	98,532	61,772	160,304	
	Imperial	179,702	20,945	12,603	33,548	
	Inyo	19,016	2,951	1,970	4,921	
	Kern	909,235	87,567	59,168	146,736	
	Kings	152,486	13,719	7,861	21,581	
	Los Angeles	10,014,009	950,697	566,995	1,517,692	
	Madera	156,255	18,025	9,641	27,667	
	Marin	262,321	47,738	15,030	62,769	
	Mariposa	17,131	3,299	1,141	4,441	
	Merced	281,202	25,194	26,098	51,292	
	Mono	13,195	3,293	1,083	4,377	
	Monterey	439,035	47,655	28,750	76,405	
	Napa	138,019	20,517	13,045	33,563	
	Orange	3,186,989	363,381	176,806	540,188	
	Riverside	2,418,185	281,482	137,249	418,731	
	Sacramento	1,585,055	179,811	83,911	263,723	
	San Benito	64,209	9,440	3,799	13,239	
	San Bernardino	2,181,654	225,045	152,557	377,602	
	San Diego	3,298,634	375,834	193,238	569,072	
	San Francisco	873,965	108,848	46,020	154,869	
	San Joaquin	779,233	82,706	56,882	139,589	
	San Luis Obispo	282,424	41,720	20,896	62,616	
	San Mateo	764,442	110,372	44,995	155,368	
	Santa Barbara	448,229	49,971	28,481	78,452	
	Santa Clara	1,936,259	261,111	120,471	381,582	
	Santa Cruz	270,861	36,147	18,805	54,952	
	Solano	453,491	55,802	26,393	82,195	
	Sonoma	488,863	68,827	35,781	104,609	
	Stanislaus	552,878	62,937	37,511	100,449	
	Tulare	473,117	43,262	31,210	74,472	
	Tuolumne	55,620	8,964	3,507	12,471	
	Ventura	843,843	99,299	52,072	151,371	
	Yolo	216,403	24,130	18,343	42,473	
	<b>Total Region</b>		<b>37,720,499</b>	<b>4,213,447</b>	<b>2,286,496</b>	<b>6,499,959</b>



## Building Damage by Count by General Occupancy

June 18, 2024

	# of Buildings					Total
	None	Slight	Moderate	Extensive	Complete	
<b>California</b>						
<b>Alameda</b>						
<i>Government</i>	10,525	3	0	0	0	10,528
<i>Agriculture</i>	422	0	0	0	0	422
<i>Commercial</i>	31,972	16	1	0	0	31,989
<i>Religion</i>	1,985	1	0	0	0	1,986
<i>Single Family</i>	344,172	1	0	0	0	344,173
<i>Other Residential</i>	61,380	15	0	0	0	61,396
<i>Education</i>	1,117	0	0	0	0	1,117
<i>Industrial</i>	10,200	5	0	0	0	10,205
<b>Amador</b>						
<i>Industrial</i>	235	0	0	0	0	235
<i>Single Family</i>	14,962	0	0	0	0	14,962
<i>Other Residential</i>	1,037	0	0	0	0	1,037
<i>Education</i>	23	0	0	0	0	23
<i>Government</i>	32	0	0	0	0	32
<i>Agriculture</i>	44	0	0	0	0	44
<i>Religion</i>	45	0	0	0	0	45
<i>Commercial</i>	1,368	0	0	0	0	1,368
<b>Calaveras</b>						

	# of Buildings					Total
	None	Slight	Moderate	Extensive	Complete	
<i>Government</i>	84	0	0	0	0	84
<i>Other Residential</i>	2,559	0	0	0	0	2,559
<i>Education</i>	35	0	0	0	0	35
<i>Religion</i>	130	0	0	0	0	130
<i>Agriculture</i>	2,207	0	0	0	0	2,207
<i>Commercial</i>	1,413	0	0	0	0	1,413
<i>Industrial</i>	466	0	0	0	0	466
<i>Single Family</i>	22,148	0	0	0	0	22,148
<b>Colusa</b>						
<i>Agriculture</i>	142	0	0	0	0	142
<i>Religion</i>	58	0	0	0	0	58
<i>Commercial</i>	794	0	0	0	0	794
<i>Industrial</i>	113	0	0	0	0	113
<i>Other Residential</i>	954	0	0	0	0	954
<i>Single Family</i>	5,954	0	0	0	0	5,954
<i>Government</i>	32	0	0	0	0	32
<i>Education</i>	33	0	0	0	0	33
<b>Contra Costa</b>						
<i>Commercial</i>	17,990	1	0	0	0	17,991
<i>Agriculture</i>	749	0	0	0	0	749
<i>Religion</i>	1,226	0	0	0	0	1,226
<i>Single Family</i>	281,935	0	0	0	0	281,935
<i>Other Residential</i>	29,122	2	0	0	0	29,124
<i>Industrial</i>	4,749	0	0	0	0	4,749
<i>Government</i>	5,024	0	0	0	0	5,024

		# of Buildings					
		None	Slight	Moderate	Extensive	Complete	Total
<b>Fresno</b>	<i>Education</i>	653	0	0	0	0	653
	<i>Commercial</i>	20,131	749	157	16	2	21,054
	<i>Religion</i>	1,423	66	16	1	0	1,507
	<i>Agriculture</i>	2,963	370	80	8	0	3,421
	<i>Industrial</i>	5,014	267	61	5	0	5,348
	<i>Government</i>	274	15	2	0	0	291
	<i>Other Residential</i>	38,848	1,671	398	51	5	40,973
	<i>Single Family</i>	222,491	3,872	63	0	0	226,425
<b>Imperial</b>	<i>Education</i>	594	7	1	0	0	602
	<i>Religion</i>	289	6	0	0	0	295
	<i>Commercial</i>	3,572	70	4	0	0	3,646
	<i>Agriculture</i>	134	4	0	0	0	138
	<i>Industrial</i>	563	16	1	0	0	580
	<i>Single Family</i>	34,931	473	1	0	0	35,405
	<i>Other Residential</i>	6,828	601	89	0	0	7,518
	<i>Government</i>	199	3	0	0	0	202
<b>Inyo</b>	<i>Education</i>	99	0	0	0	0	99
	<i>Commercial</i>	721	0	0	0	0	721
	<i>Religion</i>	57	0	0	0	0	57
	<i>Agriculture</i>	32	0	0	0	0	32
	<i>Other Residential</i>	4,049	1	0	0	0	4,050
	<i>Education</i>	41	0	0	0	0	41

	# of Buildings					Total
	None	Slight	Moderate	Extensive	Complete	
<i>Government</i>	101	0	0	0	0	101
<i>Industrial</i>	257	0	0	0	0	257
<i>Single Family</i>	4,446	0	0	0	0	4,446
<b>Kern</b>						
<i>Single Family</i>	175,498	27,841	1,768	32	1	205,139
<i>Other Residential</i>	40,009	7,691	4,596	1,915	308	54,520
<i>Industrial</i>	4,515	1,046	396	77	13	6,047
<i>Education</i>	420	32	9	1	0	462
<i>Government</i>	342	69	26	5	0	443
<i>Religion</i>	1,135	222	114	39	15	1,524
<i>Agriculture</i>	3,269	936	350	74	16	4,645
<i>Commercial</i>	12,231	2,276	794	207	58	15,567
<b>Kings</b>						
<i>Commercial</i>	1,965	252	85	15	1	2,318
<i>Religion</i>	176	24	8	2	0	210
<i>Agriculture</i>	253	43	9	1	0	306
<i>Government</i>	64	6	1	0	0	72
<i>Industrial</i>	461	71	21	3	0	555
<i>Single Family</i>	33,588	2,607	50	1	0	36,245
<i>Other Residential</i>	3,527	576	203	34	2	4,342
<i>Education</i>	98	4	0	0	0	103
<b>Los Angeles</b>						
<i>Industrial</i>	40,180	8,546	3,600	733	68	53,126
<i>Single Family</i>	1,514,634	265,637	22,164	651	54	1,803,140
<i>Other Residential</i>	398,740	62,850	14,593	4,404	1,083	481,671

	# of Buildings					Total
	None	Slight	Moderate	Extensive	Complete	
<i>Education</i>	4,845	445	165	28	2	5,486
<i>Commercial</i>	142,013	33,996	12,713	1,964	175	190,861
<i>Agriculture</i>	1,366	408	197	53	9	2,032
<i>Religion</i>	7,556	2,044	881	154	16	10,651
<i>Government</i>	2,171	572	241	44	3	3,031
<b>Madera</b>						
<i>Commercial</i>	2,859	41	5	0	0	2,905
<i>Religion</i>	118	1	0	0	0	119
<i>Government</i>	110	1	0	0	0	111
<i>Agriculture</i>	600	23	10	1	0	634
<i>Other Residential</i>	6,518	107	10	0	0	6,635
<i>Single Family</i>	38,671	241	0	0	0	38,912
<i>Education</i>	115	0	0	0	0	115
<i>Industrial</i>	885	15	3	0	0	903
<b>Marin</b>						
<i>Other Residential</i>	7,890	0	0	0	0	7,890
<i>Government</i>	143	0	0	0	0	143
<i>Education</i>	274	0	0	0	0	274
<i>Commercial</i>	8,270	0	0	0	0	8,270
<i>Religion</i>	319	0	0	0	0	319
<i>Agriculture</i>	190	0	0	0	0	190
<i>Single Family</i>	76,724	0	0	0	0	76,724
<i>Industrial</i>	1,535	0	0	0	0	1,535
<b>Mariposa</b>						
<i>Single Family</i>	8,084	0	0	0	0	8,084

	# of Buildings					Total
	None	Slight	Moderate	Extensive	Complete	
<i>Other Residential</i>	307	0	0	0	0	307
<i>Education</i>	27	0	0	0	0	27
<i>Industrial</i>	94	0	0	0	0	94
<i>Commercial</i>	689	0	0	0	0	689
<i>Agriculture</i>	29	0	0	0	0	29
<i>Religion</i>	36	0	0	0	0	36
<i>Government</i>	33	0	0	0	0	33
<b>Merced</b>						
<i>Education</i>	162	1	0	0	0	163
<i>Government</i>	169	1	0	0	0	171
<i>Commercial</i>	4,701	49	4	0	0	4,754
<i>Agriculture</i>	7,398	198	54	3	0	7,653
<i>Religion</i>	339	5	1	0	0	345
<i>Industrial</i>	1,010	12	1	0	0	1,022
<i>Single Family</i>	63,296	302	0	0	0	63,598
<i>Other Residential</i>	10,606	162	18	1	0	10,787
<b>Mono</b>						
<i>Government</i>	18	0	0	0	0	18
<i>Education</i>	21	0	0	0	0	21
<i>Religion</i>	32	0	0	0	0	32
<i>Agriculture</i>	145	0	0	0	0	145
<i>Commercial</i>	654	0	0	0	0	654
<i>Single Family</i>	7,704	0	0	0	0	7,704
<i>Industrial</i>	108	0	0	0	0	108

	# of Buildings					Total
	None	Slight	Moderate	Extensive	Complete	
<i>Other Residential</i>	1,759	0	0	0	0	1,759
<b>Monterey</b>						
<i>Single Family</i>	89,838	1,025	13	0	0	90,876
<i>Industrial</i>	1,759	66	22	2	0	1,850
<i>Other Residential</i>	18,844	532	353	79	2	19,809
<i>Education</i>	237	2	0	0	0	239
<i>Government</i>	180	4	1	0	0	185
<i>Agriculture</i>	1,320	298	154	37	6	1,815
<i>Commercial</i>	8,965	209	59	12	1	9,246
<i>Religion</i>	558	15	6	1	0	580
<b>Napa</b>						
<i>Commercial</i>	4,021	0	0	0	0	4,021
<i>Agriculture</i>	349	0	0	0	0	349
<i>Religion</i>	148	0	0	0	0	148
<i>Single Family</i>	38,761	0	0	0	0	38,761
<i>Other Residential</i>	6,978	0	0	0	0	6,978
<i>Government</i>	103	0	0	0	0	103
<i>Education</i>	132	0	0	0	0	132
<i>Industrial</i>	1,367	0	0	0	0	1,367
<b>Orange</b>						
<i>Industrial</i>	15,714	2,434	575	67	5	18,795
<i>Other Residential</i>	68,402	12,910	4,183	215	6	85,718
<i>Single Family</i>	652,722	52,717	765	8	0	706,212
<i>Education</i>	1,801	72	13	3	0	1,890
<i>Commercial</i>	58,378	7,733	1,892	320	18	68,340

	# of Buildings					Total
	None	Slight	Moderate	Extensive	Complete	
<i>Religion</i>	1,717	253	72	14	1	2,057
<i>Agriculture</i>	952	135	38	9	1	1,135
<i>Government</i>	534	90	24	3	0	650
<b>Riverside</b>						
<i>Religion</i>	788	361	133	30	7	1,319
<i>Agriculture</i>	1,293	330	76	12	2	1,713
<i>Commercial</i>	28,122	12,950	4,203	883	200	46,357
<i>Single Family</i>	397,757	183,862	22,560	1,042	234	605,455
<i>Industrial</i>	4,354	1,543	427	72	12	6,409
<i>Other Residential</i>	48,309	31,728	21,354	12,932	8,476	122,799
<i>Government</i>	2,793	2,343	1,617	365	56	7,175
<i>Education</i>	781	165	38	5	1	990
<b>Sacramento</b>						
<i>Single Family</i>	386,840	0	0	0	0	386,840
<i>Industrial</i>	6,756	0	0	0	0	6,756
<i>Other Residential</i>	56,412	1	0	0	0	56,413
<i>Education</i>	829	0	0	0	0	829
<i>Agriculture</i>	621	0	0	0	0	621
<i>Religion</i>	1,702	0	0	0	0	1,702
<i>Government</i>	619	0	0	0	0	619
<i>Commercial</i>	26,295	0	0	0	0	26,295
<b>San Benito</b>						
<i>Other Residential</i>	1,352	22	2	0	0	1,375
<i>Single Family</i>	14,647	79	0	0	0	14,726
<i>Industrial</i>	320	5	1	0	0	326

	# of Buildings					Total
	None	Slight	Moderate	Extensive	Complete	
<i>Education</i>	42	0	0	0	0	42
<i>Government</i>	44	1	0	0	0	45
<i>Commercial</i>	1,062	17	2	0	0	1,080
<i>Religion</i>	63	1	0	0	0	64
<i>Agriculture</i>	246	6	1	0	0	253
<b>San Bernardino</b>						
<i>Agriculture</i>	1,038	538	168	48	23	1,815
<i>Commercial</i>	19,007	13,178	5,126	1,819	911	40,041
<i>Religion</i>	990	702	383	174	71	2,320
<i>Single Family</i>	268,552	214,291	39,956	1,888	681	525,367
<i>Industrial</i>	4,986	2,897	1,144	320	127	9,474
<i>Other Residential</i>	38,299	29,339	16,984	9,805	4,394	98,821
<i>Government</i>	637	364	145	68	24	1,238
<i>Education</i>	626	254	87	15	3	985
<b>San Diego</b>						
<i>Single Family</i>	761,525	1,486	8	0	0	763,020
<i>Industrial</i>	14,261	49	2	0	0	14,313
<i>Other Residential</i>	126,207	1,256	96	0	0	127,559
<i>Education</i>	1,930	2	0	0	0	1,932
<i>Religion</i>	3,048	14	1	0	0	3,063
<i>Government</i>	20,804	116	4	0	0	20,924
<i>Agriculture</i>	2,177	12	1	0	0	2,190
<i>Commercial</i>	62,107	250	12	0	0	62,369
<b>San Francisco</b>						
<i>Single Family</i>	150,702	1	0	0	0	150,703

	# of Buildings					Total
	None	Slight	Moderate	Extensive	Complete	
<i>Other Residential</i>	44,527	2	0	0	0	44,529
<i>Government</i>	289	0	0	0	0	289
<i>Education</i>	572	0	0	0	0	572
<i>Industrial</i>	3,860	0	0	0	0	3,860
<i>Commercial</i>	21,341	3	0	0	0	21,344
<i>Religion</i>	1,345	0	0	0	0	1,345
<i>Agriculture</i>	162	0	0	0	0	162
<b>San Joaquin</b>						
<i>Commercial</i>	12,856	8	0	0	0	12,864
<i>Agriculture</i>	752	1	0	0	0	753
<i>Religion</i>	876	1	0	0	0	877
<i>Government</i>	303	1	0	0	0	304
<i>Single Family</i>	188,765	149	8	0	0	188,922
<i>Other Residential</i>	21,783	21	1	0	0	21,805
<i>Education</i>	395	0	0	0	0	395
<i>Industrial</i>	4,925	2	0	0	0	4,928
<b>San Luis Obispo</b>						
<i>Religion</i>	302	43	13	2	0	360
<i>Agriculture</i>	320	72	24	5	0	421
<i>Government</i>	161	20	4	0	0	185
<i>Commercial</i>	7,970	1,063	293	44	5	9,375
<i>Single Family</i>	76,691	8,622	324	1	0	85,639
<i>Industrial</i>	2,096	347	94	15	3	2,556
<i>Other Residential</i>	14,575	3,172	1,672	668	129	20,216
<i>Education</i>	171	10	1	0	0	182

	# of Buildings					Total
	None	Slight	Moderate	Extensive	Complete	
<b>San Mateo</b>						
<i>Religion</i>	736	0	0	0	0	736
<i>Agriculture</i>	539	0	0	0	0	539
<i>Government</i>	298	1	0	0	0	299
<i>Commercial</i>	14,382	13	0	0	0	14,395
<i>Industrial</i>	4,470	2	0	0	0	4,472
<i>Other Residential</i>	22,440	12	1	0	0	22,453
<i>Single Family</i>	159,926	5	0	0	0	159,931
<i>Education</i>	489	0	0	0	0	489
<b>Santa Barbara</b>						
<i>Government</i>	221	16	3	0	0	239
<i>Other Residential</i>	19,434	3,581	1,054	40	1	24,111
<i>Education</i>	290	8	1	0	0	299
<i>Religion</i>	562	49	9	1	0	621
<i>Commercial</i>	8,886	770	151	13	1	9,820
<i>Agriculture</i>	405	47	11	1	0	464
<i>Single Family</i>	93,285	5,624	72	0	0	98,982
<i>Industrial</i>	2,502	267	63	7	0	2,840
<b>Santa Clara</b>						
<i>Other Residential</i>	59,060	95	5	0	0	59,160
<i>Single Family</i>	427,169	49	1	0	0	427,219
<i>Government</i>	498	4	0	0	0	502
<i>Education</i>	1,173	0	0	0	0	1,173
<i>Industrial</i>	9,420	12	1	0	0	9,433
<i>Commercial</i>	35,407	58	4	0	0	35,469

	# of Buildings					Total
	None	Slight	Moderate	Extensive	Complete	
<i>Religion</i>	1,538	2	0	0	0	1,540
<i>Agriculture</i>	893	2	0	0	0	895
<b>Santa Cruz</b>						
<i>Religion</i>	357	2	0	0	0	359
<i>Agriculture</i>	836	4	0	0	0	840
<i>Single Family</i>	68,840	30	0	0	0	68,870
<i>Other Residential</i>	14,832	57	4	0	0	14,892
<i>Industrial</i>	1,810	8	1	0	0	1,819
<i>Education</i>	225	0	0	0	0	225
<i>Commercial</i>	6,667	24	2	0	0	6,694
<i>Government</i>	126	1	0	0	0	127
<b>Solano</b>						
<i>Religion</i>	454	0	0	0	0	454
<i>Agriculture</i>	245	0	0	0	0	245
<i>Government</i>	152	0	0	0	0	152
<i>Commercial</i>	7,268	0	0	0	0	7,268
<i>Single Family</i>	120,968	0	0	0	0	120,968
<i>Industrial</i>	2,101	0	0	0	0	2,101
<i>Other Residential</i>	12,317	0	0	0	0	12,317
<i>Education</i>	225	0	0	0	0	225
<b>Sonoma</b>						
<i>Other Residential</i>	25,033	0	0	0	0	25,033
<i>Government</i>	319	0	0	0	0	319
<i>Education</i>	367	0	0	0	0	367
<i>Religion</i>	576	0	0	0	0	576

	# of Buildings					Total
	None	Slight	Moderate	Extensive	Complete	
<i>Commercial</i>	12,110	0	0	0	0	12,110
<i>Agriculture</i>	1,304	0	0	0	0	1,304
<i>Single Family</i>	142,028	0	0	0	0	142,028
<i>Industrial</i>	3,825	0	0	0	0	3,825
<b>Stanislaus</b>						
<i>Other Residential</i>	19,513	53	3	0	0	19,569
<i>Single Family</i>	142,656	68	0	0	0	142,724
<i>Education</i>	307	0	0	0	0	307
<i>Government</i>	679	1	0	0	0	680
<i>Industrial</i>	3,463	11	1	0	0	3,475
<i>Commercial</i>	10,337	31	2	0	0	10,369
<i>Religion</i>	454	2	0	0	0	456
<i>Agriculture</i>	1,236	3	0	0	0	1,239
<b>Tulare</b>						
<i>Commercial</i>	8,600	237	34	2	0	8,873
<i>Agriculture</i>	3,359	172	23	1	0	3,555
<i>Religion</i>	805	19	2	0	0	827
<i>Government</i>	445	15	1	0	0	461
<i>Single Family</i>	110,522	1,507	4	0	0	112,034
<i>Other Residential</i>	18,983	889	147	3	0	20,022
<i>Industrial</i>	2,067	69	11	1	0	2,148
<i>Education</i>	267	2	0	0	0	269
<b>Tuolumne</b>						
<i>Education</i>	57	0	0	0	0	57
<i>Government</i>	143	0	0	0	0	143

	# of Buildings					Total
	None	Slight	Moderate	Extensive	Complete	
<i>Commercial</i>	1,576	0	0	0	0	1,576
<i>Religion</i>	121	0	0	0	0	121
<i>Agriculture</i>	82	0	0	0	0	82
<i>Industrial</i>	383	0	0	0	0	383
<i>Other Residential</i>	4,962	0	0	0	0	4,962
<i>Single Family</i>	21,645	0	0	0	0	21,645
<b>Ventura</b>						
<i>Agriculture</i>	510	70	15	3	0	598
<i>Religion</i>	1,046	119	21	1	0	1,187
<i>Industrial</i>	5,197	715	163	21	1	6,097
<i>Single Family</i>	188,147	15,639	183	0	0	203,968
<i>Other Residential</i>	20,600	4,082	1,369	110	3	26,163
<i>Education</i>	473	21	3	0	0	497
<i>Government</i>	900	87	12	1	0	1,001
<i>Commercial</i>	13,060	1,502	337	51	2	14,953
<b>Yolo</b>						
<i>Industrial</i>	1,117	0	0	0	0	1,117
<i>Other Residential</i>	9,861	0	0	0	0	9,861
<i>Education</i>	131	0	0	0	0	131
<i>Government</i>	111	0	0	0	0	111
<i>Single Family</i>	42,589	0	0	0	0	42,589
<i>Commercial</i>	4,225	0	0	0	0	4,225
<i>Agriculture</i>	281	0	0	0	0	281
<i>Religion</i>	242	0	0	0	0	242

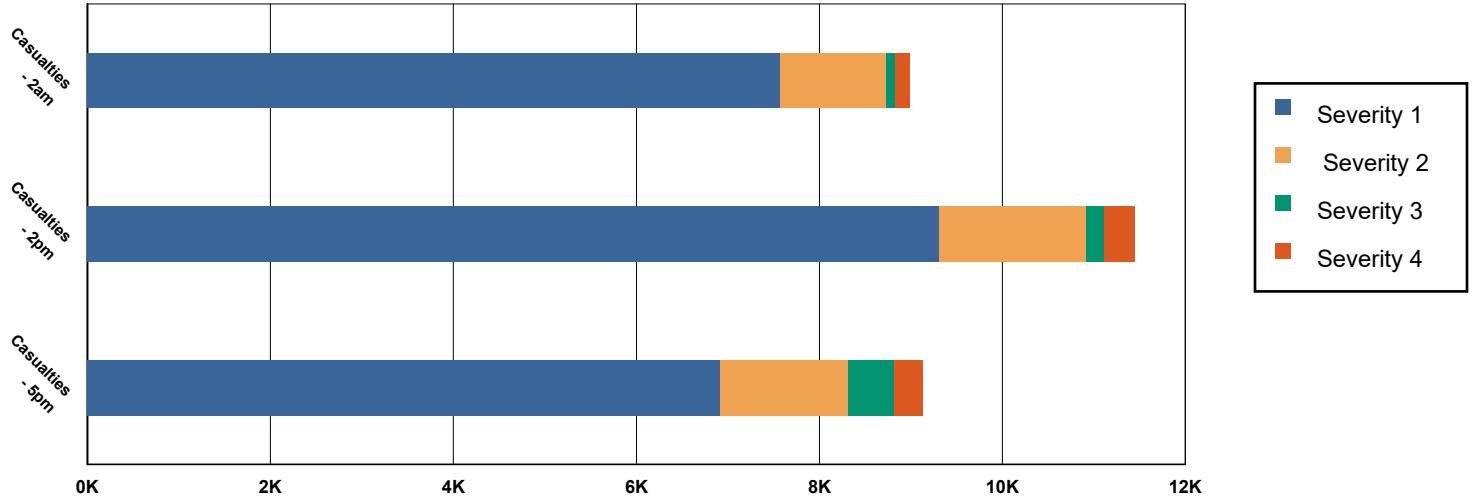
	# of Buildings					Total
	None	Slight	Moderate	Extensive	Complete	
<b>Total</b>	<b>9,613,757</b>	<b>1,053,841</b>	<b>192,821</b>	<b>41,767</b>	<b>17,239</b>	<b>10,919,425</b>
<b>Region Total</b>	<b>9,613,757</b>	<b>1,053,841</b>	<b>192,821</b>	<b>41,767</b>	<b>17,239</b>	<b>10,919,425</b>

*Totals only reflect data for those census tracts/blocks included in the user's study region and will reflect the entire county/state only if all of the census blocks for that county/states were selected at the time of study region creation.*

## Casualties Summary Report

June 18, 2024

### Region Total Casualties



### Injury Severity Level

Severity 1	Severity 2	Severity 3	Severity 4	Total
------------	------------	------------	------------	-------

#### California

##### Alameda

##### Casualties - 2am

	Severity 1	Severity 2	Severity 3	Severity 4	Total
Single Family	0	0	0	0	0
Hotels	0	0	0	0	0
Commuting	0	0	0	0	0
Educational	0	0	0	0	0
Industrial	0	0	0	0	0
Commercial	0	0	0	0	0
Other-Residential	0	0	0	0	0
<b>Total Casualties - 2am</b>	<b>0</b>	<b>0</b>	<b>0</b>	<b>0</b>	<b>0</b>

##### Casualties - 2pm

Industrial	0	0	0	0	0
Educational	0	0	0	0	0
Other-Residential	0	0	0	0	0
Single Family	0	0	0	0	0
Hotels	0	0	0	0	0
Commuting	0	0	0	0	0
Commercial	0	0	0	0	0

	Injury Severity Level				Total
	Severity 1	Severity 2	Severity 3	Severity 4	
<b>California</b>					
<b>Alameda</b>					
<b>Total Casualties - 2pm</b>	<b>0</b>	<b>0</b>	<b>0</b>	<b>0</b>	<b>0</b>
<b>Casualties - 5pm</b>					
<i>Commuting</i>	0	0	0	0	0
<i>Single Family</i>	0	0	0	0	0
<i>Commercial</i>	0	0	0	0	0
<i>Hotels</i>	0	0	0	0	0
<i>Educational</i>	0	0	0	0	0
<i>Industrial</i>	0	0	0	0	0
<i>Other-Residential</i>	0	0	0	0	0
<b>Total Casualties - 5pm</b>	<b>0</b>	<b>0</b>	<b>0</b>	<b>0</b>	<b>0</b>
<b>Amador</b>					
<b>Casualties - 2am</b>					
<i>Commercial</i>	0	0	0	0	0
<i>Other-Residential</i>	0	0	0	0	0
<i>Commuting</i>	0	0	0	0	0
<i>Educational</i>	0	0	0	0	0
<i>Single Family</i>	0	0	0	0	0
<i>Hotels</i>	0	0	0	0	0
<i>Industrial</i>	0	0	0	0	0
<b>Total Casualties - 2am</b>	<b>0</b>	<b>0</b>	<b>0</b>	<b>0</b>	<b>0</b>
<b>Casualties - 2pm</b>					
<i>Single Family</i>	0	0	0	0	0
<i>Hotels</i>	0	0	0	0	0
<i>Educational</i>	0	0	0	0	0
<i>Commuting</i>	0	0	0	0	0
<i>Commercial</i>	0	0	0	0	0
<i>Other-Residential</i>	0	0	0	0	0
<i>Industrial</i>	0	0	0	0	0
<b>Total Casualties - 2pm</b>	<b>0</b>	<b>0</b>	<b>0</b>	<b>0</b>	<b>0</b>
<b>Casualties - 5pm</b>					
<i>Commercial</i>	0	0	0	0	0
<i>Commuting</i>	0	0	0	0	0
<i>Other-Residential</i>	0	0	0	0	0
<i>Single Family</i>	0	0	0	0	0
<i>Educational</i>	0	0	0	0	0
<i>Hotels</i>	0	0	0	0	0
<i>Industrial</i>	0	0	0	0	0
<b>Total Casualties - 5pm</b>	<b>0</b>	<b>0</b>	<b>0</b>	<b>0</b>	<b>0</b>
<b>Calaveras</b>					
<b>Casualties - 2am</b>					
<i>Other-Residential</i>	0	0	0	0	0

	Injury Severity Level				Total
	Severity 1	Severity 2	Severity 3	Severity 4	
<b>California</b>					
<b>Calaveras</b>					
<b>Casualties - 2am</b>					
<i>Commuting</i>	0	0	0	0	0
<i>Commercial</i>	0	0	0	0	0
<i>Single Family</i>	0	0	0	0	0
<i>Hotels</i>	0	0	0	0	0
<i>Educational</i>	0	0	0	0	0
<i>Industrial</i>	0	0	0	0	0
<b>Total Casualties - 2am</b>	<b>0</b>	<b>0</b>	<b>0</b>	<b>0</b>	<b>0</b>
<b>Casualties - 2pm</b>					
<i>Hotels</i>	0	0	0	0	0
<i>Single Family</i>	0	0	0	0	0
<i>Educational</i>	0	0	0	0	0
<i>Commuting</i>	0	0	0	0	0
<i>Commercial</i>	0	0	0	0	0
<i>Industrial</i>	0	0	0	0	0
<i>Other-Residential</i>	0	0	0	0	0
<b>Total Casualties - 2pm</b>	<b>0</b>	<b>0</b>	<b>0</b>	<b>0</b>	<b>0</b>
<b>Casualties - 5pm</b>					
<i>Industrial</i>	0	0	0	0	0
<i>Commercial</i>	0	0	0	0	0
<i>Other-Residential</i>	0	0	0	0	0
<i>Educational</i>	0	0	0	0	0
<i>Hotels</i>	0	0	0	0	0
<i>Commuting</i>	0	0	0	0	0
<i>Single Family</i>	0	0	0	0	0
<b>Total Casualties - 5pm</b>	<b>0</b>	<b>0</b>	<b>0</b>	<b>0</b>	<b>0</b>
<b>Colusa</b>					
<b>Casualties - 2am</b>					
<i>Other-Residential</i>	0	0	0	0	0
<i>Industrial</i>	0	0	0	0	0
<i>Single Family</i>	0	0	0	0	0
<i>Commercial</i>	0	0	0	0	0
<i>Educational</i>	0	0	0	0	0
<i>Commuting</i>	0	0	0	0	0
<i>Hotels</i>	0	0	0	0	0
<b>Total Casualties - 2am</b>	<b>0</b>	<b>0</b>	<b>0</b>	<b>0</b>	<b>0</b>
<b>Casualties - 2pm</b>					
<i>Hotels</i>	0	0	0	0	0
<i>Single Family</i>	0	0	0	0	0
<i>Educational</i>	0	0	0	0	0
<i>Commercial</i>	0	0	0	0	0
<i>Commuting</i>	0	0	0	0	0

	Injury Severity Level				Total
	Severity 1	Severity 2	Severity 3	Severity 4	
<b>California</b>					
<b>Colusa</b>					
<b>Casualties - 2pm</b>					
Other-Residential	0	0	0	0	0
Industrial	0	0	0	0	0
<b>Total Casualties - 2pm</b>	<b>0</b>	<b>0</b>	<b>0</b>	<b>0</b>	<b>0</b>
<b>Casualties - 5pm</b>					
Industrial	0	0	0	0	0
Commercial	0	0	0	0	0
Other-Residential	0	0	0	0	0
Commuting	0	0	0	0	0
Single Family	0	0	0	0	0
Educational	0	0	0	0	0
Hotels	0	0	0	0	0
<b>Total Casualties - 5pm</b>	<b>0</b>	<b>0</b>	<b>0</b>	<b>0</b>	<b>0</b>
<b>Contra Costa</b>					
<b>Casualties - 2am</b>					
Educational	0	0	0	0	0
Hotels	0	0	0	0	0
Industrial	0	0	0	0	0
Other-Residential	0	0	0	0	0
Single Family	0	0	0	0	0
Commercial	0	0	0	0	0
Commuting	0	0	0	0	0
<b>Total Casualties - 2am</b>	<b>0</b>	<b>0</b>	<b>0</b>	<b>0</b>	<b>0</b>
<b>Casualties - 2pm</b>					
Other-Residential	0	0	0	0	0
Industrial	0	0	0	0	0
Hotels	0	0	0	0	0
Single Family	0	0	0	0	0
Educational	0	0	0	0	0
Commuting	0	0	0	0	0
Commercial	0	0	0	0	0
<b>Total Casualties - 2pm</b>	<b>0</b>	<b>0</b>	<b>0</b>	<b>0</b>	<b>0</b>
<b>Casualties - 5pm</b>					
Educational	0	0	0	0	0
Commuting	0	0	0	0	0
Single Family	0	0	0	0	0
Hotels	0	0	0	0	0
Industrial	0	0	0	0	0
Other-Residential	0	0	0	0	0
Commercial	0	0	0	0	0
<b>Total Casualties - 5pm</b>	<b>0</b>	<b>0</b>	<b>0</b>	<b>0</b>	<b>0</b>

	Injury Severity Level				Total
	Severity 1	Severity 2	Severity 3	Severity 4	
<b>California</b>					
<b>Fresno</b>					
<b>Casualties - 2am</b>					
<i>Hotels</i>	0	0	0	0	0
<i>Educational</i>	0	0	0	0	0
<i>Industrial</i>	0	0	0	0	0
<i>Commercial</i>	0	0	0	0	0
<i>Other-Residential</i>	13	1	0	0	15
<i>Single Family</i>	7	0	0	0	7
<i>Commuting</i>	0	0	0	0	0
<b>Total Casualties - 2am</b>	<b>20</b>	<b>2</b>	<b>0</b>	<b>0</b>	<b>22</b>
<b>Casualties - 2pm</b>					
<i>Commercial</i>	22	2	0	0	25
<i>Other-Residential</i>	5	1	0	0	5
<i>Industrial</i>	2	0	0	0	2
<i>Single Family</i>	2	0	0	0	2
<i>Hotels</i>	0	0	0	0	0
<i>Commuting</i>	0	0	0	0	0
<i>Educational</i>	6	1	0	0	7
<b>Total Casualties - 2pm</b>	<b>36</b>	<b>3</b>	<b>0</b>	<b>0</b>	<b>41</b>
<b>Casualties - 5pm</b>					
<i>Educational</i>	1	0	0	0	1
<i>Commuting</i>	0	0	0	0	1
<i>Hotels</i>	0	0	0	0	0
<i>Industrial</i>	1	0	0	0	1
<i>Single Family</i>	2	0	0	0	2
<i>Other-Residential</i>	5	1	0	0	6
<i>Commercial</i>	16	2	0	0	18
<b>Total Casualties - 5pm</b>	<b>25</b>	<b>3</b>	<b>1</b>	<b>0</b>	<b>29</b>
<b>Imperial</b>					
<b>Casualties - 2am</b>					
<i>Commercial</i>	0	0	0	0	0
<i>Other-Residential</i>	1	0	0	0	1
<i>Educational</i>	0	0	0	0	0
<i>Single Family</i>	1	0	0	0	1
<i>Commuting</i>	0	0	0	0	0
<i>Hotels</i>	0	0	0	0	0
<i>Industrial</i>	0	0	0	0	0
<b>Total Casualties - 2am</b>	<b>2</b>	<b>0</b>	<b>0</b>	<b>0</b>	<b>2</b>
<b>Casualties - 2pm</b>					
<i>Educational</i>	0	0	0	0	0
<i>Industrial</i>	0	0	0	0	0
<i>Hotels</i>	0	0	0	0	0
<i>Other-Residential</i>	0	0	0	0	0

	Injury Severity Level				Total
	Severity 1	Severity 2	Severity 3	Severity 4	
<b>California</b>					
<b>Imperial</b>					
<b>Casualties - 2pm</b>					
Single Family	0	0	0	0	0
Commercial	1	0	0	0	1
Commuting	0	0	0	0	0
<b>Total Casualties - 2pm</b>	<b>2</b>	<b>0</b>	<b>0</b>	<b>0</b>	<b>2</b>
<b>Casualties - 5pm</b>					
Single Family	0	0	0	0	0
Other-Residential	0	0	0	0	0
Commercial	1	0	0	0	1
Commuting	0	0	0	0	0
Educational	0	0	0	0	0
Hotels	0	0	0	0	0
Industrial	0	0	0	0	0
<b>Total Casualties - 5pm</b>	<b>1</b>	<b>0</b>	<b>0</b>	<b>0</b>	<b>1</b>
<b>Inyo</b>					
<b>Casualties - 2am</b>					
Single Family	0	0	0	0	0
Commercial	0	0	0	0	0
Commuting	0	0	0	0	0
Educational	0	0	0	0	0
Hotels	0	0	0	0	0
Other-Residential	0	0	0	0	0
Industrial	0	0	0	0	0
<b>Total Casualties - 2am</b>	<b>0</b>	<b>0</b>	<b>0</b>	<b>0</b>	<b>0</b>
<b>Casualties - 2pm</b>					
Industrial	0	0	0	0	0
Hotels	0	0	0	0	0
Commercial	0	0	0	0	0
Other-Residential	0	0	0	0	0
Single Family	0	0	0	0	0
Commuting	0	0	0	0	0
Educational	0	0	0	0	0
<b>Total Casualties - 2pm</b>	<b>0</b>	<b>0</b>	<b>0</b>	<b>0</b>	<b>0</b>
<b>Casualties - 5pm</b>					
Other-Residential	0	0	0	0	0
Single Family	0	0	0	0	0
Commercial	0	0	0	0	0
Educational	0	0	0	0	0
Hotels	0	0	0	0	0
Commuting	0	0	0	0	0
Industrial	0	0	0	0	0

	Injury Severity Level				Total
	Severity 1	Severity 2	Severity 3	Severity 4	
<b>California</b>					
<b>Inyo</b>					
<b>Total Casualties - 5pm</b>	<b>0</b>	<b>0</b>	<b>0</b>	<b>0</b>	<b>0</b>
<b>Kern</b>					
<b>Casualties - 2am</b>					
<i>Commercial</i>	2	0	0	0	3
<i>Commuting</i>	0	0	0	0	0
<i>Educational</i>	0	0	0	0	0
<i>Single Family</i>	49	1	0	0	50
<i>Other-Residential</i>	163	28	2	4	197
<i>Hotels</i>	0	0	0	0	0
<i>Industrial</i>	3	1	0	0	4
<b>Total Casualties - 2am</b>	<b>217</b>	<b>30</b>	<b>3</b>	<b>5</b>	<b>255</b>
<b>Casualties - 2pm</b>					
<i>Educational</i>	30	3	0	0	34
<i>Commuting</i>	0	0	0	0	1
<i>Single Family</i>	15	0	0	0	15
<i>Hotels</i>	0	0	0	0	0
<i>Other-Residential</i>	56	10	1	2	68
<i>Commercial</i>	190	37	5	9	242
<i>Industrial</i>	22	4	1	1	28
<b>Total Casualties - 2pm</b>	<b>314</b>	<b>55</b>	<b>7</b>	<b>12</b>	<b>388</b>
<b>Casualties - 5pm</b>					
<i>Single Family</i>	18	1	0	0	18
<i>Commercial</i>	136	27	4	7	174
<i>Other-Residential</i>	60	10	1	2	73
<i>Commuting</i>	2	3	5	1	10
<i>Educational</i>	4	0	0	0	5
<i>Hotels</i>	0	0	0	0	0
<i>Industrial</i>	14	3	0	1	18
<b>Total Casualties - 5pm</b>	<b>234</b>	<b>44</b>	<b>10</b>	<b>10</b>	<b>298</b>
<b>Kings</b>					
<b>Casualties - 2am</b>					
<i>Industrial</i>	0	0	0	0	0
<i>Other-Residential</i>	8	1	0	0	9
<i>Educational</i>	0	0	0	0	0
<i>Commuting</i>	0	0	0	0	0
<i>Commercial</i>	0	0	0	0	0
<i>Single Family</i>	4	0	0	0	5
<i>Hotels</i>	0	0	0	0	0
<b>Total Casualties - 2am</b>	<b>13</b>	<b>1</b>	<b>0</b>	<b>0</b>	<b>13</b>
<b>Casualties - 2pm</b>					
<i>Single Family</i>	1	0	0	0	1

	Injury Severity Level				Total
	Severity 1	Severity 2	Severity 3	Severity 4	
<b>California</b>					
<b>Kings</b>					
<b>Casualties - 2pm</b>					
<i>Other-Residential</i>	3	0	0	0	3
<i>Commercial</i>	9	1	0	0	11
<i>Educational</i>	2	0	0	0	2
<i>Commuting</i>	0	0	0	0	0
<i>Hotels</i>	0	0	0	0	0
<i>Industrial</i>	1	0	0	0	1
<b>Total Casualties - 2pm</b>	<b>16</b>	<b>2</b>	<b>0</b>	<b>0</b>	<b>18</b>
<b>Casualties - 5pm</b>					
<i>Single Family</i>	2	0	0	0	2
<i>Commercial</i>	8	1	0	0	9
<i>Commuting</i>	0	0	0	0	0
<i>Other-Residential</i>	3	0	0	0	3
<i>Educational</i>	0	0	0	0	0
<i>Hotels</i>	0	0	0	0	0
<i>Industrial</i>	1	0	0	0	1
<b>Total Casualties - 5pm</b>	<b>13</b>	<b>1</b>	<b>0</b>	<b>0</b>	<b>15</b>
<b>Los Angeles</b>					
<b>Casualties - 2am</b>					
<i>Hotels</i>	1	0	0	0	2
<i>Industrial</i>	24	3	0	1	28
<i>Educational</i>	0	0	0	0	0
<i>Single Family</i>	626	27	1	1	655
<i>Commuting</i>	0	0	0	0	1
<i>Other-Residential</i>	1,121	128	7	12	1,268
<i>Commercial</i>	22	3	0	0	26
<b>Total Casualties - 2am</b>	<b>1,796</b>	<b>161</b>	<b>8</b>	<b>14</b>	<b>1,979</b>
<b>Casualties - 2pm</b>					
<i>Industrial</i>	177	24	2	4	207
<i>Other-Residential</i>	342	39	2	4	387
<i>Commercial</i>	1,527	188	14	26	1,755
<i>Commuting</i>	1	2	3	1	7
<i>Educational</i>	670	87	7	13	777
<i>Single Family</i>	172	8	0	0	181
<i>Hotels</i>	0	0	0	0	0
<b>Total Casualties - 2pm</b>	<b>2,889</b>	<b>348</b>	<b>28</b>	<b>48</b>	<b>3,314</b>
<b>Casualties - 5pm</b>					
<i>Other-Residential</i>	421	48	3	4	476
<i>Industrial</i>	110	15	1	2	129
<i>Commuting</i>	25	34	58	11	129
<i>Single Family</i>	229	10	0	1	240
<i>Commercial</i>	1,089	139	11	21	1,260

	Injury Severity Level				Total
	Severity 1	Severity 2	Severity 3	Severity 4	
<b>California</b>					
<b>Los Angeles</b>					
<b>Casualties - 5pm</b>					
<i>Hotels</i>	0	0	0	0	0
<i>Educational</i>	160	21	2	4	187
<b>Total Casualties - 5pm</b>	<b>2,034</b>	<b>269</b>	<b>75</b>	<b>43</b>	<b>2,421</b>
<b>Madera</b>					
<b>Casualties - 2am</b>					
<i>Hotels</i>	0	0	0	0	0
<i>Educational</i>	0	0	0	0	0
<i>Single Family</i>	0	0	0	0	0
<i>Commuting</i>	0	0	0	0	0
<i>Industrial</i>	0	0	0	0	0
<i>Commercial</i>	0	0	0	0	0
<i>Other-Residential</i>	1	0	0	0	1
<b>Total Casualties - 2am</b>	<b>1</b>	<b>0</b>	<b>0</b>	<b>0</b>	<b>1</b>
<b>Casualties - 2pm</b>					
<i>Industrial</i>	0	0	0	0	0
<i>Commercial</i>	1	0	0	0	1
<i>Other-Residential</i>	0	0	0	0	0
<i>Commuting</i>	0	0	0	0	0
<i>Single Family</i>	0	0	0	0	0
<i>Hotels</i>	0	0	0	0	0
<i>Educational</i>	0	0	0	0	0
<b>Total Casualties - 2pm</b>	<b>2</b>	<b>0</b>	<b>0</b>	<b>0</b>	<b>2</b>
<b>Casualties - 5pm</b>					
<i>Industrial</i>	0	0	0	0	0
<i>Commercial</i>	1	0	0	0	1
<i>Single Family</i>	0	0	0	0	0
<i>Educational</i>	0	0	0	0	0
<i>Other-Residential</i>	0	0	0	0	0
<i>Commuting</i>	0	0	0	0	0
<i>Hotels</i>	0	0	0	0	0
<b>Total Casualties - 5pm</b>	<b>1</b>	<b>0</b>	<b>0</b>	<b>0</b>	<b>1</b>
<b>Marin</b>					
<b>Casualties - 2am</b>					
<i>Commercial</i>	0	0	0	0	0
<i>Commuting</i>	0	0	0	0	0
<i>Other-Residential</i>	0	0	0	0	0
<i>Educational</i>	0	0	0	0	0
<i>Single Family</i>	0	0	0	0	0
<i>Hotels</i>	0	0	0	0	0
<i>Industrial</i>	0	0	0	0	0

	Injury Severity Level				Total
	Severity 1	Severity 2	Severity 3	Severity 4	
<b>California</b>					
<b>Marin</b>					
<b>Total Casualties - 2am</b>	<b>0</b>	<b>0</b>	<b>0</b>	<b>0</b>	<b>0</b>
<b>Casualties - 2pm</b>					
<i>Hotels</i>	0	0	0	0	0
<i>Commuting</i>	0	0	0	0	0
<i>Educational</i>	0	0	0	0	0
<i>Industrial</i>	0	0	0	0	0
<i>Other-Residential</i>	0	0	0	0	0
<i>Commercial</i>	0	0	0	0	0
<i>Single Family</i>	0	0	0	0	0
<b>Total Casualties - 2pm</b>	<b>0</b>	<b>0</b>	<b>0</b>	<b>0</b>	<b>0</b>
<b>Casualties - 5pm</b>					
<i>Commuting</i>	0	0	0	0	0
<i>Commercial</i>	0	0	0	0	0
<i>Other-Residential</i>	0	0	0	0	0
<i>Single Family</i>	0	0	0	0	0
<i>Industrial</i>	0	0	0	0	0
<i>Educational</i>	0	0	0	0	0
<i>Hotels</i>	0	0	0	0	0
<b>Total Casualties - 5pm</b>	<b>0</b>	<b>0</b>	<b>0</b>	<b>0</b>	<b>0</b>
<b>Mariposa</b>					
<b>Casualties - 2am</b>					
<i>Commuting</i>	0	0	0	0	0
<i>Single Family</i>	0	0	0	0	0
<i>Commercial</i>	0	0	0	0	0
<i>Hotels</i>	0	0	0	0	0
<i>Educational</i>	0	0	0	0	0
<i>Industrial</i>	0	0	0	0	0
<i>Other-Residential</i>	0	0	0	0	0
<b>Total Casualties - 2am</b>	<b>0</b>	<b>0</b>	<b>0</b>	<b>0</b>	<b>0</b>
<b>Casualties - 2pm</b>					
<i>Hotels</i>	0	0	0	0	0
<i>Industrial</i>	0	0	0	0	0
<i>Commercial</i>	0	0	0	0	0
<i>Other-Residential</i>	0	0	0	0	0
<i>Educational</i>	0	0	0	0	0
<i>Commuting</i>	0	0	0	0	0
<i>Single Family</i>	0	0	0	0	0
<b>Total Casualties - 2pm</b>	<b>0</b>	<b>0</b>	<b>0</b>	<b>0</b>	<b>0</b>
<b>Casualties - 5pm</b>					
<i>Other-Residential</i>	0	0	0	0	0
<i>Educational</i>	0	0	0	0	0

	Injury Severity Level				Total
	Severity 1	Severity 2	Severity 3	Severity 4	
<b>California</b>					
<b>Mariposa</b>					
<b>Casualties - 5pm</b>					
<i>Commuting</i>	0	0	0	0	0
<i>Hotels</i>	0	0	0	0	0
<i>Single Family</i>	0	0	0	0	0
<i>Commercial</i>	0	0	0	0	0
<i>Industrial</i>	0	0	0	0	0
<b>Total Casualties - 5pm</b>	<b>0</b>	<b>0</b>	<b>0</b>	<b>0</b>	<b>0</b>
<b>Merced</b>					
<b>Casualties - 2am</b>					
<i>Hotels</i>	0	0	0	0	0
<i>Industrial</i>	0	0	0	0	0
<i>Commercial</i>	0	0	0	0	0
<i>Single Family</i>	0	0	0	0	0
<i>Other-Residential</i>	0	0	0	0	1
<i>Educational</i>	0	0	0	0	0
<i>Commuting</i>	0	0	0	0	0
<b>Total Casualties - 2am</b>	<b>1</b>	<b>0</b>	<b>0</b>	<b>0</b>	<b>1</b>
<b>Casualties - 2pm</b>					
<i>Other-Residential</i>	0	0	0	0	0
<i>Industrial</i>	0	0	0	0	0
<i>Commercial</i>	3	0	0	0	4
<i>Commuting</i>	0	0	0	0	0
<i>Hotels</i>	0	0	0	0	0
<i>Educational</i>	0	0	0	0	0
<i>Single Family</i>	0	0	0	0	0
<b>Total Casualties - 2pm</b>	<b>4</b>	<b>0</b>	<b>0</b>	<b>0</b>	<b>4</b>
<b>Casualties - 5pm</b>					
<i>Industrial</i>	0	0	0	0	0
<i>Hotels</i>	0	0	0	0	0
<i>Educational</i>	0	0	0	0	0
<i>Commuting</i>	0	0	0	0	0
<i>Single Family</i>	0	0	0	0	0
<i>Commercial</i>	3	0	0	0	3
<i>Other-Residential</i>	0	0	0	0	0
<b>Total Casualties - 5pm</b>	<b>3</b>	<b>0</b>	<b>0</b>	<b>0</b>	<b>3</b>
<b>Mono</b>					
<b>Casualties - 2am</b>					
<i>Other-Residential</i>	0	0	0	0	0
<i>Industrial</i>	0	0	0	0	0
<i>Commercial</i>	0	0	0	0	0
<i>Single Family</i>	0	0	0	0	0
<i>Educational</i>	0	0	0	0	0

	Injury Severity Level				Total
	Severity 1	Severity 2	Severity 3	Severity 4	
<b>California</b>					
<b>Mono</b>					
<b>Casualties - 2am</b>					
Commuting	0	0	0	0	0
Hotels	0	0	0	0	0
<b>Total Casualties - 2am</b>	<b>0</b>	<b>0</b>	<b>0</b>	<b>0</b>	<b>0</b>
<b>Casualties - 2pm</b>					
Commercial	0	0	0	0	0
Commuting	0	0	0	0	0
Other-Residential	0	0	0	0	0
Educational	0	0	0	0	0
Single Family	0	0	0	0	0
Hotels	0	0	0	0	0
Industrial	0	0	0	0	0
<b>Total Casualties - 2pm</b>	<b>0</b>	<b>0</b>	<b>0</b>	<b>0</b>	<b>0</b>
<b>Casualties - 5pm</b>					
Industrial	0	0	0	0	0
Commuting	0	0	0	0	0
Hotels	0	0	0	0	0
Other-Residential	0	0	0	0	0
Educational	0	0	0	0	0
Single Family	0	0	0	0	0
Commercial	0	0	0	0	0
<b>Total Casualties - 5pm</b>	<b>0</b>	<b>0</b>	<b>0</b>	<b>0</b>	<b>0</b>
<b>Monterey</b>					
<b>Casualties - 2am</b>					
Other-Residential	7	1	0	0	7
Commuting	0	0	0	0	0
Commercial	0	0	0	0	0
Single Family	2	0	0	0	2
Hotels	0	0	0	0	0
Educational	0	0	0	0	0
Industrial	0	0	0	0	0
<b>Total Casualties - 2am</b>	<b>9</b>	<b>1</b>	<b>0</b>	<b>0</b>	<b>9</b>
<b>Casualties - 2pm</b>					
Commuting	0	0	0	0	0
Commercial	17	3	0	0	20
Single Family	1	0	0	0	1
Hotels	0	0	0	0	0
Educational	2	0	0	0	2
Industrial	1	0	0	0	1
Other-Residential	2	0	0	0	3
<b>Total Casualties - 2pm</b>	<b>22</b>	<b>3</b>	<b>0</b>	<b>0</b>	<b>26</b>

	Injury Severity Level				Total
	Severity 1	Severity 2	Severity 3	Severity 4	
<b>California</b>					
<b>Monterey</b>					
<b>Casualties - 5pm</b>					
Commercial	13	2	0	0	16
Other-Residential	2	0	0	0	3
Industrial	0	0	0	0	0
Hotels	0	0	0	0	0
Educational	0	0	0	0	0
Commuting	0	0	0	0	1
Single Family	1	0	0	0	1
<b>Total Casualties - 5pm</b>	<b>17</b>	<b>3</b>	<b>1</b>	<b>0</b>	<b>21</b>
<b>Napa</b>					
<b>Casualties - 2am</b>					
Commercial	0	0	0	0	0
Other-Residential	0	0	0	0	0
Educational	0	0	0	0	0
Single Family	0	0	0	0	0
Commuting	0	0	0	0	0
Hotels	0	0	0	0	0
Industrial	0	0	0	0	0
<b>Total Casualties - 2am</b>	<b>0</b>	<b>0</b>	<b>0</b>	<b>0</b>	<b>0</b>
<b>Casualties - 2pm</b>					
Educational	0	0	0	0	0
Hotels	0	0	0	0	0
Commuting	0	0	0	0	0
Industrial	0	0	0	0	0
Other-Residential	0	0	0	0	0
Single Family	0	0	0	0	0
Commercial	0	0	0	0	0
<b>Total Casualties - 2pm</b>	<b>0</b>	<b>0</b>	<b>0</b>	<b>0</b>	<b>0</b>
<b>Casualties - 5pm</b>					
Commercial	0	0	0	0	0
Single Family	0	0	0	0	0
Other-Residential	0	0	0	0	0
Commuting	0	0	0	0	0
Industrial	0	0	0	0	0
Educational	0	0	0	0	0
Hotels	0	0	0	0	0
<b>Total Casualties - 5pm</b>	<b>0</b>	<b>0</b>	<b>0</b>	<b>0</b>	<b>0</b>
<b>Orange</b>					
<b>Casualties - 2am</b>					
Hotels	0	0	0	0	0
Commuting	0	0	0	0	0
Educational	0	0	0	0	0

## Injury Severity Level

Severity 1      Severity 2      Severity 3      Severity 4      Total

### California

#### Orange

##### Casualties - 2am

	Severity 1	Severity 2	Severity 3	Severity 4	Total
<i>Industrial</i>	5	0	0	0	5
<i>Other-Residential</i>	124	11	0	1	136
<i>Commercial</i>	3	0	0	0	3
<i>Single Family</i>	97	1	0	0	98
<b>Total Casualties - 2am</b>	<b>229</b>	<b>12</b>	<b>1</b>	<b>1</b>	<b>243</b>

##### Casualties - 2pm

<i>Industrial</i>	36	3	0	0	40
<i>Other-Residential</i>	34	3	0	0	38
<i>Commuting</i>	0	0	0	0	1
<i>Commercial</i>	192	19	1	2	214
<i>Single Family</i>	26	0	0	0	26
<i>Hotels</i>	0	0	0	0	0
<i>Educational</i>	81	8	0	1	90
<b>Total Casualties - 2pm</b>	<b>369</b>	<b>33</b>	<b>2</b>	<b>4</b>	<b>408</b>

##### Casualties - 5pm

<i>Hotels</i>	0	0	0	0	0
<i>Educational</i>	16	1	0	0	17
<i>Commuting</i>	3	3	6	1	12
<i>Single Family</i>	35	0	0	0	35
<i>Commercial</i>	136	14	1	2	152
<i>Other-Residential</i>	45	4	0	0	50
<i>Industrial</i>	22	2	0	0	25
<b>Total Casualties - 5pm</b>	<b>257</b>	<b>25</b>	<b>7</b>	<b>3</b>	<b>291</b>

#### Riverside

##### Casualties - 2am

<i>Industrial</i>	5	1	0	0	6
<i>Commercial</i>	11	2	0	0	14
<i>Other-Residential</i>	1,770	362	23	38	2,193
<i>Educational</i>	0	0	0	0	0
<i>Commuting</i>	0	0	1	0	1
<i>Single Family</i>	497	46	4	9	556
<i>Hotels</i>	1	0	0	0	1
<b>Total Casualties - 2am</b>	<b>2,284</b>	<b>411</b>	<b>28</b>	<b>48</b>	<b>2,771</b>

##### Casualties - 2pm

<i>Commercial</i>	760	135	16	30	940
<i>Other-Residential</i>	635	132	9	15	791
<i>Educational</i>	188	26	2	4	221
<i>Single Family</i>	163	17	2	3	185
<i>Commuting</i>	3	3	6	1	13
<i>Hotels</i>	0	0	0	0	0
<i>Industrial</i>	38	6	1	1	45

	Injury Severity Level				Total
	Severity 1	Severity 2	Severity 3	Severity 4	
<b>California</b>					
<b>Riverside</b>					
<b>Total Casualties - 2pm</b>	<b>1,786</b>	<b>319</b>	<b>35</b>	<b>55</b>	<b>2,194</b>
<b>Casualties - 5pm</b>					
<i>Industrial</i>	23	4	0	1	28
<i>Other-Residential</i>	635	130	8	14	788
<i>Educational</i>	21	2	0	0	23
<i>Single Family</i>	185	18	2	4	209
<i>Hotels</i>	0	0	0	0	0
<i>Commercial</i>	514	92	11	21	638
<i>Commuting</i>	44	57	98	19	218
<b>Total Casualties - 5pm</b>	<b>1,423</b>	<b>304</b>	<b>120</b>	<b>58</b>	<b>1,905</b>
<b>Sacramento</b>					
<b>Casualties - 2am</b>					
<i>Industrial</i>	0	0	0	0	0
<i>Other-Residential</i>	0	0	0	0	0
<i>Commercial</i>	0	0	0	0	0
<i>Single Family</i>	0	0	0	0	0
<i>Hotels</i>	0	0	0	0	0
<i>Commuting</i>	0	0	0	0	0
<i>Educational</i>	0	0	0	0	0
<b>Total Casualties - 2am</b>	<b>0</b>	<b>0</b>	<b>0</b>	<b>0</b>	<b>0</b>
<b>Casualties - 2pm</b>					
<i>Other-Residential</i>	0	0	0	0	0
<i>Commuting</i>	0	0	0	0	0
<i>Single Family</i>	0	0	0	0	0
<i>Commercial</i>	0	0	0	0	0
<i>Hotels</i>	0	0	0	0	0
<i>Educational</i>	0	0	0	0	0
<i>Industrial</i>	0	0	0	0	0
<b>Total Casualties - 2pm</b>	<b>0</b>	<b>0</b>	<b>0</b>	<b>0</b>	<b>0</b>
<b>Casualties - 5pm</b>					
<i>Industrial</i>	0	0	0	0	0
<i>Educational</i>	0	0	0	0	0
<i>Hotels</i>	0	0	0	0	0
<i>Commercial</i>	0	0	0	0	0
<i>Commuting</i>	0	0	0	0	0
<i>Other-Residential</i>	0	0	0	0	0
<i>Single Family</i>	0	0	0	0	0
<b>Total Casualties - 5pm</b>	<b>0</b>	<b>0</b>	<b>0</b>	<b>0</b>	<b>0</b>
<b>San Benito</b>					
<b>Casualties - 2am</b>					
<i>Other-Residential</i>	0	0	0	0	0

### Injury Severity Level

Severity 1      Severity 2      Severity 3      Severity 4      Total

#### California

##### San Benito

###### Casualties - 2am

<i>Commercial</i>	0	0	0	0	0
<i>Commuting</i>	0	0	0	0	0
<i>Hotels</i>	0	0	0	0	0
<i>Educational</i>	0	0	0	0	0
<i>Single Family</i>	0	0	0	0	0
<i>Industrial</i>	0	0	0	0	0

**Total Casualties - 2am      0      0      0      0      0**

###### Casualties - 2pm

<i>Hotels</i>	0	0	0	0	0
<i>Educational</i>	0	0	0	0	0
<i>Industrial</i>	0	0	0	0	0
<i>Other-Residential</i>	0	0	0	0	0
<i>Commercial</i>	0	0	0	0	0
<i>Commuting</i>	0	0	0	0	0
<i>Single Family</i>	0	0	0	0	0

**Total Casualties - 2pm      0      0      0      0      0**

###### Casualties - 5pm

<i>Commuting</i>	0	0	0	0	0
<i>Commercial</i>	0	0	0	0	0
<i>Other-Residential</i>	0	0	0	0	0
<i>Single Family</i>	0	0	0	0	0
<i>Industrial</i>	0	0	0	0	0
<i>Educational</i>	0	0	0	0	0
<i>Hotels</i>	0	0	0	0	0

**Total Casualties - 5pm      0      0      0      0      0**

##### San Bernardino

###### Casualties - 2am

<i>Hotels</i>	1	0	0	0	1
<i>Single Family</i>	936	130	15	29	1,111
<i>Commercial</i>	25	6	1	2	34
<i>Commuting</i>	1	1	1	0	3
<i>Educational</i>	0	0	0	0	0
<i>Other-Residential</i>	1,865	394	33	60	2,352
<i>Industrial</i>	20	5	1	1	26

**Total Casualties - 2am      2,847      536      51      93      3,526**

###### Casualties - 2pm

<i>Industrial</i>	146	34	4	9	193
<i>Hotels</i>	0	0	0	0	0
<i>Commuting</i>	5	7	12	2	27
<i>Other-Residential</i>	571	122	11	19	722
<i>Educational</i>	845	175	23	44	1,087

	Injury Severity Level				Total
	Severity 1	Severity 2	Severity 3	Severity 4	
<b>California</b>					
<b>San Bernardino</b>					
<b>Casualties - 2pm</b>					
Single Family	276	41	5	9	331
Commercial	1,844	457	66	129	2,496
<b>Total Casualties - 2pm</b>	<b>3,687</b>	<b>836</b>	<b>121</b>	<b>212</b>	<b>4,856</b>
<b>Casualties - 5pm</b>					
Other-Residential	689	147	13	23	872
Commercial	1,385	345	51	97	1,877
Single Family	356	52	6	12	427
Educational	163	34	4	9	210
Hotels	0	0	0	0	0
Commuting	93	133	214	42	482
Industrial	91	21	3	5	120
<b>Total Casualties - 5pm</b>	<b>2,777</b>	<b>732</b>	<b>291</b>	<b>188</b>	<b>3,988</b>
<b>San Diego</b>					
<b>Casualties - 2am</b>					
Commercial	0	0	0	0	0
Other-Residential	3	0	0	0	3
Commuting	0	0	0	0	0
Educational	0	0	0	0	0
Single Family	2	0	0	0	2
Industrial	0	0	0	0	0
Hotels	0	0	0	0	0
<b>Total Casualties - 2am</b>	<b>5</b>	<b>0</b>	<b>0</b>	<b>0</b>	<b>5</b>
<b>Casualties - 2pm</b>					
Hotels	0	0	0	0	0
Educational	1	0	0	0	1
Commuting	0	0	0	0	0
Commercial	8	0	0	0	8
Other-Residential	1	0	0	0	1
Single Family	1	0	0	0	1
Industrial	0	0	0	0	0
<b>Total Casualties - 2pm</b>	<b>11</b>	<b>0</b>	<b>0</b>	<b>0</b>	<b>11</b>
<b>Casualties - 5pm</b>					
Other-Residential	1	0	0	0	1
Commercial	5	0	0	0	5
Commuting	0	0	0	0	0
Single Family	1	0	0	0	1
Educational	0	0	0	0	0
Hotels	0	0	0	0	0
Industrial	0	0	0	0	0
<b>Total Casualties - 5pm</b>	<b>7</b>	<b>0</b>	<b>0</b>	<b>0</b>	<b>7</b>

	Injury Severity Level				Total
	Severity 1	Severity 2	Severity 3	Severity 4	
<b>California</b>					
<b>San Francisco</b>					
<b>Casualties - 2am</b>					
<i>Industrial</i>	0	0	0	0	0
<i>Hotels</i>	0	0	0	0	0
<i>Commercial</i>	0	0	0	0	0
<i>Other-Residential</i>	0	0	0	0	0
<i>Commuting</i>	0	0	0	0	0
<i>Educational</i>	0	0	0	0	0
<i>Single Family</i>	0	0	0	0	0
<b>Total Casualties - 2am</b>	<b>0</b>	<b>0</b>	<b>0</b>	<b>0</b>	<b>0</b>
<b>Casualties - 2pm</b>					
<i>Commercial</i>	0	0	0	0	0
<i>Industrial</i>	0	0	0	0	0
<i>Other-Residential</i>	0	0	0	0	0
<i>Single Family</i>	0	0	0	0	0
<i>Hotels</i>	0	0	0	0	0
<i>Commuting</i>	0	0	0	0	0
<i>Educational</i>	0	0	0	0	0
<b>Total Casualties - 2pm</b>	<b>0</b>	<b>0</b>	<b>0</b>	<b>0</b>	<b>0</b>
<b>Casualties - 5pm</b>					
<i>Educational</i>	0	0	0	0	0
<i>Hotels</i>	0	0	0	0	0
<i>Industrial</i>	0	0	0	0	0
<i>Commuting</i>	0	0	0	0	0
<i>Commercial</i>	0	0	0	0	0
<i>Other-Residential</i>	0	0	0	0	0
<i>Single Family</i>	0	0	0	0	0
<b>Total Casualties - 5pm</b>	<b>0</b>	<b>0</b>	<b>0</b>	<b>0</b>	<b>0</b>
<b>San Joaquin</b>					
<b>Casualties - 2am</b>					
<i>Educational</i>	0	0	0	0	0
<i>Commuting</i>	0	0	0	0	0
<i>Hotels</i>	0	0	0	0	0
<i>Commercial</i>	0	0	0	0	0
<i>Single Family</i>	0	0	0	0	0
<i>Industrial</i>	0	0	0	0	0
<i>Other-Residential</i>	0	0	0	0	0
<b>Total Casualties - 2am</b>	<b>0</b>	<b>0</b>	<b>0</b>	<b>0</b>	<b>0</b>
<b>Casualties - 2pm</b>					
<i>Industrial</i>	0	0	0	0	0
<i>Other-Residential</i>	0	0	0	0	0
<i>Educational</i>	0	0	0	0	0
<i>Single Family</i>	0	0	0	0	0

	Injury Severity Level				Total
	Severity 1	Severity 2	Severity 3	Severity 4	
<b>California</b>					
<b>San Joaquin</b>					
<b>Casualties - 2pm</b>					
<i>Hotels</i>	0	0	0	0	0
<i>Commuting</i>	0	0	0	0	0
<i>Commercial</i>	0	0	0	0	0
<b>Total Casualties - 2pm</b>	<b>0</b>	<b>0</b>	<b>0</b>	<b>0</b>	<b>0</b>
<b>Casualties - 5pm</b>					
<i>Commuting</i>	0	0	0	0	0
<i>Single Family</i>	0	0	0	0	0
<i>Educational</i>	0	0	0	0	0
<i>Hotels</i>	0	0	0	0	0
<i>Industrial</i>	0	0	0	0	0
<i>Commercial</i>	0	0	0	0	0
<i>Other-Residential</i>	0	0	0	0	0
<b>Total Casualties - 5pm</b>	<b>0</b>	<b>0</b>	<b>0</b>	<b>0</b>	<b>0</b>
<b>San Luis Obispo</b>					
<b>Casualties - 2am</b>					
<i>Commercial</i>	0	0	0	0	0
<i>Other-Residential</i>	43	6	0	1	50
<i>Industrial</i>	1	0	0	0	1
<i>Single Family</i>	11	0	0	0	12
<i>Commuting</i>	0	0	0	0	0
<i>Educational</i>	0	0	0	0	0
<i>Hotels</i>	0	0	0	0	0
<b>Total Casualties - 2am</b>	<b>55</b>	<b>7</b>	<b>0</b>	<b>1</b>	<b>63</b>
<b>Casualties - 2pm</b>					
<i>Single Family</i>	3	0	0	0	4
<i>Educational</i>	3	0	0	0	4
<i>Other-Residential</i>	14	2	0	0	16
<i>Hotels</i>	0	0	0	0	0
<i>Commuting</i>	0	0	0	0	0
<i>Commercial</i>	28	4	0	1	33
<i>Industrial</i>	4	1	0	0	5
<b>Total Casualties - 2pm</b>	<b>52</b>	<b>7</b>	<b>1</b>	<b>1</b>	<b>61</b>
<b>Casualties - 5pm</b>					
<i>Industrial</i>	3	0	0	0	3
<i>Other-Residential</i>	15	2	0	0	18
<i>Commuting</i>	1	1	2	0	5
<i>Single Family</i>	4	0	0	0	4
<i>Commercial</i>	19	3	0	1	22
<i>Hotels</i>	0	0	0	0	0
<i>Educational</i>	0	0	0	0	0

	Injury Severity Level				Total
	Severity 1	Severity 2	Severity 3	Severity 4	
<b>California</b>					
<b>San Luis Obispo</b>					
<b>Total Casualties - 5pm</b>	<b>42</b>	<b>7</b>	<b>3</b>	<b>1</b>	<b>52</b>
<b>San Mateo</b>					
<b>Casualties - 2am</b>					
<i>Industrial</i>	0	0	0	0	0
<i>Other-Residential</i>	0	0	0	0	0
<i>Single Family</i>	0	0	0	0	0
<i>Commercial</i>	0	0	0	0	0
<i>Educational</i>	0	0	0	0	0
<i>Commuting</i>	0	0	0	0	0
<i>Hotels</i>	0	0	0	0	0
<b>Total Casualties - 2am</b>	<b>0</b>	<b>0</b>	<b>0</b>	<b>0</b>	<b>0</b>
<b>Casualties - 2pm</b>					
<i>Other-Residential</i>	0	0	0	0	0
<i>Single Family</i>	0	0	0	0	0
<i>Commuting</i>	0	0	0	0	0
<i>Commercial</i>	0	0	0	0	0
<i>Educational</i>	0	0	0	0	0
<i>Hotels</i>	0	0	0	0	0
<i>Industrial</i>	0	0	0	0	0
<b>Total Casualties - 2pm</b>	<b>0</b>	<b>0</b>	<b>0</b>	<b>0</b>	<b>0</b>
<b>Casualties - 5pm</b>					
<i>Commercial</i>	0	0	0	0	0
<i>Industrial</i>	0	0	0	0	0
<i>Other-Residential</i>	0	0	0	0	0
<i>Single Family</i>	0	0	0	0	0
<i>Educational</i>	0	0	0	0	0
<i>Commuting</i>	0	0	0	0	0
<i>Hotels</i>	0	0	0	0	0
<b>Total Casualties - 5pm</b>	<b>0</b>	<b>0</b>	<b>0</b>	<b>0</b>	<b>0</b>
<b>Santa Barbara</b>					
<b>Casualties - 2am</b>					
<i>Industrial</i>	0	0	0	0	0
<i>Commercial</i>	0	0	0	0	0
<i>Other-Residential</i>	18	1	0	0	19
<i>Commuting</i>	0	0	0	0	0
<i>Educational</i>	0	0	0	0	0
<i>Single Family</i>	9	0	0	0	9
<i>Hotels</i>	0	0	0	0	0
<b>Total Casualties - 2am</b>	<b>27</b>	<b>1</b>	<b>0</b>	<b>0</b>	<b>29</b>
<b>Casualties - 2pm</b>					
<i>Commercial</i>	14	1	0	0	15

	Injury Severity Level				Total
	Severity 1	Severity 2	Severity 3	Severity 4	
<b>California</b>					
<b>Santa Barbara</b>					
<b>Casualties - 2pm</b>					
Single Family	3	0	0	0	3
Other-Residential	5	0	0	0	6
Commuting	0	0	0	0	0
Educational	6	0	0	0	6
Hotels	0	0	0	0	0
Industrial	2	0	0	0	2
<b>Total Casualties - 2pm</b>	<b>30</b>	<b>2</b>	<b>0</b>	<b>0</b>	<b>32</b>
<b>Casualties - 5pm</b>					
Other-Residential	6	1	0	0	7
Single Family	3	0	0	0	3
Commercial	10	1	0	0	10
Commuting	0	0	0	0	1
Educational	2	0	0	0	2
Industrial	1	0	0	0	1
Hotels	0	0	0	0	0
<b>Total Casualties - 5pm</b>	<b>22</b>	<b>2</b>	<b>0</b>	<b>0</b>	<b>24</b>
<b>Santa Clara</b>					
<b>Casualties - 2am</b>					
Commuting	0	0	0	0	0
Educational	0	0	0	0	0
Single Family	0	0	0	0	0
Hotels	0	0	0	0	0
Industrial	0	0	0	0	0
Commercial	0	0	0	0	0
Other-Residential	1	0	0	0	1
<b>Total Casualties - 2am</b>	<b>1</b>	<b>0</b>	<b>0</b>	<b>0</b>	<b>1</b>
<b>Casualties - 2pm</b>					
Industrial	0	0	0	0	0
Commercial	1	0	0	0	1
Single Family	0	0	0	0	0
Commuting	0	0	0	0	0
Hotels	0	0	0	0	0
Other-Residential	0	0	0	0	0
Educational	0	0	0	0	0
<b>Total Casualties - 2pm</b>	<b>1</b>	<b>0</b>	<b>0</b>	<b>0</b>	<b>1</b>
<b>Casualties - 5pm</b>					
Industrial	0	0	0	0	0
Hotels	0	0	0	0	0
Other-Residential	0	0	0	0	0
Commercial	1	0	0	0	1
Commuting	0	0	0	0	0

	Injury Severity Level				Total
	Severity 1	Severity 2	Severity 3	Severity 4	
<b>California</b>					
<b>Santa Clara</b>					
<b>Casualties - 5pm</b>					
Single Family	0	0	0	0	0
Educational	0	0	0	0	0
<b>Total Casualties - 5pm</b>	<b>1</b>	<b>0</b>	<b>0</b>	<b>0</b>	<b>1</b>
<b>Santa Cruz</b>					
<b>Casualties - 2am</b>					
Hotels	0	0	0	0	0
Educational	0	0	0	0	0
Industrial	0	0	0	0	0
Other-Residential	0	0	0	0	0
Single Family	0	0	0	0	0
Commercial	0	0	0	0	0
Commuting	0	0	0	0	0
<b>Total Casualties - 2am</b>	<b>0</b>	<b>0</b>	<b>0</b>	<b>0</b>	<b>0</b>
<b>Casualties - 2pm</b>					
Industrial	0	0	0	0	0
Other-Residential	0	0	0	0	0
Commercial	0	0	0	0	0
Commuting	0	0	0	0	0
Educational	0	0	0	0	0
Single Family	0	0	0	0	0
Hotels	0	0	0	0	0
<b>Total Casualties - 2pm</b>	<b>1</b>	<b>0</b>	<b>0</b>	<b>0</b>	<b>1</b>
<b>Casualties - 5pm</b>					
Industrial	0	0	0	0	0
Other-Residential	0	0	0	0	0
Commercial	0	0	0	0	0
Commuting	0	0	0	0	0
Single Family	0	0	0	0	0
Hotels	0	0	0	0	0
Educational	0	0	0	0	0
<b>Total Casualties - 5pm</b>	<b>0</b>	<b>0</b>	<b>0</b>	<b>0</b>	<b>0</b>
<b>Solano</b>					
<b>Casualties - 2am</b>					
Industrial	0	0	0	0	0
Other-Residential	0	0	0	0	0
Commercial	0	0	0	0	0
Educational	0	0	0	0	0
Commuting	0	0	0	0	0
Single Family	0	0	0	0	0
Hotels	0	0	0	0	0

	Injury Severity Level				Total
	Severity 1	Severity 2	Severity 3	Severity 4	
<b>California</b>					
<b>Solano</b>					
<b>Total Casualties - 2am</b>	<b>0</b>	<b>0</b>	<b>0</b>	<b>0</b>	<b>0</b>
<b>Casualties - 2pm</b>					
Single Family	0	0	0	0	0
Other-Residential	0	0	0	0	0
Commercial	0	0	0	0	0
Educational	0	0	0	0	0
Commuting	0	0	0	0	0
Hotels	0	0	0	0	0
Industrial	0	0	0	0	0
<b>Total Casualties - 2pm</b>	<b>0</b>	<b>0</b>	<b>0</b>	<b>0</b>	<b>0</b>
<b>Casualties - 5pm</b>					
Commercial	0	0	0	0	0
Other-Residential	0	0	0	0	0
Single Family	0	0	0	0	0
Educational	0	0	0	0	0
Commuting	0	0	0	0	0
Hotels	0	0	0	0	0
Industrial	0	0	0	0	0
<b>Total Casualties - 5pm</b>	<b>0</b>	<b>0</b>	<b>0</b>	<b>0</b>	<b>0</b>
<b>Sonoma</b>					
<b>Casualties - 2am</b>					
Single Family	0	0	0	0	0
Other-Residential	0	0	0	0	0
Commercial	0	0	0	0	0
Commuting	0	0	0	0	0
Hotels	0	0	0	0	0
Educational	0	0	0	0	0
Industrial	0	0	0	0	0
<b>Total Casualties - 2am</b>	<b>0</b>	<b>0</b>	<b>0</b>	<b>0</b>	<b>0</b>
<b>Casualties - 2pm</b>					
Single Family	0	0	0	0	0
Commuting	0	0	0	0	0
Educational	0	0	0	0	0
Hotels	0	0	0	0	0
Industrial	0	0	0	0	0
Other-Residential	0	0	0	0	0
Commercial	0	0	0	0	0
<b>Total Casualties - 2pm</b>	<b>0</b>	<b>0</b>	<b>0</b>	<b>0</b>	<b>0</b>
<b>Casualties - 5pm</b>					
Single Family	0	0	0	0	0
Commercial	0	0	0	0	0

	Injury Severity Level				Total
	Severity 1	Severity 2	Severity 3	Severity 4	
<b>California</b>					
<b>Sonoma</b>					
<b>Casualties - 5pm</b>					
<i>Commuting</i>	0	0	0	0	0
<i>Hotels</i>	0	0	0	0	0
<i>Educational</i>	0	0	0	0	0
<i>Industrial</i>	0	0	0	0	0
<i>Other-Residential</i>	0	0	0	0	0
<b>Total Casualties - 5pm</b>	<b>0</b>	<b>0</b>	<b>0</b>	<b>0</b>	<b>0</b>
<b>Stanislaus</b>					
<b>Casualties - 2am</b>					
<i>Hotels</i>	0	0	0	0	0
<i>Industrial</i>	0	0	0	0	0
<i>Commercial</i>	0	0	0	0	0
<i>Single Family</i>	0	0	0	0	0
<i>Other-Residential</i>	0	0	0	0	0
<i>Commuting</i>	0	0	0	0	0
<i>Educational</i>	0	0	0	0	0
<b>Total Casualties - 2am</b>	<b>0</b>	<b>0</b>	<b>0</b>	<b>0</b>	<b>0</b>
<b>Casualties - 2pm</b>					
<i>Industrial</i>	0	0	0	0	0
<i>Other-Residential</i>	0	0	0	0	0
<i>Commercial</i>	0	0	0	0	0
<i>Commuting</i>	0	0	0	0	0
<i>Educational</i>	0	0	0	0	0
<i>Single Family</i>	0	0	0	0	0
<i>Hotels</i>	0	0	0	0	0
<b>Total Casualties - 2pm</b>	<b>0</b>	<b>0</b>	<b>0</b>	<b>0</b>	<b>1</b>
<b>Casualties - 5pm</b>					
<i>Industrial</i>	0	0	0	0	0
<i>Other-Residential</i>	0	0	0	0	0
<i>Commuting</i>	0	0	0	0	0
<i>Single Family</i>	0	0	0	0	0
<i>Commercial</i>	0	0	0	0	0
<i>Hotels</i>	0	0	0	0	0
<i>Educational</i>	0	0	0	0	0
<b>Total Casualties - 5pm</b>	<b>0</b>	<b>0</b>	<b>0</b>	<b>0</b>	<b>0</b>
<b>Tulare</b>					
<b>Casualties - 2am</b>					
<i>Commercial</i>	0	0	0	0	0
<i>Commuting</i>	0	0	0	0	0
<i>Single Family</i>	2	0	0	0	2
<i>Educational</i>	0	0	0	0	0
<i>Hotels</i>	0	0	0	0	0

	Injury Severity Level				Total
	Severity 1	Severity 2	Severity 3	Severity 4	
<b>California</b>					
<b>Tulare</b>					
<b>Casualties - 2am</b>					
<i>Industrial</i>	0	0	0	0	0
<i>Other-Residential</i>	3	0	0	0	3
<b>Total Casualties - 2am</b>	<b>6</b>	<b>0</b>	<b>0</b>	<b>0</b>	<b>6</b>
<b>Casualties - 2pm</b>					
<i>Industrial</i>	0	0	0	0	0
<i>Hotels</i>	0	0	0	0	0
<i>Commercial</i>	5	0	0	0	5
<i>Other-Residential</i>	1	0	0	0	1
<i>Educational</i>	1	0	0	0	1
<i>Commuting</i>	0	0	0	0	0
<i>Single Family</i>	1	0	0	0	1
<b>Total Casualties - 2pm</b>	<b>8</b>	<b>0</b>	<b>0</b>	<b>0</b>	<b>9</b>
<b>Casualties - 5pm</b>					
<i>Other-Residential</i>	1	0	0	0	1
<i>Commercial</i>	4	0	0	0	4
<i>Single Family</i>	1	0	0	0	1
<i>Hotels</i>	0	0	0	0	0
<i>Commuting</i>	0	0	0	0	0
<i>Educational</i>	0	0	0	0	0
<i>Industrial</i>	0	0	0	0	0
<b>Total Casualties - 5pm</b>	<b>6</b>	<b>0</b>	<b>0</b>	<b>0</b>	<b>6</b>
<b>Tuolumne</b>					
<b>Casualties - 2am</b>					
<i>Other-Residential</i>	0	0	0	0	0
<i>Industrial</i>	0	0	0	0	0
<i>Commercial</i>	0	0	0	0	0
<i>Commuting</i>	0	0	0	0	0
<i>Single Family</i>	0	0	0	0	0
<i>Educational</i>	0	0	0	0	0
<i>Hotels</i>	0	0	0	0	0
<b>Total Casualties - 2am</b>	<b>0</b>	<b>0</b>	<b>0</b>	<b>0</b>	<b>0</b>
<b>Casualties - 2pm</b>					
<i>Other-Residential</i>	0	0	0	0	0
<i>Commercial</i>	0	0	0	0	0
<i>Single Family</i>	0	0	0	0	0
<i>Educational</i>	0	0	0	0	0
<i>Commuting</i>	0	0	0	0	0
<i>Industrial</i>	0	0	0	0	0
<i>Hotels</i>	0	0	0	0	0
<b>Total Casualties - 2pm</b>	<b>0</b>	<b>0</b>	<b>0</b>	<b>0</b>	<b>0</b>

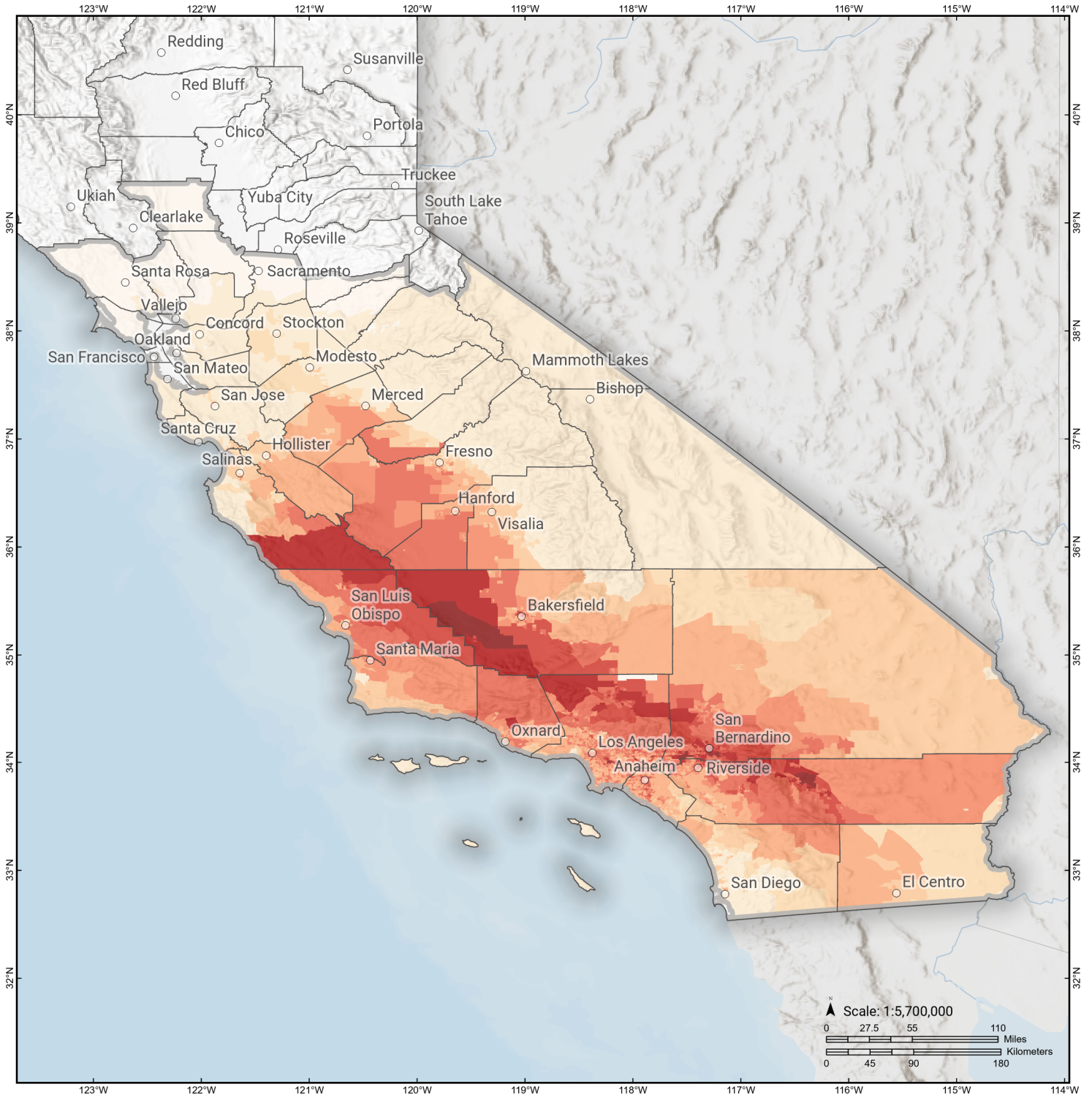
	Injury Severity Level				Total
	Severity 1	Severity 2	Severity 3	Severity 4	
<b>California</b>					
<b>Tuolumne</b>					
<b>Casualties - 5pm</b>					
<i>Industrial</i>	0	0	0	0	0
<i>Other-Residential</i>	0	0	0	0	0
<i>Commercial</i>	0	0	0	0	0
<i>Hotels</i>	0	0	0	0	0
<i>Commuting</i>	0	0	0	0	0
<i>Educational</i>	0	0	0	0	0
<i>Single Family</i>	0	0	0	0	0
<b>Total Casualties - 5pm</b>	<b>0</b>	<b>0</b>	<b>0</b>	<b>0</b>	<b>0</b>
<b>Ventura</b>					
<b>Casualties - 2am</b>					
<i>Educational</i>	0	0	0	0	0
<i>Commuting</i>	0	0	0	0	0
<i>Single Family</i>	26	0	0	0	26
<i>Hotels</i>	0	0	0	0	0
<i>Industrial</i>	1	0	0	0	1
<i>Commercial</i>	1	0	0	0	1
<i>Other-Residential</i>	29	2	0	0	31
<b>Total Casualties - 2am</b>	<b>56</b>	<b>3</b>	<b>0</b>	<b>0</b>	<b>59</b>
<b>Casualties - 2pm</b>					
<i>Industrial</i>	7	1	0	0	7
<i>Educational</i>	14	1	0	0	15
<i>Commuting</i>	0	0	0	0	0
<i>Hotels</i>	0	0	0	0	0
<i>Other-Residential</i>	8	1	0	0	9
<i>Commercial</i>	37	3	0	0	41
<i>Single Family</i>	7	0	0	0	7
<b>Total Casualties - 2pm</b>	<b>73</b>	<b>5</b>	<b>0</b>	<b>0</b>	<b>79</b>
<b>Casualties - 5pm</b>					
<i>Commuting</i>	0	1	1	0	2
<i>Other-Residential</i>	10	1	0	0	11
<i>Commercial</i>	28	2	0	0	31
<i>Hotels</i>	0	0	0	0	0
<i>Educational</i>	2	0	0	0	2
<i>Single Family</i>	9	0	0	0	9
<i>Industrial</i>	4	0	0	0	4
<b>Total Casualties - 5pm</b>	<b>54</b>	<b>4</b>	<b>1</b>	<b>0</b>	<b>60</b>
<b>Yolo</b>					
<b>Casualties - 2am</b>					
<i>Single Family</i>	0	0	0	0	0
<i>Other-Residential</i>	0	0	0	0	0
<i>Commercial</i>	0	0	0	0	0

	Injury Severity Level				Total
	Severity 1	Severity 2	Severity 3	Severity 4	
<b>California</b>					
<b>Yolo</b>					
<b>Casualties - 2am</b>					
<i>Educational</i>	0	0	0	0	0
<i>Commuting</i>	0	0	0	0	0
<i>Hotels</i>	0	0	0	0	0
<i>Industrial</i>	0	0	0	0	0
<b>Total Casualties - 2am</b>	<b>0</b>	<b>0</b>	<b>0</b>	<b>0</b>	<b>0</b>
<b>Casualties - 2pm</b>					
<i>Industrial</i>	0	0	0	0	0
<i>Hotels</i>	0	0	0	0	0
<i>Educational</i>	0	0	0	0	0
<i>Commuting</i>	0	0	0	0	0
<i>Commercial</i>	0	0	0	0	0
<i>Other-Residential</i>	0	0	0	0	0
<i>Single Family</i>	0	0	0	0	0
<b>Total Casualties - 2pm</b>	<b>0</b>	<b>0</b>	<b>0</b>	<b>0</b>	<b>0</b>
<b>Casualties - 5pm</b>					
<i>Other-Residential</i>	0	0	0	0	0
<i>Single Family</i>	0	0	0	0	0
<i>Commuting</i>	0	0	0	0	0
<i>Commercial</i>	0	0	0	0	0
<i>Hotels</i>	0	0	0	0	0
<i>Educational</i>	0	0	0	0	0
<i>Industrial</i>	0	0	0	0	0
<b>Total Casualties - 5pm</b>	<b>0</b>	<b>0</b>	<b>0</b>	<b>0</b>	<b>0</b>
<b>Region Total</b>	NA	NA	NA	NA	NA

Totals only reflect data for those census tracts/blocks included in the user's study region and will reflect the entire county/state only if all of the census blocks for that county/states were selected at the time of study region creation.

# S. San Andreas: PK+CH+CC+BB+NM+SM+NSB+SSB+BG

## Debris Generated by Census Tract

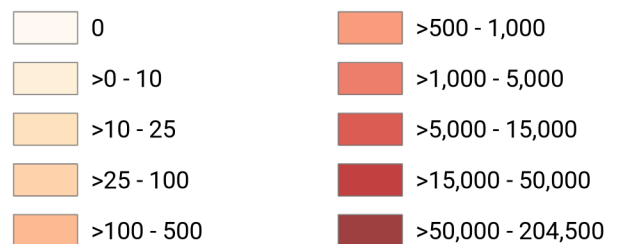


**Study Region:** S. San Andreas: PK+CH+CC  
+BB+NM+SM+NSB+SSB+BG

**Scenario:** ssanandreaspkchccbbn\_m8p11\_se



### Debris Generated (in tons)



## Debris Summary Report

June 18, 2024

All values are in thousands of tons.

	Brick, Wood & Others	Concrete & Steel	Total
<b>California</b>			
Fresno	19	29	47
Alameda	0	0	0
Solano	0	0	0
San Mateo	0	0	0
Tuolumne	0	0	0
Kings	8	11	19
San Joaquin	1	0	1
San Luis Obispo	53	50	103
Madera	1	1	3
Tulare	5	6	11
Inyo	0	0	0
Colusa	0	0	0
Napa	0	0	0
Riverside	1,411	1,108	2,518
San Bernardino	1,694	1,839	3,533
Contra Costa	0	0	0
Imperial	2	1	3
Ventura	43	65	109
Kern	171	283	454

	Brick, Wood & Others	Concrete & Steel	Total
Amador	0	0	0
Santa Cruz	1	0	1
Orange	161	279	440
Monterey	10	21	31
Sacramento	0	0	0
San Diego	6	2	8
Mariposa	0	0	0
Los Angeles	1,614	1,789	3,403
Yolo	0	0	0
Calaveras	0	0	0
Stanislaus	1	0	1
Sonoma	0	0	0
Santa Barbara	19	23	42
Santa Clara	1	0	2
San Benito	0	0	1
San Francisco	0	0	0
Merced	2	3	5
Mono	0	0	0
Marin	0	0	0
<b>Total</b>	<b>5,224</b>	<b>5,510</b>	<b>10,734</b>
<b>Region Total</b>	<b>5,224</b>	<b>5,510</b>	<b>10,734</b>

---

---

**Brick, Wood & Others**

**Concrete & Steel**

**Total**

---

*Totals only reflect data for those census tracts/blocks included in the user's study region and will reflect the entire county/state only if all of the census blocks for that county/states were selected at the time of study region creation.*

---

## Direct Economic Losses For Buildings

June 18, 2024

All values are in thousands of dollars

	Capital Stock Losses				Loss Ratio %	Income Losses				Total Loss
	Cost Structural Damage	Cost Non-struct. Damage	Cost Contents Damage	Inventory Loss		Relocation Loss	Capital Related Loss	Wages Losses	Rental Income Loss	
<b>California</b>										
Inyo	2	68	40	5	0.00	0	1	1	1	119
Contra Costa	22	749	492	53	0.00	3	5	10	6	1,340
Napa	0	6	4	1	0.00	0	0	0	0	11
Colusa	0	0	0	0	0.00	0	0	0	0	0
Imperial	3,326	31,523	15,315	2,890	0.10	443	304	338	439	54,578
San Bernardino	2,831,263	13,422,172	5,403,044	620,993	4.30	1,400,666	559,390	801,348	758,291	25,797,167
Riverside	1,727,663	8,900,970	3,427,183	185,801	2.54	770,664	301,267	361,018	427,631	16,102,197
Alameda	442	6,067	3,797	447	0.00	63	61	91	138	11,107
San Joaquin	447	4,262	2,807	371	0.00	97	41	78	83	8,186

	Capital Stock Losses				Loss Ratio %	Income Losses				Total Loss
	Cost Structural Damage	Cost Non-struct. Damage	Cost Contents Damage	Inventory Loss		Relocation Loss	Capital Related Loss	Wages Losses	Rental Income Loss	
Tuolumne	0	12	8	1	0.00	0	0	0	0	21
Tulare	11,430	95,134	54,053	12,883	0.14	2,341	2,084	2,401	1,794	182,120
Madera	3,055	20,994	11,785	2,110	0.09	473	265	286	338	39,306
Fresno	43,400	273,236	151,800	28,041	0.20	12,517	9,410	10,203	8,614	537,221
Kings	16,851	102,413	50,690	6,350	0.55	6,006	4,996	6,035	3,677	197,019
San Luis Obispo	69,312	383,352	165,083	15,460	0.72	27,149	21,614	21,423	15,299	718,692
Solano	2	102	74	11	0.00	0	0	0	1	190
San Mateo	384	3,109	1,569	133	0.00	47	69	87	229	5,626
Yolo	0	0	0	0	0.00	0	0	0	0	0
San Benito	637	6,941	3,789	490	0.06	104	113	119	84	12,278
San Francisco	67	180	103	10	0.00	4	9	10	26	408
Stanislaus	803	10,838	6,181	883	0.01	100	106	112	181	19,204
Santa Clara	1,418	15,475	8,529	876	0.00	235	348	444	529	27,855
Sonoma	0	8	6	1	0.00	0	0	0	0	16
Calaveras	0	6	5	1	0.00	0	0	0	0	13
Merced	7,075	26,699	16,664	6,299	0.07	938	295	282	342	58,594
Santa Barbara	37,982	286,283	141,094	16,288	0.41	12,148	7,211	9,367	8,654	519,028
Mono	0	2	1	0	0.00	0	0	0	0	3

	Capital Stock Losses				Loss Ratio %	Income Losses				Total Loss
	Cost Structural Damage	Cost Non-struct. Damage	Cost Contents Damage	Inventory Loss		Relocation Loss	Capital Related Loss	Wages Losses	Rental Income Loss	
Marin	0	23	16	2	0.00	0	0	0	0	42
Kern	340,389	1,406,658	650,585	119,083	1.19	121,593	68,841	79,843	59,822	2,846,814
Ventura	98,168	626,939	298,638	33,982	0.48	27,615	20,672	24,272	19,674	1,149,961
Santa Cruz	632	5,263	2,734	462	0.01	164	326	330	166	10,077
Mariposa	0	27	18	1	0.00	0	1	1	0	48
Amador	0	0	0	0	0.00	0	0	0	0	0
Sacramento	2	37	22	4	0.00	0	1	1	1	68
Monterey	30,614	89,174	48,832	14,698	0.16	6,609	2,658	2,754	2,767	198,106
Orange	385,855	2,374,188	1,177,230	108,711	0.51	126,485	99,061	116,274	96,522	4,484,327
San Diego	8,023	155,197	85,906	7,005	0.03	1,049	896	1,932	1,847	261,854
Los Angeles	2,704,306	13,328,352	6,186,360	550,402	1.06	1,284,118	727,177	929,092	784,054	26,493,862
<b>Total</b>	<b>8,323,573</b>	<b>41,576,460</b>	<b>17,914,458</b>	<b>1,734,749</b>	<b>0.33</b>	<b>3,801,630</b>	<b>1,827,221</b>	<b>2,368,153</b>	<b>2,191,212</b>	<b>79,737,456</b>
<b>Region Total</b>	<b>8,323,573</b>	<b>41,576,460</b>	<b>17,914,458</b>	<b>1,734,749</b>	<b>0.33</b>	<b>3,801,630</b>	<b>1,827,221</b>	<b>2,368,153</b>	<b>2,191,212</b>	<b>79,737,456</b>

Totals only reflect data for those census tracts/blocks included in the user's study region and will reflect the entire county/state only if all of the census blocks for that county/states were selected at the time of study region creation.

## Direct Economic Loss For Transportation

June 18, 2024

All values are in thousands of dollars

	Highway	Railway	Light Rail	Bus Facility	Ports	Ferries	Airport	Total
<b>California</b>								
<b>Alameda</b>								
Segments	0	0	0					0
Bridges	67	0	0					68
Tunnels	0	0	0					0
Facilities		436	0	22	1,725	38	3,593	5,815
<b>Total</b>	<b>67</b>	<b>436</b>	<b>0</b>	<b>22</b>	<b>1,725</b>	<b>38</b>	<b>3,593</b>	<b>5,883</b>
<b>Amador</b>								
Segments	0	0	0					0
Bridges	0	0	0					0
Tunnels	0	0	0					0
Facilities		0	0	0	0	0	6	6
<b>Total</b>	<b>0</b>	<b>0</b>	<b>0</b>	<b>0</b>	<b>0</b>	<b>0</b>	<b>6</b>	<b>6</b>
<b>Calaveras</b>								
Segments	0	0	0					0
Bridges	0	0	0					0
Tunnels	0	0	0					0
Facilities		0	0	0	0	0	11	11

	Highway	Railway	Light Rail	Bus Facility	Ports	Ferries	Airport	Total
<b>Total</b>	<b>0</b>	<b>0</b>	<b>0</b>	<b>0</b>	<b>0</b>	<b>0</b>	<b>11</b>	<b>11</b>
<b>Colusa</b>								
Segments	0	0	0					0
Bridges	0	0	0					0
Tunnels	0	0	0					0
Facilities		0	0	0	0	0	0	0
<b>Total</b>	<b>0</b>	<b>0</b>	<b>0</b>	<b>0</b>	<b>0</b>	<b>0</b>	<b>0</b>	<b>0</b>
<b>Contra Costa</b>								
Segments	0	0	0					0
Bridges	52	1	0					53
Tunnels	0	0	0					0
Facilities		188	116	0	1,880	51	231	2,466
<b>Total</b>	<b>52</b>	<b>189</b>	<b>116</b>	<b>0</b>	<b>1,880</b>	<b>51</b>	<b>231</b>	<b>2,519</b>
<b>Fresno</b>								
Segments	0	0	0					0
Bridges	3,922	148	0					4,070
Tunnels	0	0	0					0
Facilities		1,075	0	89	0	0	5,787	6,950
<b>Total</b>	<b>3,922</b>	<b>1,222</b>	<b>0</b>	<b>89</b>	<b>0</b>	<b>0</b>	<b>5,787</b>	<b>11,020</b>
<b>Imperial</b>								
Segments	0	0	0					0
Bridges	585	489	0					1,074
Tunnels	0	0	0					0
Facilities		328	0	0	0	0	2,148	2,476

	Highway	Railway	Light Rail	Bus Facility	Ports	Ferries	Airport	Total
<b>Total</b>	<b>585</b>	<b>817</b>	<b>0</b>	<b>0</b>	<b>0</b>	<b>0</b>	<b>2,148</b>	<b>3,550</b>
<b>Inyo</b>								
<i>Segments</i>	0	0	0					0
<i>Bridges</i>	2	0	0					2
<i>Tunnels</i>	0	0	0					0
<i>Facilities</i>		0	0	0	0	0	408	408
<b>Total</b>	<b>2</b>	<b>0</b>	<b>0</b>	<b>0</b>	<b>0</b>	<b>0</b>	<b>408</b>	<b>410</b>
<b>Kern</b>								
<i>Segments</i>	0	0	0					0
<i>Bridges</i>	21,321	1,251	0					22,572
<i>Tunnels</i>	11	0	0					11
<i>Facilities</i>		1,969	0	723	0	0	10,946	13,638
<b>Total</b>	<b>21,332</b>	<b>3,221</b>	<b>0</b>	<b>723</b>	<b>0</b>	<b>0</b>	<b>10,946</b>	<b>36,221</b>
<b>Kings</b>								
<i>Segments</i>	0	0	0					0
<i>Bridges</i>	1,109	93	0					1,202
<i>Tunnels</i>	0	0	0					0
<i>Facilities</i>		1,005	0	476	0	0	2,816	4,296
<b>Total</b>	<b>1,109</b>	<b>1,097</b>	<b>0</b>	<b>476</b>	<b>0</b>	<b>0</b>	<b>2,816</b>	<b>5,498</b>
<b>Los Angeles</b>								
<i>Segments</i>	0	0	0					0
<i>Bridges</i>	198,201	18,120	6					216,328
<i>Tunnels</i>	1,312	0	0					1,312
<i>Facilities</i>		12,367	225,624	3,636	52,309	742	224,818	519,496

	Highway	Railway	Light Rail	Bus Facility	Ports	Ferries	Airport	Total
<b>Total</b>	<b>199,513</b>	<b>30,488</b>	<b>225,630</b>	<b>3,636</b>	<b>52,309</b>	<b>742</b>	<b>224,818</b>	<b>737,136</b>
<b>Madera</b>								
Segments	0	0	0					0
Bridges	257	9	0					266
Tunnels	0	0	0					0
Facilities		109	0	89	0	0	435	633
<b>Total</b>	<b>257</b>	<b>118</b>	<b>0</b>	<b>89</b>	<b>0</b>	<b>0</b>	<b>435</b>	<b>899</b>
<b>Marin</b>								
Segments	0	0	0					0
Bridges	9	0	0					9
Tunnels	0	0	0					0
Facilities		0	0	10	98	7	6	121
<b>Total</b>	<b>9</b>	<b>0</b>	<b>0</b>	<b>10</b>	<b>98</b>	<b>7</b>	<b>6</b>	<b>130</b>
<b>Mariposa</b>								
Segments	0	0	0					0
Bridges	0	0	0					0
Tunnels	0	0	0					0
Facilities		0	0	86	0	0	51	137
<b>Total</b>	<b>0</b>	<b>0</b>	<b>0</b>	<b>86</b>	<b>0</b>	<b>0</b>	<b>51</b>	<b>137</b>
<b>Merced</b>								
Segments	0	0	0					0
Bridges	606	8	0					613
Tunnels	0	0	0					0
Facilities		218	0	91	0	0	1,162	1,472

	Highway	Railway	Light Rail	Bus Facility	Ports	Ferries	Airport	Total
<b>Total</b>	<b>606</b>	<b>226</b>	<b>0</b>	<b>91</b>	<b>0</b>	<b>0</b>	<b>1,162</b>	<b>2,085</b>
<b>Mono</b>								
<i>Segments</i>	0	0	0					0
<i>Bridges</i>	0	0	0					0
<i>Tunnels</i>	0	0	0					0
<i>Facilities</i>		0	0	23	0	0	119	142
<b>Total</b>	<b>0</b>	<b>0</b>	<b>0</b>	<b>23</b>	<b>0</b>	<b>0</b>	<b>119</b>	<b>142</b>
<b>Monterey</b>								
<i>Segments</i>	0	0	0					0
<i>Bridges</i>	5,055	558	0					5,614
<i>Tunnels</i>	0	0	0					0
<i>Facilities</i>		109	0	1,009	110	0	3,404	4,633
<b>Total</b>	<b>5,055</b>	<b>668</b>	<b>0</b>	<b>1,009</b>	<b>110</b>	<b>0</b>	<b>3,404</b>	<b>10,247</b>
<b>Napa</b>								
<i>Segments</i>	0	0	0					0
<i>Bridges</i>	0	0	0					0
<i>Tunnels</i>	0	0	0					0
<i>Facilities</i>		0	0	2	45	0	20	67
<b>Total</b>	<b>0</b>	<b>0</b>	<b>0</b>	<b>2</b>	<b>45</b>	<b>0</b>	<b>20</b>	<b>68</b>
<b>Orange</b>								
<i>Segments</i>	0	0	0					0
<i>Bridges</i>	24,829	593	0					25,421
<i>Tunnels</i>	22	0	0					22
<i>Facilities</i>		1,797	0	0	4,471	356	33,514	40,138

	Highway	Railway	Light Rail	Bus Facility	Ports	Ferries	Airport	Total
<b>Total</b>	<b>24,851</b>	<b>2,390</b>	<b>0</b>	<b>0</b>	<b>4,471</b>	<b>356</b>	<b>33,514</b>	<b>65,582</b>
<b>Riverside</b>								
Segments	0	0	0					0
Bridges	203,445	26,747	0					230,192
Tunnels	0	0	0					0
Facilities		3,281	0	4,590	0	0	48,057	55,928
<b>Total</b>	<b>203,445</b>	<b>30,028</b>	<b>0</b>	<b>4,590</b>	<b>0</b>	<b>0</b>	<b>48,057</b>	<b>286,120</b>
<b>Sacramento</b>								
Segments	0	0	0					0
Bridges	10	0	0					10
Tunnels	0	0	0					0
Facilities		3	336	5	494	13	466	1,316
<b>Total</b>	<b>10</b>	<b>3</b>	<b>336</b>	<b>5</b>	<b>494</b>	<b>13</b>	<b>466</b>	<b>1,326</b>
<b>San Benito</b>								
Segments	0	0	0					0
Bridges	43	1	0					44
Tunnels	0	0	0					0
Facilities		0	0	0	0	0	435	435
<b>Total</b>	<b>43</b>	<b>1</b>	<b>0</b>	<b>0</b>	<b>0</b>	<b>0</b>	<b>435</b>	<b>479</b>
<b>San Bernardino</b>								
Segments	0	0	0					0
Bridges	451,462	40,450	0					491,911
Tunnels	404	0	0					404
Facilities		11,450	0	1,294	0	0	63,034	75,778

	Highway	Railway	Light Rail	Bus Facility	Ports	Ferries	Airport	Total
<b>Total</b>	<b>451,865</b>	<b>51,900</b>	<b>0</b>	<b>1,294</b>	<b>0</b>	<b>0</b>	<b>63,034</b>	<b>568,093</b>
<b>San Diego</b>								
<i>Segments</i>	0	0	0					0
<i>Bridges</i>	523	3	0					525
<i>Tunnels</i>	1	0	0					1
<i>Facilities</i>		548	17,597	21	4,149	38	13,175	35,528
<b>Total</b>	<b>524</b>	<b>550</b>	<b>17,597</b>	<b>21</b>	<b>4,149</b>	<b>38</b>	<b>13,175</b>	<b>36,055</b>
<b>San Francisco</b>								
<i>Segments</i>	0	0	0					0
<i>Bridges</i>	14	0	0					14
<i>Tunnels</i>	0	0	0					0
<i>Facilities</i>		0	6,395	5	1,268	17	149	7,834
<b>Total</b>	<b>14</b>	<b>0</b>	<b>6,395</b>	<b>5</b>	<b>1,268</b>	<b>17</b>	<b>149</b>	<b>7,848</b>
<b>San Joaquin</b>								
<i>Segments</i>	0	0	0					0
<i>Bridges</i>	220	0	0					220
<i>Tunnels</i>	0	0	0					0
<i>Facilities</i>		410	0	21	1,578	51	418	2,479
<b>Total</b>	<b>220</b>	<b>411</b>	<b>0</b>	<b>21</b>	<b>1,578</b>	<b>51</b>	<b>418</b>	<b>2,700</b>
<b>San Luis Obispo</b>								
<i>Segments</i>	0	0	0					0
<i>Bridges</i>	7,911	265	0					8,176
<i>Tunnels</i>	0	0	0					0
<i>Facilities</i>		796	0	400	2,301	0	4,509	8,006

	Highway	Railway	Light Rail	Bus Facility	Ports	Ferries	Airport	Total
<b>Total</b>	<b>7,911</b>	<b>1,061</b>	<b>0</b>	<b>400</b>	<b>2,301</b>	<b>0</b>	<b>4,509</b>	<b>16,182</b>
<b>San Mateo</b>								
Segments	0	0	0					0
Bridges	164	0	0					164
Tunnels	0	0	0					0
Facilities		0	0	0	661	0	8,789	9,450
<b>Total</b>	<b>164</b>	<b>0</b>	<b>0</b>	<b>0</b>	<b>661</b>	<b>0</b>	<b>8,789</b>	<b>9,614</b>
<b>Santa Barbara</b>								
Segments	0	0	0					0
Bridges	1,935	83	0					2,018
Tunnels	0	0	0					0
Facilities		1,007	0	720	2,460	122	4,796	9,105
<b>Total</b>	<b>1,935</b>	<b>1,090</b>	<b>0</b>	<b>720</b>	<b>2,460</b>	<b>122</b>	<b>4,796</b>	<b>11,123</b>
<b>Santa Clara</b>								
Segments	0	0	0					0
Bridges	231	1	0					231
Tunnels	0	0	0					0
Facilities		103	5,439	47	184	0	3,593	9,364
<b>Total</b>	<b>231</b>	<b>103</b>	<b>5,439</b>	<b>47</b>	<b>184</b>	<b>0</b>	<b>3,593</b>	<b>9,595</b>
<b>Santa Cruz</b>								
Segments	0	0	0					0
Bridges	30	0	0					30
Tunnels	0	0	0					0
Facilities		0	0	45	37	0	257	339

	Highway	Railway	Light Rail	Bus Facility	Ports	Ferries	Airport	Total
<b>Total</b>	<b>30</b>	<b>0</b>	<b>0</b>	<b>45</b>	<b>37</b>	<b>0</b>	<b>257</b>	<b>369</b>
<b>Solano</b>								
Segments	0	0	0					0
Bridges	29	1	0					30
Tunnels	0	0	0					0
Facilities		54	0	7	1,052	40	26	1,179
<b>Total</b>	<b>29</b>	<b>55</b>	<b>0</b>	<b>7</b>	<b>1,052</b>	<b>40</b>	<b>26</b>	<b>1,209</b>
<b>Sonoma</b>								
Segments	0	0	0					0
Bridges	16	0	0					16
Tunnels	0	0	0					0
Facilities		0	0	3	61	0	46	110
<b>Total</b>	<b>16</b>	<b>0</b>	<b>0</b>	<b>3</b>	<b>61</b>	<b>0</b>	<b>46</b>	<b>125</b>
<b>Stanislaus</b>								
Segments	0	0	0					0
Bridges	202	2	0					204
Tunnels	0	0	0					0
Facilities		154	0	43	0	0	231	427
<b>Total</b>	<b>202</b>	<b>156</b>	<b>0</b>	<b>43</b>	<b>0</b>	<b>0</b>	<b>231</b>	<b>632</b>
<b>Tulare</b>								
Segments	0	0	0					0
Bridges	831	105	0					936
Tunnels	0	0	0					0
Facilities		0	0	353	0	0	1,087	1,440

	Highway	Railway	Light Rail	Bus Facility	Ports	Ferries	Airport	Total
<b>Total</b>	<b>831</b>	<b>105</b>	<b>0</b>	<b>353</b>	<b>0</b>	<b>0</b>	<b>1,087</b>	<b>2,376</b>
<b>Tuolumne</b>								
Segments	0	0	0					0
Bridges	0	0	0					0
Tunnels	0	0	0					0
Facilities		0	0	0	0	0	62	62
<b>Total</b>	<b>0</b>	<b>0</b>	<b>0</b>	<b>0</b>	<b>0</b>	<b>0</b>	<b>62</b>	<b>63</b>
<b>Ventura</b>								
Segments	0	0	0					0
Bridges	4,863	220	0					5,083
Tunnels	13	0	0					13
Facilities		1,192	0	163	5,214	155	4,082	10,807
<b>Total</b>	<b>4,876</b>	<b>1,412</b>	<b>0</b>	<b>163</b>	<b>5,214</b>	<b>155</b>	<b>4,082</b>	<b>15,902</b>
<b>Yolo</b>								
Segments	0	0	0					0
Bridges	5	0	0					5
Tunnels	0	0	0					0
Facilities		14	0	0	69	0	17	101
<b>Total</b>	<b>5</b>	<b>14</b>	<b>0</b>	<b>0</b>	<b>69</b>	<b>0</b>	<b>17</b>	<b>105</b>
<b>Total</b>	<b>929,711</b>	<b>127,761</b>	<b>255,512</b>	<b>13,973</b>	<b>80,168</b>	<b>1,631</b>	<b>442,704</b>	<b>1,851,460</b>
<b>Region Total</b>	<b>929,711</b>	<b>127,761</b>	<b>255,512</b>	<b>13,973</b>	<b>80,168</b>	<b>1,631</b>	<b>442,704</b>	<b>1,851,460</b>

Totals only reflect data for those census tracts/blocks included in the user's study region and will reflect the entire county/state only if all of the census blocks for that county/states were selected at the time of study region creation.

## Direct Economic Loss For Utilities

June 18, 2024

All values are in thousands of dollars

	Potable Water	Waste Water	Oil Systems	Natural Gas	Electric Power	Communication	Total
<b>California</b>							
<b>Alameda</b>							
Facilities	57	1,724	0	0	14,768	3	16,551
Pipelines	232	117	0	0			349
<b>Total</b>	<b>289</b>	<b>1,840</b>	<b>0</b>	<b>0</b>	<b>14,768</b>	<b>3</b>	<b>16,900</b>
<b>Amador</b>							
Facilities	0	3	0	0	310	0	312
Pipelines	26	13	0	0			39
<b>Total</b>	<b>26</b>	<b>16</b>	<b>0</b>	<b>0</b>	<b>310</b>	<b>0</b>	<b>352</b>
<b>Calaveras</b>							
Facilities	1	131	0	0	14,163	0	14,294
Pipelines	55	27	0	0			82
<b>Total</b>	<b>55</b>	<b>158</b>	<b>0</b>	<b>0</b>	<b>14,163</b>	<b>0</b>	<b>14,377</b>
<b>Colusa</b>							
Facilities	0	0	0	0	0	0	0

	Potable Water	Waste Water	Oil Systems	Natural Gas	Electric Power	Communication	Total
<i>Pipelines</i>	16	8	0	0			23
<b>Total</b>	16	8	0	0	0	0	23
<b>Contra Costa</b>							
<i>Facilities</i>	4	758	0	0	46,856	0	47,619
<i>Pipelines</i>	151	76	0	0			226
<b>Total</b>	154	834	0	0	46,856	0	47,845
<b>Fresno</b>							
<i>Facilities</i>	0	6,097	1	467	591,578	105	598,249
<i>Pipelines</i>	4,610	2,316	0	0			6,926
<b>Total</b>	4,610	8,413	1	467	591,578	105	605,175
<b>Imperial</b>							
<i>Facilities</i>	1,357	31,537	0	0	635,210	34	668,139
<i>Pipelines</i>	1,098	551	0	0			1,649
<b>Total</b>	2,455	32,088	0	0	635,210	34	669,788
<b>Inyo</b>							
<i>Facilities</i>	0	0	0	0	9,774	0	9,774
<i>Pipelines</i>	134	67	0	0			202
<b>Total</b>	134	67	0	0	9,774	0	9,976
<b>Kern</b>							
<i>Facilities</i>	12,474	46,284	66	47,393	6,145,428	662	6,252,308
<i>Pipelines</i>	24,860	12,488	0	0			37,347

	Potable Water	Waste Water	Oil Systems	Natural Gas	Electric Power	Communication	Total
<b>Total</b>	37,334	58,772	66	47,393	6,145,428	662	6,289,655
<b>Kings</b>							
<i>Facilities</i>	0	0	3	9,914	252,620	24	262,561
<i>Pipelines</i>	2,934	1,474	0	0			4,407
<b>Total</b>	2,934	1,474	3	9,914	252,620	24	266,969
<b>Los Angeles</b>							
<i>Facilities</i>	39,092	156,950	172	30,008	9,962,686	1,428	10,190,337
<i>Pipelines</i>	43,343	21,772	0	0			65,115
<b>Total</b>	82,435	178,722	172	30,008	9,962,686	1,428	10,255,452
<b>Madera</b>							
<i>Facilities</i>	0	0	0	0	22,233	3	22,236
<i>Pipelines</i>	501	252	0	0			753
<b>Total</b>	501	252	0	0	22,233	3	22,989
<b>Marin</b>							
<i>Facilities</i>	1	141	0	0	1	0	143
<i>Pipelines</i>	40	20	0	0			60
<b>Total</b>	41	161	0	0	1	0	203
<b>Mariposa</b>							
<i>Facilities</i>	0	492	0	0	2,808	2	3,301
<i>Pipelines</i>	45	22	0	0			67
<b>Total</b>	45	514	0	0	2,808	2	3,368

	Potable Water	Waste Water	Oil Systems	Natural Gas	Electric Power	Communication	Total
<b>Merced</b>							
<i>Facilities</i>	0	4,819	0	0	160,301	25	165,145
<i>Pipelines</i>	534	268	0	0			801
<b>Total</b>	534	5,087	0	0	160,301	25	165,946
<b>Mono</b>							
<i>Facilities</i>	0	0	0	0	54	0	54
<i>Pipelines</i>	55	28	0	0			83
<b>Total</b>	55	28	0	0	54	0	138
<b>Monterey</b>							
<i>Facilities</i>	0	12,318	0	0	189,101	118	201,537
<i>Pipelines</i>	4,213	2,116	0	0			6,329
<b>Total</b>	4,213	14,434	0	0	189,101	118	207,867
<b>Napa</b>							
<i>Facilities</i>	0	10	0	0	5	0	15
<i>Pipelines</i>	21	11	0	0			32
<b>Total</b>	21	21	0	0	5	0	47
<b>Orange</b>							
<i>Facilities</i>	3,915	31,062	12	2,300	248,886	100	286,275
<i>Pipelines</i>	3,729	1,873	0	0			5,602
<b>Total</b>	7,644	32,935	12	2,300	248,886	100	291,877
<b>Riverside</b>							

	Potable Water	Waste Water	Oil Systems	Natural Gas	Electric Power	Communication	Total
<i>Facilities</i>	36,654	254,027	0	6,440	3,368,565	2,444	3,668,130
<i>Pipelines</i>	38,040	19,108	0	0			57,148
<b>Total</b>	<b>74,694</b>	<b>273,135</b>	<b>0</b>	<b>6,440</b>	<b>3,368,565</b>	<b>2,444</b>	<b>3,725,278</b>
<b>Sacramento</b>							
<i>Facilities</i>	0	387	0	0	997	2	1,385
<i>Pipelines</i>	129	65	0	0			193
<b>Total</b>	<b>129</b>	<b>452</b>	<b>0</b>	<b>0</b>	<b>997</b>	<b>2</b>	<b>1,579</b>
<b>San Benito</b>							
<i>Facilities</i>	0	3,049	0	0	0	21	3,070
<i>Pipelines</i>	366	184	0	0			550
<b>Total</b>	<b>366</b>	<b>3,232</b>	<b>0</b>	<b>0</b>	<b>0</b>	<b>21</b>	<b>3,619</b>
<b>San Bernardino</b>							
<i>Facilities</i>	37,080	315,992	0	9,198	5,822,563	1,616	6,186,448
<i>Pipelines</i>	46,348	23,282	0	0			69,629
<b>Total</b>	<b>83,427</b>	<b>339,273</b>	<b>0</b>	<b>9,198</b>	<b>5,822,563</b>	<b>1,616</b>	<b>6,256,077</b>
<b>San Diego</b>							
<i>Facilities</i>	376	20,101	0	1,590	218,203	40	240,311
<i>Pipelines</i>	1,360	683	0	0			2,043
<b>Total</b>	<b>1,736</b>	<b>20,784</b>	<b>0</b>	<b>1,590</b>	<b>218,203</b>	<b>40</b>	<b>242,354</b>
<b>San Francisco</b>							
<i>Facilities</i>	0	379	0	0	2	0	381

	Potable Water	Waste Water	Oil Systems	Natural Gas	Electric Power	Communication	Total
<i>Pipelines</i>	23	12	0	0			35
<b>Total</b>	23	391	0	0	2	0	416
<b>San Joaquin</b>							
<i>Facilities</i>	140	861	0	0	9,104	2	10,108
<i>Pipelines</i>	277	139	0	0			416
<b>Total</b>	417	1,000	0	0	9,104	2	10,524
<b>San Luis Obispo</b>							
<i>Facilities</i>	1,009	52,347	6	0	1,482,318	289	1,535,969
<i>Pipelines</i>	14,364	7,215	0	0			21,579
<b>Total</b>	15,373	59,563	6	0	1,482,318	289	1,557,548
<b>San Mateo</b>							
<i>Facilities</i>	0	1,358	0	0	206	1	1,564
<i>Pipelines</i>	95	48	0	0			143
<b>Total</b>	95	1,405	0	0	206	1	1,707
<b>Santa Barbara</b>							
<i>Facilities</i>	0	60,054	6	4,555	81,387	333	146,335
<i>Pipelines</i>	1,770	889	0	0			2,658
<b>Total</b>	1,770	60,943	6	4,555	81,387	333	148,993
<b>Santa Clara</b>							
<i>Facilities</i>	56	369	0	0	27,952	5	28,382
<i>Pipelines</i>	366	184	0	0			550

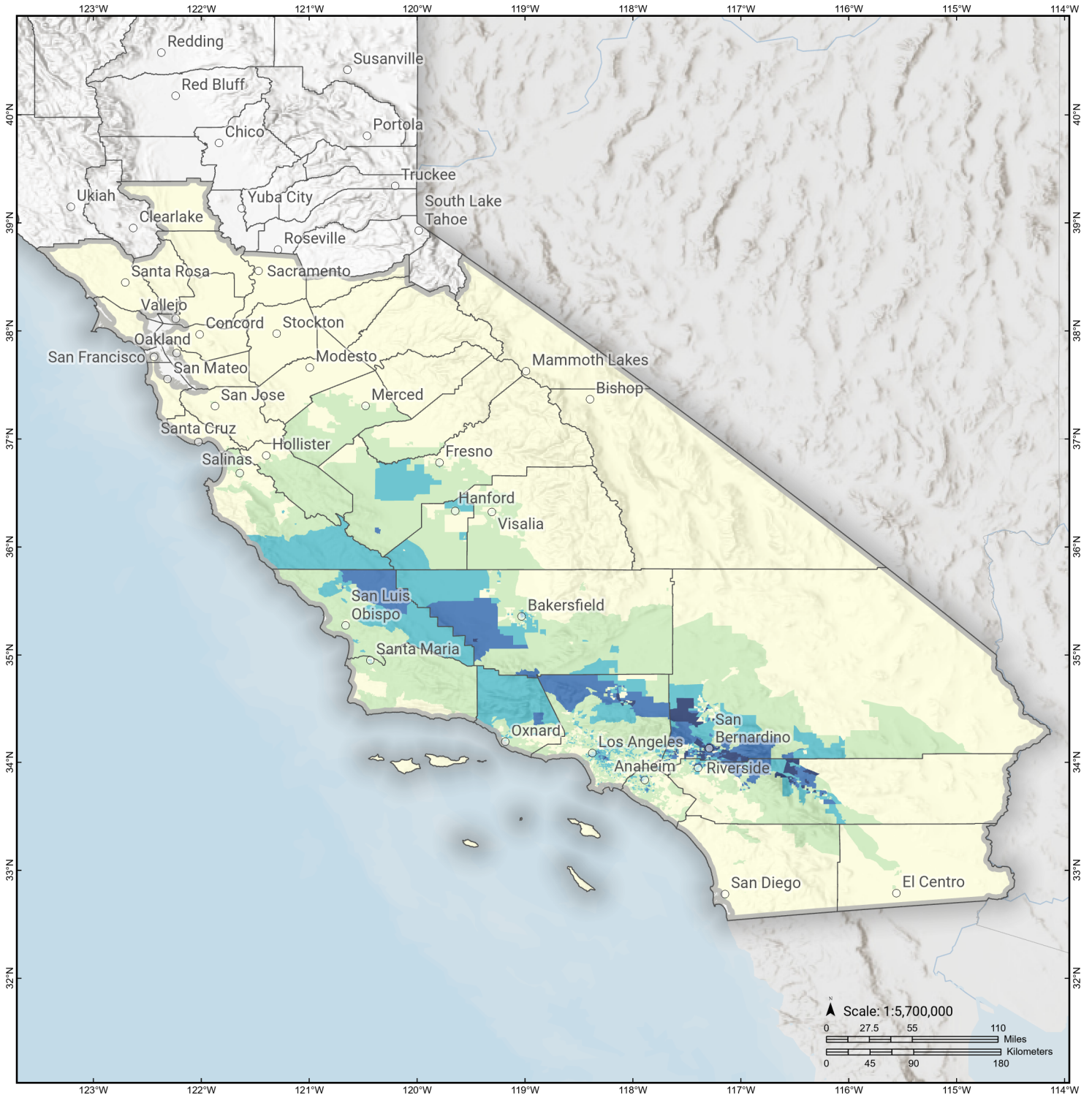
	Potable Water	Waste Water	Oil Systems	Natural Gas	Electric Power	Communication	Total
<b>Total</b>	423	553	0	0	27,952	5	28,932
<b>Santa Cruz</b>							
<i>Facilities</i>	0	492	0	0	65	1	558
<i>Pipelines</i>	132	66	0	0			199
<b>Total</b>	132	558	0	0	65	1	756
<b>Solano</b>							
<i>Facilities</i>	0	259	0	0	1,255	0	1,514
<i>Pipelines</i>	106	53	0	0			159
<b>Total</b>	106	312	0	0	1,255	0	1,673
<b>Sonoma</b>							
<i>Facilities</i>	0	28	0	0	2,054	0	2,083
<i>Pipelines</i>	86	43	0	0			130
<b>Total</b>	86	72	0	0	2,054	0	2,212
<b>Stanislaus</b>							
<i>Facilities</i>	0	492	0	0	8,978	3	9,473
<i>Pipelines</i>	245	123	0	0			368
<b>Total</b>	245	615	0	0	8,978	3	9,841
<b>Tulare</b>							
<i>Facilities</i>	348	4,573	0	0	82,079	46	87,046
<i>Pipelines</i>	1,173	589	0	0			1,763
<b>Total</b>	1,522	5,162	0	0	82,079	46	88,809

	Potable Water	Waste Water	Oil Systems	Natural Gas	Electric Power	Communication	Total
<b>Tuolumne</b>							
<i>Facilities</i>	0	123	0	0	25,596	0	25,719
<i>Pipelines</i>	68	34	0	0			102
<b>Total</b>	68	157	0	0	25,596	0	25,821
<b>Ventura</b>							
<i>Facilities</i>	5,933	76,964	9	2,232	354,768	242	440,147
<i>Pipelines</i>	3,152	1,583	0	0			4,735
<b>Total</b>	9,085	78,547	9	2,232	354,768	242	444,883
<b>Yolo</b>							
<i>Facilities</i>	0	10	0	0	8	0	18
<i>Pipelines</i>	37	19	0	0			56
<b>Total</b>	37	29	0	0	8	0	74
<b>Total</b>	<b>333,230</b>	<b>1,182,009</b>	<b>275</b>	<b>114,097</b>	<b>29,782,882</b>	<b>7,551</b>	<b>31,420,044</b>
<b>Region Total</b>	<b>333,230</b>	<b>1,182,009</b>	<b>275</b>	<b>114,097</b>	<b>29,782,882</b>	<b>7,551</b>	<b>31,420,044</b>

Totals only reflect data for those census tracts/blocks included in the user's study region and will reflect the entire county/state only if all of the census blocks for that county/states were selected at the time of study region creation.

# S. San Andreas: PK+CH+CC+BB+NM+SM+NSB+SSB+BG

## Displaced Households by Census Tract

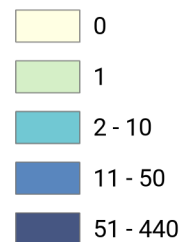


**Study Region:** S. San Andreas: PK+CH+CC  
+BB+NM+SM+NSB+SSB+BG

**Scenario:** ssanandreaspkchccbbn\_m8p11\_se



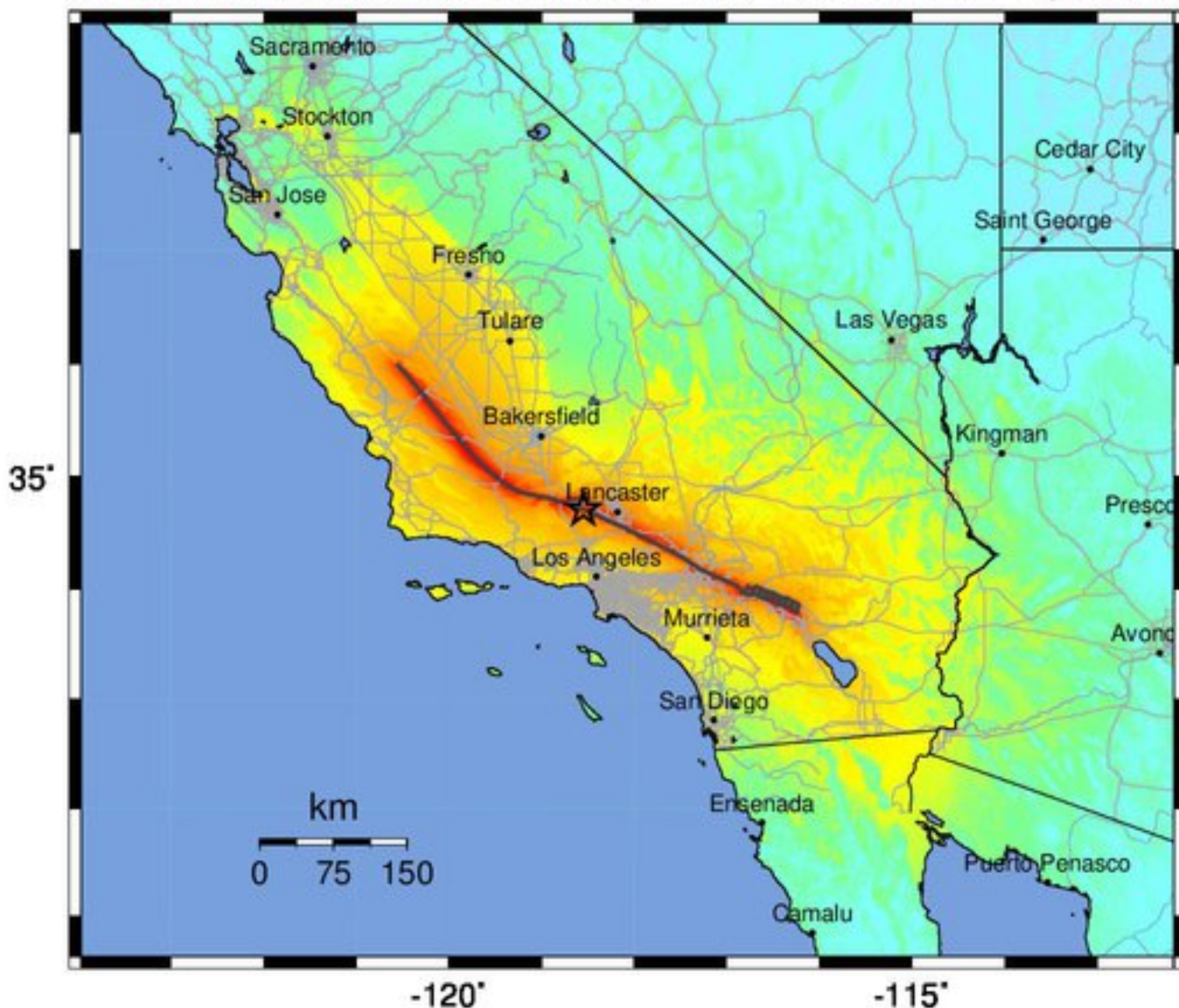
### Displaced Households



-- Earthquake Planning Scenario --

Map for S. San Andreas: PK+CH+CC+BB+NM+SM+NSB+SSB+BG - Median ground motions S

Scenario Date: Jun 30, 2017 10:03:40 AM MDT M 8.1 N34.71 W118.55 Depth: 9.1km



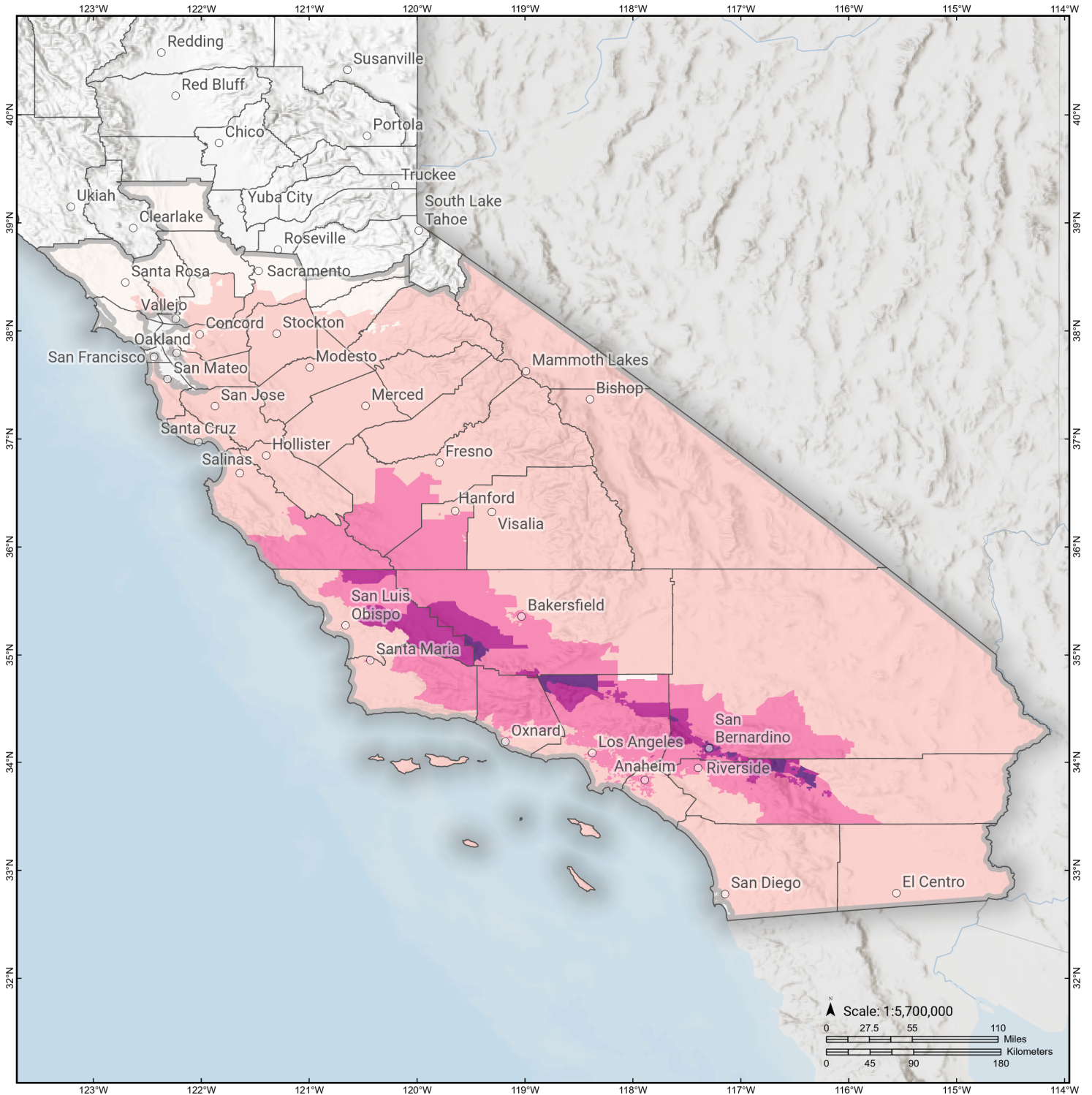
PLANNING SCENARIO ONLY -- Map Version 13 Processed 2017-07-03 01:44:42 PM MDT

PERCEIVED SHAKING	Not felt	Weak	Light	Moderate	Strong	Very strong	Severe	Violent	Extreme
POTENTIAL DAMAGE	none	none	none	Very light	Light	Moderate	Mod./Heavy	Heavy	Very Heavy
PEAK ACC.(%g)	<0.05	0.3	2.8	6.2	12	22	40	75	>139
PEAK VEL.(cm/s)	<0.02	0.1	1.4	4.7	9.6	20	41	86	>178
INSTRUMENTAL INTENSITY	I	II-III	IV	V	VI	VII	VIII	IX	X+

Scale based upon Worden et al. (2012)

# S. San Andreas: PK+CH+CC+BB+NM+SM+NSB+SSB+BG

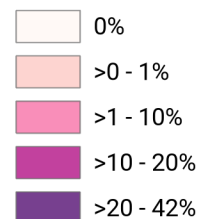
## Loss Ratio by Census Tract



**Study Region:** S. San Andreas: PK+CH+CC  
+BB+NM+SM+NSB+SSB+BG

**Scenario:** ssanandreaspkchccbbn\_m8p11\_se

**Loss Ratio** (ratio of building related economic loss to exposed value of buildings)



## Hazus Quick Assessment Report

### Estimated Economic Loss (\$ Billions)

Category	Description	Range
General Building Stock	Building Damage	25.00 - 99.80
	Building Contents	3.20 - 12.70
	Business Interruption	5.10 - 20.40
Infrastructure	Lifelines Damage	
<b>Total</b>		39.90 - 159.50

### Preliminary Damage Assessment (PDA) Estimates

Description	Residential	Commercial	Other	Total
Affected	947,600	75,500	28,600	
Minor	155,100	25,900	11,000	192,000
Major	33,900	5,300	2,500	41,700
Destroyed	15,400	1,400	490	17,290
<b>Total</b>		108,100	42,590	

### Estimated Casualties : Night Time

Severity Level	Description	# Persons
Level 1	Medical Aid	4,000 - 15,000
Level 2	Hospital Care	600 - 2,000
Level 3	Life-threatening	50 - 180
Level 4	Fatalities	80 - 300

### Estimated Shelter Needs

Type	Households	People
Displaced Households	14,000 - 56,000	35,000 - 140,000
Public Shelter	7,650	19,120

Comments :

\*Hazus damage estimates are presented using FEMA Preliminary Damage Assessment (PDA) categories. These estimates should be used for planning purposes and may not reflect actual observed damages from the PDA process.

#### Disclaimer:

The estimates of social and economic impacts contained in this report were produced using HAZUS loss estimation methodology software which is based on current scientific and engineering knowledge. There are uncertainties inherent in any loss estimation technique. Therefore, there may be significant differences between the modeled results contained in this report and the actual social and economic losses following a specific earthquake. These results can be improved by using enhanced inventory, geotechnical, and observed ground motion data.

### Earthquake Information

Location :

Origin Time:

Magnitude : 8.11

Epicenter Latitude/Longitude :  
/

Depth & Type : /U

Name :  
NA

Ground Motion /Attenuation :

Maximum PGA: 1.00

Information Sources:

Comments :

### Population and Building Exposure

Population: 37,720,499

### Building Exposure : (\$ Millions)

Residential	
Commercial	1,276,483
Other	1,010,032
Total	

Counties : See Appendix

Major Metro Area :

## Hazus Quick Assessment Report

### Estimated Economic Loss (\$ Billions)

Category	Description	Range
General Building Stock	Building Damage	25.00 - 99.80
	Building Contents	3.20 - 12.70
	Business Interruption	5.10 - 20.40
Infrastructure	Lifelines Damage	
<b>Total</b>		39.90 - 159.50

### Preliminary Damage Assessment (PDA) Estimates

Description	Residential	Commercial	Other	Total
Affected	947,600	75,500	28,600	
Minor	155,100	25,900	11,000	192,000
Major	33,900	5,300	2,500	41,700
Destroyed	15,400	1,400	490	17,290
<b>Total</b>		108,100	42,590	

### Estimated Casualties : Day Time

Severity Level	Description	# Persons
Level 1	Medical Aid	5,000 - 19,000
Level 2	Hospital Care	800 - 3,000
Level 3	Life-threatening	100 - 400
Level 4	Fatalities	170 - 700

### Estimated Shelter Needs

Type	Households	People
Displaced Households	14,000 - 56,000	35,000 - 140,000
Public Shelter	7,650	19,120

Comments :

\*Hazus damage estimates are presented using FEMA Preliminary Damage Assessment (PDA) categories. These estimates should be used for planning purposes and may not reflect actual observed damages from the PDA process.

**Disclaimer:**

The estimates of social and economic impacts contained in this report were produced using HAZUS loss estimation methodology software which is based on current scientific and engineering knowledge. There are uncertainties inherent in any loss estimation technique. Therefore, there may be significant differences between the modeled results contained in this report and the actual social and economic losses following a specific earthquake. These results can be improved by using enhanced inventory, geotechnical, and observed ground motion data.

### Earthquake Information

Location :

Origin Time:

Magnitude : 8.11

Epicenter Latitude/Longitude :  
/

Depth & Type : /U

Name :  
NA

Ground Motion /Attenuation :

Maximum PGA: 1.00

Information Sources:

Comments :

### Population and Building Exposure

Population: 37,720,499

### Building Exposure : (\$ Millions)

Residential	
Commercial	1,276,483
Other	1,010,032
Total	

Counties : See Appendix

Major Metro Area :

## Hazus Quick Assessment Report

### Estimated Economic Loss (\$ Billions)

Category	Description	Range
General Building Stock	Building Damage	25.00 - 99.80
	Building Contents	3.20 - 12.70
	Business Interruption	5.10 - 20.40
Infrastructure	Lifelines Damage	
<b>Total</b>		39.90 - 159.50

### Preliminary Damage Assessment (PDA) Estimates

Description	Residential	Commercial	Other	Total
Affected	947,600	75,500	28,600	
Minor	155,100	25,900	11,000	192,000
Major	33,900	5,300	2,500	41,700
Destroyed	15,400	1,400	490	17,290
<b>Total</b>		108,100	42,590	

### Estimated Casualties : Commute Time

Severity Level	Description	# Persons
Level 1	Medical Aid	3,000 - 14,000
Level 2	Hospital Care	700 - 3,000
Level 3	Life-threatening	300 - 1,000
Level 4	Fatalities	150 - 600

### Estimated Shelter Needs

Type	Households	People
Displaced Households	14,000 - 56,000	35,000 - 140,000
Public Shelter	7,650	19,120

Comments :

\*Hazus damage estimates are presented using FEMA Preliminary Damage Assessment (PDA) categories. These estimates should be used for planning purposes and may not reflect actual observed damages from the PDA process.

**Disclaimer:**

The estimates of social and economic impacts contained in this report were produced using HAZUS loss estimation methodology software which is based on current scientific and engineering knowledge. There are uncertainties inherent in any loss estimation technique. Therefore, there may be significant differences between the modeled results contained in this report and the actual social and economic losses following a specific earthquake. These results can be improved by using enhanced inventory, geotechnical, and observed ground motion data.

### Earthquake Information

Location :

Origin Time:

Magnitude : 8.11

Epicenter Latitude/Longitude :  
/

Depth & Type : /U

Name :  
NA

Ground Motion /Attenuation :

Maximum PGA: 1.00

Information Sources:

Comments :

### Population and Building Exposure

Population: 37,720,499

### Building Exposure : (\$ Millions)

Residential	
Commercial	1,276,483
Other	1,010,032
<b>Total</b>	

Counties : See Appendix

Major Metro Area :

## Shelter Summary Report

June 18, 2024

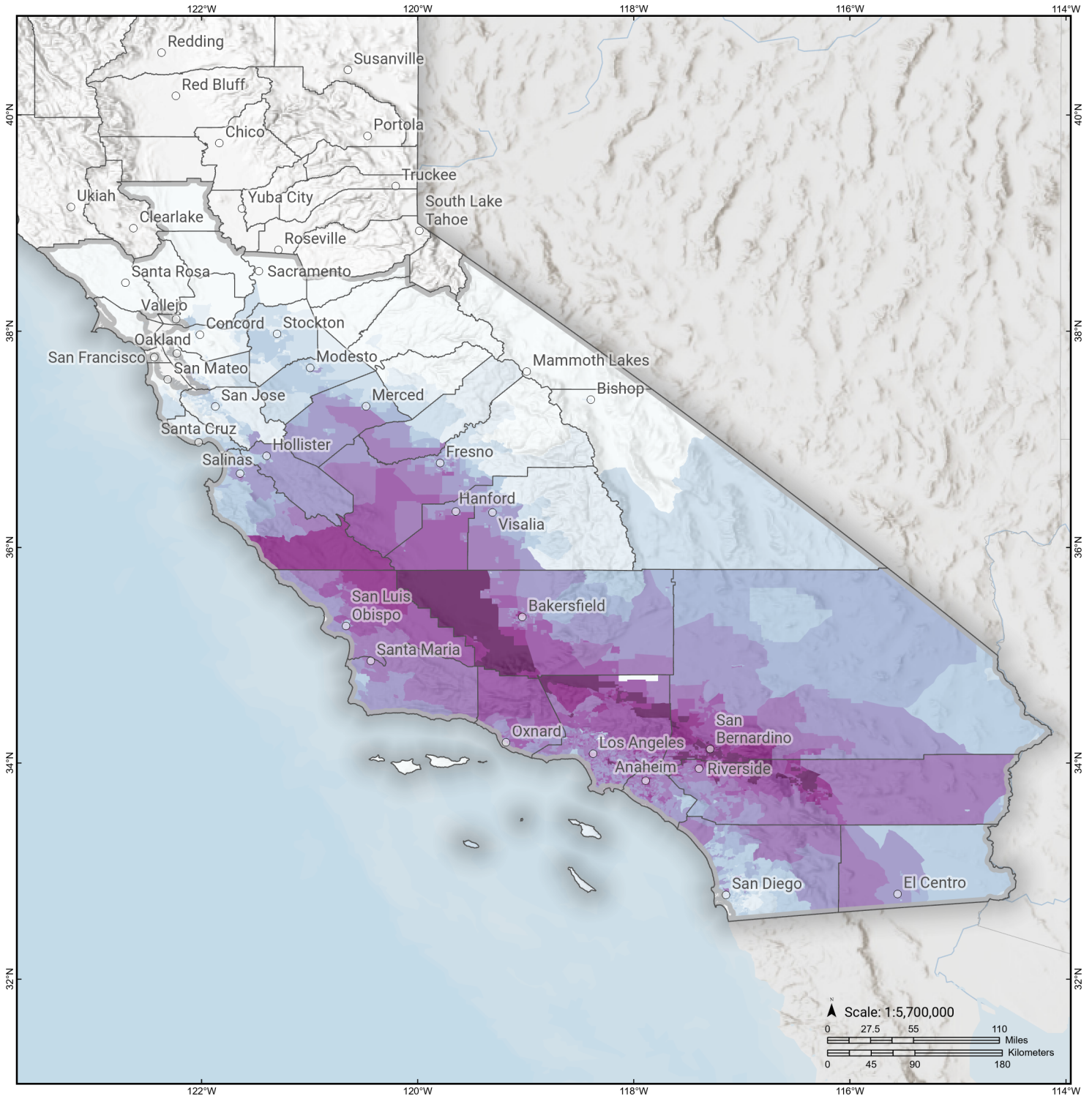
	# of Displaced Households	# of People Needing Short Term Shelter
<b>California</b>		
Fresno	53	38
Alameda	0	0
Solano	0	0
San Mateo	0	0
Tuolumne	0	0
Kings	20	15
San Joaquin	0	0
San Luis Obispo	81	40
Madera	0	0
Tulare	2	2
Inyo	0	0
Colusa	0	0
Napa	0	0
Riverside	3,679	2,638
San Bernardino	15,837	11,015
Contra Costa	0	0
Imperial	0	0
Ventura	146	86
Kern	583	462
Amador	0	0
Santa Cruz	0	0
Orange	514	351
Monterey	18	12
Sacramento	0	0
San Diego	0	0
Mariposa	0	0
Los Angeles	7,169	4,425
Yolo	0	0
Calaveras	0	0
Stanislaus	0	0
Sonoma	0	0
Santa Barbara	46	32

	# of Displaced Households	# of People Needing Short Term Shelter
Santa Clara	0	0
San Benito	0	0
San Francisco	0	0
Merced	0	0
Mono	0	0
Marin	0	0
<b>Total</b>	<b>28,150</b>	<b>19,117</b>
<b>Region Total</b>	<b>28,150</b>	<b>19,117</b>

*Totals only reflect data for those census tracts/blocks included in the user's study region and will reflect the entire county/state only if all of the census blocks for that county/states were selected at the time of study region creation.*

# S. San Andreas: PK+CH+CC+BB+NM+SM+NSB+SSB+BG

## Total Building Related Economic Loss by Census Tract



**Study Region:** S. San Andreas: PK+CH+CC  
+BB+NM+SM+NSB+SSB+BG  
**Scenario:** ssanandreaspkchccbbn\_m8p11\_se

**Economic Loss** (in thousands of USD \$)

