
Hazus: Earthquake Global Risk Report

Region Name: SSAPkchccbbMSBbgco

Earthquake Scenario: ssanandreaspkchccbbn_m8p18_se

Print Date: April 15, 2024

Disclaimer:

Totals only reflect data for those census tracts/blocks included in the user's study region.

The estimates of social and economic impacts contained in this report were produced using Hazus loss estimation methodology software which is based on current scientific and engineering knowledge. There are uncertainties inherent in any loss estimation technique. Therefore, there may be significant differences between the modeled results contained in this report and the actual social and economic losses following a specific earthquake. These results can be improved by using enhanced inventory, geotechnical, and observed ground motion data.

Table of Contents

Section	Page #
General Description of the Region	3
Building and Lifeline Inventory	4
Building Inventory	
Critical Facility Inventory	
Transportation and Utility Lifeline Inventory	
Earthquake Scenario Parameters	7
Direct Earthquake Damage	8
Buildings Damage	
Essential Facilities Damage	
Transportation and Utility Lifeline Damage	
Induced Earthquake Damage	14
Fire Following Earthquake	
Debris Generation	
Social Impact	15
Shelter Requirements	
Casualties	
Economic Loss	17
Building Related Losses	
Transportation and Utility Lifeline Losses	
Appendix A: County Listing for the Region	
Appendix B: Regional Population and Building Value Data	

General Description of the Region

Hazus-MH is a regional earthquake loss estimation model that was developed by the Federal Emergency Management Agency (FEMA) and the National Institute of Building Sciences. The primary purpose of Hazus is to provide a methodology and software application to develop multi-hazard losses at a regional scale. These loss estimates would be used primarily by local, state and regional officials to plan and stimulate efforts to reduce risks from multi-hazards and to prepare for emergency response and recovery.

The earthquake loss estimates provided in this report was based on a region that includes 36 county(ies) from the following state(s):

California

Note:

Appendix A contains a complete listing of the counties contained in the region.

The geographical size of the region is 107,861.18 square miles and contains 8,513 census tracts. There are over 12,578 thousand households in the region which has a total population of 37,209,797 people. The distribution of population by Total Region and County is provided in Appendix B.

There are an estimated 10,725 thousand buildings in the region with a total building replacement value (excluding contents) of (millions of dollars). Approximately 90.00 % of the buildings (and % of the building value) are associated with residential housing.

The replacement value of the transportation and utility lifeline systems is estimated to be 494,745 and 312,793 (millions of dollars) , respectively.

Building and Lifeline Inventory

Building Inventory

Hazus estimates that there are 10,725 thousand buildings in the region which have an aggregate total replacement value of (millions of dollars) . Appendix B provides a general distribution of the building value by Total Region and County.

In terms of building construction types found in the region, wood frame construction makes up 87% of the building inventory. The remaining percentage is distributed between the other general building types.

Critical Facility Inventory

Hazus breaks critical facilities into two (2) groups: essential facilities and high potential loss facilities (HPL). Essential facilities include hospitals, medical clinics, schools, fire stations, police stations and emergency operations facilities. High potential loss facilities include dams, levees, military installations, nuclear power plants and hazardous material sites.

For essential facilities, there are 550 hospitals in the region with a total bed capacity of 97,416 beds. There are 12,346 schools, 2,439 fire stations, 855 police stations and 196 emergency operation facilities. With respect to high potential loss facilities (HPL), there are no dams identified within the inventory. The inventory also includes no hazardous material sites, no military installations and no nuclear power plants.

Transportation and Utility Lifeline Inventory

Within Hazus, the lifeline inventory is divided between transportation and utility lifeline systems. There are seven (7) transportation systems that include highways, railways, light rail, bus, ports, ferry and airports. There are six (6) utility systems that include potable water, wastewater, natural gas, crude & refined oil, electric power and communications. The lifeline inventory data are provided in Tables 1 and 2.

The total value of the lifeline inventory is over 807,538.00 (millions of dollars). This inventory includes over 20,487.84 miles of highways, 20,376 bridges, 418,753.10 miles of pipes.

Table 1: Transportation System Lifeline Inventory

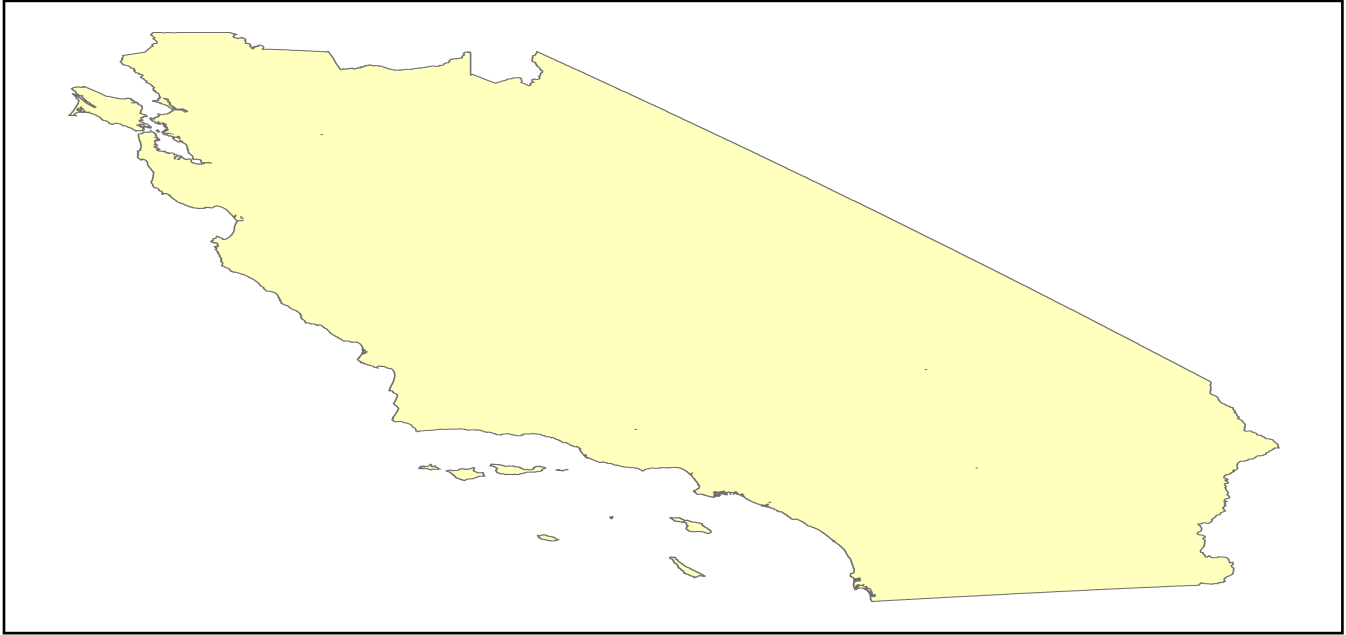
System	Component	# Locations/ # Segments	Replacement value (millions of dollars)
Highway	Bridges	20,376	117901.5969
	Segments	16,120	200415.2485
	Tunnels	105	1516.8013
	Subtotal		319833.6467
Railways	Bridges	3,327	18930.6300
	Facilities	191	508.6330
	Segments	4,628	123781.3030
	Tunnels	3	1.8495
	Subtotal		143222.4155
Light Rail	Bridges	163	28.6279
	Facilities	404	7354.8000
	Segments	23	10802.3803
	Tunnels	0	0.0000
	Subtotal		18185.8082
Bus	Facilities	83	183.7813
	Subtotal		183.7813
Ferry	Facilities	47	62.5570
	Subtotal		62.5570
Port	Facilities	698	2660.6676
	Subtotal		2660.6676
Airport	Facilities	244	7449.8390
	Runways	296	3146.4380
	Subtotal		10596.2770
		Total	494,745.20

Table 2: Utility System Lifeline Inventory

System	Component	# Locations / Segments	Replacement value (millions of dollars)
Potable Water	Distribution Lines	NA	8321.0265
	Facilities	71	2789.8740
	Pipelines	0	0.0000
		Subtotal	11110.9005
Waste Water	Distribution Lines	NA	4992.6159
	Facilities	266	45739.1788
	Pipelines	0	0.0000
		Subtotal	50731.7947
Natural Gas	Distribution Lines	NA	3328.4106
	Facilities	45	1617.5273
	Pipelines	1,015	29009.2179
		Subtotal	33955.1558
Oil Systems	Facilities	84	9.9120
	Pipelines	0	0.0000
		Subtotal	9.9120
Electrical Power	Facilities	907	216891.3623
		Subtotal	216891.3623
Communication	Facilities	803	94.7540
		Subtotal	94.7540
	Total		312,793.90

Earthquake Scenario

Hazus uses the following set of information to define the earthquake parameters used for the earthquake loss estimate provided in this report.



Scenario Name	ssanandreaspkchccbn_m8p18_se
Type of Earthquake	User-defined
Fault Name	NA
Historical Epicenter ID #	NA
Probabilistic Return Period	NA
Longitude of Epicenter	NA
Latitude of Epicenter	NA
Earthquake Magnitude	8.18
Depth (km)	NA
Rupture Length (Km)	NA
Rupture Orientation (degrees)	NA
Attenuation Function	NA

Direct Earthquake Damage

Building Damage

Hazus estimates that about 264,111 buildings will be at least moderately damaged. This is over 2.00 % of the buildings in the region. There are an estimated 19,572 buildings that will be damaged beyond repair. The definition of the 'damage states' is provided in Volume 1: Chapter 5 of the Hazus technical manual. Table 3 below summarizes the expected damage by general occupancy for the buildings in the region. Table 4 below summarizes the expected damage by general building type.

Damage Categories by General Occupancy Type

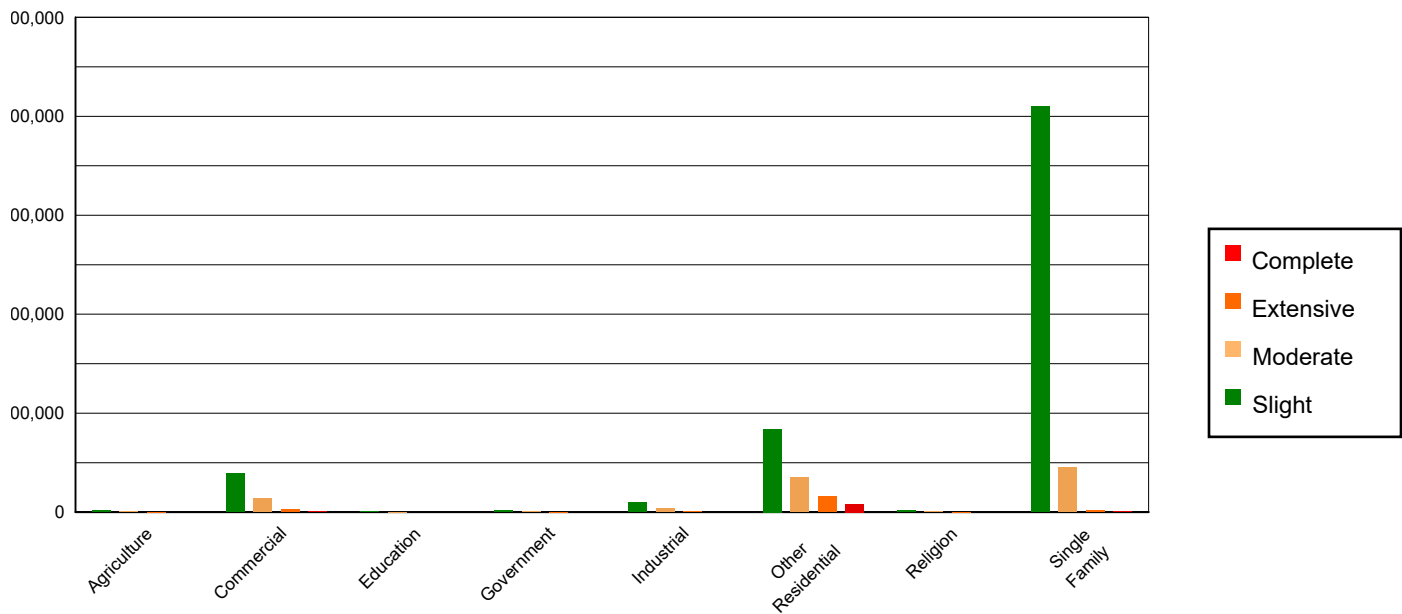


Table 3: Expected Building Damage by Occupancy

	None		Slight		Moderate		Extensive		Complete	
	Count	(%)	Count	(%)	Count	(%)	Count	(%)	Count	(%)
Agriculture	37072.94	0.40	3887.41	0.35	1310.21	0.65	276.14	0.64	65.30	0.33
Commercial	606137.62	6.47	78605.23	7.16	27163.52	13.51	5756.80	13.26	1510.83	7.72
Education	19612.79	0.21	1070.37	0.10	333.59	0.17	57.21	0.13	7.04	0.04
Government	49096.39	0.52	3917.98	0.36	2100.03	1.04	496.69	1.14	104.92	0.54
Industrial	161907.76	1.73	19241.50	1.75	6950.17	3.46	1405.20	3.24	244.38	1.25
Other Residential	1247447.71	13.32	167932.76	15.29	70880.73	35.24	31310.50	72.12	16528.30	84.45
Religion	32410.11	0.35	4135.29	0.38	1755.79	0.87	444.73	1.02	114.10	0.58
Single Family	7209675.17	77.00	819520.31	74.62	90633.52	45.06	3664.43	8.44	997.57	5.10
Total	9,363,360		1,098,311		201,128		43,412		19,572	

Table 4: Expected Building Damage by Building Type (All Design Levels)

	None		Slight		Moderate		Extensive		Complete	
	Count	(%)	Count	(%)	Count	(%)	Count	(%)	Count	(%)
Wood	8299049.59	88.63	954704.01	86.92	106395.57	52.90	3072.69	7.08	457.16	2.34
Steel	168509.42	1.80	26470.84	2.41	16536.62	8.22	4224.88	9.73	836.36	4.27
Concrete	190546.86	2.04	21934.73	2.00	10130.52	5.04	2469.22	5.69	298.50	1.53
Precast	95774.48	1.02	10259.28	0.93	3274.83	1.63	422.25	0.97	62.58	0.32
RM	414671.18	4.43	30808.74	2.81	11817.50	5.88	4187.17	9.65	827.32	4.23
URM	53765.68	0.57	10089.96	0.92	7356.29	3.66	1873.77	4.32	1503.85	7.68
MH	141043.26	1.51	44043.30	4.01	45616.22	22.68	27161.70	62.57	15586.67	79.64
Total	9,363,360		1,098,311		201,128		43,412		19,572	

*Note:

- RM Reinforced Masonry
- URM Unreinforced Masonry
- MH Manufactured Housing

Essential Facility Damage

Before the earthquake, the region had 97,416 hospital beds available for use. On the day of the earthquake, the model estimates that only 84,328 hospital beds (87.00%) are available for use by patients already in the hospital and those injured by the earthquake. After one week, 94.00% of the beds will be back in service. By 30 days, 99.00% will be operational.

Table 5: Expected Damage to Essential Facilities

Classification	Total	# Facilities		
		At Least Moderate Damage > 50%	Complete Damage > 50%	With Functionality > 50% on day 1
Hospitals	550	21	2	501
Schools	12,346	517	38	11,140
EOCs	196	15	1	174
PoliceStations	855	36	5	781
FireStations	2,439	58	5	2,235

Transportation Lifeline Damage

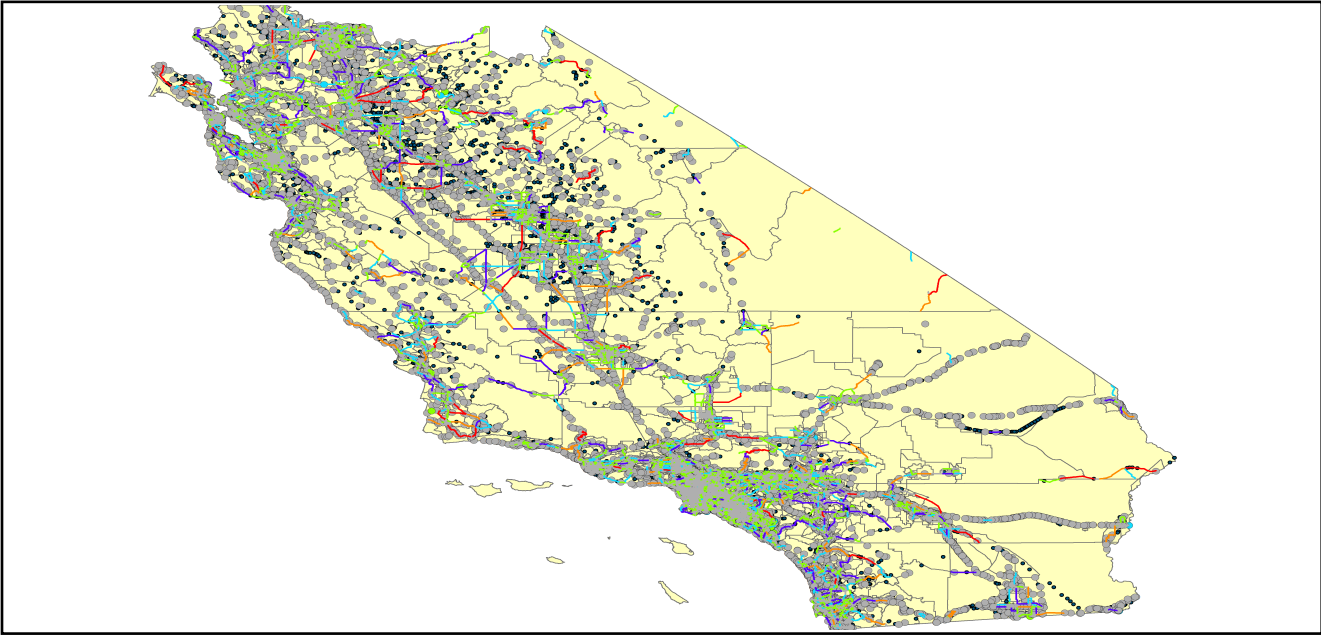


Table 6: Expected Damage to the Transportation Systems

System	Component	Number of Locations_				
		Locations/ Segments	With at Least Mod. Damage	With Complete Damage	With Functionality > 50 %	
					After Day 1	After Day 7
Highway	Segments	16,120	0	0	16,120	16,120
	Bridges	20,376	257	17	20,137	20,315
	Tunnels	105	0	0	105	105
Railways	Segments	4,628	0	0	4,628	4,628
	Bridges	3,327	10	0	3,317	3,327
	Tunnels	3	0	0	3	3
	Facilities	191	2	0	190	191
Light Rail	Segments	23	0	0	23	23
	Bridges	163	0	0	163	163
	Tunnels	0	0	0	0	0
	Facilities	404	0	0	404	404
Bus	Facilities	83	3	0	83	83
Ferry	Facilities	47	0	0	47	47
Port	Facilities	698	0	0	698	698
Airport	Facilities	244	5	0	244	244
	Runways	296	0	0	296	296

Table 6 provides damage estimates for the transportation system.

Note: Roadway segments, railroad tracks and light rail tracks are assumed to be damaged by ground failure only. If ground failure maps are not provided, damage estimates to these components will not be computed.

Tables 7-9 provide information on the damage to the utility lifeline systems. Table 7 provides damage to the utility system facilities. Table 8 provides estimates on the number of leaks and breaks by the pipelines of the utility systems. For electric power and potable water, Hazus performs a simplified system performance analysis. Table 9 provides a summary of the system performance information.

Table 7 : Expected Utility System Facility Damage

System	# of Locations				
	Total #	With at Least Moderate Damage	With Complete Damage	with Functionality > 50 %	
				After Day 1	After Day 7
Potable Water	71	5	0	62	71
Waste Water	266	13	0	229	266
Natural Gas	45	5	0	37	45
Oil Systems	84	0	0	84	84
Electrical Power	907	265	0	696	849
Communication	803	65	0	759	803

Table 8 : Expected Utility System Pipeline Damage (Site Specific)

System	Total Pipelines Length (miles)	Number of Leaks	Number of Breaks
Potable Water	258,522	48749	12187
Waste Water	155,113	24488	6122
Natural Gas	5,118	0	0
Oil	0	0	0

Table 9: Expected Potable Water and Electric Power System Performance

	Total # of Households	Number of Households without Service				
		At Day 1	At Day 3	At Day 7	At Day 30	At Day 90
Potable Water	12,578,777	1,354,893	1,297,905	1,205,160	749,922	18,745
Electric Power		490,206	328,634	145,481	15,796	635

Induced Earthquake Damage

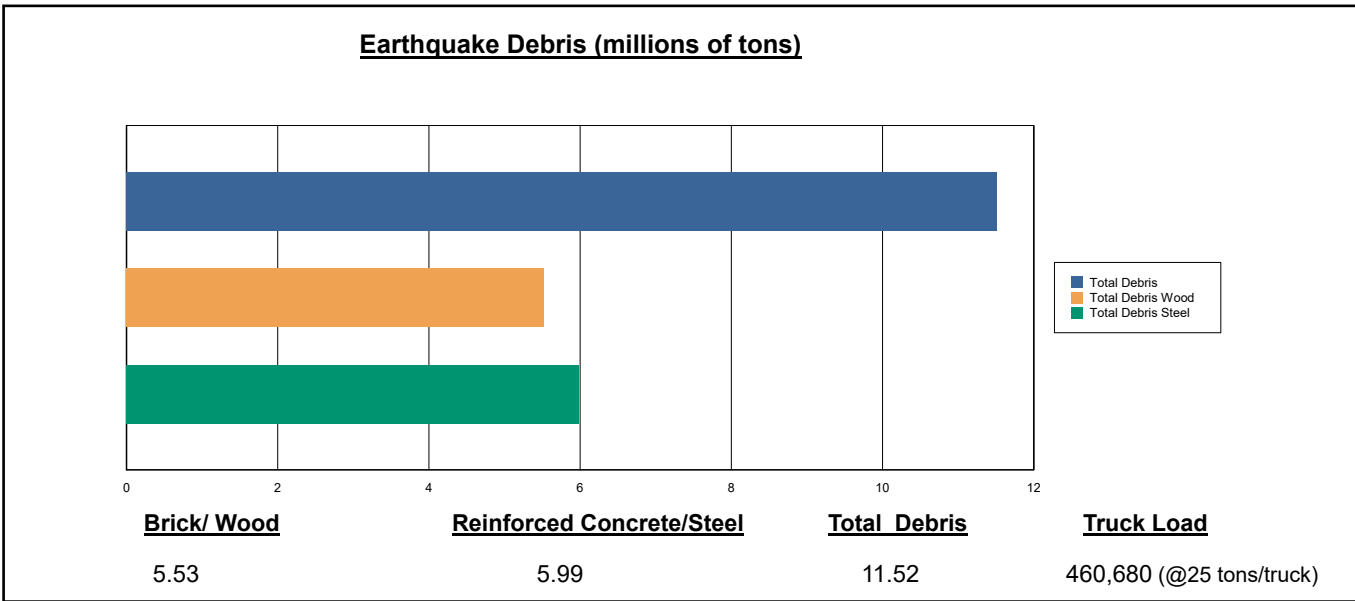
Fire Following Earthquake

Fires often occur after an earthquake. Because of the number of fires and the lack of water to fight the fires, they can often burn out of control. Hazus uses a Monte Carlo simulation model to estimate the number of ignitions and the amount of burnt area. For this scenario, the model estimates that there will be 107 ignitions that will burn about 0.93 sq. mi (0.00 % of the region's total area.) The model also estimates that the fires will displace about 8,866 people and burn about 929 (millions of dollars) of building value.

Debris Generation

Hazus estimates the amount of debris that will be generated by the earthquake. The model breaks the debris into two general categories: a) Brick/Wood and b) Reinforced Concrete/Steel. This distinction is made because of the different types of material handling equipment required to handle the debris.

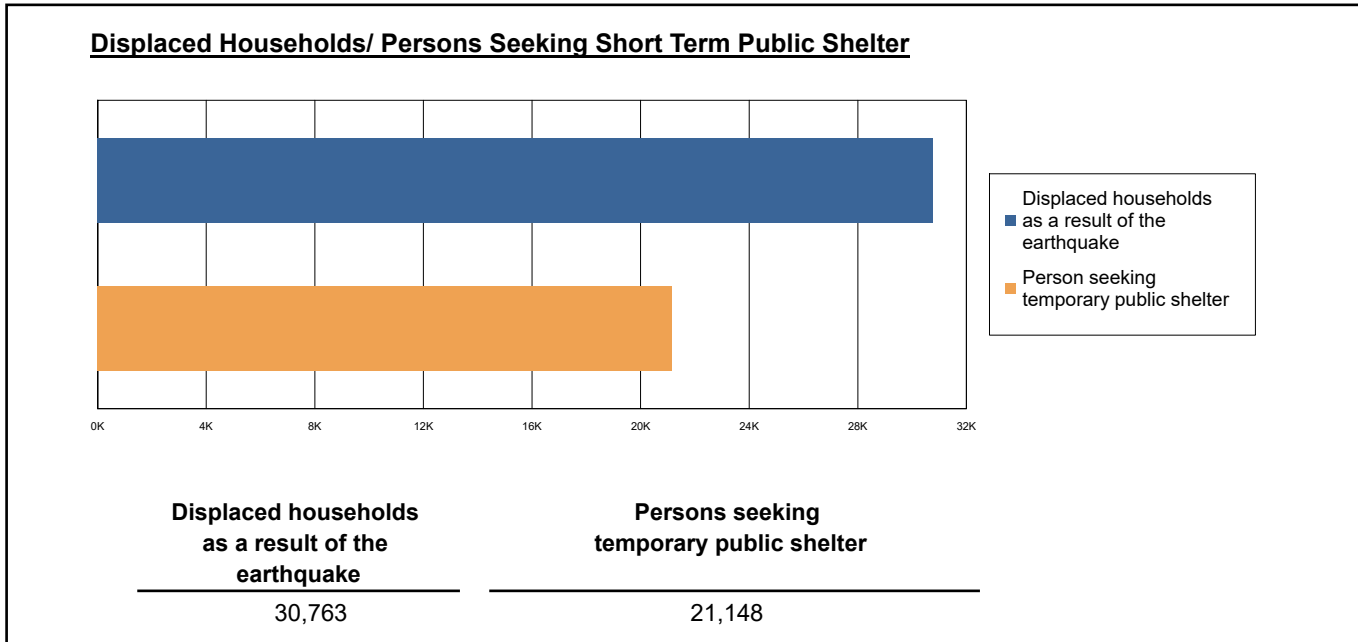
The model estimates that a total of 11,517,000 tons of debris will be generated. Of the total amount, Brick/Wood comprises 48.00% of the total, with the remainder being Reinforced Concrete/Steel. If the debris tonnage is converted to an estimated number of truckloads, it will require 460,680 truckloads (@25 tons/truck) to remove the debris generated by the earthquake.



Social Impact

Shelter Requirement

Hazus estimates the number of households that are expected to be displaced from their homes due to the earthquake and the number of displaced people that will require accommodations in temporary public shelters. The model estimates 30,763 households to be displaced due to the earthquake. Of these, 21,148 people (out of a total population of 37,209,797) will seek temporary shelter in public shelters.



Casualties

Hazus estimates the number of people that will be injured and killed by the earthquake. The casualties are broken down into four (4) severity levels that describe the extent of the injuries. The levels are described as follows;

- Severity Level 1: Injuries will require medical attention but hospitalization is not needed.
- Severity Level 2: Injuries will require hospitalization but are not considered life-threatening
- Severity Level 3: Injuries will require hospitalization and can become life threatening if not promptly treated.
- Severity Level 4: Victims are killed by the earthquake.

The casualty estimates are provided for three (3) times of day: 2:00 AM, 2:00 PM and 5:00 PM. These times represent the periods of the day that different sectors of the community are at their peak occupancy loads. The 2:00 AM estimate considers that the residential occupancy load is maximum, the 2:00 PM estimate considers that the educational, commercial and industrial sector loads are maximum and 5:00 PM represents peak commute time.

Table 10 provides a summary of the casualties estimated for this earthquake

Table 10: Casualty Estimates

		Level 1	Level 2	Level 3	Level 4
2 AM	Commercial	71.53	12.96	1.55	3.04
	Commuting	1.18	1.62	2.68	0.52
	Educational	0.00	0.00	0.00	0.00
	Hotels	3.13	0.39	0.03	0.06
	Industrial	62.81	10.48	1.13	2.20
	Other-Residential	5791.90	1070.28	74.95	131.62
	Single Family	2366.80	213.84	20.90	41.18
	Total	8,297	1,310	101	179
2 PM	Commercial	5058.41	939.64	115.38	223.35
	Commuting	10.60	14.60	24.09	4.69
	Educational	1949.04	320.49	35.31	67.88
	Hotels	0.60	0.08	0.01	0.01
	Industrial	460.95	77.36	8.43	16.21
	Other-Residential	1878.55	354.01	25.72	44.52
	Single Family	697.28	69.13	7.28	13.69
	Total	10,055	1,775	216	370
5 PM	Commercial	3644.63	691.30	86.85	165.70
	Commuting	188.11	259.13	427.45	83.28
	Educational	384.24	61.27	6.80	13.01
	Hotels	0.94	0.12	0.01	0.02
	Industrial	288.09	48.35	5.27	10.13
	Other-Residential	2122.51	393.45	28.75	49.87
	Single Family	881.12	85.39	8.89	16.73
	Total	7,510	1,539	564	339

Economic Loss

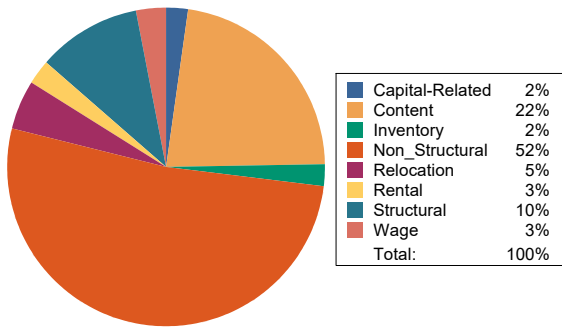
The total economic loss estimated for the earthquake is 120,403.65 (millions of dollars), which includes building and lifeline related losses based on the region's available inventory. The following three sections provide more detailed information about these losses.

Building-Related Losses

The building losses are broken into two categories: direct building losses and business interruption losses. The direct building losses are the estimated costs to repair or replace the damage caused to the building and its contents. The business interruption losses are the losses associated with inability to operate a business because of the damage sustained during the earthquake. Business interruption losses also include the temporary living expenses for those people displaced from their homes because of the earthquake.

The total building-related losses were 84,225.24 (millions of dollars); 13 % of the estimated losses were related to the business interruption of the region. By far, the largest loss was sustained by the residential occupancies which made up over 47 % of the total loss. Table 11 below provides a summary of the losses associated with the building damage.

Earthquake Losses by Loss Type (\$ millions)



Earthquake Losses by Occupancy Type (\$ millions)

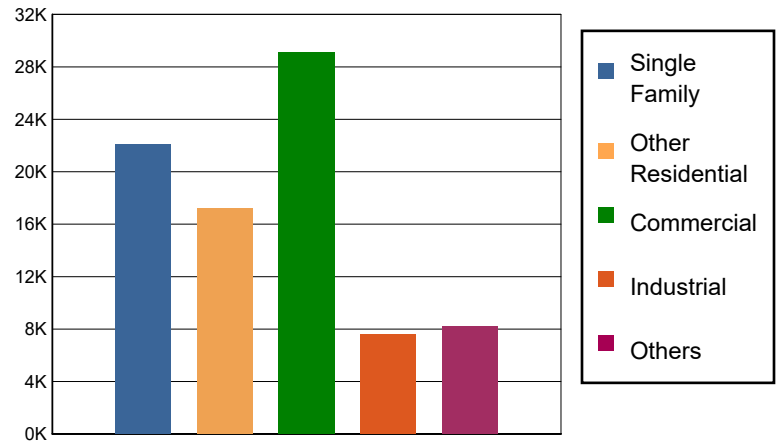


Table 11: Building-Related Economic Loss Estimates
(Millions of dollars)

Category	Area	Single Family	Other Residential	Commercial	Industrial	Others	Total
Income Losses							
	Wage	0.0000	327.3614	1875.1318	81.1565	232.7840	2,516.4337
	Capital-Related	0.0000	139.2101	1702.7857	51.3974	62.8053	1,956.1985
	Rental	220.2439	816.7249	1127.0236	41.5379	115.5824	2,321.1127
	Relocation	670.9587	806.3603	1537.5525	202.4015	802.8436	4,020.1166
	Subtotal	891.2026	2089.6567	6242.4936	376.4933	1214.0153	10813.8615
Capital Stock Losses							
	Structural	2188.9675	2010.9267	3022.4517	728.2306	890.8215	8,841.3980
	Non_Structural	13930.7577	10584.9520	11813.3899	3584.0116	3913.1200	43,826.2312
	Content	5091.1438	2542.0224	6779.6105	2516.3707	1978.9840	18,908.1314
	Inventory	0.0000	0.0000	1277.6021	384.5780	173.4418	1,835.6219
	Subtotal	21210.8690	15137.9011	22893.0542	7213.1909	6956.3673	73411.3825
	Total	22102.07	17227.56	29135.55	7589.68	8170.38	84225.24

Transportation and Utility Lifeline Losses

For the transportation and utility lifeline systems, Hazus computes the direct repair cost for each component only. There are no losses computed by Hazus for business interruption due to lifeline outages. Tables 12 & 13 provide a detailed breakdown in the expected lifeline losses.

Table 12: Transportation System Economic Losses
(Millions of dollars)

System	Component	Inventory Value	Economic Loss	Loss Ratio (%)
Highway	Segments	200415.2485	0.0000	0.00
	Bridges	117901.5969	1020.2768	0.87
	Tunnels	1516.8013	1.9402	0.13
	Subtotal	319833.6467	1022.2170	
Railways	Segments	123781.3030	0.0000	0.00
	Bridges	18930.6300	196.9301	1.04
	Tunnels	1.8495	0.0000	0.00
	Facilities	508.6330	40.0325	7.87
	Subtotal	143222.4155	236.9626	
Light Rail	Segments	10802.3803	0.0000	0.00
	Bridges	28.6279	0.0078	0.03
	Tunnels	0.0000	0.0000	0.00
	Facilities	7354.8000	278.5285	3.79
	Subtotal	18185.8082	278.5363	
Bus	Facilities	183.7813	14.5116	7.90
	Subtotal	183.7813	14.5116	
Ferry	Facilities	62.5570	1.7789	2.84
	Subtotal	62.5570	1.7789	
Port	Facilities	2660.6676	84.4913	3.18
	Subtotal	2660.6676	84.4913	
Airport	Facilities	7449.8390	476.3544	6.39
	Runways	3146.4380	0.0000	0.00
	Subtotal	10596.2770	476.3544	
Total		494,745.15	2,114.85	

Table 13: Utility System Economic Losses

(Millions of dollars)

System	Component	Inventory Value	Economic Loss	Loss Ratio (%)
Potable Water	Pipelines	0.0000	0.0000	0.00
	Facilities	2789.8740	158.0505	5.67
	Distribution Lines	8321.0265	219.3688	2.64
	Subtotal	11110.9005	377.4193	
Waste Water	Pipelines	0.0000	0.0000	0.00
	Facilities	45739.1788	1327.4378	2.90
	Distribution Lines	4992.6159	110.1945	2.21
	Subtotal	50731.7947	1437.6323	
Natural Gas	Pipelines	29009.2179	0.0000	0.00
	Facilities	1617.5273	117.7319	7.28
	Distribution Lines	3328.4106	37.7518	1.13
	Subtotal	33955.1558	155.4837	
Oil Systems	Pipelines	0.0000	0.0000	0.00
	Facilities	9.9120	0.2943	2.97
	Subtotal	9.9120	0.2943	
Electrical Power	Facilities	216891.3623	32084.7104	14.79
	Subtotal	216891.3623	32084.7104	
Communication	Facilities	94.7540	8.0241	8.47
	Subtotal	94.7540	8.0241	
	Total	312,793.88	34,063.56	

Appendix A: County Listing for the Region

Alameda,CA
Amador,CA
Calaveras,CA
Contra Costa,CA
Fresno,CA
Imperial,CA
Inyo,CA
Kern,CA
Kings,CA
Los Angeles,CA
Madera,CA
Marin,CA
Mariposa,CA
Merced,CA
Mono,CA
Monterey,CA
Napa,CA
Orange,CA
Riverside,CA
Sacramento,CA
San Benito,CA
San Bernardino,CA
San Diego,CA
San Francisco,CA
San Joaquin,CA
San Luis Obispo,CA
San Mateo,CA
Santa Barbara,CA
Santa Clara,CA

Santa Cruz,CA

Solano,CA

Stanislaus,CA

Tulare,CA

Tuolumne,CA

Ventura,CA

Yolo,CA

Appendix B: Regional Population and Building Value Data

State	County Name	Population	Building Value (millions of dollars)		
			Residential	Non-Residential	Total
California	Alameda	1,682,353	209,951	122,639	332,590
	Amador	40,474	5,608	2,517	8,125
	Calaveras	45,292	8,305	4,893	13,199
	Contra Costa	1,165,927	158,118	60,339	218,458
	Fresno	1,008,654	98,532	61,772	160,304
	Imperial	179,702	20,945	12,603	33,548
	Inyo	19,016	2,951	1,970	4,921
	Kern	909,235	87,567	59,168	146,736
	Kings	152,486	13,719	7,861	21,581
	Los Angeles	10,014,009	950,697	566,995	1,517,692
	Madera	156,255	18,025	9,641	27,667
	Marin	262,321	47,738	15,030	62,769
	Mariposa	17,131	3,299	1,141	4,441
	Merced	281,202	25,194	26,098	51,292
	Mono	13,195	3,293	1,083	4,377
	Monterey	439,035	47,655	28,750	76,405
	Napa	138,019	20,517	13,045	33,563
	Orange	3,186,989	363,381	176,806	540,188
	Riverside	2,418,185	281,482	137,249	418,731
	Sacramento	1,585,055	179,811	83,911	263,723
	San Benito	64,209	9,440	3,799	13,239
	San Bernardino	2,181,654	225,045	152,557	377,602
	San Diego	3,298,634	375,834	193,238	569,072
	San Francisco	873,965	108,848	46,020	154,869
	San Joaquin	779,233	82,706	56,882	139,589
	San Luis Obispo	282,424	41,720	20,896	62,616
	San Mateo	764,442	110,372	44,995	155,368
	Santa Barbara	448,229	49,971	28,481	78,452
	Santa Clara	1,936,259	261,111	120,471	381,582
	Santa Cruz	270,861	36,147	18,805	54,952
	Solano	453,491	55,802	26,393	82,195
	Stanislaus	552,878	62,937	37,511	100,449
Tulare	473,117	43,262	31,210	74,472	
Tuolumne	55,620	8,964	3,507	12,471	
Ventura	843,843	99,299	52,072	151,371	
Yolo	216,403	24,130	18,343	42,473	
Total Region		37,209,797	4,142,376	2,248,691	6,391,082

Building Damage by Count by General Occupancy

April 15, 2024

	# of Buildings					Total
	None	Slight	Moderate	Extensive	Complete	
California						
Alameda						
<i>Government</i>	10,524	4	0	0	0	10,528
<i>Agriculture</i>	422	0	0	0	0	422
<i>Commercial</i>	31,965	23	1	0	0	31,989
<i>Religion</i>	1,984	2	0	0	0	1,986
<i>Single Family</i>	344,172	1	0	0	0	344,173
<i>Other Residential</i>	61,376	19	1	0	0	61,396
<i>Education</i>	1,117	0	0	0	0	1,117
<i>Industrial</i>	10,199	6	0	0	0	10,205
Amador						
<i>Industrial</i>	235	0	0	0	0	235
<i>Single Family</i>	14,962	0	0	0	0	14,962
<i>Other Residential</i>	1,037	0	0	0	0	1,037
<i>Education</i>	23	0	0	0	0	23
<i>Government</i>	32	0	0	0	0	32
<i>Agriculture</i>	44	0	0	0	0	44
<i>Religion</i>	45	0	0	0	0	45
<i>Commercial</i>	1,368	0	0	0	0	1,368
Calaveras						

	# of Buildings					Total
	None	Slight	Moderate	Extensive	Complete	
<i>Government</i>	84	0	0	0	0	84
<i>Other Residential</i>	2,559	0	0	0	0	2,559
<i>Education</i>	35	0	0	0	0	35
<i>Religion</i>	130	0	0	0	0	130
<i>Agriculture</i>	2,207	0	0	0	0	2,207
<i>Commercial</i>	1,413	0	0	0	0	1,413
<i>Industrial</i>	466	0	0	0	0	466
<i>Single Family</i>	22,148	0	0	0	0	22,148
Contra Costa						
<i>Commercial</i>	17,989	2	0	0	0	17,991
<i>Agriculture</i>	749	0	0	0	0	749
<i>Religion</i>	1,226	0	0	0	0	1,226
<i>Single Family</i>	281,935	0	0	0	0	281,935
<i>Other Residential</i>	29,121	3	0	0	0	29,124
<i>Industrial</i>	4,749	0	0	0	0	4,749
<i>Government</i>	5,023	1	0	0	0	5,024
<i>Education</i>	653	0	0	0	0	653
Fresno						
<i>Commercial</i>	20,015	833	186	19	2	21,054
<i>Religion</i>	1,413	74	19	1	0	1,507
<i>Agriculture</i>	2,938	387	86	9	0	3,421
<i>Industrial</i>	4,981	289	70	7	0	5,348
<i>Government</i>	272	16	3	0	0	291
<i>Other Residential</i>	38,675	1,804	433	55	5	40,973
<i>Single Family</i>	222,104	4,253	68	0	0	226,425

		# of Buildings					
		None	Slight	Moderate	Extensive	Complete	Total
Imperial	<i>Education</i>	593	8	1	0	0	602
	<i>Religion</i>	233	50	11	1	0	295
	<i>Commercial</i>	2,927	594	118	7	0	3,646
	<i>Agriculture</i>	98	29	10	1	0	138
	<i>Industrial</i>	438	110	29	2	0	580
	<i>Single Family</i>	29,755	5,524	125	0	0	35,405
	<i>Other Residential</i>	3,714	1,622	1,570	583	29	7,518
	<i>Government</i>	170	26	5	0	0	202
Inyo	<i>Education</i>	92	7	0	0	0	99
	<i>Commercial</i>	721	0	0	0	0	721
	<i>Religion</i>	57	0	0	0	0	57
	<i>Agriculture</i>	32	0	0	0	0	32
	<i>Other Residential</i>	4,049	1	0	0	0	4,050
	<i>Education</i>	41	0	0	0	0	41
	<i>Government</i>	101	0	0	0	0	101
	<i>Industrial</i>	257	0	0	0	0	257
Kern	<i>Single Family</i>	4,446	0	0	0	0	4,446
	<i>Single Family</i>	174,176	29,129	1,803	31	1	205,139
	<i>Other Residential</i>	39,582	7,894	4,708	2,012	324	54,520
	<i>Industrial</i>	4,458	1,078	412	85	14	6,047
	<i>Education</i>	419	33	9	1	0	462
	<i>Government</i>	339	72	27	6	0	443

	# of Buildings					Total
	None	Slight	Moderate	Extensive	Complete	
<i>Religion</i>	1,119	231	118	41	15	1,524
<i>Agriculture</i>	3,237	953	360	77	18	4,645
<i>Commercial</i>	12,100	2,361	823	221	61	15,567
Kings						
<i>Commercial</i>	1,957	254	89	16	2	2,318
<i>Religion</i>	175	25	8	2	0	210
<i>Agriculture</i>	250	45	10	1	0	306
<i>Government</i>	64	6	1	0	0	72
<i>Industrial</i>	457	72	22	3	0	555
<i>Single Family</i>	33,519	2,673	52	1	0	36,245
<i>Other Residential</i>	3,511	582	209	38	2	4,342
<i>Education</i>	98	5	1	0	0	103
Los Angeles						
<i>Industrial</i>	39,598	8,876	3,798	783	72	53,126
<i>Single Family</i>	1,503,181	276,821	22,435	649	54	1,803,140
<i>Other Residential</i>	394,597	65,887	15,449	4,663	1,075	481,671
<i>Education</i>	4,817	460	174	32	3	5,486
<i>Commercial</i>	139,841	35,156	13,512	2,164	187	190,861
<i>Agriculture</i>	1,347	418	202	56	10	2,032
<i>Religion</i>	7,405	2,115	946	169	17	10,651
<i>Government</i>	2,131	595	255	46	3	3,031
Madera						
<i>Commercial</i>	2,854	45	5	0	0	2,905
<i>Religion</i>	118	1	0	0	0	119
<i>Government</i>	110	1	0	0	0	111

	# of Buildings					Total
	None	Slight	Moderate	Extensive	Complete	
<i>Agriculture</i>	597	25	11	2	0	634
<i>Other Residential</i>	6,504	118	12	0	0	6,635
<i>Single Family</i>	38,639	273	0	0	0	38,912
<i>Education</i>	115	0	0	0	0	115
<i>Industrial</i>	884	16	3	0	0	903
Marin						
<i>Other Residential</i>	7,890	0	0	0	0	7,890
<i>Government</i>	143	0	0	0	0	143
<i>Education</i>	274	0	0	0	0	274
<i>Commercial</i>	8,270	0	0	0	0	8,270
<i>Religion</i>	319	0	0	0	0	319
<i>Agriculture</i>	190	0	0	0	0	190
<i>Single Family</i>	76,724	0	0	0	0	76,724
<i>Industrial</i>	1,535	0	0	0	0	1,535
Mariposa						
<i>Single Family</i>	8,084	0	0	0	0	8,084
<i>Other Residential</i>	307	0	0	0	0	307
<i>Education</i>	27	0	0	0	0	27
<i>Industrial</i>	94	0	0	0	0	94
<i>Commercial</i>	689	0	0	0	0	689
<i>Agriculture</i>	29	0	0	0	0	29
<i>Religion</i>	36	0	0	0	0	36
<i>Government</i>	33	0	0	0	0	33
Merced						
<i>Education</i>	162	1	0	0	0	163

	# of Buildings					Total
	None	Slight	Moderate	Extensive	Complete	
<i>Government</i>	169	1	0	0	0	171
<i>Commercial</i>	4,696	54	5	0	0	4,754
<i>Agriculture</i>	7,352	228	69	5	0	7,653
<i>Religion</i>	339	5	1	0	0	345
<i>Industrial</i>	1,008	13	1	0	0	1,022
<i>Single Family</i>	63,267	331	0	0	0	63,598
<i>Other Residential</i>	10,589	176	21	1	0	10,787
Mono						
<i>Government</i>	18	0	0	0	0	18
<i>Education</i>	21	0	0	0	0	21
<i>Religion</i>	32	0	0	0	0	32
<i>Agriculture</i>	145	0	0	0	0	145
<i>Commercial</i>	654	0	0	0	0	654
<i>Single Family</i>	7,704	0	0	0	0	7,704
<i>Industrial</i>	108	0	0	0	0	108
<i>Other Residential</i>	1,759	0	0	0	0	1,759
Monterey						
<i>Single Family</i>	89,781	1,081	14	0	0	90,876
<i>Industrial</i>	1,754	69	24	3	0	1,850
<i>Other Residential</i>	18,814	551	358	84	2	19,809
<i>Education</i>	237	2	0	0	0	239
<i>Government</i>	180	4	1	0	0	185
<i>Agriculture</i>	1,308	303	158	39	7	1,815
<i>Commercial</i>	8,953	218	62	13	1	9,246

		# of Buildings					
		None	Slight	Moderate	Extensive	Complete	Total
Napa	<i>Religion</i>	557	15	6	1	0	580
	<i>Commercial</i>	4,021	0	0	0	0	4,021
	<i>Agriculture</i>	349	0	0	0	0	349
	<i>Religion</i>	148	0	0	0	0	148
	<i>Single Family</i>	38,761	0	0	0	0	38,761
	<i>Other Residential</i>	6,978	0	0	0	0	6,978
	<i>Government</i>	103	0	0	0	0	103
	<i>Education</i>	132	0	0	0	0	132
Orange	<i>Industrial</i>	1,367	0	0	0	0	1,367
	<i>Industrial</i>	15,485	2,598	635	73	5	18,795
	<i>Other Residential</i>	67,246	13,467	4,732	265	7	85,718
	<i>Single Family</i>	647,776	57,554	874	9	0	706,212
	<i>Education</i>	1,793	79	15	3	0	1,890
	<i>Commercial</i>	57,720	8,233	2,029	338	19	68,340
	<i>Religion</i>	1,696	268	77	15	1	2,057
	<i>Agriculture</i>	939	144	41	10	1	1,135
Riverside	<i>Government</i>	528	94	25	3	0	650
	<i>Religion</i>	773	365	135	35	10	1,319
	<i>Agriculture</i>	1,192	387	110	19	6	1,713
	<i>Commercial</i>	27,546	13,184	4,282	1,032	314	46,357
	<i>Single Family</i>	390,021	188,998	25,029	1,144	263	605,455
	<i>Industrial</i>	4,300	1,572	436	80	20	6,409

	# of Buildings					Total
	None	Slight	Moderate	Extensive	Complete	
<i>Other Residential</i>	45,720	32,117	21,623	12,843	10,497	122,799
<i>Government</i>	2,736	2,387	1,604	371	76	7,175
<i>Education</i>	770	172	41	6	1	990
Sacramento						
<i>Single Family</i>	386,840	0	0	0	0	386,840
<i>Industrial</i>	6,756	0	0	0	0	6,756
<i>Other Residential</i>	56,412	1	0	0	0	56,413
<i>Education</i>	829	0	0	0	0	829
<i>Agriculture</i>	621	0	0	0	0	621
<i>Religion</i>	1,702	0	0	0	0	1,702
<i>Government</i>	619	0	0	0	0	619
<i>Commercial</i>	26,295	0	0	0	0	26,295
San Benito						
<i>Other Residential</i>	1,349	24	2	0	0	1,375
<i>Single Family</i>	14,634	92	0	0	0	14,726
<i>Industrial</i>	318	7	1	0	0	326
<i>Education</i>	42	0	0	0	0	42
<i>Government</i>	43	1	0	0	0	45
<i>Commercial</i>	1,055	22	3	0	0	1,080
<i>Religion</i>	62	2	0	0	0	64
<i>Agriculture</i>	245	7	1	0	0	253
San Bernardino						
<i>Agriculture</i>	1,023	550	171	48	23	1,815
<i>Commercial</i>	18,845	13,318	5,143	1,820	916	40,041
<i>Religion</i>	982	709	384	174	71	2,320

	# of Buildings					Total
	None	Slight	Moderate	Extensive	Complete	
<i>Single Family</i>	266,621	216,672	39,566	1,829	679	525,367
<i>Industrial</i>	4,941	2,931	1,153	321	128	9,474
<i>Other Residential</i>	37,943	29,541	16,992	9,899	4,447	98,821
<i>Government</i>	632	367	145	68	25	1,238
<i>Education</i>	624	256	87	15	3	985
San Diego						
<i>Single Family</i>	760,934	2,054	31	1	0	763,020
<i>Industrial</i>	14,246	64	3	0	0	14,313
<i>Other Residential</i>	125,792	1,603	161	2	0	127,559
<i>Education</i>	1,929	3	0	0	0	1,932
<i>Religion</i>	3,043	19	1	0	0	3,063
<i>Government</i>	20,725	190	9	0	0	20,924
<i>Agriculture</i>	2,173	15	2	0	0	2,190
<i>Commercial</i>	62,018	332	19	0	0	62,369
San Francisco						
<i>Single Family</i>	150,702	1	0	0	0	150,703
<i>Other Residential</i>	44,524	5	0	0	0	44,529
<i>Government</i>	289	0	0	0	0	289
<i>Education</i>	572	0	0	0	0	572
<i>Industrial</i>	3,860	0	0	0	0	3,860
<i>Commercial</i>	21,335	8	0	0	0	21,344
<i>Religion</i>	1,345	0	0	0	0	1,345
<i>Agriculture</i>	162	0	0	0	0	162
San Joaquin						
<i>Commercial</i>	12,855	8	0	0	0	12,864

	# of Buildings					Total
	None	Slight	Moderate	Extensive	Complete	
<i>Agriculture</i>	752	1	0	0	0	753
<i>Religion</i>	876	1	0	0	0	877
<i>Government</i>	303	1	0	0	0	304
<i>Single Family</i>	188,749	164	9	0	0	188,922
<i>Other Residential</i>	21,781	23	1	0	0	21,805
<i>Education</i>	395	0	0	0	0	395
<i>Industrial</i>	4,925	3	0	0	0	4,928
San Luis Obispo						
<i>Religion</i>	300	45	13	2	0	360
<i>Agriculture</i>	317	74	25	5	0	421
<i>Government</i>	160	21	4	0	0	185
<i>Commercial</i>	7,899	1,113	309	48	5	9,375
<i>Single Family</i>	76,272	9,034	333	1	0	85,639
<i>Industrial</i>	2,076	362	99	16	3	2,556
<i>Other Residential</i>	14,346	3,276	1,774	685	135	20,216
<i>Education</i>	171	10	1	0	0	182
San Mateo						
<i>Religion</i>	735	1	0	0	0	736
<i>Agriculture</i>	539	0	0	0	0	539
<i>Government</i>	298	1	0	0	0	299
<i>Commercial</i>	14,380	15	1	0	0	14,395
<i>Industrial</i>	4,470	2	0	0	0	4,472
<i>Other Residential</i>	22,438	15	1	0	0	22,453
<i>Single Family</i>	159,924	7	0	0	0	159,931
<i>Education</i>	489	0	0	0	0	489

	# of Buildings					Total
	None	Slight	Moderate	Extensive	Complete	
Santa Barbara						
<i>Government</i>	220	16	3	0	0	239
<i>Other Residential</i>	19,188	3,725	1,151	45	1	24,111
<i>Education</i>	289	9	1	0	0	299
<i>Religion</i>	559	51	10	1	0	621
<i>Commercial</i>	8,833	814	159	14	1	9,820
<i>Agriculture</i>	401	50	12	1	0	464
<i>Single Family</i>	92,862	6,039	80	0	0	98,982
<i>Industrial</i>	2,477	287	68	7	0	2,840
Santa Clara						
<i>Other Residential</i>	59,048	106	5	0	0	59,160
<i>Single Family</i>	427,155	64	1	0	0	427,219
<i>Government</i>	497	4	0	0	0	502
<i>Education</i>	1,173	0	0	0	0	1,173
<i>Industrial</i>	9,417	14	1	0	0	9,433
<i>Commercial</i>	35,398	67	4	0	0	35,469
<i>Religion</i>	1,537	3	0	0	0	1,540
<i>Agriculture</i>	893	2	0	0	0	895
Santa Cruz						
<i>Religion</i>	356	2	0	0	0	359
<i>Agriculture</i>	835	4	1	0	0	840
<i>Single Family</i>	68,834	36	0	0	0	68,870
<i>Other Residential</i>	14,824	63	4	0	0	14,892
<i>Industrial</i>	1,809	9	1	0	0	1,819
<i>Education</i>	225	0	0	0	0	225

	# of Buildings					Total
	None	Slight	Moderate	Extensive	Complete	
Solano						
<i>Commercial</i>	6,665	27	3	0	0	6,694
<i>Government</i>	126	1	0	0	0	127
<i>Religion</i>	454	0	0	0	0	454
<i>Agriculture</i>	245	0	0	0	0	245
<i>Government</i>	152	0	0	0	0	152
<i>Commercial</i>	7,268	0	0	0	0	7,268
<i>Single Family</i>	120,968	0	0	0	0	120,968
<i>Industrial</i>	2,101	0	0	0	0	2,101
<i>Other Residential</i>	12,317	0	0	0	0	12,317
<i>Education</i>	225	0	0	0	0	225
Stanislaus						
<i>Other Residential</i>	19,511	55	3	0	0	19,569
<i>Single Family</i>	142,652	72	0	0	0	142,724
<i>Education</i>	307	0	0	0	0	307
<i>Government</i>	679	1	0	0	0	680
<i>Industrial</i>	3,463	12	1	0	0	3,475
<i>Commercial</i>	10,336	32	2	0	0	10,369
<i>Religion</i>	454	2	0	0	0	456
<i>Agriculture</i>	1,236	3	0	0	0	1,239
Tulare						
<i>Commercial</i>	8,575	258	39	2	0	8,873
<i>Agriculture</i>	3,339	188	26	1	0	3,555
<i>Religion</i>	804	21	2	0	0	827
<i>Government</i>	444	16	2	0	0	461

	# of Buildings					Total
	None	Slight	Moderate	Extensive	Complete	
<i>Single Family</i>	110,376	1,653	5	0	0	112,034
<i>Other Residential</i>	18,871	977	171	4	0	20,022
<i>Industrial</i>	2,059	76	12	1	0	2,148
<i>Education</i>	267	2	0	0	0	269
Tuolumne						
<i>Education</i>	57	0	0	0	0	57
<i>Government</i>	143	0	0	0	0	143
<i>Commercial</i>	1,576	0	0	0	0	1,576
<i>Religion</i>	121	0	0	0	0	121
<i>Agriculture</i>	82	0	0	0	0	82
<i>Industrial</i>	383	0	0	0	0	383
<i>Other Residential</i>	4,962	0	0	0	0	4,962
<i>Single Family</i>	21,645	0	0	0	0	21,645
Ventura						
<i>Agriculture</i>	504	75	16	3	0	598
<i>Religion</i>	1,033	129	23	2	0	1,187
<i>Industrial</i>	5,118	773	180	24	1	6,097
<i>Single Family</i>	186,765	16,995	209	0	0	203,968
<i>Other Residential</i>	20,254	4,274	1,499	132	5	26,163
<i>Education</i>	470	23	3	0	0	497
<i>Government</i>	895	91	13	1	0	1,001
<i>Commercial</i>	12,883	1,635	370	62	3	14,953
Yolo						
<i>Industrial</i>	1,117	0	0	0	0	1,117
<i>Other Residential</i>	9,861	0	0	0	0	9,861

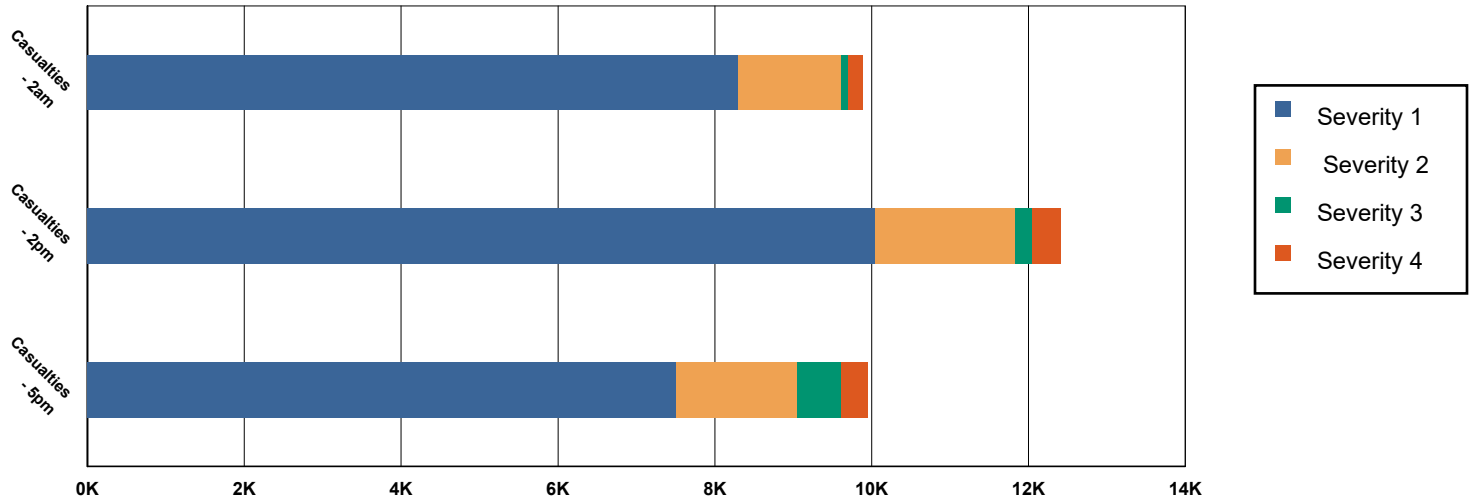
	# of Buildings					Total
	None	Slight	Moderate	Extensive	Complete	
<i>Education</i>	131	0	0	0	0	131
<i>Government</i>	111	0	0	0	0	111
<i>Single Family</i>	42,589	0	0	0	0	42,589
<i>Commercial</i>	4,225	0	0	0	0	4,225
<i>Agriculture</i>	281	0	0	0	0	281
<i>Religion</i>	242	0	0	0	0	242
Total	9,363,360	1,098,311	201,128	43,412	19,572	10,725,783
Region Total	9,363,360	1,098,311	201,128	43,412	19,572	10,725,783

Totals only reflect data for those census tracts/blocks included in the user's study region and will reflect the entire county/state only if all of the census blocks for that county/states were selected at the time of study region creation.

Casualties Summary Report

April 15, 2024

Region Total Casualties



Injury Severity Level

Severity 1	Severity 2	Severity 3	Severity 4	Total
------------	------------	------------	------------	-------

California

Alameda

Casualties - 2am

	Severity 1	Severity 2	Severity 3	Severity 4	Total
Single Family	0	0	0	0	0
Hotels	0	0	0	0	0
Commuting	0	0	0	0	0
Educational	0	0	0	0	0
Industrial	0	0	0	0	0
Commercial	0	0	0	0	0
Other-Residential	0	0	0	0	0
Total Casualties - 2am	0	0	0	0	0

Casualties - 2pm

Industrial	0	0	0	0	0
Educational	0	0	0	0	0
Other-Residential	0	0	0	0	0
Single Family	0	0	0	0	0
Hotels	0	0	0	0	0
Commuting	0	0	0	0	0
Commercial	0	0	0	0	0

	Injury Severity Level				Total
	Severity 1	Severity 2	Severity 3	Severity 4	
California					
Alameda					
Total Casualties - 2pm	1	0	0	0	1
Casualties - 5pm					
<i>Commuting</i>	0	0	0	0	0
<i>Single Family</i>	0	0	0	0	0
<i>Commercial</i>	0	0	0	0	0
<i>Hotels</i>	0	0	0	0	0
<i>Educational</i>	0	0	0	0	0
<i>Industrial</i>	0	0	0	0	0
<i>Other-Residential</i>	0	0	0	0	0
Total Casualties - 5pm	0	0	0	0	0
Amador					
Casualties - 2am					
<i>Commercial</i>	0	0	0	0	0
<i>Other-Residential</i>	0	0	0	0	0
<i>Commuting</i>	0	0	0	0	0
<i>Educational</i>	0	0	0	0	0
<i>Single Family</i>	0	0	0	0	0
<i>Hotels</i>	0	0	0	0	0
<i>Industrial</i>	0	0	0	0	0
Total Casualties - 2am	0	0	0	0	0
Casualties - 2pm					
<i>Single Family</i>	0	0	0	0	0
<i>Hotels</i>	0	0	0	0	0
<i>Educational</i>	0	0	0	0	0
<i>Commuting</i>	0	0	0	0	0
<i>Commercial</i>	0	0	0	0	0
<i>Other-Residential</i>	0	0	0	0	0
<i>Industrial</i>	0	0	0	0	0
Total Casualties - 2pm	0	0	0	0	0
Casualties - 5pm					
<i>Commercial</i>	0	0	0	0	0
<i>Commuting</i>	0	0	0	0	0
<i>Other-Residential</i>	0	0	0	0	0
<i>Single Family</i>	0	0	0	0	0
<i>Educational</i>	0	0	0	0	0
<i>Hotels</i>	0	0	0	0	0
<i>Industrial</i>	0	0	0	0	0
Total Casualties - 5pm	0	0	0	0	0
Calaveras					
Casualties - 2am					
<i>Other-Residential</i>	0	0	0	0	0

	Injury Severity Level				Total
	Severity 1	Severity 2	Severity 3	Severity 4	
California					
Calaveras					
Casualties - 2am					
<i>Commuting</i>	0	0	0	0	0
<i>Commercial</i>	0	0	0	0	0
<i>Single Family</i>	0	0	0	0	0
<i>Hotels</i>	0	0	0	0	0
<i>Educational</i>	0	0	0	0	0
<i>Industrial</i>	0	0	0	0	0
Total Casualties - 2am	0	0	0	0	0
Casualties - 2pm					
<i>Hotels</i>	0	0	0	0	0
<i>Single Family</i>	0	0	0	0	0
<i>Educational</i>	0	0	0	0	0
<i>Commuting</i>	0	0	0	0	0
<i>Commercial</i>	0	0	0	0	0
<i>Industrial</i>	0	0	0	0	0
<i>Other-Residential</i>	0	0	0	0	0
Total Casualties - 2pm	0	0	0	0	0
Casualties - 5pm					
<i>Industrial</i>	0	0	0	0	0
<i>Commercial</i>	0	0	0	0	0
<i>Other-Residential</i>	0	0	0	0	0
<i>Educational</i>	0	0	0	0	0
<i>Hotels</i>	0	0	0	0	0
<i>Commuting</i>	0	0	0	0	0
<i>Single Family</i>	0	0	0	0	0
Total Casualties - 5pm	0	0	0	0	0
Contra Costa					
Casualties - 2am					
<i>Educational</i>	0	0	0	0	0
<i>Hotels</i>	0	0	0	0	0
<i>Industrial</i>	0	0	0	0	0
<i>Other-Residential</i>	0	0	0	0	0
<i>Single Family</i>	0	0	0	0	0
<i>Commercial</i>	0	0	0	0	0
<i>Commuting</i>	0	0	0	0	0
Total Casualties - 2am	0	0	0	0	0
Casualties - 2pm					
<i>Other-Residential</i>	0	0	0	0	0
<i>Industrial</i>	0	0	0	0	0
<i>Hotels</i>	0	0	0	0	0
<i>Single Family</i>	0	0	0	0	0
<i>Educational</i>	0	0	0	0	0

	Injury Severity Level				Total
	Severity 1	Severity 2	Severity 3	Severity 4	
California					
Contra Costa					
Casualties - 2pm					
Commuting	0	0	0	0	0
Commercial	0	0	0	0	0
Total Casualties - 2pm	0	0	0	0	0
Casualties - 5pm					
Educational	0	0	0	0	0
Commuting	0	0	0	0	0
Single Family	0	0	0	0	0
Hotels	0	0	0	0	0
Industrial	0	0	0	0	0
Other-Residential	0	0	0	0	0
Commercial	0	0	0	0	0
Total Casualties - 5pm	0	0	0	0	0
Fresno					
Casualties - 2am					
Hotels	0	0	0	0	0
Educational	0	0	0	0	0
Industrial	0	0	0	0	0
Commercial	0	0	0	0	0
Other-Residential	14	2	0	0	16
Single Family	7	0	0	0	7
Commuting	0	0	0	0	0
Total Casualties - 2am	22	2	0	0	24
Casualties - 2pm					
Commercial	26	2	0	0	28
Other-Residential	5	1	0	0	6
Industrial	2	0	0	0	2
Single Family	2	0	0	0	2
Hotels	0	0	0	0	0
Commuting	0	0	0	0	0
Educational	6	1	0	0	7
Total Casualties - 2pm	41	4	0	0	46
Casualties - 5pm					
Educational	1	0	0	0	1
Commuting	0	0	0	0	1
Hotels	0	0	0	0	0
Industrial	1	0	0	0	1
Single Family	3	0	0	0	3
Other-Residential	5	1	0	0	6
Commercial	18	2	0	0	20
Total Casualties - 5pm	29	3	1	0	33

	Injury Severity Level				Total
	Severity 1	Severity 2	Severity 3	Severity 4	
California					
Imperial					
Casualties - 2am					
<i>Commercial</i>	0	0	0	0	0
<i>Other-Residential</i>	23	3	0	0	26
<i>Educational</i>	0	0	0	0	0
<i>Single Family</i>	11	0	0	0	11
<i>Commuting</i>	0	0	0	0	0
<i>Hotels</i>	0	0	0	0	0
<i>Industrial</i>	0	0	0	0	0
Total Casualties - 2am	35	3	0	0	38
Casualties - 2pm					
<i>Educational</i>	3	0	0	0	3
<i>Industrial</i>	1	0	0	0	1
<i>Hotels</i>	0	0	0	0	0
<i>Other-Residential</i>	8	1	0	0	9
<i>Single Family</i>	3	0	0	0	3
<i>Commercial</i>	12	1	0	0	13
<i>Commuting</i>	0	0	0	0	0
Total Casualties - 2pm	27	2	0	0	30
Casualties - 5pm					
<i>Single Family</i>	4	0	0	0	4
<i>Other-Residential</i>	8	1	0	0	9
<i>Commercial</i>	8	1	0	0	9
<i>Commuting</i>	1	1	2	0	3
<i>Educational</i>	0	0	0	0	0
<i>Hotels</i>	0	0	0	0	0
<i>Industrial</i>	1	0	0	0	1
Total Casualties - 5pm	22	2	2	0	26
Inyo					
Casualties - 2am					
<i>Single Family</i>	0	0	0	0	0
<i>Commercial</i>	0	0	0	0	0
<i>Commuting</i>	0	0	0	0	0
<i>Educational</i>	0	0	0	0	0
<i>Hotels</i>	0	0	0	0	0
<i>Other-Residential</i>	0	0	0	0	0
<i>Industrial</i>	0	0	0	0	0
Total Casualties - 2am	0	0	0	0	0
Casualties - 2pm					
<i>Industrial</i>	0	0	0	0	0
<i>Hotels</i>	0	0	0	0	0
<i>Commercial</i>	0	0	0	0	0
<i>Other-Residential</i>	0	0	0	0	0

	Injury Severity Level				Total
	Severity 1	Severity 2	Severity 3	Severity 4	
California					
Inyo					
Casualties - 2pm					
Single Family	0	0	0	0	0
Commuting	0	0	0	0	0
Educational	0	0	0	0	0
Total Casualties - 2pm	0	0	0	0	0
Casualties - 5pm					
Other-Residential	0	0	0	0	0
Single Family	0	0	0	0	0
Commercial	0	0	0	0	0
Educational	0	0	0	0	0
Hotels	0	0	0	0	0
Commuting	0	0	0	0	0
Industrial	0	0	0	0	0
Total Casualties - 5pm	0	0	0	0	0
Kern					
Casualties - 2am					
Commercial	3	0	0	0	3
Commuting	0	0	0	0	0
Educational	0	0	0	0	0
Single Family	51	1	0	0	52
Other-Residential	170	29	2	5	207
Hotels	0	0	0	0	0
Industrial	3	1	0	0	4
Total Casualties - 2am	227	32	3	5	267
Casualties - 2pm					
Educational	32	4	0	0	36
Commuting	0	0	0	0	1
Single Family	15	0	0	0	16
Hotels	0	0	0	0	0
Other-Residential	59	10	1	2	72
Commercial	200	39	5	10	255
Industrial	24	5	1	1	30
Total Casualties - 2pm	330	59	7	13	409
Casualties - 5pm					
Single Family	18	1	0	0	19
Commercial	143	29	4	7	183
Other-Residential	63	11	1	2	76
Commuting	2	3	5	1	11
Educational	4	0	0	0	5
Hotels	0	0	0	0	0
Industrial	15	3	0	1	19

	Injury Severity Level				Total
	Severity 1	Severity 2	Severity 3	Severity 4	
California					
Kern					
Total Casualties - 5pm	245	47	10	11	313
Kings					
Casualties - 2am					
<i>Industrial</i>	0	0	0	0	0
<i>Other-Residential</i>	8	1	0	0	9
<i>Educational</i>	0	0	0	0	0
<i>Commuting</i>	0	0	0	0	0
<i>Commercial</i>	0	0	0	0	0
<i>Single Family</i>	5	0	0	0	5
<i>Hotels</i>	0	0	0	0	0
Total Casualties - 2am	13	1	0	0	14
Casualties - 2pm					
<i>Single Family</i>	1	0	0	0	1
<i>Other-Residential</i>	3	0	0	0	3
<i>Commercial</i>	10	1	0	0	11
<i>Educational</i>	2	0	0	0	2
<i>Commuting</i>	0	0	0	0	0
<i>Hotels</i>	0	0	0	0	0
<i>Industrial</i>	1	0	0	0	1
Total Casualties - 2pm	17	2	0	0	19
Casualties - 5pm					
<i>Single Family</i>	2	0	0	0	2
<i>Commercial</i>	8	1	0	0	9
<i>Commuting</i>	0	0	0	0	0
<i>Other-Residential</i>	3	0	0	0	3
<i>Educational</i>	0	0	0	0	0
<i>Hotels</i>	0	0	0	0	0
<i>Industrial</i>	1	0	0	0	1
Total Casualties - 5pm	14	2	0	0	16
Los Angeles					
Casualties - 2am					
<i>Hotels</i>	2	0	0	0	2
<i>Industrial</i>	26	3	0	1	30
<i>Educational</i>	0	0	0	0	0
<i>Single Family</i>	648	27	1	1	677
<i>Commuting</i>	0	0	0	0	1
<i>Other-Residential</i>	1,240	143	7	13	1,403
<i>Commercial</i>	24	3	0	0	27
Total Casualties - 2am	1,939	177	9	16	2,140
Casualties - 2pm					
<i>Industrial</i>	187	26	2	4	219

Injury Severity Level

	Severity 1	Severity 2	Severity 3	Severity 4	Total
--	------------	------------	------------	------------	-------

California

Los Angeles

Casualties - 2pm

<i>Other-Residential</i>	381	44	2	4	432
<i>Commercial</i>	1,635	202	15	28	1,880
<i>Commuting</i>	1	2	3	1	7
<i>Educational</i>	713	93	8	15	829
<i>Single Family</i>	178	8	0	1	187
<i>Hotels</i>	0	0	0	0	0
Total Casualties - 2pm	3,096	376	30	52	3,554

Casualties - 5pm

<i>Other-Residential</i>	467	54	3	5	530
<i>Industrial</i>	117	16	1	3	137
<i>Commuting</i>	26	35	59	11	132
<i>Single Family</i>	236	11	0	1	248
<i>Commercial</i>	1,163	149	12	22	1,345
<i>Hotels</i>	0	0	0	0	1
<i>Educational</i>	173	24	2	4	202
Total Casualties - 5pm	2,182	289	77	45	2,593

Madera

Casualties - 2am

<i>Hotels</i>	0	0	0	0	0
<i>Educational</i>	0	0	0	0	0
<i>Single Family</i>	0	0	0	0	0
<i>Commuting</i>	0	0	0	0	0
<i>Industrial</i>	0	0	0	0	0
<i>Commercial</i>	0	0	0	0	0
<i>Other-Residential</i>	1	0	0	0	1
Total Casualties - 2am	1	0	0	0	1

Casualties - 2pm

<i>Industrial</i>	0	0	0	0	0
<i>Commercial</i>	2	0	0	0	2
<i>Other-Residential</i>	0	0	0	0	0
<i>Commuting</i>	0	0	0	0	0
<i>Single Family</i>	0	0	0	0	0
<i>Hotels</i>	0	0	0	0	0
<i>Educational</i>	0	0	0	0	0
Total Casualties - 2pm	2	0	0	0	2

Casualties - 5pm

<i>Industrial</i>	0	0	0	0	0
<i>Commercial</i>	1	0	0	0	1
<i>Single Family</i>	0	0	0	0	0
<i>Educational</i>	0	0	0	0	0
<i>Other-Residential</i>	0	0	0	0	0

	Injury Severity Level				Total
	Severity 1	Severity 2	Severity 3	Severity 4	
California					
Madera					
Casualties - 5pm					
<i>Commuting</i>	0	0	0	0	0
<i>Hotels</i>	0	0	0	0	0
Total Casualties - 5pm	1	0	0	0	2
Marin					
Casualties - 2am					
<i>Commercial</i>	0	0	0	0	0
<i>Commuting</i>	0	0	0	0	0
<i>Other-Residential</i>	0	0	0	0	0
<i>Educational</i>	0	0	0	0	0
<i>Single Family</i>	0	0	0	0	0
<i>Hotels</i>	0	0	0	0	0
<i>Industrial</i>	0	0	0	0	0
Total Casualties - 2am	0	0	0	0	0
Casualties - 2pm					
<i>Hotels</i>	0	0	0	0	0
<i>Commuting</i>	0	0	0	0	0
<i>Educational</i>	0	0	0	0	0
<i>Industrial</i>	0	0	0	0	0
<i>Other-Residential</i>	0	0	0	0	0
<i>Commercial</i>	0	0	0	0	0
<i>Single Family</i>	0	0	0	0	0
Total Casualties - 2pm	0	0	0	0	0
Casualties - 5pm					
<i>Commuting</i>	0	0	0	0	0
<i>Commercial</i>	0	0	0	0	0
<i>Other-Residential</i>	0	0	0	0	0
<i>Single Family</i>	0	0	0	0	0
<i>Industrial</i>	0	0	0	0	0
<i>Educational</i>	0	0	0	0	0
<i>Hotels</i>	0	0	0	0	0
Total Casualties - 5pm	0	0	0	0	0
Mariposa					
Casualties - 2am					
<i>Commuting</i>	0	0	0	0	0
<i>Single Family</i>	0	0	0	0	0
<i>Commercial</i>	0	0	0	0	0
<i>Hotels</i>	0	0	0	0	0
<i>Educational</i>	0	0	0	0	0
<i>Industrial</i>	0	0	0	0	0
<i>Other-Residential</i>	0	0	0	0	0

	Injury Severity Level				Total
	Severity 1	Severity 2	Severity 3	Severity 4	
California					
Mariposa					
Total Casualties - 2am	0	0	0	0	0
Casualties - 2pm					
<i>Hotels</i>	0	0	0	0	0
<i>Industrial</i>	0	0	0	0	0
<i>Commercial</i>	0	0	0	0	0
<i>Other-Residential</i>	0	0	0	0	0
<i>Educational</i>	0	0	0	0	0
<i>Commuting</i>	0	0	0	0	0
<i>Single Family</i>	0	0	0	0	0
Total Casualties - 2pm	0	0	0	0	0
Casualties - 5pm					
<i>Other-Residential</i>	0	0	0	0	0
<i>Educational</i>	0	0	0	0	0
<i>Commuting</i>	0	0	0	0	0
<i>Hotels</i>	0	0	0	0	0
<i>Single Family</i>	0	0	0	0	0
<i>Commercial</i>	0	0	0	0	0
<i>Industrial</i>	0	0	0	0	0
Total Casualties - 5pm	0	0	0	0	0
Merced					
Casualties - 2am					
<i>Hotels</i>	0	0	0	0	0
<i>Industrial</i>	0	0	0	0	0
<i>Commercial</i>	0	0	0	0	0
<i>Single Family</i>	1	0	0	0	1
<i>Other-Residential</i>	1	0	0	0	1
<i>Educational</i>	0	0	0	0	0
<i>Commuting</i>	0	0	0	0	0
Total Casualties - 2am	1	0	0	0	1
Casualties - 2pm					
<i>Other-Residential</i>	0	0	0	0	0
<i>Industrial</i>	0	0	0	0	0
<i>Commercial</i>	4	0	0	0	4
<i>Commuting</i>	0	0	0	0	0
<i>Hotels</i>	0	0	0	0	0
<i>Educational</i>	0	0	0	0	0
<i>Single Family</i>	0	0	0	0	0
Total Casualties - 2pm	5	0	0	0	5
Casualties - 5pm					
<i>Industrial</i>	0	0	0	0	0
<i>Hotels</i>	0	0	0	0	0

	Injury Severity Level				Total
	Severity 1	Severity 2	Severity 3	Severity 4	
California					
Merced					
Casualties - 5pm					
<i>Educational</i>	0	0	0	0	0
<i>Commuting</i>	0	0	0	0	0
<i>Single Family</i>	0	0	0	0	0
<i>Commercial</i>	3	0	0	0	3
<i>Other-Residential</i>	0	0	0	0	0
Total Casualties - 5pm	4	0	0	0	4
Mono					
Casualties - 2am					
<i>Other-Residential</i>	0	0	0	0	0
<i>Industrial</i>	0	0	0	0	0
<i>Commercial</i>	0	0	0	0	0
<i>Single Family</i>	0	0	0	0	0
<i>Educational</i>	0	0	0	0	0
<i>Commuting</i>	0	0	0	0	0
<i>Hotels</i>	0	0	0	0	0
Total Casualties - 2am	0	0	0	0	0
Casualties - 2pm					
<i>Commercial</i>	0	0	0	0	0
<i>Commuting</i>	0	0	0	0	0
<i>Other-Residential</i>	0	0	0	0	0
<i>Educational</i>	0	0	0	0	0
<i>Single Family</i>	0	0	0	0	0
<i>Hotels</i>	0	0	0	0	0
<i>Industrial</i>	0	0	0	0	0
Total Casualties - 2pm	0	0	0	0	0
Casualties - 5pm					
<i>Industrial</i>	0	0	0	0	0
<i>Commuting</i>	0	0	0	0	0
<i>Hotels</i>	0	0	0	0	0
<i>Other-Residential</i>	0	0	0	0	0
<i>Educational</i>	0	0	0	0	0
<i>Single Family</i>	0	0	0	0	0
<i>Commercial</i>	0	0	0	0	0
Total Casualties - 5pm	0	0	0	0	0
Monterey					
Casualties - 2am					
<i>Other-Residential</i>	7	1	0	0	8
<i>Commuting</i>	0	0	0	0	0
<i>Commercial</i>	0	0	0	0	0
<i>Single Family</i>	2	0	0	0	2
<i>Hotels</i>	0	0	0	0	0

	Injury Severity Level				Total
	Severity 1	Severity 2	Severity 3	Severity 4	
California					
Monterey					
Casualties - 2am					
<i>Educational</i>	0	0	0	0	0
<i>Industrial</i>	0	0	0	0	0
Total Casualties - 2am	9	1	0	0	10
Casualties - 2pm					
<i>Commuting</i>	0	0	0	0	0
<i>Commercial</i>	18	3	0	0	22
<i>Single Family</i>	1	0	0	0	1
<i>Hotels</i>	0	0	0	0	0
<i>Educational</i>	2	0	0	0	2
<i>Industrial</i>	1	0	0	0	1
<i>Other-Residential</i>	2	0	0	0	3
Total Casualties - 2pm	24	3	0	1	28
Casualties - 5pm					
<i>Commercial</i>	14	2	0	0	17
<i>Other-Residential</i>	3	0	0	0	3
<i>Industrial</i>	0	0	0	0	0
<i>Hotels</i>	0	0	0	0	0
<i>Educational</i>	0	0	0	0	0
<i>Commuting</i>	0	0	1	0	1
<i>Single Family</i>	1	0	0	0	1
Total Casualties - 5pm	18	3	1	1	22
Napa					
Casualties - 2am					
<i>Commercial</i>	0	0	0	0	0
<i>Other-Residential</i>	0	0	0	0	0
<i>Educational</i>	0	0	0	0	0
<i>Single Family</i>	0	0	0	0	0
<i>Commuting</i>	0	0	0	0	0
<i>Hotels</i>	0	0	0	0	0
<i>Industrial</i>	0	0	0	0	0
Total Casualties - 2am	0	0	0	0	0
Casualties - 2pm					
<i>Educational</i>	0	0	0	0	0
<i>Hotels</i>	0	0	0	0	0
<i>Commuting</i>	0	0	0	0	0
<i>Industrial</i>	0	0	0	0	0
<i>Other-Residential</i>	0	0	0	0	0
<i>Single Family</i>	0	0	0	0	0
<i>Commercial</i>	0	0	0	0	0
Total Casualties - 2pm	0	0	0	0	0

	Injury Severity Level				Total
	Severity 1	Severity 2	Severity 3	Severity 4	
California					
Napa					
Casualties - 5pm					
<i>Commercial</i>	0	0	0	0	0
<i>Single Family</i>	0	0	0	0	0
<i>Other-Residential</i>	0	0	0	0	0
<i>Commuting</i>	0	0	0	0	0
<i>Industrial</i>	0	0	0	0	0
<i>Educational</i>	0	0	0	0	0
<i>Hotels</i>	0	0	0	0	0
Total Casualties - 5pm	0	0	0	0	0
Orange					
Casualties - 2am					
<i>Hotels</i>	0	0	0	0	0
<i>Commuting</i>	0	0	0	0	0
<i>Educational</i>	0	0	0	0	0
<i>Industrial</i>	5	1	0	0	6
<i>Other-Residential</i>	134	12	0	1	147
<i>Commercial</i>	3	0	0	0	3
<i>Single Family</i>	106	1	0	0	108
Total Casualties - 2am	249	14	1	1	264
Casualties - 2pm					
<i>Industrial</i>	39	4	0	0	43
<i>Other-Residential</i>	37	3	0	0	41
<i>Commuting</i>	0	0	0	0	1
<i>Commercial</i>	205	20	1	2	229
<i>Single Family</i>	28	0	0	0	28
<i>Hotels</i>	0	0	0	0	0
<i>Educational</i>	88	8	0	1	97
Total Casualties - 2pm	397	36	2	4	439
Casualties - 5pm					
<i>Hotels</i>	0	0	0	0	0
<i>Educational</i>	18	1	0	0	19
<i>Commuting</i>	3	4	6	1	14
<i>Single Family</i>	38	0	0	0	38
<i>Commercial</i>	145	15	1	2	162
<i>Other-Residential</i>	49	4	0	0	54
<i>Industrial</i>	24	2	0	0	27
Total Casualties - 5pm	277	27	8	4	315
Riverside					
Casualties - 2am					
<i>Industrial</i>	6	1	0	0	7
<i>Commercial</i>	14	3	0	1	18
<i>Other-Residential</i>	2,210	473	30	51	2,764

Injury Severity Level

	Severity 1	Severity 2	Severity 3	Severity 4	Total
--	------------	------------	------------	------------	-------

California

Riverside

Casualties - 2am

<i>Educational</i>	0	0	0	0	0
<i>Commuting</i>	0	1	1	0	2
<i>Single Family</i>	545	53	5	10	614
<i>Hotels</i>	1	0	0	0	1
Total Casualties - 2am	2,777	531	37	62	3,406

Casualties - 2pm

<i>Commercial</i>	983	202	27	52	1,263
<i>Other-Residential</i>	776	168	11	19	974
<i>Educational</i>	232	37	4	8	280
<i>Single Family</i>	177	19	2	4	202
<i>Commuting</i>	3	5	8	1	17
<i>Hotels</i>	0	0	0	0	0
<i>Industrial</i>	44	8	1	2	54
Total Casualties - 2pm	2,216	438	52	85	2,792

Casualties - 5pm

<i>Industrial</i>	28	5	1	1	34
<i>Other-Residential</i>	793	170	11	19	993
<i>Educational</i>	21	2	0	0	24
<i>Single Family</i>	204	21	2	4	231
<i>Hotels</i>	0	0	0	0	0
<i>Commercial</i>	676	140	19	36	871
<i>Commuting</i>	60	79	134	26	299
Total Casualties - 5pm	1,781	418	167	87	2,453

Sacramento

Casualties - 2am

<i>Industrial</i>	0	0	0	0	0
<i>Other-Residential</i>	0	0	0	0	0
<i>Commercial</i>	0	0	0	0	0
<i>Single Family</i>	0	0	0	0	0
<i>Hotels</i>	0	0	0	0	0
<i>Commuting</i>	0	0	0	0	0
<i>Educational</i>	0	0	0	0	0
Total Casualties - 2am	0	0	0	0	0

Casualties - 2pm

<i>Other-Residential</i>	0	0	0	0	0
<i>Commuting</i>	0	0	0	0	0
<i>Single Family</i>	0	0	0	0	0
<i>Commercial</i>	0	0	0	0	0
<i>Hotels</i>	0	0	0	0	0
<i>Educational</i>	0	0	0	0	0
<i>Industrial</i>	0	0	0	0	0

	Injury Severity Level				Total
	Severity 1	Severity 2	Severity 3	Severity 4	
California					
Sacramento					
Total Casualties - 2pm	0	0	0	0	0
Casualties - 5pm					
<i>Industrial</i>	0	0	0	0	0
<i>Educational</i>	0	0	0	0	0
<i>Hotels</i>	0	0	0	0	0
<i>Commercial</i>	0	0	0	0	0
<i>Commuting</i>	0	0	0	0	0
<i>Other-Residential</i>	0	0	0	0	0
<i>Single Family</i>	0	0	0	0	0
Total Casualties - 5pm	0	0	0	0	0
San Benito					
Casualties - 2am					
<i>Other-Residential</i>	0	0	0	0	0
<i>Commercial</i>	0	0	0	0	0
<i>Commuting</i>	0	0	0	0	0
<i>Hotels</i>	0	0	0	0	0
<i>Educational</i>	0	0	0	0	0
<i>Single Family</i>	0	0	0	0	0
<i>Industrial</i>	0	0	0	0	0
Total Casualties - 2am	0	0	0	0	0
Casualties - 2pm					
<i>Hotels</i>	0	0	0	0	0
<i>Educational</i>	0	0	0	0	0
<i>Industrial</i>	0	0	0	0	0
<i>Other-Residential</i>	0	0	0	0	0
<i>Commercial</i>	0	0	0	0	0
<i>Commuting</i>	0	0	0	0	0
<i>Single Family</i>	0	0	0	0	0
Total Casualties - 2pm	1	0	0	0	1
Casualties - 5pm					
<i>Commuting</i>	0	0	0	0	0
<i>Commercial</i>	0	0	0	0	0
<i>Other-Residential</i>	0	0	0	0	0
<i>Single Family</i>	0	0	0	0	0
<i>Industrial</i>	0	0	0	0	0
<i>Educational</i>	0	0	0	0	0
<i>Hotels</i>	0	0	0	0	0
Total Casualties - 5pm	0	0	0	0	0
San Bernardino					
Casualties - 2am					
<i>Hotels</i>	1	0	0	0	1

Injury Severity Level

	Severity 1	Severity 2	Severity 3	Severity 4	Total
--	------------	------------	------------	------------	-------

California

San Bernardino

Casualties - 2am

<i>Single Family</i>	935	130	15	29	1,109
<i>Commercial</i>	25	6	1	2	34
<i>Commuting</i>	1	1	1	0	3
<i>Educational</i>	0	0	0	0	0
<i>Other-Residential</i>	1,879	397	33	61	2,370
<i>Industrial</i>	20	5	1	1	26
Total Casualties - 2am	2,860	538	51	93	3,543

Casualties - 2pm

<i>Industrial</i>	147	34	5	9	194
<i>Hotels</i>	0	0	0	0	0
<i>Commuting</i>	5	7	12	2	27
<i>Other-Residential</i>	575	123	11	19	728
<i>Educational</i>	843	175	23	44	1,085
<i>Single Family</i>	275	41	5	9	331
<i>Commercial</i>	1,851	458	66	129	2,505
Total Casualties - 2pm	3,696	838	122	213	4,869

Casualties - 5pm

<i>Other-Residential</i>	694	148	13	23	878
<i>Commercial</i>	1,388	346	51	97	1,881
<i>Single Family</i>	356	52	6	12	426
<i>Educational</i>	162	33	4	9	209
<i>Hotels</i>	0	0	0	0	0
<i>Commuting</i>	94	135	217	42	488
<i>Industrial</i>	92	21	3	5	121
Total Casualties - 5pm	2,786	735	294	189	4,003

San Diego

Casualties - 2am

<i>Commercial</i>	0	0	0	0	0
<i>Other-Residential</i>	4	0	0	0	4
<i>Commuting</i>	0	0	0	0	0
<i>Educational</i>	0	0	0	0	0
<i>Single Family</i>	3	0	0	0	3
<i>Industrial</i>	0	0	0	0	0
<i>Hotels</i>	0	0	0	0	0
Total Casualties - 2am	7	0	0	0	7

Casualties - 2pm

<i>Hotels</i>	0	0	0	0	0
<i>Educational</i>	1	0	0	0	2
<i>Commuting</i>	0	0	0	0	0
<i>Commercial</i>	17	0	0	0	17
<i>Other-Residential</i>	1	0	0	0	1

	Injury Severity Level				Total
	Severity 1	Severity 2	Severity 3	Severity 4	
California					
San Diego					
Casualties - 2pm					
Single Family	1	0	0	0	1
Industrial	0	0	0	0	0
Total Casualties - 2pm	21	0	0	0	21
Casualties - 5pm					
Other-Residential	1	0	0	0	1
Commercial	10	0	0	0	10
Commuting	0	0	0	0	0
Single Family	1	0	0	0	1
Educational	0	0	0	0	0
Hotels	0	0	0	0	0
Industrial	0	0	0	0	0
Total Casualties - 5pm	13	0	0	0	13
San Francisco					
Casualties - 2am					
Industrial	0	0	0	0	0
Hotels	0	0	0	0	0
Commercial	0	0	0	0	0
Other-Residential	0	0	0	0	0
Commuting	0	0	0	0	0
Educational	0	0	0	0	0
Single Family	0	0	0	0	0
Total Casualties - 2am	0	0	0	0	0
Casualties - 2pm					
Commercial	0	0	0	0	0
Industrial	0	0	0	0	0
Other-Residential	0	0	0	0	0
Single Family	0	0	0	0	0
Hotels	0	0	0	0	0
Commuting	0	0	0	0	0
Educational	0	0	0	0	0
Total Casualties - 2pm	0	0	0	0	0
Casualties - 5pm					
Educational	0	0	0	0	0
Hotels	0	0	0	0	0
Industrial	0	0	0	0	0
Commuting	0	0	0	0	0
Commercial	0	0	0	0	0
Other-Residential	0	0	0	0	0
Single Family	0	0	0	0	0
Total Casualties - 5pm	0	0	0	0	0

	Injury Severity Level				Total
	Severity 1	Severity 2	Severity 3	Severity 4	
California					
San Joaquin					
Casualties - 2am					
<i>Educational</i>	0	0	0	0	0
<i>Commuting</i>	0	0	0	0	0
<i>Hotels</i>	0	0	0	0	0
<i>Commercial</i>	0	0	0	0	0
<i>Single Family</i>	0	0	0	0	0
<i>Industrial</i>	0	0	0	0	0
<i>Other-Residential</i>	0	0	0	0	0
Total Casualties - 2am	0	0	0	0	0
Casualties - 2pm					
<i>Industrial</i>	0	0	0	0	0
<i>Other-Residential</i>	0	0	0	0	0
<i>Educational</i>	0	0	0	0	0
<i>Single Family</i>	0	0	0	0	0
<i>Hotels</i>	0	0	0	0	0
<i>Commuting</i>	0	0	0	0	0
<i>Commercial</i>	0	0	0	0	0
Total Casualties - 2pm	0	0	0	0	0
Casualties - 5pm					
<i>Commuting</i>	0	0	0	0	0
<i>Single Family</i>	0	0	0	0	0
<i>Educational</i>	0	0	0	0	0
<i>Hotels</i>	0	0	0	0	0
<i>Industrial</i>	0	0	0	0	0
<i>Commercial</i>	0	0	0	0	0
<i>Other-Residential</i>	0	0	0	0	0
Total Casualties - 5pm	0	0	0	0	0
San Luis Obispo					
Casualties - 2am					
<i>Commercial</i>	0	0	0	0	1
<i>Other-Residential</i>	44	7	0	1	52
<i>Industrial</i>	1	0	0	0	1
<i>Single Family</i>	12	0	0	0	12
<i>Commuting</i>	0	0	0	0	0
<i>Educational</i>	0	0	0	0	0
<i>Hotels</i>	0	0	0	0	0
Total Casualties - 2am	57	7	0	1	65
Casualties - 2pm					
<i>Single Family</i>	4	0	0	0	4
<i>Educational</i>	4	0	0	0	4
<i>Other-Residential</i>	14	2	0	0	17
<i>Hotels</i>	0	0	0	0	0

	Injury Severity Level				Total
	Severity 1	Severity 2	Severity 3	Severity 4	
California					
San Luis Obispo					
Casualties - 2pm					
<i>Commuting</i>	0	0	0	0	0
<i>Commercial</i>	30	4	0	1	35
<i>Industrial</i>	4	1	0	0	5
Total Casualties - 2pm	56	7	1	1	65
Casualties - 5pm					
<i>Industrial</i>	3	0	0	0	3
<i>Other-Residential</i>	16	2	0	0	19
<i>Commuting</i>	1	1	2	0	5
<i>Single Family</i>	4	0	0	0	4
<i>Commercial</i>	20	3	0	1	24
<i>Hotels</i>	0	0	0	0	0
<i>Educational</i>	0	0	0	0	0
Total Casualties - 5pm	44	7	3	1	55
San Mateo					
Casualties - 2am					
<i>Industrial</i>	0	0	0	0	0
<i>Other-Residential</i>	0	0	0	0	0
<i>Single Family</i>	0	0	0	0	0
<i>Commercial</i>	0	0	0	0	0
<i>Educational</i>	0	0	0	0	0
<i>Commuting</i>	0	0	0	0	0
<i>Hotels</i>	0	0	0	0	0
Total Casualties - 2am	0	0	0	0	0
Casualties - 2pm					
<i>Other-Residential</i>	0	0	0	0	0
<i>Single Family</i>	0	0	0	0	0
<i>Commuting</i>	0	0	0	0	0
<i>Commercial</i>	0	0	0	0	0
<i>Educational</i>	0	0	0	0	0
<i>Hotels</i>	0	0	0	0	0
<i>Industrial</i>	0	0	0	0	0
Total Casualties - 2pm	1	0	0	0	1
Casualties - 5pm					
<i>Commercial</i>	0	0	0	0	0
<i>Industrial</i>	0	0	0	0	0
<i>Other-Residential</i>	0	0	0	0	0
<i>Single Family</i>	0	0	0	0	0
<i>Educational</i>	0	0	0	0	0
<i>Commuting</i>	0	0	0	0	0
<i>Hotels</i>	0	0	0	0	0

	Injury Severity Level				Total
	Severity 1	Severity 2	Severity 3	Severity 4	
California					
San Mateo					
Total Casualties - 5pm	0	0	0	0	0
Santa Barbara					
Casualties - 2am					
<i>Industrial</i>	0	0	0	0	0
<i>Commercial</i>	0	0	0	0	0
<i>Other-Residential</i>	19	1	0	0	21
<i>Commuting</i>	0	0	0	0	0
<i>Educational</i>	0	0	0	0	0
<i>Single Family</i>	9	0	0	0	9
<i>Hotels</i>	0	0	0	0	0
Total Casualties - 2am	29	2	0	0	31
Casualties - 2pm					
<i>Commercial</i>	15	1	0	0	16
<i>Single Family</i>	3	0	0	0	3
<i>Other-Residential</i>	6	0	0	0	6
<i>Commuting</i>	0	0	0	0	0
<i>Educational</i>	6	0	0	0	6
<i>Hotels</i>	0	0	0	0	0
<i>Industrial</i>	2	0	0	0	2
Total Casualties - 2pm	31	2	0	0	33
Casualties - 5pm					
<i>Other-Residential</i>	7	1	0	0	7
<i>Single Family</i>	3	0	0	0	3
<i>Commercial</i>	10	1	0	0	11
<i>Commuting</i>	0	0	0	0	1
<i>Educational</i>	2	0	0	0	2
<i>Industrial</i>	1	0	0	0	2
<i>Hotels</i>	0	0	0	0	0
Total Casualties - 5pm	24	2	0	0	26
Santa Clara					
Casualties - 2am					
<i>Commuting</i>	0	0	0	0	0
<i>Educational</i>	0	0	0	0	0
<i>Single Family</i>	0	0	0	0	0
<i>Hotels</i>	0	0	0	0	0
<i>Industrial</i>	0	0	0	0	0
<i>Commercial</i>	0	0	0	0	0
<i>Other-Residential</i>	1	0	0	0	1
Total Casualties - 2am	1	0	0	0	1
Casualties - 2pm					
<i>Industrial</i>	0	0	0	0	0

	Injury Severity Level				Total
	Severity 1	Severity 2	Severity 3	Severity 4	
California					
Santa Clara					
Casualties - 2pm					
<i>Commercial</i>	1	0	0	0	1
<i>Single Family</i>	0	0	0	0	0
<i>Commuting</i>	0	0	0	0	0
<i>Hotels</i>	0	0	0	0	0
<i>Other-Residential</i>	0	0	0	0	0
<i>Educational</i>	0	0	0	0	0
Total Casualties - 2pm	1	0	0	0	2
Casualties - 5pm					
<i>Industrial</i>	0	0	0	0	0
<i>Hotels</i>	0	0	0	0	0
<i>Other-Residential</i>	0	0	0	0	0
<i>Commercial</i>	1	0	0	0	1
<i>Commuting</i>	0	0	0	0	0
<i>Single Family</i>	0	0	0	0	0
<i>Educational</i>	0	0	0	0	0
Total Casualties - 5pm	1	0	0	0	1
Santa Cruz					
Casualties - 2am					
<i>Hotels</i>	0	0	0	0	0
<i>Educational</i>	0	0	0	0	0
<i>Industrial</i>	0	0	0	0	0
<i>Other-Residential</i>	0	0	0	0	0
<i>Single Family</i>	0	0	0	0	0
<i>Commercial</i>	0	0	0	0	0
<i>Commuting</i>	0	0	0	0	0
Total Casualties - 2am	0	0	0	0	0
Casualties - 2pm					
<i>Industrial</i>	0	0	0	0	0
<i>Other-Residential</i>	0	0	0	0	0
<i>Commercial</i>	0	0	0	0	0
<i>Commuting</i>	0	0	0	0	0
<i>Educational</i>	0	0	0	0	0
<i>Single Family</i>	0	0	0	0	0
<i>Hotels</i>	0	0	0	0	0
Total Casualties - 2pm	1	0	0	0	1
Casualties - 5pm					
<i>Industrial</i>	0	0	0	0	0
<i>Other-Residential</i>	0	0	0	0	0
<i>Commercial</i>	0	0	0	0	0
<i>Commuting</i>	0	0	0	0	0
<i>Single Family</i>	0	0	0	0	0

	Injury Severity Level				Total
	Severity 1	Severity 2	Severity 3	Severity 4	
California					
Santa Cruz					
Casualties - 5pm					
<i>Hotels</i>	0	0	0	0	0
<i>Educational</i>	0	0	0	0	0
Total Casualties - 5pm	0	0	0	0	0
Solano					
Casualties - 2am					
<i>Industrial</i>	0	0	0	0	0
<i>Other-Residential</i>	0	0	0	0	0
<i>Commercial</i>	0	0	0	0	0
<i>Educational</i>	0	0	0	0	0
<i>Commuting</i>	0	0	0	0	0
<i>Single Family</i>	0	0	0	0	0
<i>Hotels</i>	0	0	0	0	0
Total Casualties - 2am	0	0	0	0	0
Casualties - 2pm					
<i>Single Family</i>	0	0	0	0	0
<i>Other-Residential</i>	0	0	0	0	0
<i>Commercial</i>	0	0	0	0	0
<i>Educational</i>	0	0	0	0	0
<i>Commuting</i>	0	0	0	0	0
<i>Hotels</i>	0	0	0	0	0
<i>Industrial</i>	0	0	0	0	0
Total Casualties - 2pm	0	0	0	0	0
Casualties - 5pm					
<i>Commercial</i>	0	0	0	0	0
<i>Other-Residential</i>	0	0	0	0	0
<i>Single Family</i>	0	0	0	0	0
<i>Educational</i>	0	0	0	0	0
<i>Commuting</i>	0	0	0	0	0
<i>Hotels</i>	0	0	0	0	0
<i>Industrial</i>	0	0	0	0	0
Total Casualties - 5pm	0	0	0	0	0
Stanislaus					
Casualties - 2am					
<i>Hotels</i>	0	0	0	0	0
<i>Industrial</i>	0	0	0	0	0
<i>Commercial</i>	0	0	0	0	0
<i>Single Family</i>	0	0	0	0	0
<i>Other-Residential</i>	0	0	0	0	0
<i>Commuting</i>	0	0	0	0	0
<i>Educational</i>	0	0	0	0	0

	Injury Severity Level				Total
	Severity 1	Severity 2	Severity 3	Severity 4	
California					
Stanislaus					
Total Casualties - 2am	0	0	0	0	0
Casualties - 2pm					
Industrial	0	0	0	0	0
Other-Residential	0	0	0	0	0
Commercial	0	0	0	0	0
Commuting	0	0	0	0	0
Educational	0	0	0	0	0
Single Family	0	0	0	0	0
Hotels	0	0	0	0	0
Total Casualties - 2pm	1	0	0	0	1
Casualties - 5pm					
Industrial	0	0	0	0	0
Other-Residential	0	0	0	0	0
Commuting	0	0	0	0	0
Single Family	0	0	0	0	0
Commercial	0	0	0	0	0
Hotels	0	0	0	0	0
Educational	0	0	0	0	0
Total Casualties - 5pm	0	0	0	0	0
Tulare					
Casualties - 2am					
Commercial	0	0	0	0	0
Commuting	0	0	0	0	0
Single Family	3	0	0	0	3
Educational	0	0	0	0	0
Hotels	0	0	0	0	0
Industrial	0	0	0	0	0
Other-Residential	4	0	0	0	4
Total Casualties - 2am	6	0	0	0	7
Casualties - 2pm					
Industrial	0	0	0	0	1
Hotels	0	0	0	0	0
Commercial	6	0	0	0	6
Other-Residential	1	0	0	0	1
Educational	1	0	0	0	1
Commuting	0	0	0	0	0
Single Family	1	0	0	0	1
Total Casualties - 2pm	9	0	0	0	10
Casualties - 5pm					
Other-Residential	1	0	0	0	1
Commercial	4	0	0	0	4

	Injury Severity Level				Total
	Severity 1	Severity 2	Severity 3	Severity 4	
California					
Tulare					
Casualties - 5pm					
Single Family	1	0	0	0	1
Hotels	0	0	0	0	0
Commuting	0	0	0	0	0
Educational	0	0	0	0	0
Industrial	0	0	0	0	0
Total Casualties - 5pm	7	0	0	0	7
Tuolumne					
Casualties - 2am					
Other-Residential	0	0	0	0	0
Industrial	0	0	0	0	0
Commercial	0	0	0	0	0
Commuting	0	0	0	0	0
Single Family	0	0	0	0	0
Educational	0	0	0	0	0
Hotels	0	0	0	0	0
Total Casualties - 2am	0	0	0	0	0
Casualties - 2pm					
Other-Residential	0	0	0	0	0
Commercial	0	0	0	0	0
Single Family	0	0	0	0	0
Educational	0	0	0	0	0
Commuting	0	0	0	0	0
Industrial	0	0	0	0	0
Hotels	0	0	0	0	0
Total Casualties - 2pm	0	0	0	0	0
Casualties - 5pm					
Industrial	0	0	0	0	0
Other-Residential	0	0	0	0	0
Commercial	0	0	0	0	0
Hotels	0	0	0	0	0
Commuting	0	0	0	0	0
Educational	0	0	0	0	0
Single Family	0	0	0	0	0
Total Casualties - 5pm	0	0	0	0	0
Ventura					
Casualties - 2am					
Educational	0	0	0	0	0
Commuting	0	0	0	0	0
Single Family	28	0	0	0	28
Hotels	0	0	0	0	0
Industrial	1	0	0	0	1

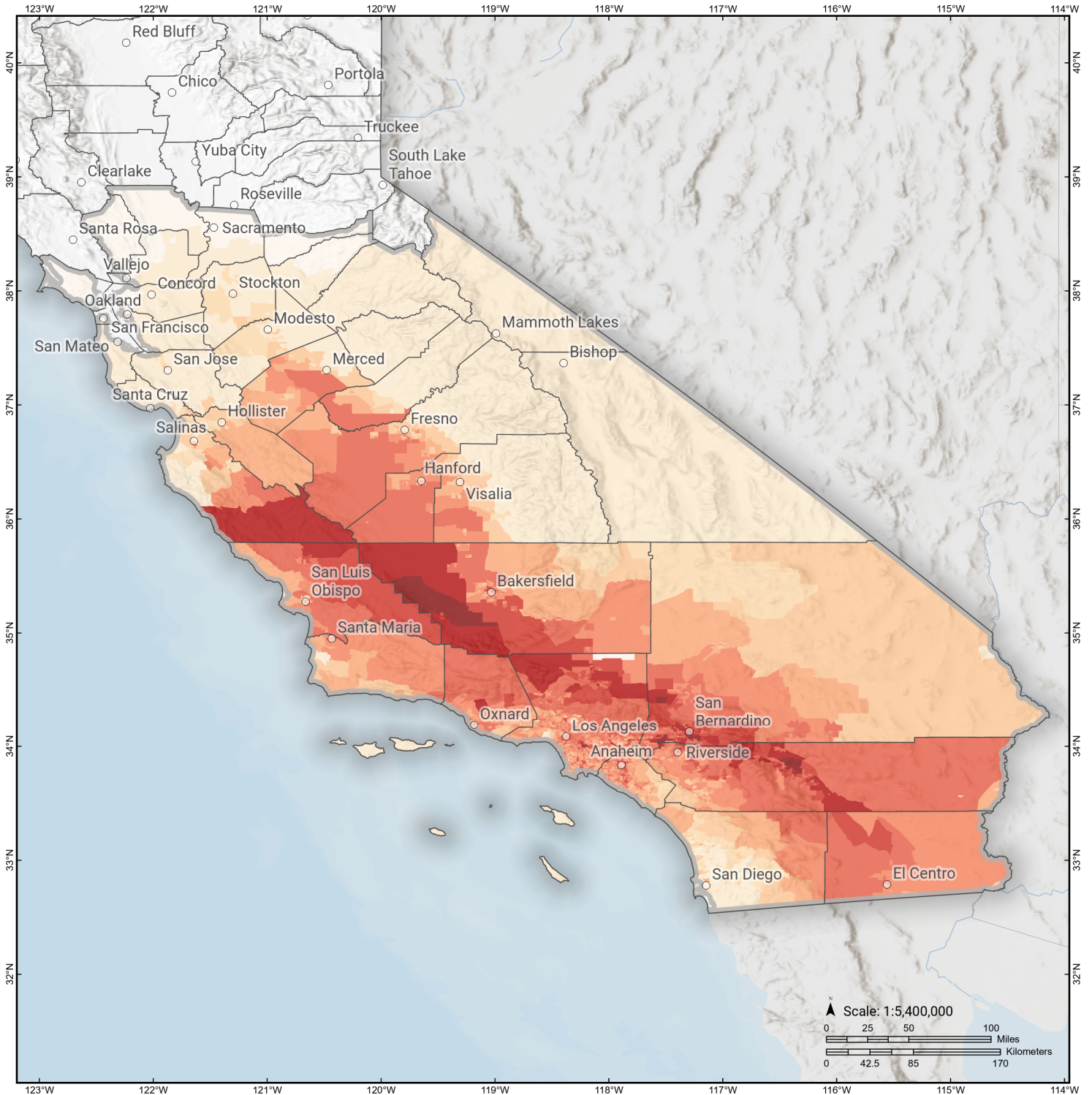
	Injury Severity Level				Total
	Severity 1	Severity 2	Severity 3	Severity 4	
California					
Ventura					
Casualties - 2am					
Commercial	1	0	0	0	1
Other-Residential	33	3	0	0	36
Total Casualties - 2am	62	3	0	0	66
Casualties - 2pm					
Industrial	8	1	0	0	8
Educational	16	1	0	0	17
Commuting	0	0	0	0	0
Hotels	0	0	0	0	0
Other-Residential	9	1	0	0	10
Commercial	43	4	0	0	47
Single Family	7	0	0	0	7
Total Casualties - 2pm	83	7	0	1	90
Casualties - 5pm					
Commuting	1	1	1	0	3
Other-Residential	12	1	0	0	13
Commercial	32	3	0	0	35
Hotels	0	0	0	0	0
Educational	2	0	0	0	2
Single Family	10	0	0	0	10
Industrial	5	0	0	0	5
Total Casualties - 5pm	61	5	1	1	68
Yolo					
Casualties - 2am					
Single Family	0	0	0	0	0
Other-Residential	0	0	0	0	0
Commercial	0	0	0	0	0
Educational	0	0	0	0	0
Commuting	0	0	0	0	0
Hotels	0	0	0	0	0
Industrial	0	0	0	0	0
Total Casualties - 2am	0	0	0	0	0
Casualties - 2pm					
Industrial	0	0	0	0	0
Hotels	0	0	0	0	0
Educational	0	0	0	0	0
Commuting	0	0	0	0	0
Commercial	0	0	0	0	0
Other-Residential	0	0	0	0	0
Single Family	0	0	0	0	0
Total Casualties - 2pm	0	0	0	0	0

	Injury Severity Level				Total
	Severity 1	Severity 2	Severity 3	Severity 4	
California					
Yolo					
Casualties - 5pm					
<i>Other-Residential</i>	0	0	0	0	0
<i>Single Family</i>	0	0	0	0	0
<i>Commuting</i>	0	0	0	0	0
<i>Commercial</i>	0	0	0	0	0
<i>Hotels</i>	0	0	0	0	0
<i>Educational</i>	0	0	0	0	0
<i>Industrial</i>	0	0	0	0	0
Total Casualties - 5pm	0	0	0	0	0
Region Total	NA	NA	NA	NA	NA

Totals only reflect data for those census tracts/blocks included in the user's study region and will reflect the entire county/state only if all of the census blocks for that county/states were selected at the time of study region creation.

S. San Andreas: PK+CH+CC+BB+NM+SM+NSB+SSB+BG+CO

Debris Generated by Census Tract

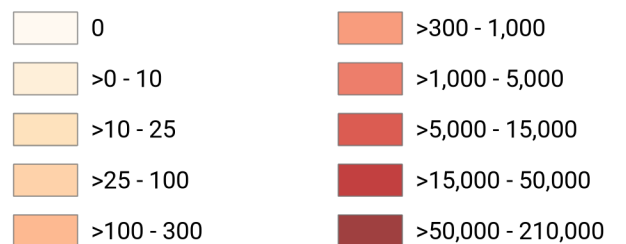


Study Region: S. San Andreas: PK+CH+CC
+BB+NM+SM+NSB+SSB+BG+CO

Scenario: ssanandreaspkchccb_n_m8p18_se



Debris Generated (in tons)



Debris Summary Report

April 15, 2024

All values are in thousands of tons.

	Brick, Wood & Others	Concrete & Steel	Total
California			
Fresno	21	33	54
Alameda	0	0	1
Solano	0	0	0
San Mateo	0	0	0
Tuolumne	0	0	0
Kings	8	12	21
San Joaquin	1	0	1
San Luis Obispo	55	53	108
Madera	1	2	3
Tulare	6	6	12
Inyo	0	0	0
Napa	0	0	0
Riverside	1,571	1,325	2,896
San Bernardino	1,703	1,850	3,553
Contra Costa	0	0	0
Imperial	33	26	59
Ventura	48	74	122
Kern	178	299	477
Amador	0	0	0

	Brick, Wood & Others	Concrete & Steel	Total
Santa Cruz	1	0	1
Orange	174	301	475
Monterey	10	22	32
Sacramento	0	0	0
San Diego	8	3	11
Mariposa	0	0	0
Los Angeles	1,713	1,925	3,638
Yolo	0	0	0
Calaveras	0	0	0
Stanislaus	1	0	1
Santa Barbara	21	25	45
Santa Clara	1	1	2
San Benito	0	0	1
San Francisco	0	0	0
Merced	2	3	5
Mono	0	0	0
Marin	0	0	0
Total	5,556	5,961	11,517
Region Total	5,556	5,961	11,517

Totals only reflect data for those census tracts/blocks included in the user's study region and will reflect the entire county/state only if all of the census blocks for that county/states were selected at the time of study region creation.

Direct Economic Losses For Buildings

April 15, 2024

All values are in thousands of dollars

	Capital Stock Losses				Loss Ratio %	Income Losses				Total Loss
	Cost Structural Damage	Cost Non-struct. Damage	Cost Contents Damage	Inventory Loss		Relocation Loss	Capital Related Loss	Wages Losses	Rental Income Loss	
California										
Inyo	2	72	43	6	0.00	0	1	1	1	126
San Bernardino	2,842,187	13,500,308	5,460,811	629,126	4.33	1,398,792	561,042	803,043	760,093	25,955,402
Riverside	1,942,686	9,763,487	3,742,340	212,380	2.80	859,135	346,187	405,374	473,383	17,744,973
Napa	0	7	5	1	0.00	0	0	0	0	13
Imperial	48,851	263,223	113,146	18,847	0.93	15,884	6,976	7,543	7,309	481,779
Contra Costa	33	1,066	694	75	0.00	5	7	14	9	1,902
Fresno	48,642	294,648	162,505	29,896	0.21	14,439	11,707	12,519	9,869	584,224
Tuolumne	0	27	19	2	0.00	0	0	0	0	48
San Luis Obispo	72,902	400,667	172,585	16,286	0.76	28,618	22,687	22,545	16,182	752,470

	Capital Stock Losses				Loss Ratio %	Income Losses				Total Loss
	Cost Structural Damage	Cost Non-struct. Damage	Cost Contents Damage	Inventory Loss		Relocation Loss	Capital Related Loss	Wages Losses	Rental Income Loss	
San Mateo	444	3,647	1,834	158	0.00	57	81	103	257	6,581
Alameda	641	6,764	4,168	478	0.00	114	92	140	210	12,606
San Joaquin	505	4,618	2,984	392	0.00	109	44	81	90	8,822
Kings	17,724	105,667	52,184	6,561	0.57	6,350	5,238	6,330	3,856	203,911
Solano	3	122	88	13	0.00	0	0	0	1	226
Tulare	12,781	103,156	58,361	14,014	0.16	2,680	2,433	2,750	2,018	198,194
Madera	3,543	22,754	12,661	2,288	0.10	562	312	341	391	42,853
San Benito	847	7,849	4,242	551	0.07	185	166	175	118	14,134
San Francisco	215	347	187	16	0.00	22	38	33	117	976
Santa Clara	1,611	17,752	9,688	1,004	0.01	269	392	510	583	31,808
Mono	0	5	3	0	0.00	0	0	0	0	9
Marin	0	34	23	3	0.00	0	0	0	0	60
Yolo	0	0	0	0	0.00	0	0	0	0	0
Calaveras	0	13	10	3	0.00	0	0	0	0	26
Merced	8,800	31,038	19,645	7,352	0.08	1,190	341	314	382	69,063
Santa Barbara	40,795	306,137	151,931	17,744	0.44	13,063	7,663	9,887	9,206	556,427
Stanislaus	847	11,238	6,392	923	0.01	107	112	119	188	19,926
Ventura	109,059	687,238	327,958	37,536	0.53	31,176	23,464	27,524	22,072	1,266,028

	Capital Stock Losses				Loss Ratio %	Income Losses				Total Loss
	Cost Structural Damage	Cost Non-struct. Damage	Cost Contents Damage	Inventory Loss		Relocation Loss	Capital Related Loss	Wages Losses	Rental Income Loss	
Orange	418,717	2,566,772	1,270,596	116,019	0.55	138,647	107,237	125,729	104,007	4,847,724
Los Angeles	2,869,075	13,955,657	6,487,325	575,762	1.11	1,372,811	782,699	1,000,575	842,227	27,886,131
Kern	356,177	1,463,870	676,173	123,596	1.24	126,853	72,665	84,228	62,659	2,966,220
Amador	0	0	0	0	0.00	0	0	0	0	0
Sacramento	3	57	34	6	0.00	1	1	1	1	104
Monterey	32,095	94,316	51,646	15,410	0.17	6,941	2,812	2,913	2,927	209,059
Santa Cruz	715	6,689	3,656	613	0.01	186	341	348	184	12,731
Mariposa	0	36	24	1	0.00	0	1	1	0	64
San Diego	11,496	206,950	114,172	8,560	0.04	1,918	1,460	3,291	2,776	350,623
Total	8,841,398	43,826,231	18,908,132	1,835,622	0.39	4,020,117	1,956,199	2,516,434	2,321,113	84,225,246
Region Total	8,841,398	43,826,231	18,908,132	1,835,622	0.39	4,020,117	1,956,199	2,516,434	2,321,113	84,225,246

Totals only reflect data for those census tracts/blocks included in the user's study region and will reflect the entire county/state only if all of the census blocks for that county/states were selected at the time of study region creation.

Direct Economic Loss For Transportation

April 15, 2024

All values are in thousands of dollars

	Highway	Railway	Light Rail	Bus Facility	Ports	Ferries	Airport	Total
California								
Alameda								
Segments	0	0	0					0
Bridges	68	2	0					70
Tunnels	0	0	0					0
Facilities		436	0	22	1,725	38	3,593	5,815
Total	68	438	0	22	1,725	38	3,593	5,885
Amador								
Segments	0	0	0					0
Bridges	0	0	0					0
Tunnels	0	0	0					0
Facilities		0	0	0	0	0	6	6
Total	0	0	0	0	0	0	6	6
Calaveras								
Segments	0	0	0					0
Bridges	0	0	0					0
Tunnels	0	0	0					0
Facilities		0	0	0	0	0	11	11

	Highway	Railway	Light Rail	Bus Facility	Ports	Ferries	Airport	Total
Total	0	0	0	0	0	0	11	11
Contra Costa								
Segments	0	0	0					0
Bridges	137	1	0					137
Tunnels	0	0	0					0
Facilities		211	165	0	2,011	51	231	2,669
Total	137	211	165	0	2,011	51	231	2,806
Fresno								
Segments	0	0	0					0
Bridges	4,500	164	0					4,664
Tunnels	0	0	0					0
Facilities		1,075	0	89	0	0	5,992	7,155
Total	4,500	1,239	0	89	0	0	5,992	11,820
Imperial								
Segments	0	0	0					0
Bridges	9,521	83,756	0					93,277
Tunnels	0	0	0					0
Facilities		796	0	0	0	0	5,431	6,227
Total	9,521	84,552	0	0	0	0	5,431	99,504
Inyo								
Segments	0	0	0					0
Bridges	2	0	0					2
Tunnels	0	0	0					0
Facilities		0	0	0	0	0	408	408

	Highway	Railway	Light Rail	Bus Facility	Ports	Ferries	Airport	Total
Total	2	0	0	0	0	0	408	410
Kern								
Segments	0	0	0					0
Bridges	23,087	1,454	0					24,541
Tunnels	11	0	0					11
Facilities		1,969	0	723	0	0	11,602	14,295
Total	23,099	3,423	0	723	0	0	11,602	38,847
Kings								
Segments	0	0	0					0
Bridges	1,316	96	0					1,412
Tunnels	0	0	0					0
Facilities		1,005	0	476	0	0	3,002	4,483
Total	1,316	1,101	0	476	0	0	3,002	5,895
Los Angeles								
Segments	0	0	0					0
Bridges	215,186	18,354	8					233,548
Tunnels	1,489	0	0					1,489
Facilities		12,752	235,468	3,802	52,571	742	226,909	532,242
Total	216,675	31,106	235,475	3,802	52,571	742	226,909	767,279
Madera								
Segments	0	0	0					0
Bridges	282	11	0					293
Tunnels	0	0	0					0
Facilities		109	0	89	0	0	435	633

	Highway	Railway	Light Rail	Bus Facility	Ports	Ferries	Airport	Total
Total	282	120	0	89	0	0	435	926
Marin								
Segments	0	0	0					0
Bridges	52	0	0					52
Tunnels	0	0	0					0
Facilities		0	0	10	94	7	6	117
Total	52	0	0	10	94	7	6	168
Mariposa								
Segments	0	0	0					0
Bridges	0	0	0					0
Tunnels	0	0	0					0
Facilities		0	0	86	0	0	51	137
Total	0	0	0	86	0	0	51	137
Merced								
Segments	0	0	0					0
Bridges	669	10	0					679
Tunnels	0	0	0					0
Facilities		218	0	91	0	0	1,162	1,472
Total	669	229	0	91	0	0	1,162	2,151
Mono								
Segments	0	0	0					0
Bridges	0	0	0					0
Tunnels	0	0	0					0
Facilities		0	0	41	0	0	119	160

	Highway	Railway	Light Rail	Bus Facility	Ports	Ferries	Airport	Total
Total	0	0	0	41	0	0	119	160
Monterey								
<i>Segments</i>	0	0	0					0
<i>Bridges</i>	5,286	648	0					5,933
<i>Tunnels</i>	0	0	0					0
<i>Facilities</i>		109	0	1,009	110	0	3,591	4,820
Total	5,286	757	0	1,009	110	0	3,591	10,753
Napa								
<i>Segments</i>	0	0	0					0
<i>Bridges</i>	0	0	0					0
<i>Tunnels</i>	0	0	0					0
<i>Facilities</i>		0	0	2	45	0	20	67
Total	0	0	0	2	45	0	20	68
Orange								
<i>Segments</i>	0	0	0					0
<i>Bridges</i>	27,298	637	0					27,935
<i>Tunnels</i>	22	0	0					22
<i>Facilities</i>		1,985	0	0	4,471	356	33,514	40,325
Total	27,320	2,622	0	0	4,471	356	33,514	68,283
Riverside								
<i>Segments</i>	0	0	0					0
<i>Bridges</i>	255,972	49,178	0					305,150
<i>Tunnels</i>	0	0	0					0
<i>Facilities</i>		3,387	0	4,753	0	0	50,783	58,923

	Highway	Railway	Light Rail	Bus Facility	Ports	Ferries	Airport	Total
Total	255,972	52,565	0	4,753	0	0	50,783	364,073
Sacramento								
<i>Segments</i>	0	0	0					0
<i>Bridges</i>	57	0	0					57
<i>Tunnels</i>	0	0	0					0
<i>Facilities</i>		3	336	5	494	13	466	1,316
Total	57	3	336	5	494	13	466	1,374
San Benito								
<i>Segments</i>	0	0	0					0
<i>Bridges</i>	48	1	0					49
<i>Tunnels</i>	0	0	0					0
<i>Facilities</i>		0	0	0	0	0	435	435
Total	48	1	0	0	0	0	435	484
San Bernardino								
<i>Segments</i>	0	0	0					0
<i>Bridges</i>	457,842	41,901	0					499,743
<i>Tunnels</i>	404	0	0					404
<i>Facilities</i>		11,534	0	1,294	0	0	63,906	76,733
Total	458,245	53,435	0	1,294	0	0	63,906	576,879
San Diego								
<i>Segments</i>	0	0	0					0
<i>Bridges</i>	797	4	0					802
<i>Tunnels</i>	1	0	0					1
<i>Facilities</i>		715	22,880	21	7,260	122	36,095	67,093

	Highway	Railway	Light Rail	Bus Facility	Ports	Ferries	Airport	Total
Total	799	719	22,880	21	7,260	122	36,095	67,896
San Francisco								
Segments	0	0	0					0
Bridges	14	0	0					14
Tunnels	0	0	0					0
Facilities		0	14,241	49	1,986	40	263	16,579
Total	14	0	14,241	49	1,986	40	263	16,593
San Joaquin								
Segments	0	0	0					0
Bridges	222	0	0					222
Tunnels	0	0	0					0
Facilities		410	0	21	1,578	51	418	2,479
Total	222	411	0	21	1,578	51	418	2,702
San Luis Obispo								
Segments	0	0	0					0
Bridges	7,965	219	0					8,184
Tunnels	0	0	0					0
Facilities		796	0	400	2,301	0	4,509	8,006
Total	7,965	1,015	0	400	2,301	0	4,509	16,191
San Mateo								
Segments	0	0	0					0
Bridges	285	0	0					285
Tunnels	0	0	0					0
Facilities		0	0	0	661	0	8,789	9,450

	Highway	Railway	Light Rail	Bus Facility	Ports	Ferries	Airport	Total
Total	285	0	0	0	661	0	8,789	9,735
Santa Barbara								
Segments	0	0	0					0
Bridges	2,073	93	0					2,166
Tunnels	0	0	0					0
Facilities		1,007	0	796	2,460	164	4,978	9,405
Total	2,073	1,100	0	796	2,460	164	4,978	11,571
Santa Clara								
Segments	0	0	0					0
Bridges	322	1	0					323
Tunnels	0	0	0					0
Facilities		103	5,439	122	184	0	3,593	9,440
Total	322	103	5,439	122	184	0	3,593	9,762
Santa Cruz								
Segments	0	0	0					0
Bridges	32	0	0					32
Tunnels	0	0	0					0
Facilities		0	0	45	37	0	257	339
Total	32	0	0	45	37	0	257	371
Solano								
Segments	0	0	0					0
Bridges	56	1	0					57
Tunnels	0	0	0					0
Facilities		54	0	7	1,052	40	71	1,225

	Highway	Railway	Light Rail	Bus Facility	Ports	Ferries	Airport	Total
Total	56	55	0	7	1,052	40	71	1,282
Stanislaus								
<i>Segments</i>	0	0	0					0
<i>Bridges</i>	214	3	0					217
<i>Tunnels</i>	0	0	0					0
<i>Facilities</i>		154	0	43	0	0	231	427
Total	214	157	0	43	0	0	231	644
Tulare								
<i>Segments</i>	0	0	0					0
<i>Bridges</i>	961	129	0					1,090
<i>Tunnels</i>	0	0	0					0
<i>Facilities</i>		0	0	353	0	0	1,270	1,622
Total	961	129	0	353	0	0	1,270	2,713
Tuolumne								
<i>Segments</i>	0	0	0					0
<i>Bridges</i>	0	0	0					0
<i>Tunnels</i>	0	0	0					0
<i>Facilities</i>		0	0	0	0	0	108	108
Total	0	0	0	0	0	0	108	108
Ventura								
<i>Segments</i>	0	0	0					0
<i>Bridges</i>	5,729	267	0					5,995
<i>Tunnels</i>	13	0	0					13
<i>Facilities</i>		1,192	0	163	5,348	155	4,082	10,941

	Highway	Railway	Light Rail	Bus Facility	Ports	Ferries	Airport	Total
Total	5,741	1,459	0	163	5,348	155	4,082	16,949
Yolo								
<i>Segments</i>	0	0	0					0
<i>Bridges</i>	284	0	0					284
<i>Tunnels</i>	0	0	0					0
<i>Facilities</i>		14	0	0	102	0	17	133
Total	284	14	0	0	102	0	17	417
Total	1,022,217	236,963	278,536	14,512	84,491	1,779	476,354	2,114,852
Region Total	1,022,217	236,963	278,536	14,512	84,491	1,779	476,354	2,114,852

Totals only reflect data for those census tracts/blocks included in the user's study region and will reflect the entire county/state only if all of the census blocks for that county/states were selected at the time of study region creation.

Direct Economic Loss For Utilities

April 15, 2024

All values are in thousands of dollars

	Potable Water	Waste Water	Oil Systems	Natural Gas	Electric Power	Communication	Total
California							
Alameda							
Facilities	57	1,724	0	0	14,913	3	16,697
Pipelines	284	143	0	0			427
Total	341	1,867	0	0	14,913	3	17,124
Amador							
Facilities	0	3	0	0	310	0	312
Pipelines	26	13	0	0			39
Total	26	16	0	0	310	0	352
Calaveras							
Facilities	1	131	0	0	14,163	0	14,294
Pipelines	55	27	0	0			82
Total	55	158	0	0	14,163	0	14,377
Contra Costa							
Facilities	59	879	0	0	46,874	1	47,813

	Potable Water	Waste Water	Oil Systems	Natural Gas	Electric Power	Communication	Total
<i>Pipelines</i>	164	82	0	0			246
Total	223	961	0	0	46,874	1	48,059
Fresno							
<i>Facilities</i>	0	6,097	1	467	598,789	105	605,460
<i>Pipelines</i>	5,138	2,581	0	0			7,719
Total	5,138	8,679	1	467	598,789	105	613,179
Imperial							
<i>Facilities</i>	9,563	143,497	0	0	2,141,757	189	2,295,006
<i>Pipelines</i>	5,600	2,813	0	0			8,413
Total	15,163	146,310	0	0	2,141,757	189	2,303,420
Inyo							
<i>Facilities</i>	0	0	0	0	9,774	0	9,774
<i>Pipelines</i>	146	73	0	0			219
Total	146	73	0	0	9,774	0	9,994
Kern							
<i>Facilities</i>	13,531	46,284	71	49,161	6,348,916	694	6,458,658
<i>Pipelines</i>	26,573	13,348	0	0			39,921
Total	40,104	59,632	71	49,161	6,348,916	694	6,498,578
Kings							
<i>Facilities</i>	0	0	3	9,914	276,624	29	286,570
<i>Pipelines</i>	3,236	1,626	0	0			4,862

	Potable Water	Waste Water	Oil Systems	Natural Gas	Electric Power	Communication	Total
Total	3,236	1,626	3	9,914	276,624	29	291,432
Los Angeles							
<i>Facilities</i>	40,377	160,839	186	31,075	9,974,334	1,462	10,208,272
<i>Pipelines</i>	44,932	22,571	0	0			67,503
Total	85,310	183,410	186	31,075	9,974,334	1,462	10,275,775
Madera							
<i>Facilities</i>	0	0	0	0	22,233	3	22,236
<i>Pipelines</i>	536	269	0	0			805
Total	536	269	0	0	22,233	3	23,041
Marin							
<i>Facilities</i>	1	261	0	0	1	0	263
<i>Pipelines</i>	41	21	0	0			62
Total	42	282	0	0	1	0	325
Mariposa							
<i>Facilities</i>	0	492	0	0	2,808	2	3,301
<i>Pipelines</i>	45	23	0	0			67
Total	45	514	0	0	2,808	2	3,369
Merced							
<i>Facilities</i>	0	6,220	0	0	160,301	27	166,549
<i>Pipelines</i>	618	310	0	0			929
Total	618	6,531	0	0	160,301	27	167,477

	Potable Water	Waste Water	Oil Systems	Natural Gas	Electric Power	Communication	Total
Mono							
<i>Facilities</i>	0	0	0	0	867	0	867
<i>Pipelines</i>	56	28	0	0			84
Total	56	28	0	0	867	0	951
Monterey							
<i>Facilities</i>	0	12,318	0	0	189,101	134	201,553
<i>Pipelines</i>	4,527	2,274	0	0			6,801
Total	4,527	14,592	0	0	189,101	134	208,354
Napa							
<i>Facilities</i>	0	10	0	0	5	0	15
<i>Pipelines</i>	24	12	0	0			36
Total	24	22	0	0	5	0	51
Orange							
<i>Facilities</i>	4,804	43,623	12	2,300	255,422	113	306,275
<i>Pipelines</i>	4,324	2,172	0	0			6,496
Total	9,128	45,795	12	2,300	255,422	113	312,770
Riverside							
<i>Facilities</i>	43,826	357,852	0	6,440	3,953,046	2,574	4,363,738
<i>Pipelines</i>	49,282	24,756	0	0			74,038
Total	93,108	382,608	0	6,440	3,953,046	2,574	4,437,776
Sacramento							

	Potable Water	Waste Water	Oil Systems	Natural Gas	Electric Power	Communication	Total
<i>Facilities</i>	0	507	0	0	1,251	2	1,760
<i>Pipelines</i>	129	65	0	0			194
Total	129	572	0	0	1,251	2	1,954
San Benito							
<i>Facilities</i>	0	3,049	0	0	0	21	3,070
<i>Pipelines</i>	412	207	0	0			619
Total	412	3,256	0	0	0	21	3,688
San Bernardino							
<i>Facilities</i>	37,080	315,992	0	9,198	5,746,250	1,627	6,110,146
<i>Pipelines</i>	48,288	24,256	0	0			72,544
Total	85,367	340,248	0	9,198	5,746,250	1,627	6,182,690
San Diego							
<i>Facilities</i>	376	22,992	0	1,590	240,746	78	265,781
<i>Pipelines</i>	1,590	799	0	0			2,389
Total	1,967	23,790	0	1,590	240,746	78	268,170
San Francisco							
<i>Facilities</i>	0	740	0	0	40	0	780
<i>Pipelines</i>	24	12	0	0			36
Total	24	752	0	0	40	0	816
San Joaquin							
<i>Facilities</i>	140	861	0	0	9,104	2	10,108

	Potable Water	Waste Water	Oil Systems	Natural Gas	Electric Power	Communication	Total
<i>Pipelines</i>	357	179	0	0			536
Total	497	1,040	0	0	9,104	2	10,644
San Luis Obispo							
<i>Facilities</i>	1,009	52,347	6	0	1,482,318	296	1,535,976
<i>Pipelines</i>	15,068	7,569	0	0			22,637
Total	16,077	59,916	6	0	1,482,318	296	1,558,613
San Mateo							
<i>Facilities</i>	0	1,358	0	0	206	1	1,564
<i>Pipelines</i>	105	53	0	0			157
Total	105	1,410	0	0	206	1	1,721
Santa Barbara							
<i>Facilities</i>	0	60,054	6	4,941	83,107	333	148,440
<i>Pipelines</i>	2,017	1,013	0	0			3,031
Total	2,017	61,068	6	4,941	83,107	333	151,471
Santa Clara							
<i>Facilities</i>	56	369	0	0	27,952	5	28,382
<i>Pipelines</i>	425	214	0	0			639
Total	481	582	0	0	27,952	5	29,021
Santa Cruz							
<i>Facilities</i>	0	1,893	0	0	65	4	1,961
<i>Pipelines</i>	143	72	0	0			215

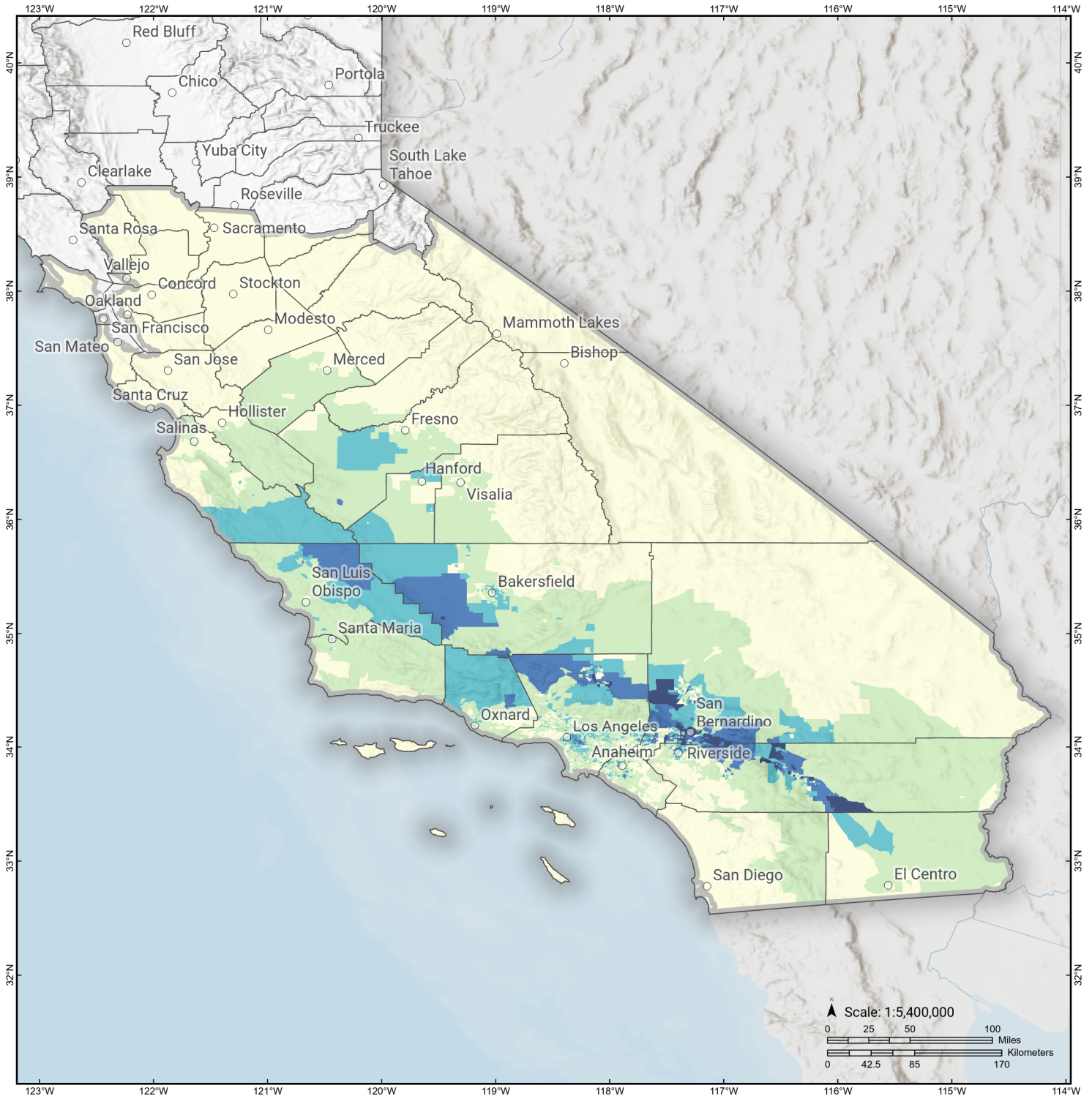
	Potable Water	Waste Water	Oil Systems	Natural Gas	Electric Power	Communication	Total
Total	143	1,965	0	0	65	4	2,176
Solano							
<i>Facilities</i>	0	259	0	0	7,536	0	7,795
<i>Pipelines</i>	110	55	0	0			165
Total	110	314	0	0	7,536	0	7,960
Stanislaus							
<i>Facilities</i>	0	492	0	0	8,978	3	9,473
<i>Pipelines</i>	251	126	0	0			377
Total	251	618	0	0	8,978	3	9,850
Tulare							
<i>Facilities</i>	348	4,573	0	0	86,449	46	91,417
<i>Pipelines</i>	1,305	655	0	0			1,960
Total	1,653	5,228	0	0	86,449	46	93,377
Tuolumne							
<i>Facilities</i>	0	123	0	0	25,699	1	25,822
<i>Pipelines</i>	68	34	0	0			102
Total	68	157	0	0	25,699	1	25,925
Ventura							
<i>Facilities</i>	6,822	81,589	9	2,647	354,768	269	446,102
<i>Pipelines</i>	3,433	1,724	0	0			5,157
Total	10,255	83,313	9	2,647	354,768	269	451,260

	Potable Water	Waste Water	Oil Systems	Natural Gas	Electric Power	Communication	Total
Yolo							
<i>Facilities</i>	0	10	0	0	8	0	18
<i>Pipelines</i>	37	19	0	0			56
Total	37	29	0	0	8	0	74
Total	377,419	1,437,632	294	117,732	32,084,710	8,024	34,025,812
Region Total	377,419	1,437,632	294	117,732	32,084,710	8,024	34,025,812

Totals only reflect data for those census tracts/blocks included in the user's study region and will reflect the entire county/state only if all of the census blocks for that county/states were selected at the time of study region creation.

S. San Andreas: PK+CH+CC+BB+NM+SM+NSB+SSB+BG+CO

Displaced Households by Census Tract

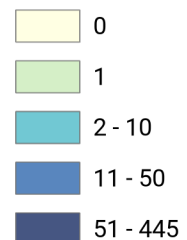


Study Region: S. San Andreas: PK+CH+CC
+BB+NM+SM+NSB+SSB+BG+CO

Scenario: ssanandreaspkchccbbn_m8p18_se

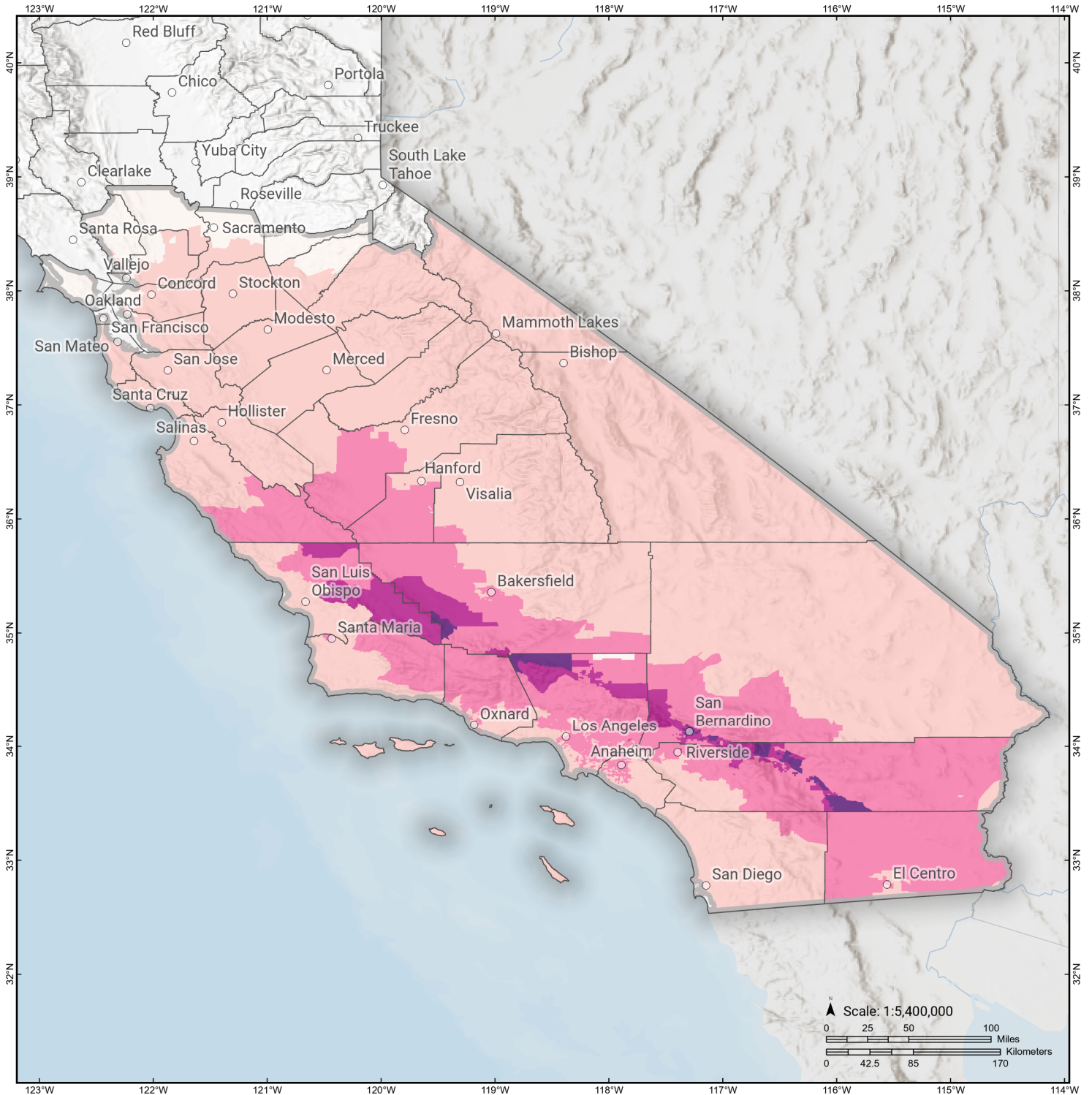


Displaced Households



S. San Andreas: PK+CH+CC+BB+NM+SM+NSB+SSB+BG+CO

Loss Ratio by Census Tract

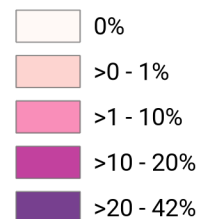


Study Region: S. San Andreas: PK+CH+CC
+BB+NM+SM+NSB+SSB+BG+CO

Scenario: ssanandreaspkchccbbn_m8p18_se



Loss Ratio (ratio of building related economic loss to exposed value of buildings)



Hazus Quick Assessment Report

Estimated Economic Loss (\$ Billions)

Category	Description	Range
General Building Stock	Building Damage	26.30 - 105.30
	Building Contents	3.30 - 13.40
	Business Interruption	5.40 - 21.60
Infrastructure	Lifelines Damage	
Total		42.10 - 168.50

Preliminary Damage Assessment (PDA) Estimates

Description	Residential	Commercial	Other	Total
Affected	987,500	78,600	30,000	
Minor	161,500	27,200	11,500	200,200
Major	35,000	5,800	2,700	43,500
Destroyed	17,500	1,500	540	19,540
Total		113,100	44,740	

Estimated Casualties : Night Time

Severity Level	Description	# Persons
Level 1	Medical Aid	4,000 - 17,000
Level 2	Hospital Care	700 - 3,000
Level 3	Life-threatening	50 - 200
Level 4	Fatalities	90 - 400

Estimated Shelter Needs

Type	Households	People
Displaced Households	15,000 - 62,000	37,500 - 155,000
Public Shelter	8,460	21,150

Comments :

*Hazus damage estimates are presented using FEMA Preliminary Damage Assessment (PDA) categories. These estimates should be used for planning purposes and may not reflect actual observed damages from the PDA process.

Disclaimer:

The estimates of social and economic impacts contained in this report were produced using HAZUS loss estimation methodology software which is based on current scientific and engineering knowledge. There are uncertainties inherent in any loss estimation technique. Therefore, there may be significant differences between the modeled results contained in this report and the actual social and economic losses following a specific earthquake. These results can be improved by using enhanced inventory, geotechnical, and observed ground motion data.

Earthquake Information

Location :

Origin Time:

Magnitude : 8.18

Epicenter Latitude/Longitude :
/

Depth & Type : /U

Name :
NA

Ground Motion /Attenuation :

Maximum PGA: 1.00

Information Sources:

Comments :

Population and Building Exposure

Population: 37,209,797

Building Exposure : (\$ Millions)

Residential	
Commercial	1,256,410
Other	992,299
Total	

Counties : See Appendix

Major Metro Area :

Hazus Quick Assessment Report

Estimated Economic Loss (\$ Billions)

Category	Description	Range
General Building Stock	Building Damage	26.30 - 105.30
	Building Contents	3.30 - 13.40
	Business Interruption	5.40 - 21.60
Infrastructure	Lifelines Damage	
Total		42.10 - 168.50

Preliminary Damage Assessment (PDA) Estimates

Description	Residential	Commercial	Other	Total
Affected	987,500	78,600	30,000	
Minor	161,500	27,200	11,500	200,200
Major	35,000	5,800	2,700	43,500
Destroyed	17,500	1,500	540	19,540
Total		113,100	44,740	

Estimated Casualties : Day Time

Severity Level	Description	# Persons
Level 1	Medical Aid	5,000 - 20,000
Level 2	Hospital Care	900 - 4,000
Level 3	Life-threatening	110 - 400
Level 4	Fatalities	190 - 700

Estimated Shelter Needs

Type	Households	People
Displaced Households	15,000 - 62,000	37,500 - 155,000
Public Shelter	8,460	21,150

Comments :

*Hazus damage estimates are presented using FEMA Preliminary Damage Assessment (PDA) categories. These estimates should be used for planning purposes and may not reflect actual observed damages from the PDA process.

Disclaimer:

The estimates of social and economic impacts contained in this report were produced using HAZUS loss estimation methodology software which is based on current scientific and engineering knowledge. There are uncertainties inherent in any loss estimation technique. Therefore, there may be significant differences between the modeled results contained in this report and the actual social and economic losses following a specific earthquake. These results can be improved by using enhanced inventory, geotechnical, and observed ground motion data.

Earthquake Information

Location :

Origin Time:

Magnitude : 8.18

Epicenter Latitude/Longitude :
/

Depth & Type : /U

Name :
NA

Ground Motion /Attenuation :

Maximum PGA: 1.00

Information Sources:

Comments :

Population and Building Exposure

Population: 37,209,797

Building Exposure : (\$ Millions)

Residential	
Commercial	1,256,410
Other	992,299
Total	

Counties : See Appendix

Major Metro Area :

Hazus Quick Assessment Report

Estimated Economic Loss (\$ Billions)

Category	Description	Range
General Building Stock	Building Damage	26.30 - 105.30
	Building Contents	3.30 - 13.40
	Business Interruption	5.40 - 21.60
Infrastructure	Lifelines Damage	
Total		42.10 - 168.50

Preliminary Damage Assessment (PDA) Estimates

Description	Residential	Commercial	Other	Total
Affected	987,500	78,600	30,000	
Minor	161,500	27,200	11,500	200,200
Major	35,000	5,800	2,700	43,500
Destroyed	17,500	1,500	540	19,540
Total		113,100	44,740	

Estimated Casualties : Commute Time

Severity Level	Description	# Persons
Level 1	Medical Aid	4,000 - 15,000
Level 2	Hospital Care	800 - 3,000
Level 3	Life-threatening	300 - 1,100
Level 4	Fatalities	170 - 700

Estimated Shelter Needs

Type	Households	People
Displaced Households	15,000 - 62,000	37,500 - 155,000
Public Shelter	8,460	21,150

Comments :

*Hazus damage estimates are presented using FEMA Preliminary Damage Assessment (PDA) categories. These estimates should be used for planning purposes and may not reflect actual observed damages from the PDA process.

Disclaimer:

The estimates of social and economic impacts contained in this report were produced using HAZUS loss estimation methodology software which is based on current scientific and engineering knowledge. There are uncertainties inherent in any loss estimation technique. Therefore, there may be significant differences between the modeled results contained in this report and the actual social and economic losses following a specific earthquake. These results can be improved by using enhanced inventory, geotechnical, and observed ground motion data.

Earthquake Information

Location :

Origin Time:

Magnitude : 8.18

Epicenter Latitude/Longitude :
/

Depth & Type : /U

Name :
NA

Ground Motion /Attenuation :

Maximum PGA: 1.00

Information Sources:

Comments :

Population and Building Exposure

Population: 37,209,797

Building Exposure : (\$ Millions)

Residential	
Commercial	1,256,410
Other	992,299
Total	

Counties : See Appendix

Major Metro Area :

Shelter Summary Report

April 15, 2024

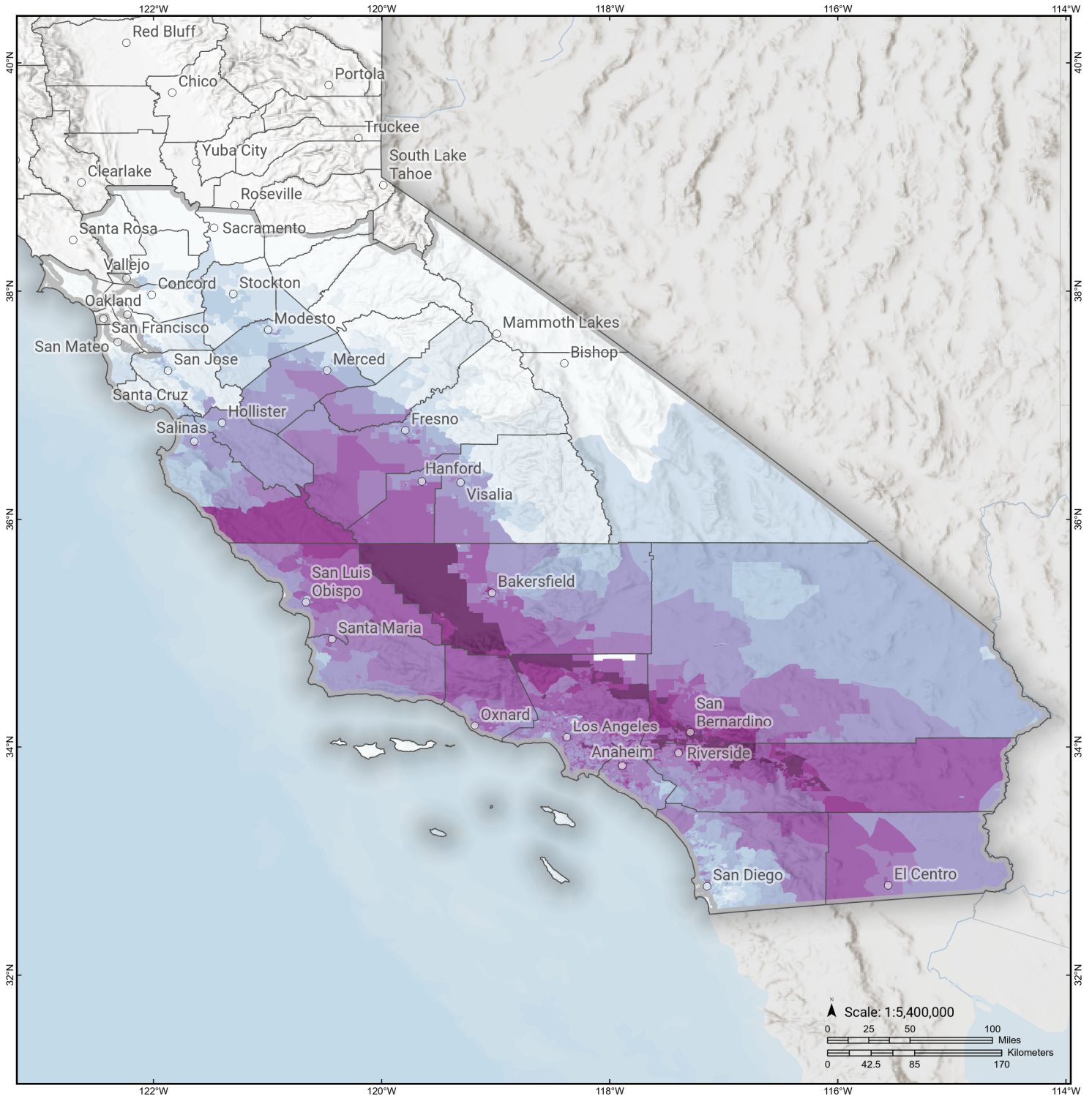
	# of Displaced Households	# of People Needing Short Term Shelter
California		
Fresno	58	43
Alameda	0	0
Solano	0	0
San Mateo	0	0
Tuolumne	0	0
Kings	22	16
San Joaquin	0	0
San Luis Obispo	88	44
Madera	0	0
Tulare	3	2
Inyo	0	0
Napa	0	0
Riverside	4,703	3,727
San Bernardino	15,864	11,041
Contra Costa	0	0
Imperial	12	13
Ventura	174	104
Kern	624	498
Amador	0	0
Santa Cruz	0	0
Orange	542	367
Monterey	19	13
Sacramento	0	0
San Diego	0	0
Mariposa	0	0
Los Angeles	8,607	5,247
Yolo	0	0
Calaveras	0	0
Stanislaus	0	0
Santa Barbara	47	32
Santa Clara	0	0
San Benito	0	0

	# of Displaced Households	# of People Needing Short Term Shelter
San Francisco	0	0
Merced	0	0
Mono	0	0
Marin	0	0
Total	30,764	21,148
Region Total	30,764	21,148

Totals only reflect data for those census tracts/blocks included in the user's study region and will reflect the entire county/state only if all of the census blocks for that county/states were selected at the time of study region creation.

S. San Andreas: PK+CH+CC+BB+NM+SM+NSB+SSB+BG+CO

Total Building Related Economic Loss by Census Tract



Study Region: S. San Andreas: PK+CH+CC
+BB+NM+SM+NSB+SSB+BG+CO

Scenario: ssanandreaspkchccbbn_m8p18_se

Economic Loss (in thousands of USD \$)

