
Hazus: Earthquake Global Risk Report

Region Name: SSA_CH_to_CO

Earthquake Scenario: ssanandreaschccbbnms_m8p17_se

Print Date: May 03, 2024

Disclaimer:

Totals only reflect data for those census tracts/blocks included in the user's study region.

The estimates of social and economic impacts contained in this report were produced using Hazus loss estimation methodology software which is based on current scientific and engineering knowledge. There are uncertainties inherent in any loss estimation technique. Therefore, there may be significant differences between the modeled results contained in this report and the actual social and economic losses following a specific earthquake. These results can be improved by using enhanced inventory, geotechnical, and observed ground motion data.

Table of Contents

Section	Page #
General Description of the Region	3
Building and Lifeline Inventory	4
Building Inventory	
Critical Facility Inventory	
Transportation and Utility Lifeline Inventory	
Earthquake Scenario Parameters	7
Direct Earthquake Damage	8
Buildings Damage	
Essential Facilities Damage	
Transportation and Utility Lifeline Damage	
Induced Earthquake Damage	14
Fire Following Earthquake	
Debris Generation	
Social Impact	15
Shelter Requirements	
Casualties	
Economic Loss	17
Building Related Losses	
Transportation and Utility Lifeline Losses	
Appendix A: County Listing for the Region	
Appendix B: Regional Population and Building Value Data	

General Description of the Region

Hazus-MH is a regional earthquake loss estimation model that was developed by the Federal Emergency Management Agency (FEMA) and the National Institute of Building Sciences. The primary purpose of Hazus is to provide a methodology and software application to develop multi-hazard losses at a regional scale. These loss estimates would be used primarily by local, state and regional officials to plan and stimulate efforts to reduce risks from multi-hazards and to prepare for emergency response and recovery.

The earthquake loss estimates provided in this report was based on a region that includes 35 county(ies) from the following state(s):

California

Note:

Appendix A contains a complete listing of the counties contained in the region.

The geographical size of the region is 107,825.14 square miles and contains 8,571 census tracts. There are over 12,674 thousand households in the region which has a total population of 37,441,783 people. The distribution of population by Total Region and County is provided in Appendix B.

There are an estimated 10,835 thousand buildings in the region with a total building replacement value (excluding contents) of (millions of dollars). Approximately 90.00 % of the buildings (and % of the building value) are associated with residential housing.

The replacement value of the transportation and utility lifeline systems is estimated to be 491,986 and 319,298 (millions of dollars) , respectively.

Building and Lifeline Inventory

Building Inventory

Hazus estimates that there are 10,835 thousand buildings in the region which have an aggregate total replacement value of (millions of dollars) . Appendix B provides a general distribution of the building value by Total Region and County.

In terms of building construction types found in the region, wood frame construction makes up 87% of the building inventory. The remaining percentage is distributed between the other general building types.

Critical Facility Inventory

Hazus breaks critical facilities into two (2) groups: essential facilities and high potential loss facilities (HPL). Essential facilities include hospitals, medical clinics, schools, fire stations, police stations and emergency operations facilities. High potential loss facilities include dams, levees, military installations, nuclear power plants and hazardous material sites.

For essential facilities, there are 558 hospitals in the region with a total bed capacity of 98,143 beds. There are 12,468 schools, 2,475 fire stations, 859 police stations and 196 emergency operation facilities. With respect to high potential loss facilities (HPL), there are no dams identified within the inventory. The inventory also includes no hazardous material sites, no military installations and no nuclear power plants.

Transportation and Utility Lifeline Inventory

Within Hazus, the lifeline inventory is divided between transportation and utility lifeline systems. There are seven (7) transportation systems that include highways, railways, light rail, bus, ports, ferry and airports. There are six (6) utility systems that include potable water, wastewater, natural gas, crude & refined oil, electric power and communications. The lifeline inventory data are provided in Tables 1 and 2.

The total value of the lifeline inventory is over 811,284.00 (millions of dollars). This inventory includes over 20,138.01 miles of highways, 20,660 bridges, 422,640.40 miles of pipes.

Table 1: Transportation System Lifeline Inventory

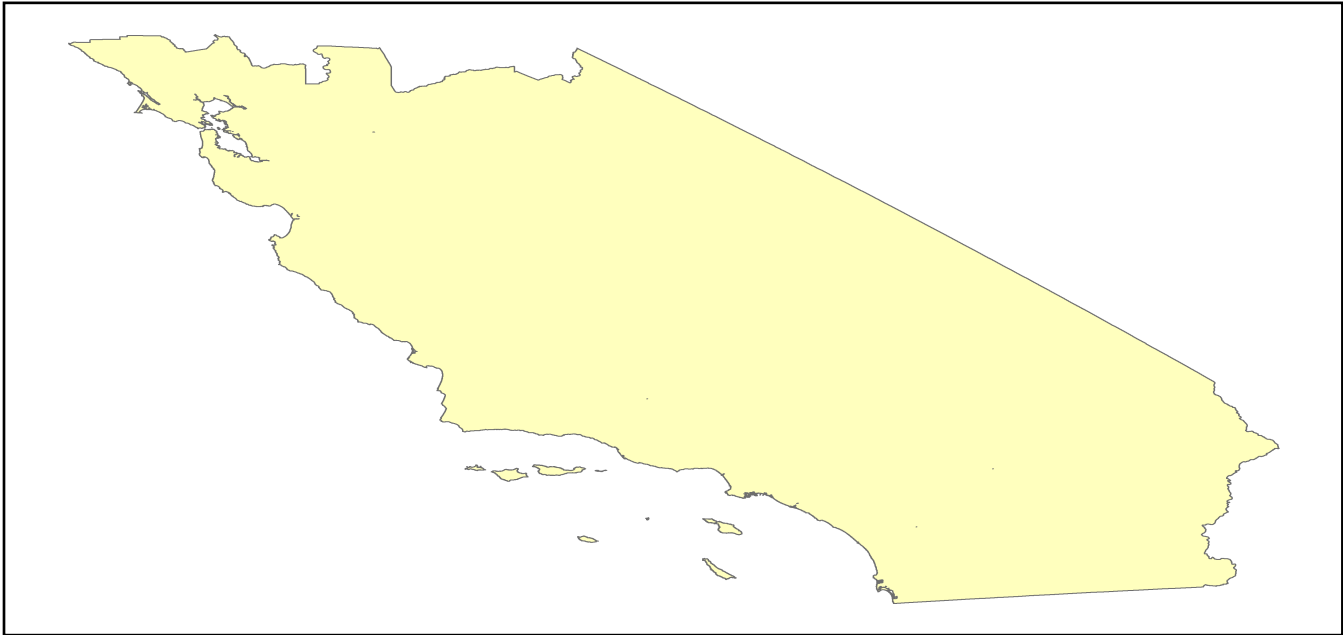
System	Component	# Locations/ # Segments	Replacement value (millions of dollars)
Highway	Bridges	20,660	116602.6613
	Segments	16,015	198295.0388
	Tunnels	105	1516.8013
	Subtotal		316414.5014
Railways	Bridges	3,323	18907.8700
	Facilities	186	495.3180
	Segments	4,667	124477.6213
	Tunnels	3	1.8495
	Subtotal		143882.6588
Light Rail	Bridges	163	28.6279
	Facilities	404	7354.8000
	Segments	23	10802.3803
	Tunnels	0	0.0000
	Subtotal		18185.8082
Bus	Facilities	84	186.1372
	Subtotal		186.1372
Ferry	Facilities	47	62.5570
	Subtotal		62.5570
Port	Facilities	688	2622.5492
	Subtotal		2622.5492
Airport	Facilities	244	7471.5911
	Runways	299	3160.9370
	Subtotal		10632.5281
		Total	491,986.70

Table 2: Utility System Lifeline Inventory

System	Component	# Locations / Segments	Replacement value (millions of dollars)
Potable Water	Distribution Lines	NA	8399.5334
	Facilities	71	2789.8740
	Pipelines	0	0.0000
		Subtotal	11189.4074
Waste Water	Distribution Lines	NA	5039.7200
	Facilities	272	46770.8896
	Pipelines	0	0.0000
		Subtotal	51810.6096
Natural Gas	Distribution Lines	NA	3359.8133
	Facilities	45	1617.5273
	Pipelines	953	28922.4136
		Subtotal	33899.7542
Oil Systems	Facilities	84	9.9120
	Pipelines	0	0.0000
		Subtotal	9.9120
Electrical Power	Facilities	908	222293.0681
		Subtotal	222293.0681
Communication	Facilities	812	95.8160
		Subtotal	95.8160
	Total		319,298.60

Earthquake Scenario

Hazus uses the following set of information to define the earthquake parameters used for the earthquake loss estimate provided in this report.



Scenario Name	ssanandreaschccbbnms_m8p17_se
Type of Earthquake	User-defined
Fault Name	NA
Historical Epicenter ID #	NA
Probabilistic Return Period	NA
Longitude of Epicenter	NA
Latitude of Epicenter	NA
Earthquake Magnitude	8.17
Depth (km)	NA
Rupture Length (Km)	NA
Rupture Orientation (degrees)	NA
Attenuation Function	NA

Direct Earthquake Damage

Building Damage

Hazus estimates that about 260,969 buildings will be at least moderately damaged. This is over 2.00 % of the buildings in the region. There are an estimated 19,419 buildings that will be damaged beyond repair. The definition of the 'damage states' is provided in Volume 1: Chapter 5 of the Hazus technical manual. Table 3 below summarizes the expected damage by general occupancy for the buildings in the region. Table 4 below summarizes the expected damage by general building type.

Damage Categories by General Occupancy Type

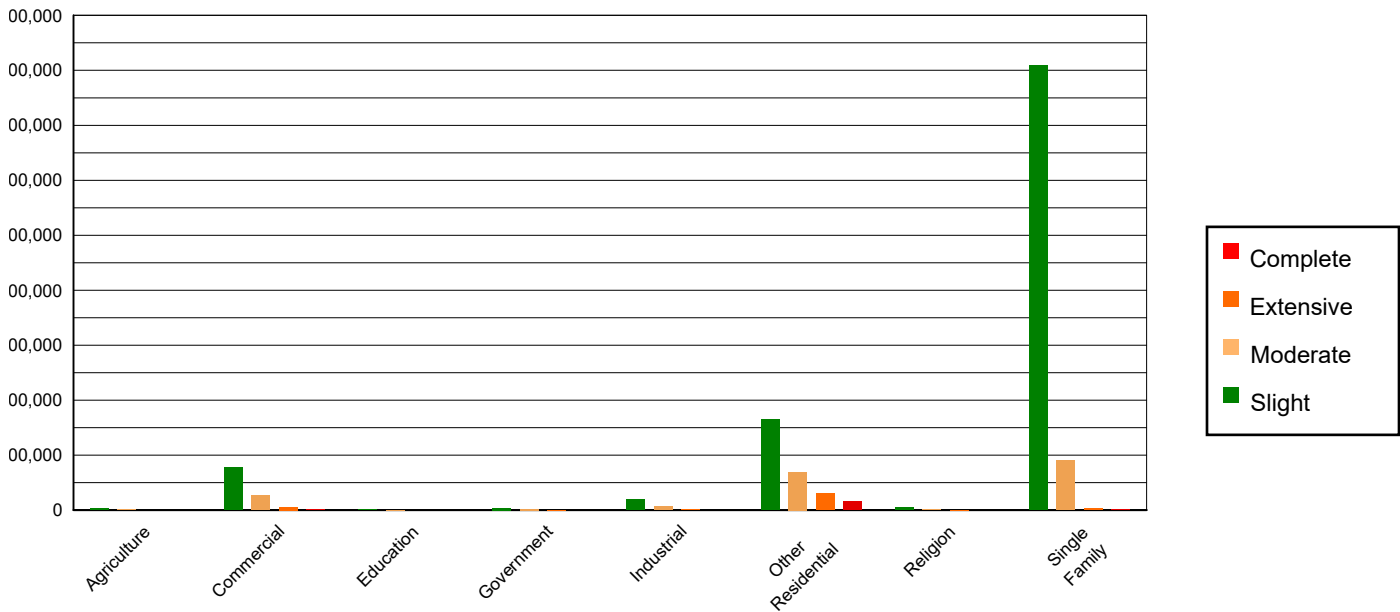


Table 3: Expected Building Damage by Occupancy

	None		Slight		Moderate		Extensive		Complete	
	Count	(%)	Count	(%)	Count	(%)	Count	(%)	Count	(%)
Agriculture	38875.46	0.41	3347.40	0.31	1078.04	0.54	232.37	0.54	57.73	0.30
Commercial	614422.25	6.47	77364.40	7.14	26743.10	13.46	5666.48	13.20	1494.77	7.70
Education	19846.69	0.21	1054.53	0.10	329.54	0.17	56.28	0.13	6.95	0.04
Government	49315.46	0.52	3884.70	0.36	2097.49	1.06	490.73	1.14	103.62	0.53
Industrial	164922.49	1.74	18864.11	1.74	6813.33	3.43	1380.75	3.22	241.32	1.24
Other Residential	1266016.20	13.34	165183.14	15.25	69632.37	35.06	30994.23	72.21	16409.05	84.50
Religion	32818.92	0.35	4057.90	0.37	1720.48	0.87	438.25	1.02	113.45	0.58
Single Family	7304862.62	76.97	809236.73	74.72	90215.15	45.42	3661.18	8.53	992.31	5.11
Total	9,491,080		1,082,993		198,630		42,920		19,419	

Table 4: Expected Building Damage by Building Type (All Design Levels)

	None		Slight		Moderate		Extensive		Complete	
	Count	(%)	Count	(%)	Count	(%)	Count	(%)	Count	(%)
Wood	8407650.73	88.58	942469.45	87.02	105817.80	53.27	3062.47	7.14	454.06	2.34
Steel	172352.95	1.82	25728.38	2.38	16108.47	8.11	4125.65	9.61	818.69	4.22
Concrete	194023.73	2.04	21456.02	1.98	9927.68	5.00	2392.34	5.57	289.48	1.49
Precast	97877.75	1.03	9933.99	0.92	3178.72	1.60	415.12	0.97	61.61	0.32
RM	418063.20	4.40	30354.95	2.80	11709.88	5.90	4170.77	9.72	823.51	4.24
URM	54765.56	0.58	9858.85	0.91	7231.56	3.64	1825.01	4.25	1483.37	7.64
MH	146346.17	1.54	43191.26	3.99	44655.41	22.48	26928.92	62.74	15488.50	79.76
Total	9,491,080		1,082,993		198,630		42,920		19,419	

*Note:

- RM Reinforced Masonry
- URM Unreinforced Masonry
- MH Manufactured Housing

Essential Facility Damage

Before the earthquake, the region had 98,143 hospital beds available for use. On the day of the earthquake, the model estimates that only 85,393 hospital beds (87.00%) are available for use by patients already in the hospital and those injured by the earthquake. After one week, 94.00% of the beds will be back in service. By 30 days, 99.00% will be operational.

Table 5: Expected Damage to Essential Facilities

Classification	Total	# Facilities		
		At Least Moderate Damage > 50%	Complete Damage > 50%	With Functionality > 50% on day 1
Hospitals	558	20	2	509
Schools	12,468	495	38	11,280
EOCs	196	15	1	173
PoliceStations	859	36	5	782
FireStations	2,475	58	5	2,273

Transportation Lifeline Damage

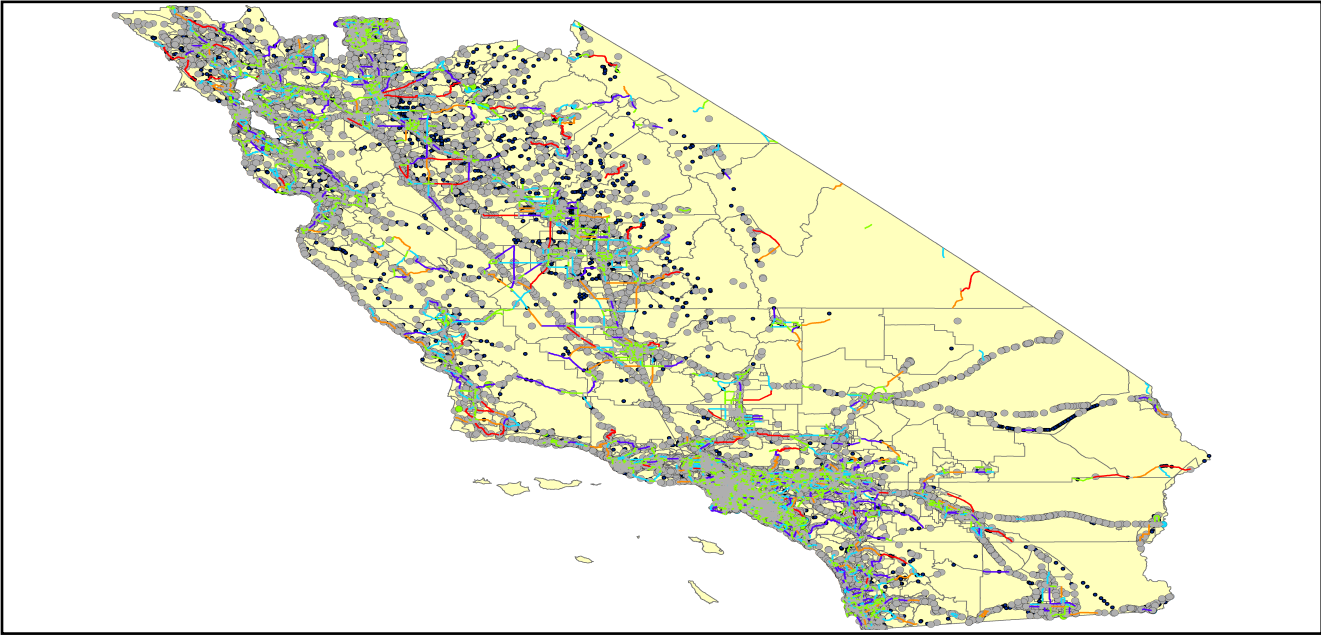


Table 6: Expected Damage to the Transportation Systems

System	Component	Locations/ Segments	Number of Locations_			
			With at Least Mod. Damage	With Complete Damage	With Functionality > 50 %	
					After Day 1	After Day 7
Highway	Segments	16,015	0	0	16,015	16,015
	Bridges	20,660	253	16	20,423	20,601
	Tunnels	105	0	0	105	105
Railways	Segments	4,667	0	0	4,667	4,667
	Bridges	3,323	10	0	3,313	3,323
	Tunnels	3	0	0	3	3
	Facilities	186	2	0	185	186
Light Rail	Segments	23	0	0	23	23
	Bridges	163	0	0	163	163
	Tunnels	0	0	0	0	0
	Facilities	404	0	0	404	404
Bus	Facilities	84	3	0	84	84
Ferry	Facilities	47	0	0	47	47
Port	Facilities	688	0	0	688	688
Airport	Facilities	244	4	0	244	244
	Runways	299	0	0	299	299

Table 6 provides damage estimates for the transportation system.

Note: Roadway segments, railroad tracks and light rail tracks are assumed to be damaged by ground failure only. If ground failure maps are not provided, damage estimates to these components will not be computed.

Tables 7-9 provide information on the damage to the utility lifeline systems. Table 7 provides damage to the utility system facilities. Table 8 provides estimates on the number of leaks and breaks by the pipelines of the utility systems. For electric power and potable water, Hazus performs a simplified system performance analysis. Table 9 provides a summary of the system performance information.

Table 7 : Expected Utility System Facility Damage

System	# of Locations				
	Total #	With at Least Moderate Damage	With Complete Damage	with Functionality > 50 %	
				After Day 1	After Day 7
Potable Water	71	5	0	62	71
Waste Water	272	13	0	237	272
Natural Gas	45	4	0	37	45
Oil Systems	84	0	0	84	84
Electrical Power	908	250	0	707	850
Communication	812	65	0	768	812

Table 8 : Expected Utility System Pipeline Damage (Site Specific)

System	Total Pipelines Length (miles)	Number of Leaks	Number of Breaks
Potable Water	260,961	46865	11716
Waste Water	156,577	23541	5885
Natural Gas	5,103	0	0
Oil	0	0	0

Table 9: Expected Potable Water and Electric Power System Performance

	Total # of Households	Number of Households without Service				
		At Day 1	At Day 3	At Day 7	At Day 30	At Day 90
Potable Water	12,674,206	1,331,334	1,277,426	1,187,832	734,774	16,359
Electric Power		490,045	327,660	144,378	15,461	636

Induced Earthquake Damage

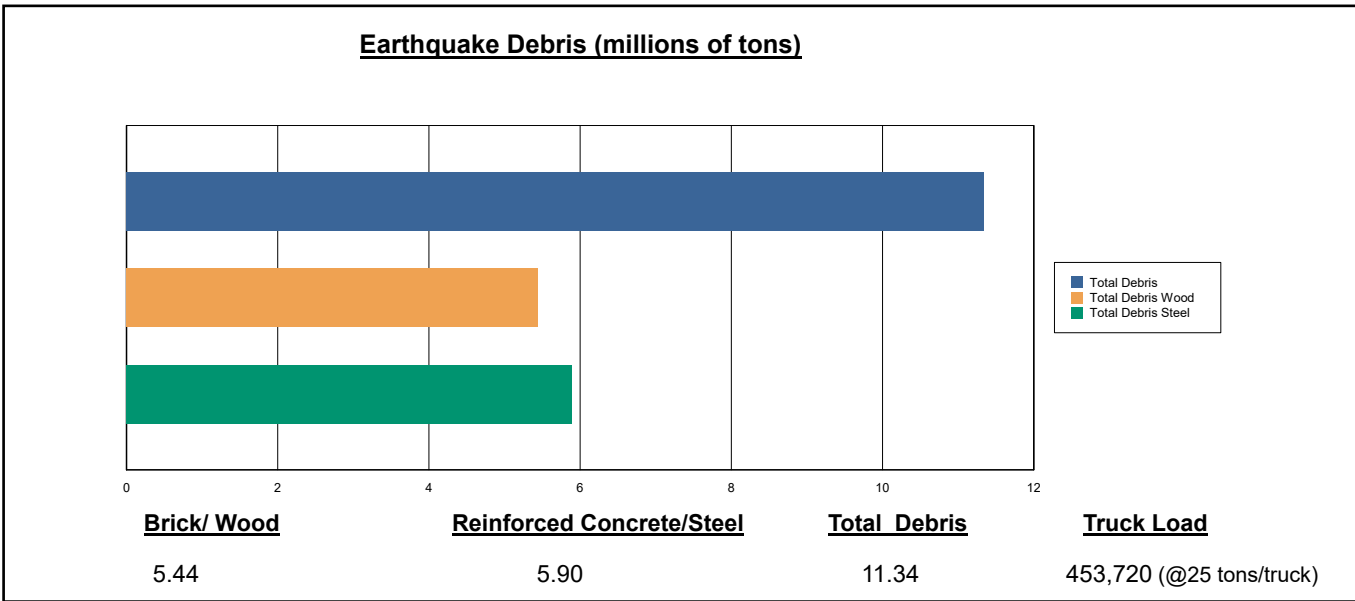
Fire Following Earthquake

Fires often occur after an earthquake. Because of the number of fires and the lack of water to fight the fires, they can often burn out of control. Hazus uses a Monte Carlo simulation model to estimate the number of ignitions and the amount of burnt area. For this scenario, the model estimates that there will be 105 ignitions that will burn about 0.93 sq. mi (0.00 % of the region's total area.) The model also estimates that the fires will displace about 9,402 people and burn about 1,056 (millions of dollars) of building value.

Debris Generation

Hazus estimates the amount of debris that will be generated by the earthquake. The model breaks the debris into two general categories: a) Brick/Wood and b) Reinforced Concrete/Steel. This distinction is made because of the different types of material handling equipment required to handle the debris.

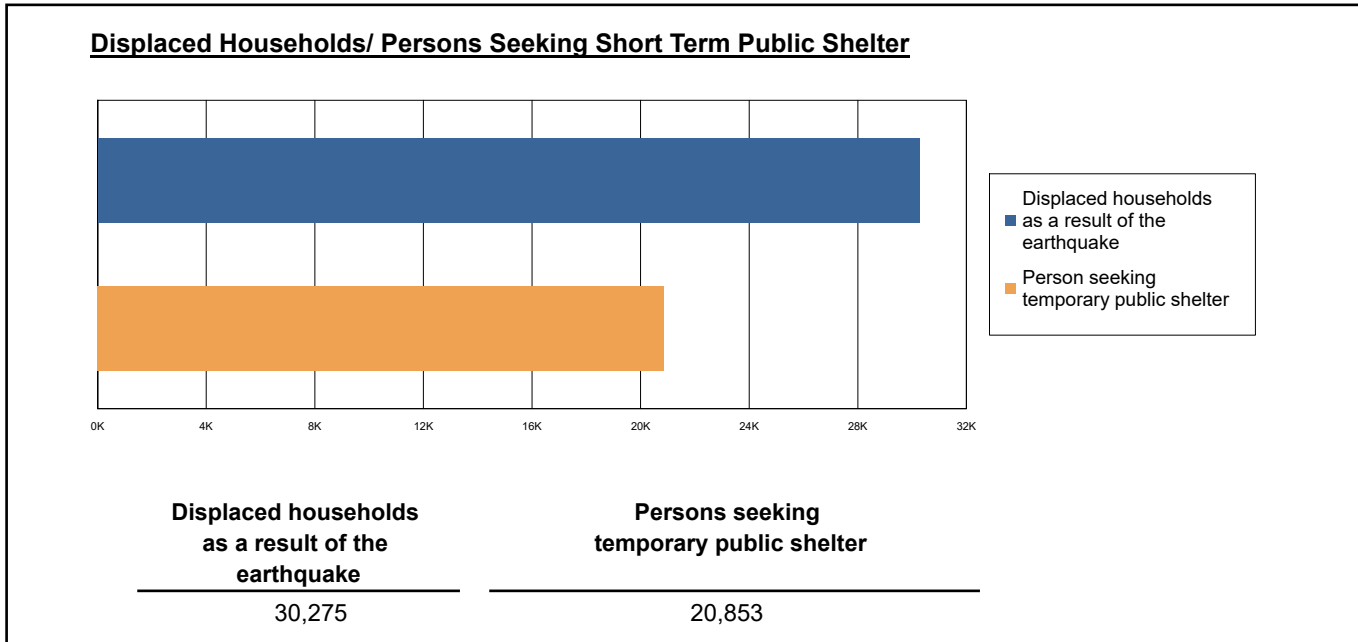
The model estimates that a total of 11,343,000 tons of debris will be generated. Of the total amount, Brick/Wood comprises 48.00% of the total, with the remainder being Reinforced Concrete/Steel. If the debris tonnage is converted to an estimated number of truckloads, it will require 453,720 truckloads (@25 tons/truck) to remove the debris generated by the earthquake.



Social Impact

Shelter Requirement

Hazus estimates the number of households that are expected to be displaced from their homes due to the earthquake and the number of displaced people that will require accommodations in temporary public shelters. The model estimates 30,275 households to be displaced due to the earthquake. Of these, 20,853 people (out of a total population of 37,441,783) will seek temporary shelter in public shelters.



Casualties

Hazus estimates the number of people that will be injured and killed by the earthquake. The casualties are broken down into four (4) severity levels that describe the extent of the injuries. The levels are described as follows;

- Severity Level 1: Injuries will require medical attention but hospitalization is not needed.
- Severity Level 2: Injuries will require hospitalization but are not considered life-threatening
- Severity Level 3: Injuries will require hospitalization and can become life threatening if not promptly treated.
- Severity Level 4: Victims are killed by the earthquake.

The casualty estimates are provided for three (3) times of day: 2:00 AM, 2:00 PM and 5:00 PM. These times represent the periods of the day that different sectors of the community are at their peak occupancy loads. The 2:00 AM estimate considers that the residential occupancy load is maximum, the 2:00 PM estimate considers that the educational, commercial and industrial sector loads are maximum and 5:00 PM represents peak commute time.

Table 10 provides a summary of the casualties estimated for this earthquake

Table 10: Casualty Estimates

		Level 1	Level 2	Level 3	Level 4
2 AM	Commercial	70.47	12.80	1.54	3.00
	Commuting	1.16	1.60	2.64	0.52
	Educational	0.00	0.00	0.00	0.00
	Hotels	3.10	0.39	0.03	0.06
	Industrial	61.88	10.36	1.12	2.18
	Other-Residential	5715.57	1056.41	73.61	129.07
	Single Family	2345.66	212.81	20.79	40.96
	Total	8,198	1,294	100	176
	2 PM	Commercial	4975.96	926.33	113.96
Commuting		10.47	14.43	23.80	4.64
Educational		1920.16	315.04	34.60	66.52
Hotels		0.60	0.08	0.01	0.01
Industrial		454.18	76.43	8.35	16.06
Other-Residential		1852.27	348.90	25.17	43.51
Single Family		691.21	68.80	7.24	13.63
Total		9,905	1,750	213	365
5 PM		Commercial	3585.16	681.53	85.78
	Commuting	185.73	256.02	422.14	82.25
	Educational	377.49	59.90	6.61	12.65
	Hotels	0.93	0.12	0.01	0.02
	Industrial	283.86	47.77	5.22	10.04
	Other-Residential	2093.70	388.10	28.20	48.86
	Single Family	873.44	84.97	8.84	16.64
	Total	7,400	1,518	557	334

Economic Loss

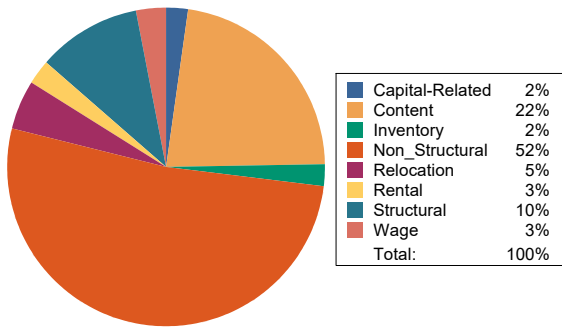
The total economic loss estimated for the earthquake is 118,367.50 (millions of dollars), which includes building and lifeline related losses based on the region's available inventory. The following three sections provide more detailed information about these losses.

Building-Related Losses

The building losses are broken into two categories: direct building losses and business interruption losses. The direct building losses are the estimated costs to repair or replace the damage caused to the building and its contents. The business interruption losses are the losses associated with inability to operate a business because of the damage sustained during the earthquake. Business interruption losses also include the temporary living expenses for those people displaced from their homes because of the earthquake.

The total building-related losses were 82,978.77 (millions of dollars); 13 % of the estimated losses were related to the business interruption of the region. By far, the largest loss was sustained by the residential occupancies which made up over 47 % of the total loss. Table 11 below provides a summary of the losses associated with the building damage.

Earthquake Losses by Loss Type (\$ millions)



Earthquake Losses by Occupancy Type (\$ millions)

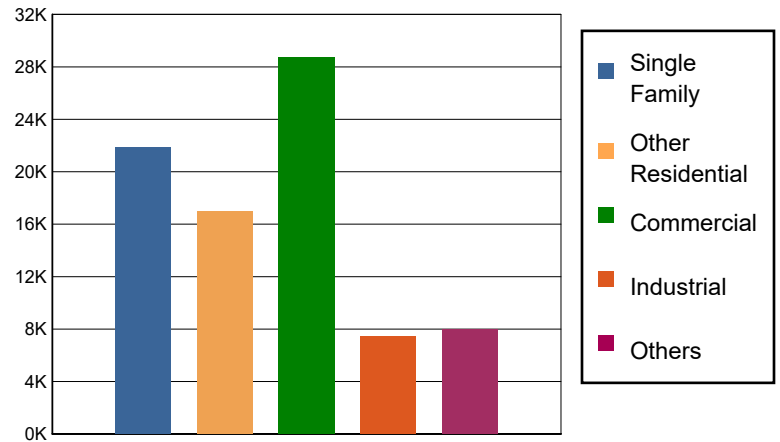


Table 11: Building-Related Economic Loss Estimates
(Millions of dollars)

Category	Area	Single Family	Other Residential	Commercial	Industrial	Others	Total
Income Losses							
	Wage	0.0000	323.2921	1846.9530	79.7592	229.3793	2,479.3836
	Capital-Related	0.0000	137.4801	1676.4254	50.5045	61.4739	1,925.8839
	Rental	218.8005	804.6854	1111.7776	40.7056	114.0724	2,290.0415
	Relocation	667.9086	795.8791	1517.7245	198.1189	788.5237	3,968.1548
	Subtotal	886.7091	2061.3367	6152.8805	369.0882	1193.4493	10663.4638
Capital Stock Losses							
	Structural	2167.3933	1984.6547	2981.7978	713.6400	853.0371	8,700.5229
	Non_Structural	13765.5789	10443.9141	11658.0907	3510.7343	3837.3713	43,215.6893
	Content	5019.9962	2504.9284	6689.3153	2464.3264	1929.6618	18,608.2281
	Inventory	0.0000	0.0000	1260.2538	376.5310	154.0790	1,790.8638
	Subtotal	20952.9684	14933.4972	22589.4576	7065.2317	6774.1492	72315.3041
	Total	21839.68	16994.83	28742.34	7434.32	7967.60	82978.77

Transportation and Utility Lifeline Losses

For the transportation and utility lifeline systems, Hazus computes the direct repair cost for each component only. There are no losses computed by Hazus for business interruption due to lifeline outages. Tables 12 & 13 provide a detailed breakdown in the expected lifeline losses.

Table 12: Transportation System Economic Losses
(Millions of dollars)

System	Component	Inventory Value	Economic Loss	Loss Ratio (%)
Highway	Segments	198295.0388	0.0000	0.00
	Bridges	116602.6613	1005.0901	0.86
	Tunnels	1516.8013	1.8345	0.12
	Subtotal	316414.5014	1006.9246	
Railways	Segments	124477.6213	0.0000	0.00
	Bridges	18907.8700	192.4462	1.02
	Tunnels	1.8495	0.0000	0.00
	Facilities	495.3180	38.9883	7.87
	Subtotal	143882.6588	231.4345	
Light Rail	Segments	10802.3803	0.0000	0.00
	Bridges	28.6279	0.0076	0.03
	Tunnels	0.0000	0.0000	0.00
	Facilities	7354.8000	265.1818	3.61
	Subtotal	18185.8082	265.1894	
Bus	Facilities	186.1372	13.7641	7.39
	Subtotal	186.1372	13.7641	
Ferry	Facilities	62.5570	1.7450	2.79
	Subtotal	62.5570	1.7450	
Port	Facilities	2622.5492	79.1041	3.02
	Subtotal	2622.5492	79.1041	
Airport	Facilities	7471.5911	470.2360	6.29
	Runways	3160.9370	0.0000	0.00
	Subtotal	10632.5281	470.2360	
Total		491,986.74	2,068.40	

Table 13: Utility System Economic Losses

(Millions of dollars)

System	Component	Inventory Value	Economic Loss	Loss Ratio (%)
Potable Water	Pipelines	0.0000	0.0000	0.00
	Facilities	2789.8740	157.2524	5.64
	Distribution Lines	8399.5334	210.8905	2.51
	Subtotal	11189.4074	368.1429	
Waste Water	Pipelines	0.0000	0.0000	0.00
	Facilities	46770.8896	1294.7618	2.77
	Distribution Lines	5039.7200	105.9357	2.10
	Subtotal	51810.6096	1400.6975	
Natural Gas	Pipelines	28922.4136	0.0000	0.00
	Facilities	1617.5273	115.8093	7.16
	Distribution Lines	3359.8133	36.2928	1.08
	Subtotal	33899.7542	152.1021	
Oil Systems	Pipelines	0.0000	0.0000	0.00
	Facilities	9.9120	0.2943	2.97
	Subtotal	9.9120	0.2943	
Electrical Power	Facilities	222293.0681	31391.3609	14.12
	Subtotal	222293.0681	31391.3609	
Communication	Facilities	95.8160	7.7357	8.07
	Subtotal	95.8160	7.7357	
	Total	319,298.57	33,320.33	

Appendix A: County Listing for the Region

- Alameda,CA
- Calaveras,CA
- Contra Costa,CA
- Fresno,CA
- Imperial,CA
- Inyo,CA
- Kern,CA
- Kings,CA
- Los Angeles,CA
- Madera,CA
- Marin,CA
- Mariposa,CA
- Merced,CA
- Mono,CA
- Monterey,CA
- Napa,CA
- Orange,CA
- Riverside,CA
- Sacramento,CA
- San Benito,CA
- San Bernardino,CA
- San Diego,CA
- San Francisco,CA
- San Joaquin,CA
- San Luis Obispo,CA
- San Mateo,CA
- Santa Barbara,CA
- Santa Clara,CA
- Santa Cruz,CA

Solano,CA

Sonoma,CA

Stanislaus,CA

Tulare,CA

Tuolumne,CA

Ventura,CA

Appendix B: Regional Population and Building Value Data

State	County Name	Population	Building Value (millions of dollars)		
			Residential	Non-Residential	Total
California	Alameda	1,682,353	209,951	122,639	332,590
	Calaveras	45,292	8,305	4,893	13,199
	Contra Costa	1,165,927	158,118	60,339	218,458
	Fresno	1,008,654	98,532	61,772	160,304
	Imperial	179,702	20,945	12,603	33,548
	Inyo	19,016	2,951	1,970	4,921
	Kern	909,235	87,567	59,168	146,736
	Kings	152,486	13,719	7,861	21,581
	Los Angeles	10,014,009	950,697	566,995	1,517,692
	Madera	156,255	18,025	9,641	27,667
	Marin	262,321	47,738	15,030	62,769
	Mariposa	17,131	3,299	1,141	4,441
	Merced	281,202	25,194	26,098	51,292
	Mono	13,195	3,293	1,083	4,377
	Monterey	439,035	47,655	28,750	76,405
	Napa	138,019	20,517	13,045	33,563
	Orange	3,186,989	363,381	176,806	540,188
	Riverside	2,418,185	281,482	137,249	418,731
	Sacramento	1,585,055	179,811	83,911	263,723
	San Benito	64,209	9,440	3,799	13,239
	San Bernardino	2,181,654	225,045	152,557	377,602
	San Diego	3,298,634	375,834	193,238	569,072
	San Francisco	873,965	108,848	46,020	154,869
	San Joaquin	779,233	82,706	56,882	139,589
	San Luis Obispo	282,424	41,720	20,896	62,616
	San Mateo	764,442	110,372	44,995	155,368
	Santa Barbara	448,229	49,971	28,481	78,452
	Santa Clara	1,936,259	261,111	120,471	381,582
	Santa Cruz	270,861	36,147	18,805	54,952
	Solano	453,491	55,802	26,393	82,195
	Sonoma	488,863	68,827	35,781	104,609
	Stanislaus	552,878	62,937	37,511	100,449
	Tulare	473,117	43,262	31,210	74,472
Tuolumne	55,620	8,964	3,507	12,471	
Ventura	843,843	99,299	52,072	151,371	
Total Region		37,441,783	4,181,465	2,263,612	6,445,093

Building Damage by Count by General Occupancy

May 03, 2024

	# of Buildings					Total
	None	Slight	Moderate	Extensive	Complete	
California						
Alameda						
<i>Government</i>	10,528	0	0	0	0	10,528
<i>Agriculture</i>	422	0	0	0	0	422
<i>Commercial</i>	31,987	2	0	0	0	31,989
<i>Religion</i>	1,986	0	0	0	0	1,986
<i>Single Family</i>	344,173	0	0	0	0	344,173
<i>Other Residential</i>	61,394	2	0	0	0	61,396
<i>Education</i>	1,117	0	0	0	0	1,117
<i>Industrial</i>	10,204	1	0	0	0	10,205
Calaveras						
<i>Government</i>	84	0	0	0	0	84
<i>Other Residential</i>	2,559	0	0	0	0	2,559
<i>Education</i>	35	0	0	0	0	35
<i>Religion</i>	130	0	0	0	0	130
<i>Agriculture</i>	2,207	0	0	0	0	2,207
<i>Commercial</i>	1,413	0	0	0	0	1,413
<i>Industrial</i>	466	0	0	0	0	466
<i>Single Family</i>	22,148	0	0	0	0	22,148
Contra Costa						

	# of Buildings					Total
	None	Slight	Moderate	Extensive	Complete	
<i>Commercial</i>	17,991	0	0	0	0	17,991
<i>Agriculture</i>	749	0	0	0	0	749
<i>Religion</i>	1,226	0	0	0	0	1,226
<i>Single Family</i>	281,935	0	0	0	0	281,935
<i>Other Residential</i>	29,124	0	0	0	0	29,124
<i>Industrial</i>	4,749	0	0	0	0	4,749
<i>Government</i>	5,024	0	0	0	0	5,024
<i>Education</i>	653	0	0	0	0	653
Fresno						
<i>Commercial</i>	20,388	558	100	8	0	21,054
<i>Religion</i>	1,446	50	10	1	0	1,507
<i>Agriculture</i>	3,147	224	44	5	0	3,421
<i>Industrial</i>	5,114	192	39	3	0	5,348
<i>Government</i>	280	10	1	0	0	291
<i>Other Residential</i>	39,512	1,219	228	14	0	40,973
<i>Single Family</i>	224,077	2,335	13	0	0	226,425
<i>Education</i>	598	4	0	0	0	602
Imperial						
<i>Religion</i>	235	49	10	1	0	295
<i>Commercial</i>	2,939	585	115	6	0	3,646
<i>Agriculture</i>	99	29	10	1	0	138
<i>Industrial</i>	440	109	28	2	0	580
<i>Single Family</i>	29,857	5,426	122	0	0	35,405
<i>Other Residential</i>	3,743	1,616	1,557	574	28	7,518
<i>Government</i>	171	25	5	0	0	202

		# of Buildings					
		None	Slight	Moderate	Extensive	Complete	Total
Inyo	<i>Education</i>	92	6	0	0	0	99
	<i>Commercial</i>	721	0	0	0	0	721
	<i>Religion</i>	57	0	0	0	0	57
	<i>Agriculture</i>	32	0	0	0	0	32
	<i>Other Residential</i>	4,049	1	0	0	0	4,050
	<i>Education</i>	41	0	0	0	0	41
	<i>Government</i>	101	0	0	0	0	101
	<i>Industrial</i>	257	0	0	0	0	257
	<i>Single Family</i>	4,446	0	0	0	0	4,446
Kern	<i>Single Family</i>	174,575	28,769	1,766	29	1	205,139
	<i>Other Residential</i>	39,711	7,823	4,667	1,999	321	54,520
	<i>Industrial</i>	4,471	1,071	408	83	14	6,047
	<i>Education</i>	419	33	9	1	0	462
	<i>Government</i>	340	71	26	6	0	443
	<i>Religion</i>	1,123	229	117	40	15	1,524
	<i>Agriculture</i>	3,246	948	357	76	18	4,645
	<i>Commercial</i>	12,136	2,337	816	218	60	15,567
	Kings	<i>Commercial</i>	1,965	252	86	15	1
<i>Religion</i>		176	24	8	2	0	210
<i>Agriculture</i>		252	44	9	1	0	306
<i>Government</i>		64	6	1	0	0	72
<i>Industrial</i>		459	71	21	3	0	555

	# of Buildings					Total
	None	Slight	Moderate	Extensive	Complete	
<i>Single Family</i>	33,596	2,599	48	1	0	36,245
<i>Other Residential</i>	3,532	570	204	34	2	4,342
<i>Education</i>	98	4	0	0	0	103
Los Angeles						
<i>Industrial</i>	39,742	8,790	3,751	772	71	53,126
<i>Single Family</i>	1,505,969	274,232	22,245	641	54	1,803,140
<i>Other Residential</i>	395,589	65,146	15,246	4,612	1,078	481,671
<i>Education</i>	4,824	456	172	31	3	5,486
<i>Commercial</i>	140,379	34,860	13,321	2,117	184	190,861
<i>Agriculture</i>	1,352	416	200	55	9	2,032
<i>Religion</i>	7,439	2,098	930	166	17	10,651
<i>Government</i>	2,140	590	252	46	3	3,031
Madera						
<i>Commercial</i>	2,886	17	1	0	0	2,905
<i>Religion</i>	118	1	0	0	0	119
<i>Government</i>	111	0	0	0	0	111
<i>Agriculture</i>	618	13	4	0	0	634
<i>Other Residential</i>	6,582	50	4	0	0	6,635
<i>Single Family</i>	38,820	92	0	0	0	38,912
<i>Education</i>	115	0	0	0	0	115
<i>Industrial</i>	895	7	1	0	0	903
Marin						
<i>Other Residential</i>	7,890	0	0	0	0	7,890
<i>Government</i>	143	0	0	0	0	143
<i>Education</i>	274	0	0	0	0	274

	# of Buildings					Total
	None	Slight	Moderate	Extensive	Complete	
<i>Commercial</i>	8,270	0	0	0	0	8,270
<i>Religion</i>	319	0	0	0	0	319
<i>Agriculture</i>	190	0	0	0	0	190
<i>Single Family</i>	76,724	0	0	0	0	76,724
<i>Industrial</i>	1,535	0	0	0	0	1,535
Mariposa						
<i>Single Family</i>	8,084	0	0	0	0	8,084
<i>Other Residential</i>	307	0	0	0	0	307
<i>Education</i>	27	0	0	0	0	27
<i>Industrial</i>	94	0	0	0	0	94
<i>Commercial</i>	689	0	0	0	0	689
<i>Agriculture</i>	29	0	0	0	0	29
<i>Religion</i>	36	0	0	0	0	36
<i>Government</i>	33	0	0	0	0	33
Merced						
<i>Education</i>	163	0	0	0	0	163
<i>Government</i>	171	0	0	0	0	171
<i>Commercial</i>	4,738	15	1	0	0	4,754
<i>Agriculture</i>	7,574	69	10	0	0	7,653
<i>Religion</i>	344	1	0	0	0	345
<i>Industrial</i>	1,018	3	0	0	0	1,022
<i>Single Family</i>	63,526	72	0	0	0	63,598
<i>Other Residential</i>	10,729	55	4	0	0	10,787
Mono						
<i>Government</i>	18	0	0	0	0	18

	# of Buildings					Total
	None	Slight	Moderate	Extensive	Complete	
<i>Education</i>	21	0	0	0	0	21
<i>Religion</i>	32	0	0	0	0	32
<i>Agriculture</i>	145	0	0	0	0	145
<i>Commercial</i>	654	0	0	0	0	654
<i>Single Family</i>	7,704	0	0	0	0	7,704
<i>Industrial</i>	108	0	0	0	0	108
<i>Other Residential</i>	1,759	0	0	0	0	1,759
Monterey						
<i>Single Family</i>	90,631	244	1	0	0	90,876
<i>Industrial</i>	1,824	22	4	0	0	1,850
<i>Other Residential</i>	19,376	326	104	3	0	19,809
<i>Education</i>	239	0	0	0	0	239
<i>Government</i>	184	1	0	0	0	185
<i>Agriculture</i>	1,628	133	46	7	0	1,815
<i>Commercial</i>	9,160	69	15	2	0	9,246
<i>Religion</i>	572	7	2	0	0	580
Napa						
<i>Commercial</i>	4,021	0	0	0	0	4,021
<i>Agriculture</i>	349	0	0	0	0	349
<i>Religion</i>	148	0	0	0	0	148
<i>Single Family</i>	38,761	0	0	0	0	38,761
<i>Other Residential</i>	6,978	0	0	0	0	6,978
<i>Government</i>	103	0	0	0	0	103
<i>Education</i>	132	0	0	0	0	132

	# of Buildings					Total
	None	Slight	Moderate	Extensive	Complete	
Orange						
<i>Industrial</i>	1,367	0	0	0	0	1,367
<i>Industrial</i>	15,534	2,562	621	72	5	18,795
<i>Other Residential</i>	67,516	13,335	4,605	255	7	85,718
<i>Single Family</i>	649,010	56,345	848	8	0	706,212
<i>Education</i>	1,795	77	14	3	0	1,890
<i>Commercial</i>	57,863	8,118	2,001	338	19	68,340
<i>Religion</i>	1,701	265	76	15	1	2,057
<i>Agriculture</i>	942	142	40	10	1	1,135
<i>Government</i>	530	93	25	3	0	650
Riverside						
<i>Religion</i>	774	365	136	35	10	1,319
<i>Agriculture</i>	1,193	385	110	19	6	1,713
<i>Commercial</i>	27,551	13,175	4,290	1,030	312	46,357
<i>Single Family</i>	390,637	188,349	25,065	1,144	261	605,455
<i>Industrial</i>	4,305	1,567	437	80	20	6,409
<i>Other Residential</i>	46,117	31,945	21,458	12,825	10,455	122,799
<i>Government</i>	2,732	2,391	1,611	366	76	7,175
<i>Education</i>	770	172	41	6	1	990
Sacramento						
<i>Single Family</i>	386,840	0	0	0	0	386,840
<i>Industrial</i>	6,756	0	0	0	0	6,756
<i>Other Residential</i>	56,413	0	0	0	0	56,413
<i>Education</i>	829	0	0	0	0	829
<i>Agriculture</i>	621	0	0	0	0	621

	# of Buildings					Total
	None	Slight	Moderate	Extensive	Complete	
<i>Religion</i>	1,702	0	0	0	0	1,702
<i>Government</i>	619	0	0	0	0	619
<i>Commercial</i>	26,295	0	0	0	0	26,295
San Benito						
<i>Other Residential</i>	1,370	5	0	0	0	1,375
<i>Single Family</i>	14,715	11	0	0	0	14,726
<i>Industrial</i>	325	1	0	0	0	326
<i>Education</i>	42	0	0	0	0	42
<i>Government</i>	45	0	0	0	0	45
<i>Commercial</i>	1,076	4	0	0	0	1,080
<i>Religion</i>	64	0	0	0	0	64
<i>Agriculture</i>	252	1	0	0	0	253
San Bernardino						
<i>Agriculture</i>	1,028	547	170	48	23	1,815
<i>Commercial</i>	18,926	13,270	5,122	1,814	909	40,041
<i>Religion</i>	986	707	383	174	71	2,320
<i>Single Family</i>	267,547	215,830	39,477	1,837	677	525,367
<i>Industrial</i>	4,958	2,921	1,148	320	127	9,474
<i>Other Residential</i>	38,091	29,488	17,002	9,848	4,391	98,821
<i>Government</i>	635	366	145	68	24	1,238
<i>Education</i>	626	255	86	14	3	985
San Diego						
<i>Single Family</i>	761,019	1,970	31	1	0	763,020
<i>Industrial</i>	14,248	62	3	0	0	14,313
<i>Other Residential</i>	125,861	1,542	153	2	0	127,559

	# of Buildings					Total
	None	Slight	Moderate	Extensive	Complete	
<i>Education</i>	1,929	3	0	0	0	1,932
<i>Religion</i>	3,045	17	1	0	0	3,063
<i>Government</i>	20,730	185	9	0	0	20,924
<i>Agriculture</i>	2,173	14	2	0	0	2,190
<i>Commercial</i>	62,044	309	16	0	0	62,369
San Francisco						
<i>Single Family</i>	150,703	0	0	0	0	150,703
<i>Other Residential</i>	44,529	0	0	0	0	44,529
<i>Government</i>	289	0	0	0	0	289
<i>Education</i>	572	0	0	0	0	572
<i>Industrial</i>	3,860	0	0	0	0	3,860
<i>Commercial</i>	21,344	0	0	0	0	21,344
<i>Religion</i>	1,345	0	0	0	0	1,345
<i>Agriculture</i>	162	0	0	0	0	162
San Joaquin						
<i>Commercial</i>	12,858	6	0	0	0	12,864
<i>Agriculture</i>	753	0	0	0	0	753
<i>Religion</i>	876	1	0	0	0	877
<i>Government</i>	303	1	0	0	0	304
<i>Single Family</i>	188,804	113	6	0	0	188,922
<i>Other Residential</i>	21,791	13	1	0	0	21,805
<i>Education</i>	395	0	0	0	0	395
<i>Industrial</i>	4,926	2	0	0	0	4,928
San Luis Obispo						
<i>Religion</i>	302	43	13	2	0	360

	# of Buildings					Total
	None	Slight	Moderate	Extensive	Complete	
<i>Agriculture</i>	320	72	24	4	0	421
<i>Government</i>	161	20	4	0	0	185
<i>Commercial</i>	7,950	1,079	297	44	5	9,375
<i>Single Family</i>	76,695	8,635	308	1	0	85,639
<i>Industrial</i>	2,091	353	95	15	3	2,556
<i>Other Residential</i>	14,636	3,151	1,653	654	122	20,216
<i>Education</i>	171	10	1	0	0	182
San Mateo						
<i>Religion</i>	736	0	0	0	0	736
<i>Agriculture</i>	539	0	0	0	0	539
<i>Government</i>	299	0	0	0	0	299
<i>Commercial</i>	14,391	4	0	0	0	14,395
<i>Industrial</i>	4,471	1	0	0	0	4,472
<i>Other Residential</i>	22,448	5	0	0	0	22,453
<i>Single Family</i>	159,931	0	0	0	0	159,931
<i>Education</i>	489	0	0	0	0	489
Santa Barbara						
<i>Government</i>	220	16	3	0	0	239
<i>Other Residential</i>	19,279	3,666	1,121	44	1	24,111
<i>Education</i>	289	8	1	0	0	299
<i>Religion</i>	559	51	10	1	0	621
<i>Commercial</i>	8,843	805	157	14	1	9,820
<i>Agriculture</i>	402	49	12	1	0	464
<i>Single Family</i>	92,961	5,942	79	0	0	98,982
<i>Industrial</i>	2,482	283	67	7	0	2,840

	# of Buildings					Total
	None	Slight	Moderate	Extensive	Complete	
Santa Clara						
<i>Other Residential</i>	59,131	28	1	0	0	59,160
<i>Single Family</i>	427,216	3	0	0	0	427,219
<i>Government</i>	499	3	0	0	0	502
<i>Education</i>	1,173	0	0	0	0	1,173
<i>Industrial</i>	9,429	4	0	0	0	9,433
<i>Commercial</i>	35,440	27	2	0	0	35,469
<i>Religion</i>	1,539	1	0	0	0	1,540
<i>Agriculture</i>	895	0	0	0	0	895
Santa Cruz						
<i>Religion</i>	358	1	0	0	0	359
<i>Agriculture</i>	839	1	0	0	0	840
<i>Single Family</i>	68,868	2	0	0	0	68,870
<i>Other Residential</i>	14,878	14	1	0	0	14,892
<i>Industrial</i>	1,817	2	0	0	0	1,819
<i>Education</i>	225	0	0	0	0	225
<i>Commercial</i>	6,687	6	0	0	0	6,694
<i>Government</i>	127	0	0	0	0	127
Solano						
<i>Religion</i>	454	0	0	0	0	454
<i>Agriculture</i>	245	0	0	0	0	245
<i>Government</i>	152	0	0	0	0	152
<i>Commercial</i>	7,268	0	0	0	0	7,268
<i>Single Family</i>	120,968	0	0	0	0	120,968
<i>Industrial</i>	2,101	0	0	0	0	2,101

	# of Buildings					Total
	None	Slight	Moderate	Extensive	Complete	
<i>Other Residential</i>	12,317	0	0	0	0	12,317
<i>Education</i>	225	0	0	0	0	225
Sonoma						
<i>Other Residential</i>	25,033	0	0	0	0	25,033
<i>Government</i>	319	0	0	0	0	319
<i>Education</i>	367	0	0	0	0	367
<i>Religion</i>	576	0	0	0	0	576
<i>Commercial</i>	12,110	0	0	0	0	12,110
<i>Agriculture</i>	1,304	0	0	0	0	1,304
<i>Single Family</i>	142,028	0	0	0	0	142,028
<i>Industrial</i>	3,825	0	0	0	0	3,825
Stanislaus						
<i>Other Residential</i>	19,555	13	0	0	0	19,569
<i>Single Family</i>	142,717	7	0	0	0	142,724
<i>Education</i>	307	0	0	0	0	307
<i>Government</i>	680	0	0	0	0	680
<i>Industrial</i>	3,471	3	0	0	0	3,475
<i>Commercial</i>	10,358	11	1	0	0	10,369
<i>Religion</i>	455	1	0	0	0	456
<i>Agriculture</i>	1,238	1	0	0	0	1,239
Tulare						
<i>Commercial</i>	8,579	254	38	2	0	8,873
<i>Agriculture</i>	3,344	184	26	1	0	3,555
<i>Religion</i>	804	21	2	0	0	827
<i>Government</i>	444	16	2	0	0	461

	# of Buildings					Total
	None	Slight	Moderate	Extensive	Complete	
<i>Single Family</i>	110,415	1,614	5	0	0	112,034
<i>Other Residential</i>	18,897	955	166	4	0	20,022
<i>Industrial</i>	2,061	74	12	1	0	2,148
<i>Education</i>	267	2	0	0	0	269
Tuolumne						
<i>Education</i>	57	0	0	0	0	57
<i>Government</i>	143	0	0	0	0	143
<i>Commercial</i>	1,576	0	0	0	0	1,576
<i>Religion</i>	121	0	0	0	0	121
<i>Agriculture</i>	82	0	0	0	0	82
<i>Industrial</i>	383	0	0	0	0	383
<i>Other Residential</i>	4,962	0	0	0	0	4,962
<i>Single Family</i>	21,645	0	0	0	0	21,645
Ventura						
<i>Agriculture</i>	505	74	16	3	0	598
<i>Religion</i>	1,036	126	23	2	0	1,187
<i>Industrial</i>	5,135	761	176	23	1	6,097
<i>Single Family</i>	187,116	16,648	203	0	0	203,968
<i>Other Residential</i>	20,360	4,215	1,460	125	4	26,163
<i>Education</i>	471	23	3	0	0	497
<i>Government</i>	896	90	13	1	0	1,001
<i>Commercial</i>	12,928	1,600	363	59	3	14,953
Total	9,491,080	1,082,993	198,630	42,920	19,419	10,835,042

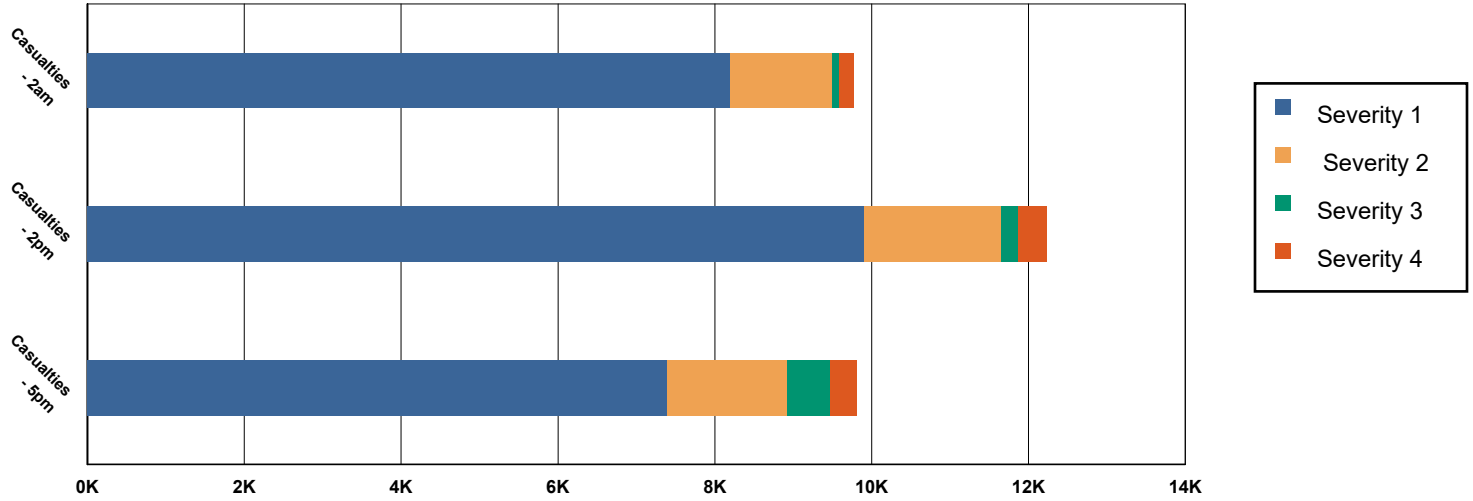
	# of Buildings					Total
	None	Slight	Moderate	Extensive	Complete	
Region Total	9,491,080	1,082,993	198,630	42,920	19,419	10,835,042

Totals only reflect data for those census tracts/blocks included in the user's study region and will reflect the entire county/state only if all of the census blocks for that county/states were selected at the time of study region creation.

Casualties Summary Report

May 03, 2024

Region Total Casualties



Injury Severity Level

Severity 1	Severity 2	Severity 3	Severity 4	Total
------------	------------	------------	------------	-------

California

Alameda

Casualties - 2am

	Severity 1	Severity 2	Severity 3	Severity 4	Total
Single Family	0	0	0	0	0
Hotels	0	0	0	0	0
Commuting	0	0	0	0	0
Educational	0	0	0	0	0
Industrial	0	0	0	0	0
Commercial	0	0	0	0	0
Other-Residential	0	0	0	0	0

Total Casualties - 2am

0	0	0	0	0
---	---	---	---	---

Casualties - 2pm

	Severity 1	Severity 2	Severity 3	Severity 4	Total
Industrial	0	0	0	0	0
Educational	0	0	0	0	0
Other-Residential	0	0	0	0	0
Single Family	0	0	0	0	0
Hotels	0	0	0	0	0
Commuting	0	0	0	0	0
Commercial	0	0	0	0	0

	Injury Severity Level				Total
	Severity 1	Severity 2	Severity 3	Severity 4	
California					
Alameda					
Total Casualties - 2pm	0	0	0	0	0
Casualties - 5pm					
<i>Commuting</i>	0	0	0	0	0
<i>Single Family</i>	0	0	0	0	0
<i>Commercial</i>	0	0	0	0	0
<i>Hotels</i>	0	0	0	0	0
<i>Educational</i>	0	0	0	0	0
<i>Industrial</i>	0	0	0	0	0
<i>Other-Residential</i>	0	0	0	0	0
Total Casualties - 5pm	0	0	0	0	0
Calaveras					
Casualties - 2am					
<i>Other-Residential</i>	0	0	0	0	0
<i>Commuting</i>	0	0	0	0	0
<i>Commercial</i>	0	0	0	0	0
<i>Single Family</i>	0	0	0	0	0
<i>Hotels</i>	0	0	0	0	0
<i>Educational</i>	0	0	0	0	0
<i>Industrial</i>	0	0	0	0	0
Total Casualties - 2am	0	0	0	0	0
Casualties - 2pm					
<i>Hotels</i>	0	0	0	0	0
<i>Single Family</i>	0	0	0	0	0
<i>Educational</i>	0	0	0	0	0
<i>Commuting</i>	0	0	0	0	0
<i>Commercial</i>	0	0	0	0	0
<i>Industrial</i>	0	0	0	0	0
<i>Other-Residential</i>	0	0	0	0	0
Total Casualties - 2pm	0	0	0	0	0
Casualties - 5pm					
<i>Industrial</i>	0	0	0	0	0
<i>Commercial</i>	0	0	0	0	0
<i>Other-Residential</i>	0	0	0	0	0
<i>Educational</i>	0	0	0	0	0
<i>Hotels</i>	0	0	0	0	0
<i>Commuting</i>	0	0	0	0	0
<i>Single Family</i>	0	0	0	0	0
Total Casualties - 5pm	0	0	0	0	0
Contra Costa					
Casualties - 2am					
<i>Educational</i>	0	0	0	0	0

	Injury Severity Level				Total
	Severity 1	Severity 2	Severity 3	Severity 4	
California					
Contra Costa					
Casualties - 2am					
<i>Hotels</i>	0	0	0	0	0
<i>Industrial</i>	0	0	0	0	0
<i>Other-Residential</i>	0	0	0	0	0
<i>Single Family</i>	0	0	0	0	0
<i>Commercial</i>	0	0	0	0	0
<i>Commuting</i>	0	0	0	0	0
Total Casualties - 2am	0	0	0	0	0
Casualties - 2pm					
<i>Other-Residential</i>	0	0	0	0	0
<i>Industrial</i>	0	0	0	0	0
<i>Hotels</i>	0	0	0	0	0
<i>Single Family</i>	0	0	0	0	0
<i>Educational</i>	0	0	0	0	0
<i>Commuting</i>	0	0	0	0	0
<i>Commercial</i>	0	0	0	0	0
Total Casualties - 2pm	0	0	0	0	0
Casualties - 5pm					
<i>Educational</i>	0	0	0	0	0
<i>Commuting</i>	0	0	0	0	0
<i>Single Family</i>	0	0	0	0	0
<i>Hotels</i>	0	0	0	0	0
<i>Industrial</i>	0	0	0	0	0
<i>Other-Residential</i>	0	0	0	0	0
<i>Commercial</i>	0	0	0	0	0
Total Casualties - 5pm	0	0	0	0	0
Fresno					
Casualties - 2am					
<i>Hotels</i>	0	0	0	0	0
<i>Educational</i>	0	0	0	0	0
<i>Industrial</i>	0	0	0	0	0
<i>Commercial</i>	0	0	0	0	0
<i>Other-Residential</i>	7	0	0	0	7
<i>Single Family</i>	4	0	0	0	4
<i>Commuting</i>	0	0	0	0	0
Total Casualties - 2am	11	0	0	0	11
Casualties - 2pm					
<i>Commercial</i>	13	1	0	0	14
<i>Other-Residential</i>	2	0	0	0	2
<i>Industrial</i>	1	0	0	0	1
<i>Single Family</i>	1	0	0	0	1
<i>Hotels</i>	0	0	0	0	0

	Injury Severity Level				Total
	Severity 1	Severity 2	Severity 3	Severity 4	
California					
Fresno					
Casualties - 2pm					
<i>Commuting</i>	0	0	0	0	0
<i>Educational</i>	3	0	0	0	3
Total Casualties - 2pm	21	1	0	0	22
Casualties - 5pm					
<i>Educational</i>	0	0	0	0	0
<i>Commuting</i>	0	0	0	0	0
<i>Hotels</i>	0	0	0	0	0
<i>Industrial</i>	1	0	0	0	1
<i>Single Family</i>	1	0	0	0	1
<i>Other-Residential</i>	2	0	0	0	3
<i>Commercial</i>	10	1	0	0	10
Total Casualties - 5pm	15	1	0	0	16
Imperial					
Casualties - 2am					
<i>Commercial</i>	0	0	0	0	0
<i>Other-Residential</i>	23	3	0	0	26
<i>Educational</i>	0	0	0	0	0
<i>Single Family</i>	11	0	0	0	11
<i>Commuting</i>	0	0	0	0	0
<i>Hotels</i>	0	0	0	0	0
<i>Industrial</i>	0	0	0	0	0
Total Casualties - 2am	34	3	0	0	37
Casualties - 2pm					
<i>Educational</i>	3	0	0	0	3
<i>Industrial</i>	1	0	0	0	1
<i>Hotels</i>	0	0	0	0	0
<i>Other-Residential</i>	8	1	0	0	9
<i>Single Family</i>	3	0	0	0	3
<i>Commercial</i>	12	1	0	0	13
<i>Commuting</i>	0	0	0	0	0
Total Casualties - 2pm	27	2	0	0	29
Casualties - 5pm					
<i>Single Family</i>	4	0	0	0	4
<i>Other-Residential</i>	8	1	0	0	9
<i>Commercial</i>	8	0	0	0	8
<i>Commuting</i>	1	1	1	0	3
<i>Educational</i>	0	0	0	0	0
<i>Hotels</i>	0	0	0	0	0
<i>Industrial</i>	1	0	0	0	1
Total Casualties - 5pm	21	2	1	0	25

	Injury Severity Level				Total
	Severity 1	Severity 2	Severity 3	Severity 4	
California					
Inyo					
Casualties - 2am					
Single Family	0	0	0	0	0
Commercial	0	0	0	0	0
Commuting	0	0	0	0	0
Educational	0	0	0	0	0
Hotels	0	0	0	0	0
Other-Residential	0	0	0	0	0
Industrial	0	0	0	0	0
Total Casualties - 2am	0	0	0	0	0
Casualties - 2pm					
Industrial	0	0	0	0	0
Hotels	0	0	0	0	0
Commercial	0	0	0	0	0
Other-Residential	0	0	0	0	0
Single Family	0	0	0	0	0
Commuting	0	0	0	0	0
Educational	0	0	0	0	0
Total Casualties - 2pm	0	0	0	0	0
Casualties - 5pm					
Other-Residential	0	0	0	0	0
Single Family	0	0	0	0	0
Commercial	0	0	0	0	0
Educational	0	0	0	0	0
Hotels	0	0	0	0	0
Commuting	0	0	0	0	0
Industrial	0	0	0	0	0
Total Casualties - 5pm	0	0	0	0	0
Kern					
Casualties - 2am					
Commercial	3	0	0	0	3
Commuting	0	0	0	0	0
Educational	0	0	0	0	0
Single Family	50	1	0	0	52
Other-Residential	169	29	2	5	205
Hotels	0	0	0	0	0
Industrial	3	1	0	0	4
Total Casualties - 2am	225	31	3	5	264
Casualties - 2pm					
Educational	31	4	0	0	36
Commuting	0	0	0	0	1
Single Family	15	0	0	0	16
Hotels	0	0	0	0	0

	Injury Severity Level				Total
	Severity 1	Severity 2	Severity 3	Severity 4	
California					
Kern					
Casualties - 2pm					
<i>Other-Residential</i>	58	10	1	2	71
<i>Commercial</i>	198	39	5	10	252
<i>Industrial</i>	24	5	1	1	30
Total Casualties - 2pm	326	58	7	13	404
Casualties - 5pm					
<i>Single Family</i>	18	1	0	0	19
<i>Commercial</i>	142	28	4	7	181
<i>Other-Residential</i>	62	11	1	2	75
<i>Commuting</i>	2	3	5	1	11
<i>Educational</i>	4	0	0	0	5
<i>Hotels</i>	0	0	0	0	0
<i>Industrial</i>	15	3	0	1	19
Total Casualties - 5pm	243	46	10	11	309
Kings					
Casualties - 2am					
<i>Industrial</i>	0	0	0	0	0
<i>Other-Residential</i>	8	1	0	0	8
<i>Educational</i>	0	0	0	0	0
<i>Commuting</i>	0	0	0	0	0
<i>Commercial</i>	0	0	0	0	0
<i>Single Family</i>	4	0	0	0	4
<i>Hotels</i>	0	0	0	0	0
Total Casualties - 2am	12	1	0	0	13
Casualties - 2pm					
<i>Single Family</i>	1	0	0	0	1
<i>Other-Residential</i>	3	0	0	0	3
<i>Commercial</i>	9	1	0	0	10
<i>Educational</i>	2	0	0	0	2
<i>Commuting</i>	0	0	0	0	0
<i>Hotels</i>	0	0	0	0	0
<i>Industrial</i>	1	0	0	0	1
Total Casualties - 2pm	16	1	0	0	18
Casualties - 5pm					
<i>Single Family</i>	2	0	0	0	2
<i>Commercial</i>	7	1	0	0	9
<i>Commuting</i>	0	0	0	0	0
<i>Other-Residential</i>	3	0	0	0	3
<i>Educational</i>	0	0	0	0	0
<i>Hotels</i>	0	0	0	0	0
<i>Industrial</i>	1	0	0	0	1

	Injury Severity Level				Total
	Severity 1	Severity 2	Severity 3	Severity 4	
California					
Kings					
Total Casualties - 5pm	13	1	0	0	14
Los Angeles					
Casualties - 2am					
<i>Hotels</i>	2	0	0	0	2
<i>Industrial</i>	25	3	0	1	29
<i>Educational</i>	0	0	0	0	0
<i>Single Family</i>	642	27	1	1	671
<i>Commuting</i>	0	0	0	0	1
<i>Other-Residential</i>	1,219	140	7	13	1,380
<i>Commercial</i>	24	3	0	0	27
Total Casualties - 2am	1,912	174	9	15	2,110
Casualties - 2pm					
<i>Industrial</i>	185	25	2	4	216
<i>Other-Residential</i>	375	44	2	4	425
<i>Commercial</i>	1,610	199	14	27	1,850
<i>Commuting</i>	1	2	3	1	7
<i>Educational</i>	696	90	7	14	808
<i>Single Family</i>	176	8	0	0	185
<i>Hotels</i>	0	0	0	0	0
Total Casualties - 2pm	3,043	368	30	50	3,491
Casualties - 5pm					
<i>Other-Residential</i>	459	53	3	5	520
<i>Industrial</i>	115	16	1	3	135
<i>Commuting</i>	26	35	58	11	129
<i>Single Family</i>	234	10	0	1	246
<i>Commercial</i>	1,145	146	11	21	1,324
<i>Hotels</i>	0	0	0	0	0
<i>Educational</i>	166	22	2	4	194
Total Casualties - 5pm	2,146	283	76	44	2,549
Madera					
Casualties - 2am					
<i>Hotels</i>	0	0	0	0	0
<i>Educational</i>	0	0	0	0	0
<i>Single Family</i>	0	0	0	0	0
<i>Commuting</i>	0	0	0	0	0
<i>Industrial</i>	0	0	0	0	0
<i>Commercial</i>	0	0	0	0	0
<i>Other-Residential</i>	0	0	0	0	0
Total Casualties - 2am	0	0	0	0	0
Casualties - 2pm					
<i>Industrial</i>	0	0	0	0	0

	Injury Severity Level				Total
	Severity 1	Severity 2	Severity 3	Severity 4	
California					
Madera					
Casualties - 2pm					
<i>Commercial</i>	0	0	0	0	0
<i>Other-Residential</i>	0	0	0	0	0
<i>Commuting</i>	0	0	0	0	0
<i>Single Family</i>	0	0	0	0	0
<i>Hotels</i>	0	0	0	0	0
<i>Educational</i>	0	0	0	0	0
Total Casualties - 2pm	1	0	0	0	1
Casualties - 5pm					
<i>Industrial</i>	0	0	0	0	0
<i>Commercial</i>	0	0	0	0	0
<i>Single Family</i>	0	0	0	0	0
<i>Educational</i>	0	0	0	0	0
<i>Other-Residential</i>	0	0	0	0	0
<i>Commuting</i>	0	0	0	0	0
<i>Hotels</i>	0	0	0	0	0
Total Casualties - 5pm	0	0	0	0	0
Marin					
Casualties - 2am					
<i>Commercial</i>	0	0	0	0	0
<i>Commuting</i>	0	0	0	0	0
<i>Other-Residential</i>	0	0	0	0	0
<i>Educational</i>	0	0	0	0	0
<i>Single Family</i>	0	0	0	0	0
<i>Hotels</i>	0	0	0	0	0
<i>Industrial</i>	0	0	0	0	0
Total Casualties - 2am	0	0	0	0	0
Casualties - 2pm					
<i>Hotels</i>	0	0	0	0	0
<i>Commuting</i>	0	0	0	0	0
<i>Educational</i>	0	0	0	0	0
<i>Industrial</i>	0	0	0	0	0
<i>Other-Residential</i>	0	0	0	0	0
<i>Commercial</i>	0	0	0	0	0
<i>Single Family</i>	0	0	0	0	0
Total Casualties - 2pm	0	0	0	0	0
Casualties - 5pm					
<i>Commuting</i>	0	0	0	0	0
<i>Commercial</i>	0	0	0	0	0
<i>Other-Residential</i>	0	0	0	0	0
<i>Single Family</i>	0	0	0	0	0
<i>Industrial</i>	0	0	0	0	0

	Injury Severity Level				Total
	Severity 1	Severity 2	Severity 3	Severity 4	
California					
Marin					
Casualties - 5pm					
<i>Educational</i>	0	0	0	0	0
<i>Hotels</i>	0	0	0	0	0
Total Casualties - 5pm	0	0	0	0	0
Mariposa					
Casualties - 2am					
<i>Commuting</i>	0	0	0	0	0
<i>Single Family</i>	0	0	0	0	0
<i>Commercial</i>	0	0	0	0	0
<i>Hotels</i>	0	0	0	0	0
<i>Educational</i>	0	0	0	0	0
<i>Industrial</i>	0	0	0	0	0
<i>Other-Residential</i>	0	0	0	0	0
Total Casualties - 2am	0	0	0	0	0
Casualties - 2pm					
<i>Hotels</i>	0	0	0	0	0
<i>Industrial</i>	0	0	0	0	0
<i>Commercial</i>	0	0	0	0	0
<i>Other-Residential</i>	0	0	0	0	0
<i>Educational</i>	0	0	0	0	0
<i>Commuting</i>	0	0	0	0	0
<i>Single Family</i>	0	0	0	0	0
Total Casualties - 2pm	0	0	0	0	0
Casualties - 5pm					
<i>Other-Residential</i>	0	0	0	0	0
<i>Educational</i>	0	0	0	0	0
<i>Commuting</i>	0	0	0	0	0
<i>Hotels</i>	0	0	0	0	0
<i>Single Family</i>	0	0	0	0	0
<i>Commercial</i>	0	0	0	0	0
<i>Industrial</i>	0	0	0	0	0
Total Casualties - 5pm	0	0	0	0	0
Merced					
Casualties - 2am					
<i>Hotels</i>	0	0	0	0	0
<i>Industrial</i>	0	0	0	0	0
<i>Commercial</i>	0	0	0	0	0
<i>Single Family</i>	0	0	0	0	0
<i>Other-Residential</i>	0	0	0	0	0
<i>Educational</i>	0	0	0	0	0
<i>Commuting</i>	0	0	0	0	0

	Injury Severity Level				Total
	Severity 1	Severity 2	Severity 3	Severity 4	
California					
Merced					
Total Casualties - 2am	0	0	0	0	0
Casualties - 2pm					
Other-Residential	0	0	0	0	0
Industrial	0	0	0	0	0
Commercial	1	0	0	0	1
Commuting	0	0	0	0	0
Hotels	0	0	0	0	0
Educational	0	0	0	0	0
Single Family	0	0	0	0	0
Total Casualties - 2pm	1	0	0	0	1
Casualties - 5pm					
Industrial	0	0	0	0	0
Hotels	0	0	0	0	0
Educational	0	0	0	0	0
Commuting	0	0	0	0	0
Single Family	0	0	0	0	0
Commercial	1	0	0	0	1
Other-Residential	0	0	0	0	0
Total Casualties - 5pm	1	0	0	0	1
Mono					
Casualties - 2am					
Other-Residential	0	0	0	0	0
Industrial	0	0	0	0	0
Commercial	0	0	0	0	0
Single Family	0	0	0	0	0
Educational	0	0	0	0	0
Commuting	0	0	0	0	0
Hotels	0	0	0	0	0
Total Casualties - 2am	0	0	0	0	0
Casualties - 2pm					
Commercial	0	0	0	0	0
Commuting	0	0	0	0	0
Other-Residential	0	0	0	0	0
Educational	0	0	0	0	0
Single Family	0	0	0	0	0
Hotels	0	0	0	0	0
Industrial	0	0	0	0	0
Total Casualties - 2pm	0	0	0	0	0
Casualties - 5pm					
Industrial	0	0	0	0	0
Commuting	0	0	0	0	0

	Injury Severity Level				Total
	Severity 1	Severity 2	Severity 3	Severity 4	
California					
Mono					
Casualties - 5pm					
<i>Hotels</i>	0	0	0	0	0
<i>Other-Residential</i>	0	0	0	0	0
<i>Educational</i>	0	0	0	0	0
<i>Single Family</i>	0	0	0	0	0
<i>Commercial</i>	0	0	0	0	0
Total Casualties - 5pm	0	0	0	0	0
Monterey					
Casualties - 2am					
<i>Other-Residential</i>	1	0	0	0	1
<i>Commuting</i>	0	0	0	0	0
<i>Commercial</i>	0	0	0	0	0
<i>Single Family</i>	0	0	0	0	0
<i>Hotels</i>	0	0	0	0	0
<i>Educational</i>	0	0	0	0	0
<i>Industrial</i>	0	0	0	0	0
Total Casualties - 2am	2	0	0	0	2
Casualties - 2pm					
<i>Commuting</i>	0	0	0	0	0
<i>Commercial</i>	3	0	0	0	3
<i>Single Family</i>	0	0	0	0	0
<i>Hotels</i>	0	0	0	0	0
<i>Educational</i>	0	0	0	0	0
<i>Industrial</i>	0	0	0	0	0
<i>Other-Residential</i>	0	0	0	0	1
Total Casualties - 2pm	4	0	0	0	5
Casualties - 5pm					
<i>Commercial</i>	2	0	0	0	3
<i>Other-Residential</i>	0	0	0	0	1
<i>Industrial</i>	0	0	0	0	0
<i>Hotels</i>	0	0	0	0	0
<i>Educational</i>	0	0	0	0	0
<i>Commuting</i>	0	0	0	0	0
<i>Single Family</i>	0	0	0	0	0
Total Casualties - 5pm	3	0	0	0	4
Napa					
Casualties - 2am					
<i>Commercial</i>	0	0	0	0	0
<i>Other-Residential</i>	0	0	0	0	0
<i>Educational</i>	0	0	0	0	0
<i>Single Family</i>	0	0	0	0	0
<i>Commuting</i>	0	0	0	0	0

	Injury Severity Level				Total
	Severity 1	Severity 2	Severity 3	Severity 4	
California					
Napa					
Casualties - 2am					
<i>Hotels</i>	0	0	0	0	0
<i>Industrial</i>	0	0	0	0	0
Total Casualties - 2am	0	0	0	0	0
Casualties - 2pm					
<i>Educational</i>	0	0	0	0	0
<i>Hotels</i>	0	0	0	0	0
<i>Commuting</i>	0	0	0	0	0
<i>Industrial</i>	0	0	0	0	0
<i>Other-Residential</i>	0	0	0	0	0
<i>Single Family</i>	0	0	0	0	0
<i>Commercial</i>	0	0	0	0	0
Total Casualties - 2pm	0	0	0	0	0
Casualties - 5pm					
<i>Commercial</i>	0	0	0	0	0
<i>Single Family</i>	0	0	0	0	0
<i>Other-Residential</i>	0	0	0	0	0
<i>Commuting</i>	0	0	0	0	0
<i>Industrial</i>	0	0	0	0	0
<i>Educational</i>	0	0	0	0	0
<i>Hotels</i>	0	0	0	0	0
Total Casualties - 5pm	0	0	0	0	0
Orange					
Casualties - 2am					
<i>Hotels</i>	0	0	0	0	0
<i>Commuting</i>	0	0	0	0	0
<i>Educational</i>	0	0	0	0	0
<i>Industrial</i>	5	1	0	0	6
<i>Other-Residential</i>	132	11	0	1	145
<i>Commercial</i>	3	0	0	0	3
<i>Single Family</i>	104	1	0	0	105
Total Casualties - 2am	245	13	1	1	260
Casualties - 2pm					
<i>Industrial</i>	38	4	0	0	43
<i>Other-Residential</i>	36	3	0	0	40
<i>Commuting</i>	0	0	0	0	1
<i>Commercial</i>	204	20	1	2	227
<i>Single Family</i>	27	0	0	0	28
<i>Hotels</i>	0	0	0	0	0
<i>Educational</i>	86	8	0	1	96
Total Casualties - 2pm	392	35	2	4	434

Injury Severity Level

Severity 1 Severity 2 Severity 3 Severity 4 Total

California

Orange

Casualties - 5pm

	Severity 1	Severity 2	Severity 3	Severity 4	Total
<i>Hotels</i>	0	0	0	0	0
<i>Educational</i>	17	1	0	0	19
<i>Commuting</i>	3	4	6	1	14
<i>Single Family</i>	37	0	0	0	38
<i>Commercial</i>	144	15	1	2	161
<i>Other-Residential</i>	48	4	0	0	53
<i>Industrial</i>	24	2	0	0	27
Total Casualties - 5pm	273	26	8	4	311

Riverside

Casualties - 2am

<i>Industrial</i>	6	1	0	0	7
<i>Commercial</i>	14	3	0	1	18
<i>Other-Residential</i>	2,195	468	30	50	2,743
<i>Educational</i>	0	0	0	0	0
<i>Commuting</i>	0	1	1	0	2
<i>Single Family</i>	543	53	5	10	612
<i>Hotels</i>	1	0	0	0	1
Total Casualties - 2am	2,759	526	36	61	3,383

Casualties - 2pm

<i>Commercial</i>	980	201	27	52	1,260
<i>Other-Residential</i>	770	166	11	18	965
<i>Educational</i>	232	37	4	8	280
<i>Single Family</i>	177	19	2	4	202
<i>Commuting</i>	3	5	8	1	17
<i>Hotels</i>	0	0	0	0	0
<i>Industrial</i>	44	8	1	2	54
Total Casualties - 2pm	2,206	436	52	85	2,778

Casualties - 5pm

<i>Industrial</i>	28	5	1	1	34
<i>Other-Residential</i>	787	168	11	18	984
<i>Educational</i>	22	2	0	0	24
<i>Single Family</i>	203	21	2	4	231
<i>Hotels</i>	0	0	0	0	0
<i>Commercial</i>	674	140	19	36	869
<i>Commuting</i>	60	79	134	26	298
Total Casualties - 5pm	1,773	415	166	86	2,440

Sacramento

Casualties - 2am

<i>Industrial</i>	0	0	0	0	0
<i>Other-Residential</i>	0	0	0	0	0
<i>Commercial</i>	0	0	0	0	0

	Injury Severity Level				Total
	Severity 1	Severity 2	Severity 3	Severity 4	
California					
Sacramento					
Casualties - 2am					
Single Family	0	0	0	0	0
Hotels	0	0	0	0	0
Commuting	0	0	0	0	0
Educational	0	0	0	0	0
Total Casualties - 2am	0	0	0	0	0
Casualties - 2pm					
Other-Residential	0	0	0	0	0
Commuting	0	0	0	0	0
Single Family	0	0	0	0	0
Commercial	0	0	0	0	0
Hotels	0	0	0	0	0
Educational	0	0	0	0	0
Industrial	0	0	0	0	0
Total Casualties - 2pm	0	0	0	0	0
Casualties - 5pm					
Industrial	0	0	0	0	0
Educational	0	0	0	0	0
Hotels	0	0	0	0	0
Commercial	0	0	0	0	0
Commuting	0	0	0	0	0
Other-Residential	0	0	0	0	0
Single Family	0	0	0	0	0
Total Casualties - 5pm	0	0	0	0	0
San Benito					
Casualties - 2am					
Other-Residential	0	0	0	0	0
Commercial	0	0	0	0	0
Commuting	0	0	0	0	0
Hotels	0	0	0	0	0
Educational	0	0	0	0	0
Single Family	0	0	0	0	0
Industrial	0	0	0	0	0
Total Casualties - 2am	0	0	0	0	0
Casualties - 2pm					
Hotels	0	0	0	0	0
Educational	0	0	0	0	0
Industrial	0	0	0	0	0
Other-Residential	0	0	0	0	0
Commercial	0	0	0	0	0
Commuting	0	0	0	0	0
Single Family	0	0	0	0	0

	Injury Severity Level				Total
	Severity 1	Severity 2	Severity 3	Severity 4	
California					
San Benito					
Total Casualties - 2pm	0	0	0	0	0
Casualties - 5pm					
<i>Commuting</i>	0	0	0	0	0
<i>Commercial</i>	0	0	0	0	0
<i>Other-Residential</i>	0	0	0	0	0
<i>Single Family</i>	0	0	0	0	0
<i>Industrial</i>	0	0	0	0	0
<i>Educational</i>	0	0	0	0	0
<i>Hotels</i>	0	0	0	0	0
Total Casualties - 5pm	0	0	0	0	0
San Bernardino					
Casualties - 2am					
<i>Hotels</i>	1	0	0	0	1
<i>Single Family</i>	933	129	15	29	1,106
<i>Commercial</i>	25	6	1	2	34
<i>Commuting</i>	1	1	1	0	3
<i>Educational</i>	0	0	0	0	0
<i>Other-Residential</i>	1,862	393	33	60	2,348
<i>Industrial</i>	20	5	1	1	26
Total Casualties - 2am	2,841	534	51	92	3,517
Casualties - 2pm					
<i>Industrial</i>	146	34	4	9	193
<i>Hotels</i>	0	0	0	0	0
<i>Commuting</i>	5	7	12	2	27
<i>Other-Residential</i>	570	121	11	19	721
<i>Educational</i>	839	174	23	44	1,079
<i>Single Family</i>	275	41	5	9	330
<i>Commercial</i>	1,839	455	66	128	2,489
Total Casualties - 2pm	3,674	832	121	211	4,838
Casualties - 5pm					
<i>Other-Residential</i>	688	146	13	23	870
<i>Commercial</i>	1,380	343	50	96	1,869
<i>Single Family</i>	355	52	6	12	425
<i>Educational</i>	162	33	4	9	209
<i>Hotels</i>	0	0	0	0	0
<i>Commuting</i>	93	133	214	42	483
<i>Industrial</i>	91	21	3	5	120
Total Casualties - 5pm	2,769	729	291	187	3,977
San Diego					
Casualties - 2am					
<i>Commercial</i>	0	0	0	0	0

	Injury Severity Level				Total
	Severity 1	Severity 2	Severity 3	Severity 4	
California					
San Diego					
Casualties - 2am					
<i>Other-Residential</i>	4	0	0	0	4
<i>Commuting</i>	0	0	0	0	0
<i>Educational</i>	0	0	0	0	0
<i>Single Family</i>	3	0	0	0	3
<i>Industrial</i>	0	0	0	0	0
<i>Hotels</i>	0	0	0	0	0
Total Casualties - 2am	7	0	0	0	7
Casualties - 2pm					
<i>Hotels</i>	0	0	0	0	0
<i>Educational</i>	1	0	0	0	1
<i>Commuting</i>	0	0	0	0	0
<i>Commercial</i>	16	0	0	0	16
<i>Other-Residential</i>	1	0	0	0	1
<i>Single Family</i>	1	0	0	0	1
<i>Industrial</i>	0	0	0	0	0
Total Casualties - 2pm	20	0	0	0	20
Casualties - 5pm					
<i>Other-Residential</i>	1	0	0	0	1
<i>Commercial</i>	9	0	0	0	9
<i>Commuting</i>	0	0	0	0	0
<i>Single Family</i>	1	0	0	0	1
<i>Educational</i>	0	0	0	0	0
<i>Hotels</i>	0	0	0	0	0
<i>Industrial</i>	0	0	0	0	0
Total Casualties - 5pm	12	0	0	0	13
San Francisco					
Casualties - 2am					
<i>Industrial</i>	0	0	0	0	0
<i>Hotels</i>	0	0	0	0	0
<i>Commercial</i>	0	0	0	0	0
<i>Other-Residential</i>	0	0	0	0	0
<i>Commuting</i>	0	0	0	0	0
<i>Educational</i>	0	0	0	0	0
<i>Single Family</i>	0	0	0	0	0
Total Casualties - 2am	0	0	0	0	0
Casualties - 2pm					
<i>Commercial</i>	0	0	0	0	0
<i>Industrial</i>	0	0	0	0	0
<i>Other-Residential</i>	0	0	0	0	0
<i>Single Family</i>	0	0	0	0	0
<i>Hotels</i>	0	0	0	0	0

	Injury Severity Level				Total
	Severity 1	Severity 2	Severity 3	Severity 4	
California					
San Francisco					
Casualties - 2pm					
Commuting	0	0	0	0	0
Educational	0	0	0	0	0
Total Casualties - 2pm	0	0	0	0	0
Casualties - 5pm					
Educational	0	0	0	0	0
Hotels	0	0	0	0	0
Industrial	0	0	0	0	0
Commuting	0	0	0	0	0
Commercial	0	0	0	0	0
Other-Residential	0	0	0	0	0
Single Family	0	0	0	0	0
Total Casualties - 5pm	0	0	0	0	0
San Joaquin					
Casualties - 2am					
Educational	0	0	0	0	0
Commuting	0	0	0	0	0
Hotels	0	0	0	0	0
Commercial	0	0	0	0	0
Single Family	0	0	0	0	0
Industrial	0	0	0	0	0
Other-Residential	0	0	0	0	0
Total Casualties - 2am	0	0	0	0	0
Casualties - 2pm					
Industrial	0	0	0	0	0
Other-Residential	0	0	0	0	0
Educational	0	0	0	0	0
Single Family	0	0	0	0	0
Hotels	0	0	0	0	0
Commuting	0	0	0	0	0
Commercial	0	0	0	0	0
Total Casualties - 2pm	0	0	0	0	0
Casualties - 5pm					
Commuting	0	0	0	0	0
Single Family	0	0	0	0	0
Educational	0	0	0	0	0
Hotels	0	0	0	0	0
Industrial	0	0	0	0	0
Commercial	0	0	0	0	0
Other-Residential	0	0	0	0	0
Total Casualties - 5pm	0	0	0	0	0

Injury Severity Level

Severity 1	Severity 2	Severity 3	Severity 4	Total
------------	------------	------------	------------	-------

California

San Luis Obispo
Casualties - 2am

<i>Commercial</i>	0	0	0	0	0
<i>Other-Residential</i>	42	6	0	1	49
<i>Industrial</i>	1	0	0	0	1
<i>Single Family</i>	11	0	0	0	12
<i>Commuting</i>	0	0	0	0	0
<i>Educational</i>	0	0	0	0	0
<i>Hotels</i>	0	0	0	0	0
Total Casualties - 2am	54	7	0	1	61

Casualties - 2pm

<i>Single Family</i>	3	0	0	0	3
<i>Educational</i>	3	0	0	0	4
<i>Other-Residential</i>	13	2	0	0	16
<i>Hotels</i>	0	0	0	0	0
<i>Commuting</i>	0	0	0	0	0
<i>Commercial</i>	28	4	0	1	33
<i>Industrial</i>	4	1	0	0	5
Total Casualties - 2pm	52	7	1	1	61

Casualties - 5pm

<i>Industrial</i>	3	0	0	0	3
<i>Other-Residential</i>	15	2	0	0	17
<i>Commuting</i>	1	1	2	0	5
<i>Single Family</i>	4	0	0	0	4
<i>Commercial</i>	19	3	0	1	22
<i>Hotels</i>	0	0	0	0	0
<i>Educational</i>	0	0	0	0	0
Total Casualties - 5pm	41	7	3	1	52

San Mateo
Casualties - 2am

<i>Industrial</i>	0	0	0	0	0
<i>Other-Residential</i>	0	0	0	0	0
<i>Single Family</i>	0	0	0	0	0
<i>Commercial</i>	0	0	0	0	0
<i>Educational</i>	0	0	0	0	0
<i>Commuting</i>	0	0	0	0	0
<i>Hotels</i>	0	0	0	0	0
Total Casualties - 2am	0	0	0	0	0

Casualties - 2pm

<i>Other-Residential</i>	0	0	0	0	0
<i>Single Family</i>	0	0	0	0	0
<i>Commuting</i>	0	0	0	0	0
<i>Commercial</i>	0	0	0	0	0

	Injury Severity Level				Total
	Severity 1	Severity 2	Severity 3	Severity 4	
California					
San Mateo					
Casualties - 2pm					
<i>Educational</i>	0	0	0	0	0
<i>Hotels</i>	0	0	0	0	0
<i>Industrial</i>	0	0	0	0	0
Total Casualties - 2pm	0	0	0	0	0
Casualties - 5pm					
<i>Commercial</i>	0	0	0	0	0
<i>Industrial</i>	0	0	0	0	0
<i>Other-Residential</i>	0	0	0	0	0
<i>Single Family</i>	0	0	0	0	0
<i>Educational</i>	0	0	0	0	0
<i>Commuting</i>	0	0	0	0	0
<i>Hotels</i>	0	0	0	0	0
Total Casualties - 5pm	0	0	0	0	0
Santa Barbara					
Casualties - 2am					
<i>Industrial</i>	0	0	0	0	0
<i>Commercial</i>	0	0	0	0	0
<i>Other-Residential</i>	19	1	0	0	20
<i>Commuting</i>	0	0	0	0	0
<i>Educational</i>	0	0	0	0	0
<i>Single Family</i>	9	0	0	0	9
<i>Hotels</i>	0	0	0	0	0
Total Casualties - 2am	28	2	0	0	30
Casualties - 2pm					
<i>Commercial</i>	14	1	0	0	16
<i>Single Family</i>	3	0	0	0	3
<i>Other-Residential</i>	6	0	0	0	6
<i>Commuting</i>	0	0	0	0	0
<i>Educational</i>	6	0	0	0	6
<i>Hotels</i>	0	0	0	0	0
<i>Industrial</i>	2	0	0	0	2
Total Casualties - 2pm	31	2	0	0	33
Casualties - 5pm					
<i>Other-Residential</i>	7	1	0	0	7
<i>Single Family</i>	3	0	0	0	3
<i>Commercial</i>	10	1	0	0	11
<i>Commuting</i>	0	0	0	0	1
<i>Educational</i>	2	0	0	0	2
<i>Industrial</i>	1	0	0	0	2
<i>Hotels</i>	0	0	0	0	0

	Injury Severity Level				Total
	Severity 1	Severity 2	Severity 3	Severity 4	
California					
Santa Barbara					
Total Casualties - 5pm	23	2	0	0	25
Santa Clara					
Casualties - 2am					
<i>Commuting</i>	0	0	0	0	0
<i>Educational</i>	0	0	0	0	0
<i>Single Family</i>	0	0	0	0	0
<i>Hotels</i>	0	0	0	0	0
<i>Industrial</i>	0	0	0	0	0
<i>Commercial</i>	0	0	0	0	0
<i>Other-Residential</i>	0	0	0	0	0
Total Casualties - 2am	0	0	0	0	0
Casualties - 2pm					
<i>Industrial</i>	0	0	0	0	0
<i>Commercial</i>	1	0	0	0	1
<i>Single Family</i>	0	0	0	0	0
<i>Commuting</i>	0	0	0	0	0
<i>Hotels</i>	0	0	0	0	0
<i>Other-Residential</i>	0	0	0	0	0
<i>Educational</i>	0	0	0	0	0
Total Casualties - 2pm	1	0	0	0	1
Casualties - 5pm					
<i>Industrial</i>	0	0	0	0	0
<i>Hotels</i>	0	0	0	0	0
<i>Other-Residential</i>	0	0	0	0	0
<i>Commercial</i>	0	0	0	0	0
<i>Commuting</i>	0	0	0	0	0
<i>Single Family</i>	0	0	0	0	0
<i>Educational</i>	0	0	0	0	0
Total Casualties - 5pm	0	0	0	0	0
Santa Cruz					
Casualties - 2am					
<i>Hotels</i>	0	0	0	0	0
<i>Educational</i>	0	0	0	0	0
<i>Industrial</i>	0	0	0	0	0
<i>Other-Residential</i>	0	0	0	0	0
<i>Single Family</i>	0	0	0	0	0
<i>Commercial</i>	0	0	0	0	0
<i>Commuting</i>	0	0	0	0	0
Total Casualties - 2am	0	0	0	0	0
Casualties - 2pm					
<i>Industrial</i>	0	0	0	0	0

	Injury Severity Level				Total
	Severity 1	Severity 2	Severity 3	Severity 4	
California					
Santa Cruz					
Casualties - 2pm					
<i>Other-Residential</i>	0	0	0	0	0
<i>Commercial</i>	0	0	0	0	0
<i>Commuting</i>	0	0	0	0	0
<i>Educational</i>	0	0	0	0	0
<i>Single Family</i>	0	0	0	0	0
<i>Hotels</i>	0	0	0	0	0
Total Casualties - 2pm	0	0	0	0	0
Casualties - 5pm					
<i>Industrial</i>	0	0	0	0	0
<i>Other-Residential</i>	0	0	0	0	0
<i>Commercial</i>	0	0	0	0	0
<i>Commuting</i>	0	0	0	0	0
<i>Single Family</i>	0	0	0	0	0
<i>Hotels</i>	0	0	0	0	0
<i>Educational</i>	0	0	0	0	0
Total Casualties - 5pm	0	0	0	0	0
Solano					
Casualties - 2am					
<i>Industrial</i>	0	0	0	0	0
<i>Other-Residential</i>	0	0	0	0	0
<i>Commercial</i>	0	0	0	0	0
<i>Educational</i>	0	0	0	0	0
<i>Commuting</i>	0	0	0	0	0
<i>Single Family</i>	0	0	0	0	0
<i>Hotels</i>	0	0	0	0	0
Total Casualties - 2am	0	0	0	0	0
Casualties - 2pm					
<i>Single Family</i>	0	0	0	0	0
<i>Other-Residential</i>	0	0	0	0	0
<i>Commercial</i>	0	0	0	0	0
<i>Educational</i>	0	0	0	0	0
<i>Commuting</i>	0	0	0	0	0
<i>Hotels</i>	0	0	0	0	0
<i>Industrial</i>	0	0	0	0	0
Total Casualties - 2pm	0	0	0	0	0
Casualties - 5pm					
<i>Commercial</i>	0	0	0	0	0
<i>Other-Residential</i>	0	0	0	0	0
<i>Single Family</i>	0	0	0	0	0
<i>Educational</i>	0	0	0	0	0
<i>Commuting</i>	0	0	0	0	0

	Injury Severity Level				Total
	Severity 1	Severity 2	Severity 3	Severity 4	
California					
Solano					
Casualties - 5pm					
<i>Hotels</i>	0	0	0	0	0
<i>Industrial</i>	0	0	0	0	0
Total Casualties - 5pm	0	0	0	0	0
Sonoma					
Casualties - 2am					
<i>Single Family</i>	0	0	0	0	0
<i>Other-Residential</i>	0	0	0	0	0
<i>Commercial</i>	0	0	0	0	0
<i>Commuting</i>	0	0	0	0	0
<i>Hotels</i>	0	0	0	0	0
<i>Educational</i>	0	0	0	0	0
<i>Industrial</i>	0	0	0	0	0
Total Casualties - 2am	0	0	0	0	0
Casualties - 2pm					
<i>Single Family</i>	0	0	0	0	0
<i>Commuting</i>	0	0	0	0	0
<i>Educational</i>	0	0	0	0	0
<i>Hotels</i>	0	0	0	0	0
<i>Industrial</i>	0	0	0	0	0
<i>Other-Residential</i>	0	0	0	0	0
<i>Commercial</i>	0	0	0	0	0
Total Casualties - 2pm	0	0	0	0	0
Casualties - 5pm					
<i>Single Family</i>	0	0	0	0	0
<i>Commercial</i>	0	0	0	0	0
<i>Commuting</i>	0	0	0	0	0
<i>Hotels</i>	0	0	0	0	0
<i>Educational</i>	0	0	0	0	0
<i>Industrial</i>	0	0	0	0	0
<i>Other-Residential</i>	0	0	0	0	0
Total Casualties - 5pm	0	0	0	0	0
Stanislaus					
Casualties - 2am					
<i>Hotels</i>	0	0	0	0	0
<i>Industrial</i>	0	0	0	0	0
<i>Commercial</i>	0	0	0	0	0
<i>Single Family</i>	0	0	0	0	0
<i>Other-Residential</i>	0	0	0	0	0
<i>Commuting</i>	0	0	0	0	0
<i>Educational</i>	0	0	0	0	0

	Injury Severity Level				Total
	Severity 1	Severity 2	Severity 3	Severity 4	
California					
Stanislaus					
Total Casualties - 2am	0	0	0	0	0
Casualties - 2pm					
Industrial	0	0	0	0	0
Other-Residential	0	0	0	0	0
Commercial	0	0	0	0	0
Commuting	0	0	0	0	0
Educational	0	0	0	0	0
Single Family	0	0	0	0	0
Hotels	0	0	0	0	0
Total Casualties - 2pm	0	0	0	0	0
Casualties - 5pm					
Industrial	0	0	0	0	0
Other-Residential	0	0	0	0	0
Commuting	0	0	0	0	0
Single Family	0	0	0	0	0
Commercial	0	0	0	0	0
Hotels	0	0	0	0	0
Educational	0	0	0	0	0
Total Casualties - 5pm	0	0	0	0	0
Tulare					
Casualties - 2am					
Commercial	0	0	0	0	0
Commuting	0	0	0	0	0
Single Family	3	0	0	0	3
Educational	0	0	0	0	0
Hotels	0	0	0	0	0
Industrial	0	0	0	0	0
Other-Residential	3	0	0	0	4
Total Casualties - 2am	6	0	0	0	6
Casualties - 2pm					
Industrial	0	0	0	0	0
Hotels	0	0	0	0	0
Commercial	6	0	0	0	6
Other-Residential	1	0	0	0	1
Educational	1	0	0	0	1
Commuting	0	0	0	0	0
Single Family	1	0	0	0	1
Total Casualties - 2pm	9	0	0	0	9
Casualties - 5pm					
Other-Residential	1	0	0	0	1
Commercial	4	0	0	0	4

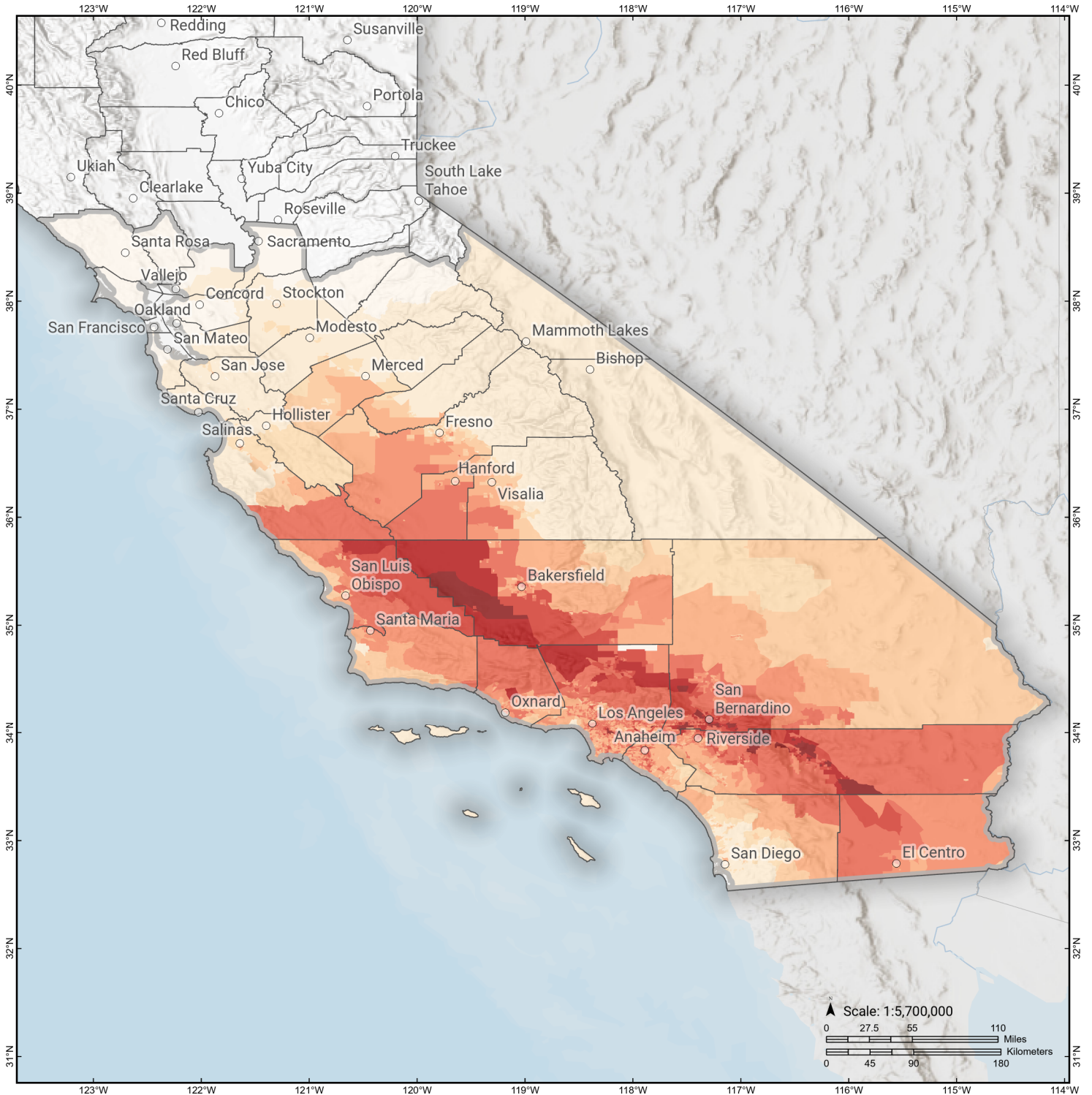
	Injury Severity Level				Total
	Severity 1	Severity 2	Severity 3	Severity 4	
California					
Tulare					
Casualties - 5pm					
Single Family	1	0	0	0	1
Hotels	0	0	0	0	0
Commuting	0	0	0	0	0
Educational	0	0	0	0	0
Industrial	0	0	0	0	0
Total Casualties - 5pm	6	0	0	0	7
Tuolumne					
Casualties - 2am					
Other-Residential	0	0	0	0	0
Industrial	0	0	0	0	0
Commercial	0	0	0	0	0
Commuting	0	0	0	0	0
Single Family	0	0	0	0	0
Educational	0	0	0	0	0
Hotels	0	0	0	0	0
Total Casualties - 2am	0	0	0	0	0
Casualties - 2pm					
Other-Residential	0	0	0	0	0
Commercial	0	0	0	0	0
Single Family	0	0	0	0	0
Educational	0	0	0	0	0
Commuting	0	0	0	0	0
Industrial	0	0	0	0	0
Hotels	0	0	0	0	0
Total Casualties - 2pm	0	0	0	0	0
Casualties - 5pm					
Industrial	0	0	0	0	0
Other-Residential	0	0	0	0	0
Commercial	0	0	0	0	0
Hotels	0	0	0	0	0
Commuting	0	0	0	0	0
Educational	0	0	0	0	0
Single Family	0	0	0	0	0
Total Casualties - 5pm	0	0	0	0	0
Ventura					
Casualties - 2am					
Educational	0	0	0	0	0
Commuting	0	0	0	0	0
Single Family	28	0	0	0	28
Hotels	0	0	0	0	0
Industrial	1	0	0	0	1

	Injury Severity Level				Total
	Severity 1	Severity 2	Severity 3	Severity 4	
California					
Ventura					
Casualties - 2am					
<i>Commercial</i>	1	0	0	0	1
<i>Other-Residential</i>	31	3	0	0	35
Total Casualties - 2am	61	3	0	0	64
Casualties - 2pm					
<i>Industrial</i>	7	1	0	0	8
<i>Educational</i>	15	1	0	0	17
<i>Commuting</i>	0	0	0	0	0
<i>Hotels</i>	0	0	0	0	0
<i>Other-Residential</i>	9	1	0	0	10
<i>Commercial</i>	41	4	0	0	46
<i>Single Family</i>	7	0	0	0	7
Total Casualties - 2pm	80	6	0	1	87
Casualties - 5pm					
<i>Commuting</i>	0	1	1	0	2
<i>Other-Residential</i>	11	1	0	0	13
<i>Commercial</i>	31	3	0	0	34
<i>Hotels</i>	0	0	0	0	0
<i>Educational</i>	2	0	0	0	2
<i>Single Family</i>	10	0	0	0	10
<i>Industrial</i>	5	0	0	0	5
Total Casualties - 5pm	59	5	1	1	66
Region Total	NA	NA	NA	NA	NA

Totals only reflect data for those census tracts/blocks included in the user's study region and will reflect the entire county/state only if all of the census blocks for that county/states were selected at the time of study region creation.

S. San Andreas: CH+CC+BB+NM+SM+NSB+SSB+BG+CO

Debris Generated by Census Tract

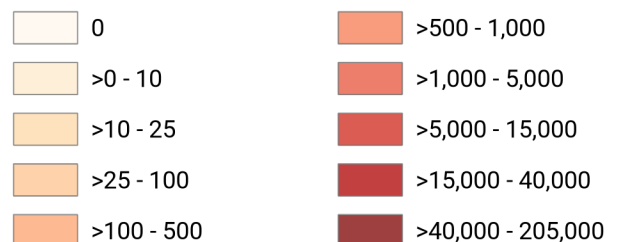


Study Region: S. San Andreas: CH+CC+BB+NM
+SM+NSB+SSB+BG+CO

Scenario: ssanandreaschccbbnms_m8p17_se



Debris Generated (in tons)



Debris Summary Report

May 03, 2024

All values are in thousands of tons.

	Brick, Wood & Others	Concrete & Steel	Total
California			
Fresno	12	16	28
Alameda	0	0	0
Solano	0	0	0
San Mateo	0	0	0
Tuolumne	0	0	0
Kings	8	11	19
San Joaquin	1	0	1
San Luis Obispo	52	50	101
Madera	1	0	1
Tulare	6	6	12
Inyo	0	0	0
Napa	0	0	0
Riverside	1,567	1,322	2,889
San Bernardino	1,694	1,838	3,532
Contra Costa	0	0	0
Imperial	32	25	58
Ventura	46	72	118
Kern	177	295	472
Santa Cruz	0	0	0

	Brick, Wood & Others	Concrete & Steel	Total
Orange	171	297	468
Monterey	2	4	6
Sacramento	0	0	0
San Diego	7	3	11
Mariposa	0	0	0
Los Angeles	1,691	1,890	3,581
Calaveras	0	0	0
Stanislaus	0	0	0
Sonoma	0	0	0
Santa Barbara	20	25	45
Santa Clara	0	0	1
San Benito	0	0	0
San Francisco	0	0	0
Merced	1	0	1
Mono	0	0	0
Marin	0	0	0
Total	5,488	5,855	11,343
Region Total	5,488	5,855	11,343

Totals only reflect data for those census tracts/blocks included in the user's study region and will reflect the entire county/state only if all of the census blocks for that county/states were selected at the time of study region creation.

Direct Economic Losses For Buildings

May 3, 2024

All values are in thousands of dollars

	Capital Stock Losses				Loss Ratio %	Income Losses				Total Loss
	Cost Structural Damage	Cost Non-struct. Damage	Cost Contents Damage	Inventory Loss		Relocation Loss	Capital Related Loss	Wages Losses	Rental Income Loss	
California										
Inyo	2	71	42	6	0.00	0	1	1	1	124
Contra Costa	3	86	57	6	0.00	0	1	1	1	153
Napa	0	0	0	0	0.00	0	0	0	0	0
Imperial	47,997	259,516	111,801	18,649	0.92	15,590	6,789	7,338	7,141	474,821
San Bernardino	2,828,094	13,433,128	5,428,282	625,530	4.31	1,394,772	558,348	799,554	756,232	25,823,940
Riverside	1,938,215	9,739,771	3,733,352	212,112	2.79	858,490	346,103	405,204	472,793	17,706,039
Alameda	33	1,696	1,130	126	0.00	3	6	10	9	3,013
San Joaquin	339	2,858	1,911	266	0.00	79	37	73	67	5,630
Tuolumne	0	1	1	0	0.00	0	0	0	0	2

	Capital Stock Losses				Loss Ratio %	Income Losses				Total Loss
	Cost Structural Damage	Cost Non-struct. Damage	Cost Contents Damage	Inventory Loss		Relocation Loss	Capital Related Loss	Wages Losses	Rental Income Loss	
Tulare	12,482	101,082	57,220	13,741	0.15	2,618	2,398	2,715	1,976	194,231
Madera	1,063	11,297	6,672	1,203	0.04	143	81	88	124	20,672
Fresno	26,259	190,314	109,746	19,795	0.14	7,058	6,240	6,472	5,158	371,041
Kings	16,927	102,443	50,857	6,422	0.55	6,010	5,011	6,070	3,661	197,401
San Luis Obispo	68,668	380,622	164,517	15,615	0.72	26,801	20,836	20,865	15,234	713,158
Solano	1	30	21	3	0.00	0	0	0	0	56
San Mateo	137	1,139	599	53	0.00	15	25	30	96	2,094
San Benito	96	1,326	686	101	0.01	10	15	16	15	2,265
San Francisco	0	0	0	0	0.00	0	0	0	0	0
Stanislaus	250	4,210	2,579	373	0.00	31	35	37	68	7,585
Santa Clara	686	6,955	4,050	411	0.00	125	168	252	336	12,982
Sonoma	0	0	0	0	0.00	0	0	0	0	0
Calaveras	0	0	0	0	0.00	0	0	0	0	0
Merced	1,618	8,145	5,098	2,063	0.02	160	62	59	86	17,292
Santa Barbara	40,259	302,487	150,144	17,500	0.44	12,883	7,561	9,778	9,118	549,730
Mono	0	1	0	0	0.00	0	0	0	0	1
Marin	0	0	0	0	0.00	0	0	0	0	0
Kern	352,161	1,448,173	669,233	122,432	1.23	125,391	71,789	83,194	61,883	2,934,256

	Capital Stock Losses				Loss Ratio %	Income Losses				Total Loss
	Cost Structural Damage	Cost Non-struct. Damage	Cost Contents Damage	Inventory Loss		Relocation Loss	Capital Related Loss	Wages Losses	Rental Income Loss	
Ventura	106,321	670,730	319,471	36,495	0.51	30,328	22,752	26,763	21,435	1,234,296
Santa Cruz	131	1,642	997	170	0.00	24	42	45	36	3,087
Mariposa	0	12	9	1	0.00	0	0	0	0	21
Sacramento	2	25	15	3	0.00	0	0	0	1	46
Monterey	7,040	25,259	14,457	4,847	0.04	1,389	561	574	603	54,730
Orange	411,883	2,523,465	1,249,992	114,497	0.54	136,278	105,911	124,086	102,641	4,768,753
San Diego	10,957	200,358	110,763	8,356	0.04	1,789	1,284	3,055	2,569	339,130
Los Angeles	2,828,900	13,798,850	6,414,527	570,089	1.10	1,348,167	769,828	983,104	828,758	27,542,221
Total	8,700,523	43,215,690	18,608,228	1,790,864	0.39	3,968,155	1,925,884	2,479,384	2,290,042	82,978,770
Region Total	8,700,523	43,215,690	18,608,228	1,790,864	0.39	3,968,155	1,925,884	2,479,384	2,290,042	82,978,770

Totals only reflect data for those census tracts/blocks included in the user's study region and will reflect the entire county/state only if all of the census blocks for that county/states were selected at the time of study region creation.

Direct Economic Loss For Transportation

May 03, 2024

All values are in thousands of dollars

	Highway	Railway	Light Rail	Bus Facility	Ports	Ferries	Airport	Total
California								
Alameda								
Segments	0	0	0					0
Bridges	60	0	0					60
Tunnels	0	0	0					0
Facilities		117	0	2	387	16	3,593	4,115
Total	60	117	0	2	387	16	3,593	4,176
Calaveras								
Segments	0	0	0					0
Bridges	0	0	0					0
Tunnels	0	0	0					0
Facilities		0	0	0	0	0	11	11
Total	0	0	0	0	0	0	11	11
Contra Costa								
Segments	0	0	0					0
Bridges	40	0	0					40
Tunnels	0	0	0					0
Facilities		28	18	0	869	40	71	1,026

	Highway	Railway	Light Rail	Bus Facility	Ports	Ferries	Airport	Total
Total	40	29	18	0	869	40	71	1,067
Fresno								
Segments	0	0	0					0
Bridges	2,335	81	0					2,415
Tunnels	0	0	0					0
Facilities		1,075	0	89	0	0	5,225	6,388
Total	2,335	1,155	0	89	0	0	5,225	8,804
Imperial								
Segments	0	0	0					0
Bridges	9,239	84,094	0					93,333
Tunnels	0	0	0					0
Facilities		796	0	0	0	0	5,245	6,041
Total	9,239	84,889	0	0	0	0	5,245	99,374
Inyo								
Segments	0	0	0					0
Bridges	2	0	0					2
Tunnels	0	0	0					0
Facilities		0	0	0	0	0	408	408
Total	2	0	0	0	0	0	408	410
Kern								
Segments	0	0	0					0
Bridges	23,638	1,416	0					25,054
Tunnels	11	0	0					11
Facilities		1,969	0	723	0	0	11,602	14,295

	Highway	Railway	Light Rail	Bus Facility	Ports	Ferries	Airport	Total
Total	23,649	3,385	0	723	0	0	11,602	39,360
Kings								
Segments	0	0	0					0
Bridges	1,189	96	0					1,285
Tunnels	0	0	0					0
Facilities		1,005	0	400	0	0	2,816	4,220
Total	1,189	1,101	0	400	0	0	2,816	5,505
Los Angeles								
Segments	0	0	0					0
Bridges	213,475	17,181	8					230,664
Tunnels	1,408	0	0					1,408
Facilities		12,752	232,758	3,802	52,571	742	226,502	529,126
Total	214,883	29,933	232,766	3,802	52,571	742	226,502	761,198
Madera								
Segments	0	0	0					0
Bridges	151	3	0					154
Tunnels	0	0	0					0
Facilities		109	0	89	0	0	268	467
Total	151	112	0	89	0	0	268	620
Marin								
Segments	0	0	0					0
Bridges	50	0	0					50
Tunnels	0	0	0					0
Facilities		0	0	10	98	7	6	121

	Highway	Railway	Light Rail	Bus Facility	Ports	Ferries	Airport	Total
Total	50	0	0	10	98	7	6	171
Mariposa								
Segments	0	0	0					0
Bridges	0	0	0					0
Tunnels	0	0	0					0
Facilities		0	0	86	0	0	51	137
Total	0	0	0	86	0	0	51	137
Merced								
Segments	0	0	0					0
Bridges	300	4	0					304
Tunnels	0	0	0					0
Facilities		51	0	21	0	0	410	483
Total	300	55	0	21	0	0	410	787
Mono								
Segments	0	0	0					0
Bridges	0	0	0					0
Tunnels	0	0	0					0
Facilities		0	0	23	0	0	74	96
Total	0	0	0	23	0	0	74	96
Monterey								
Segments	0	0	0					0
Bridges	1,411	111	0					1,521
Tunnels	0	0	0					0
Facilities		26	0	562	110	0	1,919	2,617

	Highway	Railway	Light Rail	Bus Facility	Ports	Ferries	Airport	Total
Total	1,411	136	0	562	110	0	1,919	4,138
Napa								
Segments	0	0	0					0
Bridges	0	0	0					0
Tunnels	0	0	0					0
Facilities		0	0	2	12	0	20	35
Total	0	0	0	2	12	0	20	35
Orange								
Segments	0	0	0					0
Bridges	26,862	645	0					27,506
Tunnels	22	0	0					22
Facilities		1,985	0	0	4,602	402	33,514	40,503
Total	26,884	2,629	0	0	4,602	402	33,514	68,031
Riverside								
Segments	0	0	0					0
Bridges	254,800	48,668	0					303,468
Tunnels	0	0	0					0
Facilities		3,345	0	4,753	0	0	50,601	58,699
Total	254,800	52,013	0	4,753	0	0	50,601	362,167
Sacramento								
Segments	0	0	0					0
Bridges	9	0	0					9
Tunnels	0	0	0					0
Facilities		3	336	5	428	13	466	1,251

	Highway	Railway	Light Rail	Bus Facility	Ports	Ferries	Airport	Total
Total	9	3	336	5	428	13	466	1,260
San Benito								
Segments	0	0	0					0
Bridges	12	1	0					13
Tunnels	0	0	0					0
Facilities		0	0	0	0	0	102	102
Total	12	1	0	0	0	0	102	115
San Bernardino								
Segments	0	0	0					0
Bridges	453,712	39,465	0					493,177
Tunnels	379	0	0					379
Facilities		11,450	0	1,294	0	0	63,411	76,155
Total	454,090	50,915	0	1,294	0	0	63,411	569,710
San Diego								
Segments	0	0	0					0
Bridges	706	4	0					710
Tunnels	1	0	0					1
Facilities		631	23,144	21	6,542	122	36,095	66,556
Total	707	635	23,144	21	6,542	122	36,095	67,268
San Francisco								
Segments	0	0	0					0
Bridges	14	0	0					14
Tunnels	0	0	0					0
Facilities		0	3,486	5	224	6	34	3,756

	Highway	Railway	Light Rail	Bus Facility	Ports	Ferries	Airport	Total
Total	14	0	3,486	5	224	6	34	3,769
San Joaquin								
Segments	0	0	0					0
Bridges	215	0	0					216
Tunnels	0	0	0					0
Facilities		388	0	21	1,578	51	418	2,456
Total	215	388	0	21	1,578	51	418	2,672
San Luis Obispo								
Segments	0	0	0					0
Bridges	7,905	218	0					8,123
Tunnels	0	0	0					0
Facilities		796	0	400	2,301	0	4,312	7,809
Total	7,905	1,014	0	400	2,301	0	4,312	15,932
San Mateo								
Segments	0	0	0					0
Bridges	94	0	0					94
Tunnels	0	0	0					0
Facilities		0	0	0	400	0	8,744	9,143
Total	94	0	0	0	400	0	8,744	9,237
Santa Barbara								
Segments	0	0	0					0
Bridges	2,082	89	0					2,172
Tunnels	0	0	0					0
Facilities		1,007	0	796	2,460	164	4,796	9,222

	Highway	Railway	Light Rail	Bus Facility	Ports	Ferries	Airport	Total
Total	2,082	1,096	0	796	2,460	164	4,796	11,394
Santa Clara								
<i>Segments</i>	0	0	0					0
<i>Bridges</i>	176	0	0					176
<i>Tunnels</i>	0	0	0					0
<i>Facilities</i>		103	5,439	47	184	0	3,593	9,364
Total	176	103	5,439	47	184	0	3,593	9,540
Santa Cruz								
<i>Segments</i>	0	0	0					0
<i>Bridges</i>	19	0	0					19
<i>Tunnels</i>	0	0	0					0
<i>Facilities</i>		0	0	45	37	0	257	339
Total	19	0	0	45	37	0	257	358
Solano								
<i>Segments</i>	0	0	0					0
<i>Bridges</i>	13	0	0					13
<i>Tunnels</i>	0	0	0					0
<i>Facilities</i>		9	0	7	922	28	26	992
Total	13	9	0	7	922	28	26	1,004
Sonoma								
<i>Segments</i>	0	0	0					0
<i>Bridges</i>	2	0	0					2
<i>Tunnels</i>	0	0	0					0
<i>Facilities</i>		0	0	3	29	0	46	77

	Highway	Railway	Light Rail	Bus Facility	Ports	Ferries	Airport	Total
Total	2	0	0	3	29	0	46	79
Stanislaus								
Segments	0	0	0					0
Bridges	68	0	0					68
Tunnels	0	0	0					0
Facilities		154	0	43	0	0	231	427
Total	68	154	0	43	0	0	231	496
Tulare								
Segments	0	0	0					0
Bridges	947	116	0					1,063
Tunnels	0	0	0					0
Facilities		0	0	353	0	0	1,270	1,622
Total	947	116	0	353	0	0	1,270	2,686
Tuolumne								
Segments	0	0	0					0
Bridges	0	0	0					0
Tunnels	0	0	0					0
Facilities		0	0	0	0	0	17	17
Total	0	0	0	0	0	0	17	17
Ventura								
Segments	0	0	0					0
Bridges	5,565	253	0					5,818
Tunnels	13	0	0					13
Facilities		1,192	0	163	5,348	155	4,082	10,941

	Highway	Railway	Light Rail	Bus Facility	Ports	Ferries	Airport	Total
Total	5,578	1,445	0	163	5,348	155	4,082	16,772
Total	1,006,925	231,434	265,189	13,764	79,104	1,745	470,236	2,068,398
Region Total	1,006,925	231,434	265,189	13,764	79,104	1,745	470,236	2,068,398

Totals only reflect data for those census tracts/blocks included in the user's study region and will reflect the entire county/state only if all of the census blocks for that county/states were selected at the time of study region creation.

Direct Economic Loss For Utilities

May 03, 2024

All values are in thousands of dollars

	Potable Water	Waste Water	Oil Systems	Natural Gas	Electric Power	Communication	Total
California							
Alameda							
<i>Facilities</i>	29	761	0	0	8,282	2	9,073
<i>Pipelines</i>	142	71	0	0			214
Total	171	832	0	0	8,282	2	9,287
Calaveras							
<i>Facilities</i>	1	10	0	0	1,359	0	1,370
<i>Pipelines</i>	55	27	0	0			82
Total	55	38	0	0	1,359	0	1,452
Contra Costa							
<i>Facilities</i>	4	277	0	0	14,498	0	14,779
<i>Pipelines</i>	134	67	0	0			202
Total	138	344	0	0	14,498	0	14,980
Fresno							
<i>Facilities</i>	0	6,097	1	467	435,460	70	442,096

	Potable Water	Waste Water	Oil Systems	Natural Gas	Electric Power	Communication	Total
<i>Pipelines</i>	3,072	1,543	0	0			4,616
Total	3,072	7,641	1	467	435,460	70	446,711
Imperial							
<i>Facilities</i>	9,563	143,497	0	0	2,118,267	189	2,271,517
<i>Pipelines</i>	5,514	2,770	0	0			8,284
Total	15,077	146,267	0	0	2,118,267	189	2,279,801
Inyo							
<i>Facilities</i>	0	0	0	0	9,774	0	9,774
<i>Pipelines</i>	144	72	0	0			216
Total	144	72	0	0	9,774	0	9,990
Kern							
<i>Facilities</i>	13,531	46,284	66	47,393	6,285,496	682	6,393,453
<i>Pipelines</i>	26,354	13,238	0	0			39,592
Total	39,885	59,523	66	47,393	6,285,496	682	6,433,045
Kings							
<i>Facilities</i>	0	0	3	9,914	252,620	29	262,566
<i>Pipelines</i>	3,100	1,557	0	0			4,657
Total	3,100	1,557	3	9,914	252,620	29	267,223
Los Angeles							
<i>Facilities</i>	40,377	160,839	189	31,075	9,967,670	1,456	10,201,607
<i>Pipelines</i>	44,585	22,396	0	0			66,981

	Potable Water	Waste Water	Oil Systems	Natural Gas	Electric Power	Communication	Total
Total	84,962	183,236	189	31,075	9,967,670	1,456	10,268,588
Madera							
<i>Facilities</i>	0	0	0	0	14,173	3	14,176
<i>Pipelines</i>	435	219	0	0			654
Total	435	219	0	0	14,173	3	14,829
Marin							
<i>Facilities</i>	1	21	0	0	1	0	22
<i>Pipelines</i>	36	18	0	0			54
Total	36	39	0	0	1	0	76
Mariposa							
<i>Facilities</i>	0	371	0	0	2,808	2	3,181
<i>Pipelines</i>	45	22	0	0			67
Total	45	394	0	0	2,808	2	3,248
Merced							
<i>Facilities</i>	0	615	0	0	24,155	2	24,772
<i>Pipelines</i>	380	191	0	0			570
Total	380	805	0	0	24,155	2	25,342
Mono							
<i>Facilities</i>	0	0	0	0	54	0	54
<i>Pipelines</i>	55	28	0	0			83
Total	55	28	0	0	54	0	137

	Potable Water	Waste Water	Oil Systems	Natural Gas	Electric Power	Communication	Total
Monterey							
<i>Facilities</i>	0	1,107	0	0	74,714	35	75,856
<i>Pipelines</i>	1,783	895	0	0			2,678
Total	1,783	2,002	0	0	74,714	35	78,534
Napa							
<i>Facilities</i>	0	10	0	0	5	0	15
<i>Pipelines</i>	19	10	0	0			29
Total	19	20	0	0	5	0	44
Orange							
<i>Facilities</i>	4,804	43,623	12	2,300	248,886	120	299,745
<i>Pipelines</i>	4,191	2,105	0	0			6,296
Total	8,995	45,729	12	2,300	248,886	120	306,041
Riverside							
<i>Facilities</i>	43,826	353,963	0	6,440	3,910,278	2,522	4,317,028
<i>Pipelines</i>	48,929	24,578	0	0			73,507
Total	92,755	378,541	0	6,440	3,910,278	2,522	4,390,536
Sacramento							
<i>Facilities</i>	0	26	0	0	997	1	1,024
<i>Pipelines</i>	128	64	0	0			193
Total	128	90	0	0	997	1	1,216
San Benito							

	Potable Water	Waste Water	Oil Systems	Natural Gas	Electric Power	Communication	Total
<i>Facilities</i>	0	246	0	0	0	3	249
<i>Pipelines</i>	194	97	0	0			291
Total	194	343	0	0	0	3	540
San Bernardino							
<i>Facilities</i>	37,080	322,036	0	9,198	5,738,199	1,616	6,108,129
<i>Pipelines</i>	47,693	23,957	0	0			71,650
Total	84,772	345,994	0	9,198	5,738,199	1,616	6,179,779
San Diego							
<i>Facilities</i>	376	22,992	0	1,590	239,674	78	264,710
<i>Pipelines</i>	1,575	791	0	0			2,365
Total	1,951	23,783	0	1,590	239,674	78	267,075
San Francisco							
<i>Facilities</i>	0	18	0	0	2	0	20
<i>Pipelines</i>	23	12	0	0			35
Total	23	30	0	0	2	0	55
San Joaquin							
<i>Facilities</i>	85	740	0	0	6,275	2	7,103
<i>Pipelines</i>	173	87	0	0			261
Total	259	827	0	0	6,275	2	7,364
San Luis Obispo							
<i>Facilities</i>	348	47,723	6	0	1,482,318	289	1,530,684

	Potable Water	Waste Water	Oil Systems	Natural Gas	Electric Power	Communication	Total
<i>Pipelines</i>	14,593	7,330	0	0			21,923
Total	14,941	55,053	6	0	1,482,318	289	1,552,606
San Mateo							
<i>Facilities</i>	0	515	0	0	206	1	721
<i>Pipelines</i>	79	40	0	0			118
Total	79	555	0	0	206	1	840
Santa Barbara							
<i>Facilities</i>	0	60,054	6	4,941	83,107	333	148,440
<i>Pipelines</i>	1,984	997	0	0			2,980
Total	1,984	61,051	6	4,941	83,107	333	151,421
Santa Clara							
<i>Facilities</i>	56	369	0	0	14,198	4	14,627
<i>Pipelines</i>	236	118	0	0			354
Total	292	487	0	0	14,198	4	14,981
Santa Cruz							
<i>Facilities</i>	0	492	0	0	65	1	558
<i>Pipelines</i>	87	44	0	0			131
Total	87	535	0	0	65	1	688
Solano							
<i>Facilities</i>	0	18	0	0	1,255	0	1,273
<i>Pipelines</i>	102	51	0	0			153

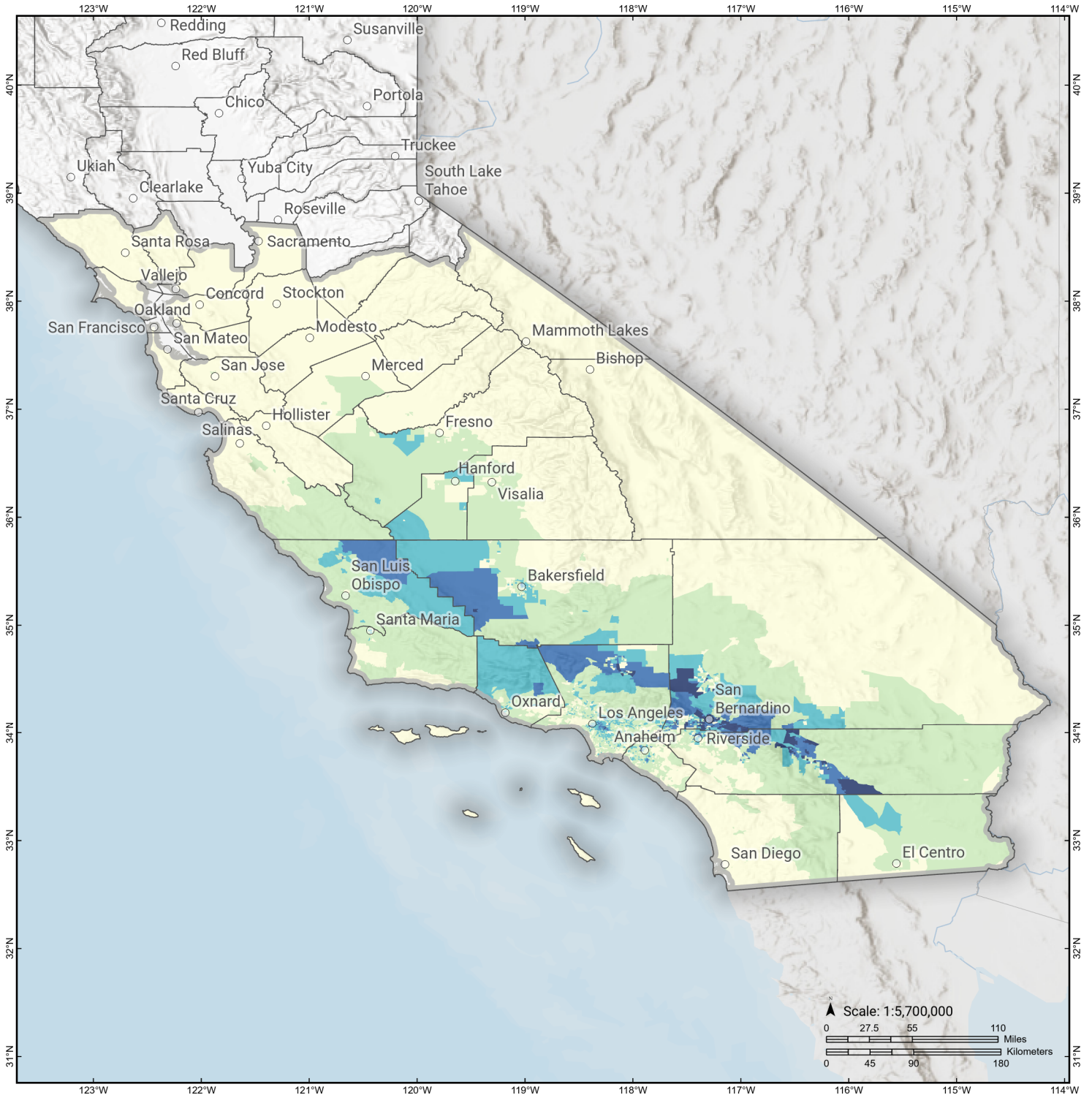
	Potable Water	Waste Water	Oil Systems	Natural Gas	Electric Power	Communication	Total
Total	102	69	0	0	1,255	0	1,426
Sonoma							
<i>Facilities</i>	0	26	0	0	2,027	0	2,053
<i>Pipelines</i>	78	39	0	0			116
Total	78	65	0	0	2,027	0	2,169
Stanislaus							
<i>Facilities</i>	0	492	0	0	8,978	3	9,473
<i>Pipelines</i>	222	112	0	0			334
Total	222	603	0	0	8,978	3	9,807
Tulare							
<i>Facilities</i>	348	4,573	0	0	82,079	44	87,044
<i>Pipelines</i>	1,284	645	0	0			1,929
Total	1,632	5,218	0	0	82,079	44	88,973
Tuolumne							
<i>Facilities</i>	0	3	0	0	8,717	0	8,720
<i>Pipelines</i>	68	34	0	0			102
Total	68	37	0	0	8,717	0	8,822
Ventura							
<i>Facilities</i>	6,822	76,964	11	2,492	354,768	248	441,306
<i>Pipelines</i>	3,401	1,708	0	0			5,109
Total	10,223	78,672	11	2,492	354,768	248	446,415

	Potable Water	Waste Water	Oil Systems	Natural Gas	Electric Power	Communication	Total
Total	368,143	1,400,698	294	115,809	31,391,361	7,736	33,284,041
Region Total	368,143	1,400,698	294	115,809	31,391,361	7,736	33,284,041

Totals only reflect data for those census tracts/blocks included in the user's study region and will reflect the entire county/state only if all of the census blocks for that county/states were selected at the time of study region creation.

S. San Andreas: CH+CC+BB+NM+SM+NSB+SSB+BG+CO

Displaced Households by Census Tract

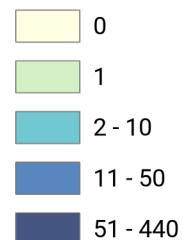


Study Region: S. San Andreas: CH+CC+BB+NM
+SM+NSB+SSB+BG+CO

Scenario: ssanandreaschccbbnms_m8p17_se

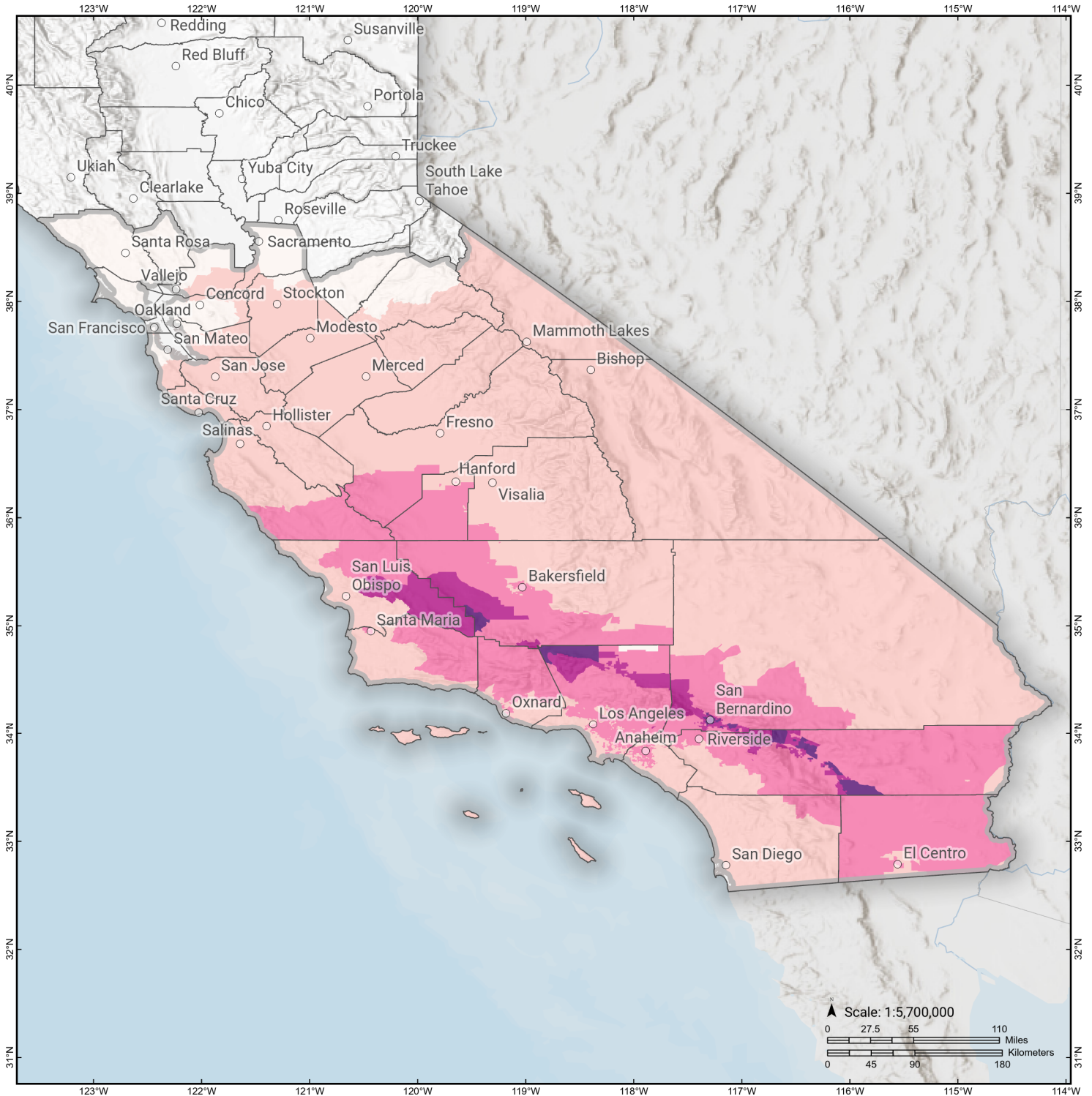


Displaced Households



S. San Andreas: CH+CC+BB+NM+SM+NSB+SSB+BG+CO

Loss Ratio by Census Tract

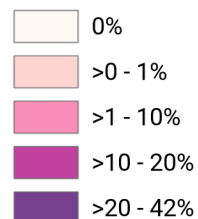


Study Region: S. San Andreas: CH+CC+BB+NM
+SM+NSB+SSB+BG+CO

Scenario: ssanandreaschccbbnms_m8p17_se



Loss Ratio (ratio of building related economic loss to exposed value of buildings)



Hazus Quick Assessment Report

Estimated Economic Loss (\$ Billions)

Category	Description	Range
General Building Stock	Building Damage	26.00 - 103.80
	Building Contents	3.30 - 13.10
	Business Interruption	5.30 - 21.30
Infrastructure	Lifelines Damage	
Total		41.50 - 166.00

Preliminary Damage Assessment (PDA) Estimates

Description	Residential	Commercial	Other	Total
Affected	974,400	77,400	29,000	
Minor	159,800	26,700	11,100	197,600
Major	34,700	5,700	2,600	43,000
Destroyed	17,400	1,500	520	19,420
Total		111,300	43,220	

Estimated Casualties : Night Time

Severity Level	Description	# Persons
Level 1	Medical Aid	4,000 - 16,000
Level 2	Hospital Care	600 - 3,000
Level 3	Life-threatening	50 - 200
Level 4	Fatalities	90 - 400

Estimated Shelter Needs

Type	Households	People
Displaced Households	15,000 - 61,000	37,500 - 152,500
Public Shelter	8,340	20,850

Comments :

*Hazus damage estimates are presented using FEMA Preliminary Damage Assessment (PDA) categories. These estimates should be used for planning purposes and may not reflect actual observed damages from the PDA process.

Disclaimer:

The estimates of social and economic impacts contained in this report were produced using HAZUS loss estimation methodology software which is based on current scientific and engineering knowledge. There are uncertainties inherent in any loss estimation technique. Therefore, there may be significant differences between the modeled results contained in this report and the actual social and economic losses following a specific earthquake. These results can be improved by using enhanced inventory, geotechnical, and observed ground motion data.

Earthquake Information

Location :

Origin Time:

Magnitude : 8.17

Epicenter Latitude/Longitude :
/

Depth & Type : /U

Name :
NA

Ground Motion /Attenuation :

Maximum PGA: 1.00

Information Sources:

Comments :

Population and Building Exposure

Population: 37,441,783

Building Exposure : (\$ Millions)

Residential	
Commercial	1,264,068
Other	999,561
Total	

Counties : See Appendix

Major Metro Area :

Hazus Quick Assessment Report

Estimated Economic Loss (\$ Billions)

Category	Description	Range
General Building Stock	Building Damage	26.00 - 103.80
	Building Contents	3.30 - 13.10
	Business Interruption	5.30 - 21.30
Infrastructure	Lifelines Damage	
Total		41.50 - 166.00

Preliminary Damage Assessment (PDA) Estimates

Description	Residential	Commercial	Other	Total
Affected	974,400	77,400	29,000	
Minor	159,800	26,700	11,100	197,600
Major	34,700	5,700	2,600	43,000
Destroyed	17,400	1,500	520	19,420
Total		111,300	43,220	

Estimated Casualties : Day Time

Severity Level	Description	# Persons
Level 1	Medical Aid	5,000 - 20,000
Level 2	Hospital Care	900 - 4,000
Level 3	Life-threatening	110 - 400
Level 4	Fatalities	180 - 700

Estimated Shelter Needs

Type	Households	People
Displaced Households	15,000 - 61,000	37,500 - 152,500
Public Shelter	8,340	20,850

Comments :

*Hazus damage estimates are presented using FEMA Preliminary Damage Assessment (PDA) categories. These estimates should be used for planning purposes and may not reflect actual observed damages from the PDA process.

Disclaimer:

The estimates of social and economic impacts contained in this report were produced using HAZUS loss estimation methodology software which is based on current scientific and engineering knowledge. There are uncertainties inherent in any loss estimation technique. Therefore, there may be significant differences between the modeled results contained in this report and the actual social and economic losses following a specific earthquake. These results can be improved by using enhanced inventory, geotechnical, and observed ground motion data.

Earthquake Information

Location :

Origin Time:

Magnitude : 8.17

Epicenter Latitude/Longitude :
/

Depth & Type : /U

Name :
NA

Ground Motion /Attenuation :

Maximum PGA: 1.00

Information Sources:

Comments :

Population and Building Exposure

Population: 37,441,783

Building Exposure : (\$ Millions)

Residential	
Commercial	1,264,068
Other	999,561
Total	

Counties : See Appendix

Major Metro Area :

Hazus Quick Assessment Report

Estimated Economic Loss (\$ Billions)

Category	Description	Range
General Building Stock	Building Damage	26.00 - 103.80
	Building Contents	3.30 - 13.10
	Business Interruption	5.30 - 21.30
Infrastructure	Lifelines Damage	
Total		41.50 - 166.00

Preliminary Damage Assessment (PDA) Estimates

Description	Residential	Commercial	Other	Total
Affected	974,400	77,400	29,000	
Minor	159,800	26,700	11,100	197,600
Major	34,700	5,700	2,600	43,000
Destroyed	17,400	1,500	520	19,420
Total		111,300	43,220	

Estimated Casualties : Commute Time

Severity Level	Description	# Persons
Level 1	Medical Aid	4,000 - 15,000
Level 2	Hospital Care	800 - 3,000
Level 3	Life-threatening	300 - 1,100
Level 4	Fatalities	170 - 700

Estimated Shelter Needs

Type	Households	People
Displaced Households	15,000 - 61,000	37,500 - 152,500
Public Shelter	8,340	20,850

Comments :

*Hazus damage estimates are presented using FEMA Preliminary Damage Assessment (PDA) categories. These estimates should be used for planning purposes and may not reflect actual observed damages from the PDA process.

Disclaimer:

The estimates of social and economic impacts contained in this report were produced using HAZUS loss estimation methodology software which is based on current scientific and engineering knowledge. There are uncertainties inherent in any loss estimation technique. Therefore, there may be significant differences between the modeled results contained in this report and the actual social and economic losses following a specific earthquake. These results can be improved by using enhanced inventory, geotechnical, and observed ground motion data.

Earthquake Information

Location :

Origin Time:

Magnitude : 8.17

Epicenter Latitude/Longitude :
/

Depth & Type : /U

Name :
NA

Ground Motion /Attenuation :

Maximum PGA: 1.00

Information Sources:

Comments :

Population and Building Exposure

Population: 37,441,783

Building Exposure : (\$ Millions)

Residential	
Commercial	1,264,068
Other	999,561
Total	

Counties : See Appendix

Major Metro Area :

Shelter Summary Report

May 03, 2024

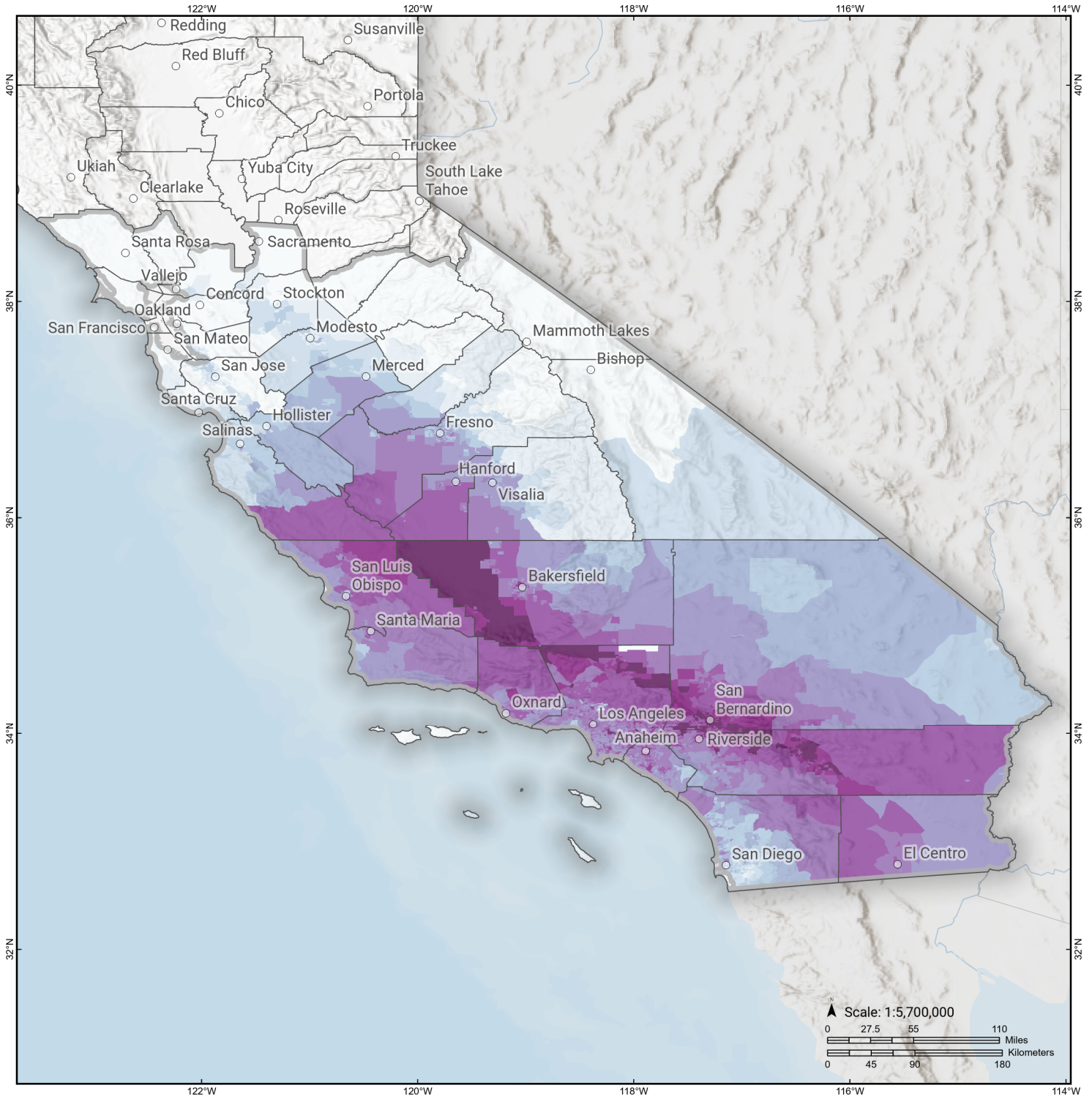
	# of Displaced Households	# of People Needing Short Term Shelter
California		
Fresno	18	13
Alameda	0	0
Solano	0	0
San Mateo	0	0
Tuolumne	0	0
Kings	19	14
San Joaquin	0	0
San Luis Obispo	80	40
Madera	0	0
Tulare	2	2
Inyo	0	0
Napa	0	0
Riverside	4,648	3,704
San Bernardino	15,775	10,973
Contra Costa	0	0
Imperial	11	13
Ventura	163	98
Kern	614	489
Santa Cruz	0	0
Orange	544	368
Monterey	1	1
Sacramento	0	0
San Diego	0	0
Mariposa	0	0
Los Angeles	8,353	5,107
Calaveras	0	0
Stanislaus	0	0
Sonoma	0	0
Santa Barbara	46	32
Santa Clara	0	0
San Benito	0	0
San Francisco	0	0

	# of Displaced Households	# of People Needing Short Term Shelter
Merced	0	0
Mono	0	0
Marin	0	0
Total	30,275	20,853
Region Total	30,275	20,853

Totals only reflect data for those census tracts/blocks included in the user's study region and will reflect the entire county/state only if all of the census blocks for that county/states were selected at the time of study region creation.

S. San Andreas: CH+CC+BB+NM+SM+NSB+SSB+BG+CO

Total Building Related Economic Loss by Census Tract



Study Region: S. San Andreas: CH+CC+BB+NM
+SM+NSB+SSB+BG+CO

Scenario: ssanandreaschccbbnms_m8p17_se

Economic Loss (in thousands of USD \$)

