
Hazus: Earthquake Global Risk Report

Region Name: SSanAndreasCHtoBG

Earthquake Scenario: ssanandreaschccbbnms_m8p1_se

Print Date: June 17, 2024

Disclaimer:

Totals only reflect data for those census tracts/blocks included in the user's study region.

The estimates of social and economic impacts contained in this report were produced using Hazus loss estimation methodology software which is based on current scientific and engineering knowledge. There are uncertainties inherent in any loss estimation technique. Therefore, there may be significant differences between the modeled results contained in this report and the actual social and economic losses following a specific earthquake. These results can be improved by using enhanced inventory, geotechnical, and observed ground motion data.

Table of Contents

Section	Page #
General Description of the Region	3
Building and Lifeline Inventory	4
Building Inventory	
Critical Facility Inventory	
Transportation and Utility Lifeline Inventory	
Earthquake Scenario Parameters	7
Direct Earthquake Damage	8
Buildings Damage	
Essential Facilities Damage	
Transportation and Utility Lifeline Damage	
Induced Earthquake Damage	14
Fire Following Earthquake	
Debris Generation	
Social Impact	15
Shelter Requirements	
Casualties	
Economic Loss	17
Building Related Losses	
Transportation and Utility Lifeline Losses	
Appendix A: County Listing for the Region	
Appendix B: Regional Population and Building Value Data	

General Description of the Region

Hazus-MH is a regional earthquake loss estimation model that was developed by the Federal Emergency Management Agency (FEMA) and the National Institute of Building Sciences. The primary purpose of Hazus is to provide a methodology and software application to develop multi-hazard losses at a regional scale. These loss estimates would be used primarily by local, state and regional officials to plan and stimulate efforts to reduce risks from multi-hazards and to prepare for emergency response and recovery.

The earthquake loss estimates provided in this report was based on a region that includes 32 county(ies) from the following state(s):

California

Note:

Appendix A contains a complete listing of the counties contained in the region.

The geographical size of the region is 104,904.68 square miles and contains 8,348 census tracts. There are over 12,332 thousand households in the region which has a total population of 36,552,580 people. The distribution of population by Total Region and County is provided in Appendix B.

There are an estimated 10,502 thousand buildings in the region with a total building replacement value (excluding contents) of (millions of dollars). Approximately 90.00 % of the buildings (and % of the building value) are associated with residential housing.

The replacement value of the transportation and utility lifeline systems is estimated to be 480,374 and 305,937 (millions of dollars) , respectively.

Building and Lifeline Inventory

Building Inventory

Hazus estimates that there are 10,502 thousand buildings in the region which have an aggregate total replacement value of (millions of dollars) . Appendix B provides a general distribution of the building value by Total Region and County.

In terms of building construction types found in the region, wood frame construction makes up 87% of the building inventory. The remaining percentage is distributed between the other general building types.

Critical Facility Inventory

Hazus breaks critical facilities into two (2) groups: essential facilities and high potential loss facilities (HPL). Essential facilities include hospitals, medical clinics, schools, fire stations, police stations and emergency operations facilities. High potential loss facilities include dams, levees, military installations, nuclear power plants and hazardous material sites.

For essential facilities, there are 540 hospitals in the region with a total bed capacity of 94,970 beds. There are 12,066 schools, 2,324 fire stations, 813 police stations and 186 emergency operation facilities. With respect to high potential loss facilities (HPL), there are no dams identified within the inventory. The inventory also includes no hazardous material sites, no military installations and no nuclear power plants.

Transportation and Utility Lifeline Inventory

Within Hazus, the lifeline inventory is divided between transportation and utility lifeline systems. There are seven (7) transportation systems that include highways, railways, light rail, bus, ports, ferry and airports. There are six (6) utility systems that include potable water, wastewater, natural gas, crude & refined oil, electric power and communications. The lifeline inventory data are provided in Tables 1 and 2.

The total value of the lifeline inventory is over 786,311.00 (millions of dollars). This inventory includes over 19,376.83 miles of highways, 19,687 bridges, 408,347.00 miles of pipes.

Table 1: Transportation System Lifeline Inventory

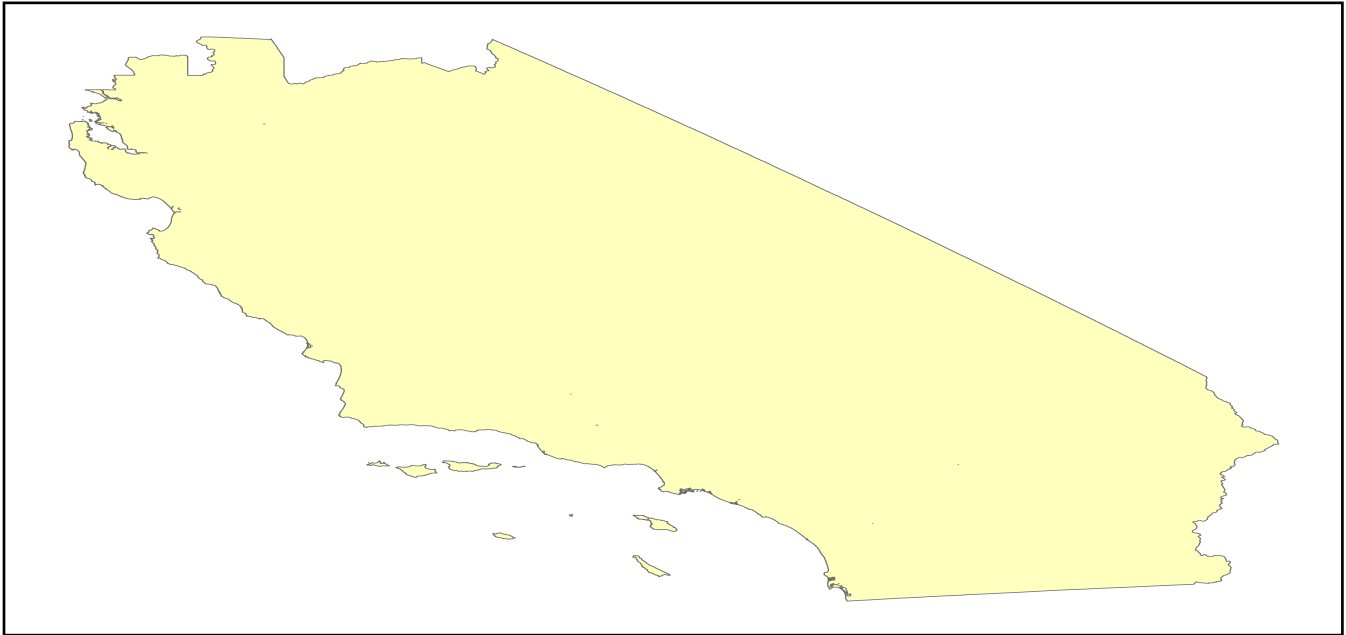
System	Component	# Locations/ # Segments	Replacement value (millions of dollars)
Highway	Bridges	19,687	113455.9024
	Segments	15,711	192299.8175
	Tunnels	101	1427.6587
	Subtotal		307183.3786
Railways	Bridges	3,251	18498.1900
	Facilities	186	495.3180
	Segments	4,554	122795.0861
	Tunnels	3	1.8495
	Subtotal		141790.4436
Light Rail	Bridges	163	28.6279
	Facilities	404	7354.8000
	Segments	23	10802.3803
	Tunnels	0	0.0000
	Subtotal		18185.8082
Bus	Facilities	78	171.9720
	Subtotal		171.9720
Ferry	Facilities	42	55.9020
	Subtotal		55.9020
Port	Facilities	654	2492.9464
	Subtotal		2492.9464
Airport	Facilities	237	7404.6830
	Runways	286	3089.1554
	Subtotal		10493.8384
		Total	480,374.30

Table 2: Utility System Lifeline Inventory

System	Component	# Locations / Segments	Replacement value (millions of dollars)
Potable Water	Distribution Lines	NA	8115.6600
	Facilities	70	2750.5800
	Pipelines	0	0.0000
		Subtotal	10866.2400
Waste Water	Distribution Lines	NA	4869.3960
	Facilities	249	42815.9982
	Pipelines	0	0.0000
		Subtotal	47685.3942
Natural Gas	Distribution Lines	NA	3246.2640
	Facilities	45	1617.5273
	Pipelines	927	27891.8038
		Subtotal	32755.5951
Oil Systems	Facilities	84	9.9120
	Pipelines	0	0.0000
		Subtotal	9.9120
Electrical Power	Facilities	897	214527.9154
		Subtotal	214527.9154
Communication	Facilities	783	92.3940
		Subtotal	92.3940
	Total		305,937.50

Earthquake Scenario

Hazus uses the following set of information to define the earthquake parameters used for the earthquake loss estimate provided in this report.



Scenario Name	ssanandreaschccbbnms_m8p1_se
Type of Earthquake	User-defined
Fault Name	NA
Historical Epicenter ID #	NA
Probabilistic Return Period	NA
Longitude of Epicenter	NA
Latitude of Epicenter	NA
Earthquake Magnitude	8.10
Depth (km)	NA
Rupture Length (Km)	NA
Rupture Orientation (degrees)	NA
Attenuation Function	NA

Direct Earthquake Damage

Building Damage

Hazus estimates that about 240,479 buildings will be at least moderately damaged. This is over 2.00 % of the buildings in the region. There are an estimated 16,424 buildings that will be damaged beyond repair. The definition of the 'damage states' is provided in Volume 1: Chapter 5 of the Hazus technical manual. Table 3 below summarizes the expected damage by general occupancy for the buildings in the region. Table 4 below summarizes the expected damage by general building type.

Damage Categories by General Occupancy Type

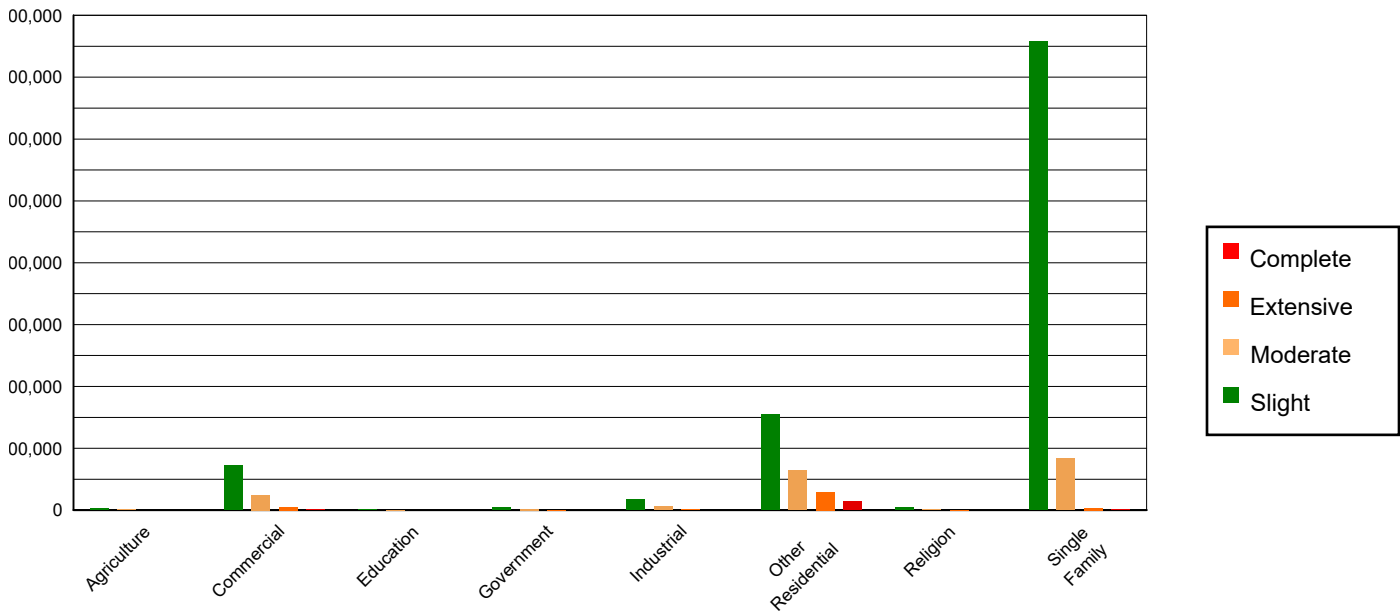


Table 3: Expected Building Damage by Occupancy

	None		Slight		Moderate		Extensive		Complete	
	Count	(%)	Count	(%)	Count	(%)	Count	(%)	Count	(%)
Agriculture	37450.33	0.40	3078.69	0.30	964.67	0.53	205.79	0.51	48.53	0.30
Commercial	597553.77	6.46	72715.03	7.17	24674.41	13.43	5046.50	12.50	1300.29	7.92
Education	19173.86	0.21	986.54	0.10	305.76	0.17	48.74	0.12	6.09	0.04
Government	49103.73	0.53	3667.61	0.36	2016.12	1.10	461.25	1.14	78.29	0.48
Industrial	160228.06	1.73	17582.35	1.73	6228.83	3.39	1243.22	3.08	212.53	1.29
Other Residential	1245860.75	13.47	154909.94	15.28	64217.64	34.96	29596.61	73.28	13749.05	83.71
Religion	32227.48	0.35	3800.12	0.37	1578.46	0.86	396.21	0.98	103.74	0.63
Single Family	7106102.79	76.84	757355.04	74.68	83682.13	45.56	3388.87	8.39	926.17	5.64
Total	9,247,701		1,014,095		183,668		40,387		16,425	

Table 4: Expected Building Damage by Building Type (All Design Levels)

	None		Slight		Moderate		Extensive		Complete	
	Count	(%)	Count	(%)	Count	(%)	Count	(%)	Count	(%)
Wood	8184481.39	88.50	881028.09	86.88	98134.57	53.43	2778.54	6.88	410.39	2.50
Steel	167974.04	1.82	24334.99	2.40	14699.68	8.00	3729.67	9.23	695.24	4.23
Concrete	187465.77	2.03	20151.90	1.99	9170.84	4.99	2069.87	5.13	243.94	1.49
Precast	93945.63	1.02	9075.64	0.89	2860.60	1.56	377.16	0.93	52.96	0.32
RM	410850.25	4.44	28318.35	2.79	11146.71	6.07	3823.00	9.47	667.42	4.06
URM	54566.85	0.59	9631.12	0.95	6504.03	3.54	1601.65	3.97	1417.89	8.63
MH	148416.85	1.60	41555.23	4.10	41151.57	22.41	26007.31	64.39	12936.84	78.76
Total	9,247,701		1,014,095		183,668		40,387		16,425	

*Note:

- RM Reinforced Masonry
- URM Unreinforced Masonry
- MH Manufactured Housing

Essential Facility Damage

Before the earthquake, the region had 94,970 hospital beds available for use. On the day of the earthquake, the model estimates that only 83,229 hospital beds (88.00%) are available for use by patients already in the hospital and those injured by the earthquake. After one week, 95.00% of the beds will be back in service. By 30 days, 99.00% will be operational.

Table 5: Expected Damage to Essential Facilities

Classification	Total	# Facilities		
		At Least Moderate Damage > 50%	Complete Damage > 50%	With Functionality > 50% on day 1
Hospitals	540	16	2	494
Schools	12,066	393	38	11,001
EOCs	186	15	1	166
PoliceStations	813	34	4	743
FireStations	2,324	48	5	2,140

Transportation Lifeline Damage

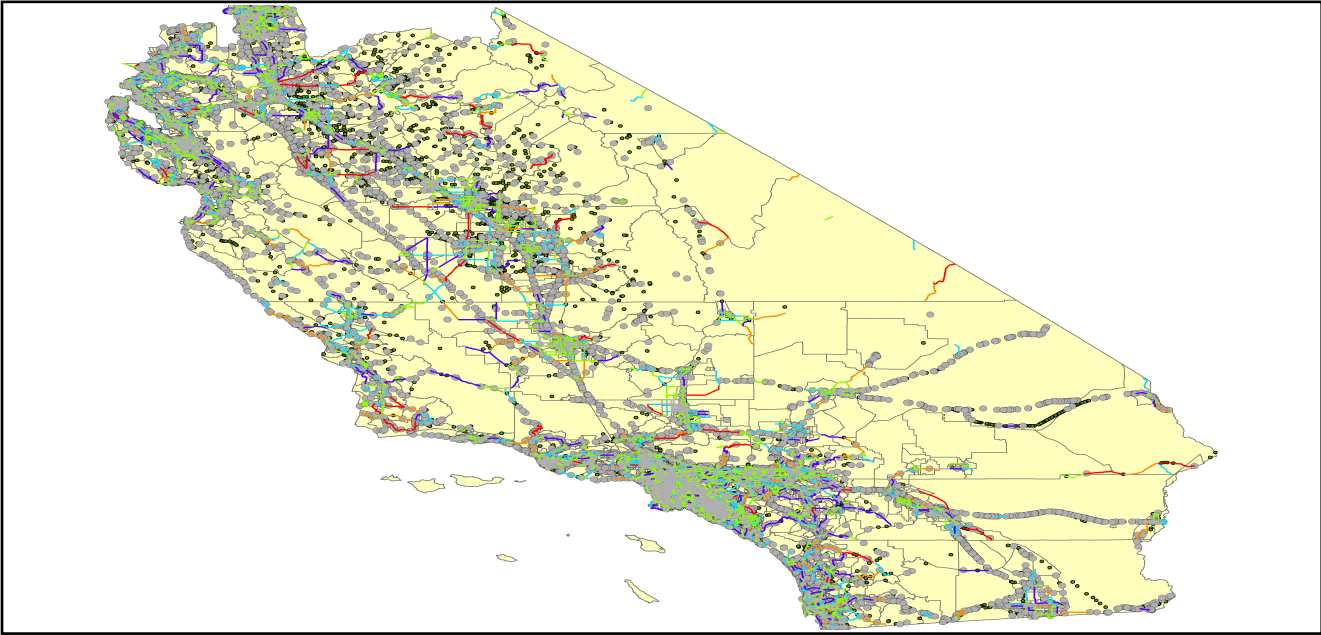


Table 6: Expected Damage to the Transportation Systems

System	Component	Number of Locations_				
		Locations/ Segments	With at Least Mod. Damage	With Complete Damage	With Functionality > 50 %	
					After Day 1	After Day 7
Highway	Segments	15,711	0	0	15,711	15,711
	Bridges	19,687	185	11	19,514	19,638
	Tunnels	101	0	0	101	101
Railways	Segments	4,554	0	0	4,554	4,554
	Bridges	3,251	0	0	3,251	3,251
	Tunnels	3	0	0	3	3
	Facilities	186	2	0	185	186
Light Rail	Segments	23	0	0	23	23
	Bridges	163	0	0	163	163
	Tunnels	0	0	0	0	0
	Facilities	404	0	0	404	404
Bus	Facilities	78	2	0	78	78
Ferry	Facilities	42	0	0	42	42
Port	Facilities	654	0	0	654	654
Airport	Facilities	237	3	0	237	237
	Runways	286	0	0	286	286

Table 6 provides damage estimates for the transportation system.

Note: Roadway segments, railroad tracks and light rail tracks are assumed to be damaged by ground failure only. If ground failure maps are not provided, damage estimates to these components will not be computed.

Tables 7-9 provide information on the damage to the utility lifeline systems. Table 7 provides damage to the utility system facilities. Table 8 provides estimates on the number of leaks and breaks by the pipelines of the utility systems. For electric power and potable water, Hazus performs a simplified system performance analysis. Table 9 provides a summary of the system performance information.

Table 7 : Expected Utility System Facility Damage

System	# of Locations				
	Total #	With at Least Moderate Damage	With Complete Damage	with Functionality > 50 %	
				After Day 1	After Day 7
Potable Water	70	5	0	63	70
Waste Water	249	9	0	219	249
Natural Gas	45	2	0	37	45
Oil Systems	84	0	0	84	84
Electrical Power	897	220	0	724	842
Communication	783	60	0	742	783

Table 8 : Expected Utility System Pipeline Damage (Site Specific)

System	Total Pipelines Length (miles)	Number of Leaks	Number of Breaks
Potable Water	252,142	40607	10152
Waste Water	151,285	20398	5100
Natural Gas	4,921	0	0
Oil	0	0	0

Table 9: Expected Potable Water and Electric Power System Performance

	Total # of Households	Number of Households without Service				
		At Day 1	At Day 3	At Day 7	At Day 30	At Day 90
Potable Water	12,332,600	1,121,263	1,070,989	984,154	529,344	244
Electric Power		467,289	308,673	133,909	14,045	612

Induced Earthquake Damage

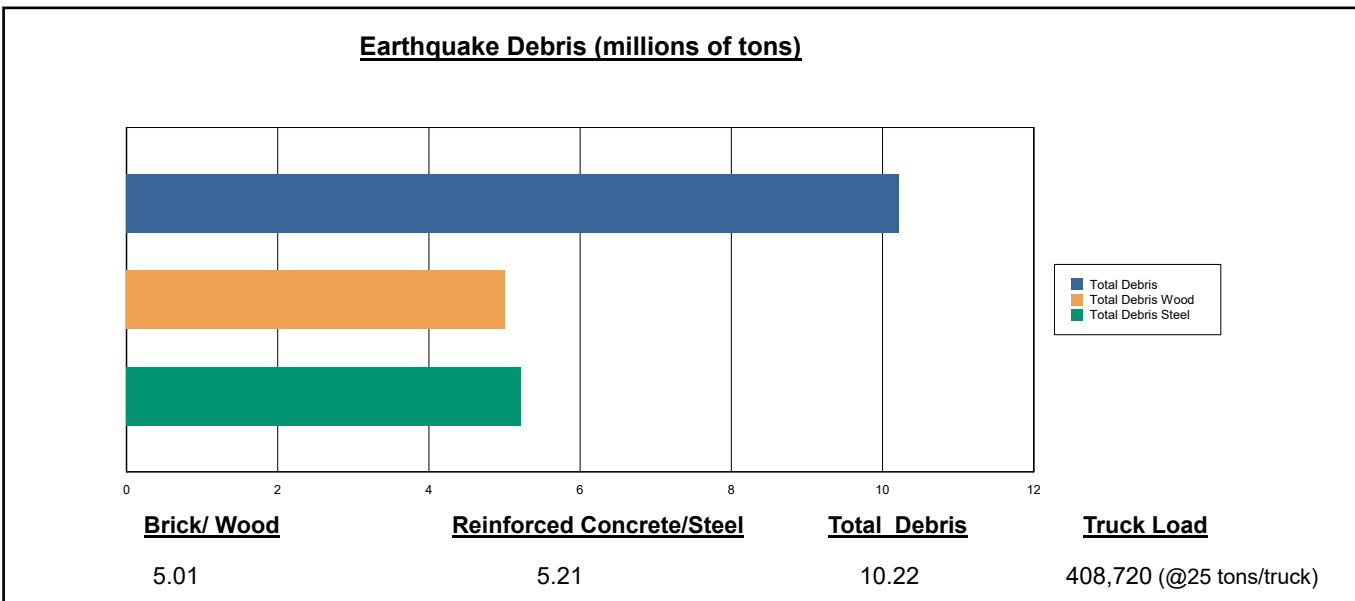
Fire Following Earthquake

Fires often occur after an earthquake. Because of the number of fires and the lack of water to fight the fires, they can often burn out of control. Hazus uses a Monte Carlo simulation model to estimate the number of ignitions and the amount of burnt area. For this scenario, the model estimates that there will be 97 ignitions that will burn about 0.99 sq. mi (0.00 % of the region's total area.) The model also estimates that the fires will displace about 9,988 people and burn about 1,022 (millions of dollars) of building value.

Debris Generation

Hazus estimates the amount of debris that will be generated by the earthquake. The model breaks the debris into two general categories: a) Brick/Wood and b) Reinforced Concrete/Steel. This distinction is made because of the different types of material handling equipment required to handle the debris.

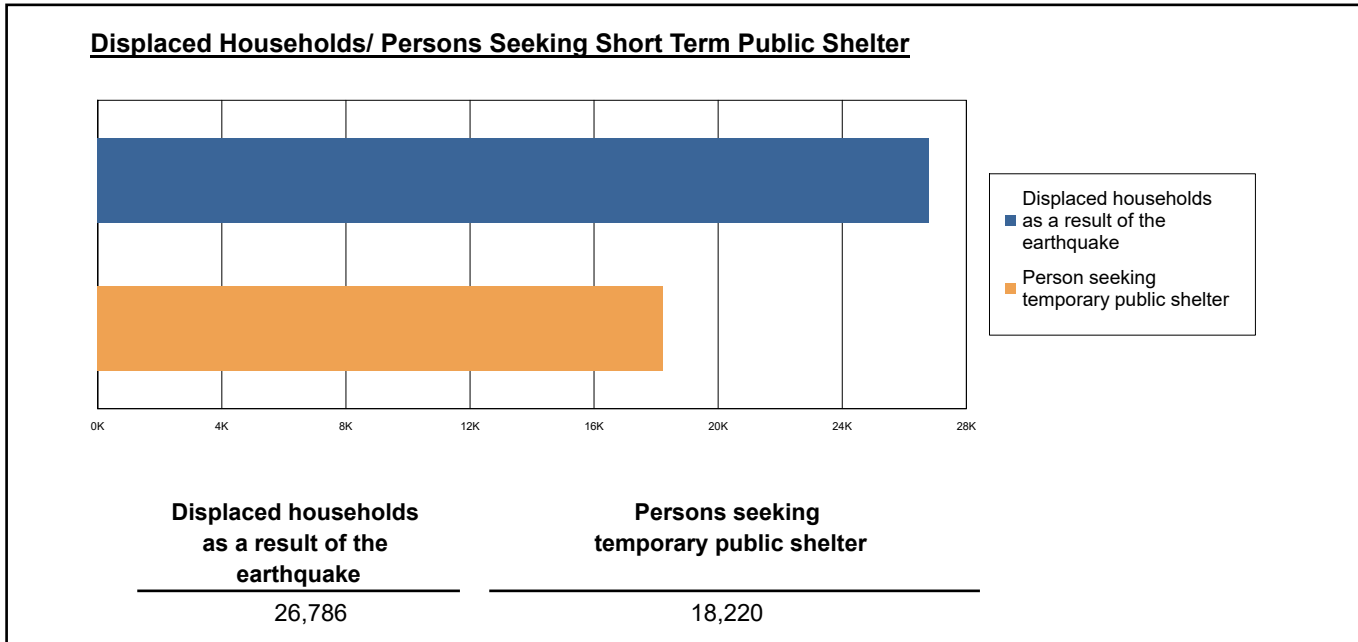
The model estimates that a total of 10,218,000 tons of debris will be generated. Of the total amount, Brick/Wood comprises 49.00% of the total, with the remainder being Reinforced Concrete/Steel. If the debris tonnage is converted to an estimated number of truckloads, it will require 408,720 truckloads (@25 tons/truck) to remove the debris generated by the earthquake.



Social Impact

Shelter Requirement

Hazus estimates the number of households that are expected to be displaced from their homes due to the earthquake and the number of displaced people that will require accommodations in temporary public shelters. The model estimates 26,786 households to be displaced due to the earthquake. Of these, 18,220 people (out of a total population of 36,552,580) will seek temporary shelter in public shelters.



Casualties

Hazus estimates the number of people that will be injured and killed by the earthquake. The casualties are broken down into four (4) severity levels that describe the extent of the injuries. The levels are described as follows;

- Severity Level 1: Injuries will require medical attention but hospitalization is not needed.
- Severity Level 2: Injuries will require hospitalization but are not considered life-threatening
- Severity Level 3: Injuries will require hospitalization and can become life threatening if not promptly treated.
- Severity Level 4: Victims are killed by the earthquake.

The casualty estimates are provided for three (3) times of day: 2:00 AM, 2:00 PM and 5:00 PM. These times represent the periods of the day that different sectors of the community are at their peak occupancy loads. The 2:00 AM estimate considers that the residential occupancy load is maximum, the 2:00 PM estimate considers that the educational, commercial and industrial sector loads are maximum and 5:00 PM represents peak commute time.

Table 10 provides a summary of the casualties estimated for this earthquake

Table 10: Casualty Estimates

		Level 1	Level 2	Level 3	Level 4
2 AM	Commercial	62.19	10.95	1.28	2.50
	Commuting	1.02	1.41	2.31	0.45
	Educational	0.00	0.00	0.00	0.00
	Hotels	2.85	0.35	0.03	0.05
	Industrial	55.95	9.26	0.99	1.93
	Other-Residential	4938.76	892.15	62.61	110.43
	Single Family	2174.95	197.11	19.33	38.08
	Total	7,236	1,111	87	153
2 PM	Commercial	4413.61	802.15	96.69	187.02
	Commuting	9.15	12.65	20.81	4.06
	Educational	1749.47	280.05	29.93	57.49
	Hotels	0.55	0.07	0.01	0.01
	Industrial	410.62	68.35	7.42	14.27
	Other-Residential	1603.76	296.45	21.68	37.63
	Single Family	641.49	63.79	6.73	12.67
	Total	8,829	1,524	183	313
5 PM	Commercial	3184.62	592.89	73.35	139.79
	Commuting	161.31	223.18	367.01	71.56
	Educational	350.96	54.21	5.79	11.09
	Hotels	0.85	0.10	0.01	0.02
	Industrial	256.64	42.72	4.64	8.92
	Other-Residential	1810.22	328.62	24.14	41.98
	Single Family	809.84	78.77	8.23	15.49
	Total	6,574	1,320	483	289

Economic Loss

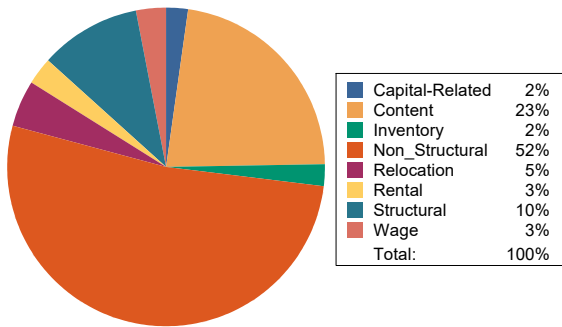
The total economic loss estimated for the earthquake is 108,173.38 (millions of dollars), which includes building and lifeline related losses based on the region's available inventory. The following three sections provide more detailed information about these losses.

Building-Related Losses

The building losses are broken into two categories: direct building losses and business interruption losses. The direct building losses are the estimated costs to repair or replace the damage caused to the building and its contents. The business interruption losses are the losses associated with inability to operate a business because of the damage sustained during the earthquake. Business interruption losses also include the temporary living expenses for those people displaced from their homes because of the earthquake.

The total building-related losses were 76,255.11 (millions of dollars); 13 % of the estimated losses were related to the business interruption of the region. By far, the largest loss was sustained by the residential occupancies which made up over 47 % of the total loss. Table 11 below provides a summary of the losses associated with the building damage.

Earthquake Losses by Loss Type (\$ millions)



Earthquake Losses by Occupancy Type (\$ millions)

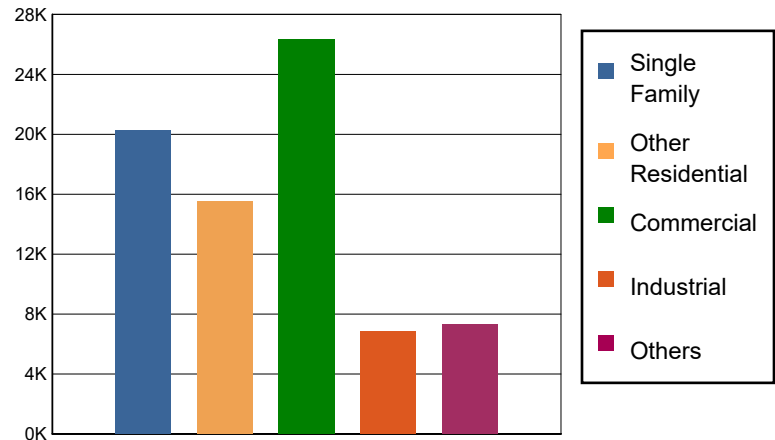


Table 11: Building-Related Economic Loss Estimates
(Millions of dollars)

Category	Area	Single Family	Other Residential	Commercial	Industrial	Others	Total
Income Losses							
	Wage	0.0000	295.0305	1670.1026	72.9085	211.1131	2,249.1547
	Capital-Related	0.0000	125.4599	1506.3098	46.1412	57.3068	1,735.2177
	Rental	202.5170	734.0035	1013.5929	37.1541	104.6949	2,091.9624
	Relocation	616.7701	719.1964	1376.8583	180.4583	730.6458	3,623.9289
	Subtotal	819.2871	1873.6903	5566.8636	336.6621	1103.7606	9700.2637
Capital Stock Losses							
	Structural	2013.4987	1780.5386	2705.1311	652.1785	769.7309	7,921.0778
	Non_Structural	12791.7245	9566.3503	10697.0082	3247.3846	3520.4717	39,822.9393
	Content	4652.3483	2296.2720	6173.8607	2280.1448	1761.0166	17,163.6424
	Inventory	0.0000	0.0000	1167.3843	348.7253	131.0727	1,647.1823
	Subtotal	19457.5715	13643.1609	20743.3843	6528.4332	6182.2919	66554.8418
	Total	20276.86	15516.85	26310.25	6865.10	7286.05	76255.11

Transportation and Utility Lifeline Losses

For the transportation and utility lifeline systems, Hazus computes the direct repair cost for each component only. There are no losses computed by Hazus for business interruption due to lifeline outages. Tables 12 & 13 provide a detailed breakdown in the expected lifeline losses.

Table 12: Transportation System Economic Losses
(Millions of dollars)

System	Component	Inventory Value	Economic Loss	Loss Ratio (%)
Highway	Segments	192299.8175	0.0000	0.00
	Bridges	113455.9024	894.9696	0.79
	Tunnels	1427.6587	1.8078	0.13
	Subtotal	307183.3786	896.7774	
Railways	Segments	122795.0861	0.0000	0.00
	Bridges	18498.1900	83.1420	0.45
	Tunnels	1.8495	0.0000	0.00
	Facilities	495.3180	37.5404	7.58
	Subtotal	141790.4436	120.6824	
Light Rail	Segments	10802.3803	0.0000	0.00
	Bridges	28.6279	0.0057	0.02
	Tunnels	0.0000	0.0000	0.00
	Facilities	7354.8000	245.4140	3.34
	Subtotal	18185.8082	245.4197	
Bus	Facilities	171.9720	12.9242	7.52
	Subtotal	171.9720	12.9242	
Ferry	Facilities	55.9020	1.5212	2.72
	Subtotal	55.9020	1.5212	
Port	Facilities	2492.9464	74.8318	3.00
	Subtotal	2492.9464	74.8318	
Airport	Facilities	7404.6830	432.6131	5.84
	Runways	3089.1554	0.0000	0.00
	Subtotal	10493.8384	432.6131	
Total		480,374.29	1,784.77	

Table 13: Utility System Economic Losses
(Millions of dollars)

System	Component	Inventory Value	Economic Loss	Loss Ratio (%)
Potable Water	Pipelines	0.0000	0.0000	0.00
	Facilities	2750.5800	135.6812	4.93
	Distribution Lines	8115.6600	182.7328	2.25
	Subtotal	10866.2400	318.4140	
Waste Water	Pipelines	0.0000	0.0000	0.00
	Facilities	42815.9982	1011.5529	2.36
	Distribution Lines	4869.3960	91.7914	1.89
	Subtotal	47685.3942	1103.3443	
Natural Gas	Pipelines	27891.8038	0.0000	0.00
	Facilities	1617.5273	108.2772	6.69
	Distribution Lines	3246.2640	31.4470	0.97
	Subtotal	32755.5951	139.7242	
Oil Systems	Pipelines	0.0000	0.0000	0.00
	Facilities	9.9120	0.2720	2.74
	Subtotal	9.9120	0.2720	
Electrical Power	Facilities	214527.9154	28564.5741	13.32
	Subtotal	214527.9154	28564.5741	
Communication	Facilities	92.3940	7.1675	7.76
	Subtotal	92.3940	7.1675	
	Total	305,937.45	30,133.50	

Appendix A: County Listing for the Region

Alameda,CA
Calaveras,CA
Contra Costa,CA
Fresno,CA
Imperial,CA
Inyo,CA
Kern,CA
Kings,CA
Los Angeles,CA
Madera,CA
Mariposa,CA
Merced,CA
Mono,CA
Monterey,CA
Orange,CA
Riverside,CA
Sacramento,CA
San Benito,CA
San Bernardino,CA
San Diego,CA
San Francisco,CA
San Joaquin,CA
San Luis Obispo,CA
San Mateo,CA
Santa Barbara,CA
Santa Clara,CA
Santa Cruz,CA
Solano,CA
Stanislaus,CA



Tulare,CA

Tuolumne,CA

Ventura,CA

Appendix B: Regional Population and Building Value Data

State	County Name	Population	Building Value (millions of dollars)		
			Residential	Non-Residential	Total
California	Alameda	1,682,353	209,951	122,639	332,590
	Calaveras	45,292	8,305	4,893	13,199
	Contra Costa	1,165,927	158,118	60,339	218,458
	Fresno	1,008,654	98,532	61,772	160,304
	Imperial	179,702	20,945	12,603	33,548
	Inyo	19,016	2,951	1,970	4,921
	Kern	909,235	87,567	59,168	146,736
	Kings	152,486	13,719	7,861	21,581
	Los Angeles	10,014,009	950,697	566,995	1,517,692
	Madera	156,255	18,025	9,641	27,667
	Mariposa	17,131	3,299	1,141	4,441
	Merced	281,202	25,194	26,098	51,292
	Mono	13,195	3,293	1,083	4,377
	Monterey	439,035	47,655	28,750	76,405
	Orange	3,186,989	363,381	176,806	540,188
	Riverside	2,418,185	281,482	137,249	418,731
	Sacramento	1,585,055	179,811	83,911	263,723
	San Benito	64,209	9,440	3,799	13,239
	San Bernardino	2,181,654	225,045	152,557	377,602
	San Diego	3,298,634	375,834	193,238	569,072
	San Francisco	873,965	108,848	46,020	154,869
	San Joaquin	779,233	82,706	56,882	139,589
	San Luis Obispo	282,424	41,720	20,896	62,616
	San Mateo	764,442	110,372	44,995	155,368
	Santa Barbara	448,229	49,971	28,481	78,452
	Santa Clara	1,936,259	261,111	120,471	381,582
	Santa Cruz	270,861	36,147	18,805	54,952
	Solano	453,491	55,802	26,393	82,195
	Stanislaus	552,878	62,937	37,511	100,449
	Tulare	473,117	43,262	31,210	74,472
	Tuolumne	55,620	8,964	3,507	12,471
	Ventura	843,843	99,299	52,072	151,371
	Total Region		36,552,580	4,044,383	2,199,756

Building Damage by Count by General Occupancy

June 17, 2024

	# of Buildings					Total
	None	Slight	Moderate	Extensive	Complete	
California						
Alameda						
<i>Government</i>	10,528	0	0	0	0	10,528
<i>Commercial</i>	31,988	1	0	0	0	31,989
<i>Agriculture</i>	422	0	0	0	0	422
<i>Religion</i>	1,986	0	0	0	0	1,986
<i>Single Family</i>	344,173	0	0	0	0	344,173
<i>Education</i>	1,117	0	0	0	0	1,117
<i>Industrial</i>	10,205	0	0	0	0	10,205
<i>Other Residential</i>	61,395	1	0	0	0	61,396
Calaveras						
<i>Education</i>	35	0	0	0	0	35
<i>Government</i>	84	0	0	0	0	84
<i>Other Residential</i>	2,559	0	0	0	0	2,559
<i>Commercial</i>	1,413	0	0	0	0	1,413
<i>Religion</i>	130	0	0	0	0	130
<i>Agriculture</i>	2,207	0	0	0	0	2,207
<i>Industrial</i>	466	0	0	0	0	466
<i>Single Family</i>	22,148	0	0	0	0	22,148
Contra Costa						

	# of Buildings					Total
	None	Slight	Moderate	Extensive	Complete	
<i>Commercial</i>	17,991	0	0	0	0	17,991
<i>Agriculture</i>	749	0	0	0	0	749
<i>Religion</i>	1,226	0	0	0	0	1,226
<i>Single Family</i>	281,935	0	0	0	0	281,935
<i>Government</i>	5,024	0	0	0	0	5,024
<i>Education</i>	653	0	0	0	0	653
<i>Industrial</i>	4,749	0	0	0	0	4,749
<i>Other Residential</i>	29,124	0	0	0	0	29,124
Fresno						
<i>Commercial</i>	20,503	468	78	5	0	21,054
<i>Religion</i>	1,458	42	7	0	0	1,507
<i>Agriculture</i>	3,181	199	38	4	0	3,421
<i>Industrial</i>	5,154	162	30	2	0	5,348
<i>Other Residential</i>	39,747	1,030	186	10	0	40,973
<i>Single Family</i>	224,512	1,904	10	0	0	226,425
<i>Government</i>	282	8	1	0	0	291
<i>Education</i>	598	3	0	0	0	602
Imperial						
<i>Commercial</i>	3,577	66	4	0	0	3,646
<i>Agriculture</i>	134	4	0	0	0	138
<i>Religion</i>	289	5	0	0	0	295
<i>Industrial</i>	564	15	1	0	0	580
<i>Single Family</i>	34,958	446	0	0	0	35,405
<i>Other Residential</i>	6,870	567	81	0	0	7,518
<i>Government</i>	199	3	0	0	0	202

		# of Buildings					
		None	Slight	Moderate	Extensive	Complete	Total
Inyo	<i>Education</i>	99	0	0	0	0	99
	<i>Religion</i>	57	0	0	0	0	57
	<i>Agriculture</i>	32	0	0	0	0	32
	<i>Commercial</i>	721	0	0	0	0	721
	<i>Industrial</i>	257	0	0	0	0	257
	<i>Other Residential</i>	4,049	1	0	0	0	4,050
	<i>Single Family</i>	4,446	0	0	0	0	4,446
Kern	<i>Education</i>	41	0	0	0	0	41
	<i>Government</i>	101	0	0	0	0	101
Kern	<i>Single Family</i>	176,711	26,734	1,665	29	1	205,139
	<i>Education</i>	422	31	9	1	0	462
	<i>Industrial</i>	4,566	1,018	381	71	12	6,047
	<i>Other Residential</i>	40,396	7,499	4,499	1,840	286	54,520
	<i>Government</i>	346	67	25	5	0	443
	<i>Commercial</i>	12,350	2,211	762	190	54	15,567
	<i>Religion</i>	1,147	217	109	36	14	1,524
Kings	<i>Agriculture</i>	3,310	914	335	71	15	4,645
	<i>Commercial</i>	1,989	235	79	13	1	2,318
	<i>Agriculture</i>	257	40	8	1	0	306
	<i>Religion</i>	178	23	7	2	0	210
	<i>Government</i>	65	6	1	0	0	72
	<i>Other Residential</i>	3,601	523	187	30	1	4,342

	# of Buildings					Total
	None	Slight	Moderate	Extensive	Complete	
<i>Industrial</i>	468	66	19	2	0	555
<i>Single Family</i>	33,905	2,300	40	1	0	36,245
<i>Education</i>	99	4	0	0	0	103
Los Angeles						
<i>Single Family</i>	1,526,479	255,120	20,899	593	49	1,803,140
<i>Other Residential</i>	402,712	59,717	14,022	4,235	985	481,671
<i>Industrial</i>	40,677	8,268	3,433	689	60	53,126
<i>Education</i>	4,870	430	158	26	2	5,486
<i>Commercial</i>	143,771	32,974	12,135	1,826	156	190,861
<i>Religion</i>	7,673	1,982	839	143	14	10,651
<i>Government</i>	2,196	557	233	41	3	3,031
<i>Agriculture</i>	1,384	400	191	50	8	2,032
Madera						
<i>Commercial</i>	2,890	14	1	0	0	2,905
<i>Religion</i>	119	0	0	0	0	119
<i>Government</i>	111	0	0	0	0	111
<i>Agriculture</i>	621	10	2	0	0	634
<i>Other Residential</i>	6,591	41	3	0	0	6,635
<i>Industrial</i>	897	6	1	0	0	903
<i>Single Family</i>	38,840	72	0	0	0	38,912
<i>Education</i>	115	0	0	0	0	115
Mariposa						
<i>Single Family</i>	8,084	0	0	0	0	8,084
<i>Education</i>	27	0	0	0	0	27
<i>Industrial</i>	94	0	0	0	0	94

	# of Buildings					Total
	None	Slight	Moderate	Extensive	Complete	
<i>Other Residential</i>	307	0	0	0	0	307
<i>Commercial</i>	689	0	0	0	0	689
<i>Religion</i>	36	0	0	0	0	36
<i>Agriculture</i>	29	0	0	0	0	29
<i>Government</i>	33	0	0	0	0	33
Merced						
<i>Education</i>	163	0	0	0	0	163
<i>Government</i>	171	0	0	0	0	171
<i>Commercial</i>	4,739	14	1	0	0	4,754
<i>Religion</i>	344	1	0	0	0	345
<i>Agriculture</i>	7,585	60	8	0	0	7,653
<i>Single Family</i>	63,534	64	0	0	0	63,598
<i>Industrial</i>	1,019	3	0	0	0	1,022
<i>Other Residential</i>	10,732	51	3	0	0	10,787
Mono						
<i>Government</i>	18	0	0	0	0	18
<i>Education</i>	21	0	0	0	0	21
<i>Commercial</i>	654	0	0	0	0	654
<i>Religion</i>	32	0	0	0	0	32
<i>Agriculture</i>	145	0	0	0	0	145
<i>Other Residential</i>	1,759	0	0	0	0	1,759
<i>Single Family</i>	7,704	0	0	0	0	7,704
<i>Industrial</i>	108	0	0	0	0	108
Monterey						
<i>Single Family</i>	90,691	185	1	0	0	90,876

	# of Buildings					Total
	None	Slight	Moderate	Extensive	Complete	
<i>Industrial</i>	1,829	18	3	0	0	1,850
<i>Education</i>	239	0	0	0	0	239
<i>Other Residential</i>	19,422	297	87	3	0	19,809
<i>Commercial</i>	9,178	55	11	1	0	9,246
<i>Religion</i>	574	5	1	0	0	580
<i>Agriculture</i>	1,645	123	41	6	0	1,815
<i>Government</i>	184	1	0	0	0	185
Orange						
<i>Other Residential</i>	69,529	12,371	3,636	176	6	85,718
<i>Single Family</i>	656,302	49,224	679	7	0	706,212
<i>Industrial</i>	15,915	2,289	525	62	4	18,795
<i>Education</i>	1,807	67	13	3	0	1,890
<i>Commercial</i>	58,944	7,315	1,768	297	16	68,340
<i>Agriculture</i>	963	128	35	8	1	1,135
<i>Government</i>	541	85	22	2	0	650
<i>Religion</i>	1,735	240	68	13	1	2,057
Riverside						
<i>Agriculture</i>	1,303	323	74	11	2	1,713
<i>Religion</i>	800	356	128	29	6	1,319
<i>Commercial</i>	28,521	12,732	4,068	847	189	46,357
<i>Single Family</i>	402,830	179,854	21,567	984	219	605,455
<i>Industrial</i>	4,406	1,509	412	69	12	6,409
<i>Other Residential</i>	49,725	31,280	20,766	12,872	8,156	122,799
<i>Government</i>	2,870	2,341	1,569	344	52	7,175

	# of Buildings					Total
	None	Slight	Moderate	Extensive	Complete	
<i>Education</i>	787	161	36	5	1	990
Sacramento						
<i>Single Family</i>	386,840	0	0	0	0	386,840
<i>Industrial</i>	6,756	0	0	0	0	6,756
<i>Other Residential</i>	56,413	0	0	0	0	56,413
<i>Education</i>	829	0	0	0	0	829
<i>Commercial</i>	26,295	0	0	0	0	26,295
<i>Religion</i>	1,702	0	0	0	0	1,702
<i>Agriculture</i>	621	0	0	0	0	621
<i>Government</i>	619	0	0	0	0	619
San Benito						
<i>Other Residential</i>	1,371	4	0	0	0	1,375
<i>Government</i>	45	0	0	0	0	45
<i>Single Family</i>	14,720	6	0	0	0	14,726
<i>Industrial</i>	325	1	0	0	0	326
<i>Education</i>	42	0	0	0	0	42
<i>Agriculture</i>	252	1	0	0	0	253
<i>Religion</i>	64	0	0	0	0	64
<i>Commercial</i>	1,076	3	0	0	0	1,080
San Bernardino						
<i>Agriculture</i>	1,058	526	163	47	22	1,815
<i>Commercial</i>	19,415	12,985	4,995	1,769	876	40,041
<i>Religion</i>	1,011	695	376	169	69	2,320
<i>Single Family</i>	273,774	210,863	38,299	1,774	657	525,367
<i>Industrial</i>	5,081	2,851	1,113	308	121	9,474

	# of Buildings					Total
	None	Slight	Moderate	Extensive	Complete	
<i>Other Residential</i>	39,035	29,122	16,791	9,672	4,200	98,821
<i>Government</i>	648	357	142	67	23	1,238
<i>Education</i>	635	249	84	14	3	985
San Diego						
<i>Single Family</i>	761,715	1,298	7	0	0	763,020
<i>Industrial</i>	14,268	43	2	0	0	14,313
<i>Other Residential</i>	126,328	1,144	87	0	0	127,559
<i>Education</i>	1,930	2	0	0	0	1,932
<i>Commercial</i>	62,138	221	10	0	0	62,369
<i>Religion</i>	3,050	13	1	0	0	3,063
<i>Agriculture</i>	2,178	11	1	0	0	2,190
<i>Government</i>	20,813	107	4	0	0	20,924
San Francisco						
<i>Other Residential</i>	44,529	0	0	0	0	44,529
<i>Government</i>	289	0	0	0	0	289
<i>Single Family</i>	150,703	0	0	0	0	150,703
<i>Education</i>	572	0	0	0	0	572
<i>Industrial</i>	3,860	0	0	0	0	3,860
<i>Commercial</i>	21,344	0	0	0	0	21,344
<i>Religion</i>	1,345	0	0	0	0	1,345
<i>Agriculture</i>	162	0	0	0	0	162
San Joaquin						
<i>Commercial</i>	12,862	1	0	0	0	12,864
<i>Religion</i>	877	0	0	0	0	877
<i>Agriculture</i>	753	0	0	0	0	753

	# of Buildings					Total
	None	Slight	Moderate	Extensive	Complete	
<i>Government</i>	304	0	0	0	0	304
<i>Single Family</i>	188,890	31	1	0	0	188,922
<i>Education</i>	395	0	0	0	0	395
<i>Industrial</i>	4,927	1	0	0	0	4,928
<i>Other Residential</i>	21,799	6	0	0	0	21,805
San Luis Obispo						
<i>Agriculture</i>	326	68	23	4	0	421
<i>Government</i>	163	18	4	0	0	185
<i>Religion</i>	307	40	12	1	0	360
<i>Commercial</i>	8,090	978	265	38	4	9,375
<i>Other Residential</i>	15,054	2,937	1,492	623	110	20,216
<i>Single Family</i>	77,496	7,860	282	1	0	85,639
<i>Industrial</i>	2,129	325	86	13	3	2,556
<i>Education</i>	172	9	1	0	0	182
San Mateo						
<i>Religion</i>	736	0	0	0	0	736
<i>Commercial</i>	14,392	3	0	0	0	14,395
<i>Government</i>	299	0	0	0	0	299
<i>Agriculture</i>	539	0	0	0	0	539
<i>Single Family</i>	159,931	0	0	0	0	159,931
<i>Other Residential</i>	22,450	3	0	0	0	22,453
<i>Industrial</i>	4,472	0	0	0	0	4,472
<i>Education</i>	489	0	0	0	0	489
Santa Barbara						
<i>Education</i>	290	8	1	0	0	299

	# of Buildings					Total
	None	Slight	Moderate	Extensive	Complete	
<i>Government</i>	221	15	3	0	0	239
<i>Other Residential</i>	19,631	3,482	963	34	1	24,111
<i>Agriculture</i>	408	45	10	1	0	464
<i>Religion</i>	564	47	9	1	0	621
<i>Commercial</i>	8,914	749	144	12	0	9,820
<i>Industrial</i>	2,515	259	60	6	0	2,840
<i>Single Family</i>	93,567	5,349	66	0	0	98,982
Santa Clara						
<i>Single Family</i>	427,217	2	0	0	0	427,219
<i>Government</i>	499	3	0	0	0	502
<i>Other Residential</i>	59,136	23	1	0	0	59,160
<i>Education</i>	1,173	0	0	0	0	1,173
<i>Industrial</i>	9,430	3	0	0	0	9,433
<i>Religion</i>	1,539	1	0	0	0	1,540
<i>Commercial</i>	35,444	23	1	0	0	35,469
<i>Agriculture</i>	895	0	0	0	0	895
Santa Cruz						
<i>Agriculture</i>	839	1	0	0	0	840
<i>Religion</i>	358	0	0	0	0	359
<i>Other Residential</i>	14,880	12	0	0	0	14,892
<i>Industrial</i>	1,817	2	0	0	0	1,819
<i>Single Family</i>	68,869	1	0	0	0	68,870
<i>Education</i>	225	0	0	0	0	225
<i>Commercial</i>	6,688	6	0	0	0	6,694
<i>Government</i>	127	0	0	0	0	127

	# of Buildings					Total
	None	Slight	Moderate	Extensive	Complete	
Solano						
<i>Agriculture</i>	245	0	0	0	0	245
<i>Religion</i>	454	0	0	0	0	454
<i>Commercial</i>	7,268	0	0	0	0	7,268
<i>Government</i>	152	0	0	0	0	152
<i>Other Residential</i>	12,317	0	0	0	0	12,317
<i>Industrial</i>	2,101	0	0	0	0	2,101
<i>Single Family</i>	120,968	0	0	0	0	120,968
<i>Education</i>	225	0	0	0	0	225
Stanislaus						
<i>Other Residential</i>	19,561	8	0	0	0	19,569
<i>Education</i>	307	0	0	0	0	307
<i>Industrial</i>	3,473	2	0	0	0	3,475
<i>Single Family</i>	142,723	1	0	0	0	142,724
<i>Government</i>	680	0	0	0	0	680
<i>Religion</i>	456	0	0	0	0	456
<i>Commercial</i>	10,363	6	0	0	0	10,369
<i>Agriculture</i>	1,238	1	0	0	0	1,239
Tulare						
<i>Religion</i>	807	18	2	0	0	827
<i>Commercial</i>	8,615	224	32	2	0	8,873
<i>Agriculture</i>	3,374	159	21	1	0	3,555
<i>Government</i>	446	14	1	0	0	461
<i>Single Family</i>	110,596	1,434	4	0	0	112,034
<i>Education</i>	267	2	0	0	0	269

	# of Buildings					Total
	None	Slight	Moderate	Extensive	Complete	
<i>Industrial</i>	2,072	65	10	1	0	2,148
<i>Other Residential</i>	19,050	837	132	3	0	20,022
Tuolumne						
<i>Education</i>	57	0	0	0	0	57
<i>Government</i>	143	0	0	0	0	143
<i>Commercial</i>	1,576	0	0	0	0	1,576
<i>Religion</i>	121	0	0	0	0	121
<i>Agriculture</i>	82	0	0	0	0	82
<i>Other Residential</i>	4,962	0	0	0	0	4,962
<i>Industrial</i>	383	0	0	0	0	383
<i>Single Family</i>	21,645	0	0	0	0	21,645
Ventura						
<i>Agriculture</i>	515	67	14	2	0	598
<i>Religion</i>	1,054	113	19	1	0	1,187
<i>Industrial</i>	5,246	677	153	20	1	6,097
<i>Single Family</i>	189,198	14,609	161	0	0	203,968
<i>Other Residential</i>	20,828	3,954	1,281	98	3	26,163
<i>Education</i>	474	20	3	0	0	497
<i>Government</i>	903	85	12	1	0	1,001
<i>Commercial</i>	13,158	1,428	318	47	2	14,953
Total	9,247,701	1,014,095	183,668	40,387	16,425	10,502,276
Region Total	9,247,701	1,014,095	183,668	40,387	16,425	10,502,276

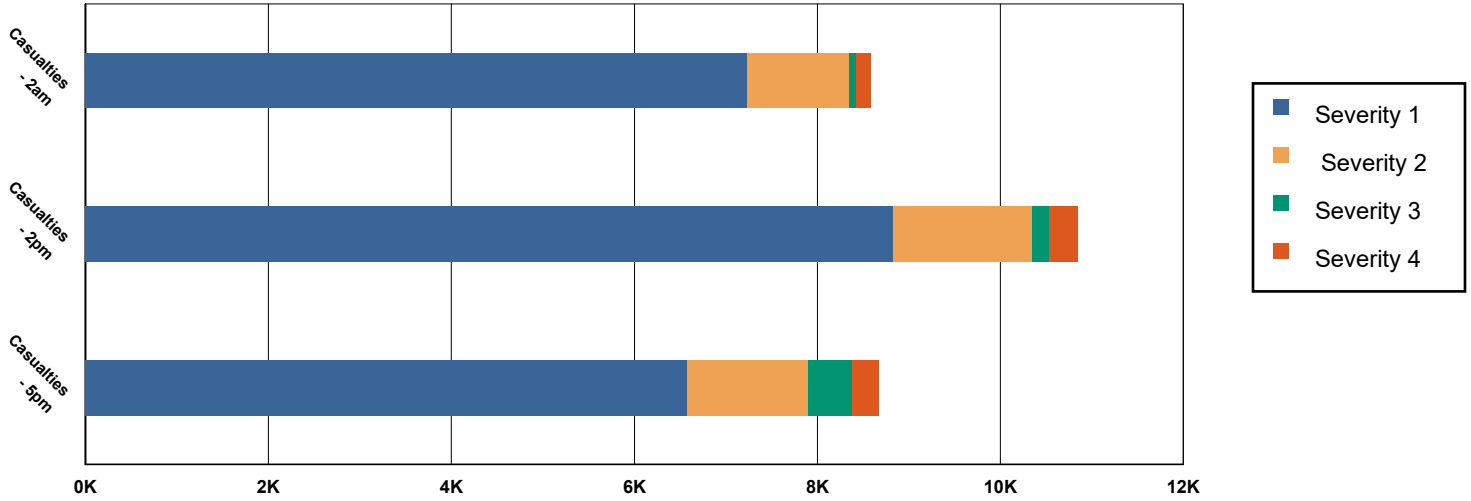
# of Buildings					
None	Slight	Moderate	Extensive	Complete	Total

Totals only reflect data for those census tracts/blocks included in the user's study region and will reflect the entire county/state only if all of the census blocks for that county/states were selected at the time of study region creation.

Casualties Summary Report

June 17, 2024

Region Total Casualties



Injury Severity Level

Severity 1 Severity 2 Severity 3 Severity 4 Total

California

Alameda

Casualties - 2am

	Severity 1	Severity 2	Severity 3	Severity 4	Total
Single Family	0	0	0	0	0
Hotels	0	0	0	0	0
Commuting	0	0	0	0	0
Educational	0	0	0	0	0
Industrial	0	0	0	0	0
Commercial	0	0	0	0	0
Other-Residential	0	0	0	0	0

Total Casualties - 2am

0 0 0 0 0

Casualties - 2pm

	Severity 1	Severity 2	Severity 3	Severity 4	Total
Industrial	0	0	0	0	0
Educational	0	0	0	0	0
Other-Residential	0	0	0	0	0
Single Family	0	0	0	0	0
Hotels	0	0	0	0	0
Commuting	0	0	0	0	0
Commercial	0	0	0	0	0

	Injury Severity Level				Total
	Severity 1	Severity 2	Severity 3	Severity 4	
California					
Alameda					
Total Casualties - 2pm	0	0	0	0	0
Casualties - 5pm					
Commuting	0	0	0	0	0
Single Family	0	0	0	0	0
Commercial	0	0	0	0	0
Hotels	0	0	0	0	0
Educational	0	0	0	0	0
Industrial	0	0	0	0	0
Other-Residential	0	0	0	0	0
Total Casualties - 5pm	0	0	0	0	0
Calaveras					
Casualties - 2am					
Other-Residential	0	0	0	0	0
Commuting	0	0	0	0	0
Commercial	0	0	0	0	0
Single Family	0	0	0	0	0
Hotels	0	0	0	0	0
Educational	0	0	0	0	0
Industrial	0	0	0	0	0
Total Casualties - 2am	0	0	0	0	0
Casualties - 2pm					
Hotels	0	0	0	0	0
Single Family	0	0	0	0	0
Educational	0	0	0	0	0
Commuting	0	0	0	0	0
Commercial	0	0	0	0	0
Industrial	0	0	0	0	0
Other-Residential	0	0	0	0	0
Total Casualties - 2pm	0	0	0	0	0
Casualties - 5pm					
Industrial	0	0	0	0	0
Commercial	0	0	0	0	0
Other-Residential	0	0	0	0	0
Educational	0	0	0	0	0
Hotels	0	0	0	0	0
Commuting	0	0	0	0	0
Single Family	0	0	0	0	0
Total Casualties - 5pm	0	0	0	0	0
Contra Costa					
Casualties - 2am					
Educational	0	0	0	0	0

	Injury Severity Level				Total
	Severity 1	Severity 2	Severity 3	Severity 4	
California					
Contra Costa					
Casualties - 2am					
<i>Hotels</i>	0	0	0	0	0
<i>Industrial</i>	0	0	0	0	0
<i>Other-Residential</i>	0	0	0	0	0
<i>Single Family</i>	0	0	0	0	0
<i>Commercial</i>	0	0	0	0	0
<i>Commuting</i>	0	0	0	0	0
Total Casualties - 2am	0	0	0	0	0
Casualties - 2pm					
<i>Other-Residential</i>	0	0	0	0	0
<i>Industrial</i>	0	0	0	0	0
<i>Hotels</i>	0	0	0	0	0
<i>Single Family</i>	0	0	0	0	0
<i>Educational</i>	0	0	0	0	0
<i>Commuting</i>	0	0	0	0	0
<i>Commercial</i>	0	0	0	0	0
Total Casualties - 2pm	0	0	0	0	0
Casualties - 5pm					
<i>Educational</i>	0	0	0	0	0
<i>Commuting</i>	0	0	0	0	0
<i>Single Family</i>	0	0	0	0	0
<i>Hotels</i>	0	0	0	0	0
<i>Industrial</i>	0	0	0	0	0
<i>Other-Residential</i>	0	0	0	0	0
<i>Commercial</i>	0	0	0	0	0
Total Casualties - 5pm	0	0	0	0	0
Fresno					
Casualties - 2am					
<i>Hotels</i>	0	0	0	0	0
<i>Educational</i>	0	0	0	0	0
<i>Industrial</i>	0	0	0	0	0
<i>Commercial</i>	0	0	0	0	0
<i>Other-Residential</i>	5	0	0	0	6
<i>Single Family</i>	3	0	0	0	3
<i>Commuting</i>	0	0	0	0	0
Total Casualties - 2am	9	0	0	0	9
Casualties - 2pm					
<i>Commercial</i>	11	1	0	0	12
<i>Other-Residential</i>	2	0	0	0	2
<i>Industrial</i>	1	0	0	0	1
<i>Single Family</i>	1	0	0	0	1
<i>Hotels</i>	0	0	0	0	0

	Injury Severity Level				Total
	Severity 1	Severity 2	Severity 3	Severity 4	
California					
Fresno					
Casualties - 2pm					
<i>Commuting</i>	0	0	0	0	0
<i>Educational</i>	2	0	0	0	2
Total Casualties - 2pm	17	1	0	0	18
Casualties - 5pm					
<i>Educational</i>	0	0	0	0	0
<i>Commuting</i>	0	0	0	0	0
<i>Hotels</i>	0	0	0	0	0
<i>Industrial</i>	1	0	0	0	1
<i>Single Family</i>	1	0	0	0	1
<i>Other-Residential</i>	2	0	0	0	2
<i>Commercial</i>	8	1	0	0	8
Total Casualties - 5pm	12	1	0	0	13
Imperial					
Casualties - 2am					
<i>Commercial</i>	0	0	0	0	0
<i>Other-Residential</i>	1	0	0	0	1
<i>Educational</i>	0	0	0	0	0
<i>Single Family</i>	1	0	0	0	1
<i>Commuting</i>	0	0	0	0	0
<i>Hotels</i>	0	0	0	0	0
<i>Industrial</i>	0	0	0	0	0
Total Casualties - 2am	2	0	0	0	2
Casualties - 2pm					
<i>Educational</i>	0	0	0	0	0
<i>Industrial</i>	0	0	0	0	0
<i>Hotels</i>	0	0	0	0	0
<i>Other-Residential</i>	0	0	0	0	0
<i>Single Family</i>	0	0	0	0	0
<i>Commercial</i>	1	0	0	0	1
<i>Commuting</i>	0	0	0	0	0
Total Casualties - 2pm	2	0	0	0	2
Casualties - 5pm					
<i>Single Family</i>	0	0	0	0	0
<i>Other-Residential</i>	0	0	0	0	0
<i>Commercial</i>	1	0	0	0	1
<i>Commuting</i>	0	0	0	0	0
<i>Educational</i>	0	0	0	0	0
<i>Hotels</i>	0	0	0	0	0
<i>Industrial</i>	0	0	0	0	0
Total Casualties - 5pm	1	0	0	0	1

	Injury Severity Level				Total
	Severity 1	Severity 2	Severity 3	Severity 4	
California					
Inyo					
Casualties - 2am					
Single Family	0	0	0	0	0
Commercial	0	0	0	0	0
Commuting	0	0	0	0	0
Educational	0	0	0	0	0
Hotels	0	0	0	0	0
Other-Residential	0	0	0	0	0
Industrial	0	0	0	0	0
Total Casualties - 2am	0	0	0	0	0
Casualties - 2pm					
Industrial	0	0	0	0	0
Hotels	0	0	0	0	0
Commercial	0	0	0	0	0
Other-Residential	0	0	0	0	0
Single Family	0	0	0	0	0
Commuting	0	0	0	0	0
Educational	0	0	0	0	0
Total Casualties - 2pm	0	0	0	0	0
Casualties - 5pm					
Other-Residential	0	0	0	0	0
Single Family	0	0	0	0	0
Commercial	0	0	0	0	0
Educational	0	0	0	0	0
Hotels	0	0	0	0	0
Commuting	0	0	0	0	0
Industrial	0	0	0	0	0
Total Casualties - 5pm	0	0	0	0	0
Kern					
Casualties - 2am					
Commercial	2	0	0	0	3
Commuting	0	0	0	0	0
Educational	0	0	0	0	0
Single Family	47	1	0	0	48
Other-Residential	155	26	2	4	187
Hotels	0	0	0	0	0
Industrial	3	1	0	0	4
Total Casualties - 2am	207	28	2	4	242
Casualties - 2pm					
Educational	28	3	0	0	32
Commuting	0	0	0	0	1
Single Family	14	0	0	0	15
Hotels	0	0	0	0	0

	Injury Severity Level				Total
	Severity 1	Severity 2	Severity 3	Severity 4	
California					
Kern					
Casualties - 2pm					
<i>Other-Residential</i>	53	9	1	1	65
<i>Commercial</i>	178	35	4	9	226
<i>Industrial</i>	21	4	0	1	26
Total Casualties - 2pm	295	52	6	12	365
Casualties - 5pm					
<i>Single Family</i>	17	0	0	0	17
<i>Commercial</i>	128	26	3	7	163
<i>Other-Residential</i>	57	10	1	2	69
<i>Commuting</i>	2	3	4	1	9
<i>Educational</i>	4	0	0	0	4
<i>Hotels</i>	0	0	0	0	0
<i>Industrial</i>	13	2	0	1	17
Total Casualties - 5pm	220	41	9	10	280
Kings					
Casualties - 2am					
<i>Industrial</i>	0	0	0	0	0
<i>Other-Residential</i>	7	1	0	0	8
<i>Educational</i>	0	0	0	0	0
<i>Commuting</i>	0	0	0	0	0
<i>Commercial</i>	0	0	0	0	0
<i>Single Family</i>	4	0	0	0	4
<i>Hotels</i>	0	0	0	0	0
Total Casualties - 2am	11	1	0	0	12
Casualties - 2pm					
<i>Single Family</i>	1	0	0	0	1
<i>Other-Residential</i>	2	0	0	0	3
<i>Commercial</i>	8	1	0	0	9
<i>Educational</i>	2	0	0	0	2
<i>Commuting</i>	0	0	0	0	0
<i>Hotels</i>	0	0	0	0	0
<i>Industrial</i>	1	0	0	0	1
Total Casualties - 2pm	14	1	0	0	16
Casualties - 5pm					
<i>Single Family</i>	1	0	0	0	1
<i>Commercial</i>	7	1	0	0	8
<i>Commuting</i>	0	0	0	0	0
<i>Other-Residential</i>	3	0	0	0	3
<i>Educational</i>	0	0	0	0	0
<i>Hotels</i>	0	0	0	0	0
<i>Industrial</i>	1	0	0	0	1

	Injury Severity Level				Total
	Severity 1	Severity 2	Severity 3	Severity 4	
California					
Kings					
Total Casualties - 5pm	11	1	0	0	13
Los Angeles					
Casualties - 2am					
<i>Hotels</i>	1	0	0	0	2
<i>Industrial</i>	23	3	0	0	26
<i>Educational</i>	0	0	0	0	0
<i>Single Family</i>	595	25	1	1	622
<i>Commuting</i>	0	0	0	0	1
<i>Other-Residential</i>	1,051	118	6	10	1,186
<i>Commercial</i>	21	2	0	0	24
Total Casualties - 2am	1,692	149	7	12	1,860
Casualties - 2pm					
<i>Industrial</i>	165	22	2	3	193
<i>Other-Residential</i>	321	36	2	3	362
<i>Commercial</i>	1,436	173	12	23	1,644
<i>Commuting</i>	1	2	3	1	7
<i>Educational</i>	631	79	6	12	727
<i>Single Family</i>	163	7	0	0	171
<i>Hotels</i>	0	0	0	0	0
Total Casualties - 2pm	2,717	319	25	42	3,104
Casualties - 5pm					
<i>Other-Residential</i>	394	45	2	4	445
<i>Industrial</i>	103	14	1	2	121
<i>Commuting</i>	23	31	53	10	117
<i>Single Family</i>	217	10	0	1	228
<i>Commercial</i>	1,020	128	10	18	1,176
<i>Hotels</i>	0	0	0	0	0
<i>Educational</i>	153	20	2	3	178
Total Casualties - 5pm	1,911	247	68	38	2,264
Madera					
Casualties - 2am					
<i>Hotels</i>	0	0	0	0	0
<i>Educational</i>	0	0	0	0	0
<i>Single Family</i>	0	0	0	0	0
<i>Commuting</i>	0	0	0	0	0
<i>Industrial</i>	0	0	0	0	0
<i>Commercial</i>	0	0	0	0	0
<i>Other-Residential</i>	0	0	0	0	0
Total Casualties - 2am	0	0	0	0	0
Casualties - 2pm					
<i>Industrial</i>	0	0	0	0	0

	Injury Severity Level				Total
	Severity 1	Severity 2	Severity 3	Severity 4	
California					
Madera					
Casualties - 2pm					
Commercial	0	0	0	0	0
Other-Residential	0	0	0	0	0
Commuting	0	0	0	0	0
Single Family	0	0	0	0	0
Hotels	0	0	0	0	0
Educational	0	0	0	0	0
Total Casualties - 2pm	0	0	0	0	1
Casualties - 5pm					
Industrial	0	0	0	0	0
Commercial	0	0	0	0	0
Single Family	0	0	0	0	0
Educational	0	0	0	0	0
Other-Residential	0	0	0	0	0
Commuting	0	0	0	0	0
Hotels	0	0	0	0	0
Total Casualties - 5pm	0	0	0	0	0
Mariposa					
Casualties - 2am					
Commuting	0	0	0	0	0
Single Family	0	0	0	0	0
Commercial	0	0	0	0	0
Hotels	0	0	0	0	0
Educational	0	0	0	0	0
Industrial	0	0	0	0	0
Other-Residential	0	0	0	0	0
Total Casualties - 2am	0	0	0	0	0
Casualties - 2pm					
Hotels	0	0	0	0	0
Industrial	0	0	0	0	0
Commercial	0	0	0	0	0
Other-Residential	0	0	0	0	0
Educational	0	0	0	0	0
Commuting	0	0	0	0	0
Single Family	0	0	0	0	0
Total Casualties - 2pm	0	0	0	0	0
Casualties - 5pm					
Other-Residential	0	0	0	0	0
Educational	0	0	0	0	0
Commuting	0	0	0	0	0
Hotels	0	0	0	0	0
Single Family	0	0	0	0	0

	Injury Severity Level				Total
	Severity 1	Severity 2	Severity 3	Severity 4	
California					
Mariposa					
Casualties - 5pm					
Commercial	0	0	0	0	0
Industrial	0	0	0	0	0
Total Casualties - 5pm	0	0	0	0	0
Merced					
Casualties - 2am					
Hotels	0	0	0	0	0
Industrial	0	0	0	0	0
Commercial	0	0	0	0	0
Single Family	0	0	0	0	0
Other-Residential	0	0	0	0	0
Educational	0	0	0	0	0
Commuting	0	0	0	0	0
Total Casualties - 2am	0	0	0	0	0
Casualties - 2pm					
Other-Residential	0	0	0	0	0
Industrial	0	0	0	0	0
Commercial	1	0	0	0	1
Commuting	0	0	0	0	0
Hotels	0	0	0	0	0
Educational	0	0	0	0	0
Single Family	0	0	0	0	0
Total Casualties - 2pm	1	0	0	0	1
Casualties - 5pm					
Industrial	0	0	0	0	0
Hotels	0	0	0	0	0
Educational	0	0	0	0	0
Commuting	0	0	0	0	0
Single Family	0	0	0	0	0
Commercial	1	0	0	0	1
Other-Residential	0	0	0	0	0
Total Casualties - 5pm	1	0	0	0	1
Mono					
Casualties - 2am					
Other-Residential	0	0	0	0	0
Industrial	0	0	0	0	0
Commercial	0	0	0	0	0
Single Family	0	0	0	0	0
Educational	0	0	0	0	0
Commuting	0	0	0	0	0
Hotels	0	0	0	0	0

	Injury Severity Level				Total
	Severity 1	Severity 2	Severity 3	Severity 4	
California					
Mono					
Total Casualties - 2am	0	0	0	0	0
Casualties - 2pm					
Commercial	0	0	0	0	0
Commuting	0	0	0	0	0
Other-Residential	0	0	0	0	0
Educational	0	0	0	0	0
Single Family	0	0	0	0	0
Hotels	0	0	0	0	0
Industrial	0	0	0	0	0
Total Casualties - 2pm	0	0	0	0	0
Casualties - 5pm					
Industrial	0	0	0	0	0
Commuting	0	0	0	0	0
Hotels	0	0	0	0	0
Other-Residential	0	0	0	0	0
Educational	0	0	0	0	0
Single Family	0	0	0	0	0
Commercial	0	0	0	0	0
Total Casualties - 5pm	0	0	0	0	0
Monterey					
Casualties - 2am					
Other-Residential	1	0	0	0	1
Commuting	0	0	0	0	0
Commercial	0	0	0	0	0
Single Family	0	0	0	0	0
Hotels	0	0	0	0	0
Educational	0	0	0	0	0
Industrial	0	0	0	0	0
Total Casualties - 2am	1	0	0	0	2
Casualties - 2pm					
Commuting	0	0	0	0	0
Commercial	3	0	0	0	3
Single Family	0	0	0	0	0
Hotels	0	0	0	0	0
Educational	0	0	0	0	0
Industrial	0	0	0	0	0
Other-Residential	0	0	0	0	0
Total Casualties - 2pm	3	0	0	0	4
Casualties - 5pm					
Commercial	2	0	0	0	2
Other-Residential	0	0	0	0	0

	Injury Severity Level				Total
	Severity 1	Severity 2	Severity 3	Severity 4	
California					
Monterey					
Casualties - 5pm					
<i>Industrial</i>	0	0	0	0	0
<i>Hotels</i>	0	0	0	0	0
<i>Educational</i>	0	0	0	0	0
<i>Commuting</i>	0	0	0	0	0
<i>Single Family</i>	0	0	0	0	0
Total Casualties - 5pm	3	0	0	0	3
Orange					
Casualties - 2am					
<i>Hotels</i>	0	0	0	0	0
<i>Commuting</i>	0	0	0	0	0
<i>Educational</i>	0	0	0	0	0
<i>Industrial</i>	5	0	0	0	5
<i>Other-Residential</i>	113	10	0	1	124
<i>Commercial</i>	3	0	0	0	3
<i>Single Family</i>	90	1	0	0	91
Total Casualties - 2am	210	11	1	1	223
Casualties - 2pm					
<i>Industrial</i>	33	3	0	0	37
<i>Other-Residential</i>	31	3	0	0	34
<i>Commuting</i>	0	0	0	0	1
<i>Commercial</i>	179	17	1	2	200
<i>Single Family</i>	24	0	0	0	24
<i>Hotels</i>	0	0	0	0	0
<i>Educational</i>	78	7	0	1	87
Total Casualties - 2pm	346	31	2	4	382
Casualties - 5pm					
<i>Hotels</i>	0	0	0	0	0
<i>Educational</i>	16	1	0	0	17
<i>Commuting</i>	2	3	5	1	10
<i>Single Family</i>	32	0	0	0	32
<i>Commercial</i>	127	13	1	1	141
<i>Other-Residential</i>	41	4	0	0	45
<i>Industrial</i>	21	2	0	0	23
Total Casualties - 5pm	238	22	6	3	270
Riverside					
Casualties - 2am					
<i>Industrial</i>	5	1	0	0	6
<i>Commercial</i>	10	2	0	0	13
<i>Other-Residential</i>	1,715	349	22	37	2,123
<i>Educational</i>	0	0	0	0	0
<i>Commuting</i>	0	0	1	0	1

	Injury Severity Level				Total
	Severity 1	Severity 2	Severity 3	Severity 4	
California					
Riverside					
Casualties - 2am					
Single Family	479	43	4	8	535
Hotels	1	0	0	0	1
Total Casualties - 2am	2,210	396	27	46	2,679
Casualties - 2pm					
Commercial	726	127	15	28	897
Other-Residential	616	128	8	14	767
Educational	177	24	2	4	207
Single Family	157	16	2	3	178
Commuting	2	3	6	1	12
Hotels	0	0	0	0	0
Industrial	36	5	1	1	43
Total Casualties - 2pm	1,715	304	33	52	2,104
Casualties - 5pm					
Industrial	22	3	0	1	27
Other-Residential	616	126	8	14	763
Educational	19	2	0	0	21
Single Family	178	17	2	3	201
Hotels	0	0	0	0	0
Commercial	492	87	10	19	608
Commuting	42	55	94	18	209
Total Casualties - 5pm	1,369	291	115	56	1,830
Sacramento					
Casualties - 2am					
Industrial	0	0	0	0	0
Other-Residential	0	0	0	0	0
Commercial	0	0	0	0	0
Single Family	0	0	0	0	0
Hotels	0	0	0	0	0
Commuting	0	0	0	0	0
Educational	0	0	0	0	0
Total Casualties - 2am	0	0	0	0	0
Casualties - 2pm					
Other-Residential	0	0	0	0	0
Commuting	0	0	0	0	0
Single Family	0	0	0	0	0
Commercial	0	0	0	0	0
Hotels	0	0	0	0	0
Educational	0	0	0	0	0
Industrial	0	0	0	0	0
Total Casualties - 2pm	0	0	0	0	0

	Injury Severity Level				Total
	Severity 1	Severity 2	Severity 3	Severity 4	
California					
Sacramento					
Casualties - 5pm					
<i>Industrial</i>	0	0	0	0	0
<i>Educational</i>	0	0	0	0	0
<i>Hotels</i>	0	0	0	0	0
<i>Commercial</i>	0	0	0	0	0
<i>Commuting</i>	0	0	0	0	0
<i>Other-Residential</i>	0	0	0	0	0
<i>Single Family</i>	0	0	0	0	0
Total Casualties - 5pm	0	0	0	0	0
San Benito					
Casualties - 2am					
<i>Other-Residential</i>	0	0	0	0	0
<i>Commercial</i>	0	0	0	0	0
<i>Commuting</i>	0	0	0	0	0
<i>Hotels</i>	0	0	0	0	0
<i>Educational</i>	0	0	0	0	0
<i>Single Family</i>	0	0	0	0	0
<i>Industrial</i>	0	0	0	0	0
Total Casualties - 2am	0	0	0	0	0
Casualties - 2pm					
<i>Hotels</i>	0	0	0	0	0
<i>Educational</i>	0	0	0	0	0
<i>Industrial</i>	0	0	0	0	0
<i>Other-Residential</i>	0	0	0	0	0
<i>Commercial</i>	0	0	0	0	0
<i>Commuting</i>	0	0	0	0	0
<i>Single Family</i>	0	0	0	0	0
Total Casualties - 2pm	0	0	0	0	0
Casualties - 5pm					
<i>Commuting</i>	0	0	0	0	0
<i>Commercial</i>	0	0	0	0	0
<i>Other-Residential</i>	0	0	0	0	0
<i>Single Family</i>	0	0	0	0	0
<i>Industrial</i>	0	0	0	0	0
<i>Educational</i>	0	0	0	0	0
<i>Hotels</i>	0	0	0	0	0
Total Casualties - 5pm	0	0	0	0	0
San Bernardino					
Casualties - 2am					
<i>Hotels</i>	0	0	0	0	1
<i>Single Family</i>	909	126	14	28	1,078
<i>Commercial</i>	24	6	1	2	32

Injury Severity Level

Severity 1 Severity 2 Severity 3 Severity 4 Total

California

San Bernardino

Casualties - 2am

<i>Commuting</i>	1	1	1	0	3
<i>Educational</i>	0	0	0	0	0
<i>Other-Residential</i>	1,804	379	32	58	2,271
<i>Industrial</i>	19	4	1	1	25
Total Casualties - 2am	2,756	516	49	89	3,410

Casualties - 2pm

<i>Industrial</i>	140	32	4	8	185
<i>Hotels</i>	0	0	0	0	0
<i>Commuting</i>	5	7	12	2	26
<i>Other-Residential</i>	551	117	10	18	697
<i>Educational</i>	808	165	21	41	1,035
<i>Single Family</i>	268	40	5	9	321
<i>Commercial</i>	1,784	441	64	124	2,412
Total Casualties - 2pm	3,556	802	116	203	4,677

Casualties - 5pm

<i>Other-Residential</i>	666	141	12	22	842
<i>Commercial</i>	1,341	333	49	93	1,816
<i>Single Family</i>	346	51	6	12	414
<i>Educational</i>	155	31	4	8	197
<i>Hotels</i>	0	0	0	0	0
<i>Commuting</i>	91	130	208	41	469
<i>Industrial</i>	88	20	3	5	116
Total Casualties - 5pm	2,686	706	282	181	3,854

San Diego

Casualties - 2am

<i>Commercial</i>	0	0	0	0	0
<i>Other-Residential</i>	3	0	0	0	3
<i>Commuting</i>	0	0	0	0	0
<i>Educational</i>	0	0	0	0	0
<i>Single Family</i>	2	0	0	0	2
<i>Industrial</i>	0	0	0	0	0
<i>Hotels</i>	0	0	0	0	0
Total Casualties - 2am	5	0	0	0	5

Casualties - 2pm

<i>Hotels</i>	0	0	0	0	0
<i>Educational</i>	1	0	0	0	1
<i>Commuting</i>	0	0	0	0	0
<i>Commercial</i>	7	0	0	0	7
<i>Other-Residential</i>	1	0	0	0	1
<i>Single Family</i>	1	0	0	0	1
<i>Industrial</i>	0	0	0	0	0

	Injury Severity Level				Total
	Severity 1	Severity 2	Severity 3	Severity 4	
California					
San Diego					
Total Casualties - 2pm	10	0	0	0	10
Casualties - 5pm					
<i>Other-Residential</i>	1	0	0	0	1
<i>Commercial</i>	4	0	0	0	4
<i>Commuting</i>	0	0	0	0	0
<i>Single Family</i>	1	0	0	0	1
<i>Educational</i>	0	0	0	0	0
<i>Hotels</i>	0	0	0	0	0
<i>Industrial</i>	0	0	0	0	0
Total Casualties - 5pm	6	0	0	0	7
San Francisco					
Casualties - 2am					
<i>Industrial</i>	0	0	0	0	0
<i>Hotels</i>	0	0	0	0	0
<i>Commercial</i>	0	0	0	0	0
<i>Other-Residential</i>	0	0	0	0	0
<i>Commuting</i>	0	0	0	0	0
<i>Educational</i>	0	0	0	0	0
<i>Single Family</i>	0	0	0	0	0
Total Casualties - 2am	0	0	0	0	0
Casualties - 2pm					
<i>Commercial</i>	0	0	0	0	0
<i>Industrial</i>	0	0	0	0	0
<i>Other-Residential</i>	0	0	0	0	0
<i>Single Family</i>	0	0	0	0	0
<i>Hotels</i>	0	0	0	0	0
<i>Commuting</i>	0	0	0	0	0
<i>Educational</i>	0	0	0	0	0
Total Casualties - 2pm	0	0	0	0	0
Casualties - 5pm					
<i>Educational</i>	0	0	0	0	0
<i>Hotels</i>	0	0	0	0	0
<i>Industrial</i>	0	0	0	0	0
<i>Commuting</i>	0	0	0	0	0
<i>Commercial</i>	0	0	0	0	0
<i>Other-Residential</i>	0	0	0	0	0
<i>Single Family</i>	0	0	0	0	0
Total Casualties - 5pm	0	0	0	0	0
San Joaquin					
Casualties - 2am					
<i>Educational</i>	0	0	0	0	0

	Injury Severity Level				Total
	Severity 1	Severity 2	Severity 3	Severity 4	
California					
San Joaquin					
Casualties - 2am					
<i>Commuting</i>	0	0	0	0	0
<i>Hotels</i>	0	0	0	0	0
<i>Commercial</i>	0	0	0	0	0
<i>Single Family</i>	0	0	0	0	0
<i>Industrial</i>	0	0	0	0	0
<i>Other-Residential</i>	0	0	0	0	0
Total Casualties - 2am	0	0	0	0	0
Casualties - 2pm					
<i>Industrial</i>	0	0	0	0	0
<i>Other-Residential</i>	0	0	0	0	0
<i>Educational</i>	0	0	0	0	0
<i>Single Family</i>	0	0	0	0	0
<i>Hotels</i>	0	0	0	0	0
<i>Commuting</i>	0	0	0	0	0
<i>Commercial</i>	0	0	0	0	0
Total Casualties - 2pm	0	0	0	0	0
Casualties - 5pm					
<i>Commuting</i>	0	0	0	0	0
<i>Single Family</i>	0	0	0	0	0
<i>Educational</i>	0	0	0	0	0
<i>Hotels</i>	0	0	0	0	0
<i>Industrial</i>	0	0	0	0	0
<i>Commercial</i>	0	0	0	0	0
<i>Other-Residential</i>	0	0	0	0	0
Total Casualties - 5pm	0	0	0	0	0
San Luis Obispo					
Casualties - 2am					
<i>Commercial</i>	0	0	0	0	0
<i>Other-Residential</i>	38	6	0	0	44
<i>Industrial</i>	1	0	0	0	1
<i>Single Family</i>	10	0	0	0	10
<i>Commuting</i>	0	0	0	0	0
<i>Educational</i>	0	0	0	0	0
<i>Hotels</i>	0	0	0	0	0
Total Casualties - 2am	49	6	0	0	56
Casualties - 2pm					
<i>Single Family</i>	3	0	0	0	3
<i>Educational</i>	3	0	0	0	3
<i>Other-Residential</i>	12	2	0	0	14
<i>Hotels</i>	0	0	0	0	0
<i>Commuting</i>	0	0	0	0	0

Injury Severity Level

Severity 1 Severity 2 Severity 3 Severity 4 Total

California

San Luis Obispo

Casualties - 2pm

<i>Commercial</i>	25	3	0	1	29
<i>Industrial</i>	4	0	0	0	4

Total Casualties - 2pm	47	6	1	1	55
-------------------------------	-----------	----------	----------	----------	-----------

Casualties - 5pm

<i>Industrial</i>	2	0	0	0	3
<i>Other-Residential</i>	14	2	0	0	16
<i>Commuting</i>	1	1	2	0	4
<i>Single Family</i>	4	0	0	0	4
<i>Commercial</i>	17	2	0	0	20
<i>Hotels</i>	0	0	0	0	0
<i>Educational</i>	0	0	0	0	0

Total Casualties - 5pm	37	6	2	1	47
-------------------------------	-----------	----------	----------	----------	-----------

San Mateo

Casualties - 2am

<i>Industrial</i>	0	0	0	0	0
<i>Other-Residential</i>	0	0	0	0	0
<i>Single Family</i>	0	0	0	0	0
<i>Commercial</i>	0	0	0	0	0
<i>Educational</i>	0	0	0	0	0
<i>Commuting</i>	0	0	0	0	0
<i>Hotels</i>	0	0	0	0	0

Total Casualties - 2am	0	0	0	0	0
-------------------------------	----------	----------	----------	----------	----------

Casualties - 2pm

<i>Other-Residential</i>	0	0	0	0	0
<i>Single Family</i>	0	0	0	0	0
<i>Commuting</i>	0	0	0	0	0
<i>Commercial</i>	0	0	0	0	0
<i>Educational</i>	0	0	0	0	0
<i>Hotels</i>	0	0	0	0	0
<i>Industrial</i>	0	0	0	0	0

Total Casualties - 2pm	0	0	0	0	0
-------------------------------	----------	----------	----------	----------	----------

Casualties - 5pm

<i>Commercial</i>	0	0	0	0	0
<i>Industrial</i>	0	0	0	0	0
<i>Other-Residential</i>	0	0	0	0	0
<i>Single Family</i>	0	0	0	0	0
<i>Educational</i>	0	0	0	0	0
<i>Commuting</i>	0	0	0	0	0
<i>Hotels</i>	0	0	0	0	0

Total Casualties - 5pm	0	0	0	0	0
-------------------------------	----------	----------	----------	----------	----------

	Injury Severity Level				Total
	Severity 1	Severity 2	Severity 3	Severity 4	
California					
Santa Barbara					
Casualties - 2am					
<i>Industrial</i>	0	0	0	0	0
<i>Commercial</i>	0	0	0	0	0
<i>Other-Residential</i>	16	1	0	0	18
<i>Commuting</i>	0	0	0	0	0
<i>Educational</i>	0	0	0	0	0
<i>Single Family</i>	8	0	0	0	8
<i>Hotels</i>	0	0	0	0	0
Total Casualties - 2am	25	1	0	0	27
Casualties - 2pm					
<i>Commercial</i>	13	1	0	0	14
<i>Single Family</i>	2	0	0	0	2
<i>Other-Residential</i>	5	0	0	0	5
<i>Commuting</i>	0	0	0	0	0
<i>Educational</i>	5	0	0	0	6
<i>Hotels</i>	0	0	0	0	0
<i>Industrial</i>	2	0	0	0	2
Total Casualties - 2pm	28	2	0	0	30
Casualties - 5pm					
<i>Other-Residential</i>	6	0	0	0	6
<i>Single Family</i>	3	0	0	0	3
<i>Commercial</i>	9	1	0	0	10
<i>Commuting</i>	0	0	0	0	0
<i>Educational</i>	1	0	0	0	2
<i>Industrial</i>	1	0	0	0	1
<i>Hotels</i>	0	0	0	0	0
Total Casualties - 5pm	21	1	0	0	23
Santa Clara					
Casualties - 2am					
<i>Commuting</i>	0	0	0	0	0
<i>Educational</i>	0	0	0	0	0
<i>Single Family</i>	0	0	0	0	0
<i>Hotels</i>	0	0	0	0	0
<i>Industrial</i>	0	0	0	0	0
<i>Commercial</i>	0	0	0	0	0
<i>Other-Residential</i>	0	0	0	0	0
Total Casualties - 2am	0	0	0	0	0
Casualties - 2pm					
<i>Industrial</i>	0	0	0	0	0
<i>Commercial</i>	1	0	0	0	1
<i>Single Family</i>	0	0	0	0	0
<i>Commuting</i>	0	0	0	0	0

	Injury Severity Level				Total
	Severity 1	Severity 2	Severity 3	Severity 4	
California					
Santa Clara					
Casualties - 2pm					
<i>Hotels</i>	0	0	0	0	0
<i>Other-Residential</i>	0	0	0	0	0
<i>Educational</i>	0	0	0	0	0
Total Casualties - 2pm	1	0	0	0	1
Casualties - 5pm					
<i>Industrial</i>	0	0	0	0	0
<i>Hotels</i>	0	0	0	0	0
<i>Other-Residential</i>	0	0	0	0	0
<i>Commercial</i>	0	0	0	0	0
<i>Commuting</i>	0	0	0	0	0
<i>Single Family</i>	0	0	0	0	0
<i>Educational</i>	0	0	0	0	0
Total Casualties - 5pm	0	0	0	0	0
Santa Cruz					
Casualties - 2am					
<i>Hotels</i>	0	0	0	0	0
<i>Educational</i>	0	0	0	0	0
<i>Industrial</i>	0	0	0	0	0
<i>Other-Residential</i>	0	0	0	0	0
<i>Single Family</i>	0	0	0	0	0
<i>Commercial</i>	0	0	0	0	0
<i>Commuting</i>	0	0	0	0	0
Total Casualties - 2am	0	0	0	0	0
Casualties - 2pm					
<i>Industrial</i>	0	0	0	0	0
<i>Other-Residential</i>	0	0	0	0	0
<i>Commercial</i>	0	0	0	0	0
<i>Commuting</i>	0	0	0	0	0
<i>Educational</i>	0	0	0	0	0
<i>Single Family</i>	0	0	0	0	0
<i>Hotels</i>	0	0	0	0	0
Total Casualties - 2pm	0	0	0	0	0
Casualties - 5pm					
<i>Industrial</i>	0	0	0	0	0
<i>Other-Residential</i>	0	0	0	0	0
<i>Commercial</i>	0	0	0	0	0
<i>Commuting</i>	0	0	0	0	0
<i>Single Family</i>	0	0	0	0	0
<i>Hotels</i>	0	0	0	0	0
<i>Educational</i>	0	0	0	0	0

	Injury Severity Level				Total
	Severity 1	Severity 2	Severity 3	Severity 4	
California					
Santa Cruz					
Total Casualties - 5pm	0	0	0	0	0
Solano					
Casualties - 2am					
<i>Industrial</i>	0	0	0	0	0
<i>Other-Residential</i>	0	0	0	0	0
<i>Commercial</i>	0	0	0	0	0
<i>Educational</i>	0	0	0	0	0
<i>Commuting</i>	0	0	0	0	0
<i>Single Family</i>	0	0	0	0	0
<i>Hotels</i>	0	0	0	0	0
Total Casualties - 2am	0	0	0	0	0
Casualties - 2pm					
<i>Single Family</i>	0	0	0	0	0
<i>Other-Residential</i>	0	0	0	0	0
<i>Commercial</i>	0	0	0	0	0
<i>Educational</i>	0	0	0	0	0
<i>Commuting</i>	0	0	0	0	0
<i>Hotels</i>	0	0	0	0	0
<i>Industrial</i>	0	0	0	0	0
Total Casualties - 2pm	0	0	0	0	0
Casualties - 5pm					
<i>Commercial</i>	0	0	0	0	0
<i>Other-Residential</i>	0	0	0	0	0
<i>Single Family</i>	0	0	0	0	0
<i>Educational</i>	0	0	0	0	0
<i>Commuting</i>	0	0	0	0	0
<i>Hotels</i>	0	0	0	0	0
<i>Industrial</i>	0	0	0	0	0
Total Casualties - 5pm	0	0	0	0	0
Stanislaus					
Casualties - 2am					
<i>Hotels</i>	0	0	0	0	0
<i>Industrial</i>	0	0	0	0	0
<i>Commercial</i>	0	0	0	0	0
<i>Single Family</i>	0	0	0	0	0
<i>Other-Residential</i>	0	0	0	0	0
<i>Commuting</i>	0	0	0	0	0
<i>Educational</i>	0	0	0	0	0
Total Casualties - 2am	0	0	0	0	0
Casualties - 2pm					
<i>Industrial</i>	0	0	0	0	0

	Injury Severity Level				Total
	Severity 1	Severity 2	Severity 3	Severity 4	
California					
Stanislaus					
Casualties - 2pm					
<i>Other-Residential</i>	0	0	0	0	0
<i>Commercial</i>	0	0	0	0	0
<i>Commuting</i>	0	0	0	0	0
<i>Educational</i>	0	0	0	0	0
<i>Single Family</i>	0	0	0	0	0
<i>Hotels</i>	0	0	0	0	0
Total Casualties - 2pm	0	0	0	0	0
Casualties - 5pm					
<i>Industrial</i>	0	0	0	0	0
<i>Other-Residential</i>	0	0	0	0	0
<i>Commuting</i>	0	0	0	0	0
<i>Single Family</i>	0	0	0	0	0
<i>Commercial</i>	0	0	0	0	0
<i>Hotels</i>	0	0	0	0	0
<i>Educational</i>	0	0	0	0	0
Total Casualties - 5pm	0	0	0	0	0
Tulare					
Casualties - 2am					
<i>Commercial</i>	0	0	0	0	0
<i>Commuting</i>	0	0	0	0	0
<i>Single Family</i>	2	0	0	0	2
<i>Educational</i>	0	0	0	0	0
<i>Hotels</i>	0	0	0	0	0
<i>Industrial</i>	0	0	0	0	0
<i>Other-Residential</i>	3	0	0	0	3
Total Casualties - 2am	5	0	0	0	5
Casualties - 2pm					
<i>Industrial</i>	0	0	0	0	0
<i>Hotels</i>	0	0	0	0	0
<i>Commercial</i>	5	0	0	0	5
<i>Other-Residential</i>	1	0	0	0	1
<i>Educational</i>	1	0	0	0	1
<i>Commuting</i>	0	0	0	0	0
<i>Single Family</i>	1	0	0	0	1
Total Casualties - 2pm	8	0	0	0	8
Casualties - 5pm					
<i>Other-Residential</i>	1	0	0	0	1
<i>Commercial</i>	3	0	0	0	3
<i>Single Family</i>	1	0	0	0	1
<i>Hotels</i>	0	0	0	0	0
<i>Commuting</i>	0	0	0	0	0

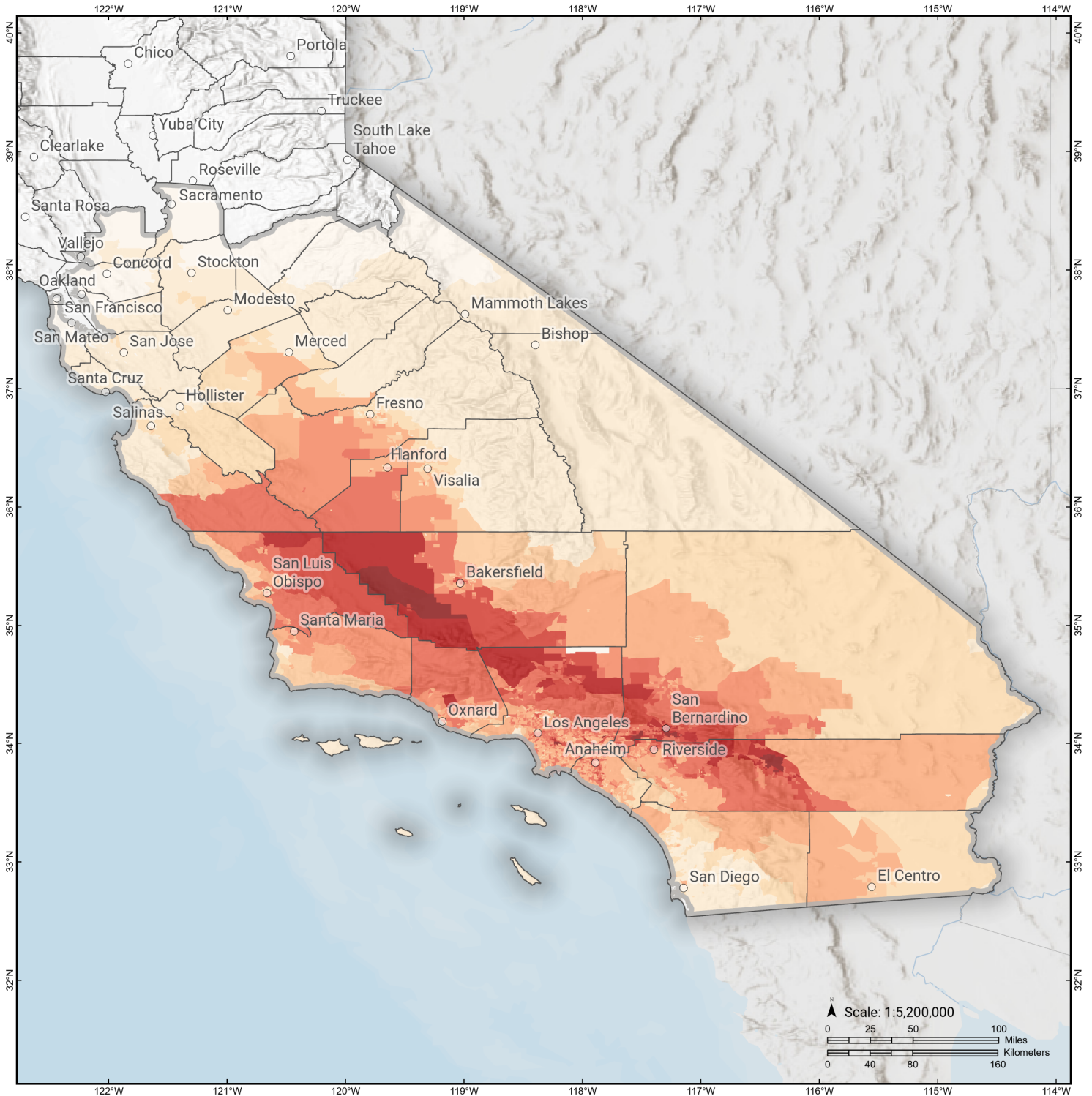
	Injury Severity Level				Total
	Severity 1	Severity 2	Severity 3	Severity 4	
California					
Tulare					
Casualties - 5pm					
<i>Educational</i>	0	0	0	0	0
<i>Industrial</i>	0	0	0	0	0
Total Casualties - 5pm	6	0	0	0	6
Tuolumne					
Casualties - 2am					
<i>Other-Residential</i>	0	0	0	0	0
<i>Industrial</i>	0	0	0	0	0
<i>Commercial</i>	0	0	0	0	0
<i>Commuting</i>	0	0	0	0	0
<i>Single Family</i>	0	0	0	0	0
<i>Educational</i>	0	0	0	0	0
<i>Hotels</i>	0	0	0	0	0
Total Casualties - 2am	0	0	0	0	0
Casualties - 2pm					
<i>Other-Residential</i>	0	0	0	0	0
<i>Commercial</i>	0	0	0	0	0
<i>Single Family</i>	0	0	0	0	0
<i>Educational</i>	0	0	0	0	0
<i>Commuting</i>	0	0	0	0	0
<i>Industrial</i>	0	0	0	0	0
<i>Hotels</i>	0	0	0	0	0
Total Casualties - 2pm	0	0	0	0	0
Casualties - 5pm					
<i>Industrial</i>	0	0	0	0	0
<i>Other-Residential</i>	0	0	0	0	0
<i>Commercial</i>	0	0	0	0	0
<i>Hotels</i>	0	0	0	0	0
<i>Commuting</i>	0	0	0	0	0
<i>Educational</i>	0	0	0	0	0
<i>Single Family</i>	0	0	0	0	0
Total Casualties - 5pm	0	0	0	0	0
Ventura					
Casualties - 2am					
<i>Educational</i>	0	0	0	0	0
<i>Commuting</i>	0	0	0	0	0
<i>Single Family</i>	24	0	0	0	24
<i>Hotels</i>	0	0	0	0	0
<i>Industrial</i>	1	0	0	0	1
<i>Commercial</i>	0	0	0	0	1
<i>Other-Residential</i>	27	2	0	0	29

	Injury Severity Level				Total
	Severity 1	Severity 2	Severity 3	Severity 4	
California					
Ventura					
Total Casualties - 2am	52	2	0	0	55
Casualties - 2pm					
<i>Industrial</i>	6	0	0	0	7
<i>Educational</i>	13	1	0	0	14
<i>Commuting</i>	0	0	0	0	0
<i>Hotels</i>	0	0	0	0	0
<i>Other-Residential</i>	7	1	0	0	8
<i>Commercial</i>	35	3	0	0	39
<i>Single Family</i>	6	0	0	0	6
Total Casualties - 2pm	68	5	0	0	74
Casualties - 5pm					
<i>Commuting</i>	0	0	1	0	2
<i>Other-Residential</i>	10	1	0	0	11
<i>Commercial</i>	26	2	0	0	29
<i>Hotels</i>	0	0	0	0	0
<i>Educational</i>	2	0	0	0	2
<i>Single Family</i>	9	0	0	0	9
<i>Industrial</i>	4	0	0	0	4
Total Casualties - 5pm	50	4	1	0	56
Region Total	NA	NA	NA	NA	NA

Totals only reflect data for those census tracts/blocks included in the user's study region and will reflect the entire county/state only if all of the census blocks for that county/states were selected at the time of study region creation.

S. San Andreas: CH+CC+BB+NM+SM+NSB+SSB+BG

Debris Generated by Census Tract

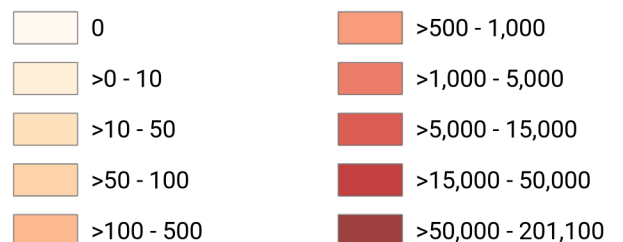


Study Region: S. San Andreas: CH+CC+BB+NM
+SM+NSB+SSB+BG

Scenario: ssanandreaschccbbnms_m8p1_se



Debris Generated (in tons)



Debris Summary Report

June 17, 2024

All values are in thousands of tons.

	Brick, Wood & Others	Concrete & Steel	Total
California			
Alameda	0	0	0
Calaveras	0	0	0
Contra Costa	0	0	0
Fresno	10	12	22
Imperial	2	1	3
Inyo	0	0	0
Kern	164	266	430
Kings	7	10	17
Los Angeles	1,532	1,693	3,224
Madera	0	0	1
Mariposa	0	0	0
Merced	1	0	1
Mono	0	0	0
Monterey	2	3	5
Orange	151	260	411
Riverside	1,372	1,067	2,439
Sacramento	0	0	0
San Benito	0	0	0
San Bernardino	1,644	1,769	3,414

	Brick, Wood & Others	Concrete & Steel	Total
San Diego	5	2	7
San Francisco	0	0	0
San Joaquin	0	0	0
San Luis Obispo	47	45	92
San Mateo	0	0	0
Santa Barbara	18	21	40
Santa Clara	0	0	1
Santa Cruz	0	0	0
Solano	0	0	0
Stanislaus	0	0	0
Tulare	5	5	10
Tuolumne	0	0	0
Ventura	41	62	102
Total	5,002	5,216	10,219
Region Total	5,002	5,216	10,219

Totals only reflect data for those census tracts/blocks included in the user's study region and will reflect the entire county/state only if all of the census blocks for that county/states were selected at the time of study region creation.

Direct Economic Losses For Buildings

June 17, 2024

All values are in thousands of dollars

	Capital Stock Losses				Loss Ratio %	Income Losses				Total Loss
	Cost Structural Damage	Cost Non-struct. Damage	Cost Contents Damage	Inventory Loss		Relocation Loss	Capital Related Loss	Wages Losses	Rental Income Loss	
California										
Inyo	2	66	39	5	0.00	0	1	1	1	116
Contra Costa	1	33	22	2	0.00	0	0	0	0	58
Imperial	3,113	30,177	14,741	2,762	0.10	402	278	307	411	52,190
San Bernardino	2,741,118	13,038,877	5,258,233	604,201	4.18	1,354,137	541,331	774,666	734,389	25,046,952
Riverside	1,670,442	8,635,161	3,327,174	180,074	2.46	741,320	290,473	347,612	413,169	15,605,425
Alameda	18	1,049	710	80	0.00	2	4	6	5	1,873
San Joaquin	122	1,666	1,135	168	0.00	26	8	19	22	3,167
Tuolumne	0	0	0	0	0.00	0	0	0	0	1
Tulare	10,621	91,201	52,006	12,266	0.14	2,163	1,976	2,284	1,687	174,204

	Capital Stock Losses				Loss Ratio %	Income Losses				Total Loss
	Cost Structural Damage	Cost Non-struct. Damage	Cost Contents Damage	Inventory Loss		Relocation Loss	Capital Related Loss	Wages Losses	Rental Income Loss	
Madera	789	9,256	5,518	975	0.04	100	56	63	96	16,851
Fresno	21,002	167,166	98,148	17,743	0.12	5,302	4,951	5,115	4,088	323,515
Kings	15,158	94,607	47,624	6,032	0.51	5,422	4,578	5,551	3,321	182,293
San Luis Obispo	62,198	350,321	152,144	14,417	0.66	24,177	18,737	18,722	13,666	654,382
Solano	0	2	1	0	0.00	0	0	0	0	4
San Mateo	110	900	485	45	0.00	10	20	24	82	1,675
San Benito	68	1,002	557	83	0.01	9	14	15	12	1,758
San Francisco	0	0	0	0	0.00	0	0	0	0	0
Stanislaus	128	2,948	1,934	278	0.00	13	16	18	39	5,375
Santa Clara	622	5,880	3,459	360	0.00	116	157	234	313	11,141
Calaveras	0	0	0	0	0.00	0	0	0	0	0
Merced	1,335	7,341	4,554	1,750	0.02	130	56	54	79	15,299
Santa Barbara	35,734	271,495	133,160	15,165	0.39	11,315	6,860	8,943	8,170	490,843
Mono	0	1	0	0	0.00	0	0	0	0	1
Kern	323,112	1,350,628	627,625	114,904	1.14	115,210	64,380	74,627	56,527	2,727,013
Ventura	92,064	597,619	287,042	32,702	0.46	25,779	19,463	22,855	18,465	1,095,990
Santa Cruz	117	1,500	921	156	0.00	21	39	41	32	2,827
Mariposa	0	10	7	0	0.00	0	0	0	0	17

	Capital Stock Losses				Loss Ratio %	Income Losses				Total Loss
	Cost Structural Damage	Cost Non-struct. Damage	Cost Contents Damage	Inventory Loss		Relocation Loss	Capital Related Loss	Wages Losses	Rental Income Loss	
Sacramento	1	21	12	2	0.00	0	0	0	1	38
Monterey	5,802	21,585	12,615	4,312	0.04	1,100	473	460	463	46,811
Orange	359,384	2,241,363	1,115,594	102,921	0.48	116,904	92,153	108,356	90,079	4,226,754
San Diego	7,126	139,325	77,276	6,331	0.03	894	772	1,702	1,646	235,071
Los Angeles	2,570,893	12,761,738	5,940,907	529,448	1.01	1,219,379	688,422	877,479	745,198	25,333,464
Total	7,921,078	39,822,940	17,163,643	1,647,182	0.37	3,623,929	1,735,218	2,249,155	2,091,963	76,255,107
Region Total	7,921,078	39,822,940	17,163,643	1,647,182	0.37	3,623,929	1,735,218	2,249,155	2,091,963	76,255,107

Totals only reflect data for those census tracts/blocks included in the user's study region and will reflect the entire county/state only if all of the census blocks for that county/states were selected at the time of study region creation.

Direct Economic Loss For Transportation

June 17, 2024

All values are in thousands of dollars

	Highway	Railway	Light Rail	Bus Facility	Ports	Ferries	Airport	Total
California								
Alameda								
Segments	0	0	0					0
Bridges	51	0	0					51
Tunnels	0	0	0					0
Facilities		94	0	2	355	4	3,479	3,934
Total	51	94	0	2	355	4	3,479	3,985
Calaveras								
Segments	0	0	0					0
Bridges	0	0	0					0
Tunnels	0	0	0					0
Facilities		0	0	0	0	0	11	11
Total	0	0	0	0	0	0	11	11
Contra Costa								
Segments	0	0	0					0
Bridges	21	0	0					21
Tunnels	0	0	0					0
Facilities		28	18	0	608	40	71	765

	Highway	Railway	Light Rail	Bus Facility	Ports	Ferries	Airport	Total
Total	21	28	18	0	608	40	71	787
Fresno								
Segments	0	0	0					0
Bridges	1,616	57	0					1,673
Tunnels	0	0	0					0
Facilities		1,075	0	89	0	0	5,225	6,388
Total	1,616	1,132	0	89	0	0	5,225	8,062
Imperial								
Segments	0	0	0					0
Bridges	526	474	0					1,000
Tunnels	0	0	0					0
Facilities		328	0	0	0	0	1,965	2,293
Total	526	801	0	0	0	0	1,965	3,293
Inyo								
Segments	0	0	0					0
Bridges	2	0	0					2
Tunnels	0	0	0					0
Facilities		0	0	0	0	0	408	408
Total	2	0	0	0	0	0	408	410
Kern								
Segments	0	0	0					0
Bridges	20,502	1,166	0					21,668
Tunnels	11	0	0					11
Facilities		1,969	0	723	0	0	10,946	13,638

	Highway	Railway	Light Rail	Bus Facility	Ports	Ferries	Airport	Total
Total	20,513	3,135	0	723	0	0	10,946	35,317
Kings								
Segments	0	0	0					0
Bridges	1,014	86	0					1,100
Tunnels	0	0	0					0
Facilities		1,005	0	324	0	0	2,816	4,145
Total	1,014	1,091	0	324	0	0	2,816	5,245
Los Angeles								
Segments	0	0	0					0
Bridges	187,505	16,393	6					203,904
Tunnels	1,383	0	0					1,383
Facilities		12,367	222,300	3,478	52,046	742	222,451	513,384
Total	188,888	28,760	222,306	3,478	52,046	742	222,451	718,671
Madera								
Segments	0	0	0					0
Bridges	102	2	0					105
Tunnels	0	0	0					0
Facilities		109	0	89	0	0	102	300
Total	102	112	0	89	0	0	102	405
Mariposa								
Segments	0	0	0					0
Bridges	0	0	0					0
Tunnels	0	0	0					0
Facilities		0	0	48	0	0	51	99

	Highway	Railway	Light Rail	Bus Facility	Ports	Ferries	Airport	Total
Total	0	0	0	48	0	0	51	99
Merced								
Segments	0	0	0					0
Bridges	148	3	0					150
Tunnels	0	0	0					0
Facilities		51	0	21	0	0	410	483
Total	148	54	0	21	0	0	410	633
Mono								
Segments	0	0	0					0
Bridges	0	0	0					0
Tunnels	0	0	0					0
Facilities		0	0	23	0	0	28	51
Total	0	0	0	23	0	0	28	51
Monterey								
Segments	0	0	0					0
Bridges	1,257	90	0					1,347
Tunnels	0	0	0					0
Facilities		26	0	562	110	0	1,554	2,252
Total	1,257	116	0	562	110	0	1,554	3,598
Orange								
Segments	0	0	0					0
Bridges	23,301	539	0					23,840
Tunnels	22	0	0					22
Facilities		1,797	0	0	4,471	356	33,044	39,668

	Highway	Railway	Light Rail	Bus Facility	Ports	Ferries	Airport	Total
Total	23,323	2,337	0	0	4,471	356	33,044	63,530
Riverside								
Segments	0	0	0					0
Bridges	200,044	26,107	0					226,150
Tunnels	0	0	0					0
Facilities		3,239	0	4,590	0	0	47,344	55,173
Total	200,044	29,345	0	4,590	0	0	47,344	281,323
Sacramento								
Segments	0	0	0					0
Bridges	9	0	0					9
Tunnels	0	0	0					0
Facilities		3	330	5	428	1	26	793
Total	9	3	330	5	428	1	26	802
San Benito								
Segments	0	0	0					0
Bridges	12	0	0					12
Tunnels	0	0	0					0
Facilities		0	0	0	0	0	102	102
Total	12	0	0	0	0	0	102	114
San Bernardino								
Segments	0	0	0					0
Bridges	443,640	37,676	0					481,316
Tunnels	379	0	0					379
Facilities		11,348	0	1,294	0	0	62,640	75,282

	Highway	Railway	Light Rail	Bus Facility	Ports	Ferries	Airport	Total
Total	444,019	49,024	0	1,294	0	0	62,640	556,977
San Diego								
Segments	0	0	0					0
Bridges	438	2	0					440
Tunnels	0	0	0					0
Facilities		548	13,841	21	4,149	38	13,009	31,606
Total	438	550	13,841	21	4,149	38	13,009	32,047
San Francisco								
Segments	0	0	0					0
Bridges	14	0	0					14
Tunnels	0	0	0					0
Facilities		0	3,486	5	224	6	34	3,756
Total	14	0	3,486	5	224	6	34	3,769
San Joaquin								
Segments	0	0	0					0
Bridges	196	0	0					196
Tunnels	0	0	0					0
Facilities		388	0	21	1,578	51	418	2,456
Total	196	388	0	21	1,578	51	418	2,652
San Luis Obispo								
Segments	0	0	0					0
Bridges	7,266	159	0					7,425
Tunnels	0	0	0					0
Facilities		796	0	400	2,301	0	4,107	7,604

	Highway	Railway	Light Rail	Bus Facility	Ports	Ferries	Airport	Total
Total	7,266	955	0	400	2,301	0	4,107	15,029
San Mateo								
Segments	0	0	0					0
Bridges	71	0	0					71
Tunnels	0	0	0					0
Facilities		0	0	0	400	0	8,744	9,143
Total	71	0	0	0	400	0	8,744	9,215
Santa Barbara								
Segments	0	0	0					0
Bridges	1,781	72	0					1,853
Tunnels	0	0	0					0
Facilities		913	0	571	2,326	122	4,336	8,269
Total	1,781	985	0	571	2,326	122	4,336	10,122
Santa Clara								
Segments	0	0	0					0
Bridges	172	0	0					172
Tunnels	0	0	0					0
Facilities		103	5,439	47	184	0	3,593	9,364
Total	172	103	5,439	47	184	0	3,593	9,536
Santa Cruz								
Segments	0	0	0					0
Bridges	18	0	0					18
Tunnels	0	0	0					0
Facilities		0	0	45	37	0	257	339

	Highway	Railway	Light Rail	Bus Facility	Ports	Ferries	Airport	Total
Total	18	0	0	45	37	0	257	357
Solano								
Segments	0	0	0					0
Bridges	13	0	0					13
Tunnels	0	0	0					0
Facilities		9	0	7	400	6	26	447
Total	13	9	0	7	400	6	26	459
Stanislaus								
Segments	0	0	0					0
Bridges	63	0	0					63
Tunnels	0	0	0					0
Facilities		154	0	43	0	0	231	427
Total	63	154	0	43	0	0	231	491
Tulare								
Segments	0	0	0					0
Bridges	763	101	0					864
Tunnels	0	0	0					0
Facilities		0	0	353	0	0	1,087	1,440
Total	763	101	0	353	0	0	1,087	2,304
Tuolumne								
Segments	0	0	0					0
Bridges	0	0	0					0
Tunnels	0	0	0					0
Facilities		0	0	0	0	0	17	17

	Highway	Railway	Light Rail	Bus Facility	Ports	Ferries	Airport	Total
Total	0	0	0	0	0	0	17	17
Ventura								
<i>Segments</i>	0	0	0					0
<i>Bridges</i>	4,427	213	0					4,640
<i>Tunnels</i>	13	0	0					13
<i>Facilities</i>		1,192	0	163	5,214	155	4,082	10,807
Total	4,440	1,406	0	163	5,214	155	4,082	15,460
Total	896,777	120,682	245,420	12,924	74,832	1,521	432,613	1,784,770
Region Total	896,777	120,682	245,420	12,924	74,832	1,521	432,613	1,784,770

Totals only reflect data for those census tracts/blocks included in the user's study region and will reflect the entire county/state only if all of the census blocks for that county/states were selected at the time of study region creation.

Direct Economic Loss For Utilities

June 17, 2024

All values are in thousands of dollars

	Potable Water	Waste Water	Oil Systems	Natural Gas	Electric Power	Communication	Total
California							
Alameda							
<i>Facilities</i>	29	641	0	0	6,094	1	6,765
<i>Pipelines</i>	126	63	0	0			189
Total	155	704	0	0	6,094	1	6,954
Calaveras							
<i>Facilities</i>	1	10	0	0	1,359	0	1,370
<i>Pipelines</i>	55	27	0	0			82
Total	55	38	0	0	1,359	0	1,452
Contra Costa							
<i>Facilities</i>	4	156	0	0	2,724	0	2,884
<i>Pipelines</i>	130	65	0	0			195
Total	133	222	0	0	2,724	0	3,079
Fresno							
<i>Facilities</i>	0	4,696	1	467	389,437	65	394,666

	Potable Water	Waste Water	Oil Systems	Natural Gas	Electric Power	Communication	Total
<i>Pipelines</i>	2,720	1,366	0	0			4,086
Total	2,720	6,062	1	467	389,437	65	398,752
Imperial							
<i>Facilities</i>	1,357	28,646	0	0	634,597	29	664,630
<i>Pipelines</i>	1,065	535	0	0			1,600
Total	2,423	29,181	0	0	634,597	29	666,230
Inyo							
<i>Facilities</i>	0	0	0	0	9,774	0	9,774
<i>Pipelines</i>	131	66	0	0			196
Total	131	66	0	0	9,774	0	9,971
Kern							
<i>Facilities</i>	12,474	46,284	66	44,135	5,976,221	650	6,079,831
<i>Pipelines</i>	24,173	12,143	0	0			36,315
Total	36,647	58,427	66	44,135	5,976,221	650	6,116,147
Kings							
<i>Facilities</i>	0	0	3	8,867	213,171	24	222,066
<i>Pipelines</i>	2,766	1,389	0	0			4,155
Total	2,766	1,389	3	8,867	213,171	24	226,221
Los Angeles							
<i>Facilities</i>	37,019	147,877	172	30,008	9,845,296	1,400	10,061,771
<i>Pipelines</i>	41,633	20,913	0	0			62,546

	Potable Water	Waste Water	Oil Systems	Natural Gas	Electric Power	Communication	Total
Total	78,652	168,790	172	30,008	9,845,296	1,400	10,124,317
Madera							
<i>Facilities</i>	0	0	0	0	14,173	3	14,176
<i>Pipelines</i>	357	179	0	0			536
Total	357	179	0	0	14,173	3	14,712
Mariposa							
<i>Facilities</i>	0	131	0	0	2,808	2	2,940
<i>Pipelines</i>	45	22	0	0			67
Total	45	153	0	0	2,808	2	3,007
Merced							
<i>Facilities</i>	0	615	0	0	21,946	2	22,564
<i>Pipelines</i>	348	175	0	0			522
Total	348	789	0	0	21,946	2	23,086
Mono							
<i>Facilities</i>	0	0	0	0	54	0	54
<i>Pipelines</i>	54	27	0	0			81
Total	54	27	0	0	54	0	135
Monterey							
<i>Facilities</i>	0	1,107	0	0	58,191	28	59,326
<i>Pipelines</i>	1,585	796	0	0			2,381
Total	1,585	1,903	0	0	58,191	28	61,707

	Potable Water	Waste Water	Oil Systems	Natural Gas	Electric Power	Communication	Total
Orange							
<i>Facilities</i>	3,915	31,062	12	2,300	248,886	93	286,268
<i>Pipelines</i>	3,584	1,800	0	0			5,384
Total	7,499	32,862	12	2,300	248,886	93	291,652
Riverside							
<i>Facilities</i>	36,654	249,402	0	5,857	3,208,903	2,404	3,503,220
<i>Pipelines</i>	36,996	18,584	0	0			55,580
Total	73,650	267,986	0	5,857	3,208,903	2,404	3,558,800
Sacramento							
<i>Facilities</i>	0	26	0	0	509	0	535
<i>Pipelines</i>	114	57	0	0			171
Total	114	83	0	0	509	0	705
San Benito							
<i>Facilities</i>	0	246	0	0	0	3	249
<i>Pipelines</i>	168	84	0	0			252
Total	168	330	0	0	0	3	501
San Bernardino							
<i>Facilities</i>	37,080	310,052	0	8,266	5,728,438	1,570	6,085,406
<i>Pipelines</i>	45,031	22,620	0	0			67,651
Total	82,111	332,672	0	8,266	5,728,438	1,570	6,153,057
San Diego							

	Potable Water	Waste Water	Oil Systems	Natural Gas	Electric Power	Communication	Total
<i>Facilities</i>	376	17,211	0	1,590	206,548	33	225,758
<i>Pipelines</i>	1,326	666	0	0			1,992
Total	1,703	17,877	0	1,590	206,548	33	227,750
San Francisco							
<i>Facilities</i>	0	18	0	0	2	0	20
<i>Pipelines</i>	23	12	0	0			35
Total	23	30	0	0	2	0	55
San Joaquin							
<i>Facilities</i>	85	740	0	0	6,275	2	7,103
<i>Pipelines</i>	97	49	0	0			146
Total	183	789	0	0	6,275	2	7,249
San Luis Obispo							
<i>Facilities</i>	348	47,723	6	0	1,442,642	269	1,490,989
<i>Pipelines</i>	13,643	6,853	0	0			20,496
Total	13,991	54,576	6	0	1,442,642	269	1,511,485
San Mateo							
<i>Facilities</i>	0	395	0	0	206	1	601
<i>Pipelines</i>	72	36	0	0			108
Total	72	431	0	0	206	1	708
Santa Barbara							
<i>Facilities</i>	0	53,274	6	4,555	81,387	319	139,541

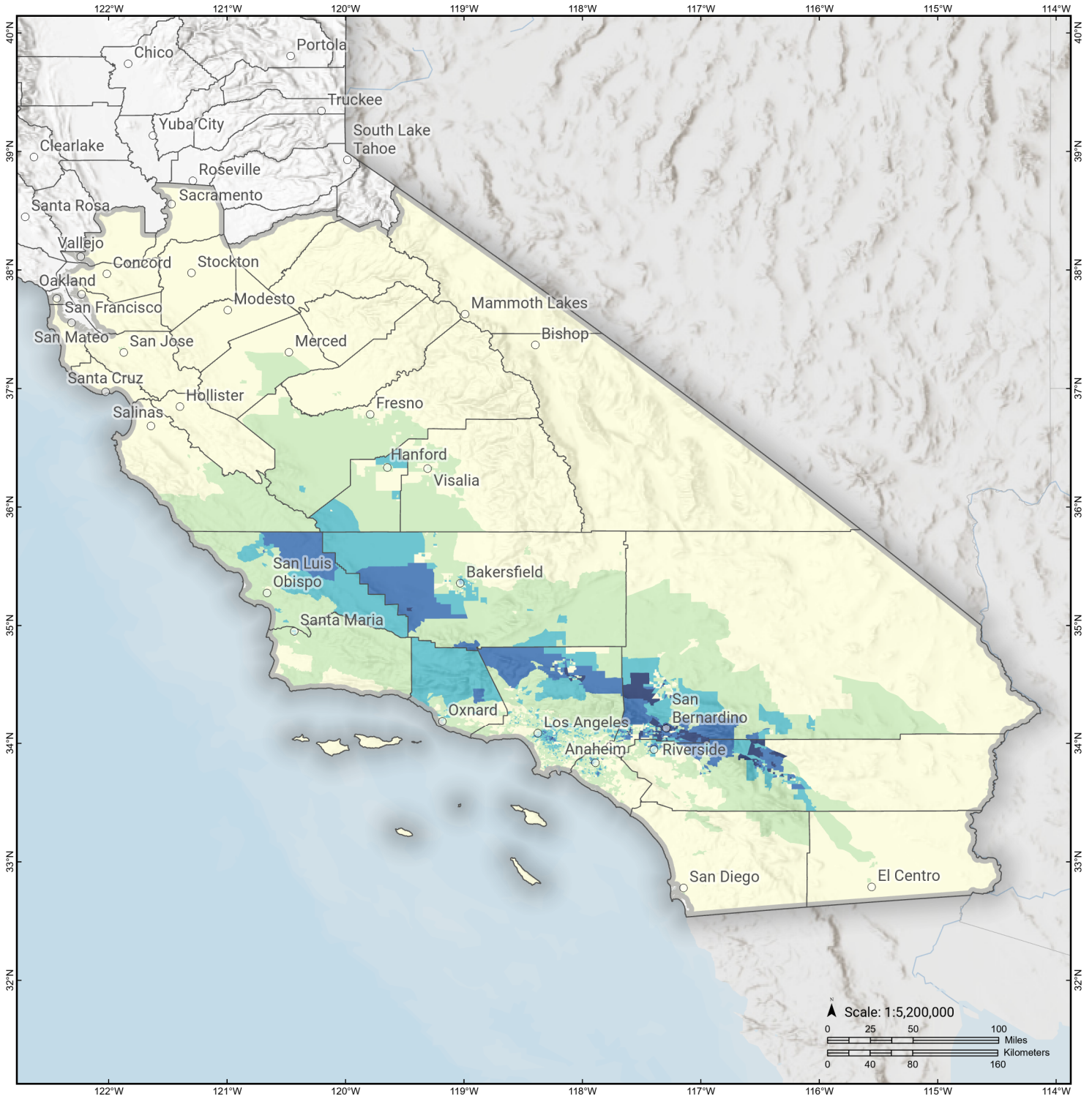
	Potable Water	Waste Water	Oil Systems	Natural Gas	Electric Power	Communication	Total
<i>Pipelines</i>	1,699	853	0	0			2,553
Total	1,699	54,128	6	4,555	81,387	319	142,094
Santa Clara							
<i>Facilities</i>	56	369	0	0	14,198	4	14,627
<i>Pipelines</i>	176	89	0	0			265
Total	233	457	0	0	14,198	4	14,892
Santa Cruz							
<i>Facilities</i>	0	492	0	0	65	1	557
<i>Pipelines</i>	60	30	0	0			90
Total	60	522	0	0	65	1	648
Solano							
<i>Facilities</i>	0	18	0	0	1,255	0	1,273
<i>Pipelines</i>	98	49	0	0			147
Total	98	67	0	0	1,255	0	1,420
Stanislaus							
<i>Facilities</i>	0	492	0	0	8,836	3	9,331
<i>Pipelines</i>	205	103	0	0			308
Total	205	595	0	0	8,836	3	9,639
Tulare							
<i>Facilities</i>	348	4,573	0	0	77,095	39	82,055
<i>Pipelines</i>	1,130	568	0	0			1,698

	Potable Water	Waste Water	Oil Systems	Natural Gas	Electric Power	Communication	Total
Total	1,479	5,141	0	0	77,095	39	83,753
Tuolumne							
<i>Facilities</i>	0	3	0	0	8,717	0	8,720
<i>Pipelines</i>	68	34	0	0			102
Total	68	37	0	0	8,717	0	8,822
Ventura							
<i>Facilities</i>	5,933	65,295	6	2,232	354,768	221	428,456
<i>Pipelines</i>	3,058	1,536	0	0			4,595
Total	8,992	66,832	6	2,232	354,768	221	433,051
Total	318,414	1,103,344	272	108,277	28,564,574	7,168	30,102,049
Region Total	318,414	1,103,344	272	108,277	28,564,574	7,168	30,102,049

Totals only reflect data for those census tracts/blocks included in the user's study region and will reflect the entire county/state only if all of the census blocks for that county/states were selected at the time of study region creation.

S. San Andreas: CH+CC+BB+NM+SM+NSB+SSB+BG

Displaced Households by Census Tract

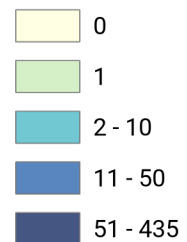


Study Region: S. San Andreas: CH+CC+BB+NM
+SM+NSB+SSB+BG

Scenario: ssanandreaschccbbnms_m8p1_se



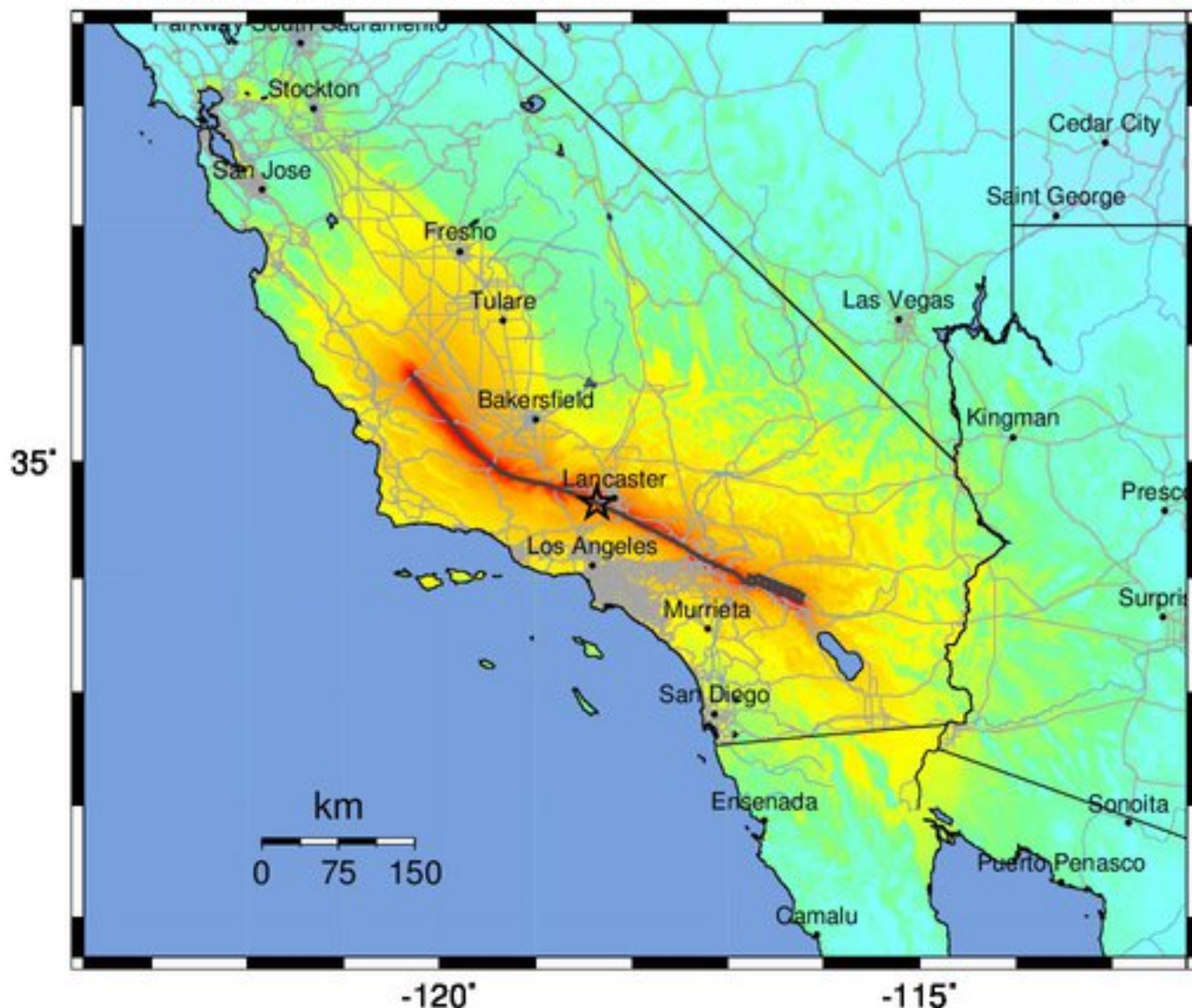
Displaced Households



-- Earthquake Planning Scenario --

Map for S. San Andreas: CH+CC+BB+NM+SM+NSB+SSB+BG - Median ground motions Scenario

Scenario Date: Jun 30, 2017 10:03:39 AM MDT M 8.1 N34.64 W118.36 Depth: 7.9km



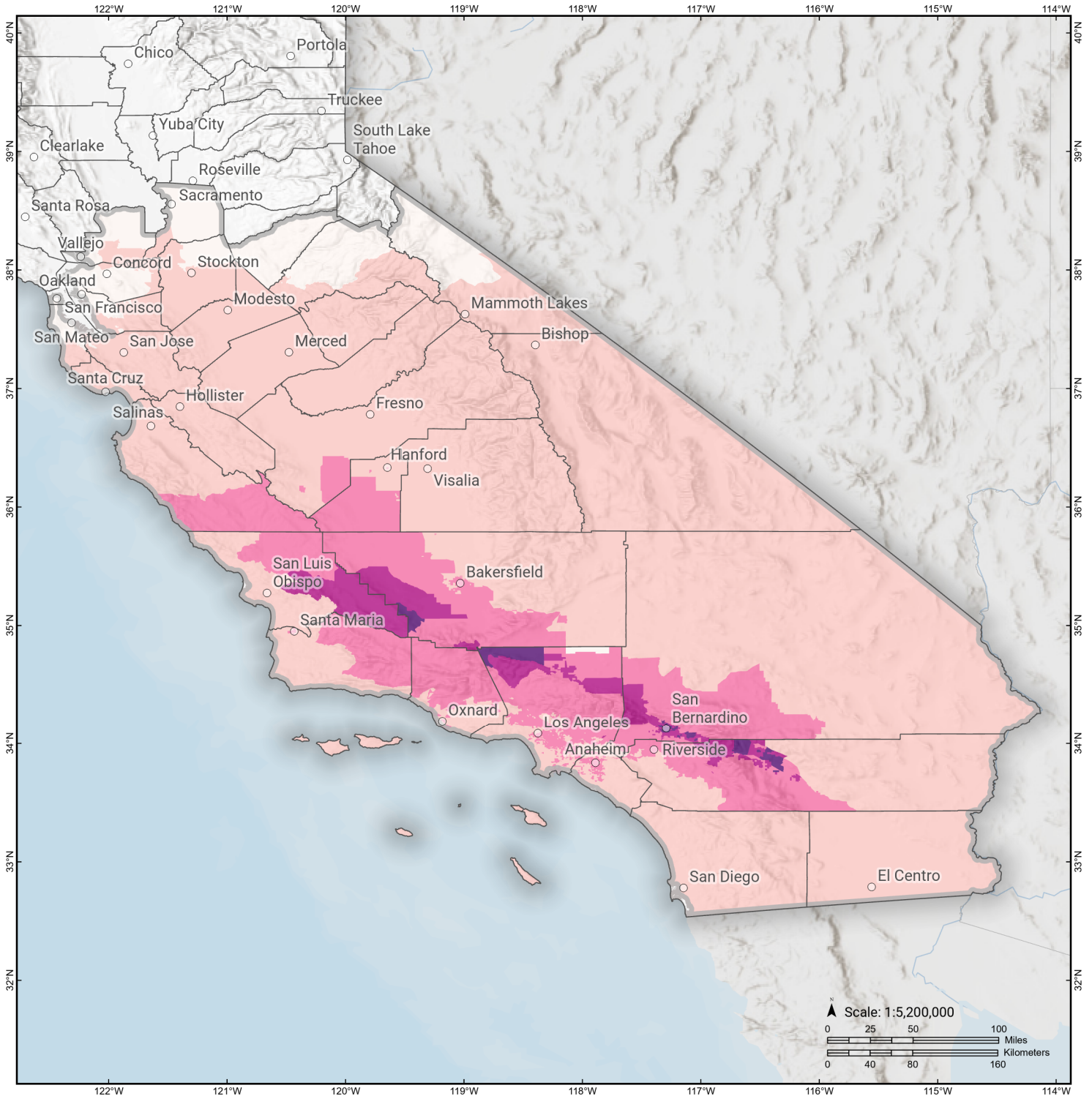
PLANNING SCENARIO ONLY -- Map Version 13 Processed 2017-07-03 12:15:09 PM MDT

PERCEIVED SHAKING	Not felt	Weak	Light	Moderate	Strong	Very strong	Severe	Violent	Extreme
POTENTIAL DAMAGE	none	none	none	Very light	Light	Moderate	Mod./Heavy	Heavy	Very Heavy
PEAK ACC.(%g)	<0.05	0.3	2.8	6.2	12	22	40	75	>139
PEAK VEL.(cm/s)	<0.02	0.1	1.4	4.7	9.6	20	41	86	>178
INSTRUMENTAL INTENSITY	I	II-III	IV	V	VI	VII	VIII	IX	X+

Scale based upon Worden et al. (2012)

S. San Andreas: CH+CC+BB+NM+SM+NSB+SSB+BG

Loss Ratio by Census Tract



Study Region: S. San Andreas: CH+CC+BB+NM
+SM+NSB+SSB+BG

Scenario: ssanandreaschccbbnms_m8p1_se



Loss Ratio (ratio of building related economic loss to exposed value of buildings)



Hazus Quick Assessment Report

Estimated Economic Loss (\$ Billions)

Category	Description	Range
General Building Stock	Building Damage	23.90 - 95.50
	Building Contents	3.00 - 12.10
	Business Interruption	4.90 - 19.40
Infrastructure	Lifelines Damage	
Total		38.10 - 152.50

Preliminary Damage Assessment (PDA) Estimates

Description	Residential	Commercial	Other	Total
Affected	912,300	72,700	27,000	
Minor	147,900	24,700	10,200	182,800
Major	33,000	5,000	2,400	40,400
Destroyed	14,700	1,300	450	16,450
Total		103,700	40,050	

Estimated Casualties : Night Time

Severity Level	Description	# Persons
Level 1	Medical Aid	4,000 - 14,000
Level 2	Hospital Care	600 - 2,000
Level 3	Life-threatening	40 - 170
Level 4	Fatalities	80 - 300

Estimated Shelter Needs

Type	Households	People
Displaced Households	13,000 - 54,000	32,500 - 135,000
Public Shelter	7,290	18,220

Comments :

*Hazus damage estimates are presented using FEMA Preliminary Damage Assessment (PDA) categories. These estimates should be used for planning purposes and may not reflect actual observed damages from the PDA process.

Disclaimer:

The estimates of social and economic impacts contained in this report were produced using HAZUS loss estimation methodology software which is based on current scientific and engineering knowledge. There are uncertainties inherent in any loss estimation technique. Therefore, there may be significant differences between the modeled results contained in this report and the actual social and economic losses following a specific earthquake. These results can be improved by using enhanced inventory, geotechnical, and observed ground motion data.

Earthquake Information

Location :

Origin Time:

Magnitude : 8.10

Epicenter Latitude/Longitude :
/

Depth & Type : /U

Name :
NA

Ground Motion /Attenuation :

Maximum PGA: 1.00

Information Sources:

Comments :

Population and Building Exposure

Population: 36,552,580

Building Exposure : (\$ Millions)

Residential	
Commercial	1,228,563
Other	971,209
Total	

Counties : See Appendix

Major Metro Area :

Hazus Quick Assessment Report

Estimated Economic Loss (\$ Billions)

Category	Description	Range
General Building Stock	Building Damage	23.90 - 95.50
	Building Contents	3.00 - 12.10
	Business Interruption	4.90 - 19.40
Infrastructure	Lifelines Damage	
Total		38.10 - 152.50

Preliminary Damage Assessment (PDA) Estimates

Description	Residential	Commercial	Other	Total
Affected	912,300	72,700	27,000	
Minor	147,900	24,700	10,200	182,800
Major	33,000	5,000	2,400	40,400
Destroyed	14,700	1,300	450	16,450
Total		103,700	40,050	

Estimated Casualties : Day Time

Severity Level	Description	# Persons
Level 1	Medical Aid	4,000 - 18,000
Level 2	Hospital Care	800 - 3,000
Level 3	Life-threatening	90 - 400
Level 4	Fatalities	160 - 600

Estimated Shelter Needs

Type	Households	People
Displaced Households	13,000 - 54,000	32,500 - 135,000
Public Shelter	7,290	18,220

Comments :

*Hazus damage estimates are presented using FEMA Preliminary Damage Assessment (PDA) categories. These estimates should be used for planning purposes and may not reflect actual observed damages from the PDA process.

Disclaimer:

The estimates of social and economic impacts contained in this report were produced using HAZUS loss estimation methodology software which is based on current scientific and engineering knowledge. There are uncertainties inherent in any loss estimation technique. Therefore, there may be significant differences between the modeled results contained in this report and the actual social and economic losses following a specific earthquake. These results can be improved by using enhanced inventory, geotechnical, and observed ground motion data.

Earthquake Information

Location :

Origin Time:

Magnitude : 8.10

Epicenter Latitude/Longitude :
/

Depth & Type : /U

Name :
NA

Ground Motion /Attenuation :

Maximum PGA: 1.00

Information Sources:

Comments :

Population and Building Exposure

Population: 36,552,580

Building Exposure : (\$ Millions)

Residential	
Commercial	1,228,563
Other	971,209
Total	

Counties : See Appendix

Major Metro Area :

Hazus Quick Assessment Report

Estimated Economic Loss (\$ Billions)

Category	Description	Range
General Building Stock	Building Damage	23.90 - 95.50
	Building Contents	3.00 - 12.10
	Business Interruption	4.90 - 19.40
Infrastructure	Lifelines Damage	
Total		38.10 - 152.50

Preliminary Damage Assessment (PDA) Estimates

Description	Residential	Commercial	Other	Total
Affected	912,300	72,700	27,000	
Minor	147,900	24,700	10,200	182,800
Major	33,000	5,000	2,400	40,400
Destroyed	14,700	1,300	450	16,450
Total		103,700	40,050	

Estimated Casualties : Commute Time

Severity Level	Description	# Persons
Level 1	Medical Aid	3,000 - 13,000
Level 2	Hospital Care	700 - 3,000
Level 3	Life-threatening	200 - 1,000
Level 4	Fatalities	140 - 600

Estimated Shelter Needs

Type	Households	People
Displaced Households	13,000 - 54,000	32,500 - 135,000
Public Shelter	7,290	18,220

Comments :

*Hazus damage estimates are presented using FEMA Preliminary Damage Assessment (PDA) categories. These estimates should be used for planning purposes and may not reflect actual observed damages from the PDA process.

Disclaimer:

The estimates of social and economic impacts contained in this report were produced using HAZUS loss estimation methodology software which is based on current scientific and engineering knowledge. There are uncertainties inherent in any loss estimation technique. Therefore, there may be significant differences between the modeled results contained in this report and the actual social and economic losses following a specific earthquake. These results can be improved by using enhanced inventory, geotechnical, and observed ground motion data.

Earthquake Information

Location :

Origin Time:

Magnitude : 8.10

Epicenter Latitude/Longitude :
/

Depth & Type : /U

Name :
NA

Ground Motion /Attenuation :

Maximum PGA: 1.00

Information Sources:

Comments :

Population and Building Exposure

Population: 36,552,580

Building Exposure : (\$ Millions)

Residential	
Commercial	1,228,563
Other	971,209
Total	

Counties : See Appendix

Major Metro Area :

Shelter Summary Report

June 17, 2024

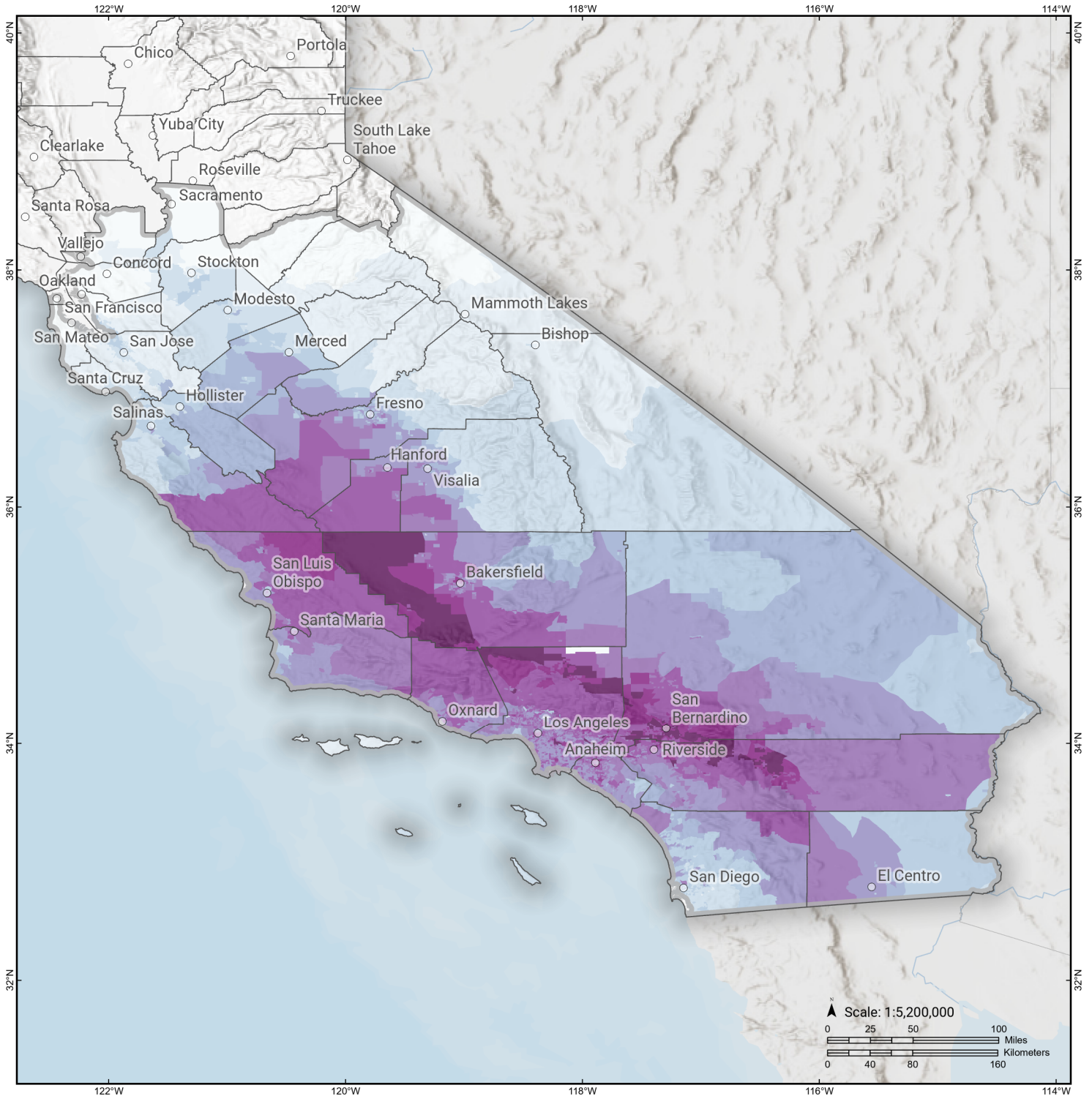
	# of Displaced Households	# of People Needing Short Term Shelter
California		
Alameda	0	0
Calaveras	0	0
Contra Costa	0	0
Fresno	13	9
Imperial	0	0
Inyo	0	0
Kern	550	434
Kings	17	12
Los Angeles	6,603	4,078
Madera	0	0
Mariposa	0	0
Merced	0	0
Mono	0	0
Monterey	1	1
Orange	481	331
Riverside	3,501	2,515
Sacramento	0	0
San Benito	0	0
San Bernardino	15,374	10,698
San Diego	0	0
San Francisco	0	0
San Joaquin	0	0
San Luis Obispo	70	35
San Mateo	0	0
Santa Barbara	40	28
Santa Clara	0	0
Santa Cruz	0	0
Solano	0	0
Stanislaus	0	0
Tulare	2	2
Tuolumne	0	0
Ventura	134	79

	# of Displaced Households	# of People Needing Short Term Shelter
Total	26,787	18,221
Region Total	26,787	18,221

Totals only reflect data for those census tracts/blocks included in the user's study region and will reflect the entire county/state only if all of the census blocks for that county/states were selected at the time of study region creation.

S. San Andreas: CH+CC+BB+NM+SM+NSB+SSB+BG

Total Building Related Economic Loss by Census Tract



Study Region: S. San Andreas: CH+CC+BB+NM
+SM+NSB+SSB+BG

Scenario: ssanandreaschccbbnms_m8p1_se



Economic Loss (in thousands of USD \$)

