
Hazus: Earthquake Global Risk Report

Region Name: Reliz

Earthquake Scenario: reliz2011cfmshaw09mo_m7p44_se

Print Date: June 14, 2024

Disclaimer:

Totals only reflect data for those census tracts/blocks included in the user's study region.

The estimates of social and economic impacts contained in this report were produced using Hazus loss estimation methodology software which is based on current scientific and engineering knowledge. There are uncertainties inherent in any loss estimation technique. Therefore, there may be significant differences between the modeled results contained in this report and the actual social and economic losses following a specific earthquake. These results can be improved by using enhanced inventory, geotechnical, and observed ground motion data.

Table of Contents

Section	Page #
General Description of the Region	3
Building and Lifeline Inventory	4
Building Inventory	
Critical Facility Inventory	
Transportation and Utility Lifeline Inventory	
Earthquake Scenario Parameters	7
Direct Earthquake Damage	8
Buildings Damage	
Essential Facilities Damage	
Transportation and Utility Lifeline Damage	
Induced Earthquake Damage	14
Fire Following Earthquake	
Debris Generation	
Social Impact	15
Shelter Requirements	
Casualties	
Economic Loss	17
Building Related Losses	
Transportation and Utility Lifeline Losses	
Appendix A: County Listing for the Region	
Appendix B: Regional Population and Building Value Data	

General Description of the Region

Hazus-MH is a regional earthquake loss estimation model that was developed by the Federal Emergency Management Agency (FEMA) and the National Institute of Building Sciences. The primary purpose of Hazus is to provide a methodology and software application to develop multi-hazard losses at a regional scale. These loss estimates would be used primarily by local, state and regional officials to plan and stimulate efforts to reduce risks from multi-hazards and to prepare for emergency response and recovery.

The earthquake loss estimates provided in this report was based on a region that includes 30 county(ies) from the following state(s):

California

Note:

Appendix A contains a complete listing of the counties contained in the region.

The geographical size of the region is 55,211.44 square miles and contains 3,609 census tracts. There are over 5,397 thousand households in the region which has a total population of 15,711,229 people. The distribution of population by Total Region and County is provided in Appendix B.

There are an estimated 4,757 thousand buildings in the region with a total building replacement value (excluding contents) of (millions of dollars). Approximately 90.00 % of the buildings (and % of the building value) are associated with residential housing.

The replacement value of the transportation and utility lifeline systems is estimated to be 246,855 and 179,031 (millions of dollars) , respectively.

Building and Lifeline Inventory

Building Inventory

Hazus estimates that there are 4,757 thousand buildings in the region which have an aggregate total replacement value of (millions of dollars) . Appendix B provides a general distribution of the building value by Total Region and County.

In terms of building construction types found in the region, wood frame construction makes up 87% of the building inventory. The remaining percentage is distributed between the other general building types.

Critical Facility Inventory

Hazus breaks critical facilities into two (2) groups: essential facilities and high potential loss facilities (HPL). Essential facilities include hospitals, medical clinics, schools, fire stations, police stations and emergency operations facilities. High potential loss facilities include dams, levees, military installations, nuclear power plants and hazardous material sites.

For essential facilities, there are 262 hospitals in the region with a total bed capacity of 41,622 beds. There are 5,709 schools, 1,378 fire stations, 505 police stations and 87 emergency operation facilities. With respect to high potential loss facilities (HPL), there are no dams identified within the inventory. The inventory also includes no hazardous material sites, no military installations and no nuclear power plants.

Transportation and Utility Lifeline Inventory

Within Hazus, the lifeline inventory is divided between transportation and utility lifeline systems. There are seven (7) transportation systems that include highways, railways, light rail, bus, ports, ferry and airports. There are six (6) utility systems that include potable water, wastewater, natural gas, crude & refined oil, electric power and communications. The lifeline inventory data are provided in Tables 1 and 2.

The total value of the lifeline inventory is over 425,886.00 (millions of dollars). This inventory includes over 10,866.54 miles of highways, 11,294 bridges, 239,493.78 miles of pipes.

Table 1: Transportation System Lifeline Inventory

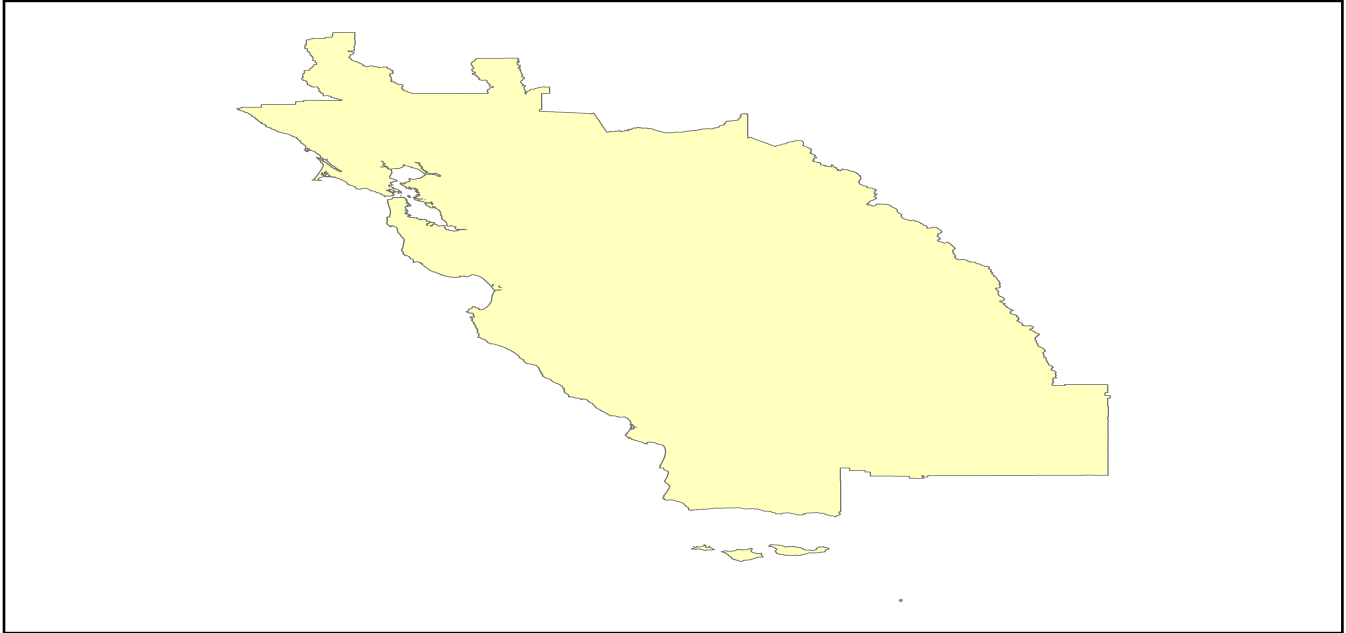
System	Component	# Locations/ # Segments	Replacement value (millions of dollars)
Highway	Bridges	11,294	57724.8731
	Segments	7,460	96008.1298
	Tunnels	47	987.1159
	Subtotal		154720.1188
Railways	Bridges	1,654	9411.2600
	Facilities	95	252.9850
	Segments	3,292	66699.0988
	Tunnels	3	1.8495
	Subtotal		76365.1933
Light Rail	Bridges	112	15.3529
	Facilities	255	4154.0000
	Segments	15	5403.2756
	Tunnels	0	0.0000
	Subtotal		9572.6285
Bus	Facilities	53	118.9169
	Subtotal		118.9169
Ferry	Facilities	28	37.2680
	Subtotal		37.2680
Port	Facilities	368	1402.7588
	Subtotal		1402.7588
Airport	Facilities	115	2934.6633
	Runways	169	1704.3938
	Subtotal		4639.0571
		Total	246,855.90

Table 2: Utility System Lifeline Inventory

System	Component	# Locations / Segments	Replacement value (millions of dollars)
Potable Water	Distribution Lines	NA	4757.5519
	Facilities	26	1021.6440
	Pipelines	0	0.0000
		Subtotal	5779.1959
Waste Water	Distribution Lines	NA	2854.5311
	Facilities	164	28200.0952
	Pipelines	0	0.0000
		Subtotal	31054.6263
Natural Gas	Distribution Lines	NA	1903.0208
	Facilities	18	705.7212
	Pipelines	855	16991.2619
		Subtotal	19600.0039
Oil Systems	Facilities	34	4.0120
	Pipelines	0	0.0000
		Subtotal	4.0120
Electrical Power	Facilities	505	122531.2075
		Subtotal	122531.2075
Communication	Facilities	531	62.6580
		Subtotal	62.6580
	Total		179,031.70

Earthquake Scenario

Hazus uses the following set of information to define the earthquake parameters used for the earthquake loss estimate provided in this report.



Scenario Name	reliz2011cfmshaw09mo_m7p44_se
Type of Earthquake	User-defined
Fault Name	NA
Historical Epicenter ID #	NA
Probabilistic Return Period	NA
Longitude of Epicenter	NA
Latitude of Epicenter	NA
Earthquake Magnitude	7.44
Depth (km)	NA
Rupture Length (Km)	NA
Rupture Orientation (degrees)	NA
Attenuation Function	NA

Direct Earthquake Damage

Building Damage

Hazus estimates that about 28,208 buildings will be at least moderately damaged. This is over 1.00 % of the buildings in the region. There are an estimated 1,047 buildings that will be damaged beyond repair. The definition of the 'damage states' is provided in Volume 1: Chapter 5 of the Hazus technical manual. Table 3 below summarizes the expected damage by general occupancy for the buildings in the region. Table 4 below summarizes the expected damage by general building type.

Damage Categories by General Occupancy Type

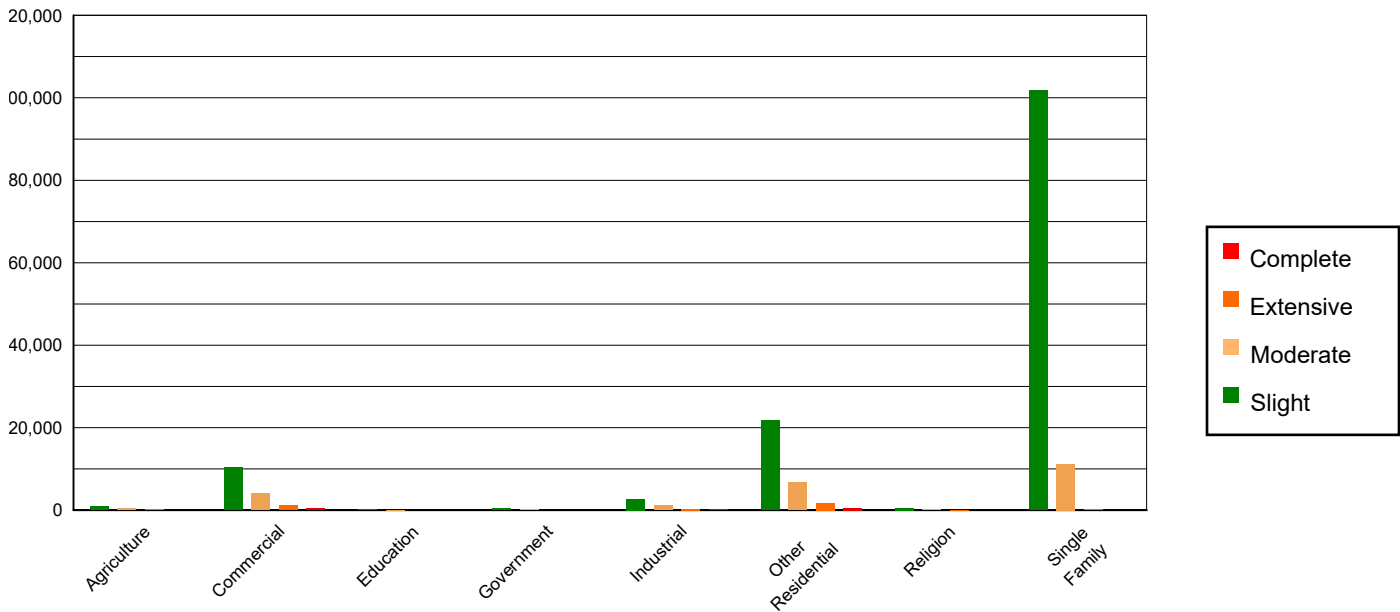


Table 3: Expected Building Damage by Occupancy

	None		Slight		Moderate		Extensive		Complete	
	Count	(%)	Count	(%)	Count	(%)	Count	(%)	Count	(%)
Agriculture	34020.16	0.74	916.03	0.66	369.88	1.56	80.07	2.35	17.85	1.70
Commercial	291541.67	6.35	10445.12	7.53	4019.36	16.92	1072.25	31.47	406.59	38.81
Education	9390.23	0.20	186.59	0.13	50.02	0.21	7.76	0.23	2.39	0.23
Government	21363.60	0.47	360.90	0.26	94.40	0.40	24.36	0.71	6.74	0.64
Industrial	81300.82	1.77	2676.14	1.93	1068.35	4.50	281.66	8.27	78.02	7.45
Other Residential	590015.44	12.85	21764.25	15.70	6739.86	28.37	1761.19	51.68	508.25	48.52
Religion	17905.88	0.39	522.12	0.38	225.67	0.95	68.65	2.01	26.68	2.55
Single Family	3544866.79	77.22	101781.77	73.41	11185.62	47.09	111.77	3.28	1.05	0.10
Total	4,590,405		138,653		23,753		3,408		1,048	

Table 4: Expected Building Damage by Building Type (All Design Levels)

	None		Slight		Moderate		Extensive		Complete	
	Count	(%)	Count	(%)	Count	(%)	Count	(%)	Count	(%)
Wood	3986311.72	86.84	117899.44	85.03	13636.93	57.41	237.17	6.96	17.56	1.68
Steel	104486.13	2.28	4120.74	2.97	2086.75	8.79	711.29	20.87	235.61	22.49
Concrete	116686.21	2.54	4235.05	3.05	1726.20	7.27	620.56	18.21	290.50	27.73
Precast	61760.16	1.35	2366.23	1.71	1100.59	4.63	181.54	5.33	17.07	1.63
RM	178156.28	3.88	3247.69	2.34	1425.81	6.00	200.41	5.88	5.72	0.55
URM	41578.46	0.91	3085.24	2.23	747.58	3.15	320.64	9.41	242.09	23.11
MH	101425.64	2.21	3698.55	2.67	3029.30	12.75	1136.11	33.34	239.03	22.82
Total	4,590,405		138,653		23,753		3,408		1,048	

*Note:

- RM Reinforced Masonry
- URM Unreinforced Masonry
- MH Manufactured Housing

Essential Facility Damage

Before the earthquake, the region had 41,622 hospital beds available for use. On the day of the earthquake, the model estimates that only 40,027 hospital beds (96.00%) are available for use by patients already in the hospital and those injured by the earthquake. After one week, 98.00% of the beds will be back in service. By 30 days, 99.00% will be operational.

Table 5: Expected Damage to Essential Facilities

Classification	Total	# Facilities		
		At Least Moderate Damage > 50%	Complete Damage > 50%	With Functionality > 50% on day 1
Hospitals	262	3	0	255
Schools	5,709	68	1	5,517
EOCs	87	0	0	83
PoliceStations	505	12	0	473
FireStations	1,378	17	1	1,337

Transportation Lifeline Damage

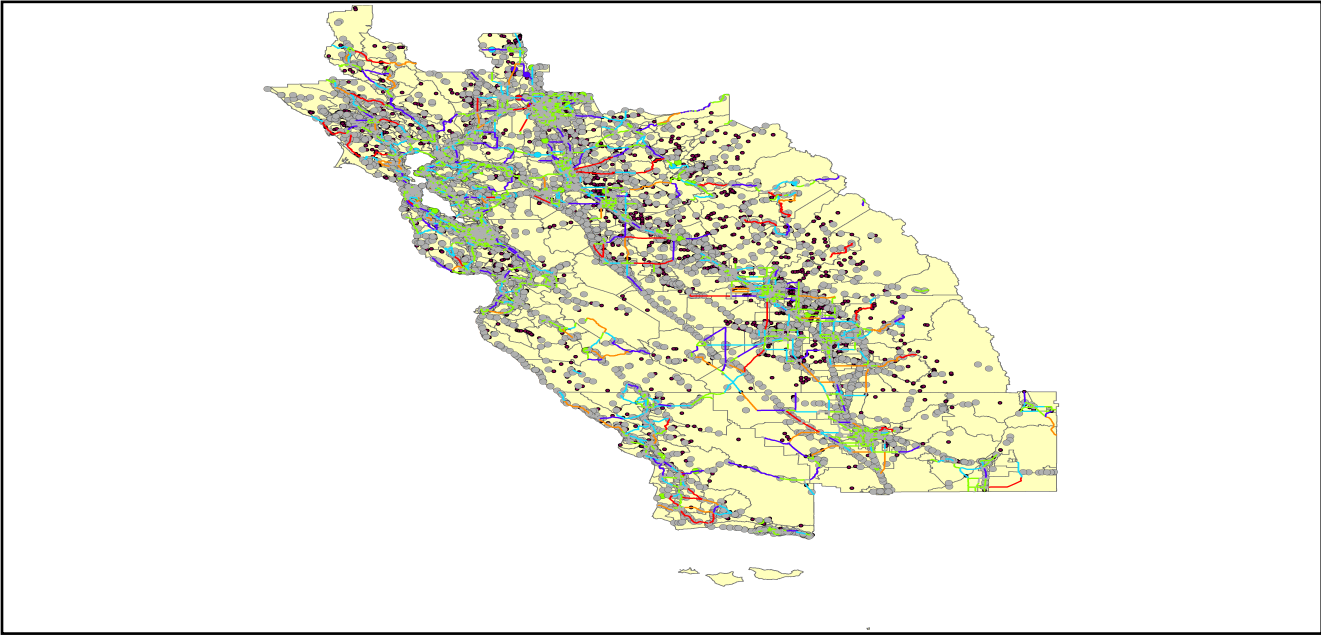


Table 6: Expected Damage to the Transportation Systems

System	Component	Number of Locations_				
		Locations/ Segments	With at Least Mod. Damage	With Complete Damage	With Functionality > 50 %	
					After Day 1	After Day 7
Highway	Segments	7,460	0	0	7,460	7,460
	Bridges	11,294	24	0	11,268	11,290
	Tunnels	47	0	0	47	47
Railways	Segments	3,292	0	0	3,292	3,292
	Bridges	1,654	0	0	1,654	1,654
	Tunnels	3	0	0	3	3
	Facilities	95	0	0	95	95
Light Rail	Segments	15	0	0	15	15
	Bridges	112	0	0	112	112
	Tunnels	0	0	0	0	0
	Facilities	255	0	0	255	255
Bus	Facilities	53	1	0	53	53
Ferry	Facilities	28	0	0	28	28
Port	Facilities	368	0	0	368	368
Airport	Facilities	115	1	0	115	115
	Runways	169	0	0	169	169

Table 6 provides damage estimates for the transportation system.

Note: Roadway segments, railroad tracks and light rail tracks are assumed to be damaged by ground failure only. If ground failure maps are not provided, damage estimates to these components will not be computed.

Tables 7-9 provide information on the damage to the utility lifeline systems. Table 7 provides damage to the utility system facilities. Table 8 provides estimates on the number of leaks and breaks by the pipelines of the utility systems. For electric power and potable water, Hazus performs a simplified system performance analysis. Table 9 provides a summary of the system performance information.

Table 7 : Expected Utility System Facility Damage

System	# of Locations				
	Total #	With at Least Moderate Damage	With Complete Damage	with Functionality > 50 %	
				After Day 1	After Day 7
Potable Water	26	0	0	26	26
Waste Water	164	9	0	151	164
Natural Gas	18	0	0	18	18
Oil Systems	34	0	0	34	34
Electrical Power	505	7	0	499	503
Communication	531	32	0	517	531

Table 8 : Expected Utility System Pipeline Damage (Site Specific)

System	Total Pipelines Length (miles)	Number of Leaks	Number of Breaks
Potable Water	147,810	4699	1175
Waste Water	88,686	2360	590
Natural Gas	2,998	0	0
Oil	0	0	0

Table 9: Expected Potable Water and Electric Power System Performance

	Total # of Households	Number of Households without Service				
		At Day 1	At Day 3	At Day 7	At Day 30	At Day 90
Potable Water	5,397,261	43,766	34,524	26,113	0	0
Electric Power		104,075	66,134	27,135	2,589	140

Induced Earthquake Damage

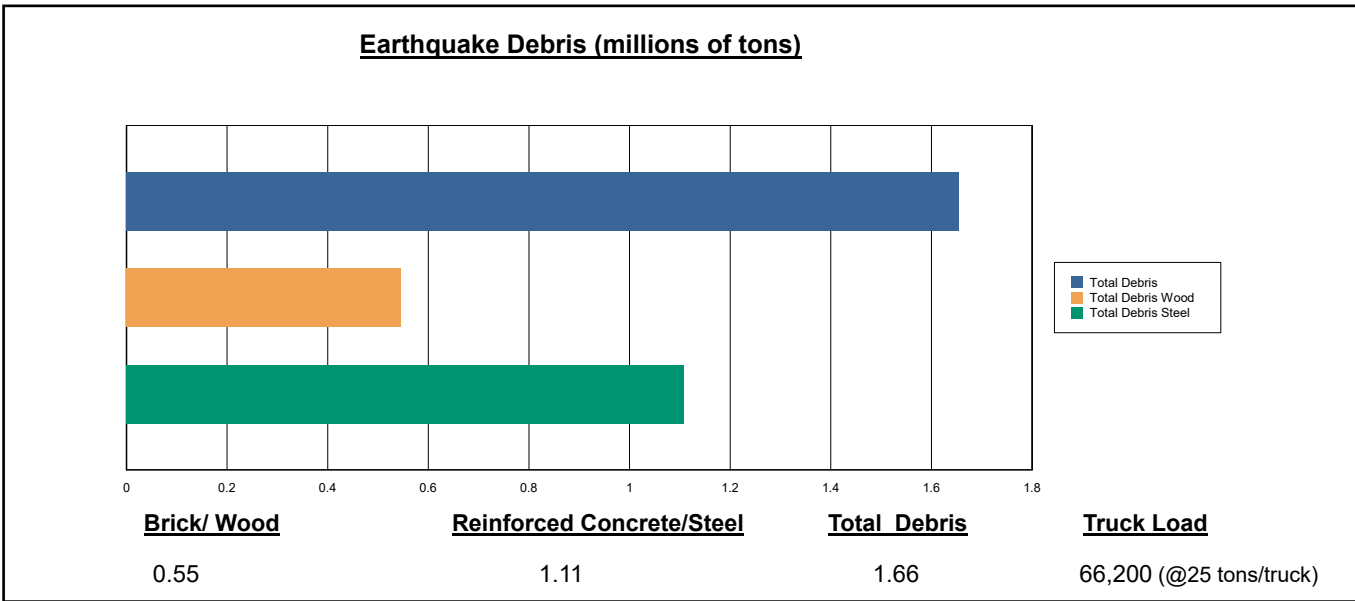
Fire Following Earthquake

Fires often occur after an earthquake. Because of the number of fires and the lack of water to fight the fires, they can often burn out of control. Hazus uses a Monte Carlo simulation model to estimate the number of ignitions and the amount of burnt area. For this scenario, the model estimates that there will be 47 ignitions that will burn about 0.85 sq. mi (0.00 % of the region's total area.) The model also estimates that the fires will displace about 7,757 people and burn about 1,133 (millions of dollars) of building value.

Debris Generation

Hazus estimates the amount of debris that will be generated by the earthquake. The model breaks the debris into two general categories: a) Brick/Wood and b) Reinforced Concrete/Steel. This distinction is made because of the different types of material handling equipment required to handle the debris.

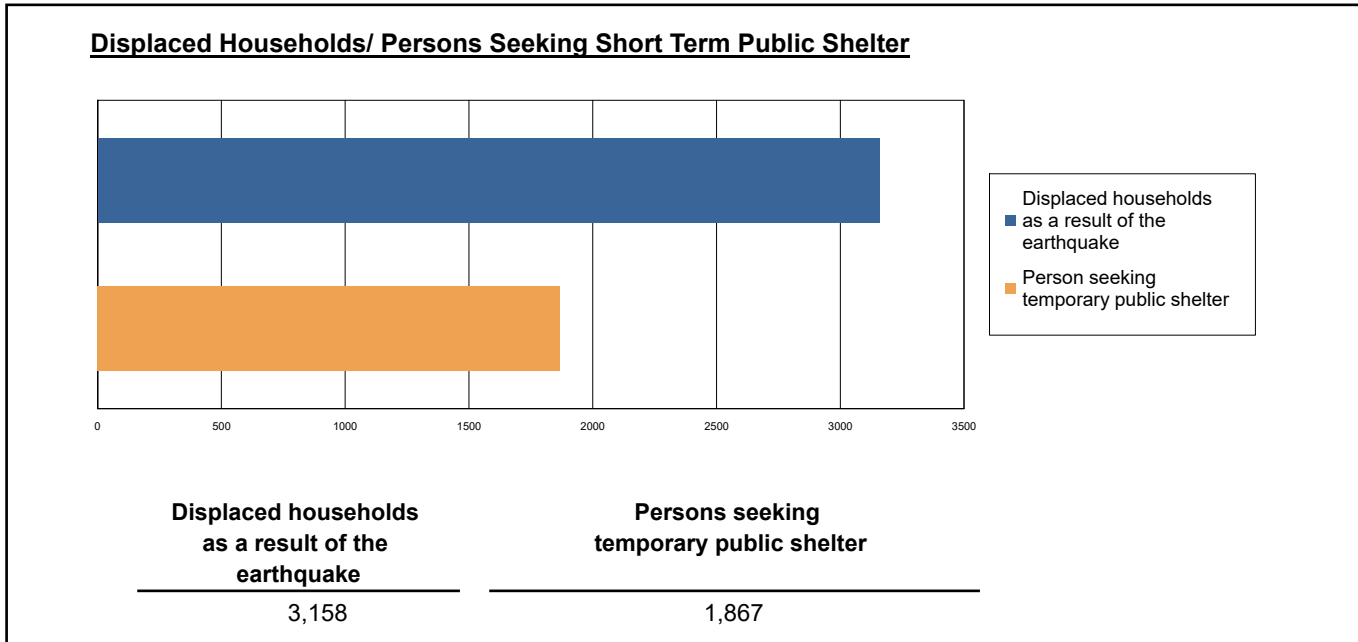
The model estimates that a total of 1,655,000 tons of debris will be generated. Of the total amount, Brick/Wood comprises 33.00% of the total, with the remainder being Reinforced Concrete/Steel. If the debris tonnage is converted to an estimated number of truckloads, it will require 66,200 truckloads (@25 tons/truck) to remove the debris generated by the earthquake.



Social Impact

Shelter Requirement

Hazus estimates the number of households that are expected to be displaced from their homes due to the earthquake and the number of displaced people that will require accommodations in temporary public shelters. The model estimates 3,158 households to be displaced due to the earthquake. Of these, 1,867 people (out of a total population of 15,711,229) will seek temporary shelter in public shelters.



Casualties

Hazus estimates the number of people that will be injured and killed by the earthquake. The casualties are broken down into four (4) severity levels that describe the extent of the injuries. The levels are described as follows;

- Severity Level 1: Injuries will require medical attention but hospitalization is not needed.
- Severity Level 2: Injuries will require hospitalization but are not considered life-threatening
- Severity Level 3: Injuries will require hospitalization and can become life threatening if not promptly treated.
- Severity Level 4: Victims are killed by the earthquake.

The casualty estimates are provided for three (3) times of day: 2:00 AM, 2:00 PM and 5:00 PM. These times represent the periods of the day that different sectors of the community are at their peak occupancy loads. The 2:00 AM estimate considers that the residential occupancy load is maximum, the 2:00 PM estimate considers that the educational, commercial and industrial sector loads are maximum and 5:00 PM represents peak commute time.

Table 10 provides a summary of the casualties estimated for this earthquake

Table 10: Casualty Estimates

		Level 1	Level 2	Level 3	Level 4
2 AM	Commercial	14.41	3.24	0.46	0.91
	Commuting	0.17	0.23	0.38	0.07
	Educational	0.00	0.00	0.00	0.00
	Hotels	0.60	0.09	0.01	0.02
	Industrial	13.42	2.74	0.36	0.70
	Other-Residential	475.10	90.38	11.00	21.39
	Single Family	232.23	10.23	0.02	0.04
	Total	736	107	12	23
2 PM	Commercial	989.14	222.70	31.81	62.08
	Commuting	1.49	2.03	3.38	0.66
	Educational	402.56	87.27	11.64	22.76
	Hotels	0.12	0.02	0.00	0.00
	Industrial	98.57	20.17	2.64	5.11
	Other-Residential	148.93	28.91	3.65	6.86
	Single Family	68.01	3.16	0.01	0.02
	Total	1,709	364	53	97
5 PM	Commercial	692.20	156.63	22.48	43.24
	Commuting	29.10	39.62	65.91	12.81
	Educational	138.44	32.50	4.43	8.67
	Hotels	0.18	0.03	0.00	0.01
	Industrial	61.61	12.61	1.65	3.20
	Other-Residential	180.01	35.22	4.46	8.38
	Single Family	84.87	3.89	0.01	0.02
	Total	1,186	280	99	76

Economic Loss

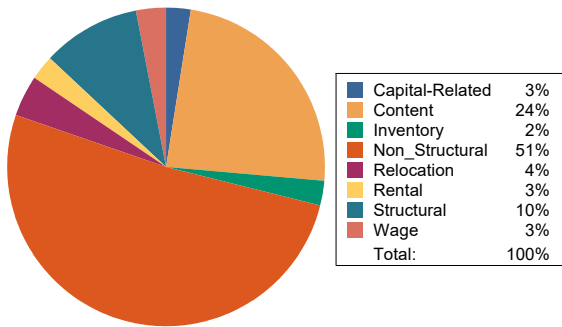
The total economic loss estimated for the earthquake is 15,804.93 (millions of dollars), which includes building and lifeline related losses based on the region's available inventory. The following three sections provide more detailed information about these losses.

Building-Related Losses

The building losses are broken into two categories: direct building losses and business interruption losses. The direct building losses are the estimated costs to repair or replace the damage caused to the building and its contents. The business interruption losses are the losses associated with inability to operate a business because of the damage sustained during the earthquake. Business interruption losses also include the temporary living expenses for those people displaced from their homes because of the earthquake.

The total building-related losses were 12,982.15 (millions of dollars); 12 % of the estimated losses were related to the business interruption of the region. By far, the largest loss was sustained by the residential occupancies which made up over 42 % of the total loss. Table 11 below provides a summary of the losses associated with the building damage.

Earthquake Losses by Loss Type (\$ millions)



Earthquake Losses by Occupancy Type (\$ millions)

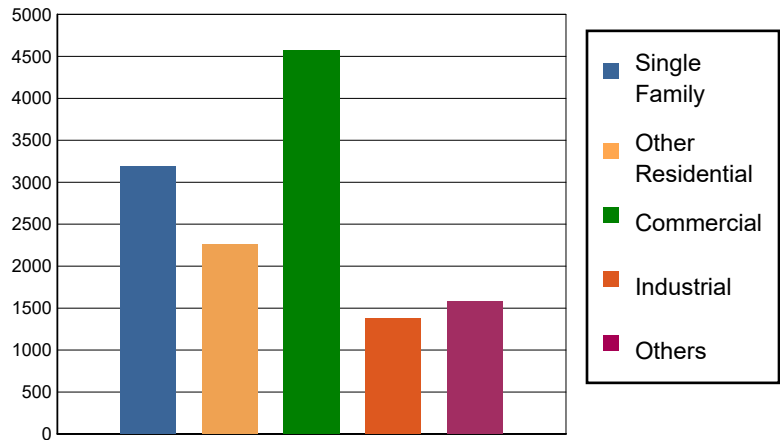


Table 11: Building-Related Economic Loss Estimates
(Millions of dollars)

Category	Area	Single Family	Other Residential	Commercial	Industrial	Others	Total
Income Losses							
	Wage	0.0000	43.8373	312.9862	11.7480	39.6582	408.2297
	Capital-Related	0.0000	18.6291	295.6844	7.0285	12.4160	333.7580
	Rental	24.4122	113.4206	163.7999	6.8783	18.7536	327.2646
	Relocation	74.1633	67.5231	222.6511	35.5205	148.4851	548.3431
	Subtotal	98.5755	243.4101	995.1216	61.1753	219.3129	1617.5954
Capital Stock Losses							
	Structural	291.6212	195.1208	495.7279	137.4447	167.9976	1,287.9122
	Non_Structural	2002.8681	1423.3180	1845.4405	657.7451	741.8160	6,671.1877
	Content	794.6390	399.4327	1031.3369	454.9320	405.6107	3,085.9513
	Inventory	0.0000	0.0000	202.1699	70.9101	46.4241	319.5041
	Subtotal	3089.1283	2017.8715	3574.6752	1321.0319	1361.8484	11364.5553
	Total	3187.70	2261.28	4569.80	1382.21	1581.16	12982.15

Transportation and Utility Lifeline Losses

For the transportation and utility lifeline systems, Hazus computes the direct repair cost for each component only. There are no losses computed by Hazus for business interruption due to lifeline outages. Tables 12 & 13 provide a detailed breakdown in the expected lifeline losses.

Table 12: Transportation System Economic Losses
(Millions of dollars)

System	Component	Inventory Value	Economic Loss	Loss Ratio (%)
Highway	Segments	96008.1298	0.0000	0.00
	Bridges	57724.8731	103.6099	0.18
	Tunnels	987.1159	1.2312	0.12
	Subtotal	154720.1188	104.8411	
Railways	Segments	66699.0988	0.0000	0.00
	Bridges	9411.2600	13.9936	0.15
	Tunnels	1.8495	0.0000	0.00
	Facilities	252.9850	5.3500	2.11
	Subtotal	76365.1933	19.3436	
Light Rail	Segments	5403.2756	0.0000	0.00
	Bridges	15.3529	0.0005	0.00
	Tunnels	0.0000	0.0000	0.00
	Facilities	4154.0000	146.1104	3.52
	Subtotal	9572.6285	146.1109	
Bus	Facilities	118.9169	8.6173	7.25
	Subtotal	118.9169	8.6173	
Ferry	Facilities	37.2680	0.6129	1.64
	Subtotal	37.2680	0.6129	
Port	Facilities	1402.7588	36.3702	2.59
	Subtotal	1402.7588	36.3702	
Airport	Facilities	2934.6633	112.1667	3.82
	Runways	1704.3938	0.0000	0.00
	Subtotal	4639.0571	112.1667	
Total		246,855.94	428.06	

Table 13: Utility System Economic Losses

(Millions of dollars)

System	Component	Inventory Value	Economic Loss	Loss Ratio (%)
Potable Water	Pipelines	0.0000	0.0000	0.00
	Facilities	1021.6440	3.4585	0.34
	Distribution Lines	4757.5519	21.1458	0.44
	Subtotal	5779.1959	24.6043	
Waste Water	Pipelines	0.0000	0.0000	0.00
	Facilities	28200.0952	681.8207	2.42
	Distribution Lines	2854.5311	10.6221	0.37
	Subtotal	31054.6263	692.4428	
Natural Gas	Pipelines	16991.2619	0.0000	0.00
	Facilities	705.7212	0.2330	0.03
	Distribution Lines	1903.0208	3.6391	0.19
	Subtotal	19600.0039	3.8721	
Oil Systems	Pipelines	0.0000	0.0000	0.00
	Facilities	4.0120	0.0017	0.04
	Subtotal	4.0120	0.0017	
Electrical Power	Facilities	122531.2075	1671.3282	1.36
	Subtotal	122531.2075	1671.3282	
Communication	Facilities	62.6580	2.4719	3.95
	Subtotal	62.6580	2.4719	
	Total	179,031.70	2,394.72	

Appendix A: County Listing for the Region

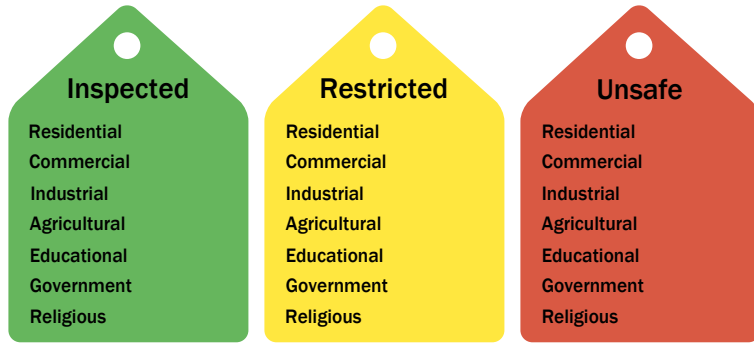
- Alameda,CA
- Amador,CA
- Calaveras,CA
- Contra Costa,CA
- Fresno,CA
- Kern,CA
- Kings,CA
- Lake,CA
- Madera,CA
- Marin,CA
- Mariposa,CA
- Merced,CA
- Monterey,CA
- Napa,CA
- Sacramento,CA
- San Benito,CA
- San Francisco,CA
- San Joaquin,CA
- San Luis Obispo,CA
- San Mateo,CA
- Santa Barbara,CA
- Santa Clara,CA
- Santa Cruz,CA
- Solano,CA
- Sonoma,CA
- Stanislaus,CA
- Sutter,CA
- Tulare,CA
- Tuolumne,CA



Yolo, CA

Appendix B: Regional Population and Building Value Data

State	County Name	Population	Building Value (millions of dollars)			
			Residential	Non-Residential	Total	
California	Alameda	1,682,353	209,951	122,639	332,590	
	Amador	40,474	5,608	2,517	8,125	
	Calaveras	45,292	8,305	4,893	13,199	
	Contra Costa	1,165,927	158,118	60,339	218,458	
	Fresno	1,008,654	98,532	61,772	160,304	
	Kern	909,235	87,567	59,168	146,736	
	Kings	152,486	13,719	7,861	21,581	
	Lake	68,163	9,699	4,530	14,229	
	Madera	156,255	18,025	9,641	27,667	
	Marin	262,321	47,738	15,030	62,769	
	Mariposa	17,131	3,299	1,141	4,441	
	Merced	281,202	25,194	26,098	51,292	
	Monterey	439,035	47,655	28,750	76,405	
	Napa	138,019	20,517	13,045	33,563	
	Sacramento	1,585,055	179,811	83,911	263,723	
	San Benito	64,209	9,440	3,799	13,239	
	San Francisco	873,965	108,848	46,020	154,869	
	San Joaquin	779,233	82,706	56,882	139,589	
	San Luis Obispo	282,424	41,720	20,896	62,616	
	San Mateo	764,442	110,372	44,995	155,368	
	Santa Barbara	448,229	49,971	28,481	78,452	
	Santa Clara	1,936,259	261,111	120,471	381,582	
	Santa Cruz	270,861	36,147	18,805	54,952	
	Solano	453,491	55,802	26,393	82,195	
	Sonoma	488,863	68,827	35,781	104,609	
	Stanislaus	552,878	62,937	37,511	100,449	
	Sutter	99,633	10,618	6,448	17,066	
	Tulare	473,117	43,262	31,210	74,472	
	Tuolumne	55,620	8,964	3,507	12,471	
	Yolo	216,403	24,130	18,343	42,473	
	Total Region		15,711,229	1,908,593	1,000,877	2,909,484

Building Inspection Tagging (Counts)

Total Economic Loss
Total:

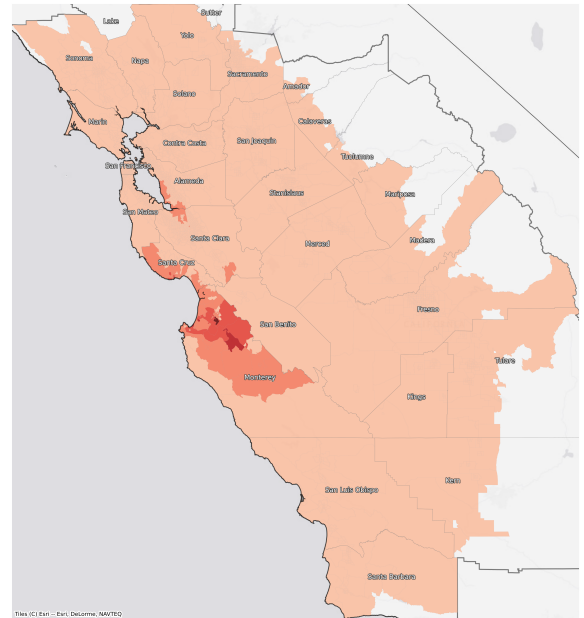
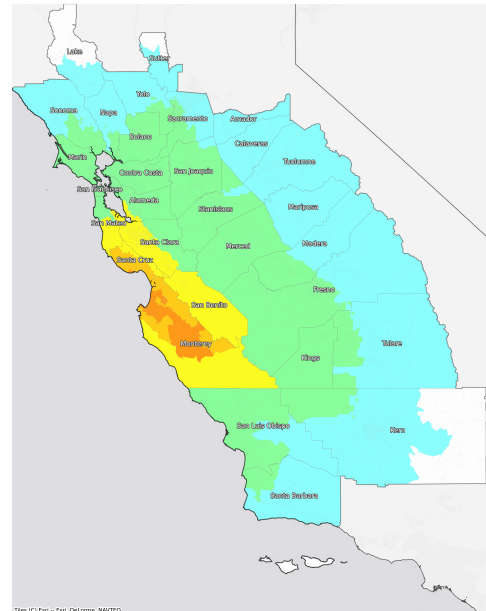
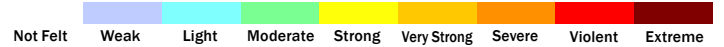
Top Counties	State	Total

Injuries & Fatalities
**Total Day:
Total Night:**

Top Counties	State	Injuries (day/night)	Fatalities (day/night)

Displaced Households & Short-Term Shelter Needs
**Total Displaced:
Total Needing Shelter:**

Top Counties	State	Displaced	Needing Shelter

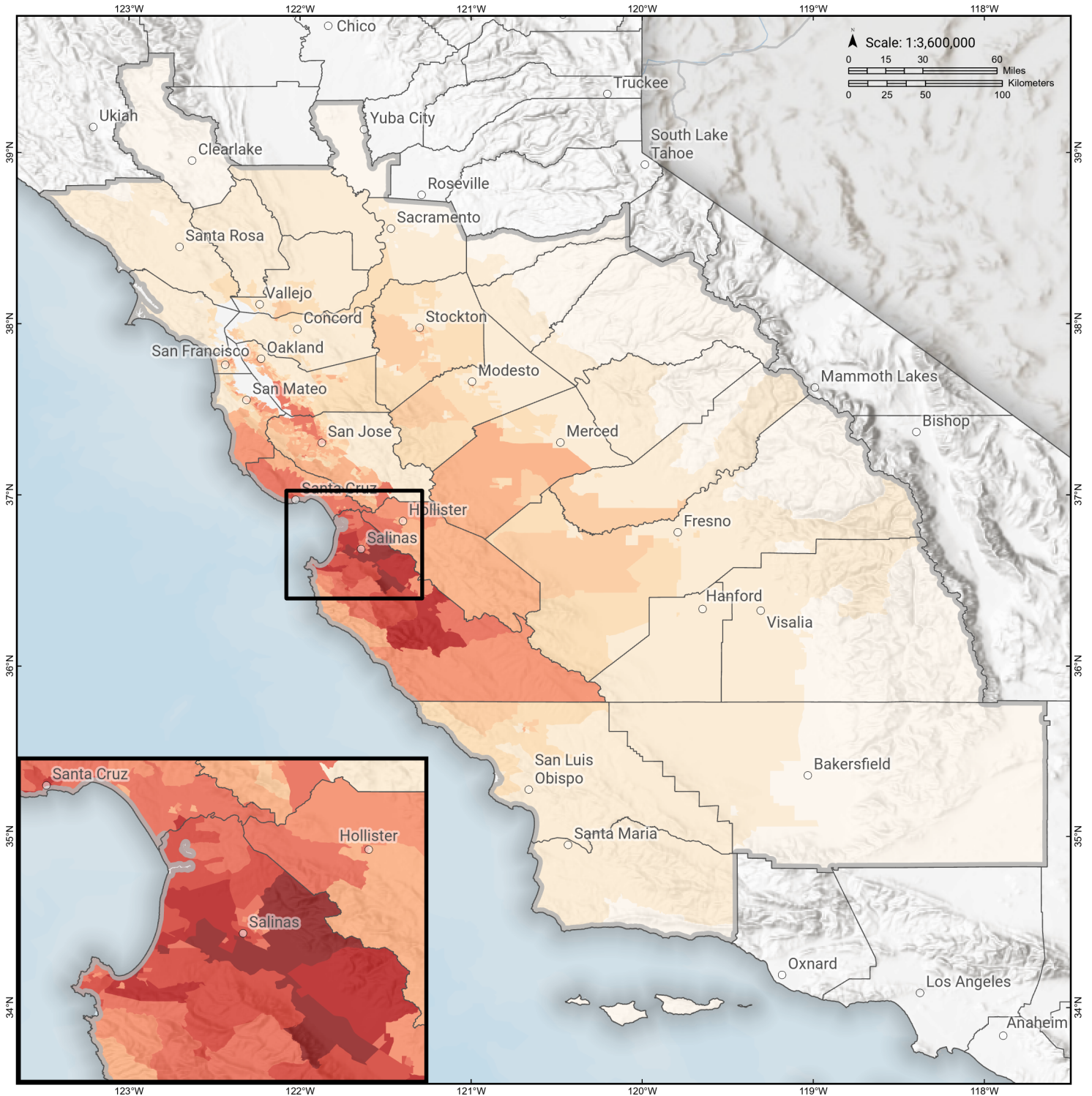
Economic Impacts by Census Tract

Ground Shaking

Debris
**Total Tons:
Total Truckloads:**

Type	Tons

The estimates of social and economic impacts contained in this report were produced using Hazus loss estimation methodology software which is based on current scientific and engineering knowledge. There are uncertainties inherent in any loss estimation technique. Therefore, there may be significant differences between the modeled results contained in this report and the actual social and economic losses following a specific earthquake.

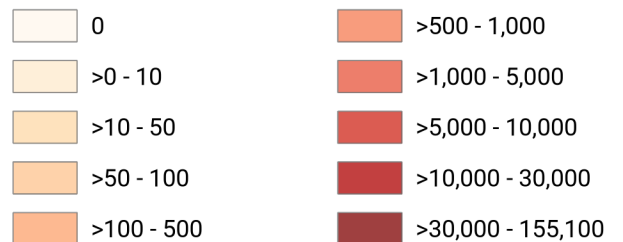
Reliz

Debris Generated by Census Tract



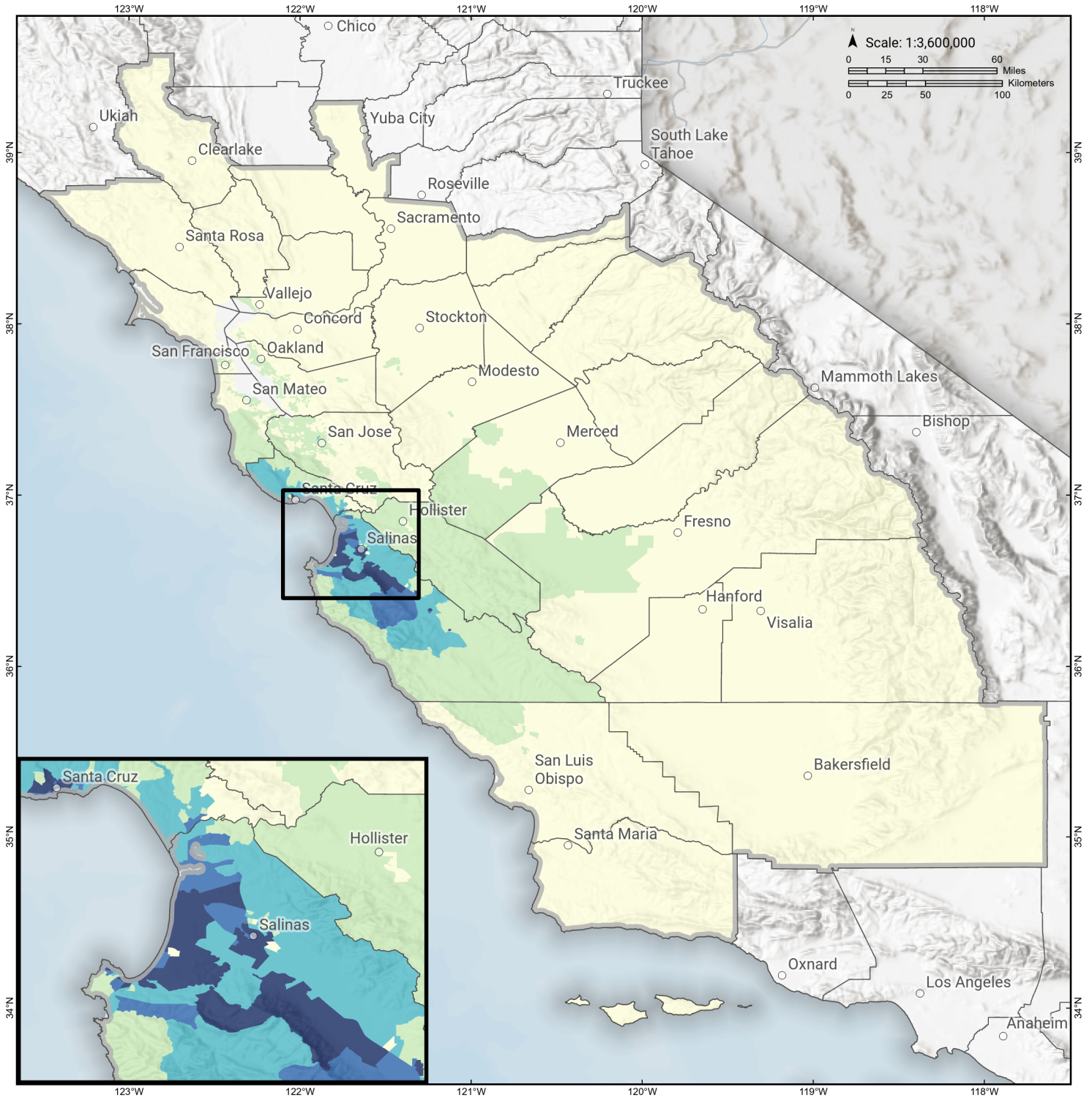
Study Region: Reliz
Scenario: reliz2011cfmshaw09mo_m7p44_se

Debris Generated (in tons)



Reliz

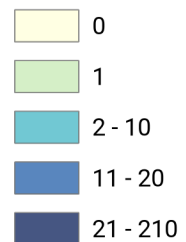
Displaced Households by Census Tract



Study Region: Reliz
Scenario: reliz2011cfmshaw09mo_m7p44_se

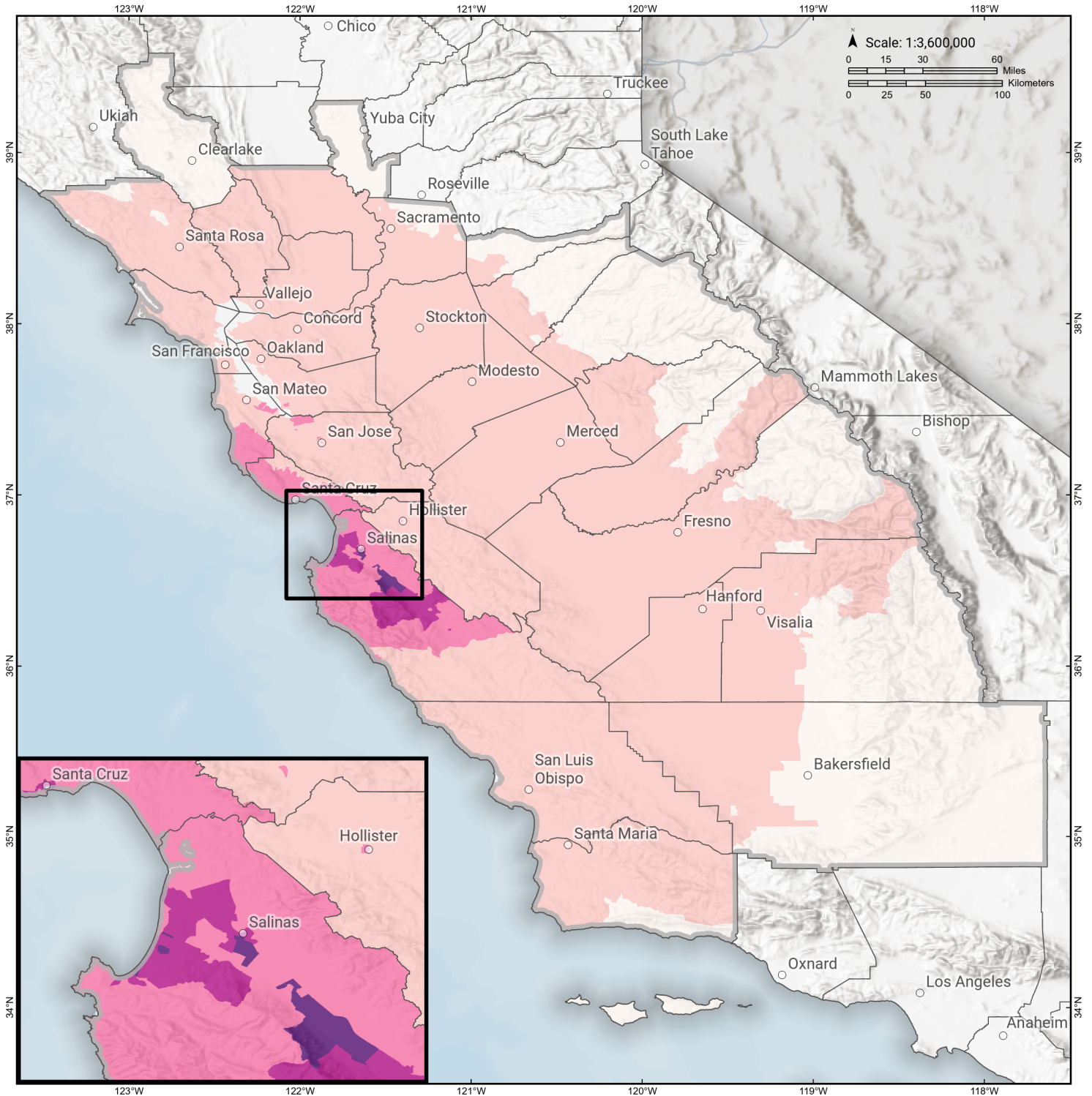


Displaced Households



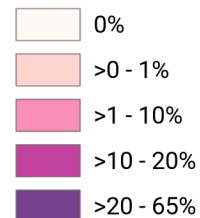
Reliz

Loss Ratio by Census Tract



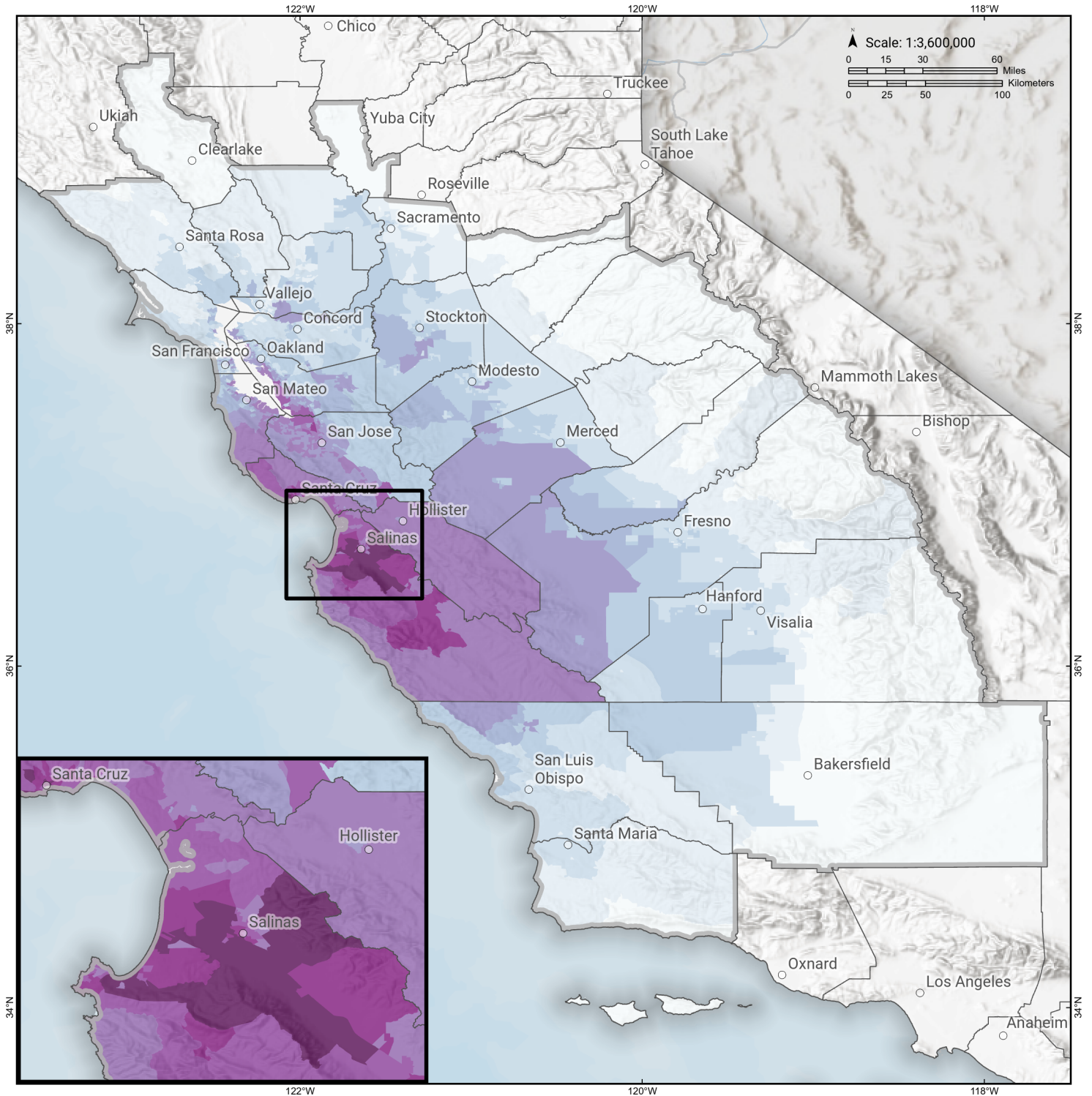
Study Region: Reliz
Scenario: reliz2011cfmshaw09mo_m7p44_se

Loss Ratio (ratio of building related economic loss to exposed value of buildings)



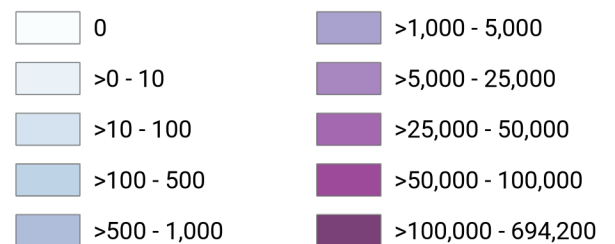
Reliz

Total Building Related Economic Loss by Census Tract



Study Region: Reliz
Scenario: reliz2011cfmshaw09mo_m7p44_se

Economic Loss (in thousands of USD \$)



Building Damage by Count by General Occupancy

June 13, 2024

	# of Buildings					Total
	None	Slight	Moderate	Extensive	Complete	
California						
Alameda						
<i>Government</i>	10,356	160	12	0	0	10,528
<i>Agriculture</i>	410	10	1	0	0	422
<i>Commercial</i>	31,149	768	71	1	0	31,989
<i>Religion</i>	1,939	43	4	0	0	1,986
<i>Single Family</i>	341,140	3,027	6	0	0	344,173
<i>Other Residential</i>	60,373	948	75	1	0	61,396
<i>Education</i>	1,105	11	1	0	0	1,117
<i>Industrial</i>	9,842	327	35	0	0	10,205
Amador						
<i>Industrial</i>	235	0	0	0	0	235
<i>Single Family</i>	14,962	0	0	0	0	14,962
<i>Other Residential</i>	1,037	0	0	0	0	1,037
<i>Education</i>	23	0	0	0	0	23
<i>Government</i>	32	0	0	0	0	32
<i>Agriculture</i>	44	0	0	0	0	44
<i>Religion</i>	45	0	0	0	0	45
<i>Commercial</i>	1,368	0	0	0	0	1,368
Calaveras						

	# of Buildings					Total
	None	Slight	Moderate	Extensive	Complete	
<i>Government</i>	84	0	0	0	0	84
<i>Other Residential</i>	2,559	0	0	0	0	2,559
<i>Education</i>	35	0	0	0	0	35
<i>Religion</i>	130	0	0	0	0	130
<i>Agriculture</i>	2,207	0	0	0	0	2,207
<i>Commercial</i>	1,413	0	0	0	0	1,413
<i>Industrial</i>	466	0	0	0	0	466
<i>Single Family</i>	22,148	0	0	0	0	22,148
Contra Costa						
<i>Commercial</i>	17,930	57	4	0	0	17,991
<i>Agriculture</i>	746	3	0	0	0	749
<i>Religion</i>	1,220	6	0	0	0	1,226
<i>Single Family</i>	281,735	200	0	0	0	281,935
<i>Other Residential</i>	29,017	102	5	0	0	29,124
<i>Industrial</i>	4,725	22	2	0	0	4,749
<i>Government</i>	5,008	15	1	0	0	5,024
<i>Education</i>	652	1	0	0	0	653
Fresno						
<i>Commercial</i>	21,031	22	1	0	0	21,054
<i>Religion</i>	1,505	2	0	0	0	1,507
<i>Agriculture</i>	3,409	11	1	0	0	3,421
<i>Industrial</i>	5,340	7	0	0	0	5,348
<i>Government</i>	290	1	0	0	0	291
<i>Other Residential</i>	40,904	66	4	0	0	40,973
<i>Single Family</i>	226,391	34	0	0	0	226,425

		# of Buildings					
		None	Slight	Moderate	Extensive	Complete	Total
Kern	<i>Education</i>	602	0	0	0	0	602
	<i>Single Family</i>	205,139	0	0	0	0	205,139
	<i>Other Residential</i>	54,517	3	0	0	0	54,520
	<i>Industrial</i>	6,047	0	0	0	0	6,047
	<i>Education</i>	462	0	0	0	0	462
	<i>Government</i>	443	0	0	0	0	443
	<i>Religion</i>	1,524	0	0	0	0	1,524
	<i>Agriculture</i>	4,645	0	0	0	0	4,645
	<i>Commercial</i>	15,566	1	0	0	0	15,567
Kings	<i>Commercial</i>	2,315	3	0	0	0	2,318
	<i>Religion</i>	210	0	0	0	0	210
	<i>Agriculture</i>	306	0	0	0	0	306
	<i>Government</i>	72	0	0	0	0	72
	<i>Industrial</i>	554	1	0	0	0	555
	<i>Single Family</i>	36,238	7	0	0	0	36,245
	<i>Other Residential</i>	4,336	6	0	0	0	4,342
	<i>Education</i>	103	0	0	0	0	103
Lake	<i>Agriculture</i>	161	0	0	0	0	161
	<i>Single Family</i>	21,633	0	0	0	0	21,633
	<i>Other Residential</i>	14,601	0	0	0	0	14,601
	<i>Education</i>	68	0	0	0	0	68
	<i>Industrial</i>	354	0	0	0	0	354

	# of Buildings					Total
	None	Slight	Moderate	Extensive	Complete	
<i>Commercial</i>	2,091	0	0	0	0	2,091
<i>Religion</i>	140	0	0	0	0	140
<i>Government</i>	78	0	0	0	0	78
Madera						
<i>Commercial</i>	2,901	4	0	0	0	2,905
<i>Religion</i>	119	0	0	0	0	119
<i>Government</i>	111	0	0	0	0	111
<i>Agriculture</i>	631	2	0	0	0	634
<i>Other Residential</i>	6,626	9	0	0	0	6,635
<i>Single Family</i>	38,903	9	0	0	0	38,912
<i>Education</i>	115	0	0	0	0	115
<i>Industrial</i>	902	1	0	0	0	903
Marin						
<i>Other Residential</i>	7,875	15	1	0	0	7,890
<i>Government</i>	143	0	0	0	0	143
<i>Education</i>	274	0	0	0	0	274
<i>Commercial</i>	8,252	17	1	0	0	8,270
<i>Religion</i>	319	0	0	0	0	319
<i>Agriculture</i>	189	1	0	0	0	190
<i>Single Family</i>	76,703	20	0	0	0	76,724
<i>Industrial</i>	1,527	7	0	0	0	1,535
Mariposa						
<i>Single Family</i>	8,084	0	0	0	0	8,084
<i>Other Residential</i>	307	0	0	0	0	307
<i>Education</i>	27	0	0	0	0	27

	# of Buildings					Total
	None	Slight	Moderate	Extensive	Complete	
<i>Industrial</i>	94	0	0	0	0	94
<i>Commercial</i>	689	0	0	0	0	689
<i>Agriculture</i>	29	0	0	0	0	29
<i>Religion</i>	36	0	0	0	0	36
<i>Government</i>	33	0	0	0	0	33
Merced						
<i>Education</i>	163	0	0	0	0	163
<i>Government</i>	170	1	0	0	0	171
<i>Commercial</i>	4,727	26	1	0	0	4,754
<i>Agriculture</i>	7,531	106	16	0	0	7,653
<i>Religion</i>	343	2	0	0	0	345
<i>Industrial</i>	1,017	5	0	0	0	1,022
<i>Single Family</i>	63,438	160	0	0	0	63,598
<i>Other Residential</i>	10,697	84	6	0	0	10,787
Monterey						
<i>Single Family</i>	34,634	47,308	8,829	104	1	90,876
<i>Industrial</i>	444	579	563	202	63	1,850
<i>Other Residential</i>	6,058	8,417	3,676	1,213	445	19,809
<i>Education</i>	126	80	28	4	1	239
<i>Government</i>	52	63	46	18	6	185
<i>Agriculture</i>	1,097	419	223	60	16	1,815
<i>Commercial</i>	2,529	3,171	2,395	810	341	9,246
<i>Religion</i>	173	182	145	56	23	580
Napa						
<i>Commercial</i>	4,020	1	0	0	0	4,021

	# of Buildings					Total
	None	Slight	Moderate	Extensive	Complete	
<i>Agriculture</i>	349	0	0	0	0	349
<i>Religion</i>	148	0	0	0	0	148
<i>Single Family</i>	38,760	1	0	0	0	38,761
<i>Other Residential</i>	6,975	3	0	0	0	6,978
<i>Government</i>	103	0	0	0	0	103
<i>Education</i>	132	0	0	0	0	132
<i>Industrial</i>	1,366	1	0	0	0	1,367
Sacramento						
<i>Single Family</i>	386,837	3	0	0	0	386,840
<i>Industrial</i>	6,755	1	0	0	0	6,756
<i>Other Residential</i>	56,401	11	1	0	0	56,413
<i>Education</i>	829	0	0	0	0	829
<i>Agriculture</i>	621	0	0	0	0	621
<i>Religion</i>	1,701	0	0	0	0	1,702
<i>Government</i>	619	0	0	0	0	619
<i>Commercial</i>	26,288	7	0	0	0	26,295
San Benito						
<i>Other Residential</i>	1,123	217	34	1	0	1,375
<i>Single Family</i>	13,198	1,515	13	0	0	14,726
<i>Industrial</i>	281	37	8	1	0	326
<i>Education</i>	39	3	1	0	0	42
<i>Government</i>	38	5	2	0	0	45
<i>Commercial</i>	900	140	36	3	0	1,080
<i>Religion</i>	52	9	3	0	0	64

	# of Buildings					Total
	None	Slight	Moderate	Extensive	Complete	
<i>Agriculture</i>	228	21	3	0	0	253
San Francisco						
<i>Single Family</i>	149,904	746	52	0	0	150,703
<i>Other Residential</i>	43,552	904	72	0	0	44,529
<i>Government</i>	275	13	1	0	0	289
<i>Education</i>	563	8	1	0	0	572
<i>Industrial</i>	3,758	92	10	0	0	3,860
<i>Commercial</i>	20,624	658	62	0	0	21,344
<i>Religion</i>	1,320	23	2	0	0	1,345
<i>Agriculture</i>	159	2	0	0	0	162
San Joaquin						
<i>Commercial</i>	12,826	36	2	0	0	12,864
<i>Agriculture</i>	751	2	0	0	0	753
<i>Religion</i>	874	3	0	0	0	877
<i>Government</i>	302	1	0	0	0	304
<i>Single Family</i>	188,253	619	50	0	0	188,922
<i>Other Residential</i>	21,707	92	6	0	0	21,805
<i>Education</i>	395	0	0	0	0	395
<i>Industrial</i>	4,914	13	1	0	0	4,928
San Luis Obispo						
<i>Religion</i>	359	1	0	0	0	360
<i>Agriculture</i>	420	1	0	0	0	421
<i>Government</i>	185	0	0	0	0	185
<i>Commercial</i>	9,349	24	1	0	0	9,375
<i>Single Family</i>	85,577	62	0	0	0	85,639

	# of Buildings					Total
	None	Slight	Moderate	Extensive	Complete	
<i>Industrial</i>	2,549	7	0	0	0	2,556
<i>Other Residential</i>	20,082	126	8	0	0	20,216
<i>Education</i>	182	0	0	0	0	182
San Mateo						
<i>Religion</i>	701	31	3	0	0	736
<i>Agriculture</i>	490	39	9	1	0	539
<i>Government</i>	283	15	2	0	0	299
<i>Commercial</i>	13,688	633	73	1	0	14,395
<i>Industrial</i>	4,207	231	33	1	0	4,472
<i>Other Residential</i>	21,477	886	88	2	0	22,453
<i>Single Family</i>	156,615	3,289	26	0	0	159,931
<i>Education</i>	482	6	1	0	0	489
Santa Barbara						
<i>Government</i>	239	0	0	0	0	239
<i>Other Residential</i>	24,104	7	0	0	0	24,111
<i>Education</i>	299	0	0	0	0	299
<i>Religion</i>	621	0	0	0	0	621
<i>Commercial</i>	9,819	0	0	0	0	9,820
<i>Agriculture</i>	464	0	0	0	0	464
<i>Single Family</i>	98,982	0	0	0	0	98,982
<i>Industrial</i>	2,840	0	0	0	0	2,840
Santa Clara						
<i>Other Residential</i>	54,073	4,542	535	10	0	59,160
<i>Single Family</i>	407,329	19,719	170	1	0	427,219
<i>Government</i>	444	48	9	0	0	502

	# of Buildings					Total
	None	Slight	Moderate	Extensive	Complete	
<i>Education</i>	1,141	28	4	0	0	1,173
<i>Industrial</i>	8,545	763	120	4	0	9,433
<i>Commercial</i>	32,390	2,686	381	12	0	35,469
<i>Religion</i>	1,417	109	14	0	0	1,540
<i>Agriculture</i>	817	64	13	1	0	895
Santa Cruz						
<i>Religion</i>	184	106	53	12	3	359
<i>Agriculture</i>	490	228	102	19	2	840
<i>Single Family</i>	41,864	24,961	2,039	7	0	68,870
<i>Other Residential</i>	6,828	5,242	2,224	534	63	14,892
<i>Industrial</i>	873	563	295	74	15	1,819
<i>Education</i>	157	49	15	3	1	225
<i>Commercial</i>	3,256	2,140	987	246	65	6,694
<i>Government</i>	63	37	21	6	1	127
Solano						
<i>Religion</i>	453	1	0	0	0	454
<i>Agriculture</i>	245	0	0	0	0	245
<i>Government</i>	152	0	0	0	0	152
<i>Commercial</i>	7,256	11	1	0	0	7,268
<i>Single Family</i>	120,949	19	0	0	0	120,968
<i>Industrial</i>	2,095	5	0	0	0	2,101
<i>Other Residential</i>	12,298	18	1	0	0	12,317
<i>Education</i>	225	0	0	0	0	225
Sonoma						
<i>Other Residential</i>	25,026	7	0	0	0	25,033

	# of Buildings					Total
	None	Slight	Moderate	Extensive	Complete	
<i>Government</i>	319	0	0	0	0	319
<i>Education</i>	367	0	0	0	0	367
<i>Religion</i>	576	0	0	0	0	576
<i>Commercial</i>	12,106	3	0	0	0	12,110
<i>Agriculture</i>	1,303	1	0	0	0	1,304
<i>Single Family</i>	142,028	0	0	0	0	142,028
<i>Industrial</i>	3,824	1	0	0	0	3,825
Stanislaus						
<i>Other Residential</i>	19,511	55	3	0	0	19,569
<i>Single Family</i>	142,642	82	0	0	0	142,724
<i>Education</i>	307	0	0	0	0	307
<i>Government</i>	679	1	0	0	0	680
<i>Industrial</i>	3,462	12	1	0	0	3,475
<i>Commercial</i>	10,334	33	2	0	0	10,369
<i>Religion</i>	454	2	0	0	0	456
<i>Agriculture</i>	1,235	4	0	0	0	1,239
Sutter						
<i>Other Residential</i>	3,113	0	0	0	0	3,113
<i>Industrial</i>	636	0	0	0	0	636
<i>Education</i>	62	0	0	0	0	62
<i>Government</i>	77	0	0	0	0	77
<i>Single Family</i>	24,512	0	0	0	0	24,512
<i>Commercial</i>	2,052	0	0	0	0	2,052
<i>Agriculture</i>	1,125	0	0	0	0	1,125
<i>Religion</i>	154	0	0	0	0	154

	# of Buildings					Total
	None	Slight	Moderate	Extensive	Complete	
Tulare						
<i>Commercial</i>	8,871	2	0	0	0	8,873
<i>Agriculture</i>	3,554	1	0	0	0	3,555
<i>Religion</i>	827	0	0	0	0	827
<i>Government</i>	461	0	0	0	0	461
<i>Single Family</i>	112,034	0	0	0	0	112,034
<i>Other Residential</i>	20,017	5	0	0	0	20,022
<i>Industrial</i>	2,148	0	0	0	0	2,148
<i>Education</i>	269	0	0	0	0	269
Tuolumne						
<i>Education</i>	57	0	0	0	0	57
<i>Government</i>	143	0	0	0	0	143
<i>Commercial</i>	1,576	0	0	0	0	1,576
<i>Religion</i>	121	0	0	0	0	121
<i>Agriculture</i>	82	0	0	0	0	82
<i>Industrial</i>	383	0	0	0	0	383
<i>Other Residential</i>	4,962	0	0	0	0	4,962
<i>Single Family</i>	21,645	0	0	0	0	21,645
Yolo						
<i>Industrial</i>	1,117	0	0	0	0	1,117
<i>Other Residential</i>	9,859	2	0	0	0	9,861
<i>Education</i>	131	0	0	0	0	131
<i>Government</i>	111	0	0	0	0	111
<i>Single Family</i>	42,589	0	0	0	0	42,589
<i>Commercial</i>	4,224	1	0	0	0	4,225

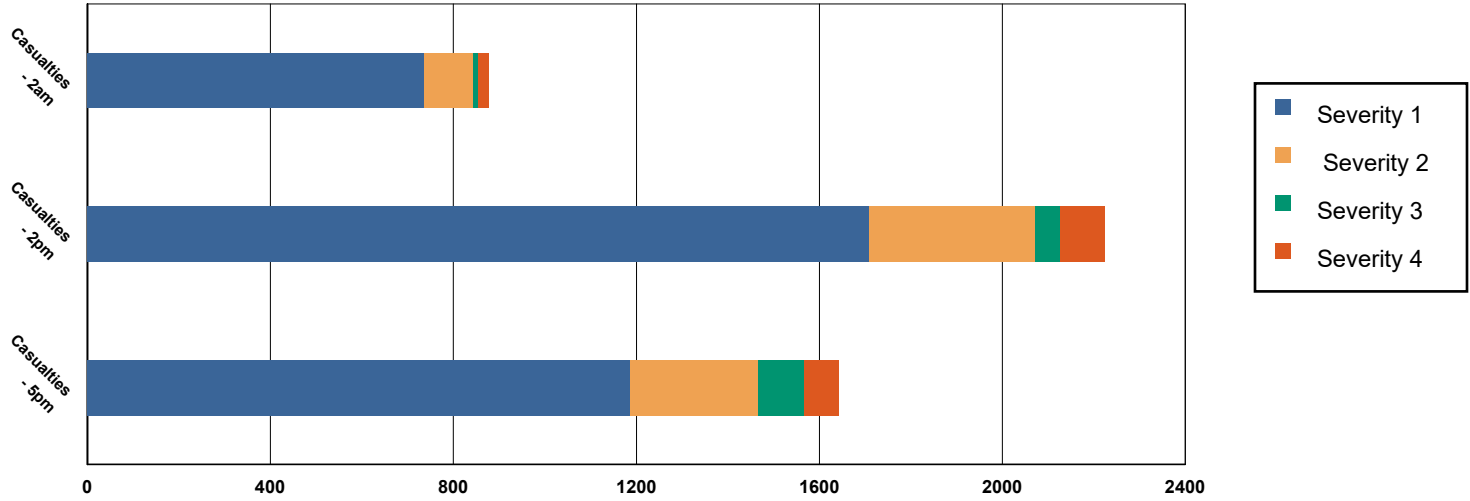
	# of Buildings					Total
	None	Slight	Moderate	Extensive	Complete	
<i>Agriculture</i>	281	0	0	0	0	281
<i>Religion</i>	242	0	0	0	0	242
Total	4,590,405	138,653	23,753	3,408	1,048	4,757,266
Region Total	4,590,405	138,653	23,753	3,408	1,048	4,757,266

Totals only reflect data for those census tracts/blocks included in the user's study region and will reflect the entire county/state only if all of the census blocks for that county/states were selected at the time of study region creation.

Casualties Summary Report

June 14, 2024

Region Total Casualties



Injury Severity Level

Severity 1	Severity 2	Severity 3	Severity 4	Total
------------	------------	------------	------------	-------

California

Alameda

Casualties - 2am

	Severity 1	Severity 2	Severity 3	Severity 4	Total
Single Family	5	0	0	0	5
Hotels	0	0	0	0	0
Commuting	0	0	0	0	0
Educational	0	0	0	0	0
Industrial	0	0	0	0	0
Commercial	0	0	0	0	0
Other-Residential	6	0	0	0	6
Total Casualties - 2am	11	0	0	0	11

Casualties - 2pm

Industrial	2	0	0	0	2
Educational	2	0	0	0	2
Other-Residential	2	0	0	0	2
Single Family	1	0	0	0	1
Hotels	0	0	0	0	0
Commuting	0	0	0	0	0
Commercial	14	1	0	0	14

	Injury Severity Level				Total
	Severity 1	Severity 2	Severity 3	Severity 4	
California					
Alameda					
Total Casualties - 2pm	21	1	0	0	22
Casualties - 5pm					
<i>Commuting</i>	0	0	0	0	0
<i>Single Family</i>	2	0	0	0	2
<i>Commercial</i>	9	0	0	0	10
<i>Hotels</i>	0	0	0	0	0
<i>Educational</i>	0	0	0	0	0
<i>Industrial</i>	1	0	0	0	2
<i>Other-Residential</i>	2	0	0	0	2
Total Casualties - 5pm	15	1	0	0	15
Amador					
Casualties - 2am					
<i>Commercial</i>	0	0	0	0	0
<i>Other-Residential</i>	0	0	0	0	0
<i>Commuting</i>	0	0	0	0	0
<i>Educational</i>	0	0	0	0	0
<i>Single Family</i>	0	0	0	0	0
<i>Hotels</i>	0	0	0	0	0
<i>Industrial</i>	0	0	0	0	0
Total Casualties - 2am	0	0	0	0	0
Casualties - 2pm					
<i>Single Family</i>	0	0	0	0	0
<i>Hotels</i>	0	0	0	0	0
<i>Educational</i>	0	0	0	0	0
<i>Commuting</i>	0	0	0	0	0
<i>Commercial</i>	0	0	0	0	0
<i>Other-Residential</i>	0	0	0	0	0
<i>Industrial</i>	0	0	0	0	0
Total Casualties - 2pm	0	0	0	0	0
Casualties - 5pm					
<i>Commercial</i>	0	0	0	0	0
<i>Commuting</i>	0	0	0	0	0
<i>Other-Residential</i>	0	0	0	0	0
<i>Single Family</i>	0	0	0	0	0
<i>Educational</i>	0	0	0	0	0
<i>Hotels</i>	0	0	0	0	0
<i>Industrial</i>	0	0	0	0	0
Total Casualties - 5pm	0	0	0	0	0
Calaveras					
Casualties - 2am					
<i>Other-Residential</i>	0	0	0	0	0

	Injury Severity Level				Total
	Severity 1	Severity 2	Severity 3	Severity 4	
California					
Calaveras					
Casualties - 2am					
<i>Commuting</i>	0	0	0	0	0
<i>Commercial</i>	0	0	0	0	0
<i>Single Family</i>	0	0	0	0	0
<i>Hotels</i>	0	0	0	0	0
<i>Educational</i>	0	0	0	0	0
<i>Industrial</i>	0	0	0	0	0
Total Casualties - 2am	0	0	0	0	0
Casualties - 2pm					
<i>Hotels</i>	0	0	0	0	0
<i>Single Family</i>	0	0	0	0	0
<i>Educational</i>	0	0	0	0	0
<i>Commuting</i>	0	0	0	0	0
<i>Commercial</i>	0	0	0	0	0
<i>Industrial</i>	0	0	0	0	0
<i>Other-Residential</i>	0	0	0	0	0
Total Casualties - 2pm	0	0	0	0	0
Casualties - 5pm					
<i>Industrial</i>	0	0	0	0	0
<i>Commercial</i>	0	0	0	0	0
<i>Other-Residential</i>	0	0	0	0	0
<i>Educational</i>	0	0	0	0	0
<i>Hotels</i>	0	0	0	0	0
<i>Commuting</i>	0	0	0	0	0
<i>Single Family</i>	0	0	0	0	0
Total Casualties - 5pm	0	0	0	0	0
Contra Costa					
Casualties - 2am					
<i>Educational</i>	0	0	0	0	0
<i>Hotels</i>	0	0	0	0	0
<i>Industrial</i>	0	0	0	0	0
<i>Other-Residential</i>	0	0	0	0	0
<i>Single Family</i>	0	0	0	0	0
<i>Commercial</i>	0	0	0	0	0
<i>Commuting</i>	0	0	0	0	0
Total Casualties - 2am	1	0	0	0	1
Casualties - 2pm					
<i>Other-Residential</i>	0	0	0	0	0
<i>Industrial</i>	0	0	0	0	0
<i>Hotels</i>	0	0	0	0	0
<i>Single Family</i>	0	0	0	0	0
<i>Educational</i>	0	0	0	0	0

	Injury Severity Level				Total
	Severity 1	Severity 2	Severity 3	Severity 4	
California					
Contra Costa					
Casualties - 2pm					
<i>Commuting</i>	0	0	0	0	0
<i>Commercial</i>	1	0	0	0	1
Total Casualties - 2pm	1	0	0	0	1
Casualties - 5pm					
<i>Educational</i>	0	0	0	0	0
<i>Commuting</i>	0	0	0	0	0
<i>Single Family</i>	0	0	0	0	0
<i>Hotels</i>	0	0	0	0	0
<i>Industrial</i>	0	0	0	0	0
<i>Other-Residential</i>	0	0	0	0	0
<i>Commercial</i>	1	0	0	0	1
Total Casualties - 5pm	1	0	0	0	1
Fresno					
Casualties - 2am					
<i>Hotels</i>	0	0	0	0	0
<i>Educational</i>	0	0	0	0	0
<i>Industrial</i>	0	0	0	0	0
<i>Commercial</i>	0	0	0	0	0
<i>Other-Residential</i>	0	0	0	0	0
<i>Single Family</i>	0	0	0	0	0
<i>Commuting</i>	0	0	0	0	0
Total Casualties - 2am	0	0	0	0	0
Casualties - 2pm					
<i>Commercial</i>	0	0	0	0	0
<i>Other-Residential</i>	0	0	0	0	0
<i>Industrial</i>	0	0	0	0	0
<i>Single Family</i>	0	0	0	0	0
<i>Hotels</i>	0	0	0	0	0
<i>Commuting</i>	0	0	0	0	0
<i>Educational</i>	0	0	0	0	0
Total Casualties - 2pm	1	0	0	0	1
Casualties - 5pm					
<i>Educational</i>	0	0	0	0	0
<i>Commuting</i>	0	0	0	0	0
<i>Hotels</i>	0	0	0	0	0
<i>Industrial</i>	0	0	0	0	0
<i>Single Family</i>	0	0	0	0	0
<i>Other-Residential</i>	0	0	0	0	0
<i>Commercial</i>	0	0	0	0	0
Total Casualties - 5pm	0	0	0	0	0

	Injury Severity Level				Total
	Severity 1	Severity 2	Severity 3	Severity 4	
California					
Kern					
Casualties - 2am					
Commercial	0	0	0	0	0
Commuting	0	0	0	0	0
Educational	0	0	0	0	0
Single Family	0	0	0	0	0
Other-Residential	0	0	0	0	0
Hotels	0	0	0	0	0
Industrial	0	0	0	0	0
Total Casualties - 2am	0	0	0	0	0
Casualties - 2pm					
Educational	0	0	0	0	0
Commuting	0	0	0	0	0
Single Family	0	0	0	0	0
Hotels	0	0	0	0	0
Other-Residential	0	0	0	0	0
Commercial	0	0	0	0	0
Industrial	0	0	0	0	0
Total Casualties - 2pm	0	0	0	0	0
Casualties - 5pm					
Single Family	0	0	0	0	0
Commercial	0	0	0	0	0
Other-Residential	0	0	0	0	0
Commuting	0	0	0	0	0
Educational	0	0	0	0	0
Hotels	0	0	0	0	0
Industrial	0	0	0	0	0
Total Casualties - 5pm	0	0	0	0	0
Kings					
Casualties - 2am					
Industrial	0	0	0	0	0
Other-Residential	0	0	0	0	0
Educational	0	0	0	0	0
Commuting	0	0	0	0	0
Commercial	0	0	0	0	0
Single Family	0	0	0	0	0
Hotels	0	0	0	0	0
Total Casualties - 2am	0	0	0	0	0
Casualties - 2pm					
Single Family	0	0	0	0	0
Other-Residential	0	0	0	0	0
Commercial	0	0	0	0	0
Educational	0	0	0	0	0

	Injury Severity Level				Total
	Severity 1	Severity 2	Severity 3	Severity 4	
California					
Kings					
Casualties - 2pm					
<i>Commuting</i>	0	0	0	0	0
<i>Hotels</i>	0	0	0	0	0
<i>Industrial</i>	0	0	0	0	0
Total Casualties - 2pm	0	0	0	0	0
Casualties - 5pm					
<i>Single Family</i>	0	0	0	0	0
<i>Commercial</i>	0	0	0	0	0
<i>Commuting</i>	0	0	0	0	0
<i>Other-Residential</i>	0	0	0	0	0
<i>Educational</i>	0	0	0	0	0
<i>Hotels</i>	0	0	0	0	0
<i>Industrial</i>	0	0	0	0	0
Total Casualties - 5pm	0	0	0	0	0
Lake					
Casualties - 2am					
<i>Hotels</i>	0	0	0	0	0
<i>Industrial</i>	0	0	0	0	0
<i>Other-Residential</i>	0	0	0	0	0
<i>Commuting</i>	0	0	0	0	0
<i>Educational</i>	0	0	0	0	0
<i>Single Family</i>	0	0	0	0	0
<i>Commercial</i>	0	0	0	0	0
Total Casualties - 2am	0	0	0	0	0
Casualties - 2pm					
<i>Industrial</i>	0	0	0	0	0
<i>Single Family</i>	0	0	0	0	0
<i>Commercial</i>	0	0	0	0	0
<i>Other-Residential</i>	0	0	0	0	0
<i>Hotels</i>	0	0	0	0	0
<i>Educational</i>	0	0	0	0	0
<i>Commuting</i>	0	0	0	0	0
Total Casualties - 2pm	0	0	0	0	0
Casualties - 5pm					
<i>Other-Residential</i>	0	0	0	0	0
<i>Industrial</i>	0	0	0	0	0
<i>Commercial</i>	0	0	0	0	0
<i>Educational</i>	0	0	0	0	0
<i>Commuting</i>	0	0	0	0	0
<i>Single Family</i>	0	0	0	0	0
<i>Hotels</i>	0	0	0	0	0

	Injury Severity Level				Total
	Severity 1	Severity 2	Severity 3	Severity 4	
California					
Lake					
Total Casualties - 5pm	0	0	0	0	0
Madera					
Casualties - 2am					
<i>Hotels</i>	0	0	0	0	0
<i>Educational</i>	0	0	0	0	0
<i>Single Family</i>	0	0	0	0	0
<i>Commuting</i>	0	0	0	0	0
<i>Industrial</i>	0	0	0	0	0
<i>Commercial</i>	0	0	0	0	0
<i>Other-Residential</i>	0	0	0	0	0
Total Casualties - 2am	0	0	0	0	0
Casualties - 2pm					
<i>Industrial</i>	0	0	0	0	0
<i>Commercial</i>	0	0	0	0	0
<i>Other-Residential</i>	0	0	0	0	0
<i>Commuting</i>	0	0	0	0	0
<i>Single Family</i>	0	0	0	0	0
<i>Hotels</i>	0	0	0	0	0
<i>Educational</i>	0	0	0	0	0
Total Casualties - 2pm	0	0	0	0	0
Casualties - 5pm					
<i>Industrial</i>	0	0	0	0	0
<i>Commercial</i>	0	0	0	0	0
<i>Single Family</i>	0	0	0	0	0
<i>Educational</i>	0	0	0	0	0
<i>Other-Residential</i>	0	0	0	0	0
<i>Commuting</i>	0	0	0	0	0
<i>Hotels</i>	0	0	0	0	0
Total Casualties - 5pm	0	0	0	0	0
Marin					
Casualties - 2am					
<i>Commercial</i>	0	0	0	0	0
<i>Commuting</i>	0	0	0	0	0
<i>Other-Residential</i>	0	0	0	0	0
<i>Educational</i>	0	0	0	0	0
<i>Single Family</i>	0	0	0	0	0
<i>Hotels</i>	0	0	0	0	0
<i>Industrial</i>	0	0	0	0	0
Total Casualties - 2am	0	0	0	0	0
Casualties - 2pm					
<i>Hotels</i>	0	0	0	0	0

	Injury Severity Level				Total
	Severity 1	Severity 2	Severity 3	Severity 4	
California					
Marin					
Casualties - 2pm					
<i>Commuting</i>	0	0	0	0	0
<i>Educational</i>	0	0	0	0	0
<i>Industrial</i>	0	0	0	0	0
<i>Other-Residential</i>	0	0	0	0	0
<i>Commercial</i>	0	0	0	0	0
<i>Single Family</i>	0	0	0	0	0
Total Casualties - 2pm	0	0	0	0	0
Casualties - 5pm					
<i>Commuting</i>	0	0	0	0	0
<i>Commercial</i>	0	0	0	0	0
<i>Other-Residential</i>	0	0	0	0	0
<i>Single Family</i>	0	0	0	0	0
<i>Industrial</i>	0	0	0	0	0
<i>Educational</i>	0	0	0	0	0
<i>Hotels</i>	0	0	0	0	0
Total Casualties - 5pm	0	0	0	0	0
Mariposa					
Casualties - 2am					
<i>Commuting</i>	0	0	0	0	0
<i>Single Family</i>	0	0	0	0	0
<i>Commercial</i>	0	0	0	0	0
<i>Hotels</i>	0	0	0	0	0
<i>Educational</i>	0	0	0	0	0
<i>Industrial</i>	0	0	0	0	0
<i>Other-Residential</i>	0	0	0	0	0
Total Casualties - 2am	0	0	0	0	0
Casualties - 2pm					
<i>Hotels</i>	0	0	0	0	0
<i>Industrial</i>	0	0	0	0	0
<i>Commercial</i>	0	0	0	0	0
<i>Other-Residential</i>	0	0	0	0	0
<i>Educational</i>	0	0	0	0	0
<i>Commuting</i>	0	0	0	0	0
<i>Single Family</i>	0	0	0	0	0
Total Casualties - 2pm	0	0	0	0	0
Casualties - 5pm					
<i>Other-Residential</i>	0	0	0	0	0
<i>Educational</i>	0	0	0	0	0
<i>Commuting</i>	0	0	0	0	0
<i>Hotels</i>	0	0	0	0	0
<i>Single Family</i>	0	0	0	0	0

	Injury Severity Level				Total
	Severity 1	Severity 2	Severity 3	Severity 4	
California					
Mariposa					
Casualties - 5pm					
Commercial	0	0	0	0	0
Industrial	0	0	0	0	0
Total Casualties - 5pm	0	0	0	0	0
Merced					
Casualties - 2am					
Hotels	0	0	0	0	0
Industrial	0	0	0	0	0
Commercial	0	0	0	0	0
Single Family	0	0	0	0	0
Other-Residential	0	0	0	0	0
Educational	0	0	0	0	0
Commuting	0	0	0	0	0
Total Casualties - 2am	0	0	0	0	0
Casualties - 2pm					
Other-Residential	0	0	0	0	0
Industrial	0	0	0	0	0
Commercial	1	0	0	0	1
Commuting	0	0	0	0	0
Hotels	0	0	0	0	0
Educational	0	0	0	0	0
Single Family	0	0	0	0	0
Total Casualties - 2pm	2	0	0	0	2
Casualties - 5pm					
Industrial	0	0	0	0	0
Hotels	0	0	0	0	0
Educational	0	0	0	0	0
Commuting	0	0	0	0	0
Single Family	0	0	0	0	0
Commercial	1	0	0	0	1
Other-Residential	0	0	0	0	0
Total Casualties - 5pm	1	0	0	0	1
Monterey					
Casualties - 2am					
Other-Residential	338	73	9	18	438
Commuting	0	0	0	0	1
Commercial	9	2	0	1	13
Single Family	141	8	0	0	150
Hotels	0	0	0	0	0
Educational	0	0	0	0	0
Industrial	9	2	0	1	12

	Injury Severity Level				Total
	Severity 1	Severity 2	Severity 3	Severity 4	
California					
Monterey					
Total Casualties - 2am	498	86	10	19	613
Casualties - 2pm					
<i>Commuting</i>	1	2	3	1	6
<i>Commercial</i>	677	171	25	50	924
<i>Single Family</i>	42	3	0	0	44
<i>Hotels</i>	0	0	0	0	0
<i>Educational</i>	349	81	11	22	463
<i>Industrial</i>	64	15	2	4	85
<i>Other-Residential</i>	104	23	3	6	136
Total Casualties - 2pm	1,238	295	44	82	1,659
Casualties - 5pm					
<i>Commercial</i>	491	124	18	35	669
<i>Other-Residential</i>	129	28	4	7	168
<i>Industrial</i>	40	10	1	3	53
<i>Hotels</i>	0	0	0	0	0
<i>Educational</i>	131	32	4	9	176
<i>Commuting</i>	23	33	53	10	120
<i>Single Family</i>	52	3	0	0	55
Total Casualties - 5pm	866	230	81	64	1,241
Napa					
Casualties - 2am					
<i>Commercial</i>	0	0	0	0	0
<i>Other-Residential</i>	0	0	0	0	0
<i>Educational</i>	0	0	0	0	0
<i>Single Family</i>	0	0	0	0	0
<i>Commuting</i>	0	0	0	0	0
<i>Hotels</i>	0	0	0	0	0
<i>Industrial</i>	0	0	0	0	0
Total Casualties - 2am	0	0	0	0	0
Casualties - 2pm					
<i>Educational</i>	0	0	0	0	0
<i>Hotels</i>	0	0	0	0	0
<i>Commuting</i>	0	0	0	0	0
<i>Industrial</i>	0	0	0	0	0
<i>Other-Residential</i>	0	0	0	0	0
<i>Single Family</i>	0	0	0	0	0
<i>Commercial</i>	0	0	0	0	0
Total Casualties - 2pm	0	0	0	0	0
Casualties - 5pm					
<i>Commercial</i>	0	0	0	0	0
<i>Single Family</i>	0	0	0	0	0

	Injury Severity Level				Total
	Severity 1	Severity 2	Severity 3	Severity 4	
California					
Napa					
Casualties - 5pm					
<i>Other-Residential</i>	0	0	0	0	0
<i>Commuting</i>	0	0	0	0	0
<i>Industrial</i>	0	0	0	0	0
<i>Educational</i>	0	0	0	0	0
<i>Hotels</i>	0	0	0	0	0
Total Casualties - 5pm	0	0	0	0	0
Sacramento					
Casualties - 2am					
<i>Industrial</i>	0	0	0	0	0
<i>Other-Residential</i>	0	0	0	0	0
<i>Commercial</i>	0	0	0	0	0
<i>Single Family</i>	0	0	0	0	0
<i>Hotels</i>	0	0	0	0	0
<i>Commuting</i>	0	0	0	0	0
<i>Educational</i>	0	0	0	0	0
Total Casualties - 2am	0	0	0	0	0
Casualties - 2pm					
<i>Other-Residential</i>	0	0	0	0	0
<i>Commuting</i>	0	0	0	0	0
<i>Single Family</i>	0	0	0	0	0
<i>Commercial</i>	0	0	0	0	0
<i>Hotels</i>	0	0	0	0	0
<i>Educational</i>	0	0	0	0	0
<i>Industrial</i>	0	0	0	0	0
Total Casualties - 2pm	0	0	0	0	0
Casualties - 5pm					
<i>Industrial</i>	0	0	0	0	0
<i>Educational</i>	0	0	0	0	0
<i>Hotels</i>	0	0	0	0	0
<i>Commercial</i>	0	0	0	0	0
<i>Commuting</i>	0	0	0	0	0
<i>Other-Residential</i>	0	0	0	0	0
<i>Single Family</i>	0	0	0	0	0
Total Casualties - 5pm	0	0	0	0	0
San Benito					
Casualties - 2am					
<i>Other-Residential</i>	1	0	0	0	1
<i>Commercial</i>	0	0	0	0	0
<i>Commuting</i>	0	0	0	0	0
<i>Hotels</i>	0	0	0	0	0
<i>Educational</i>	0	0	0	0	0

	Injury Severity Level				Total
	Severity 1	Severity 2	Severity 3	Severity 4	
California					
San Benito					
Casualties - 2am					
Single Family	3	0	0	0	3
Industrial	0	0	0	0	0
Total Casualties - 2am	4	0	0	0	4
Casualties - 2pm					
Hotels	0	0	0	0	0
Educational	2	0	0	0	2
Industrial	0	0	0	0	0
Other-Residential	0	0	0	0	0
Commercial	2	0	0	0	2
Commuting	0	0	0	0	0
Single Family	1	0	0	0	1
Total Casualties - 2pm	5	0	0	0	6
Casualties - 5pm					
Commuting	0	0	0	0	0
Commercial	2	0	0	0	2
Other-Residential	0	0	0	0	0
Single Family	1	0	0	0	1
Industrial	0	0	0	0	0
Educational	0	0	0	0	0
Hotels	0	0	0	0	0
Total Casualties - 5pm	3	0	0	0	4
San Francisco					
Casualties - 2am					
Industrial	0	0	0	0	0
Hotels	0	0	0	0	0
Commercial	0	0	0	0	0
Other-Residential	9	0	0	0	10
Commuting	0	0	0	0	0
Educational	0	0	0	0	0
Single Family	1	0	0	0	1
Total Casualties - 2am	11	0	0	0	11
Casualties - 2pm					
Commercial	13	1	0	0	14
Industrial	1	0	0	0	1
Other-Residential	3	0	0	0	3
Single Family	0	0	0	0	0
Hotels	0	0	0	0	0
Commuting	0	0	0	0	0
Educational	2	0	0	0	2
Total Casualties - 2pm	19	1	0	0	20

	Injury Severity Level				Total
	Severity 1	Severity 2	Severity 3	Severity 4	
California					
San Francisco					
Casualties - 5pm					
<i>Educational</i>	1	0	0	0	1
<i>Hotels</i>	0	0	0	0	0
<i>Industrial</i>	0	0	0	0	0
<i>Commuting</i>	0	0	0	0	0
<i>Commercial</i>	8	0	0	0	8
<i>Other-Residential</i>	3	0	0	0	4
<i>Single Family</i>	1	0	0	0	1
Total Casualties - 5pm	13	1	0	0	13
San Joaquin					
Casualties - 2am					
<i>Educational</i>	0	0	0	0	0
<i>Commuting</i>	0	0	0	0	0
<i>Hotels</i>	0	0	0	0	0
<i>Commercial</i>	0	0	0	0	0
<i>Single Family</i>	2	0	0	0	2
<i>Industrial</i>	0	0	0	0	0
<i>Other-Residential</i>	0	0	0	0	0
Total Casualties - 2am	2	0	0	0	2
Casualties - 2pm					
<i>Industrial</i>	0	0	0	0	0
<i>Other-Residential</i>	0	0	0	0	0
<i>Educational</i>	0	0	0	0	0
<i>Single Family</i>	1	0	0	0	1
<i>Hotels</i>	0	0	0	0	0
<i>Commuting</i>	0	0	0	0	0
<i>Commercial</i>	1	0	0	0	1
Total Casualties - 2pm	1	0	0	0	1
Casualties - 5pm					
<i>Commuting</i>	0	0	0	0	0
<i>Single Family</i>	1	0	0	0	1
<i>Educational</i>	0	0	0	0	0
<i>Hotels</i>	0	0	0	0	0
<i>Industrial</i>	0	0	0	0	0
<i>Commercial</i>	0	0	0	0	0
<i>Other-Residential</i>	0	0	0	0	0
Total Casualties - 5pm	1	0	0	0	1
San Luis Obispo					
Casualties - 2am					
<i>Commercial</i>	0	0	0	0	0
<i>Other-Residential</i>	0	0	0	0	0
<i>Industrial</i>	0	0	0	0	0

	Injury Severity Level				Total
	Severity 1	Severity 2	Severity 3	Severity 4	
California					
San Luis Obispo					
Casualties - 2am					
Single Family	0	0	0	0	0
Commuting	0	0	0	0	0
Educational	0	0	0	0	0
Hotels	0	0	0	0	0
Total Casualties - 2am	0	0	0	0	0
Casualties - 2pm					
Single Family	0	0	0	0	0
Educational	0	0	0	0	0
Other-Residential	0	0	0	0	0
Hotels	0	0	0	0	0
Commuting	0	0	0	0	0
Commercial	0	0	0	0	0
Industrial	0	0	0	0	0
Total Casualties - 2pm	0	0	0	0	0
Casualties - 5pm					
Industrial	0	0	0	0	0
Other-Residential	0	0	0	0	0
Commuting	0	0	0	0	0
Single Family	0	0	0	0	0
Commercial	0	0	0	0	0
Hotels	0	0	0	0	0
Educational	0	0	0	0	0
Total Casualties - 5pm	0	0	0	0	0
San Mateo					
Casualties - 2am					
Industrial	0	0	0	0	0
Other-Residential	5	0	0	0	6
Single Family	5	0	0	0	5
Commercial	0	0	0	0	0
Educational	0	0	0	0	0
Commuting	0	0	0	0	0
Hotels	0	0	0	0	0
Total Casualties - 2am	11	0	0	0	12
Casualties - 2pm					
Other-Residential	2	0	0	0	2
Single Family	1	0	0	0	1
Commuting	0	0	0	0	0
Commercial	13	1	0	0	14
Educational	2	0	0	0	2
Hotels	0	0	0	0	0
Industrial	2	0	0	0	2

	Injury Severity Level				Total
	Severity 1	Severity 2	Severity 3	Severity 4	
California					
San Mateo					
Total Casualties - 2pm	19	1	0	0	20
Casualties - 5pm					
<i>Commercial</i>	8	0	0	0	8
<i>Industrial</i>	1	0	0	0	1
<i>Other-Residential</i>	2	0	0	0	2
<i>Single Family</i>	2	0	0	0	2
<i>Educational</i>	0	0	0	0	0
<i>Commuting</i>	0	0	0	0	1
<i>Hotels</i>	0	0	0	0	0
Total Casualties - 5pm	14	1	0	0	15
Santa Barbara					
Casualties - 2am					
<i>Industrial</i>	0	0	0	0	0
<i>Commercial</i>	0	0	0	0	0
<i>Other-Residential</i>	0	0	0	0	0
<i>Commuting</i>	0	0	0	0	0
<i>Educational</i>	0	0	0	0	0
<i>Single Family</i>	0	0	0	0	0
<i>Hotels</i>	0	0	0	0	0
Total Casualties - 2am	0	0	0	0	0
Casualties - 2pm					
<i>Commercial</i>	0	0	0	0	0
<i>Single Family</i>	0	0	0	0	0
<i>Other-Residential</i>	0	0	0	0	0
<i>Commuting</i>	0	0	0	0	0
<i>Educational</i>	0	0	0	0	0
<i>Hotels</i>	0	0	0	0	0
<i>Industrial</i>	0	0	0	0	0
Total Casualties - 2pm	0	0	0	0	0
Casualties - 5pm					
<i>Other-Residential</i>	0	0	0	0	0
<i>Single Family</i>	0	0	0	0	0
<i>Commercial</i>	0	0	0	0	0
<i>Commuting</i>	0	0	0	0	0
<i>Educational</i>	0	0	0	0	0
<i>Industrial</i>	0	0	0	0	0
<i>Hotels</i>	0	0	0	0	0
Total Casualties - 5pm	0	0	0	0	0
Santa Clara					
Casualties - 2am					
<i>Commuting</i>	0	0	0	0	0

Injury Severity Level

Severity 1 Severity 2 Severity 3 Severity 4 Total

California

Santa Clara

Casualties - 2am

<i>Educational</i>	0	0	0	0	0
<i>Single Family</i>	31	0	0	0	31
<i>Hotels</i>	0	0	0	0	0
<i>Industrial</i>	1	0	0	0	1
<i>Commercial</i>	1	0	0	0	1
<i>Other-Residential</i>	26	1	0	0	27
Total Casualties - 2am	59	1	0	0	60

Casualties - 2pm

<i>Industrial</i>	8	0	0	0	9
<i>Commercial</i>	44	2	0	0	47
<i>Single Family</i>	8	0	0	0	8
<i>Commuting</i>	0	0	0	0	0
<i>Hotels</i>	0	0	0	0	0
<i>Other-Residential</i>	8	0	0	0	8
<i>Educational</i>	9	0	0	0	10
Total Casualties - 2pm	78	3	0	0	82

Casualties - 5pm

<i>Industrial</i>	5	0	0	0	5
<i>Hotels</i>	0	0	0	0	0
<i>Other-Residential</i>	9	0	0	0	10
<i>Commercial</i>	29	1	0	0	31
<i>Commuting</i>	0	0	1	0	1
<i>Single Family</i>	11	0	0	0	11
<i>Educational</i>	2	0	0	0	2
Total Casualties - 5pm	57	3	1	0	60

Santa Cruz

Casualties - 2am

<i>Hotels</i>	0	0	0	0	0
<i>Educational</i>	0	0	0	0	0
<i>Industrial</i>	3	1	0	0	4
<i>Other-Residential</i>	89	16	2	4	110
<i>Single Family</i>	43	1	0	0	44
<i>Commercial</i>	3	1	0	0	5
<i>Commuting</i>	0	0	0	0	0
Total Casualties - 2am	138	18	2	4	163

Casualties - 2pm

<i>Industrial</i>	21	4	0	1	27
<i>Other-Residential</i>	30	5	1	1	37
<i>Commercial</i>	221	47	6	12	286
<i>Commuting</i>	0	0	1	0	1
<i>Educational</i>	36	5	1	1	43

	Injury Severity Level				Total
	Severity 1	Severity 2	Severity 3	Severity 4	
California					
Santa Cruz					
Casualties - 2pm					
Single Family	13	0	0	0	14
Hotels	0	0	0	0	0
Total Casualties - 2pm	322	63	9	16	409
Casualties - 5pm					
Industrial	13	3	0	1	17
Other-Residential	34	6	1	1	42
Commercial	142	30	4	8	184
Commuting	5	6	11	2	25
Single Family	16	1	0	0	16
Hotels	0	0	0	0	0
Educational	5	0	0	0	5
Total Casualties - 5pm	215	46	17	12	289
Solano					
Casualties - 2am					
Industrial	0	0	0	0	0
Other-Residential	0	0	0	0	0
Commercial	0	0	0	0	0
Educational	0	0	0	0	0
Commuting	0	0	0	0	0
Single Family	0	0	0	0	0
Hotels	0	0	0	0	0
Total Casualties - 2am	0	0	0	0	0
Casualties - 2pm					
Single Family	0	0	0	0	0
Other-Residential	0	0	0	0	0
Commercial	0	0	0	0	0
Educational	0	0	0	0	0
Commuting	0	0	0	0	0
Hotels	0	0	0	0	0
Industrial	0	0	0	0	0
Total Casualties - 2pm	0	0	0	0	0
Casualties - 5pm					
Commercial	0	0	0	0	0
Other-Residential	0	0	0	0	0
Single Family	0	0	0	0	0
Educational	0	0	0	0	0
Commuting	0	0	0	0	0
Hotels	0	0	0	0	0
Industrial	0	0	0	0	0
Total Casualties - 5pm	0	0	0	0	0

	Injury Severity Level				Total
	Severity 1	Severity 2	Severity 3	Severity 4	
California					
Sonoma					
Casualties - 2am					
Single Family	0	0	0	0	0
Other-Residential	0	0	0	0	0
Commercial	0	0	0	0	0
Commuting	0	0	0	0	0
Hotels	0	0	0	0	0
Educational	0	0	0	0	0
Industrial	0	0	0	0	0
Total Casualties - 2am	0	0	0	0	0
Casualties - 2pm					
Single Family	0	0	0	0	0
Commuting	0	0	0	0	0
Educational	0	0	0	0	0
Hotels	0	0	0	0	0
Industrial	0	0	0	0	0
Other-Residential	0	0	0	0	0
Commercial	0	0	0	0	0
Total Casualties - 2pm	0	0	0	0	0
Casualties - 5pm					
Single Family	0	0	0	0	0
Commercial	0	0	0	0	0
Commuting	0	0	0	0	0
Hotels	0	0	0	0	0
Educational	0	0	0	0	0
Industrial	0	0	0	0	0
Other-Residential	0	0	0	0	0
Total Casualties - 5pm	0	0	0	0	0
Stanislaus					
Casualties - 2am					
Hotels	0	0	0	0	0
Industrial	0	0	0	0	0
Commercial	0	0	0	0	0
Single Family	0	0	0	0	0
Other-Residential	0	0	0	0	0
Commuting	0	0	0	0	0
Educational	0	0	0	0	0
Total Casualties - 2am	0	0	0	0	0
Casualties - 2pm					
Industrial	0	0	0	0	0
Other-Residential	0	0	0	0	0
Commercial	0	0	0	0	0
Commuting	0	0	0	0	0

	Injury Severity Level				Total
	Severity 1	Severity 2	Severity 3	Severity 4	
California					
Stanislaus					
Casualties - 2pm					
<i>Educational</i>	0	0	0	0	0
<i>Single Family</i>	0	0	0	0	0
<i>Hotels</i>	0	0	0	0	0
Total Casualties - 2pm	1	0	0	0	1
Casualties - 5pm					
<i>Industrial</i>	0	0	0	0	0
<i>Other-Residential</i>	0	0	0	0	0
<i>Commuting</i>	0	0	0	0	0
<i>Single Family</i>	0	0	0	0	0
<i>Commercial</i>	0	0	0	0	0
<i>Hotels</i>	0	0	0	0	0
<i>Educational</i>	0	0	0	0	0
Total Casualties - 5pm	0	0	0	0	0
Sutter					
Casualties - 2am					
<i>Educational</i>	0	0	0	0	0
<i>Commuting</i>	0	0	0	0	0
<i>Hotels</i>	0	0	0	0	0
<i>Industrial</i>	0	0	0	0	0
<i>Other-Residential</i>	0	0	0	0	0
<i>Single Family</i>	0	0	0	0	0
<i>Commercial</i>	0	0	0	0	0
Total Casualties - 2am	0	0	0	0	0
Casualties - 2pm					
<i>Industrial</i>	0	0	0	0	0
<i>Commuting</i>	0	0	0	0	0
<i>Other-Residential</i>	0	0	0	0	0
<i>Single Family</i>	0	0	0	0	0
<i>Commercial</i>	0	0	0	0	0
<i>Hotels</i>	0	0	0	0	0
<i>Educational</i>	0	0	0	0	0
Total Casualties - 2pm	0	0	0	0	0
Casualties - 5pm					
<i>Commuting</i>	0	0	0	0	0
<i>Commercial</i>	0	0	0	0	0
<i>Educational</i>	0	0	0	0	0
<i>Single Family</i>	0	0	0	0	0
<i>Hotels</i>	0	0	0	0	0
<i>Industrial</i>	0	0	0	0	0
<i>Other-Residential</i>	0	0	0	0	0

	Injury Severity Level				Total
	Severity 1	Severity 2	Severity 3	Severity 4	
California					
Sutter					
Total Casualties - 5pm	0	0	0	0	0
Tulare					
Casualties - 2am					
<i>Commercial</i>	0	0	0	0	0
<i>Commuting</i>	0	0	0	0	0
<i>Single Family</i>	0	0	0	0	0
<i>Educational</i>	0	0	0	0	0
<i>Hotels</i>	0	0	0	0	0
<i>Industrial</i>	0	0	0	0	0
<i>Other-Residential</i>	0	0	0	0	0
Total Casualties - 2am	0	0	0	0	0
Casualties - 2pm					
<i>Industrial</i>	0	0	0	0	0
<i>Hotels</i>	0	0	0	0	0
<i>Commercial</i>	0	0	0	0	0
<i>Other-Residential</i>	0	0	0	0	0
<i>Educational</i>	0	0	0	0	0
<i>Commuting</i>	0	0	0	0	0
<i>Single Family</i>	0	0	0	0	0
Total Casualties - 2pm	0	0	0	0	0
Casualties - 5pm					
<i>Other-Residential</i>	0	0	0	0	0
<i>Commercial</i>	0	0	0	0	0
<i>Single Family</i>	0	0	0	0	0
<i>Hotels</i>	0	0	0	0	0
<i>Commuting</i>	0	0	0	0	0
<i>Educational</i>	0	0	0	0	0
<i>Industrial</i>	0	0	0	0	0
Total Casualties - 5pm	0	0	0	0	0
Tuolumne					
Casualties - 2am					
<i>Other-Residential</i>	0	0	0	0	0
<i>Industrial</i>	0	0	0	0	0
<i>Commercial</i>	0	0	0	0	0
<i>Commuting</i>	0	0	0	0	0
<i>Single Family</i>	0	0	0	0	0
<i>Educational</i>	0	0	0	0	0
<i>Hotels</i>	0	0	0	0	0
Total Casualties - 2am	0	0	0	0	0
Casualties - 2pm					
<i>Other-Residential</i>	0	0	0	0	0

	Injury Severity Level				Total
	Severity 1	Severity 2	Severity 3	Severity 4	
California					
Tuolumne					
Casualties - 2pm					
Commercial	0	0	0	0	0
Single Family	0	0	0	0	0
Educational	0	0	0	0	0
Commuting	0	0	0	0	0
Industrial	0	0	0	0	0
Hotels	0	0	0	0	0
Total Casualties - 2pm	0	0	0	0	0
Casualties - 5pm					
Industrial	0	0	0	0	0
Other-Residential	0	0	0	0	0
Commercial	0	0	0	0	0
Hotels	0	0	0	0	0
Commuting	0	0	0	0	0
Educational	0	0	0	0	0
Single Family	0	0	0	0	0
Total Casualties - 5pm	0	0	0	0	0
Yolo					
Casualties - 2am					
Single Family	0	0	0	0	0
Other-Residential	0	0	0	0	0
Commercial	0	0	0	0	0
Educational	0	0	0	0	0
Commuting	0	0	0	0	0
Hotels	0	0	0	0	0
Industrial	0	0	0	0	0
Total Casualties - 2am	0	0	0	0	0
Casualties - 2pm					
Industrial	0	0	0	0	0
Hotels	0	0	0	0	0
Educational	0	0	0	0	0
Commuting	0	0	0	0	0
Commercial	0	0	0	0	0
Other-Residential	0	0	0	0	0
Single Family	0	0	0	0	0
Total Casualties - 2pm	0	0	0	0	0
Casualties - 5pm					
Other-Residential	0	0	0	0	0
Single Family	0	0	0	0	0
Commuting	0	0	0	0	0
Commercial	0	0	0	0	0
Hotels	0	0	0	0	0

	Injury Severity Level				
	Severity 1	Severity 2	Severity 3	Severity 4	Total
California					
Yolo					
Casualties - 5pm					
<i>Educational</i>	0	0	0	0	0
<i>Industrial</i>	0	0	0	0	0
Total Casualties - 5pm	0	0	0	0	0
Region Total	NA	NA	NA	NA	NA

Totals only reflect data for those census tracts/blocks included in the user's study region and will reflect the entire county/state only if all of the census blocks for that county/states were selected at the time of study region creation.

Debris Summary Report

June 14, 2024

All values are in thousands of tons.

	Brick, Wood & Others	Concrete & Steel	Total
California			
Fresno	1	0	1
Alameda	16	12	29
Solano	0	0	0
San Mateo	10	10	20
Tuolumne	0	0	0
Kings	0	0	0
San Joaquin	3	0	4
San Luis Obispo	1	0	1
Madera	0	0	0
Tulare	0	0	0
Napa	0	0	0
Contra Costa	1	1	2
Kern	0	0	0
Amador	0	0	0
Santa Cruz	113	200	314
Lake	0	0	0
Monterey	323	829	1,152
Sacramento	0	0	0
Mariposa	0	0	0

	Brick, Wood & Others	Concrete & Steel	Total
Yolo	0	0	0
Calaveras	0	0	0
Stanislaus	1	0	1
Sonoma	0	0	0
Santa Barbara	0	0	0
Santa Clara	52	44	95
San Benito	4	4	8
San Francisco	22	5	26
Merced	1	1	2
Marin	0	0	0
Sutter	0	0	0
Total	549	1,106	1,655
Region Total	549	1,106	1,655

Totals only reflect data for those census tracts/blocks included in the user's study region and will reflect the entire county/state only if all of the census blocks for that county/states were selected at the time of study region creation.

Direct Economic Losses For Buildings

June 14, 2024

All values are in thousands of dollars

	Capital Stock Losses				Loss Ratio %	Income Losses				Total Loss
	Cost Structural Damage	Cost Non-struct. Damage	Cost Contents Damage	Inventory Loss		Relocation Loss	Capital Related Loss	Wages Losses	Rental Income Loss	
California										
Contra Costa	1,537	23,443	12,320	1,258	0.01	211	236	354	327	39,686
Napa	30	691	416	54	0.00	2	6	6	6	1,211
Alameda	27,614	274,194	150,967	16,085	0.09	4,889	4,343	6,130	6,061	490,284
San Joaquin	2,046	15,109	8,624	1,144	0.01	455	177	261	361	28,177
Tuolumne	0	0	0	0	0.00	0	0	0	0	0
Tulare	26	1,337	907	190	0.00	2	5	6	6	2,479
Madera	144	1,915	1,109	215	0.01	13	9	11	21	3,437
Fresno	651	10,365	6,478	1,295	0.01	87	89	110	135	19,209
Kings	57	1,229	719	95	0.01	7	14	16	13	2,150

	Capital Stock Losses				Loss Ratio %	Income Losses				Total Loss
	Cost Structural Damage	Cost Non-struct. Damage	Cost Contents Damage	Inventory Loss		Relocation Loss	Capital Related Loss	Wages Losses	Rental Income Loss	
San Luis Obispo	440	7,532	4,036	379	0.01	69	111	101	117	12,783
Solano	242	3,846	2,255	289	0.00	30	39	49	54	6,804
San Mateo	26,102	250,585	127,565	9,897	0.18	4,455	4,254	4,999	6,369	434,226
Yolo	13	906	641	73	0.00	1	3	4	4	1,645
San Benito	9,167	60,718	28,438	2,901	0.53	2,144	1,584	1,819	1,269	108,040
San Francisco	18,254	67,593	39,986	2,511	0.06	4,135	3,187	3,659	7,185	146,509
Stanislaus	887	11,703	6,732	981	0.01	114	114	121	192	20,845
Sutter	0	0	0	0	0.00	0	0	0	0	0
Santa Clara	119,764	1,060,463	542,836	40,856	0.31	21,265	22,211	25,560	25,012	1,857,966
Sonoma	58	1,265	818	127	0.00	6	9	10	13	2,306
Calaveras	0	4	3	1	0.00	0	0	0	0	9
Merced	2,535	14,016	8,725	3,215	0.03	257	130	120	152	29,151
Santa Barbara	9	462	291	41	0.00	1	2	2	2	810
Marin	231	3,511	1,923	184	0.01	27	48	48	57	6,029
Kern	10	310	199	48	0.00	1	1	1	2	572
Lake	0	0	0	0	0.00	0	0	0	0	0
Santa Cruz	253,404	1,252,339	569,784	54,885	2.74	98,972	82,363	100,019	65,747	2,477,513
Mariposa	0	1	1	0	0.00	0	0	0	0	2

	Capital Stock Losses				Loss Ratio %	Income Losses				Total Loss
	Cost Structural Damage	Cost Non-struct. Damage	Cost Contents Damage	Inventory Loss		Relocation Loss	Capital Related Loss	Wages Losses	Rental Income Loss	
Amador	0	1	1	0	0.00	0	0	0	0	1
Sacramento	88	1,830	1,186	115	0.00	14	25	32	33	3,322
Monterey	824,602	3,605,822	1,568,992	182,662	5.80	411,188	214,801	264,792	214,126	7,286,987
Total	1,287,912	6,671,188	3,085,952	319,504	0.33	548,343	333,758	408,230	327,265	12,982,152
Region Total	1,287,912	6,671,188	3,085,952	319,504	0.33	548,343	333,758	408,230	327,265	12,982,152

Totals only reflect data for those census tracts/blocks included in the user's study region and will reflect the entire county/state only if all of the census blocks for that county/states were selected at the time of study region creation.

Direct Economic Loss For Transportation

June 14, 2024

All values are in thousands of dollars

	Highway	Railway	Light Rail	Bus Facility	Ports	Ferries	Airport	Total
California								
Alameda								
Segments	0	0	0					0
Bridges	633	35	0					667
Tunnels	5	0	0					5
Facilities		1,857	0	95	7,612	164	15,304	25,032
Total	637	1,892	0	95	7,612	164	15,304	25,704
Amador								
Segments	0	0	0					0
Bridges	0	0	0					0
Tunnels	0	0	0					0
Facilities		0	0	0	0	0	6	6
Total	0	0	0	0	0	0	6	6
Calaveras								
Segments	0	0	0					0
Bridges	0	0	0					0
Tunnels	0	0	0					0
Facilities		0	0	0	0	0	11	11

	Highway	Railway	Light Rail	Bus Facility	Ports	Ferries	Airport	Total
Total	0	0	0	0	0	0	11	11
Contra Costa								
Segments	0	0	0					0
Bridges	173	1	0					175
Tunnels	0	0	0					0
Facilities		256	165	0	4,023	93	231	4,768
Total	173	258	165	0	4,023	93	231	4,943
Fresno								
Segments	0	0	0					0
Bridges	232	0	0					232
Tunnels	0	0	0					0
Facilities		231	0	21	0	0	1,473	1,724
Total	232	231	0	21	0	0	1,473	1,956
Kern								
Segments	0	0	0					0
Bridges	2	0	0					2
Tunnels	0	0	0					0
Facilities		66	0	44	0	0	211	320
Total	2	66	0	44	0	0	211	323
Kings								
Segments	0	0	0					0
Bridges	12	0	0					12
Tunnels	0	0	0					0
Facilities		128	0	41	0	0	359	529

	Highway	Railway	Light Rail	Bus Facility	Ports	Ferries	Airport	Total
Total	12	128	0	41	0	0	359	541
Lake								
<i>Segments</i>	0	0	0					0
<i>Bridges</i>	0	0	0					0
<i>Tunnels</i>	0	0	0					0
<i>Facilities</i>		0	0	0	0	0	0	0
Total	0	0	0	0	0	0	0	0
Madera								
<i>Segments</i>	0	0	0					0
<i>Bridges</i>	15	0	0					15
<i>Tunnels</i>	0	0	0					0
<i>Facilities</i>		26	0	21	0	0	102	149
Total	15	26	0	21	0	0	102	164
Marin								
<i>Segments</i>	0	0	0					0
<i>Bridges</i>	283	0	0					283
<i>Tunnels</i>	0	0	0					0
<i>Facilities</i>		0	0	92	881	64	51	1,088
Total	283	0	0	92	881	64	51	1,371
Mariposa								
<i>Segments</i>	0	0	0					0
<i>Bridges</i>	0	0	0					0
<i>Tunnels</i>	0	0	0					0
<i>Facilities</i>		0	0	10	0	0	6	15

	Highway	Railway	Light Rail	Bus Facility	Ports	Ferries	Airport	Total
Total	0	0	0	10	0	0	6	15
Merced								
Segments	0	0	0					0
Bridges	190	2	0					192
Tunnels	0	0	0					0
Facilities		51	0	21	0	0	743	816
Total	190	53	0	21	0	0	743	1,008
Monterey								
Segments	0	0	0					0
Bridges	76,799	8,165	0					84,965
Tunnels	1,213	0	0					1,213
Facilities		916	0	6,168	3,641	0	14,446	25,170
Total	78,012	9,081	0	6,168	3,641	0	14,446	111,347
Napa								
Segments	0	0	0					0
Bridges	0	0	0					1
Tunnels	0	0	0					0
Facilities		0	0	22	110	0	180	312
Total	0	0	0	22	110	0	180	312
Sacramento								
Segments	0	0	0					0
Bridges	10	0	0					10
Tunnels	0	0	0					0
Facilities		26	2,145	43	624	13	4,152	7,002

	Highway	Railway	Light Rail	Bus Facility	Ports	Ferries	Airport	Total
Total	10	26	2,145	43	624	13	4,152	7,011
San Benito								
Segments	0	0	0					0
Bridges	549	27	0					576
Tunnels	0	0	0					0
Facilities		0	0	0	0	0	1,173	1,173
Total	549	27	0	0	0	0	1,173	1,749
San Francisco								
Segments	0	0	0					0
Bridges	935	0	0					936
Tunnels	1	0	0					1
Facilities		0	101,382	207	8,480	177	1,147	111,392
Total	937	0	101,382	207	8,480	177	1,147	112,329
San Joaquin								
Segments	0	0	0					0
Bridges	210	0	0					210
Tunnels	0	0	0					0
Facilities		410	0	21	1,578	51	418	2,479
Total	210	411	0	21	1,578	51	418	2,689
San Luis Obispo								
Segments	0	0	0					0
Bridges	50	0	0					50
Tunnels	0	0	0					0
Facilities		161	0	41	413	0	784	1,399

	Highway	Railway	Light Rail	Bus Facility	Ports	Ferries	Airport	Total
Total	50	161	0	41	413	0	784	1,450
San Mateo								
<i>Segments</i>	0	0	0					0
<i>Bridges</i>	5,908	10	0					5,919
<i>Tunnels</i>	8	0	0					8
<i>Facilities</i>		0	0	0	4,127	0	37,897	42,025
Total	5,916	10	0	0	4,127	0	37,897	47,951
Santa Barbara								
<i>Segments</i>	0	0	0					0
<i>Bridges</i>	9	0	0					9
<i>Tunnels</i>	0	0	0					0
<i>Facilities</i>		60	0	64	29	0	251	403
Total	9	60	0	64	29	0	251	412
Santa Clara								
<i>Segments</i>	0	0	0					0
<i>Bridges</i>	5,466	108	0					5,575
<i>Tunnels</i>	5	0	0					5
<i>Facilities</i>		804	42,419	364	1,438	0	28,153	73,179
Total	5,471	912	42,420	364	1,438	0	28,153	78,759
Santa Cruz								
<i>Segments</i>	0	0	0					0
<i>Bridges</i>	11,957	5,642	0					17,599
<i>Tunnels</i>	0	0	0					0
<i>Facilities</i>		0	0	1,147	1,165	0	3,950	6,262

	Highway	Railway	Light Rail	Bus Facility	Ports	Ferries	Airport	Total
Total	11,957	5,642	0	1,147	1,165	0	3,950	23,860
Solano								
Segments	0	0	0					0
Bridges	88	2	0					90
Tunnels	0	0	0					0
Facilities		77	0	65	1,368	51	231	1,792
Total	88	79	0	65	1,368	51	231	1,882
Sonoma								
Segments	0	0	0					0
Bridges	16	0	0					16
Tunnels	0	0	0					0
Facilities		0	0	23	257	0	323	603
Total	16	0	0	23	257	0	323	619
Stanislaus								
Segments	0	0	0					0
Bridges	64	0	0					64
Tunnels	0	0	0					0
Facilities		154	0	43	0	0	231	427
Total	64	154	0	43	0	0	231	491
Sutter								
Segments	0	0	0					0
Bridges	0	0	0					0
Tunnels	0	0	0					0
Facilities		0	0	0	0	0	0	0

	Highway	Railway	Light Rail	Bus Facility	Ports	Ferries	Airport	Total
Total	0	0	0	0	0	0	0	0
Tulare								
Segments	0	0	0					0
Bridges	2	0	0					2
Tunnels	0	0	0					0
Facilities		0	0	64	0	0	210	274
Total	2	0	0	64	0	0	210	276
Tuolumne								
Segments	0	0	0					0
Bridges	0	0	0					0
Tunnels	0	0	0					0
Facilities		0	0	0	0	0	17	17
Total	0	0	0	0	0	0	17	17
Yolo								
Segments	0	0	0					0
Bridges	5	0	0					5
Tunnels	0	0	0					0
Facilities		128	0	0	624	0	108	860
Total	5	128	0	0	624	0	108	865
Total	104,841	19,344	146,111	8,617	36,370	613	112,167	428,063
Region Total	104,841	19,344	146,111	8,617	36,370	613	112,167	428,063

Totals only reflect data for those census tracts/blocks included in the user's study region and will reflect the entire county/state only if all of the census blocks for that county/states were selected at the time of study region creation.

Direct Economic Loss For Utilities

June 14, 2024

All values are in thousands of dollars

	Potable Water	Waste Water	Oil Systems	Natural Gas	Electric Power	Communication	Total
California							
Alameda							
<i>Facilities</i>	725	18,661	0	0	67,600	46	87,032
<i>Pipelines</i>	405	203	0	0			609
Total	1,130	18,865	0	0	67,600	46	87,641
Amador							
<i>Facilities</i>	0	3	0	0	310	0	312
<i>Pipelines</i>	7	4	0	0			11
Total	7	6	0	0	310	0	323
Calaveras							
<i>Facilities</i>	1	10	0	0	1,359	0	1,370
<i>Pipelines</i>	15	8	0	0			23
Total	16	18	0	0	1,359	0	1,393
Contra Costa							
<i>Facilities</i>	169	4,524	1	0	53,266	2	57,961

	Potable Water	Waste Water	Oil Systems	Natural Gas	Electric Power	Communication	Total
<i>Pipelines</i>	170	85	0	0			256
Total	339	4,609	1	0	53,266	2	58,216
Fresno							
<i>Facilities</i>	0	492	0	13	119,649	6	120,160
<i>Pipelines</i>	512	257	0	0			769
Total	512	749	0	13	119,649	6	120,928
Kern							
<i>Facilities</i>	2	3	0	75	23,169	1	23,250
<i>Pipelines</i>	205	103	0	0			308
Total	207	106	0	75	23,169	1	23,558
Kings							
<i>Facilities</i>	0	0	0	134	6,360	1	6,495
<i>Pipelines</i>	79	40	0	0			118
Total	79	40	0	134	6,360	1	6,613
Lake							
<i>Facilities</i>	0	0	0	0	252	0	252
<i>Pipelines</i>	10	5	0	0			16
Total	10	5	0	0	252	0	267
Madera							
<i>Facilities</i>	0	0	0	0	1,347	0	1,347
<i>Pipelines</i>	92	46	0	0			139

	Potable Water	Waste Water	Oil Systems	Natural Gas	Electric Power	Communication	Total
Total	92	46	0	0	1,347	0	1,486
Marin							
<i>Facilities</i>	28	984	0	0	56	1	1,069
<i>Pipelines</i>	46	23	0	0			69
Total	74	1,007	0	0	56	1	1,137
Mariposa							
<i>Facilities</i>	0	10	0	0	283	0	293
<i>Pipelines</i>	17	8	0	0			25
Total	17	19	0	0	283	0	318
Merced							
<i>Facilities</i>	0	2,016	0	0	159,557	7	161,580
<i>Pipelines</i>	225	113	0	0			338
Total	225	2,129	0	0	159,557	7	161,918
Monterey							
<i>Facilities</i>	0	492,001	0	0	856,258	1,811	1,350,071
<i>Pipelines</i>	13,839	6,952	0	0			20,791
Total	13,839	498,953	0	0	856,258	1,811	1,370,862
Napa							
<i>Facilities</i>	0	492	0	0	312	0	804
<i>Pipelines</i>	21	10	0	0			31
Total	21	502	0	0	312	0	835

	Potable Water	Waste Water	Oil Systems	Natural Gas	Electric Power	Communication	Total
Sacramento							
<i>Facilities</i>	0	868	0	0	5,798	3	6,669
<i>Pipelines</i>	124	62	0	0			186
Total	124	931	0	0	5,798	3	6,855
San Benito							
<i>Facilities</i>	0	16,609	0	0	0	44	16,653
<i>Pipelines</i>	481	242	0	0			723
Total	481	16,851	0	0	0	44	17,376
San Francisco							
<i>Facilities</i>	0	7,868	0	0	605	10	8,483
<i>Pipelines</i>	56	28	0	0			85
Total	56	7,896	0	0	605	10	8,567
San Joaquin							
<i>Facilities</i>	140	861	0	0	9,393	2	10,396
<i>Pipelines</i>	123	62	0	0			184
Total	263	922	0	0	9,393	2	10,581
San Luis Obispo							
<i>Facilities</i>	348	3,786	0	0	25,125	12	29,273
<i>Pipelines</i>	218	110	0	0			328
Total	567	3,896	0	0	25,125	12	29,600
San Mateo							

	Potable Water	Waste Water	Oil Systems	Natural Gas	Electric Power	Communication	Total
<i>Facilities</i>	0	25,598	0	0	9,831	36	35,465
<i>Pipelines</i>	374	188	0	0			562
Total	374	25,785	0	0	9,831	36	36,026
Santa Barbara							
<i>Facilities</i>	0	138	0	10	209	3	361
<i>Pipelines</i>	79	40	0	0			119
Total	79	178	0	10	209	3	480
Santa Clara							
<i>Facilities</i>	2,018	13,245	0	0	284,320	207	299,789
<i>Pipelines</i>	1,277	641	0	0			1,918
Total	3,294	13,886	0	0	284,320	207	301,707
Santa Cruz							
<i>Facilities</i>	0	90,566	0	0	6,531	271	97,369
<i>Pipelines</i>	2,314	1,162	0	0			3,476
Total	2,314	91,729	0	0	6,531	271	100,845
Solano							
<i>Facilities</i>	0	861	0	0	25,044	1	25,905
<i>Pipelines</i>	108	54	0	0			163
Total	108	915	0	0	25,044	1	26,068
Sonoma							
<i>Facilities</i>	0	871	0	0	2,202	1	3,074

	Potable Water	Waste Water	Oil Systems	Natural Gas	Electric Power	Communication	Total
<i>Pipelines</i>	85	43	0	0			127
Total	85	914	0	0	2,202	1	3,202
Stanislaus							
<i>Facilities</i>	0	492	0	0	8,858	3	9,353
<i>Pipelines</i>	82	41	0	0			124
Total	82	533	0	0	8,858	3	9,476
Sutter							
<i>Facilities</i>	0	0	0	0	0	0	0
<i>Pipelines</i>	17	8	0	0			25
Total	17	8	0	0	0	0	25
Tulare							
<i>Facilities</i>	28	369	0	0	1,707	1	2,105
<i>Pipelines</i>	110	55	0	0			165
Total	138	424	0	0	1,707	1	2,271
Tuolumne							
<i>Facilities</i>	0	3	0	0	1,427	0	1,430
<i>Pipelines</i>	18	9	0	0			26
Total	18	11	0	0	1,427	0	1,456
Yolo							
<i>Facilities</i>	0	492	0	0	502	1	994
<i>Pipelines</i>	37	18	0	0			55

	Potable Water	Waste Water	Oil Systems	Natural Gas	Electric Power	Communication	Total
Total	37	510	0	0	502	1	1,049
Total	24,604	692,443	2	233	1,671,328	2,472	2,391,082
Region Total	24,604	692,443	2	233	1,671,328	2,472	2,391,082

Totals only reflect data for those census tracts/blocks included in the user's study region and will reflect the entire county/state only if all of the census blocks for that county/states were selected at the time of study region creation.

Hazus Quick Assessment Report

Estimated Economic Loss (\$ Billions)

Category	Description	Range
General Building Stock	Building Damage	4.00 - 15.90
	Building Contents	0.60 - 2.30
	Business Interruption	0.80 - 3.20
Infrastructure	Lifelines Damage	
Total		6.50 - 26.00

Preliminary Damage Assessment (PDA) Estimates

Description	Residential	Commercial	Other	Total
Affected	123,500	10,400	4,400	138,300
Minor	17,900	4,000	1,700	23,600
Major	1,900	1,100	460	3,460
Destroyed	510	410	130	1,050
Total	143,810	15,910	6,690	166,410

Estimated Casualties : Night Time

Severity Level	Description	# Persons
Level 1	Medical Aid	400 - 1,500
Level 2	Hospital Care	50 - 200
Level 3	Life-threatening	10 - 20
Level 4	Fatalities	10 - 50

Estimated Shelter Needs

Type	Households	People
Displaced Households	1,600 - 6,000	4,000 - 15,000
Public Shelter	750	1,870

Comments :

*Hazus damage estimates are presented using FEMA Preliminary Damage Assessment (PDA) categories. These estimates should be used for planning purposes and may not reflect actual observed damages from the PDA process.

Disclaimer:

The estimates of social and economic impacts contained in this report were produced using HAZUS loss estimation methodology software which is based on current scientific and engineering knowledge. There are uncertainties inherent in any loss estimation technique. Therefore, there may be significant differences between the modeled results contained in this report and the actual social and economic losses following a specific earthquake. These results can be improved by using enhanced inventory, geotechnical, and observed ground motion data.

Earthquake Information

Location :

Origin Time:

Magnitude : 7.44

Epicenter Latitude/Longitude :
/

Depth & Type : /U

Name :
NA

Ground Motion /Attenuation :

Maximum PGA: 1.00

Information Sources:

Comments :

Population and Building Exposure

Population: 15,711,229

Building Exposure : (\$ Millions)

Residential	1,908,608
Commercial	526,348
Other	474,544
Total	2,909,500

Counties : See Appendix

Major Metro Area :

Hazus Quick Assessment Report

Estimated Economic Loss (\$ Billions)

Category	Description	Range
General Building Stock	Building Damage	4.00 - 15.90
	Building Contents	0.60 - 2.30
	Business Interruption	0.80 - 3.20
Infrastructure	Lifelines Damage	
Total		6.50 - 26.00

Preliminary Damage Assessment (PDA) Estimates

Description	Residential	Commercial	Other	Total
Affected	123,500	10,400	4,400	138,300
Minor	17,900	4,000	1,700	23,600
Major	1,900	1,100	460	3,460
Destroyed	510	410	130	1,050
Total	143,810	15,910	6,690	166,410

Estimated Casualties : Day Time

Severity Level	Description	# Persons
Level 1	Medical Aid	900 - 3,000
Level 2	Hospital Care	180 - 700
Level 3	Life-threatening	30 - 110
Level 4	Fatalities	50 - 190

Estimated Shelter Needs

Type	Households	People
Displaced Households	1,600 - 6,000	4,000 - 15,000
Public Shelter	750	1,870

Comments :

*Hazus damage estimates are presented using FEMA Preliminary Damage Assessment (PDA) categories. These estimates should be used for planning purposes and may not reflect actual observed damages from the PDA process.

Disclaimer:

The estimates of social and economic impacts contained in this report were produced using HAZUS loss estimation methodology software which is based on current scientific and engineering knowledge. There are uncertainties inherent in any loss estimation technique. Therefore, there may be significant differences between the modeled results contained in this report and the actual social and economic losses following a specific earthquake. These results can be improved by using enhanced inventory, geotechnical, and observed ground motion data.

Earthquake Information

Location :

Origin Time:

Magnitude : 7.44

Epicenter Latitude/Longitude :
/

Depth & Type : /U

Name :
NA

Ground Motion /Attenuation :

Maximum PGA: 1.00

Information Sources:

Comments :

Population and Building Exposure

Population: 15,711,229

Building Exposure : (\$ Millions)

Residential	1,908,608
Commercial	526,348
Other	474,544
Total	2,909,500

Counties : See Appendix

Major Metro Area :

Hazus Quick Assessment Report

Estimated Economic Loss (\$ Billions)

Category	Description	Range
General Building Stock	Building Damage	4.00 - 15.90
	Building Contents	0.60 - 2.30
	Business Interruption	0.80 - 3.20
Infrastructure	Lifelines Damage	
Total		6.50 - 26.00

Preliminary Damage Assessment (PDA) Estimates

Description	Residential	Commercial	Other	Total
Affected	123,500	10,400	4,400	138,300
Minor	17,900	4,000	1,700	23,600
Major	1,900	1,100	460	3,460
Destroyed	510	410	130	1,050
Total	143,810	15,910	6,690	166,410

Estimated Casualties : Commute Time

Severity Level	Description	# Persons
Level 1	Medical Aid	600 - 2,000
Level 2	Hospital Care	140 - 600
Level 3	Life-threatening	50 - 200
Level 4	Fatalities	40 - 150

Estimated Shelter Needs

Type	Households	People
Displaced Households	1,600 - 6,000	4,000 - 15,000
Public Shelter	750	1,870

Comments :

*Hazus damage estimates are presented using FEMA Preliminary Damage Assessment (PDA) categories. These estimates should be used for planning purposes and may not reflect actual observed damages from the PDA process.

Disclaimer:

The estimates of social and economic impacts contained in this report were produced using HAZUS loss estimation methodology software which is based on current scientific and engineering knowledge. There are uncertainties inherent in any loss estimation technique. Therefore, there may be significant differences between the modeled results contained in this report and the actual social and economic losses following a specific earthquake. These results can be improved by using enhanced inventory, geotechnical, and observed ground motion data.

Earthquake Information

Location :

Origin Time:

Magnitude : 7.44

Epicenter Latitude/Longitude :

/

Depth & Type : /U

Name :

NA

Ground Motion /Attenuation :

Maximum PGA: 1.00

Information Sources:

Comments :

Population and Building Exposure

Population: 15,711,229

Building Exposure : (\$ Millions)

Residential	1,908,608
Commercial	526,348
Other	474,544
Total	2,909,500

Counties : See Appendix

Major Metro Area :

Shelter Summary Report

June 14, 2024

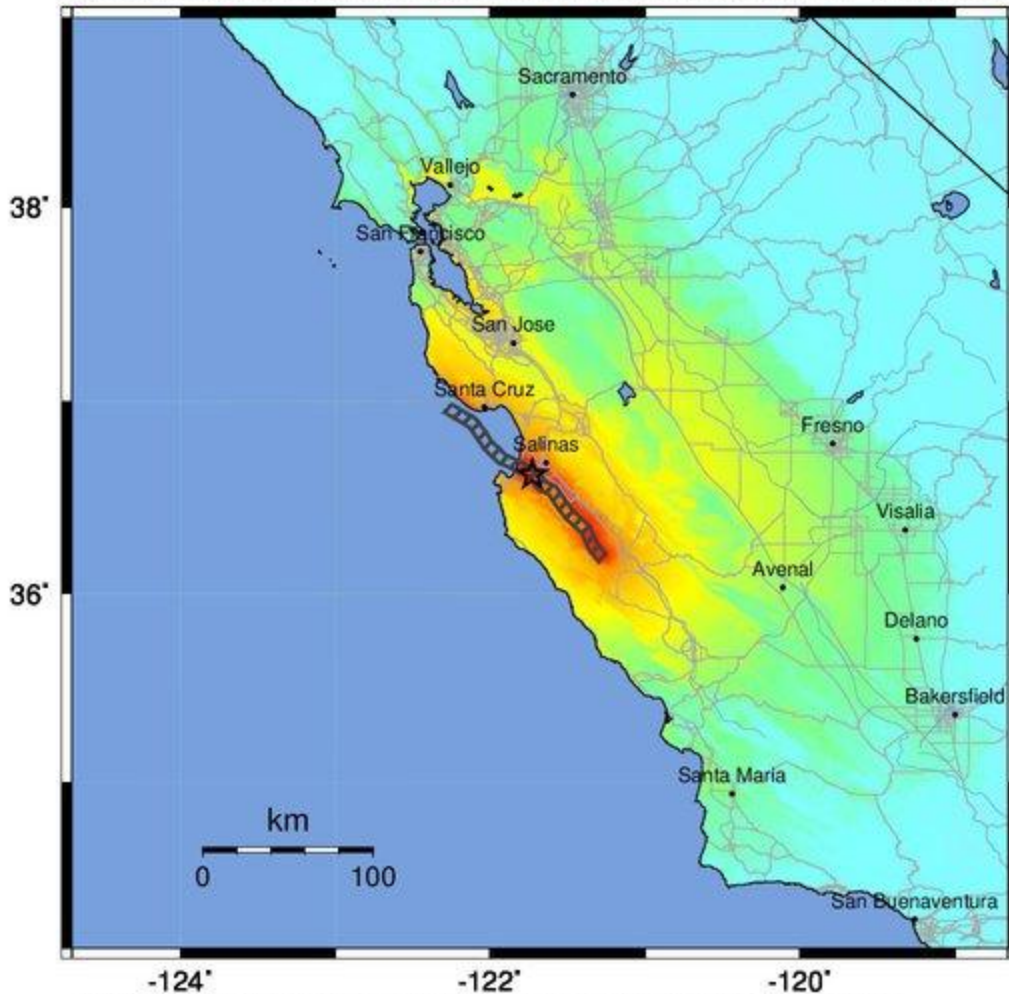
	# of Displaced Households	# of People Needing Short Term Shelter
California		
Fresno	0	0
Alameda	3	1
Solano	0	0
San Mateo	4	2
Tuolumne	0	0
Kings	0	0
San Joaquin	0	0
San Luis Obispo	0	0
Madera	0	0
Tulare	0	0
Napa	0	0
Contra Costa	0	0
Kern	0	0
Amador	0	0
Santa Cruz	737	408
Lake	0	0
Monterey	2,392	1,444
Sacramento	0	0
Mariposa	0	0
Yolo	0	0
Calaveras	0	0
Stanislaus	0	0
Sonoma	0	0
Santa Barbara	0	0
Santa Clara	19	10
San Benito	1	0
San Francisco	3	1
Merced	0	0
Marin	0	0
Sutter	0	0

	# of Displaced Households	# of People Needing Short Term Shelter
Total	3,158	1,868
Region Total	3,158	1,868

Totals only reflect data for those census tracts/blocks included in the user's study region and will reflect the entire county/state only if all of the census blocks for that county/states were selected at the time of study region creation.

-- Earthquake Planning Scenario --
 ShakeMap for Reliz - Median ground motions Scenario

Scenario Date: May 16, 2017 08:32:05 AM MDT M 7.4 N36.62 W121.73 Depth: 7.0km



PLANNING SCENARIO ONLY -- Map Version 10 Processed 2017-05-17 12:50:48 AM MDT

PERCEIVED SHAKING	Not felt	Weak	Light	Moderate	Strong	Very strong	Severe	Violent	Extreme
POTENTIAL DAMAGE	none	none	none	Very light	Light	Moderate	Mod./Heavy	Heavy	Very Heavy
PEAK ACC.(%g)	<0.05	0.3	2.8	6.2	12	22	40	75	>139
PEAK VEL.(cm/s)	<0.02	0.1	1.4	4.7	9.6	20	41	86	>178
INSTRUMENTAL INTENSITY	I	II-III	IV	V	VI	VII	VIII	IX	X+

Scale based upon Worden et al. (2012)