

## Hazus: Earthquake Global Risk Report

---

**Region Name:** Ortigalitasouth

**Earthquake Scenario:** ortigalitasouthshaw0\_m7p01\_se

**Print Date:** May 01, 2024

**Disclaimer:**

*Totals only reflect data for those census tracts/blocks included in the user's study region.*

*The estimates of social and economic impacts contained in this report were produced using Hazus loss estimation methodology software which is based on current scientific and engineering knowledge. There are uncertainties inherent in any loss estimation technique. Therefore, there may be significant differences between the modeled results contained in this report and the actual social and economic losses following a specific earthquake. These results can be improved by using enhanced inventory, geotechnical, and observed ground motion data.*

## Table of Contents

<b>Section</b>	<b>Page #</b>
<b>General Description of the Region</b>	<b>3</b>
<b>Building and Lifeline Inventory</b>	<b>4</b>
Building Inventory	
Critical Facility Inventory	
Transportation and Utility Lifeline Inventory	
<b>Earthquake Scenario Parameters</b>	<b>7</b>
<b>Direct Earthquake Damage</b>	<b>8</b>
Buildings Damage	
Essential Facilities Damage	
Transportation and Utility Lifeline Damage	
<b>Induced Earthquake Damage</b>	<b>14</b>
Fire Following Earthquake	
Debris Generation	
<b>Social Impact</b>	<b>15</b>
Shelter Requirements	
Casualties	
<b>Economic Loss</b>	<b>17</b>
Building Related Losses	
Transportation and Utility Lifeline Losses	
<b>Appendix A: County Listing for the Region</b>	
<b>Appendix B: Regional Population and Building Value Data</b>	

## General Description of the Region

Hazus-MH is a regional earthquake loss estimation model that was developed by the Federal Emergency Management Agency (FEMA) and the National Institute of Building Sciences. The primary purpose of Hazus is to provide a methodology and software application to develop multi-hazard losses at a regional scale. These loss estimates would be used primarily by local, state and regional officials to plan and stimulate efforts to reduce risks from multi-hazards and to prepare for emergency response and recovery.

The earthquake loss estimates provided in this report was based on a region that includes 27 county(ies) from the following state(s):

California

Note:

Appendix A contains a complete listing of the counties contained in the region.

The geographical size of the region is 50,513.92 square miles and contains 3,459 census tracts. There are over 5,188 thousand households in the region which has a total population of 15,095,204 people. The distribution of population by Total Region and County is provided in Appendix B.

There are an estimated 4,549 thousand buildings in the region with a total building replacement value (excluding contents) of (millions of dollars). Approximately 90.00 % of the buildings (and % of the building value) are associated with residential housing.

The replacement value of the transportation and utility lifeline systems is estimated to be 237,546 and 172,694 (millions of dollars) , respectively.

## Building and Lifeline Inventory

### Building Inventory

Hazus estimates that there are 4,549 thousand buildings in the region which have an aggregate total replacement value of (millions of dollars) . Appendix B provides a general distribution of the building value by Total Region and County.

In terms of building construction types found in the region, wood frame construction makes up 87% of the building inventory. The remaining percentage is distributed between the other general building types.

### Critical Facility Inventory

Hazus breaks critical facilities into two (2) groups: essential facilities and high potential loss facilities (HPL). Essential facilities include hospitals, medical clinics, schools, fire stations, police stations and emergency operations facilities. High potential loss facilities include dams, levees, military installations, nuclear power plants and hazardous material sites.

For essential facilities, there are 248 hospitals in the region with a total bed capacity of 40,494 beds. There are 5,435 schools, 1,296 fire stations, 474 police stations and 81 emergency operation facilities. With respect to high potential loss facilities (HPL), there are no dams identified within the inventory. The inventory also includes no hazardous material sites, no military installations and no nuclear power plants.

### Transportation and Utility Lifeline Inventory

Within Hazus, the lifeline inventory is divided between transportation and utility lifeline systems. There are seven (7) transportation systems that include highways, railways, light rail, bus, ports, ferry and airports. There are six (6) utility systems that include potable water, wastewater, natural gas, crude & refined oil, electric power and communications. The lifeline inventory data are provided in Tables 1 and 2.

The total value of the lifeline inventory is over 410,240.00 (millions of dollars). This inventory includes over 10,234.60 miles of highways, 10,633 bridges, 222,838.55 miles of pipes.

**Table 1: Transportation System Lifeline Inventory**

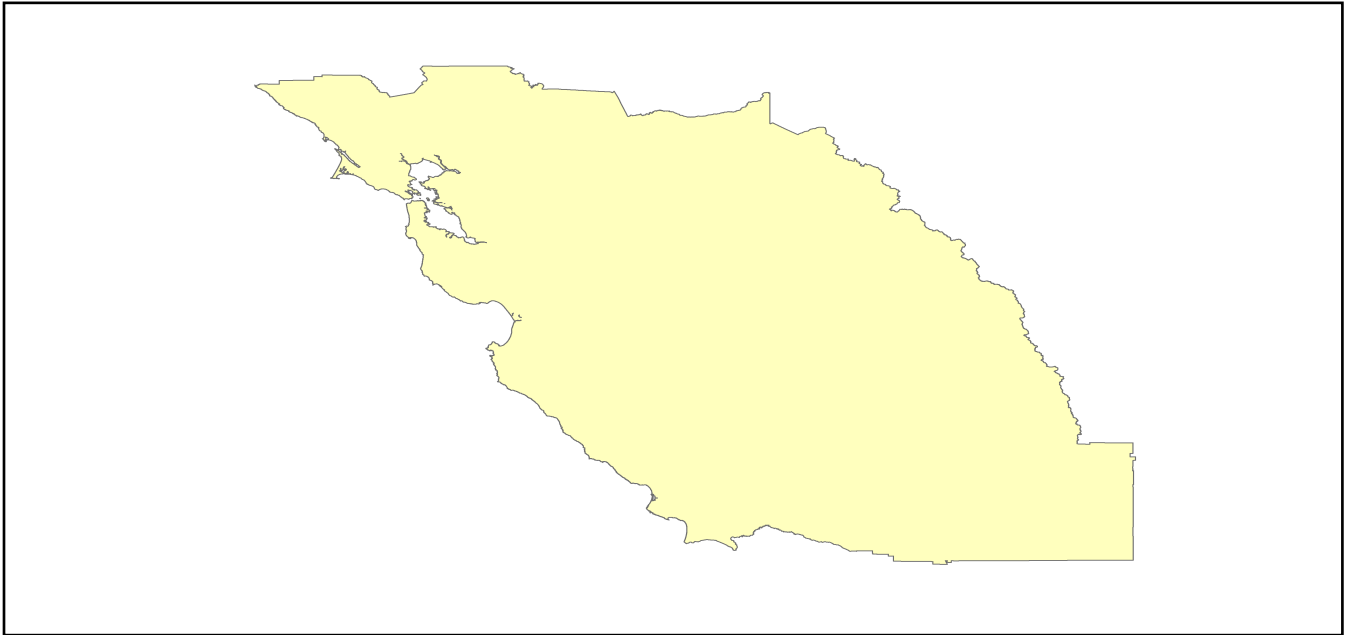
System	Component	# Locations/ # Segments	Replacement value (millions of dollars)
<b>Highway</b>	Bridges	10,633	55795.7045
	Segments	7,126	91000.6523
	Tunnels	46	981.4915
	<b>Subtotal</b>		<b>147777.8483</b>
<b>Railways</b>	Bridges	1,524	8671.5600
	Facilities	90	239.6700
	Segments	3,178	65349.0478
	Tunnels	3	1.8495
	<b>Subtotal</b>		<b>74262.1273</b>
<b>Light Rail</b>	Bridges	112	15.3529
	Facilities	255	4154.0000
	Segments	15	5403.2756
	Tunnels	0	0.0000
	<b>Subtotal</b>		<b>9572.6285</b>
<b>Bus</b>	Facilities	49	110.3685
	<b>Subtotal</b>		<b>110.3685</b>
<b>Ferry</b>	Facilities	25	33.2750
	<b>Subtotal</b>		<b>33.2750</b>
<b>Port</b>	Facilities	359	1368.4522
	<b>Subtotal</b>		<b>1368.4522</b>
<b>Airport</b>	Facilities	107	2844.7336
	Runways	157	1577.1432
	<b>Subtotal</b>		<b>4421.8768</b>
		<b>Total</b>	<b>237,546.60</b>

**Table 2: Utility System Lifeline Inventory**

System	Component	# Locations / Segments	Replacement value (millions of dollars)
<b>Potable Water</b>	Distribution Lines	NA	4425.9267
	Facilities	24	943.0560
	Pipelines	0	0.0000
		<b>Subtotal</b>	<b>5368.9827</b>
<b>Waste Water</b>	Distribution Lines	NA	2655.5560
	Facilities	155	26652.5290
	Pipelines	0	0.0000
		<b>Subtotal</b>	<b>29308.0850</b>
<b>Natural Gas</b>	Distribution Lines	NA	1770.3707
	Facilities	13	549.0112
	Pipelines	791	16027.9888
		<b>Subtotal</b>	<b>18347.3707</b>
<b>Oil Systems</b>	Facilities	32	3.7760
	Pipelines	0	0.0000
		<b>Subtotal</b>	<b>3.7760</b>
<b>Electrical Power</b>	Facilities	491	119610.4149
		<b>Subtotal</b>	<b>119610.4149</b>
<b>Communication</b>	Facilities	473	55.8140
		<b>Subtotal</b>	<b>55.8140</b>
	<b>Total</b>		<b>172,694.40</b>

## Earthquake Scenario

Hazus uses the following set of information to define the earthquake parameters used for the earthquake loss estimate provided in this report.



<b>Scenario Name</b>	ortigalitasouthshaw0_m7p01_se
<b>Type of Earthquake</b>	User-defined
<b>Fault Name</b>	NA
<b>Historical Epicenter ID #</b>	NA
<b>Probabilistic Return Period</b>	NA
<b>Longitude of Epicenter</b>	NA
<b>Latitude of Epicenter</b>	NA
<b>Earthquake Magnitude</b>	7.01
<b>Depth (km)</b>	NA
<b>Rupture Length (Km)</b>	NA
<b>Rupture Orientation (degrees)</b>	NA
<b>Attenuation Function</b>	NA

## Direct Earthquake Damage

### Building Damage

Hazus estimates that about 2,216 buildings will be at least moderately damaged. This is over 0.00 % of the buildings in the region. There are an estimated 19 buildings that will be damaged beyond repair. The definition of the 'damage states' is provided in Volume 1: Chapter 5 of the Hazus technical manual. Table 3 below summarizes the expected damage by general occupancy for the buildings in the region. Table 4 below summarizes the expected damage by general building type.

### Damage Categories by General Occupancy Type

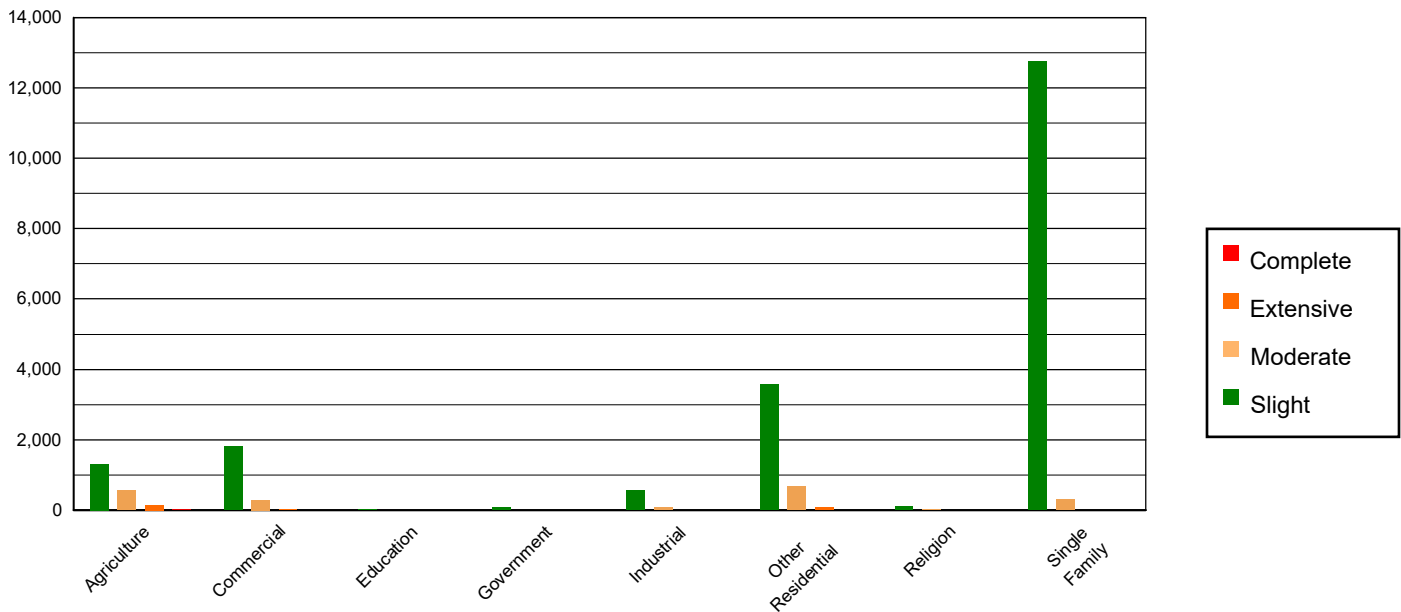


Table 3: Expected Building Damage by Occupancy

	None		Slight		Moderate		Extensive		Complete	
	Count	(%)	Count	(%)	Count	(%)	Count	(%)	Count	(%)
<b>Agriculture</b>	31617.33	0.70	1299.28	6.44	572.61	29.32	148.19	60.70	16.59	86.73
<b>Commercial</b>	291385.46	6.44	1818.86	9.01	298.98	15.31	18.04	7.39	0.65	3.41
<b>Education</b>	9189.11	0.20	16.76	0.08	2.06	0.11	0.06	0.03	0.00	0.00
<b>Government</b>	21375.89	0.47	71.15	0.35	8.71	0.45	0.25	0.10	0.00	0.01
<b>Industrial</b>	80933.60	1.79	557.84	2.76	80.29	4.11	3.24	1.33	0.03	0.14
<b>Other Residential</b>	574634.22	12.69	3581.60	17.75	673.10	34.46	73.22	29.99	1.86	9.70
<b>Religion</b>	17716.11	0.39	101.94	0.51	15.52	0.79	0.43	0.18	0.00	0.01
<b>Single Family</b>	3499784.12	77.32	12733.34	63.10	301.86	15.45	0.68	0.28	0.00	0.00
<b>Total</b>	<b>4,526,636</b>		<b>20,181</b>		<b>1,953</b>		<b>244</b>		<b>19</b>	

**Table 4: Expected Building Damage by Building Type (All Design Levels)**

	None		Slight		Moderate		Extensive		Complete	
	Count	(%)	Count	(%)	Count	(%)	Count	(%)	Count	(%)
<b>Wood</b>	3935202.44	86.93	13958.67	69.17	348.58	17.85	2.85	1.17	0.05	0.26
<b>Steel</b>	104942.96	2.32	1286.77	6.38	469.75	24.05	113.07	46.31	11.77	61.55
<b>Concrete</b>	117371.22	2.59	765.81	3.79	180.98	9.27	29.24	11.97	1.16	6.08
<b>Precast</b>	61401.68	1.36	573.59	2.84	106.17	5.44	3.50	1.44	0.03	0.14
<b>RM</b>	175907.11	3.89	457.46	2.27	82.32	4.21	2.54	1.04	0.00	0.00
<b>URM</b>	43967.85	0.97	1385.59	6.87	234.32	12.00	33.57	13.75	5.51	28.80
<b>MH</b>	87842.57	1.94	1752.88	8.69	531.00	27.19	59.37	24.32	0.61	3.18
<b>Total</b>	<b>4,526,636</b>		<b>20,181</b>		<b>1,953</b>		<b>244</b>		<b>19</b>	

\*Note:

RM      Reinforced Masonry  
 URM     Unreinforced Masonry  
 MH      Manufactured Housing

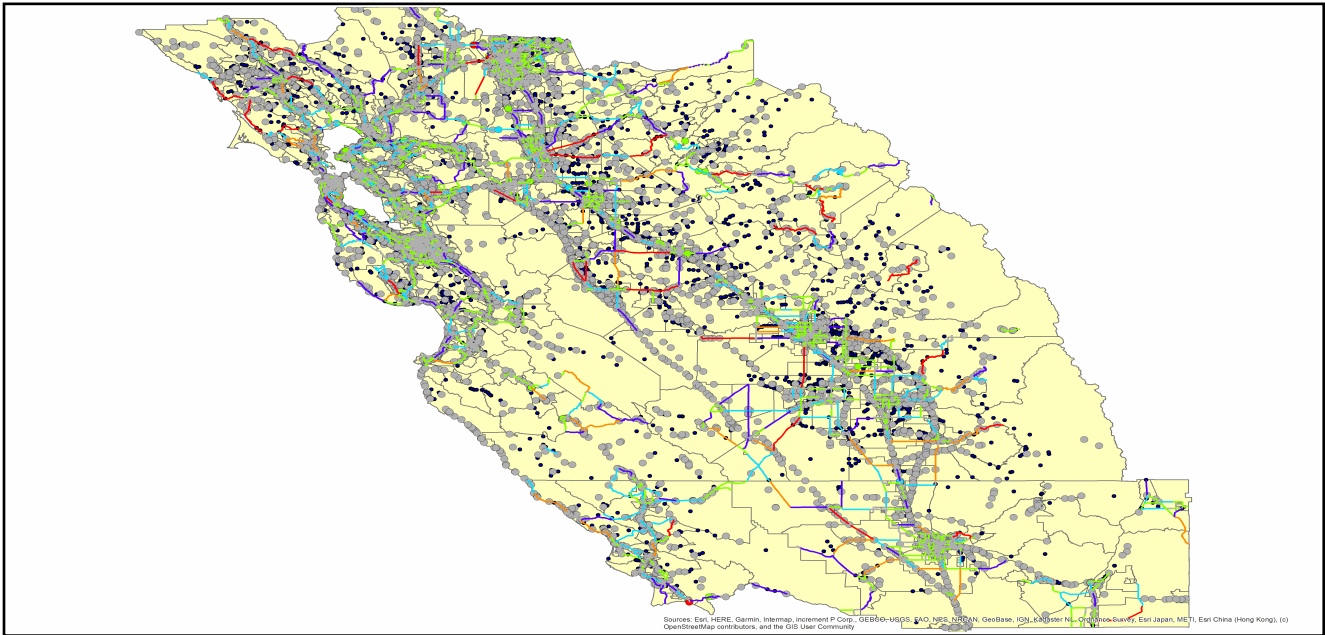
## Essential Facility Damage

Before the earthquake, the region had 40,494 hospital beds available for use. On the day of the earthquake, the model estimates that only 40,331 hospital beds (100.00%) are available for use by patients already in the hospital and those injured by the earthquake. After one week, 100.00% of the beds will be back in service. By 30 days, 100.00% will be operational.

**Table 5: Expected Damage to Essential Facilities**

Classification	Total	# Facilities		
		At Least Moderate Damage > 50%	Complete Damage > 50%	With Functionality > 50% on day 1
Hospitals	248	0	0	248
Schools	5,435	0	0	5,434
EOCs	81	0	0	81
PoliceStations	474	0	0	474
FireStations	1,296	0	0	1,293

## Transportation Lifeline Damage



**Table 6: Expected Damage to the Transportation Systems**

System	Component	Number of Locations_				
		Locations/ Segments	With at Least Mod. Damage	With Complete Damage	With Functionality > 50 %	
					After Day 1	After Day 7
Highway	Segments	7,126	0	0	7,126	7,126
	Bridges	10,633	2	0	10,628	10,632
	Tunnels	46	0	0	46	46
Railways	Segments	3,178	0	0	3,178	3,178
	Bridges	1,524	0	0	1,524	1,524
	Tunnels	3	0	0	3	3
	Facilities	90	0	0	90	90
Light Rail	Segments	15	0	0	15	15
	Bridges	112	0	0	112	112
	Tunnels	0	0	0	0	0
	Facilities	255	0	0	255	255
Bus	Facilities	49	0	0	49	49
Ferry	Facilities	25	0	0	25	25
Port	Facilities	359	0	0	359	359
Airport	Facilities	107	0	0	107	107
	Runways	157	0	0	157	157

Table 6 provides damage estimates for the transportation system.

Note: Roadway segments, railroad tracks and light rail tracks are assumed to be damaged by ground failure only. If ground failure maps are not provided, damage estimates to these components will not be computed.

Tables 7-9 provide information on the damage to the utility lifeline systems. Table 7 provides damage to the utility system facilities. Table 8 provides estimates on the number of leaks and breaks by the pipelines of the utility systems. For electric power and potable water, Hazus performs a simplified system performance analysis. Table 9 provides a summary of the system performance information.

**Table 7 : Expected Utility System Facility Damage**

System	# of Locations				
	Total #	With at Least Moderate Damage	With Complete Damage	with Functionality > 50 %	
				After Day 1	After Day 7
Potable Water	24	0	0	24	24
Waste Water	155	0	0	155	155
Natural Gas	13	0	0	13	13
Oil Systems	32	0	0	32	32
Electrical Power	491	8	0	485	490
Communication	473	0	0	473	473

**Table 8 : Expected Utility System Pipeline Damage (Site Specific)**

System	Total Pipelines Length (miles)	Number of Leaks	Number of Breaks
Potable Water	137,507	1342	335
Waste Water	82,504	674	168
Natural Gas	2,828	0	0
Oil	0	0	0

**Table 9: Expected Potable Water and Electric Power System Performance**

	Total # of Households	Number of Households without Service				
		At Day 1	At Day 3	At Day 7	At Day 30	At Day 90
Potable Water	5,188,224	706	62	0	0	0
Electric Power		956	532	174	8	1

## Induced Earthquake Damage

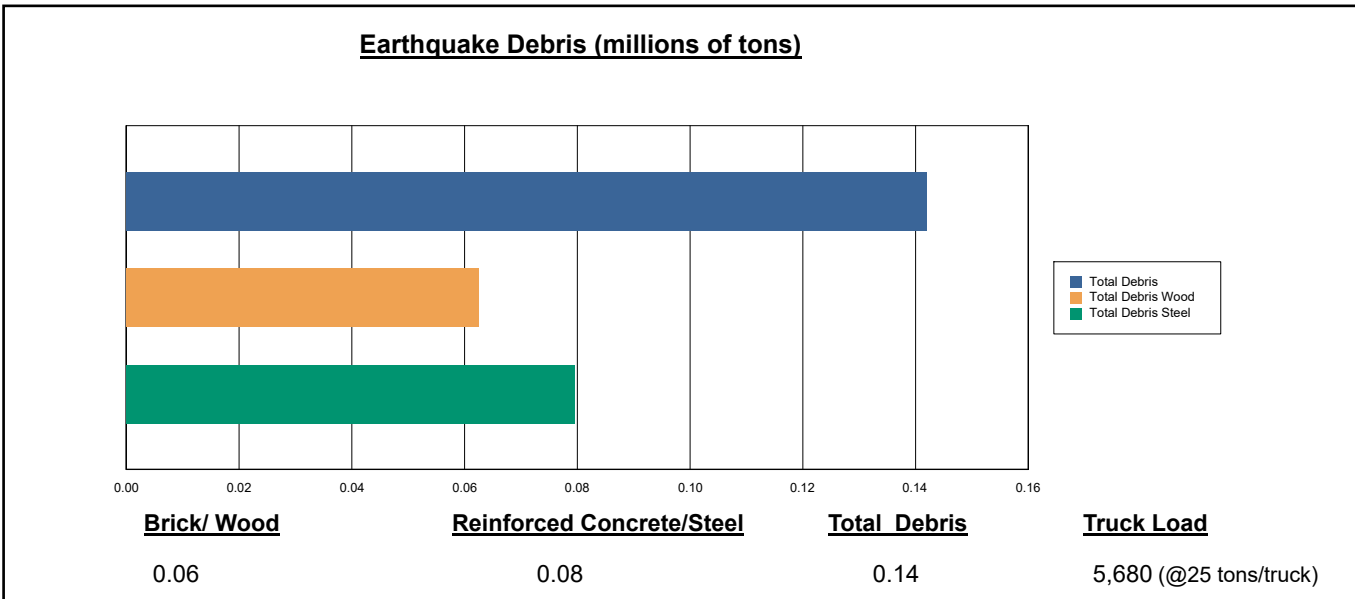
### Fire Following Earthquake

Fires often occur after an earthquake. Because of the number of fires and the lack of water to fight the fires, they can often burn out of control. Hazus uses a Monte Carlo simulation model to estimate the number of ignitions and the amount of burnt area. For this scenario, the model estimates that there will be 13 ignitions that will burn about 0.13 sq. mi (0.00 % of the region's total area.) The model also estimates that the fires will displace about 1,310 people and burn about 129 (millions of dollars) of building value.

### Debris Generation

Hazus estimates the amount of debris that will be generated by the earthquake. The model breaks the debris into two general categories: a) Brick/Wood and b) Reinforced Concrete/Steel. This distinction is made because of the different types of material handling equipment required to handle the debris.

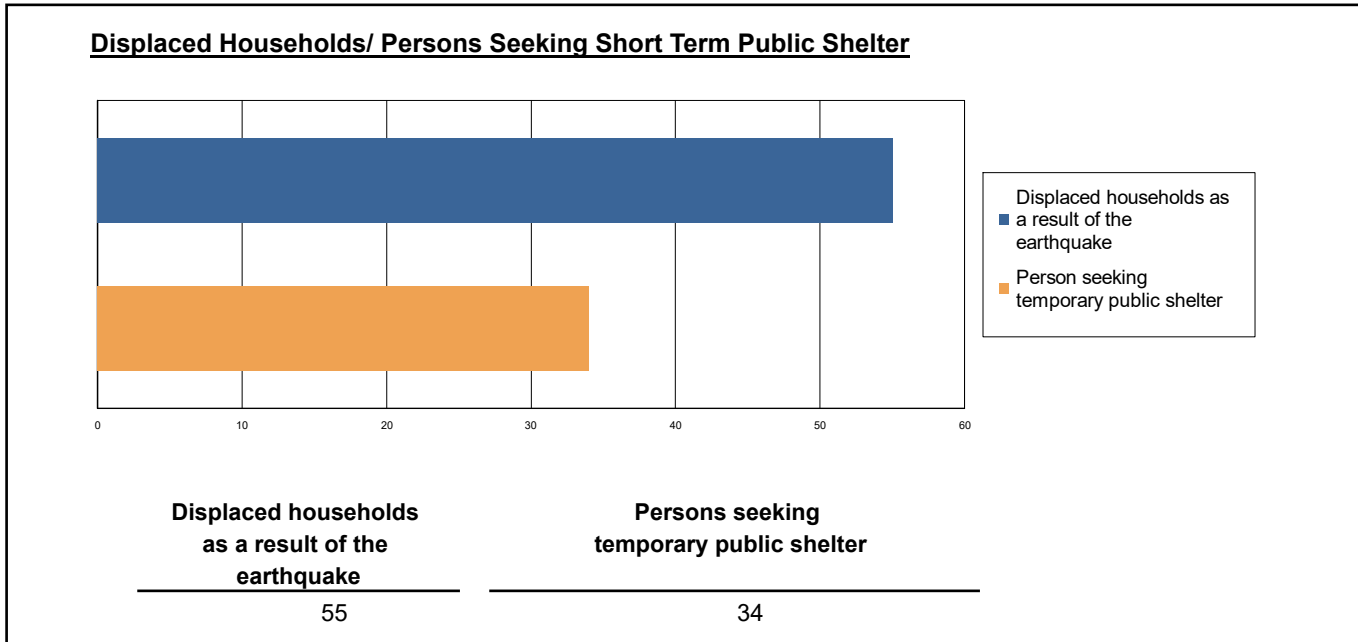
The model estimates that a total of 142,000 tons of debris will be generated. Of the total amount, Brick/Wood comprises 44.00% of the total, with the remainder being Reinforced Concrete/Steel. If the debris tonnage is converted to an estimated number of truckloads, it will require 5,680 truckloads (@25 tons/truck) to remove the debris generated by the earthquake.



## Social Impact

### Shelter Requirement

Hazus estimates the number of households that are expected to be displaced from their homes due to the earthquake and the number of displaced people that will require accommodations in temporary public shelters. The model estimates 55 households to be displaced due to the earthquake. Of these, 34 people (out of a total population of 15,095,204) will seek temporary shelter in public shelters.



### Casualties

Hazus estimates the number of people that will be injured and killed by the earthquake. The casualties are broken down into four (4) severity levels that describe the extent of the injuries. The levels are described as follows;

- Severity Level 1: Injuries will require medical attention but hospitalization is not needed.
- Severity Level 2: Injuries will require hospitalization but are not considered life-threatening
- Severity Level 3: Injuries will require hospitalization and can become life threatening if not promptly treated.
- Severity Level 4: Victims are killed by the earthquake.

The casualty estimates are provided for three (3) times of day: 2:00 AM, 2:00 PM and 5:00 PM. These times represent the periods of the day that different sectors of the community are at their peak occupancy loads. The 2:00 AM estimate considers that the residential occupancy load is maximum, the 2:00 PM estimate considers that the educational, commercial and industrial sector loads are maximum and 5:00 PM represents peak commute time.

Table 10 provides a summary of the casualties estimated for this earthquake

**Table 10: Casualty Estimates**

		Level 1	Level 2	Level 3	Level 4
<b>2 AM</b>	Commercial	1.07	0.13	0.01	0.02
	Commuting	0.00	0.01	0.01	0.00
	Educational	0.00	0.00	0.00	0.00
	Hotels	0.02	0.00	0.00	0.00
	Industrial	0.63	0.04	0.00	0.00
	Other-Residential	18.14	1.14	0.04	0.07
	Single Family	22.67	0.32	0.00	0.00
	<b>Total</b>	<b>43</b>	<b>2</b>	<b>0</b>	<b>0</b>
<b>2 PM</b>	Commercial	76.12	8.76	0.59	1.09
	Commuting	0.04	0.05	0.09	0.02
	Educational	7.34	0.42	0.00	0.01
	Hotels	0.00	0.00	0.00	0.00
	Industrial	4.55	0.28	0.01	0.01
	Other-Residential	5.52	0.36	0.01	0.02
	Single Family	6.58	0.10	0.00	0.00
	<b>Total</b>	<b>100</b>	<b>10</b>	<b>1</b>	<b>1</b>
<b>5 PM</b>	Commercial	53.85	6.12	0.40	0.74
	Commuting	0.68	0.82	1.49	0.28
	Educational	0.42	0.02	0.00	0.00
	Hotels	0.01	0.00	0.00	0.00
	Industrial	2.84	0.17	0.00	0.01
	Other-Residential	6.58	0.43	0.02	0.03
	Single Family	8.13	0.12	0.00	0.00
	<b>Total</b>	<b>73</b>	<b>8</b>	<b>2</b>	<b>1</b>

## Economic Loss

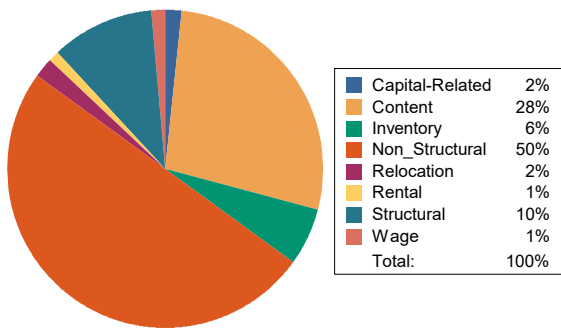
The total economic loss estimated for the earthquake is 4,532.41 (millions of dollars), which includes building and lifeline related losses based on the region's available inventory. The following three sections provide more detailed information about these losses.

## Building-Related Losses

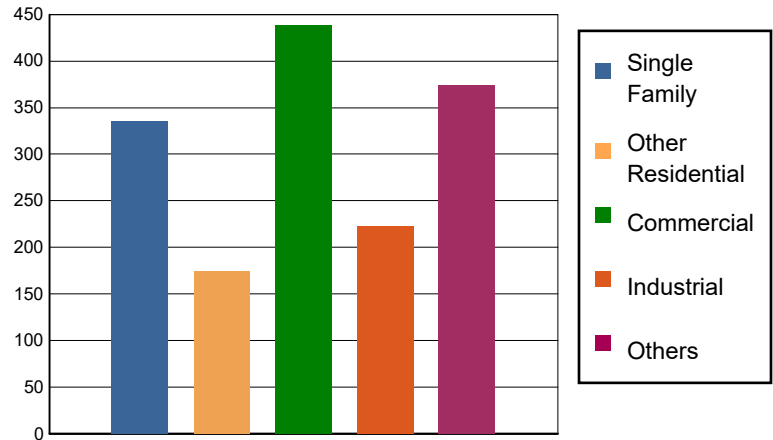
The building losses are broken into two categories: direct building losses and business interruption losses. The direct building losses are the estimated costs to repair or replace the damage caused to the building and its contents. The business interruption losses are the losses associated with inability to operate a business because of the damage sustained during the earthquake. Business interruption losses also include the temporary living expenses for those people displaced from their homes because of the earthquake.

The total building-related losses were 1,544.09 (millions of dollars); 6 % of the estimated losses were related to the business interruption of the region. By far, the largest loss was sustained by the residential occupancies which made up over 33 % of the total loss. Table 11 below provides a summary of the losses associated with the building damage.

Earthquake Losses by Loss Type (\$ millions)



Earthquake Losses by Occupancy Type (\$ millions)



**Table 11: Building-Related Economic Loss Estimates**  
(Millions of dollars)

Category	Area	Single Family	Other Residential	Commercial	Industrial	Others	Total
<b>Income Losses</b>							
	Wage	0.0000	0.4666	19.9262	0.6730	2.0112	23.0770
	Capital-Related	0.0000	0.1981	22.1878	0.4050	1.2829	24.0738
	Rental	1.4393	3.7345	11.0725	0.6410	0.7395	17.6268
	Relocation	2.1806	2.7881	9.8843	2.4249	11.4910	28.7689
	<b>Subtotal</b>	<b>3.6199</b>	<b>7.1873</b>	<b>63.0708</b>	<b>4.1439</b>	<b>15.5246</b>	<b>93.5465</b>
<b>Capital Stock Losses</b>							
	Structural	25.1418	10.9275	26.0428	10.6736	89.0805	161.8662
	Non_Structural	217.3622	117.4683	199.8206	112.8515	123.1089	770.6115
	Content	89.4691	38.4111	126.2855	81.6412	90.4519	426.2588
	Inventory	0.0000	0.0000	23.1335	12.8775	55.7964	91.8074
	<b>Subtotal</b>	<b>331.9731</b>	<b>166.8069</b>	<b>375.2824</b>	<b>218.0438</b>	<b>358.4377</b>	<b>1450.5439</b>
	<b>Total</b>	<b>335.59</b>	<b>173.99</b>	<b>438.35</b>	<b>222.19</b>	<b>373.96</b>	<b>1544.09</b>

## Transportation and Utility Lifeline Losses

For the transportation and utility lifeline systems, Hazus computes the direct repair cost for each component only. There are no losses computed by Hazus for business interruption due to lifeline outages. Tables 12 & 13 provide a detailed breakdown in the expected lifeline losses.

**Table 12: Transportation System Economic Losses**  
(Millions of dollars)

System	Component	Inventory Value	Economic Loss	Loss Ratio (%)
Highway	Segments	91000.6523	0.0000	0.00
	Bridges	55795.7045	17.8244	0.03
	Tunnels	981.4915	0.0003	0.00
	<b>Subtotal</b>	<b>147777.8483</b>	<b>17.8247</b>	
Railways	Segments	65349.0478	0.0000	0.00
	Bridges	8671.5600	0.4990	0.01
	Tunnels	1.8495	0.0000	0.00
	Facilities	239.6700	3.0737	1.28
	<b>Subtotal</b>	<b>74262.1273</b>	<b>3.5727</b>	
Light Rail	Segments	5403.2756	0.0000	0.00
	Bridges	15.3529	0.0000	0.00
	Tunnels	0.0000	0.0000	0.00
	Facilities	4154.0000	41.7132	1.00
	<b>Subtotal</b>	<b>9572.6285</b>	<b>41.7132</b>	
Bus	Facilities	110.3685	1.4020	1.27
	<b>Subtotal</b>	<b>110.3685</b>	<b>1.4020</b>	
Ferry	Facilities	33.2750	0.2635	0.79
	<b>Subtotal</b>	<b>33.2750</b>	<b>0.2635</b>	
Port	Facilities	1368.4522	11.6950	0.85
	<b>Subtotal</b>	<b>1368.4522</b>	<b>11.6950</b>	
Airport	Facilities	2844.7336	29.4412	1.03
	Runways	1577.1432	0.0000	0.00
	<b>Subtotal</b>	<b>4421.8768</b>	<b>29.4412</b>	
<b>Total</b>		<b>237,546.58</b>	<b>105.91</b>	

**Table 13: Utility System Economic Losses**  
(Millions of dollars)

System	Component	Inventory Value	Economic Loss	Loss Ratio (%)
Potable Water	Pipelines	0.0000	0.0000	0.00
	Facilities	943.0560	0.8552	0.09
	Distribution Lines	4425.9267	6.0369	0.14
	<b>Subtotal</b>	<b>5368.9827</b>	<b>6.8921</b>	
Waste Water	Pipelines	0.0000	0.0000	0.00
	Facilities	26652.5290	59.9304	0.22
	Distribution Lines	2655.5560	3.0325	0.11
	<b>Subtotal</b>	<b>29308.0850</b>	<b>62.9629</b>	
Natural Gas	Pipelines	16027.9888	0.0000	0.00
	Facilities	549.0112	0.1852	0.03
	Distribution Lines	1770.3707	1.0389	0.06
	<b>Subtotal</b>	<b>18347.3707</b>	<b>1.2241</b>	
Oil Systems	Pipelines	0.0000	0.0000	0.00
	Facilities	3.7760	0.0014	0.04
	<b>Subtotal</b>	<b>3.7760</b>	<b>0.0014</b>	
Electrical Power	Facilities	119610.4149	2811.0275	2.35
	<b>Subtotal</b>	<b>119610.4149</b>	<b>2811.0275</b>	
Communication	Facilities	55.8140	0.2926	0.52
	<b>Subtotal</b>	<b>55.8140</b>	<b>0.2926</b>	
	<b>Total</b>	<b>172,694.44</b>	<b>2,882.40</b>	

---

## Appendix A: County Listing for the Region

Alameda,CA  
Amador,CA  
Calaveras,CA  
Contra Costa,CA  
Fresno,CA  
Kern,CA  
Kings,CA  
Madera,CA  
Marin,CA  
Mariposa,CA  
Merced,CA  
Monterey,CA  
Napa,CA  
Sacramento,CA  
San Benito,CA  
San Francisco,CA  
San Joaquin,CA  
San Luis Obispo,CA  
San Mateo,CA  
Santa Clara,CA  
Santa Cruz,CA  
Solano,CA  
Sonoma,CA  
Stanislaus,CA  
Tulare,CA  
Tuolumne,CA  
Yolo,CA

## Appendix B: Regional Population and Building Value Data

State	County Name	Population	Building Value (millions of dollars)		
			Residential	Non-Residential	Total
California	Alameda	1,682,353	209,951	122,639	332,590
	Amador	40,474	5,608	2,517	8,125
	Calaveras	45,292	8,305	4,893	13,199
	Contra Costa	1,165,927	158,118	60,339	218,458
	Fresno	1,008,654	98,532	61,772	160,304
	Kern	909,235	87,567	59,168	146,736
	Kings	152,486	13,719	7,861	21,581
	Madera	156,255	18,025	9,641	27,667
	Marin	262,321	47,738	15,030	62,769
	Mariposa	17,131	3,299	1,141	4,441
	Merced	281,202	25,194	26,098	51,292
	Monterey	439,035	47,655	28,750	76,405
	Napa	138,019	20,517	13,045	33,563
	Sacramento	1,585,055	179,811	83,911	263,723
	San Benito	64,209	9,440	3,799	13,239
	San Francisco	873,965	108,848	46,020	154,869
	San Joaquin	779,233	82,706	56,882	139,589
	San Luis Obispo	282,424	41,720	20,896	62,616
	San Mateo	764,442	110,372	44,995	155,368
	Santa Clara	1,936,259	261,111	120,471	381,582
	Santa Cruz	270,861	36,147	18,805	54,952
	Solano	453,491	55,802	26,393	82,195
	Sonoma	488,863	68,827	35,781	104,609
	Stanislaus	552,878	62,937	37,511	100,449
	Tulare	473,117	43,262	31,210	74,472
	Tuolumne	55,620	8,964	3,507	12,471
	Yolo	216,403	24,130	18,343	42,473
<b>Total Region</b>		<b>15,095,204</b>	<b>1,838,305</b>	<b>961,418</b>	<b>2,799,737</b>

**Building Inspection Tagging (Counts)**

**Total Economic Loss**
**Total:**

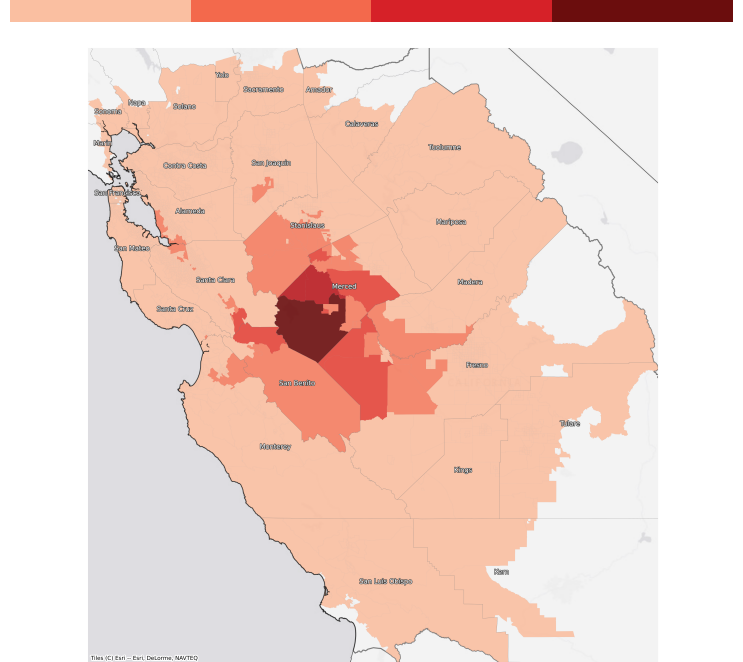
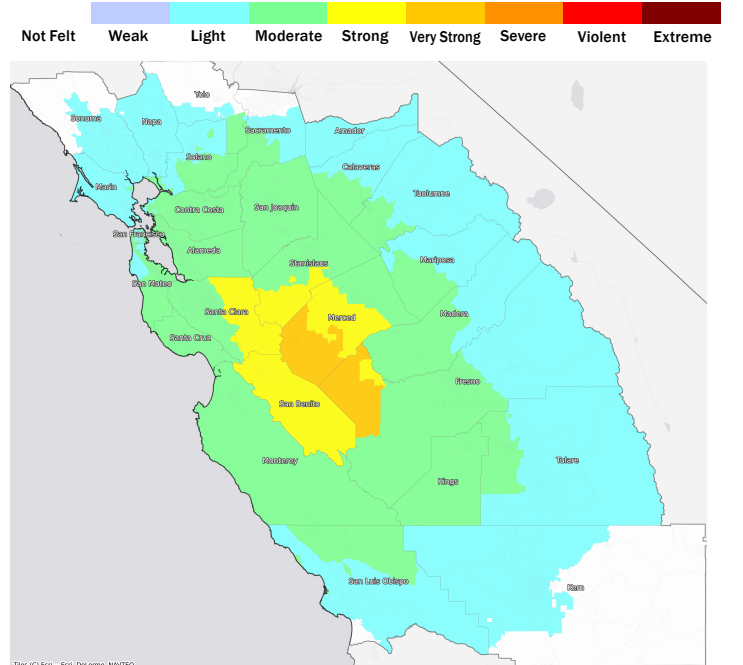
Top Counties	State	Total

**Injuries & Fatalities**
**Total Day:  
Total Night:**

Top Counties	State	Injuries (day/night)	Fatalities (day/night)

**Displaced Households & Short-Term Shelter Needs**
**Total Displaced:  
Total Needing Shelter:**

Top Counties	State	Displaced	Needing Shelter

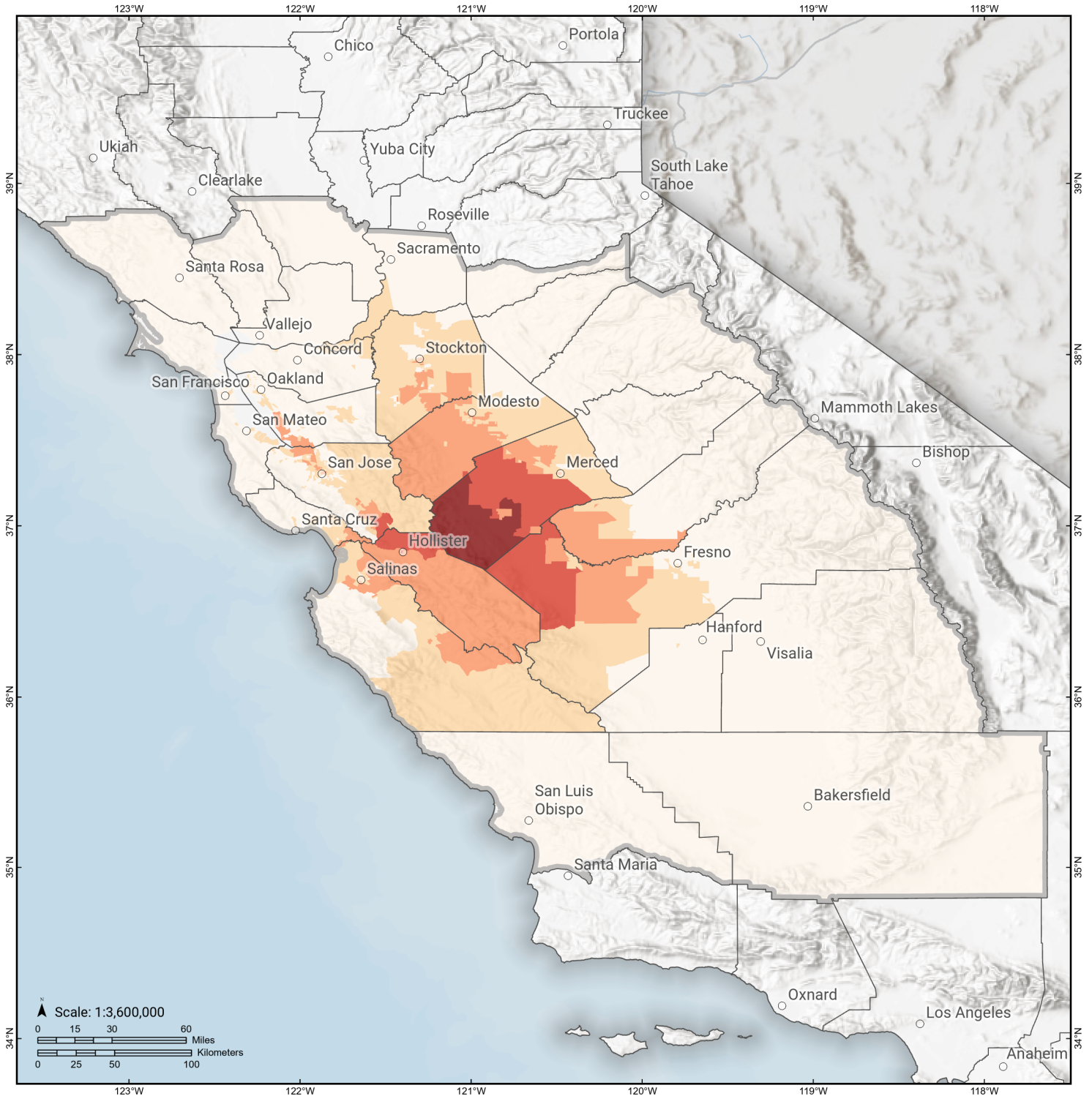
**Economic Impacts by Census Tract**

**Ground Shaking**

**Debris**
**Total Tons:  
Total Truckloads:**

Type	Tons

The estimates of social and economic impacts contained in this report were produced using Hazus loss estimation methodology software which is based on current scientific and engineering knowledge. There are uncertainties inherent in any loss estimation technique. Therefore, there may be significant differences between the modeled results contained in this report and the actual social and economic losses following a specific earthquake.

# Ortigalita (South)

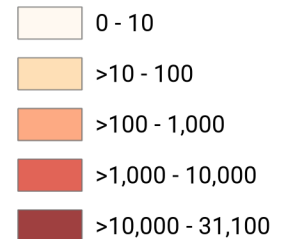
## Debris Generated by Census Tract



**Study Region:** Ortigalita (South)  
**Scenario:** ortigalitasouthshaw0\_m7p01\_se

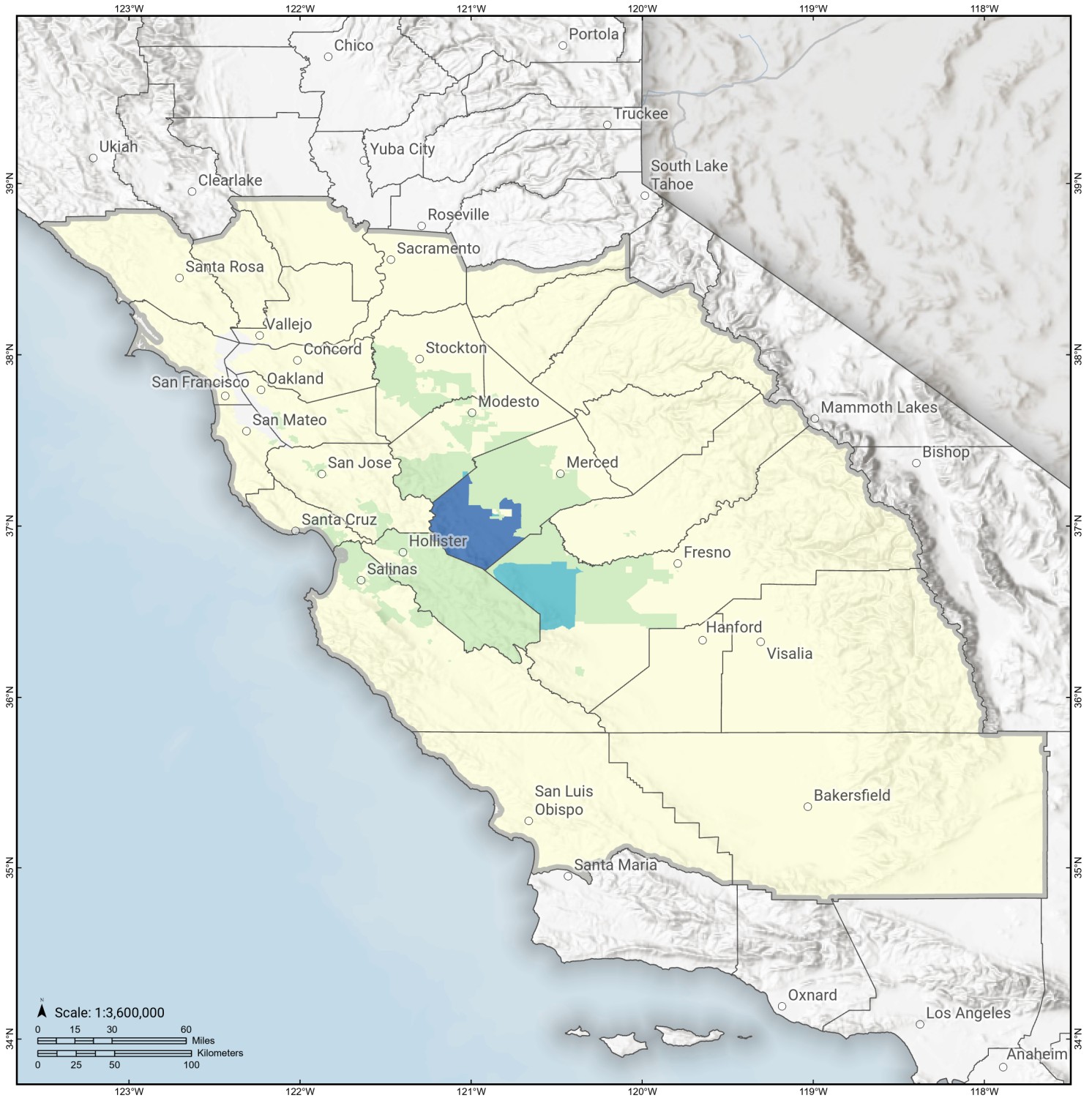


### Debris Generated (in tons)



# Ortigalita (South)

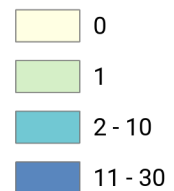
## Displaced Households by Census Tract



**Study Region:** Ortigalita (South)  
**Scenario:** ortigalitasouthshaw0\_m7p01\_se

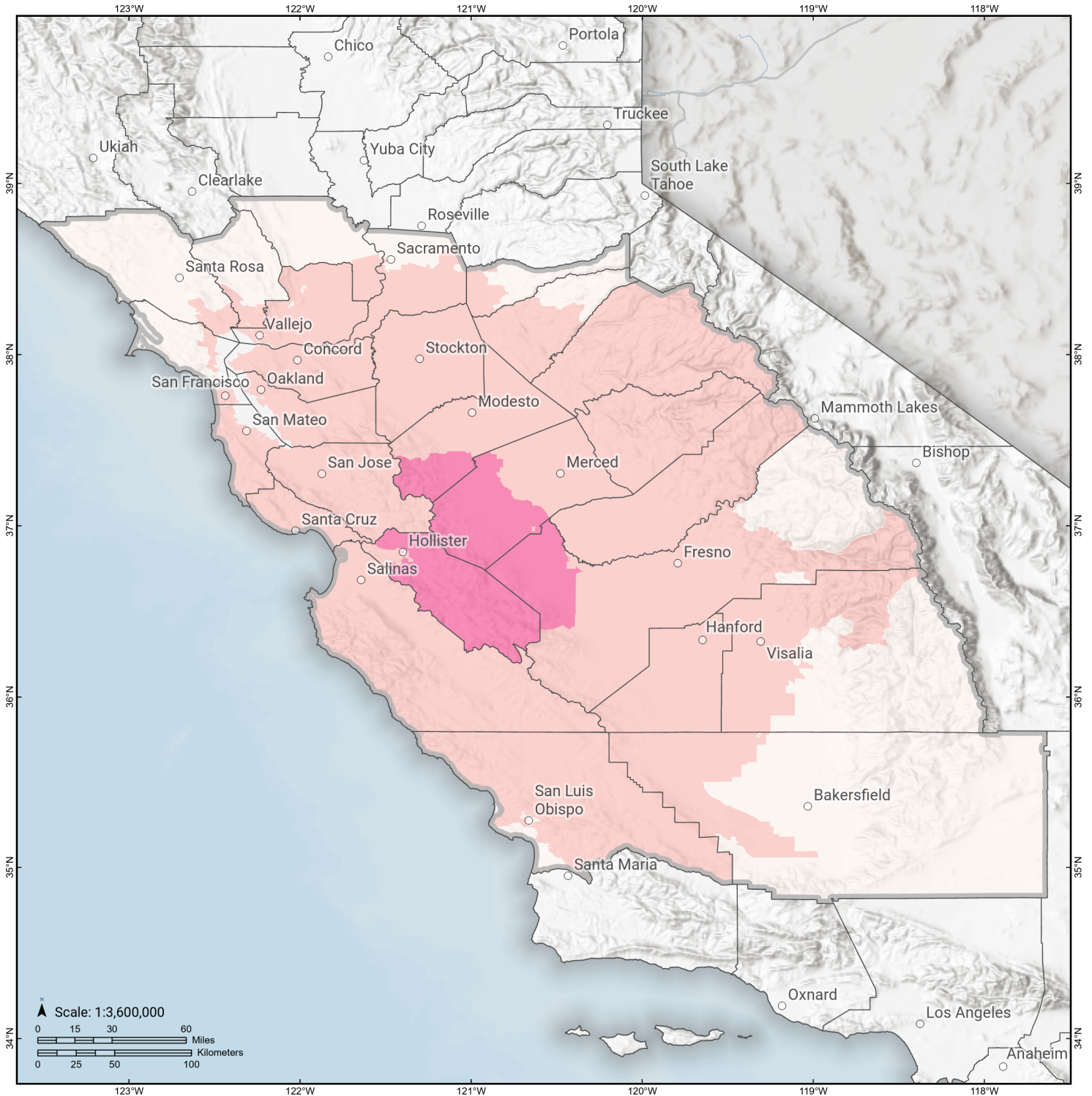


### Displaced Households



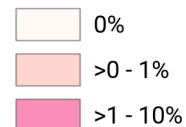
# Ortigalita (South)

## Loss Ratio by Census Tract



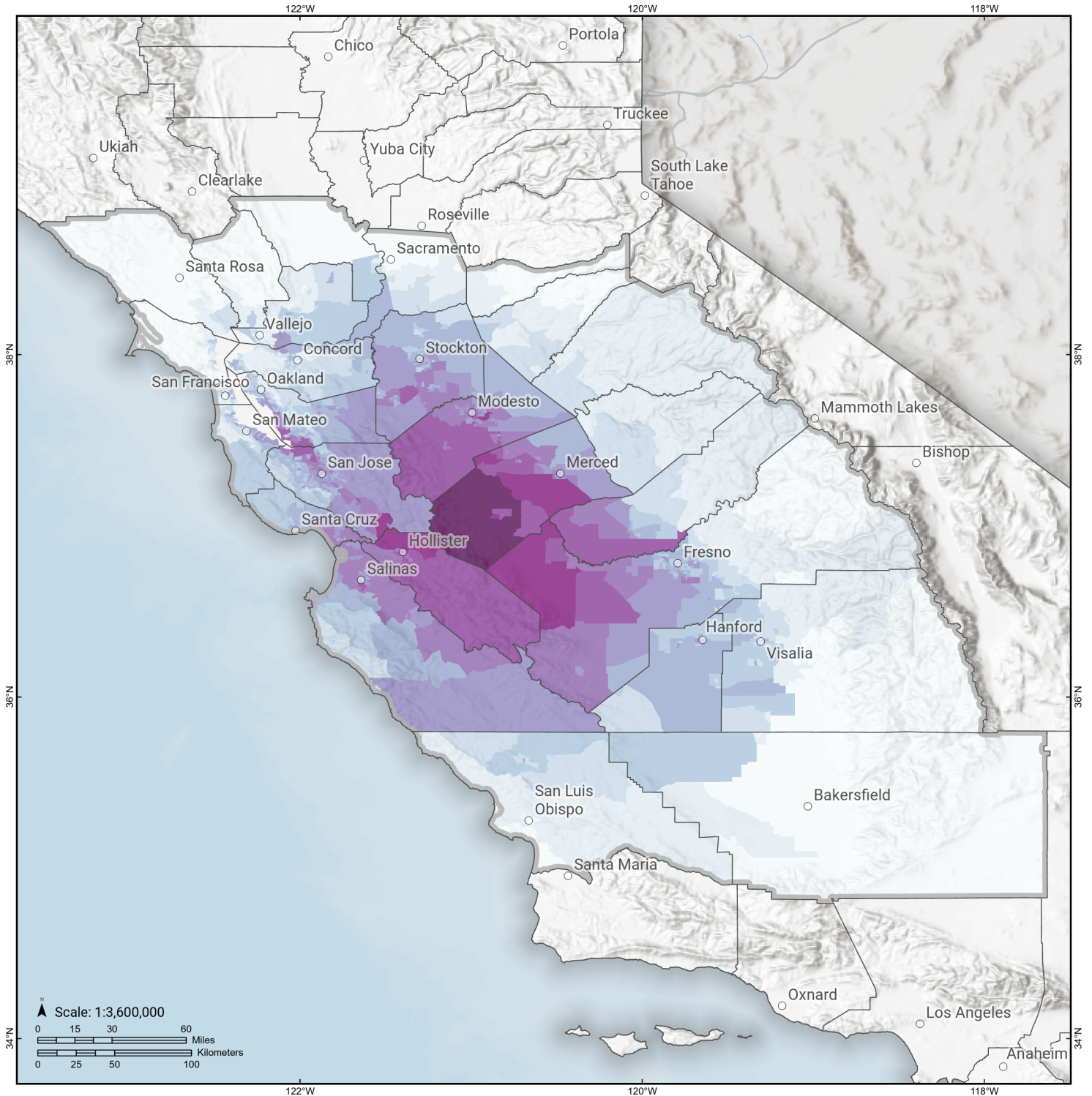
**Study Region:** Ortigalita (South)  
**Scenario:** ortigalitasouthshaw0\_m7p01\_se

**Loss Ratio** (ratio of building related economic loss to exposed value of buildings)



# Ortigalita (South)

## Total Building Related Economic Loss by Census Tract



**Study Region:** Ortigalita (South)  
**Scenario:** ortigalitasouthshaw0\_m7p01\_se



### Economic Loss (in thousands of USD \$)



## Building Damage by Count by General Occupancy

May 01, 2024

	# of Buildings					Total
	None	Slight	Moderate	Extensive	Complete	
<b>California</b>						
<b>Alameda</b>						
<i>Government</i>	10,515	12	0	0	0	10,528
<i>Agriculture</i>	421	1	0	0	0	422
<i>Commercial</i>	31,919	67	3	0	0	31,989
<i>Religion</i>	1,982	4	0	0	0	1,986
<i>Single Family</i>	344,029	144	0	0	0	344,173
<i>Other Residential</i>	61,306	86	4	0	0	61,396
<i>Education</i>	1,116	1	0	0	0	1,117
<i>Industrial</i>	10,177	27	1	0	0	10,205
<b>Amador</b>						
<i>Industrial</i>	235	0	0	0	0	235
<i>Single Family</i>	14,962	0	0	0	0	14,962
<i>Other Residential</i>	1,037	0	0	0	0	1,037
<i>Education</i>	23	0	0	0	0	23
<i>Government</i>	32	0	0	0	0	32
<i>Agriculture</i>	44	0	0	0	0	44
<i>Religion</i>	45	0	0	0	0	45
<i>Commercial</i>	1,368	0	0	0	0	1,368
<b>Calaveras</b>						

	# of Buildings					Total
	None	Slight	Moderate	Extensive	Complete	
<i>Government</i>	84	0	0	0	0	84
<i>Other Residential</i>	2,559	0	0	0	0	2,559
<i>Education</i>	35	0	0	0	0	35
<i>Religion</i>	130	0	0	0	0	130
<i>Agriculture</i>	2,207	0	0	0	0	2,207
<i>Commercial</i>	1,413	0	0	0	0	1,413
<i>Industrial</i>	466	0	0	0	0	466
<i>Single Family</i>	22,148	0	0	0	0	22,148
<b>Contra Costa</b>						
<i>Commercial</i>	17,984	7	0	0	0	17,991
<i>Agriculture</i>	748	1	0	0	0	749
<i>Religion</i>	1,225	1	0	0	0	1,226
<i>Single Family</i>	281,924	11	0	0	0	281,935
<i>Other Residential</i>	29,106	17	1	0	0	29,124
<i>Industrial</i>	4,747	2	0	0	0	4,749
<i>Government</i>	5,022	2	0	0	0	5,024
<i>Education</i>	653	0	0	0	0	653
<b>Fresno</b>						
<i>Commercial</i>	20,910	121	21	2	0	21,054
<i>Religion</i>	1,490	14	2	0	0	1,507
<i>Agriculture</i>	3,367	48	6	0	0	3,421
<i>Industrial</i>	5,289	50	9	0	0	5,348
<i>Government</i>	288	2	0	0	0	291
<i>Other Residential</i>	40,562	330	76	4	0	40,973
<i>Single Family</i>	225,930	488	7	0	0	226,425

		# of Buildings					
		None	Slight	Moderate	Extensive	Complete	Total
<b>Kern</b>	<i>Education</i>	601	1	0	0	0	602
	<i>Single Family</i>	205,139	0	0	0	0	205,139
	<i>Other Residential</i>	54,520	0	0	0	0	54,520
	<i>Industrial</i>	6,047	0	0	0	0	6,047
	<i>Education</i>	462	0	0	0	0	462
	<i>Government</i>	443	0	0	0	0	443
	<i>Religion</i>	1,524	0	0	0	0	1,524
	<i>Agriculture</i>	4,645	0	0	0	0	4,645
	<i>Commercial</i>	15,567	0	0	0	0	15,567
<b>Kings</b>	<i>Commercial</i>	2,312	6	0	0	0	2,318
	<i>Religion</i>	209	1	0	0	0	210
	<i>Agriculture</i>	306	0	0	0	0	306
	<i>Government</i>	72	0	0	0	0	72
	<i>Industrial</i>	554	1	0	0	0	555
	<i>Single Family</i>	36,229	16	0	0	0	36,245
	<i>Other Residential</i>	4,333	9	0	0	0	4,342
	<i>Education</i>	103	0	0	0	0	103
<b>Madera</b>	<i>Commercial</i>	2,883	20	2	0	0	2,905
	<i>Religion</i>	118	1	0	0	0	119
	<i>Government</i>	111	0	0	0	0	111
	<i>Agriculture</i>	616	15	3	0	0	634
	<i>Other Residential</i>	6,577	54	4	0	0	6,635

	# of Buildings					Total
	None	Slight	Moderate	Extensive	Complete	
<i>Single Family</i>	38,804	108	0	0	0	38,912
<i>Education</i>	115	0	0	0	0	115
<i>Industrial</i>	894	8	1	0	0	903
<b>Marin</b>						
<i>Other Residential</i>	7,890	0	0	0	0	7,890
<i>Government</i>	143	0	0	0	0	143
<i>Education</i>	274	0	0	0	0	274
<i>Commercial</i>	8,270	0	0	0	0	8,270
<i>Religion</i>	319	0	0	0	0	319
<i>Agriculture</i>	190	0	0	0	0	190
<i>Single Family</i>	76,724	0	0	0	0	76,724
<i>Industrial</i>	1,535	0	0	0	0	1,535
<b>Mariposa</b>						
<i>Single Family</i>	8,084	0	0	0	0	8,084
<i>Other Residential</i>	307	0	0	0	0	307
<i>Education</i>	27	0	0	0	0	27
<i>Industrial</i>	94	0	0	0	0	94
<i>Commercial</i>	689	0	0	0	0	689
<i>Agriculture</i>	29	0	0	0	0	29
<i>Religion</i>	36	0	0	0	0	36
<i>Government</i>	33	0	0	0	0	33
<b>Merced</b>						
<i>Education</i>	156	6	1	0	0	163
<i>Government</i>	158	11	2	0	0	171
<i>Commercial</i>	4,106	492	144	12	1	4,754

	# of Buildings					Total
	None	Slight	Moderate	Extensive	Complete	
<i>Agriculture</i>	5,850	1,098	542	147	17	7,653
<i>Religion</i>	312	27	6	0	0	345
<i>Industrial</i>	909	89	23	1	0	1,022
<i>Single Family</i>	58,451	4,951	196	0	0	63,598
<i>Other Residential</i>	9,441	883	393	67	2	10,787
<b>Monterey</b>						
<i>Single Family</i>	90,369	507	0	0	0	90,876
<i>Industrial</i>	1,810	36	4	0	0	1,850
<i>Other Residential</i>	19,446	337	27	0	0	19,809
<i>Education</i>	238	1	0	0	0	239
<i>Government</i>	182	2	0	0	0	185
<i>Agriculture</i>	1,796	17	2	0	0	1,815
<i>Commercial</i>	9,100	133	13	0	0	9,246
<i>Religion</i>	570	9	1	0	0	580
<b>Napa</b>						
<i>Commercial</i>	4,021	0	0	0	0	4,021
<i>Agriculture</i>	349	0	0	0	0	349
<i>Religion</i>	148	0	0	0	0	148
<i>Single Family</i>	38,761	0	0	0	0	38,761
<i>Other Residential</i>	6,978	0	0	0	0	6,978
<i>Government</i>	103	0	0	0	0	103
<i>Education</i>	132	0	0	0	0	132
<i>Industrial</i>	1,367	0	0	0	0	1,367
<b>Sacramento</b>						
<i>Single Family</i>	386,839	1	0	0	0	386,840

	# of Buildings					Total
	None	Slight	Moderate	Extensive	Complete	
<i>Industrial</i>	6,756	0	0	0	0	6,756
<i>Other Residential</i>	56,408	5	0	0	0	56,413
<i>Education</i>	829	0	0	0	0	829
<i>Agriculture</i>	621	0	0	0	0	621
<i>Religion</i>	1,702	0	0	0	0	1,702
<i>Government</i>	619	0	0	0	0	619
<i>Commercial</i>	26,293	2	0	0	0	26,295
<b>San Benito</b>						
<i>Other Residential</i>	1,175	172	27	0	0	1,375
<i>Single Family</i>	13,545	1,172	9	0	0	14,726
<i>Industrial</i>	277	41	7	0	0	326
<i>Education</i>	39	2	1	0	0	42
<i>Government</i>	36	7	2	0	0	45
<i>Commercial</i>	930	123	25	1	0	1,080
<i>Religion</i>	54	8	2	0	0	64
<i>Agriculture</i>	218	30	4	0	0	253
<b>San Francisco</b>						
<i>Single Family</i>	150,680	22	1	0	0	150,703
<i>Other Residential</i>	44,489	39	1	0	0	44,529
<i>Government</i>	288	1	0	0	0	289
<i>Education</i>	572	0	0	0	0	572
<i>Industrial</i>	3,855	5	0	0	0	3,860
<i>Commercial</i>	21,309	34	1	0	0	21,344
<i>Religion</i>	1,344	1	0	0	0	1,345

	# of Buildings					Total
	None	Slight	Moderate	Extensive	Complete	
<i>Agriculture</i>	162	0	0	0	0	162
<b>San Joaquin</b>						
<i>Commercial</i>	12,805	55	3	0	0	12,864
<i>Agriculture</i>	748	4	0	0	0	753
<i>Religion</i>	873	4	0	0	0	877
<i>Government</i>	302	2	0	0	0	304
<i>Single Family</i>	187,919	936	67	0	0	188,922
<i>Other Residential</i>	21,638	156	12	0	0	21,805
<i>Education</i>	395	0	0	0	0	395
<i>Industrial</i>	4,903	24	2	0	0	4,928
<b>San Luis Obispo</b>						
<i>Religion</i>	360	0	0	0	0	360
<i>Agriculture</i>	421	0	0	0	0	421
<i>Government</i>	185	0	0	0	0	185
<i>Commercial</i>	9,374	1	0	0	0	9,375
<i>Single Family</i>	85,639	0	0	0	0	85,639
<i>Industrial</i>	2,556	0	0	0	0	2,556
<i>Other Residential</i>	20,212	4	0	0	0	20,216
<i>Education</i>	182	0	0	0	0	182
<b>San Mateo</b>						
<i>Religion</i>	735	1	0	0	0	736
<i>Agriculture</i>	538	1	0	0	0	539
<i>Government</i>	298	1	0	0	0	299
<i>Commercial</i>	14,373	22	1	0	0	14,395
<i>Industrial</i>	4,463	9	0	0	0	4,472

	# of Buildings					Total
	None	Slight	Moderate	Extensive	Complete	
<i>Other Residential</i>	22,413	38	2	0	0	22,453
<i>Single Family</i>	159,883	47	0	0	0	159,931
<i>Education</i>	489	0	0	0	0	489
<b>Santa Clara</b>						
<i>Other Residential</i>	58,392	710	58	0	0	59,160
<i>Single Family</i>	425,628	1,587	4	0	0	427,219
<i>Government</i>	491	9	1	0	0	502
<i>Education</i>	1,170	2	0	0	0	1,173
<i>Industrial</i>	9,305	117	11	0	0	9,433
<i>Commercial</i>	35,105	336	28	0	0	35,469
<i>Religion</i>	1,526	13	1	0	0	1,540
<i>Agriculture</i>	874	19	2	0	0	895
<b>Santa Cruz</b>						
<i>Religion</i>	354	4	1	0	0	359
<i>Agriculture</i>	819	18	4	0	0	840
<i>Single Family</i>	68,704	166	0	0	0	68,870
<i>Other Residential</i>	14,724	156	12	0	0	14,892
<i>Industrial</i>	1,798	19	2	0	0	1,819
<i>Education</i>	224	1	0	0	0	225
<i>Commercial</i>	6,628	60	6	0	0	6,694
<i>Government</i>	125	2	0	0	0	127
<b>Solano</b>						
<i>Religion</i>	454	0	0	0	0	454
<i>Agriculture</i>	245	0	0	0	0	245
<i>Government</i>	152	0	0	0	0	152

	# of Buildings					Total
	None	Slight	Moderate	Extensive	Complete	
<i>Commercial</i>	7,267	1	0	0	0	7,268
<i>Single Family</i>	120,967	1	0	0	0	120,968
<i>Industrial</i>	2,100	1	0	0	0	2,101
<i>Other Residential</i>	12,315	2	0	0	0	12,317
<i>Education</i>	225	0	0	0	0	225
<b>Sonoma</b>						
<i>Other Residential</i>	25,033	0	0	0	0	25,033
<i>Government</i>	319	0	0	0	0	319
<i>Education</i>	367	0	0	0	0	367
<i>Religion</i>	576	0	0	0	0	576
<i>Commercial</i>	12,110	0	0	0	0	12,110
<i>Agriculture</i>	1,304	0	0	0	0	1,304
<i>Single Family</i>	142,028	0	0	0	0	142,028
<i>Industrial</i>	3,825	0	0	0	0	3,825
<b>Stanislaus</b>						
<i>Other Residential</i>	18,933	578	56	1	0	19,569
<i>Single Family</i>	140,129	2,578	17	0	0	142,724
<i>Education</i>	305	2	0	0	0	307
<i>Government</i>	658	20	2	0	0	680
<i>Industrial</i>	3,325	130	19	1	0	3,475
<i>Commercial</i>	9,979	336	52	2	0	10,369
<i>Religion</i>	438	15	2	0	0	456
<i>Agriculture</i>	1,183	47	9	0	0	1,239
<b>Tulare</b>						
<i>Commercial</i>	8,871	2	0	0	0	8,873

	# of Buildings					Total
	None	Slight	Moderate	Extensive	Complete	
<i>Agriculture</i>	3,554	1	0	0	0	3,555
<i>Religion</i>	827	0	0	0	0	827
<i>Government</i>	461	0	0	0	0	461
<i>Single Family</i>	112,034	0	0	0	0	112,034
<i>Other Residential</i>	20,017	5	0	0	0	20,022
<i>Industrial</i>	2,148	0	0	0	0	2,148
<i>Education</i>	269	0	0	0	0	269
<b>Tuolumne</b>						
<i>Education</i>	57	0	0	0	0	57
<i>Government</i>	143	0	0	0	0	143
<i>Commercial</i>	1,576	0	0	0	0	1,576
<i>Religion</i>	121	0	0	0	0	121
<i>Agriculture</i>	82	0	0	0	0	82
<i>Industrial</i>	383	0	0	0	0	383
<i>Other Residential</i>	4,962	0	0	0	0	4,962
<i>Single Family</i>	21,645	0	0	0	0	21,645
<b>Yolo</b>						
<i>Industrial</i>	1,117	0	0	0	0	1,117
<i>Other Residential</i>	9,861	0	0	0	0	9,861
<i>Education</i>	131	0	0	0	0	131
<i>Government</i>	111	0	0	0	0	111
<i>Single Family</i>	42,589	0	0	0	0	42,589
<i>Commercial</i>	4,225	0	0	0	0	4,225
<i>Agriculture</i>	281	0	0	0	0	281
<i>Religion</i>	242	0	0	0	0	242

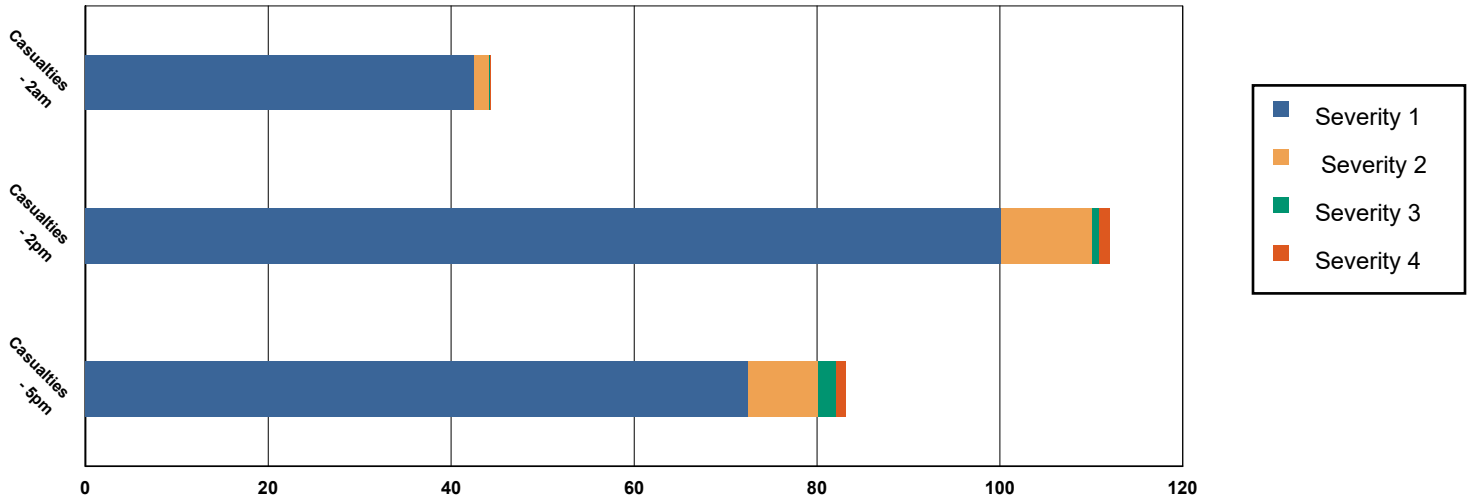
	# of Buildings					Total
	None	Slight	Moderate	Extensive	Complete	
<b>Total</b>	<b>4,526,636</b>	<b>20,181</b>	<b>1,953</b>	<b>244</b>	<b>19</b>	<b>4,549,033</b>
<b>Region Total</b>	<b>4,526,636</b>	<b>20,181</b>	<b>1,953</b>	<b>244</b>	<b>19</b>	<b>4,549,033</b>

*Totals only reflect data for those census tracts/blocks included in the user's study region and will reflect the entire county/state only if all of the census blocks for that county/states were selected at the time of study region creation.*

## Casualties Summary Report

May 01, 2024

### Region Total Casualties



### Injury Severity Level

Severity 1	Severity 2	Severity 3	Severity 4	Total
------------	------------	------------	------------	-------

#### California

##### Alameda

##### Casualties - 2am

	Severity 1	Severity 2	Severity 3	Severity 4	Total
Single Family	0	0	0	0	0
Hotels	0	0	0	0	0
Commuting	0	0	0	0	0
Educational	0	0	0	0	0
Industrial	0	0	0	0	0
Commercial	0	0	0	0	0
Other-Residential	0	0	0	0	0
<b>Total Casualties - 2am</b>	<b>1</b>	<b>0</b>	<b>0</b>	<b>0</b>	<b>1</b>

##### Casualties - 2pm

Industrial	0	0	0	0	0
Educational	0	0	0	0	0
Other-Residential	0	0	0	0	0
Single Family	0	0	0	0	0
Hotels	0	0	0	0	0
Commuting	0	0	0	0	0
Commercial	1	0	0	0	1

	Injury Severity Level				Total
	Severity 1	Severity 2	Severity 3	Severity 4	
<b>California</b>					
<b>Alameda</b>					
<b>Total Casualties - 2pm</b>	<b>1</b>	<b>0</b>	<b>0</b>	<b>0</b>	<b>1</b>
<b>Casualties - 5pm</b>					
<i>Commuting</i>	0	0	0	0	0
<i>Single Family</i>	0	0	0	0	0
<i>Commercial</i>	1	0	0	0	1
<i>Hotels</i>	0	0	0	0	0
<i>Educational</i>	0	0	0	0	0
<i>Industrial</i>	0	0	0	0	0
<i>Other-Residential</i>	0	0	0	0	0
<b>Total Casualties - 5pm</b>	<b>1</b>	<b>0</b>	<b>0</b>	<b>0</b>	<b>1</b>
<b>Amador</b>					
<b>Casualties - 2am</b>					
<i>Commercial</i>	0	0	0	0	0
<i>Other-Residential</i>	0	0	0	0	0
<i>Commuting</i>	0	0	0	0	0
<i>Educational</i>	0	0	0	0	0
<i>Single Family</i>	0	0	0	0	0
<i>Hotels</i>	0	0	0	0	0
<i>Industrial</i>	0	0	0	0	0
<b>Total Casualties - 2am</b>	<b>0</b>	<b>0</b>	<b>0</b>	<b>0</b>	<b>0</b>
<b>Casualties - 2pm</b>					
<i>Single Family</i>	0	0	0	0	0
<i>Hotels</i>	0	0	0	0	0
<i>Educational</i>	0	0	0	0	0
<i>Commuting</i>	0	0	0	0	0
<i>Commercial</i>	0	0	0	0	0
<i>Other-Residential</i>	0	0	0	0	0
<i>Industrial</i>	0	0	0	0	0
<b>Total Casualties - 2pm</b>	<b>0</b>	<b>0</b>	<b>0</b>	<b>0</b>	<b>0</b>
<b>Casualties - 5pm</b>					
<i>Commercial</i>	0	0	0	0	0
<i>Commuting</i>	0	0	0	0	0
<i>Other-Residential</i>	0	0	0	0	0
<i>Single Family</i>	0	0	0	0	0
<i>Educational</i>	0	0	0	0	0
<i>Hotels</i>	0	0	0	0	0
<i>Industrial</i>	0	0	0	0	0
<b>Total Casualties - 5pm</b>	<b>0</b>	<b>0</b>	<b>0</b>	<b>0</b>	<b>0</b>
<b>Calaveras</b>					
<b>Casualties - 2am</b>					
<i>Other-Residential</i>	0	0	0	0	0

	Injury Severity Level				Total
	Severity 1	Severity 2	Severity 3	Severity 4	
<b>California</b>					
<b>Calaveras</b>					
<b>Casualties - 2am</b>					
Commuting	0	0	0	0	0
Commercial	0	0	0	0	0
Single Family	0	0	0	0	0
Hotels	0	0	0	0	0
Educational	0	0	0	0	0
Industrial	0	0	0	0	0
<b>Total Casualties - 2am</b>	<b>0</b>	<b>0</b>	<b>0</b>	<b>0</b>	<b>0</b>
<b>Casualties - 2pm</b>					
Hotels	0	0	0	0	0
Single Family	0	0	0	0	0
Educational	0	0	0	0	0
Commuting	0	0	0	0	0
Commercial	0	0	0	0	0
Industrial	0	0	0	0	0
Other-Residential	0	0	0	0	0
<b>Total Casualties - 2pm</b>	<b>0</b>	<b>0</b>	<b>0</b>	<b>0</b>	<b>0</b>
<b>Casualties - 5pm</b>					
Industrial	0	0	0	0	0
Commercial	0	0	0	0	0
Other-Residential	0	0	0	0	0
Educational	0	0	0	0	0
Hotels	0	0	0	0	0
Commuting	0	0	0	0	0
Single Family	0	0	0	0	0
<b>Total Casualties - 5pm</b>	<b>0</b>	<b>0</b>	<b>0</b>	<b>0</b>	<b>0</b>
<b>Contra Costa</b>					
<b>Casualties - 2am</b>					
Educational	0	0	0	0	0
Hotels	0	0	0	0	0
Industrial	0	0	0	0	0
Other-Residential	0	0	0	0	0
Single Family	0	0	0	0	0
Commercial	0	0	0	0	0
Commuting	0	0	0	0	0
<b>Total Casualties - 2am</b>	<b>0</b>	<b>0</b>	<b>0</b>	<b>0</b>	<b>0</b>
<b>Casualties - 2pm</b>					
Other-Residential	0	0	0	0	0
Industrial	0	0	0	0	0
Hotels	0	0	0	0	0
Single Family	0	0	0	0	0
Educational	0	0	0	0	0

	Injury Severity Level				Total
	Severity 1	Severity 2	Severity 3	Severity 4	
<b>California</b>					
<b>Contra Costa</b>					
<b>Casualties - 2pm</b>					
Commuting	0	0	0	0	0
Commercial	0	0	0	0	0
<b>Total Casualties - 2pm</b>	<b>0</b>	<b>0</b>	<b>0</b>	<b>0</b>	<b>0</b>
<b>Casualties - 5pm</b>					
Educational	0	0	0	0	0
Commuting	0	0	0	0	0
Single Family	0	0	0	0	0
Hotels	0	0	0	0	0
Industrial	0	0	0	0	0
Other-Residential	0	0	0	0	0
Commercial	0	0	0	0	0
<b>Total Casualties - 5pm</b>	<b>0</b>	<b>0</b>	<b>0</b>	<b>0</b>	<b>0</b>
<b>Fresno</b>					
<b>Casualties - 2am</b>					
Hotels	0	0	0	0	0
Educational	0	0	0	0	0
Industrial	0	0	0	0	0
Commercial	0	0	0	0	0
Other-Residential	2	0	0	0	2
Single Family	1	0	0	0	1
Commuting	0	0	0	0	0
<b>Total Casualties - 2am</b>	<b>3</b>	<b>0</b>	<b>0</b>	<b>0</b>	<b>3</b>
<b>Casualties - 2pm</b>					
Commercial	2	0	0	0	3
Other-Residential	1	0	0	0	1
Industrial	0	0	0	0	0
Single Family	0	0	0	0	0
Hotels	0	0	0	0	0
Commuting	0	0	0	0	0
Educational	0	0	0	0	0
<b>Total Casualties - 2pm</b>	<b>4</b>	<b>0</b>	<b>0</b>	<b>0</b>	<b>4</b>
<b>Casualties - 5pm</b>					
Educational	0	0	0	0	0
Commuting	0	0	0	0	0
Hotels	0	0	0	0	0
Industrial	0	0	0	0	0
Single Family	0	0	0	0	0
Other-Residential	1	0	0	0	1
Commercial	2	0	0	0	2
<b>Total Casualties - 5pm</b>	<b>3</b>	<b>0</b>	<b>0</b>	<b>0</b>	<b>3</b>

	Injury Severity Level				Total
	Severity 1	Severity 2	Severity 3	Severity 4	
<b>California</b>					
<b>Kern</b>					
<b>Casualties - 2am</b>					
Commercial	0	0	0	0	0
Commuting	0	0	0	0	0
Educational	0	0	0	0	0
Single Family	0	0	0	0	0
Other-Residential	0	0	0	0	0
Hotels	0	0	0	0	0
Industrial	0	0	0	0	0
<b>Total Casualties - 2am</b>	<b>0</b>	<b>0</b>	<b>0</b>	<b>0</b>	<b>0</b>
<b>Casualties - 2pm</b>					
Educational	0	0	0	0	0
Commuting	0	0	0	0	0
Single Family	0	0	0	0	0
Hotels	0	0	0	0	0
Other-Residential	0	0	0	0	0
Commercial	0	0	0	0	0
Industrial	0	0	0	0	0
<b>Total Casualties - 2pm</b>	<b>0</b>	<b>0</b>	<b>0</b>	<b>0</b>	<b>0</b>
<b>Casualties - 5pm</b>					
Single Family	0	0	0	0	0
Commercial	0	0	0	0	0
Other-Residential	0	0	0	0	0
Commuting	0	0	0	0	0
Educational	0	0	0	0	0
Hotels	0	0	0	0	0
Industrial	0	0	0	0	0
<b>Total Casualties - 5pm</b>	<b>0</b>	<b>0</b>	<b>0</b>	<b>0</b>	<b>0</b>
<b>Kings</b>					
<b>Casualties - 2am</b>					
Industrial	0	0	0	0	0
Other-Residential	0	0	0	0	0
Educational	0	0	0	0	0
Commuting	0	0	0	0	0
Commercial	0	0	0	0	0
Single Family	0	0	0	0	0
Hotels	0	0	0	0	0
<b>Total Casualties - 2am</b>	<b>0</b>	<b>0</b>	<b>0</b>	<b>0</b>	<b>0</b>
<b>Casualties - 2pm</b>					
Single Family	0	0	0	0	0
Other-Residential	0	0	0	0	0
Commercial	0	0	0	0	0
Educational	0	0	0	0	0

	Injury Severity Level				Total
	Severity 1	Severity 2	Severity 3	Severity 4	
<b>California</b>					
<b>Kings</b>					
<b>Casualties - 2pm</b>					
<i>Commuting</i>	0	0	0	0	0
<i>Hotels</i>	0	0	0	0	0
<i>Industrial</i>	0	0	0	0	0
<b>Total Casualties - 2pm</b>	<b>0</b>	<b>0</b>	<b>0</b>	<b>0</b>	<b>0</b>
<b>Casualties - 5pm</b>					
<i>Single Family</i>	0	0	0	0	0
<i>Commercial</i>	0	0	0	0	0
<i>Commuting</i>	0	0	0	0	0
<i>Other-Residential</i>	0	0	0	0	0
<i>Educational</i>	0	0	0	0	0
<i>Hotels</i>	0	0	0	0	0
<i>Industrial</i>	0	0	0	0	0
<b>Total Casualties - 5pm</b>	<b>0</b>	<b>0</b>	<b>0</b>	<b>0</b>	<b>0</b>
<b>Madera</b>					
<b>Casualties - 2am</b>					
<i>Hotels</i>	0	0	0	0	0
<i>Educational</i>	0	0	0	0	0
<i>Single Family</i>	0	0	0	0	0
<i>Commuting</i>	0	0	0	0	0
<i>Industrial</i>	0	0	0	0	0
<i>Commercial</i>	0	0	0	0	0
<i>Other-Residential</i>	0	0	0	0	0
<b>Total Casualties - 2am</b>	<b>0</b>	<b>0</b>	<b>0</b>	<b>0</b>	<b>0</b>
<b>Casualties - 2pm</b>					
<i>Industrial</i>	0	0	0	0	0
<i>Commercial</i>	0	0	0	0	0
<i>Other-Residential</i>	0	0	0	0	0
<i>Commuting</i>	0	0	0	0	0
<i>Single Family</i>	0	0	0	0	0
<i>Hotels</i>	0	0	0	0	0
<i>Educational</i>	0	0	0	0	0
<b>Total Casualties - 2pm</b>	<b>1</b>	<b>0</b>	<b>0</b>	<b>0</b>	<b>1</b>
<b>Casualties - 5pm</b>					
<i>Industrial</i>	0	0	0	0	0
<i>Commercial</i>	0	0	0	0	0
<i>Single Family</i>	0	0	0	0	0
<i>Educational</i>	0	0	0	0	0
<i>Other-Residential</i>	0	0	0	0	0
<i>Commuting</i>	0	0	0	0	0
<i>Hotels</i>	0	0	0	0	0

	Injury Severity Level				Total
	Severity 1	Severity 2	Severity 3	Severity 4	
<b>California</b>					
<b>Madera</b>					
<b>Total Casualties - 5pm</b>	<b>0</b>	<b>0</b>	<b>0</b>	<b>0</b>	<b>1</b>
<b>Marin</b>					
<b>Casualties - 2am</b>					
<i>Commercial</i>	0	0	0	0	0
<i>Commuting</i>	0	0	0	0	0
<i>Other-Residential</i>	0	0	0	0	0
<i>Educational</i>	0	0	0	0	0
<i>Single Family</i>	0	0	0	0	0
<i>Hotels</i>	0	0	0	0	0
<i>Industrial</i>	0	0	0	0	0
<b>Total Casualties - 2am</b>	<b>0</b>	<b>0</b>	<b>0</b>	<b>0</b>	<b>0</b>
<b>Casualties - 2pm</b>					
<i>Hotels</i>	0	0	0	0	0
<i>Commuting</i>	0	0	0	0	0
<i>Educational</i>	0	0	0	0	0
<i>Industrial</i>	0	0	0	0	0
<i>Other-Residential</i>	0	0	0	0	0
<i>Commercial</i>	0	0	0	0	0
<i>Single Family</i>	0	0	0	0	0
<b>Total Casualties - 2pm</b>	<b>0</b>	<b>0</b>	<b>0</b>	<b>0</b>	<b>0</b>
<b>Casualties - 5pm</b>					
<i>Commuting</i>	0	0	0	0	0
<i>Commercial</i>	0	0	0	0	0
<i>Other-Residential</i>	0	0	0	0	0
<i>Single Family</i>	0	0	0	0	0
<i>Industrial</i>	0	0	0	0	0
<i>Educational</i>	0	0	0	0	0
<i>Hotels</i>	0	0	0	0	0
<b>Total Casualties - 5pm</b>	<b>0</b>	<b>0</b>	<b>0</b>	<b>0</b>	<b>0</b>
<b>Mariposa</b>					
<b>Casualties - 2am</b>					
<i>Commuting</i>	0	0	0	0	0
<i>Single Family</i>	0	0	0	0	0
<i>Commercial</i>	0	0	0	0	0
<i>Hotels</i>	0	0	0	0	0
<i>Educational</i>	0	0	0	0	0
<i>Industrial</i>	0	0	0	0	0
<i>Other-Residential</i>	0	0	0	0	0
<b>Total Casualties - 2am</b>	<b>0</b>	<b>0</b>	<b>0</b>	<b>0</b>	<b>0</b>
<b>Casualties - 2pm</b>					
<i>Hotels</i>	0	0	0	0	0

	Injury Severity Level				Total
	Severity 1	Severity 2	Severity 3	Severity 4	
<b>California</b>					
<b>Mariposa</b>					
<b>Casualties - 2pm</b>					
Industrial	0	0	0	0	0
Commercial	0	0	0	0	0
Other-Residential	0	0	0	0	0
Educational	0	0	0	0	0
Commuting	0	0	0	0	0
Single Family	0	0	0	0	0
<b>Total Casualties - 2pm</b>	<b>0</b>	<b>0</b>	<b>0</b>	<b>0</b>	<b>0</b>
<b>Casualties - 5pm</b>					
Other-Residential	0	0	0	0	0
Educational	0	0	0	0	0
Commuting	0	0	0	0	0
Hotels	0	0	0	0	0
Single Family	0	0	0	0	0
Commercial	0	0	0	0	0
Industrial	0	0	0	0	0
<b>Total Casualties - 5pm</b>	<b>0</b>	<b>0</b>	<b>0</b>	<b>0</b>	<b>0</b>
<b>Merced</b>					
<b>Casualties - 2am</b>					
Hotels	0	0	0	0	0
Industrial	0	0	0	0	0
Commercial	1	0	0	0	1
Single Family	9	0	0	0	9
Other-Residential	7	1	0	0	8
Educational	0	0	0	0	0
Commuting	0	0	0	0	0
<b>Total Casualties - 2am</b>	<b>17</b>	<b>1</b>	<b>0</b>	<b>0</b>	<b>19</b>
<b>Casualties - 2pm</b>					
Other-Residential	2	0	0	0	2
Industrial	1	0	0	0	2
Commercial	56	8	1	1	66
Commuting	0	0	0	0	0
Hotels	0	0	0	0	0
Educational	3	0	0	0	3
Single Family	3	0	0	0	3
<b>Total Casualties - 2pm</b>	<b>66</b>	<b>9</b>	<b>1</b>	<b>1</b>	<b>76</b>
<b>Casualties - 5pm</b>					
Industrial	1	0	0	0	1
Hotels	0	0	0	0	0
Educational	0	0	0	0	0
Commuting	0	1	1	0	2
Single Family	3	0	0	0	3

	Injury Severity Level				Total
	Severity 1	Severity 2	Severity 3	Severity 4	
<b>California</b>					
<b>Merced</b>					
<b>Casualties - 5pm</b>					
<i>Commercial</i>	40	5	0	1	47
<i>Other-Residential</i>	3	0	0	0	3
<b>Total Casualties - 5pm</b>	<b>47</b>	<b>6</b>	<b>1</b>	<b>1</b>	<b>56</b>
<b>Monterey</b>					
<b>Casualties - 2am</b>					
<i>Other-Residential</i>	1	0	0	0	1
<i>Commuting</i>	0	0	0	0	0
<i>Commercial</i>	0	0	0	0	0
<i>Single Family</i>	1	0	0	0	1
<i>Hotels</i>	0	0	0	0	0
<i>Educational</i>	0	0	0	0	0
<i>Industrial</i>	0	0	0	0	0
<b>Total Casualties - 2am</b>	<b>2</b>	<b>0</b>	<b>0</b>	<b>0</b>	<b>2</b>
<b>Casualties - 2pm</b>					
<i>Commuting</i>	0	0	0	0	0
<i>Commercial</i>	1	0	0	0	2
<i>Single Family</i>	0	0	0	0	0
<i>Hotels</i>	0	0	0	0	0
<i>Educational</i>	0	0	0	0	0
<i>Industrial</i>	0	0	0	0	0
<i>Other-Residential</i>	0	0	0	0	0
<b>Total Casualties - 2pm</b>	<b>3</b>	<b>0</b>	<b>0</b>	<b>0</b>	<b>3</b>
<b>Casualties - 5pm</b>					
<i>Commercial</i>	1	0	0	0	1
<i>Other-Residential</i>	0	0	0	0	0
<i>Industrial</i>	0	0	0	0	0
<i>Hotels</i>	0	0	0	0	0
<i>Educational</i>	0	0	0	0	0
<i>Commuting</i>	0	0	0	0	0
<i>Single Family</i>	0	0	0	0	0
<b>Total Casualties - 5pm</b>	<b>2</b>	<b>0</b>	<b>0</b>	<b>0</b>	<b>2</b>
<b>Napa</b>					
<b>Casualties - 2am</b>					
<i>Commercial</i>	0	0	0	0	0
<i>Other-Residential</i>	0	0	0	0	0
<i>Educational</i>	0	0	0	0	0
<i>Single Family</i>	0	0	0	0	0
<i>Commuting</i>	0	0	0	0	0
<i>Hotels</i>	0	0	0	0	0
<i>Industrial</i>	0	0	0	0	0

	Injury Severity Level				Total
	Severity 1	Severity 2	Severity 3	Severity 4	
<b>California</b>					
<b>Napa</b>					
<b>Total Casualties - 2am</b>	<b>0</b>	<b>0</b>	<b>0</b>	<b>0</b>	<b>0</b>
<b>Casualties - 2pm</b>					
<i>Educational</i>	0	0	0	0	0
<i>Hotels</i>	0	0	0	0	0
<i>Commuting</i>	0	0	0	0	0
<i>Industrial</i>	0	0	0	0	0
<i>Other-Residential</i>	0	0	0	0	0
<i>Single Family</i>	0	0	0	0	0
<i>Commercial</i>	0	0	0	0	0
<b>Total Casualties - 2pm</b>	<b>0</b>	<b>0</b>	<b>0</b>	<b>0</b>	<b>0</b>
<b>Casualties - 5pm</b>					
<i>Commercial</i>	0	0	0	0	0
<i>Single Family</i>	0	0	0	0	0
<i>Other-Residential</i>	0	0	0	0	0
<i>Commuting</i>	0	0	0	0	0
<i>Industrial</i>	0	0	0	0	0
<i>Educational</i>	0	0	0	0	0
<i>Hotels</i>	0	0	0	0	0
<b>Total Casualties - 5pm</b>	<b>0</b>	<b>0</b>	<b>0</b>	<b>0</b>	<b>0</b>
<b>Sacramento</b>					
<b>Casualties - 2am</b>					
<i>Industrial</i>	0	0	0	0	0
<i>Other-Residential</i>	0	0	0	0	0
<i>Commercial</i>	0	0	0	0	0
<i>Single Family</i>	0	0	0	0	0
<i>Hotels</i>	0	0	0	0	0
<i>Commuting</i>	0	0	0	0	0
<i>Educational</i>	0	0	0	0	0
<b>Total Casualties - 2am</b>	<b>0</b>	<b>0</b>	<b>0</b>	<b>0</b>	<b>0</b>
<b>Casualties - 2pm</b>					
<i>Other-Residential</i>	0	0	0	0	0
<i>Commuting</i>	0	0	0	0	0
<i>Single Family</i>	0	0	0	0	0
<i>Commercial</i>	0	0	0	0	0
<i>Hotels</i>	0	0	0	0	0
<i>Educational</i>	0	0	0	0	0
<i>Industrial</i>	0	0	0	0	0
<b>Total Casualties - 2pm</b>	<b>0</b>	<b>0</b>	<b>0</b>	<b>0</b>	<b>0</b>
<b>Casualties - 5pm</b>					
<i>Industrial</i>	0	0	0	0	0
<i>Educational</i>	0	0	0	0	0

	Injury Severity Level				Total
	Severity 1	Severity 2	Severity 3	Severity 4	
<b>California</b>					
<b>Sacramento</b>					
<b>Casualties - 5pm</b>					
<i>Hotels</i>	0	0	0	0	0
<i>Commercial</i>	0	0	0	0	0
<i>Commuting</i>	0	0	0	0	0
<i>Other-Residential</i>	0	0	0	0	0
<i>Single Family</i>	0	0	0	0	0
<b>Total Casualties - 5pm</b>	<b>0</b>	<b>0</b>	<b>0</b>	<b>0</b>	<b>0</b>
<b>San Benito</b>					
<b>Casualties - 2am</b>					
<i>Other-Residential</i>	1	0	0	0	1
<i>Commercial</i>	0	0	0	0	0
<i>Commuting</i>	0	0	0	0	0
<i>Hotels</i>	0	0	0	0	0
<i>Educational</i>	0	0	0	0	0
<i>Single Family</i>	2	0	0	0	2
<i>Industrial</i>	0	0	0	0	0
<b>Total Casualties - 2am</b>	<b>3</b>	<b>0</b>	<b>0</b>	<b>0</b>	<b>3</b>
<b>Casualties - 2pm</b>					
<i>Hotels</i>	0	0	0	0	0
<i>Educational</i>	1	0	0	0	1
<i>Industrial</i>	0	0	0	0	0
<i>Other-Residential</i>	0	0	0	0	0
<i>Commercial</i>	2	0	0	0	2
<i>Commuting</i>	0	0	0	0	0
<i>Single Family</i>	1	0	0	0	1
<b>Total Casualties - 2pm</b>	<b>4</b>	<b>0</b>	<b>0</b>	<b>0</b>	<b>4</b>
<b>Casualties - 5pm</b>					
<i>Commuting</i>	0	0	0	0	1
<i>Commercial</i>	1	0	0	0	1
<i>Other-Residential</i>	0	0	0	0	0
<i>Single Family</i>	1	0	0	0	1
<i>Industrial</i>	0	0	0	0	0
<i>Educational</i>	0	0	0	0	0
<i>Hotels</i>	0	0	0	0	0
<b>Total Casualties - 5pm</b>	<b>3</b>	<b>0</b>	<b>0</b>	<b>0</b>	<b>3</b>
<b>San Francisco</b>					
<b>Casualties - 2am</b>					
<i>Industrial</i>	0	0	0	0	0
<i>Hotels</i>	0	0	0	0	0
<i>Commercial</i>	0	0	0	0	0
<i>Other-Residential</i>	0	0	0	0	0
<i>Commuting</i>	0	0	0	0	0

	Injury Severity Level				Total
	Severity 1	Severity 2	Severity 3	Severity 4	
<b>California</b>					
<b>San Francisco</b>					
<b>Casualties - 2am</b>					
<i>Educational</i>	0	0	0	0	0
<i>Single Family</i>	0	0	0	0	0
<b>Total Casualties - 2am</b>	<b>0</b>	<b>0</b>	<b>0</b>	<b>0</b>	<b>0</b>
<b>Casualties - 2pm</b>					
<i>Commercial</i>	1	0	0	0	1
<i>Industrial</i>	0	0	0	0	0
<i>Other-Residential</i>	0	0	0	0	0
<i>Single Family</i>	0	0	0	0	0
<i>Hotels</i>	0	0	0	0	0
<i>Commuting</i>	0	0	0	0	0
<i>Educational</i>	0	0	0	0	0
<b>Total Casualties - 2pm</b>	<b>1</b>	<b>0</b>	<b>0</b>	<b>0</b>	<b>1</b>
<b>Casualties - 5pm</b>					
<i>Educational</i>	0	0	0	0	0
<i>Hotels</i>	0	0	0	0	0
<i>Industrial</i>	0	0	0	0	0
<i>Commuting</i>	0	0	0	0	0
<i>Commercial</i>	0	0	0	0	0
<i>Other-Residential</i>	0	0	0	0	0
<i>Single Family</i>	0	0	0	0	0
<b>Total Casualties - 5pm</b>	<b>0</b>	<b>0</b>	<b>0</b>	<b>0</b>	<b>0</b>
<b>San Joaquin</b>					
<b>Casualties - 2am</b>					
<i>Educational</i>	0	0	0	0	0
<i>Commuting</i>	0	0	0	0	0
<i>Hotels</i>	0	0	0	0	0
<i>Commercial</i>	0	0	0	0	0
<i>Single Family</i>	2	0	0	0	2
<i>Industrial</i>	0	0	0	0	0
<i>Other-Residential</i>	1	0	0	0	1
<b>Total Casualties - 2am</b>	<b>3</b>	<b>0</b>	<b>0</b>	<b>0</b>	<b>3</b>
<b>Casualties - 2pm</b>					
<i>Industrial</i>	0	0	0	0	0
<i>Other-Residential</i>	0	0	0	0	0
<i>Educational</i>	0	0	0	0	0
<i>Single Family</i>	1	0	0	0	1
<i>Hotels</i>	0	0	0	0	0
<i>Commuting</i>	0	0	0	0	0
<i>Commercial</i>	1	0	0	0	1
<b>Total Casualties - 2pm</b>	<b>2</b>	<b>0</b>	<b>0</b>	<b>0</b>	<b>2</b>

## Injury Severity Level

Severity 1      Severity 2      Severity 3      Severity 4      Total

### California

#### San Joaquin

##### Casualties - 5pm

<i>Commuting</i>	0	0	0	0	0
<i>Single Family</i>	1	0	0	0	1
<i>Educational</i>	0	0	0	0	0
<i>Hotels</i>	0	0	0	0	0
<i>Industrial</i>	0	0	0	0	0
<i>Commercial</i>	1	0	0	0	1
<i>Other-Residential</i>	0	0	0	0	0
<b>Total Casualties - 5pm</b>	<b>2</b>	<b>0</b>	<b>0</b>	<b>0</b>	<b>2</b>

#### San Luis Obispo

##### Casualties - 2am

<i>Commercial</i>	0	0	0	0	0
<i>Other-Residential</i>	0	0	0	0	0
<i>Industrial</i>	0	0	0	0	0
<i>Single Family</i>	0	0	0	0	0
<i>Commuting</i>	0	0	0	0	0
<i>Educational</i>	0	0	0	0	0
<i>Hotels</i>	0	0	0	0	0
<b>Total Casualties - 2am</b>	<b>0</b>	<b>0</b>	<b>0</b>	<b>0</b>	<b>0</b>

##### Casualties - 2pm

<i>Single Family</i>	0	0	0	0	0
<i>Educational</i>	0	0	0	0	0
<i>Other-Residential</i>	0	0	0	0	0
<i>Hotels</i>	0	0	0	0	0
<i>Commuting</i>	0	0	0	0	0
<i>Commercial</i>	0	0	0	0	0
<i>Industrial</i>	0	0	0	0	0
<b>Total Casualties - 2pm</b>	<b>0</b>	<b>0</b>	<b>0</b>	<b>0</b>	<b>0</b>

##### Casualties - 5pm

<i>Industrial</i>	0	0	0	0	0
<i>Other-Residential</i>	0	0	0	0	0
<i>Commuting</i>	0	0	0	0	0
<i>Single Family</i>	0	0	0	0	0
<i>Commercial</i>	0	0	0	0	0
<i>Hotels</i>	0	0	0	0	0
<i>Educational</i>	0	0	0	0	0
<b>Total Casualties - 5pm</b>	<b>0</b>	<b>0</b>	<b>0</b>	<b>0</b>	<b>0</b>

#### San Mateo

##### Casualties - 2am

<i>Industrial</i>	0	0	0	0	0
<i>Other-Residential</i>	0	0	0	0	0
<i>Single Family</i>	0	0	0	0	0

	Injury Severity Level				Total
	Severity 1	Severity 2	Severity 3	Severity 4	
<b>California</b>					
<b>San Mateo</b>					
<b>Casualties - 2am</b>					
Commercial	0	0	0	0	0
Educational	0	0	0	0	0
Commuting	0	0	0	0	0
Hotels	0	0	0	0	0
<b>Total Casualties - 2am</b>	<b>0</b>	<b>0</b>	<b>0</b>	<b>0</b>	<b>0</b>
<b>Casualties - 2pm</b>					
Other-Residential	0	0	0	0	0
Single Family	0	0	0	0	0
Commuting	0	0	0	0	0
Commercial	0	0	0	0	0
Educational	0	0	0	0	0
Hotels	0	0	0	0	0
Industrial	0	0	0	0	0
<b>Total Casualties - 2pm</b>	<b>1</b>	<b>0</b>	<b>0</b>	<b>0</b>	<b>1</b>
<b>Casualties - 5pm</b>					
Commercial	0	0	0	0	0
Industrial	0	0	0	0	0
Other-Residential	0	0	0	0	0
Single Family	0	0	0	0	0
Educational	0	0	0	0	0
Commuting	0	0	0	0	0
Hotels	0	0	0	0	0
<b>Total Casualties - 5pm</b>	<b>0</b>	<b>0</b>	<b>0</b>	<b>0</b>	<b>0</b>
<b>Santa Clara</b>					
<b>Casualties - 2am</b>					
Commuting	0	0	0	0	0
Educational	0	0	0	0	0
Single Family	3	0	0	0	3
Hotels	0	0	0	0	0
Industrial	0	0	0	0	0
Commercial	0	0	0	0	0
Other-Residential	3	0	0	0	3
<b>Total Casualties - 2am</b>	<b>5</b>	<b>0</b>	<b>0</b>	<b>0</b>	<b>6</b>
<b>Casualties - 2pm</b>					
Industrial	1	0	0	0	1
Commercial	5	0	0	0	5
Single Family	1	0	0	0	1
Commuting	0	0	0	0	0
Hotels	0	0	0	0	0
Other-Residential	1	0	0	0	1
Educational	1	0	0	0	1

	Injury Severity Level				Total
	Severity 1	Severity 2	Severity 3	Severity 4	
<b>California</b>					
<b>Santa Clara</b>					
<b>Total Casualties - 2pm</b>	<b>8</b>	<b>0</b>	<b>0</b>	<b>0</b>	<b>8</b>
<b>Casualties - 5pm</b>					
<i>Industrial</i>	1	0	0	0	1
<i>Hotels</i>	0	0	0	0	0
<i>Other-Residential</i>	1	0	0	0	1
<i>Commercial</i>	3	0	0	0	3
<i>Commuting</i>	0	0	0	0	0
<i>Single Family</i>	1	0	0	0	1
<i>Educational</i>	0	0	0	0	0
<b>Total Casualties - 5pm</b>	<b>6</b>	<b>0</b>	<b>0</b>	<b>0</b>	<b>6</b>
<b>Santa Cruz</b>					
<b>Casualties - 2am</b>					
<i>Hotels</i>	0	0	0	0	0
<i>Educational</i>	0	0	0	0	0
<i>Industrial</i>	0	0	0	0	0
<i>Other-Residential</i>	1	0	0	0	1
<i>Single Family</i>	0	0	0	0	0
<i>Commercial</i>	0	0	0	0	0
<i>Commuting</i>	0	0	0	0	0
<b>Total Casualties - 2am</b>	<b>1</b>	<b>0</b>	<b>0</b>	<b>0</b>	<b>1</b>
<b>Casualties - 2pm</b>					
<i>Industrial</i>	0	0	0	0	0
<i>Other-Residential</i>	0	0	0	0	0
<i>Commercial</i>	1	0	0	0	1
<i>Commuting</i>	0	0	0	0	0
<i>Educational</i>	0	0	0	0	0
<i>Single Family</i>	0	0	0	0	0
<i>Hotels</i>	0	0	0	0	0
<b>Total Casualties - 2pm</b>	<b>1</b>	<b>0</b>	<b>0</b>	<b>0</b>	<b>1</b>
<b>Casualties - 5pm</b>					
<i>Industrial</i>	0	0	0	0	0
<i>Other-Residential</i>	0	0	0	0	0
<i>Commercial</i>	1	0	0	0	1
<i>Commuting</i>	0	0	0	0	0
<i>Single Family</i>	0	0	0	0	0
<i>Hotels</i>	0	0	0	0	0
<i>Educational</i>	0	0	0	0	0
<b>Total Casualties - 5pm</b>	<b>1</b>	<b>0</b>	<b>0</b>	<b>0</b>	<b>1</b>
<b>Solano</b>					
<b>Casualties - 2am</b>					
<i>Industrial</i>	0	0	0	0	0

### Injury Severity Level

Severity 1      Severity 2      Severity 3      Severity 4      Total

#### California

##### Solano

###### Casualties - 2am

<i>Other-Residential</i>	0	0	0	0	0
<i>Commercial</i>	0	0	0	0	0
<i>Educational</i>	0	0	0	0	0
<i>Commuting</i>	0	0	0	0	0
<i>Single Family</i>	0	0	0	0	0
<i>Hotels</i>	0	0	0	0	0

**Total Casualties - 2am      0      0      0      0      0**

###### Casualties - 2pm

<i>Single Family</i>	0	0	0	0	0
<i>Other-Residential</i>	0	0	0	0	0
<i>Commercial</i>	0	0	0	0	0
<i>Educational</i>	0	0	0	0	0
<i>Commuting</i>	0	0	0	0	0
<i>Hotels</i>	0	0	0	0	0
<i>Industrial</i>	0	0	0	0	0

**Total Casualties - 2pm      0      0      0      0      0**

###### Casualties - 5pm

<i>Commercial</i>	0	0	0	0	0
<i>Other-Residential</i>	0	0	0	0	0
<i>Single Family</i>	0	0	0	0	0
<i>Educational</i>	0	0	0	0	0
<i>Commuting</i>	0	0	0	0	0
<i>Hotels</i>	0	0	0	0	0
<i>Industrial</i>	0	0	0	0	0

**Total Casualties - 5pm      0      0      0      0      0**

##### Sonoma

###### Casualties - 2am

<i>Single Family</i>	0	0	0	0	0
<i>Other-Residential</i>	0	0	0	0	0
<i>Commercial</i>	0	0	0	0	0
<i>Commuting</i>	0	0	0	0	0
<i>Hotels</i>	0	0	0	0	0
<i>Educational</i>	0	0	0	0	0
<i>Industrial</i>	0	0	0	0	0

**Total Casualties - 2am      0      0      0      0      0**

###### Casualties - 2pm

<i>Single Family</i>	0	0	0	0	0
<i>Commuting</i>	0	0	0	0	0
<i>Educational</i>	0	0	0	0	0
<i>Hotels</i>	0	0	0	0	0
<i>Industrial</i>	0	0	0	0	0

	Injury Severity Level				Total
	Severity 1	Severity 2	Severity 3	Severity 4	
<b>California</b>					
<b>Sonoma</b>					
<b>Casualties - 2pm</b>					
Other-Residential	0	0	0	0	0
Commercial	0	0	0	0	0
<b>Total Casualties - 2pm</b>	<b>0</b>	<b>0</b>	<b>0</b>	<b>0</b>	<b>0</b>
<b>Casualties - 5pm</b>					
Single Family	0	0	0	0	0
Commercial	0	0	0	0	0
Commuting	0	0	0	0	0
Hotels	0	0	0	0	0
Educational	0	0	0	0	0
Industrial	0	0	0	0	0
Other-Residential	0	0	0	0	0
<b>Total Casualties - 5pm</b>	<b>0</b>	<b>0</b>	<b>0</b>	<b>0</b>	<b>0</b>
<b>Stanislaus</b>					
<b>Casualties - 2am</b>					
Hotels	0	0	0	0	0
Industrial	0	0	0	0	0
Commercial	0	0	0	0	0
Single Family	4	0	0	0	4
Other-Residential	3	0	0	0	3
Commuting	0	0	0	0	0
Educational	0	0	0	0	0
<b>Total Casualties - 2am</b>	<b>7</b>	<b>0</b>	<b>0</b>	<b>0</b>	<b>7</b>
<b>Casualties - 2pm</b>					
Industrial	1	0	0	0	1
Other-Residential	1	0	0	0	1
Commercial	5	0	0	0	6
Commuting	0	0	0	0	0
Educational	1	0	0	0	1
Single Family	1	0	0	0	1
Hotels	0	0	0	0	0
<b>Total Casualties - 2pm</b>	<b>9</b>	<b>0</b>	<b>0</b>	<b>0</b>	<b>10</b>
<b>Casualties - 5pm</b>					
Industrial	1	0	0	0	1
Other-Residential	1	0	0	0	1
Commuting	0	0	0	0	0
Single Family	1	0	0	0	1
Commercial	4	0	0	0	4
Hotels	0	0	0	0	0
Educational	0	0	0	0	0
<b>Total Casualties - 5pm</b>	<b>7</b>	<b>0</b>	<b>0</b>	<b>0</b>	<b>7</b>

	Injury Severity Level				Total
	Severity 1	Severity 2	Severity 3	Severity 4	
<b>California</b>					
<b>Tulare</b>					
<b>Casualties - 2am</b>					
Commercial	0	0	0	0	0
Commuting	0	0	0	0	0
Single Family	0	0	0	0	0
Educational	0	0	0	0	0
Hotels	0	0	0	0	0
Industrial	0	0	0	0	0
Other-Residential	0	0	0	0	0
<b>Total Casualties - 2am</b>	<b>0</b>	<b>0</b>	<b>0</b>	<b>0</b>	<b>0</b>
<b>Casualties - 2pm</b>					
Industrial	0	0	0	0	0
Hotels	0	0	0	0	0
Commercial	0	0	0	0	0
Other-Residential	0	0	0	0	0
Educational	0	0	0	0	0
Commuting	0	0	0	0	0
Single Family	0	0	0	0	0
<b>Total Casualties - 2pm</b>	<b>0</b>	<b>0</b>	<b>0</b>	<b>0</b>	<b>0</b>
<b>Casualties - 5pm</b>					
Other-Residential	0	0	0	0	0
Commercial	0	0	0	0	0
Single Family	0	0	0	0	0
Hotels	0	0	0	0	0
Commuting	0	0	0	0	0
Educational	0	0	0	0	0
Industrial	0	0	0	0	0
<b>Total Casualties - 5pm</b>	<b>0</b>	<b>0</b>	<b>0</b>	<b>0</b>	<b>0</b>
<b>Tuolumne</b>					
<b>Casualties - 2am</b>					
Other-Residential	0	0	0	0	0
Industrial	0	0	0	0	0
Commercial	0	0	0	0	0
Commuting	0	0	0	0	0
Single Family	0	0	0	0	0
Educational	0	0	0	0	0
Hotels	0	0	0	0	0
<b>Total Casualties - 2am</b>	<b>0</b>	<b>0</b>	<b>0</b>	<b>0</b>	<b>0</b>
<b>Casualties - 2pm</b>					
Other-Residential	0	0	0	0	0
Commercial	0	0	0	0	0
Single Family	0	0	0	0	0
Educational	0	0	0	0	0

	Injury Severity Level				Total
	Severity 1	Severity 2	Severity 3	Severity 4	
<b>California</b>					
<b>Tuolumne</b>					
<b>Casualties - 2pm</b>					
<i>Commuting</i>	0	0	0	0	0
<i>Industrial</i>	0	0	0	0	0
<i>Hotels</i>	0	0	0	0	0
<b>Total Casualties - 2pm</b>	<b>0</b>	<b>0</b>	<b>0</b>	<b>0</b>	<b>0</b>
<b>Casualties - 5pm</b>					
<i>Industrial</i>	0	0	0	0	0
<i>Other-Residential</i>	0	0	0	0	0
<i>Commercial</i>	0	0	0	0	0
<i>Hotels</i>	0	0	0	0	0
<i>Commuting</i>	0	0	0	0	0
<i>Educational</i>	0	0	0	0	0
<i>Single Family</i>	0	0	0	0	0
<b>Total Casualties - 5pm</b>	<b>0</b>	<b>0</b>	<b>0</b>	<b>0</b>	<b>0</b>
<b>Yolo</b>					
<b>Casualties - 2am</b>					
<i>Single Family</i>	0	0	0	0	0
<i>Other-Residential</i>	0	0	0	0	0
<i>Commercial</i>	0	0	0	0	0
<i>Educational</i>	0	0	0	0	0
<i>Commuting</i>	0	0	0	0	0
<i>Hotels</i>	0	0	0	0	0
<i>Industrial</i>	0	0	0	0	0
<b>Total Casualties - 2am</b>	<b>0</b>	<b>0</b>	<b>0</b>	<b>0</b>	<b>0</b>
<b>Casualties - 2pm</b>					
<i>Industrial</i>	0	0	0	0	0
<i>Hotels</i>	0	0	0	0	0
<i>Educational</i>	0	0	0	0	0
<i>Commuting</i>	0	0	0	0	0
<i>Commercial</i>	0	0	0	0	0
<i>Other-Residential</i>	0	0	0	0	0
<i>Single Family</i>	0	0	0	0	0
<b>Total Casualties - 2pm</b>	<b>0</b>	<b>0</b>	<b>0</b>	<b>0</b>	<b>0</b>
<b>Casualties - 5pm</b>					
<i>Other-Residential</i>	0	0	0	0	0
<i>Single Family</i>	0	0	0	0	0
<i>Commuting</i>	0	0	0	0	0
<i>Commercial</i>	0	0	0	0	0
<i>Hotels</i>	0	0	0	0	0
<i>Educational</i>	0	0	0	0	0
<i>Industrial</i>	0	0	0	0	0

	Injury Severity Level				Total
	Severity 1	Severity 2	Severity 3	Severity 4	
<b>California</b>					
<b>Yolo</b>					
<b>Total Casualties - 5pm</b>	<b>0</b>	<b>0</b>	<b>0</b>	<b>0</b>	<b>0</b>
<b>Region Total</b>	NA	NA	NA	NA	NA

*Totals only reflect data for those census tracts/blocks included in the user's study region and will reflect the entire county/state only if all of the census blocks for that county/states were selected at the time of study region creation.*

## Debris Summary Report

May 01, 2024

All values are in thousands of tons.

	Brick, Wood & Others	Concrete & Steel	Total
<b>California</b>			
Fresno	4	4	8
Alameda	1	1	2
Solano	0	0	0
San Mateo	0	0	1
Tuolumne	0	0	0
Kings	0	0	0
San Joaquin	5	1	6
San Luis Obispo	0	0	0
Madera	1	0	1
Tulare	0	0	0
Napa	0	0	0
Contra Costa	0	0	0
Kern	0	0	0
Amador	0	0	0
Santa Cruz	1	1	2
Monterey	3	2	4
Sacramento	0	0	0
Mariposa	0	0	0
Yolo	0	0	0

	Brick, Wood & Others	Concrete & Steel	Total
Calaveras	0	0	0
Stanislaus	9	7	16
Sonoma	0	0	0
Santa Clara	7	4	11
San Benito	3	3	6
San Francisco	1	0	1
Merced	28	57	85
Marin	0	0	0
<b>Total</b>	<b>63</b>	<b>80</b>	<b>142</b>
<b>Region Total</b>	<b>63</b>	<b>80</b>	<b>142</b>

Totals only reflect data for those census tracts/blocks included in the user's study region and will reflect the entire county/state only if all of the census blocks for that county/states were selected at the time of study region creation.

## Direct Economic Losses For Buildings

May 1, 2024

All values are in thousands of dollars

	Capital Stock Losses				Loss Ratio %	Income Losses				Total Loss
	Cost Structural Damage	Cost Non-struct. Damage	Cost Contents Damage	Inventory Loss		Relocation Loss	Capital Related Loss	Wages Losses	Rental Income Loss	
<b>California</b>										
Contra Costa	140	4,033	2,389	231	0.00	16	22	36	32	6,900
Napa	0	20	14	2	0.00	0	0	0	0	36
Alameda	1,709	24,455	13,423	1,494	0.01	173	245	361	372	42,231
Fresno	6,672	50,520	28,051	5,536	0.04	1,637	1,483	1,605	1,376	96,879
San Joaquin	3,721	32,836	18,629	2,365	0.03	740	300	391	576	59,559
Kings	100	1,848	1,045	129	0.01	14	23	28	24	3,211
Tuolumne	0	27	19	2	0.00	0	0	0	0	48
San Luis Obispo	10	321	194	21	0.00	1	3	2	4	556
Solano	23	800	527	68	0.00	2	4	5	5	1,435

	Capital Stock Losses				Loss Ratio %	Income Losses				Total Loss
	Cost Structural Damage	Cost Non-struct. Damage	Cost Contents Damage	Inventory Loss		Relocation Loss	Capital Related Loss	Wages Losses	Rental Income Loss	
San Mateo	627	8,337	4,243	366	0.01	46	84	91	198	13,994
Tulare	25	1,294	876	175	0.00	2	5	6	6	2,388
Madera	1,164	11,623	6,780	1,417	0.05	144	86	98	147	21,459
Yolo	0	44	32	4	0.00	0	0	0	0	81
Calaveras	1	38	30	9	0.00	0	0	0	0	79
San Benito	7,382	51,746	25,098	2,929	0.45	1,508	1,200	1,343	984	92,190
San Francisco	655	2,644	1,716	129	0.00	54	85	95	242	5,621
Merced	106,552	242,404	138,289	52,574	0.68	18,593	15,378	13,171	7,133	594,093
Stanislaus	15,707	137,398	75,652	10,360	0.15	3,260	2,389	2,693	2,995	250,455
Santa Clara	11,558	141,166	75,592	7,825	0.04	1,515	1,820	2,065	2,363	243,905
Sonoma	1	13	10	2	0.00	0	0	0	0	26
Marin	2	101	67	8	0.00	0	0	0	1	179
Kern	0	22	17	6	0.00	0	0	0	0	45
Amador	0	3	2	0	0.00	0	0	0	0	6
Sacramento	21	452	271	33	0.00	4	6	5	6	799
Monterey	3,644	40,068	22,965	4,026	0.06	647	491	550	765	73,156
Santa Cruz	2,149	18,384	10,317	2,094	0.04	413	449	531	398	34,735
Mariposa	0	14	10	1	0.00	0	0	0	0	25

	Capital Stock Losses				Loss Ratio %	Income Losses				Total Loss
	Cost Structural Damage	Cost Non-struct. Damage	Cost Contents Damage	Inventory Loss		Relocation Loss	Capital Related Loss	Wages Losses	Rental Income Loss	
<b>Total</b>	161,866	770,612	426,259	91,807	0.06	28,769	24,074	23,077	17,627	1,544,092
<b>Region Total</b>	<b>161,866</b>	<b>770,612</b>	<b>426,259</b>	<b>91,807</b>	<b>0.06</b>	<b>28,769</b>	<b>24,074</b>	<b>23,077</b>	<b>17,627</b>	<b>1,544,092</b>

Totals only reflect data for those census tracts/blocks included in the user's study region and will reflect the entire county/state only if all of the census blocks for that county/states were selected at the time of study region creation.

## Direct Economic Loss For Transportation

May 01, 2024

All values are in thousands of dollars

	Highway	Railway	Light Rail	Bus Facility	Ports	Ferries	Airport	Total
<b>California</b>								
<b>Alameda</b>								
Segments	0	0	0					0
Bridges	37	0	0					37
Tunnels	0	0	0					0
Facilities		436	0	22	1,725	38	3,593	5,815
<b>Total</b>	<b>37</b>	<b>436</b>	<b>0</b>	<b>22</b>	<b>1,725</b>	<b>38</b>	<b>3,593</b>	<b>5,852</b>
<b>Amador</b>								
Segments	0	0	0					0
Bridges	0	0	0					0
Tunnels	0	0	0					0
Facilities		0	0	0	0	0	6	6
<b>Total</b>	<b>0</b>	<b>0</b>	<b>0</b>	<b>0</b>	<b>0</b>	<b>0</b>	<b>6</b>	<b>6</b>
<b>Calaveras</b>								
Segments	0	0	0					0
Bridges	0	0	0					0
Tunnels	0	0	0					0
Facilities		0	0	0	0	0	57	57

	Highway	Railway	Light Rail	Bus Facility	Ports	Ferries	Airport	Total
<b>Total</b>	<b>0</b>	<b>0</b>	<b>0</b>	<b>0</b>	<b>0</b>	<b>0</b>	<b>57</b>	<b>57</b>
<b>Contra Costa</b>								
Segments	0	0	0					0
Bridges	20	0	0					20
Tunnels	0	0	0					0
Facilities		211	165	0	2,435	51	231	3,093
<b>Total</b>	<b>20</b>	<b>211</b>	<b>165</b>	<b>0</b>	<b>2,435</b>	<b>51</b>	<b>231</b>	<b>3,113</b>
<b>Fresno</b>								
Segments	0	0	0					0
Bridges	3,802	17	0					3,818
Tunnels	0	0	0					0
Facilities		314	0	21	0	0	2,004	2,339
<b>Total</b>	<b>3,802</b>	<b>331</b>	<b>0</b>	<b>21</b>	<b>0</b>	<b>0</b>	<b>2,004</b>	<b>6,158</b>
<b>Kern</b>								
Segments	0	0	0					0
Bridges	1	0	0					1
Tunnels	0	0	0					0
Facilities		20	0	7	0	0	69	96
<b>Total</b>	<b>1</b>	<b>20</b>	<b>0</b>	<b>7</b>	<b>0</b>	<b>0</b>	<b>69</b>	<b>97</b>
<b>Kings</b>								
Segments	0	0	0					0
Bridges	6	0	0					6
Tunnels	0	0	0					0
Facilities		128	0	41	0	0	359	529

	Highway	Railway	Light Rail	Bus Facility	Ports	Ferries	Airport	Total
<b>Total</b>	<b>6</b>	<b>128</b>	<b>0</b>	<b>41</b>	<b>0</b>	<b>0</b>	<b>359</b>	<b>535</b>
<b>Madera</b>								
Segments	0	0	0					0
Bridges	78	0	0					78
Tunnels	0	0	0					0
Facilities		26	0	21	0	0	268	315
<b>Total</b>	<b>78</b>	<b>26</b>	<b>0</b>	<b>21</b>	<b>0</b>	<b>0</b>	<b>268</b>	<b>393</b>
<b>Marin</b>								
Segments	0	0	0					0
Bridges	1	0	0					1
Tunnels	0	0	0					0
Facilities		0	0	51	424	19	51	545
<b>Total</b>	<b>1</b>	<b>0</b>	<b>0</b>	<b>51</b>	<b>424</b>	<b>19</b>	<b>51</b>	<b>546</b>
<b>Mariposa</b>								
Segments	0	0	0					0
Bridges	0	0	0					0
Tunnels	0	0	0					0
Facilities		0	0	10	0	0	51	61
<b>Total</b>	<b>0</b>	<b>0</b>	<b>0</b>	<b>10</b>	<b>0</b>	<b>0</b>	<b>51</b>	<b>61</b>
<b>Merced</b>								
Segments	0	0	0					0
Bridges	11,546	436	0					11,982
Tunnels	0	0	0					0
Facilities		218	0	91	0	0	2,683	2,993

	Highway	Railway	Light Rail	Bus Facility	Ports	Ferries	Airport	Total
<b>Total</b>	<b>11,546</b>	<b>654</b>	<b>0</b>	<b>91</b>	<b>0</b>	<b>0</b>	<b>2,683</b>	<b>14,975</b>
<b>Monterey</b>								
<i>Segments</i>	0	0	0					0
<i>Bridges</i>	254	1	0					255
<i>Tunnels</i>	0	0	0					0
<i>Facilities</i>		109	0	477	110	0	1,241	1,937
<b>Total</b>	<b>254</b>	<b>110</b>	<b>0</b>	<b>477</b>	<b>110</b>	<b>0</b>	<b>1,241</b>	<b>2,193</b>
<b>Napa</b>								
<i>Segments</i>	0	0	0					0
<i>Bridges</i>	0	0	0					0
<i>Tunnels</i>	0	0	0					0
<i>Facilities</i>		0	0	2	45	0	134	182
<b>Total</b>	<b>0</b>	<b>0</b>	<b>0</b>	<b>2</b>	<b>45</b>	<b>0</b>	<b>134</b>	<b>182</b>
<b>Sacramento</b>								
<i>Segments</i>	0	0	0					0
<i>Bridges</i>	4	0	0					4
<i>Tunnels</i>	0	0	0					0
<i>Facilities</i>		0	263	0	514	13	65	855
<b>Total</b>	<b>4</b>	<b>0</b>	<b>263</b>	<b>0</b>	<b>514</b>	<b>13</b>	<b>65</b>	<b>859</b>
<b>San Benito</b>								
<i>Segments</i>	0	0	0					0
<i>Bridges</i>	693	7	0					700
<i>Tunnels</i>	0	0	0					0
<i>Facilities</i>		0	0	0	0	0	986	986

	Highway	Railway	Light Rail	Bus Facility	Ports	Ferries	Airport	Total
<b>Total</b>	<b>693</b>	<b>7</b>	<b>0</b>	<b>0</b>	<b>0</b>	<b>0</b>	<b>986</b>	<b>1,687</b>
<b>San Francisco</b>								
Segments	0	0	0					0
Bridges	14	0	0					14
Tunnels	0	0	0					0
Facilities		0	27,073	49	1,986	40	263	29,411
<b>Total</b>	<b>14</b>	<b>0</b>	<b>27,073</b>	<b>49</b>	<b>1,986</b>	<b>40</b>	<b>263</b>	<b>29,424</b>
<b>San Joaquin</b>								
Segments	0	0	0					0
Bridges	203	0	0					203
Tunnels	0	0	0					0
Facilities		494	0	21	1,578	51	1,003	3,148
<b>Total</b>	<b>203</b>	<b>494</b>	<b>0</b>	<b>21</b>	<b>1,578</b>	<b>51</b>	<b>1,003</b>	<b>3,352</b>
<b>San Luis Obispo</b>								
Segments	0	0	0					0
Bridges	1	0	0					1
Tunnels	0	0	0					0
Facilities		28	0	23	159	0	127	337
<b>Total</b>	<b>1</b>	<b>28</b>	<b>0</b>	<b>23</b>	<b>159</b>	<b>0</b>	<b>127</b>	<b>338</b>
<b>San Mateo</b>								
Segments	0	0	0					0
Bridges	66	0	0					66
Tunnels	0	0	0					0
Facilities		0	0	0	661	0	8,789	9,450

	Highway	Railway	Light Rail	Bus Facility	Ports	Ferries	Airport	Total
<b>Total</b>	<b>66</b>	<b>0</b>	<b>0</b>	<b>0</b>	<b>661</b>	<b>0</b>	<b>8,789</b>	<b>9,516</b>
<b>Santa Clara</b>								
<i>Segments</i>	0	0	0					0
<i>Bridges</i>	314	2	0					317
<i>Tunnels</i>	0	0	0					0
<i>Facilities</i>		353	14,213	206	662	0	4,891	20,325
<b>Total</b>	<b>315</b>	<b>356</b>	<b>14,213</b>	<b>206</b>	<b>662</b>	<b>0</b>	<b>4,891</b>	<b>20,642</b>
<b>Santa Cruz</b>								
<i>Segments</i>	0	0	0					0
<i>Bridges</i>	22	0	0					22
<i>Tunnels</i>	0	0	0					0
<i>Facilities</i>		0	0	45	37	0	1,096	1,177
<b>Total</b>	<b>22</b>	<b>0</b>	<b>0</b>	<b>45</b>	<b>37</b>	<b>0</b>	<b>1,096</b>	<b>1,200</b>
<b>Solano</b>								
<i>Segments</i>	0	0	0					0
<i>Bridges</i>	9	0	0					9
<i>Tunnels</i>	0	0	0					0
<i>Facilities</i>		77	0	65	1,248	51	116	1,558
<b>Total</b>	<b>9</b>	<b>77</b>	<b>0</b>	<b>65</b>	<b>1,248</b>	<b>51</b>	<b>116</b>	<b>1,566</b>
<b>Sonoma</b>								
<i>Segments</i>	0	0	0					0
<i>Bridges</i>	2	0	0					2
<i>Tunnels</i>	0	0	0					0
<i>Facilities</i>		0	0	3	37	0	35	74

	Highway	Railway	Light Rail	Bus Facility	Ports	Ferries	Airport	Total
<b>Total</b>	<b>2</b>	<b>0</b>	<b>0</b>	<b>3</b>	<b>37</b>	<b>0</b>	<b>35</b>	<b>76</b>
<b>Stanislaus</b>								
Segments	0	0	0					0
Bridges	750	35	0					785
Tunnels	0	0	0					0
Facilities		655	0	183	0	0	999	1,837
<b>Total</b>	<b>750</b>	<b>691</b>	<b>0</b>	<b>183</b>	<b>0</b>	<b>0</b>	<b>999</b>	<b>2,622</b>
<b>Tulare</b>								
Segments	0	0	0					0
Bridges	1	0	0					1
Tunnels	0	0	0					0
Facilities		0	0	64	0	0	210	274
<b>Total</b>	<b>1</b>	<b>0</b>	<b>0</b>	<b>64</b>	<b>0</b>	<b>0</b>	<b>210</b>	<b>275</b>
<b>Tuolumne</b>								
Segments	0	0	0					0
Bridges	0	0	0					0
Tunnels	0	0	0					0
Facilities		0	0	0	0	0	108	108
<b>Total</b>	<b>0</b>	<b>0</b>	<b>0</b>	<b>0</b>	<b>0</b>	<b>0</b>	<b>108</b>	<b>108</b>
<b>Yolo</b>								
Segments	0	0	0					0
Bridges	0	0	0					0
Tunnels	0	0	0					0
Facilities		3	0	0	73	0	6	82

	Highway	Railway	Light Rail	Bus Facility	Ports	Ferries	Airport	Total
<b>Total</b>	0	3	0	0	73	0	6	82
<b>Total</b>	17,825	3,573	41,713	1,402	11,695	263	29,441	105,912
<b>Region Total</b>	17,825	3,573	41,713	1,402	11,695	263	29,441	105,912

*Totals only reflect data for those census tracts/blocks included in the user's study region and will reflect the entire county/state only if all of the census blocks for that county/states were selected at the time of study region creation.*

## Direct Economic Loss For Utilities

May 01, 2024

All values are in thousands of dollars

	Potable Water	Waste Water	Oil Systems	Natural Gas	Electric Power	Communication	Total
<b>California</b>							
<b>Alameda</b>							
Facilities	84	1,844	0	0	14,913	4	16,845
Pipelines	122	61	0	0			183
<b>Total</b>	<b>206</b>	<b>1,905</b>	<b>0</b>	<b>0</b>	<b>14,913</b>	<b>4</b>	<b>17,028</b>
<b>Amador</b>							
Facilities	0	3	0	0	618	0	621
Pipelines	7	3	0	0			10
<b>Total</b>	<b>7</b>	<b>6</b>	<b>0</b>	<b>0</b>	<b>618</b>	<b>0</b>	<b>631</b>
<b>Calaveras</b>							
Facilities	28	251	0	0	14,243	0	14,523
Pipelines	16	8	0	0			24
<b>Total</b>	<b>44</b>	<b>259</b>	<b>0</b>	<b>0</b>	<b>14,243</b>	<b>0</b>	<b>14,547</b>
<b>Contra Costa</b>							
Facilities	169	1,721	1	0	50,305	2	52,197

	Potable Water	Waste Water	Oil Systems	Natural Gas	Electric Power	Communication	Total
<i>Pipelines</i>	116	58	0	0			174
<b>Total</b>	284	1,779	1	0	50,305	2	52,371
<b>Fresno</b>							
<i>Facilities</i>	0	492	0	13	432,108	15	432,628
<i>Pipelines</i>	1,197	601	0	0			1,798
<b>Total</b>	1,197	1,093	0	13	432,108	15	434,426
<b>Kern</b>							
<i>Facilities</i>	1	0	0	38	3,490	0	3,528
<i>Pipelines</i>	78	39	0	0			117
<b>Total</b>	79	39	0	38	3,490	0	3,645
<b>Kings</b>							
<i>Facilities</i>	0	0	0	134	6,360	1	6,495
<i>Pipelines</i>	78	39	0	0			117
<b>Total</b>	78	39	0	134	6,360	1	6,612
<b>Madera</b>							
<i>Facilities</i>	0	0	0	0	9,076	1	9,077
<i>Pipelines</i>	150	75	0	0			225
<b>Total</b>	150	75	0	0	9,076	1	9,302
<b>Marin</b>							
<i>Facilities</i>	1	502	0	0	1	0	504
<i>Pipelines</i>	12	6	0	0			18

	Potable Water	Waste Water	Oil Systems	Natural Gas	Electric Power	Communication	Total
<b>Total</b>	12	508	0	0	1	0	521
<b>Mariposa</b>							
<i>Facilities</i>	0	131	0	0	2,808	2	2,940
<i>Pipelines</i>	21	11	0	0			32
<b>Total</b>	21	141	0	0	2,808	2	2,972
<b>Merced</b>							
<i>Facilities</i>	0	11,599	0	0	1,924,179	80	1,935,858
<i>Pipelines</i>	2,235	1,122	0	0			3,357
<b>Total</b>	2,235	12,721	0	0	1,924,179	80	1,939,215
<b>Monterey</b>							
<i>Facilities</i>	0	12,318	0	0	97,805	63	110,186
<i>Pipelines</i>	277	139	0	0			416
<b>Total</b>	277	12,457	0	0	97,805	63	110,602
<b>Napa</b>							
<i>Facilities</i>	0	10	0	0	5	0	15
<i>Pipelines</i>	10	5	0	0			14
<b>Total</b>	10	15	0	0	5	0	30
<b>Sacramento</b>							
<i>Facilities</i>	0	861	0	0	6,650	2	7,512
<i>Pipelines</i>	50	25	0	0			75
<b>Total</b>	50	886	0	0	6,650	2	7,587

	Potable Water	Waste Water	Oil Systems	Natural Gas	Electric Power	Communication	Total
<b>San Benito</b>							
<i>Facilities</i>	0	5,939	0	0	0	36	5,975
<i>Pipelines</i>	555	279	0	0			834
<b>Total</b>	555	6,218	0	0	0	36	6,809
<b>San Francisco</b>							
<i>Facilities</i>	0	740	0	0	108	1	849
<i>Pipelines</i>	19	9	0	0			28
<b>Total</b>	19	750	0	0	108	1	877
<b>San Joaquin</b>							
<i>Facilities</i>	140	2,262	0	0	18,956	9	21,367
<i>Pipelines</i>	112	56	0	0			168
<b>Total</b>	252	2,318	0	0	18,956	9	21,535
<b>San Luis Obispo</b>							
<i>Facilities</i>	28	497	0	0	21,676	1	22,202
<i>Pipelines</i>	91	46	0	0			137
<b>Total</b>	119	543	0	0	21,676	1	22,339
<b>San Mateo</b>							
<i>Facilities</i>	0	1,478	0	0	362	1	1,841
<i>Pipelines</i>	51	25	0	0			76
<b>Total</b>	51	1,503	0	0	362	1	1,917
<b>Santa Clara</b>							

	Potable Water	Waste Water	Oil Systems	Natural Gas	Electric Power	Communication	Total
<i>Facilities</i>	376	369	0	0	87,684	27	88,456
<i>Pipelines</i>	274	138	0	0			412
<b>Total</b>	651	507	0	0	87,684	27	88,868
<b>Santa Cruz</b>							
<i>Facilities</i>	0	1,893	0	0	600	6	2,499
<i>Pipelines</i>	63	32	0	0			95
<b>Total</b>	63	1,925	0	0	600	6	2,594
<b>Solano</b>							
<i>Facilities</i>	0	740	0	0	24,574	1	25,315
<i>Pipelines</i>	64	32	0	0			96
<b>Total</b>	64	772	0	0	24,574	1	25,411
<b>Sonoma</b>							
<i>Facilities</i>	0	138	0	0	2	0	141
<i>Pipelines</i>	18	9	0	0			28
<b>Total</b>	18	148	0	0	2	0	168
<b>Stanislaus</b>							
<i>Facilities</i>	0	15,768	0	0	78,971	41	94,780
<i>Pipelines</i>	286	144	0	0			429
<b>Total</b>	286	15,912	0	0	78,971	41	95,209
<b>Tulare</b>							
<i>Facilities</i>	28	248	0	0	1,454	1	1,732

	Potable Water	Waste Water	Oil Systems	Natural Gas	Electric Power	Communication	Total
<i>Pipelines</i>	101	51	0	0			152
<b>Total</b>	129	299	0	0	1,454	1	1,884
<b>Tuolumne</b>							
<i>Facilities</i>	0	123	0	0	14,077	1	14,201
<i>Pipelines</i>	22	11	0	0			33
<b>Total</b>	22	134	0	0	14,077	1	14,234
<b>Yolo</b>							
<i>Facilities</i>	0	3	0	0	2	0	5
<i>Pipelines</i>	12	6	0	0			19
<b>Total</b>	12	9	0	0	2	0	23
<b>Total</b>	<b>6,892</b>	<b>62,963</b>	<b>1</b>	<b>185</b>	<b>2,811,028</b>	<b>293</b>	<b>2,881,362</b>
<b>Region Total</b>	<b>6,892</b>	<b>62,963</b>	<b>1</b>	<b>185</b>	<b>2,811,028</b>	<b>293</b>	<b>2,881,362</b>

Totals only reflect data for those census tracts/blocks included in the user's study region and will reflect the entire county/state only if all of the census blocks for that county/states were selected at the time of study region creation.

## Hazus Quick Assessment Report

### Estimated Economic Loss (\$ Billions)

Category	Description	Range
General Building Stock	Building Damage	0.50 - 1.90
	Building Contents	0.10 - 0.50
	Business Interruption	0.00 - 0.20
Infrastructure	Lifelines Damage	
<b>Total</b>		0.80 - 3.10

### Preliminary Damage Assessment (PDA) Estimates

Description	Residential	Commercial	Other	Total
Affected	16,300	1,800	2,000	20,100
Minor	970	300	670	1,940
Major	70	20	150	240
Destroyed	< 10	< 10	20	20
<b>Total</b>	17,340	2,120	2,840	22,300

### Estimated Casualties : Night Time

Severity Level	Description	# Persons
Level 1	Medical Aid	20 - 90
Level 2	Hospital Care	< 10
Level 3	Life-threatening	< 10
Level 4	Fatalities	< 10

### Estimated Shelter Needs

Type	Households	People
Displaced Households	30 - 110	75 - 275
Public Shelter	10	40

Comments :

\*Hazus damage estimates are presented using FEMA Preliminary Damage Assessment (PDA) categories. These estimates should be used for planning purposes and may not reflect actual observed damages from the PDA process.

**Disclaimer:**

The estimates of social and economic impacts contained in this report were produced using HAZUS loss estimation methodology software which is based on current scientific and engineering knowledge. There are uncertainties inherent in any loss estimation technique. Therefore, there may be significant differences between the modeled results contained in this report and the actual social and economic losses following a specific earthquake. These results can be improved by using enhanced inventory, geotechnical, and observed ground motion data.

### Earthquake Information

Location :

Origin Time:

Magnitude : 7.01

Epicenter Latitude/Longitude :  
/

Depth & Type : /U

Name :  
NA

Ground Motion /Attenuation :

Maximum PGA: 0.00

Information Sources:

Comments :

### Population and Building Exposure

Population: 15,095,204

### Building Exposure : (\$ Millions)

Residential	1,838,319
Commercial	504,880
Other	456,553
<b>Total</b>	<b>2,799,752</b>

Counties : See Appendix

Major Metro Area :

## Hazus Quick Assessment Report

### Estimated Economic Loss (\$ Billions)

Category	Description	Range
General Building Stock	Building Damage	0.50 - 1.90
	Building Contents	0.10 - 0.50
	Business Interruption	0.00 - 0.20
Infrastructure	Lifelines Damage	
<b>Total</b>		0.80 - 3.10

### Preliminary Damage Assessment (PDA) Estimates

Description	Residential	Commercial	Other	Total
Affected	16,300	1,800	2,000	20,100
Minor	970	300	670	1,940
Major	70	20	150	240
Destroyed	< 10	< 10	20	20
<b>Total</b>	17,340	2,120	2,840	22,300

### Estimated Casualties : Day Time

Severity Level	Description	# Persons
Level 1	Medical Aid	50 - 200
Level 2	Hospital Care	10 - 20
Level 3	Life-threatening	< 10
Level 4	Fatalities	< 10

### Estimated Shelter Needs

Type	Households	People
Displaced Households	30 - 110	75 - 275
Public Shelter	10	40

Comments :

\*Hazus damage estimates are presented using FEMA Preliminary Damage Assessment (PDA) categories. These estimates should be used for planning purposes and may not reflect actual observed damages from the PDA process.

**Disclaimer:**

The estimates of social and economic impacts contained in this report were produced using HAZUS loss estimation methodology software which is based on current scientific and engineering knowledge. There are uncertainties inherent in any loss estimation technique. Therefore, there may be significant differences between the modeled results contained in this report and the actual social and economic losses following a specific earthquake. These results can be improved by using enhanced inventory, geotechnical, and observed ground motion data.

### Earthquake Information

Location :

Origin Time:

Magnitude : 7.01

Epicenter Latitude/Longitude :  
/

Depth & Type : /U

Name :  
NA

Ground Motion /Attenuation :

Maximum PGA: 0.00

Information Sources:

Comments :

### Population and Building Exposure

Population: 15,095,204

### Building Exposure : (\$ Millions)

Residential	1,838,319
Commercial	504,880
Other	456,553
<b>Total</b>	<b>2,799,752</b>

Counties : See Appendix

Major Metro Area :

## Hazus Quick Assessment Report

### Estimated Economic Loss (\$ Billions)

Category	Description	Range
General Building Stock	Building Damage	0.50 - 1.90
	Building Contents	0.10 - 0.50
	Business Interruption	0.00 - 0.20
Infrastructure	Lifelines Damage	
<b>Total</b>		0.80 - 3.10

### Preliminary Damage Assessment (PDA) Estimates

Description	Residential	Commercial	Other	Total
Affected	16,300	1,800	2,000	20,100
Minor	970	300	670	1,940
Major	70	20	150	240
Destroyed	< 10	< 10	20	20
<b>Total</b>	17,340	2,120	2,840	22,300

### Estimated Casualties : Commute Time

Severity Level	Description	# Persons
Level 1	Medical Aid	40 - 150
Level 2	Hospital Care	0 - 20
Level 3	Life-threatening	< 10
Level 4	Fatalities	< 10

### Estimated Shelter Needs

Type	Households	People
Displaced Households	30 - 110	75 - 275
Public Shelter	10	40

Comments :

*\*Hazus damage estimates are presented using FEMA Preliminary Damage Assessment (PDA) categories. These estimates should be used for planning purposes and may not reflect actual observed damages from the PDA process.*

**Disclaimer:**

*The estimates of social and economic impacts contained in this report were produced using HAZUS loss estimation methodology software which is based on current scientific and engineering knowledge. There are uncertainties inherent in any loss estimation technique. Therefore, there may be significant differences between the modeled results contained in this report and the actual social and economic losses following a specific earthquake. These results can be improved by using enhanced inventory, geotechnical, and observed ground motion data.*

### Earthquake Information

Location :

Origin Time:

Magnitude : 7.01

Epicenter Latitude/Longitude :  
/

Depth & Type : /U

Name :  
NA

Ground Motion /Attenuation :

Maximum PGA: 0.00

Information Sources:

Comments :

### Population and Building Exposure

Population: 15,095,204

### Building Exposure : (\$ Millions)

Residential	1,838,319
Commercial	504,880
Other	456,553
<b>Total</b>	<b>2,799,752</b>

Counties : See Appendix

Major Metro Area :

## Shelter Summary Report

May 01, 2024

	# of Displaced Households	# of People Needing Short Term Shelter
<b>California</b>		
Fresno	1	1
Alameda	0	0
Solano	0	0
San Mateo	0	0
Tuolumne	0	0
Kings	0	0
San Joaquin	0	0
San Luis Obispo	0	0
Madera	0	0
Tulare	0	0
Napa	0	0
Contra Costa	0	0
Kern	0	0
Amador	0	0
Santa Cruz	0	0
Monterey	0	0
Sacramento	0	0
Mariposa	0	0
Yolo	0	0
Calaveras	0	0
Stanislaus	3	2
Sonoma	0	0
Santa Clara	1	0
San Benito	0	0
San Francisco	0	0
Merced	50	30
Marin	0	0
<b>Total</b>	<b>56</b>	<b>35</b>
<b>Region Total</b>	<b>56</b>	<b>35</b>

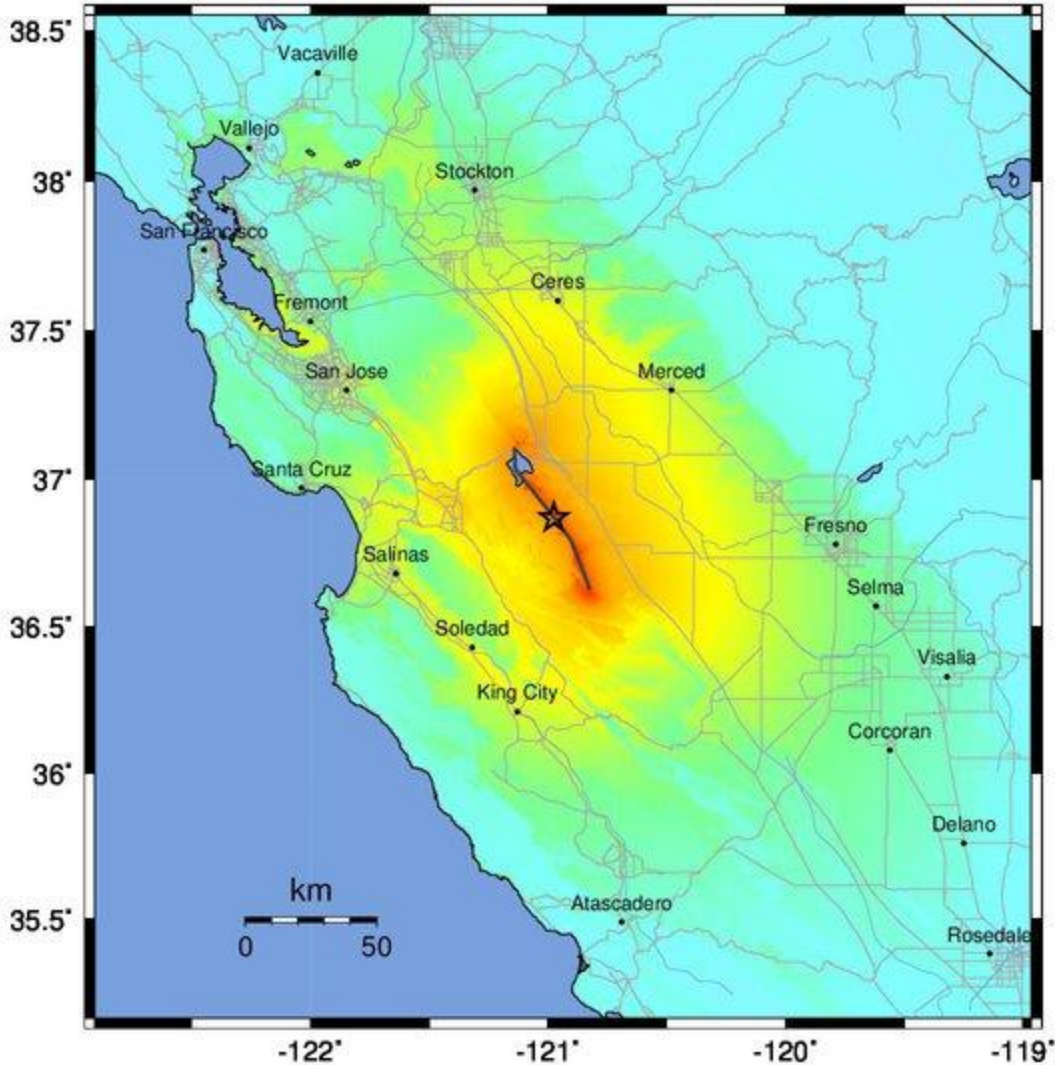
---

# of Displaced Households	# of People Needing Short Term Shelter
------------------------------	---

---

*Totals only reflect data for those census tracts/blocks included in the user's study region and will reflect the entire county/state only if all of the census blocks for that county/states were selected at the time of study region creation.*

-- Earthquake Planning Scenario --  
**ShakeMap for Ortigalita (South) - Median ground motions Scenario**  
 Scenario Date: May 16, 2017 08:31:47 AM MDT M 7.0 N36.87 W120.98 Depth: 7.0km



PLANNING SCENARIO ONLY -- Map Version 13 Processed 2017-05-16 11:35:19 PM MDT

PERCEIVED SHAKING	Not felt	Weak	Light	Moderate	Strong	Very strong	Severe	Violent	Extreme
POTENTIAL DAMAGE	none	none	none	Very light	Light	Moderate	Mod./Heavy	Heavy	Very Heavy
PEAK ACC.(%g)	<0.05	0.3	2.8	6.2	12	22	40	75	>139
PEAK VEL.(cm/s)	<0.02	0.1	1.4	4.7	9.6	20	41	86	>178
INSTRUMENTAL INTENSITY	I	II-III	IV	V	VI	VII	VIII	IX	X+

Scale based upon Worden et al. (2012)