

Building Inspection Tagging (Counts)

| | | |
|---|--|--|
| Inspected Residential Commercial Industrial Agricultural Educational Government Religious | Restricted Residential Commercial Industrial Agricultural Educational Government Religious | Unsafe Residential Commercial Industrial Agricultural Educational Government Religious |
|---|--|--|

Total Economic Loss
Total:

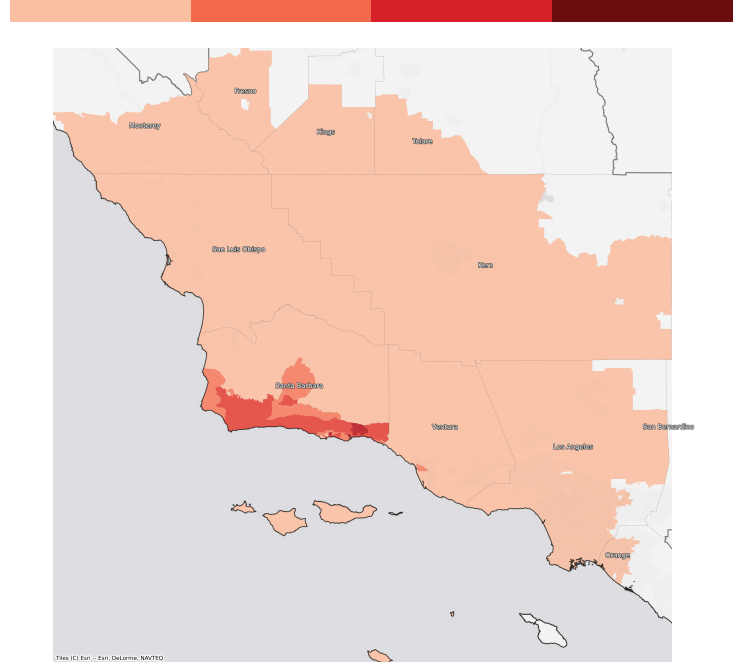
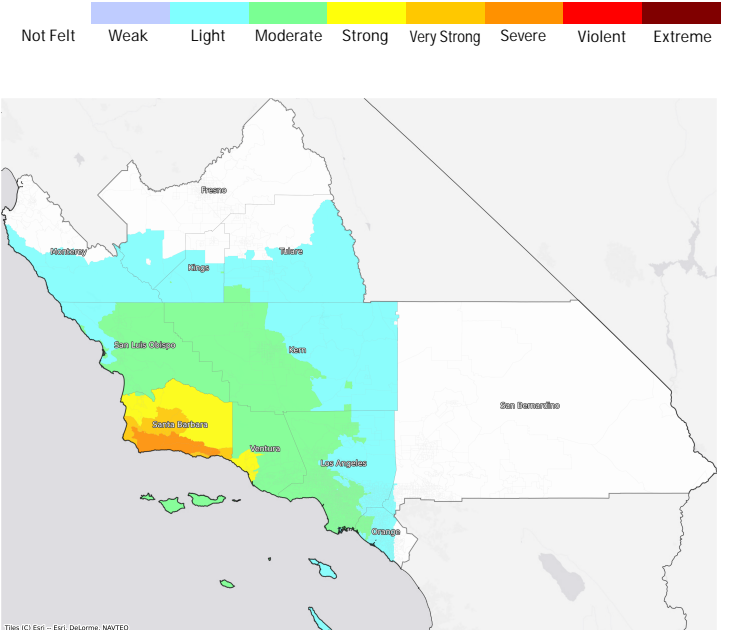
| Top Counties | State | Total |
|--------------|-------|-------|
| | | |
| | | |
| | | |
| | | |
| | | |
| | | |
| | | |
| | | |

Injuries & Fatalities
**Total Day:
Total Night:**

| Top Counties | State | Injuries (day/night) | Fatalities (day/night) |
|--------------|-------|----------------------|------------------------|
| | | | |
| | | | |
| | | | |
| | | | |
| | | | |
| | | | |
| | | | |
| | | | |

Displaced Households & Short-Term Shelter Needs
**Total Displaced:
Total Needing Shelter:**

| Top Counties | State | Displaced | Needing Shelter |
|--------------|-------|-----------|-----------------|
| | | | |
| | | | |
| | | | |
| | | | |
| | | | |
| | | | |
| | | | |
| | | | |

Economic Impacts by Census Tract

Ground Shaking

Debris
**Total Tons:
Total Truckloads:**

| Type | Tons |
|------|------|
| | |
| | |
| | |

The estimates of social and economic impacts contained in this report were produced using Hazus loss estimation methodology software which is based on current scientific and engineering knowledge. There are uncertainties inherent in any loss estimation technique. Therefore, there may be significant differences between the modeled results contained in this report and the actual social and economic losses following a specific earthquake.