

### Building Inspection Tagging (Counts)

<b>Inspected</b> Residential Commercial Industrial Agricultural Educational Government Religious	<b>Restricted</b> Residential Commercial Industrial Agricultural Educational Government Religious	<b>Unsafe</b> Residential Commercial Industrial Agricultural Educational Government Religious
---	--	--

Total Economic Loss

Total:

Top Counties	State	Total

Injuries & Fatalities

Total Day:  
Total Night:

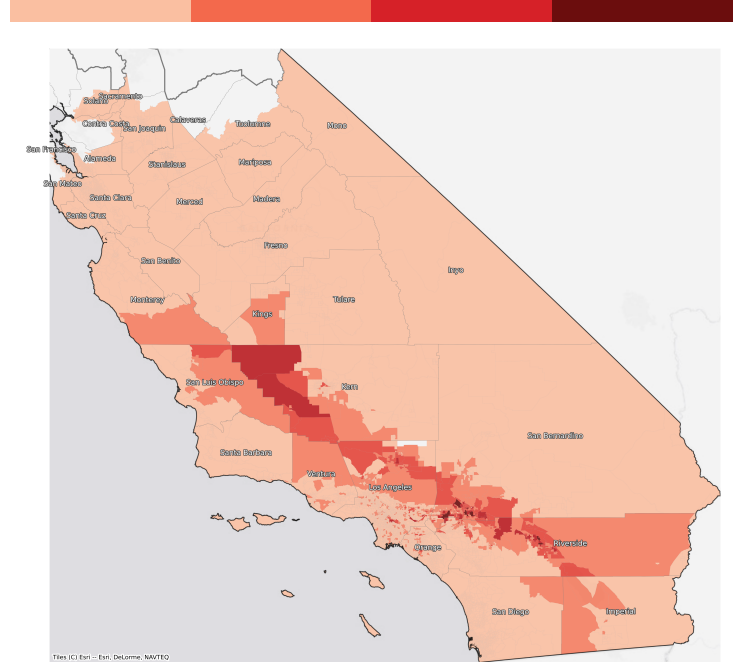
Top Counties	State	Injuries (day/night)	Fatalities (day/night)

Displaced Households & Short-Term Shelter Needs

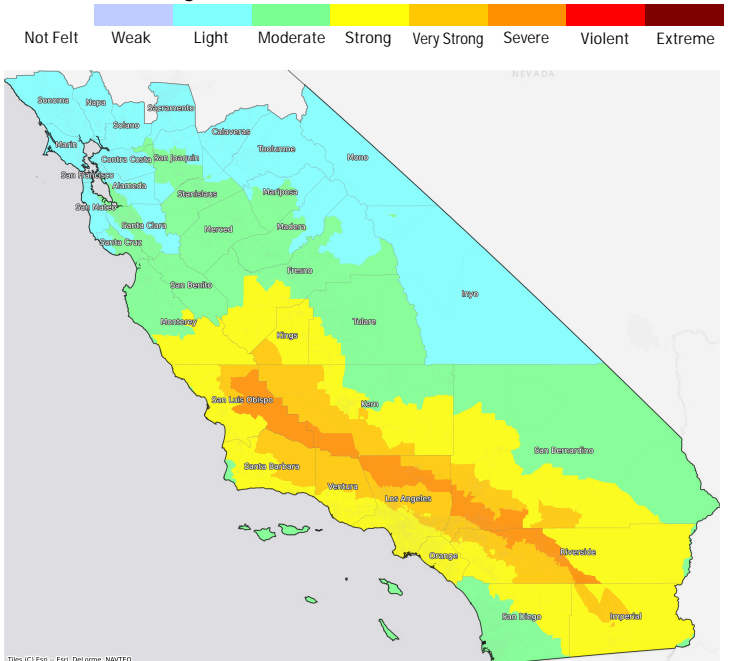
Total Displaced:  
Total Needing Shelter:

Top Counties	State	Displaced	Needing Shelter

### Economic Impacts by Census Tract



### Ground Shaking



Debris

Total Tons:  
Total Truckloads:

Type	Tons

The estimates of social and economic impacts contained in this report were produced using Hazus loss estimation methodology software which is based on current scientific and engineering knowledge. There are uncertainties inherent in any loss estimation technique. Therefore, there may be significant differences between the modeled results contained in this report and the actual social and economic losses following a specific earthquake.