

**Building Inspection Tagging (Counts)**

|   |  |  |
|---|--|--|
| <b>Inspected</b><br>Residential<br>Commercial<br>Industrial<br>Agricultural<br>Educational<br>Government<br>Religious | <b>Restricted</b><br>Residential<br>Commercial<br>Industrial<br>Agricultural<br>Educational<br>Government<br>Religious | <b>Unsafe</b><br>Residential<br>Commercial<br>Industrial<br>Agricultural<br>Educational<br>Government<br>Religious |
|---|--|--|

**Total Economic Loss**
**Total:**

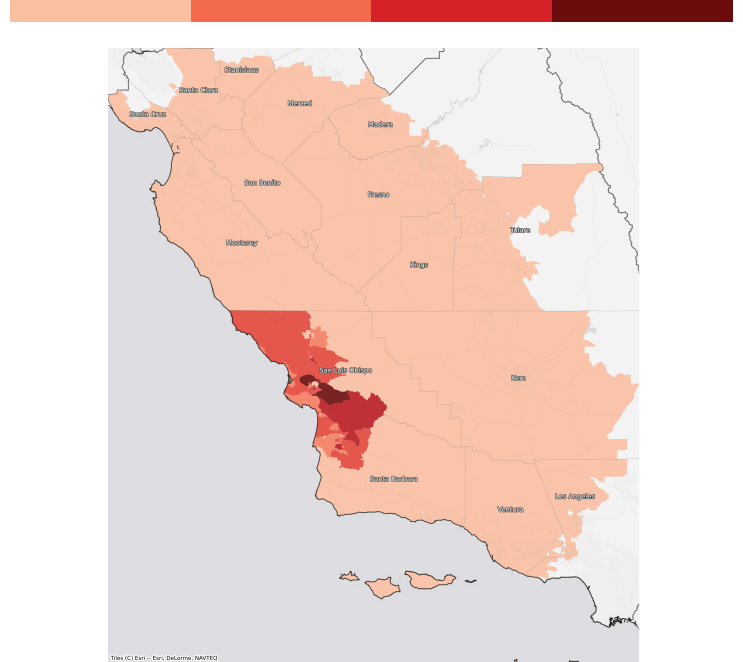
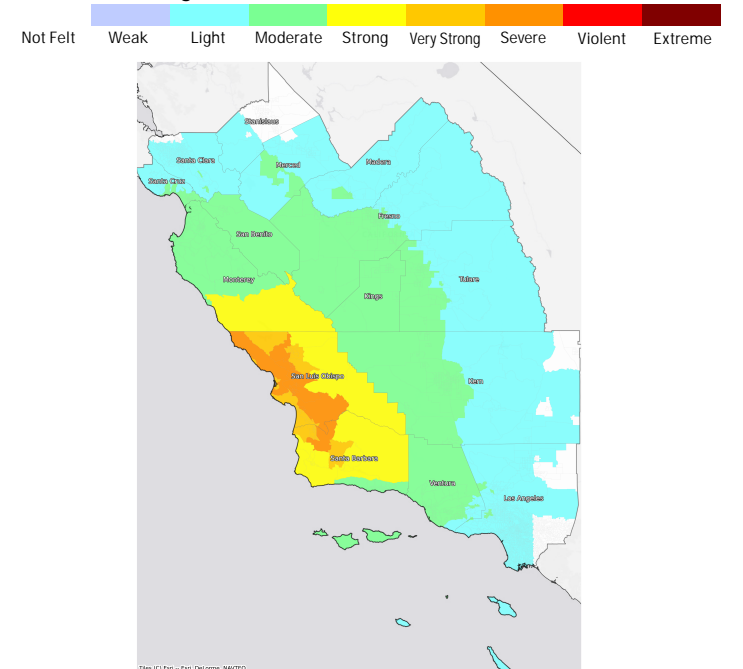
| Top Counties | State | Total |
|--------------|-------|-------|
|              |       |       |
|              |       |       |
|              |       |       |
|              |       |       |
|              |       |       |
|              |       |       |
|              |       |       |
|              |       |       |

**Injuries & Fatalities**
**Total Day:  
Total Night:**

| Top Counties | State | Injuries (day/night) | Fatalities (day/night) |
|--------------|-------|----------------------|------------------------|
|              |       |                      |                        |
|              |       |                      |                        |
|              |       |                      |                        |
|              |       |                      |                        |
|              |       |                      |                        |
|              |       |                      |                        |
|              |       |                      |                        |
|              |       |                      |                        |

**Displaced Households & Short-Term Shelter Needs**
**Total Displaced:  
Total Needing Shelter:**

| Top Counties | State | Displaced | Needing Shelter |
|--------------|-------|-----------|-----------------|
|              |       |           |                 |
|              |       |           |                 |
|              |       |           |                 |
|              |       |           |                 |
|              |       |           |                 |
|              |       |           |                 |
|              |       |           |                 |
|              |       |           |                 |

**Economic Impacts by Census Tract**

**Ground Shaking**

**Debris**
**Total Tons:  
Total Truckloads:**

| Type | Tons |
|------|------|
|      |      |
|      |      |
|      |      |
|      |      |

The estimates of social and economic impacts contained in this report were produced using Hazus loss estimation methodology software which is based on current scientific and engineering knowledge. There are uncertainties inherent in any loss estimation technique. Therefore, there may be significant differences between the modeled results contained in this report and the actual social and economic losses following a specific earthquake.