
Hazus: Earthquake Global Risk Report

Region Name: NSASANSAPSAS

Earthquake Scenario: nsanandreassansapsas_m7p88_se

Print Date: June 10, 2024

Disclaimer:

Totals only reflect data for those census tracts/blocks included in the user's study region.

The estimates of social and economic impacts contained in this report were produced using Hazus loss estimation methodology software which is based on current scientific and engineering knowledge. There are uncertainties inherent in any loss estimation technique. Therefore, there may be significant differences between the modeled results contained in this report and the actual social and economic losses following a specific earthquake. These results can be improved by using enhanced inventory, geotechnical, and observed ground motion data.

Table of Contents

Section	Page #
General Description of the Region	3
Building and Lifeline Inventory	4
Building Inventory	
Critical Facility Inventory	
Transportation and Utility Lifeline Inventory	
Earthquake Scenario Parameters	7
Direct Earthquake Damage	8
Buildings Damage	
Essential Facilities Damage	
Transportation and Utility Lifeline Damage	
Induced Earthquake Damage	14
Fire Following Earthquake	
Debris Generation	
Social Impact	15
Shelter Requirements	
Casualties	
Economic Loss	17
Building Related Losses	
Transportation and Utility Lifeline Losses	
Appendix A: County Listing for the Region	
Appendix B: Regional Population and Building Value Data	

General Description of the Region

Hazus-MH is a regional earthquake loss estimation model that was developed by the Federal Emergency Management Agency (FEMA) and the National Institute of Building Sciences. The primary purpose of Hazus is to provide a methodology and software application to develop multi-hazard losses at a regional scale. These loss estimates would be used primarily by local, state and regional officials to plan and stimulate efforts to reduce risks from multi-hazards and to prepare for emergency response and recovery.

The earthquake loss estimates provided in this report was based on a region that includes 46 county(ies) from the following state(s):

California

Note:

Appendix A contains a complete listing of the counties contained in the region.

The geographical size of the region is 94,254.51 square miles and contains 4,021 census tracts. There are over 6,026 thousand households in the region which has a total population of 17,323,782 people. The distribution of population by Total Region and County is provided in Appendix B.

There are an estimated 5,452 thousand buildings in the region with a total building replacement value (excluding contents) of (millions of dollars). Approximately 90.00 % of the buildings (and % of the building value) are associated with residential housing.

The replacement value of the transportation and utility lifeline systems is estimated to be 295,693 and 254,540 (millions of dollars) , respectively.

Building and Lifeline Inventory

Building Inventory

Hazus estimates that there are 5,452 thousand buildings in the region which have an aggregate total replacement value of (millions of dollars) . Appendix B provides a general distribution of the building value by Total Region and County.

In terms of building construction types found in the region, wood frame construction makes up 86% of the building inventory. The remaining percentage is distributed between the other general building types.

Critical Facility Inventory

Hazus breaks critical facilities into two (2) groups: essential facilities and high potential loss facilities (HPL). Essential facilities include hospitals, medical clinics, schools, fire stations, police stations and emergency operations facilities. High potential loss facilities include dams, levees, military installations, nuclear power plants and hazardous material sites.

For essential facilities, there are 312 hospitals in the region with a total bed capacity of 45,042 beds. There are 6,634 schools, 1,915 fire stations, 620 police stations and 105 emergency operation facilities. With respect to high potential loss facilities (HPL), there are no dams identified within the inventory. The inventory also includes no hazardous material sites, no military installations and no nuclear power plants.

Transportation and Utility Lifeline Inventory

Within Hazus, the lifeline inventory is divided between transportation and utility lifeline systems. There are seven (7) transportation systems that include highways, railways, light rail, bus, ports, ferry and airports. There are six (6) utility systems that include potable water, wastewater, natural gas, crude & refined oil, electric power and communications. The lifeline inventory data are provided in Tables 1 and 2.

The total value of the lifeline inventory is over 550,233.00 (millions of dollars). This inventory includes over 14,967.58 miles of highways, 15,500 bridges, 362,443.84 miles of pipes.

Table 1: Transportation System Lifeline Inventory

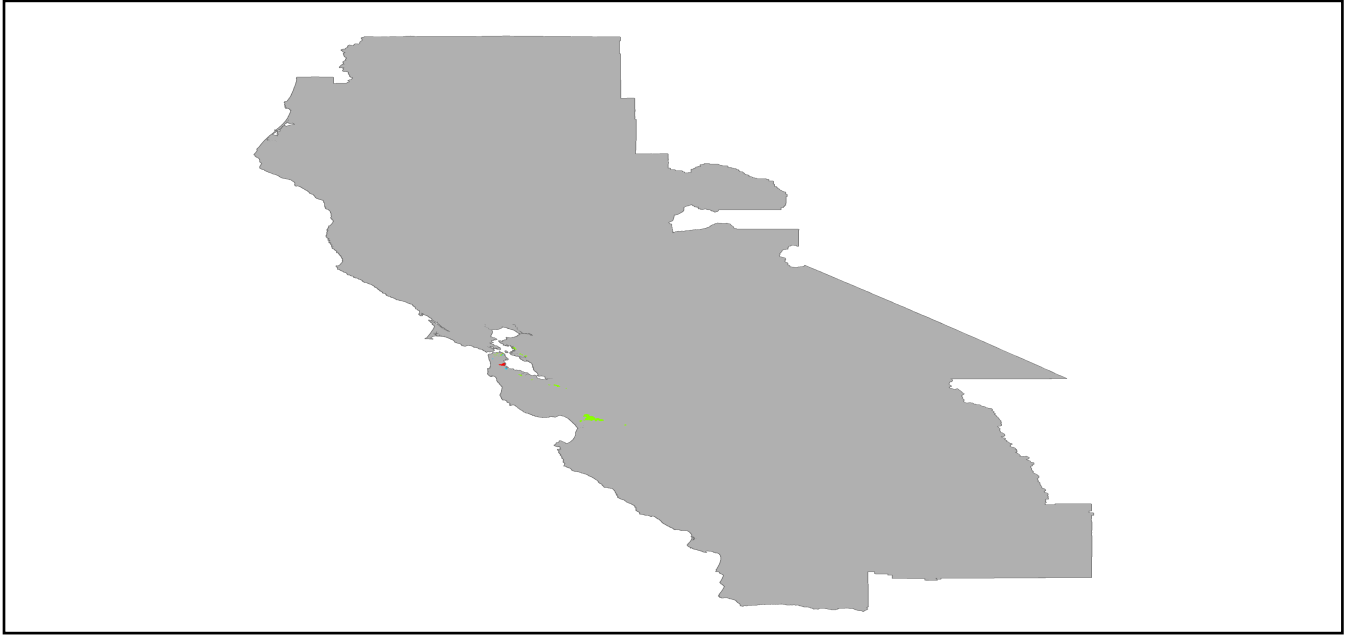
System	Component	# Locations/ # Segments	Replacement value (millions of dollars)
Highway	Bridges	15,500	67938.5388
	Segments	8,657	124441.8949
	Tunnels	55	1030.2636
	Subtotal		193410.6973
Railways	Bridges	2,328	13246.3200
	Facilities	103	274.2890
	Segments	3,929	72065.3822
	Tunnels	3	1.8495
	Subtotal		85587.8407
Light Rail	Bridges	112	15.3529
	Facilities	255	4154.0000
	Segments	15	5403.2756
	Tunnels	0	0.0000
	Subtotal		9572.6285
Bus	Facilities	67	150.3722
	Subtotal		150.3722
Ferry	Facilities	28	37.2680
	Subtotal		37.2680
Port	Facilities	401	1528.5497
	Subtotal		1528.5497
Airport	Facilities	177	3290.3176
	Runways	235	2115.8175
	Subtotal		5406.1351
		Total	295,693.50

Table 2: Utility System Lifeline Inventory

System	Component	# Locations / Segments	Replacement value (millions of dollars)
Potable Water	Distribution Lines	NA	7211.6575
	Facilities	31	1218.1140
	Pipelines	0	0.0000
		Subtotal	8429.7715
Waste Water	Distribution Lines	NA	4326.9945
	Facilities	232	39892.8176
	Pipelines	0	0.0000
		Subtotal	44219.8121
Natural Gas	Distribution Lines	NA	2884.6630
	Facilities	21	829.4518
	Pipelines	1,188	22418.2283
		Subtotal	26132.3431
Oil Systems	Facilities	35	4.1300
	Pipelines	0	0.0000
		Subtotal	4.1300
Electrical Power	Facilities	633	175677.5075
		Subtotal	175677.5075
Communication	Facilities	649	76.5820
		Subtotal	76.5820
	Total		254,540.10

Earthquake Scenario

Hazus uses the following set of information to define the earthquake parameters used for the earthquake loss estimate provided in this report.



Scenario Name	nsanandreassansapsas_m7p88_se
Type of Earthquake	User-defined
Fault Name	NA
Historical Epicenter ID #	NA
Probabilistic Return Period	NA
Longitude of Epicenter	NA
Latitude of Epicenter	NA
Earthquake Magnitude	7.88
Depth (km)	NA
Rupture Length (Km)	NA
Rupture Orientation (degrees)	NA
Attenuation Function	NA

Direct Earthquake Damage

Building Damage

Hazus estimates that about 282,261 buildings will be at least moderately damaged. This is over 5.00 % of the buildings in the region. There are an estimated 19,647 buildings that will be damaged beyond repair. The definition of the 'damage states' is provided in Volume 1: Chapter 5 of the Hazus technical manual. Table 3 below summarizes the expected damage by general occupancy for the buildings in the region. Table 4 below summarizes the expected damage by general building type.

Damage Categories by General Occupancy Type

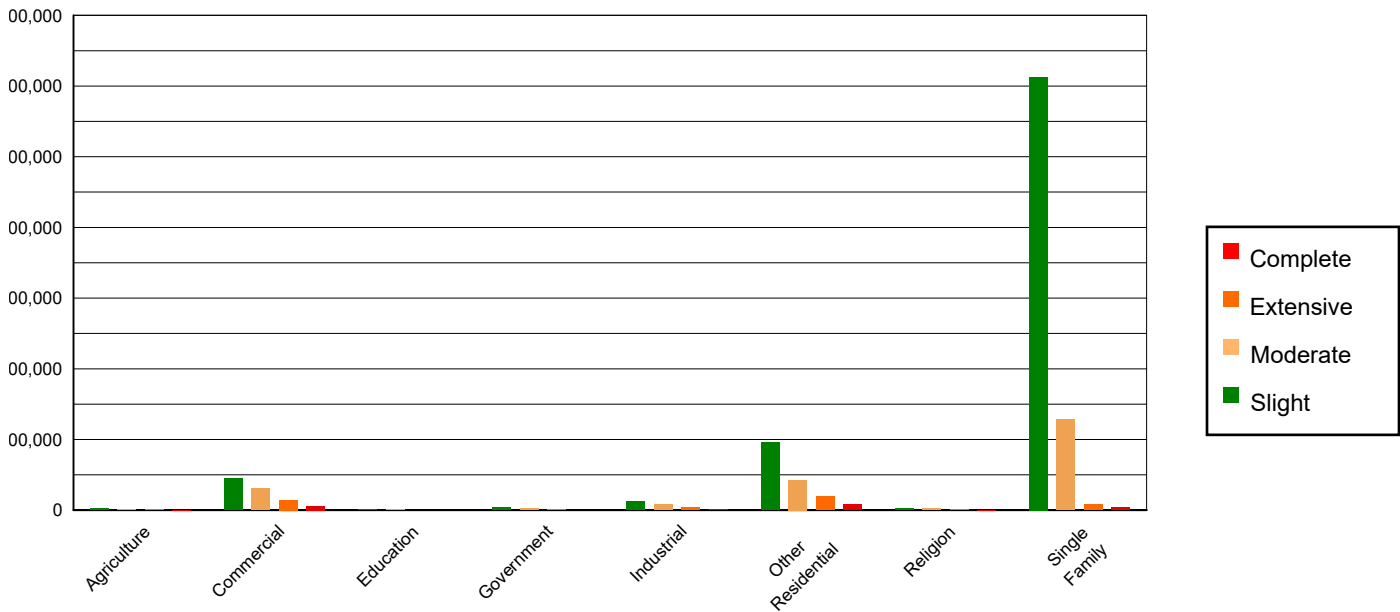


Table 3: Expected Building Damage by Occupancy

	None		Slight		Moderate		Extensive		Complete	
	Count	(%)	Count	(%)	Count	(%)	Count	(%)	Count	(%)
Agriculture	37671.76	0.86	2350.15	0.30	1479.83	0.69	601.38	1.29	262.88	1.34
Commercial	254091.35	5.78	45262.12	5.84	30789.99	14.26	14320.45	30.70	6016.09	30.62
Education	9064.34	0.21	1127.12	0.15	502.48	0.23	177.31	0.38	101.75	0.52
Government	17830.04	0.41	3691.51	0.48	1782.23	0.83	447.41	0.96	130.81	0.67
Industrial	71076.73	1.62	12144.71	1.57	8286.00	3.84	3791.88	8.13	1504.68	7.66
Other Residential	572367.61	13.02	95623.02	12.33	42650.29	19.75	18846.09	40.40	7969.00	40.56
Religion	15522.63	0.35	2445.35	0.32	1836.19	0.85	861.93	1.85	297.89	1.52
Single Family	3417265.60	77.76	612896.92	79.03	128635.38	59.56	7604.76	16.30	3364.35	17.12
Total	4,394,890		775,541		215,962		46,651		19,647	

Table 4: Expected Building Damage by Building Type (All Design Levels)

	None		Slight		Moderate		Extensive		Complete	
	Count	(%)	Count	(%)	Count	(%)	Count	(%)	Count	(%)
Wood	3853258.68	87.68	699757.86	90.23	143282.15	66.35	5349.56	11.47	662.89	3.37
Steel	83228.86	1.89	13884.10	1.79	15879.34	7.35	8906.16	19.09	4590.47	23.36
Concrete	92000.11	2.09	18235.73	2.35	15873.41	7.35	8891.51	19.06	4010.58	20.41
Precast	57649.37	1.31	9170.65	1.18	6496.74	3.01	1881.48	4.03	363.07	1.85
RM	158383.43	3.60	22213.67	2.86	16735.88	7.75	4516.28	9.68	484.92	2.47
URM	19977.54	0.45	4344.95	0.56	6448.53	2.99	9127.69	19.57	7800.94	39.70
MH	130392.06	2.97	7933.94	1.02	11246.35	5.21	7978.51	17.10	1734.57	8.83
Total	4,394,890		775,541		215,962		46,651		19,647	

*Note:

- RM Reinforced Masonry
- URM Unreinforced Masonry
- MH Manufactured Housing

Essential Facility Damage

Before the earthquake, the region had 45,042 hospital beds available for use. On the day of the earthquake, the model estimates that only 34,036 hospital beds (76.00%) are available for use by patients already in the hospital and those injured by the earthquake. After one week, 83.00% of the beds will be back in service. By 30 days, 90.00% will be operational.

Table 5: Expected Damage to Essential Facilities

Classification	Total	# Facilities		
		At Least Moderate Damage > 50%	Complete Damage > 50%	With Functionality > 50% on day 1
Hospitals	312	51	9	245
Schools	6,634	1,040	161	5,234
EOCs	105	15	5	82
PoliceStations	620	69	16	518
FireStations	1,915	175	23	1,644

Transportation Lifeline Damage

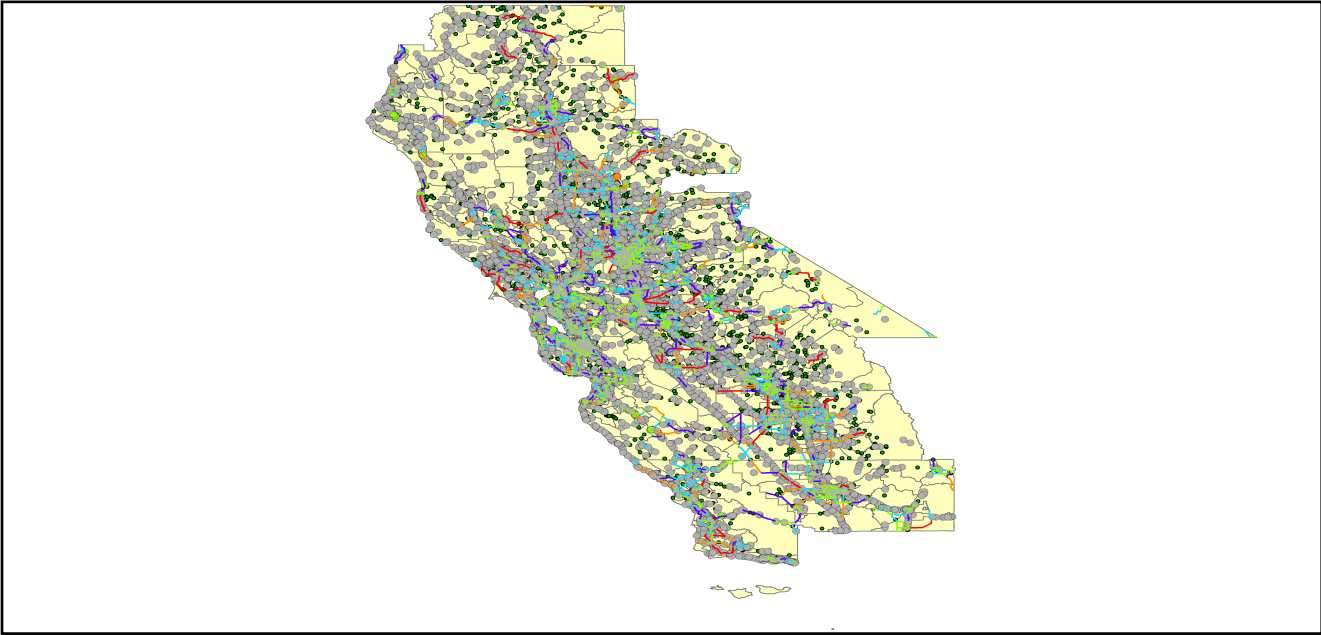


Table 6: Expected Damage to the Transportation Systems

System	Component	Number of Locations_				
		Locations/ Segments	With at Least Mod. Damage	With Complete Damage	With Functionality > 50 %	
					After Day 1	After Day 7
Highway	Segments	8,657	0	0	8,657	8,657
	Bridges	15,500	87	0	15,418	15,477
	Tunnels	55	0	0	55	55
Railways	Segments	3,929	0	0	3,929	3,929
	Bridges	2,328	0	0	2,328	2,328
	Tunnels	3	0	0	3	3
	Facilities	103	0	0	103	103
Light Rail	Segments	15	0	0	15	15
	Bridges	112	0	0	112	112
	Tunnels	0	0	0	0	0
	Facilities	255	52	0	255	255
Bus	Facilities	67	0	0	67	67
Ferry	Facilities	28	0	0	28	28
Port	Facilities	401	7	0	397	401
Airport	Facilities	177	1	0	177	177
	Runways	235	0	0	235	235

Table 6 provides damage estimates for the transportation system.

Note: Roadway segments, railroad tracks and light rail tracks are assumed to be damaged by ground failure only. If ground failure maps are not provided, damage estimates to these components will not be computed.

Tables 7-9 provide information on the damage to the utility lifeline systems. Table 7 provides damage to the utility system facilities. Table 8 provides estimates on the number of leaks and breaks by the pipelines of the utility systems. For electric power and potable water, Hazus performs a simplified system performance analysis. Table 9 provides a summary of the system performance information.

Table 7 : Expected Utility System Facility Damage

System	# of Locations				
	Total #	With at Least Moderate Damage	With Complete Damage	with Functionality > 50 %	
				After Day 1	After Day 7
Potable Water	31	1	0	30	31
Waste Water	232	22	0	160	232
Natural Gas	21	0	0	21	21
Oil Systems	35	0	0	35	35
Electrical Power	633	49	0	594	631
Communication	649	84	0	617	649

Table 8 : Expected Utility System Pipeline Damage (Site Specific)

System	Total Pipelines Length (miles)	Number of Leaks	Number of Breaks
Potable Water	224,056	21687	5422
Waste Water	134,433	10894	2723
Natural Gas	3,955	0	0
Oil	0	0	0

Table 9: Expected Potable Water and Electric Power System Performance

	Total # of Households	Number of Households without Service				
		At Day 1	At Day 3	At Day 7	At Day 30	At Day 90
Potable Water	6,026,313	944,520	845,050	627,819	176,872	0
Electric Power		791,168	502,517	205,456	18,977	1,065

Induced Earthquake Damage

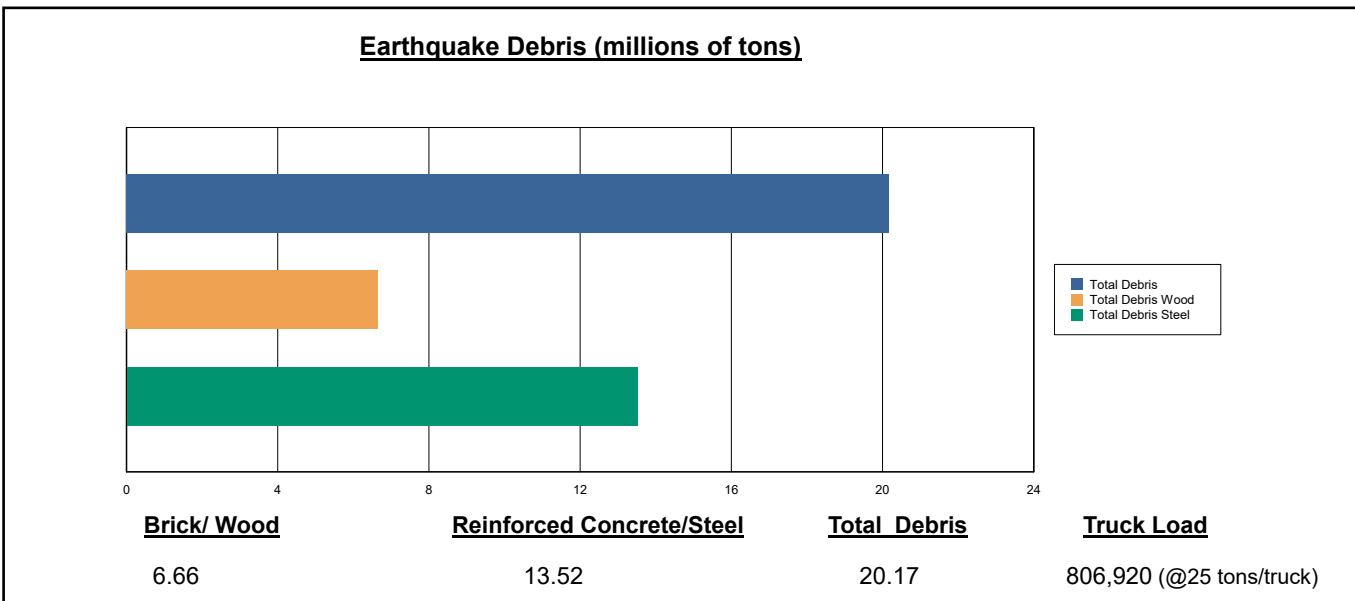
Fire Following Earthquake

Fires often occur after an earthquake. Because of the number of fires and the lack of water to fight the fires, they can often burn out of control. Hazus uses a Monte Carlo simulation model to estimate the number of ignitions and the amount of burnt area. For this scenario, the model estimates that there will be 88 ignitions that will burn about 2.48 sq. mi (0.00 % of the region's total area.) The model also estimates that the fires will displace about 23,979 people and burn about 3,429 (millions of dollars) of building value.

Debris Generation

Hazus estimates the amount of debris that will be generated by the earthquake. The model breaks the debris into two general categories: a) Brick/Wood and b) Reinforced Concrete/Steel. This distinction is made because of the different types of material handling equipment required to handle the debris.

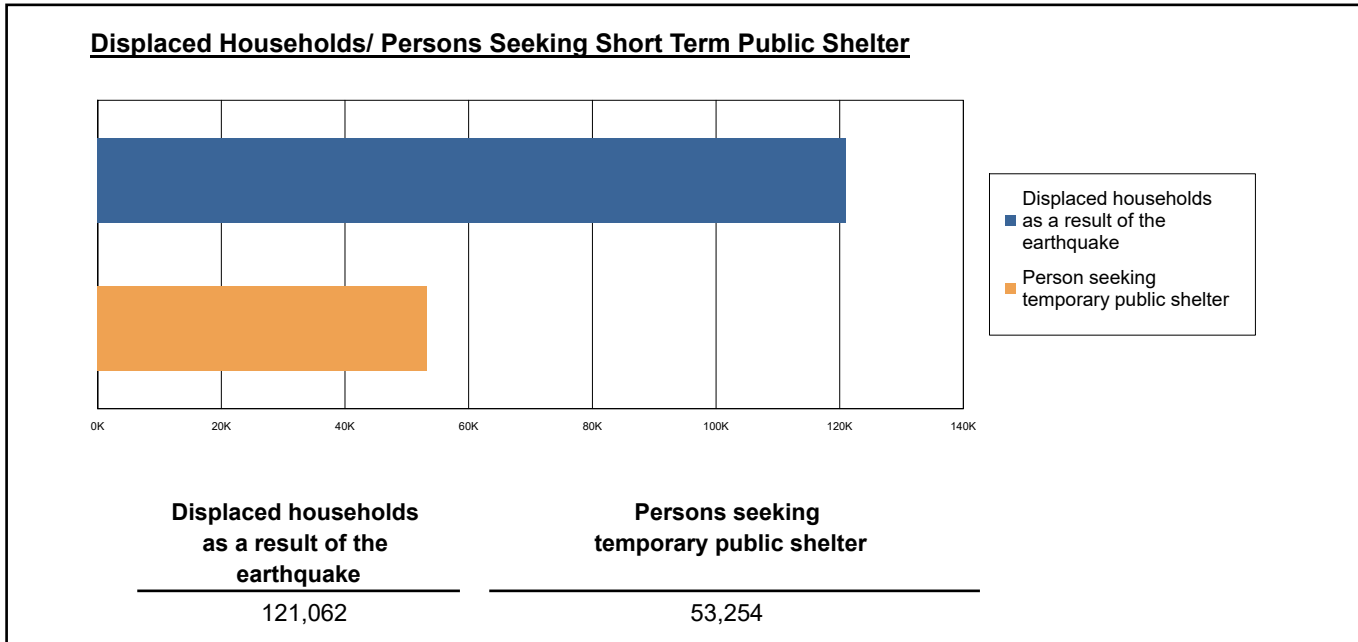
The model estimates that a total of 20,173,000 tons of debris will be generated. Of the total amount, Brick/Wood comprises 33.00% of the total, with the remainder being Reinforced Concrete/Steel. If the debris tonnage is converted to an estimated number of truckloads, it will require 806,920 truckloads (@25 tons/truck) to remove the debris generated by the earthquake.



Social Impact

Shelter Requirement

Hazus estimates the number of households that are expected to be displaced from their homes due to the earthquake and the number of displaced people that will require accommodations in temporary public shelters. The model estimates 121,062 households to be displaced due to the earthquake. Of these, 53,254 people (out of a total population of 17,323,782) will seek temporary shelter in public shelters.



Casualties

Hazus estimates the number of people that will be injured and killed by the earthquake. The casualties are broken down into four (4) severity levels that describe the extent of the injuries. The levels are described as follows;

- Severity Level 1: Injuries will require medical attention but hospitalization is not needed.
- Severity Level 2: Injuries will require hospitalization but are not considered life-threatening
- Severity Level 3: Injuries will require hospitalization and can become life threatening if not promptly treated.
- Severity Level 4: Victims are killed by the earthquake.

The casualty estimates are provided for three (3) times of day: 2:00 AM, 2:00 PM and 5:00 PM. These times represent the periods of the day that different sectors of the community are at their peak occupancy loads. The 2:00 AM estimate considers that the residential occupancy load is maximum, the 2:00 PM estimate considers that the educational, commercial and industrial sector loads are maximum and 5:00 PM represents peak commute time.

Table 10 provides a summary of the casualties estimated for this earthquake

Table 10: Casualty Estimates

		Level 1	Level 2	Level 3	Level 4
2 AM	Commercial	264.30	67.81	9.83	19.36
	Commuting	0.93	1.27	2.11	0.41
	Educational	0.00	0.00	0.00	0.00
	Hotels	25.45	6.28	0.85	1.68
	Industrial	232.30	58.72	8.55	16.79
	Other-Residential	10014.37	2526.80	361.27	710.50
	Single Family	3192.45	486.74	56.10	110.52
	Total	13,730	3,148	439	859
2 PM	Commercial	16508.04	4219.99	616.05	1202.81
	Commuting	8.37	11.43	18.98	3.69
	Educational	3704.79	855.08	119.58	231.01
	Hotels	4.92	1.22	0.17	0.33
	Industrial	1715.41	435.13	63.85	124.07
	Other-Residential	3196.62	825.13	123.97	230.82
	Single Family	963.43	157.11	19.35	36.33
	Total	26,102	6,505	962	1,829
5 PM	Commercial	10975.82	2806.39	415.19	796.81
	Commuting	175.06	236.51	395.58	76.78
	Educational	775.43	169.75	22.80	43.46
	Hotels	7.62	1.88	0.26	0.50
	Industrial	1072.13	271.96	39.91	77.54
	Other-Residential	3963.05	1025.46	154.24	287.26
	Single Family	1227.21	198.32	24.30	45.64
	Total	18,196	4,710	1,052	1,328

Economic Loss

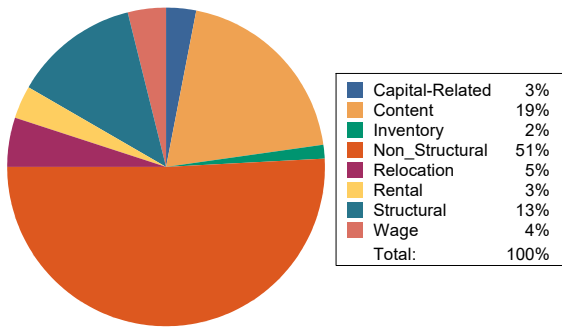
The total economic loss estimated for the earthquake is 130,009.63 (millions of dollars), which includes building and lifeline related losses based on the region's available inventory. The following three sections provide more detailed information about these losses.

Building-Related Losses

The building losses are broken into two categories: direct building losses and business interruption losses. The direct building losses are the estimated costs to repair or replace the damage caused to the building and its contents. The business interruption losses are the losses associated with inability to operate a business because of the damage sustained during the earthquake. Business interruption losses also include the temporary living expenses for those people displaced from their homes because of the earthquake.

The total building-related losses were 119,210.41 (millions of dollars); 16 % of the estimated losses were related to the business interruption of the region. By far, the largest loss was sustained by the residential occupancies which made up over 49 % of the total loss. Table 11 below provides a summary of the losses associated with the building damage.

Earthquake Losses by Loss Type (\$ millions)



Earthquake Losses by Occupancy Type (\$ millions)

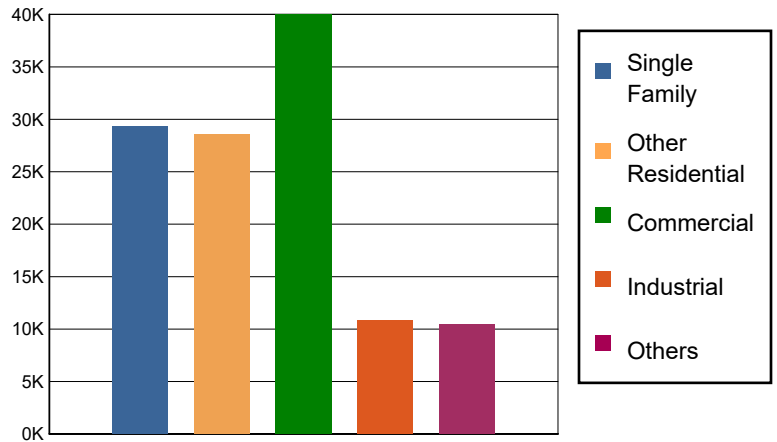


Table 11: Building-Related Economic Loss Estimates
(Millions of dollars)

Category	Area	Single Family	Other Residential	Commercial	Industrial	Others	Total
Income Losses							
	Wage	0.0000	791.2034	3499.7485	135.9835	311.1798	4,738.1152
	Capital-Related	0.0000	336.3011	3276.2459	81.5204	78.8503	3,772.9177
	Rental	315.9623	1907.6926	1567.4416	71.8898	165.2407	4,028.2270
	Relocation	1099.5696	1107.5533	2330.1232	328.2206	1127.8120	5,993.2787
	Subtotal	1415.5319	4142.7504	10673.5592	617.6143	1683.0828	18532.5386
Capital Stock Losses							
	Structural	3475.7389	3537.2890	5193.1278	1402.4608	1516.1270	15,124.7435
	Non_Structural	18110.2353	17089.2997	15491.7535	5038.6475	4772.4579	60,502.3939
	Content	6366.1204	3772.9107	7487.8187	3318.9413	2284.9991	23,230.7902
	Inventory	0.0000	0.0000	1145.9025	468.9448	205.0936	1,819.9409
	Subtotal	27952.0946	24399.4994	29318.6025	10228.9944	8778.6776	100677.8685
	Total	29367.63	28542.25	39992.16	10846.61	10461.76	119210.41

Transportation and Utility Lifeline Losses

For the transportation and utility lifeline systems, Hazus computes the direct repair cost for each component only. There are no losses computed by Hazus for business interruption due to lifeline outages. Tables 12 & 13 provide a detailed breakdown in the expected lifeline losses.

Table 12: Transportation System Economic Losses
(Millions of dollars)

System	Component	Inventory Value	Economic Loss	Loss Ratio (%)
Highway	Segments	124441.8949	0.0000	0.00
	Bridges	67938.5388	1078.2010	1.59
	Tunnels	1030.2636	21.1456	2.05
	Subtotal	193410.6973	1099.3466	
Railways	Segments	72065.3822	0.0000	0.00
	Bridges	13246.3200	55.2791	0.42
	Tunnels	1.8495	0.0090	0.49
	Facilities	274.2890	19.0876	6.96
	Subtotal	85587.8407	74.3757	
Light Rail	Segments	5403.2756	0.0000	0.00
	Bridges	15.3529	0.1293	0.84
	Tunnels	0.0000	0.0000	0.00
	Facilities	4154.0000	1093.6538	26.33
	Subtotal	9572.6285	1093.7831	
Bus	Facilities	150.3722	11.2733	7.50
	Subtotal	150.3722	11.2733	
Ferry	Facilities	37.2680	4.5908	12.32
	Subtotal	37.2680	4.5908	
Port	Facilities	1528.5497	202.8108	13.27
	Subtotal	1528.5497	202.8108	
Airport	Facilities	3290.3176	527.3579	16.03
	Runways	2115.8175	0.0000	0.00
	Subtotal	5406.1351	527.3579	
Total		295,693.49	3,013.54	

Table 13: Utility System Economic Losses

(Millions of dollars)

System	Component	Inventory Value	Economic Loss	Loss Ratio (%)
Potable Water	Pipelines	0.0000	0.0000	0.00
	Facilities	1218.1140	36.5181	3.00
	Distribution Lines	7211.6575	97.5918	1.35
	Subtotal	8429.7715	134.1099	
Waste Water	Pipelines	0.0000	0.0000	0.00
	Facilities	39892.8176	2039.5496	5.11
	Distribution Lines	4326.9945	49.0229	1.13
	Subtotal	44219.8121	2088.5725	
Natural Gas	Pipelines	22418.2283	0.0000	0.00
	Facilities	829.4518	0.3476	0.04
	Distribution Lines	2884.6630	16.7949	0.58
	Subtotal	26132.3431	17.1425	
Oil Systems	Pipelines	0.0000	0.0000	0.00
	Facilities	4.1300	0.0772	1.87
	Subtotal	4.1300	0.0772	
Electrical Power	Facilities	175677.5075	5539.3817	3.15
	Subtotal	175677.5075	5539.3817	
Communication	Facilities	76.5820	6.4075	8.37
	Subtotal	76.5820	6.4075	
	Total	254,540.15	7,785.69	

Appendix A: County Listing for the Region

Alameda,CA

Alpine,CA

Amador,CA

Butte,CA

Calaveras,CA

Colusa,CA

Contra Costa,CA

El Dorado,CA

Fresno,CA

Glenn,CA

Humboldt,CA

Kern,CA

Kings,CA

Lake,CA

Madera,CA

Marin,CA

Mariposa,CA

Mendocino,CA

Merced,CA

Mono,CA

Monterey,CA

Napa,CA

Nevada,CA

Placer,CA

Plumas,CA

Sacramento,CA

San Benito,CA

San Francisco,CA

San Joaquin,CA

San Luis Obispo, CA

San Mateo, CA

Santa Barbara, CA

Santa Clara, CA

Santa Cruz, CA

Shasta, CA

Siskiyou, CA

Solano, CA

Sonoma, CA

Stanislaus, CA

Sutter, CA

Tehama, CA

Trinity, CA

Tulare, CA

Tuolumne, CA

Yolo, CA

Yuba, CA

Appendix B: Regional Population and Building Value Data

State	County Name	Population	Building Value (millions of dollars)		
			Residential	Non-Residential	Total
California	Alameda	1,682,353	209,951	122,639	332,590
	Alpine	1,204	721	139	861
	Amador	40,474	5,608	2,517	8,125
	Butte	211,632	25,875	16,639	42,514
	Calaveras	45,292	8,305	4,893	13,199
	Colusa	21,839	2,244	2,024	4,268
	Contra Costa	1,165,927	158,118	60,339	218,458
	El Dorado	191,185	34,907	9,704	44,611
	Fresno	1,008,654	98,532	61,772	160,304
	Glenn	28,917	2,791	3,717	6,508
	Humboldt	136,463	19,361	8,683	28,044
	Kern	909,235	87,567	59,168	146,736
	Kings	152,486	13,719	7,861	21,581
	Lake	68,163	9,699	4,530	14,229
	Madera	156,255	18,025	9,641	27,667
	Marin	262,321	47,738	15,030	62,769
	Mariposa	17,131	3,299	1,141	4,441
	Mendocino	91,601	14,237	8,510	22,748
	Merced	281,202	25,194	26,098	51,292
	Mono	13,195	3,293	1,083	4,377
	Monterey	439,035	47,655	28,750	76,405
	Napa	138,019	20,517	13,045	33,563
	Nevada	102,241	17,908	6,108	24,016
	Placer	404,739	69,985	24,193	94,179
	Plumas	19,790	6,128	2,276	8,405
	Sacramento	1,585,055	179,811	83,911	263,723
	San Benito	64,209	9,440	3,799	13,239
	San Francisco	873,965	108,848	46,020	154,869
	San Joaquin	779,233	82,706	56,882	139,589
	San Luis Obispo	282,424	41,720	20,896	62,616
	San Mateo	764,442	110,372	44,995	155,368
	Santa Barbara	448,229	49,971	28,481	78,452
	Santa Clara	1,936,259	261,111	120,471	381,582
	Santa Cruz	270,861	36,147	18,805	54,952
	Shasta	182,155	21,572	15,715	37,288
	Siskiyou	44,076	6,856	4,758	11,615
	Solano	453,491	55,802	26,393	82,195
	Sonoma	488,863	68,827	35,781	104,609
	Stanislaus	552,878	62,937	37,511	100,449

	Sutter	99,633	10,618	6,448	17,066
	Tehama	65,829	7,705	5,113	12,818
	Trinity	16,112	2,209	1,485	3,694
	Tulare	473,117	43,262	31,210	74,472
	Tuolumne	55,620	8,964	3,507	12,471
	Yolo	216,403	24,130	18,343	42,473
	Yuba	81,575	8,161	4,677	12,839
Total Region		17,323,782	2,152,546	1,115,701	3,268,269

Building Inspection Tagging (Counts)

Inspected Residential Commercial Industrial Agricultural Educational Government Religious	Restricted Residential Commercial Industrial Agricultural Educational Government Religious	Unsafe Residential Commercial Industrial Agricultural Educational Government Religious
---	--	--

Total Economic Loss

Total:

Top Counties	State	Total

Injuries & Fatalities

Total Day: Total Night:

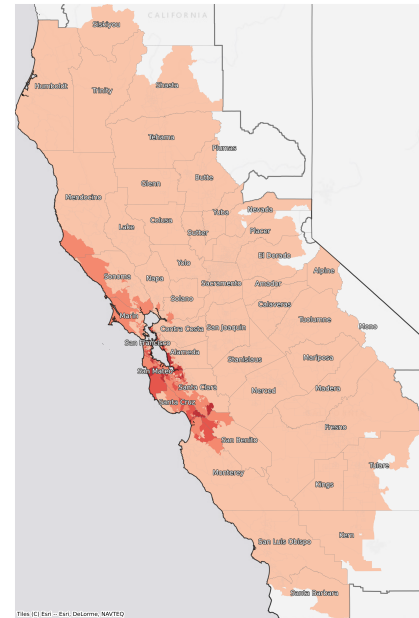
Top Counties	State	Injuries (day/night)	Fatalities (day/night)

Displaced Households & Short-Term Shelter Needs

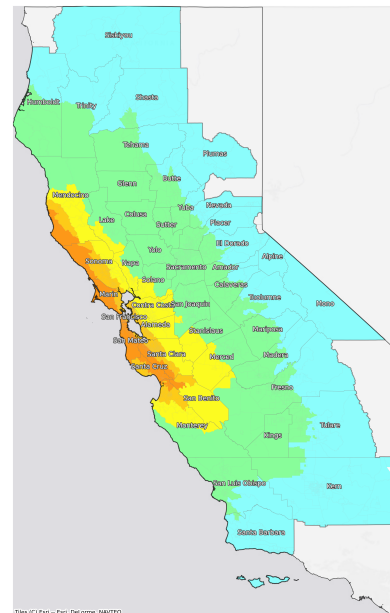
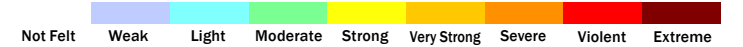
Total Displaced: Total Needing Shelter:

Top Counties	State	Displaced	Needing Shelter

Economic Impacts by Census Tract



Ground Shaking



Debris

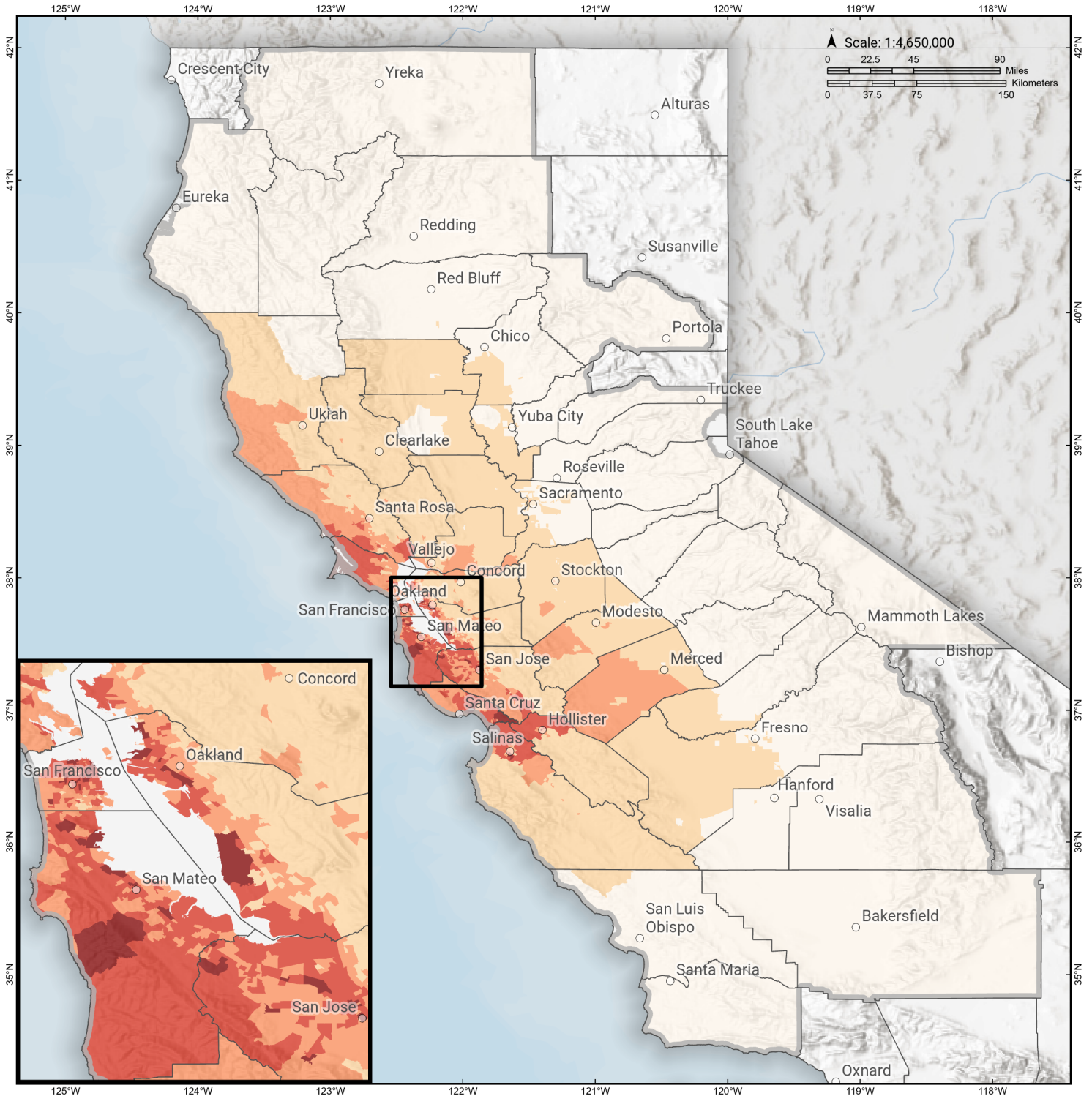
Total Tons: Total Truckloads:

Type	Tons

The estimates of social and economic impacts contained in this report were produced using Hazus loss estimation methodology software which is based on current scientific and engineering knowledge. There are uncertainties inherent in any loss estimation technique. Therefore, there may be significant differences between the modeled results contained in this report and the actual social and economic losses following a specific earthquake.

N. San Andreas: SAN+SAP+SAS

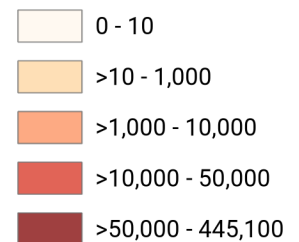
Debris Generated by Census Tract



Study Region: N. San Andreas: SAN+SAP+SAS
Scenario: nsanandreassansapsas_m7p88_se

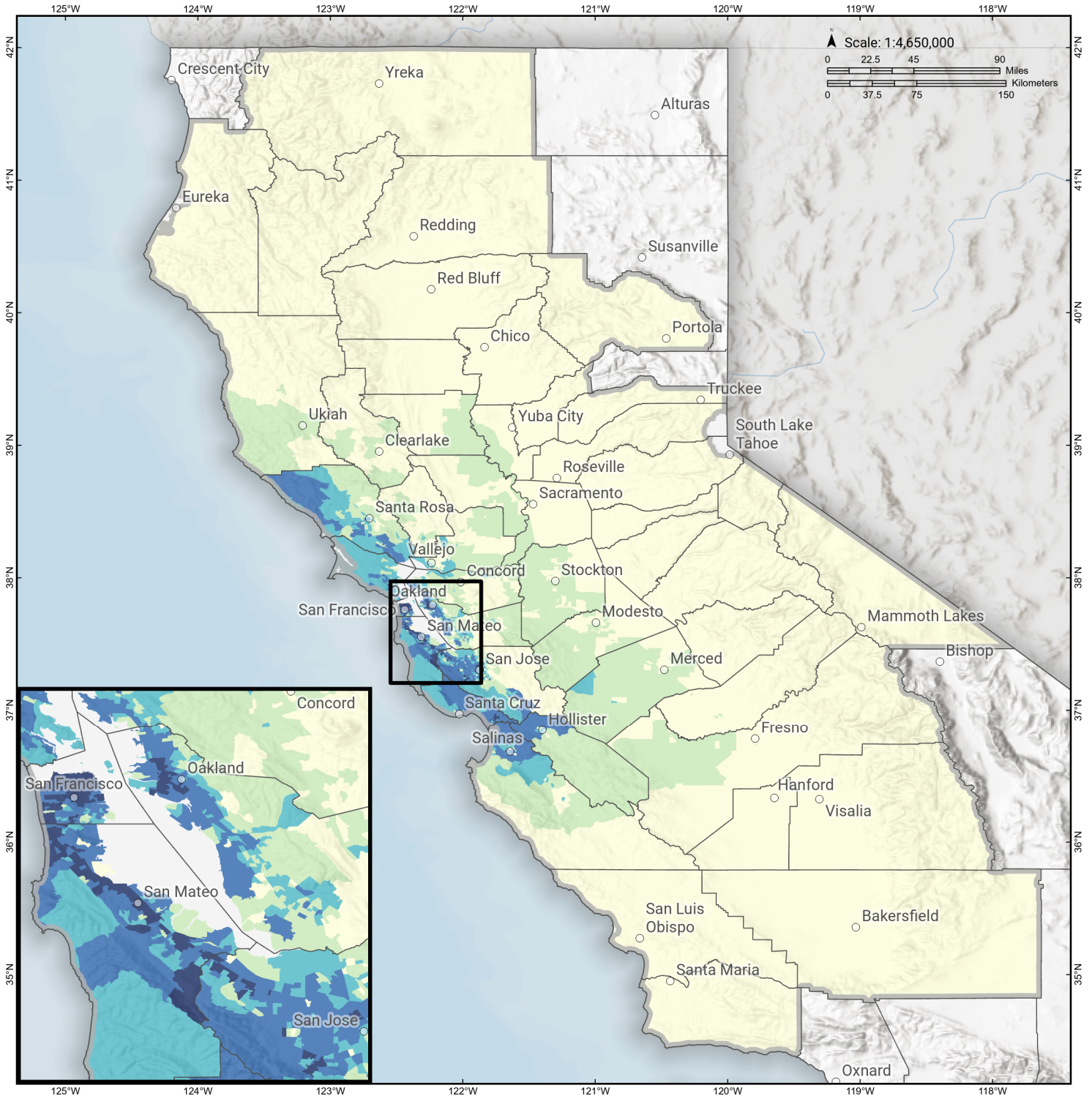


Debris Generated (in tons)



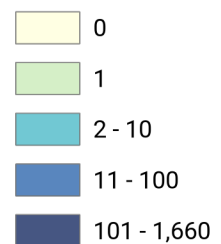
N. San Andreas: SAN+SAP+SAS

Displaced Households by Census Tract



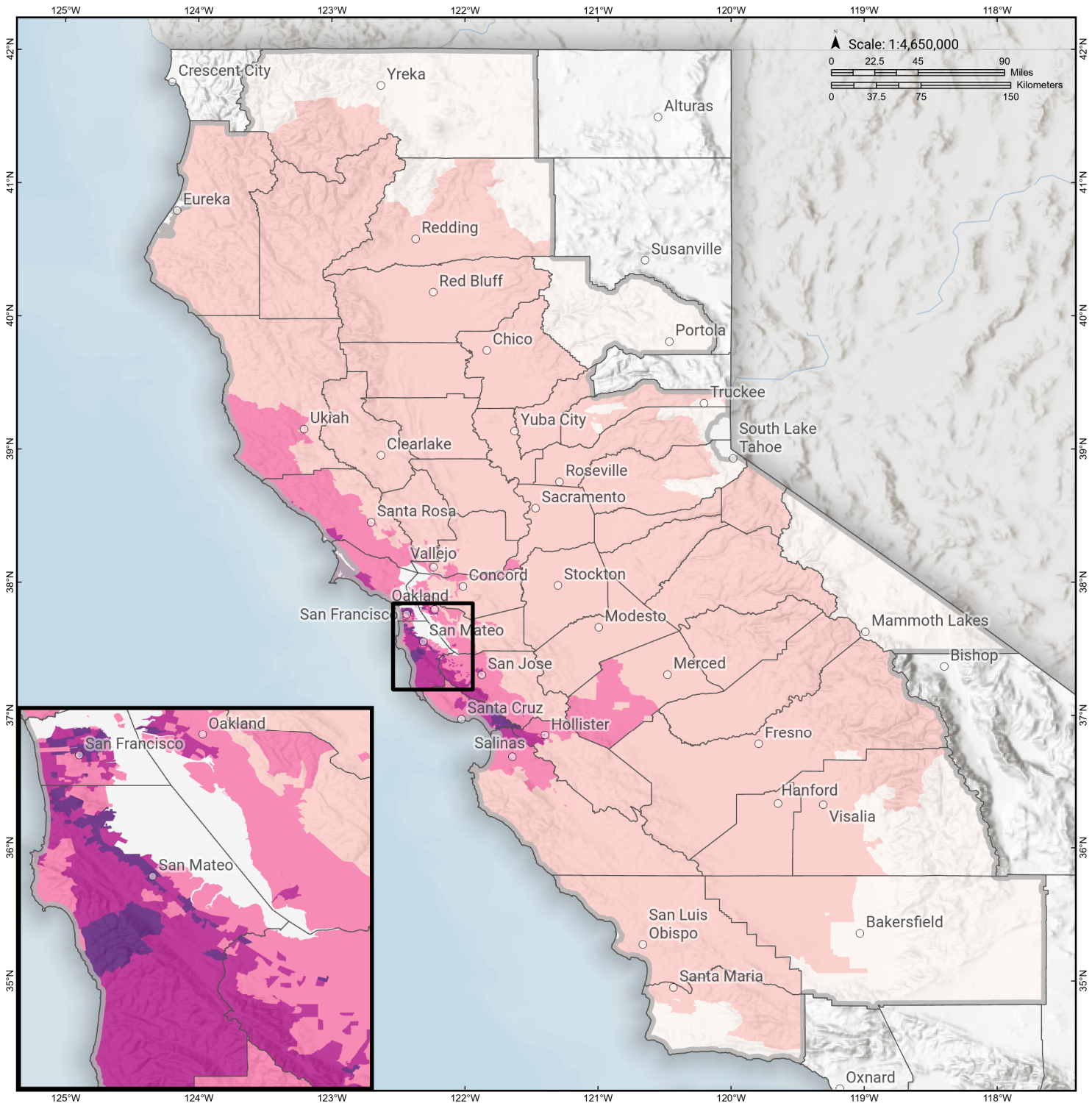
Study Region: N. San Andreas: SAN+SAP+SAS
Scenario: nsanandreassansapsas_m7p88_se

Displaced Households



N. San Andreas: SAN+SAP+SAS

Loss Ratio by Census Tract



Study Region: N. San Andreas: SAN+SAP+SAS

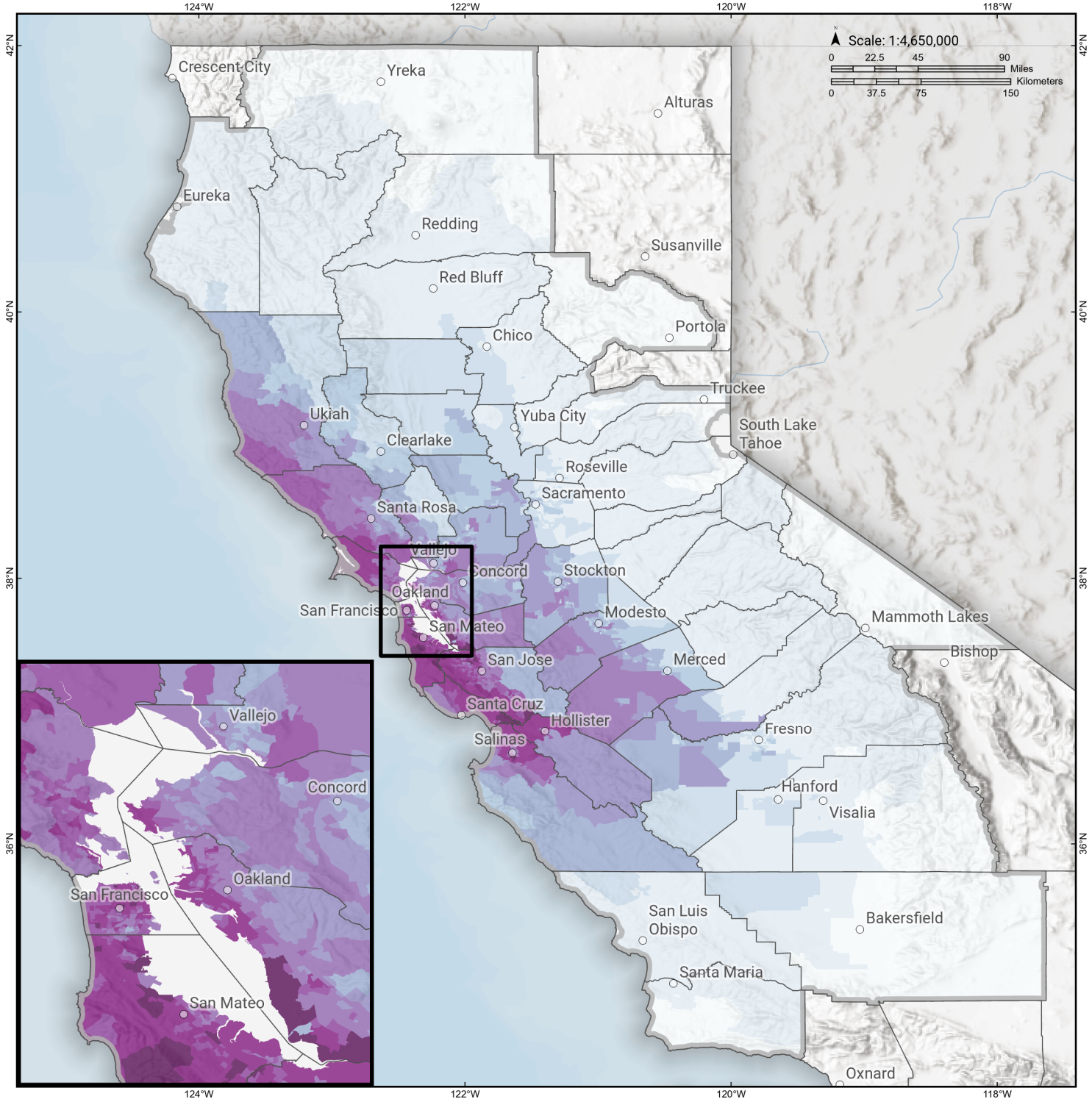
Scenario: nsanandreassansapsas_m7p88_se

Loss Ratio (ratio of building related economic loss to exposed value of buildings)

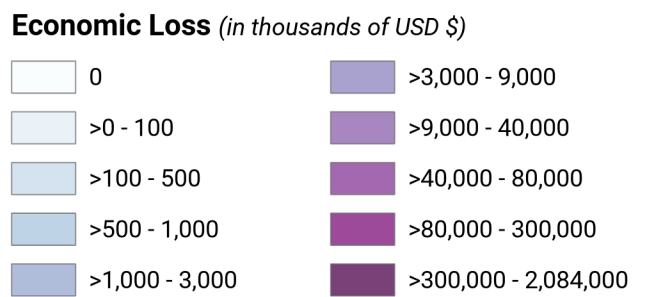


N. San Andreas: SAN+SAP+SAS

Total Building Related Economic Loss by Census Tract



Study Region: N. San Andreas: SAN+SAP+SAS
Scenario: nsanandreassansapsas_m7p88_se



Building Damage by Count by General Occupancy



June 10, 2024

	# of Buildings					Total
	None	Slight	Moderate	Extensive	Complete	
California						
Alameda						
<i>Government</i>	6,706	2,480	1,093	207	42	10,528
<i>Commercial</i>	17,214	7,716	4,497	2,069	493	31,989
<i>Agriculture</i>	249	98	49	20	6	422
<i>Religion</i>	992	494	320	145	35	1,986
<i>Single Family</i>	264,677	76,160	3,286	43	8	344,173
<i>Education</i>	840	140	73	49	14	1,117
<i>Industrial</i>	5,310	2,630	1,476	591	198	10,205
<i>Other Residential</i>	38,224	15,629	5,000	2,099	444	61,396
Alpine						
<i>Education</i>	5	0	0	0	0	5
<i>Commercial</i>	48	0	0	0	0	48
<i>Government</i>	4	0	0	0	0	4
<i>Agriculture</i>	0	0	0	0	0	0
<i>Religion</i>	1	0	0	0	0	1
<i>Industrial</i>	14	0	0	0	0	14
<i>Single Family</i>	842	0	0	0	0	842
<i>Other Residential</i>	97	0	0	0	0	97
Amador						

	# of Buildings					Total
	None	Slight	Moderate	Extensive	Complete	
<i>Industrial</i>	235	0	0	0	0	235
<i>Other Residential</i>	1,037	0	0	0	0	1,037
<i>Single Family</i>	14,962	0	0	0	0	14,962
<i>Education</i>	23	0	0	0	0	23
<i>Government</i>	32	0	0	0	0	32
<i>Commercial</i>	1,368	0	0	0	0	1,368
<i>Agriculture</i>	44	0	0	0	0	44
<i>Religion</i>	45	0	0	0	0	45
Butte						
<i>Religion</i>	530	1	0	0	0	531
<i>Agriculture</i>	508	1	0	0	0	510
<i>Government</i>	147	0	0	0	0	147
<i>Commercial</i>	6,379	6	0	0	0	6,385
<i>Industrial</i>	1,520	2	0	0	0	1,522
<i>Other Residential</i>	21,473	24	1	0	0	21,498
<i>Single Family</i>	50,279	4	0	0	0	50,283
<i>Education</i>	172	0	0	0	0	172
Calaveras						
<i>Education</i>	35	0	0	0	0	35
<i>Government</i>	84	0	0	0	0	84
<i>Other Residential</i>	2,558	1	0	0	0	2,559
<i>Commercial</i>	1,413	0	0	0	0	1,413
<i>Religion</i>	130	0	0	0	0	130
<i>Agriculture</i>	2,206	0	0	0	0	2,207
<i>Industrial</i>	466	0	0	0	0	466

	# of Buildings					Total
	None	Slight	Moderate	Extensive	Complete	
Colusa						
<i>Single Family</i>	22,148	0	0	0	0	22,148
<i>Agriculture</i>	141	1	0	0	0	142
<i>Religion</i>	57	1	0	0	0	58
<i>Commercial</i>	786	8	1	0	0	794
<i>Industrial</i>	112	1	0	0	0	113
<i>Other Residential</i>	944	9	1	0	0	954
<i>Single Family</i>	5,937	17	0	0	0	5,954
<i>Government</i>	32	0	0	0	0	32
<i>Education</i>	33	0	0	0	0	33
Contra Costa						
<i>Commercial</i>	14,908	2,222	658	171	32	17,991
<i>Agriculture</i>	628	88	26	5	1	749
<i>Religion</i>	934	189	78	20	5	1,226
<i>Single Family</i>	255,632	25,703	597	2	1	281,935
<i>Government</i>	4,175	605	206	32	6	5,024
<i>Education</i>	613	32	7	1	0	653
<i>Industrial</i>	3,648	742	284	62	14	4,749
<i>Other Residential</i>	23,642	4,374	956	127	24	29,124
El Dorado						
<i>Education</i>	128	0	0	0	0	128
<i>Industrial</i>	1,199	0	0	0	0	1,199
<i>Other Residential</i>	10,420	0	0	0	0	10,420
<i>Single Family</i>	71,424	0	0	0	0	71,424
<i>Government</i>	100	0	0	0	0	100

	# of Buildings					Total
	None	Slight	Moderate	Extensive	Complete	
<i>Commercial</i>	4,768	0	0	0	0	4,768
<i>Religion</i>	180	0	0	0	0	180
<i>Agriculture</i>	161	0	0	0	0	161
Fresno						
<i>Commercial</i>	20,968	77	8	0	0	21,054
<i>Religion</i>	1,498	8	1	0	0	1,507
<i>Agriculture</i>	3,397	22	2	0	0	3,421
<i>Industrial</i>	5,321	25	2	0	0	5,348
<i>Other Residential</i>	40,771	185	16	0	0	40,973
<i>Single Family</i>	226,245	180	0	0	0	226,425
<i>Government</i>	289	2	0	0	0	291
<i>Education</i>	602	0	0	0	0	602
Glenn						
<i>Government</i>	99	0	0	0	0	99
<i>Education</i>	35	0	0	0	0	35
<i>Industrial</i>	253	1	0	0	0	254
<i>Other Residential</i>	2,132	19	1	0	0	2,152
<i>Single Family</i>	7,412	5	0	0	0	7,417
<i>Commercial</i>	881	4	0	0	0	885
<i>Agriculture</i>	1,357	8	1	0	0	1,365
<i>Religion</i>	89	0	0	0	0	89
Humboldt						
<i>Agriculture</i>	150	0	0	0	0	150
<i>Religion</i>	61	0	0	0	0	61
<i>Government</i>	87	0	0	0	0	87

		# of Buildings					
		None	Slight	Moderate	Extensive	Complete	Total
Kern	<i>Commercial</i>	3,115	3	0	0	0	3,118
	<i>Single Family</i>	38,358	1	0	0	0	38,359
	<i>Industrial</i>	739	1	0	0	0	740
	<i>Other Residential</i>	12,052	6	0	0	0	12,058
	<i>Education</i>	127	0	0	0	0	127
	<i>Single Family</i>	205,139	0	0	0	0	205,139
	<i>Education</i>	462	0	0	0	0	462
	<i>Industrial</i>	6,047	0	0	0	0	6,047
	<i>Other Residential</i>	54,519	1	0	0	0	54,520
	<i>Government</i>	443	0	0	0	0	443
Kings	<i>Commercial</i>	15,567	0	0	0	0	15,567
	<i>Religion</i>	1,524	0	0	0	0	1,524
	<i>Agriculture</i>	4,645	0	0	0	0	4,645
	<i>Commercial</i>	2,313	5	0	0	0	2,318
	<i>Agriculture</i>	306	0	0	0	0	306
	<i>Religion</i>	210	0	0	0	0	210
	<i>Government</i>	72	0	0	0	0	72
	<i>Other Residential</i>	4,335	7	0	0	0	4,342
	<i>Industrial</i>	554	1	0	0	0	555
	<i>Single Family</i>	36,231	14	0	0	0	36,245
Lake	<i>Education</i>	103	0	0	0	0	103
	<i>Agriculture</i>	154	6	1	0	0	161

	# of Buildings					Total
	None	Slight	Moderate	Extensive	Complete	
<i>Single Family</i>	21,386	246	1	0	0	21,633
<i>Other Residential</i>	13,483	988	129	1	0	14,601
<i>Education</i>	68	0	0	0	0	68
<i>Industrial</i>	339	13	2	0	0	354
<i>Religion</i>	134	5	1	0	0	140
<i>Commercial</i>	2,010	66	14	1	0	2,091
<i>Government</i>	75	2	0	0	0	78
Madera						
<i>Commercial</i>	2,886	17	1	0	0	2,905
<i>Religion</i>	118	1	0	0	0	119
<i>Government</i>	111	0	0	0	0	111
<i>Agriculture</i>	617	14	3	0	0	634
<i>Other Residential</i>	6,587	44	3	0	0	6,635
<i>Industrial</i>	896	6	1	0	0	903
<i>Single Family</i>	38,832	80	0	0	0	38,912
<i>Education</i>	115	0	0	0	0	115
Marin						
<i>Other Residential</i>	3,605	2,970	943	316	57	7,890
<i>Government</i>	65	44	27	7	1	143
<i>Education</i>	189	59	19	5	2	274
<i>Commercial</i>	3,245	2,786	1,637	484	118	8,270
<i>Religion</i>	129	110	60	15	4	319
<i>Agriculture</i>	67	63	41	14	4	190
<i>Single Family</i>	45,276	28,597	2,808	40	2	76,724

	# of Buildings					Total
	None	Slight	Moderate	Extensive	Complete	
<i>Industrial</i>	565	512	345	93	20	1,535
Mariposa						
<i>Single Family</i>	8,084	0	0	0	0	8,084
<i>Education</i>	27	0	0	0	0	27
<i>Industrial</i>	94	0	0	0	0	94
<i>Other Residential</i>	307	0	0	0	0	307
<i>Commercial</i>	689	0	0	0	0	689
<i>Religion</i>	36	0	0	0	0	36
<i>Agriculture</i>	29	0	0	0	0	29
<i>Government</i>	33	0	0	0	0	33
Mendocino						
<i>Commercial</i>	2,772	524	136	4	0	3,436
<i>Religion</i>	183	27	6	0	0	216
<i>Agriculture</i>	160	20	4	0	0	184
<i>Other Residential</i>	4,690	1,328	767	252	23	7,060
<i>Government</i>	65	13	4	0	0	83
<i>Single Family</i>	21,914	3,854	201	0	0	25,969
<i>Education</i>	94	6	1	0	0	101
<i>Industrial</i>	705	128	34	1	0	869
Merced						
<i>Education</i>	161	2	0	0	0	163
<i>Government</i>	165	5	1	0	0	171
<i>Commercial</i>	4,518	198	34	3	0	4,754
<i>Religion</i>	329	14	2	0	0	345
<i>Agriculture</i>	6,585	646	344	77	1	7,653

	# of Buildings					Total
	None	Slight	Moderate	Extensive	Complete	
Mono						
<i>Single Family</i>	62,088	1,501	9	0	0	63,598
<i>Industrial</i>	975	41	6	0	0	1,022
<i>Other Residential</i>	10,069	584	125	9	0	10,787
<i>Government</i>	18	0	0	0	0	18
<i>Education</i>	21	0	0	0	0	21
<i>Commercial</i>	654	0	0	0	0	654
<i>Religion</i>	32	0	0	0	0	32
<i>Agriculture</i>	145	0	0	0	0	145
<i>Other Residential</i>	1,759	0	0	0	0	1,759
<i>Single Family</i>	7,704	0	0	0	0	7,704
<i>Industrial</i>	108	0	0	0	0	108
Monterey						
<i>Single Family</i>	65,494	23,331	2,034	12	3	90,876
<i>Industrial</i>	1,008	432	268	94	48	1,850
<i>Education</i>	198	32	8	1	0	239
<i>Other Residential</i>	12,049	4,361	1,656	1,304	439	19,809
<i>Commercial</i>	5,546	2,122	1,074	341	162	9,246
<i>Religion</i>	351	127	71	22	9	580
<i>Agriculture</i>	1,538	175	79	18	5	1,815
<i>Government</i>	121	39	18	5	2	185
Napa						
<i>Agriculture</i>	317	25	6	1	0	349
<i>Commercial</i>	3,516	382	108	14	0	4,021
<i>Religion</i>	128	15	4	1	0	148

	# of Buildings					Total
	None	Slight	Moderate	Extensive	Complete	
<i>Single Family</i>	36,488	2,250	23	0	0	38,761
<i>Other Residential</i>	5,777	868	307	25	0	6,978
<i>Government</i>	90	10	3	0	0	103
<i>Education</i>	122	7	2	1	0	132
<i>Industrial</i>	1,176	148	39	5	0	1,367
Nevada						
<i>Religion</i>	189	0	0	0	0	189
<i>Commercial</i>	2,835	0	0	0	0	2,835
<i>Government</i>	60	0	0	0	0	60
<i>Agriculture</i>	132	0	0	0	0	132
<i>Single Family</i>	43,280	0	0	0	0	43,280
<i>Education</i>	108	0	0	0	0	108
<i>Industrial</i>	1,161	0	0	0	0	1,161
<i>Other Residential</i>	6,384	0	0	0	0	6,384
Placer						
<i>Education</i>	231	0	0	0	0	231
<i>Government</i>	377	0	0	0	0	377
<i>Commercial</i>	8,536	2	0	0	0	8,538
<i>Agriculture</i>	258	0	0	0	0	258
<i>Religion</i>	382	0	0	0	0	382
<i>Other Residential</i>	14,838	5	0	0	0	14,843
<i>Single Family</i>	134,708	11	0	0	0	134,719
<i>Industrial</i>	2,702	1	0	0	0	2,703
Plumas						
<i>Commercial</i>	1,215	0	0	0	0	1,215

	# of Buildings					Total
	None	Slight	Moderate	Extensive	Complete	
<i>Religion</i>	30	0	0	0	0	30
<i>Agriculture</i>	84	0	0	0	0	84
<i>Single Family</i>	9,877	0	0	0	0	9,877
<i>Education</i>	26	0	0	0	0	26
<i>Industrial</i>	184	0	0	0	0	184
<i>Other Residential</i>	5,032	0	0	0	0	5,032
<i>Government</i>	45	0	0	0	0	45
Sacramento						
<i>Single Family</i>	386,315	522	3	0	0	386,840
<i>Industrial</i>	6,717	32	6	1	0	6,756
<i>Other Residential</i>	56,108	267	38	1	0	56,413
<i>Education</i>	828	1	0	0	0	829
<i>Commercial</i>	26,039	207	43	7	0	26,295
<i>Religion</i>	1,680	18	3	0	0	1,702
<i>Agriculture</i>	617	3	1	0	0	621
<i>Government</i>	589	25	4	0	0	619
San Benito						
<i>Other Residential</i>	324	586	213	176	75	1,375
<i>Government</i>	10	12	13	4	6	45
<i>Single Family</i>	5,158	8,257	1,292	18	0	14,726
<i>Industrial</i>	117	105	72	22	11	326
<i>Education</i>	20	14	6	1	2	42
<i>Agriculture</i>	144	65	31	9	3	253
<i>Religion</i>	16	23	14	4	7	64
<i>Commercial</i>	319	349	232	85	95	1,080

	# of Buildings					Total
	None	Slight	Moderate	Extensive	Complete	
San Francisco						
<i>Other Residential</i>	8,920	17,000	9,454	5,193	3,962	44,529
<i>Government</i>	35	78	99	47	30	289
<i>Single Family</i>	40,665	74,296	27,932	4,764	3,046	150,703
<i>Education</i>	211	171	84	53	53	572
<i>Industrial</i>	665	1,135	987	677	397	3,860
<i>Commercial</i>	3,209	6,648	5,399	3,718	2,370	21,344
<i>Religion</i>	194	428	387	223	114	1,345
<i>Agriculture</i>	26	51	42	27	16	162
San Joaquin						
<i>Commercial</i>	12,502	319	41	2	0	12,864
<i>Religion</i>	852	22	3	0	0	877
<i>Agriculture</i>	731	19	2	0	0	753
<i>Government</i>	292	10	2	0	0	304
<i>Single Family</i>	184,399	4,147	368	8	0	188,922
<i>Education</i>	391	3	0	0	0	395
<i>Industrial</i>	4,776	132	19	1	0	4,928
<i>Other Residential</i>	21,012	712	80	1	0	21,805
San Luis Obispo						
<i>Agriculture</i>	421	0	0	0	0	421
<i>Government</i>	185	0	0	0	0	185
<i>Religion</i>	360	0	0	0	0	360
<i>Commercial</i>	9,372	3	0	0	0	9,375
<i>Other Residential</i>	20,200	16	0	0	0	20,216
<i>Single Family</i>	85,638	1	0	0	0	85,639

	# of Buildings					Total
	None	Slight	Moderate	Extensive	Complete	
<i>Industrial</i>	2,555	1	0	0	0	2,556
<i>Education</i>	182	0	0	0	0	182
San Mateo						
<i>Religion</i>	54	153	257	207	65	736
<i>Commercial</i>	1,409	3,593	4,777	3,365	1,251	14,395
<i>Government</i>	33	65	104	76	20	299
<i>Agriculture</i>	48	144	185	104	58	539
<i>Single Family</i>	25,705	85,053	46,959	2,024	190	159,931
<i>Other Residential</i>	3,100	9,151	6,469	2,429	1,304	22,453
<i>Industrial</i>	470	1,043	1,443	1,103	414	4,472
<i>Education</i>	137	181	128	31	12	489
Santa Barbara						
<i>Education</i>	299	0	0	0	0	299
<i>Government</i>	239	0	0	0	0	239
<i>Other Residential</i>	24,108	3	0	0	0	24,111
<i>Agriculture</i>	464	0	0	0	0	464
<i>Religion</i>	621	0	0	0	0	621
<i>Commercial</i>	9,820	0	0	0	0	9,820
<i>Industrial</i>	2,840	0	0	0	0	2,840
<i>Single Family</i>	98,982	0	0	0	0	98,982
Santa Clara						
<i>Single Family</i>	190,542	202,924	33,128	517	107	427,219
<i>Government</i>	153	155	134	46	15	502
<i>Other Residential</i>	20,231	23,237	10,399	4,438	854	59,160
<i>Education</i>	652	356	131	22	12	1,173

	# of Buildings					Total
	None	Slight	Moderate	Extensive	Complete	
<i>Industrial</i>	3,001	3,171	2,251	761	248	9,433
<i>Religion</i>	413	495	449	153	30	1,540
<i>Commercial</i>	10,417	12,107	9,033	2,886	1,025	35,469
<i>Agriculture</i>	276	302	218	73	27	895
Santa Cruz						
<i>Agriculture</i>	105	205	241	170	119	840
<i>Religion</i>	60	110	107	56	27	359
<i>Other Residential</i>	3,781	5,847	2,686	1,822	756	14,892
<i>Industrial</i>	308	550	554	265	142	1,819
<i>Single Family</i>	23,220	37,145	8,341	157	6	68,870
<i>Education</i>	103	73	33	10	6	225
<i>Commercial</i>	1,426	2,203	1,802	834	429	6,694
<i>Government</i>	30	34	34	19	10	127
Shasta						
<i>Religion</i>	66	0	0	0	0	66
<i>Commercial</i>	5,254	0	0	0	0	5,254
<i>Agriculture</i>	3,235	0	0	0	0	3,235
<i>Single Family</i>	51,815	0	0	0	0	51,815
<i>Other Residential</i>	16,942	7	0	0	0	16,949
<i>Industrial</i>	1,038	0	0	0	0	1,038
<i>Government</i>	87	0	0	0	0	87
<i>Education</i>	136	0	0	0	0	136
Siskiyou						
<i>Religion</i>	127	0	0	0	0	127
<i>Commercial</i>	1,591	0	0	0	0	1,591

	# of Buildings					Total
	None	Slight	Moderate	Extensive	Complete	
<i>Agriculture</i>	201	0	0	0	0	201
<i>Single Family</i>	17,794	0	0	0	0	17,794
<i>Government</i>	244	0	0	0	0	244
<i>Other Residential</i>	5,095	0	0	0	0	5,095
<i>Industrial</i>	480	0	0	0	0	480
<i>Education</i>	76	0	0	0	0	76
Solano						
<i>Agriculture</i>	224	15	4	1	0	245
<i>Religion</i>	392	44	15	3	0	454
<i>Commercial</i>	6,437	604	190	35	2	7,268
<i>Government</i>	140	11	1	0	0	152
<i>Other Residential</i>	10,672	1,224	374	46	1	12,317
<i>Industrial</i>	1,795	222	69	14	1	2,101
<i>Single Family</i>	114,779	6,133	55	0	0	120,968
<i>Education</i>	217	6	2	0	0	225
Sonoma						
<i>Government</i>	197	81	36	5	0	319
<i>Other Residential</i>	15,998	5,477	2,927	602	29	25,033
<i>Education</i>	314	41	8	3	1	367
<i>Religion</i>	366	141	56	12	1	576
<i>Commercial</i>	8,033	2,696	1,045	298	38	12,110
<i>Agriculture</i>	692	328	183	79	21	1,304
<i>Single Family</i>	109,977	30,436	1,596	18	1	142,028
<i>Industrial</i>	2,382	927	403	100	12	3,825
Stanislaus						

	# of Buildings					Total
	None	Slight	Moderate	Extensive	Complete	
<i>Other Residential</i>	18,936	536	94	3	0	19,569
<i>Education</i>	305	2	0	0	0	307
<i>Industrial</i>	3,326	124	24	2	0	3,475
<i>Single Family</i>	140,991	1,731	2	0	0	142,724
<i>Government</i>	661	17	2	0	0	680
<i>Religion</i>	438	15	3	0	0	456
<i>Commercial</i>	9,994	321	52	2	0	10,369
<i>Agriculture</i>	1,187	39	12	2	0	1,239
Sutter						
<i>Other Residential</i>	3,097	15	1	0	0	3,113
<i>Government</i>	77	0	0	0	0	77
<i>Education</i>	62	0	0	0	0	62
<i>Industrial</i>	634	2	0	0	0	636
<i>Single Family</i>	24,495	17	0	0	0	24,512
<i>Agriculture</i>	1,117	7	1	0	0	1,125
<i>Commercial</i>	2,047	5	0	0	0	2,052
<i>Religion</i>	154	0	0	0	0	154
Tehama						
<i>Religion</i>	110	0	0	0	0	110
<i>Agriculture</i>	299	0	0	0	0	299
<i>Single Family</i>	21,219	3	0	0	0	21,222
<i>Other Residential</i>	3,986	5	0	0	0	3,991
<i>Industrial</i>	552	0	0	0	0	552
<i>Education</i>	57	0	0	0	0	57
<i>Commercial</i>	1,269	1	0	0	0	1,270

		# of Buildings					
		None	Slight	Moderate	Extensive	Complete	Total
Trinity	<i>Government</i>	50	0	0	0	0	50
	<i>Agriculture</i>	4	0	0	0	0	4
	<i>Commercial</i>	1,005	0	0	0	0	1,005
	<i>Religion</i>	45	0	0	0	0	45
	<i>Industrial</i>	58	0	0	0	0	58
	<i>Single Family</i>	6,294	0	0	0	0	6,294
	<i>Other Residential</i>	1,354	0	0	0	0	1,354
	<i>Education</i>	26	0	0	0	0	26
Tulare	<i>Government</i>	8	0	0	0	0	8
	<i>Religion</i>	827	0	0	0	0	827
	<i>Commercial</i>	8,871	2	0	0	0	8,873
	<i>Agriculture</i>	3,554	1	0	0	0	3,555
	<i>Government</i>	461	0	0	0	0	461
	<i>Single Family</i>	112,034	0	0	0	0	112,034
	<i>Education</i>	269	0	0	0	0	269
	<i>Industrial</i>	2,148	0	0	0	0	2,148
<i>Other Residential</i>	20,016	6	0	0	0	20,022	
Tuolumne	<i>Education</i>	57	0	0	0	0	57
	<i>Government</i>	143	0	0	0	0	143
	<i>Commercial</i>	1,576	0	0	0	0	1,576
	<i>Religion</i>	121	0	0	0	0	121
	<i>Agriculture</i>	82	0	0	0	0	82

		# of Buildings					
		None	Slight	Moderate	Extensive	Complete	Total
Yolo	<i>Other Residential</i>	4,962	0	0	0	0	4,962
	<i>Industrial</i>	383	0	0	0	0	383
	<i>Single Family</i>	21,645	0	0	0	0	21,645
	<i>Education</i>	130	1	0	0	0	131
	<i>Government</i>	109	2	0	0	0	111
	<i>Industrial</i>	1,098	17	2	0	0	1,117
	<i>Other Residential</i>	9,743	111	7	0	0	9,861
	<i>Single Family</i>	42,318	271	0	0	0	42,589
	<i>Commercial</i>	4,158	61	6	0	0	4,225
	<i>Agriculture</i>	276	4	1	0	0	281
Yuba	<i>Religion</i>	238	3	0	0	0	242
	<i>Other Residential</i>	7,003	17	1	0	0	7,021
	<i>Government</i>	591	0	0	0	0	591
	<i>Education</i>	54	0	0	0	0	54
	<i>Agriculture</i>	92	0	0	0	0	92
	<i>Religion</i>	98	0	0	0	0	98
	<i>Commercial</i>	1,196	3	0	0	0	1,199
	<i>Industrial</i>	403	1	0	0	0	404
	<i>Single Family</i>	18,860	7	0	0	0	18,867
	Total	4,394,890	775,541	215,962	46,651	19,647	5,452,692
Region Total	4,394,890	775,541	215,962	46,651	19,647	5,452,692	

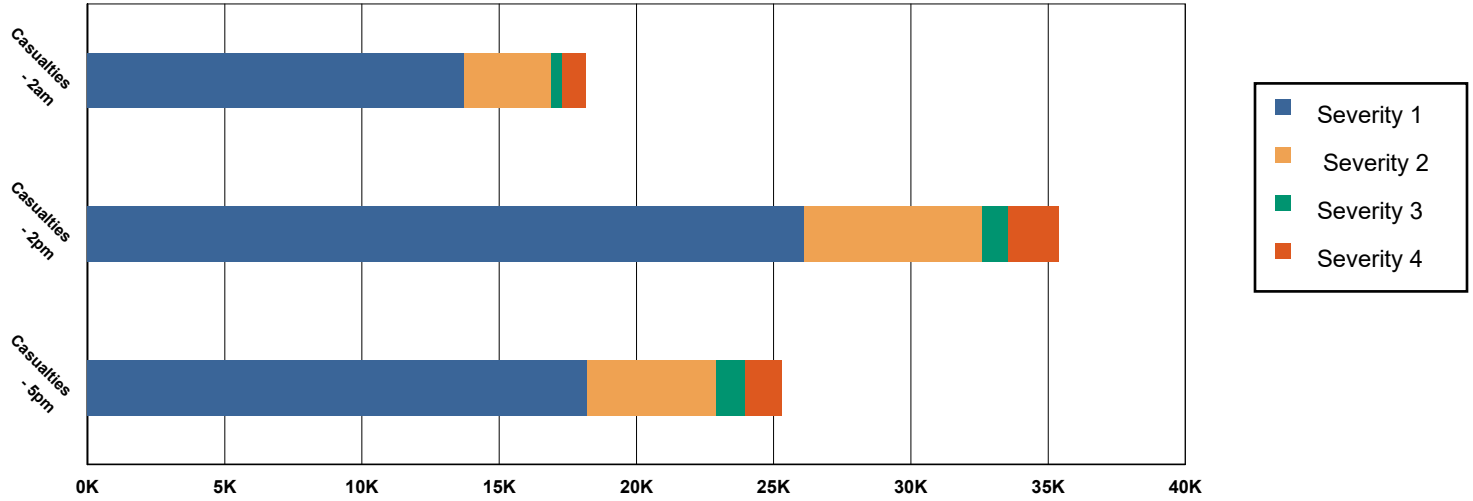
# of Buildings					
None	Slight	Moderate	Extensive	Complete	Total

Totals only reflect data for those census tracts/blocks included in the user's study region and will reflect the entire county/state only if all of the census blocks for that county/states were selected at the time of study region creation.

Casualties Summary Report

June 10, 2024

Region Total Casualties



Injury Severity Level

Severity 1 Severity 2 Severity 3 Severity 4 Total

California

Alameda

Casualties - 2am

	Severity 1	Severity 2	Severity 3	Severity 4	Total
Single Family	144	4	0	0	149
Hotels	1	0	0	0	1
Commuting	0	0	0	0	0
Educational	0	0	0	0	0
Industrial	30	7	1	2	39
Commercial	30	7	1	2	39
Other-Residential	795	163	21	42	1,021
Total Casualties - 2am	999	181	23	46	1,249

Casualties - 2pm

Industrial	218	51	7	14	290
Educational	332	69	9	18	429
Other-Residential	256	53	7	13	330
Single Family	39	1	0	0	41
Hotels	0	0	0	0	0
Commuting	0	0	1	0	2
Commercial	1,889	413	56	109	2,467

Injury Severity Level

Severity 1 Severity 2 Severity 3 Severity 4 Total

California

Alameda

	Severity 1	Severity 2	Severity 3	Severity 4	Total
Total Casualties - 2pm	2,735	588	81	155	3,558
Casualties - 5pm					
<i>Commuting</i>	7	9	16	3	36
<i>Single Family</i>	52	2	0	0	54
<i>Commercial</i>	1,279	278	38	73	1,668
<i>Hotels</i>	0	0	0	0	0
<i>Educational</i>	34	5	1	1	41
<i>Industrial</i>	136	32	5	9	181
<i>Other-Residential</i>	311	65	9	17	402
Total Casualties - 5pm	1,820	391	68	102	2,382

Alpine

	Severity 1	Severity 2	Severity 3	Severity 4	Total
Casualties - 2am					
<i>Industrial</i>	0	0	0	0	0
<i>Single Family</i>	0	0	0	0	0
<i>Commercial</i>	0	0	0	0	0
<i>Other-Residential</i>	0	0	0	0	0
<i>Hotels</i>	0	0	0	0	0
<i>Commuting</i>	0	0	0	0	0
<i>Educational</i>	0	0	0	0	0
Total Casualties - 2am	0	0	0	0	0

	Severity 1	Severity 2	Severity 3	Severity 4	Total
Casualties - 2pm					
<i>Educational</i>	0	0	0	0	0
<i>Other-Residential</i>	0	0	0	0	0
<i>Single Family</i>	0	0	0	0	0
<i>Hotels</i>	0	0	0	0	0
<i>Commercial</i>	0	0	0	0	0
<i>Commuting</i>	0	0	0	0	0
<i>Industrial</i>	0	0	0	0	0
Total Casualties - 2pm	0	0	0	0	0

	Severity 1	Severity 2	Severity 3	Severity 4	Total
Casualties - 5pm					
<i>Industrial</i>	0	0	0	0	0
<i>Other-Residential</i>	0	0	0	0	0
<i>Commuting</i>	0	0	0	0	0
<i>Commercial</i>	0	0	0	0	0
<i>Single Family</i>	0	0	0	0	0
<i>Educational</i>	0	0	0	0	0
<i>Hotels</i>	0	0	0	0	0
Total Casualties - 5pm	0	0	0	0	0

Amador

	Severity 1	Severity 2	Severity 3	Severity 4	Total
Casualties - 2am					
<i>Commercial</i>	0	0	0	0	0

	Injury Severity Level				Total
	Severity 1	Severity 2	Severity 3	Severity 4	
California					
Amador					
Casualties - 2am					
<i>Other-Residential</i>	0	0	0	0	0
<i>Commuting</i>	0	0	0	0	0
<i>Educational</i>	0	0	0	0	0
<i>Single Family</i>	0	0	0	0	0
<i>Hotels</i>	0	0	0	0	0
<i>Industrial</i>	0	0	0	0	0
Total Casualties - 2am	0	0	0	0	0
Casualties - 2pm					
<i>Single Family</i>	0	0	0	0	0
<i>Hotels</i>	0	0	0	0	0
<i>Educational</i>	0	0	0	0	0
<i>Commuting</i>	0	0	0	0	0
<i>Commercial</i>	0	0	0	0	0
<i>Other-Residential</i>	0	0	0	0	0
<i>Industrial</i>	0	0	0	0	0
Total Casualties - 2pm	0	0	0	0	0
Casualties - 5pm					
<i>Commercial</i>	0	0	0	0	0
<i>Commuting</i>	0	0	0	0	0
<i>Other-Residential</i>	0	0	0	0	0
<i>Single Family</i>	0	0	0	0	0
<i>Educational</i>	0	0	0	0	0
<i>Hotels</i>	0	0	0	0	0
<i>Industrial</i>	0	0	0	0	0
Total Casualties - 5pm	0	0	0	0	0
Butte					
Casualties - 2am					
<i>Industrial</i>	0	0	0	0	0
<i>Commercial</i>	0	0	0	0	0
<i>Other-Residential</i>	0	0	0	0	0
<i>Single Family</i>	0	0	0	0	0
<i>Commuting</i>	0	0	0	0	0
<i>Educational</i>	0	0	0	0	0
<i>Hotels</i>	0	0	0	0	0
Total Casualties - 2am	0	0	0	0	0
Casualties - 2pm					
<i>Single Family</i>	0	0	0	0	0
<i>Educational</i>	0	0	0	0	0
<i>Commuting</i>	0	0	0	0	0
<i>Other-Residential</i>	0	0	0	0	0
<i>Hotels</i>	0	0	0	0	0

	Injury Severity Level				Total
	Severity 1	Severity 2	Severity 3	Severity 4	
California					
Butte					
Casualties - 2pm					
Commercial	0	0	0	0	0
Industrial	0	0	0	0	0
Total Casualties - 2pm	0	0	0	0	0
Casualties - 5pm					
Industrial	0	0	0	0	0
Other-Residential	0	0	0	0	0
Single Family	0	0	0	0	0
Commercial	0	0	0	0	0
Commuting	0	0	0	0	0
Hotels	0	0	0	0	0
Educational	0	0	0	0	0
Total Casualties - 5pm	0	0	0	0	0
Calaveras					
Casualties - 2am					
Other-Residential	0	0	0	0	0
Commuting	0	0	0	0	0
Commercial	0	0	0	0	0
Single Family	0	0	0	0	0
Hotels	0	0	0	0	0
Educational	0	0	0	0	0
Industrial	0	0	0	0	0
Total Casualties - 2am	0	0	0	0	0
Casualties - 2pm					
Hotels	0	0	0	0	0
Single Family	0	0	0	0	0
Educational	0	0	0	0	0
Commuting	0	0	0	0	0
Commercial	0	0	0	0	0
Industrial	0	0	0	0	0
Other-Residential	0	0	0	0	0
Total Casualties - 2pm	0	0	0	0	0
Casualties - 5pm					
Industrial	0	0	0	0	0
Commercial	0	0	0	0	0
Other-Residential	0	0	0	0	0
Educational	0	0	0	0	0
Hotels	0	0	0	0	0
Commuting	0	0	0	0	0
Single Family	0	0	0	0	0
Total Casualties - 5pm	0	0	0	0	0

	Injury Severity Level				Total
	Severity 1	Severity 2	Severity 3	Severity 4	
California					
Colusa					
Casualties - 2am					
<i>Other-Residential</i>	0	0	0	0	0
<i>Industrial</i>	0	0	0	0	0
<i>Single Family</i>	0	0	0	0	0
<i>Commercial</i>	0	0	0	0	0
<i>Educational</i>	0	0	0	0	0
<i>Commuting</i>	0	0	0	0	0
<i>Hotels</i>	0	0	0	0	0
Total Casualties - 2am	0	0	0	0	0
Casualties - 2pm					
<i>Hotels</i>	0	0	0	0	0
<i>Single Family</i>	0	0	0	0	0
<i>Educational</i>	0	0	0	0	0
<i>Commercial</i>	0	0	0	0	0
<i>Commuting</i>	0	0	0	0	0
<i>Other-Residential</i>	0	0	0	0	0
<i>Industrial</i>	0	0	0	0	0
Total Casualties - 2pm	0	0	0	0	0
Casualties - 5pm					
<i>Industrial</i>	0	0	0	0	0
<i>Commercial</i>	0	0	0	0	0
<i>Other-Residential</i>	0	0	0	0	0
<i>Commuting</i>	0	0	0	0	0
<i>Single Family</i>	0	0	0	0	0
<i>Educational</i>	0	0	0	0	0
<i>Hotels</i>	0	0	0	0	0
Total Casualties - 5pm	0	0	0	0	0
Contra Costa					
Casualties - 2am					
<i>Educational</i>	0	0	0	0	0
<i>Hotels</i>	0	0	0	0	0
<i>Industrial</i>	2	0	0	0	3
<i>Other-Residential</i>	57	9	1	2	69
<i>Single Family</i>	45	1	0	0	45
<i>Commercial</i>	3	0	0	0	3
<i>Commuting</i>	0	0	0	0	0
Total Casualties - 2am	106	11	1	3	121
Casualties - 2pm					
<i>Other-Residential</i>	18	3	0	1	22
<i>Industrial</i>	17	3	0	1	22
<i>Hotels</i>	0	0	0	0	0
<i>Single Family</i>	13	0	0	0	13

	Injury Severity Level				Total
	Severity 1	Severity 2	Severity 3	Severity 4	
California					
Contra Costa					
Casualties - 2pm					
<i>Educational</i>	29	4	0	1	34
<i>Commuting</i>	0	0	0	0	1
<i>Commercial</i>	190	36	5	9	239
Total Casualties - 2pm	267	46	6	11	331
Casualties - 5pm					
<i>Educational</i>	2	0	0	0	2
<i>Commuting</i>	2	3	5	1	11
<i>Single Family</i>	16	0	0	0	16
<i>Hotels</i>	0	0	0	0	0
<i>Industrial</i>	11	2	0	0	13
<i>Other-Residential</i>	21	4	0	1	26
<i>Commercial</i>	136	26	3	6	171
Total Casualties - 5pm	188	34	9	9	240
El Dorado					
Casualties - 2am					
<i>Commuting</i>	0	0	0	0	0
<i>Educational</i>	0	0	0	0	0
<i>Single Family</i>	0	0	0	0	0
<i>Hotels</i>	0	0	0	0	0
<i>Other-Residential</i>	0	0	0	0	0
<i>Industrial</i>	0	0	0	0	0
<i>Commercial</i>	0	0	0	0	0
Total Casualties - 2am	0	0	0	0	0
Casualties - 2pm					
<i>Industrial</i>	0	0	0	0	0
<i>Other-Residential</i>	0	0	0	0	0
<i>Single Family</i>	0	0	0	0	0
<i>Hotels</i>	0	0	0	0	0
<i>Educational</i>	0	0	0	0	0
<i>Commuting</i>	0	0	0	0	0
<i>Commercial</i>	0	0	0	0	0
Total Casualties - 2pm	0	0	0	0	0
Casualties - 5pm					
<i>Commercial</i>	0	0	0	0	0
<i>Commuting</i>	0	0	0	0	0
<i>Single Family</i>	0	0	0	0	0
<i>Educational</i>	0	0	0	0	0
<i>Hotels</i>	0	0	0	0	0
<i>Industrial</i>	0	0	0	0	0
<i>Other-Residential</i>	0	0	0	0	0

	Injury Severity Level				Total
	Severity 1	Severity 2	Severity 3	Severity 4	
California					
El Dorado					
Total Casualties - 5pm	0	0	0	0	0
Fresno					
Casualties - 2am					
<i>Hotels</i>	0	0	0	0	0
<i>Educational</i>	0	0	0	0	0
<i>Industrial</i>	0	0	0	0	0
<i>Commercial</i>	0	0	0	0	0
<i>Other-Residential</i>	1	0	0	0	1
<i>Single Family</i>	0	0	0	0	0
<i>Commuting</i>	0	0	0	0	0
Total Casualties - 2am	1	0	0	0	1
Casualties - 2pm					
<i>Commercial</i>	1	0	0	0	1
<i>Other-Residential</i>	0	0	0	0	0
<i>Industrial</i>	0	0	0	0	0
<i>Single Family</i>	0	0	0	0	0
<i>Hotels</i>	0	0	0	0	0
<i>Commuting</i>	0	0	0	0	0
<i>Educational</i>	0	0	0	0	0
Total Casualties - 2pm	2	0	0	0	2
Casualties - 5pm					
<i>Educational</i>	0	0	0	0	0
<i>Commuting</i>	0	0	0	0	0
<i>Hotels</i>	0	0	0	0	0
<i>Industrial</i>	0	0	0	0	0
<i>Single Family</i>	0	0	0	0	0
<i>Other-Residential</i>	0	0	0	0	0
<i>Commercial</i>	1	0	0	0	1
Total Casualties - 5pm	1	0	0	0	1
Glenn					
Casualties - 2am					
<i>Hotels</i>	0	0	0	0	0
<i>Educational</i>	0	0	0	0	0
<i>Industrial</i>	0	0	0	0	0
<i>Other-Residential</i>	0	0	0	0	0
<i>Commercial</i>	0	0	0	0	0
<i>Commuting</i>	0	0	0	0	0
<i>Single Family</i>	0	0	0	0	0
Total Casualties - 2am	0	0	0	0	0
Casualties - 2pm					
<i>Industrial</i>	0	0	0	0	0

	Injury Severity Level				Total
	Severity 1	Severity 2	Severity 3	Severity 4	
California					
Glenn					
Casualties - 2pm					
Other-Residential	0	0	0	0	0
Commuting	0	0	0	0	0
Commercial	0	0	0	0	0
Hotels	0	0	0	0	0
Single Family	0	0	0	0	0
Educational	0	0	0	0	0
Total Casualties - 2pm	0	0	0	0	0
Casualties - 5pm					
Educational	0	0	0	0	0
Commuting	0	0	0	0	0
Hotels	0	0	0	0	0
Single Family	0	0	0	0	0
Industrial	0	0	0	0	0
Commercial	0	0	0	0	0
Other-Residential	0	0	0	0	0
Total Casualties - 5pm	0	0	0	0	0
Humboldt					
Casualties - 2am					
Single Family	0	0	0	0	0
Commercial	0	0	0	0	0
Commuting	0	0	0	0	0
Hotels	0	0	0	0	0
Educational	0	0	0	0	0
Industrial	0	0	0	0	0
Other-Residential	0	0	0	0	0
Total Casualties - 2am	0	0	0	0	0
Casualties - 2pm					
Industrial	0	0	0	0	0
Hotels	0	0	0	0	0
Commercial	0	0	0	0	0
Other-Residential	0	0	0	0	0
Single Family	0	0	0	0	0
Educational	0	0	0	0	0
Commuting	0	0	0	0	0
Total Casualties - 2pm	0	0	0	0	0
Casualties - 5pm					
Commercial	0	0	0	0	0
Other-Residential	0	0	0	0	0
Commuting	0	0	0	0	0
Hotels	0	0	0	0	0
Single Family	0	0	0	0	0

	Injury Severity Level				Total
	Severity 1	Severity 2	Severity 3	Severity 4	
California					
Humboldt					
Casualties - 5pm					
<i>Educational</i>	0	0	0	0	0
<i>Industrial</i>	0	0	0	0	0
Total Casualties - 5pm	0	0	0	0	0
Kern					
Casualties - 2am					
<i>Commercial</i>	0	0	0	0	0
<i>Commuting</i>	0	0	0	0	0
<i>Educational</i>	0	0	0	0	0
<i>Single Family</i>	0	0	0	0	0
<i>Other-Residential</i>	0	0	0	0	0
<i>Hotels</i>	0	0	0	0	0
<i>Industrial</i>	0	0	0	0	0
Total Casualties - 2am	0	0	0	0	0
Casualties - 2pm					
<i>Educational</i>	0	0	0	0	0
<i>Commuting</i>	0	0	0	0	0
<i>Single Family</i>	0	0	0	0	0
<i>Hotels</i>	0	0	0	0	0
<i>Other-Residential</i>	0	0	0	0	0
<i>Commercial</i>	0	0	0	0	0
<i>Industrial</i>	0	0	0	0	0
Total Casualties - 2pm	0	0	0	0	0
Casualties - 5pm					
<i>Single Family</i>	0	0	0	0	0
<i>Commercial</i>	0	0	0	0	0
<i>Other-Residential</i>	0	0	0	0	0
<i>Commuting</i>	0	0	0	0	0
<i>Educational</i>	0	0	0	0	0
<i>Hotels</i>	0	0	0	0	0
<i>Industrial</i>	0	0	0	0	0
Total Casualties - 5pm	0	0	0	0	0
Kings					
Casualties - 2am					
<i>Industrial</i>	0	0	0	0	0
<i>Other-Residential</i>	0	0	0	0	0
<i>Educational</i>	0	0	0	0	0
<i>Commuting</i>	0	0	0	0	0
<i>Commercial</i>	0	0	0	0	0
<i>Single Family</i>	0	0	0	0	0
<i>Hotels</i>	0	0	0	0	0

	Injury Severity Level				Total
	Severity 1	Severity 2	Severity 3	Severity 4	
California					
Kings					
Total Casualties - 2am	0	0	0	0	0
Casualties - 2pm					
Single Family	0	0	0	0	0
Other-Residential	0	0	0	0	0
Commercial	0	0	0	0	0
Educational	0	0	0	0	0
Commuting	0	0	0	0	0
Hotels	0	0	0	0	0
Industrial	0	0	0	0	0
Total Casualties - 2pm	0	0	0	0	0
Casualties - 5pm					
Single Family	0	0	0	0	0
Commercial	0	0	0	0	0
Commuting	0	0	0	0	0
Other-Residential	0	0	0	0	0
Educational	0	0	0	0	0
Hotels	0	0	0	0	0
Industrial	0	0	0	0	0
Total Casualties - 5pm	0	0	0	0	0
Lake					
Casualties - 2am					
Hotels	0	0	0	0	0
Industrial	0	0	0	0	0
Other-Residential	2	0	0	0	2
Commuting	0	0	0	0	0
Educational	0	0	0	0	0
Single Family	0	0	0	0	0
Commercial	0	0	0	0	0
Total Casualties - 2am	2	0	0	0	2
Casualties - 2pm					
Industrial	0	0	0	0	0
Single Family	0	0	0	0	0
Commercial	1	0	0	0	1
Other-Residential	1	0	0	0	1
Hotels	0	0	0	0	0
Educational	0	0	0	0	0
Commuting	0	0	0	0	0
Total Casualties - 2pm	2	0	0	0	2
Casualties - 5pm					
Other-Residential	1	0	0	0	1
Industrial	0	0	0	0	0

	Injury Severity Level				Total
	Severity 1	Severity 2	Severity 3	Severity 4	
California					
Lake					
Casualties - 5pm					
Commercial	0	0	0	0	0
Educational	0	0	0	0	0
Commuting	0	0	0	0	0
Single Family	0	0	0	0	0
Hotels	0	0	0	0	0
Total Casualties - 5pm	1	0	0	0	1
Madera					
Casualties - 2am					
Hotels	0	0	0	0	0
Educational	0	0	0	0	0
Single Family	0	0	0	0	0
Commuting	0	0	0	0	0
Industrial	0	0	0	0	0
Commercial	0	0	0	0	0
Other-Residential	0	0	0	0	0
Total Casualties - 2am	0	0	0	0	0
Casualties - 2pm					
Industrial	0	0	0	0	0
Commercial	0	0	0	0	0
Other-Residential	0	0	0	0	0
Commuting	0	0	0	0	0
Single Family	0	0	0	0	0
Hotels	0	0	0	0	0
Educational	0	0	0	0	0
Total Casualties - 2pm	1	0	0	0	1
Casualties - 5pm					
Industrial	0	0	0	0	0
Commercial	0	0	0	0	0
Single Family	0	0	0	0	0
Educational	0	0	0	0	0
Other-Residential	0	0	0	0	0
Commuting	0	0	0	0	0
Hotels	0	0	0	0	0
Total Casualties - 5pm	0	0	0	0	0
Marin					
Casualties - 2am					
Commercial	4	1	0	0	5
Commuting	0	0	0	0	0
Other-Residential	56	9	1	2	68
Educational	0	0	0	0	0
Single Family	53	2	0	0	55

	Injury Severity Level				Total
	Severity 1	Severity 2	Severity 3	Severity 4	
California					
Marin					
Casualties - 2am					
<i>Hotels</i>	0	0	0	0	0
<i>Industrial</i>	4	1	0	0	5
Total Casualties - 2am	117	13	1	3	134
Casualties - 2pm					
<i>Hotels</i>	0	0	0	0	0
<i>Commuting</i>	0	0	0	0	1
<i>Educational</i>	33	5	1	1	40
<i>Industrial</i>	27	6	1	1	35
<i>Other-Residential</i>	20	3	0	1	24
<i>Commercial</i>	269	58	8	15	350
<i>Single Family</i>	18	1	0	0	18
Total Casualties - 2pm	367	73	10	19	468
Casualties - 5pm					
<i>Commuting</i>	2	3	5	1	11
<i>Commercial</i>	170	37	5	9	221
<i>Other-Residential</i>	21	4	0	1	26
<i>Single Family</i>	19	1	0	0	20
<i>Industrial</i>	17	3	0	1	22
<i>Educational</i>	3	0	0	0	3
<i>Hotels</i>	0	0	0	0	0
Total Casualties - 5pm	233	48	11	12	303
Mariposa					
Casualties - 2am					
<i>Commuting</i>	0	0	0	0	0
<i>Single Family</i>	0	0	0	0	0
<i>Commercial</i>	0	0	0	0	0
<i>Hotels</i>	0	0	0	0	0
<i>Educational</i>	0	0	0	0	0
<i>Industrial</i>	0	0	0	0	0
<i>Other-Residential</i>	0	0	0	0	0
Total Casualties - 2am	0	0	0	0	0
Casualties - 2pm					
<i>Hotels</i>	0	0	0	0	0
<i>Industrial</i>	0	0	0	0	0
<i>Commercial</i>	0	0	0	0	0
<i>Other-Residential</i>	0	0	0	0	0
<i>Educational</i>	0	0	0	0	0
<i>Commuting</i>	0	0	0	0	0
<i>Single Family</i>	0	0	0	0	0
Total Casualties - 2pm	0	0	0	0	0

	Injury Severity Level				Total
	Severity 1	Severity 2	Severity 3	Severity 4	
California					
Mariposa					
Casualties - 5pm					
<i>Other-Residential</i>	0	0	0	0	0
<i>Educational</i>	0	0	0	0	0
<i>Commuting</i>	0	0	0	0	0
<i>Hotels</i>	0	0	0	0	0
<i>Single Family</i>	0	0	0	0	0
<i>Commercial</i>	0	0	0	0	0
<i>Industrial</i>	0	0	0	0	0
Total Casualties - 5pm	0	0	0	0	0
Mendocino					
Casualties - 2am					
<i>Educational</i>	0	0	0	0	0
<i>Hotels</i>	0	0	0	0	0
<i>Commuting</i>	0	0	0	0	0
<i>Industrial</i>	0	0	0	0	0
<i>Other-Residential</i>	13	2	0	0	15
<i>Single Family</i>	5	0	0	0	5
<i>Commercial</i>	0	0	0	0	0
Total Casualties - 2am	18	2	0	0	20
Casualties - 2pm					
<i>Industrial</i>	1	0	0	0	1
<i>Other-Residential</i>	5	1	0	0	6
<i>Commercial</i>	6	0	0	0	6
<i>Single Family</i>	2	0	0	0	2
<i>Commuting</i>	0	0	0	0	0
<i>Hotels</i>	0	0	0	0	0
<i>Educational</i>	1	0	0	0	1
Total Casualties - 2pm	15	1	0	0	16
Casualties - 5pm					
<i>Hotels</i>	0	0	0	0	0
<i>Single Family</i>	2	0	0	0	2
<i>Educational</i>	0	0	0	0	0
<i>Commuting</i>	1	1	1	0	3
<i>Commercial</i>	4	0	0	0	4
<i>Other-Residential</i>	5	1	0	0	5
<i>Industrial</i>	1	0	0	0	1
Total Casualties - 5pm	11	2	1	0	15
Merced					
Casualties - 2am					
<i>Hotels</i>	0	0	0	0	0
<i>Industrial</i>	0	0	0	0	0
<i>Commercial</i>	0	0	0	0	0

	Injury Severity Level				Total
	Severity 1	Severity 2	Severity 3	Severity 4	
California					
Merced					
Casualties - 2am					
Single Family	2	0	0	0	2
Other-Residential	2	0	0	0	3
Educational	0	0	0	0	0
Commuting	0	0	0	0	0
Total Casualties - 2am	5	0	0	0	5
Casualties - 2pm					
Other-Residential	1	0	0	0	1
Industrial	1	0	0	0	1
Commercial	24	2	0	0	26
Commuting	0	0	0	0	0
Hotels	0	0	0	0	0
Educational	1	0	0	0	1
Single Family	1	0	0	0	1
Total Casualties - 2pm	28	2	0	0	30
Casualties - 5pm					
Industrial	1	0	0	0	1
Hotels	0	0	0	0	0
Educational	0	0	0	0	0
Commuting	0	0	0	0	0
Single Family	1	0	0	0	1
Commercial	19	2	0	0	21
Other-Residential	1	0	0	0	1
Total Casualties - 5pm	21	2	0	0	23
Mono					
Casualties - 2am					
Other-Residential	0	0	0	0	0
Industrial	0	0	0	0	0
Commercial	0	0	0	0	0
Single Family	0	0	0	0	0
Educational	0	0	0	0	0
Commuting	0	0	0	0	0
Hotels	0	0	0	0	0
Total Casualties - 2am	0	0	0	0	0
Casualties - 2pm					
Commercial	0	0	0	0	0
Commuting	0	0	0	0	0
Other-Residential	0	0	0	0	0
Educational	0	0	0	0	0
Single Family	0	0	0	0	0
Hotels	0	0	0	0	0
Industrial	0	0	0	0	0

	Injury Severity Level				Total
	Severity 1	Severity 2	Severity 3	Severity 4	
California					
Mono					
Total Casualties - 2pm	0	0	0	0	0
Casualties - 5pm					
<i>Industrial</i>	0	0	0	0	0
<i>Commuting</i>	0	0	0	0	0
<i>Hotels</i>	0	0	0	0	0
<i>Other-Residential</i>	0	0	0	0	0
<i>Educational</i>	0	0	0	0	0
<i>Single Family</i>	0	0	0	0	0
<i>Commercial</i>	0	0	0	0	0
Total Casualties - 5pm	0	0	0	0	0
Monterey					
Casualties - 2am					
<i>Other-Residential</i>	241	54	6	12	313
<i>Commuting</i>	0	0	0	0	0
<i>Commercial</i>	4	1	0	0	6
<i>Single Family</i>	59	3	0	0	62
<i>Hotels</i>	0	0	0	0	0
<i>Educational</i>	0	0	0	0	0
<i>Industrial</i>	5	1	0	0	7
Total Casualties - 2am	309	59	7	13	388
Casualties - 2pm					
<i>Commuting</i>	0	0	1	0	1
<i>Commercial</i>	301	77	12	23	413
<i>Single Family</i>	16	1	0	0	17
<i>Hotels</i>	0	0	0	0	0
<i>Educational</i>	70	13	2	3	88
<i>Industrial</i>	39	10	1	3	53
<i>Other-Residential</i>	70	16	2	4	92
Total Casualties - 2pm	496	117	18	33	664
Casualties - 5pm					
<i>Commercial</i>	225	57	9	17	308
<i>Other-Residential</i>	90	21	3	5	118
<i>Industrial</i>	24	6	1	2	33
<i>Hotels</i>	0	0	0	0	0
<i>Educational</i>	15	3	0	1	19
<i>Commuting</i>	5	7	12	2	26
<i>Single Family</i>	21	1	0	0	23
Total Casualties - 5pm	381	95	24	26	527
Napa					
Casualties - 2am					
<i>Commercial</i>	0	0	0	0	0

	Injury Severity Level				Total
	Severity 1	Severity 2	Severity 3	Severity 4	
California					
Napa					
Casualties - 2am					
<i>Other-Residential</i>	5	0	0	0	6
<i>Educational</i>	0	0	0	0	0
<i>Single Family</i>	3	0	0	0	3
<i>Commuting</i>	0	0	0	0	0
<i>Hotels</i>	0	0	0	0	0
<i>Industrial</i>	0	0	0	0	0
Total Casualties - 2am	9	0	0	0	9
Casualties - 2pm					
<i>Educational</i>	2	0	0	0	2
<i>Hotels</i>	0	0	0	0	0
<i>Commuting</i>	0	0	0	0	0
<i>Industrial</i>	2	0	0	0	2
<i>Other-Residential</i>	1	0	0	0	2
<i>Single Family</i>	1	0	0	0	1
<i>Commercial</i>	10	1	0	0	10
Total Casualties - 2pm	15	1	0	0	17
Casualties - 5pm					
<i>Commercial</i>	6	1	0	0	6
<i>Single Family</i>	1	0	0	0	1
<i>Other-Residential</i>	2	0	0	0	2
<i>Commuting</i>	0	0	0	0	0
<i>Industrial</i>	1	0	0	0	1
<i>Educational</i>	0	0	0	0	0
<i>Hotels</i>	0	0	0	0	0
Total Casualties - 5pm	10	1	0	0	11
Nevada					
Casualties - 2am					
<i>Single Family</i>	0	0	0	0	0
<i>Commercial</i>	0	0	0	0	0
<i>Commuting</i>	0	0	0	0	0
<i>Hotels</i>	0	0	0	0	0
<i>Educational</i>	0	0	0	0	0
<i>Industrial</i>	0	0	0	0	0
<i>Other-Residential</i>	0	0	0	0	0
Total Casualties - 2am	0	0	0	0	0
Casualties - 2pm					
<i>Hotels</i>	0	0	0	0	0
<i>Industrial</i>	0	0	0	0	0
<i>Commercial</i>	0	0	0	0	0
<i>Single Family</i>	0	0	0	0	0
<i>Other-Residential</i>	0	0	0	0	0

	Injury Severity Level				Total
	Severity 1	Severity 2	Severity 3	Severity 4	
California					
Nevada					
Casualties - 2pm					
<i>Educational</i>	0	0	0	0	0
<i>Commuting</i>	0	0	0	0	0
Total Casualties - 2pm	0	0	0	0	0
Casualties - 5pm					
<i>Commuting</i>	0	0	0	0	0
<i>Hotels</i>	0	0	0	0	0
<i>Other-Residential</i>	0	0	0	0	0
<i>Educational</i>	0	0	0	0	0
<i>Single Family</i>	0	0	0	0	0
<i>Commercial</i>	0	0	0	0	0
<i>Industrial</i>	0	0	0	0	0
Total Casualties - 5pm	0	0	0	0	0
Placer					
Casualties - 2am					
<i>Hotels</i>	0	0	0	0	0
<i>Educational</i>	0	0	0	0	0
<i>Industrial</i>	0	0	0	0	0
<i>Other-Residential</i>	0	0	0	0	0
<i>Commercial</i>	0	0	0	0	0
<i>Single Family</i>	0	0	0	0	0
<i>Commuting</i>	0	0	0	0	0
Total Casualties - 2am	0	0	0	0	0
Casualties - 2pm					
<i>Other-Residential</i>	0	0	0	0	0
<i>Industrial</i>	0	0	0	0	0
<i>Commercial</i>	0	0	0	0	0
<i>Single Family</i>	0	0	0	0	0
<i>Educational</i>	0	0	0	0	0
<i>Commuting</i>	0	0	0	0	0
<i>Hotels</i>	0	0	0	0	0
Total Casualties - 2pm	0	0	0	0	0
Casualties - 5pm					
<i>Single Family</i>	0	0	0	0	0
<i>Hotels</i>	0	0	0	0	0
<i>Commuting</i>	0	0	0	0	0
<i>Educational</i>	0	0	0	0	0
<i>Commercial</i>	0	0	0	0	0
<i>Industrial</i>	0	0	0	0	0
<i>Other-Residential</i>	0	0	0	0	0
Total Casualties - 5pm	0	0	0	0	0

	Injury Severity Level				Total
	Severity 1	Severity 2	Severity 3	Severity 4	
California					
Plumas					
Casualties - 2am					
<i>Educational</i>	0	0	0	0	0
<i>Single Family</i>	0	0	0	0	0
<i>Commuting</i>	0	0	0	0	0
<i>Hotels</i>	0	0	0	0	0
<i>Industrial</i>	0	0	0	0	0
<i>Other-Residential</i>	0	0	0	0	0
<i>Commercial</i>	0	0	0	0	0
Total Casualties - 2am	0	0	0	0	0
Casualties - 2pm					
<i>Industrial</i>	0	0	0	0	0
<i>Single Family</i>	0	0	0	0	0
<i>Commercial</i>	0	0	0	0	0
<i>Other-Residential</i>	0	0	0	0	0
<i>Hotels</i>	0	0	0	0	0
<i>Educational</i>	0	0	0	0	0
<i>Commuting</i>	0	0	0	0	0
Total Casualties - 2pm	0	0	0	0	0
Casualties - 5pm					
<i>Other-Residential</i>	0	0	0	0	0
<i>Single Family</i>	0	0	0	0	0
<i>Educational</i>	0	0	0	0	0
<i>Hotels</i>	0	0	0	0	0
<i>Commuting</i>	0	0	0	0	0
<i>Commercial</i>	0	0	0	0	0
<i>Industrial</i>	0	0	0	0	0
Total Casualties - 5pm	0	0	0	0	0
Sacramento					
Casualties - 2am					
<i>Industrial</i>	0	0	0	0	0
<i>Other-Residential</i>	2	0	0	0	2
<i>Commercial</i>	0	0	0	0	0
<i>Single Family</i>	1	0	0	0	1
<i>Hotels</i>	0	0	0	0	0
<i>Commuting</i>	0	0	0	0	0
<i>Educational</i>	0	0	0	0	0
Total Casualties - 2am	3	0	0	0	3
Casualties - 2pm					
<i>Other-Residential</i>	1	0	0	0	1
<i>Commuting</i>	0	0	0	0	0
<i>Single Family</i>	0	0	0	0	0
<i>Commercial</i>	14	1	0	0	15

	Injury Severity Level				Total
	Severity 1	Severity 2	Severity 3	Severity 4	
California					
Sacramento					
Casualties - 2pm					
<i>Hotels</i>	0	0	0	0	0
<i>Educational</i>	0	0	0	0	0
<i>Industrial</i>	0	0	0	0	0
Total Casualties - 2pm	15	1	0	0	16
Casualties - 5pm					
<i>Industrial</i>	0	0	0	0	0
<i>Educational</i>	0	0	0	0	0
<i>Hotels</i>	0	0	0	0	0
<i>Commercial</i>	7	0	0	0	8
<i>Commuting</i>	0	0	0	0	0
<i>Other-Residential</i>	1	0	0	0	1
<i>Single Family</i>	0	0	0	0	0
Total Casualties - 5pm	8	1	0	0	9
San Benito					
Casualties - 2am					
<i>Other-Residential</i>	24	5	0	1	31
<i>Commercial</i>	2	0	0	0	2
<i>Commuting</i>	0	0	0	0	0
<i>Hotels</i>	0	0	0	0	0
<i>Educational</i>	0	0	0	0	0
<i>Single Family</i>	26	2	0	0	28
<i>Industrial</i>	1	0	0	0	2
Total Casualties - 2am	54	8	1	1	63
Casualties - 2pm					
<i>Hotels</i>	0	0	0	0	0
<i>Educational</i>	97	30	5	10	143
<i>Industrial</i>	9	2	0	1	12
<i>Other-Residential</i>	7	2	0	0	9
<i>Commercial</i>	114	32	5	10	161
<i>Commuting</i>	0	0	0	0	1
<i>Single Family</i>	8	0	0	0	8
Total Casualties - 2pm	235	67	11	21	334
Casualties - 5pm					
<i>Commuting</i>	2	3	5	1	12
<i>Commercial</i>	84	24	4	7	119
<i>Other-Residential</i>	9	2	0	0	11
<i>Single Family</i>	10	1	0	0	10
<i>Industrial</i>	5	1	0	0	7
<i>Educational</i>	13	4	1	1	20
<i>Hotels</i>	0	0	0	0	0

	Injury Severity Level				Total
	Severity 1	Severity 2	Severity 3	Severity 4	
California					
San Benito					
Total Casualties - 5pm	123	35	10	10	179
San Francisco					
Casualties - 2am					
<i>Industrial</i>	67	19	3	6	95
<i>Hotels</i>	20	5	1	1	27
<i>Commercial</i>	122	33	5	10	170
<i>Other-Residential</i>	5,888	1,622	244	481	8,236
<i>Commuting</i>	0	0	0	0	0
<i>Educational</i>	0	0	0	0	0
<i>Single Family</i>	1,492	366	53	104	2,015
Total Casualties - 2am	7,590	2,045	305	602	10,543
Casualties - 2pm					
<i>Commercial</i>	6,927	1,892	278	544	9,640
<i>Industrial</i>	500	143	22	43	709
<i>Other-Residential</i>	1,894	533	85	157	2,669
<i>Single Family</i>	471	120	18	34	643
<i>Hotels</i>	4	1	0	0	5
<i>Commuting</i>	0	1	1	0	2
<i>Educational</i>	1,428	370	55	105	1,957
Total Casualties - 2pm	11,224	3,060	459	884	15,627
Casualties - 5pm					
<i>Educational</i>	451	112	16	30	609
<i>Hotels</i>	6	2	0	0	8
<i>Industrial</i>	313	90	14	27	443
<i>Commuting</i>	11	14	25	5	55
<i>Commercial</i>	4,233	1,164	175	335	5,907
<i>Other-Residential</i>	2,370	669	106	197	3,343
<i>Single Family</i>	595	151	23	43	812
Total Casualties - 5pm	7,979	2,201	359	638	11,178
San Joaquin					
Casualties - 2am					
<i>Educational</i>	0	0	0	0	0
<i>Commuting</i>	0	0	0	0	0
<i>Hotels</i>	0	0	0	0	0
<i>Commercial</i>	0	0	0	0	0
<i>Single Family</i>	11	1	0	0	11
<i>Industrial</i>	0	0	0	0	0
<i>Other-Residential</i>	3	0	0	0	3
Total Casualties - 2am	14	1	0	0	15
Casualties - 2pm					
<i>Industrial</i>	1	0	0	0	1

	Injury Severity Level				Total
	Severity 1	Severity 2	Severity 3	Severity 4	
California					
San Joaquin					
Casualties - 2pm					
<i>Other-Residential</i>	1	0	0	0	1
<i>Educational</i>	1	0	0	0	1
<i>Single Family</i>	4	0	0	0	4
<i>Hotels</i>	0	0	0	0	0
<i>Commuting</i>	0	0	0	0	0
<i>Commercial</i>	6	0	0	0	7
Total Casualties - 2pm	13	1	0	0	14
Casualties - 5pm					
<i>Commuting</i>	0	0	0	0	0
<i>Single Family</i>	4	0	0	0	4
<i>Educational</i>	0	0	0	0	0
<i>Hotels</i>	0	0	0	0	0
<i>Industrial</i>	1	0	0	0	1
<i>Commercial</i>	4	0	0	0	4
<i>Other-Residential</i>	1	0	0	0	1
Total Casualties - 5pm	10	1	0	0	11
San Luis Obispo					
Casualties - 2am					
<i>Commercial</i>	0	0	0	0	0
<i>Other-Residential</i>	0	0	0	0	0
<i>Industrial</i>	0	0	0	0	0
<i>Single Family</i>	0	0	0	0	0
<i>Commuting</i>	0	0	0	0	0
<i>Educational</i>	0	0	0	0	0
<i>Hotels</i>	0	0	0	0	0
Total Casualties - 2am	0	0	0	0	0
Casualties - 2pm					
<i>Single Family</i>	0	0	0	0	0
<i>Educational</i>	0	0	0	0	0
<i>Other-Residential</i>	0	0	0	0	0
<i>Hotels</i>	0	0	0	0	0
<i>Commuting</i>	0	0	0	0	0
<i>Commercial</i>	0	0	0	0	0
<i>Industrial</i>	0	0	0	0	0
Total Casualties - 2pm	0	0	0	0	0
Casualties - 5pm					
<i>Industrial</i>	0	0	0	0	0
<i>Other-Residential</i>	0	0	0	0	0
<i>Commuting</i>	0	0	0	0	0
<i>Single Family</i>	0	0	0	0	0
<i>Commercial</i>	0	0	0	0	0

	Injury Severity Level				Total
	Severity 1	Severity 2	Severity 3	Severity 4	
California					
San Luis Obispo					
Casualties - 5pm					
<i>Hotels</i>	0	0	0	0	0
<i>Educational</i>	0	0	0	0	0
Total Casualties - 5pm	0	0	0	0	0
San Mateo					
Casualties - 2am					
<i>Industrial</i>	47	12	2	3	65
<i>Other-Residential</i>	1,328	316	42	83	1,769
<i>Single Family</i>	583	59	1	2	644
<i>Commercial</i>	43	11	2	3	60
<i>Educational</i>	0	0	0	0	0
<i>Commuting</i>	0	1	1	0	2
<i>Hotels</i>	3	1	0	0	4
Total Casualties - 2am	2,005	399	48	92	2,544
Casualties - 2pm					
<i>Other-Residential</i>	413	99	14	26	551
<i>Single Family</i>	170	18	0	1	189
<i>Commuting</i>	3	5	8	2	18
<i>Commercial</i>	3,055	800	121	236	4,212
<i>Educational</i>	685	160	23	44	912
<i>Hotels</i>	1	0	0	0	1
<i>Industrial</i>	348	89	13	25	475
Total Casualties - 2pm	4,675	1,171	179	333	6,358
Casualties - 5pm					
<i>Commercial</i>	2,253	595	91	175	3,114
<i>Industrial</i>	218	56	8	16	297
<i>Other-Residential</i>	518	124	17	32	691
<i>Single Family</i>	222	23	1	1	246
<i>Educational</i>	67	13	2	3	85
<i>Commuting</i>	76	102	171	33	382
<i>Hotels</i>	1	0	0	0	1
Total Casualties - 5pm	3,353	913	290	260	4,815
Santa Barbara					
Casualties - 2am					
<i>Industrial</i>	0	0	0	0	0
<i>Commercial</i>	0	0	0	0	0
<i>Other-Residential</i>	0	0	0	0	0
<i>Commuting</i>	0	0	0	0	0
<i>Educational</i>	0	0	0	0	0
<i>Single Family</i>	0	0	0	0	0
<i>Hotels</i>	0	0	0	0	0

	Injury Severity Level				Total
	Severity 1	Severity 2	Severity 3	Severity 4	
California					
Santa Barbara					
Total Casualties - 2am	0	0	0	0	0
Casualties - 2pm					
Commercial	0	0	0	0	0
Single Family	0	0	0	0	0
Other-Residential	0	0	0	0	0
Commuting	0	0	0	0	0
Educational	0	0	0	0	0
Hotels	0	0	0	0	0
Industrial	0	0	0	0	0
Total Casualties - 2pm	0	0	0	0	0
Casualties - 5pm					
Other-Residential	0	0	0	0	0
Single Family	0	0	0	0	0
Commercial	0	0	0	0	0
Commuting	0	0	0	0	0
Educational	0	0	0	0	0
Industrial	0	0	0	0	0
Hotels	0	0	0	0	0
Total Casualties - 5pm	0	0	0	0	0
Santa Clara					
Casualties - 2am					
Commuting	0	0	1	0	1
Educational	0	0	0	0	0
Single Family	601	42	2	3	647
Hotels	1	0	0	0	2
Industrial	54	13	2	3	72
Commercial	40	10	1	3	54
Other-Residential	1,081	226	28	56	1,391
Total Casualties - 2am	1,778	290	34	65	2,167
Casualties - 2pm					
Industrial	399	93	13	25	530
Commercial	2,595	626	90	176	3,487
Single Family	171	13	1	1	186
Commuting	3	4	6	1	13
Hotels	0	0	0	0	0
Other-Residential	353	77	11	20	460
Educational	711	133	16	30	890
Total Casualties - 2pm	4,232	946	135	253	5,567
Casualties - 5pm					
Industrial	250	58	8	16	331
Hotels	0	0	0	0	0

	Injury Severity Level				Total
	Severity 1	Severity 2	Severity 3	Severity 4	
California					
Santa Clara					
Casualties - 5pm					
<i>Other-Residential</i>	416	89	12	22	538
<i>Commercial</i>	1,758	418	60	116	2,351
<i>Commuting</i>	52	73	119	23	267
<i>Single Family</i>	222	16	1	1	241
<i>Educational</i>	134	21	2	4	160
Total Casualties - 5pm	2,832	675	201	181	3,889
Santa Cruz					
Casualties - 2am					
<i>Hotels</i>	0	0	0	0	1
<i>Educational</i>	0	0	0	0	0
<i>Industrial</i>	17	5	1	1	23
<i>Other-Residential</i>	437	112	16	30	595
<i>Single Family</i>	112	8	0	0	120
<i>Commercial</i>	13	4	1	1	18
<i>Commuting</i>	0	0	0	0	0
Total Casualties - 2am	579	129	17	33	758
Casualties - 2pm					
<i>Industrial</i>	124	34	5	10	172
<i>Other-Residential</i>	133	34	5	9	181
<i>Commercial</i>	907	248	38	75	1,268
<i>Commuting</i>	1	1	2	0	4
<i>Educational</i>	275	65	9	17	366
<i>Single Family</i>	34	2	0	0	36
<i>Hotels</i>	0	0	0	0	0
Total Casualties - 2pm	1,473	385	59	111	2,027
Casualties - 5pm					
<i>Industrial</i>	77	21	3	6	108
<i>Other-Residential</i>	168	44	6	12	230
<i>Commercial</i>	657	181	28	54	920
<i>Commuting</i>	14	20	32	6	72
<i>Single Family</i>	42	3	0	0	45
<i>Hotels</i>	0	0	0	0	0
<i>Educational</i>	50	11	1	3	65
Total Casualties - 5pm	1,008	280	71	81	1,440
Shasta					
Casualties - 2am					
<i>Other-Residential</i>	0	0	0	0	0
<i>Single Family</i>	0	0	0	0	0
<i>Commuting</i>	0	0	0	0	0
<i>Commercial</i>	0	0	0	0	0
<i>Hotels</i>	0	0	0	0	0

	Injury Severity Level				Total
	Severity 1	Severity 2	Severity 3	Severity 4	
California					
Shasta					
Casualties - 2am					
<i>Educational</i>	0	0	0	0	0
<i>Industrial</i>	0	0	0	0	0
Total Casualties - 2am	0	0	0	0	0
Casualties - 2pm					
<i>Commuting</i>	0	0	0	0	0
<i>Educational</i>	0	0	0	0	0
<i>Single Family</i>	0	0	0	0	0
<i>Hotels</i>	0	0	0	0	0
<i>Other-Residential</i>	0	0	0	0	0
<i>Industrial</i>	0	0	0	0	0
<i>Commercial</i>	0	0	0	0	0
Total Casualties - 2pm	0	0	0	0	0
Casualties - 5pm					
<i>Hotels</i>	0	0	0	0	0
<i>Commercial</i>	0	0	0	0	0
<i>Commuting</i>	0	0	0	0	0
<i>Single Family</i>	0	0	0	0	0
<i>Educational</i>	0	0	0	0	0
<i>Industrial</i>	0	0	0	0	0
<i>Other-Residential</i>	0	0	0	0	0
Total Casualties - 5pm	0	0	0	0	0
Siskiyou					
Casualties - 2am					
<i>Commuting</i>	0	0	0	0	0
<i>Educational</i>	0	0	0	0	0
<i>Hotels</i>	0	0	0	0	0
<i>Single Family</i>	0	0	0	0	0
<i>Industrial</i>	0	0	0	0	0
<i>Other-Residential</i>	0	0	0	0	0
<i>Commercial</i>	0	0	0	0	0
Total Casualties - 2am	0	0	0	0	0
Casualties - 2pm					
<i>Industrial</i>	0	0	0	0	0
<i>Single Family</i>	0	0	0	0	0
<i>Other-Residential</i>	0	0	0	0	0
<i>Commercial</i>	0	0	0	0	0
<i>Educational</i>	0	0	0	0	0
<i>Commuting</i>	0	0	0	0	0
<i>Hotels</i>	0	0	0	0	0
Total Casualties - 2pm	0	0	0	0	0

	Injury Severity Level				Total
	Severity 1	Severity 2	Severity 3	Severity 4	
California					
Siskiyou					
Casualties - 5pm					
<i>Hotels</i>	0	0	0	0	0
<i>Industrial</i>	0	0	0	0	0
<i>Commercial</i>	0	0	0	0	0
<i>Other-Residential</i>	0	0	0	0	0
<i>Single Family</i>	0	0	0	0	0
<i>Educational</i>	0	0	0	0	0
<i>Commuting</i>	0	0	0	0	0
Total Casualties - 5pm	0	0	0	0	0
Solano					
Casualties - 2am					
<i>Industrial</i>	0	0	0	0	0
<i>Other-Residential</i>	10	1	0	0	11
<i>Commercial</i>	0	0	0	0	0
<i>Educational</i>	0	0	0	0	0
<i>Commuting</i>	0	0	0	0	0
<i>Single Family</i>	9	0	0	0	9
<i>Hotels</i>	0	0	0	0	0
Total Casualties - 2am	19	1	0	0	20
Casualties - 2pm					
<i>Single Family</i>	2	0	0	0	2
<i>Other-Residential</i>	3	0	0	0	4
<i>Commercial</i>	16	2	0	0	17
<i>Educational</i>	4	1	0	0	5
<i>Commuting</i>	0	0	0	0	0
<i>Hotels</i>	0	0	0	0	0
<i>Industrial</i>	3	0	0	0	3
Total Casualties - 2pm	28	3	0	0	31
Casualties - 5pm					
<i>Commercial</i>	12	1	0	0	13
<i>Other-Residential</i>	4	0	0	0	4
<i>Single Family</i>	3	0	0	0	3
<i>Educational</i>	1	0	0	0	1
<i>Commuting</i>	0	0	1	0	1
<i>Hotels</i>	0	0	0	0	0
<i>Industrial</i>	2	0	0	0	2
Total Casualties - 5pm	21	2	1	0	24
Sonoma					
Casualties - 2am					
<i>Single Family</i>	43	1	0	0	44
<i>Other-Residential</i>	66	8	0	1	75
<i>Commercial</i>	2	0	0	0	3

	Injury Severity Level				Total
	Severity 1	Severity 2	Severity 3	Severity 4	
California					
Sonoma					
Casualties - 2am					
<i>Commuting</i>	0	0	0	0	0
<i>Hotels</i>	0	0	0	0	0
<i>Educational</i>	0	0	0	0	0
<i>Industrial</i>	4	1	0	0	4
Total Casualties - 2am	115	10	1	1	126
Casualties - 2pm					
<i>Single Family</i>	13	0	0	0	13
<i>Commuting</i>	0	0	0	0	0
<i>Educational</i>	33	4	0	1	39
<i>Hotels</i>	0	0	0	0	0
<i>Industrial</i>	26	4	0	1	31
<i>Other-Residential</i>	20	2	0	0	23
<i>Commercial</i>	177	31	3	7	218
Total Casualties - 2pm	269	42	5	8	324
Casualties - 5pm					
<i>Single Family</i>	15	0	0	0	16
<i>Commercial</i>	123	22	2	5	152
<i>Commuting</i>	2	2	4	1	8
<i>Hotels</i>	0	0	0	0	0
<i>Educational</i>	5	0	0	0	6
<i>Industrial</i>	16	3	0	0	19
<i>Other-Residential</i>	24	3	0	0	28
Total Casualties - 5pm	186	30	6	6	229
Stanislaus					
Casualties - 2am					
<i>Hotels</i>	0	0	0	0	0
<i>Industrial</i>	0	0	0	0	0
<i>Commercial</i>	0	0	0	0	0
<i>Single Family</i>	2	0	0	0	2
<i>Other-Residential</i>	3	0	0	0	3
<i>Commuting</i>	0	0	0	0	0
<i>Educational</i>	0	0	0	0	0
Total Casualties - 2am	5	0	0	0	6
Casualties - 2pm					
<i>Industrial</i>	1	0	0	0	1
<i>Other-Residential</i>	1	0	0	0	1
<i>Commercial</i>	5	0	0	0	6
<i>Commuting</i>	0	0	0	0	0
<i>Educational</i>	1	0	0	0	1
<i>Single Family</i>	1	0	0	0	1
<i>Hotels</i>	0	0	0	0	0

	Injury Severity Level				Total
	Severity 1	Severity 2	Severity 3	Severity 4	
California					
Stanislaus					
Total Casualties - 2pm	9	1	0	0	10
Casualties - 5pm					
<i>Industrial</i>	1	0	0	0	1
<i>Other-Residential</i>	1	0	0	0	1
<i>Commuting</i>	0	0	0	0	0
<i>Single Family</i>	1	0	0	0	1
<i>Commercial</i>	4	0	0	0	4
<i>Hotels</i>	0	0	0	0	0
<i>Educational</i>	0	0	0	0	0
Total Casualties - 5pm	6	0	0	0	7
Sutter					
Casualties - 2am					
<i>Educational</i>	0	0	0	0	0
<i>Commuting</i>	0	0	0	0	0
<i>Hotels</i>	0	0	0	0	0
<i>Industrial</i>	0	0	0	0	0
<i>Other-Residential</i>	0	0	0	0	0
<i>Single Family</i>	0	0	0	0	0
<i>Commercial</i>	0	0	0	0	0
Total Casualties - 2am	0	0	0	0	0
Casualties - 2pm					
<i>Industrial</i>	0	0	0	0	0
<i>Commuting</i>	0	0	0	0	0
<i>Other-Residential</i>	0	0	0	0	0
<i>Single Family</i>	0	0	0	0	0
<i>Commercial</i>	0	0	0	0	0
<i>Hotels</i>	0	0	0	0	0
<i>Educational</i>	0	0	0	0	0
Total Casualties - 2pm	0	0	0	0	0
Casualties - 5pm					
<i>Commuting</i>	0	0	0	0	0
<i>Commercial</i>	0	0	0	0	0
<i>Educational</i>	0	0	0	0	0
<i>Single Family</i>	0	0	0	0	0
<i>Hotels</i>	0	0	0	0	0
<i>Industrial</i>	0	0	0	0	0
<i>Other-Residential</i>	0	0	0	0	0
Total Casualties - 5pm	0	0	0	0	0
Tehama					
Casualties - 2am					
<i>Hotels</i>	0	0	0	0	0

	Injury Severity Level				Total
	Severity 1	Severity 2	Severity 3	Severity 4	
California					
Tehama					
Casualties - 2am					
<i>Industrial</i>	0	0	0	0	0
<i>Commercial</i>	0	0	0	0	0
<i>Other-Residential</i>	0	0	0	0	0
<i>Educational</i>	0	0	0	0	0
<i>Commuting</i>	0	0	0	0	0
<i>Single Family</i>	0	0	0	0	0
Total Casualties - 2am	0	0	0	0	0
Casualties - 2pm					
<i>Other-Residential</i>	0	0	0	0	0
<i>Commercial</i>	0	0	0	0	0
<i>Industrial</i>	0	0	0	0	0
<i>Single Family</i>	0	0	0	0	0
<i>Educational</i>	0	0	0	0	0
<i>Commuting</i>	0	0	0	0	0
<i>Hotels</i>	0	0	0	0	0
Total Casualties - 2pm	0	0	0	0	0
Casualties - 5pm					
<i>Hotels</i>	0	0	0	0	0
<i>Educational</i>	0	0	0	0	0
<i>Industrial</i>	0	0	0	0	0
<i>Single Family</i>	0	0	0	0	0
<i>Commercial</i>	0	0	0	0	0
<i>Commuting</i>	0	0	0	0	0
<i>Other-Residential</i>	0	0	0	0	0
Total Casualties - 5pm	0	0	0	0	0
Trinity					
Casualties - 2am					
<i>Commercial</i>	0	0	0	0	0
<i>Educational</i>	0	0	0	0	0
<i>Other-Residential</i>	0	0	0	0	0
<i>Single Family</i>	0	0	0	0	0
<i>Commuting</i>	0	0	0	0	0
<i>Hotels</i>	0	0	0	0	0
<i>Industrial</i>	0	0	0	0	0
Total Casualties - 2am	0	0	0	0	0
Casualties - 2pm					
<i>Educational</i>	0	0	0	0	0
<i>Commuting</i>	0	0	0	0	0
<i>Hotels</i>	0	0	0	0	0
<i>Single Family</i>	0	0	0	0	0
<i>Commercial</i>	0	0	0	0	0

	Injury Severity Level				Total
	Severity 1	Severity 2	Severity 3	Severity 4	
California					
Trinity					
Casualties - 2pm					
<i>Industrial</i>	0	0	0	0	0
<i>Other-Residential</i>	0	0	0	0	0
Total Casualties - 2pm	0	0	0	0	0
Casualties - 5pm					
<i>Single Family</i>	0	0	0	0	0
<i>Commercial</i>	0	0	0	0	0
<i>Other-Residential</i>	0	0	0	0	0
<i>Commuting</i>	0	0	0	0	0
<i>Hotels</i>	0	0	0	0	0
<i>Educational</i>	0	0	0	0	0
<i>Industrial</i>	0	0	0	0	0
Total Casualties - 5pm	0	0	0	0	0
Tulare					
Casualties - 2am					
<i>Commercial</i>	0	0	0	0	0
<i>Commuting</i>	0	0	0	0	0
<i>Single Family</i>	0	0	0	0	0
<i>Educational</i>	0	0	0	0	0
<i>Hotels</i>	0	0	0	0	0
<i>Industrial</i>	0	0	0	0	0
<i>Other-Residential</i>	0	0	0	0	0
Total Casualties - 2am	0	0	0	0	0
Casualties - 2pm					
<i>Industrial</i>	0	0	0	0	0
<i>Hotels</i>	0	0	0	0	0
<i>Commercial</i>	0	0	0	0	0
<i>Other-Residential</i>	0	0	0	0	0
<i>Educational</i>	0	0	0	0	0
<i>Commuting</i>	0	0	0	0	0
<i>Single Family</i>	0	0	0	0	0
Total Casualties - 2pm	0	0	0	0	0
Casualties - 5pm					
<i>Other-Residential</i>	0	0	0	0	0
<i>Commercial</i>	0	0	0	0	0
<i>Single Family</i>	0	0	0	0	0
<i>Hotels</i>	0	0	0	0	0
<i>Commuting</i>	0	0	0	0	0
<i>Educational</i>	0	0	0	0	0
<i>Industrial</i>	0	0	0	0	0
Total Casualties - 5pm	0	0	0	0	0

	Injury Severity Level				Total
	Severity 1	Severity 2	Severity 3	Severity 4	
California					
Tuolumne					
Casualties - 2am					
<i>Other-Residential</i>	0	0	0	0	0
<i>Industrial</i>	0	0	0	0	0
<i>Commercial</i>	0	0	0	0	0
<i>Commuting</i>	0	0	0	0	0
<i>Single Family</i>	0	0	0	0	0
<i>Educational</i>	0	0	0	0	0
<i>Hotels</i>	0	0	0	0	0
Total Casualties - 2am	0	0	0	0	0
Casualties - 2pm					
<i>Other-Residential</i>	0	0	0	0	0
<i>Commercial</i>	0	0	0	0	0
<i>Single Family</i>	0	0	0	0	0
<i>Educational</i>	0	0	0	0	0
<i>Commuting</i>	0	0	0	0	0
<i>Industrial</i>	0	0	0	0	0
<i>Hotels</i>	0	0	0	0	0
Total Casualties - 2pm	0	0	0	0	0
Casualties - 5pm					
<i>Industrial</i>	0	0	0	0	0
<i>Other-Residential</i>	0	0	0	0	0
<i>Commercial</i>	0	0	0	0	0
<i>Hotels</i>	0	0	0	0	0
<i>Commuting</i>	0	0	0	0	0
<i>Educational</i>	0	0	0	0	0
<i>Single Family</i>	0	0	0	0	0
Total Casualties - 5pm	0	0	0	0	0
Yolo					
Casualties - 2am					
<i>Single Family</i>	0	0	0	0	0
<i>Other-Residential</i>	0	0	0	0	0
<i>Commercial</i>	0	0	0	0	0
<i>Educational</i>	0	0	0	0	0
<i>Commuting</i>	0	0	0	0	0
<i>Hotels</i>	0	0	0	0	0
<i>Industrial</i>	0	0	0	0	0
Total Casualties - 2am	1	0	0	0	1
Casualties - 2pm					
<i>Industrial</i>	0	0	0	0	0
<i>Hotels</i>	0	0	0	0	0
<i>Educational</i>	0	0	0	0	0
<i>Commuting</i>	0	0	0	0	0

	Injury Severity Level				Total
	Severity 1	Severity 2	Severity 3	Severity 4	
California					
Yolo					
Casualties - 2pm					
Commercial	1	0	0	0	1
Other-Residential	0	0	0	0	0
Single Family	0	0	0	0	0
Total Casualties - 2pm	2	0	0	0	2
Casualties - 5pm					
Other-Residential	0	0	0	0	0
Single Family	0	0	0	0	0
Commuting	0	0	0	0	0
Commercial	1	0	0	0	1
Hotels	0	0	0	0	0
Educational	0	0	0	0	0
Industrial	0	0	0	0	0
Total Casualties - 5pm	1	0	0	0	1
Yuba					
Casualties - 2am					
Industrial	0	0	0	0	0
Other-Residential	0	0	0	0	0
Commercial	0	0	0	0	0
Educational	0	0	0	0	0
Single Family	0	0	0	0	0
Commuting	0	0	0	0	0
Hotels	0	0	0	0	0
Total Casualties - 2am	0	0	0	0	0
Casualties - 2pm					
Commercial	0	0	0	0	0
Commuting	0	0	0	0	0
Single Family	0	0	0	0	0
Other-Residential	0	0	0	0	0
Industrial	0	0	0	0	0
Hotels	0	0	0	0	0
Educational	0	0	0	0	0
Total Casualties - 2pm	0	0	0	0	0
Casualties - 5pm					
Hotels	0	0	0	0	0
Educational	0	0	0	0	0
Industrial	0	0	0	0	0
Other-Residential	0	0	0	0	0
Single Family	0	0	0	0	0
Commercial	0	0	0	0	0
Commuting	0	0	0	0	0

	Injury Severity Level				Total
	Severity 1	Severity 2	Severity 3	Severity 4	
California					
Yuba					
Total Casualties - 5pm	0	0	0	0	0
Region Total	NA	NA	NA	NA	NA

Totals only reflect data for those census tracts/blocks included in the user's study region and will reflect the entire county/state only if all of the census blocks for that county/states were selected at the time of study region creation.

Debris Summary Report

June 10, 2024

All values are in thousands of tons.

	Brick, Wood & Others	Concrete & Steel	Total
California			
Alameda	739	1,727	2,466
Alpine	0	0	0
Amador	0	0	0
Butte	0	0	0
Calaveras	0	0	0
Colusa	0	0	0
Contra Costa	83	178	261
El Dorado	0	0	0
Fresno	2	1	3
Glenn	0	0	0
Humboldt	0	0	0
Kern	0	0	0
Kings	0	0	0
Lake	2	1	3
Madera	1	0	1
Marin	122	215	338
Mariposa	0	0	0
Mendocino	16	13	30
Merced	8	29	37

	Brick, Wood & Others	Concrete & Steel	Total
Mono	0	0	0
Monterey	178	418	597
Napa	9	16	26
Nevada	0	0	0
Placer	0	0	0
Plumas	0	0	0
Sacramento	4	5	9
San Benito	51	121	172
San Francisco	2,781	4,594	7,375
San Joaquin	21	8	29
San Luis Obispo	0	0	0
San Mateo	962	2,603	3,565
Santa Barbara	0	0	0
Santa Clara	1,107	2,394	3,501
Santa Cruz	367	963	1,330
Shasta	0	0	0
Siskiyou	0	0	0
Solano	19	33	52
Sonoma	125	234	359
Stanislaus	7	10	17
Sutter	0	0	0
Tehama	0	0	0
Trinity	0	0	0
Tulare	0	0	0
Tuolumne	0	0	0
Yolo	1	1	2

	Brick, Wood & Others	Concrete & Steel	Total
Yuba	0	0	0
Total	6,607	13,566	20,173
Region Total	6,607	13,566	20,173

Totals only reflect data for those census tracts/blocks included in the user's study region and will reflect the entire county/state only if all of the census blocks for that county/states were selected at the time of study region creation.

Direct Economic Losses For Buildings

June 10, 2024

All values are in thousands of dollars

	Capital Stock Losses				Loss Ratio %	Income Losses				Total Loss
	Cost Structural Damage	Cost Non-struct. Damage	Cost Contents Damage	Inventory Loss		Relocation Loss	Capital Related Loss	Wages Losses	Rental Income Loss	
California										
Contra Costa	213,925	1,217,736	579,536	48,727	0.66	73,681	45,717	61,150	46,456	2,286,928
Mendocino	26,119	193,702	90,907	8,303	0.97	9,135	6,599	7,102	6,144	348,012
Napa	21,251	129,717	64,556	7,004	0.45	7,208	5,466	6,653	5,074	246,929
Siskiyou	0	0	0	0	0.00	0	0	0	0	0
Plumas	0	0	0	0	0.00	0	0	0	0	0
Colusa	145	1,987	1,227	222	0.05	29	47	54	40	3,750
Shasta	13	638	417	70	0.00	1	1	1	2	1,141
Trinity	0	9	6	1	0.00	0	0	0	0	15
Tehama	21	473	292	45	0.00	3	3	3	5	844

	Capital Stock Losses				Loss Ratio %	Income Losses				Total Loss
	Cost Structural Damage	Cost Non-struct. Damage	Cost Contents Damage	Inventory Loss		Relocation Loss	Capital Related Loss	Wages Losses	Rental Income Loss	
Alameda	1,618,132	6,115,953	2,662,514	228,607	2.33	680,025	470,277	618,966	439,828	12,834,303
Humboldt	42	864	556	59	0.00	7	7	9	13	1,558
Nevada	0	13	9	1	0.00	0	0	0	0	23
San Joaquin	21,074	173,659	99,492	12,195	0.14	5,819	3,151	4,250	3,830	323,471
Tuolumne	0	51	35	3	0.00	0	0	0	0	89
Tulare	29	1,431	972	204	0.00	2	5	6	7	2,655
Madera	1,136	9,655	5,541	1,160	0.04	155	70	83	142	17,941
Butte	129	1,681	1,101	159	0.00	22	17	21	24	3,154
Fresno	2,251	25,663	14,773	2,713	0.02	434	652	665	503	47,653
Kings	86	1,689	960	117	0.01	12	21	27	21	2,933
San Luis Obispo	32	907	521	56	0.00	4	9	8	11	1,547
Solano	40,717	253,795	122,815	11,764	0.36	13,615	10,677	13,525	9,628	476,535
San Mateo	3,220,775	13,079,114	4,537,344	314,158	10.49	1,318,529	790,421	1,016,487	798,871	25,075,698
Yolo	2,129	34,919	21,718	2,344	0.09	343	507	580	475	63,015
Glenn	143	970	599	189	0.02	18	18	18	16	1,970
San Benito	135,387	602,030	252,511	25,391	5.57	50,573	31,724	37,521	21,706	1,156,843
San Francisco	4,598,099	16,133,847	5,418,093	278,542	13.39	1,832,295	1,014,701	1,296,972	1,531,775	32,104,324
Stanislaus	16,269	121,072	67,267	9,281	0.14	3,990	2,328	2,623	3,006	225,836

	Capital Stock Losses				Loss Ratio %	Income Losses				Total Loss
	Cost Structural Damage	Cost Non-struct. Damage	Cost Contents Damage	Inventory Loss		Relocation Loss	Capital Related Loss	Wages Losses	Rental Income Loss	
Sutter	197	2,062	1,143	263	0.01	21	12	14	21	3,733
Santa Clara	3,164,048	14,446,105	5,869,847	403,780	4.62	1,260,026	855,723	1,027,980	732,231	27,759,739
Sonoma	301,827	1,313,159	601,607	71,700	1.54	102,425	84,646	97,981	62,023	2,635,368
Calaveras	7	157	115	34	0.00	0	1	1	1	318
Yuba	62	994	529	65	0.01	10	20	22	17	1,719
Alpine	0	0	0	0	0.00	0	0	0	0	0
Merced	54,621	94,302	55,183	20,927	0.29	7,743	3,002	2,773	2,037	240,588
Santa Barbara	5	272	180	27	0.00	1	1	2	2	489
Mono	0	0	0	0	0.00	0	0	0	0	0
Placer	57	1,930	1,139	110	0.00	3	6	6	9	3,260
Marin	308,370	1,554,129	675,767	33,277	2.97	116,854	105,159	113,913	76,030	2,983,499
Kern	2	115	75	19	0.00	0	0	0	0	212
El Dorado	0	83	61	4	0.00	0	0	0	0	148
Lake	2,542	19,774	9,289	822	0.16	849	558	547	609	34,990
Santa Cruz	985,283	3,399,960	1,377,788	231,312	7.98	351,655	253,074	326,920	196,362	7,122,355
Mariposa	0	32	21	1	0.00	0	1	1	0	56
Amador	0	51	36	4	0.00	0	0	0	0	92
Sacramento	7,871	50,606	24,873	2,318	0.02	2,952	3,295	4,217	3,086	99,217

	Capital Stock Losses				Loss Ratio %	Income Losses				Total Loss
	Cost Structural Damage	Cost Non-struct. Damage	Cost Contents Damage	Inventory Loss		Relocation Loss	Capital Related Loss	Wages Losses	Rental Income Loss	
Monterey	381,948	1,517,091	669,377	103,964	2.49	154,841	84,999	97,015	88,224	3,097,459
Total	15,124,744	60,502,394	23,230,790	1,819,941	1.19	5,993,279	3,772,918	4,738,115	4,028,227	119,210,409
Region Total	15,124,744	60,502,394	23,230,790	1,819,941	1.19	5,993,279	3,772,918	4,738,115	4,028,227	119,210,409

Totals only reflect data for those census tracts/blocks included in the user's study region and will reflect the entire county/state only if all of the census blocks for that county/states were selected at the time of study region creation.

Direct Economic Loss For Transportation

June 10, 2024

All values are in thousands of dollars

	Highway	Railway	Light Rail	Bus Facility	Ports	Ferries	Airport	Total
California								
Alameda								
Segments	0	0	0					0
Bridges	73,129	6,904	65					80,098
Tunnels	1,677	0	0					1,677
Facilities		7,827	0	434	33,422	745	68,185	110,613
Total	74,806	14,732	65	434	33,422	745	68,185	192,388
Alpine								
Segments	0	0	0					0
Bridges	0	0	0					0
Tunnels	0	0	0					0
Facilities		0	0	0	0	0	6	6
Total	0	0	0	0	0	0	6	6
Amador								
Segments	0	0	0					0
Bridges	0	0	0					0
Tunnels	0	0	0					0
Facilities		0	0	0	0	0	51	51

	Highway	Railway	Light Rail	Bus Facility	Ports	Ferries	Airport	Total
Total	0	0	0	0	0	0	51	51
Butte								
Segments	0	0	0					0
Bridges	32	0	0					32
Tunnels	0	0	0					0
Facilities		26	0	0	0	0	231	256
Total	32	26	0	0	0	0	231	288
Calaveras								
Segments	0	0	0					0
Bridges	0	0	0					0
Tunnels	0	0	0					0
Facilities		0	0	0	0	0	102	102
Total	0	0	0	0	0	0	102	102
Colusa								
Segments	0	0	0					0
Bridges	91	4	0					96
Tunnels	0	0	0					0
Facilities		0	0	0	0	0	51	51
Total	91	4	0	0	0	0	51	147
Contra Costa								
Segments	0	0	0					0
Bridges	20,658	1,518	14					22,190
Tunnels	214	4	0					218
Facilities		3,762	1,293	0	37,739	550	2,278	45,621

	Highway	Railway	Light Rail	Bus Facility	Ports	Ferries	Airport	Total
Total	20,872	5,284	1,306	0	37,739	550	2,278	68,028
El Dorado								
Segments	0	0	0					0
Bridges	0	0	0					0
Tunnels	0	0	0					0
Facilities		0	0	26	0	0	236	262
Total	0	0	0	26	0	0	236	263
Fresno								
Segments	0	0	0					0
Bridges	606	11	0					617
Tunnels	0	0	0					0
Facilities		231	0	21	0	0	1,473	1,724
Total	606	242	0	21	0	0	1,473	2,341
Glenn								
Segments	0	0	0					0
Bridges	20	1	0					21
Tunnels	0	0	0					0
Facilities		0	0	0	37	0	102	139
Total	20	1	0	0	37	0	102	160
Humboldt								
Segments	0	0	0					0
Bridges	22	0	0					22
Tunnels	0	0	0					0
Facilities		0	0	44	808	0	821	1,673

	Highway	Railway	Light Rail	Bus Facility	Ports	Ferries	Airport	Total
Total	22	0	0	44	808	0	821	1,694
Kern								
<i>Segments</i>	0	0	0					0
<i>Bridges</i>	3	0	0					3
<i>Tunnels</i>	0	0	0					0
<i>Facilities</i>		66	0	44	0	0	200	309
Total	3	66	0	44	0	0	200	311
Kings								
<i>Segments</i>	0	0	0					0
<i>Bridges</i>	12	0	0					12
<i>Tunnels</i>	0	0	0					0
<i>Facilities</i>		128	0	41	0	0	359	529
Total	12	128	0	41	0	0	359	541
Lake								
<i>Segments</i>	0	0	0					0
<i>Bridges</i>	66	0	0					66
<i>Tunnels</i>	0	0	0					0
<i>Facilities</i>		0	0	0	0	0	617	617
Total	66	0	0	0	0	0	617	683
Madera								
<i>Segments</i>	0	0	0					0
<i>Bridges</i>	135	1	0					137
<i>Tunnels</i>	0	0	0					0
<i>Facilities</i>		26	0	21	0	0	268	315

	Highway	Railway	Light Rail	Bus Facility	Ports	Ferries	Airport	Total
Total	135	27	0	21	0	0	268	452
Marin								
<i>Segments</i>	0	0	0					0
<i>Bridges</i>	32,948	187	0					33,135
<i>Tunnels</i>	1,785	0	0					1,785
<i>Facilities</i>		0	0	2,254	18,875	1,506	989	23,625
Total	34,733	187	0	2,254	18,875	1,506	989	58,545
Mariposa								
<i>Segments</i>	0	0	0					0
<i>Bridges</i>	0	0	0					0
<i>Tunnels</i>	0	0	0					0
<i>Facilities</i>		0	0	86	0	0	51	137
Total	0	0	0	86	0	0	51	137
Mendocino								
<i>Segments</i>	0	0	0					0
<i>Bridges</i>	4,489	133	0					4,622
<i>Tunnels</i>	0	0	0					0
<i>Facilities</i>		0	0	696	564	0	3,603	4,862
Total	4,489	133	0	696	564	0	3,603	9,485
Merced								
<i>Segments</i>	0	0	0					0
<i>Bridges</i>	1,771	73	0					1,843
<i>Tunnels</i>	0	0	0					0
<i>Facilities</i>		218	0	91	0	0	2,113	2,422

	Highway	Railway	Light Rail	Bus Facility	Ports	Ferries	Airport	Total
Total	1,771	291	0	91	0	0	2,113	4,266
Mono								
Segments	0	0	0					0
Bridges	0	0	0					0
Tunnels	0	0	0					0
Facilities		0	0	5	0	0	28	33
Total	0	0	0	5	0	0	28	33
Monterey								
Segments	0	0	0					0
Bridges	19,911	3,015	0					22,926
Tunnels	16	0	0					16
Facilities		497	0	2,108	997	0	6,471	10,073
Total	19,927	3,512	0	2,108	997	0	6,471	33,015
Napa								
Segments	0	0	0					0
Bridges	416	247	0					663
Tunnels	0	0	0					0
Facilities		0	0	171	1,131	0	1,878	3,180
Total	416	247	0	171	1,131	0	1,878	3,844
Nevada								
Segments	0	0	0					0
Bridges	0	0	0					0
Tunnels	0	0	0					0
Facilities		3	0	0	0	0	11	14

	Highway	Railway	Light Rail	Bus Facility	Ports	Ferries	Airport	Total
Total	0	3	0	0	0	0	11	15
Placer								
Segments	0	0	0					0
Bridges	8	0	0					8
Tunnels	0	0	0					0
Facilities		80	0	2	0	0	159	241
Total	8	80	0	2	0	0	159	249
Plumas								
Segments	0	0	0					0
Bridges	0	0	0					0
Tunnels	0	0	0					0
Facilities		0	0	0	0	0	40	40
Total	0	0	0	0	0	0	40	40
Sacramento								
Segments	0	0	0					0
Bridges	1,686	2	0					1,688
Tunnels	0	0	0					0
Facilities		26	3,024	43	4,114	55	4,364	11,625
Total	1,686	27	3,024	43	4,114	55	4,364	13,313
San Benito								
Segments	0	0	0					0
Bridges	18,839	2,436	0					21,275
Tunnels	0	0	0					0
Facilities		0	0	0	0	0	3,030	3,030

	Highway	Railway	Light Rail	Bus Facility	Ports	Ferries	Airport	Total
Total	18,839	2,436	0	0	0	0	3,030	24,305
San Francisco								
Segments	0	0	0					0
Bridges	220,125	1,167	0					221,292
Tunnels	6,779	0	0					6,779
Facilities		0	963,801	1,142	47,598	1,205	10,315	1,024,061
Total	226,904	1,167	963,801	1,142	47,598	1,205	10,315	1,252,133
San Joaquin								
Segments	0	0	0					0
Bridges	2,028	42	0					2,070
Tunnels	0	0	0					0
Facilities		1,748	0	91	7,905	218	2,239	12,202
Total	2,028	1,789	0	91	7,905	218	2,239	14,272
San Luis Obispo								
Segments	0	0	0					0
Bridges	33	0	0					33
Tunnels	0	0	0					0
Facilities		77	0	41	294	0	451	863
Total	33	77	0	41	294	0	451	896
San Mateo								
Segments	0	0	0					0
Bridges	399,840	13,678	0					413,518
Tunnels	10,499	5	0					10,505
Facilities		0	0	0	19,423	0	312,649	332,072

	Highway	Railway	Light Rail	Bus Facility	Ports	Ferries	Airport	Total
Total	410,339	13,683	0	0	19,423	0	312,649	756,094
Santa Barbara								
Segments	0	0	0					0
Bridges	9	0	0					9
Tunnels	0	0	0					0
Facilities		37	0	46	33	1	91	208
Total	9	37	0	46	33	1	91	217
Santa Clara								
Segments	0	0	0					0
Bridges	231,684	17,113	51					248,848
Tunnels	176	0	0					176
Facilities		2,410	125,536	1,473	3,707	0	84,427	217,553
Total	231,860	19,524	125,586	1,473	3,707	0	84,427	466,577
Santa Cruz								
Segments	0	0	0					0
Bridges	29,573	7,245	0					36,818
Tunnels	0	0	0					0
Facilities		0	0	1,239	863	0	9,187	11,289
Total	29,573	7,245	0	1,239	863	0	9,187	48,107
Shasta								
Segments	0	0	0					0
Bridges	0	0	0					0
Tunnels	0	0	0					0
Facilities		26	0	22	0	0	184	231

	Highway	Railway	Light Rail	Bus Facility	Ports	Ferries	Airport	Total
Total	0	26	0	22	0	0	184	232
Siskiyou								
Segments	0	0	0					0
Bridges	0	0	0					0
Tunnels	0	0	0					0
Facilities		3	0	2	0	0	23	28
Total	0	3	0	2	0	0	23	28
Solano								
Segments	0	0	0					0
Bridges	4,504	479	0					4,983
Tunnels	0	0	0					0
Facilities		697	0	512	11,536	311	1,165	14,222
Total	4,504	1,176	0	512	11,536	311	1,165	19,205
Sonoma								
Segments	0	0	0					0
Bridges	12,913	985	0					13,898
Tunnels	0	0	0					0
Facilities		0	0	348	11,108	0	6,351	17,808
Total	12,913	985	0	348	11,108	0	6,351	31,706
Stanislaus								
Segments	0	0	0					0
Bridges	559	33	0					592
Tunnels	0	0	0					0
Facilities		655	0	183	0	0	999	1,837

	Highway	Railway	Light Rail	Bus Facility	Ports	Ferries	Airport	Total
Total	559	689	0	183	0	0	999	2,429
Sutter								
Segments	0	0	0					0
Bridges	92	0	0					92
Tunnels	0	0	0					0
Facilities		0	0	0	0	0	129	129
Total	92	0	0	0	0	0	129	220
Tehama								
Segments	0	0	0					0
Bridges	34	0	0					34
Tunnels	0	0	0					0
Facilities		0	0	0	0	0	102	102
Total	34	0	0	0	0	0	102	136
Trinity								
Segments	0	0	0					0
Bridges	0	0	0					0
Tunnels	0	0	0					0
Facilities		0	0	0	0	0	210	210
Total	0	0	0	0	0	0	210	210
Tulare								
Segments	0	0	0					0
Bridges	25	0	0					25
Tunnels	0	0	0					0
Facilities		0	0	64	0	0	210	274

	Highway	Railway	Light Rail	Bus Facility	Ports	Ferries	Airport	Total
Total	25	0	0	64	0	0	210	299
Tuolumne								
Segments	0	0	0					0
Bridges	0	0	0					0
Tunnels	0	0	0					0
Facilities		0	0	0	0	0	153	153
Total	0	0	0	0	0	0	153	153
Yolo								
Segments	0	0	0					0
Bridges	1,935	4	0					1,940
Tunnels	0	0	0					0
Facilities		546	0	0	2,658	0	652	3,857
Total	1,935	551	0	0	2,658	0	652	5,796
Yuba								
Segments	0	0	0					0
Bridges	1	0	0					1
Tunnels	0	0	0					0
Facilities		0	0	22	0	0	102	124
Total	1	0	0	22	0	0	102	125
Total	1,099,347	74,376	1,093,783	11,273	202,811	4,591	527,358	3,013,538
Region Total	1,099,347	74,376	1,093,783	11,273	202,811	4,591	527,358	3,013,538

Totals only reflect data for those census tracts/blocks included in the user's study region and will reflect the entire county/state only if all of the census blocks for that county/states were selected at the time of study region creation.

Direct Economic Loss For Utilities

June 10, 2024

All values are in thousands of dollars

	Potable Water	Waste Water	Oil Systems	Natural Gas	Electric Power	Communication	Total
California							
Alameda							
<i>Facilities</i>	8,991	206,538	0	0	565,449	463	781,442
<i>Pipelines</i>	4,966	2,495	0	0			7,460
Total	13,957	209,033	0	0	565,449	463	788,902
Alpine							
<i>Facilities</i>	0	3	0	0	0	0	3
<i>Pipelines</i>	6	3	0	0			9
Total	6	6	0	0	0	0	11
Amador							
<i>Facilities</i>	0	3	0	0	7,382	0	7,384
<i>Pipelines</i>	26	13	0	0			39
Total	26	16	0	0	7,382	0	7,424
Butte							
<i>Facilities</i>	28	492	0	0	36,473	1	36,994

	Potable Water	Waste Water	Oil Systems	Natural Gas	Electric Power	Communication	Total
<i>Pipelines</i>	126	64	0	0			190
Total	155	555	0	0	36,473	1	37,184
Calaveras							
<i>Facilities</i>	28	492	0	0	25,137	0	25,657
<i>Pipelines</i>	55	27	0	0			82
Total	83	519	0	0	25,137	0	25,740
Colusa							
<i>Facilities</i>	0	3,172	0	75	11,633	0	14,879
<i>Pipelines</i>	132	66	0	0			199
Total	132	3,238	0	75	11,633	0	15,078
Contra Costa							
<i>Facilities</i>	10,497	121,790	65	0	982,061	115	1,114,528
<i>Pipelines</i>	2,179	1,095	0	0			3,274
Total	12,676	122,885	65	0	982,061	115	1,117,801
El Dorado							
<i>Facilities</i>	28	492	0	0	13,173	1	13,694
<i>Pipelines</i>	84	42	0	0			126
Total	112	534	0	0	13,173	1	13,820
Fresno							
<i>Facilities</i>	0	492	0	13	157,197	11	157,713
<i>Pipelines</i>	1,060	533	0	0			1,593

	Potable Water	Waste Water	Oil Systems	Natural Gas	Electric Power	Communication	Total
Total	1,060	1,024	0	13	157,197	11	159,306
Glenn							
<i>Facilities</i>	0	123	0	0	136	0	259
<i>Pipelines</i>	126	63	0	0			189
Total	126	186	0	0	136	0	448
Humboldt							
<i>Facilities</i>	0	4,155	0	0	2,621	4	6,781
<i>Pipelines</i>	169	85	0	0			254
Total	169	4,240	0	0	2,621	4	7,035
Kern							
<i>Facilities</i>	2	8	0	44	8,682	0	8,736
<i>Pipelines</i>	305	153	0	0			458
Total	307	161	0	44	8,682	0	9,194
Kings							
<i>Facilities</i>	0	0	0	134	6,360	1	6,495
<i>Pipelines</i>	208	104	0	0			312
Total	208	104	0	134	6,360	1	6,807
Lake							
<i>Facilities</i>	697	0	0	0	83,528	43	84,268
<i>Pipelines</i>	319	160	0	0			479
Total	1,015	160	0	0	83,528	43	84,747

	Potable Water	Waste Water	Oil Systems	Natural Gas	Electric Power	Communication	Total
Madera							
<i>Facilities</i>	0	0	0	0	13,793	1	13,794
<i>Pipelines</i>	294	148	0	0			442
Total	294	148	0	0	13,793	1	14,236
Marin							
<i>Facilities</i>	4,139	167,711	0	0	6,022	292	178,164
<i>Pipelines</i>	4,506	2,263	0	0			6,769
Total	8,645	169,974	0	0	6,022	292	184,932
Mariposa							
<i>Facilities</i>	0	371	0	0	2,808	2	3,181
<i>Pipelines</i>	45	22	0	0			67
Total	45	394	0	0	2,808	2	3,248
Mendocino							
<i>Facilities</i>	0	99,006	0	0	7,095	325	106,426
<i>Pipelines</i>	5,539	2,782	0	0			8,321
Total	5,539	101,788	0	0	7,095	325	114,747
Merced							
<i>Facilities</i>	0	9,111	0	0	600,401	36	609,548
<i>Pipelines</i>	877	441	0	0			1,318
Total	877	9,551	0	0	600,401	36	610,865
Mono							

	Potable Water	Waste Water	Oil Systems	Natural Gas	Electric Power	Communication	Total
<i>Facilities</i>	0	0	0	0	54	0	54
<i>Pipelines</i>	44	22	0	0			66
Total	44	22	0	0	54	0	120
Monterey							
<i>Facilities</i>	0	122,104	0	0	747,394	1,094	870,591
<i>Pipelines</i>	4,834	2,428	0	0			7,262
Total	4,834	124,532	0	0	747,394	1,094	877,853
Napa							
<i>Facilities</i>	0	25,439	0	0	4,314	31	29,783
<i>Pipelines</i>	261	131	0	0			393
Total	261	25,570	0	0	4,314	31	30,176
Nevada							
<i>Facilities</i>	0	379	0	0	317	0	696
<i>Pipelines</i>	69	35	0	0			104
Total	69	414	0	0	317	0	800
Placer							
<i>Facilities</i>	0	1,229	0	0	4,168	1	5,399
<i>Pipelines</i>	98	49	0	0			147
Total	98	1,279	0	0	4,168	1	5,546
Plumas							
<i>Facilities</i>	1	10	0	0	980	0	991

	Potable Water	Waste Water	Oil Systems	Natural Gas	Electric Power	Communication	Total
<i>Pipelines</i>	80	40	0	0			121
Total	81	51	0	0	980	0	1,112
Sacramento							
<i>Facilities</i>	0	2,631	0	0	20,196	30	22,857
<i>Pipelines</i>	479	241	0	0			720
Total	479	2,872	0	0	20,196	30	23,577
San Benito							
<i>Facilities</i>	0	95,812	0	0	0	152	95,964
<i>Pipelines</i>	4,199	2,109	0	0			6,308
Total	4,199	97,922	0	0	0	152	102,272
San Francisco							
<i>Facilities</i>	0	208,753	0	0	19,057	1,011	228,821
<i>Pipelines</i>	4,668	2,345	0	0			7,013
Total	4,668	211,098	0	0	19,057	1,011	235,834
San Joaquin							
<i>Facilities</i>	1,101	13,561	3	0	116,395	33	131,094
<i>Pipelines</i>	634	318	0	0			952
Total	1,735	13,879	3	0	116,395	33	132,046
San Luis Obispo							
<i>Facilities</i>	28	984	0	0	25,125	6	26,143
<i>Pipelines</i>	160	80	0	0			240

	Potable Water	Waste Water	Oil Systems	Natural Gas	Electric Power	Communication	Total
Total	188	1,064	0	0	25,125	6	26,383
San Mateo							
<i>Facilities</i>	0	569,383	0	0	64,769	902	635,054
<i>Pipelines</i>	19,982	10,037	0	0			30,019
Total	19,982	579,420	0	0	64,769	902	665,073
Santa Barbara							
<i>Facilities</i>	0	18	0	4	18	1	42
<i>Pipelines</i>	93	47	0	0			140
Total	93	65	0	4	18	1	182
Santa Clara							
<i>Facilities</i>	10,920	65,585	0	0	960,992	1,194	1,038,691
<i>Pipelines</i>	20,513	10,304	0	0			30,818
Total	31,434	75,889	0	0	960,992	1,194	1,069,509
Santa Cruz							
<i>Facilities</i>	0	112,936	0	0	9,352	325	122,614
<i>Pipelines</i>	11,223	5,637	0	0			16,860
Total	11,223	118,574	0	0	9,352	325	139,474
Shasta							
<i>Facilities</i>	29	863	0	3	7,594	2	8,490
<i>Pipelines</i>	118	59	0	0			177
Total	147	923	0	3	7,594	2	8,668

	Potable Water	Waste Water	Oil Systems	Natural Gas	Electric Power	Communication	Total
Siskiyou							
<i>Facilities</i>	0	3	0	0	5	0	7
<i>Pipelines</i>	93	47	0	0			140
Total	93	49	0	0	5	0	147
Solano							
<i>Facilities</i>	0	27,121	9	0	209,437	26	236,593
<i>Pipelines</i>	1,050	528	0	0			1,578
Total	1,050	27,649	9	0	209,437	26	238,171
Sonoma							
<i>Facilities</i>	0	159,328	0	0	693,284	237	852,849
<i>Pipelines</i>	6,683	3,357	0	0			10,040
Total	6,683	162,685	0	0	693,284	237	862,889
Stanislaus							
<i>Facilities</i>	0	11,878	0	0	78,971	45	90,895
<i>Pipelines</i>	529	266	0	0			795
Total	529	12,144	0	0	78,971	45	91,689
Sutter							
<i>Facilities</i>	0	246	0	0	6,808	1	7,055
<i>Pipelines</i>	132	66	0	0			198
Total	132	312	0	0	6,808	1	7,253
Tehama							

	Potable Water	Waste Water	Oil Systems	Natural Gas	Electric Power	Communication	Total
<i>Facilities</i>	0	248	0	75	411	1	735
<i>Pipelines</i>	120	60	0	0			180
Total	120	309	0	75	411	1	915
Trinity							
<i>Facilities</i>	0	0	0	0	612	0	612
<i>Pipelines</i>	79	40	0	0			119
Total	79	40	0	0	612	0	731
Tulare							
<i>Facilities</i>	28	369	0	0	1,834	2	2,232
<i>Pipelines</i>	124	62	0	0			186
Total	152	431	0	0	1,834	2	2,418
Tuolumne							
<i>Facilities</i>	0	123	0	0	28,320	1	28,444
<i>Pipelines</i>	68	34	0	0			102
Total	68	157	0	0	28,320	1	28,546
Yolo							
<i>Facilities</i>	0	6,097	0	0	6,937	14	13,049
<i>Pipelines</i>	183	92	0	0			275
Total	183	6,189	0	0	6,937	14	13,324
Yuba							
<i>Facilities</i>	0	492	0	0	2,088	0	2,580

	Potable Water	Waste Water	Oil Systems	Natural Gas	Electric Power	Communication	Total
<i>Pipelines</i>	54	27	0	0			82
Total	54	519	0	0	2,088	0	2,662
Total	134,110	2,088,572	77	348	5,539,382	6,408	7,768,896
Region Total	134,110	2,088,572	77	348	5,539,382	6,408	7,768,896

Totals only reflect data for those census tracts/blocks included in the user's study region and will reflect the entire county/state only if all of the census blocks for that county/states were selected at the time of study region creation.

Hazus Quick Assessment Report

Estimated Economic Loss (\$ Billions)

Category	Description	Range
General Building Stock	Building Damage	37.80 - 151.30
	Building Contents	3.70 - 14.80
	Business Interruption	9.30 - 37.10
Infrastructure	Lifelines Damage	
Total		59.60 - 238.40

Preliminary Damage Assessment (PDA) Estimates

Description	Residential	Commercial	Other	Total
Affected	708,500	45,300	20,600	774,400
Minor	171,300	30,800	13,000	215,100
Major	26,500	14,300	5,900	46,700
Destroyed	11,300	6,000	2,300	19,600
Total	917,600	96,400	41,800	

Estimated Casualties : Night Time

Severity Level	Description	# Persons
Level 1	Medical Aid	7,000 - 27,000
Level 2	Hospital Care	1,600 - 6,000
Level 3	Life-threatening	200 - 900
Level 4	Fatalities	400 - 1,700

Estimated Shelter Needs

Type	Households	People
Displaced Households	61,000 - 242,000	152,500 - 605,000
Public Shelter	21,300	53,260

Comments :

*Hazus damage estimates are presented using FEMA Preliminary Damage Assessment (PDA) categories. These estimates should be used for planning purposes and may not reflect actual observed damages from the PDA process.

Disclaimer:

The estimates of social and economic impacts contained in this report were produced using HAZUS loss estimation methodology software which is based on current scientific and engineering knowledge. There are uncertainties inherent in any loss estimation technique. Therefore, there may be significant differences between the modeled results contained in this report and the actual social and economic losses following a specific earthquake. These results can be improved by using enhanced inventory, geotechnical, and observed ground motion data.

Earthquake Information

Location :

Origin Time:

Magnitude : 7.88

Epicenter Latitude/Longitude :
/

Depth & Type : /U

Name :
NA

Ground Motion /Attenuation :

Maximum PGA: 1.00

Information Sources:

Comments :

Population and Building Exposure

Population: 17,323,782

Building Exposure : (\$ Millions)

Residential	
Commercial	587,802
Other	527,922
Total	

Counties : See Appendix

Major Metro Area :

Hazus Quick Assessment Report

Estimated Economic Loss (\$ Billions)

Category	Description	Range
General Building Stock	Building Damage	37.80 - 151.30
	Building Contents	3.70 - 14.80
	Business Interruption	9.30 - 37.10
Infrastructure	Lifelines Damage	
Total		59.60 - 238.40

Preliminary Damage Assessment (PDA) Estimates

Description	Residential	Commercial	Other	Total
Affected	708,500	45,300	20,600	774,400
Minor	171,300	30,800	13,000	215,100
Major	26,500	14,300	5,900	46,700
Destroyed	11,300	6,000	2,300	19,600
Total	917,600	96,400	41,800	

Estimated Casualties : Day Time

Severity Level	Description	# Persons
Level 1	Medical Aid	13,000 - 52,000
Level 2	Hospital Care	3,000 - 13,000
Level 3	Life-threatening	500 - 1,900
Level 4	Fatalities	900 - 4,000

Estimated Shelter Needs

Type	Households	People
Displaced Households	61,000 - 242,000	152,500 - 605,000
Public Shelter	21,300	53,260

Comments :

**Hazus damage estimates are presented using FEMA Preliminary Damage Assessment (PDA) categories. These estimates should be used for planning purposes and may not reflect actual observed damages from the PDA process.*

Disclaimer:

The estimates of social and economic impacts contained in this report were produced using HAZUS loss estimation methodology software which is based on current scientific and engineering knowledge. There are uncertainties inherent in any loss estimation technique. Therefore, there may be significant differences between the modeled results contained in this report and the actual social and economic losses following a specific earthquake. These results can be improved by using enhanced inventory, geotechnical, and observed ground motion data.

Earthquake Information

Location :

Origin Time:

Magnitude : 7.88

Epicenter Latitude/Longitude :
/

Depth & Type : /U

Name :
NA

Ground Motion /Attenuation :

Maximum PGA: 1.00

Information Sources:

Comments :

Population and Building Exposure

Population: 17,323,782

Building Exposure : (\$ Millions)

Residential	
Commercial	587,802
Other	527,922
Total	

Counties : See Appendix

Major Metro Area :

Hazus Quick Assessment Report

Estimated Economic Loss (\$ Billions)

Category	Description	Range
General Building Stock	Building Damage	37.80 - 151.30
	Building Contents	3.70 - 14.80
	Business Interruption	9.30 - 37.10
Infrastructure	Lifelines Damage	
Total		59.60 - 238.40

Preliminary Damage Assessment (PDA) Estimates

Description	Residential	Commercial	Other	Total
Affected	708,500	45,300	20,600	774,400
Minor	171,300	30,800	13,000	215,100
Major	26,500	14,300	5,900	46,700
Destroyed	11,300	6,000	2,300	19,600
Total	917,600	96,400	41,800	

Estimated Casualties : Commute Time

Severity Level	Description	# Persons
Level 1	Medical Aid	9,000 - 36,000
Level 2	Hospital Care	2,000 - 9,000
Level 3	Life-threatening	500 - 2,000
Level 4	Fatalities	700 - 3,000

Estimated Shelter Needs

Type	Households	People
Displaced Households	61,000 - 242,000	152,500 - 605,000
Public Shelter	21,300	53,260

Comments :

*Hazus damage estimates are presented using FEMA Preliminary Damage Assessment (PDA) categories. These estimates should be used for planning purposes and may not reflect actual observed damages from the PDA process.

Disclaimer:

The estimates of social and economic impacts contained in this report were produced using HAZUS loss estimation methodology software which is based on current scientific and engineering knowledge. There are uncertainties inherent in any loss estimation technique. Therefore, there may be significant differences between the modeled results contained in this report and the actual social and economic losses following a specific earthquake. These results can be improved by using enhanced inventory, geotechnical, and observed ground motion data.

Earthquake Information

Location :

Origin Time:

Magnitude : 7.88

Epicenter Latitude/Longitude :
/

Depth & Type : /U

Name :
NA

Ground Motion /Attenuation :

Maximum PGA: 1.00

Information Sources:

Comments :

Population and Building Exposure

Population: 17,323,782

Building Exposure : (\$ Millions)

Residential	
Commercial	587,802
Other	527,922
Total	

Counties : See Appendix

Major Metro Area :

Shelter Summary Report

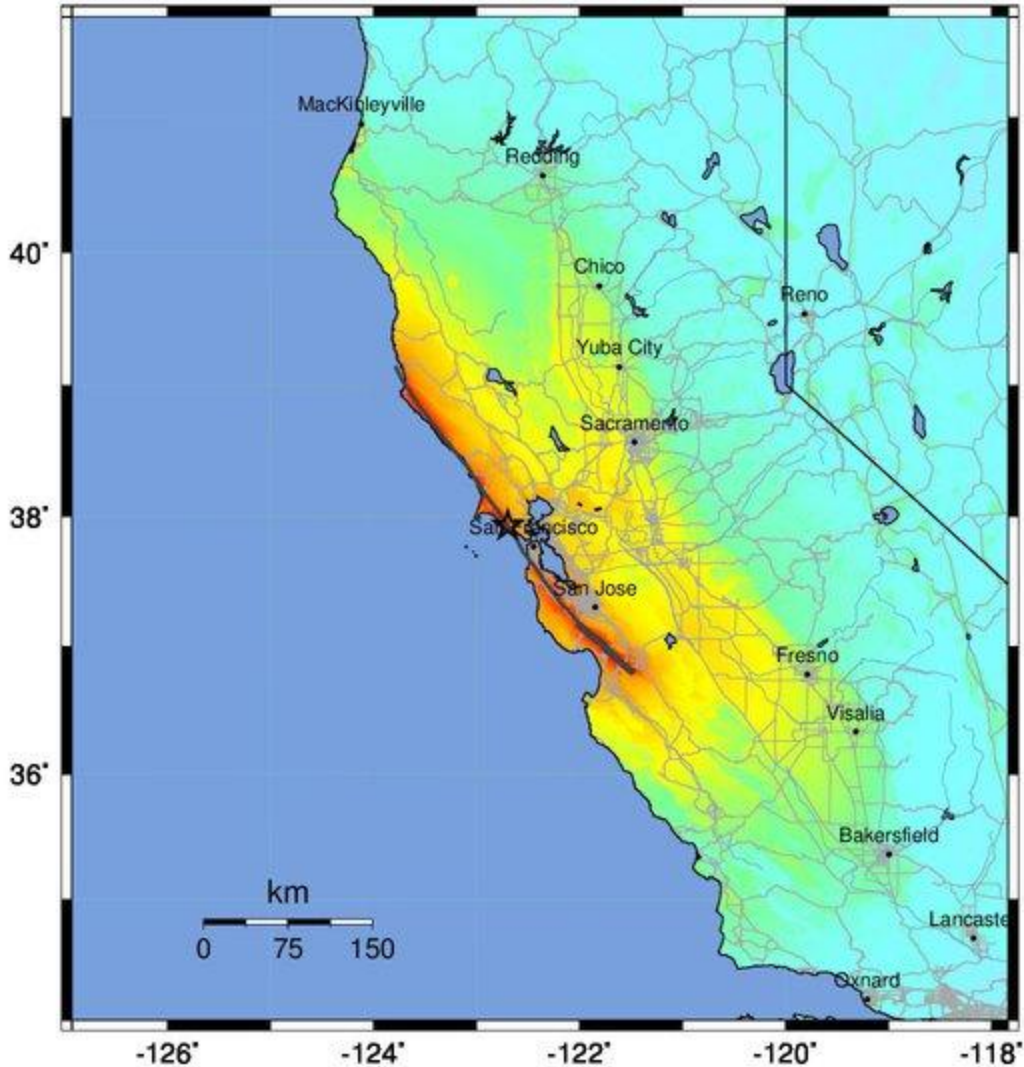
June 10, 2024

	# of Displaced Households	# of People Needing Short Term Shelter
California		
Alameda	9,855	5,126
Alpine	0	0
Amador	0	0
Butte	0	0
Calaveras	0	0
Colusa	0	0
Contra Costa	439	275
El Dorado	0	0
Fresno	0	0
Glenn	0	0
Humboldt	0	0
Kern	0	0
Kings	0	0
Lake	1	1
Madera	0	0
Marin	715	310
Mariposa	0	0
Mendocino	2	1
Merced	8	6
Mono	0	0
Monterey	997	688
Napa	19	10
Nevada	0	0
Placer	0	0
Plumas	0	0
Sacramento	2	1
San Benito	134	78
San Francisco	74,720	30,372
San Joaquin	4	3
San Luis Obispo	0	0
San Mateo	20,507	9,448
Santa Barbara	0	0

	# of Displaced Households	# of People Needing Short Term Shelter
Santa Clara	10,186	4,918
Santa Cruz	2,871	1,736
Shasta	0	0
Siskiyou	0	0
Solano	73	39
Sonoma	525	241
Stanislaus	4	3
Sutter	0	0
Tehama	0	0
Trinity	0	0
Tulare	0	0
Tuolumne	0	0
Yolo	0	0
Yuba	0	0
Total	121,062	53,255
Region Total	121,062	53,255

Totals only reflect data for those census tracts/blocks included in the user's study region and will reflect the entire county/state only if all of the census blocks for that county/states were selected at the time of study region creation.

-- Earthquake Planning Scenario --
ShakeMap for N. San Andreas: SAN+SAP+SAS - Median ground motions Scenario
 Scenario Date: Jun 30, 2017 10:03:45 AM MDT M 7.9 N37.93 W122.70 Depth: 6.6km



-126° -124° -122° -120° -118°
 PLANNING SCENARIO ONLY -- Map Version 13 Processed 2017-07-03 09:57:37 AM MDT

PERCEIVED SHAKING	Not felt	Weak	Light	Moderate	Strong	Very strong	Severe	Violent	Extreme
POTENTIAL DAMAGE	none	none	none	Very light	Light	Moderate	Mod./Heavy	Heavy	Very Heavy
PEAK ACC.(%g)	<0.05	0.3	2.8	6.2	12	22	40	75	>139
PEAK VEL.(cm/s)	<0.02	0.1	1.4	4.7	9.6	20	41	86	>178
INSTRUMENTAL INTENSITY	I	II-III	IV	V	VI	VII	VIII	IX	X+

Scale based upon Worden et al. (2012)