
Hazus: Earthquake Global Risk Report

Region Name: MontereyBayTularci

Earthquake Scenario: montereybaytularcito_m7p26_se

Print Date: May 06, 2024

Disclaimer:

Totals only reflect data for those census tracts/blocks included in the user's study region.

The estimates of social and economic impacts contained in this report were produced using Hazus loss estimation methodology software which is based on current scientific and engineering knowledge. There are uncertainties inherent in any loss estimation technique. Therefore, there may be significant differences between the modeled results contained in this report and the actual social and economic losses following a specific earthquake. These results can be improved by using enhanced inventory, geotechnical, and observed ground motion data.

Table of Contents

Section	Page #
General Description of the Region	3
Building and Lifeline Inventory	4
Building Inventory	
Critical Facility Inventory	
Transportation and Utility Lifeline Inventory	
Earthquake Scenario Parameters	7
Direct Earthquake Damage	8
Buildings Damage	
Essential Facilities Damage	
Transportation and Utility Lifeline Damage	
Induced Earthquake Damage	14
Fire Following Earthquake	
Debris Generation	
Social Impact	15
Shelter Requirements	
Casualties	
Economic Loss	17
Building Related Losses	
Transportation and Utility Lifeline Losses	
Appendix A: County Listing for the Region	
Appendix B: Regional Population and Building Value Data	

General Description of the Region

Hazus-MH is a regional earthquake loss estimation model that was developed by the Federal Emergency Management Agency (FEMA) and the National Institute of Building Sciences. The primary purpose of Hazus is to provide a methodology and software application to develop multi-hazard losses at a regional scale. These loss estimates would be used primarily by local, state and regional officials to plan and stimulate efforts to reduce risks from multi-hazards and to prepare for emergency response and recovery.

The earthquake loss estimates provided in this report was based on a region that includes 28 county(ies) from the following state(s):

California

Note:

Appendix A contains a complete listing of the counties contained in the region.

The geographical size of the region is 53,265.06 square miles and contains 3,567 census tracts. There are over 5,336 thousand households in the region which has a total population of 15,543,433 people. The distribution of population by Total Region and County is provided in Appendix B.

There are an estimated 4,686 thousand buildings in the region with a total building replacement value (excluding contents) of (millions of dollars). Approximately 90.00 % of the buildings (and % of the building value) are associated with residential housing.

The replacement value of the transportation and utility lifeline systems is estimated to be 243,994 and 175,232 (millions of dollars) , respectively.

Building and Lifeline Inventory

Building Inventory

Hazus estimates that there are 4,686 thousand buildings in the region which have an aggregate total replacement value of (millions of dollars) . Appendix B provides a general distribution of the building value by Total Region and County.

In terms of building construction types found in the region, wood frame construction makes up 87% of the building inventory. The remaining percentage is distributed between the other general building types.

Critical Facility Inventory

Hazus breaks critical facilities into two (2) groups: essential facilities and high potential loss facilities (HPL). Essential facilities include hospitals, medical clinics, schools, fire stations, police stations and emergency operations facilities. High potential loss facilities include dams, levees, military installations, nuclear power plants and hazardous material sites.

For essential facilities, there are 257 hospitals in the region with a total bed capacity of 41,514 beds. There are 5,610 schools, 1,340 fire stations, 495 police stations and 84 emergency operation facilities. With respect to high potential loss facilities (HPL), there are no dams identified within the inventory. The inventory also includes no hazardous material sites, no military installations and no nuclear power plants.

Transportation and Utility Lifeline Inventory

Within Hazus, the lifeline inventory is divided between transportation and utility lifeline systems. There are seven (7) transportation systems that include highways, railways, light rail, bus, ports, ferry and airports. There are six (6) utility systems that include potable water, wastewater, natural gas, crude & refined oil, electric power and communications. The lifeline inventory data are provided in Tables 1 and 2.

The total value of the lifeline inventory is over 419,226.00 (millions of dollars). This inventory includes over 10,605.56 miles of highways, 11,051 bridges, 230,782.16 miles of pipes.

Table 1: Transportation System Lifeline Inventory

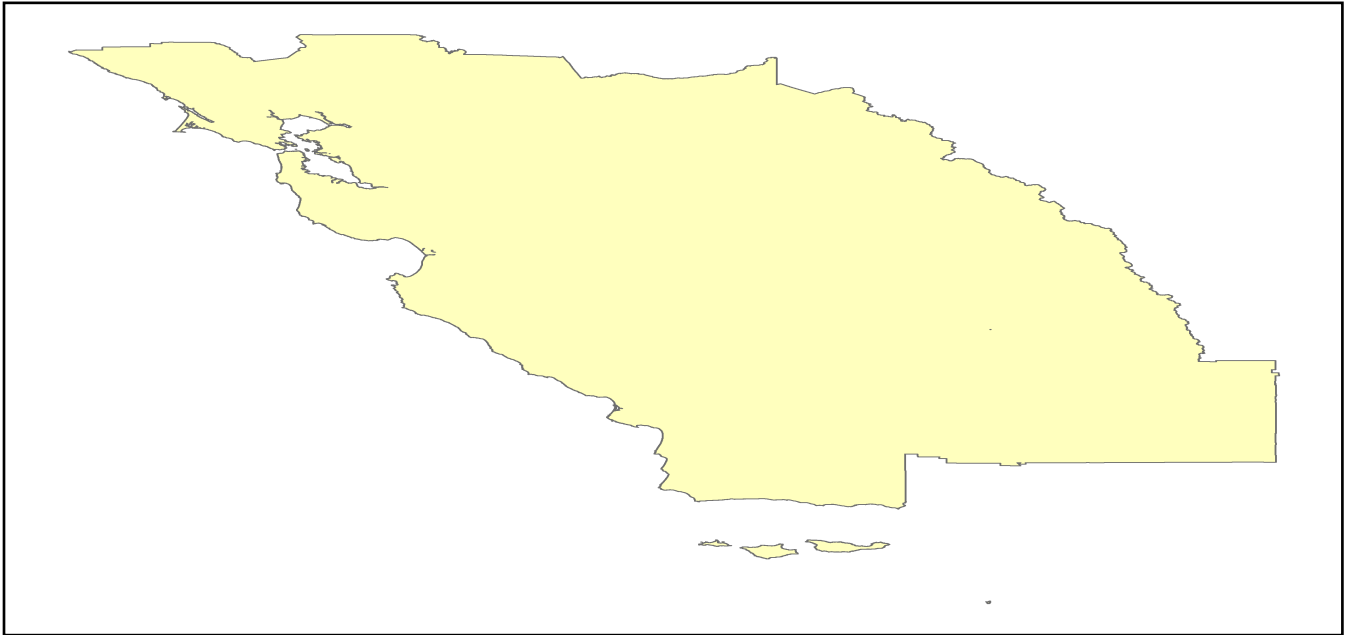
System	Component	# Locations/ # Segments	Replacement value (millions of dollars)
Highway	Bridges	11,051	56820.9039
	Segments	7,397	94300.2335
	Tunnels	47	987.1159
	Subtotal		152108.2533
Railways	Bridges	1,629	9269.0100
	Facilities	95	252.9850
	Segments	3,287	66635.6505
	Tunnels	3	1.8495
	Subtotal		76159.4950
Light Rail	Bridges	112	15.3529
	Facilities	255	4154.0000
	Segments	15	5403.2756
	Tunnels	0	0.0000
	Subtotal		9572.6285
Bus	Facilities	53	118.9169
	Subtotal		118.9169
Ferry	Facilities	28	37.2680
	Subtotal		37.2680
Port	Facilities	368	1402.7588
	Subtotal		1402.7588
Airport	Facilities	112	2910.7073
	Runways	166	1683.9829
	Subtotal		4594.6902
		Total	243,994.00

Table 2: Utility System Lifeline Inventory

System	Component	# Locations / Segments	Replacement value (millions of dollars)
Potable Water	Distribution Lines	NA	4584.0267
	Facilities	24	943.0560
	Pipelines	0	0.0000
		Subtotal	5527.0827
Waste Water	Distribution Lines	NA	2750.4160
	Facilities	162	27856.1916
	Pipelines	0	0.0000
		Subtotal	30606.6076
Natural Gas	Distribution Lines	NA	1833.6107
	Facilities	18	705.7212
	Pipelines	800	16505.1669
		Subtotal	19044.4988
Oil Systems	Facilities	34	4.0120
	Pipelines	0	0.0000
		Subtotal	4.0120
Electrical Power	Facilities	497	119989.2956
		Subtotal	119989.2956
Communication	Facilities	515	60.7700
		Subtotal	60.7700
	Total		175,232.30

Earthquake Scenario

Hazus uses the following set of information to define the earthquake parameters used for the earthquake loss estimate provided in this report.



Scenario Name	montereybaytularcito_m7p26_se
Type of Earthquake	User-defined
Fault Name	NA
Historical Epicenter ID #	NA
Probabilistic Return Period	NA
Longitude of Epicenter	NA
Latitude of Epicenter	NA
Earthquake Magnitude	7.26
Depth (km)	NA
Rupture Length (Km)	NA
Rupture Orientation (degrees)	NA
Attenuation Function	NA

Direct Earthquake Damage

Building Damage

Hazus estimates that about 21,656 buildings will be at least moderately damaged. This is over 0.00 % of the buildings in the region. There are an estimated 446 buildings that will be damaged beyond repair. The definition of the 'damage states' is provided in Volume 1: Chapter 5 of the Hazus technical manual. Table 3 below summarizes the expected damage by general occupancy for the buildings in the region. Table 4 below summarizes the expected damage by general building type.

Damage Categories by General Occupancy Type

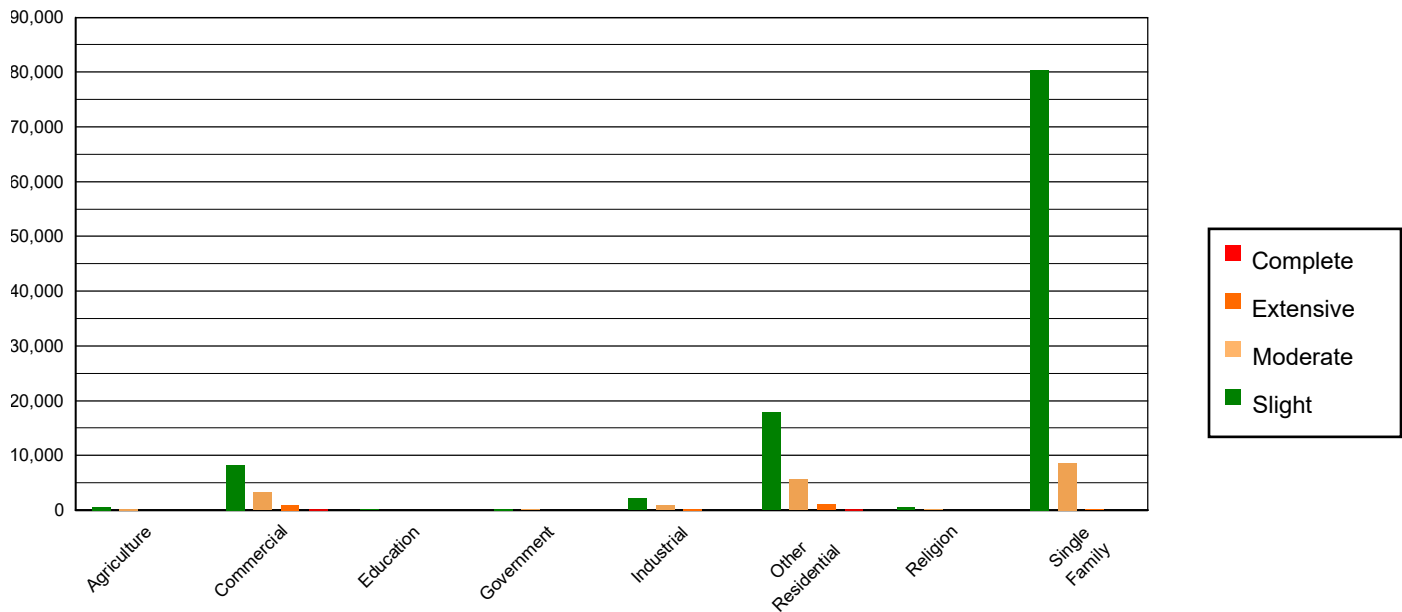


Table 3: Expected Building Damage by Occupancy

	None		Slight		Moderate		Extensive		Complete	
	Count	(%)	Count	(%)	Count	(%)	Count	(%)	Count	(%)
Agriculture	33239.27	0.73	614.95	0.56	222.62	1.19	38.14	1.55	3.02	0.68
Commercial	290595.69	6.38	8316.45	7.55	3277.33	17.48	960.86	38.99	191.67	42.91
Education	9317.45	0.20	139.94	0.13	41.36	0.22	7.05	0.29	1.20	0.27
Government	21349.60	0.47	256.44	0.23	69.59	0.37	17.29	0.70	2.09	0.47
Industrial	81253.72	1.78	2150.01	1.95	785.55	4.19	193.08	7.84	32.63	7.31
Other Residential	578381.41	12.70	17831.52	16.20	5554.92	29.63	1100.38	44.65	206.76	46.29
Religion	17785.86	0.39	427.90	0.39	182.37	0.97	50.69	2.06	8.18	1.83
Single Family	3522750.67	77.34	80342.09	72.99	8611.29	45.94	96.86	3.93	1.09	0.24
Total	4,554,674		110,079		18,745		2,464		447	

Table 4: Expected Building Damage by Building Type (All Design Levels)

	None		Slight		Moderate		Extensive		Complete	
	Count	(%)	Count	(%)	Count	(%)	Count	(%)	Count	(%)
Wood	3960778.02	86.96	93521.29	84.96	10611.90	56.61	189.56	7.69	7.09	1.59
Steel	104458.01	2.29	3293.76	2.99	1667.83	8.90	526.28	21.36	107.82	24.14
Concrete	116633.25	2.56	3285.79	2.98	1447.97	7.72	567.00	23.01	116.92	26.18
Precast	61524.81	1.35	1911.55	1.74	784.63	4.19	145.99	5.92	15.48	3.47
RM	177241.12	3.89	2474.11	2.25	1104.04	5.89	215.80	8.76	8.30	1.86
URM	42838.43	0.94	2016.76	1.83	602.20	3.21	262.89	10.67	120.16	26.90
MH	91200.05	2.00	3576.05	3.25	2526.46	13.48	556.83	22.60	70.86	15.87
Total	4,554,674		110,079		18,745		2,464		447	

*Note:

- RM Reinforced Masonry
- URM Unreinforced Masonry
- MH Manufactured Housing

Essential Facility Damage

Before the earthquake, the region had 41,514 hospital beds available for use. On the day of the earthquake, the model estimates that only 40,264 hospital beds (97.00%) are available for use by patients already in the hospital and those injured by the earthquake. After one week, 99.00% of the beds will be back in service. By 30 days, 100.00% will be operational.

Table 5: Expected Damage to Essential Facilities

Classification	Total	# Facilities		
		At Least Moderate Damage > 50%	Complete Damage > 50%	With Functionality > 50% on day 1
Hospitals	257	2	0	252
Schools	5,610	47	0	5,489
EOCs	84	1	0	82
PoliceStations	495	10	1	476
FireStations	1,340	14	0	1,309

Transportation Lifeline Damage

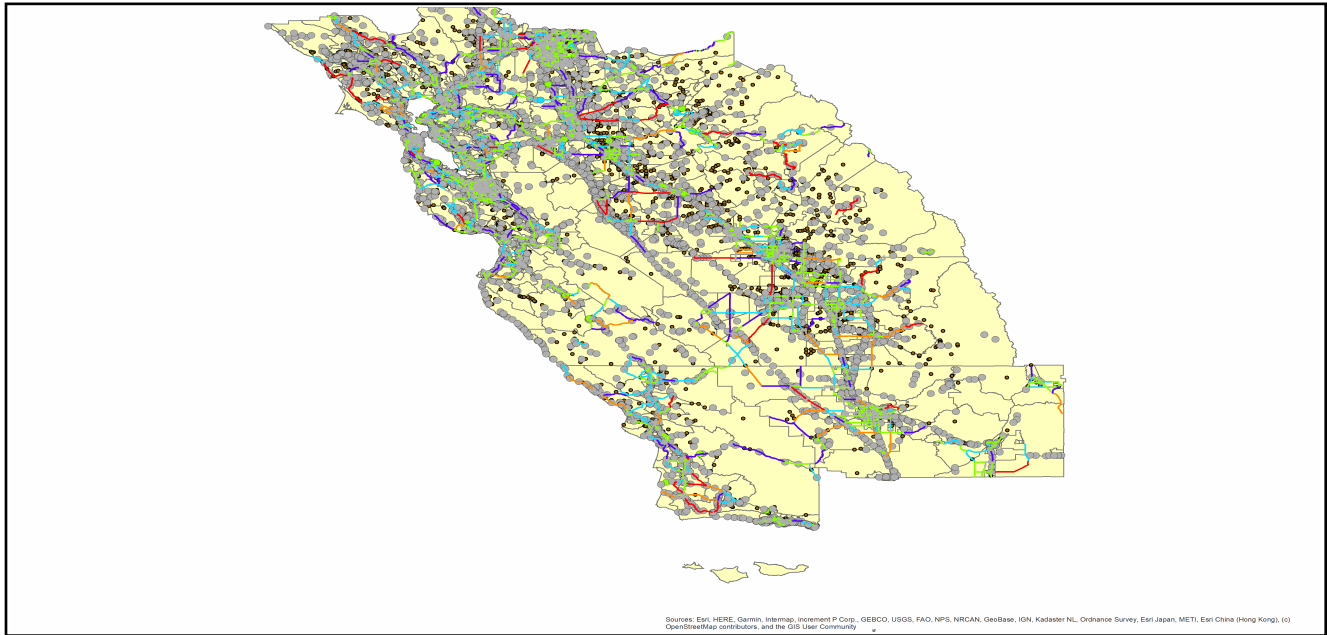


Table 6: Expected Damage to the Transportation Systems

System	Component	Number of Locations_				
		Locations/ Segments	With at Least Mod. Damage	With Complete Damage	With Functionality > 50 %	
					After Day 1	After Day 7
Highway	Segments	7,397	0	0	7,397	7,397
	Bridges	11,051	11	0	11,037	11,049
	Tunnels	47	0	0	47	47
Railways	Segments	3,287	0	0	3,287	3,287
	Bridges	1,629	0	0	1,629	1,629
	Tunnels	3	0	0	3	3
	Facilities	95	0	0	95	95
Light Rail	Segments	15	0	0	15	15
	Bridges	112	0	0	112	112
	Tunnels	0	0	0	0	0
	Facilities	255	0	0	255	255
Bus	Facilities	53	4	0	53	53
Ferry	Facilities	28	0	0	28	28
Port	Facilities	368	3	0	368	368
Airport	Facilities	112	1	0	112	112
	Runways	166	0	0	166	166

Table 6 provides damage estimates for the transportation system.

Note: Roadway segments, railroad tracks and light rail tracks are assumed to be damaged by ground failure only. If ground failure maps are not provided, damage estimates to these components will not be computed.

Tables 7-9 provide information on the damage to the utility lifeline systems. Table 7 provides damage to the utility system facilities. Table 8 provides estimates on the number of leaks and breaks by the pipelines of the utility systems. For electric power and potable water, Hazus performs a simplified system performance analysis. Table 9 provides a summary of the system performance information.

Table 7 : Expected Utility System Facility Damage

System	# of Locations				
	Total #	With at Least Moderate Damage	With Complete Damage	with Functionality > 50 %	
				After Day 1	After Day 7
Potable Water	24	0	0	24	24
Waste Water	162	8	0	150	162
Natural Gas	18	0	0	18	18
Oil Systems	34	0	0	34	34
Electrical Power	497	5	0	494	497
Communication	515	20	0	505	515

Table 8 : Expected Utility System Pipeline Damage (Site Specific)

System	Total Pipelines Length (miles)	Number of Leaks	Number of Breaks
Potable Water	142,419	2694	673
Waste Water	85,451	1353	338
Natural Gas	2,912	0	0
Oil	0	0	0

Table 9: Expected Potable Water and Electric Power System Performance

	Total # of Households	Number of Households without Service				
		At Day 1	At Day 3	At Day 7	At Day 30	At Day 90
Potable Water	5,336,577	13,551	7,983	3,124	0	0
Electric Power		47,605	31,385	13,681	1,478	63

Induced Earthquake Damage

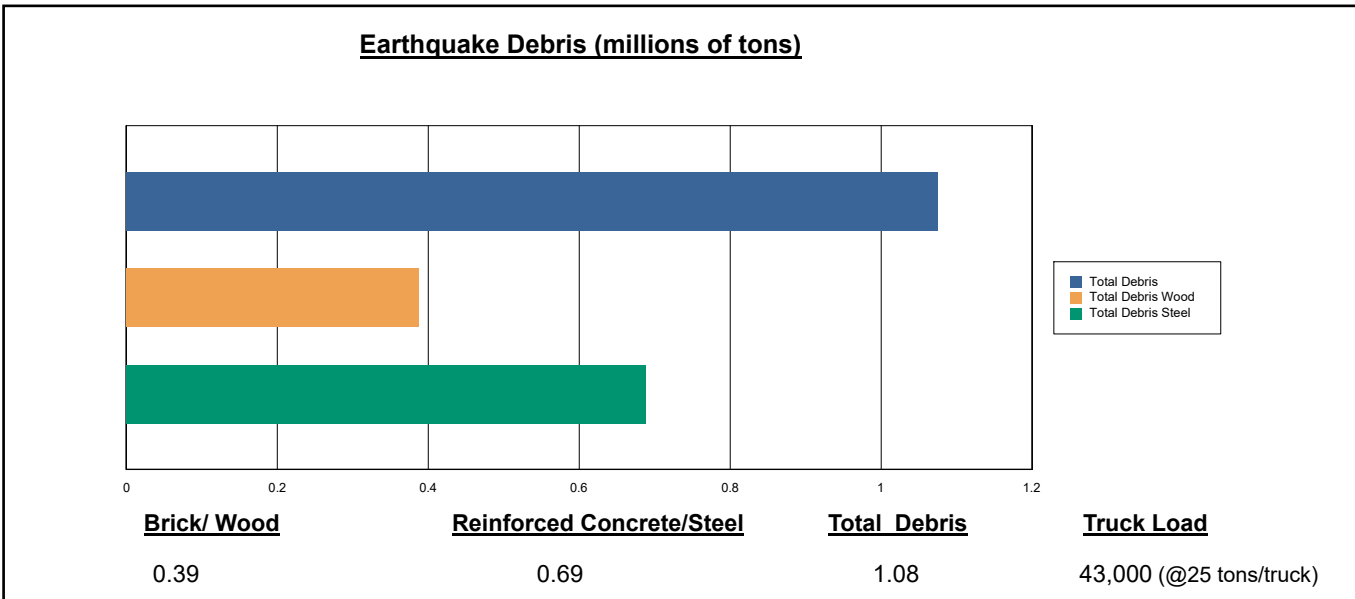
Fire Following Earthquake

Fires often occur after an earthquake. Because of the number of fires and the lack of water to fight the fires, they can often burn out of control. Hazus uses a Monte Carlo simulation model to estimate the number of ignitions and the amount of burnt area. For this scenario, the model estimates that there will be 33 ignitions that will burn about 0.66 sq. mi (0.00 % of the region's total area.) The model also estimates that the fires will displace about 7,193 people and burn about 956 (millions of dollars) of building value.

Debris Generation

Hazus estimates the amount of debris that will be generated by the earthquake. The model breaks the debris into two general categories: a) Brick/Wood and b) Reinforced Concrete/Steel. This distinction is made because of the different types of material handling equipment required to handle the debris.

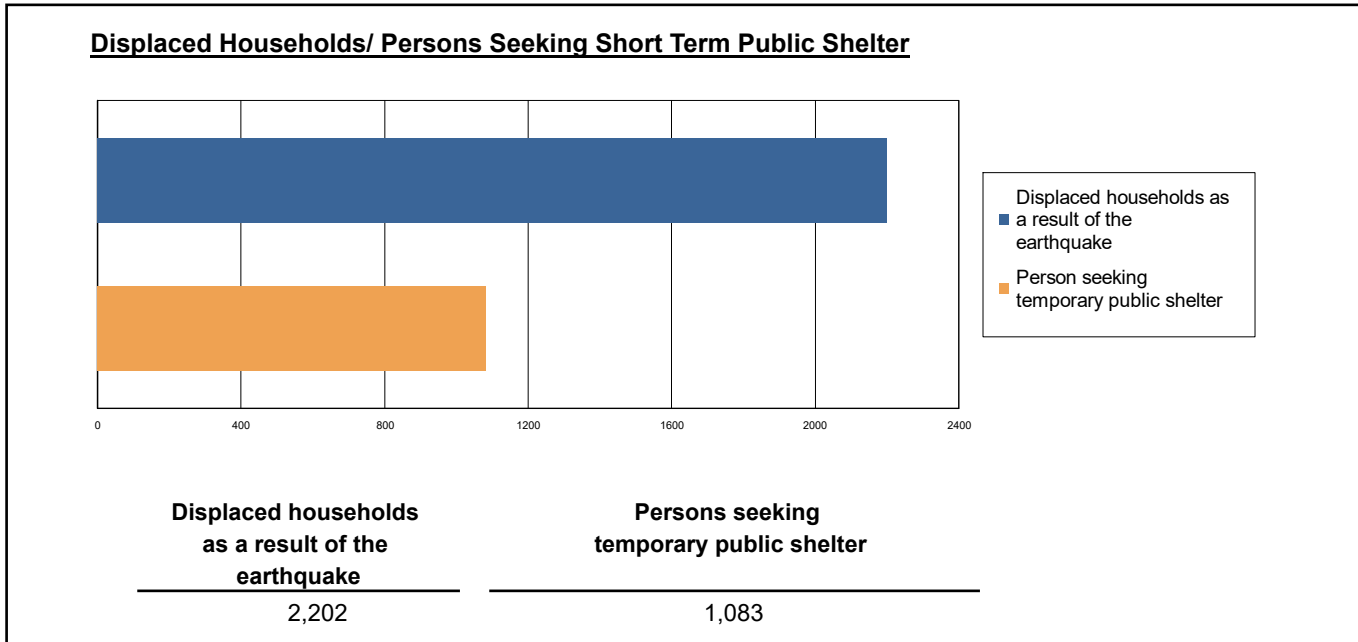
The model estimates that a total of 1,075,000 tons of debris will be generated. Of the total amount, Brick/Wood comprises 36.00% of the total, with the remainder being Reinforced Concrete/Steel. If the debris tonnage is converted to an estimated number of truckloads, it will require 43,000 truckloads (@25 tons/truck) to remove the debris generated by the earthquake.



Social Impact

Shelter Requirement

Hazus estimates the number of households that are expected to be displaced from their homes due to the earthquake and the number of displaced people that will require accommodations in temporary public shelters. The model estimates 2,202 households to be displaced due to the earthquake. Of these, 1,083 people (out of a total population of 15,543,433) will seek temporary shelter in public shelters.



Casualties

Hazus estimates the number of people that will be injured and killed by the earthquake. The casualties are broken down into four (4) severity levels that describe the extent of the injuries. The levels are described as follows;

- Severity Level 1: Injuries will require medical attention but hospitalization is not needed.
- Severity Level 2: Injuries will require hospitalization but are not considered life-threatening
- Severity Level 3: Injuries will require hospitalization and can become life threatening if not promptly treated.
- Severity Level 4: Victims are killed by the earthquake.

The casualty estimates are provided for three (3) times of day: 2:00 AM, 2:00 PM and 5:00 PM. These times represent the periods of the day that different sectors of the community are at their peak occupancy loads. The 2:00 AM estimate considers that the residential occupancy load is maximum, the 2:00 PM estimate considers that the educational, commercial and industrial sector loads are maximum and 5:00 PM represents peak commute time.

Table 10 provides a summary of the casualties estimated for this earthquake

Table 10: Casualty Estimates

		Level 1	Level 2	Level 3	Level 4
2 AM	Commercial	8.70	1.62	0.20	0.40
	Commuting	0.07	0.10	0.16	0.03
	Educational	0.00	0.00	0.00	0.00
	Hotels	0.74	0.13	0.02	0.03
	Industrial	7.49	1.22	0.14	0.26
	Other-Residential	259.04	39.87	4.19	8.13
	Single Family	161.29	6.33	0.01	0.02
	Total	437	49	5	9
	2 PM	Commercial	579.15	108.37	13.56
Commuting		0.64	0.88	1.45	0.28
Educational		193.91	30.50	3.11	6.02
Hotels		0.14	0.03	0.00	0.01
Industrial		54.83	9.00	1.00	1.94
Other-Residential		87.73	14.19	1.58	2.97
Single Family		50.26	2.22	0.01	0.01
Total		967	165	21	38
5 PM		Commercial	380.55	70.86	8.88
	Commuting	12.72	17.38	28.84	5.61
	Educational	67.05	11.35	1.22	2.36
	Hotels	0.22	0.04	0.01	0.01
	Industrial	34.27	5.62	0.63	1.21
	Other-Residential	97.46	15.46	1.70	3.18
	Single Family	58.74	2.41	0.01	0.01
	Total	651	123	41	29

Economic Loss

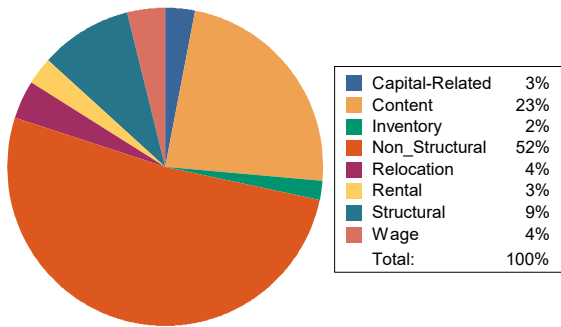
The total economic loss estimated for the earthquake is 11,534.93 (millions of dollars), which includes building and lifeline related losses based on the region's available inventory. The following three sections provide more detailed information about these losses.

Building-Related Losses

The building losses are broken into two categories: direct building losses and business interruption losses. The direct building losses are the estimated costs to repair or replace the damage caused to the building and its contents. The business interruption losses are the losses associated with inability to operate a business because of the damage sustained during the earthquake. Business interruption losses also include the temporary living expenses for those people displaced from their homes because of the earthquake.

The total building-related losses were 9,588.36 (millions of dollars); 14 % of the estimated losses were related to the business interruption of the region. By far, the largest loss was sustained by the residential occupancies which made up over 47 % of the total loss. Table 11 below provides a summary of the losses associated with the building damage.

Earthquake Losses by Loss Type (\$ millions)



Earthquake Losses by Occupancy Type (\$ millions)

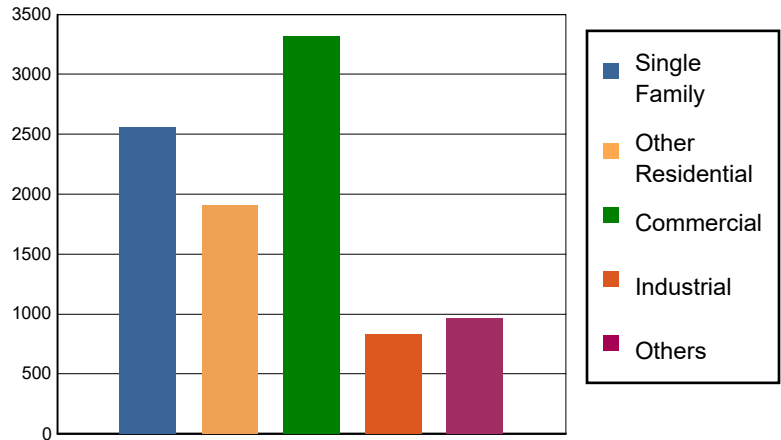


Table 11: Building-Related Economic Loss Estimates
(Millions of dollars)

Category	Area	Single Family	Other Residential	Commercial	Industrial	Others	Total
Income Losses							
	Wage	0.0000	71.9034	257.3312	6.4625	24.5274	360.2245
	Capital-Related	0.0000	30.5486	240.5970	3.8535	7.3604	282.3595
	Rental	19.5184	114.2988	120.0178	3.8151	11.5529	269.2030
	Relocation	59.4229	51.8813	161.2568	19.7220	90.5177	382.8007
	Subtotal	78.9413	268.6321	779.2028	33.8531	133.9584	1294.5877
Capital Stock Losses							
	Structural	234.9949	159.7789	339.4729	72.3165	99.2556	905.8188
	Non_Structural	1607.0914	1159.6678	1319.0252	404.7118	450.8953	4,941.3915
	Content	637.6990	321.2501	747.1351	281.4087	256.6757	2,244.1686
	Inventory	0.0000	0.0000	134.4587	42.3369	25.5945	202.3901
	Subtotal	2479.7853	1640.6968	2540.0919	800.7739	832.4211	8293.7690
	Total	2558.73	1909.33	3319.29	834.63	966.38	9588.36

Transportation and Utility Lifeline Losses

For the transportation and utility lifeline systems, Hazus computes the direct repair cost for each component only. There are no losses computed by Hazus for business interruption due to lifeline outages. Tables 12 & 13 provide a detailed breakdown in the expected lifeline losses.

Table 12: Transportation System Economic Losses
(Millions of dollars)

System	Component	Inventory Value	Economic Loss	Loss Ratio (%)
Highway	Segments	94300.2335	0.0000	0.00
	Bridges	56820.9039	51.1952	0.09
	Tunnels	987.1159	2.7538	0.28
	Subtotal	152108.2533	53.9490	
Railways	Segments	66635.6505	0.0000	0.00
	Bridges	9269.0100	5.1279	0.06
	Tunnels	1.8495	0.0000	0.00
	Facilities	252.9850	3.6367	1.44
	Subtotal	76159.4950	8.7646	
Light Rail	Segments	5403.2756	0.0000	0.00
	Bridges	15.3529	0.0004	0.00
	Tunnels	0.0000	0.0000	0.00
	Facilities	4154.0000	68.9351	1.66
	Subtotal	9572.6285	68.9355	
Bus	Facilities	118.9169	7.3504	6.18
	Subtotal	118.9169	7.3504	
Ferry	Facilities	37.2680	0.4040	1.08
	Subtotal	37.2680	0.4040	
Port	Facilities	1402.7588	25.7755	1.84
	Subtotal	1402.7588	25.7755	
Airport	Facilities	2910.7073	100.9493	3.47
	Runways	1683.9829	0.0000	0.00
	Subtotal	4594.6902	100.9493	
Total		243,994.01	266.13	

Table 13: Utility System Economic Losses
(Millions of dollars)

System	Component	Inventory Value	Economic Loss	Loss Ratio (%)
Potable Water	Pipelines	0.0000	0.0000	0.00
	Facilities	943.0560	2.7893	0.30
	Distribution Lines	4584.0267	12.1229	0.26
	Subtotal	5527.0827	14.9122	
Waste Water	Pipelines	0.0000	0.0000	0.00
	Facilities	27856.1916	397.6626	1.43
	Distribution Lines	2750.4160	6.0896	0.22
	Subtotal	30606.6076	403.7522	
Natural Gas	Pipelines	16505.1669	0.0000	0.00
	Facilities	705.7212	0.1853	0.03
	Distribution Lines	1833.6107	2.0863	0.11
	Subtotal	19044.4988	2.2716	
Oil Systems	Pipelines	0.0000	0.0000	0.00
	Facilities	4.0120	0.0017	0.04
	Subtotal	4.0120	0.0017	
Electrical Power	Facilities	119989.2956	1257.7870	1.05
	Subtotal	119989.2956	1257.7870	
Communication	Facilities	60.7700	1.7204	2.83
	Subtotal	60.7700	1.7204	
	Total	175,232.27	1,680.45	

Appendix A: County Listing for the Region

Alameda,CA
Amador,CA
Calaveras,CA
Contra Costa,CA
Fresno,CA
Kern,CA
Kings,CA
Madera,CA
Marin,CA
Mariposa,CA
Merced,CA
Monterey,CA
Napa,CA
Sacramento,CA
San Benito,CA
San Francisco,CA
San Joaquin,CA
San Luis Obispo,CA
San Mateo,CA
Santa Barbara,CA
Santa Clara,CA
Santa Cruz,CA
Solano,CA
Sonoma,CA
Stanislaus,CA
Tulare,CA
Tuolumne,CA
Yolo,CA

Appendix B: Regional Population and Building Value Data

State	County Name	Population	Building Value (millions of dollars)		
			Residential	Non-Residential	Total
California	Alameda	1,682,353	209,951	122,639	332,590
	Amador	40,474	5,608	2,517	8,125
	Calaveras	45,292	8,305	4,893	13,199
	Contra Costa	1,165,927	158,118	60,339	218,458
	Fresno	1,008,654	98,532	61,772	160,304
	Kern	909,235	87,567	59,168	146,736
	Kings	152,486	13,719	7,861	21,581
	Madera	156,255	18,025	9,641	27,667
	Marin	262,321	47,738	15,030	62,769
	Mariposa	17,131	3,299	1,141	4,441
	Merced	281,202	25,194	26,098	51,292
	Monterey	439,035	47,655	28,750	76,405
	Napa	138,019	20,517	13,045	33,563
	Sacramento	1,585,055	179,811	83,911	263,723
	San Benito	64,209	9,440	3,799	13,239
	San Francisco	873,965	108,848	46,020	154,869
	San Joaquin	779,233	82,706	56,882	139,589
	San Luis Obispo	282,424	41,720	20,896	62,616
	San Mateo	764,442	110,372	44,995	155,368
	Santa Barbara	448,229	49,971	28,481	78,452
	Santa Clara	1,936,259	261,111	120,471	381,582
	Santa Cruz	270,861	36,147	18,805	54,952
	Solano	453,491	55,802	26,393	82,195
	Sonoma	488,863	68,827	35,781	104,609
	Stanislaus	552,878	62,937	37,511	100,449
	Tulare	473,117	43,262	31,210	74,472
	Tuolumne	55,620	8,964	3,507	12,471
Yolo	216,403	24,130	18,343	42,473	
Total Region		15,543,433	1,888,276	989,899	2,878,189

Building Damage by Count by General Occupancy

May 06, 2024

	# of Buildings					Total
	None	Slight	Moderate	Extensive	Complete	
California						
Alameda						
<i>Government</i>	10,425	97	6	0	0	10,528
<i>Agriculture</i>	415	6	1	0	0	422
<i>Commercial</i>	31,480	473	36	0	0	31,989
<i>Religion</i>	1,958	26	2	0	0	1,986
<i>Single Family</i>	342,441	1,731	1	0	0	344,173
<i>Other Residential</i>	60,795	561	40	0	0	61,396
<i>Education</i>	1,110	7	1	0	0	1,117
<i>Industrial</i>	9,974	213	19	0	0	10,205
Amador						
<i>Industrial</i>	235	0	0	0	0	235
<i>Single Family</i>	14,962	0	0	0	0	14,962
<i>Other Residential</i>	1,037	0	0	0	0	1,037
<i>Education</i>	23	0	0	0	0	23
<i>Government</i>	32	0	0	0	0	32
<i>Agriculture</i>	44	0	0	0	0	44
<i>Religion</i>	45	0	0	0	0	45
<i>Commercial</i>	1,368	0	0	0	0	1,368
Calaveras						

	# of Buildings					Total
	None	Slight	Moderate	Extensive	Complete	
<i>Government</i>	84	0	0	0	0	84
<i>Other Residential</i>	2,559	0	0	0	0	2,559
<i>Education</i>	35	0	0	0	0	35
<i>Religion</i>	130	0	0	0	0	130
<i>Agriculture</i>	2,207	0	0	0	0	2,207
<i>Commercial</i>	1,413	0	0	0	0	1,413
<i>Industrial</i>	466	0	0	0	0	466
<i>Single Family</i>	22,148	0	0	0	0	22,148
Contra Costa						
<i>Commercial</i>	17,959	30	2	0	0	17,991
<i>Agriculture</i>	747	2	0	0	0	749
<i>Religion</i>	1,223	3	0	0	0	1,226
<i>Single Family</i>	281,857	78	0	0	0	281,935
<i>Other Residential</i>	29,067	55	2	0	0	29,124
<i>Industrial</i>	4,737	11	1	0	0	4,749
<i>Government</i>	5,016	8	0	0	0	5,024
<i>Education</i>	652	1	0	0	0	653
Fresno						
<i>Commercial</i>	21,044	10	0	0	0	21,054
<i>Religion</i>	1,506	1	0	0	0	1,507
<i>Agriculture</i>	3,418	3	0	0	0	3,421
<i>Industrial</i>	5,345	3	0	0	0	5,348
<i>Government</i>	291	0	0	0	0	291
<i>Other Residential</i>	40,945	27	1	0	0	40,973
<i>Single Family</i>	226,419	6	0	0	0	226,425

		# of Buildings					
		None	Slight	Moderate	Extensive	Complete	Total
Kern	<i>Education</i>	602	0	0	0	0	602
	<i>Single Family</i>	205,139	0	0	0	0	205,139
	<i>Other Residential</i>	54,520	0	0	0	0	54,520
	<i>Industrial</i>	6,047	0	0	0	0	6,047
	<i>Education</i>	462	0	0	0	0	462
	<i>Government</i>	443	0	0	0	0	443
	<i>Religion</i>	1,524	0	0	0	0	1,524
	<i>Agriculture</i>	4,645	0	0	0	0	4,645
	<i>Commercial</i>	15,567	0	0	0	0	15,567
Kings	<i>Commercial</i>	2,317	1	0	0	0	2,318
	<i>Religion</i>	210	0	0	0	0	210
	<i>Agriculture</i>	306	0	0	0	0	306
	<i>Government</i>	72	0	0	0	0	72
	<i>Industrial</i>	555	0	0	0	0	555
	<i>Single Family</i>	36,245	0	0	0	0	36,245
	<i>Other Residential</i>	4,340	2	0	0	0	4,342
	<i>Education</i>	103	0	0	0	0	103
Madera	<i>Commercial</i>	2,904	1	0	0	0	2,905
	<i>Religion</i>	119	0	0	0	0	119
	<i>Government</i>	111	0	0	0	0	111
	<i>Agriculture</i>	633	1	0	0	0	634
	<i>Other Residential</i>	6,632	3	0	0	0	6,635

	# of Buildings					Total
	None	Slight	Moderate	Extensive	Complete	
<i>Single Family</i>	38,911	1	0	0	0	38,912
<i>Education</i>	115	0	0	0	0	115
<i>Industrial</i>	903	0	0	0	0	903
Marin						
<i>Other Residential</i>	7,883	6	0	0	0	7,890
<i>Government</i>	143	0	0	0	0	143
<i>Education</i>	274	0	0	0	0	274
<i>Commercial</i>	8,263	7	0	0	0	8,270
<i>Religion</i>	319	0	0	0	0	319
<i>Agriculture</i>	190	0	0	0	0	190
<i>Single Family</i>	76,718	6	0	0	0	76,724
<i>Industrial</i>	1,532	3	0	0	0	1,535
Mariposa						
<i>Single Family</i>	8,084	0	0	0	0	8,084
<i>Other Residential</i>	307	0	0	0	0	307
<i>Education</i>	27	0	0	0	0	27
<i>Industrial</i>	94	0	0	0	0	94
<i>Commercial</i>	689	0	0	0	0	689
<i>Agriculture</i>	29	0	0	0	0	29
<i>Religion</i>	36	0	0	0	0	36
<i>Government</i>	33	0	0	0	0	33
Merced						
<i>Education</i>	163	0	0	0	0	163
<i>Government</i>	171	0	0	0	0	171
<i>Commercial</i>	4,743	10	1	0	0	4,754

	# of Buildings					Total
	None	Slight	Moderate	Extensive	Complete	
<i>Agriculture</i>	7,594	53	6	0	0	7,653
<i>Religion</i>	344	1	0	0	0	345
<i>Industrial</i>	1,020	2	0	0	0	1,022
<i>Single Family</i>	63,545	53	0	0	0	63,598
<i>Other Residential</i>	10,748	37	2	0	0	10,787
Monterey						
<i>Single Family</i>	47,926	36,209	6,650	91	1	90,876
<i>Industrial</i>	809	513	378	127	22	1,850
<i>Other Residential</i>	9,047	7,051	2,894	655	162	19,809
<i>Education</i>	155	56	24	4	0	239
<i>Government</i>	86	52	33	12	1	185
<i>Agriculture</i>	1,428	250	112	23	2	1,815
<i>Commercial</i>	3,765	2,637	1,964	737	143	9,246
<i>Religion</i>	252	166	117	40	6	580
Napa						
<i>Commercial</i>	4,020	1	0	0	0	4,021
<i>Agriculture</i>	349	0	0	0	0	349
<i>Religion</i>	148	0	0	0	0	148
<i>Single Family</i>	38,761	0	0	0	0	38,761
<i>Other Residential</i>	6,976	2	0	0	0	6,978
<i>Government</i>	103	0	0	0	0	103
<i>Education</i>	132	0	0	0	0	132
<i>Industrial</i>	1,367	0	0	0	0	1,367
Sacramento						
<i>Single Family</i>	386,839	1	0	0	0	386,840

	# of Buildings					Total
	None	Slight	Moderate	Extensive	Complete	
<i>Industrial</i>	6,756	0	0	0	0	6,756
<i>Other Residential</i>	56,406	6	0	0	0	56,413
<i>Education</i>	829	0	0	0	0	829
<i>Agriculture</i>	621	0	0	0	0	621
<i>Religion</i>	1,702	0	0	0	0	1,702
<i>Government</i>	619	0	0	0	0	619
<i>Commercial</i>	26,293	2	0	0	0	26,295
San Benito						
<i>Other Residential</i>	1,271	94	9	0	0	1,375
<i>Single Family</i>	14,231	494	1	0	0	14,726
<i>Industrial</i>	307	16	2	0	0	326
<i>Education</i>	41	1	0	0	0	42
<i>Government</i>	42	3	1	0	0	45
<i>Commercial</i>	1,003	66	11	0	0	1,080
<i>Religion</i>	58	5	1	0	0	64
<i>Agriculture</i>	244	8	1	0	0	253
San Francisco						
<i>Single Family</i>	150,337	344	22	0	0	150,703
<i>Other Residential</i>	44,031	468	30	0	0	44,529
<i>Government</i>	280	8	1	0	0	289
<i>Education</i>	567	5	0	0	0	572
<i>Industrial</i>	3,802	53	5	0	0	3,860
<i>Commercial</i>	20,935	380	29	0	0	21,344
<i>Religion</i>	1,332	12	1	0	0	1,345

	# of Buildings					Total
	None	Slight	Moderate	Extensive	Complete	
<i>Agriculture</i>	161	1	0	0	0	162
San Joaquin						
<i>Commercial</i>	12,848	15	1	0	0	12,864
<i>Agriculture</i>	752	1	0	0	0	753
<i>Religion</i>	876	1	0	0	0	877
<i>Government</i>	303	1	0	0	0	304
<i>Single Family</i>	188,619	286	17	0	0	188,922
<i>Other Residential</i>	21,755	47	3	0	0	21,805
<i>Education</i>	395	0	0	0	0	395
<i>Industrial</i>	4,921	6	0	0	0	4,928
San Luis Obispo						
<i>Religion</i>	360	0	0	0	0	360
<i>Agriculture</i>	421	0	0	0	0	421
<i>Government</i>	185	0	0	0	0	185
<i>Commercial</i>	9,370	4	0	0	0	9,375
<i>Single Family</i>	85,637	2	0	0	0	85,639
<i>Industrial</i>	2,555	1	0	0	0	2,556
<i>Other Residential</i>	20,193	22	1	0	0	20,216
<i>Education</i>	182	0	0	0	0	182
San Mateo						
<i>Religion</i>	715	19	2	0	0	736
<i>Agriculture</i>	513	22	4	0	0	539
<i>Government</i>	289	9	1	0	0	299
<i>Commercial</i>	13,965	393	36	0	0	14,395
<i>Industrial</i>	4,305	149	18	0	0	4,472

	# of Buildings					Total
	None	Slight	Moderate	Extensive	Complete	
<i>Other Residential</i>	21,857	549	47	1	0	22,453
<i>Single Family</i>	158,146	1,776	9	0	0	159,931
<i>Education</i>	485	3	0	0	0	489
Santa Barbara						
<i>Government</i>	239	0	0	0	0	239
<i>Other Residential</i>	24,108	3	0	0	0	24,111
<i>Education</i>	299	0	0	0	0	299
<i>Religion</i>	621	0	0	0	0	621
<i>Commercial</i>	9,820	0	0	0	0	9,820
<i>Agriculture</i>	464	0	0	0	0	464
<i>Single Family</i>	98,982	0	0	0	0	98,982
<i>Industrial</i>	2,840	0	0	0	0	2,840
Santa Clara						
<i>Other Residential</i>	55,016	3,733	405	6	0	59,160
<i>Single Family</i>	411,276	15,828	115	1	0	427,219
<i>Government</i>	453	41	7	0	0	502
<i>Education</i>	1,149	22	3	0	0	1,173
<i>Industrial</i>	8,719	622	90	2	0	9,433
<i>Commercial</i>	33,006	2,174	281	7	0	35,469
<i>Religion</i>	1,440	89	11	0	0	1,540
<i>Agriculture</i>	831	53	10	1	0	895
Santa Cruz						
<i>Religion</i>	194	103	49	11	3	359
<i>Agriculture</i>	527	210	87	14	1	840
<i>Single Family</i>	43,610	23,459	1,796	5	0	68,870

	# of Buildings					Total
	None	Slight	Moderate	Extensive	Complete	
<i>Other Residential</i>	7,187	5,104	2,118	438	45	14,892
<i>Industrial</i>	930	543	272	63	11	1,819
<i>Education</i>	162	46	13	3	1	225
<i>Commercial</i>	3,441	2,074	915	216	48	6,694
<i>Government</i>	66	36	20	5	1	127
Solano						
<i>Religion</i>	454	0	0	0	0	454
<i>Agriculture</i>	245	0	0	0	0	245
<i>Government</i>	152	0	0	0	0	152
<i>Commercial</i>	7,262	6	0	0	0	7,268
<i>Single Family</i>	120,960	8	0	0	0	120,968
<i>Industrial</i>	2,098	3	0	0	0	2,101
<i>Other Residential</i>	12,306	10	0	0	0	12,317
<i>Education</i>	225	0	0	0	0	225
Sonoma						
<i>Other Residential</i>	25,030	3	0	0	0	25,033
<i>Government</i>	319	0	0	0	0	319
<i>Education</i>	367	0	0	0	0	367
<i>Religion</i>	576	0	0	0	0	576
<i>Commercial</i>	12,109	1	0	0	0	12,110
<i>Agriculture</i>	1,304	0	0	0	0	1,304
<i>Single Family</i>	142,028	0	0	0	0	142,028
<i>Industrial</i>	3,825	0	0	0	0	3,825
Stanislaus						
<i>Other Residential</i>	19,519	47	2	0	0	19,569

	# of Buildings					Total
	None	Slight	Moderate	Extensive	Complete	
<i>Single Family</i>	142,661	63	0	0	0	142,724
<i>Education</i>	307	0	0	0	0	307
<i>Government</i>	679	1	0	0	0	680
<i>Industrial</i>	3,464	10	1	0	0	3,475
<i>Commercial</i>	10,338	29	2	0	0	10,369
<i>Religion</i>	455	1	0	0	0	456
<i>Agriculture</i>	1,236	3	0	0	0	1,239
Tulare						
<i>Commercial</i>	8,873	0	0	0	0	8,873
<i>Agriculture</i>	3,555	0	0	0	0	3,555
<i>Religion</i>	827	0	0	0	0	827
<i>Government</i>	461	0	0	0	0	461
<i>Single Family</i>	112,034	0	0	0	0	112,034
<i>Other Residential</i>	20,022	0	0	0	0	20,022
<i>Industrial</i>	2,148	0	0	0	0	2,148
<i>Education</i>	269	0	0	0	0	269
Tuolumne						
<i>Education</i>	57	0	0	0	0	57
<i>Government</i>	143	0	0	0	0	143
<i>Commercial</i>	1,576	0	0	0	0	1,576
<i>Religion</i>	121	0	0	0	0	121
<i>Agriculture</i>	82	0	0	0	0	82
<i>Industrial</i>	383	0	0	0	0	383
<i>Other Residential</i>	4,962	0	0	0	0	4,962
<i>Single Family</i>	21,645	0	0	0	0	21,645

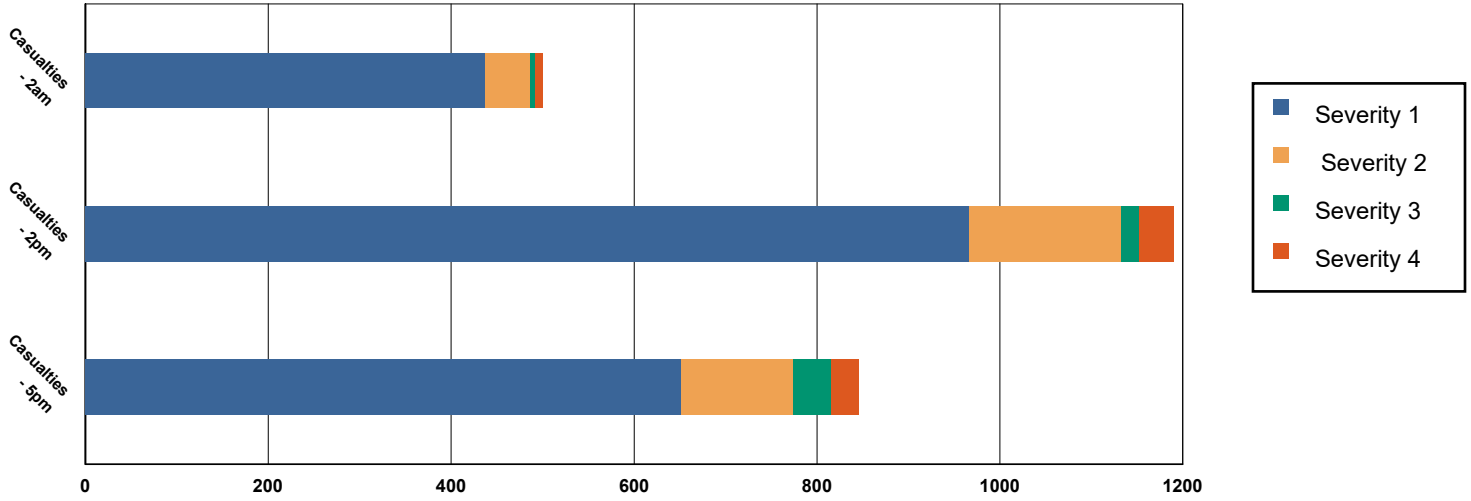
	# of Buildings					Total
	None	Slight	Moderate	Extensive	Complete	
Yolo						
<i>Industrial</i>	1,117	0	0	0	0	1,117
<i>Other Residential</i>	9,861	0	0	0	0	9,861
<i>Education</i>	131	0	0	0	0	131
<i>Government</i>	111	0	0	0	0	111
<i>Single Family</i>	42,589	0	0	0	0	42,589
<i>Commercial</i>	4,225	0	0	0	0	4,225
<i>Agriculture</i>	281	0	0	0	0	281
<i>Religion</i>	242	0	0	0	0	242
Total	4,554,674	110,079	18,745	2,464	447	4,686,409
Region Total	4,554,674	110,079	18,745	2,464	447	4,686,409

Totals only reflect data for those census tracts/blocks included in the user's study region and will reflect the entire county/state only if all of the census blocks for that county/states were selected at the time of study region creation.

Casualties Summary Report

May 06, 2024

Region Total Casualties



Injury Severity Level

Severity 1	Severity 2	Severity 3	Severity 4	Total
------------	------------	------------	------------	-------

California

Alameda

Casualties - 2am

	Severity 1	Severity 2	Severity 3	Severity 4	Total
Single Family	3	0	0	0	3
Hotels	0	0	0	0	0
Commuting	0	0	0	0	0
Educational	0	0	0	0	0
Industrial	0	0	0	0	0
Commercial	0	0	0	0	0
Other-Residential	3	0	0	0	3
Total Casualties - 2am	6	0	0	0	6

Casualties - 2pm

	Severity 1	Severity 2	Severity 3	Severity 4	Total
Industrial	2	0	0	0	2
Educational	1	0	0	0	1
Other-Residential	1	0	0	0	1
Single Family	1	0	0	0	1
Hotels	0	0	0	0	0
Commuting	0	0	0	0	0
Commercial	8	0	0	0	9

	Injury Severity Level				Total
	Severity 1	Severity 2	Severity 3	Severity 4	
California					
Alameda					
Total Casualties - 2pm	13	0	0	0	13
Casualties - 5pm					
<i>Commuting</i>	0	0	0	0	0
<i>Single Family</i>	1	0	0	0	1
<i>Commercial</i>	6	0	0	0	6
<i>Hotels</i>	0	0	0	0	0
<i>Educational</i>	0	0	0	0	0
<i>Industrial</i>	1	0	0	0	1
<i>Other-Residential</i>	1	0	0	0	1
Total Casualties - 5pm	9	0	0	0	9
Amador					
Casualties - 2am					
<i>Commercial</i>	0	0	0	0	0
<i>Other-Residential</i>	0	0	0	0	0
<i>Commuting</i>	0	0	0	0	0
<i>Educational</i>	0	0	0	0	0
<i>Single Family</i>	0	0	0	0	0
<i>Hotels</i>	0	0	0	0	0
<i>Industrial</i>	0	0	0	0	0
Total Casualties - 2am	0	0	0	0	0
Casualties - 2pm					
<i>Single Family</i>	0	0	0	0	0
<i>Hotels</i>	0	0	0	0	0
<i>Educational</i>	0	0	0	0	0
<i>Commuting</i>	0	0	0	0	0
<i>Commercial</i>	0	0	0	0	0
<i>Other-Residential</i>	0	0	0	0	0
<i>Industrial</i>	0	0	0	0	0
Total Casualties - 2pm	0	0	0	0	0
Casualties - 5pm					
<i>Commercial</i>	0	0	0	0	0
<i>Commuting</i>	0	0	0	0	0
<i>Other-Residential</i>	0	0	0	0	0
<i>Single Family</i>	0	0	0	0	0
<i>Educational</i>	0	0	0	0	0
<i>Hotels</i>	0	0	0	0	0
<i>Industrial</i>	0	0	0	0	0
Total Casualties - 5pm	0	0	0	0	0
Calaveras					
Casualties - 2am					
<i>Other-Residential</i>	0	0	0	0	0

	Injury Severity Level				Total
	Severity 1	Severity 2	Severity 3	Severity 4	
California					
Calaveras					
Casualties - 2am					
<i>Commuting</i>	0	0	0	0	0
<i>Commercial</i>	0	0	0	0	0
<i>Single Family</i>	0	0	0	0	0
<i>Hotels</i>	0	0	0	0	0
<i>Educational</i>	0	0	0	0	0
<i>Industrial</i>	0	0	0	0	0
Total Casualties - 2am	0	0	0	0	0
Casualties - 2pm					
<i>Hotels</i>	0	0	0	0	0
<i>Single Family</i>	0	0	0	0	0
<i>Educational</i>	0	0	0	0	0
<i>Commuting</i>	0	0	0	0	0
<i>Commercial</i>	0	0	0	0	0
<i>Industrial</i>	0	0	0	0	0
<i>Other-Residential</i>	0	0	0	0	0
Total Casualties - 2pm	0	0	0	0	0
Casualties - 5pm					
<i>Industrial</i>	0	0	0	0	0
<i>Commercial</i>	0	0	0	0	0
<i>Other-Residential</i>	0	0	0	0	0
<i>Educational</i>	0	0	0	0	0
<i>Hotels</i>	0	0	0	0	0
<i>Commuting</i>	0	0	0	0	0
<i>Single Family</i>	0	0	0	0	0
Total Casualties - 5pm	0	0	0	0	0
Contra Costa					
Casualties - 2am					
<i>Educational</i>	0	0	0	0	0
<i>Hotels</i>	0	0	0	0	0
<i>Industrial</i>	0	0	0	0	0
<i>Other-Residential</i>	0	0	0	0	0
<i>Single Family</i>	0	0	0	0	0
<i>Commercial</i>	0	0	0	0	0
<i>Commuting</i>	0	0	0	0	0
Total Casualties - 2am	0	0	0	0	0
Casualties - 2pm					
<i>Other-Residential</i>	0	0	0	0	0
<i>Industrial</i>	0	0	0	0	0
<i>Hotels</i>	0	0	0	0	0
<i>Single Family</i>	0	0	0	0	0
<i>Educational</i>	0	0	0	0	0

	Injury Severity Level				Total
	Severity 1	Severity 2	Severity 3	Severity 4	
California					
Contra Costa					
Casualties - 2pm					
<i>Commuting</i>	0	0	0	0	0
<i>Commercial</i>	1	0	0	0	1
Total Casualties - 2pm	1	0	0	0	1
Casualties - 5pm					
<i>Educational</i>	0	0	0	0	0
<i>Commuting</i>	0	0	0	0	0
<i>Single Family</i>	0	0	0	0	0
<i>Hotels</i>	0	0	0	0	0
<i>Industrial</i>	0	0	0	0	0
<i>Other-Residential</i>	0	0	0	0	0
<i>Commercial</i>	0	0	0	0	0
Total Casualties - 5pm	0	0	0	0	0
Fresno					
Casualties - 2am					
<i>Hotels</i>	0	0	0	0	0
<i>Educational</i>	0	0	0	0	0
<i>Industrial</i>	0	0	0	0	0
<i>Commercial</i>	0	0	0	0	0
<i>Other-Residential</i>	0	0	0	0	0
<i>Single Family</i>	0	0	0	0	0
<i>Commuting</i>	0	0	0	0	0
Total Casualties - 2am	0	0	0	0	0
Casualties - 2pm					
<i>Commercial</i>	0	0	0	0	0
<i>Other-Residential</i>	0	0	0	0	0
<i>Industrial</i>	0	0	0	0	0
<i>Single Family</i>	0	0	0	0	0
<i>Hotels</i>	0	0	0	0	0
<i>Commuting</i>	0	0	0	0	0
<i>Educational</i>	0	0	0	0	0
Total Casualties - 2pm	0	0	0	0	0
Casualties - 5pm					
<i>Educational</i>	0	0	0	0	0
<i>Commuting</i>	0	0	0	0	0
<i>Hotels</i>	0	0	0	0	0
<i>Industrial</i>	0	0	0	0	0
<i>Single Family</i>	0	0	0	0	0
<i>Other-Residential</i>	0	0	0	0	0
<i>Commercial</i>	0	0	0	0	0
Total Casualties - 5pm	0	0	0	0	0

	Injury Severity Level				Total
	Severity 1	Severity 2	Severity 3	Severity 4	
California					
Kern					
Casualties - 2am					
Commercial	0	0	0	0	0
Commuting	0	0	0	0	0
Educational	0	0	0	0	0
Single Family	0	0	0	0	0
Other-Residential	0	0	0	0	0
Hotels	0	0	0	0	0
Industrial	0	0	0	0	0
Total Casualties - 2am	0	0	0	0	0
Casualties - 2pm					
Educational	0	0	0	0	0
Commuting	0	0	0	0	0
Single Family	0	0	0	0	0
Hotels	0	0	0	0	0
Other-Residential	0	0	0	0	0
Commercial	0	0	0	0	0
Industrial	0	0	0	0	0
Total Casualties - 2pm	0	0	0	0	0
Casualties - 5pm					
Single Family	0	0	0	0	0
Commercial	0	0	0	0	0
Other-Residential	0	0	0	0	0
Commuting	0	0	0	0	0
Educational	0	0	0	0	0
Hotels	0	0	0	0	0
Industrial	0	0	0	0	0
Total Casualties - 5pm	0	0	0	0	0
Kings					
Casualties - 2am					
Industrial	0	0	0	0	0
Other-Residential	0	0	0	0	0
Educational	0	0	0	0	0
Commuting	0	0	0	0	0
Commercial	0	0	0	0	0
Single Family	0	0	0	0	0
Hotels	0	0	0	0	0
Total Casualties - 2am	0	0	0	0	0
Casualties - 2pm					
Single Family	0	0	0	0	0
Other-Residential	0	0	0	0	0
Commercial	0	0	0	0	0
Educational	0	0	0	0	0

	Injury Severity Level				Total
	Severity 1	Severity 2	Severity 3	Severity 4	
California					
Kings					
Casualties - 2pm					
<i>Commuting</i>	0	0	0	0	0
<i>Hotels</i>	0	0	0	0	0
<i>Industrial</i>	0	0	0	0	0
Total Casualties - 2pm	0	0	0	0	0
Casualties - 5pm					
<i>Single Family</i>	0	0	0	0	0
<i>Commercial</i>	0	0	0	0	0
<i>Commuting</i>	0	0	0	0	0
<i>Other-Residential</i>	0	0	0	0	0
<i>Educational</i>	0	0	0	0	0
<i>Hotels</i>	0	0	0	0	0
<i>Industrial</i>	0	0	0	0	0
Total Casualties - 5pm	0	0	0	0	0
Madera					
Casualties - 2am					
<i>Hotels</i>	0	0	0	0	0
<i>Educational</i>	0	0	0	0	0
<i>Single Family</i>	0	0	0	0	0
<i>Commuting</i>	0	0	0	0	0
<i>Industrial</i>	0	0	0	0	0
<i>Commercial</i>	0	0	0	0	0
<i>Other-Residential</i>	0	0	0	0	0
Total Casualties - 2am	0	0	0	0	0
Casualties - 2pm					
<i>Industrial</i>	0	0	0	0	0
<i>Commercial</i>	0	0	0	0	0
<i>Other-Residential</i>	0	0	0	0	0
<i>Commuting</i>	0	0	0	0	0
<i>Single Family</i>	0	0	0	0	0
<i>Hotels</i>	0	0	0	0	0
<i>Educational</i>	0	0	0	0	0
Total Casualties - 2pm	0	0	0	0	0
Casualties - 5pm					
<i>Industrial</i>	0	0	0	0	0
<i>Commercial</i>	0	0	0	0	0
<i>Single Family</i>	0	0	0	0	0
<i>Educational</i>	0	0	0	0	0
<i>Other-Residential</i>	0	0	0	0	0
<i>Commuting</i>	0	0	0	0	0
<i>Hotels</i>	0	0	0	0	0

	Injury Severity Level				Total
	Severity 1	Severity 2	Severity 3	Severity 4	
California					
Madera					
Total Casualties - 5pm	0	0	0	0	0
Marin					
Casualties - 2am					
<i>Commercial</i>	0	0	0	0	0
<i>Commuting</i>	0	0	0	0	0
<i>Other-Residential</i>	0	0	0	0	0
<i>Educational</i>	0	0	0	0	0
<i>Single Family</i>	0	0	0	0	0
<i>Hotels</i>	0	0	0	0	0
<i>Industrial</i>	0	0	0	0	0
Total Casualties - 2am	0	0	0	0	0
Casualties - 2pm					
<i>Hotels</i>	0	0	0	0	0
<i>Commuting</i>	0	0	0	0	0
<i>Educational</i>	0	0	0	0	0
<i>Industrial</i>	0	0	0	0	0
<i>Other-Residential</i>	0	0	0	0	0
<i>Commercial</i>	0	0	0	0	0
<i>Single Family</i>	0	0	0	0	0
Total Casualties - 2pm	0	0	0	0	0
Casualties - 5pm					
<i>Commuting</i>	0	0	0	0	0
<i>Commercial</i>	0	0	0	0	0
<i>Other-Residential</i>	0	0	0	0	0
<i>Single Family</i>	0	0	0	0	0
<i>Industrial</i>	0	0	0	0	0
<i>Educational</i>	0	0	0	0	0
<i>Hotels</i>	0	0	0	0	0
Total Casualties - 5pm	0	0	0	0	0
Mariposa					
Casualties - 2am					
<i>Commuting</i>	0	0	0	0	0
<i>Single Family</i>	0	0	0	0	0
<i>Commercial</i>	0	0	0	0	0
<i>Hotels</i>	0	0	0	0	0
<i>Educational</i>	0	0	0	0	0
<i>Industrial</i>	0	0	0	0	0
<i>Other-Residential</i>	0	0	0	0	0
Total Casualties - 2am	0	0	0	0	0
Casualties - 2pm					
<i>Hotels</i>	0	0	0	0	0

	Injury Severity Level				Total
	Severity 1	Severity 2	Severity 3	Severity 4	
California					
Mariposa					
Casualties - 2pm					
<i>Industrial</i>	0	0	0	0	0
<i>Commercial</i>	0	0	0	0	0
<i>Other-Residential</i>	0	0	0	0	0
<i>Educational</i>	0	0	0	0	0
<i>Commuting</i>	0	0	0	0	0
<i>Single Family</i>	0	0	0	0	0
Total Casualties - 2pm	0	0	0	0	0
Casualties - 5pm					
<i>Other-Residential</i>	0	0	0	0	0
<i>Educational</i>	0	0	0	0	0
<i>Commuting</i>	0	0	0	0	0
<i>Hotels</i>	0	0	0	0	0
<i>Single Family</i>	0	0	0	0	0
<i>Commercial</i>	0	0	0	0	0
<i>Industrial</i>	0	0	0	0	0
Total Casualties - 5pm	0	0	0	0	0
Merced					
Casualties - 2am					
<i>Hotels</i>	0	0	0	0	0
<i>Industrial</i>	0	0	0	0	0
<i>Commercial</i>	0	0	0	0	0
<i>Single Family</i>	0	0	0	0	0
<i>Other-Residential</i>	0	0	0	0	0
<i>Educational</i>	0	0	0	0	0
<i>Commuting</i>	0	0	0	0	0
Total Casualties - 2am	0	0	0	0	0
Casualties - 2pm					
<i>Other-Residential</i>	0	0	0	0	0
<i>Industrial</i>	0	0	0	0	0
<i>Commercial</i>	1	0	0	0	1
<i>Commuting</i>	0	0	0	0	0
<i>Hotels</i>	0	0	0	0	0
<i>Educational</i>	0	0	0	0	0
<i>Single Family</i>	0	0	0	0	0
Total Casualties - 2pm	1	0	0	0	1
Casualties - 5pm					
<i>Industrial</i>	0	0	0	0	0
<i>Hotels</i>	0	0	0	0	0
<i>Educational</i>	0	0	0	0	0
<i>Commuting</i>	0	0	0	0	0
<i>Single Family</i>	0	0	0	0	0

	Injury Severity Level				Total
	Severity 1	Severity 2	Severity 3	Severity 4	
California					
Merced					
Casualties - 5pm					
Commercial	0	0	0	0	0
Other-Residential	0	0	0	0	0
Total Casualties - 5pm	0	0	0	0	1
Monterey					
Casualties - 2am					
Other-Residential	152	27	3	5	187
Commuting	0	0	0	0	0
Commercial	5	1	0	0	6
Single Family	89	5	0	0	94
Hotels	1	0	0	0	1
Educational	0	0	0	0	0
Industrial	4	1	0	0	5
Total Casualties - 2am	250	33	3	6	292
Casualties - 2pm					
Commuting	0	1	1	0	2
Commercial	336	69	9	17	431
Single Family	29	2	0	0	31
Hotels	0	0	0	0	0
Educational	152	26	3	5	185
Industrial	28	5	1	1	35
Other-Residential	53	10	1	2	65
Total Casualties - 2pm	598	112	14	26	750
Casualties - 5pm					
Commercial	224	46	6	11	287
Other-Residential	57	10	1	2	71
Industrial	17	3	0	1	22
Hotels	0	0	0	0	0
Educational	61	11	1	2	75
Commuting	9	12	20	4	44
Single Family	33	2	0	0	35
Total Casualties - 5pm	401	85	28	20	534
Napa					
Casualties - 2am					
Commercial	0	0	0	0	0
Other-Residential	0	0	0	0	0
Educational	0	0	0	0	0
Single Family	0	0	0	0	0
Commuting	0	0	0	0	0
Hotels	0	0	0	0	0
Industrial	0	0	0	0	0

	Injury Severity Level				Total
	Severity 1	Severity 2	Severity 3	Severity 4	
California					
Napa					
Total Casualties - 2am	0	0	0	0	0
Casualties - 2pm					
<i>Educational</i>	0	0	0	0	0
<i>Hotels</i>	0	0	0	0	0
<i>Commuting</i>	0	0	0	0	0
<i>Industrial</i>	0	0	0	0	0
<i>Other-Residential</i>	0	0	0	0	0
<i>Single Family</i>	0	0	0	0	0
<i>Commercial</i>	0	0	0	0	0
Total Casualties - 2pm	0	0	0	0	0
Casualties - 5pm					
<i>Commercial</i>	0	0	0	0	0
<i>Single Family</i>	0	0	0	0	0
<i>Other-Residential</i>	0	0	0	0	0
<i>Commuting</i>	0	0	0	0	0
<i>Industrial</i>	0	0	0	0	0
<i>Educational</i>	0	0	0	0	0
<i>Hotels</i>	0	0	0	0	0
Total Casualties - 5pm	0	0	0	0	0
Sacramento					
Casualties - 2am					
<i>Industrial</i>	0	0	0	0	0
<i>Other-Residential</i>	0	0	0	0	0
<i>Commercial</i>	0	0	0	0	0
<i>Single Family</i>	0	0	0	0	0
<i>Hotels</i>	0	0	0	0	0
<i>Commuting</i>	0	0	0	0	0
<i>Educational</i>	0	0	0	0	0
Total Casualties - 2am	0	0	0	0	0
Casualties - 2pm					
<i>Other-Residential</i>	0	0	0	0	0
<i>Commuting</i>	0	0	0	0	0
<i>Single Family</i>	0	0	0	0	0
<i>Commercial</i>	0	0	0	0	0
<i>Hotels</i>	0	0	0	0	0
<i>Educational</i>	0	0	0	0	0
<i>Industrial</i>	0	0	0	0	0
Total Casualties - 2pm	0	0	0	0	0
Casualties - 5pm					
<i>Industrial</i>	0	0	0	0	0
<i>Educational</i>	0	0	0	0	0

	Injury Severity Level				Total
	Severity 1	Severity 2	Severity 3	Severity 4	
California					
Sacramento					
Casualties - 5pm					
<i>Hotels</i>	0	0	0	0	0
<i>Commercial</i>	0	0	0	0	0
<i>Commuting</i>	0	0	0	0	0
<i>Other-Residential</i>	0	0	0	0	0
<i>Single Family</i>	0	0	0	0	0
Total Casualties - 5pm	0	0	0	0	0
San Benito					
Casualties - 2am					
<i>Other-Residential</i>	0	0	0	0	0
<i>Commercial</i>	0	0	0	0	0
<i>Commuting</i>	0	0	0	0	0
<i>Hotels</i>	0	0	0	0	0
<i>Educational</i>	0	0	0	0	0
<i>Single Family</i>	1	0	0	0	1
<i>Industrial</i>	0	0	0	0	0
Total Casualties - 2am	1	0	0	0	1
Casualties - 2pm					
<i>Hotels</i>	0	0	0	0	0
<i>Educational</i>	1	0	0	0	1
<i>Industrial</i>	0	0	0	0	0
<i>Other-Residential</i>	0	0	0	0	0
<i>Commercial</i>	1	0	0	0	1
<i>Commuting</i>	0	0	0	0	0
<i>Single Family</i>	0	0	0	0	0
Total Casualties - 2pm	2	0	0	0	2
Casualties - 5pm					
<i>Commuting</i>	0	0	0	0	0
<i>Commercial</i>	1	0	0	0	1
<i>Other-Residential</i>	0	0	0	0	0
<i>Single Family</i>	0	0	0	0	0
<i>Industrial</i>	0	0	0	0	0
<i>Educational</i>	0	0	0	0	0
<i>Hotels</i>	0	0	0	0	0
Total Casualties - 5pm	1	0	0	0	1
San Francisco					
Casualties - 2am					
<i>Industrial</i>	0	0	0	0	0
<i>Hotels</i>	0	0	0	0	0
<i>Commercial</i>	0	0	0	0	0
<i>Other-Residential</i>	5	0	0	0	5
<i>Commuting</i>	0	0	0	0	0

	Injury Severity Level				Total
	Severity 1	Severity 2	Severity 3	Severity 4	
California					
San Francisco					
Casualties - 2am					
<i>Educational</i>	0	0	0	0	0
<i>Single Family</i>	1	0	0	0	1
Total Casualties - 2am	6	0	0	0	6
Casualties - 2pm					
<i>Commercial</i>	8	0	0	0	8
<i>Industrial</i>	0	0	0	0	0
<i>Other-Residential</i>	2	0	0	0	2
<i>Single Family</i>	0	0	0	0	0
<i>Hotels</i>	0	0	0	0	0
<i>Commuting</i>	0	0	0	0	0
<i>Educational</i>	1	0	0	0	1
Total Casualties - 2pm	11	0	0	0	11
Casualties - 5pm					
<i>Educational</i>	0	0	0	0	0
<i>Hotels</i>	0	0	0	0	0
<i>Industrial</i>	0	0	0	0	0
<i>Commuting</i>	0	0	0	0	0
<i>Commercial</i>	4	0	0	0	4
<i>Other-Residential</i>	2	0	0	0	2
<i>Single Family</i>	0	0	0	0	0
Total Casualties - 5pm	7	0	0	0	7
San Joaquin					
Casualties - 2am					
<i>Educational</i>	0	0	0	0	0
<i>Commuting</i>	0	0	0	0	0
<i>Hotels</i>	0	0	0	0	0
<i>Commercial</i>	0	0	0	0	0
<i>Single Family</i>	1	0	0	0	1
<i>Industrial</i>	0	0	0	0	0
<i>Other-Residential</i>	0	0	0	0	0
Total Casualties - 2am	1	0	0	0	1
Casualties - 2pm					
<i>Industrial</i>	0	0	0	0	0
<i>Other-Residential</i>	0	0	0	0	0
<i>Educational</i>	0	0	0	0	0
<i>Single Family</i>	0	0	0	0	0
<i>Hotels</i>	0	0	0	0	0
<i>Commuting</i>	0	0	0	0	0
<i>Commercial</i>	0	0	0	0	0
Total Casualties - 2pm	1	0	0	0	1

	Injury Severity Level				Total
	Severity 1	Severity 2	Severity 3	Severity 4	
California					
San Joaquin					
Casualties - 5pm					
<i>Commuting</i>	0	0	0	0	0
<i>Single Family</i>	0	0	0	0	0
<i>Educational</i>	0	0	0	0	0
<i>Hotels</i>	0	0	0	0	0
<i>Industrial</i>	0	0	0	0	0
<i>Commercial</i>	0	0	0	0	0
<i>Other-Residential</i>	0	0	0	0	0
Total Casualties - 5pm	0	0	0	0	1
San Luis Obispo					
Casualties - 2am					
<i>Commercial</i>	0	0	0	0	0
<i>Other-Residential</i>	0	0	0	0	0
<i>Industrial</i>	0	0	0	0	0
<i>Single Family</i>	0	0	0	0	0
<i>Commuting</i>	0	0	0	0	0
<i>Educational</i>	0	0	0	0	0
<i>Hotels</i>	0	0	0	0	0
Total Casualties - 2am	0	0	0	0	0
Casualties - 2pm					
<i>Single Family</i>	0	0	0	0	0
<i>Educational</i>	0	0	0	0	0
<i>Other-Residential</i>	0	0	0	0	0
<i>Hotels</i>	0	0	0	0	0
<i>Commuting</i>	0	0	0	0	0
<i>Commercial</i>	0	0	0	0	0
<i>Industrial</i>	0	0	0	0	0
Total Casualties - 2pm	0	0	0	0	0
Casualties - 5pm					
<i>Industrial</i>	0	0	0	0	0
<i>Other-Residential</i>	0	0	0	0	0
<i>Commuting</i>	0	0	0	0	0
<i>Single Family</i>	0	0	0	0	0
<i>Commercial</i>	0	0	0	0	0
<i>Hotels</i>	0	0	0	0	0
<i>Educational</i>	0	0	0	0	0
Total Casualties - 5pm	0	0	0	0	0
San Mateo					
Casualties - 2am					
<i>Industrial</i>	0	0	0	0	0
<i>Other-Residential</i>	3	0	0	0	3
<i>Single Family</i>	3	0	0	0	3

Injury Severity Level

	Severity 1	Severity 2	Severity 3	Severity 4	Total
--	------------	------------	------------	------------	-------

California

San Mateo

Casualties - 2am

<i>Commercial</i>	0	0	0	0	0
<i>Educational</i>	0	0	0	0	0
<i>Commuting</i>	0	0	0	0	0
<i>Hotels</i>	0	0	0	0	0
Total Casualties - 2am	6	0	0	0	6

Casualties - 2pm

<i>Other-Residential</i>	1	0	0	0	1
<i>Single Family</i>	1	0	0	0	1
<i>Commuting</i>	0	0	0	0	0
<i>Commercial</i>	8	0	0	0	8
<i>Educational</i>	1	0	0	0	1
<i>Hotels</i>	0	0	0	0	0
<i>Industrial</i>	1	0	0	0	1
Total Casualties - 2pm	12	0	0	0	12

Casualties - 5pm

<i>Commercial</i>	5	0	0	0	5
<i>Industrial</i>	1	0	0	0	1
<i>Other-Residential</i>	1	0	0	0	1
<i>Single Family</i>	1	0	0	0	1
<i>Educational</i>	0	0	0	0	0
<i>Commuting</i>	0	0	0	0	0
<i>Hotels</i>	0	0	0	0	0
Total Casualties - 5pm	8	0	0	0	8

Santa Barbara

Casualties - 2am

<i>Industrial</i>	0	0	0	0	0
<i>Commercial</i>	0	0	0	0	0
<i>Other-Residential</i>	0	0	0	0	0
<i>Commuting</i>	0	0	0	0	0
<i>Educational</i>	0	0	0	0	0
<i>Single Family</i>	0	0	0	0	0
<i>Hotels</i>	0	0	0	0	0
Total Casualties - 2am	0	0	0	0	0

Casualties - 2pm

<i>Commercial</i>	0	0	0	0	0
<i>Single Family</i>	0	0	0	0	0
<i>Other-Residential</i>	0	0	0	0	0
<i>Commuting</i>	0	0	0	0	0
<i>Educational</i>	0	0	0	0	0
<i>Hotels</i>	0	0	0	0	0
<i>Industrial</i>	0	0	0	0	0

	Injury Severity Level				Total
	Severity 1	Severity 2	Severity 3	Severity 4	
California					
Santa Barbara					
Total Casualties - 2pm	0	0	0	0	0
Casualties - 5pm					
<i>Other-Residential</i>	0	0	0	0	0
<i>Single Family</i>	0	0	0	0	0
<i>Commercial</i>	0	0	0	0	0
<i>Commuting</i>	0	0	0	0	0
<i>Educational</i>	0	0	0	0	0
<i>Industrial</i>	0	0	0	0	0
<i>Hotels</i>	0	0	0	0	0
Total Casualties - 5pm	0	0	0	0	0
Santa Clara					
Casualties - 2am					
<i>Commuting</i>	0	0	0	0	0
<i>Educational</i>	0	0	0	0	0
<i>Single Family</i>	25	0	0	0	25
<i>Hotels</i>	0	0	0	0	0
<i>Industrial</i>	1	0	0	0	1
<i>Commercial</i>	1	0	0	0	1
<i>Other-Residential</i>	20	1	0	0	21
Total Casualties - 2am	46	1	0	0	47
Casualties - 2pm					
<i>Industrial</i>	6	0	0	0	7
<i>Commercial</i>	35	2	0	0	37
<i>Single Family</i>	7	0	0	0	7
<i>Commuting</i>	0	0	0	0	0
<i>Hotels</i>	0	0	0	0	0
<i>Other-Residential</i>	6	0	0	0	6
<i>Educational</i>	7	0	0	0	7
Total Casualties - 2pm	61	3	0	0	63
Casualties - 5pm					
<i>Industrial</i>	4	0	0	0	4
<i>Hotels</i>	0	0	0	0	0
<i>Other-Residential</i>	7	0	0	0	7
<i>Commercial</i>	23	1	0	0	24
<i>Commuting</i>	0	0	0	0	1
<i>Single Family</i>	9	0	0	0	9
<i>Educational</i>	1	0	0	0	1
Total Casualties - 5pm	44	2	0	0	47
Santa Cruz					
Casualties - 2am					
<i>Hotels</i>	0	0	0	0	0

Injury Severity Level

Severity 1 Severity 2 Severity 3 Severity 4 Total

California

Santa Cruz

Casualties - 2am

<i>Educational</i>	0	0	0	0	0
<i>Industrial</i>	2	0	0	0	3
<i>Other-Residential</i>	75	12	1	3	91
<i>Single Family</i>	40	1	0	0	41
<i>Commercial</i>	3	1	0	0	4
<i>Commuting</i>	0	0	0	0	0
Total Casualties - 2am	120	15	2	3	139

Casualties - 2pm

<i>Industrial</i>	18	3	0	1	22
<i>Other-Residential</i>	25	4	1	1	31
<i>Commercial</i>	182	37	5	9	232
<i>Commuting</i>	0	0	0	0	1
<i>Educational</i>	31	4	0	1	37
<i>Single Family</i>	12	0	0	0	13
<i>Hotels</i>	0	0	0	0	0
Total Casualties - 2pm	269	49	6	12	336

Casualties - 5pm

<i>Industrial</i>	11	2	0	0	14
<i>Other-Residential</i>	28	5	1	1	35
<i>Commercial</i>	117	23	3	6	149
<i>Commuting</i>	4	5	9	2	19
<i>Single Family</i>	14	0	0	0	15
<i>Hotels</i>	0	0	0	0	0
<i>Educational</i>	5	0	0	0	5
Total Casualties - 5pm	179	36	12	9	236

Solano

Casualties - 2am

<i>Industrial</i>	0	0	0	0	0
<i>Other-Residential</i>	0	0	0	0	0
<i>Commercial</i>	0	0	0	0	0
<i>Educational</i>	0	0	0	0	0
<i>Commuting</i>	0	0	0	0	0
<i>Single Family</i>	0	0	0	0	0
<i>Hotels</i>	0	0	0	0	0
Total Casualties - 2am	0	0	0	0	0

Casualties - 2pm

<i>Single Family</i>	0	0	0	0	0
<i>Other-Residential</i>	0	0	0	0	0
<i>Commercial</i>	0	0	0	0	0
<i>Educational</i>	0	0	0	0	0
<i>Commuting</i>	0	0	0	0	0

	Injury Severity Level				Total
	Severity 1	Severity 2	Severity 3	Severity 4	
California					
Solano					
Casualties - 2pm					
<i>Hotels</i>	0	0	0	0	0
<i>Industrial</i>	0	0	0	0	0
Total Casualties - 2pm	0	0	0	0	0
Casualties - 5pm					
<i>Commercial</i>	0	0	0	0	0
<i>Other-Residential</i>	0	0	0	0	0
<i>Single Family</i>	0	0	0	0	0
<i>Educational</i>	0	0	0	0	0
<i>Commuting</i>	0	0	0	0	0
<i>Hotels</i>	0	0	0	0	0
<i>Industrial</i>	0	0	0	0	0
Total Casualties - 5pm	0	0	0	0	0
Sonoma					
Casualties - 2am					
<i>Single Family</i>	0	0	0	0	0
<i>Other-Residential</i>	0	0	0	0	0
<i>Commercial</i>	0	0	0	0	0
<i>Commuting</i>	0	0	0	0	0
<i>Hotels</i>	0	0	0	0	0
<i>Educational</i>	0	0	0	0	0
<i>Industrial</i>	0	0	0	0	0
Total Casualties - 2am	0	0	0	0	0
Casualties - 2pm					
<i>Single Family</i>	0	0	0	0	0
<i>Commuting</i>	0	0	0	0	0
<i>Educational</i>	0	0	0	0	0
<i>Hotels</i>	0	0	0	0	0
<i>Industrial</i>	0	0	0	0	0
<i>Other-Residential</i>	0	0	0	0	0
<i>Commercial</i>	0	0	0	0	0
Total Casualties - 2pm	0	0	0	0	0
Casualties - 5pm					
<i>Single Family</i>	0	0	0	0	0
<i>Commercial</i>	0	0	0	0	0
<i>Commuting</i>	0	0	0	0	0
<i>Hotels</i>	0	0	0	0	0
<i>Educational</i>	0	0	0	0	0
<i>Industrial</i>	0	0	0	0	0
<i>Other-Residential</i>	0	0	0	0	0
Total Casualties - 5pm	0	0	0	0	0

	Injury Severity Level				Total
	Severity 1	Severity 2	Severity 3	Severity 4	
California					
Stanislaus					
Casualties - 2am					
<i>Hotels</i>	0	0	0	0	0
<i>Industrial</i>	0	0	0	0	0
<i>Commercial</i>	0	0	0	0	0
<i>Single Family</i>	0	0	0	0	0
<i>Other-Residential</i>	0	0	0	0	0
<i>Commuting</i>	0	0	0	0	0
<i>Educational</i>	0	0	0	0	0
Total Casualties - 2am	0	0	0	0	0
Casualties - 2pm					
<i>Industrial</i>	0	0	0	0	0
<i>Other-Residential</i>	0	0	0	0	0
<i>Commercial</i>	0	0	0	0	0
<i>Commuting</i>	0	0	0	0	0
<i>Educational</i>	0	0	0	0	0
<i>Single Family</i>	0	0	0	0	0
<i>Hotels</i>	0	0	0	0	0
Total Casualties - 2pm	0	0	0	0	0
Casualties - 5pm					
<i>Industrial</i>	0	0	0	0	0
<i>Other-Residential</i>	0	0	0	0	0
<i>Commuting</i>	0	0	0	0	0
<i>Single Family</i>	0	0	0	0	0
<i>Commercial</i>	0	0	0	0	0
<i>Hotels</i>	0	0	0	0	0
<i>Educational</i>	0	0	0	0	0
Total Casualties - 5pm	0	0	0	0	0
Tulare					
Casualties - 2am					
<i>Commercial</i>	0	0	0	0	0
<i>Commuting</i>	0	0	0	0	0
<i>Single Family</i>	0	0	0	0	0
<i>Educational</i>	0	0	0	0	0
<i>Hotels</i>	0	0	0	0	0
<i>Industrial</i>	0	0	0	0	0
<i>Other-Residential</i>	0	0	0	0	0
Total Casualties - 2am	0	0	0	0	0
Casualties - 2pm					
<i>Industrial</i>	0	0	0	0	0
<i>Hotels</i>	0	0	0	0	0
<i>Commercial</i>	0	0	0	0	0
<i>Other-Residential</i>	0	0	0	0	0

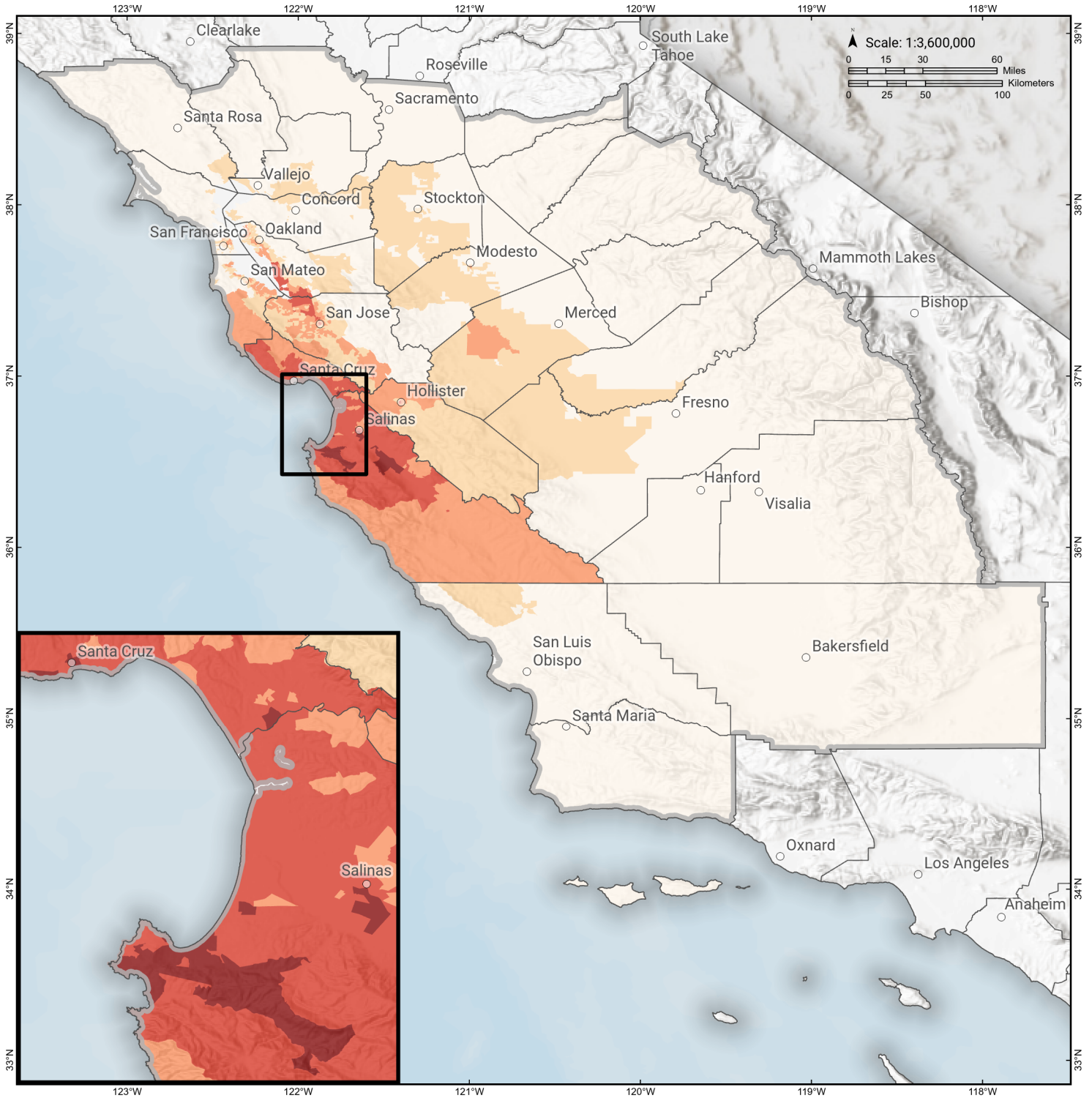
	Injury Severity Level				Total
	Severity 1	Severity 2	Severity 3	Severity 4	
California					
Tulare					
Casualties - 2pm					
<i>Educational</i>	0	0	0	0	0
<i>Commuting</i>	0	0	0	0	0
<i>Single Family</i>	0	0	0	0	0
Total Casualties - 2pm	0	0	0	0	0
Casualties - 5pm					
<i>Other-Residential</i>	0	0	0	0	0
<i>Commercial</i>	0	0	0	0	0
<i>Single Family</i>	0	0	0	0	0
<i>Hotels</i>	0	0	0	0	0
<i>Commuting</i>	0	0	0	0	0
<i>Educational</i>	0	0	0	0	0
<i>Industrial</i>	0	0	0	0	0
Total Casualties - 5pm	0	0	0	0	0
Tuolumne					
Casualties - 2am					
<i>Other-Residential</i>	0	0	0	0	0
<i>Industrial</i>	0	0	0	0	0
<i>Commercial</i>	0	0	0	0	0
<i>Commuting</i>	0	0	0	0	0
<i>Single Family</i>	0	0	0	0	0
<i>Educational</i>	0	0	0	0	0
<i>Hotels</i>	0	0	0	0	0
Total Casualties - 2am	0	0	0	0	0
Casualties - 2pm					
<i>Other-Residential</i>	0	0	0	0	0
<i>Commercial</i>	0	0	0	0	0
<i>Single Family</i>	0	0	0	0	0
<i>Educational</i>	0	0	0	0	0
<i>Commuting</i>	0	0	0	0	0
<i>Industrial</i>	0	0	0	0	0
<i>Hotels</i>	0	0	0	0	0
Total Casualties - 2pm	0	0	0	0	0
Casualties - 5pm					
<i>Industrial</i>	0	0	0	0	0
<i>Other-Residential</i>	0	0	0	0	0
<i>Commercial</i>	0	0	0	0	0
<i>Hotels</i>	0	0	0	0	0
<i>Commuting</i>	0	0	0	0	0
<i>Educational</i>	0	0	0	0	0
<i>Single Family</i>	0	0	0	0	0

	Injury Severity Level				Total
	Severity 1	Severity 2	Severity 3	Severity 4	
California					
Tuolumne					
Total Casualties - 5pm	0	0	0	0	0
Yolo					
Casualties - 2am					
Single Family	0	0	0	0	0
Other-Residential	0	0	0	0	0
Commercial	0	0	0	0	0
Educational	0	0	0	0	0
Commuting	0	0	0	0	0
Hotels	0	0	0	0	0
Industrial	0	0	0	0	0
Total Casualties - 2am	0	0	0	0	0
Casualties - 2pm					
Industrial	0	0	0	0	0
Hotels	0	0	0	0	0
Educational	0	0	0	0	0
Commuting	0	0	0	0	0
Commercial	0	0	0	0	0
Other-Residential	0	0	0	0	0
Single Family	0	0	0	0	0
Total Casualties - 2pm	0	0	0	0	0
Casualties - 5pm					
Other-Residential	0	0	0	0	0
Single Family	0	0	0	0	0
Commuting	0	0	0	0	0
Commercial	0	0	0	0	0
Hotels	0	0	0	0	0
Educational	0	0	0	0	0
Industrial	0	0	0	0	0
Total Casualties - 5pm	0	0	0	0	0
Region Total	NA	NA	NA	NA	NA

Totals only reflect data for those census tracts/blocks included in the user's study region and will reflect the entire county/state only if all of the census blocks for that county/states were selected at the time of study region creation.

Monterey Bay-Tularcitos

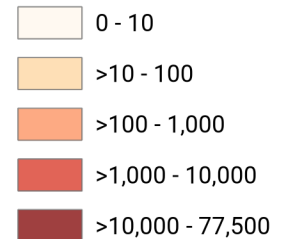
Debris Generated by Census Tract



Study Region: Monterey Bay-Tularcitos
Scenario: montereybaytularcito_m7p26_se



Debris Generated (in tons)



Debris Summary Report

May 06, 2024

All values are in thousands of tons.

	Brick, Wood & Others	Concrete & Steel	Total
California			
Fresno	0	0	0
Alameda	10	7	17
Solano	0	0	0
San Mateo	6	5	12
Tuolumne	0	0	0
Kings	0	0	0
San Joaquin	2	0	2
San Luis Obispo	0	0	0
Madera	0	0	0
Tulare	0	0	0
Napa	0	0	0
Contra Costa	1	0	1
Kern	0	0	0
Amador	0	0	0
Santa Cruz	102	171	272
Monterey	215	464	679
Sacramento	0	0	0
Mariposa	0	0	0
Yolo	0	0	0

	Brick, Wood & Others	Concrete & Steel	Total
Calaveras	0	0	0
Stanislaus	1	0	1
Sonoma	0	0	0
Santa Barbara	0	0	0
Santa Clara	41	32	73
San Benito	1	1	2
San Francisco	12	2	14
Merced	1	0	1
Marin	0	0	0
Total	391	684	1,075
Region Total	391	684	1,075

Totals only reflect data for those census tracts/blocks included in the user's study region and will reflect the entire county/state only if all of the census blocks for that county/states were selected at the time of study region creation.

Direct Economic Losses For Buildings

May 6, 2024

All values are in thousands of dollars

	Capital Stock Losses				Loss Ratio %	Income Losses				Total Loss
	Cost Structural Damage	Cost Non-struct. Damage	Cost Contents Damage	Inventory Loss		Relocation Loss	Capital Related Loss	Wages Losses	Rental Income Loss	
California										
Contra Costa	732	12,637	6,720	680	0.01	90	116	174	165	21,313
Napa	18	482	301	38	0.00	2	4	4	4	853
Alameda	16,530	174,078	97,137	10,779	0.06	2,614	2,418	3,473	3,538	310,566
San Joaquin	1,039	9,699	5,758	802	0.01	189	87	128	168	17,871
Tuolumne	0	0	0	0	0.00	0	0	0	0	0
Tulare	0	37	29	12	0.00	0	0	0	0	78
Madera	45	769	492	111	0.00	3	2	2	5	1,429
Fresno	206	5,123	3,354	601	0.00	21	28	30	43	9,407
Kings	14	583	391	54	0.00	2	4	4	4	1,056

	Capital Stock Losses				Loss Ratio %	Income Losses				Total Loss
	Cost Structural Damage	Cost Non-struct. Damage	Cost Contents Damage	Inventory Loss		Relocation Loss	Capital Related Loss	Wages Losses	Rental Income Loss	
San Luis Obispo	56	1,207	674	70	0.00	8	17	14	20	2,065
Solano	127	2,543	1,556	198	0.00	14	20	24	27	4,508
San Mateo	14,741	141,307	69,982	5,737	0.10	2,227	2,277	2,665	3,690	242,626
Yolo	4	335	253	17	0.00	0	1	1	1	612
San Benito	2,851	24,223	11,978	1,284	0.20	507	416	474	395	42,129
San Francisco	9,849	25,576	14,229	926	0.02	1,948	1,656	1,855	3,912	59,950
Stanislaus	720	10,126	5,868	834	0.01	86	92	98	164	17,986
Santa Clara	92,148	873,327	451,260	34,140	0.25	15,371	16,913	19,432	19,162	1,521,753
Sonoma	21	520	331	53	0.00	2	3	4	4	938
Calaveras	0	1	1	0	0.00	0	0	0	0	3
Merced	1,063	5,186	3,229	1,428	0.01	95	44	39	58	11,143
Santa Barbara	5	242	161	23	0.00	1	1	2	2	436
Marin	87	1,661	961	94	0.00	9	17	17	22	2,868
Kern	0	13	10	3	0.00	0	0	0	0	26
Santa Cruz	225,486	1,139,404	523,183	49,444	2.48	87,806	72,762	88,094	58,463	2,244,642
Mariposa	0	0	0	0	0.00	0	0	0	0	0
Amador	0	0	0	0	0.00	0	0	0	0	0
Sacramento	24	394	222	28	0.00	5	7	7	8	695

	Capital Stock Losses				Loss Ratio %	Income Losses				Total Loss
	Cost Structural Damage	Cost Non-struct. Damage	Cost Contents Damage	Inventory Loss		Relocation Loss	Capital Related Loss	Wages Losses	Rental Income Loss	
Monterey	540,053	2,511,918	1,046,088	95,035	3.99	271,803	185,475	243,683	179,349	5,073,406
Total	905,819	4,941,392	2,244,169	202,390	0.26	382,801	282,360	360,225	269,203	9,588,359
Region Total	905,819	4,941,392	2,244,169	202,390	0.26	382,801	282,360	360,225	269,203	9,588,359

Totals only reflect data for those census tracts/blocks included in the user's study region and will reflect the entire county/state only if all of the census blocks for that county/states were selected at the time of study region creation.

Direct Economic Loss For Transportation

May 06, 2024

All values are in thousands of dollars

	Highway	Railway	Light Rail	Bus Facility	Ports	Ferries	Airport	Total
California								
Alameda								
Segments	0	0	0					0
Bridges	357	14	0					372
Tunnels	0	0	0					0
Facilities		938	0	22	4,130	122	14,885	20,097
Total	358	952	0	22	4,130	122	14,885	20,469
Amador								
Segments	0	0	0					0
Bridges	0	0	0					0
Tunnels	0	0	0					0
Facilities		0	0	0	0	0	6	6
Total	0	0	0	0	0	0	6	6
Calaveras								
Segments	0	0	0					0
Bridges	0	0	0					0
Tunnels	0	0	0					0
Facilities		0	0	0	0	0	11	11

	Highway	Railway	Light Rail	Bus Facility	Ports	Ferries	Airport	Total
Total	0	0	0	0	0	0	11	11
Contra Costa								
Segments	0	0	0					0
Bridges	63	1	0					64
Tunnels	0	0	0					0
Facilities		256	165	0	2,827	51	231	3,530
Total	63	257	165	0	2,827	51	231	3,594
Fresno								
Segments	0	0	0					0
Bridges	56	0	0					56
Tunnels	0	0	0					0
Facilities		231	0	21	0	0	1,095	1,346
Total	56	231	0	21	0	0	1,095	1,402
Kern								
Segments	0	0	0					0
Bridges	0	0	0					0
Tunnels	0	0	0					0
Facilities		6	0	2	0	0	17	25
Total	0	6	0	2	0	0	17	25
Kings								
Segments	0	0	0					0
Bridges	0	0	0					0
Tunnels	0	0	0					0
Facilities		128	0	41	0	0	359	529

	Highway	Railway	Light Rail	Bus Facility	Ports	Ferries	Airport	Total
Total	0	128	0	41	0	0	359	529
Madera								
Segments	0	0	0					0
Bridges	6	0	0					6
Tunnels	0	0	0					0
Facilities		26	0	21	0	0	102	149
Total	6	26	0	21	0	0	102	155
Marin								
Segments	0	0	0					0
Bridges	56	0	0					56
Tunnels	0	0	0					0
Facilities		0	0	92	881	64	51	1,088
Total	56	0	0	92	881	64	51	1,144
Mariposa								
Segments	0	0	0					0
Bridges	0	0	0					0
Tunnels	0	0	0					0
Facilities		0	0	10	0	0	6	15
Total	0	0	0	10	0	0	6	15
Merced								
Segments	0	0	0					0
Bridges	82	0	0					82
Tunnels	0	0	0					0
Facilities		51	0	21	0	0	410	483

	Highway	Railway	Light Rail	Bus Facility	Ports	Ferries	Airport	Total
Total	82	51	0	21	0	0	410	565
Monterey								
<i>Segments</i>	0	0	0					0
<i>Bridges</i>	33,848	1,001	0					34,849
<i>Tunnels</i>	2,748	0	0					2,748
<i>Facilities</i>		394	0	5,402	5,020	0	11,313	22,128
Total	36,596	1,394	0	5,402	5,020	0	11,313	59,725
Napa								
<i>Segments</i>	0	0	0					0
<i>Bridges</i>	0	0	0					1
<i>Tunnels</i>	0	0	0					0
<i>Facilities</i>		0	0	22	110	0	134	266
Total	0	0	0	22	110	0	134	267
Sacramento								
<i>Segments</i>	0	0	0					0
<i>Bridges</i>	9	0	0					9
<i>Tunnels</i>	0	0	0					0
<i>Facilities</i>		3	379	5	559	13	71	1,029
Total	9	3	379	5	559	13	71	1,038
San Benito								
<i>Segments</i>	0	0	0					0
<i>Bridges</i>	148	7	0					155
<i>Tunnels</i>	0	0	0					0
<i>Facilities</i>		0	0	0	0	0	800	800

	Highway	Railway	Light Rail	Bus Facility	Ports	Ferries	Airport	Total
Total	148	7	0	0	0	0	800	955
San Francisco								
Segments	0	0	0					0
Bridges	711	0	0					711
Tunnels	0	0	0					0
Facilities		0	31,375	49	2,617	51	308	34,401
Total	711	0	31,375	49	2,617	51	308	35,112
San Joaquin								
Segments	0	0	0					0
Bridges	197	0	0					197
Tunnels	0	0	0					0
Facilities		410	0	21	1,578	51	418	2,479
Total	197	411	0	21	1,578	51	418	2,676
San Luis Obispo								
Segments	0	0	0					0
Bridges	14	0	0					14
Tunnels	0	0	0					0
Facilities		77	0	41	294	0	451	863
Total	14	77	0	41	294	0	451	877
San Mateo								
Segments	0	0	0					0
Bridges	2,347	4	0					2,350
Tunnels	1	0	0					1
Facilities		0	0	0	3,602	0	37,437	41,040

	Highway	Railway	Light Rail	Bus Facility	Ports	Ferries	Airport	Total
Total	2,347	4	0	0	3,602	0	37,437	43,391
Santa Barbara								
Segments	0	0	0					0
Bridges	1	0	0					1
Tunnels	0	0	0					0
Facilities		28	0	46	0	0	28	102
Total	1	28	0	46	0	0	28	103
Santa Clara								
Segments	0	0	0					0
Bridges	3,618	63	0					3,681
Tunnels	5	0	0					5
Facilities		804	37,016	364	1,438	0	28,153	67,776
Total	3,623	867	37,016	364	1,438	0	28,153	71,462
Santa Cruz								
Segments	0	0	0					0
Bridges	9,576	4,036	0					13,612
Tunnels	0	0	0					0
Facilities		0	0	1,055	1,014	0	3,950	6,019
Total	9,576	4,036	0	1,055	1,014	0	3,950	19,631
Solano								
Segments	0	0	0					0
Bridges	23	2	0					24
Tunnels	0	0	0					0
Facilities		77	0	65	1,248	51	231	1,672

	Highway	Railway	Light Rail	Bus Facility	Ports	Ferries	Airport	Total
Total	23	79	0	65	1,248	51	231	1,697
Sonoma								
Segments	0	0	0					0
Bridges	16	0	0					16
Tunnels	0	0	0					0
Facilities		0	0	3	257	0	155	414
Total	16	0	0	3	257	0	155	430
Stanislaus								
Segments	0	0	0					0
Bridges	62	0	0					62
Tunnels	0	0	0					0
Facilities		154	0	43	0	0	231	427
Total	62	154	0	43	0	0	231	489
Tulare								
Segments	0	0	0					0
Bridges	0	0	0					0
Tunnels	0	0	0					0
Facilities		0	0	5	0	0	17	22
Total	0	0	0	5	0	0	17	22
Tuolumne								
Segments	0	0	0					0
Bridges	0	0	0					0
Tunnels	0	0	0					0
Facilities		0	0	0	0	0	17	17

	Highway	Railway	Light Rail	Bus Facility	Ports	Ferries	Airport	Total
Total	0	0	0	0	0	0	17	17
Yolo								
<i>Segments</i>	0	0	0					0
<i>Bridges</i>	5	0	0					5
<i>Tunnels</i>	0	0	0					0
<i>Facilities</i>		54	0	0	200	0	62	316
Total	5	54	0	0	200	0	62	321
Total	53,949	8,765	68,935	7,350	25,776	404	100,949	266,128
Region Total	53,949	8,765	68,935	7,350	25,776	404	100,949	266,128

Totals only reflect data for those census tracts/blocks included in the user's study region and will reflect the entire county/state only if all of the census blocks for that county/states were selected at the time of study region creation.

Direct Economic Loss For Utilities

May 06, 2024

All values are in thousands of dollars

	Potable Water	Waste Water	Oil Systems	Natural Gas	Electric Power	Communication	Total
California							
Alameda							
<i>Facilities</i>	405	11,654	0	0	52,543	26	64,627
<i>Pipelines</i>	324	163	0	0			487
Total	729	11,817	0	0	52,543	26	65,114
Amador							
<i>Facilities</i>	0	3	0	0	310	0	312
<i>Pipelines</i>	7	3	0	0			10
Total	7	6	0	0	310	0	323
Calaveras							
<i>Facilities</i>	1	10	0	0	1,359	0	1,370
<i>Pipelines</i>	14	7	0	0			21
Total	14	17	0	0	1,359	0	1,391
Contra Costa							
<i>Facilities</i>	169	1,721	1	0	51,571	2	53,463

	Potable Water	Waste Water	Oil Systems	Natural Gas	Electric Power	Communication	Total
<i>Pipelines</i>	135	68	0	0			202
Total	303	1,789	1	0	51,571	2	53,665
Fresno							
<i>Facilities</i>	0	492	0	13	56,245	3	56,754
<i>Pipelines</i>	247	124	0	0			371
Total	247	616	0	13	56,245	3	57,125
Kern							
<i>Facilities</i>	1	3	0	38	2,812	0	2,853
<i>Pipelines</i>	95	48	0	0			142
Total	95	50	0	38	2,812	0	2,995
Kings							
<i>Facilities</i>	0	0	0	134	6,360	1	6,495
<i>Pipelines</i>	78	39	0	0			117
Total	78	39	0	134	6,360	1	6,612
Madera							
<i>Facilities</i>	0	0	0	0	1,347	0	1,347
<i>Pipelines</i>	60	30	0	0			90
Total	60	30	0	0	1,347	0	1,437
Marin							
<i>Facilities</i>	28	984	0	0	56	1	1,069
<i>Pipelines</i>	39	20	0	0			59

	Potable Water	Waste Water	Oil Systems	Natural Gas	Electric Power	Communication	Total
Total	67	1,003	0	0	56	1	1,127
Mariposa							
<i>Facilities</i>	0	10	0	0	42	0	53
<i>Pipelines</i>	10	5	0	0			14
Total	10	15	0	0	42	0	67
Merced							
<i>Facilities</i>	0	615	0	0	137,337	2	137,954
<i>Pipelines</i>	111	56	0	0			166
Total	111	670	0	0	137,337	2	138,120
Monterey							
<i>Facilities</i>	0	267,489	0	0	629,130	1,235	897,854
<i>Pipelines</i>	7,220	3,627	0	0			10,847
Total	7,220	271,116	0	0	629,130	1,235	908,702
Napa							
<i>Facilities</i>	0	492	0	0	5	0	497
<i>Pipelines</i>	16	8	0	0			24
Total	16	500	0	0	5	0	521
Sacramento							
<i>Facilities</i>	0	748	0	0	2,237	2	2,987
<i>Pipelines</i>	99	50	0	0			149
Total	99	798	0	0	2,237	2	3,136

	Potable Water	Waste Water	Oil Systems	Natural Gas	Electric Power	Communication	Total
San Benito							
<i>Facilities</i>	0	8,830	0	0	0	22	8,852
<i>Pipelines</i>	202	102	0	0			304
Total	202	8,931	0	0	0	22	9,155
San Francisco							
<i>Facilities</i>	0	861	0	0	108	6	974
<i>Pipelines</i>	26	13	0	0			40
Total	26	874	0	0	108	6	1,014
San Joaquin							
<i>Facilities</i>	140	861	0	0	9,104	2	10,108
<i>Pipelines</i>	94	47	0	0			141
Total	234	908	0	0	9,104	2	10,249
San Luis Obispo							
<i>Facilities</i>	28	984	0	0	25,125	6	26,143
<i>Pipelines</i>	132	66	0	0			199
Total	160	1,050	0	0	25,125	6	26,342
San Mateo							
<i>Facilities</i>	0	14,299	0	0	2,968	29	17,295
<i>Pipelines</i>	213	107	0	0			320
Total	213	14,406	0	0	2,968	29	17,615
Santa Barbara							

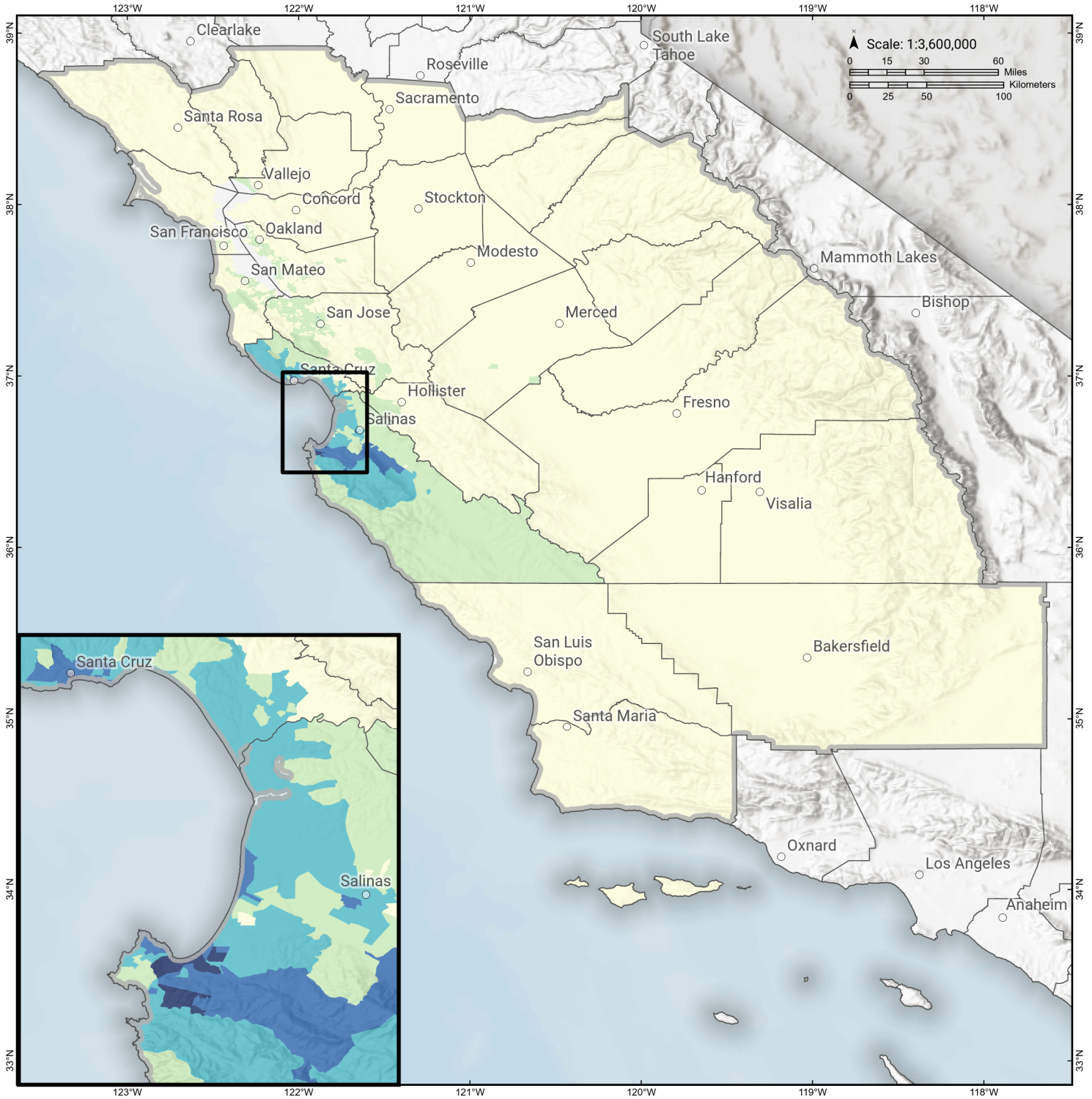
	Potable Water	Waste Water	Oil Systems	Natural Gas	Electric Power	Communication	Total
<i>Facilities</i>	0	5	0	0	8	1	14
<i>Pipelines</i>	52	26	0	0			79
Total	52	31	0	0	8	1	93
Santa Clara							
<i>Facilities</i>	2,018	10,354	0	0	237,030	142	249,544
<i>Pipelines</i>	890	447	0	0			1,337
Total	2,908	10,801	0	0	237,030	142	250,881
Santa Cruz							
<i>Facilities</i>	0	75,134	0	0	6,531	236	81,901
<i>Pipelines</i>	1,719	863	0	0			2,583
Total	1,719	75,998	0	0	6,531	236	84,484
Solano							
<i>Facilities</i>	0	861	0	0	25,044	1	25,905
<i>Pipelines</i>	97	49	0	0			146
Total	97	909	0	0	25,044	1	26,050
Sonoma							
<i>Facilities</i>	0	384	0	0	63	1	447
<i>Pipelines</i>	66	33	0	0			99
Total	66	417	0	0	63	1	546
Stanislaus							
<i>Facilities</i>	0	492	0	0	8,858	3	9,353

	Potable Water	Waste Water	Oil Systems	Natural Gas	Electric Power	Communication	Total
<i>Pipelines</i>	64	32	0	0			97
Total	64	524	0	0	8,858	3	9,449
Tulare							
<i>Facilities</i>	1	5	0	0	56	0	62
<i>Pipelines</i>	72	36	0	0			108
Total	72	41	0	0	56	0	170
Tuolumne							
<i>Facilities</i>	0	3	0	0	1,427	0	1,430
<i>Pipelines</i>	14	7	0	0			22
Total	14	10	0	0	1,427	0	1,452
Yolo							
<i>Facilities</i>	0	371	0	0	112	1	484
<i>Pipelines</i>	27	13	0	0			40
Total	27	385	0	0	112	1	524
Total	14,912	403,752	2	185	1,257,787	1,720	1,678,359
Region Total	14,912	403,752	2	185	1,257,787	1,720	1,678,359

Totals only reflect data for those census tracts/blocks included in the user's study region and will reflect the entire county/state only if all of the census blocks for that county/states were selected at the time of study region creation.

Monterey Bay-Tularcitos

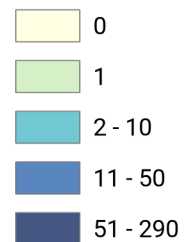
Displaced Households by Census Tract



Study Region: Monterey Bay-Tularcitos
Scenario: montereybaytularcito_m7p26_se



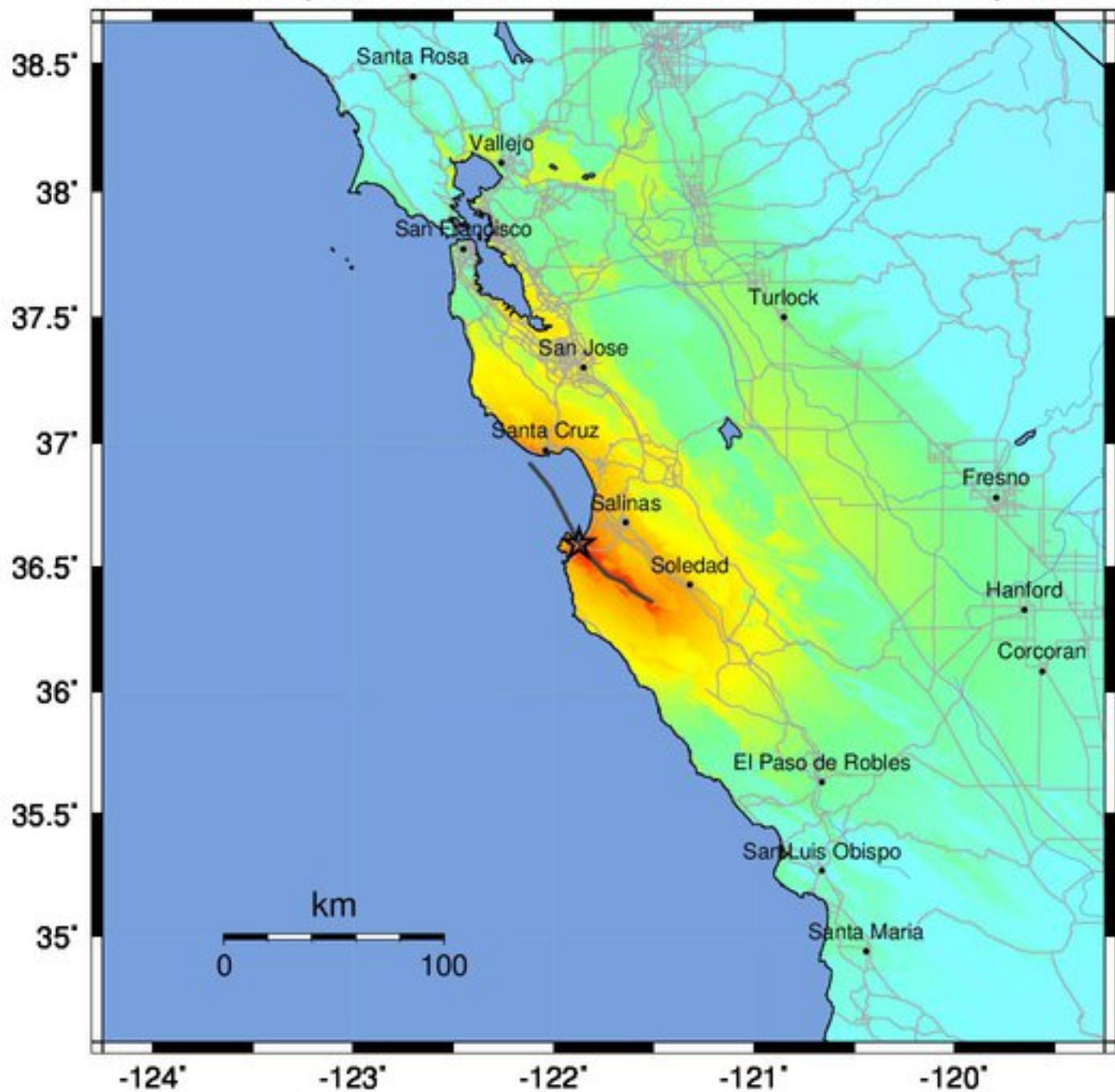
Displaced Households



-- Earthquake Planning Scenario --

ShakeMap for Monterey Bay-Tularcitos - Median ground motions Scenario

Scenario Date: May 16, 2017 08:31:47 AM MDT M 7.3 N36.60 W121.87 Depth: 9.0km



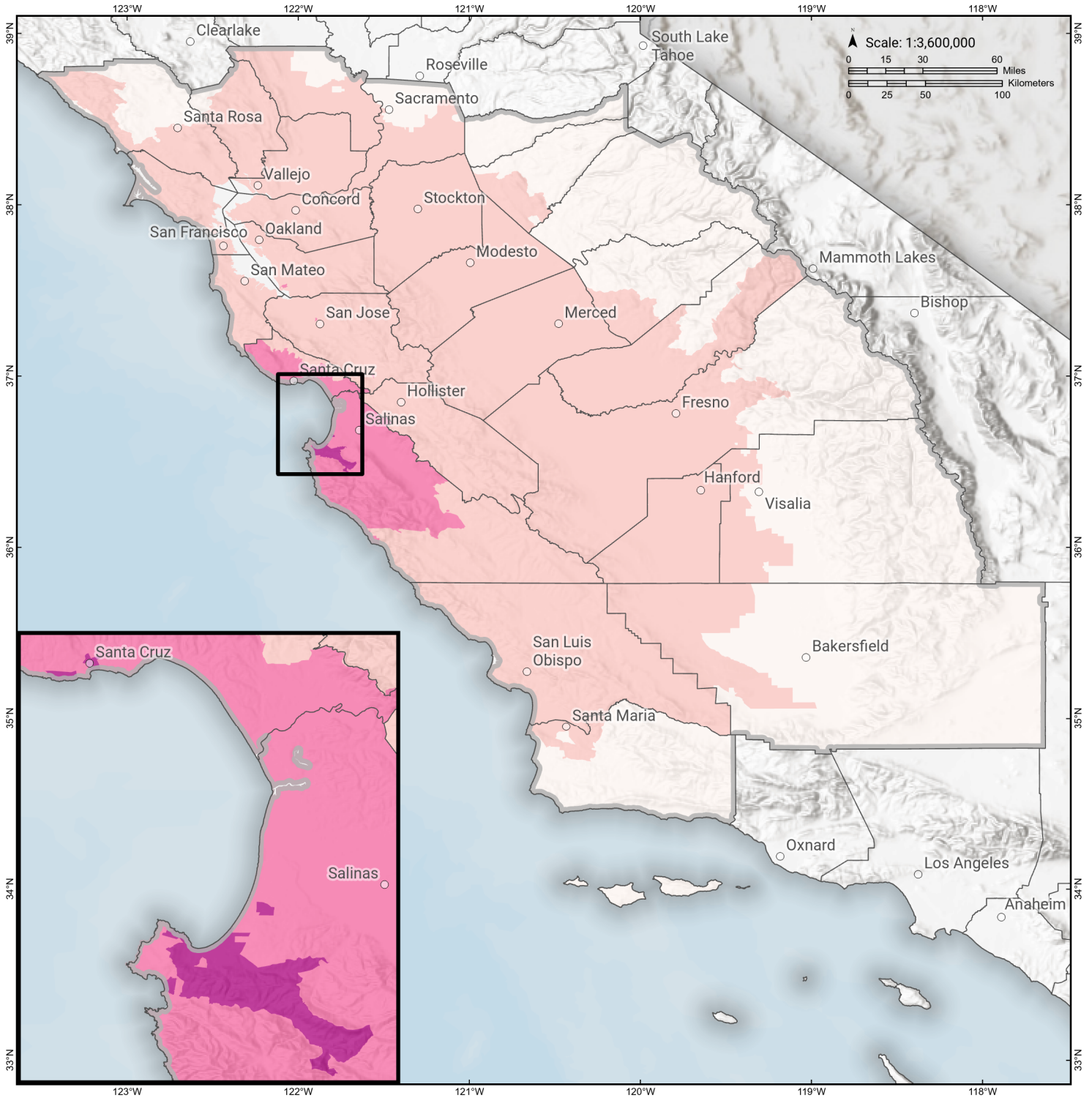
PLANNING SCENARIO ONLY -- Map Version 12 Processed 2017-05-16 09:45:09 PM MDT

PERCEIVED SHAKING	Not felt	Weak	Light	Moderate	Strong	Very strong	Severe	Violent	Extreme
POTENTIAL DAMAGE	none	none	none	Very light	Light	Moderate	Mod./Heavy	Heavy	Very Heavy
PEAK ACC.(%g)	<0.05	0.3	2.8	6.2	12	22	40	75	>139
PEAK VEL.(cm/s)	<0.02	0.1	1.4	4.7	9.6	20	41	86	>178
INSTRUMENTAL INTENSITY	I	II-III	IV	V	VI	VII	VIII	IX	X+

Scale based upon Worden et al. (2012)

Monterey Bay-Tularcitos

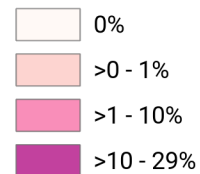
Loss Ratio by Census Tract



Study Region: Monterey Bay-Tularcitos
Scenario: montereybaytularcito_m7p26_se



Loss Ratio (ratio of building related economic loss to exposed value of buildings)



Hazus Quick Assessment Report

Estimated Economic Loss (\$ Billions)

Category	Description	Range
General Building Stock	Building Damage	2.90 - 11.70
	Building Contents	0.40 - 1.50
	Business Interruption	0.60 - 2.60
Infrastructure	Lifelines Damage	
Total		4.80 - 19.20

Preliminary Damage Assessment (PDA) Estimates

Description	Residential	Commercial	Other	Total
Affected	98,200	8,300	3,400	109,900
Minor	14,200	3,300	1,200	18,700
Major	1,200	960	310	2,470
Destroyed	210	190	50	450
Total	113,810	12,750	4,960	131,520

Estimated Casualties : Night Time

Severity Level	Description	# Persons
Level 1	Medical Aid	200 - 900
Level 2	Hospital Care	20 - 100
Level 3	Life-threatening	< 10
Level 4	Fatalities	0 - 20

Estimated Shelter Needs

Type	Households	People
Displaced Households	1,100 - 4,000	2,750 - 10,000
Public Shelter	430	1,080

Comments :

*Hazus damage estimates are presented using FEMA Preliminary Damage Assessment (PDA) categories. These estimates should be used for planning purposes and may not reflect actual observed damages from the PDA process.

Disclaimer:

The estimates of social and economic impacts contained in this report were produced using HAZUS loss estimation methodology software which is based on current scientific and engineering knowledge. There are uncertainties inherent in any loss estimation technique. Therefore, there may be significant differences between the modeled results contained in this report and the actual social and economic losses following a specific earthquake. These results can be improved by using enhanced inventory, geotechnical, and observed ground motion data.

Earthquake Information

Location :

Origin Time:

Magnitude : 7.26

Epicenter Latitude/Longitude :
/

Depth & Type : /U

Name :
NA

Ground Motion /Attenuation :

Maximum PGA: 1.00

Information Sources:

Comments :

Population and Building Exposure

Population: 15,543,433

Building Exposure : (\$ Millions)

Residential	1,888,290
Commercial	520,400
Other	469,513
Total	2,878,203

Counties : See Appendix

Major Metro Area :

Hazus Quick Assessment Report

Estimated Economic Loss (\$ Billions)

Category	Description	Range
General Building Stock	Building Damage	2.90 - 11.70
	Building Contents	0.40 - 1.50
	Business Interruption	0.60 - 2.60
Infrastructure	Lifelines Damage	
Total		4.80 - 19.20

Preliminary Damage Assessment (PDA) Estimates

Description	Residential	Commercial	Other	Total
Affected	98,200	8,300	3,400	109,900
Minor	14,200	3,300	1,200	18,700
Major	1,200	960	310	2,470
Destroyed	210	190	50	450
Total	113,810	12,750	4,960	131,520

Estimated Casualties : Day Time

Severity Level	Description	# Persons
Level 1	Medical Aid	500 - 1,900
Level 2	Hospital Care	80 - 300
Level 3	Life-threatening	10 - 40
Level 4	Fatalities	20 - 80

Estimated Shelter Needs

Type	Households	People
Displaced Households	1,100 - 4,000	2,750 - 10,000
Public Shelter	430	1,080

Comments :

*Hazus damage estimates are presented using FEMA Preliminary Damage Assessment (PDA) categories. These estimates should be used for planning purposes and may not reflect actual observed damages from the PDA process.

Disclaimer:

The estimates of social and economic impacts contained in this report were produced using HAZUS loss estimation methodology software which is based on current scientific and engineering knowledge. There are uncertainties inherent in any loss estimation technique. Therefore, there may be significant differences between the modeled results contained in this report and the actual social and economic losses following a specific earthquake. These results can be improved by using enhanced inventory, geotechnical, and observed ground motion data.

Earthquake Information

Location :

Origin Time:

Magnitude : 7.26

Epicenter Latitude/Longitude :
/

Depth & Type : /U

Name :
NA

Ground Motion /Attenuation :

Maximum PGA: 1.00

Information Sources:

Comments :

Population and Building Exposure

Population: 15,543,433

Building Exposure : (\$ Millions)

Residential	1,888,290
Commercial	520,400
Other	469,513
Total	2,878,203

Counties : See Appendix

Major Metro Area :

Hazus Quick Assessment Report

Estimated Economic Loss (\$ Billions)

Category	Description	Range
General Building Stock	Building Damage	2.90 - 11.70
	Building Contents	0.40 - 1.50
	Business Interruption	0.60 - 2.60
Infrastructure	Lifelines Damage	
Total		4.80 - 19.20

Preliminary Damage Assessment (PDA) Estimates

Description	Residential	Commercial	Other	Total
Affected	98,200	8,300	3,400	109,900
Minor	14,200	3,300	1,200	18,700
Major	1,200	960	310	2,470
Destroyed	210	190	50	450
Total	113,810	12,750	4,960	131,520

Estimated Casualties : Commute Time

Severity Level	Description	# Persons
Level 1	Medical Aid	300 - 1,300
Level 2	Hospital Care	60 - 200
Level 3	Life-threatening	20 - 80
Level 4	Fatalities	10 - 60

Estimated Shelter Needs

Type	Households	People
Displaced Households	1,100 - 4,000	2,750 - 10,000
Public Shelter	430	1,080

Comments :

*Hazus damage estimates are presented using FEMA Preliminary Damage Assessment (PDA) categories. These estimates should be used for planning purposes and may not reflect actual observed damages from the PDA process.

Disclaimer:

The estimates of social and economic impacts contained in this report were produced using HAZUS loss estimation methodology software which is based on current scientific and engineering knowledge. There are uncertainties inherent in any loss estimation technique. Therefore, there may be significant differences between the modeled results contained in this report and the actual social and economic losses following a specific earthquake. These results can be improved by using enhanced inventory, geotechnical, and observed ground motion data.

Earthquake Information

Location :

Origin Time:

Magnitude : 7.26

Epicenter Latitude/Longitude :
/

Depth & Type : /U

Name :
NA

Ground Motion /Attenuation :

Maximum PGA: 1.00

Information Sources:

Comments :

Population and Building Exposure

Population: 15,543,433

Building Exposure : (\$ Millions)

Residential	1,888,290
Commercial	520,400
Other	469,513
Total	2,878,203

Counties : See Appendix

Major Metro Area :

Shelter Summary Report

May 06, 2024

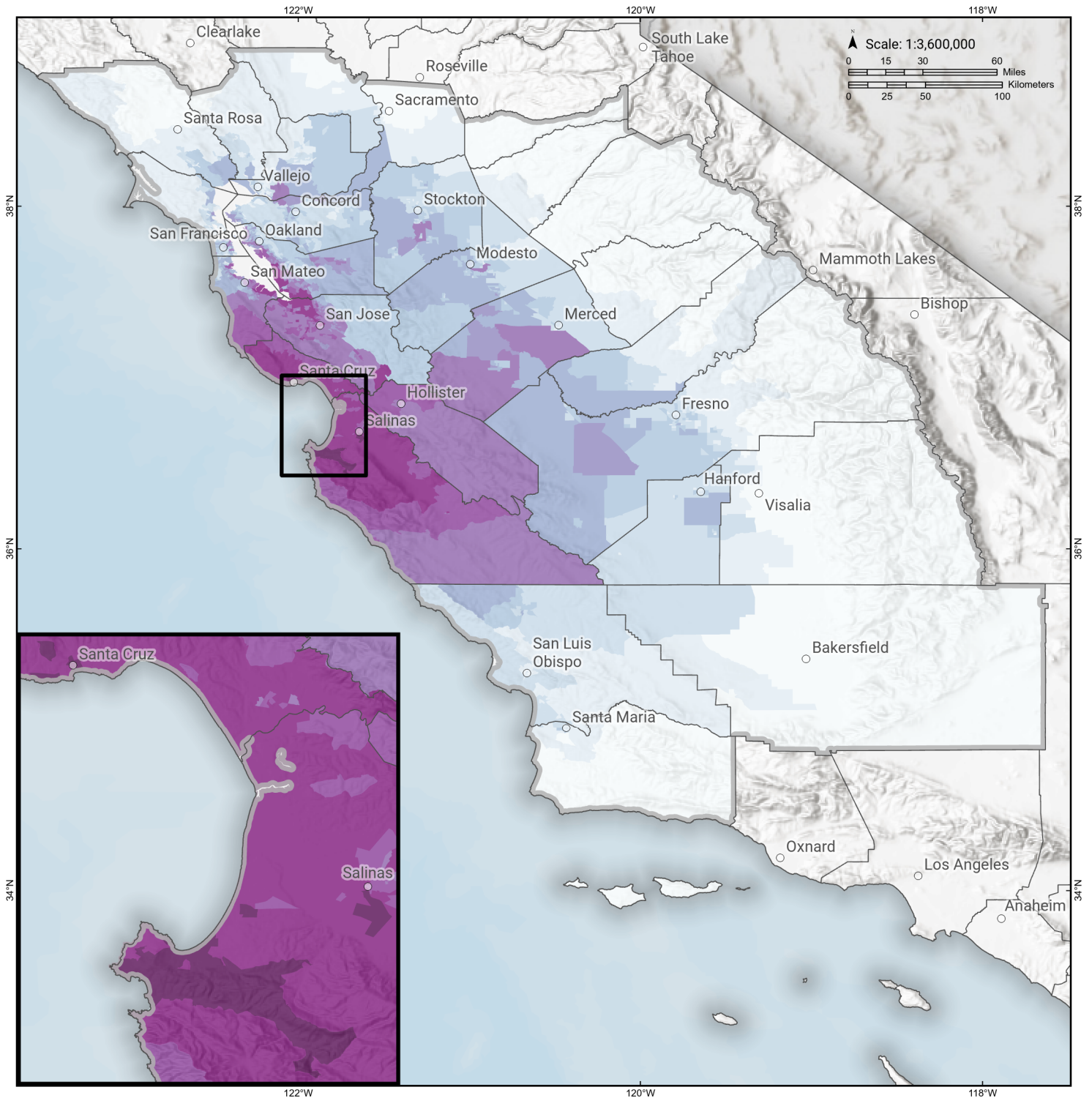
	# of Displaced Households	# of People Needing Short Term Shelter
California		
Fresno	0	0
Alameda	1	1
Solano	0	0
San Mateo	1	1
Tuolumne	0	0
Kings	0	0
San Joaquin	0	0
San Luis Obispo	0	0
Madera	0	0
Tulare	0	0
Napa	0	0
Contra Costa	0	0
Kern	0	0
Amador	0	0
Santa Cruz	619	344
Monterey	1,567	730
Sacramento	0	0
Mariposa	0	0
Yolo	0	0
Calaveras	0	0
Stanislaus	0	0
Sonoma	0	0
Santa Barbara	0	0
Santa Clara	13	7
San Benito	0	0
San Francisco	2	1
Merced	0	0
Marin	0	0
Total	2,202	1,084
Region Total	2,202	1,084

# of Displaced Households	# of People Needing Short Term Shelter
------------------------------	---

Totals only reflect data for those census tracts/blocks included in the user's study region and will reflect the entire county/state only if all of the census blocks for that county/states were selected at the time of study region creation.

Monterey Bay-Tularcitos

Total Building Related Economic Loss by Census Tract



Study Region: Monterey Bay-Tularcitos
Scenario: montereybaytularcito_m7p26_se



Economic Loss (in thousands of USD \$)

