

---

## Hazus: Earthquake Global Risk Report

---

**Region Name:** MonteVistaShan

**Earthquake Scenario:** montevistashannon201\_m7p14\_se

**Print Date:** June 11, 2024

**Disclaimer:**

*Totals only reflect data for those census tracts/blocks included in the user's study region.*

*The estimates of social and economic impacts contained in this report were produced using Hazus loss estimation methodology software which is based on current scientific and engineering knowledge. There are uncertainties inherent in any loss estimation technique. Therefore, there may be significant differences between the modeled results contained in this report and the actual social and economic losses following a specific earthquake. These results can be improved by using enhanced inventory, geotechnical, and observed ground motion data.*

## Table of Contents

<b>Section</b>	<b>Page #</b>
<b>General Description of the Region</b>	<b>3</b>
<b>Building and Lifeline Inventory</b>	<b>4</b>
Building Inventory	
Critical Facility Inventory	
Transportation and Utility Lifeline Inventory	
<b>Earthquake Scenario Parameters</b>	<b>7</b>
<b>Direct Earthquake Damage</b>	<b>8</b>
Buildings Damage	
Essential Facilities Damage	
Transportation and Utility Lifeline Damage	
<b>Induced Earthquake Damage</b>	<b>14</b>
Fire Following Earthquake	
Debris Generation	
<b>Social Impact</b>	<b>15</b>
Shelter Requirements	
Casualties	
<b>Economic Loss</b>	<b>17</b>
Building Related Losses	
Transportation and Utility Lifeline Losses	
<b>Appendix A: County Listing for the Region</b>	
<b>Appendix B: Regional Population and Building Value Data</b>	

## General Description of the Region

Hazus-MH is a regional earthquake loss estimation model that was developed by the Federal Emergency Management Agency (FEMA) and the National Institute of Building Sciences. The primary purpose of Hazus is to provide a methodology and software application to develop multi-hazard losses at a regional scale. These loss estimates would be used primarily by local, state and regional officials to plan and stimulate efforts to reduce risks from multi-hazards and to prepare for emergency response and recovery.

The earthquake loss estimates provided in this report was based on a region that includes 32 county(ies) from the following state(s):

California

Note:

Appendix A contains a complete listing of the counties contained in the region.

The geographical size of the region is 47,975.14 square miles and contains 3,355 census tracts. There are over 5,123 thousand households in the region which has a total population of 14,671,587 people. The distribution of population by Total Region and County is provided in Appendix B.

There are an estimated 4,508 thousand buildings in the region with a total building replacement value (excluding contents) of (millions of dollars). Approximately 90.00 % of the buildings (and % of the building value) are associated with residential housing.

The replacement value of the transportation and utility lifeline systems is estimated to be 231,700 and 163,973 (millions of dollars) , respectively.

## Building and Lifeline Inventory

### Building Inventory

Hazus estimates that there are 4,508 thousand buildings in the region which have an aggregate total replacement value of (millions of dollars) . Appendix B provides a general distribution of the building value by Total Region and County.

In terms of building construction types found in the region, wood frame construction makes up 87% of the building inventory. The remaining percentage is distributed between the other general building types.

### Critical Facility Inventory

Hazus breaks critical facilities into two (2) groups: essential facilities and high potential loss facilities (HPL). Essential facilities include hospitals, medical clinics, schools, fire stations, police stations and emergency operations facilities. High potential loss facilities include dams, levees, military installations, nuclear power plants and hazardous material sites.

For essential facilities, there are 244 hospitals in the region with a total bed capacity of 38,036 beds. There are 5,367 schools, 1,406 fire stations, 472 police stations and 86 emergency operation facilities. With respect to high potential loss facilities (HPL), there are no dams identified within the inventory. The inventory also includes no hazardous material sites, no military installations and no nuclear power plants.

### Transportation and Utility Lifeline Inventory

Within Hazus, the lifeline inventory is divided between transportation and utility lifeline systems. There are seven (7) transportation systems that include highways, railways, light rail, bus, ports, ferry and airports. There are six (6) utility systems that include potable water, wastewater, natural gas, crude & refined oil, electric power and communications. The lifeline inventory data are provided in Tables 1 and 2.

The total value of the lifeline inventory is over 395,673.00 (millions of dollars). This inventory includes over 9,907.14 miles of highways, 10,826 bridges, 216,379.40 miles of pipes.

**Table 1: Transportation System Lifeline Inventory**

System	Component	# Locations/ # Segments	Replacement value (millions of dollars)
<b>Highway</b>	Bridges	10,826	56670.0918
	Segments	6,846	86692.6215
	Tunnels	45	980.7166
	<b>Subtotal</b>		<b>144343.4299</b>
<b>Railways</b>	Bridges	1,546	8796.7400
	Facilities	87	231.6810
	Segments	2,913	63024.0721
	Tunnels	3	1.8495
	<b>Subtotal</b>		<b>72054.3426</b>
<b>Light Rail</b>	Bridges	112	15.3529
	Facilities	255	4154.0000
	Segments	15	5403.2756
	Tunnels	0	0.0000
	<b>Subtotal</b>		<b>9572.6285</b>
<b>Bus</b>	Facilities	49	111.2872
	<b>Subtotal</b>		<b>111.2872</b>
<b>Ferry</b>	Facilities	25	33.2750
	<b>Subtotal</b>		<b>33.2750</b>
<b>Port</b>	Facilities	369	1406.5707
	<b>Subtotal</b>		<b>1406.5707</b>
<b>Airport</b>	Facilities	104	2822.5273
	Runways	143	1356.5498
	<b>Subtotal</b>		<b>4179.0771</b>
		<b>Total</b>	<b>231,700.60</b>

**Table 2: Utility System Lifeline Inventory**

System	Component	# Locations / Segments	Replacement value (millions of dollars)
<b>Potable Water</b>	Distribution Lines	NA	4305.8756
	Facilities	22	864.4680
	Pipelines	0	0.0000
		<b>Subtotal</b>	<b>5170.3436</b>
<b>Waste Water</b>	Distribution Lines	NA	2583.5253
	Facilities	178	30607.4204
	Pipelines	0	0.0000
		<b>Subtotal</b>	<b>33190.9457</b>
<b>Natural Gas</b>	Distribution Lines	NA	1722.3502
	Facilities	4	183.7334
	Pipelines	883	13240.0881
		<b>Subtotal</b>	<b>15146.1717</b>
<b>Oil Systems</b>	Facilities	19	2.2420
	Pipelines	0	0.0000
		<b>Subtotal</b>	<b>2.2420</b>
<b>Electrical Power</b>	Facilities	347	110413.7979
		<b>Subtotal</b>	<b>110413.7979</b>
<b>Communication</b>	Facilities	426	50.2680
		<b>Subtotal</b>	<b>50.2680</b>
	<b>Total</b>		<b>163,973.80</b>

## Earthquake Scenario

Hazus uses the following set of information to define the earthquake parameters used for the earthquake loss estimate provided in this report.



<b>Scenario Name</b>	montevistashannon201_m7p14_se
<b>Type of Earthquake</b>	User-defined
<b>Fault Name</b>	NA
<b>Historical Epicenter ID #</b>	NA
<b>Probabilistic Return Period</b>	NA
<b>Longitude of Epicenter</b>	NA
<b>Latitude of Epicenter</b>	NA
<b>Earthquake Magnitude</b>	7.14
<b>Depth (km)</b>	NA
<b>Rupture Length (Km)</b>	NA
<b>Rupture Orientation (degrees)</b>	NA
<b>Attenuation Function</b>	NA

## Direct Earthquake Damage

### Building Damage

Hazus estimates that about 122,060 buildings will be at least moderately damaged. This is over 3.00 % of the buildings in the region. There are an estimated 1,791 buildings that will be damaged beyond repair. The definition of the 'damage states' is provided in Volume 1: Chapter 5 of the Hazus technical manual. Table 3 below summarizes the expected damage by general occupancy for the buildings in the region. Table 4 below summarizes the expected damage by general building type.

### Damage Categories by General Occupancy Type

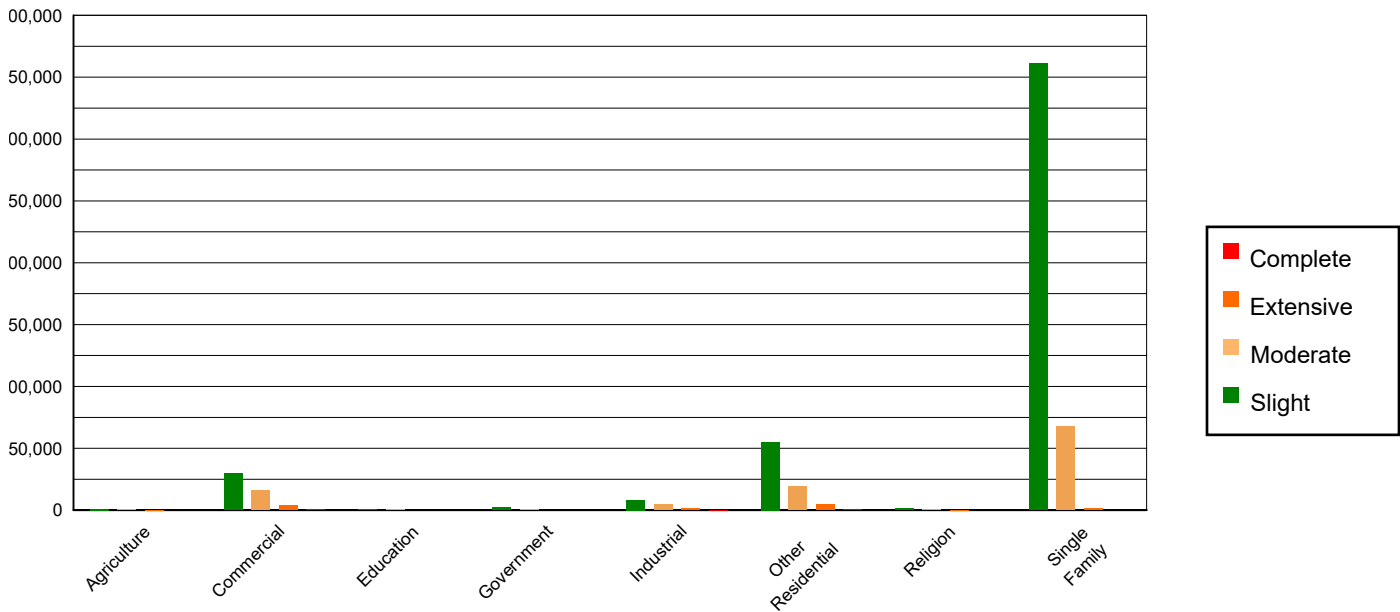


Table 3: Expected Building Damage by Occupancy

	None		Slight		Moderate		Extensive		Complete	
	Count	(%)	Count	(%)	Count	(%)	Count	(%)	Count	(%)
<b>Agriculture</b>	25958.06	0.66	969.04	0.21	487.55	0.45	129.06	1.17	33.30	1.86
<b>Commercial</b>	242196.98	6.17	29466.45	6.42	15835.03	14.49	3714.81	33.77	746.74	41.69
<b>Education</b>	8117.03	0.21	722.49	0.16	269.16	0.25	37.26	0.34	8.06	0.45
<b>Government</b>	19529.64	0.50	1789.91	0.39	498.21	0.46	65.04	0.59	7.20	0.40
<b>Industrial</b>	65924.19	1.68	8248.99	1.80	4262.29	3.90	1030.99	9.37	191.55	10.69
<b>Other Residential</b>	482589.92	12.29	55154.77	12.02	19432.42	17.78	4560.24	41.45	696.65	38.90
<b>Religion</b>	14272.69	0.36	1428.34	0.31	792.89	0.73	194.21	1.77	22.87	1.28
<b>Single Family</b>	3068551.83	78.14	361127.74	78.69	67690.94	61.95	1269.79	11.54	84.70	4.73
<b>Total</b>	<b>3,927,140</b>		<b>458,908</b>		<b>109,268</b>		<b>11,001</b>		<b>1,791</b>	

**Table 4: Expected Building Damage by Building Type (All Design Levels)**

	None		Slight		Moderate		Extensive		Complete	
	Count	(%)	Count	(%)	Count	(%)	Count	(%)	Count	(%)
<b>Wood</b>	3435745.42	87.49	404955.93	88.24	74822.79	68.48	1392.52	12.66	59.42	3.32
<b>Steel</b>	82281.20	2.10	10334.65	2.25	7592.69	6.95	2331.22	21.19	466.05	26.02
<b>Concrete</b>	93526.92	2.38	13132.99	2.86	6933.71	6.35	1737.75	15.80	407.01	22.72
<b>Precast</b>	50310.84	1.28	5735.10	1.25	3831.08	3.51	718.18	6.53	56.49	3.15
<b>RM</b>	154091.89	3.92	11668.33	2.54	6803.55	6.23	1154.44	10.49	35.19	1.96
<b>URM</b>	31712.13	0.81	8598.59	1.87	3534.93	3.24	788.43	7.17	429.09	23.96
<b>MH</b>	79471.94	2.02	4482.14	0.98	5749.72	5.26	2878.86	26.17	337.81	18.86
<b>Total</b>	<b>3,927,140</b>		<b>458,908</b>		<b>109,268</b>		<b>11,001</b>		<b>1,791</b>	

\*Note:

- RM Reinforced Masonry
- URM Unreinforced Masonry
- MH Manufactured Housing

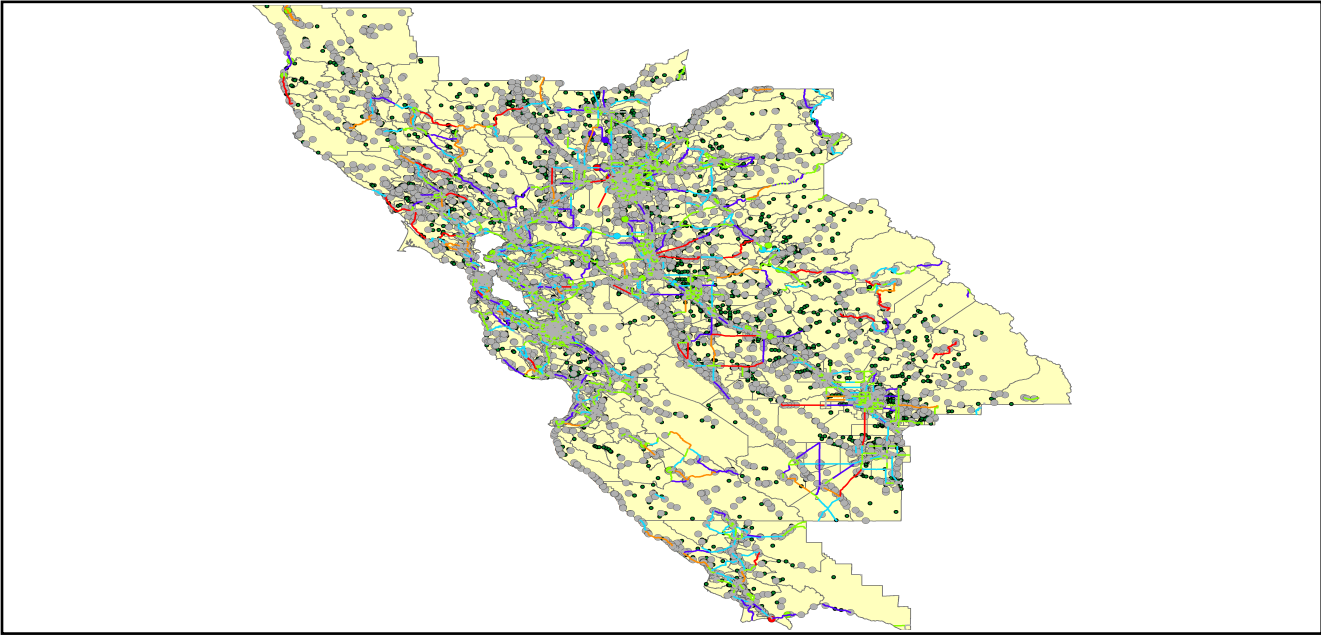
## Essential Facility Damage

Before the earthquake, the region had 38,036 hospital beds available for use. On the day of the earthquake, the model estimates that only 32,496 hospital beds (85.00%) are available for use by patients already in the hospital and those injured by the earthquake. After one week, 92.00% of the beds will be back in service. By 30 days, 96.00% will be operational.

**Table 5: Expected Damage to Essential Facilities**

Classification	Total	# Facilities		
		At Least Moderate Damage > 50%	Complete Damage > 50%	With Functionality > 50% on day 1
Hospitals	244	17	0	215
Schools	5,367	396	0	4,753
EOCs	86	5	0	75
PoliceStations	472	23	0	435
FireStations	1,406	58	0	1,298

Transportation Lifeline Damage



**Table 6: Expected Damage to the Transportation Systems**

System	Component	Number of Locations_				
		Locations/ Segments	With at Least Mod. Damage	With Complete Damage	With Functionality > 50 %	
					After Day 1	After Day 7
Highway	Segments	6,846	0	0	6,846	6,846
	Bridges	10,826	32	0	10,787	10,811
	Tunnels	45	0	0	45	45
Railways	Segments	2,913	0	0	2,913	2,913
	Bridges	1,546	0	0	1,546	1,546
	Tunnels	3	0	0	3	3
	Facilities	87	0	0	87	87
Light Rail	Segments	15	0	0	15	15
	Bridges	112	0	0	112	112
	Tunnels	0	0	0	0	0
	Facilities	255	4	0	255	255
Bus	Facilities	49	1	0	49	49
Ferry	Facilities	25	0	0	25	25
Port	Facilities	369	0	0	369	369
Airport	Facilities	104	0	0	104	104
	Runways	143	0	0	143	143

Table 6 provides damage estimates for the transportation system.

Note: Roadway segments, railroad tracks and light rail tracks are assumed to be damaged by ground failure only. If ground failure maps are not provided, damage estimates to these components will not be computed.

Tables 7-9 provide information on the damage to the utility lifeline systems. Table 7 provides damage to the utility system facilities. Table 8 provides estimates on the number of leaks and breaks by the pipelines of the utility systems. For electric power and potable water, Hazus performs a simplified system performance analysis. Table 9 provides a summary of the system performance information.

**Table 7 : Expected Utility System Facility Damage**

System	# of Locations				
	Total #	With at Least Moderate Damage	With Complete Damage	with Functionality > 50 %	
				After Day 1	After Day 7
Potable Water	22	1	0	20	22
Waste Water	178	2	0	161	178
Natural Gas	4	0	0	4	4
Oil Systems	19	0	0	19	19
Electrical Power	347	27	0	321	343
Communication	426	28	0	408	426

**Table 8 : Expected Utility System Pipeline Damage (Site Specific)**

System	Total Pipelines Length (miles)	Number of Leaks	Number of Breaks
Potable Water	133,777	7377	1844
Waste Water	80,266	3705	926
Natural Gas	2,336	0	0
Oil	0	0	0

**Table 9: Expected Potable Water and Electric Power System Performance**

	Total # of Households	Number of Households without Service				
		At Day 1	At Day 3	At Day 7	At Day 30	At Day 90
Potable Water	5,123,359	429,345	394,321	324,073	68,274	0
Electric Power		421,520	281,548	124,235	13,551	548

## Induced Earthquake Damage

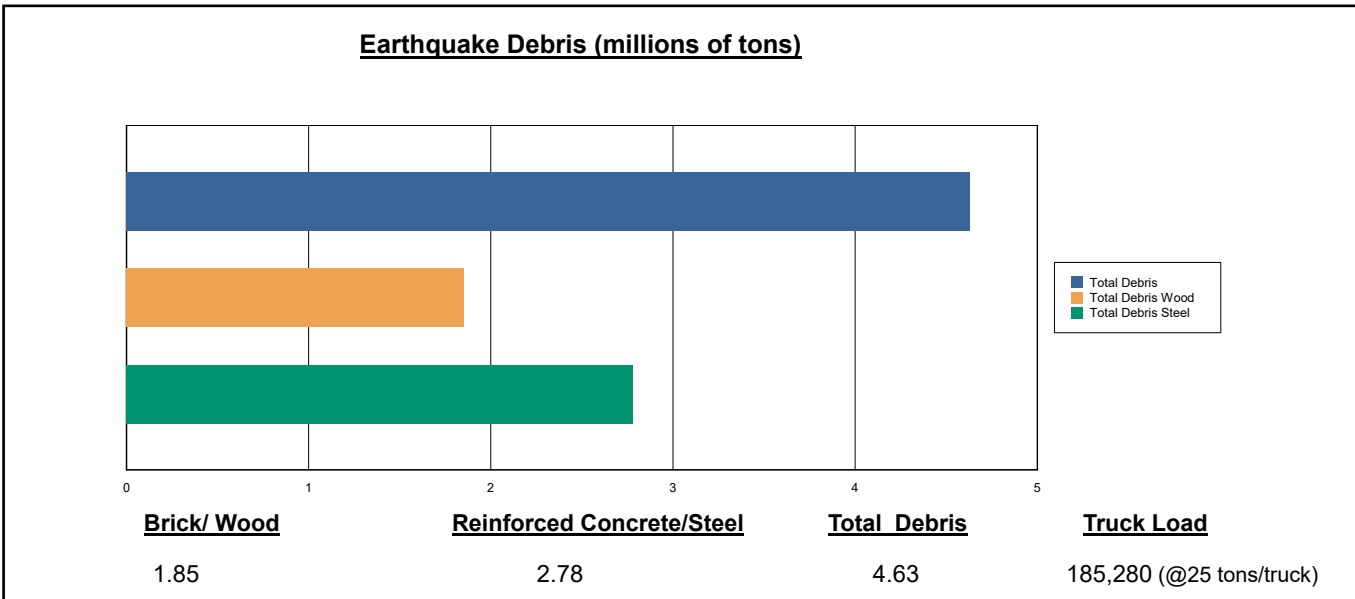
### Fire Following Earthquake

Fires often occur after an earthquake. Because of the number of fires and the lack of water to fight the fires, they can often burn out of control. Hazus uses a Monte Carlo simulation model to estimate the number of ignitions and the amount of burnt area. For this scenario, the model estimates that there will be 66 ignitions that will burn about 1.75 sq. mi 0.00 % of the region's total area.) The model also estimates that the fires will displace about 16,975 people and burn about 2,332 (millions of dollars) of building value.

### Debris Generation

Hazus estimates the amount of debris that will be generated by the earthquake. The model breaks the debris into two general categories: a) Brick/Wood and b) Reinforced Concrete/Steel. This distinction is made because of the different types of material handling equipment required to handle the debris.

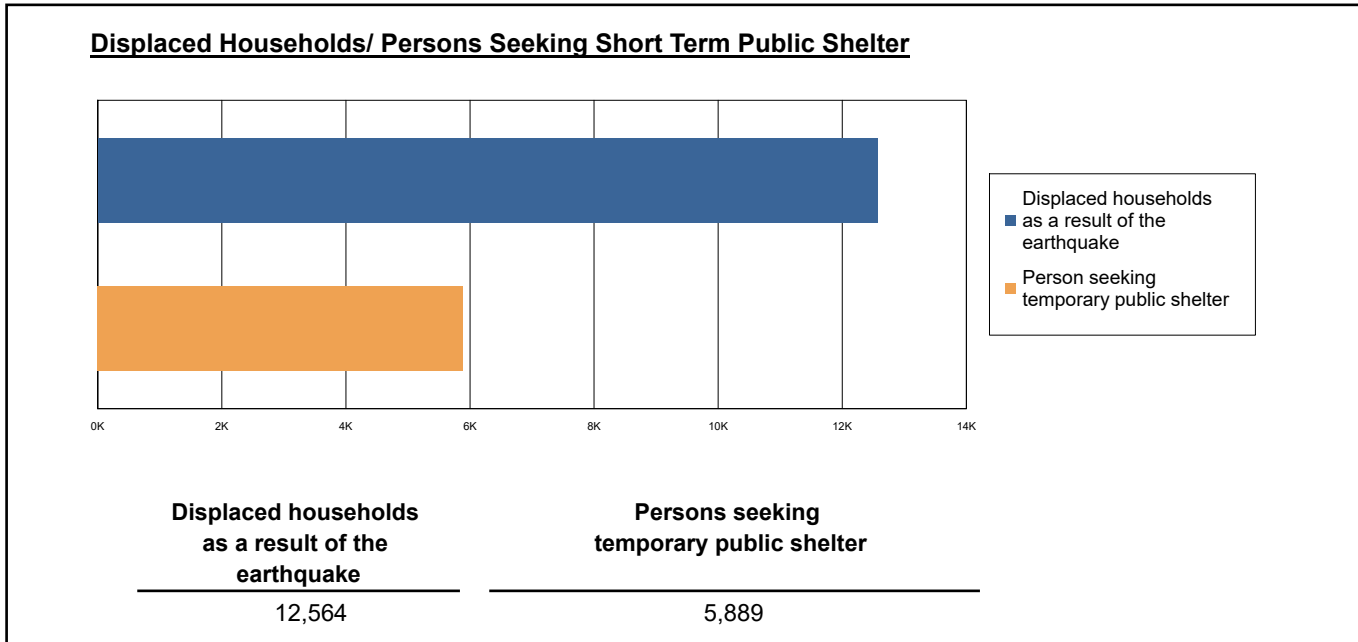
The model estimates that a total of 4,632,000 tons of debris will be generated. Of the total amount, Brick/Wood comprises 40.00% of the total, with the remainder being Reinforced Concrete/Steel. If the debris tonnage is converted to an estimated number of truckloads, it will require 185,280 truckloads (@25 tons/truck) to remove the debris generated by the earthquake.



## Social Impact

### Shelter Requirement

Hazus estimates the number of households that are expected to be displaced from their homes due to the earthquake and the number of displaced people that will require accommodations in temporary public shelters. The model estimates 12,564 households to be displaced due to the earthquake. Of these, 5,889 people (out of a total population of 14,671,587) will seek temporary shelter in public shelters.



### Casualties

Hazus estimates the number of people that will be injured and killed by the earthquake. The casualties are broken down into four (4) severity levels that describe the extent of the injuries. The levels are described as follows;

- Severity Level 1: Injuries will require medical attention but hospitalization is not needed.
- Severity Level 2: Injuries will require hospitalization but are not considered life-threatening
- Severity Level 3: Injuries will require hospitalization and can become life threatening if not promptly treated.
- Severity Level 4: Victims are killed by the earthquake.

The casualty estimates are provided for three (3) times of day: 2:00 AM, 2:00 PM and 5:00 PM. These times represent the periods of the day that different sectors of the community are at their peak occupancy loads. The 2:00 AM estimate considers that the residential occupancy load is maximum, the 2:00 PM estimate considers that the educational, commercial and industrial sector loads are maximum and 5:00 PM represents peak commute time.

Table 10 provides a summary of the casualties estimated for this earthquake

**Table 10: Casualty Estimates**

		Level 1	Level 2	Level 3	Level 4
<b>2 AM</b>	Commercial	43.23	8.01	0.95	1.87
	Commuting	0.55	0.78	1.26	0.25
	Educational	0.00	0.00	0.00	0.00
	Hotels	2.14	0.26	0.02	0.03
	Industrial	52.15	9.33	1.07	2.09
	Other-Residential	1276.34	196.07	19.87	38.61
	Single Family	1101.55	70.74	1.13	2.15
	<b>Total</b>	<b>2,476</b>	<b>285</b>	<b>24</b>	<b>45</b>
<b>2 PM</b>	Commercial	2836.33	525.45	62.66	121.84
	Commuting	4.96	6.99	11.35	2.22
	Educational	822.07	124.16	11.56	22.27
	Hotels	0.41	0.05	0.00	0.01
	Industrial	382.88	68.78	7.95	15.38
	Other-Residential	400.15	64.55	7.04	13.17
	Single Family	312.88	21.12	0.42	0.74
	<b>Total</b>	<b>4,760</b>	<b>811</b>	<b>101</b>	<b>176</b>
<b>5 PM</b>	Commercial	1950.60	360.62	43.12	82.70
	Commuting	101.18	140.76	230.57	45.00
	Educational	153.87	21.12	1.68	3.22
	Hotels	0.64	0.08	0.00	0.01
	Industrial	239.30	42.99	4.97	9.62
	Other-Residential	486.75	76.84	8.15	15.23
	Single Family	408.16	27.18	0.52	0.91
	<b>Total</b>	<b>3,341</b>	<b>670</b>	<b>289</b>	<b>157</b>

## Economic Loss

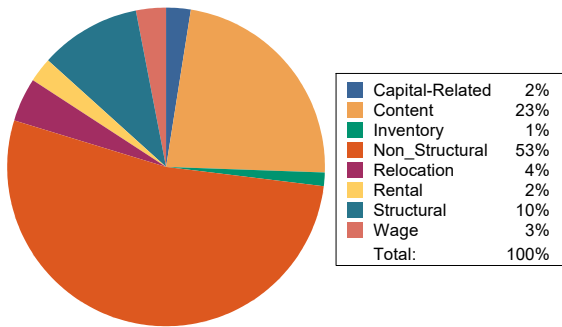
The total economic loss estimated for the earthquake is 50,474.62 (millions of dollars), which includes building and lifeline related losses based on the region's available inventory. The following three sections provide more detailed information about these losses.

## Building-Related Losses

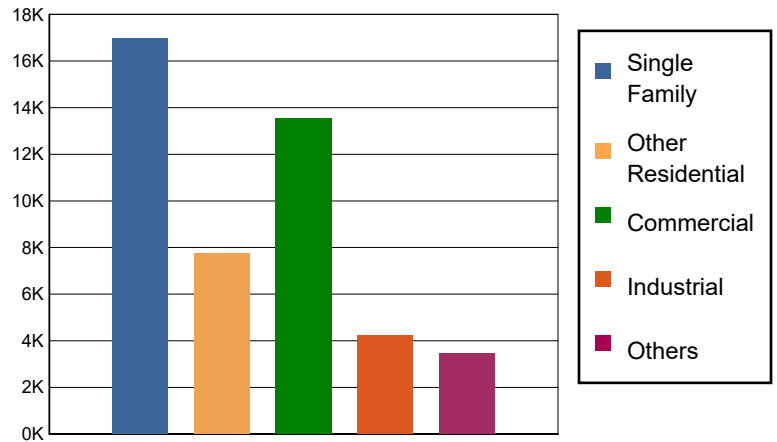
The building losses are broken into two categories: direct building losses and business interruption losses. The direct building losses are the estimated costs to repair or replace the damage caused to the building and its contents. The business interruption losses are the losses associated with inability to operate a business because of the damage sustained during the earthquake. Business interruption losses also include the temporary living expenses for those people displaced from their homes because of the earthquake.

The total building-related losses were 45,952.55 (millions of dollars); 12 % of the estimated losses were related to the business interruption of the region. By far, the largest loss was sustained by the residential occupancies which made up over 54 % of the total loss. Table 11 below provides a summary of the losses associated with the building damage.

Earthquake Losses by Loss Type (\$ millions)



Earthquake Losses by Occupancy Type (\$ millions)



**Table 11: Building-Related Economic Loss Estimates**  
(Millions of dollars)

Category	Area	Single Family	Other Residential	Commercial	Industrial	Others	Total
<b>Income Losses</b>							
	Wage	0.0000	154.1388	1102.7715	44.0958	89.5046	1,390.5107
	Capital-Related	0.0000	65.5559	1014.6830	26.5852	22.6211	1,129.4452
	Rental	152.9464	393.3391	520.4700	26.3374	43.3660	1,136.4589
	Relocation	534.7533	251.7391	751.0590	113.0772	303.1201	1,953.7487
	<b>Subtotal</b>	<b>687.6997</b>	<b>864.7729</b>	<b>3388.9835</b>	<b>210.0956</b>	<b>458.6118</b>	<b>5610.1635</b>
<b>Capital Stock Losses</b>							
	Structural	1768.9772	787.5050	1439.4319	421.4204	377.5329	4,794.8674
	Non_Structural	10539.1803	4821.3273	5321.6674	1980.0292	1653.2937	24,315.4979
	Content	3995.8866	1286.0289	2958.4561	1406.4387	905.6279	10,552.4382
	Inventory	0.0000	0.0000	432.0827	199.0422	48.4622	679.5871
	<b>Subtotal</b>	<b>16304.0441</b>	<b>6894.8612</b>	<b>10151.6381</b>	<b>4006.9305</b>	<b>2984.9167</b>	<b>40342.3906</b>
	<b>Total</b>	<b>16991.74</b>	<b>7759.63</b>	<b>13540.62</b>	<b>4217.03</b>	<b>3443.53</b>	<b>45952.55</b>

### Transportation and Utility Lifeline Losses

For the transportation and utility lifeline systems, Hazus computes the direct repair cost for each component only. There are no losses computed by Hazus for business interruption due to lifeline outages. Tables 12 & 13 provide a detailed breakdown in the expected lifeline losses.

**Table 12: Transportation System Economic Losses**  
(Millions of dollars)

System	Component	Inventory Value	Economic Loss	Loss Ratio (%)
Highway	Segments	86692.6215	0.0000	0.00
	Bridges	56670.0918	512.9395	0.91
	Tunnels	980.7166	2.1709	0.22
	<b>Subtotal</b>	<b>144343.4299</b>	<b>515.1104</b>	
Railways	Segments	63024.0721	0.0000	0.00
	Bridges	8796.7400	25.7568	0.29
	Tunnels	1.8495	0.0003	0.02
	Facilities	231.6810	9.7073	4.19
	<b>Subtotal</b>	<b>72054.3426</b>	<b>35.4644</b>	
Light Rail	Segments	5403.2756	0.0000	0.00
	Bridges	15.3529	0.0997	0.65
	Tunnels	0.0000	0.0000	0.00
	Facilities	4154.0000	406.2704	9.78
	<b>Subtotal</b>	<b>9572.6285</b>	<b>406.3701</b>	
Bus	Facilities	111.2872	3.9664	3.56
	<b>Subtotal</b>	<b>111.2872</b>	<b>3.9664</b>	
Ferry	Facilities	33.2750	1.6542	4.97
	<b>Subtotal</b>	<b>33.2750</b>	<b>1.6542</b>	
Port	Facilities	1406.5707	84.5781	6.01
	<b>Subtotal</b>	<b>1406.5707</b>	<b>84.5781</b>	
Airport	Facilities	2822.5273	315.2275	11.17
	Runways	1356.5498	0.0000	0.00
	<b>Subtotal</b>	<b>4179.0771</b>	<b>315.2275</b>	
<b>Total</b>		<b>231,700.61</b>	<b>1,362.37</b>	

**Table 13: Utility System Economic Losses**

(Millions of dollars)

System	Component	Inventory Value	Economic Loss	Loss Ratio (%)
Potable Water	Pipelines	0.0000	0.0000	0.00
	Facilities	864.4680	19.7871	2.29
	Distribution Lines	4305.8756	33.1950	0.77
	<b>Subtotal</b>	<b>5170.3436</b>	<b>52.9821</b>	
Waste Water	Pipelines	0.0000	0.0000	0.00
	Facilities	30607.4204	559.6842	1.83
	Distribution Lines	2583.5253	16.6747	0.65
	<b>Subtotal</b>	<b>33190.9457</b>	<b>576.3589</b>	
Natural Gas	Pipelines	13240.0881	0.0000	0.00
	Facilities	183.7334	0.0042	0.00
	Distribution Lines	1722.3502	5.7126	0.33
	<b>Subtotal</b>	<b>15146.1717</b>	<b>5.7168</b>	
Oil Systems	Pipelines	0.0000	0.0000	0.00
	Facilities	2.2420	0.0157	0.70
	<b>Subtotal</b>	<b>2.2420</b>	<b>0.0157</b>	
Electrical Power	Facilities	110413.7979	2522.0504	2.28
	<b>Subtotal</b>	<b>110413.7979</b>	<b>2522.0504</b>	
Communication	Facilities	50.2680	2.5707	5.11
	<b>Subtotal</b>	<b>50.2680</b>	<b>2.5707</b>	
	<b>Total</b>	<b>163,973.77</b>	<b>3,159.69</b>	

---

## Appendix A: County Listing for the Region

Alameda,CA  
Amador,CA  
Calaveras,CA  
Colusa,CA  
Contra Costa,CA  
El Dorado,CA  
Fresno,CA  
Kings,CA  
Lake,CA  
Madera,CA  
Marin,CA  
Mariposa,CA  
Mendocino,CA  
Merced,CA  
Monterey,CA  
Napa,CA  
Placer,CA  
Sacramento,CA  
San Benito,CA  
San Francisco,CA  
San Joaquin,CA  
San Luis Obispo,CA  
San Mateo,CA  
Santa Clara,CA  
Santa Cruz,CA  
Solano,CA  
Sonoma,CA  
Stanislaus,CA  
Sutter,CA



---

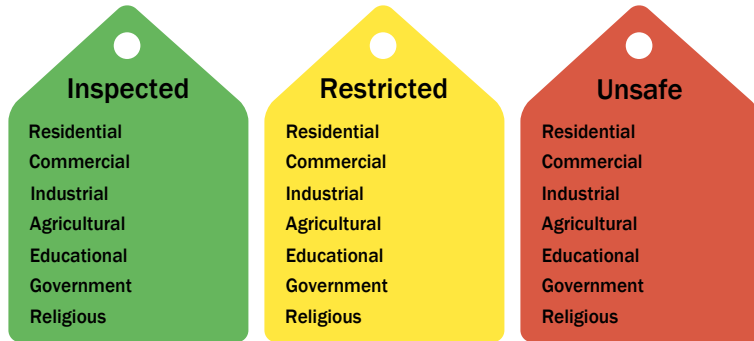
Tuolumne, CA

Yolo, CA

Yuba, CA

## Appendix B: Regional Population and Building Value Data

State	County Name	Population	Building Value (millions of dollars)		
			Residential	Non-Residential	Total
California	Alameda	1,682,353	209,951	122,639	332,590
	Amador	40,474	5,608	2,517	8,125
	Calaveras	45,292	8,305	4,893	13,199
	Colusa	21,839	2,244	2,024	4,268
	Contra Costa	1,165,927	158,118	60,339	218,458
	El Dorado	191,185	34,907	9,704	44,611
	Fresno	1,008,654	98,532	61,772	160,304
	Kings	152,486	13,719	7,861	21,581
	Lake	68,163	9,699	4,530	14,229
	Madera	156,255	18,025	9,641	27,667
	Marin	262,321	47,738	15,030	62,769
	Mariposa	17,131	3,299	1,141	4,441
	Mendocino	91,601	14,237	8,510	22,748
	Merced	281,202	25,194	26,098	51,292
	Monterey	439,035	47,655	28,750	76,405
	Napa	138,019	20,517	13,045	33,563
	Placer	404,739	69,985	24,193	94,179
	Sacramento	1,585,055	179,811	83,911	263,723
	San Benito	64,209	9,440	3,799	13,239
	San Francisco	873,965	108,848	46,020	154,869
	San Joaquin	779,233	82,706	56,882	139,589
	San Luis Obispo	282,424	41,720	20,896	62,616
	San Mateo	764,442	110,372	44,995	155,368
	Santa Clara	1,936,259	261,111	120,471	381,582
	Santa Cruz	270,861	36,147	18,805	54,952
	Solano	453,491	55,802	26,393	82,195
	Sonoma	488,863	68,827	35,781	104,609
	Stanislaus	552,878	62,937	37,511	100,449
	Sutter	99,633	10,618	6,448	17,066
	Tuolumne	55,620	8,964	3,507	12,471
	Yolo	216,403	24,130	18,343	42,473
	Yuba	81,575	8,161	4,677	12,839
	<b>Total Region</b>		<b>14,671,587</b>	<b>1,857,327</b>	<b>931,126</b>

**Building Inspection Tagging (Counts)**

**Total Economic Loss**
**Total:**

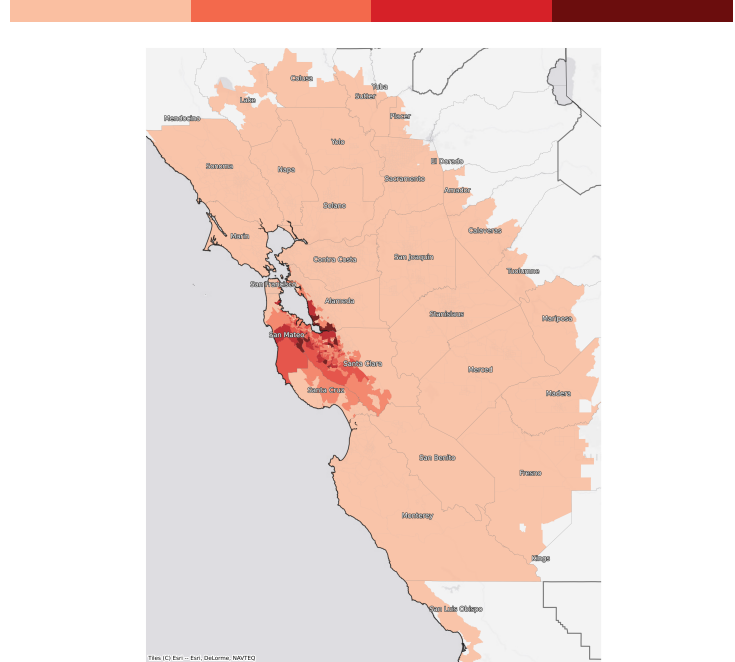
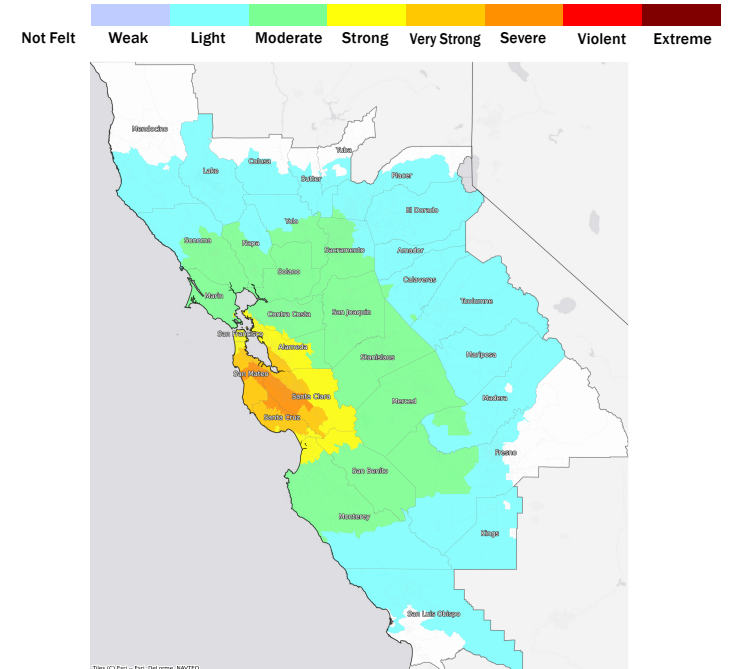
Top Counties	State	Total

**Injuries & Fatalities**
**Total Day:  
Total Night:**

Top Counties	State	Injuries (day/night)	Fatalities (day/night)

**Displaced Households & Short-Term Shelter Needs**
**Total Displaced:  
Total Needing Shelter:**

Top Counties	State	Displaced	Needing Shelter

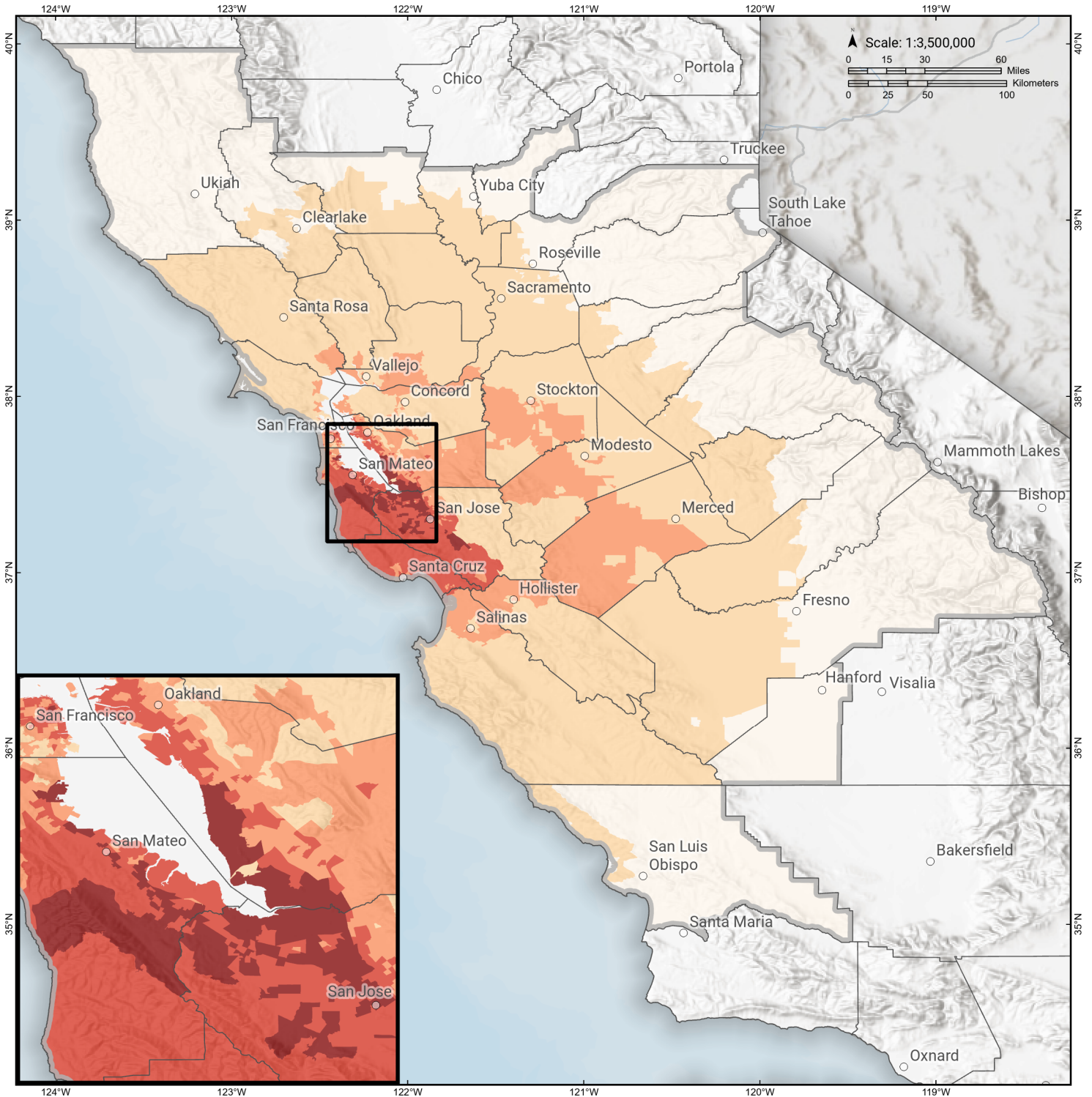
**Economic Impacts by Census Tract**

**Ground Shaking**

**Debris**
**Total Tons:  
Total Truckloads:**

Type	Tons

The estimates of social and economic impacts contained in this report were produced using Hazus loss estimation methodology software which is based on current scientific and engineering knowledge. There are uncertainties inherent in any loss estimation technique. Therefore, there may be significant differences between the modeled results contained in this report and the actual social and economic losses following a specific earthquake.

# Monte Vista - Shannon

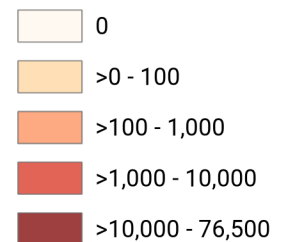
## Debris Generated by Census Tract



**Study Region:** Monte Vista - Shannon  
**Scenario:** montevistashannon201\_m7p14\_se

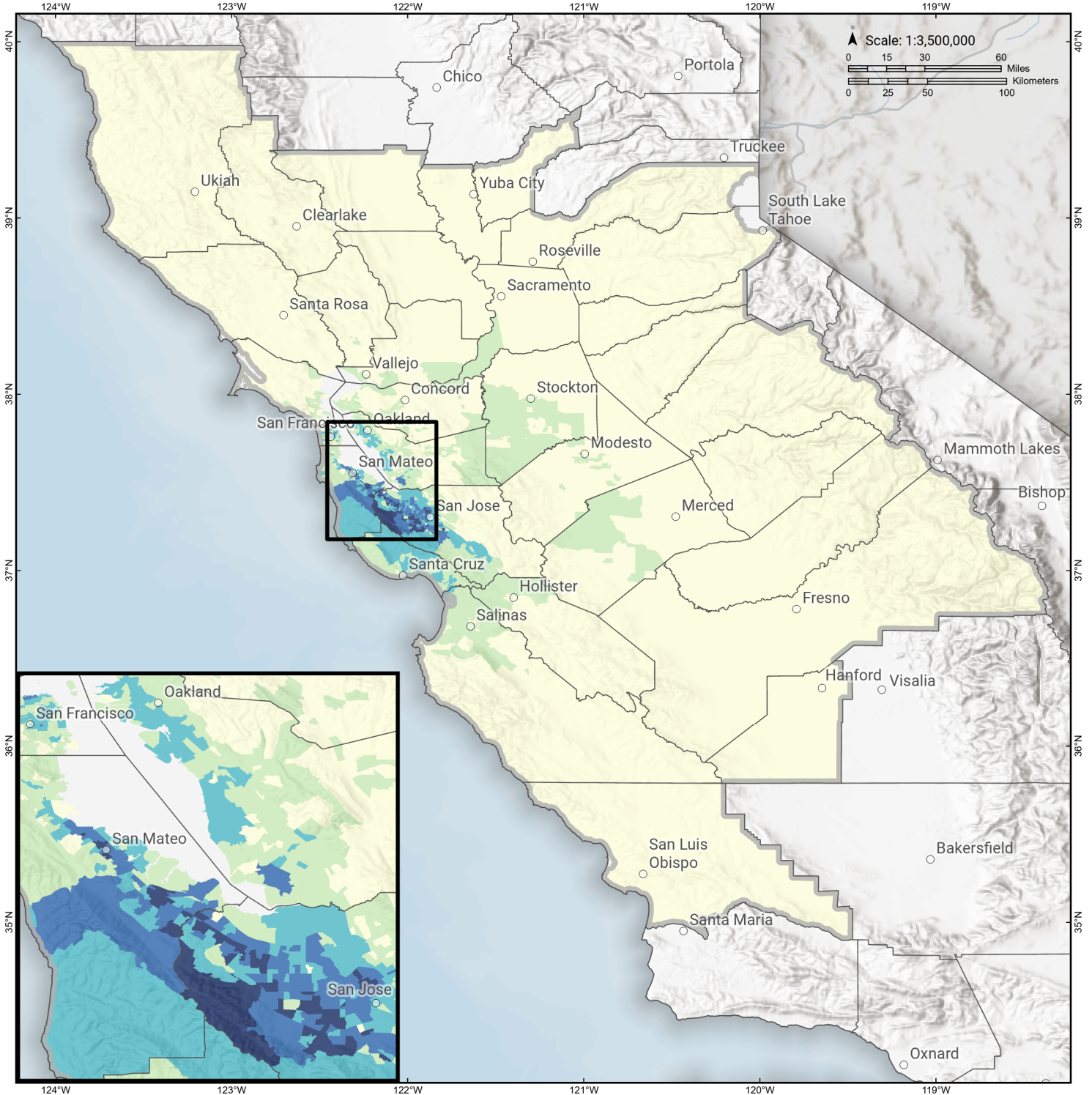


### Debris Generated (in tons)



# Monte Vista - Shannon

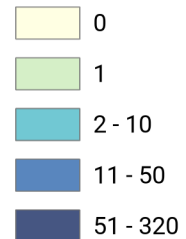
## Displaced Households by Census Tract



**Study Region:** Monte Vista - Shannon  
**Scenario:** montevistashannon201\_m7p14\_se

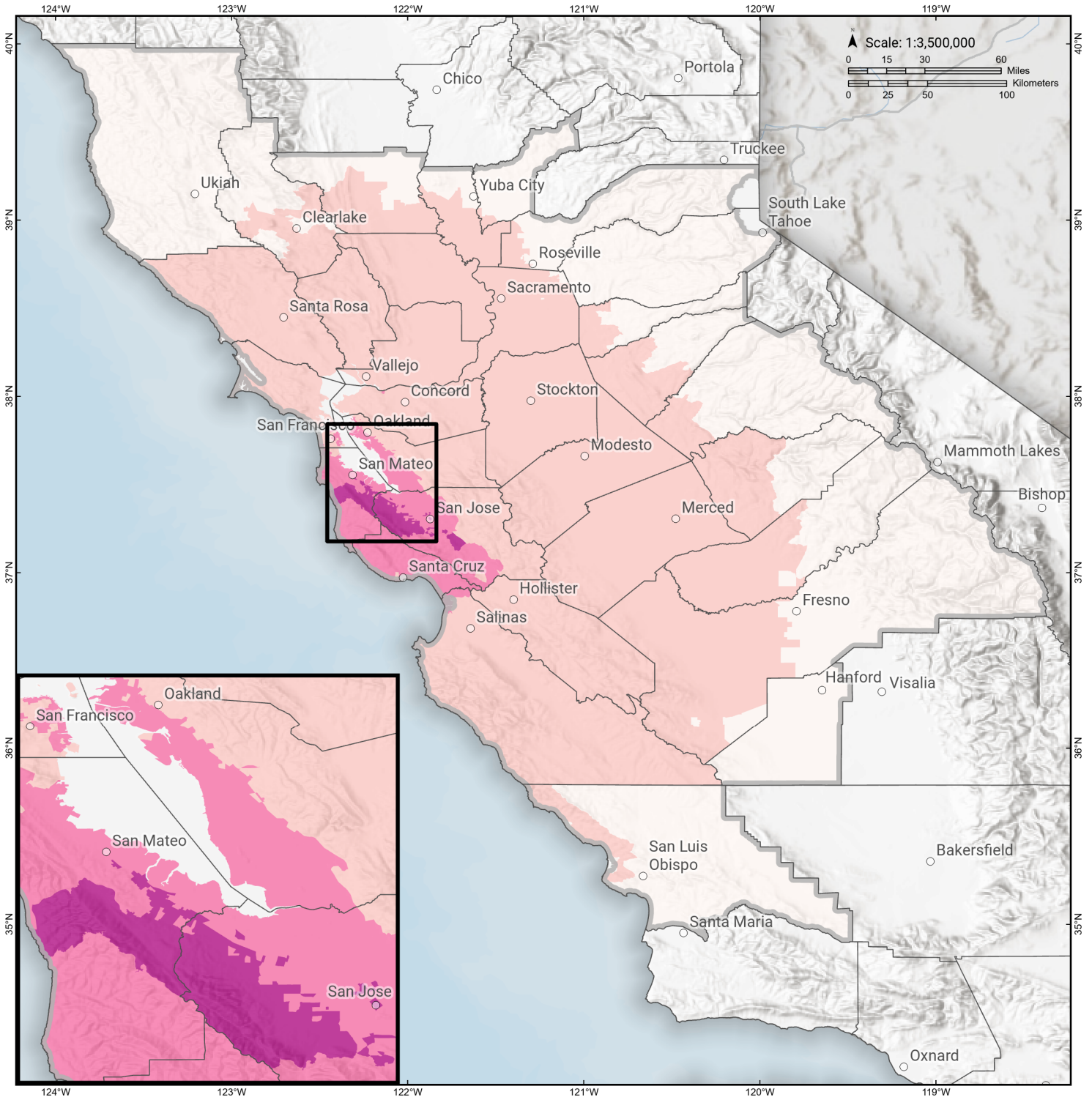


### Displaced Households



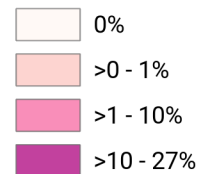
# Monte Vista - Shannon

## Loss Ratio by Census Tract



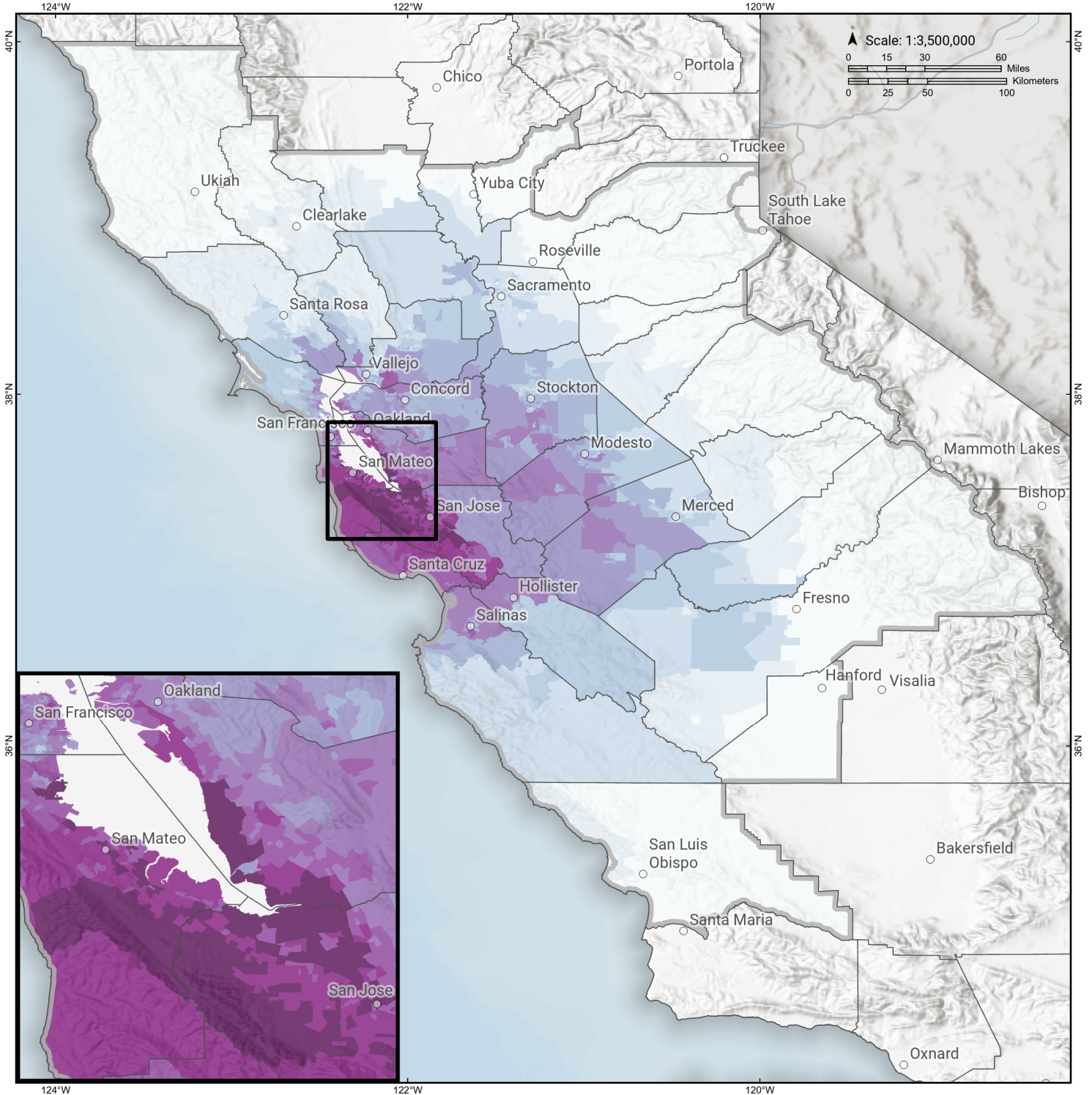
**Study Region:** Monte Vista - Shannon  
**Scenario:** montevistashannon201\_m7p14\_se

**Loss Ratio** (ratio of building related economic loss to exposed value of buildings)



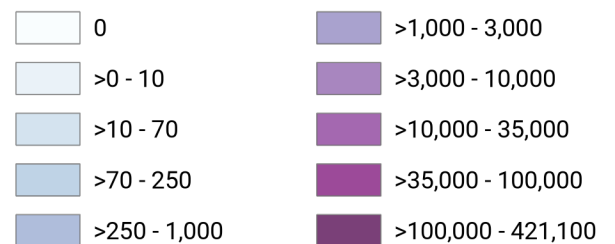
# Monte Vista - Shannon

## Total Building Related Economic Loss by Census Tract



**Study Region:** Monte Vista - Shannon  
**Scenario:** montevistashannon201\_m7p14\_se

### Economic Loss (in thousands of USD \$)



## Building Damage by Count by General Occupancy

June 11, 2024

	# of Buildings					Total
	None	Slight	Moderate	Extensive	Complete	
<b>California</b>						
<b>Alameda</b>						
<i>Government</i>	8,946	1,312	260	10	0	10,528
<i>Agriculture</i>	336	65	19	2	0	422
<i>Commercial</i>	25,125	5,352	1,419	91	1	31,989
<i>Religion</i>	1,575	314	90	7	0	1,986
<i>Single Family</i>	301,806	41,300	1,066	1	0	344,173
<i>Other Residential</i>	51,397	8,357	1,534	106	2	61,396
<i>Education</i>	997	92	25	2	0	1,117
<i>Industrial</i>	7,611	1,971	574	47	2	10,205
<b>Amador</b>						
<i>Industrial</i>	235	0	0	0	0	235
<i>Single Family</i>	14,962	0	0	0	0	14,962
<i>Other Residential</i>	1,037	0	0	0	0	1,037
<i>Education</i>	23	0	0	0	0	23
<i>Government</i>	32	0	0	0	0	32
<i>Agriculture</i>	44	0	0	0	0	44
<i>Religion</i>	45	0	0	0	0	45
<i>Commercial</i>	1,368	0	0	0	0	1,368
<b>Calaveras</b>						

	# of Buildings					Total
	None	Slight	Moderate	Extensive	Complete	
<i>Government</i>	84	0	0	0	0	84
<i>Other Residential</i>	2,559	0	0	0	0	2,559
<i>Education</i>	35	0	0	0	0	35
<i>Religion</i>	130	0	0	0	0	130
<i>Agriculture</i>	2,207	0	0	0	0	2,207
<i>Commercial</i>	1,413	0	0	0	0	1,413
<i>Industrial</i>	466	0	0	0	0	466
<i>Single Family</i>	22,148	0	0	0	0	22,148
<b>Colusa</b>						
<i>Agriculture</i>	142	0	0	0	0	142
<i>Religion</i>	58	0	0	0	0	58
<i>Commercial</i>	794	0	0	0	0	794
<i>Industrial</i>	113	0	0	0	0	113
<i>Other Residential</i>	954	0	0	0	0	954
<i>Single Family</i>	5,954	0	0	0	0	5,954
<i>Government</i>	32	0	0	0	0	32
<i>Education</i>	33	0	0	0	0	33
<b>Contra Costa</b>						
<i>Commercial</i>	17,441	493	55	1	0	17,991
<i>Agriculture</i>	725	21	3	0	0	749
<i>Religion</i>	1,178	42	6	0	0	1,226
<i>Single Family</i>	278,230	3,693	11	0	0	281,935
<i>Other Residential</i>	28,241	826	57	1	0	29,124
<i>Industrial</i>	4,554	170	24	1	0	4,749
<i>Government</i>	4,893	118	13	0	0	5,024

	# of Buildings					Total
	None	Slight	Moderate	Extensive	Complete	
<i>Education</i>	647	6	1	0	0	653
<b>El Dorado</b>						
<i>Other Residential</i>	10,420	0	0	0	0	10,420
<i>Industrial</i>	1,199	0	0	0	0	1,199
<i>Education</i>	128	0	0	0	0	128
<i>Single Family</i>	71,424	0	0	0	0	71,424
<i>Commercial</i>	4,768	0	0	0	0	4,768
<i>Government</i>	100	0	0	0	0	100
<i>Religion</i>	180	0	0	0	0	180
<i>Agriculture</i>	161	0	0	0	0	161
<b>Fresno</b>						
<i>Commercial</i>	21,053	1	0	0	0	21,054
<i>Religion</i>	1,507	0	0	0	0	1,507
<i>Agriculture</i>	3,421	0	0	0	0	3,421
<i>Industrial</i>	5,348	0	0	0	0	5,348
<i>Government</i>	291	0	0	0	0	291
<i>Other Residential</i>	40,969	4	0	0	0	40,973
<i>Single Family</i>	226,424	1	0	0	0	226,425
<i>Education</i>	602	0	0	0	0	602
<b>Kings</b>						
<i>Commercial</i>	2,318	0	0	0	0	2,318
<i>Religion</i>	210	0	0	0	0	210
<i>Agriculture</i>	306	0	0	0	0	306
<i>Government</i>	72	0	0	0	0	72
<i>Industrial</i>	555	0	0	0	0	555

		# of Buildings					
		None	Slight	Moderate	Extensive	Complete	Total
<b>Lake</b>	<i>Single Family</i>	36,245	0	0	0	0	36,245
	<i>Other Residential</i>	4,342	0	0	0	0	4,342
	<i>Education</i>	103	0	0	0	0	103
	<i>Agriculture</i>	161	0	0	0	0	161
	<i>Single Family</i>	21,633	0	0	0	0	21,633
	<i>Other Residential</i>	14,601	0	0	0	0	14,601
	<i>Education</i>	68	0	0	0	0	68
	<i>Industrial</i>	354	0	0	0	0	354
	<i>Commercial</i>	2,091	0	0	0	0	2,091
<b>Madera</b>	<i>Religion</i>	140	0	0	0	0	140
	<i>Government</i>	78	0	0	0	0	78
	<i>Commercial</i>	2,904	1	0	0	0	2,905
	<i>Religion</i>	119	0	0	0	0	119
	<i>Government</i>	111	0	0	0	0	111
	<i>Agriculture</i>	633	1	0	0	0	634
	<i>Other Residential</i>	6,633	2	0	0	0	6,635
	<i>Single Family</i>	38,912	0	0	0	0	38,912
	<i>Education</i>	115	0	0	0	0	115
<b>Marin</b>	<i>Industrial</i>	903	0	0	0	0	903
	<i>Other Residential</i>	7,776	105	9	0	0	7,890
	<i>Government</i>	141	2	0	0	0	143
	<i>Education</i>	273	1	0	0	0	274

	# of Buildings					Total
	None	Slight	Moderate	Extensive	Complete	
<i>Commercial</i>	8,108	149	13	0	0	8,270
<i>Religion</i>	315	4	0	0	0	319
<i>Agriculture</i>	185	4	1	0	0	190
<i>Single Family</i>	76,350	373	1	0	0	76,724
<i>Industrial</i>	1,483	47	5	0	0	1,535
<b>Mariposa</b>						
<i>Single Family</i>	8,084	0	0	0	0	8,084
<i>Other Residential</i>	307	0	0	0	0	307
<i>Education</i>	27	0	0	0	0	27
<i>Industrial</i>	94	0	0	0	0	94
<i>Commercial</i>	689	0	0	0	0	689
<i>Agriculture</i>	29	0	0	0	0	29
<i>Religion</i>	36	0	0	0	0	36
<i>Government</i>	33	0	0	0	0	33
<b>Mendocino</b>						
<i>Commercial</i>	3,436	0	0	0	0	3,436
<i>Religion</i>	216	0	0	0	0	216
<i>Agriculture</i>	184	0	0	0	0	184
<i>Single Family</i>	25,969	0	0	0	0	25,969
<i>Other Residential</i>	7,060	0	0	0	0	7,060
<i>Government</i>	83	0	0	0	0	83
<i>Education</i>	101	0	0	0	0	101
<i>Industrial</i>	869	0	0	0	0	869
<b>Merced</b>						
<i>Education</i>	163	0	0	0	0	163

	# of Buildings					Total
	None	Slight	Moderate	Extensive	Complete	
<i>Government</i>	170	1	0	0	0	171
<i>Commercial</i>	4,729	24	1	0	0	4,754
<i>Agriculture</i>	7,492	136	24	1	0	7,653
<i>Religion</i>	343	2	0	0	0	345
<i>Industrial</i>	1,016	5	0	0	0	1,022
<i>Single Family</i>	63,484	114	0	0	0	63,598
<i>Other Residential</i>	10,694	86	7	0	0	10,787
<b>Monterey</b>						
<i>Single Family</i>	89,177	1,690	10	0	0	90,876
<i>Industrial</i>	1,754	81	14	1	0	1,850
<i>Other Residential</i>	18,697	955	154	2	0	19,809
<i>Education</i>	237	2	0	0	0	239
<i>Government</i>	180	5	1	0	0	185
<i>Agriculture</i>	1,799	14	2	0	0	1,815
<i>Commercial</i>	8,879	319	46	2	0	9,246
<i>Religion</i>	559	19	2	0	0	580
<b>Napa</b>						
<i>Commercial</i>	4,002	18	1	0	0	4,021
<i>Agriculture</i>	348	1	0	0	0	349
<i>Religion</i>	147	1	0	0	0	148
<i>Single Family</i>	38,720	41	0	0	0	38,761
<i>Other Residential</i>	6,942	34	2	0	0	6,978
<i>Government</i>	102	1	0	0	0	103
<i>Education</i>	131	1	0	0	0	132

	# of Buildings					Total
	None	Slight	Moderate	Extensive	Complete	
<b>Placer</b>						
<i>Industrial</i>	1,359	8	0	0	0	1,367
<i>Education</i>	231	0	0	0	0	231
<i>Commercial</i>	8,538	0	0	0	0	8,538
<i>Government</i>	377	0	0	0	0	377
<i>Agriculture</i>	258	0	0	0	0	258
<i>Religion</i>	382	0	0	0	0	382
<i>Industrial</i>	2,703	0	0	0	0	2,703
<i>Other Residential</i>	14,843	0	0	0	0	14,843
<i>Single Family</i>	134,719	0	0	0	0	134,719
<b>Sacramento</b>						
<i>Single Family</i>	386,828	12	0	0	0	386,840
<i>Industrial</i>	6,754	2	0	0	0	6,756
<i>Other Residential</i>	56,378	33	2	0	0	56,413
<i>Education</i>	829	0	0	0	0	829
<i>Agriculture</i>	621	0	0	0	0	621
<i>Religion</i>	1,701	1	0	0	0	1,702
<i>Government</i>	619	0	0	0	0	619
<i>Commercial</i>	26,278	16	1	0	0	26,295
<b>San Benito</b>						
<i>Other Residential</i>	1,291	77	7	0	0	1,375
<i>Single Family</i>	14,325	400	1	0	0	14,726
<i>Industrial</i>	309	14	2	0	0	326
<i>Education</i>	41	1	0	0	0	42
<i>Government</i>	42	2	0	0	0	45

	# of Buildings					Total
	None	Slight	Moderate	Extensive	Complete	
<i>Commercial</i>	1,018	54	7	0	0	1,080
<i>Religion</i>	60	4	1	0	0	64
<i>Agriculture</i>	247	5	1	0	0	253
<b>San Francisco</b>						
<i>Single Family</i>	137,494	12,171	999	39	0	150,703
<i>Other Residential</i>	36,613	6,298	1,554	64	0	44,529
<i>Government</i>	199	67	21	1	0	289
<i>Education</i>	496	56	20	1	0	572
<i>Industrial</i>	2,980	661	207	12	0	3,860
<i>Commercial</i>	16,158	3,936	1,190	59	0	21,344
<i>Religion</i>	1,097	198	48	2	0	1,345
<i>Agriculture</i>	133	22	6	0	0	162
<b>San Joaquin</b>						
<i>Commercial</i>	12,743	112	9	0	0	12,864
<i>Agriculture</i>	745	8	1	0	0	753
<i>Religion</i>	868	8	1	0	0	877
<i>Government</i>	300	3	0	0	0	304
<i>Single Family</i>	186,933	1,830	157	2	0	188,922
<i>Other Residential</i>	21,508	272	24	0	0	21,805
<i>Education</i>	394	1	0	0	0	395
<i>Industrial</i>	4,876	48	4	0	0	4,928
<b>San Luis Obispo</b>						
<i>Religion</i>	360	0	0	0	0	360
<i>Agriculture</i>	421	0	0	0	0	421
<i>Government</i>	185	0	0	0	0	185

	# of Buildings					Total
	None	Slight	Moderate	Extensive	Complete	
<i>Commercial</i>	9,375	0	0	0	0	9,375
<i>Single Family</i>	85,639	0	0	0	0	85,639
<i>Industrial</i>	2,556	0	0	0	0	2,556
<i>Other Residential</i>	20,216	0	0	0	0	20,216
<i>Education</i>	182	0	0	0	0	182
<b>San Mateo</b>						
<i>Religion</i>	291	224	172	45	5	736
<i>Agriculture</i>	165	174	139	44	18	539
<i>Government</i>	129	87	67	15	1	299
<i>Commercial</i>	5,868	4,563	3,067	732	165	14,395
<i>Industrial</i>	1,835	1,346	977	262	52	4,472
<i>Other Residential</i>	10,298	8,368	2,949	644	195	22,453
<i>Single Family</i>	85,631	62,230	11,789	251	30	159,931
<i>Education</i>	304	131	47	6	1	489
<b>Santa Clara</b>						
<i>Other Residential</i>	17,914	25,422	11,724	3,602	498	59,160
<i>Single Family</i>	155,999	217,471	52,719	975	55	427,219
<i>Government</i>	176	158	125	37	6	502
<i>Education</i>	572	400	168	26	7	1,173
<i>Industrial</i>	3,071	3,300	2,246	680	136	9,433
<i>Commercial</i>	10,153	12,523	9,451	2,765	577	35,469
<i>Religion</i>	435	509	442	137	18	1,540
<i>Agriculture</i>	319	281	209	71	15	895
<b>Santa Cruz</b>						
<i>Religion</i>	231	94	31	3	0	359

	# of Buildings					Total
	None	Slight	Moderate	Extensive	Complete	
<i>Agriculture</i>	535	213	80	11	0	840
<i>Single Family</i>	49,076	18,856	937	1	0	68,870
<i>Other Residential</i>	9,429	3,937	1,383	141	2	14,892
<i>Industrial</i>	1,080	509	201	28	1	1,819
<i>Education</i>	184	32	8	1	0	225
<i>Commercial</i>	4,373	1,697	556	64	3	6,694
<i>Government</i>	89	27	10	1	0	127
<b>Solano</b>						
<i>Religion</i>	448	5	1	0	0	454
<i>Agriculture</i>	243	2	0	0	0	245
<i>Government</i>	151	1	0	0	0	152
<i>Commercial</i>	7,183	78	7	0	0	7,268
<i>Single Family</i>	120,587	380	0	0	0	120,968
<i>Industrial</i>	2,060	37	4	0	0	2,101
<i>Other Residential</i>	12,168	138	10	0	0	12,317
<i>Education</i>	224	1	0	0	0	225
<b>Sonoma</b>						
<i>Other Residential</i>	24,988	42	2	0	0	25,033
<i>Government</i>	318	1	0	0	0	319
<i>Education</i>	367	0	0	0	0	367
<i>Religion</i>	575	1	0	0	0	576
<i>Commercial</i>	12,093	16	1	0	0	12,110
<i>Agriculture</i>	1,298	5	1	0	0	1,304
<i>Single Family</i>	142,003	25	0	0	0	142,028
<i>Industrial</i>	3,818	7	0	0	0	3,825

	# of Buildings					Total
	None	Slight	Moderate	Extensive	Complete	
<b>Stanislaus</b>						
<i>Other Residential</i>	19,361	195	13	0	0	19,569
<i>Single Family</i>	142,185	539	0	0	0	142,724
<i>Education</i>	307	0	0	0	0	307
<i>Government</i>	674	6	0	0	0	680
<i>Industrial</i>	3,429	42	4	0	0	3,475
<i>Commercial</i>	10,249	110	9	0	0	10,369
<i>Religion</i>	451	5	0	0	0	456
<i>Agriculture</i>	1,221	16	2	0	0	1,239
<b>Sutter</b>						
<i>Other Residential</i>	3,113	0	0	0	0	3,113
<i>Industrial</i>	636	0	0	0	0	636
<i>Education</i>	62	0	0	0	0	62
<i>Government</i>	77	0	0	0	0	77
<i>Single Family</i>	24,512	0	0	0	0	24,512
<i>Commercial</i>	2,052	0	0	0	0	2,052
<i>Agriculture</i>	1,125	0	0	0	0	1,125
<i>Religion</i>	154	0	0	0	0	154
<b>Tuolumne</b>						
<i>Education</i>	57	0	0	0	0	57
<i>Government</i>	143	0	0	0	0	143
<i>Commercial</i>	1,576	0	0	0	0	1,576
<i>Religion</i>	121	0	0	0	0	121
<i>Agriculture</i>	82	0	0	0	0	82
<i>Industrial</i>	383	0	0	0	0	383

		# of Buildings					
		None	Slight	Moderate	Extensive	Complete	Total
<b>Yolo</b>	<i>Other Residential</i>	4,962	0	0	0	0	4,962
	<i>Single Family</i>	21,645	0	0	0	0	21,645
	<i>Industrial</i>	1,116	1	0	0	0	1,117
	<i>Other Residential</i>	9,857	3	0	0	0	9,861
	<i>Education</i>	131	0	0	0	0	131
	<i>Government</i>	111	0	0	0	0	111
	<i>Single Family</i>	42,587	2	0	0	0	42,589
	<i>Commercial</i>	4,222	3	0	0	0	4,225
	<i>Agriculture</i>	281	0	0	0	0	281
<b>Yuba</b>	<i>Religion</i>	242	0	0	0	0	242
	<i>Government</i>	591	0	0	0	0	591
	<i>Education</i>	54	0	0	0	0	54
	<i>Other Residential</i>	7,021	0	0	0	0	7,021
	<i>Religion</i>	98	0	0	0	0	98
	<i>Commercial</i>	1,199	0	0	0	0	1,199
	<i>Agriculture</i>	92	0	0	0	0	92
	<i>Single Family</i>	18,867	0	0	0	0	18,867
	<i>Industrial</i>	404	0	0	0	0	404
<b>Total</b>	<b>3,927,140</b>	<b>458,908</b>	<b>109,268</b>	<b>11,001</b>	<b>1,791</b>	<b>4,508,109</b>	
<b>Region Total</b>	<b>3,927,140</b>	<b>458,908</b>	<b>109,268</b>	<b>11,001</b>	<b>1,791</b>	<b>4,508,109</b>	

---

<b># of Buildings</b>					
<b>None</b>	<b>Slight</b>	<b>Moderate</b>	<b>Extensive</b>	<b>Complete</b>	<b>Total</b>

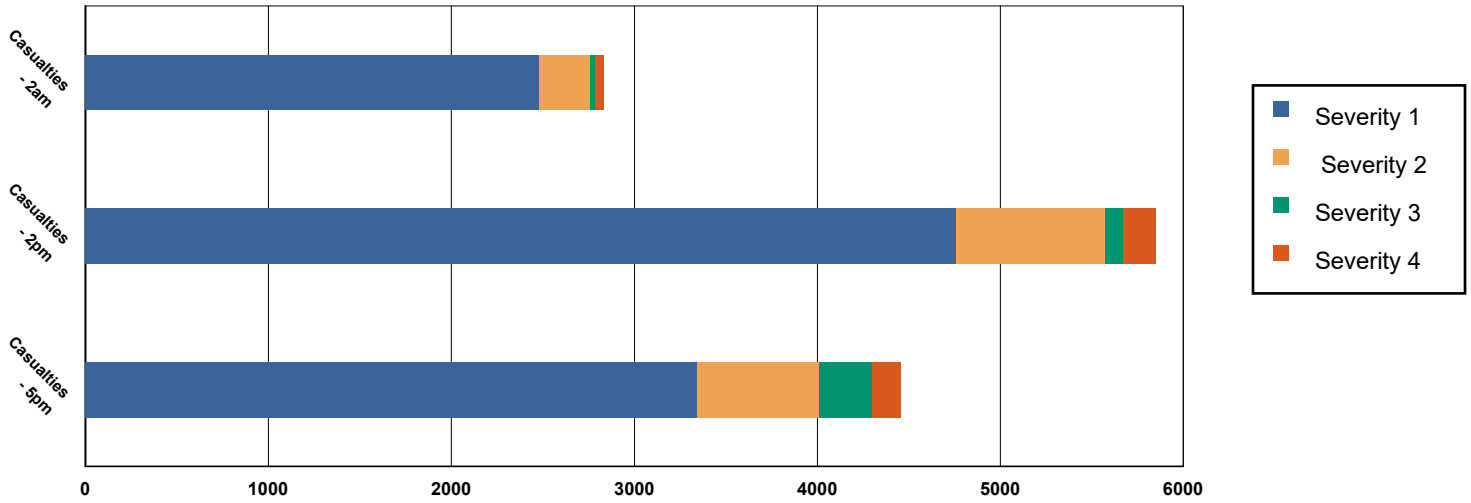
---

*Totals only reflect data for those census tracts/blocks included in the user's study region and will reflect the entire county/state only if all of the census blocks for that county/states were selected at the time of study region creation.*

### Casualties Summary Report

June 11, 2024

### Region Total Casualties



### Injury Severity Level

Severity 1      Severity 2      Severity 3      Severity 4      Total

#### California

##### Alameda

##### Casualties - 2am

	Severity 1	Severity 2	Severity 3	Severity 4	Total
Single Family	72	1	0	0	73
Hotels	0	0	0	0	0
Commuting	0	0	0	0	0
Educational	0	0	0	0	0
Industrial	4	0	0	0	4
Commercial	3	0	0	0	3
Other-Residential	78	5	0	0	83
<b>Total Casualties - 2am</b>	<b>157</b>	<b>6</b>	<b>0</b>	<b>0</b>	<b>163</b>

##### Casualties - 2pm

Industrial	27	2	0	0	29
Educational	31	2	0	0	34
Other-Residential	23	1	0	0	25
Single Family	19	0	0	0	19
Hotels	0	0	0	0	0
Commuting	0	0	0	0	0
Commercial	175	13	0	0	189

	Injury Severity Level				Total
	Severity 1	Severity 2	Severity 3	Severity 4	
<b>California</b>					
<b>Alameda</b>					
<b>Total Casualties - 2pm</b>	<b>276</b>	<b>19</b>	<b>1</b>	<b>1</b>	<b>296</b>
<b>Casualties - 5pm</b>					
<i>Commuting</i>	1	1	3	1	6
<i>Single Family</i>	26	0	0	0	26
<i>Commercial</i>	122	9	0	0	131
<i>Hotels</i>	0	0	0	0	0
<i>Educational</i>	4	0	0	0	4
<i>Industrial</i>	17	1	0	0	18
<i>Other-Residential</i>	29	2	0	0	31
<b>Total Casualties - 5pm</b>	<b>199</b>	<b>14</b>	<b>3</b>	<b>1</b>	<b>217</b>
<b>Amador</b>					
<b>Casualties - 2am</b>					
<i>Commercial</i>	0	0	0	0	0
<i>Other-Residential</i>	0	0	0	0	0
<i>Commuting</i>	0	0	0	0	0
<i>Educational</i>	0	0	0	0	0
<i>Single Family</i>	0	0	0	0	0
<i>Hotels</i>	0	0	0	0	0
<i>Industrial</i>	0	0	0	0	0
<b>Total Casualties - 2am</b>	<b>0</b>	<b>0</b>	<b>0</b>	<b>0</b>	<b>0</b>
<b>Casualties - 2pm</b>					
<i>Single Family</i>	0	0	0	0	0
<i>Hotels</i>	0	0	0	0	0
<i>Educational</i>	0	0	0	0	0
<i>Commuting</i>	0	0	0	0	0
<i>Commercial</i>	0	0	0	0	0
<i>Other-Residential</i>	0	0	0	0	0
<i>Industrial</i>	0	0	0	0	0
<b>Total Casualties - 2pm</b>	<b>0</b>	<b>0</b>	<b>0</b>	<b>0</b>	<b>0</b>
<b>Casualties - 5pm</b>					
<i>Commercial</i>	0	0	0	0	0
<i>Commuting</i>	0	0	0	0	0
<i>Other-Residential</i>	0	0	0	0	0
<i>Single Family</i>	0	0	0	0	0
<i>Educational</i>	0	0	0	0	0
<i>Hotels</i>	0	0	0	0	0
<i>Industrial</i>	0	0	0	0	0
<b>Total Casualties - 5pm</b>	<b>0</b>	<b>0</b>	<b>0</b>	<b>0</b>	<b>0</b>
<b>Calaveras</b>					
<b>Casualties - 2am</b>					
<i>Other-Residential</i>	0	0	0	0	0

	Injury Severity Level				Total
	Severity 1	Severity 2	Severity 3	Severity 4	
<b>California</b>					
<b>Calaveras</b>					
<b>Casualties - 2am</b>					
Commuting	0	0	0	0	0
Commercial	0	0	0	0	0
Single Family	0	0	0	0	0
Hotels	0	0	0	0	0
Educational	0	0	0	0	0
Industrial	0	0	0	0	0
<b>Total Casualties - 2am</b>	<b>0</b>	<b>0</b>	<b>0</b>	<b>0</b>	<b>0</b>
<b>Casualties - 2pm</b>					
Hotels	0	0	0	0	0
Single Family	0	0	0	0	0
Educational	0	0	0	0	0
Commuting	0	0	0	0	0
Commercial	0	0	0	0	0
Industrial	0	0	0	0	0
Other-Residential	0	0	0	0	0
<b>Total Casualties - 2pm</b>	<b>0</b>	<b>0</b>	<b>0</b>	<b>0</b>	<b>0</b>
<b>Casualties - 5pm</b>					
Industrial	0	0	0	0	0
Commercial	0	0	0	0	0
Other-Residential	0	0	0	0	0
Educational	0	0	0	0	0
Hotels	0	0	0	0	0
Commuting	0	0	0	0	0
Single Family	0	0	0	0	0
<b>Total Casualties - 5pm</b>	<b>0</b>	<b>0</b>	<b>0</b>	<b>0</b>	<b>0</b>
<b>Colusa</b>					
<b>Casualties - 2am</b>					
Other-Residential	0	0	0	0	0
Industrial	0	0	0	0	0
Single Family	0	0	0	0	0
Commercial	0	0	0	0	0
Educational	0	0	0	0	0
Commuting	0	0	0	0	0
Hotels	0	0	0	0	0
<b>Total Casualties - 2am</b>	<b>0</b>	<b>0</b>	<b>0</b>	<b>0</b>	<b>0</b>
<b>Casualties - 2pm</b>					
Hotels	0	0	0	0	0
Single Family	0	0	0	0	0
Educational	0	0	0	0	0
Commercial	0	0	0	0	0
Commuting	0	0	0	0	0

	Injury Severity Level				Total
	Severity 1	Severity 2	Severity 3	Severity 4	
<b>California</b>					
<b>Colusa</b>					
<b>Casualties - 2pm</b>					
Other-Residential	0	0	0	0	0
Industrial	0	0	0	0	0
<b>Total Casualties - 2pm</b>	<b>0</b>	<b>0</b>	<b>0</b>	<b>0</b>	<b>0</b>
<b>Casualties - 5pm</b>					
Industrial	0	0	0	0	0
Commercial	0	0	0	0	0
Other-Residential	0	0	0	0	0
Commuting	0	0	0	0	0
Single Family	0	0	0	0	0
Educational	0	0	0	0	0
Hotels	0	0	0	0	0
<b>Total Casualties - 5pm</b>	<b>0</b>	<b>0</b>	<b>0</b>	<b>0</b>	<b>0</b>
<b>Contra Costa</b>					
<b>Casualties - 2am</b>					
Educational	0	0	0	0	0
Hotels	0	0	0	0	0
Industrial	0	0	0	0	0
Other-Residential	3	0	0	0	4
Single Family	6	0	0	0	6
Commercial	0	0	0	0	0
Commuting	0	0	0	0	0
<b>Total Casualties - 2am</b>	<b>10</b>	<b>0</b>	<b>0</b>	<b>0</b>	<b>10</b>
<b>Casualties - 2pm</b>					
Other-Residential	1	0	0	0	1
Industrial	1	0	0	0	1
Hotels	0	0	0	0	0
Single Family	2	0	0	0	2
Educational	1	0	0	0	1
Commuting	0	0	0	0	0
Commercial	10	0	0	0	10
<b>Total Casualties - 2pm</b>	<b>15</b>	<b>1</b>	<b>0</b>	<b>0</b>	<b>16</b>
<b>Casualties - 5pm</b>					
Educational	0	0	0	0	0
Commuting	0	0	0	0	0
Single Family	2	0	0	0	2
Hotels	0	0	0	0	0
Industrial	1	0	0	0	1
Other-Residential	1	0	0	0	1
Commercial	7	0	0	0	7
<b>Total Casualties - 5pm</b>	<b>11</b>	<b>0</b>	<b>0</b>	<b>0</b>	<b>12</b>

	Injury Severity Level				Total
	Severity 1	Severity 2	Severity 3	Severity 4	
<b>California</b>					
<b>El Dorado</b>					
<b>Casualties - 2am</b>					
<i>Commuting</i>	0	0	0	0	0
<i>Educational</i>	0	0	0	0	0
<i>Single Family</i>	0	0	0	0	0
<i>Hotels</i>	0	0	0	0	0
<i>Other-Residential</i>	0	0	0	0	0
<i>Industrial</i>	0	0	0	0	0
<i>Commercial</i>	0	0	0	0	0
<b>Total Casualties - 2am</b>	<b>0</b>	<b>0</b>	<b>0</b>	<b>0</b>	<b>0</b>
<b>Casualties - 2pm</b>					
<i>Industrial</i>	0	0	0	0	0
<i>Other-Residential</i>	0	0	0	0	0
<i>Single Family</i>	0	0	0	0	0
<i>Hotels</i>	0	0	0	0	0
<i>Educational</i>	0	0	0	0	0
<i>Commuting</i>	0	0	0	0	0
<i>Commercial</i>	0	0	0	0	0
<b>Total Casualties - 2pm</b>	<b>0</b>	<b>0</b>	<b>0</b>	<b>0</b>	<b>0</b>
<b>Casualties - 5pm</b>					
<i>Commercial</i>	0	0	0	0	0
<i>Commuting</i>	0	0	0	0	0
<i>Single Family</i>	0	0	0	0	0
<i>Educational</i>	0	0	0	0	0
<i>Hotels</i>	0	0	0	0	0
<i>Industrial</i>	0	0	0	0	0
<i>Other-Residential</i>	0	0	0	0	0
<b>Total Casualties - 5pm</b>	<b>0</b>	<b>0</b>	<b>0</b>	<b>0</b>	<b>0</b>
<b>Fresno</b>					
<b>Casualties - 2am</b>					
<i>Hotels</i>	0	0	0	0	0
<i>Educational</i>	0	0	0	0	0
<i>Industrial</i>	0	0	0	0	0
<i>Commercial</i>	0	0	0	0	0
<i>Other-Residential</i>	0	0	0	0	0
<i>Single Family</i>	0	0	0	0	0
<i>Commuting</i>	0	0	0	0	0
<b>Total Casualties - 2am</b>	<b>0</b>	<b>0</b>	<b>0</b>	<b>0</b>	<b>0</b>
<b>Casualties - 2pm</b>					
<i>Commercial</i>	0	0	0	0	0
<i>Other-Residential</i>	0	0	0	0	0
<i>Industrial</i>	0	0	0	0	0
<i>Single Family</i>	0	0	0	0	0

	Injury Severity Level				Total
	Severity 1	Severity 2	Severity 3	Severity 4	
<b>California</b>					
<b>Fresno</b>					
<b>Casualties - 2pm</b>					
<i>Hotels</i>	0	0	0	0	0
<i>Commuting</i>	0	0	0	0	0
<i>Educational</i>	0	0	0	0	0
<b>Total Casualties - 2pm</b>	<b>0</b>	<b>0</b>	<b>0</b>	<b>0</b>	<b>0</b>
<b>Casualties - 5pm</b>					
<i>Educational</i>	0	0	0	0	0
<i>Commuting</i>	0	0	0	0	0
<i>Hotels</i>	0	0	0	0	0
<i>Industrial</i>	0	0	0	0	0
<i>Single Family</i>	0	0	0	0	0
<i>Other-Residential</i>	0	0	0	0	0
<i>Commercial</i>	0	0	0	0	0
<b>Total Casualties - 5pm</b>	<b>0</b>	<b>0</b>	<b>0</b>	<b>0</b>	<b>0</b>
<b>Kings</b>					
<b>Casualties - 2am</b>					
<i>Industrial</i>	0	0	0	0	0
<i>Other-Residential</i>	0	0	0	0	0
<i>Educational</i>	0	0	0	0	0
<i>Commuting</i>	0	0	0	0	0
<i>Commercial</i>	0	0	0	0	0
<i>Single Family</i>	0	0	0	0	0
<i>Hotels</i>	0	0	0	0	0
<b>Total Casualties - 2am</b>	<b>0</b>	<b>0</b>	<b>0</b>	<b>0</b>	<b>0</b>
<b>Casualties - 2pm</b>					
<i>Single Family</i>	0	0	0	0	0
<i>Other-Residential</i>	0	0	0	0	0
<i>Commercial</i>	0	0	0	0	0
<i>Educational</i>	0	0	0	0	0
<i>Commuting</i>	0	0	0	0	0
<i>Hotels</i>	0	0	0	0	0
<i>Industrial</i>	0	0	0	0	0
<b>Total Casualties - 2pm</b>	<b>0</b>	<b>0</b>	<b>0</b>	<b>0</b>	<b>0</b>
<b>Casualties - 5pm</b>					
<i>Single Family</i>	0	0	0	0	0
<i>Commercial</i>	0	0	0	0	0
<i>Commuting</i>	0	0	0	0	0
<i>Other-Residential</i>	0	0	0	0	0
<i>Educational</i>	0	0	0	0	0
<i>Hotels</i>	0	0	0	0	0
<i>Industrial</i>	0	0	0	0	0

	Injury Severity Level				Total
	Severity 1	Severity 2	Severity 3	Severity 4	
<b>California</b>					
<b>Kings</b>					
<b>Total Casualties - 5pm</b>	<b>0</b>	<b>0</b>	<b>0</b>	<b>0</b>	<b>0</b>
<b>Lake</b>					
<b>Casualties - 2am</b>					
<i>Hotels</i>	0	0	0	0	0
<i>Industrial</i>	0	0	0	0	0
<i>Other-Residential</i>	0	0	0	0	0
<i>Commuting</i>	0	0	0	0	0
<i>Educational</i>	0	0	0	0	0
<i>Single Family</i>	0	0	0	0	0
<i>Commercial</i>	0	0	0	0	0
<b>Total Casualties - 2am</b>	<b>0</b>	<b>0</b>	<b>0</b>	<b>0</b>	<b>0</b>
<b>Casualties - 2pm</b>					
<i>Industrial</i>	0	0	0	0	0
<i>Single Family</i>	0	0	0	0	0
<i>Commercial</i>	0	0	0	0	0
<i>Other-Residential</i>	0	0	0	0	0
<i>Hotels</i>	0	0	0	0	0
<i>Educational</i>	0	0	0	0	0
<i>Commuting</i>	0	0	0	0	0
<b>Total Casualties - 2pm</b>	<b>0</b>	<b>0</b>	<b>0</b>	<b>0</b>	<b>0</b>
<b>Casualties - 5pm</b>					
<i>Other-Residential</i>	0	0	0	0	0
<i>Industrial</i>	0	0	0	0	0
<i>Commercial</i>	0	0	0	0	0
<i>Educational</i>	0	0	0	0	0
<i>Commuting</i>	0	0	0	0	0
<i>Single Family</i>	0	0	0	0	0
<i>Hotels</i>	0	0	0	0	0
<b>Total Casualties - 5pm</b>	<b>0</b>	<b>0</b>	<b>0</b>	<b>0</b>	<b>0</b>
<b>Madera</b>					
<b>Casualties - 2am</b>					
<i>Hotels</i>	0	0	0	0	0
<i>Educational</i>	0	0	0	0	0
<i>Single Family</i>	0	0	0	0	0
<i>Commuting</i>	0	0	0	0	0
<i>Industrial</i>	0	0	0	0	0
<i>Commercial</i>	0	0	0	0	0
<i>Other-Residential</i>	0	0	0	0	0
<b>Total Casualties - 2am</b>	<b>0</b>	<b>0</b>	<b>0</b>	<b>0</b>	<b>0</b>
<b>Casualties - 2pm</b>					
<i>Industrial</i>	0	0	0	0	0

	Injury Severity Level				Total
	Severity 1	Severity 2	Severity 3	Severity 4	
<b>California</b>					
<b>Madera</b>					
<b>Casualties - 2pm</b>					
Commercial	0	0	0	0	0
Other-Residential	0	0	0	0	0
Commuting	0	0	0	0	0
Single Family	0	0	0	0	0
Hotels	0	0	0	0	0
Educational	0	0	0	0	0
<b>Total Casualties - 2pm</b>	<b>0</b>	<b>0</b>	<b>0</b>	<b>0</b>	<b>0</b>
<b>Casualties - 5pm</b>					
Industrial	0	0	0	0	0
Commercial	0	0	0	0	0
Single Family	0	0	0	0	0
Educational	0	0	0	0	0
Other-Residential	0	0	0	0	0
Commuting	0	0	0	0	0
Hotels	0	0	0	0	0
<b>Total Casualties - 5pm</b>	<b>0</b>	<b>0</b>	<b>0</b>	<b>0</b>	<b>0</b>
<b>Marin</b>					
<b>Casualties - 2am</b>					
Commercial	0	0	0	0	0
Commuting	0	0	0	0	0
Other-Residential	0	0	0	0	0
Educational	0	0	0	0	0
Single Family	0	0	0	0	0
Hotels	0	0	0	0	0
Industrial	0	0	0	0	0
<b>Total Casualties - 2am</b>	<b>1</b>	<b>0</b>	<b>0</b>	<b>0</b>	<b>1</b>
<b>Casualties - 2pm</b>					
Hotels	0	0	0	0	0
Commuting	0	0	0	0	0
Educational	0	0	0	0	0
Industrial	0	0	0	0	0
Other-Residential	0	0	0	0	0
Commercial	1	0	0	0	1
Single Family	0	0	0	0	0
<b>Total Casualties - 2pm</b>	<b>2</b>	<b>0</b>	<b>0</b>	<b>0</b>	<b>2</b>
<b>Casualties - 5pm</b>					
Commuting	0	0	0	0	0
Commercial	1	0	0	0	1
Other-Residential	0	0	0	0	0
Single Family	0	0	0	0	0
Industrial	0	0	0	0	0

	Injury Severity Level				Total
	Severity 1	Severity 2	Severity 3	Severity 4	
<b>California</b>					
<b>Marin</b>					
<b>Casualties - 5pm</b>					
<i>Educational</i>	0	0	0	0	0
<i>Hotels</i>	0	0	0	0	0
<b>Total Casualties - 5pm</b>	<b>1</b>	<b>0</b>	<b>0</b>	<b>0</b>	<b>1</b>
<b>Mariposa</b>					
<b>Casualties - 2am</b>					
<i>Commuting</i>	0	0	0	0	0
<i>Single Family</i>	0	0	0	0	0
<i>Commercial</i>	0	0	0	0	0
<i>Hotels</i>	0	0	0	0	0
<i>Educational</i>	0	0	0	0	0
<i>Industrial</i>	0	0	0	0	0
<i>Other-Residential</i>	0	0	0	0	0
<b>Total Casualties - 2am</b>	<b>0</b>	<b>0</b>	<b>0</b>	<b>0</b>	<b>0</b>
<b>Casualties - 2pm</b>					
<i>Hotels</i>	0	0	0	0	0
<i>Industrial</i>	0	0	0	0	0
<i>Commercial</i>	0	0	0	0	0
<i>Other-Residential</i>	0	0	0	0	0
<i>Educational</i>	0	0	0	0	0
<i>Commuting</i>	0	0	0	0	0
<i>Single Family</i>	0	0	0	0	0
<b>Total Casualties - 2pm</b>	<b>0</b>	<b>0</b>	<b>0</b>	<b>0</b>	<b>0</b>
<b>Casualties - 5pm</b>					
<i>Other-Residential</i>	0	0	0	0	0
<i>Educational</i>	0	0	0	0	0
<i>Commuting</i>	0	0	0	0	0
<i>Hotels</i>	0	0	0	0	0
<i>Single Family</i>	0	0	0	0	0
<i>Commercial</i>	0	0	0	0	0
<i>Industrial</i>	0	0	0	0	0
<b>Total Casualties - 5pm</b>	<b>0</b>	<b>0</b>	<b>0</b>	<b>0</b>	<b>0</b>
<b>Mendocino</b>					
<b>Casualties - 2am</b>					
<i>Educational</i>	0	0	0	0	0
<i>Hotels</i>	0	0	0	0	0
<i>Commuting</i>	0	0	0	0	0
<i>Industrial</i>	0	0	0	0	0
<i>Other-Residential</i>	0	0	0	0	0
<i>Single Family</i>	0	0	0	0	0
<i>Commercial</i>	0	0	0	0	0

	Injury Severity Level				Total
	Severity 1	Severity 2	Severity 3	Severity 4	
<b>California</b>					
<b>Mendocino</b>					
<b>Total Casualties - 2am</b>	<b>0</b>	<b>0</b>	<b>0</b>	<b>0</b>	<b>0</b>
<b>Casualties - 2pm</b>					
<i>Industrial</i>	0	0	0	0	0
<i>Other-Residential</i>	0	0	0	0	0
<i>Commercial</i>	0	0	0	0	0
<i>Single Family</i>	0	0	0	0	0
<i>Commuting</i>	0	0	0	0	0
<i>Hotels</i>	0	0	0	0	0
<i>Educational</i>	0	0	0	0	0
<b>Total Casualties - 2pm</b>	<b>0</b>	<b>0</b>	<b>0</b>	<b>0</b>	<b>0</b>
<b>Casualties - 5pm</b>					
<i>Hotels</i>	0	0	0	0	0
<i>Single Family</i>	0	0	0	0	0
<i>Educational</i>	0	0	0	0	0
<i>Commuting</i>	0	0	0	0	0
<i>Commercial</i>	0	0	0	0	0
<i>Other-Residential</i>	0	0	0	0	0
<i>Industrial</i>	0	0	0	0	0
<b>Total Casualties - 5pm</b>	<b>0</b>	<b>0</b>	<b>0</b>	<b>0</b>	<b>0</b>
<b>Merced</b>					
<b>Casualties - 2am</b>					
<i>Hotels</i>	0	0	0	0	0
<i>Industrial</i>	0	0	0	0	0
<i>Commercial</i>	0	0	0	0	0
<i>Single Family</i>	0	0	0	0	0
<i>Other-Residential</i>	0	0	0	0	0
<i>Educational</i>	0	0	0	0	0
<i>Commuting</i>	0	0	0	0	0
<b>Total Casualties - 2am</b>	<b>0</b>	<b>0</b>	<b>0</b>	<b>0</b>	<b>0</b>
<b>Casualties - 2pm</b>					
<i>Other-Residential</i>	0	0	0	0	0
<i>Industrial</i>	0	0	0	0	0
<i>Commercial</i>	2	0	0	0	2
<i>Commuting</i>	0	0	0	0	0
<i>Hotels</i>	0	0	0	0	0
<i>Educational</i>	0	0	0	0	0
<i>Single Family</i>	0	0	0	0	0
<b>Total Casualties - 2pm</b>	<b>2</b>	<b>0</b>	<b>0</b>	<b>0</b>	<b>2</b>
<b>Casualties - 5pm</b>					
<i>Industrial</i>	0	0	0	0	0
<i>Hotels</i>	0	0	0	0	0

	Injury Severity Level				Total
	Severity 1	Severity 2	Severity 3	Severity 4	
<b>California</b>					
<b>Merced</b>					
<b>Casualties - 5pm</b>					
<i>Educational</i>	0	0	0	0	0
<i>Commuting</i>	0	0	0	0	0
<i>Single Family</i>	0	0	0	0	0
<i>Commercial</i>	1	0	0	0	1
<i>Other-Residential</i>	0	0	0	0	0
<b>Total Casualties - 5pm</b>	<b>2</b>	<b>0</b>	<b>0</b>	<b>0</b>	<b>2</b>
<b>Monterey</b>					
<b>Casualties - 2am</b>					
<i>Other-Residential</i>	4	0	0	0	4
<i>Commuting</i>	0	0	0	0	0
<i>Commercial</i>	0	0	0	0	0
<i>Single Family</i>	3	0	0	0	3
<i>Hotels</i>	0	0	0	0	0
<i>Educational</i>	0	0	0	0	0
<i>Industrial</i>	0	0	0	0	0
<b>Total Casualties - 2am</b>	<b>7</b>	<b>0</b>	<b>0</b>	<b>0</b>	<b>7</b>
<b>Casualties - 2pm</b>					
<i>Commuting</i>	0	0	0	0	0
<i>Commercial</i>	4	0	0	0	4
<i>Single Family</i>	1	0	0	0	1
<i>Hotels</i>	0	0	0	0	0
<i>Educational</i>	1	0	0	0	1
<i>Industrial</i>	0	0	0	0	1
<i>Other-Residential</i>	1	0	0	0	1
<b>Total Casualties - 2pm</b>	<b>7</b>	<b>0</b>	<b>0</b>	<b>0</b>	<b>7</b>
<b>Casualties - 5pm</b>					
<i>Commercial</i>	3	0	0	0	3
<i>Other-Residential</i>	1	0	0	0	2
<i>Industrial</i>	0	0	0	0	0
<i>Hotels</i>	0	0	0	0	0
<i>Educational</i>	0	0	0	0	0
<i>Commuting</i>	0	0	0	0	0
<i>Single Family</i>	1	0	0	0	1
<b>Total Casualties - 5pm</b>	<b>6</b>	<b>0</b>	<b>0</b>	<b>0</b>	<b>6</b>
<b>Napa</b>					
<b>Casualties - 2am</b>					
<i>Commercial</i>	0	0	0	0	0
<i>Other-Residential</i>	0	0	0	0	0
<i>Educational</i>	0	0	0	0	0
<i>Single Family</i>	0	0	0	0	0
<i>Commuting</i>	0	0	0	0	0

	Injury Severity Level				Total
	Severity 1	Severity 2	Severity 3	Severity 4	
<b>California</b>					
<b>Napa</b>					
<b>Casualties - 2am</b>					
<i>Hotels</i>	0	0	0	0	0
<i>Industrial</i>	0	0	0	0	0
<b>Total Casualties - 2am</b>	<b>0</b>	<b>0</b>	<b>0</b>	<b>0</b>	<b>0</b>
<b>Casualties - 2pm</b>					
<i>Educational</i>	0	0	0	0	0
<i>Hotels</i>	0	0	0	0	0
<i>Commuting</i>	0	0	0	0	0
<i>Industrial</i>	0	0	0	0	0
<i>Other-Residential</i>	0	0	0	0	0
<i>Single Family</i>	0	0	0	0	0
<i>Commercial</i>	0	0	0	0	0
<b>Total Casualties - 2pm</b>	<b>0</b>	<b>0</b>	<b>0</b>	<b>0</b>	<b>0</b>
<b>Casualties - 5pm</b>					
<i>Commercial</i>	0	0	0	0	0
<i>Single Family</i>	0	0	0	0	0
<i>Other-Residential</i>	0	0	0	0	0
<i>Commuting</i>	0	0	0	0	0
<i>Industrial</i>	0	0	0	0	0
<i>Educational</i>	0	0	0	0	0
<i>Hotels</i>	0	0	0	0	0
<b>Total Casualties - 5pm</b>	<b>0</b>	<b>0</b>	<b>0</b>	<b>0</b>	<b>0</b>
<b>Placer</b>					
<b>Casualties - 2am</b>					
<i>Hotels</i>	0	0	0	0	0
<i>Educational</i>	0	0	0	0	0
<i>Industrial</i>	0	0	0	0	0
<i>Other-Residential</i>	0	0	0	0	0
<i>Commercial</i>	0	0	0	0	0
<i>Single Family</i>	0	0	0	0	0
<i>Commuting</i>	0	0	0	0	0
<b>Total Casualties - 2am</b>	<b>0</b>	<b>0</b>	<b>0</b>	<b>0</b>	<b>0</b>
<b>Casualties - 2pm</b>					
<i>Other-Residential</i>	0	0	0	0	0
<i>Industrial</i>	0	0	0	0	0
<i>Commercial</i>	0	0	0	0	0
<i>Single Family</i>	0	0	0	0	0
<i>Educational</i>	0	0	0	0	0
<i>Commuting</i>	0	0	0	0	0
<i>Hotels</i>	0	0	0	0	0
<b>Total Casualties - 2pm</b>	<b>0</b>	<b>0</b>	<b>0</b>	<b>0</b>	<b>0</b>

	Injury Severity Level				Total
	Severity 1	Severity 2	Severity 3	Severity 4	
<b>California</b>					
<b>Placer</b>					
<b>Casualties - 5pm</b>					
Single Family	0	0	0	0	0
Hotels	0	0	0	0	0
Commuting	0	0	0	0	0
Educational	0	0	0	0	0
Commercial	0	0	0	0	0
Industrial	0	0	0	0	0
Other-Residential	0	0	0	0	0
<b>Total Casualties - 5pm</b>	<b>0</b>	<b>0</b>	<b>0</b>	<b>0</b>	<b>0</b>
<b>Sacramento</b>					
<b>Casualties - 2am</b>					
Industrial	0	0	0	0	0
Other-Residential	0	0	0	0	0
Commercial	0	0	0	0	0
Single Family	0	0	0	0	0
Hotels	0	0	0	0	0
Commuting	0	0	0	0	0
Educational	0	0	0	0	0
<b>Total Casualties - 2am</b>	<b>0</b>	<b>0</b>	<b>0</b>	<b>0</b>	<b>0</b>
<b>Casualties - 2pm</b>					
Other-Residential	0	0	0	0	0
Commuting	0	0	0	0	0
Single Family	0	0	0	0	0
Commercial	0	0	0	0	0
Hotels	0	0	0	0	0
Educational	0	0	0	0	0
Industrial	0	0	0	0	0
<b>Total Casualties - 2pm</b>	<b>0</b>	<b>0</b>	<b>0</b>	<b>0</b>	<b>0</b>
<b>Casualties - 5pm</b>					
Industrial	0	0	0	0	0
Educational	0	0	0	0	0
Hotels	0	0	0	0	0
Commercial	0	0	0	0	0
Commuting	0	0	0	0	0
Other-Residential	0	0	0	0	0
Single Family	0	0	0	0	0
<b>Total Casualties - 5pm</b>	<b>0</b>	<b>0</b>	<b>0</b>	<b>0</b>	<b>0</b>
<b>San Benito</b>					
<b>Casualties - 2am</b>					
Other-Residential	0	0	0	0	0
Commercial	0	0	0	0	0
Commuting	0	0	0	0	0

	Injury Severity Level				Total
	Severity 1	Severity 2	Severity 3	Severity 4	
<b>California</b>					
<b>San Benito</b>					
<b>Casualties - 2am</b>					
<i>Hotels</i>	0	0	0	0	0
<i>Educational</i>	0	0	0	0	0
<i>Single Family</i>	1	0	0	0	1
<i>Industrial</i>	0	0	0	0	0
<b>Total Casualties - 2am</b>	<b>1</b>	<b>0</b>	<b>0</b>	<b>0</b>	<b>1</b>
<b>Casualties - 2pm</b>					
<i>Hotels</i>	0	0	0	0	0
<i>Educational</i>	0	0	0	0	0
<i>Industrial</i>	0	0	0	0	0
<i>Other-Residential</i>	0	0	0	0	0
<i>Commercial</i>	1	0	0	0	1
<i>Commuting</i>	0	0	0	0	0
<i>Single Family</i>	0	0	0	0	0
<b>Total Casualties - 2pm</b>	<b>1</b>	<b>0</b>	<b>0</b>	<b>0</b>	<b>1</b>
<b>Casualties - 5pm</b>					
<i>Commuting</i>	0	0	0	0	0
<i>Commercial</i>	0	0	0	0	0
<i>Other-Residential</i>	0	0	0	0	0
<i>Single Family</i>	0	0	0	0	0
<i>Industrial</i>	0	0	0	0	0
<i>Educational</i>	0	0	0	0	0
<i>Hotels</i>	0	0	0	0	0
<b>Total Casualties - 5pm</b>	<b>1</b>	<b>0</b>	<b>0</b>	<b>0</b>	<b>1</b>
<b>San Francisco</b>					
<b>Casualties - 2am</b>					
<i>Industrial</i>	1	0	0	0	1
<i>Hotels</i>	1	0	0	0	1
<i>Commercial</i>	3	0	0	0	3
<i>Other-Residential</i>	110	9	0	0	119
<i>Commuting</i>	0	0	0	0	0
<i>Educational</i>	0	0	0	0	0
<i>Single Family</i>	26	1	0	0	27
<b>Total Casualties - 2am</b>	<b>141</b>	<b>10</b>	<b>0</b>	<b>0</b>	<b>151</b>
<b>Casualties - 2pm</b>					
<i>Commercial</i>	150	12	0	0	162
<i>Industrial</i>	9	1	0	0	10
<i>Other-Residential</i>	35	3	0	0	38
<i>Single Family</i>	8	0	0	0	8
<i>Hotels</i>	0	0	0	0	0
<i>Commuting</i>	0	0	0	0	0
<i>Educational</i>	26	2	0	0	28

	Injury Severity Level				Total
	Severity 1	Severity 2	Severity 3	Severity 4	
<b>California</b>					
<b>San Francisco</b>					
<b>Total Casualties - 2pm</b>	<b>227</b>	<b>18</b>	<b>0</b>	<b>0</b>	<b>246</b>
<b>Casualties - 5pm</b>					
<i>Educational</i>	9	1	0	0	10
<i>Hotels</i>	0	0	0	0	0
<i>Industrial</i>	6	0	0	0	6
<i>Commuting</i>	0	0	0	0	0
<i>Commercial</i>	88	7	0	0	95
<i>Other-Residential</i>	43	3	0	0	46
<i>Single Family</i>	10	0	0	0	10
<b>Total Casualties - 5pm</b>	<b>155</b>	<b>12</b>	<b>0</b>	<b>0</b>	<b>168</b>
<b>San Joaquin</b>					
<b>Casualties - 2am</b>					
<i>Educational</i>	0	0	0	0	0
<i>Commuting</i>	0	0	0	0	0
<i>Hotels</i>	0	0	0	0	0
<i>Commercial</i>	0	0	0	0	0
<i>Single Family</i>	5	0	0	0	5
<i>Industrial</i>	0	0	0	0	0
<i>Other-Residential</i>	1	0	0	0	1
<b>Total Casualties - 2am</b>	<b>6</b>	<b>0</b>	<b>0</b>	<b>0</b>	<b>6</b>
<b>Casualties - 2pm</b>					
<i>Industrial</i>	0	0	0	0	0
<i>Other-Residential</i>	0	0	0	0	0
<i>Educational</i>	0	0	0	0	0
<i>Single Family</i>	2	0	0	0	2
<i>Hotels</i>	0	0	0	0	0
<i>Commuting</i>	0	0	0	0	0
<i>Commercial</i>	2	0	0	0	2
<b>Total Casualties - 2pm</b>	<b>4</b>	<b>0</b>	<b>0</b>	<b>0</b>	<b>5</b>
<b>Casualties - 5pm</b>					
<i>Commuting</i>	0	0	0	0	0
<i>Single Family</i>	2	0	0	0	2
<i>Educational</i>	0	0	0	0	0
<i>Hotels</i>	0	0	0	0	0
<i>Industrial</i>	0	0	0	0	0
<i>Commercial</i>	1	0	0	0	1
<i>Other-Residential</i>	0	0	0	0	0
<b>Total Casualties - 5pm</b>	<b>4</b>	<b>0</b>	<b>0</b>	<b>0</b>	<b>4</b>
<b>San Luis Obispo</b>					
<b>Casualties - 2am</b>					
<i>Commercial</i>	0	0	0	0	0

	Injury Severity Level				Total
	Severity 1	Severity 2	Severity 3	Severity 4	
<b>California</b>					
<b>San Luis Obispo</b>					
<b>Casualties - 2am</b>					
<i>Other-Residential</i>	0	0	0	0	0
<i>Industrial</i>	0	0	0	0	0
<i>Single Family</i>	0	0	0	0	0
<i>Commuting</i>	0	0	0	0	0
<i>Educational</i>	0	0	0	0	0
<i>Hotels</i>	0	0	0	0	0
<b>Total Casualties - 2am</b>	<b>0</b>	<b>0</b>	<b>0</b>	<b>0</b>	<b>0</b>
<b>Casualties - 2pm</b>					
<i>Single Family</i>	0	0	0	0	0
<i>Educational</i>	0	0	0	0	0
<i>Other-Residential</i>	0	0	0	0	0
<i>Hotels</i>	0	0	0	0	0
<i>Commuting</i>	0	0	0	0	0
<i>Commercial</i>	0	0	0	0	0
<i>Industrial</i>	0	0	0	0	0
<b>Total Casualties - 2pm</b>	<b>0</b>	<b>0</b>	<b>0</b>	<b>0</b>	<b>0</b>
<b>Casualties - 5pm</b>					
<i>Industrial</i>	0	0	0	0	0
<i>Other-Residential</i>	0	0	0	0	0
<i>Commuting</i>	0	0	0	0	0
<i>Single Family</i>	0	0	0	0	0
<i>Commercial</i>	0	0	0	0	0
<i>Hotels</i>	0	0	0	0	0
<i>Educational</i>	0	0	0	0	0
<b>Total Casualties - 5pm</b>	<b>0</b>	<b>0</b>	<b>0</b>	<b>0</b>	<b>0</b>
<b>San Mateo</b>					
<b>Casualties - 2am</b>					
<i>Industrial</i>	9	2	0	0	11
<i>Other-Residential</i>	290	57	7	15	370
<i>Single Family</i>	192	13	0	0	206
<i>Commercial</i>	9	2	0	0	11
<i>Educational</i>	0	0	0	0	0
<i>Commuting</i>	0	0	0	0	1
<i>Hotels</i>	1	0	0	0	1
<b>Total Casualties - 2am</b>	<b>501</b>	<b>73</b>	<b>8</b>	<b>16</b>	<b>598</b>
<b>Casualties - 2pm</b>					
<i>Other-Residential</i>	91	19	3	5	118
<i>Single Family</i>	56	4	0	0	60
<i>Commuting</i>	1	1	2	0	5
<i>Commercial</i>	587	114	14	27	741
<i>Educational</i>	137	22	2	4	166

	Injury Severity Level				Total
	Severity 1	Severity 2	Severity 3	Severity 4	
<b>California</b>					
<b>San Mateo</b>					
<b>Casualties - 2pm</b>					
<i>Hotels</i>	0	0	0	0	0
<i>Industrial</i>	66	12	1	3	82
<b>Total Casualties - 2pm</b>	<b>939</b>	<b>172</b>	<b>22</b>	<b>39</b>	<b>1,172</b>
<b>Casualties - 5pm</b>					
<i>Commercial</i>	412	82	10	19	524
<i>Industrial</i>	41	7	1	2	51
<i>Other-Residential</i>	112	23	3	6	144
<i>Single Family</i>	71	5	0	0	76
<i>Educational</i>	19	3	0	0	22
<i>Commuting</i>	22	29	49	9	109
<i>Hotels</i>	0	0	0	0	0
<b>Total Casualties - 5pm</b>	<b>677</b>	<b>149</b>	<b>63</b>	<b>37</b>	<b>926</b>
<b>Santa Clara</b>					
<b>Casualties - 2am</b>					
<i>Commuting</i>	0	1	1	0	2
<i>Educational</i>	0	0	0	0	0
<i>Single Family</i>	765	55	1	2	823
<i>Hotels</i>	1	0	0	0	1
<i>Industrial</i>	37	7	1	2	47
<i>Commercial</i>	28	6	1	1	36
<i>Other-Residential</i>	760	123	12	23	918
<b>Total Casualties - 2am</b>	<b>1,591</b>	<b>192</b>	<b>16</b>	<b>29</b>	<b>1,827</b>
<b>Casualties - 2pm</b>					
<i>Industrial</i>	271	53	6	13	343
<i>Commercial</i>	1,853	381	48	94	2,376
<i>Single Family</i>	216	16	0	1	234
<i>Commuting</i>	4	5	9	2	20
<i>Hotels</i>	0	0	0	0	0
<i>Other-Residential</i>	239	41	4	8	292
<i>Educational</i>	609	97	9	18	733
<b>Total Casualties - 2pm</b>	<b>3,191</b>	<b>593</b>	<b>78</b>	<b>135</b>	<b>3,997</b>
<b>Casualties - 5pm</b>					
<i>Industrial</i>	169	33	4	8	214
<i>Hotels</i>	0	0	0	0	0
<i>Other-Residential</i>	289	48	5	9	351
<i>Commercial</i>	1,279	259	33	63	1,633
<i>Commuting</i>	77	109	177	35	398
<i>Single Family</i>	285	21	0	1	307
<i>Educational</i>	119	17	1	3	140
<b>Total Casualties - 5pm</b>	<b>2,218</b>	<b>487</b>	<b>220</b>	<b>118</b>	<b>3,043</b>

	Injury Severity Level				Total
	Severity 1	Severity 2	Severity 3	Severity 4	
<b>California</b>					
<b>Santa Cruz</b>					
<b>Casualties - 2am</b>					
<i>Hotels</i>	0	0	0	0	0
<i>Educational</i>	0	0	0	0	0
<i>Industrial</i>	1	0	0	0	1
<i>Other-Residential</i>	28	2	0	0	30
<i>Single Family</i>	29	1	0	0	30
<i>Commercial</i>	1	0	0	0	1
<i>Commuting</i>	0	0	0	0	0
<b>Total Casualties - 2am</b>	<b>59</b>	<b>3</b>	<b>0</b>	<b>0</b>	<b>62</b>
<b>Casualties - 2pm</b>					
<i>Industrial</i>	8	1	0	0	9
<i>Other-Residential</i>	9	1	0	0	9
<i>Commercial</i>	50	5	0	0	55
<i>Commuting</i>	0	0	0	0	0
<i>Educational</i>	15	1	0	0	17
<i>Single Family</i>	9	0	0	0	9
<i>Hotels</i>	0	0	0	0	0
<b>Total Casualties - 2pm</b>	<b>90</b>	<b>8</b>	<b>0</b>	<b>1</b>	<b>99</b>
<b>Casualties - 5pm</b>					
<i>Industrial</i>	5	1	0	0	6
<i>Other-Residential</i>	10	1	0	0	11
<i>Commercial</i>	35	4	0	0	39
<i>Commuting</i>	1	1	2	0	4
<i>Single Family</i>	11	0	0	0	11
<i>Hotels</i>	0	0	0	0	0
<i>Educational</i>	3	0	0	0	4
<b>Total Casualties - 5pm</b>	<b>65</b>	<b>7</b>	<b>2</b>	<b>1</b>	<b>74</b>
<b>Solano</b>					
<b>Casualties - 2am</b>					
<i>Industrial</i>	0	0	0	0	0
<i>Other-Residential</i>	0	0	0	0	0
<i>Commercial</i>	0	0	0	0	0
<i>Educational</i>	0	0	0	0	0
<i>Commuting</i>	0	0	0	0	0
<i>Single Family</i>	1	0	0	0	1
<i>Hotels</i>	0	0	0	0	0
<b>Total Casualties - 2am</b>	<b>1</b>	<b>0</b>	<b>0</b>	<b>0</b>	<b>1</b>
<b>Casualties - 2pm</b>					
<i>Single Family</i>	0	0	0	0	0
<i>Other-Residential</i>	0	0	0	0	0
<i>Commercial</i>	1	0	0	0	1
<i>Educational</i>	0	0	0	0	0

	Injury Severity Level				Total
	Severity 1	Severity 2	Severity 3	Severity 4	
<b>California</b>					
<b>Solano</b>					
<b>Casualties - 2pm</b>					
<i>Commuting</i>	0	0	0	0	0
<i>Hotels</i>	0	0	0	0	0
<i>Industrial</i>	0	0	0	0	0
<b>Total Casualties - 2pm</b>	<b>1</b>	<b>0</b>	<b>0</b>	<b>0</b>	<b>1</b>
<b>Casualties - 5pm</b>					
<i>Commercial</i>	1	0	0	0	1
<i>Other-Residential</i>	0	0	0	0	0
<i>Single Family</i>	0	0	0	0	0
<i>Educational</i>	0	0	0	0	0
<i>Commuting</i>	0	0	0	0	0
<i>Hotels</i>	0	0	0	0	0
<i>Industrial</i>	0	0	0	0	0
<b>Total Casualties - 5pm</b>	<b>1</b>	<b>0</b>	<b>0</b>	<b>0</b>	<b>1</b>
<b>Sonoma</b>					
<b>Casualties - 2am</b>					
<i>Single Family</i>	0	0	0	0	0
<i>Other-Residential</i>	0	0	0	0	0
<i>Commercial</i>	0	0	0	0	0
<i>Commuting</i>	0	0	0	0	0
<i>Hotels</i>	0	0	0	0	0
<i>Educational</i>	0	0	0	0	0
<i>Industrial</i>	0	0	0	0	0
<b>Total Casualties - 2am</b>	<b>0</b>	<b>0</b>	<b>0</b>	<b>0</b>	<b>0</b>
<b>Casualties - 2pm</b>					
<i>Single Family</i>	0	0	0	0	0
<i>Commuting</i>	0	0	0	0	0
<i>Educational</i>	0	0	0	0	0
<i>Hotels</i>	0	0	0	0	0
<i>Industrial</i>	0	0	0	0	0
<i>Other-Residential</i>	0	0	0	0	0
<i>Commercial</i>	0	0	0	0	0
<b>Total Casualties - 2pm</b>	<b>0</b>	<b>0</b>	<b>0</b>	<b>0</b>	<b>0</b>
<b>Casualties - 5pm</b>					
<i>Single Family</i>	0	0	0	0	0
<i>Commercial</i>	0	0	0	0	0
<i>Commuting</i>	0	0	0	0	0
<i>Hotels</i>	0	0	0	0	0
<i>Educational</i>	0	0	0	0	0
<i>Industrial</i>	0	0	0	0	0
<i>Other-Residential</i>	0	0	0	0	0

	Injury Severity Level				Total
	Severity 1	Severity 2	Severity 3	Severity 4	
<b>California</b>					
<b>Sonoma</b>					
<b>Total Casualties - 5pm</b>	<b>0</b>	<b>0</b>	<b>0</b>	<b>0</b>	<b>0</b>
<b>Stanislaus</b>					
<b>Casualties - 2am</b>					
<i>Hotels</i>	0	0	0	0	0
<i>Industrial</i>	0	0	0	0	0
<i>Commercial</i>	0	0	0	0	0
<i>Single Family</i>	1	0	0	0	1
<i>Other-Residential</i>	1	0	0	0	1
<i>Commuting</i>	0	0	0	0	0
<i>Educational</i>	0	0	0	0	0
<b>Total Casualties - 2am</b>	<b>1</b>	<b>0</b>	<b>0</b>	<b>0</b>	<b>2</b>
<b>Casualties - 2pm</b>					
<i>Industrial</i>	0	0	0	0	0
<i>Other-Residential</i>	0	0	0	0	0
<i>Commercial</i>	1	0	0	0	1
<i>Commuting</i>	0	0	0	0	0
<i>Educational</i>	0	0	0	0	0
<i>Single Family</i>	0	0	0	0	0
<i>Hotels</i>	0	0	0	0	0
<b>Total Casualties - 2pm</b>	<b>2</b>	<b>0</b>	<b>0</b>	<b>0</b>	<b>2</b>
<b>Casualties - 5pm</b>					
<i>Industrial</i>	0	0	0	0	0
<i>Other-Residential</i>	0	0	0	0	0
<i>Commuting</i>	0	0	0	0	0
<i>Single Family</i>	0	0	0	0	0
<i>Commercial</i>	1	0	0	0	1
<i>Hotels</i>	0	0	0	0	0
<i>Educational</i>	0	0	0	0	0
<b>Total Casualties - 5pm</b>	<b>2</b>	<b>0</b>	<b>0</b>	<b>0</b>	<b>2</b>
<b>Sutter</b>					
<b>Casualties - 2am</b>					
<i>Educational</i>	0	0	0	0	0
<i>Commuting</i>	0	0	0	0	0
<i>Hotels</i>	0	0	0	0	0
<i>Industrial</i>	0	0	0	0	0
<i>Other-Residential</i>	0	0	0	0	0
<i>Single Family</i>	0	0	0	0	0
<i>Commercial</i>	0	0	0	0	0
<b>Total Casualties - 2am</b>	<b>0</b>	<b>0</b>	<b>0</b>	<b>0</b>	<b>0</b>
<b>Casualties - 2pm</b>					
<i>Industrial</i>	0	0	0	0	0

	Injury Severity Level				Total
	Severity 1	Severity 2	Severity 3	Severity 4	
<b>California</b>					
<b>Sutter</b>					
<b>Casualties - 2pm</b>					
Commuting	0	0	0	0	0
Other-Residential	0	0	0	0	0
Single Family	0	0	0	0	0
Commercial	0	0	0	0	0
Hotels	0	0	0	0	0
Educational	0	0	0	0	0
<b>Total Casualties - 2pm</b>	<b>0</b>	<b>0</b>	<b>0</b>	<b>0</b>	<b>0</b>
<b>Casualties - 5pm</b>					
Commuting	0	0	0	0	0
Commercial	0	0	0	0	0
Educational	0	0	0	0	0
Single Family	0	0	0	0	0
Hotels	0	0	0	0	0
Industrial	0	0	0	0	0
Other-Residential	0	0	0	0	0
<b>Total Casualties - 5pm</b>	<b>0</b>	<b>0</b>	<b>0</b>	<b>0</b>	<b>0</b>
<b>Tuolumne</b>					
<b>Casualties - 2am</b>					
Other-Residential	0	0	0	0	0
Industrial	0	0	0	0	0
Commercial	0	0	0	0	0
Commuting	0	0	0	0	0
Single Family	0	0	0	0	0
Educational	0	0	0	0	0
Hotels	0	0	0	0	0
<b>Total Casualties - 2am</b>	<b>0</b>	<b>0</b>	<b>0</b>	<b>0</b>	<b>0</b>
<b>Casualties - 2pm</b>					
Other-Residential	0	0	0	0	0
Commercial	0	0	0	0	0
Single Family	0	0	0	0	0
Educational	0	0	0	0	0
Commuting	0	0	0	0	0
Industrial	0	0	0	0	0
Hotels	0	0	0	0	0
<b>Total Casualties - 2pm</b>	<b>0</b>	<b>0</b>	<b>0</b>	<b>0</b>	<b>0</b>
<b>Casualties - 5pm</b>					
Industrial	0	0	0	0	0
Other-Residential	0	0	0	0	0
Commercial	0	0	0	0	0
Hotels	0	0	0	0	0
Commuting	0	0	0	0	0

	Injury Severity Level				Total
	Severity 1	Severity 2	Severity 3	Severity 4	
<b>California</b>					
<b>Tuolumne</b>					
<b>Casualties - 5pm</b>					
<i>Educational</i>	0	0	0	0	0
<i>Single Family</i>	0	0	0	0	0
<b>Total Casualties - 5pm</b>	<b>0</b>	<b>0</b>	<b>0</b>	<b>0</b>	<b>0</b>
<b>Yolo</b>					
<b>Casualties - 2am</b>					
<i>Single Family</i>	0	0	0	0	0
<i>Other-Residential</i>	0	0	0	0	0
<i>Commercial</i>	0	0	0	0	0
<i>Educational</i>	0	0	0	0	0
<i>Commuting</i>	0	0	0	0	0
<i>Hotels</i>	0	0	0	0	0
<i>Industrial</i>	0	0	0	0	0
<b>Total Casualties - 2am</b>	<b>0</b>	<b>0</b>	<b>0</b>	<b>0</b>	<b>0</b>
<b>Casualties - 2pm</b>					
<i>Industrial</i>	0	0	0	0	0
<i>Hotels</i>	0	0	0	0	0
<i>Educational</i>	0	0	0	0	0
<i>Commuting</i>	0	0	0	0	0
<i>Commercial</i>	0	0	0	0	0
<i>Other-Residential</i>	0	0	0	0	0
<i>Single Family</i>	0	0	0	0	0
<b>Total Casualties - 2pm</b>	<b>0</b>	<b>0</b>	<b>0</b>	<b>0</b>	<b>0</b>
<b>Casualties - 5pm</b>					
<i>Other-Residential</i>	0	0	0	0	0
<i>Single Family</i>	0	0	0	0	0
<i>Commuting</i>	0	0	0	0	0
<i>Commercial</i>	0	0	0	0	0
<i>Hotels</i>	0	0	0	0	0
<i>Educational</i>	0	0	0	0	0
<i>Industrial</i>	0	0	0	0	0
<b>Total Casualties - 5pm</b>	<b>0</b>	<b>0</b>	<b>0</b>	<b>0</b>	<b>0</b>
<b>Yuba</b>					
<b>Casualties - 2am</b>					
<i>Industrial</i>	0	0	0	0	0
<i>Other-Residential</i>	0	0	0	0	0
<i>Commercial</i>	0	0	0	0	0
<i>Educational</i>	0	0	0	0	0
<i>Single Family</i>	0	0	0	0	0
<i>Commuting</i>	0	0	0	0	0
<i>Hotels</i>	0	0	0	0	0

	Injury Severity Level				Total
	Severity 1	Severity 2	Severity 3	Severity 4	
<b>California</b>					
<b>Yuba</b>					
<b>Total Casualties - 2am</b>	<b>0</b>	<b>0</b>	<b>0</b>	<b>0</b>	<b>0</b>
<b>Casualties - 2pm</b>					
Commercial	0	0	0	0	0
Commuting	0	0	0	0	0
Single Family	0	0	0	0	0
Other-Residential	0	0	0	0	0
Industrial	0	0	0	0	0
Hotels	0	0	0	0	0
Educational	0	0	0	0	0
<b>Total Casualties - 2pm</b>	<b>0</b>	<b>0</b>	<b>0</b>	<b>0</b>	<b>0</b>
<b>Casualties - 5pm</b>					
Hotels	0	0	0	0	0
Educational	0	0	0	0	0
Industrial	0	0	0	0	0
Other-Residential	0	0	0	0	0
Single Family	0	0	0	0	0
Commercial	0	0	0	0	0
Commuting	0	0	0	0	0
<b>Total Casualties - 5pm</b>	<b>0</b>	<b>0</b>	<b>0</b>	<b>0</b>	<b>0</b>
<b>Region Total</b>	NA	NA	NA	NA	NA

Totals only reflect data for those census tracts/blocks included in the user's study region and will reflect the entire county/state only if all of the census blocks for that county/states were selected at the time of study region creation.

## Debris Summary Report

June 11, 2024

All values are in thousands of tons.

	Brick, Wood & Others	Concrete & Steel	Total
<b>California</b>			
Alameda	158	214	372
Amador	0	0	0
Calaveras	0	0	0
Colusa	0	0	0
Contra Costa	10	7	17
El Dorado	0	0	0
Fresno	0	0	0
Kings	0	0	0
Lake	0	0	0
Madera	0	0	0
Marin	2	1	3
Mariposa	0	0	0
Mendocino	0	0	0
Merced	1	1	2
Monterey	7	6	12
Napa	0	0	1
Placer	0	0	0
Sacramento	0	0	0
San Benito	1	1	2

	Brick, Wood & Others	Concrete & Steel	Total
San Francisco	208	91	299
San Joaquin	10	2	12
San Luis Obispo	0	0	0
San Mateo	300	541	841
Santa Clara	1,083	1,857	2,940
Santa Cruz	56	68	124
Solano	2	1	3
Sonoma	0	0	1
Stanislaus	3	2	4
Sutter	0	0	0
Tuolumne	0	0	0
Yolo	0	0	0
Yuba	0	0	0
<b>Total</b>	<b>1,841</b>	<b>2,791</b>	<b>4,632</b>
<b>Region Total</b>	<b>1,841</b>	<b>2,791</b>	<b>4,632</b>

Totals only reflect data for those census tracts/blocks included in the user's study region and will reflect the entire county/state only if all of the census blocks for that county/states were selected at the time of study region creation.

## Direct Economic Losses For Buildings

June 11, 2024

All values are in thousands of dollars

	Capital Stock Losses				Loss Ratio %	Income Losses				Total Loss
	Cost Structural Damage	Cost Non-struct. Damage	Cost Contents Damage	Inventory Loss		Relocation Loss	Capital Related Loss	Wages Losses	Rental Income Loss	
<b>California</b>										
Colusa	0	8	6	1	0.00	0	0	0	0	16
Contra Costa	19,765	222,766	114,412	10,017	0.11	3,220	2,776	3,889	3,693	380,539
Mendocino	0	0	0	0	0.00	0	0	0	0	0
Napa	491	5,868	3,110	403	0.02	66	79	95	104	10,215
Alameda	344,457	2,094,986	1,056,065	96,950	0.73	111,957	70,907	96,909	80,720	3,952,950
Fresno	27	528	326	85	0.00	3	4	4	4	981
San Joaquin	7,614	62,648	35,327	4,437	0.05	1,685	652	866	1,214	114,442
Kings	0	0	0	0	0.00	0	0	0	0	0
Tuolumne	0	3	2	0	0.00	0	0	0	0	4

	Capital Stock Losses				Loss Ratio %	Income Losses				Total Loss
	Cost Structural Damage	Cost Non-struct. Damage	Cost Contents Damage	Inventory Loss		Relocation Loss	Capital Related Loss	Wages Losses	Rental Income Loss	
San Luis Obispo	0	0	0	0	0.00	0	0	0	0	0
Solano	2,394	28,514	15,550	1,766	0.04	370	374	465	474	49,906
San Mateo	932,031	4,744,418	1,975,147	111,838	3.65	365,290	211,578	264,734	224,178	8,829,214
Madera	26	599	385	80	0.00	2	1	1	3	1,098
Yolo	49	1,804	1,242	128	0.00	5	12	13	13	3,266
Calaveras	1	35	27	9	0.00	0	0	0	0	74
Yuba	0	0	0	0	0.00	0	0	0	0	0
San Benito	2,282	19,655	9,648	1,046	0.17	379	290	339	306	33,944
San Francisco	213,217	663,881	326,601	17,687	0.57	86,437	51,681	61,220	85,522	1,506,248
Merced	3,411	14,246	9,346	4,164	0.03	380	144	126	148	31,966
Stanislaus	3,849	47,109	27,124	4,000	0.05	593	442	494	712	84,323
Sutter	1	23	17	7	0.00	0	0	0	0	48
Santa Clara	3,122,838	15,561,505	6,571,869	382,825	4.90	1,339,216	756,296	921,071	709,856	29,365,476
Sonoma	450	5,612	3,003	489	0.01	62	78	97	79	9,870
Placer	0	6	4	0	0.00	0	0	0	0	11
Marin	2,696	34,501	18,717	1,455	0.06	412	568	593	624	59,566
El Dorado	0	0	0	0	0.00	0	0	0	0	0
Amador	0	5	3	0	0.00	0	0	0	0	9

	Capital Stock Losses				Loss Ratio %	Income Losses				Total Loss
	Cost Structural Damage	Cost Non-struct. Damage	Cost Contents Damage	Inventory Loss		Relocation Loss	Capital Related Loss	Wages Losses	Rental Income Loss	
<b>Sacramento</b>	228	5,587	3,533	377	0.00	46	76	83	80	10,011
<b>Lake</b>	0	3	1	0	0.00	0	0	0	0	4
<b>Monterey</b>	11,072	89,930	47,474	7,760	0.13	2,684	1,628	1,853	2,422	164,823
<b>Santa Cruz</b>	127,967	711,258	333,496	34,063	1.53	40,943	31,859	37,658	26,306	1,343,549
<b>Mariposa</b>	0	1	0	0	0.00	0	0	0	0	1
<b>Total</b>	<b>4,794,868</b>	<b>24,315,498</b>	<b>10,552,438</b>	<b>679,587</b>	<b>0.38</b>	<b>1,953,749</b>	<b>1,129,445</b>	<b>1,390,511</b>	<b>1,136,459</b>	<b>45,952,556</b>
<b>Region Total</b>	<b>4,794,868</b>	<b>24,315,498</b>	<b>10,552,438</b>	<b>679,587</b>	<b>0.38</b>	<b>1,953,749</b>	<b>1,129,445</b>	<b>1,390,511</b>	<b>1,136,459</b>	<b>45,952,556</b>

Totals only reflect data for those census tracts/blocks included in the user's study region and will reflect the entire county/state only if all of the census blocks for that county/states were selected at the time of study region creation.

## Direct Economic Loss For Transportation

June 11, 2024

All values are in thousands of dollars

	Highway	Railway	Light Rail	Bus Facility	Ports	Ferries	Airport	Total
<b>California</b>								
<b>Alameda</b>								
Segments	0	0	0					0
Bridges	11,940	1,420	5					13,366
Tunnels	87	0	0					87
Facilities		4,364	0	176	17,723	395	40,634	63,292
<b>Total</b>	<b>12,028</b>	<b>5,784</b>	<b>5</b>	<b>176</b>	<b>17,723</b>	<b>395</b>	<b>40,634</b>	<b>76,745</b>
<b>Amador</b>								
Segments	0	0	0					0
Bridges	0	0	0					0
Tunnels	0	0	0					0
Facilities		0	0	0	0	0	6	6
<b>Total</b>	<b>0</b>	<b>0</b>	<b>0</b>	<b>0</b>	<b>0</b>	<b>0</b>	<b>6</b>	<b>6</b>
<b>Calaveras</b>								
Segments	0	0	0					0
Bridges	0	0	0					0
Tunnels	0	0	0					0
Facilities		0	0	0	0	0	11	11

	Highway	Railway	Light Rail	Bus Facility	Ports	Ferries	Airport	Total
<b>Total</b>	<b>0</b>	<b>0</b>	<b>0</b>	<b>0</b>	<b>0</b>	<b>0</b>	<b>11</b>	<b>11</b>
<b>Colusa</b>								
Segments	0	0	0					0
Bridges	0	0	0					0
Tunnels	0	0	0					0
Facilities		0	0	0	0	0	0	0
<b>Total</b>	<b>0</b>	<b>0</b>	<b>0</b>	<b>0</b>	<b>0</b>	<b>0</b>	<b>0</b>	<b>0</b>
<b>Contra Costa</b>								
Segments	0	0	0					0
Bridges	1,127	36	0					1,164
Tunnels	4	0	0					4
Facilities		1,368	703	0	14,534	264	983	17,851
<b>Total</b>	<b>1,130</b>	<b>1,404</b>	<b>703</b>	<b>0</b>	<b>14,534</b>	<b>264</b>	<b>983</b>	<b>19,019</b>
<b>El Dorado</b>								
Segments	0	0	0					0
Bridges	0	0	0					0
Tunnels	0	0	0					0
Facilities		0	0	7	0	0	31	38
<b>Total</b>	<b>0</b>	<b>0</b>	<b>0</b>	<b>7</b>	<b>0</b>	<b>0</b>	<b>31</b>	<b>38</b>
<b>Fresno</b>								
Segments	0	0	0					0
Bridges	21	0	0					21
Tunnels	0	0	0					0
Facilities		46	0	2	0	0	200	248

	Highway	Railway	Light Rail	Bus Facility	Ports	Ferries	Airport	Total
<b>Total</b>	<b>21</b>	<b>46</b>	<b>0</b>	<b>2</b>	<b>0</b>	<b>0</b>	<b>200</b>	<b>269</b>
<b>Kings</b>								
Segments	0	0	0					0
Bridges	0	0	0					0
Tunnels	0	0	0					0
Facilities		3	0	5	0	0	6	13
<b>Total</b>	<b>0</b>	<b>3</b>	<b>0</b>	<b>5</b>	<b>0</b>	<b>0</b>	<b>6</b>	<b>13</b>
<b>Lake</b>								
Segments	0	0	0					0
Bridges	0	0	0					0
Tunnels	0	0	0					0
Facilities		0	0	0	0	0	6	6
<b>Total</b>	<b>0</b>	<b>0</b>	<b>0</b>	<b>0</b>	<b>0</b>	<b>0</b>	<b>6</b>	<b>6</b>
<b>Madera</b>								
Segments	0	0	0					0
Bridges	6	0	0					6
Tunnels	0	0	0					0
Facilities		26	0	21	0	0	102	149
<b>Total</b>	<b>6</b>	<b>26</b>	<b>0</b>	<b>21</b>	<b>0</b>	<b>0</b>	<b>102</b>	<b>154</b>
<b>Marin</b>								
Segments	0	0	0					0
Bridges	980	0	0					980
Tunnels	3	0	0					3
Facilities		0	0	391	3,799	273	217	4,681

	Highway	Railway	Light Rail	Bus Facility	Ports	Ferries	Airport	Total
<b>Total</b>	<b>984</b>	<b>0</b>	<b>0</b>	<b>391</b>	<b>3,799</b>	<b>273</b>	<b>217</b>	<b>5,665</b>
<b>Mariposa</b>								
Segments	0	0	0					0
Bridges	0	0	0					0
Tunnels	0	0	0					0
Facilities		0	0	5	0	0	6	10
<b>Total</b>	<b>0</b>	<b>0</b>	<b>0</b>	<b>5</b>	<b>0</b>	<b>0</b>	<b>6</b>	<b>10</b>
<b>Mendocino</b>								
Segments	0	0	0					0
Bridges	0	0	0					0
Tunnels	0	0	0					0
Facilities		0	0	0	0	0	6	6
<b>Total</b>	<b>0</b>	<b>0</b>	<b>0</b>	<b>0</b>	<b>0</b>	<b>0</b>	<b>6</b>	<b>6</b>
<b>Merced</b>								
Segments	0	0	0					0
Bridges	140	2	0					141
Tunnels	0	0	0					0
Facilities		51	0	21	0	0	743	816
<b>Total</b>	<b>140</b>	<b>53</b>	<b>0</b>	<b>21</b>	<b>0</b>	<b>0</b>	<b>743</b>	<b>957</b>
<b>Monterey</b>								
Segments	0	0	0					0
Bridges	349	21	0					370
Tunnels	0	0	0					0
Facilities		109	0	548	469	0	1,537	2,663

	Highway	Railway	Light Rail	Bus Facility	Ports	Ferries	Airport	Total
<b>Total</b>	<b>349</b>	<b>130</b>	<b>0</b>	<b>548</b>	<b>469</b>	<b>0</b>	<b>1,537</b>	<b>3,034</b>
<b>Napa</b>								
Segments	0	0	0					0
Bridges	3	3	0					6
Tunnels	0	0	0					0
Facilities		0	0	22	230	0	599	851
<b>Total</b>	<b>3</b>	<b>3</b>	<b>0</b>	<b>22</b>	<b>230</b>	<b>0</b>	<b>599</b>	<b>857</b>
<b>Placer</b>								
Segments	0	0	0					0
Bridges	0	0	0					0
Tunnels	0	0	0					0
Facilities		9	0	0	0	0	17	26
<b>Total</b>	<b>0</b>	<b>9</b>	<b>0</b>	<b>0</b>	<b>0</b>	<b>0</b>	<b>17</b>	<b>26</b>
<b>Sacramento</b>								
Segments	0	0	0					0
Bridges	28	0	0					28
Tunnels	0	0	0					0
Facilities		26	3,024	43	2,060	13	4,198	9,363
<b>Total</b>	<b>28</b>	<b>26</b>	<b>3,024</b>	<b>43</b>	<b>2,060</b>	<b>13</b>	<b>4,198</b>	<b>9,391</b>
<b>San Benito</b>								
Segments	0	0	0					0
Bridges	111	14	0					125
Tunnels	0	0	0					0
Facilities		0	0	0	0	0	617	617

	Highway	Railway	Light Rail	Bus Facility	Ports	Ferries	Airport	Total
<b>Total</b>	<b>111</b>	<b>14</b>	<b>0</b>	<b>0</b>	<b>0</b>	<b>0</b>	<b>617</b>	<b>742</b>
<b>San Francisco</b>								
<i>Segments</i>	0	0	0					0
<i>Bridges</i>	14,327	29	0					14,356
<i>Tunnels</i>	103	0	0					103
<i>Facilities</i>		0	250,277	381	17,834	356	3,174	272,021
<b>Total</b>	<b>14,430</b>	<b>29</b>	<b>250,277</b>	<b>381</b>	<b>17,834</b>	<b>356</b>	<b>3,174</b>	<b>286,481</b>
<b>San Joaquin</b>								
<i>Segments</i>	0	0	0					0
<i>Bridges</i>	354	4	0					357
<i>Tunnels</i>	0	0	0					0
<i>Facilities</i>		577	0	21	3,732	218	1,170	5,719
<b>Total</b>	<b>354</b>	<b>581</b>	<b>0</b>	<b>21</b>	<b>3,732</b>	<b>218</b>	<b>1,170</b>	<b>6,077</b>
<b>San Luis Obispo</b>								
<i>Segments</i>	0	0	0					0
<i>Bridges</i>	1	0	0					1
<i>Tunnels</i>	0	0	0					0
<i>Facilities</i>		3	0	0	0	0	11	14
<b>Total</b>	<b>1</b>	<b>3</b>	<b>0</b>	<b>0</b>	<b>0</b>	<b>0</b>	<b>11</b>	<b>15</b>
<b>San Mateo</b>								
<i>Segments</i>	0	0	0					0
<i>Bridges</i>	172,376	3,860	0					176,236
<i>Tunnels</i>	1,797	0	0					1,797
<i>Facilities</i>		0	0	0	13,729	0	171,320	185,048

	Highway	Railway	Light Rail	Bus Facility	Ports	Ferries	Airport	Total
<b>Total</b>	<b>174,173</b>	<b>3,860</b>	<b>0</b>	<b>0</b>	<b>13,729</b>	<b>0</b>	<b>171,320</b>	<b>363,082</b>
<b>Santa Clara</b>								
Segments	0	0	0					0
Bridges	307,507	20,101	94					327,702
Tunnels	176	0	0					176
Facilities		2,516	152,266	1,273	3,707	0	84,971	244,734
<b>Total</b>	<b>307,683</b>	<b>22,617</b>	<b>152,360</b>	<b>1,273</b>	<b>3,707</b>	<b>0</b>	<b>84,971</b>	<b>572,611</b>
<b>Santa Cruz</b>								
Segments	0	0	0					0
Bridges	3,293	240	0					3,534
Tunnels	0	0	0					0
Facilities		0	0	779	564	0	3,453	4,796
<b>Total</b>	<b>3,293</b>	<b>240</b>	<b>0</b>	<b>779</b>	<b>564</b>	<b>0</b>	<b>3,453</b>	<b>8,330</b>
<b>Solano</b>								
Segments	0	0	0					0
Bridges	178	20	0					198
Tunnels	0	0	0					0
Facilities		328	0	136	5,197	135	231	6,026
<b>Total</b>	<b>178</b>	<b>348</b>	<b>0</b>	<b>136</b>	<b>5,197</b>	<b>135</b>	<b>231</b>	<b>6,224</b>
<b>Sonoma</b>								
Segments	0	0	0					0
Bridges	60	4	0					64
Tunnels	0	0	0					0
Facilities		0	0	23	377	0	414	813

	Highway	Railway	Light Rail	Bus Facility	Ports	Ferries	Airport	Total
<b>Total</b>	<b>60</b>	<b>4</b>	<b>0</b>	<b>23</b>	<b>377</b>	<b>0</b>	<b>414</b>	<b>877</b>
<b>Stanislaus</b>								
Segments	0	0	0					0
Bridges	106	2	0					108
Tunnels	0	0	0					0
Facilities		154	0	113	0	0	397	664
<b>Total</b>	<b>106</b>	<b>156</b>	<b>0</b>	<b>113</b>	<b>0</b>	<b>0</b>	<b>397</b>	<b>772</b>
<b>Sutter</b>								
Segments	0	0	0					0
Bridges	0	0	0					0
Tunnels	0	0	0					0
Facilities		0	0	0	0	0	0	0
<b>Total</b>	<b>0</b>	<b>0</b>	<b>0</b>	<b>0</b>	<b>0</b>	<b>0</b>	<b>0</b>	<b>0</b>
<b>Tuolumne</b>								
Segments	0	0	0					0
Bridges	0	0	0					0
Tunnels	0	0	0					0
Facilities		0	0	0	0	0	17	17
<b>Total</b>	<b>0</b>	<b>0</b>	<b>0</b>	<b>0</b>	<b>0</b>	<b>0</b>	<b>17</b>	<b>17</b>
<b>Yolo</b>								
Segments	0	0	0					0
Bridges	32	0	0					32
Tunnels	0	0	0					0
Facilities		128	0	0	624	0	153	905

	Highway	Railway	Light Rail	Bus Facility	Ports	Ferries	Airport	Total
<b>Total</b>	<b>32</b>	<b>128</b>	<b>0</b>	<b>0</b>	<b>624</b>	<b>0</b>	<b>153</b>	<b>938</b>
<b>Yuba</b>								
<i>Segments</i>	0	0	0					0
<i>Bridges</i>	0	0	0					0
<i>Tunnels</i>	0	0	0					0
<i>Facilities</i>		0	0	0	0	0	0	0
<b>Total</b>	<b>0</b>	<b>0</b>	<b>0</b>	<b>0</b>	<b>0</b>	<b>0</b>	<b>0</b>	<b>0</b>
<b>Total</b>	<b>515,110</b>	<b>35,464</b>	<b>406,370</b>	<b>3,966</b>	<b>84,578</b>	<b>1,654</b>	<b>315,228</b>	<b>1,362,371</b>
<b>Region Total</b>	<b>515,110</b>	<b>35,464</b>	<b>406,370</b>	<b>3,966</b>	<b>84,578</b>	<b>1,654</b>	<b>315,228</b>	<b>1,362,371</b>

Totals only reflect data for those census tracts/blocks included in the user's study region and will reflect the entire county/state only if all of the census blocks for that county/states were selected at the time of study region creation.

## Direct Economic Loss For Utilities

June 11, 2024

All values are in thousands of dollars

	Potable Water	Waste Water	Oil Systems	Natural Gas	Electric Power	Communication	Total
<b>California</b>							
<b>Alameda</b>							
<i>Facilities</i>	4,972	82,516	0	0	332,026	243	419,757
<i>Pipelines</i>	1,648	828	0	0			2,476
<b>Total</b>	<b>6,620</b>	<b>83,344</b>	<b>0</b>	<b>0</b>	<b>332,026</b>	<b>243</b>	<b>422,234</b>
<b>Amador</b>							
<i>Facilities</i>	0	3	0	0	618	0	621
<i>Pipelines</i>	7	4	0	0			11
<b>Total</b>	<b>7</b>	<b>6</b>	<b>0</b>	<b>0</b>	<b>618</b>	<b>0</b>	<b>632</b>
<b>Calaveras</b>							
<i>Facilities</i>	28	131	0	0	14,243	0	14,402
<i>Pipelines</i>	15	8	0	0			23
<b>Total</b>	<b>43</b>	<b>138</b>	<b>0</b>	<b>0</b>	<b>14,243</b>	<b>0</b>	<b>14,425</b>
<b>Colusa</b>							
<i>Facilities</i>	0	0	0	0	0	0	0

	Potable Water	Waste Water	Oil Systems	Natural Gas	Electric Power	Communication	Total
<i>Pipelines</i>	12	6	0	0			18
<b>Total</b>	12	6	0	0	0	0	18
<b>Contra Costa</b>							
<i>Facilities</i>	2,090	27,122	12	0	379,597	36	408,856
<i>Pipelines</i>	467	234	0	0			701
<b>Total</b>	2,557	27,356	12	0	379,597	36	409,557
<b>El Dorado</b>							
<i>Facilities</i>	1	10	0	0	1,510	0	1,521
<i>Pipelines</i>	18	9	0	0			27
<b>Total</b>	18	19	0	0	1,510	0	1,548
<b>Fresno</b>							
<i>Facilities</i>	0	5	0	0	14,111	1	14,117
<i>Pipelines</i>	180	91	0	0			271
<b>Total</b>	180	96	0	0	14,111	1	14,388
<b>Kings</b>							
<i>Facilities</i>	0	0	0	4	184	0	188
<i>Pipelines</i>	54	27	0	0			81
<b>Total</b>	54	27	0	4	184	0	269
<b>Lake</b>							
<i>Facilities</i>	1	0	0	0	252	0	253
<i>Pipelines</i>	24	12	0	0			36

	Potable Water	Waste Water	Oil Systems	Natural Gas	Electric Power	Communication	Total
<b>Total</b>	25	12	0	0	252	0	289
<b>Madera</b>							
<i>Facilities</i>	0	0	0	0	628	0	629
<i>Pipelines</i>	59	30	0	0			89
<b>Total</b>	59	30	0	0	628	0	718
<b>Marin</b>							
<i>Facilities</i>	28	12,195	0	0	770	17	13,010
<i>Pipelines</i>	66	33	0	0			99
<b>Total</b>	94	12,228	0	0	770	17	13,109
<b>Mariposa</b>							
<i>Facilities</i>	0	8	0	0	283	0	291
<i>Pipelines</i>	10	5	0	0			14
<b>Total</b>	10	13	0	0	283	0	305
<b>Mendocino</b>							
<i>Facilities</i>	0	3	0	0	0	0	3
<i>Pipelines</i>	10	5	0	0			15
<b>Total</b>	10	8	0	0	0	0	17
<b>Merced</b>							
<i>Facilities</i>	0	2,016	0	0	157,349	5	159,370
<i>Pipelines</i>	158	79	0	0			237
<b>Total</b>	158	2,095	0	0	157,349	5	159,607

	Potable Water	Waste Water	Oil Systems	Natural Gas	Electric Power	Communication	Total
<b>Monterey</b>							
<i>Facilities</i>	0	33,953	0	0	201,202	79	235,234
<i>Pipelines</i>	300	151	0	0			451
<b>Total</b>	300	34,104	0	0	201,202	79	235,685
<b>Napa</b>							
<i>Facilities</i>	0	492	0	0	312	3	807
<i>Pipelines</i>	25	12	0	0			37
<b>Total</b>	25	504	0	0	312	3	844
<b>Placer</b>							
<i>Facilities</i>	0	146	0	0	447	0	594
<i>Pipelines</i>	29	14	0	0			43
<b>Total</b>	29	161	0	0	447	0	637
<b>Sacramento</b>							
<i>Facilities</i>	0	1,229	0	0	10,961	5	12,195
<i>Pipelines</i>	124	62	0	0			186
<b>Total</b>	124	1,292	0	0	10,961	5	12,382
<b>San Benito</b>							
<i>Facilities</i>	0	12,719	0	0	0	24	12,743
<i>Pipelines</i>	100	50	0	0			150
<b>Total</b>	100	12,770	0	0	0	24	12,894
<b>San Francisco</b>							

	Potable Water	Waste Water	Oil Systems	Natural Gas	Electric Power	Communication	Total
<i>Facilities</i>	0	38,683	0	0	4,060	166	42,909
<i>Pipelines</i>	224	112	0	0			336
<b>Total</b>	224	38,795	0	0	4,060	166	43,244
<b>San Joaquin</b>							
<i>Facilities</i>	461	7,868	1	0	41,329	11	49,670
<i>Pipelines</i>	204	102	0	0			306
<b>Total</b>	664	7,970	1	0	41,329	11	49,976
<b>San Luis Obispo</b>							
<i>Facilities</i>	1	5	0	0	218	0	224
<i>Pipelines</i>	30	15	0	0			45
<b>Total</b>	30	20	0	0	218	0	268
<b>San Mateo</b>							
<i>Facilities</i>	0	201,932	0	0	57,407	324	259,663
<i>Pipelines</i>	6,745	3,388	0	0			10,133
<b>Total</b>	6,745	205,321	0	0	57,407	324	269,796
<b>Santa Clara</b>							
<i>Facilities</i>	12,206	71,524	0	0	1,203,037	1,468	1,288,235
<i>Pipelines</i>	20,572	10,334	0	0			30,906
<b>Total</b>	32,777	81,858	0	0	1,203,037	1,468	1,319,140
<b>Santa Cruz</b>							
<i>Facilities</i>	0	52,834	0	0	4,063	158	57,055

	Potable Water	Waste Water	Oil Systems	Natural Gas	Electric Power	Communication	Total
<i>Pipelines</i>	1,633	820	0	0			2,453
<b>Total</b>	1,633	53,654	0	0	4,063	158	59,507
<b>Solano</b>							
<i>Facilities</i>	0	5,065	3	0	28,426	5	33,499
<i>Pipelines</i>	135	68	0	0			203
<b>Total</b>	135	5,133	3	0	28,426	5	33,702
<b>Sonoma</b>							
<i>Facilities</i>	0	2,633	0	0	2,202	3	4,838
<i>Pipelines</i>	94	47	0	0			141
<b>Total</b>	94	2,680	0	0	2,202	3	4,979
<b>Stanislaus</b>							
<i>Facilities</i>	0	6,097	0	0	56,305	23	62,425
<i>Pipelines</i>	177	89	0	0			265
<b>Total</b>	177	6,186	0	0	56,305	23	62,691
<b>Sutter</b>							
<i>Facilities</i>	0	0	0	0	302	0	303
<i>Pipelines</i>	17	9	0	0			26
<b>Total</b>	17	9	0	0	302	0	328
<b>Tuolumne</b>							
<i>Facilities</i>	0	3	0	0	9,706	0	9,709
<i>Pipelines</i>	16	8	0	0			24

	Potable Water	Waste Water	Oil Systems	Natural Gas	Electric Power	Communication	Total
<b>Total</b>	16	10	0	0	9,706	0	9,733
<b>Yolo</b>							
<i>Facilities</i>	0	492	0	0	502	1	995
<i>Pipelines</i>	37	19	0	0			56
<b>Total</b>	37	511	0	0	502	1	1,051
<b>Yuba</b>							
<i>Facilities</i>	0	0	0	0	0	0	0
<i>Pipelines</i>	7	3	0	0			10
<b>Total</b>	7	3	0	0	0	0	10
<b>Total</b>	<b>52,982</b>	<b>576,359</b>	<b>16</b>	<b>4</b>	<b>2,522,050</b>	<b>2,571</b>	<b>3,153,982</b>
<b>Region Total</b>	<b>52,982</b>	<b>576,359</b>	<b>16</b>	<b>4</b>	<b>2,522,050</b>	<b>2,571</b>	<b>3,153,982</b>

Totals only reflect data for those census tracts/blocks included in the user's study region and will reflect the entire county/state only if all of the census blocks for that county/states were selected at the time of study region creation.

## Hazus Quick Assessment Report

### Estimated Economic Loss (\$ Billions)

Category	Description	Range
General Building Stock	Building Damage	14.60 - 58.20
	Building Contents	1.50 - 5.80
	Business Interruption	2.80 - 11.20
Infrastructure	Lifelines Damage	
<b>Total</b>		23.00 - 91.90

### Preliminary Damage Assessment (PDA) Estimates

Description	Residential	Commercial	Other	Total
Affected	416,300	29,500	12,400	458,200
Minor	87,100	15,800	5,900	108,800
Major	5,800	3,700	1,500	11,000
Destroyed	780	750	260	1,790
<b>Total</b>	509,980	49,750	20,060	579,790

### Estimated Casualties : Night Time

Severity Level	Description	# Persons
Level 1	Medical Aid	1,200 - 5,000
Level 2	Hospital Care	140 - 600
Level 3	Life-threatening	10 - 50
Level 4	Fatalities	20 - 90

### Estimated Shelter Needs

Type	Households	People
Displaced Households	6,000 - 25,000	15,000 - 62,500
Public Shelter	2,360	5,890

Comments :

\*Hazus damage estimates are presented using FEMA Preliminary Damage Assessment (PDA) categories. These estimates should be used for planning purposes and may not reflect actual observed damages from the PDA process.

**Disclaimer:**

The estimates of social and economic impacts contained in this report were produced using HAZUS loss estimation methodology software which is based on current scientific and engineering knowledge. There are uncertainties inherent in any loss estimation technique. Therefore, there may be significant differences between the modeled results contained in this report and the actual social and economic losses following a specific earthquake. These results can be improved by using enhanced inventory, geotechnical, and observed ground motion data.

### Earthquake Information

Location :

Origin Time:

Magnitude : 7.14

Epicenter Latitude/Longitude :  
/

Depth & Type : /U

Name :  
NA

Ground Motion /Attenuation :

Maximum PGA: 1.00

Information Sources:

Comments :

### Population and Building Exposure

Population: 14,671,587

### Building Exposure : (\$ Millions)

Residential	1,857,344
Commercial	499,173
Other	431,968
<b>Total</b>	<b>2,788,485</b>

Counties : See Appendix

Major Metro Area :

## Hazus Quick Assessment Report

### Estimated Economic Loss (\$ Billions)

Category	Description	Range
General Building Stock	Building Damage	14.60 - 58.20
	Building Contents	1.50 - 5.80
	Business Interruption	2.80 - 11.20
Infrastructure	Lifelines Damage	
<b>Total</b>		23.00 - 91.90

### Preliminary Damage Assessment (PDA) Estimates

Description	Residential	Commercial	Other	Total
Affected	416,300	29,500	12,400	458,200
Minor	87,100	15,800	5,900	108,800
Major	5,800	3,700	1,500	11,000
Destroyed	780	750	260	1,790
<b>Total</b>	509,980	49,750	20,060	579,790

### Estimated Casualties : Day Time

Severity Level	Description	# Persons
Level 1	Medical Aid	2,000 - 10,000
Level 2	Hospital Care	400 - 1,600
Level 3	Life-threatening	50 - 200
Level 4	Fatalities	90 - 400

### Estimated Shelter Needs

Type	Households	People
Displaced Households	6,000 - 25,000	15,000 - 62,500
Public Shelter	2,360	5,890

Comments :

*\*Hazus damage estimates are presented using FEMA Preliminary Damage Assessment (PDA) categories. These estimates should be used for planning purposes and may not reflect actual observed damages from the PDA process.*

**Disclaimer:**

*The estimates of social and economic impacts contained in this report were produced using HAZUS loss estimation methodology software which is based on current scientific and engineering knowledge. There are uncertainties inherent in any loss estimation technique. Therefore, there may be significant differences between the modeled results contained in this report and the actual social and economic losses following a specific earthquake. These results can be improved by using enhanced inventory, geotechnical, and observed ground motion data.*

### Earthquake Information

Location :

Origin Time:

Magnitude : 7.14

Epicenter Latitude/Longitude :  
/

Depth & Type : /U

Name :  
NA

Ground Motion /Attenuation :

Maximum PGA: 1.00

Information Sources:

Comments :

### Population and Building Exposure

Population: 14,671,587

### Building Exposure : (\$ Millions)

Residential	1,857,344
Commercial	499,173
Other	431,968
<b>Total</b>	<b>2,788,485</b>

Counties : See Appendix

Major Metro Area :

## Hazus Quick Assessment Report

### Estimated Economic Loss (\$ Billions)

Category	Description	Range
General Building Stock	Building Damage	14.60 - 58.20
	Building Contents	1.50 - 5.80
	Business Interruption	2.80 - 11.20
Infrastructure	Lifelines Damage	
<b>Total</b>		23.00 - 91.90

### Preliminary Damage Assessment (PDA) Estimates

Description	Residential	Commercial	Other	Total
Affected	416,300	29,500	12,400	458,200
Minor	87,100	15,800	5,900	108,800
Major	5,800	3,700	1,500	11,000
Destroyed	780	750	260	1,790
<b>Total</b>	509,980	49,750	20,060	579,790

### Estimated Casualties : Commute Time

Severity Level	Description	# Persons
Level 1	Medical Aid	1,700 - 7,000
Level 2	Hospital Care	300 - 1,300
Level 3	Life-threatening	140 - 600
Level 4	Fatalities	80 - 300

### Estimated Shelter Needs

Type	Households	People
Displaced Households	6,000 - 25,000	15,000 - 62,500
Public Shelter	2,360	5,890

Comments :

\*Hazus damage estimates are presented using FEMA Preliminary Damage Assessment (PDA) categories. These estimates should be used for planning purposes and may not reflect actual observed damages from the PDA process.

**Disclaimer:**

The estimates of social and economic impacts contained in this report were produced using HAZUS loss estimation methodology software which is based on current scientific and engineering knowledge. There are uncertainties inherent in any loss estimation technique. Therefore, there may be significant differences between the modeled results contained in this report and the actual social and economic losses following a specific earthquake. These results can be improved by using enhanced inventory, geotechnical, and observed ground motion data.

### Earthquake Information

Location :

Origin Time:

Magnitude : 7.14

Epicenter Latitude/Longitude :  
/

Depth & Type : /U

Name :  
NA

Ground Motion /Attenuation :

Maximum PGA: 1.00

Information Sources:

Comments :

### Population and Building Exposure

Population: 14,671,587

### Building Exposure : (\$ Millions)

Residential	1,857,344
Commercial	499,173
Other	431,968
<b>Total</b>	<b>2,788,485</b>

Counties : See Appendix

Major Metro Area :

## Shelter Summary Report

June 11, 2024

	# of Displaced Households	# of People Needing Short Term Shelter
<b>California</b>		
Alameda	311	166
Amador	0	0
Calaveras	0	0
Colusa	0	0
Contra Costa	2	1
El Dorado	0	0
Fresno	0	0
Kings	0	0
Lake	0	0
Madera	0	0
Marin	0	0
Mariposa	0	0
Mendocino	0	0
Merced	0	0
Monterey	3	2
Napa	0	0
Placer	0	0
Sacramento	0	0
San Benito	0	0
San Francisco	567	242
San Joaquin	1	1
San Luis Obispo	0	0
San Mateo	2,728	1,230
Santa Clara	8,808	4,166
Santa Cruz	144	80
Solano	0	0
Sonoma	0	0
Stanislaus	0	0
Sutter	0	0
Tuolumne	0	0
Yolo	0	0
Yuba	0	0

---

---

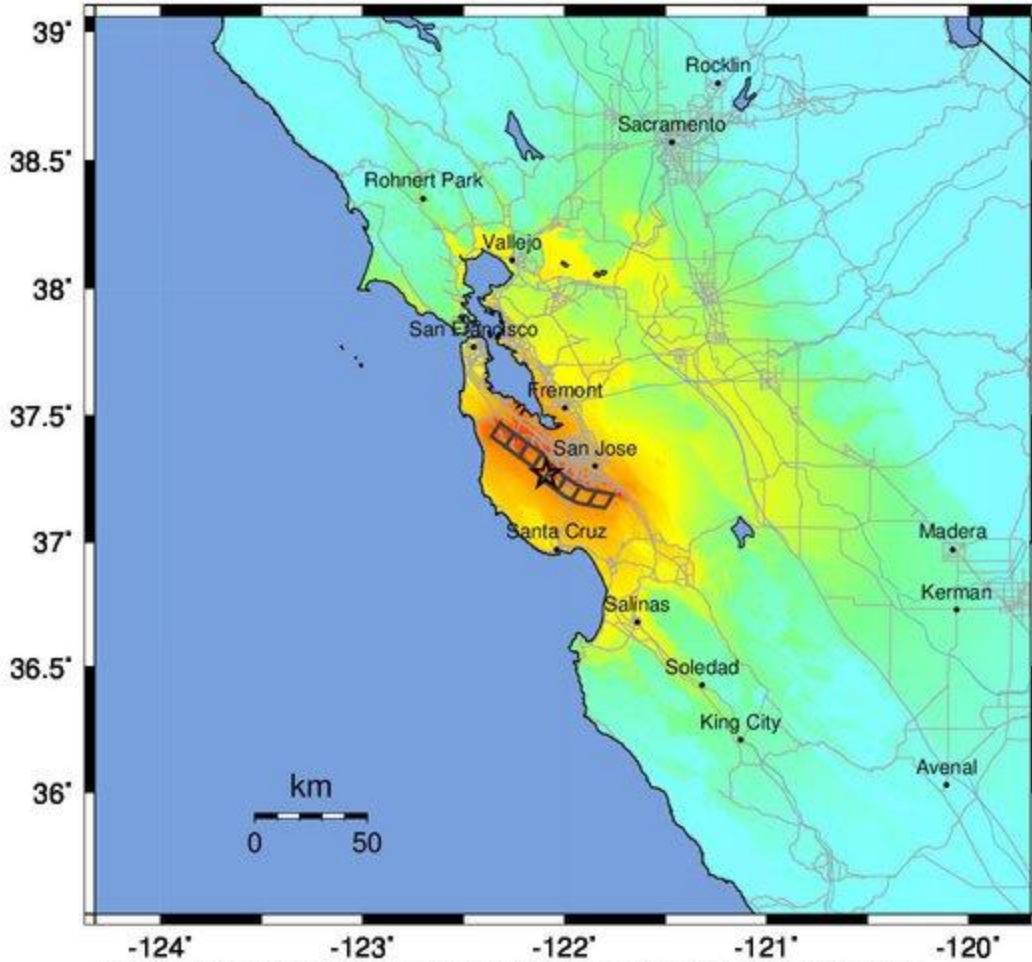
	# of Displaced Households	# of People Needing Short Term Shelter
<b>Total</b>	<b>12,564</b>	<b>5,889</b>
<b>Region Total</b>	<b>12,564</b>	<b>5,889</b>

---

---

*Totals only reflect data for those census tracts/blocks included in the user's study region and will reflect the entire county/state only if all of the census blocks for that county/states were selected at the time of study region creation.*

-- Earthquake Planning Scenario --  
 ShakeMap for Monte Vista - Shannon - Median ground motions Scenario  
 Scenario Date: May 16, 2017 08:32:04 AM MDT M 7.1 N37.27 W122.09 Depth: 9.1km



PLANNING SCENARIO ONLY -- Map Version 10 Processed 2017-05-16 09:48:07 PM MDT

PERCEIVED SHAKING	Not felt	Weak	Light	Moderate	Strong	Very strong	Severe	Violent	Extreme
POTENTIAL DAMAGE	none	none	none	Very light	Light	Moderate	Mod./Heavy	Heavy	Very Heavy
PEAK ACC.(%g)	<0.05	0.3	2.8	6.2	12	22	40	75	>139
PEAK VEL.(cm/s)	<0.02	0.1	1.4	4.7	9.6	20	41	86	>178
INSTRUMENTAL INTENSITY	I	II-III	IV	V	VI	VII	VIII	IX	X+

Scale based upon Worden et al. (2012)