
Hazus: Earthquake Global Risk Report

Region Name: Maacama

Earthquake Scenario: maacama2011cfmshaw09_m7p55_se

Print Date: April 25, 2024

Disclaimer:

Totals only reflect data for those census tracts/blocks included in the user's study region.

The estimates of social and economic impacts contained in this report were produced using Hazus loss estimation methodology software which is based on current scientific and engineering knowledge. There are uncertainties inherent in any loss estimation technique. Therefore, there may be significant differences between the modeled results contained in this report and the actual social and economic losses following a specific earthquake. These results can be improved by using enhanced inventory, geotechnical, and observed ground motion data.

Table of Contents

Section	Page #
General Description of the Region	3
Building and Lifeline Inventory	4
Building Inventory	
Critical Facility Inventory	
Transportation and Utility Lifeline Inventory	
Earthquake Scenario Parameters	7
Direct Earthquake Damage	8
Buildings Damage	
Essential Facilities Damage	
Transportation and Utility Lifeline Damage	
Induced Earthquake Damage	14
Fire Following Earthquake	
Debris Generation	
Social Impact	15
Shelter Requirements	
Casualties	
Economic Loss	17
Building Related Losses	
Transportation and Utility Lifeline Losses	
Appendix A: County Listing for the Region	
Appendix B: Regional Population and Building Value Data	

General Description of the Region

Hazus-MH is a regional earthquake loss estimation model that was developed by the Federal Emergency Management Agency (FEMA) and the National Institute of Building Sciences. The primary purpose of Hazus is to provide a methodology and software application to develop multi-hazard losses at a regional scale. These loss estimates would be used primarily by local, state and regional officials to plan and stimulate efforts to reduce risks from multi-hazards and to prepare for emergency response and recovery.

The earthquake loss estimates provided in this report was based on a region that includes 39 county(ies) from the following state(s):

California

Note:

Appendix A contains a complete listing of the counties contained in the region.

The geographical size of the region is 66,991.47 square miles and contains 3,222 census tracts. There are over 4,945 thousand households in the region which has a total population of 13,925,561 people. The distribution of population by Total Region and County is provided in Appendix B.

There are an estimated 4,371 thousand buildings in the region with a total building replacement value (excluding contents) of (millions of dollars). Approximately 90.00 % of the buildings (and % of the building value) are associated with residential housing.

The replacement value of the transportation and utility lifeline systems is estimated to be 239,319 and 175,294 (millions of dollars) , respectively.

Building and Lifeline Inventory

Building Inventory

Hazus estimates that there are 4,371 thousand buildings in the region which have an aggregate total replacement value of (millions of dollars) . Appendix B provides a general distribution of the building value by Total Region and County.

In terms of building construction types found in the region, wood frame construction makes up 86% of the building inventory. The remaining percentage is distributed between the other general building types.

Critical Facility Inventory

Hazus breaks critical facilities into two (2) groups: essential facilities and high potential loss facilities (HPL). Essential facilities include hospitals, medical clinics, schools, fire stations, police stations and emergency operations facilities. High potential loss facilities include dams, levees, military installations, nuclear power plants and hazardous material sites.

For essential facilities, there are 251 hospitals in the region with a total bed capacity of 34,209 beds. There are 5,286 schools, 1,591 fire stations, 499 police stations and 86 emergency operation facilities. With respect to high potential loss facilities (HPL), there are no dams identified within the inventory. The inventory also includes no hazardous material sites, no military installations and no nuclear power plants.

Transportation and Utility Lifeline Inventory

Within Hazus, the lifeline inventory is divided between transportation and utility lifeline systems. There are seven (7) transportation systems that include highways, railways, light rail, bus, ports, ferry and airports. There are six (6) utility systems that include potable water, wastewater, natural gas, crude & refined oil, electric power and communications. The lifeline inventory data are provided in Tables 1 and 2.

The total value of the lifeline inventory is over 414,613.00 (millions of dollars). This inventory includes over 10,880.83 miles of highways, 12,185 bridges, 267,591.56 miles of pipes.

Table 1: Transportation System Lifeline Inventory

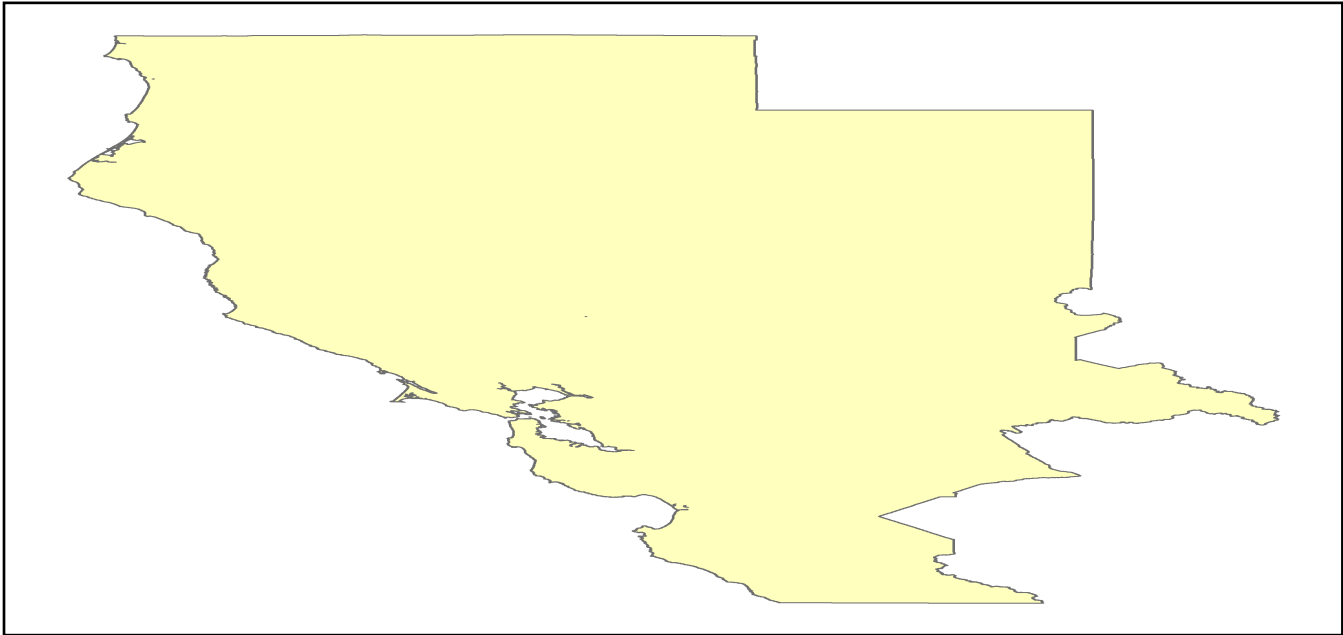
System	Component	# Locations/ # Segments	Replacement value (millions of dollars)
Highway	Bridges	12,185	59151.3489
	Segments	6,802	91466.4311
	Tunnels	46	924.6586
	Subtotal		151542.4386
Railways	Bridges	1,812	10310.2800
	Facilities	73	194.3990
	Segments	3,305	61770.8191
	Tunnels	3	1.8495
	Subtotal		72277.3476
Light Rail	Bridges	112	15.3529
	Facilities	255	4154.0000
	Segments	15	5403.2756
	Tunnels	0	0.0000
	Subtotal		9572.6285
Bus	Facilities	44	100.8303
	Subtotal		100.8303
Ferry	Facilities	25	33.2750
	Subtotal		33.2750
Port	Facilities	385	1467.5602
	Subtotal		1467.5602
Airport	Facilities	134	2888.0763
	Runways	173	1437.0834
	Subtotal		4325.1597
		Total	239,319.20

Table 2: Utility System Lifeline Inventory

System	Component	# Locations / Segments	Replacement value (millions of dollars)
Potable Water	Distribution Lines	NA	5328.5189
	Facilities	25	982.3500
	Pipelines	0	0.0000
		Subtotal	6310.8689
Waste Water	Distribution Lines	NA	3197.1114
	Facilities	204	35078.1672
	Pipelines	0	0.0000
		Subtotal	38275.2786
Natural Gas	Distribution Lines	NA	2131.4076
	Facilities	3	123.7305
	Pipelines	986	15376.4605
		Subtotal	17631.5986
Oil Systems	Facilities	16	1.8880
	Pipelines	0	0.0000
		Subtotal	1.8880
Electrical Power	Facilities	340	113024.3124
		Subtotal	113024.3124
Communication	Facilities	426	50.2680
		Subtotal	50.2680
	Total		175,294.20

Earthquake Scenario

Hazus uses the following set of information to define the earthquake parameters used for the earthquake loss estimate provided in this report.



Scenario Name	maacama2011cfmshaw09_m7p55_se
Type of Earthquake	User-defined
Fault Name	NA
Historical Epicenter ID #	NA
Probabilistic Return Period	NA
Longitude of Epicenter	NA
Latitude of Epicenter	NA
Earthquake Magnitude	7.55
Depth (km)	NA
Rupture Length (Km)	NA
Rupture Orientation (degrees)	NA
Attenuation Function	NA

Direct Earthquake Damage

Building Damage

Hazus estimates that about 34,905 buildings will be at least moderately damaged. This is over 1.00 % of the buildings in the region. There are an estimated 1,236 buildings that will be damaged beyond repair. The definition of the 'damage states' is provided in Volume 1: Chapter 5 of the Hazus technical manual. Table 3 below summarizes the expected damage by general occupancy for the buildings in the region. Table 4 below summarizes the expected damage by general building type.

Damage Categories by General Occupancy Type

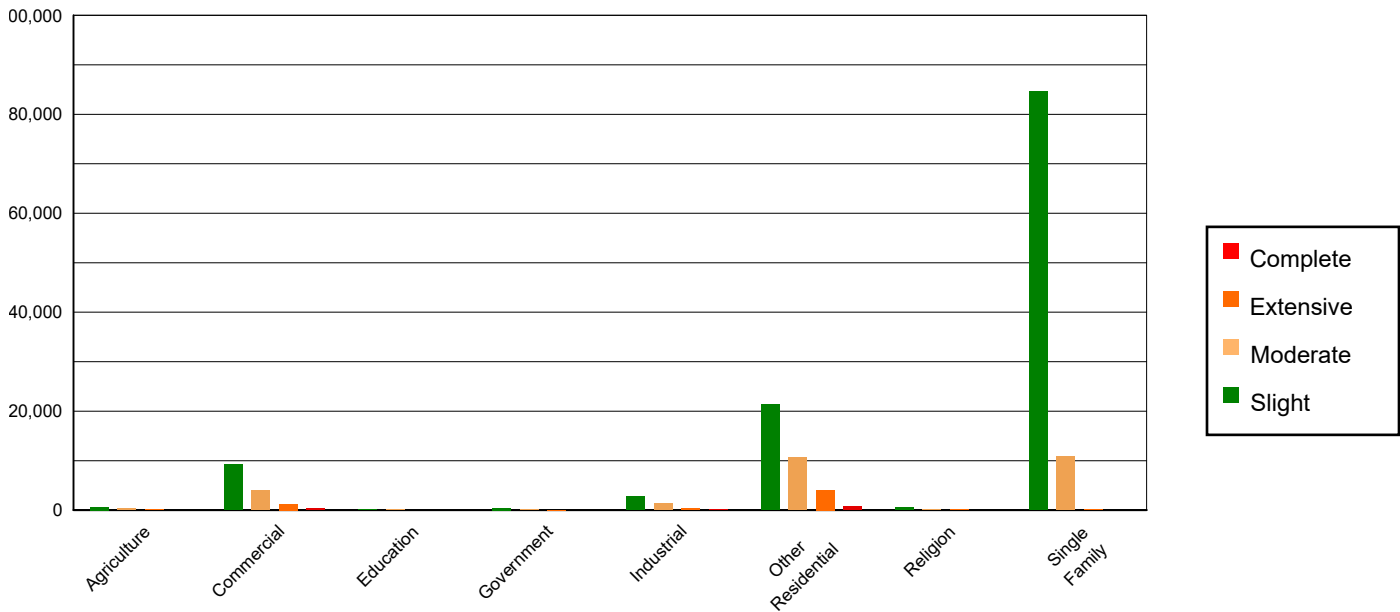


Table 3: Expected Building Damage by Occupancy

	None		Slight		Moderate		Extensive		Complete	
	Count	(%)	Count	(%)	Count	(%)	Count	(%)	Count	(%)
Agriculture	27862.46	0.66	622.44	0.52	314.16	1.14	98.07	1.61	26.87	2.17
Commercial	265992.17	6.31	9274.52	7.75	4041.58	14.65	1269.84	20.91	381.89	30.89
Education	8718.46	0.21	184.09	0.15	60.63	0.22	8.33	0.14	1.49	0.12
Government	21510.86	0.51	416.03	0.35	118.45	0.43	31.12	0.51	4.55	0.37
Industrial	71917.30	1.71	2732.18	2.28	1337.45	4.85	364.57	6.00	106.50	8.61
Other Residential	534299.02	12.67	21408.01	17.89	10624.63	38.50	4088.37	67.32	694.96	56.21
Religion	15082.31	0.36	484.96	0.41	214.31	0.78	64.24	1.06	17.19	1.39
Single Family	3271722.05	77.58	84540.08	70.65	10884.70	39.44	148.22	2.44	2.96	0.24
Total	4,217,105		119,662		27,596		6,073		1,236	

Table 4: Expected Building Damage by Building Type (All Design Levels)

	None		Slight		Moderate		Extensive		Complete	
	Count	(%)	Count	(%)	Count	(%)	Count	(%)	Count	(%)
Wood	3665662.12	86.92	96589.62	80.72	13187.70	47.79	273.96	4.51	14.88	1.20
Steel	92885.43	2.20	4037.11	3.37	2244.19	8.13	705.43	11.62	208.96	16.90
Concrete	105648.46	2.51	4038.56	3.37	1803.13	6.53	640.89	10.55	257.27	20.81
Precast	54369.38	1.29	1953.22	1.63	1077.52	3.90	286.90	4.72	41.68	3.37
RM	165384.75	3.92	2523.84	2.11	1469.00	5.32	454.67	7.49	25.71	2.08
URM	40375.19	0.96	3682.64	3.08	681.32	2.47	191.43	3.15	179.07	14.48
MH	92779.30	2.20	6837.33	5.71	7133.05	25.85	3519.47	57.95	508.82	41.15
Total	4,217,105		119,662		27,596		6,073		1,236	

*Note:

- RM Reinforced Masonry
- URM Unreinforced Masonry
- MH Manufactured Housing

Essential Facility Damage

Before the earthquake, the region had 34,209 hospital beds available for use. On the day of the earthquake, the model estimates that only 32,382 hospital beds (95.00%) are available for use by patients already in the hospital and those injured by the earthquake. After one week, 98.00% of the beds will be back in service. By 30 days, 99.00% will be operational.

Table 5: Expected Damage to Essential Facilities

Classification	Total	# Facilities		
		At Least Moderate Damage > 50%	Complete Damage > 50%	With Functionality > 50% on day 1
Hospitals	251	4	0	242
Schools	5,286	64	0	5,110
EOCs	86	2	0	82
PoliceStations	499	6	0	480
FireStations	1,591	12	0	1,539

Transportation Lifeline Damage



Table 6: Expected Damage to the Transportation Systems

System	Component	Number of Locations_				
		Locations/ Segments	With at Least Mod. Damage	With Complete Damage	With Functionality > 50 %	
					After Day 1	After Day 7
Highway	Segments	6,802	0	0	6,802	6,802
	Bridges	12,185	28	0	12,155	12,177
	Tunnels	46	0	0	46	46
Railways	Segments	3,305	0	0	3,305	3,305
	Bridges	1,812	0	0	1,812	1,812
	Tunnels	3	0	0	3	3
	Facilities	73	0	0	73	73
Light Rail	Segments	15	0	0	15	15
	Bridges	112	0	0	112	112
	Tunnels	0	0	0	0	0
	Facilities	255	0	0	255	255
Bus	Facilities	44	3	0	43	44
Ferry	Facilities	25	0	0	25	25
Port	Facilities	385	0	0	385	385
Airport	Facilities	134	3	0	133	134
	Runways	173	0	0	173	173

Table 6 provides damage estimates for the transportation system.

Note: Roadway segments, railroad tracks and light rail tracks are assumed to be damaged by ground failure only. If ground failure maps are not provided, damage estimates to these components will not be computed.

Tables 7-9 provide information on the damage to the utility lifeline systems. Table 7 provides damage to the utility system facilities. Table 8 provides estimates on the number of leaks and breaks by the pipelines of the utility systems. For electric power and potable water, Hazus performs a simplified system performance analysis. Table 9 provides a summary of the system performance information.

Table 7 : Expected Utility System Facility Damage

System	# of Locations				
	Total #	With at Least Moderate Damage	With Complete Damage	with Functionality > 50 %	
				After Day 1	After Day 7
Potable Water	25	0	0	25	25
Waste Water	204	7	0	191	203
Natural Gas	3	0	0	3	3
Oil Systems	16	0	0	16	16
Electrical Power	340	11	1	329	337
Communication	426	25	0	414	426

Table 8 : Expected Utility System Pipeline Damage (Site Specific)

System	Total Pipelines Length (miles)	Number of Leaks	Number of Breaks
Potable Water	165,549	6104	1526
Waste Water	99,330	3066	766
Natural Gas	2,713	0	0
Oil	0	0	0

Table 9: Expected Potable Water and Electric Power System Performance

	Total # of Households	Number of Households without Service				
		At Day 1	At Day 3	At Day 7	At Day 30	At Day 90
Potable Water	4,945,450	47,457	39,130	23,823	0	0
Electric Power		92,163	58,421	23,855	2,211	123

Induced Earthquake Damage

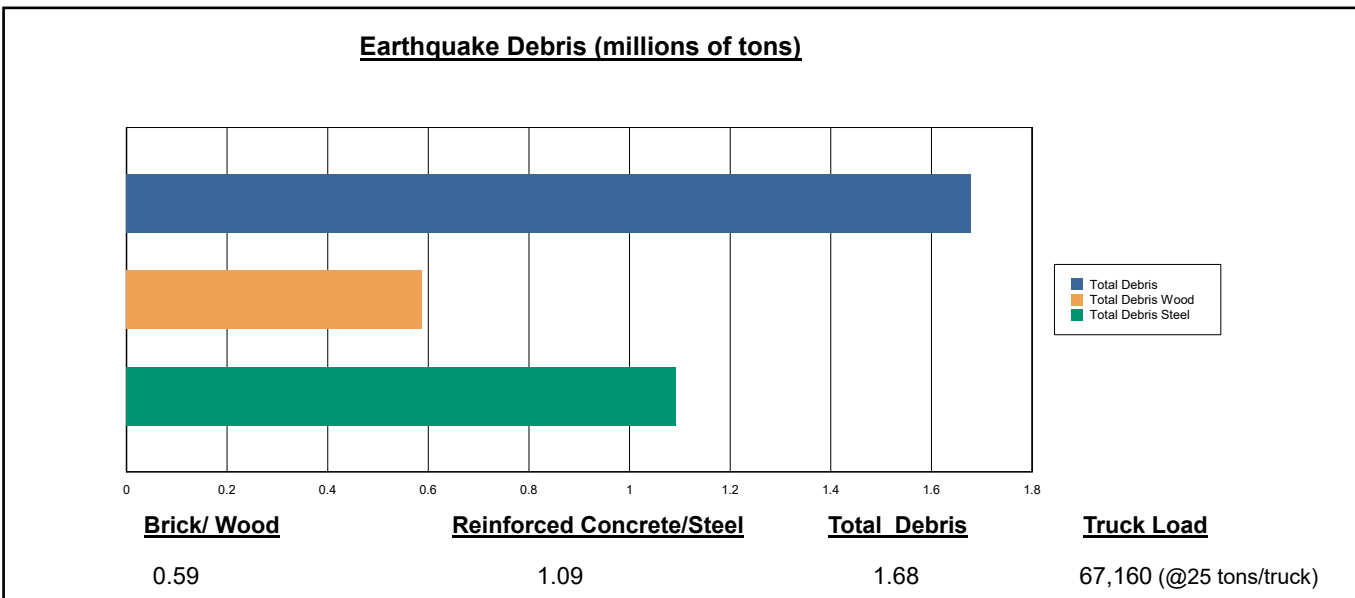
Fire Following Earthquake

Fires often occur after an earthquake. Because of the number of fires and the lack of water to fight the fires, they can often burn out of control. Hazus uses a Monte Carlo simulation model to estimate the number of ignitions and the amount of burnt area. For this scenario, the model estimates that there will be 21 ignitions that will burn about 0.16 sq. mi (0.00 % of the region's total area.) The model also estimates that the fires will displace about 1,728 people and burn about 238 (millions of dollars) of building value.

Debris Generation

Hazus estimates the amount of debris that will be generated by the earthquake. The model breaks the debris into two general categories: a) Brick/Wood and b) Reinforced Concrete/Steel. This distinction is made because of the different types of material handling equipment required to handle the debris.

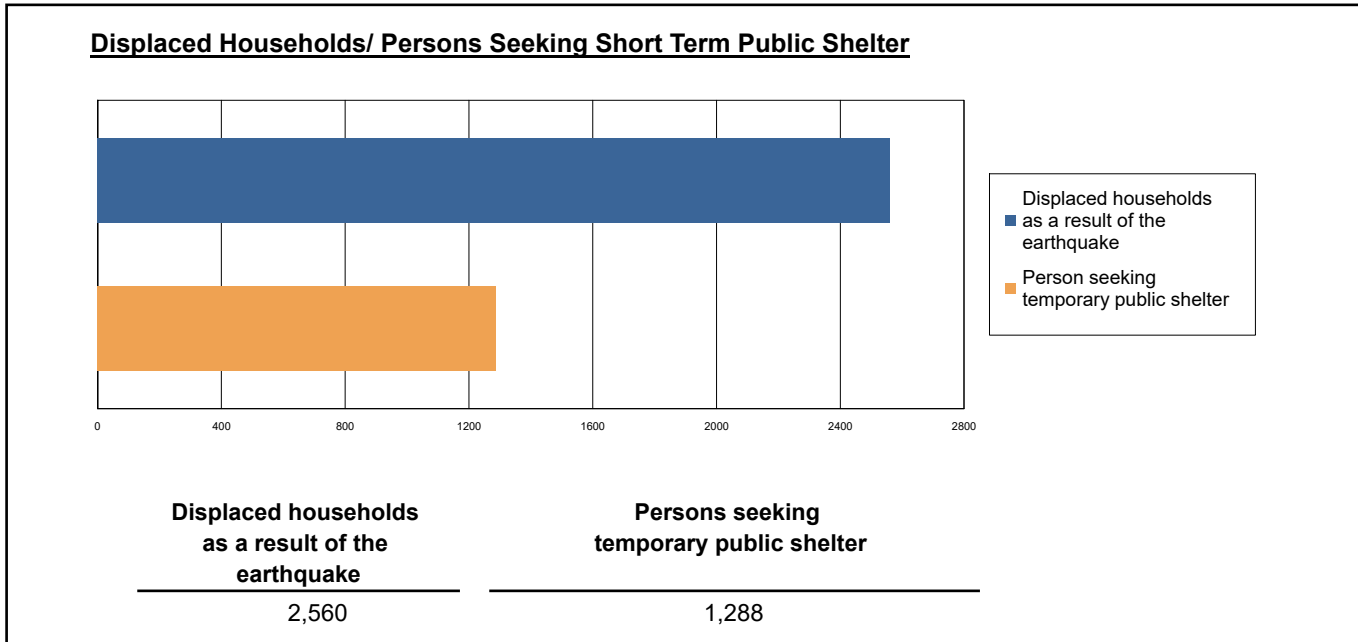
The model estimates that a total of 1,679,000 tons of debris will be generated. Of the total amount, Brick/Wood comprises 35.00% of the total, with the remainder being Reinforced Concrete/Steel. If the debris tonnage is converted to an estimated number of truckloads, it will require 67,160 truckloads (@25 tons/truck) to remove the debris generated by the earthquake.



Social Impact

Shelter Requirement

Hazus estimates the number of households that are expected to be displaced from their homes due to the earthquake and the number of displaced people that will require accommodations in temporary public shelters. The model estimates 2,560 households to be displaced due to the earthquake. Of these, 1,288 people (out of a total population of 13,925,561) will seek temporary shelter in public shelters.



Casualties

Hazus estimates the number of people that will be injured and killed by the earthquake. The casualties are broken down into four (4) severity levels that describe the extent of the injuries. The levels are described as follows;

- Severity Level 1: Injuries will require medical attention but hospitalization is not needed.
- Severity Level 2: Injuries will require hospitalization but are not considered life-threatening
- Severity Level 3: Injuries will require hospitalization and can become life threatening if not promptly treated.
- Severity Level 4: Victims are killed by the earthquake.

The casualty estimates are provided for three (3) times of day: 2:00 AM, 2:00 PM and 5:00 PM. These times represent the periods of the day that different sectors of the community are at their peak occupancy loads. The 2:00 AM estimate considers that the residential occupancy load is maximum, the 2:00 PM estimate considers that the educational, commercial and industrial sector loads are maximum and 5:00 PM represents peak commute time.

Table 10 provides a summary of the casualties estimated for this earthquake

Table 10: Casualty Estimates

		Level 1	Level 2	Level 3	Level 4
2 AM	Commercial	13.16	2.89	0.41	0.81
	Commuting	0.11	0.17	0.26	0.05
	Educational	0.00	0.00	0.00	0.00
	Hotels	1.48	0.35	0.05	0.10
	Industrial	16.46	3.61	0.49	0.97
	Other-Residential	450.84	79.21	7.72	14.66
	Single Family	182.85	9.09	0.04	0.07
	Total	665	95	9	17
2 PM	Commercial	839.66	183.86	25.92	50.66
	Commuting	0.98	1.54	2.32	0.46
	Educational	240.83	45.03	5.48	10.61
	Hotels	0.28	0.07	0.01	0.02
	Industrial	121.19	26.65	3.67	7.15
	Other-Residential	139.67	24.65	2.47	4.56
	Single Family	55.70	2.88	0.02	0.03
	Total	1,398	285	40	73
5 PM	Commercial	559.44	123.05	17.44	33.66
	Commuting	19.16	29.65	45.09	8.98
	Educational	49.97	8.65	0.95	1.83
	Hotels	0.44	0.10	0.02	0.03
	Industrial	75.75	16.66	2.29	4.47
	Other-Residential	166.94	29.90	3.05	5.65
	Single Family	67.12	3.47	0.02	0.03
	Total	939	211	69	55

Economic Loss

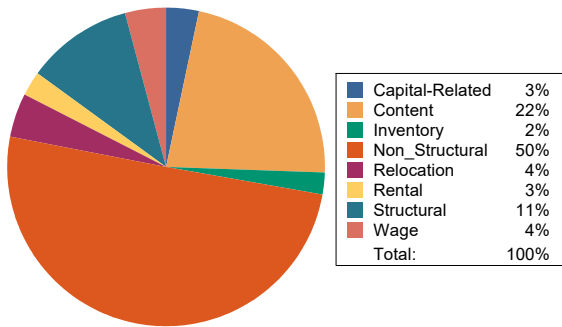
The total economic loss estimated for the earthquake is 17,883.62 (millions of dollars), which includes building and lifeline related losses based on the region's available inventory. The following three sections provide more detailed information about these losses.

Building-Related Losses

The building losses are broken into two categories: direct building losses and business interruption losses. The direct building losses are the estimated costs to repair or replace the damage caused to the building and its contents. The business interruption losses are the losses associated with inability to operate a business because of the damage sustained during the earthquake. Business interruption losses also include the temporary living expenses for those people displaced from their homes because of the earthquake.

The total building-related losses were 11,687.41 (millions of dollars); 14 % of the estimated losses were related to the business interruption of the region. By far, the largest loss was sustained by the residential occupancies which made up over 41 % of the total loss. Table 11 below provides a summary of the losses associated with the building damage.

Earthquake Losses by Loss Type (\$ millions)



Earthquake Losses by Occupancy Type (\$ millions)

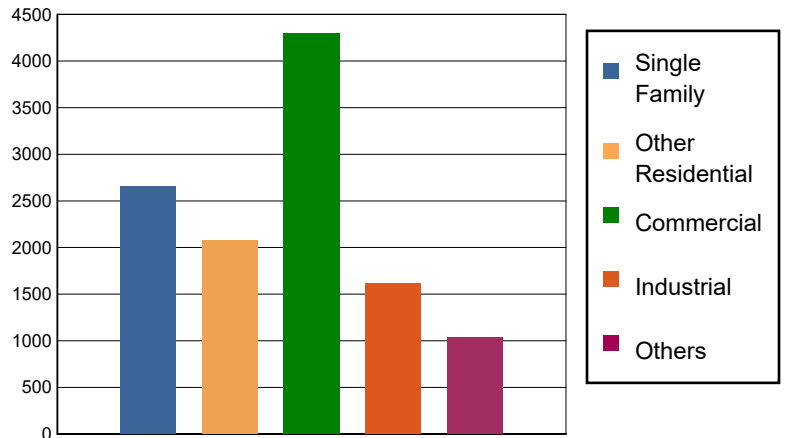


Table 11: Building-Related Economic Loss Estimates
(Millions of dollars)

Category	Area	Single Family	Other Residential	Commercial	Industrial	Others	Total
Income Losses							
	Wage	0.0000	57.2827	380.3992	15.2432	24.3965	477.3216
	Capital-Related	0.0000	24.3447	350.4620	9.2222	6.3049	390.3338
	Rental	24.2475	105.7181	160.0937	9.1903	11.5892	310.8388
	Relocation	77.8174	84.5639	223.5370	45.5924	82.3547	513.8654
	Subtotal	102.0649	271.9094	1114.4919	79.2481	124.6453	1692.3596
Capital Stock Losses							
	Structural	254.2527	219.0866	464.9953	176.5646	148.6873	1,263.5865
	Non_Structural	1670.8471	1272.3974	1697.5636	753.5345	490.8890	5,885.2316
	Content	634.0074	315.7389	876.4711	519.7561	241.2612	2,587.2347
	Inventory	0.0000	0.0000	140.8912	82.7144	35.3877	258.9933
	Subtotal	2559.1072	1807.2229	3179.9212	1532.5696	916.2252	9995.0461
	Total	2661.17	2079.13	4294.41	1611.82	1040.87	11687.41

Transportation and Utility Lifeline Losses

For the transportation and utility lifeline systems, Hazus computes the direct repair cost for each component only. There are no losses computed by Hazus for business interruption due to lifeline outages. Tables 12 & 13 provide a detailed breakdown in the expected lifeline losses.

Table 12: Transportation System Economic Losses
(Millions of dollars)

System	Component	Inventory Value	Economic Loss	Loss Ratio (%)
Highway	Segments	91466.4311	0.0000	0.00
	Bridges	59151.3489	122.1403	0.21
	Tunnels	924.6586	0.0223	0.00
	Subtotal	151542.4386	122.1626	
Railways	Segments	61770.8191	0.0000	0.00
	Bridges	10310.2800	38.1550	0.37
	Tunnels	1.8495	0.0001	0.01
	Facilities	194.3990	4.7000	2.42
	Subtotal	72277.3476	42.8551	
Light Rail	Segments	5403.2756	0.0000	0.00
	Bridges	15.3529	0.0003	0.00
	Tunnels	0.0000	0.0000	0.00
	Facilities	4154.0000	118.2542	2.85
	Subtotal	9572.6285	118.2545	
Bus	Facilities	100.8303	5.6750	5.63
	Subtotal	100.8303	5.6750	
Ferry	Facilities	33.2750	1.3731	4.13
	Subtotal	33.2750	1.3731	
Port	Facilities	1467.5602	57.5446	3.92
	Subtotal	1467.5602	57.5446	
Airport	Facilities	2888.0763	106.1490	3.68
	Runways	1437.0834	0.0000	0.00
	Subtotal	4325.1597	106.1490	
Total		239,319.24	454.01	

Table 13: Utility System Economic Losses

(Millions of dollars)

System	Component	Inventory Value	Economic Loss	Loss Ratio (%)
Potable Water	Pipelines	0.0000	0.0000	0.00
	Facilities	982.3500	8.6934	0.88
	Distribution Lines	5328.5189	27.4659	0.52
	Subtotal	6310.8689	36.1593	
Waste Water	Pipelines	0.0000	0.0000	0.00
	Facilities	35078.1672	617.0748	1.76
	Distribution Lines	3197.1114	13.7968	0.43
	Subtotal	38275.2786	630.8716	
Natural Gas	Pipelines	15376.4605	0.0000	0.00
	Facilities	123.7305	0.7356	0.59
	Distribution Lines	2131.4076	4.7267	0.22
	Subtotal	17631.5986	5.4623	
Oil Systems	Pipelines	0.0000	0.0000	0.00
	Facilities	1.8880	0.0148	0.78
	Subtotal	1.8880	0.0148	
Electrical Power	Facilities	113024.3124	5067.7067	4.48
	Subtotal	113024.3124	5067.7067	
Communication	Facilities	50.2680	1.9825	3.94
	Subtotal	50.2680	1.9825	
	Total	175,294.21	5,742.20	

Appendix A: County Listing for the Region

Alameda,CA
Amador,CA
Butte,CA
Calaveras,CA
Colusa,CA
Contra Costa,CA
Del Norte,CA
El Dorado,CA
Glenn,CA
Humboldt,CA
Lake,CA
Lassen,CA
Marin,CA
Mendocino,CA
Merced,CA
Monterey,CA
Napa,CA
Nevada,CA
Placer,CA
Plumas,CA
Sacramento,CA
San Benito,CA
San Francisco,CA
San Joaquin,CA
San Mateo,CA
Santa Clara,CA
Santa Cruz,CA
Shasta,CA
Sierra,CA

Siskiyou,CA

Solano,CA

Sonoma,CA

Stanislaus,CA

Sutter,CA

Tehama,CA

Trinity,CA

Tuolumne,CA

Yolo,CA

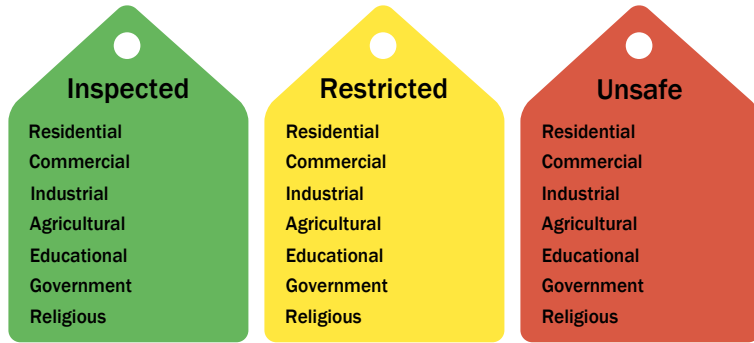
Yuba,CA

Appendix B: Regional Population and Building Value Data

State	County Name	Population	Building Value (millions of dollars)		
			Residential	Non-Residential	Total
California	Alameda	1,682,353	209,951	122,639	332,590
	Amador	40,474	5,608	2,517	8,125
	Butte	211,632	25,875	16,639	42,514
	Calaveras	45,292	8,305	4,893	13,199
	Colusa	21,839	2,244	2,024	4,268
	Contra Costa	1,165,927	158,118	60,339	218,458
	Del Norte	27,743	5,004	1,876	6,881
	El Dorado	191,185	34,907	9,704	44,611
	Glenn	28,917	2,791	3,717	6,508
	Humboldt	136,463	19,361	8,683	28,044
	Lake	68,163	9,699	4,530	14,229
	Lassen	32,730	4,033	2,008	6,042
	Marin	262,321	47,738	15,030	62,769
	Mendocino	91,601	14,237	8,510	22,748
	Merced	281,202	25,194	26,098	51,292
	Monterey	439,035	47,655	28,750	76,405
	Napa	138,019	20,517	13,045	33,563
	Nevada	102,241	17,908	6,108	24,016
	Placer	404,739	69,985	24,193	94,179
	Plumas	19,790	6,128	2,276	8,405
	Sacramento	1,585,055	179,811	83,911	263,723
	San Benito	64,209	9,440	3,799	13,239
	San Francisco	873,965	108,848	46,020	154,869
	San Joaquin	779,233	82,706	56,882	139,589
	San Mateo	764,442	110,372	44,995	155,368
	Santa Clara	1,936,259	261,111	120,471	381,582
	Santa Cruz	270,861	36,147	18,805	54,952
	Shasta	182,155	21,572	15,715	37,288
	Sierra	3,236	596	419	1,015
	Siskiyou	44,076	6,856	4,758	11,615
	Solano	453,491	55,802	26,393	82,195
	Sonoma	488,863	68,827	35,781	104,609
	Stanislaus	552,878	62,937	37,511	100,449
	Sutter	99,633	10,618	6,448	17,066
	Tehama	65,829	7,705	5,113	12,818
	Trinity	16,112	2,209	1,485	3,694
	Tuolumne	55,620	8,964	3,507	12,471
	Yolo	216,403	24,130	18,343	42,473
	Yuba	81,575	8,161	4,677	12,839



Total Region		13,925,561	1,802,070	898,612	2,700,700
--------------	--	------------	-----------	---------	-----------

Building Inspection Tagging (Counts)

Total Economic Loss
Total:

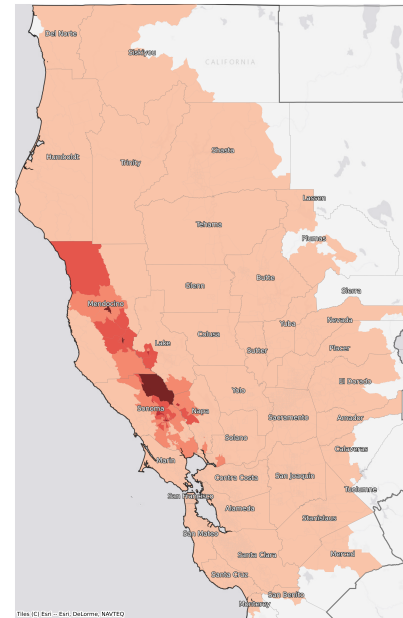
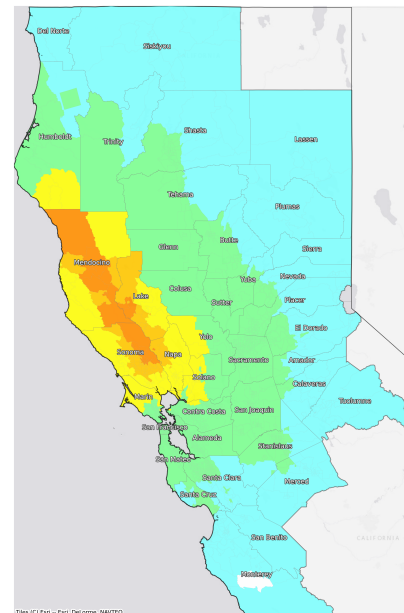
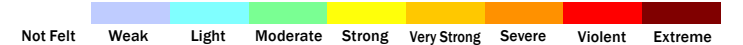
Top Counties	State	Total

Injuries & Fatalities
**Total Day:
Total Night:**

Top Counties	State	Injuries (day/night)	Fatalities (day/night)

Displaced Households & Short-Term Shelter Needs
**Total Displaced:
Total Needing Shelter:**

Top Counties	State	Displaced	Needing Shelter

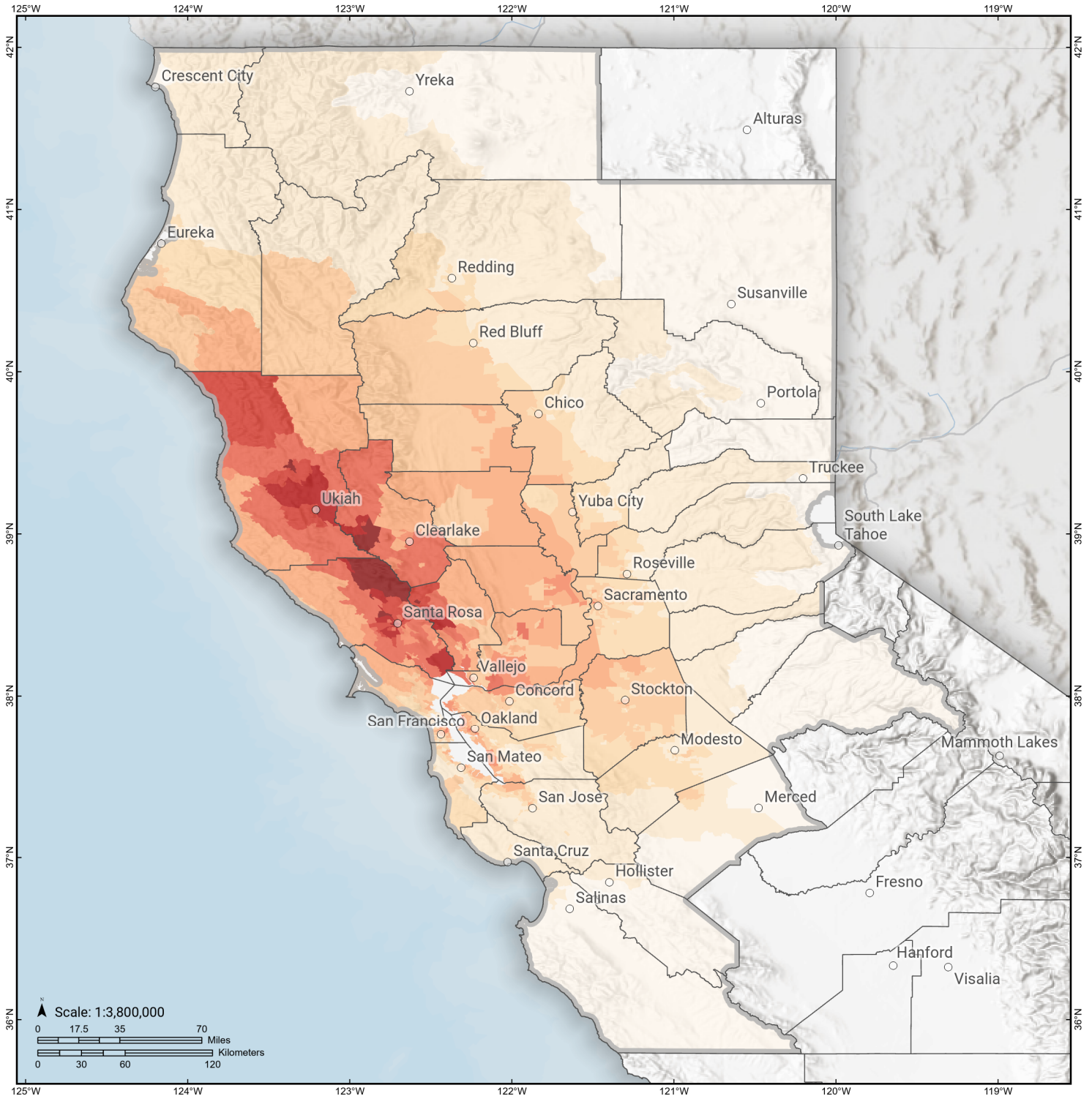
Economic Impacts by Census Tract

Ground Shaking

Debris
**Total Tons:
Total Truckloads:**

Type	Tons

The estimates of social and economic impacts contained in this report were produced using Hazus loss estimation methodology software which is based on current scientific and engineering knowledge. There are uncertainties inherent in any loss estimation technique. Therefore, there may be significant differences between the modeled results contained in this report and the actual social and economic losses following a specific earthquake.

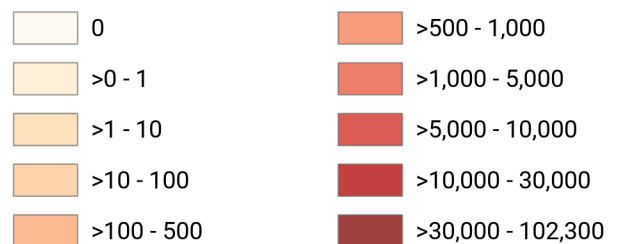
Maacama

Debris Generated by Census Tract



Study Region: Maacama
Scenario: maacama2011cfmshaw09_m7p55_se

Debris Generated (in tons)



Maacama

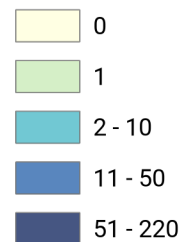
Displaced Households by Census Tract



Study Region: Maacama

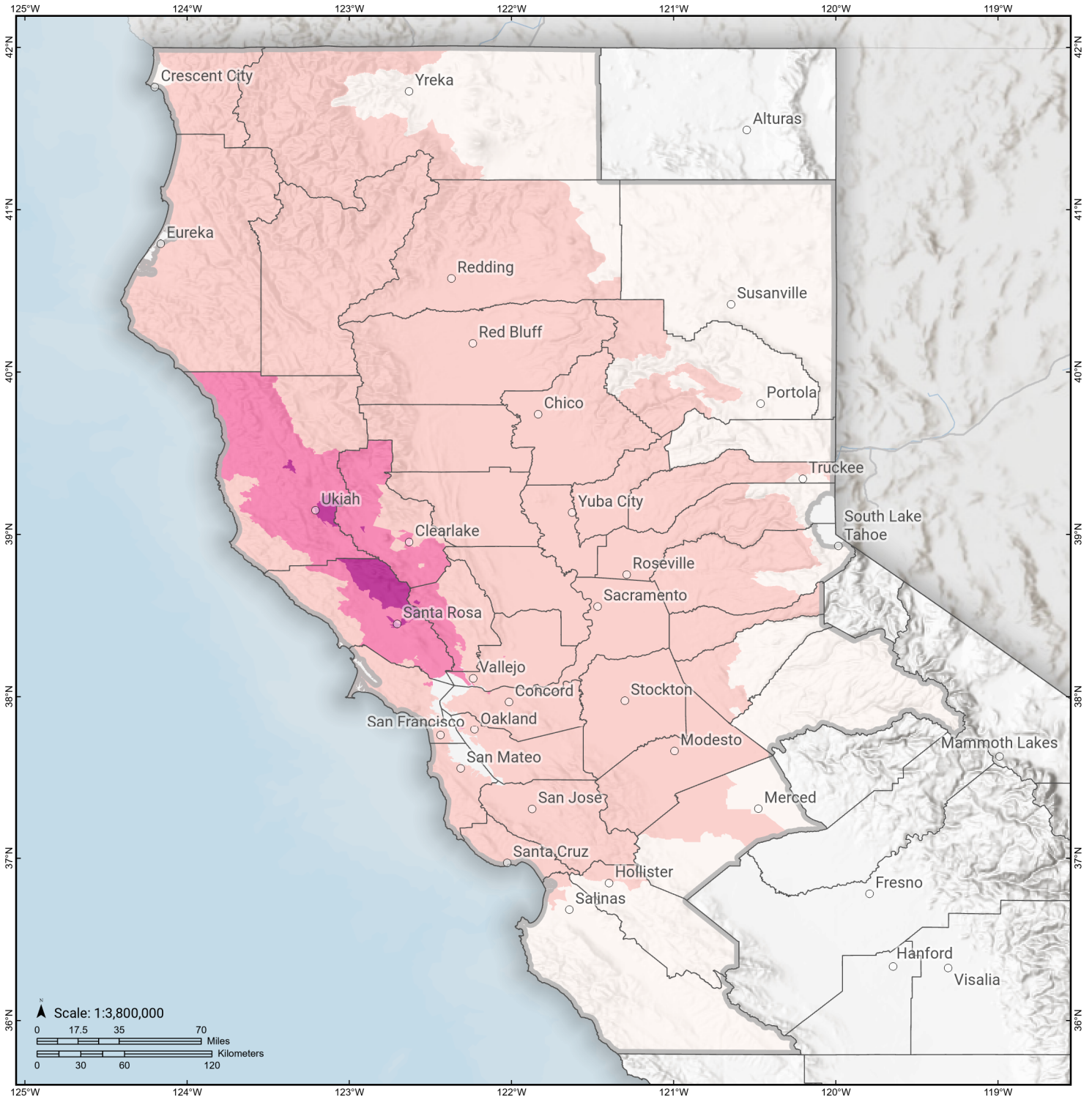
Scenario: maacama2011cfmshaw09_m7p55_se

Displaced Households



Maacama

Loss Ratio by Census Tract



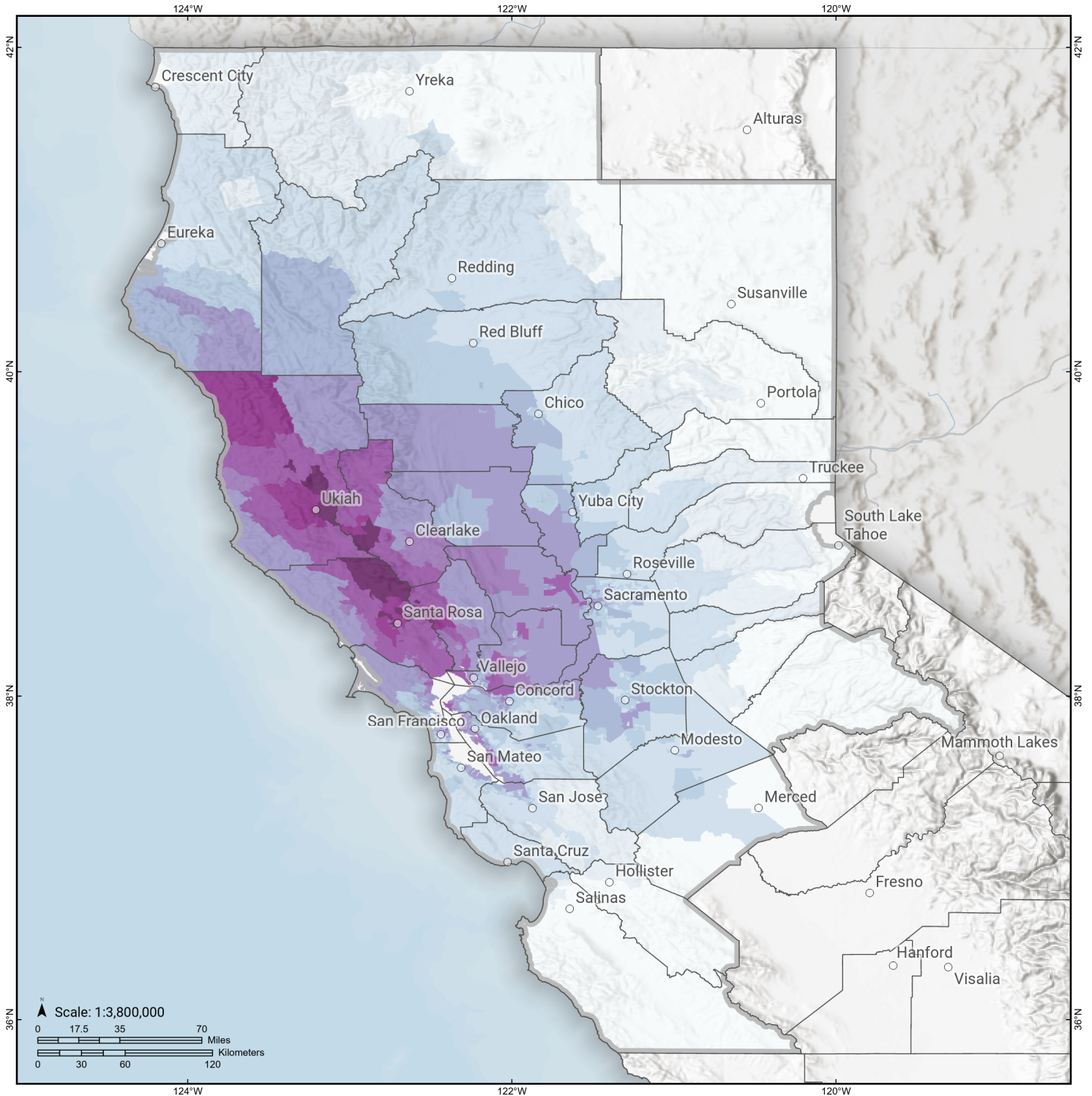
Study Region: Maacama
Scenario: maacama2011cfmshaw09_m7p55_se

Loss Ratio (ratio of building related economic loss to exposed value of buildings)



Maacama

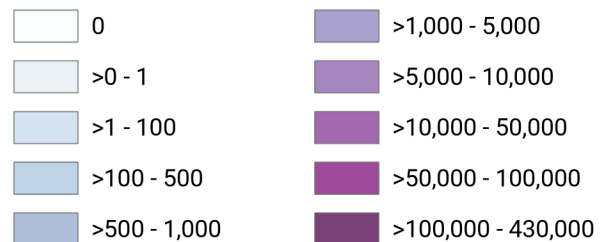
Total Building Related Economic Loss by Census Tract



Study Region: Maacama

Scenario: maacama2011cfmshaw09_m7p55_se

Economic Loss (in thousands of USD \$)



Building Damage by Count by General Occupancy

April 25, 2024

	# of Buildings					Total
	None	Slight	Moderate	Extensive	Complete	
California						
Alameda						
<i>Government</i>	10,386	125	16	0	0	10,528
<i>Agriculture</i>	408	10	4	0	0	422
<i>Commercial</i>	30,989	852	142	5	0	31,989
<i>Religion</i>	1,923	54	9	0	0	1,986
<i>Single Family</i>	343,170	1,000	3	0	0	344,173
<i>Other Residential</i>	60,380	905	108	3	0	61,396
<i>Education</i>	1,095	18	4	0	0	1,117
<i>Industrial</i>	9,855	277	69	4	0	10,205
Amador						
<i>Industrial</i>	235	0	0	0	0	235
<i>Single Family</i>	14,962	0	0	0	0	14,962
<i>Other Residential</i>	1,037	0	0	0	0	1,037
<i>Education</i>	23	0	0	0	0	23
<i>Government</i>	32	0	0	0	0	32
<i>Agriculture</i>	44	0	0	0	0	44
<i>Religion</i>	45	0	0	0	0	45
<i>Commercial</i>	1,368	0	0	0	0	1,368
Butte						

	# of Buildings					Total
	None	Slight	Moderate	Extensive	Complete	
<i>Government</i>	146	1	0	0	0	147
<i>Religion</i>	528	3	0	0	0	531
<i>Agriculture</i>	506	4	1	0	0	510
<i>Commercial</i>	6,364	20	1	0	0	6,385
<i>Industrial</i>	1,514	8	1	0	0	1,522
<i>Single Family</i>	50,258	25	0	0	0	50,283
<i>Other Residential</i>	21,413	79	6	0	0	21,498
<i>Education</i>	172	0	0	0	0	172
Calaveras						
<i>Government</i>	84	0	0	0	0	84
<i>Other Residential</i>	2,559	0	0	0	0	2,559
<i>Education</i>	35	0	0	0	0	35
<i>Religion</i>	130	0	0	0	0	130
<i>Agriculture</i>	2,207	0	0	0	0	2,207
<i>Commercial</i>	1,413	0	0	0	0	1,413
<i>Industrial</i>	466	0	0	0	0	466
<i>Single Family</i>	22,148	0	0	0	0	22,148
Colusa						
<i>Agriculture</i>	136	5	1	0	0	142
<i>Religion</i>	55	2	0	0	0	58
<i>Commercial</i>	760	29	5	0	0	794
<i>Industrial</i>	109	4	0	0	0	113
<i>Other Residential</i>	916	34	4	0	0	954
<i>Single Family</i>	5,864	89	0	0	0	5,954
<i>Government</i>	31	1	0	0	0	32

	# of Buildings					Total
	None	Slight	Moderate	Extensive	Complete	
<i>Education</i>	33	0	0	0	0	33
Contra Costa						
<i>Commercial</i>	17,588	335	63	5	0	17,991
<i>Agriculture</i>	732	13	3	1	0	749
<i>Religion</i>	1,183	35	7	1	0	1,226
<i>Single Family</i>	280,095	1,837	3	0	0	281,935
<i>Other Residential</i>	28,414	639	69	2	0	29,124
<i>Industrial</i>	4,571	144	31	3	0	4,749
<i>Government</i>	4,910	94	19	2	0	5,024
<i>Education</i>	649	4	0	0	0	653
Del Norte						
<i>Commercial</i>	729	0	0	0	0	729
<i>Agriculture</i>	134	0	0	0	0	134
<i>Government</i>	18	0	0	0	0	18
<i>Religion</i>	53	0	0	0	0	53
<i>Other Residential</i>	3,861	0	0	0	0	3,861
<i>Education</i>	31	0	0	0	0	31
<i>Industrial</i>	61	0	0	0	0	61
<i>Single Family</i>	6,117	0	0	0	0	6,117
El Dorado						
<i>Other Residential</i>	10,420	0	0	0	0	10,420
<i>Industrial</i>	1,199	0	0	0	0	1,199
<i>Education</i>	128	0	0	0	0	128
<i>Single Family</i>	71,424	0	0	0	0	71,424
<i>Commercial</i>	4,768	0	0	0	0	4,768

	# of Buildings					Total
	None	Slight	Moderate	Extensive	Complete	
<i>Government</i>	100	0	0	0	0	100
<i>Religion</i>	180	0	0	0	0	180
<i>Agriculture</i>	161	0	0	0	0	161
Glenn						
<i>Other Residential</i>	2,059	81	11	0	0	2,152
<i>Government</i>	98	1	0	0	0	99
<i>Education</i>	35	0	0	0	0	35
<i>Industrial</i>	249	4	1	0	0	254
<i>Single Family</i>	7,372	45	0	0	0	7,417
<i>Commercial</i>	863	19	2	0	0	885
<i>Agriculture</i>	1,328	31	7	0	0	1,365
<i>Religion</i>	87	2	0	0	0	89
Humboldt						
<i>Government</i>	86	1	0	0	0	87
<i>Agriculture</i>	148	2	0	0	0	150
<i>Religion</i>	60	1	0	0	0	61
<i>Commercial</i>	3,082	32	4	0	0	3,118
<i>Single Family</i>	38,212	146	0	0	0	38,359
<i>Other Residential</i>	11,912	128	17	0	0	12,058
<i>Education</i>	127	0	0	0	0	127
<i>Industrial</i>	729	9	2	0	0	740
Lake						
<i>Agriculture</i>	92	45	17	4	2	161
<i>Single Family</i>	16,166	5,070	395	2	0	21,633
<i>Other Residential</i>	5,998	4,403	3,201	935	63	14,601

	# of Buildings					Total
	None	Slight	Moderate	Extensive	Complete	
<i>Education</i>	57	10	1	0	0	68
<i>Industrial</i>	193	96	51	12	2	354
<i>Commercial</i>	1,251	516	241	60	22	2,091
<i>Religion</i>	79	35	18	6	2	140
<i>Government</i>	45	21	9	2	1	78
Lassen						
<i>Other Residential</i>	2,627	0	0	0	0	2,627
<i>Education</i>	40	0	0	0	0	40
<i>Government</i>	22	0	0	0	0	22
<i>Industrial</i>	140	0	0	0	0	140
<i>Commercial</i>	913	0	0	0	0	913
<i>Religion</i>	71	0	0	0	0	71
<i>Agriculture</i>	37	0	0	0	0	37
<i>Single Family</i>	9,562	0	0	0	0	9,562
Marin						
<i>Other Residential</i>	7,627	215	47	1	0	7,890
<i>Government</i>	139	4	1	0	0	143
<i>Education</i>	271	3	0	0	0	274
<i>Commercial</i>	7,971	263	35	2	0	8,270
<i>Religion</i>	311	8	1	0	0	319
<i>Agriculture</i>	180	7	2	1	0	190
<i>Single Family</i>	75,688	1,031	5	0	0	76,724
<i>Industrial</i>	1,421	95	18	1	0	1,535
Mendocino						
<i>Commercial</i>	1,485	804	708	385	53	3,436

	# of Buildings					Total
	None	Slight	Moderate	Extensive	Complete	
<i>Religion</i>	97	54	47	17	1	216
<i>Agriculture</i>	85	60	31	8	1	184
<i>Single Family</i>	13,612	10,144	2,166	46	1	25,969
<i>Other Residential</i>	1,975	1,819	1,892	1,184	190	7,060
<i>Government</i>	43	15	13	11	2	83
<i>Education</i>	57	26	15	2	0	101
<i>Industrial</i>	340	230	195	92	12	869
Merced						
<i>Education</i>	163	0	0	0	0	163
<i>Government</i>	171	0	0	0	0	171
<i>Commercial</i>	4,754	0	0	0	0	4,754
<i>Agriculture</i>	7,650	3	0	0	0	7,653
<i>Religion</i>	345	0	0	0	0	345
<i>Industrial</i>	1,022	0	0	0	0	1,022
<i>Single Family</i>	63,598	0	0	0	0	63,598
<i>Other Residential</i>	10,786	1	0	0	0	10,787
Monterey						
<i>Single Family</i>	90,876	0	0	0	0	90,876
<i>Industrial</i>	1,850	0	0	0	0	1,850
<i>Other Residential</i>	19,809	0	0	0	0	19,809
<i>Education</i>	239	0	0	0	0	239
<i>Government</i>	185	0	0	0	0	185
<i>Agriculture</i>	1,815	0	0	0	0	1,815
<i>Commercial</i>	9,246	0	0	0	0	9,246

		# of Buildings					
		None	Slight	Moderate	Extensive	Complete	Total
Napa	<i>Religion</i>	580	0	0	0	0	580
	<i>Commercial</i>	2,877	715	314	85	31	4,021
	<i>Agriculture</i>	250	66	25	7	1	349
	<i>Religion</i>	100	29	14	4	1	148
	<i>Single Family</i>	32,654	5,640	462	6	0	38,761
	<i>Other Residential</i>	4,525	1,395	655	278	125	6,978
	<i>Government</i>	77	17	8	2	0	103
	<i>Education</i>	110	15	6	1	0	132
Nevada	<i>Industrial</i>	934	256	128	36	13	1,367
	<i>Commercial</i>	2,835	0	0	0	0	2,835
	<i>Religion</i>	189	0	0	0	0	189
	<i>Government</i>	60	0	0	0	0	60
	<i>Agriculture</i>	132	0	0	0	0	132
	<i>Single Family</i>	43,280	0	0	0	0	43,280
	<i>Other Residential</i>	6,384	0	0	0	0	6,384
	<i>Education</i>	108	0	0	0	0	108
Placer	<i>Industrial</i>	1,161	0	0	0	0	1,161
	<i>Education</i>	231	0	0	0	0	231
	<i>Commercial</i>	8,530	7	0	0	0	8,538
	<i>Government</i>	377	0	0	0	0	377
	<i>Agriculture</i>	258	0	0	0	0	258
	<i>Religion</i>	382	0	0	0	0	382

	# of Buildings					Total
	None	Slight	Moderate	Extensive	Complete	
<i>Industrial</i>	2,700	3	0	0	0	2,703
<i>Other Residential</i>	14,831	12	1	0	0	14,843
<i>Single Family</i>	134,692	27	0	0	0	134,719
Plumas						
<i>Commercial</i>	1,215	0	0	0	0	1,215
<i>Religion</i>	30	0	0	0	0	30
<i>Agriculture</i>	84	0	0	0	0	84
<i>Other Residential</i>	5,032	0	0	0	0	5,032
<i>Single Family</i>	9,877	0	0	0	0	9,877
<i>Government</i>	45	0	0	0	0	45
<i>Education</i>	26	0	0	0	0	26
<i>Industrial</i>	184	0	0	0	0	184
Sacramento						
<i>Single Family</i>	386,060	776	3	0	0	386,840
<i>Industrial</i>	6,713	37	5	0	0	6,756
<i>Other Residential</i>	56,107	287	19	0	0	56,413
<i>Education</i>	828	1	0	0	0	829
<i>Agriculture</i>	617	3	1	0	0	621
<i>Religion</i>	1,678	21	3	0	0	1,702
<i>Government</i>	589	25	4	0	0	619
<i>Commercial</i>	26,026	233	35	1	0	26,295
San Benito						
<i>Other Residential</i>	1,375	0	0	0	0	1,375
<i>Single Family</i>	14,726	0	0	0	0	14,726
<i>Industrial</i>	326	0	0	0	0	326

	# of Buildings					Total
	None	Slight	Moderate	Extensive	Complete	
<i>Education</i>	42	0	0	0	0	42
<i>Government</i>	45	0	0	0	0	45
<i>Commercial</i>	1,080	0	0	0	0	1,080
<i>Religion</i>	64	0	0	0	0	64
<i>Agriculture</i>	253	0	0	0	0	253
San Francisco						
<i>Single Family</i>	149,524	1,085	93	1	0	150,703
<i>Other Residential</i>	42,952	1,418	158	2	0	44,529
<i>Government</i>	265	21	3	0	0	289
<i>Education</i>	557	13	2	0	0	572
<i>Industrial</i>	3,688	148	23	0	0	3,860
<i>Commercial</i>	20,111	1,088	143	2	0	21,344
<i>Religion</i>	1,301	39	5	0	0	1,345
<i>Agriculture</i>	157	4	1	0	0	162
San Joaquin						
<i>Commercial</i>	12,821	40	2	0	0	12,864
<i>Agriculture</i>	750	3	0	0	0	753
<i>Religion</i>	874	3	0	0	0	877
<i>Government</i>	302	2	0	0	0	304
<i>Single Family</i>	188,205	664	53	0	0	188,922
<i>Other Residential</i>	21,675	122	8	0	0	21,805
<i>Education</i>	395	0	0	0	0	395
<i>Industrial</i>	4,912	15	1	0	0	4,928
San Mateo						
<i>Religion</i>	731	5	0	0	0	736

	# of Buildings					Total
	None	Slight	Moderate	Extensive	Complete	
<i>Agriculture</i>	536	3	0	0	0	539
<i>Government</i>	296	3	0	0	0	299
<i>Commercial</i>	14,288	101	6	0	0	14,395
<i>Industrial</i>	4,434	35	3	0	0	4,472
<i>Other Residential</i>	22,308	136	9	0	0	22,453
<i>Single Family</i>	159,661	270	0	0	0	159,931
<i>Education</i>	488	1	0	0	0	489
Santa Clara						
<i>Other Residential</i>	59,067	89	4	0	0	59,160
<i>Single Family</i>	427,177	42	0	0	0	427,219
<i>Government</i>	498	3	0	0	0	502
<i>Education</i>	1,173	0	0	0	0	1,173
<i>Industrial</i>	9,421	12	1	0	0	9,433
<i>Commercial</i>	35,410	56	3	0	0	35,469
<i>Religion</i>	1,538	2	0	0	0	1,540
<i>Agriculture</i>	894	1	0	0	0	895
Santa Cruz						
<i>Religion</i>	359	0	0	0	0	359
<i>Agriculture</i>	840	0	0	0	0	840
<i>Single Family</i>	68,870	0	0	0	0	68,870
<i>Other Residential</i>	14,889	2	0	0	0	14,892
<i>Industrial</i>	1,819	0	0	0	0	1,819
<i>Education</i>	225	0	0	0	0	225
<i>Commercial</i>	6,692	2	0	0	0	6,694
<i>Government</i>	127	0	0	0	0	127

	# of Buildings					Total
	None	Slight	Moderate	Extensive	Complete	
Shasta						
<i>Agriculture</i>	3,233	1	0	0	0	3,235
<i>Religion</i>	66	0	0	0	0	66
<i>Commercial</i>	5,253	1	0	0	0	5,254
<i>Single Family</i>	51,812	3	0	0	0	51,815
<i>Industrial</i>	1,037	1	0	0	0	1,038
<i>Other Residential</i>	16,914	34	1	0	0	16,949
<i>Education</i>	136	0	0	0	0	136
<i>Government</i>	87	0	0	0	0	87
Sierra						
<i>Single Family</i>	1,858	0	0	0	0	1,858
<i>Other Residential</i>	153	0	0	0	0	153
<i>Industrial</i>	66	0	0	0	0	66
<i>Education</i>	14	0	0	0	0	14
<i>Commercial</i>	141	0	0	0	0	141
<i>Religion</i>	12	0	0	0	0	12
<i>Agriculture</i>	7	0	0	0	0	7
<i>Government</i>	16	0	0	0	0	16
Siskiyou						
<i>Commercial</i>	1,591	0	0	0	0	1,591
<i>Religion</i>	127	0	0	0	0	127
<i>Agriculture</i>	201	0	0	0	0	201
<i>Single Family</i>	17,794	0	0	0	0	17,794
<i>Industrial</i>	480	0	0	0	0	480
<i>Government</i>	244	0	0	0	0	244

	# of Buildings					Total
	None	Slight	Moderate	Extensive	Complete	
Solano						
<i>Other Residential</i>	5,095	0	0	0	0	5,095
<i>Education</i>	76	0	0	0	0	76
<i>Religion</i>	421	27	6	1	0	454
<i>Agriculture</i>	228	13	3	1	0	245
<i>Government</i>	145	7	1	0	0	152
<i>Commercial</i>	6,759	421	82	6	0	7,268
<i>Single Family</i>	117,407	3,547	13	0	0	120,968
<i>Industrial</i>	1,919	149	30	3	0	2,101
<i>Other Residential</i>	11,377	796	140	4	0	12,317
<i>Education</i>	220	4	1	0	0	225
Sonoma						
<i>Other Residential</i>	10,418	8,384	4,236	1,678	317	25,033
<i>Government</i>	187	71	44	14	2	319
<i>Education</i>	244	85	31	5	1	367
<i>Religion</i>	271	154	102	36	13	576
<i>Commercial</i>	5,339	3,551	2,227	717	276	12,110
<i>Agriculture</i>	681	315	209	76	22	1,304
<i>Single Family</i>	82,084	52,164	7,685	93	2	142,028
<i>Industrial</i>	1,610	1,151	771	213	79	3,825
Stanislaus						
<i>Other Residential</i>	19,561	8	0	0	0	19,569
<i>Single Family</i>	142,724	0	0	0	0	142,724
<i>Education</i>	307	0	0	0	0	307
<i>Government</i>	680	0	0	0	0	680

	# of Buildings					Total
	None	Slight	Moderate	Extensive	Complete	
Sutter						
<i>Industrial</i>	3,474	1	0	0	0	3,475
<i>Commercial</i>	10,364	5	0	0	0	10,369
<i>Religion</i>	456	0	0	0	0	456
<i>Agriculture</i>	1,239	0	0	0	0	1,239
<i>Other Residential</i>	3,062	48	3	0	0	3,113
<i>Industrial</i>	628	7	1	0	0	636
<i>Education</i>	62	0	0	0	0	62
<i>Government</i>	76	1	0	0	0	77
<i>Single Family</i>	24,423	89	0	0	0	24,512
<i>Commercial</i>	2,033	17	1	0	0	2,052
<i>Agriculture</i>	1,099	21	5	0	0	1,125
<i>Religion</i>	153	1	0	0	0	154
Tehama						
<i>Religion</i>	110	0	0	0	0	110
<i>Agriculture</i>	299	0	0	0	0	299
<i>Industrial</i>	551	1	0	0	0	552
<i>Other Residential</i>	3,965	25	1	0	0	3,991
<i>Single Family</i>	21,204	18	0	0	0	21,222
<i>Education</i>	57	0	0	0	0	57
<i>Commercial</i>	1,266	4	0	0	0	1,270
<i>Government</i>	50	0	0	0	0	50
Trinity						
<i>Religion</i>	45	0	0	0	0	45
<i>Commercial</i>	1,004	1	0	0	0	1,005

	# of Buildings					Total
	None	Slight	Moderate	Extensive	Complete	
<i>Agriculture</i>	4	0	0	0	0	4
<i>Single Family</i>	6,290	4	0	0	0	6,294
<i>Industrial</i>	58	0	0	0	0	58
<i>Other Residential</i>	1,338	15	1	0	0	1,354
<i>Education</i>	26	0	0	0	0	26
<i>Government</i>	8	0	0	0	0	8
Tuolumne						
<i>Education</i>	57	0	0	0	0	57
<i>Government</i>	143	0	0	0	0	143
<i>Commercial</i>	1,576	0	0	0	0	1,576
<i>Religion</i>	121	0	0	0	0	121
<i>Agriculture</i>	82	0	0	0	0	82
<i>Industrial</i>	383	0	0	0	0	383
<i>Other Residential</i>	4,962	0	0	0	0	4,962
<i>Single Family</i>	21,645	0	0	0	0	21,645
Yolo						
<i>Industrial</i>	1,064	45	8	0	0	1,117
<i>Other Residential</i>	9,523	308	29	1	0	9,861
<i>Education</i>	129	2	0	0	0	131
<i>Government</i>	107	4	1	0	0	111
<i>Single Family</i>	41,776	810	3	0	0	42,589
<i>Commercial</i>	4,041	157	26	1	0	4,225
<i>Agriculture</i>	265	11	4	0	0	281
<i>Religion</i>	232	8	1	0	0	242
Yuba						

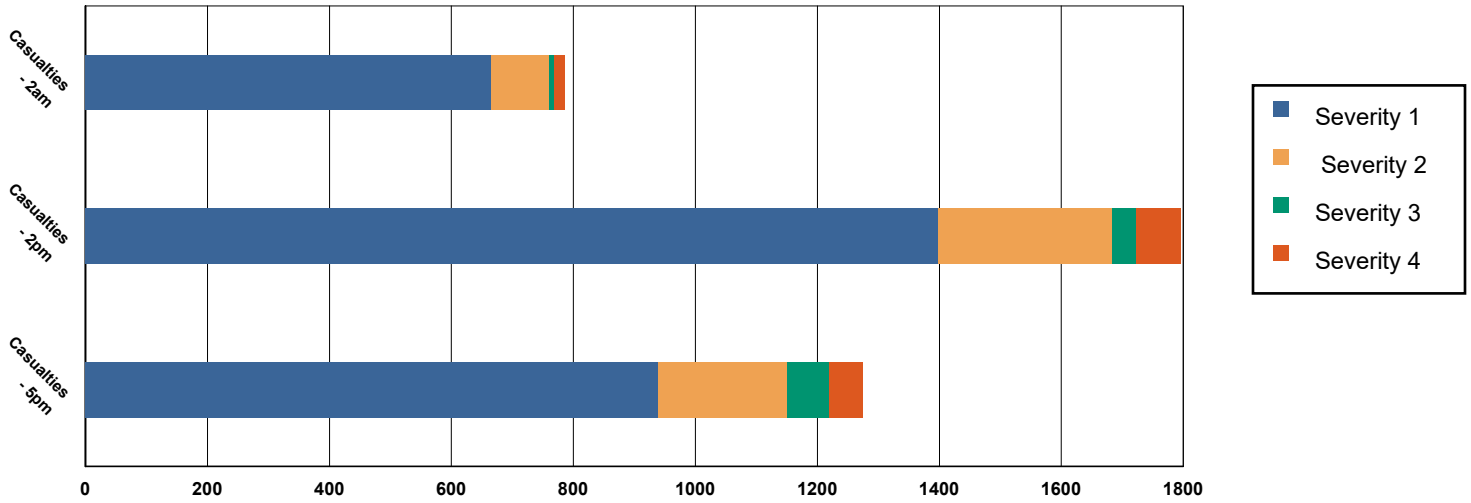
	# of Buildings					Total
	None	Slight	Moderate	Extensive	Complete	
<i>Government</i>	591	0	0	0	0	591
<i>Education</i>	54	0	0	0	0	54
<i>Other Residential</i>	6,993	27	1	0	0	7,021
<i>Religion</i>	98	0	0	0	0	98
<i>Commercial</i>	1,194	5	0	0	0	1,199
<i>Agriculture</i>	92	0	0	0	0	92
<i>Single Family</i>	18,853	14	0	0	0	18,867
<i>Industrial</i>	403	1	0	0	0	404
Total	4,217,105	119,662	27,596	6,073	1,236	4,371,672
Region Total	4,217,105	119,662	27,596	6,073	1,236	4,371,672

Totals only reflect data for those census tracts/blocks included in the user's study region and will reflect the entire county/state only if all of the census blocks for that county/states were selected at the time of study region creation.

Casualties Summary Report

April 25, 2024

Region Total Casualties



Injury Severity Level

Severity 1	Severity 2	Severity 3	Severity 4	Total
------------	------------	------------	------------	-------

California

Alameda

Casualties - 2am

	Severity 1	Severity 2	Severity 3	Severity 4	Total
Single Family	1	0	0	0	1
Hotels	0	0	0	0	0
Commuting	0	0	0	0	0
Educational	0	0	0	0	0
Industrial	0	0	0	0	0
Commercial	0	0	0	0	0
Other-Residential	8	0	0	0	9
Total Casualties - 2am	11	0	0	0	11

Casualties - 2pm

Industrial	2	0	0	0	3
Educational	3	0	0	0	3
Other-Residential	3	0	0	0	3
Single Family	0	0	0	0	0
Hotels	0	0	0	0	0
Commuting	0	0	0	0	0
Commercial	19	1	0	0	20

	Injury Severity Level				Total
	Severity 1	Severity 2	Severity 3	Severity 4	
California					
Alameda					
Total Casualties - 2pm	27	1	0	0	29
Casualties - 5pm					
<i>Commuting</i>	0	0	0	0	0
<i>Single Family</i>	1	0	0	0	1
<i>Commercial</i>	12	1	0	0	12
<i>Hotels</i>	0	0	0	0	0
<i>Educational</i>	0	0	0	0	0
<i>Industrial</i>	2	0	0	0	2
<i>Other-Residential</i>	3	0	0	0	3
Total Casualties - 5pm	17	1	0	0	18
Amador					
Casualties - 2am					
<i>Commercial</i>	0	0	0	0	0
<i>Other-Residential</i>	0	0	0	0	0
<i>Commuting</i>	0	0	0	0	0
<i>Educational</i>	0	0	0	0	0
<i>Single Family</i>	0	0	0	0	0
<i>Hotels</i>	0	0	0	0	0
<i>Industrial</i>	0	0	0	0	0
Total Casualties - 2am	0	0	0	0	0
Casualties - 2pm					
<i>Single Family</i>	0	0	0	0	0
<i>Hotels</i>	0	0	0	0	0
<i>Educational</i>	0	0	0	0	0
<i>Commuting</i>	0	0	0	0	0
<i>Commercial</i>	0	0	0	0	0
<i>Other-Residential</i>	0	0	0	0	0
<i>Industrial</i>	0	0	0	0	0
Total Casualties - 2pm	0	0	0	0	0
Casualties - 5pm					
<i>Commercial</i>	0	0	0	0	0
<i>Commuting</i>	0	0	0	0	0
<i>Other-Residential</i>	0	0	0	0	0
<i>Single Family</i>	0	0	0	0	0
<i>Educational</i>	0	0	0	0	0
<i>Hotels</i>	0	0	0	0	0
<i>Industrial</i>	0	0	0	0	0
Total Casualties - 5pm	0	0	0	0	0
Butte					
Casualties - 2am					
<i>Industrial</i>	0	0	0	0	0

Injury Severity Level

Severity 1 Severity 2 Severity 3 Severity 4 Total

California

Butte

Casualties - 2am

<i>Commercial</i>	0	0	0	0	0
<i>Other-Residential</i>	0	0	0	0	0
<i>Single Family</i>	0	0	0	0	0
<i>Commuting</i>	0	0	0	0	0
<i>Educational</i>	0	0	0	0	0
<i>Hotels</i>	0	0	0	0	0
Total Casualties - 2am	0	0	0	0	0

Casualties - 2pm

<i>Single Family</i>	0	0	0	0	0
<i>Educational</i>	0	0	0	0	0
<i>Commuting</i>	0	0	0	0	0
<i>Other-Residential</i>	0	0	0	0	0
<i>Hotels</i>	0	0	0	0	0
<i>Commercial</i>	0	0	0	0	0
<i>Industrial</i>	0	0	0	0	0
Total Casualties - 2pm	0	0	0	0	0

Casualties - 5pm

<i>Industrial</i>	0	0	0	0	0
<i>Other-Residential</i>	0	0	0	0	0
<i>Single Family</i>	0	0	0	0	0
<i>Commercial</i>	0	0	0	0	0
<i>Commuting</i>	0	0	0	0	0
<i>Hotels</i>	0	0	0	0	0
<i>Educational</i>	0	0	0	0	0
Total Casualties - 5pm	0	0	0	0	0

Calaveras

Casualties - 2am

<i>Other-Residential</i>	0	0	0	0	0
<i>Commuting</i>	0	0	0	0	0
<i>Commercial</i>	0	0	0	0	0
<i>Single Family</i>	0	0	0	0	0
<i>Hotels</i>	0	0	0	0	0
<i>Educational</i>	0	0	0	0	0
<i>Industrial</i>	0	0	0	0	0
Total Casualties - 2am	0	0	0	0	0

Casualties - 2pm

<i>Hotels</i>	0	0	0	0	0
<i>Single Family</i>	0	0	0	0	0
<i>Educational</i>	0	0	0	0	0
<i>Commuting</i>	0	0	0	0	0
<i>Commercial</i>	0	0	0	0	0

	Injury Severity Level				Total
	Severity 1	Severity 2	Severity 3	Severity 4	
California					
Calaveras					
Casualties - 2pm					
<i>Industrial</i>	0	0	0	0	0
<i>Other-Residential</i>	0	0	0	0	0
Total Casualties - 2pm	0	0	0	0	0
Casualties - 5pm					
<i>Industrial</i>	0	0	0	0	0
<i>Commercial</i>	0	0	0	0	0
<i>Other-Residential</i>	0	0	0	0	0
<i>Educational</i>	0	0	0	0	0
<i>Hotels</i>	0	0	0	0	0
<i>Commuting</i>	0	0	0	0	0
<i>Single Family</i>	0	0	0	0	0
Total Casualties - 5pm	0	0	0	0	0
Colusa					
Casualties - 2am					
<i>Other-Residential</i>	0	0	0	0	0
<i>Industrial</i>	0	0	0	0	0
<i>Single Family</i>	0	0	0	0	0
<i>Commercial</i>	0	0	0	0	0
<i>Educational</i>	0	0	0	0	0
<i>Commuting</i>	0	0	0	0	0
<i>Hotels</i>	0	0	0	0	0
Total Casualties - 2am	0	0	0	0	0
Casualties - 2pm					
<i>Hotels</i>	0	0	0	0	0
<i>Single Family</i>	0	0	0	0	0
<i>Educational</i>	0	0	0	0	0
<i>Commercial</i>	0	0	0	0	0
<i>Commuting</i>	0	0	0	0	0
<i>Other-Residential</i>	0	0	0	0	0
<i>Industrial</i>	0	0	0	0	0
Total Casualties - 2pm	0	0	0	0	0
Casualties - 5pm					
<i>Industrial</i>	0	0	0	0	0
<i>Commercial</i>	0	0	0	0	0
<i>Other-Residential</i>	0	0	0	0	0
<i>Commuting</i>	0	0	0	0	0
<i>Single Family</i>	0	0	0	0	0
<i>Educational</i>	0	0	0	0	0
<i>Hotels</i>	0	0	0	0	0
Total Casualties - 5pm	0	0	0	0	0

	Injury Severity Level				Total
	Severity 1	Severity 2	Severity 3	Severity 4	
California					
Contra Costa					
Casualties - 2am					
<i>Educational</i>	0	0	0	0	0
<i>Hotels</i>	0	0	0	0	0
<i>Industrial</i>	0	0	0	0	0
<i>Other-Residential</i>	3	0	0	0	3
<i>Single Family</i>	3	0	0	0	3
<i>Commercial</i>	0	0	0	0	0
<i>Commuting</i>	0	0	0	0	0
Total Casualties - 2am	6	0	0	0	6
Casualties - 2pm					
<i>Other-Residential</i>	1	0	0	0	1
<i>Industrial</i>	1	0	0	0	1
<i>Hotels</i>	0	0	0	0	0
<i>Single Family</i>	1	0	0	0	1
<i>Educational</i>	1	0	0	0	1
<i>Commuting</i>	0	0	0	0	0
<i>Commercial</i>	10	1	0	0	11
Total Casualties - 2pm	14	1	0	0	15
Casualties - 5pm					
<i>Educational</i>	0	0	0	0	0
<i>Commuting</i>	0	0	0	0	0
<i>Single Family</i>	1	0	0	0	1
<i>Hotels</i>	0	0	0	0	0
<i>Industrial</i>	1	0	0	0	1
<i>Other-Residential</i>	1	0	0	0	1
<i>Commercial</i>	7	0	0	0	7
Total Casualties - 5pm	9	1	0	0	10
Del Norte					
Casualties - 2am					
<i>Hotels</i>	0	0	0	0	0
<i>Industrial</i>	0	0	0	0	0
<i>Commercial</i>	0	0	0	0	0
<i>Single Family</i>	0	0	0	0	0
<i>Other-Residential</i>	0	0	0	0	0
<i>Educational</i>	0	0	0	0	0
<i>Commuting</i>	0	0	0	0	0
Total Casualties - 2am	0	0	0	0	0
Casualties - 2pm					
<i>Commercial</i>	0	0	0	0	0
<i>Industrial</i>	0	0	0	0	0
<i>Other-Residential</i>	0	0	0	0	0
<i>Single Family</i>	0	0	0	0	0

	Injury Severity Level				Total
	Severity 1	Severity 2	Severity 3	Severity 4	
California					
Del Norte					
Casualties - 2pm					
<i>Educational</i>	0	0	0	0	0
<i>Commuting</i>	0	0	0	0	0
<i>Hotels</i>	0	0	0	0	0
Total Casualties - 2pm	0	0	0	0	0
Casualties - 5pm					
<i>Hotels</i>	0	0	0	0	0
<i>Educational</i>	0	0	0	0	0
<i>Industrial</i>	0	0	0	0	0
<i>Single Family</i>	0	0	0	0	0
<i>Other-Residential</i>	0	0	0	0	0
<i>Commuting</i>	0	0	0	0	0
<i>Commercial</i>	0	0	0	0	0
Total Casualties - 5pm	0	0	0	0	0
El Dorado					
Casualties - 2am					
<i>Commuting</i>	0	0	0	0	0
<i>Educational</i>	0	0	0	0	0
<i>Single Family</i>	0	0	0	0	0
<i>Hotels</i>	0	0	0	0	0
<i>Other-Residential</i>	0	0	0	0	0
<i>Industrial</i>	0	0	0	0	0
<i>Commercial</i>	0	0	0	0	0
Total Casualties - 2am	0	0	0	0	0
Casualties - 2pm					
<i>Industrial</i>	0	0	0	0	0
<i>Other-Residential</i>	0	0	0	0	0
<i>Single Family</i>	0	0	0	0	0
<i>Hotels</i>	0	0	0	0	0
<i>Educational</i>	0	0	0	0	0
<i>Commuting</i>	0	0	0	0	0
<i>Commercial</i>	0	0	0	0	0
Total Casualties - 2pm	0	0	0	0	0
Casualties - 5pm					
<i>Commercial</i>	0	0	0	0	0
<i>Commuting</i>	0	0	0	0	0
<i>Single Family</i>	0	0	0	0	0
<i>Educational</i>	0	0	0	0	0
<i>Hotels</i>	0	0	0	0	0
<i>Industrial</i>	0	0	0	0	0
<i>Other-Residential</i>	0	0	0	0	0

	Injury Severity Level				Total
	Severity 1	Severity 2	Severity 3	Severity 4	
California					
El Dorado					
Total Casualties - 5pm	0	0	0	0	0
Glenn					
Casualties - 2am					
<i>Hotels</i>	0	0	0	0	0
<i>Educational</i>	0	0	0	0	0
<i>Industrial</i>	0	0	0	0	0
<i>Other-Residential</i>	0	0	0	0	0
<i>Commercial</i>	0	0	0	0	0
<i>Commuting</i>	0	0	0	0	0
<i>Single Family</i>	0	0	0	0	0
Total Casualties - 2am	0	0	0	0	0
Casualties - 2pm					
<i>Industrial</i>	0	0	0	0	0
<i>Other-Residential</i>	0	0	0	0	0
<i>Commuting</i>	0	0	0	0	0
<i>Commercial</i>	1	0	0	0	1
<i>Hotels</i>	0	0	0	0	0
<i>Single Family</i>	0	0	0	0	0
<i>Educational</i>	0	0	0	0	0
Total Casualties - 2pm	1	0	0	0	1
Casualties - 5pm					
<i>Educational</i>	0	0	0	0	0
<i>Commuting</i>	0	0	0	0	0
<i>Hotels</i>	0	0	0	0	0
<i>Single Family</i>	0	0	0	0	0
<i>Industrial</i>	0	0	0	0	0
<i>Commercial</i>	0	0	0	0	0
<i>Other-Residential</i>	0	0	0	0	0
Total Casualties - 5pm	0	0	0	0	0
Humboldt					
Casualties - 2am					
<i>Single Family</i>	0	0	0	0	0
<i>Commercial</i>	0	0	0	0	0
<i>Commuting</i>	0	0	0	0	0
<i>Hotels</i>	0	0	0	0	0
<i>Educational</i>	0	0	0	0	0
<i>Industrial</i>	0	0	0	0	0
<i>Other-Residential</i>	0	0	0	0	0
Total Casualties - 2am	0	0	0	0	0
Casualties - 2pm					
<i>Industrial</i>	0	0	0	0	0

	Injury Severity Level				Total
	Severity 1	Severity 2	Severity 3	Severity 4	
California					
Humboldt					
Casualties - 2pm					
<i>Hotels</i>	0	0	0	0	0
<i>Commercial</i>	0	0	0	0	0
<i>Other-Residential</i>	0	0	0	0	0
<i>Single Family</i>	0	0	0	0	0
<i>Educational</i>	0	0	0	0	0
<i>Commuting</i>	0	0	0	0	0
Total Casualties - 2pm	0	0	0	0	0
Casualties - 5pm					
<i>Commercial</i>	0	0	0	0	0
<i>Other-Residential</i>	0	0	0	0	0
<i>Commuting</i>	0	0	0	0	0
<i>Hotels</i>	0	0	0	0	0
<i>Single Family</i>	0	0	0	0	0
<i>Educational</i>	0	0	0	0	0
<i>Industrial</i>	0	0	0	0	0
Total Casualties - 5pm	0	0	0	0	0
Lake					
Casualties - 2am					
<i>Hotels</i>	0	0	0	0	0
<i>Industrial</i>	0	0	0	0	0
<i>Other-Residential</i>	48	7	0	1	56
<i>Commuting</i>	0	0	0	0	0
<i>Educational</i>	0	0	0	0	0
<i>Single Family</i>	6	0	0	0	6
<i>Commercial</i>	1	0	0	0	1
Total Casualties - 2am	56	7	0	1	64
Casualties - 2pm					
<i>Industrial</i>	2	0	0	0	3
<i>Single Family</i>	2	0	0	0	2
<i>Commercial</i>	38	9	1	3	51
<i>Other-Residential</i>	17	2	0	0	19
<i>Hotels</i>	0	0	0	0	0
<i>Educational</i>	4	1	0	0	5
<i>Commuting</i>	0	0	0	0	0
Total Casualties - 2pm	63	12	2	3	80
Casualties - 5pm					
<i>Other-Residential</i>	17	2	0	0	20
<i>Industrial</i>	1	0	0	0	2
<i>Commercial</i>	23	5	1	2	31
<i>Educational</i>	0	0	0	0	0
<i>Commuting</i>	0	0	1	0	1

	Injury Severity Level				Total
	Severity 1	Severity 2	Severity 3	Severity 4	
California					
Lake					
Casualties - 5pm					
Single Family	2	0	0	0	2
Hotels	0	0	0	0	0
Total Casualties - 5pm	44	9	2	2	57
Lassen					
Casualties - 2am					
Hotels	0	0	0	0	0
Industrial	0	0	0	0	0
Educational	0	0	0	0	0
Single Family	0	0	0	0	0
Commercial	0	0	0	0	0
Commuting	0	0	0	0	0
Other-Residential	0	0	0	0	0
Total Casualties - 2am	0	0	0	0	0
Casualties - 2pm					
Industrial	0	0	0	0	0
Other-Residential	0	0	0	0	0
Commercial	0	0	0	0	0
Commuting	0	0	0	0	0
Single Family	0	0	0	0	0
Hotels	0	0	0	0	0
Educational	0	0	0	0	0
Total Casualties - 2pm	0	0	0	0	0
Casualties - 5pm					
Industrial	0	0	0	0	0
Single Family	0	0	0	0	0
Commercial	0	0	0	0	0
Hotels	0	0	0	0	0
Other-Residential	0	0	0	0	0
Commuting	0	0	0	0	0
Educational	0	0	0	0	0
Total Casualties - 5pm	0	0	0	0	0
Marin					
Casualties - 2am					
Commercial	0	0	0	0	0
Commuting	0	0	0	0	0
Other-Residential	1	0	0	0	1
Educational	0	0	0	0	0
Single Family	1	0	0	0	1
Hotels	0	0	0	0	0
Industrial	0	0	0	0	0

	Injury Severity Level				Total
	Severity 1	Severity 2	Severity 3	Severity 4	
California					
Marin					
Total Casualties - 2am	2	0	0	0	2
Casualties - 2pm					
<i>Hotels</i>	0	0	0	0	0
<i>Commuting</i>	0	0	0	0	0
<i>Educational</i>	0	0	0	0	0
<i>Industrial</i>	1	0	0	0	1
<i>Other-Residential</i>	0	0	0	0	0
<i>Commercial</i>	3	0	0	0	3
<i>Single Family</i>	0	0	0	0	0
Total Casualties - 2pm	4	0	0	0	5
Casualties - 5pm					
<i>Commuting</i>	0	0	0	0	0
<i>Commercial</i>	2	0	0	0	2
<i>Other-Residential</i>	0	0	0	0	0
<i>Single Family</i>	0	0	0	0	0
<i>Industrial</i>	0	0	0	0	0
<i>Educational</i>	0	0	0	0	0
<i>Hotels</i>	0	0	0	0	0
Total Casualties - 5pm	3	0	0	0	3
Mendocino					
Casualties - 2am					
<i>Educational</i>	0	0	0	0	0
<i>Hotels</i>	0	0	0	0	0
<i>Commuting</i>	0	0	0	0	0
<i>Industrial</i>	2	0	0	0	2
<i>Other-Residential</i>	72	12	1	1	86
<i>Single Family</i>	31	2	0	0	33
<i>Commercial</i>	2	0	0	0	2
Total Casualties - 2am	107	15	1	1	125
Casualties - 2pm					
<i>Industrial</i>	12	2	0	1	15
<i>Other-Residential</i>	22	4	0	0	27
<i>Commercial</i>	112	24	3	6	145
<i>Single Family</i>	10	1	0	0	11
<i>Commuting</i>	0	0	1	0	2
<i>Hotels</i>	0	0	0	0	0
<i>Educational</i>	26	4	0	1	32
Total Casualties - 2pm	182	35	5	8	231
Casualties - 5pm					
<i>Hotels</i>	0	0	0	0	0
<i>Single Family</i>	12	1	0	0	12

	Injury Severity Level				Total
	Severity 1	Severity 2	Severity 3	Severity 4	
California					
Mendocino					
Casualties - 5pm					
<i>Educational</i>	2	0	0	0	2
<i>Commuting</i>	5	9	13	3	30
<i>Commercial</i>	69	14	2	4	89
<i>Other-Residential</i>	26	4	0	0	31
<i>Industrial</i>	7	1	0	0	9
Total Casualties - 5pm	122	30	15	7	174
Merced					
Casualties - 2am					
<i>Hotels</i>	0	0	0	0	0
<i>Industrial</i>	0	0	0	0	0
<i>Commercial</i>	0	0	0	0	0
<i>Single Family</i>	0	0	0	0	0
<i>Other-Residential</i>	0	0	0	0	0
<i>Educational</i>	0	0	0	0	0
<i>Commuting</i>	0	0	0	0	0
Total Casualties - 2am	0	0	0	0	0
Casualties - 2pm					
<i>Other-Residential</i>	0	0	0	0	0
<i>Industrial</i>	0	0	0	0	0
<i>Commercial</i>	0	0	0	0	0
<i>Commuting</i>	0	0	0	0	0
<i>Hotels</i>	0	0	0	0	0
<i>Educational</i>	0	0	0	0	0
<i>Single Family</i>	0	0	0	0	0
Total Casualties - 2pm	0	0	0	0	0
Casualties - 5pm					
<i>Industrial</i>	0	0	0	0	0
<i>Hotels</i>	0	0	0	0	0
<i>Educational</i>	0	0	0	0	0
<i>Commuting</i>	0	0	0	0	0
<i>Single Family</i>	0	0	0	0	0
<i>Commercial</i>	0	0	0	0	0
<i>Other-Residential</i>	0	0	0	0	0
Total Casualties - 5pm	0	0	0	0	0
Monterey					
Casualties - 2am					
<i>Other-Residential</i>	0	0	0	0	0
<i>Commuting</i>	0	0	0	0	0
<i>Commercial</i>	0	0	0	0	0
<i>Single Family</i>	0	0	0	0	0
<i>Hotels</i>	0	0	0	0	0

	Injury Severity Level				Total
	Severity 1	Severity 2	Severity 3	Severity 4	
California					
Monterey					
Casualties - 2am					
<i>Educational</i>	0	0	0	0	0
<i>Industrial</i>	0	0	0	0	0
Total Casualties - 2am	0	0	0	0	0
Casualties - 2pm					
<i>Commuting</i>	0	0	0	0	0
<i>Commercial</i>	0	0	0	0	0
<i>Single Family</i>	0	0	0	0	0
<i>Hotels</i>	0	0	0	0	0
<i>Educational</i>	0	0	0	0	0
<i>Industrial</i>	0	0	0	0	0
<i>Other-Residential</i>	0	0	0	0	0
Total Casualties - 2pm	0	0	0	0	0
Casualties - 5pm					
<i>Commercial</i>	0	0	0	0	0
<i>Other-Residential</i>	0	0	0	0	0
<i>Industrial</i>	0	0	0	0	0
<i>Hotels</i>	0	0	0	0	0
<i>Educational</i>	0	0	0	0	0
<i>Commuting</i>	0	0	0	0	0
<i>Single Family</i>	0	0	0	0	0
Total Casualties - 5pm	0	0	0	0	0
Napa					
Casualties - 2am					
<i>Commercial</i>	1	0	0	0	1
<i>Other-Residential</i>	44	9	1	1	56
<i>Educational</i>	0	0	0	0	0
<i>Single Family</i>	9	0	0	0	10
<i>Commuting</i>	0	0	0	0	0
<i>Hotels</i>	0	0	0	0	1
<i>Industrial</i>	2	0	0	0	3
Total Casualties - 2am	57	10	1	2	70
Casualties - 2pm					
<i>Educational</i>	8	1	0	0	9
<i>Hotels</i>	0	0	0	0	0
<i>Commuting</i>	0	0	0	0	0
<i>Industrial</i>	15	3	0	1	20
<i>Other-Residential</i>	14	3	0	0	17
<i>Single Family</i>	3	0	0	0	3
<i>Commercial</i>	64	15	2	4	86
Total Casualties - 2pm	104	22	3	6	135

	Injury Severity Level				Total
	Severity 1	Severity 2	Severity 3	Severity 4	
California					
Napa					
Casualties - 5pm					
<i>Commercial</i>	42	10	1	3	56
<i>Single Family</i>	3	0	0	0	3
<i>Other-Residential</i>	16	3	0	1	20
<i>Commuting</i>	0	1	1	0	3
<i>Industrial</i>	10	2	0	1	13
<i>Educational</i>	0	0	0	0	0
<i>Hotels</i>	0	0	0	0	0
Total Casualties - 5pm	71	17	3	4	95
Nevada					
Casualties - 2am					
<i>Single Family</i>	0	0	0	0	0
<i>Commercial</i>	0	0	0	0	0
<i>Commuting</i>	0	0	0	0	0
<i>Hotels</i>	0	0	0	0	0
<i>Educational</i>	0	0	0	0	0
<i>Industrial</i>	0	0	0	0	0
<i>Other-Residential</i>	0	0	0	0	0
Total Casualties - 2am	0	0	0	0	0
Casualties - 2pm					
<i>Hotels</i>	0	0	0	0	0
<i>Industrial</i>	0	0	0	0	0
<i>Commercial</i>	0	0	0	0	0
<i>Single Family</i>	0	0	0	0	0
<i>Other-Residential</i>	0	0	0	0	0
<i>Educational</i>	0	0	0	0	0
<i>Commuting</i>	0	0	0	0	0
Total Casualties - 2pm	0	0	0	0	0
Casualties - 5pm					
<i>Commuting</i>	0	0	0	0	0
<i>Hotels</i>	0	0	0	0	0
<i>Other-Residential</i>	0	0	0	0	0
<i>Educational</i>	0	0	0	0	0
<i>Single Family</i>	0	0	0	0	0
<i>Commercial</i>	0	0	0	0	0
<i>Industrial</i>	0	0	0	0	0
Total Casualties - 5pm	0	0	0	0	0
Placer					
Casualties - 2am					
<i>Hotels</i>	0	0	0	0	0
<i>Educational</i>	0	0	0	0	0
<i>Industrial</i>	0	0	0	0	0

	Injury Severity Level				Total
	Severity 1	Severity 2	Severity 3	Severity 4	
California					
Placer					
Casualties - 2am					
Other-Residential	0	0	0	0	0
Commercial	0	0	0	0	0
Single Family	0	0	0	0	0
Commuting	0	0	0	0	0
Total Casualties - 2am	0	0	0	0	0
Casualties - 2pm					
Other-Residential	0	0	0	0	0
Industrial	0	0	0	0	0
Commercial	0	0	0	0	0
Single Family	0	0	0	0	0
Educational	0	0	0	0	0
Commuting	0	0	0	0	0
Hotels	0	0	0	0	0
Total Casualties - 2pm	0	0	0	0	0
Casualties - 5pm					
Single Family	0	0	0	0	0
Hotels	0	0	0	0	0
Commuting	0	0	0	0	0
Educational	0	0	0	0	0
Commercial	0	0	0	0	0
Industrial	0	0	0	0	0
Other-Residential	0	0	0	0	0
Total Casualties - 5pm	0	0	0	0	0
Plumas					
Casualties - 2am					
Educational	0	0	0	0	0
Single Family	0	0	0	0	0
Commuting	0	0	0	0	0
Hotels	0	0	0	0	0
Industrial	0	0	0	0	0
Other-Residential	0	0	0	0	0
Commercial	0	0	0	0	0
Total Casualties - 2am	0	0	0	0	0
Casualties - 2pm					
Industrial	0	0	0	0	0
Single Family	0	0	0	0	0
Commercial	0	0	0	0	0
Other-Residential	0	0	0	0	0
Hotels	0	0	0	0	0
Educational	0	0	0	0	0
Commuting	0	0	0	0	0

	Injury Severity Level				Total
	Severity 1	Severity 2	Severity 3	Severity 4	
California					
Plumas					
Total Casualties - 2pm	0	0	0	0	0
Casualties - 5pm					
Other-Residential	0	0	0	0	0
Single Family	0	0	0	0	0
Educational	0	0	0	0	0
Hotels	0	0	0	0	0
Commuting	0	0	0	0	0
Commercial	0	0	0	0	0
Industrial	0	0	0	0	0
Total Casualties - 5pm	0	0	0	0	0
Sacramento					
Casualties - 2am					
Industrial	0	0	0	0	0
Other-Residential	1	0	0	0	2
Commercial	0	0	0	0	0
Single Family	1	0	0	0	1
Hotels	0	0	0	0	0
Commuting	0	0	0	0	0
Educational	0	0	0	0	0
Total Casualties - 2am	3	0	0	0	3
Casualties - 2pm					
Other-Residential	1	0	0	0	1
Commuting	0	0	0	0	0
Single Family	0	0	0	0	0
Commercial	14	1	0	0	14
Hotels	0	0	0	0	0
Educational	0	0	0	0	0
Industrial	0	0	0	0	0
Total Casualties - 2pm	15	1	0	0	16
Casualties - 5pm					
Industrial	0	0	0	0	0
Educational	0	0	0	0	0
Hotels	0	0	0	0	0
Commercial	7	0	0	0	8
Commuting	0	0	0	0	0
Other-Residential	1	0	0	0	1
Single Family	0	0	0	0	0
Total Casualties - 5pm	8	0	0	0	9
San Benito					
Casualties - 2am					
Other-Residential	0	0	0	0	0

	Injury Severity Level				Total
	Severity 1	Severity 2	Severity 3	Severity 4	
California					
San Benito					
Casualties - 2am					
<i>Commercial</i>	0	0	0	0	0
<i>Commuting</i>	0	0	0	0	0
<i>Hotels</i>	0	0	0	0	0
<i>Educational</i>	0	0	0	0	0
<i>Single Family</i>	0	0	0	0	0
<i>Industrial</i>	0	0	0	0	0
Total Casualties - 2am	0	0	0	0	0
Casualties - 2pm					
<i>Hotels</i>	0	0	0	0	0
<i>Educational</i>	0	0	0	0	0
<i>Industrial</i>	0	0	0	0	0
<i>Other-Residential</i>	0	0	0	0	0
<i>Commercial</i>	0	0	0	0	0
<i>Commuting</i>	0	0	0	0	0
<i>Single Family</i>	0	0	0	0	0
Total Casualties - 2pm	0	0	0	0	0
Casualties - 5pm					
<i>Commuting</i>	0	0	0	0	0
<i>Commercial</i>	0	0	0	0	0
<i>Other-Residential</i>	0	0	0	0	0
<i>Single Family</i>	0	0	0	0	0
<i>Industrial</i>	0	0	0	0	0
<i>Educational</i>	0	0	0	0	0
<i>Hotels</i>	0	0	0	0	0
Total Casualties - 5pm	0	0	0	0	0
San Francisco					
Casualties - 2am					
<i>Industrial</i>	0	0	0	0	0
<i>Hotels</i>	0	0	0	0	0
<i>Commercial</i>	0	0	0	0	1
<i>Other-Residential</i>	16	1	0	0	17
<i>Commuting</i>	0	0	0	0	0
<i>Educational</i>	0	0	0	0	0
<i>Single Family</i>	2	0	0	0	2
Total Casualties - 2am	19	1	0	0	20
Casualties - 2pm					
<i>Commercial</i>	26	1	0	0	28
<i>Industrial</i>	1	0	0	0	1
<i>Other-Residential</i>	5	0	0	0	5
<i>Single Family</i>	1	0	0	0	1
<i>Hotels</i>	0	0	0	0	0

	Injury Severity Level				Total
	Severity 1	Severity 2	Severity 3	Severity 4	
California					
San Francisco					
Casualties - 2pm					
<i>Commuting</i>	0	0	0	0	0
<i>Educational</i>	3	0	0	0	3
Total Casualties - 2pm	36	2	0	0	38
Casualties - 5pm					
<i>Educational</i>	1	0	0	0	1
<i>Hotels</i>	0	0	0	0	0
<i>Industrial</i>	1	0	0	0	1
<i>Commuting</i>	0	0	0	0	0
<i>Commercial</i>	15	1	0	0	15
<i>Other-Residential</i>	6	0	0	0	6
<i>Single Family</i>	1	0	0	0	1
Total Casualties - 5pm	23	1	0	0	25
San Joaquin					
Casualties - 2am					
<i>Educational</i>	0	0	0	0	0
<i>Commuting</i>	0	0	0	0	0
<i>Hotels</i>	0	0	0	0	0
<i>Commercial</i>	0	0	0	0	0
<i>Single Family</i>	2	0	0	0	2
<i>Industrial</i>	0	0	0	0	0
<i>Other-Residential</i>	0	0	0	0	0
Total Casualties - 2am	2	0	0	0	2
Casualties - 2pm					
<i>Industrial</i>	0	0	0	0	0
<i>Other-Residential</i>	0	0	0	0	0
<i>Educational</i>	0	0	0	0	0
<i>Single Family</i>	1	0	0	0	1
<i>Hotels</i>	0	0	0	0	0
<i>Commuting</i>	0	0	0	0	0
<i>Commercial</i>	1	0	0	0	1
Total Casualties - 2pm	2	0	0	0	2
Casualties - 5pm					
<i>Commuting</i>	0	0	0	0	0
<i>Single Family</i>	1	0	0	0	1
<i>Educational</i>	0	0	0	0	0
<i>Hotels</i>	0	0	0	0	0
<i>Industrial</i>	0	0	0	0	0
<i>Commercial</i>	0	0	0	0	0
<i>Other-Residential</i>	0	0	0	0	0
Total Casualties - 5pm	1	0	0	0	1

Injury Severity Level

Severity 1 Severity 2 Severity 3 Severity 4 Total

California

San Mateo

Casualties - 2am

<i>Industrial</i>	0	0	0	0	0
<i>Other-Residential</i>	1	0	0	0	1
<i>Single Family</i>	0	0	0	0	0
<i>Commercial</i>	0	0	0	0	0
<i>Educational</i>	0	0	0	0	0
<i>Commuting</i>	0	0	0	0	0
<i>Hotels</i>	0	0	0	0	0
Total Casualties - 2am	1	0	0	0	1

Casualties - 2pm

<i>Other-Residential</i>	0	0	0	0	0
<i>Single Family</i>	0	0	0	0	0
<i>Commuting</i>	0	0	0	0	0
<i>Commercial</i>	2	0	0	0	2
<i>Educational</i>	0	0	0	0	0
<i>Hotels</i>	0	0	0	0	0
<i>Industrial</i>	0	0	0	0	0
Total Casualties - 2pm	3	0	0	0	3

Casualties - 5pm

<i>Commercial</i>	1	0	0	0	1
<i>Industrial</i>	0	0	0	0	0
<i>Other-Residential</i>	0	0	0	0	0
<i>Single Family</i>	0	0	0	0	0
<i>Educational</i>	0	0	0	0	0
<i>Commuting</i>	0	0	0	0	0
<i>Hotels</i>	0	0	0	0	0
Total Casualties - 5pm	2	0	0	0	2

Santa Clara

Casualties - 2am

<i>Commuting</i>	0	0	0	0	0
<i>Educational</i>	0	0	0	0	0
<i>Single Family</i>	0	0	0	0	0
<i>Hotels</i>	0	0	0	0	0
<i>Industrial</i>	0	0	0	0	0
<i>Commercial</i>	0	0	0	0	0
<i>Other-Residential</i>	1	0	0	0	1
Total Casualties - 2am	1	0	0	0	1

Casualties - 2pm

<i>Industrial</i>	0	0	0	0	0
<i>Commercial</i>	1	0	0	0	1
<i>Single Family</i>	0	0	0	0	0
<i>Commuting</i>	0	0	0	0	0

	Injury Severity Level				Total
	Severity 1	Severity 2	Severity 3	Severity 4	
California					
Santa Clara					
Casualties - 2pm					
<i>Hotels</i>	0	0	0	0	0
<i>Other-Residential</i>	0	0	0	0	0
<i>Educational</i>	0	0	0	0	0
Total Casualties - 2pm	1	0	0	0	1
Casualties - 5pm					
<i>Industrial</i>	0	0	0	0	0
<i>Hotels</i>	0	0	0	0	0
<i>Other-Residential</i>	0	0	0	0	0
<i>Commercial</i>	1	0	0	0	1
<i>Commuting</i>	0	0	0	0	0
<i>Single Family</i>	0	0	0	0	0
<i>Educational</i>	0	0	0	0	0
Total Casualties - 5pm	1	0	0	0	1
Santa Cruz					
Casualties - 2am					
<i>Hotels</i>	0	0	0	0	0
<i>Educational</i>	0	0	0	0	0
<i>Industrial</i>	0	0	0	0	0
<i>Other-Residential</i>	0	0	0	0	0
<i>Single Family</i>	0	0	0	0	0
<i>Commercial</i>	0	0	0	0	0
<i>Commuting</i>	0	0	0	0	0
Total Casualties - 2am	0	0	0	0	0
Casualties - 2pm					
<i>Industrial</i>	0	0	0	0	0
<i>Other-Residential</i>	0	0	0	0	0
<i>Commercial</i>	0	0	0	0	0
<i>Commuting</i>	0	0	0	0	0
<i>Educational</i>	0	0	0	0	0
<i>Single Family</i>	0	0	0	0	0
<i>Hotels</i>	0	0	0	0	0
Total Casualties - 2pm	0	0	0	0	0
Casualties - 5pm					
<i>Industrial</i>	0	0	0	0	0
<i>Other-Residential</i>	0	0	0	0	0
<i>Commercial</i>	0	0	0	0	0
<i>Commuting</i>	0	0	0	0	0
<i>Single Family</i>	0	0	0	0	0
<i>Hotels</i>	0	0	0	0	0
<i>Educational</i>	0	0	0	0	0

	Injury Severity Level				Total
	Severity 1	Severity 2	Severity 3	Severity 4	
California					
Santa Cruz					
Total Casualties - 5pm	0	0	0	0	0
Shasta					
Casualties - 2am					
<i>Other-Residential</i>	0	0	0	0	0
<i>Single Family</i>	0	0	0	0	0
<i>Commuting</i>	0	0	0	0	0
<i>Commercial</i>	0	0	0	0	0
<i>Hotels</i>	0	0	0	0	0
<i>Educational</i>	0	0	0	0	0
<i>Industrial</i>	0	0	0	0	0
Total Casualties - 2am	0	0	0	0	0
Casualties - 2pm					
<i>Commuting</i>	0	0	0	0	0
<i>Educational</i>	0	0	0	0	0
<i>Single Family</i>	0	0	0	0	0
<i>Hotels</i>	0	0	0	0	0
<i>Other-Residential</i>	0	0	0	0	0
<i>Industrial</i>	0	0	0	0	0
<i>Commercial</i>	0	0	0	0	0
Total Casualties - 2pm	0	0	0	0	0
Casualties - 5pm					
<i>Hotels</i>	0	0	0	0	0
<i>Commercial</i>	0	0	0	0	0
<i>Commuting</i>	0	0	0	0	0
<i>Single Family</i>	0	0	0	0	0
<i>Educational</i>	0	0	0	0	0
<i>Industrial</i>	0	0	0	0	0
<i>Other-Residential</i>	0	0	0	0	0
Total Casualties - 5pm	0	0	0	0	0
Sierra					
Casualties - 2am					
<i>Other-Residential</i>	0	0	0	0	0
<i>Commercial</i>	0	0	0	0	0
<i>Commuting</i>	0	0	0	0	0
<i>Hotels</i>	0	0	0	0	0
<i>Single Family</i>	0	0	0	0	0
<i>Educational</i>	0	0	0	0	0
<i>Industrial</i>	0	0	0	0	0
Total Casualties - 2am	0	0	0	0	0
Casualties - 2pm					
<i>Hotels</i>	0	0	0	0	0

	Injury Severity Level				Total
	Severity 1	Severity 2	Severity 3	Severity 4	
California					
Sierra					
Casualties - 2pm					
<i>Educational</i>	0	0	0	0	0
<i>Industrial</i>	0	0	0	0	0
<i>Other-Residential</i>	0	0	0	0	0
<i>Commuting</i>	0	0	0	0	0
<i>Single Family</i>	0	0	0	0	0
<i>Commercial</i>	0	0	0	0	0
Total Casualties - 2pm	0	0	0	0	0
Casualties - 5pm					
<i>Educational</i>	0	0	0	0	0
<i>Hotels</i>	0	0	0	0	0
<i>Commuting</i>	0	0	0	0	0
<i>Industrial</i>	0	0	0	0	0
<i>Other-Residential</i>	0	0	0	0	0
<i>Commercial</i>	0	0	0	0	0
<i>Single Family</i>	0	0	0	0	0
Total Casualties - 5pm	0	0	0	0	0
Siskiyou					
Casualties - 2am					
<i>Commuting</i>	0	0	0	0	0
<i>Educational</i>	0	0	0	0	0
<i>Hotels</i>	0	0	0	0	0
<i>Single Family</i>	0	0	0	0	0
<i>Industrial</i>	0	0	0	0	0
<i>Other-Residential</i>	0	0	0	0	0
<i>Commercial</i>	0	0	0	0	0
Total Casualties - 2am	0	0	0	0	0
Casualties - 2pm					
<i>Industrial</i>	0	0	0	0	0
<i>Single Family</i>	0	0	0	0	0
<i>Other-Residential</i>	0	0	0	0	0
<i>Commercial</i>	0	0	0	0	0
<i>Educational</i>	0	0	0	0	0
<i>Commuting</i>	0	0	0	0	0
<i>Hotels</i>	0	0	0	0	0
Total Casualties - 2pm	0	0	0	0	0
Casualties - 5pm					
<i>Hotels</i>	0	0	0	0	0
<i>Industrial</i>	0	0	0	0	0
<i>Commercial</i>	0	0	0	0	0
<i>Other-Residential</i>	0	0	0	0	0
<i>Single Family</i>	0	0	0	0	0

	Injury Severity Level				Total
	Severity 1	Severity 2	Severity 3	Severity 4	
California					
Siskiyou					
Casualties - 5pm					
<i>Educational</i>	0	0	0	0	0
<i>Commuting</i>	0	0	0	0	0
Total Casualties - 5pm	0	0	0	0	0
Solano					
Casualties - 2am					
<i>Industrial</i>	0	0	0	0	0
<i>Other-Residential</i>	4	0	0	0	4
<i>Commercial</i>	0	0	0	0	0
<i>Educational</i>	0	0	0	0	0
<i>Commuting</i>	0	0	0	0	0
<i>Single Family</i>	5	0	0	0	5
<i>Hotels</i>	0	0	0	0	0
Total Casualties - 2am	9	0	0	0	9
Casualties - 2pm					
<i>Single Family</i>	1	0	0	0	1
<i>Other-Residential</i>	1	0	0	0	1
<i>Commercial</i>	6	0	0	0	7
<i>Educational</i>	2	0	0	0	2
<i>Commuting</i>	0	0	0	0	0
<i>Hotels</i>	0	0	0	0	0
<i>Industrial</i>	1	0	0	0	1
Total Casualties - 2pm	11	1	0	0	12
Casualties - 5pm					
<i>Commercial</i>	5	0	0	0	5
<i>Other-Residential</i>	1	0	0	0	1
<i>Single Family</i>	2	0	0	0	2
<i>Educational</i>	0	0	0	0	0
<i>Commuting</i>	0	0	0	0	0
<i>Hotels</i>	0	0	0	0	0
<i>Industrial</i>	1	0	0	0	1
Total Casualties - 5pm	9	1	0	0	9
Sonoma					
Casualties - 2am					
<i>Single Family</i>	118	6	0	0	125
<i>Other-Residential</i>	248	50	6	11	315
<i>Commercial</i>	8	2	0	1	11
<i>Commuting</i>	0	0	0	0	0
<i>Hotels</i>	1	0	0	0	1
<i>Educational</i>	0	0	0	0	0
<i>Industrial</i>	11	3	0	1	15

	Injury Severity Level				Total
	Severity 1	Severity 2	Severity 3	Severity 4	
California					
Sonoma					
Total Casualties - 2am	387	61	7	13	468
Casualties - 2pm					
Single Family	35	2	0	0	37
Commuting	1	1	1	0	3
Educational	192	38	5	9	245
Hotels	0	0	0	0	0
Industrial	84	20	3	6	113
Other-Residential	75	15	2	3	96
Commercial	541	132	19	38	729
Total Casualties - 2pm	928	208	30	56	1,223
Casualties - 5pm					
Single Family	43	2	0	0	46
Commercial	374	91	13	26	503
Commuting	13	19	30	6	68
Hotels	0	0	0	0	0
Educational	46	8	1	2	57
Industrial	53	13	2	3	70
Other-Residential	94	19	2	4	119
Total Casualties - 5pm	622	152	48	41	864
Stanislaus					
Casualties - 2am					
Hotels	0	0	0	0	0
Industrial	0	0	0	0	0
Commercial	0	0	0	0	0
Single Family	0	0	0	0	0
Other-Residential	0	0	0	0	0
Commuting	0	0	0	0	0
Educational	0	0	0	0	0
Total Casualties - 2am	0	0	0	0	0
Casualties - 2pm					
Industrial	0	0	0	0	0
Other-Residential	0	0	0	0	0
Commercial	0	0	0	0	0
Commuting	0	0	0	0	0
Educational	0	0	0	0	0
Single Family	0	0	0	0	0
Hotels	0	0	0	0	0
Total Casualties - 2pm	0	0	0	0	0
Casualties - 5pm					
Industrial	0	0	0	0	0
Other-Residential	0	0	0	0	0

	Injury Severity Level				Total
	Severity 1	Severity 2	Severity 3	Severity 4	
California					
Stanislaus					
Casualties - 5pm					
Commuting	0	0	0	0	0
Single Family	0	0	0	0	0
Commercial	0	0	0	0	0
Hotels	0	0	0	0	0
Educational	0	0	0	0	0
Total Casualties - 5pm	0	0	0	0	0
Sutter					
Casualties - 2am					
Educational	0	0	0	0	0
Commuting	0	0	0	0	0
Hotels	0	0	0	0	0
Industrial	0	0	0	0	0
Other-Residential	0	0	0	0	0
Single Family	0	0	0	0	0
Commercial	0	0	0	0	0
Total Casualties - 2am	0	0	0	0	0
Casualties - 2pm					
Industrial	0	0	0	0	0
Commuting	0	0	0	0	0
Other-Residential	0	0	0	0	0
Single Family	0	0	0	0	0
Commercial	0	0	0	0	0
Hotels	0	0	0	0	0
Educational	0	0	0	0	0
Total Casualties - 2pm	1	0	0	0	1
Casualties - 5pm					
Commuting	0	0	0	0	0
Commercial	0	0	0	0	0
Educational	0	0	0	0	0
Single Family	0	0	0	0	0
Hotels	0	0	0	0	0
Industrial	0	0	0	0	0
Other-Residential	0	0	0	0	0
Total Casualties - 5pm	0	0	0	0	0
Tehama					
Casualties - 2am					
Hotels	0	0	0	0	0
Industrial	0	0	0	0	0
Commercial	0	0	0	0	0
Other-Residential	0	0	0	0	0
Educational	0	0	0	0	0

	Injury Severity Level				Total
	Severity 1	Severity 2	Severity 3	Severity 4	
California					
Tehama					
Casualties - 2am					
Commuting	0	0	0	0	0
Single Family	0	0	0	0	0
Total Casualties - 2am	0	0	0	0	0
Casualties - 2pm					
Other-Residential	0	0	0	0	0
Commercial	0	0	0	0	0
Industrial	0	0	0	0	0
Single Family	0	0	0	0	0
Educational	0	0	0	0	0
Commuting	0	0	0	0	0
Hotels	0	0	0	0	0
Total Casualties - 2pm	0	0	0	0	0
Casualties - 5pm					
Hotels	0	0	0	0	0
Educational	0	0	0	0	0
Industrial	0	0	0	0	0
Single Family	0	0	0	0	0
Commercial	0	0	0	0	0
Commuting	0	0	0	0	0
Other-Residential	0	0	0	0	0
Total Casualties - 5pm	0	0	0	0	0
Trinity					
Casualties - 2am					
Commercial	0	0	0	0	0
Educational	0	0	0	0	0
Other-Residential	0	0	0	0	0
Single Family	0	0	0	0	0
Commuting	0	0	0	0	0
Hotels	0	0	0	0	0
Industrial	0	0	0	0	0
Total Casualties - 2am	0	0	0	0	0
Casualties - 2pm					
Educational	0	0	0	0	0
Commuting	0	0	0	0	0
Hotels	0	0	0	0	0
Single Family	0	0	0	0	0
Commercial	0	0	0	0	0
Industrial	0	0	0	0	0
Other-Residential	0	0	0	0	0
Total Casualties - 2pm	0	0	0	0	0

	Injury Severity Level				Total
	Severity 1	Severity 2	Severity 3	Severity 4	
California					
Trinity					
Casualties - 5pm					
Single Family	0	0	0	0	0
Commercial	0	0	0	0	0
Other-Residential	0	0	0	0	0
Commuting	0	0	0	0	0
Hotels	0	0	0	0	0
Educational	0	0	0	0	0
Industrial	0	0	0	0	0
Total Casualties - 5pm	0	0	0	0	0
Tuolumne					
Casualties - 2am					
Other-Residential	0	0	0	0	0
Industrial	0	0	0	0	0
Commercial	0	0	0	0	0
Commuting	0	0	0	0	0
Single Family	0	0	0	0	0
Educational	0	0	0	0	0
Hotels	0	0	0	0	0
Total Casualties - 2am	0	0	0	0	0
Casualties - 2pm					
Other-Residential	0	0	0	0	0
Commercial	0	0	0	0	0
Single Family	0	0	0	0	0
Educational	0	0	0	0	0
Commuting	0	0	0	0	0
Industrial	0	0	0	0	0
Hotels	0	0	0	0	0
Total Casualties - 2pm	0	0	0	0	0
Casualties - 5pm					
Industrial	0	0	0	0	0
Other-Residential	0	0	0	0	0
Commercial	0	0	0	0	0
Hotels	0	0	0	0	0
Commuting	0	0	0	0	0
Educational	0	0	0	0	0
Single Family	0	0	0	0	0
Total Casualties - 5pm	0	0	0	0	0
Yolo					
Casualties - 2am					
Single Family	1	0	0	0	1
Other-Residential	2	0	0	0	2
Commercial	0	0	0	0	0

Injury Severity Level

Severity 1 Severity 2 Severity 3 Severity 4 Total

California

Yolo

Casualties - 2am

<i>Educational</i>	0	0	0	0	0
<i>Commuting</i>	0	0	0	0	0
<i>Hotels</i>	0	0	0	0	0
<i>Industrial</i>	0	0	0	0	0
Total Casualties - 2am	3	0	0	0	3

Casualties - 2pm

<i>Industrial</i>	0	0	0	0	0
<i>Hotels</i>	0	0	0	0	0
<i>Educational</i>	1	0	0	0	1
<i>Commuting</i>	0	0	0	0	0
<i>Commercial</i>	3	0	0	0	3
<i>Other-Residential</i>	1	0	0	0	1
<i>Single Family</i>	0	0	0	0	0
Total Casualties - 2pm	5	0	0	0	5

Casualties - 5pm

<i>Other-Residential</i>	1	0	0	0	1
<i>Single Family</i>	0	0	0	0	0
<i>Commuting</i>	0	0	0	0	0
<i>Commercial</i>	2	0	0	0	2
<i>Hotels</i>	0	0	0	0	0
<i>Educational</i>	0	0	0	0	0
<i>Industrial</i>	0	0	0	0	0
Total Casualties - 5pm	3	0	0	0	3

Yuba

Casualties - 2am

<i>Industrial</i>	0	0	0	0	0
<i>Other-Residential</i>	0	0	0	0	0
<i>Commercial</i>	0	0	0	0	0
<i>Educational</i>	0	0	0	0	0
<i>Single Family</i>	0	0	0	0	0
<i>Commuting</i>	0	0	0	0	0
<i>Hotels</i>	0	0	0	0	0
Total Casualties - 2am	0	0	0	0	0

Casualties - 2pm

<i>Commercial</i>	0	0	0	0	0
<i>Commuting</i>	0	0	0	0	0
<i>Single Family</i>	0	0	0	0	0
<i>Other-Residential</i>	0	0	0	0	0
<i>Industrial</i>	0	0	0	0	0
<i>Hotels</i>	0	0	0	0	0
<i>Educational</i>	0	0	0	0	0

	Injury Severity Level				Total
	Severity 1	Severity 2	Severity 3	Severity 4	
California					
Yuba					
Total Casualties - 2pm	0	0	0	0	0
Casualties - 5pm					
<i>Hotels</i>	0	0	0	0	0
<i>Educational</i>	0	0	0	0	0
<i>Industrial</i>	0	0	0	0	0
<i>Other-Residential</i>	0	0	0	0	0
<i>Single Family</i>	0	0	0	0	0
<i>Commercial</i>	0	0	0	0	0
<i>Commuting</i>	0	0	0	0	0
Total Casualties - 5pm	0	0	0	0	0
Region Total	NA	NA	NA	NA	NA

Totals only reflect data for those census tracts/blocks included in the user's study region and will reflect the entire county/state only if all of the census blocks for that county/states were selected at the time of study region creation.

Debris Summary Report

April 25, 2024

All values are in thousands of tons.

	Brick, Wood & Others	Concrete & Steel	Total
California			
Butte	0	0	1
Alameda	18	17	35
Humboldt	1	0	1
Del Norte	0	0	0
Solano	9	12	21
San Mateo	2	1	3
Tuolumne	0	0	0
San Joaquin	4	0	4
Nevada	0	0	0
Colusa	0	0	1
Plumas	0	0	0
Shasta	0	0	0
Siskiyou	0	0	0
Napa	48	97	145
Mendocino	101	199	300
Contra Costa	7	10	18
Tehama	0	0	0
Trinity	0	0	0
El Dorado	0	0	0

	Brick, Wood & Others	Concrete & Steel	Total
Amador	0	0	0
Santa Cruz	0	0	0
Sierra	0	0	0
Lake	52	60	112
Monterey	0	0	0
Sacramento	4	4	8
Yolo	3	4	7
Calaveras	0	0	0
Yuba	0	0	0
Glenn	0	0	1
Stanislaus	0	0	0
Sonoma	299	669	967
Santa Clara	1	0	2
San Benito	0	0	0
San Francisco	36	11	47
Merced	0	0	0
Placer	0	0	0
Marin	3	3	6
Lassen	0	0	0
Sutter	0	0	1
Total	590	1,090	1,680
Region Total	590	1,090	1,680

Brick, Wood & Others

Concrete & Steel

Total

Totals only reflect data for those census tracts/blocks included in the user's study region and will reflect the entire county/state only if all of the census blocks for that county/states were selected at the time of study region creation.

Direct Economic Losses For Buildings

April 25, 2024

All values are in thousands of dollars

	Capital Stock Losses				Loss Ratio %	Income Losses				Total Loss
	Cost Structural Damage	Cost Non-struct. Damage	Cost Contents Damage	Inventory Loss		Relocation Loss	Capital Related Loss	Wages Losses	Rental Income Loss	
California										
Contra Costa	15,055	139,383	74,332	7,119	0.07	4,485	3,257	4,328	3,400	251,360
Mendocino	233,669	950,259	387,192	39,584	5.20	106,703	72,087	91,884	55,479	1,936,858
Napa	95,054	439,522	201,021	22,890	1.59	34,010	35,453	41,852	27,496	897,299
Siskiyou	0	2	1	0	0.00	0	0	0	0	3
Plumas	0	1	0	0	0.00	0	0	0	0	1
Colusa	756	6,063	3,447	613	0.16	200	306	315	201	11,901
Shasta	53	1,280	768	133	0.00	5	3	3	6	2,251
Trinity	21	357	193	28	0.01	3	0	0	2	605
Tehama	103	1,483	820	135	0.01	14	10	10	19	2,595

	Capital Stock Losses				Loss Ratio %	Income Losses				Total Loss
	Cost Structural Damage	Cost Non-struct. Damage	Cost Contents Damage	Inventory Loss		Relocation Loss	Capital Related Loss	Wages Losses	Rental Income Loss	
Alameda	27,455	175,598	97,526	8,407	0.06	9,004	8,469	11,066	8,130	345,656
Humboldt	973	9,757	5,225	484	0.04	202	205	210	218	17,274
Del Norte	0	0	0	0	0.00	0	0	0	0	0
Nevada	0	41	30	3	0.00	0	0	0	0	74
San Joaquin	2,266	17,398	9,973	1,319	0.01	507	239	323	408	32,433
Tuolumne	0	0	0	0	0.00	0	0	0	0	0
Butte	477	4,814	2,808	371	0.01	101	107	114	102	8,893
Solano	19,361	162,697	82,139	8,038	0.22	4,969	4,453	5,921	4,178	291,755
San Mateo	3,165	37,209	19,071	1,592	0.03	406	545	642	1,055	63,684
Yolo	6,836	66,602	37,765	4,256	0.17	1,551	1,807	2,101	1,548	122,466
Glenn	926	5,727	3,599	972	0.10	170	130	134	110	11,768
San Benito	0	0	0	0	0.00	0	0	0	0	1
Lassen	0	0	0	0	0.00	0	0	0	0	0
San Francisco	33,848	109,681	62,711	3,780	0.09	9,623	7,123	7,994	13,703	248,462
Stanislaus	84	2,724	1,804	251	0.00	8	12	12	25	4,921
Sutter	833	6,827	3,720	863	0.04	108	57	65	88	12,561
Santa Clara	1,443	15,991	8,947	788	0.00	207	316	417	537	28,646
Sonoma	735,998	3,273,735	1,382,341	139,812	3.83	304,563	235,235	286,324	173,332	6,531,340

	Capital Stock Losses				Loss Ratio %	Income Losses				Total Loss
	Cost Structural Damage	Cost Non-struct. Damage	Cost Contents Damage	Inventory Loss		Relocation Loss	Capital Related Loss	Wages Losses	Rental Income Loss	
Calaveras	1	23	18	6	0.00	0	0	0	0	48
Yuba	111	1,548	801	101	0.01	17	34	38	27	2,678
Merced	39	182	147	94	0.00	2	1	0	1	465
Placer	181	3,678	2,067	205	0.00	19	30	35	37	6,252
Marin	6,656	67,499	35,195	2,375	0.12	1,319	1,405	1,491	1,406	117,346
El Dorado	0	88	65	4	0.00	0	0	0	0	157
Lake	70,626	312,506	123,831	11,269	2.69	33,180	16,388	18,483	16,590	602,873
Sierra	0	0	0	0	0.00	0	0	0	0	0
Santa Cruz	21	494	330	46	0.00	3	6	7	7	912
Amador	0	38	27	3	0.00	0	0	0	0	70
Sacramento	7,576	72,019	39,315	3,452	0.03	2,486	2,655	3,552	2,732	133,787
Monterey	0	6	5	1	0.00	0	0	0	0	13
Total	1,263,587	5,885,232	2,587,235	258,993	0.37	513,866	390,334	477,322	310,839	11,687,408
Region Total	1,263,587	5,885,232	2,587,235	258,993	0.37	513,866	390,334	477,322	310,839	11,687,408

Totals only reflect data for those census tracts/blocks included in the user's study region and will reflect the entire county/state only if all of the census blocks for that county/states were selected at the time of study region creation.

Direct Economic Loss For Transportation

April 25, 2024

All values are in thousands of dollars

	Highway	Railway	Light Rail	Bus Facility	Ports	Ferries	Airport	Total
California								
Alameda								
Segments	0	0	0					0
Bridges	788	10	0					798
Tunnels	9	0	0					9
Facilities		1,606	0	95	7,229	164	14,719	23,814
Total	796	1,617	0	95	7,229	164	14,719	24,621
Amador								
Segments	0	0	0					0
Bridges	0	0	0					0
Tunnels	0	0	0					0
Facilities		0	0	0	0	0	51	51
Total	0	0	0	0	0	0	51	51
Butte								
Segments	0	0	0					0
Bridges	32	0	0					32
Tunnels	0	0	0					0
Facilities		26	0	0	0	0	231	256

	Highway	Railway	Light Rail	Bus Facility	Ports	Ferries	Airport	Total
Total	32	26	0	0	0	0	231	288
Calaveras								
Segments	0	0	0					0
Bridges	0	0	0					0
Tunnels	0	0	0					0
Facilities		0	0	0	0	0	11	11
Total	0	0	0	0	0	0	11	11
Colusa								
Segments	0	0	0					0
Bridges	100	4	0					105
Tunnels	0	0	0					0
Facilities		0	0	0	0	0	217	217
Total	100	4	0	0	0	0	217	322
Contra Costa								
Segments	0	0	0					0
Bridges	1,815	53	0					1,869
Tunnels	4	0	0					4
Facilities		1,092	703	0	13,353	264	816	16,228
Total	1,819	1,146	703	0	13,353	264	816	18,101
Del Norte								
Segments	0	0	0					0
Bridges	0	0	0					0
Tunnels	0	0	0					0
Facilities		0	0	2	4	0	62	69

	Highway	Railway	Light Rail	Bus Facility	Ports	Ferries	Airport	Total
Total	0	0	0	2	4	0	62	69
El Dorado								
Segments	0	0	0					0
Bridges	0	0	0					0
Tunnels	0	0	0					0
Facilities		0	0	26	0	0	236	262
Total	0	0	0	26	0	0	236	263
Glenn								
Segments	0	0	0					0
Bridges	69	3	0					72
Tunnels	0	0	0					0
Facilities		0	0	0	156	0	435	591
Total	69	3	0	0	156	0	435	664
Humboldt								
Segments	0	0	0					0
Bridges	372	0	0					372
Tunnels	0	0	0					0
Facilities		0	0	44	1,286	0	1,706	3,036
Total	372	0	0	44	1,286	0	1,706	3,407
Lake								
Segments	0	0	0					0
Bridges	2,755	0	0					2,755
Tunnels	0	0	0					0
Facilities		0	0	0	0	0	2,403	2,403

	Highway	Railway	Light Rail	Bus Facility	Ports	Ferries	Airport	Total
Total	2,755	0	0	0	0	0	2,403	5,158
Lassen								
Segments	0	0	0					0
Bridges	0	0	0					0
Tunnels	0	0	0					0
Facilities		0	0	0	0	0	34	34
Total	0	0	0	0	0	0	34	34
Marin								
Segments	0	0	0					0
Bridges	1,917	0	0					1,917
Tunnels	0	0	0					0
Facilities		0	0	474	4,421	273	587	5,754
Total	1,917	0	0	474	4,421	273	587	7,671
Mendocino								
Segments	0	0	0					0
Bridges	56,954	29,524	0					86,478
Tunnels	0	0	0					0
Facilities		0	0	3,000	422	0	6,542	9,964
Total	56,954	29,524	0	3,000	422	0	6,542	96,441
Merced								
Segments	0	0	0					0
Bridges	1	0	0					1
Tunnels	0	0	0					0
Facilities		6	0	2	0	0	91	99

	Highway	Railway	Light Rail	Bus Facility	Ports	Ferries	Airport	Total
Total	1	6	0	2	0	0	91	100
Monterey								
Segments	0	0	0					0
Bridges	0	0	0					0
Tunnels	0	0	0					0
Facilities		3	0	17	12	0	37	69
Total	0	3	0	17	12	0	37	70
Napa								
Segments	0	0	0					0
Bridges	2,806	634	0					3,440
Tunnels	0	0	0					0
Facilities		0	0	251	1,131	0	2,627	4,010
Total	2,806	634	0	251	1,131	0	2,627	7,450
Nevada								
Segments	0	0	0					0
Bridges	0	0	0					0
Tunnels	0	0	0					0
Facilities		3	0	0	0	0	57	60
Total	0	3	0	0	0	0	57	60
Placer								
Segments	0	0	0					0
Bridges	8	0	0					8
Tunnels	0	0	0					0
Facilities		103	0	21	0	0	159	283

	Highway	Railway	Light Rail	Bus Facility	Ports	Ferries	Airport	Total
Total	8	103	0	21	0	0	159	291
Plumas								
Segments	0	0	0					0
Bridges	0	0	0					0
Tunnels	0	0	0					0
Facilities		0	0	0	0	0	40	40
Total	0	0	0	0	0	0	40	40
Sacramento								
Segments	0	0	0					0
Bridges	1,626	1	0					1,627
Tunnels	0	0	0					0
Facilities		109	7,864	181	2,658	55	17,547	28,414
Total	1,626	110	7,864	181	2,658	55	17,547	30,041
San Benito								
Segments	0	0	0					0
Bridges	0	0	0					0
Tunnels	0	0	0					0
Facilities		0	0	0	0	0	11	11
Total	0	0	0	0	0	0	11	12
San Francisco								
Segments	0	0	0					0
Bridges	2,094	0	0					2,094
Tunnels	8	0	0					8
Facilities		0	104,249	207	8,480	218	1,313	114,468

	Highway	Railway	Light Rail	Bus Facility	Ports	Ferries	Airport	Total
Total	2,103	0	104,249	207	8,480	218	1,313	116,571
San Joaquin								
Segments	0	0	0					0
Bridges	232	2	0					234
Tunnels	0	0	0					0
Facilities		410	0	21	3,613	135	584	4,763
Total	232	413	0	21	3,613	135	584	4,998
San Mateo								
Segments	0	0	0					0
Bridges	643	1	0					643
Tunnels	1	0	0					1
Facilities		0	0	0	2,336	0	37,271	39,607
Total	644	1	0	0	2,336	0	37,271	40,251
Santa Clara								
Segments	0	0	0					0
Bridges	143	0	0					143
Tunnels	0	0	0					0
Facilities		103	5,439	47	184	0	3,593	9,364
Total	143	103	5,439	47	184	0	3,593	9,507
Santa Cruz								
Segments	0	0	0					0
Bridges	0	0	0					0
Tunnels	0	0	0					0
Facilities		0	0	45	37	0	257	339

	Highway	Railway	Light Rail	Bus Facility	Ports	Ferries	Airport	Total
Total	0	0	0	45	37	0	257	339
Shasta								
Segments	0	0	0					0
Bridges	3	0	0					3
Tunnels	0	0	0					0
Facilities		26	0	22	0	0	184	231
Total	3	26	0	22	0	0	184	235
Sierra								
Segments	0	0	0					0
Bridges	0	0	0					0
Tunnels	0	0	0					0
Facilities		0	0	0	0	0	6	6
Total	0	0	0	0	0	0	6	6
Siskiyou								
Segments	0	0	0					0
Bridges	0	0	0					0
Tunnels	0	0	0					0
Facilities		3	0	2	0	0	40	45
Total	0	3	0	2	0	0	40	45
Solano								
Segments	0	0	0					0
Bridges	1,843	145	0					1,988
Tunnels	0	0	0					0
Facilities		511	0	433	7,417	264	1,443	10,068

	Highway	Railway	Light Rail	Bus Facility	Ports	Ferries	Airport	Total
Total	1,843	656	0	433	7,417	264	1,443	12,056
Sonoma								
<i>Segments</i>	0	0	0					0
<i>Bridges</i>	45,758	7,771	0					53,529
<i>Tunnels</i>	0	0	0					0
<i>Facilities</i>		0	0	720	2,148	0	10,669	13,536
Total	45,758	7,771	0	720	2,148	0	10,669	67,066
Stanislaus								
<i>Segments</i>	0	0	0					0
<i>Bridges</i>	25	0	0					25
<i>Tunnels</i>	0	0	0					0
<i>Facilities</i>		154	0	43	0	0	231	427
Total	25	154	0	43	0	0	231	453
Sutter								
<i>Segments</i>	0	0	0					0
<i>Bridges</i>	144	1	0					145
<i>Tunnels</i>	0	0	0					0
<i>Facilities</i>		0	0	0	0	0	129	129
Total	144	1	0	0	0	0	129	273
Tehama								
<i>Segments</i>	0	0	0					0
<i>Bridges</i>	44	0	0					44
<i>Tunnels</i>	0	0	0					0
<i>Facilities</i>		0	0	0	0	0	102	102

	Highway	Railway	Light Rail	Bus Facility	Ports	Ferries	Airport	Total
Total	44	0	0	0	0	0	102	146
Trinity								
Segments	0	0	0					0
Bridges	2	0	0					2
Tunnels	0	0	0					0
Facilities		0	0	0	0	0	937	937
Total	2	0	0	0	0	0	937	938
Tuolumne								
Segments	0	0	0					0
Bridges	0	0	0					0
Tunnels	0	0	0					0
Facilities		0	0	0	0	0	17	17
Total	0	0	0	0	0	0	17	17
Yolo								
Segments	0	0	0					0
Bridges	1,963	5	0					1,967
Tunnels	0	0	0					0
Facilities		546	0	0	2,658	0	652	3,857
Total	1,963	551	0	0	2,658	0	652	5,824
Yuba								
Segments	0	0	0					0
Bridges	1	0	0					1
Tunnels	0	0	0					0
Facilities		0	0	22	0	0	102	124

	Highway	Railway	Light Rail	Bus Facility	Ports	Ferries	Airport	Total
Total	1	0	0	22	0	0	102	125
Total	122,163	42,855	118,254	5,675	57,545	1,373	106,149	454,014
Region Total	122,163	42,855	118,254	5,675	57,545	1,373	106,149	454,014

Totals only reflect data for those census tracts/blocks included in the user's study region and will reflect the entire county/state only if all of the census blocks for that county/states were selected at the time of study region creation.

Direct Economic Loss For Utilities

April 25, 2024

All values are in thousands of dollars

	Potable Water	Waste Water	Oil Systems	Natural Gas	Electric Power	Communication	Total
California							
Alameda							
<i>Facilities</i>	405	15,858	0	0	68,794	30	85,087
<i>Pipelines</i>	335	168	0	0			504
Total	740	16,027	0	0	68,794	30	85,591
Amador							
<i>Facilities</i>	0	3	0	0	1,249	0	1,252
<i>Pipelines</i>	22	11	0	0			33
Total	22	14	0	0	1,249	0	1,285
Butte							
<i>Facilities</i>	28	492	0	0	47,235	3	47,758
<i>Pipelines</i>	125	63	0	0			187
Total	153	554	0	0	47,235	3	47,946
Calaveras							
<i>Facilities</i>	28	10	0	0	1,439	0	1,478

	Potable Water	Waste Water	Oil Systems	Natural Gas	Electric Power	Communication	Total
<i>Pipelines</i>	34	17	0	0			52
Total	63	28	0	0	1,439	0	1,529
Colusa							
<i>Facilities</i>	0	4,573	0	658	48,608	2	53,841
<i>Pipelines</i>	175	88	0	0			263
Total	175	4,661	0	658	48,608	2	54,105
Contra Costa							
<i>Facilities</i>	2,090	24,319	12	0	371,181	15	397,617
<i>Pipelines</i>	476	239	0	0			715
Total	2,566	24,558	12	0	371,181	15	398,332
Del Norte							
<i>Facilities</i>	0	3	0	0	0	0	3
<i>Pipelines</i>	12	6	0	0			18
Total	12	9	0	0	0	0	21
El Dorado							
<i>Facilities</i>	28	492	0	0	13,173	1	13,694
<i>Pipelines</i>	72	36	0	0			107
Total	100	528	0	0	13,173	1	13,801
Glenn							
<i>Facilities</i>	0	1,524	0	0	1,876	2	3,402
<i>Pipelines</i>	166	83	0	0			249

	Potable Water	Waste Water	Oil Systems	Natural Gas	Electric Power	Communication	Total
Total	166	1,608	0	0	1,876	2	3,652
Humboldt							
<i>Facilities</i>	0	18,030	0	0	8,425	27	26,482
<i>Pipelines</i>	398	200	0	0			598
Total	398	18,230	0	0	8,425	27	27,080
Lake							
<i>Facilities</i>	4,852	0	0	0	449,822	377	455,051
<i>Pipelines</i>	2,332	1,172	0	0			3,504
Total	7,184	1,172	0	0	449,822	377	458,555
Lassen							
<i>Facilities</i>	0	3	0	0	25	0	28
<i>Pipelines</i>	42	21	0	0			63
Total	42	24	0	0	25	0	91
Marin							
<i>Facilities</i>	1,009	19,465	0	0	3,507	27	24,007
<i>Pipelines</i>	196	98	0	0			295
Total	1,205	19,563	0	0	3,507	27	24,302
Mendocino							
<i>Facilities</i>	0	146,419	0	0	60,709	506	207,634
<i>Pipelines</i>	10,704	5,377	0	0			16,080
Total	10,704	151,795	0	0	60,709	506	223,715

	Potable Water	Waste Water	Oil Systems	Natural Gas	Electric Power	Communication	Total
Merced							
<i>Facilities</i>	0	133	0	0	1,143	0	1,276
<i>Pipelines</i>	82	41	0	0			123
Total	82	174	0	0	1,143	0	1,399
Monterey							
<i>Facilities</i>	0	23	0	0	12,025	0	12,048
<i>Pipelines</i>	64	32	0	0			96
Total	64	55	0	0	12,025	0	12,144
Napa							
<i>Facilities</i>	0	49,385	0	0	11,727	128	61,240
<i>Pipelines</i>	643	323	0	0			965
Total	643	49,707	0	0	11,727	128	62,205
Nevada							
<i>Facilities</i>	0	740	0	0	317	1	1,058
<i>Pipelines</i>	57	28	0	0			85
Total	57	769	0	0	317	1	1,142
Placer							
<i>Facilities</i>	0	1,229	0	0	4,492	1	5,722
<i>Pipelines</i>	79	40	0	0			119
Total	79	1,269	0	0	4,492	1	5,841
Plumas							

	Potable Water	Waste Water	Oil Systems	Natural Gas	Electric Power	Communication	Total
<i>Facilities</i>	1	10	0	0	980	0	991
<i>Pipelines</i>	47	24	0	0			71
Total	48	34	0	0	980	0	1,062
Sacramento							
<i>Facilities</i>	0	2,631	0	0	29,663	50	32,344
<i>Pipelines</i>	351	176	0	0			527
Total	351	2,807	0	0	29,663	50	32,871
San Benito							
<i>Facilities</i>	0	126	0	0	0	0	126
<i>Pipelines</i>	23	11	0	0			34
Total	23	137	0	0	0	0	160
San Francisco							
<i>Facilities</i>	0	9,269	0	0	605	15	9,889
<i>Pipelines</i>	74	37	0	0			111
Total	74	9,306	0	0	605	15	9,999
San Joaquin							
<i>Facilities</i>	140	861	0	0	9,393	2	10,396
<i>Pipelines</i>	162	81	0	0			244
Total	303	942	0	0	9,393	2	10,640
San Mateo							
<i>Facilities</i>	0	11,408	0	0	362	10	11,780

	Potable Water	Waste Water	Oil Systems	Natural Gas	Electric Power	Communication	Total
<i>Pipelines</i>	117	59	0	0			176
Total	117	11,467	0	0	362	10	11,956
Santa Clara							
<i>Facilities</i>	56	369	0	0	14,198	4	14,627
<i>Pipelines</i>	142	72	0	0			214
Total	199	440	0	0	14,198	4	14,841
Santa Cruz							
<i>Facilities</i>	0	492	0	0	42	1	535
<i>Pipelines</i>	43	22	0	0			65
Total	43	514	0	0	42	1	600
Shasta							
<i>Facilities</i>	56	863	0	3	57,971	3	58,896
<i>Pipelines</i>	112	56	0	0			168
Total	168	919	0	3	57,971	3	59,064
Sierra							
<i>Facilities</i>	0	0	0	0	10	0	10
<i>Pipelines</i>	18	9	0	0			27
Total	18	9	0	0	10	0	37
Siskiyou							
<i>Facilities</i>	0	5	0	0	38	0	43
<i>Pipelines</i>	96	48	0	0			145

	Potable Water	Waste Water	Oil Systems	Natural Gas	Electric Power	Communication	Total
Total	96	54	0	0	38	0	188
Solano							
<i>Facilities</i>	0	22,233	3	0	203,172	19	225,427
<i>Pipelines</i>	630	316	0	0			946
Total	630	22,549	3	0	203,172	19	226,373
Sonoma							
<i>Facilities</i>	0	278,530	0	0	3,553,163	726	3,832,419
<i>Pipelines</i>	8,902	4,472	0	0			13,374
Total	8,902	283,002	0	0	3,553,163	726	3,845,793
Stanislaus							
<i>Facilities</i>	0	492	0	0	8,652	3	9,147
<i>Pipelines</i>	64	32	0	0			96
Total	64	524	0	0	8,652	3	9,243
Sutter							
<i>Facilities</i>	0	246	0	0	44,194	4	44,444
<i>Pipelines</i>	132	66	0	0			198
Total	132	312	0	0	44,194	4	44,642
Tehama							
<i>Facilities</i>	0	248	0	75	793	3	1,120
<i>Pipelines</i>	134	67	0	0			201
Total	134	316	0	75	793	3	1,320

	Potable Water	Waste Water	Oil Systems	Natural Gas	Electric Power	Communication	Total
Trinity							
<i>Facilities</i>	0	0	0	0	14,826	0	14,826
<i>Pipelines</i>	133	67	0	0			200
Total	133	67	0	0	14,826	0	15,025
Tuolumne							
<i>Facilities</i>	0	3	0	0	1,427	0	1,430
<i>Pipelines</i>	16	8	0	0			24
Total	16	11	0	0	1,427	0	1,454
Yolo							
<i>Facilities</i>	0	6,097	0	0	6,937	22	13,056
<i>Pipelines</i>	205	103	0	0			308
Total	205	6,201	0	0	6,937	22	13,365
Yuba							
<i>Facilities</i>	0	492	0	0	15,532	0	16,024
<i>Pipelines</i>	51	26	0	0			77
Total	51	518	0	0	15,532	0	16,101
Total	36,159	630,872	15	736	5,067,707	1,983	5,737,471
Region Total	36,159	630,872	15	736	5,067,707	1,983	5,737,471

Totals only reflect data for those census tracts/blocks included in the user's study region and will reflect the entire county/state only if all of the census blocks for that county/states were selected at the time of study region creation.

Hazus Quick Assessment Report

Estimated Economic Loss (\$ Billions)

Category	Description	Range
General Building Stock	Building Damage	3.60 - 14.30
	Building Contents	0.50 - 2.10
	Business Interruption	0.80 - 3.40
Infrastructure	Lifelines Damage	
Total		5.80 - 23.40

Preliminary Damage Assessment (PDA) Estimates

Description	Residential	Commercial	Other	Total
Affected	105,900	9,300	4,200	119,400
Minor	21,500	4,000	1,900	27,400
Major	4,200	1,300	570	6,070
Destroyed	700	380	160	1,240
Total	132,300	14,980	6,830	154,110

Estimated Casualties : Night Time

Severity Level	Description	# Persons
Level 1	Medical Aid	300 - 1,300
Level 2	Hospital Care	50 - 190
Level 3	Life-threatening	0 - 20
Level 4	Fatalities	10 - 30

Estimated Shelter Needs

Type	Households	People
Displaced Households	1,300 - 5,000	3,250 - 12,500
Public Shelter	520	1,290

Comments :

*Hazus damage estimates are presented using FEMA Preliminary Damage Assessment (PDA) categories. These estimates should be used for planning purposes and may not reflect actual observed damages from the PDA process.

Disclaimer:

The estimates of social and economic impacts contained in this report were produced using HAZUS loss estimation methodology software which is based on current scientific and engineering knowledge. There are uncertainties inherent in any loss estimation technique. Therefore, there may be significant differences between the modeled results contained in this report and the actual social and economic losses following a specific earthquake. These results can be improved by using enhanced inventory, geotechnical, and observed ground motion data.

Earthquake Information

Location :

Origin Time:

Magnitude : 7.55

Epicenter Latitude/Longitude :
/

Depth & Type : /U

Name :
NA

Ground Motion /Attenuation :

Maximum PGA: 1.00

Information Sources:

Comments :

Population and Building Exposure

Population: 13,925,561

Building Exposure : (\$ Millions)

Residential	1,802,090
Commercial	481,626
Other	417,004
Total	2,700,720

Counties : See Appendix

Major Metro Area :

Hazus Quick Assessment Report

Estimated Economic Loss (\$ Billions)

Category	Description	Range
General Building Stock	Building Damage	3.60 - 14.30
	Building Contents	0.50 - 2.10
	Business Interruption	0.80 - 3.40
Infrastructure	Lifelines Damage	
Total		5.80 - 23.40

Preliminary Damage Assessment (PDA) Estimates

Description	Residential	Commercial	Other	Total
Affected	105,900	9,300	4,200	119,400
Minor	21,500	4,000	1,900	27,400
Major	4,200	1,300	570	6,070
Destroyed	700	380	160	1,240
Total	132,300	14,980	6,830	154,110

Estimated Casualties : Day Time

Severity Level	Description	# Persons
Level 1	Medical Aid	700 - 3,000
Level 2	Hospital Care	140 - 600
Level 3	Life-threatening	20 - 80
Level 4	Fatalities	40 - 150

Estimated Shelter Needs

Type	Households	People
Displaced Households	1,300 - 5,000	3,250 - 12,500
Public Shelter	520	1,290

Comments :

*Hazus damage estimates are presented using FEMA Preliminary Damage Assessment (PDA) categories. These estimates should be used for planning purposes and may not reflect actual observed damages from the PDA process.

Disclaimer:

The estimates of social and economic impacts contained in this report were produced using HAZUS loss estimation methodology software which is based on current scientific and engineering knowledge. There are uncertainties inherent in any loss estimation technique. Therefore, there may be significant differences between the modeled results contained in this report and the actual social and economic losses following a specific earthquake. These results can be improved by using enhanced inventory, geotechnical, and observed ground motion data.

Earthquake Information

Location :

Origin Time:

Magnitude : 7.55

Epicenter Latitude/Longitude :
/

Depth & Type : /U

Name :
NA

Ground Motion /Attenuation :

Maximum PGA: 1.00

Information Sources:

Comments :

Population and Building Exposure

Population: 13,925,561

Building Exposure : (\$ Millions)

Residential	1,802,090
Commercial	481,626
Other	417,004
Total	2,700,720

Counties : See Appendix

Major Metro Area :

Hazus Quick Assessment Report

Estimated Economic Loss (\$ Billions)

Category	Description	Range
General Building Stock	Building Damage	3.60 - 14.30
	Building Contents	0.50 - 2.10
	Business Interruption	0.80 - 3.40
Infrastructure	Lifelines Damage	
Total		5.80 - 23.40

Preliminary Damage Assessment (PDA) Estimates

Description	Residential	Commercial	Other	Total
Affected	105,900	9,300	4,200	119,400
Minor	21,500	4,000	1,900	27,400
Major	4,200	1,300	570	6,070
Destroyed	700	380	160	1,240
Total	132,300	14,980	6,830	154,110

Estimated Casualties : Commute Time

Severity Level	Description	# Persons
Level 1	Medical Aid	500 - 1,900
Level 2	Hospital Care	110 - 400
Level 3	Life-threatening	30 - 140
Level 4	Fatalities	30 - 110

Estimated Shelter Needs

Type	Households	People
Displaced Households	1,300 - 5,000	3,250 - 12,500
Public Shelter	520	1,290

Comments :

*Hazus damage estimates are presented using FEMA Preliminary Damage Assessment (PDA) categories. These estimates should be used for planning purposes and may not reflect actual observed damages from the PDA process.

Disclaimer:

The estimates of social and economic impacts contained in this report were produced using HAZUS loss estimation methodology software which is based on current scientific and engineering knowledge. There are uncertainties inherent in any loss estimation technique. Therefore, there may be significant differences between the modeled results contained in this report and the actual social and economic losses following a specific earthquake. These results can be improved by using enhanced inventory, geotechnical, and observed ground motion data.

Earthquake Information

Location :

Origin Time:

Magnitude : 7.55

Epicenter Latitude/Longitude :
/

Depth & Type : /U

Name :
NA

Ground Motion /Attenuation :

Maximum PGA: 1.00

Information Sources:

Comments :

Population and Building Exposure

Population: 13,925,561

Building Exposure : (\$ Millions)

Residential	1,802,090
Commercial	481,626
Other	417,004
Total	2,700,720

Counties : See Appendix

Major Metro Area :

Shelter Summary Report

April 25, 2024

	# of Displaced Households	# of People Needing Short Term Shelter
California		
Butte	0	0
Alameda	17	8
Humboldt	0	0
Del Norte	0	0
Solano	8	4
San Mateo	0	0
Tuolumne	0	0
San Joaquin	0	0
Nevada	0	0
Colusa	0	0
Plumas	0	0
Shasta	0	0
Siskiyou	0	0
Napa	144	65
Mendocino	347	210
Contra Costa	4	3
Tehama	0	0
Trinity	0	0
El Dorado	0	0
Amador	0	0
Santa Cruz	0	0
Sierra	0	0
Lake	117	67
Monterey	0	0
Sacramento	2	1
Yolo	1	1
Calaveras	0	0
Yuba	0	0
Glenn	0	0
Stanislaus	0	0
Sonoma	1,902	922
Santa Clara	0	0

	# of Displaced Households	# of People Needing Short Term Shelter
San Benito	0	0
San Francisco	16	6
Merced	0	0
Placer	0	0
Marin	1	0
Lassen	0	0
Sutter	0	0
Total	2,561	1,288
Region Total	2,561	1,288

Totals only reflect data for those census tracts/blocks included in the user's study region and will reflect the entire county/state only if all of the census blocks for that county/states were selected at the time of study region creation.