
Hazus: Earthquake Global Risk Report

Region Name: Likely

Earthquake Scenario: likely2011cfmshaw09m_m7p16_se

Print Date: June 06, 2024

Disclaimer:

Totals only reflect data for those census tracts/blocks included in the user's study region.

The estimates of social and economic impacts contained in this report were produced using Hazus loss estimation methodology software which is based on current scientific and engineering knowledge. There are uncertainties inherent in any loss estimation technique. Therefore, there may be significant differences between the modeled results contained in this report and the actual social and economic losses following a specific earthquake. These results can be improved by using enhanced inventory, geotechnical, and observed ground motion data.

Table of Contents

Section	Page #
General Description of the Region	3
Building and Lifeline Inventory	4
Building Inventory	
Critical Facility Inventory	
Transportation and Utility Lifeline Inventory	
Earthquake Scenario Parameters	7
Direct Earthquake Damage	8
Buildings Damage	
Essential Facilities Damage	
Transportation and Utility Lifeline Damage	
Induced Earthquake Damage	14
Fire Following Earthquake	
Debris Generation	
Social Impact	15
Shelter Requirements	
Casualties	
Economic Loss	17
Building Related Losses	
Transportation and Utility Lifeline Losses	
Appendix A: County Listing for the Region	
Appendix B: Regional Population and Building Value Data	

General Description of the Region

Hazus-MH is a regional earthquake loss estimation model that was developed by the Federal Emergency Management Agency (FEMA) and the National Institute of Building Sciences. The primary purpose of Hazus is to provide a methodology and software application to develop multi-hazard losses at a regional scale. These loss estimates would be used primarily by local, state and regional officials to plan and stimulate efforts to reduce risks from multi-hazards and to prepare for emergency response and recovery.

The earthquake loss estimates provided in this report was based on a region that includes 11 county(ies) from the following state(s):

California

Note:

Appendix A contains a complete listing of the counties contained in the region.

The geographical size of the region is 33,035.04 square miles and contains 276 census tracts. There are over 425 thousand households in the region which has a total population of 1,091,240 people. The distribution of population by Total Region and County is provided in Appendix B.

There are an estimated 476 thousand buildings in the region with a total building replacement value (excluding contents) of 244,496 (millions of dollars). Approximately 90.00 % of the buildings (and 67.00% of the building value) are associated with residential housing.

The replacement value of the transportation and utility lifeline systems is estimated to be 35,175 and 56,589 (millions of dollars) , respectively.

Building and Lifeline Inventory

Building Inventory

Hazus estimates that there are 476 thousand buildings in the region which have an aggregate total replacement value of 244,496 (millions of dollars) . Appendix B provides a general distribution of the building value by Total Region and County.

In terms of building construction types found in the region, wood frame construction makes up 84% of the building inventory. The remaining percentage is distributed between the other general building types.

Critical Facility Inventory

Hazus breaks critical facilities into two (2) groups: essential facilities and high potential loss facilities (HPL). Essential facilities include hospitals, medical clinics, schools, fire stations, police stations and emergency operations facilities. High potential loss facilities include dams, levees, military installations, nuclear power plants and hazardous material sites.

For essential facilities, there are 34 hospitals in the region with a total bed capacity of 2,645 beds. There are 602 schools, 353 fire stations, 71 police stations and 13 emergency operation facilities. With respect to high potential loss facilities (HPL), there are no dams identified within the inventory. The inventory also includes no hazardous material sites, no military installations and no nuclear power plants.

Transportation and Utility Lifeline Inventory

Within Hazus, the lifeline inventory is divided between transportation and utility lifeline systems. There are seven (7) transportation systems that include highways, railways, light rail, bus, ports, ferry and airports. There are six (6) utility systems that include potable water, wastewater, natural gas, crude & refined oil, electric power and communications. The lifeline inventory data are provided in Tables 1 and 2.

The total value of the lifeline inventory is over 91,764.00 (millions of dollars). This inventory includes over 2,935.36 miles of highways, 2,877 bridges, 99,549.85 miles of pipes.

Table 1: Transportation System Lifeline Inventory

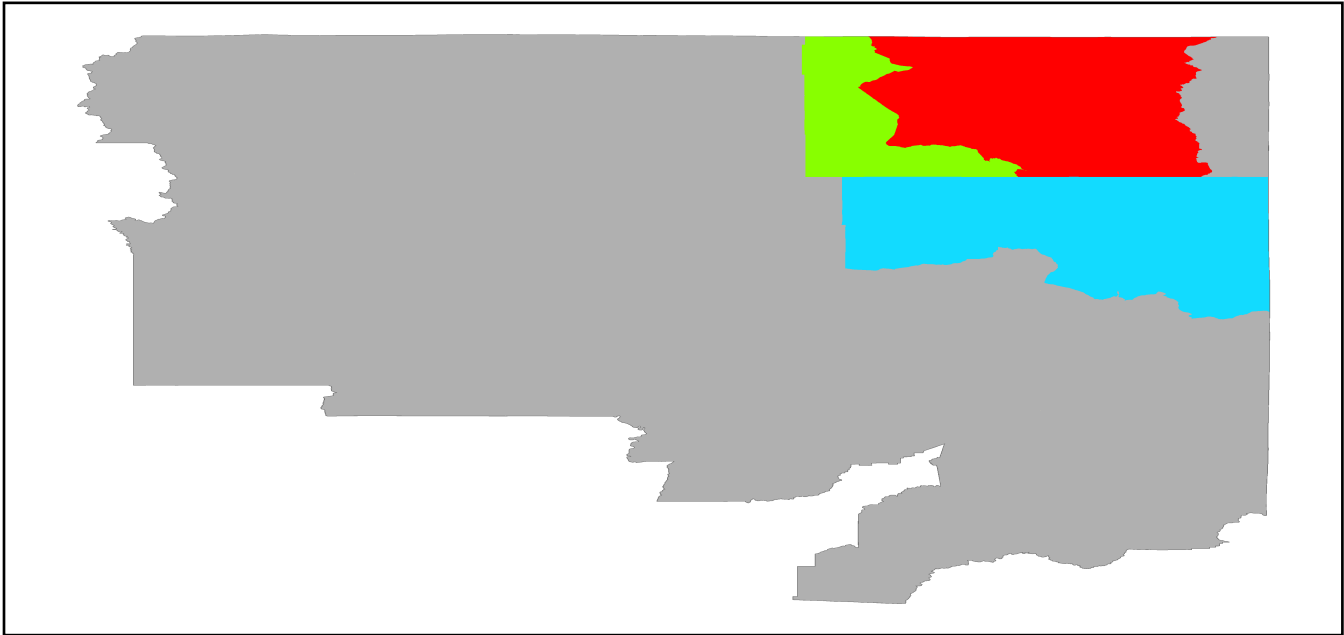
System	Component	# Locations/ # Segments	Replacement value (millions of dollars)
Highway	Bridges	2,877	6494.5602
	Segments	818	19590.1258
	Tunnels	7	40.7535
	Subtotal		26125.4395
Railways	Bridges	595	3385.5500
	Facilities	8	21.3040
	Segments	650	5120.3967
	Tunnels	0	0.0000
	Subtotal		8527.2507
Light Rail	Bridges	0	0.0000
	Facilities	0	0.0000
	Segments	0	0.0000
	Tunnels	0	0.0000
	Subtotal		0.0000
Bus	Facilities	3	6.7760
	Subtotal		6.7760
Ferry	Facilities	0	0.0000
	Subtotal		0.0000
Port	Facilities	0	0.0000
	Subtotal		0.0000
Airport	Facilities	46	259.7480
	Runways	48	256.4520
	Subtotal		516.2000
		Total	35,175.70

Table 2: Utility System Lifeline Inventory

System	Component	# Locations / Segments	Replacement value (millions of dollars)
Potable Water	Distribution Lines	NA	1987.0525
	Facilities	4	157.1760
	Pipelines	0	0.0000
		Subtotal	2144.2285
Waste Water	Distribution Lines	NA	1192.2315
	Facilities	40	6878.0720
	Pipelines	0	0.0000
		Subtotal	8070.3035
Natural Gas	Distribution Lines	NA	794.8210
	Facilities	3	123.7305
	Pipelines	171	4389.7334
		Subtotal	5308.2849
Oil Systems	Facilities	1	0.1180
	Pipelines	0	0.0000
		Subtotal	0.1180
Electrical Power	Facilities	105	41058.1708
		Subtotal	41058.1708
Communication	Facilities	71	8.3780
		Subtotal	8.3780
	Total		56,589.50

Earthquake Scenario

Hazus uses the following set of information to define the earthquake parameters used for the earthquake loss estimate provided in this report.



Scenario Name	likely2011cfmshaw09m_m7p16_se
Type of Earthquake	User-defined
Fault Name	NA
Historical Epicenter ID #	NA
Probabilistic Return Period	NA
Longitude of Epicenter	NA
Latitude of Epicenter	NA
Earthquake Magnitude	7.16
Depth (km)	NA
Rupture Length (Km)	NA
Rupture Orientation (degrees)	NA
Attenuation Function	NA

Direct Earthquake Damage

Building Damage

Hazus estimates that about 217 buildings will be at least moderately damaged. This is over 0.00 % of the buildings in the region. There are an estimated 0 buildings that will be damaged beyond repair. The definition of the 'damage states' is provided in Volume 1: Chapter 5 of the Hazus technical manual. Table 3 below summarizes the expected damage by general occupancy for the buildings in the region. Table 4 below summarizes the expected damage by general building type.

Damage Categories by General Occupancy Type

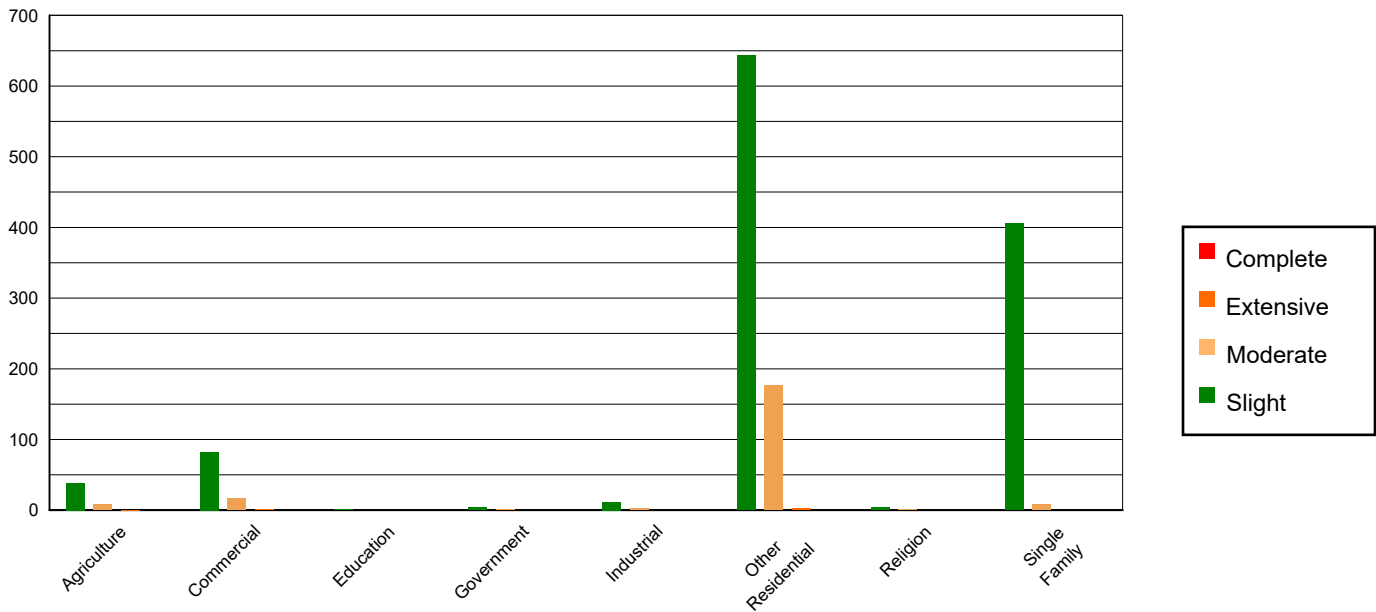


Table 3: Expected Building Damage by Occupancy

	None		Slight		Moderate		Extensive		Complete	
	Count	(%)	Count	(%)	Count	(%)	Count	(%)	Count	(%)
Agriculture	5169.81	1.09	38.23	3.21	7.69	3.60	0.26	7.78	0.00	19.08
Commercial	29578.96	6.22	82.42	6.93	16.93	7.92	0.69	20.29	0.00	64.16
Education	905.11	0.19	0.82	0.07	0.08	0.04	0.00	0.01	0.00	0.00
Government	1067.68	0.22	3.16	0.27	1.09	0.51	0.06	1.80	0.00	6.02
Industrial	7966.11	1.68	11.71	0.98	2.16	1.01	0.02	0.67	0.00	0.00
Other Residential	79097.62	16.64	643.30	54.07	176.74	82.68	2.35	68.95	0.00	7.63
Religion	1594.32	0.34	4.01	0.34	0.66	0.31	0.02	0.50	0.00	3.11
Single Family	350029.50	73.63	406.09	34.13	8.42	3.94	0.00	0.00	0.00	0.00
Total	475,409		1,190		214		3		0	

Table 4: Expected Building Damage by Building Type (All Design Levels)

	None		Slight		Moderate		Extensive		Complete	
	Count	(%)	Count	(%)	Count	(%)	Count	(%)	Count	(%)
Wood	400540.08	84.25	461.01	38.75	9.95	4.66	0.00	0.01	0.00	0.00
Steel	10230.76	2.15	35.05	2.95	9.37	4.38	0.38	11.26	0.00	11.60
Concrete	10270.37	2.16	27.20	2.29	5.79	2.71	0.23	6.81	0.00	0.00
Precast	7037.40	1.48	23.64	1.99	5.67	2.65	0.13	3.86	0.00	2.96
RM	13320.02	2.80	18.20	1.53	2.85	1.33	0.01	0.21	0.00	0.00
URM	1299.15	0.27	17.17	1.44	5.83	2.73	0.38	11.13	0.01	85.44
MH	32711.31	6.88	607.46	51.06	174.31	81.54	2.27	66.71	0.00	0.00
Total	475,409		1,190		214		3		0	

*Note:

- RM Reinforced Masonry
- URM Unreinforced Masonry
- MH Manufactured Housing

Essential Facility Damage

Before the earthquake, the region had 2,645 hospital beds available for use. On the day of the earthquake, the model estimates that only 2,578 hospital beds (97.00%) are available for use by patients already in the hospital and those injured by the earthquake. After one week, 99.00% of the beds will be back in service. By 30 days, 100.00% will be operational.

Table 5: Expected Damage to Essential Facilities

Classification	Total	# Facilities		
		At Least Moderate Damage > 50%	Complete Damage > 50%	With Functionality > 50% on day 1
Hospitals	34	0	0	33
Schools	602	1	0	598
EOCs	13	0	0	13
PoliceStations	71	0	0	71
FireStations	353	1	0	348

Transportation Lifeline Damage

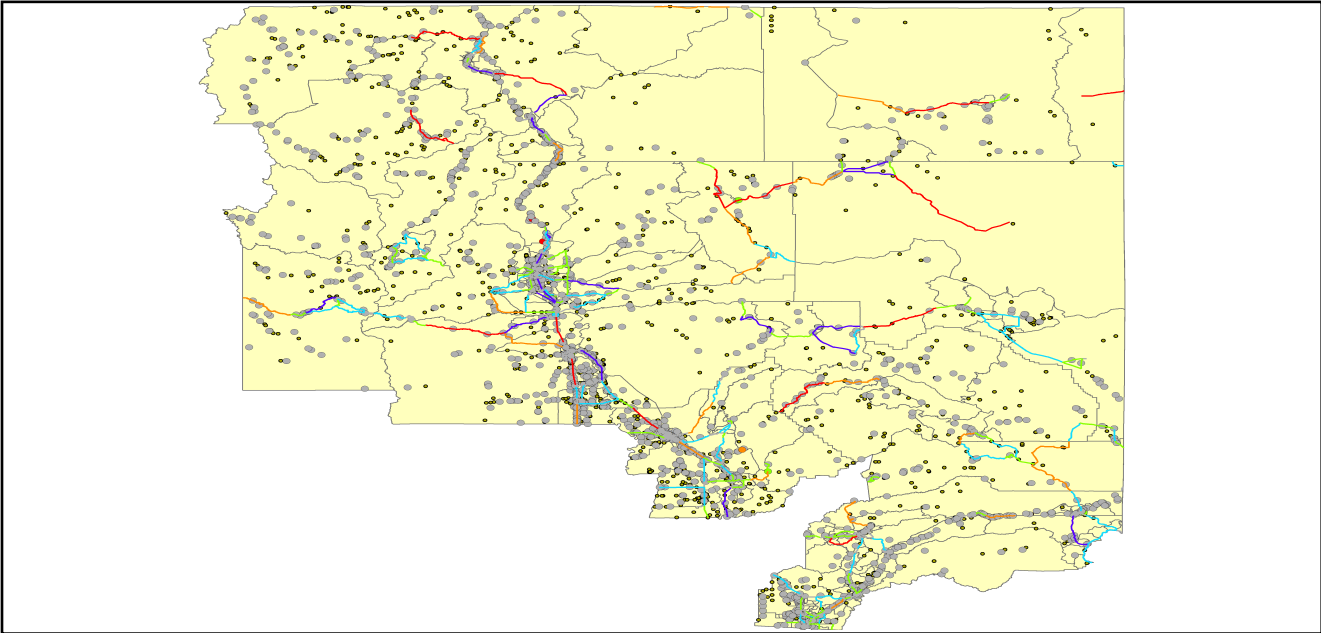


Table 6: Expected Damage to the Transportation Systems

System	Component	Number of Locations_				
		Locations/ Segments	With at Least Mod. Damage	With Complete Damage	With Functionality > 50 %	
					After Day 1	After Day 7
Highway	Segments	818	0	0	818	818
	Bridges	2,877	0	0	2,877	2,877
	Tunnels	7	0	0	7	7
Railways	Segments	650	0	0	650	650
	Bridges	595	0	0	595	595
	Tunnels	0	0	0	0	0
	Facilities	8	0	0	8	8
Light Rail	Segments	0	0	0	0	0
	Bridges	0	0	0	0	0
	Tunnels	0	0	0	0	0
	Facilities	0	0	0	0	0
Bus	Facilities	3	0	0	3	3
Ferry	Facilities	0	0	0	0	0
Port	Facilities	0	0	0	0	0
Airport	Facilities	46	0	0	46	46
	Runways	48	0	0	48	48

Table 6 provides damage estimates for the transportation system.

Note: Roadway segments, railroad tracks and light rail tracks are assumed to be damaged by ground failure only. If ground failure maps are not provided, damage estimates to these components will not be computed.

Tables 7-9 provide information on the damage to the utility lifeline systems. Table 7 provides damage to the utility system facilities. Table 8 provides estimates on the number of leaks and breaks by the pipelines of the utility systems. For electric power and potable water, Hazus performs a simplified system performance analysis. Table 9 provides a summary of the system performance information.

Table 7 : Expected Utility System Facility Damage

System	# of Locations				
	Total #	With at Least Moderate Damage	With Complete Damage	with Functionality > 50 %	
				After Day 1	After Day 7
Potable Water	4	0	0	4	4
Waste Water	40	0	0	40	40
Natural Gas	3	0	0	3	3
Oil Systems	1	0	0	1	1
Electrical Power	105	0	0	105	105
Communication	71	1	0	71	71

Table 8 : Expected Utility System Pipeline Damage (Site Specific)

System	Total Pipelines Length (miles)	Number of Leaks	Number of Breaks
Potable Water	61,735	600	150
Waste Water	37,041	302	75
Natural Gas	774	0	0
Oil	0	0	0

Table 9: Expected Potable Water and Electric Power System Performance

	Total # of Households	Number of Households without Service				
		At Day 1	At Day 3	At Day 7	At Day 30	At Day 90
Potable Water	425,690	1	0	0	0	0
Electric Power		0	0	0	0	0

Induced Earthquake Damage

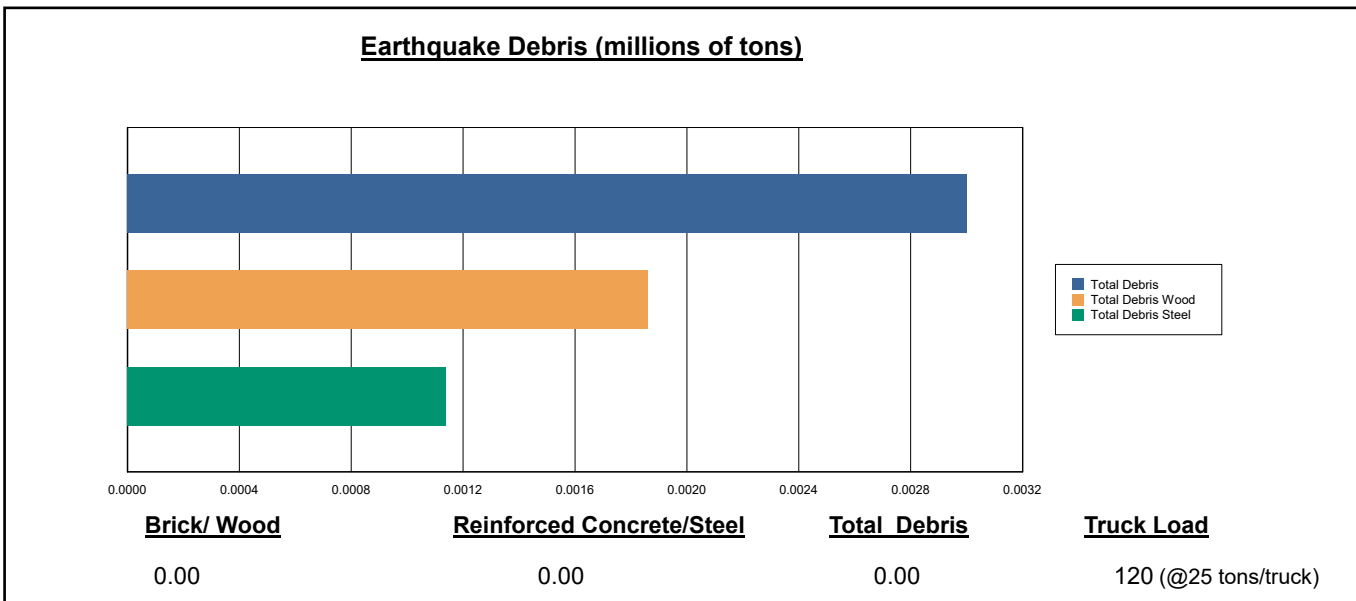
Fire Following Earthquake

Fires often occur after an earthquake. Because of the number of fires and the lack of water to fight the fires, they can often burn out of control. Hazus uses a Monte Carlo simulation model to estimate the number of ignitions and the amount of burnt area. For this scenario, the model estimates that there will be 0 ignitions that will burn about 0.00 sq. mi 0.00 % of the region's total area.) The model also estimates that the fires will displace about 0 people and burn about 0 (millions of dollars) of building value.

Debris Generation

Hazus estimates the amount of debris that will be generated by the earthquake. The model breaks the debris into two general categories: a) Brick/Wood and b) Reinforced Concrete/Steel. This distinction is made because of the different types of material handling equipment required to handle the debris.

The model estimates that a total of 3,000 tons of debris will be generated. Of the total amount, Brick/Wood comprises 62.00% of the total, with the remainder being Reinforced Concrete/Steel. If the debris tonnage is converted to an estimated number of truckloads, it will require 120 truckloads (@25 tons/truck) to remove the debris generated by the earthquake.



Social Impact

Shelter Requirement

Hazus estimates the number of households that are expected to be displaced from their homes due to the earthquake and the number of displaced people that will require accommodations in temporary public shelters. The model estimates 0 households to be displaced due to the earthquake. Of these, 0 people (out of a total population of 1,091,240) will seek temporary shelter in public shelters.

<u>Displaced Households/ Persons Seeking Short Term Public Shelter</u>	
<u>Displaced households as a result of the earthquake</u>	<u>Persons seeking temporary public shelter</u>
0	0

Casualties

Hazus estimates the number of people that will be injured and killed by the earthquake. The casualties are broken down into four (4) severity levels that describe the extent of the injuries. The levels are described as follows;

- Severity Level 1: Injuries will require medical attention but hospitalization is not needed.
- Severity Level 2: Injuries will require hospitalization but are not considered life-threatening
- Severity Level 3: Injuries will require hospitalization and can become life threatening if not promptly treated.
- Severity Level 4: Victims are killed by the earthquake.

The casualty estimates are provided for three (3) times of day: 2:00 AM, 2:00 PM and 5:00 PM. These times represent the periods of the day that different sectors of the community are at their peak occupancy loads. The 2:00 AM estimate considers that the residential occupancy load is maximum, the 2:00 PM estimate considers that the educational, commercial and industrial sector loads are maximum and 5:00 PM represents peak commute time.

Table 10 provides a summary of the casualties estimated for this earthquake

Table 10: Casualty Estimates

		Level 1	Level 2	Level 3	Level 4
2 AM	Commercial	0.01	0.00	0.00	0.00
	Commuting	0.00	0.00	0.00	0.00
	Educational	0.00	0.00	0.00	0.00
	Hotels	0.00	0.00	0.00	0.00
	Industrial	0.00	0.00	0.00	0.00
	Other-Residential	1.33	0.09	0.00	0.00
	Single Family	0.37	0.00	0.00	0.00
	Total	2	0	0	0
	2 PM	Commercial	0.91	0.06	0.00
Commuting		0.00	0.00	0.01	0.00
Educational		0.12	0.01	0.00	0.00
Hotels		0.00	0.00	0.00	0.00
Industrial		0.03	0.00	0.00	0.00
Other-Residential		0.51	0.03	0.00	0.00
Single Family		0.14	0.00	0.00	0.00
Total		2	0	0	0
5 PM		Commercial	0.57	0.04	0.00
	Commuting	0.04	0.06	0.10	0.02
	Educational	0.00	0.00	0.00	0.00
	Hotels	0.00	0.00	0.00	0.00
	Industrial	0.02	0.00	0.00	0.00
	Other-Residential	0.47	0.03	0.00	0.00
	Single Family	0.13	0.00	0.00	0.00
	Total	1	0	0	0

Economic Loss

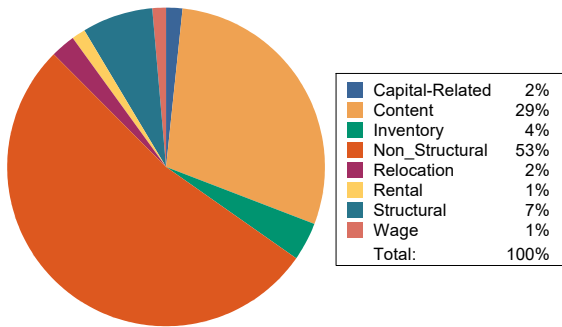
The total economic loss estimated for the earthquake is 182.21 (millions of dollars), which includes building and lifeline related losses based on the region's available inventory. The following three sections provide more detailed information about these losses.

Building-Related Losses

The building losses are broken into two categories: direct building losses and business interruption losses. The direct building losses are the estimated costs to repair or replace the damage caused to the building and its contents. The business interruption losses are the losses associated with inability to operate a business because of the damage sustained during the earthquake. Business interruption losses also include the temporary living expenses for those people displaced from their homes because of the earthquake.

The total building-related losses were 47.03 (millions of dollars); 7 % of the estimated losses were related to the business interruption of the region. By far, the largest loss was sustained by the residential occupancies which made up over 38 % of the total loss. Table 11 below provides a summary of the losses associated with the building damage.

Earthquake Losses by Loss Type (\$ millions)



Earthquake Losses by Occupancy Type (\$ millions)

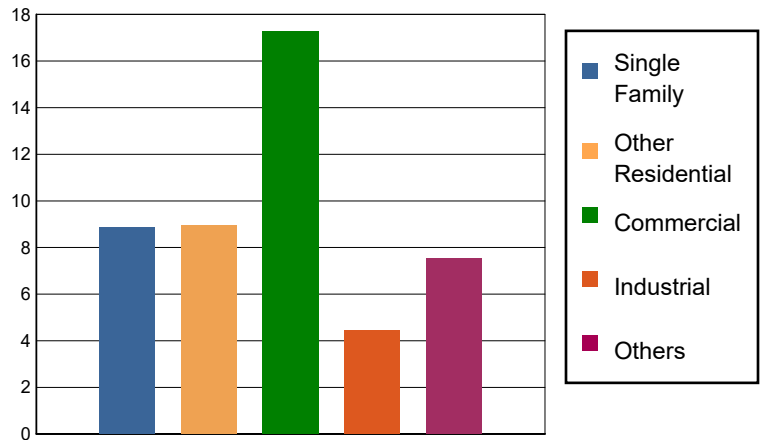


Table 11: Building-Related Economic Loss Estimates
(Millions of dollars)

Category	Area	Single Family	Other Residential	Commercial	Industrial	Others	Total
Income Losses							
	Wage	0.0000	0.0060	0.5725	0.0080	0.0539	0.6404
	Capital-Related	0.0000	0.0025	0.7649	0.0049	0.0094	0.7817
	Rental	0.0376	0.1053	0.5092	0.0125	0.0283	0.6929
	Relocation	0.0526	0.4477	0.4393	0.0601	0.1503	1.1500
	Subtotal	0.0902	0.5615	2.2859	0.0855	0.2419	3.2650
Capital Stock Losses							
	Structural	0.5756	0.9857	0.9286	0.1735	0.7482	3.4116
	Non_Structural	5.5384	5.7808	8.3216	2.2413	2.9001	24.7822
	Content	2.6621	1.6273	5.4059	1.7239	2.2514	13.6706
	Inventory	0.0000	0.0000	0.3169	0.2024	1.3769	1.8962
	Subtotal	8.7761	8.3938	14.9730	4.3411	7.2766	43.7606
	Total	8.87	8.96	17.26	4.43	7.52	47.03

Transportation and Utility Lifeline Losses

For the transportation and utility lifeline systems, Hazus computes the direct repair cost for each component only. There are no losses computed by Hazus for business interruption due to lifeline outages. Tables 12 & 13 provide a detailed breakdown in the expected lifeline losses.

Table 12: Transportation System Economic Losses
(Millions of dollars)

System	Component	Inventory Value	Economic Loss	Loss Ratio (%)
Highway	Segments	19590.1258	0.0000	0.00
	Bridges	6494.5602	0.9029	0.01
	Tunnels	40.7535	0.0000	0.00
	Subtotal	26125.4395	0.9029	
Railways	Segments	5120.3967	0.0000	0.00
	Bridges	3385.5500	3.2384	0.10
	Tunnels	0.0000	0.0000	0.00
	Facilities	21.3040	0.0570	0.27
	Subtotal	8527.2507	3.2954	
Light Rail	Segments	0.0000	0.0000	0.00
	Bridges	0.0000	0.0000	0.00
	Tunnels	0.0000	0.0000	0.00
	Facilities	0.0000	0.0000	0.00
	Subtotal	0.0000	0.0000	
Bus	Facilities	6.7760	0.0440	0.65
	Subtotal	6.7760	0.0440	
Ferry	Facilities	0.0000	0.0000	0.00
	Subtotal	0.0000	0.0000	
Port	Facilities	0.0000	0.0000	0.00
	Subtotal	0.0000	0.0000	
Airport	Facilities	259.7480	6.3309	2.44
	Runways	256.4520	0.0000	0.00
	Subtotal	516.2000	6.3309	
Total		35,175.67	10.57	

Table 13: Utility System Economic Losses
(Millions of dollars)

System	Component	Inventory Value	Economic Loss	Loss Ratio (%)
Potable Water	Pipelines	0.0000	0.0000	0.00
	Facilities	157.1760	0.0574	0.04
	Distribution Lines	1987.0525	2.7020	0.14
	Subtotal	2144.2285	2.7594	
Waste Water	Pipelines	0.0000	0.0000	0.00
	Facilities	6878.0720	12.8594	0.19
	Distribution Lines	1192.2315	1.3573	0.11
	Subtotal	8070.3035	14.2167	
Natural Gas	Pipelines	4389.7334	0.0000	0.00
	Facilities	123.7305	1.6675	1.35
	Distribution Lines	794.8210	0.4650	0.06
	Subtotal	5308.2849	2.1325	
Oil Systems	Pipelines	0.0000	0.0000	0.00
	Facilities	0.1180	0.0000	0.00
	Subtotal	0.1180	0.0000	
Electrical Power	Facilities	41058.1708	105.4438	0.26
	Subtotal	41058.1708	105.4438	
Communication	Facilities	8.3780	0.0550	0.66
	Subtotal	8.3780	0.0550	
	Total	56,589.48	124.61	

Appendix A: County Listing for the Region

Butte,CA

Lassen,CA

Modoc,CA

Nevada,CA

Placer,CA

Plumas,CA

Shasta,CA

Sierra,CA

Siskiyou,CA

Tehama,CA

Trinity,CA

Appendix B: Regional Population and Building Value Data

State	County Name	Population	Building Value (millions of dollars)		
			Residential	Non-Residential	Total
California	Butte	211,632	25,875	16,639	42,514
	Lassen	32,730	4,033	2,008	6,042
	Modoc	8,700	1,435	1,468	2,904
	Nevada	102,241	17,908	6,108	24,016
	Placer	404,739	69,985	24,193	94,179
	Plumas	19,790	6,128	2,276	8,405
	Shasta	182,155	21,572	15,715	37,288
	Sierra	3,236	596	419	1,015
	Siskiyou	44,076	6,856	4,758	11,615
	Tehama	65,829	7,705	5,113	12,818
	Trinity	16,112	2,209	1,485	3,694
Total Region		1,091,240	164,302	80,182	244,490

Building Inspection Tagging (Counts)

Total Economic Loss
Total:

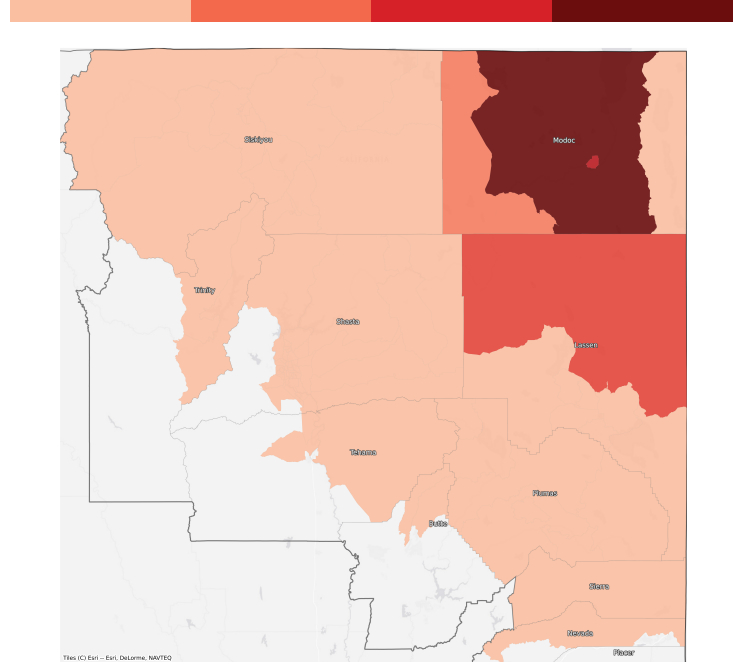
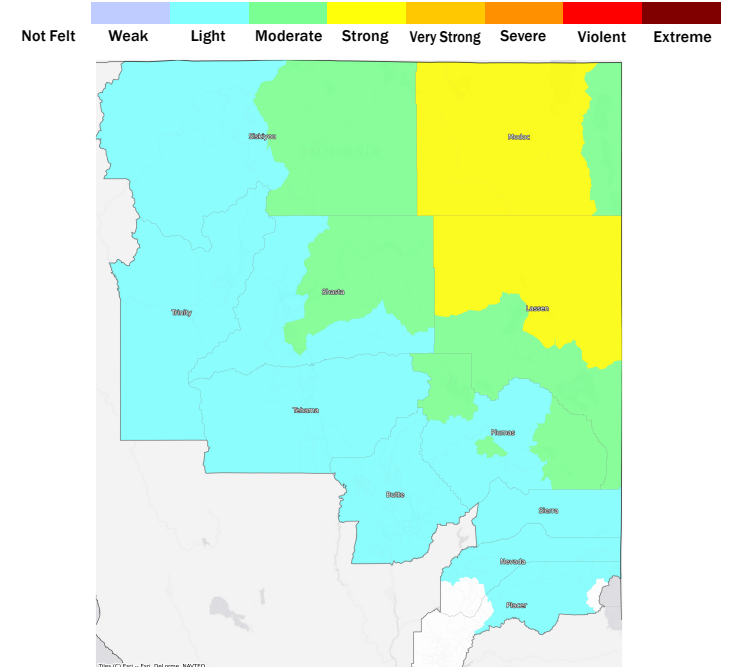
Top Counties	State	Total

Injuries & Fatalities
**Total Day:
Total Night:**

Top Counties	State	Injuries (day/night)	Fatalities (day/night)

Displaced Households & Short-Term Shelter Needs
**Total Displaced:
Total Needing Shelter:**

Top Counties	State	Displaced	Needing Shelter

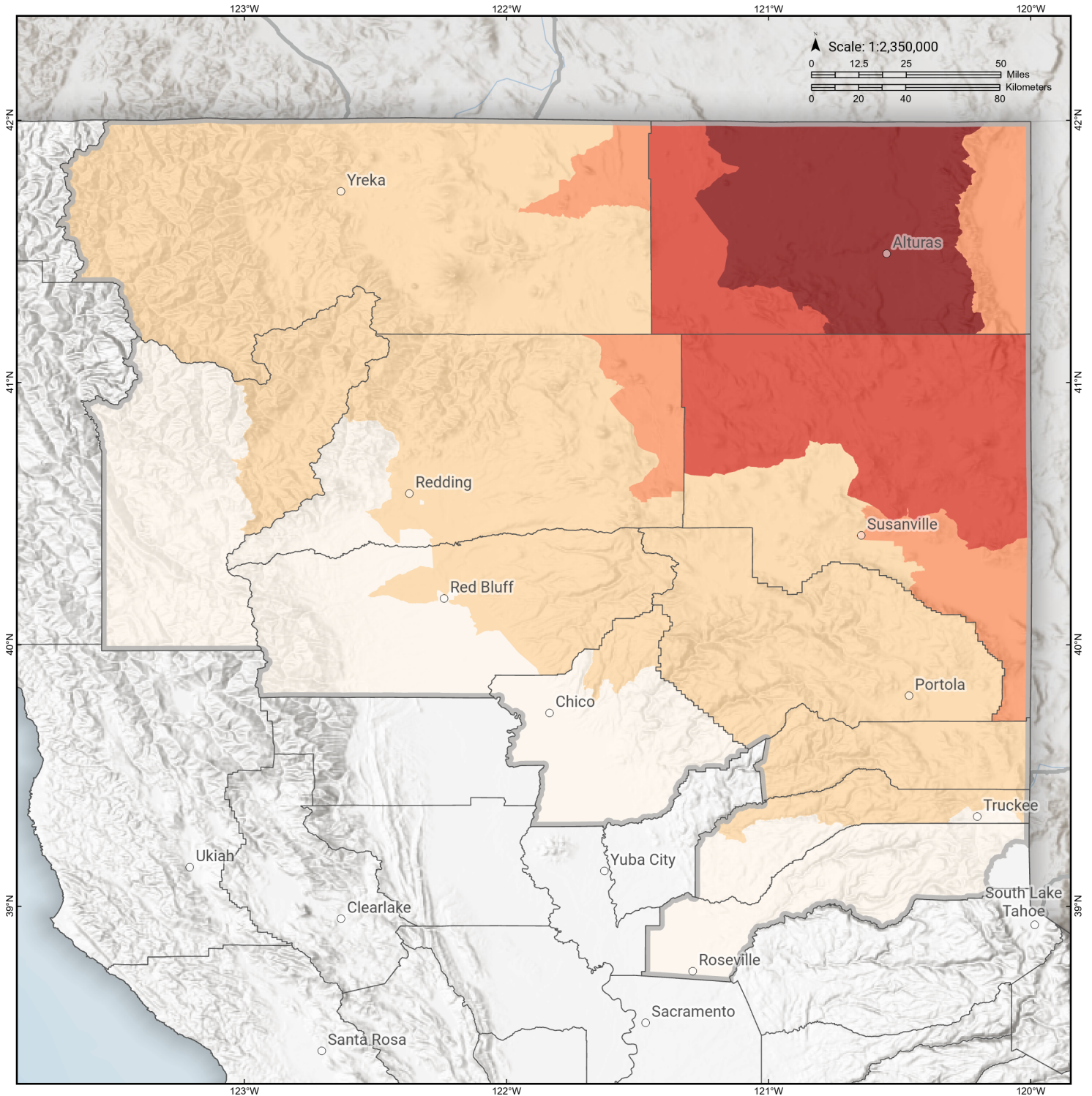
Economic Impacts by Census Tract

Ground Shaking

Debris
**Total Tons:
Total Truckloads:**

Type	Tons

The estimates of social and economic impacts contained in this report were produced using Hazus loss estimation methodology software which is based on current scientific and engineering knowledge. There are uncertainties inherent in any loss estimation technique. Therefore, there may be significant differences between the modeled results contained in this report and the actual social and economic losses following a specific earthquake.

Likely

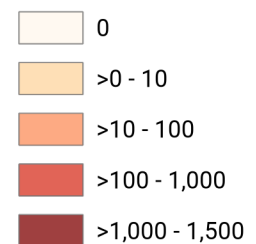
Debris Generated by Census Tract



Study Region: Likely
Scenario: likely2011cfmshaw09m_m7p16_se



Debris Generated (in tons)



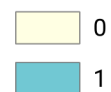
Likely Displaced Households by Census Tract



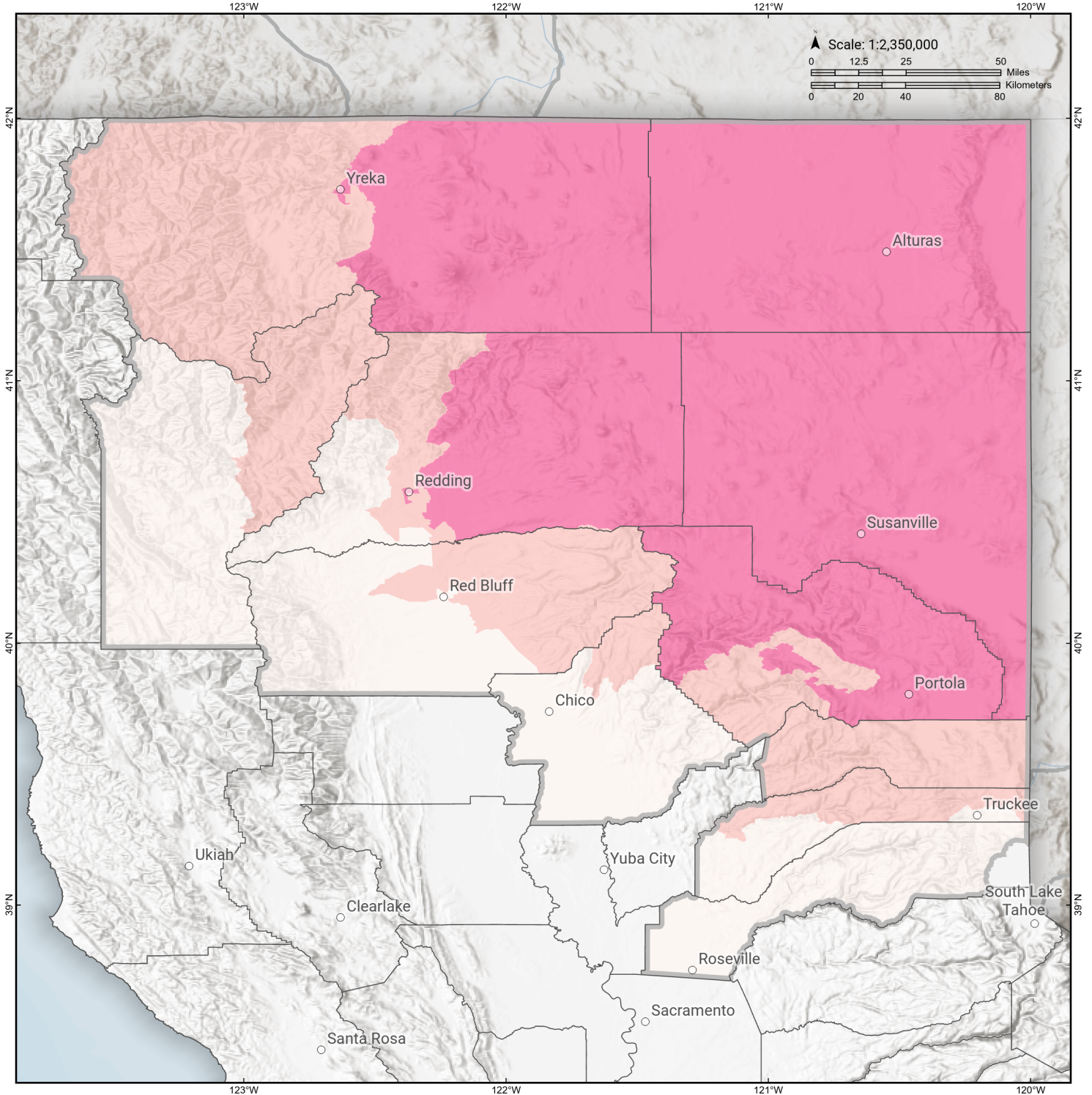
Study Region: Likely
Scenario: likely2011cfmshaw09m_m7p16_se



Displaced Households

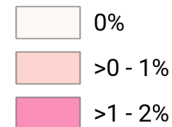


Likely Loss Ratio by Census Tract



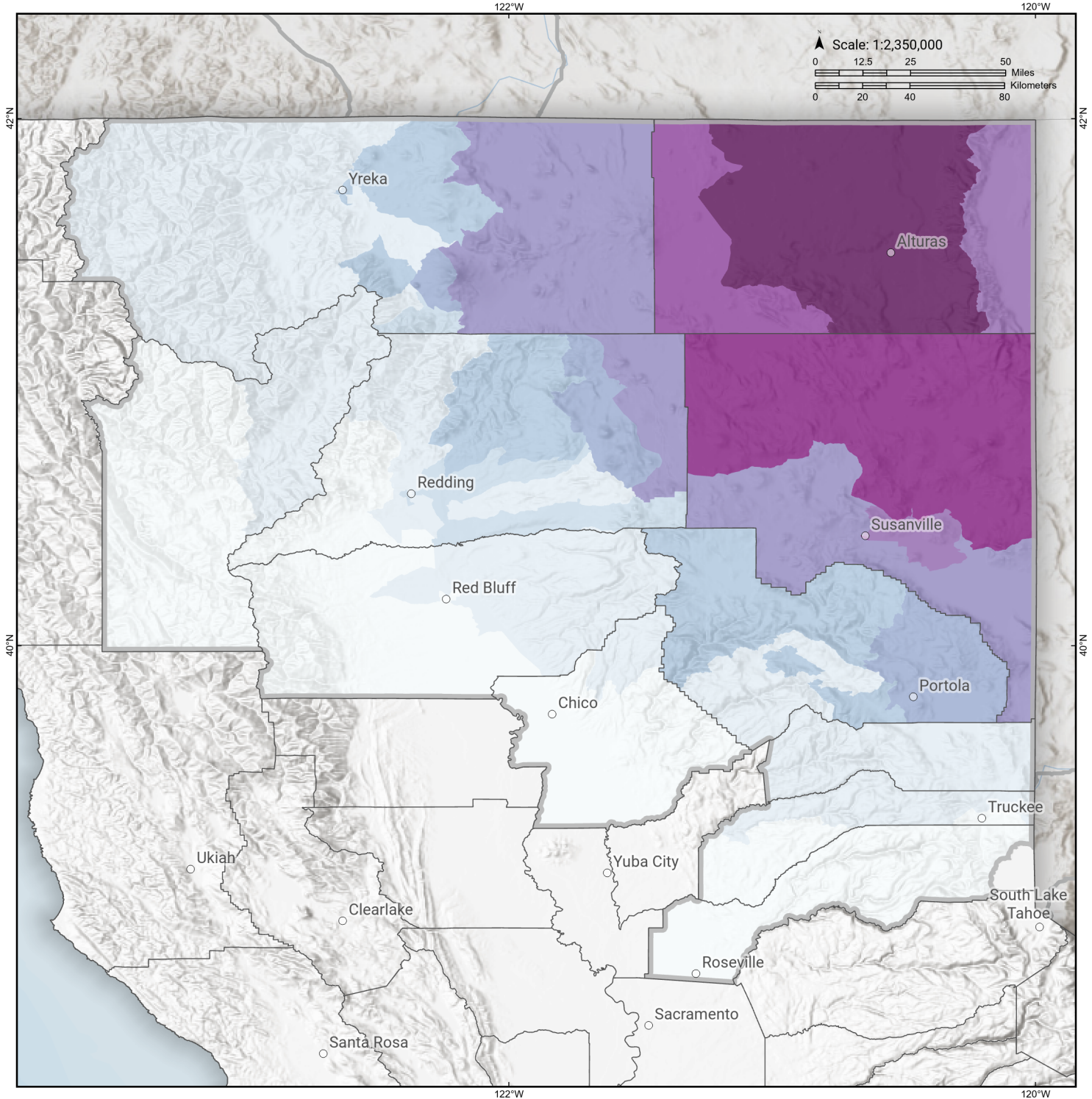
Study Region: Likely
Scenario: likely2011cfmshaw09m_m7p16_se

Loss Ratio (ratio of building related economic loss to exposed value of buildings)



Likely

Total Building Related Economic Loss by Census Tract



Study Region: Likely
Scenario: likely2011cfmshaw09m_m7p16_se



Economic Loss (in thousands of USD \$)



Building Damage by Count by General Occupancy

June 06, 2024

	# of Buildings					Total
	None	Slight	Moderate	Extensive	Complete	
California						
Butte						
<i>Agriculture</i>	510	0	0	0	0	510
<i>Commercial</i>	6,385	0	0	0	0	6,385
<i>Education</i>	172	0	0	0	0	172
<i>Government</i>	147	0	0	0	0	147
<i>Industrial</i>	1,522	0	0	0	0	1,522
<i>Religion</i>	531	0	0	0	0	531
<i>Other Residential</i>	21,498	0	0	0	0	21,498
<i>Single Family</i>	50,283	0	0	0	0	50,283
Lassen						
<i>Agriculture</i>	36	0	0	0	0	37
<i>Commercial</i>	889	21	3	0	0	913
<i>Education</i>	40	0	0	0	0	40
<i>Government</i>	22	0	0	0	0	22
<i>Industrial</i>	134	5	1	0	0	140
<i>Religion</i>	70	1	0	0	0	71
<i>Other Residential</i>	2,532	80	14	0	0	2,627
<i>Single Family</i>	9,461	99	1	0	0	9,562
Modoc						

	# of Buildings					Total
	None	Slight	Moderate	Extensive	Complete	
<i>Agriculture</i>	404	37	8	0	0	449
<i>Commercial</i>	457	61	14	1	0	532
<i>Education</i>	19	1	0	0	0	20
<i>Government</i>	12	3	1	0	0	16
<i>Industrial</i>	69	6	1	0	0	76
<i>Religion</i>	33	3	0	0	0	36
<i>Other Residential</i>	1,275	554	162	2	0	1,994
<i>Single Family</i>	3,428	305	7	0	0	3,740
Nevada						
<i>Agriculture</i>	132	0	0	0	0	132
<i>Commercial</i>	2,835	0	0	0	0	2,835
<i>Education</i>	108	0	0	0	0	108
<i>Government</i>	60	0	0	0	0	60
<i>Industrial</i>	1,161	0	0	0	0	1,161
<i>Religion</i>	189	0	0	0	0	189
<i>Other Residential</i>	6,384	0	0	0	0	6,384
<i>Single Family</i>	43,280	0	0	0	0	43,280
Placer						
<i>Agriculture</i>	258	0	0	0	0	258
<i>Commercial</i>	8,538	0	0	0	0	8,538
<i>Education</i>	231	0	0	0	0	231
<i>Government</i>	377	0	0	0	0	377
<i>Industrial</i>	2,703	0	0	0	0	2,703
<i>Religion</i>	382	0	0	0	0	382
<i>Other Residential</i>	14,843	0	0	0	0	14,843

	# of Buildings					Total
	None	Slight	Moderate	Extensive	Complete	
Plumas						
<i>Single Family</i>	134,719	0	0	0	0	134,719
<i>Agriculture</i>	84	0	0	0	0	84
<i>Commercial</i>	1,215	0	0	0	0	1,215
<i>Education</i>	26	0	0	0	0	26
<i>Government</i>	45	0	0	0	0	45
<i>Industrial</i>	184	0	0	0	0	184
<i>Religion</i>	30	0	0	0	0	30
<i>Other Residential</i>	5,031	1	0	0	0	5,032
<i>Single Family</i>	9,877	0	0	0	0	9,877
Shasta						
<i>Agriculture</i>	3,234	1	0	0	0	3,235
<i>Commercial</i>	5,253	1	0	0	0	5,254
<i>Education</i>	136	0	0	0	0	136
<i>Government</i>	87	0	0	0	0	87
<i>Industrial</i>	1,038	0	0	0	0	1,038
<i>Religion</i>	66	0	0	0	0	66
<i>Other Residential</i>	16,945	4	0	0	0	16,949
<i>Single Family</i>	51,815	0	0	0	0	51,815
Sierra						
<i>Agriculture</i>	7	0	0	0	0	7
<i>Commercial</i>	141	0	0	0	0	141
<i>Education</i>	14	0	0	0	0	14
<i>Government</i>	16	0	0	0	0	16
<i>Industrial</i>	66	0	0	0	0	66

	# of Buildings					Total
	None	Slight	Moderate	Extensive	Complete	
<i>Religion</i>	12	0	0	0	0	12
<i>Other Residential</i>	153	0	0	0	0	153
<i>Single Family</i>	1,858	0	0	0	0	1,858
Siskiyou						
<i>Agriculture</i>	201	0	0	0	0	201
<i>Commercial</i>	1,591	0	0	0	0	1,591
<i>Education</i>	76	0	0	0	0	76
<i>Government</i>	244	0	0	0	0	244
<i>Industrial</i>	480	0	0	0	0	480
<i>Religion</i>	127	0	0	0	0	127
<i>Other Residential</i>	5,091	4	0	0	0	5,095
<i>Single Family</i>	17,793	1	0	0	0	17,794
Tehama						
<i>Agriculture</i>	299	0	0	0	0	299
<i>Commercial</i>	1,270	0	0	0	0	1,270
<i>Education</i>	57	0	0	0	0	57
<i>Government</i>	50	0	0	0	0	50
<i>Industrial</i>	552	0	0	0	0	552
<i>Religion</i>	110	0	0	0	0	110
<i>Other Residential</i>	3,991	0	0	0	0	3,991
<i>Single Family</i>	21,222	0	0	0	0	21,222
Trinity						
<i>Agriculture</i>	4	0	0	0	0	4
<i>Commercial</i>	1,005	0	0	0	0	1,005
<i>Education</i>	26	0	0	0	0	26

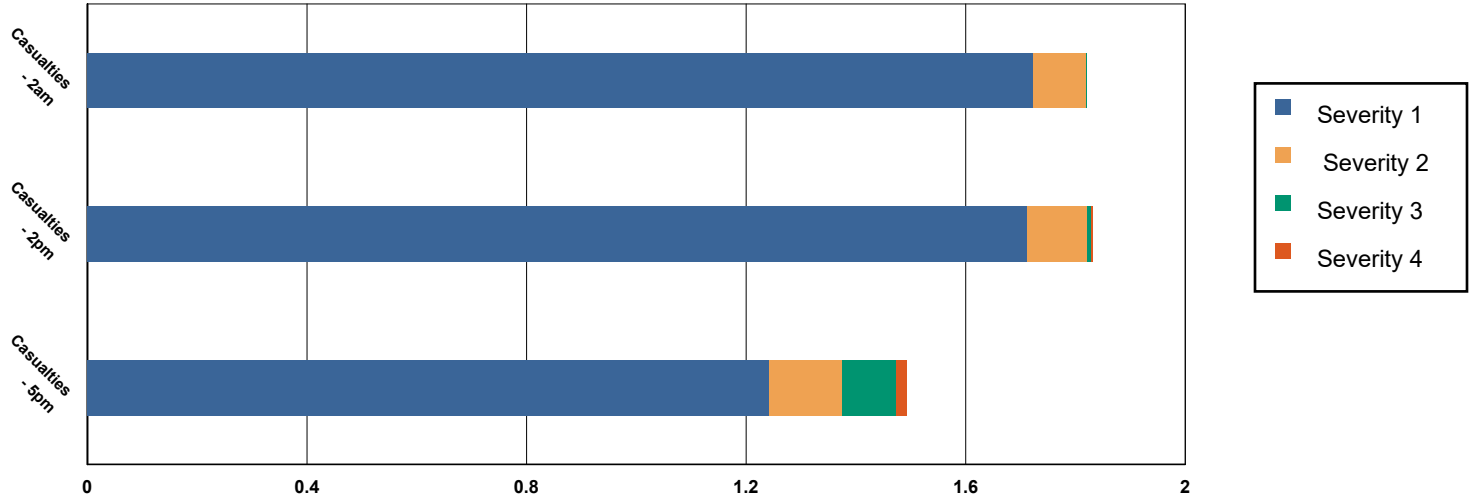
	# of Buildings					Total
	None	Slight	Moderate	Extensive	Complete	
<i>Government</i>	8	0	0	0	0	8
<i>Industrial</i>	58	0	0	0	0	58
<i>Religion</i>	45	0	0	0	0	45
<i>Other Residential</i>	1,354	0	0	0	0	1,354
<i>Single Family</i>	6,294	0	0	0	0	6,294
Total	475,409	1,190	214	3	0	476,816
Region Total	475,409	1,190	214	3	0	476,816

Totals only reflect data for those census tracts/blocks included in the user's study region and will reflect the entire county/state only if all of the census blocks for that county/states were selected at the time of study region creation.

Casualties Summary Report

June 06, 2024

Region Total Casualties



Injury Severity Level

Severity 1	Severity 2	Severity 3	Severity 4	Total
------------	------------	------------	------------	-------

California

Butte

Casualties - 2am

	Severity 1	Severity 2	Severity 3	Severity 4	Total
Commuting	0	0	0	0	0
Commercial	0	0	0	0	0
Educational	0	0	0	0	0
Hotels	0	0	0	0	0
Industrial	0	0	0	0	0
Other-Residential	0	0	0	0	0
Single Family	0	0	0	0	0

Total Casualties - 2am

0	0	0	0	0
---	---	---	---	---

Casualties - 2pm

	Severity 1	Severity 2	Severity 3	Severity 4	Total
Commuting	0	0	0	0	0
Commercial	0	0	0	0	0
Educational	0	0	0	0	0
Hotels	0	0	0	0	0
Industrial	0	0	0	0	0
Other-Residential	0	0	0	0	0
Single Family	0	0	0	0	0

	Injury Severity Level				Total
	Severity 1	Severity 2	Severity 3	Severity 4	
California					
Butte					
Total Casualties - 2pm	0	0	0	0	0
Casualties - 5pm					
<i>Commuting</i>	0	0	0	0	0
<i>Commercial</i>	0	0	0	0	0
<i>Educational</i>	0	0	0	0	0
<i>Hotels</i>	0	0	0	0	0
<i>Industrial</i>	0	0	0	0	0
<i>Other-Residential</i>	0	0	0	0	0
<i>Single Family</i>	0	0	0	0	0
Total Casualties - 5pm	0	0	0	0	0
Lassen					
Casualties - 2am					
<i>Commuting</i>	0	0	0	0	0
<i>Commercial</i>	0	0	0	0	0
<i>Educational</i>	0	0	0	0	0
<i>Hotels</i>	0	0	0	0	0
<i>Industrial</i>	0	0	0	0	0
<i>Other-Residential</i>	0	0	0	0	0
<i>Single Family</i>	0	0	0	0	0
Total Casualties - 2am	0	0	0	0	0
Casualties - 2pm					
<i>Commuting</i>	0	0	0	0	0
<i>Commercial</i>	0	0	0	0	0
<i>Educational</i>	0	0	0	0	0
<i>Hotels</i>	0	0	0	0	0
<i>Industrial</i>	0	0	0	0	0
<i>Other-Residential</i>	0	0	0	0	0
<i>Single Family</i>	0	0	0	0	0
Total Casualties - 2pm	0	0	0	0	0
Casualties - 5pm					
<i>Commuting</i>	0	0	0	0	0
<i>Commercial</i>	0	0	0	0	0
<i>Educational</i>	0	0	0	0	0
<i>Hotels</i>	0	0	0	0	0
<i>Industrial</i>	0	0	0	0	0
<i>Other-Residential</i>	0	0	0	0	0
<i>Single Family</i>	0	0	0	0	0
Total Casualties - 5pm	0	0	0	0	0
Modoc					
Casualties - 2am					
<i>Commuting</i>	0	0	0	0	0

Injury Severity Level

Severity 1 Severity 2 Severity 3 Severity 4 Total

California

Modoc

Casualties - 2am

<i>Commercial</i>	0	0	0	0	0
<i>Educational</i>	0	0	0	0	0
<i>Hotels</i>	0	0	0	0	0
<i>Industrial</i>	0	0	0	0	0
<i>Other-Residential</i>	1	0	0	0	1
<i>Single Family</i>	0	0	0	0	0
Total Casualties - 2am	1	0	0	0	2

Casualties - 2pm

<i>Commuting</i>	0	0	0	0	0
<i>Commercial</i>	1	0	0	0	1
<i>Educational</i>	0	0	0	0	0
<i>Hotels</i>	0	0	0	0	0
<i>Industrial</i>	0	0	0	0	0
<i>Other-Residential</i>	0	0	0	0	0
<i>Single Family</i>	0	0	0	0	0
Total Casualties - 2pm	1	0	0	0	2

Casualties - 5pm

<i>Commuting</i>	0	0	0	0	0
<i>Commercial</i>	0	0	0	0	1
<i>Educational</i>	0	0	0	0	0
<i>Hotels</i>	0	0	0	0	0
<i>Industrial</i>	0	0	0	0	0
<i>Other-Residential</i>	0	0	0	0	0
<i>Single Family</i>	0	0	0	0	0
Total Casualties - 5pm	1	0	0	0	1

Nevada

Casualties - 2am

<i>Commuting</i>	0	0	0	0	0
<i>Commercial</i>	0	0	0	0	0
<i>Educational</i>	0	0	0	0	0
<i>Hotels</i>	0	0	0	0	0
<i>Industrial</i>	0	0	0	0	0
<i>Other-Residential</i>	0	0	0	0	0
<i>Single Family</i>	0	0	0	0	0
Total Casualties - 2am	0	0	0	0	0

Casualties - 2pm

<i>Commuting</i>	0	0	0	0	0
<i>Commercial</i>	0	0	0	0	0
<i>Educational</i>	0	0	0	0	0
<i>Hotels</i>	0	0	0	0	0
<i>Industrial</i>	0	0	0	0	0

	Injury Severity Level				Total
	Severity 1	Severity 2	Severity 3	Severity 4	
California					
Nevada					
Casualties - 2pm					
<i>Other-Residential</i>	0	0	0	0	0
<i>Single Family</i>	0	0	0	0	0
Total Casualties - 2pm	0	0	0	0	0
Casualties - 5pm					
<i>Commuting</i>	0	0	0	0	0
<i>Commercial</i>	0	0	0	0	0
<i>Educational</i>	0	0	0	0	0
<i>Hotels</i>	0	0	0	0	0
<i>Industrial</i>	0	0	0	0	0
<i>Other-Residential</i>	0	0	0	0	0
<i>Single Family</i>	0	0	0	0	0
Total Casualties - 5pm	0	0	0	0	0
Placer					
Casualties - 2am					
<i>Commuting</i>	0	0	0	0	0
<i>Commercial</i>	0	0	0	0	0
<i>Educational</i>	0	0	0	0	0
<i>Hotels</i>	0	0	0	0	0
<i>Industrial</i>	0	0	0	0	0
<i>Other-Residential</i>	0	0	0	0	0
<i>Single Family</i>	0	0	0	0	0
Total Casualties - 2am	0	0	0	0	0
Casualties - 2pm					
<i>Commuting</i>	0	0	0	0	0
<i>Commercial</i>	0	0	0	0	0
<i>Educational</i>	0	0	0	0	0
<i>Hotels</i>	0	0	0	0	0
<i>Industrial</i>	0	0	0	0	0
<i>Other-Residential</i>	0	0	0	0	0
<i>Single Family</i>	0	0	0	0	0
Total Casualties - 2pm	0	0	0	0	0
Casualties - 5pm					
<i>Commuting</i>	0	0	0	0	0
<i>Commercial</i>	0	0	0	0	0
<i>Educational</i>	0	0	0	0	0
<i>Hotels</i>	0	0	0	0	0
<i>Industrial</i>	0	0	0	0	0
<i>Other-Residential</i>	0	0	0	0	0
<i>Single Family</i>	0	0	0	0	0
Total Casualties - 5pm	0	0	0	0	0

	Injury Severity Level				Total
	Severity 1	Severity 2	Severity 3	Severity 4	
California					
Plumas					
Casualties - 2am					
<i>Commuting</i>	0	0	0	0	0
<i>Commercial</i>	0	0	0	0	0
<i>Educational</i>	0	0	0	0	0
<i>Hotels</i>	0	0	0	0	0
<i>Industrial</i>	0	0	0	0	0
<i>Other-Residential</i>	0	0	0	0	0
<i>Single Family</i>	0	0	0	0	0
Total Casualties - 2am	0	0	0	0	0
Casualties - 2pm					
<i>Commuting</i>	0	0	0	0	0
<i>Commercial</i>	0	0	0	0	0
<i>Educational</i>	0	0	0	0	0
<i>Hotels</i>	0	0	0	0	0
<i>Industrial</i>	0	0	0	0	0
<i>Other-Residential</i>	0	0	0	0	0
<i>Single Family</i>	0	0	0	0	0
Total Casualties - 2pm	0	0	0	0	0
Casualties - 5pm					
<i>Commuting</i>	0	0	0	0	0
<i>Commercial</i>	0	0	0	0	0
<i>Educational</i>	0	0	0	0	0
<i>Hotels</i>	0	0	0	0	0
<i>Industrial</i>	0	0	0	0	0
<i>Other-Residential</i>	0	0	0	0	0
<i>Single Family</i>	0	0	0	0	0
Total Casualties - 5pm	0	0	0	0	0
Shasta					
Casualties - 2am					
<i>Commuting</i>	0	0	0	0	0
<i>Commercial</i>	0	0	0	0	0
<i>Educational</i>	0	0	0	0	0
<i>Hotels</i>	0	0	0	0	0
<i>Industrial</i>	0	0	0	0	0
<i>Other-Residential</i>	0	0	0	0	0
<i>Single Family</i>	0	0	0	0	0
Total Casualties - 2am	0	0	0	0	0
Casualties - 2pm					
<i>Commuting</i>	0	0	0	0	0
<i>Commercial</i>	0	0	0	0	0
<i>Educational</i>	0	0	0	0	0
<i>Hotels</i>	0	0	0	0	0

	Injury Severity Level				Total
	Severity 1	Severity 2	Severity 3	Severity 4	
California					
Shasta					
Casualties - 2pm					
<i>Industrial</i>	0	0	0	0	0
<i>Other-Residential</i>	0	0	0	0	0
<i>Single Family</i>	0	0	0	0	0
Total Casualties - 2pm	0	0	0	0	0
Casualties - 5pm					
<i>Commuting</i>	0	0	0	0	0
<i>Commercial</i>	0	0	0	0	0
<i>Educational</i>	0	0	0	0	0
<i>Hotels</i>	0	0	0	0	0
<i>Industrial</i>	0	0	0	0	0
<i>Other-Residential</i>	0	0	0	0	0
<i>Single Family</i>	0	0	0	0	0
Total Casualties - 5pm	0	0	0	0	0
Sierra					
Casualties - 2am					
<i>Commuting</i>	0	0	0	0	0
<i>Commercial</i>	0	0	0	0	0
<i>Educational</i>	0	0	0	0	0
<i>Hotels</i>	0	0	0	0	0
<i>Industrial</i>	0	0	0	0	0
<i>Other-Residential</i>	0	0	0	0	0
<i>Single Family</i>	0	0	0	0	0
Total Casualties - 2am	0	0	0	0	0
Casualties - 2pm					
<i>Commuting</i>	0	0	0	0	0
<i>Commercial</i>	0	0	0	0	0
<i>Educational</i>	0	0	0	0	0
<i>Hotels</i>	0	0	0	0	0
<i>Industrial</i>	0	0	0	0	0
<i>Other-Residential</i>	0	0	0	0	0
<i>Single Family</i>	0	0	0	0	0
Total Casualties - 2pm	0	0	0	0	0
Casualties - 5pm					
<i>Commuting</i>	0	0	0	0	0
<i>Commercial</i>	0	0	0	0	0
<i>Educational</i>	0	0	0	0	0
<i>Hotels</i>	0	0	0	0	0
<i>Industrial</i>	0	0	0	0	0
<i>Other-Residential</i>	0	0	0	0	0
<i>Single Family</i>	0	0	0	0	0

	Injury Severity Level				Total
	Severity 1	Severity 2	Severity 3	Severity 4	
California					
Sierra					
Total Casualties - 5pm	0	0	0	0	0
Siskiyou					
Casualties - 2am					
<i>Commuting</i>	0	0	0	0	0
<i>Commercial</i>	0	0	0	0	0
<i>Educational</i>	0	0	0	0	0
<i>Hotels</i>	0	0	0	0	0
<i>Industrial</i>	0	0	0	0	0
<i>Other-Residential</i>	0	0	0	0	0
<i>Single Family</i>	0	0	0	0	0
Total Casualties - 2am	0	0	0	0	0
Casualties - 2pm					
<i>Commuting</i>	0	0	0	0	0
<i>Commercial</i>	0	0	0	0	0
<i>Educational</i>	0	0	0	0	0
<i>Hotels</i>	0	0	0	0	0
<i>Industrial</i>	0	0	0	0	0
<i>Other-Residential</i>	0	0	0	0	0
<i>Single Family</i>	0	0	0	0	0
Total Casualties - 2pm	0	0	0	0	0
Casualties - 5pm					
<i>Commuting</i>	0	0	0	0	0
<i>Commercial</i>	0	0	0	0	0
<i>Educational</i>	0	0	0	0	0
<i>Hotels</i>	0	0	0	0	0
<i>Industrial</i>	0	0	0	0	0
<i>Other-Residential</i>	0	0	0	0	0
<i>Single Family</i>	0	0	0	0	0
Total Casualties - 5pm	0	0	0	0	0
Tehama					
Casualties - 2am					
<i>Commuting</i>	0	0	0	0	0
<i>Commercial</i>	0	0	0	0	0
<i>Educational</i>	0	0	0	0	0
<i>Hotels</i>	0	0	0	0	0
<i>Industrial</i>	0	0	0	0	0
<i>Other-Residential</i>	0	0	0	0	0
<i>Single Family</i>	0	0	0	0	0
Total Casualties - 2am	0	0	0	0	0
Casualties - 2pm					
<i>Commuting</i>	0	0	0	0	0

	Injury Severity Level				Total
	Severity 1	Severity 2	Severity 3	Severity 4	
California					
Tehama					
Casualties - 2pm					
<i>Commercial</i>	0	0	0	0	0
<i>Educational</i>	0	0	0	0	0
<i>Hotels</i>	0	0	0	0	0
<i>Industrial</i>	0	0	0	0	0
<i>Other-Residential</i>	0	0	0	0	0
<i>Single Family</i>	0	0	0	0	0
Total Casualties - 2pm	0	0	0	0	0
Casualties - 5pm					
<i>Commuting</i>	0	0	0	0	0
<i>Commercial</i>	0	0	0	0	0
<i>Educational</i>	0	0	0	0	0
<i>Hotels</i>	0	0	0	0	0
<i>Industrial</i>	0	0	0	0	0
<i>Other-Residential</i>	0	0	0	0	0
<i>Single Family</i>	0	0	0	0	0
Total Casualties - 5pm	0	0	0	0	0
Trinity					
Casualties - 2am					
<i>Commuting</i>	0	0	0	0	0
<i>Commercial</i>	0	0	0	0	0
<i>Educational</i>	0	0	0	0	0
<i>Hotels</i>	0	0	0	0	0
<i>Industrial</i>	0	0	0	0	0
<i>Other-Residential</i>	0	0	0	0	0
<i>Single Family</i>	0	0	0	0	0
Total Casualties - 2am	0	0	0	0	0
Casualties - 2pm					
<i>Commuting</i>	0	0	0	0	0
<i>Commercial</i>	0	0	0	0	0
<i>Educational</i>	0	0	0	0	0
<i>Hotels</i>	0	0	0	0	0
<i>Industrial</i>	0	0	0	0	0
<i>Other-Residential</i>	0	0	0	0	0
<i>Single Family</i>	0	0	0	0	0
Total Casualties - 2pm	0	0	0	0	0
Casualties - 5pm					
<i>Commuting</i>	0	0	0	0	0
<i>Commercial</i>	0	0	0	0	0
<i>Educational</i>	0	0	0	0	0
<i>Hotels</i>	0	0	0	0	0
<i>Industrial</i>	0	0	0	0	0

	Injury Severity Level				Total
	Severity 1	Severity 2	Severity 3	Severity 4	
California					
Trinity					
Casualties - 5pm					
<i>Other-Residential</i>	0	0	0	0	0
<i>Single Family</i>	0	0	0	0	0
Total Casualties - 5pm	0	0	0	0	0
Region Total	NA	NA	NA	NA	NA

Totals only reflect data for those census tracts/blocks included in the user's study region and will reflect the entire county/state only if all of the census blocks for that county/states were selected at the time of study region creation.

Debris Summary Report

June 06, 2024

All values are in thousands of tons.

	Brick, Wood & Others	Concrete & Steel	Total
California			
Butte	0	0	0
Lassen	0	0	1
Modoc	2	1	3
Nevada	0	0	0
Placer	0	0	0
Plumas	0	0	0
Shasta	0	0	0
Sierra	0	0	0
Siskiyou	0	0	0
Tehama	0	0	0
Trinity	0	0	0
Total	2	1	4
Region Total	2	1	4

Totals only reflect data for those census tracts/blocks included in the user's study region and will reflect the entire county/state only if all of the census blocks for that county/states were selected at the time of study region creation.

Direct Economic Losses For Buildings

June 6, 2024

All values are in thousands of dollars

	Capital Stock Losses				Loss Ratio %	Income Losses				Total Loss
	Cost Structural Damage	Cost Non-struct. Damage	Cost Contents Damage	Inventory Loss		Relocation Loss	Capital Related Loss	Wages Losses	Rental Income Loss	
California										
Shasta	10	320	213	43	0.00	1	5	4	3	600
Siskiyou	14	435	278	30	0.00	2	1	1	2	764
Trinity	0	1	0	0	0.00	0	0	0	0	1
Tehama	0	2	2	0	0.00	0	0	0	0	4
Plumas	2	88	56	3	0.00	0	0	0	1	151
Butte	0	0	0	0	0.00	0	0	0	0	1
Nevada	0	0	0	0	0.00	0	0	0	0	1
Lassen	553	6,380	3,542	193	0.11	166	275	222	149	11,479
Placer	0	0	0	0	0.00	0	0	0	0	0

	Capital Stock Losses				Loss Ratio %	Income Losses				Total Loss
	Cost Structural Damage	Cost Non-struct. Damage	Cost Contents Damage	Inventory Loss		Relocation Loss	Capital Related Loss	Wages Losses	Rental Income Loss	
Modoc	2,832	17,556	9,579	1,626	0.70	982	500	413	539	34,026
Sierra	0	1	1	0	0.00	0	0	0	0	2
Total	3,412	24,782	13,671	1,896	0.07	1,150	782	641	693	47,027
Region Total	3,412	24,782	13,671	1,896	0.07	1,150	782	641	693	47,027

Totals only reflect data for those census tracts/blocks included in the user's study region and will reflect the entire county/state only if all of the census blocks for that county/states were selected at the time of study region creation.

Direct Economic Loss For Transportation

June 06, 2024

All values are in thousands of dollars

	Highway	Railway	Light Rail	Bus Facility	Ports	Ferries	Airport	Total
California								
Butte								
Segments	0	0	0					0
Bridges	1	0	0					1
Tunnels	0	0	0					0
Facilities		3	0	0	0	0	26	28
Total	1	3	0	0	0	0	26	29
Lassen								
Segments	0	0	0					0
Bridges	16	1	0					17
Tunnels	0	0	0					0
Facilities		0	0	0	0	0	2,092	2,092
Total	16	1	0	0	0	0	2,092	2,109
Modoc								
Segments	0	0	0					0
Bridges	882	3,234	0					4,116
Tunnels	0	0	0					0
Facilities		0	0	0	0	0	3,069	3,069

	Highway	Railway	Light Rail	Bus Facility	Ports	Ferries	Airport	Total
Total	882	3,234	0	0	0	0	3,069	7,185
Nevada								
Segments	0	0	0					0
Bridges	0	0	0					0
Tunnels	0	0	0					0
Facilities		3	0	0	0	0	6	9
Total	0	3	0	0	0	0	6	9
Placer								
Segments	0	0	0					0
Bridges	0	0	0					0
Tunnels	0	0	0					0
Facilities		0	0	0	0	0	6	6
Total	0	0	0	0	0	0	6	6
Plumas								
Segments	0	0	0					0
Bridges	1	0	0					1
Tunnels	0	0	0					0
Facilities		0	0	0	0	0	357	357
Total	1	0	0	0	0	0	357	358
Shasta								
Segments	0	0	0					0
Bridges	2	0	0					2
Tunnels	0	0	0					0
Facilities		26	0	22	0	0	395	443

	Highway	Railway	Light Rail	Bus Facility	Ports	Ferries	Airport	Total
Total	2	26	0	22	0	0	395	445
Sierra								
Segments	0	0	0					0
Bridges	0	0	0					0
Tunnels	0	0	0					0
Facilities		0	0	0	0	0	51	51
Total	0	0	0	0	0	0	51	51
Siskiyou								
Segments	0	0	0					0
Bridges	1	4	0					5
Tunnels	0	0	0					0
Facilities		26	0	22	0	0	306	354
Total	1	29	0	22	0	0	306	358
Tehama								
Segments	0	0	0					0
Bridges	1	0	0					1
Tunnels	0	0	0					0
Facilities		0	0	0	0	0	11	11
Total	1	0	0	0	0	0	11	12
Trinity								
Segments	0	0	0					0
Bridges	0	0	0					0
Tunnels	0	0	0					0
Facilities		0	0	0	0	0	11	11

	Highway	Railway	Light Rail	Bus Facility	Ports	Ferries	Airport	Total
Total	0	0	0	0	0	0	11	11
Total	903	3,295	0	44	0	0	6,331	10,573
Region Total	903	3,295	0	44	0	0	6,331	10,573

Totals only reflect data for those census tracts/blocks included in the user's study region and will reflect the entire county/state only if all of the census blocks for that county/states were selected at the time of study region creation.

Direct Economic Loss For Utilities

June 06, 2024

All values are in thousands of dollars

	Potable Water	Waste Water	Oil Systems	Natural Gas	Electric Power	Communication	Total
California							
Butte							
Facilities	1	10	0	0	2,316	0	2,327
Pipelines	41	20	0	0			61
Total	41	31	0	0	2,316	0	2,388
Lassen							
Facilities	0	1,524	0	0	23,684	7	25,216
Pipelines	924	464	0	0			1,389
Total	924	1,989	0	0	23,684	7	26,604
Modoc							
Facilities	0	8,304	0	1,590	0	44	9,939
Pipelines	1,265	635	0	0			1,901
Total	1,265	8,940	0	1,590	0	44	11,839
Nevada							
Facilities	0	10	0	0	15	0	25

	Potable Water	Waste Water	Oil Systems	Natural Gas	Electric Power	Communication	Total
<i>Pipelines</i>	14	7	0	0			21
Total	14	17	0	0	15	0	46
Placer							
<i>Facilities</i>	0	0	0	0	43	0	43
<i>Pipelines</i>	8	4	0	0			12
Total	8	4	0	0	43	0	55
Plumas							
<i>Facilities</i>	28	492	0	0	14,768	1	15,289
<i>Pipelines</i>	87	44	0	0			131
Total	115	536	0	0	14,768	1	15,420
Shasta							
<i>Facilities</i>	29	743	0	75	61,286	2	62,134
<i>Pipelines</i>	111	56	0	0			167
Total	140	799	0	75	61,286	2	62,301
Sierra							
<i>Facilities</i>	0	0	0	0	284	0	284
<i>Pipelines</i>	15	8	0	0			23
Total	15	8	0	0	284	0	307
Siskiyou							
<i>Facilities</i>	0	1,647	0	0	2,514	1	4,162
<i>Pipelines</i>	168	84	0	0			252

	Potable Water	Waste Water	Oil Systems	Natural Gas	Electric Power	Communication	Total
Total	168	1,732	0	0	2,514	1	4,414
Tehama							
<i>Facilities</i>	0	128	0	3	191	0	322
<i>Pipelines</i>	51	25	0	0			76
Total	51	154	0	3	191	0	398
Trinity							
<i>Facilities</i>	0	0	0	0	343	0	343
<i>Pipelines</i>	18	9	0	0			26
Total	18	9	0	0	343	0	370
Total	2,759	14,217	0	1,667	105,444	55	124,142
Region Total	2,759	14,217	0	1,667	105,444	55	124,142

Totals only reflect data for those census tracts/blocks included in the user's study region and will reflect the entire county/state only if all of the census blocks for that county/states were selected at the time of study region creation.

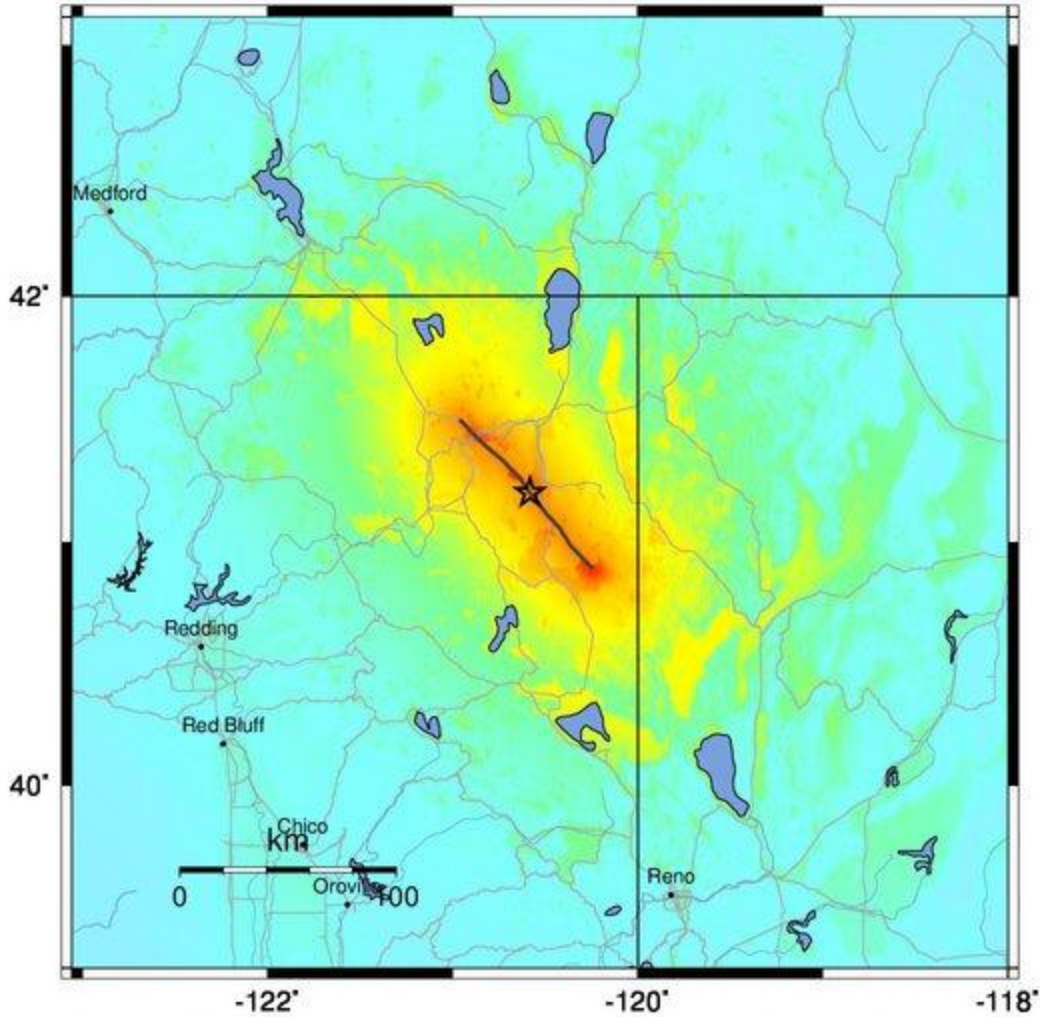
Shelter Summary Report

June 06, 2024

	# of Displaced Households	# of People Needing Short Term Shelter
California		
Butte	0	0
Lassen	0	0
Modoc	0	0
Nevada	0	0
Placer	0	0
Plumas	0	0
Shasta	0	0
Sierra	0	0
Siskiyou	0	0
Tehama	0	0
Trinity	0	0
Total	0	0
Region Total	0	0

Totals only reflect data for those census tracts/blocks included in the user's study region and will reflect the entire county/state only if all of the census blocks for that county/states were selected at the time of study region creation.

-- Earthquake Planning Scenario --
ShakeMap for Likely - Median ground motions Scenario
 Scenario Date: May 16, 2017 08:32:08 AM MDT M 7.2 N41.20 W120.58 Depth: 6.0km



PLANNING SCENARIO ONLY -- Map Version 14 Processed 2017-05-16 08:35:46 PM MDT

PERCEIVED SHAKING	Not felt	Weak	Light	Moderate	Strong	Very strong	Severe	Violent	Extreme
POTENTIAL DAMAGE	none	none	none	Very light	Light	Moderate	Mod./Heavy	Heavy	Very Heavy
PEAK ACC.(%g)	<0.05	0.3	2.8	6.2	12	22	40	75	>139
PEAK VEL.(cm/s)	<0.02	0.1	1.4	4.7	9.6	20	41	86	>178
INSTRUMENTAL INTENSITY	I	II-III	IV	V	VI	VII	VIII	IX	X+

Scale based upon Worden et al. (2012)