

## Hazus: Earthquake Global Risk Report

---

**Region Name:** HuntingCreekBerrye

**Earthquake Scenario:** huntingcreekberryess\_m6p69\_se

**Print Date:** May 07, 2024

**Disclaimer:**

*Totals only reflect data for those census tracts/blocks included in the user's study region.*

*The estimates of social and economic impacts contained in this report were produced using Hazus loss estimation methodology software which is based on current scientific and engineering knowledge. There are uncertainties inherent in any loss estimation technique. Therefore, there may be significant differences between the modeled results contained in this report and the actual social and economic losses following a specific earthquake. These results can be improved by using enhanced inventory, geotechnical, and observed ground motion data.*

## Table of Contents

<b>Section</b>	<b>Page #</b>
<b>General Description of the Region</b>	<b>3</b>
<b>Building and Lifeline Inventory</b>	<b>4</b>
Building Inventory	
Critical Facility Inventory	
Transportation and Utility Lifeline Inventory	
<b>Earthquake Scenario Parameters</b>	<b>7</b>
<b>Direct Earthquake Damage</b>	<b>8</b>
Buildings Damage	
Essential Facilities Damage	
Transportation and Utility Lifeline Damage	
<b>Induced Earthquake Damage</b>	<b>14</b>
Fire Following Earthquake	
Debris Generation	
<b>Social Impact</b>	<b>15</b>
Shelter Requirements	
Casualties	
<b>Economic Loss</b>	<b>17</b>
Building Related Losses	
Transportation and Utility Lifeline Losses	
<b>Appendix A: County Listing for the Region</b>	
<b>Appendix B: Regional Population and Building Value Data</b>	

## General Description of the Region

Hazus-MH is a regional earthquake loss estimation model that was developed by the Federal Emergency Management Agency (FEMA) and the National Institute of Building Sciences. The primary purpose of Hazus is to provide a methodology and software application to develop multi-hazard losses at a regional scale. These loss estimates would be used primarily by local, state and regional officials to plan and stimulate efforts to reduce risks from multi-hazards and to prepare for emergency response and recovery.

The earthquake loss estimates provided in this report was based on a region that includes 26 county(ies) from the following state(s):

California

Note:

Appendix A contains a complete listing of the counties contained in the region.

The geographical size of the region is 31,164.10 square miles and contains 2,827 census tracts. There are over 4,406 thousand households in the region which has a total population of 12,352,329 people. The distribution of population by Total Region and County is provided in Appendix B.

There are an estimated 3,807 thousand buildings in the region with a total building replacement value (excluding contents) of (millions of dollars). Approximately 90.00 % of the buildings (and % of the building value) are associated with residential housing.

The replacement value of the transportation and utility lifeline systems is estimated to be 197,695 and 118,551 (millions of dollars) , respectively.

## Building and Lifeline Inventory

### Building Inventory

Hazus estimates that there are 3,807 thousand buildings in the region which have an aggregate total replacement value of (millions of dollars) . Appendix B provides a general distribution of the building value by Total Region and County.

In terms of building construction types found in the region, wood frame construction makes up 87% of the building inventory. The remaining percentage is distributed between the other general building types.

### Critical Facility Inventory

Hazus breaks critical facilities into two (2) groups: essential facilities and high potential loss facilities (HPL). Essential facilities include hospitals, medical clinics, schools, fire stations, police stations and emergency operations facilities. High potential loss facilities include dams, levees, military installations, nuclear power plants and hazardous material sites.

For essential facilities, there are 205 hospitals in the region with a total bed capacity of 31,062 beds. There are 4,429 schools, 1,192 fire stations, 386 police stations and 71 emergency operation facilities. With respect to high potential loss facilities (HPL), there are no dams identified within the inventory. The inventory also includes no hazardous material sites, no military installations and no nuclear power plants.

### Transportation and Utility Lifeline Inventory

Within Hazus, the lifeline inventory is divided between transportation and utility lifeline systems. There are seven (7) transportation systems that include highways, railways, light rail, bus, ports, ferry and airports. There are six (6) utility systems that include potable water, wastewater, natural gas, crude & refined oil, electric power and communications. The lifeline inventory data are provided in Tables 1 and 2.

The total value of the lifeline inventory is over 316,246.00 (millions of dollars). This inventory includes over 7,332.80 miles of highways, 8,977 bridges, 158,218.45 miles of pipes.

**Table 1: Transportation System Lifeline Inventory**

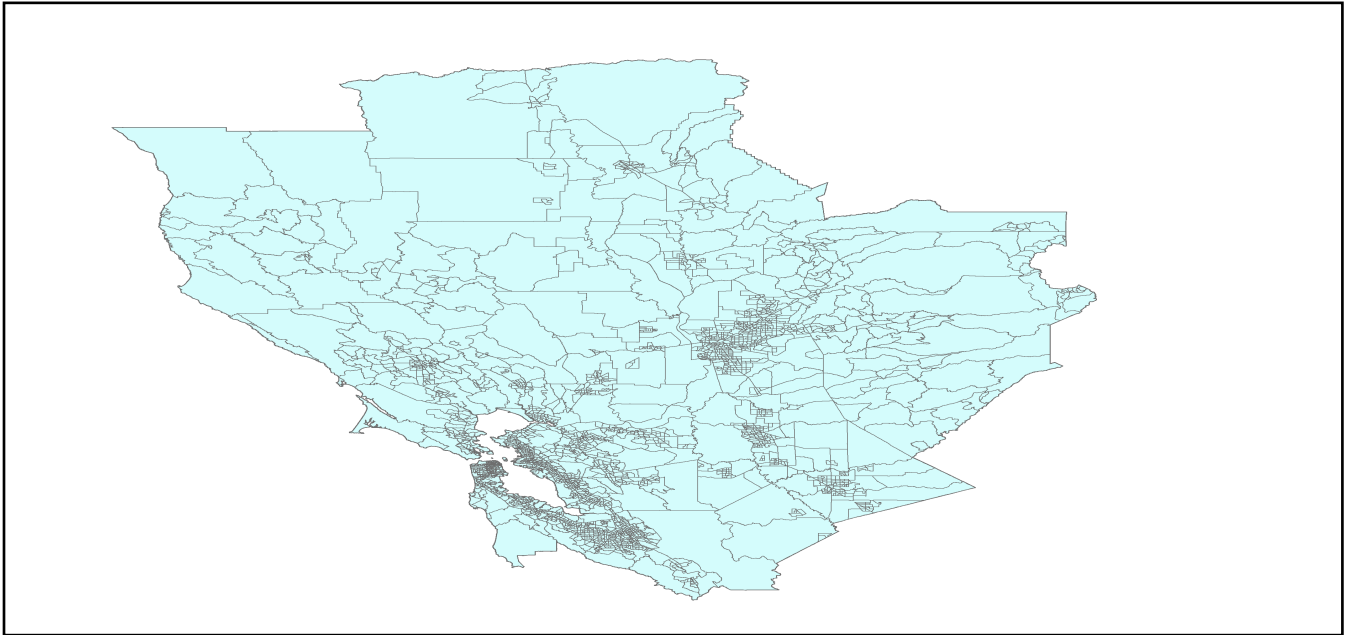
System	Component	# Locations/ # Segments	Replacement value (millions of dollars)
<b>Highway</b>	Bridges	8,977	51375.2943
	Segments	5,733	66857.1474
	Tunnels	40	851.2123
	<b>Subtotal</b>		<b>119083.6540</b>
<b>Railways</b>	Bridges	1,361	7744.0900
	Facilities	68	181.0840
	Segments	2,625	56085.4090
	Tunnels	3	1.8495
	<b>Subtotal</b>		<b>64012.4325</b>
<b>Light Rail</b>	Bridges	112	15.3529
	Facilities	255	4154.0000
	Segments	15	5403.2756
	Tunnels	0	0.0000
	<b>Subtotal</b>		<b>9572.6285</b>
<b>Bus</b>	Facilities	27	62.3408
	<b>Subtotal</b>		<b>62.3408</b>
<b>Ferry</b>	Facilities	25	33.2750
	<b>Subtotal</b>		<b>33.2750</b>
<b>Port</b>	Facilities	358	1364.6404
	<b>Subtotal</b>		<b>1364.6404</b>
<b>Airport</b>	Facilities	75	2513.2693
	Runways	112	1052.7497
	<b>Subtotal</b>		<b>3566.0190</b>
		<b>Total</b>	<b>197,695.00</b>

**Table 2: Utility System Lifeline Inventory**

System	Component	# Locations / Segments	Replacement value (millions of dollars)
<b>Potable Water</b>	Distribution Lines	NA	3141.1990
	Facilities	22	864.4680
	Pipelines	0	0.0000
		<b>Subtotal</b>	<b>4005.6670</b>
<b>Waste Water</b>	Distribution Lines	NA	1884.7194
	Facilities	156	26824.4808
	Pipelines	0	0.0000
		<b>Subtotal</b>	<b>28709.2002</b>
<b>Natural Gas</b>	Distribution Lines	NA	1256.4796
	Facilities	2	82.4870
	Pipelines	871	11736.1727
		<b>Subtotal</b>	<b>13075.1393</b>
<b>Oil Systems</b>	Facilities	16	1.8880
	Pipelines	0	0.0000
		<b>Subtotal</b>	<b>1.8880</b>
<b>Electrical Power</b>	Facilities	244	72726.1984
		<b>Subtotal</b>	<b>72726.1984</b>
<b>Communication</b>	Facilities	281	33.1580
		<b>Subtotal</b>	<b>33.1580</b>
		<b>Total</b>	<b>118,551.30</b>

## Earthquake Scenario

Hazus uses the following set of information to define the earthquake parameters used for the earthquake loss estimate provided in this report.



<b>Scenario Name</b>	huntingcreekberryess_m6p69_se
<b>Type of Earthquake</b>	User-defined
<b>Fault Name</b>	NA
<b>Historical Epicenter ID #</b>	NA
<b>Probabilistic Return Period</b>	NA
<b>Longitude of Epicenter</b>	NA
<b>Latitude of Epicenter</b>	NA
<b>Earthquake Magnitude</b>	6.69
<b>Depth (km)</b>	NA
<b>Rupture Length (Km)</b>	NA
<b>Rupture Orientation (degrees)</b>	NA
<b>Attenuation Function</b>	NA

## Direct Earthquake Damage

### Building Damage

Hazus estimates that about 3,255 buildings will be at least moderately damaged. This is over 0.00 % of the buildings in the region. There are an estimated 4 buildings that will be damaged beyond repair. The definition of the 'damage states' is provided in Volume 1: Chapter 5 of the Hazus technical manual. Table 3 below summarizes the expected damage by general occupancy for the buildings in the region. Table 4 below summarizes the expected damage by general building type.

### Damage Categories by General Occupancy Type

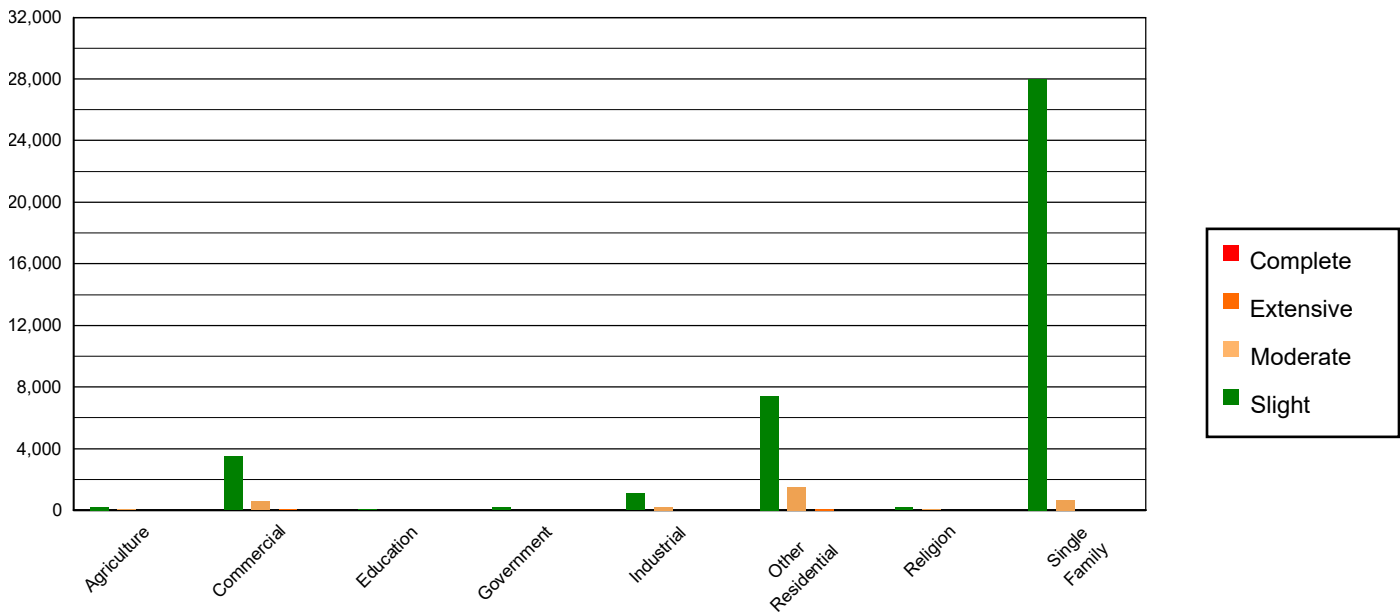


Table 3: Expected Building Damage by Occupancy

	None		Slight		Moderate		Extensive		Complete	
	Count	(%)	Count	(%)	Count	(%)	Count	(%)	Count	(%)
<b>Agriculture</b>	14149.55	0.38	223.00	0.55	51.58	1.67	4.68	2.94	0.19	4.45
<b>Commercial</b>	239499.73	6.36	3501.39	8.62	597.58	19.32	43.65	27.41	1.65	39.22
<b>Education</b>	7712.34	0.20	48.57	0.12	8.36	0.27	1.59	1.00	0.14	3.43
<b>Government</b>	20699.81	0.55	160.80	0.40	21.35	0.69	1.00	0.63	0.04	0.94
<b>Industrial</b>	66972.29	1.78	1085.33	2.67	217.12	7.02	15.59	9.79	0.67	15.88
<b>Other Residential</b>	463148.34	12.31	7430.53	18.29	1490.11	48.19	90.57	56.86	1.45	34.42
<b>Religion</b>	13723.84	0.36	174.77	0.43	28.38	0.92	1.94	1.22	0.07	1.66
<b>Single Family</b>	2937222.80	78.05	28006.15	68.93	677.79	21.92	0.26	0.16	0.00	0.00
<b>Total</b>	<b>3,763,129</b>		<b>40,631</b>		<b>3,092</b>		<b>159</b>		<b>4</b>	

**Table 4: Expected Building Damage by Building Type (All Design Levels)**

	None		Slight		Moderate		Extensive		Complete	
	Count	(%)	Count	(%)	Count	(%)	Count	(%)	Count	(%)
<b>Wood</b>	3269004.39	86.87	30876.06	75.99	721.55	23.33	0.55	0.34	0.00	0.11
<b>Steel</b>	82675.08	2.20	1567.68	3.86	397.14	12.84	33.32	20.92	1.37	32.42
<b>Concrete</b>	95685.30	2.54	1325.54	3.26	243.36	7.87	28.26	17.74	0.76	17.93
<b>Precast</b>	47755.88	1.27	892.18	2.20	170.45	5.51	5.18	3.25	0.15	3.56
<b>RM</b>	151225.18	4.02	763.62	1.88	109.24	3.53	1.35	0.85	0.00	0.00
<b>URM</b>	40800.00	1.08	1849.25	4.55	272.80	8.82	22.94	14.40	1.66	39.50
<b>MH</b>	75982.85	2.02	3356.23	8.26	1177.72	38.09	67.68	42.49	0.27	6.47
<b>Total</b>	<b>3,763,129</b>		<b>40,631</b>		<b>3,092</b>		<b>159</b>		<b>4</b>	

\*Note:

- RM      Reinforced Masonry
- URM    Unreinforced Masonry
- MH      Manufactured Housing

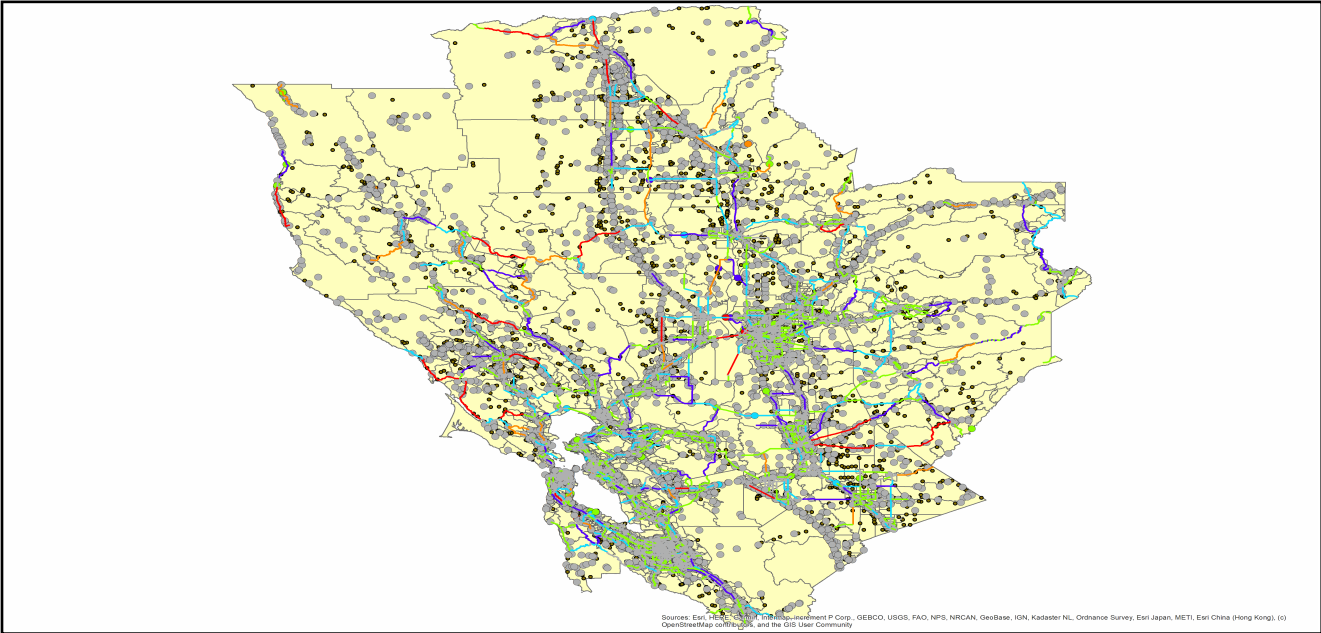
## Essential Facility Damage

Before the earthquake, the region had 31,062 hospital beds available for use. On the day of the earthquake, the model estimates that only 30,616 hospital beds (99.00%) are available for use by patients already in the hospital and those injured by the earthquake. After one week, 100.00% of the beds will be back in service. By 30 days, 100.00% will be operational.

**Table 5: Expected Damage to Essential Facilities**

Classification	Total	# Facilities		
		At Least Moderate Damage > 50%	Complete Damage > 50%	With Functionality > 50% on day 1
Hospitals	205	0	0	205
Schools	4,429	10	0	4,417
EOCs	71	1	0	70
PoliceStations	386	2	0	384
FireStations	1,192	2	0	1,188

Transportation Lifeline Damage



**Table 6: Expected Damage to the Transportation Systems**

System	Component	Number of Locations				
		Locations/ Segments	With at Least Mod. Damage	With Complete Damage	With Functionality > 50 %	
					After Day 1	After Day 7
Highway	Segments	5,733	0	0	5,733	5,733
	Bridges	8,977	0	0	8,977	8,977
	Tunnels	40	0	0	40	40
Railways	Segments	2,625	0	0	2,625	2,625
	Bridges	1,361	0	0	1,361	1,361
	Tunnels	3	0	0	3	3
	Facilities	68	0	0	68	68
Light Rail	Segments	15	0	0	15	15
	Bridges	112	0	0	112	112
	Tunnels	0	0	0	0	0
	Facilities	255	0	0	255	255
Bus	Facilities	27	0	0	27	27
Ferry	Facilities	25	0	0	25	25
Port	Facilities	358	0	0	358	358
Airport	Facilities	75	0	0	75	75
	Runways	112	0	0	112	112

Table 6 provides damage estimates for the transportation system.

Note: Roadway segments, railroad tracks and light rail tracks are assumed to be damaged by ground failure only. If ground failure maps are not provided, damage estimates to these components will not be computed.

Tables 7-9 provide information on the damage to the utility lifeline systems. Table 7 provides damage to the utility system facilities. Table 8 provides estimates on the number of leaks and breaks by the pipelines of the utility systems. For electric power and potable water, Hazus performs a simplified system performance analysis. Table 9 provides a summary of the system performance information.

**Table 7 : Expected Utility System Facility Damage**

System	# of Locations				
	Total #	With at Least Moderate Damage	With Complete Damage	with Functionality > 50 %	
				After Day 1	After Day 7
Potable Water	22	0	0	22	22
Waste Water	156	0	0	153	156
Natural Gas	2	0	0	2	2
Oil Systems	16	0	0	16	16
Electrical Power	244	1	0	243	244
Communication	281	1	0	281	281

**Table 8 : Expected Utility System Pipeline Damage (Site Specific)**

System	Total Pipelines Length (miles)	Number of Leaks	Number of Breaks
Potable Water	97,593	698	175
Waste Water	58,555	351	88
Natural Gas	2,071	0	0
Oil	0	0	0

**Table 9: Expected Potable Water and Electric Power System Performance**

	Total # of Households	Number of Households without Service				
		At Day 1	At Day 3	At Day 7	At Day 30	At Day 90
Potable Water	4,406,607	18	0	0	0	0
Electric Power		1,286	726	244	14	2

## Induced Earthquake Damage

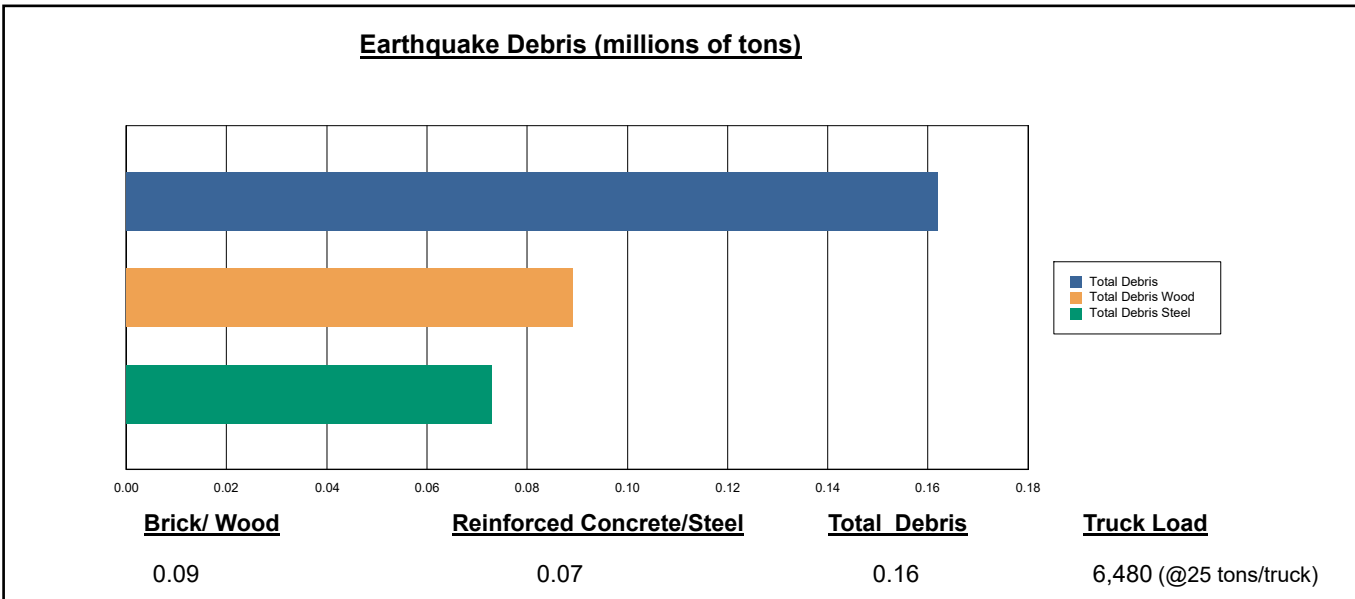
### Fire Following Earthquake

Fires often occur after an earthquake. Because of the number of fires and the lack of water to fight the fires, they can often burn out of control. Hazus uses a Monte Carlo simulation model to estimate the number of ignitions and the amount of burnt area. For this scenario, the model estimates that there will be 9 ignitions that will burn about 0.05 sq. mi (0.00 % of the region's total area.) The model also estimates that the fires will displace about 592 people and burn about 75 (millions of dollars) of building value.

### Debris Generation

Hazus estimates the amount of debris that will be generated by the earthquake. The model breaks the debris into two general categories: a) Brick/Wood and b) Reinforced Concrete/Steel. This distinction is made because of the different types of material handling equipment required to handle the debris.

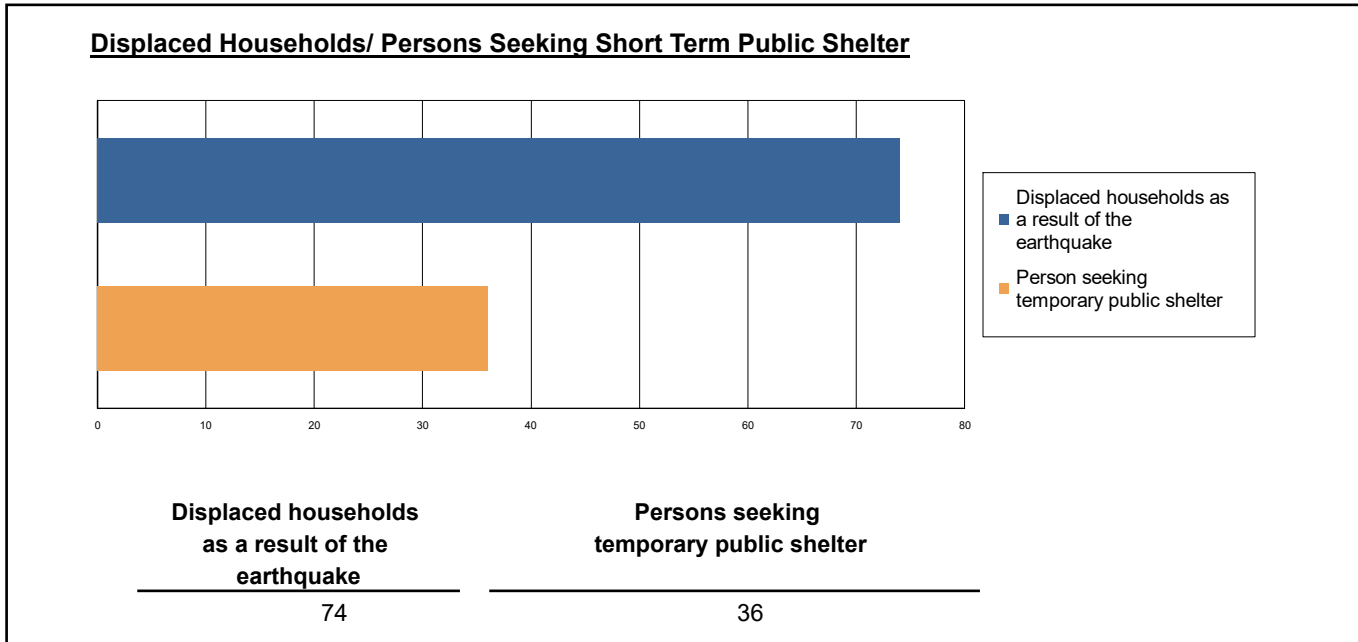
The model estimates that a total of 162,000 tons of debris will be generated. Of the total amount, Brick/Wood comprises 55.00% of the total, with the remainder being Reinforced Concrete/Steel. If the debris tonnage is converted to an estimated number of truckloads, it will require 6,480 truckloads (@25 tons/truck) to remove the debris generated by the earthquake.



## Social Impact

### Shelter Requirement

Hazus estimates the number of households that are expected to be displaced from their homes due to the earthquake and the number of displaced people that will require accommodations in temporary public shelters. The model estimates 74 households to be displaced due to the earthquake. Of these, 36 people (out of a total population of 12,352,329) will seek temporary shelter in public shelters.



### Casualties

Hazus estimates the number of people that will be injured and killed by the earthquake. The casualties are broken down into four (4) severity levels that describe the extent of the injuries. The levels are described as follows;

- Severity Level 1: Injuries will require medical attention but hospitalization is not needed.
- Severity Level 2: Injuries will require hospitalization but are not considered life-threatening
- Severity Level 3: Injuries will require hospitalization and can become life threatening if not promptly treated.
- Severity Level 4: Victims are killed by the earthquake.

The casualty estimates are provided for three (3) times of day: 2:00 AM, 2:00 PM and 5:00 PM. These times represent the periods of the day that different sectors of the community are at their peak occupancy loads. The 2:00 AM estimate considers that the residential occupancy load is maximum, the 2:00 PM estimate considers that the educational, commercial and industrial sector loads are maximum and 5:00 PM represents peak commute time.

Table 10 provides a summary of the casualties estimated for this earthquake

**Table 10: Casualty Estimates**

		Level 1	Level 2	Level 3	Level 4
<b>2 AM</b>	Commercial	1.06	0.07	0.00	0.01
	Commuting	0.00	0.01	0.01	0.00
	Educational	0.00	0.00	0.00	0.00
	Hotels	0.10	0.01	0.00	0.00
	Industrial	1.31	0.10	0.00	0.01
	Other-Residential	34.75	1.97	0.04	0.07
	Single Family	41.45	0.54	0.00	0.00
	<b>Total</b>	<b>79</b>	<b>3</b>	<b>0</b>	<b>0</b>
<b>2 PM</b>	Commercial	65.65	4.44	0.16	0.30
	Commuting	0.03	0.05	0.08	0.01
	Educational	20.05	2.16	0.20	0.39
	Hotels	0.02	0.00	0.00	0.00
	Industrial	9.55	0.76	0.03	0.06
	Other-Residential	10.57	0.60	0.01	0.02
	Single Family	11.60	0.16	0.00	0.00
	<b>Total</b>	<b>117</b>	<b>8</b>	<b>0</b>	<b>1</b>
<b>5 PM</b>	Commercial	42.30	2.86	0.10	0.18
	Commuting	0.71	0.92	1.59	0.31
	Educational	1.73	0.04	0.00	0.00
	Hotels	0.03	0.00	0.00	0.00
	Industrial	5.97	0.48	0.02	0.04
	Other-Residential	12.58	0.73	0.02	0.03
	Single Family	14.83	0.21	0.00	0.00
	<b>Total</b>	<b>78</b>	<b>5</b>	<b>2</b>	<b>1</b>

## Economic Loss

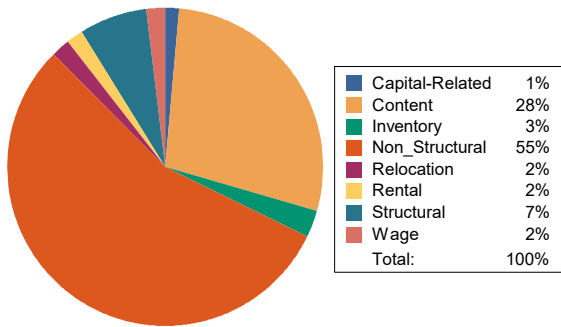
The total economic loss estimated for the earthquake is 4,145.04 (millions of dollars), which includes building and lifeline related losses based on the region's available inventory. The following three sections provide more detailed information about these losses.

## Building-Related Losses

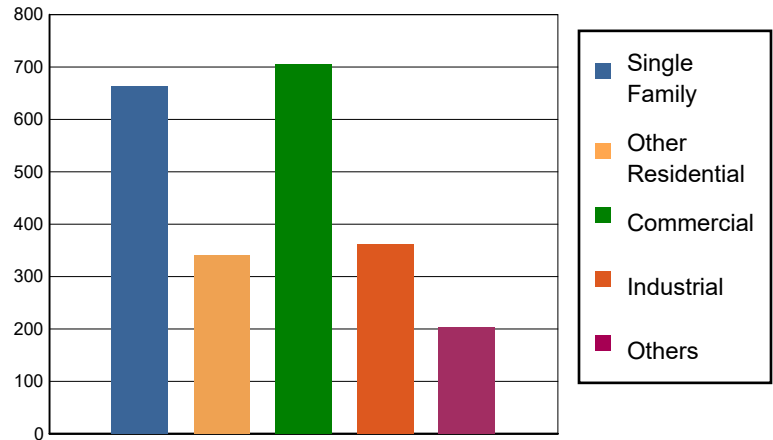
The building losses are broken into two categories: direct building losses and business interruption losses. The direct building losses are the estimated costs to repair or replace the damage caused to the building and its contents. The business interruption losses are the losses associated with inability to operate a business because of the damage sustained during the earthquake. Business interruption losses also include the temporary living expenses for those people displaced from their homes because of the earthquake.

The total building-related losses were 2,274.76 (millions of dollars); 7 % of the estimated losses were related to the business interruption of the region. By far, the largest loss was sustained by the residential occupancies which made up over 44 % of the total loss. Table 11 below provides a summary of the losses associated with the building damage.

Earthquake Losses by Loss Type (\$ millions)



Earthquake Losses by Occupancy Type (\$ millions)



**Table 11: Building-Related Economic Loss Estimates**  
(Millions of dollars)

Category	Area	Single Family	Other Residential	Commercial	Industrial	Others	Total
<b>Income Losses</b>							
	Wage	0.0000	2.4805	33.0852	1.6058	4.1810	41.3525
	Capital-Related	0.0000	1.0539	30.6908	0.9660	0.8061	33.5168
	Rental	2.9429	9.9616	19.8659	1.1343	1.3508	35.2555
	Relocation	4.4910	6.1690	18.5955	5.2541	6.5588	41.0684
	<b>Subtotal</b>	<b>7.4339</b>	<b>19.6650</b>	<b>102.2374</b>	<b>8.9602</b>	<b>12.8967</b>	<b>151.1932</b>
<b>Capital Stock Losses</b>							
	Structural	57.3251	23.1760	46.1811	22.1810	15.1500	164.0132
	Non_Structural	430.2469	227.1217	319.7884	180.2650	102.9653	1,260.3873
	Content	168.4225	71.7105	204.4547	129.0521	64.8531	638.4929
	Inventory	0.0000	0.0000	33.2595	21.2910	6.1238	60.6743
	<b>Subtotal</b>	<b>655.9945</b>	<b>322.0082</b>	<b>603.6837</b>	<b>352.7891</b>	<b>189.0922</b>	<b>2123.5677</b>
	<b>Total</b>	<b>663.43</b>	<b>341.67</b>	<b>705.92</b>	<b>361.75</b>	<b>201.99</b>	<b>2274.76</b>

## Transportation and Utility Lifeline Losses

For the transportation and utility lifeline systems, Hazus computes the direct repair cost for each component only. There are no losses computed by Hazus for business interruption due to lifeline outages. Tables 12 & 13 provide a detailed breakdown in the expected lifeline losses.

**Table 12: Transportation System Economic Losses**  
(Millions of dollars)

System	Component	Inventory Value	Economic Loss	Loss Ratio (%)
Highway	Segments	66857.1474	0.0000	0.00
	Bridges	51375.2943	10.4977	0.02
	Tunnels	851.2123	0.0007	0.00
	<b>Subtotal</b>	<b>119083.6540</b>	<b>10.4984</b>	
Railways	Segments	56085.4090	0.0000	0.00
	Bridges	7744.0900	0.8211	0.01
	Tunnels	1.8495	0.0000	0.00
	Facilities	181.0840	3.7430	2.07
	<b>Subtotal</b>	<b>64012.4325</b>	<b>4.5641</b>	
Light Rail	Segments	5403.2756	0.0000	0.00
	Bridges	15.3529	0.0000	0.00
	Tunnels	0.0000	0.0000	0.00
	Facilities	4154.0000	38.2627	0.92
	<b>Subtotal</b>	<b>9572.6285</b>	<b>38.2627</b>	
Bus	Facilities	62.3408	1.5473	2.48
	<b>Subtotal</b>	<b>62.3408</b>	<b>1.5473</b>	
Ferry	Facilities	33.2750	0.8676	2.61
	<b>Subtotal</b>	<b>33.2750</b>	<b>0.8676</b>	
Port	Facilities	1364.6404	38.8490	2.85
	<b>Subtotal</b>	<b>1364.6404</b>	<b>38.8490</b>	
Airport	Facilities	2513.2693	43.1832	1.72
	Runways	1052.7497	0.0000	0.00
	<b>Subtotal</b>	<b>3566.0190</b>	<b>43.1832</b>	
<b>Total</b>		<b>197,694.99</b>	<b>137.77</b>	

**Table 13: Utility System Economic Losses**  
(Millions of dollars)

System	Component	Inventory Value	Economic Loss	Loss Ratio (%)
Potable Water	Pipelines	0.0000	0.0000	0.00
	Facilities	864.4680	2.1087	0.24
	Distribution Lines	3141.1990	3.1427	0.10
	<b>Subtotal</b>	<b>4005.6670</b>	<b>5.2514</b>	
Waste Water	Pipelines	0.0000	0.0000	0.00
	Facilities	26824.4808	155.1169	0.58
	Distribution Lines	1884.7194	1.5786	0.08
	<b>Subtotal</b>	<b>28709.2002</b>	<b>156.6955</b>	
Natural Gas	Pipelines	11736.1727	0.0000	0.00
	Facilities	82.4870	0.0749	0.09
	Distribution Lines	1256.4796	0.5408	0.04
	<b>Subtotal</b>	<b>13075.1393</b>	<b>0.6157</b>	
Oil Systems	Pipelines	0.0000	0.0000	0.00
	Facilities	1.8880	0.0139	0.74
	<b>Subtotal</b>	<b>1.8880</b>	<b>0.0139</b>	
Electrical Power	Facilities	72726.1984	1569.6207	2.16
	<b>Subtotal</b>	<b>72726.1984</b>	<b>1569.6207</b>	
Communication	Facilities	33.1580	0.3126	0.94
	<b>Subtotal</b>	<b>33.1580</b>	<b>0.3126</b>	
	<b>Total</b>	<b>118,551.25</b>	<b>1,732.51</b>	

---

## Appendix A: County Listing for the Region

Alameda,CA

Amador,CA

Butte,CA

Calaveras,CA

Colusa,CA

Contra Costa,CA

El Dorado,CA

Glenn,CA

Lake,CA

Marin,CA

Mendocino,CA

Napa,CA

Nevada,CA

Placer,CA

Sacramento,CA

San Francisco,CA

San Joaquin,CA

San Mateo,CA

Santa Clara,CA

Solano,CA

Sonoma,CA

Stanislaus,CA

Sutter,CA

Tehama,CA

Yolo,CA

Yuba,CA

## Appendix B: Regional Population and Building Value Data

State	County Name	Population	Building Value (millions of dollars)		
			Residential	Non-Residential	Total
California	Alameda	1,682,353	209,951	122,639	332,590
	Amador	40,474	5,608	2,517	8,125
	Butte	211,632	25,875	16,639	42,514
	Calaveras	45,292	8,305	4,893	13,199
	Colusa	21,839	2,244	2,024	4,268
	Contra Costa	1,165,927	158,118	60,339	218,458
	El Dorado	191,185	34,907	9,704	44,611
	Glenn	28,917	2,791	3,717	6,508
	Lake	68,163	9,699	4,530	14,229
	Marin	262,321	47,738	15,030	62,769
	Mendocino	91,601	14,237	8,510	22,748
	Napa	138,019	20,517	13,045	33,563
	Nevada	102,241	17,908	6,108	24,016
	Placer	404,739	69,985	24,193	94,179
	Sacramento	1,585,055	179,811	83,911	263,723
	San Francisco	873,965	108,848	46,020	154,869
	San Joaquin	779,233	82,706	56,882	139,589
	San Mateo	764,442	110,372	44,995	155,368
	Santa Clara	1,936,259	261,111	120,471	381,582
	Solano	453,491	55,802	26,393	82,195
	Sonoma	488,863	68,827	35,781	104,609
Stanislaus	552,878	62,937	37,511	100,449	
Sutter	99,633	10,618	6,448	17,066	
Tehama	65,829	7,705	5,113	12,818	
Yolo	216,403	24,130	18,343	42,473	
Yuba	81,575	8,161	4,677	12,839	
<b>Total Region</b>		<b>12,352,329</b>	<b>1,608,911</b>	<b>780,433</b>	<b>2,389,357</b>

**Building Inspection Tagging (Counts)**

<b>Inspected</b> Residential Commercial Industrial Agricultural Educational Government Religious	<b>Restricted</b> Residential Commercial Industrial Agricultural Educational Government Religious	<b>Unsafe</b> Residential Commercial Industrial Agricultural Educational Government Religious
---	--	--

**Total Economic Loss**
**Total:**

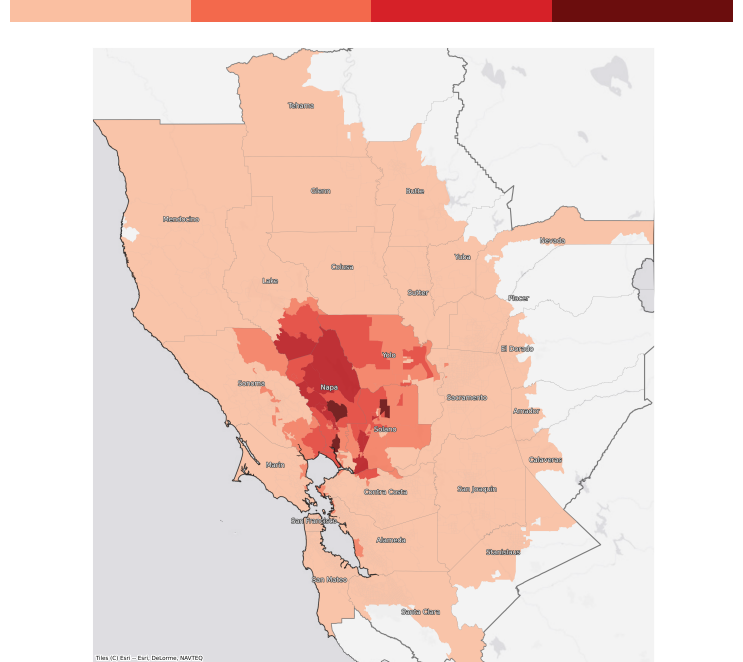
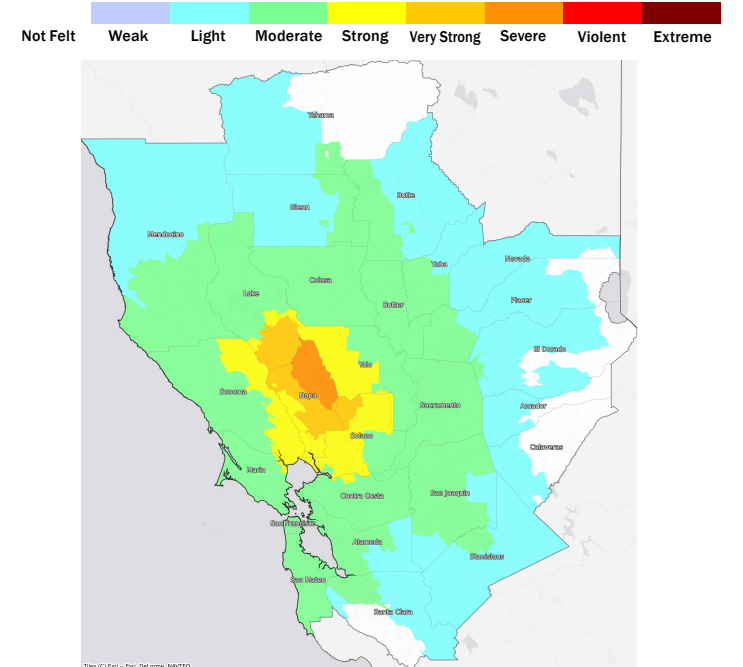
Top Counties	State	Total

**Injuries & Fatalities**
**Total Day:  
Total Night:**

Top Counties	State	Injuries (day/night)	Fatalities (day/night)

**Displaced Households & Short-Term Shelter Needs**
**Total Displaced:  
Total Needing Shelter:**

Top Counties	State	Displaced	Needing Shelter

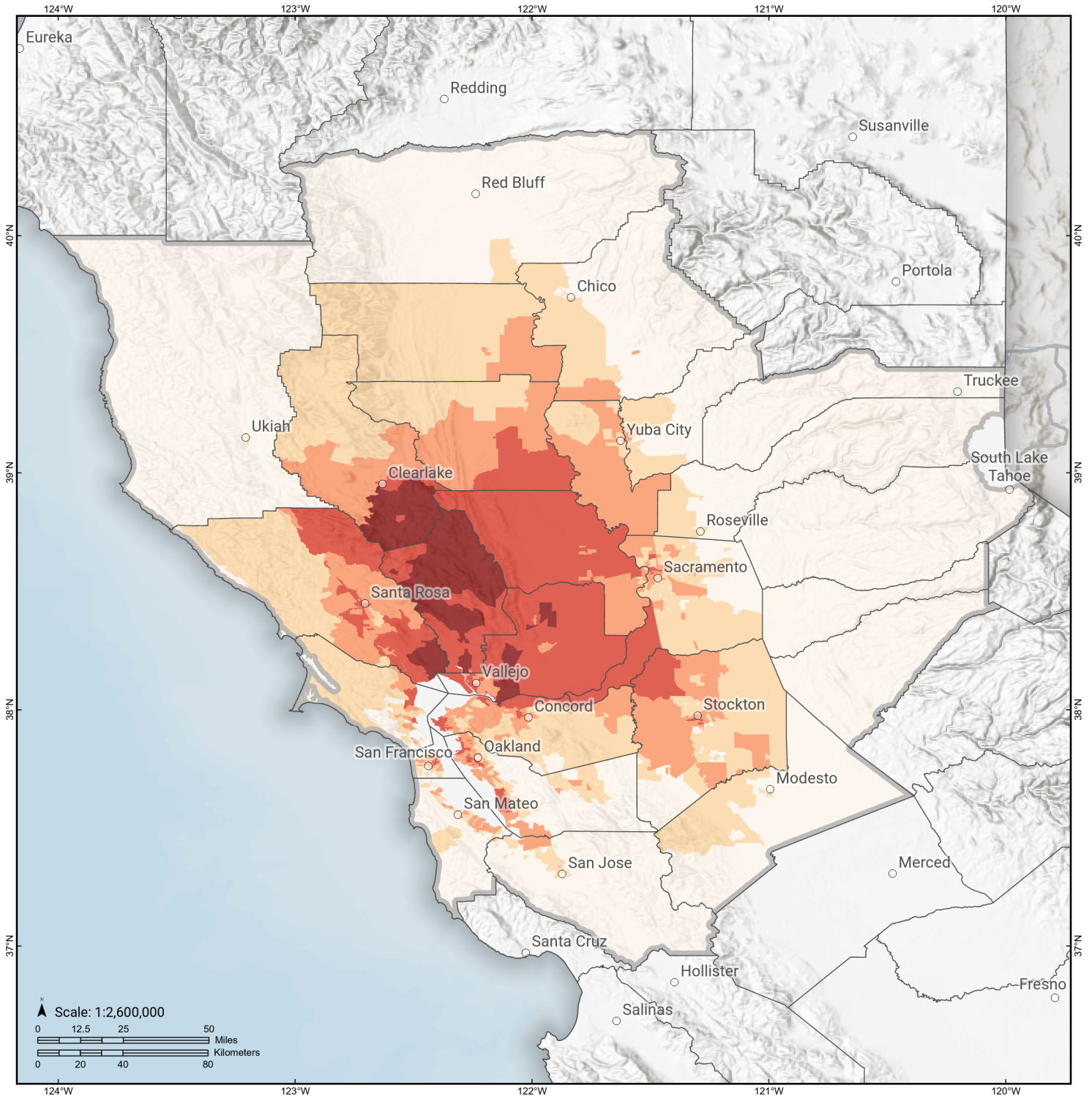
**Economic Impacts by Census Tract**

**Ground Shaking**

**Debris**
**Total Tons:  
Total Truckloads:**

Type	Tons

The estimates of social and economic impacts contained in this report were produced using Hazus loss estimation methodology software which is based on current scientific and engineering knowledge. There are uncertainties inherent in any loss estimation technique. Therefore, there may be significant differences between the modeled results contained in this report and the actual social and economic losses following a specific earthquake.

# Hunting Creek - Berryessa

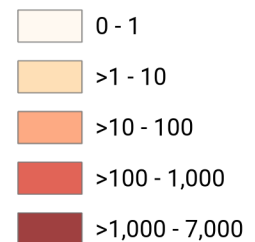
## Debris Generated by Census Tract



**Study Region:** Hunting Creek - Berryessa  
**Scenario:** huntingcreekberryess\_m6p69\_se

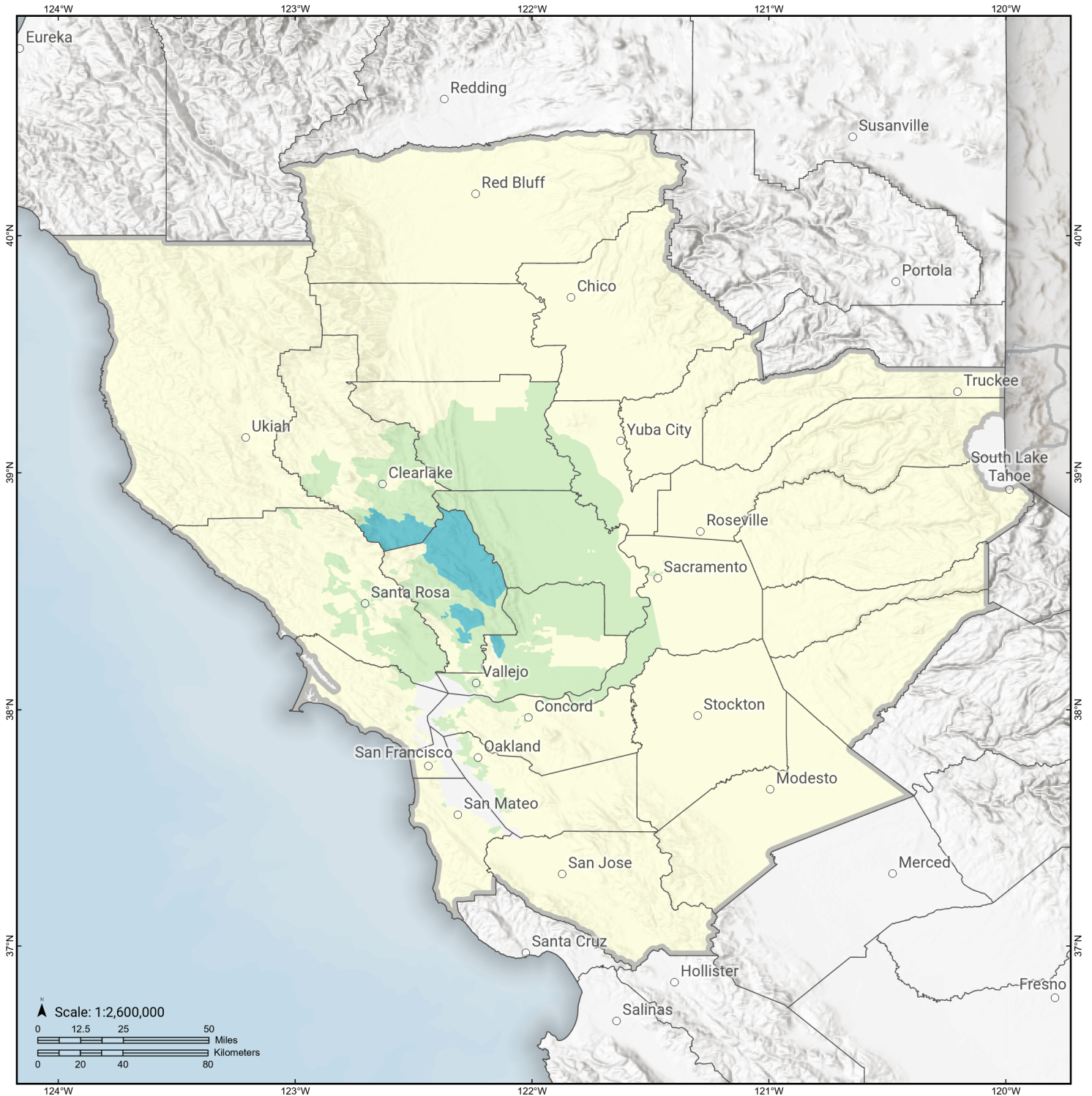


### Debris Generated (in tons)



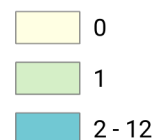
# Hunting Creek - Berryessa

## Displaced Households by Census Tract



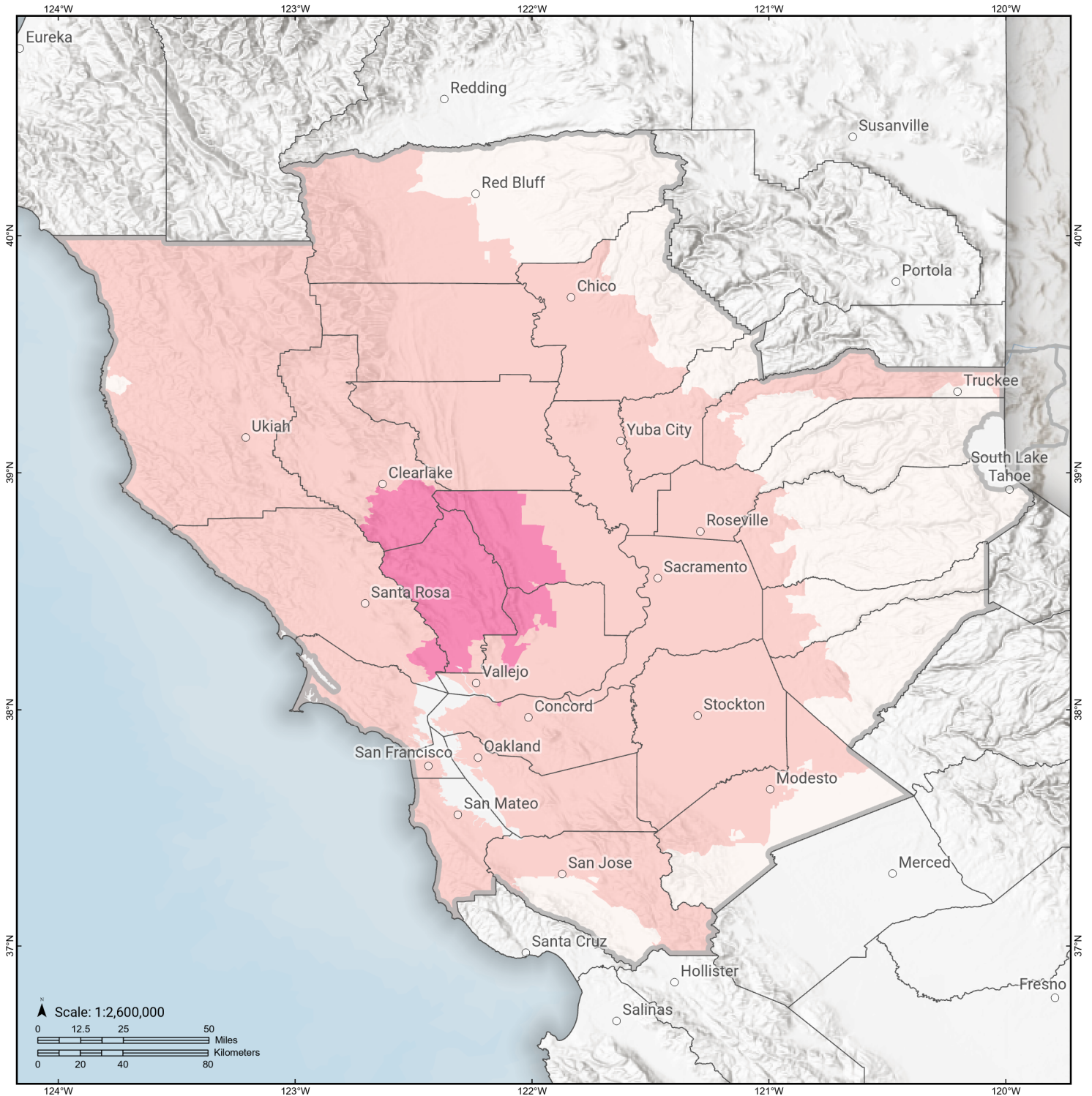
**Study Region:** Hunting Creek - Berryessa  
**Scenario:** huntingcreekberryess\_m6p69\_se

### Displaced Households



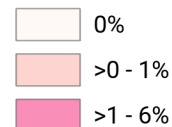
# Hunting Creek - Berryessa

## Loss Ratio by Census Tract



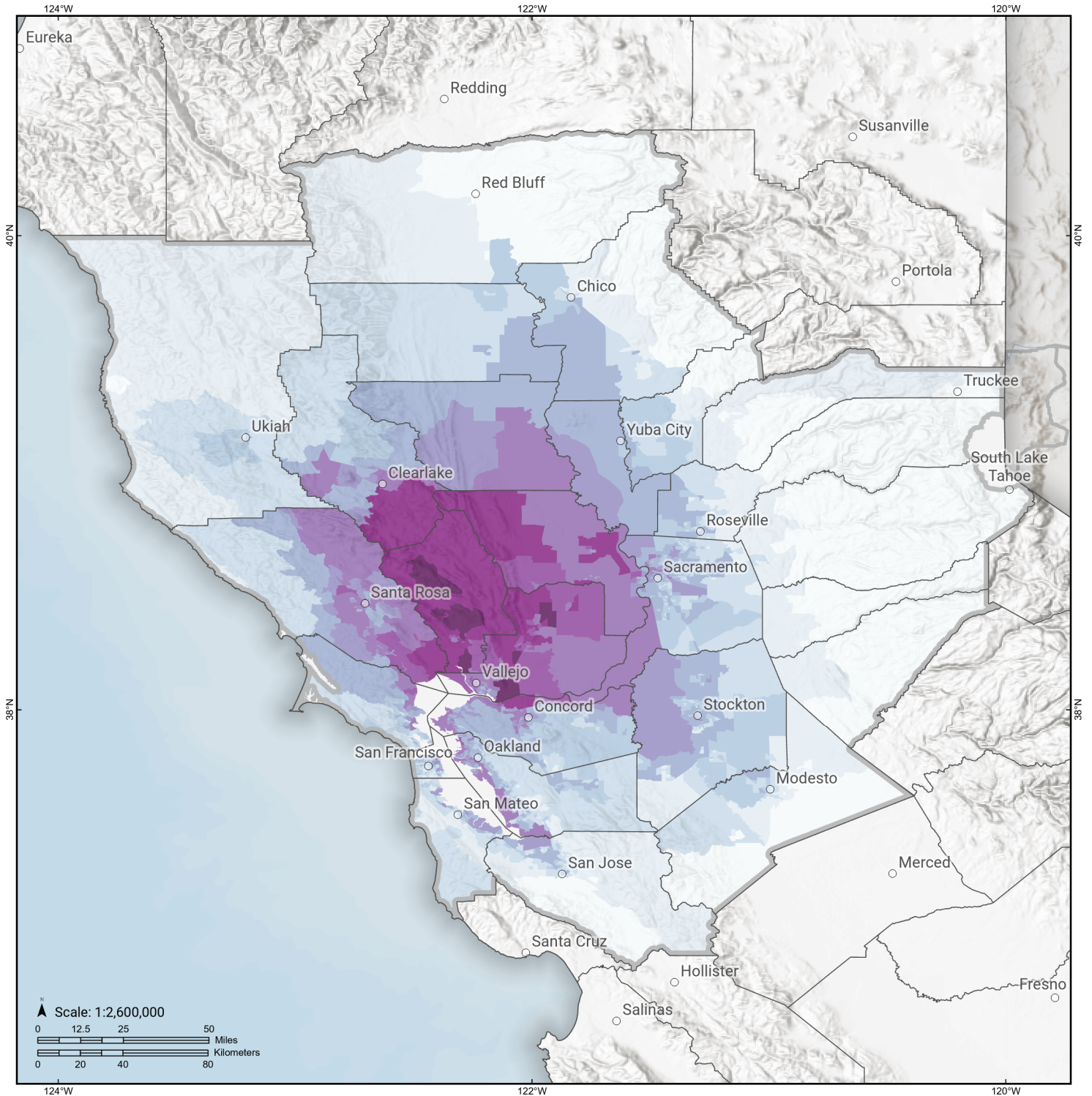
**Study Region:** Hunting Creek - Berryessa  
**Scenario:** huntingcreekberryess\_m6p69\_se

**Loss Ratio** (ratio of building related economic loss to exposed value of buildings)



# Hunting Creek - Berryessa

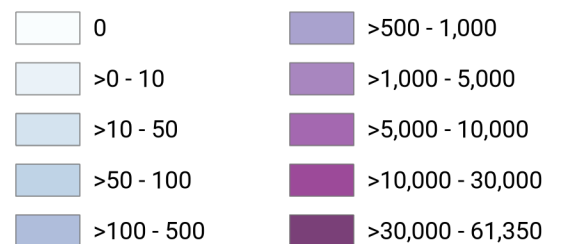
## Total Building Related Economic Loss by Census Tract



**Study Region:** Hunting Creek - Berryessa  
**Scenario:** huntingcreekberryess\_m6p69\_se



**Economic Loss** (in thousands of USD \$)



## Building Damage by Count by General Occupancy

May 07, 2024

	# of Buildings					Total
	None	Slight	Moderate	Extensive	Complete	
<b>California</b>						
<b>Alameda</b>						
<i>Agriculture</i>	418	3	0	0	0	422
<i>Commercial</i>	31,672	290	26	0	0	31,989
<i>Education</i>	1,110	6	1	0	0	1,117
<i>Government</i>	10,489	37	2	0	0	10,528
<i>Industrial</i>	10,117	81	8	0	0	10,205
<i>Religion</i>	1,968	17	1	0	0	1,986
<i>Other Residential</i>	61,072	302	21	0	0	61,396
<i>Single Family</i>	343,912	260	1	0	0	344,173
<b>Amador</b>						
<i>Agriculture</i>	44	0	0	0	0	44
<i>Commercial</i>	1,368	0	0	0	0	1,368
<i>Education</i>	23	0	0	0	0	23
<i>Government</i>	32	0	0	0	0	32
<i>Industrial</i>	235	0	0	0	0	235
<i>Religion</i>	45	0	0	0	0	45
<i>Other Residential</i>	1,037	0	0	0	0	1,037
<i>Single Family</i>	14,962	0	0	0	0	14,962
<b>Butte</b>						

	# of Buildings					Total
	None	Slight	Moderate	Extensive	Complete	
<i>Agriculture</i>	509	1	0	0	0	510
<i>Commercial</i>	6,380	5	0	0	0	6,385
<i>Education</i>	172	0	0	0	0	172
<i>Government</i>	147	0	0	0	0	147
<i>Industrial</i>	1,520	1	0	0	0	1,522
<i>Religion</i>	530	1	0	0	0	531
<i>Other Residential</i>	21,484	14	1	0	0	21,498
<i>Single Family</i>	50,281	2	0	0	0	50,283
<b>Calaveras</b>						
<i>Agriculture</i>	2,207	0	0	0	0	2,207
<i>Commercial</i>	1,413	0	0	0	0	1,413
<i>Education</i>	35	0	0	0	0	35
<i>Government</i>	84	0	0	0	0	84
<i>Industrial</i>	466	0	0	0	0	466
<i>Religion</i>	130	0	0	0	0	130
<i>Other Residential</i>	2,559	0	0	0	0	2,559
<i>Single Family</i>	22,148	0	0	0	0	22,148
<b>Colusa</b>						
<i>Agriculture</i>	139	3	0	0	0	142
<i>Commercial</i>	778	14	2	0	0	794
<i>Education</i>	33	0	0	0	0	33
<i>Government</i>	32	0	0	0	0	32
<i>Industrial</i>	111	2	0	0	0	113
<i>Religion</i>	57	1	0	0	0	58
<i>Other Residential</i>	934	18	2	0	0	954

	# of Buildings					Total
	None	Slight	Moderate	Extensive	Complete	
<i>Single Family</i>	5,899	55	0	0	0	5,954
<b>Contra Costa</b>						
<i>Agriculture</i>	739	8	1	0	0	749
<i>Commercial</i>	17,769	199	22	1	0	17,991
<i>Education</i>	651	2	0	0	0	653
<i>Government</i>	4,963	55	6	0	0	5,024
<i>Industrial</i>	4,642	95	12	0	0	4,749
<i>Religion</i>	1,204	20	2	0	0	1,226
<i>Other Residential</i>	28,668	422	34	0	0	29,124
<i>Single Family</i>	280,826	1,107	1	0	0	281,935
<b>El Dorado</b>						
<i>Agriculture</i>	161	0	0	0	0	161
<i>Commercial</i>	4,768	0	0	0	0	4,768
<i>Education</i>	128	0	0	0	0	128
<i>Government</i>	100	0	0	0	0	100
<i>Industrial</i>	1,199	0	0	0	0	1,199
<i>Religion</i>	180	0	0	0	0	180
<i>Other Residential</i>	10,420	0	0	0	0	10,420
<i>Single Family</i>	71,424	0	0	0	0	71,424
<b>Glenn</b>						
<i>Agriculture</i>	1,362	3	0	0	0	1,365
<i>Commercial</i>	883	2	0	0	0	885
<i>Education</i>	35	0	0	0	0	35
<i>Government</i>	99	0	0	0	0	99
<i>Industrial</i>	254	0	0	0	0	254

		# of Buildings					
		None	Slight	Moderate	Extensive	Complete	Total
<b>Lake</b>	<i>Religion</i>	89	0	0	0	0	89
	<i>Other Residential</i>	2,146	6	0	0	0	2,152
	<i>Single Family</i>	7,415	2	0	0	0	7,417
	<i>Agriculture</i>	153	7	1	0	0	161
	<i>Commercial</i>	1,963	109	18	1	0	2,091
	<i>Education</i>	66	2	0	0	0	68
	<i>Government</i>	76	2	0	0	0	78
	<i>Industrial</i>	328	22	3	0	0	354
	<i>Religion</i>	131	7	1	0	0	140
	<i>Other Residential</i>	12,738	1,487	368	8	0	14,601
<b>Marin</b>	<i>Single Family</i>	20,459	1,153	22	0	0	21,633
	<i>Agriculture</i>	187	2	1	0	0	190
	<i>Commercial</i>	8,189	75	6	0	0	8,270
	<i>Education</i>	273	1	0	0	0	274
	<i>Government</i>	142	1	0	0	0	143
	<i>Industrial</i>	1,494	37	4	0	0	1,535
	<i>Religion</i>	317	2	0	0	0	319
	<i>Other Residential</i>	7,824	60	6	0	0	7,890
	<i>Single Family</i>	76,498	226	1	0	0	76,724
	<b>Mendocino</b>	<i>Agriculture</i>	184	0	0	0	0
<i>Commercial</i>		3,435	1	0	0	0	3,436
<i>Education</i>		101	0	0	0	0	101

		# of Buildings					
		None	Slight	Moderate	Extensive	Complete	Total
<b>Napa</b>	<i>Government</i>	83	0	0	0	0	83
	<i>Industrial</i>	869	0	0	0	0	869
	<i>Religion</i>	216	0	0	0	0	216
	<i>Other Residential</i>	7,056	4	0	0	0	7,060
	<i>Single Family</i>	25,968	1	0	0	0	25,969
	<i>Agriculture</i>	228	90	27	3	0	349
	<i>Commercial</i>	2,673	1,008	303	35	2	4,021
	<i>Education</i>	106	18	6	2	0	132
	<i>Government</i>	71	23	8	1	0	103
	<i>Industrial</i>	911	327	116	13	1	1,367
<b>Nevada</b>	<i>Religion</i>	100	35	12	1	0	148
	<i>Other Residential</i>	4,310	1,881	709	76	1	6,978
	<i>Single Family</i>	28,463	9,847	450	0	0	38,761
	<i>Agriculture</i>	132	0	0	0	0	132
	<i>Commercial</i>	2,835	0	0	0	0	2,835
	<i>Education</i>	108	0	0	0	0	108
	<i>Government</i>	60	0	0	0	0	60
	<i>Industrial</i>	1,161	0	0	0	0	1,161
	<i>Religion</i>	189	0	0	0	0	189
	<i>Other Residential</i>	6,384	0	0	0	0	6,384
<b>Placer</b>	<i>Single Family</i>	43,280	0	0	0	0	43,280
	<i>Agriculture</i>	258	0	0	0	0	258

	# of Buildings					Total
	None	Slight	Moderate	Extensive	Complete	
<i>Commercial</i>	8,536	2	0	0	0	8,538
<i>Education</i>	231	0	0	0	0	231
<i>Government</i>	377	0	0	0	0	377
<i>Industrial</i>	2,702	1	0	0	0	2,703
<i>Religion</i>	382	0	0	0	0	382
<i>Other Residential</i>	14,838	5	0	0	0	14,843
<i>Single Family</i>	134,708	11	0	0	0	134,719
<b>Sacramento</b>						
<i>Agriculture</i>	619	2	0	0	0	621
<i>Commercial</i>	26,153	131	11	0	0	26,295
<i>Education</i>	828	1	0	0	0	829
<i>Government</i>	609	9	1	0	0	619
<i>Industrial</i>	6,733	22	2	0	0	6,756
<i>Religion</i>	1,691	10	1	0	0	1,702
<i>Other Residential</i>	56,220	183	10	0	0	56,413
<i>Single Family</i>	386,386	451	3	0	0	386,840
<b>San Francisco</b>						
<i>Agriculture</i>	161	1	0	0	0	162
<i>Commercial</i>	21,096	234	14	0	0	21,344
<i>Education</i>	569	3	0	0	0	572
<i>Government</i>	284	4	0	0	0	289
<i>Industrial</i>	3,823	35	3	0	0	3,860
<i>Religion</i>	1,339	5	0	0	0	1,345
<i>Other Residential</i>	44,272	245	12	0	0	44,529

	# of Buildings					Total
	None	Slight	Moderate	Extensive	Complete	
<i>Single Family</i>	150,393	291	20	0	0	150,703
<b>San Joaquin</b>						
<i>Agriculture</i>	751	2	0	0	0	753
<i>Commercial</i>	12,838	25	1	0	0	12,864
<i>Education</i>	395	0	0	0	0	395
<i>Government</i>	304	0	0	0	0	304
<i>Industrial</i>	4,920	8	0	0	0	4,928
<i>Religion</i>	876	1	0	0	0	877
<i>Other Residential</i>	21,719	81	5	0	0	21,805
<i>Single Family</i>	188,399	485	38	0	0	188,922
<b>San Mateo</b>						
<i>Agriculture</i>	538	0	0	0	0	539
<i>Commercial</i>	14,379	16	0	0	0	14,395
<i>Education</i>	489	0	0	0	0	489
<i>Government</i>	299	0	0	0	0	299
<i>Industrial</i>	4,465	7	0	0	0	4,472
<i>Religion</i>	735	1	0	0	0	736
<i>Other Residential</i>	22,425	27	1	0	0	22,453
<i>Single Family</i>	159,898	33	0	0	0	159,931
<b>Santa Clara</b>						
<i>Agriculture</i>	895	0	0	0	0	895
<i>Commercial</i>	35,459	10	0	0	0	35,469
<i>Education</i>	1,173	0	0	0	0	1,173
<i>Government</i>	502	0	0	0	0	502
<i>Industrial</i>	9,430	2	0	0	0	9,433

	# of Buildings					Total
	None	Slight	Moderate	Extensive	Complete	
<i>Religion</i>	1,540	0	0	0	0	1,540
<i>Other Residential</i>	59,141	18	0	0	0	59,160
<i>Single Family</i>	427,217	2	0	0	0	427,219
<b>Solano</b>						
<i>Agriculture</i>	211	28	5	0	0	245
<i>Commercial</i>	6,340	806	117	4	0	7,268
<i>Education</i>	215	9	1	0	0	225
<i>Government</i>	135	15	2	0	0	152
<i>Industrial</i>	1,809	251	40	1	0	2,101
<i>Religion</i>	401	46	7	0	0	454
<i>Other Residential</i>	10,766	1,353	194	4	0	12,317
<i>Single Family</i>	110,299	10,548	121	0	0	120,968
<b>Sonoma</b>						
<i>Agriculture</i>	1,248	46	10	1	0	1,304
<i>Commercial</i>	11,652	402	54	2	0	12,110
<i>Education</i>	363	3	0	0	0	367
<i>Government</i>	309	8	2	0	0	319
<i>Industrial</i>	3,666	138	20	1	0	3,825
<i>Religion</i>	557	17	2	0	0	576
<i>Other Residential</i>	24,006	932	93	1	0	25,033
<i>Single Family</i>	139,721	2,298	9	0	0	142,028
<b>Stanislaus</b>						
<i>Agriculture</i>	1,239	0	0	0	0	1,239
<i>Commercial</i>	10,368	1	0	0	0	10,369
<i>Education</i>	307	0	0	0	0	307

	# of Buildings					Total
	None	Slight	Moderate	Extensive	Complete	
<i>Government</i>	680	0	0	0	0	680
<i>Industrial</i>	3,475	0	0	0	0	3,475
<i>Religion</i>	456	0	0	0	0	456
<i>Other Residential</i>	19,567	2	0	0	0	19,569
<i>Single Family</i>	142,724	0	0	0	0	142,724
<b>Sutter</b>						
<i>Agriculture</i>	1,114	10	1	0	0	1,125
<i>Commercial</i>	2,046	6	0	0	0	2,052
<i>Education</i>	62	0	0	0	0	62
<i>Government</i>	77	0	0	0	0	77
<i>Industrial</i>	633	3	0	0	0	636
<i>Religion</i>	154	0	0	0	0	154
<i>Other Residential</i>	3,094	18	1	0	0	3,113
<i>Single Family</i>	24,490	22	0	0	0	24,512
<b>Tehama</b>						
<i>Agriculture</i>	299	0	0	0	0	299
<i>Commercial</i>	1,270	0	0	0	0	1,270
<i>Education</i>	57	0	0	0	0	57
<i>Government</i>	50	0	0	0	0	50
<i>Industrial</i>	552	0	0	0	0	552
<i>Religion</i>	110	0	0	0	0	110
<i>Other Residential</i>	3,990	1	0	0	0	3,991
<i>Single Family</i>	21,222	0	0	0	0	21,222
<b>Yolo</b>						
<i>Agriculture</i>	261	17	3	0	0	281

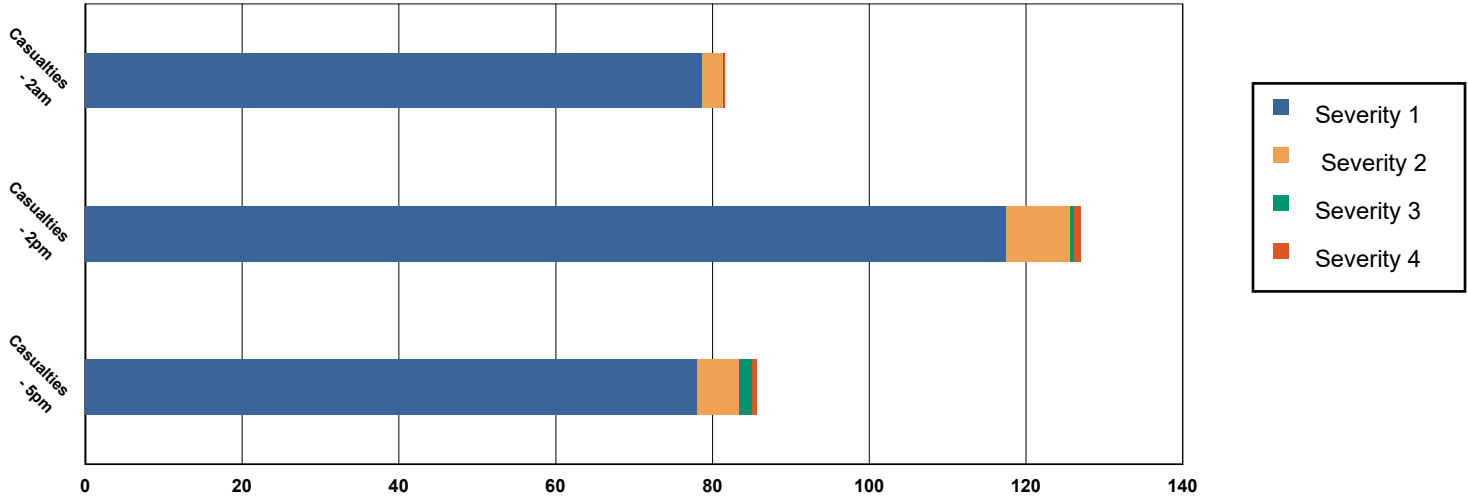
	# of Buildings					Total
	None	Slight	Moderate	Extensive	Complete	
<i>Commercial</i>	4,039	163	22	0	0	4,225
<i>Education</i>	129	2	0	0	0	131
<i>Government</i>	107	4	1	0	0	111
<i>Industrial</i>	1,056	52	9	0	0	1,117
<i>Religion</i>	231	10	2	0	0	242
<i>Other Residential</i>	9,474	355	32	0	0	9,861
<i>Single Family</i>	41,374	1,204	11	0	0	42,589
<b>Yuba</b>						
<i>Agriculture</i>	92	0	0	0	0	92
<i>Commercial</i>	1,196	3	0	0	0	1,199
<i>Education</i>	54	0	0	0	0	54
<i>Government</i>	591	0	0	0	0	591
<i>Industrial</i>	403	1	0	0	0	404
<i>Religion</i>	98	0	0	0	0	98
<i>Other Residential</i>	7,003	17	1	0	0	7,021
<i>Single Family</i>	18,859	8	0	0	0	18,867
<b>Total</b>	<b>3,763,129</b>	<b>40,631</b>	<b>3,092</b>	<b>159</b>	<b>4</b>	<b>3,807,015</b>
<b>Region Total</b>	<b>3,763,129</b>	<b>40,631</b>	<b>3,092</b>	<b>159</b>	<b>4</b>	<b>3,807,015</b>

Totals only reflect data for those census tracts/blocks included in the user's study region and will reflect the entire county/state only if all of the census blocks for that county/states were selected at the time of study region creation.

### Casualties Summary Report

May 07, 2024

### Region Total Casualties



### Injury Severity Level

Severity 1	Severity 2	Severity 3	Severity 4	Total
------------	------------	------------	------------	-------

#### California

##### Alameda

##### Casualties - 2am

	Severity 1	Severity 2	Severity 3	Severity 4	Total
Single Family	0	0	0	0	0
Hotels	0	0	0	0	0
Commuting	0	0	0	0	0
Educational	0	0	0	0	0
Industrial	0	0	0	0	0
Commercial	0	0	0	0	0
Other-Residential	2	0	0	0	2
<b>Total Casualties - 2am</b>	<b>3</b>	<b>0</b>	<b>0</b>	<b>0</b>	<b>3</b>

##### Casualties - 2pm

	Severity 1	Severity 2	Severity 3	Severity 4	Total
Industrial	0	0	0	0	0
Educational	1	0	0	0	1
Other-Residential	1	0	0	0	1
Single Family	0	0	0	0	0
Hotels	0	0	0	0	0
Commuting	0	0	0	0	0
Commercial	5	0	0	0	5

	Injury Severity Level				Total
	Severity 1	Severity 2	Severity 3	Severity 4	
<b>California</b>					
<b>Alameda</b>					
<b>Total Casualties - 2pm</b>	<b>7</b>	<b>0</b>	<b>0</b>	<b>0</b>	<b>7</b>
<b>Casualties - 5pm</b>					
<i>Commuting</i>	0	0	0	0	0
<i>Single Family</i>	0	0	0	0	0
<i>Commercial</i>	3	0	0	0	3
<i>Hotels</i>	0	0	0	0	0
<i>Educational</i>	0	0	0	0	0
<i>Industrial</i>	0	0	0	0	0
<i>Other-Residential</i>	1	0	0	0	1
<b>Total Casualties - 5pm</b>	<b>4</b>	<b>0</b>	<b>0</b>	<b>0</b>	<b>4</b>
<b>Amador</b>					
<b>Casualties - 2am</b>					
<i>Commercial</i>	0	0	0	0	0
<i>Other-Residential</i>	0	0	0	0	0
<i>Commuting</i>	0	0	0	0	0
<i>Educational</i>	0	0	0	0	0
<i>Single Family</i>	0	0	0	0	0
<i>Hotels</i>	0	0	0	0	0
<i>Industrial</i>	0	0	0	0	0
<b>Total Casualties - 2am</b>	<b>0</b>	<b>0</b>	<b>0</b>	<b>0</b>	<b>0</b>
<b>Casualties - 2pm</b>					
<i>Single Family</i>	0	0	0	0	0
<i>Hotels</i>	0	0	0	0	0
<i>Educational</i>	0	0	0	0	0
<i>Commuting</i>	0	0	0	0	0
<i>Commercial</i>	0	0	0	0	0
<i>Other-Residential</i>	0	0	0	0	0
<i>Industrial</i>	0	0	0	0	0
<b>Total Casualties - 2pm</b>	<b>0</b>	<b>0</b>	<b>0</b>	<b>0</b>	<b>0</b>
<b>Casualties - 5pm</b>					
<i>Commercial</i>	0	0	0	0	0
<i>Commuting</i>	0	0	0	0	0
<i>Other-Residential</i>	0	0	0	0	0
<i>Single Family</i>	0	0	0	0	0
<i>Educational</i>	0	0	0	0	0
<i>Hotels</i>	0	0	0	0	0
<i>Industrial</i>	0	0	0	0	0
<b>Total Casualties - 5pm</b>	<b>0</b>	<b>0</b>	<b>0</b>	<b>0</b>	<b>0</b>
<b>Butte</b>					
<b>Casualties - 2am</b>					
<i>Industrial</i>	0	0	0	0	0

	Injury Severity Level				Total
	Severity 1	Severity 2	Severity 3	Severity 4	
<b>California</b>					
<b>Butte</b>					
<b>Casualties - 2am</b>					
Commercial	0	0	0	0	0
Other-Residential	0	0	0	0	0
Single Family	0	0	0	0	0
Commuting	0	0	0	0	0
Educational	0	0	0	0	0
Hotels	0	0	0	0	0
<b>Total Casualties - 2am</b>	<b>0</b>	<b>0</b>	<b>0</b>	<b>0</b>	<b>0</b>
<b>Casualties - 2pm</b>					
Single Family	0	0	0	0	0
Educational	0	0	0	0	0
Commuting	0	0	0	0	0
Other-Residential	0	0	0	0	0
Hotels	0	0	0	0	0
Commercial	0	0	0	0	0
Industrial	0	0	0	0	0
<b>Total Casualties - 2pm</b>	<b>0</b>	<b>0</b>	<b>0</b>	<b>0</b>	<b>0</b>
<b>Casualties - 5pm</b>					
Industrial	0	0	0	0	0
Other-Residential	0	0	0	0	0
Single Family	0	0	0	0	0
Commercial	0	0	0	0	0
Commuting	0	0	0	0	0
Hotels	0	0	0	0	0
Educational	0	0	0	0	0
<b>Total Casualties - 5pm</b>	<b>0</b>	<b>0</b>	<b>0</b>	<b>0</b>	<b>0</b>
<b>Calaveras</b>					
<b>Casualties - 2am</b>					
Other-Residential	0	0	0	0	0
Commuting	0	0	0	0	0
Commercial	0	0	0	0	0
Single Family	0	0	0	0	0
Hotels	0	0	0	0	0
Educational	0	0	0	0	0
Industrial	0	0	0	0	0
<b>Total Casualties - 2am</b>	<b>0</b>	<b>0</b>	<b>0</b>	<b>0</b>	<b>0</b>
<b>Casualties - 2pm</b>					
Hotels	0	0	0	0	0
Single Family	0	0	0	0	0
Educational	0	0	0	0	0
Commuting	0	0	0	0	0
Commercial	0	0	0	0	0

	Injury Severity Level				Total
	Severity 1	Severity 2	Severity 3	Severity 4	
<b>California</b>					
<b>Calaveras</b>					
<b>Casualties - 2pm</b>					
<i>Industrial</i>	0	0	0	0	0
<i>Other-Residential</i>	0	0	0	0	0
<b>Total Casualties - 2pm</b>	<b>0</b>	<b>0</b>	<b>0</b>	<b>0</b>	<b>0</b>
<b>Casualties - 5pm</b>					
<i>Industrial</i>	0	0	0	0	0
<i>Commercial</i>	0	0	0	0	0
<i>Other-Residential</i>	0	0	0	0	0
<i>Educational</i>	0	0	0	0	0
<i>Hotels</i>	0	0	0	0	0
<i>Commuting</i>	0	0	0	0	0
<i>Single Family</i>	0	0	0	0	0
<b>Total Casualties - 5pm</b>	<b>0</b>	<b>0</b>	<b>0</b>	<b>0</b>	<b>0</b>
<b>Colusa</b>					
<b>Casualties - 2am</b>					
<i>Other-Residential</i>	0	0	0	0	0
<i>Industrial</i>	0	0	0	0	0
<i>Single Family</i>	0	0	0	0	0
<i>Commercial</i>	0	0	0	0	0
<i>Educational</i>	0	0	0	0	0
<i>Commuting</i>	0	0	0	0	0
<i>Hotels</i>	0	0	0	0	0
<b>Total Casualties - 2am</b>	<b>0</b>	<b>0</b>	<b>0</b>	<b>0</b>	<b>0</b>
<b>Casualties - 2pm</b>					
<i>Hotels</i>	0	0	0	0	0
<i>Single Family</i>	0	0	0	0	0
<i>Educational</i>	0	0	0	0	0
<i>Commercial</i>	0	0	0	0	0
<i>Commuting</i>	0	0	0	0	0
<i>Other-Residential</i>	0	0	0	0	0
<i>Industrial</i>	0	0	0	0	0
<b>Total Casualties - 2pm</b>	<b>0</b>	<b>0</b>	<b>0</b>	<b>0</b>	<b>0</b>
<b>Casualties - 5pm</b>					
<i>Industrial</i>	0	0	0	0	0
<i>Commercial</i>	0	0	0	0	0
<i>Other-Residential</i>	0	0	0	0	0
<i>Commuting</i>	0	0	0	0	0
<i>Single Family</i>	0	0	0	0	0
<i>Educational</i>	0	0	0	0	0
<i>Hotels</i>	0	0	0	0	0
<b>Total Casualties - 5pm</b>	<b>0</b>	<b>0</b>	<b>0</b>	<b>0</b>	<b>0</b>

	Injury Severity Level				Total
	Severity 1	Severity 2	Severity 3	Severity 4	
<b>California</b>					
<b>Contra Costa</b>					
<b>Casualties - 2am</b>					
<i>Educational</i>	0	0	0	0	0
<i>Hotels</i>	0	0	0	0	0
<i>Industrial</i>	0	0	0	0	0
<i>Other-Residential</i>	2	0	0	0	2
<i>Single Family</i>	2	0	0	0	2
<i>Commercial</i>	0	0	0	0	0
<i>Commuting</i>	0	0	0	0	0
<b>Total Casualties - 2am</b>	<b>3</b>	<b>0</b>	<b>0</b>	<b>0</b>	<b>3</b>
<b>Casualties - 2pm</b>					
<i>Other-Residential</i>	0	0	0	0	0
<i>Industrial</i>	1	0	0	0	1
<i>Hotels</i>	0	0	0	0	0
<i>Single Family</i>	0	0	0	0	0
<i>Educational</i>	0	0	0	0	0
<i>Commuting</i>	0	0	0	0	0
<i>Commercial</i>	4	0	0	0	4
<b>Total Casualties - 2pm</b>	<b>6</b>	<b>0</b>	<b>0</b>	<b>0</b>	<b>6</b>
<b>Casualties - 5pm</b>					
<i>Educational</i>	0	0	0	0	0
<i>Commuting</i>	0	0	0	0	0
<i>Single Family</i>	1	0	0	0	1
<i>Hotels</i>	0	0	0	0	0
<i>Industrial</i>	0	0	0	0	0
<i>Other-Residential</i>	1	0	0	0	1
<i>Commercial</i>	3	0	0	0	3
<b>Total Casualties - 5pm</b>	<b>4</b>	<b>0</b>	<b>0</b>	<b>0</b>	<b>4</b>
<b>El Dorado</b>					
<b>Casualties - 2am</b>					
<i>Commuting</i>	0	0	0	0	0
<i>Educational</i>	0	0	0	0	0
<i>Single Family</i>	0	0	0	0	0
<i>Hotels</i>	0	0	0	0	0
<i>Other-Residential</i>	0	0	0	0	0
<i>Industrial</i>	0	0	0	0	0
<i>Commercial</i>	0	0	0	0	0
<b>Total Casualties - 2am</b>	<b>0</b>	<b>0</b>	<b>0</b>	<b>0</b>	<b>0</b>
<b>Casualties - 2pm</b>					
<i>Industrial</i>	0	0	0	0	0
<i>Other-Residential</i>	0	0	0	0	0
<i>Single Family</i>	0	0	0	0	0
<i>Hotels</i>	0	0	0	0	0

	Injury Severity Level				Total
	Severity 1	Severity 2	Severity 3	Severity 4	
<b>California</b>					
<b>El Dorado</b>					
<b>Casualties - 2pm</b>					
<i>Educational</i>	0	0	0	0	0
<i>Commuting</i>	0	0	0	0	0
<i>Commercial</i>	0	0	0	0	0
<b>Total Casualties - 2pm</b>	<b>0</b>	<b>0</b>	<b>0</b>	<b>0</b>	<b>0</b>
<b>Casualties - 5pm</b>					
<i>Commercial</i>	0	0	0	0	0
<i>Commuting</i>	0	0	0	0	0
<i>Single Family</i>	0	0	0	0	0
<i>Educational</i>	0	0	0	0	0
<i>Hotels</i>	0	0	0	0	0
<i>Industrial</i>	0	0	0	0	0
<i>Other-Residential</i>	0	0	0	0	0
<b>Total Casualties - 5pm</b>	<b>0</b>	<b>0</b>	<b>0</b>	<b>0</b>	<b>0</b>
<b>Glenn</b>					
<b>Casualties - 2am</b>					
<i>Hotels</i>	0	0	0	0	0
<i>Educational</i>	0	0	0	0	0
<i>Industrial</i>	0	0	0	0	0
<i>Other-Residential</i>	0	0	0	0	0
<i>Commercial</i>	0	0	0	0	0
<i>Commuting</i>	0	0	0	0	0
<i>Single Family</i>	0	0	0	0	0
<b>Total Casualties - 2am</b>	<b>0</b>	<b>0</b>	<b>0</b>	<b>0</b>	<b>0</b>
<b>Casualties - 2pm</b>					
<i>Industrial</i>	0	0	0	0	0
<i>Other-Residential</i>	0	0	0	0	0
<i>Commuting</i>	0	0	0	0	0
<i>Commercial</i>	0	0	0	0	0
<i>Hotels</i>	0	0	0	0	0
<i>Single Family</i>	0	0	0	0	0
<i>Educational</i>	0	0	0	0	0
<b>Total Casualties - 2pm</b>	<b>0</b>	<b>0</b>	<b>0</b>	<b>0</b>	<b>0</b>
<b>Casualties - 5pm</b>					
<i>Educational</i>	0	0	0	0	0
<i>Commuting</i>	0	0	0	0	0
<i>Hotels</i>	0	0	0	0	0
<i>Single Family</i>	0	0	0	0	0
<i>Industrial</i>	0	0	0	0	0
<i>Commercial</i>	0	0	0	0	0
<i>Other-Residential</i>	0	0	0	0	0

	Injury Severity Level				Total
	Severity 1	Severity 2	Severity 3	Severity 4	
<b>California</b>					
<b>Glenn</b>					
<b>Total Casualties - 5pm</b>	<b>0</b>	<b>0</b>	<b>0</b>	<b>0</b>	<b>0</b>
<b>Lake</b>					
<b>Casualties - 2am</b>					
<i>Hotels</i>	0	0	0	0	0
<i>Industrial</i>	0	0	0	0	0
<i>Other-Residential</i>	3	0	0	0	3
<i>Commuting</i>	0	0	0	0	0
<i>Educational</i>	0	0	0	0	0
<i>Single Family</i>	1	0	0	0	1
<i>Commercial</i>	0	0	0	0	0
<b>Total Casualties - 2am</b>	<b>4</b>	<b>0</b>	<b>0</b>	<b>0</b>	<b>5</b>
<b>Casualties - 2pm</b>					
<i>Industrial</i>	0	0	0	0	0
<i>Single Family</i>	0	0	0	0	0
<i>Commercial</i>	1	0	0	0	1
<i>Other-Residential</i>	1	0	0	0	1
<i>Hotels</i>	0	0	0	0	0
<i>Educational</i>	0	0	0	0	0
<i>Commuting</i>	0	0	0	0	0
<b>Total Casualties - 2pm</b>	<b>3</b>	<b>0</b>	<b>0</b>	<b>0</b>	<b>3</b>
<b>Casualties - 5pm</b>					
<i>Other-Residential</i>	1	0	0	0	1
<i>Industrial</i>	0	0	0	0	0
<i>Commercial</i>	1	0	0	0	1
<i>Educational</i>	0	0	0	0	0
<i>Commuting</i>	0	0	0	0	0
<i>Single Family</i>	0	0	0	0	0
<i>Hotels</i>	0	0	0	0	0
<b>Total Casualties - 5pm</b>	<b>2</b>	<b>0</b>	<b>0</b>	<b>0</b>	<b>2</b>
<b>Marin</b>					
<b>Casualties - 2am</b>					
<i>Commercial</i>	0	0	0	0	0
<i>Commuting</i>	0	0	0	0	0
<i>Other-Residential</i>	0	0	0	0	0
<i>Educational</i>	0	0	0	0	0
<i>Single Family</i>	0	0	0	0	0
<i>Hotels</i>	0	0	0	0	0
<i>Industrial</i>	0	0	0	0	0
<b>Total Casualties - 2am</b>	<b>1</b>	<b>0</b>	<b>0</b>	<b>0</b>	<b>1</b>
<b>Casualties - 2pm</b>					
<i>Hotels</i>	0	0	0	0	0

	Injury Severity Level				Total
	Severity 1	Severity 2	Severity 3	Severity 4	
<b>California</b>					
<b>Marin</b>					
<b>Casualties - 2pm</b>					
<i>Commuting</i>	0	0	0	0	0
<i>Educational</i>	0	0	0	0	0
<i>Industrial</i>	0	0	0	0	0
<i>Other-Residential</i>	0	0	0	0	0
<i>Commercial</i>	1	0	0	0	1
<i>Single Family</i>	0	0	0	0	0
<b>Total Casualties - 2pm</b>	<b>1</b>	<b>0</b>	<b>0</b>	<b>0</b>	<b>1</b>
<b>Casualties - 5pm</b>					
<i>Commuting</i>	0	0	0	0	0
<i>Commercial</i>	0	0	0	0	0
<i>Other-Residential</i>	0	0	0	0	0
<i>Single Family</i>	0	0	0	0	0
<i>Industrial</i>	0	0	0	0	0
<i>Educational</i>	0	0	0	0	0
<i>Hotels</i>	0	0	0	0	0
<b>Total Casualties - 5pm</b>	<b>1</b>	<b>0</b>	<b>0</b>	<b>0</b>	<b>1</b>
<b>Mendocino</b>					
<b>Casualties - 2am</b>					
<i>Educational</i>	0	0	0	0	0
<i>Hotels</i>	0	0	0	0	0
<i>Commuting</i>	0	0	0	0	0
<i>Industrial</i>	0	0	0	0	0
<i>Other-Residential</i>	0	0	0	0	0
<i>Single Family</i>	0	0	0	0	0
<i>Commercial</i>	0	0	0	0	0
<b>Total Casualties - 2am</b>	<b>0</b>	<b>0</b>	<b>0</b>	<b>0</b>	<b>0</b>
<b>Casualties - 2pm</b>					
<i>Industrial</i>	0	0	0	0	0
<i>Other-Residential</i>	0	0	0	0	0
<i>Commercial</i>	0	0	0	0	0
<i>Single Family</i>	0	0	0	0	0
<i>Commuting</i>	0	0	0	0	0
<i>Hotels</i>	0	0	0	0	0
<i>Educational</i>	0	0	0	0	0
<b>Total Casualties - 2pm</b>	<b>0</b>	<b>0</b>	<b>0</b>	<b>0</b>	<b>0</b>
<b>Casualties - 5pm</b>					
<i>Hotels</i>	0	0	0	0	0
<i>Single Family</i>	0	0	0	0	0
<i>Educational</i>	0	0	0	0	0
<i>Commuting</i>	0	0	0	0	0
<i>Commercial</i>	0	0	0	0	0

	Injury Severity Level				Total
	Severity 1	Severity 2	Severity 3	Severity 4	
<b>California</b>					
<b>Mendocino</b>					
<b>Casualties - 5pm</b>					
Other-Residential	0	0	0	0	0
Industrial	0	0	0	0	0
<b>Total Casualties - 5pm</b>	<b>0</b>	<b>0</b>	<b>0</b>	<b>0</b>	<b>0</b>
<b>Napa</b>					
<b>Casualties - 2am</b>					
Commercial	0	0	0	0	0
Other-Residential	14	1	0	0	15
Educational	0	0	0	0	0
Single Family	15	0	0	0	15
Commuting	0	0	0	0	0
Hotels	0	0	0	0	0
Industrial	1	0	0	0	1
<b>Total Casualties - 2am</b>	<b>30</b>	<b>2</b>	<b>0</b>	<b>0</b>	<b>32</b>
<b>Casualties - 2pm</b>					
Educational	13	2	0	0	15
Hotels	0	0	0	0	0
Commuting	0	0	0	0	0
Industrial	5	1	0	0	6
Other-Residential	4	0	0	0	4
Single Family	4	0	0	0	4
Commercial	27	3	0	0	30
<b>Total Casualties - 2pm</b>	<b>52</b>	<b>6</b>	<b>0</b>	<b>1</b>	<b>59</b>
<b>Casualties - 5pm</b>					
Commercial	17	2	0	0	19
Single Family	5	0	0	0	6
Other-Residential	5	0	0	0	5
Commuting	0	1	1	0	2
Industrial	3	0	0	0	4
Educational	0	0	0	0	0
Hotels	0	0	0	0	0
<b>Total Casualties - 5pm</b>	<b>32</b>	<b>3</b>	<b>1</b>	<b>0</b>	<b>37</b>
<b>Nevada</b>					
<b>Casualties - 2am</b>					
Single Family	0	0	0	0	0
Commercial	0	0	0	0	0
Commuting	0	0	0	0	0
Hotels	0	0	0	0	0
Educational	0	0	0	0	0
Industrial	0	0	0	0	0
Other-Residential	0	0	0	0	0

	Injury Severity Level				Total
	Severity 1	Severity 2	Severity 3	Severity 4	
<b>California</b>					
<b>Nevada</b>					
<b>Total Casualties - 2am</b>	<b>0</b>	<b>0</b>	<b>0</b>	<b>0</b>	<b>0</b>
<b>Casualties - 2pm</b>					
<i>Hotels</i>	0	0	0	0	0
<i>Industrial</i>	0	0	0	0	0
<i>Commercial</i>	0	0	0	0	0
<i>Single Family</i>	0	0	0	0	0
<i>Other-Residential</i>	0	0	0	0	0
<i>Educational</i>	0	0	0	0	0
<i>Commuting</i>	0	0	0	0	0
<b>Total Casualties - 2pm</b>	<b>0</b>	<b>0</b>	<b>0</b>	<b>0</b>	<b>0</b>
<b>Casualties - 5pm</b>					
<i>Commuting</i>	0	0	0	0	0
<i>Hotels</i>	0	0	0	0	0
<i>Other-Residential</i>	0	0	0	0	0
<i>Educational</i>	0	0	0	0	0
<i>Single Family</i>	0	0	0	0	0
<i>Commercial</i>	0	0	0	0	0
<i>Industrial</i>	0	0	0	0	0
<b>Total Casualties - 5pm</b>	<b>0</b>	<b>0</b>	<b>0</b>	<b>0</b>	<b>0</b>
<b>Placer</b>					
<b>Casualties - 2am</b>					
<i>Hotels</i>	0	0	0	0	0
<i>Educational</i>	0	0	0	0	0
<i>Industrial</i>	0	0	0	0	0
<i>Other-Residential</i>	0	0	0	0	0
<i>Commercial</i>	0	0	0	0	0
<i>Single Family</i>	0	0	0	0	0
<i>Commuting</i>	0	0	0	0	0
<b>Total Casualties - 2am</b>	<b>0</b>	<b>0</b>	<b>0</b>	<b>0</b>	<b>0</b>
<b>Casualties - 2pm</b>					
<i>Other-Residential</i>	0	0	0	0	0
<i>Industrial</i>	0	0	0	0	0
<i>Commercial</i>	0	0	0	0	0
<i>Single Family</i>	0	0	0	0	0
<i>Educational</i>	0	0	0	0	0
<i>Commuting</i>	0	0	0	0	0
<i>Hotels</i>	0	0	0	0	0
<b>Total Casualties - 2pm</b>	<b>0</b>	<b>0</b>	<b>0</b>	<b>0</b>	<b>0</b>
<b>Casualties - 5pm</b>					
<i>Single Family</i>	0	0	0	0	0
<i>Hotels</i>	0	0	0	0	0

	Injury Severity Level				Total
	Severity 1	Severity 2	Severity 3	Severity 4	
<b>California</b>					
<b>Placer</b>					
<b>Casualties - 5pm</b>					
<i>Commuting</i>	0	0	0	0	0
<i>Educational</i>	0	0	0	0	0
<i>Commercial</i>	0	0	0	0	0
<i>Industrial</i>	0	0	0	0	0
<i>Other-Residential</i>	0	0	0	0	0
<b>Total Casualties - 5pm</b>	<b>0</b>	<b>0</b>	<b>0</b>	<b>0</b>	<b>0</b>
<b>Sacramento</b>					
<b>Casualties - 2am</b>					
<i>Industrial</i>	0	0	0	0	0
<i>Other-Residential</i>	1	0	0	0	1
<i>Commercial</i>	0	0	0	0	0
<i>Single Family</i>	1	0	0	0	1
<i>Hotels</i>	0	0	0	0	0
<i>Commuting</i>	0	0	0	0	0
<i>Educational</i>	0	0	0	0	0
<b>Total Casualties - 2am</b>	<b>1</b>	<b>0</b>	<b>0</b>	<b>0</b>	<b>2</b>
<b>Casualties - 2pm</b>					
<i>Other-Residential</i>	0	0	0	0	0
<i>Commuting</i>	0	0	0	0	0
<i>Single Family</i>	0	0	0	0	0
<i>Commercial</i>	4	0	0	0	4
<i>Hotels</i>	0	0	0	0	0
<i>Educational</i>	0	0	0	0	0
<i>Industrial</i>	0	0	0	0	0
<b>Total Casualties - 2pm</b>	<b>5</b>	<b>0</b>	<b>0</b>	<b>0</b>	<b>5</b>
<b>Casualties - 5pm</b>					
<i>Industrial</i>	0	0	0	0	0
<i>Educational</i>	0	0	0	0	0
<i>Hotels</i>	0	0	0	0	0
<i>Commercial</i>	2	0	0	0	2
<i>Commuting</i>	0	0	0	0	0
<i>Other-Residential</i>	0	0	0	0	0
<i>Single Family</i>	0	0	0	0	0
<b>Total Casualties - 5pm</b>	<b>3</b>	<b>0</b>	<b>0</b>	<b>0</b>	<b>3</b>
<b>San Francisco</b>					
<b>Casualties - 2am</b>					
<i>Industrial</i>	0	0	0	0	0
<i>Hotels</i>	0	0	0	0	0
<i>Commercial</i>	0	0	0	0	0
<i>Other-Residential</i>	2	0	0	0	2
<i>Commuting</i>	0	0	0	0	0

	Injury Severity Level				Total
	Severity 1	Severity 2	Severity 3	Severity 4	
<b>California</b>					
<b>San Francisco</b>					
<b>Casualties - 2am</b>					
<i>Educational</i>	0	0	0	0	0
<i>Single Family</i>	1	0	0	0	1
<b>Total Casualties - 2am</b>	<b>3</b>	<b>0</b>	<b>0</b>	<b>0</b>	<b>3</b>
<b>Casualties - 2pm</b>					
<i>Commercial</i>	4	0	0	0	4
<i>Industrial</i>	0	0	0	0	0
<i>Other-Residential</i>	1	0	0	0	1
<i>Single Family</i>	0	0	0	0	0
<i>Hotels</i>	0	0	0	0	0
<i>Commuting</i>	0	0	0	0	0
<i>Educational</i>	0	0	0	0	0
<b>Total Casualties - 2pm</b>	<b>6</b>	<b>0</b>	<b>0</b>	<b>0</b>	<b>6</b>
<b>Casualties - 5pm</b>					
<i>Educational</i>	0	0	0	0	0
<i>Hotels</i>	0	0	0	0	0
<i>Industrial</i>	0	0	0	0	0
<i>Commuting</i>	0	0	0	0	0
<i>Commercial</i>	2	0	0	0	2
<i>Other-Residential</i>	1	0	0	0	1
<i>Single Family</i>	0	0	0	0	0
<b>Total Casualties - 5pm</b>	<b>4</b>	<b>0</b>	<b>0</b>	<b>0</b>	<b>4</b>
<b>San Joaquin</b>					
<b>Casualties - 2am</b>					
<i>Educational</i>	0	0	0	0	0
<i>Commuting</i>	0	0	0	0	0
<i>Hotels</i>	0	0	0	0	0
<i>Commercial</i>	0	0	0	0	0
<i>Single Family</i>	1	0	0	0	1
<i>Industrial</i>	0	0	0	0	0
<i>Other-Residential</i>	0	0	0	0	0
<b>Total Casualties - 2am</b>	<b>1</b>	<b>0</b>	<b>0</b>	<b>0</b>	<b>2</b>
<b>Casualties - 2pm</b>					
<i>Industrial</i>	0	0	0	0	0
<i>Other-Residential</i>	0	0	0	0	0
<i>Educational</i>	0	0	0	0	0
<i>Single Family</i>	0	0	0	0	0
<i>Hotels</i>	0	0	0	0	0
<i>Commuting</i>	0	0	0	0	0
<i>Commercial</i>	0	0	0	0	0
<b>Total Casualties - 2pm</b>	<b>1</b>	<b>0</b>	<b>0</b>	<b>0</b>	<b>1</b>

	Injury Severity Level				Total
	Severity 1	Severity 2	Severity 3	Severity 4	
<b>California</b>					
<b>San Joaquin</b>					
<b>Casualties - 5pm</b>					
Commuting	0	0	0	0	0
Single Family	0	0	0	0	0
Educational	0	0	0	0	0
Hotels	0	0	0	0	0
Industrial	0	0	0	0	0
Commercial	0	0	0	0	0
Other-Residential	0	0	0	0	0
<b>Total Casualties - 5pm</b>	<b>1</b>	<b>0</b>	<b>0</b>	<b>0</b>	<b>1</b>
<b>San Mateo</b>					
<b>Casualties - 2am</b>					
Industrial	0	0	0	0	0
Other-Residential	0	0	0	0	0
Single Family	0	0	0	0	0
Commercial	0	0	0	0	0
Educational	0	0	0	0	0
Commuting	0	0	0	0	0
Hotels	0	0	0	0	0
<b>Total Casualties - 2am</b>	<b>0</b>	<b>0</b>	<b>0</b>	<b>0</b>	<b>0</b>
<b>Casualties - 2pm</b>					
Other-Residential	0	0	0	0	0
Single Family	0	0	0	0	0
Commuting	0	0	0	0	0
Commercial	0	0	0	0	0
Educational	0	0	0	0	0
Hotels	0	0	0	0	0
Industrial	0	0	0	0	0
<b>Total Casualties - 2pm</b>	<b>0</b>	<b>0</b>	<b>0</b>	<b>0</b>	<b>0</b>
<b>Casualties - 5pm</b>					
Commercial	0	0	0	0	0
Industrial	0	0	0	0	0
Other-Residential	0	0	0	0	0
Single Family	0	0	0	0	0
Educational	0	0	0	0	0
Commuting	0	0	0	0	0
Hotels	0	0	0	0	0
<b>Total Casualties - 5pm</b>	<b>0</b>	<b>0</b>	<b>0</b>	<b>0</b>	<b>0</b>
<b>Santa Clara</b>					
<b>Casualties - 2am</b>					
Commuting	0	0	0	0	0
Educational	0	0	0	0	0
Single Family	0	0	0	0	0

## Injury Severity Level

	Severity 1	Severity 2	Severity 3	Severity 4	Total
--	------------	------------	------------	------------	-------

### California

#### Santa Clara

##### Casualties - 2am

<i>Hotels</i>	0	0	0	0	0
<i>Industrial</i>	0	0	0	0	0
<i>Commercial</i>	0	0	0	0	0
<i>Other-Residential</i>	0	0	0	0	0
<b>Total Casualties - 2am</b>	<b>0</b>	<b>0</b>	<b>0</b>	<b>0</b>	<b>0</b>

##### Casualties - 2pm

<i>Industrial</i>	0	0	0	0	0
<i>Commercial</i>	0	0	0	0	0
<i>Single Family</i>	0	0	0	0	0
<i>Commuting</i>	0	0	0	0	0
<i>Hotels</i>	0	0	0	0	0
<i>Other-Residential</i>	0	0	0	0	0
<i>Educational</i>	0	0	0	0	0
<b>Total Casualties - 2pm</b>	<b>0</b>	<b>0</b>	<b>0</b>	<b>0</b>	<b>0</b>

##### Casualties - 5pm

<i>Industrial</i>	0	0	0	0	0
<i>Hotels</i>	0	0	0	0	0
<i>Other-Residential</i>	0	0	0	0	0
<i>Commercial</i>	0	0	0	0	0
<i>Commuting</i>	0	0	0	0	0
<i>Single Family</i>	0	0	0	0	0
<i>Educational</i>	0	0	0	0	0
<b>Total Casualties - 5pm</b>	<b>0</b>	<b>0</b>	<b>0</b>	<b>0</b>	<b>0</b>

#### Solano

##### Casualties - 2am

<i>Industrial</i>	0	0	0	0	0
<i>Other-Residential</i>	6	0	0	0	6
<i>Commercial</i>	0	0	0	0	0
<i>Educational</i>	0	0	0	0	0
<i>Commuting</i>	0	0	0	0	0
<i>Single Family</i>	15	0	0	0	15
<i>Hotels</i>	0	0	0	0	0
<b>Total Casualties - 2am</b>	<b>22</b>	<b>0</b>	<b>0</b>	<b>0</b>	<b>22</b>

##### Casualties - 2pm

<i>Single Family</i>	4	0	0	0	4
<i>Other-Residential</i>	2	0	0	0	2
<i>Commercial</i>	12	1	0	0	13
<i>Educational</i>	3	0	0	0	3
<i>Commuting</i>	0	0	0	0	0
<i>Hotels</i>	0	0	0	0	0
<i>Industrial</i>	2	0	0	0	2

	Injury Severity Level				Total
	Severity 1	Severity 2	Severity 3	Severity 4	
<b>California</b>					
<b>Solano</b>					
<b>Total Casualties - 2pm</b>	<b>22</b>	<b>1</b>	<b>0</b>	<b>0</b>	<b>23</b>
<b>Casualties - 5pm</b>					
Commercial	8	0	0	0	9
Other-Residential	2	0	0	0	2
Single Family	5	0	0	0	5
Educational	0	0	0	0	0
Commuting	0	0	0	0	1
Hotels	0	0	0	0	0
Industrial	1	0	0	0	1
<b>Total Casualties - 5pm</b>	<b>17</b>	<b>1</b>	<b>0</b>	<b>0</b>	<b>19</b>
<b>Sonoma</b>					
<b>Casualties - 2am</b>					
Single Family	3	0	0	0	3
Other-Residential	3	0	0	0	3
Commercial	0	0	0	0	0
Commuting	0	0	0	0	0
Hotels	0	0	0	0	0
Educational	0	0	0	0	0
Industrial	0	0	0	0	0
<b>Total Casualties - 2am</b>	<b>6</b>	<b>0</b>	<b>0</b>	<b>0</b>	<b>6</b>
<b>Casualties - 2pm</b>					
Single Family	1	0	0	0	1
Commuting	0	0	0	0	0
Educational	1	0	0	0	1
Hotels	0	0	0	0	0
Industrial	1	0	0	0	1
Other-Residential	1	0	0	0	1
Commercial	5	0	0	0	5
<b>Total Casualties - 2pm</b>	<b>9</b>	<b>0</b>	<b>0</b>	<b>0</b>	<b>9</b>
<b>Casualties - 5pm</b>					
Single Family	1	0	0	0	1
Commercial	3	0	0	0	3
Commuting	0	0	0	0	0
Hotels	0	0	0	0	0
Educational	0	0	0	0	0
Industrial	1	0	0	0	1
Other-Residential	1	0	0	0	1
<b>Total Casualties - 5pm</b>	<b>6</b>	<b>0</b>	<b>0</b>	<b>0</b>	<b>6</b>
<b>Stanislaus</b>					
<b>Casualties - 2am</b>					
Hotels	0	0	0	0	0

	Injury Severity Level				Total
	Severity 1	Severity 2	Severity 3	Severity 4	
<b>California</b>					
<b>Stanislaus</b>					
<b>Casualties - 2am</b>					
<i>Industrial</i>	0	0	0	0	0
<i>Commercial</i>	0	0	0	0	0
<i>Single Family</i>	0	0	0	0	0
<i>Other-Residential</i>	0	0	0	0	0
<i>Commuting</i>	0	0	0	0	0
<i>Educational</i>	0	0	0	0	0
<b>Total Casualties - 2am</b>	<b>0</b>	<b>0</b>	<b>0</b>	<b>0</b>	<b>0</b>
<b>Casualties - 2pm</b>					
<i>Industrial</i>	0	0	0	0	0
<i>Other-Residential</i>	0	0	0	0	0
<i>Commercial</i>	0	0	0	0	0
<i>Commuting</i>	0	0	0	0	0
<i>Educational</i>	0	0	0	0	0
<i>Single Family</i>	0	0	0	0	0
<i>Hotels</i>	0	0	0	0	0
<b>Total Casualties - 2pm</b>	<b>0</b>	<b>0</b>	<b>0</b>	<b>0</b>	<b>0</b>
<b>Casualties - 5pm</b>					
<i>Industrial</i>	0	0	0	0	0
<i>Other-Residential</i>	0	0	0	0	0
<i>Commuting</i>	0	0	0	0	0
<i>Single Family</i>	0	0	0	0	0
<i>Commercial</i>	0	0	0	0	0
<i>Hotels</i>	0	0	0	0	0
<i>Educational</i>	0	0	0	0	0
<b>Total Casualties - 5pm</b>	<b>0</b>	<b>0</b>	<b>0</b>	<b>0</b>	<b>0</b>
<b>Sutter</b>					
<b>Casualties - 2am</b>					
<i>Educational</i>	0	0	0	0	0
<i>Commuting</i>	0	0	0	0	0
<i>Hotels</i>	0	0	0	0	0
<i>Industrial</i>	0	0	0	0	0
<i>Other-Residential</i>	0	0	0	0	0
<i>Single Family</i>	0	0	0	0	0
<i>Commercial</i>	0	0	0	0	0
<b>Total Casualties - 2am</b>	<b>0</b>	<b>0</b>	<b>0</b>	<b>0</b>	<b>0</b>
<b>Casualties - 2pm</b>					
<i>Industrial</i>	0	0	0	0	0
<i>Commuting</i>	0	0	0	0	0
<i>Other-Residential</i>	0	0	0	0	0
<i>Single Family</i>	0	0	0	0	0
<i>Commercial</i>	0	0	0	0	0

	Injury Severity Level				Total
	Severity 1	Severity 2	Severity 3	Severity 4	
<b>California</b>					
<b>Sutter</b>					
<b>Casualties - 2pm</b>					
<i>Hotels</i>	0	0	0	0	0
<i>Educational</i>	0	0	0	0	0
<b>Total Casualties - 2pm</b>	<b>0</b>	<b>0</b>	<b>0</b>	<b>0</b>	<b>0</b>
<b>Casualties - 5pm</b>					
<i>Commuting</i>	0	0	0	0	0
<i>Commercial</i>	0	0	0	0	0
<i>Educational</i>	0	0	0	0	0
<i>Single Family</i>	0	0	0	0	0
<i>Hotels</i>	0	0	0	0	0
<i>Industrial</i>	0	0	0	0	0
<i>Other-Residential</i>	0	0	0	0	0
<b>Total Casualties - 5pm</b>	<b>0</b>	<b>0</b>	<b>0</b>	<b>0</b>	<b>0</b>
<b>Tehama</b>					
<b>Casualties - 2am</b>					
<i>Hotels</i>	0	0	0	0	0
<i>Industrial</i>	0	0	0	0	0
<i>Commercial</i>	0	0	0	0	0
<i>Other-Residential</i>	0	0	0	0	0
<i>Educational</i>	0	0	0	0	0
<i>Commuting</i>	0	0	0	0	0
<i>Single Family</i>	0	0	0	0	0
<b>Total Casualties - 2am</b>	<b>0</b>	<b>0</b>	<b>0</b>	<b>0</b>	<b>0</b>
<b>Casualties - 2pm</b>					
<i>Other-Residential</i>	0	0	0	0	0
<i>Commercial</i>	0	0	0	0	0
<i>Industrial</i>	0	0	0	0	0
<i>Single Family</i>	0	0	0	0	0
<i>Educational</i>	0	0	0	0	0
<i>Commuting</i>	0	0	0	0	0
<i>Hotels</i>	0	0	0	0	0
<b>Total Casualties - 2pm</b>	<b>0</b>	<b>0</b>	<b>0</b>	<b>0</b>	<b>0</b>
<b>Casualties - 5pm</b>					
<i>Hotels</i>	0	0	0	0	0
<i>Educational</i>	0	0	0	0	0
<i>Industrial</i>	0	0	0	0	0
<i>Single Family</i>	0	0	0	0	0
<i>Commercial</i>	0	0	0	0	0
<i>Commuting</i>	0	0	0	0	0
<i>Other-Residential</i>	0	0	0	0	0
<b>Total Casualties - 5pm</b>	<b>0</b>	<b>0</b>	<b>0</b>	<b>0</b>	<b>0</b>

	Injury Severity Level				Total
	Severity 1	Severity 2	Severity 3	Severity 4	
<b>California</b>					
<b>Yolo</b>					
<b>Casualties - 2am</b>					
Single Family	2	0	0	0	2
Other-Residential	2	0	0	0	2
Commercial	0	0	0	0	0
Educational	0	0	0	0	0
Commuting	0	0	0	0	0
Hotels	0	0	0	0	0
Industrial	0	0	0	0	0
<b>Total Casualties - 2am</b>	<b>4</b>	<b>0</b>	<b>0</b>	<b>0</b>	<b>4</b>
<b>Casualties - 2pm</b>					
Industrial	0	0	0	0	0
Hotels	0	0	0	0	0
Educational	1	0	0	0	1
Commuting	0	0	0	0	0
Commercial	3	0	0	0	3
Other-Residential	1	0	0	0	1
Single Family	1	0	0	0	1
<b>Total Casualties - 2pm</b>	<b>5</b>	<b>0</b>	<b>0</b>	<b>0</b>	<b>5</b>
<b>Casualties - 5pm</b>					
Other-Residential	1	0	0	0	1
Single Family	1	0	0	0	1
Commuting	0	0	0	0	0
Commercial	2	0	0	0	2
Hotels	0	0	0	0	0
Educational	0	0	0	0	0
Industrial	0	0	0	0	0
<b>Total Casualties - 5pm</b>	<b>4</b>	<b>0</b>	<b>0</b>	<b>0</b>	<b>4</b>
<b>Yuba</b>					
<b>Casualties - 2am</b>					
Industrial	0	0	0	0	0
Other-Residential	0	0	0	0	0
Commercial	0	0	0	0	0
Educational	0	0	0	0	0
Single Family	0	0	0	0	0
Commuting	0	0	0	0	0
Hotels	0	0	0	0	0
<b>Total Casualties - 2am</b>	<b>0</b>	<b>0</b>	<b>0</b>	<b>0</b>	<b>0</b>
<b>Casualties - 2pm</b>					
Commercial	0	0	0	0	0
Commuting	0	0	0	0	0
Single Family	0	0	0	0	0
Other-Residential	0	0	0	0	0

	Injury Severity Level				Total
	Severity 1	Severity 2	Severity 3	Severity 4	
<b>California</b>					
<b>Yuba</b>					
<b>Casualties - 2pm</b>					
<i>Industrial</i>	0	0	0	0	0
<i>Hotels</i>	0	0	0	0	0
<i>Educational</i>	0	0	0	0	0
<b>Total Casualties - 2pm</b>	<b>0</b>	<b>0</b>	<b>0</b>	<b>0</b>	<b>0</b>
<b>Casualties - 5pm</b>					
<i>Hotels</i>	0	0	0	0	0
<i>Educational</i>	0	0	0	0	0
<i>Industrial</i>	0	0	0	0	0
<i>Other-Residential</i>	0	0	0	0	0
<i>Single Family</i>	0	0	0	0	0
<i>Commercial</i>	0	0	0	0	0
<i>Commuting</i>	0	0	0	0	0
<b>Total Casualties - 5pm</b>	<b>0</b>	<b>0</b>	<b>0</b>	<b>0</b>	<b>0</b>
<b>Region Total</b>	NA	NA	NA	NA	NA

Totals only reflect data for those census tracts/blocks included in the user's study region and will reflect the entire county/state only if all of the census blocks for that county/states were selected at the time of study region creation.

## Debris Summary Report

May 07, 2024

All values are in thousands of tons.

	Brick, Wood & Others	Concrete & Steel	Total
<b>California</b>			
Butte	0	0	0
Alameda	6	2	9
Solano	18	15	34
San Mateo	0	0	0
San Joaquin	3	0	3
Nevada	0	0	0
Colusa	0	0	0
Napa	30	36	67
Mendocino	0	0	0
Contra Costa	4	3	8
Tehama	0	0	0
El Dorado	0	0	0
Amador	0	0	0
Lake	4	2	6
Sacramento	3	1	4
Yolo	4	3	7
Calaveras	0	0	0
Yuba	0	0	0
Glenn	0	0	0

	Brick, Wood & Others	Concrete & Steel	Total
Stanislaus	0	0	0
Sonoma	8	7	14
Santa Clara	0	0	0
San Francisco	8	1	8
Placer	0	0	0
Marin	1	1	1
Sutter	0	0	0
<b>Total</b>	<b>90</b>	<b>72</b>	<b>163</b>
<b>Region Total</b>	<b>90</b>	<b>72</b>	<b>163</b>

*Totals only reflect data for those census tracts/blocks included in the user's study region and will reflect the entire county/state only if all of the census blocks for that county/states were selected at the time of study region creation.*

## Direct Economic Losses For Buildings

May 7, 2024

All values are in thousands of dollars

	Capital Stock Losses				Loss Ratio %	Income Losses				Total Loss
	Cost Structural Damage	Cost Non-struct. Damage	Cost Contents Damage	Inventory Loss		Relocation Loss	Capital Related Loss	Wages Losses	Rental Income Loss	
<b>California</b>										
Colusa	335	3,591	2,129	384	0.09	65	101	110	83	6,797
Contra Costa	7,353	94,960	53,026	5,338	0.05	1,347	1,243	1,737	1,478	166,481
Mendocino	12	459	276	39	0.00	1	2	2	3	794
Napa	67,247	410,182	198,990	18,044	1.42	22,275	16,250	19,424	15,051	767,463
Tehama	1	52	34	5	0.00	0	0	0	0	92
Alameda	6,209	51,416	28,755	2,681	0.02	1,340	1,521	2,075	1,853	95,850
Butte	87	1,210	818	115	0.00	14	13	16	18	2,290
Nevada	0	1	1	0	0.00	0	0	0	0	1
San Joaquin	1,343	9,989	5,878	716	0.01	303	107	129	229	18,695

	Capital Stock Losses				Loss Ratio %	Income Losses				Total Loss
	Cost Structural Damage	Cost Non-struct. Damage	Cost Contents Damage	Inventory Loss		Relocation Loss	Capital Related Loss	Wages Losses	Rental Income Loss	
<b>Solano</b>	43,008	351,358	169,753	15,268	0.48	7,995	6,538	9,107	7,702	610,730
<b>San Mateo</b>	452	7,316	3,898	348	0.00	28	63	64	141	12,310
<b>Yolo</b>	7,558	81,671	47,631	4,943	0.21	1,503	1,949	2,090	1,556	148,900
<b>Calaveras</b>	0	4	3	1	0.00	0	0	0	0	9
<b>Yuba</b>	61	986	533	63	0.01	8	13	13	15	1,692
<b>Glenn</b>	48	440	290	84	0.01	5	5	6	7	884
<b>San Francisco</b>	5,509	16,177	9,162	650	0.01	908	874	944	1,960	36,184
<b>Stanislaus</b>	13	776	512	72	0.00	1	1	1	3	1,379
<b>Sutter</b>	246	2,530	1,422	358	0.02	26	16	19	26	4,642
<b>Santa Clara</b>	162	4,602	3,035	296	0.00	14	31	36	49	8,225
<b>Sonoma</b>	14,133	122,516	61,613	7,111	0.13	2,820	2,984	3,497	2,863	217,536
<b>Placer</b>	56	1,854	1,105	106	0.00	3	5	6	9	3,144
<b>Marin</b>	1,547	18,349	9,724	840	0.03	208	215	231	307	31,422
<b>El Dorado</b>	0	29	22	1	0.00	0	0	0	0	52
<b>Amador</b>	0	5	4	1	0.00	0	0	0	0	10
<b>Sacramento</b>	3,275	40,513	21,809	1,959	0.02	634	776	1,092	1,009	71,067
<b>Lake</b>	5,360	39,403	18,072	1,250	0.31	1,570	811	755	894	68,114

	Capital Stock Losses				Loss Ratio %	Income Losses				Total Loss
	Cost Structural Damage	Cost Non-struct. Damage	Cost Contents Damage	Inventory Loss		Relocation Loss	Capital Related Loss	Wages Losses	Rental Income Loss	
<b>Total</b>	164,013	1,260,387	638,493	60,674	0.11	41,069	33,517	41,353	35,256	2,274,763
<b>Region Total</b>	164,013	1,260,387	638,493	60,674	0.11	41,069	33,517	41,353	35,256	2,274,763

Totals only reflect data for those census tracts/blocks included in the user's study region and will reflect the entire county/state only if all of the census blocks for that county/states were selected at the time of study region creation.

## Direct Economic Loss For Transportation

May 07, 2024

All values are in thousands of dollars

	Highway	Railway	Light Rail	Bus Facility	Ports	Ferries	Airport	Total
<b>California</b>								
<b>Alameda</b>								
Segments	0	0	0					0
Bridges	98	0	0					98
Tunnels	0	0	0					0
Facilities		938	0	22	3,759	38	3,593	8,351
<b>Total</b>	<b>98</b>	<b>938</b>	<b>0</b>	<b>22</b>	<b>3,759</b>	<b>38</b>	<b>3,593</b>	<b>8,449</b>
<b>Amador</b>								
Segments	0	0	0					0
Bridges	0	0	0					0
Tunnels	0	0	0					0
Facilities		0	0	0	0	0	0	0
<b>Total</b>	<b>0</b>	<b>0</b>	<b>0</b>	<b>0</b>	<b>0</b>	<b>0</b>	<b>0</b>	<b>0</b>
<b>Butte</b>								
Segments	0	0	0					0
Bridges	1	0	0					1
Tunnels	0	0	0					0
Facilities		26	0	0	0	0	185	211

	Highway	Railway	Light Rail	Bus Facility	Ports	Ferries	Airport	Total
<b>Total</b>	<b>1</b>	<b>26</b>	<b>0</b>	<b>0</b>	<b>0</b>	<b>0</b>	<b>185</b>	<b>212</b>
<b>Calaveras</b>								
Segments	0	0	0					0
Bridges	0	0	0					0
Tunnels	0	0	0					0
Facilities		0	0	0	0	0	0	0
<b>Total</b>	<b>0</b>	<b>0</b>	<b>0</b>	<b>0</b>	<b>0</b>	<b>0</b>	<b>0</b>	<b>0</b>
<b>Colusa</b>								
Segments	0	0	0					0
Bridges	19	1	0					20
Tunnels	0	0	0					0
Facilities		0	0	0	0	0	217	217
<b>Total</b>	<b>19</b>	<b>1</b>	<b>0</b>	<b>0</b>	<b>0</b>	<b>0</b>	<b>217</b>	<b>238</b>
<b>Contra Costa</b>								
Segments	0	0	0					0
Bridges	572	27	0					599
Tunnels	1	0	0					1
Facilities		925	703	0	11,199	218	816	13,861
<b>Total</b>	<b>573</b>	<b>952</b>	<b>703</b>	<b>0</b>	<b>11,199</b>	<b>218</b>	<b>816</b>	<b>14,461</b>
<b>El Dorado</b>								
Segments	0	0	0					0
Bridges	0	0	0					0
Tunnels	0	0	0					0
Facilities		0	0	0	0	0	20	20

	Highway	Railway	Light Rail	Bus Facility	Ports	Ferries	Airport	Total
<b>Total</b>	<b>0</b>	<b>0</b>	<b>0</b>	<b>0</b>	<b>0</b>	<b>0</b>	<b>20</b>	<b>20</b>
<b>Glenn</b>								
Segments	0	0	0					0
Bridges	2	0	0					2
Tunnels	0	0	0					0
Facilities		0	0	0	37	0	102	139
<b>Total</b>	<b>2</b>	<b>0</b>	<b>0</b>	<b>0</b>	<b>37</b>	<b>0</b>	<b>102</b>	<b>141</b>
<b>Lake</b>								
Segments	0	0	0					0
Bridges	87	0	0					87
Tunnels	0	0	0					0
Facilities		0	0	0	0	0	268	268
<b>Total</b>	<b>87</b>	<b>0</b>	<b>0</b>	<b>0</b>	<b>0</b>	<b>0</b>	<b>268</b>	<b>356</b>
<b>Marin</b>								
Segments	0	0	0					0
Bridges	782	0	0					782
Tunnels	0	0	0					0
Facilities		0	0	242	2,078	106	400	2,825
<b>Total</b>	<b>782</b>	<b>0</b>	<b>0</b>	<b>242</b>	<b>2,078</b>	<b>106</b>	<b>400</b>	<b>3,607</b>
<b>Mendocino</b>								
Segments	0	0	0					0
Bridges	0	0	0					0
Tunnels	0	0	0					0
Facilities		0	0	68	4	0	164	236

	Highway	Railway	Light Rail	Bus Facility	Ports	Ferries	Airport	Total
<b>Total</b>	<b>0</b>	<b>0</b>	<b>0</b>	<b>68</b>	<b>4</b>	<b>0</b>	<b>164</b>	<b>236</b>
<b>Napa</b>								
Segments	0	0	0					0
Bridges	4,930	438	0					5,368
Tunnels	0	0	0					0
Facilities		0	0	423	1,697	0	2,065	4,184
<b>Total</b>	<b>4,930</b>	<b>438</b>	<b>0</b>	<b>423</b>	<b>1,697</b>	<b>0</b>	<b>2,065</b>	<b>9,552</b>
<b>Nevada</b>								
Segments	0	0	0					0
Bridges	0	0	0					0
Tunnels	0	0	0					0
Facilities		0	0	0	0	0	6	6
<b>Total</b>	<b>0</b>	<b>0</b>	<b>0</b>	<b>0</b>	<b>0</b>	<b>0</b>	<b>6</b>	<b>6</b>
<b>Placer</b>								
Segments	0	0	0					0
Bridges	0	0	0					0
Tunnels	0	0	0					0
Facilities		57	0	2	0	0	108	167
<b>Total</b>	<b>0</b>	<b>57</b>	<b>0</b>	<b>2</b>	<b>0</b>	<b>0</b>	<b>108</b>	<b>167</b>
<b>Sacramento</b>								
Segments	0	0	0					0
Bridges	295	0	0					295
Tunnels	0	0	0					0
Facilities		26	3,024	43	2,658	55	17,128	22,933

	Highway	Railway	Light Rail	Bus Facility	Ports	Ferries	Airport	Total
<b>Total</b>	<b>295</b>	<b>26</b>	<b>3,024</b>	<b>43</b>	<b>2,658</b>	<b>55</b>	<b>17,128</b>	<b>23,228</b>
<b>San Francisco</b>								
<i>Segments</i>	0	0	0					0
<i>Bridges</i>	261	0	0					261
<i>Tunnels</i>	0	0	0					0
<i>Facilities</i>		0	31,375	49	3,335	51	308	35,118
<b>Total</b>	<b>261</b>	<b>0</b>	<b>31,375</b>	<b>49</b>	<b>3,335</b>	<b>51</b>	<b>308</b>	<b>35,380</b>
<b>San Joaquin</b>								
<i>Segments</i>	0	0	0					0
<i>Bridges</i>	8	0	0					8
<i>Tunnels</i>	0	0	0					0
<i>Facilities</i>		410	0	21	2,655	135	418	3,640
<b>Total</b>	<b>8</b>	<b>411</b>	<b>0</b>	<b>21</b>	<b>2,655</b>	<b>135</b>	<b>418</b>	<b>3,648</b>
<b>San Mateo</b>								
<i>Segments</i>	0	0	0					0
<i>Bridges</i>	32	0	0					32
<i>Tunnels</i>	0	0	0					0
<i>Facilities</i>		0	0	0	661	0	8,789	9,450
<b>Total</b>	<b>32</b>	<b>0</b>	<b>0</b>	<b>0</b>	<b>661</b>	<b>0</b>	<b>8,789</b>	<b>9,482</b>
<b>Santa Clara</b>								
<i>Segments</i>	0	0	0					0
<i>Bridges</i>	4	0	0					4
<i>Tunnels</i>	0	0	0					0
<i>Facilities</i>		103	3,160	23	184	0	3,464	6,934

	Highway	Railway	Light Rail	Bus Facility	Ports	Ferries	Airport	Total
<b>Total</b>	<b>4</b>	<b>103</b>	<b>3,160</b>	<b>23</b>	<b>184</b>	<b>0</b>	<b>3,464</b>	<b>6,938</b>
<b>Solano</b>								
<i>Segments</i>	0	0	0					0
<i>Bridges</i>	2,545	254	0					2,799
<i>Tunnels</i>	0	0	0					0
<i>Facilities</i>		699	0	512	7,417	264	2,095	10,987
<b>Total</b>	<b>2,545</b>	<b>953</b>	<b>0</b>	<b>512</b>	<b>7,417</b>	<b>264</b>	<b>2,095</b>	<b>13,787</b>
<b>Sonoma</b>								
<i>Segments</i>	0	0	0					0
<i>Bridges</i>	389	99	0					488
<i>Tunnels</i>	0	0	0					0
<i>Facilities</i>		0	0	97	508	0	1,762	2,366
<b>Total</b>	<b>389</b>	<b>99</b>	<b>0</b>	<b>97</b>	<b>508</b>	<b>0</b>	<b>1,762</b>	<b>2,854</b>
<b>Stanislaus</b>								
<i>Segments</i>	0	0	0					0
<i>Bridges</i>	1	0	0					1
<i>Tunnels</i>	0	0	0					0
<i>Facilities</i>		14	0	24	0	0	26	64
<b>Total</b>	<b>1</b>	<b>14</b>	<b>0</b>	<b>24</b>	<b>0</b>	<b>0</b>	<b>26</b>	<b>65</b>
<b>Sutter</b>								
<i>Segments</i>	0	0	0					0
<i>Bridges</i>	23	0	0					23
<i>Tunnels</i>	0	0	0					0
<i>Facilities</i>		0	0	0	0	0	129	129

	Highway	Railway	Light Rail	Bus Facility	Ports	Ferries	Airport	Total
<b>Total</b>	<b>23</b>	<b>0</b>	<b>0</b>	<b>0</b>	<b>0</b>	<b>0</b>	<b>129</b>	<b>152</b>
<b>Tehama</b>								
Segments	0	0	0					0
Bridges	0	0	0					0
Tunnels	0	0	0					0
Facilities		0	0	0	0	0	0	0
<b>Total</b>	<b>0</b>	<b>0</b>	<b>0</b>	<b>0</b>	<b>0</b>	<b>0</b>	<b>0</b>	<b>0</b>
<b>Yolo</b>								
Segments	0	0	0					0
Bridges	448	2	0					450
Tunnels	0	0	0					0
Facilities		546	0	0	2,658	0	1,017	4,222
<b>Total</b>	<b>448</b>	<b>548</b>	<b>0</b>	<b>0</b>	<b>2,658</b>	<b>0</b>	<b>1,017</b>	<b>4,671</b>
<b>Yuba</b>								
Segments	0	0	0					0
Bridges	0	0	0					0
Tunnels	0	0	0					0
Facilities		0	0	22	0	0	102	124
<b>Total</b>	<b>0</b>	<b>0</b>	<b>0</b>	<b>22</b>	<b>0</b>	<b>0</b>	<b>102</b>	<b>124</b>
<b>Total</b>	<b>10,498</b>	<b>4,564</b>	<b>38,263</b>	<b>1,547</b>	<b>38,849</b>	<b>868</b>	<b>43,183</b>	<b>137,772</b>
<b>Region Total</b>	<b>10,498</b>	<b>4,564</b>	<b>38,263</b>	<b>1,547</b>	<b>38,849</b>	<b>868</b>	<b>43,183</b>	<b>137,772</b>

Totals only reflect data for those census tracts/blocks included in the user's study region and will reflect the entire county/state only if all of the census blocks for that county/states were selected at the time of study region creation.

## Direct Economic Loss For Utilities

May 07, 2024

All values are in thousands of dollars

	Potable Water	Waste Water	Oil Systems	Natural Gas	Electric Power	Communication	Total
<b>California</b>							
<b>Alameda</b>							
<i>Facilities</i>	84	8,851	0	0	16,913	15	25,863
<i>Pipelines</i>	108	54	0	0			162
<b>Total</b>	192	8,905	0	0	16,913	15	26,025
<b>Amador</b>							
<i>Facilities</i>	0	0	0	0	323	0	323
<i>Pipelines</i>	4	2	0	0			5
<b>Total</b>	4	2	0	0	323	0	328
<b>Butte</b>							
<i>Facilities</i>	1	492	0	0	2,649	0	3,142
<i>Pipelines</i>	40	20	0	0			60
<b>Total</b>	40	512	0	0	2,649	0	3,202
<b>Calaveras</b>							
<i>Facilities</i>	1	0	0	0	1	0	2

	Potable Water	Waste Water	Oil Systems	Natural Gas	Electric Power	Communication	Total
<i>Pipelines</i>	2	1	0	0			3
<b>Total</b>	3	1	0	0	1	0	5
<b>Colusa</b>							
<i>Facilities</i>	0	4,573	0	75	11,633	0	16,281
<i>Pipelines</i>	75	38	0	0			112
<b>Total</b>	75	4,611	0	75	11,633	0	16,393
<b>Contra Costa</b>							
<i>Facilities</i>	809	15,735	11	0	358,443	10	375,009
<i>Pipelines</i>	166	83	0	0			249
<b>Total</b>	975	15,818	11	0	358,443	10	375,257
<b>El Dorado</b>							
<i>Facilities</i>	0	131	0	0	25	0	155
<i>Pipelines</i>	13	7	0	0			20
<b>Total</b>	13	137	0	0	25	0	175
<b>Glenn</b>							
<i>Facilities</i>	0	123	0	0	136	0	259
<i>Pipelines</i>	33	16	0	0			49
<b>Total</b>	33	139	0	0	136	0	308
<b>Lake</b>							
<i>Facilities</i>	697	0	0	0	83,528	10	84,235
<i>Pipelines</i>	346	174	0	0			520

	Potable Water	Waste Water	Oil Systems	Natural Gas	Electric Power	Communication	Total
<b>Total</b>	1,043	174	0	0	83,528	10	84,755
<b>Marin</b>							
<i>Facilities</i>	348	6,589	0	0	770	13	7,720
<i>Pipelines</i>	51	26	0	0			77
<b>Total</b>	399	6,615	0	0	770	13	7,797
<b>Mendocino</b>							
<i>Facilities</i>	0	377	0	0	350	1	728
<i>Pipelines</i>	61	31	0	0			92
<b>Total</b>	61	407	0	0	350	1	820
<b>Napa</b>							
<i>Facilities</i>	0	48,386	0	0	33,735	87	82,207
<i>Pipelines</i>	623	313	0	0			936
<b>Total</b>	623	48,699	0	0	33,735	87	83,144
<b>Nevada</b>							
<i>Facilities</i>	0	15	0	0	36	0	51
<i>Pipelines</i>	14	7	0	0			20
<b>Total</b>	14	22	0	0	36	0	72
<b>Placer</b>							
<i>Facilities</i>	0	1,109	0	0	3,420	1	4,530
<i>Pipelines</i>	35	18	0	0			53
<b>Total</b>	35	1,127	0	0	3,420	1	4,584

	Potable Water	Waste Water	Oil Systems	Natural Gas	Electric Power	Communication	Total
<b>Sacramento</b>							
<i>Facilities</i>	0	2,631	0	0	20,638	19	23,287
<i>Pipelines</i>	125	63	0	0			188
<b>Total</b>	125	2,694	0	0	20,638	19	23,475
<b>San Francisco</b>							
<i>Facilities</i>	0	2,262	0	0	108	4	2,374
<i>Pipelines</i>	23	12	0	0			35
<b>Total</b>	23	2,274	0	0	108	4	2,408
<b>San Joaquin</b>							
<i>Facilities</i>	113	861	0	0	9,333	2	10,309
<i>Pipelines</i>	89	45	0	0			134
<b>Total</b>	202	905	0	0	9,333	2	10,443
<b>San Mateo</b>							
<i>Facilities</i>	0	1,598	0	0	362	3	1,963
<i>Pipelines</i>	38	19	0	0			58
<b>Total</b>	38	1,618	0	0	362	3	2,021
<b>Santa Clara</b>							
<i>Facilities</i>	56	369	0	0	6,055	2	6,482
<i>Pipelines</i>	61	31	0	0			92
<b>Total</b>	118	400	0	0	6,055	2	6,574
<b>Solano</b>							

	Potable Water	Waste Water	Oil Systems	Natural Gas	Electric Power	Communication	Total
<i>Facilities</i>	0	32,902	3	0	339,794	41	372,741
<i>Pipelines</i>	642	323	0	0			965
<b>Total</b>	642	33,225	3	0	339,794	41	373,705
<b>Sonoma</b>							
<i>Facilities</i>	0	21,147	0	0	664,363	80	685,591
<i>Pipelines</i>	286	144	0	0			430
<b>Total</b>	286	21,291	0	0	664,363	80	686,021
<b>Stanislaus</b>							
<i>Facilities</i>	0	131	0	0	2,256	1	2,388
<i>Pipelines</i>	42	21	0	0			64
<b>Total</b>	42	152	0	0	2,256	1	2,451
<b>Sutter</b>							
<i>Facilities</i>	0	246	0	0	6,808	1	7,055
<i>Pipelines</i>	31	16	0	0			47
<b>Total</b>	31	262	0	0	6,808	1	7,102
<b>Tehama</b>							
<i>Facilities</i>	0	0	0	0	165	0	165
<i>Pipelines</i>	17	9	0	0			26
<b>Total</b>	17	9	0	0	165	0	191
<b>Yolo</b>							
<i>Facilities</i>	0	6,097	0	0	6,937	22	13,056

	Potable Water	Waste Water	Oil Systems	Natural Gas	Electric Power	Communication	Total
<i>Pipelines</i>	195	98	0	0			292
<b>Total</b>	195	6,195	0	0	6,937	22	13,348
<b>Yuba</b>							
<i>Facilities</i>	0	492	0	0	840	0	1,332
<i>Pipelines</i>	21	11	0	0			32
<b>Total</b>	21	502	0	0	840	0	1,364
<b>Total</b>	<b>5,251</b>	<b>156,695</b>	<b>14</b>	<b>75</b>	<b>1,569,621</b>	<b>313</b>	<b>1,731,969</b>
<b>Region Total</b>	<b>5,251</b>	<b>156,695</b>	<b>14</b>	<b>75</b>	<b>1,569,621</b>	<b>313</b>	<b>1,731,969</b>

Totals only reflect data for those census tracts/blocks included in the user's study region and will reflect the entire county/state only if all of the census blocks for that county/states were selected at the time of study region creation.

## Direct Economic Loss For Utilities

April 08, 2024

All values are in thousands of dollars

	Potable Water	Waste Water	Oil Systems	Natural Gas	Electric Power	Communication	Total
<b>California</b>							
<b>Alameda</b>							
<i>Facilities</i>	84	8,851	0	0	16,913	15	25,863
<i>Pipelines</i>	108	54	0	0			162
<b>Total</b>	192	8,905	0	0	16,913	15	26,025
<b>Amador</b>							
<i>Facilities</i>	0	0	0	0	323	0	323
<i>Pipelines</i>	4	2	0	0			5
<b>Total</b>	4	2	0	0	323	0	328
<b>Butte</b>							
<i>Facilities</i>	1	492	0	0	2,649	0	3,142
<i>Pipelines</i>	40	20	0	0			60
<b>Total</b>	40	512	0	0	2,649	0	3,202
<b>Calaveras</b>							
<i>Facilities</i>	1	0	0	0	1	0	2

	Potable Water	Waste Water	Oil Systems	Natural Gas	Electric Power	Communication	Total
<i>Pipelines</i>	2	1	0	0			3
<b>Total</b>	3	1	0	0	1	0	5
<b>Colusa</b>							
<i>Facilities</i>	0	4,573	0	75	11,633	0	16,281
<i>Pipelines</i>	75	38	0	0			112
<b>Total</b>	75	4,611	0	75	11,633	0	16,393
<b>Contra Costa</b>							
<i>Facilities</i>	809	15,735	11	0	358,443	10	375,009
<i>Pipelines</i>	166	83	0	0			249
<b>Total</b>	975	15,818	11	0	358,443	10	375,257
<b>El Dorado</b>							
<i>Facilities</i>	0	131	0	0	25	0	155
<i>Pipelines</i>	13	7	0	0			20
<b>Total</b>	13	137	0	0	25	0	175
<b>Glenn</b>							
<i>Facilities</i>	0	123	0	0	136	0	259
<i>Pipelines</i>	33	16	0	0			49
<b>Total</b>	33	139	0	0	136	0	308
<b>Lake</b>							
<i>Facilities</i>	697	0	0	0	83,528	10	84,235
<i>Pipelines</i>	346	174	0	0			520

	Potable Water	Waste Water	Oil Systems	Natural Gas	Electric Power	Communication	Total
<b>Total</b>	1,043	174	0	0	83,528	10	84,755
<b>Marin</b>							
<i>Facilities</i>	348	6,589	0	0	770	13	7,720
<i>Pipelines</i>	51	26	0	0			77
<b>Total</b>	399	6,615	0	0	770	13	7,797
<b>Mendocino</b>							
<i>Facilities</i>	0	377	0	0	350	1	728
<i>Pipelines</i>	61	31	0	0			92
<b>Total</b>	61	407	0	0	350	1	820
<b>Napa</b>							
<i>Facilities</i>	0	48,386	0	0	33,735	87	82,207
<i>Pipelines</i>	623	313	0	0			936
<b>Total</b>	623	48,699	0	0	33,735	87	83,144
<b>Nevada</b>							
<i>Facilities</i>	0	15	0	0	36	0	51
<i>Pipelines</i>	14	7	0	0			20
<b>Total</b>	14	22	0	0	36	0	72
<b>Placer</b>							
<i>Facilities</i>	0	1,109	0	0	3,420	1	4,530
<i>Pipelines</i>	35	18	0	0			53
<b>Total</b>	35	1,127	0	0	3,420	1	4,584

	Potable Water	Waste Water	Oil Systems	Natural Gas	Electric Power	Communication	Total
<b>Sacramento</b>							
<i>Facilities</i>	0	2,631	0	0	20,638	19	23,287
<i>Pipelines</i>	125	63	0	0			188
<b>Total</b>	125	2,694	0	0	20,638	19	23,475
<b>San Francisco</b>							
<i>Facilities</i>	0	2,262	0	0	108	4	2,374
<i>Pipelines</i>	23	12	0	0			35
<b>Total</b>	23	2,274	0	0	108	4	2,408
<b>San Joaquin</b>							
<i>Facilities</i>	113	861	0	0	9,333	2	10,309
<i>Pipelines</i>	89	45	0	0			134
<b>Total</b>	202	905	0	0	9,333	2	10,443
<b>San Mateo</b>							
<i>Facilities</i>	0	1,598	0	0	362	3	1,963
<i>Pipelines</i>	38	19	0	0			58
<b>Total</b>	38	1,618	0	0	362	3	2,021
<b>Santa Clara</b>							
<i>Facilities</i>	56	369	0	0	6,055	2	6,482
<i>Pipelines</i>	61	31	0	0			92
<b>Total</b>	118	400	0	0	6,055	2	6,574
<b>Solano</b>							

	Potable Water	Waste Water	Oil Systems	Natural Gas	Electric Power	Communication	Total
<i>Facilities</i>	0	32,902	3	0	339,794	41	372,741
<i>Pipelines</i>	642	323	0	0			965
<b>Total</b>	642	33,225	3	0	339,794	41	373,705
<b>Sonoma</b>							
<i>Facilities</i>	0	21,147	0	0	664,363	80	685,591
<i>Pipelines</i>	286	144	0	0			430
<b>Total</b>	286	21,291	0	0	664,363	80	686,021
<b>Stanislaus</b>							
<i>Facilities</i>	0	131	0	0	2,256	1	2,388
<i>Pipelines</i>	42	21	0	0			64
<b>Total</b>	42	152	0	0	2,256	1	2,451
<b>Sutter</b>							
<i>Facilities</i>	0	246	0	0	6,808	1	7,055
<i>Pipelines</i>	31	16	0	0			47
<b>Total</b>	31	262	0	0	6,808	1	7,102
<b>Tehama</b>							
<i>Facilities</i>	0	0	0	0	165	0	165
<i>Pipelines</i>	17	9	0	0			26
<b>Total</b>	17	9	0	0	165	0	191
<b>Yolo</b>							
<i>Facilities</i>	0	6,097	0	0	6,937	22	13,056

	Potable Water	Waste Water	Oil Systems	Natural Gas	Electric Power	Communication	Total
<i>Pipelines</i>	195	98	0	0			292
<b>Total</b>	195	6,195	0	0	6,937	22	13,348
<b>Yuba</b>							
<i>Facilities</i>	0	492	0	0	840	0	1,332
<i>Pipelines</i>	21	11	0	0			32
<b>Total</b>	21	502	0	0	840	0	1,364
<b>Total</b>	<b>5,251</b>	<b>156,695</b>	<b>14</b>	<b>75</b>	<b>1,569,621</b>	<b>313</b>	<b>1,731,969</b>
<b>Region Total</b>	<b>5,251</b>	<b>156,695</b>	<b>14</b>	<b>75</b>	<b>1,569,621</b>	<b>313</b>	<b>1,731,969</b>

Totals only reflect data for those census tracts/blocks included in the user's study region and will reflect the entire county/state only if all of the census blocks for that county/states were selected at the time of study region creation.

## Hazus Quick Assessment Report

### Estimated Economic Loss (\$ Billions)

Category	Description	Range
General Building Stock	Building Damage	0.70 - 2.80
	Building Contents	0.10 - 0.50
	Business Interruption	0.10 - 0.30
Infrastructure	Lifelines Damage	
<b>Total</b>		1.10 - 4.50

### Preliminary Damage Assessment (PDA) Estimates

Description	Residential	Commercial	Other	Total
Affected	35,400	3,500	1,600	40,500
Minor	2,200	600	310	3,110
Major	90	40	20	150
Destroyed	< 10	< 10	< 10	< 10
<b>Total</b>	37,690	4,140	1,930	43,760

### Estimated Casualties : Night Time

Severity Level	Description	# Persons
Level 1	Medical Aid	40 - 160
Level 2	Hospital Care	< 10
Level 3	Life-threatening	< 10
Level 4	Fatalities	< 10

### Estimated Shelter Needs

Type	Households	People
Displaced Households	40 - 150	100 - 375
Public Shelter	10	40

Comments :

\*Hazus damage estimates are presented using FEMA Preliminary Damage Assessment (PDA) categories. These estimates should be used for planning purposes and may not reflect actual observed damages from the PDA process.

#### Disclaimer:

The estimates of social and economic impacts contained in this report were produced using HAZUS loss estimation methodology software which is based on current scientific and engineering knowledge. There are uncertainties inherent in any loss estimation technique. Therefore, there may be significant differences between the modeled results contained in this report and the actual social and economic losses following a specific earthquake. These results can be improved by using enhanced inventory, geotechnical, and observed ground motion data.

### Earthquake Information

Location :

Origin Time:

Magnitude : 6.69

Epicenter Latitude/Longitude :  
/

Depth & Type : /U

Name :  
NA

Ground Motion /Attenuation :

Maximum PGA: 0.00

Information Sources:

Comments :

### Population and Building Exposure

Population: 12,352,329

#### Building Exposure : (\$ Millions)

Residential	1,608,923
Commercial	423,259
Other	357,187
<b>Total</b>	<b>2,389,369</b>

Counties : See Appendix

Major Metro Area :

## Hazus Quick Assessment Report

### Estimated Economic Loss (\$ Billions)

Category	Description	Range
General Building Stock	Building Damage	0.70 - 2.80
	Building Contents	0.10 - 0.50
	Business Interruption	0.10 - 0.30
Infrastructure	Lifelines Damage	
<b>Total</b>		1.10 - 4.50

### Preliminary Damage Assessment (PDA) Estimates

Description	Residential	Commercial	Other	Total
Affected	35,400	3,500	1,600	40,500
Minor	2,200	600	310	3,110
Major	90	40	20	150
Destroyed	< 10	< 10	< 10	< 10
<b>Total</b>	37,690	4,140	1,930	43,760

### Estimated Casualties : Day Time

Severity Level	Description	# Persons
Level 1	Medical Aid	60 - 200
Level 2	Hospital Care	0 - 20
Level 3	Life-threatening	< 10
Level 4	Fatalities	< 10

### Estimated Shelter Needs

Type	Households	People
Displaced Households	40 - 150	100 - 375
Public Shelter	10	40

Comments :

*\*Hazus damage estimates are presented using FEMA Preliminary Damage Assessment (PDA) categories. These estimates should be used for planning purposes and may not reflect actual observed damages from the PDA process.*

**Disclaimer:**

*The estimates of social and economic impacts contained in this report were produced using HAZUS loss estimation methodology software which is based on current scientific and engineering knowledge. There are uncertainties inherent in any loss estimation technique. Therefore, there may be significant differences between the modeled results contained in this report and the actual social and economic losses following a specific earthquake. These results can be improved by using enhanced inventory, geotechnical, and observed ground motion data.*

### Earthquake Information

Location :

Origin Time:

Magnitude : 6.69

Epicenter Latitude/Longitude :  
/

Depth & Type : /U

Name :  
NA

Ground Motion /Attenuation :

Maximum PGA: 0.00

Information Sources:

Comments :

### Population and Building Exposure

Population: 12,352,329

### Building Exposure : (\$ Millions)

Residential	1,608,923
Commercial	423,259
Other	357,187
<b>Total</b>	<b>2,389,369</b>

Counties : See Appendix

Major Metro Area :

## Hazus Quick Assessment Report

### Estimated Economic Loss (\$ Billions)

Category	Description	Range
General Building Stock	Building Damage	0.70 - 2.80
	Building Contents	0.10 - 0.50
	Business Interruption	0.10 - 0.30
Infrastructure	Lifelines Damage	
<b>Total</b>		1.10 - 4.50

### Preliminary Damage Assessment (PDA) Estimates

Description	Residential	Commercial	Other	Total
Affected	35,400	3,500	1,600	40,500
Minor	2,200	600	310	3,110
Major	90	40	20	150
Destroyed	< 10	< 10	< 10	< 10
<b>Total</b>	37,690	4,140	1,930	43,760

### Estimated Casualties : Commute Time

Severity Level	Description	# Persons
Level 1	Medical Aid	40 - 160
Level 2	Hospital Care	< 10
Level 3	Life-threatening	< 10
Level 4	Fatalities	< 10

### Estimated Shelter Needs

Type	Households	People
Displaced Households	40 - 150	100 - 375
Public Shelter	10	40

Comments :

\*Hazus damage estimates are presented using FEMA Preliminary Damage Assessment (PDA) categories. These estimates should be used for planning purposes and may not reflect actual observed damages from the PDA process.

**Disclaimer:**

The estimates of social and economic impacts contained in this report were produced using HAZUS loss estimation methodology software which is based on current scientific and engineering knowledge. There are uncertainties inherent in any loss estimation technique. Therefore, there may be significant differences between the modeled results contained in this report and the actual social and economic losses following a specific earthquake. These results can be improved by using enhanced inventory, geotechnical, and observed ground motion data.

### Earthquake Information

Location :

Origin Time:

Magnitude : 6.69

Epicenter Latitude/Longitude :  
/

Depth & Type : /U

Name :  
NA

Ground Motion /Attenuation :

Maximum PGA: 0.00

Information Sources:

Comments :

### Population and Building Exposure

Population: 12,352,329

### Building Exposure : (\$ Millions)

Residential	1,608,923
Commercial	423,259
Other	357,187
<b>Total</b>	<b>2,389,369</b>

Counties : See Appendix

Major Metro Area :

## Shelter Summary Report

May 07, 2024

	# of Displaced Households	# of People Needing Short Term Shelter
<b>California</b>		
Butte	0	0
Alameda	1	0
Solano	10	5
San Mateo	0	0
San Joaquin	0	0
Nevada	0	0
Colusa	0	0
Napa	58	29
Mendocino	0	0
Contra Costa	0	0
Tehama	0	0
El Dorado	0	0
Amador	0	0
Lake	3	1
Sacramento	0	0
Yolo	1	0
Calaveras	0	0
Yuba	0	0
Glenn	0	0
Stanislaus	0	0
Sonoma	2	1
Santa Clara	0	0
San Francisco	0	0
Placer	0	0
Marin	0	0
Sutter	0	0
<b>Total</b>	<b>75</b>	<b>37</b>
<b>Region Total</b>	<b>75</b>	<b>37</b>

---

# of Displaced Households	# of People Needing Short Term Shelter
------------------------------	---

---

*Totals only reflect data for those census tracts/blocks included in the user's study region and will reflect the entire county/state only if all of the census blocks for that county/states were selected at the time of study region creation.*

