
Hazus: Earthquake Global Risk Report

Region Name: Hosgri

Earthquake Scenario: hosgrishaw09modgeol_m7p54_se

Print Date: June 05, 2024

Disclaimer:

Totals only reflect data for those census tracts/blocks included in the user's study region.

The estimates of social and economic impacts contained in this report were produced using Hazus loss estimation methodology software which is based on current scientific and engineering knowledge. There are uncertainties inherent in any loss estimation technique. Therefore, there may be significant differences between the modeled results contained in this report and the actual social and economic losses following a specific earthquake. These results can be improved by using enhanced inventory, geotechnical, and observed ground motion data.

Table of Contents

Section	Page #
General Description of the Region	3
Building and Lifeline Inventory	4
Building Inventory	
Critical Facility Inventory	
Transportation and Utility Lifeline Inventory	
Earthquake Scenario Parameters	7
Direct Earthquake Damage	8
Buildings Damage	
Essential Facilities Damage	
Transportation and Utility Lifeline Damage	
Induced Earthquake Damage	14
Fire Following Earthquake	
Debris Generation	
Social Impact	15
Shelter Requirements	
Casualties	
Economic Loss	17
Building Related Losses	
Transportation and Utility Lifeline Losses	
Appendix A: County Listing for the Region	
Appendix B: Regional Population and Building Value Data	

General Description of the Region

Hazus-MH is a regional earthquake loss estimation model that was developed by the Federal Emergency Management Agency (FEMA) and the National Institute of Building Sciences. The primary purpose of Hazus is to provide a methodology and software application to develop multi-hazard losses at a regional scale. These loss estimates would be used primarily by local, state and regional officials to plan and stimulate efforts to reduce risks from multi-hazards and to prepare for emergency response and recovery.

The earthquake loss estimates provided in this report was based on a region that includes 26 county(ies) from the following state(s):

California

Note:

Appendix A contains a complete listing of the counties contained in the region.

The geographical size of the region is 54,256.32 square miles and contains 6,156 census tracts. There are over 8,903 thousand households in the region which has a total population of 26,043,496 people. The distribution of population by Total Region and County is provided in Appendix B.

There are an estimated 7,356 thousand buildings in the region with a total building replacement value (excluding contents) of (millions of dollars). Approximately 90.00 % of the buildings (and % of the building value) are associated with residential housing.

The replacement value of the transportation and utility lifeline systems is estimated to be 342,338 and 213,588 (millions of dollars) , respectively.

Building and Lifeline Inventory

Building Inventory

Hazus estimates that there are 7,356 thousand buildings in the region which have an aggregate total replacement value of (millions of dollars) . Appendix B provides a general distribution of the building value by Total Region and County.

In terms of building construction types found in the region, wood frame construction makes up 87% of the building inventory. The remaining percentage is distributed between the other general building types.

Critical Facility Inventory

Hazus breaks critical facilities into two (2) groups: essential facilities and high potential loss facilities (HPL). Essential facilities include hospitals, medical clinics, schools, fire stations, police stations and emergency operations facilities. High potential loss facilities include dams, levees, military installations, nuclear power plants and hazardous material sites.

For essential facilities, there are 399 hospitals in the region with a total bed capacity of 71,085 beds. There are 8,973 schools, 1,679 fire stations, 640 police stations and 139 emergency operation facilities. With respect to high potential loss facilities (HPL), there are no dams identified within the inventory. The inventory also includes no hazardous material sites, no military installations and no nuclear power plants.

Transportation and Utility Lifeline Inventory

Within Hazus, the lifeline inventory is divided between transportation and utility lifeline systems. There are seven (7) transportation systems that include highways, railways, light rail, bus, ports, ferry and airports. There are six (6) utility systems that include potable water, wastewater, natural gas, crude & refined oil, electric power and communications. The lifeline inventory data are provided in Tables 1 and 2.

The total value of the lifeline inventory is over 555,926.00 (millions of dollars). This inventory includes over 13,125.84 miles of highways, 14,522 bridges, 274,053.82 miles of pipes.

Table 1: Transportation System Lifeline Inventory

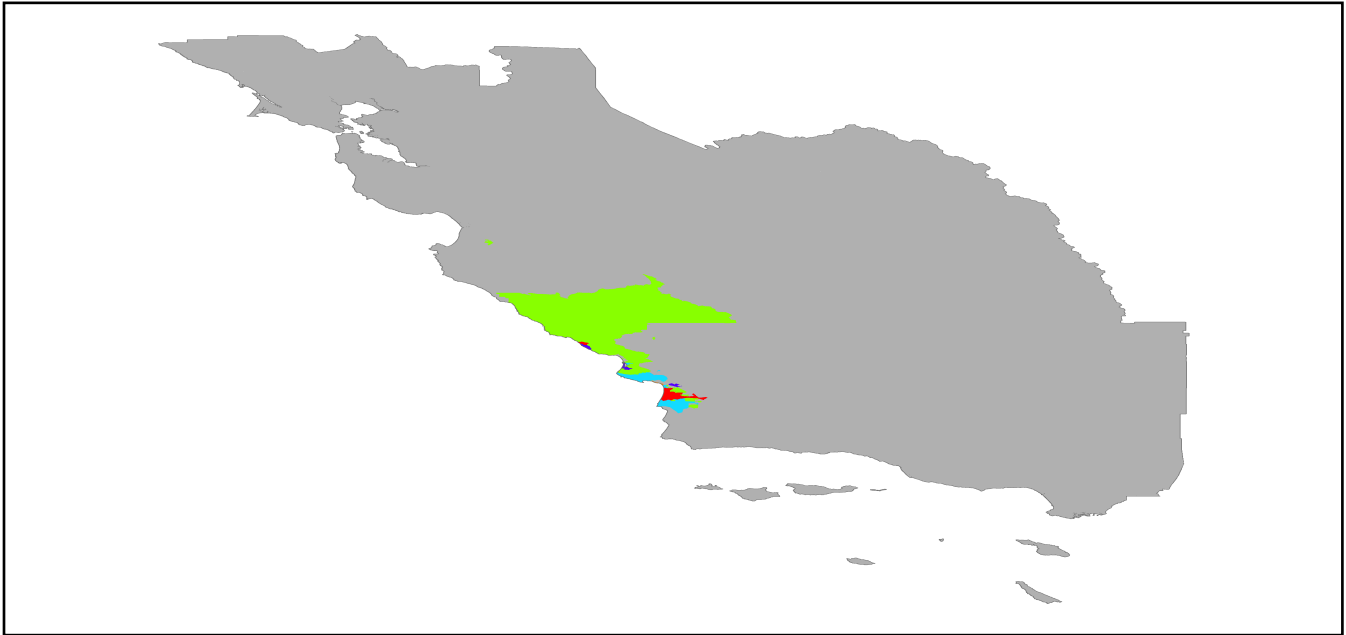
System	Component	# Locations/ # Segments	Replacement value (millions of dollars)
Highway	Bridges	14,522	82799.5671
	Segments	11,898	129857.4981
	Tunnels	93	1432.1384
	Subtotal		214089.2036
Railways	Bridges	1,965	11180.8500
	Facilities	142	378.1460
	Segments	3,745	91942.4543
	Tunnels	3	1.8495
	Subtotal		103503.2998
Light Rail	Bridges	140	21.5267
	Facilities	335	6447.5200
	Segments	19	8233.0240
	Tunnels	0	0.0000
	Subtotal		14702.0707
Bus	Facilities	69	153.8125
	Subtotal		153.8125
Ferry	Facilities	40	53.2400
	Subtotal		53.2400
Port	Facilities	572	2180.3752
	Subtotal		2180.3752
Airport	Facilities	159	5502.5588
	Runways	192	2153.4019
	Subtotal		7655.9607
		Total	342,338.00

Table 2: Utility System Lifeline Inventory

System	Component	# Locations / Segments	Replacement value (millions of dollars)
Potable Water	Distribution Lines	NA	5447.7281
	Facilities	43	1689.6420
	Pipelines	0	0.0000
		Subtotal	7137.3701
Waste Water	Distribution Lines	NA	3268.6368
	Facilities	186	31983.0348
	Pipelines	0	0.0000
		Subtotal	35251.6716
Natural Gas	Distribution Lines	NA	2179.0912
	Facilities	31	1107.0372
	Pipelines	814	18417.6912
		Subtotal	21703.8196
Oil Systems	Facilities	80	9.4400
	Pipelines	0	0.0000
		Subtotal	9.4400
Electrical Power	Facilities	597	149413.4291
		Subtotal	149413.4291
Communication	Facilities	615	72.5700
		Subtotal	72.5700
	Total		213,588.30

Earthquake Scenario

Hazus uses the following set of information to define the earthquake parameters used for the earthquake loss estimate provided in this report.



Scenario Name	hosgrishaw09modgeol_m7p54_se
Type of Earthquake	User-defined
Fault Name	NA
Historical Epicenter ID #	NA
Probabilistic Return Period	NA
Longitude of Epicenter	NA
Latitude of Epicenter	NA
Earthquake Magnitude	7.54
Depth (km)	NA
Rupture Length (Km)	NA
Rupture Orientation (degrees)	NA
Attenuation Function	NA

Direct Earthquake Damage

Building Damage

Hazus estimates that about 11,138 buildings will be at least moderately damaged. This is over 0.00 % of the buildings in the region. There are an estimated 93 buildings that will be damaged beyond repair. The definition of the 'damage states' is provided in Volume 1: Chapter 5 of the Hazus technical manual. Table 3 below summarizes the expected damage by general occupancy for the buildings in the region. Table 4 below summarizes the expected damage by general building type.

Damage Categories by General Occupancy Type

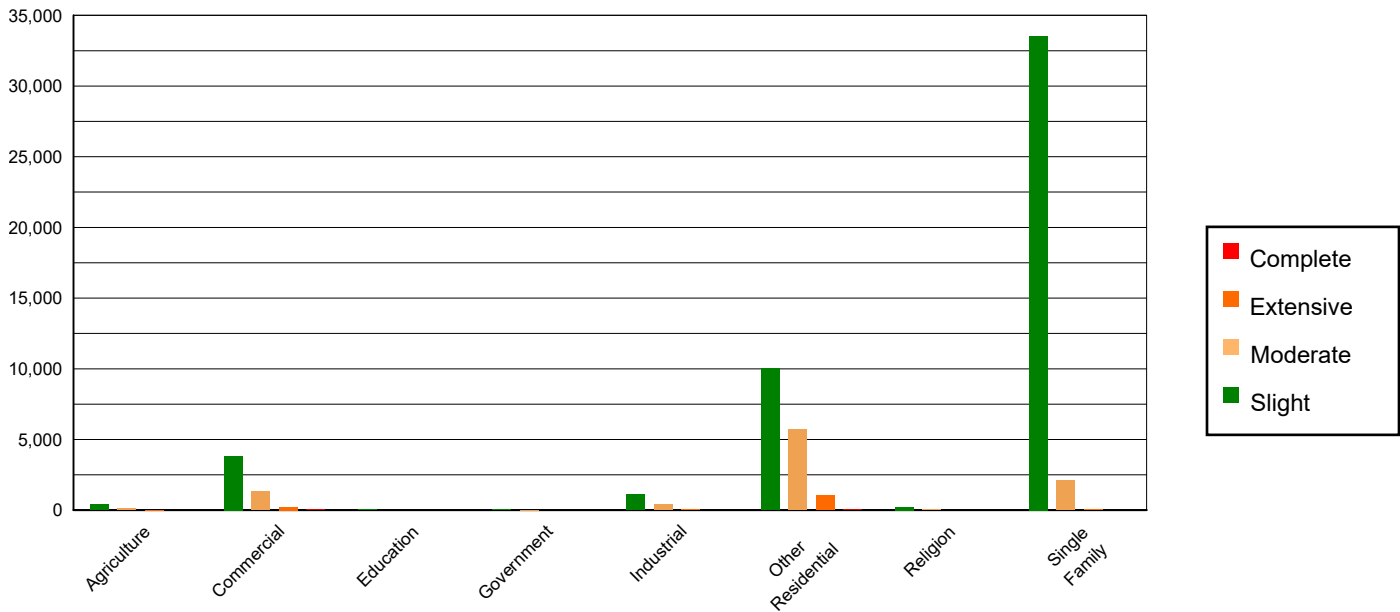


Table 3: Expected Building Damage by Occupancy

	None		Slight		Moderate		Extensive		Complete	
	Count	(%)	Count	(%)	Count	(%)	Count	(%)	Count	(%)
Agriculture	33602.66	0.46	393.03	0.80	116.69	1.21	17.94	1.31	3.67	3.93
Commercial	495196.51	6.79	3822.42	7.77	1305.04	13.49	214.35	15.61	35.68	38.18
Education	15200.91	0.21	36.50	0.07	6.05	0.06	0.52	0.04	0.01	0.01
Government	25264.10	0.35	70.78	0.14	19.22	0.20	2.73	0.20	0.18	0.19
Industrial	139905.32	1.92	1090.99	2.22	380.22	3.93	56.22	4.09	4.25	4.55
Other Residential	1075694.35	14.74	10009.47	20.36	5687.68	58.81	1049.77	76.44	48.74	52.15
Religion	29457.43	0.40	214.26	0.44	73.23	0.76	9.56	0.70	0.51	0.55
Single Family	5481925.62	75.13	33534.14	68.20	2083.68	21.54	22.16	1.61	0.40	0.43
Total	7,296,247		49,172		9,672		1,373		93	

Table 4: Expected Building Damage by Building Type (All Design Levels)

	None		Slight		Moderate		Extensive		Complete	
	Count	(%)	Count	(%)	Count	(%)	Count	(%)	Count	(%)
Wood	6379747.03	87.44	38933.74	79.18	2441.68	25.25	31.43	2.29	1.54	1.65
Steel	158430.72	2.17	1624.54	3.30	821.12	8.49	148.75	10.83	19.16	20.50
Concrete	174396.34	2.39	1566.47	3.19	666.93	6.90	146.09	10.64	22.79	24.38
Precast	82982.23	1.14	1006.03	2.05	344.04	3.56	31.74	2.31	1.60	1.71
RM	325423.06	4.46	1034.31	2.10	309.02	3.20	20.83	1.52	0.28	0.30
URM	68258.92	0.94	568.70	1.16	214.03	2.21	65.16	4.74	17.67	18.91
MH	107008.60	1.47	4437.80	9.03	4874.98	50.40	929.25	67.67	30.41	32.54
Total	7,296,247		49,172		9,672		1,373		93	

*Note:

- RM Reinforced Masonry
- URM Unreinforced Masonry
- MH Manufactured Housing

Essential Facility Damage

Before the earthquake, the region had 71,085 hospital beds available for use. On the day of the earthquake, the model estimates that only 70,674 hospital beds (99.00%) are available for use by patients already in the hospital and those injured by the earthquake. After one week, 100.00% of the beds will be back in service. By 30 days, 100.00% will be operational.

Table 5: Expected Damage to Essential Facilities

Classification	Total	# Facilities		
		At Least Moderate Damage > 50%	Complete Damage > 50%	With Functionality > 50% on day 1
Hospitals	399	0	0	398
Schools	8,973	10	0	8,943
EOCs	139	1	0	138
PoliceStations	640	2	0	633
FireStations	1,679	1	0	1,669

Transportation Lifeline Damage

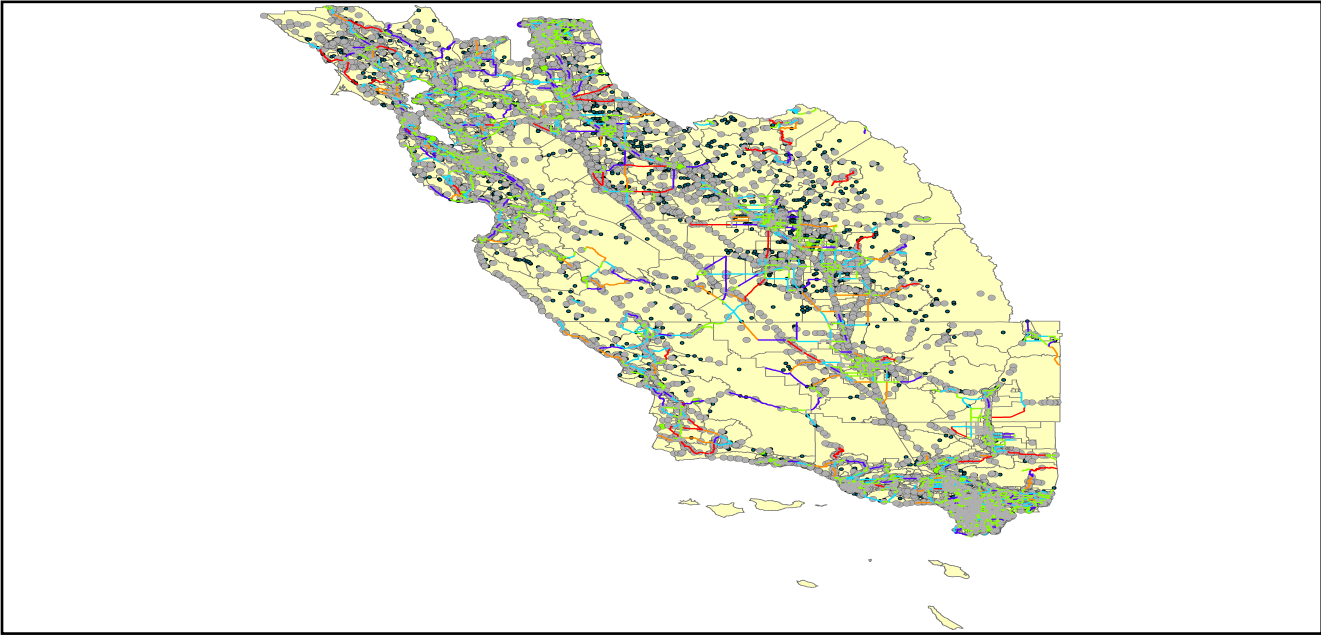


Table 6: Expected Damage to the Transportation Systems

System	Component	Number of Locations_				
		Locations/ Segments	With at Least Mod. Damage	With Complete Damage	With Functionality > 50 %	
					After Day 1	After Day 7
Highway	Segments	11,898	0	0	11,898	11,898
	Bridges	14,522	0	0	14,521	14,522
	Tunnels	93	0	0	93	93
Railways	Segments	3,745	0	0	3,745	3,745
	Bridges	1,965	0	0	1,965	1,965
	Tunnels	3	0	0	3	3
	Facilities	142	0	0	142	142
Light Rail	Segments	19	0	0	19	19
	Bridges	140	0	0	140	140
	Tunnels	0	0	0	0	0
	Facilities	335	0	0	335	335
Bus	Facilities	69	0	0	69	69
Ferry	Facilities	40	0	0	40	40
Port	Facilities	572	1	0	572	572
Airport	Facilities	159	0	0	159	159
	Runways	192	0	0	192	192

Table 6 provides damage estimates for the transportation system.

Note: Roadway segments, railroad tracks and light rail tracks are assumed to be damaged by ground failure only. If ground failure maps are not provided, damage estimates to these components will not be computed.

Tables 7-9 provide information on the damage to the utility lifeline systems. Table 7 provides damage to the utility system facilities. Table 8 provides estimates on the number of leaks and breaks by the pipelines of the utility systems. For electric power and potable water, Hazus performs a simplified system performance analysis. Table 9 provides a summary of the system performance information.

Table 7 : Expected Utility System Facility Damage

System	# of Locations				
	Total #	With at Least Moderate Damage	With Complete Damage	with Functionality > 50 %	
				After Day 1	After Day 7
Potable Water	43	1	0	42	43
Waste Water	186	1	0	180	186
Natural Gas	31	0	0	31	31
Oil Systems	80	0	0	80	80
Electrical Power	597	3	0	595	597
Communication	615	5	0	614	615

Table 8 : Expected Utility System Pipeline Damage (Site Specific)

System	Total Pipelines Length (miles)	Number of Leaks	Number of Breaks
Potable Water	169,253	2166	541
Waste Water	101,552	1088	272
Natural Gas	3,249	0	0
Oil	0	0	0

Table 9: Expected Potable Water and Electric Power System Performance

	Total # of Households	Number of Households without Service				
		At Day 1	At Day 3	At Day 7	At Day 30	At Day 90
Potable Water	8,903,179	1,851	655	15	0	0
Electric Power		8,929	5,360	2,057	188	13

Induced Earthquake Damage

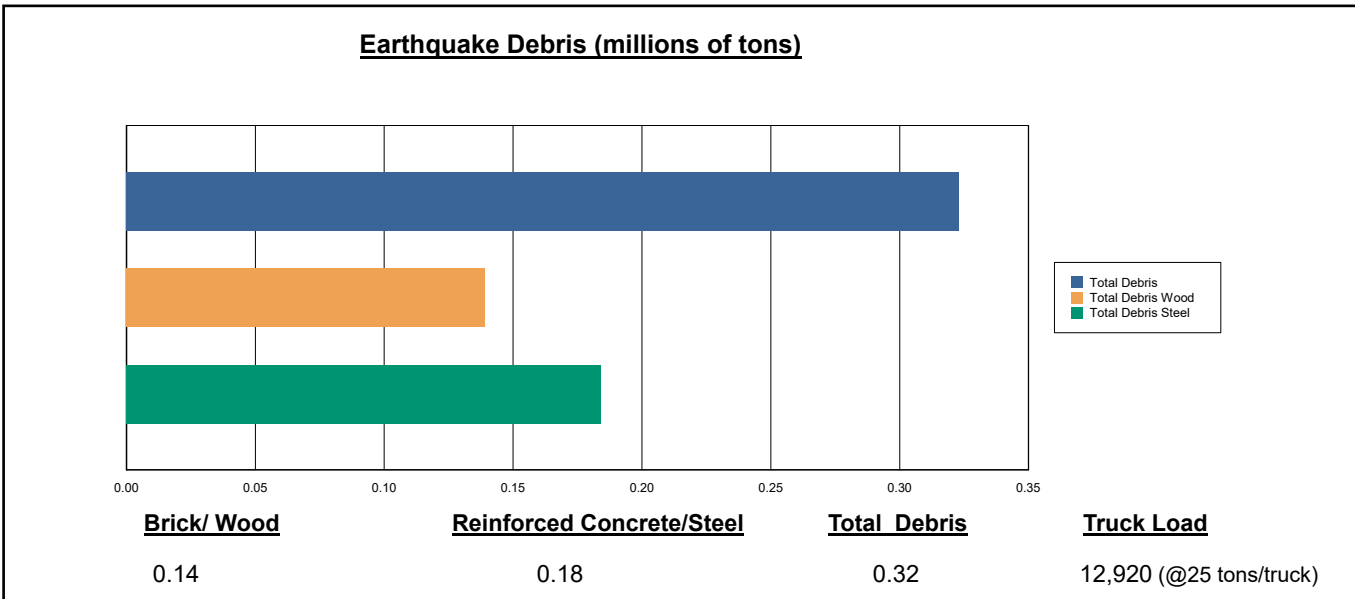
Fire Following Earthquake

Fires often occur after an earthquake. Because of the number of fires and the lack of water to fight the fires, they can often burn out of control. Hazus uses a Monte Carlo simulation model to estimate the number of ignitions and the amount of burnt area. For this scenario, the model estimates that there will be 7 ignitions that will burn about 0.10 sq. mi (0.00 % of the region's total area.) The model also estimates that the fires will displace about 998 people and burn about 89 (millions of dollars) of building value.

Debris Generation

Hazus estimates the amount of debris that will be generated by the earthquake. The model breaks the debris into two general categories: a) Brick/Wood and b) Reinforced Concrete/Steel. This distinction is made because of the different types of material handling equipment required to handle the debris.

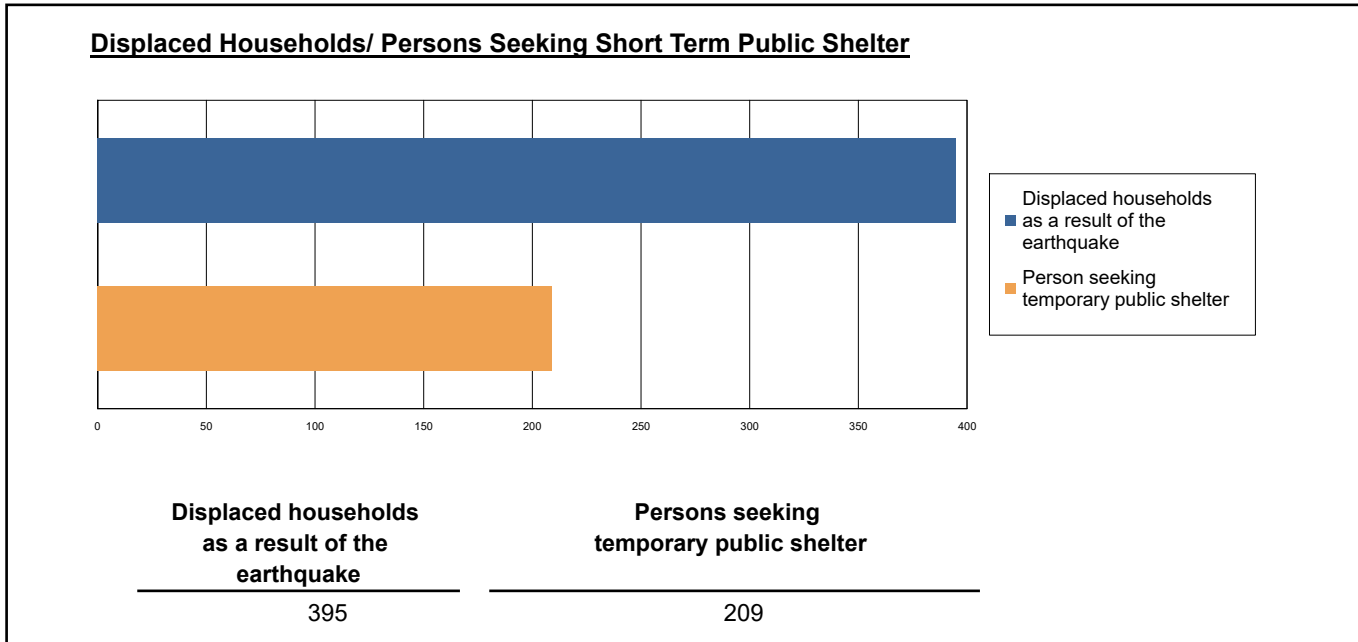
The model estimates that a total of 323,000 tons of debris will be generated. Of the total amount, Brick/Wood comprises 43.00% of the total, with the remainder being Reinforced Concrete/Steel. If the debris tonnage is converted to an estimated number of truckloads, it will require 12,920 truckloads (@25 tons/truck) to remove the debris generated by the earthquake.



Social Impact

Shelter Requirement

Hazus estimates the number of households that are expected to be displaced from their homes due to the earthquake and the number of displaced people that will require accommodations in temporary public shelters. The model estimates 395 households to be displaced due to the earthquake. Of these, 209 people (out of a total population of 26,043,496) will seek temporary shelter in public shelters.



Casualties

Hazus estimates the number of people that will be injured and killed by the earthquake. The casualties are broken down into four (4) severity levels that describe the extent of the injuries. The levels are described as follows;

- Severity Level 1: Injuries will require medical attention but hospitalization is not needed.
- Severity Level 2: Injuries will require hospitalization but are not considered life-threatening
- Severity Level 3: Injuries will require hospitalization and can become life threatening if not promptly treated.
- Severity Level 4: Victims are killed by the earthquake.

The casualty estimates are provided for three (3) times of day: 2:00 AM, 2:00 PM and 5:00 PM. These times represent the periods of the day that different sectors of the community are at their peak occupancy loads. The 2:00 AM estimate considers that the residential occupancy load is maximum, the 2:00 PM estimate considers that the educational, commercial and industrial sector loads are maximum and 5:00 PM represents peak commute time.

Table 10 provides a summary of the casualties estimated for this earthquake

Table 10: Casualty Estimates

		Level 1	Level 2	Level 3	Level 4
2 AM	Commercial	1.70	0.24	0.02	0.05
	Commuting	0.01	0.02	0.03	0.01
	Educational	0.00	0.00	0.00	0.00
	Hotels	0.20	0.03	0.00	0.01
	Industrial	1.98	0.26	0.02	0.04
	Other-Residential	104.24	11.83	0.61	1.14
	Single Family	52.58	1.33	0.00	0.01
	Total	161	14	1	1
	2 PM	Commercial	123.32	17.69	1.79
Commuting		0.12	0.15	0.27	0.05
Educational		24.10	2.31	0.16	0.30
Hotels		0.04	0.01	0.00	0.00
Industrial		14.46	1.89	0.16	0.32
Other-Residential		32.07	3.77	0.22	0.40
Single Family		16.18	0.46	0.00	0.00
Total		210	26	3	5
5 PM	Commercial	84.65	12.06	1.21	2.31
	Commuting	2.11	2.64	4.67	0.89
	Educational	3.80	0.28	0.02	0.03
	Hotels	0.06	0.01	0.00	0.00
	Industrial	9.04	1.18	0.10	0.20
	Other-Residential	37.81	4.38	0.24	0.44
	Single Family	18.95	0.51	0.00	0.00
	Total	156	21	6	4

Economic Loss

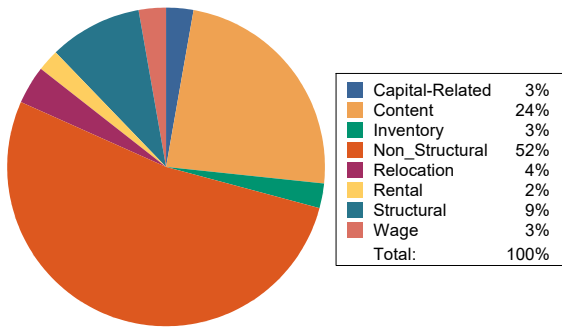
The total economic loss estimated for the earthquake is 4,391.57 (millions of dollars), which includes building and lifeline related losses based on the region's available inventory. The following three sections provide more detailed information about these losses.

Building-Related Losses

The building losses are broken into two categories: direct building losses and business interruption losses. The direct building losses are the estimated costs to repair or replace the damage caused to the building and its contents. The business interruption losses are the losses associated with inability to operate a business because of the damage sustained during the earthquake. Business interruption losses also include the temporary living expenses for those people displaced from their homes because of the earthquake.

The total building-related losses were 2,791.39 (millions of dollars); 12 % of the estimated losses were related to the business interruption of the region. By far, the largest loss was sustained by the residential occupancies which made up over 46 % of the total loss. Table 11 below provides a summary of the losses associated with the building damage.

Earthquake Losses by Loss Type (\$ millions)



Earthquake Losses by Occupancy Type (\$ millions)

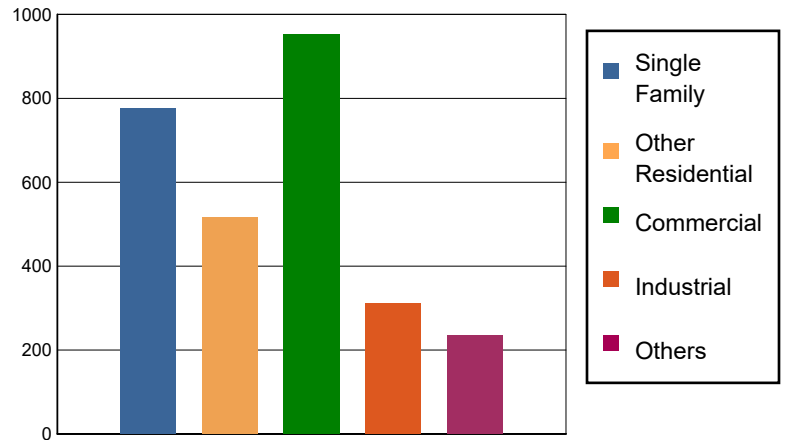


Table 11: Building-Related Economic Loss Estimates
(Millions of dollars)

Category	Area	Single Family	Other Residential	Commercial	Industrial	Others	Total
Income Losses							
	Wage	0.0000	5.9836	67.8933	2.6010	3.7619	80.2398
	Capital-Related	0.0000	2.5405	68.7115	1.6290	1.0400	73.9210
	Rental	5.6595	20.4381	36.1233	1.9679	1.3562	65.5450
	Relocation	14.3276	25.6638	44.7834	8.9826	9.5284	103.2858
	Subtotal	19.9871	54.6260	217.5115	15.1805	15.6865	322.9916
Capital Stock Losses							
	Structural	71.4122	52.2235	83.3857	28.2776	24.2440	259.5430
	Non_Structural	495.4191	324.7072	386.6519	148.1179	110.4677	1,465.3638
	Content	189.7184	84.8052	223.5282	103.2323	70.4332	671.7173
	Inventory	0.0000	0.0000	41.7141	16.3777	13.6852	71.7770
	Subtotal	756.5497	461.7359	735.2799	296.0055	218.8301	2468.4011
	Total	776.54	516.36	952.79	311.19	234.52	2791.39

Transportation and Utility Lifeline Losses

For the transportation and utility lifeline systems, Hazus computes the direct repair cost for each component only. There are no losses computed by Hazus for business interruption due to lifeline outages. Tables 12 & 13 provide a detailed breakdown in the expected lifeline losses.

Table 12: Transportation System Economic Losses
(Millions of dollars)

System	Component	Inventory Value	Economic Loss	Loss Ratio (%)
Highway	Segments	129857.4981	0.0000	0.00
	Bridges	82799.5671	23.1525	0.03
	Tunnels	1432.1384	0.2514	0.02
	Subtotal	214089.2036	23.4039	
Railways	Segments	91942.4543	0.0000	0.00
	Bridges	11180.8500	1.4994	0.01
	Tunnels	1.8495	0.0000	0.00
	Facilities	378.1460	4.4782	1.18
	Subtotal	103503.2998	5.9776	
Light Rail	Segments	8233.0240	0.0000	0.00
	Bridges	21.5267	0.0000	0.00
	Tunnels	0.0000	0.0000	0.00
	Facilities	6447.5200	30.3166	0.47
	Subtotal	14702.0707	30.3166	
Bus	Facilities	153.8125	3.5955	2.34
	Subtotal	153.8125	3.5955	
Ferry	Facilities	53.2400	0.3190	0.60
	Subtotal	53.2400	0.3190	
Port	Facilities	2180.3752	20.7596	0.95
	Subtotal	2180.3752	20.7596	
Airport	Facilities	5502.5588	40.7431	0.74
	Runways	2153.4019	0.0000	0.00
	Subtotal	7655.9607	40.7431	
Total		342,337.96	125.12	

Table 13: Utility System Economic Losses

(Millions of dollars)

System	Component	Inventory Value	Economic Loss	Loss Ratio (%)
Potable Water	Pipelines	0.0000	0.0000	0.00
	Facilities	1689.6420	15.4748	0.92
	Distribution Lines	5447.7281	9.7470	0.18
	Subtotal	7137.3701	25.2218	
Waste Water	Pipelines	0.0000	0.0000	0.00
	Facilities	31983.0348	210.1294	0.66
	Distribution Lines	3268.6368	4.8962	0.15
	Subtotal	35251.6716	215.0256	
Natural Gas	Pipelines	18417.6912	0.0000	0.00
	Facilities	1107.0372	2.4170	0.22
	Distribution Lines	2179.0912	1.6774	0.08
	Subtotal	21703.8196	4.0944	
Oil Systems	Pipelines	0.0000	0.0000	0.00
	Facilities	9.4400	0.0402	0.43
	Subtotal	9.4400	0.0402	
Electrical Power	Facilities	149413.4291	1229.3893	0.82
	Subtotal	149413.4291	1229.3893	
Communication	Facilities	72.5700	1.2916	1.78
	Subtotal	72.5700	1.2916	
	Total	213,588.30	1,475.06	

Appendix A: County Listing for the Region

Alameda,CA
Contra Costa,CA
Fresno,CA
Kern,CA
Kings,CA
Los Angeles,CA
Madera,CA
Marin,CA
Mariposa,CA
Merced,CA
Monterey,CA
Napa,CA
Sacramento,CA
San Benito,CA
San Francisco,CA
San Joaquin,CA
San Luis Obispo,CA
San Mateo,CA
Santa Barbara,CA
Santa Clara,CA
Santa Cruz,CA
Solano,CA
Sonoma,CA
Stanislaus,CA
Tulare,CA
Ventura,CA

Appendix B: Regional Population and Building Value Data

State	County Name	Population	Building Value (millions of dollars)		
			Residential	Non-Residential	Total
California	Alameda	1,682,353	209,951	122,639	332,590
	Contra Costa	1,165,927	158,118	60,339	218,458
	Fresno	1,008,654	98,532	61,772	160,304
	Kern	909,235	87,567	59,168	146,736
	Kings	152,486	13,719	7,861	21,581
	Los Angeles	10,014,009	950,697	566,995	1,517,692
	Madera	156,255	18,025	9,641	27,667
	Marin	262,321	47,738	15,030	62,769
	Mariposa	17,131	3,299	1,141	4,441
	Merced	281,202	25,194	26,098	51,292
	Monterey	439,035	47,655	28,750	76,405
	Napa	138,019	20,517	13,045	33,563
	Sacramento	1,585,055	179,811	83,911	263,723
	San Benito	64,209	9,440	3,799	13,239
	San Francisco	873,965	108,848	46,020	154,869
	San Joaquin	779,233	82,706	56,882	139,589
	San Luis Obispo	282,424	41,720	20,896	62,616
	San Mateo	764,442	110,372	44,995	155,368
	Santa Barbara	448,229	49,971	28,481	78,452
	Santa Clara	1,936,259	261,111	120,471	381,582
Santa Cruz	270,861	36,147	18,805	54,952	
Solano	453,491	55,802	26,393	82,195	
Sonoma	488,863	68,827	35,781	104,609	
Stanislaus	552,878	62,937	37,511	100,449	
Tulare	473,117	43,262	31,210	74,472	
Ventura	843,843	99,299	52,072	151,371	
Total Region		26,043,496	2,891,265	1,579,706	4,470,984

Building Inspection Tagging (Counts)

Total Economic Loss
Total:

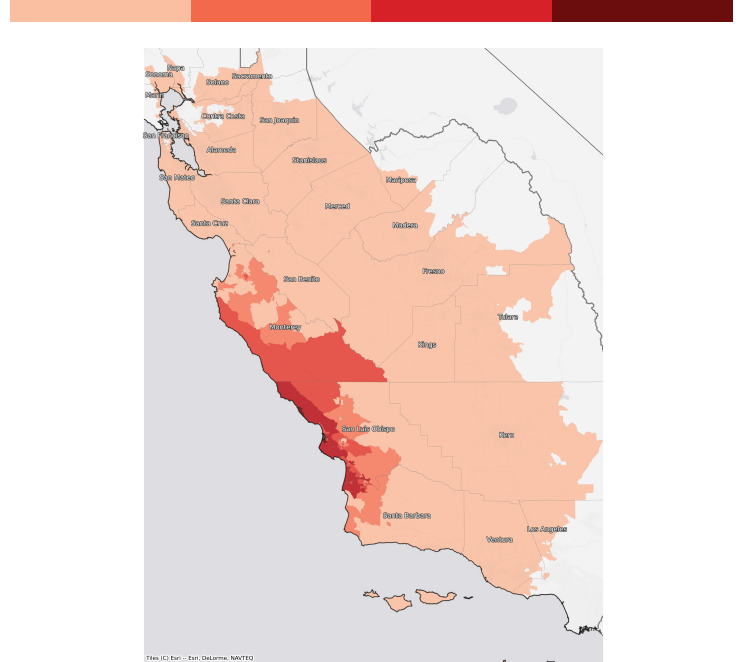
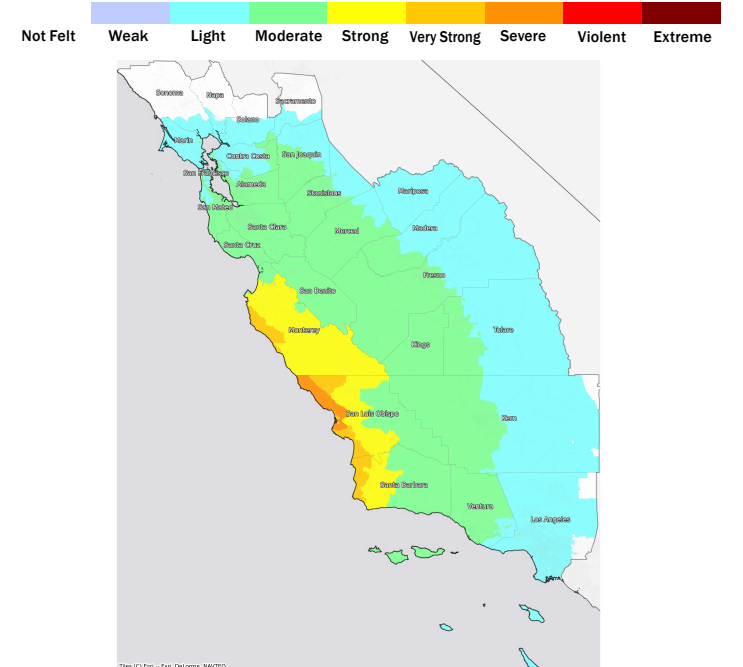
Top Counties	State	Total

Injuries & Fatalities
**Total Day:
Total Night:**

Top Counties	State	Injuries (day/night)	Fatalities (day/night)

Displaced Households & Short-Term Shelter Needs
**Total Displaced:
Total Needing Shelter:**

Top Counties	State	Displaced	Needing Shelter

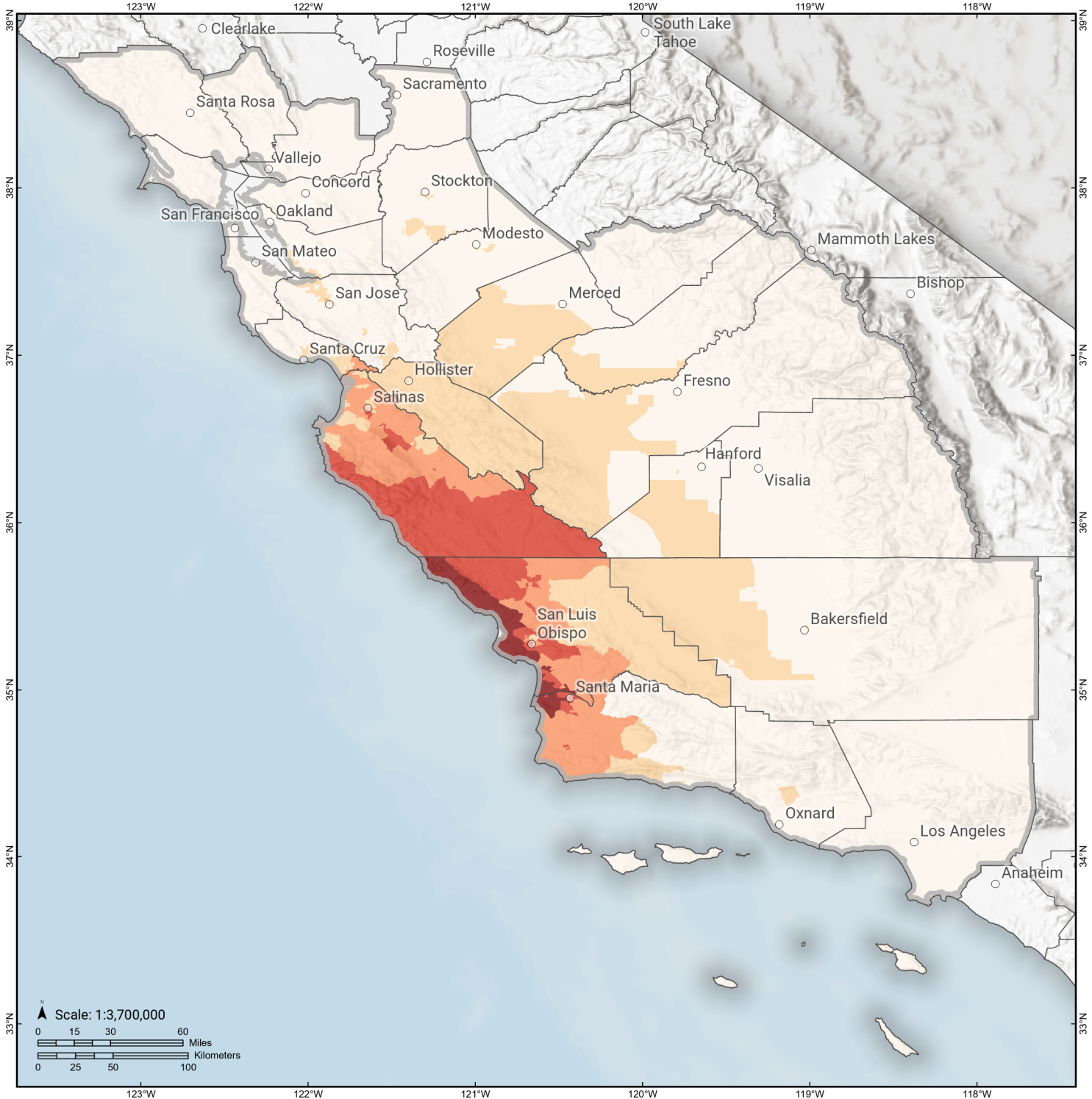
Economic Impacts by Census Tract

Ground Shaking

Debris
**Total Tons:
Total Truckloads:**

Type	Tons

The estimates of social and economic impacts contained in this report were produced using Hazus loss estimation methodology software which is based on current scientific and engineering knowledge. There are uncertainties inherent in any loss estimation technique. Therefore, there may be significant differences between the modeled results contained in this report and the actual social and economic losses following a specific earthquake.

Hosgri

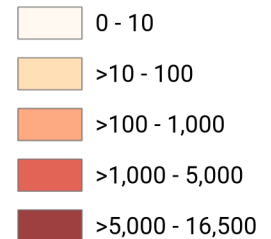
Debris Generated by Census Tract



Study Region: Hosgri
Scenario: hosgrishaw09modgeol_m7p54_se



Debris Generated (in tons)



Hosgri

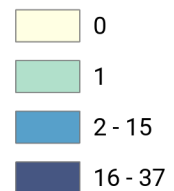
Displaced Households by Census Tract



Study Region: Hosgri
Scenario: hosgrishaw09modgeol_m7p54_se

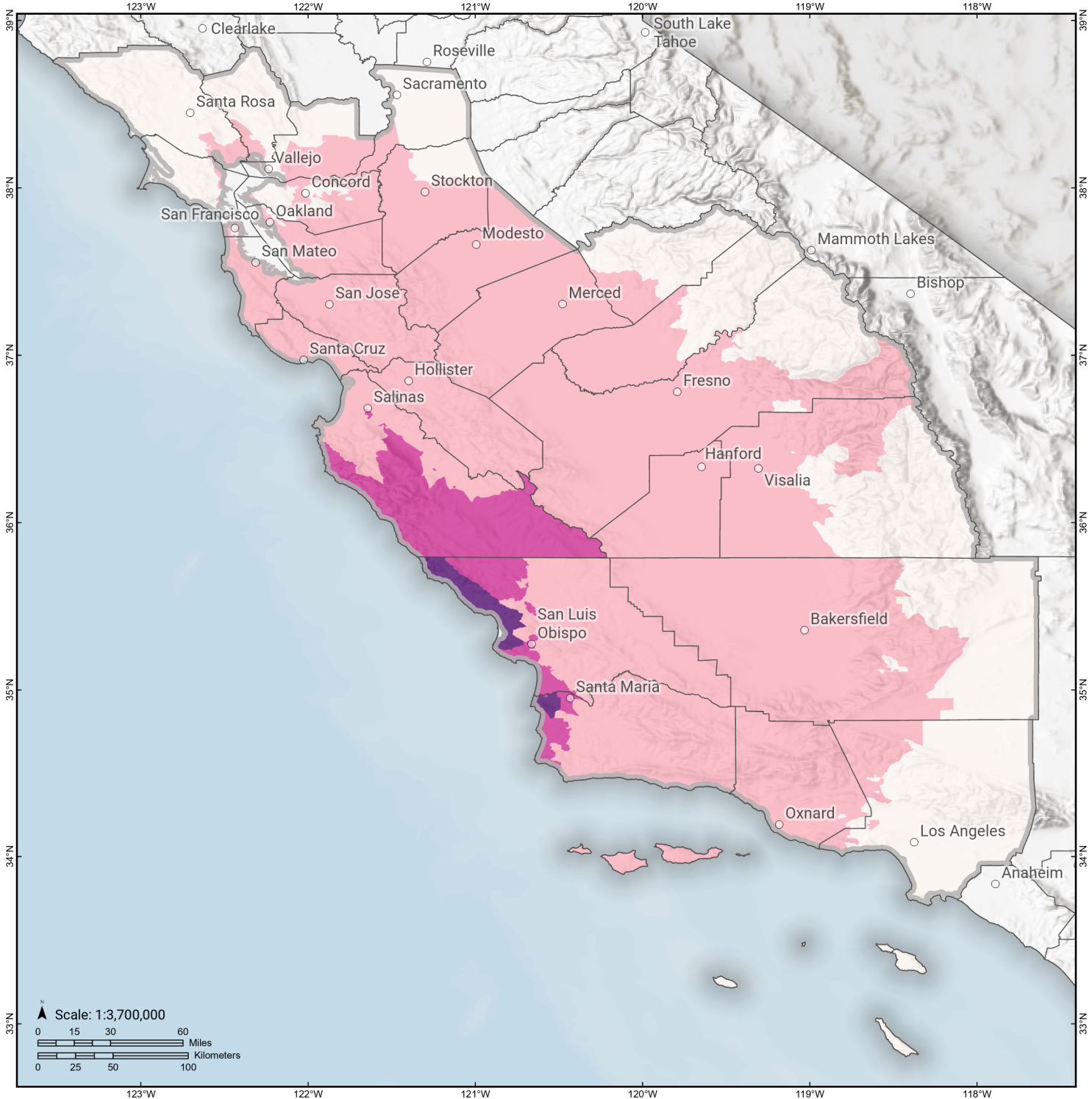


Displaced Households



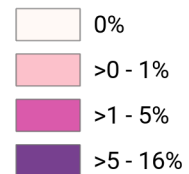
Hosgri

Loss Ratio by Census Tract



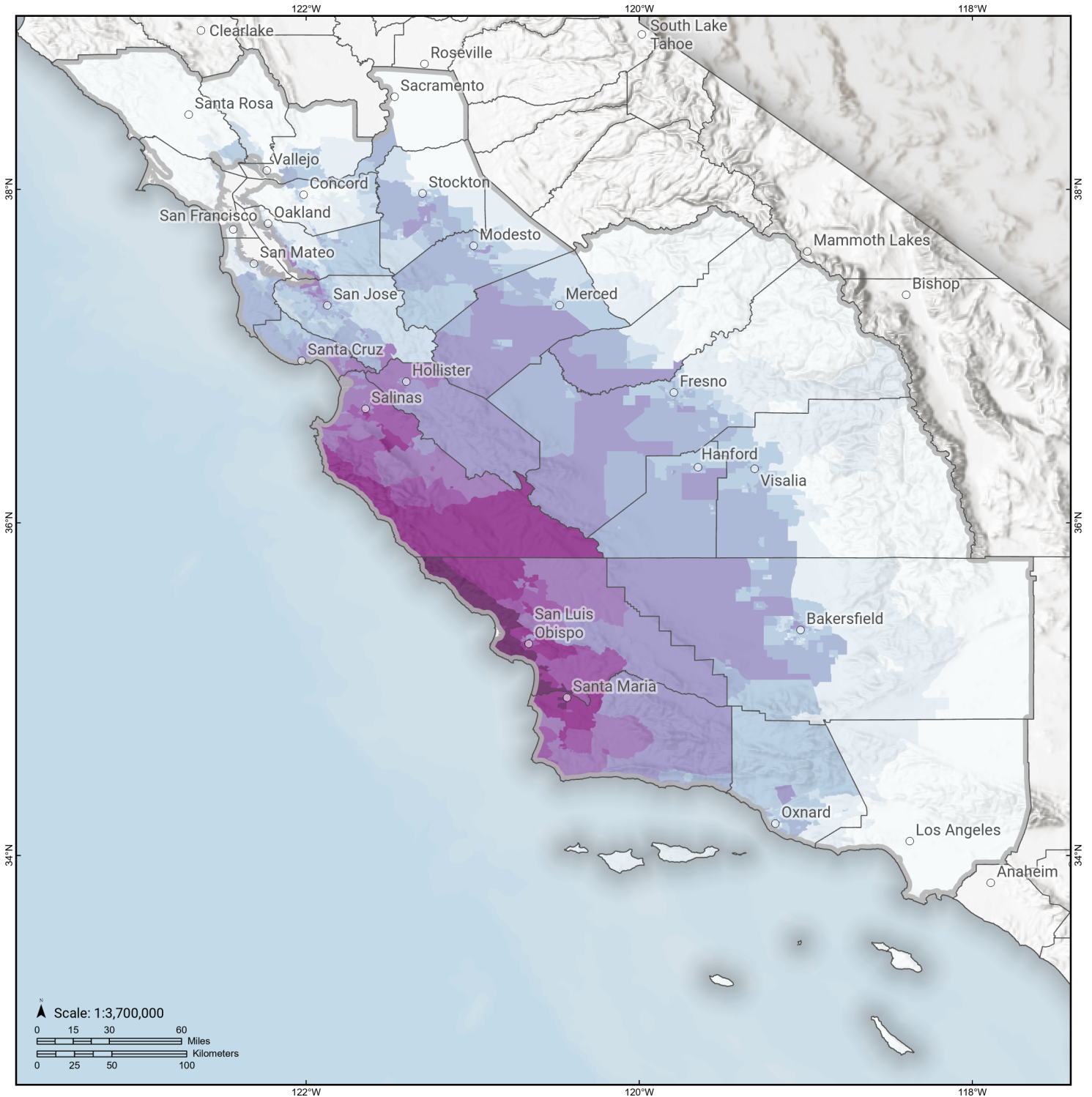
Study Region: Hosgri
Scenario: hosgrishaw09modgeol_m7p54_se

Loss Ratio (ratio of building related economic loss to exposed value of buildings)



Hosgri

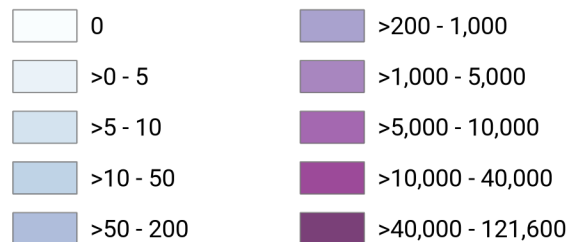
Total Building Related Economic Loss by Census Tract



Study Region: Hosgri
Scenario: hosgrishaw09modgeol_m7p54_se



Economic Loss (in thousands of USD \$)



Building Damage by Count by General Occupancy

June 05, 2024

	# of Buildings					Total
	None	Slight	Moderate	Extensive	Complete	
California						
Alameda						
<i>Government</i>	10,526	2	0	0	0	10,528
<i>Agriculture</i>	422	0	0	0	0	422
<i>Commercial</i>	31,972	17	1	0	0	31,989
<i>Religion</i>	1,985	1	0	0	0	1,986
<i>Single Family</i>	344,170	3	0	0	0	344,173
<i>Other Residential</i>	61,378	18	0	0	0	61,396
<i>Education</i>	1,117	0	0	0	0	1,117
<i>Industrial</i>	10,199	6	0	0	0	10,205
Contra Costa						
<i>Commercial</i>	17,990	1	0	0	0	17,991
<i>Agriculture</i>	749	0	0	0	0	749
<i>Religion</i>	1,226	0	0	0	0	1,226
<i>Single Family</i>	281,935	0	0	0	0	281,935
<i>Other Residential</i>	29,122	1	0	0	0	29,124
<i>Industrial</i>	4,749	0	0	0	0	4,749
<i>Government</i>	5,024	0	0	0	0	5,024
<i>Education</i>	653	0	0	0	0	653
Fresno						

		# of Buildings					
		None	Slight	Moderate	Extensive	Complete	Total
Kern	<i>Commercial</i>	21,040	13	1	0	0	21,054
	<i>Religion</i>	1,506	1	0	0	0	1,507
	<i>Agriculture</i>	3,415	6	0	0	0	3,421
	<i>Industrial</i>	5,344	4	0	0	0	5,348
	<i>Government</i>	290	1	0	0	0	291
	<i>Other Residential</i>	40,937	35	1	0	0	40,973
	<i>Single Family</i>	226,412	13	0	0	0	226,425
	<i>Education</i>	602	0	0	0	0	602
	<i>Single Family</i>	205,133	6	0	0	0	205,139
	<i>Other Residential</i>	54,473	45	2	0	0	54,520
	<i>Industrial</i>	6,043	3	0	0	0	6,047
	<i>Education</i>	462	0	0	0	0	462
	<i>Government</i>	443	0	0	0	0	443
	<i>Religion</i>	1,523	1	0	0	0	1,524
<i>Agriculture</i>	4,640	5	0	0	0	4,645	
Kings	<i>Commercial</i>	15,558	9	0	0	0	15,567
	<i>Commercial</i>	2,314	3	0	0	0	2,318
	<i>Religion</i>	210	0	0	0	0	210
	<i>Agriculture</i>	305	1	0	0	0	306
	<i>Government</i>	72	0	0	0	0	72
	<i>Industrial</i>	554	1	0	0	0	555
	<i>Single Family</i>	36,237	8	0	0	0	36,245
	<i>Other Residential</i>	4,332	9	0	0	0	4,342

	# of Buildings					Total
	None	Slight	Moderate	Extensive	Complete	
<i>Education</i>	103	0	0	0	0	103
Los Angeles						
<i>Industrial</i>	53,126	0	0	0	0	53,126
<i>Single Family</i>	1,803,140	0	0	0	0	1,803,140
<i>Other Residential</i>	481,671	0	0	0	0	481,671
<i>Education</i>	5,486	0	0	0	0	5,486
<i>Commercial</i>	190,861	0	0	0	0	190,861
<i>Agriculture</i>	2,032	0	0	0	0	2,032
<i>Religion</i>	10,651	0	0	0	0	10,651
<i>Government</i>	3,031	0	0	0	0	3,031
Madera						
<i>Commercial</i>	2,904	1	0	0	0	2,905
<i>Religion</i>	119	0	0	0	0	119
<i>Government</i>	111	0	0	0	0	111
<i>Agriculture</i>	633	1	0	0	0	634
<i>Other Residential</i>	6,633	2	0	0	0	6,635
<i>Single Family</i>	38,912	0	0	0	0	38,912
<i>Education</i>	115	0	0	0	0	115
<i>Industrial</i>	903	0	0	0	0	903
Marin						
<i>Other Residential</i>	7,890	0	0	0	0	7,890
<i>Government</i>	143	0	0	0	0	143
<i>Education</i>	274	0	0	0	0	274
<i>Commercial</i>	8,270	0	0	0	0	8,270
<i>Religion</i>	319	0	0	0	0	319

	# of Buildings					Total
	None	Slight	Moderate	Extensive	Complete	
<i>Agriculture</i>	190	0	0	0	0	190
<i>Single Family</i>	76,724	0	0	0	0	76,724
<i>Industrial</i>	1,535	0	0	0	0	1,535
Mariposa						
<i>Single Family</i>	8,084	0	0	0	0	8,084
<i>Other Residential</i>	307	0	0	0	0	307
<i>Education</i>	27	0	0	0	0	27
<i>Industrial</i>	94	0	0	0	0	94
<i>Commercial</i>	689	0	0	0	0	689
<i>Agriculture</i>	29	0	0	0	0	29
<i>Religion</i>	36	0	0	0	0	36
<i>Government</i>	33	0	0	0	0	33
Merced						
<i>Education</i>	163	0	0	0	0	163
<i>Government</i>	171	0	0	0	0	171
<i>Commercial</i>	4,750	3	0	0	0	4,754
<i>Agriculture</i>	7,627	24	2	0	0	7,653
<i>Religion</i>	345	0	0	0	0	345
<i>Industrial</i>	1,021	1	0	0	0	1,022
<i>Single Family</i>	63,590	8	0	0	0	63,598
<i>Other Residential</i>	10,772	15	1	0	0	10,787
Monterey						
<i>Single Family</i>	87,564	3,289	24	0	0	90,876
<i>Industrial</i>	1,649	151	46	5	0	1,850
<i>Other Residential</i>	17,887	1,511	389	21	0	19,809

		# of Buildings					
		None	Slight	Moderate	Extensive	Complete	Total
Napa	<i>Education</i>	234	4	1	0	0	239
	<i>Government</i>	172	11	2	0	0	185
	<i>Agriculture</i>	1,531	212	64	8	0	1,815
	<i>Commercial</i>	8,401	631	195	19	0	9,246
	<i>Religion</i>	512	51	16	1	0	580
	<i>Commercial</i>	4,021	0	0	0	0	4,021
	<i>Agriculture</i>	349	0	0	0	0	349
	<i>Religion</i>	148	0	0	0	0	148
	<i>Single Family</i>	38,761	0	0	0	0	38,761
	<i>Other Residential</i>	6,978	0	0	0	0	6,978
Sacramento	<i>Government</i>	103	0	0	0	0	103
	<i>Education</i>	132	0	0	0	0	132
	<i>Industrial</i>	1,367	0	0	0	0	1,367
	<i>Single Family</i>	386,840	0	0	0	0	386,840
	<i>Industrial</i>	6,756	0	0	0	0	6,756
	<i>Other Residential</i>	56,413	0	0	0	0	56,413
	<i>Education</i>	829	0	0	0	0	829
	<i>Agriculture</i>	621	0	0	0	0	621
	<i>Religion</i>	1,702	0	0	0	0	1,702
San Benito	<i>Government</i>	619	0	0	0	0	619
	<i>Commercial</i>	26,295	0	0	0	0	26,295
	<i>Other Residential</i>	1,345	28	2	0	0	1,375

	# of Buildings					Total
	None	Slight	Moderate	Extensive	Complete	
<i>Single Family</i>	14,634	92	0	0	0	14,726
<i>Industrial</i>	319	6	2	0	0	326
<i>Education</i>	41	1	0	0	0	42
<i>Government</i>	43	2	1	0	0	45
<i>Commercial</i>	1,049	26	5	0	0	1,080
<i>Religion</i>	62	2	0	0	0	64
<i>Agriculture</i>	250	2	0	0	0	253
San Francisco						
<i>Single Family</i>	150,699	4	0	0	0	150,703
<i>Other Residential</i>	44,520	9	0	0	0	44,529
<i>Government</i>	289	0	0	0	0	289
<i>Education</i>	572	0	0	0	0	572
<i>Industrial</i>	3,858	2	0	0	0	3,860
<i>Commercial</i>	21,333	11	0	0	0	21,344
<i>Religion</i>	1,345	0	0	0	0	1,345
<i>Agriculture</i>	162	0	0	0	0	162
San Joaquin						
<i>Commercial</i>	12,861	3	0	0	0	12,864
<i>Agriculture</i>	753	0	0	0	0	753
<i>Religion</i>	877	0	0	0	0	877
<i>Government</i>	304	0	0	0	0	304
<i>Single Family</i>	188,840	78	4	0	0	188,922
<i>Other Residential</i>	21,794	10	0	0	0	21,805
<i>Education</i>	395	0	0	0	0	395

	# of Buildings					Total
	None	Slight	Moderate	Extensive	Complete	
<i>Industrial</i>	4,927	1	0	0	0	4,928
San Luis Obispo						
<i>Religion</i>	242	78	34	6	0	360
<i>Agriculture</i>	297	82	32	8	3	421
<i>Government</i>	143	29	11	2	0	185
<i>Commercial</i>	6,251	2,077	847	167	33	9,375
<i>Single Family</i>	63,503	20,312	1,802	21	0	85,639
<i>Industrial</i>	1,758	544	212	39	3	2,556
<i>Other Residential</i>	11,619	5,088	2,858	611	40	20,216
<i>Education</i>	161	17	3	0	0	182
San Mateo						
<i>Religion</i>	735	1	0	0	0	736
<i>Agriculture</i>	538	1	0	0	0	539
<i>Government</i>	298	1	0	0	0	299
<i>Commercial</i>	14,378	16	1	0	0	14,395
<i>Industrial</i>	4,467	5	0	0	0	4,472
<i>Other Residential</i>	22,428	24	1	0	0	22,453
<i>Single Family</i>	159,913	18	0	0	0	159,931
<i>Education</i>	489	0	0	0	0	489
Santa Barbara						
<i>Government</i>	216	18	4	0	0	239
<i>Other Residential</i>	18,435	2,845	2,405	417	8	24,111
<i>Education</i>	285	12	2	0	0	299
<i>Religion</i>	528	69	22	2	0	621
<i>Commercial</i>	8,713	836	241	28	3	9,820

	# of Buildings					Total
	None	Slight	Moderate	Extensive	Complete	
<i>Agriculture</i>	404	44	14	2	0	464
<i>Single Family</i>	89,331	9,397	253	1	0	98,982
<i>Industrial</i>	2,396	317	113	12	1	2,840
Santa Clara						
<i>Other Residential</i>	59,003	149	8	0	0	59,160
<i>Single Family</i>	427,098	120	1	0	0	427,219
<i>Government</i>	497	4	0	0	0	502
<i>Education</i>	1,173	0	0	0	0	1,173
<i>Industrial</i>	9,409	23	1	0	0	9,433
<i>Commercial</i>	35,380	85	5	0	0	35,469
<i>Religion</i>	1,536	3	0	0	0	1,540
<i>Agriculture</i>	892	2	0	0	0	895
Santa Cruz						
<i>Religion</i>	353	5	1	0	0	359
<i>Agriculture</i>	823	14	3	0	0	840
<i>Single Family</i>	68,686	184	0	0	0	68,870
<i>Other Residential</i>	14,680	193	18	0	0	14,892
<i>Industrial</i>	1,789	25	5	0	0	1,819
<i>Education</i>	224	1	0	0	0	225
<i>Commercial</i>	6,605	79	10	0	0	6,694
<i>Government</i>	124	2	1	0	0	127
Solano						
<i>Religion</i>	454	0	0	0	0	454
<i>Agriculture</i>	245	0	0	0	0	245
<i>Government</i>	152	0	0	0	0	152

	# of Buildings					Total
	None	Slight	Moderate	Extensive	Complete	
<i>Commercial</i>	7,268	0	0	0	0	7,268
<i>Single Family</i>	120,968	0	0	0	0	120,968
<i>Industrial</i>	2,101	0	0	0	0	2,101
<i>Other Residential</i>	12,317	0	0	0	0	12,317
<i>Education</i>	225	0	0	0	0	225
Sonoma						
<i>Other Residential</i>	25,033	0	0	0	0	25,033
<i>Government</i>	319	0	0	0	0	319
<i>Education</i>	367	0	0	0	0	367
<i>Religion</i>	576	0	0	0	0	576
<i>Commercial</i>	12,110	0	0	0	0	12,110
<i>Agriculture</i>	1,304	0	0	0	0	1,304
<i>Single Family</i>	142,028	0	0	0	0	142,028
<i>Industrial</i>	3,825	0	0	0	0	3,825
Stanislaus						
<i>Other Residential</i>	19,561	8	0	0	0	19,569
<i>Single Family</i>	142,723	1	0	0	0	142,724
<i>Education</i>	307	0	0	0	0	307
<i>Government</i>	680	0	0	0	0	680
<i>Industrial</i>	3,474	1	0	0	0	3,475
<i>Commercial</i>	10,364	5	0	0	0	10,369
<i>Religion</i>	456	0	0	0	0	456
<i>Agriculture</i>	1,239	0	0	0	0	1,239
Tulare						
<i>Commercial</i>	8,871	2	0	0	0	8,873

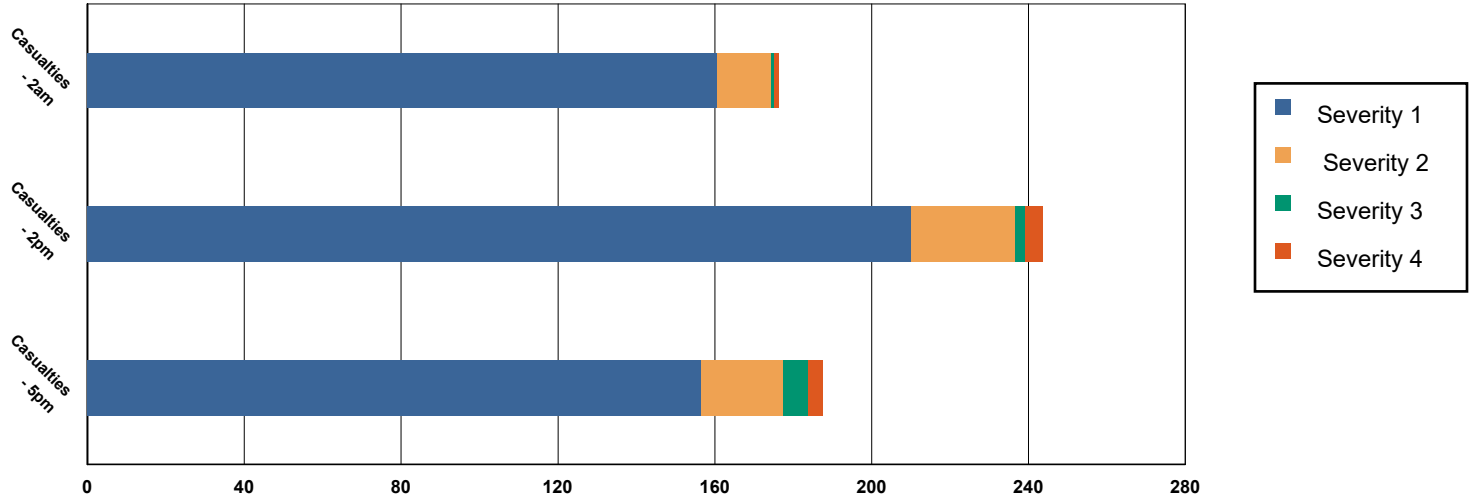
	# of Buildings					Total
	None	Slight	Moderate	Extensive	Complete	
<i>Agriculture</i>	3,554	1	0	0	0	3,555
<i>Religion</i>	827	0	0	0	0	827
<i>Government</i>	461	0	0	0	0	461
<i>Single Family</i>	112,034	0	0	0	0	112,034
<i>Other Residential</i>	20,015	7	0	0	0	20,022
<i>Industrial</i>	2,148	0	0	0	0	2,148
<i>Education</i>	269	0	0	0	0	269
Ventura						
<i>Agriculture</i>	598	0	0	0	0	598
<i>Religion</i>	1,187	0	0	0	0	1,187
<i>Industrial</i>	6,096	1	0	0	0	6,097
<i>Single Family</i>	203,968	0	0	0	0	203,968
<i>Other Residential</i>	26,152	11	0	0	0	26,163
<i>Education</i>	497	0	0	0	0	497
<i>Government</i>	1,001	0	0	0	0	1,001
<i>Commercial</i>	14,950	3	0	0	0	14,953
Total	7,296,247	49,172	9,672	1,373	93	7,356,557
Region Total	7,296,247	49,172	9,672	1,373	93	7,356,557

Totals only reflect data for those census tracts/blocks included in the user's study region and will reflect the entire county/state only if all of the census blocks for that county/states were selected at the time of study region creation.

Casualties Summary Report

June 05, 2024

Region Total Casualties



Injury Severity Level

Severity 1	Severity 2	Severity 3	Severity 4	Total
------------	------------	------------	------------	-------

California

Alameda

Casualties - 2am

	Severity 1	Severity 2	Severity 3	Severity 4	Total
Single Family	0	0	0	0	0
Hotels	0	0	0	0	0
Commuting	0	0	0	0	0
Educational	0	0	0	0	0
Industrial	0	0	0	0	0
Commercial	0	0	0	0	0
Other-Residential	0	0	0	0	0

Total Casualties - 2am

0	0	0	0	0
---	---	---	---	---

Casualties - 2pm

	Severity 1	Severity 2	Severity 3	Severity 4	Total
Industrial	0	0	0	0	0
Educational	0	0	0	0	0
Other-Residential	0	0	0	0	0
Single Family	0	0	0	0	0
Hotels	0	0	0	0	0
Commuting	0	0	0	0	0
Commercial	0	0	0	0	0

	Injury Severity Level				Total
	Severity 1	Severity 2	Severity 3	Severity 4	
California					
Alameda					
Total Casualties - 2pm	0	0	0	0	0
Casualties - 5pm					
<i>Commuting</i>	0	0	0	0	0
<i>Single Family</i>	0	0	0	0	0
<i>Commercial</i>	0	0	0	0	0
<i>Hotels</i>	0	0	0	0	0
<i>Educational</i>	0	0	0	0	0
<i>Industrial</i>	0	0	0	0	0
<i>Other-Residential</i>	0	0	0	0	0
Total Casualties - 5pm	0	0	0	0	0
Contra Costa					
Casualties - 2am					
<i>Educational</i>	0	0	0	0	0
<i>Hotels</i>	0	0	0	0	0
<i>Industrial</i>	0	0	0	0	0
<i>Other-Residential</i>	0	0	0	0	0
<i>Single Family</i>	0	0	0	0	0
<i>Commercial</i>	0	0	0	0	0
<i>Commuting</i>	0	0	0	0	0
Total Casualties - 2am	0	0	0	0	0
Casualties - 2pm					
<i>Other-Residential</i>	0	0	0	0	0
<i>Industrial</i>	0	0	0	0	0
<i>Hotels</i>	0	0	0	0	0
<i>Single Family</i>	0	0	0	0	0
<i>Educational</i>	0	0	0	0	0
<i>Commuting</i>	0	0	0	0	0
<i>Commercial</i>	0	0	0	0	0
Total Casualties - 2pm	0	0	0	0	0
Casualties - 5pm					
<i>Educational</i>	0	0	0	0	0
<i>Commuting</i>	0	0	0	0	0
<i>Single Family</i>	0	0	0	0	0
<i>Hotels</i>	0	0	0	0	0
<i>Industrial</i>	0	0	0	0	0
<i>Other-Residential</i>	0	0	0	0	0
<i>Commercial</i>	0	0	0	0	0
Total Casualties - 5pm	0	0	0	0	0
Fresno					
Casualties - 2am					
<i>Hotels</i>	0	0	0	0	0

	Injury Severity Level				Total
	Severity 1	Severity 2	Severity 3	Severity 4	
California					
Fresno					
Casualties - 2am					
<i>Educational</i>	0	0	0	0	0
<i>Industrial</i>	0	0	0	0	0
<i>Commercial</i>	0	0	0	0	0
<i>Other-Residential</i>	0	0	0	0	0
<i>Single Family</i>	0	0	0	0	0
<i>Commuting</i>	0	0	0	0	0
Total Casualties - 2am	0	0	0	0	0
Casualties - 2pm					
<i>Commercial</i>	0	0	0	0	0
<i>Other-Residential</i>	0	0	0	0	0
<i>Industrial</i>	0	0	0	0	0
<i>Single Family</i>	0	0	0	0	0
<i>Hotels</i>	0	0	0	0	0
<i>Commuting</i>	0	0	0	0	0
<i>Educational</i>	0	0	0	0	0
Total Casualties - 2pm	0	0	0	0	0
Casualties - 5pm					
<i>Educational</i>	0	0	0	0	0
<i>Commuting</i>	0	0	0	0	0
<i>Hotels</i>	0	0	0	0	0
<i>Industrial</i>	0	0	0	0	0
<i>Single Family</i>	0	0	0	0	0
<i>Other-Residential</i>	0	0	0	0	0
<i>Commercial</i>	0	0	0	0	0
Total Casualties - 5pm	0	0	0	0	0
Kern					
Casualties - 2am					
<i>Commercial</i>	0	0	0	0	0
<i>Commuting</i>	0	0	0	0	0
<i>Educational</i>	0	0	0	0	0
<i>Single Family</i>	0	0	0	0	0
<i>Other-Residential</i>	0	0	0	0	0
<i>Hotels</i>	0	0	0	0	0
<i>Industrial</i>	0	0	0	0	0
Total Casualties - 2am	0	0	0	0	0
Casualties - 2pm					
<i>Educational</i>	0	0	0	0	0
<i>Commuting</i>	0	0	0	0	0
<i>Single Family</i>	0	0	0	0	0
<i>Hotels</i>	0	0	0	0	0
<i>Other-Residential</i>	0	0	0	0	0

	Injury Severity Level				Total
	Severity 1	Severity 2	Severity 3	Severity 4	
California					
Kern					
Casualties - 2pm					
<i>Commercial</i>	0	0	0	0	0
<i>Industrial</i>	0	0	0	0	0
Total Casualties - 2pm	0	0	0	0	0
Casualties - 5pm					
<i>Single Family</i>	0	0	0	0	0
<i>Commercial</i>	0	0	0	0	0
<i>Other-Residential</i>	0	0	0	0	0
<i>Commuting</i>	0	0	0	0	0
<i>Educational</i>	0	0	0	0	0
<i>Hotels</i>	0	0	0	0	0
<i>Industrial</i>	0	0	0	0	0
Total Casualties - 5pm	0	0	0	0	0
Kings					
Casualties - 2am					
<i>Industrial</i>	0	0	0	0	0
<i>Other-Residential</i>	0	0	0	0	0
<i>Educational</i>	0	0	0	0	0
<i>Commuting</i>	0	0	0	0	0
<i>Commercial</i>	0	0	0	0	0
<i>Single Family</i>	0	0	0	0	0
<i>Hotels</i>	0	0	0	0	0
Total Casualties - 2am	0	0	0	0	0
Casualties - 2pm					
<i>Single Family</i>	0	0	0	0	0
<i>Other-Residential</i>	0	0	0	0	0
<i>Commercial</i>	0	0	0	0	0
<i>Educational</i>	0	0	0	0	0
<i>Commuting</i>	0	0	0	0	0
<i>Hotels</i>	0	0	0	0	0
<i>Industrial</i>	0	0	0	0	0
Total Casualties - 2pm	0	0	0	0	0
Casualties - 5pm					
<i>Single Family</i>	0	0	0	0	0
<i>Commercial</i>	0	0	0	0	0
<i>Commuting</i>	0	0	0	0	0
<i>Other-Residential</i>	0	0	0	0	0
<i>Educational</i>	0	0	0	0	0
<i>Hotels</i>	0	0	0	0	0
<i>Industrial</i>	0	0	0	0	0
Total Casualties - 5pm	0	0	0	0	0

	Injury Severity Level				Total
	Severity 1	Severity 2	Severity 3	Severity 4	
California					
Los Angeles					
Casualties - 2am					
<i>Hotels</i>	0	0	0	0	0
<i>Industrial</i>	0	0	0	0	0
<i>Educational</i>	0	0	0	0	0
<i>Single Family</i>	0	0	0	0	0
<i>Commuting</i>	0	0	0	0	0
<i>Other-Residential</i>	0	0	0	0	0
<i>Commercial</i>	0	0	0	0	0
Total Casualties - 2am	0	0	0	0	0
Casualties - 2pm					
<i>Industrial</i>	0	0	0	0	0
<i>Other-Residential</i>	0	0	0	0	0
<i>Commercial</i>	0	0	0	0	0
<i>Commuting</i>	0	0	0	0	0
<i>Educational</i>	0	0	0	0	0
<i>Single Family</i>	0	0	0	0	0
<i>Hotels</i>	0	0	0	0	0
Total Casualties - 2pm	0	0	0	0	0
Casualties - 5pm					
<i>Other-Residential</i>	0	0	0	0	0
<i>Industrial</i>	0	0	0	0	0
<i>Commuting</i>	0	0	0	0	0
<i>Single Family</i>	0	0	0	0	0
<i>Commercial</i>	0	0	0	0	0
<i>Hotels</i>	0	0	0	0	0
<i>Educational</i>	0	0	0	0	0
Total Casualties - 5pm	0	0	0	0	0
Madera					
Casualties - 2am					
<i>Hotels</i>	0	0	0	0	0
<i>Educational</i>	0	0	0	0	0
<i>Single Family</i>	0	0	0	0	0
<i>Commuting</i>	0	0	0	0	0
<i>Industrial</i>	0	0	0	0	0
<i>Commercial</i>	0	0	0	0	0
<i>Other-Residential</i>	0	0	0	0	0
Total Casualties - 2am	0	0	0	0	0
Casualties - 2pm					
<i>Industrial</i>	0	0	0	0	0
<i>Commercial</i>	0	0	0	0	0
<i>Other-Residential</i>	0	0	0	0	0
<i>Commuting</i>	0	0	0	0	0

	Injury Severity Level				Total
	Severity 1	Severity 2	Severity 3	Severity 4	
California					
Madera					
Casualties - 2pm					
Single Family	0	0	0	0	0
Hotels	0	0	0	0	0
Educational	0	0	0	0	0
Total Casualties - 2pm	0	0	0	0	0
Casualties - 5pm					
Industrial	0	0	0	0	0
Commercial	0	0	0	0	0
Single Family	0	0	0	0	0
Educational	0	0	0	0	0
Other-Residential	0	0	0	0	0
Commuting	0	0	0	0	0
Hotels	0	0	0	0	0
Total Casualties - 5pm	0	0	0	0	0
Marin					
Casualties - 2am					
Commercial	0	0	0	0	0
Commuting	0	0	0	0	0
Other-Residential	0	0	0	0	0
Educational	0	0	0	0	0
Single Family	0	0	0	0	0
Hotels	0	0	0	0	0
Industrial	0	0	0	0	0
Total Casualties - 2am	0	0	0	0	0
Casualties - 2pm					
Hotels	0	0	0	0	0
Commuting	0	0	0	0	0
Educational	0	0	0	0	0
Industrial	0	0	0	0	0
Other-Residential	0	0	0	0	0
Commercial	0	0	0	0	0
Single Family	0	0	0	0	0
Total Casualties - 2pm	0	0	0	0	0
Casualties - 5pm					
Commuting	0	0	0	0	0
Commercial	0	0	0	0	0
Other-Residential	0	0	0	0	0
Single Family	0	0	0	0	0
Industrial	0	0	0	0	0
Educational	0	0	0	0	0
Hotels	0	0	0	0	0

	Injury Severity Level				Total
	Severity 1	Severity 2	Severity 3	Severity 4	
California					
Marin					
Total Casualties - 5pm	0	0	0	0	0
Mariposa					
Casualties - 2am					
<i>Commuting</i>	0	0	0	0	0
<i>Single Family</i>	0	0	0	0	0
<i>Commercial</i>	0	0	0	0	0
<i>Hotels</i>	0	0	0	0	0
<i>Educational</i>	0	0	0	0	0
<i>Industrial</i>	0	0	0	0	0
<i>Other-Residential</i>	0	0	0	0	0
Total Casualties - 2am	0	0	0	0	0
Casualties - 2pm					
<i>Hotels</i>	0	0	0	0	0
<i>Industrial</i>	0	0	0	0	0
<i>Commercial</i>	0	0	0	0	0
<i>Other-Residential</i>	0	0	0	0	0
<i>Educational</i>	0	0	0	0	0
<i>Commuting</i>	0	0	0	0	0
<i>Single Family</i>	0	0	0	0	0
Total Casualties - 2pm	0	0	0	0	0
Casualties - 5pm					
<i>Other-Residential</i>	0	0	0	0	0
<i>Educational</i>	0	0	0	0	0
<i>Commuting</i>	0	0	0	0	0
<i>Hotels</i>	0	0	0	0	0
<i>Single Family</i>	0	0	0	0	0
<i>Commercial</i>	0	0	0	0	0
<i>Industrial</i>	0	0	0	0	0
Total Casualties - 5pm	0	0	0	0	0
Merced					
Casualties - 2am					
<i>Hotels</i>	0	0	0	0	0
<i>Industrial</i>	0	0	0	0	0
<i>Commercial</i>	0	0	0	0	0
<i>Single Family</i>	0	0	0	0	0
<i>Other-Residential</i>	0	0	0	0	0
<i>Educational</i>	0	0	0	0	0
<i>Commuting</i>	0	0	0	0	0
Total Casualties - 2am	0	0	0	0	0
Casualties - 2pm					
<i>Other-Residential</i>	0	0	0	0	0

	Injury Severity Level				Total
	Severity 1	Severity 2	Severity 3	Severity 4	
California					
Merced					
Casualties - 2pm					
<i>Industrial</i>	0	0	0	0	0
<i>Commercial</i>	0	0	0	0	0
<i>Commuting</i>	0	0	0	0	0
<i>Hotels</i>	0	0	0	0	0
<i>Educational</i>	0	0	0	0	0
<i>Single Family</i>	0	0	0	0	0
Total Casualties - 2pm	0	0	0	0	0
Casualties - 5pm					
<i>Industrial</i>	0	0	0	0	0
<i>Hotels</i>	0	0	0	0	0
<i>Educational</i>	0	0	0	0	0
<i>Commuting</i>	0	0	0	0	0
<i>Single Family</i>	0	0	0	0	0
<i>Commercial</i>	0	0	0	0	0
<i>Other-Residential</i>	0	0	0	0	0
Total Casualties - 5pm	0	0	0	0	0
Monterey					
Casualties - 2am					
<i>Other-Residential</i>	9	1	0	0	9
<i>Commuting</i>	0	0	0	0	0
<i>Commercial</i>	0	0	0	0	0
<i>Single Family</i>	5	0	0	0	5
<i>Hotels</i>	0	0	0	0	0
<i>Educational</i>	0	0	0	0	0
<i>Industrial</i>	0	0	0	0	0
Total Casualties - 2am	14	1	0	0	15
Casualties - 2pm					
<i>Commuting</i>	0	0	0	0	0
<i>Commercial</i>	16	1	0	0	17
<i>Single Family</i>	1	0	0	0	1
<i>Hotels</i>	0	0	0	0	0
<i>Educational</i>	3	0	0	0	4
<i>Industrial</i>	1	0	0	0	2
<i>Other-Residential</i>	3	0	0	0	3
Total Casualties - 2pm	24	2	0	0	26
Casualties - 5pm					
<i>Commercial</i>	12	1	0	0	12
<i>Other-Residential</i>	3	0	0	0	3
<i>Industrial</i>	1	0	0	0	1
<i>Hotels</i>	0	0	0	0	0
<i>Educational</i>	1	0	0	0	1

	Injury Severity Level				Total
	Severity 1	Severity 2	Severity 3	Severity 4	
California					
Monterey					
Casualties - 5pm					
<i>Commuting</i>	0	0	1	0	1
<i>Single Family</i>	2	0	0	0	2
Total Casualties - 5pm	18	2	1	0	21
Napa					
Casualties - 2am					
<i>Commercial</i>	0	0	0	0	0
<i>Other-Residential</i>	0	0	0	0	0
<i>Educational</i>	0	0	0	0	0
<i>Single Family</i>	0	0	0	0	0
<i>Commuting</i>	0	0	0	0	0
<i>Hotels</i>	0	0	0	0	0
<i>Industrial</i>	0	0	0	0	0
Total Casualties - 2am	0	0	0	0	0
Casualties - 2pm					
<i>Educational</i>	0	0	0	0	0
<i>Hotels</i>	0	0	0	0	0
<i>Commuting</i>	0	0	0	0	0
<i>Industrial</i>	0	0	0	0	0
<i>Other-Residential</i>	0	0	0	0	0
<i>Single Family</i>	0	0	0	0	0
<i>Commercial</i>	0	0	0	0	0
Total Casualties - 2pm	0	0	0	0	0
Casualties - 5pm					
<i>Commercial</i>	0	0	0	0	0
<i>Single Family</i>	0	0	0	0	0
<i>Other-Residential</i>	0	0	0	0	0
<i>Commuting</i>	0	0	0	0	0
<i>Industrial</i>	0	0	0	0	0
<i>Educational</i>	0	0	0	0	0
<i>Hotels</i>	0	0	0	0	0
Total Casualties - 5pm	0	0	0	0	0
Sacramento					
Casualties - 2am					
<i>Industrial</i>	0	0	0	0	0
<i>Other-Residential</i>	0	0	0	0	0
<i>Commercial</i>	0	0	0	0	0
<i>Single Family</i>	0	0	0	0	0
<i>Hotels</i>	0	0	0	0	0
<i>Commuting</i>	0	0	0	0	0
<i>Educational</i>	0	0	0	0	0

	Injury Severity Level				Total
	Severity 1	Severity 2	Severity 3	Severity 4	
California					
Sacramento					
Total Casualties - 2am	0	0	0	0	0
Casualties - 2pm					
<i>Other-Residential</i>	0	0	0	0	0
<i>Commuting</i>	0	0	0	0	0
<i>Single Family</i>	0	0	0	0	0
<i>Commercial</i>	0	0	0	0	0
<i>Hotels</i>	0	0	0	0	0
<i>Educational</i>	0	0	0	0	0
<i>Industrial</i>	0	0	0	0	0
Total Casualties - 2pm	0	0	0	0	0
Casualties - 5pm					
<i>Industrial</i>	0	0	0	0	0
<i>Educational</i>	0	0	0	0	0
<i>Hotels</i>	0	0	0	0	0
<i>Commercial</i>	0	0	0	0	0
<i>Commuting</i>	0	0	0	0	0
<i>Other-Residential</i>	0	0	0	0	0
<i>Single Family</i>	0	0	0	0	0
Total Casualties - 5pm	0	0	0	0	0
San Benito					
Casualties - 2am					
<i>Other-Residential</i>	0	0	0	0	0
<i>Commercial</i>	0	0	0	0	0
<i>Commuting</i>	0	0	0	0	0
<i>Hotels</i>	0	0	0	0	0
<i>Educational</i>	0	0	0	0	0
<i>Single Family</i>	0	0	0	0	0
<i>Industrial</i>	0	0	0	0	0
Total Casualties - 2am	0	0	0	0	0
Casualties - 2pm					
<i>Hotels</i>	0	0	0	0	0
<i>Educational</i>	0	0	0	0	0
<i>Industrial</i>	0	0	0	0	0
<i>Other-Residential</i>	0	0	0	0	0
<i>Commercial</i>	0	0	0	0	0
<i>Commuting</i>	0	0	0	0	0
<i>Single Family</i>	0	0	0	0	0
Total Casualties - 2pm	1	0	0	0	1
Casualties - 5pm					
<i>Commuting</i>	0	0	0	0	0
<i>Commercial</i>	0	0	0	0	0

	Injury Severity Level				Total
	Severity 1	Severity 2	Severity 3	Severity 4	
California					
San Benito					
Casualties - 5pm					
<i>Other-Residential</i>	0	0	0	0	0
<i>Single Family</i>	0	0	0	0	0
<i>Industrial</i>	0	0	0	0	0
<i>Educational</i>	0	0	0	0	0
<i>Hotels</i>	0	0	0	0	0
Total Casualties - 5pm	0	0	0	0	0
San Francisco					
Casualties - 2am					
<i>Industrial</i>	0	0	0	0	0
<i>Hotels</i>	0	0	0	0	0
<i>Commercial</i>	0	0	0	0	0
<i>Other-Residential</i>	0	0	0	0	0
<i>Commuting</i>	0	0	0	0	0
<i>Educational</i>	0	0	0	0	0
<i>Single Family</i>	0	0	0	0	0
Total Casualties - 2am	0	0	0	0	0
Casualties - 2pm					
<i>Commercial</i>	0	0	0	0	0
<i>Industrial</i>	0	0	0	0	0
<i>Other-Residential</i>	0	0	0	0	0
<i>Single Family</i>	0	0	0	0	0
<i>Hotels</i>	0	0	0	0	0
<i>Commuting</i>	0	0	0	0	0
<i>Educational</i>	0	0	0	0	0
Total Casualties - 2pm	0	0	0	0	0
Casualties - 5pm					
<i>Educational</i>	0	0	0	0	0
<i>Hotels</i>	0	0	0	0	0
<i>Industrial</i>	0	0	0	0	0
<i>Commuting</i>	0	0	0	0	0
<i>Commercial</i>	0	0	0	0	0
<i>Other-Residential</i>	0	0	0	0	0
<i>Single Family</i>	0	0	0	0	0
Total Casualties - 5pm	0	0	0	0	0
San Joaquin					
Casualties - 2am					
<i>Educational</i>	0	0	0	0	0
<i>Commuting</i>	0	0	0	0	0
<i>Hotels</i>	0	0	0	0	0
<i>Commercial</i>	0	0	0	0	0
<i>Single Family</i>	0	0	0	0	0

	Injury Severity Level				Total
	Severity 1	Severity 2	Severity 3	Severity 4	
California					
San Joaquin					
Casualties - 2am					
<i>Industrial</i>	0	0	0	0	0
<i>Other-Residential</i>	0	0	0	0	0
Total Casualties - 2am	0	0	0	0	0
Casualties - 2pm					
<i>Industrial</i>	0	0	0	0	0
<i>Other-Residential</i>	0	0	0	0	0
<i>Educational</i>	0	0	0	0	0
<i>Single Family</i>	0	0	0	0	0
<i>Hotels</i>	0	0	0	0	0
<i>Commuting</i>	0	0	0	0	0
<i>Commercial</i>	0	0	0	0	0
Total Casualties - 2pm	0	0	0	0	0
Casualties - 5pm					
<i>Commuting</i>	0	0	0	0	0
<i>Single Family</i>	0	0	0	0	0
<i>Educational</i>	0	0	0	0	0
<i>Hotels</i>	0	0	0	0	0
<i>Industrial</i>	0	0	0	0	0
<i>Commercial</i>	0	0	0	0	0
<i>Other-Residential</i>	0	0	0	0	0
Total Casualties - 5pm	0	0	0	0	0
San Luis Obispo					
Casualties - 2am					
<i>Commercial</i>	1	0	0	0	1
<i>Other-Residential</i>	49	6	0	1	57
<i>Industrial</i>	1	0	0	0	1
<i>Single Family</i>	30	1	0	0	31
<i>Commuting</i>	0	0	0	0	0
<i>Educational</i>	0	0	0	0	0
<i>Hotels</i>	0	0	0	0	0
Total Casualties - 2am	82	8	0	1	91
Casualties - 2pm					
<i>Single Family</i>	10	0	0	0	10
<i>Educational</i>	10	1	0	0	11
<i>Other-Residential</i>	16	2	0	0	19
<i>Hotels</i>	0	0	0	0	0
<i>Commuting</i>	0	0	0	0	0
<i>Commercial</i>	79	14	2	3	97
<i>Industrial</i>	9	1	0	0	11
Total Casualties - 2pm	124	19	2	4	149

	Injury Severity Level				Total
	Severity 1	Severity 2	Severity 3	Severity 4	
California					
San Luis Obispo					
Casualties - 5pm					
<i>Industrial</i>	6	1	0	0	7
<i>Other-Residential</i>	18	2	0	0	21
<i>Commuting</i>	1	2	3	1	7
<i>Single Family</i>	11	0	0	0	11
<i>Commercial</i>	52	9	1	2	63
<i>Hotels</i>	0	0	0	0	0
<i>Educational</i>	1	0	0	0	1
Total Casualties - 5pm	88	14	4	3	110
San Mateo					
Casualties - 2am					
<i>Industrial</i>	0	0	0	0	0
<i>Other-Residential</i>	0	0	0	0	0
<i>Single Family</i>	0	0	0	0	0
<i>Commercial</i>	0	0	0	0	0
<i>Educational</i>	0	0	0	0	0
<i>Commuting</i>	0	0	0	0	0
<i>Hotels</i>	0	0	0	0	0
Total Casualties - 2am	0	0	0	0	0
Casualties - 2pm					
<i>Other-Residential</i>	0	0	0	0	0
<i>Single Family</i>	0	0	0	0	0
<i>Commuting</i>	0	0	0	0	0
<i>Commercial</i>	0	0	0	0	0
<i>Educational</i>	0	0	0	0	0
<i>Hotels</i>	0	0	0	0	0
<i>Industrial</i>	0	0	0	0	0
Total Casualties - 2pm	1	0	0	0	1
Casualties - 5pm					
<i>Commercial</i>	0	0	0	0	0
<i>Industrial</i>	0	0	0	0	0
<i>Other-Residential</i>	0	0	0	0	0
<i>Single Family</i>	0	0	0	0	0
<i>Educational</i>	0	0	0	0	0
<i>Commuting</i>	0	0	0	0	0
<i>Hotels</i>	0	0	0	0	0
Total Casualties - 5pm	0	0	0	0	0
Santa Barbara					
Casualties - 2am					
<i>Industrial</i>	0	0	0	0	1
<i>Commercial</i>	0	0	0	0	0
<i>Other-Residential</i>	44	5	0	0	49

	Injury Severity Level				Total
	Severity 1	Severity 2	Severity 3	Severity 4	
California					
Santa Barbara					
Casualties - 2am					
<i>Commuting</i>	0	0	0	0	0
<i>Educational</i>	0	0	0	0	0
<i>Single Family</i>	17	0	0	0	17
<i>Hotels</i>	0	0	0	0	0
Total Casualties - 2am	62	5	0	0	67
Casualties - 2pm					
<i>Commercial</i>	25	3	0	0	28
<i>Single Family</i>	5	0	0	0	5
<i>Other-Residential</i>	12	1	0	0	14
<i>Commuting</i>	0	0	0	0	0
<i>Educational</i>	10	1	0	0	11
<i>Hotels</i>	0	0	0	0	0
<i>Industrial</i>	4	0	0	0	4
Total Casualties - 2pm	55	6	0	1	62
Casualties - 5pm					
<i>Other-Residential</i>	16	2	0	0	18
<i>Single Family</i>	6	0	0	0	6
<i>Commercial</i>	19	2	0	0	21
<i>Commuting</i>	1	1	1	0	3
<i>Educational</i>	2	0	0	0	2
<i>Industrial</i>	2	0	0	0	2
<i>Hotels</i>	0	0	0	0	0
Total Casualties - 5pm	45	5	1	1	53
Santa Clara					
Casualties - 2am					
<i>Commuting</i>	0	0	0	0	0
<i>Educational</i>	0	0	0	0	0
<i>Single Family</i>	0	0	0	0	0
<i>Hotels</i>	0	0	0	0	0
<i>Industrial</i>	0	0	0	0	0
<i>Commercial</i>	0	0	0	0	0
<i>Other-Residential</i>	1	0	0	0	1
Total Casualties - 2am	1	0	0	0	1
Casualties - 2pm					
<i>Industrial</i>	0	0	0	0	0
<i>Commercial</i>	1	0	0	0	1
<i>Single Family</i>	0	0	0	0	0
<i>Commuting</i>	0	0	0	0	0
<i>Hotels</i>	0	0	0	0	0
<i>Other-Residential</i>	0	0	0	0	0
<i>Educational</i>	0	0	0	0	0

	Injury Severity Level				Total
	Severity 1	Severity 2	Severity 3	Severity 4	
California					
Santa Clara					
Total Casualties - 2pm	2	0	0	0	2
Casualties - 5pm					
<i>Industrial</i>	0	0	0	0	0
<i>Hotels</i>	0	0	0	0	0
<i>Other-Residential</i>	0	0	0	0	0
<i>Commercial</i>	1	0	0	0	1
<i>Commuting</i>	0	0	0	0	0
<i>Single Family</i>	0	0	0	0	0
<i>Educational</i>	0	0	0	0	0
Total Casualties - 5pm	1	0	0	0	1
Santa Cruz					
Casualties - 2am					
<i>Hotels</i>	0	0	0	0	0
<i>Educational</i>	0	0	0	0	0
<i>Industrial</i>	0	0	0	0	0
<i>Other-Residential</i>	1	0	0	0	1
<i>Single Family</i>	0	0	0	0	0
<i>Commercial</i>	0	0	0	0	0
<i>Commuting</i>	0	0	0	0	0
Total Casualties - 2am	1	0	0	0	1
Casualties - 2pm					
<i>Industrial</i>	0	0	0	0	0
<i>Other-Residential</i>	0	0	0	0	0
<i>Commercial</i>	1	0	0	0	1
<i>Commuting</i>	0	0	0	0	0
<i>Educational</i>	0	0	0	0	0
<i>Single Family</i>	0	0	0	0	0
<i>Hotels</i>	0	0	0	0	0
Total Casualties - 2pm	2	0	0	0	2
Casualties - 5pm					
<i>Industrial</i>	0	0	0	0	0
<i>Other-Residential</i>	0	0	0	0	0
<i>Commercial</i>	1	0	0	0	1
<i>Commuting</i>	0	0	0	0	0
<i>Single Family</i>	0	0	0	0	0
<i>Hotels</i>	0	0	0	0	0
<i>Educational</i>	0	0	0	0	0
Total Casualties - 5pm	1	0	0	0	1
Solano					
Casualties - 2am					
<i>Industrial</i>	0	0	0	0	0

	Injury Severity Level				Total
	Severity 1	Severity 2	Severity 3	Severity 4	
California					
Solano					
Casualties - 2am					
<i>Other-Residential</i>	0	0	0	0	0
<i>Commercial</i>	0	0	0	0	0
<i>Educational</i>	0	0	0	0	0
<i>Commuting</i>	0	0	0	0	0
<i>Single Family</i>	0	0	0	0	0
<i>Hotels</i>	0	0	0	0	0
Total Casualties - 2am	0	0	0	0	0
Casualties - 2pm					
<i>Single Family</i>	0	0	0	0	0
<i>Other-Residential</i>	0	0	0	0	0
<i>Commercial</i>	0	0	0	0	0
<i>Educational</i>	0	0	0	0	0
<i>Commuting</i>	0	0	0	0	0
<i>Hotels</i>	0	0	0	0	0
<i>Industrial</i>	0	0	0	0	0
Total Casualties - 2pm	0	0	0	0	0
Casualties - 5pm					
<i>Commercial</i>	0	0	0	0	0
<i>Other-Residential</i>	0	0	0	0	0
<i>Single Family</i>	0	0	0	0	0
<i>Educational</i>	0	0	0	0	0
<i>Commuting</i>	0	0	0	0	0
<i>Hotels</i>	0	0	0	0	0
<i>Industrial</i>	0	0	0	0	0
Total Casualties - 5pm	0	0	0	0	0
Sonoma					
Casualties - 2am					
<i>Single Family</i>	0	0	0	0	0
<i>Other-Residential</i>	0	0	0	0	0
<i>Commercial</i>	0	0	0	0	0
<i>Commuting</i>	0	0	0	0	0
<i>Hotels</i>	0	0	0	0	0
<i>Educational</i>	0	0	0	0	0
<i>Industrial</i>	0	0	0	0	0
Total Casualties - 2am	0	0	0	0	0
Casualties - 2pm					
<i>Single Family</i>	0	0	0	0	0
<i>Commuting</i>	0	0	0	0	0
<i>Educational</i>	0	0	0	0	0
<i>Hotels</i>	0	0	0	0	0
<i>Industrial</i>	0	0	0	0	0

	Injury Severity Level				Total
	Severity 1	Severity 2	Severity 3	Severity 4	
California					
Sonoma					
Casualties - 2pm					
Other-Residential	0	0	0	0	0
Commercial	0	0	0	0	0
Total Casualties - 2pm	0	0	0	0	0
Casualties - 5pm					
Single Family	0	0	0	0	0
Commercial	0	0	0	0	0
Commuting	0	0	0	0	0
Hotels	0	0	0	0	0
Educational	0	0	0	0	0
Industrial	0	0	0	0	0
Other-Residential	0	0	0	0	0
Total Casualties - 5pm	0	0	0	0	0
Stanislaus					
Casualties - 2am					
Hotels	0	0	0	0	0
Industrial	0	0	0	0	0
Commercial	0	0	0	0	0
Single Family	0	0	0	0	0
Other-Residential	0	0	0	0	0
Commuting	0	0	0	0	0
Educational	0	0	0	0	0
Total Casualties - 2am	0	0	0	0	0
Casualties - 2pm					
Industrial	0	0	0	0	0
Other-Residential	0	0	0	0	0
Commercial	0	0	0	0	0
Commuting	0	0	0	0	0
Educational	0	0	0	0	0
Single Family	0	0	0	0	0
Hotels	0	0	0	0	0
Total Casualties - 2pm	0	0	0	0	0
Casualties - 5pm					
Industrial	0	0	0	0	0
Other-Residential	0	0	0	0	0
Commuting	0	0	0	0	0
Single Family	0	0	0	0	0
Commercial	0	0	0	0	0
Hotels	0	0	0	0	0
Educational	0	0	0	0	0
Total Casualties - 5pm	0	0	0	0	0

	Injury Severity Level				Total
	Severity 1	Severity 2	Severity 3	Severity 4	
California					
Tulare					
Casualties - 2am					
Commercial	0	0	0	0	0
Commuting	0	0	0	0	0
Single Family	0	0	0	0	0
Educational	0	0	0	0	0
Hotels	0	0	0	0	0
Industrial	0	0	0	0	0
Other-Residential	0	0	0	0	0
Total Casualties - 2am	0	0	0	0	0
Casualties - 2pm					
Industrial	0	0	0	0	0
Hotels	0	0	0	0	0
Commercial	0	0	0	0	0
Other-Residential	0	0	0	0	0
Educational	0	0	0	0	0
Commuting	0	0	0	0	0
Single Family	0	0	0	0	0
Total Casualties - 2pm	0	0	0	0	0
Casualties - 5pm					
Other-Residential	0	0	0	0	0
Commercial	0	0	0	0	0
Single Family	0	0	0	0	0
Hotels	0	0	0	0	0
Commuting	0	0	0	0	0
Educational	0	0	0	0	0
Industrial	0	0	0	0	0
Total Casualties - 5pm	0	0	0	0	0
Ventura					
Casualties - 2am					
Educational	0	0	0	0	0
Commuting	0	0	0	0	0
Single Family	0	0	0	0	0
Hotels	0	0	0	0	0
Industrial	0	0	0	0	0
Commercial	0	0	0	0	0
Other-Residential	0	0	0	0	0
Total Casualties - 2am	0	0	0	0	0
Casualties - 2pm					
Industrial	0	0	0	0	0
Educational	0	0	0	0	0
Commuting	0	0	0	0	0
Hotels	0	0	0	0	0

	Injury Severity Level				Total
	Severity 1	Severity 2	Severity 3	Severity 4	
California					
Ventura					
Casualties - 2pm					
<i>Other-Residential</i>	0	0	0	0	0
<i>Commercial</i>	0	0	0	0	0
<i>Single Family</i>	0	0	0	0	0
Total Casualties - 2pm	0	0	0	0	0
Casualties - 5pm					
<i>Commuting</i>	0	0	0	0	0
<i>Other-Residential</i>	0	0	0	0	0
<i>Commercial</i>	0	0	0	0	0
<i>Hotels</i>	0	0	0	0	0
<i>Educational</i>	0	0	0	0	0
<i>Single Family</i>	0	0	0	0	0
<i>Industrial</i>	0	0	0	0	0
Total Casualties - 5pm	0	0	0	0	0
Region Total	NA	NA	NA	NA	NA

Totals only reflect data for those census tracts/blocks included in the user's study region and will reflect the entire county/state only if all of the census blocks for that county/states were selected at the time of study region creation.

Debris Summary Report

June 05, 2024

All values are in thousands of tons.

	Brick, Wood & Others	Concrete & Steel	Total
California			
Alameda	0	0	1
Contra Costa	0	0	0
Fresno	0	0	0
Kern	0	0	0
Kings	0	0	0
Los Angeles	0	0	0
Madera	0	0	0
Marin	0	0	0
Mariposa	0	0	0
Merced	0	0	0
Monterey	15	26	41
Napa	0	0	0
Sacramento	0	0	0
San Benito	0	1	1
San Francisco	0	0	0
San Joaquin	0	0	0
San Luis Obispo	84	108	192
San Mateo	0	0	0
Santa Barbara	36	46	81

	Brick, Wood & Others	Concrete & Steel	Total
Santa Clara	2	1	2
Santa Cruz	2	1	3
Solano	0	0	0
Sonoma	0	0	0
Stanislaus	0	0	0
Tulare	0	0	0
Ventura	0	0	0
Total	140	183	323
Region Total	140	183	323

Totals only reflect data for those census tracts/blocks included in the user's study region and will reflect the entire county/state only if all of the census blocks for that county/states were selected at the time of study region creation.

Direct Economic Losses For Buildings

June 5, 2024

All values are in thousands of dollars

	Capital Stock Losses				Loss Ratio %	Income Losses				Total Loss
	Cost Structural Damage	Cost Non-struct. Damage	Cost Contents Damage	Inventory Loss		Relocation Loss	Capital Related Loss	Wages Losses	Rental Income Loss	
California										
Contra Costa	13	541	364	41	0.00	1	2	4	4	969
Napa	0	10	6	1	0.00	0	0	0	0	17
Alameda	383	6,925	4,414	523	0.00	36	57	75	110	12,524
San Joaquin	195	2,335	1,591	222	0.00	29	10	19	30	4,432
Tulare	32	1,531	1,040	230	0.00	2	5	6	7	2,853
Madera	27	623	403	82	0.00	2	1	1	3	1,143
Fresno	310	6,158	4,000	739	0.00	38	40	52	74	11,411
Kings	69	1,354	779	109	0.01	9	15	17	15	2,368
San Luis Obispo	150,420	815,429	352,717	28,252	1.54	64,872	50,160	51,383	41,655	1,554,888

	Capital Stock Losses				Loss Ratio %	Income Losses				Total Loss
	Cost Structural Damage	Cost Non-struct. Damage	Cost Contents Damage	Inventory Loss		Relocation Loss	Capital Related Loss	Wages Losses	Rental Income Loss	
Solano	2	84	61	9	0.00	0	0	0	0	157
San Mateo	463	5,384	2,808	255	0.00	45	76	86	206	9,324
San Benito	929	6,920	3,479	379	0.06	301	188	213	143	12,551
San Francisco	240	770	493	39	0.00	19	36	35	109	1,739
Stanislaus	85	2,681	1,782	251	0.00	9	13	12	23	4,855
Santa Clara	2,073	26,027	14,102	1,455	0.01	287	447	562	674	45,626
Sonoma	1	12	9	2	0.00	0	0	0	0	24
Merced	393	2,457	1,688	743	0.01	30	15	13	18	5,357
Santa Barbara	66,285	357,280	161,643	19,006	0.54	26,180	15,235	18,931	13,728	678,288
Marin	1	39	26	3	0.00	0	0	0	0	69
Kern	251	4,007	2,495	542	0.00	29	34	40	44	7,441
Ventura	52	1,836	1,167	170	0.00	5	10	12	15	3,267
Santa Cruz	2,653	24,367	13,741	2,239	0.05	727	805	1,047	587	46,166
Mariposa	0	0	0	0	0.00	0	0	0	0	0
Sacramento	3	48	31	6	0.00	0	1	1	1	91
Monterey	34,665	198,525	102,868	16,476	0.31	10,664	6,772	7,729	8,099	385,799
Los Angeles	1	20	12	2	0.00	0	0	0	1	35

	Capital Stock Losses				Loss Ratio %	Income Losses				Total Loss
	Cost Structural Damage	Cost Non-struct. Damage	Cost Contents Damage	Inventory Loss		Relocation Loss	Capital Related Loss	Wages Losses	Rental Income Loss	
Total	259,543	1,465,364	671,718	71,777	0.10	103,286	73,921	80,240	65,545	2,791,395
Region Total	259,543	1,465,364	671,718	71,777	0.10	103,286	73,921	80,240	65,545	2,791,395

Totals only reflect data for those census tracts/blocks included in the user's study region and will reflect the entire county/state only if all of the census blocks for that county/states were selected at the time of study region creation.

Direct Economic Loss For Transportation

June 05, 2024

All values are in thousands of dollars

	Highway	Railway	Light Rail	Bus Facility	Ports	Ferries	Airport	Total
California								
Alameda								
Segments	0	0	0					0
Bridges	37	0	0					38
Tunnels	0	0	0					0
Facilities		436	0	22	1,725	38	3,593	5,815
Total	37	436	0	22	1,725	38	3,593	5,853
Contra Costa								
Segments	0	0	0					0
Bridges	21	0	0					21
Tunnels	0	0	0					0
Facilities		188	18	0	1,815	51	231	2,303
Total	21	188	18	0	1,815	51	231	2,325
Fresno								
Segments	0	0	0					0
Bridges	105	0	0					105
Tunnels	0	0	0					0
Facilities		231	0	21	0	0	1,306	1,558

	Highway	Railway	Light Rail	Bus Facility	Ports	Ferries	Airport	Total
Total	105	231	0	21	0	0	1,306	1,663
Kern								
Segments	0	0	0					0
Bridges	59	0	0					59
Tunnels	0	0	0					0
Facilities		180	0	62	0	0	698	939
Total	59	180	0	62	0	0	698	999
Kings								
Segments	0	0	0					0
Bridges	12	0	0					12
Tunnels	0	0	0					0
Facilities		128	0	41	0	0	359	529
Total	12	128	0	41	0	0	359	541
Los Angeles								
Segments	0	0	0					0
Bridges	25	0	0					25
Tunnels	0	0	0					0
Facilities		120	2,430	33	824	14	2,764	6,184
Total	25	120	2,430	33	824	14	2,764	6,209
Madera								
Segments	0	0	0					0
Bridges	7	0	0					7
Tunnels	0	0	0					0
Facilities		26	0	21	0	0	102	149

	Highway	Railway	Light Rail	Bus Facility	Ports	Ferries	Airport	Total
Total	7	26	0	21	0	0	102	155
Marin								
Segments	0	0	0					0
Bridges	3	0	0					3
Tunnels	0	0	0					0
Facilities		0	0	10	98	7	51	166
Total	3	0	0	10	98	7	51	169
Mariposa								
Segments	0	0	0					0
Bridges	0	0	0					0
Tunnels	0	0	0					0
Facilities		0	0	10	0	0	6	15
Total	0	0	0	10	0	0	6	15
Merced								
Segments	0	0	0					0
Bridges	82	0	0					82
Tunnels	0	0	0					0
Facilities		51	0	21	0	0	410	483
Total	82	51	0	21	0	0	410	565
Monterey								
Segments	0	0	0					0
Bridges	6,788	42	0					6,830
Tunnels	251	0	0					251
Facilities		201	0	1,458	469	0	4,213	6,341

	Highway	Railway	Light Rail	Bus Facility	Ports	Ferries	Airport	Total
Total	7,039	243	0	1,458	469	0	4,213	13,422
Napa								
Segments	0	0	0					0
Bridges	0	0	0					0
Tunnels	0	0	0					0
Facilities		0	0	0	37	0	14	51
Total	0	0	0	0	37	0	14	51
Sacramento								
Segments	0	0	0					0
Bridges	4	0	0					4
Tunnels	0	0	0					0
Facilities		0	0	0	477	13	0	490
Total	4	0	0	0	477	13	0	494
San Benito								
Segments	0	0	0					0
Bridges	21	1	0					21
Tunnels	0	0	0					0
Facilities		0	0	0	0	0	435	435
Total	21	1	0	0	0	0	435	456
San Francisco								
Segments	0	0	0					0
Bridges	14	0	0					14
Tunnels	0	0	0					0
Facilities		0	22,430	49	1,823	40	263	24,605

	Highway	Railway	Light Rail	Bus Facility	Ports	Ferries	Airport	Total
Total	14	0	22,430	49	1,823	40	263	24,618
San Joaquin								
Segments	0	0	0					0
Bridges	21	0	0					21
Tunnels	0	0	0					0
Facilities		388	0	21	1,578	51	418	2,456
Total	21	388	0	21	1,578	51	418	2,477
San Luis Obispo								
Segments	0	0	0					0
Bridges	12,216	539	0					12,755
Tunnels	0	0	0					0
Facilities		1,086	0	476	8,382	0	6,866	16,810
Total	12,216	1,625	0	476	8,382	0	6,866	29,565
San Mateo								
Segments	0	0	0					0
Bridges	88	0	0					88
Tunnels	0	0	0					0
Facilities		0	0	0	661	0	8,789	9,450
Total	88	0	0	0	661	0	8,789	9,537
Santa Barbara								
Segments	0	0	0					0
Bridges	3,362	917	0					4,279
Tunnels	0	0	0					0
Facilities		1,051	0	956	809	38	4,665	7,519

	Highway	Railway	Light Rail	Bus Facility	Ports	Ferries	Airport	Total
Total	3,362	1,968	0	956	809	38	4,665	11,799
Santa Clara								
<i>Segments</i>	0	0	0					0
<i>Bridges</i>	193	0	0					194
<i>Tunnels</i>	0	0	0					0
<i>Facilities</i>		103	5,439	122	184	0	3,593	9,440
Total	193	103	5,439	122	184	0	3,593	9,633
Santa Cruz								
<i>Segments</i>	0	0	0					0
<i>Bridges</i>	32	0	0					32
<i>Tunnels</i>	0	0	0					0
<i>Facilities</i>		0	0	118	156	0	1,096	1,370
Total	32	0	0	118	156	0	1,096	1,402
Solano								
<i>Segments</i>	0	0	0					0
<i>Bridges</i>	8	0	0					8
<i>Tunnels</i>	0	0	0					0
<i>Facilities</i>		31	0	7	1,020	40	11	1,109
Total	8	31	0	7	1,020	40	11	1,118
Sonoma								
<i>Segments</i>	0	0	0					0
<i>Bridges</i>	1	0	0					1
<i>Tunnels</i>	0	0	0					0
<i>Facilities</i>		0	0	0	37	0	14	51

	Highway	Railway	Light Rail	Bus Facility	Ports	Ferries	Airport	Total
Total	1	0	0	0	37	0	14	52
Stanislaus								
Segments	0	0	0					0
Bridges	30	0	0					30
Tunnels	0	0	0					0
Facilities		154	0	43	0	0	185	382
Total	30	154	0	43	0	0	185	412
Tulare								
Segments	0	0	0					0
Bridges	4	0	0					4
Tunnels	0	0	0					0
Facilities		0	0	83	0	0	255	338
Total	4	0	0	83	0	0	255	342
Ventura								
Segments	0	0	0					0
Bridges	20	0	0					20
Tunnels	0	0	0					0
Facilities		105	0	21	665	26	406	1,222
Total	20	105	0	21	665	26	406	1,243
Total	23,404	5,978	30,317	3,595	20,760	319	40,743	125,115
Region Total	23,404	5,978	30,317	3,595	20,760	319	40,743	125,115

Totals only reflect data for those census tracts/blocks included in the user's study region and will reflect the entire county/state only if all of the census blocks for that county/states were selected at the time of study region creation.

Direct Economic Loss For Utilities

June 05, 2024

All values are in thousands of dollars

	Potable Water	Waste Water	Oil Systems	Natural Gas	Electric Power	Communication	Total
California							
Alameda							
<i>Facilities</i>	57	1,724	0	0	14,913	3	16,697
<i>Pipelines</i>	123	62	0	0			184
Total	179	1,785	0	0	14,913	3	16,881
Contra Costa							
<i>Facilities</i>	4	638	0	0	33,264	0	33,906
<i>Pipelines</i>	116	58	0	0			174
Total	120	696	0	0	33,264	0	34,080
Fresno							
<i>Facilities</i>	0	492	0	13	26,624	6	27,134
<i>Pipelines</i>	343	172	0	0			515
Total	343	664	0	13	26,624	6	27,649
Kern							
<i>Facilities</i>	57	128	1	291	59,811	4	60,293

	Potable Water	Waste Water	Oil Systems	Natural Gas	Electric Power	Communication	Total
<i>Pipelines</i>	377	189	0	0			566
Total	434	317	1	291	59,811	4	60,860
Kings							
<i>Facilities</i>	0	0	0	134	8,104	1	8,239
<i>Pipelines</i>	125	63	0	0			188
Total	125	63	0	134	8,104	1	8,427
Los Angeles							
<i>Facilities</i>	35	49	0	13	84,316	0	84,414
<i>Pipelines</i>	470	236	0	0			706
Total	505	285	0	13	84,316	0	85,119
Madera							
<i>Facilities</i>	0	0	0	0	1,347	0	1,347
<i>Pipelines</i>	60	30	0	0			90
Total	60	30	0	0	1,347	0	1,437
Marin							
<i>Facilities</i>	1	261	0	0	1	0	263
<i>Pipelines</i>	17	9	0	0			26
Total	18	270	0	0	1	0	289
Mariposa							
<i>Facilities</i>	0	10	0	0	42	0	53
<i>Pipelines</i>	10	5	0	0			15

	Potable Water	Waste Water	Oil Systems	Natural Gas	Electric Power	Communication	Total
Total	10	15	0	0	42	0	67
Merced							
<i>Facilities</i>	0	615	0	0	21,856	2	22,473
<i>Pipelines</i>	104	52	0	0			156
Total	104	667	0	0	21,856	2	22,629
Monterey							
<i>Facilities</i>	0	39,734	0	0	139,601	225	179,560
<i>Pipelines</i>	1,859	934	0	0			2,793
Total	1,859	40,667	0	0	139,601	225	182,353
Napa							
<i>Facilities</i>	0	3	0	0	0	0	3
<i>Pipelines</i>	4	2	0	0			6
Total	4	5	0	0	0	0	8
Sacramento							
<i>Facilities</i>	0	10	0	0	0	1	11
<i>Pipelines</i>	10	5	0	0			16
Total	10	16	0	0	0	1	27
San Benito							
<i>Facilities</i>	0	3,049	0	0	0	7	3,056
<i>Pipelines</i>	120	60	0	0			181
Total	120	3,109	0	0	0	7	3,237

	Potable Water	Waste Water	Oil Systems	Natural Gas	Electric Power	Communication	Total
San Francisco							
<i>Facilities</i>	0	500	0	0	40	0	540
<i>Pipelines</i>	23	11	0	0			34
Total	23	511	0	0	40	0	574
San Joaquin							
<i>Facilities</i>	85	740	0	0	6,275	2	7,103
<i>Pipelines</i>	90	45	0	0			135
Total	175	785	0	0	6,275	2	7,237
San Luis Obispo							
<i>Facilities</i>	15,011	142,471	25	0	741,255	615	899,376
<i>Pipelines</i>	3,913	1,965	0	0			5,878
Total	18,924	144,436	25	0	741,255	615	905,254
San Mateo							
<i>Facilities</i>	0	1,478	0	0	362	1	1,841
<i>Pipelines</i>	67	34	0	0			101
Total	67	1,512	0	0	362	1	1,942
Santa Barbara							
<i>Facilities</i>	0	11,845	13	1,879	30,765	401	44,903
<i>Pipelines</i>	1,306	656	0	0			1,963
Total	1,306	12,501	13	1,879	30,765	401	46,866
Santa Clara							

	Potable Water	Waste Water	Oil Systems	Natural Gas	Electric Power	Communication	Total
<i>Facilities</i>	56	369	0	0	27,952	5	28,382
<i>Pipelines</i>	161	81	0	0			242
Total	217	450	0	0	27,952	5	28,623
Santa Cruz							
<i>Facilities</i>	0	3,295	0	0	600	8	3,903
<i>Pipelines</i>	113	57	0	0			170
Total	113	3,351	0	0	600	8	4,073
Solano							
<i>Facilities</i>	0	254	0	0	573	0	827
<i>Pipelines</i>	39	20	0	0			59
Total	39	273	0	0	573	0	886
Sonoma							
<i>Facilities</i>	0	5	0	0	0	0	5
<i>Pipelines</i>	11	6	0	0			17
Total	11	11	0	0	0	0	22
Stanislaus							
<i>Facilities</i>	0	492	0	0	8,510	3	9,005
<i>Pipelines</i>	64	32	0	0			97
Total	64	524	0	0	8,510	3	9,102
Tulare							
<i>Facilities</i>	28	369	0	0	3,137	2	3,536

	Potable Water	Waste Water	Oil Systems	Natural Gas	Electric Power	Communication	Total
<i>Pipelines</i>	111	56	0	0			167
Total	139	425	0	0	3,137	2	3,703
Ventura							
<i>Facilities</i>	140	1,601	0	87	20,043	4	21,875
<i>Pipelines</i>	111	56	0	0			166
Total	251	1,656	0	87	20,043	4	22,042
Total	25,222	215,026	40	2,417	1,229,389	1,292	1,473,385
Region Total	25,222	215,026	40	2,417	1,229,389	1,292	1,473,385

Totals only reflect data for those census tracts/blocks included in the user's study region and will reflect the entire county/state only if all of the census blocks for that county/states were selected at the time of study region creation.

Hazus Quick Assessment Report

Estimated Economic Loss (\$ Billions)

Category	Description	Range
General Building Stock	Building Damage	0.90 - 3.40
	Building Contents	0.10 - 0.50
	Business Interruption	0.20 - 0.60
Infrastructure	Lifelines Damage	
Total		1.40 - 5.60

Preliminary Damage Assessment (PDA) Estimates

Description	Residential	Commercial	Other	Total
Affected	43,500	3,800	1,700	49,000
Minor	7,800	1,300	580	9,680
Major	1,100	210	90	1,400
Destroyed	50	40	< 10	90
Total	52,450	5,350	2,370	60,170

Estimated Casualties : Night Time

Severity Level	Description	# Persons
Level 1	Medical Aid	80 - 300
Level 2	Hospital Care	10 - 30
Level 3	Life-threatening	< 10
Level 4	Fatalities	< 10

Estimated Shelter Needs

Type	Households	People
Displaced Households	200 - 800	500 - 2,000
Public Shelter	80	210

Comments :

*Hazus damage estimates are presented using FEMA Preliminary Damage Assessment (PDA) categories. These estimates should be used for planning purposes and may not reflect actual observed damages from the PDA process.

Disclaimer:

The estimates of social and economic impacts contained in this report were produced using HAZUS loss estimation methodology software which is based on current scientific and engineering knowledge. There are uncertainties inherent in any loss estimation technique. Therefore, there may be significant differences between the modeled results contained in this report and the actual social and economic losses following a specific earthquake. These results can be improved by using enhanced inventory, geotechnical, and observed ground motion data.

Earthquake Information

Location :

Origin Time:

Magnitude : 7.54

Epicenter Latitude/Longitude :
/

Depth & Type : /U

Name :
NA

Ground Motion /Attenuation :

Maximum PGA: 1.00

Information Sources:

Comments :

Population and Building Exposure

Population: 26,043,496

Building Exposure : (\$ Millions)

Residential	
Commercial	858,241
Other	721,478
Total	

Counties : See Appendix

Major Metro Area :

Hazus Quick Assessment Report

Estimated Economic Loss (\$ Billions)

Category	Description	Range
General Building Stock	Building Damage	0.90 - 3.40
	Building Contents	0.10 - 0.50
	Business Interruption	0.20 - 0.60
Infrastructure	Lifelines Damage	
Total		1.40 - 5.60

Preliminary Damage Assessment (PDA) Estimates

Description	Residential	Commercial	Other	Total
Affected	43,500	3,800	1,700	49,000
Minor	7,800	1,300	580	9,680
Major	1,100	210	90	1,400
Destroyed	50	40	< 10	90
Total	52,450	5,350	2,370	60,170

Estimated Casualties : Day Time

Severity Level	Description	# Persons
Level 1	Medical Aid	110 - 400
Level 2	Hospital Care	10 - 50
Level 3	Life-threatening	< 10
Level 4	Fatalities	< 10

Estimated Shelter Needs

Type	Households	People
Displaced Households	200 - 800	500 - 2,000
Public Shelter	80	210

Comments :

*Hazus damage estimates are presented using FEMA Preliminary Damage Assessment (PDA) categories. These estimates should be used for planning purposes and may not reflect actual observed damages from the PDA process.

Disclaimer:

The estimates of social and economic impacts contained in this report were produced using HAZUS loss estimation methodology software which is based on current scientific and engineering knowledge. There are uncertainties inherent in any loss estimation technique. Therefore, there may be significant differences between the modeled results contained in this report and the actual social and economic losses following a specific earthquake. These results can be improved by using enhanced inventory, geotechnical, and observed ground motion data.

Earthquake Information

Location :

Origin Time:

Magnitude : 7.54

Epicenter Latitude/Longitude :
/

Depth & Type : /U

Name :
NA

Ground Motion /Attenuation :

Maximum PGA: 1.00

Information Sources:

Comments :

Population and Building Exposure

Population: 26,043,496

Building Exposure : (\$ Millions)

Residential	
Commercial	858,241
Other	721,478
Total	

Counties : See Appendix

Major Metro Area :

Hazus Quick Assessment Report

Estimated Economic Loss (\$ Billions)

Category	Description	Range
General Building Stock	Building Damage	0.90 - 3.40
	Building Contents	0.10 - 0.50
	Business Interruption	0.20 - 0.60
Infrastructure	Lifelines Damage	
Total		1.40 - 5.60

Preliminary Damage Assessment (PDA) Estimates

Description	Residential	Commercial	Other	Total
Affected	43,500	3,800	1,700	49,000
Minor	7,800	1,300	580	9,680
Major	1,100	210	90	1,400
Destroyed	50	40	< 10	90
Total	52,450	5,350	2,370	60,170

Estimated Casualties : Commute Time

Severity Level	Description	# Persons
Level 1	Medical Aid	80 - 300
Level 2	Hospital Care	10 - 40
Level 3	Life-threatening	< 10
Level 4	Fatalities	< 10

Estimated Shelter Needs

Type	Households	People
Displaced Households	200 - 800	500 - 2,000
Public Shelter	80	210

Comments :

*Hazus damage estimates are presented using FEMA Preliminary Damage Assessment (PDA) categories. These estimates should be used for planning purposes and may not reflect actual observed damages from the PDA process.

Disclaimer:

The estimates of social and economic impacts contained in this report were produced using HAZUS loss estimation methodology software which is based on current scientific and engineering knowledge. There are uncertainties inherent in any loss estimation technique. Therefore, there may be significant differences between the modeled results contained in this report and the actual social and economic losses following a specific earthquake. These results can be improved by using enhanced inventory, geotechnical, and observed ground motion data.

Earthquake Information

Location :

Origin Time:

Magnitude : 7.54

Epicenter Latitude/Longitude :
/

Depth & Type : /U

Name :
NA

Ground Motion /Attenuation :

Maximum PGA: 1.00

Information Sources:

Comments :

Population and Building Exposure

Population: 26,043,496

Building Exposure : (\$ Millions)

Residential	
Commercial	858,241
Other	721,478
Total	

Counties : See Appendix

Major Metro Area :

Shelter Summary Report

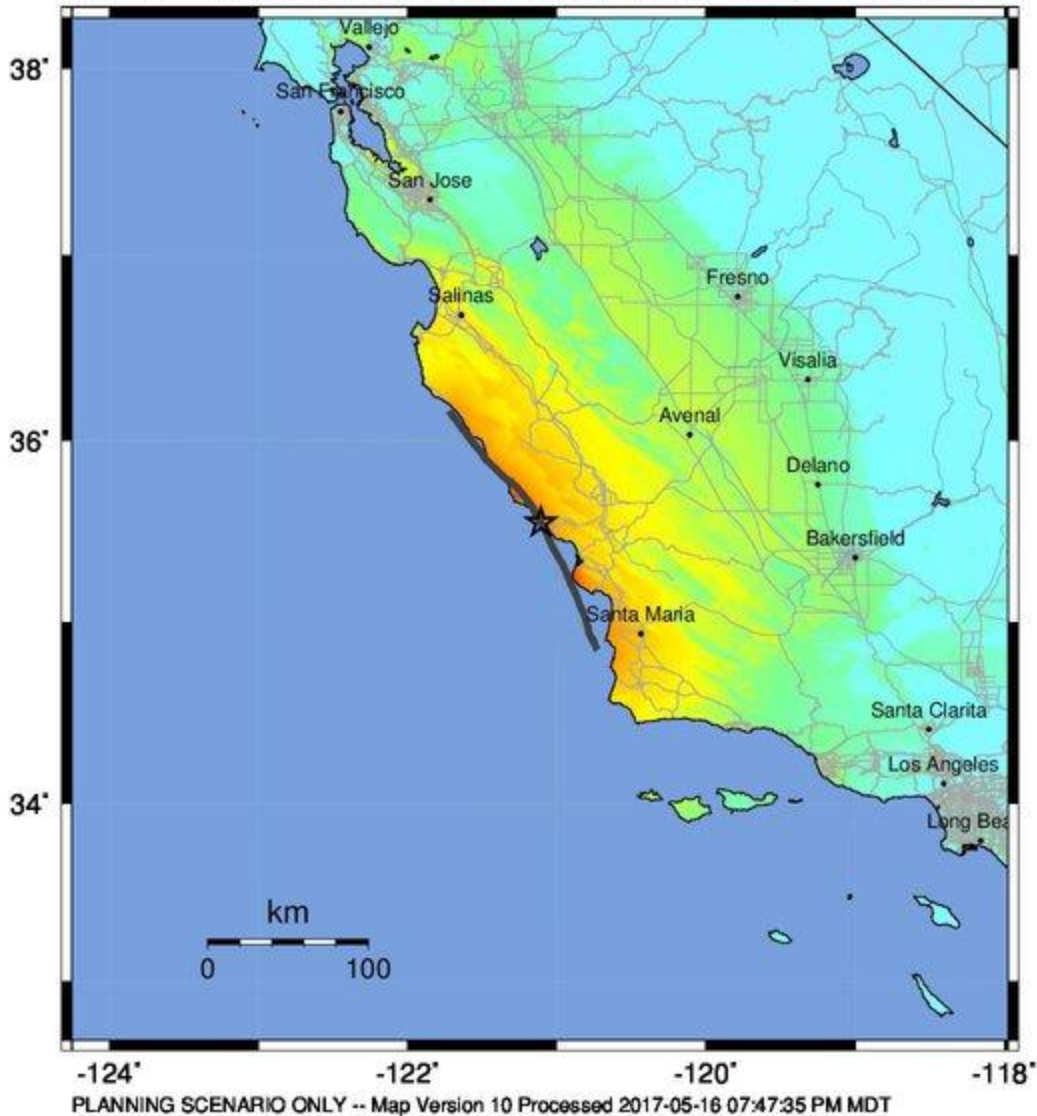
June 05, 2024

	# of Displaced Households	# of People Needing Short Term Shelter
California		
Alameda	0	0
Contra Costa	0	0
Fresno	0	0
Kern	0	0
Kings	0	0
Los Angeles	0	0
Madera	0	0
Marin	0	0
Mariposa	0	0
Merced	0	0
Monterey	27	19
Napa	0	0
Sacramento	0	0
San Benito	0	0
San Francisco	0	0
San Joaquin	0	0
San Luis Obispo	261	111
San Mateo	0	0
Santa Barbara	106	80
Santa Clara	0	0
Santa Cruz	1	1
Solano	0	0
Sonoma	0	0
Stanislaus	0	0
Tulare	0	0
Ventura	0	0
Total	396	210
Region Total	396	210

# of Displaced Households	# of People Needing Short Term Shelter
------------------------------	---

Totals only reflect data for those census tracts/blocks included in the user's study region and will reflect the entire county/state only if all of the census blocks for that county/states were selected at the time of study region creation.

-- Earthquake Planning Scenario --
ShakeMap for Hosgri - Median ground motions Scenario
 Scenario Date: May 16, 2017 08:31:48 AM MDT M 7.5 N35.55 W121.11 Depth: 7.8km



PERCEIVED SHAKING	Not felt	Weak	Light	Moderate	Strong	Very strong	Severe	Violent	Extreme
POTENTIAL DAMAGE	none	none	none	Very light	Light	Moderate	Mod./Heavy	Heavy	Very Heavy
PEAK ACC.(%g)	<0.05	0.3	2.8	6.2	12	22	40	75	>139
PEAK VEL.(cm/s)	<0.02	0.1	1.4	4.7	9.6	20	41	86	>178
INSTRUMENTAL INTENSITY	I	II-III	IV	V	VI	VII	VIII	IX	X+

Scale based upon Worden et al. (2012)