

Building Damage by Count by General Occupancy

April 26, 2024

	# of Buildings					Total
	None	Slight	Moderate	Extensive	Complete	
California						
Alameda						
<i>Government</i>	2,282	3,419	3,058	1,214	554	10,528
<i>Agriculture</i>	79	144	113	47	40	422
<i>Commercial</i>	5,701	10,165	8,647	4,092	3,383	31,989
<i>Religion</i>	294	565	553	290	283	1,986
<i>Single Family</i>	85,189	195,892	61,243	1,649	200	344,173
<i>Other Residential</i>	13,637	27,571	12,002	3,916	4,270	61,396
<i>Education</i>	409	380	196	67	66	1,117
<i>Industrial</i>	2,042	3,397	2,909	1,173	685	10,205
Amador						
<i>Industrial</i>	235	0	0	0	0	235
<i>Single Family</i>	14,961	1	0	0	0	14,962
<i>Other Residential</i>	1,034	3	0	0	0	1,037
<i>Education</i>	23	0	0	0	0	23
<i>Government</i>	32	0	0	0	0	32
<i>Agriculture</i>	44	0	0	0	0	44
<i>Religion</i>	45	0	0	0	0	45
<i>Commercial</i>	1,367	1	0	0	0	1,368
Calaveras						

	# of Buildings					Total
	None	Slight	Moderate	Extensive	Complete	
<i>Government</i>	84	0	0	0	0	84
<i>Other Residential</i>	2,553	6	0	0	0	2,559
<i>Education</i>	35	0	0	0	0	35
<i>Religion</i>	130	0	0	0	0	130
<i>Agriculture</i>	2,204	3	0	0	0	2,207
<i>Commercial</i>	1,411	2	0	0	0	1,413
<i>Industrial</i>	465	1	0	0	0	466
<i>Single Family</i>	22,147	1	0	0	0	22,148
Colusa						
<i>Agriculture</i>	142	0	0	0	0	142
<i>Religion</i>	58	0	0	0	0	58
<i>Commercial</i>	792	1	0	0	0	794
<i>Industrial</i>	113	0	0	0	0	113
<i>Other Residential</i>	952	2	0	0	0	954
<i>Single Family</i>	5,952	2	0	0	0	5,954
<i>Government</i>	32	0	0	0	0	32
<i>Education</i>	33	0	0	0	0	33
Contra Costa						
<i>Commercial</i>	8,825	6,108	2,577	392	89	17,991
<i>Agriculture</i>	384	247	97	17	5	749
<i>Religion</i>	580	395	200	43	8	1,226
<i>Single Family</i>	157,277	111,370	13,169	114	4	281,935
<i>Other Residential</i>	14,198	11,577	2,831	333	185	29,124
<i>Industrial</i>	2,374	1,505	702	127	41	4,749
<i>Government</i>	2,765	1,491	656	98	15	5,024

	# of Buildings					Total
	None	Slight	Moderate	Extensive	Complete	
<i>Education</i>	449	158	41	3	2	653
El Dorado						
<i>Other Residential</i>	10,413	7	0	0	0	10,420
<i>Industrial</i>	1,199	0	0	0	0	1,199
<i>Education</i>	128	0	0	0	0	128
<i>Single Family</i>	71,424	0	0	0	0	71,424
<i>Commercial</i>	4,767	1	0	0	0	4,768
<i>Government</i>	100	0	0	0	0	100
<i>Religion</i>	180	0	0	0	0	180
<i>Agriculture</i>	161	0	0	0	0	161
Fresno						
<i>Commercial</i>	21,053	1	0	0	0	21,054
<i>Religion</i>	1,507	0	0	0	0	1,507
<i>Agriculture</i>	3,420	1	0	0	0	3,421
<i>Industrial</i>	5,348	0	0	0	0	5,348
<i>Government</i>	291	0	0	0	0	291
<i>Other Residential</i>	40,968	4	0	0	0	40,973
<i>Single Family</i>	226,424	1	0	0	0	226,425
<i>Education</i>	602	0	0	0	0	602
Lake						
<i>Agriculture</i>	161	0	0	0	0	161
<i>Single Family</i>	21,633	0	0	0	0	21,633
<i>Other Residential</i>	14,585	16	0	0	0	14,601
<i>Education</i>	68	0	0	0	0	68
<i>Industrial</i>	354	0	0	0	0	354

	# of Buildings					Total
	None	Slight	Moderate	Extensive	Complete	
<i>Commercial</i>	2,090	1	0	0	0	2,091
<i>Religion</i>	140	0	0	0	0	140
<i>Government</i>	78	0	0	0	0	78
Madera						
<i>Commercial</i>	2,904	1	0	0	0	2,905
<i>Religion</i>	119	0	0	0	0	119
<i>Government</i>	111	0	0	0	0	111
<i>Agriculture</i>	633	1	0	0	0	634
<i>Other Residential</i>	6,631	4	0	0	0	6,635
<i>Single Family</i>	38,911	1	0	0	0	38,912
<i>Education</i>	115	0	0	0	0	115
<i>Industrial</i>	903	0	0	0	0	903
Marin						
<i>Other Residential</i>	5,817	1,695	341	35	2	7,890
<i>Government</i>	107	27	8	1	0	143
<i>Education</i>	240	28	5	0	0	274
<i>Commercial</i>	5,788	1,906	531	41	3	8,270
<i>Religion</i>	232	69	17	1	0	319
<i>Agriculture</i>	131	42	15	2	1	190
<i>Single Family</i>	59,988	16,103	632	2	0	76,724
<i>Industrial</i>	971	407	146	11	1	1,535
Mariposa						
<i>Single Family</i>	8,084	0	0	0	0	8,084
<i>Other Residential</i>	307	0	0	0	0	307
<i>Education</i>	27	0	0	0	0	27

	# of Buildings					Total
	None	Slight	Moderate	Extensive	Complete	
<i>Industrial</i>	94	0	0	0	0	94
<i>Commercial</i>	689	0	0	0	0	689
<i>Agriculture</i>	29	0	0	0	0	29
<i>Religion</i>	36	0	0	0	0	36
<i>Government</i>	33	0	0	0	0	33
Mendocino						
<i>Commercial</i>	3,436	0	0	0	0	3,436
<i>Religion</i>	216	0	0	0	0	216
<i>Agriculture</i>	184	0	0	0	0	184
<i>Single Family</i>	25,969	0	0	0	0	25,969
<i>Other Residential</i>	7,059	1	0	0	0	7,060
<i>Government</i>	83	0	0	0	0	83
<i>Education</i>	101	0	0	0	0	101
<i>Industrial</i>	869	0	0	0	0	869
Merced						
<i>Education</i>	163	0	0	0	0	163
<i>Government</i>	170	1	0	0	0	171
<i>Commercial</i>	4,718	34	2	0	0	4,754
<i>Agriculture</i>	7,413	197	42	1	0	7,653
<i>Religion</i>	343	2	0	0	0	345
<i>Industrial</i>	1,013	9	1	0	0	1,022
<i>Single Family</i>	63,381	217	0	0	0	63,598
<i>Other Residential</i>	10,651	125	11	0	0	10,787
Monterey						
<i>Single Family</i>	90,111	763	2	0	0	90,876

	# of Buildings					Total
	None	Slight	Moderate	Extensive	Complete	
<i>Industrial</i>	1,799	44	7	0	0	1,850
<i>Other Residential</i>	19,222	528	59	0	0	19,809
<i>Education</i>	238	1	0	0	0	239
<i>Government</i>	182	3	0	0	0	185
<i>Agriculture</i>	1,805	8	2	0	0	1,815
<i>Commercial</i>	9,038	186	21	0	0	9,246
<i>Religion</i>	568	11	1	0	0	580
Napa						
<i>Commercial</i>	3,629	328	60	4	0	4,021
<i>Agriculture</i>	324	20	4	1	0	349
<i>Religion</i>	133	12	2	0	0	148
<i>Single Family</i>	36,254	2,471	36	0	0	38,761
<i>Other Residential</i>	6,143	684	145	7	0	6,978
<i>Government</i>	92	9	2	0	0	103
<i>Education</i>	124	6	2	0	0	132
<i>Industrial</i>	1,210	131	24	2	0	1,367
Nevada						
<i>Commercial</i>	2,835	0	0	0	0	2,835
<i>Religion</i>	189	0	0	0	0	189
<i>Government</i>	60	0	0	0	0	60
<i>Agriculture</i>	132	0	0	0	0	132
<i>Single Family</i>	43,280	0	0	0	0	43,280
<i>Other Residential</i>	6,383	1	0	0	0	6,384
<i>Education</i>	108	0	0	0	0	108

	# of Buildings					Total
	None	Slight	Moderate	Extensive	Complete	
Placer						
<i>Industrial</i>	1,161	0	0	0	0	1,161
<i>Education</i>	231	0	0	0	0	231
<i>Commercial</i>	8,531	7	0	0	0	8,538
<i>Government</i>	377	0	0	0	0	377
<i>Agriculture</i>	258	0	0	0	0	258
<i>Religion</i>	382	0	0	0	0	382
<i>Industrial</i>	2,701	2	0	0	0	2,703
<i>Other Residential</i>	14,831	11	0	0	0	14,843
<i>Single Family</i>	134,704	15	0	0	0	134,719
Sacramento						
<i>Single Family</i>	386,244	593	4	0	0	386,840
<i>Industrial</i>	6,726	27	3	0	0	6,756
<i>Other Residential</i>	56,113	269	30	0	0	56,413
<i>Education</i>	828	1	0	0	0	829
<i>Agriculture</i>	617	3	1	0	0	621
<i>Religion</i>	1,691	10	1	0	0	1,702
<i>Government</i>	612	7	0	0	0	619
<i>Commercial</i>	26,142	134	19	1	0	26,295
San Benito						
<i>Other Residential</i>	1,292	75	7	0	0	1,375
<i>Single Family</i>	14,394	331	1	0	0	14,726
<i>Industrial</i>	308	14	3	0	0	326
<i>Education</i>	41	1	0	0	0	42
<i>Government</i>	40	3	2	0	0	45

	# of Buildings					Total
	None	Slight	Moderate	Extensive	Complete	
<i>Commercial</i>	1,005	60	13	1	0	1,080
<i>Religion</i>	59	4	1	0	0	64
<i>Agriculture</i>	247	5	1	0	0	253
San Francisco						
<i>Single Family</i>	104,834	39,105	5,993	730	41	150,703
<i>Other Residential</i>	26,272	13,339	4,429	475	14	44,529
<i>Government</i>	125	95	59	9	0	289
<i>Education</i>	408	102	52	9	0	572
<i>Industrial</i>	2,001	1,109	633	111	6	3,860
<i>Commercial</i>	10,425	6,583	3,704	605	27	21,344
<i>Religion</i>	736	398	187	23	1	1,345
<i>Agriculture</i>	96	43	20	2	0	162
San Joaquin						
<i>Commercial</i>	11,796	935	130	3	0	12,864
<i>Agriculture</i>	692	53	8	0	0	753
<i>Religion</i>	806	62	9	0	0	877
<i>Government</i>	280	20	3	0	0	304
<i>Single Family</i>	172,111	15,408	1,347	56	0	188,922
<i>Other Residential</i>	19,592	1,925	279	8	0	21,805
<i>Education</i>	383	11	1	0	0	395
<i>Industrial</i>	4,465	400	61	1	0	4,928
San Mateo						
<i>Religion</i>	446	217	69	5	0	736
<i>Agriculture</i>	356	130	46	6	0	539
<i>Government</i>	184	86	27	1	0	299

	# of Buildings					Total
	None	Slight	Moderate	Extensive	Complete	
<i>Commercial</i>	8,663	4,275	1,356	97	4	14,395
<i>Industrial</i>	2,503	1,376	550	42	1	4,472
<i>Other Residential</i>	13,487	7,327	1,480	152	8	22,453
<i>Single Family</i>	110,801	46,138	2,987	6	0	159,931
<i>Education</i>	395	78	15	1	0	489
Santa Clara						
<i>Other Residential</i>	31,390	20,575	6,051	1,072	72	59,160
<i>Single Family</i>	265,834	149,724	11,587	71	4	427,219
<i>Government</i>	276	147	65	11	2	502
<i>Education</i>	899	221	47	5	1	1,173
<i>Industrial</i>	4,785	3,138	1,305	183	22	9,433
<i>Commercial</i>	19,435	11,392	4,064	520	59	35,469
<i>Religion</i>	852	479	180	25	4	1,540
<i>Agriculture</i>	569	221	86	16	2	895
Santa Cruz						
<i>Religion</i>	330	24	5	0	0	359
<i>Agriculture</i>	736	78	22	4	0	840
<i>Single Family</i>	65,014	3,824	31	0	0	68,870
<i>Other Residential</i>	13,595	1,154	139	4	0	14,892
<i>Industrial</i>	1,651	138	28	3	0	1,819
<i>Education</i>	218	6	1	0	0	225
<i>Commercial</i>	6,171	452	69	3	0	6,694
<i>Government</i>	117	7	2	0	0	127
Solano						
<i>Religion</i>	356	68	22	6	1	454

	# of Buildings					Total
	None	Slight	Moderate	Extensive	Complete	
<i>Agriculture</i>	216	23	5	1	0	245
<i>Government</i>	129	19	4	0	0	152
<i>Commercial</i>	5,946	971	279	61	11	7,268
<i>Single Family</i>	105,482	15,078	407	1	0	120,968
<i>Industrial</i>	1,678	315	90	15	3	2,101
<i>Other Residential</i>	9,654	2,057	510	87	9	12,317
<i>Education</i>	209	13	2	1	0	225
Sonoma						
<i>Other Residential</i>	23,586	1,225	196	11	14	25,033
<i>Government</i>	297	13	4	1	4	319
<i>Education</i>	358	7	2	0	0	367
<i>Religion</i>	545	24	5	1	1	576
<i>Commercial</i>	11,356	587	122	20	25	12,110
<i>Agriculture</i>	1,160	98	26	5	14	1,304
<i>Single Family</i>	137,476	4,478	73	0	0	142,028
<i>Industrial</i>	3,527	222	54	7	16	3,825
Stanislaus						
<i>Other Residential</i>	18,962	560	47	0	0	19,569
<i>Single Family</i>	139,842	2,863	18	0	0	142,724
<i>Education</i>	305	2	0	0	0	307
<i>Government</i>	660	18	2	0	0	680
<i>Industrial</i>	3,338	121	16	0	0	3,475
<i>Commercial</i>	10,001	330	37	1	0	10,369
<i>Religion</i>	441	14	1	0	0	456
<i>Agriculture</i>	1,184	47	8	0	0	1,239

	# of Buildings					Total
	None	Slight	Moderate	Extensive	Complete	
Sutter						
<i>Other Residential</i>	3,109	4	0	0	0	3,113
<i>Industrial</i>	635	1	0	0	0	636
<i>Education</i>	62	0	0	0	0	62
<i>Government</i>	77	0	0	0	0	77
<i>Single Family</i>	24,510	2	0	0	0	24,512
<i>Commercial</i>	2,051	1	0	0	0	2,052
<i>Agriculture</i>	1,122	3	0	0	0	1,125
<i>Religion</i>	154	0	0	0	0	154
Tuolumne						
<i>Education</i>	57	0	0	0	0	57
<i>Government</i>	143	0	0	0	0	143
<i>Commercial</i>	1,576	0	0	0	0	1,576
<i>Religion</i>	121	0	0	0	0	121
<i>Agriculture</i>	82	0	0	0	0	82
<i>Industrial</i>	383	0	0	0	0	383
<i>Other Residential</i>	4,960	2	0	0	0	4,962
<i>Single Family</i>	21,645	0	0	0	0	21,645
Yolo						
<i>Industrial</i>	1,102	14	1	0	0	1,117
<i>Other Residential</i>	9,767	90	4	0	0	9,861
<i>Education</i>	130	0	0	0	0	131
<i>Government</i>	110	1	0	0	0	111
<i>Single Family</i>	42,380	209	0	0	0	42,589
<i>Commercial</i>	4,174	47	4	0	0	4,225

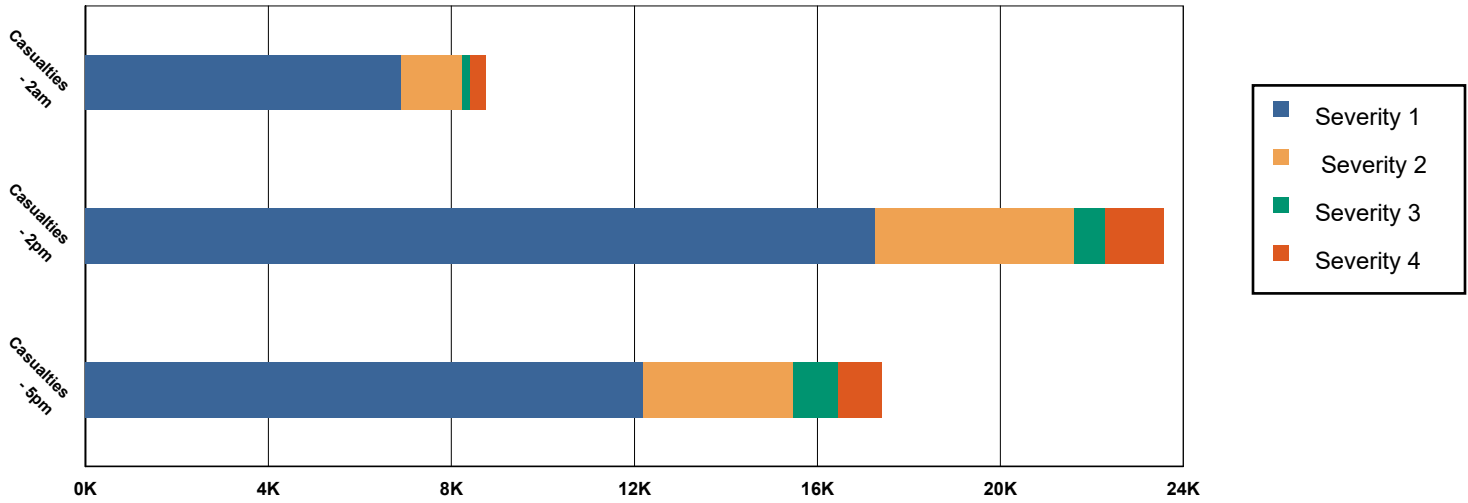
		# of Buildings					
		None	Slight	Moderate	Extensive	Complete	Total
Yuba	<i>Agriculture</i>	278	2	0	0	0	281
	<i>Religion</i>	240	2	0	0	0	242
	<i>Government</i>	591	0	0	0	0	591
	<i>Education</i>	54	0	0	0	0	54
	<i>Other Residential</i>	7,014	6	0	0	0	7,021
	<i>Religion</i>	98	0	0	0	0	98
	<i>Commercial</i>	1,198	1	0	0	0	1,199
	<i>Agriculture</i>	92	0	0	0	0	92
	<i>Single Family</i>	18,865	2	0	0	0	18,867
	<i>Industrial</i>	404	0	0	0	0	404
Total		3,448,103	762,428	160,272	18,167	10,204	4,399,173
Region Total		3,448,103	762,428	160,272	18,167	10,204	4,399,173

Totals only reflect data for those census tracts/blocks included in the user's study region and will reflect the entire county/state only if all of the census blocks for that county/states were selected at the time of study region creation.

Casualties Summary Report

April 26, 2024

Region Total Casualties



Injury Severity Level

Severity 1	Severity 2	Severity 3	Severity 4	Total
------------	------------	------------	------------	-------

California

Alameda

Casualties - 2am

	Severity 1	Severity 2	Severity 3	Severity 4	Total
Single Family	845	76	3	5	928
Hotels	2	1	0	0	3
Commuting	1	1	2	0	5
Educational	0	0	0	0	0
Industrial	82	22	3	6	114
Commercial	123	35	5	11	174
Other-Residential	3,850	1,045	152	299	5,346
Total Casualties - 2am	4,903	1,179	166	322	6,570

Casualties - 2pm

Industrial	608	160	24	48	840
Educational	2,811	797	129	248	3,984
Other-Residential	1,368	382	59	109	1,917
Single Family	242	23	1	2	268
Hotels	0	0	0	0	1
Commuting	10	13	22	4	49
Commercial	9,147	2,601	412	804	12,964

	Injury Severity Level				Total
	Severity 1	Severity 2	Severity 3	Severity 4	
California					
Alameda					
Total Casualties - 2pm	14,185	3,976	647	1,215	20,023
Casualties - 5pm					
<i>Commuting</i>	186	253	421	82	941
<i>Single Family</i>	318	30	1	2	350
<i>Commercial</i>	6,826	1,946	311	598	9,680
<i>Hotels</i>	1	0	0	0	1
<i>Educational</i>	724	209	35	67	1,035
<i>Industrial</i>	380	100	15	30	525
<i>Other-Residential</i>	1,512	415	63	117	2,107
Total Casualties - 5pm	9,946	2,952	846	895	14,639
Amador					
Casualties - 2am					
<i>Commercial</i>	0	0	0	0	0
<i>Other-Residential</i>	0	0	0	0	0
<i>Commuting</i>	0	0	0	0	0
<i>Educational</i>	0	0	0	0	0
<i>Single Family</i>	0	0	0	0	0
<i>Hotels</i>	0	0	0	0	0
<i>Industrial</i>	0	0	0	0	0
Total Casualties - 2am	0	0	0	0	0
Casualties - 2pm					
<i>Single Family</i>	0	0	0	0	0
<i>Hotels</i>	0	0	0	0	0
<i>Educational</i>	0	0	0	0	0
<i>Commuting</i>	0	0	0	0	0
<i>Commercial</i>	0	0	0	0	0
<i>Other-Residential</i>	0	0	0	0	0
<i>Industrial</i>	0	0	0	0	0
Total Casualties - 2pm	0	0	0	0	0
Casualties - 5pm					
<i>Commercial</i>	0	0	0	0	0
<i>Commuting</i>	0	0	0	0	0
<i>Other-Residential</i>	0	0	0	0	0
<i>Single Family</i>	0	0	0	0	0
<i>Educational</i>	0	0	0	0	0
<i>Hotels</i>	0	0	0	0	0
<i>Industrial</i>	0	0	0	0	0
Total Casualties - 5pm	0	0	0	0	0
Calaveras					
Casualties - 2am					
<i>Other-Residential</i>	0	0	0	0	0

	Injury Severity Level				Total
	Severity 1	Severity 2	Severity 3	Severity 4	
California					
Calaveras					
Casualties - 2am					
Commuting	0	0	0	0	0
Commercial	0	0	0	0	0
Single Family	0	0	0	0	0
Hotels	0	0	0	0	0
Educational	0	0	0	0	0
Industrial	0	0	0	0	0
Total Casualties - 2am	0	0	0	0	0
Casualties - 2pm					
Hotels	0	0	0	0	0
Single Family	0	0	0	0	0
Educational	0	0	0	0	0
Commuting	0	0	0	0	0
Commercial	0	0	0	0	0
Industrial	0	0	0	0	0
Other-Residential	0	0	0	0	0
Total Casualties - 2pm	0	0	0	0	0
Casualties - 5pm					
Industrial	0	0	0	0	0
Commercial	0	0	0	0	0
Other-Residential	0	0	0	0	0
Educational	0	0	0	0	0
Hotels	0	0	0	0	0
Commuting	0	0	0	0	0
Single Family	0	0	0	0	0
Total Casualties - 5pm	0	0	0	0	0
Colusa					
Casualties - 2am					
Other-Residential	0	0	0	0	0
Industrial	0	0	0	0	0
Single Family	0	0	0	0	0
Commercial	0	0	0	0	0
Educational	0	0	0	0	0
Commuting	0	0	0	0	0
Hotels	0	0	0	0	0
Total Casualties - 2am	0	0	0	0	0
Casualties - 2pm					
Hotels	0	0	0	0	0
Single Family	0	0	0	0	0
Educational	0	0	0	0	0
Commercial	0	0	0	0	0
Commuting	0	0	0	0	0

	Injury Severity Level				Total
	Severity 1	Severity 2	Severity 3	Severity 4	
California					
Colusa					
Casualties - 2pm					
Other-Residential	0	0	0	0	0
Industrial	0	0	0	0	0
Total Casualties - 2pm	0	0	0	0	0
Casualties - 5pm					
Industrial	0	0	0	0	0
Commercial	0	0	0	0	0
Other-Residential	0	0	0	0	0
Commuting	0	0	0	0	0
Single Family	0	0	0	0	0
Educational	0	0	0	0	0
Hotels	0	0	0	0	0
Total Casualties - 5pm	0	0	0	0	0
Contra Costa					
Casualties - 2am					
Educational	0	0	0	0	0
Hotels	0	0	0	0	0
Industrial	7	1	0	0	9
Other-Residential	165	24	2	4	195
Single Family	280	13	0	0	293
Commercial	6	1	0	0	8
Commuting	0	0	0	0	0
Total Casualties - 2am	459	39	3	5	505
Casualties - 2pm					
Other-Residential	50	7	1	1	60
Industrial	51	9	1	2	63
Hotels	0	0	0	0	0
Single Family	81	4	0	0	85
Educational	110	16	2	3	130
Commuting	1	1	2	0	4
Commercial	500	88	10	20	618
Total Casualties - 2pm	793	125	15	27	960
Casualties - 5pm					
Educational	11	1	0	0	12
Commuting	14	21	33	7	75
Single Family	102	5	0	0	107
Hotels	0	0	0	0	0
Industrial	32	6	1	1	39
Other-Residential	61	9	1	2	73
Commercial	382	68	8	16	474
Total Casualties - 5pm	603	110	43	25	781

	Injury Severity Level				Total
	Severity 1	Severity 2	Severity 3	Severity 4	
California					
El Dorado					
Casualties - 2am					
<i>Commuting</i>	0	0	0	0	0
<i>Educational</i>	0	0	0	0	0
<i>Single Family</i>	0	0	0	0	0
<i>Hotels</i>	0	0	0	0	0
<i>Other-Residential</i>	0	0	0	0	0
<i>Industrial</i>	0	0	0	0	0
<i>Commercial</i>	0	0	0	0	0
Total Casualties - 2am	0	0	0	0	0
Casualties - 2pm					
<i>Industrial</i>	0	0	0	0	0
<i>Other-Residential</i>	0	0	0	0	0
<i>Single Family</i>	0	0	0	0	0
<i>Hotels</i>	0	0	0	0	0
<i>Educational</i>	0	0	0	0	0
<i>Commuting</i>	0	0	0	0	0
<i>Commercial</i>	0	0	0	0	0
Total Casualties - 2pm	0	0	0	0	0
Casualties - 5pm					
<i>Commercial</i>	0	0	0	0	0
<i>Commuting</i>	0	0	0	0	0
<i>Single Family</i>	0	0	0	0	0
<i>Educational</i>	0	0	0	0	0
<i>Hotels</i>	0	0	0	0	0
<i>Industrial</i>	0	0	0	0	0
<i>Other-Residential</i>	0	0	0	0	0
Total Casualties - 5pm	0	0	0	0	0
Fresno					
Casualties - 2am					
<i>Hotels</i>	0	0	0	0	0
<i>Educational</i>	0	0	0	0	0
<i>Industrial</i>	0	0	0	0	0
<i>Commercial</i>	0	0	0	0	0
<i>Other-Residential</i>	0	0	0	0	0
<i>Single Family</i>	0	0	0	0	0
<i>Commuting</i>	0	0	0	0	0
Total Casualties - 2am	0	0	0	0	0
Casualties - 2pm					
<i>Commercial</i>	0	0	0	0	0
<i>Other-Residential</i>	0	0	0	0	0
<i>Industrial</i>	0	0	0	0	0
<i>Single Family</i>	0	0	0	0	0

	Injury Severity Level				Total
	Severity 1	Severity 2	Severity 3	Severity 4	
California					
Fresno					
Casualties - 2pm					
<i>Hotels</i>	0	0	0	0	0
<i>Commuting</i>	0	0	0	0	0
<i>Educational</i>	0	0	0	0	0
Total Casualties - 2pm	0	0	0	0	0
Casualties - 5pm					
<i>Educational</i>	0	0	0	0	0
<i>Commuting</i>	0	0	0	0	0
<i>Hotels</i>	0	0	0	0	0
<i>Industrial</i>	0	0	0	0	0
<i>Single Family</i>	0	0	0	0	0
<i>Other-Residential</i>	0	0	0	0	0
<i>Commercial</i>	0	0	0	0	0
Total Casualties - 5pm	0	0	0	0	0
Lake					
Casualties - 2am					
<i>Hotels</i>	0	0	0	0	0
<i>Industrial</i>	0	0	0	0	0
<i>Other-Residential</i>	0	0	0	0	0
<i>Commuting</i>	0	0	0	0	0
<i>Educational</i>	0	0	0	0	0
<i>Single Family</i>	0	0	0	0	0
<i>Commercial</i>	0	0	0	0	0
Total Casualties - 2am	0	0	0	0	0
Casualties - 2pm					
<i>Industrial</i>	0	0	0	0	0
<i>Single Family</i>	0	0	0	0	0
<i>Commercial</i>	0	0	0	0	0
<i>Other-Residential</i>	0	0	0	0	0
<i>Hotels</i>	0	0	0	0	0
<i>Educational</i>	0	0	0	0	0
<i>Commuting</i>	0	0	0	0	0
Total Casualties - 2pm	0	0	0	0	0
Casualties - 5pm					
<i>Other-Residential</i>	0	0	0	0	0
<i>Industrial</i>	0	0	0	0	0
<i>Commercial</i>	0	0	0	0	0
<i>Educational</i>	0	0	0	0	0
<i>Commuting</i>	0	0	0	0	0
<i>Single Family</i>	0	0	0	0	0
<i>Hotels</i>	0	0	0	0	0

	Injury Severity Level				Total
	Severity 1	Severity 2	Severity 3	Severity 4	
California					
Lake					
Total Casualties - 5pm	0	0	0	0	0
Madera					
Casualties - 2am					
<i>Hotels</i>	0	0	0	0	0
<i>Educational</i>	0	0	0	0	0
<i>Single Family</i>	0	0	0	0	0
<i>Commuting</i>	0	0	0	0	0
<i>Industrial</i>	0	0	0	0	0
<i>Commercial</i>	0	0	0	0	0
<i>Other-Residential</i>	0	0	0	0	0
Total Casualties - 2am	0	0	0	0	0
Casualties - 2pm					
<i>Industrial</i>	0	0	0	0	0
<i>Commercial</i>	0	0	0	0	0
<i>Other-Residential</i>	0	0	0	0	0
<i>Commuting</i>	0	0	0	0	0
<i>Single Family</i>	0	0	0	0	0
<i>Hotels</i>	0	0	0	0	0
<i>Educational</i>	0	0	0	0	0
Total Casualties - 2pm	0	0	0	0	0
Casualties - 5pm					
<i>Industrial</i>	0	0	0	0	0
<i>Commercial</i>	0	0	0	0	0
<i>Single Family</i>	0	0	0	0	0
<i>Educational</i>	0	0	0	0	0
<i>Other-Residential</i>	0	0	0	0	0
<i>Commuting</i>	0	0	0	0	0
<i>Hotels</i>	0	0	0	0	0
Total Casualties - 5pm	0	0	0	0	0
Marin					
Casualties - 2am					
<i>Commercial</i>	1	0	0	0	1
<i>Commuting</i>	0	0	0	0	0
<i>Other-Residential</i>	11	1	0	0	12
<i>Educational</i>	0	0	0	0	0
<i>Single Family</i>	25	0	0	0	25
<i>Hotels</i>	0	0	0	0	0
<i>Industrial</i>	1	0	0	0	1
Total Casualties - 2am	37	1	0	0	38
Casualties - 2pm					
<i>Hotels</i>	0	0	0	0	0

	Injury Severity Level				Total
	Severity 1	Severity 2	Severity 3	Severity 4	
California					
Marin					
Casualties - 2pm					
<i>Commuting</i>	0	0	0	0	0
<i>Educational</i>	5	0	0	0	5
<i>Industrial</i>	5	0	0	0	5
<i>Other-Residential</i>	4	0	0	0	4
<i>Commercial</i>	37	4	0	0	41
<i>Single Family</i>	8	0	0	0	8
Total Casualties - 2pm	58	5	0	0	64
Casualties - 5pm					
<i>Commuting</i>	1	1	2	0	4
<i>Commercial</i>	24	2	0	0	26
<i>Other-Residential</i>	4	0	0	0	4
<i>Single Family</i>	9	0	0	0	9
<i>Industrial</i>	3	0	0	0	3
<i>Educational</i>	1	0	0	0	1
<i>Hotels</i>	0	0	0	0	0
Total Casualties - 5pm	41	4	2	1	48
Mariposa					
Casualties - 2am					
<i>Commuting</i>	0	0	0	0	0
<i>Single Family</i>	0	0	0	0	0
<i>Commercial</i>	0	0	0	0	0
<i>Hotels</i>	0	0	0	0	0
<i>Educational</i>	0	0	0	0	0
<i>Industrial</i>	0	0	0	0	0
<i>Other-Residential</i>	0	0	0	0	0
Total Casualties - 2am	0	0	0	0	0
Casualties - 2pm					
<i>Hotels</i>	0	0	0	0	0
<i>Industrial</i>	0	0	0	0	0
<i>Commercial</i>	0	0	0	0	0
<i>Other-Residential</i>	0	0	0	0	0
<i>Educational</i>	0	0	0	0	0
<i>Commuting</i>	0	0	0	0	0
<i>Single Family</i>	0	0	0	0	0
Total Casualties - 2pm	0	0	0	0	0
Casualties - 5pm					
<i>Other-Residential</i>	0	0	0	0	0
<i>Educational</i>	0	0	0	0	0
<i>Commuting</i>	0	0	0	0	0
<i>Hotels</i>	0	0	0	0	0
<i>Single Family</i>	0	0	0	0	0

	Injury Severity Level				Total
	Severity 1	Severity 2	Severity 3	Severity 4	
California					
Mariposa					
Casualties - 5pm					
<i>Commercial</i>	0	0	0	0	0
<i>Industrial</i>	0	0	0	0	0
Total Casualties - 5pm	0	0	0	0	0
Mendocino					
Casualties - 2am					
<i>Educational</i>	0	0	0	0	0
<i>Hotels</i>	0	0	0	0	0
<i>Commuting</i>	0	0	0	0	0
<i>Industrial</i>	0	0	0	0	0
<i>Other-Residential</i>	0	0	0	0	0
<i>Single Family</i>	0	0	0	0	0
<i>Commercial</i>	0	0	0	0	0
Total Casualties - 2am	0	0	0	0	0
Casualties - 2pm					
<i>Industrial</i>	0	0	0	0	0
<i>Other-Residential</i>	0	0	0	0	0
<i>Commercial</i>	0	0	0	0	0
<i>Single Family</i>	0	0	0	0	0
<i>Commuting</i>	0	0	0	0	0
<i>Hotels</i>	0	0	0	0	0
<i>Educational</i>	0	0	0	0	0
Total Casualties - 2pm	0	0	0	0	0
Casualties - 5pm					
<i>Hotels</i>	0	0	0	0	0
<i>Single Family</i>	0	0	0	0	0
<i>Educational</i>	0	0	0	0	0
<i>Commuting</i>	0	0	0	0	0
<i>Commercial</i>	0	0	0	0	0
<i>Other-Residential</i>	0	0	0	0	0
<i>Industrial</i>	0	0	0	0	0
Total Casualties - 5pm	0	0	0	0	0
Merced					
Casualties - 2am					
<i>Hotels</i>	0	0	0	0	0
<i>Industrial</i>	0	0	0	0	0
<i>Commercial</i>	0	0	0	0	0
<i>Single Family</i>	0	0	0	0	0
<i>Other-Residential</i>	0	0	0	0	0
<i>Educational</i>	0	0	0	0	0
<i>Commuting</i>	0	0	0	0	0

	Injury Severity Level				Total
	Severity 1	Severity 2	Severity 3	Severity 4	
California					
Merced					
Total Casualties - 2am	1	0	0	0	1
Casualties - 2pm					
<i>Other-Residential</i>	0	0	0	0	0
<i>Industrial</i>	0	0	0	0	0
<i>Commercial</i>	3	0	0	0	3
<i>Commuting</i>	0	0	0	0	0
<i>Hotels</i>	0	0	0	0	0
<i>Educational</i>	0	0	0	0	0
<i>Single Family</i>	0	0	0	0	0
Total Casualties - 2pm	3	0	0	0	3
Casualties - 5pm					
<i>Industrial</i>	0	0	0	0	0
<i>Hotels</i>	0	0	0	0	0
<i>Educational</i>	0	0	0	0	0
<i>Commuting</i>	0	0	0	0	1
<i>Single Family</i>	0	0	0	0	0
<i>Commercial</i>	2	0	0	0	2
<i>Other-Residential</i>	0	0	0	0	0
Total Casualties - 5pm	3	0	0	0	4
Monterey					
Casualties - 2am					
<i>Other-Residential</i>	2	0	0	0	2
<i>Commuting</i>	0	0	0	0	0
<i>Commercial</i>	0	0	0	0	0
<i>Single Family</i>	1	0	0	0	1
<i>Hotels</i>	0	0	0	0	0
<i>Educational</i>	0	0	0	0	0
<i>Industrial</i>	0	0	0	0	0
Total Casualties - 2am	3	0	0	0	3
Casualties - 2pm					
<i>Commuting</i>	0	0	0	0	0
<i>Commercial</i>	2	0	0	0	2
<i>Single Family</i>	0	0	0	0	0
<i>Hotels</i>	0	0	0	0	0
<i>Educational</i>	1	0	0	0	1
<i>Industrial</i>	0	0	0	0	0
<i>Other-Residential</i>	1	0	0	0	1
Total Casualties - 2pm	4	0	0	0	4
Casualties - 5pm					
<i>Commercial</i>	1	0	0	0	1
<i>Other-Residential</i>	1	0	0	0	1

	Injury Severity Level				Total
	Severity 1	Severity 2	Severity 3	Severity 4	
California					
Monterey					
Casualties - 5pm					
<i>Industrial</i>	0	0	0	0	0
<i>Hotels</i>	0	0	0	0	0
<i>Educational</i>	0	0	0	0	0
<i>Commuting</i>	0	0	0	0	0
<i>Single Family</i>	0	0	0	0	0
Total Casualties - 5pm	3	0	0	0	3
Napa					
Casualties - 2am					
<i>Commercial</i>	0	0	0	0	0
<i>Other-Residential</i>	3	0	0	0	3
<i>Educational</i>	0	0	0	0	0
<i>Single Family</i>	4	0	0	0	4
<i>Commuting</i>	0	0	0	0	0
<i>Hotels</i>	0	0	0	0	0
<i>Industrial</i>	0	0	0	0	0
Total Casualties - 2am	7	0	0	0	7
Casualties - 2pm					
<i>Educational</i>	1	0	0	0	2
<i>Hotels</i>	0	0	0	0	0
<i>Commuting</i>	0	0	0	0	0
<i>Industrial</i>	1	0	0	0	1
<i>Other-Residential</i>	1	0	0	0	1
<i>Single Family</i>	1	0	0	0	1
<i>Commercial</i>	6	0	0	0	7
Total Casualties - 2pm	10	1	0	0	11
Casualties - 5pm					
<i>Commercial</i>	4	0	0	0	4
<i>Single Family</i>	1	0	0	0	1
<i>Other-Residential</i>	1	0	0	0	1
<i>Commuting</i>	0	1	1	0	2
<i>Industrial</i>	1	0	0	0	1
<i>Educational</i>	0	0	0	0	0
<i>Hotels</i>	0	0	0	0	0
Total Casualties - 5pm	7	1	1	0	9
Nevada					
Casualties - 2am					
<i>Single Family</i>	0	0	0	0	0
<i>Commercial</i>	0	0	0	0	0
<i>Commuting</i>	0	0	0	0	0
<i>Hotels</i>	0	0	0	0	0
<i>Educational</i>	0	0	0	0	0

	Injury Severity Level				Total
	Severity 1	Severity 2	Severity 3	Severity 4	
California					
Nevada					
Casualties - 2am					
<i>Industrial</i>	0	0	0	0	0
<i>Other-Residential</i>	0	0	0	0	0
Total Casualties - 2am	0	0	0	0	0
Casualties - 2pm					
<i>Hotels</i>	0	0	0	0	0
<i>Industrial</i>	0	0	0	0	0
<i>Commercial</i>	0	0	0	0	0
<i>Single Family</i>	0	0	0	0	0
<i>Other-Residential</i>	0	0	0	0	0
<i>Educational</i>	0	0	0	0	0
<i>Commuting</i>	0	0	0	0	0
Total Casualties - 2pm	0	0	0	0	0
Casualties - 5pm					
<i>Commuting</i>	0	0	0	0	0
<i>Hotels</i>	0	0	0	0	0
<i>Other-Residential</i>	0	0	0	0	0
<i>Educational</i>	0	0	0	0	0
<i>Single Family</i>	0	0	0	0	0
<i>Commercial</i>	0	0	0	0	0
<i>Industrial</i>	0	0	0	0	0
Total Casualties - 5pm	0	0	0	0	0
Placer					
Casualties - 2am					
<i>Hotels</i>	0	0	0	0	0
<i>Educational</i>	0	0	0	0	0
<i>Industrial</i>	0	0	0	0	0
<i>Other-Residential</i>	0	0	0	0	0
<i>Commercial</i>	0	0	0	0	0
<i>Single Family</i>	0	0	0	0	0
<i>Commuting</i>	0	0	0	0	0
Total Casualties - 2am	0	0	0	0	0
Casualties - 2pm					
<i>Other-Residential</i>	0	0	0	0	0
<i>Industrial</i>	0	0	0	0	0
<i>Commercial</i>	0	0	0	0	0
<i>Single Family</i>	0	0	0	0	0
<i>Educational</i>	0	0	0	0	0
<i>Commuting</i>	0	0	0	0	0
<i>Hotels</i>	0	0	0	0	0
Total Casualties - 2pm	0	0	0	0	0

	Injury Severity Level				Total
	Severity 1	Severity 2	Severity 3	Severity 4	
California					
Placer					
Casualties - 5pm					
Single Family	0	0	0	0	0
Hotels	0	0	0	0	0
Commuting	0	0	0	0	0
Educational	0	0	0	0	0
Commercial	0	0	0	0	0
Industrial	0	0	0	0	0
Other-Residential	0	0	0	0	0
Total Casualties - 5pm	0	0	0	0	0
Sacramento					
Casualties - 2am					
Industrial	0	0	0	0	0
Other-Residential	1	0	0	0	1
Commercial	0	0	0	0	0
Single Family	1	0	0	0	1
Hotels	0	0	0	0	0
Commuting	0	0	0	0	0
Educational	0	0	0	0	0
Total Casualties - 2am	2	0	0	0	2
Casualties - 2pm					
Other-Residential	0	0	0	0	0
Commuting	0	0	0	0	0
Single Family	0	0	0	0	0
Commercial	4	0	0	0	4
Hotels	0	0	0	0	0
Educational	0	0	0	0	0
Industrial	0	0	0	0	0
Total Casualties - 2pm	5	0	0	0	5
Casualties - 5pm					
Industrial	0	0	0	0	0
Educational	0	0	0	0	0
Hotels	0	0	0	0	0
Commercial	2	0	0	0	2
Commuting	0	0	0	0	0
Other-Residential	0	0	0	0	0
Single Family	0	0	0	0	0
Total Casualties - 5pm	3	0	0	0	3
San Benito					
Casualties - 2am					
Other-Residential	0	0	0	0	0
Commercial	0	0	0	0	0
Commuting	0	0	0	0	0

	Injury Severity Level				Total
	Severity 1	Severity 2	Severity 3	Severity 4	
California					
San Benito					
Casualties - 2am					
<i>Hotels</i>	0	0	0	0	0
<i>Educational</i>	0	0	0	0	0
<i>Single Family</i>	1	0	0	0	1
<i>Industrial</i>	0	0	0	0	0
Total Casualties - 2am	1	0	0	0	1
Casualties - 2pm					
<i>Hotels</i>	0	0	0	0	0
<i>Educational</i>	1	0	0	0	1
<i>Industrial</i>	0	0	0	0	0
<i>Other-Residential</i>	0	0	0	0	0
<i>Commercial</i>	1	0	0	0	1
<i>Commuting</i>	0	0	0	0	0
<i>Single Family</i>	0	0	0	0	0
Total Casualties - 2pm	2	0	0	0	2
Casualties - 5pm					
<i>Commuting</i>	0	0	0	0	1
<i>Commercial</i>	1	0	0	0	1
<i>Other-Residential</i>	0	0	0	0	0
<i>Single Family</i>	0	0	0	0	0
<i>Industrial</i>	0	0	0	0	0
<i>Educational</i>	0	0	0	0	0
<i>Hotels</i>	0	0	0	0	0
Total Casualties - 5pm	1	0	0	0	2
San Francisco					
Casualties - 2am					
<i>Industrial</i>	5	1	0	0	6
<i>Hotels</i>	2	0	0	0	3
<i>Commercial</i>	11	1	0	0	13
<i>Other-Residential</i>	371	39	2	3	415
<i>Commuting</i>	0	0	0	0	0
<i>Educational</i>	0	0	0	0	0
<i>Single Family</i>	141	12	1	2	156
Total Casualties - 2am	531	54	3	5	592
Casualties - 2pm					
<i>Commercial</i>	599	73	4	7	683
<i>Industrial</i>	40	5	0	1	47
<i>Other-Residential</i>	120	13	1	1	135
<i>Single Family</i>	43	4	0	1	48
<i>Hotels</i>	0	0	0	0	0
<i>Commuting</i>	0	0	0	0	0
<i>Educational</i>	59	5	0	0	65

Injury Severity Level

Severity 1 Severity 2 Severity 3 Severity 4 Total

California

San Francisco

	Severity 1	Severity 2	Severity 3	Severity 4	Total
Total Casualties - 2pm	862	101	6	10	978
Casualties - 5pm					
<i>Educational</i>	18	2	0	0	20
<i>Hotels</i>	1	0	0	0	1
<i>Industrial</i>	25	3	0	0	29
<i>Commuting</i>	1	1	2	0	5
<i>Commercial</i>	349	42	2	4	398
<i>Other-Residential</i>	147	16	1	1	164
<i>Single Family</i>	54	5	0	1	60
Total Casualties - 5pm	595	70	6	7	677

San Joaquin

	Severity 1	Severity 2	Severity 3	Severity 4	Total
Casualties - 2am					
<i>Educational</i>	0	0	0	0	0
<i>Commuting</i>	0	0	0	0	0
<i>Hotels</i>	0	0	0	0	0
<i>Commercial</i>	0	0	0	0	0
<i>Single Family</i>	41	2	0	0	43
<i>Industrial</i>	1	0	0	0	1
<i>Other-Residential</i>	11	1	0	0	11
Total Casualties - 2am	52	3	0	0	55

	Severity 1	Severity 2	Severity 3	Severity 4	Total
Casualties - 2pm					
<i>Industrial</i>	4	0	0	0	4
<i>Other-Residential</i>	3	0	0	0	4
<i>Educational</i>	4	0	0	0	4
<i>Single Family</i>	13	1	0	0	14
<i>Hotels</i>	0	0	0	0	0
<i>Commuting</i>	0	0	0	0	0
<i>Commercial</i>	17	1	0	0	17
Total Casualties - 2pm	41	2	0	0	43

	Severity 1	Severity 2	Severity 3	Severity 4	Total
Casualties - 5pm					
<i>Commuting</i>	0	0	0	0	0
<i>Single Family</i>	15	1	0	0	16
<i>Educational</i>	0	0	0	0	0
<i>Hotels</i>	0	0	0	0	0
<i>Industrial</i>	3	0	0	0	3
<i>Commercial</i>	11	1	0	0	12
<i>Other-Residential</i>	4	0	0	0	4
Total Casualties - 5pm	34	2	0	0	36

San Mateo

	Severity 1	Severity 2	Severity 3	Severity 4	Total
Casualties - 2am					
<i>Industrial</i>	3	0	0	0	3

Injury Severity Level

Severity 1 Severity 2 Severity 3 Severity 4 Total

California

San Mateo

Casualties - 2am

<i>Other-Residential</i>	82	6	0	1	89
<i>Single Family</i>	95	3	0	0	98
<i>Commercial</i>	2	0	0	0	2
<i>Educational</i>	0	0	0	0	0
<i>Commuting</i>	0	0	0	0	0
<i>Hotels</i>	0	0	0	0	0
Total Casualties - 2am	182	10	0	1	193

Casualties - 2pm

<i>Other-Residential</i>	24	2	0	0	27
<i>Single Family</i>	26	1	0	0	27
<i>Commuting</i>	0	0	0	0	0
<i>Commercial</i>	141	12	0	1	155
<i>Educational</i>	25	2	0	0	27
<i>Hotels</i>	0	0	0	0	0
<i>Industrial</i>	20	2	0	0	22
Total Casualties - 2pm	238	19	1	1	258

Casualties - 5pm

<i>Commercial</i>	95	8	0	1	104
<i>Industrial</i>	13	1	0	0	14
<i>Other-Residential</i>	30	2	0	0	33
<i>Single Family</i>	35	1	0	0	36
<i>Educational</i>	3	0	0	0	3
<i>Commuting</i>	2	2	5	1	10
<i>Hotels</i>	0	0	0	0	0
Total Casualties - 5pm	177	16	5	2	200

Santa Clara

Casualties - 2am

<i>Commuting</i>	0	0	0	0	0
<i>Educational</i>	0	0	0	0	0
<i>Single Family</i>	330	12	0	0	342
<i>Hotels</i>	0	0	0	0	0
<i>Industrial</i>	15	2	0	0	17
<i>Commercial</i>	8	1	0	0	9
<i>Other-Residential</i>	286	33	3	5	327
Total Casualties - 2am	639	48	3	6	696

Casualties - 2pm

<i>Industrial</i>	109	14	1	2	125
<i>Commercial</i>	503	69	6	12	590
<i>Single Family</i>	89	3	0	0	92
<i>Commuting</i>	1	1	2	0	4
<i>Hotels</i>	0	0	0	0	0

	Injury Severity Level				Total
	Severity 1	Severity 2	Severity 3	Severity 4	
California					
Santa Clara					
Casualties - 2pm					
<i>Other-Residential</i>	87	11	1	2	100
<i>Educational</i>	116	11	1	1	129
Total Casualties - 2pm	905	109	11	17	1,041
Casualties - 5pm					
<i>Industrial</i>	68	8	1	1	78
<i>Hotels</i>	0	0	0	0	0
<i>Other-Residential</i>	107	13	1	2	123
<i>Commercial</i>	353	48	4	8	414
<i>Commuting</i>	19	24	42	8	93
<i>Single Family</i>	120	5	0	0	124
<i>Educational</i>	14	1	0	0	15
Total Casualties - 5pm	680	99	48	20	847
Santa Cruz					
Casualties - 2am					
<i>Hotels</i>	0	0	0	0	0
<i>Educational</i>	0	0	0	0	0
<i>Industrial</i>	0	0	0	0	0
<i>Other-Residential</i>	5	0	0	0	5
<i>Single Family</i>	5	0	0	0	5
<i>Commercial</i>	0	0	0	0	0
<i>Commuting</i>	0	0	0	0	0
Total Casualties - 2am	10	0	0	0	10
Casualties - 2pm					
<i>Industrial</i>	1	0	0	0	1
<i>Other-Residential</i>	1	0	0	0	1
<i>Commercial</i>	8	0	0	0	8
<i>Commuting</i>	0	0	0	0	0
<i>Educational</i>	2	0	0	0	2
<i>Single Family</i>	1	0	0	0	1
<i>Hotels</i>	0	0	0	0	0
Total Casualties - 2pm	14	1	0	0	15
Casualties - 5pm					
<i>Industrial</i>	1	0	0	0	1
<i>Other-Residential</i>	2	0	0	0	2
<i>Commercial</i>	5	0	0	0	6
<i>Commuting</i>	0	0	0	0	0
<i>Single Family</i>	2	0	0	0	2
<i>Hotels</i>	0	0	0	0	0
<i>Educational</i>	0	0	0	0	0
Total Casualties - 5pm	10	1	0	0	11

Injury Severity Level

Severity 1 Severity 2 Severity 3 Severity 4 Total

California

Solano

Casualties - 2am

<i>Industrial</i>	1	0	0	0	1
<i>Other-Residential</i>	22	3	0	1	26
<i>Commercial</i>	0	0	0	0	0
<i>Educational</i>	0	0	0	0	0
<i>Commuting</i>	0	0	0	0	0
<i>Single Family</i>	23	0	0	0	24
<i>Hotels</i>	0	0	0	0	0
Total Casualties - 2am	46	4	0	1	51

Casualties - 2pm

<i>Single Family</i>	6	0	0	0	7
<i>Other-Residential</i>	7	1	0	0	9
<i>Commercial</i>	31	4	0	1	36
<i>Educational</i>	11	2	0	1	14
<i>Commuting</i>	0	0	0	0	0
<i>Hotels</i>	0	0	0	0	0
<i>Industrial</i>	4	1	0	0	5
Total Casualties - 2pm	60	8	1	2	71

Casualties - 5pm

<i>Commercial</i>	22	3	0	1	26
<i>Other-Residential</i>	8	1	0	0	10
<i>Single Family</i>	8	0	0	0	8
<i>Educational</i>	2	0	0	0	3
<i>Commuting</i>	1	1	1	0	3
<i>Hotels</i>	0	0	0	0	0
<i>Industrial</i>	3	0	0	0	3
Total Casualties - 5pm	44	6	2	1	53

Sonoma

Casualties - 2am

<i>Single Family</i>	6	0	0	0	6
<i>Other-Residential</i>	8	1	0	0	10
<i>Commercial</i>	1	0	0	0	1
<i>Commuting</i>	0	0	0	0	0
<i>Hotels</i>	0	0	0	0	0
<i>Educational</i>	0	0	0	0	0
<i>Industrial</i>	2	1	0	0	3
Total Casualties - 2am	17	2	0	1	20

Casualties - 2pm

<i>Single Family</i>	2	0	0	0	2
<i>Commuting</i>	0	1	1	0	2
<i>Educational</i>	7	1	0	0	8
<i>Hotels</i>	0	0	0	0	0

Injury Severity Level

Severity 1 Severity 2 Severity 3 Severity 4 Total

California

Sonoma

Casualties - 2pm

<i>Industrial</i>	14	4	1	1	20
<i>Other-Residential</i>	2	0	0	0	3
<i>Commercial</i>	39	11	2	3	55
Total Casualties - 2pm	64	16	3	5	89

Casualties - 5pm

<i>Single Family</i>	2	0	0	0	2
<i>Commercial</i>	24	6	1	2	33
<i>Commuting</i>	7	10	17	3	38
<i>Hotels</i>	0	0	0	0	0
<i>Educational</i>	2	0	0	0	2
<i>Industrial</i>	8	3	0	1	12
<i>Other-Residential</i>	3	0	0	0	4
Total Casualties - 5pm	47	20	18	6	91

Stanislaus

Casualties - 2am

<i>Hotels</i>	0	0	0	0	0
<i>Industrial</i>	0	0	0	0	0
<i>Commercial</i>	0	0	0	0	0
<i>Single Family</i>	4	0	0	0	4
<i>Other-Residential</i>	2	0	0	0	2
<i>Commuting</i>	0	0	0	0	0
<i>Educational</i>	0	0	0	0	0
Total Casualties - 2am	7	0	0	0	7

Casualties - 2pm

<i>Industrial</i>	1	0	0	0	1
<i>Other-Residential</i>	1	0	0	0	1
<i>Commercial</i>	5	0	0	0	5
<i>Commuting</i>	0	0	0	0	0
<i>Educational</i>	1	0	0	0	1
<i>Single Family</i>	1	0	0	0	1
<i>Hotels</i>	0	0	0	0	0
Total Casualties - 2pm	8	0	0	0	9

Casualties - 5pm

<i>Industrial</i>	0	0	0	0	0
<i>Other-Residential</i>	1	0	0	0	1
<i>Commuting</i>	0	0	0	0	1
<i>Single Family</i>	1	0	0	0	1
<i>Commercial</i>	3	0	0	0	3
<i>Hotels</i>	0	0	0	0	0
<i>Educational</i>	0	0	0	0	0

	Injury Severity Level				Total
	Severity 1	Severity 2	Severity 3	Severity 4	
California					
Stanislaus					
Total Casualties - 5pm	6	0	0	0	7
Sutter					
Casualties - 2am					
<i>Educational</i>	0	0	0	0	0
<i>Commuting</i>	0	0	0	0	0
<i>Hotels</i>	0	0	0	0	0
<i>Industrial</i>	0	0	0	0	0
<i>Other-Residential</i>	0	0	0	0	0
<i>Single Family</i>	0	0	0	0	0
<i>Commercial</i>	0	0	0	0	0
Total Casualties - 2am	0	0	0	0	0
Casualties - 2pm					
<i>Industrial</i>	0	0	0	0	0
<i>Commuting</i>	0	0	0	0	0
<i>Other-Residential</i>	0	0	0	0	0
<i>Single Family</i>	0	0	0	0	0
<i>Commercial</i>	0	0	0	0	0
<i>Hotels</i>	0	0	0	0	0
<i>Educational</i>	0	0	0	0	0
Total Casualties - 2pm	0	0	0	0	0
Casualties - 5pm					
<i>Commuting</i>	0	0	0	0	0
<i>Commercial</i>	0	0	0	0	0
<i>Educational</i>	0	0	0	0	0
<i>Single Family</i>	0	0	0	0	0
<i>Hotels</i>	0	0	0	0	0
<i>Industrial</i>	0	0	0	0	0
<i>Other-Residential</i>	0	0	0	0	0
Total Casualties - 5pm	0	0	0	0	0
Tuolumne					
Casualties - 2am					
<i>Other-Residential</i>	0	0	0	0	0
<i>Industrial</i>	0	0	0	0	0
<i>Commercial</i>	0	0	0	0	0
<i>Commuting</i>	0	0	0	0	0
<i>Single Family</i>	0	0	0	0	0
<i>Educational</i>	0	0	0	0	0
<i>Hotels</i>	0	0	0	0	0
Total Casualties - 2am	0	0	0	0	0
Casualties - 2pm					
<i>Other-Residential</i>	0	0	0	0	0

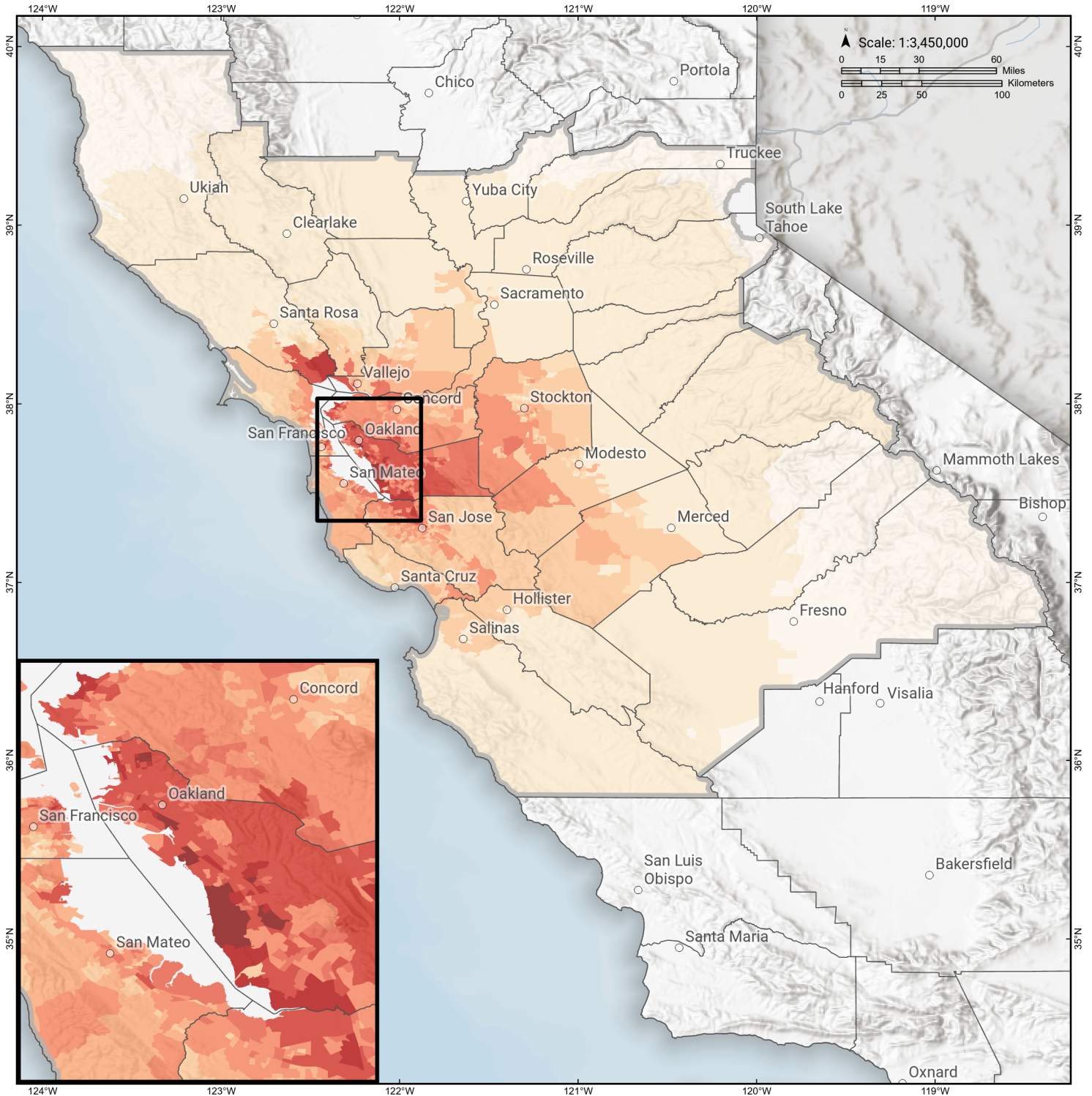
	Injury Severity Level				Total
	Severity 1	Severity 2	Severity 3	Severity 4	
California					
Tuolumne					
Casualties - 2pm					
Commercial	0	0	0	0	0
Single Family	0	0	0	0	0
Educational	0	0	0	0	0
Commuting	0	0	0	0	0
Industrial	0	0	0	0	0
Hotels	0	0	0	0	0
Total Casualties - 2pm	0	0	0	0	0
Casualties - 5pm					
Industrial	0	0	0	0	0
Other-Residential	0	0	0	0	0
Commercial	0	0	0	0	0
Hotels	0	0	0	0	0
Commuting	0	0	0	0	0
Educational	0	0	0	0	0
Single Family	0	0	0	0	0
Total Casualties - 5pm	0	0	0	0	0
Yolo					
Casualties - 2am					
Single Family	0	0	0	0	0
Other-Residential	0	0	0	0	0
Commercial	0	0	0	0	0
Educational	0	0	0	0	0
Commuting	0	0	0	0	0
Hotels	0	0	0	0	0
Industrial	0	0	0	0	0
Total Casualties - 2am	1	0	0	0	1
Casualties - 2pm					
Industrial	0	0	0	0	0
Hotels	0	0	0	0	0
Educational	0	0	0	0	0
Commuting	0	0	0	0	0
Commercial	1	0	0	0	1
Other-Residential	0	0	0	0	0
Single Family	0	0	0	0	0
Total Casualties - 2pm	1	0	0	0	1
Casualties - 5pm					
Other-Residential	0	0	0	0	0
Single Family	0	0	0	0	0
Commuting	0	0	0	0	0
Commercial	0	0	0	0	0
Hotels	0	0	0	0	0

	Injury Severity Level				Total
	Severity 1	Severity 2	Severity 3	Severity 4	
California					
Yolo					
Casualties - 5pm					
<i>Educational</i>	0	0	0	0	0
<i>Industrial</i>	0	0	0	0	0
Total Casualties - 5pm	1	0	0	0	1
Yuba					
Casualties - 2am					
<i>Industrial</i>	0	0	0	0	0
<i>Other-Residential</i>	0	0	0	0	0
<i>Commercial</i>	0	0	0	0	0
<i>Educational</i>	0	0	0	0	0
<i>Single Family</i>	0	0	0	0	0
<i>Commuting</i>	0	0	0	0	0
<i>Hotels</i>	0	0	0	0	0
Total Casualties - 2am	0	0	0	0	0
Casualties - 2pm					
<i>Commercial</i>	0	0	0	0	0
<i>Commuting</i>	0	0	0	0	0
<i>Single Family</i>	0	0	0	0	0
<i>Other-Residential</i>	0	0	0	0	0
<i>Industrial</i>	0	0	0	0	0
<i>Hotels</i>	0	0	0	0	0
<i>Educational</i>	0	0	0	0	0
Total Casualties - 2pm	0	0	0	0	0
Casualties - 5pm					
<i>Hotels</i>	0	0	0	0	0
<i>Educational</i>	0	0	0	0	0
<i>Industrial</i>	0	0	0	0	0
<i>Other-Residential</i>	0	0	0	0	0
<i>Single Family</i>	0	0	0	0	0
<i>Commercial</i>	0	0	0	0	0
<i>Commuting</i>	0	0	0	0	0
Total Casualties - 5pm	0	0	0	0	0
Region Total	NA	NA	NA	NA	NA

Totals only reflect data for those census tracts/blocks included in the user's study region and will reflect the entire county/state only if all of the census blocks for that county/states were selected at the time of study region creation.

Haywired M 7.05 Scenario

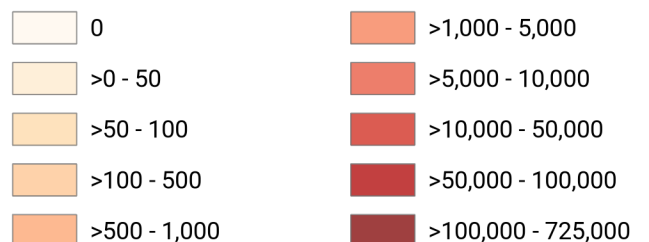
Debris Generated by Census Tract



Study Region: Haywired M 7.05 Scenario
Scenario: glegacyhaywiredm7p05_se



Debris Generated (in tons)



Debris Summary Report

April 26, 2024

All values are in thousands of tons.

	Brick, Wood & Others	Concrete & Steel	Total
California			
Fresno	0	0	0
Alameda	2,351	6,174	8,525
Solano	36	54	90
San Mateo	125	153	278
Tuolumne	0	0	0
San Joaquin	60	29	89
Nevada	0	0	0
Madera	0	0	0
Colusa	0	0	0
Napa	7	10	17
Mendocino	0	0	0
Contra Costa	316	465	781
El Dorado	0	0	0
Amador	0	0	0
Santa Cruz	11	10	21
Lake	0	0	0
Monterey	4	2	6
Sacramento	3	2	5
Mariposa	0	0	0

	Brick, Wood & Others	Concrete & Steel	Total
Yolo	1	1	2
Calaveras	0	0	0
Yuba	0	0	0
Stanislaus	9	8	16
Sonoma	21	94	115
Santa Clara	439	604	1,043
San Benito	1	1	3
San Francisco	619	395	1,014
Merced	2	2	4
Placer	0	0	0
Marin	37	34	71
Sutter	0	0	0
Total	4,042	8,038	12,080
Region Total	4,042	8,038	12,080

Totals only reflect data for those census tracts/blocks included in the user's study region and will reflect the entire county/state only if all of the census blocks for that county/states were selected at the time of study region creation.

Direct Economic Losses For Buildings

April 26, 2024

All values are in thousands of dollars

	Capital Stock Losses				Loss Ratio %	Income Losses				Total Loss
	Cost Structural Damage	Cost Non-struct. Damage	Cost Contents Damage	Inventory Loss		Relocation Loss	Capital Related Loss	Wages Losses	Rental Income Loss	
California										
Contra Costa	856,567	5,259,920	2,432,255	161,439	2.80	314,705	139,761	185,656	165,456	9,515,759
Mendocino	1	97	64	9	0.00	0	0	0	0	171
Napa	17,154	137,072	72,960	7,721	0.46	4,347	3,307	4,256	3,597	250,414
Colusa	23	345	219	41	0.01	4	8	9	7	658
Alameda	5,646,115	26,303,084	11,365,458	745,951	9.61	2,782,005	1,359,508	1,968,209	1,429,881	51,600,210
Nevada	1	56	35	2	0.00	0	0	0	0	94
San Joaquin	78,063	560,096	306,004	35,353	0.46	21,000	8,428	10,301	12,673	1,031,918
Tuolumne	4	268	168	13	0.00	0	0	1	1	456
Madera	56	862	539	119	0.00	4	3	3	7	1,592

	Capital Stock Losses				Loss Ratio %	Income Losses				Total Loss
	Cost Structural Damage	Cost Non-struct. Damage	Cost Contents Damage	Inventory Loss		Relocation Loss	Capital Related Loss	Wages Losses	Rental Income Loss	
Fresno	28	656	424	117	0.00	3	4	4	4	1,240
Solano	76,691	503,667	243,855	20,742	0.71	24,165	17,766	22,631	17,250	926,767
San Mateo	352,926	2,292,113	1,074,048	68,764	1.70	104,948	63,226	76,061	77,484	4,109,570
Yolo	1,601	28,839	18,404	2,026	0.07	219	259	302	327	51,976
San Benito	2,605	23,646	13,275	1,405	0.20	792	650	720	434	43,527
San Francisco	757,356	2,117,740	924,991	45,892	1.86	334,139	202,354	246,668	290,783	4,919,922
Stanislaus	15,480	143,239	79,765	10,869	0.16	3,015	1,609	1,890	2,614	258,481
Sutter	49	772	488	124	0.00	4	3	3	5	1,448
Santa Clara	1,175,297	7,386,952	3,725,060	258,320	2.24	374,890	254,777	293,428	255,562	13,724,286
Sonoma	69,401	405,477	229,660	34,825	0.45	18,759	20,535	22,092	10,539	811,289
Calaveras	52	581	395	116	0.00	6	11	11	8	1,182
Yuba	18	504	297	35	0.00	1	3	3	4	866
Merced	5,605	25,277	17,074	7,310	0.06	668	236	204	230	56,604
Placer	115	3,279	1,981	201	0.00	14	23	24	31	5,669
Marin	94,433	675,505	324,156	15,685	1.23	23,683	18,779	20,921	18,373	1,191,534
El Dorado	8	672	429	27	0.00	0	1	1	2	1,141
Lake	13	335	169	14	0.00	1	2	1	3	538
Santa Cruz	23,978	172,924	91,292	12,878	0.36	4,845	4,485	5,248	3,955	319,605

	Capital Stock Losses				Loss Ratio %	Income Losses				Total Loss
	Cost Structural Damage	Cost Non-struct. Damage	Cost Contents Damage	Inventory Loss		Relocation Loss	Capital Related Loss	Wages Losses	Rental Income Loss	
Mariposa	1	49	31	2	0.00	0	1	1	1	87
Amador	12	324	198	21	0.00	1	4	3	4	569
Sacramento	3,856	49,913	27,374	2,524	0.02	817	995	1,190	1,095	87,764
Monterey	5,297	55,002	31,132	4,893	0.08	1,126	754	881	1,186	100,271
Total	9,182,804	46,149,269	20,982,202	1,437,439	0.73	4,014,160	2,097,494	2,860,724	2,291,516	89,015,609
Region Total	9,182,804	46,149,269	20,982,202	1,437,439	0.73	4,014,160	2,097,494	2,860,724	2,291,516	89,015,609

Totals only reflect data for those census tracts/blocks included in the user's study region and will reflect the entire county/state only if all of the census blocks for that county/states were selected at the time of study region creation.

Direct Economic Loss For Transportation

April 26, 2024

All values are in thousands of dollars

	Highway	Railway	Light Rail	Bus Facility	Ports	Ferries	Airport	Total
California								
Alameda								
Segments	0	0	0					0
Bridges	591,962	134,591	1,687					728,241
Tunnels	23,335	0	0					23,335
Facilities		13,455	0	711	47,708	1,009	103,487	166,370
Total	615,297	148,046	1,687	711	47,708	1,009	103,487	917,945
Amador								
Segments	0	0	0					0
Bridges	0	0	0					0
Tunnels	0	0	0					0
Facilities		0	0	0	0	0	51	51
Total	0	0	0	0	0	0	51	51
Calaveras								
Segments	0	0	0					0
Bridges	0	0	0					0
Tunnels	0	0	0					0
Facilities		0	0	0	0	0	102	102

	Highway	Railway	Light Rail	Bus Facility	Ports	Ferries	Airport	Total
Total	0	0	0	0	0	0	102	102
Colusa								
Segments	0	0	0					0
Bridges	0	0	0					0
Tunnels	0	0	0					0
Facilities		0	0	0	0	0	51	51
Total	0	0	0	0	0	0	51	51
Contra Costa								
Segments	0	0	0					0
Bridges	83,336	10,088	74					93,497
Tunnels	13,326	51	0					13,377
Facilities		6,117	2,321	0	53,955	743	4,059	67,195
Total	96,662	16,256	2,394	0	53,955	743	4,059	174,069
El Dorado								
Segments	0	0	0					0
Bridges	0	0	0					0
Tunnels	0	0	0					0
Facilities		0	0	24	0	0	231	254
Total	0	0	0	24	0	0	231	255
Fresno								
Segments	0	0	0					0
Bridges	198	6	0					204
Tunnels	0	0	0					0
Facilities		0	0	0	0	0	108	108

	Highway	Railway	Light Rail	Bus Facility	Ports	Ferries	Airport	Total
Total	198	6	0	0	0	0	108	312
Lake								
Segments	0	0	0					0
Bridges	4	0	0					4
Tunnels	0	0	0					0
Facilities		0	0	0	0	0	51	51
Total	4	0	0	0	0	0	51	55
Madera								
Segments	0	0	0					0
Bridges	20	0	0					20
Tunnels	0	0	0					0
Facilities		26	0	21	0	0	102	149
Total	20	26	0	21	0	0	102	168
Marin								
Segments	0	0	0					0
Bridges	20,258	21	0					20,279
Tunnels	204	0	0					204
Facilities		0	0	1,418	24,855	984	1,410	28,667
Total	20,462	21	0	1,418	24,855	984	1,410	49,151
Mariposa								
Segments	0	0	0					0
Bridges	0	0	0					0
Tunnels	0	0	0					0
Facilities		0	0	0	0	0	51	51

	Highway	Railway	Light Rail	Bus Facility	Ports	Ferries	Airport	Total
Total	0	0	0	0	0	0	51	51
Mendocino								
Segments	0	0	0					0
Bridges	13	1	0					14
Tunnels	0	0	0					0
Facilities		0	0	45	0	0	102	147
Total	13	1	0	45	0	0	102	161
Merced								
Segments	0	0	0					0
Bridges	3,168	409	0					3,577
Tunnels	0	0	0					0
Facilities		51	0	21	0	0	743	816
Total	3,168	460	0	21	0	0	743	4,392
Monterey								
Segments	0	0	0					0
Bridges	361	43	0					404
Tunnels	0	0	0					0
Facilities		109	0	458	230	0	1,719	2,517
Total	361	152	0	458	230	0	1,719	2,920
Napa								
Segments	0	0	0					0
Bridges	1,801	4,181	0					5,982
Tunnels	0	0	0					0
Facilities		0	0	251	1,697	0	1,696	3,643

	Highway	Railway	Light Rail	Bus Facility	Ports	Ferries	Airport	Total
Total	1,801	4,181	0	251	1,697	0	1,696	9,625
Nevada								
Segments	0	0	0					0
Bridges	0	0	0					0
Tunnels	0	0	0					0
Facilities		0	0	0	0	0	0	0
Total	0	0	0	0	0	0	0	0
Placer								
Segments	0	0	0					0
Bridges	0	0	0					0
Tunnels	0	0	0					0
Facilities		80	0	2	0	0	153	235
Total	0	80	0	2	0	0	153	236
Sacramento								
Segments	0	0	0					0
Bridges	147	0	0					147
Tunnels	0	0	0					0
Facilities		26	4,279	112	4,782	55	4,198	13,451
Total	147	26	4,279	112	4,782	55	4,198	13,598
San Benito								
Segments	0	0	0					0
Bridges	2,726	907	0					3,633
Tunnels	0	0	0					0
Facilities		0	0	0	0	0	986	986

	Highway	Railway	Light Rail	Bus Facility	Ports	Ferries	Airport	Total
Total	2,726	907	0	0	0	0	986	4,619
San Francisco								
Segments	0	0	0					0
Bridges	71,251	85	0					71,336
Tunnels	1,895	0	0					1,895
Facilities		0	495,290	746	37,106	787	4,237	538,166
Total	73,146	85	495,290	746	37,106	787	4,237	611,397
San Joaquin								
Segments	0	0	0					0
Bridges	2,409	55	0					2,464
Tunnels	0	0	0					0
Facilities		3,032	0	168	13,577	495	3,261	20,533
Total	2,409	3,087	0	168	13,577	495	3,261	22,997
San Mateo								
Segments	0	0	0					0
Bridges	37,247	443	0					37,690
Tunnels	1,144	1	0					1,145
Facilities		0	0	0	14,177	0	170,052	184,229
Total	38,391	443	0	0	14,177	0	170,052	223,064
Santa Clara								
Segments	0	0	0					0
Bridges	110,322	5,556	11					115,889
Tunnels	176	0	0					176
Facilities		2,834	140,134	1,093	4,616	0	83,395	232,072

	Highway	Railway	Light Rail	Bus Facility	Ports	Ferries	Airport	Total
Total	110,498	8,390	140,145	1,093	4,616	0	83,395	348,137
Santa Cruz								
<i>Segments</i>	0	0	0					0
<i>Bridges</i>	399	112	0					511
<i>Tunnels</i>	0	0	0					0
<i>Facilities</i>		0	0	352	288	0	2,016	2,655
Total	399	112	0	352	288	0	2,016	3,166
Solano								
<i>Segments</i>	0	0	0					0
<i>Bridges</i>	5,583	233	0					5,816
<i>Tunnels</i>	0	0	0					0
<i>Facilities</i>		1,192	0	592	17,209	504	1,348	20,844
Total	5,583	1,425	0	592	17,209	504	1,348	26,660
Sonoma								
<i>Segments</i>	0	0	0					0
<i>Bridges</i>	23,430	31,683	0					55,113
<i>Tunnels</i>	0	0	0					0
<i>Facilities</i>		0	0	178	4,045	0	3,373	7,595
Total	23,430	31,683	0	178	4,045	0	3,373	62,709
Stanislaus								
<i>Segments</i>	0	0	0					0
<i>Bridges</i>	776	55	0					831
<i>Tunnels</i>	0	0	0					0
<i>Facilities</i>		572	0	259	0	0	999	1,830

	Highway	Railway	Light Rail	Bus Facility	Ports	Ferries	Airport	Total
Total	776	627	0	259	0	0	999	2,661
Sutter								
Segments	0	0	0					0
Bridges	1	0	0					1
Tunnels	0	0	0					0
Facilities		0	0	0	0	0	129	129
Total	1	0	0	0	0	0	129	129
Tuolumne								
Segments	0	0	0					0
Bridges	0	0	0					0
Tunnels	0	0	0					0
Facilities		0	0	0	0	0	153	153
Total	0	0	0	0	0	0	153	153
Yolo								
Segments	0	0	0					0
Bridges	277	0	0					277
Tunnels	0	0	0					0
Facilities		379	0	0	2,658	0	486	3,523
Total	277	379	0	0	2,658	0	486	3,800
Yuba								
Segments	0	0	0					0
Bridges	0	0	0					0
Tunnels	0	0	0					0
Facilities		0	0	22	0	0	102	124

	Highway	Railway	Light Rail	Bus Facility	Ports	Ferries	Airport	Total
Total	0	0	0	22	0	0	102	124
Total	995,768	216,391	643,796	6,473	226,901	4,577	388,851	2,482,757
Region Total	995,768	216,391	643,796	6,473	226,901	4,577	388,851	2,482,757

Totals only reflect data for those census tracts/blocks included in the user's study region and will reflect the entire county/state only if all of the census blocks for that county/states were selected at the time of study region creation.

Direct Economic Loss For Utilities

April 26, 2024

All values are in thousands of dollars

	Potable Water	Waste Water	Oil Systems	Natural Gas	Electric Power	Communication	Total
California							
Alameda							
<i>Facilities</i>	28,787	685,194	0	0	1,001,911	1,342	1,717,235
<i>Pipelines</i>	66,708	33,509	0	0			100,218
Total	95,496	718,704	0	0	1,001,911	1,342	1,817,453
Amador							
<i>Facilities</i>	0	3	0	0	7,382	0	7,384
<i>Pipelines</i>	26	13	0	0			39
Total	26	16	0	0	7,382	0	7,424
Calaveras							
<i>Facilities</i>	28	492	0	0	25,137	0	25,657
<i>Pipelines</i>	55	27	0	0			82
Total	83	519	0	0	25,137	0	25,740
Colusa							
<i>Facilities</i>	0	123	0	0	398	0	521

	Potable Water	Waste Water	Oil Systems	Natural Gas	Electric Power	Communication	Total
<i>Pipelines</i>	157	79	0	0			237
Total	157	202	0	0	398	0	758
Contra Costa							
<i>Facilities</i>	42,478	325,558	158	0	1,880,985	318	2,249,497
<i>Pipelines</i>	19,300	9,695	0	0			28,996
Total	61,778	335,253	158	0	1,880,985	318	2,278,492
El Dorado							
<i>Facilities</i>	28	492	0	0	13,173	1	13,694
<i>Pipelines</i>	84	42	0	0			126
Total	112	534	0	0	13,173	1	13,819
Fresno							
<i>Facilities</i>	0	0	0	0	16,241	1	16,242
<i>Pipelines</i>	1,456	731	0	0			2,187
Total	1,456	731	0	0	16,241	1	18,429
Lake							
<i>Facilities</i>	56	0	0	0	5,226	1	5,284
<i>Pipelines</i>	334	168	0	0			502
Total	390	168	0	0	5,226	1	5,786
Madera							
<i>Facilities</i>	0	0	0	0	628	0	629
<i>Pipelines</i>	396	199	0	0			595

	Potable Water	Waste Water	Oil Systems	Natural Gas	Electric Power	Communication	Total
Total	396	199	0	0	628	0	1,224
Marin							
<i>Facilities</i>	2,955	135,729	0	0	9,190	179	148,053
<i>Pipelines</i>	1,268	637	0	0			1,906
Total	4,223	136,366	0	0	9,190	179	149,959
Mariposa							
<i>Facilities</i>	0	0	0	0	2,808	2	2,809
<i>Pipelines</i>	29	15	0	0			43
Total	29	15	0	0	2,808	2	2,853
Mendocino							
<i>Facilities</i>	0	246	0	0	95	1	341
<i>Pipelines</i>	230	116	0	0			346
Total	230	362	0	0	95	1	687
Merced							
<i>Facilities</i>	0	3,418	0	0	369,823	13	373,254
<i>Pipelines</i>	1,690	849	0	0			2,538
Total	1,690	4,266	0	0	369,823	13	375,793
Monterey							
<i>Facilities</i>	0	16,610	0	0	199,649	50	216,308
<i>Pipelines</i>	993	499	0	0			1,492
Total	993	17,109	0	0	199,649	50	217,800

	Potable Water	Waste Water	Oil Systems	Natural Gas	Electric Power	Communication	Total
Napa							
<i>Facilities</i>	0	27,173	0	0	312	17	27,501
<i>Pipelines</i>	1,367	687	0	0			2,054
Total	1,367	27,859	0	0	312	17	29,555
Nevada							
<i>Facilities</i>	0	246	0	0	18	0	264
<i>Pipelines</i>	29	14	0	0			43
Total	29	260	0	0	18	0	307
Placer							
<i>Facilities</i>	0	1,229	0	0	4,440	1	5,670
<i>Pipelines</i>	89	45	0	0			134
Total	89	1,274	0	0	4,440	1	5,804
Sacramento							
<i>Facilities</i>	0	6,835	0	0	25,937	46	32,819
<i>Pipelines</i>	209	105	0	0			314
Total	209	6,940	0	0	25,937	46	33,133
San Benito							
<i>Facilities</i>	0	22,527	0	0	0	58	22,586
<i>Pipelines</i>	993	499	0	0			1,492
Total	993	23,026	0	0	0	58	24,078
San Francisco							

	Potable Water	Waste Water	Oil Systems	Natural Gas	Electric Power	Communication	Total
<i>Facilities</i>	0	107,053	0	0	10,842	572	118,467
<i>Pipelines</i>	358	180	0	0			539
Total	358	107,233	0	0	10,842	572	119,006
San Joaquin							
<i>Facilities</i>	3,972	38,683	6	0	238,393	98	281,152
<i>Pipelines</i>	938	471	0	0			1,409
Total	4,910	39,154	6	0	238,393	98	282,561
San Mateo							
<i>Facilities</i>	0	195,553	0	0	31,963	344	227,861
<i>Pipelines</i>	935	470	0	0			1,405
Total	935	196,023	0	0	31,963	344	229,266
Santa Clara							
<i>Facilities</i>	12,206	101,315	0	0	998,375	707	1,112,602
<i>Pipelines</i>	21,918	11,010	0	0			32,928
Total	34,123	112,325	0	0	998,375	707	1,145,530
Santa Cruz							
<i>Facilities</i>	0	21,549	0	0	2,425	53	24,027
<i>Pipelines</i>	686	344	0	0			1,030
Total	686	21,893	0	0	2,425	53	25,057
Solano							
<i>Facilities</i>	0	56,408	17	0	325,073	53	381,551

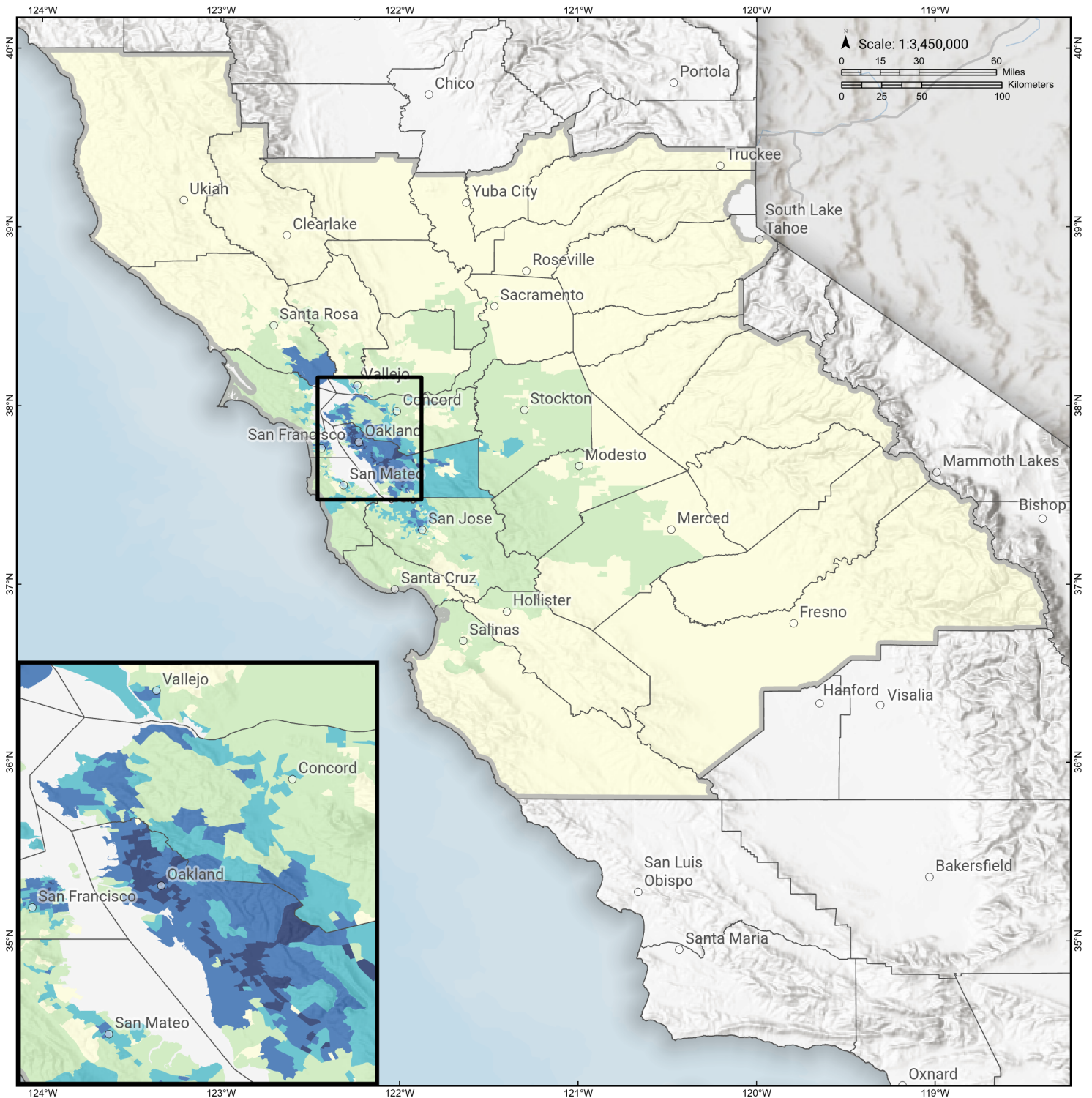
	Potable Water	Waste Water	Oil Systems	Natural Gas	Electric Power	Communication	Total
<i>Pipelines</i>	2,604	1,308	0	0			3,912
Total	2,604	57,716	17	0	325,073	53	385,463
Sonoma							
<i>Facilities</i>	0	59,878	0	0	42,610	56	102,545
<i>Pipelines</i>	7,476	3,755	0	0			11,231
Total	7,476	63,633	0	0	42,610	56	113,776
Stanislaus							
<i>Facilities</i>	0	11,878	0	0	94,976	88	106,942
<i>Pipelines</i>	732	368	0	0			1,100
Total	732	12,246	0	0	94,976	88	108,042
Sutter							
<i>Facilities</i>	0	123	0	0	6,808	1	6,931
<i>Pipelines</i>	84	42	0	0			126
Total	84	165	0	0	6,808	1	7,057
Tuolumne							
<i>Facilities</i>	0	123	0	0	15,597	1	15,722
<i>Pipelines</i>	68	34	0	0			102
Total	68	157	0	0	15,597	1	15,824
Yolo							
<i>Facilities</i>	0	6,097	0	0	6,937	12	13,047
<i>Pipelines</i>	177	89	0	0			266

	Potable Water	Waste Water	Oil Systems	Natural Gas	Electric Power	Communication	Total
Total	177	6,186	0	0	6,937	12	13,313
Yuba							
<i>Facilities</i>	0	492	0	0	49	0	541
<i>Pipelines</i>	23	11	0	0			34
Total	23	503	0	0	49	0	575
Total	221,923	1,891,039	181	0	5,337,402	4,016	7,454,561
Region Total	221,923	1,891,039	181	0	5,337,402	4,016	7,454,561

Totals only reflect data for those census tracts/blocks included in the user's study region and will reflect the entire county/state only if all of the census blocks for that county/states were selected at the time of study region creation.

Haywired M 7.05 Scenario

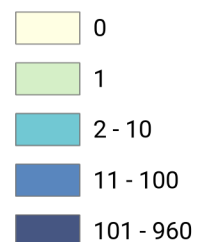
Displaced Households by Census Tract



Study Region: Haywired M 7.05 Scenario
Scenario: glegacyhaywiredm7p05_se



Displaced Households



Hazus: Earthquake Global Risk Report

Region Name: HaywiredScenario

Earthquake Scenario: gllegacyhaywiredm7p05_se

Print Date: April 26, 2024

Disclaimer:

Totals only reflect data for those census tracts/blocks included in the user's study region.

The estimates of social and economic impacts contained in this report were produced using Hazus loss estimation methodology software which is based on current scientific and engineering knowledge. There are uncertainties inherent in any loss estimation technique. Therefore, there may be significant differences between the modeled results contained in this report and the actual social and economic losses following a specific earthquake. These results can be improved by using enhanced inventory, geotechnical, and observed ground motion data.

Table of Contents

Section	Page #
General Description of the Region	3
Building and Lifeline Inventory	4
Building Inventory	
Critical Facility Inventory	
Transportation and Utility Lifeline Inventory	
Earthquake Scenario Parameters	7
Direct Earthquake Damage	8
Buildings Damage	
Essential Facilities Damage	
Transportation and Utility Lifeline Damage	
Induced Earthquake Damage	14
Fire Following Earthquake	
Debris Generation	
Social Impact	15
Shelter Requirements	
Casualties	
Economic Loss	17
Building Related Losses	
Transportation and Utility Lifeline Losses	
Appendix A: County Listing for the Region	
Appendix B: Regional Population and Building Value Data	

General Description of the Region

Hazus-MH is a regional earthquake loss estimation model that was developed by the Federal Emergency Management Agency (FEMA) and the National Institute of Building Sciences. The primary purpose of Hazus is to provide a methodology and software application to develop multi-hazard losses at a regional scale. These loss estimates would be used primarily by local, state and regional officials to plan and stimulate efforts to reduce risks from multi-hazards and to prepare for emergency response and recovery.

The earthquake loss estimates provided in this report was based on a region that includes 31 county(ies) from the following state(s):

California

Note:

Appendix A contains a complete listing of the counties contained in the region.

The geographical size of the region is 44,232.55 square miles and contains 3,281 census tracts. There are over 5,014 thousand households in the region which has a total population of 14,338,918 people. The distribution of population by Total Region and County is provided in Appendix B.

There are an estimated 4,399 thousand buildings in the region with a total building replacement value (excluding contents) of (millions of dollars). Approximately 90.00 % of the buildings (and % of the building value) are associated with residential housing.

The replacement value of the transportation and utility lifeline systems is estimated to be 222,655 and 157,069 (millions of dollars) , respectively.

Building and Lifeline Inventory

Building Inventory

Hazus estimates that there are 4,399 thousand buildings in the region which have an aggregate total replacement value of (millions of dollars) . Appendix B provides a general distribution of the building value by Total Region and County.

In terms of building construction types found in the region, wood frame construction makes up 87% of the building inventory. The remaining percentage is distributed between the other general building types.

Critical Facility Inventory

Hazus breaks critical facilities into two (2) groups: essential facilities and high potential loss facilities (HPL). Essential facilities include hospitals, medical clinics, schools, fire stations, police stations and emergency operations facilities. High potential loss facilities include dams, levees, military installations, nuclear power plants and hazardous material sites.

For essential facilities, there are 237 hospitals in the region with a total bed capacity of 36,323 beds. There are 5,246 schools, 1,376 fire stations, 455 police stations and 84 emergency operation facilities. With respect to high potential loss facilities (HPL), there are no dams identified within the inventory. The inventory also includes no hazardous material sites, no military installations and no nuclear power plants.

Transportation and Utility Lifeline Inventory

Within Hazus, the lifeline inventory is divided between transportation and utility lifeline systems. There are seven (7) transportation systems that include highways, railways, light rail, bus, ports, ferry and airports. There are six (6) utility systems that include potable water, wastewater, natural gas, crude & refined oil, electric power and communications. The lifeline inventory data are provided in Tables 1 and 2.

The total value of the lifeline inventory is over 379,724.00 (millions of dollars). This inventory includes over 9,257.19 miles of highways, 10,401 bridges, 203,674.23 miles of pipes.

Table 1: Transportation System Lifeline Inventory

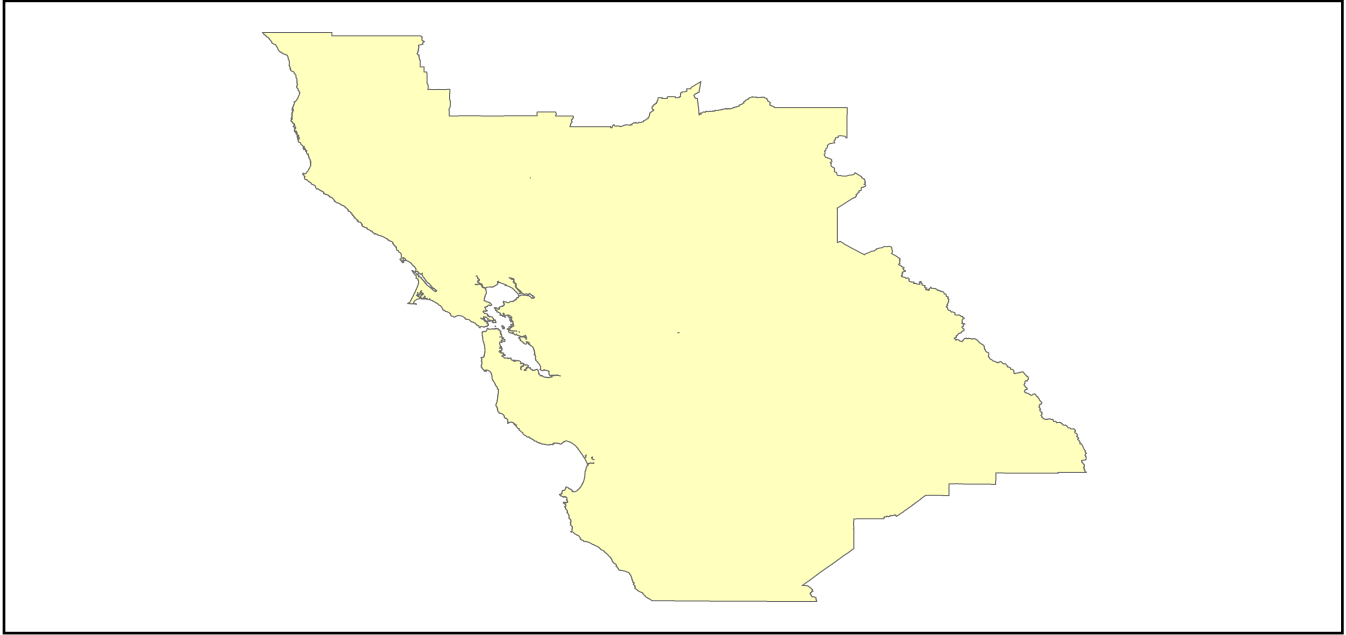
System	Component	# Locations/ # Segments	Replacement value (millions of dollars)
Highway	Bridges	10,401	55739.5959
	Segments	6,583	82010.4022
	Tunnels	46	982.1213
	Subtotal		138732.1194
Railways	Bridges	1,493	8495.1700
	Facilities	80	213.0400
	Segments	2,909	60139.3929
	Tunnels	3	1.8495
	Subtotal		68849.4524
Light Rail	Bridges	112	15.3529
	Facilities	255	4154.0000
	Segments	15	5403.2756
	Tunnels	0	0.0000
	Subtotal		9572.6285
Bus	Facilities	45	102.6914
	Subtotal		102.6914
Ferry	Facilities	25	33.2750
	Subtotal		33.2750
Port	Facilities	361	1376.0759
	Subtotal		1376.0759
Airport	Facilities	97	2748.9448
	Runways	136	1240.3548
	Subtotal		3989.2996
		Total	222,655.50

Table 2: Utility System Lifeline Inventory

System	Component	# Locations / Segments	Replacement value (millions of dollars)
Potable Water	Distribution Lines	NA	4052.3927
	Facilities	21	825.1740
	Pipelines	0	0.0000
		Subtotal	4877.5667
Waste Water	Distribution Lines	NA	2431.4356
	Facilities	177	30435.4686
	Pipelines	0	0.0000
		Subtotal	32866.9042
Natural Gas	Distribution Lines	NA	1620.9571
	Facilities	2	59.4451
	Pipelines	849	12648.2696
		Subtotal	14328.6718
Oil Systems	Facilities	16	1.8880
	Pipelines	0	0.0000
		Subtotal	1.8880
Electrical Power	Facilities	325	104948.4149
		Subtotal	104948.4149
Communication	Facilities	392	46.2560
		Subtotal	46.2560
	Total		157,069.70

Earthquake Scenario

Hazus uses the following set of information to define the earthquake parameters used for the earthquake loss estimate provided in this report.



Scenario Name	gllegacyhaywiredm7p05_se
Type of Earthquake	User-defined
Fault Name	NA
Historical Epicenter ID #	NA
Probabilistic Return Period	NA
Longitude of Epicenter	NA
Latitude of Epicenter	NA
Earthquake Magnitude	7.05
Depth (km)	NA
Rupture Length (Km)	NA
Rupture Orientation (degrees)	NA
Attenuation Function	NA

Direct Earthquake Damage

Building Damage

Hazus estimates that about 188,641 buildings will be at least moderately damaged. This is over 4.00 % of the buildings in the region. There are an estimated 10,203 buildings that will be damaged beyond repair. The definition of the 'damage states' is provided in Volume 1: Chapter 5 of the Hazus technical manual. Table 3 below summarizes the expected damage by general occupancy for the buildings in the region. Table 4 below summarizes the expected damage by general building type.

Damage Categories by General Occupancy Type

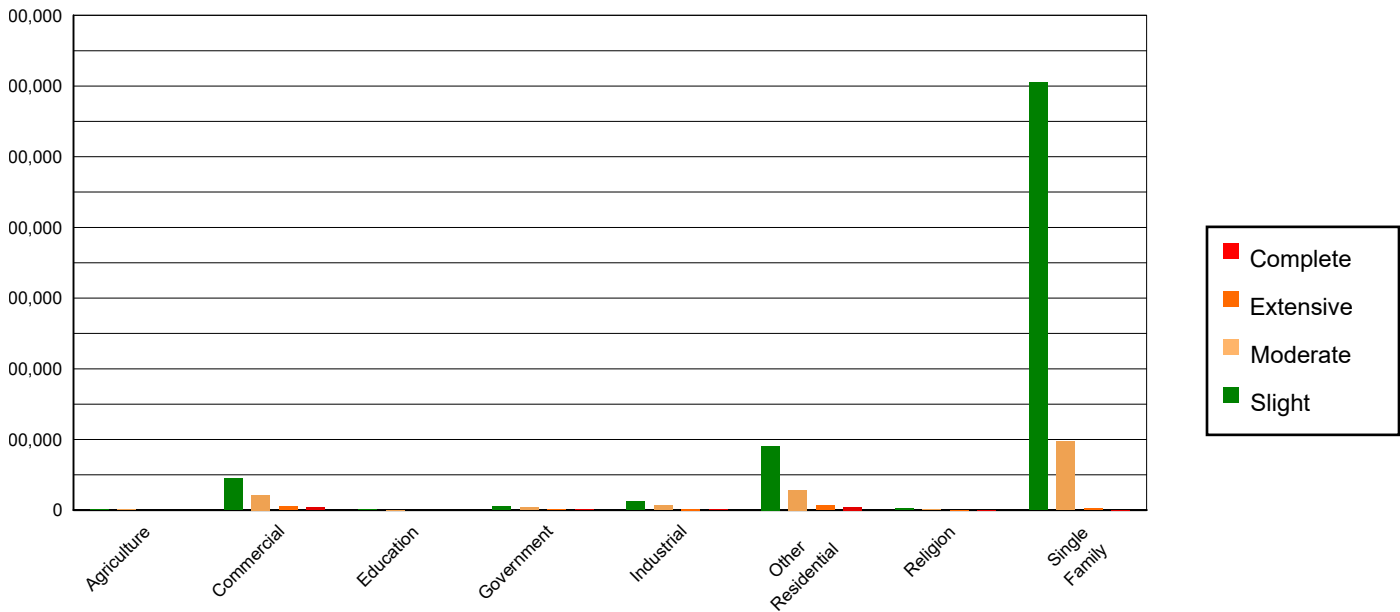


Table 3: Expected Building Damage by Occupancy

	None		Slight		Moderate		Extensive		Complete	
	Count	(%)	Count	(%)	Count	(%)	Count	(%)	Count	(%)
Agriculture	24951.60	0.72	1368.15	0.18	494.94	0.31	104.80	0.58	62.53	0.61
Commercial	207514.48	6.02	44510.59	5.84	21636.43	13.50	5840.01	32.15	3600.50	35.29
Education	7440.92	0.22	1016.03	0.13	364.40	0.23	86.56	0.48	69.09	0.68
Government	10519.24	0.31	5367.76	0.70	3893.38	2.43	1336.89	7.36	575.73	5.64
Industrial	56354.80	1.63	12370.14	1.62	6533.52	4.08	1674.54	9.22	775.00	7.60
Other Residential	414177.48	12.01	90844.48	11.92	28563.14	17.82	6101.71	33.59	4573.18	44.82
Religion	12024.15	0.35	2357.85	0.31	1253.86	0.78	395.50	2.18	298.64	2.93
Single Family	2715120.59	78.74	604592.80	79.30	97531.90	60.85	2626.75	14.46	248.96	2.44
Total	3,448,103		762,428		160,272		18,167		10,204	

Table 4: Expected Building Damage by Building Type (All Design Levels)

	None		Slight		Moderate		Extensive		Complete	
	Count	(%)	Count	(%)	Count	(%)	Count	(%)	Count	(%)
Wood	3035496.43	88.03	678769.94	89.03	105980.62	66.13	2690.04	14.81	510.30	5.00
Steel	66895.80	1.94	14779.83	1.94	12018.49	7.50	4056.27	22.33	2450.91	24.02
Concrete	75520.75	2.19	19982.26	2.62	10471.69	6.53	3726.16	20.51	2810.68	27.55
Precast	42650.61	1.24	9087.67	1.19	5799.88	3.62	966.44	5.32	258.84	2.54
RM	137066.83	3.98	21235.81	2.79	9911.35	6.18	1507.55	8.30	362.66	3.55
URM	18193.16	0.53	11332.09	1.49	9843.33	6.14	3147.66	17.33	2119.68	20.77
MH	72279.68	2.10	7240.19	0.95	6246.20	3.90	2072.64	11.41	1690.56	16.57
Total	3,448,103		762,428		160,272		18,167		10,204	

*Note:

- RM Reinforced Masonry
- URM Unreinforced Masonry
- MH Manufactured Housing

Essential Facility Damage

Before the earthquake, the region had 36,323 hospital beds available for use. On the day of the earthquake, the model estimates that only 27,624 hospital beds (76.00%) are available for use by patients already in the hospital and those injured by the earthquake. After one week, 87.00% of the beds will be back in service. By 30 days, 96.00% will be operational.

Table 5: Expected Damage to Essential Facilities

Classification	Total	# Facilities		
		At Least Moderate Damage > 50%	Complete Damage > 50%	With Functionality > 50% on day 1
Hospitals	237	26	1	187
Schools	5,246	575	83	4,201
EOCs	84	7	1	71
PoliceStations	455	32	7	380
FireStations	1,376	82	13	1,206

Transportation Lifeline Damage

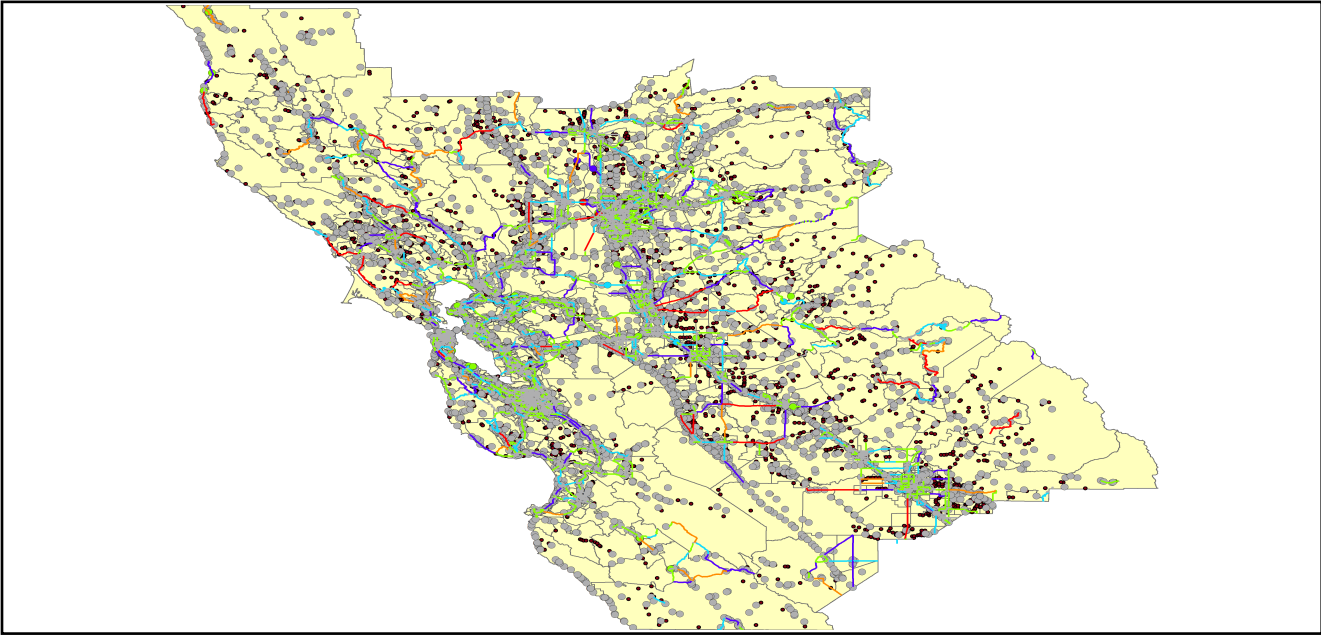


Table 6: Expected Damage to the Transportation Systems

System	Component	Number of Locations_				
		Locations/ Segments	With at Least Mod. Damage	With Complete Damage	With Functionality > 50 %	
					After Day 1	After Day 7
Highway	Segments	6,583	0	0	6,583	6,583
	Bridges	10,401	191	62	10,215	10,255
	Tunnels	46	5	0	46	46
Railways	Segments	2,909	0	0	2,909	2,909
	Bridges	1,493	38	8	1,455	1,465
	Tunnels	3	0	0	3	3
	Facilities	80	3	0	80	80
Light Rail	Segments	15	0	0	15	15
	Bridges	112	14	2	98	100
	Tunnels	0	0	0	0	0
	Facilities	255	1	0	255	255
Bus	Facilities	45	0	0	45	45
Ferry	Facilities	25	0	0	25	25
Port	Facilities	361	14	1	359	360
Airport	Facilities	97	2	0	97	97
	Runways	136	0	0	136	136

Table 6 provides damage estimates for the transportation system.

Note: Roadway segments, railroad tracks and light rail tracks are assumed to be damaged by ground failure only. If ground failure maps are not provided, damage estimates to these components will not be computed.

Tables 7-9 provide information on the damage to the utility lifeline systems. Table 7 provides damage to the utility system facilities. Table 8 provides estimates on the number of leaks and breaks by the pipelines of the utility systems. For electric power and potable water, Hazus performs a simplified system performance analysis. Table 9 provides a summary of the system performance information.

Table 7 : Expected Utility System Facility Damage

System	# of Locations				
	Total #	With at Least Moderate Damage	With Complete Damage	with Functionality > 50 %	
				After Day 1	After Day 7
Potable Water	21	8	0	11	21
Waste Water	177	25	0	116	174
Natural Gas	2	0	0	2	2
Oil Systems	16	3	0	10	16
Electrical Power	325	52	1	281	323
Communication	392	40	0	376	391

Table 8 : Expected Utility System Pipeline Damage (Site Specific)

System	Total Pipelines Length (miles)	Number of Leaks	Number of Breaks
Potable Water	125,902	29203	7301
Waste Water	75,541	14669	3667
Natural Gas	2,231	0	0
Oil	0	0	0

Table 9: Expected Potable Water and Electric Power System Performance

	Total # of Households	Number of Households without Service				
		At Day 1	At Day 3	At Day 7	At Day 30	At Day 90
Potable Water	5,014,236	1,154,732	1,116,125	1,052,736	672,249	407,725
Electric Power		792,480	554,680	271,604	42,542	1,008

Induced Earthquake Damage

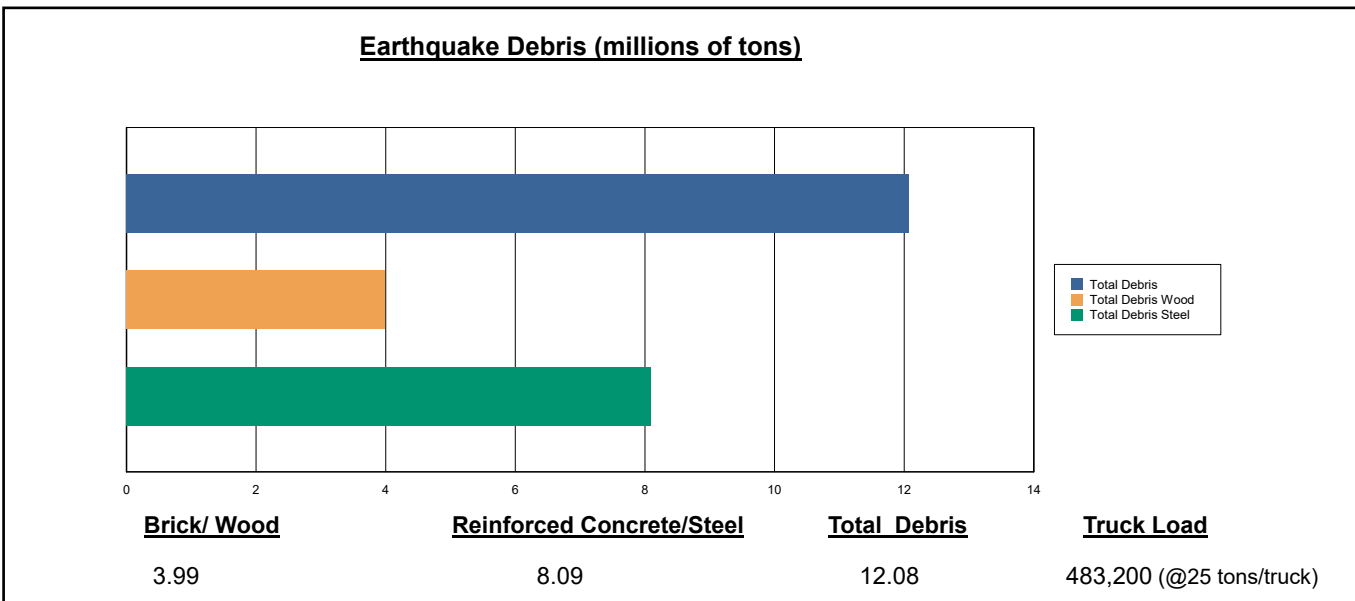
Fire Following Earthquake

Fires often occur after an earthquake. Because of the number of fires and the lack of water to fight the fires, they can often burn out of control. Hazus uses a Monte Carlo simulation model to estimate the number of ignitions and the amount of burnt area. For this scenario, the model estimates that there will be 107 ignitions that will burn about 2.94 sq. mi (0.01 % of the region's total area.) The model also estimates that the fires will displace about 31,740 people and burn about 4,212 (millions of dollars) of building value.

Debris Generation

Hazus estimates the amount of debris that will be generated by the earthquake. The model breaks the debris into two general categories: a) Brick/Wood and b) Reinforced Concrete/Steel. This distinction is made because of the different types of material handling equipment required to handle the debris.

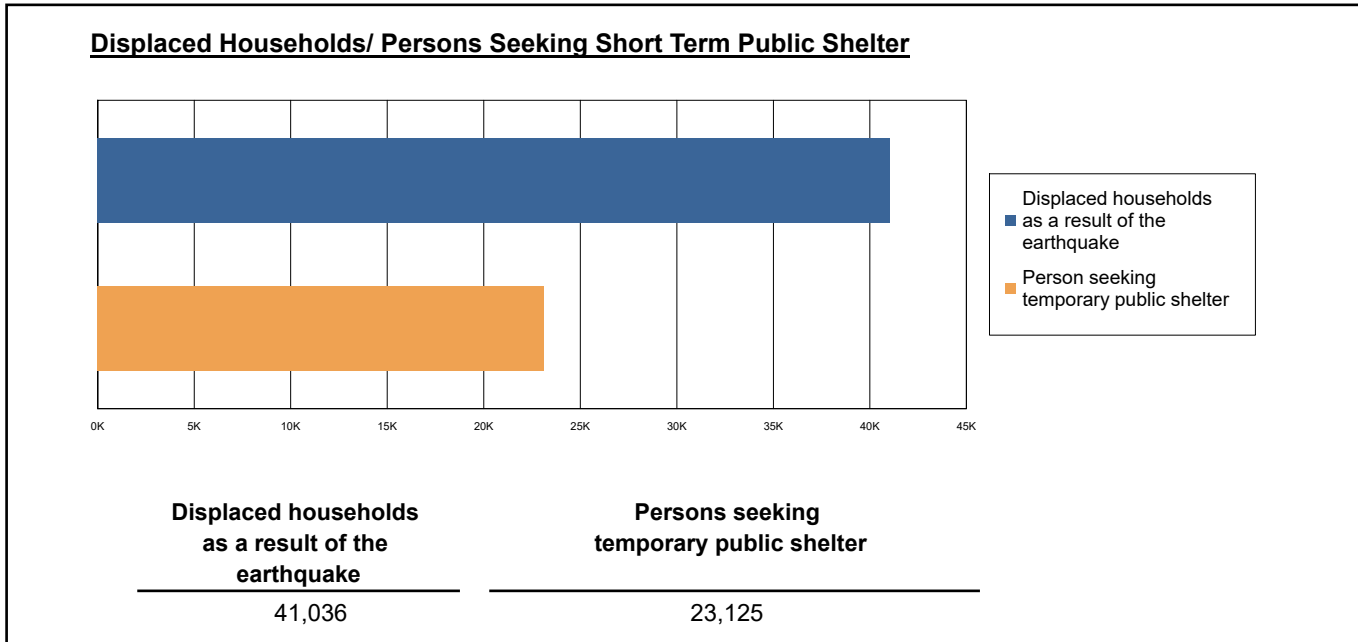
The model estimates that a total of 12,080,000 tons of debris will be generated. Of the total amount, Brick/Wood comprises 33.00% of the total, with the remainder being Reinforced Concrete/Steel. If the debris tonnage is converted to an estimated number of truckloads, it will require 483,200 truckloads (@25 tons/truck) to remove the debris generated by the earthquake.



Social Impact

Shelter Requirement

Hazus estimates the number of households that are expected to be displaced from their homes due to the earthquake and the number of displaced people that will require accommodations in temporary public shelters. The model estimates 41,036 households to be displaced due to the earthquake. Of these, 23,125 people (out of a total population of 14,338,918) will seek temporary shelter in public shelters.



Casualties

Hazus estimates the number of people that will be injured and killed by the earthquake. The casualties are broken down into four (4) severity levels that describe the extent of the injuries. The levels are described as follows;

- Severity Level 1: Injuries will require medical attention but hospitalization is not needed.
- Severity Level 2: Injuries will require hospitalization but are not considered life-threatening
- Severity Level 3: Injuries will require hospitalization and can become life threatening if not promptly treated.
- Severity Level 4: Victims are killed by the earthquake.

The casualty estimates are provided for three (3) times of day: 2:00 AM, 2:00 PM and 5:00 PM. These times represent the periods of the day that different sectors of the community are at their peak occupancy loads. The 2:00 AM estimate considers that the residential occupancy load is maximum, the 2:00 PM estimate considers that the educational, commercial and industrial sector loads are maximum and 5:00 PM represents peak commute time.

Table 10 provides a summary of the casualties estimated for this earthquake

Table 10: Casualty Estimates

		Level 1	Level 2	Level 3	Level 4
2 AM	Commercial	152.32	38.54	5.74	11.32
	Commuting	1.33	1.82	3.02	0.59
	Educational	0.00	0.00	0.00	0.00
	Hotels	5.01	0.87	0.09	0.18
	Industrial	116.55	26.47	3.73	7.34
	Other-Residential	4818.24	1153.96	159.66	312.86
	Single Family	1802.08	119.46	3.53	6.75
	Total	6,896	1,341	176	339
2 PM	Commercial	11041.18	2864.00	435.31	848.92
	Commuting	12.00	16.38	27.19	5.29
	Educational	3154.54	834.65	131.67	253.28
	Hotels	0.97	0.17	0.02	0.04
	Industrial	858.02	195.26	27.69	53.92
	Other-Residential	1670.77	417.22	61.08	113.81
	Single Family	514.77	36.48	1.38	2.48
	Total	17,252	4,364	684	1,278
5 PM	Commercial	8104.22	2126.73	327.82	629.46
	Commuting	231.97	315.46	525.17	102.06
	Educational	775.91	213.74	35.27	67.04
	Hotels	1.50	0.26	0.03	0.05
	Industrial	536.27	122.03	17.30	33.70
	Other-Residential	1880.90	457.43	65.74	122.56
	Single Family	669.16	46.40	1.57	2.80
	Total	12,200	3,282	973	958

Economic Loss

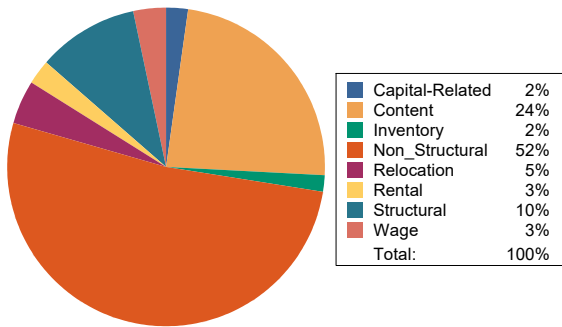
The total economic loss estimated for the earthquake is 98,975.54 (millions of dollars), which includes building and lifeline related losses based on the region's available inventory. The following three sections provide more detailed information about these losses.

Building-Related Losses

The building losses are broken into two categories: direct building losses and business interruption losses. The direct building losses are the estimated costs to repair or replace the damage caused to the building and its contents. The business interruption losses are the losses associated with inability to operate a business because of the damage sustained during the earthquake. Business interruption losses also include the temporary living expenses for those people displaced from their homes because of the earthquake.

The total building-related losses were 89,015.61 (millions of dollars); 13 % of the estimated losses were related to the business interruption of the region. By far, the largest loss was sustained by the residential occupancies which made up over 47 % of the total loss. Table 11 below provides a summary of the losses associated with the building damage.

Earthquake Losses by Loss Type (\$ millions)



Earthquake Losses by Occupancy Type (\$ millions)

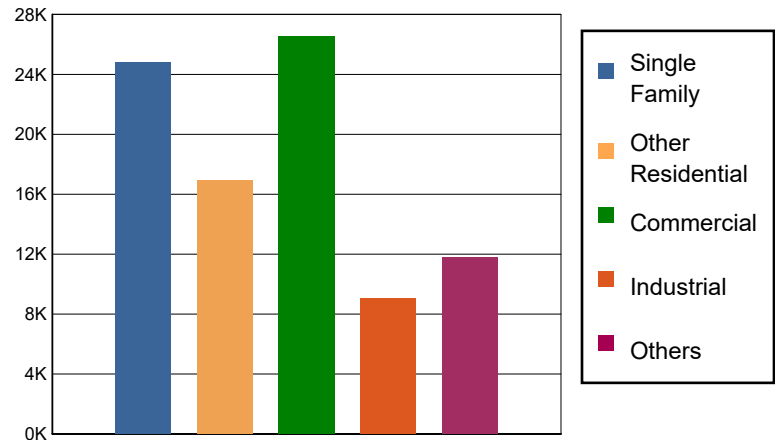


Table 11: Building-Related Economic Loss Estimates
(Millions of dollars)

Category	Area	Single Family	Other Residential	Commercial	Industrial	Others	Total
Income Losses							
	Wage	0.0000	317.9570	2062.4124	88.4183	391.9356	2,860.7233
	Capital-Related	0.0000	135.2081	1830.0366	53.2428	79.0067	2,097.4942
	Rental	208.0842	880.8520	919.8979	49.6610	233.0205	2,291.5156
	Relocation	693.5580	528.6363	1335.2725	234.0407	1222.6527	4,014.1602
	Subtotal	901.6422	1862.6534	6147.6194	425.3628	1926.6155	11263.8933
Capital Stock Losses							
	Structural	2427.8263	1778.8353	2854.1477	882.5946	1239.4004	9,182.8043
	Non_Structural	15262.1156	10492.0853	10559.0894	4226.8135	5609.1647	46,149.2685
	Content	6177.9334	2806.4636	6008.1303	3045.2280	2944.4465	20,982.2018
	Inventory	0.0000	0.0000	935.2325	436.9750	65.2318	1,437.4393
	Subtotal	23867.8753	15077.3842	20356.5999	8591.6111	9858.2434	77751.7139
	Total	24769.52	16940.04	26504.22	9016.97	11784.86	89015.61

Transportation and Utility Lifeline Losses

For the transportation and utility lifeline systems, Hazus computes the direct repair cost for each component only. There are no losses computed by Hazus for business interruption due to lifeline outages. Tables 12 & 13 provide a detailed breakdown in the expected lifeline losses.

Table 12: Transportation System Economic Losses
(Millions of dollars)

System	Component	Inventory Value	Economic Loss	Loss Ratio (%)
Highway	Segments	82010.4022	0.0000	0.00
	Bridges	55739.5959	955.6883	1.71
	Tunnels	982.1213	40.0793	4.08
	Subtotal	138732.1194	995.7676	
Railways	Segments	60139.3929	0.0000	0.00
	Bridges	8495.1700	188.4675	2.22
	Tunnels	1.8495	0.0515	2.78
	Facilities	213.0400	27.8720	13.08
	Subtotal	68849.4524	216.3910	
Light Rail	Segments	5403.2756	0.0000	0.00
	Bridges	15.3529	1.7725	11.55
	Tunnels	0.0000	0.0000	0.00
	Facilities	4154.0000	642.0234	15.46
	Subtotal	9572.6285	643.7959	
Bus	Facilities	102.6914	6.4730	6.30
	Subtotal	102.6914	6.4730	
Ferry	Facilities	33.2750	4.5774	13.76
	Subtotal	33.2750	4.5774	
Port	Facilities	1376.0759	226.9014	16.49
	Subtotal	1376.0759	226.9014	
Airport	Facilities	2748.9448	388.8506	14.15
	Runways	1240.3548	0.0000	0.00
	Subtotal	3989.2996	388.8506	
Total		222,655.54	2,482.76	

Table 13: Utility System Economic Losses

(Millions of dollars)

System	Component	Inventory Value	Economic Loss	Loss Ratio (%)
Potable Water	Pipelines	0.0000	0.0000	0.00
	Facilities	825.1740	90.5090	10.97
	Distribution Lines	4052.3927	131.4138	3.24
	Subtotal	4877.5667	221.9228	
Waste Water	Pipelines	0.0000	0.0000	0.00
	Facilities	30435.4686	1825.0268	6.00
	Distribution Lines	2431.4356	66.0125	2.71
	Subtotal	32866.9042	1891.0393	
Natural Gas	Pipelines	12648.2696	0.0000	0.00
	Facilities	59.4451	0.0000	0.00
	Distribution Lines	1620.9571	22.6154	1.40
	Subtotal	14328.6718	22.6154	
Oil Systems	Pipelines	0.0000	0.0000	0.00
	Facilities	1.8880	0.1807	9.57
	Subtotal	1.8880	0.1807	
Electrical Power	Facilities	104948.4149	5337.4018	5.09
	Subtotal	104948.4149	5337.4018	
Communication	Facilities	46.2560	4.0165	8.68
	Subtotal	46.2560	4.0165	
	Total	157,069.70	7,477.18	

Appendix A: County Listing for the Region

Alameda,CA

Amador,CA

Calaveras,CA

Colusa,CA

Contra Costa,CA

El Dorado,CA

Fresno,CA

Lake,CA

Madera,CA

Marin,CA

Mariposa,CA

Mendocino,CA

Merced,CA

Monterey,CA

Napa,CA

Nevada,CA

Placer,CA

Sacramento,CA

San Benito,CA

San Francisco,CA

San Joaquin,CA

San Mateo,CA

Santa Clara,CA

Santa Cruz,CA

Solano,CA

Sonoma,CA

Stanislaus,CA

Sutter,CA

Tuolumne,CA



Yolo, CA

Yuba, CA

Appendix B: Regional Population and Building Value Data

State	County Name	Population	Building Value (millions of dollars)			
			Residential	Non-Residential	Total	
California	Alameda	1,682,353	209,951	122,639	332,590	
	Amador	40,474	5,608	2,517	8,125	
	Calaveras	45,292	8,305	4,893	13,199	
	Colusa	21,839	2,244	2,024	4,268	
	Contra Costa	1,165,927	158,118	60,339	218,458	
	El Dorado	191,185	34,907	9,704	44,611	
	Fresno	1,008,654	98,532	61,772	160,304	
	Lake	68,163	9,699	4,530	14,229	
	Madera	156,255	18,025	9,641	27,667	
	Marin	262,321	47,738	15,030	62,769	
	Mariposa	17,131	3,299	1,141	4,441	
	Mendocino	91,601	14,237	8,510	22,748	
	Merced	281,202	25,194	26,098	51,292	
	Monterey	439,035	47,655	28,750	76,405	
	Napa	138,019	20,517	13,045	33,563	
	Nevada	102,241	17,908	6,108	24,016	
	Placer	404,739	69,985	24,193	94,179	
	Sacramento	1,585,055	179,811	83,911	263,723	
	San Benito	64,209	9,440	3,799	13,239	
	San Francisco	873,965	108,848	46,020	154,869	
	San Joaquin	779,233	82,706	56,882	139,589	
	San Mateo	764,442	110,372	44,995	155,368	
	Santa Clara	1,936,259	261,111	120,471	381,582	
	Santa Cruz	270,861	36,147	18,805	54,952	
	Solano	453,491	55,802	26,393	82,195	
	Sonoma	488,863	68,827	35,781	104,609	
	Stanislaus	552,878	62,937	37,511	100,449	
	Sutter	99,633	10,618	6,448	17,066	
	Tuolumne	55,620	8,964	3,507	12,471	
	Yolo	216,403	24,130	18,343	42,473	
	Yuba	81,575	8,161	4,677	12,839	
	Total Region		14,338,918	1,819,796	908,477	2,728,288

Hazus Quick Assessment Report

Estimated Economic Loss (\$ Billions)

Category	Description	Range
General Building Stock	Building Damage	27.70 - 110.70
	Building Contents	3.10 - 12.40
	Business Interruption	5.60 - 22.50
Infrastructure	Lifelines Damage	
Total		44.50 - 178.00

Preliminary Damage Assessment (PDA) Estimates

Description	Residential	Commercial	Other	Total
Affected	695,400	44,500	21,200	761,100
Minor	126,100	21,600	11,800	159,500
Major	8,700	5,800	3,600	18,100
Destroyed	4,800	3,600	1,800	10,200
Total	835,000	75,500	38,400	948,900

Estimated Casualties : Night Time

Severity Level	Description	# Persons
Level 1	Medical Aid	3,000 - 14,000
Level 2	Hospital Care	700 - 3,000
Level 3	Life-threatening	90 - 400
Level 4	Fatalities	170 - 700

Estimated Shelter Needs

Type	Households	People
Displaced Households	21,000 - 82,000	52,500 - 205,000
Public Shelter	9,250	23,130

Comments :

*Hazus damage estimates are presented using FEMA Preliminary Damage Assessment (PDA) categories. These estimates should be used for planning purposes and may not reflect actual observed damages from the PDA process.

Disclaimer:

The estimates of social and economic impacts contained in this report were produced using HAZUS loss estimation methodology software which is based on current scientific and engineering knowledge. There are uncertainties inherent in any loss estimation technique. Therefore, there may be significant differences between the modeled results contained in this report and the actual social and economic losses following a specific earthquake. These results can be improved by using enhanced inventory, geotechnical, and observed ground motion data.

Earthquake Information

Location :

Origin Time:

Magnitude : 7.05

Epicenter Latitude/Longitude :
/

Depth & Type : /U

Name :
NA

Ground Motion /Attenuation :

Maximum PGA: 1.00

Information Sources:

Comments :

Population and Building Exposure

Population: 14,338,918

Building Exposure : (\$ Millions)

Residential	1,819,812
Commercial	485,895
Other	422,597
Total	2,728,304

Counties : See Appendix

Major Metro Area :

Hazus Quick Assessment Report

Estimated Economic Loss (\$ Billions)

Category	Description	Range
General Building Stock	Building Damage	27.70 - 110.70
	Building Contents	3.10 - 12.40
	Business Interruption	5.60 - 22.50
Infrastructure	Lifelines Damage	
Total		44.50 - 178.00

Preliminary Damage Assessment (PDA) Estimates

Description	Residential	Commercial	Other	Total
Affected	695,400	44,500	21,200	761,100
Minor	126,100	21,600	11,800	159,500
Major	8,700	5,800	3,600	18,100
Destroyed	4,800	3,600	1,800	10,200
Total	835,000	75,500	38,400	948,900

Estimated Casualties : Day Time

Severity Level	Description	# Persons
Level 1	Medical Aid	9,000 - 35,000
Level 2	Hospital Care	2,000 - 9,000
Level 3	Life-threatening	300 - 1,400
Level 4	Fatalities	600 - 3,000

Estimated Shelter Needs

Type	Households	People
Displaced Households	21,000 - 82,000	52,500 - 205,000
Public Shelter	9,250	23,130

Comments :

*Hazus damage estimates are presented using FEMA Preliminary Damage Assessment (PDA) categories. These estimates should be used for planning purposes and may not reflect actual observed damages from the PDA process.

Disclaimer:

The estimates of social and economic impacts contained in this report were produced using HAZUS loss estimation methodology software which is based on current scientific and engineering knowledge. There are uncertainties inherent in any loss estimation technique. Therefore, there may be significant differences between the modeled results contained in this report and the actual social and economic losses following a specific earthquake. These results can be improved by using enhanced inventory, geotechnical, and observed ground motion data.

Earthquake Information

Location :

Origin Time:

Magnitude : 7.05

Epicenter Latitude/Longitude :
/

Depth & Type : /U

Name :
NA

Ground Motion /Attenuation :

Maximum PGA: 1.00

Information Sources:

Comments :

Population and Building Exposure

Population: 14,338,918

Building Exposure : (\$ Millions)

Residential	1,819,812
Commercial	485,895
Other	422,597
Total	2,728,304

Counties : See Appendix

Major Metro Area :

Hazus Quick Assessment Report

Estimated Economic Loss (\$ Billions)

Category	Description	Range
General Building Stock	Building Damage	27.70 - 110.70
	Building Contents	3.10 - 12.40
	Business Interruption	5.60 - 22.50
Infrastructure	Lifelines Damage	
Total		44.50 - 178.00

Preliminary Damage Assessment (PDA) Estimates

Description	Residential	Commercial	Other	Total
Affected	695,400	44,500	21,200	761,100
Minor	126,100	21,600	11,800	159,500
Major	8,700	5,800	3,600	18,100
Destroyed	4,800	3,600	1,800	10,200
Total	835,000	75,500	38,400	948,900

Estimated Casualties : Commute Time

Severity Level	Description	# Persons
Level 1	Medical Aid	6,000 - 24,000
Level 2	Hospital Care	1,600 - 7,000
Level 3	Life-threatening	500 - 1,900
Level 4	Fatalities	500 - 1,900

Estimated Shelter Needs

Type	Households	People
Displaced Households	21,000 - 82,000	52,500 - 205,000
Public Shelter	9,250	23,130

Comments :

*Hazus damage estimates are presented using FEMA Preliminary Damage Assessment (PDA) categories. These estimates should be used for planning purposes and may not reflect actual observed damages from the PDA process.

Disclaimer:

The estimates of social and economic impacts contained in this report were produced using HAZUS loss estimation methodology software which is based on current scientific and engineering knowledge. There are uncertainties inherent in any loss estimation technique. Therefore, there may be significant differences between the modeled results contained in this report and the actual social and economic losses following a specific earthquake. These results can be improved by using enhanced inventory, geotechnical, and observed ground motion data.

Earthquake Information

Location :

Origin Time:

Magnitude : 7.05

Epicenter Latitude/Longitude :
/

Depth & Type : /U

Name :
NA

Ground Motion /Attenuation :

Maximum PGA: 1.00

Information Sources:

Comments :

Population and Building Exposure

Population: 14,338,918

Building Exposure : (\$ Millions)

Residential	1,819,812
Commercial	485,895
Other	422,597
Total	2,728,304

Counties : See Appendix

Major Metro Area :

Shelter Summary Report

April 26, 2024

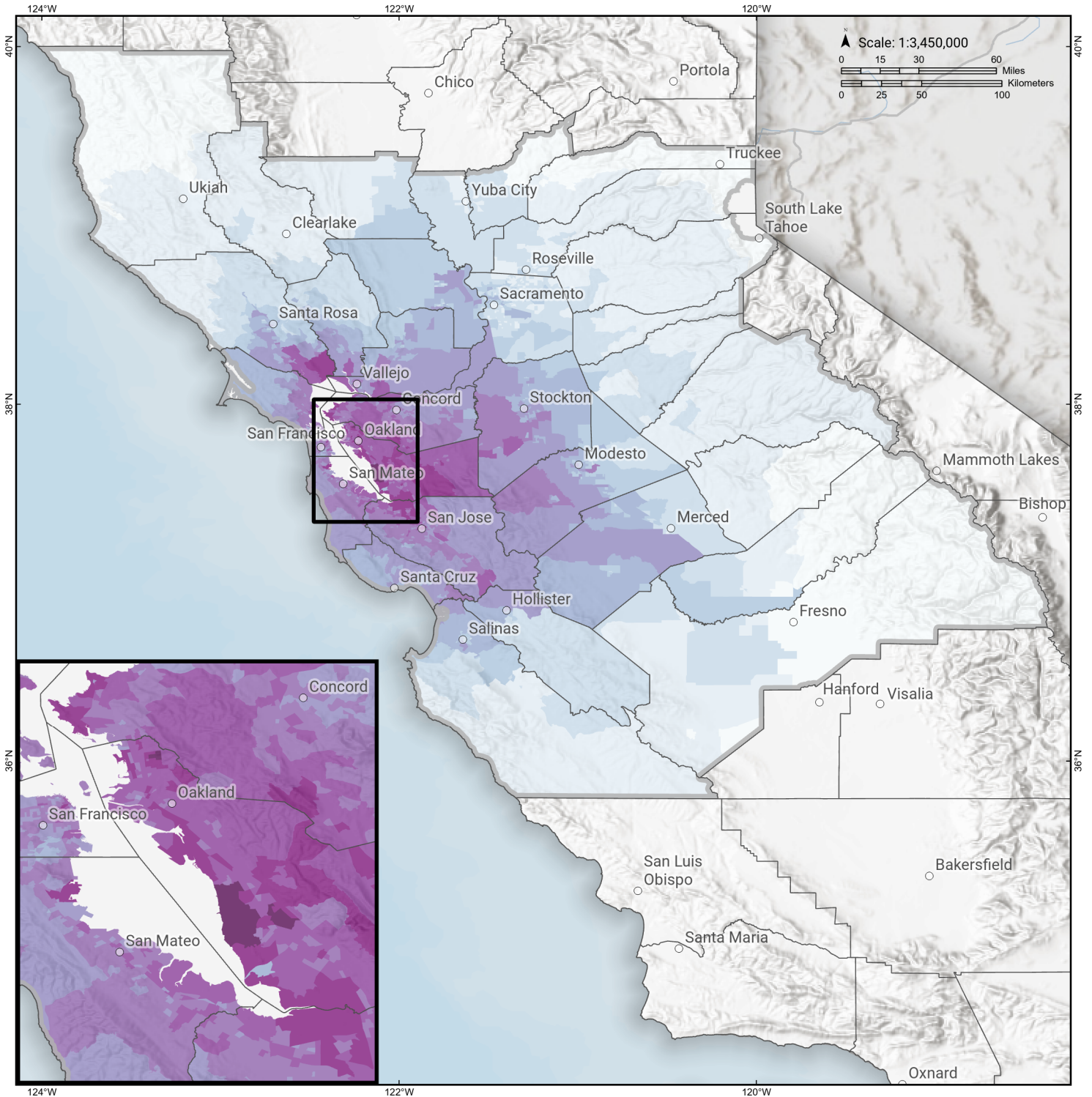
	# of Displaced Households	# of People Needing Short Term Shelter
California		
Fresno	0	0
Alameda	33,067	19,380
Solano	157	87
San Mateo	363	178
Tuolumne	0	0
San Joaquin	28	18
Nevada	0	0
Madera	0	0
Colusa	0	0
Napa	6	3
Mendocino	0	0
Contra Costa	1,223	627
El Dorado	0	0
Amador	0	0
Santa Cruz	10	7
Lake	0	0
Monterey	1	1
Sacramento	0	0
Mariposa	0	0
Yolo	0	0
Calaveras	0	0
Yuba	0	0
Stanislaus	1	0
Sonoma	56	23
Santa Clara	1,229	672
San Benito	0	0
San Francisco	4,837	2,102
Merced	0	0
Placer	0	0
Marin	60	25
Sutter	0	0

	# of Displaced Households	# of People Needing Short Term Shelter
Total	41,037	23,125
Region Total	41,037	23,125

Totals only reflect data for those census tracts/blocks included in the user's study region and will reflect the entire county/state only if all of the census blocks for that county/states were selected at the time of study region creation.

Haywired M 7.05 Scenario

Total Building Related Economic Loss by Census Tract



Study Region: Haywired M 7.05 Scenario
Scenario: glegacyhaywiredm7p05_se



Economic Loss (in thousands of USD \$)

