
Hazus: Earthquake Global Risk Report

Region Name: HaywardRCHNHSHE

Earthquake Scenario: haywardrchnhsheshaw0_m7p58_se

Print Date: April 25, 2024

Disclaimer:

Totals only reflect data for those census tracts/blocks included in the user's study region.

The estimates of social and economic impacts contained in this report were produced using Hazus loss estimation methodology software which is based on current scientific and engineering knowledge. There are uncertainties inherent in any loss estimation technique. Therefore, there may be significant differences between the modeled results contained in this report and the actual social and economic losses following a specific earthquake. These results can be improved by using enhanced inventory, geotechnical, and observed ground motion data.

Table of Contents

Section	Page #
General Description of the Region	3
Building and Lifeline Inventory	4
Building Inventory	
Critical Facility Inventory	
Transportation and Utility Lifeline Inventory	
Earthquake Scenario Parameters	7
Direct Earthquake Damage	8
Buildings Damage	
Essential Facilities Damage	
Transportation and Utility Lifeline Damage	
Induced Earthquake Damage	14
Fire Following Earthquake	
Debris Generation	
Social Impact	15
Shelter Requirements	
Casualties	
Economic Loss	17
Building Related Losses	
Transportation and Utility Lifeline Losses	
Appendix A: County Listing for the Region	
Appendix B: Regional Population and Building Value Data	

General Description of the Region

Hazus-MH is a regional earthquake loss estimation model that was developed by the Federal Emergency Management Agency (FEMA) and the National Institute of Building Sciences. The primary purpose of Hazus is to provide a methodology and software application to develop multi-hazard losses at a regional scale. These loss estimates would be used primarily by local, state and regional officials to plan and stimulate efforts to reduce risks from multi-hazards and to prepare for emergency response and recovery.

The earthquake loss estimates provided in this report was based on a region that includes 44 county(ies) from the following state(s):

California

Note:

Appendix A contains a complete listing of the counties contained in the region.

The geographical size of the region is 82,961.03 square miles and contains 3,894 census tracts. There are over 5,854 thousand households in the region which has a total population of 16,821,518 people. The distribution of population by Total Region and County is provided in Appendix B.

There are an estimated 5,281 thousand buildings in the region with a total building replacement value (excluding contents) of (millions of dollars). Approximately 90.00 % of the buildings (and % of the building value) are associated with residential housing.

The replacement value of the transportation and utility lifeline systems is estimated to be 282,283 and 249,015 (millions of dollars) , respectively.

Building and Lifeline Inventory

Building Inventory

Hazus estimates that there are 5,281 thousand buildings in the region which have an aggregate total replacement value of (millions of dollars) . Appendix B provides a general distribution of the building value by Total Region and County.

In terms of building construction types found in the region, wood frame construction makes up 86% of the building inventory. The remaining percentage is distributed between the other general building types.

Critical Facility Inventory

Hazus breaks critical facilities into two (2) groups: essential facilities and high potential loss facilities (HPL). Essential facilities include hospitals, medical clinics, schools, fire stations, police stations and emergency operations facilities. High potential loss facilities include dams, levees, military installations, nuclear power plants and hazardous material sites.

For essential facilities, there are 301 hospitals in the region with a total bed capacity of 43,983 beds. There are 6,396 schools, 1,819 fire stations, 583 police stations and 101 emergency operation facilities. With respect to high potential loss facilities (HPL), there are no dams identified within the inventory. The inventory also includes no hazardous material sites, no military installations and no nuclear power plants.

Transportation and Utility Lifeline Inventory

Within Hazus, the lifeline inventory is divided between transportation and utility lifeline systems. There are seven (7) transportation systems that include highways, railways, light rail, bus, ports, ferry and airports. There are six (6) utility systems that include potable water, wastewater, natural gas, crude & refined oil, electric power and communications. The lifeline inventory data are provided in Tables 1 and 2.

The total value of the lifeline inventory is over 531,298.00 (millions of dollars). This inventory includes over 13,875.84 miles of highways, 14,681 bridges, 334,044.70 miles of pipes.

Table 1: Transportation System Lifeline Inventory

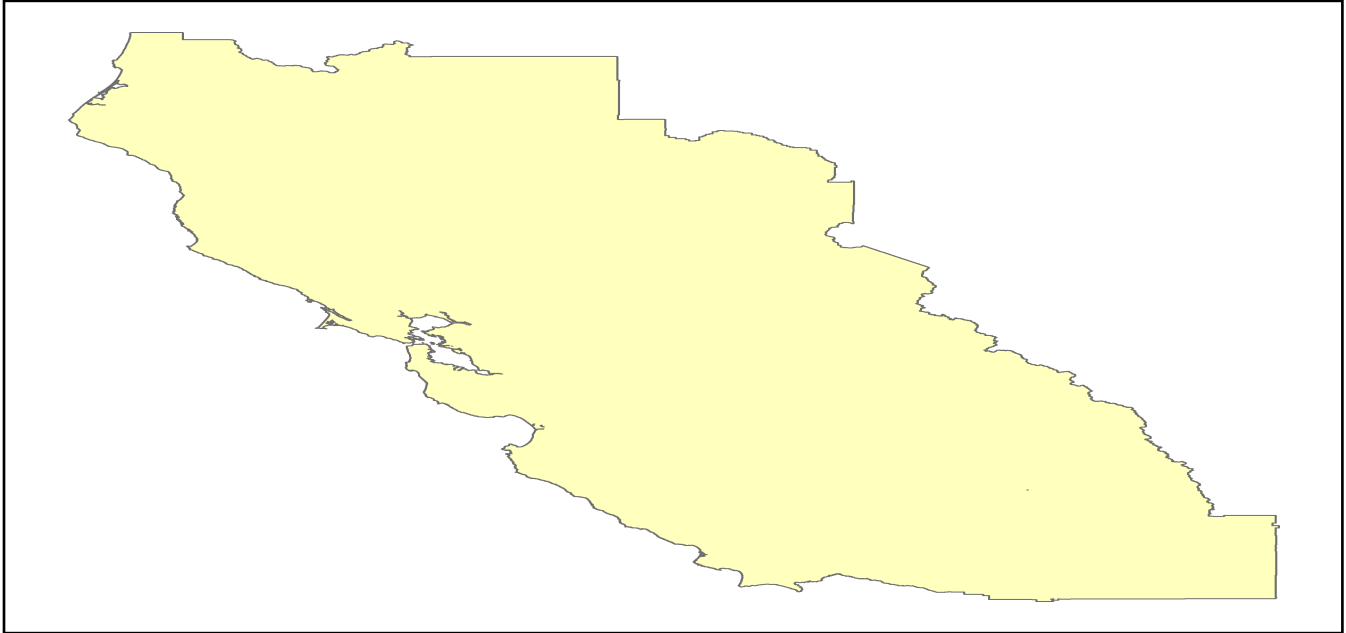
System	Component	# Locations/ # Segments	Replacement value (millions of dollars)
Highway	Bridges	14,681	66224.2671
	Segments	8,282	115990.0148
	Tunnels	53	1022.2451
	Subtotal		183236.5270
Railways	Bridges	2,156	12267.6400
	Facilities	97	258.3110
	Segments	3,682	70161.6174
	Tunnels	3	1.8495
	Subtotal		82689.4179
Light Rail	Bridges	112	15.3529
	Facilities	255	4154.0000
	Segments	15	5403.2756
	Tunnels	0	0.0000
	Subtotal		9572.6285
Bus	Facilities	60	135.2922
	Subtotal		135.2922
Ferry	Facilities	25	33.2750
	Subtotal		33.2750
Port	Facilities	392	1494.2431
	Subtotal		1494.2431
Airport	Facilities	161	3166.0439
	Runways	216	1956.3254
	Subtotal		5122.3693
		Total	282,283.80

Table 2: Utility System Lifeline Inventory

System	Component	# Locations / Segments	Replacement value (millions of dollars)
Potable Water	Distribution Lines	NA	6642.4118
	Facilities	31	1218.1140
	Pipelines	0	0.0000
		Subtotal	7860.5258
Waste Water	Distribution Lines	NA	3985.4471
	Facilities	223	38345.2514
	Pipelines	0	0.0000
		Subtotal	42330.6985
Natural Gas	Distribution Lines	NA	2656.9647
	Facilities	16	672.7418
	Pipelines	1,175	21838.5469
		Subtotal	25168.2534
Oil Systems	Facilities	33	3.8940
	Pipelines	0	0.0000
		Subtotal	3.8940
Electrical Power	Facilities	617	173581.4429
		Subtotal	173581.4429
Communication	Facilities	598	70.5640
		Subtotal	70.5640
	Total		249,015.40

Earthquake Scenario

Hazus uses the following set of information to define the earthquake parameters used for the earthquake loss estimate provided in this report.



Scenario Name	haywardrchnhsheshaw0_m7p58_se
Type of Earthquake	User-defined
Fault Name	NA
Historical Epicenter ID #	NA
Probabilistic Return Period	NA
Longitude of Epicenter	NA
Latitude of Epicenter	NA
Earthquake Magnitude	7.58
Depth (km)	NA
Rupture Length (Km)	NA
Rupture Orientation (degrees)	NA
Attenuation Function	NA

Direct Earthquake Damage

Building Damage

Hazus estimates that about 387,596 buildings will be at least moderately damaged. This is over 7.00 % of the buildings in the region. There are an estimated 27,107 buildings that will be damaged beyond repair. The definition of the 'damage states' is provided in Volume 1: Chapter 5 of the Hazus technical manual. Table 3 below summarizes the expected damage by general occupancy for the buildings in the region. Table 4 below summarizes the expected damage by general building type.

Damage Categories by General Occupancy Type

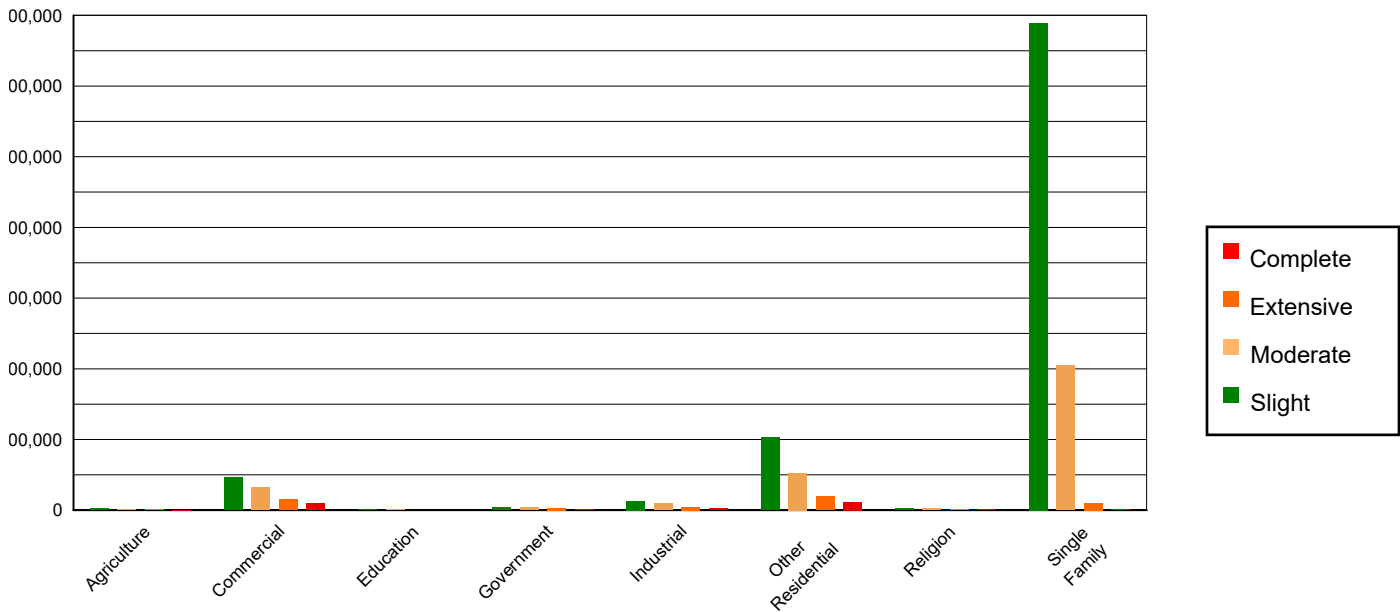


Table 3: Expected Building Damage by Occupancy

	None		Slight		Moderate		Extensive		Complete	
	Count	(%)	Count	(%)	Count	(%)	Count	(%)	Count	(%)
Agriculture	37397.38	0.93	2164.18	0.25	1295.26	0.42	473.35	0.89	232.82	0.86
Commercial	234965.83	5.83	46685.70	5.42	32417.74	10.56	14826.27	27.75	9660.47	35.64
Education	8380.07	0.21	1243.27	0.14	631.00	0.21	176.12	0.33	160.54	0.59
Government	11134.63	0.28	4205.42	0.49	4065.59	1.32	2938.30	5.50	1053.05	3.88
Industrial	64034.42	1.59	12870.29	1.49	9599.47	3.13	4399.06	8.23	2538.78	9.37
Other Residential	520113.17	12.90	103236.50	11.98	52427.01	17.07	19266.87	36.07	11600.45	42.79
Religion	14337.04	0.36	2351.36	0.27	1839.61	0.60	1012.17	1.89	655.83	2.42
Single Family	3141535.84	77.92	689282.43	79.96	204791.36	66.69	10329.37	19.34	1206.00	4.45
Total	4,031,898		862,039		307,067		53,421		27,108	

Table 4: Expected Building Damage by Building Type (All Design Levels)

	None		Slight		Moderate		Extensive		Complete	
	Count	(%)	Count	(%)	Count	(%)	Count	(%)	Count	(%)
Wood	3536825.26	87.72	780129.71	90.50	231222.89	75.30	10245.77	19.18	1297.14	4.79
Steel	75486.76	1.87	14025.89	1.63	17189.29	5.60	9840.09	18.42	6003.39	22.15
Concrete	82694.34	2.05	19612.28	2.28	16327.79	5.32	8829.42	16.53	7026.27	25.92
Precast	51520.98	1.28	9398.80	1.09	8090.11	2.63	2864.88	5.36	877.62	3.24
RM	150047.38	3.72	22839.91	2.65	15743.10	5.13	6857.22	12.84	1148.46	4.24
URM	18660.88	0.46	6920.67	0.80	9421.92	3.07	6358.78	11.90	6087.39	22.46
MH	116662.77	2.89	9111.89	1.06	9071.93	2.95	8425.32	15.77	4667.67	17.22
Total	4,031,898		862,039		307,067		53,421		27,108	

*Note:

- RM Reinforced Masonry
- URM Unreinforced Masonry
- MH Manufactured Housing

Essential Facility Damage

Before the earthquake, the region had 43,983 hospital beds available for use. On the day of the earthquake, the model estimates that only 31,882 hospital beds (72.00%) are available for use by patients already in the hospital and those injured by the earthquake. After one week, 81.00% of the beds will be back in service. By 30 days, 91.00% will be operational.

Table 5: Expected Damage to Essential Facilities

Classification	Total	# Facilities		
		At Least Moderate Damage > 50%	Complete Damage > 50%	With Functionality > 50% on day 1
Hospitals	301	54	13	225
Schools	6,396	1,080	276	4,721
EOCs	101	16	4	71
PoliceStations	583	78	15	449
FireStations	1,819	169	39	1,520

Transportation Lifeline Damage

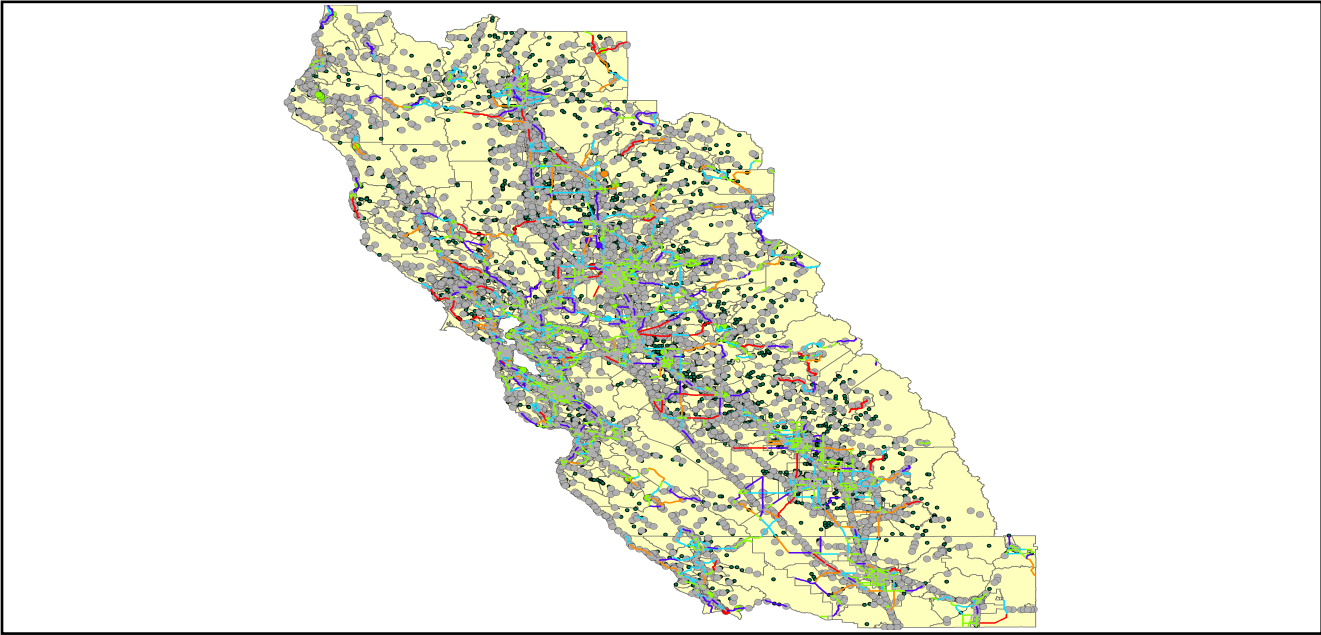


Table 6: Expected Damage to the Transportation Systems

System	Component	Number of Locations_				
		Locations/ Segments	With at Least Mod. Damage	With Complete Damage	With Functionality > 50 %	
					After Day 1	After Day 7
Highway	Segments	8,282	0	0	8,282	8,282
	Bridges	14,681	176	8	14,527	14,629
	Tunnels	53	0	0	53	53
Railways	Segments	3,682	0	0	3,682	3,682
	Bridges	2,156	0	0	2,156	2,156
	Tunnels	3	0	0	3	3
	Facilities	97	10	0	97	97
Light Rail	Segments	15	0	0	15	15
	Bridges	112	0	0	112	112
	Tunnels	0	0	0	0	0
	Facilities	255	8	0	255	255
Bus	Facilities	60	1	0	60	60
Ferry	Facilities	25	0	0	25	25
Port	Facilities	392	9	0	392	392
Airport	Facilities	161	5	0	160	161
	Runways	216	0	0	216	216

Table 6 provides damage estimates for the transportation system.

Note: Roadway segments, railroad tracks and light rail tracks are assumed to be damaged by ground failure only. If ground failure maps are not provided, damage estimates to these components will not be computed.

Tables 7-9 provide information on the damage to the utility lifeline systems. Table 7 provides damage to the utility system facilities. Table 8 provides estimates on the number of leaks and breaks by the pipelines of the utility systems. For electric power and potable water, Hazus performs a simplified system performance analysis. Table 9 provides a summary of the system performance information.

Table 7 : Expected Utility System Facility Damage

System	# of Locations				
	Total #	With at Least Moderate Damage	With Complete Damage	with Functionality > 50 %	
				After Day 1	After Day 7
Potable Water	31	9	0	21	31
Waste Water	223	34	0	152	223
Natural Gas	16	0	0	16	16
Oil Systems	33	6	0	27	33
Electrical Power	617	58	0	569	615
Communication	598	56	0	570	598

Table 8 : Expected Utility System Pipeline Damage (Site Specific)

System	Total Pipelines Length (miles)	Number of Leaks	Number of Breaks
Potable Water	206,370	23122	5781
Waste Water	123,822	11615	2904
Natural Gas	3,853	0	0
Oil	0	0	0

Table 9: Expected Potable Water and Electric Power System Performance

	Total # of Households	Number of Households without Service				
		At Day 1	At Day 3	At Day 7	At Day 30	At Day 90
Potable Water	5,854,723	1,030,151	977,404	897,975	442,489	0
Electric Power		933,094	647,721	301,838	36,371	1,181

Induced Earthquake Damage

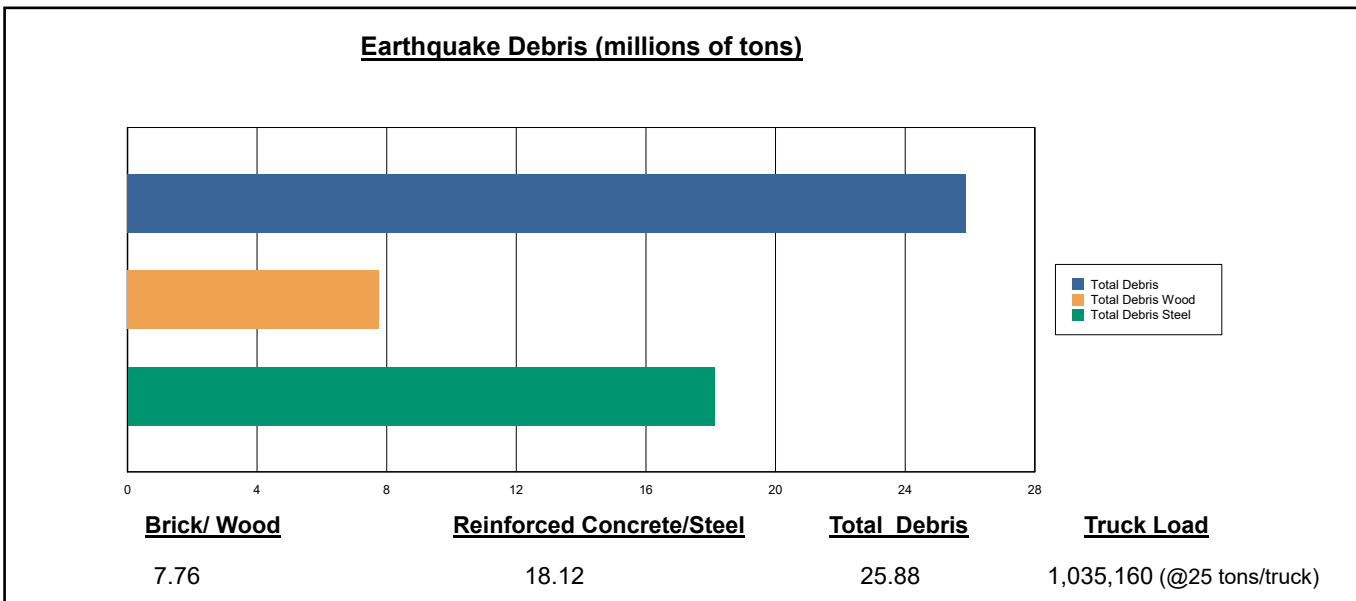
Fire Following Earthquake

Fires often occur after an earthquake. Because of the number of fires and the lack of water to fight the fires, they can often burn out of control. Hazus uses a Monte Carlo simulation model to estimate the number of ignitions and the amount of burnt area. For this scenario, the model estimates that there will be 105 ignitions that will burn about 5.09 sq. mi (0.01 % of the region's total area.) The model also estimates that the fires will displace about 44,548 people and burn about 6,334 (millions of dollars) of building value.

Debris Generation

Hazus estimates the amount of debris that will be generated by the earthquake. The model breaks the debris into two general categories: a) Brick/Wood and b) Reinforced Concrete/Steel. This distinction is made because of the different types of material handling equipment required to handle the debris.

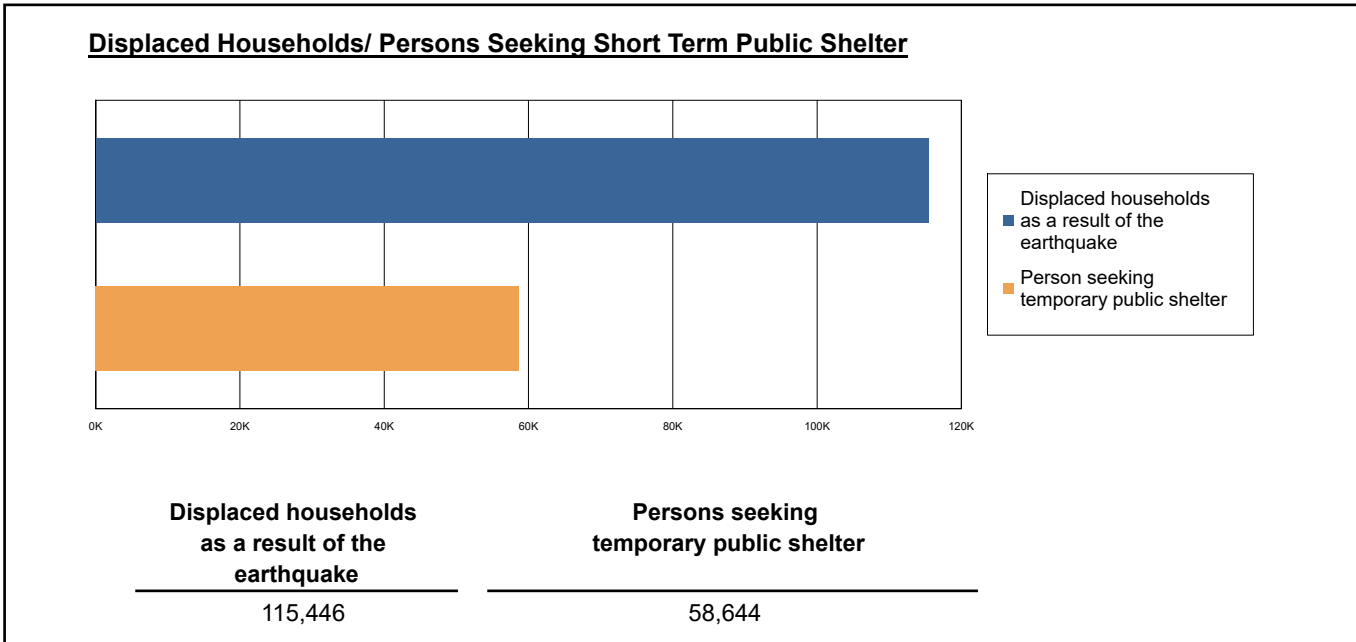
The model estimates that a total of 25,879,000 tons of debris will be generated. Of the total amount, Brick/Wood comprises 30.00% of the total, with the remainder being Reinforced Concrete/Steel. If the debris tonnage is converted to an estimated number of truckloads, it will require 1,035,160 truckloads (@25 tons/truck) to remove the debris generated by the earthquake.



Social Impact

Shelter Requirement

Hazus estimates the number of households that are expected to be displaced from their homes due to the earthquake and the number of displaced people that will require accommodations in temporary public shelters. The model estimates 115,446 households to be displaced due to the earthquake. Of these, 58,644 people (out of a total population of 16,821,518) will seek temporary shelter in public shelters.



Casualties

Hazus estimates the number of people that will be injured and killed by the earthquake. The casualties are broken down into four (4) severity levels that describe the extent of the injuries. The levels are described as follows;

- Severity Level 1: Injuries will require medical attention but hospitalization is not needed.
- Severity Level 2: Injuries will require hospitalization but are not considered life-threatening
- Severity Level 3: Injuries will require hospitalization and can become life threatening if not promptly treated.
- Severity Level 4: Victims are killed by the earthquake.

The casualty estimates are provided for three (3) times of day: 2:00 AM, 2:00 PM and 5:00 PM. These times represent the periods of the day that different sectors of the community are at their peak occupancy loads. The 2:00 AM estimate considers that the residential occupancy load is maximum, the 2:00 PM estimate considers that the educational, commercial and industrial sector loads are maximum and 5:00 PM represents peak commute time.

Table 10 provides a summary of the casualties estimated for this earthquake

Table 10: Casualty Estimates

		Level 1	Level 2	Level 3	Level 4
2 AM	Commercial	370.89	102.53	15.88	31.33
	Commuting	1.73	2.37	3.93	0.76
	Educational	0.00	0.00	0.00	0.00
	Hotels	16.75	3.70	0.47	0.92
	Industrial	342.16	91.45	13.91	27.37
	Other-Residential	10957.35	2784.45	388.08	760.01
	Single Family	3190.30	320.75	16.92	32.85
	Total	14,879	3,305	439	853
	2 PM	Commercial	25107.43	6969.99	1089.29
	Commuting	15.61	21.30	35.38	6.88
	Educational	5291.76	1351.75	203.05	394.31
	Hotels	3.23	0.72	0.09	0.18
	Industrial	2523.97	675.17	103.26	201.18
	Other-Residential	3630.29	944.60	138.50	257.91
	Single Family	938.80	99.55	6.05	11.11
	Total	37,511	10,063	1,576	3,001
	5 PM	Commercial	17666.08	4912.77	775.42
	Commuting	312.36	424.29	706.93	137.36
	Educational	834.20	192.55	27.61	53.02
	Hotels	5.02	1.11	0.14	0.28
	Industrial	1577.48	421.98	64.54	125.74
	Other-Residential	4290.92	1106.29	160.74	299.37
	Single Family	1207.91	126.04	7.37	13.50
	Total	25,894	7,185	1,743	2,122

Economic Loss

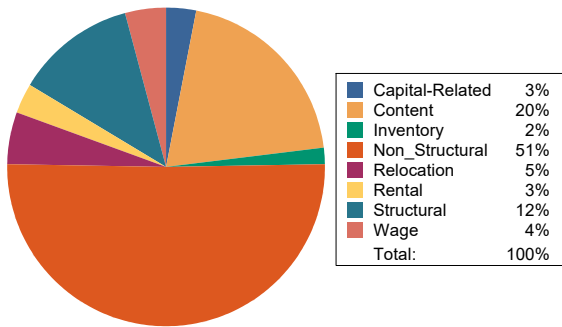
The total economic loss estimated for the earthquake is 163,786.32 (millions of dollars), which includes building and lifeline related losses based on the region's available inventory. The following three sections provide more detailed information about these losses.

Building-Related Losses

The building losses are broken into two categories: direct building losses and business interruption losses. The direct building losses are the estimated costs to repair or replace the damage caused to the building and its contents. The business interruption losses are the losses associated with inability to operate a business because of the damage sustained during the earthquake. Business interruption losses also include the temporary living expenses for those people displaced from their homes because of the earthquake.

The total building-related losses were 150,150.19 (millions of dollars); 15 % of the estimated losses were related to the business interruption of the region. By far, the largest loss was sustained by the residential occupancies which made up over 43 % of the total loss. Table 11 below provides a summary of the losses associated with the building damage.

Earthquake Losses by Loss Type (\$ millions)



Earthquake Losses by Occupancy Type (\$ millions)

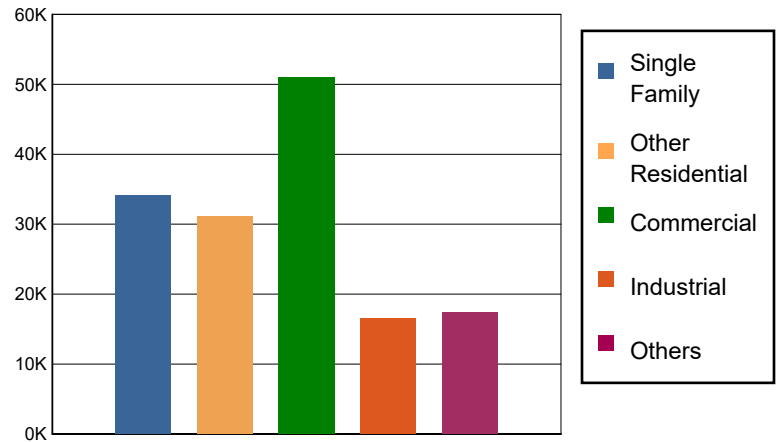


Table 11: Building-Related Economic Loss Estimates
(Millions of dollars)

Category	Area	Single Family	Other Residential	Commercial	Industrial	Others	Total
Income Losses							
	Wage	0.0000	802.3722	4441.1102	208.5939	604.7998	6,056.8761
	Capital-Related	0.0000	341.1483	3997.0837	125.9823	107.1155	4,571.3298
	Rental	408.1015	1941.9066	1868.5798	102.7328	382.4295	4,703.7502
	Relocation	1482.0708	1179.2137	2802.0716	462.8330	1920.4724	7,846.6615
	Subtotal	1890.1723	4264.6408	13108.8453	900.1420	3014.8172	23178.6176
Capital Stock Losses							
	Structural	3885.1856	3730.6571	6393.5963	2056.6494	2334.0619	18,400.1503
	Non_Structural	21037.5951	18919.6926	20193.7143	7743.6409	8295.3913	76,190.0342
	Content	7259.3012	4159.6651	9804.9535	5141.8429	3615.6286	29,981.3913
	Inventory	0.0000	0.0000	1506.4652	736.1112	157.4221	2,399.9985
	Subtotal	32182.0819	26810.0148	37898.7293	15678.2444	14402.5039	126971.5743
	Total	34072.25	31074.66	51007.57	16578.39	17417.32	150150.19

Transportation and Utility Lifeline Losses

For the transportation and utility lifeline systems, Hazus computes the direct repair cost for each component only. There are no losses computed by Hazus for business interruption due to lifeline outages. Tables 12 & 13 provide a detailed breakdown in the expected lifeline losses.

Table 12: Transportation System Economic Losses
(Millions of dollars)

System	Component	Inventory Value	Economic Loss	Loss Ratio (%)
Highway	Segments	115990.0148	0.0000	0.00
	Bridges	66224.2671	1465.9617	2.21
	Tunnels	1022.2451	27.9700	2.74
	Subtotal	183236.5270	1493.9317	
Railways	Segments	70161.6174	0.0000	0.00
	Bridges	12267.6400	230.1543	1.88
	Tunnels	1.8495	0.0520	2.81
	Facilities	258.3110	31.0226	12.01
	Subtotal	82689.4179	261.2289	
Light Rail	Segments	5403.2756	0.0000	0.00
	Bridges	15.3529	1.7672	11.51
	Tunnels	0.0000	0.0000	0.00
	Facilities	4154.0000	727.4305	17.51
	Subtotal	9572.6285	729.1977	
Bus	Facilities	135.2922	9.5692	7.07
	Subtotal	135.2922	9.5692	
Ferry	Facilities	33.2750	5.4271	16.31
	Subtotal	33.2750	5.4271	
Port	Facilities	1494.2431	251.3163	16.82
	Subtotal	1494.2431	251.3163	
Airport	Facilities	3166.0439	414.9978	13.11
	Runways	1956.3254	0.0000	0.00
	Subtotal	5122.3693	414.9978	
Total		282,283.75	3,165.67	

Table 13: Utility System Economic Losses

(Millions of dollars)

System	Component	Inventory Value	Economic Loss	Loss Ratio (%)
Potable Water	Pipelines	0.0000	0.0000	0.00
	Facilities	1218.1140	117.8071	9.67
	Distribution Lines	6642.4118	104.0498	1.57
	Subtotal	7860.5258	221.8569	
Waste Water	Pipelines	0.0000	0.0000	0.00
	Facilities	38345.2514	2292.8363	5.98
	Distribution Lines	3985.4471	52.2669	1.31
	Subtotal	42330.6985	2345.1032	
Natural Gas	Pipelines	21838.5469	0.0000	0.00
	Facilities	672.7418	0.8889	0.13
	Distribution Lines	2656.9647	17.9062	0.67
	Subtotal	25168.2534	18.7951	
Oil Systems	Pipelines	0.0000	0.0000	0.00
	Facilities	3.8940	0.2503	6.43
	Subtotal	3.8940	0.2503	
Electrical Power	Facilities	173581.4429	7879.4486	4.54
	Subtotal	173581.4429	7879.4486	
Communication	Facilities	70.5640	4.9940	7.08
	Subtotal	70.5640	4.9940	
	Total	249,015.38	10,470.45	

Appendix A: County Listing for the Region

Alameda,CA
Alpine,CA
Amador,CA
Butte,CA
Calaveras,CA
Colusa,CA
Contra Costa,CA
El Dorado,CA
Fresno,CA
Glenn,CA
Humboldt,CA
Kern,CA
Kings,CA
Lake,CA
Madera,CA
Marin,CA
Mariposa,CA
Mendocino,CA
Merced,CA
Monterey,CA
Napa,CA
Nevada,CA
Placer,CA
Plumas,CA
Sacramento,CA
San Benito,CA
San Francisco,CA
San Joaquin,CA
San Luis Obispo,CA

San Mateo,CA

Santa Clara,CA

Santa Cruz,CA

Shasta,CA

Sierra,CA

Solano,CA

Sonoma,CA

Stanislaus,CA

Sutter,CA

Tehama,CA

Trinity,CA

Tulare,CA

Tuolumne,CA

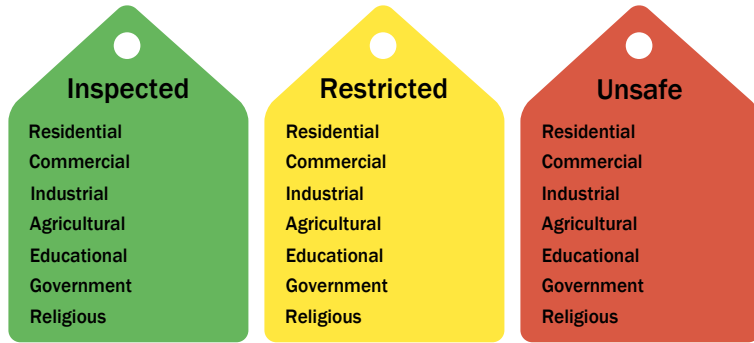
Yolo,CA

Yuba,CA

Appendix B: Regional Population and Building Value Data

State	County Name	Population	Building Value (millions of dollars)		
			Residential	Non-Residential	Total
California	Alameda	1,682,353	209,951	122,639	332,590
	Alpine	1,204	721	139	861
	Amador	40,474	5,608	2,517	8,125
	Butte	211,632	25,875	16,639	42,514
	Calaveras	45,292	8,305	4,893	13,199
	Colusa	21,839	2,244	2,024	4,268
	Contra Costa	1,165,927	158,118	60,339	218,458
	El Dorado	191,185	34,907	9,704	44,611
	Fresno	1,008,654	98,532	61,772	160,304
	Glenn	28,917	2,791	3,717	6,508
	Humboldt	136,463	19,361	8,683	28,044
	Kern	909,235	87,567	59,168	146,736
	Kings	152,486	13,719	7,861	21,581
	Lake	68,163	9,699	4,530	14,229
	Madera	156,255	18,025	9,641	27,667
	Marin	262,321	47,738	15,030	62,769
	Mariposa	17,131	3,299	1,141	4,441
	Mendocino	91,601	14,237	8,510	22,748
	Merced	281,202	25,194	26,098	51,292
	Monterey	439,035	47,655	28,750	76,405
	Napa	138,019	20,517	13,045	33,563
	Nevada	102,241	17,908	6,108	24,016
	Placer	404,739	69,985	24,193	94,179
	Plumas	19,790	6,128	2,276	8,405
	Sacramento	1,585,055	179,811	83,911	263,723
	San Benito	64,209	9,440	3,799	13,239
	San Francisco	873,965	108,848	46,020	154,869
	San Joaquin	779,233	82,706	56,882	139,589
	San Luis Obispo	282,424	41,720	20,896	62,616
	San Mateo	764,442	110,372	44,995	155,368
	Santa Clara	1,936,259	261,111	120,471	381,582
	Santa Cruz	270,861	36,147	18,805	54,952
	Shasta	182,155	21,572	15,715	37,288
	Sierra	3,236	596	419	1,015
	Solano	453,491	55,802	26,393	82,195
	Sonoma	488,863	68,827	35,781	104,609
	Stanislaus	552,878	62,937	37,511	100,449
	Sutter	99,633	10,618	6,448	17,066
	Tehama	65,829	7,705	5,113	12,818

	Trinity	16,112	2,209	1,485	3,694
	Tulare	473,117	43,262	31,210	74,472
	Tuolumne	55,620	8,964	3,507	12,471
	Yolo	216,403	24,130	18,343	42,473
	Yuba	81,575	8,161	4,677	12,839
Total Region		16,821,518	2,093,022	1,081,798	3,174,840

Building Inspection Tagging (Counts)

Total Economic Loss
Total:

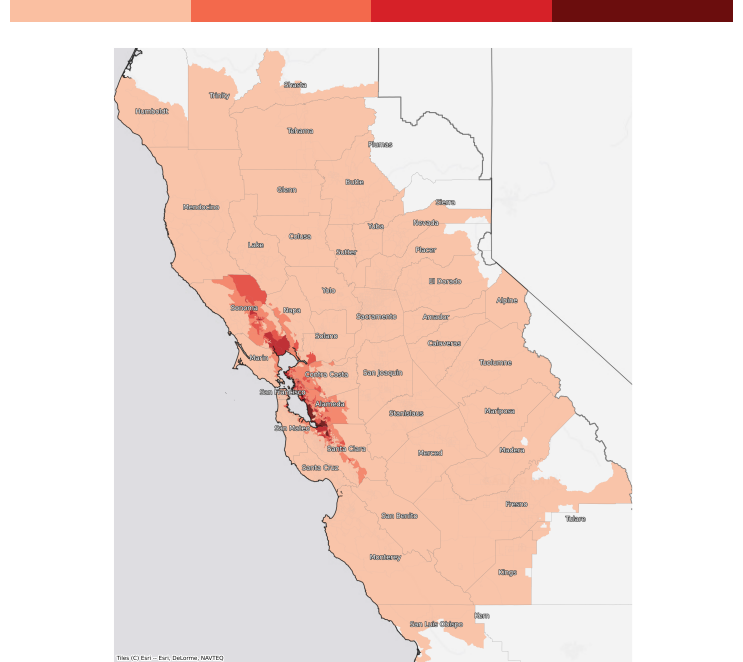
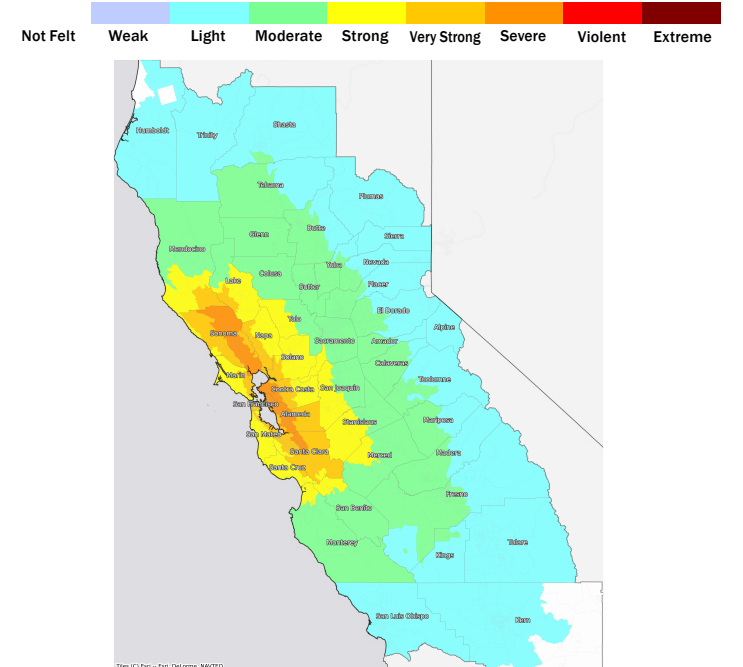
Top Counties	State	Total

Injuries & Fatalities
**Total Day:
Total Night:**

Top Counties	State	Injuries (day/night)	Fatalities (day/night)

Displaced Households & Short-Term Shelter Needs
**Total Displaced:
Total Needing Shelter:**

Top Counties	State	Displaced	Needing Shelter

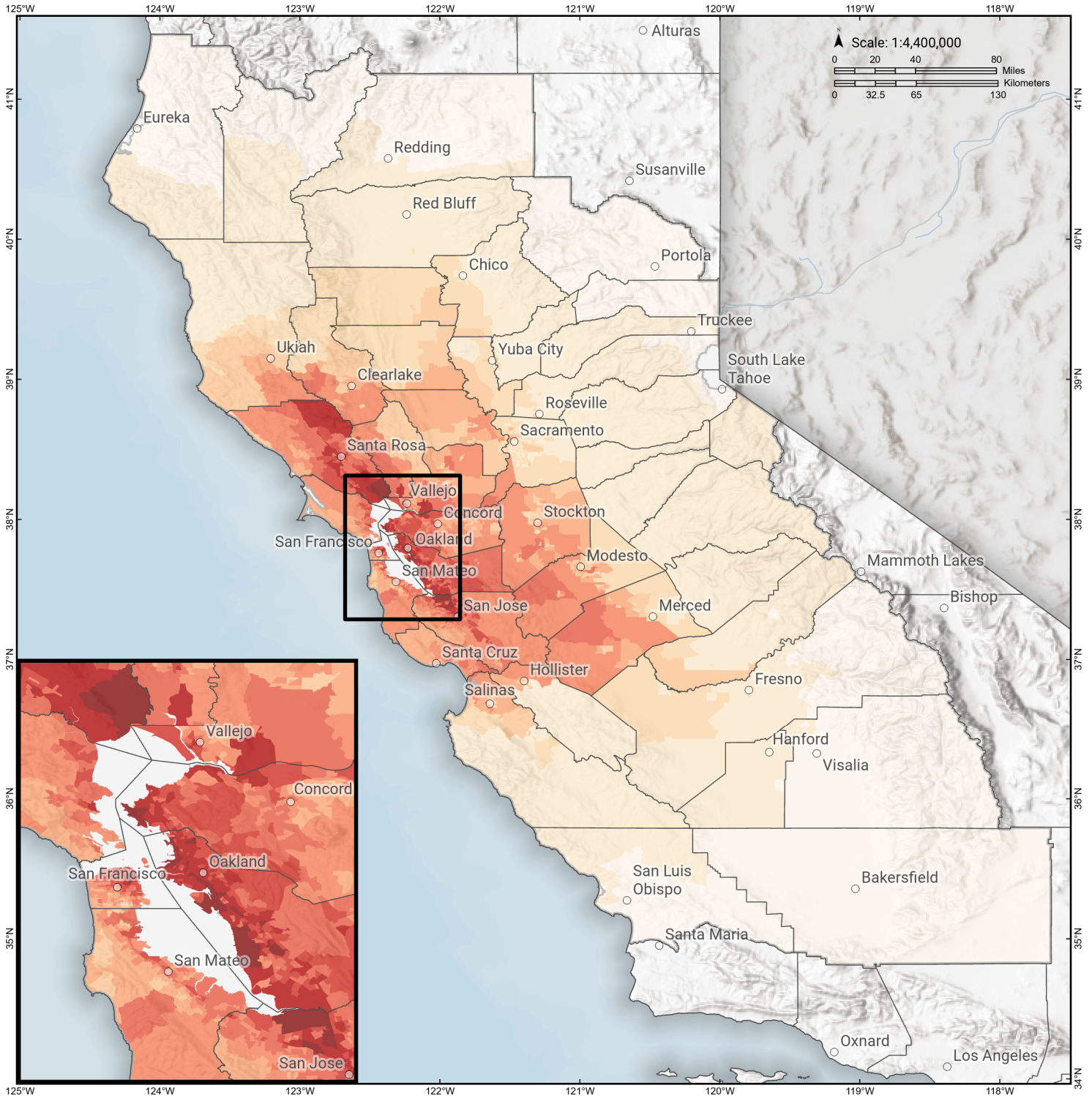
Economic Impacts by Census Tract

Ground Shaking

Debris
**Total Tons:
Total Truckloads:**

Type	Tons

The estimates of social and economic impacts contained in this report were produced using Hazus loss estimation methodology software which is based on current scientific and engineering knowledge. There are uncertainties inherent in any loss estimation technique. Therefore, there may be significant differences between the modeled results contained in this report and the actual social and economic losses following a specific earthquake.

Hayward: RC+HN+HS+HE

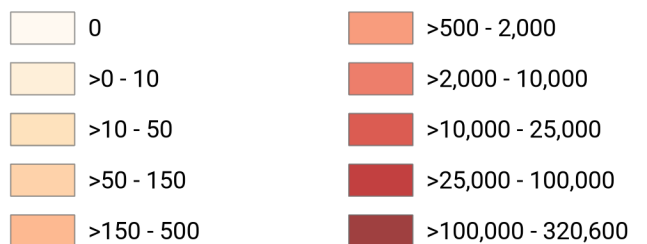
Debris Generated by Census Tract



Study Region: Hayward: RC+HN+HS+HE
Scenario: haywardrchnhsheshaw0_m7p58_se

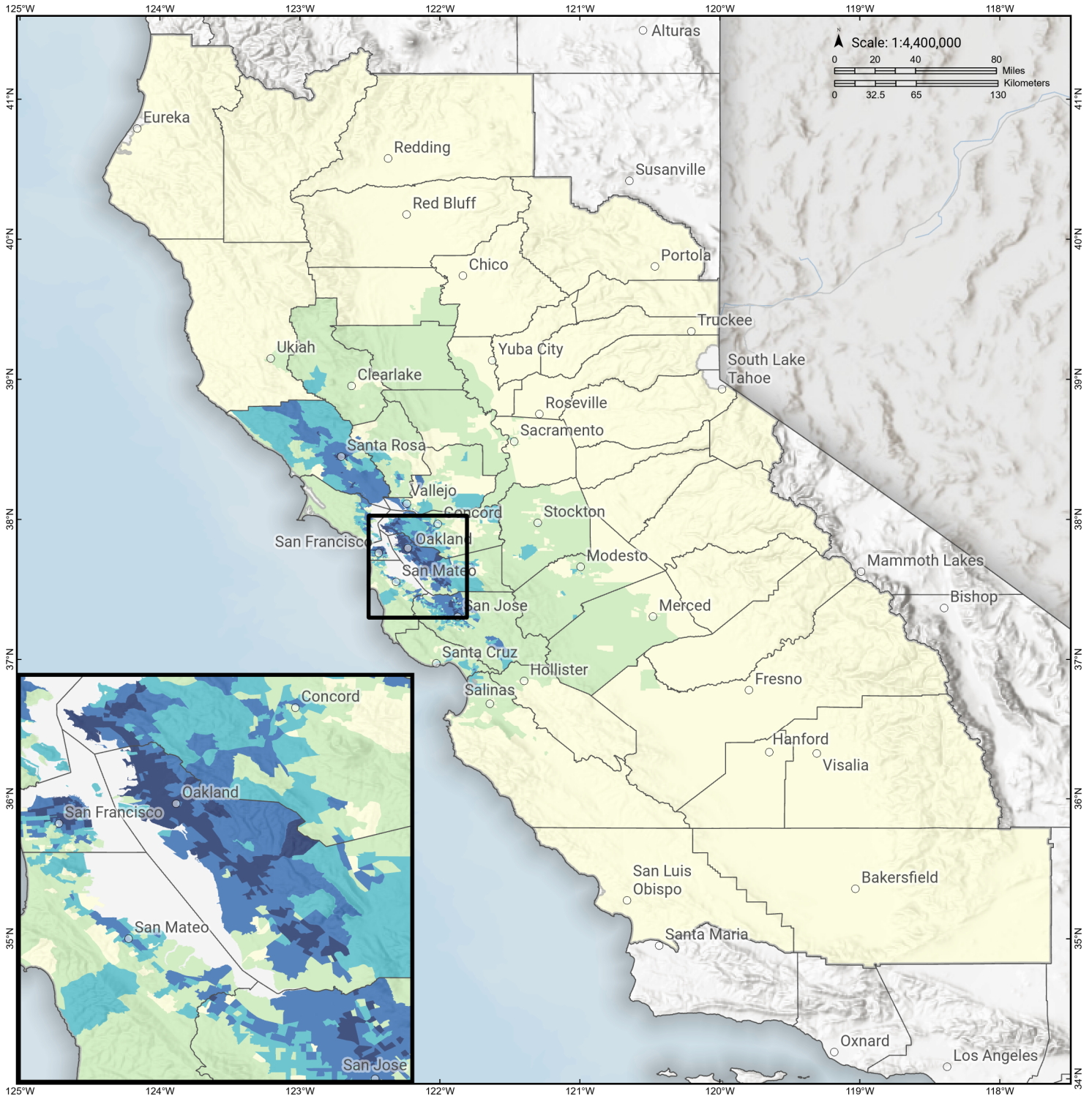


Debris Generated (in tons)



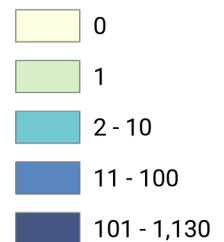
Hayward: RC+HN+HS+HE

Displaced Households by Census Tract



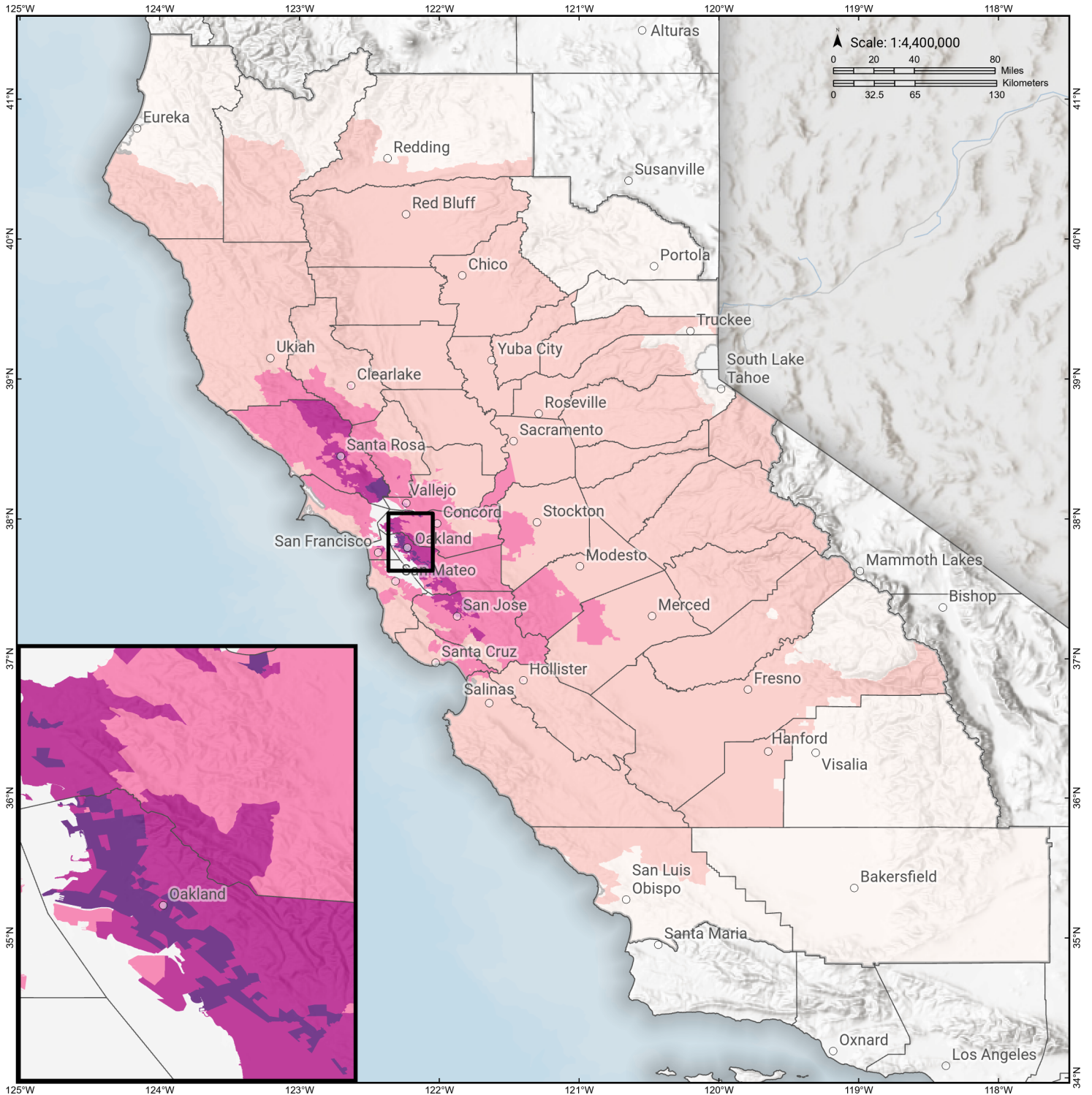
Study Region: Hayward: RC+HN+HS+HE
Scenario: haywardrchnhsheshaw0_m7p58_se

Displaced Households



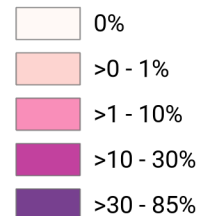
Hayward: RC+HN+HS+HE

Loss Ratio by Census Tract



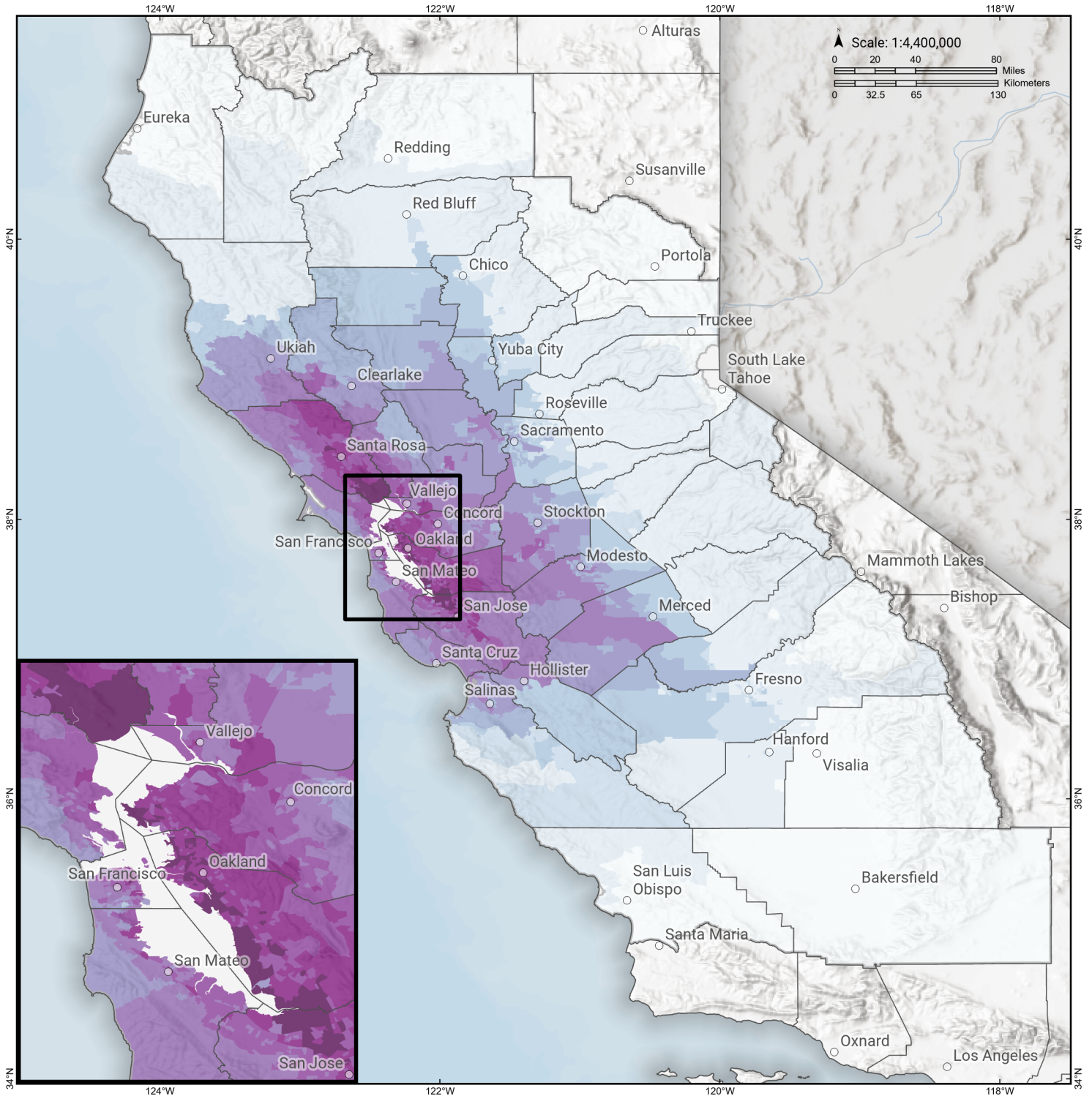
Study Region: Hayward: RC+HN+HS+HE
Scenario: haywardrchnhsheshaw0_m7p58_se

Loss Ratio (ratio of building related economic loss to exposed value of buildings)

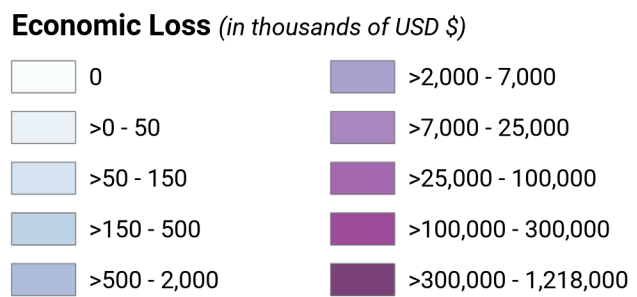


Hayward: RC+HN+HS+HE

Total Building Related Economic Loss by Census Tract



Study Region: Hayward: RC+HN+HS+HE
Scenario: haywardrchnhsheshaw0_m7p58_se



Building Damage by Count by General Occupancy

April 25, 2024

	# of Buildings					Total
	None	Slight	Moderate	Extensive	Complete	
California						
Alameda						
<i>Government</i>	1,970	2,482	2,831	2,372	873	10,528
<i>Commercial</i>	4,109	7,720	8,035	5,825	6,300	31,989
<i>Agriculture</i>	67	117	108	67	62	422
<i>Religion</i>	164	366	522	474	460	1,986
<i>Single Family</i>	66,351	176,171	97,001	4,265	385	344,173
<i>Education</i>	294	366	258	75	125	1,117
<i>Industrial</i>	1,690	2,657	2,466	1,795	1,597	10,205
<i>Other Residential</i>	6,345	24,051	19,010	5,589	6,402	61,396
Alpine						
<i>Education</i>	5	0	0	0	0	5
<i>Commercial</i>	48	0	0	0	0	48
<i>Government</i>	4	0	0	0	0	4
<i>Agriculture</i>	0	0	0	0	0	0
<i>Religion</i>	1	0	0	0	0	1
<i>Industrial</i>	14	0	0	0	0	14
<i>Single Family</i>	842	0	0	0	0	842
<i>Other Residential</i>	97	0	0	0	0	97
Amador						

	# of Buildings					Total
	None	Slight	Moderate	Extensive	Complete	
<i>Industrial</i>	235	0	0	0	0	235
<i>Other Residential</i>	1,036	1	0	0	0	1,037
<i>Single Family</i>	14,962	0	0	0	0	14,962
<i>Education</i>	23	0	0	0	0	23
<i>Government</i>	32	0	0	0	0	32
<i>Commercial</i>	1,368	0	0	0	0	1,368
<i>Agriculture</i>	44	0	0	0	0	44
<i>Religion</i>	45	0	0	0	0	45
Butte						
<i>Religion</i>	530	1	0	0	0	531
<i>Agriculture</i>	508	2	0	0	0	510
<i>Government</i>	147	0	0	0	0	147
<i>Commercial</i>	6,378	7	0	0	0	6,385
<i>Industrial</i>	1,519	3	0	0	0	1,522
<i>Other Residential</i>	21,464	32	2	0	0	21,498
<i>Single Family</i>	50,277	6	0	0	0	50,283
<i>Education</i>	172	0	0	0	0	172
Calaveras						
<i>Education</i>	35	0	0	0	0	35
<i>Government</i>	84	0	0	0	0	84
<i>Other Residential</i>	2,556	3	0	0	0	2,559
<i>Commercial</i>	1,413	0	0	0	0	1,413
<i>Religion</i>	130	0	0	0	0	130
<i>Agriculture</i>	2,206	1	0	0	0	2,207
<i>Industrial</i>	466	0	0	0	0	466

	# of Buildings					Total
	None	Slight	Moderate	Extensive	Complete	
Colusa						
Single Family	22,148	0	0	0	0	22,148
Agriculture	139	3	0	0	0	142
Religion	56	2	0	0	0	58
Commercial	773	18	3	0	0	794
Industrial	110	2	0	0	0	113
Other Residential	930	22	3	0	0	954
Single Family	5,900	54	0	0	0	5,954
Government	31	1	0	0	0	32
Education	33	0	0	0	0	33
Contra Costa						
Commercial	7,696	5,032	3,284	1,352	626	17,991
Agriculture	364	205	124	39	17	749
Religion	445	293	252	162	74	1,226
Single Family	156,245	95,632	28,851	1,161	45	281,935
Government	2,531	1,082	836	445	130	5,024
Education	403	152	78	14	6	653
Industrial	1,885	1,260	1,007	425	172	4,749
Other Residential	11,848	10,347	5,120	1,303	506	29,124
El Dorado						
Education	128	0	0	0	0	128
Industrial	1,199	0	0	0	0	1,199
Other Residential	10,420	0	0	0	0	10,420
Single Family	71,424	0	0	0	0	71,424
Government	100	0	0	0	0	100

	# of Buildings					Total
	None	Slight	Moderate	Extensive	Complete	
<i>Commercial</i>	4,768	0	0	0	0	4,768
<i>Religion</i>	180	0	0	0	0	180
<i>Agriculture</i>	161	0	0	0	0	161
Fresno						
<i>Commercial</i>	21,041	12	1	0	0	21,054
<i>Religion</i>	1,505	1	0	0	0	1,507
<i>Agriculture</i>	3,418	3	0	0	0	3,421
<i>Industrial</i>	5,345	3	0	0	0	5,348
<i>Other Residential</i>	40,944	28	1	0	0	40,973
<i>Single Family</i>	226,416	9	0	0	0	226,425
<i>Government</i>	290	1	0	0	0	291
<i>Education</i>	602	0	0	0	0	602
Glenn						
<i>Government</i>	99	0	0	0	0	99
<i>Education</i>	35	0	0	0	0	35
<i>Industrial</i>	252	1	0	0	0	254
<i>Other Residential</i>	2,120	30	2	0	0	2,152
<i>Single Family</i>	7,405	12	0	0	0	7,417
<i>Commercial</i>	878	7	1	0	0	885
<i>Agriculture</i>	1,352	11	2	0	0	1,365
<i>Religion</i>	88	1	0	0	0	89
Humboldt						
<i>Agriculture</i>	150	0	0	0	0	150
<i>Religion</i>	61	0	0	0	0	61
<i>Government</i>	87	0	0	0	0	87

		# of Buildings					
		None	Slight	Moderate	Extensive	Complete	Total
Kern	<i>Commercial</i>	3,118	0	0	0	0	3,118
	<i>Single Family</i>	38,359	0	0	0	0	38,359
	<i>Industrial</i>	740	0	0	0	0	740
	<i>Other Residential</i>	12,058	0	0	0	0	12,058
	<i>Education</i>	127	0	0	0	0	127
	<i>Single Family</i>	205,139	0	0	0	0	205,139
	<i>Education</i>	462	0	0	0	0	462
	<i>Industrial</i>	6,047	0	0	0	0	6,047
	<i>Other Residential</i>	54,520	0	0	0	0	54,520
	<i>Government</i>	443	0	0	0	0	443
Kings	<i>Commercial</i>	15,567	0	0	0	0	15,567
	<i>Religion</i>	1,524	0	0	0	0	1,524
	<i>Agriculture</i>	4,645	0	0	0	0	4,645
	<i>Commercial</i>	2,317	1	0	0	0	2,318
	<i>Agriculture</i>	306	0	0	0	0	306
	<i>Religion</i>	210	0	0	0	0	210
	<i>Government</i>	72	0	0	0	0	72
	<i>Other Residential</i>	4,341	1	0	0	0	4,342
	<i>Industrial</i>	555	0	0	0	0	555
	<i>Single Family</i>	36,245	0	0	0	0	36,245
Lake	<i>Education</i>	103	0	0	0	0	103
	<i>Agriculture</i>	135	20	5	1	0	161

	# of Buildings					Total
	None	Slight	Moderate	Extensive	Complete	
<i>Single Family</i>	20,075	1,539	18	0	0	21,633
<i>Other Residential</i>	10,067	3,198	1,277	59	0	14,601
<i>Education</i>	66	2	0	0	0	68
<i>Industrial</i>	295	46	12	1	0	354
<i>Religion</i>	118	16	5	1	0	140
<i>Commercial</i>	1,802	223	57	9	0	2,091
<i>Government</i>	69	7	1	0	0	78
Madera						
<i>Commercial</i>	2,900	4	0	0	0	2,905
<i>Religion</i>	119	0	0	0	0	119
<i>Government</i>	111	0	0	0	0	111
<i>Agriculture</i>	630	4	0	0	0	634
<i>Other Residential</i>	6,623	12	1	0	0	6,635
<i>Industrial</i>	901	1	0	0	0	903
<i>Single Family</i>	38,899	13	0	0	0	38,912
<i>Education</i>	115	0	0	0	0	115
Marin						
<i>Other Residential</i>	4,840	2,121	583	272	74	7,890
<i>Government</i>	76	40	21	5	1	143
<i>Education</i>	210	48	14	2	0	274
<i>Commercial</i>	4,059	2,542	1,347	281	40	8,270
<i>Religion</i>	166	99	47	7	1	319
<i>Agriculture</i>	91	53	33	10	3	190
<i>Single Family</i>	52,010	23,066	1,640	8	0	76,724

	# of Buildings					Total
	None	Slight	Moderate	Extensive	Complete	
<i>Industrial</i>	606	490	339	86	14	1,535
Mariposa						
<i>Single Family</i>	8,084	0	0	0	0	8,084
<i>Education</i>	27	0	0	0	0	27
<i>Industrial</i>	94	0	0	0	0	94
<i>Other Residential</i>	307	0	0	0	0	307
<i>Commercial</i>	689	0	0	0	0	689
<i>Religion</i>	36	0	0	0	0	36
<i>Agriculture</i>	29	0	0	0	0	29
<i>Government</i>	33	0	0	0	0	33
Mendocino						
<i>Commercial</i>	3,330	96	10	0	0	3,436
<i>Religion</i>	211	4	0	0	0	216
<i>Agriculture</i>	180	4	0	0	0	184
<i>Other Residential</i>	6,657	337	64	1	0	7,060
<i>Government</i>	80	2	0	0	0	83
<i>Single Family</i>	25,591	376	2	0	0	25,969
<i>Education</i>	100	1	0	0	0	101
<i>Industrial</i>	841	26	3	0	0	869
Merced						
<i>Education</i>	162	1	0	0	0	163
<i>Government</i>	168	3	0	0	0	171
<i>Commercial</i>	4,621	114	18	1	0	4,754
<i>Religion</i>	335	9	1	0	0	345
<i>Agriculture</i>	6,844	509	254	46	1	7,653

	# of Buildings					Total
	None	Slight	Moderate	Extensive	Complete	
<i>Single Family</i>	62,772	824	2	0	0	63,598
<i>Industrial</i>	992	26	3	0	0	1,022
<i>Other Residential</i>	10,334	379	70	4	0	10,787
Monterey						
<i>Single Family</i>	89,234	1,634	8	0	0	90,876
<i>Industrial</i>	1,730	91	26	3	0	1,850
<i>Education</i>	237	2	0	0	0	239
<i>Other Residential</i>	18,387	1,127	286	9	0	19,809
<i>Commercial</i>	8,776	373	91	6	0	9,246
<i>Religion</i>	553	22	5	0	0	580
<i>Agriculture</i>	1,796	16	3	0	0	1,815
<i>Government</i>	179	5	1	0	0	185
Napa						
<i>Agriculture</i>	213	85	40	9	2	349
<i>Commercial</i>	2,032	1,243	550	152	45	4,021
<i>Religion</i>	70	46	23	6	2	148
<i>Single Family</i>	25,634	12,414	713	1	0	38,761
<i>Other Residential</i>	3,251	2,138	1,106	429	55	6,978
<i>Government</i>	48	29	20	5	1	103
<i>Education</i>	94	26	7	3	2	132
<i>Industrial</i>	653	419	230	53	12	1,367
Nevada						
<i>Religion</i>	189	0	0	0	0	189
<i>Commercial</i>	2,835	0	0	0	0	2,835
<i>Government</i>	60	0	0	0	0	60

	# of Buildings					Total
	None	Slight	Moderate	Extensive	Complete	
<i>Agriculture</i>	132	0	0	0	0	132
<i>Single Family</i>	43,280	0	0	0	0	43,280
<i>Education</i>	108	0	0	0	0	108
<i>Industrial</i>	1,161	0	0	0	0	1,161
<i>Other Residential</i>	6,384	0	0	0	0	6,384
Placer						
<i>Education</i>	231	0	0	0	0	231
<i>Government</i>	377	0	0	0	0	377
<i>Commercial</i>	8,530	7	0	0	0	8,538
<i>Agriculture</i>	258	0	0	0	0	258
<i>Religion</i>	382	0	0	0	0	382
<i>Other Residential</i>	14,830	12	1	0	0	14,843
<i>Single Family</i>	134,692	27	0	0	0	134,719
<i>Industrial</i>	2,700	3	0	0	0	2,703
Plumas						
<i>Commercial</i>	1,215	0	0	0	0	1,215
<i>Religion</i>	30	0	0	0	0	30
<i>Agriculture</i>	84	0	0	0	0	84
<i>Single Family</i>	9,877	0	0	0	0	9,877
<i>Education</i>	26	0	0	0	0	26
<i>Industrial</i>	184	0	0	0	0	184
<i>Other Residential</i>	5,032	0	0	0	0	5,032
<i>Government</i>	45	0	0	0	0	45
Sacramento						
<i>Single Family</i>	385,534	1,299	7	0	0	386,840

	# of Buildings					Total
	None	Slight	Moderate	Extensive	Complete	
<i>Industrial</i>	6,674	67	13	2	0	6,756
<i>Other Residential</i>	55,801	509	98	5	0	56,413
<i>Education</i>	827	2	0	0	0	829
<i>Commercial</i>	25,853	358	72	12	1	26,295
<i>Religion</i>	1,665	31	5	0	0	1,702
<i>Agriculture</i>	613	5	2	1	0	621
<i>Government</i>	584	30	5	0	0	619
San Benito						
<i>Other Residential</i>	1,208	142	25	1	0	1,375
<i>Government</i>	38	5	2	0	0	45
<i>Single Family</i>	14,031	692	3	0	0	14,726
<i>Industrial</i>	296	24	6	1	0	326
<i>Education</i>	40	2	1	0	0	42
<i>Agriculture</i>	242	9	1	0	0	253
<i>Religion</i>	55	6	3	0	0	64
<i>Commercial</i>	952	91	33	4	0	1,080
San Francisco						
<i>Other Residential</i>	22,725	11,845	6,800	2,758	400	44,529
<i>Government</i>	84	82	82	32	8	289
<i>Single Family</i>	105,410	34,660	7,330	2,719	583	150,703
<i>Education</i>	373	89	60	41	9	572
<i>Industrial</i>	1,587	959	792	416	106	3,860
<i>Commercial</i>	8,283	5,449	4,615	2,456	541	21,344
<i>Religion</i>	593	359	264	108	20	1,345
<i>Agriculture</i>	75	39	34	13	1	162

	# of Buildings					Total
	None	Slight	Moderate	Extensive	Complete	
San Joaquin						
<i>Commercial</i>	12,059	691	109	5	0	12,864
<i>Religion</i>	820	49	8	0	0	877
<i>Agriculture</i>	706	40	7	0	0	753
<i>Government</i>	283	18	4	0	0	304
<i>Single Family</i>	178,548	9,497	843	34	0	188,922
<i>Education</i>	386	8	1	0	0	395
<i>Industrial</i>	4,582	293	51	2	0	4,928
<i>Other Residential</i>	20,008	1,522	267	8	0	21,805
San Luis Obispo						
<i>Agriculture</i>	421	0	0	0	0	421
<i>Government</i>	185	0	0	0	0	185
<i>Religion</i>	360	0	0	0	0	360
<i>Commercial</i>	9,375	0	0	0	0	9,375
<i>Other Residential</i>	20,216	0	0	0	0	20,216
<i>Single Family</i>	85,639	0	0	0	0	85,639
<i>Industrial</i>	2,556	0	0	0	0	2,556
<i>Education</i>	182	0	0	0	0	182
San Mateo						
<i>Religion</i>	451	190	83	12	1	736
<i>Commercial</i>	9,131	3,632	1,378	219	35	14,395
<i>Government</i>	183	78	34	3	0	299
<i>Agriculture</i>	376	100	47	13	3	539
<i>Single Family</i>	129,105	29,543	1,270	12	1	159,931
<i>Other Residential</i>	15,197	5,478	1,217	464	97	22,453

	# of Buildings					Total
	None	Slight	Moderate	Extensive	Complete	
<i>Industrial</i>	2,618	1,177	571	93	13	4,472
<i>Education</i>	417	56	12	3	1	489
Santa Clara						
<i>Single Family</i>	196,448	190,408	39,007	1,194	162	427,219
<i>Government</i>	159	161	126	35	21	502
<i>Other Residential</i>	20,763	23,300	8,472	4,663	1,962	59,160
<i>Education</i>	715	312	115	21	10	1,173
<i>Industrial</i>	2,611	3,191	2,466	860	306	9,433
<i>Religion</i>	482	501	384	130	43	1,540
<i>Commercial</i>	11,712	12,133	8,199	2,443	982	35,469
<i>Agriculture</i>	307	284	200	70	35	895
Santa Cruz						
<i>Agriculture</i>	639	136	53	12	1	840
<i>Religion</i>	291	49	16	3	0	359
<i>Other Residential</i>	11,520	2,426	871	74	2	14,892
<i>Industrial</i>	1,426	272	102	19	1	1,819
<i>Single Family</i>	62,234	6,550	86	0	0	68,870
<i>Education</i>	206	14	4	1	0	225
<i>Commercial</i>	5,454	900	295	44	1	6,694
<i>Government</i>	103	16	6	1	0	127
Shasta						
<i>Religion</i>	66	0	0	0	0	66
<i>Commercial</i>	5,254	0	0	0	0	5,254
<i>Agriculture</i>	3,235	0	0	0	0	3,235
<i>Single Family</i>	51,815	0	0	0	0	51,815

	# of Buildings					Total
	None	Slight	Moderate	Extensive	Complete	
<i>Other Residential</i>	16,949	0	0	0	0	16,949
<i>Industrial</i>	1,038	0	0	0	0	1,038
<i>Government</i>	87	0	0	0	0	87
<i>Education</i>	136	0	0	0	0	136
Sierra						
<i>Single Family</i>	1,858	0	0	0	0	1,858
<i>Other Residential</i>	153	0	0	0	0	153
<i>Industrial</i>	66	0	0	0	0	66
<i>Education</i>	14	0	0	0	0	14
<i>Agriculture</i>	7	0	0	0	0	7
<i>Religion</i>	12	0	0	0	0	12
<i>Commercial</i>	141	0	0	0	0	141
<i>Government</i>	16	0	0	0	0	16
Solano						
<i>Agriculture</i>	191	37	12	3	2	245
<i>Religion</i>	268	104	57	18	7	454
<i>Commercial</i>	4,885	1,461	627	211	83	7,268
<i>Government</i>	111	28	12	1	0	152
<i>Other Residential</i>	7,679	3,131	993	399	115	12,317
<i>Industrial</i>	1,343	461	214	59	24	2,101
<i>Single Family</i>	94,517	25,253	1,193	4	2	120,968
<i>Education</i>	193	24	5	2	1	225
Sonoma						
<i>Government</i>	85	100	78	37	19	319
<i>Other Residential</i>	4,167	9,725	5,936	3,216	1,989	25,033

	# of Buildings					Total
	None	Slight	Moderate	Extensive	Complete	
<i>Education</i>	137	135	73	15	7	367
<i>Religion</i>	119	166	155	90	47	576
<i>Commercial</i>	1,947	3,816	3,543	1,798	1,006	12,110
<i>Agriculture</i>	281	386	344	186	107	1,304
<i>Single Family</i>	39,232	75,040	26,796	933	28	142,028
<i>Industrial</i>	566	1,139	1,244	581	295	3,825
Stanislaus						
<i>Other Residential</i>	18,397	966	193	13	0	19,569
<i>Education</i>	303	3	1	0	0	307
<i>Industrial</i>	3,218	206	46	4	0	3,475
<i>Single Family</i>	139,031	3,674	18	0	0	142,724
<i>Government</i>	645	31	4	0	0	680
<i>Religion</i>	421	28	7	1	0	456
<i>Commercial</i>	9,653	582	127	7	0	10,369
<i>Agriculture</i>	1,148	69	19	3	0	1,239
Sutter						
<i>Other Residential</i>	3,073	38	2	0	0	3,113
<i>Government</i>	76	1	0	0	0	77
<i>Education</i>	62	0	0	0	0	62
<i>Industrial</i>	629	6	0	0	0	636
<i>Single Family</i>	24,438	74	0	0	0	24,512
<i>Agriculture</i>	1,105	16	3	0	0	1,125
<i>Commercial</i>	2,037	14	1	0	0	2,052
<i>Religion</i>	153	1	0	0	0	154
Tehama						

		# of Buildings					
		None	Slight	Moderate	Extensive	Complete	Total
	<i>Religion</i>	110	0	0	0	0	110
	<i>Agriculture</i>	299	0	0	0	0	299
	<i>Single Family</i>	21,220	2	0	0	0	21,222
	<i>Other Residential</i>	3,987	4	0	0	0	3,991
	<i>Industrial</i>	552	0	0	0	0	552
	<i>Education</i>	57	0	0	0	0	57
	<i>Commercial</i>	1,269	1	0	0	0	1,270
	<i>Government</i>	50	0	0	0	0	50
Trinity							
	<i>Agriculture</i>	4	0	0	0	0	4
	<i>Commercial</i>	1,005	0	0	0	0	1,005
	<i>Religion</i>	45	0	0	0	0	45
	<i>Industrial</i>	58	0	0	0	0	58
	<i>Single Family</i>	6,294	0	0	0	0	6,294
	<i>Other Residential</i>	1,354	0	0	0	0	1,354
	<i>Education</i>	26	0	0	0	0	26
	<i>Government</i>	8	0	0	0	0	8
Tulare							
	<i>Religion</i>	827	0	0	0	0	827
	<i>Commercial</i>	8,873	0	0	0	0	8,873
	<i>Agriculture</i>	3,555	0	0	0	0	3,555
	<i>Government</i>	461	0	0	0	0	461
	<i>Single Family</i>	112,034	0	0	0	0	112,034
	<i>Education</i>	269	0	0	0	0	269
	<i>Industrial</i>	2,148	0	0	0	0	2,148

	# of Buildings					Total
	None	Slight	Moderate	Extensive	Complete	
<i>Other Residential</i>	20,022	0	0	0	0	20,022
Tuolumne						
<i>Education</i>	57	0	0	0	0	57
<i>Government</i>	143	0	0	0	0	143
<i>Commercial</i>	1,576	0	0	0	0	1,576
<i>Religion</i>	121	0	0	0	0	121
<i>Agriculture</i>	82	0	0	0	0	82
<i>Other Residential</i>	4,962	0	0	0	0	4,962
<i>Industrial</i>	383	0	0	0	0	383
<i>Single Family</i>	21,645	0	0	0	0	21,645
Yolo						
<i>Education</i>	129	2	0	0	0	131
<i>Government</i>	106	4	1	0	0	111
<i>Industrial</i>	1,067	43	7	0	0	1,117
<i>Other Residential</i>	9,543	292	25	1	0	9,861
<i>Single Family</i>	41,784	803	2	0	0	42,589
<i>Commercial</i>	4,047	153	25	1	0	4,225
<i>Agriculture</i>	267	10	3	0	0	281
<i>Religion</i>	232	8	1	0	0	242
Yuba						
<i>Other Residential</i>	6,998	22	1	0	0	7,021
<i>Government</i>	591	0	0	0	0	591
<i>Education</i>	54	0	0	0	0	54
<i>Agriculture</i>	92	0	0	0	0	92
<i>Religion</i>	98	0	0	0	0	98

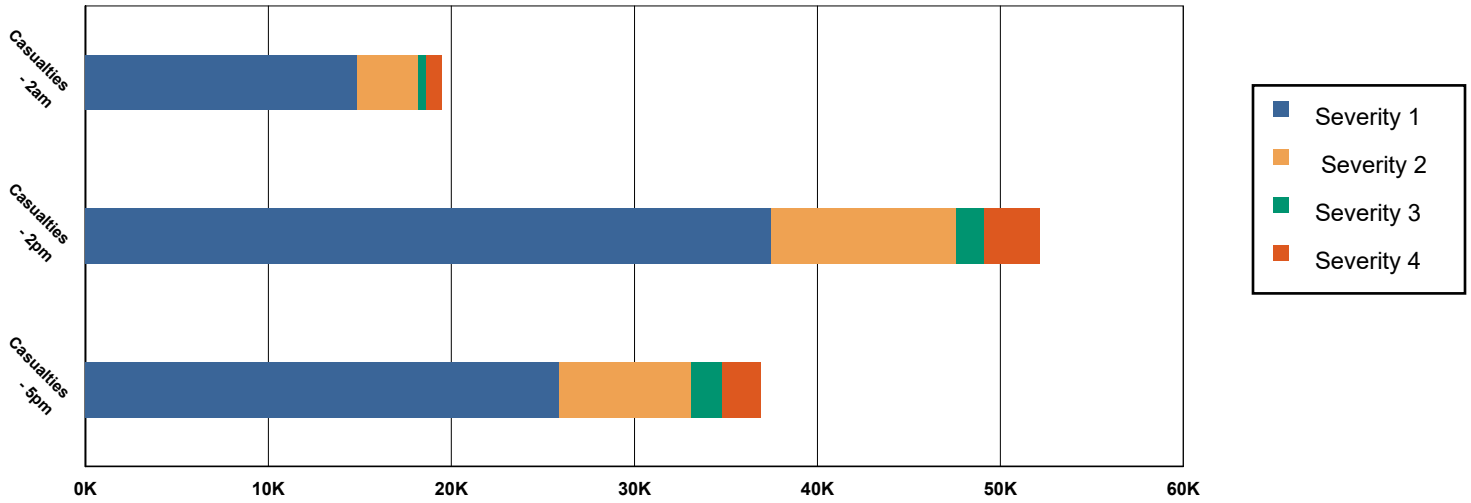
	# of Buildings					Total
	None	Slight	Moderate	Extensive	Complete	
<i>Commercial</i>	1,195	4	0	0	0	1,199
<i>Industrial</i>	403	1	0	0	0	404
<i>Single Family</i>	18,856	11	0	0	0	18,867
Total	4,031,898	862,039	307,067	53,421	27,108	5,281,534
Region Total	4,031,898	862,039	307,067	53,421	27,108	5,281,534

Totals only reflect data for those census tracts/blocks included in the user's study region and will reflect the entire county/state only if all of the census blocks for that county/states were selected at the time of study region creation.

Casualties Summary Report

April 25, 2024

Region Total Casualties



Injury Severity Level

Severity 1	Severity 2	Severity 3	Severity 4	Total
------------	------------	------------	------------	-------

California

Alameda

Casualties - 2am

	Severity 1	Severity 2	Severity 3	Severity 4	Total
Single Family	1,192	127	4	8	1,333
Hotels	4	1	0	0	5
Commuting	1	1	2	0	4
Educational	0	0	0	0	0
Industrial	179	53	8	17	257
Commercial	219	66	11	21	317
Other-Residential	6,445	1,820	272	536	9,073
Total Casualties - 2am	8,040	2,068	297	582	10,988

Casualties - 2pm

Industrial	1,320	388	63	122	1,893
Educational	3,180	876	136	264	4,457
Other-Residential	2,192	630	98	183	3,103
Single Family	350	39	2	3	394
Hotels	1	0	0	0	1
Commuting	7	9	15	3	34
Commercial	15,402	4,597	748	1,463	22,209

Injury Severity Level

	Severity 1	Severity 2	Severity 3	Severity 4	Total
--	------------	------------	------------	------------	-------

California

Alameda

	Severity 1	Severity 2	Severity 3	Severity 4	Total
Total Casualties - 2pm	22,452	6,540	1,061	2,038	32,092
Casualties - 5pm					
<i>Commuting</i>	130	173	293	57	653
<i>Single Family</i>	454	49	2	3	509
<i>Commercial</i>	11,110	3,304	541	1,041	15,995
<i>Hotels</i>	1	0	0	0	2
<i>Educational</i>	433	105	16	30	583
<i>Industrial</i>	825	242	39	76	1,183
<i>Other-Residential</i>	2,546	727	113	211	3,596
Total Casualties - 5pm	15,498	4,602	1,003	1,418	22,521

Alpine

	Severity 1	Severity 2	Severity 3	Severity 4	Total
Casualties - 2am					
<i>Industrial</i>	0	0	0	0	0
<i>Single Family</i>	0	0	0	0	0
<i>Commercial</i>	0	0	0	0	0
<i>Other-Residential</i>	0	0	0	0	0
<i>Hotels</i>	0	0	0	0	0
<i>Commuting</i>	0	0	0	0	0
<i>Educational</i>	0	0	0	0	0
Total Casualties - 2am	0	0	0	0	0

Casualties - 2pm					
<i>Educational</i>	0	0	0	0	0
<i>Other-Residential</i>	0	0	0	0	0
<i>Single Family</i>	0	0	0	0	0
<i>Hotels</i>	0	0	0	0	0
<i>Commercial</i>	0	0	0	0	0
<i>Commuting</i>	0	0	0	0	0
<i>Industrial</i>	0	0	0	0	0
Total Casualties - 2pm	0	0	0	0	0

Casualties - 5pm					
<i>Industrial</i>	0	0	0	0	0
<i>Other-Residential</i>	0	0	0	0	0
<i>Commuting</i>	0	0	0	0	0
<i>Commercial</i>	0	0	0	0	0
<i>Single Family</i>	0	0	0	0	0
<i>Educational</i>	0	0	0	0	0
<i>Hotels</i>	0	0	0	0	0
Total Casualties - 5pm	0	0	0	0	0

Amador

Casualties - 2am					
<i>Commercial</i>	0	0	0	0	0

	Injury Severity Level				Total
	Severity 1	Severity 2	Severity 3	Severity 4	
California					
Amador					
Casualties - 2am					
<i>Other-Residential</i>	0	0	0	0	0
<i>Commuting</i>	0	0	0	0	0
<i>Educational</i>	0	0	0	0	0
<i>Single Family</i>	0	0	0	0	0
<i>Hotels</i>	0	0	0	0	0
<i>Industrial</i>	0	0	0	0	0
Total Casualties - 2am	0	0	0	0	0
Casualties - 2pm					
<i>Single Family</i>	0	0	0	0	0
<i>Hotels</i>	0	0	0	0	0
<i>Educational</i>	0	0	0	0	0
<i>Commuting</i>	0	0	0	0	0
<i>Commercial</i>	0	0	0	0	0
<i>Other-Residential</i>	0	0	0	0	0
<i>Industrial</i>	0	0	0	0	0
Total Casualties - 2pm	0	0	0	0	0
Casualties - 5pm					
<i>Commercial</i>	0	0	0	0	0
<i>Commuting</i>	0	0	0	0	0
<i>Other-Residential</i>	0	0	0	0	0
<i>Single Family</i>	0	0	0	0	0
<i>Educational</i>	0	0	0	0	0
<i>Hotels</i>	0	0	0	0	0
<i>Industrial</i>	0	0	0	0	0
Total Casualties - 5pm	0	0	0	0	0
Butte					
Casualties - 2am					
<i>Industrial</i>	0	0	0	0	0
<i>Commercial</i>	0	0	0	0	0
<i>Other-Residential</i>	0	0	0	0	0
<i>Single Family</i>	0	0	0	0	0
<i>Commuting</i>	0	0	0	0	0
<i>Educational</i>	0	0	0	0	0
<i>Hotels</i>	0	0	0	0	0
Total Casualties - 2am	0	0	0	0	0
Casualties - 2pm					
<i>Single Family</i>	0	0	0	0	0
<i>Educational</i>	0	0	0	0	0
<i>Commuting</i>	0	0	0	0	0
<i>Other-Residential</i>	0	0	0	0	0
<i>Hotels</i>	0	0	0	0	0

	Injury Severity Level				Total
	Severity 1	Severity 2	Severity 3	Severity 4	
California					
Butte					
Casualties - 2pm					
Commercial	0	0	0	0	0
Industrial	0	0	0	0	0
Total Casualties - 2pm	0	0	0	0	0
Casualties - 5pm					
Industrial	0	0	0	0	0
Other-Residential	0	0	0	0	0
Single Family	0	0	0	0	0
Commercial	0	0	0	0	0
Commuting	0	0	0	0	0
Hotels	0	0	0	0	0
Educational	0	0	0	0	0
Total Casualties - 5pm	0	0	0	0	0
Calaveras					
Casualties - 2am					
Other-Residential	0	0	0	0	0
Commuting	0	0	0	0	0
Commercial	0	0	0	0	0
Single Family	0	0	0	0	0
Hotels	0	0	0	0	0
Educational	0	0	0	0	0
Industrial	0	0	0	0	0
Total Casualties - 2am	0	0	0	0	0
Casualties - 2pm					
Hotels	0	0	0	0	0
Single Family	0	0	0	0	0
Educational	0	0	0	0	0
Commuting	0	0	0	0	0
Commercial	0	0	0	0	0
Industrial	0	0	0	0	0
Other-Residential	0	0	0	0	0
Total Casualties - 2pm	0	0	0	0	0
Casualties - 5pm					
Industrial	0	0	0	0	0
Commercial	0	0	0	0	0
Other-Residential	0	0	0	0	0
Educational	0	0	0	0	0
Hotels	0	0	0	0	0
Commuting	0	0	0	0	0
Single Family	0	0	0	0	0
Total Casualties - 5pm	0	0	0	0	0

	Injury Severity Level				Total
	Severity 1	Severity 2	Severity 3	Severity 4	
California					
Colusa					
Casualties - 2am					
<i>Other-Residential</i>	0	0	0	0	0
<i>Industrial</i>	0	0	0	0	0
<i>Single Family</i>	0	0	0	0	0
<i>Commercial</i>	0	0	0	0	0
<i>Educational</i>	0	0	0	0	0
<i>Commuting</i>	0	0	0	0	0
<i>Hotels</i>	0	0	0	0	0
Total Casualties - 2am	0	0	0	0	0
Casualties - 2pm					
<i>Hotels</i>	0	0	0	0	0
<i>Single Family</i>	0	0	0	0	0
<i>Educational</i>	0	0	0	0	0
<i>Commercial</i>	0	0	0	0	0
<i>Commuting</i>	0	0	0	0	0
<i>Other-Residential</i>	0	0	0	0	0
<i>Industrial</i>	0	0	0	0	0
Total Casualties - 2pm	0	0	0	0	0
Casualties - 5pm					
<i>Industrial</i>	0	0	0	0	0
<i>Commercial</i>	0	0	0	0	0
<i>Other-Residential</i>	0	0	0	0	0
<i>Commuting</i>	0	0	0	0	0
<i>Single Family</i>	0	0	0	0	0
<i>Educational</i>	0	0	0	0	0
<i>Hotels</i>	0	0	0	0	0
Total Casualties - 5pm	0	0	0	0	0
Contra Costa					
Casualties - 2am					
<i>Educational</i>	0	0	0	0	0
<i>Hotels</i>	0	0	0	0	0
<i>Industrial</i>	19	5	1	1	26
<i>Other-Residential</i>	487	108	14	27	636
<i>Single Family</i>	404	32	0	1	437
<i>Commercial</i>	25	7	1	2	35
<i>Commuting</i>	0	0	0	0	1
Total Casualties - 2am	935	152	17	32	1,136
Casualties - 2pm					
<i>Other-Residential</i>	155	34	5	9	203
<i>Industrial</i>	140	35	5	10	189
<i>Hotels</i>	0	0	0	0	0
<i>Single Family</i>	123	10	0	0	134

Injury Severity Level

	Severity 1	Severity 2	Severity 3	Severity 4	Total
--	------------	------------	------------	------------	-------

California

Contra Costa

Casualties - 2pm

<i>Educational</i>	461	113	17	33	623
<i>Commuting</i>	2	3	4	1	10
<i>Commercial</i>	1,897	499	77	150	2,623
Total Casualties - 2pm	2,777	694	108	202	3,781

Casualties - 5pm

<i>Educational</i>	69	16	2	4	92
<i>Commuting</i>	37	52	84	16	189
<i>Single Family</i>	151	12	0	0	164
<i>Hotels</i>	0	0	0	0	0
<i>Industrial</i>	87	22	3	6	118
<i>Other-Residential</i>	187	42	6	11	245
<i>Commercial</i>	1,410	372	57	110	1,949
Total Casualties - 5pm	1,941	516	153	148	2,758

El Dorado

Casualties - 2am

<i>Commuting</i>	0	0	0	0	0
<i>Educational</i>	0	0	0	0	0
<i>Single Family</i>	0	0	0	0	0
<i>Hotels</i>	0	0	0	0	0
<i>Other-Residential</i>	0	0	0	0	0
<i>Industrial</i>	0	0	0	0	0
<i>Commercial</i>	0	0	0	0	0
Total Casualties - 2am	0	0	0	0	0

Casualties - 2pm

<i>Industrial</i>	0	0	0	0	0
<i>Other-Residential</i>	0	0	0	0	0
<i>Single Family</i>	0	0	0	0	0
<i>Hotels</i>	0	0	0	0	0
<i>Educational</i>	0	0	0	0	0
<i>Commuting</i>	0	0	0	0	0
<i>Commercial</i>	0	0	0	0	0
Total Casualties - 2pm	0	0	0	0	0

Casualties - 5pm

<i>Commercial</i>	0	0	0	0	0
<i>Commuting</i>	0	0	0	0	0
<i>Single Family</i>	0	0	0	0	0
<i>Educational</i>	0	0	0	0	0
<i>Hotels</i>	0	0	0	0	0
<i>Industrial</i>	0	0	0	0	0
<i>Other-Residential</i>	0	0	0	0	0

	Injury Severity Level				Total
	Severity 1	Severity 2	Severity 3	Severity 4	
California					
El Dorado					
Total Casualties - 5pm	0	0	0	0	0
Fresno					
Casualties - 2am					
<i>Hotels</i>	0	0	0	0	0
<i>Educational</i>	0	0	0	0	0
<i>Industrial</i>	0	0	0	0	0
<i>Commercial</i>	0	0	0	0	0
<i>Other-Residential</i>	0	0	0	0	0
<i>Single Family</i>	0	0	0	0	0
<i>Commuting</i>	0	0	0	0	0
Total Casualties - 2am	0	0	0	0	0
Casualties - 2pm					
<i>Commercial</i>	0	0	0	0	0
<i>Other-Residential</i>	0	0	0	0	0
<i>Industrial</i>	0	0	0	0	0
<i>Single Family</i>	0	0	0	0	0
<i>Hotels</i>	0	0	0	0	0
<i>Commuting</i>	0	0	0	0	0
<i>Educational</i>	0	0	0	0	0
Total Casualties - 2pm	0	0	0	0	0
Casualties - 5pm					
<i>Educational</i>	0	0	0	0	0
<i>Commuting</i>	0	0	0	0	0
<i>Hotels</i>	0	0	0	0	0
<i>Industrial</i>	0	0	0	0	0
<i>Single Family</i>	0	0	0	0	0
<i>Other-Residential</i>	0	0	0	0	0
<i>Commercial</i>	0	0	0	0	0
Total Casualties - 5pm	0	0	0	0	0
Glenn					
Casualties - 2am					
<i>Hotels</i>	0	0	0	0	0
<i>Educational</i>	0	0	0	0	0
<i>Industrial</i>	0	0	0	0	0
<i>Other-Residential</i>	0	0	0	0	0
<i>Commercial</i>	0	0	0	0	0
<i>Commuting</i>	0	0	0	0	0
<i>Single Family</i>	0	0	0	0	0
Total Casualties - 2am	0	0	0	0	0
Casualties - 2pm					
<i>Industrial</i>	0	0	0	0	0

	Injury Severity Level				Total
	Severity 1	Severity 2	Severity 3	Severity 4	
California					
Glenn					
Casualties - 2pm					
<i>Other-Residential</i>	0	0	0	0	0
<i>Commuting</i>	0	0	0	0	0
<i>Commercial</i>	0	0	0	0	0
<i>Hotels</i>	0	0	0	0	0
<i>Single Family</i>	0	0	0	0	0
<i>Educational</i>	0	0	0	0	0
Total Casualties - 2pm	0	0	0	0	0
Casualties - 5pm					
<i>Educational</i>	0	0	0	0	0
<i>Commuting</i>	0	0	0	0	0
<i>Hotels</i>	0	0	0	0	0
<i>Single Family</i>	0	0	0	0	0
<i>Industrial</i>	0	0	0	0	0
<i>Commercial</i>	0	0	0	0	0
<i>Other-Residential</i>	0	0	0	0	0
Total Casualties - 5pm	0	0	0	0	0
Humboldt					
Casualties - 2am					
<i>Single Family</i>	0	0	0	0	0
<i>Commercial</i>	0	0	0	0	0
<i>Commuting</i>	0	0	0	0	0
<i>Hotels</i>	0	0	0	0	0
<i>Educational</i>	0	0	0	0	0
<i>Industrial</i>	0	0	0	0	0
<i>Other-Residential</i>	0	0	0	0	0
Total Casualties - 2am	0	0	0	0	0
Casualties - 2pm					
<i>Industrial</i>	0	0	0	0	0
<i>Hotels</i>	0	0	0	0	0
<i>Commercial</i>	0	0	0	0	0
<i>Other-Residential</i>	0	0	0	0	0
<i>Single Family</i>	0	0	0	0	0
<i>Educational</i>	0	0	0	0	0
<i>Commuting</i>	0	0	0	0	0
Total Casualties - 2pm	0	0	0	0	0
Casualties - 5pm					
<i>Commercial</i>	0	0	0	0	0
<i>Other-Residential</i>	0	0	0	0	0
<i>Commuting</i>	0	0	0	0	0
<i>Hotels</i>	0	0	0	0	0
<i>Single Family</i>	0	0	0	0	0

	Injury Severity Level				Total
	Severity 1	Severity 2	Severity 3	Severity 4	
California					
Humboldt					
Casualties - 5pm					
<i>Educational</i>	0	0	0	0	0
<i>Industrial</i>	0	0	0	0	0
Total Casualties - 5pm	0	0	0	0	0
Kern					
Casualties - 2am					
<i>Commercial</i>	0	0	0	0	0
<i>Commuting</i>	0	0	0	0	0
<i>Educational</i>	0	0	0	0	0
<i>Single Family</i>	0	0	0	0	0
<i>Other-Residential</i>	0	0	0	0	0
<i>Hotels</i>	0	0	0	0	0
<i>Industrial</i>	0	0	0	0	0
Total Casualties - 2am	0	0	0	0	0
Casualties - 2pm					
<i>Educational</i>	0	0	0	0	0
<i>Commuting</i>	0	0	0	0	0
<i>Single Family</i>	0	0	0	0	0
<i>Hotels</i>	0	0	0	0	0
<i>Other-Residential</i>	0	0	0	0	0
<i>Commercial</i>	0	0	0	0	0
<i>Industrial</i>	0	0	0	0	0
Total Casualties - 2pm	0	0	0	0	0
Casualties - 5pm					
<i>Single Family</i>	0	0	0	0	0
<i>Commercial</i>	0	0	0	0	0
<i>Other-Residential</i>	0	0	0	0	0
<i>Commuting</i>	0	0	0	0	0
<i>Educational</i>	0	0	0	0	0
<i>Hotels</i>	0	0	0	0	0
<i>Industrial</i>	0	0	0	0	0
Total Casualties - 5pm	0	0	0	0	0
Kings					
Casualties - 2am					
<i>Industrial</i>	0	0	0	0	0
<i>Other-Residential</i>	0	0	0	0	0
<i>Educational</i>	0	0	0	0	0
<i>Commuting</i>	0	0	0	0	0
<i>Commercial</i>	0	0	0	0	0
<i>Single Family</i>	0	0	0	0	0
<i>Hotels</i>	0	0	0	0	0

	Injury Severity Level				Total
	Severity 1	Severity 2	Severity 3	Severity 4	
California					
Kings					
Total Casualties - 2am	0	0	0	0	0
Casualties - 2pm					
Single Family	0	0	0	0	0
Other-Residential	0	0	0	0	0
Commercial	0	0	0	0	0
Educational	0	0	0	0	0
Commuting	0	0	0	0	0
Hotels	0	0	0	0	0
Industrial	0	0	0	0	0
Total Casualties - 2pm	0	0	0	0	0
Casualties - 5pm					
Single Family	0	0	0	0	0
Commercial	0	0	0	0	0
Commuting	0	0	0	0	0
Other-Residential	0	0	0	0	0
Educational	0	0	0	0	0
Hotels	0	0	0	0	0
Industrial	0	0	0	0	0
Total Casualties - 5pm	0	0	0	0	0
Lake					
Casualties - 2am					
Hotels	0	0	0	0	0
Industrial	0	0	0	0	0
Other-Residential	11	1	0	0	12
Commuting	0	0	0	0	0
Educational	0	0	0	0	0
Single Family	1	0	0	0	1
Commercial	0	0	0	0	0
Total Casualties - 2am	12	1	0	0	13
Casualties - 2pm					
Industrial	0	0	0	0	0
Single Family	0	0	0	0	0
Commercial	4	0	0	0	4
Other-Residential	4	0	0	0	4
Hotels	0	0	0	0	0
Educational	0	0	0	0	0
Commuting	0	0	0	0	0
Total Casualties - 2pm	9	1	0	0	10
Casualties - 5pm					
Other-Residential	4	0	0	0	4
Industrial	0	0	0	0	0

	Injury Severity Level				Total
	Severity 1	Severity 2	Severity 3	Severity 4	
California					
Lake					
Casualties - 5pm					
<i>Commercial</i>	2	0	0	0	3
<i>Educational</i>	0	0	0	0	0
<i>Commuting</i>	0	0	0	0	0
<i>Single Family</i>	1	0	0	0	1
<i>Hotels</i>	0	0	0	0	0
Total Casualties - 5pm	7	1	0	0	8
Madera					
Casualties - 2am					
<i>Hotels</i>	0	0	0	0	0
<i>Educational</i>	0	0	0	0	0
<i>Single Family</i>	0	0	0	0	0
<i>Commuting</i>	0	0	0	0	0
<i>Industrial</i>	0	0	0	0	0
<i>Commercial</i>	0	0	0	0	0
<i>Other-Residential</i>	0	0	0	0	0
Total Casualties - 2am	0	0	0	0	0
Casualties - 2pm					
<i>Industrial</i>	0	0	0	0	0
<i>Commercial</i>	0	0	0	0	0
<i>Other-Residential</i>	0	0	0	0	0
<i>Commuting</i>	0	0	0	0	0
<i>Single Family</i>	0	0	0	0	0
<i>Hotels</i>	0	0	0	0	0
<i>Educational</i>	0	0	0	0	0
Total Casualties - 2pm	0	0	0	0	0
Casualties - 5pm					
<i>Industrial</i>	0	0	0	0	0
<i>Commercial</i>	0	0	0	0	0
<i>Single Family</i>	0	0	0	0	0
<i>Educational</i>	0	0	0	0	0
<i>Other-Residential</i>	0	0	0	0	0
<i>Commuting</i>	0	0	0	0	0
<i>Hotels</i>	0	0	0	0	0
Total Casualties - 5pm	0	0	0	0	0
Marin					
Casualties - 2am					
<i>Commercial</i>	2	0	0	0	3
<i>Commuting</i>	0	0	0	0	0
<i>Other-Residential</i>	46	7	1	1	55
<i>Educational</i>	0	0	0	0	0
<i>Single Family</i>	41	1	0	0	42

	Injury Severity Level				Total
	Severity 1	Severity 2	Severity 3	Severity 4	
California					
Marin					
Casualties - 2am					
<i>Hotels</i>	0	0	0	0	0
<i>Industrial</i>	3	1	0	0	4
Total Casualties - 2am	92	9	1	1	103
Casualties - 2pm					
<i>Hotels</i>	0	0	0	0	0
<i>Commuting</i>	0	0	0	0	1
<i>Educational</i>	17	2	0	0	19
<i>Industrial</i>	22	4	0	1	27
<i>Other-Residential</i>	16	2	0	0	19
<i>Commercial</i>	149	26	3	6	183
<i>Single Family</i>	13	0	0	0	13
Total Casualties - 2pm	216	34	4	7	261
Casualties - 5pm					
<i>Commuting</i>	3	4	7	1	15
<i>Commercial</i>	93	16	2	3	114
<i>Other-Residential</i>	17	3	0	0	20
<i>Single Family</i>	15	1	0	0	15
<i>Industrial</i>	13	3	0	1	17
<i>Educational</i>	2	0	0	0	2
<i>Hotels</i>	0	0	0	0	0
Total Casualties - 5pm	143	25	9	6	182
Mariposa					
Casualties - 2am					
<i>Commuting</i>	0	0	0	0	0
<i>Single Family</i>	0	0	0	0	0
<i>Commercial</i>	0	0	0	0	0
<i>Hotels</i>	0	0	0	0	0
<i>Educational</i>	0	0	0	0	0
<i>Industrial</i>	0	0	0	0	0
<i>Other-Residential</i>	0	0	0	0	0
Total Casualties - 2am	0	0	0	0	0
Casualties - 2pm					
<i>Hotels</i>	0	0	0	0	0
<i>Industrial</i>	0	0	0	0	0
<i>Commercial</i>	0	0	0	0	0
<i>Other-Residential</i>	0	0	0	0	0
<i>Educational</i>	0	0	0	0	0
<i>Commuting</i>	0	0	0	0	0
<i>Single Family</i>	0	0	0	0	0
Total Casualties - 2pm	0	0	0	0	0

	Injury Severity Level				Total
	Severity 1	Severity 2	Severity 3	Severity 4	
California					
Mariposa					
Casualties - 5pm					
<i>Other-Residential</i>	0	0	0	0	0
<i>Educational</i>	0	0	0	0	0
<i>Commuting</i>	0	0	0	0	0
<i>Hotels</i>	0	0	0	0	0
<i>Single Family</i>	0	0	0	0	0
<i>Commercial</i>	0	0	0	0	0
<i>Industrial</i>	0	0	0	0	0
Total Casualties - 5pm	0	0	0	0	0
Mendocino					
Casualties - 2am					
<i>Educational</i>	0	0	0	0	0
<i>Hotels</i>	0	0	0	0	0
<i>Commuting</i>	0	0	0	0	0
<i>Industrial</i>	0	0	0	0	0
<i>Other-Residential</i>	1	0	0	0	1
<i>Single Family</i>	1	0	0	0	1
<i>Commercial</i>	0	0	0	0	0
Total Casualties - 2am	1	0	0	0	1
Casualties - 2pm					
<i>Industrial</i>	0	0	0	0	0
<i>Other-Residential</i>	0	0	0	0	0
<i>Commercial</i>	1	0	0	0	1
<i>Single Family</i>	0	0	0	0	0
<i>Commuting</i>	0	0	0	0	0
<i>Hotels</i>	0	0	0	0	0
<i>Educational</i>	0	0	0	0	0
Total Casualties - 2pm	1	0	0	0	1
Casualties - 5pm					
<i>Hotels</i>	0	0	0	0	0
<i>Single Family</i>	0	0	0	0	0
<i>Educational</i>	0	0	0	0	0
<i>Commuting</i>	0	0	0	0	0
<i>Commercial</i>	0	0	0	0	0
<i>Other-Residential</i>	0	0	0	0	0
<i>Industrial</i>	0	0	0	0	0
Total Casualties - 5pm	1	0	0	0	1
Merced					
Casualties - 2am					
<i>Hotels</i>	0	0	0	0	0
<i>Industrial</i>	0	0	0	0	0
<i>Commercial</i>	0	0	0	0	0

Injury Severity Level

Severity 1 Severity 2 Severity 3 Severity 4 Total

California

Merced

Casualties - 2am

Single Family	1	0	0	0	1
Other-Residential	1	0	0	0	1
Educational	0	0	0	0	0
Commuting	0	0	0	0	0
Total Casualties - 2am	3	0	0	0	3

Casualties - 2pm

Other-Residential	0	0	0	0	0
Industrial	1	0	0	0	1
Commercial	17	2	0	0	18
Commuting	0	0	0	0	0
Hotels	0	0	0	0	0
Educational	1	0	0	0	1
Single Family	0	0	0	0	0
Total Casualties - 2pm	19	2	0	0	21

Casualties - 5pm

Industrial	0	0	0	0	0
Hotels	0	0	0	0	0
Educational	0	0	0	0	0
Commuting	0	0	0	0	0
Single Family	0	0	0	0	0
Commercial	14	1	0	0	15
Other-Residential	0	0	0	0	1
Total Casualties - 5pm	15	1	0	0	16

Monterey

Casualties - 2am

Other-Residential	6	0	0	0	6
Commuting	0	0	0	0	0
Commercial	0	0	0	0	0
Single Family	3	0	0	0	3
Hotels	0	0	0	0	0
Educational	0	0	0	0	0
Industrial	0	0	0	0	0
Total Casualties - 2am	9	0	0	0	9

Casualties - 2pm

Commuting	0	0	0	0	0
Commercial	6	0	0	0	6
Single Family	1	0	0	0	1
Hotels	0	0	0	0	0
Educational	1	0	0	0	1
Industrial	1	0	0	0	1
Other-Residential	2	0	0	0	2

	Injury Severity Level				Total
	Severity 1	Severity 2	Severity 3	Severity 4	
California					
Monterey					
Total Casualties - 2pm	10	1	0	0	11
Casualties - 5pm					
Commercial	4	0	0	0	4
Other-Residential	2	0	0	0	2
Industrial	1	0	0	0	1
Hotels	0	0	0	0	0
Educational	0	0	0	0	0
Commuting	0	0	0	0	0
Single Family	1	0	0	0	1
Total Casualties - 5pm	8	1	0	0	9
Napa					
Casualties - 2am					
Commercial	2	1	0	0	3
Other-Residential	48	8	1	2	59
Educational	0	0	0	0	0
Single Family	21	1	0	0	22
Commuting	0	0	0	0	0
Hotels	0	0	0	0	0
Industrial	2	0	0	0	3
Total Casualties - 2am	73	10	1	2	86
Casualties - 2pm					
Educational	35	8	1	2	46
Hotels	0	0	0	0	0
Commuting	0	0	0	0	0
Industrial	17	3	0	1	21
Other-Residential	14	2	0	0	17
Single Family	5	0	0	0	6
Commercial	126	29	4	8	167
Total Casualties - 2pm	198	43	6	12	258
Casualties - 5pm					
Commercial	79	18	2	5	104
Single Family	8	0	0	0	8
Other-Residential	18	3	0	1	22
Commuting	1	2	3	1	7
Industrial	11	2	0	0	13
Educational	1	0	0	0	1
Hotels	0	0	0	0	0
Total Casualties - 5pm	117	25	6	7	154
Nevada					
Casualties - 2am					
Single Family	0	0	0	0	0

	Injury Severity Level				Total
	Severity 1	Severity 2	Severity 3	Severity 4	
California					
Nevada					
Casualties - 2am					
<i>Commercial</i>	0	0	0	0	0
<i>Commuting</i>	0	0	0	0	0
<i>Hotels</i>	0	0	0	0	0
<i>Educational</i>	0	0	0	0	0
<i>Industrial</i>	0	0	0	0	0
<i>Other-Residential</i>	0	0	0	0	0
Total Casualties - 2am	0	0	0	0	0
Casualties - 2pm					
<i>Hotels</i>	0	0	0	0	0
<i>Industrial</i>	0	0	0	0	0
<i>Commercial</i>	0	0	0	0	0
<i>Single Family</i>	0	0	0	0	0
<i>Other-Residential</i>	0	0	0	0	0
<i>Educational</i>	0	0	0	0	0
<i>Commuting</i>	0	0	0	0	0
Total Casualties - 2pm	0	0	0	0	0
Casualties - 5pm					
<i>Commuting</i>	0	0	0	0	0
<i>Hotels</i>	0	0	0	0	0
<i>Other-Residential</i>	0	0	0	0	0
<i>Educational</i>	0	0	0	0	0
<i>Single Family</i>	0	0	0	0	0
<i>Commercial</i>	0	0	0	0	0
<i>Industrial</i>	0	0	0	0	0
Total Casualties - 5pm	0	0	0	0	0
Placer					
Casualties - 2am					
<i>Hotels</i>	0	0	0	0	0
<i>Educational</i>	0	0	0	0	0
<i>Industrial</i>	0	0	0	0	0
<i>Other-Residential</i>	0	0	0	0	0
<i>Commercial</i>	0	0	0	0	0
<i>Single Family</i>	0	0	0	0	0
<i>Commuting</i>	0	0	0	0	0
Total Casualties - 2am	0	0	0	0	0
Casualties - 2pm					
<i>Other-Residential</i>	0	0	0	0	0
<i>Industrial</i>	0	0	0	0	0
<i>Commercial</i>	0	0	0	0	0
<i>Single Family</i>	0	0	0	0	0
<i>Educational</i>	0	0	0	0	0

	Injury Severity Level				Total
	Severity 1	Severity 2	Severity 3	Severity 4	
California					
Placer					
Casualties - 2pm					
Commuting	0	0	0	0	0
Hotels	0	0	0	0	0
Total Casualties - 2pm	0	0	0	0	0
Casualties - 5pm					
Single Family	0	0	0	0	0
Hotels	0	0	0	0	0
Commuting	0	0	0	0	0
Educational	0	0	0	0	0
Commercial	0	0	0	0	0
Industrial	0	0	0	0	0
Other-Residential	0	0	0	0	0
Total Casualties - 5pm	0	0	0	0	0
Plumas					
Casualties - 2am					
Educational	0	0	0	0	0
Single Family	0	0	0	0	0
Commuting	0	0	0	0	0
Hotels	0	0	0	0	0
Industrial	0	0	0	0	0
Other-Residential	0	0	0	0	0
Commercial	0	0	0	0	0
Total Casualties - 2am	0	0	0	0	0
Casualties - 2pm					
Industrial	0	0	0	0	0
Single Family	0	0	0	0	0
Commercial	0	0	0	0	0
Other-Residential	0	0	0	0	0
Hotels	0	0	0	0	0
Educational	0	0	0	0	0
Commuting	0	0	0	0	0
Total Casualties - 2pm	0	0	0	0	0
Casualties - 5pm					
Other-Residential	0	0	0	0	0
Single Family	0	0	0	0	0
Educational	0	0	0	0	0
Hotels	0	0	0	0	0
Commuting	0	0	0	0	0
Commercial	0	0	0	0	0
Industrial	0	0	0	0	0
Total Casualties - 5pm	0	0	0	0	0

	Injury Severity Level				Total
	Severity 1	Severity 2	Severity 3	Severity 4	
California					
Sacramento					
Casualties - 2am					
<i>Industrial</i>	0	0	0	0	0
<i>Other-Residential</i>	3	0	0	0	3
<i>Commercial</i>	0	0	0	0	0
<i>Single Family</i>	2	0	0	0	2
<i>Hotels</i>	0	0	0	0	0
<i>Commuting</i>	0	0	0	0	0
<i>Educational</i>	0	0	0	0	0
Total Casualties - 2am	6	0	0	0	6
Casualties - 2pm					
<i>Other-Residential</i>	1	0	0	0	1
<i>Commuting</i>	0	0	0	0	0
<i>Single Family</i>	1	0	0	0	1
<i>Commercial</i>	19	1	0	0	20
<i>Hotels</i>	0	0	0	0	0
<i>Educational</i>	1	0	0	0	1
<i>Industrial</i>	1	0	0	0	1
Total Casualties - 2pm	22	1	0	0	24
Casualties - 5pm					
<i>Industrial</i>	0	0	0	0	1
<i>Educational</i>	0	0	0	0	0
<i>Hotels</i>	0	0	0	0	0
<i>Commercial</i>	10	1	0	0	11
<i>Commuting</i>	0	0	0	0	0
<i>Other-Residential</i>	1	0	0	0	1
<i>Single Family</i>	1	0	0	0	1
Total Casualties - 5pm	13	1	0	0	14
San Benito					
Casualties - 2am					
<i>Other-Residential</i>	0	0	0	0	1
<i>Commercial</i>	0	0	0	0	0
<i>Commuting</i>	0	0	0	0	0
<i>Hotels</i>	0	0	0	0	0
<i>Educational</i>	0	0	0	0	0
<i>Single Family</i>	1	0	0	0	1
<i>Industrial</i>	0	0	0	0	0
Total Casualties - 2am	2	0	0	0	2
Casualties - 2pm					
<i>Hotels</i>	0	0	0	0	0
<i>Educational</i>	2	0	0	0	2
<i>Industrial</i>	0	0	0	0	0
<i>Other-Residential</i>	0	0	0	0	0

	Injury Severity Level				Total
	Severity 1	Severity 2	Severity 3	Severity 4	
California					
San Benito					
Casualties - 2pm					
<i>Commercial</i>	2	0	0	0	2
<i>Commuting</i>	0	0	0	0	0
<i>Single Family</i>	0	0	0	0	0
Total Casualties - 2pm	4	0	0	0	5
Casualties - 5pm					
<i>Commuting</i>	0	0	0	0	0
<i>Commercial</i>	1	0	0	0	1
<i>Other-Residential</i>	0	0	0	0	0
<i>Single Family</i>	0	0	0	0	0
<i>Industrial</i>	0	0	0	0	0
<i>Educational</i>	0	0	0	0	0
<i>Hotels</i>	0	0	0	0	0
Total Casualties - 5pm	2	0	0	0	2
San Francisco					
Casualties - 2am					
<i>Industrial</i>	27	6	1	2	36
<i>Hotels</i>	9	2	0	0	11
<i>Commercial</i>	50	11	1	3	66
<i>Other-Residential</i>	1,472	286	33	65	1,856
<i>Commuting</i>	0	0	0	0	0
<i>Educational</i>	0	0	0	0	0
<i>Single Family</i>	372	70	9	18	469
Total Casualties - 2am	1,930	376	45	87	2,438
Casualties - 2pm					
<i>Commercial</i>	2,711	604	77	149	3,541
<i>Industrial</i>	198	48	7	13	266
<i>Other-Residential</i>	483	97	12	22	614
<i>Single Family</i>	119	23	3	6	151
<i>Hotels</i>	2	0	0	0	2
<i>Commuting</i>	0	0	0	0	0
<i>Educational</i>	252	45	5	10	312
Total Casualties - 2pm	3,765	817	104	200	4,886
Casualties - 5pm					
<i>Educational</i>	86	15	2	3	105
<i>Hotels</i>	3	1	0	0	3
<i>Industrial</i>	124	30	4	8	166
<i>Commuting</i>	1	2	3	1	7
<i>Commercial</i>	1,559	347	45	86	2,036
<i>Other-Residential</i>	589	117	15	27	748
<i>Single Family</i>	148	29	4	7	188

	Injury Severity Level				Total
	Severity 1	Severity 2	Severity 3	Severity 4	
California					
San Francisco					
Total Casualties - 5pm	2,510	540	72	132	3,254
San Joaquin					
Casualties - 2am					
<i>Educational</i>	0	0	0	0	0
<i>Commuting</i>	0	0	0	0	0
<i>Hotels</i>	0	0	0	0	0
<i>Commercial</i>	0	0	0	0	0
<i>Single Family</i>	25	1	0	0	27
<i>Industrial</i>	0	0	0	0	0
<i>Other-Residential</i>	8	0	0	0	9
Total Casualties - 2am	34	2	0	0	36
Casualties - 2pm					
<i>Industrial</i>	3	0	0	0	3
<i>Other-Residential</i>	3	0	0	0	3
<i>Educational</i>	3	0	0	0	3
<i>Single Family</i>	8	0	0	0	9
<i>Hotels</i>	0	0	0	0	0
<i>Commuting</i>	0	0	0	0	0
<i>Commercial</i>	14	1	0	0	15
Total Casualties - 2pm	31	2	0	0	32
Casualties - 5pm					
<i>Commuting</i>	0	0	0	0	0
<i>Single Family</i>	10	1	0	0	10
<i>Educational</i>	0	0	0	0	0
<i>Hotels</i>	0	0	0	0	0
<i>Industrial</i>	2	0	0	0	2
<i>Commercial</i>	9	1	0	0	10
<i>Other-Residential</i>	3	0	0	0	3
Total Casualties - 5pm	24	1	0	0	26
San Luis Obispo					
Casualties - 2am					
<i>Commercial</i>	0	0	0	0	0
<i>Other-Residential</i>	0	0	0	0	0
<i>Industrial</i>	0	0	0	0	0
<i>Single Family</i>	0	0	0	0	0
<i>Commuting</i>	0	0	0	0	0
<i>Educational</i>	0	0	0	0	0
<i>Hotels</i>	0	0	0	0	0
Total Casualties - 2am	0	0	0	0	0
Casualties - 2pm					
<i>Single Family</i>	0	0	0	0	0

	Injury Severity Level				Total
	Severity 1	Severity 2	Severity 3	Severity 4	
California					
San Luis Obispo					
Casualties - 2pm					
<i>Educational</i>	0	0	0	0	0
<i>Other-Residential</i>	0	0	0	0	0
<i>Hotels</i>	0	0	0	0	0
<i>Commuting</i>	0	0	0	0	0
<i>Commercial</i>	0	0	0	0	0
<i>Industrial</i>	0	0	0	0	0
Total Casualties - 2pm	0	0	0	0	0
Casualties - 5pm					
<i>Industrial</i>	0	0	0	0	0
<i>Other-Residential</i>	0	0	0	0	0
<i>Commuting</i>	0	0	0	0	0
<i>Single Family</i>	0	0	0	0	0
<i>Commercial</i>	0	0	0	0	0
<i>Hotels</i>	0	0	0	0	0
<i>Educational</i>	0	0	0	0	0
Total Casualties - 5pm	0	0	0	0	0
San Mateo					
Casualties - 2am					
<i>Industrial</i>	4	1	0	0	5
<i>Other-Residential</i>	126	20	2	5	153
<i>Single Family</i>	57	1	0	0	59
<i>Commercial</i>	3	0	0	0	4
<i>Educational</i>	0	0	0	0	0
<i>Commuting</i>	0	0	0	0	0
<i>Hotels</i>	0	0	0	0	0
Total Casualties - 2am	191	23	3	5	221
Casualties - 2pm					
<i>Other-Residential</i>	38	6	1	1	47
<i>Single Family</i>	16	0	0	0	16
<i>Commuting</i>	0	0	1	0	1
<i>Commercial</i>	215	32	3	6	257
<i>Educational</i>	30	4	0	1	35
<i>Hotels</i>	0	0	0	0	0
<i>Industrial</i>	28	4	0	1	33
Total Casualties - 2pm	328	47	5	9	389
Casualties - 5pm					
<i>Commercial</i>	146	22	2	4	175
<i>Industrial</i>	18	2	0	0	21
<i>Other-Residential</i>	48	8	1	2	59
<i>Single Family</i>	21	0	0	0	21
<i>Educational</i>	2	0	0	0	2

	Injury Severity Level				Total
	Severity 1	Severity 2	Severity 3	Severity 4	
California					
San Mateo					
Casualties - 5pm					
<i>Commuting</i>	6	7	12	2	27
<i>Hotels</i>	0	0	0	0	0
Total Casualties - 5pm	240	40	16	9	305
Santa Clara					
Casualties - 2am					
<i>Commuting</i>	0	1	1	0	2
<i>Educational</i>	0	0	0	0	0
<i>Single Family</i>	718	61	3	6	787
<i>Hotels</i>	1	0	0	0	2
<i>Industrial</i>	69	16	2	4	91
<i>Commercial</i>	40	10	1	3	54
<i>Other-Residential</i>	1,427	330	42	81	1,880
Total Casualties - 2am	2,255	418	49	94	2,815
Casualties - 2pm					
<i>Industrial</i>	506	117	16	31	670
<i>Commercial</i>	2,682	672	99	193	3,646
<i>Single Family</i>	195	18	1	2	216
<i>Commuting</i>	4	5	8	2	19
<i>Hotels</i>	0	0	0	0	0
<i>Other-Residential</i>	454	109	15	28	606
<i>Educational</i>	570	112	14	27	723
Total Casualties - 2pm	4,411	1,032	153	283	5,879
Casualties - 5pm					
<i>Industrial</i>	316	73	10	19	418
<i>Hotels</i>	0	0	0	0	0
<i>Other-Residential</i>	546	128	17	31	722
<i>Commercial</i>	1,929	481	71	137	2,618
<i>Commuting</i>	78	101	174	33	386
<i>Single Family</i>	268	24	1	2	296
<i>Educational</i>	59	7	0	1	67
Total Casualties - 5pm	3,196	815	273	224	4,507
Santa Cruz					
Casualties - 2am					
<i>Hotels</i>	0	0	0	0	0
<i>Educational</i>	0	0	0	0	0
<i>Industrial</i>	1	0	0	0	1
<i>Other-Residential</i>	18	2	0	0	19
<i>Single Family</i>	9	0	0	0	9
<i>Commercial</i>	0	0	0	0	0
<i>Commuting</i>	0	0	0	0	0

	Injury Severity Level				Total
	Severity 1	Severity 2	Severity 3	Severity 4	
California					
Santa Cruz					
Total Casualties - 2am	28	2	0	0	30
Casualties - 2pm					
<i>Industrial</i>	4	0	0	0	5
<i>Other-Residential</i>	5	0	0	0	6
<i>Commercial</i>	29	3	0	0	33
<i>Commuting</i>	0	0	0	0	0
<i>Educational</i>	7	1	0	0	8
<i>Single Family</i>	3	0	0	0	3
<i>Hotels</i>	0	0	0	0	0
Total Casualties - 2pm	49	5	0	0	54
Casualties - 5pm					
<i>Industrial</i>	3	0	0	0	3
<i>Other-Residential</i>	6	1	0	0	7
<i>Commercial</i>	20	2	0	0	22
<i>Commuting</i>	0	0	0	0	1
<i>Single Family</i>	3	0	0	0	3
<i>Hotels</i>	0	0	0	0	0
<i>Educational</i>	1	0	0	0	1
Total Casualties - 5pm	34	3	0	0	38
Shasta					
Casualties - 2am					
<i>Other-Residential</i>	0	0	0	0	0
<i>Single Family</i>	0	0	0	0	0
<i>Commuting</i>	0	0	0	0	0
<i>Commercial</i>	0	0	0	0	0
<i>Hotels</i>	0	0	0	0	0
<i>Educational</i>	0	0	0	0	0
<i>Industrial</i>	0	0	0	0	0
Total Casualties - 2am	0	0	0	0	0
Casualties - 2pm					
<i>Commuting</i>	0	0	0	0	0
<i>Educational</i>	0	0	0	0	0
<i>Single Family</i>	0	0	0	0	0
<i>Hotels</i>	0	0	0	0	0
<i>Other-Residential</i>	0	0	0	0	0
<i>Industrial</i>	0	0	0	0	0
<i>Commercial</i>	0	0	0	0	0
Total Casualties - 2pm	0	0	0	0	0
Casualties - 5pm					
<i>Hotels</i>	0	0	0	0	0
<i>Commercial</i>	0	0	0	0	0

	Injury Severity Level				Total
	Severity 1	Severity 2	Severity 3	Severity 4	
California					
Shasta					
Casualties - 5pm					
<i>Commuting</i>	0	0	0	0	0
<i>Single Family</i>	0	0	0	0	0
<i>Educational</i>	0	0	0	0	0
<i>Industrial</i>	0	0	0	0	0
<i>Other-Residential</i>	0	0	0	0	0
Total Casualties - 5pm	0	0	0	0	0
Sierra					
Casualties - 2am					
<i>Other-Residential</i>	0	0	0	0	0
<i>Commercial</i>	0	0	0	0	0
<i>Commuting</i>	0	0	0	0	0
<i>Hotels</i>	0	0	0	0	0
<i>Single Family</i>	0	0	0	0	0
<i>Educational</i>	0	0	0	0	0
<i>Industrial</i>	0	0	0	0	0
Total Casualties - 2am	0	0	0	0	0
Casualties - 2pm					
<i>Hotels</i>	0	0	0	0	0
<i>Educational</i>	0	0	0	0	0
<i>Industrial</i>	0	0	0	0	0
<i>Other-Residential</i>	0	0	0	0	0
<i>Commuting</i>	0	0	0	0	0
<i>Single Family</i>	0	0	0	0	0
<i>Commercial</i>	0	0	0	0	0
Total Casualties - 2pm	0	0	0	0	0
Casualties - 5pm					
<i>Educational</i>	0	0	0	0	0
<i>Hotels</i>	0	0	0	0	0
<i>Commuting</i>	0	0	0	0	0
<i>Industrial</i>	0	0	0	0	0
<i>Other-Residential</i>	0	0	0	0	0
<i>Commercial</i>	0	0	0	0	0
<i>Single Family</i>	0	0	0	0	0
Total Casualties - 5pm	0	0	0	0	0
Solano					
Casualties - 2am					
<i>Industrial</i>	3	1	0	0	4
<i>Other-Residential</i>	89	20	3	6	117
<i>Commercial</i>	2	0	0	0	3
<i>Educational</i>	0	0	0	0	0
<i>Commuting</i>	0	0	0	0	0

	Injury Severity Level				Total
	Severity 1	Severity 2	Severity 3	Severity 4	
California					
Solano					
Casualties - 2am					
Single Family	43	1	0	0	44
Hotels	0	0	0	0	0
Total Casualties - 2am	137	22	3	6	168
Casualties - 2pm					
Single Family	12	0	0	0	12
Other-Residential	30	7	1	2	40
Commercial	159	38	6	11	214
Educational	32	7	1	2	43
Commuting	0	0	0	0	1
Hotels	0	0	0	0	0
Industrial	21	5	1	1	27
Total Casualties - 2pm	254	58	9	16	337
Casualties - 5pm					
Commercial	120	29	4	8	162
Other-Residential	34	8	1	2	45
Single Family	15	0	0	0	16
Educational	4	1	0	0	5
Commuting	3	3	6	1	13
Hotels	0	0	0	0	0
Industrial	13	3	0	1	17
Total Casualties - 5pm	189	44	12	13	258
Sonoma					
Casualties - 2am					
Single Family	292	24	0	0	316
Other-Residential	761	181	20	39	1,000
Commercial	25	7	1	2	35
Commuting	0	0	1	0	2
Hotels	2	1	0	0	3
Educational	0	0	0	0	0
Industrial	35	10	1	3	49
Total Casualties - 2am	1,115	223	24	44	1,406
Casualties - 2pm					
Single Family	90	8	0	0	97
Commuting	3	4	6	1	14
Educational	695	184	29	55	963
Hotels	0	0	0	0	1
Industrial	260	71	11	21	363
Other-Residential	230	55	6	12	303
Commercial	1,662	464	73	143	2,343
Total Casualties - 2pm	2,940	786	125	233	4,084

Injury Severity Level

	Severity 1	Severity 2	Severity 3	Severity 4	Total
--	------------	------------	------------	------------	-------

California

Sonoma

Casualties - 5pm

<i>Single Family</i>	110	9	0	0	119
<i>Commercial</i>	1,150	319	50	97	1,616
<i>Commuting</i>	54	80	125	25	283
<i>Hotels</i>	1	0	0	0	1
<i>Educational</i>	179	48	8	15	249
<i>Industrial</i>	162	45	7	13	227
<i>Other-Residential</i>	285	68	8	15	376
Total Casualties - 5pm	1,940	569	198	165	2,872

Stanislaus

Casualties - 2am

<i>Hotels</i>	0	0	0	0	0
<i>Industrial</i>	0	0	0	0	0
<i>Commercial</i>	0	0	0	0	0
<i>Single Family</i>	5	0	0	0	5
<i>Other-Residential</i>	6	0	0	0	6
<i>Commuting</i>	0	0	0	0	0
<i>Educational</i>	0	0	0	0	0
Total Casualties - 2am	12	0	0	0	12

Casualties - 2pm

<i>Industrial</i>	2	0	0	0	2
<i>Other-Residential</i>	2	0	0	0	2
<i>Commercial</i>	11	1	0	0	11
<i>Commuting</i>	0	0	0	0	0
<i>Educational</i>	3	0	0	0	3
<i>Single Family</i>	2	0	0	0	2
<i>Hotels</i>	0	0	0	0	0
Total Casualties - 2pm	19	1	0	0	20

Casualties - 5pm

<i>Industrial</i>	1	0	0	0	1
<i>Other-Residential</i>	2	0	0	0	2
<i>Commuting</i>	0	0	0	0	0
<i>Single Family</i>	2	0	0	0	2
<i>Commercial</i>	7	1	0	0	8
<i>Hotels</i>	0	0	0	0	0
<i>Educational</i>	0	0	0	0	0
Total Casualties - 5pm	13	1	0	0	14

Sutter

Casualties - 2am

<i>Educational</i>	0	0	0	0	0
<i>Commuting</i>	0	0	0	0	0
<i>Hotels</i>	0	0	0	0	0

	Injury Severity Level				Total
	Severity 1	Severity 2	Severity 3	Severity 4	
California					
Sutter					
Casualties - 2am					
Industrial	0	0	0	0	0
Other-Residential	0	0	0	0	0
Single Family	0	0	0	0	0
Commercial	0	0	0	0	0
Total Casualties - 2am	0	0	0	0	0
Casualties - 2pm					
Industrial	0	0	0	0	0
Commuting	0	0	0	0	0
Other-Residential	0	0	0	0	0
Single Family	0	0	0	0	0
Commercial	0	0	0	0	0
Hotels	0	0	0	0	0
Educational	0	0	0	0	0
Total Casualties - 2pm	0	0	0	0	0
Casualties - 5pm					
Commuting	0	0	0	0	0
Commercial	0	0	0	0	0
Educational	0	0	0	0	0
Single Family	0	0	0	0	0
Hotels	0	0	0	0	0
Industrial	0	0	0	0	0
Other-Residential	0	0	0	0	0
Total Casualties - 5pm	0	0	0	0	0
Tehama					
Casualties - 2am					
Hotels	0	0	0	0	0
Industrial	0	0	0	0	0
Commercial	0	0	0	0	0
Other-Residential	0	0	0	0	0
Educational	0	0	0	0	0
Commuting	0	0	0	0	0
Single Family	0	0	0	0	0
Total Casualties - 2am	0	0	0	0	0
Casualties - 2pm					
Other-Residential	0	0	0	0	0
Commercial	0	0	0	0	0
Industrial	0	0	0	0	0
Single Family	0	0	0	0	0
Educational	0	0	0	0	0
Commuting	0	0	0	0	0
Hotels	0	0	0	0	0

	Injury Severity Level				Total
	Severity 1	Severity 2	Severity 3	Severity 4	
California					
Tehama					
Total Casualties - 2pm	0	0	0	0	0
Casualties - 5pm					
<i>Hotels</i>	0	0	0	0	0
<i>Educational</i>	0	0	0	0	0
<i>Industrial</i>	0	0	0	0	0
<i>Single Family</i>	0	0	0	0	0
<i>Commercial</i>	0	0	0	0	0
<i>Commuting</i>	0	0	0	0	0
<i>Other-Residential</i>	0	0	0	0	0
Total Casualties - 5pm	0	0	0	0	0
Trinity					
Casualties - 2am					
<i>Commercial</i>	0	0	0	0	0
<i>Educational</i>	0	0	0	0	0
<i>Other-Residential</i>	0	0	0	0	0
<i>Single Family</i>	0	0	0	0	0
<i>Commuting</i>	0	0	0	0	0
<i>Hotels</i>	0	0	0	0	0
<i>Industrial</i>	0	0	0	0	0
Total Casualties - 2am	0	0	0	0	0
Casualties - 2pm					
<i>Educational</i>	0	0	0	0	0
<i>Commuting</i>	0	0	0	0	0
<i>Hotels</i>	0	0	0	0	0
<i>Single Family</i>	0	0	0	0	0
<i>Commercial</i>	0	0	0	0	0
<i>Industrial</i>	0	0	0	0	0
<i>Other-Residential</i>	0	0	0	0	0
Total Casualties - 2pm	0	0	0	0	0
Casualties - 5pm					
<i>Single Family</i>	0	0	0	0	0
<i>Commercial</i>	0	0	0	0	0
<i>Other-Residential</i>	0	0	0	0	0
<i>Commuting</i>	0	0	0	0	0
<i>Hotels</i>	0	0	0	0	0
<i>Educational</i>	0	0	0	0	0
<i>Industrial</i>	0	0	0	0	0
Total Casualties - 5pm	0	0	0	0	0
Tulare					
Casualties - 2am					
<i>Commercial</i>	0	0	0	0	0

	Injury Severity Level				Total
	Severity 1	Severity 2	Severity 3	Severity 4	
California					
Tulare					
Casualties - 2am					
Commuting	0	0	0	0	0
Single Family	0	0	0	0	0
Educational	0	0	0	0	0
Hotels	0	0	0	0	0
Industrial	0	0	0	0	0
Other-Residential	0	0	0	0	0
Total Casualties - 2am	0	0	0	0	0
Casualties - 2pm					
Industrial	0	0	0	0	0
Hotels	0	0	0	0	0
Commercial	0	0	0	0	0
Other-Residential	0	0	0	0	0
Educational	0	0	0	0	0
Commuting	0	0	0	0	0
Single Family	0	0	0	0	0
Total Casualties - 2pm	0	0	0	0	0
Casualties - 5pm					
Other-Residential	0	0	0	0	0
Commercial	0	0	0	0	0
Single Family	0	0	0	0	0
Hotels	0	0	0	0	0
Commuting	0	0	0	0	0
Educational	0	0	0	0	0
Industrial	0	0	0	0	0
Total Casualties - 5pm	0	0	0	0	0
Tuolumne					
Casualties - 2am					
Other-Residential	0	0	0	0	0
Industrial	0	0	0	0	0
Commercial	0	0	0	0	0
Commuting	0	0	0	0	0
Single Family	0	0	0	0	0
Educational	0	0	0	0	0
Hotels	0	0	0	0	0
Total Casualties - 2am	0	0	0	0	0
Casualties - 2pm					
Other-Residential	0	0	0	0	0
Commercial	0	0	0	0	0
Single Family	0	0	0	0	0
Educational	0	0	0	0	0
Commuting	0	0	0	0	0

	Injury Severity Level				Total
	Severity 1	Severity 2	Severity 3	Severity 4	
California					
Tuolumne					
Casualties - 2pm					
<i>Industrial</i>	0	0	0	0	0
<i>Hotels</i>	0	0	0	0	0
Total Casualties - 2pm	0	0	0	0	0
Casualties - 5pm					
<i>Industrial</i>	0	0	0	0	0
<i>Other-Residential</i>	0	0	0	0	0
<i>Commercial</i>	0	0	0	0	0
<i>Hotels</i>	0	0	0	0	0
<i>Commuting</i>	0	0	0	0	0
<i>Educational</i>	0	0	0	0	0
<i>Single Family</i>	0	0	0	0	0
Total Casualties - 5pm	0	0	0	0	0
Yolo					
Casualties - 2am					
<i>Single Family</i>	1	0	0	0	1
<i>Other-Residential</i>	1	0	0	0	2
<i>Commercial</i>	0	0	0	0	0
<i>Educational</i>	0	0	0	0	0
<i>Commuting</i>	0	0	0	0	0
<i>Hotels</i>	0	0	0	0	0
<i>Industrial</i>	0	0	0	0	0
Total Casualties - 2am	3	0	0	0	3
Casualties - 2pm					
<i>Industrial</i>	0	0	0	0	0
<i>Hotels</i>	0	0	0	0	0
<i>Educational</i>	1	0	0	0	1
<i>Commuting</i>	0	0	0	0	0
<i>Commercial</i>	2	0	0	0	3
<i>Other-Residential</i>	1	0	0	0	1
<i>Single Family</i>	0	0	0	0	0
Total Casualties - 2pm	5	0	0	0	5
Casualties - 5pm					
<i>Other-Residential</i>	1	0	0	0	1
<i>Single Family</i>	0	0	0	0	0
<i>Commuting</i>	0	0	0	0	0
<i>Commercial</i>	2	0	0	0	2
<i>Hotels</i>	0	0	0	0	0
<i>Educational</i>	0	0	0	0	0
<i>Industrial</i>	0	0	0	0	0
Total Casualties - 5pm	3	0	0	0	3

	Injury Severity Level				Total
	Severity 1	Severity 2	Severity 3	Severity 4	
California					
Yuba					
Casualties - 2am					
<i>Industrial</i>	0	0	0	0	0
<i>Other-Residential</i>	0	0	0	0	0
<i>Commercial</i>	0	0	0	0	0
<i>Educational</i>	0	0	0	0	0
<i>Single Family</i>	0	0	0	0	0
<i>Commuting</i>	0	0	0	0	0
<i>Hotels</i>	0	0	0	0	0
Total Casualties - 2am	0	0	0	0	0
Casualties - 2pm					
<i>Commercial</i>	0	0	0	0	0
<i>Commuting</i>	0	0	0	0	0
<i>Single Family</i>	0	0	0	0	0
<i>Other-Residential</i>	0	0	0	0	0
<i>Industrial</i>	0	0	0	0	0
<i>Hotels</i>	0	0	0	0	0
<i>Educational</i>	0	0	0	0	0
Total Casualties - 2pm	0	0	0	0	0
Casualties - 5pm					
<i>Hotels</i>	0	0	0	0	0
<i>Educational</i>	0	0	0	0	0
<i>Industrial</i>	0	0	0	0	0
<i>Other-Residential</i>	0	0	0	0	0
<i>Single Family</i>	0	0	0	0	0
<i>Commercial</i>	0	0	0	0	0
<i>Commuting</i>	0	0	0	0	0
Total Casualties - 5pm	0	0	0	0	0
Region Total	NA	NA	NA	NA	NA

Totals only reflect data for those census tracts/blocks included in the user's study region and will reflect the entire county/state only if all of the census blocks for that county/states were selected at the time of study region creation.

Debris Summary Report

April 25, 2024

All values are in thousands of tons.

	Brick, Wood & Others	Concrete & Steel	Total
California			
Alameda	3,332	9,879	13,212
Alpine	0	0	0
Amador	0	0	0
Butte	0	0	0
Calaveras	0	0	0
Colusa	0	0	1
Contra Costa	559	1,414	1,973
El Dorado	0	0	0
Fresno	0	0	0
Glenn	0	0	0
Humboldt	0	0	0
Kern	0	0	0
Kings	0	0	0
Lake	11	8	19
Madera	0	0	0
Marin	86	149	235
Mariposa	0	0	0
Mendocino	1	1	3
Merced	6	19	24

	Brick, Wood & Others	Concrete & Steel	Total
Monterey	8	11	19
Napa	68	144	213
Nevada	0	0	0
Placer	0	0	0
Plumas	0	0	0
Sacramento	8	9	17
San Benito	2	4	6
San Francisco	1,353	1,611	2,964
San Joaquin	43	22	65
San Luis Obispo	0	0	0
San Mateo	117	222	339
Santa Clara	1,158	2,594	3,752
Santa Cruz	28	47	76
Shasta	0	0	0
Sierra	0	0	0
Solano	95	194	290
Sonoma	739	1,887	2,627
Stanislaus	14	24	38
Sutter	0	0	1
Tehama	0	0	0
Trinity	0	0	0
Tulare	0	0	0
Tuolumne	0	0	0
Yolo	3	4	7
Yuba	0	0	0

	Brick, Wood & Others	Concrete & Steel	Total
Total	7,635	18,244	25,880
Region Total	7,635	18,244	25,880

Totals only reflect data for those census tracts/blocks included in the user's study region and will reflect the entire county/state only if all of the census blocks for that county/states were selected at the time of study region creation.

Direct Economic Losses For Buildings

April 25, 2024

All values are in thousands of dollars

	Capital Stock Losses				Loss Ratio %	Income Losses				Total Loss
	Cost Structural Damage	Cost Non-struct. Damage	Cost Contents Damage	Inventory Loss		Relocation Loss	Capital Related Loss	Wages Losses	Rental Income Loss	
California										
Contra Costa	1,625,512	7,403,722	2,925,759	226,864	4.13	727,872	332,500	468,978	367,875	14,079,082
Mendocino	2,803	32,585	17,499	2,057	0.16	543	527	588	555	57,157
Napa	156,111	711,741	323,444	32,725	2.59	59,627	48,960	60,094	40,426	1,433,128
Plumas	0	0	0	0	0.00	0	0	0	0	0
Colusa	425	4,367	2,599	459	0.11	106	178	191	115	8,440
Shasta	0	26	19	4	0.00	0	0	0	0	49
Trinity	0	0	0	0	0.00	0	0	0	0	0
Tehama	16	390	238	37	0.00	2	2	1	3	689
Alameda	8,557,821	35,616,856	13,373,988	1,000,543	13.28	3,863,916	2,003,370	2,877,992	2,180,420	69,474,906

	Capital Stock Losses				Loss Ratio %	Income Losses				Total Loss
	Cost Structural Damage	Cost Non-struct. Damage	Cost Contents Damage	Inventory Loss		Relocation Loss	Capital Related Loss	Wages Losses	Rental Income Loss	
Humboldt	0	2	2	0	0.00	0	0	0	0	5
Nevada	0	38	27	2	0.00	0	0	0	0	68
San Joaquin	52,912	358,438	192,189	23,225	0.29	15,340	8,248	10,078	9,494	669,924
Tuolumne	0	58	39	3	0.00	0	0	0	0	101
Tulare	0	8	6	2	0.00	0	0	0	0	16
Madera	206	2,344	1,332	278	0.01	19	13	15	28	4,235
Butte	173	1,954	1,252	182	0.01	33	21	26	30	3,671
Fresno	261	5,633	3,663	621	0.00	37	46	55	68	10,385
Kings	7	346	234	25	0.00	1	3	3	3	623
San Luis Obispo	0	5	3	0	0.00	0	0	0	0	9
Solano	203,430	1,016,035	441,080	38,026	1.48	75,782	58,534	74,638	49,997	1,957,521
San Mateo	331,902	1,811,198	807,731	55,994	1.38	113,020	87,271	103,829	88,679	3,399,624
Yolo	6,599	66,238	38,258	4,066	0.17	1,478	1,769	2,092	1,485	121,985
Glenn	264	1,980	1,234	306	0.03	38	35	36	32	3,926
San Benito	5,716	32,587	14,900	1,586	0.29	1,928	1,389	1,604	928	60,637
San Francisco	1,980,076	4,789,678	1,774,395	110,550	4.37	806,315	544,301	660,866	728,555	11,394,736
Stanislaus	32,157	194,136	101,016	14,106	0.23	9,190	4,799	5,415	6,455	367,274
Sutter	616	5,144	2,650	617	0.03	75	45	52	72	9,271

	Capital Stock Losses				Loss Ratio %	Income Losses				Total Loss
	Cost Structural Damage	Cost Non-struct. Damage	Cost Contents Damage	Inventory Loss		Relocation Loss	Capital Related Loss	Wages Losses	Rental Income Loss	
Santa Clara	3,182,084	14,410,373	5,958,975	460,566	4.61	1,244,947	826,804	975,564	714,807	27,774,121
Sonoma	1,888,535	7,856,121	3,126,787	345,901	9.32	801,503	549,350	697,444	432,303	15,697,945
Calaveras	18	264	185	57	0.00	2	4	4	2	536
Yuba	84	1,264	662	80	0.01	12	23	25	21	2,171
Alpine	0	0	0	0	0.00	0	0	0	0	0
Merced	36,171	60,859	36,849	15,223	0.19	4,973	1,584	1,335	1,071	158,064
Placer	181	3,791	2,139	213	0.00	19	30	36	38	6,446
Marin	226,168	1,186,090	526,706	27,951	2.25	82,448	70,979	79,964	54,585	2,254,892
Kern	0	0	0	0	0.00	0	0	0	0	0
El Dorado	0	206	144	7	0.00	0	0	0	0	358
Lake	14,451	76,767	32,856	2,772	0.64	6,164	2,865	2,835	2,925	141,635
Sierra	0	0	0	0	0.00	0	0	0	0	0
Santa Cruz	66,268	311,565	149,040	20,047	0.69	21,310	19,248	22,962	14,236	624,677
Mariposa	0	14	10	1	0.00	0	0	0	0	25
Amador	1	89	60	7	0.00	0	1	0	1	158
Sacramento	13,961	122,439	67,693	6,305	0.05	4,836	5,417	6,809	4,866	232,327
Monterey	15,218	104,683	55,728	8,589	0.16	5,126	3,015	3,344	3,676	199,380

	Capital Stock Losses				Loss Ratio %	Income Losses				Total Loss
	Cost Structural Damage	Cost Non-struct. Damage	Cost Contents Damage	Inventory Loss		Relocation Loss	Capital Related Loss	Wages Losses	Rental Income Loss	
Total	18,400,151	76,190,034	29,981,392	2,399,999	1.06	7,846,662	4,571,330	6,056,876	4,703,751	150,150,194
Region Total	18,400,151	76,190,034	29,981,392	2,399,999	1.06	7,846,662	4,571,330	6,056,876	4,703,751	150,150,194

Totals only reflect data for those census tracts/blocks included in the user's study region and will reflect the entire county/state only if all of the census blocks for that county/states were selected at the time of study region creation.

Direct Economic Loss For Transportation

April 25, 2024

All values are in thousands of dollars

	Highway	Railway	Light Rail	Bus Facility	Ports	Ferries	Airport	Total
California								
Alameda								
Segments	0	0	0					0
Bridges	572,491	132,804	1,425					706,720
Tunnels	16,728	0	0					16,728
Facilities		14,998	0	800	51,704	1,115	113,331	181,949
Total	589,219	147,802	1,425	800	51,704	1,115	113,331	905,397
Alpine								
Segments	0	0	0					0
Bridges	0	0	0					0
Tunnels	0	0	0					0
Facilities		0	0	0	0	0	6	6
Total	0	0	0	0	0	0	6	6
Amador								
Segments	0	0	0					0
Bridges	0	0	0					0
Tunnels	0	0	0					0
Facilities		0	0	0	0	0	51	51

	Highway	Railway	Light Rail	Bus Facility	Ports	Ferries	Airport	Total
Total	0	0	0	0	0	0	51	51
Butte								
Segments	0	0	0					0
Bridges	19	0	0					19
Tunnels	0	0	0					0
Facilities		26	0	0	0	0	231	256
Total	19	26	0	0	0	0	231	275
Calaveras								
Segments	0	0	0					0
Bridges	0	0	0					0
Tunnels	0	0	0					0
Facilities		0	0	0	0	0	102	102
Total	0	0	0	0	0	0	102	102
Colusa								
Segments	0	0	0					0
Bridges	95	4	0					99
Tunnels	0	0	0					0
Facilities		0	0	0	0	0	217	217
Total	95	4	0	0	0	0	217	317
Contra Costa								
Segments	0	0	0					0
Bridges	167,740	28,737	274					196,751
Tunnels	7,639	51	0					7,691
Facilities		7,789	1,896	0	68,783	708	3,862	83,038

	Highway	Railway	Light Rail	Bus Facility	Ports	Ferries	Airport	Total
Total	175,380	36,578	2,170	0	68,783	708	3,862	287,480
El Dorado								
Segments	0	0	0					0
Bridges	0	0	0					0
Tunnels	0	0	0					0
Facilities		0	0	26	0	0	236	262
Total	0	0	0	26	0	0	236	263
Fresno								
Segments	0	0	0					0
Bridges	95	0	0					96
Tunnels	0	0	0					0
Facilities		231	0	21	0	0	1,095	1,346
Total	95	231	0	21	0	0	1,095	1,442
Glenn								
Segments	0	0	0					0
Bridges	22	1	0					24
Tunnels	0	0	0					0
Facilities		0	0	0	37	0	268	305
Total	22	1	0	0	37	0	268	329
Humboldt								
Segments	0	0	0					0
Bridges	1	0	0					1
Tunnels	0	0	0					0
Facilities		0	0	5	90	0	130	225

	Highway	Railway	Light Rail	Bus Facility	Ports	Ferries	Airport	Total
Total	1	0	0	5	90	0	130	226
Kern								
Segments	0	0	0					0
Bridges	1	0	0					1
Tunnels	0	0	0					0
Facilities		20	0	7	0	0	75	102
Total	1	20	0	7	0	0	75	103
Kings								
Segments	0	0	0					0
Bridges	0	0	0					0
Tunnels	0	0	0					0
Facilities		105	0	41	0	0	359	506
Total	0	105	0	41	0	0	359	506
Lake								
Segments	0	0	0					0
Bridges	311	0	0					311
Tunnels	0	0	0					0
Facilities		0	0	0	0	0	1,001	1,001
Total	311	0	0	0	0	0	1,001	1,312
Madera								
Segments	0	0	0					0
Bridges	18	0	0					18
Tunnels	0	0	0					0
Facilities		26	0	21	0	0	102	149

	Highway	Railway	Light Rail	Bus Facility	Ports	Ferries	Airport	Total
Total	18	26	0	21	0	0	102	167
Marin								
<i>Segments</i>	0	0	0					0
<i>Bridges</i>	30,129	125	0					30,254
<i>Tunnels</i>	532	0	0					532
<i>Facilities</i>		0	0	1,974	25,286	1,294	1,410	29,965
Total	30,661	125	0	1,974	25,286	1,294	1,410	60,752
Mariposa								
<i>Segments</i>	0	0	0					0
<i>Bridges</i>	0	0	0					0
<i>Tunnels</i>	0	0	0					0
<i>Facilities</i>		0	0	67	0	0	51	118
Total	0	0	0	67	0	0	51	118
Mendocino								
<i>Segments</i>	0	0	0					0
<i>Bridges</i>	549	97	0					646
<i>Tunnels</i>	0	0	0					0
<i>Facilities</i>		0	0	450	37	0	1,119	1,606
Total	549	97	0	450	37	0	1,119	2,252
Merced								
<i>Segments</i>	0	0	0					0
<i>Bridges</i>	757	24	0					782
<i>Tunnels</i>	0	0	0					0
<i>Facilities</i>		135	0	91	0	0	1,930	2,156

	Highway	Railway	Light Rail	Bus Facility	Ports	Ferries	Airport	Total
Total	757	159	0	91	0	0	1,930	2,938
Monterey								
Segments	0	0	0					0
Bridges	485	19	0					505
Tunnels	1	0	0					1
Facilities		201	0	844	469	0	1,765	3,279
Total	486	220	0	844	469	0	1,765	3,785
Napa								
Segments	0	0	0					0
Bridges	5,744	3,788	0					9,532
Tunnels	0	0	0					0
Facilities		0	0	423	2,285	0	4,011	6,719
Total	5,744	3,788	0	423	2,285	0	4,011	16,250
Nevada								
Segments	0	0	0					0
Bridges	0	0	0					0
Tunnels	0	0	0					0
Facilities		3	0	0	0	0	57	60
Total	0	3	0	0	0	0	57	60
Placer								
Segments	0	0	0					0
Bridges	8	0	0					8
Tunnels	0	0	0					0
Facilities		103	0	21	0	0	159	283

	Highway	Railway	Light Rail	Bus Facility	Ports	Ferries	Airport	Total
Total	8	103	0	21	0	0	159	291
Plumas								
Segments	0	0	0					0
Bridges	0	0	0					0
Tunnels	0	0	0					0
Facilities		0	0	0	0	0	40	40
Total	0	0	0	0	0	0	40	40
Sacramento								
Segments	0	0	0					0
Bridges	1,801	3	0					1,804
Tunnels	0	0	0					0
Facilities		109	10,731	181	5,573	100	17,714	34,409
Total	1,801	112	10,731	181	5,573	100	17,714	36,213
San Benito								
Segments	0	0	0					0
Bridges	235	41	0					276
Tunnels	0	0	0					0
Facilities		0	0	0	0	0	800	800
Total	235	41	0	0	0	0	800	1,076
San Francisco								
Segments	0	0	0					0
Bridges	96,332	255	0					96,587
Tunnels	2,477	0	0					2,477
Facilities		0	557,647	1,142	45,776	1,152	5,455	611,173

	Highway	Railway	Light Rail	Bus Facility	Ports	Ferries	Airport	Total
Total	98,809	255	557,647	1,142	45,776	1,152	5,455	710,237
San Joaquin								
Segments	0	0	0					0
Bridges	3,203	122	0					3,325
Tunnels	0	0	0					0
Facilities		1,931	0	91	9,612	402	3,075	15,111
Total	3,203	2,053	0	91	9,612	402	3,075	18,436
San Luis Obispo								
Segments	0	0	0					0
Bridges	1	0	0					1
Tunnels	0	0	0					0
Facilities		9	0	5	33	0	141	187
Total	1	9	0	5	33	0	141	188
San Mateo								
Segments	0	0	0					0
Bridges	87,619	632	0					88,251
Tunnels	328	1	0					329
Facilities		0	0	0	11,049	0	134,571	145,621
Total	87,947	633	0	0	11,049	0	134,571	234,201
Santa Clara								
Segments	0	0	0					0
Bridges	334,080	23,794	68					357,942
Tunnels	264	0	0					264
Facilities		2,835	157,156	808	5,371	0	97,133	263,301

	Highway	Railway	Light Rail	Bus Facility	Ports	Ferries	Airport	Total
Total	334,345	26,628	157,224	808	5,371	0	97,133	621,508
Santa Cruz								
<i>Segments</i>	0	0	0					0
<i>Bridges</i>	987	66	0					1,053
<i>Tunnels</i>	0	0	0					0
<i>Facilities</i>		0	0	434	288	0	2,956	3,678
Total	987	66	0	434	288	0	2,956	4,730
Shasta								
<i>Segments</i>	0	0	0					0
<i>Bridges</i>	0	0	0					0
<i>Tunnels</i>	0	0	0					0
<i>Facilities</i>		3	0	2	0	0	64	69
Total	0	3	0	2	0	0	64	69
Sierra								
<i>Segments</i>	0	0	0					0
<i>Bridges</i>	0	0	0					0
<i>Tunnels</i>	0	0	0					0
<i>Facilities</i>		0	0	0	0	0	6	6
Total	0	0	0	0	0	0	6	6
Solano								
<i>Segments</i>	0	0	0					0
<i>Bridges</i>	19,793	1,874	0					21,667
<i>Tunnels</i>	0	0	0					0
<i>Facilities</i>		1,298	0	841	18,571	656	1,808	23,173

	Highway	Railway	Light Rail	Bus Facility	Ports	Ferries	Airport	Total
Total	19,793	3,172	0	841	18,571	656	1,808	44,840
Sonoma								
<i>Segments</i>	0	0	0					0
<i>Bridges</i>	140,317	37,714	0					178,031
<i>Tunnels</i>	0	0	0					0
<i>Facilities</i>		0	0	1,061	3,696	0	17,267	22,024
Total	140,317	37,714	0	1,061	3,696	0	17,267	200,055
Stanislaus								
<i>Segments</i>	0	0	0					0
<i>Bridges</i>	989	45	0					1,034
<i>Tunnels</i>	0	0	0					0
<i>Facilities</i>		655	0	183	0	0	1,165	2,003
Total	989	701	0	183	0	0	1,165	3,037
Sutter								
<i>Segments</i>	0	0	0					0
<i>Bridges</i>	107	0	0					107
<i>Tunnels</i>	0	0	0					0
<i>Facilities</i>		0	0	0	0	0	129	129
Total	107	0	0	0	0	0	129	235
Tehama								
<i>Segments</i>	0	0	0					0
<i>Bridges</i>	21	0	0					21
<i>Tunnels</i>	0	0	0					0
<i>Facilities</i>		0	0	0	0	0	102	102

	Highway	Railway	Light Rail	Bus Facility	Ports	Ferries	Airport	Total
Total	21	0	0	0	0	0	102	123
Trinity								
Segments	0	0	0					0
Bridges	0	0	0					0
Tunnels	0	0	0					0
Facilities		0	0	0	0	0	68	68
Total	0	0	0	0	0	0	68	68
Tulare								
Segments	0	0	0					0
Bridges	1	0	0					1
Tunnels	0	0	0					0
Facilities		0	0	9	0	0	28	38
Total	1	0	0	9	0	0	28	38
Tuolumne								
Segments	0	0	0					0
Bridges	0	0	0					0
Tunnels	0	0	0					0
Facilities		0	0	0	0	0	153	153
Total	0	0	0	0	0	0	153	153
Yolo								
Segments	0	0	0					0
Bridges	2,004	7	0					2,011
Tunnels	0	0	0					0
Facilities		546	0	0	2,658	0	652	3,857

	Highway	Railway	Light Rail	Bus Facility	Ports	Ferries	Airport	Total
Total	2,004	553	0	0	2,658	0	652	5,868
Yuba								
<i>Segments</i>	0	0	0					0
<i>Bridges</i>	1	0	0					1
<i>Tunnels</i>	0	0	0					0
<i>Facilities</i>		0	0	22	0	0	102	124
Total	1	0	0	22	0	0	102	125
Total	1,493,932	261,229	729,198	9,569	251,316	5,427	414,998	3,165,669
Region Total	1,493,932	261,229	729,198	9,569	251,316	5,427	414,998	3,165,669

Totals only reflect data for those census tracts/blocks included in the user's study region and will reflect the entire county/state only if all of the census blocks for that county/states were selected at the time of study region creation.

Direct Economic Loss For Utilities

April 25, 2024

All values are in thousands of dollars

	Potable Water	Waste Water	Oil Systems	Natural Gas	Electric Power	Communication	Total
California							
Alameda							
<i>Facilities</i>	36,973	586,631	0	0	932,237	1,291	1,557,131
<i>Pipelines</i>	36,700	18,435	0	0			55,135
Total	73,673	605,066	0	0	932,237	1,291	1,612,266
Alpine							
<i>Facilities</i>	0	3	0	0	0	0	3
<i>Pipelines</i>	2	1	0	0			3
Total	2	4	0	0	0	0	6
Amador							
<i>Facilities</i>	0	3	0	0	7,382	0	7,384
<i>Pipelines</i>	25	13	0	0			38
Total	25	15	0	0	7,382	0	7,423
Butte							
<i>Facilities</i>	28	492	0	0	43,687	3	44,210

	Potable Water	Waste Water	Oil Systems	Natural Gas	Electric Power	Communication	Total
<i>Pipelines</i>	109	55	0	0			164
Total	137	547	0	0	43,687	3	44,374
Calaveras							
<i>Facilities</i>	28	492	0	0	25,137	1	25,658
<i>Pipelines</i>	55	27	0	0			82
Total	83	519	0	0	25,137	1	25,740
Colusa							
<i>Facilities</i>	0	4,573	0	658	48,608	2	53,841
<i>Pipelines</i>	142	71	0	0			213
Total	142	4,644	0	658	48,608	2	54,054
Contra Costa							
<i>Facilities</i>	57,547	393,102	207	0	1,713,665	322	2,164,842
<i>Pipelines</i>	12,599	6,329	0	0			18,927
Total	70,146	399,430	207	0	1,713,665	322	2,183,769
El Dorado							
<i>Facilities</i>	28	492	0	0	13,173	1	13,694
<i>Pipelines</i>	76	38	0	0			114
Total	104	530	0	0	13,173	1	13,807
Fresno							
<i>Facilities</i>	0	492	0	13	24,481	3	24,990
<i>Pipelines</i>	315	158	0	0			473

	Potable Water	Waste Water	Oil Systems	Natural Gas	Electric Power	Communication	Total
Total	315	650	0	13	24,481	3	25,463
Glenn							
<i>Facilities</i>	0	1,524	0	0	136	0	1,660
<i>Pipelines</i>	100	50	0	0			150
Total	100	1,575	0	0	136	0	1,811
Humboldt							
<i>Facilities</i>	0	269	0	0	96	0	365
<i>Pipelines</i>	74	37	0	0			112
Total	74	306	0	0	96	0	477
Kern							
<i>Facilities</i>	2	3	0	6	2,139	0	2,150
<i>Pipelines</i>	147	74	0	0			221
Total	149	76	0	6	2,139	0	2,370
Kings							
<i>Facilities</i>	0	0	0	134	5,344	1	5,479
<i>Pipelines</i>	78	39	0	0			117
Total	78	39	0	134	5,344	1	5,596
Lake							
<i>Facilities</i>	2,018	0	0	0	238,162	72	240,253
<i>Pipelines</i>	690	347	0	0			1,037
Total	2,708	347	0	0	238,162	72	241,289

	Potable Water	Waste Water	Oil Systems	Natural Gas	Electric Power	Communication	Total
Madera							
<i>Facilities</i>	0	0	0	0	1,347	0	1,347
<i>Pipelines</i>	136	68	0	0			204
Total	136	68	0	0	1,347	0	1,550
Marin							
<i>Facilities</i>	6,781	174,090	0	0	9,190	241	190,303
<i>Pipelines</i>	1,808	908	0	0			2,716
Total	8,589	174,998	0	0	9,190	241	193,019
Mariposa							
<i>Facilities</i>	0	371	0	0	2,808	2	3,181
<i>Pipelines</i>	43	22	0	0			65
Total	43	393	0	0	2,808	2	3,246
Mendocino							
<i>Facilities</i>	0	12,124	0	0	7,095	39	19,259
<i>Pipelines</i>	590	297	0	0			887
Total	590	12,421	0	0	7,095	39	20,146
Merced							
<i>Facilities</i>	0	7,709	0	0	371,442	25	379,176
<i>Pipelines</i>	478	240	0	0			719
Total	478	7,950	0	0	371,442	25	379,895
Monterey							

	Potable Water	Waste Water	Oil Systems	Natural Gas	Electric Power	Communication	Total
<i>Facilities</i>	0	33,953	0	0	201,514	91	235,557
<i>Pipelines</i>	423	213	0	0			636
Total	423	34,165	0	0	201,514	91	236,193
Napa							
<i>Facilities</i>	0	72,890	0	0	11,727	87	84,704
<i>Pipelines</i>	998	501	0	0			1,499
Total	998	73,392	0	0	11,727	87	86,203
Nevada							
<i>Facilities</i>	0	620	0	0	317	1	937
<i>Pipelines</i>	56	28	0	0			85
Total	56	648	0	0	317	1	1,022
Placer							
<i>Facilities</i>	0	1,229	0	0	4,492	1	5,722
<i>Pipelines</i>	81	41	0	0			122
Total	81	1,270	0	0	4,492	1	5,844
Plumas							
<i>Facilities</i>	1	10	0	0	980	0	991
<i>Pipelines</i>	40	20	0	0			60
Total	40	30	0	0	980	0	1,051
Sacramento							
<i>Facilities</i>	0	11,039	0	0	55,765	67	66,871

	Potable Water	Waste Water	Oil Systems	Natural Gas	Electric Power	Communication	Total
<i>Pipelines</i>	463	233	0	0			696
Total	463	11,272	0	0	55,765	67	67,568
San Benito							
<i>Facilities</i>	0	12,719	0	0	0	29	12,748
<i>Pipelines</i>	192	97	0	0			289
Total	192	12,816	0	0	0	29	13,037
San Francisco							
<i>Facilities</i>	0	138,475	0	0	9,345	379	148,199
<i>Pipelines</i>	919	462	0	0			1,381
Total	919	138,937	0	0	9,345	379	149,579
San Joaquin							
<i>Facilities</i>	2,082	25,123	6	0	156,884	60	184,154
<i>Pipelines</i>	815	409	0	0			1,224
Total	2,897	25,532	6	0	156,884	60	185,378
San Luis Obispo							
<i>Facilities</i>	1	261	0	0	1,363	0	1,625
<i>Pipelines</i>	110	55	0	0			166
Total	111	317	0	0	1,363	0	1,791
San Mateo							
<i>Facilities</i>	0	150,314	0	0	27,934	276	178,525
<i>Pipelines</i>	1,712	860	0	0			2,572

	Potable Water	Waste Water	Oil Systems	Natural Gas	Electric Power	Communication	Total
Total	1,712	151,174	0	0	27,934	276	181,097
Santa Clara							
<i>Facilities</i>	12,317	89,752	0	0	1,252,273	971	1,355,313
<i>Pipelines</i>	18,389	9,237	0	0			27,626
Total	30,706	98,989	0	0	1,252,273	971	1,382,938
Santa Cruz							
<i>Facilities</i>	0	25,439	0	0	3,485	79	29,003
<i>Pipelines</i>	704	354	0	0			1,058
Total	704	25,792	0	0	3,485	79	30,061
Shasta							
<i>Facilities</i>	1	620	0	3	6,418	0	7,042
<i>Pipelines</i>	65	32	0	0			97
Total	66	652	0	3	6,418	0	7,139
Sierra							
<i>Facilities</i>	0	0	0	0	10	0	10
<i>Pipelines</i>	17	9	0	0			26
Total	17	9	0	0	10	0	36
Solano							
<i>Facilities</i>	0	78,376	37	0	495,500	65	573,979
<i>Pipelines</i>	2,266	1,138	0	0			3,404
Total	2,266	79,515	37	0	495,500	65	577,383

	Potable Water	Waste Water	Oil Systems	Natural Gas	Electric Power	Communication	Total
Sonoma							
<i>Facilities</i>	0	450,552	0	0	2,012,243	796	2,463,592
<i>Pipelines</i>	21,413	10,756	0	0			32,169
Total	21,413	461,309	0	0	2,012,243	796	2,495,761
Stanislaus							
<i>Facilities</i>	0	11,878	0	0	96,946	70	108,894
<i>Pipelines</i>	519	261	0	0			780
Total	519	12,139	0	0	96,946	70	109,674
Sutter							
<i>Facilities</i>	0	246	0	0	44,194	1	44,442
<i>Pipelines</i>	128	64	0	0			192
Total	128	310	0	0	44,194	1	44,634
Tehama							
<i>Facilities</i>	0	248	0	75	411	1	735
<i>Pipelines</i>	97	49	0	0			145
Total	97	297	0	75	411	1	881
Trinity							
<i>Facilities</i>	0	0	0	0	478	0	478
<i>Pipelines</i>	40	20	0	0			60
Total	40	20	0	0	478	0	539
Tulare							

	Potable Water	Waste Water	Oil Systems	Natural Gas	Electric Power	Communication	Total
<i>Facilities</i>	1	8	0	0	250	0	259
<i>Pipelines</i>	106	53	0	0			159
Total	106	61	0	0	250	0	418
Tuolumne							
<i>Facilities</i>	0	123	0	0	28,320	1	28,444
<i>Pipelines</i>	61	30	0	0			91
Total	61	153	0	0	28,320	1	28,535
Yolo							
<i>Facilities</i>	0	6,097	0	0	6,937	17	13,051
<i>Pipelines</i>	222	111	0	0			333
Total	222	6,209	0	0	6,937	17	13,384
Yuba							
<i>Facilities</i>	0	492	0	0	15,532	0	16,024
<i>Pipelines</i>	47	24	0	0			71
Total	47	515	0	0	15,532	0	16,095
Total	221,857	2,345,103	250	889	7,879,449	4,994	10,452,542
Region Total	221,857	2,345,103	250	889	7,879,449	4,994	10,452,542

Totals only reflect data for those census tracts/blocks included in the user's study region and will reflect the entire county/state only if all of the census blocks for that county/states were selected at the time of study region creation.

Hazus Quick Assessment Report

Estimated Economic Loss (\$ Billions)

Category	Description	Range
General Building Stock	Building Damage	47.30 - 189.20
	Building Contents	5.20 - 20.00
	Business Interruption	11.60 - 46.40
Infrastructure	Lifelines Damage	
Total		75.10 - 300.30

Preliminary Damage Assessment (PDA) Estimates

Description	Residential	Commercial	Other	Total
Affected	792,500	46,700	21,600	860,800
Minor	257,200	32,400	16,300	305,900
Major	29,600	14,800	9,000	53,400
Destroyed	12,800	9,700	4,600	27,100
Total		103,600	51,500	

Estimated Casualties : Night Time

Severity Level	Description	# Persons
Level 1	Medical Aid	7,000 - 30,000
Level 2	Hospital Care	1,700 - 7,000
Level 3	Life-threatening	200 - 900
Level 4	Fatalities	400 - 1,700

Estimated Shelter Needs

Type	Households	People
Displaced Households	58,000 - 231,000	145,000 - 577,500
Public Shelter	23,460	58,650

Comments :

*Hazus damage estimates are presented using FEMA Preliminary Damage Assessment (PDA) categories. These estimates should be used for planning purposes and may not reflect actual observed damages from the PDA process.

Disclaimer:

The estimates of social and economic impacts contained in this report were produced using HAZUS loss estimation methodology software which is based on current scientific and engineering knowledge. There are uncertainties inherent in any loss estimation technique. Therefore, there may be significant differences between the modeled results contained in this report and the actual social and economic losses following a specific earthquake. These results can be improved by using enhanced inventory, geotechnical, and observed ground motion data.

Earthquake Information

Location :

Origin Time:

Magnitude : 7.58

Epicenter Latitude/Longitude :
/

Depth & Type : /U

Name :
NA

Ground Motion /Attenuation :

Maximum PGA: 1.00

Information Sources:

Comments :

Population and Building Exposure

Population: 16,821,518

Building Exposure : (\$ Millions)

Residential	2,093,045
Commercial	569,810
Other	512,009
Total	3,174,864

Counties : See Appendix

Major Metro Area :

Hazus Quick Assessment Report

Estimated Economic Loss (\$ Billions)

Category	Description	Range
General Building Stock	Building Damage	47.30 - 189.20
	Building Contents	5.20 - 20.00
	Business Interruption	11.60 - 46.40
Infrastructure	Lifelines Damage	
Total		75.10 - 300.30

Preliminary Damage Assessment (PDA) Estimates

Description	Residential	Commercial	Other	Total
Affected	792,500	46,700	21,600	860,800
Minor	257,200	32,400	16,300	305,900
Major	29,600	14,800	9,000	53,400
Destroyed	12,800	9,700	4,600	27,100
Total		103,600	51,500	

Estimated Casualties : Day Time

Severity Level	Description	# Persons
Level 1	Medical Aid	19,000 - 75,000
Level 2	Hospital Care	5,000 - 20,000
Level 3	Life-threatening	800 - 3,000
Level 4	Fatalities	1,500 - 6,000

Estimated Shelter Needs

Type	Households	People
Displaced Households	58,000 - 231,000	145,000 - 577,500
Public Shelter	23,460	58,650

Earthquake Information

Location :

Origin Time:

Magnitude : 7.58

Epicenter Latitude/Longitude :
/

Depth & Type : /U

Name :
NA

Ground Motion /Attenuation :

Maximum PGA: 1.00

Information Sources:

Comments :

Population and Building Exposure

Population: 16,821,518

Building Exposure : (\$ Millions)

Residential	2,093,045
Commercial	569,810
Other	512,009
Total	3,174,864

Counties : See Appendix

Comments :

Major Metro Area :

*Hazus damage estimates are presented using FEMA Preliminary Damage Assessment (PDA) categories. These estimates should be used for planning purposes and may not reflect actual observed damages from the PDA process.

Disclaimer:

The estimates of social and economic impacts contained in this report were produced using HAZUS loss estimation methodology software which is based on current scientific and engineering knowledge. There are uncertainties inherent in any loss estimation technique. Therefore, there may be significant differences between the modeled results contained in this report and the actual social and economic losses following a specific earthquake. These results can be improved by using enhanced inventory, geotechnical, and observed ground motion data.

Hazus Quick Assessment Report

Estimated Economic Loss (\$ Billions)

Category	Description	Range
General Building Stock	Building Damage	47.30 - 189.20
	Building Contents	5.20 - 20.00
	Business Interruption	11.60 - 46.40
Infrastructure	Lifelines Damage	
Total		75.10 - 300.30

Preliminary Damage Assessment (PDA) Estimates

Description	Residential	Commercial	Other	Total
Affected	792,500	46,700	21,600	860,800
Minor	257,200	32,400	16,300	305,900
Major	29,600	14,800	9,000	53,400
Destroyed	12,800	9,700	4,600	27,100
Total		103,600	51,500	

Estimated Casualties : Commute Time

Severity Level	Description	# Persons
Level 1	Medical Aid	13,000 - 52,000
Level 2	Hospital Care	4,000 - 14,000
Level 3	Life-threatening	900 - 3,000
Level 4	Fatalities	1,100 - 4,000

Estimated Shelter Needs

Type	Households	People
Displaced Households	58,000 - 231,000	145,000 - 577,500
Public Shelter	23,460	58,650

Comments :

*Hazus damage estimates are presented using FEMA Preliminary Damage Assessment (PDA) categories. These estimates should be used for planning purposes and may not reflect actual observed damages from the PDA process.

Disclaimer:

The estimates of social and economic impacts contained in this report were produced using HAZUS loss estimation methodology software which is based on current scientific and engineering knowledge. There are uncertainties inherent in any loss estimation technique. Therefore, there may be significant differences between the modeled results contained in this report and the actual social and economic losses following a specific earthquake. These results can be improved by using enhanced inventory, geotechnical, and observed ground motion data.

Earthquake Information

Location :

Origin Time:

Magnitude : 7.58

Epicenter Latitude/Longitude :
/

Depth & Type : /U

Name :
NA

Ground Motion /Attenuation :

Maximum PGA: 1.00

Information Sources:

Comments :

Population and Building Exposure

Population: 16,821,518

Building Exposure : (\$ Millions)

Residential	2,093,045
Commercial	569,810
Other	512,009
Total	3,174,864

Counties : See Appendix

Major Metro Area :

Shelter Summary Report

April 25, 2024

	# of Displaced Households	# of People Needing Short Term Shelter
California		
Alameda	61,596	33,193
Alpine	0	0
Amador	0	0
Butte	0	0
Calaveras	0	0
Colusa	0	0
Contra Costa	6,719	3,817
El Dorado	0	0
Fresno	0	0
Glenn	0	0
Humboldt	0	0
Kern	0	0
Kings	0	0
Lake	12	7
Madera	0	0
Marin	517	258
Mariposa	0	0
Mendocino	0	0
Merced	2	1
Monterey	10	7
Napa	281	138
Nevada	0	0
Placer	0	0
Plumas	0	0
Sacramento	4	2
San Benito	1	0
San Francisco	28,120	11,522
San Joaquin	20	13
San Luis Obispo	0	0
San Mateo	1,004	475
Santa Clara	9,633	5,483
Santa Cruz	122	77

	# of Displaced Households	# of People Needing Short Term Shelter
Shasta	0	0
Sierra	0	0
Solano	698	382
Sonoma	6,695	3,258
Stanislaus	13	10
Sutter	0	0
Tehama	0	0
Trinity	0	0
Tulare	0	0
Tuolumne	0	0
Yolo	1	1
Yuba	0	0
Total	115,447	58,645
Region Total	115,447	58,645

Totals only reflect data for those census tracts/blocks included in the user's study region and will reflect the entire county/state only if all of the census blocks for that county/states were selected at the time of study region creation.