
Hazus: Earthquake Global Risk Report

Region Name: GreatValley14

Earthquake Scenario: greatvalley14kettlem_m7p12_se

Print Date: May 31, 2024

Disclaimer:

Totals only reflect data for those census tracts/blocks included in the user's study region.

The estimates of social and economic impacts contained in this report were produced using Hazus loss estimation methodology software which is based on current scientific and engineering knowledge. There are uncertainties inherent in any loss estimation technique. Therefore, there may be significant differences between the modeled results contained in this report and the actual social and economic losses following a specific earthquake. These results can be improved by using enhanced inventory, geotechnical, and observed ground motion data.

Table of Contents

Section	Page #
General Description of the Region	3
Building and Lifeline Inventory	4
Building Inventory	
Critical Facility Inventory	
Transportation and Utility Lifeline Inventory	
Earthquake Scenario Parameters	7
Direct Earthquake Damage	8
Buildings Damage	
Essential Facilities Damage	
Transportation and Utility Lifeline Damage	
Induced Earthquake Damage	14
Fire Following Earthquake	
Debris Generation	
Social Impact	15
Shelter Requirements	
Casualties	
Economic Loss	17
Building Related Losses	
Transportation and Utility Lifeline Losses	
Appendix A: County Listing for the Region	
Appendix B: Regional Population and Building Value Data	

General Description of the Region

Hazus-MH is a regional earthquake loss estimation model that was developed by the Federal Emergency Management Agency (FEMA) and the National Institute of Building Sciences. The primary purpose of Hazus is to provide a methodology and software application to develop multi-hazard losses at a regional scale. These loss estimates would be used primarily by local, state and regional officials to plan and stimulate efforts to reduce risks from multi-hazards and to prepare for emergency response and recovery.

The earthquake loss estimates provided in this report was based on a region that includes 21 county(ies) from the following state(s):

California

Note:

Appendix A contains a complete listing of the counties contained in the region.

The geographical size of the region is 61,993.30 square miles and contains 4,998 census tracts. There are over 7,075 thousand households in the region which has a total population of 21,108,066 people. The distribution of population by Total Region and County is provided in Appendix B.

There are an estimated 5,855 thousand buildings in the region with a total building replacement value (excluding contents) of (millions of dollars). Approximately 90.00 % of the buildings (and % of the building value) are associated with residential housing.

The replacement value of the transportation and utility lifeline systems is estimated to be 280,958 and 175,574 (millions of dollars) , respectively.

Building and Lifeline Inventory

Building Inventory

Hazus estimates that there are 5,855 thousand buildings in the region which have an aggregate total replacement value of (millions of dollars) . Appendix B provides a general distribution of the building value by Total Region and County.

In terms of building construction types found in the region, wood frame construction makes up 87% of the building inventory. The remaining percentage is distributed between the other general building types.

Critical Facility Inventory

Hazus breaks critical facilities into two (2) groups: essential facilities and high potential loss facilities (HPL). Essential facilities include hospitals, medical clinics, schools, fire stations, police stations and emergency operations facilities. High potential loss facilities include dams, levees, military installations, nuclear power plants and hazardous material sites.

For essential facilities, there are 319 hospitals in the region with a total bed capacity of 57,053 beds. There are 7,344 schools, 1,312 fire stations, 486 police stations and 122 emergency operation facilities. With respect to high potential loss facilities (HPL), there are no dams identified within the inventory. The inventory also includes no hazardous material sites, no military installations and no nuclear power plants.

Transportation and Utility Lifeline Inventory

Within Hazus, the lifeline inventory is divided between transportation and utility lifeline systems. There are seven (7) transportation systems that include highways, railways, light rail, bus, ports, ferry and airports. There are six (6) utility systems that include potable water, wastewater, natural gas, crude & refined oil, electric power and communications. The lifeline inventory data are provided in Tables 1 and 2.

The total value of the lifeline inventory is over 456,532.00 (millions of dollars). This inventory includes over 11,850.17 miles of highways, 11,800 bridges, 246,039.93 miles of pipes.

Table 1: Transportation System Lifeline Inventory

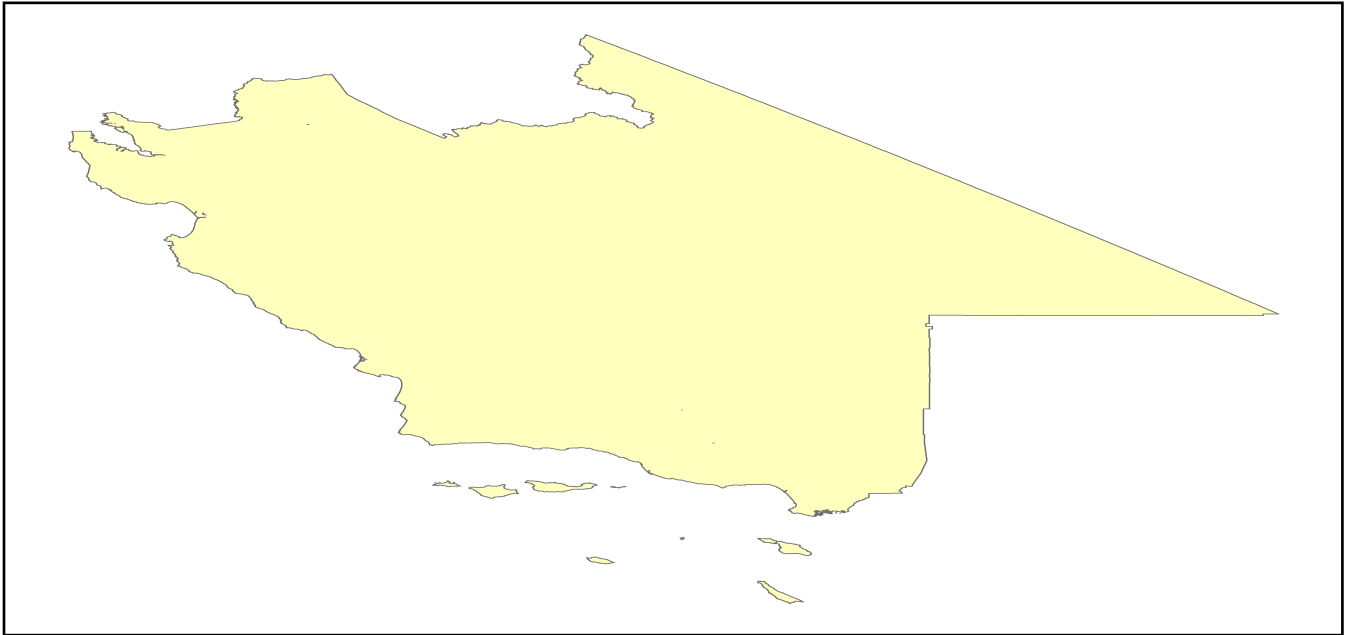
System	Component	# Locations/ # Segments	Replacement value (millions of dollars)
Highway	Bridges	11,800	62460.0798
	Segments	9,665	114764.8204
	Tunnels	72	1036.1494
	Subtotal		178261.0496
Railways	Bridges	1,603	9121.0700
	Facilities	128	340.8640
	Segments	3,057	77597.9296
	Tunnels	1	0.0938
	Subtotal		87059.9574
Light Rail	Bridges	114	18.2026
	Facilities	141	2858.2700
	Segments	7	4365.3859
	Tunnels	0	0.0000
	Subtotal		7241.8585
Bus	Facilities	58	127.6645
	Subtotal		127.6645
Ferry	Facilities	22	29.2820
	Subtotal		29.2820
Port	Facilities	355	1353.2049
	Subtotal		1353.2049
Airport	Facilities	152	4988.7391
	Runways	170	1896.2784
	Subtotal		6885.0175
		Total	280,958.00

Table 2: Utility System Lifeline Inventory

System	Component	# Locations / Segments	Replacement value (millions of dollars)
Potable Water	Distribution Lines	NA	4895.6532
	Facilities	36	1414.5840
	Pipelines	0	0.0000
		Subtotal	6310.2372
Waste Water	Distribution Lines	NA	2937.3919
	Facilities	125	21493.9750
	Pipelines	0	0.0000
		Subtotal	24431.3669
Natural Gas	Distribution Lines	NA	1958.2613
	Facilities	31	1107.0372
	Pipelines	592	15183.1578
		Subtotal	18248.4563
Oil Systems	Facilities	66	7.7880
	Pipelines	0	0.0000
		Subtotal	7.7880
Electrical Power	Facilities	532	126514.3139
		Subtotal	126514.3139
Communication	Facilities	525	61.9500
		Subtotal	61.9500
	Total		175,574.10

Earthquake Scenario

Hazus uses the following set of information to define the earthquake parameters used for the earthquake loss estimate provided in this report.



Scenario Name	greatvalley14kettlem_m7p12_se
Type of Earthquake	User-defined
Fault Name	NA
Historical Epicenter ID #	NA
Probabilistic Return Period	NA
Longitude of Epicenter	NA
Latitude of Epicenter	NA
Earthquake Magnitude	7.12
Depth (km)	NA
Rupture Length (Km)	NA
Rupture Orientation (degrees)	NA
Attenuation Function	NA

Direct Earthquake Damage

Building Damage

Hazus estimates that about 3,271 buildings will be at least moderately damaged. This is over 0.00 % of the buildings in the region. There are an estimated 21 buildings that will be damaged beyond repair. The definition of the 'damage states' is provided in Volume 1: Chapter 5 of the Hazus technical manual. Table 3 below summarizes the expected damage by general occupancy for the buildings in the region. Table 4 below summarizes the expected damage by general building type.

Damage Categories by General Occupancy Type

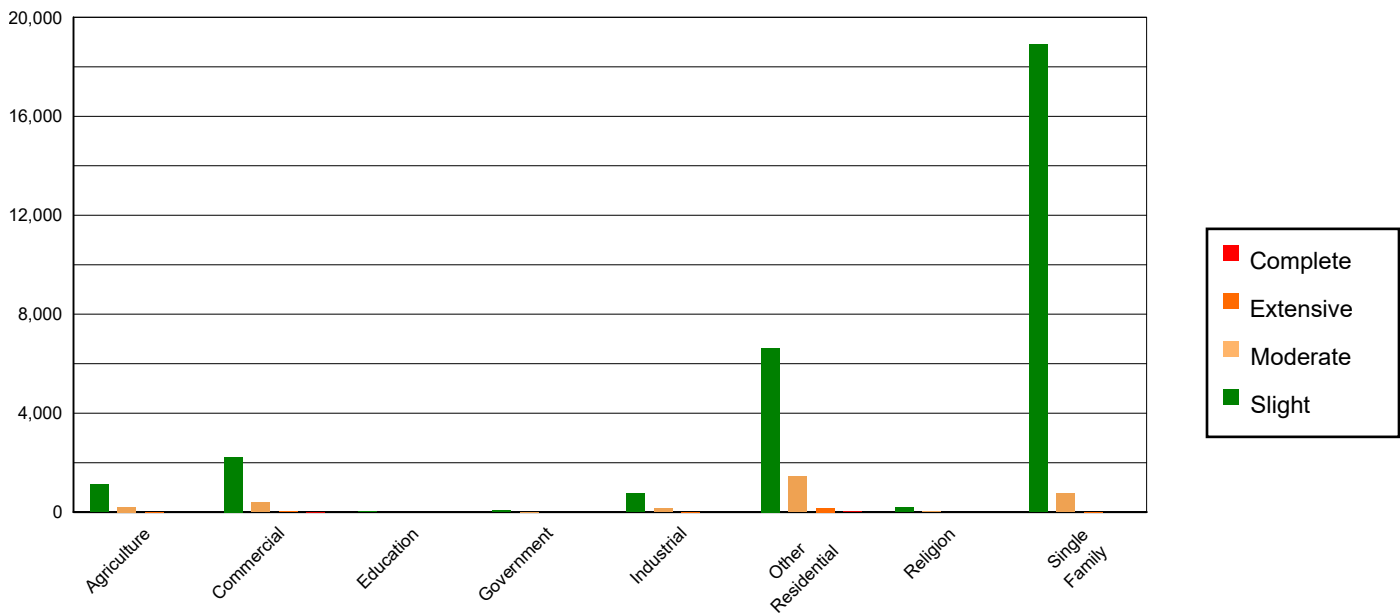


Table 3: Expected Building Damage by Occupancy

	None		Slight		Moderate		Extensive		Complete	
	Count	(%)	Count	(%)	Count	(%)	Count	(%)	Count	(%)
Agriculture	29344.60	0.50	1130.08	3.77	208.12	6.91	8.13	3.42	0.06	0.30
Commercial	401972.38	6.90	2232.55	7.45	404.82	13.44	33.54	14.12	6.71	31.46
Education	12221.35	0.21	27.74	0.09	4.80	0.16	0.11	0.05	0.00	0.00
Government	18748.51	0.32	68.16	0.23	10.08	0.33	0.25	0.11	0.00	0.01
Industrial	116670.56	2.00	766.26	2.56	160.38	5.32	11.33	4.77	0.46	2.16
Other Residential	907749.18	15.59	6636.81	22.16	1442.55	47.89	172.94	72.81	13.52	63.37
Religion	23858.90	0.41	177.63	0.59	33.89	1.12	3.20	1.35	0.38	1.80
Single Family	4312088.06	74.06	18913.06	63.14	747.67	24.82	8.02	3.38	0.19	0.90
Total	5,822,654		29,952		3,012		238		21	

Table 4: Expected Building Damage by Building Type (All Design Levels)

	None		Slight		Moderate		Extensive		Complete	
	Count	(%)	Count	(%)	Count	(%)	Count	(%)	Count	(%)
Wood	5072877.50	87.12	21988.87	73.41	863.02	28.65	10.23	4.31	0.45	2.13
Steel	126052.36	2.16	1519.47	5.07	408.82	13.57	29.09	12.25	2.81	13.16
Concrete	138538.56	2.38	894.80	2.99	158.12	5.25	17.28	7.27	2.30	10.80
Precast	67377.52	1.16	869.14	2.90	179.20	5.95	6.10	2.57	0.24	1.14
RM	269961.51	4.64	605.13	2.02	108.49	3.60	4.85	2.04	0.08	0.36
URM	49341.56	0.85	443.04	1.48	112.21	3.72	14.88	6.27	4.98	23.34
MH	98504.54	1.69	3631.85	12.13	1182.46	39.25	155.09	65.29	10.47	49.07
Total	5,822,654		29,952		3,012		238		21	

*Note:

- RM Reinforced Masonry
- URM Unreinforced Masonry
- MH Manufactured Housing

Essential Facility Damage

Before the earthquake, the region had 57,053 hospital beds available for use. On the day of the earthquake, the model estimates that only 56,686 hospital beds (99.00%) are available for use by patients already in the hospital and those injured by the earthquake. After one week, 100.00% of the beds will be back in service. By 30 days, 100.00% will be operational.

Table 5: Expected Damage to Essential Facilities

Classification	Total	# Facilities		
		At Least Moderate Damage > 50%	Complete Damage > 50%	With Functionality > 50% on day 1
Hospitals	319	0	0	318
Schools	7,344	0	0	7,321
EOCs	122	0	0	122
PoliceStations	486	0	0	483
FireStations	1,312	0	0	1,304

Transportation Lifeline Damage

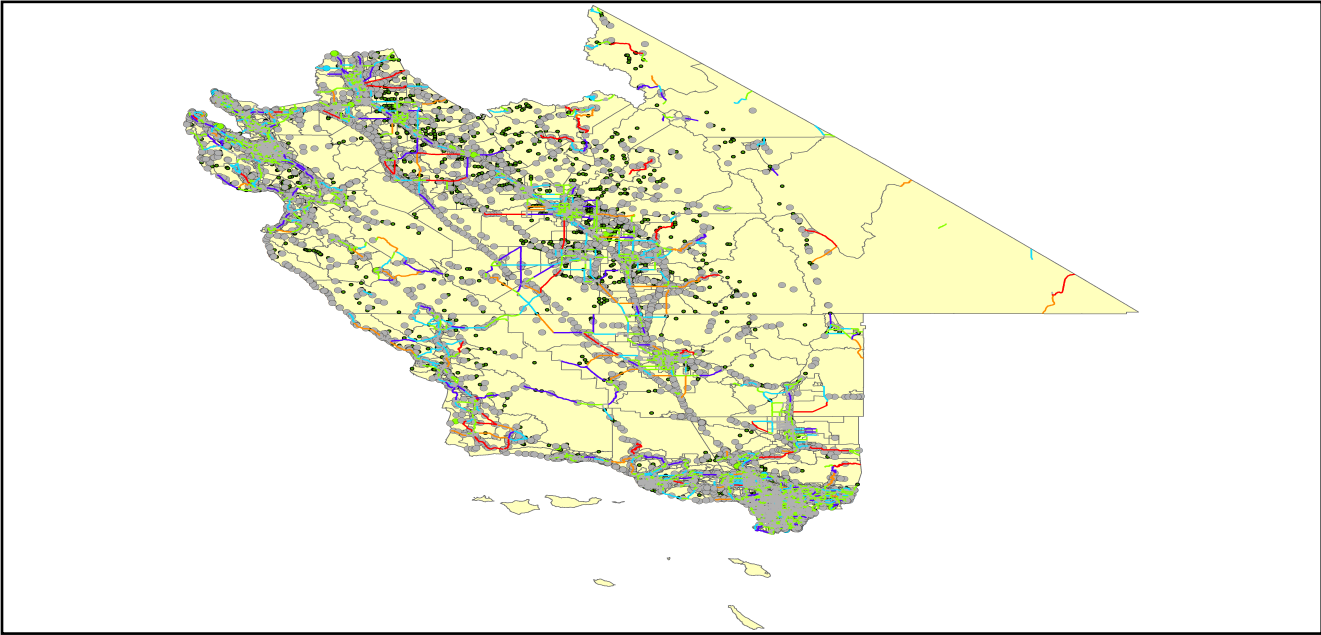


Table 6: Expected Damage to the Transportation Systems

System	Component	Number of Locations_				
		Locations/ Segments	With at Least Mod. Damage	With Complete Damage	With Functionality > 50 %	
					After Day 1	After Day 7
Highway	Segments	9,665	0	0	9,665	9,665
	Bridges	11,800	5	0	11,794	11,798
	Tunnels	72	0	0	72	72
Railways	Segments	3,057	0	0	3,057	3,057
	Bridges	1,603	0	0	1,603	1,603
	Tunnels	1	0	0	1	1
	Facilities	128	0	0	128	128
Light Rail	Segments	7	0	0	7	7
	Bridges	114	0	0	114	114
	Tunnels	0	0	0	0	0
	Facilities	141	0	0	141	141
Bus	Facilities	58	0	0	58	58
Ferry	Facilities	22	0	0	22	22
Port	Facilities	355	0	0	355	355
Airport	Facilities	152	0	0	152	152
	Runways	170	0	0	170	170

Table 6 provides damage estimates for the transportation system.

Note: Roadway segments, railroad tracks and light rail tracks are assumed to be damaged by ground failure only. If ground failure maps are not provided, damage estimates to these components will not be computed.

Tables 7-9 provide information on the damage to the utility lifeline systems. Table 7 provides damage to the utility system facilities. Table 8 provides estimates on the number of leaks and breaks by the pipelines of the utility systems. For electric power and potable water, Hazus performs a simplified system performance analysis. Table 9 provides a summary of the system performance information.

Table 7 : Expected Utility System Facility Damage

System	# of Locations				
	Total #	With at Least Moderate Damage	With Complete Damage	with Functionality > 50 %	
				After Day 1	After Day 7
Potable Water	36	0	0	36	36
Waste Water	125	0	0	125	125
Natural Gas	31	2	0	29	31
Oil Systems	66	0	0	66	66
Electrical Power	532	25	0	515	527
Communication	525	1	0	525	525

Table 8 : Expected Utility System Pipeline Damage (Site Specific)

System	Total Pipelines Length (miles)	Number of Leaks	Number of Breaks
Potable Water	152,101	2502	625
Waste Water	91,261	1257	314
Natural Gas	2,679	0	0
Oil	0	0	0

Table 9: Expected Potable Water and Electric Power System Performance

	Total # of Households	Number of Households without Service				
		At Day 1	At Day 3	At Day 7	At Day 30	At Day 90
Potable Water	7,075,844	5,371	3,184	397	0	0
Electric Power		3,827	2,684	1,240	133	5

Induced Earthquake Damage

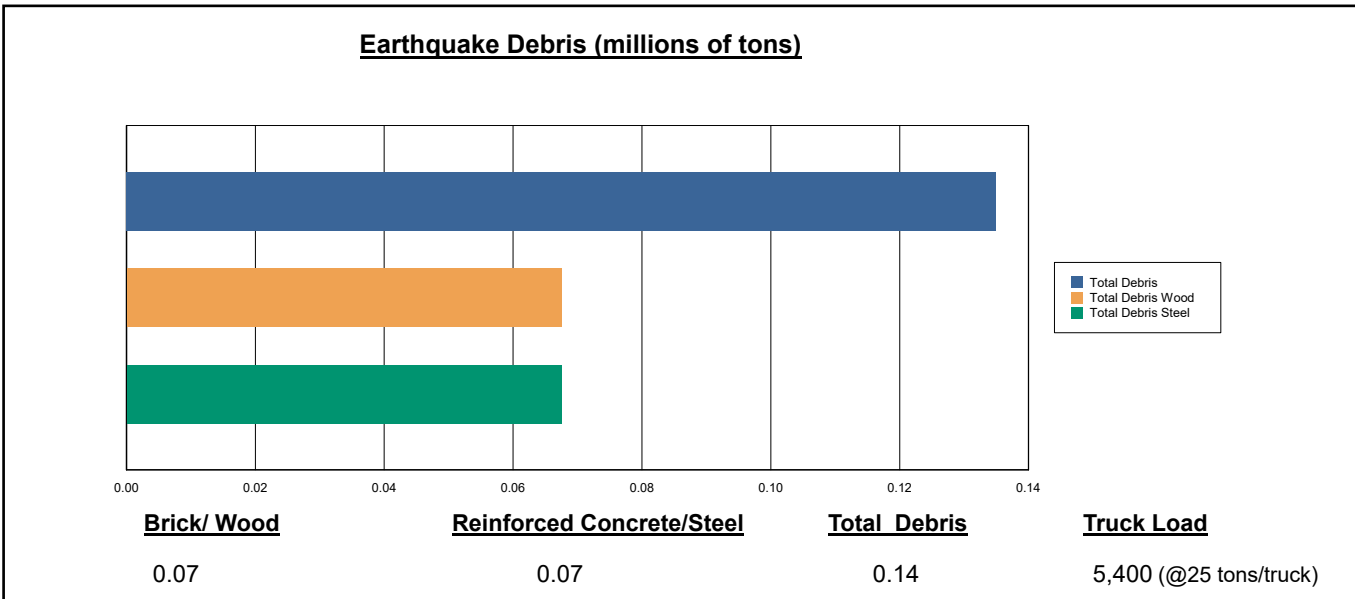
Fire Following Earthquake

Fires often occur after an earthquake. Because of the number of fires and the lack of water to fight the fires, they can often burn out of control. Hazus uses a Monte Carlo simulation model to estimate the number of ignitions and the amount of burnt area. For this scenario, the model estimates that there will be 5 ignitions that will burn about 0.09 sq. mi (0.00 % of the region's total area.) The model also estimates that the fires will displace about 697 people and burn about 79 (millions of dollars) of building value.

Debris Generation

Hazus estimates the amount of debris that will be generated by the earthquake. The model breaks the debris into two general categories: a) Brick/Wood and b) Reinforced Concrete/Steel. This distinction is made because of the different types of material handling equipment required to handle the debris.

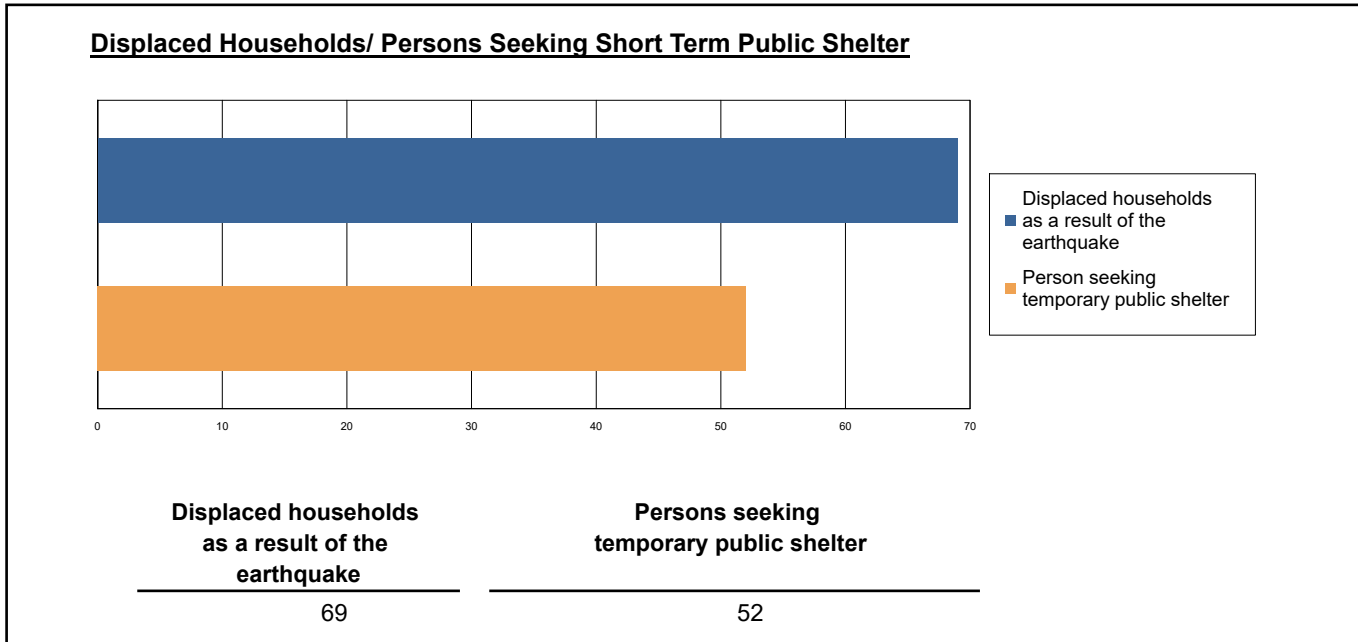
The model estimates that a total of 135,000 tons of debris will be generated. Of the total amount, Brick/Wood comprises 50.00% of the total, with the remainder being Reinforced Concrete/Steel. If the debris tonnage is converted to an estimated number of truckloads, it will require 5,400 truckloads (@25 tons/truck) to remove the debris generated by the earthquake.



Social Impact

Shelter Requirement

Hazus estimates the number of households that are expected to be displaced from their homes due to the earthquake and the number of displaced people that will require accommodations in temporary public shelters. The model estimates 69 households to be displaced due to the earthquake. Of these, 52 people (out of a total population of 21,108,066) will seek temporary shelter in public shelters.



Casualties

Hazus estimates the number of people that will be injured and killed by the earthquake. The casualties are broken down into four (4) severity levels that describe the extent of the injuries. The levels are described as follows;

- Severity Level 1: Injuries will require medical attention but hospitalization is not needed.
- Severity Level 2: Injuries will require hospitalization but are not considered life-threatening
- Severity Level 3: Injuries will require hospitalization and can become life threatening if not promptly treated.
- Severity Level 4: Victims are killed by the earthquake.

The casualty estimates are provided for three (3) times of day: 2:00 AM, 2:00 PM and 5:00 PM. These times represent the periods of the day that different sectors of the community are at their peak occupancy loads. The 2:00 AM estimate considers that the residential occupancy load is maximum, the 2:00 PM estimate considers that the educational, commercial and industrial sector loads are maximum and 5:00 PM represents peak commute time.

Table 10 provides a summary of the casualties estimated for this earthquake

Table 10: Casualty Estimates

		Level 1	Level 2	Level 3	Level 4
2 AM	Commercial	0.72	0.07	0.01	0.01
	Commuting	0.01	0.01	0.01	0.00
	Educational	0.00	0.00	0.00	0.00
	Hotels	0.01	0.00	0.00	0.00
	Industrial	0.80	0.07	0.00	0.01
	Other-Residential	46.02	4.19	0.21	0.38
	Single Family	35.56	0.78	0.00	0.00
	Total	83	5	0	0
2 PM	Commercial	59.74	5.90	0.49	0.94
	Commuting	0.06	0.07	0.13	0.03
	Educational	12.92	0.83	0.01	0.02
	Hotels	0.00	0.00	0.00	0.00
	Industrial	5.81	0.49	0.03	0.05
	Other-Residential	15.52	1.33	0.06	0.10
	Single Family	10.41	0.22	0.00	0.00
	Total	104	9	1	1
5 PM	Commercial	45.35	5.08	0.49	0.92
	Commuting	0.92	1.12	2.02	0.38
	Educational	1.32	0.07	0.00	0.00
	Hotels	0.00	0.00	0.00	0.00
	Industrial	3.63	0.31	0.02	0.03
	Other-Residential	16.72	1.56	0.08	0.15
	Single Family	12.79	0.30	0.00	0.00
	Total	81	8	3	1

Economic Loss

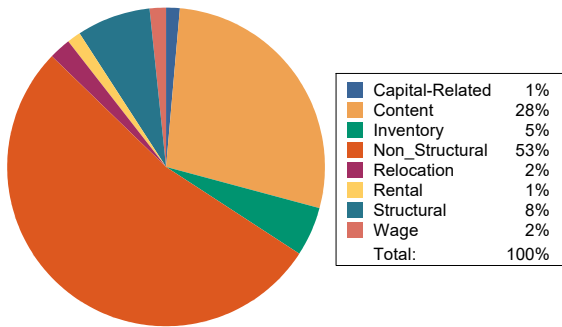
The total economic loss estimated for the earthquake is 4,075.03 (millions of dollars), which includes building and lifeline related losses based on the region's available inventory. The following three sections provide more detailed information about these losses.

Building-Related Losses

The building losses are broken into two categories: direct building losses and business interruption losses. The direct building losses are the estimated costs to repair or replace the damage caused to the building and its contents. The business interruption losses are the losses associated with inability to operate a business because of the damage sustained during the earthquake. Business interruption losses also include the temporary living expenses for those people displaced from their homes because of the earthquake.

The total building-related losses were 1,747.64 (millions of dollars); 6 % of the estimated losses were related to the business interruption of the region. By far, the largest loss was sustained by the residential occupancies which made up over 38 % of the total loss. Table 11 below provides a summary of the losses associated with the building damage.

Earthquake Losses by Loss Type (\$ millions)



Earthquake Losses by Occupancy Type (\$ millions)

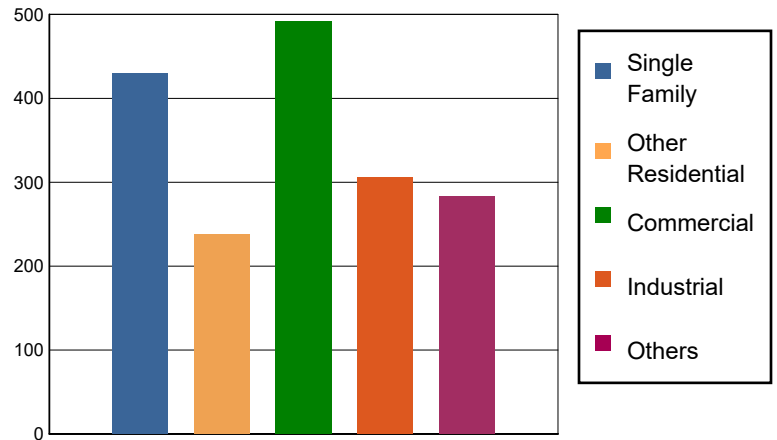


Table 11: Building-Related Economic Loss Estimates
(Millions of dollars)

Category	Area	Single Family	Other Residential	Commercial	Industrial	Others	Total
Income Losses							
	Wage	0.0000	0.5735	22.6334	1.7154	2.1075	27.0298
	Capital-Related	0.0000	0.2435	21.6834	1.0912	0.6249	23.6430
	Rental	2.6042	5.7658	13.7869	1.0350	0.7087	23.9006
	Relocation	5.1066	6.3548	14.1839	4.8686	6.5725	37.0864
	Subtotal	7.7108	12.9376	72.2876	8.7102	10.0136	111.6598
Capital Stock Losses							
	Structural	35.8470	17.7403	31.2797	19.4944	30.6805	135.0419
	Non_Structural	276.9108	159.8063	222.0168	150.2136	118.8053	927.7528
	Content	109.1971	47.4176	139.3007	108.5477	82.0826	486.5457
	Inventory	0.0000	0.0000	26.8434	18.6759	41.1206	86.6399
	Subtotal	421.9549	224.9642	419.4406	296.9316	272.6890	1635.9803
	Total	429.67	237.90	491.73	305.64	282.70	1747.64

Transportation and Utility Lifeline Losses

For the transportation and utility lifeline systems, Hazus computes the direct repair cost for each component only. There are no losses computed by Hazus for business interruption due to lifeline outages. Tables 12 & 13 provide a detailed breakdown in the expected lifeline losses.

Table 12: Transportation System Economic Losses
(Millions of dollars)

System	Component	Inventory Value	Economic Loss	Loss Ratio (%)
Highway	Segments	114764.8204	0.0000	0.00
	Bridges	62460.0798	16.2635	0.03
	Tunnels	1036.1494	0.0000	0.00
	Subtotal	178261.0496	16.2635	
Railways	Segments	77597.9296	0.0000	0.00
	Bridges	9121.0700	0.3222	0.00
	Tunnels	0.0938	0.0000	0.00
	Facilities	340.8640	3.7599	1.10
	Subtotal	87059.9574	4.0821	
Light Rail	Segments	4365.3859	0.0000	0.00
	Bridges	18.2026	0.0000	0.00
	Tunnels	0.0000	0.0000	0.00
	Facilities	2858.2700	1.5594	0.05
	Subtotal	7241.8585	1.5594	
Bus	Facilities	127.6645	2.3536	1.84
	Subtotal	127.6645	2.3536	
Ferry	Facilities	29.2820	0.0128	0.04
	Subtotal	29.2820	0.0128	
Port	Facilities	1353.2049	2.2080	0.16
	Subtotal	1353.2049	2.2080	
Airport	Facilities	4988.7391	19.3773	0.39
	Runways	1896.2784	0.0000	0.00
	Subtotal	6885.0175	19.3773	
	Total	280,958.03	45.86	

Table 13: Utility System Economic Losses

(Millions of dollars)

System	Component	Inventory Value	Economic Loss	Loss Ratio (%)
Potable Water	Pipelines	0.0000	0.0000	0.00
	Facilities	1414.5840	1.2470	0.09
	Distribution Lines	4895.6532	11.2585	0.23
	Subtotal	6310.2372	12.5055	
Waste Water	Pipelines	0.0000	0.0000	0.00
	Facilities	21493.9750	41.6820	0.19
	Distribution Lines	2937.3919	5.6554	0.19
	Subtotal	24431.3669	47.3374	
Natural Gas	Pipelines	15183.1578	0.0000	0.00
	Facilities	1107.0372	39.7647	3.59
	Distribution Lines	1958.2613	1.9375	0.10
	Subtotal	18248.4563	41.7022	
Oil Systems	Pipelines	0.0000	0.0000	0.00
	Facilities	7.7880	0.0086	0.11
	Subtotal	7.7880	0.0086	
Electrical Power	Facilities	126514.3139	2179.6243	1.72
	Subtotal	126514.3139	2179.6243	
Communication	Facilities	61.9500	0.3585	0.58
	Subtotal	61.9500	0.3585	
	Total	175,574.11	2,281.54	

Appendix A: County Listing for the Region

Alameda,CA
Fresno,CA
Inyo,CA
Kern,CA
Kings,CA
Los Angeles,CA
Madera,CA
Mariposa,CA
Merced,CA
Mono,CA
Monterey,CA
San Benito,CA
San Joaquin,CA
San Luis Obispo,CA
San Mateo,CA
Santa Barbara,CA
Santa Clara,CA
Santa Cruz,CA
Stanislaus,CA
Tulare,CA
Ventura,CA

Appendix B: Regional Population and Building Value Data

State	County Name	Population	Building Value (millions of dollars)		
			Residential	Non-Residential	Total
California	Alameda	1,682,353	209,951	122,639	332,590
	Fresno	1,008,654	98,532	61,772	160,304
	Inyo	19,016	2,951	1,970	4,921
	Kern	909,235	87,567	59,168	146,736
	Kings	152,486	13,719	7,861	21,581
	Los Angeles	10,014,009	950,697	566,995	1,517,692
	Madera	156,255	18,025	9,641	27,667
	Mariposa	17,131	3,299	1,141	4,441
	Merced	281,202	25,194	26,098	51,292
	Mono	13,195	3,293	1,083	4,377
	Monterey	439,035	47,655	28,750	76,405
	San Benito	64,209	9,440	3,799	13,239
	San Joaquin	779,233	82,706	56,882	139,589
	San Luis Obispo	282,424	41,720	20,896	62,616
	San Mateo	764,442	110,372	44,995	155,368
	Santa Barbara	448,229	49,971	28,481	78,452
	Santa Clara	1,936,259	261,111	120,471	381,582
	Santa Cruz	270,861	36,147	18,805	54,952
	Stanislaus	552,878	62,937	37,511	100,449
	Tulare	473,117	43,262	31,210	74,472
Ventura	843,843	99,299	52,072	151,371	
Total Region		21,108,066	2,257,848	1,302,240	3,560,096

Building Inspection Tagging (Counts)

Total Economic Loss
Total:

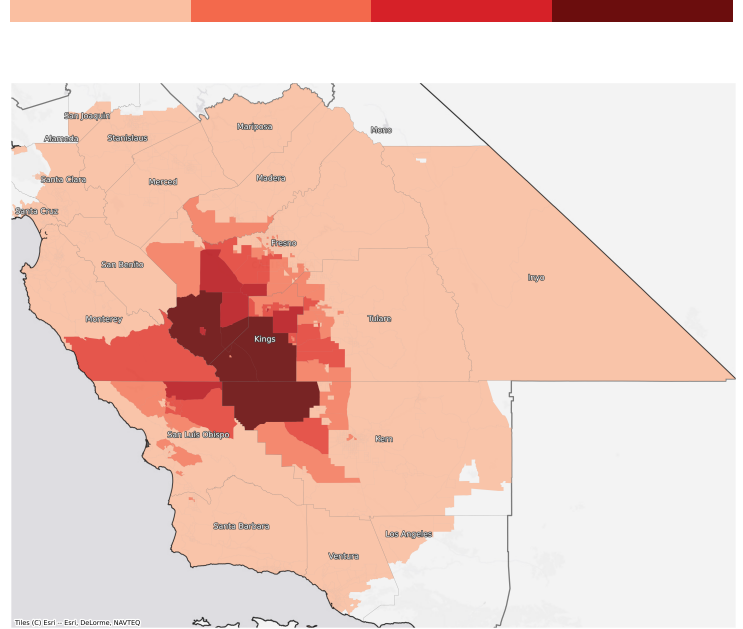
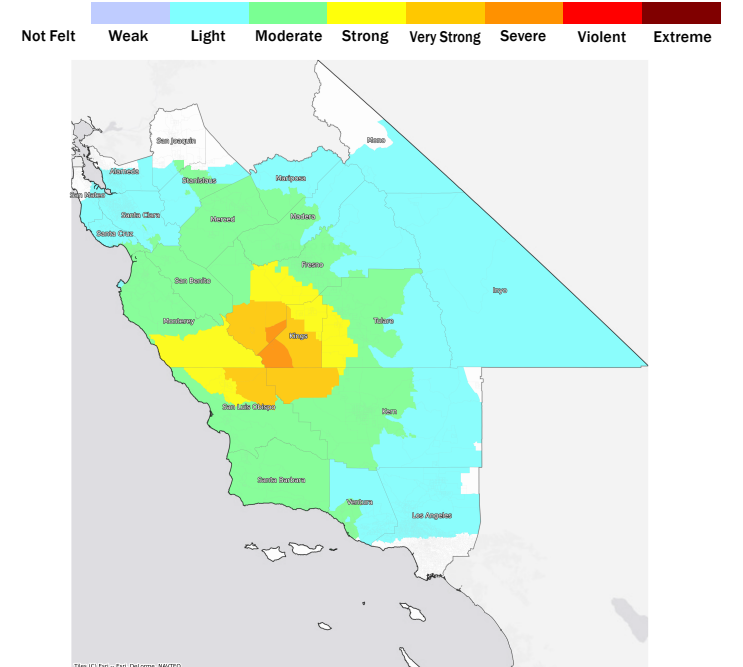
Top Counties	State	Total

Injuries & Fatalities
**Total Day:
Total Night:**

Top Counties	State	Injuries (day/night)	Fatalities (day/night)

Displaced Households & Short-Term Shelter Needs
**Total Displaced:
Total Needing Shelter:**

Top Counties	State	Displaced	Needing Shelter

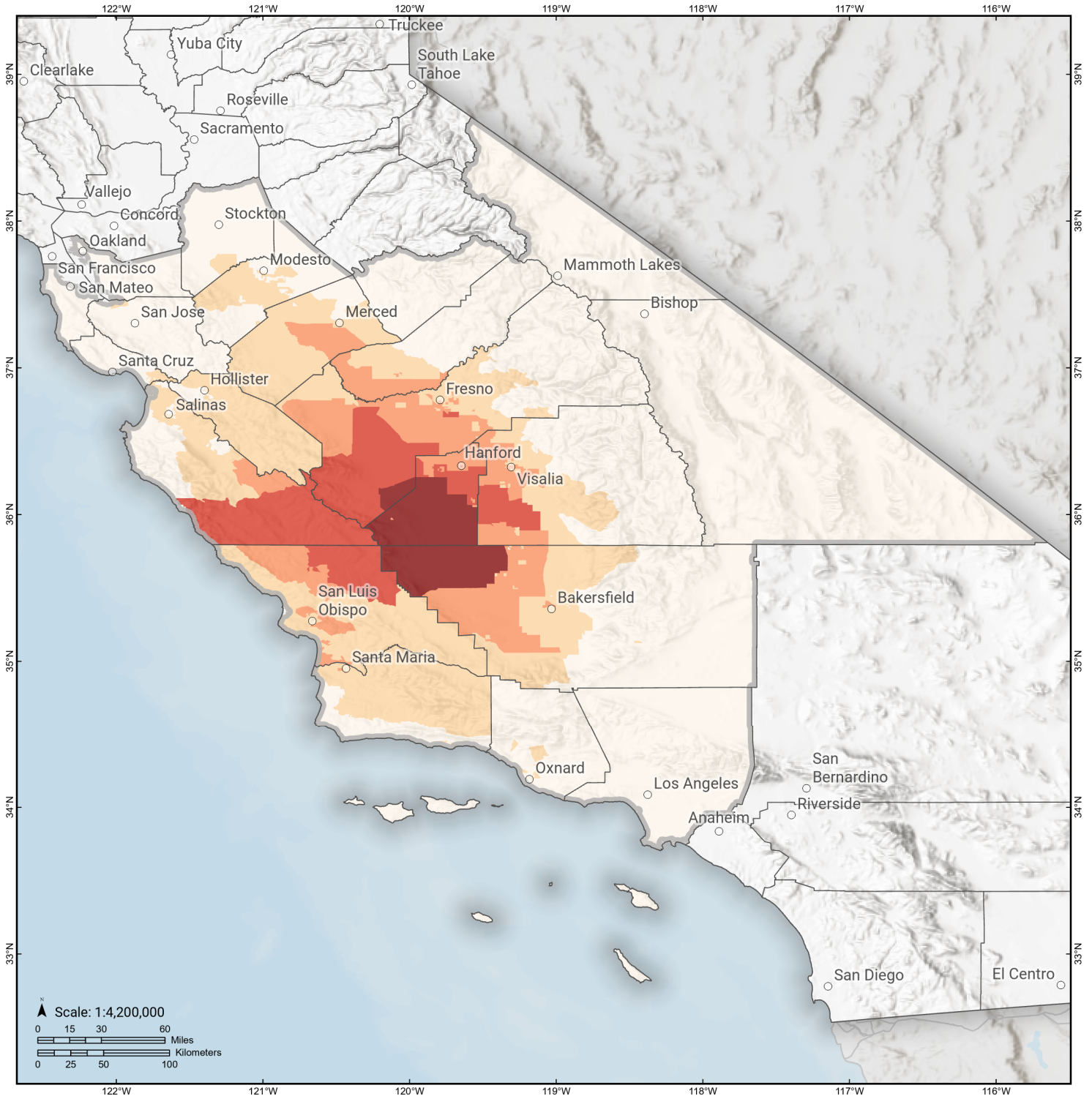
Economic Impacts by Census Tract

Ground Shaking

Debris
**Total Tons:
Total Truckloads:**

Type	Tons

The estimates of social and economic impacts contained in this report were produced using Hazus loss estimation methodology software which is based on current scientific and engineering knowledge. There are uncertainties inherent in any loss estimation technique. Therefore, there may be significant differences between the modeled results contained in this report and the actual social and economic losses following a specific earthquake.

Great Valley 14 (Kettleman Hills)

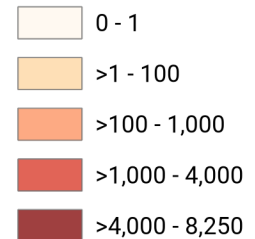
Debris Generated by Census Tract



Study Region: Great Valley 14 (Kettleman Hills)
Scenario: greatvalley14kettlem_m7p12_se

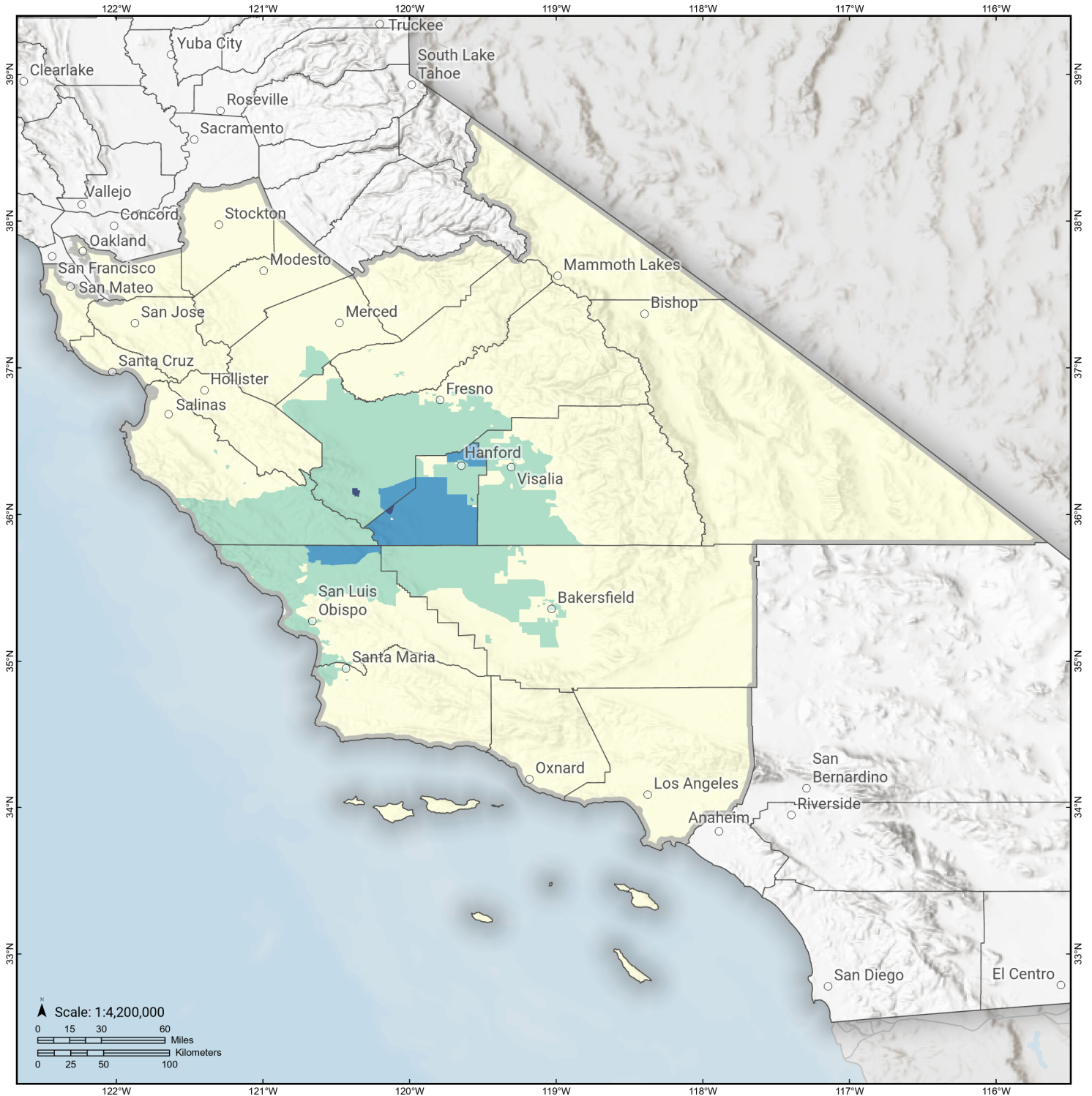


Debris Generated (in tons)



Great Valley 14 (Kettleman Hills)

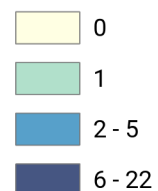
Displaced Households by Census Tract



Study Region: Great Valley 14 (Kettleman Hills)
Scenario: greatvalley14kettlem_m7p12_se

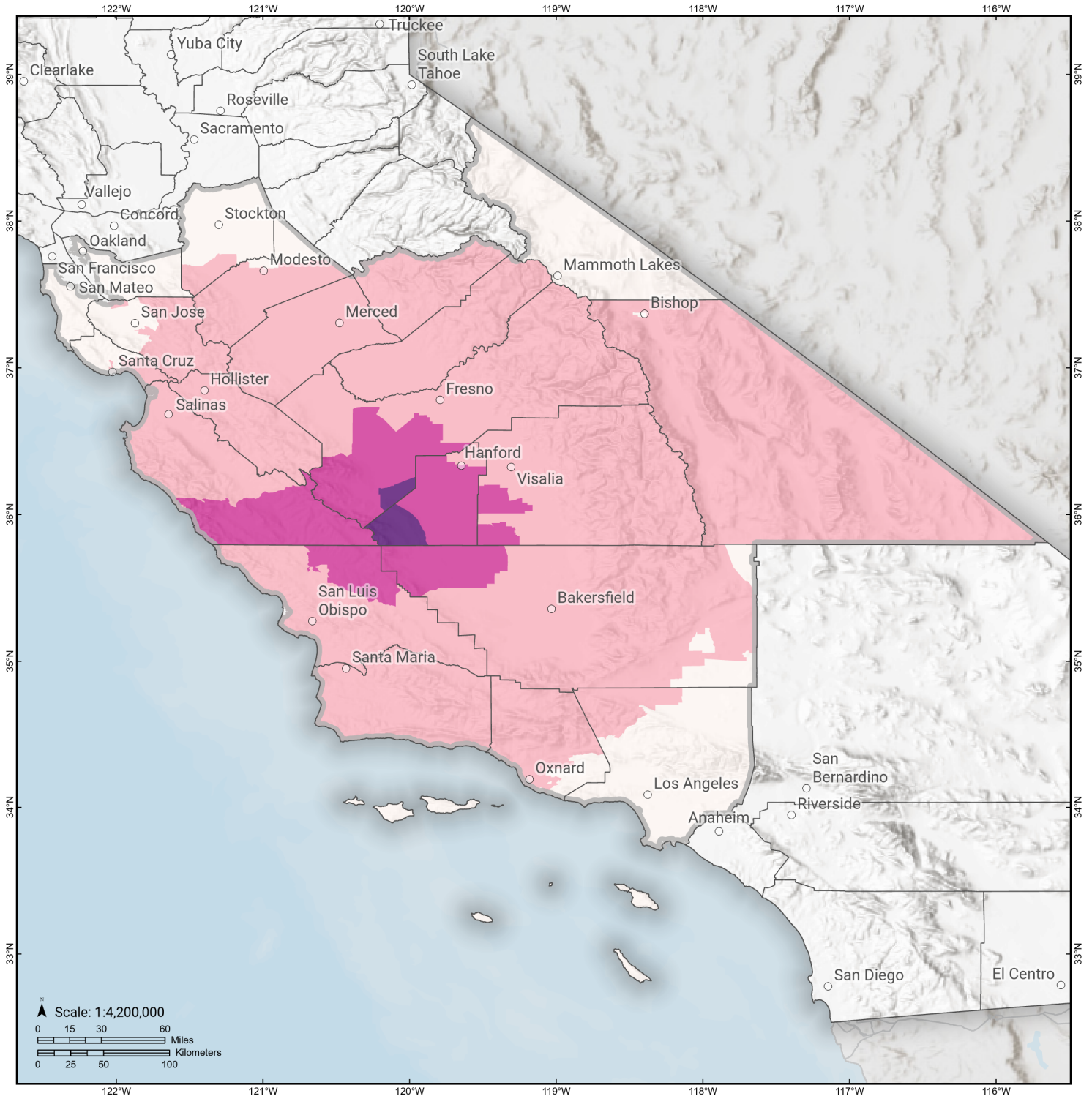


Displaced Households



Great Valley 14 (Kettleman Hills)

Loss Ratio by Census Tract



Study Region: Great Valley 14 (Kettleman Hills)
Scenario: greatvalley14kettlem_m7p12_se

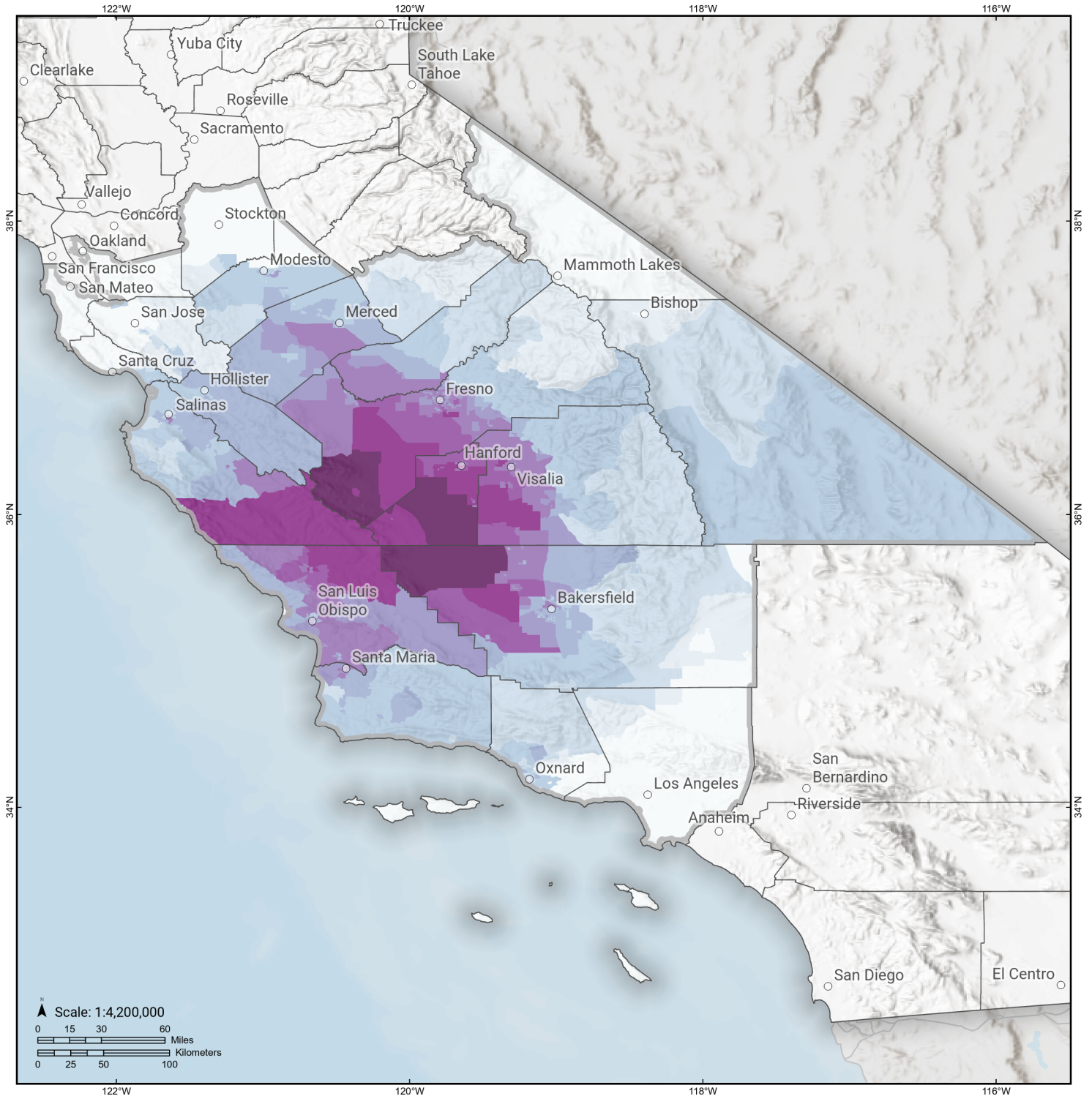


Loss Ratio (ratio of building related economic loss to exposed value of buildings)

- 0%
- >0 - 1%
- >1 - 5%
- >5 - 12%

Great Valley 14 (Kettleman Hills)

Total Building Related Economic Loss by Census Tract



Study Region: Great Valley 14 (Kettleman Hills)

Scenario: greatvalley14kettlem_m7p12_se



Economic Loss (in thousands of USD \$)

0	>500 - 1,000
>0 - 1	>1,000 - 5,000
>1 - 10	>5,000 - 10,000
>10 - 100	>10,000 - 50,000
>100 - 500	>50,000 - 66,700

Building Damage by Count by General Occupancy

May 31, 2024

	# of Buildings					Total
	None	Slight	Moderate	Extensive	Complete	
California						
Alameda						
<i>Agriculture</i>	422	0	0	0	0	422
<i>Commercial</i>	31,989	0	0	0	0	31,989
<i>Education</i>	1,117	0	0	0	0	1,117
<i>Government</i>	10,528	0	0	0	0	10,528
<i>Industrial</i>	10,205	0	0	0	0	10,205
<i>Religion</i>	1,986	0	0	0	0	1,986
<i>Other Residential</i>	61,396	0	0	0	0	61,396
<i>Single Family</i>	344,173	0	0	0	0	344,173
Fresno						
<i>Agriculture</i>	2,908	427	83	3	0	3,421
<i>Commercial</i>	20,148	761	135	9	1	21,054
<i>Education</i>	592	9	1	0	0	602
<i>Government</i>	276	13	2	0	0	291
<i>Industrial</i>	5,004	274	65	5	0	5,348
<i>Religion</i>	1,433	63	11	0	0	1,507
<i>Other Residential</i>	38,840	1,752	330	47	3	40,973
<i>Single Family</i>	221,397	4,876	152	1	0	226,425
Inyo						

		# of Buildings					
		None	Slight	Moderate	Extensive	Complete	Total
Kern	<i>Agriculture</i>	32	0	0	0	0	32
	<i>Commercial</i>	721	0	0	0	0	721
	<i>Education</i>	41	0	0	0	0	41
	<i>Government</i>	101	0	0	0	0	101
	<i>Industrial</i>	257	0	0	0	0	257
	<i>Religion</i>	57	0	0	0	0	57
	<i>Other Residential</i>	4,050	0	0	0	0	4,050
	<i>Single Family</i>	4,446	0	0	0	0	4,446
	<i>Agriculture</i>	4,438	179	27	1	0	4,645
	<i>Commercial</i>	15,360	186	20	0	0	15,567
	<i>Education</i>	460	1	0	0	0	462
	<i>Government</i>	429	12	2	0	0	443
	<i>Industrial</i>	5,943	92	11	0	0	6,047
	<i>Religion</i>	1,500	21	3	0	0	1,524
Kings	<i>Other Residential</i>	53,533	814	168	6	0	54,520
	<i>Single Family</i>	204,081	1,053	5	0	0	205,139
	<i>Agriculture</i>	198	78	28	2	0	306
	<i>Commercial</i>	1,705	440	145	22	6	2,318
	<i>Education</i>	89	11	3	0	0	103
	<i>Government</i>	55	13	3	0	0	72
	<i>Industrial</i>	387	119	44	4	0	555
	<i>Religion</i>	150	42	15	3	0	210
	<i>Other Residential</i>	2,908	1,020	309	94	10	4,342

	# of Buildings					Total
	None	Slight	Moderate	Extensive	Complete	
<i>Single Family</i>	29,075	6,627	535	7	0	36,245
Los Angeles						
<i>Agriculture</i>	2,032	0	0	0	0	2,032
<i>Commercial</i>	190,861	0	0	0	0	190,861
<i>Education</i>	5,486	0	0	0	0	5,486
<i>Government</i>	3,031	0	0	0	0	3,031
<i>Industrial</i>	53,126	0	0	0	0	53,126
<i>Religion</i>	10,651	0	0	0	0	10,651
<i>Other Residential</i>	481,671	0	0	0	0	481,671
<i>Single Family</i>	1,803,140	0	0	0	0	1,803,140
Madera						
<i>Agriculture</i>	621	11	2	0	0	634
<i>Commercial</i>	2,875	28	2	0	0	2,905
<i>Education</i>	115	0	0	0	0	115
<i>Government</i>	110	1	0	0	0	111
<i>Industrial</i>	892	10	1	0	0	903
<i>Religion</i>	118	1	0	0	0	119
<i>Other Residential</i>	6,566	65	4	0	0	6,635
<i>Single Family</i>	38,745	167	0	0	0	38,912
Mariposa						
<i>Agriculture</i>	29	0	0	0	0	29
<i>Commercial</i>	689	0	0	0	0	689
<i>Education</i>	27	0	0	0	0	27
<i>Government</i>	33	0	0	0	0	33
<i>Industrial</i>	94	0	0	0	0	94

	# of Buildings					Total
	None	Slight	Moderate	Extensive	Complete	
<i>Religion</i>	36	0	0	0	0	36
<i>Other Residential</i>	307	0	0	0	0	307
<i>Single Family</i>	8,084	0	0	0	0	8,084
Merced						
<i>Agriculture</i>	7,608	40	4	0	0	7,653
<i>Commercial</i>	4,744	9	0	0	0	4,754
<i>Education</i>	163	0	0	0	0	163
<i>Government</i>	171	0	0	0	0	171
<i>Industrial</i>	1,019	2	0	0	0	1,022
<i>Religion</i>	344	1	0	0	0	345
<i>Other Residential</i>	10,750	35	2	0	0	10,787
<i>Single Family</i>	63,565	33	0	0	0	63,598
Mono						
<i>Agriculture</i>	145	0	0	0	0	145
<i>Commercial</i>	654	0	0	0	0	654
<i>Education</i>	21	0	0	0	0	21
<i>Government</i>	18	0	0	0	0	18
<i>Industrial</i>	108	0	0	0	0	108
<i>Religion</i>	32	0	0	0	0	32
<i>Other Residential</i>	1,759	0	0	0	0	1,759
<i>Single Family</i>	7,704	0	0	0	0	7,704
Monterey						
<i>Agriculture</i>	1,692	101	21	1	0	1,815
<i>Commercial</i>	9,209	33	4	0	0	9,246
<i>Education</i>	239	0	0	0	0	239

	# of Buildings					Total
	None	Slight	Moderate	Extensive	Complete	
<i>Government</i>	184	1	0	0	0	185
<i>Industrial</i>	1,839	10	1	0	0	1,850
<i>Religion</i>	577	3	0	0	0	580
<i>Other Residential</i>	19,588	186	35	0	0	19,809
<i>Single Family</i>	90,741	135	1	0	0	90,876
San Benito						
<i>Agriculture</i>	252	1	0	0	0	253
<i>Commercial</i>	1,079	1	0	0	0	1,080
<i>Education</i>	42	0	0	0	0	42
<i>Government</i>	45	0	0	0	0	45
<i>Industrial</i>	326	0	0	0	0	326
<i>Religion</i>	64	0	0	0	0	64
<i>Other Residential</i>	1,373	2	0	0	0	1,375
<i>Single Family</i>	14,723	3	0	0	0	14,726
San Joaquin						
<i>Agriculture</i>	753	0	0	0	0	753
<i>Commercial</i>	12,864	0	0	0	0	12,864
<i>Education</i>	395	0	0	0	0	395
<i>Government</i>	304	0	0	0	0	304
<i>Industrial</i>	4,928	0	0	0	0	4,928
<i>Religion</i>	877	0	0	0	0	877
<i>Other Residential</i>	21,805	0	0	0	0	21,805
<i>Single Family</i>	188,920	2	0	0	0	188,922
San Luis Obispo						
<i>Agriculture</i>	388	28	5	0	0	421

	# of Buildings					Total
	None	Slight	Moderate	Extensive	Complete	
<i>Commercial</i>	8,950	373	51	2	0	9,375
<i>Education</i>	179	3	0	0	0	182
<i>Government</i>	178	6	1	0	0	185
<i>Industrial</i>	2,397	136	22	1	0	2,556
<i>Religion</i>	342	16	2	0	0	360
<i>Other Residential</i>	18,406	1,362	424	24	0	20,216
<i>Single Family</i>	82,798	2,807	34	0	0	85,639
San Mateo						
<i>Agriculture</i>	539	0	0	0	0	539
<i>Commercial</i>	14,395	0	0	0	0	14,395
<i>Education</i>	489	0	0	0	0	489
<i>Government</i>	299	0	0	0	0	299
<i>Industrial</i>	4,472	0	0	0	0	4,472
<i>Religion</i>	736	0	0	0	0	736
<i>Other Residential</i>	22,453	0	0	0	0	22,453
<i>Single Family</i>	159,931	0	0	0	0	159,931
Santa Barbara						
<i>Agriculture</i>	462	2	0	0	0	464
<i>Commercial</i>	9,779	38	3	0	0	9,820
<i>Education</i>	299	0	0	0	0	299
<i>Government</i>	238	1	0	0	0	239
<i>Industrial</i>	2,823	15	1	0	0	2,840
<i>Religion</i>	618	3	0	0	0	621
<i>Other Residential</i>	23,813	277	22	0	0	24,111

	# of Buildings					Total
	None	Slight	Moderate	Extensive	Complete	
<i>Single Family</i>	98,766	216	0	0	0	98,982
Santa Clara						
<i>Agriculture</i>	895	0	0	0	0	895
<i>Commercial</i>	35,468	1	0	0	0	35,469
<i>Education</i>	1,173	0	0	0	0	1,173
<i>Government</i>	502	0	0	0	0	502
<i>Industrial</i>	9,433	0	0	0	0	9,433
<i>Religion</i>	1,540	0	0	0	0	1,540
<i>Other Residential</i>	59,158	2	0	0	0	59,160
<i>Single Family</i>	427,219	0	0	0	0	427,219
Santa Cruz						
<i>Agriculture</i>	840	0	0	0	0	840
<i>Commercial</i>	6,693	1	0	0	0	6,694
<i>Education</i>	225	0	0	0	0	225
<i>Government</i>	127	0	0	0	0	127
<i>Industrial</i>	1,819	0	0	0	0	1,819
<i>Religion</i>	359	0	0	0	0	359
<i>Other Residential</i>	14,889	3	0	0	0	14,892
<i>Single Family</i>	68,870	0	0	0	0	68,870
Stanislaus						
<i>Agriculture</i>	1,239	0	0	0	0	1,239
<i>Commercial</i>	10,364	4	0	0	0	10,369
<i>Education</i>	307	0	0	0	0	307
<i>Government</i>	680	0	0	0	0	680
<i>Industrial</i>	3,474	1	0	0	0	3,475

	# of Buildings					Total
	None	Slight	Moderate	Extensive	Complete	
<i>Religion</i>	456	0	0	0	0	456
<i>Other Residential</i>	19,563	6	0	0	0	19,569
<i>Single Family</i>	142,724	0	0	0	0	142,724
Tulare						
<i>Agriculture</i>	3,254	262	38	1	0	3,555
<i>Commercial</i>	8,473	355	44	1	0	8,873
<i>Education</i>	266	3	0	0	0	269
<i>Government</i>	438	21	2	0	0	461
<i>Industrial</i>	2,027	106	15	0	0	2,148
<i>Religion</i>	796	28	3	0	0	827
<i>Other Residential</i>	18,766	1,106	149	1	0	20,022
<i>Single Family</i>	109,018	2,995	21	0	0	112,034
Ventura						
<i>Agriculture</i>	598	0	0	0	0	598
<i>Commercial</i>	14,951	2	0	0	0	14,953
<i>Education</i>	497	0	0	0	0	497
<i>Government</i>	1,001	0	0	0	0	1,001
<i>Industrial</i>	6,096	1	0	0	0	6,097
<i>Religion</i>	1,187	0	0	0	0	1,187
<i>Other Residential</i>	26,156	7	0	0	0	26,163
<i>Single Family</i>	203,968	0	0	0	0	203,968
Total	5,822,654	29,952	3,012	238	21	5,855,877
Region Total	5,822,654	29,952	3,012	238	21	5,855,877

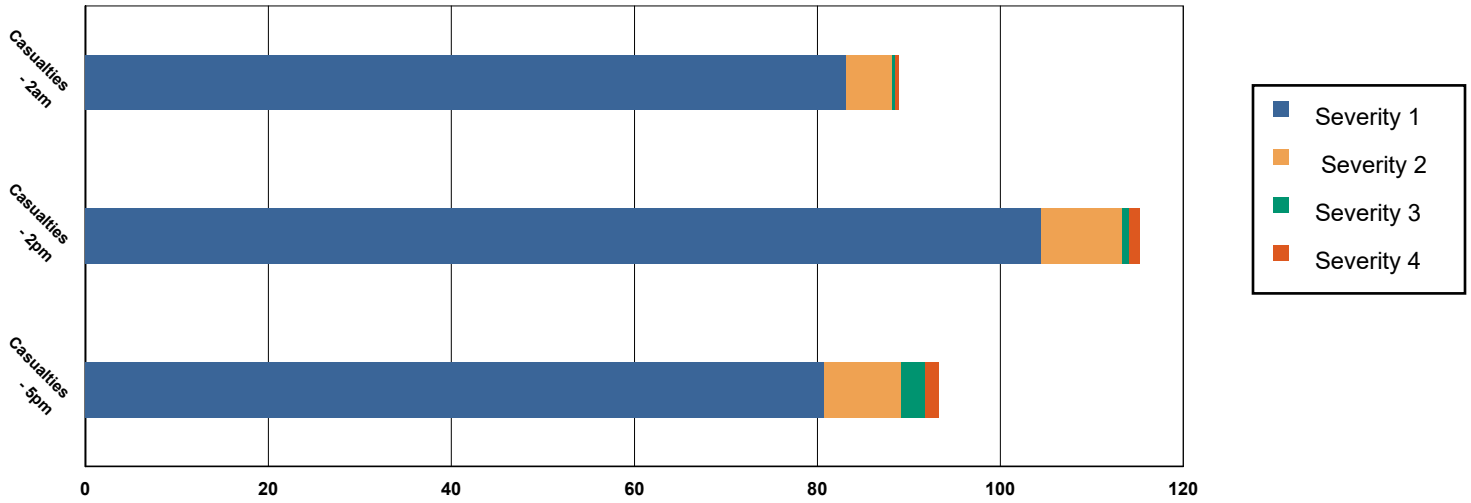
# of Buildings					
None	Slight	Moderate	Extensive	Complete	Total

Totals only reflect data for those census tracts/blocks included in the user's study region and will reflect the entire county/state only if all of the census blocks for that county/states were selected at the time of study region creation.

Casualties Summary Report

May 31, 2024

Region Total Casualties



Injury Severity Level

Severity 1 Severity 2 Severity 3 Severity 4 Total

California

Alameda

Casualties - 2am

	Severity 1	Severity 2	Severity 3	Severity 4	Total
Single Family	0	0	0	0	0
Hotels	0	0	0	0	0
Commuting	0	0	0	0	0
Educational	0	0	0	0	0
Industrial	0	0	0	0	0
Commercial	0	0	0	0	0
Other-Residential	0	0	0	0	0
Total Casualties - 2am	0	0	0	0	0

Casualties - 2pm

Industrial	0	0	0	0	0
Educational	0	0	0	0	0
Other-Residential	0	0	0	0	0
Single Family	0	0	0	0	0
Hotels	0	0	0	0	0
Commuting	0	0	0	0	0
Commercial	0	0	0	0	0

	Injury Severity Level				Total
	Severity 1	Severity 2	Severity 3	Severity 4	
California					
Alameda					
Total Casualties - 2pm	0	0	0	0	0
Casualties - 5pm					
<i>Commuting</i>	0	0	0	0	0
<i>Single Family</i>	0	0	0	0	0
<i>Commercial</i>	0	0	0	0	0
<i>Hotels</i>	0	0	0	0	0
<i>Educational</i>	0	0	0	0	0
<i>Industrial</i>	0	0	0	0	0
<i>Other-Residential</i>	0	0	0	0	0
Total Casualties - 5pm	0	0	0	0	0
Fresno					
Casualties - 2am					
<i>Hotels</i>	0	0	0	0	0
<i>Educational</i>	0	0	0	0	0
<i>Industrial</i>	0	0	0	0	0
<i>Commercial</i>	0	0	0	0	0
<i>Other-Residential</i>	13	1	0	0	14
<i>Single Family</i>	10	0	0	0	10
<i>Commuting</i>	0	0	0	0	0
Total Casualties - 2am	23	1	0	0	24
Casualties - 2pm					
<i>Commercial</i>	19	1	0	0	21
<i>Other-Residential</i>	4	0	0	0	5
<i>Industrial</i>	2	0	0	0	2
<i>Single Family</i>	3	0	0	0	3
<i>Hotels</i>	0	0	0	0	0
<i>Commuting</i>	0	0	0	0	0
<i>Educational</i>	5	0	0	0	5
Total Casualties - 2pm	33	2	0	0	36
Casualties - 5pm					
<i>Educational</i>	1	0	0	0	1
<i>Commuting</i>	0	0	1	0	2
<i>Hotels</i>	0	0	0	0	0
<i>Industrial</i>	1	0	0	0	1
<i>Single Family</i>	3	0	0	0	3
<i>Other-Residential</i>	5	0	0	0	5
<i>Commercial</i>	14	1	0	0	15
Total Casualties - 5pm	24	2	1	0	27
Inyo					
Casualties - 2am					
<i>Single Family</i>	0	0	0	0	0

	Injury Severity Level				Total
	Severity 1	Severity 2	Severity 3	Severity 4	
California					
Inyo					
Casualties - 2am					
<i>Commercial</i>	0	0	0	0	0
<i>Commuting</i>	0	0	0	0	0
<i>Educational</i>	0	0	0	0	0
<i>Hotels</i>	0	0	0	0	0
<i>Other-Residential</i>	0	0	0	0	0
<i>Industrial</i>	0	0	0	0	0
Total Casualties - 2am	0	0	0	0	0
Casualties - 2pm					
<i>Industrial</i>	0	0	0	0	0
<i>Hotels</i>	0	0	0	0	0
<i>Commercial</i>	0	0	0	0	0
<i>Other-Residential</i>	0	0	0	0	0
<i>Single Family</i>	0	0	0	0	0
<i>Commuting</i>	0	0	0	0	0
<i>Educational</i>	0	0	0	0	0
Total Casualties - 2pm	0	0	0	0	0
Casualties - 5pm					
<i>Other-Residential</i>	0	0	0	0	0
<i>Single Family</i>	0	0	0	0	0
<i>Commercial</i>	0	0	0	0	0
<i>Educational</i>	0	0	0	0	0
<i>Hotels</i>	0	0	0	0	0
<i>Commuting</i>	0	0	0	0	0
<i>Industrial</i>	0	0	0	0	0
Total Casualties - 5pm	0	0	0	0	0
Kern					
Casualties - 2am					
<i>Commercial</i>	0	0	0	0	0
<i>Commuting</i>	0	0	0	0	0
<i>Educational</i>	0	0	0	0	0
<i>Single Family</i>	2	0	0	0	2
<i>Other-Residential</i>	2	0	0	0	2
<i>Hotels</i>	0	0	0	0	0
<i>Industrial</i>	0	0	0	0	0
Total Casualties - 2am	4	0	0	0	5
Casualties - 2pm					
<i>Educational</i>	1	0	0	0	1
<i>Commuting</i>	0	0	0	0	0
<i>Single Family</i>	1	0	0	0	1
<i>Hotels</i>	0	0	0	0	0
<i>Other-Residential</i>	1	0	0	0	1

	Injury Severity Level				Total
	Severity 1	Severity 2	Severity 3	Severity 4	
California					
Kern					
Casualties - 2pm					
<i>Commercial</i>	6	0	0	0	6
<i>Industrial</i>	0	0	0	0	0
Total Casualties - 2pm	8	0	0	0	8
Casualties - 5pm					
<i>Single Family</i>	1	0	0	0	1
<i>Commercial</i>	3	0	0	0	4
<i>Other-Residential</i>	1	0	0	0	1
<i>Commuting</i>	0	0	0	0	0
<i>Educational</i>	0	0	0	0	0
<i>Hotels</i>	0	0	0	0	0
<i>Industrial</i>	0	0	0	0	0
Total Casualties - 5pm	5	0	0	0	5
Kings					
Casualties - 2am					
<i>Industrial</i>	0	0	0	0	0
<i>Other-Residential</i>	21	2	0	0	24
<i>Educational</i>	0	0	0	0	0
<i>Commuting</i>	0	0	0	0	0
<i>Commercial</i>	0	0	0	0	0
<i>Single Family</i>	15	1	0	0	16
<i>Hotels</i>	0	0	0	0	0
Total Casualties - 2am	37	3	0	0	40
Casualties - 2pm					
<i>Single Family</i>	4	0	0	0	4
<i>Other-Residential</i>	7	1	0	0	8
<i>Commercial</i>	21	3	0	1	26
<i>Educational</i>	5	0	0	0	5
<i>Commuting</i>	0	0	0	0	0
<i>Hotels</i>	0	0	0	0	0
<i>Industrial</i>	2	0	0	0	3
Total Casualties - 2pm	40	5	1	1	46
Casualties - 5pm					
<i>Single Family</i>	5	0	0	0	6
<i>Commercial</i>	18	3	0	1	23
<i>Commuting</i>	0	1	1	0	2
<i>Other-Residential</i>	8	1	0	0	9
<i>Educational</i>	0	0	0	0	0
<i>Hotels</i>	0	0	0	0	0
<i>Industrial</i>	1	0	0	0	2
Total Casualties - 5pm	34	5	2	1	42

	Injury Severity Level				Total
	Severity 1	Severity 2	Severity 3	Severity 4	
California					
Los Angeles					
Casualties - 2am					
<i>Hotels</i>	0	0	0	0	0
<i>Industrial</i>	0	0	0	0	0
<i>Educational</i>	0	0	0	0	0
<i>Single Family</i>	0	0	0	0	0
<i>Commuting</i>	0	0	0	0	0
<i>Other-Residential</i>	0	0	0	0	0
<i>Commercial</i>	0	0	0	0	0
Total Casualties - 2am	0	0	0	0	0
Casualties - 2pm					
<i>Industrial</i>	0	0	0	0	0
<i>Other-Residential</i>	0	0	0	0	0
<i>Commercial</i>	0	0	0	0	0
<i>Commuting</i>	0	0	0	0	0
<i>Educational</i>	0	0	0	0	0
<i>Single Family</i>	0	0	0	0	0
<i>Hotels</i>	0	0	0	0	0
Total Casualties - 2pm	0	0	0	0	0
Casualties - 5pm					
<i>Other-Residential</i>	0	0	0	0	0
<i>Industrial</i>	0	0	0	0	0
<i>Commuting</i>	0	0	0	0	0
<i>Single Family</i>	0	0	0	0	0
<i>Commercial</i>	0	0	0	0	0
<i>Hotels</i>	0	0	0	0	0
<i>Educational</i>	0	0	0	0	0
Total Casualties - 5pm	0	0	0	0	0
Madera					
Casualties - 2am					
<i>Hotels</i>	0	0	0	0	0
<i>Educational</i>	0	0	0	0	0
<i>Single Family</i>	0	0	0	0	0
<i>Commuting</i>	0	0	0	0	0
<i>Industrial</i>	0	0	0	0	0
<i>Commercial</i>	0	0	0	0	0
<i>Other-Residential</i>	0	0	0	0	0
Total Casualties - 2am	1	0	0	0	1
Casualties - 2pm					
<i>Industrial</i>	0	0	0	0	0
<i>Commercial</i>	0	0	0	0	0
<i>Other-Residential</i>	0	0	0	0	0
<i>Commuting</i>	0	0	0	0	0

	Injury Severity Level				Total
	Severity 1	Severity 2	Severity 3	Severity 4	
California					
Madera					
Casualties - 2pm					
Single Family	0	0	0	0	0
Hotels	0	0	0	0	0
Educational	0	0	0	0	0
Total Casualties - 2pm	1	0	0	0	1
Casualties - 5pm					
Industrial	0	0	0	0	0
Commercial	0	0	0	0	0
Single Family	0	0	0	0	0
Educational	0	0	0	0	0
Other-Residential	0	0	0	0	0
Commuting	0	0	0	0	0
Hotels	0	0	0	0	0
Total Casualties - 5pm	1	0	0	0	1
Mariposa					
Casualties - 2am					
Commuting	0	0	0	0	0
Single Family	0	0	0	0	0
Commercial	0	0	0	0	0
Hotels	0	0	0	0	0
Educational	0	0	0	0	0
Industrial	0	0	0	0	0
Other-Residential	0	0	0	0	0
Total Casualties - 2am	0	0	0	0	0
Casualties - 2pm					
Hotels	0	0	0	0	0
Industrial	0	0	0	0	0
Commercial	0	0	0	0	0
Other-Residential	0	0	0	0	0
Educational	0	0	0	0	0
Commuting	0	0	0	0	0
Single Family	0	0	0	0	0
Total Casualties - 2pm	0	0	0	0	0
Casualties - 5pm					
Other-Residential	0	0	0	0	0
Educational	0	0	0	0	0
Commuting	0	0	0	0	0
Hotels	0	0	0	0	0
Single Family	0	0	0	0	0
Commercial	0	0	0	0	0
Industrial	0	0	0	0	0

	Injury Severity Level				Total
	Severity 1	Severity 2	Severity 3	Severity 4	
California					
Mariposa					
Total Casualties - 5pm	0	0	0	0	0
Merced					
Casualties - 2am					
<i>Hotels</i>	0	0	0	0	0
<i>Industrial</i>	0	0	0	0	0
<i>Commercial</i>	0	0	0	0	0
<i>Single Family</i>	0	0	0	0	0
<i>Other-Residential</i>	0	0	0	0	0
<i>Educational</i>	0	0	0	0	0
<i>Commuting</i>	0	0	0	0	0
Total Casualties - 2am	0	0	0	0	0
Casualties - 2pm					
<i>Other-Residential</i>	0	0	0	0	0
<i>Industrial</i>	0	0	0	0	0
<i>Commercial</i>	0	0	0	0	0
<i>Commuting</i>	0	0	0	0	0
<i>Hotels</i>	0	0	0	0	0
<i>Educational</i>	0	0	0	0	0
<i>Single Family</i>	0	0	0	0	0
Total Casualties - 2pm	1	0	0	0	1
Casualties - 5pm					
<i>Industrial</i>	0	0	0	0	0
<i>Hotels</i>	0	0	0	0	0
<i>Educational</i>	0	0	0	0	0
<i>Commuting</i>	0	0	0	0	0
<i>Single Family</i>	0	0	0	0	0
<i>Commercial</i>	0	0	0	0	0
<i>Other-Residential</i>	0	0	0	0	0
Total Casualties - 5pm	0	0	0	0	0
Mono					
Casualties - 2am					
<i>Other-Residential</i>	0	0	0	0	0
<i>Industrial</i>	0	0	0	0	0
<i>Commercial</i>	0	0	0	0	0
<i>Single Family</i>	0	0	0	0	0
<i>Educational</i>	0	0	0	0	0
<i>Commuting</i>	0	0	0	0	0
<i>Hotels</i>	0	0	0	0	0
Total Casualties - 2am	0	0	0	0	0
Casualties - 2pm					
<i>Commercial</i>	0	0	0	0	0

	Injury Severity Level				Total
	Severity 1	Severity 2	Severity 3	Severity 4	
California					
Mono					
Casualties - 2pm					
<i>Commuting</i>	0	0	0	0	0
<i>Other-Residential</i>	0	0	0	0	0
<i>Educational</i>	0	0	0	0	0
<i>Single Family</i>	0	0	0	0	0
<i>Hotels</i>	0	0	0	0	0
<i>Industrial</i>	0	0	0	0	0
Total Casualties - 2pm	0	0	0	0	0
Casualties - 5pm					
<i>Industrial</i>	0	0	0	0	0
<i>Commuting</i>	0	0	0	0	0
<i>Hotels</i>	0	0	0	0	0
<i>Other-Residential</i>	0	0	0	0	0
<i>Educational</i>	0	0	0	0	0
<i>Single Family</i>	0	0	0	0	0
<i>Commercial</i>	0	0	0	0	0
Total Casualties - 5pm	0	0	0	0	0
Monterey					
Casualties - 2am					
<i>Other-Residential</i>	1	0	0	0	1
<i>Commuting</i>	0	0	0	0	0
<i>Commercial</i>	0	0	0	0	0
<i>Single Family</i>	0	0	0	0	0
<i>Hotels</i>	0	0	0	0	0
<i>Educational</i>	0	0	0	0	0
<i>Industrial</i>	0	0	0	0	0
Total Casualties - 2am	1	0	0	0	1
Casualties - 2pm					
<i>Commuting</i>	0	0	0	0	0
<i>Commercial</i>	1	0	0	0	1
<i>Single Family</i>	0	0	0	0	0
<i>Hotels</i>	0	0	0	0	0
<i>Educational</i>	0	0	0	0	0
<i>Industrial</i>	0	0	0	0	0
<i>Other-Residential</i>	0	0	0	0	0
Total Casualties - 2pm	2	0	0	0	2
Casualties - 5pm					
<i>Commercial</i>	1	0	0	0	1
<i>Other-Residential</i>	0	0	0	0	0
<i>Industrial</i>	0	0	0	0	0
<i>Hotels</i>	0	0	0	0	0
<i>Educational</i>	0	0	0	0	0

	Injury Severity Level				Total
	Severity 1	Severity 2	Severity 3	Severity 4	
California					
Monterey					
Casualties - 5pm					
Commuting	0	0	0	0	0
Single Family	0	0	0	0	0
Total Casualties - 5pm	1	0	0	0	1
San Benito					
Casualties - 2am					
Other-Residential	0	0	0	0	0
Commercial	0	0	0	0	0
Commuting	0	0	0	0	0
Hotels	0	0	0	0	0
Educational	0	0	0	0	0
Single Family	0	0	0	0	0
Industrial	0	0	0	0	0
Total Casualties - 2am	0	0	0	0	0
Casualties - 2pm					
Hotels	0	0	0	0	0
Educational	0	0	0	0	0
Industrial	0	0	0	0	0
Other-Residential	0	0	0	0	0
Commercial	0	0	0	0	0
Commuting	0	0	0	0	0
Single Family	0	0	0	0	0
Total Casualties - 2pm	0	0	0	0	0
Casualties - 5pm					
Commuting	0	0	0	0	0
Commercial	0	0	0	0	0
Other-Residential	0	0	0	0	0
Single Family	0	0	0	0	0
Industrial	0	0	0	0	0
Educational	0	0	0	0	0
Hotels	0	0	0	0	0
Total Casualties - 5pm	0	0	0	0	0
San Joaquin					
Casualties - 2am					
Educational	0	0	0	0	0
Commuting	0	0	0	0	0
Hotels	0	0	0	0	0
Commercial	0	0	0	0	0
Single Family	0	0	0	0	0
Industrial	0	0	0	0	0
Other-Residential	0	0	0	0	0

	Injury Severity Level				Total
	Severity 1	Severity 2	Severity 3	Severity 4	
California					
San Joaquin					
Total Casualties - 2am	0	0	0	0	0
Casualties - 2pm					
<i>Industrial</i>	0	0	0	0	0
<i>Other-Residential</i>	0	0	0	0	0
<i>Educational</i>	0	0	0	0	0
<i>Single Family</i>	0	0	0	0	0
<i>Hotels</i>	0	0	0	0	0
<i>Commuting</i>	0	0	0	0	0
<i>Commercial</i>	0	0	0	0	0
Total Casualties - 2pm	0	0	0	0	0
Casualties - 5pm					
<i>Commuting</i>	0	0	0	0	0
<i>Single Family</i>	0	0	0	0	0
<i>Educational</i>	0	0	0	0	0
<i>Hotels</i>	0	0	0	0	0
<i>Industrial</i>	0	0	0	0	0
<i>Commercial</i>	0	0	0	0	0
<i>Other-Residential</i>	0	0	0	0	0
Total Casualties - 5pm	0	0	0	0	0
San Luis Obispo					
Casualties - 2am					
<i>Commercial</i>	0	0	0	0	0
<i>Other-Residential</i>	5	0	0	0	5
<i>Industrial</i>	0	0	0	0	0
<i>Single Family</i>	3	0	0	0	3
<i>Commuting</i>	0	0	0	0	0
<i>Educational</i>	0	0	0	0	0
<i>Hotels</i>	0	0	0	0	0
Total Casualties - 2am	8	0	0	0	8
Casualties - 2pm					
<i>Single Family</i>	1	0	0	0	1
<i>Educational</i>	1	0	0	0	1
<i>Other-Residential</i>	1	0	0	0	2
<i>Hotels</i>	0	0	0	0	0
<i>Commuting</i>	0	0	0	0	0
<i>Commercial</i>	4	0	0	0	4
<i>Industrial</i>	1	0	0	0	1
Total Casualties - 2pm	8	0	0	0	8
Casualties - 5pm					
<i>Industrial</i>	0	0	0	0	0
<i>Other-Residential</i>	2	0	0	0	2

	Injury Severity Level				Total
	Severity 1	Severity 2	Severity 3	Severity 4	
California					
San Luis Obispo					
Casualties - 5pm					
<i>Commuting</i>	0	0	0	0	0
<i>Single Family</i>	1	0	0	0	1
<i>Commercial</i>	3	0	0	0	3
<i>Hotels</i>	0	0	0	0	0
<i>Educational</i>	0	0	0	0	0
Total Casualties - 5pm	6	0	0	0	7
San Mateo					
Casualties - 2am					
<i>Industrial</i>	0	0	0	0	0
<i>Other-Residential</i>	0	0	0	0	0
<i>Single Family</i>	0	0	0	0	0
<i>Commercial</i>	0	0	0	0	0
<i>Educational</i>	0	0	0	0	0
<i>Commuting</i>	0	0	0	0	0
<i>Hotels</i>	0	0	0	0	0
Total Casualties - 2am	0	0	0	0	0
Casualties - 2pm					
<i>Other-Residential</i>	0	0	0	0	0
<i>Single Family</i>	0	0	0	0	0
<i>Commuting</i>	0	0	0	0	0
<i>Commercial</i>	0	0	0	0	0
<i>Educational</i>	0	0	0	0	0
<i>Hotels</i>	0	0	0	0	0
<i>Industrial</i>	0	0	0	0	0
Total Casualties - 2pm	0	0	0	0	0
Casualties - 5pm					
<i>Commercial</i>	0	0	0	0	0
<i>Industrial</i>	0	0	0	0	0
<i>Other-Residential</i>	0	0	0	0	0
<i>Single Family</i>	0	0	0	0	0
<i>Educational</i>	0	0	0	0	0
<i>Commuting</i>	0	0	0	0	0
<i>Hotels</i>	0	0	0	0	0
Total Casualties - 5pm	0	0	0	0	0
Santa Barbara					
Casualties - 2am					
<i>Industrial</i>	0	0	0	0	0
<i>Commercial</i>	0	0	0	0	0
<i>Other-Residential</i>	1	0	0	0	1
<i>Commuting</i>	0	0	0	0	0
<i>Educational</i>	0	0	0	0	0

	Injury Severity Level				Total
	Severity 1	Severity 2	Severity 3	Severity 4	
California					
Santa Barbara					
Casualties - 2am					
Single Family	0	0	0	0	0
Hotels	0	0	0	0	0
Total Casualties - 2am	1	0	0	0	1
Casualties - 2pm					
Commercial	0	0	0	0	0
Single Family	0	0	0	0	0
Other-Residential	0	0	0	0	0
Commuting	0	0	0	0	0
Educational	0	0	0	0	0
Hotels	0	0	0	0	0
Industrial	0	0	0	0	0
Total Casualties - 2pm	1	0	0	0	1
Casualties - 5pm					
Other-Residential	0	0	0	0	0
Single Family	0	0	0	0	0
Commercial	0	0	0	0	0
Commuting	0	0	0	0	0
Educational	0	0	0	0	0
Industrial	0	0	0	0	0
Hotels	0	0	0	0	0
Total Casualties - 5pm	1	0	0	0	1
Santa Clara					
Casualties - 2am					
Commuting	0	0	0	0	0
Educational	0	0	0	0	0
Single Family	0	0	0	0	0
Hotels	0	0	0	0	0
Industrial	0	0	0	0	0
Commercial	0	0	0	0	0
Other-Residential	0	0	0	0	0
Total Casualties - 2am	0	0	0	0	0
Casualties - 2pm					
Industrial	0	0	0	0	0
Commercial	0	0	0	0	0
Single Family	0	0	0	0	0
Commuting	0	0	0	0	0
Hotels	0	0	0	0	0
Other-Residential	0	0	0	0	0
Educational	0	0	0	0	0
Total Casualties - 2pm	0	0	0	0	0

Injury Severity Level

Severity 1 Severity 2 Severity 3 Severity 4 Total

California

Santa Clara

Casualties - 5pm

<i>Industrial</i>	0	0	0	0	0
<i>Hotels</i>	0	0	0	0	0
<i>Other-Residential</i>	0	0	0	0	0
<i>Commercial</i>	0	0	0	0	0
<i>Commuting</i>	0	0	0	0	0
<i>Single Family</i>	0	0	0	0	0
<i>Educational</i>	0	0	0	0	0
Total Casualties - 5pm	0	0	0	0	0

Santa Cruz

Casualties - 2am

<i>Hotels</i>	0	0	0	0	0
<i>Educational</i>	0	0	0	0	0
<i>Industrial</i>	0	0	0	0	0
<i>Other-Residential</i>	0	0	0	0	0
<i>Single Family</i>	0	0	0	0	0
<i>Commercial</i>	0	0	0	0	0
<i>Commuting</i>	0	0	0	0	0
Total Casualties - 2am	0	0	0	0	0

Casualties - 2pm

<i>Industrial</i>	0	0	0	0	0
<i>Other-Residential</i>	0	0	0	0	0
<i>Commercial</i>	0	0	0	0	0
<i>Commuting</i>	0	0	0	0	0
<i>Educational</i>	0	0	0	0	0
<i>Single Family</i>	0	0	0	0	0
<i>Hotels</i>	0	0	0	0	0
Total Casualties - 2pm	0	0	0	0	0

Casualties - 5pm

<i>Industrial</i>	0	0	0	0	0
<i>Other-Residential</i>	0	0	0	0	0
<i>Commercial</i>	0	0	0	0	0
<i>Commuting</i>	0	0	0	0	0
<i>Single Family</i>	0	0	0	0	0
<i>Hotels</i>	0	0	0	0	0
<i>Educational</i>	0	0	0	0	0
Total Casualties - 5pm	0	0	0	0	0

Stanislaus

Casualties - 2am

<i>Hotels</i>	0	0	0	0	0
<i>Industrial</i>	0	0	0	0	0
<i>Commercial</i>	0	0	0	0	0

	Injury Severity Level				Total
	Severity 1	Severity 2	Severity 3	Severity 4	
California					
Stanislaus					
Casualties - 2am					
Single Family	0	0	0	0	0
Other-Residential	0	0	0	0	0
Commuting	0	0	0	0	0
Educational	0	0	0	0	0
Total Casualties - 2am	0	0	0	0	0
Casualties - 2pm					
Industrial	0	0	0	0	0
Other-Residential	0	0	0	0	0
Commercial	0	0	0	0	0
Commuting	0	0	0	0	0
Educational	0	0	0	0	0
Single Family	0	0	0	0	0
Hotels	0	0	0	0	0
Total Casualties - 2pm	0	0	0	0	0
Casualties - 5pm					
Industrial	0	0	0	0	0
Other-Residential	0	0	0	0	0
Commuting	0	0	0	0	0
Single Family	0	0	0	0	0
Commercial	0	0	0	0	0
Hotels	0	0	0	0	0
Educational	0	0	0	0	0
Total Casualties - 5pm	0	0	0	0	0
Tulare					
Casualties - 2am					
Commercial	0	0	0	0	0
Commuting	0	0	0	0	0
Single Family	5	0	0	0	5
Educational	0	0	0	0	0
Hotels	0	0	0	0	0
Industrial	0	0	0	0	0
Other-Residential	4	0	0	0	4
Total Casualties - 2am	9	0	0	0	9
Casualties - 2pm					
Industrial	1	0	0	0	1
Hotels	0	0	0	0	0
Commercial	7	0	0	0	8
Other-Residential	1	0	0	0	1
Educational	2	0	0	0	2
Commuting	0	0	0	0	0
Single Family	1	0	0	0	1

	Injury Severity Level				Total
	Severity 1	Severity 2	Severity 3	Severity 4	
California					
Tulare					
Total Casualties - 2pm	12	0	0	0	12
Casualties - 5pm					
<i>Other-Residential</i>	1	0	0	0	1
<i>Commercial</i>	5	0	0	0	5
<i>Single Family</i>	2	0	0	0	2
<i>Hotels</i>	0	0	0	0	0
<i>Commuting</i>	0	0	0	0	0
<i>Educational</i>	0	0	0	0	0
<i>Industrial</i>	0	0	0	0	0
Total Casualties - 5pm	9	0	0	0	9
Ventura					
Casualties - 2am					
<i>Educational</i>	0	0	0	0	0
<i>Commuting</i>	0	0	0	0	0
<i>Single Family</i>	0	0	0	0	0
<i>Hotels</i>	0	0	0	0	0
<i>Industrial</i>	0	0	0	0	0
<i>Commercial</i>	0	0	0	0	0
<i>Other-Residential</i>	0	0	0	0	0
Total Casualties - 2am	0	0	0	0	0
Casualties - 2pm					
<i>Industrial</i>	0	0	0	0	0
<i>Educational</i>	0	0	0	0	0
<i>Commuting</i>	0	0	0	0	0
<i>Hotels</i>	0	0	0	0	0
<i>Other-Residential</i>	0	0	0	0	0
<i>Commercial</i>	0	0	0	0	0
<i>Single Family</i>	0	0	0	0	0
Total Casualties - 2pm	0	0	0	0	0
Casualties - 5pm					
<i>Commuting</i>	0	0	0	0	0
<i>Other-Residential</i>	0	0	0	0	0
<i>Commercial</i>	0	0	0	0	0
<i>Hotels</i>	0	0	0	0	0
<i>Educational</i>	0	0	0	0	0
<i>Single Family</i>	0	0	0	0	0
<i>Industrial</i>	0	0	0	0	0
Total Casualties - 5pm	0	0	0	0	0
Region Total	NA	NA	NA	NA	NA

Injury Severity Level

Severity 1

Severity 2

Severity 3

Severity 4

Total

Totals only reflect data for those census tracts/blocks included in the user's study region and will reflect the entire county/state only if all of the census blocks for that county/states were selected at the time of study region creation.

Debris Summary Report

May 31, 2024

All values are in thousands of tons.

	Brick, Wood & Others	Concrete & Steel	Total
California			
Fresno	20	24	44
Alameda	0	0	0
San Mateo	0	0	0
Kings	20	23	43
San Joaquin	0	0	0
San Luis Obispo	9	6	15
Madera	1	0	1
Tulare	8	7	15
Inyo	0	0	0
Ventura	0	0	0
Kern	7	6	12
Santa Cruz	0	0	0
Monterey	1	1	2
Mariposa	0	0	0
Los Angeles	0	0	0
Stanislaus	0	0	0
Santa Barbara	1	0	1
Santa Clara	0	0	0
San Benito	0	0	0

	Brick, Wood & Others	Concrete & Steel	Total
Merced	0	0	1
Mono	0	0	0
Total	67	68	135
Region Total	67	68	135

Totals only reflect data for those census tracts/blocks included in the user's study region and will reflect the entire county/state only if all of the census blocks for that county/states were selected at the time of study region creation.

Direct Economic Losses For Buildings

May 31, 2024

All values are in thousands of dollars

	Capital Stock Losses				Loss Ratio %	Income Losses				Total Loss
	Cost Structural Damage	Cost Non-struct. Damage	Cost Contents Damage	Inventory Loss		Relocation Loss	Capital Related Loss	Wages Losses	Rental Income Loss	
California										
Inyo	0	11	7	1	0.00	0	0	0	0	19
Alameda	0	0	0	0	0.00	0	0	0	0	0
Fresno	43,531	303,197	169,710	32,127	0.22	11,616	7,422	8,245	7,815	583,663
San Joaquin	7	47	26	3	0.00	1	0	0	1	85
Kings	40,535	229,492	106,790	12,541	1.25	15,328	8,658	10,524	8,231	432,100
San Luis Obispo	14,003	110,785	52,786	5,104	0.20	3,700	3,575	3,405	2,910	196,269
San Mateo	0	0	0	0	0.00	0	0	0	0	0
Tulare	17,386	141,671	78,396	17,294	0.21	3,142	2,311	2,777	2,610	265,587
Madera	1,210	13,682	7,670	1,253	0.05	151	99	120	184	24,369

	Capital Stock Losses				Loss Ratio %	Income Losses				Total Loss
	Cost Structural Damage	Cost Non-struct. Damage	Cost Contents Damage	Inventory Loss		Relocation Loss	Capital Related Loss	Wages Losses	Rental Income Loss	
San Benito	31	597	343	52	0.00	2	4	5	5	1,039
Merced	849	5,253	3,358	1,322	0.01	77	40	40	53	10,990
Santa Barbara	1,153	15,944	8,509	1,157	0.02	186	179	248	235	27,611
Stanislaus	69	2,177	1,460	206	0.00	7	11	10	20	3,961
Santa Clara	14	373	236	34	0.00	1	3	2	4	667
Mono	0	0	0	0	0.00	0	0	0	0	0
Kern	13,411	89,450	48,029	12,099	0.07	2,436	1,191	1,501	1,606	169,723
Ventura	26	1,174	752	107	0.00	2	5	6	8	2,080
Monterey	2,786	13,457	8,179	3,272	0.02	435	138	141	214	28,623
Santa Cruz	29	433	289	68	0.00	3	6	6	6	841
Mariposa	0	5	4	0	0.00	0	0	0	0	9
Los Angeles	0	4	2	0	0.00	0	0	0	0	6
Total	135,042	927,753	486,546	86,640	0.10	37,087	23,643	27,030	23,901	1,747,642
Region Total	135,042	927,753	486,546	86,640	0.10	37,087	23,643	27,030	23,901	1,747,642

Totals only reflect data for those census tracts/blocks included in the user's study region and will reflect the entire county/state only if all of the census blocks for that county/states were selected at the time of study region creation.

Direct Economic Loss For Transportation

May 31, 2024

All values are in thousands of dollars

	Highway	Railway	Light Rail	Bus Facility	Ports	Ferries	Airport	Total
California								
Alameda								
Segments	0	0	0					0
Bridges	0	0	0					0
Tunnels	0	0	0					0
Facilities		9	0	0	16	0	14	39
Total	0	9	0	0	16	0	14	39
Fresno								
Segments	0	0	0					0
Bridges	5,346	47	0					5,392
Tunnels	0	0	0					0
Facilities		1,075	0	89	0	0	6,048	7,212
Total	5,346	1,121	0	89	0	0	6,048	12,604
Inyo								
Segments	0	0	0					0
Bridges	0	0	0					0
Tunnels	0	0	0					0
Facilities		0	0	0	0	0	113	113

	Highway	Railway	Light Rail	Bus Facility	Ports	Ferries	Airport	Total
Total	0	0	0	0	0	0	113	113
Kern								
Segments	0	0	0					0
Bridges	387	1	0					388
Tunnels	0	0	0					0
Facilities		430	0	197	0	0	1,787	2,414
Total	387	432	0	197	0	0	1,787	2,802
Kings								
Segments	0	0	0					0
Bridges	8,341	170	0					8,511
Tunnels	0	0	0					0
Facilities		1,192	0	636	0	0	3,199	5,027
Total	8,341	1,363	0	636	0	0	3,199	13,538
Los Angeles								
Segments	0	0	0					0
Bridges	3	0	0					3
Tunnels	0	0	0					0
Facilities		11	296	9	0	0	389	706
Total	3	11	296	9	0	0	389	709
Madera								
Segments	0	0	0					0
Bridges	43	1	0					43
Tunnels	0	0	0					0
Facilities		109	0	89	0	0	102	300

	Highway	Railway	Light Rail	Bus Facility	Ports	Ferries	Airport	Total
Total	43	110	0	89	0	0	102	344
Mariposa								
Segments	0	0	0					0
Bridges	0	0	0					0
Tunnels	0	0	0					0
Facilities		0	0	5	0	0	51	56
Total	0	0	0	5	0	0	51	56
Merced								
Segments	0	0	0					0
Bridges	56	0	0					56
Tunnels	0	0	0					0
Facilities		51	0	21	0	0	410	483
Total	56	51	0	21	0	0	410	539
Mono								
Segments	0	0	0					0
Bridges	0	0	0					0
Tunnels	0	0	0					0
Facilities		0	0	2	0	0	6	8
Total	0	0	0	2	0	0	6	8
Monterey								
Segments	0	0	0					0
Bridges	700	27	0					727
Tunnels	0	0	0					0
Facilities		26	0	298	45	0	1,357	1,725

	Highway	Railway	Light Rail	Bus Facility	Ports	Ferries	Airport	Total
Total	700	52	0	298	45	0	1,357	2,452
San Benito								
Segments	0	0	0					0
Bridges	3	0	0					3
Tunnels	0	0	0					0
Facilities		0	0	0	0	0	102	102
Total	3	0	0	0	0	0	102	105
San Joaquin								
Segments	0	0	0					0
Bridges	0	0	0					0
Tunnels	0	0	0					0
Facilities		0	0	0	0	0	0	0
Total	0	0	0	0	0	0	0	0
San Luis Obispo								
Segments	0	0	0					0
Bridges	939	17	0					956
Tunnels	0	0	0					0
Facilities		419	0	250	1,131	0	2,474	4,275
Total	939	436	0	250	1,131	0	2,474	5,231
San Mateo								
Segments	0	0	0					0
Bridges	1	0	0					1
Tunnels	0	0	0					0
Facilities		0	0	0	41	0	14	55

	Highway	Railway	Light Rail	Bus Facility	Ports	Ferries	Airport	Total
Total	1	0	0	0	41	0	14	56
Santa Barbara								
Segments	0	0	0					0
Bridges	72	0	0					72
Tunnels	0	0	0					0
Facilities		212	0	216	257	0	635	1,321
Total	72	212	0	216	257	0	635	1,392
Santa Clara								
Segments	0	0	0					0
Bridges	3	0	0					3
Tunnels	0	0	0					0
Facilities		11	1,263	26	20	0	514	1,834
Total	3	11	1,263	26	20	0	514	1,838
Santa Cruz								
Segments	0	0	0					0
Bridges	0	0	0					0
Tunnels	0	0	0					0
Facilities		0	0	25	37	0	257	319
Total	0	0	0	25	37	0	257	319
Stanislaus								
Segments	0	0	0					0
Bridges	1	0	0					1
Tunnels	0	0	0					0
Facilities		154	0	43	0	0	180	376

	Highway	Railway	Light Rail	Bus Facility	Ports	Ferries	Airport	Total
Total	1	154	0	43	0	0	180	377
Tulare								
Segments	0	0	0					0
Bridges	367	59	0					426
Tunnels	0	0	0					0
Facilities		0	0	427	0	0	1,452	1,879
Total	367	59	0	427	0	0	1,452	2,305
Ventura								
Segments	0	0	0					0
Bridges	2	0	0					2
Tunnels	0	0	0					0
Facilities		60	0	21	661	13	272	1,026
Total	2	60	0	21	661	13	272	1,027
Total	16,263	4,082	1,559	2,354	2,208	13	19,377	45,857
Region Total	16,263	4,082	1,559	2,354	2,208	13	19,377	45,857

Totals only reflect data for those census tracts/blocks included in the user's study region and will reflect the entire county/state only if all of the census blocks for that county/states were selected at the time of study region creation.

Direct Economic Loss For Utilities

May 31, 2024

All values are in thousands of dollars

	Potable Water	Waste Water	Oil Systems	Natural Gas	Electric Power	Communication	Total
California							
Alameda							
Facilities	1	5	0	0	306	0	312
Pipelines	38	19	0	0			57
Total	39	24	0	0	306	0	369
Fresno							
Facilities	0	4,696	1	467	575,930	103	581,197
Pipelines	2,834	1,424	0	0			4,258
Total	2,834	6,120	1	467	575,930	103	585,454
Inyo							
Facilities	0	0	0	0	216	0	216
Pipelines	55	28	0	0			83
Total	55	28	0	0	216	0	299
Kern							
Facilities	433	1,770	1	3,645	457,983	21	463,853

	Potable Water	Waste Water	Oil Systems	Natural Gas	Electric Power	Communication	Total
<i>Pipelines</i>	772	388	0	0			1,160
Total	1,205	2,158	1	3,645	457,983	21	465,013
Kings							
<i>Facilities</i>	0	0	3	35,406	453,695	42	489,146
<i>Pipelines</i>	4,715	2,369	0	0			7,084
Total	4,715	2,369	3	35,406	453,695	42	496,230
Los Angeles							
<i>Facilities</i>	4	15	0	9	11,874	0	11,902
<i>Pipelines</i>	135	68	0	0			203
Total	139	83	0	9	11,874	0	12,106
Madera							
<i>Facilities</i>	0	0	0	0	14,173	3	14,176
<i>Pipelines</i>	152	76	0	0			229
Total	152	76	0	0	14,173	3	14,404
Mariposa							
<i>Facilities</i>	0	128	0	0	283	1	411
<i>Pipelines</i>	14	7	0	0			21
Total	14	135	0	0	283	1	433
Merced							
<i>Facilities</i>	0	615	0	0	21,946	2	22,564
<i>Pipelines</i>	90	45	0	0			135

	Potable Water	Waste Water	Oil Systems	Natural Gas	Electric Power	Communication	Total
Total	90	660	0	0	21,946	2	22,699
Mono							
<i>Facilities</i>	0	0	0	0	43	0	43
<i>Pipelines</i>	10	5	0	0			15
Total	10	5	0	0	43	0	58
Monterey							
<i>Facilities</i>	0	1,107	0	0	44,228	16	45,350
<i>Pipelines</i>	551	277	0	0			827
Total	551	1,383	0	0	44,228	16	46,178
San Benito							
<i>Facilities</i>	0	246	0	0	0	3	249
<i>Pipelines</i>	56	28	0	0			83
Total	56	274	0	0	0	3	332
San Joaquin							
<i>Facilities</i>	0	0	0	0	0	0	0
<i>Pipelines</i>	5	2	0	0			7
Total	5	2	0	0	0	0	7
San Luis Obispo							
<i>Facilities</i>	348	21,865	2	0	502,340	100	524,656
<i>Pipelines</i>	887	446	0	0			1,333
Total	1,235	22,311	2	0	502,340	100	525,988

	Potable Water	Waste Water	Oil Systems	Natural Gas	Electric Power	Communication	Total
San Mateo							
<i>Facilities</i>	0	3	0	0	3	0	6
<i>Pipelines</i>	14	7	0	0			21
Total	14	9	0	0	3	0	26
Santa Barbara							
<i>Facilities</i>	0	2,262	1	157	1,207	23	3,650
<i>Pipelines</i>	116	58	0	0			174
Total	116	2,320	1	157	1,207	23	3,824
Santa Clara							
<i>Facilities</i>	1	8	0	0	3,129	0	3,138
<i>Pipelines</i>	102	51	0	0			153
Total	103	59	0	0	3,129	0	3,290
Santa Cruz							
<i>Facilities</i>	0	131	0	0	42	0	173
<i>Pipelines</i>	32	16	0	0			48
Total	32	147	0	0	42	0	221
Stanislaus							
<i>Facilities</i>	0	492	0	0	8,499	2	8,992
<i>Pipelines</i>	47	23	0	0			70
Total	47	515	0	0	8,499	2	9,062
Tulare							

	Potable Water	Waste Water	Oil Systems	Natural Gas	Electric Power	Communication	Total
<i>Facilities</i>	348	7,464	0	0	77,709	40	85,560
<i>Pipelines</i>	539	271	0	0			810
Total	888	7,735	0	0	77,709	40	86,371
Ventura							
<i>Facilities</i>	112	876	0	80	6,021	3	7,092
<i>Pipelines</i>	95	48	0	0			142
Total	207	924	0	80	6,021	3	7,234
Total	12,505	47,337	9	39,765	2,179,624	359	2,279,599
Region Total	12,505	47,337	9	39,765	2,179,624	359	2,279,599

Totals only reflect data for those census tracts/blocks included in the user's study region and will reflect the entire county/state only if all of the census blocks for that county/states were selected at the time of study region creation.

Hazus Quick Assessment Report

Estimated Economic Loss (\$ Billions)

Category	Description	Range
General Building Stock	Building Damage	0.50 - 2.10
	Building Contents	0.10 - 0.60
	Business Interruption	0.10 - 0.20
Infrastructure	Lifelines Damage	
Total		0.90 - 3.50

Preliminary Damage Assessment (PDA) Estimates

Description	Residential	Commercial	Other	Total
Affected	25,500	2,200	2,100	29,800
Minor	2,200	400	390	2,990
Major	180	30	20	230
Destroyed	10	< 10	< 10	10
Total	27,890	2,630	2,510	33,030

Estimated Casualties : Night Time

Severity Level	Description	# Persons
Level 1	Medical Aid	40 - 170
Level 2	Hospital Care	< 10
Level 3	Life-threatening	< 10
Level 4	Fatalities	< 10

Estimated Shelter Needs

Type	Households	People
Displaced Households	40 - 140	100 - 350
Public Shelter	20	50

Earthquake Information

Location :

Origin Time:

Magnitude : 7.12

Epicenter Latitude/Longitude :
/

Depth & Type : /U

Name :
NA

Ground Motion /Attenuation :

Maximum PGA: 0.00

Information Sources:

Comments :

Population and Building Exposure

Population: 21,108,066

Building Exposure : (\$ Millions)

Residential	
Commercial	701,695
Other	600,555
Total	

Counties : See Appendix

Major Metro Area :

Comments :

**Hazus damage estimates are presented using FEMA Preliminary Damage Assessment (PDA) categories. These estimates should be used for planning purposes and may not reflect actual observed damages from the PDA process.*

Disclaimer:

The estimates of social and economic impacts contained in this report were produced using HAZUS loss estimation methodology software which is based on current scientific and engineering knowledge. There are uncertainties inherent in any loss estimation technique. Therefore, there may be significant differences between the modeled results contained in this report and the actual social and economic losses following a specific earthquake. These results can be improved by using enhanced inventory, geotechnical, and observed ground motion data.

Hazus Quick Assessment Report

Estimated Economic Loss (\$ Billions)

Category	Description	Range
General Building Stock	Building Damage	0.50 - 2.10
	Building Contents	0.10 - 0.60
	Business Interruption	0.10 - 0.20
Infrastructure	Lifelines Damage	
Total		0.90 - 3.50

Preliminary Damage Assessment (PDA) Estimates

Description	Residential	Commercial	Other	Total
Affected	25,500	2,200	2,100	29,800
Minor	2,200	400	390	2,990
Major	180	30	20	230
Destroyed	10	< 10	< 10	10
Total	27,890	2,630	2,510	33,030

Estimated Casualties : Day Time

Severity Level	Description	# Persons
Level 1	Medical Aid	50 - 200
Level 2	Hospital Care	0 - 20
Level 3	Life-threatening	< 10
Level 4	Fatalities	< 10

Estimated Shelter Needs

Type	Households	People
Displaced Households	40 - 140	100 - 350
Public Shelter	20	50

Comments :

*Hazus damage estimates are presented using FEMA Preliminary Damage Assessment (PDA) categories. These estimates should be used for planning purposes and may not reflect actual observed damages from the PDA process.

Disclaimer:

The estimates of social and economic impacts contained in this report were produced using HAZUS loss estimation methodology software which is based on current scientific and engineering knowledge. There are uncertainties inherent in any loss estimation technique. Therefore, there may be significant differences between the modeled results contained in this report and the actual social and economic losses following a specific earthquake. These results can be improved by using enhanced inventory, geotechnical, and observed ground motion data.

Earthquake Information

Location :

Origin Time:

Magnitude : 7.12

Epicenter Latitude/Longitude :
/

Depth & Type : /U

Name :
NA

Ground Motion /Attenuation :

Maximum PGA: 0.00

Information Sources:

Comments :

Population and Building Exposure

Population: 21,108,066

Building Exposure : (\$ Millions)

Residential	
Commercial	701,695
Other	600,555
Total	

Counties : See Appendix

Major Metro Area :

Hazus Quick Assessment Report

Estimated Economic Loss (\$ Billions)

Category	Description	Range
General Building Stock	Building Damage	0.50 - 2.10
	Building Contents	0.10 - 0.60
	Business Interruption	0.10 - 0.20
Infrastructure	Lifelines Damage	
Total		0.90 - 3.50

Preliminary Damage Assessment (PDA) Estimates

Description	Residential	Commercial	Other	Total
Affected	25,500	2,200	2,100	29,800
Minor	2,200	400	390	2,990
Major	180	30	20	230
Destroyed	10	< 10	< 10	10
Total	27,890	2,630	2,510	33,030

Estimated Casualties : Commute Time

Severity Level	Description	# Persons
Level 1	Medical Aid	40 - 160
Level 2	Hospital Care	0 - 20
Level 3	Life-threatening	< 10
Level 4	Fatalities	< 10

Estimated Shelter Needs

Type	Households	People
Displaced Households	40 - 140	100 - 350
Public Shelter	20	50

Comments :

*Hazus damage estimates are presented using FEMA Preliminary Damage Assessment (PDA) categories. These estimates should be used for planning purposes and may not reflect actual observed damages from the PDA process.

Disclaimer:

The estimates of social and economic impacts contained in this report were produced using HAZUS loss estimation methodology software which is based on current scientific and engineering knowledge. There are uncertainties inherent in any loss estimation technique. Therefore, there may be significant differences between the modeled results contained in this report and the actual social and economic losses following a specific earthquake. These results can be improved by using enhanced inventory, geotechnical, and observed ground motion data.

Earthquake Information

Location :

Origin Time:

Magnitude : 7.12

Epicenter Latitude/Longitude :
/

Depth & Type : /U

Name :
NA

Ground Motion /Attenuation :

Maximum PGA: 0.00

Information Sources:

Comments :

Population and Building Exposure

Population: 21,108,066

Building Exposure : (\$ Millions)

Residential	
Commercial	701,695
Other	600,555
Total	

Counties : See Appendix

Major Metro Area :

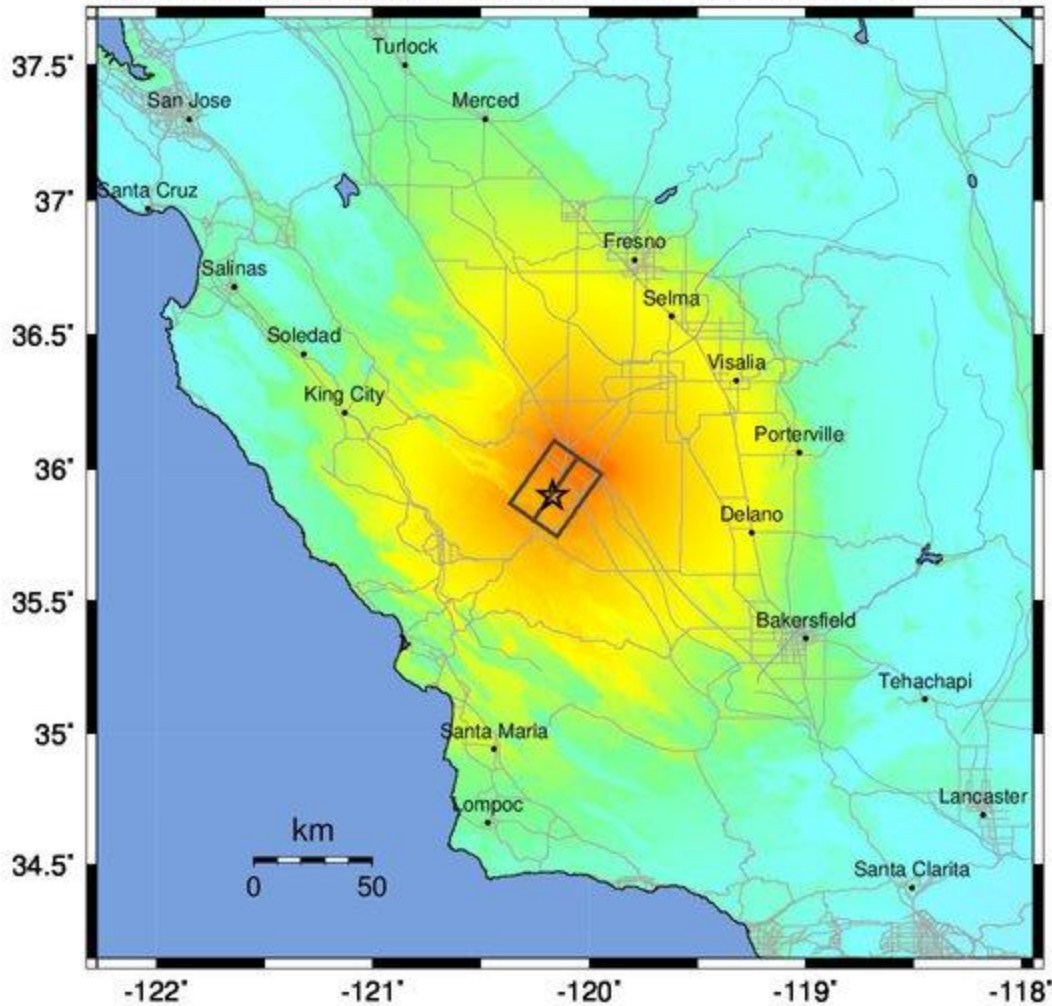
Shelter Summary Report

May 31, 2024

	# of Displaced Households	# of People Needing Short Term Shelter
California		
Fresno	27	19
Alameda	0	0
San Mateo	0	0
Kings	36	29
San Joaquin	0	0
San Luis Obispo	4	2
Madera	0	0
Tulare	1	1
Inyo	0	0
Ventura	0	0
Kern	1	1
Santa Cruz	0	0
Monterey	0	0
Mariposa	0	0
Los Angeles	0	0
Stanislaus	0	0
Santa Barbara	0	0
Santa Clara	0	0
San Benito	0	0
Merced	0	0
Mono	0	0
Total	70	53
Region Total	70	53

Totals only reflect data for those census tracts/blocks included in the user's study region and will reflect the entire county/state only if all of the census blocks for that county/states were selected at the time of study region creation.

-- Earthquake Planning Scenario --
ShakeMap for Great Valley 14 (Kettleman Hills) - Median ground motions Scenario
 Scenario Date: May 16, 2017 08:31:55 AM MDT M 7.1 N35.90 W120.17 Depth: 17.3km



-122° -121° -120° -119° -118°
 PLANNING SCENARIO ONLY -- Map Version 10 Processed 2017-05-16 06:29:17 PM MDT

PERCEIVED SHAKING	Not felt	Weak	Light	Moderate	Strong	Very strong	Severe	Violent	Extreme
POTENTIAL DAMAGE	none	none	none	Very light	Light	Moderate	Mod./Heavy	Heavy	Very Heavy
PEAK ACC.(%g)	<0.05	0.3	2.8	6.2	12	22	40	75	>139
PEAK VEL.(cm/s)	<0.02	0.1	1.4	4.7	9.6	20	41	86	>178
INSTRUMENTAL INTENSITY	I	II-III	IV	V	VI	VII	VIII	IX	X+

Scale based upon Worden et al. (2012)