
Hazus: Earthquake Global Risk Report

Region Name: GreatValley13Coali

Earthquake Scenario: greatvalley13coaling_m7p03_se

Print Date: May 07, 2024

Disclaimer:

Totals only reflect data for those census tracts/blocks included in the user's study region.

The estimates of social and economic impacts contained in this report were produced using Hazus loss estimation methodology software which is based on current scientific and engineering knowledge. There are uncertainties inherent in any loss estimation technique. Therefore, there may be significant differences between the modeled results contained in this report and the actual social and economic losses following a specific earthquake. These results can be improved by using enhanced inventory, geotechnical, and observed ground motion data.

Table of Contents

Section	Page #
General Description of the Region	3
Building and Lifeline Inventory	4
Building Inventory	
Critical Facility Inventory	
Transportation and Utility Lifeline Inventory	
Earthquake Scenario Parameters	7
Direct Earthquake Damage	8
Buildings Damage	
Essential Facilities Damage	
Transportation and Utility Lifeline Damage	
Induced Earthquake Damage	14
Fire Following Earthquake	
Debris Generation	
Social Impact	15
Shelter Requirements	
Casualties	
Economic Loss	17
Building Related Losses	
Transportation and Utility Lifeline Losses	
Appendix A: County Listing for the Region	
Appendix B: Regional Population and Building Value Data	

General Description of the Region

Hazus-MH is a regional earthquake loss estimation model that was developed by the Federal Emergency Management Agency (FEMA) and the National Institute of Building Sciences. The primary purpose of Hazus is to provide a methodology and software application to develop multi-hazard losses at a regional scale. These loss estimates would be used primarily by local, state and regional officials to plan and stimulate efforts to reduce risks from multi-hazards and to prepare for emergency response and recovery.

The earthquake loss estimates provided in this report was based on a region that includes 21 county(ies) from the following state(s):

California

Note:

Appendix A contains a complete listing of the counties contained in the region.

The geographical size of the region is 51,681.93 square miles and contains 5,247 census tracts. There are over 7,492 thousand households in the region which has a total population of 22,297,402 people. The distribution of population by Total Region and County is provided in Appendix B.

There are an estimated 6,206 thousand buildings in the region with a total building replacement value (excluding contents) of (millions of dollars). Approximately 90.00 % of the buildings (and % of the building value) are associated with residential housing.

The replacement value of the transportation and utility lifeline systems is estimated to be 290,905 and 191,570 (millions of dollars) , respectively.

Building and Lifeline Inventory

Building Inventory

Hazus estimates that there are 6,206 thousand buildings in the region which have an aggregate total replacement value of (millions of dollars) . Appendix B provides a general distribution of the building value by Total Region and County.

In terms of building construction types found in the region, wood frame construction makes up 87% of the building inventory. The remaining percentage is distributed between the other general building types.

Critical Facility Inventory

Hazus breaks critical facilities into two (2) groups: essential facilities and high potential loss facilities (HPL). Essential facilities include hospitals, medical clinics, schools, fire stations, police stations and emergency operations facilities. High potential loss facilities include dams, levees, military installations, nuclear power plants and hazardous material sites.

For essential facilities, there are 334 hospitals in the region with a total bed capacity of 58,930 beds. There are 7,722 schools, 1,386 fire stations, 519 police stations and 122 emergency operation facilities. With respect to high potential loss facilities (HPL), there are no dams identified within the inventory. The inventory also includes no hazardous material sites, no military installations and no nuclear power plants.

Transportation and Utility Lifeline Inventory

Within Hazus, the lifeline inventory is divided between transportation and utility lifeline systems. There are seven (7) transportation systems that include highways, railways, light rail, bus, ports, ferry and airports. There are six (6) utility systems that include potable water, wastewater, natural gas, crude & refined oil, electric power and communications. The lifeline inventory data are provided in Tables 1 and 2.

The total value of the lifeline inventory is over 482,475.00 (millions of dollars). This inventory includes over 11,481.69 miles of highways, 12,419 bridges, 247,372.77 miles of pipes.

Table 1: Transportation System Lifeline Inventory

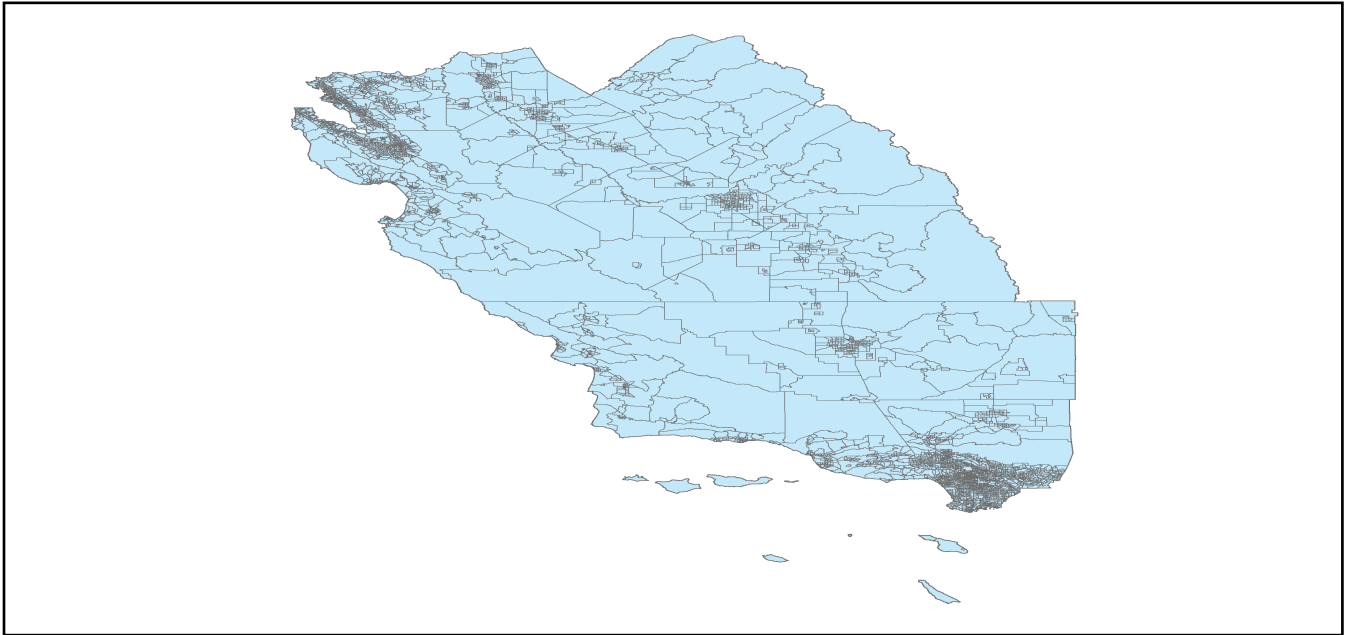
System	Component	# Locations/ # Segments	Replacement value (millions of dollars)
Highway	Bridges	12,419	68272.4968
	Segments	10,046	113040.1128
	Tunnels	76	1125.8229
	Subtotal		182438.4325
Railways	Bridges	1,746	9934.7400
	Facilities	138	367.4940
	Segments	3,158	81994.3833
	Tunnels	3	1.8495
	Subtotal		92298.4668
Light Rail	Bridges	140	21.5267
	Facilities	144	2875.4000
	Segments	8	4628.5449
	Tunnels	0	0.0000
	Subtotal		7525.4716
Bus	Facilities	56	123.4139
	Subtotal		123.4139
Ferry	Facilities	26	34.6060
	Subtotal		34.6060
Port	Facilities	432	1646.7169
	Subtotal		1646.7169
Airport	Facilities	145	4959.6951
	Runways	164	1878.6886
	Subtotal		6838.3837
		Total	290,905.50

Table 2: Utility System Lifeline Inventory

System	Component	# Locations / Segments	Replacement value (millions of dollars)
Potable Water	Distribution Lines	NA	4920.7086
	Facilities	42	1650.3480
	Pipelines	0	0.0000
		Subtotal	6571.0566
Waste Water	Distribution Lines	NA	2952.4252
	Facilities	140	24073.2520
	Pipelines	0	0.0000
		Subtotal	27025.6772
Natural Gas	Distribution Lines	NA	1968.2834
	Facilities	31	1107.0372
	Pipelines	626	15679.6767
		Subtotal	18754.9973
Oil Systems	Facilities	77	9.0860
	Pipelines	0	0.0000
		Subtotal	9.0860
Electrical Power	Facilities	546	139146.5037
		Subtotal	139146.5037
Communication	Facilities	534	63.0120
		Subtotal	63.0120
	Total		191,570.30

Earthquake Scenario

Hazus uses the following set of information to define the earthquake parameters used for the earthquake loss estimate provided in this report.



Scenario Name	greatvalley13coaling_m7p03_se
Type of Earthquake	User-defined
Fault Name	NA
Historical Epicenter ID #	NA
Probabilistic Return Period	NA
Longitude of Epicenter	NA
Latitude of Epicenter	NA
Earthquake Magnitude	7.03
Depth (km)	NA
Rupture Length (Km)	NA
Rupture Orientation (degrees)	NA
Attenuation Function	NA

Direct Earthquake Damage

Building Damage

Hazus estimates that about 2,699 buildings will be at least moderately damaged. This is over 0.00 % of the buildings in the region. There are an estimated 24 buildings that will be damaged beyond repair. The definition of the 'damage states' is provided in Volume 1: Chapter 5 of the Hazus technical manual. Table 3 below summarizes the expected damage by general occupancy for the buildings in the region. Table 4 below summarizes the expected damage by general building type.

Damage Categories by General Occupancy Type

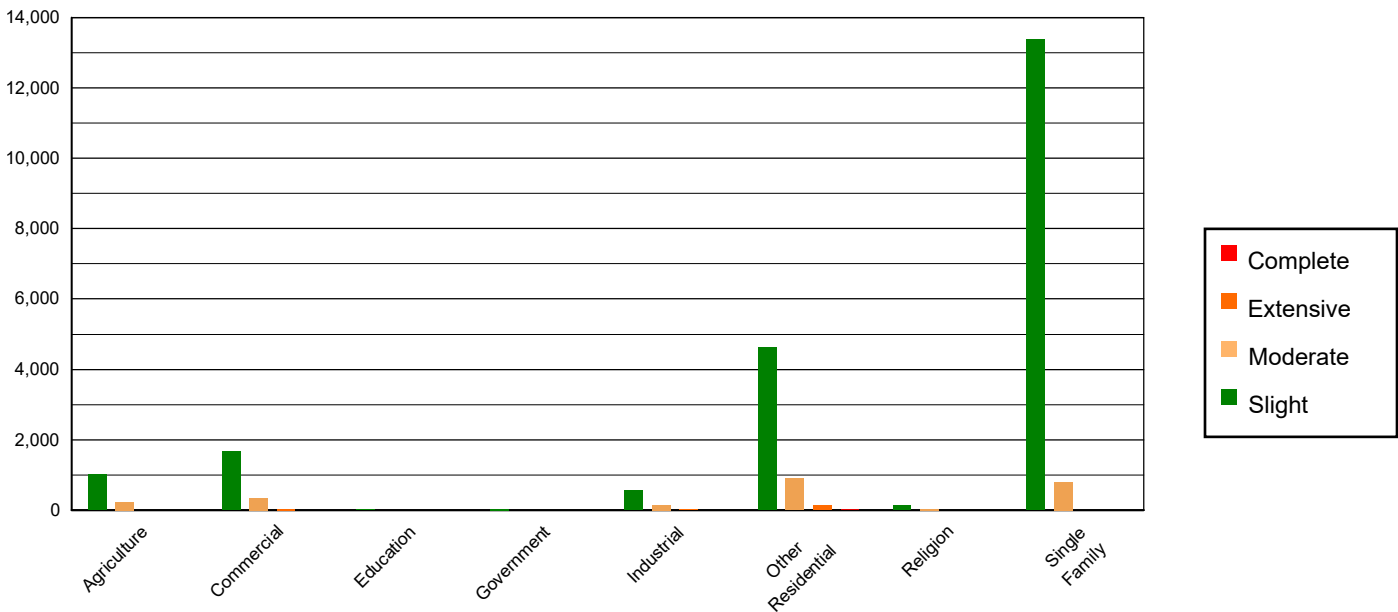


Table 3: Expected Building Damage by Occupancy

	None		Slight		Moderate		Extensive		Complete	
	Count	(%)	Count	(%)	Count	(%)	Count	(%)	Count	(%)
Agriculture	30074.05	0.49	1021.41	4.76	239.69	9.69	9.81	4.86	0.04	0.17
Commercial	420768.74	6.81	1675.41	7.80	354.21	14.32	37.60	18.62	6.04	24.62
Education	12871.63	0.21	23.60	0.11	6.28	0.25	0.48	0.24	0.01	0.02
Government	23824.59	0.39	43.10	0.20	7.17	0.29	0.14	0.07	0.00	0.00
Industrial	121654.88	1.97	565.74	2.63	142.69	5.77	11.59	5.74	1.10	4.49
Other Residential	938603.41	15.18	4637.11	21.59	901.12	36.43	133.04	65.89	17.31	70.57
Religion	25164.18	0.41	135.30	0.63	30.24	1.22	2.25	1.11	0.03	0.12
Single Family	4609011.52	74.56	13376.47	62.28	791.99	32.02	7.02	3.47	0.00	0.00
Total	6,181,973		21,478		2,473		202		25	

Table 4: Expected Building Damage by Building Type (All Design Levels)

	None		Slight		Moderate		Extensive		Complete	
	Count	(%)	Count	(%)	Count	(%)	Count	(%)	Count	(%)
Wood	5398449.80	87.33	15813.53	73.63	960.52	38.83	10.02	4.96	0.13	0.54
Steel	133362.21	2.16	1184.60	5.52	375.70	15.19	33.61	16.64	5.32	21.69
Concrete	147154.46	2.38	687.83	3.20	133.19	5.38	18.31	9.07	6.14	25.02
Precast	71539.75	1.16	644.25	3.00	173.67	7.02	10.02	4.96	0.76	3.08
RM	279297.37	4.52	472.16	2.20	118.64	4.80	8.86	4.39	0.14	0.55
URM	49963.04	0.81	405.16	1.89	85.72	3.47	14.12	6.99	7.76	31.62
MH	102206.37	1.65	2270.61	10.57	625.97	25.31	106.97	52.98	4.29	17.49
Total	6,181,973		21,478		2,473		202		25	

*Note:

RM Reinforced Masonry
 URM Unreinforced Masonry
 MH Manufactured Housing

Essential Facility Damage

Before the earthquake, the region had 58,930 hospital beds available for use. On the day of the earthquake, the model estimates that only 58,519 hospital beds (99.00%) are available for use by patients already in the hospital and those injured by the earthquake. After one week, 100.00% of the beds will be back in service. By 30 days, 100.00% will be operational.

Table 5: Expected Damage to Essential Facilities

Classification	Total	# Facilities		
		At Least Moderate Damage > 50%	Complete Damage > 50%	With Functionality > 50% on day 1
Hospitals	334	0	0	332
Schools	7,722	10	0	7,699
EOCs	122	0	0	121
PoliceStations	519	0	0	514
FireStations	1,386	0	0	1,378

Table 6: Expected Damage to the Transportation Systems

System	Component	Locations/ Segments	Number of Locations_			
			With at Least Mod. Damage	With Complete Damage	With Functionality > 50 %	
					After Day 1	After Day 7
Highway	Segments	10,046	0	0	10,046	10,046
	Bridges	12,419	4	0	12,412	12,418
	Tunnels	76	0	0	76	76
Railways	Segments	3,158	0	0	3,158	3,158
	Bridges	1,746	0	0	1,746	1,746
	Tunnels	3	0	0	3	3
	Facilities	138	0	0	138	138
Light Rail	Segments	8	0	0	8	8
	Bridges	140	0	0	140	140
	Tunnels	0	0	0	0	0
	Facilities	144	0	0	144	144
Bus	Facilities	56	0	0	56	56
Ferry	Facilities	26	0	0	26	26
Port	Facilities	432	0	0	432	432
Airport	Facilities	145	1	0	145	145
	Runways	164	0	0	164	164

Table 6 provides damage estimates for the transportation system.

Note: Roadway segments, railroad tracks and light rail tracks are assumed to be damaged by ground failure only. If ground failure maps are not provided, damage estimates to these components will not be computed.

Tables 7-9 provide information on the damage to the utility lifeline systems. Table 7 provides damage to the utility system facilities. Table 8 provides estimates on the number of leaks and breaks by the pipelines of the utility systems. For electric power and potable water, Hazus performs a simplified system performance analysis. Table 9 provides a summary of the system performance information.

Table 7 : Expected Utility System Facility Damage

System	# of Locations				
	Total #	With at Least Moderate Damage	With Complete Damage	with Functionality > 50 %	
				After Day 1	After Day 7
Potable Water	42	0	0	42	42
Waste Water	140	0	0	140	140
Natural Gas	31	2	0	29	31
Oil Systems	77	0	0	77	77
Electrical Power	546	30	0	523	540
Communication	534	1	0	533	534

Table 8 : Expected Utility System Pipeline Damage (Site Specific)

System	Total Pipelines Length (miles)	Number of Leaks	Number of Breaks
Potable Water	152,879	2078	520
Waste Water	91,728	1044	261
Natural Gas	2,766	0	0
Oil	0	0	0

Table 9: Expected Potable Water and Electric Power System Performance

	Total # of Households	Number of Households without Service				
		At Day 1	At Day 3	At Day 7	At Day 30	At Day 90
Potable Water	7,492,064	2,965	1,544	216	0	0
Electric Power		6,246	4,163	1,788	166	8

Induced Earthquake Damage

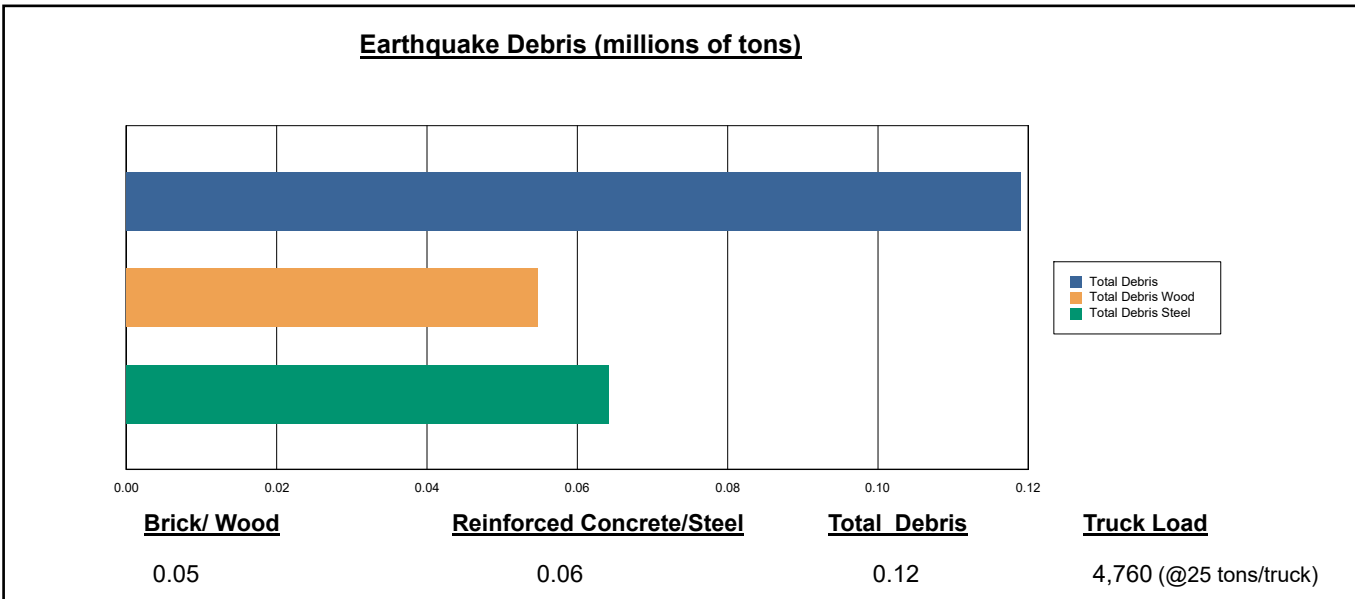
Fire Following Earthquake

Fires often occur after an earthquake. Because of the number of fires and the lack of water to fight the fires, they can often burn out of control. Hazus uses a Monte Carlo simulation model to estimate the number of ignitions and the amount of burnt area. For this scenario, the model estimates that there will be 3 ignitions that will burn about 0.08 sq. mi (0.00 % of the region's total area.) The model also estimates that the fires will displace about 522 people and burn about 52 (millions of dollars) of building value.

Debris Generation

Hazus estimates the amount of debris that will be generated by the earthquake. The model breaks the debris into two general categories: a) Brick/Wood and b) Reinforced Concrete/Steel. This distinction is made because of the different types of material handling equipment required to handle the debris.

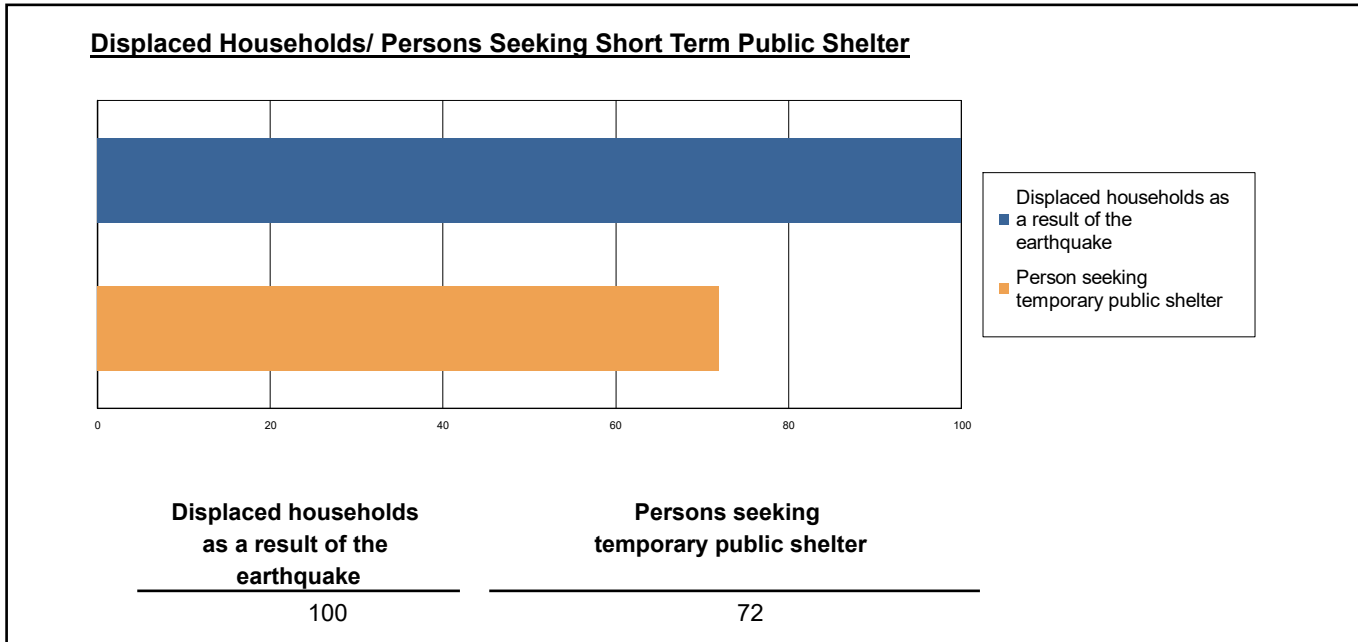
The model estimates that a total of 119,000 tons of debris will be generated. Of the total amount, Brick/Wood comprises 46.00% of the total, with the remainder being Reinforced Concrete/Steel. If the debris tonnage is converted to an estimated number of truckloads, it will require 4,760 truckloads (@25 tons/truck) to remove the debris generated by the earthquake.



Social Impact

Shelter Requirement

Hazus estimates the number of households that are expected to be displaced from their homes due to the earthquake and the number of displaced people that will require accommodations in temporary public shelters. The model estimates 100 households to be displaced due to the earthquake. Of these, 72 people (out of a total population of 22,297,402) will seek temporary shelter in public shelters.



Casualties

Hazus estimates the number of people that will be injured and killed by the earthquake. The casualties are broken down into four (4) severity levels that describe the extent of the injuries. The levels are described as follows;

- Severity Level 1: Injuries will require medical attention but hospitalization is not needed.
- Severity Level 2: Injuries will require hospitalization but are not considered life-threatening
- Severity Level 3: Injuries will require hospitalization and can become life threatening if not promptly treated.
- Severity Level 4: Victims are killed by the earthquake.

The casualty estimates are provided for three (3) times of day: 2:00 AM, 2:00 PM and 5:00 PM. These times represent the periods of the day that different sectors of the community are at their peak occupancy loads. The 2:00 AM estimate considers that the residential occupancy load is maximum, the 2:00 PM estimate considers that the educational, commercial and industrial sector loads are maximum and 5:00 PM represents peak commute time.

Table 10 provides a summary of the casualties estimated for this earthquake

Table 10: Casualty Estimates

		Level 1	Level 2	Level 3	Level 4
2 AM	Commercial	0.60	0.06	0.00	0.01
	Commuting	0.01	0.01	0.02	0.00
	Educational	0.00	0.00	0.00	0.00
	Hotels	0.02	0.00	0.00	0.00
	Industrial	0.59	0.05	0.00	0.00
	Other-Residential	37.51	4.24	0.39	0.76
	Single Family	27.39	0.74	0.00	0.00
	Total	66	5	0	1
2 PM	Commercial	50.77	5.40	0.47	0.91
	Commuting	0.10	0.12	0.22	0.04
	Educational	18.30	1.95	0.13	0.25
	Hotels	0.00	0.00	0.00	0.00
	Industrial	4.29	0.34	0.01	0.03
	Other-Residential	13.09	1.52	0.14	0.27
	Single Family	8.41	0.25	0.00	0.00
	Total	95	10	1	1
5 PM	Commercial	37.55	4.17	0.38	0.72
	Commuting	1.47	1.77	3.22	0.61
	Educational	3.60	0.46	0.04	0.07
	Hotels	0.01	0.00	0.00	0.00
	Industrial	2.68	0.22	0.01	0.02
	Other-Residential	13.81	1.64	0.16	0.30
	Single Family	9.88	0.28	0.00	0.00
	Total	69	9	4	2

Economic Loss

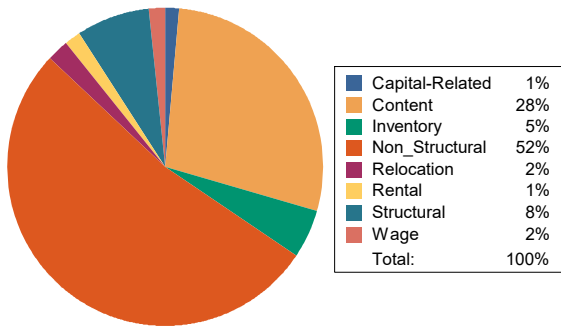
The total economic loss estimated for the earthquake is 3,417.89 (millions of dollars), which includes building and lifeline related losses based on the region's available inventory. The following three sections provide more detailed information about these losses.

Building-Related Losses

The building losses are broken into two categories: direct building losses and business interruption losses. The direct building losses are the estimated costs to repair or replace the damage caused to the building and its contents. The business interruption losses are the losses associated with inability to operate a business because of the damage sustained during the earthquake. Business interruption losses also include the temporary living expenses for those people displaced from their homes because of the earthquake.

The total building-related losses were 1,489.43 (millions of dollars); 7 % of the estimated losses were related to the business interruption of the region. By far, the largest loss was sustained by the residential occupancies which made up over 37 % of the total loss. Table 11 below provides a summary of the losses associated with the building damage.

Earthquake Losses by Loss Type (\$ millions)



Earthquake Losses by Occupancy Type (\$ millions)

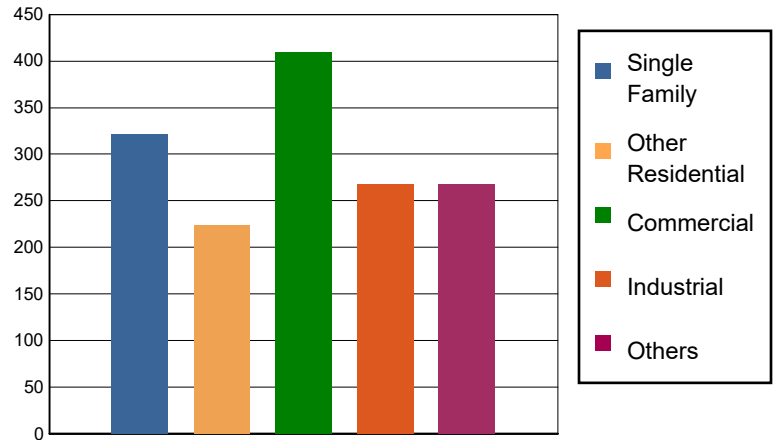


Table 11: Building-Related Economic Loss Estimates
(Millions of dollars)

Category	Area	Single Family	Other Residential	Commercial	Industrial	Others	Total
Income Losses							
	Wage	0.0000	1.4062	18.3968	1.1885	1.9637	22.9552
	Capital-Related	0.0000	0.5970	17.5771	0.8398	0.6700	19.6839
	Rental	2.0892	6.7911	11.3151	0.9102	0.6710	21.7766
	Relocation	4.9692	5.1046	12.3250	4.8555	7.8304	35.0847
	Subtotal	7.0584	13.8989	59.6140	7.7940	11.1351	99.5004
Capital Stock Losses							
	Structural	25.5247	16.0797	26.5251	16.7219	30.7906	115.6420
	Non_Structural	205.7116	148.5349	184.2912	130.6593	110.0334	779.2304
	Content	83.3828	44.8714	116.7837	96.7968	76.5447	418.3794
	Inventory	0.0000	0.0000	22.1254	15.8277	38.7275	76.6806
	Subtotal	314.6191	209.4860	349.7254	260.0057	256.0962	1389.9324
	Total	321.68	223.38	409.34	267.80	267.23	1489.43

Transportation and Utility Lifeline Losses

For the transportation and utility lifeline systems, Hazus computes the direct repair cost for each component only. There are no losses computed by Hazus for business interruption due to lifeline outages. Tables 12 & 13 provide a detailed breakdown in the expected lifeline losses.

Table 12: Transportation System Economic Losses
(Millions of dollars)

System	Component	Inventory Value	Economic Loss	Loss Ratio (%)
Highway	Segments	113040.1128	0.0000	0.00
	Bridges	68272.4968	14.4447	0.02
	Tunnels	1125.8229	0.0000	0.00
	Subtotal	182438.4325	14.4447	
Railways	Segments	81994.3833	0.0000	0.00
	Bridges	9934.7400	0.2454	0.00
	Tunnels	1.8495	0.0000	0.00
	Facilities	367.4940	3.2359	0.88
	Subtotal	92298.4668	3.4813	
Light Rail	Segments	4628.5449	0.0000	0.00
	Bridges	21.5267	0.0000	0.00
	Tunnels	0.0000	0.0000	0.00
	Facilities	2875.4000	4.5099	0.16
	Subtotal	7525.4716	4.5099	
Bus	Facilities	123.4139	2.1343	1.73
	Subtotal	123.4139	2.1343	
Ferry	Facilities	34.6060	0.0043	0.01
	Subtotal	34.6060	0.0043	
Port	Facilities	1646.7169	1.7308	0.11
	Subtotal	1646.7169	1.7308	
Airport	Facilities	4959.6951	20.4636	0.41
	Runways	1878.6886	0.0000	0.00
	Subtotal	6838.3837	20.4636	
Total		290,905.49	46.77	

Table 13: Utility System Economic Losses
(Millions of dollars)

System	Component	Inventory Value	Economic Loss	Loss Ratio (%)
Potable Water	Pipelines	0.0000	0.0000	0.00
	Facilities	1650.3480	0.4912	0.03
	Distribution Lines	4920.7086	9.3523	0.19
	Subtotal	6571.0566	9.8435	
Waste Water	Pipelines	0.0000	0.0000	0.00
	Facilities	24073.2520	21.5662	0.09
	Distribution Lines	2952.4252	4.6979	0.16
	Subtotal	27025.6772	26.2641	
Natural Gas	Pipelines	15679.6767	0.0000	0.00
	Facilities	1107.0372	26.4332	2.39
	Distribution Lines	1968.2834	1.6095	0.08
	Subtotal	18754.9973	28.0427	
Oil Systems	Pipelines	0.0000	0.0000	0.00
	Facilities	9.0860	0.0054	0.06
	Subtotal	9.0860	0.0054	
Electrical Power	Facilities	139146.5037	1817.2318	1.31
	Subtotal	139146.5037	1817.2318	
Communication	Facilities	63.0120	0.2991	0.47
	Subtotal	63.0120	0.2991	
	Total	191,570.33	1,881.69	

Appendix A: County Listing for the Region

Alameda,CA
Contra Costa,CA
Fresno,CA
Kern,CA
Kings,CA
Los Angeles,CA
Madera,CA
Mariposa,CA
Merced,CA
Monterey,CA
San Benito,CA
San Joaquin,CA
San Luis Obispo,CA
San Mateo,CA
Santa Barbara,CA
Santa Clara,CA
Santa Cruz,CA
Stanislaus,CA
Tulare,CA
Tuolumne,CA
Ventura,CA

Appendix B: Regional Population and Building Value Data

State	County Name	Population	Building Value (millions of dollars)		
			Residential	Non-Residential	Total
California	Alameda	1,682,353	209,951	122,639	332,590
	Contra Costa	1,165,927	158,118	60,339	218,458
	Fresno	1,008,654	98,532	61,772	160,304
	Kern	909,235	87,567	59,168	146,736
	Kings	152,486	13,719	7,861	21,581
	Los Angeles	10,014,009	950,697	566,995	1,517,692
	Madera	156,255	18,025	9,641	27,667
	Mariposa	17,131	3,299	1,141	4,441
	Merced	281,202	25,194	26,098	51,292
	Monterey	439,035	47,655	28,750	76,405
	San Benito	64,209	9,440	3,799	13,239
	San Joaquin	779,233	82,706	56,882	139,589
	San Luis Obispo	282,424	41,720	20,896	62,616
	San Mateo	764,442	110,372	44,995	155,368
	Santa Barbara	448,229	49,971	28,481	78,452
	Santa Clara	1,936,259	261,111	120,471	381,582
	Santa Cruz	270,861	36,147	18,805	54,952
	Stanislaus	552,878	62,937	37,511	100,449
	Tulare	473,117	43,262	31,210	74,472
	Tuolumne	55,620	8,964	3,507	12,471
Ventura	843,843	99,299	52,072	151,371	
Total Region		22,297,402	2,418,686	1,363,033	3,781,727

Building Inspection Tagging (Counts)

Total Economic Loss
Total:

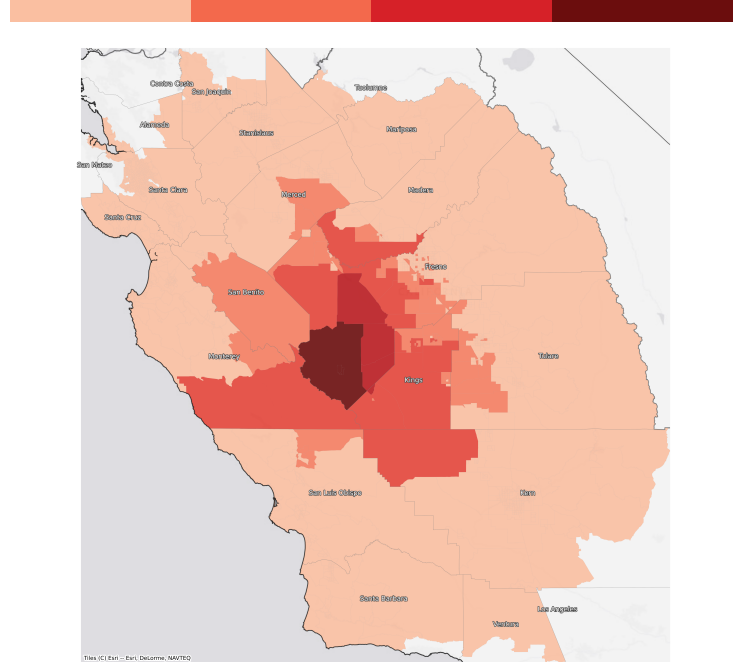
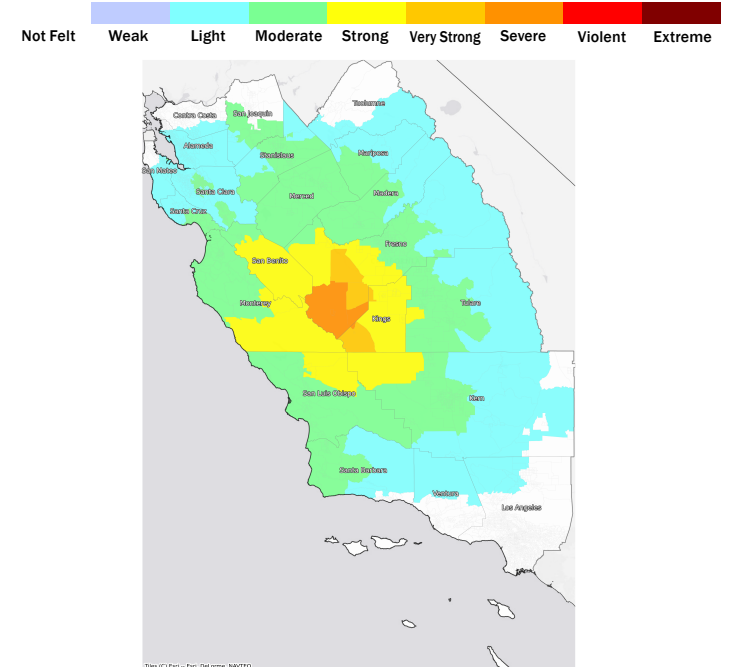
Top Counties	State	Total

Injuries & Fatalities
**Total Day:
Total Night:**

Top Counties	State	Injuries (day/night)	Fatalities (day/night)

Displaced Households & Short-Term Shelter Needs
**Total Displaced:
Total Needing Shelter:**

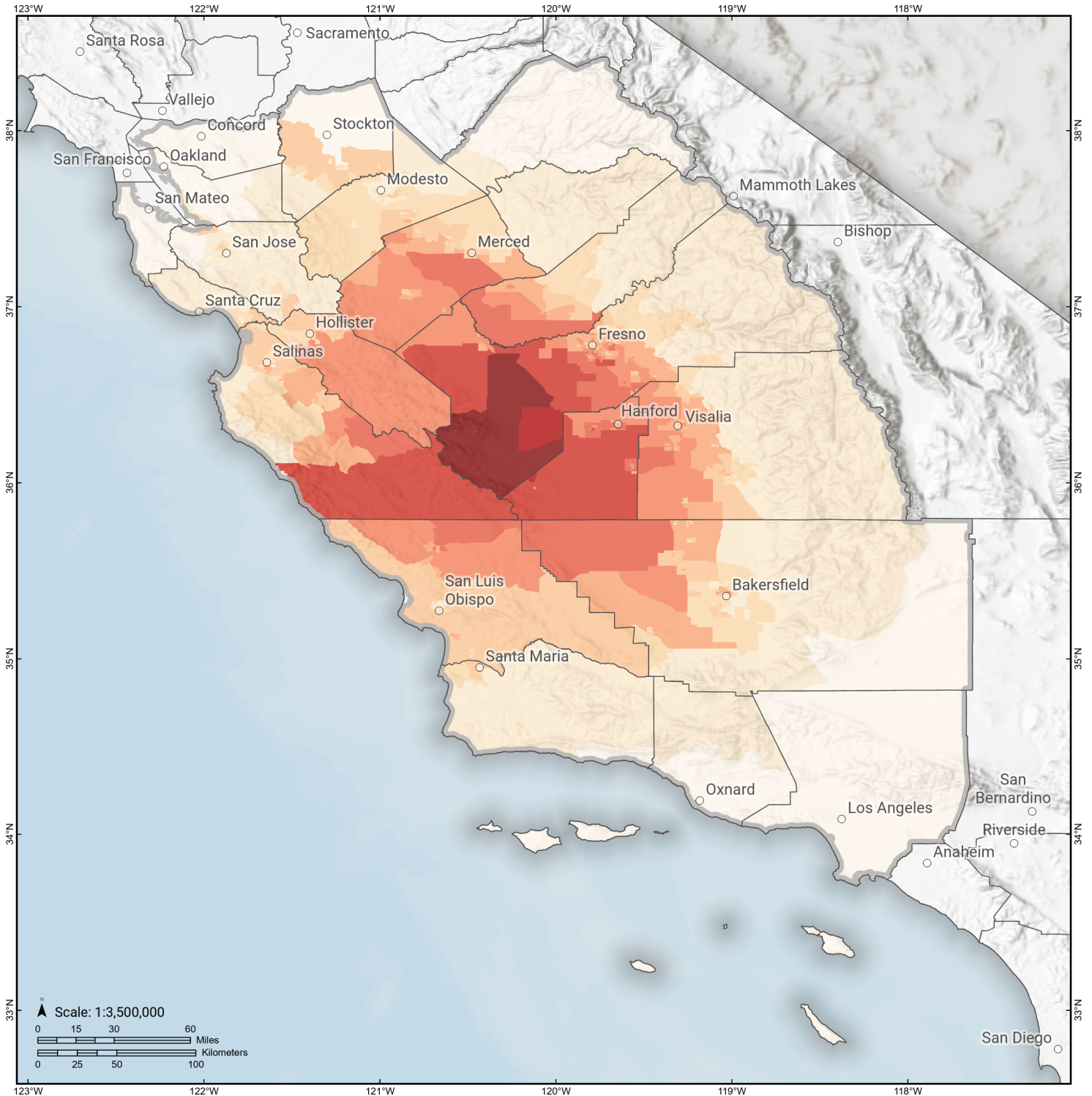
Top Counties	State	Displaced	Needing Shelter

Economic Impacts by Census Tract

Ground Shaking

Debris
**Total Tons:
Total Truckloads:**

Type	Tons

The estimates of social and economic impacts contained in this report were produced using Hazus loss estimation methodology software which is based on current scientific and engineering knowledge. There are uncertainties inherent in any loss estimation technique. Therefore, there may be significant differences between the modeled results contained in this report and the actual social and economic losses following a specific earthquake.

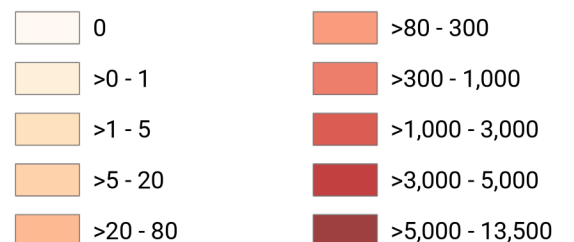
Great Valley 13 (Coalinga) Debris Generated by Census Tract



Study Region: Great Valley 13 (Coalinga)
Scenario: greatvalley13coaling_m7p03_se



Debris Generated (in tons)



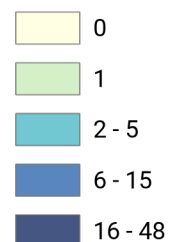
Great Valley 13 (Coalinga) Displaced Households by Census Tract



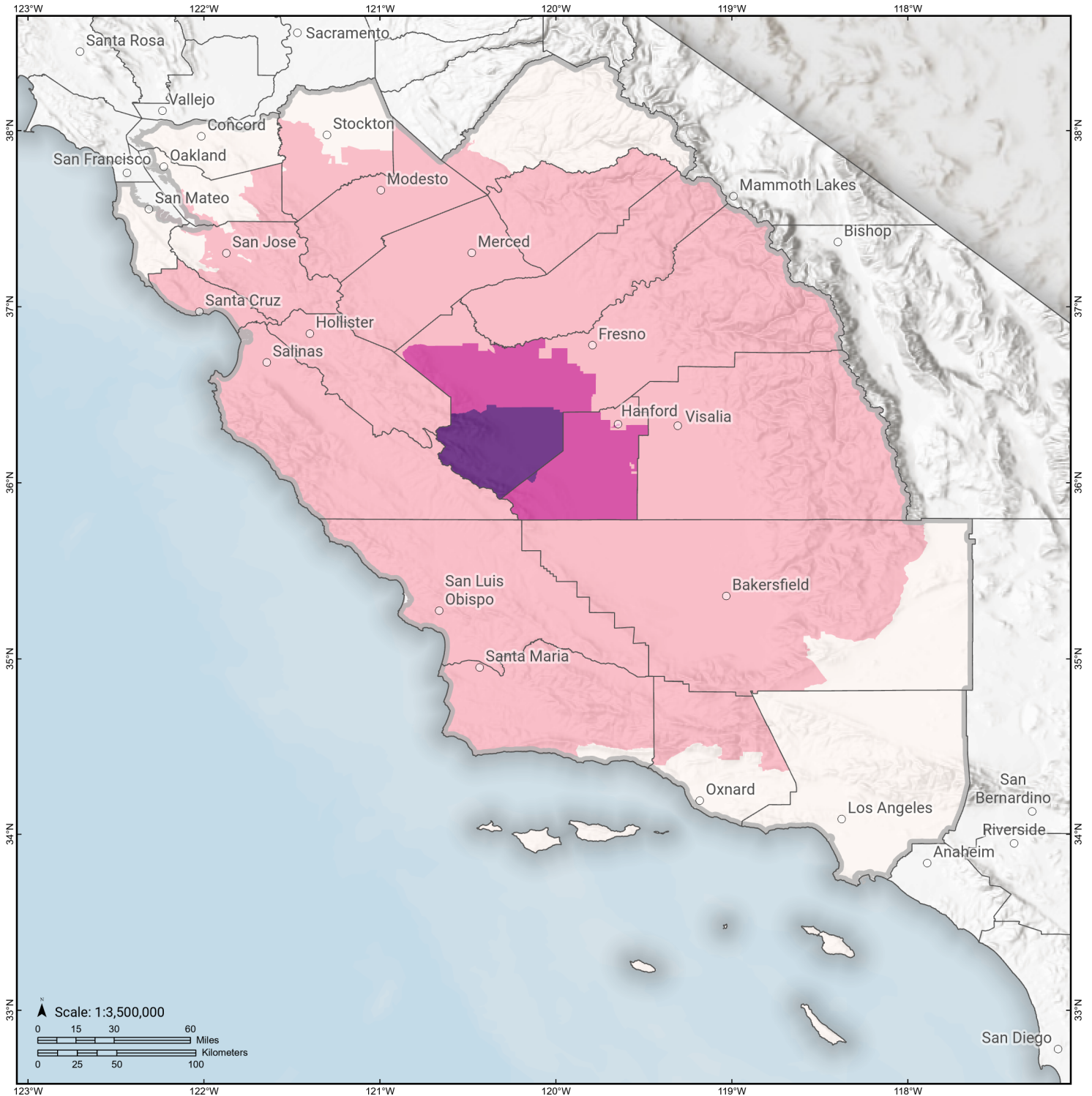
Study Region: Great Valley 13 (Coalinga)
Scenario: greatvalley13coaling_m7p03_se



Displaced Households

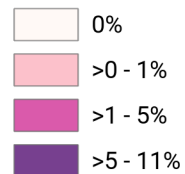


Great Valley 13 (Coalinga) Loss Ratio by Census Tract



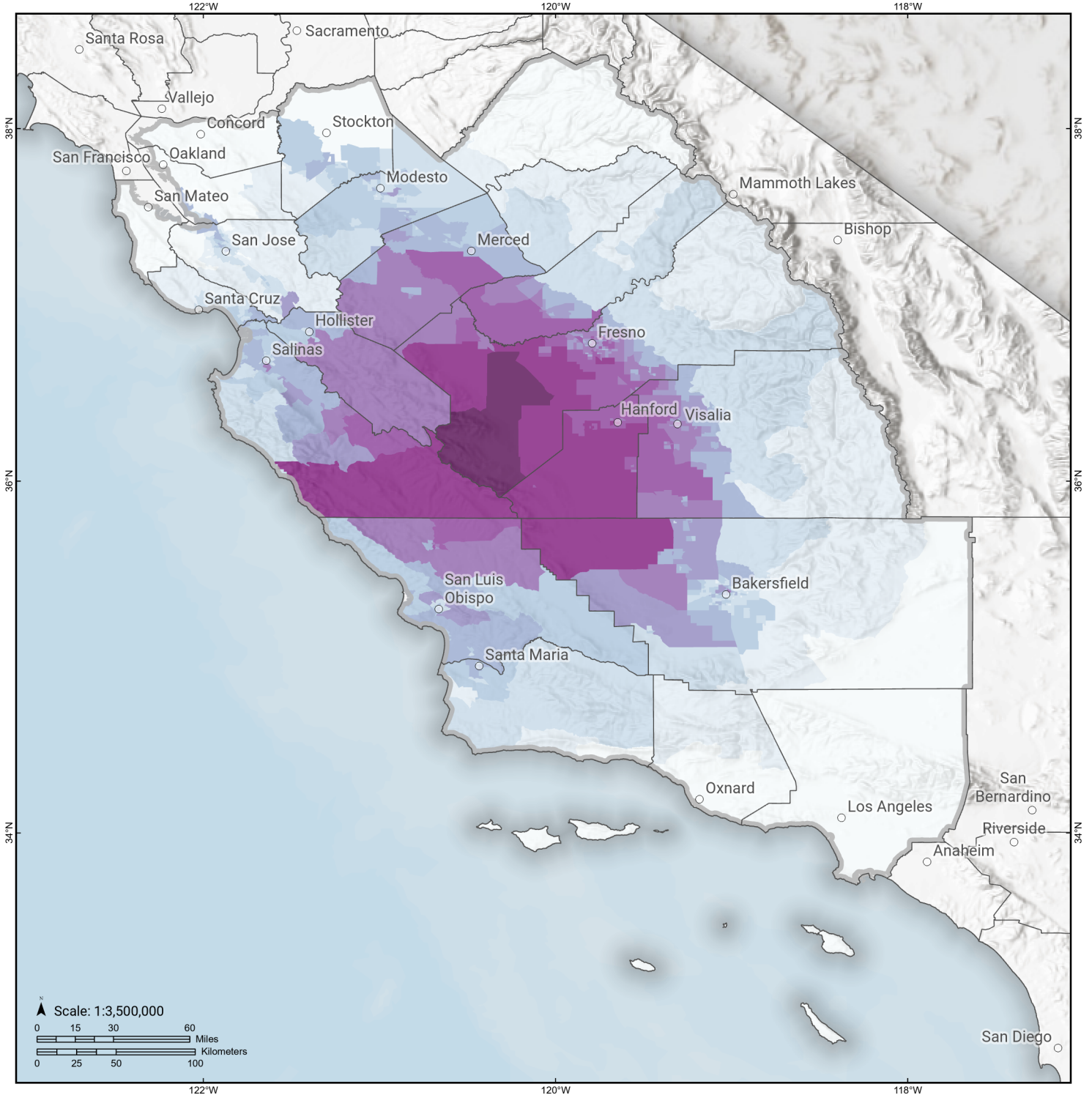
Study Region: Great Valley 13 (Coalinga)
Scenario: greatvalley13coaling_m7p03_se

Loss Ratio (ratio of building related economic loss to exposed value of buildings)



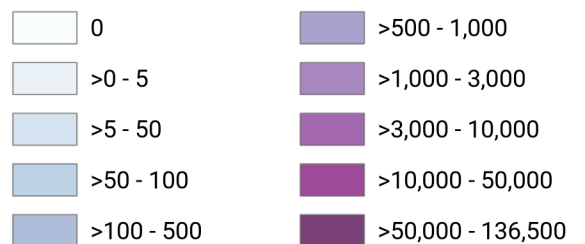
Great Valley 13 (Coalinga)

Total Building Related Economic Loss by Census Tract



Study Region: Great Valley 13 (Coalinga)
Scenario: greatvalley13coaling_m7p03_se

Economic Loss (in thousands of USD \$)



Building Damage by Count by General Occupancy

May 07, 2024

	# of Buildings					Total
	None	Slight	Moderate	Extensive	Complete	
California						
Alameda						
<i>Government</i>	10,528	0	0	0	0	10,528
<i>Agriculture</i>	422	0	0	0	0	422
<i>Commercial</i>	31,989	0	0	0	0	31,989
<i>Religion</i>	1,986	0	0	0	0	1,986
<i>Single Family</i>	344,173	0	0	0	0	344,173
<i>Other Residential</i>	61,396	0	0	0	0	61,396
<i>Education</i>	1,117	0	0	0	0	1,117
<i>Industrial</i>	10,205	0	0	0	0	10,205
Contra Costa						
<i>Commercial</i>	17,991	0	0	0	0	17,991
<i>Agriculture</i>	749	0	0	0	0	749
<i>Religion</i>	1,226	0	0	0	0	1,226
<i>Single Family</i>	281,935	0	0	0	0	281,935
<i>Other Residential</i>	29,124	0	0	0	0	29,124
<i>Industrial</i>	4,749	0	0	0	0	4,749
<i>Government</i>	5,024	0	0	0	0	5,024
<i>Education</i>	653	0	0	0	0	653
Fresno						

		# of Buildings					
		None	Slight	Moderate	Extensive	Complete	Total
Kern	<i>Commercial</i>	19,923	870	227	29	5	21,054
	<i>Religion</i>	1,413	74	19	2	0	1,507
	<i>Agriculture</i>	2,645	594	174	8	0	3,421
	<i>Industrial</i>	4,912	321	104	10	1	5,348
	<i>Government</i>	269	18	4	0	0	291
	<i>Other Residential</i>	38,216	2,089	539	113	17	40,973
	<i>Single Family</i>	219,621	6,191	606	7	0	226,425
	<i>Education</i>	584	13	5	0	0	602
	<i>Single Family</i>	205,031	108	0	0	0	205,139
	<i>Other Residential</i>	54,327	179	14	0	0	54,520
	<i>Industrial</i>	6,030	16	1	0	0	6,047
	<i>Education</i>	462	0	0	0	0	462
	<i>Government</i>	441	2	0	0	0	443
	<i>Religion</i>	1,519	4	0	0	0	1,524
<i>Agriculture</i>	4,612	30	2	0	0	4,645	
Kings	<i>Commercial</i>	15,528	37	2	0	0	15,567
	<i>Commercial</i>	1,896	329	85	8	1	2,318
	<i>Religion</i>	172	29	8	1	0	210
	<i>Agriculture</i>	247	49	9	1	0	306
	<i>Government</i>	61	9	2	0	0	72
	<i>Industrial</i>	447	84	23	1	0	555
	<i>Single Family</i>	31,548	4,516	180	0	0	36,245
	<i>Other Residential</i>	3,337	808	177	19	1	4,342

	# of Buildings					Total
	None	Slight	Moderate	Extensive	Complete	
<i>Education</i>	94	8	2	0	0	103
Los Angeles						
<i>Industrial</i>	53,126	0	0	0	0	53,126
<i>Single Family</i>	1,803,140	0	0	0	0	1,803,140
<i>Other Residential</i>	481,671	0	0	0	0	481,671
<i>Education</i>	5,486	0	0	0	0	5,486
<i>Commercial</i>	190,861	0	0	0	0	190,861
<i>Agriculture</i>	2,032	0	0	0	0	2,032
<i>Religion</i>	10,651	0	0	0	0	10,651
<i>Government</i>	3,031	0	0	0	0	3,031
Madera						
<i>Commercial</i>	2,847	53	5	0	0	2,905
<i>Religion</i>	117	2	0	0	0	119
<i>Government</i>	110	1	0	0	0	111
<i>Agriculture</i>	606	23	5	0	0	634
<i>Other Residential</i>	6,505	120	10	0	0	6,635
<i>Single Family</i>	38,529	382	1	0	0	38,912
<i>Education</i>	115	0	0	0	0	115
<i>Industrial</i>	882	19	2	0	0	903
Mariposa						
<i>Single Family</i>	8,084	0	0	0	0	8,084
<i>Other Residential</i>	307	0	0	0	0	307
<i>Education</i>	27	0	0	0	0	27
<i>Industrial</i>	94	0	0	0	0	94
<i>Commercial</i>	689	0	0	0	0	689

	# of Buildings					Total
	None	Slight	Moderate	Extensive	Complete	
<i>Agriculture</i>	29	0	0	0	0	29
<i>Religion</i>	36	0	0	0	0	36
<i>Government</i>	33	0	0	0	0	33
Merced						
<i>Education</i>	163	0	0	0	0	163
<i>Government</i>	170	1	0	0	0	171
<i>Commercial</i>	4,722	30	2	0	0	4,754
<i>Agriculture</i>	7,538	101	14	0	0	7,653
<i>Religion</i>	342	3	0	0	0	345
<i>Industrial</i>	1,014	7	0	0	0	1,022
<i>Single Family</i>	63,432	166	0	0	0	63,598
<i>Other Residential</i>	10,682	99	7	0	0	10,787
Monterey						
<i>Single Family</i>	90,596	279	1	0	0	90,876
<i>Industrial</i>	1,826	21	3	0	0	1,850
<i>Other Residential</i>	19,523	250	36	0	0	19,809
<i>Education</i>	239	0	0	0	0	239
<i>Government</i>	184	1	0	0	0	185
<i>Agriculture</i>	1,687	105	22	1	0	1,815
<i>Commercial</i>	9,177	61	8	0	0	9,246
<i>Religion</i>	574	5	1	0	0	580
San Benito						
<i>Other Residential</i>	1,366	8	1	0	0	1,375
<i>Single Family</i>	14,697	29	0	0	0	14,726
<i>Industrial</i>	323	2	0	0	0	326

	# of Buildings					Total
	None	Slight	Moderate	Extensive	Complete	
<i>Education</i>	42	0	0	0	0	42
<i>Government</i>	45	0	0	0	0	45
<i>Commercial</i>	1,074	6	0	0	0	1,080
<i>Religion</i>	64	0	0	0	0	64
<i>Agriculture</i>	249	4	0	0	0	253
San Joaquin						
<i>Commercial</i>	12,863	1	0	0	0	12,864
<i>Agriculture</i>	753	0	0	0	0	753
<i>Religion</i>	877	0	0	0	0	877
<i>Government</i>	304	0	0	0	0	304
<i>Single Family</i>	188,896	25	1	0	0	188,922
<i>Other Residential</i>	21,800	5	0	0	0	21,805
<i>Education</i>	395	0	0	0	0	395
<i>Industrial</i>	4,928	0	0	0	0	4,928
San Luis Obispo						
<i>Religion</i>	355	5	0	0	0	360
<i>Agriculture</i>	412	8	1	0	0	421
<i>Government</i>	183	2	0	0	0	185
<i>Commercial</i>	9,262	104	9	0	0	9,375
<i>Single Family</i>	85,074	563	1	0	0	85,639
<i>Industrial</i>	2,511	40	4	0	0	2,556
<i>Other Residential</i>	19,640	504	71	1	0	20,216
<i>Education</i>	181	1	0	0	0	182
San Mateo						
<i>Religion</i>	736	0	0	0	0	736

	# of Buildings					Total
	None	Slight	Moderate	Extensive	Complete	
<i>Agriculture</i>	539	0	0	0	0	539
<i>Government</i>	299	0	0	0	0	299
<i>Commercial</i>	14,394	1	0	0	0	14,395
<i>Industrial</i>	4,472	0	0	0	0	4,472
<i>Other Residential</i>	22,452	1	0	0	0	22,453
<i>Single Family</i>	159,931	0	0	0	0	159,931
<i>Education</i>	489	0	0	0	0	489
Santa Barbara						
<i>Government</i>	239	0	0	0	0	239
<i>Other Residential</i>	24,057	51	2	0	0	24,111
<i>Education</i>	299	0	0	0	0	299
<i>Religion</i>	621	0	0	0	0	621
<i>Commercial</i>	9,816	4	0	0	0	9,820
<i>Agriculture</i>	464	0	0	0	0	464
<i>Single Family</i>	98,968	14	0	0	0	98,982
<i>Industrial</i>	2,838	2	0	0	0	2,840
Santa Clara						
<i>Other Residential</i>	59,146	14	0	0	0	59,160
<i>Single Family</i>	427,217	2	0	0	0	427,219
<i>Government</i>	502	0	0	0	0	502
<i>Education</i>	1,173	0	0	0	0	1,173
<i>Industrial</i>	9,431	2	0	0	0	9,433
<i>Commercial</i>	35,461	8	0	0	0	35,469
<i>Religion</i>	1,540	0	0	0	0	1,540

	# of Buildings					Total
	None	Slight	Moderate	Extensive	Complete	
<i>Agriculture</i>	895	0	0	0	0	895
Santa Cruz						
<i>Religion</i>	359	0	0	0	0	359
<i>Agriculture</i>	839	1	0	0	0	840
<i>Single Family</i>	68,869	1	0	0	0	68,870
<i>Other Residential</i>	14,882	9	0	0	0	14,892
<i>Industrial</i>	1,818	1	0	0	0	1,819
<i>Education</i>	225	0	0	0	0	225
<i>Commercial</i>	6,689	5	0	0	0	6,694
<i>Government</i>	127	0	0	0	0	127
Stanislaus						
<i>Other Residential</i>	19,554	15	0	0	0	19,569
<i>Single Family</i>	142,712	12	0	0	0	142,724
<i>Education</i>	307	0	0	0	0	307
<i>Government</i>	680	0	0	0	0	680
<i>Industrial</i>	3,472	3	0	0	0	3,475
<i>Commercial</i>	10,357	11	1	0	0	10,369
<i>Religion</i>	455	1	0	0	0	456
<i>Agriculture</i>	1,238	1	0	0	0	1,239
Tulare						
<i>Commercial</i>	8,703	156	14	0	0	8,873
<i>Agriculture</i>	3,438	105	11	0	0	3,555
<i>Religion</i>	814	12	1	0	0	827
<i>Government</i>	452	8	1	0	0	461
<i>Single Family</i>	110,943	1,089	1	0	0	112,034

	# of Buildings					Total
	None	Slight	Moderate	Extensive	Complete	
<i>Other Residential</i>	19,493	487	43	0	0	20,022
<i>Industrial</i>	2,097	46	5	0	0	2,148
<i>Education</i>	268	1	0	0	0	269
Tuolumne						
<i>Education</i>	57	0	0	0	0	57
<i>Government</i>	143	0	0	0	0	143
<i>Commercial</i>	1,576	0	0	0	0	1,576
<i>Religion</i>	121	0	0	0	0	121
<i>Agriculture</i>	82	0	0	0	0	82
<i>Industrial</i>	383	0	0	0	0	383
<i>Other Residential</i>	4,962	0	0	0	0	4,962
<i>Single Family</i>	21,645	0	0	0	0	21,645
Ventura						
<i>Agriculture</i>	598	0	0	0	0	598
<i>Religion</i>	1,187	0	0	0	0	1,187
<i>Industrial</i>	6,097	0	0	0	0	6,097
<i>Single Family</i>	203,968	0	0	0	0	203,968
<i>Other Residential</i>	26,163	0	0	0	0	26,163
<i>Education</i>	497	0	0	0	0	497
<i>Government</i>	1,001	0	0	0	0	1,001
<i>Commercial</i>	14,953	0	0	0	0	14,953
Total	6,181,973	21,478	2,473	202	25	6,206,151
Region Total	6,181,973	21,478	2,473	202	25	6,206,151

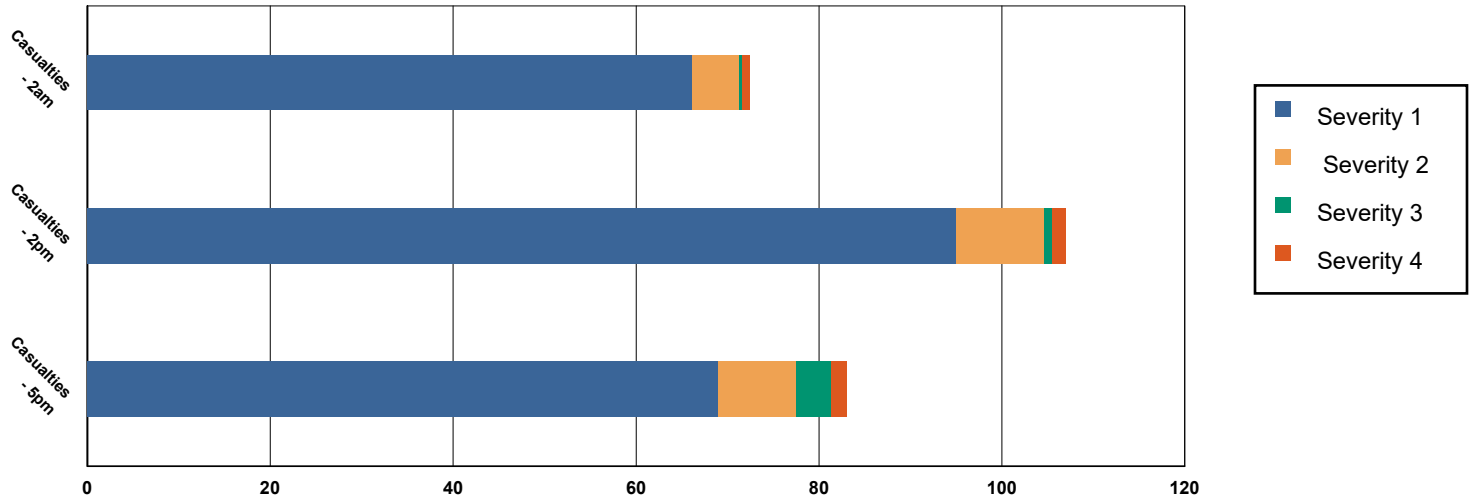
# of Buildings					
None	Slight	Moderate	Extensive	Complete	Total

Totals only reflect data for those census tracts/blocks included in the user's study region and will reflect the entire county/state only if all of the census blocks for that county/states were selected at the time of study region creation.

Casualties Summary Report

May 07, 2024

Region Total Casualties



Injury Severity Level

Severity 1	Severity 2	Severity 3	Severity 4	Total
------------	------------	------------	------------	-------

California

Alameda

Casualties - 2am

	Severity 1	Severity 2	Severity 3	Severity 4	Total
Single Family	0	0	0	0	0
Hotels	0	0	0	0	0
Commuting	0	0	0	0	0
Educational	0	0	0	0	0
Industrial	0	0	0	0	0
Commercial	0	0	0	0	0
Other-Residential	0	0	0	0	0
Total Casualties - 2am	0	0	0	0	0

Casualties - 2pm

Industrial	0	0	0	0	0
Educational	0	0	0	0	0
Other-Residential	0	0	0	0	0
Single Family	0	0	0	0	0
Hotels	0	0	0	0	0
Commuting	0	0	0	0	0
Commercial	0	0	0	0	0

	Injury Severity Level				Total
	Severity 1	Severity 2	Severity 3	Severity 4	
California					
Alameda					
Total Casualties - 2pm	0	0	0	0	0
Casualties - 5pm					
<i>Commuting</i>	0	0	0	0	0
<i>Single Family</i>	0	0	0	0	0
<i>Commercial</i>	0	0	0	0	0
<i>Hotels</i>	0	0	0	0	0
<i>Educational</i>	0	0	0	0	0
<i>Industrial</i>	0	0	0	0	0
<i>Other-Residential</i>	0	0	0	0	0
Total Casualties - 5pm	0	0	0	0	0
Contra Costa					
Casualties - 2am					
<i>Educational</i>	0	0	0	0	0
<i>Hotels</i>	0	0	0	0	0
<i>Industrial</i>	0	0	0	0	0
<i>Other-Residential</i>	0	0	0	0	0
<i>Single Family</i>	0	0	0	0	0
<i>Commercial</i>	0	0	0	0	0
<i>Commuting</i>	0	0	0	0	0
Total Casualties - 2am	0	0	0	0	0
Casualties - 2pm					
<i>Other-Residential</i>	0	0	0	0	0
<i>Industrial</i>	0	0	0	0	0
<i>Hotels</i>	0	0	0	0	0
<i>Single Family</i>	0	0	0	0	0
<i>Educational</i>	0	0	0	0	0
<i>Commuting</i>	0	0	0	0	0
<i>Commercial</i>	0	0	0	0	0
Total Casualties - 2pm	0	0	0	0	0
Casualties - 5pm					
<i>Educational</i>	0	0	0	0	0
<i>Commuting</i>	0	0	0	0	0
<i>Single Family</i>	0	0	0	0	0
<i>Hotels</i>	0	0	0	0	0
<i>Industrial</i>	0	0	0	0	0
<i>Other-Residential</i>	0	0	0	0	0
<i>Commercial</i>	0	0	0	0	0
Total Casualties - 5pm	0	0	0	0	0
Fresno					
Casualties - 2am					
<i>Hotels</i>	0	0	0	0	0

	Injury Severity Level				Total
	Severity 1	Severity 2	Severity 3	Severity 4	
California					
Fresno					
Casualties - 2am					
<i>Educational</i>	0	0	0	0	0
<i>Industrial</i>	0	0	0	0	0
<i>Commercial</i>	0	0	0	0	0
<i>Other-Residential</i>	25	4	0	1	29
<i>Single Family</i>	15	1	0	0	15
<i>Commuting</i>	0	0	0	0	0
Total Casualties - 2am	41	4	0	1	46
Casualties - 2pm					
<i>Commercial</i>	33	4	0	1	39
<i>Other-Residential</i>	9	1	0	0	11
<i>Industrial</i>	3	0	0	0	3
<i>Single Family</i>	5	0	0	0	5
<i>Hotels</i>	0	0	0	0	0
<i>Commuting</i>	0	0	0	0	0
<i>Educational</i>	14	2	0	0	16
Total Casualties - 2pm	64	8	1	1	74
Casualties - 5pm					
<i>Educational</i>	3	0	0	0	4
<i>Commuting</i>	1	2	3	1	6
<i>Hotels</i>	0	0	0	0	0
<i>Industrial</i>	2	0	0	0	2
<i>Single Family</i>	5	0	0	0	6
<i>Other-Residential</i>	9	1	0	0	11
<i>Commercial</i>	24	3	0	1	28
Total Casualties - 5pm	45	7	3	2	57
Kern					
Casualties - 2am					
<i>Commercial</i>	0	0	0	0	0
<i>Commuting</i>	0	0	0	0	0
<i>Educational</i>	0	0	0	0	0
<i>Single Family</i>	0	0	0	0	0
<i>Other-Residential</i>	0	0	0	0	0
<i>Hotels</i>	0	0	0	0	0
<i>Industrial</i>	0	0	0	0	0
Total Casualties - 2am	1	0	0	0	1
Casualties - 2pm					
<i>Educational</i>	0	0	0	0	0
<i>Commuting</i>	0	0	0	0	0
<i>Single Family</i>	0	0	0	0	0
<i>Hotels</i>	0	0	0	0	0
<i>Other-Residential</i>	0	0	0	0	0

	Injury Severity Level				Total
	Severity 1	Severity 2	Severity 3	Severity 4	
California					
Kern					
Casualties - 2pm					
<i>Commercial</i>	1	0	0	0	1
<i>Industrial</i>	0	0	0	0	0
Total Casualties - 2pm	1	0	0	0	1
Casualties - 5pm					
<i>Single Family</i>	0	0	0	0	0
<i>Commercial</i>	1	0	0	0	1
<i>Other-Residential</i>	0	0	0	0	0
<i>Commuting</i>	0	0	0	0	0
<i>Educational</i>	0	0	0	0	0
<i>Hotels</i>	0	0	0	0	0
<i>Industrial</i>	0	0	0	0	0
Total Casualties - 5pm	1	0	0	0	1
Kings					
Casualties - 2am					
<i>Industrial</i>	0	0	0	0	0
<i>Other-Residential</i>	8	1	0	0	9
<i>Educational</i>	0	0	0	0	0
<i>Commuting</i>	0	0	0	0	0
<i>Commercial</i>	0	0	0	0	0
<i>Single Family</i>	9	0	0	0	9
<i>Hotels</i>	0	0	0	0	0
Total Casualties - 2am	17	1	0	0	18
Casualties - 2pm					
<i>Single Family</i>	2	0	0	0	2
<i>Other-Residential</i>	3	0	0	0	3
<i>Commercial</i>	9	1	0	0	10
<i>Educational</i>	3	0	0	0	3
<i>Commuting</i>	0	0	0	0	0
<i>Hotels</i>	0	0	0	0	0
<i>Industrial</i>	1	0	0	0	1
Total Casualties - 2pm	18	1	0	0	19
Casualties - 5pm					
<i>Single Family</i>	3	0	0	0	3
<i>Commercial</i>	7	1	0	0	8
<i>Commuting</i>	0	0	0	0	0
<i>Other-Residential</i>	3	0	0	0	3
<i>Educational</i>	0	0	0	0	0
<i>Hotels</i>	0	0	0	0	0
<i>Industrial</i>	1	0	0	0	1
Total Casualties - 5pm	14	1	0	0	16

	Injury Severity Level				Total
	Severity 1	Severity 2	Severity 3	Severity 4	
California					
Los Angeles					
Casualties - 2am					
<i>Hotels</i>	0	0	0	0	0
<i>Industrial</i>	0	0	0	0	0
<i>Educational</i>	0	0	0	0	0
<i>Single Family</i>	0	0	0	0	0
<i>Commuting</i>	0	0	0	0	0
<i>Other-Residential</i>	0	0	0	0	0
<i>Commercial</i>	0	0	0	0	0
Total Casualties - 2am	0	0	0	0	0
Casualties - 2pm					
<i>Industrial</i>	0	0	0	0	0
<i>Other-Residential</i>	0	0	0	0	0
<i>Commercial</i>	0	0	0	0	0
<i>Commuting</i>	0	0	0	0	0
<i>Educational</i>	0	0	0	0	0
<i>Single Family</i>	0	0	0	0	0
<i>Hotels</i>	0	0	0	0	0
Total Casualties - 2pm	0	0	0	0	0
Casualties - 5pm					
<i>Other-Residential</i>	0	0	0	0	0
<i>Industrial</i>	0	0	0	0	0
<i>Commuting</i>	0	0	0	0	0
<i>Single Family</i>	0	0	0	0	0
<i>Commercial</i>	0	0	0	0	0
<i>Hotels</i>	0	0	0	0	0
<i>Educational</i>	0	0	0	0	0
Total Casualties - 5pm	0	0	0	0	0
Madera					
Casualties - 2am					
<i>Hotels</i>	0	0	0	0	0
<i>Educational</i>	0	0	0	0	0
<i>Single Family</i>	1	0	0	0	1
<i>Commuting</i>	0	0	0	0	0
<i>Industrial</i>	0	0	0	0	0
<i>Commercial</i>	0	0	0	0	0
<i>Other-Residential</i>	1	0	0	0	1
Total Casualties - 2am	1	0	0	0	1
Casualties - 2pm					
<i>Industrial</i>	0	0	0	0	0
<i>Commercial</i>	1	0	0	0	1
<i>Other-Residential</i>	0	0	0	0	0
<i>Commuting</i>	0	0	0	0	0

	Injury Severity Level				Total
	Severity 1	Severity 2	Severity 3	Severity 4	
California					
Madera					
Casualties - 2pm					
Single Family	0	0	0	0	0
Hotels	0	0	0	0	0
Educational	0	0	0	0	0
Total Casualties - 2pm	2	0	0	0	2
Casualties - 5pm					
Industrial	0	0	0	0	0
Commercial	1	0	0	0	1
Single Family	0	0	0	0	0
Educational	0	0	0	0	0
Other-Residential	0	0	0	0	0
Commuting	0	0	0	0	0
Hotels	0	0	0	0	0
Total Casualties - 5pm	1	0	0	0	1
Mariposa					
Casualties - 2am					
Commuting	0	0	0	0	0
Single Family	0	0	0	0	0
Commercial	0	0	0	0	0
Hotels	0	0	0	0	0
Educational	0	0	0	0	0
Industrial	0	0	0	0	0
Other-Residential	0	0	0	0	0
Total Casualties - 2am	0	0	0	0	0
Casualties - 2pm					
Hotels	0	0	0	0	0
Industrial	0	0	0	0	0
Commercial	0	0	0	0	0
Other-Residential	0	0	0	0	0
Educational	0	0	0	0	0
Commuting	0	0	0	0	0
Single Family	0	0	0	0	0
Total Casualties - 2pm	0	0	0	0	0
Casualties - 5pm					
Other-Residential	0	0	0	0	0
Educational	0	0	0	0	0
Commuting	0	0	0	0	0
Hotels	0	0	0	0	0
Single Family	0	0	0	0	0
Commercial	0	0	0	0	0
Industrial	0	0	0	0	0

	Injury Severity Level				Total
	Severity 1	Severity 2	Severity 3	Severity 4	
California					
Mariposa					
Total Casualties - 5pm	0	0	0	0	0
Merced					
Casualties - 2am					
<i>Hotels</i>	0	0	0	0	0
<i>Industrial</i>	0	0	0	0	0
<i>Commercial</i>	0	0	0	0	0
<i>Single Family</i>	0	0	0	0	0
<i>Other-Residential</i>	0	0	0	0	0
<i>Educational</i>	0	0	0	0	0
<i>Commuting</i>	0	0	0	0	0
Total Casualties - 2am	1	0	0	0	1
Casualties - 2pm					
<i>Other-Residential</i>	0	0	0	0	0
<i>Industrial</i>	0	0	0	0	0
<i>Commercial</i>	1	0	0	0	1
<i>Commuting</i>	0	0	0	0	0
<i>Hotels</i>	0	0	0	0	0
<i>Educational</i>	0	0	0	0	0
<i>Single Family</i>	0	0	0	0	0
Total Casualties - 2pm	2	0	0	0	2
Casualties - 5pm					
<i>Industrial</i>	0	0	0	0	0
<i>Hotels</i>	0	0	0	0	0
<i>Educational</i>	0	0	0	0	0
<i>Commuting</i>	0	0	0	0	0
<i>Single Family</i>	0	0	0	0	0
<i>Commercial</i>	1	0	0	0	1
<i>Other-Residential</i>	0	0	0	0	0
Total Casualties - 5pm	1	0	0	0	1
Monterey					
Casualties - 2am					
<i>Other-Residential</i>	1	0	0	0	1
<i>Commuting</i>	0	0	0	0	0
<i>Commercial</i>	0	0	0	0	0
<i>Single Family</i>	1	0	0	0	1
<i>Hotels</i>	0	0	0	0	0
<i>Educational</i>	0	0	0	0	0
<i>Industrial</i>	0	0	0	0	0
Total Casualties - 2am	1	0	0	0	1
Casualties - 2pm					
<i>Commuting</i>	0	0	0	0	0

	Injury Severity Level				Total
	Severity 1	Severity 2	Severity 3	Severity 4	
California					
Monterey					
Casualties - 2pm					
Commercial	2	0	0	0	2
Single Family	0	0	0	0	0
Hotels	0	0	0	0	0
Educational	0	0	0	0	0
Industrial	0	0	0	0	0
Other-Residential	0	0	0	0	0
Total Casualties - 2pm	2	0	0	0	2
Casualties - 5pm					
Commercial	1	0	0	0	1
Other-Residential	0	0	0	0	0
Industrial	0	0	0	0	0
Hotels	0	0	0	0	0
Educational	0	0	0	0	0
Commuting	0	0	0	0	0
Single Family	0	0	0	0	0
Total Casualties - 5pm	2	0	0	0	2
San Benito					
Casualties - 2am					
Other-Residential	0	0	0	0	0
Commercial	0	0	0	0	0
Commuting	0	0	0	0	0
Hotels	0	0	0	0	0
Educational	0	0	0	0	0
Single Family	0	0	0	0	0
Industrial	0	0	0	0	0
Total Casualties - 2am	0	0	0	0	0
Casualties - 2pm					
Hotels	0	0	0	0	0
Educational	0	0	0	0	0
Industrial	0	0	0	0	0
Other-Residential	0	0	0	0	0
Commercial	0	0	0	0	0
Commuting	0	0	0	0	0
Single Family	0	0	0	0	0
Total Casualties - 2pm	0	0	0	0	0
Casualties - 5pm					
Commuting	0	0	0	0	0
Commercial	0	0	0	0	0
Other-Residential	0	0	0	0	0
Single Family	0	0	0	0	0
Industrial	0	0	0	0	0

	Injury Severity Level				Total
	Severity 1	Severity 2	Severity 3	Severity 4	
California					
San Benito					
Casualties - 5pm					
<i>Educational</i>	0	0	0	0	0
<i>Hotels</i>	0	0	0	0	0
Total Casualties - 5pm	0	0	0	0	0
San Joaquin					
Casualties - 2am					
<i>Educational</i>	0	0	0	0	0
<i>Commuting</i>	0	0	0	0	0
<i>Hotels</i>	0	0	0	0	0
<i>Commercial</i>	0	0	0	0	0
<i>Single Family</i>	0	0	0	0	0
<i>Industrial</i>	0	0	0	0	0
<i>Other-Residential</i>	0	0	0	0	0
Total Casualties - 2am	0	0	0	0	0
Casualties - 2pm					
<i>Industrial</i>	0	0	0	0	0
<i>Other-Residential</i>	0	0	0	0	0
<i>Educational</i>	0	0	0	0	0
<i>Single Family</i>	0	0	0	0	0
<i>Hotels</i>	0	0	0	0	0
<i>Commuting</i>	0	0	0	0	0
<i>Commercial</i>	0	0	0	0	0
Total Casualties - 2pm	0	0	0	0	0
Casualties - 5pm					
<i>Commuting</i>	0	0	0	0	0
<i>Single Family</i>	0	0	0	0	0
<i>Educational</i>	0	0	0	0	0
<i>Hotels</i>	0	0	0	0	0
<i>Industrial</i>	0	0	0	0	0
<i>Commercial</i>	0	0	0	0	0
<i>Other-Residential</i>	0	0	0	0	0
Total Casualties - 5pm	0	0	0	0	0
San Luis Obispo					
Casualties - 2am					
<i>Commercial</i>	0	0	0	0	0
<i>Other-Residential</i>	1	0	0	0	1
<i>Industrial</i>	0	0	0	0	0
<i>Single Family</i>	1	0	0	0	1
<i>Commuting</i>	0	0	0	0	0
<i>Educational</i>	0	0	0	0	0
<i>Hotels</i>	0	0	0	0	0

	Injury Severity Level				Total
	Severity 1	Severity 2	Severity 3	Severity 4	
California					
San Luis Obispo					
Total Casualties - 2am	2	0	0	0	2
Casualties - 2pm					
Single Family	0	0	0	0	0
Educational	0	0	0	0	0
Other-Residential	0	0	0	0	0
Hotels	0	0	0	0	0
Commuting	0	0	0	0	0
Commercial	1	0	0	0	1
Industrial	0	0	0	0	0
Total Casualties - 2pm	2	0	0	0	2
Casualties - 5pm					
Industrial	0	0	0	0	0
Other-Residential	0	0	0	0	0
Commuting	0	0	0	0	0
Single Family	0	0	0	0	0
Commercial	1	0	0	0	1
Hotels	0	0	0	0	0
Educational	0	0	0	0	0
Total Casualties - 5pm	1	0	0	0	1
San Mateo					
Casualties - 2am					
Industrial	0	0	0	0	0
Other-Residential	0	0	0	0	0
Single Family	0	0	0	0	0
Commercial	0	0	0	0	0
Educational	0	0	0	0	0
Commuting	0	0	0	0	0
Hotels	0	0	0	0	0
Total Casualties - 2am	0	0	0	0	0
Casualties - 2pm					
Other-Residential	0	0	0	0	0
Single Family	0	0	0	0	0
Commuting	0	0	0	0	0
Commercial	0	0	0	0	0
Educational	0	0	0	0	0
Hotels	0	0	0	0	0
Industrial	0	0	0	0	0
Total Casualties - 2pm	0	0	0	0	0
Casualties - 5pm					
Commercial	0	0	0	0	0
Industrial	0	0	0	0	0

	Injury Severity Level				Total
	Severity 1	Severity 2	Severity 3	Severity 4	
California					
San Mateo					
Casualties - 5pm					
<i>Other-Residential</i>	0	0	0	0	0
<i>Single Family</i>	0	0	0	0	0
<i>Educational</i>	0	0	0	0	0
<i>Commuting</i>	0	0	0	0	0
<i>Hotels</i>	0	0	0	0	0
Total Casualties - 5pm	0	0	0	0	0
Santa Barbara					
Casualties - 2am					
<i>Industrial</i>	0	0	0	0	0
<i>Commercial</i>	0	0	0	0	0
<i>Other-Residential</i>	0	0	0	0	0
<i>Commuting</i>	0	0	0	0	0
<i>Educational</i>	0	0	0	0	0
<i>Single Family</i>	0	0	0	0	0
<i>Hotels</i>	0	0	0	0	0
Total Casualties - 2am	0	0	0	0	0
Casualties - 2pm					
<i>Commercial</i>	0	0	0	0	0
<i>Single Family</i>	0	0	0	0	0
<i>Other-Residential</i>	0	0	0	0	0
<i>Commuting</i>	0	0	0	0	0
<i>Educational</i>	0	0	0	0	0
<i>Hotels</i>	0	0	0	0	0
<i>Industrial</i>	0	0	0	0	0
Total Casualties - 2pm	0	0	0	0	0
Casualties - 5pm					
<i>Other-Residential</i>	0	0	0	0	0
<i>Single Family</i>	0	0	0	0	0
<i>Commercial</i>	0	0	0	0	0
<i>Commuting</i>	0	0	0	0	0
<i>Educational</i>	0	0	0	0	0
<i>Industrial</i>	0	0	0	0	0
<i>Hotels</i>	0	0	0	0	0
Total Casualties - 5pm	0	0	0	0	0
Santa Clara					
Casualties - 2am					
<i>Commuting</i>	0	0	0	0	0
<i>Educational</i>	0	0	0	0	0
<i>Single Family</i>	0	0	0	0	0
<i>Hotels</i>	0	0	0	0	0
<i>Industrial</i>	0	0	0	0	0

	Injury Severity Level				Total
	Severity 1	Severity 2	Severity 3	Severity 4	
California					
Santa Clara					
Casualties - 2am					
Commercial	0	0	0	0	0
Other-Residential	0	0	0	0	0
Total Casualties - 2am	0	0	0	0	0
Casualties - 2pm					
Industrial	0	0	0	0	0
Commercial	0	0	0	0	0
Single Family	0	0	0	0	0
Commuting	0	0	0	0	0
Hotels	0	0	0	0	0
Other-Residential	0	0	0	0	0
Educational	0	0	0	0	0
Total Casualties - 2pm	0	0	0	0	0
Casualties - 5pm					
Industrial	0	0	0	0	0
Hotels	0	0	0	0	0
Other-Residential	0	0	0	0	0
Commercial	0	0	0	0	0
Commuting	0	0	0	0	0
Single Family	0	0	0	0	0
Educational	0	0	0	0	0
Total Casualties - 5pm	0	0	0	0	0
Santa Cruz					
Casualties - 2am					
Hotels	0	0	0	0	0
Educational	0	0	0	0	0
Industrial	0	0	0	0	0
Other-Residential	0	0	0	0	0
Single Family	0	0	0	0	0
Commercial	0	0	0	0	0
Commuting	0	0	0	0	0
Total Casualties - 2am	0	0	0	0	0
Casualties - 2pm					
Industrial	0	0	0	0	0
Other-Residential	0	0	0	0	0
Commercial	0	0	0	0	0
Commuting	0	0	0	0	0
Educational	0	0	0	0	0
Single Family	0	0	0	0	0
Hotels	0	0	0	0	0
Total Casualties - 2pm	0	0	0	0	0

	Injury Severity Level				Total
	Severity 1	Severity 2	Severity 3	Severity 4	
California					
Santa Cruz					
Casualties - 5pm					
<i>Industrial</i>	0	0	0	0	0
<i>Other-Residential</i>	0	0	0	0	0
<i>Commercial</i>	0	0	0	0	0
<i>Commuting</i>	0	0	0	0	0
<i>Single Family</i>	0	0	0	0	0
<i>Hotels</i>	0	0	0	0	0
<i>Educational</i>	0	0	0	0	0
Total Casualties - 5pm	0	0	0	0	0
Stanislaus					
Casualties - 2am					
<i>Hotels</i>	0	0	0	0	0
<i>Industrial</i>	0	0	0	0	0
<i>Commercial</i>	0	0	0	0	0
<i>Single Family</i>	0	0	0	0	0
<i>Other-Residential</i>	0	0	0	0	0
<i>Commuting</i>	0	0	0	0	0
<i>Educational</i>	0	0	0	0	0
Total Casualties - 2am	0	0	0	0	0
Casualties - 2pm					
<i>Industrial</i>	0	0	0	0	0
<i>Other-Residential</i>	0	0	0	0	0
<i>Commercial</i>	0	0	0	0	0
<i>Commuting</i>	0	0	0	0	0
<i>Educational</i>	0	0	0	0	0
<i>Single Family</i>	0	0	0	0	0
<i>Hotels</i>	0	0	0	0	0
Total Casualties - 2pm	0	0	0	0	0
Casualties - 5pm					
<i>Industrial</i>	0	0	0	0	0
<i>Other-Residential</i>	0	0	0	0	0
<i>Commuting</i>	0	0	0	0	0
<i>Single Family</i>	0	0	0	0	0
<i>Commercial</i>	0	0	0	0	0
<i>Hotels</i>	0	0	0	0	0
<i>Educational</i>	0	0	0	0	0
Total Casualties - 5pm	0	0	0	0	0
Tulare					
Casualties - 2am					
<i>Commercial</i>	0	0	0	0	0
<i>Commuting</i>	0	0	0	0	0
<i>Single Family</i>	2	0	0	0	2

Injury Severity Level

Severity 1	Severity 2	Severity 3	Severity 4	Total
------------	------------	------------	------------	-------

California

Tulare

Casualties - 2am

<i>Educational</i>	0	0	0	0	0
<i>Hotels</i>	0	0	0	0	0
<i>Industrial</i>	0	0	0	0	0
<i>Other-Residential</i>	1	0	0	0	1
Total Casualties - 2am	3	0	0	0	3

Casualties - 2pm

<i>Industrial</i>	0	0	0	0	0
<i>Hotels</i>	0	0	0	0	0
<i>Commercial</i>	3	0	0	0	3
<i>Other-Residential</i>	0	0	0	0	0
<i>Educational</i>	1	0	0	0	1
<i>Commuting</i>	0	0	0	0	0
<i>Single Family</i>	0	0	0	0	0
Total Casualties - 2pm	4	0	0	0	5

Casualties - 5pm

<i>Other-Residential</i>	1	0	0	0	1
<i>Commercial</i>	2	0	0	0	2
<i>Single Family</i>	1	0	0	0	1
<i>Hotels</i>	0	0	0	0	0
<i>Commuting</i>	0	0	0	0	0
<i>Educational</i>	0	0	0	0	0
<i>Industrial</i>	0	0	0	0	0
Total Casualties - 5pm	3	0	0	0	3

Tuolumne

Casualties - 2am

<i>Other-Residential</i>	0	0	0	0	0
<i>Industrial</i>	0	0	0	0	0
<i>Commercial</i>	0	0	0	0	0
<i>Commuting</i>	0	0	0	0	0
<i>Single Family</i>	0	0	0	0	0
<i>Educational</i>	0	0	0	0	0
<i>Hotels</i>	0	0	0	0	0
Total Casualties - 2am	0	0	0	0	0

Casualties - 2pm

<i>Other-Residential</i>	0	0	0	0	0
<i>Commercial</i>	0	0	0	0	0
<i>Single Family</i>	0	0	0	0	0
<i>Educational</i>	0	0	0	0	0
<i>Commuting</i>	0	0	0	0	0
<i>Industrial</i>	0	0	0	0	0
<i>Hotels</i>	0	0	0	0	0

	Injury Severity Level				Total
	Severity 1	Severity 2	Severity 3	Severity 4	
California					
Tuolumne					
Total Casualties - 2pm	0	0	0	0	0
Casualties - 5pm					
<i>Industrial</i>	0	0	0	0	0
<i>Other-Residential</i>	0	0	0	0	0
<i>Commercial</i>	0	0	0	0	0
<i>Hotels</i>	0	0	0	0	0
<i>Commuting</i>	0	0	0	0	0
<i>Educational</i>	0	0	0	0	0
<i>Single Family</i>	0	0	0	0	0
Total Casualties - 5pm	0	0	0	0	0
Ventura					
Casualties - 2am					
<i>Educational</i>	0	0	0	0	0
<i>Commuting</i>	0	0	0	0	0
<i>Single Family</i>	0	0	0	0	0
<i>Hotels</i>	0	0	0	0	0
<i>Industrial</i>	0	0	0	0	0
<i>Commercial</i>	0	0	0	0	0
<i>Other-Residential</i>	0	0	0	0	0
Total Casualties - 2am	0	0	0	0	0
Casualties - 2pm					
<i>Industrial</i>	0	0	0	0	0
<i>Educational</i>	0	0	0	0	0
<i>Commuting</i>	0	0	0	0	0
<i>Hotels</i>	0	0	0	0	0
<i>Other-Residential</i>	0	0	0	0	0
<i>Commercial</i>	0	0	0	0	0
<i>Single Family</i>	0	0	0	0	0
Total Casualties - 2pm	0	0	0	0	0
Casualties - 5pm					
<i>Commuting</i>	0	0	0	0	0
<i>Other-Residential</i>	0	0	0	0	0
<i>Commercial</i>	0	0	0	0	0
<i>Hotels</i>	0	0	0	0	0
<i>Educational</i>	0	0	0	0	0
<i>Single Family</i>	0	0	0	0	0
<i>Industrial</i>	0	0	0	0	0
Total Casualties - 5pm	0	0	0	0	0
Region Total	NA	NA	NA	NA	NA

Injury Severity Level

Severity 1

Severity 2

Severity 3

Severity 4

Total

Totals only reflect data for those census tracts/blocks included in the user's study region and will reflect the entire county/state only if all of the census blocks for that county/states were selected at the time of study region creation.

Debris Summary Report

May 07, 2024

All values are in thousands of tons.

	Brick, Wood & Others	Concrete & Steel	Total
California			
Fresno	32	47	79
Alameda	0	0	0
San Mateo	0	0	0
Tuolumne	0	0	0
Kings	10	10	20
San Joaquin	0	0	0
San Luis Obispo	2	1	3
Madera	1	1	2
Tulare	3	2	6
Contra Costa	0	0	0
Ventura	0	0	0
Kern	1	1	2
Santa Cruz	0	0	0
Monterey	2	2	3
Mariposa	0	0	0
Los Angeles	0	0	0
Stanislaus	0	0	0
Santa Barbara	0	0	0
Santa Clara	0	0	0

	Brick, Wood & Others	Concrete & Steel	Total
San Benito	0	0	0
Merced	1	1	2
Total	54	65	119
Region Total	54	65	119

Totals only reflect data for those census tracts/blocks included in the user's study region and will reflect the entire county/state only if all of the census blocks for that county/states were selected at the time of study region creation.

Direct Economic Losses For Buildings

May 7, 2024

All values are in thousands of dollars

	Capital Stock Losses				Loss Ratio %	Income Losses				Total Loss
	Cost Structural Damage	Cost Non-struct. Damage	Cost Contents Damage	Inventory Loss		Relocation Loss	Capital Related Loss	Wages Losses	Rental Income Loss	
California										
Contra Costa	0	0	0	0	0.00	0	0	0	0	0
Alameda	5	184	130	21	0.00	0	1	1	1	344
San Joaquin	84	1,065	706	97	0.00	12	2	3	10	1,978
Tuolumne	0	0	0	0	0.00	0	0	0	0	0
Tulare	6,261	65,442	37,234	7,922	0.10	935	808	984	970	120,555
Madera	2,704	25,139	13,837	2,385	0.10	387	241	282	389	45,364
Fresno	73,915	446,868	242,451	46,349	0.32	25,387	12,760	14,755	14,497	876,982
Kings	20,849	142,618	69,432	7,599	0.76	6,574	4,450	5,480	4,267	261,269
San Luis Obispo	2,964	28,144	13,392	1,355	0.05	573	693	649	636	48,407

	Capital Stock Losses				Loss Ratio %	Income Losses				Total Loss
	Cost Structural Damage	Cost Non-struct. Damage	Cost Contents Damage	Inventory Loss		Relocation Loss	Capital Related Loss	Wages Losses	Rental Income Loss	
San Mateo	23	172	91	9	0.00	1	4	3	17	321
San Benito	229	2,647	1,407	231	0.02	19	34	32	28	4,629
Stanislaus	213	4,408	2,735	389	0.00	26	36	36	55	7,899
Santa Clara	126	3,075	1,985	219	0.00	12	23	29	38	5,507
Merced	2,650	14,949	9,166	3,450	0.03	288	152	148	189	30,991
Santa Barbara	112	2,081	1,100	153	0.00	14	14	21	22	3,517
Kern	1,669	18,239	10,377	2,334	0.01	200	150	201	224	33,395
Ventura	0	0	0	0	0.00	0	0	0	0	0
Santa Cruz	92	1,280	809	140	0.00	15	23	27	23	2,408
Mariposa	0	12	9	1	0.00	0	0	0	0	22
Monterey	3,747	22,906	13,517	4,026	0.03	640	292	304	412	45,845
Los Angeles	0	0	0	0	0.00	0	0	0	0	0
Total	115,642	779,231	418,380	76,681	0.07	35,085	19,684	22,955	21,777	1,489,435
Region Total	115,642	779,231	418,380	76,681	0.07	35,085	19,684	22,955	21,777	1,489,435

Totals only reflect data for those census tracts/blocks included in the user's study region and will reflect the entire county/state only if all of the census blocks for that county/states were selected at the time of study region creation.

Direct Economic Loss For Transportation

May 07, 2024

All values are in thousands of dollars

	Highway	Railway	Light Rail	Bus Facility	Ports	Ferries	Airport	Total
California								
Alameda								
Segments	0	0	0					0
Bridges	1	0	0					1
Tunnels	0	0	0					0
Facilities		26	0	0	220	4	399	649
Total	1	26	0	0	220	4	399	650
Contra Costa								
Segments	0	0	0					0
Bridges	0	0	0					0
Tunnels	0	0	0					0
Facilities		0	0	0	0	0	0	0
Total	0	0	0	0	0	0	0	0
Fresno								
Segments	0	0	0					0
Bridges	11,132	163	0					11,295
Tunnels	0	0	0					0
Facilities		1,169	0	89	0	0	7,022	8,280

	Highway	Railway	Light Rail	Bus Facility	Ports	Ferries	Airport	Total
Total	11,132	1,331	0	89	0	0	7,022	19,574
Kern								
<i>Segments</i>	0	0	0					0
<i>Bridges</i>	75	0	0					75
<i>Tunnels</i>	0	0	0					0
<i>Facilities</i>		263	0	197	0	0	1,065	1,524
Total	75	263	0	197	0	0	1,065	1,599
Kings								
<i>Segments</i>	0	0	0					0
<i>Bridges</i>	2,088	62	0					2,151
<i>Tunnels</i>	0	0	0					0
<i>Facilities</i>		1,099	0	636	0	0	3,199	4,933
Total	2,088	1,161	0	636	0	0	3,199	7,084
Los Angeles								
<i>Segments</i>	0	0	0					0
<i>Bridges</i>	0	0	0					0
<i>Tunnels</i>	0	0	0					0
<i>Facilities</i>		0	0	0	0	0	11	11
Total	0	0	0	0	0	0	11	11
Madera								
<i>Segments</i>	0	0	0					0
<i>Bridges</i>	85	1	0					86
<i>Tunnels</i>	0	0	0					0
<i>Facilities</i>		109	0	89	0	0	435	633

	Highway	Railway	Light Rail	Bus Facility	Ports	Ferries	Airport	Total
Total	85	110	0	89	0	0	435	719
Mariposa								
Segments	0	0	0					0
Bridges	0	0	0					0
Tunnels	0	0	0					0
Facilities		0	0	29	0	0	51	80
Total	0	0	0	29	0	0	51	80
Merced								
Segments	0	0	0					0
Bridges	86	0	0					86
Tunnels	0	0	0					0
Facilities		51	0	21	0	0	577	649
Total	86	51	0	21	0	0	577	735
Monterey								
Segments	0	0	0					0
Bridges	517	11	0					528
Tunnels	0	0	0					0
Facilities		26	0	484	110	0	1,353	1,973
Total	517	37	0	484	110	0	1,353	2,501
San Benito								
Segments	0	0	0					0
Bridges	8	0	0					8
Tunnels	0	0	0					0
Facilities		0	0	0	0	0	102	102

	Highway	Railway	Light Rail	Bus Facility	Ports	Ferries	Airport	Total
Total	8	0	0	0	0	0	102	110
San Joaquin								
Segments	0	0	0					0
Bridges	1	0	0					1
Tunnels	0	0	0					0
Facilities		26	0	0	37	0	180	242
Total	1	26	0	0	37	0	180	243
San Luis Obispo								
Segments	0	0	0					0
Bridges	221	2	0					224
Tunnels	0	0	0					0
Facilities		161	0	109	772	0	967	2,008
Total	221	163	0	109	772	0	967	2,232
San Mateo								
Segments	0	0	0					0
Bridges	1	0	0					1
Tunnels	0	0	0					0
Facilities		0	0	0	371	0	129	500
Total	1	0	0	0	371	0	129	501
Santa Barbara								
Segments	0	0	0					0
Bridges	9	0	0					9
Tunnels	0	0	0					0
Facilities		51	0	82	0	0	254	387

	Highway	Railway	Light Rail	Bus Facility	Ports	Ferries	Airport	Total
Total	9	51	0	82	0	0	254	396
Santa Clara								
Segments	0	0	0					0
Bridges	4	0	0					4
Tunnels	0	0	0					0
Facilities		103	4,510	26	184	0	3,479	8,300
Total	4	103	4,510	26	184	0	3,479	8,304
Santa Cruz								
Segments	0	0	0					0
Bridges	1	0	0					1
Tunnels	0	0	0					0
Facilities		0	0	45	37	0	257	339
Total	1	0	0	45	37	0	257	340
Stanislaus								
Segments	0	0	0					0
Bridges	28	0	0					28
Tunnels	0	0	0					0
Facilities		154	0	43	0	0	231	427
Total	28	154	0	43	0	0	231	455
Tulare								
Segments	0	0	0					0
Bridges	188	6	0					194
Tunnels	0	0	0					0
Facilities		0	0	285	0	0	754	1,040

	Highway	Railway	Light Rail	Bus Facility	Ports	Ferries	Airport	Total
Total	188	6	0	285	0	0	754	1,234
Tuolumne								
Segments	0	0	0					0
Bridges	0	0	0					0
Tunnels	0	0	0					0
Facilities		0	0	0	0	0	0	0
Total	0	0	0	0	0	0	0	0
Ventura								
Segments	0	0	0					0
Bridges	0	0	0					0
Tunnels	0	0	0					0
Facilities		0	0	0	0	0	0	0
Total	0	0	0	0	0	0	0	0
Total	14,445	3,481	4,510	2,134	1,731	4	20,464	46,769
Region Total	14,445	3,481	4,510	2,134	1,731	4	20,464	46,769

Totals only reflect data for those census tracts/blocks included in the user's study region and will reflect the entire county/state only if all of the census blocks for that county/states were selected at the time of study region creation.

Direct Economic Loss For Utilities

May 07, 2024

All values are in thousands of dollars

	Potable Water	Waste Water	Oil Systems	Natural Gas	Electric Power	Communication	Total
California							
Alameda							
<i>Facilities</i>	1	21	0	0	734	0	756
<i>Pipelines</i>	63	32	0	0			95
Total	64	52	0	0	734	0	851
Contra Costa							
<i>Facilities</i>	0	0	0	0	8	0	8
<i>Pipelines</i>	5	3	0	0			8
Total	5	3	0	0	8	0	16
Fresno							
<i>Facilities</i>	0	6,097	1	467	992,137	141	998,843
<i>Pipelines</i>	5,558	2,792	0	0			8,350
Total	5,558	8,889	1	467	992,137	141	1,007,194
Kern							
<i>Facilities</i>	57	128	1	726	113,409	4	114,326

	Potable Water	Waste Water	Oil Systems	Natural Gas	Electric Power	Communication	Total
<i>Pipelines</i>	302	152	0	0			454
Total	359	280	1	726	113,409	4	114,780
Kings							
<i>Facilities</i>	0	0	3	25,231	335,325	29	360,588
<i>Pipelines</i>	1,376	691	0	0			2,068
Total	1,376	691	3	25,231	335,325	29	362,656
Los Angeles							
<i>Facilities</i>	0	0	0	3	4,481	0	4,484
<i>Pipelines</i>	17	8	0	0			25
Total	17	8	0	3	4,481	0	4,509
Madera							
<i>Facilities</i>	0	0	0	0	22,233	3	22,236
<i>Pipelines</i>	191	96	0	0			287
Total	191	96	0	0	22,233	3	22,523
Mariposa							
<i>Facilities</i>	0	131	0	0	2,808	2	2,940
<i>Pipelines</i>	17	8	0	0			25
Total	17	139	0	0	2,808	2	2,965
Merced							
<i>Facilities</i>	0	615	0	0	26,718	7	27,340
<i>Pipelines</i>	121	61	0	0			181

	Potable Water	Waste Water	Oil Systems	Natural Gas	Electric Power	Communication	Total
Total	121	675	0	0	26,718	7	27,521
Monterey							
<i>Facilities</i>	0	1,107	0	0	57,915	40	59,061
<i>Pipelines</i>	576	289	0	0			865
Total	576	1,396	0	0	57,915	40	59,926
San Benito							
<i>Facilities</i>	0	246	0	0	0	22	268
<i>Pipelines</i>	112	56	0	0			168
Total	112	302	0	0	0	22	436
San Joaquin							
<i>Facilities</i>	0	369	0	0	1,458	0	1,828
<i>Pipelines</i>	35	18	0	0			53
Total	35	386	0	0	1,458	0	1,880
San Luis Obispo							
<i>Facilities</i>	28	8,078	0	0	213,838	17	221,961
<i>Pipelines</i>	347	174	0	0			521
Total	375	8,253	0	0	213,838	17	222,483
San Mateo							
<i>Facilities</i>	0	126	0	0	3	1	129
<i>Pipelines</i>	18	9	0	0			27
Total	18	135	0	0	3	1	156

	Potable Water	Waste Water	Oil Systems	Natural Gas	Electric Power	Communication	Total
Santa Barbara							
<i>Facilities</i>	0	246	0	6	538	4	794
<i>Pipelines</i>	73	37	0	0			110
Total	73	283	0	6	538	4	904
Santa Clara							
<i>Facilities</i>	56	369	0	0	10,841	3	11,268
<i>Pipelines</i>	114	57	0	0			172
Total	171	426	0	0	10,841	3	11,440
Santa Cruz							
<i>Facilities</i>	0	371	0	0	42	1	414
<i>Pipelines</i>	35	17	0	0			52
Total	35	389	0	0	42	1	467
Stanislaus							
<i>Facilities</i>	0	492	0	0	8,834	3	9,328
<i>Pipelines</i>	62	31	0	0			93
Total	62	523	0	0	8,834	3	9,421
Tulare							
<i>Facilities</i>	348	3,172	0	0	25,491	23	29,034
<i>Pipelines</i>	321	161	0	0			482
Total	669	3,333	0	0	25,491	23	29,515
Tuolumne							

	Potable Water	Waste Water	Oil Systems	Natural Gas	Electric Power	Communication	Total
<i>Facilities</i>	0	0	0	0	419	0	419
<i>Pipelines</i>	4	2	0	0			6
Total	4	2	0	0	419	0	425
Ventura							
<i>Facilities</i>	0	0	0	0	0	0	0
<i>Pipelines</i>	6	3	0	0			9
Total	6	3	0	0	0	0	9
Total	9,843	26,264	5	26,433	1,817,232	299	1,880,077
Region Total	9,843	26,264	5	26,433	1,817,232	299	1,880,077

Totals only reflect data for those census tracts/blocks included in the user's study region and will reflect the entire county/state only if all of the census blocks for that county/states were selected at the time of study region creation.

Hazus Quick Assessment Report

Estimated Economic Loss (\$ Billions)

Category	Description	Range
General Building Stock	Building Damage	0.40 - 1.80
	Building Contents	0.10 - 0.50
	Business Interruption	0.00 - 0.20
Infrastructure	Lifelines Damage	
Total		0.70 - 3.00

Preliminary Damage Assessment (PDA) Estimates

Description	Residential	Commercial	Other	Total
Affected	18,000	1,700	1,700	21,400
Minor	1,700	350	410	2,460
Major	140	40	20	200
Destroyed	20	< 10	< 10	20
Total	19,860	2,090	2,130	24,080

Estimated Casualties : Night Time

Severity Level	Description	# Persons
Level 1	Medical Aid	30 - 130
Level 2	Hospital Care	< 10
Level 3	Life-threatening	< 10
Level 4	Fatalities	< 10

Estimated Shelter Needs

Type	Households	People
Displaced Households	50 - 200	125 - 500
Public Shelter	30	70

Comments :

*Hazus damage estimates are presented using FEMA Preliminary Damage Assessment (PDA) categories. These estimates should be used for planning purposes and may not reflect actual observed damages from the PDA process.

Disclaimer:

The estimates of social and economic impacts contained in this report were produced using HAZUS loss estimation methodology software which is based on current scientific and engineering knowledge. There are uncertainties inherent in any loss estimation technique. Therefore, there may be significant differences between the modeled results contained in this report and the actual social and economic losses following a specific earthquake. These results can be improved by using enhanced inventory, geotechnical, and observed ground motion data.

Earthquake Information

Location :

Origin Time:

Magnitude : 7.03

Epicenter Latitude/Longitude :
/

Depth & Type : /U

Name :
NA

Ground Motion /Attenuation :

Maximum PGA: 0.00

Information Sources:

Comments :

Population and Building Exposure

Population: 22,297,402

Building Exposure : (\$ Millions)

Residential	
Commercial	731,000
Other	632,042
Total	

Counties : See Appendix

Major Metro Area :

Hazus Quick Assessment Report

Estimated Economic Loss (\$ Billions)

Category	Description	Range
General Building Stock	Building Damage	0.40 - 1.80
	Building Contents	0.10 - 0.50
	Business Interruption	0.00 - 0.20
Infrastructure	Lifelines Damage	
Total		0.70 - 3.00

Preliminary Damage Assessment (PDA) Estimates

Description	Residential	Commercial	Other	Total
Affected	18,000	1,700	1,700	21,400
Minor	1,700	350	410	2,460
Major	140	40	20	200
Destroyed	20	< 10	< 10	20
Total	19,860	2,090	2,130	24,080

Estimated Casualties : Day Time

Severity Level	Description	# Persons
Level 1	Medical Aid	50 - 190
Level 2	Hospital Care	10 - 20
Level 3	Life-threatening	< 10
Level 4	Fatalities	< 10

Estimated Shelter Needs

Type	Households	People
Displaced Households	50 - 200	125 - 500
Public Shelter	30	70

Earthquake Information

Location :

Origin Time:

Magnitude : 7.03

Epicenter Latitude/Longitude :
/

Depth & Type : /U

Name :
NA

Ground Motion /Attenuation :

Maximum PGA: 0.00

Information Sources:

Comments :

Population and Building Exposure

Population: 22,297,402

Building Exposure : (\$ Millions)

Residential	
Commercial	731,000
Other	632,042
Total	

Counties : See Appendix

Major Metro Area :

Comments :

*Hazus damage estimates are presented using FEMA Preliminary Damage Assessment (PDA) categories. These estimates should be used for planning purposes and may not reflect actual observed damages from the PDA process.

Disclaimer:

The estimates of social and economic impacts contained in this report were produced using HAZUS loss estimation methodology software which is based on current scientific and engineering knowledge. There are uncertainties inherent in any loss estimation technique. Therefore, there may be significant differences between the modeled results contained in this report and the actual social and economic losses following a specific earthquake. These results can be improved by using enhanced inventory, geotechnical, and observed ground motion data.

Hazus Quick Assessment Report

Estimated Economic Loss (\$ Billions)

Category	Description	Range
General Building Stock	Building Damage	0.40 - 1.80
	Building Contents	0.10 - 0.50
	Business Interruption	0.00 - 0.20
Infrastructure	Lifelines Damage	
Total		0.70 - 3.00

Preliminary Damage Assessment (PDA) Estimates

Description	Residential	Commercial	Other	Total
Affected	18,000	1,700	1,700	21,400
Minor	1,700	350	410	2,460
Major	140	40	20	200
Destroyed	20	< 10	< 10	20
Total	19,860	2,090	2,130	24,080

Estimated Casualties : Commute Time

Severity Level	Description	# Persons
Level 1	Medical Aid	30 - 140
Level 2	Hospital Care	0 - 20
Level 3	Life-threatening	< 10
Level 4	Fatalities	< 10

Estimated Shelter Needs

Type	Households	People
Displaced Households	50 - 200	125 - 500
Public Shelter	30	70

Comments :

*Hazus damage estimates are presented using FEMA Preliminary Damage Assessment (PDA) categories. These estimates should be used for planning purposes and may not reflect actual observed damages from the PDA process.

Disclaimer:

The estimates of social and economic impacts contained in this report were produced using HAZUS loss estimation methodology software which is based on current scientific and engineering knowledge. There are uncertainties inherent in any loss estimation technique. Therefore, there may be significant differences between the modeled results contained in this report and the actual social and economic losses following a specific earthquake. These results can be improved by using enhanced inventory, geotechnical, and observed ground motion data.

Earthquake Information

Location :

Origin Time:

Magnitude : 7.03

Epicenter Latitude/Longitude :
/

Depth & Type : /U

Name :
NA

Ground Motion /Attenuation :

Maximum PGA: 0.00

Information Sources:

Comments :

Population and Building Exposure

Population: 22,297,402

Building Exposure : (\$ Millions)

Residential	
Commercial	731,000
Other	632,042
Total	

Counties : See Appendix

Major Metro Area :

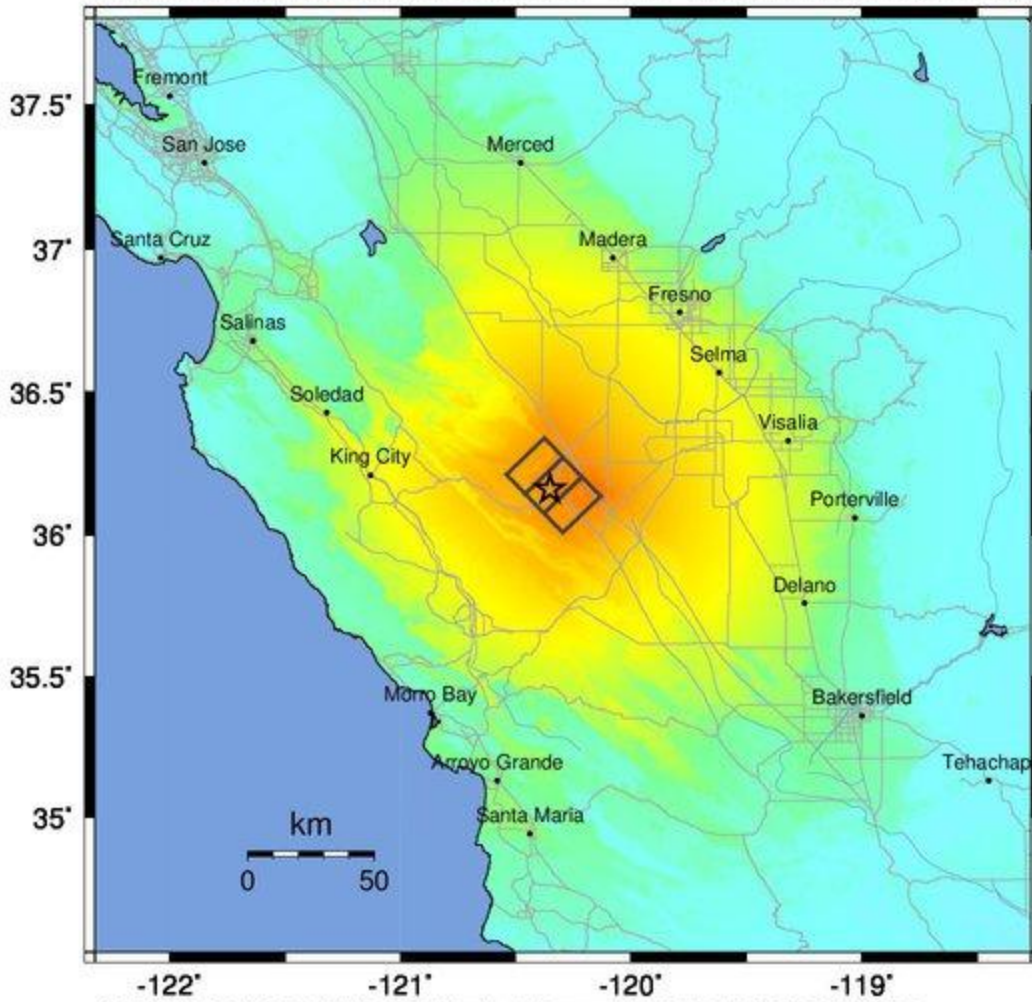
Shelter Summary Report

May 07, 2024

	# of Displaced Households	# of People Needing Short Term Shelter
California		
Fresno	84	59
Alameda	0	0
San Mateo	0	0
Tuolumne	0	0
Kings	16	13
San Joaquin	0	0
San Luis Obispo	0	0
Madera	0	0
Tulare	0	0
Contra Costa	0	0
Ventura	0	0
Kern	0	0
Santa Cruz	0	0
Monterey	0	0
Mariposa	0	0
Los Angeles	0	0
Stanislaus	0	0
Santa Barbara	0	0
Santa Clara	0	0
San Benito	0	0
Merced	0	0
Total	101	72
Region Total	101	72

Totals only reflect data for those census tracts/blocks included in the user's study region and will reflect the entire county/state only if all of the census blocks for that county/states were selected at the time of study region creation.

-- Earthquake Planning Scenario --
ShakeMap for Great Valley 13 (Coalinga) - Median ground motions Scenario
 Scenario Date: May 16, 2017 08:31:55 AM MDT M 7.0 N36.16 W120.35 Depth: 13.0km



PLANNING SCENARIO ONLY -- Map Version 10 Processed 2017-05-16 06:26:56 PM MDT

PERCEIVED SHAKING	Not felt	Weak	Light	Moderate	Strong	Very strong	Severe	Violent	Extreme
POTENTIAL DAMAGE	none	none	none	Very light	Light	Moderate	Mod./Heavy	Heavy	Very Heavy
PEAK ACC. (%g)	<0.05	0.3	2.8	6.2	12	22	40	75	>139
PEAK VEL. (cm/s)	<0.02	0.1	1.4	4.7	9.6	20	41	86	>178
INSTRUMENTAL INTENSITY	I	II-III	IV	V	VI	VII	VIII	IX	X+

Scale based upon Worden et al. (2012)