
Hazus: Earthquake Global Risk Report

Region Name: GreatValley09

Earthquake Scenario: greatvalley09lagunas_m6p57_se

Print Date: May 29, 2024

Disclaimer:

Totals only reflect data for those census tracts/blocks included in the user's study region.

The estimates of social and economic impacts contained in this report were produced using Hazus loss estimation methodology software which is based on current scientific and engineering knowledge. There are uncertainties inherent in any loss estimation technique. Therefore, there may be significant differences between the modeled results contained in this report and the actual social and economic losses following a specific earthquake. These results can be improved by using enhanced inventory, geotechnical, and observed ground motion data.

Table of Contents

Section	Page #
General Description of the Region	3
Building and Lifeline Inventory	4
Building Inventory	
Critical Facility Inventory	
Transportation and Utility Lifeline Inventory	
Earthquake Scenario Parameters	7
Direct Earthquake Damage	8
Buildings Damage	
Essential Facilities Damage	
Transportation and Utility Lifeline Damage	
Induced Earthquake Damage	14
Fire Following Earthquake	
Debris Generation	
Social Impact	15
Shelter Requirements	
Casualties	
Economic Loss	17
Building Related Losses	
Transportation and Utility Lifeline Losses	
Appendix A: County Listing for the Region	
Appendix B: Regional Population and Building Value Data	

General Description of the Region

Hazus-MH is a regional earthquake loss estimation model that was developed by the Federal Emergency Management Agency (FEMA) and the National Institute of Building Sciences. The primary purpose of Hazus is to provide a methodology and software application to develop multi-hazard losses at a regional scale. These loss estimates would be used primarily by local, state and regional officials to plan and stimulate efforts to reduce risks from multi-hazards and to prepare for emergency response and recovery.

The earthquake loss estimates provided in this report was based on a region that includes 20 county(ies) from the following state(s):

California

Note:

Appendix A contains a complete listing of the counties contained in the region.

The geographical size of the region is 37,749.78 square miles and contains 2,696 census tracts. There are over 4,100 thousand households in the region which has a total population of 12,165,924 people. The distribution of population by Total Region and County is provided in Appendix B.

There are an estimated 3,628 thousand buildings in the region with a total building replacement value (excluding contents) of (millions of dollars). Approximately 90.00 % of the buildings (and % of the building value) are associated with residential housing.

The replacement value of the transportation and utility lifeline systems is estimated to be 187,391 and 121,146 (millions of dollars) , respectively.

Building and Lifeline Inventory

Building Inventory

Hazus estimates that there are 3,628 thousand buildings in the region which have an aggregate total replacement value of (millions of dollars) . Appendix B provides a general distribution of the building value by Total Region and County.

In terms of building construction types found in the region, wood frame construction makes up 88% of the building inventory. The remaining percentage is distributed between the other general building types.

Critical Facility Inventory

Hazus breaks critical facilities into two (2) groups: essential facilities and high potential loss facilities (HPL). Essential facilities include hospitals, medical clinics, schools, fire stations, police stations and emergency operations facilities. High potential loss facilities include dams, levees, military installations, nuclear power plants and hazardous material sites.

For essential facilities, there are 190 hospitals in the region with a total bed capacity of 30,348 beds. There are 4,371 schools, 973 fire stations, 355 police stations and 65 emergency operation facilities. With respect to high potential loss facilities (HPL), there are no dams identified within the inventory. The inventory also includes no hazardous material sites, no military installations and no nuclear power plants.

Transportation and Utility Lifeline Inventory

Within Hazus, the lifeline inventory is divided between transportation and utility lifeline systems. There are seven (7) transportation systems that include highways, railways, light rail, bus, ports, ferry and airports. There are six (6) utility systems that include potable water, wastewater, natural gas, crude & refined oil, electric power and communications. The lifeline inventory data are provided in Tables 1 and 2.

The total value of the lifeline inventory is over 308,537.00 (millions of dollars). This inventory includes over 7,426.63 miles of highways, 8,537 bridges, 165,469.23 miles of pipes.

Table 1: Transportation System Lifeline Inventory

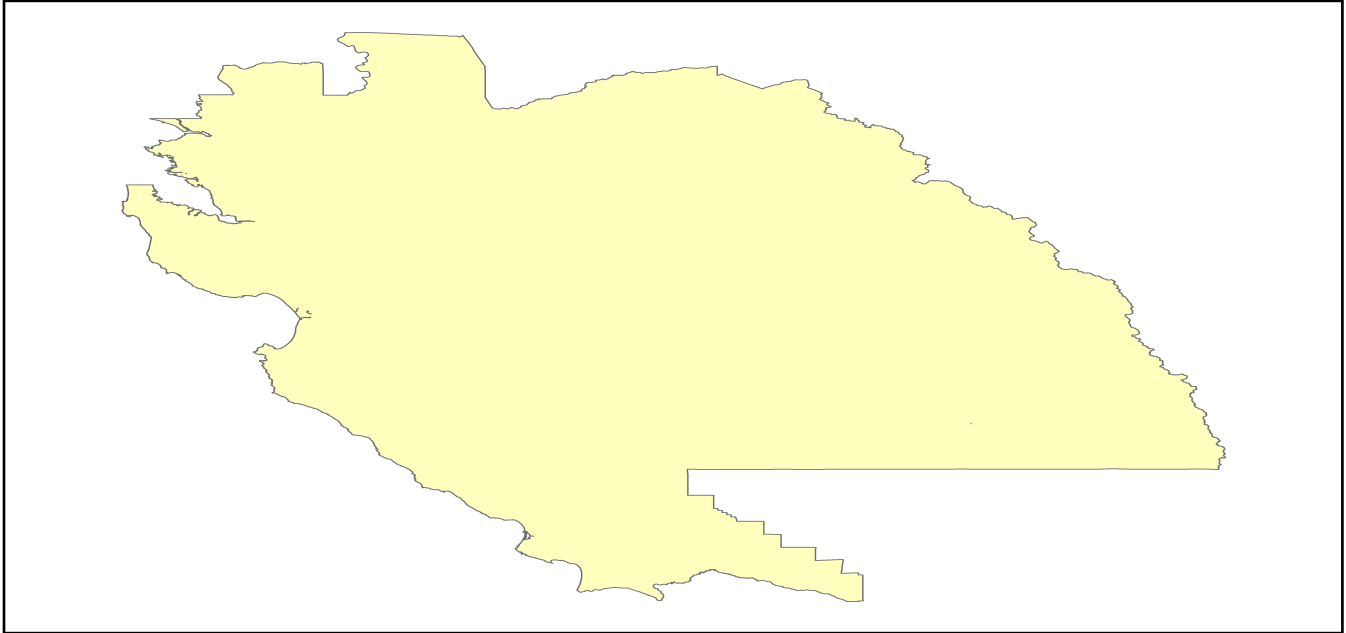
System	Component	# Locations/ # Segments	Replacement value (millions of dollars)
Highway	Bridges	8,537	41800.0762
	Segments	5,543	68108.3465
	Tunnels	25	654.5770
	Subtotal		110562.9997
Railways	Bridges	1,230	6998.7000
	Facilities	78	207.7140
	Segments	2,708	60587.8393
	Tunnels	3	1.8495
	Subtotal		67796.1028
Light Rail	Bridges	112	15.3529
	Facilities	119	895.9300
	Segments	7	3307.2442
	Tunnels	0	0.0000
	Subtotal		4218.5271
Bus	Facilities	37	82.5763
	Subtotal		82.5763
Ferry	Facilities	16	21.2960
	Subtotal		21.2960
Port	Facilities	253	964.3967
	Subtotal		964.3967
Airport	Facilities	76	2612.0952
	Runways	110	1133.2299
	Subtotal		3745.3251
		Total	187,391.20

Table 2: Utility System Lifeline Inventory

System	Component	# Locations / Segments	Replacement value (millions of dollars)
Potable Water	Distribution Lines	NA	3294.9961
	Facilities	19	746.5860
	Pipelines	0	0.0000
		Subtotal	4041.5821
Waste Water	Distribution Lines	NA	1976.9977
	Facilities	117	20118.3606
	Pipelines	0	0.0000
		Subtotal	22095.3583
Natural Gas	Distribution Lines	NA	1317.9984
	Facilities	3	142.4899
	Pipelines	603	9502.7197
		Subtotal	10963.2080
Oil Systems	Facilities	19	2.2420
	Pipelines	0	0.0000
		Subtotal	2.2420
Electrical Power	Facilities	312	84002.6029
		Subtotal	84002.6029
Communication	Facilities	354	41.7720
		Subtotal	41.7720
	Total		121,146.80

Earthquake Scenario

Hazus uses the following set of information to define the earthquake parameters used for the earthquake loss estimate provided in this report.



Scenario Name	greatvalley09lagunas_m6p57_se
Type of Earthquake	User-defined
Fault Name	NA
Historical Epicenter ID #	NA
Probabilistic Return Period	NA
Longitude of Epicenter	NA
Latitude of Epicenter	NA
Earthquake Magnitude	6.57
Depth (km)	NA
Rupture Length (Km)	NA
Rupture Orientation (degrees)	NA
Attenuation Function	NA

Direct Earthquake Damage

Building Damage

Hazus estimates that about 2,797 buildings will be at least moderately damaged. This is over 0.00 % of the buildings in the region. There are an estimated 21 buildings that will be damaged beyond repair. The definition of the 'damage states' is provided in Volume 1: Chapter 5 of the Hazus technical manual. Table 3 below summarizes the expected damage by general occupancy for the buildings in the region. Table 4 below summarizes the expected damage by general building type.

Damage Categories by General Occupancy Type

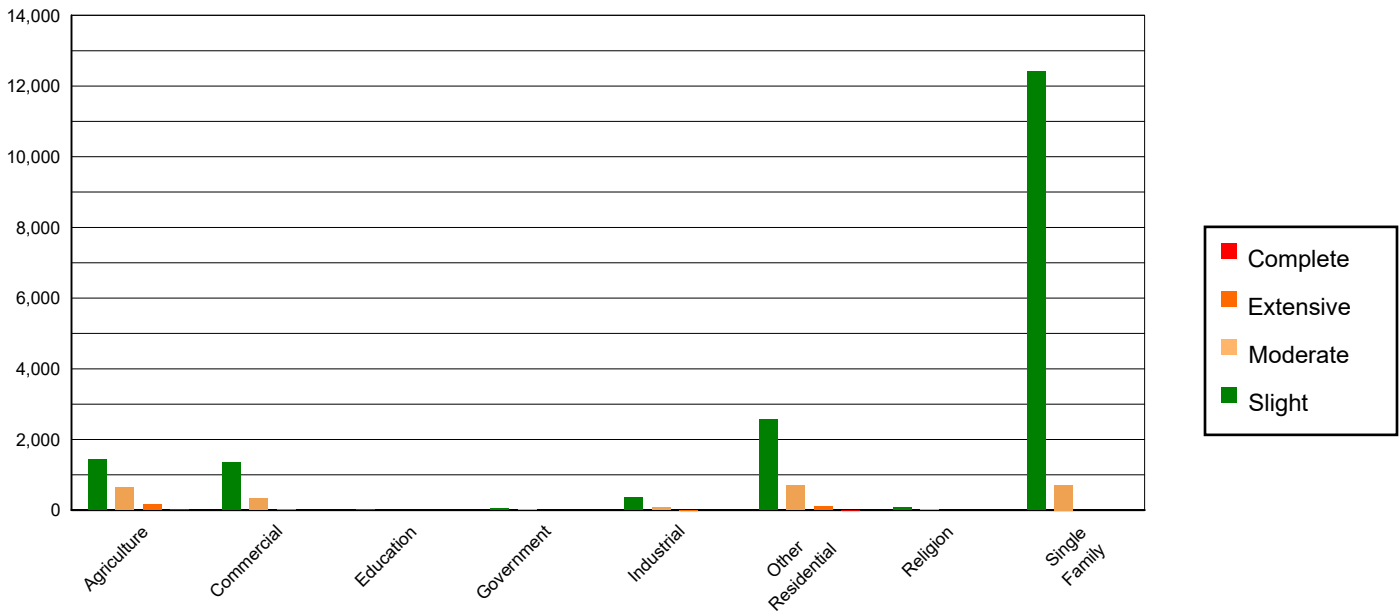


Table 3: Expected Building Damage by Occupancy

	None		Slight		Moderate		Extensive		Complete	
	Count	(%)	Count	(%)	Count	(%)	Count	(%)	Count	(%)
Agriculture	24445.17	0.68	1425.79	7.82	639.19	25.79	154.49	52.09	14.36	66.09
Commercial	224919.75	6.23	1340.99	7.35	326.17	13.16	27.89	9.40	2.20	10.13
Education	7230.48	0.20	14.10	0.08	2.35	0.09	0.06	0.02	0.00	0.00
Government	19964.39	0.55	42.79	0.23	8.45	0.34	0.37	0.13	0.00	0.01
Industrial	63152.43	1.75	360.07	1.97	71.79	2.90	4.48	1.51	0.24	1.09
Other Residential	425753.17	11.80	2554.51	14.01	697.72	28.15	105.71	35.64	4.89	22.49
Religion	13533.84	0.38	79.27	0.43	19.84	0.80	2.02	0.68	0.04	0.20
Single Family	2828781.77	78.41	12417.37	68.10	713.30	28.78	1.56	0.53	0.00	0.00
Total	3,607,781		18,235		2,479		297		22	

Table 4: Expected Building Damage by Building Type (All Design Levels)

	None		Slight		Moderate		Extensive		Complete	
	Count	(%)	Count	(%)	Count	(%)	Count	(%)	Count	(%)
Wood	3170792.68	87.89	13880.86	76.12	837.72	33.80	4.42	1.49	0.07	0.30
Steel	78184.87	2.17	948.55	5.20	469.38	18.94	119.44	40.27	11.66	53.67
Concrete	88719.09	2.46	582.85	3.20	202.14	8.15	40.16	13.54	3.11	14.30
Precast	49802.76	1.38	439.89	2.41	132.84	5.36	5.93	2.00	0.08	0.37
RM	132792.65	3.68	414.70	2.27	113.51	4.58	3.77	1.27	0.00	0.00
URM	25944.80	0.72	840.42	4.61	183.52	7.40	36.61	12.34	5.36	24.65
MH	61544.16	1.71	1127.61	6.18	539.70	21.77	86.26	29.08	1.46	6.71
Total	3,607,781		18,235		2,479		297		22	

*Note:

- RM Reinforced Masonry
- URM Unreinforced Masonry
- MH Manufactured Housing

Essential Facility Damage

Before the earthquake, the region had 30,348 hospital beds available for use. On the day of the earthquake, the model estimates that only 30,184 hospital beds (99.00%) are available for use by patients already in the hospital and those injured by the earthquake. After one week, 100.00% of the beds will be back in service. By 30 days, 100.00% will be operational.

Table 5: Expected Damage to Essential Facilities

Classification	Total	# Facilities		
		At Least Moderate Damage > 50%	Complete Damage > 50%	With Functionality > 50% on day 1
Hospitals	190	0	0	189
Schools	4,371	0	0	4,357
EOCs	65	0	0	65
PoliceStations	355	0	0	352
FireStations	973	0	0	967

Transportation Lifeline Damage

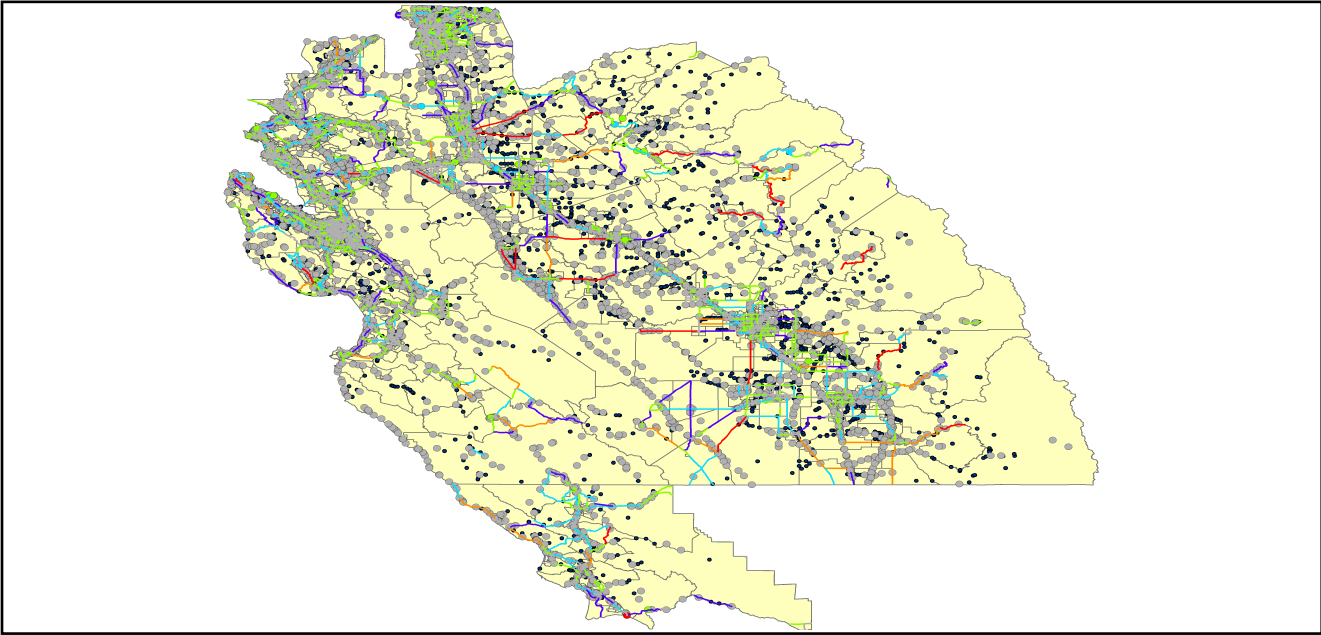


Table 6: Expected Damage to the Transportation Systems

System	Component	Number of Locations_				
		Locations/ Segments	With at Least Mod. Damage	With Complete Damage	With Functionality > 50 %	
					After Day 1	After Day 7
Highway	Segments	5,543	0	0	5,543	5,543
	Bridges	8,537	16	0	8,513	8,537
	Tunnels	25	0	0	25	25
Railways	Segments	2,708	0	0	2,708	2,708
	Bridges	1,230	0	0	1,230	1,230
	Tunnels	3	0	0	3	3
	Facilities	78	0	0	78	78
Light Rail	Segments	7	0	0	7	7
	Bridges	112	0	0	112	112
	Tunnels	0	0	0	0	0
	Facilities	119	0	0	119	119
Bus	Facilities	37	0	0	37	37
Ferry	Facilities	16	0	0	16	16
Port	Facilities	253	0	0	253	253
Airport	Facilities	76	0	0	76	76
	Runways	110	0	0	110	110

Table 6 provides damage estimates for the transportation system.

Note: Roadway segments, railroad tracks and light rail tracks are assumed to be damaged by ground failure only. If ground failure maps are not provided, damage estimates to these components will not be computed.

Tables 7-9 provide information on the damage to the utility lifeline systems. Table 7 provides damage to the utility system facilities. Table 8 provides estimates on the number of leaks and breaks by the pipelines of the utility systems. For electric power and potable water, Hazus performs a simplified system performance analysis. Table 9 provides a summary of the system performance information.

Table 7 : Expected Utility System Facility Damage

System	# of Locations				
	Total #	With at Least Moderate Damage	With Complete Damage	with Functionality > 50 %	
				After Day 1	After Day 7
Potable Water	19	0	0	19	19
Waste Water	117	0	0	116	117
Natural Gas	3	0	0	3	3
Oil Systems	19	0	0	19	19
Electrical Power	312	7	0	306	311
Communication	354	1	0	353	354

Table 8 : Expected Utility System Pipeline Damage (Site Specific)

System	Total Pipelines Length (miles)	Number of Leaks	Number of Breaks
Potable Water	102,371	781	195
Waste Water	61,422	392	98
Natural Gas	1,676	0	0
Oil	0	0	0

Table 9: Expected Potable Water and Electric Power System Performance

	Total # of Households	Number of Households without Service				
		At Day 1	At Day 3	At Day 7	At Day 30	At Day 90
Potable Water	4,100,997	175	0	0	0	0
Electric Power		3,903	2,096	651	31	6

Induced Earthquake Damage

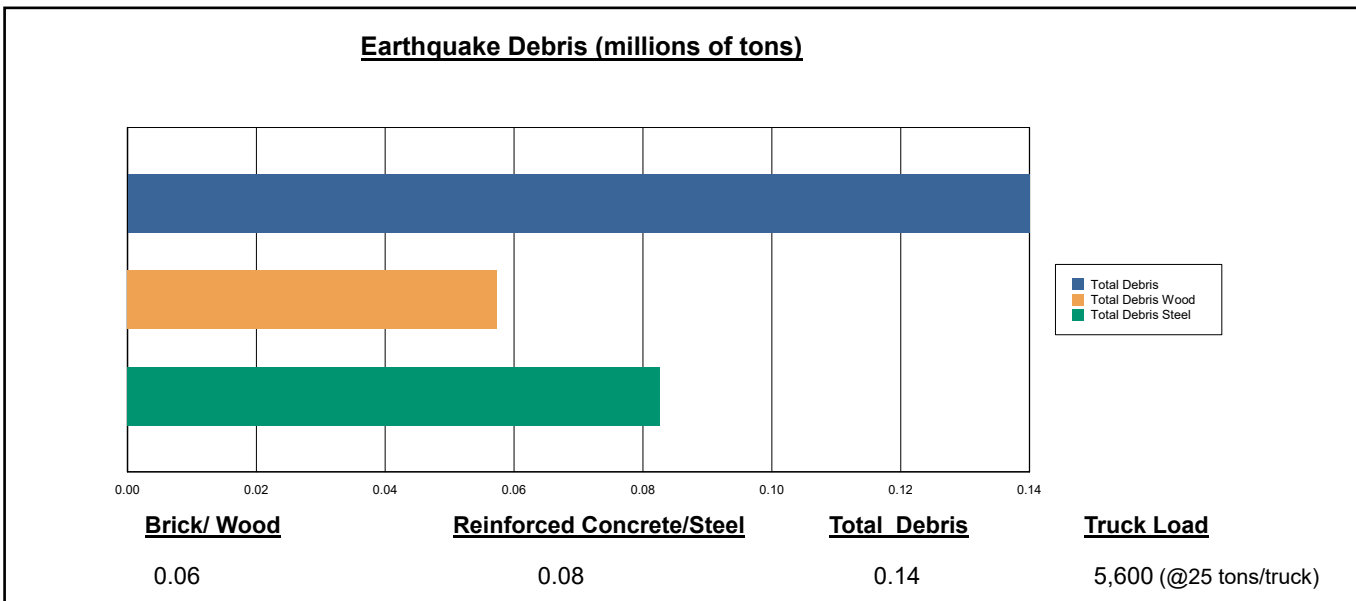
Fire Following Earthquake

Fires often occur after an earthquake. Because of the number of fires and the lack of water to fight the fires, they can often burn out of control. Hazus uses a Monte Carlo simulation model to estimate the number of ignitions and the amount of burnt area. For this scenario, the model estimates that there will be 1 ignitions that will burn about 0.02 sq. mi (0.00 % of the region's total area.) The model also estimates that the fires will displace about 151 people and burn about 13 (millions of dollars) of building value.

Debris Generation

Hazus estimates the amount of debris that will be generated by the earthquake. The model breaks the debris into two general categories: a) Brick/Wood and b) Reinforced Concrete/Steel. This distinction is made because of the different types of material handling equipment required to handle the debris.

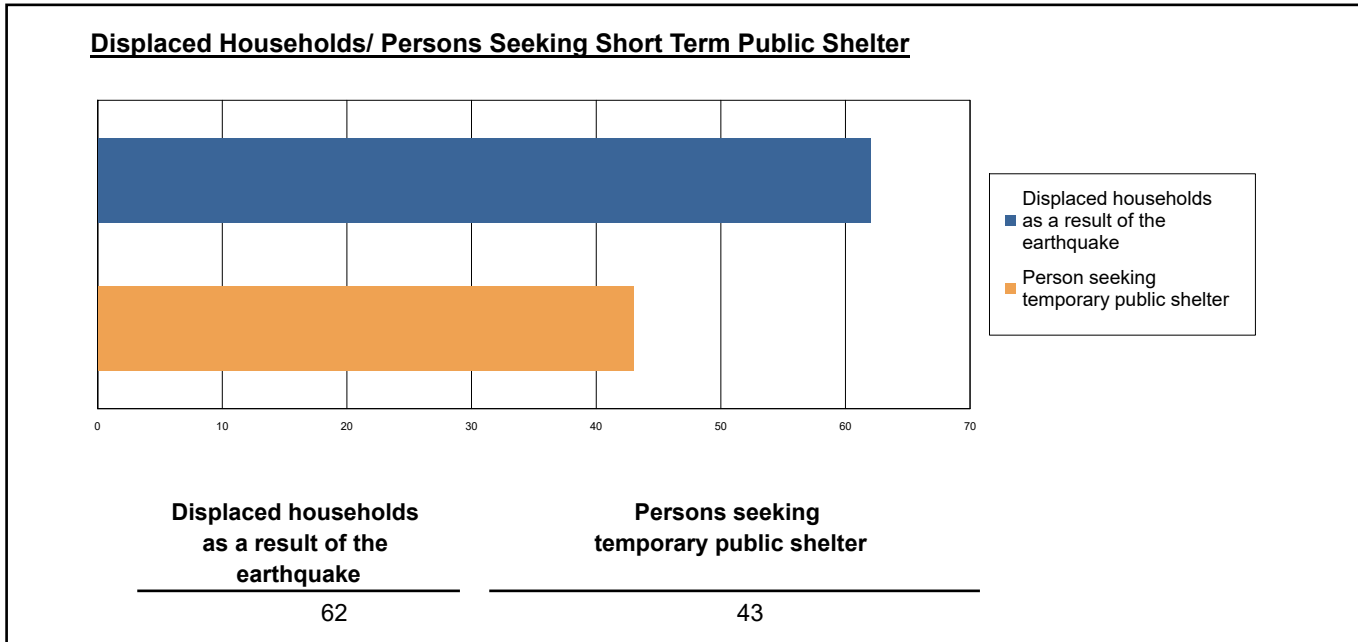
The model estimates that a total of 140,000 tons of debris will be generated. Of the total amount, Brick/Wood comprises 41.00% of the total, with the remainder being Reinforced Concrete/Steel. If the debris tonnage is converted to an estimated number of truckloads, it will require 5,600 truckloads (@25 tons/truck) to remove the debris generated by the earthquake.



Social Impact

Shelter Requirement

Hazus estimates the number of households that are expected to be displaced from their homes due to the earthquake and the number of displaced people that will require accommodations in temporary public shelters. The model estimates 62 households to be displaced due to the earthquake. Of these, 43 people (out of a total population of 12,165,924) will seek temporary shelter in public shelters.



Casualties

Hazus estimates the number of people that will be injured and killed by the earthquake. The casualties are broken down into four (4) severity levels that describe the extent of the injuries. The levels are described as follows;

- Severity Level 1: Injuries will require medical attention but hospitalization is not needed.
- Severity Level 2: Injuries will require hospitalization but are not considered life-threatening
- Severity Level 3: Injuries will require hospitalization and can become life threatening if not promptly treated.
- Severity Level 4: Victims are killed by the earthquake.

The casualty estimates are provided for three (3) times of day: 2:00 AM, 2:00 PM and 5:00 PM. These times represent the periods of the day that different sectors of the community are at their peak occupancy loads. The 2:00 AM estimate considers that the residential occupancy load is maximum, the 2:00 PM estimate considers that the educational, commercial and industrial sector loads are maximum and 5:00 PM represents peak commute time.

Table 10 provides a summary of the casualties estimated for this earthquake

Table 10: Casualty Estimates

		Level 1	Level 2	Level 3	Level 4
2 AM	Commercial	0.99	0.12	0.01	0.01
	Commuting	0.01	0.01	0.02	0.00
	Educational	0.00	0.00	0.00	0.00
	Hotels	0.01	0.00	0.00	0.00
	Industrial	0.47	0.04	0.00	0.00
	Other-Residential	16.73	1.51	0.09	0.18
	Single Family	24.75	0.67	0.00	0.00
	Total	43	2	0	0
2 PM	Commercial	74.28	8.77	0.56	1.05
	Commuting	0.08	0.09	0.17	0.03
	Educational	7.92	0.64	0.03	0.05
	Hotels	0.00	0.00	0.00	0.00
	Industrial	3.41	0.29	0.01	0.02
	Other-Residential	5.24	0.50	0.03	0.06
	Single Family	7.26	0.21	0.00	0.00
	Total	98	11	1	1
5 PM	Commercial	54.57	6.45	0.42	0.77
	Commuting	1.29	1.55	2.82	0.54
	Educational	0.14	0.00	0.00	0.00
	Hotels	0.00	0.00	0.00	0.00
	Industrial	2.13	0.18	0.01	0.01
	Other-Residential	6.11	0.57	0.04	0.07
	Single Family	8.94	0.25	0.00	0.00
	Total	73	9	3	1

Economic Loss

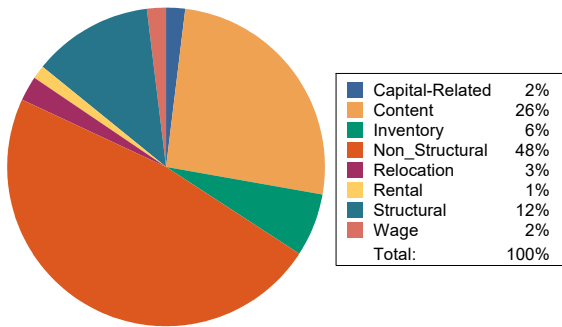
The total economic loss estimated for the earthquake is 3,956.09 (millions of dollars), which includes building and lifeline related losses based on the region's available inventory. The following three sections provide more detailed information about these losses.

Building-Related Losses

The building losses are broken into two categories: direct building losses and business interruption losses. The direct building losses are the estimated costs to repair or replace the damage caused to the building and its contents. The business interruption losses are the losses associated with inability to operate a business because of the damage sustained during the earthquake. Business interruption losses also include the temporary living expenses for those people displaced from their homes because of the earthquake.

The total building-related losses were 1,317.11 (millions of dollars); 8 % of the estimated losses were related to the business interruption of the region. By far, the largest loss was sustained by the residential occupancies which made up over 33 % of the total loss. Table 11 below provides a summary of the losses associated with the building damage.

Earthquake Losses by Loss Type (\$ millions)



Earthquake Losses by Occupancy Type (\$ millions)

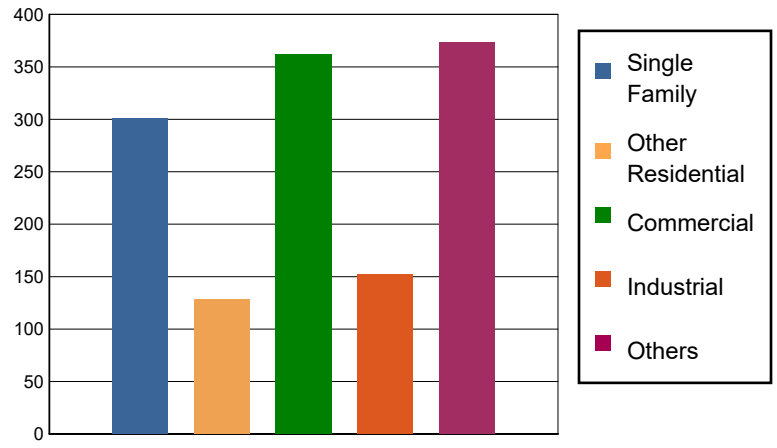


Table 11: Building-Related Economic Loss Estimates
(Millions of dollars)

Category	Area	Single Family	Other Residential	Commercial	Industrial	Others	Total
Income Losses							
	Wage	0.0000	0.5545	22.5707	0.5323	1.8078	25.4653
	Capital-Related	0.0000	0.2356	25.2018	0.3187	1.2933	27.0494
	Rental	2.0876	3.3944	10.7324	0.5320	0.7819	17.5283
	Relocation	5.0888	3.1265	11.3603	2.3009	12.9630	34.8395
	Subtotal	7.1764	7.3110	69.8652	3.6839	16.8460	104.8825
Capital Stock Losses							
	Structural	25.8945	9.5737	23.5968	8.0279	94.4748	161.5677
	Non_Structural	191.4467	85.0801	157.1540	75.8531	117.1635	626.6974
	Content	76.3990	26.2451	96.2743	55.7806	85.7689	340.4679
	Inventory	0.0000	0.0000	15.1888	9.0782	59.2299	83.4969
	Subtotal	293.7402	120.8989	292.2139	148.7398	356.6371	1212.2299
	Total	300.92	128.21	362.08	152.42	373.48	1317.11

Transportation and Utility Lifeline Losses

For the transportation and utility lifeline systems, Hazus computes the direct repair cost for each component only. There are no losses computed by Hazus for business interruption due to lifeline outages. Tables 12 & 13 provide a detailed breakdown in the expected lifeline losses.

Table 12: Transportation System Economic Losses
(Millions of dollars)

System	Component	Inventory Value	Economic Loss	Loss Ratio (%)
Highway	Segments	68108.3465	0.0000	0.00
	Bridges	41800.0762	29.5287	0.07
	Tunnels	654.5770	0.0000	0.00
	Subtotal	110562.9997	29.5287	
Railways	Segments	60587.8393	0.0000	0.00
	Bridges	6998.7000	2.1845	0.03
	Tunnels	1.8495	0.0000	0.00
	Facilities	207.7140	1.9443	0.94
	Subtotal	67796.1028	4.1288	
Light Rail	Segments	3307.2442	0.0000	0.00
	Bridges	15.3529	0.0000	0.00
	Tunnels	0.0000	0.0000	0.00
	Facilities	895.9300	5.5546	0.62
	Subtotal	4218.5271	5.5546	
Bus	Facilities	82.5763	0.8885	1.08
	Subtotal	82.5763	0.8885	
Ferry	Facilities	21.2960	0.0897	0.42
	Subtotal	21.2960	0.0897	
Port	Facilities	964.3967	4.6823	0.49
	Subtotal	964.3967	4.6823	
Airport	Facilities	2612.0952	16.7804	0.64
	Runways	1133.2299	0.0000	0.00
	Subtotal	3745.3251	16.7804	
Total		187,391.22	61.65	

Table 13: Utility System Economic Losses

(Millions of dollars)

System	Component	Inventory Value	Economic Loss	Loss Ratio (%)
Potable Water	Pipelines	0.0000	0.0000	0.00
	Facilities	746.5860	0.2002	0.03
	Distribution Lines	3294.9961	3.5146	0.11
	Subtotal	4041.5821	3.7148	
Waste Water	Pipelines	0.0000	0.0000	0.00
	Facilities	20118.3606	41.5031	0.21
	Distribution Lines	1976.9977	1.7655	0.09
	Subtotal	22095.3583	43.2686	
Natural Gas	Pipelines	9502.7197	0.0000	0.00
	Facilities	142.4899	0.1472	0.10
	Distribution Lines	1317.9984	0.6048	0.05
	Subtotal	10963.2080	0.7520	
Oil Systems	Pipelines	0.0000	0.0000	0.00
	Facilities	2.2420	0.0006	0.03
	Subtotal	2.2420	0.0006	
Electrical Power	Facilities	84002.6029	2529.3762	3.01
	Subtotal	84002.6029	2529.3762	
Communication	Facilities	41.7720	0.2153	0.52
	Subtotal	41.7720	0.2153	
	Total	121,146.77	2,577.33	

Appendix A: County Listing for the Region

Alameda,CA
Calaveras,CA
Contra Costa,CA
Fresno,CA
Kings,CA
Madera,CA
Mariposa,CA
Merced,CA
Monterey,CA
Sacramento,CA
San Benito,CA
San Joaquin,CA
San Luis Obispo,CA
San Mateo,CA
Santa Clara,CA
Santa Cruz,CA
Solano,CA
Stanislaus,CA
Tulare,CA
Tuolumne,CA

Appendix B: Regional Population and Building Value Data

State	County Name	Population	Building Value (millions of dollars)		
			Residential	Non-Residential	Total
California	Alameda	1,682,353	209,951	122,639	332,590
	Calaveras	45,292	8,305	4,893	13,199
	Contra Costa	1,165,927	158,118	60,339	218,458
	Fresno	1,008,654	98,532	61,772	160,304
	Kings	152,486	13,719	7,861	21,581
	Madera	156,255	18,025	9,641	27,667
	Mariposa	17,131	3,299	1,141	4,441
	Merced	281,202	25,194	26,098	51,292
	Monterey	439,035	47,655	28,750	76,405
	Sacramento	1,585,055	179,811	83,911	263,723
	San Benito	64,209	9,440	3,799	13,239
	San Joaquin	779,233	82,706	56,882	139,589
	San Luis Obispo	282,424	41,720	20,896	62,616
	San Mateo	764,442	110,372	44,995	155,368
	Santa Clara	1,936,259	261,111	120,471	381,582
	Santa Cruz	270,861	36,147	18,805	54,952
	Solano	453,491	55,802	26,393	82,195
	Stanislaus	552,878	62,937	37,511	100,449
	Tulare	473,117	43,262	31,210	74,472
	Tuolumne	55,620	8,964	3,507	12,471
Total Region		12,165,924	1,475,070	771,514	2,246,593

Building Inspection Tagging (Counts)

Total Economic Loss
Total:

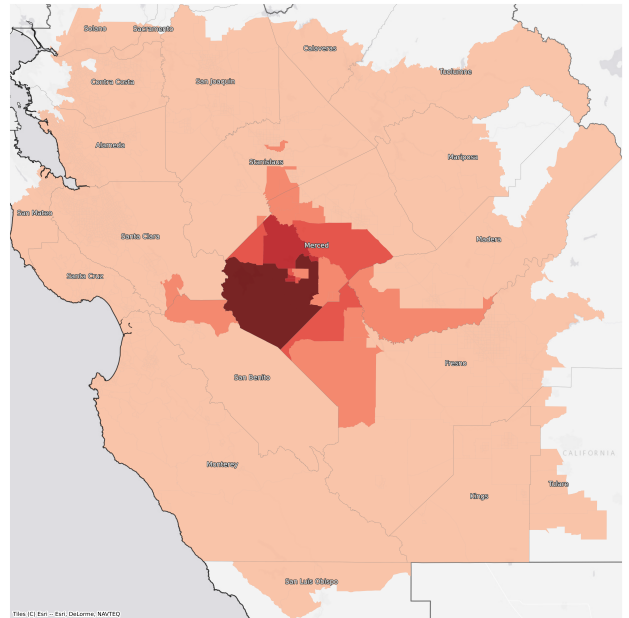
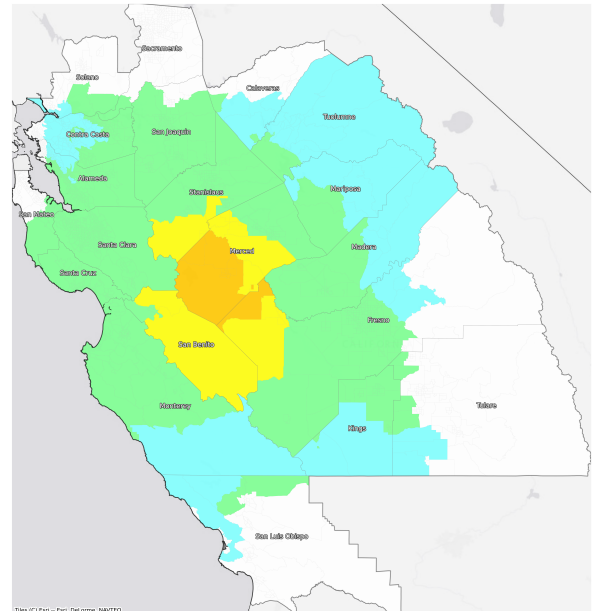
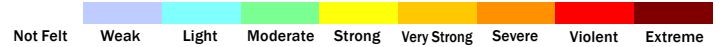
Top Counties	State	Total

Injuries & Fatalities
**Total Day:
Total Night:**

Top Counties	State	Injuries (day/night)	Fatalities (day/night)

Displaced Households & Short-Term Shelter Needs
**Total Displaced:
Total Needing Shelter:**

Top Counties	State	Displaced	Needing Shelter

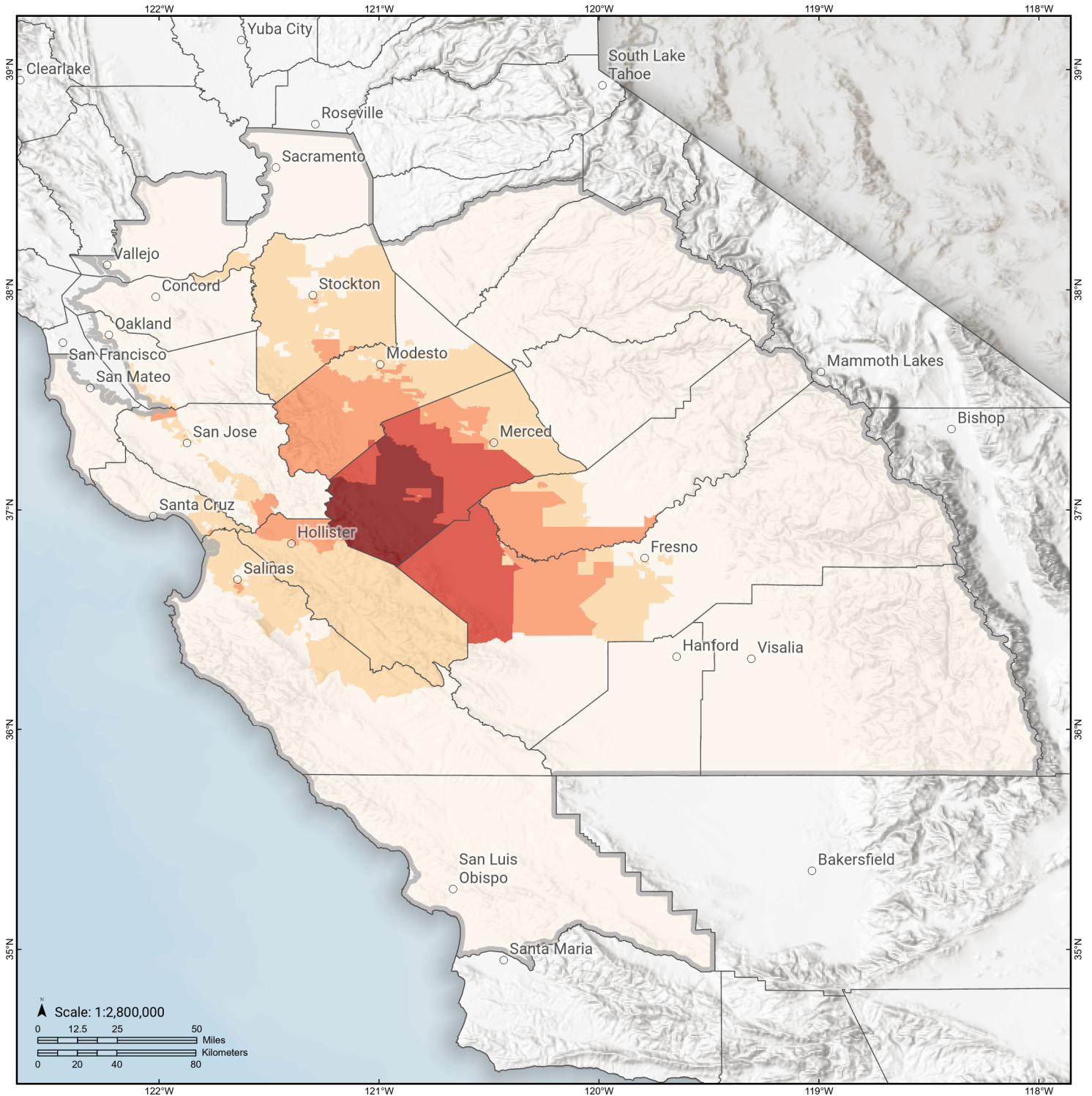
Economic Impacts by Census Tract

Ground Shaking

Debris
**Total Tons:
Total Truckloads:**

Type	Tons

The estimates of social and economic impacts contained in this report were produced using Hazus loss estimation methodology software which is based on current scientific and engineering knowledge. There are uncertainties inherent in any loss estimation technique. Therefore, there may be significant differences between the modeled results contained in this report and the actual social and economic losses following a specific earthquake.

Great Valley 09 (Laguna Seca)

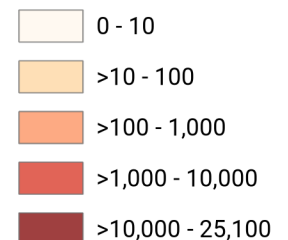
Debris Generated by Census Tract



Study Region: Great Valley 09 (Laguna Seca)
Scenario: greatvalley09lagunas_m6p57_se

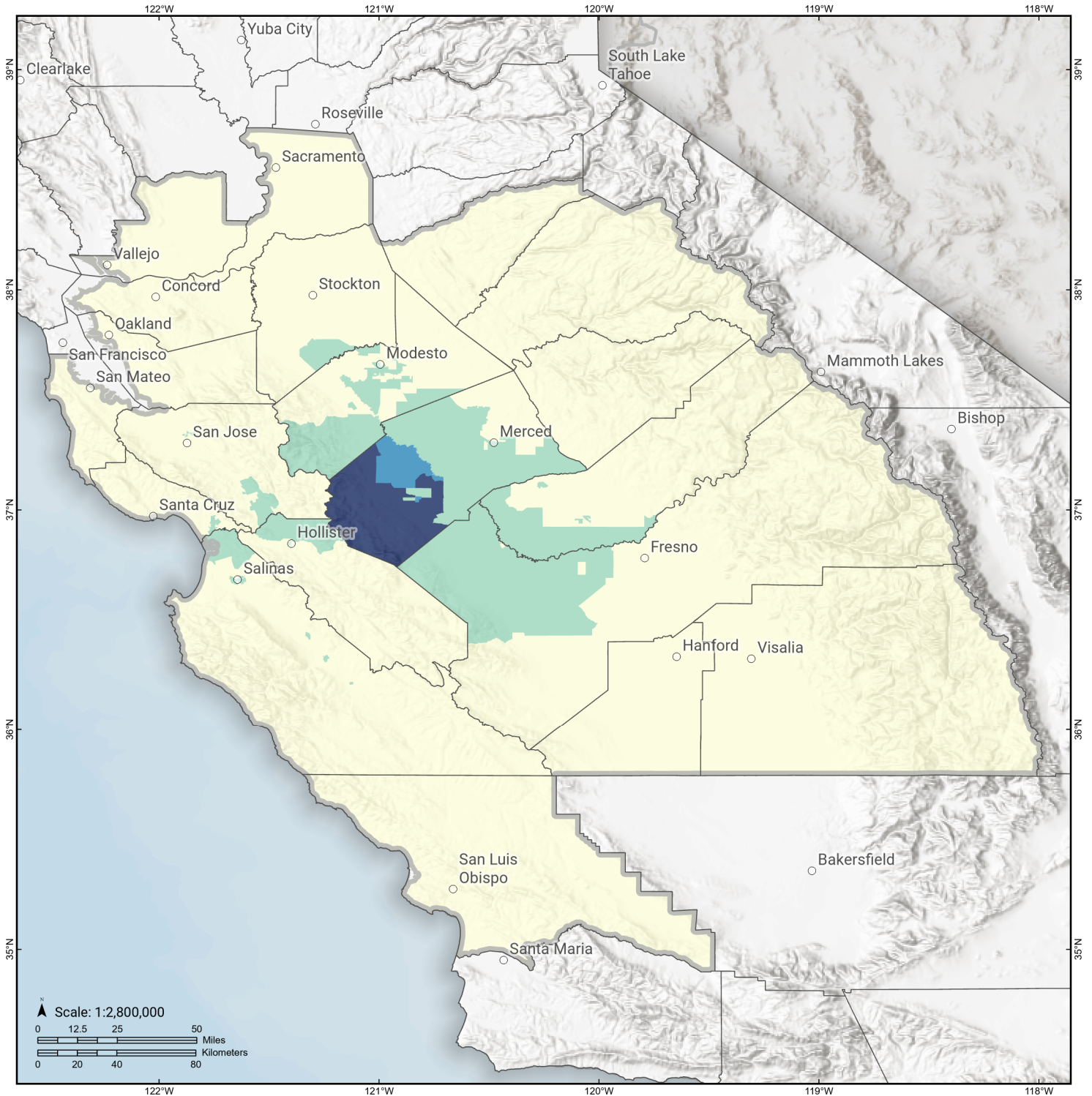


Debris Generated (in tons)



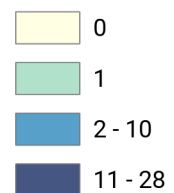
Great Valley 09 (Laguna Seca)

Displaced Households by Census Tract



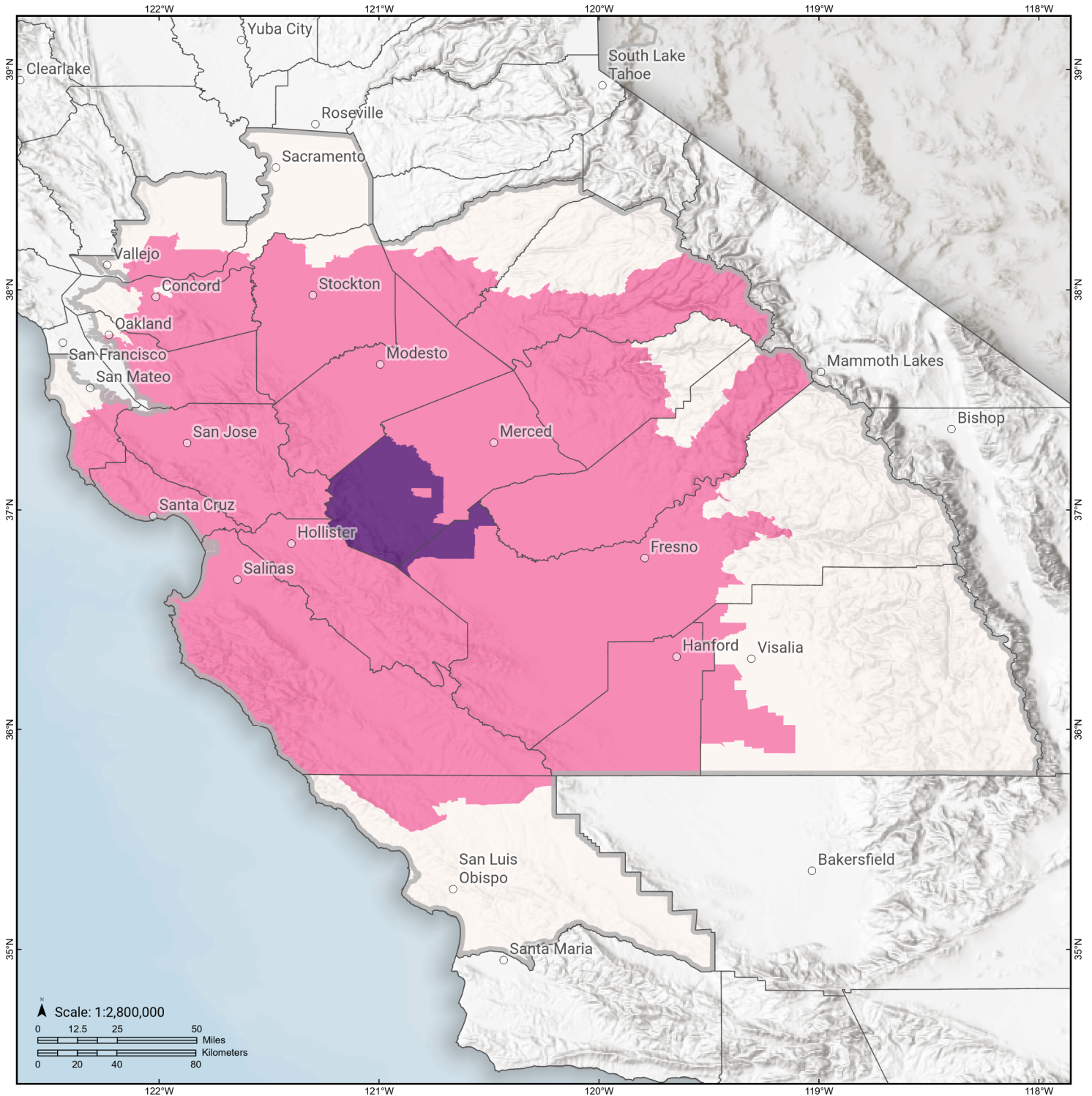
Study Region: Great Valley 09 (Laguna Seca)
Scenario: greatvalley09lagunas_m6p57_se

Displaced Households



Great Valley 09 (Laguna Seca)

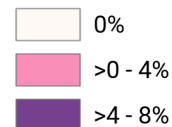
Loss Ratio by Census Tract



Study Region: Great Valley 09 (Laguna Seca)

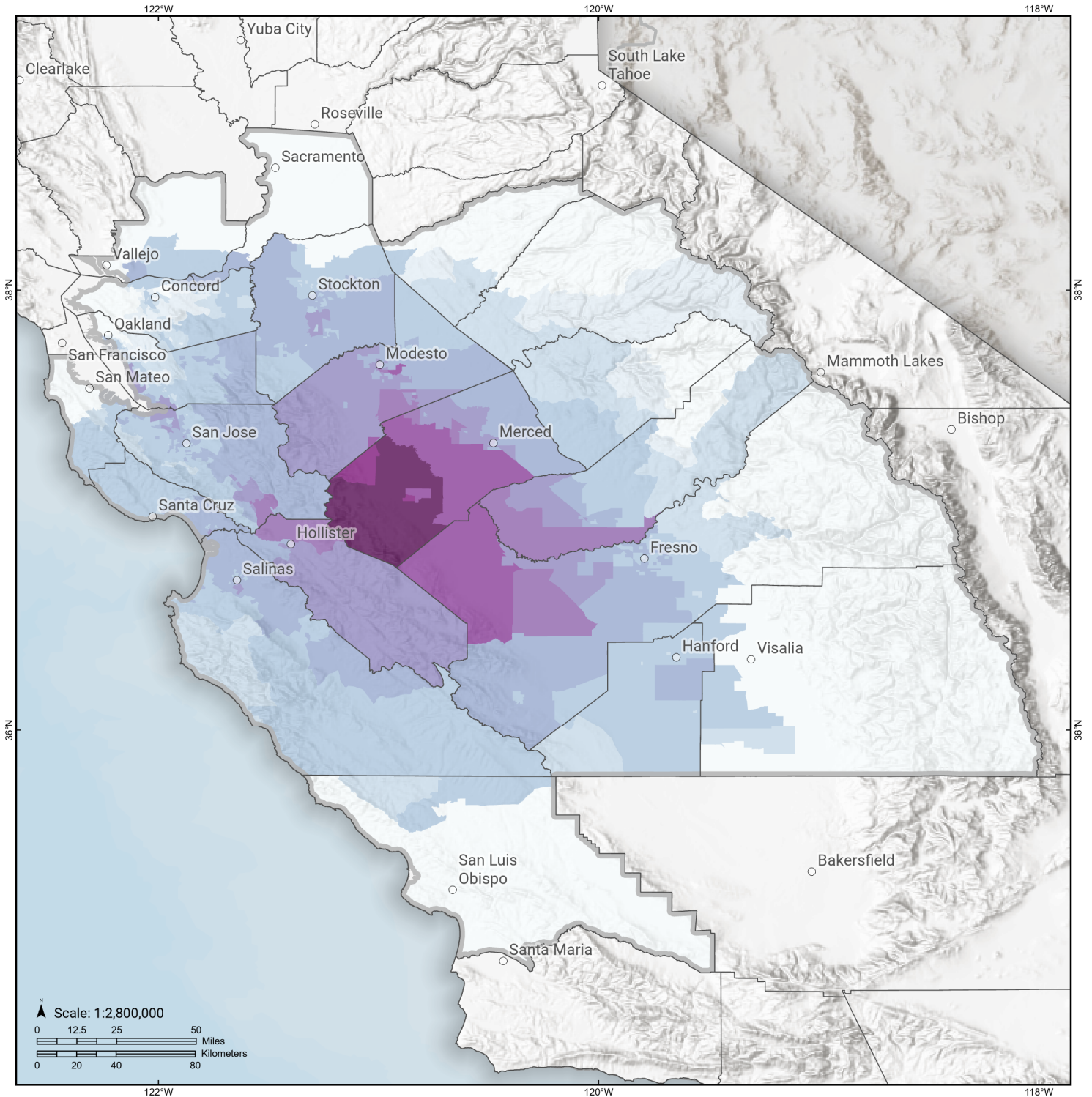
Scenario: greatvalley09lagunas_m6p57_se

Loss Ratio (ratio of building related economic loss to exposed value of buildings)



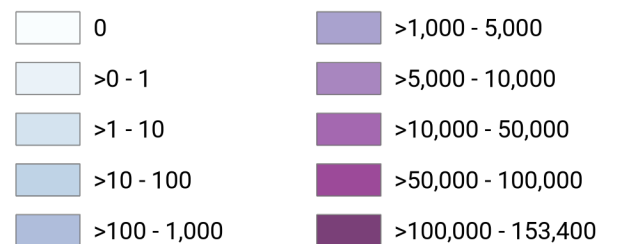
Great Valley 09 (Laguna Seca)

Total Building Related Economic Loss by Census Tract



Study Region: Great Valley 09 (Laguna Seca)
Scenario: greatvalley09lagunas_m6p57_se

Economic Loss (in thousands of USD \$)



Building Damage by Count by General Occupancy

May 29, 2024

	# of Buildings					Total
	None	Slight	Moderate	Extensive	Complete	
California						
Alameda						
<i>Agriculture</i>	422	0	0	0	0	422
<i>Commercial</i>	31,975	14	1	0	0	31,989
<i>Education</i>	1,117	0	0	0	0	1,117
<i>Government</i>	10,526	2	0	0	0	10,528
<i>Industrial</i>	10,199	6	0	0	0	10,205
<i>Religion</i>	1,985	1	0	0	0	1,986
<i>Other Residential</i>	61,378	17	1	0	0	61,396
<i>Single Family</i>	344,156	17	0	0	0	344,173
Calaveras						
<i>Agriculture</i>	2,207	0	0	0	0	2,207
<i>Commercial</i>	1,413	0	0	0	0	1,413
<i>Education</i>	35	0	0	0	0	35
<i>Government</i>	84	0	0	0	0	84
<i>Industrial</i>	466	0	0	0	0	466
<i>Religion</i>	130	0	0	0	0	130
<i>Other Residential</i>	2,559	0	0	0	0	2,559
<i>Single Family</i>	22,148	0	0	0	0	22,148
Contra Costa						

	# of Buildings					Total
	None	Slight	Moderate	Extensive	Complete	
<i>Agriculture</i>	749	0	0	0	0	749
<i>Commercial</i>	17,989	2	0	0	0	17,991
<i>Education</i>	653	0	0	0	0	653
<i>Government</i>	5,023	1	0	0	0	5,024
<i>Industrial</i>	4,749	0	0	0	0	4,749
<i>Religion</i>	1,226	0	0	0	0	1,226
<i>Other Residential</i>	29,120	4	0	0	0	29,124
<i>Single Family</i>	281,934	1	0	0	0	281,935
Fresno						
<i>Agriculture</i>	3,370	44	7	0	0	3,421
<i>Commercial</i>	20,917	109	24	4	0	21,054
<i>Education</i>	601	1	0	0	0	602
<i>Government</i>	290	1	0	0	0	291
<i>Industrial</i>	5,279	53	16	1	0	5,348
<i>Religion</i>	1,489	14	3	0	0	1,507
<i>Other Residential</i>	40,547	309	104	13	0	40,973
<i>Single Family</i>	225,791	619	15	0	0	226,425
Kings						
<i>Agriculture</i>	306	0	0	0	0	306
<i>Commercial</i>	2,317	1	0	0	0	2,318
<i>Education</i>	103	0	0	0	0	103
<i>Government</i>	72	0	0	0	0	72
<i>Industrial</i>	555	0	0	0	0	555
<i>Religion</i>	210	0	0	0	0	210
<i>Other Residential</i>	4,340	2	0	0	0	4,342

	# of Buildings					Total
	None	Slight	Moderate	Extensive	Complete	
Madera						
<i>Single Family</i>	36,244	1	0	0	0	36,245
<i>Agriculture</i>	608	22	4	0	0	634
<i>Commercial</i>	2,876	26	2	0	0	2,905
<i>Education</i>	115	0	0	0	0	115
<i>Government</i>	110	1	0	0	0	111
<i>Industrial</i>	891	11	1	0	0	903
<i>Religion</i>	118	1	0	0	0	119
<i>Other Residential</i>	6,556	73	6	0	0	6,635
<i>Single Family</i>	38,744	168	0	0	0	38,912
Mariposa						
<i>Agriculture</i>	29	0	0	0	0	29
<i>Commercial</i>	689	0	0	0	0	689
<i>Education</i>	27	0	0	0	0	27
<i>Government</i>	33	0	0	0	0	33
<i>Industrial</i>	94	0	0	0	0	94
<i>Religion</i>	36	0	0	0	0	36
<i>Other Residential</i>	307	0	0	0	0	307
<i>Single Family</i>	8,084	0	0	0	0	8,084
Merced						
<i>Agriculture</i>	5,560	1,305	620	154	14	7,653
<i>Commercial</i>	3,788	698	243	23	2	4,754
<i>Education</i>	151	10	2	0	0	163
<i>Government</i>	149	16	6	0	0	171
<i>Industrial</i>	864	120	35	3	0	1,022

	# of Buildings					Total
	None	Slight	Moderate	Extensive	Complete	
<i>Religion</i>	291	38	14	2	0	345
<i>Other Residential</i>	9,018	1,160	512	92	5	10,787
<i>Single Family</i>	54,451	8,497	649	1	0	63,598
Monterey						
<i>Agriculture</i>	1,810	4	0	0	0	1,815
<i>Commercial</i>	9,197	46	3	0	0	9,246
<i>Education</i>	239	0	0	0	0	239
<i>Government</i>	184	1	0	0	0	185
<i>Industrial</i>	1,837	12	1	0	0	1,850
<i>Religion</i>	577	3	0	0	0	580
<i>Other Residential</i>	19,683	119	7	0	0	19,809
<i>Single Family</i>	90,771	105	0	0	0	90,876
Sacramento						
<i>Agriculture</i>	621	0	0	0	0	621
<i>Commercial</i>	26,294	1	0	0	0	26,295
<i>Education</i>	829	0	0	0	0	829
<i>Government</i>	619	0	0	0	0	619
<i>Industrial</i>	6,756	0	0	0	0	6,756
<i>Religion</i>	1,702	0	0	0	0	1,702
<i>Other Residential</i>	56,411	2	0	0	0	56,413
<i>Single Family</i>	386,840	0	0	0	0	386,840
San Benito						
<i>Agriculture</i>	245	7	1	0	0	253
<i>Commercial</i>	1,030	45	5	0	0	1,080
<i>Education</i>	41	1	0	0	0	42

	# of Buildings					Total
	None	Slight	Moderate	Extensive	Complete	
<i>Government</i>	42	2	0	0	0	45
<i>Industrial</i>	311	14	2	0	0	326
<i>Religion</i>	61	3	0	0	0	64
<i>Other Residential</i>	1,307	62	5	0	0	1,375
<i>Single Family</i>	14,383	342	1	0	0	14,726
San Joaquin						
<i>Agriculture</i>	751	2	0	0	0	753
<i>Commercial</i>	12,841	22	1	0	0	12,864
<i>Education</i>	395	0	0	0	0	395
<i>Government</i>	304	0	0	0	0	304
<i>Industrial</i>	4,918	9	1	0	0	4,928
<i>Religion</i>	875	2	0	0	0	877
<i>Other Residential</i>	21,728	72	5	0	0	21,805
<i>Single Family</i>	188,409	477	36	0	0	188,922
San Luis Obispo						
<i>Agriculture</i>	421	0	0	0	0	421
<i>Commercial</i>	9,375	0	0	0	0	9,375
<i>Education</i>	182	0	0	0	0	182
<i>Government</i>	185	0	0	0	0	185
<i>Industrial</i>	2,556	0	0	0	0	2,556
<i>Religion</i>	360	0	0	0	0	360
<i>Other Residential</i>	20,215	1	0	0	0	20,216
<i>Single Family</i>	85,639	0	0	0	0	85,639
San Mateo						
<i>Agriculture</i>	539	0	0	0	0	539

	# of Buildings					Total
	None	Slight	Moderate	Extensive	Complete	
<i>Commercial</i>	14,391	4	0	0	0	14,395
<i>Education</i>	489	0	0	0	0	489
<i>Government</i>	299	0	0	0	0	299
<i>Industrial</i>	4,470	2	0	0	0	4,472
<i>Religion</i>	736	0	0	0	0	736
<i>Other Residential</i>	22,445	8	0	0	0	22,453
<i>Single Family</i>	159,927	4	0	0	0	159,931
Santa Clara						
<i>Agriculture</i>	889	6	1	0	0	895
<i>Commercial</i>	35,372	91	6	0	0	35,469
<i>Education</i>	1,172	0	0	0	0	1,173
<i>Government</i>	499	3	0	0	0	502
<i>Industrial</i>	9,400	31	2	0	0	9,433
<i>Religion</i>	1,536	3	0	0	0	1,540
<i>Other Residential</i>	58,921	225	13	0	0	59,160
<i>Single Family</i>	426,913	305	1	0	0	427,219
Santa Cruz						
<i>Agriculture</i>	834	6	1	0	0	840
<i>Commercial</i>	6,671	21	2	0	0	6,694
<i>Education</i>	225	0	0	0	0	225
<i>Government</i>	126	1	0	0	0	127
<i>Industrial</i>	1,812	6	1	0	0	1,819
<i>Religion</i>	357	2	0	0	0	359
<i>Other Residential</i>	14,832	57	3	0	0	14,892

	# of Buildings					Total
	None	Slight	Moderate	Extensive	Complete	
Solano						
<i>Single Family</i>	68,837	33	0	0	0	68,870
<i>Agriculture</i>	245	0	0	0	0	245
<i>Commercial</i>	7,268	0	0	0	0	7,268
<i>Education</i>	225	0	0	0	0	225
<i>Government</i>	152	0	0	0	0	152
<i>Industrial</i>	2,101	0	0	0	0	2,101
<i>Religion</i>	454	0	0	0	0	454
<i>Other Residential</i>	12,317	0	0	0	0	12,317
<i>Single Family</i>	120,968	0	0	0	0	120,968
Stanislaus						
<i>Agriculture</i>	1,205	29	5	0	0	1,239
<i>Commercial</i>	10,069	261	38	1	0	10,369
<i>Education</i>	305	1	0	0	0	307
<i>Government</i>	664	14	2	0	0	680
<i>Industrial</i>	3,365	96	14	1	0	3,475
<i>Religion</i>	443	12	2	0	0	456
<i>Other Residential</i>	19,088	440	40	1	0	19,569
<i>Single Family</i>	140,862	1,849	12	0	0	142,724
Tulare						
<i>Agriculture</i>	3,555	0	0	0	0	3,555
<i>Commercial</i>	8,873	0	0	0	0	8,873
<i>Education</i>	269	0	0	0	0	269
<i>Government</i>	461	0	0	0	0	461
<i>Industrial</i>	2,148	0	0	0	0	2,148

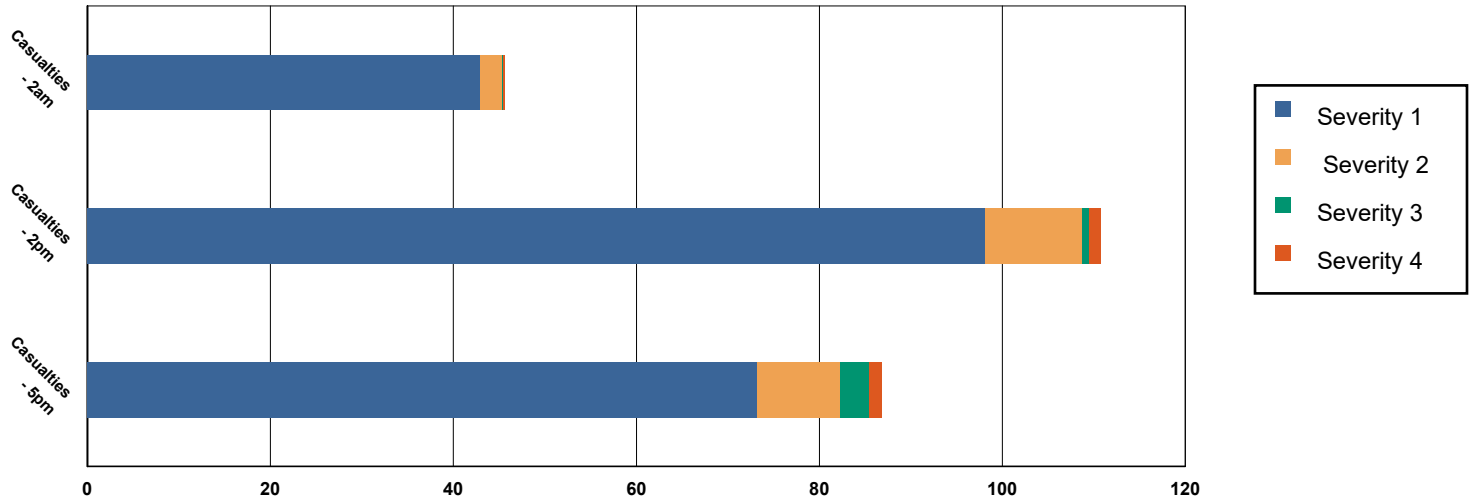
	# of Buildings					Total
	None	Slight	Moderate	Extensive	Complete	
<i>Religion</i>	827	0	0	0	0	827
<i>Other Residential</i>	20,021	1	0	0	0	20,022
<i>Single Family</i>	112,034	0	0	0	0	112,034
Tuolumne						
<i>Agriculture</i>	82	0	0	0	0	82
<i>Commercial</i>	1,576	0	0	0	0	1,576
<i>Education</i>	57	0	0	0	0	57
<i>Government</i>	143	0	0	0	0	143
<i>Industrial</i>	383	0	0	0	0	383
<i>Religion</i>	121	0	0	0	0	121
<i>Other Residential</i>	4,962	0	0	0	0	4,962
<i>Single Family</i>	21,645	0	0	0	0	21,645
Total	3,607,781	18,235	2,479	297	22	3,628,813
Region Total	3,607,781	18,235	2,479	297	22	3,628,813

Totals only reflect data for those census tracts/blocks included in the user's study region and will reflect the entire county/state only if all of the census blocks for that county/states were selected at the time of study region creation.

Casualties Summary Report

May 29, 2024

Region Total Casualties



Injury Severity Level

Severity 1	Severity 2	Severity 3	Severity 4	Total
------------	------------	------------	------------	-------

California

Alameda

Casualties - 2am

	Severity 1	Severity 2	Severity 3	Severity 4	Total
Commuting	0	0	0	0	0
Commercial	0	0	0	0	0
Educational	0	0	0	0	0
Hotels	0	0	0	0	0
Industrial	0	0	0	0	0
Other-Residential	0	0	0	0	0
Single Family	0	0	0	0	0

Total Casualties - 2am

0	0	0	0	0
---	---	---	---	---

Casualties - 2pm

	Severity 1	Severity 2	Severity 3	Severity 4	Total
Commuting	0	0	0	0	0
Commercial	0	0	0	0	0
Educational	0	0	0	0	0
Hotels	0	0	0	0	0
Industrial	0	0	0	0	0
Other-Residential	0	0	0	0	0
Single Family	0	0	0	0	0

	Injury Severity Level				Total
	Severity 1	Severity 2	Severity 3	Severity 4	
California					
Alameda					
Total Casualties - 2pm	0	0	0	0	0
Casualties - 5pm					
<i>Commuting</i>	0	0	0	0	0
<i>Commercial</i>	0	0	0	0	0
<i>Educational</i>	0	0	0	0	0
<i>Hotels</i>	0	0	0	0	0
<i>Industrial</i>	0	0	0	0	0
<i>Other-Residential</i>	0	0	0	0	0
<i>Single Family</i>	0	0	0	0	0
Total Casualties - 5pm	0	0	0	0	0
Calaveras					
Casualties - 2am					
<i>Commuting</i>	0	0	0	0	0
<i>Commercial</i>	0	0	0	0	0
<i>Educational</i>	0	0	0	0	0
<i>Hotels</i>	0	0	0	0	0
<i>Industrial</i>	0	0	0	0	0
<i>Other-Residential</i>	0	0	0	0	0
<i>Single Family</i>	0	0	0	0	0
Total Casualties - 2am	0	0	0	0	0
Casualties - 2pm					
<i>Commuting</i>	0	0	0	0	0
<i>Commercial</i>	0	0	0	0	0
<i>Educational</i>	0	0	0	0	0
<i>Hotels</i>	0	0	0	0	0
<i>Industrial</i>	0	0	0	0	0
<i>Other-Residential</i>	0	0	0	0	0
<i>Single Family</i>	0	0	0	0	0
Total Casualties - 2pm	0	0	0	0	0
Casualties - 5pm					
<i>Commuting</i>	0	0	0	0	0
<i>Commercial</i>	0	0	0	0	0
<i>Educational</i>	0	0	0	0	0
<i>Hotels</i>	0	0	0	0	0
<i>Industrial</i>	0	0	0	0	0
<i>Other-Residential</i>	0	0	0	0	0
<i>Single Family</i>	0	0	0	0	0
Total Casualties - 5pm	0	0	0	0	0
Contra Costa					
Casualties - 2am					
<i>Commuting</i>	0	0	0	0	0

	Injury Severity Level				Total
	Severity 1	Severity 2	Severity 3	Severity 4	
California					
Contra Costa					
Casualties - 2am					
Commercial	0	0	0	0	0
Educational	0	0	0	0	0
Hotels	0	0	0	0	0
Industrial	0	0	0	0	0
Other-Residential	0	0	0	0	0
Single Family	0	0	0	0	0
Total Casualties - 2am	0	0	0	0	0
Casualties - 2pm					
Commuting	0	0	0	0	0
Commercial	0	0	0	0	0
Educational	0	0	0	0	0
Hotels	0	0	0	0	0
Industrial	0	0	0	0	0
Other-Residential	0	0	0	0	0
Single Family	0	0	0	0	0
Total Casualties - 2pm	0	0	0	0	0
Casualties - 5pm					
Commuting	0	0	0	0	0
Commercial	0	0	0	0	0
Educational	0	0	0	0	0
Hotels	0	0	0	0	0
Industrial	0	0	0	0	0
Other-Residential	0	0	0	0	0
Single Family	0	0	0	0	0
Total Casualties - 5pm	0	0	0	0	0
Fresno					
Casualties - 2am					
Commuting	0	0	0	0	0
Commercial	0	0	0	0	0
Educational	0	0	0	0	0
Hotels	0	0	0	0	0
Industrial	0	0	0	0	0
Other-Residential	2	0	0	0	2
Single Family	1	0	0	0	1
Total Casualties - 2am	4	0	0	0	4
Casualties - 2pm					
Commuting	0	0	0	0	0
Commercial	3	0	0	0	3
Educational	0	0	0	0	0
Hotels	0	0	0	0	0
Industrial	0	0	0	0	0

	Injury Severity Level				Total
	Severity 1	Severity 2	Severity 3	Severity 4	
California					
Fresno					
Casualties - 2pm					
Other-Residential	1	0	0	0	1
Single Family	0	0	0	0	0
Total Casualties - 2pm	4	0	0	0	5
Casualties - 5pm					
Commuting	0	0	0	0	1
Commercial	2	0	0	0	2
Educational	0	0	0	0	0
Hotels	0	0	0	0	0
Industrial	0	0	0	0	0
Other-Residential	1	0	0	0	1
Single Family	0	0	0	0	0
Total Casualties - 5pm	3	0	0	0	4
Kings					
Casualties - 2am					
Commuting	0	0	0	0	0
Commercial	0	0	0	0	0
Educational	0	0	0	0	0
Hotels	0	0	0	0	0
Industrial	0	0	0	0	0
Other-Residential	0	0	0	0	0
Single Family	0	0	0	0	0
Total Casualties - 2am	0	0	0	0	0
Casualties - 2pm					
Commuting	0	0	0	0	0
Commercial	0	0	0	0	0
Educational	0	0	0	0	0
Hotels	0	0	0	0	0
Industrial	0	0	0	0	0
Other-Residential	0	0	0	0	0
Single Family	0	0	0	0	0
Total Casualties - 2pm	0	0	0	0	0
Casualties - 5pm					
Commuting	0	0	0	0	0
Commercial	0	0	0	0	0
Educational	0	0	0	0	0
Hotels	0	0	0	0	0
Industrial	0	0	0	0	0
Other-Residential	0	0	0	0	0
Single Family	0	0	0	0	0
Total Casualties - 5pm	0	0	0	0	0

	Injury Severity Level				Total
	Severity 1	Severity 2	Severity 3	Severity 4	
California					
Madera					
Casualties - 2am					
<i>Commuting</i>	0	0	0	0	0
<i>Commercial</i>	0	0	0	0	0
<i>Educational</i>	0	0	0	0	0
<i>Hotels</i>	0	0	0	0	0
<i>Industrial</i>	0	0	0	0	0
<i>Other-Residential</i>	0	0	0	0	0
<i>Single Family</i>	0	0	0	0	0
Total Casualties - 2am	1	0	0	0	1
Casualties - 2pm					
<i>Commuting</i>	0	0	0	0	0
<i>Commercial</i>	1	0	0	0	1
<i>Educational</i>	0	0	0	0	0
<i>Hotels</i>	0	0	0	0	0
<i>Industrial</i>	0	0	0	0	0
<i>Other-Residential</i>	0	0	0	0	0
<i>Single Family</i>	0	0	0	0	0
Total Casualties - 2pm	1	0	0	0	1
Casualties - 5pm					
<i>Commuting</i>	0	0	0	0	0
<i>Commercial</i>	0	0	0	0	0
<i>Educational</i>	0	0	0	0	0
<i>Hotels</i>	0	0	0	0	0
<i>Industrial</i>	0	0	0	0	0
<i>Other-Residential</i>	0	0	0	0	0
<i>Single Family</i>	0	0	0	0	0
Total Casualties - 5pm	1	0	0	0	1
Mariposa					
Casualties - 2am					
<i>Commuting</i>	0	0	0	0	0
<i>Commercial</i>	0	0	0	0	0
<i>Educational</i>	0	0	0	0	0
<i>Hotels</i>	0	0	0	0	0
<i>Industrial</i>	0	0	0	0	0
<i>Other-Residential</i>	0	0	0	0	0
<i>Single Family</i>	0	0	0	0	0
Total Casualties - 2am	0	0	0	0	0
Casualties - 2pm					
<i>Commuting</i>	0	0	0	0	0
<i>Commercial</i>	0	0	0	0	0
<i>Educational</i>	0	0	0	0	0
<i>Hotels</i>	0	0	0	0	0

Injury Severity Level

Severity 1 Severity 2 Severity 3 Severity 4 Total

California

Mariposa

Casualties - 2pm

<i>Industrial</i>	0	0	0	0	0
<i>Other-Residential</i>	0	0	0	0	0
<i>Single Family</i>	0	0	0	0	0
Total Casualties - 2pm	0	0	0	0	0

Casualties - 5pm

<i>Commuting</i>	0	0	0	0	0
<i>Commercial</i>	0	0	0	0	0
<i>Educational</i>	0	0	0	0	0
<i>Hotels</i>	0	0	0	0	0
<i>Industrial</i>	0	0	0	0	0
<i>Other-Residential</i>	0	0	0	0	0
<i>Single Family</i>	0	0	0	0	0
Total Casualties - 5pm	0	0	0	0	0

Merced

Casualties - 2am

<i>Commuting</i>	0	0	0	0	0
<i>Commercial</i>	1	0	0	0	1
<i>Educational</i>	0	0	0	0	0
<i>Hotels</i>	0	0	0	0	0
<i>Industrial</i>	0	0	0	0	0
<i>Other-Residential</i>	10	1	0	0	12
<i>Single Family</i>	18	1	0	0	19
Total Casualties - 2am	30	2	0	0	32

Casualties - 2pm

<i>Commuting</i>	0	0	0	0	0
<i>Commercial</i>	64	8	1	1	74
<i>Educational</i>	6	1	0	0	7
<i>Hotels</i>	0	0	0	0	0
<i>Industrial</i>	2	0	0	0	2
<i>Other-Residential</i>	3	0	0	0	4
<i>Single Family</i>	5	0	0	0	5
Total Casualties - 2pm	81	10	1	1	92

Casualties - 5pm

<i>Commuting</i>	1	1	3	0	6
<i>Commercial</i>	47	6	0	1	55
<i>Educational</i>	0	0	0	0	0
<i>Hotels</i>	0	0	0	0	0
<i>Industrial</i>	1	0	0	0	1
<i>Other-Residential</i>	4	0	0	0	4
<i>Single Family</i>	7	0	0	0	7

	Injury Severity Level				Total
	Severity 1	Severity 2	Severity 3	Severity 4	
California					
Merced					
Total Casualties - 5pm	60	8	3	1	73
Monterey					
Casualties - 2am					
<i>Commuting</i>	0	0	0	0	0
<i>Commercial</i>	0	0	0	0	0
<i>Educational</i>	0	0	0	0	0
<i>Hotels</i>	0	0	0	0	0
<i>Industrial</i>	0	0	0	0	0
<i>Other-Residential</i>	0	0	0	0	0
<i>Single Family</i>	0	0	0	0	0
Total Casualties - 2am	1	0	0	0	1
Casualties - 2pm					
<i>Commuting</i>	0	0	0	0	0
<i>Commercial</i>	0	0	0	0	0
<i>Educational</i>	0	0	0	0	0
<i>Hotels</i>	0	0	0	0	0
<i>Industrial</i>	0	0	0	0	0
<i>Other-Residential</i>	0	0	0	0	0
<i>Single Family</i>	0	0	0	0	0
Total Casualties - 2pm	1	0	0	0	1
Casualties - 5pm					
<i>Commuting</i>	0	0	0	0	0
<i>Commercial</i>	0	0	0	0	0
<i>Educational</i>	0	0	0	0	0
<i>Hotels</i>	0	0	0	0	0
<i>Industrial</i>	0	0	0	0	0
<i>Other-Residential</i>	0	0	0	0	0
<i>Single Family</i>	0	0	0	0	0
Total Casualties - 5pm	1	0	0	0	1
Sacramento					
Casualties - 2am					
<i>Commuting</i>	0	0	0	0	0
<i>Commercial</i>	0	0	0	0	0
<i>Educational</i>	0	0	0	0	0
<i>Hotels</i>	0	0	0	0	0
<i>Industrial</i>	0	0	0	0	0
<i>Other-Residential</i>	0	0	0	0	0
<i>Single Family</i>	0	0	0	0	0
Total Casualties - 2am	0	0	0	0	0
Casualties - 2pm					
<i>Commuting</i>	0	0	0	0	0

	Injury Severity Level				Total
	Severity 1	Severity 2	Severity 3	Severity 4	
California					
Sacramento					
Casualties - 2pm					
<i>Commercial</i>	0	0	0	0	0
<i>Educational</i>	0	0	0	0	0
<i>Hotels</i>	0	0	0	0	0
<i>Industrial</i>	0	0	0	0	0
<i>Other-Residential</i>	0	0	0	0	0
<i>Single Family</i>	0	0	0	0	0
Total Casualties - 2pm	0	0	0	0	0
Casualties - 5pm					
<i>Commuting</i>	0	0	0	0	0
<i>Commercial</i>	0	0	0	0	0
<i>Educational</i>	0	0	0	0	0
<i>Hotels</i>	0	0	0	0	0
<i>Industrial</i>	0	0	0	0	0
<i>Other-Residential</i>	0	0	0	0	0
<i>Single Family</i>	0	0	0	0	0
Total Casualties - 5pm	0	0	0	0	0
San Benito					
Casualties - 2am					
<i>Commuting</i>	0	0	0	0	0
<i>Commercial</i>	0	0	0	0	0
<i>Educational</i>	0	0	0	0	0
<i>Hotels</i>	0	0	0	0	0
<i>Industrial</i>	0	0	0	0	0
<i>Other-Residential</i>	0	0	0	0	0
<i>Single Family</i>	1	0	0	0	1
Total Casualties - 2am	1	0	0	0	1
Casualties - 2pm					
<i>Commuting</i>	0	0	0	0	0
<i>Commercial</i>	0	0	0	0	0
<i>Educational</i>	0	0	0	0	0
<i>Hotels</i>	0	0	0	0	0
<i>Industrial</i>	0	0	0	0	0
<i>Other-Residential</i>	0	0	0	0	0
<i>Single Family</i>	0	0	0	0	0
Total Casualties - 2pm	1	0	0	0	1
Casualties - 5pm					
<i>Commuting</i>	0	0	0	0	0
<i>Commercial</i>	0	0	0	0	0
<i>Educational</i>	0	0	0	0	0
<i>Hotels</i>	0	0	0	0	0
<i>Industrial</i>	0	0	0	0	0

	Injury Severity Level				Total
	Severity 1	Severity 2	Severity 3	Severity 4	
California					
San Benito					
Casualties - 5pm					
<i>Other-Residential</i>	0	0	0	0	0
<i>Single Family</i>	0	0	0	0	0
Total Casualties - 5pm	1	0	0	0	1
San Joaquin					
Casualties - 2am					
<i>Commuting</i>	0	0	0	0	0
<i>Commercial</i>	0	0	0	0	0
<i>Educational</i>	0	0	0	0	0
<i>Hotels</i>	0	0	0	0	0
<i>Industrial</i>	0	0	0	0	0
<i>Other-Residential</i>	0	0	0	0	0
<i>Single Family</i>	1	0	0	0	1
Total Casualties - 2am	1	0	0	0	2
Casualties - 2pm					
<i>Commuting</i>	0	0	0	0	0
<i>Commercial</i>	0	0	0	0	0
<i>Educational</i>	0	0	0	0	0
<i>Hotels</i>	0	0	0	0	0
<i>Industrial</i>	0	0	0	0	0
<i>Other-Residential</i>	0	0	0	0	0
<i>Single Family</i>	0	0	0	0	0
Total Casualties - 2pm	1	0	0	0	1
Casualties - 5pm					
<i>Commuting</i>	0	0	0	0	0
<i>Commercial</i>	0	0	0	0	0
<i>Educational</i>	0	0	0	0	0
<i>Hotels</i>	0	0	0	0	0
<i>Industrial</i>	0	0	0	0	0
<i>Other-Residential</i>	0	0	0	0	0
<i>Single Family</i>	0	0	0	0	0
Total Casualties - 5pm	1	0	0	0	1
San Luis Obispo					
Casualties - 2am					
<i>Commuting</i>	0	0	0	0	0
<i>Commercial</i>	0	0	0	0	0
<i>Educational</i>	0	0	0	0	0
<i>Hotels</i>	0	0	0	0	0
<i>Industrial</i>	0	0	0	0	0
<i>Other-Residential</i>	0	0	0	0	0
<i>Single Family</i>	0	0	0	0	0

	Injury Severity Level				Total
	Severity 1	Severity 2	Severity 3	Severity 4	
California					
San Luis Obispo					
Total Casualties - 2am	0	0	0	0	0
Casualties - 2pm					
<i>Commuting</i>	0	0	0	0	0
<i>Commercial</i>	0	0	0	0	0
<i>Educational</i>	0	0	0	0	0
<i>Hotels</i>	0	0	0	0	0
<i>Industrial</i>	0	0	0	0	0
<i>Other-Residential</i>	0	0	0	0	0
<i>Single Family</i>	0	0	0	0	0
Total Casualties - 2pm	0	0	0	0	0
Casualties - 5pm					
<i>Commuting</i>	0	0	0	0	0
<i>Commercial</i>	0	0	0	0	0
<i>Educational</i>	0	0	0	0	0
<i>Hotels</i>	0	0	0	0	0
<i>Industrial</i>	0	0	0	0	0
<i>Other-Residential</i>	0	0	0	0	0
<i>Single Family</i>	0	0	0	0	0
Total Casualties - 5pm	0	0	0	0	0
San Mateo					
Casualties - 2am					
<i>Commuting</i>	0	0	0	0	0
<i>Commercial</i>	0	0	0	0	0
<i>Educational</i>	0	0	0	0	0
<i>Hotels</i>	0	0	0	0	0
<i>Industrial</i>	0	0	0	0	0
<i>Other-Residential</i>	0	0	0	0	0
<i>Single Family</i>	0	0	0	0	0
Total Casualties - 2am	0	0	0	0	0
Casualties - 2pm					
<i>Commuting</i>	0	0	0	0	0
<i>Commercial</i>	0	0	0	0	0
<i>Educational</i>	0	0	0	0	0
<i>Hotels</i>	0	0	0	0	0
<i>Industrial</i>	0	0	0	0	0
<i>Other-Residential</i>	0	0	0	0	0
<i>Single Family</i>	0	0	0	0	0
Total Casualties - 2pm	0	0	0	0	0
Casualties - 5pm					
<i>Commuting</i>	0	0	0	0	0
<i>Commercial</i>	0	0	0	0	0

	Injury Severity Level				Total
	Severity 1	Severity 2	Severity 3	Severity 4	
California					
San Mateo					
Casualties - 5pm					
<i>Educational</i>	0	0	0	0	0
<i>Hotels</i>	0	0	0	0	0
<i>Industrial</i>	0	0	0	0	0
<i>Other-Residential</i>	0	0	0	0	0
<i>Single Family</i>	0	0	0	0	0
Total Casualties - 5pm	0	0	0	0	0
Santa Clara					
Casualties - 2am					
<i>Commuting</i>	0	0	0	0	0
<i>Commercial</i>	0	0	0	0	0
<i>Educational</i>	0	0	0	0	0
<i>Hotels</i>	0	0	0	0	0
<i>Industrial</i>	0	0	0	0	0
<i>Other-Residential</i>	1	0	0	0	1
<i>Single Family</i>	1	0	0	0	1
Total Casualties - 2am	1	0	0	0	1
Casualties - 2pm					
<i>Commuting</i>	0	0	0	0	0
<i>Commercial</i>	1	0	0	0	1
<i>Educational</i>	0	0	0	0	0
<i>Hotels</i>	0	0	0	0	0
<i>Industrial</i>	0	0	0	0	0
<i>Other-Residential</i>	0	0	0	0	0
<i>Single Family</i>	0	0	0	0	0
Total Casualties - 2pm	2	0	0	0	2
Casualties - 5pm					
<i>Commuting</i>	0	0	0	0	0
<i>Commercial</i>	1	0	0	0	1
<i>Educational</i>	0	0	0	0	0
<i>Hotels</i>	0	0	0	0	0
<i>Industrial</i>	0	0	0	0	0
<i>Other-Residential</i>	0	0	0	0	0
<i>Single Family</i>	0	0	0	0	0
Total Casualties - 5pm	1	0	0	0	1
Santa Cruz					
Casualties - 2am					
<i>Commuting</i>	0	0	0	0	0
<i>Commercial</i>	0	0	0	0	0
<i>Educational</i>	0	0	0	0	0
<i>Hotels</i>	0	0	0	0	0
<i>Industrial</i>	0	0	0	0	0

	Injury Severity Level				Total
	Severity 1	Severity 2	Severity 3	Severity 4	
California					
Santa Cruz					
Casualties - 2am					
Other-Residential	0	0	0	0	0
Single Family	0	0	0	0	0
Total Casualties - 2am	0	0	0	0	0
Casualties - 2pm					
Commuting	0	0	0	0	0
Commercial	0	0	0	0	0
Educational	0	0	0	0	0
Hotels	0	0	0	0	0
Industrial	0	0	0	0	0
Other-Residential	0	0	0	0	0
Single Family	0	0	0	0	0
Total Casualties - 2pm	0	0	0	0	0
Casualties - 5pm					
Commuting	0	0	0	0	0
Commercial	0	0	0	0	0
Educational	0	0	0	0	0
Hotels	0	0	0	0	0
Industrial	0	0	0	0	0
Other-Residential	0	0	0	0	0
Single Family	0	0	0	0	0
Total Casualties - 5pm	0	0	0	0	0
Solano					
Casualties - 2am					
Commuting	0	0	0	0	0
Commercial	0	0	0	0	0
Educational	0	0	0	0	0
Hotels	0	0	0	0	0
Industrial	0	0	0	0	0
Other-Residential	0	0	0	0	0
Single Family	0	0	0	0	0
Total Casualties - 2am	0	0	0	0	0
Casualties - 2pm					
Commuting	0	0	0	0	0
Commercial	0	0	0	0	0
Educational	0	0	0	0	0
Hotels	0	0	0	0	0
Industrial	0	0	0	0	0
Other-Residential	0	0	0	0	0
Single Family	0	0	0	0	0
Total Casualties - 2pm	0	0	0	0	0

	Injury Severity Level				Total
	Severity 1	Severity 2	Severity 3	Severity 4	
California					
Solano					
Casualties - 5pm					
<i>Commuting</i>	0	0	0	0	0
<i>Commercial</i>	0	0	0	0	0
<i>Educational</i>	0	0	0	0	0
<i>Hotels</i>	0	0	0	0	0
<i>Industrial</i>	0	0	0	0	0
<i>Other-Residential</i>	0	0	0	0	0
<i>Single Family</i>	0	0	0	0	0
Total Casualties - 5pm	0	0	0	0	0
Stanislaus					
Casualties - 2am					
<i>Commuting</i>	0	0	0	0	0
<i>Commercial</i>	0	0	0	0	0
<i>Educational</i>	0	0	0	0	0
<i>Hotels</i>	0	0	0	0	0
<i>Industrial</i>	0	0	0	0	0
<i>Other-Residential</i>	2	0	0	0	2
<i>Single Family</i>	3	0	0	0	3
Total Casualties - 2am	5	0	0	0	5
Casualties - 2pm					
<i>Commuting</i>	0	0	0	0	0
<i>Commercial</i>	4	0	0	0	4
<i>Educational</i>	1	0	0	0	1
<i>Hotels</i>	0	0	0	0	0
<i>Industrial</i>	1	0	0	0	1
<i>Other-Residential</i>	1	0	0	0	1
<i>Single Family</i>	1	0	0	0	1
Total Casualties - 2pm	7	0	0	0	7
Casualties - 5pm					
<i>Commuting</i>	0	0	0	0	0
<i>Commercial</i>	3	0	0	0	3
<i>Educational</i>	0	0	0	0	0
<i>Hotels</i>	0	0	0	0	0
<i>Industrial</i>	0	0	0	0	0
<i>Other-Residential</i>	1	0	0	0	1
<i>Single Family</i>	1	0	0	0	1
Total Casualties - 5pm	5	0	0	0	5
Tulare					
Casualties - 2am					
<i>Commuting</i>	0	0	0	0	0
<i>Commercial</i>	0	0	0	0	0
<i>Educational</i>	0	0	0	0	0

	Injury Severity Level				Total
	Severity 1	Severity 2	Severity 3	Severity 4	
California					
Tulare					
Casualties - 2am					
<i>Hotels</i>	0	0	0	0	0
<i>Industrial</i>	0	0	0	0	0
<i>Other-Residential</i>	0	0	0	0	0
<i>Single Family</i>	0	0	0	0	0
Total Casualties - 2am	0	0	0	0	0
Casualties - 2pm					
<i>Commuting</i>	0	0	0	0	0
<i>Commercial</i>	0	0	0	0	0
<i>Educational</i>	0	0	0	0	0
<i>Hotels</i>	0	0	0	0	0
<i>Industrial</i>	0	0	0	0	0
<i>Other-Residential</i>	0	0	0	0	0
<i>Single Family</i>	0	0	0	0	0
Total Casualties - 2pm	0	0	0	0	0
Casualties - 5pm					
<i>Commuting</i>	0	0	0	0	0
<i>Commercial</i>	0	0	0	0	0
<i>Educational</i>	0	0	0	0	0
<i>Hotels</i>	0	0	0	0	0
<i>Industrial</i>	0	0	0	0	0
<i>Other-Residential</i>	0	0	0	0	0
<i>Single Family</i>	0	0	0	0	0
Total Casualties - 5pm	0	0	0	0	0
Tuolumne					
Casualties - 2am					
<i>Commuting</i>	0	0	0	0	0
<i>Commercial</i>	0	0	0	0	0
<i>Educational</i>	0	0	0	0	0
<i>Hotels</i>	0	0	0	0	0
<i>Industrial</i>	0	0	0	0	0
<i>Other-Residential</i>	0	0	0	0	0
<i>Single Family</i>	0	0	0	0	0
Total Casualties - 2am	0	0	0	0	0
Casualties - 2pm					
<i>Commuting</i>	0	0	0	0	0
<i>Commercial</i>	0	0	0	0	0
<i>Educational</i>	0	0	0	0	0
<i>Hotels</i>	0	0	0	0	0
<i>Industrial</i>	0	0	0	0	0
<i>Other-Residential</i>	0	0	0	0	0
<i>Single Family</i>	0	0	0	0	0

	Injury Severity Level				Total
	Severity 1	Severity 2	Severity 3	Severity 4	
California					
Tuolumne					
Total Casualties - 2pm	0	0	0	0	0
Casualties - 5pm					
<i>Commuting</i>	0	0	0	0	0
<i>Commercial</i>	0	0	0	0	0
<i>Educational</i>	0	0	0	0	0
<i>Hotels</i>	0	0	0	0	0
<i>Industrial</i>	0	0	0	0	0
<i>Other-Residential</i>	0	0	0	0	0
<i>Single Family</i>	0	0	0	0	0
Total Casualties - 5pm	0	0	0	0	0
Region Total	NA	NA	NA	NA	NA

Totals only reflect data for those census tracts/blocks included in the user's study region and will reflect the entire county/state only if all of the census blocks for that county/states were selected at the time of study region creation.

Debris Summary Report

May 29, 2024

All values are in thousands of tons.

	Brick, Wood & Others	Concrete & Steel	Total
California			
Alameda	0	0	0
Calaveras	0	0	0
Contra Costa	0	0	0
Fresno	4	6	10
Kings	0	0	0
Madera	1	1	2
Mariposa	0	0	0
Merced	38	69	107
Monterey	1	0	1
Sacramento	0	0	0
San Benito	1	1	2
San Joaquin	3	0	3
San Luis Obispo	0	0	0
San Mateo	0	0	0
Santa Clara	2	1	3
Santa Cruz	1	0	1
Solano	0	0	0
Stanislaus	7	5	12
Tulare	0	0	0

	Brick, Wood & Others	Concrete & Steel	Total
Tuolumne	0	0	0
Total	57	83	140
Region Total	57	83	140

Totals only reflect data for those census tracts/blocks included in the user's study region and will reflect the entire county/state only if all of the census blocks for that county/states were selected at the time of study region creation.

Direct Economic Losses For Buildings

May 29, 2024

All values are in thousands of dollars

	Capital Stock Losses				Loss Ratio %	Income Losses				Total Loss
	Cost Structural Damage	Cost Non-struct. Damage	Cost Contents Damage	Inventory Loss		Relocation Loss	Capital Related Loss	Wages Losses	Rental Income Loss	
California										
Contra Costa	31	1,200	752	82	0.00	3	7	10	9	2,095
Alameda	296	7,137	4,357	514	0.00	27	45	63	64	12,503
Fresno	8,584	53,762	29,119	5,742	0.04	2,428	1,864	1,904	1,560	104,962
San Joaquin	1,555	11,764	6,700	923	0.01	312	92	114	228	21,687
Kings	18	640	415	57	0.00	2	4	4	4	1,144
Tuolumne	0	7	5	0	0.00	0	0	0	0	13
San Luis Obispo	2	50	28	3	0.00	0	0	0	0	84
Solano	6	170	116	18	0.00	1	1	2	2	316
San Mateo	104	1,826	1,065	108	0.00	6	15	15	38	3,178

	Capital Stock Losses				Loss Ratio %	Income Losses				Total Loss
	Cost Structural Damage	Cost Non-struct. Damage	Cost Contents Damage	Inventory Loss		Relocation Loss	Capital Related Loss	Wages Losses	Rental Income Loss	
Tulare	4	135	100	46	0.00	0	0	0	0	286
Madera	1,774	15,563	9,018	1,875	0.06	236	137	149	215	28,966
Calaveras	1	29	22	8	0.00	0	0	0	0	62
San Benito	1,909	16,632	8,030	936	0.14	260	228	265	245	28,505
Merced	132,029	361,959	195,179	61,623	0.96	28,748	22,258	20,264	12,098	834,158
Stanislaus	11,013	103,335	57,231	7,667	0.11	2,225	1,724	1,900	2,152	187,247
Santa Clara	2,636	36,923	19,880	2,336	0.01	321	407	468	558	63,528
Sacramento	6	65	29	6	0.00	1	2	2	2	113
Monterey	988	10,508	5,676	979	0.02	158	136	152	227	18,824
Santa Cruz	613	4,981	2,737	572	0.01	110	129	152	126	9,422
Mariposa	0	13	9	1	0.00	0	0	0	0	23
Total	161,568	626,698	340,468	83,497	0.07	34,840	27,050	25,466	17,529	1,317,114
Region Total	161,568	626,698	340,468	83,497	0.07	34,840	27,050	25,466	17,529	1,317,114

Totals only reflect data for those census tracts/blocks included in the user's study region and will reflect the entire county/state only if all of the census blocks for that county/states were selected at the time of study region creation.

Direct Economic Loss For Transportation

May 29, 2024

All values are in thousands of dollars

	Highway	Railway	Light Rail	Bus Facility	Ports	Ferries	Airport	Total
California								
Alameda								
Segments	0	0	0					0
Bridges	1	0	0					1
Tunnels	0	0	0					0
Facilities		180	0	0	440	0	3,593	4,213
Total	1	180	0	0	440	0	3,593	4,214
Calaveras								
Segments	0	0	0					0
Bridges	0	0	0					0
Tunnels	0	0	0					0
Facilities		0	0	0	0	0	0	0
Total	0	0	0	0	0	0	0	0
Contra Costa								
Segments	0	0	0					0
Bridges	1	0	0					1
Tunnels	0	0	0					0
Facilities		77	116	0	1,191	38	231	1,653

	Highway	Railway	Light Rail	Bus Facility	Ports	Ferries	Airport	Total
Total	1	77	116	0	1,191	38	231	1,654
Fresno								
<i>Segments</i>	0	0	0					0
<i>Bridges</i>	4,595	29	0					4,624
<i>Tunnels</i>	0	0	0					0
<i>Facilities</i>		231	0	21	0	0	1,922	2,174
Total	4,595	260	0	21	0	0	1,922	6,798
Kings								
<i>Segments</i>	0	0	0					0
<i>Bridges</i>	0	0	0					0
<i>Tunnels</i>	0	0	0					0
<i>Facilities</i>		128	0	41	0	0	359	529
Total	0	128	0	41	0	0	359	529
Madera								
<i>Segments</i>	0	0	0					0
<i>Bridges</i>	82	0	0					82
<i>Tunnels</i>	0	0	0					0
<i>Facilities</i>		26	0	89	0	0	268	383
Total	82	26	0	89	0	0	268	465
Mariposa								
<i>Segments</i>	0	0	0					0
<i>Bridges</i>	0	0	0					0
<i>Tunnels</i>	0	0	0					0
<i>Facilities</i>		0	0	10	0	0	51	61

	Highway	Railway	Light Rail	Bus Facility	Ports	Ferries	Airport	Total
Total	0	0	0	10	0	0	51	61
Merced								
Segments	0	0	0					0
Bridges	24,353	2,141	0					26,495
Tunnels	0	0	0					0
Facilities		218	0	91	0	0	3,507	3,817
Total	24,353	2,360	0	91	0	0	3,507	30,311
Monterey								
Segments	0	0	0					0
Bridges	42	0	0					42
Tunnels	0	0	0					0
Facilities		26	0	266	110	0	489	890
Total	42	26	0	266	110	0	489	932
Sacramento								
Segments	0	0	0					0
Bridges	0	0	0					0
Tunnels	0	0	0					0
Facilities		0	0	0	404	0	0	404
Total	0	0	0	0	404	0	0	404
San Benito								
Segments	0	0	0					0
Bridges	33	1	0					34
Tunnels	0	0	0					0
Facilities		0	0	0	0	0	617	617

	Highway	Railway	Light Rail	Bus Facility	Ports	Ferries	Airport	Total
Total	33	1	0	0	0	0	617	651
San Joaquin								
Segments	0	0	0					0
Bridges	45	0	0					45
Tunnels	0	0	0					0
Facilities		385	0	21	1,432	51	418	2,307
Total	45	385	0	21	1,432	51	418	2,352
San Luis Obispo								
Segments	0	0	0					0
Bridges	0	0	0					0
Tunnels	0	0	0					0
Facilities		0	0	0	0	0	0	0
Total	0	0	0	0	0	0	0	0
San Mateo								
Segments	0	0	0					0
Bridges	2	0	0					2
Tunnels	0	0	0					0
Facilities		0	0	0	367	0	0	367
Total	2	0	0	0	367	0	0	369
Santa Clara								
Segments	0	0	0					0
Bridges	41	0	0					41
Tunnels	0	0	0					0
Facilities		103	5,439	122	184	0	4,012	9,859

	Highway	Railway	Light Rail	Bus Facility	Ports	Ferries	Airport	Total
Total	41	103	5,439	122	184	0	4,012	9,900
Santa Cruz								
Segments	0	0	0					0
Bridges	1	0	0					1
Tunnels	0	0	0					0
Facilities		0	0	45	37	0	257	339
Total	1	0	0	45	37	0	257	340
Solano								
Segments	0	0	0					0
Bridges	0	0	0					0
Tunnels	0	0	0					0
Facilities		0	0	0	518	0	0	518
Total	0	0	0	0	518	0	0	518
Stanislaus								
Segments	0	0	0					0
Bridges	333	13	0					346
Tunnels	0	0	0					0
Facilities		572	0	183	0	0	999	1,753
Total	333	585	0	183	0	0	999	2,099
Tulare								
Segments	0	0	0					0
Bridges	0	0	0					0
Tunnels	0	0	0					0
Facilities		0	0	0	0	0	0	0

	Highway	Railway	Light Rail	Bus Facility	Ports	Ferries	Airport	Total
Total	0	0	0	0	0	0	0	0
Tuolumne								
<i>Segments</i>	0	0	0					0
<i>Bridges</i>	0	0	0					0
<i>Tunnels</i>	0	0	0					0
<i>Facilities</i>		0	0	0	0	0	57	57
Total	0	0	0	0	0	0	57	57
Total	29,529	4,129	5,555	889	4,682	90	16,780	61,653
Region Total	29,529	4,129	5,555	889	4,682	90	16,780	61,653

Totals only reflect data for those census tracts/blocks included in the user's study region and will reflect the entire county/state only if all of the census blocks for that county/states were selected at the time of study region creation.

Direct Economic Loss For Utilities

May 29, 2024

All values are in thousands of dollars

	Potable Water	Waste Water	Oil Systems	Natural Gas	Electric Power	Communication	Total
California							
Alameda							
<i>Facilities</i>	29	863	0	0	12,278	2	13,172
<i>Pipelines</i>	77	39	0	0			115
Total	106	902	0	0	12,278	2	13,287
Calaveras							
<i>Facilities</i>	0	126	0	0	13,540	0	13,665
<i>Pipelines</i>	3	2	0	0			5
Total	3	127	0	0	13,540	0	13,670
Contra Costa							
<i>Facilities</i>	3	500	0	0	46,647	1	47,150
<i>Pipelines</i>	49	25	0	0			74
Total	52	524	0	0	46,647	1	47,224
Fresno							
<i>Facilities</i>	0	369	0	13	329,050	10	329,443

	Potable Water	Waste Water	Oil Systems	Natural Gas	Electric Power	Communication	Total
<i>Pipelines</i>	866	435	0	0			1,301
Total	866	804	0	13	329,050	10	330,744
Kings							
<i>Facilities</i>	0	0	0	134	6,360	1	6,495
<i>Pipelines</i>	64	32	0	0			96
Total	64	32	0	134	6,360	1	6,591
Madera							
<i>Facilities</i>	0	0	0	0	8,360	1	8,360
<i>Pipelines</i>	122	61	0	0			183
Total	122	61	0	0	8,360	1	8,544
Mariposa							
<i>Facilities</i>	0	131	0	0	2,808	2	2,940
<i>Pipelines</i>	10	5	0	0			15
Total	10	136	0	0	2,808	2	2,955
Merced							
<i>Facilities</i>	0	20,516	0	0	1,971,730	141	1,992,386
<i>Pipelines</i>	1,631	819	0	0			2,451
Total	1,631	21,335	0	0	1,971,730	141	1,994,837
Monterey							
<i>Facilities</i>	0	1,107	0	0	14,053	7	15,167
<i>Pipelines</i>	115	58	0	0			173

	Potable Water	Waste Water	Oil Systems	Natural Gas	Electric Power	Communication	Total
Total	115	1,164	0	0	14,053	7	15,340
Sacramento							
<i>Facilities</i>	0	0	0	0	0	0	0
<i>Pipelines</i>	2	1	0	0			2
Total	2	1	0	0	0	0	2
San Benito							
<i>Facilities</i>	0	3,049	0	0	0	14	3,063
<i>Pipelines</i>	109	55	0	0			164
Total	109	3,104	0	0	0	14	3,227
San Joaquin							
<i>Facilities</i>	112	738	0	0	6,189	2	7,042
<i>Pipelines</i>	78	39	0	0			117
Total	190	777	0	0	6,189	2	7,158
San Luis Obispo							
<i>Facilities</i>	0	0	0	0	0	0	0
<i>Pipelines</i>	21	11	0	0			32
Total	21	11	0	0	0	0	32
San Mateo							
<i>Facilities</i>	0	123	0	0	203	1	327
<i>Pipelines</i>	13	6	0	0			19
Total	13	129	0	0	203	1	346

	Potable Water	Waste Water	Oil Systems	Natural Gas	Electric Power	Communication	Total
Santa Clara							
<i>Facilities</i>	56	369	0	0	27,952	5	28,382
<i>Pipelines</i>	138	70	0	0			208
Total	195	438	0	0	27,952	5	28,590
Santa Cruz							
<i>Facilities</i>	0	492	0	0	65	1	558
<i>Pipelines</i>	37	18	0	0			55
Total	37	510	0	0	65	1	613
Solano							
<i>Facilities</i>	0	123	0	0	4	0	127
<i>Pipelines</i>	11	5	0	0			16
Total	11	128	0	0	4	0	143
Stanislaus							
<i>Facilities</i>	0	12,877	0	0	76,211	28	89,116
<i>Pipelines</i>	130	65	0	0			196
Total	130	12,943	0	0	76,211	28	89,312
Tulare							
<i>Facilities</i>	0	0	0	0	32	0	32
<i>Pipelines</i>	24	12	0	0			37
Total	24	12	0	0	32	0	69
Tuolumne							

	Potable Water	Waste Water	Oil Systems	Natural Gas	Electric Power	Communication	Total
<i>Facilities</i>	0	123	0	0	13,896	0	14,019
<i>Pipelines</i>	14	7	0	0			22
Total	14	130	0	0	13,896	0	14,041
Total	3,715	43,269	1	147	2,529,376	215	2,576,723
Region Total	3,715	43,269	1	147	2,529,376	215	2,576,723

Totals only reflect data for those census tracts/blocks included in the user's study region and will reflect the entire county/state only if all of the census blocks for that county/states were selected at the time of study region creation.

Hazus Quick Assessment Report

Estimated Economic Loss (\$ Billions)

Category	Description	Range
General Building Stock	Building Damage	0.40 - 1.60
	Building Contents	0.10 - 0.50
	Business Interruption	0.10 - 0.20
Infrastructure	Lifelines Damage	
Total		0.70 - 2.60

Preliminary Damage Assessment (PDA) Estimates

Description	Residential	Commercial	Other	Total
Affected	15,000	1,300	1,900	18,200
Minor	1,400	330	740	2,470
Major	110	30	160	300
Destroyed	< 10	< 10	10	10
Total	16,510	1,660	2,810	20,980

Estimated Casualties : Night Time

Severity Level	Description	# Persons
Level 1	Medical Aid	20 - 90
Level 2	Hospital Care	< 10
Level 3	Life-threatening	< 10
Level 4	Fatalities	< 10

Estimated Shelter Needs

Type	Households	People
Displaced Households	30 - 120	75 - 300
Public Shelter	20	40

Comments :

**Hazus damage estimates are presented using FEMA Preliminary Damage Assessment (PDA) categories. These estimates should be used for planning purposes and may not reflect actual observed damages from the PDA process.*

Disclaimer:

The estimates of social and economic impacts contained in this report were produced using HAZUS loss estimation methodology software which is based on current scientific and engineering knowledge. There are uncertainties inherent in any loss estimation technique. Therefore, there may be significant differences between the modeled results contained in this report and the actual social and economic losses following a specific earthquake. These results can be improved by using enhanced inventory, geotechnical, and observed ground motion data.

Earthquake Information

Location :

Origin Time:

Magnitude : 6.57

Epicenter Latitude/Longitude :
/

Depth & Type : /U

Name :
NA

Ground Motion /Attenuation :

Maximum PGA: 0.00

Information Sources:

Comments :

Population and Building Exposure

Population: 12,165,924

Building Exposure : (\$ Millions)

Residential	1,475,080
Commercial	404,240
Other	367,283
Total	2,246,603

Counties : See Appendix

Major Metro Area :

Hazus Quick Assessment Report

Estimated Economic Loss (\$ Billions)

Category	Description	Range
General Building Stock	Building Damage	0.40 - 1.60
	Building Contents	0.10 - 0.50
	Business Interruption	0.10 - 0.20
Infrastructure	Lifelines Damage	
Total		0.70 - 2.60

Preliminary Damage Assessment (PDA) Estimates

Description	Residential	Commercial	Other	Total
Affected	15,000	1,300	1,900	18,200
Minor	1,400	330	740	2,470
Major	110	30	160	300
Destroyed	< 10	< 10	10	10
Total	16,510	1,660	2,810	20,980

Estimated Casualties : Day Time

Severity Level	Description	# Persons
Level 1	Medical Aid	50 - 200
Level 2	Hospital Care	10 - 20
Level 3	Life-threatening	< 10
Level 4	Fatalities	< 10

Estimated Shelter Needs

Type	Households	People
Displaced Households	30 - 120	75 - 300
Public Shelter	20	40

Comments :

*Hazus damage estimates are presented using FEMA Preliminary Damage Assessment (PDA) categories. These estimates should be used for planning purposes and may not reflect actual observed damages from the PDA process.

Disclaimer:

The estimates of social and economic impacts contained in this report were produced using HAZUS loss estimation methodology software which is based on current scientific and engineering knowledge. There are uncertainties inherent in any loss estimation technique. Therefore, there may be significant differences between the modeled results contained in this report and the actual social and economic losses following a specific earthquake. These results can be improved by using enhanced inventory, geotechnical, and observed ground motion data.

Earthquake Information

Location :

Origin Time:

Magnitude : 6.57

Epicenter Latitude/Longitude :
/

Depth & Type : /U

Name :
NA

Ground Motion /Attenuation :

Maximum PGA: 0.00

Information Sources:

Comments :

Population and Building Exposure

Population: 12,165,924

Building Exposure : (\$ Millions)

Residential	1,475,080
Commercial	404,240
Other	367,283
Total	2,246,603

Counties : See Appendix

Major Metro Area :

Hazus Quick Assessment Report

Estimated Economic Loss (\$ Billions)

Category	Description	Range
General Building Stock	Building Damage	0.40 - 1.60
	Building Contents	0.10 - 0.50
	Business Interruption	0.10 - 0.20
Infrastructure	Lifelines Damage	
Total		0.70 - 2.60

Preliminary Damage Assessment (PDA) Estimates

Description	Residential	Commercial	Other	Total
Affected	15,000	1,300	1,900	18,200
Minor	1,400	330	740	2,470
Major	110	30	160	300
Destroyed	< 10	< 10	10	10
Total	16,510	1,660	2,810	20,980

Estimated Casualties : Commute Time

Severity Level	Description	# Persons
Level 1	Medical Aid	40 - 150
Level 2	Hospital Care	0 - 20
Level 3	Life-threatening	< 10
Level 4	Fatalities	< 10

Estimated Shelter Needs

Type	Households	People
Displaced Households	30 - 120	75 - 300
Public Shelter	20	40

Comments :

*Hazus damage estimates are presented using FEMA Preliminary Damage Assessment (PDA) categories. These estimates should be used for planning purposes and may not reflect actual observed damages from the PDA process.

Disclaimer:

The estimates of social and economic impacts contained in this report were produced using HAZUS loss estimation methodology software which is based on current scientific and engineering knowledge. There are uncertainties inherent in any loss estimation technique. Therefore, there may be significant differences between the modeled results contained in this report and the actual social and economic losses following a specific earthquake. These results can be improved by using enhanced inventory, geotechnical, and observed ground motion data.

Earthquake Information

Location :

Origin Time:

Magnitude : 6.57

Epicenter Latitude/Longitude :
/

Depth & Type : /U

Name :
NA

Ground Motion /Attenuation :

Maximum PGA: 0.00

Information Sources:

Comments :

Population and Building Exposure

Population: 12,165,924

Building Exposure : (\$ Millions)

Residential	1,475,080
Commercial	404,240
Other	367,283
Total	2,246,603

Counties : See Appendix

Major Metro Area :

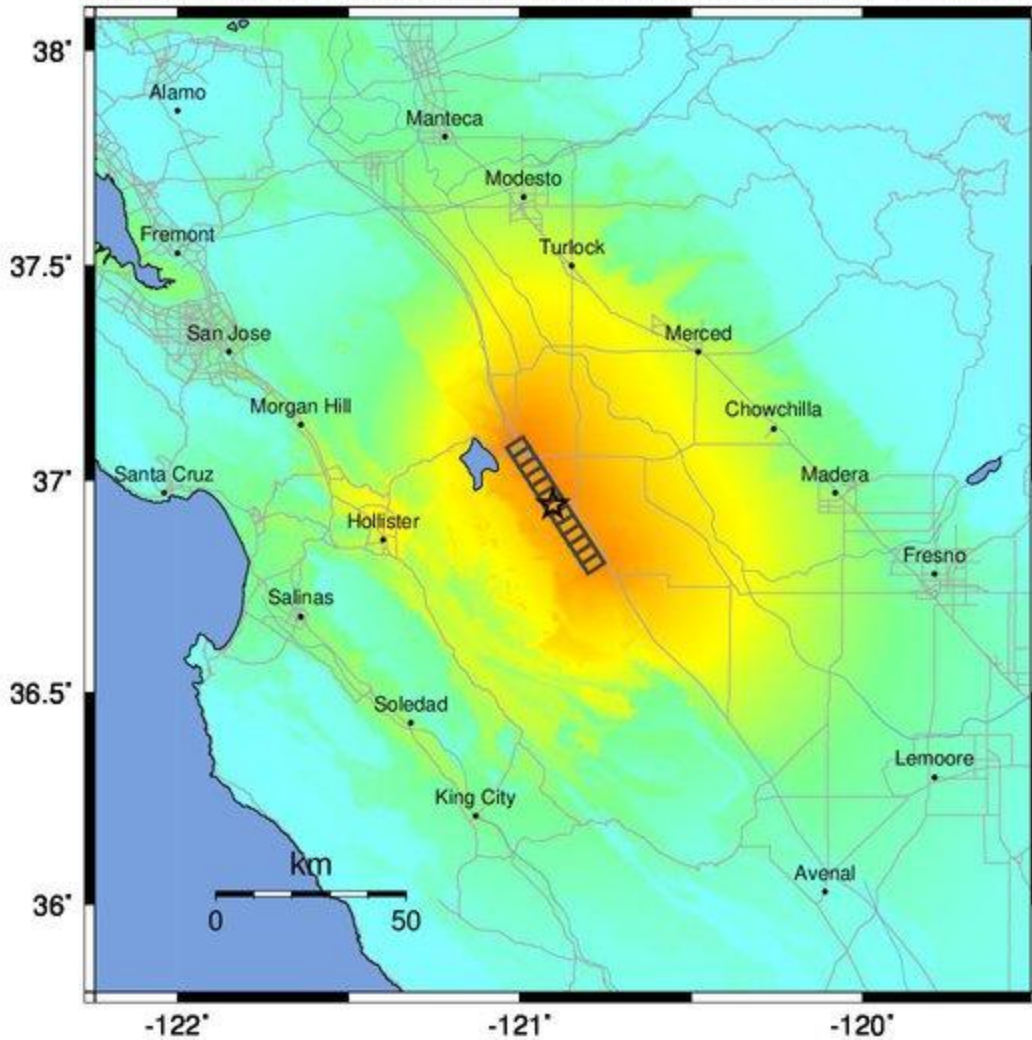
Shelter Summary Report

May 29, 2024

	# of Displaced Households	# of People Needing Short Term Shelter
California		
Alameda	0	0
Calaveras	0	0
Contra Costa	0	0
Fresno	1	1
Kings	0	0
Madera	0	0
Mariposa	0	0
Merced	59	41
Monterey	0	0
Sacramento	0	0
San Benito	0	0
San Joaquin	0	0
San Luis Obispo	0	0
San Mateo	0	0
Santa Clara	0	0
Santa Cruz	0	0
Solano	0	0
Stanislaus	2	1
Tulare	0	0
Tuolumne	0	0
Total	62	43
Region Total	62	43

Totals only reflect data for those census tracts/blocks included in the user's study region and will reflect the entire county/state only if all of the census blocks for that county/states were selected at the time of study region creation.

-- Earthquake Planning Scenario --
ShakeMap for Great Valley 09 (Laguna Seca) - Median ground motions Scenario
 Scenario Date: May 16, 2017 08:31:56 AM MDT M 6.6 N36.94 W120.90 Depth: 8.7km



-122° -121° -120°
 PLANNING SCENARIO ONLY -- Map Version 10 Processed 2017-05-16 06:18:50 PM MDT

PERCEIVED SHAKING	Not felt	Weak	Light	Moderate	Strong	Very strong	Severe	Violent	Extreme
POTENTIAL DAMAGE	none	none	none	Very light	Light	Moderate	Mod./Heavy	Heavy	Very Heavy
PEAK ACC.(%g)	<0.05	0.3	2.8	6.2	12	22	40	75	>139
PEAK VEL.(cm/s)	<0.02	0.1	1.4	4.7	9.6	20	41	86	>178
INSTRUMENTAL INTENSITY	I	II-III	IV	V	VI	VII	VIII	IX	X+

Scale based upon Worden et al. (2012)