
Hazus: Earthquake Global Risk Report

Region Name: GreatValley08Quint

Earthquake Scenario: greatvalley08quintoe_m6p59_se

Print Date: May 02, 2024

Disclaimer:

Totals only reflect data for those census tracts/blocks included in the user's study region.

The estimates of social and economic impacts contained in this report were produced using Hazus loss estimation methodology software which is based on current scientific and engineering knowledge. There are uncertainties inherent in any loss estimation technique. Therefore, there may be significant differences between the modeled results contained in this report and the actual social and economic losses following a specific earthquake. These results can be improved by using enhanced inventory, geotechnical, and observed ground motion data.

Table of Contents

Section	Page #
General Description of the Region	3
Building and Lifeline Inventory	4
Building Inventory	
Critical Facility Inventory	
Transportation and Utility Lifeline Inventory	
Earthquake Scenario Parameters	7
Direct Earthquake Damage	8
Buildings Damage	
Essential Facilities Damage	
Transportation and Utility Lifeline Damage	
Induced Earthquake Damage	14
Fire Following Earthquake	
Debris Generation	
Social Impact	15
Shelter Requirements	
Casualties	
Economic Loss	17
Building Related Losses	
Transportation and Utility Lifeline Losses	
Appendix A: County Listing for the Region	
Appendix B: Regional Population and Building Value Data	

General Description of the Region

Hazus-MH is a regional earthquake loss estimation model that was developed by the Federal Emergency Management Agency (FEMA) and the National Institute of Building Sciences. The primary purpose of Hazus is to provide a methodology and software application to develop multi-hazard losses at a regional scale. These loss estimates would be used primarily by local, state and regional officials to plan and stimulate efforts to reduce risks from multi-hazards and to prepare for emergency response and recovery.

The earthquake loss estimates provided in this report was based on a region that includes 22 county(ies) from the following state(s):

California

Note:

Appendix A contains a complete listing of the counties contained in the region.

The geographical size of the region is 32,632.04 square miles and contains 2,936 census tracts. There are over 4,476 thousand households in the region which has a total population of 12,951,704 people. The distribution of population by Total Region and County is provided in Appendix B.

There are an estimated 3,839 thousand buildings in the region with a total building replacement value (excluding contents) of (millions of dollars). Approximately 90.00 % of the buildings (and % of the building value) are associated with residential housing.

The replacement value of the transportation and utility lifeline systems is estimated to be 195,872 and 127,143 (millions of dollars) , respectively.

Building and Lifeline Inventory

Building Inventory

Hazus estimates that there are 3,839 thousand buildings in the region which have an aggregate total replacement value of (millions of dollars) . Appendix B provides a general distribution of the building value by Total Region and County.

In terms of building construction types found in the region, wood frame construction makes up 87% of the building inventory. The remaining percentage is distributed between the other general building types.

Critical Facility Inventory

Hazus breaks critical facilities into two (2) groups: essential facilities and high potential loss facilities (HPL). Essential facilities include hospitals, medical clinics, schools, fire stations, police stations and emergency operations facilities. High potential loss facilities include dams, levees, military installations, nuclear power plants and hazardous material sites.

For essential facilities, there are 211 hospitals in the region with a total bed capacity of 34,217 beds. There are 4,600 schools, 1,061 fire stations, 381 police stations and 69 emergency operation facilities. With respect to high potential loss facilities (HPL), there are no dams identified within the inventory. The inventory also includes no hazardous material sites, no military installations and no nuclear power plants.

Transportation and Utility Lifeline Inventory

Within Hazus, the lifeline inventory is divided between transportation and utility lifeline systems. There are seven (7) transportation systems that include highways, railways, light rail, bus, ports, ferry and airports. There are six (6) utility systems that include potable water, wastewater, natural gas, crude & refined oil, electric power and communications. The lifeline inventory data are provided in Tables 1 and 2.

The total value of the lifeline inventory is over 323,015.00 (millions of dollars). This inventory includes over 7,346.47 miles of highways, 8,504 bridges, 156,350.61 miles of pipes.

Table 1: Transportation System Lifeline Inventory

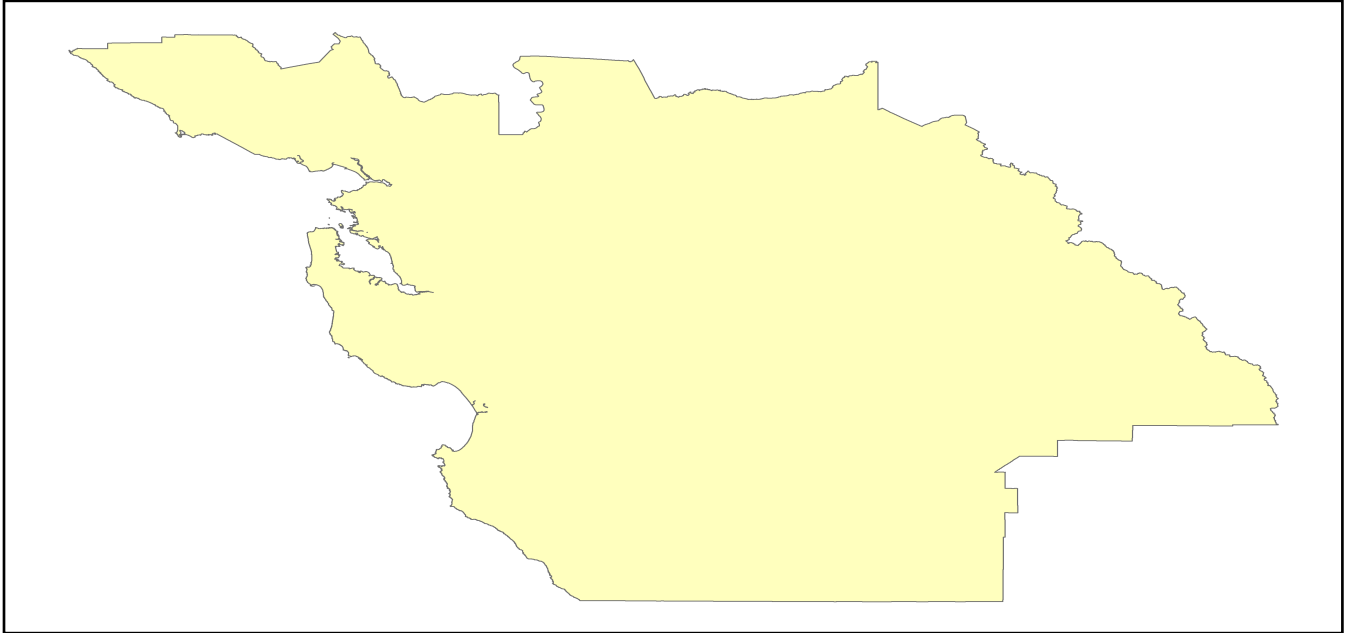
System	Component	# Locations/ # Segments	Replacement value (millions of dollars)
Highway	Bridges	8,504	47407.8876
	Segments	5,861	67737.5658
	Tunnels	38	871.7499
	Subtotal		116017.2033
Railways	Bridges	1,183	6731.2700
	Facilities	75	199.7250
	Segments	2,675	58299.2722
	Tunnels	3	1.8495
	Subtotal		65232.1167
Light Rail	Bridges	112	15.3529
	Facilities	255	4154.0000
	Segments	15	5403.2756
	Tunnels	0	0.0000
	Subtotal		9572.6285
Bus	Facilities	35	79.3449
	Subtotal		79.3449
Ferry	Facilities	20	26.6200
	Subtotal		26.6200
Port	Facilities	310	1181.6718
	Subtotal		1181.6718
Airport	Facilities	76	2637.6448
	Runways	112	1125.4721
	Subtotal		3763.1169
		Total	195,872.70

Table 2: Utility System Lifeline Inventory

System	Component	# Locations / Segments	Replacement value (millions of dollars)
Potable Water	Distribution Lines	NA	3109.6501
	Facilities	17	667.9980
	Pipelines	0	0.0000
		Subtotal	3777.6481
Waste Water	Distribution Lines	NA	1865.7901
	Facilities	129	22181.7822
	Pipelines	0	0.0000
		Subtotal	24047.5723
Natural Gas	Distribution Lines	NA	1243.8600
	Facilities	3	142.4899
	Pipelines	619	10039.6870
		Subtotal	11426.0369
Oil Systems	Facilities	17	2.0060
	Pipelines	0	0.0000
		Subtotal	2.0060
Electrical Power	Facilities	293	87851.0812
		Subtotal	87851.0812
Communication	Facilities	332	39.1760
		Subtotal	39.1760
	Total		127,143.50

Earthquake Scenario

Hazus uses the following set of information to define the earthquake parameters used for the earthquake loss estimate provided in this report.



Scenario Name	greatvalley08quintoe_m6p59_se
Type of Earthquake	User-defined
Fault Name	NA
Historical Epicenter ID #	NA
Probabilistic Return Period	NA
Longitude of Epicenter	NA
Latitude of Epicenter	NA
Earthquake Magnitude	6.59
Depth (km)	NA
Rupture Length (Km)	NA
Rupture Orientation (degrees)	NA
Attenuation Function	NA

Direct Earthquake Damage

Building Damage

Hazus estimates that about 2,910 buildings will be at least moderately damaged. This is over 0.00 % of the buildings in the region. There are an estimated 79 buildings that will be damaged beyond repair. The definition of the 'damage states' is provided in Volume 1: Chapter 5 of the Hazus technical manual. Table 3 below summarizes the expected damage by general occupancy for the buildings in the region. Table 4 below summarizes the expected damage by general building type.

Damage Categories by General Occupancy Type

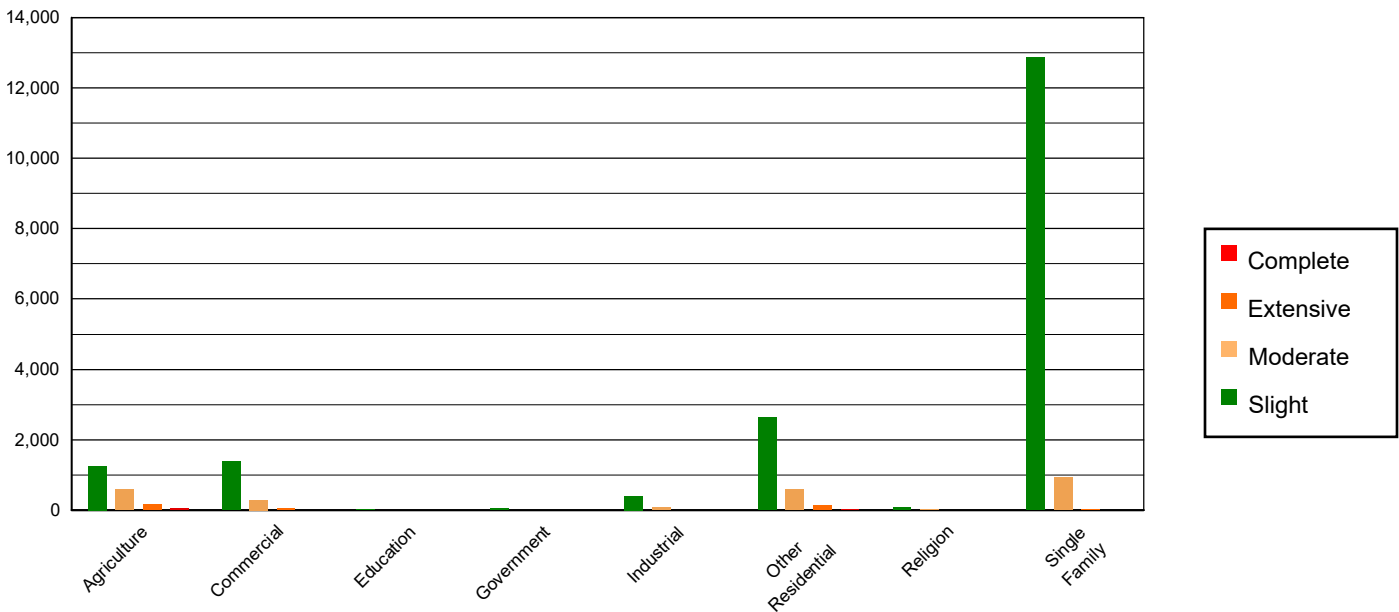


Table 3: Expected Building Damage by Occupancy

	None		Slight		Moderate		Extensive		Complete	
	Count	(%)	Count	(%)	Count	(%)	Count	(%)	Count	(%)
Agriculture	22509.92	0.59	1260.20	6.74	583.31	23.49	158.46	45.64	50.12	62.74
Commercial	245478.64	6.43	1381.83	7.40	295.63	11.90	47.52	13.69	8.38	10.49
Education	7872.08	0.21	15.31	0.08	2.56	0.10	0.05	0.02	0.00	0.00
Government	20043.19	0.52	60.85	0.33	8.38	0.34	0.53	0.15	0.06	0.07
Industrial	67696.48	1.77	398.35	2.13	69.15	2.78	7.31	2.11	0.71	0.89
Other Residential	463100.44	12.13	2638.27	14.12	576.19	23.20	119.75	34.50	20.35	25.47
Religion	14473.99	0.38	69.84	0.37	16.19	0.65	1.85	0.53	0.12	0.15
Single Family	2976891.92	77.97	12859.26	68.83	931.99	37.53	11.69	3.37	0.14	0.18
Total	3,818,067		18,684		2,483		347		80	

Table 4: Expected Building Damage by Building Type (All Design Levels)

	None		Slight		Moderate		Extensive		Complete	
	Count	(%)	Count	(%)	Count	(%)	Count	(%)	Count	(%)
Wood	3329168.36	87.20	13973.21	74.79	1056.34	42.54	22.36	6.44	1.52	1.90
Steel	87713.99	2.30	962.80	5.15	427.63	17.22	119.97	34.56	37.59	47.06
Concrete	99448.28	2.60	591.62	3.17	181.14	7.29	47.77	13.76	12.00	15.03
Precast	50279.34	1.32	444.83	2.38	110.92	4.47	8.45	2.43	0.50	0.63
RM	154079.96	4.04	397.15	2.13	96.15	3.87	12.84	3.70	0.40	0.50
URM	42067.08	1.10	1129.20	6.04	214.61	8.64	40.76	11.74	16.38	20.50
MH	55309.65	1.45	1185.11	6.34	396.60	15.97	95.02	27.37	11.49	14.39
Total	3,818,067		18,684		2,483		347		80	

*Note:

RM Reinforced Masonry
 URM Unreinforced Masonry
 MH Manufactured Housing

Essential Facility Damage

Before the earthquake, the region had 34,217 hospital beds available for use. On the day of the earthquake, the model estimates that only 34,071 hospital beds (100.00%) are available for use by patients already in the hospital and those injured by the earthquake. After one week, 100.00% of the beds will be back in service. By 30 days, 100.00% will be operational.

Table 5: Expected Damage to Essential Facilities

Classification	Total	# Facilities		
		At Least Moderate Damage > 50%	Complete Damage > 50%	With Functionality > 50% on day 1
Hospitals	211	0	0	211
Schools	4,600	0	0	4,598
EOCs	69	0	0	69
PoliceStations	381	0	0	380
FireStations	1,061	0	0	1,057

Transportation Lifeline Damage

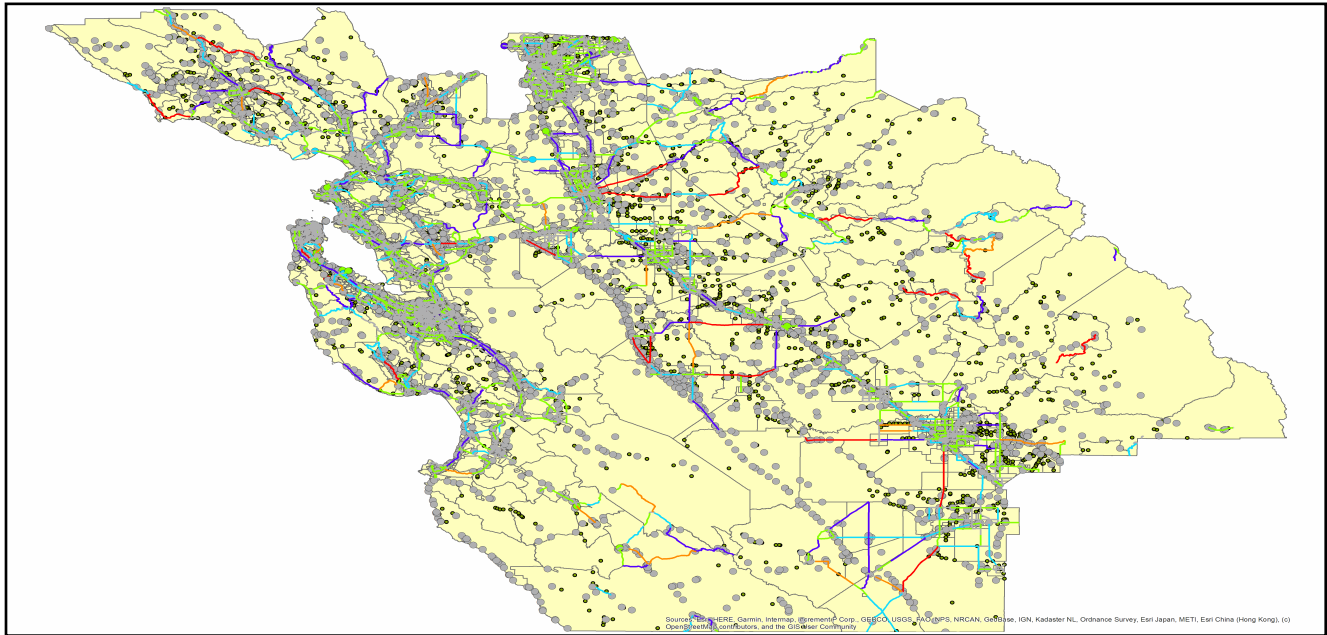


Table 6: Expected Damage to the Transportation Systems

System	Component	Number of Locations_				
		Locations/ Segments	With at Least Mod. Damage	With Complete Damage	With Functionality > 50 %	
					After Day 1	After Day 7
Highway	Segments	5,861	0	0	5,861	5,861
	Bridges	8,504	19	0	8,484	8,493
	Tunnels	38	0	0	38	38
Railways	Segments	2,675	0	0	2,675	2,675
	Bridges	1,183	0	0	1,183	1,183
	Tunnels	3	0	0	3	3
	Facilities	75	0	0	75	75
Light Rail	Segments	15	0	0	15	15
	Bridges	112	0	0	112	112
	Tunnels	0	0	0	0	0
	Facilities	255	0	0	255	255
Bus	Facilities	35	0	0	35	35
Ferry	Facilities	20	0	0	20	20
Port	Facilities	310	0	0	310	310
Airport	Facilities	76	0	0	76	76
	Runways	112	0	0	112	112

Table 6 provides damage estimates for the transportation system.

Note: Roadway segments, railroad tracks and light rail tracks are assumed to be damaged by ground failure only. If ground failure maps are not provided, damage estimates to these components will not be computed.

Tables 7-9 provide information on the damage to the utility lifeline systems. Table 7 provides damage to the utility system facilities. Table 8 provides estimates on the number of leaks and breaks by the pipelines of the utility systems. For electric power and potable water, Hazus performs a simplified system performance analysis. Table 9 provides a summary of the system performance information.

Table 7 : Expected Utility System Facility Damage

System	# of Locations				
	Total #	With at Least Moderate Damage	With Complete Damage	with Functionality > 50 %	
				After Day 1	After Day 7
Potable Water	17	0	0	17	17
Waste Water	129	0	0	127	129
Natural Gas	3	0	0	3	3
Oil Systems	17	0	0	17	17
Electrical Power	293	7	1	289	289
Communication	332	0	0	332	332

Table 8 : Expected Utility System Pipeline Damage (Site Specific)

System	Total Pipelines Length (miles)	Number of Leaks	Number of Breaks
Potable Water	96,612	701	175
Waste Water	57,967	352	88
Natural Gas	1,771	0	0
Oil	0	0	0

Table 9: Expected Potable Water and Electric Power System Performance

	Total # of Households	Number of Households without Service				
		At Day 1	At Day 3	At Day 7	At Day 30	At Day 90
Potable Water	4,476,181	268	0	0	0	0
Electric Power		1,829	1,439	790	126	2

Induced Earthquake Damage

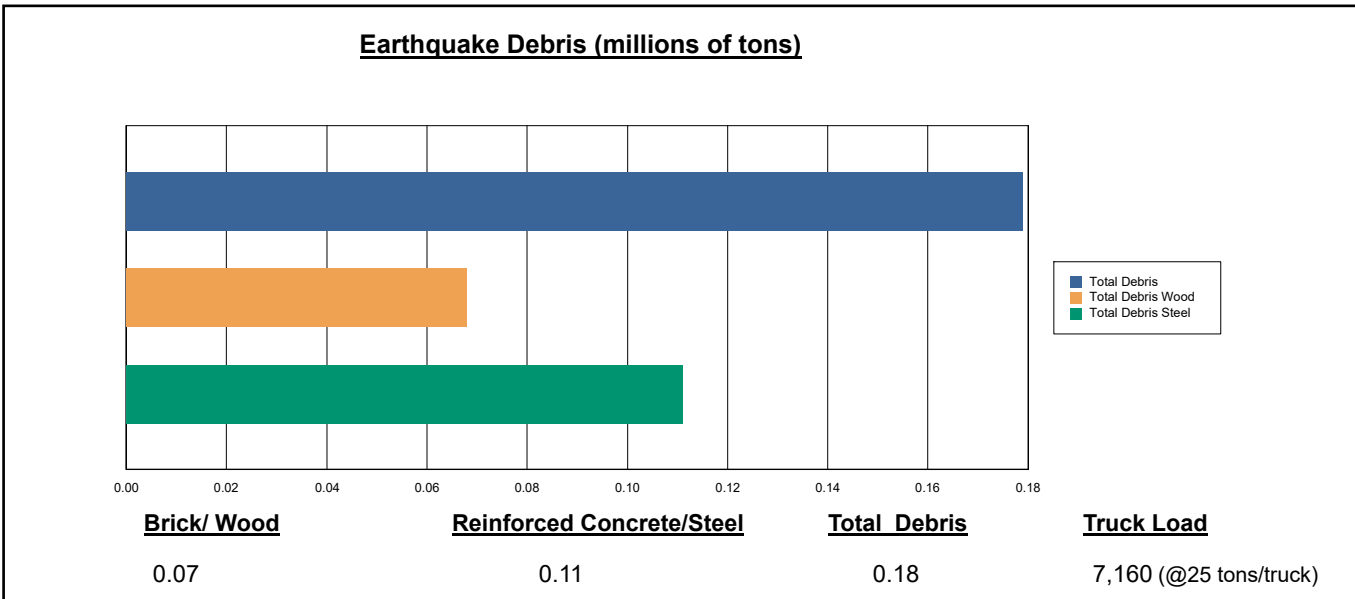
Fire Following Earthquake

Fires often occur after an earthquake. Because of the number of fires and the lack of water to fight the fires, they can often burn out of control. Hazus uses a Monte Carlo simulation model to estimate the number of ignitions and the amount of burnt area. For this scenario, the model estimates that there will be 5 ignitions that will burn about 0.10 sq. mi (0.00 % of the region's total area.) The model also estimates that the fires will displace about 901 people and burn about 102 (millions of dollars) of building value.

Debris Generation

Hazus estimates the amount of debris that will be generated by the earthquake. The model breaks the debris into two general categories: a) Brick/Wood and b) Reinforced Concrete/Steel. This distinction is made because of the different types of material handling equipment required to handle the debris.

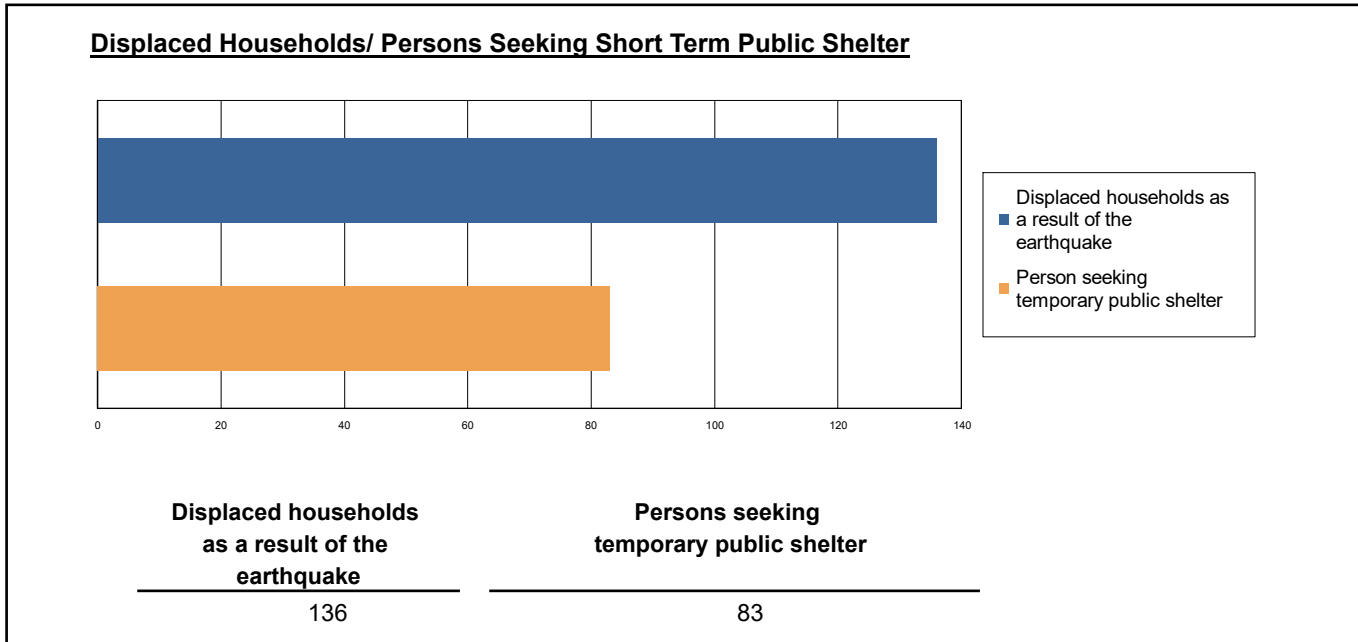
The model estimates that a total of 179,000 tons of debris will be generated. Of the total amount, Brick/Wood comprises 38.00% of the total, with the remainder being Reinforced Concrete/Steel. If the debris tonnage is converted to an estimated number of truckloads, it will require 7,160 truckloads (@25 tons/truck) to remove the debris generated by the earthquake.



Social Impact

Shelter Requirement

Hazus estimates the number of households that are expected to be displaced from their homes due to the earthquake and the number of displaced people that will require accommodations in temporary public shelters. The model estimates 136 households to be displaced due to the earthquake. Of these, 83 people (out of a total population of 12,951,704) will seek temporary shelter in public shelters.



Casualties

Hazus estimates the number of people that will be injured and killed by the earthquake. The casualties are broken down into four (4) severity levels that describe the extent of the injuries. The levels are described as follows;

- Severity Level 1: Injuries will require medical attention but hospitalization is not needed.
- Severity Level 2: Injuries will require hospitalization but are not considered life-threatening
- Severity Level 3: Injuries will require hospitalization and can become life threatening if not promptly treated.
- Severity Level 4: Victims are killed by the earthquake.

The casualty estimates are provided for three (3) times of day: 2:00 AM, 2:00 PM and 5:00 PM. These times represent the periods of the day that different sectors of the community are at their peak occupancy loads. The 2:00 AM estimate considers that the residential occupancy load is maximum, the 2:00 PM estimate considers that the educational, commercial and industrial sector loads are maximum and 5:00 PM represents peak commute time.

Table 10 provides a summary of the casualties estimated for this earthquake

Table 10: Casualty Estimates

		Level 1	Level 2	Level 3	Level 4
2 AM	Commercial	1.50	0.27	0.03	0.06
	Commuting	0.01	0.02	0.03	0.01
	Educational	0.00	0.00	0.00	0.00
	Hotels	0.01	0.00	0.00	0.00
	Industrial	0.62	0.07	0.01	0.01
	Other-Residential	21.33	2.82	0.27	0.52
	Single Family	27.18	0.93	0.00	0.01
	Total	51	4	0	1
2 PM	Commercial	118.42	21.99	2.46	4.67
	Commuting	0.12	0.14	0.26	0.05
	Educational	8.45	0.70	0.03	0.06
	Hotels	0.00	0.00	0.00	0.00
	Industrial	4.55	0.53	0.05	0.10
	Other-Residential	6.56	0.90	0.09	0.17
	Single Family	8.02	0.30	0.00	0.00
	Total	146	25	3	5
5 PM	Commercial	89.53	16.86	1.92	3.61
	Commuting	1.96	2.42	4.33	0.82
	Educational	0.21	0.01	0.00	0.00
	Hotels	0.00	0.00	0.00	0.00
	Industrial	2.84	0.33	0.03	0.06
	Other-Residential	7.88	1.08	0.11	0.20
	Single Family	9.89	0.36	0.00	0.00
	Total	112	21	6	5

Economic Loss

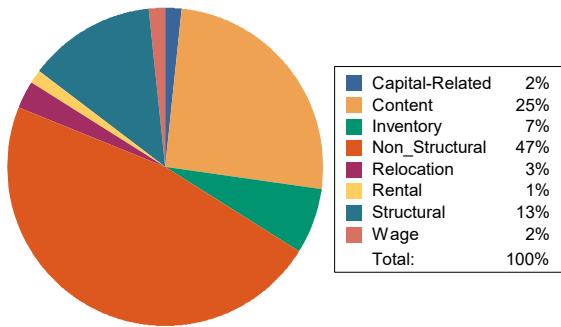
The total economic loss estimated for the earthquake is 4,871.10 (millions of dollars), which includes building and lifeline related losses based on the region's available inventory. The following three sections provide more detailed information about these losses.

Building-Related Losses

The building losses are broken into two categories: direct building losses and business interruption losses. The direct building losses are the estimated costs to repair or replace the damage caused to the building and its contents. The business interruption losses are the losses associated with inability to operate a business because of the damage sustained during the earthquake. Business interruption losses also include the temporary living expenses for those people displaced from their homes because of the earthquake.

The total building-related losses were 1,453.99 (millions of dollars); 7 % of the estimated losses were related to the business interruption of the region. By far, the largest loss was sustained by the residential occupancies which made up over 32 % of the total loss. Table 11 below provides a summary of the losses associated with the building damage.

Earthquake Losses by Loss Type (\$ millions)



Earthquake Losses by Occupancy Type (\$ millions)

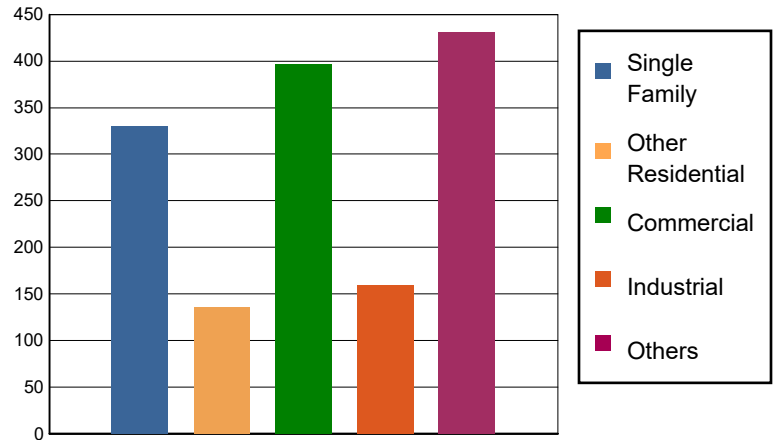


Table 11: Building-Related Economic Loss Estimates
(Millions of dollars)

Category	Area	Single Family	Other Residential	Commercial	Industrial	Others	Total
Income Losses							
	Wage	0.0000	0.2645	21.8614	0.5709	2.1317	24.8285
	Capital-Related	0.0000	0.1124	23.1544	0.3420	1.8041	25.4129
	Rental	2.4632	3.6946	11.7220	0.5440	0.7623	19.1861
	Relocation	6.5080	3.2480	12.7342	2.2726	13.4561	38.2189
	Subtotal	8.9712	7.3195	69.4720	3.7295	18.1542	107.6464
Capital Stock Losses							
	Structural	28.4480	10.2518	31.5531	8.7289	112.2650	191.2468
	Non_Structural	209.9127	90.5823	173.5508	80.0888	134.1701	688.3047
	Content	82.9085	27.7423	104.0963	58.0170	97.7790	370.5431
	Inventory	0.0000	0.0000	17.9988	9.0914	69.1627	96.2529
	Subtotal	321.2692	128.5764	327.1990	155.9261	413.3768	1346.3475
	Total	330.24	135.90	396.67	159.66	431.53	1453.99

Transportation and Utility Lifeline Losses

For the transportation and utility lifeline systems, Hazus computes the direct repair cost for each component only. There are no losses computed by Hazus for business interruption due to lifeline outages. Tables 12 & 13 provide a detailed breakdown in the expected lifeline losses.

Table 12: Transportation System Economic Losses
(Millions of dollars)

System	Component	Inventory Value	Economic Loss	Loss Ratio (%)
Highway	Segments	67737.5658	0.0000	0.00
	Bridges	47407.8876	32.3989	0.07
	Tunnels	871.7499	0.0000	0.00
	Subtotal	116017.2033	32.3989	
Railways	Segments	58299.2722	0.0000	0.00
	Bridges	6731.2700	2.5723	0.04
	Tunnels	1.8495	0.0000	0.00
	Facilities	199.7250	2.1761	1.09
	Subtotal	65232.1167	4.7484	
Light Rail	Segments	5403.2756	0.0000	0.00
	Bridges	15.3529	0.0000	0.00
	Tunnels	0.0000	0.0000	0.00
	Facilities	4154.0000	19.4039	0.47
	Subtotal	9572.6285	19.4039	
Bus	Facilities	79.3449	0.7386	0.93
	Subtotal	79.3449	0.7386	
Ferry	Facilities	26.6200	0.2079	0.78
	Subtotal	26.6200	0.2079	
Port	Facilities	1181.6718	9.7603	0.83
	Subtotal	1181.6718	9.7603	
Airport	Facilities	2637.6448	24.3769	0.92
	Runways	1125.4721	0.0000	0.00
	Subtotal	3763.1169	24.3769	
Total		195,872.70	91.63	

Table 13: Utility System Economic Losses
(Millions of dollars)

System	Component	Inventory Value	Economic Loss	Loss Ratio (%)
Potable Water	Pipelines	0.0000	0.0000	0.00
	Facilities	667.9980	0.3676	0.06
	Distribution Lines	3109.6501	3.1523	0.10
	Subtotal	3777.6481	3.5199	
Waste Water	Pipelines	0.0000	0.0000	0.00
	Facilities	22181.7822	55.7794	0.25
	Distribution Lines	1865.7901	1.5835	0.08
	Subtotal	24047.5723	57.3629	
Natural Gas	Pipelines	10039.6870	0.0000	0.00
	Facilities	142.4899	0.0169	0.01
	Distribution Lines	1243.8600	0.5425	0.04
	Subtotal	11426.0369	0.5594	
Oil Systems	Pipelines	0.0000	0.0000	0.00
	Facilities	2.0060	0.0004	0.02
	Subtotal	2.0060	0.0004	
Electrical Power	Facilities	87851.0812	3263.8706	3.72
	Subtotal	87851.0812	3263.8706	
Communication	Facilities	39.1760	0.1549	0.40
	Subtotal	39.1760	0.1549	
	Total	127,143.52	3,325.47	

Appendix A: County Listing for the Region

Alameda,CA

Amador,CA

Calaveras,CA

Contra Costa,CA

Fresno,CA

Kings,CA

Madera,CA

Mariposa,CA

Merced,CA

Monterey,CA

Napa,CA

Sacramento,CA

San Benito,CA

San Francisco,CA

San Joaquin,CA

San Mateo,CA

Santa Clara,CA

Santa Cruz,CA

Solano,CA

Sonoma,CA

Stanislaus,CA

Tuolumne,CA

Appendix B: Regional Population and Building Value Data

State	County Name	Population	Building Value (millions of dollars)		
			Residential	Non-Residential	Total
California	Alameda	1,682,353	209,951	122,639	332,590
	Amador	40,474	5,608	2,517	8,125
	Calaveras	45,292	8,305	4,893	13,199
	Contra Costa	1,165,927	158,118	60,339	218,458
	Fresno	1,008,654	98,532	61,772	160,304
	Kings	152,486	13,719	7,861	21,581
	Madera	156,255	18,025	9,641	27,667
	Mariposa	17,131	3,299	1,141	4,441
	Merced	281,202	25,194	26,098	51,292
	Monterey	439,035	47,655	28,750	76,405
	Napa	138,019	20,517	13,045	33,563
	Sacramento	1,585,055	179,811	83,911	263,723
	San Benito	64,209	9,440	3,799	13,239
	San Francisco	873,965	108,848	46,020	154,869
	San Joaquin	779,233	82,706	56,882	139,589
	San Mateo	764,442	110,372	44,995	155,368
	Santa Clara	1,936,259	261,111	120,471	381,582
	Santa Cruz	270,861	36,147	18,805	54,952
	Solano	453,491	55,802	26,393	82,195
	Sonoma	488,863	68,827	35,781	104,609
Stanislaus	552,878	62,937	37,511	100,449	
Tuolumne	55,620	8,964	3,507	12,471	
Total Region		12,951,704	1,593,888	816,771	2,410,671

Building Inspection Tagging (Counts)

Total Economic Loss
Total:

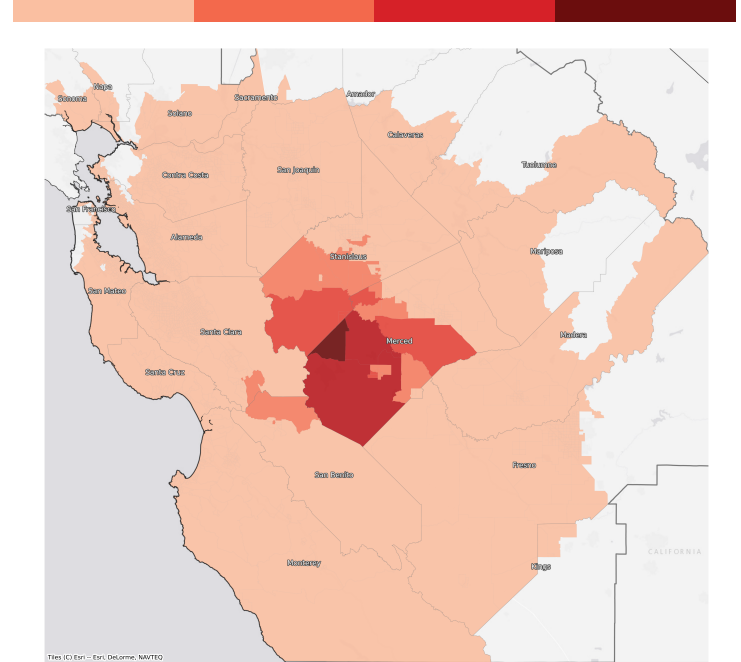
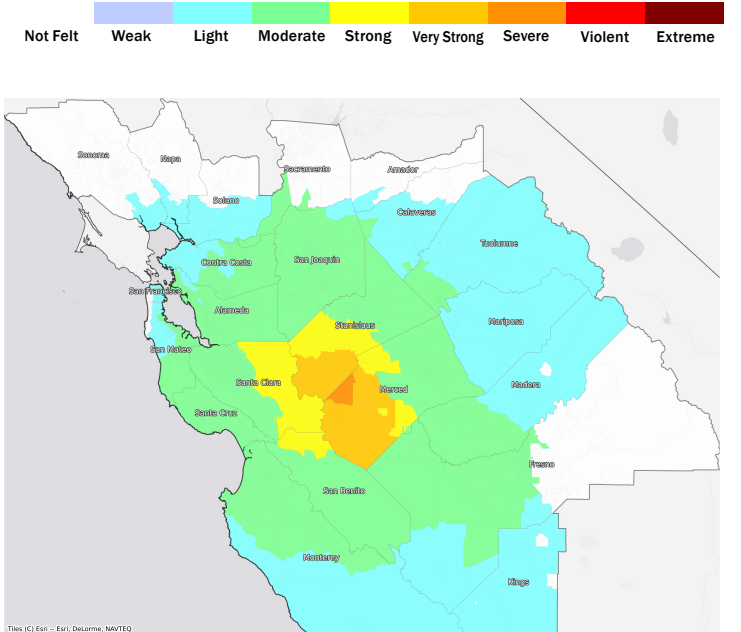
Top Counties	State	Total

Injuries & Fatalities
**Total Day:
Total Night:**

Top Counties	State	Injuries (day/night)	Fatalities (day/night)

Displaced Households & Short-Term Shelter Needs
**Total Displaced:
Total Needing Shelter:**

Top Counties	State	Displaced	Needing Shelter

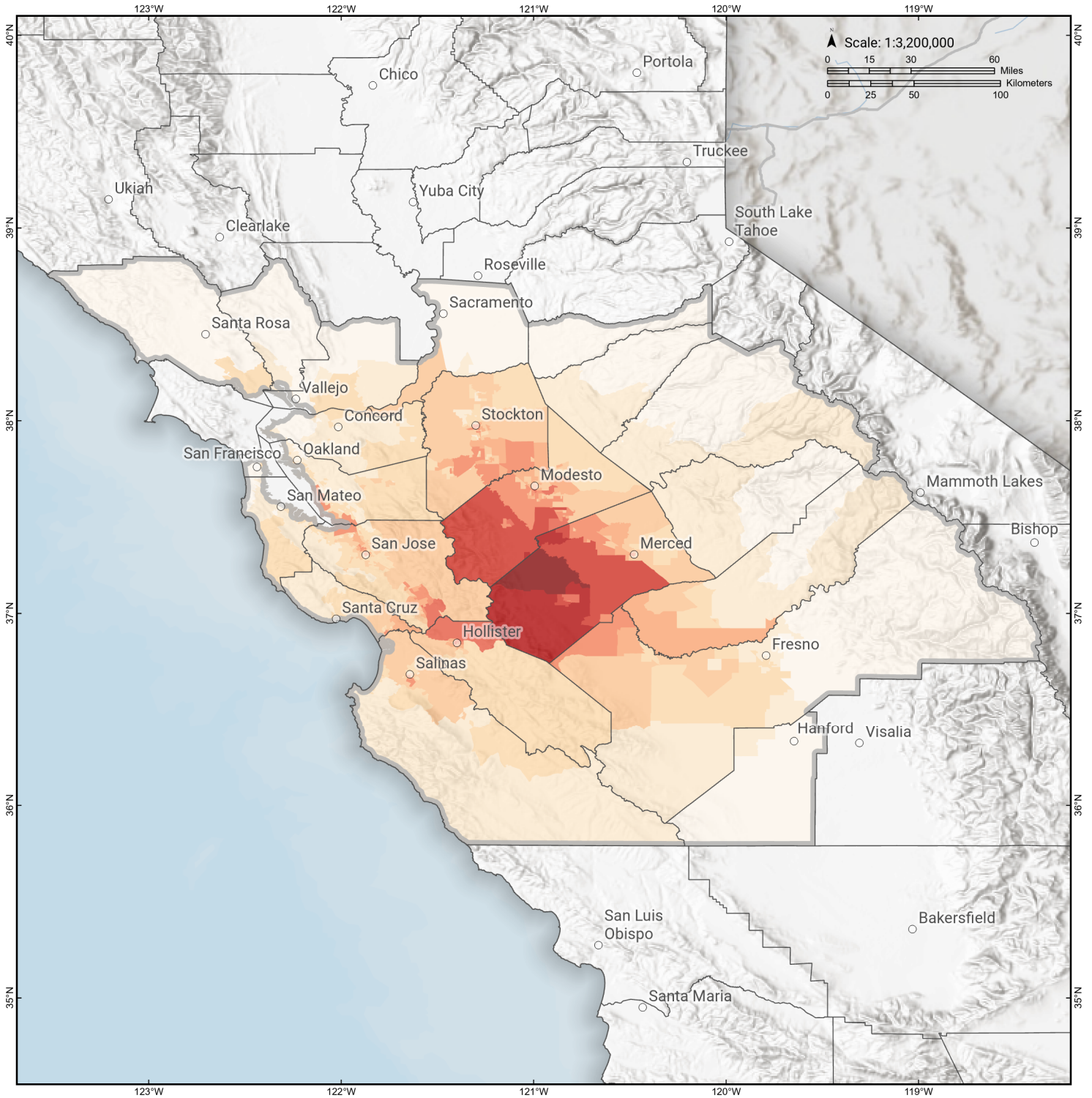
Economic Impacts by Census Tract

Ground Shaking

Debris
**Total Tons:
Total Truckloads:**

Type	Tons

The estimates of social and economic impacts contained in this report were produced using Hazus loss estimation methodology software which is based on current scientific and engineering knowledge. There are uncertainties inherent in any loss estimation technique. Therefore, there may be significant differences between the modeled results contained in this report and the actual social and economic losses following a specific earthquake.

Great Valley 08 (Quinto)

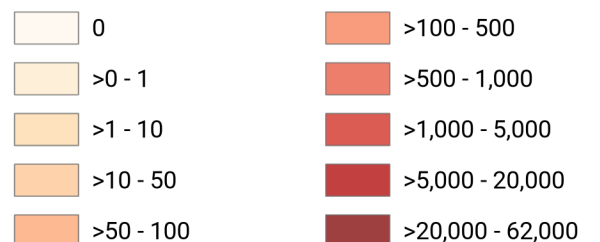
Debris Generated by Census Tract



Study Region: Great Valley 08 (Quinto)
Scenario: greatvalley08quintoe_m6p59_se

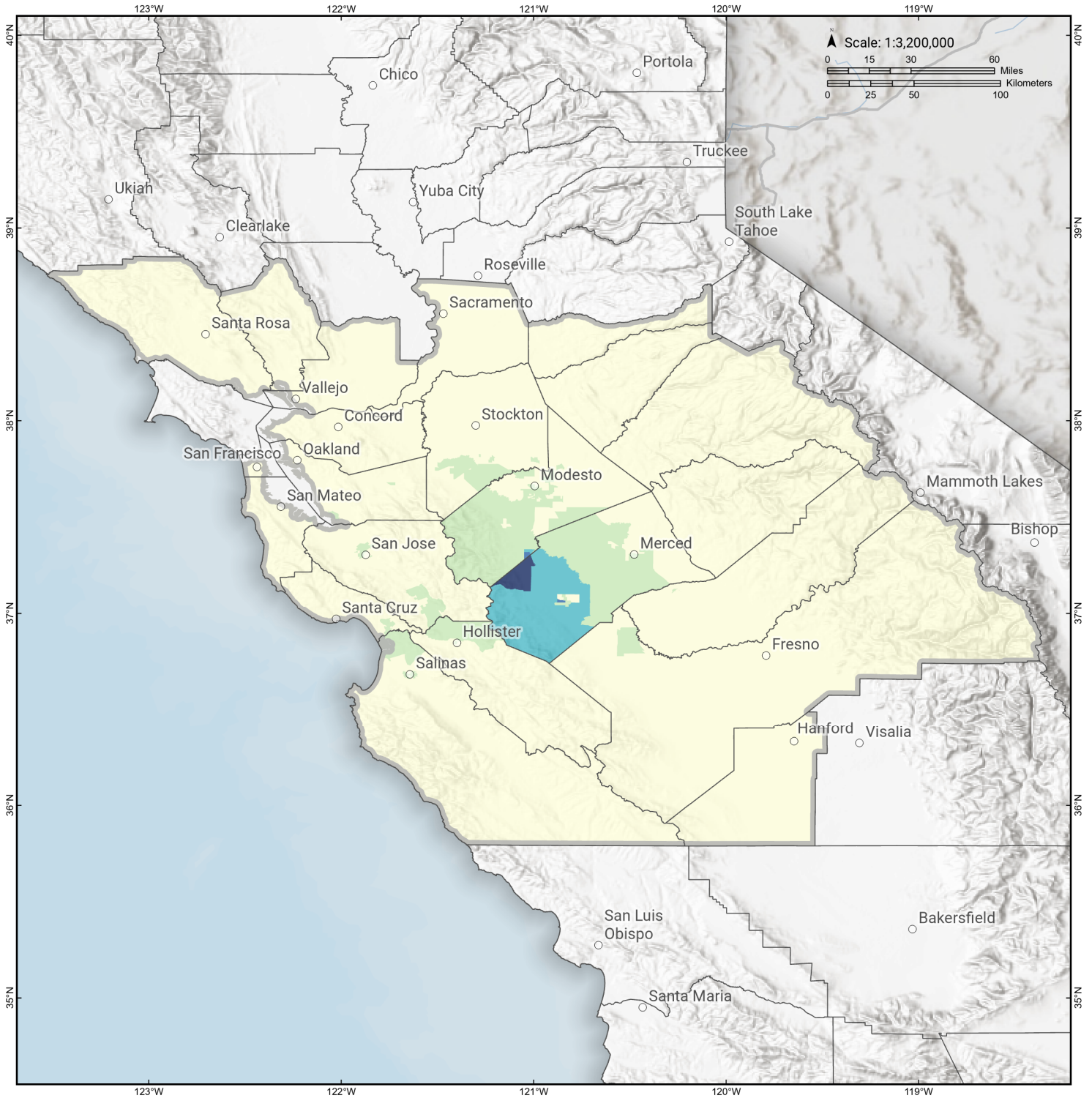


Debris Generated (in tons)



Great Valley 08 (Quinto)

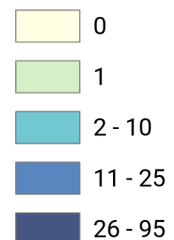
Displaced Households by Census Tract



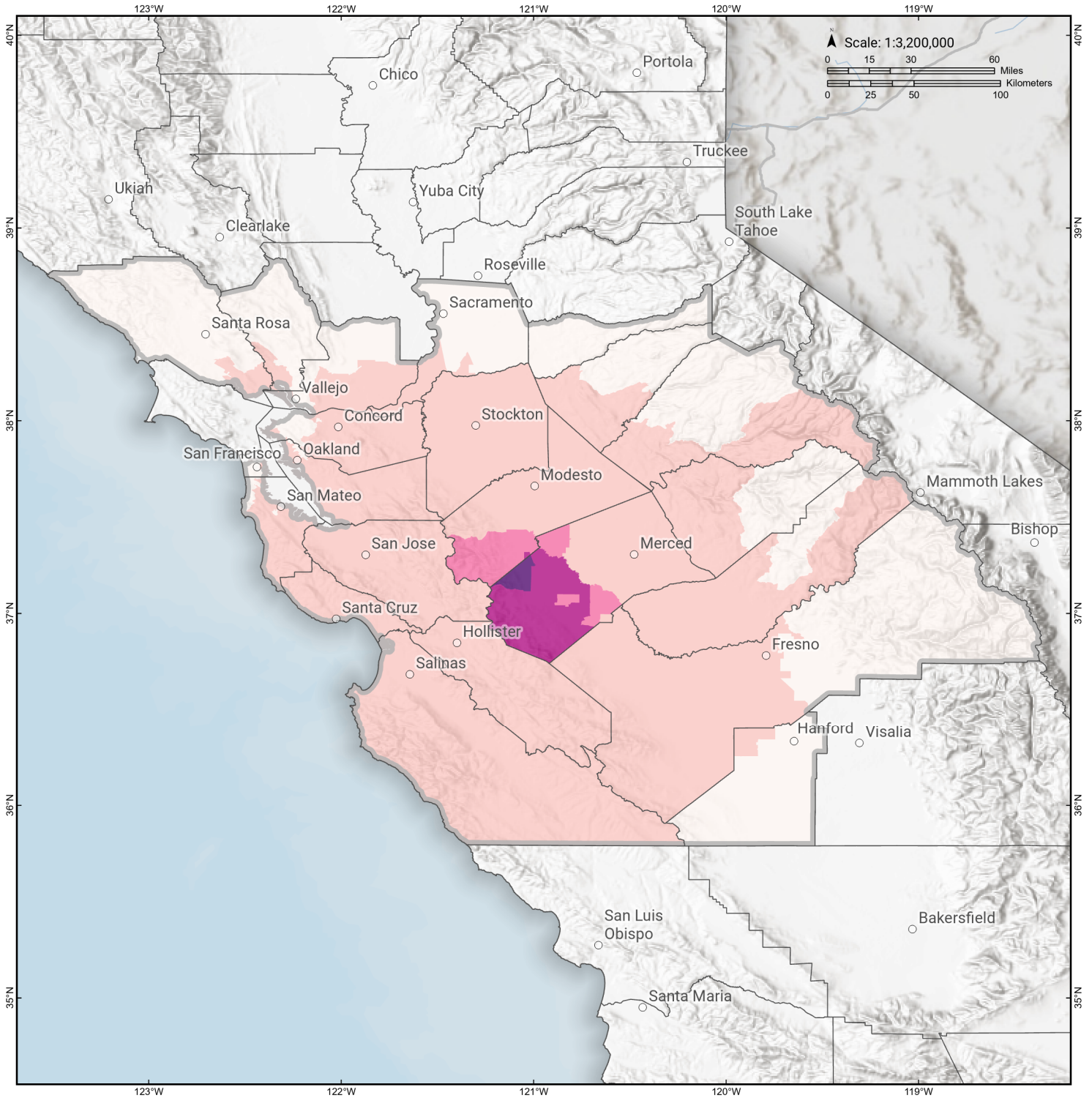
Study Region: Great Valley 08 (Quinto)
Scenario: greatvalley08quintoe_m6p59_se



Displaced Households



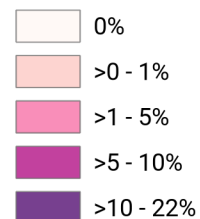
Great Valley 08 (Quinto) Loss Ratio by Census Tract



Study Region: Great Valley 08 (Quinto)
Scenario: greatvalley08quintoe_m6p59_se

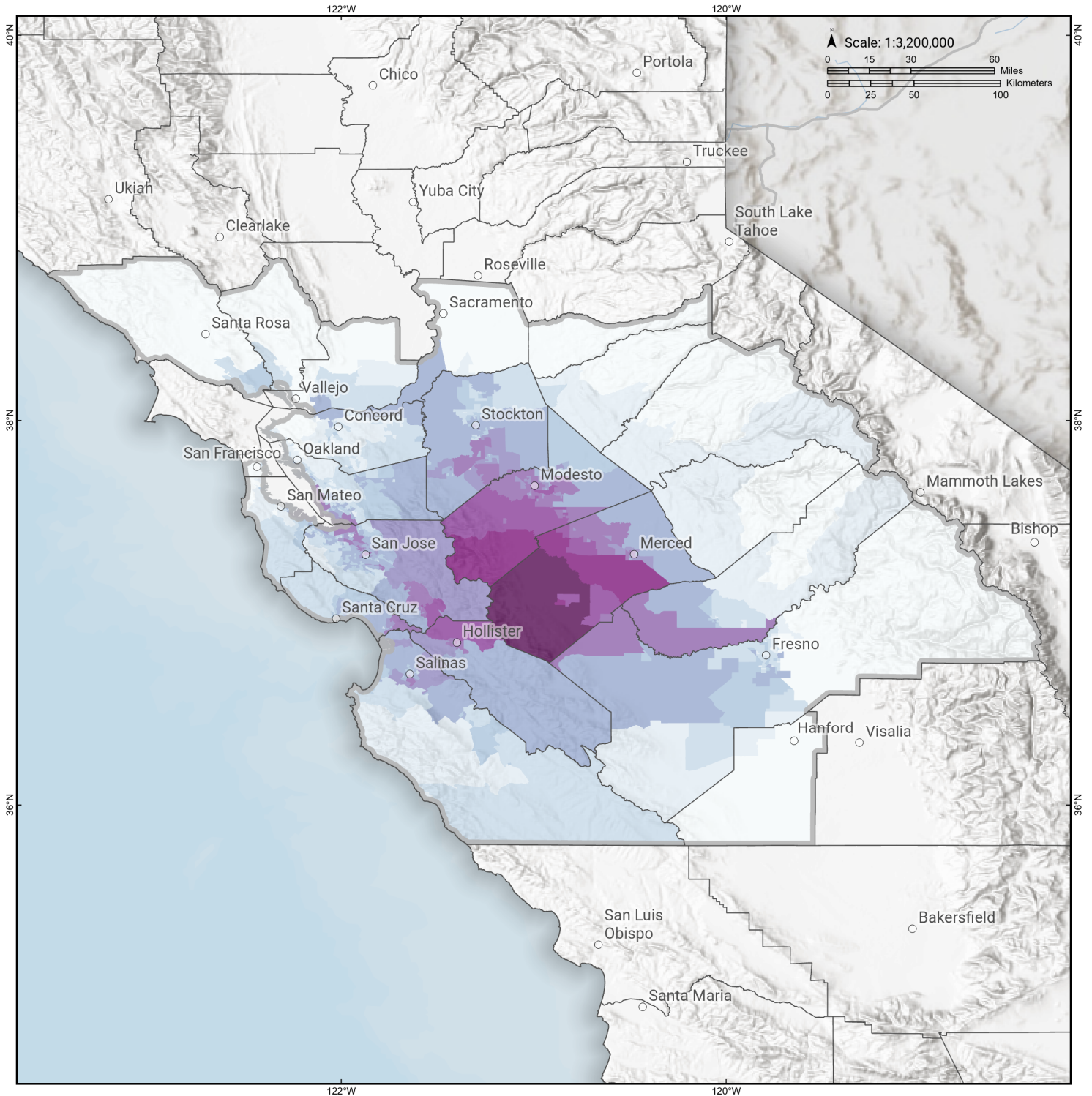


Loss Ratio (ratio of building related economic loss to exposed value of buildings)



Great Valley 08 (Quinto)

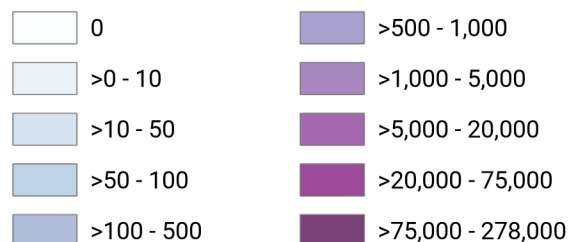
Total Building Related Economic Loss by Census Tract



Study Region: Great Valley 08 (Quinto)
Scenario: greatvalley08quintoe_m6p59_se



Economic Loss (in thousands of USD \$)



Building Damage by Count by General Occupancy

May 02, 2024

	# of Buildings					Total
	None	Slight	Moderate	Extensive	Complete	
California						
Alameda						
<i>Agriculture</i>	421	1	0	0	0	422
<i>Commercial</i>	31,955	33	1	0	0	31,989
<i>Education</i>	1,117	0	0	0	0	1,117
<i>Government</i>	10,522	6	0	0	0	10,528
<i>Industrial</i>	10,191	14	0	0	0	10,205
<i>Religion</i>	1,984	2	0	0	0	1,986
<i>Other Residential</i>	61,354	40	2	0	0	61,396
<i>Single Family</i>	344,111	62	0	0	0	344,173
Amador						
<i>Agriculture</i>	44	0	0	0	0	44
<i>Commercial</i>	1,368	0	0	0	0	1,368
<i>Education</i>	23	0	0	0	0	23
<i>Government</i>	32	0	0	0	0	32
<i>Industrial</i>	235	0	0	0	0	235
<i>Religion</i>	45	0	0	0	0	45
<i>Other Residential</i>	1,037	0	0	0	0	1,037
<i>Single Family</i>	14,962	0	0	0	0	14,962
Calaveras						

	# of Buildings					Total
	None	Slight	Moderate	Extensive	Complete	
<i>Agriculture</i>	2,207	0	0	0	0	2,207
<i>Commercial</i>	1,413	0	0	0	0	1,413
<i>Education</i>	35	0	0	0	0	35
<i>Government</i>	84	0	0	0	0	84
<i>Industrial</i>	466	0	0	0	0	466
<i>Religion</i>	130	0	0	0	0	130
<i>Other Residential</i>	2,559	0	0	0	0	2,559
<i>Single Family</i>	22,148	0	0	0	0	22,148
Contra Costa						
<i>Agriculture</i>	749	0	0	0	0	749
<i>Commercial</i>	17,987	4	0	0	0	17,991
<i>Education</i>	653	0	0	0	0	653
<i>Government</i>	5,023	1	0	0	0	5,024
<i>Industrial</i>	4,748	1	0	0	0	4,749
<i>Religion</i>	1,226	0	0	0	0	1,226
<i>Other Residential</i>	29,115	8	0	0	0	29,124
<i>Single Family</i>	281,932	3	0	0	0	281,935
Fresno						
<i>Agriculture</i>	3,418	3	0	0	0	3,421
<i>Commercial</i>	21,042	11	1	0	0	21,054
<i>Education</i>	602	0	0	0	0	602
<i>Government</i>	291	0	0	0	0	291
<i>Industrial</i>	5,343	4	0	0	0	5,348
<i>Religion</i>	1,506	1	0	0	0	1,507
<i>Other Residential</i>	40,936	35	2	0	0	40,973

	# of Buildings					Total
	None	Slight	Moderate	Extensive	Complete	
Kings						
<i>Single Family</i>	226,406	19	0	0	0	226,425
<i>Agriculture</i>	306	0	0	0	0	306
<i>Commercial</i>	2,318	0	0	0	0	2,318
<i>Education</i>	103	0	0	0	0	103
<i>Government</i>	72	0	0	0	0	72
<i>Industrial</i>	555	0	0	0	0	555
<i>Religion</i>	210	0	0	0	0	210
<i>Other Residential</i>	4,342	0	0	0	0	4,342
<i>Single Family</i>	36,245	0	0	0	0	36,245
Madera						
<i>Agriculture</i>	629	4	0	0	0	634
<i>Commercial</i>	2,900	5	0	0	0	2,905
<i>Education</i>	115	0	0	0	0	115
<i>Government</i>	111	0	0	0	0	111
<i>Industrial</i>	901	2	0	0	0	903
<i>Religion</i>	119	0	0	0	0	119
<i>Other Residential</i>	6,621	14	1	0	0	6,635
<i>Single Family</i>	38,896	16	0	0	0	38,912
Mariposa						
<i>Agriculture</i>	29	0	0	0	0	29
<i>Commercial</i>	689	0	0	0	0	689
<i>Education</i>	27	0	0	0	0	27
<i>Government</i>	33	0	0	0	0	33
<i>Industrial</i>	94	0	0	0	0	94

	# of Buildings					Total
	None	Slight	Moderate	Extensive	Complete	
<i>Religion</i>	36	0	0	0	0	36
<i>Other Residential</i>	307	0	0	0	0	307
<i>Single Family</i>	8,084	0	0	0	0	8,084
Merced						
<i>Agriculture</i>	5,758	1,133	556	157	50	7,653
<i>Commercial</i>	4,022	524	170	31	6	4,754
<i>Education</i>	153	8	2	0	0	163
<i>Government</i>	156	12	3	0	0	171
<i>Industrial</i>	898	93	27	4	0	1,022
<i>Religion</i>	305	28	10	1	0	345
<i>Other Residential</i>	9,323	925	407	112	20	10,787
<i>Single Family</i>	56,613	6,232	742	11	0	63,598
Monterey						
<i>Agriculture</i>	1,813	2	0	0	0	1,815
<i>Commercial</i>	9,204	39	3	0	0	9,246
<i>Education</i>	239	0	0	0	0	239
<i>Government</i>	184	1	0	0	0	185
<i>Industrial</i>	1,840	9	1	0	0	1,850
<i>Religion</i>	578	2	0	0	0	580
<i>Other Residential</i>	19,695	107	7	0	0	19,809
<i>Single Family</i>	90,791	85	0	0	0	90,876
Napa						
<i>Agriculture</i>	349	0	0	0	0	349
<i>Commercial</i>	4,021	0	0	0	0	4,021
<i>Education</i>	132	0	0	0	0	132

	# of Buildings					Total
	None	Slight	Moderate	Extensive	Complete	
<i>Government</i>	103	0	0	0	0	103
<i>Industrial</i>	1,367	0	0	0	0	1,367
<i>Religion</i>	148	0	0	0	0	148
<i>Other Residential</i>	6,978	0	0	0	0	6,978
<i>Single Family</i>	38,761	0	0	0	0	38,761
Sacramento						
<i>Agriculture</i>	621	0	0	0	0	621
<i>Commercial</i>	26,293	2	0	0	0	26,295
<i>Education</i>	829	0	0	0	0	829
<i>Government</i>	619	0	0	0	0	619
<i>Industrial</i>	6,756	0	0	0	0	6,756
<i>Religion</i>	1,702	0	0	0	0	1,702
<i>Other Residential</i>	56,409	4	0	0	0	56,413
<i>Single Family</i>	386,839	1	0	0	0	386,840
San Benito						
<i>Agriculture</i>	246	6	1	0	0	253
<i>Commercial</i>	1,019	54	8	0	0	1,080
<i>Education</i>	41	1	0	0	0	42
<i>Government</i>	41	3	1	0	0	45
<i>Industrial</i>	307	17	2	0	0	326
<i>Religion</i>	60	4	1	0	0	64
<i>Other Residential</i>	1,294	73	7	0	0	1,375
<i>Single Family</i>	14,311	414	1	0	0	14,726
San Francisco						
<i>Agriculture</i>	162	0	0	0	0	162

	# of Buildings					Total
	None	Slight	Moderate	Extensive	Complete	
<i>Commercial</i>	21,335	8	0	0	0	21,344
<i>Education</i>	572	0	0	0	0	572
<i>Government</i>	289	0	0	0	0	289
<i>Industrial</i>	3,859	1	0	0	0	3,860
<i>Religion</i>	1,345	0	0	0	0	1,345
<i>Other Residential</i>	44,525	4	0	0	0	44,529
<i>Single Family</i>	150,701	2	0	0	0	150,703
San Joaquin						
<i>Agriculture</i>	749	4	0	0	0	753
<i>Commercial</i>	12,817	44	3	0	0	12,864
<i>Education</i>	395	0	0	0	0	395
<i>Government</i>	303	1	0	0	0	304
<i>Industrial</i>	4,908	19	1	0	0	4,928
<i>Religion</i>	874	3	0	0	0	877
<i>Other Residential</i>	21,656	138	10	0	0	21,805
<i>Single Family</i>	188,007	851	63	0	0	188,922
San Mateo						
<i>Agriculture</i>	539	0	0	0	0	539
<i>Commercial</i>	14,384	11	0	0	0	14,395
<i>Education</i>	489	0	0	0	0	489
<i>Government</i>	299	0	0	0	0	299
<i>Industrial</i>	4,467	4	0	0	0	4,472
<i>Religion</i>	736	0	0	0	0	736
<i>Other Residential</i>	22,431	21	1	0	0	22,453

	# of Buildings					Total
	None	Slight	Moderate	Extensive	Complete	
<i>Single Family</i>	159,912	19	0	0	0	159,931
Santa Clara						
<i>Agriculture</i>	882	12	1	0	0	895
<i>Commercial</i>	35,246	207	15	0	0	35,469
<i>Education</i>	1,171	1	0	0	0	1,173
<i>Government</i>	494	7	1	0	0	502
<i>Industrial</i>	9,358	70	6	0	0	9,433
<i>Religion</i>	1,531	8	0	0	0	1,540
<i>Other Residential</i>	58,688	442	30	0	0	59,160
<i>Single Family</i>	426,372	845	2	0	0	427,219
Santa Cruz						
<i>Agriculture</i>	831	8	1	0	0	840
<i>Commercial</i>	6,666	26	2	0	0	6,694
<i>Education</i>	225	0	0	0	0	225
<i>Government</i>	126	1	0	0	0	127
<i>Industrial</i>	1,811	8	1	0	0	1,819
<i>Religion</i>	357	2	0	0	0	359
<i>Other Residential</i>	14,818	70	4	0	0	14,892
<i>Single Family</i>	68,824	46	0	0	0	68,870
Solano						
<i>Agriculture</i>	245	0	0	0	0	245
<i>Commercial</i>	7,268	0	0	0	0	7,268
<i>Education</i>	225	0	0	0	0	225
<i>Government</i>	152	0	0	0	0	152
<i>Industrial</i>	2,101	0	0	0	0	2,101

	# of Buildings					Total
	None	Slight	Moderate	Extensive	Complete	
<i>Religion</i>	454	0	0	0	0	454
<i>Other Residential</i>	12,317	0	0	0	0	12,317
<i>Single Family</i>	120,968	0	0	0	0	120,968
Sonoma						
<i>Agriculture</i>	1,304	0	0	0	0	1,304
<i>Commercial</i>	12,110	0	0	0	0	12,110
<i>Education</i>	367	0	0	0	0	367
<i>Government</i>	319	0	0	0	0	319
<i>Industrial</i>	3,825	0	0	0	0	3,825
<i>Religion</i>	576	0	0	0	0	576
<i>Other Residential</i>	25,033	0	0	0	0	25,033
<i>Single Family</i>	142,028	0	0	0	0	142,028
Stanislaus						
<i>Agriculture</i>	1,127	87	23	2	0	1,239
<i>Commercial</i>	9,845	414	92	16	2	10,369
<i>Education</i>	303	4	1	0	0	307
<i>Government</i>	647	29	4	0	0	680
<i>Industrial</i>	3,285	155	30	4	1	3,475
<i>Religion</i>	433	18	4	1	0	456
<i>Other Residential</i>	18,700	756	105	7	1	19,569
<i>Single Family</i>	138,335	4,265	123	0	0	142,724
Tuolumne						
<i>Agriculture</i>	82	0	0	0	0	82
<i>Commercial</i>	1,576	0	0	0	0	1,576
<i>Education</i>	57	0	0	0	0	57

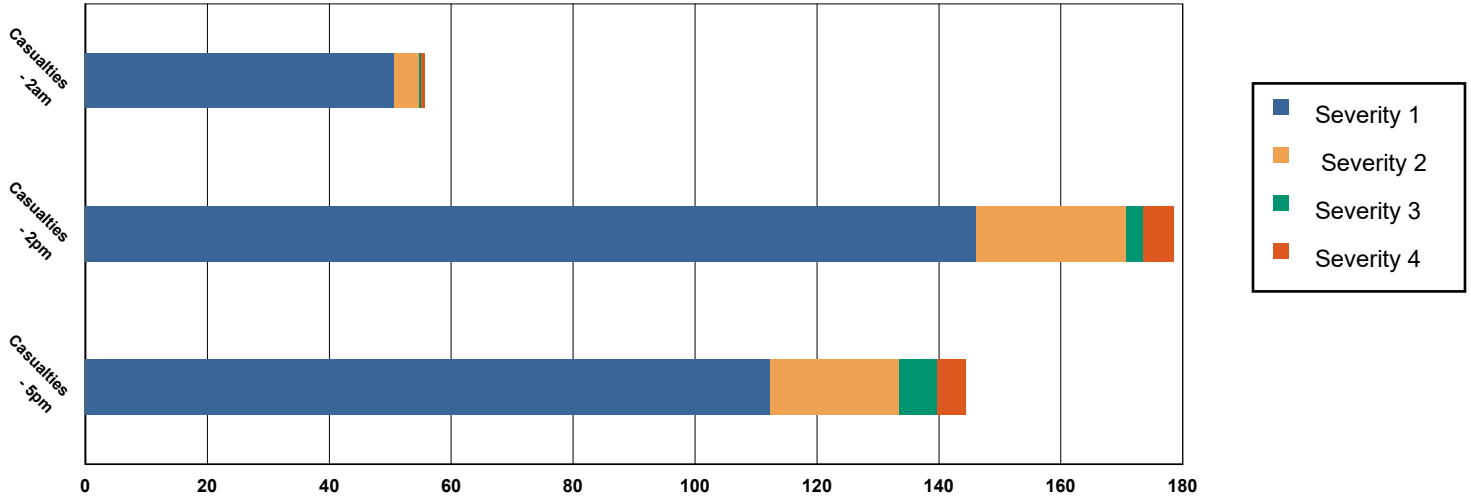
	# of Buildings					Total
	None	Slight	Moderate	Extensive	Complete	
<i>Government</i>	143	0	0	0	0	143
<i>Industrial</i>	383	0	0	0	0	383
<i>Religion</i>	121	0	0	0	0	121
<i>Other Residential</i>	4,962	0	0	0	0	4,962
<i>Single Family</i>	21,645	0	0	0	0	21,645
Total	3,818,067	18,684	2,483	347	80	3,839,661
Region Total	3,818,067	18,684	2,483	347	80	3,839,661

Totals only reflect data for those census tracts/blocks included in the user's study region and will reflect the entire county/state only if all of the census blocks for that county/states were selected at the time of study region creation.

Casualties Summary Report

May 02, 2024

Region Total Casualties



Injury Severity Level

Severity 1 Severity 2 Severity 3 Severity 4 Total

California

Alameda

Casualties - 2am

	Severity 1	Severity 2	Severity 3	Severity 4	Total
Commuting	0	0	0	0	0
Commercial	0	0	0	0	0
Educational	0	0	0	0	0
Hotels	0	0	0	0	0
Industrial	0	0	0	0	0
Other-Residential	0	0	0	0	0
Single Family	0	0	0	0	0
Total Casualties - 2am	0	0	0	0	0

Casualties - 2pm

	Severity 1	Severity 2	Severity 3	Severity 4	Total
Commuting	0	0	0	0	0
Commercial	0	0	0	0	0
Educational	0	0	0	0	0
Hotels	0	0	0	0	0
Industrial	0	0	0	0	0
Other-Residential	0	0	0	0	0
Single Family	0	0	0	0	0

	Injury Severity Level				Total
	Severity 1	Severity 2	Severity 3	Severity 4	
California					
Alameda					
Total Casualties - 2pm	1	0	0	0	1
Casualties - 5pm					
<i>Commuting</i>	0	0	0	0	0
<i>Commercial</i>	0	0	0	0	0
<i>Educational</i>	0	0	0	0	0
<i>Hotels</i>	0	0	0	0	0
<i>Industrial</i>	0	0	0	0	0
<i>Other-Residential</i>	0	0	0	0	0
<i>Single Family</i>	0	0	0	0	0
Total Casualties - 5pm	0	0	0	0	0
Amador					
Casualties - 2am					
<i>Commuting</i>	0	0	0	0	0
<i>Commercial</i>	0	0	0	0	0
<i>Educational</i>	0	0	0	0	0
<i>Hotels</i>	0	0	0	0	0
<i>Industrial</i>	0	0	0	0	0
<i>Other-Residential</i>	0	0	0	0	0
<i>Single Family</i>	0	0	0	0	0
Total Casualties - 2am	0	0	0	0	0
Casualties - 2pm					
<i>Commuting</i>	0	0	0	0	0
<i>Commercial</i>	0	0	0	0	0
<i>Educational</i>	0	0	0	0	0
<i>Hotels</i>	0	0	0	0	0
<i>Industrial</i>	0	0	0	0	0
<i>Other-Residential</i>	0	0	0	0	0
<i>Single Family</i>	0	0	0	0	0
Total Casualties - 2pm	0	0	0	0	0
Casualties - 5pm					
<i>Commuting</i>	0	0	0	0	0
<i>Commercial</i>	0	0	0	0	0
<i>Educational</i>	0	0	0	0	0
<i>Hotels</i>	0	0	0	0	0
<i>Industrial</i>	0	0	0	0	0
<i>Other-Residential</i>	0	0	0	0	0
<i>Single Family</i>	0	0	0	0	0
Total Casualties - 5pm	0	0	0	0	0
Calaveras					
Casualties - 2am					
<i>Commuting</i>	0	0	0	0	0

	Injury Severity Level				Total
	Severity 1	Severity 2	Severity 3	Severity 4	
California					
Calaveras					
Casualties - 2am					
Commercial	0	0	0	0	0
Educational	0	0	0	0	0
Hotels	0	0	0	0	0
Industrial	0	0	0	0	0
Other-Residential	0	0	0	0	0
Single Family	0	0	0	0	0
Total Casualties - 2am	0	0	0	0	0
Casualties - 2pm					
Commuting	0	0	0	0	0
Commercial	0	0	0	0	0
Educational	0	0	0	0	0
Hotels	0	0	0	0	0
Industrial	0	0	0	0	0
Other-Residential	0	0	0	0	0
Single Family	0	0	0	0	0
Total Casualties - 2pm	0	0	0	0	0
Casualties - 5pm					
Commuting	0	0	0	0	0
Commercial	0	0	0	0	0
Educational	0	0	0	0	0
Hotels	0	0	0	0	0
Industrial	0	0	0	0	0
Other-Residential	0	0	0	0	0
Single Family	0	0	0	0	0
Total Casualties - 5pm	0	0	0	0	0
Contra Costa					
Casualties - 2am					
Commuting	0	0	0	0	0
Commercial	0	0	0	0	0
Educational	0	0	0	0	0
Hotels	0	0	0	0	0
Industrial	0	0	0	0	0
Other-Residential	0	0	0	0	0
Single Family	0	0	0	0	0
Total Casualties - 2am	0	0	0	0	0
Casualties - 2pm					
Commuting	0	0	0	0	0
Commercial	0	0	0	0	0
Educational	0	0	0	0	0
Hotels	0	0	0	0	0
Industrial	0	0	0	0	0

	Injury Severity Level				Total
	Severity 1	Severity 2	Severity 3	Severity 4	
California					
Contra Costa					
Casualties - 2pm					
Other-Residential	0	0	0	0	0
Single Family	0	0	0	0	0
Total Casualties - 2pm	0	0	0	0	0
Casualties - 5pm					
Commuting	0	0	0	0	0
Commercial	0	0	0	0	0
Educational	0	0	0	0	0
Hotels	0	0	0	0	0
Industrial	0	0	0	0	0
Other-Residential	0	0	0	0	0
Single Family	0	0	0	0	0
Total Casualties - 5pm	0	0	0	0	0
Fresno					
Casualties - 2am					
Commuting	0	0	0	0	0
Commercial	0	0	0	0	0
Educational	0	0	0	0	0
Hotels	0	0	0	0	0
Industrial	0	0	0	0	0
Other-Residential	0	0	0	0	0
Single Family	0	0	0	0	0
Total Casualties - 2am	0	0	0	0	0
Casualties - 2pm					
Commuting	0	0	0	0	0
Commercial	0	0	0	0	0
Educational	0	0	0	0	0
Hotels	0	0	0	0	0
Industrial	0	0	0	0	0
Other-Residential	0	0	0	0	0
Single Family	0	0	0	0	0
Total Casualties - 2pm	0	0	0	0	0
Casualties - 5pm					
Commuting	0	0	0	0	0
Commercial	0	0	0	0	0
Educational	0	0	0	0	0
Hotels	0	0	0	0	0
Industrial	0	0	0	0	0
Other-Residential	0	0	0	0	0
Single Family	0	0	0	0	0
Total Casualties - 5pm	0	0	0	0	0

	Injury Severity Level				Total
	Severity 1	Severity 2	Severity 3	Severity 4	
California					
Kings					
Casualties - 2am					
Commuting	0	0	0	0	0
Commercial	0	0	0	0	0
Educational	0	0	0	0	0
Hotels	0	0	0	0	0
Industrial	0	0	0	0	0
Other-Residential	0	0	0	0	0
Single Family	0	0	0	0	0
Total Casualties - 2am	0	0	0	0	0
Casualties - 2pm					
Commuting	0	0	0	0	0
Commercial	0	0	0	0	0
Educational	0	0	0	0	0
Hotels	0	0	0	0	0
Industrial	0	0	0	0	0
Other-Residential	0	0	0	0	0
Single Family	0	0	0	0	0
Total Casualties - 2pm	0	0	0	0	0
Casualties - 5pm					
Commuting	0	0	0	0	0
Commercial	0	0	0	0	0
Educational	0	0	0	0	0
Hotels	0	0	0	0	0
Industrial	0	0	0	0	0
Other-Residential	0	0	0	0	0
Single Family	0	0	0	0	0
Total Casualties - 5pm	0	0	0	0	0
Madera					
Casualties - 2am					
Commuting	0	0	0	0	0
Commercial	0	0	0	0	0
Educational	0	0	0	0	0
Hotels	0	0	0	0	0
Industrial	0	0	0	0	0
Other-Residential	0	0	0	0	0
Single Family	0	0	0	0	0
Total Casualties - 2am	0	0	0	0	0
Casualties - 2pm					
Commuting	0	0	0	0	0
Commercial	0	0	0	0	0
Educational	0	0	0	0	0
Hotels	0	0	0	0	0

	Injury Severity Level				Total
	Severity 1	Severity 2	Severity 3	Severity 4	
California					
Madera					
Casualties - 2pm					
<i>Industrial</i>	0	0	0	0	0
<i>Other-Residential</i>	0	0	0	0	0
<i>Single Family</i>	0	0	0	0	0
Total Casualties - 2pm	0	0	0	0	0
Casualties - 5pm					
<i>Commuting</i>	0	0	0	0	0
<i>Commercial</i>	0	0	0	0	0
<i>Educational</i>	0	0	0	0	0
<i>Hotels</i>	0	0	0	0	0
<i>Industrial</i>	0	0	0	0	0
<i>Other-Residential</i>	0	0	0	0	0
<i>Single Family</i>	0	0	0	0	0
Total Casualties - 5pm	0	0	0	0	0
Mariposa					
Casualties - 2am					
<i>Commuting</i>	0	0	0	0	0
<i>Commercial</i>	0	0	0	0	0
<i>Educational</i>	0	0	0	0	0
<i>Hotels</i>	0	0	0	0	0
<i>Industrial</i>	0	0	0	0	0
<i>Other-Residential</i>	0	0	0	0	0
<i>Single Family</i>	0	0	0	0	0
Total Casualties - 2am	0	0	0	0	0
Casualties - 2pm					
<i>Commuting</i>	0	0	0	0	0
<i>Commercial</i>	0	0	0	0	0
<i>Educational</i>	0	0	0	0	0
<i>Hotels</i>	0	0	0	0	0
<i>Industrial</i>	0	0	0	0	0
<i>Other-Residential</i>	0	0	0	0	0
<i>Single Family</i>	0	0	0	0	0
Total Casualties - 2pm	0	0	0	0	0
Casualties - 5pm					
<i>Commuting</i>	0	0	0	0	0
<i>Commercial</i>	0	0	0	0	0
<i>Educational</i>	0	0	0	0	0
<i>Hotels</i>	0	0	0	0	0
<i>Industrial</i>	0	0	0	0	0
<i>Other-Residential</i>	0	0	0	0	0
<i>Single Family</i>	0	0	0	0	0

	Injury Severity Level				Total
	Severity 1	Severity 2	Severity 3	Severity 4	
California					
Mariposa					
Total Casualties - 5pm	0	0	0	0	0
Merced					
Casualties - 2am					
<i>Commuting</i>	0	0	0	0	0
<i>Commercial</i>	1	0	0	0	2
<i>Educational</i>	0	0	0	0	0
<i>Hotels</i>	0	0	0	0	0
<i>Industrial</i>	0	0	0	0	0
<i>Other-Residential</i>	14	2	0	0	17
<i>Single Family</i>	16	1	0	0	16
Total Casualties - 2am	31	3	0	1	35
Casualties - 2pm					
<i>Commuting</i>	0	0	0	0	1
<i>Commercial</i>	99	20	2	4	126
<i>Educational</i>	5	1	0	0	6
<i>Hotels</i>	0	0	0	0	0
<i>Industrial</i>	2	0	0	0	3
<i>Other-Residential</i>	4	1	0	0	5
<i>Single Family</i>	5	0	0	0	5
Total Casualties - 2pm	116	22	3	5	145
Casualties - 5pm					
<i>Commuting</i>	2	2	4	1	9
<i>Commercial</i>	76	15	2	3	97
<i>Educational</i>	0	0	0	0	0
<i>Hotels</i>	0	0	0	0	0
<i>Industrial</i>	1	0	0	0	2
<i>Other-Residential</i>	5	1	0	0	6
<i>Single Family</i>	6	0	0	0	6
Total Casualties - 5pm	90	19	6	4	119
Monterey					
Casualties - 2am					
<i>Commuting</i>	0	0	0	0	0
<i>Commercial</i>	0	0	0	0	0
<i>Educational</i>	0	0	0	0	0
<i>Hotels</i>	0	0	0	0	0
<i>Industrial</i>	0	0	0	0	0
<i>Other-Residential</i>	0	0	0	0	0
<i>Single Family</i>	0	0	0	0	0
Total Casualties - 2am	1	0	0	0	1
Casualties - 2pm					
<i>Commuting</i>	0	0	0	0	0

	Injury Severity Level				Total
	Severity 1	Severity 2	Severity 3	Severity 4	
California					
Monterey					
Casualties - 2pm					
<i>Commercial</i>	0	0	0	0	0
<i>Educational</i>	0	0	0	0	0
<i>Hotels</i>	0	0	0	0	0
<i>Industrial</i>	0	0	0	0	0
<i>Other-Residential</i>	0	0	0	0	0
<i>Single Family</i>	0	0	0	0	0
Total Casualties - 2pm	1	0	0	0	1
Casualties - 5pm					
<i>Commuting</i>	0	0	0	0	0
<i>Commercial</i>	0	0	0	0	0
<i>Educational</i>	0	0	0	0	0
<i>Hotels</i>	0	0	0	0	0
<i>Industrial</i>	0	0	0	0	0
<i>Other-Residential</i>	0	0	0	0	0
<i>Single Family</i>	0	0	0	0	0
Total Casualties - 5pm	0	0	0	0	1
Napa					
Casualties - 2am					
<i>Commuting</i>	0	0	0	0	0
<i>Commercial</i>	0	0	0	0	0
<i>Educational</i>	0	0	0	0	0
<i>Hotels</i>	0	0	0	0	0
<i>Industrial</i>	0	0	0	0	0
<i>Other-Residential</i>	0	0	0	0	0
<i>Single Family</i>	0	0	0	0	0
Total Casualties - 2am	0	0	0	0	0
Casualties - 2pm					
<i>Commuting</i>	0	0	0	0	0
<i>Commercial</i>	0	0	0	0	0
<i>Educational</i>	0	0	0	0	0
<i>Hotels</i>	0	0	0	0	0
<i>Industrial</i>	0	0	0	0	0
<i>Other-Residential</i>	0	0	0	0	0
<i>Single Family</i>	0	0	0	0	0
Total Casualties - 2pm	0	0	0	0	0
Casualties - 5pm					
<i>Commuting</i>	0	0	0	0	0
<i>Commercial</i>	0	0	0	0	0
<i>Educational</i>	0	0	0	0	0
<i>Hotels</i>	0	0	0	0	0
<i>Industrial</i>	0	0	0	0	0

	Injury Severity Level				Total
	Severity 1	Severity 2	Severity 3	Severity 4	
California					
Napa					
Casualties - 5pm					
Other-Residential	0	0	0	0	0
Single Family	0	0	0	0	0
Total Casualties - 5pm	0	0	0	0	0
Sacramento					
Casualties - 2am					
Commuting	0	0	0	0	0
Commercial	0	0	0	0	0
Educational	0	0	0	0	0
Hotels	0	0	0	0	0
Industrial	0	0	0	0	0
Other-Residential	0	0	0	0	0
Single Family	0	0	0	0	0
Total Casualties - 2am	0	0	0	0	0
Casualties - 2pm					
Commuting	0	0	0	0	0
Commercial	0	0	0	0	0
Educational	0	0	0	0	0
Hotels	0	0	0	0	0
Industrial	0	0	0	0	0
Other-Residential	0	0	0	0	0
Single Family	0	0	0	0	0
Total Casualties - 2pm	0	0	0	0	0
Casualties - 5pm					
Commuting	0	0	0	0	0
Commercial	0	0	0	0	0
Educational	0	0	0	0	0
Hotels	0	0	0	0	0
Industrial	0	0	0	0	0
Other-Residential	0	0	0	0	0
Single Family	0	0	0	0	0
Total Casualties - 5pm	0	0	0	0	0
San Benito					
Casualties - 2am					
Commuting	0	0	0	0	0
Commercial	0	0	0	0	0
Educational	0	0	0	0	0
Hotels	0	0	0	0	0
Industrial	0	0	0	0	0
Other-Residential	0	0	0	0	0
Single Family	1	0	0	0	1

	Injury Severity Level				Total
	Severity 1	Severity 2	Severity 3	Severity 4	
California					
San Benito					
Total Casualties - 2am	1	0	0	0	1
Casualties - 2pm					
<i>Commuting</i>	0	0	0	0	0
<i>Commercial</i>	1	0	0	0	1
<i>Educational</i>	0	0	0	0	0
<i>Hotels</i>	0	0	0	0	0
<i>Industrial</i>	0	0	0	0	0
<i>Other-Residential</i>	0	0	0	0	0
<i>Single Family</i>	0	0	0	0	0
Total Casualties - 2pm	1	0	0	0	1
Casualties - 5pm					
<i>Commuting</i>	0	0	0	0	0
<i>Commercial</i>	0	0	0	0	0
<i>Educational</i>	0	0	0	0	0
<i>Hotels</i>	0	0	0	0	0
<i>Industrial</i>	0	0	0	0	0
<i>Other-Residential</i>	0	0	0	0	0
<i>Single Family</i>	0	0	0	0	0
Total Casualties - 5pm	1	0	0	0	1
San Francisco					
Casualties - 2am					
<i>Commuting</i>	0	0	0	0	0
<i>Commercial</i>	0	0	0	0	0
<i>Educational</i>	0	0	0	0	0
<i>Hotels</i>	0	0	0	0	0
<i>Industrial</i>	0	0	0	0	0
<i>Other-Residential</i>	0	0	0	0	0
<i>Single Family</i>	0	0	0	0	0
Total Casualties - 2am	0	0	0	0	0
Casualties - 2pm					
<i>Commuting</i>	0	0	0	0	0
<i>Commercial</i>	0	0	0	0	0
<i>Educational</i>	0	0	0	0	0
<i>Hotels</i>	0	0	0	0	0
<i>Industrial</i>	0	0	0	0	0
<i>Other-Residential</i>	0	0	0	0	0
<i>Single Family</i>	0	0	0	0	0
Total Casualties - 2pm	0	0	0	0	0
Casualties - 5pm					
<i>Commuting</i>	0	0	0	0	0
<i>Commercial</i>	0	0	0	0	0

	Injury Severity Level				Total
	Severity 1	Severity 2	Severity 3	Severity 4	
California					
San Francisco					
Casualties - 5pm					
<i>Educational</i>	0	0	0	0	0
<i>Hotels</i>	0	0	0	0	0
<i>Industrial</i>	0	0	0	0	0
<i>Other-Residential</i>	0	0	0	0	0
<i>Single Family</i>	0	0	0	0	0
Total Casualties - 5pm	0	0	0	0	0
San Joaquin					
Casualties - 2am					
<i>Commuting</i>	0	0	0	0	0
<i>Commercial</i>	0	0	0	0	0
<i>Educational</i>	0	0	0	0	0
<i>Hotels</i>	0	0	0	0	0
<i>Industrial</i>	0	0	0	0	0
<i>Other-Residential</i>	0	0	0	0	1
<i>Single Family</i>	2	0	0	0	2
Total Casualties - 2am	3	0	0	0	3
Casualties - 2pm					
<i>Commuting</i>	0	0	0	0	0
<i>Commercial</i>	1	0	0	0	1
<i>Educational</i>	0	0	0	0	0
<i>Hotels</i>	0	0	0	0	0
<i>Industrial</i>	0	0	0	0	0
<i>Other-Residential</i>	0	0	0	0	0
<i>Single Family</i>	1	0	0	0	1
Total Casualties - 2pm	2	0	0	0	2
Casualties - 5pm					
<i>Commuting</i>	0	0	0	0	0
<i>Commercial</i>	0	0	0	0	0
<i>Educational</i>	0	0	0	0	0
<i>Hotels</i>	0	0	0	0	0
<i>Industrial</i>	0	0	0	0	0
<i>Other-Residential</i>	0	0	0	0	0
<i>Single Family</i>	1	0	0	0	1
Total Casualties - 5pm	1	0	0	0	1
San Mateo					
Casualties - 2am					
<i>Commuting</i>	0	0	0	0	0
<i>Commercial</i>	0	0	0	0	0
<i>Educational</i>	0	0	0	0	0
<i>Hotels</i>	0	0	0	0	0
<i>Industrial</i>	0	0	0	0	0

	Injury Severity Level				Total
	Severity 1	Severity 2	Severity 3	Severity 4	
California					
San Mateo					
Casualties - 2am					
Other-Residential	0	0	0	0	0
Single Family	0	0	0	0	0
Total Casualties - 2am	0	0	0	0	0
Casualties - 2pm					
Commuting	0	0	0	0	0
Commercial	0	0	0	0	0
Educational	0	0	0	0	0
Hotels	0	0	0	0	0
Industrial	0	0	0	0	0
Other-Residential	0	0	0	0	0
Single Family	0	0	0	0	0
Total Casualties - 2pm	0	0	0	0	0
Casualties - 5pm					
Commuting	0	0	0	0	0
Commercial	0	0	0	0	0
Educational	0	0	0	0	0
Hotels	0	0	0	0	0
Industrial	0	0	0	0	0
Other-Residential	0	0	0	0	0
Single Family	0	0	0	0	0
Total Casualties - 5pm	0	0	0	0	0
Santa Clara					
Casualties - 2am					
Commuting	0	0	0	0	0
Commercial	0	0	0	0	0
Educational	0	0	0	0	0
Hotels	0	0	0	0	0
Industrial	0	0	0	0	0
Other-Residential	2	0	0	0	2
Single Family	1	0	0	0	1
Total Casualties - 2am	3	0	0	0	3
Casualties - 2pm					
Commuting	0	0	0	0	0
Commercial	3	0	0	0	3
Educational	0	0	0	0	0
Hotels	0	0	0	0	0
Industrial	0	0	0	0	0
Other-Residential	0	0	0	0	1
Single Family	0	0	0	0	0
Total Casualties - 2pm	5	0	0	0	5

	Injury Severity Level				Total
	Severity 1	Severity 2	Severity 3	Severity 4	
California					
Santa Clara					
Casualties - 5pm					
<i>Commuting</i>	0	0	0	0	0
<i>Commercial</i>	2	0	0	0	2
<i>Educational</i>	0	0	0	0	0
<i>Hotels</i>	0	0	0	0	0
<i>Industrial</i>	0	0	0	0	0
<i>Other-Residential</i>	1	0	0	0	1
<i>Single Family</i>	0	0	0	0	0
Total Casualties - 5pm	3	0	0	0	3
Santa Cruz					
Casualties - 2am					
<i>Commuting</i>	0	0	0	0	0
<i>Commercial</i>	0	0	0	0	0
<i>Educational</i>	0	0	0	0	0
<i>Hotels</i>	0	0	0	0	0
<i>Industrial</i>	0	0	0	0	0
<i>Other-Residential</i>	0	0	0	0	0
<i>Single Family</i>	0	0	0	0	0
Total Casualties - 2am	0	0	0	0	0
Casualties - 2pm					
<i>Commuting</i>	0	0	0	0	0
<i>Commercial</i>	0	0	0	0	0
<i>Educational</i>	0	0	0	0	0
<i>Hotels</i>	0	0	0	0	0
<i>Industrial</i>	0	0	0	0	0
<i>Other-Residential</i>	0	0	0	0	0
<i>Single Family</i>	0	0	0	0	0
Total Casualties - 2pm	1	0	0	0	1
Casualties - 5pm					
<i>Commuting</i>	0	0	0	0	0
<i>Commercial</i>	0	0	0	0	0
<i>Educational</i>	0	0	0	0	0
<i>Hotels</i>	0	0	0	0	0
<i>Industrial</i>	0	0	0	0	0
<i>Other-Residential</i>	0	0	0	0	0
<i>Single Family</i>	0	0	0	0	0
Total Casualties - 5pm	0	0	0	0	0
Solano					
Casualties - 2am					
<i>Commuting</i>	0	0	0	0	0
<i>Commercial</i>	0	0	0	0	0
<i>Educational</i>	0	0	0	0	0

	Injury Severity Level				Total
	Severity 1	Severity 2	Severity 3	Severity 4	
California					
Solano					
Casualties - 2am					
<i>Hotels</i>	0	0	0	0	0
<i>Industrial</i>	0	0	0	0	0
<i>Other-Residential</i>	0	0	0	0	0
<i>Single Family</i>	0	0	0	0	0
Total Casualties - 2am	0	0	0	0	0
Casualties - 2pm					
<i>Commuting</i>	0	0	0	0	0
<i>Commercial</i>	0	0	0	0	0
<i>Educational</i>	0	0	0	0	0
<i>Hotels</i>	0	0	0	0	0
<i>Industrial</i>	0	0	0	0	0
<i>Other-Residential</i>	0	0	0	0	0
<i>Single Family</i>	0	0	0	0	0
Total Casualties - 2pm	0	0	0	0	0
Casualties - 5pm					
<i>Commuting</i>	0	0	0	0	0
<i>Commercial</i>	0	0	0	0	0
<i>Educational</i>	0	0	0	0	0
<i>Hotels</i>	0	0	0	0	0
<i>Industrial</i>	0	0	0	0	0
<i>Other-Residential</i>	0	0	0	0	0
<i>Single Family</i>	0	0	0	0	0
Total Casualties - 5pm	0	0	0	0	0
Sonoma					
Casualties - 2am					
<i>Commuting</i>	0	0	0	0	0
<i>Commercial</i>	0	0	0	0	0
<i>Educational</i>	0	0	0	0	0
<i>Hotels</i>	0	0	0	0	0
<i>Industrial</i>	0	0	0	0	0
<i>Other-Residential</i>	0	0	0	0	0
<i>Single Family</i>	0	0	0	0	0
Total Casualties - 2am	0	0	0	0	0
Casualties - 2pm					
<i>Commuting</i>	0	0	0	0	0
<i>Commercial</i>	0	0	0	0	0
<i>Educational</i>	0	0	0	0	0
<i>Hotels</i>	0	0	0	0	0
<i>Industrial</i>	0	0	0	0	0
<i>Other-Residential</i>	0	0	0	0	0
<i>Single Family</i>	0	0	0	0	0

	Injury Severity Level				Total
	Severity 1	Severity 2	Severity 3	Severity 4	
California					
Sonoma					
Total Casualties - 2pm	0	0	0	0	0
Casualties - 5pm					
<i>Commuting</i>	0	0	0	0	0
<i>Commercial</i>	0	0	0	0	0
<i>Educational</i>	0	0	0	0	0
<i>Hotels</i>	0	0	0	0	0
<i>Industrial</i>	0	0	0	0	0
<i>Other-Residential</i>	0	0	0	0	0
<i>Single Family</i>	0	0	0	0	0
Total Casualties - 5pm	0	0	0	0	0
Stanislaus					
Casualties - 2am					
<i>Commuting</i>	0	0	0	0	0
<i>Commercial</i>	0	0	0	0	0
<i>Educational</i>	0	0	0	0	0
<i>Hotels</i>	0	0	0	0	0
<i>Industrial</i>	0	0	0	0	0
<i>Other-Residential</i>	4	0	0	0	5
<i>Single Family</i>	7	0	0	0	7
Total Casualties - 2am	12	0	0	0	12
Casualties - 2pm					
<i>Commuting</i>	0	0	0	0	0
<i>Commercial</i>	13	2	0	0	15
<i>Educational</i>	2	0	0	0	2
<i>Hotels</i>	0	0	0	0	0
<i>Industrial</i>	1	0	0	0	2
<i>Other-Residential</i>	1	0	0	0	2
<i>Single Family</i>	2	0	0	0	2
Total Casualties - 2pm	20	2	0	0	23
Casualties - 5pm					
<i>Commuting</i>	0	0	0	0	1
<i>Commercial</i>	10	1	0	0	11
<i>Educational</i>	0	0	0	0	0
<i>Hotels</i>	0	0	0	0	0
<i>Industrial</i>	1	0	0	0	1
<i>Other-Residential</i>	2	0	0	0	2
<i>Single Family</i>	2	0	0	0	3
Total Casualties - 5pm	15	2	1	0	18
Tuolumne					
Casualties - 2am					
<i>Commuting</i>	0	0	0	0	0

	Injury Severity Level				Total
	Severity 1	Severity 2	Severity 3	Severity 4	
California					
Tuolumne					
Casualties - 2am					
<i>Commercial</i>	0	0	0	0	0
<i>Educational</i>	0	0	0	0	0
<i>Hotels</i>	0	0	0	0	0
<i>Industrial</i>	0	0	0	0	0
<i>Other-Residential</i>	0	0	0	0	0
<i>Single Family</i>	0	0	0	0	0
Total Casualties - 2am	0	0	0	0	0
Casualties - 2pm					
<i>Commuting</i>	0	0	0	0	0
<i>Commercial</i>	0	0	0	0	0
<i>Educational</i>	0	0	0	0	0
<i>Hotels</i>	0	0	0	0	0
<i>Industrial</i>	0	0	0	0	0
<i>Other-Residential</i>	0	0	0	0	0
<i>Single Family</i>	0	0	0	0	0
Total Casualties - 2pm	0	0	0	0	0
Casualties - 5pm					
<i>Commuting</i>	0	0	0	0	0
<i>Commercial</i>	0	0	0	0	0
<i>Educational</i>	0	0	0	0	0
<i>Hotels</i>	0	0	0	0	0
<i>Industrial</i>	0	0	0	0	0
<i>Other-Residential</i>	0	0	0	0	0
<i>Single Family</i>	0	0	0	0	0
Total Casualties - 5pm	0	0	0	0	0
Region Total	NA	NA	NA	NA	NA

Totals only reflect data for those census tracts/blocks included in the user's study region and will reflect the entire county/state only if all of the census blocks for that county/states were selected at the time of study region creation.

Debris Summary Report

May 02, 2024

All values are in thousands of tons.

	Brick, Wood & Others	Concrete & Steel	Total
California			
Alameda	1	0	1
Amador	0	0	0
Calaveras	0	0	0
Contra Costa	0	0	0
Fresno	0	0	0
Kings	0	0	0
Madera	0	0	0
Mariposa	0	0	0
Merced	40	91	131
Monterey	1	0	1
Napa	0	0	0
Sacramento	0	0	0
San Benito	1	1	2
San Francisco	0	0	0
San Joaquin	4	1	5
San Mateo	0	0	0
Santa Clara	4	2	6
Santa Cruz	1	0	1
Solano	0	0	0

	Brick, Wood & Others	Concrete & Steel	Total
Sonoma	0	0	0
Stanislaus	15	16	31
Tuolumne	0	0	0
Total	68	112	180
Region Total	68	112	180

Totals only reflect data for those census tracts/blocks included in the user's study region and will reflect the entire county/state only if all of the census blocks for that county/states were selected at the time of study region creation.

Direct Economic Losses For Buildings

May 2, 2024

All values are in thousands of dollars

	Capital Stock Losses				Loss Ratio %	Income Losses				Total Loss
	Cost Structural Damage	Cost Non-struct. Damage	Cost Contents Damage	Inventory Loss		Relocation Loss	Capital Related Loss	Wages Losses	Rental Income Loss	
California										
Contra Costa	64	2,301	1,419	148	0.00	7	12	18	17	3,986
Napa	1	28	16	2	0.00	0	0	0	0	48
Alameda	774	13,805	7,929	898	0.00	71	109	153	169	23,908
Fresno	310	5,330	3,352	623	0.00	46	55	55	56	9,826
San Joaquin	3,058	23,134	12,523	1,638	0.02	604	216	251	454	41,877
Kings	0	4	2	0	0.00	0	0	0	0	7
Tuolumne	0	5	4	0	0.00	0	0	0	0	9
Solano	4	163	115	17	0.00	0	1	1	1	302
San Mateo	276	4,670	2,532	229	0.00	17	37	36	81	7,879

	Capital Stock Losses				Loss Ratio %	Income Losses				Total Loss
	Cost Structural Damage	Cost Non-struct. Damage	Cost Contents Damage	Inventory Loss		Relocation Loss	Capital Related Loss	Wages Losses	Rental Income Loss	
Madera	245	2,618	1,516	341	0.01	23	15	17	32	4,809
Calaveras	0	16	12	4	0.00	0	0	0	0	32
San Benito	2,453	20,390	9,982	1,075	0.17	410	298	358	321	35,287
San Francisco	167	423	281	29	0.00	12	27	25	74	1,038
Merced	147,299	336,431	184,981	71,424	0.94	28,271	17,920	16,360	10,741	813,426
Stanislaus	28,429	187,432	98,425	13,991	0.21	7,668	5,400	6,014	5,497	352,856
Santa Clara	6,559	75,608	38,637	4,143	0.02	823	1,061	1,235	1,396	129,463
Sonoma	4	53	36	8	0.00	0	0	0	0	102
Amador	0	0	0	0	0.00	0	0	0	0	0
Sacramento	25	235	131	23	0.00	5	7	7	7	441
Monterey	809	8,685	4,715	795	0.01	131	112	127	191	15,564
Santa Cruz	771	6,971	3,933	864	0.01	131	144	170	148	13,131
Mariposa	0	4	3	0	0.00	0	0	0	0	7
Total	191,247	688,305	370,543	96,253	0.06	38,219	25,413	24,829	19,186	1,453,996
Region Total	191,247	688,305	370,543	96,253	0.06	38,219	25,413	24,829	19,186	1,453,996

Totals only reflect data for those census tracts/blocks included in the user's study region and will reflect the entire county/state only if all of the census blocks for that county/states were selected at the time of study region creation.

Direct Economic Loss For Transportation

May 02, 2024

All values are in thousands of dollars

	Highway	Railway	Light Rail	Bus Facility	Ports	Ferries	Airport	Total
California								
Alameda								
Segments	0	0	0					0
Bridges	1	0	0					1
Tunnels	0	0	0					0
Facilities		436	0	22	1,725	38	3,593	5,815
Total	1	436	0	22	1,725	38	3,593	5,816
Amador								
Segments	0	0	0					0
Bridges	0	0	0					0
Tunnels	0	0	0					0
Facilities		0	0	0	0	0	0	0
Total	0	0	0	0	0	0	0	0
Calaveras								
Segments	0	0	0					0
Bridges	0	0	0					0
Tunnels	0	0	0					0
Facilities		0	0	0	0	0	11	11

	Highway	Railway	Light Rail	Bus Facility	Ports	Ferries	Airport	Total
Total	0	0	0	0	0	0	11	11
Contra Costa								
Segments	0	0	0					0
Bridges	1	0	0					1
Tunnels	0	0	0					0
Facilities		142	165	0	2,011	51	231	2,600
Total	1	142	165	0	2,011	51	231	2,601
Fresno								
Segments	0	0	0					0
Bridges	47	0	0					47
Tunnels	0	0	0					0
Facilities		154	0	21	0	0	448	623
Total	47	154	0	21	0	0	448	670
Kings								
Segments	0	0	0					0
Bridges	0	0	0					0
Tunnels	0	0	0					0
Facilities		3	0	5	0	0	51	58
Total	0	3	0	5	0	0	51	59
Madera								
Segments	0	0	0					0
Bridges	10	0	0					10
Tunnels	0	0	0					0
Facilities		26	0	21	0	0	102	149

	Highway	Railway	Light Rail	Bus Facility	Ports	Ferries	Airport	Total
Total	10	26	0	21	0	0	102	158
Mariposa								
Segments	0	0	0					0
Bridges	0	0	0					0
Tunnels	0	0	0					0
Facilities		0	0	5	0	0	51	56
Total	0	0	0	5	0	0	51	56
Merced								
Segments	0	0	0					0
Bridges	28,859	2,396	0					31,255
Tunnels	0	0	0					0
Facilities		135	0	91	0	0	3,291	3,516
Total	28,859	2,531	0	91	0	0	3,291	34,771
Monterey								
Segments	0	0	0					0
Bridges	22	0	0					22
Tunnels	0	0	0					0
Facilities		26	0	173	110	0	387	696
Total	22	26	0	173	110	0	387	718
Napa								
Segments	0	0	0					0
Bridges	0	0	0					0
Tunnels	0	0	0					0
Facilities		0	0	0	37	0	14	51

	Highway	Railway	Light Rail	Bus Facility	Ports	Ferries	Airport	Total
Total	0	0	0	0	37	0	14	51
Sacramento								
Segments	0	0	0					0
Bridges	0	0	0					0
Tunnels	0	0	0					0
Facilities		0	0	0	477	0	0	477
Total	0	0	0	0	477	0	0	477
San Benito								
Segments	0	0	0					0
Bridges	14	1	0					15
Tunnels	0	0	0					0
Facilities		0	0	0	0	0	800	800
Total	14	1	0	0	0	0	800	815
San Francisco								
Segments	0	0	0					0
Bridges	13	0	0					13
Tunnels	0	0	0					0
Facilities		0	11,385	5	1,888	40	134	13,453
Total	13	0	11,385	5	1,888	40	134	13,466
San Joaquin								
Segments	0	0	0					0
Bridges	48	0	0					48
Tunnels	0	0	0					0
Facilities		494	0	21	1,578	51	584	2,729

	Highway	Railway	Light Rail	Bus Facility	Ports	Ferries	Airport	Total
Total	48	494	0	21	1,578	51	584	2,777
San Mateo								
<i>Segments</i>	0	0	0					0
<i>Bridges</i>	29	0	0					29
<i>Tunnels</i>	0	0	0					0
<i>Facilities</i>		0	0	0	624	0	8,738	9,362
Total	29	0	0	0	624	0	8,738	9,391
Santa Clara								
<i>Segments</i>	0	0	0					0
<i>Bridges</i>	115	0	0					115
<i>Tunnels</i>	0	0	0					0
<i>Facilities</i>		103	7,854	122	184	0	4,431	12,694
Total	115	103	7,854	122	184	0	4,431	12,809
Santa Cruz								
<i>Segments</i>	0	0	0					0
<i>Bridges</i>	1	0	0					1
<i>Tunnels</i>	0	0	0					0
<i>Facilities</i>		0	0	45	37	0	257	339
Total	1	0	0	45	37	0	257	340
Solano								
<i>Segments</i>	0	0	0					0
<i>Bridges</i>	1	0	0					1
<i>Tunnels</i>	0	0	0					0
<i>Facilities</i>		3	0	24	1,052	27	51	1,157

	Highway	Railway	Light Rail	Bus Facility	Ports	Ferries	Airport	Total
Total	1	3	0	24	1,052	27	51	1,158
Sonoma								
Segments	0	0	0					0
Bridges	0	0	0					0
Tunnels	0	0	0					0
Facilities		0	0	0	37	0	0	37
Total	0	0	0	0	37	0	0	37
Stanislaus								
Segments	0	0	0					0
Bridges	3,236	175	0					3,411
Tunnels	0	0	0					0
Facilities		655	0	183	0	0	1,185	2,024
Total	3,236	831	0	183	0	0	1,185	5,435
Tuolumne								
Segments	0	0	0					0
Bridges	0	0	0					0
Tunnels	0	0	0					0
Facilities		0	0	0	0	0	17	17
Total	0	0	0	0	0	0	17	17
Total	32,399	4,748	19,404	739	9,760	208	24,377	91,635
Region Total	32,399	4,748	19,404	739	9,760	208	24,377	91,635

Totals only reflect data for those census tracts/blocks included in the user's study region and will reflect the entire county/state only if all of the census blocks for that county/states were selected at the time of study region creation.

Direct Economic Loss For Utilities

May 02, 2024

All values are in thousands of dollars

	Potable Water	Waste Water	Oil Systems	Natural Gas	Electric Power	Communication	Total
California							
Alameda							
<i>Facilities</i>	84	1,724	0	0	14,913	3	16,724
<i>Pipelines</i>	97	49	0	0			146
Total	182	1,773	0	0	14,913	3	16,870
Amador							
<i>Facilities</i>	0	0	0	0	0	0	0
<i>Pipelines</i>	0	0	0	0			1
Total	0	0	0	0	0	0	1
Calaveras							
<i>Facilities</i>	1	131	0	0	14,163	0	14,294
<i>Pipelines</i>	6	3	0	0			9
Total	7	134	0	0	14,163	0	14,303
Contra Costa							
<i>Facilities</i>	86	879	0	0	46,926	1	47,892

	Potable Water	Waste Water	Oil Systems	Natural Gas	Electric Power	Communication	Total
<i>Pipelines</i>	76	38	0	0			115
Total	162	917	0	0	46,926	1	48,007
Fresno							
<i>Facilities</i>	0	246	0	13	18,051	3	18,312
<i>Pipelines</i>	178	89	0	0			268
Total	178	335	0	13	18,051	3	18,580
Kings							
<i>Facilities</i>	0	0	0	4	176	0	180
<i>Pipelines</i>	22	11	0	0			33
Total	22	11	0	4	176	0	213
Madera							
<i>Facilities</i>	0	0	0	0	628	0	629
<i>Pipelines</i>	61	31	0	0			91
Total	61	31	0	0	628	0	720
Mariposa							
<i>Facilities</i>	0	8	0	0	2,808	0	2,816
<i>Pipelines</i>	10	5	0	0			14
Total	10	13	0	0	2,808	0	2,830
Merced							
<i>Facilities</i>	0	21,407	0	0	2,909,135	63	2,930,605
<i>Pipelines</i>	1,783	895	0	0			2,678

	Potable Water	Waste Water	Oil Systems	Natural Gas	Electric Power	Communication	Total
Total	1,783	22,303	0	0	2,909,135	63	2,933,283
Monterey							
<i>Facilities</i>	0	1,107	0	0	13,503	7	14,616
<i>Pipelines</i>	96	48	0	0			144
Total	96	1,155	0	0	13,503	7	14,761
Napa							
<i>Facilities</i>	0	3	0	0	0	0	3
<i>Pipelines</i>	2	1	0	0			3
Total	2	4	0	0	0	0	6
Sacramento							
<i>Facilities</i>	0	0	0	0	0	0	0
<i>Pipelines</i>	6	3	0	0			8
Total	6	3	0	0	0	0	8
San Benito							
<i>Facilities</i>	0	3,049	0	0	0	17	3,066
<i>Pipelines</i>	83	42	0	0			124
Total	83	3,090	0	0	0	17	3,190
San Francisco							
<i>Facilities</i>	0	497	0	0	0	0	497
<i>Pipelines</i>	6	3	0	0			8
Total	6	500	0	0	0	0	506

	Potable Water	Waste Water	Oil Systems	Natural Gas	Electric Power	Communication	Total
San Joaquin							
<i>Facilities</i>	140	861	0	0	18,956	7	19,964
<i>Pipelines</i>	88	44	0	0			133
Total	229	905	0	0	18,956	7	20,097
San Mateo							
<i>Facilities</i>	0	1,229	0	0	206	1	1,436
<i>Pipelines</i>	30	15	0	0			46
Total	30	1,245	0	0	206	1	1,481
Santa Clara							
<i>Facilities</i>	56	369	0	0	65,549	11	65,985
<i>Pipelines</i>	185	93	0	0			279
Total	242	462	0	0	65,549	11	66,264
Santa Cruz							
<i>Facilities</i>	0	492	0	0	65	1	558
<i>Pipelines</i>	40	20	0	0			61
Total	40	512	0	0	65	1	618
Solano							
<i>Facilities</i>	0	374	0	0	10,815	0	11,190
<i>Pipelines</i>	18	9	0	0			27
Total	18	383	0	0	10,815	0	11,217
Sonoma							

	Potable Water	Waste Water	Oil Systems	Natural Gas	Electric Power	Communication	Total
<i>Facilities</i>	0	0	0	0	0	0	0
<i>Pipelines</i>	5	3	0	0			8
Total	5	3	0	0	0	0	8
Stanislaus							
<i>Facilities</i>	0	23,283	0	0	134,036	39	157,358
<i>Pipelines</i>	344	173	0	0			517
Total	344	23,456	0	0	134,036	39	157,875
Tuolumne							
<i>Facilities</i>	0	123	0	0	13,943	0	14,066
<i>Pipelines</i>	14	7	0	0			22
Total	14	130	0	0	13,943	0	14,087
Total	3,520	57,363	0	17	3,263,871	155	3,324,926
Region Total	3,520	57,363	0	17	3,263,871	155	3,324,926

Totals only reflect data for those census tracts/blocks included in the user's study region and will reflect the entire county/state only if all of the census blocks for that county/states were selected at the time of study region creation.

Hazus Quick Assessment Report

Estimated Economic Loss (\$ Billions)

Category	Description	Range
General Building Stock	Building Damage	0.40 - 1.80
	Building Contents	0.10 - 0.50
	Business Interruption	0.10 - 0.20
Infrastructure	Lifelines Damage	
Total		0.70 - 2.90

Preliminary Damage Assessment (PDA) Estimates

Description	Residential	Commercial	Other	Total
Affected	15,500	1,400	1,800	18,700
Minor	1,500	300	680	2,480
Major	130	50	170	350
Destroyed	20	< 10	50	70
Total	17,150	1,750	2,700	21,600

Estimated Casualties : Night Time

Severity Level	Description	# Persons
Level 1	Medical Aid	30 - 100
Level 2	Hospital Care	< 10
Level 3	Life-threatening	< 10
Level 4	Fatalities	< 10

Estimated Shelter Needs

Type	Households	People
Displaced Households	70 - 300	175 - 750
Public Shelter	30	80

Comments :

**Hazus damage estimates are presented using FEMA Preliminary Damage Assessment (PDA) categories. These estimates should be used for planning purposes and may not reflect actual observed damages from the PDA process.*

Disclaimer:

The estimates of social and economic impacts contained in this report were produced using HAZUS loss estimation methodology software which is based on current scientific and engineering knowledge. There are uncertainties inherent in any loss estimation technique. Therefore, there may be significant differences between the modeled results contained in this report and the actual social and economic losses following a specific earthquake. These results can be improved by using enhanced inventory, geotechnical, and observed ground motion data.

Earthquake Information

Location :

Origin Time:

Magnitude : 6.59

Epicenter Latitude/Longitude :
/

Depth & Type : /U

Name :
NA

Ground Motion /Attenuation :

Maximum PGA: 1.00

Information Sources:

Comments :

Population and Building Exposure

Population: 12,951,704

Building Exposure : (\$ Millions)

Residential	1,593,899
Commercial	433,431
Other	383,351
Total	2,410,681

Counties : See Appendix

Major Metro Area :

Hazus Quick Assessment Report

Estimated Economic Loss (\$ Billions)

Category	Description	Range
General Building Stock	Building Damage	0.40 - 1.80
	Building Contents	0.10 - 0.50
	Business Interruption	0.10 - 0.20
Infrastructure	Lifelines Damage	
Total		0.70 - 2.90

Preliminary Damage Assessment (PDA) Estimates

Description	Residential	Commercial	Other	Total
Affected	15,500	1,400	1,800	18,700
Minor	1,500	300	680	2,480
Major	130	50	170	350
Destroyed	20	< 10	50	70
Total	17,150	1,750	2,700	21,600

Estimated Casualties : Day Time

Severity Level	Description	# Persons
Level 1	Medical Aid	70 - 300
Level 2	Hospital Care	10 - 50
Level 3	Life-threatening	< 10
Level 4	Fatalities	< 10

Estimated Shelter Needs

Type	Households	People
Displaced Households	70 - 300	175 - 750
Public Shelter	30	80

Comments :

**Hazus damage estimates are presented using FEMA Preliminary Damage Assessment (PDA) categories. These estimates should be used for planning purposes and may not reflect actual observed damages from the PDA process.*

Disclaimer:

The estimates of social and economic impacts contained in this report were produced using HAZUS loss estimation methodology software which is based on current scientific and engineering knowledge. There are uncertainties inherent in any loss estimation technique. Therefore, there may be significant differences between the modeled results contained in this report and the actual social and economic losses following a specific earthquake. These results can be improved by using enhanced inventory, geotechnical, and observed ground motion data.

Earthquake Information

Location :

Origin Time:

Magnitude : 6.59

Epicenter Latitude/Longitude :
/

Depth & Type : /U

Name :
NA

Ground Motion /Attenuation :

Maximum PGA: 1.00

Information Sources:

Comments :

Population and Building Exposure

Population: 12,951,704

Building Exposure : (\$ Millions)

Residential	1,593,899
Commercial	433,431
Other	383,351
Total	2,410,681

Counties : See Appendix

Major Metro Area :

Hazus Quick Assessment Report

Estimated Economic Loss (\$ Billions)

Category	Description	Range
General Building Stock	Building Damage	0.40 - 1.80
	Building Contents	0.10 - 0.50
	Business Interruption	0.10 - 0.20
Infrastructure	Lifelines Damage	
Total		0.70 - 2.90

Preliminary Damage Assessment (PDA) Estimates

Description	Residential	Commercial	Other	Total
Affected	15,500	1,400	1,800	18,700
Minor	1,500	300	680	2,480
Major	130	50	170	350
Destroyed	20	< 10	50	70
Total	17,150	1,750	2,700	21,600

Estimated Casualties : Commute Time

Severity Level	Description	# Persons
Level 1	Medical Aid	60 - 200
Level 2	Hospital Care	10 - 40
Level 3	Life-threatening	< 10
Level 4	Fatalities	< 10

Estimated Shelter Needs

Type	Households	People
Displaced Households	70 - 300	175 - 750
Public Shelter	30	80

Comments :

**Hazus damage estimates are presented using FEMA Preliminary Damage Assessment (PDA) categories. These estimates should be used for planning purposes and may not reflect actual observed damages from the PDA process.*

Disclaimer:

The estimates of social and economic impacts contained in this report were produced using HAZUS loss estimation methodology software which is based on current scientific and engineering knowledge. There are uncertainties inherent in any loss estimation technique. Therefore, there may be significant differences between the modeled results contained in this report and the actual social and economic losses following a specific earthquake. These results can be improved by using enhanced inventory, geotechnical, and observed ground motion data.

Earthquake Information

Location :

Origin Time:

Magnitude : 6.59

Epicenter Latitude/Longitude :
/

Depth & Type : /U

Name :
NA

Ground Motion /Attenuation :

Maximum PGA: 1.00

Information Sources:

Comments :

Population and Building Exposure

Population: 12,951,704

Building Exposure : (\$ Millions)

Residential	1,593,899
Commercial	433,431
Other	383,351
Total	2,410,681

Counties : See Appendix

Major Metro Area :

Shelter Summary Report

May 02, 2024

	# of Displaced Households	# of People Needing Short Term Shelter
California		
Alameda	0	0
Amador	0	0
Calaveras	0	0
Contra Costa	0	0
Fresno	0	0
Kings	0	0
Madera	0	0
Mariposa	0	0
Merced	115	70
Monterey	0	0
Napa	0	0
Sacramento	0	0
San Benito	0	0
San Francisco	0	0
San Joaquin	0	0
San Mateo	0	0
Santa Clara	0	0
Santa Cruz	0	0
Solano	0	0
Sonoma	0	0
Stanislaus	21	13
Tuolumne	0	0
Total	137	84
Region Total	137	84

Totals only reflect data for those census tracts/blocks included in the user's study region and will reflect the entire county/state only if all of the census blocks for that county/states were selected at the time of study region creation.

