

Hazus: Earthquake Global Risk Report

Region Name: GreatValley07

Earthquake Scenario: greatvalley07orestim_m6p92_se

Print Date: May 28, 2024

Disclaimer:

Totals only reflect data for those census tracts/blocks included in the user's study region.

The estimates of social and economic impacts contained in this report were produced using Hazus loss estimation methodology software which is based on current scientific and engineering knowledge. There are uncertainties inherent in any loss estimation technique. Therefore, there may be significant differences between the modeled results contained in this report and the actual social and economic losses following a specific earthquake. These results can be improved by using enhanced inventory, geotechnical, and observed ground motion data.

Table of Contents

Section	Page #
General Description of the Region	3
Building and Lifeline Inventory	4
Building Inventory	
Critical Facility Inventory	
Transportation and Utility Lifeline Inventory	
Earthquake Scenario Parameters	7
Direct Earthquake Damage	8
Buildings Damage	
Essential Facilities Damage	
Transportation and Utility Lifeline Damage	
Induced Earthquake Damage	14
Fire Following Earthquake	
Debris Generation	
Social Impact	15
Shelter Requirements	
Casualties	
Economic Loss	17
Building Related Losses	
Transportation and Utility Lifeline Losses	
Appendix A: County Listing for the Region	
Appendix B: Regional Population and Building Value Data	

General Description of the Region

Hazus-MH is a regional earthquake loss estimation model that was developed by the Federal Emergency Management Agency (FEMA) and the National Institute of Building Sciences. The primary purpose of Hazus is to provide a methodology and software application to develop multi-hazard losses at a regional scale. These loss estimates would be used primarily by local, state and regional officials to plan and stimulate efforts to reduce risks from multi-hazards and to prepare for emergency response and recovery.

The earthquake loss estimates provided in this report was based on a region that includes 32 county(ies) from the following state(s):

California

Note:

Appendix A contains a complete listing of the counties contained in the region.

The geographical size of the region is 46,687.58 square miles and contains 3,367 census tracts. There are over 5,121 thousand households in the region which has a total population of 14,771,883 people. The distribution of population by Total Region and County is provided in Appendix B.

There are an estimated 4,500 thousand buildings in the region with a total building replacement value (excluding contents) of (millions of dollars). Approximately 90.00 % of the buildings (and % of the building value) are associated with residential housing.

The replacement value of the transportation and utility lifeline systems is estimated to be 228,060 and 157,975 (millions of dollars) , respectively.

Building and Lifeline Inventory

Building Inventory

Hazus estimates that there are 4,500 thousand buildings in the region which have an aggregate total replacement value of (millions of dollars) . Appendix B provides a general distribution of the building value by Total Region and County.

In terms of building construction types found in the region, wood frame construction makes up 87% of the building inventory. The remaining percentage is distributed between the other general building types.

Critical Facility Inventory

Hazus breaks critical facilities into two (2) groups: essential facilities and high potential loss facilities (HPL). Essential facilities include hospitals, medical clinics, schools, fire stations, police stations and emergency operations facilities. High potential loss facilities include dams, levees, military installations, nuclear power plants and hazardous material sites.

For essential facilities, there are 241 hospitals in the region with a total bed capacity of 38,234 beds. There are 5,408 schools, 1,359 fire stations, 461 police stations and 85 emergency operation facilities. With respect to high potential loss facilities (HPL), there are no dams identified within the inventory. The inventory also includes no hazardous material sites, no military installations and no nuclear power plants.

Transportation and Utility Lifeline Inventory

Within Hazus, the lifeline inventory is divided between transportation and utility lifeline systems. There are seven (7) transportation systems that include highways, railways, light rail, bus, ports, ferry and airports. There are six (6) utility systems that include potable water, wastewater, natural gas, crude & refined oil, electric power and communications. The lifeline inventory data are provided in Tables 1 and 2.

The total value of the lifeline inventory is over 386,035.00 (millions of dollars). This inventory includes over 9,666.05 miles of highways, 10,712 bridges, 205,171.73 miles of pipes.

Table 1: Transportation System Lifeline Inventory

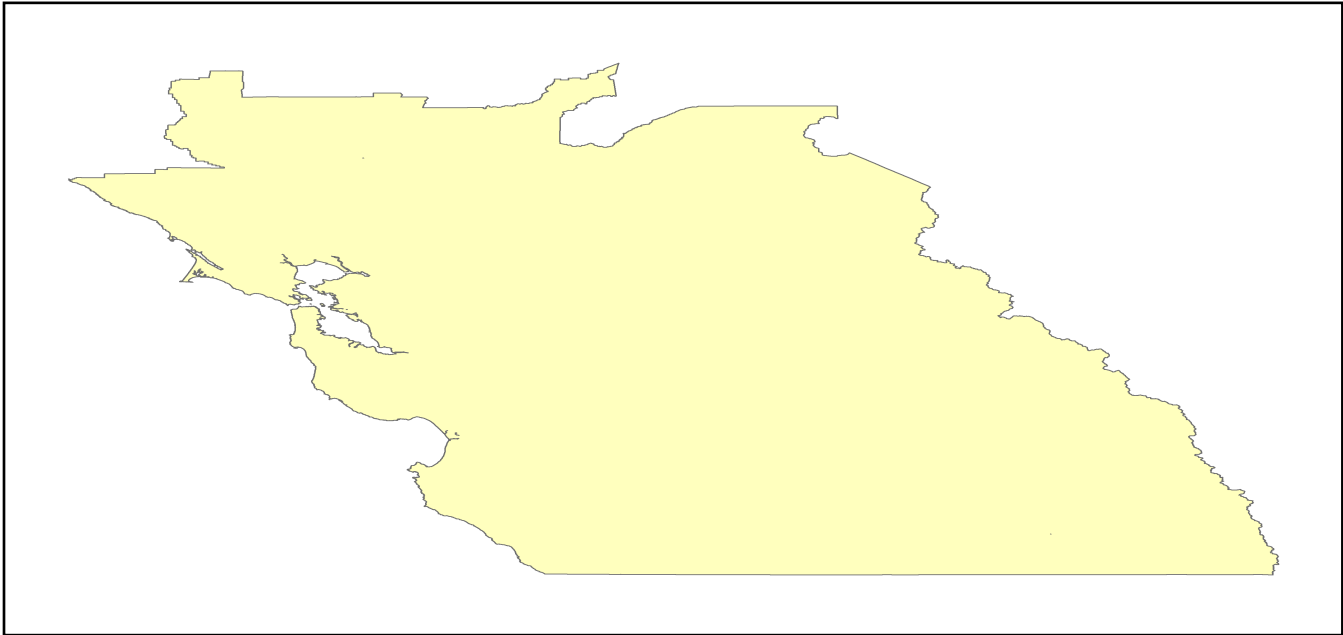
System	Component	# Locations/ # Segments	Replacement value (millions of dollars)
Highway	Bridges	10,712	55551.2420
	Segments	6,777	85056.8165
	Tunnels	45	980.7166
	Subtotal		141588.7751
Railways	Bridges	1,497	8517.9300
	Facilities	84	223.6920
	Segments	2,980	62567.4878
	Tunnels	3	1.8495
	Subtotal		71310.9593
Light Rail	Bridges	112	15.3529
	Facilities	255	4154.0000
	Segments	15	5403.2756
	Tunnels	0	0.0000
	Subtotal		9572.6285
Bus	Facilities	48	108.5606
	Subtotal		108.5606
Ferry	Facilities	25	33.2750
	Subtotal		33.2750
Port	Facilities	351	1337.9575
	Subtotal		1337.9575
Airport	Facilities	100	2780.9568
	Runways	139	1327.5326
	Subtotal		4108.4894
		Total	228,060.60

Table 2: Utility System Lifeline Inventory

System	Component	# Locations / Segments	Replacement value (millions of dollars)
Potable Water	Distribution Lines	NA	4081.2663
	Facilities	22	864.4680
	Pipelines	0	0.0000
		Subtotal	4945.7343
Waste Water	Distribution Lines	NA	2448.7598
	Facilities	168	28887.9024
	Pipelines	0	0.0000
		Subtotal	31336.6622
Natural Gas	Distribution Lines	NA	1632.5065
	Facilities	4	183.7334
	Pipelines	872	12999.5153
		Subtotal	14815.7552
Oil Systems	Facilities	17	2.0060
	Pipelines	0	0.0000
		Subtotal	2.0060
Electrical Power	Facilities	368	106827.6332
		Subtotal	106827.6332
Communication	Facilities	408	48.1440
		Subtotal	48.1440
	Total		157,975.90

Earthquake Scenario

Hazus uses the following set of information to define the earthquake parameters used for the earthquake loss estimate provided in this report.



Scenario Name	greatvalley07orestim_m6p92_se
Type of Earthquake	User-defined
Fault Name	NA
Historical Epicenter ID #	NA
Probabilistic Return Period	NA
Longitude of Epicenter	NA
Latitude of Epicenter	NA
Earthquake Magnitude	6.92
Depth (km)	NA
Rupture Length (Km)	NA
Rupture Orientation (degrees)	NA
Attenuation Function	NA

Direct Earthquake Damage

Building Damage

Hazus estimates that about 20,810 buildings will be at least moderately damaged. This is over 0.00 % of the buildings in the region. There are an estimated 397 buildings that will be damaged beyond repair. The definition of the 'damage states' is provided in Volume 1: Chapter 5 of the Hazus technical manual. Table 3 below summarizes the expected damage by general occupancy for the buildings in the region. Table 4 below summarizes the expected damage by general building type.

Damage Categories by General Occupancy Type

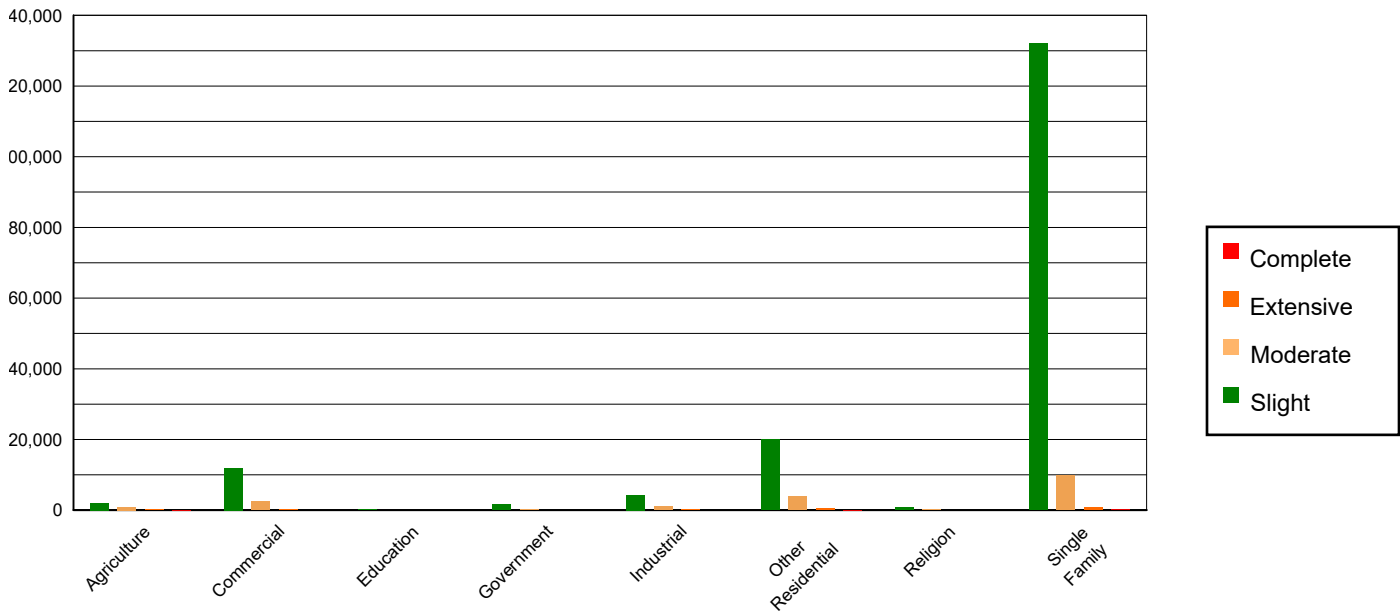


Table 3: Expected Building Damage by Occupancy

	None		Slight		Moderate		Extensive		Complete	
	Count	(%)	Count	(%)	Count	(%)	Count	(%)	Count	(%)
Agriculture	27306.07	0.63	2013.11	1.17	905.45	4.86	261.12	14.60	41.25	10.38
Commercial	273363.32	6.35	11940.71	6.92	2490.09	13.37	238.55	13.34	37.33	9.39
Education	8945.81	0.21	170.81	0.10	26.43	0.14	1.71	0.10	0.24	0.06
Government	20171.40	0.47	1605.66	0.93	288.41	1.55	19.66	1.10	1.87	0.47
Industrial	73021.74	1.70	4258.48	2.47	1014.65	5.45	89.70	5.02	10.43	2.62
Other Residential	530873.11	12.33	20024.81	11.60	3833.97	20.59	478.63	26.77	66.48	16.72
Religion	16162.70	0.38	638.26	0.37	147.01	0.79	13.75	0.77	1.28	0.32
Single Family	3357201.76	77.95	131948.66	76.45	9919.00	53.26	684.86	38.30	238.71	60.04
Total	4,307,046		172,600		18,625		1,788		398	

Table 4: Expected Building Damage by Building Type (All Design Levels)

	None		Slight		Moderate		Extensive		Complete	
	Count	(%)	Count	(%)	Count	(%)	Count	(%)	Count	(%)
Wood	3770970.72	87.55	138333.46	80.15	7164.76	38.47	40.74	2.28	0.59	0.15
Steel	94531.89	2.19	5898.64	3.42	2011.76	10.80	337.00	18.85	52.90	13.30
Concrete	108374.36	2.52	5166.76	2.99	1100.38	5.91	167.74	9.38	17.22	4.33
Precast	55741.11	1.29	3485.77	2.02	909.64	4.88	37.68	2.11	1.20	0.30
RM	165394.12	3.84	5843.81	3.39	1642.21	8.82	79.69	4.46	0.16	0.04
URM	32128.07	0.75	8139.75	4.72	3516.66	18.88	822.17	45.98	314.57	79.12
MH	79905.63	1.86	5732.29	3.32	2279.61	12.24	302.96	16.94	10.97	2.76
Total	4,307,046		172,600		18,625		1,788		398	

*Note:

- RM Reinforced Masonry
- URM Unreinforced Masonry
- MH Manufactured Housing

Essential Facility Damage

Before the earthquake, the region had 38,234 hospital beds available for use. On the day of the earthquake, the model estimates that only 36,754 hospital beds (96.00%) are available for use by patients already in the hospital and those injured by the earthquake. After one week, 99.00% of the beds will be back in service. By 30 days, 100.00% will be operational.

Table 5: Expected Damage to Essential Facilities

Classification	Total	# Facilities		
		At Least Moderate Damage > 50%	Complete Damage > 50%	With Functionality > 50% on day 1
Hospitals	241	1	0	239
Schools	5,408	26	0	5,329
EOCs	85	0	0	85
PoliceStations	461	0	0	455
FireStations	1,359	2	0	1,340

Transportation Lifeline Damage

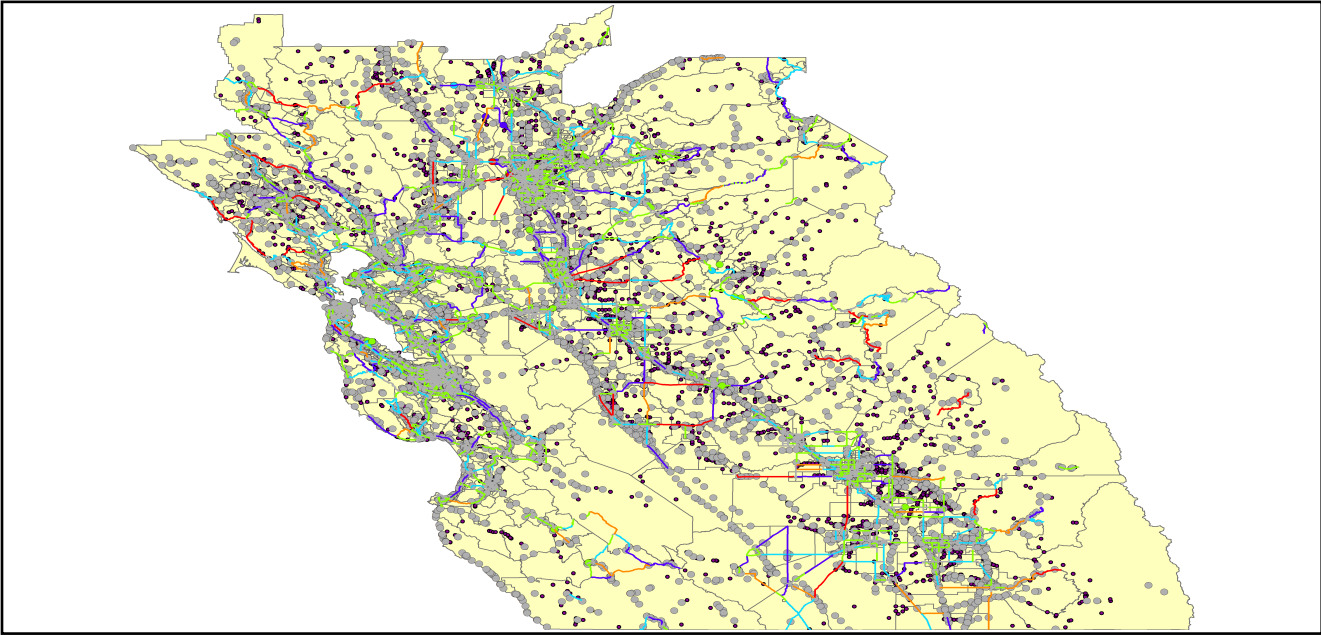


Table 6: Expected Damage to the Transportation Systems

System	Component	Number of Locations_				
		Locations/ Segments	With at Least Mod. Damage	With Complete Damage	With Functionality > 50 %	
					After Day 1	After Day 7
Highway	Segments	6,777	0	0	6,777	6,777
	Bridges	10,712	13	0	10,693	10,706
	Tunnels	45	0	0	45	45
Railways	Segments	2,980	0	0	2,980	2,980
	Bridges	1,497	0	0	1,497	1,497
	Tunnels	3	0	0	3	3
	Facilities	84	0	0	84	84
Light Rail	Segments	15	0	0	15	15
	Bridges	112	0	0	112	112
	Tunnels	0	0	0	0	0
	Facilities	255	0	0	255	255
Bus	Facilities	48	0	0	48	48
Ferry	Facilities	25	0	0	25	25
Port	Facilities	351	0	0	351	351
Airport	Facilities	100	0	0	100	100
	Runways	139	0	0	139	139

Table 6 provides damage estimates for the transportation system.

Note: Roadway segments, railroad tracks and light rail tracks are assumed to be damaged by ground failure only. If ground failure maps are not provided, damage estimates to these components will not be computed.

Tables 7-9 provide information on the damage to the utility lifeline systems. Table 7 provides damage to the utility system facilities. Table 8 provides estimates on the number of leaks and breaks by the pipelines of the utility systems. For electric power and potable water, Hazus performs a simplified system performance analysis. Table 9 provides a summary of the system performance information.

Table 7 : Expected Utility System Facility Damage

System	# of Locations				
	Total #	With at Least Moderate Damage	With Complete Damage	with Functionality > 50 %	
				After Day 1	After Day 7
Potable Water	22	0	0	22	22
Waste Water	168	4	0	158	168
Natural Gas	4	0	0	4	4
Oil Systems	17	1	0	16	16
Electrical Power	368	17	0	352	365
Communication	408	7	0	401	408

Table 8 : Expected Utility System Pipeline Damage (Site Specific)

System	Total Pipelines Length (miles)	Number of Leaks	Number of Breaks
Potable Water	126,799	2299	575
Waste Water	76,079	1155	289
Natural Gas	2,293	0	0
Oil	0	0	0

Table 9: Expected Potable Water and Electric Power System Performance

	Total # of Households	Number of Households without Service				
		At Day 1	At Day 3	At Day 7	At Day 30	At Day 90
Potable Water	5,121,799	7,127	1,344	0	0	0
Electric Power		41,517	25,487	9,693	693	56

Induced Earthquake Damage

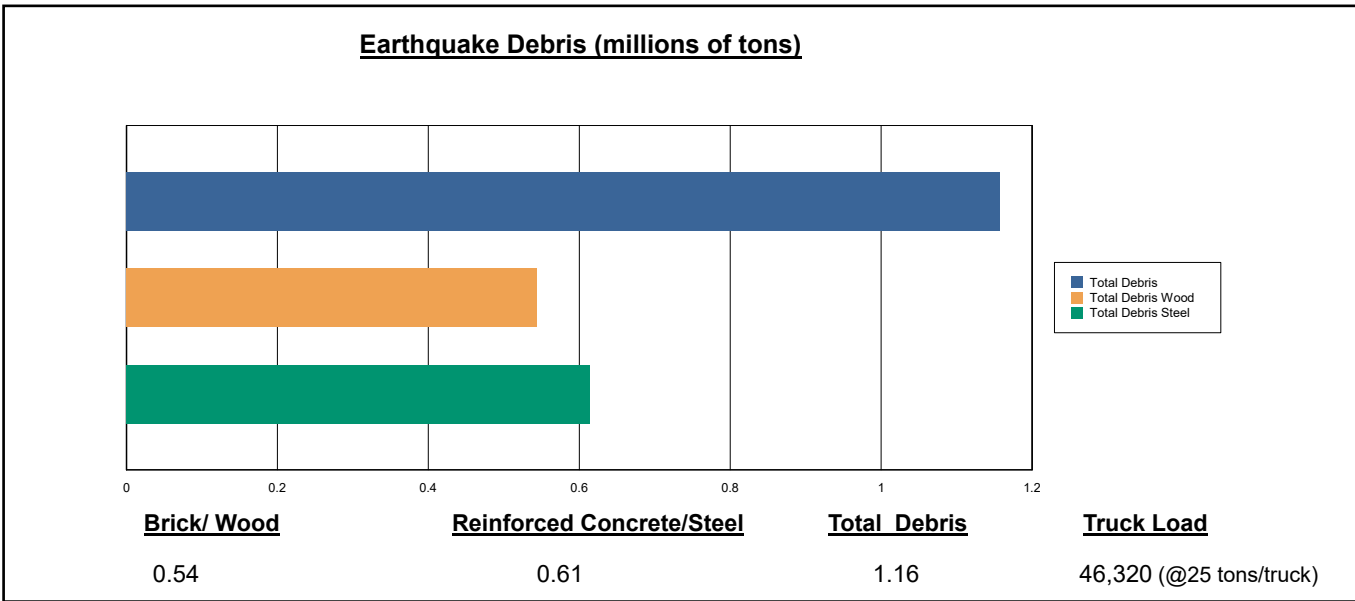
Fire Following Earthquake

Fires often occur after an earthquake. Because of the number of fires and the lack of water to fight the fires, they can often burn out of control. Hazus uses a Monte Carlo simulation model to estimate the number of ignitions and the amount of burnt area. For this scenario, the model estimates that there will be 54 ignitions that will burn about 0.99 sq. mi (0.00 % of the region's total area.) The model also estimates that the fires will displace about 10,473 people and burn about 1,405 (millions of dollars) of building value.

Debris Generation

Hazus estimates the amount of debris that will be generated by the earthquake. The model breaks the debris into two general categories: a) Brick/Wood and b) Reinforced Concrete/Steel. This distinction is made because of the different types of material handling equipment required to handle the debris.

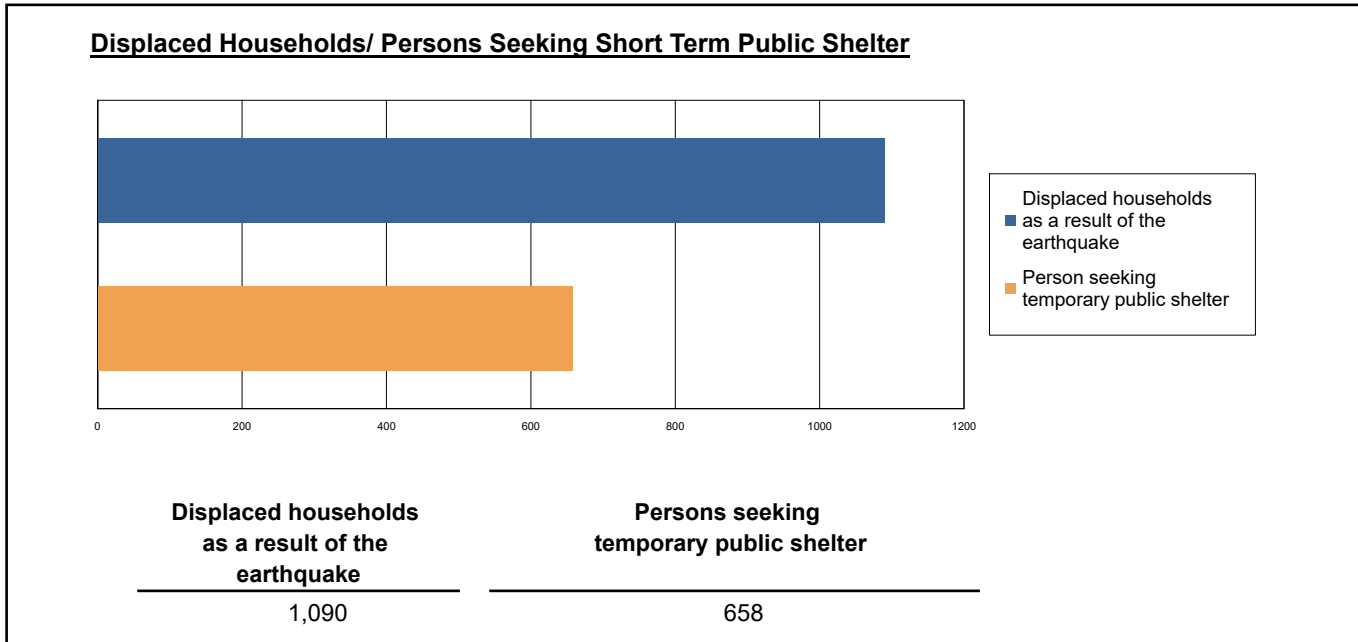
The model estimates that a total of 1,158,000 tons of debris will be generated. Of the total amount, Brick/Wood comprises 47.00% of the total, with the remainder being Reinforced Concrete/Steel. If the debris tonnage is converted to an estimated number of truckloads, it will require 46,320 truckloads (@25 tons/truck) to remove the debris generated by the earthquake.



Social Impact

Shelter Requirement

Hazus estimates the number of households that are expected to be displaced from their homes due to the earthquake and the number of displaced people that will require accommodations in temporary public shelters. The model estimates 1,090 households to be displaced due to the earthquake. Of these, 658 people (out of a total population of 14,771,883) will seek temporary shelter in public shelters.



Casualties

Hazus estimates the number of people that will be injured and killed by the earthquake. The casualties are broken down into four (4) severity levels that describe the extent of the injuries. The levels are described as follows;

- Severity Level 1: Injuries will require medical attention but hospitalization is not needed.
- Severity Level 2: Injuries will require hospitalization but are not considered life-threatening
- Severity Level 3: Injuries will require hospitalization and can become life threatening if not promptly treated.
- Severity Level 4: Victims are killed by the earthquake.

The casualty estimates are provided for three (3) times of day: 2:00 AM, 2:00 PM and 5:00 PM. These times represent the periods of the day that different sectors of the community are at their peak occupancy loads. The 2:00 AM estimate considers that the residential occupancy load is maximum, the 2:00 PM estimate considers that the educational, commercial and industrial sector loads are maximum and 5:00 PM represents peak commute time.

Table 10 provides a summary of the casualties estimated for this earthquake

Table 10: Casualty Estimates

		Level 1	Level 2	Level 3	Level 4
2 AM	Commercial	6.44	0.74	0.06	0.12
	Commuting	0.04	0.06	0.10	0.02
	Educational	0.00	0.00	0.00	0.00
	Hotels	0.18	0.01	0.00	0.00
	Industrial	7.94	0.77	0.04	0.08
	Other-Residential	186.81	21.79	2.21	4.30
	Single Family	420.31	47.96	5.77	11.29
	Total	622	71	8	16
2 PM	Commercial	460.65	55.00	4.54	8.61
	Commuting	0.40	0.52	0.90	0.17
	Educational	76.15	6.93	0.51	0.98
	Hotels	0.03	0.00	0.00	0.00
	Industrial	57.89	5.63	0.32	0.60
	Other-Residential	59.57	7.55	0.83	1.54
	Single Family	130.76	16.93	2.16	4.04
	Total	785	93	9	16
5 PM	Commercial	334.08	40.80	3.42	6.40
	Commuting	7.41	9.44	16.47	3.16
	Educational	5.37	0.22	0.00	0.00
	Hotels	0.05	0.00	0.00	0.00
	Industrial	36.18	3.52	0.20	0.37
	Other-Residential	70.17	8.69	0.94	1.76
	Single Family	159.49	19.72	2.50	4.67
	Total	613	82	24	16

Economic Loss

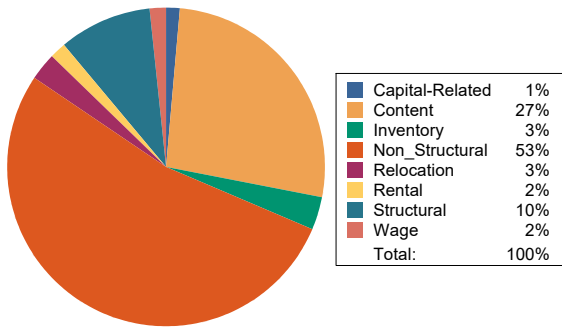
The total economic loss estimated for the earthquake is 16,714.67 (millions of dollars), which includes building and lifeline related losses based on the region's available inventory. The following three sections provide more detailed information about these losses.

Building-Related Losses

The building losses are broken into two categories: direct building losses and business interruption losses. The direct building losses are the estimated costs to repair or replace the damage caused to the building and its contents. The business interruption losses are the losses associated with inability to operate a business because of the damage sustained during the earthquake. Business interruption losses also include the temporary living expenses for those people displaced from their homes because of the earthquake.

The total building-related losses were 11,754.57 (millions of dollars); 7 % of the estimated losses were related to the business interruption of the region. By far, the largest loss was sustained by the residential occupancies which made up over 44 % of the total loss. Table 11 below provides a summary of the losses associated with the building damage.

Earthquake Losses by Loss Type (\$ millions)



Earthquake Losses by Occupancy Type (\$ millions)

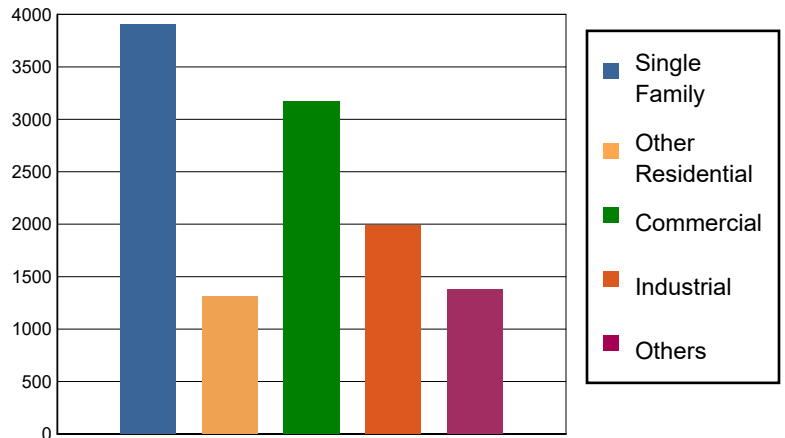


Table 11: Building-Related Economic Loss Estimates
(Millions of dollars)

Category	Area	Single Family	Other Residential	Commercial	Industrial	Others	Total
Income Losses							
	Wage	0.0000	5.8691	151.3235	12.4043	25.2997	194.8966
	Capital-Related	0.0000	2.4952	145.2743	7.4545	5.2527	160.4767
	Rental	31.9809	40.9914	97.1250	9.8056	9.8546	189.7575
	Relocation	90.3126	26.0444	108.4424	47.9047	52.3764	325.0805
	Subtotal	122.2935	75.4001	502.1652	77.5691	92.7834	870.2113
Capital Stock Losses							
	Structural	399.6824	101.5139	257.0353	148.8000	218.4937	1,125.5253
	Non_Structural	2450.7564	863.9525	1375.7831	958.5203	589.7553	6,238.7676
	Content	935.9114	268.1880	863.4101	701.6136	377.1852	3,146.3083
	Inventory	0.0000	0.0000	169.7283	102.0805	101.9438	373.7526
	Subtotal	3786.3502	1233.6544	2665.9568	1911.0144	1287.3780	10884.3538
	Total	3908.64	1309.05	3168.12	1988.58	1380.16	11754.57

Transportation and Utility Lifeline Losses

For the transportation and utility lifeline systems, Hazus computes the direct repair cost for each component only. There are no losses computed by Hazus for business interruption due to lifeline outages. Tables 12 & 13 provide a detailed breakdown in the expected lifeline losses.

Table 12: Transportation System Economic Losses
(Millions of dollars)

System	Component	Inventory Value	Economic Loss	Loss Ratio (%)
Highway	Segments	85056.8165	0.0000	0.00
	Bridges	55551.2420	82.3466	0.15
	Tunnels	980.7166	0.0175	0.00
	Subtotal	141588.7751	82.3641	
Railways	Segments	62567.4878	0.0000	0.00
	Bridges	8517.9300	13.1964	0.15
	Tunnels	1.8495	0.0001	0.01
	Facilities	223.6920	10.9097	4.88
	Subtotal	71310.9593	24.1062	
Light Rail	Segments	5403.2756	0.0000	0.00
	Bridges	15.3529	0.0004	0.00
	Tunnels	0.0000	0.0000	0.00
	Facilities	4154.0000	113.9962	2.74
	Subtotal	9572.6285	113.9966	
Bus	Facilities	108.5606	2.5952	2.39
	Subtotal	108.5606	2.5952	
Ferry	Facilities	33.2750	2.0456	6.15
	Subtotal	33.2750	2.0456	
Port	Facilities	1337.9575	69.2627	5.18
	Subtotal	1337.9575	69.2627	
Airport	Facilities	2780.9568	111.5309	4.01
	Runways	1327.5326	0.0000	0.00
	Subtotal	4108.4894	111.5309	
Total		228,060.65	405.90	

Table 13: Utility System Economic Losses

(Millions of dollars)

System	Component	Inventory Value	Economic Loss	Loss Ratio (%)
Potable Water	Pipelines	0.0000	0.0000	0.00
	Facilities	864.4680	11.4004	1.32
	Distribution Lines	4081.2663	10.3442	0.25
	Subtotal	4945.7343	21.7446	
Waste Water	Pipelines	0.0000	0.0000	0.00
	Facilities	28887.9024	402.4841	1.39
	Distribution Lines	2448.7598	5.1961	0.21
	Subtotal	31336.6622	407.6802	
Natural Gas	Pipelines	12999.5153	0.0000	0.00
	Facilities	183.7334	0.0169	0.01
	Distribution Lines	1632.5065	1.7802	0.11
	Subtotal	14815.7552	1.7971	
Oil Systems	Pipelines	0.0000	0.0000	0.00
	Facilities	2.0060	0.0510	2.54
	Subtotal	2.0060	0.0510	
Electrical Power	Facilities	106827.6332	4121.6838	3.86
	Subtotal	106827.6332	4121.6838	
Communication	Facilities	48.1440	1.2402	2.58
	Subtotal	48.1440	1.2402	
	Total	157,975.93	4,554.20	

Appendix A: County Listing for the Region

Alameda,CA

Alpine,CA

Amador,CA

Calaveras,CA

Colusa,CA

Contra Costa,CA

El Dorado,CA

Fresno,CA

Kings,CA

Lake,CA

Madera,CA

Marin,CA

Mariposa,CA

Merced,CA

Monterey,CA

Napa,CA

Placer,CA

Sacramento,CA

San Benito,CA

San Francisco,CA

San Joaquin,CA

San Mateo,CA

Santa Clara,CA

Santa Cruz,CA

Solano,CA

Sonoma,CA

Stanislaus,CA

Sutter,CA

Tulare,CA



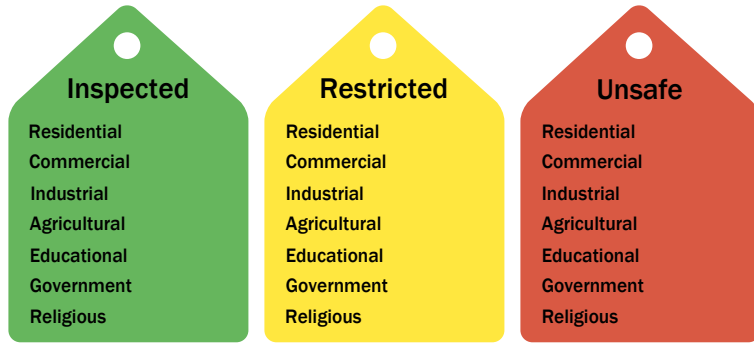
Tuolumne, CA

Yolo, CA

Yuba, CA

Appendix B: Regional Population and Building Value Data

State	County Name	Population	Building Value (millions of dollars)		
			Residential	Non-Residential	Total
California	Alameda	1,682,353	209,951	122,639	332,590
	Alpine	1,204	721	139	861
	Amador	40,474	5,608	2,517	8,125
	Calaveras	45,292	8,305	4,893	13,199
	Colusa	21,839	2,244	2,024	4,268
	Contra Costa	1,165,927	158,118	60,339	218,458
	El Dorado	191,185	34,907	9,704	44,611
	Fresno	1,008,654	98,532	61,772	160,304
	Kings	152,486	13,719	7,861	21,581
	Lake	68,163	9,699	4,530	14,229
	Madera	156,255	18,025	9,641	27,667
	Marin	262,321	47,738	15,030	62,769
	Mariposa	17,131	3,299	1,141	4,441
	Merced	281,202	25,194	26,098	51,292
	Monterey	439,035	47,655	28,750	76,405
	Napa	138,019	20,517	13,045	33,563
	Placer	404,739	69,985	24,193	94,179
	Sacramento	1,585,055	179,811	83,911	263,723
	San Benito	64,209	9,440	3,799	13,239
	San Francisco	873,965	108,848	46,020	154,869
	San Joaquin	779,233	82,706	56,882	139,589
	San Mateo	764,442	110,372	44,995	155,368
	Santa Clara	1,936,259	261,111	120,471	381,582
	Santa Cruz	270,861	36,147	18,805	54,952
	Solano	453,491	55,802	26,393	82,195
	Sonoma	488,863	68,827	35,781	104,609
	Stanislaus	552,878	62,937	37,511	100,449
	Sutter	99,633	10,618	6,448	17,066
	Tulare	473,117	43,262	31,210	74,472
	Tuolumne	55,620	8,964	3,507	12,471
	Yolo	216,403	24,130	18,343	42,473
	Yuba	81,575	8,161	4,677	12,839
	Total Region		14,771,883	1,845,353	933,069

Building Inspection Tagging (Counts)

Total Economic Loss
Total:

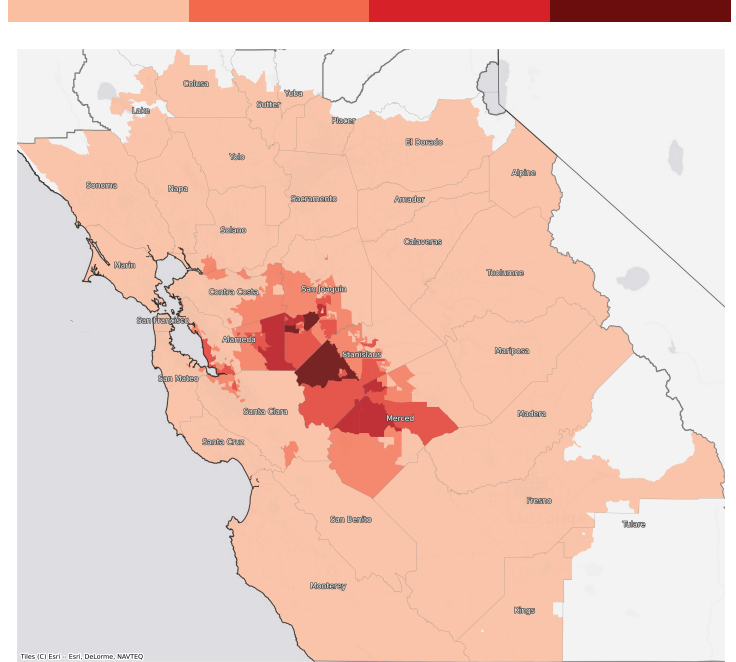
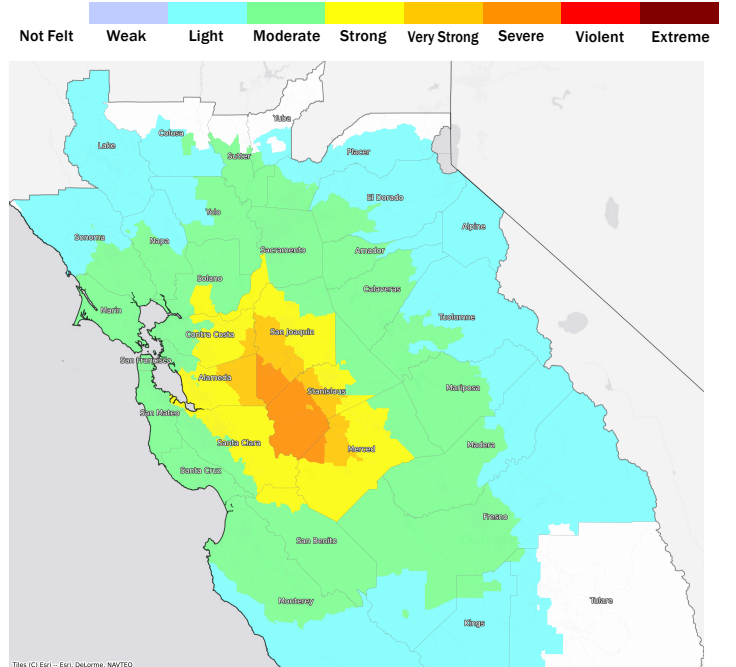
Top Counties	State	Total

Injuries & Fatalities
**Total Day:
Total Night:**

Top Counties	State	Injuries (day/night)	Fatalities (day/night)

Displaced Households & Short-Term Shelter Needs
**Total Displaced:
Total Needing Shelter:**

Top Counties	State	Displaced	Needing Shelter

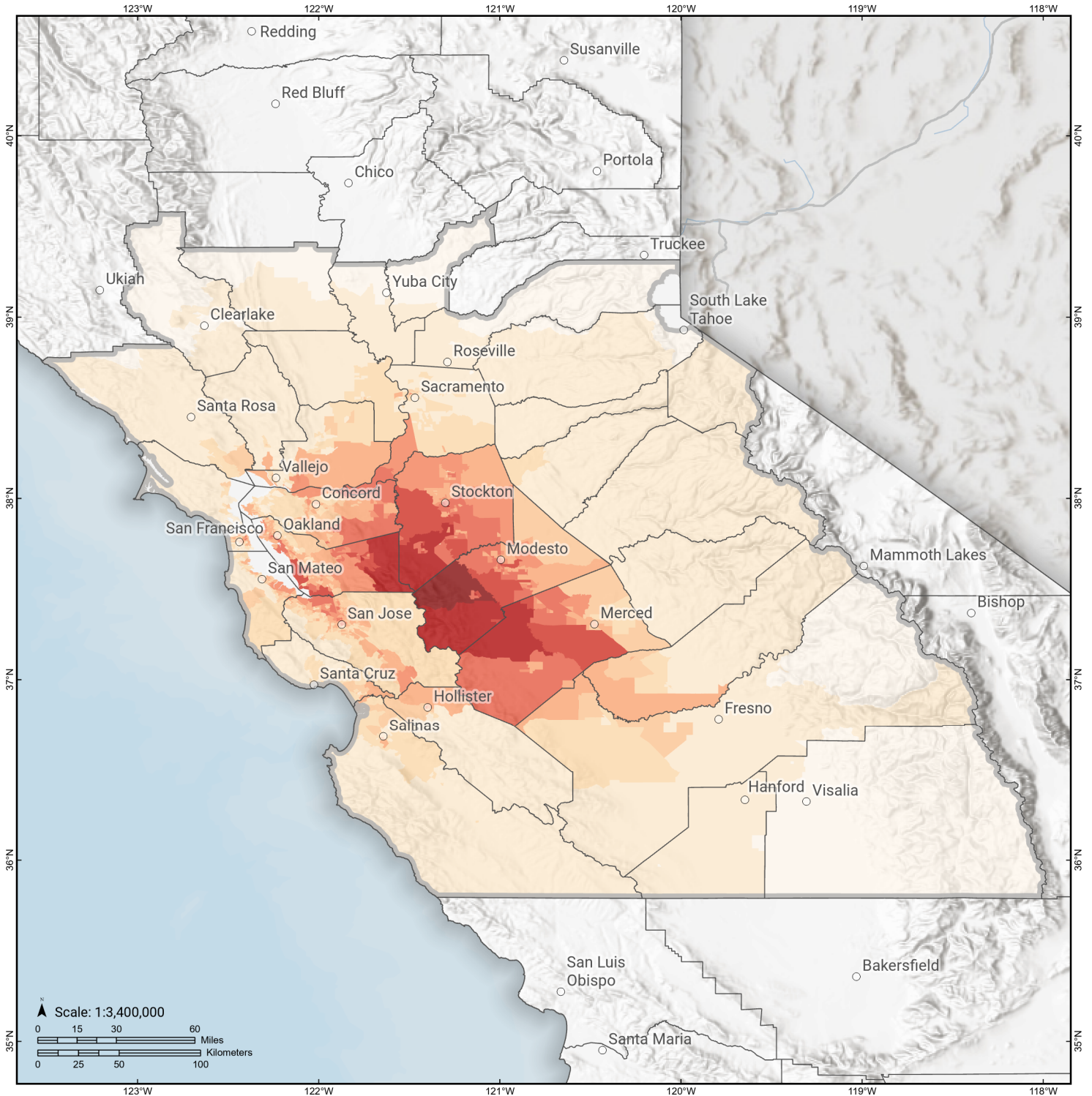
Economic Impacts by Census Tract

Ground Shaking

Debris
**Total Tons:
Total Truckloads:**

Type	Tons

The estimates of social and economic impacts contained in this report were produced using Hazus loss estimation methodology software which is based on current scientific and engineering knowledge. There are uncertainties inherent in any loss estimation technique. Therefore, there may be significant differences between the modeled results contained in this report and the actual social and economic losses following a specific earthquake.

Great Valley 07 (Orestimba)

Debris Generated by Census Tract



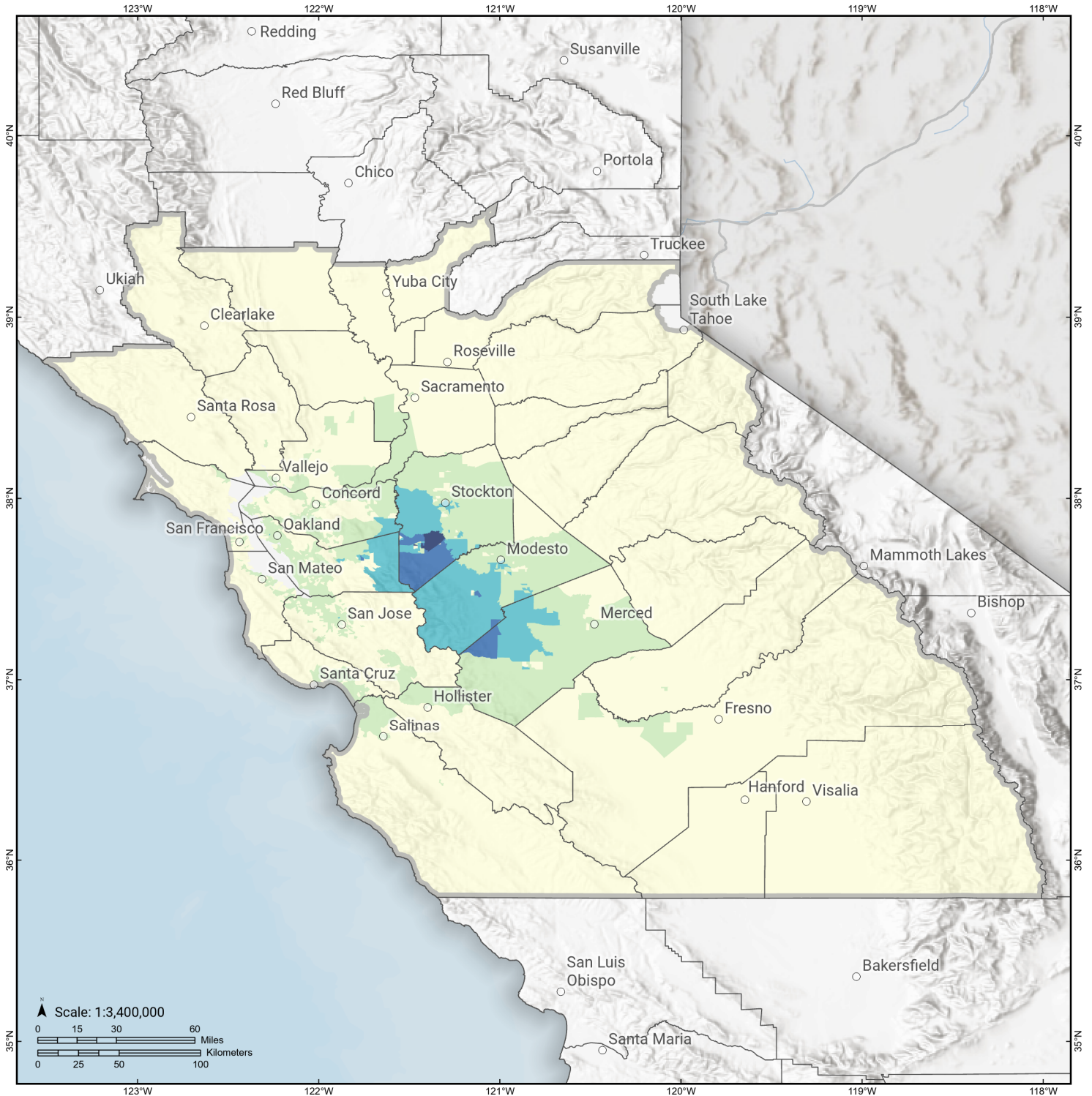
Study Region: Great Valley 07 (Orestimba)
Scenario: greatvalley07orestim_m6p92_se

Debris Generated (in tons)



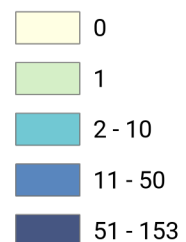
Great Valley 07 (Orestimba)

Displaced Households by Census Tract



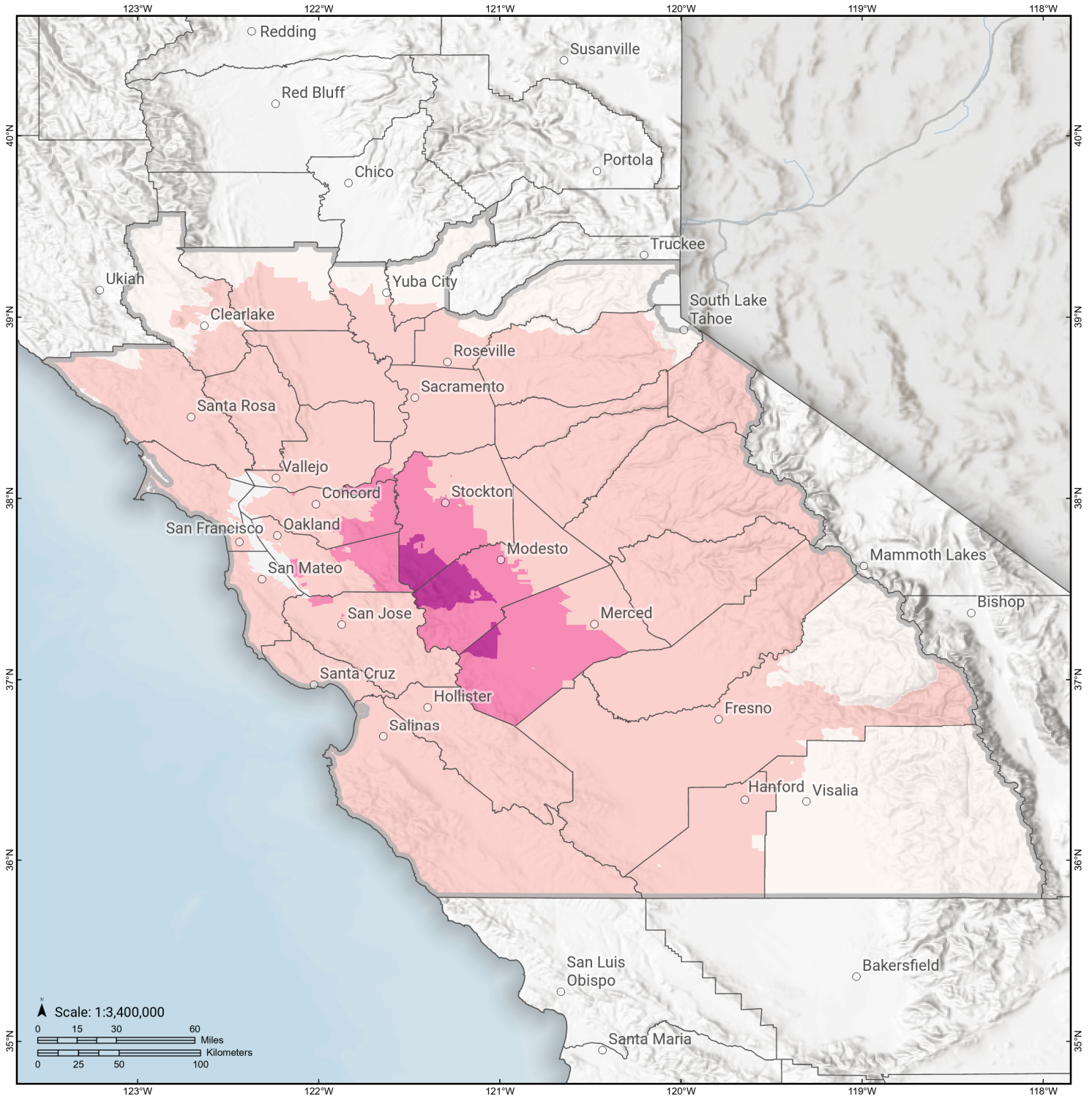
Study Region: Great Valley 07 (Orestimba)
Scenario: greatvalley07orestim_m6p92_se

Displaced Households



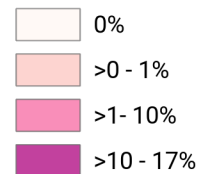
Great Valley 07 (Orestimba)

Loss Ratio by Census Tract



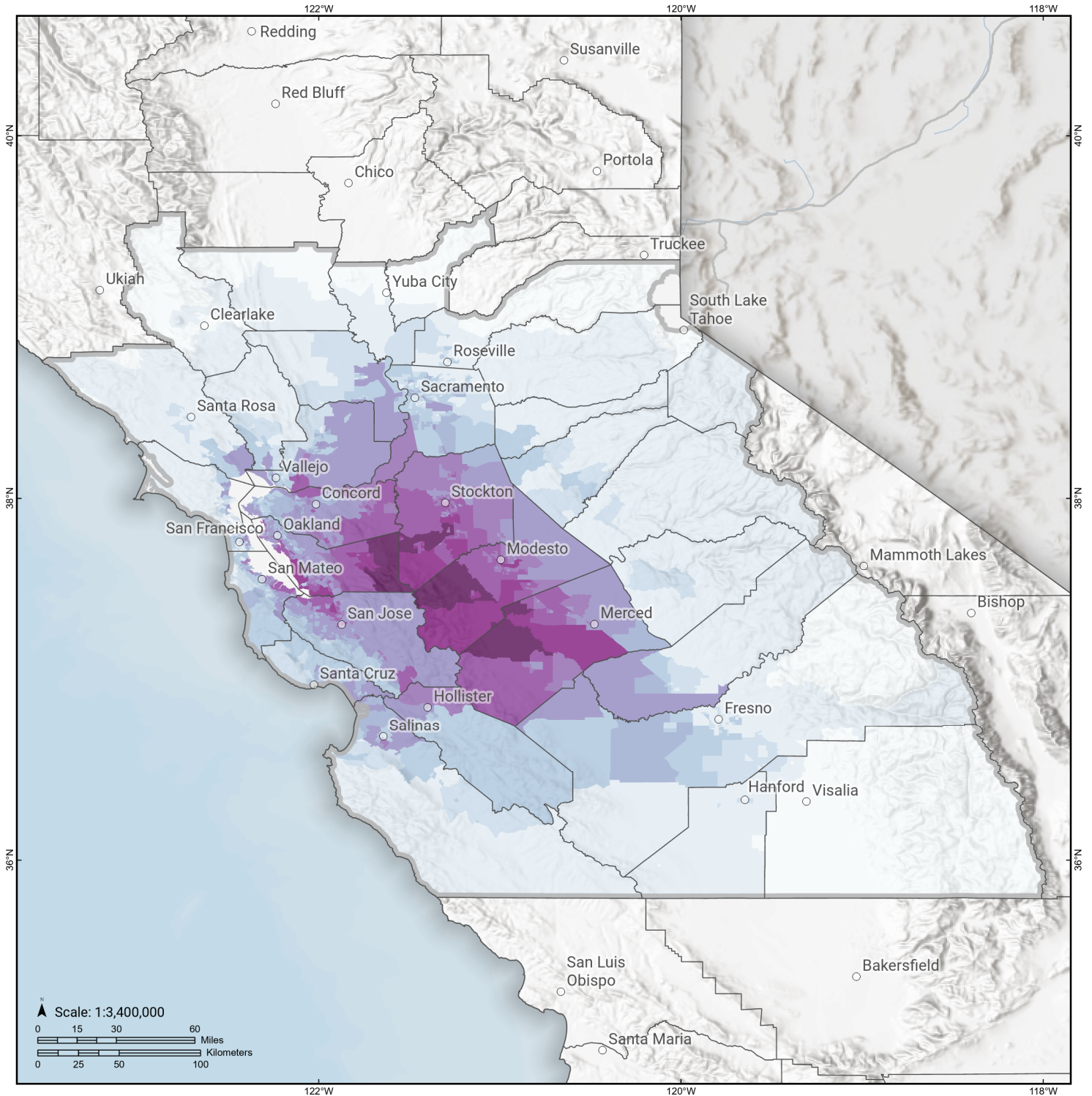
Study Region: Great Valley 07 (Orestimba)
Scenario: greatvalley07orestim_m6p92_se

Loss Ratio (ratio of building related economic loss to exposed value of buildings)



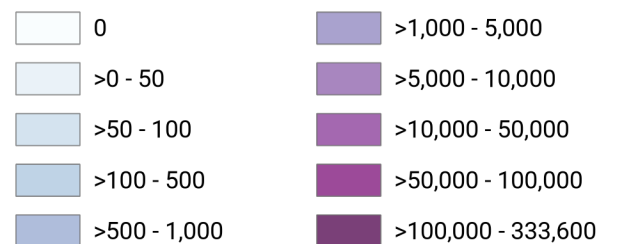
Great Valley 07 (Orestimba)

Total Building Related Economic Loss by Census Tract



Study Region: Great Valley 07 (Orestimba)
Scenario: greatvalley07orestim_m6p92_se

Economic Loss (in thousands of USD \$)



Building Damage by Count by General Occupancy

May 28, 2024

	# of Buildings					Total
	None	Slight	Moderate	Extensive	Complete	
California						
Alameda						
<i>Government</i>	9,386	959	169	13	1	10,528
<i>Agriculture</i>	356	52	12	2	0	422
<i>Commercial</i>	28,389	3,003	545	47	4	31,989
<i>Religion</i>	1,804	151	28	3	0	1,986
<i>Single Family</i>	315,764	27,549	859	1	0	344,173
<i>Other Residential</i>	56,948	3,719	668	60	2	61,396
<i>Education</i>	1,061	49	7	0	0	1,117
<i>Industrial</i>	8,736	1,204	250	14	1	10,205
Alpine						
<i>Education</i>	5	0	0	0	0	5
<i>Commercial</i>	48	0	0	0	0	48
<i>Government</i>	4	0	0	0	0	4
<i>Agriculture</i>	0	0	0	0	0	0
<i>Religion</i>	1	0	0	0	0	1
<i>Industrial</i>	14	0	0	0	0	14
<i>Single Family</i>	842	0	0	0	0	842
<i>Other Residential</i>	97	0	0	0	0	97
Amador						

	# of Buildings					Total
	None	Slight	Moderate	Extensive	Complete	
<i>Industrial</i>	235	0	0	0	0	235
<i>Single Family</i>	14,961	1	0	0	0	14,962
<i>Other Residential</i>	1,034	3	0	0	0	1,037
<i>Education</i>	23	0	0	0	0	23
<i>Government</i>	32	0	0	0	0	32
<i>Agriculture</i>	44	0	0	0	0	44
<i>Religion</i>	45	0	0	0	0	45
<i>Commercial</i>	1,367	1	0	0	0	1,368
Calaveras						
<i>Government</i>	84	0	0	0	0	84
<i>Other Residential</i>	2,554	5	0	0	0	2,559
<i>Education</i>	35	0	0	0	0	35
<i>Religion</i>	130	0	0	0	0	130
<i>Agriculture</i>	2,204	3	0	0	0	2,207
<i>Commercial</i>	1,412	1	0	0	0	1,413
<i>Industrial</i>	465	0	0	0	0	466
<i>Single Family</i>	22,146	2	0	0	0	22,148
Colusa						
<i>Agriculture</i>	142	0	0	0	0	142
<i>Religion</i>	58	0	0	0	0	58
<i>Commercial</i>	794	0	0	0	0	794
<i>Industrial</i>	113	0	0	0	0	113
<i>Other Residential</i>	954	0	0	0	0	954
<i>Single Family</i>	5,954	0	0	0	0	5,954
<i>Government</i>	32	0	0	0	0	32

	# of Buildings					Total
	None	Slight	Moderate	Extensive	Complete	
<i>Education</i>	33	0	0	0	0	33
Contra Costa						
<i>Commercial</i>	16,878	979	128	6	0	17,991
<i>Agriculture</i>	649	78	20	2	0	749
<i>Religion</i>	1,153	63	9	0	0	1,226
<i>Single Family</i>	268,244	13,557	134	0	0	281,935
<i>Other Residential</i>	27,337	1,555	223	8	0	29,124
<i>Industrial</i>	4,403	297	46	2	0	4,749
<i>Government</i>	4,598	373	52	2	0	5,024
<i>Education</i>	638	14	1	0	0	653
El Dorado						
<i>Other Residential</i>	10,420	0	0	0	0	10,420
<i>Industrial</i>	1,199	0	0	0	0	1,199
<i>Education</i>	128	0	0	0	0	128
<i>Single Family</i>	71,424	0	0	0	0	71,424
<i>Commercial</i>	4,768	0	0	0	0	4,768
<i>Government</i>	100	0	0	0	0	100
<i>Religion</i>	180	0	0	0	0	180
<i>Agriculture</i>	161	0	0	0	0	161
Fresno						
<i>Commercial</i>	21,037	16	1	0	0	21,054
<i>Religion</i>	1,505	2	0	0	0	1,507
<i>Agriculture</i>	3,415	6	0	0	0	3,421
<i>Industrial</i>	5,341	6	0	0	0	5,348
<i>Government</i>	291	0	0	0	0	291

		# of Buildings					
		None	Slight	Moderate	Extensive	Complete	Total
Kings	<i>Other Residential</i>	40,921	49	3	0	0	40,973
	<i>Single Family</i>	226,395	30	0	0	0	226,425
	<i>Education</i>	602	0	0	0	0	602
	<i>Commercial</i>	2,317	1	0	0	0	2,318
	<i>Religion</i>	210	0	0	0	0	210
	<i>Agriculture</i>	306	0	0	0	0	306
	<i>Government</i>	72	0	0	0	0	72
	<i>Industrial</i>	555	0	0	0	0	555
	<i>Single Family</i>	36,245	0	0	0	0	36,245
	<i>Other Residential</i>	4,341	1	0	0	0	4,342
Lake	<i>Education</i>	103	0	0	0	0	103
	<i>Agriculture</i>	161	0	0	0	0	161
	<i>Single Family</i>	21,633	0	0	0	0	21,633
	<i>Other Residential</i>	14,601	0	0	0	0	14,601
	<i>Education</i>	68	0	0	0	0	68
	<i>Industrial</i>	354	0	0	0	0	354
	<i>Commercial</i>	2,091	0	0	0	0	2,091
	<i>Religion</i>	140	0	0	0	0	140
	<i>Government</i>	78	0	0	0	0	78
	<i>Commercial</i>	2,890	14	1	0	0	2,905
Madera	<i>Religion</i>	119	0	0	0	0	119
	<i>Government</i>	111	0	0	0	0	111

	# of Buildings					Total
	None	Slight	Moderate	Extensive	Complete	
<i>Agriculture</i>	623	10	1	0	0	634
<i>Other Residential</i>	6,598	35	2	0	0	6,635
<i>Single Family</i>	38,846	66	0	0	0	38,912
<i>Education</i>	115	0	0	0	0	115
<i>Industrial</i>	898	5	0	0	0	903
Marin						
<i>Other Residential</i>	7,865	23	2	0	0	7,890
<i>Government</i>	143	0	0	0	0	143
<i>Education</i>	274	0	0	0	0	274
<i>Commercial</i>	8,242	27	1	0	0	8,270
<i>Religion</i>	318	1	0	0	0	319
<i>Agriculture</i>	189	1	0	0	0	190
<i>Single Family</i>	76,681	43	0	0	0	76,724
<i>Industrial</i>	1,522	12	1	0	0	1,535
Mariposa						
<i>Single Family</i>	8,084	0	0	0	0	8,084
<i>Other Residential</i>	307	0	0	0	0	307
<i>Education</i>	27	0	0	0	0	27
<i>Industrial</i>	94	0	0	0	0	94
<i>Commercial</i>	689	0	0	0	0	689
<i>Agriculture</i>	29	0	0	0	0	29
<i>Religion</i>	36	0	0	0	0	36
<i>Government</i>	33	0	0	0	0	33
Merced						
<i>Education</i>	153	8	1	0	0	163

	# of Buildings					Total
	None	Slight	Moderate	Extensive	Complete	
<i>Government</i>	154	15	2	0	0	171
<i>Commercial</i>	4,021	563	149	19	2	4,754
<i>Agriculture</i>	5,308	1,374	701	232	38	7,653
<i>Religion</i>	292	41	11	1	0	345
<i>Industrial</i>	856	131	33	2	0	1,022
<i>Single Family</i>	56,250	7,004	343	1	0	63,598
<i>Other Residential</i>	8,889	1,392	416	84	6	10,787
Monterey						
<i>Single Family</i>	90,720	156	0	0	0	90,876
<i>Industrial</i>	1,835	14	1	0	0	1,850
<i>Other Residential</i>	19,622	174	13	0	0	19,809
<i>Education</i>	239	0	0	0	0	239
<i>Government</i>	184	1	0	0	0	185
<i>Agriculture</i>	1,812	3	0	0	0	1,815
<i>Commercial</i>	9,187	55	4	0	0	9,246
<i>Religion</i>	577	3	0	0	0	580
Napa						
<i>Commercial</i>	4,005	15	1	0	0	4,021
<i>Agriculture</i>	348	1	0	0	0	349
<i>Religion</i>	147	1	0	0	0	148
<i>Single Family</i>	38,732	29	0	0	0	38,761
<i>Other Residential</i>	6,949	27	1	0	0	6,978
<i>Government</i>	102	1	0	0	0	103
<i>Education</i>	131	0	0	0	0	132

	# of Buildings					Total
	None	Slight	Moderate	Extensive	Complete	
Placer						
<i>Industrial</i>	1,360	6	0	0	0	1,367
<i>Education</i>	231	0	0	0	0	231
<i>Commercial</i>	8,537	1	0	0	0	8,538
<i>Government</i>	377	0	0	0	0	377
<i>Agriculture</i>	258	0	0	0	0	258
<i>Religion</i>	382	0	0	0	0	382
<i>Industrial</i>	2,703	0	0	0	0	2,703
<i>Other Residential</i>	14,841	2	0	0	0	14,843
<i>Single Family</i>	134,719	0	0	0	0	134,719
Sacramento						
<i>Single Family</i>	386,178	658	4	0	0	386,840
<i>Industrial</i>	6,724	28	3	0	0	6,756
<i>Other Residential</i>	56,077	297	38	0	0	56,413
<i>Education</i>	828	1	0	0	0	829
<i>Agriculture</i>	617	3	1	0	0	621
<i>Religion</i>	1,689	12	1	0	0	1,702
<i>Government</i>	609	9	1	0	0	619
<i>Commercial</i>	26,122	148	24	2	0	26,295
San Benito						
<i>Other Residential</i>	1,308	62	5	0	0	1,375
<i>Single Family</i>	14,391	335	1	0	0	14,726
<i>Industrial</i>	311	13	2	0	0	326
<i>Education</i>	41	1	0	0	0	42
<i>Government</i>	42	2	0	0	0	45

	# of Buildings					Total
	None	Slight	Moderate	Extensive	Complete	
<i>Commercial</i>	1,029	45	6	0	0	1,080
<i>Religion</i>	60	3	0	0	0	64
<i>Agriculture</i>	248	4	0	0	0	253
San Francisco						
<i>Single Family</i>	149,821	820	61	1	0	150,703
<i>Other Residential</i>	43,632	831	66	0	0	44,529
<i>Government</i>	277	11	1	0	0	289
<i>Education</i>	563	8	1	0	0	572
<i>Industrial</i>	3,753	96	11	0	0	3,860
<i>Commercial</i>	20,648	635	61	0	0	21,344
<i>Religion</i>	1,323	20	2	0	0	1,345
<i>Agriculture</i>	160	2	0	0	0	162
San Joaquin						
<i>Commercial</i>	9,835	2,252	701	68	9	12,864
<i>Agriculture</i>	589	121	37	6	1	753
<i>Religion</i>	664	155	52	5	0	877
<i>Government</i>	228	54	21	2	0	304
<i>Single Family</i>	139,812	41,369	6,825	676	239	188,922
<i>Other Residential</i>	16,381	4,041	1,117	219	47	21,805
<i>Education</i>	341	43	10	0	0	395
<i>Industrial</i>	3,600	954	332	39	3	4,928
San Mateo						
<i>Religion</i>	717	17	2	0	0	736
<i>Agriculture</i>	526	11	2	0	0	539
<i>Government</i>	290	8	1	0	0	299

	# of Buildings					Total
	None	Slight	Moderate	Extensive	Complete	
<i>Commercial</i>	14,017	348	30	0	0	14,395
<i>Industrial</i>	4,316	140	16	0	0	4,472
<i>Other Residential</i>	21,903	507	43	1	0	22,453
<i>Single Family</i>	158,327	1,595	8	0	0	159,931
<i>Education</i>	486	3	0	0	0	489
Santa Clara						
<i>Other Residential</i>	55,414	3,350	391	6	0	59,160
<i>Single Family</i>	414,390	12,740	89	1	0	427,219
<i>Government</i>	463	33	5	0	0	502
<i>Education</i>	1,153	18	2	0	0	1,173
<i>Industrial</i>	8,761	591	79	2	0	9,433
<i>Commercial</i>	33,467	1,783	214	5	0	35,469
<i>Religion</i>	1,457	74	9	0	0	1,540
<i>Agriculture</i>	838	48	9	0	0	895
Santa Cruz						
<i>Religion</i>	354	4	0	0	0	359
<i>Agriculture</i>	821	16	3	0	0	840
<i>Single Family</i>	68,658	212	0	0	0	68,870
<i>Other Residential</i>	14,674	203	15	0	0	14,892
<i>Industrial</i>	1,794	23	2	0	0	1,819
<i>Education</i>	224	1	0	0	0	225
<i>Commercial</i>	6,615	72	6	0	0	6,694
<i>Government</i>	125	2	0	0	0	127
Solano						
<i>Religion</i>	446	7	1	0	0	454

	# of Buildings					Total
	None	Slight	Moderate	Extensive	Complete	
<i>Agriculture</i>	239	5	1	0	0	245
<i>Government</i>	150	2	0	0	0	152
<i>Commercial</i>	7,149	109	10	0	0	7,268
<i>Single Family</i>	120,253	714	1	0	0	120,968
<i>Industrial</i>	2,041	54	6	0	0	2,101
<i>Other Residential</i>	12,128	176	13	0	0	12,317
<i>Education</i>	224	1	0	0	0	225
Sonoma						
<i>Other Residential</i>	25,019	14	0	0	0	25,033
<i>Government</i>	319	0	0	0	0	319
<i>Education</i>	367	0	0	0	0	367
<i>Religion</i>	576	0	0	0	0	576
<i>Commercial</i>	12,103	7	0	0	0	12,110
<i>Agriculture</i>	1,302	2	0	0	0	1,304
<i>Single Family</i>	142,022	6	0	0	0	142,028
<i>Industrial</i>	3,822	3	0	0	0	3,825
Stanislaus						
<i>Other Residential</i>	15,130	3,513	815	100	11	19,569
<i>Single Family</i>	116,146	24,979	1,594	6	0	142,724
<i>Education</i>	280	23	4	1	0	307
<i>Government</i>	507	134	35	2	1	680
<i>Industrial</i>	2,536	673	230	29	7	3,475
<i>Commercial</i>	7,807	1,842	608	91	22	10,369
<i>Religion</i>	339	82	30	4	0	456
<i>Agriculture</i>	828	273	117	19	2	1,239

	# of Buildings					Total
	None	Slight	Moderate	Extensive	Complete	
Sutter						
<i>Other Residential</i>	3,113	0	0	0	0	3,113
<i>Industrial</i>	636	0	0	0	0	636
<i>Education</i>	62	0	0	0	0	62
<i>Government</i>	77	0	0	0	0	77
<i>Single Family</i>	24,512	0	0	0	0	24,512
<i>Commercial</i>	2,052	0	0	0	0	2,052
<i>Agriculture</i>	1,124	1	0	0	0	1,125
<i>Religion</i>	154	0	0	0	0	154
Tulare						
<i>Commercial</i>	8,873	0	0	0	0	8,873
<i>Agriculture</i>	3,555	0	0	0	0	3,555
<i>Religion</i>	827	0	0	0	0	827
<i>Government</i>	461	0	0	0	0	461
<i>Single Family</i>	112,034	0	0	0	0	112,034
<i>Other Residential</i>	20,022	0	0	0	0	20,022
<i>Industrial</i>	2,148	0	0	0	0	2,148
<i>Education</i>	269	0	0	0	0	269
Tuolumne						
<i>Education</i>	57	0	0	0	0	57
<i>Government</i>	143	0	0	0	0	143
<i>Commercial</i>	1,576	0	0	0	0	1,576
<i>Religion</i>	121	0	0	0	0	121
<i>Agriculture</i>	82	0	0	0	0	82
<i>Industrial</i>	383	0	0	0	0	383

		# of Buildings					
		None	Slight	Moderate	Extensive	Complete	Total
Yolo	<i>Other Residential</i>	4,960	2	0	0	0	4,962
	<i>Single Family</i>	21,645	0	0	0	0	21,645
	<i>Industrial</i>	1,110	7	0	0	0	1,117
	<i>Other Residential</i>	9,816	43	2	0	0	9,861
	<i>Education</i>	131	0	0	0	0	131
	<i>Government</i>	110	1	0	0	0	111
	<i>Single Family</i>	42,506	83	0	0	0	42,589
	<i>Commercial</i>	4,202	22	1	0	0	4,225
	<i>Agriculture</i>	280	1	0	0	0	281
	<i>Religion</i>	241	1	0	0	0	242
Yuba	<i>Government</i>	591	0	0	0	0	591
	<i>Education</i>	54	0	0	0	0	54
	<i>Other Residential</i>	7,021	0	0	0	0	7,021
	<i>Religion</i>	98	0	0	0	0	98
	<i>Commercial</i>	1,199	0	0	0	0	1,199
	<i>Agriculture</i>	92	0	0	0	0	92
	<i>Single Family</i>	18,867	0	0	0	0	18,867
	<i>Industrial</i>	404	0	0	0	0	404
Total	4,307,046	172,600	18,625	1,788	398	4,500,457	
Region Total	4,307,046	172,600	18,625	1,788	398	4,500,457	

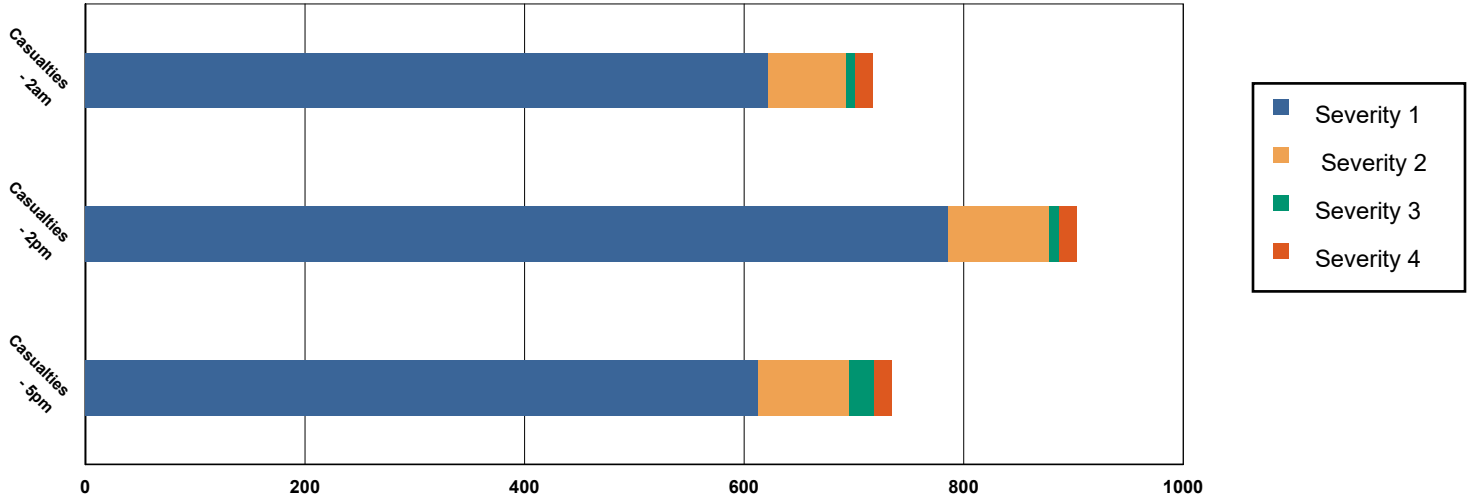
# of Buildings					
None	Slight	Moderate	Extensive	Complete	Total

Totals only reflect data for those census tracts/blocks included in the user's study region and will reflect the entire county/state only if all of the census blocks for that county/states were selected at the time of study region creation.

Casualties Summary Report

May 28, 2024

Region Total Casualties



Injury Severity Level

Severity 1	Severity 2	Severity 3	Severity 4	Total
------------	------------	------------	------------	-------

California

Alameda

Casualties - 2am

	Severity 1	Severity 2	Severity 3	Severity 4	Total
Single Family	45	1	0	0	45
Hotels	0	0	0	0	0
Commuting	0	0	0	0	0
Educational	0	0	0	0	0
Industrial	2	0	0	0	2
Commercial	1	0	0	0	2
Other-Residential	27	1	0	0	28
Total Casualties - 2am	74	2	0	0	77

Casualties - 2pm

Industrial	13	1	0	0	15
Educational	13	1	0	0	14
Other-Residential	8	0	0	0	8
Single Family	11	0	0	0	12
Hotels	0	0	0	0	0
Commuting	0	0	0	0	0
Commercial	88	7	0	1	96

	Injury Severity Level				Total
	Severity 1	Severity 2	Severity 3	Severity 4	
California					
Alameda					
Total Casualties - 2pm	134	9	1	1	144
Casualties - 5pm					
<i>Commuting</i>	1	1	2	0	5
<i>Single Family</i>	16	0	0	0	16
<i>Commercial</i>	62	5	0	1	67
<i>Hotels</i>	0	0	0	0	0
<i>Educational</i>	1	0	0	0	1
<i>Industrial</i>	8	1	0	0	9
<i>Other-Residential</i>	10	1	0	0	10
Total Casualties - 5pm	98	8	2	1	109
Alpine					
Casualties - 2am					
<i>Industrial</i>	0	0	0	0	0
<i>Single Family</i>	0	0	0	0	0
<i>Commercial</i>	0	0	0	0	0
<i>Other-Residential</i>	0	0	0	0	0
<i>Hotels</i>	0	0	0	0	0
<i>Commuting</i>	0	0	0	0	0
<i>Educational</i>	0	0	0	0	0
Total Casualties - 2am	0	0	0	0	0
Casualties - 2pm					
<i>Educational</i>	0	0	0	0	0
<i>Other-Residential</i>	0	0	0	0	0
<i>Single Family</i>	0	0	0	0	0
<i>Hotels</i>	0	0	0	0	0
<i>Commercial</i>	0	0	0	0	0
<i>Commuting</i>	0	0	0	0	0
<i>Industrial</i>	0	0	0	0	0
Total Casualties - 2pm	0	0	0	0	0
Casualties - 5pm					
<i>Industrial</i>	0	0	0	0	0
<i>Other-Residential</i>	0	0	0	0	0
<i>Commuting</i>	0	0	0	0	0
<i>Commercial</i>	0	0	0	0	0
<i>Single Family</i>	0	0	0	0	0
<i>Educational</i>	0	0	0	0	0
<i>Hotels</i>	0	0	0	0	0
Total Casualties - 5pm	0	0	0	0	0
Amador					
Casualties - 2am					
<i>Commercial</i>	0	0	0	0	0

	Injury Severity Level				Total
	Severity 1	Severity 2	Severity 3	Severity 4	
California					
Amador					
Casualties - 2am					
Other-Residential	0	0	0	0	0
Commuting	0	0	0	0	0
Educational	0	0	0	0	0
Single Family	0	0	0	0	0
Hotels	0	0	0	0	0
Industrial	0	0	0	0	0
Total Casualties - 2am	0	0	0	0	0
Casualties - 2pm					
Single Family	0	0	0	0	0
Hotels	0	0	0	0	0
Educational	0	0	0	0	0
Commuting	0	0	0	0	0
Commercial	0	0	0	0	0
Other-Residential	0	0	0	0	0
Industrial	0	0	0	0	0
Total Casualties - 2pm	0	0	0	0	0
Casualties - 5pm					
Commercial	0	0	0	0	0
Commuting	0	0	0	0	0
Other-Residential	0	0	0	0	0
Single Family	0	0	0	0	0
Educational	0	0	0	0	0
Hotels	0	0	0	0	0
Industrial	0	0	0	0	0
Total Casualties - 5pm	0	0	0	0	0
Calaveras					
Casualties - 2am					
Other-Residential	0	0	0	0	0
Commuting	0	0	0	0	0
Commercial	0	0	0	0	0
Single Family	0	0	0	0	0
Hotels	0	0	0	0	0
Educational	0	0	0	0	0
Industrial	0	0	0	0	0
Total Casualties - 2am	0	0	0	0	0
Casualties - 2pm					
Hotels	0	0	0	0	0
Single Family	0	0	0	0	0
Educational	0	0	0	0	0
Commuting	0	0	0	0	0
Commercial	0	0	0	0	0

	Injury Severity Level				Total
	Severity 1	Severity 2	Severity 3	Severity 4	
California					
Calaveras					
Casualties - 2pm					
<i>Industrial</i>	0	0	0	0	0
<i>Other-Residential</i>	0	0	0	0	0
Total Casualties - 2pm	0	0	0	0	0
Casualties - 5pm					
<i>Industrial</i>	0	0	0	0	0
<i>Commercial</i>	0	0	0	0	0
<i>Other-Residential</i>	0	0	0	0	0
<i>Educational</i>	0	0	0	0	0
<i>Hotels</i>	0	0	0	0	0
<i>Commuting</i>	0	0	0	0	0
<i>Single Family</i>	0	0	0	0	0
Total Casualties - 5pm	0	0	0	0	0
Colusa					
Casualties - 2am					
<i>Other-Residential</i>	0	0	0	0	0
<i>Industrial</i>	0	0	0	0	0
<i>Single Family</i>	0	0	0	0	0
<i>Commercial</i>	0	0	0	0	0
<i>Educational</i>	0	0	0	0	0
<i>Commuting</i>	0	0	0	0	0
<i>Hotels</i>	0	0	0	0	0
Total Casualties - 2am	0	0	0	0	0
Casualties - 2pm					
<i>Hotels</i>	0	0	0	0	0
<i>Single Family</i>	0	0	0	0	0
<i>Educational</i>	0	0	0	0	0
<i>Commercial</i>	0	0	0	0	0
<i>Commuting</i>	0	0	0	0	0
<i>Other-Residential</i>	0	0	0	0	0
<i>Industrial</i>	0	0	0	0	0
Total Casualties - 2pm	0	0	0	0	0
Casualties - 5pm					
<i>Industrial</i>	0	0	0	0	0
<i>Commercial</i>	0	0	0	0	0
<i>Other-Residential</i>	0	0	0	0	0
<i>Commuting</i>	0	0	0	0	0
<i>Single Family</i>	0	0	0	0	0
<i>Educational</i>	0	0	0	0	0
<i>Hotels</i>	0	0	0	0	0
Total Casualties - 5pm	0	0	0	0	0

	Injury Severity Level				Total
	Severity 1	Severity 2	Severity 3	Severity 4	
California					
Contra Costa					
Casualties - 2am					
<i>Educational</i>	0	0	0	0	0
<i>Hotels</i>	0	0	0	0	0
<i>Industrial</i>	0	0	0	0	0
<i>Other-Residential</i>	7	0	0	0	7
<i>Single Family</i>	22	0	0	0	22
<i>Commercial</i>	0	0	0	0	0
<i>Commuting</i>	0	0	0	0	0
Total Casualties - 2am	30	0	0	0	30
Casualties - 2pm					
<i>Other-Residential</i>	2	0	0	0	2
<i>Industrial</i>	2	0	0	0	2
<i>Hotels</i>	0	0	0	0	0
<i>Single Family</i>	6	0	0	0	6
<i>Educational</i>	5	0	0	0	5
<i>Commuting</i>	0	0	0	0	0
<i>Commercial</i>	26	1	0	0	28
Total Casualties - 2pm	41	2	0	0	43
Casualties - 5pm					
<i>Educational</i>	0	0	0	0	0
<i>Commuting</i>	0	0	0	0	0
<i>Single Family</i>	8	0	0	0	8
<i>Hotels</i>	0	0	0	0	0
<i>Industrial</i>	1	0	0	0	2
<i>Other-Residential</i>	3	0	0	0	3
<i>Commercial</i>	20	1	0	0	21
Total Casualties - 5pm	32	1	0	0	34
El Dorado					
Casualties - 2am					
<i>Commuting</i>	0	0	0	0	0
<i>Educational</i>	0	0	0	0	0
<i>Single Family</i>	0	0	0	0	0
<i>Hotels</i>	0	0	0	0	0
<i>Other-Residential</i>	0	0	0	0	0
<i>Industrial</i>	0	0	0	0	0
<i>Commercial</i>	0	0	0	0	0
Total Casualties - 2am	0	0	0	0	0
Casualties - 2pm					
<i>Industrial</i>	0	0	0	0	0
<i>Other-Residential</i>	0	0	0	0	0
<i>Single Family</i>	0	0	0	0	0
<i>Hotels</i>	0	0	0	0	0

	Injury Severity Level				Total
	Severity 1	Severity 2	Severity 3	Severity 4	
California					
El Dorado					
Casualties - 2pm					
<i>Educational</i>	0	0	0	0	0
<i>Commuting</i>	0	0	0	0	0
<i>Commercial</i>	0	0	0	0	0
Total Casualties - 2pm	0	0	0	0	0
Casualties - 5pm					
<i>Commercial</i>	0	0	0	0	0
<i>Commuting</i>	0	0	0	0	0
<i>Single Family</i>	0	0	0	0	0
<i>Educational</i>	0	0	0	0	0
<i>Hotels</i>	0	0	0	0	0
<i>Industrial</i>	0	0	0	0	0
<i>Other-Residential</i>	0	0	0	0	0
Total Casualties - 5pm	0	0	0	0	0
Fresno					
Casualties - 2am					
<i>Hotels</i>	0	0	0	0	0
<i>Educational</i>	0	0	0	0	0
<i>Industrial</i>	0	0	0	0	0
<i>Commercial</i>	0	0	0	0	0
<i>Other-Residential</i>	0	0	0	0	0
<i>Single Family</i>	0	0	0	0	0
<i>Commuting</i>	0	0	0	0	0
Total Casualties - 2am	0	0	0	0	0
Casualties - 2pm					
<i>Commercial</i>	0	0	0	0	0
<i>Other-Residential</i>	0	0	0	0	0
<i>Industrial</i>	0	0	0	0	0
<i>Single Family</i>	0	0	0	0	0
<i>Hotels</i>	0	0	0	0	0
<i>Commuting</i>	0	0	0	0	0
<i>Educational</i>	0	0	0	0	0
Total Casualties - 2pm	0	0	0	0	0
Casualties - 5pm					
<i>Educational</i>	0	0	0	0	0
<i>Commuting</i>	0	0	0	0	0
<i>Hotels</i>	0	0	0	0	0
<i>Industrial</i>	0	0	0	0	0
<i>Single Family</i>	0	0	0	0	0
<i>Other-Residential</i>	0	0	0	0	0
<i>Commercial</i>	0	0	0	0	0

	Injury Severity Level				Total
	Severity 1	Severity 2	Severity 3	Severity 4	
California					
Fresno					
Total Casualties - 5pm	0	0	0	0	0
Kings					
Casualties - 2am					
<i>Industrial</i>	0	0	0	0	0
<i>Other-Residential</i>	0	0	0	0	0
<i>Educational</i>	0	0	0	0	0
<i>Commuting</i>	0	0	0	0	0
<i>Commercial</i>	0	0	0	0	0
<i>Single Family</i>	0	0	0	0	0
<i>Hotels</i>	0	0	0	0	0
Total Casualties - 2am	0	0	0	0	0
Casualties - 2pm					
<i>Single Family</i>	0	0	0	0	0
<i>Other-Residential</i>	0	0	0	0	0
<i>Commercial</i>	0	0	0	0	0
<i>Educational</i>	0	0	0	0	0
<i>Commuting</i>	0	0	0	0	0
<i>Hotels</i>	0	0	0	0	0
<i>Industrial</i>	0	0	0	0	0
Total Casualties - 2pm	0	0	0	0	0
Casualties - 5pm					
<i>Single Family</i>	0	0	0	0	0
<i>Commercial</i>	0	0	0	0	0
<i>Commuting</i>	0	0	0	0	0
<i>Other-Residential</i>	0	0	0	0	0
<i>Educational</i>	0	0	0	0	0
<i>Hotels</i>	0	0	0	0	0
<i>Industrial</i>	0	0	0	0	0
Total Casualties - 5pm	0	0	0	0	0
Lake					
Casualties - 2am					
<i>Hotels</i>	0	0	0	0	0
<i>Industrial</i>	0	0	0	0	0
<i>Other-Residential</i>	0	0	0	0	0
<i>Commuting</i>	0	0	0	0	0
<i>Educational</i>	0	0	0	0	0
<i>Single Family</i>	0	0	0	0	0
<i>Commercial</i>	0	0	0	0	0
Total Casualties - 2am	0	0	0	0	0
Casualties - 2pm					
<i>Industrial</i>	0	0	0	0	0

	Injury Severity Level				Total
	Severity 1	Severity 2	Severity 3	Severity 4	
California					
Lake					
Casualties - 2pm					
Single Family	0	0	0	0	0
Commercial	0	0	0	0	0
Other-Residential	0	0	0	0	0
Hotels	0	0	0	0	0
Educational	0	0	0	0	0
Commuting	0	0	0	0	0
Total Casualties - 2pm	0	0	0	0	0
Casualties - 5pm					
Other-Residential	0	0	0	0	0
Industrial	0	0	0	0	0
Commercial	0	0	0	0	0
Educational	0	0	0	0	0
Commuting	0	0	0	0	0
Single Family	0	0	0	0	0
Hotels	0	0	0	0	0
Total Casualties - 5pm	0	0	0	0	0
Madera					
Casualties - 2am					
Hotels	0	0	0	0	0
Educational	0	0	0	0	0
Single Family	0	0	0	0	0
Commuting	0	0	0	0	0
Industrial	0	0	0	0	0
Commercial	0	0	0	0	0
Other-Residential	0	0	0	0	0
Total Casualties - 2am	0	0	0	0	0
Casualties - 2pm					
Industrial	0	0	0	0	0
Commercial	0	0	0	0	0
Other-Residential	0	0	0	0	0
Commuting	0	0	0	0	0
Single Family	0	0	0	0	0
Hotels	0	0	0	0	0
Educational	0	0	0	0	0
Total Casualties - 2pm	0	0	0	0	0
Casualties - 5pm					
Industrial	0	0	0	0	0
Commercial	0	0	0	0	0
Single Family	0	0	0	0	0
Educational	0	0	0	0	0
Other-Residential	0	0	0	0	0

	Injury Severity Level				Total
	Severity 1	Severity 2	Severity 3	Severity 4	
California					
Madera					
Casualties - 5pm					
Commuting	0	0	0	0	0
Hotels	0	0	0	0	0
Total Casualties - 5pm	0	0	0	0	0
Marin					
Casualties - 2am					
Commercial	0	0	0	0	0
Commuting	0	0	0	0	0
Other-Residential	0	0	0	0	0
Educational	0	0	0	0	0
Single Family	0	0	0	0	0
Hotels	0	0	0	0	0
Industrial	0	0	0	0	0
Total Casualties - 2am	0	0	0	0	0
Casualties - 2pm					
Hotels	0	0	0	0	0
Commuting	0	0	0	0	0
Educational	0	0	0	0	0
Industrial	0	0	0	0	0
Other-Residential	0	0	0	0	0
Commercial	0	0	0	0	0
Single Family	0	0	0	0	0
Total Casualties - 2pm	0	0	0	0	0
Casualties - 5pm					
Commuting	0	0	0	0	0
Commercial	0	0	0	0	0
Other-Residential	0	0	0	0	0
Single Family	0	0	0	0	0
Industrial	0	0	0	0	0
Educational	0	0	0	0	0
Hotels	0	0	0	0	0
Total Casualties - 5pm	0	0	0	0	0
Mariposa					
Casualties - 2am					
Commuting	0	0	0	0	0
Single Family	0	0	0	0	0
Commercial	0	0	0	0	0
Hotels	0	0	0	0	0
Educational	0	0	0	0	0
Industrial	0	0	0	0	0
Other-Residential	0	0	0	0	0

	Injury Severity Level				Total
	Severity 1	Severity 2	Severity 3	Severity 4	
California					
Mariposa					
Total Casualties - 2am	0	0	0	0	0
Casualties - 2pm					
<i>Hotels</i>	0	0	0	0	0
<i>Industrial</i>	0	0	0	0	0
<i>Commercial</i>	0	0	0	0	0
<i>Other-Residential</i>	0	0	0	0	0
<i>Educational</i>	0	0	0	0	0
<i>Commuting</i>	0	0	0	0	0
<i>Single Family</i>	0	0	0	0	0
Total Casualties - 2pm	0	0	0	0	0
Casualties - 5pm					
<i>Other-Residential</i>	0	0	0	0	0
<i>Educational</i>	0	0	0	0	0
<i>Commuting</i>	0	0	0	0	0
<i>Hotels</i>	0	0	0	0	0
<i>Single Family</i>	0	0	0	0	0
<i>Commercial</i>	0	0	0	0	0
<i>Industrial</i>	0	0	0	0	0
Total Casualties - 5pm	0	0	0	0	0
Merced					
Casualties - 2am					
<i>Hotels</i>	0	0	0	0	0
<i>Industrial</i>	0	0	0	0	0
<i>Commercial</i>	1	0	0	0	1
<i>Single Family</i>	14	0	0	0	15
<i>Other-Residential</i>	11	1	0	0	12
<i>Educational</i>	0	0	0	0	0
<i>Commuting</i>	0	0	0	0	0
Total Casualties - 2am	26	2	0	0	28
Casualties - 2pm					
<i>Other-Residential</i>	3	0	0	0	4
<i>Industrial</i>	3	0	0	0	4
<i>Commercial</i>	104	16	1	2	125
<i>Commuting</i>	0	0	0	0	0
<i>Hotels</i>	0	0	0	0	0
<i>Educational</i>	5	0	0	0	5
<i>Single Family</i>	4	0	0	0	4
Total Casualties - 2pm	120	18	1	3	141
Casualties - 5pm					
<i>Industrial</i>	2	0	0	0	2
<i>Hotels</i>	0	0	0	0	0

	Injury Severity Level				Total
	Severity 1	Severity 2	Severity 3	Severity 4	
California					
Merced					
Casualties - 5pm					
<i>Educational</i>	0	0	0	0	0
<i>Commuting</i>	1	1	2	0	4
<i>Single Family</i>	5	0	0	0	5
<i>Commercial</i>	85	13	1	2	101
<i>Other-Residential</i>	4	0	0	0	4
Total Casualties - 5pm	96	15	3	2	117
Monterey					
Casualties - 2am					
<i>Other-Residential</i>	1	0	0	0	1
<i>Commuting</i>	0	0	0	0	0
<i>Commercial</i>	0	0	0	0	0
<i>Single Family</i>	0	0	0	0	0
<i>Hotels</i>	0	0	0	0	0
<i>Educational</i>	0	0	0	0	0
<i>Industrial</i>	0	0	0	0	0
Total Casualties - 2am	1	0	0	0	1
Casualties - 2pm					
<i>Commuting</i>	0	0	0	0	0
<i>Commercial</i>	1	0	0	0	1
<i>Single Family</i>	0	0	0	0	0
<i>Hotels</i>	0	0	0	0	0
<i>Educational</i>	0	0	0	0	0
<i>Industrial</i>	0	0	0	0	0
<i>Other-Residential</i>	0	0	0	0	0
Total Casualties - 2pm	1	0	0	0	1
Casualties - 5pm					
<i>Commercial</i>	0	0	0	0	0
<i>Other-Residential</i>	0	0	0	0	0
<i>Industrial</i>	0	0	0	0	0
<i>Hotels</i>	0	0	0	0	0
<i>Educational</i>	0	0	0	0	0
<i>Commuting</i>	0	0	0	0	0
<i>Single Family</i>	0	0	0	0	0
Total Casualties - 5pm	1	0	0	0	1
Napa					
Casualties - 2am					
<i>Commercial</i>	0	0	0	0	0
<i>Other-Residential</i>	0	0	0	0	0
<i>Educational</i>	0	0	0	0	0
<i>Single Family</i>	0	0	0	0	0
<i>Commuting</i>	0	0	0	0	0

	Injury Severity Level				Total
	Severity 1	Severity 2	Severity 3	Severity 4	
California					
Napa					
Casualties - 2am					
<i>Hotels</i>	0	0	0	0	0
<i>Industrial</i>	0	0	0	0	0
Total Casualties - 2am	0	0	0	0	0
Casualties - 2pm					
<i>Educational</i>	0	0	0	0	0
<i>Hotels</i>	0	0	0	0	0
<i>Commuting</i>	0	0	0	0	0
<i>Industrial</i>	0	0	0	0	0
<i>Other-Residential</i>	0	0	0	0	0
<i>Single Family</i>	0	0	0	0	0
<i>Commercial</i>	0	0	0	0	0
Total Casualties - 2pm	0	0	0	0	0
Casualties - 5pm					
<i>Commercial</i>	0	0	0	0	0
<i>Single Family</i>	0	0	0	0	0
<i>Other-Residential</i>	0	0	0	0	0
<i>Commuting</i>	0	0	0	0	0
<i>Industrial</i>	0	0	0	0	0
<i>Educational</i>	0	0	0	0	0
<i>Hotels</i>	0	0	0	0	0
Total Casualties - 5pm	0	0	0	0	0
Placer					
Casualties - 2am					
<i>Hotels</i>	0	0	0	0	0
<i>Educational</i>	0	0	0	0	0
<i>Industrial</i>	0	0	0	0	0
<i>Other-Residential</i>	0	0	0	0	0
<i>Commercial</i>	0	0	0	0	0
<i>Single Family</i>	0	0	0	0	0
<i>Commuting</i>	0	0	0	0	0
Total Casualties - 2am	0	0	0	0	0
Casualties - 2pm					
<i>Other-Residential</i>	0	0	0	0	0
<i>Industrial</i>	0	0	0	0	0
<i>Commercial</i>	0	0	0	0	0
<i>Single Family</i>	0	0	0	0	0
<i>Educational</i>	0	0	0	0	0
<i>Commuting</i>	0	0	0	0	0
<i>Hotels</i>	0	0	0	0	0
Total Casualties - 2pm	0	0	0	0	0

	Injury Severity Level				Total
	Severity 1	Severity 2	Severity 3	Severity 4	
California					
Placer					
Casualties - 5pm					
Single Family	0	0	0	0	0
Hotels	0	0	0	0	0
Commuting	0	0	0	0	0
Educational	0	0	0	0	0
Commercial	0	0	0	0	0
Industrial	0	0	0	0	0
Other-Residential	0	0	0	0	0
Total Casualties - 5pm	0	0	0	0	0
Sacramento					
Casualties - 2am					
Industrial	0	0	0	0	0
Other-Residential	1	0	0	0	1
Commercial	0	0	0	0	0
Single Family	1	0	0	0	1
Hotels	0	0	0	0	0
Commuting	0	0	0	0	0
Educational	0	0	0	0	0
Total Casualties - 2am	2	0	0	0	2
Casualties - 2pm					
Other-Residential	0	0	0	0	0
Commuting	0	0	0	0	0
Single Family	0	0	0	0	0
Commercial	4	0	0	0	5
Hotels	0	0	0	0	0
Educational	0	0	0	0	0
Industrial	0	0	0	0	0
Total Casualties - 2pm	5	0	0	0	6
Casualties - 5pm					
Industrial	0	0	0	0	0
Educational	0	0	0	0	0
Hotels	0	0	0	0	0
Commercial	2	0	0	0	3
Commuting	0	0	0	0	0
Other-Residential	0	0	0	0	0
Single Family	0	0	0	0	0
Total Casualties - 5pm	3	0	0	0	3
San Benito					
Casualties - 2am					
Other-Residential	0	0	0	0	0
Commercial	0	0	0	0	0
Commuting	0	0	0	0	0

	Injury Severity Level				Total
	Severity 1	Severity 2	Severity 3	Severity 4	
California					
San Benito					
Casualties - 2am					
<i>Hotels</i>	0	0	0	0	0
<i>Educational</i>	0	0	0	0	0
<i>Single Family</i>	1	0	0	0	1
<i>Industrial</i>	0	0	0	0	0
Total Casualties - 2am	1	0	0	0	1
Casualties - 2pm					
<i>Hotels</i>	0	0	0	0	0
<i>Educational</i>	0	0	0	0	0
<i>Industrial</i>	0	0	0	0	0
<i>Other-Residential</i>	0	0	0	0	0
<i>Commercial</i>	0	0	0	0	0
<i>Commuting</i>	0	0	0	0	0
<i>Single Family</i>	0	0	0	0	0
Total Casualties - 2pm	1	0	0	0	1
Casualties - 5pm					
<i>Commuting</i>	0	0	0	0	0
<i>Commercial</i>	0	0	0	0	0
<i>Other-Residential</i>	0	0	0	0	0
<i>Single Family</i>	0	0	0	0	0
<i>Industrial</i>	0	0	0	0	0
<i>Educational</i>	0	0	0	0	0
<i>Hotels</i>	0	0	0	0	0
Total Casualties - 5pm	1	0	0	0	1
San Francisco					
Casualties - 2am					
<i>Industrial</i>	0	0	0	0	0
<i>Hotels</i>	0	0	0	0	0
<i>Commercial</i>	0	0	0	0	0
<i>Other-Residential</i>	9	0	0	0	9
<i>Commuting</i>	0	0	0	0	0
<i>Educational</i>	0	0	0	0	0
<i>Single Family</i>	2	0	0	0	2
Total Casualties - 2am	11	0	0	0	11
Casualties - 2pm					
<i>Commercial</i>	13	1	0	0	13
<i>Industrial</i>	1	0	0	0	1
<i>Other-Residential</i>	3	0	0	0	3
<i>Single Family</i>	0	0	0	0	0
<i>Hotels</i>	0	0	0	0	0
<i>Commuting</i>	0	0	0	0	0
<i>Educational</i>	1	0	0	0	2

Injury Severity Level

Severity 1 Severity 2 Severity 3 Severity 4 Total

California

San Francisco

	Severity 1	Severity 2	Severity 3	Severity 4	Total
Total Casualties - 2pm	18	1	0	0	19
Casualties - 5pm					
<i>Educational</i>	1	0	0	0	1
<i>Hotels</i>	0	0	0	0	0
<i>Industrial</i>	0	0	0	0	0
<i>Commuting</i>	0	0	0	0	0
<i>Commercial</i>	7	0	0	0	8
<i>Other-Residential</i>	3	0	0	0	3
<i>Single Family</i>	1	0	0	0	1
Total Casualties - 5pm	12	1	0	0	13

San Joaquin

	Severity 1	Severity 2	Severity 3	Severity 4	Total
Casualties - 2am					
<i>Educational</i>	0	0	0	0	0
<i>Commuting</i>	0	0	0	0	0
<i>Hotels</i>	0	0	0	0	0
<i>Commercial</i>	1	0	0	0	2
<i>Single Family</i>	264	45	6	11	326
<i>Industrial</i>	3	0	0	0	3
<i>Other-Residential</i>	74	14	2	3	93
Total Casualties - 2am	342	59	8	15	423

	Severity 1	Severity 2	Severity 3	Severity 4	Total
Casualties - 2pm					
<i>Industrial</i>	19	2	0	0	21
<i>Other-Residential</i>	26	5	1	1	32
<i>Educational</i>	20	1	0	0	22
<i>Single Family</i>	88	16	2	4	110
<i>Hotels</i>	0	0	0	0	0
<i>Commuting</i>	0	0	0	0	1
<i>Commercial</i>	90	11	1	2	103
Total Casualties - 2pm	243	36	4	7	290

	Severity 1	Severity 2	Severity 3	Severity 4	Total
Casualties - 5pm					
<i>Commuting</i>	4	5	8	2	18
<i>Single Family</i>	103	19	2	5	129
<i>Educational</i>	1	0	0	0	1
<i>Hotels</i>	0	0	0	0	0
<i>Industrial</i>	12	1	0	0	13
<i>Commercial</i>	63	7	1	1	72
<i>Other-Residential</i>	29	6	1	1	36
Total Casualties - 5pm	211	38	12	9	270

San Mateo

	Severity 1	Severity 2	Severity 3	Severity 4	Total
Casualties - 2am					
<i>Industrial</i>	0	0	0	0	0

	Injury Severity Level				Total
	Severity 1	Severity 2	Severity 3	Severity 4	
California					
San Mateo					
Casualties - 2am					
<i>Other-Residential</i>	3	0	0	0	3
<i>Single Family</i>	3	0	0	0	3
<i>Commercial</i>	0	0	0	0	0
<i>Educational</i>	0	0	0	0	0
<i>Commuting</i>	0	0	0	0	0
<i>Hotels</i>	0	0	0	0	0
Total Casualties - 2am	6	0	0	0	6
Casualties - 2pm					
<i>Other-Residential</i>	1	0	0	0	1
<i>Single Family</i>	1	0	0	0	1
<i>Commuting</i>	0	0	0	0	0
<i>Commercial</i>	7	0	0	0	7
<i>Educational</i>	1	0	0	0	1
<i>Hotels</i>	0	0	0	0	0
<i>Industrial</i>	1	0	0	0	1
Total Casualties - 2pm	10	0	0	0	10
Casualties - 5pm					
<i>Commercial</i>	4	0	0	0	4
<i>Industrial</i>	1	0	0	0	1
<i>Other-Residential</i>	1	0	0	0	1
<i>Single Family</i>	1	0	0	0	1
<i>Educational</i>	0	0	0	0	0
<i>Commuting</i>	0	0	0	0	0
<i>Hotels</i>	0	0	0	0	0
Total Casualties - 5pm	7	0	0	0	7
Santa Clara					
Casualties - 2am					
<i>Commuting</i>	0	0	0	0	0
<i>Educational</i>	0	0	0	0	0
<i>Single Family</i>	21	0	0	0	22
<i>Hotels</i>	0	0	0	0	0
<i>Industrial</i>	1	0	0	0	1
<i>Commercial</i>	0	0	0	0	0
<i>Other-Residential</i>	18	1	0	0	18
Total Casualties - 2am	41	1	0	0	41
Casualties - 2pm					
<i>Industrial</i>	7	0	0	0	7
<i>Commercial</i>	28	1	0	0	30
<i>Single Family</i>	6	0	0	0	6
<i>Commuting</i>	0	0	0	0	0
<i>Hotels</i>	0	0	0	0	0

	Injury Severity Level				Total
	Severity 1	Severity 2	Severity 3	Severity 4	
California					
Santa Clara					
Casualties - 2pm					
Other-Residential	5	0	0	0	5
Educational	6	0	0	0	6
Total Casualties - 2pm	51	2	0	0	53
Casualties - 5pm					
Industrial	4	0	0	0	4
Hotels	0	0	0	0	0
Other-Residential	6	0	0	0	7
Commercial	19	1	0	0	20
Commuting	0	0	0	0	0
Single Family	8	0	0	0	8
Educational	1	0	0	0	1
Total Casualties - 5pm	38	1	0	0	40
Santa Cruz					
Casualties - 2am					
Hotels	0	0	0	0	0
Educational	0	0	0	0	0
Industrial	0	0	0	0	0
Other-Residential	1	0	0	0	1
Single Family	0	0	0	0	0
Commercial	0	0	0	0	0
Commuting	0	0	0	0	0
Total Casualties - 2am	1	0	0	0	1
Casualties - 2pm					
Industrial	0	0	0	0	0
Other-Residential	0	0	0	0	0
Commercial	1	0	0	0	1
Commuting	0	0	0	0	0
Educational	0	0	0	0	0
Single Family	0	0	0	0	0
Hotels	0	0	0	0	0
Total Casualties - 2pm	2	0	0	0	2
Casualties - 5pm					
Industrial	0	0	0	0	0
Other-Residential	0	0	0	0	0
Commercial	1	0	0	0	1
Commuting	0	0	0	0	0
Single Family	0	0	0	0	0
Hotels	0	0	0	0	0
Educational	0	0	0	0	0
Total Casualties - 5pm	1	0	0	0	1

	Injury Severity Level				Total
	Severity 1	Severity 2	Severity 3	Severity 4	
California					
Solano					
Casualties - 2am					
<i>Industrial</i>	0	0	0	0	0
<i>Other-Residential</i>	1	0	0	0	1
<i>Commercial</i>	0	0	0	0	0
<i>Educational</i>	0	0	0	0	0
<i>Commuting</i>	0	0	0	0	0
<i>Single Family</i>	1	0	0	0	1
<i>Hotels</i>	0	0	0	0	0
Total Casualties - 2am	2	0	0	0	2
Casualties - 2pm					
<i>Single Family</i>	0	0	0	0	0
<i>Other-Residential</i>	0	0	0	0	0
<i>Commercial</i>	1	0	0	0	1
<i>Educational</i>	0	0	0	0	0
<i>Commuting</i>	0	0	0	0	0
<i>Hotels</i>	0	0	0	0	0
<i>Industrial</i>	0	0	0	0	0
Total Casualties - 2pm	2	0	0	0	2
Casualties - 5pm					
<i>Commercial</i>	1	0	0	0	1
<i>Other-Residential</i>	0	0	0	0	0
<i>Single Family</i>	0	0	0	0	0
<i>Educational</i>	0	0	0	0	0
<i>Commuting</i>	0	0	0	0	0
<i>Hotels</i>	0	0	0	0	0
<i>Industrial</i>	0	0	0	0	0
Total Casualties - 5pm	1	0	0	0	2
Sonoma					
Casualties - 2am					
<i>Single Family</i>	0	0	0	0	0
<i>Other-Residential</i>	0	0	0	0	0
<i>Commercial</i>	0	0	0	0	0
<i>Commuting</i>	0	0	0	0	0
<i>Hotels</i>	0	0	0	0	0
<i>Educational</i>	0	0	0	0	0
<i>Industrial</i>	0	0	0	0	0
Total Casualties - 2am	0	0	0	0	0
Casualties - 2pm					
<i>Single Family</i>	0	0	0	0	0
<i>Commuting</i>	0	0	0	0	0
<i>Educational</i>	0	0	0	0	0
<i>Hotels</i>	0	0	0	0	0

	Injury Severity Level				Total
	Severity 1	Severity 2	Severity 3	Severity 4	
California					
Sonoma					
Casualties - 2pm					
<i>Industrial</i>	0	0	0	0	0
<i>Other-Residential</i>	0	0	0	0	0
<i>Commercial</i>	0	0	0	0	0
Total Casualties - 2pm	0	0	0	0	0
Casualties - 5pm					
<i>Single Family</i>	0	0	0	0	0
<i>Commercial</i>	0	0	0	0	0
<i>Commuting</i>	0	0	0	0	0
<i>Hotels</i>	0	0	0	0	0
<i>Educational</i>	0	0	0	0	0
<i>Industrial</i>	0	0	0	0	0
<i>Other-Residential</i>	0	0	0	0	0
Total Casualties - 5pm	0	0	0	0	0
Stanislaus					
Casualties - 2am					
<i>Hotels</i>	0	0	0	0	0
<i>Industrial</i>	2	0	0	0	2
<i>Commercial</i>	1	0	0	0	2
<i>Single Family</i>	47	1	0	0	48
<i>Other-Residential</i>	36	4	0	1	41
<i>Commuting</i>	0	0	0	0	0
<i>Educational</i>	0	0	0	0	0
Total Casualties - 2am	85	6	0	1	93
Casualties - 2pm					
<i>Industrial</i>	11	1	0	0	13
<i>Other-Residential</i>	11	1	0	0	13
<i>Commercial</i>	95	17	2	4	118
<i>Commuting</i>	0	0	0	0	1
<i>Educational</i>	24	4	0	1	29
<i>Single Family</i>	14	0	0	0	14
<i>Hotels</i>	0	0	0	0	0
Total Casualties - 2pm	156	24	3	5	188
Casualties - 5pm					
<i>Industrial</i>	7	1	0	0	8
<i>Other-Residential</i>	13	2	0	0	15
<i>Commuting</i>	2	3	4	1	9
<i>Single Family</i>	17	1	0	0	17
<i>Commercial</i>	69	12	2	3	86
<i>Hotels</i>	0	0	0	0	0
<i>Educational</i>	1	0	0	0	1

	Injury Severity Level				Total
	Severity 1	Severity 2	Severity 3	Severity 4	
California					
Stanislaus					
Total Casualties - 5pm	109	18	6	4	137
Sutter					
Casualties - 2am					
<i>Educational</i>	0	0	0	0	0
<i>Commuting</i>	0	0	0	0	0
<i>Hotels</i>	0	0	0	0	0
<i>Industrial</i>	0	0	0	0	0
<i>Other-Residential</i>	0	0	0	0	0
<i>Single Family</i>	0	0	0	0	0
<i>Commercial</i>	0	0	0	0	0
Total Casualties - 2am	0	0	0	0	0
Casualties - 2pm					
<i>Industrial</i>	0	0	0	0	0
<i>Commuting</i>	0	0	0	0	0
<i>Other-Residential</i>	0	0	0	0	0
<i>Single Family</i>	0	0	0	0	0
<i>Commercial</i>	0	0	0	0	0
<i>Hotels</i>	0	0	0	0	0
<i>Educational</i>	0	0	0	0	0
Total Casualties - 2pm	0	0	0	0	0
Casualties - 5pm					
<i>Commuting</i>	0	0	0	0	0
<i>Commercial</i>	0	0	0	0	0
<i>Educational</i>	0	0	0	0	0
<i>Single Family</i>	0	0	0	0	0
<i>Hotels</i>	0	0	0	0	0
<i>Industrial</i>	0	0	0	0	0
<i>Other-Residential</i>	0	0	0	0	0
Total Casualties - 5pm	0	0	0	0	0
Tulare					
Casualties - 2am					
<i>Commercial</i>	0	0	0	0	0
<i>Commuting</i>	0	0	0	0	0
<i>Single Family</i>	0	0	0	0	0
<i>Educational</i>	0	0	0	0	0
<i>Hotels</i>	0	0	0	0	0
<i>Industrial</i>	0	0	0	0	0
<i>Other-Residential</i>	0	0	0	0	0
Total Casualties - 2am	0	0	0	0	0
Casualties - 2pm					
<i>Industrial</i>	0	0	0	0	0

	Injury Severity Level				Total
	Severity 1	Severity 2	Severity 3	Severity 4	
California					
Tulare					
Casualties - 2pm					
<i>Hotels</i>	0	0	0	0	0
<i>Commercial</i>	0	0	0	0	0
<i>Other-Residential</i>	0	0	0	0	0
<i>Educational</i>	0	0	0	0	0
<i>Commuting</i>	0	0	0	0	0
<i>Single Family</i>	0	0	0	0	0
Total Casualties - 2pm	0	0	0	0	0
Casualties - 5pm					
<i>Other-Residential</i>	0	0	0	0	0
<i>Commercial</i>	0	0	0	0	0
<i>Single Family</i>	0	0	0	0	0
<i>Hotels</i>	0	0	0	0	0
<i>Commuting</i>	0	0	0	0	0
<i>Educational</i>	0	0	0	0	0
<i>Industrial</i>	0	0	0	0	0
Total Casualties - 5pm	0	0	0	0	0
Tuolumne					
Casualties - 2am					
<i>Other-Residential</i>	0	0	0	0	0
<i>Industrial</i>	0	0	0	0	0
<i>Commercial</i>	0	0	0	0	0
<i>Commuting</i>	0	0	0	0	0
<i>Single Family</i>	0	0	0	0	0
<i>Educational</i>	0	0	0	0	0
<i>Hotels</i>	0	0	0	0	0
Total Casualties - 2am	0	0	0	0	0
Casualties - 2pm					
<i>Other-Residential</i>	0	0	0	0	0
<i>Commercial</i>	0	0	0	0	0
<i>Single Family</i>	0	0	0	0	0
<i>Educational</i>	0	0	0	0	0
<i>Commuting</i>	0	0	0	0	0
<i>Industrial</i>	0	0	0	0	0
<i>Hotels</i>	0	0	0	0	0
Total Casualties - 2pm	0	0	0	0	0
Casualties - 5pm					
<i>Industrial</i>	0	0	0	0	0
<i>Other-Residential</i>	0	0	0	0	0
<i>Commercial</i>	0	0	0	0	0
<i>Hotels</i>	0	0	0	0	0
<i>Commuting</i>	0	0	0	0	0

	Injury Severity Level				Total
	Severity 1	Severity 2	Severity 3	Severity 4	
California					
Tuolumne					
Casualties - 5pm					
<i>Educational</i>	0	0	0	0	0
<i>Single Family</i>	0	0	0	0	0
Total Casualties - 5pm	0	0	0	0	0
Yolo					
Casualties - 2am					
<i>Single Family</i>	0	0	0	0	0
<i>Other-Residential</i>	0	0	0	0	0
<i>Commercial</i>	0	0	0	0	0
<i>Educational</i>	0	0	0	0	0
<i>Commuting</i>	0	0	0	0	0
<i>Hotels</i>	0	0	0	0	0
<i>Industrial</i>	0	0	0	0	0
Total Casualties - 2am	0	0	0	0	0
Casualties - 2pm					
<i>Industrial</i>	0	0	0	0	0
<i>Hotels</i>	0	0	0	0	0
<i>Educational</i>	0	0	0	0	0
<i>Commuting</i>	0	0	0	0	0
<i>Commercial</i>	0	0	0	0	0
<i>Other-Residential</i>	0	0	0	0	0
<i>Single Family</i>	0	0	0	0	0
Total Casualties - 2pm	0	0	0	0	0
Casualties - 5pm					
<i>Other-Residential</i>	0	0	0	0	0
<i>Single Family</i>	0	0	0	0	0
<i>Commuting</i>	0	0	0	0	0
<i>Commercial</i>	0	0	0	0	0
<i>Hotels</i>	0	0	0	0	0
<i>Educational</i>	0	0	0	0	0
<i>Industrial</i>	0	0	0	0	0
Total Casualties - 5pm	0	0	0	0	0
Yuba					
Casualties - 2am					
<i>Industrial</i>	0	0	0	0	0
<i>Other-Residential</i>	0	0	0	0	0
<i>Commercial</i>	0	0	0	0	0
<i>Educational</i>	0	0	0	0	0
<i>Single Family</i>	0	0	0	0	0
<i>Commuting</i>	0	0	0	0	0
<i>Hotels</i>	0	0	0	0	0

	Injury Severity Level				Total
	Severity 1	Severity 2	Severity 3	Severity 4	
California					
Yuba					
Total Casualties - 2am	0	0	0	0	0
Casualties - 2pm					
Commercial	0	0	0	0	0
Commuting	0	0	0	0	0
Single Family	0	0	0	0	0
Other-Residential	0	0	0	0	0
Industrial	0	0	0	0	0
Hotels	0	0	0	0	0
Educational	0	0	0	0	0
Total Casualties - 2pm	0	0	0	0	0
Casualties - 5pm					
Hotels	0	0	0	0	0
Educational	0	0	0	0	0
Industrial	0	0	0	0	0
Other-Residential	0	0	0	0	0
Single Family	0	0	0	0	0
Commercial	0	0	0	0	0
Commuting	0	0	0	0	0
Total Casualties - 5pm	0	0	0	0	0
Region Total	NA	NA	NA	NA	NA

Totals only reflect data for those census tracts/blocks included in the user's study region and will reflect the entire county/state only if all of the census blocks for that county/states were selected at the time of study region creation.

Debris Summary Report

May 28, 2024

All values are in thousands of tons.

	Brick, Wood & Others	Concrete & Steel	Total
California			
Fresno	0	0	1
Alameda	80	88	169
Solano	2	2	4
San Mateo	6	5	10
Tuolumne	0	0	0
Kings	0	0	0
San Joaquin	228	203	432
Madera	0	0	1
Tulare	0	0	0
Colusa	0	0	0
Napa	0	0	0
Contra Costa	26	18	44
El Dorado	0	0	0
Amador	0	0	0
Santa Cruz	2	1	2
Lake	0	0	0
Monterey	1	0	2
Sacramento	3	2	5
Mariposa	0	0	0

	Brick, Wood & Others	Concrete & Steel	Total
Yolo	0	0	1
Calaveras	0	0	0
Yuba	0	0	0
Alpine	0	0	0
Stanislaus	91	163	254
Sonoma	0	0	0
Santa Clara	35	28	63
San Benito	1	1	2
San Francisco	23	4	26
Merced	42	100	142
Placer	0	0	0
Marin	0	0	0
Sutter	0	0	0
Total	542	616	1,158
Region Total	542	616	1,158

Totals only reflect data for those census tracts/blocks included in the user's study region and will reflect the entire county/state only if all of the census blocks for that county/states were selected at the time of study region creation.

Direct Economic Losses For Buildings

May 28, 2024

All values are in thousands of dollars

	Capital Stock Losses				Loss Ratio %	Income Losses				Total Loss
	Cost Structural Damage	Cost Non-struct. Damage	Cost Contents Damage	Inventory Loss		Relocation Loss	Capital Related Loss	Wages Losses	Rental Income Loss	
California										
Contra Costa	61,193	510,790	236,269	17,423	0.26	9,449	6,115	9,084	8,831	859,155
Napa	391	4,699	2,484	321	0.02	52	64	78	85	8,174
Colusa	2	39	27	6	0.00	0	0	0	1	74
Alameda	188,435	1,383,018	689,152	57,908	0.47	48,353	33,742	46,498	36,504	2,483,610
San Joaquin	370,541	1,888,784	932,118	97,349	1.62	150,282	52,659	63,777	67,234	3,622,744
Tuolumne	4	239	149	12	0.00	0	0	1	1	407
Tulare	0	39	28	8	0.00	0	0	0	0	75
Madera	749	7,250	4,069	882	0.03	86	54	63	103	13,257
Fresno	455	7,971	5,024	903	0.01	64	74	74	79	14,645

	Capital Stock Losses				Loss Ratio %	Income Losses				Total Loss
	Cost Structural Damage	Cost Non-struct. Damage	Cost Contents Damage	Inventory Loss		Relocation Loss	Capital Related Loss	Wages Losses	Rental Income Loss	
Kings	9	382	256	29	0.00	1	3	4	3	686
Solano	3,860	45,057	24,400	2,746	0.06	566	561	708	706	78,604
San Mateo	12,910	127,906	63,476	5,111	0.09	1,843	1,885	2,173	3,175	218,478
Yolo	690	9,688	5,411	630	0.02	79	104	123	140	16,865
San Benito	1,888	15,671	7,406	806	0.13	300	238	280	249	26,838
San Francisco	17,281	60,186	34,466	2,487	0.05	3,907	3,068	3,466	6,647	131,508
Stanislaus	207,374	1,030,591	523,571	67,460	1.23	68,515	32,372	38,370	39,246	2,007,499
Sutter	7	114	79	27	0.00	0	0	0	0	227
Santa Clara	75,801	701,543	365,878	31,529	0.20	12,324	12,723	14,574	15,543	1,229,914
Sonoma	159	2,553	1,587	254	0.00	19	24	28	31	4,656
Calaveras	46	527	358	110	0.00	5	11	11	7	1,075
Yuba	1	50	31	3	0.00	0	0	0	0	86
Alpine	0	0	0	0	0.00	0	0	0	0	0
Merced	175,245	345,094	197,209	80,945	1.01	27,492	14,786	13,207	8,995	862,974
Placer	16	1,119	753	81	0.00	2	4	4	6	1,986
Marin	407	6,032	3,329	322	0.01	49	74	76	94	10,383
El Dorado	0	89	65	4	0.00	0	0	0	0	158
Lake	0	1	0	0	0.00	0	0	0	0	1

	Capital Stock Losses				Loss Ratio %	Income Losses				Total Loss
	Cost Structural Damage	Cost Non-struct. Damage	Cost Contents Damage	Inventory Loss		Relocation Loss	Capital Related Loss	Wages Losses	Rental Income Loss	
Santa Cruz	2,223	22,895	12,907	2,253	0.05	403	424	524	436	42,066
Mariposa	1	59	38	3	0.00	0	2	1	1	104
Amador	8	224	138	16	0.00	1	3	2	3	394
Sacramento	4,563	47,843	24,778	2,373	0.02	1,086	1,321	1,584	1,353	84,900
Monterey	1,266	18,316	10,852	1,752	0.03	202	165	186	286	33,024
Total	1,125,526	6,238,768	3,146,308	373,753	0.17	325,081	160,477	194,897	189,758	11,754,567
Region Total	1,125,526	6,238,768	3,146,308	373,753	0.17	325,081	160,477	194,897	189,758	11,754,567

Totals only reflect data for those census tracts/blocks included in the user's study region and will reflect the entire county/state only if all of the census blocks for that county/states were selected at the time of study region creation.

Direct Economic Loss For Transportation

May 28, 2024

All values are in thousands of dollars

	Highway	Railway	Light Rail	Bus Facility	Ports	Ferries	Airport	Total
California								
Alameda								
Segments	0	0	0					0
Bridges	9,506	3,252	0					12,758
Tunnels	9	0	0					9
Facilities		2,132	0	95	8,005	164	17,261	27,658
Total	9,515	5,384	0	95	8,005	164	17,261	40,425
Alpine								
Segments	0	0	0					0
Bridges	0	0	0					0
Tunnels	0	0	0					0
Facilities		0	0	0	0	0	6	6
Total	0	0	0	0	0	0	6	6
Amador								
Segments	0	0	0					0
Bridges	0	0	0					0
Tunnels	0	0	0					0
Facilities		0	0	0	0	0	51	51

	Highway	Railway	Light Rail	Bus Facility	Ports	Ferries	Airport	Total
Total	0	0	0	0	0	0	51	51
Calaveras								
Segments	0	0	0					0
Bridges	0	0	0					0
Tunnels	0	0	0					0
Facilities		0	0	0	0	0	102	102
Total	0	0	0	0	0	0	102	102
Colusa								
Segments	0	0	0					0
Bridges	0	0	0					0
Tunnels	0	0	0					0
Facilities		0	0	0	0	0	0	0
Total	0	0	0	0	0	0	0	0
Contra Costa								
Segments	0	0	0					0
Bridges	1,714	581	0					2,295
Tunnels	3	0	0					3
Facilities		1,109	1,096	0	13,450	497	1,965	18,116
Total	1,718	1,690	1,096	0	13,450	497	1,965	20,414
El Dorado								
Segments	0	0	0					0
Bridges	0	0	0					0
Tunnels	0	0	0					0
Facilities		0	0	26	0	0	191	217

	Highway	Railway	Light Rail	Bus Facility	Ports	Ferries	Airport	Total
Total	0	0	0	26	0	0	191	217
Fresno								
Segments	0	0	0					0
Bridges	63	1	0					64
Tunnels	0	0	0					0
Facilities		231	0	21	0	0	1,306	1,558
Total	63	231	0	21	0	0	1,306	1,622
Kings								
Segments	0	0	0					0
Bridges	0	0	0					0
Tunnels	0	0	0					0
Facilities		105	0	41	0	0	359	506
Total	0	105	0	41	0	0	359	506
Lake								
Segments	0	0	0					0
Bridges	0	0	0					0
Tunnels	0	0	0					0
Facilities		0	0	0	0	0	6	6
Total	0	0	0	0	0	0	6	6
Madera								
Segments	0	0	0					0
Bridges	23	0	0					23
Tunnels	0	0	0					0
Facilities		26	0	21	0	0	268	315

	Highway	Railway	Light Rail	Bus Facility	Ports	Ferries	Airport	Total
Total	23	26	0	21	0	0	268	338
Marin								
Segments	0	0	0					0
Bridges	260	0	0					260
Tunnels	0	0	0					0
Facilities		0	0	92	1,001	64	51	1,208
Total	260	0	0	92	1,001	64	51	1,468
Mariposa								
Segments	0	0	0					0
Bridges	0	0	0					0
Tunnels	0	0	0					0
Facilities		0	0	86	0	0	51	137
Total	0	0	0	86	0	0	51	137
Merced								
Segments	0	0	0					0
Bridges	8,359	2,192	0					10,551
Tunnels	0	0	0					0
Facilities		218	0	91	0	0	4,413	4,722
Total	8,359	2,410	0	91	0	0	4,413	15,272
Monterey								
Segments	0	0	0					0
Bridges	25	0	0					25
Tunnels	0	0	0					0
Facilities		109	0	336	110	0	857	1,412

	Highway	Railway	Light Rail	Bus Facility	Ports	Ferries	Airport	Total
Total	25	109	0	336	110	0	857	1,437
Napa								
<i>Segments</i>	0	0	0					0
<i>Bridges</i>	3	2	0					5
<i>Tunnels</i>	0	0	0					0
<i>Facilities</i>		0	0	22	230	0	180	431
Total	3	2	0	22	230	0	180	436
Placer								
<i>Segments</i>	0	0	0					0
<i>Bridges</i>	0	0	0					0
<i>Tunnels</i>	0	0	0					0
<i>Facilities</i>		54	0	0	0	0	62	117
Total	0	54	0	0	0	0	62	117
Sacramento								
<i>Segments</i>	0	0	0					0
<i>Bridges</i>	377	0	0					377
<i>Tunnels</i>	0	0	0					0
<i>Facilities</i>		26	3,024	43	4,020	100	4,364	11,577
Total	377	26	3,024	43	4,020	100	4,364	11,955
San Benito								
<i>Segments</i>	0	0	0					0
<i>Bridges</i>	22	1	0					22
<i>Tunnels</i>	0	0	0					0
<i>Facilities</i>		0	0	0	0	0	617	617

	Highway	Railway	Light Rail	Bus Facility	Ports	Ferries	Airport	Total
Total	22	1	0	0	0	0	617	640
San Francisco								
<i>Segments</i>	0	0	0					0
<i>Bridges</i>	744	0	0					745
<i>Tunnels</i>	1	0	0					1
<i>Facilities</i>		0	74,133	207	8,480	177	728	83,725
Total	745	0	74,133	207	8,480	177	728	84,470
San Joaquin								
<i>Segments</i>	0	0	0					0
<i>Bridges</i>	42,399	4,005	0					46,404
<i>Tunnels</i>	0	0	0					0
<i>Facilities</i>		4,247	0	247	19,946	688	8,529	33,657
Total	42,399	8,252	0	247	19,946	688	8,529	80,061
San Mateo								
<i>Segments</i>	0	0	0					0
<i>Bridges</i>	2,172	2	0					2,174
<i>Tunnels</i>	0	0	0					0
<i>Facilities</i>		0	0	0	3,351	0	37,271	40,622
Total	2,172	2	0	0	3,351	0	37,271	42,797
Santa Clara								
<i>Segments</i>	0	0	0					0
<i>Bridges</i>	1,934	29	0					1,963
<i>Tunnels</i>	5	0	0					5
<i>Facilities</i>		804	35,743	281	1,438	0	27,233	65,499

	Highway	Railway	Light Rail	Bus Facility	Ports	Ferries	Airport	Total
Total	1,939	832	35,743	281	1,438	0	27,233	67,467
Santa Cruz								
<i>Segments</i>	0	0	0					0
<i>Bridges</i>	24	0	0					24
<i>Tunnels</i>	0	0	0					0
<i>Facilities</i>		0	0	191	37	0	1,096	1,324
Total	24	0	0	191	37	0	1,096	1,348
Solano								
<i>Segments</i>	0	0	0					0
<i>Bridges</i>	271	19	0					290
<i>Tunnels</i>	0	0	0					0
<i>Facilities</i>		328	0	278	8,073	356	563	9,598
Total	271	347	0	278	8,073	356	563	9,888
Sonoma								
<i>Segments</i>	0	0	0					0
<i>Bridges</i>	16	1	0					16
<i>Tunnels</i>	0	0	0					0
<i>Facilities</i>		0	0	23	377	0	368	768
Total	16	1	0	23	377	0	368	784
Stanislaus								
<i>Segments</i>	0	0	0					0
<i>Bridges</i>	14,135	3,113	0					17,248
<i>Tunnels</i>	0	0	0					0
<i>Facilities</i>		1,393	0	493	0	0	3,315	5,201

	Highway	Railway	Light Rail	Bus Facility	Ports	Ferries	Airport	Total
Total	14,135	4,507	0	493	0	0	3,315	22,450
Sutter								
Segments	0	0	0					0
Bridges	0	0	0					0
Tunnels	0	0	0					0
Facilities		0	0	0	0	0	0	0
Total	0	0	0	0	0	0	0	0
Tulare								
Segments	0	0	0					0
Bridges	0	0	0					0
Tunnels	0	0	0					0
Facilities		0	0	2	0	0	11	14
Total	0	0	0	2	0	0	11	14
Tuolumne								
Segments	0	0	0					0
Bridges	0	0	0					0
Tunnels	0	0	0					0
Facilities		0	0	0	0	0	153	153
Total	0	0	0	0	0	0	153	153
Yolo								
Segments	0	0	0					0
Bridges	297	0	0					297
Tunnels	0	0	0					0
Facilities		128	0	0	744	0	153	1,025

	Highway	Railway	Light Rail	Bus Facility	Ports	Ferries	Airport	Total
Total	297	128	0	0	744	0	153	1,322
Yuba								
<i>Segments</i>	0	0	0					0
<i>Bridges</i>	0	0	0					0
<i>Tunnels</i>	0	0	0					0
<i>Facilities</i>		0	0	0	0	0	0	0
Total	0	0	0	0	0	0	0	0
Total	82,364	24,106	113,997	2,595	69,263	2,046	111,531	405,901
Region Total	82,364	24,106	113,997	2,595	69,263	2,046	111,531	405,901

Totals only reflect data for those census tracts/blocks included in the user's study region and will reflect the entire county/state only if all of the census blocks for that county/states were selected at the time of study region creation.

Direct Economic Loss For Utilities

May 28, 2024

All values are in thousands of dollars

	Potable Water	Waste Water	Oil Systems	Natural Gas	Electric Power	Communication	Total
California							
Alameda							
<i>Facilities</i>	1,706	57,501	0	0	719,797	133	779,136
<i>Pipelines</i>	1,460	734	0	0			2,194
Total	3,166	58,234	0	0	719,797	133	781,330
Alpine							
<i>Facilities</i>	0	3	0	0	0	0	3
<i>Pipelines</i>	1	1	0	0			2
Total	1	3	0	0	0	0	5
Amador							
<i>Facilities</i>	0	3	0	0	7,382	0	7,384
<i>Pipelines</i>	18	9	0	0			28
Total	18	12	0	0	7,382	0	7,412
Calaveras							
<i>Facilities</i>	28	492	0	0	25,137	1	25,658

	Potable Water	Waste Water	Oil Systems	Natural Gas	Electric Power	Communication	Total
<i>Pipelines</i>	33	17	0	0			50
Total	62	509	0	0	25,137	1	25,708
Colusa							
<i>Facilities</i>	0	0	0	0	0	0	0
<i>Pipelines</i>	11	6	0	0			17
Total	11	6	0	0	0	0	17
Contra Costa							
<i>Facilities</i>	2,090	47,795	11	0	874,113	55	924,064
<i>Pipelines</i>	838	421	0	0			1,259
Total	2,928	48,216	11	0	874,113	55	925,324
El Dorado							
<i>Facilities</i>	28	371	0	0	13,093	1	13,493
<i>Pipelines</i>	26	13	0	0			39
Total	54	384	0	0	13,093	1	13,532
Fresno							
<i>Facilities</i>	0	492	0	13	58,484	4	58,992
<i>Pipelines</i>	260	130	0	0			390
Total	260	622	0	13	58,484	4	59,383
Kings							
<i>Facilities</i>	0	0	0	4	4,659	1	4,664
<i>Pipelines</i>	65	33	0	0			98

	Potable Water	Waste Water	Oil Systems	Natural Gas	Electric Power	Communication	Total
Total	65	33	0	4	4,659	1	4,761
Lake							
<i>Facilities</i>	1	0	0	0	252	0	253
<i>Pipelines</i>	17	8	0	0			25
Total	18	8	0	0	252	0	278
Madera							
<i>Facilities</i>	0	0	0	0	9,076	1	9,077
<i>Pipelines</i>	95	48	0	0			142
Total	95	48	0	0	9,076	1	9,219
Marin							
<i>Facilities</i>	28	3,786	0	0	56	4	3,874
<i>Pipelines</i>	38	19	0	0			57
Total	66	3,805	0	0	56	4	3,931
Mariposa							
<i>Facilities</i>	0	371	0	0	2,808	2	3,181
<i>Pipelines</i>	32	16	0	0			48
Total	32	387	0	0	2,808	2	3,229
Merced							
<i>Facilities</i>	0	41,554	0	0	907,174	102	948,829
<i>Pipelines</i>	1,319	662	0	0			1,981
Total	1,319	42,216	0	0	907,174	102	950,811

	Potable Water	Waste Water	Oil Systems	Natural Gas	Electric Power	Communication	Total
Monterey							
<i>Facilities</i>	0	1,107	0	0	86,921	16	88,044
<i>Pipelines</i>	125	63	0	0			188
Total	125	1,170	0	0	86,921	16	88,233
Napa							
<i>Facilities</i>	0	492	0	0	312	3	806
<i>Pipelines</i>	20	10	0	0			30
Total	20	502	0	0	312	3	836
Placer							
<i>Facilities</i>	0	989	0	0	3,111	1	4,101
<i>Pipelines</i>	34	17	0	0			51
Total	34	1,006	0	0	3,111	1	4,152
Sacramento							
<i>Facilities</i>	0	6,835	0	0	28,697	40	35,573
<i>Pipelines</i>	160	81	0	0			241
Total	160	6,916	0	0	28,697	40	35,814
San Benito							
<i>Facilities</i>	0	5,939	0	0	0	17	5,956
<i>Pipelines</i>	79	39	0	0			118
Total	79	5,979	0	0	0	17	6,074
San Francisco							

	Potable Water	Waste Water	Oil Systems	Natural Gas	Electric Power	Communication	Total
<i>Facilities</i>	0	6,466	0	0	108	8	6,582
<i>Pipelines</i>	26	13	0	0			40
Total	26	6,480	0	0	108	8	6,622
San Joaquin							
<i>Facilities</i>	5,501	110,857	37	0	549,936	290	666,621
<i>Pipelines</i>	2,893	1,453	0	0			4,346
Total	8,394	112,311	37	0	549,936	290	670,967
San Mateo							
<i>Facilities</i>	0	17,101	0	0	2,968	26	20,096
<i>Pipelines</i>	113	57	0	0			170
Total	113	17,158	0	0	2,968	26	20,265
Santa Clara							
<i>Facilities</i>	2,018	13,245	0	0	267,439	101	282,803
<i>Pipelines</i>	540	271	0	0			811
Total	2,558	13,516	0	0	267,439	101	283,614
Santa Cruz							
<i>Facilities</i>	0	3,295	0	0	600	8	3,903
<i>Pipelines</i>	49	25	0	0			74
Total	49	3,319	0	0	600	8	3,977
Solano							
<i>Facilities</i>	0	12,160	3	0	189,849	12	202,024

	Potable Water	Waste Water	Oil Systems	Natural Gas	Electric Power	Communication	Total
<i>Pipelines</i>	177	89	0	0			266
Total	177	12,248	3	0	189,849	12	202,290
Sonoma							
<i>Facilities</i>	0	871	0	0	2,202	1	3,075
<i>Pipelines</i>	69	35	0	0			103
Total	69	905	0	0	2,202	1	3,178
Stanislaus							
<i>Facilities</i>	0	70,020	0	0	332,510	411	402,942
<i>Pipelines</i>	1,700	854	0	0			2,554
Total	1,700	70,875	0	0	332,510	411	405,496
Sutter							
<i>Facilities</i>	0	0	0	0	5,811	0	5,811
<i>Pipelines</i>	18	9	0	0			27
Total	18	9	0	0	5,811	0	5,838
Tulare							
<i>Facilities</i>	1	3	0	0	207	0	210
<i>Pipelines</i>	43	22	0	0			64
Total	43	24	0	0	207	0	274
Tuolumne							
<i>Facilities</i>	0	123	0	0	28,480	1	28,604
<i>Pipelines</i>	38	19	0	0			57

	Potable Water	Waste Water	Oil Systems	Natural Gas	Electric Power	Communication	Total
Total	38	142	0	0	28,480	1	28,662
Yolo							
<i>Facilities</i>	0	492	0	0	502	1	995
<i>Pipelines</i>	39	19	0	0			58
Total	39	511	0	0	502	1	1,052
Yuba							
<i>Facilities</i>	0	123	0	0	0	0	123
<i>Pipelines</i>	7	3	0	0			10
Total	7	126	0	0	0	0	133
Total	21,745	407,680	51	17	4,121,684	1,240	4,552,417
Region Total	21,745	407,680	51	17	4,121,684	1,240	4,552,417

Totals only reflect data for those census tracts/blocks included in the user's study region and will reflect the entire county/state only if all of the census blocks for that county/states were selected at the time of study region creation.

Hazus Quick Assessment Report

Estimated Economic Loss (\$ Billions)

Category	Description	Range
General Building Stock	Building Damage	3.70 - 14.70
	Building Contents	0.70 - 3.00
	Business Interruption	0.40 - 1.70
Infrastructure	Lifelines Damage	
Total		5.90 - 23.50

Preliminary Damage Assessment (PDA) Estimates

Description	Residential	Commercial	Other	Total
Affected	152,000	11,900	8,300	172,200
Minor	13,800	2,500	2,300	18,600
Major	1,200	240	390	1,830
Destroyed	310	40	60	410
Total	167,310	14,680	11,050	193,040

Estimated Casualties : Night Time

Severity Level	Description	# Persons
Level 1	Medical Aid	300 - 1,200
Level 2	Hospital Care	40 - 140
Level 3	Life-threatening	0 - 20
Level 4	Fatalities	10 - 30

Estimated Shelter Needs

Type	Households	People
Displaced Households	500 - 2,000	1,250 - 5,000
Public Shelter	260	660

Comments :

*Hazus damage estimates are presented using FEMA Preliminary Damage Assessment (PDA) categories. These estimates should be used for planning purposes and may not reflect actual observed damages from the PDA process.

Disclaimer:

The estimates of social and economic impacts contained in this report were produced using HAZUS loss estimation methodology software which is based on current scientific and engineering knowledge. There are uncertainties inherent in any loss estimation technique. Therefore, there may be significant differences between the modeled results contained in this report and the actual social and economic losses following a specific earthquake. These results can be improved by using enhanced inventory, geotechnical, and observed ground motion data.

Earthquake Information

Location :

Origin Time:

Magnitude : 6.92

Epicenter Latitude/Longitude :
/

Depth & Type : /U

Name :
NA

Ground Motion /Attenuation :

Maximum PGA: 0.00

Information Sources:

Comments :

Population and Building Exposure

Population: 14,771,883

Building Exposure : (\$ Millions)

Residential	1,845,369
Commercial	496,148
Other	436,937
Total	2,778,454

Counties : See Appendix

Major Metro Area :

Hazus Quick Assessment Report

Estimated Economic Loss (\$ Billions)

Category	Description	Range
General Building Stock	Building Damage	3.70 - 14.70
	Building Contents	0.70 - 3.00
	Business Interruption	0.40 - 1.70
Infrastructure	Lifelines Damage	
Total		5.90 - 23.50

Preliminary Damage Assessment (PDA) Estimates

Description	Residential	Commercial	Other	Total
Affected	152,000	11,900	8,300	172,200
Minor	13,800	2,500	2,300	18,600
Major	1,200	240	390	1,830
Destroyed	310	40	60	410
Total	167,310	14,680	11,050	193,040

Estimated Casualties : Day Time

Severity Level	Description	# Persons
Level 1	Medical Aid	400 - 1,600
Level 2	Hospital Care	50 - 190
Level 3	Life-threatening	0 - 20
Level 4	Fatalities	10 - 30

Estimated Shelter Needs

Type	Households	People
Displaced Households	500 - 2,000	1,250 - 5,000
Public Shelter	260	660

Comments :

*Hazus damage estimates are presented using FEMA Preliminary Damage Assessment (PDA) categories. These estimates should be used for planning purposes and may not reflect actual observed damages from the PDA process.

Disclaimer:

The estimates of social and economic impacts contained in this report were produced using HAZUS loss estimation methodology software which is based on current scientific and engineering knowledge. There are uncertainties inherent in any loss estimation technique. Therefore, there may be significant differences between the modeled results contained in this report and the actual social and economic losses following a specific earthquake. These results can be improved by using enhanced inventory, geotechnical, and observed ground motion data.

Earthquake Information

Location :

Origin Time:

Magnitude : 6.92

Epicenter Latitude/Longitude :
/

Depth & Type : /U

Name :
NA

Ground Motion /Attenuation :

Maximum PGA: 0.00

Information Sources:

Comments :

Population and Building Exposure

Population: 14,771,883

Building Exposure : (\$ Millions)

Residential	1,845,369
Commercial	496,148
Other	436,937
Total	2,778,454

Counties : See Appendix

Major Metro Area :

Hazus Quick Assessment Report

Estimated Economic Loss (\$ Billions)

Category	Description	Range
General Building Stock	Building Damage	3.70 - 14.70
	Building Contents	0.70 - 3.00
	Business Interruption	0.40 - 1.70
Infrastructure	Lifelines Damage	
Total		5.90 - 23.50

Preliminary Damage Assessment (PDA) Estimates

Description	Residential	Commercial	Other	Total
Affected	152,000	11,900	8,300	172,200
Minor	13,800	2,500	2,300	18,600
Major	1,200	240	390	1,830
Destroyed	310	40	60	410
Total	167,310	14,680	11,050	193,040

Estimated Casualties : Commute Time

Severity Level	Description	# Persons
Level 1	Medical Aid	300 - 1,200
Level 2	Hospital Care	40 - 160
Level 3	Life-threatening	10 - 50
Level 4	Fatalities	10 - 30

Estimated Shelter Needs

Type	Households	People
Displaced Households	500 - 2,000	1,250 - 5,000
Public Shelter	260	660

Comments :

*Hazus damage estimates are presented using FEMA Preliminary Damage Assessment (PDA) categories. These estimates should be used for planning purposes and may not reflect actual observed damages from the PDA process.

Disclaimer:

The estimates of social and economic impacts contained in this report were produced using HAZUS loss estimation methodology software which is based on current scientific and engineering knowledge. There are uncertainties inherent in any loss estimation technique. Therefore, there may be significant differences between the modeled results contained in this report and the actual social and economic losses following a specific earthquake. These results can be improved by using enhanced inventory, geotechnical, and observed ground motion data.

Earthquake Information

Location :

Origin Time:

Magnitude : 6.92

Epicenter Latitude/Longitude :
/

Depth & Type : /U

Name :
NA

Ground Motion /Attenuation :

Maximum PGA: 0.00

Information Sources:

Comments :

Population and Building Exposure

Population: 14,771,883

Building Exposure : (\$ Millions)

Residential	1,845,369
Commercial	496,148
Other	436,937
Total	2,778,454

Counties : See Appendix

Major Metro Area :

Shelter Summary Report

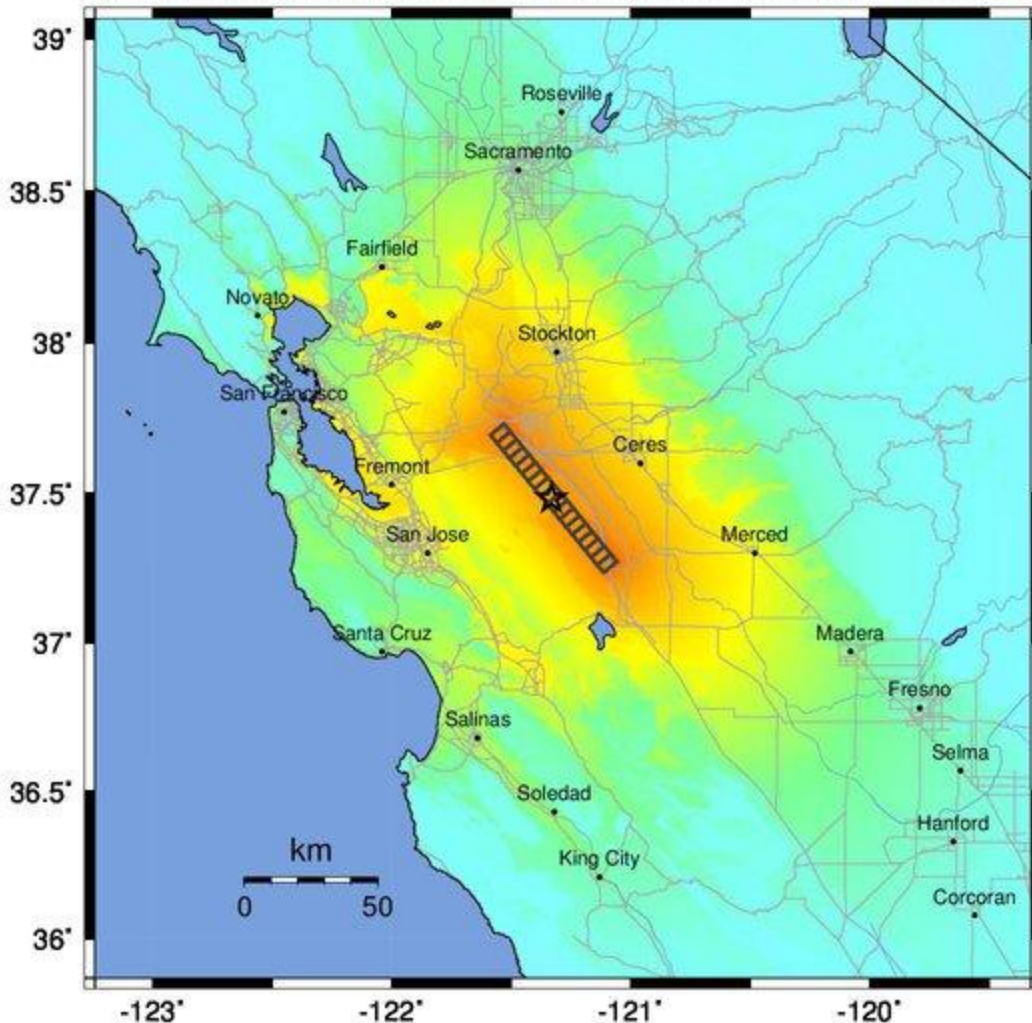
May 28, 2024

	# of Displaced Households	# of People Needing Short Term Shelter
California		
Fresno	0	0
Alameda	67	31
Solano	0	0
San Mateo	1	1
Tuolumne	0	0
Kings	0	0
San Joaquin	784	470
Madera	0	0
Tulare	0	0
Colusa	0	0
Napa	0	0
Contra Costa	6	3
El Dorado	0	0
Amador	0	0
Santa Cruz	0	0
Lake	0	0
Monterey	0	0
Sacramento	0	0
Mariposa	0	0
Yolo	0	0
Calaveras	0	0
Yuba	0	0
Alpine	0	0
Stanislaus	148	102
Sonoma	0	0
Santa Clara	10	6
San Benito	0	0
San Francisco	3	1
Merced	71	44
Placer	0	0
Marin	0	0
Sutter	0	0

	# of Displaced Households	# of People Needing Short Term Shelter
Total	1,090	659
Region Total	1,090	659

Totals only reflect data for those census tracts/blocks included in the user's study region and will reflect the entire county/state only if all of the census blocks for that county/states were selected at the time of study region creation.

-- Earthquake Planning Scenario --
ShakeMap for Great Valley 07 (Orestimba) - Median ground motions Scenario
 Scenario Date: May 16, 2017 08:31:55 AM MDT M 6.9 N37.48 W121.33 Depth: 8.7km



PLANNING SCENARIO ONLY -- Map Version 10 Processed 2017-05-16 06:14:27 PM MDT

PERCEIVED SHAKING	Not felt	Weak	Light	Moderate	Strong	Very strong	Severe	Violent	Extreme
POTENTIAL DAMAGE	none	none	none	Very light	Light	Moderate	Mod./Heavy	Heavy	Very Heavy
PEAK ACC.(%g)	<0.05	0.3	2.8	6.2	12	22	40	75	>139
PEAK VEL.(cm/s)	<0.02	0.1	1.4	4.7	9.6	20	41	86	>178
INSTRUMENTAL INTENSITY	I	II-III	IV	V	VI	VII	VIII	IX	X+

Scale based upon Worden et al. (2012)