

---

## Hazus: Earthquake Global Risk Report

---

**Region Name:** GreatVly06MidALT2

**Earthquake Scenario:** greatvalley06midland\_m7p12\_se

**Print Date:** April 15, 2024

**Disclaimer:**

*Totals only reflect data for those census tracts/blocks included in the user's study region.*

*The estimates of social and economic impacts contained in this report were produced using Hazus loss estimation methodology software which is based on current scientific and engineering knowledge. There are uncertainties inherent in any loss estimation technique. Therefore, there may be significant differences between the modeled results contained in this report and the actual social and economic losses following a specific earthquake. These results can be improved by using enhanced inventory, geotechnical, and observed ground motion data.*

## Table of Contents

<b>Section</b>	<b>Page #</b>
<b>General Description of the Region</b>	<b>3</b>
<b>Building and Lifeline Inventory</b>	<b>4</b>
Building Inventory	
Critical Facility Inventory	
Transportation and Utility Lifeline Inventory	
<b>Earthquake Scenario Parameters</b>	<b>7</b>
<b>Direct Earthquake Damage</b>	<b>8</b>
Buildings Damage	
Essential Facilities Damage	
Transportation and Utility Lifeline Damage	
<b>Induced Earthquake Damage</b>	<b>14</b>
Fire Following Earthquake	
Debris Generation	
<b>Social Impact</b>	<b>15</b>
Shelter Requirements	
Casualties	
<b>Economic Loss</b>	<b>17</b>
Building Related Losses	
Transportation and Utility Lifeline Losses	
<b>Appendix A: County Listing for the Region</b>	
<b>Appendix B: Regional Population and Building Value Data</b>	

## General Description of the Region

Hazus-MH is a regional earthquake loss estimation model that was developed by the Federal Emergency Management Agency (FEMA) and the National Institute of Building Sciences. The primary purpose of Hazus is to provide a methodology and software application to develop multi-hazard losses at a regional scale. These loss estimates would be used primarily by local, state and regional officials to plan and stimulate efforts to reduce risks from multi-hazards and to prepare for emergency response and recovery.

The earthquake loss estimates provided in this report was based on a region that includes 35 county(ies) from the following state(s):

California

Note:

Appendix A contains a complete listing of the counties contained in the region.

The geographical size of the region is 48,953.76 square miles and contains 3,345 census tracts. There are over 5,109 thousand households in the region which has a total population of 14,583,907 people. The distribution of population by Total Region and County is provided in Appendix B.

There are an estimated 4,495 thousand buildings in the region with a total building replacement value (excluding contents) of (millions of dollars). Approximately 90.00 % of the buildings (and % of the building value) are associated with residential housing.

The replacement value of the transportation and utility lifeline systems is estimated to be 229,195 and 170,238 (millions of dollars) , respectively.

## Building and Lifeline Inventory

### Building Inventory

Hazus estimates that there are 4,495 thousand buildings in the region which have an aggregate total replacement value of (millions of dollars) . Appendix B provides a general distribution of the building value by Total Region and County.

In terms of building construction types found in the region, wood frame construction makes up 87% of the building inventory. The remaining percentage is distributed between the other general building types.

### Critical Facility Inventory

Hazus breaks critical facilities into two (2) groups: essential facilities and high potential loss facilities (HPL). Essential facilities include hospitals, medical clinics, schools, fire stations, police stations and emergency operations facilities. High potential loss facilities include dams, levees, military installations, nuclear power plants and hazardous material sites.

For essential facilities, there are 247 hospitals in the region with a total bed capacity of 36,901 beds. There are 5,391 schools, 1,452 fire stations, 475 police stations and 89 emergency operation facilities. With respect to high potential loss facilities (HPL), there are no dams identified within the inventory. The inventory also includes no hazardous material sites, no military installations and no nuclear power plants.

### Transportation and Utility Lifeline Inventory

Within Hazus, the lifeline inventory is divided between transportation and utility lifeline systems. There are seven (7) transportation systems that include highways, railways, light rail, bus, ports, ferry and airports. There are six (6) utility systems that include potable water, wastewater, natural gas, crude & refined oil, electric power and communications. The lifeline inventory data are provided in Tables 1 and 2.

The total value of the lifeline inventory is over 399,433.00 (millions of dollars). This inventory includes over 9,788.46 miles of highways, 11,169 bridges, 218,581.54 miles of pipes.

**Table 1: Transportation System Lifeline Inventory**

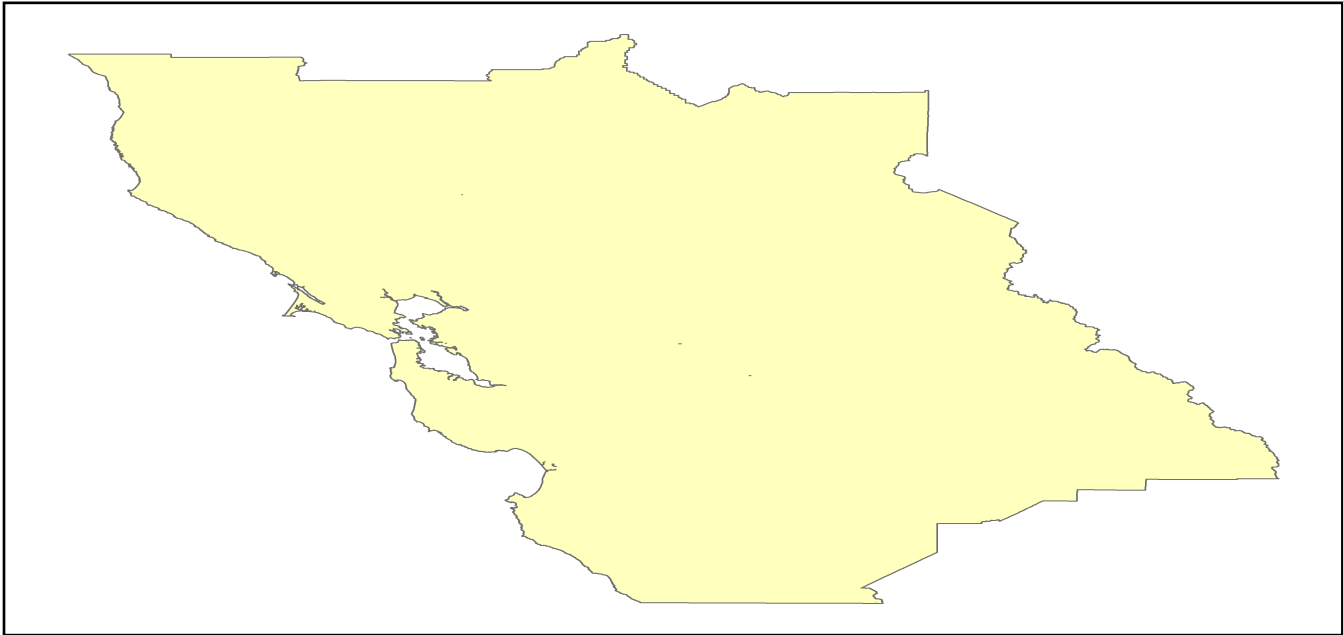
System	Component	# Locations/ # Segments	Replacement value (millions of dollars)
<b>Highway</b>	Bridges	11,169	57128.5190
	Segments	6,809	85631.8239
	Tunnels	47	985.3863
	<b>Subtotal</b>		<b>143745.7292</b>
<b>Railways</b>	Bridges	1,609	9155.2100
	Facilities	81	215.7030
	Segments	2,965	60896.1021
	Tunnels	3	1.8495
	<b>Subtotal</b>		<b>70268.8646</b>
<b>Light Rail</b>	Bridges	112	15.3529
	Facilities	255	4154.0000
	Segments	15	5403.2756
	Tunnels	0	0.0000
	<b>Subtotal</b>		<b>9572.6285</b>
<b>Bus</b>	Facilities	45	102.6914
	<b>Subtotal</b>		<b>102.6914</b>
<b>Ferry</b>	Facilities	25	33.2750
	<b>Subtotal</b>		<b>33.2750</b>
<b>Port</b>	Facilities	362	1379.8878
	<b>Subtotal</b>		<b>1379.8878</b>
<b>Airport</b>	Facilities	104	2794.1008
	Runways	147	1298.3841
	<b>Subtotal</b>		<b>4092.4849</b>
		<b>Total</b>	<b>229,195.60</b>

**Table 2: Utility System Lifeline Inventory**

System	Component	# Locations / Segments	Replacement value (millions of dollars)
<b>Potable Water</b>	Distribution Lines	NA	4347.2114
	Facilities	22	864.4680
	Pipelines	0	0.0000
		<b>Subtotal</b>	<b>5211.6794</b>
<b>Waste Water</b>	Distribution Lines	NA	2608.3268
	Facilities	183	31467.1794
	Pipelines	0	0.0000
		<b>Subtotal</b>	<b>34075.5062</b>
<b>Natural Gas</b>	Distribution Lines	NA	1738.8845
	Facilities	2	59.4451
	Pipelines	967	14075.6045
		<b>Subtotal</b>	<b>15873.9341</b>
<b>Oil Systems</b>	Facilities	17	2.0060
	Pipelines	0	0.0000
		<b>Subtotal</b>	<b>2.0060</b>
<b>Electrical Power</b>	Facilities	345	115027.2149
		<b>Subtotal</b>	<b>115027.2149</b>
<b>Communication</b>	Facilities	410	48.3800
		<b>Subtotal</b>	<b>48.3800</b>
	<b>Total</b>		<b>170,238.70</b>

## Earthquake Scenario

Hazus uses the following set of information to define the earthquake parameters used for the earthquake loss estimate provided in this report.



<b>Scenario Name</b>	greatvalley06midland_m7p12_se
<b>Type of Earthquake</b>	User-defined
<b>Fault Name</b>	NA
<b>Historical Epicenter ID #</b>	NA
<b>Probabilistic Return Period</b>	NA
<b>Longitude of Epicenter</b>	NA
<b>Latitude of Epicenter</b>	NA
<b>Earthquake Magnitude</b>	7.12
<b>Depth (km)</b>	NA
<b>Rupture Length (Km)</b>	NA
<b>Rupture Orientation (degrees)</b>	NA
<b>Attenuation Function</b>	NA

## Direct Earthquake Damage

### Building Damage

Hazus estimates that about 68,185 buildings will be at least moderately damaged. This is over 2.00 % of the buildings in the region. There are an estimated 1,201 buildings that will be damaged beyond repair. The definition of the 'damage states' is provided in Volume 1: Chapter 5 of the Hazus technical manual. Table 3 below summarizes the expected damage by general occupancy for the buildings in the region. Table 4 below summarizes the expected damage by general building type.

### Damage Categories by General Occupancy Type

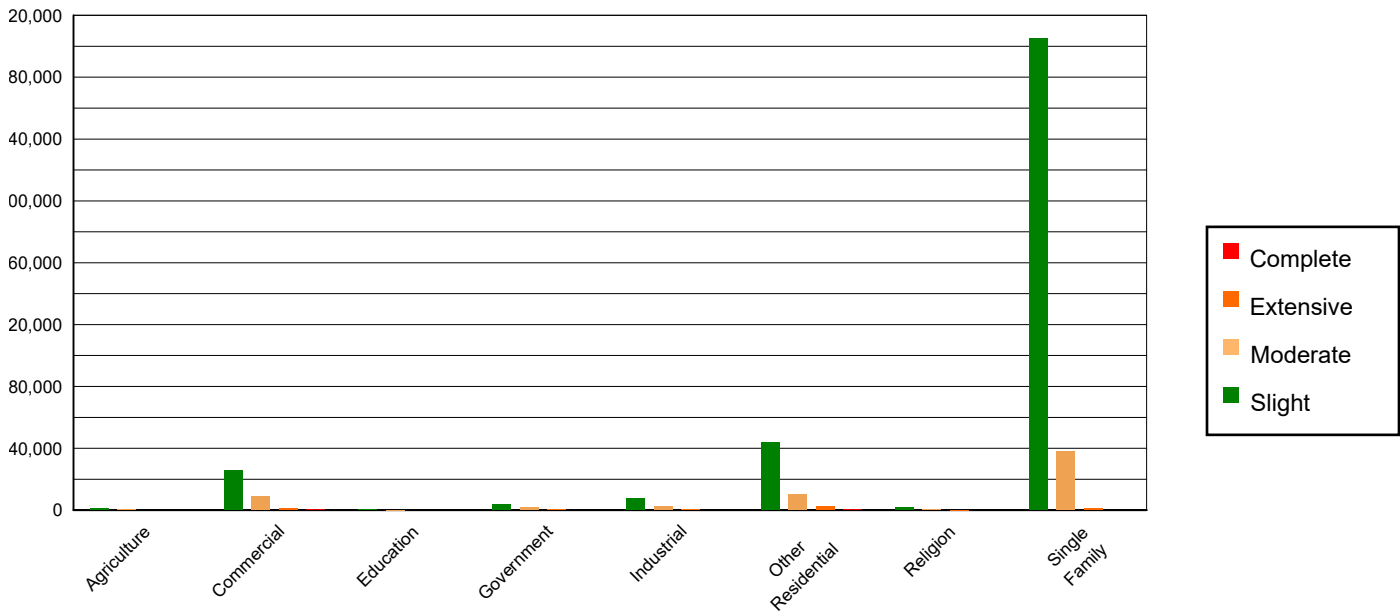


Table 3: Expected Building Damage by Occupancy

	None		Slight		Moderate		Extensive		Complete	
	Count	(%)	Count	(%)	Count	(%)	Count	(%)	Count	(%)
<b>Agriculture</b>	27605.05	0.68	842.77	0.22	309.27	0.50	76.77	1.50	30.14	2.51
<b>Commercial</b>	254974.62	6.31	25472.96	6.57	8608.59	13.91	1206.27	23.62	298.56	24.85
<b>Education</b>	8568.49	0.21	473.35	0.12	143.48	0.23	14.37	0.28	3.32	0.28
<b>Government</b>	16107.56	0.40	3893.38	1.00	1626.05	2.63	253.96	4.97	78.05	6.50
<b>Industrial</b>	69029.55	1.71	7384.62	1.90	2663.62	4.30	401.85	7.87	84.36	7.02
<b>Other Residential</b>	511457.02	12.66	43606.44	11.24	10198.56	16.48	2243.85	43.93	654.12	54.44
<b>Religion</b>	14832.40	0.37	1452.93	0.37	543.84	0.88	101.69	1.99	32.14	2.68
<b>Single Family</b>	3137083.04	77.66	304825.15	78.57	37783.30	61.06	808.71	15.83	20.79	1.73
<b>Total</b>	<b>4,039,658</b>		<b>387,952</b>		<b>61,877</b>		<b>5,107</b>		<b>1,201</b>	

**Table 4: Expected Building Damage by Building Type (All Design Levels)**

	None		Slight		Moderate		Extensive		Complete	
	Count	(%)	Count	(%)	Count	(%)	Count	(%)	Count	(%)
<b>Wood</b>	3530970.00	87.41	330313.62	85.14	37074.20	59.92	548.79	10.74	29.03	2.42
<b>Steel</b>	85821.93	2.12	10704.66	2.76	5417.27	8.75	943.87	18.48	194.81	16.21
<b>Concrete</b>	98645.05	2.44	11815.17	3.05	4274.32	6.91	711.32	13.93	217.32	18.09
<b>Precast</b>	52122.15	1.29	5706.90	1.47	2302.03	3.72	252.00	4.93	31.39	2.61
<b>RM</b>	159233.08	3.94	10517.67	2.71	3177.17	5.13	339.57	6.65	23.61	1.96
<b>URM</b>	25716.92	0.64	12613.83	3.25	6063.08	9.80	705.89	13.82	168.91	14.06
<b>MH</b>	87148.60	2.16	6279.77	1.62	3568.63	5.77	1606.05	31.44	536.41	44.65
<b>Total</b>	<b>4,039,658</b>		<b>387,952</b>		<b>61,877</b>		<b>5,107</b>		<b>1,201</b>	

\*Note:

- RM Reinforced Masonry
- URM Unreinforced Masonry
- MH Manufactured Housing

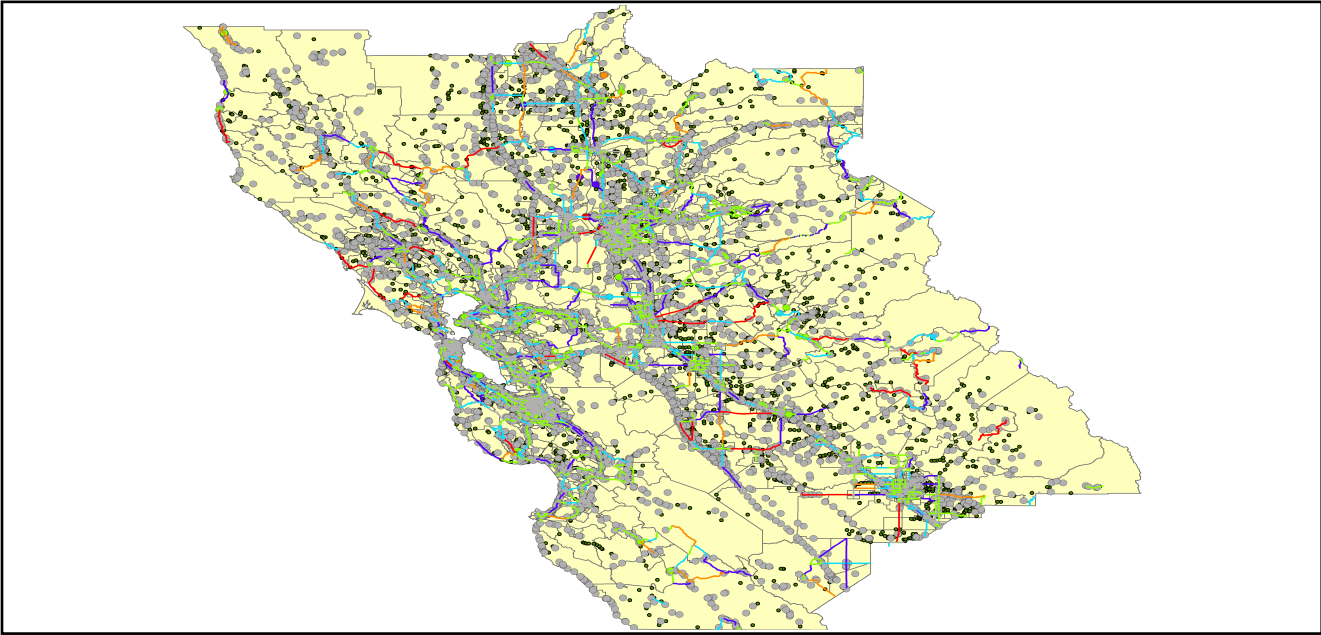
## Essential Facility Damage

Before the earthquake, the region had 36,901 hospital beds available for use. On the day of the earthquake, the model estimates that only 32,925 hospital beds (89.00%) are available for use by patients already in the hospital and those injured by the earthquake. After one week, 96.00% of the beds will be back in service. By 30 days, 99.00% will be operational.

**Table 5: Expected Damage to Essential Facilities**

Classification	Total	# Facilities		
		At Least Moderate Damage > 50%	Complete Damage > 50%	With Functionality > 50% on day 1
Hospitals	247	2	0	230
Schools	5,391	88	5	5,020
EOCs	89	2	0	85
PoliceStations	475	10	0	448
FireStations	1,452	11	1	1,386

Transportation Lifeline Damage



**Table 6: Expected Damage to the Transportation Systems**

System	Component	Number of Locations_				
		Locations/ Segments	With at Least Mod. Damage	With Complete Damage	With Functionality > 50 %	
					After Day 1	After Day 7
Highway	Segments	6,809	0	0	6,809	6,809
	Bridges	11,169	14	0	11,155	11,166
	Tunnels	47	0	0	47	47
Railways	Segments	2,965	0	0	2,965	2,965
	Bridges	1,609	0	0	1,609	1,609
	Tunnels	3	0	0	3	3
	Facilities	81	2	0	80	81
Light Rail	Segments	15	0	0	15	15
	Bridges	112	0	0	112	112
	Tunnels	0	0	0	0	0
	Facilities	255	3	0	253	255
Bus	Facilities	45	1	0	45	45
Ferry	Facilities	25	0	0	25	25
Port	Facilities	362	16	0	360	362
Airport	Facilities	104	1	0	104	104
	Runways	147	0	0	147	147

Table 6 provides damage estimates for the transportation system.

Note: Roadway segments, railroad tracks and light rail tracks are assumed to be damaged by ground failure only. If ground failure maps are not provided, damage estimates to these components will not be computed.

Tables 7-9 provide information on the damage to the utility lifeline systems. Table 7 provides damage to the utility system facilities. Table 8 provides estimates on the number of leaks and breaks by the pipelines of the utility systems. For electric power and potable water, Hazus performs a simplified system performance analysis. Table 9 provides a summary of the system performance information.

**Table 7 : Expected Utility System Facility Damage**

System	# of Locations				
	Total #	With at Least Moderate Damage	With Complete Damage	with Functionality > 50 %	
				After Day 1	After Day 7
Potable Water	22	0	0	20	22
Waste Water	183	6	0	164	183
Natural Gas	2	0	0	2	2
Oil Systems	17	1	0	13	16
Electrical Power	345	43	2	307	330
Communication	410	7	0	403	410

**Table 8 : Expected Utility System Pipeline Damage (Site Specific)**

System	Total Pipelines Length (miles)	Number of Leaks	Number of Breaks
Potable Water	135,062	6064	1516
Waste Water	81,037	3046	761
Natural Gas	2,483	0	0
Oil	0	0	0

**Table 9: Expected Potable Water and Electric Power System Performance**

	Total # of Households	Number of Households without Service				
		At Day 1	At Day 3	At Day 7	At Day 30	At Day 90
Potable Water	5,109,667	183,504	161,094	126,788	300	0
Electric Power		199,521	140,321	68,173	9,774	253

## Induced Earthquake Damage

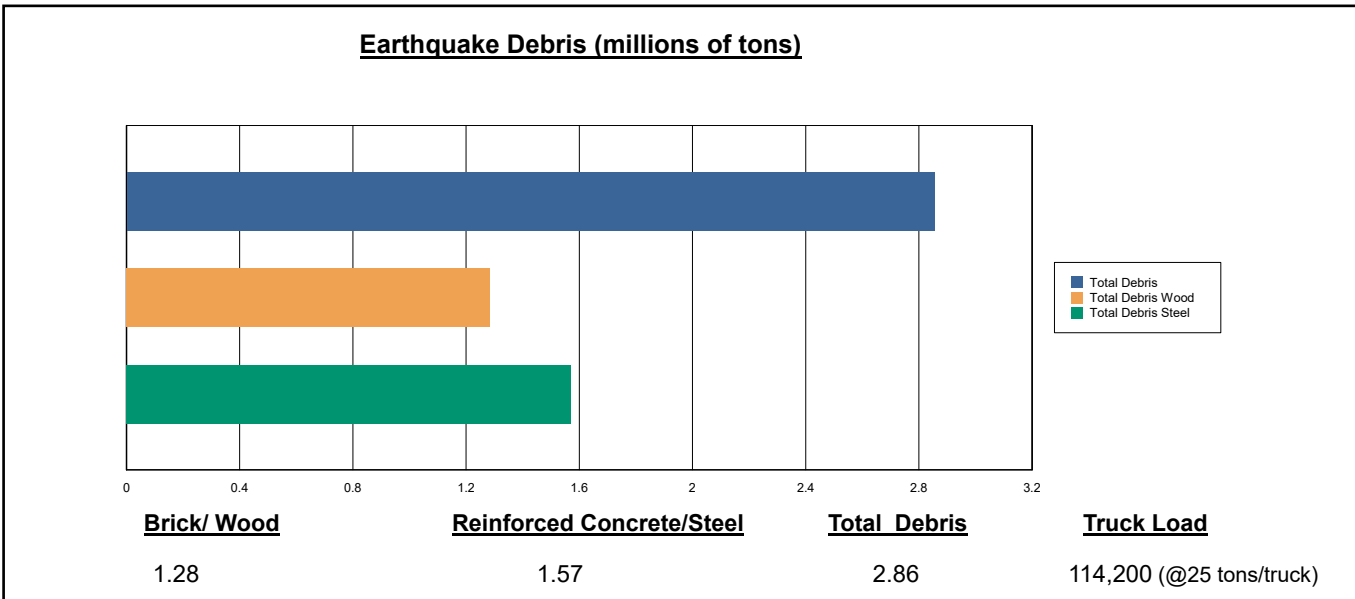
### Fire Following Earthquake

Fires often occur after an earthquake. Because of the number of fires and the lack of water to fight the fires, they can often burn out of control. Hazus uses a Monte Carlo simulation model to estimate the number of ignitions and the amount of burnt area. For this scenario, the model estimates that there will be 71 ignitions that will burn about 1.31 sq. mi (0.00 % of the region's total area.) The model also estimates that the fires will displace about 14,845 people and burn about 1,892 (millions of dollars) of building value.

### Debris Generation

Hazus estimates the amount of debris that will be generated by the earthquake. The model breaks the debris into two general categories: a) Brick/Wood and b) Reinforced Concrete/Steel. This distinction is made because of the different types of material handling equipment required to handle the debris.

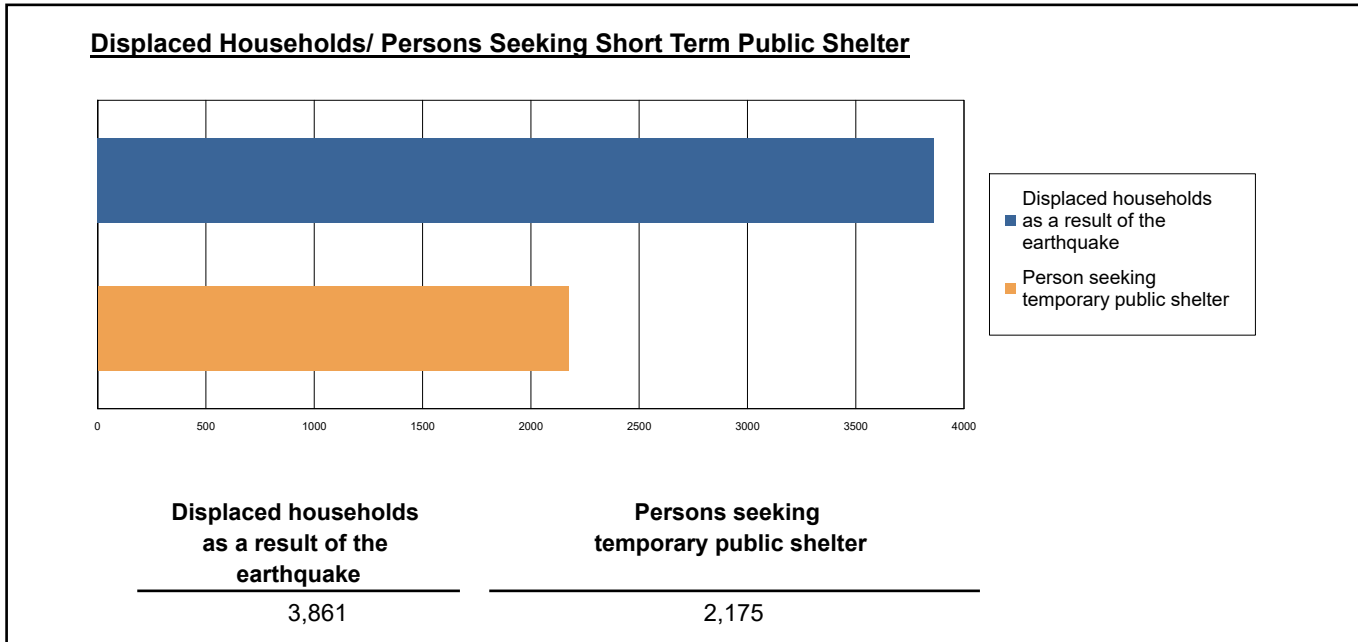
The model estimates that a total of 2,855,000 tons of debris will be generated. Of the total amount, Brick/Wood comprises 45.00% of the total, with the remainder being Reinforced Concrete/Steel. If the debris tonnage is converted to an estimated number of truckloads, it will require 114,200 truckloads (@25 tons/truck) to remove the debris generated by the earthquake.



## Social Impact

### Shelter Requirement

Hazus estimates the number of households that are expected to be displaced from their homes due to the earthquake and the number of displaced people that will require accommodations in temporary public shelters. The model estimates 3,861 households to be displaced due to the earthquake. Of these, 2,175 people (out of a total population of 14,583,907) will seek temporary shelter in public shelters.



### Casualties

Hazus estimates the number of people that will be injured and killed by the earthquake. The casualties are broken down into four (4) severity levels that describe the extent of the injuries. The levels are described as follows;

- Severity Level 1: Injuries will require medical attention but hospitalization is not needed.
- Severity Level 2: Injuries will require hospitalization but are not considered life-threatening
- Severity Level 3: Injuries will require hospitalization and can become life threatening if not promptly treated.
- Severity Level 4: Victims are killed by the earthquake.

The casualty estimates are provided for three (3) times of day: 2:00 AM, 2:00 PM and 5:00 PM. These times represent the periods of the day that different sectors of the community are at their peak occupancy loads. The 2:00 AM estimate considers that the residential occupancy load is maximum, the 2:00 PM estimate considers that the educational, commercial and industrial sector loads are maximum and 5:00 PM represents peak commute time.

Table 10 provides a summary of the casualties estimated for this earthquake

**Table 10: Casualty Estimates**

		Level 1	Level 2	Level 3	Level 4
<b>2 AM</b>	Commercial	24.89	4.16	0.49	0.97
	Commuting	0.28	0.49	0.69	0.14
	Educational	0.00	0.00	0.00	0.00
	Hotels	0.88	0.08	0.00	0.01
	Industrial	21.53	3.26	0.35	0.69
	Other-Residential	655.23	86.92	6.85	12.77
	Single Family	787.46	41.15	0.52	0.89
	<b>Total</b>	<b>1,490</b>	<b>136</b>	<b>9</b>	<b>15</b>
	<b>2 PM</b>	Commercial	1776.00	311.58	38.43
Commuting		2.52	4.43	6.18	1.26
Educational		370.21	59.47	6.88	13.37
Hotels		0.17	0.02	0.00	0.00
Industrial		157.63	23.98	2.60	5.04
Other-Residential		205.17	27.63	2.24	4.06
Single Family		229.23	12.82	0.22	0.36
<b>Total</b>		<b>2,741</b>	<b>440</b>	<b>57</b>	<b>99</b>
<b>5 PM</b>		Commercial	1314.45	240.87	30.83
	Commuting	48.52	85.00	118.91	24.27
	Educational	31.26	2.35	0.03	0.06
	Hotels	0.26	0.02	0.00	0.00
	Industrial	98.52	14.99	1.62	3.15
	Other-Residential	244.62	33.00	2.71	4.91
	Single Family	290.92	15.90	0.24	0.38
	<b>Total</b>	<b>2,029</b>	<b>392</b>	<b>154</b>	<b>92</b>

## Economic Loss

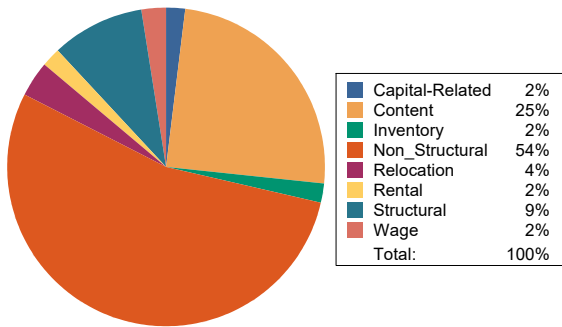
The total economic loss estimated for the earthquake is 40,055.90 (millions of dollars), which includes building and lifeline related losses based on the region's available inventory. The following three sections provide more detailed information about these losses.

## Building-Related Losses

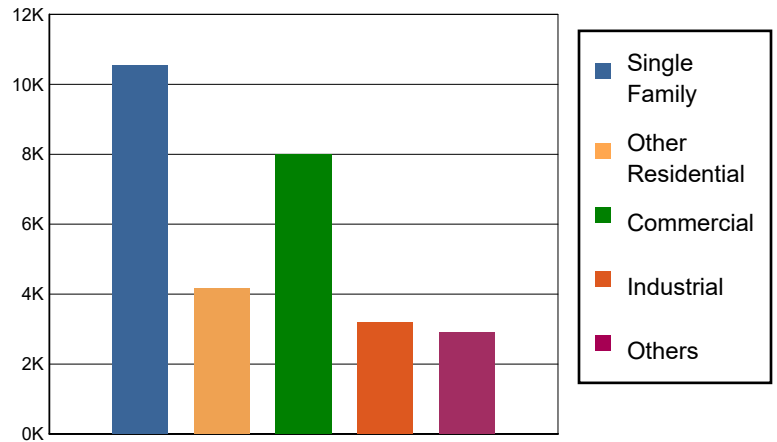
The building losses are broken into two categories: direct building losses and business interruption losses. The direct building losses are the estimated costs to repair or replace the damage caused to the building and its contents. The business interruption losses are the losses associated with inability to operate a business because of the damage sustained during the earthquake. Business interruption losses also include the temporary living expenses for those people displaced from their homes because of the earthquake.

The total building-related losses were 28,815.29 (millions of dollars); 10 % of the estimated losses were related to the business interruption of the region. By far, the largest loss was sustained by the residential occupancies which made up over 51 % of the total loss. Table 11 below provides a summary of the losses associated with the building damage.

Earthquake Losses by Loss Type (\$ millions)



Earthquake Losses by Occupancy Type (\$ millions)



**Table 11: Building-Related Economic Loss Estimates**  
(Millions of dollars)

Category	Area	Single Family	Other Residential	Commercial	Industrial	Others	Total
<b>Income Losses</b>							
	Wage	0.0000	51.9555	548.1796	30.4827	88.9815	719.5993
	Capital-Related	0.0000	22.0911	495.8567	18.4814	12.5242	548.9534
	Rental	90.8676	172.4332	284.3047	16.0991	46.7764	610.4810
	Relocation	288.6002	114.8435	368.0013	73.8971	199.0174	1,044.3595
	<b>Subtotal</b>	<b>379.4678</b>	<b>361.3233</b>	<b>1696.3423</b>	<b>138.9603</b>	<b>347.2995</b>	<b>2923.3932</b>
<b>Capital Stock Losses</b>							
	Structural	1034.7869	359.7262	743.4046	275.5130	280.7685	2,694.1992
	Non_Structural	6621.9301	2664.0578	3271.1996	1532.3405	1430.8688	15,520.3968
	Content	2505.4632	778.6673	1943.9695	1092.0235	805.1907	7,125.3142
	Inventory	0.0000	0.0000	350.7178	164.5790	36.6879	551.9847
	<b>Subtotal</b>	<b>10162.1802</b>	<b>3802.4513</b>	<b>6309.2915</b>	<b>3064.4560</b>	<b>2553.5159</b>	<b>25891.8949</b>
	<b>Total</b>	<b>10541.65</b>	<b>4163.77</b>	<b>8005.63</b>	<b>3203.42</b>	<b>2900.82</b>	<b>28815.29</b>

### Transportation and Utility Lifeline Losses

For the transportation and utility lifeline systems, Hazus computes the direct repair cost for each component only. There are no losses computed by Hazus for business interruption due to lifeline outages. Tables 12 & 13 provide a detailed breakdown in the expected lifeline losses.

**Table 12: Transportation System Economic Losses**  
(Millions of dollars)

System	Component	Inventory Value	Economic Loss	Loss Ratio (%)
Highway	Segments	85631.8239	0.0000	0.00
	Bridges	57128.5190	256.3377	0.45
	Tunnels	985.3863	1.5798	0.16
	<b>Subtotal</b>	<b>143745.7292</b>	<b>257.9175</b>	
Railways	Segments	60896.1021	0.0000	0.00
	Bridges	9155.2100	57.2710	0.63
	Tunnels	1.8495	0.0345	1.87
	Facilities	215.7030	17.5832	8.15
	<b>Subtotal</b>	<b>70268.8646</b>	<b>74.8887</b>	
Light Rail	Segments	5403.2756	0.0000	0.00
	Bridges	15.3529	0.0343	0.22
	Tunnels	0.0000	0.0000	0.00
	Facilities	4154.0000	257.6000	6.20
	<b>Subtotal</b>	<b>9572.6285</b>	<b>257.6343</b>	
Bus	Facilities	102.6914	4.5852	4.47
	<b>Subtotal</b>	<b>102.6914</b>	<b>4.5852</b>	
Ferry	Facilities	33.2750	5.1005	15.33
	<b>Subtotal</b>	<b>33.2750</b>	<b>5.1005</b>	
Port	Facilities	1379.8878	182.2406	13.21
	<b>Subtotal</b>	<b>1379.8878</b>	<b>182.2406</b>	
Airport	Facilities	2794.1008	171.9205	6.15
	Runways	1298.3841	0.0000	0.00
	<b>Subtotal</b>	<b>4092.4849</b>	<b>171.9205</b>	
<b>Total</b>		<b>229,195.56</b>	<b>954.29</b>	

**Table 13: Utility System Economic Losses**

(Millions of dollars)

System	Component	Inventory Value	Economic Loss	Loss Ratio (%)
Potable Water	Pipelines	0.0000	0.0000	0.00
	Facilities	864.4680	31.6191	3.66
	Distribution Lines	4347.2114	27.2869	0.63
	<b>Subtotal</b>	<b>5211.6794</b>	<b>58.9060</b>	
Waste Water	Pipelines	0.0000	0.0000	0.00
	Facilities	31467.1794	961.8494	3.06
	Distribution Lines	2608.3268	13.7069	0.53
	<b>Subtotal</b>	<b>34075.5062</b>	<b>975.5563</b>	
Natural Gas	Pipelines	14075.6045	0.0000	0.00
	Facilities	59.4451	0.0751	0.13
	Distribution Lines	1738.8845	4.6959	0.27
	<b>Subtotal</b>	<b>15873.9341</b>	<b>4.7710</b>	
Oil Systems	Pipelines	0.0000	0.0000	0.00
	Facilities	2.0060	0.1711	8.53
	<b>Subtotal</b>	<b>2.0060</b>	<b>0.1711</b>	
Electrical Power	Facilities	115027.2149	9245.2831	8.04
	<b>Subtotal</b>	<b>115027.2149</b>	<b>9245.2831</b>	
Communication	Facilities	48.3800	1.6282	3.37
	<b>Subtotal</b>	<b>48.3800</b>	<b>1.6282</b>	
	<b>Total</b>	<b>170,238.72</b>	<b>10,286.32</b>	

---

## Appendix A: County Listing for the Region

Alameda,CA

Alpine,CA

Amador,CA

Butte,CA

Calaveras,CA

Colusa,CA

Contra Costa,CA

El Dorado,CA

Fresno,CA

Glenn,CA

Lake,CA

Madera,CA

Marin,CA

Mariposa,CA

Mendocino,CA

Merced,CA

Monterey,CA

Napa,CA

Nevada,CA

Placer,CA

Sacramento,CA

San Benito,CA

San Francisco,CA

San Joaquin,CA

San Mateo,CA

Santa Clara,CA

Santa Cruz,CA

Sierra,CA

Solano,CA

---

Sonoma, CA

Stanislaus, CA

Sutter, CA

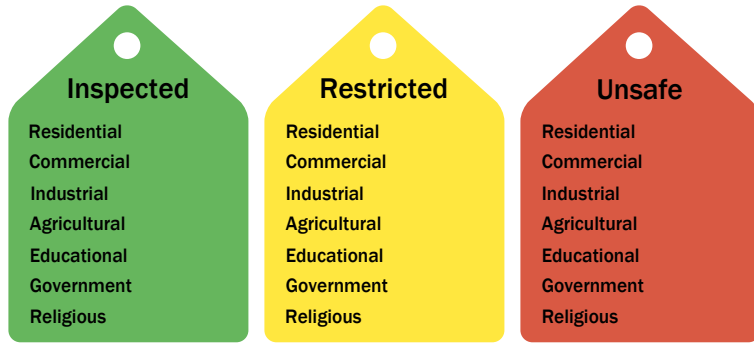
Tuolumne, CA

Yolo, CA

Yuba, CA

## Appendix B: Regional Population and Building Value Data

State	County Name	Population	Building Value (millions of dollars)		
			Residential	Non-Residential	Total
California	Alameda	1,682,353	209,951	122,639	332,590
	Alpine	1,204	721	139	861
	Amador	40,474	5,608	2,517	8,125
	Butte	211,632	25,875	16,639	42,514
	Calaveras	45,292	8,305	4,893	13,199
	Colusa	21,839	2,244	2,024	4,268
	Contra Costa	1,165,927	158,118	60,339	218,458
	El Dorado	191,185	34,907	9,704	44,611
	Fresno	1,008,654	98,532	61,772	160,304
	Glenn	28,917	2,791	3,717	6,508
	Lake	68,163	9,699	4,530	14,229
	Madera	156,255	18,025	9,641	27,667
	Marin	262,321	47,738	15,030	62,769
	Mariposa	17,131	3,299	1,141	4,441
	Mendocino	91,601	14,237	8,510	22,748
	Merced	281,202	25,194	26,098	51,292
	Monterey	439,035	47,655	28,750	76,405
	Napa	138,019	20,517	13,045	33,563
	Nevada	102,241	17,908	6,108	24,016
	Placer	404,739	69,985	24,193	94,179
	Sacramento	1,585,055	179,811	83,911	263,723
	San Benito	64,209	9,440	3,799	13,239
	San Francisco	873,965	108,848	46,020	154,869
	San Joaquin	779,233	82,706	56,882	139,589
	San Mateo	764,442	110,372	44,995	155,368
	Santa Clara	1,936,259	261,111	120,471	381,582
	Santa Cruz	270,861	36,147	18,805	54,952
	Sierra	3,236	596	419	1,015
	Solano	453,491	55,802	26,393	82,195
	Sonoma	488,863	68,827	35,781	104,609
	Stanislaus	552,878	62,937	37,511	100,449
	Sutter	99,633	10,618	6,448	17,066
	Tuolumne	55,620	8,964	3,507	12,471
Yolo	216,403	24,130	18,343	42,473	
Yuba	81,575	8,161	4,677	12,839	
<b>Total Region</b>		<b>14,583,907</b>	<b>1,849,779</b>	<b>929,391</b>	<b>2,779,186</b>

**Building Inspection Tagging (Counts)**

**Total Economic Loss**
**Total:**

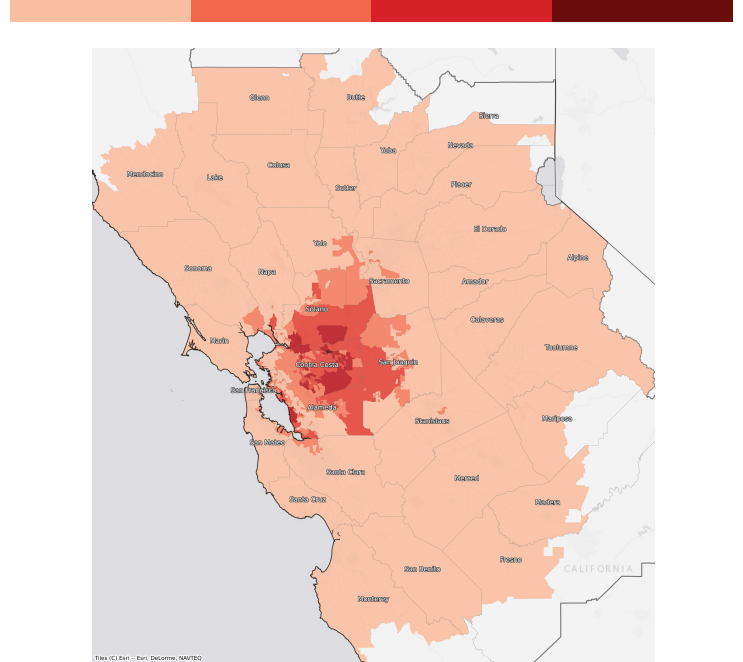
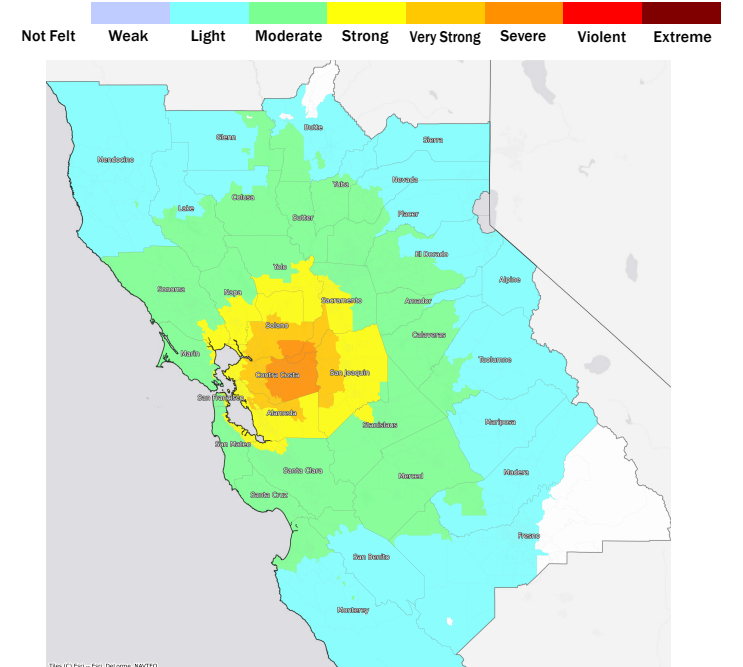
Top Counties	State	Total

**Injuries & Fatalities**
**Total Day:  
Total Night:**

Top Counties	State	Injuries (day/night)	Fatalities (day/night)

**Displaced Households & Short-Term Shelter Needs**
**Total Displaced:  
Total Needing Shelter:**

Top Counties	State	Displaced	Needing Shelter

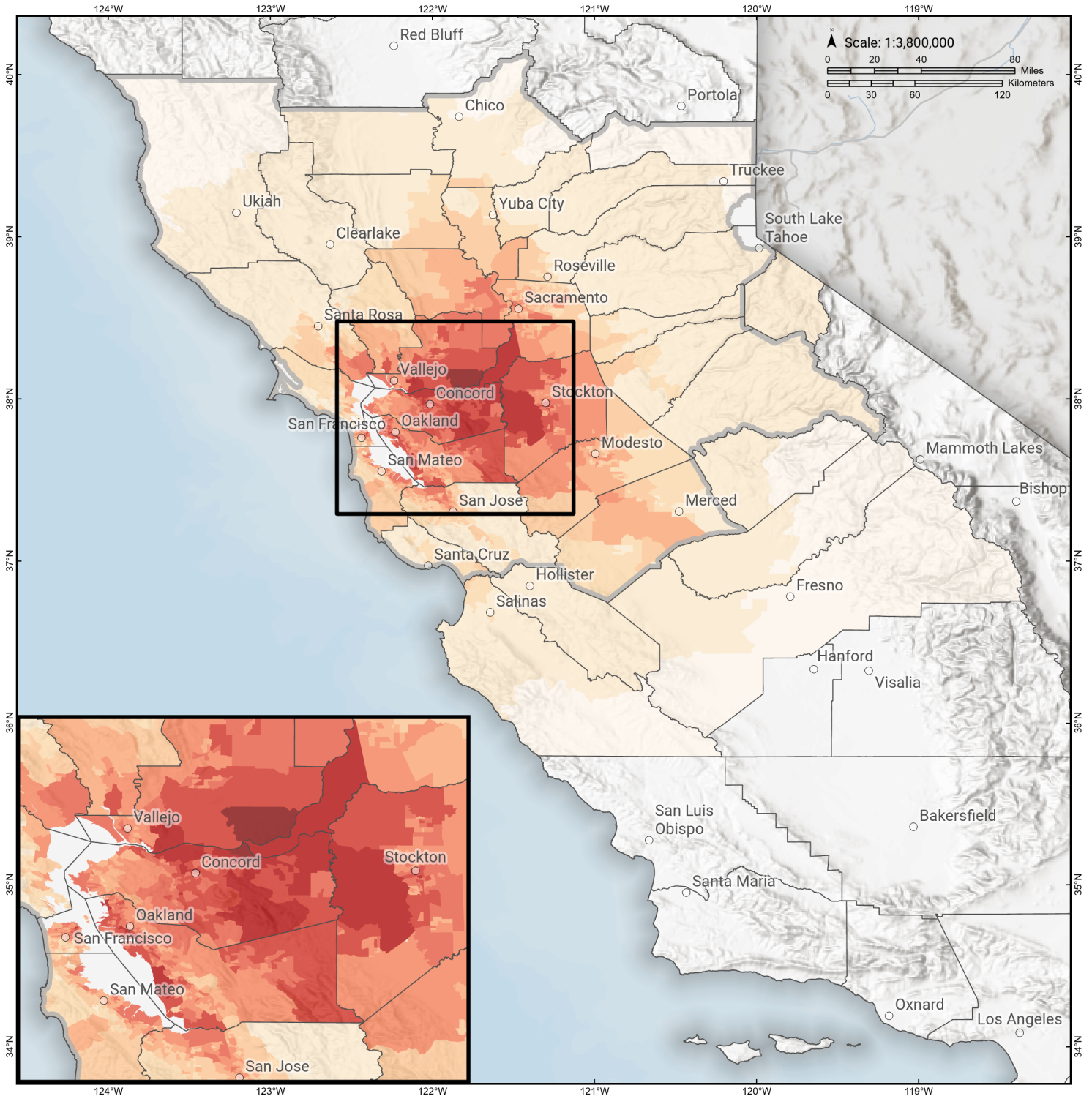
**Economic Impacts by Census Tract**

**Ground Shaking**

**Debris**
**Total Tons:  
Total Truckloads:**

Type	Tons

The estimates of social and economic impacts contained in this report were produced using Hazus loss estimation methodology software which is based on current scientific and engineering knowledge. There are uncertainties inherent in any loss estimation technique. Therefore, there may be significant differences between the modeled results contained in this report and the actual social and economic losses following a specific earthquake.

# Great Valley 06 Midland alt2

## Debris Generated by Census Tract



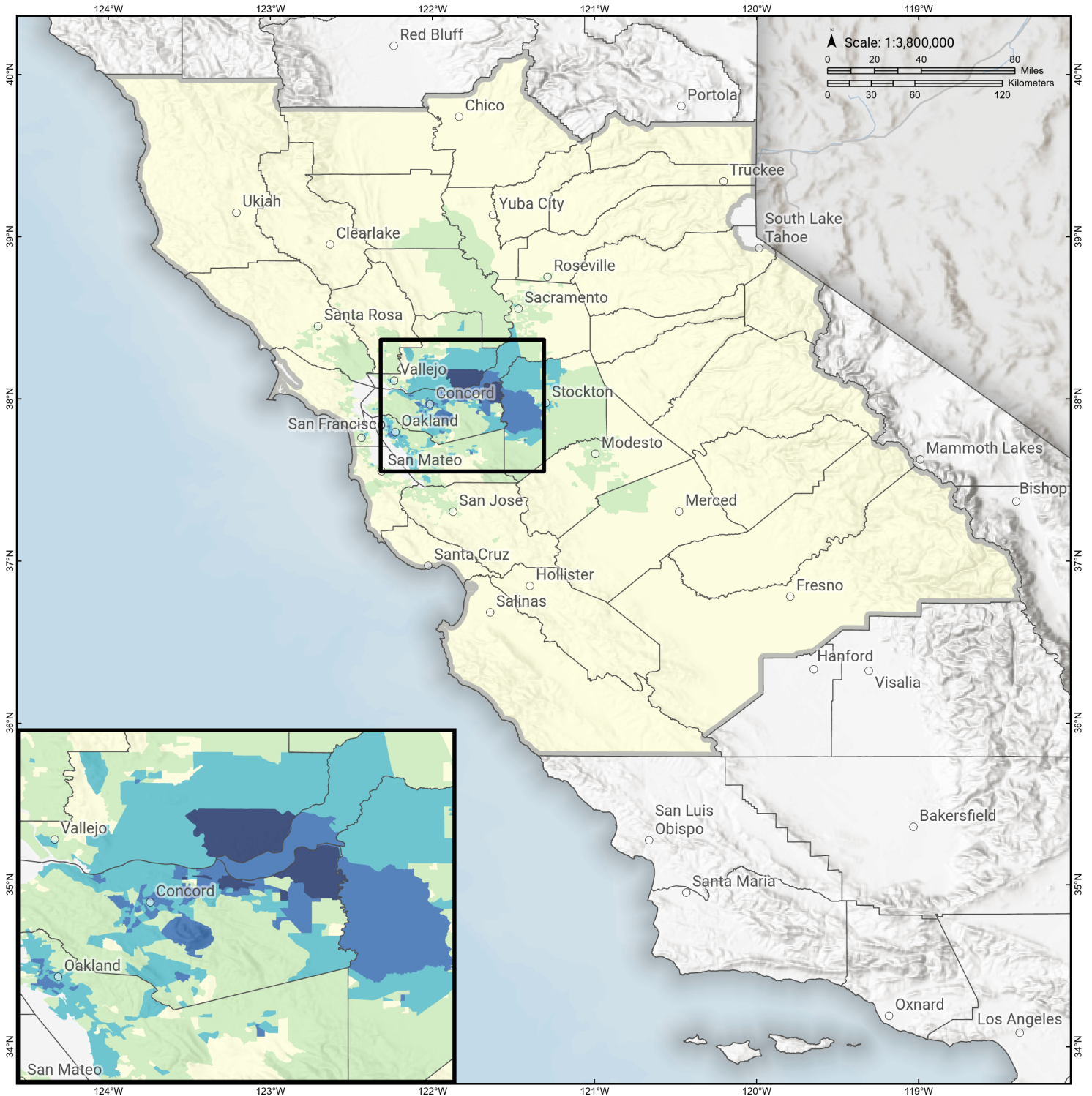
**Study Region:** Great Valley 06 Midland alt2  
**Scenario:** greatvalley06midland\_m7p12\_se

### Debris Generated (in tons)



# Great Valley 06 Midland alt2

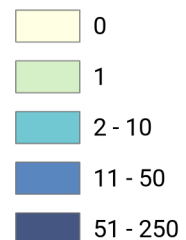
## Displaced Households by Census Tract



**Study Region:** Great Valley 06 Midland alt2  
**Scenario:** greatvalley06midland\_m7p12\_se

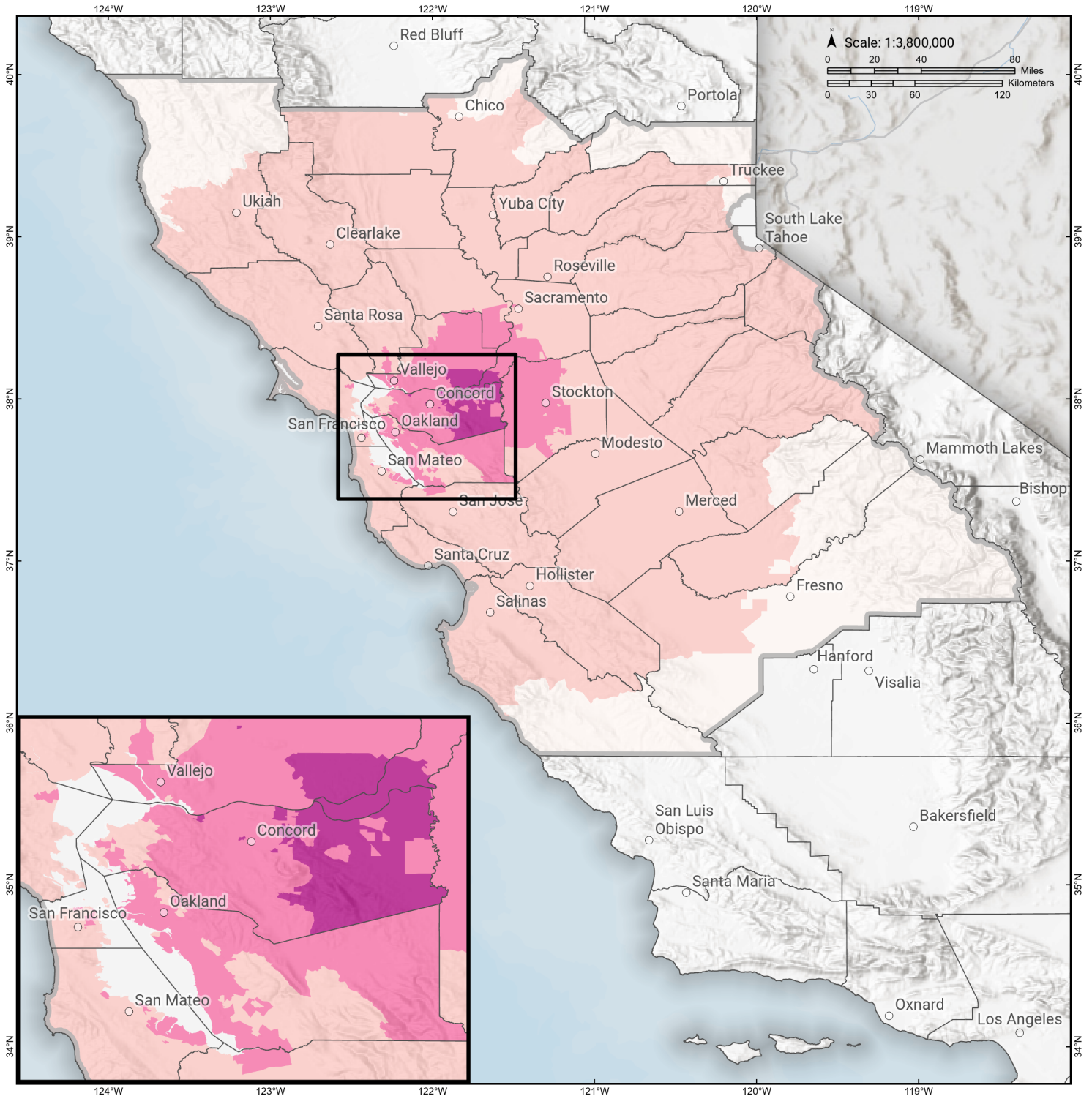


### Displaced Households



# Great Valley 06 Midland alt2

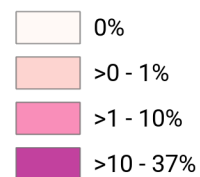
## Loss Ratio by Census Tract



**Study Region:** Great Valley 06 Midland alt2  
**Scenario:** greatvalley06midland\_m7p12\_se

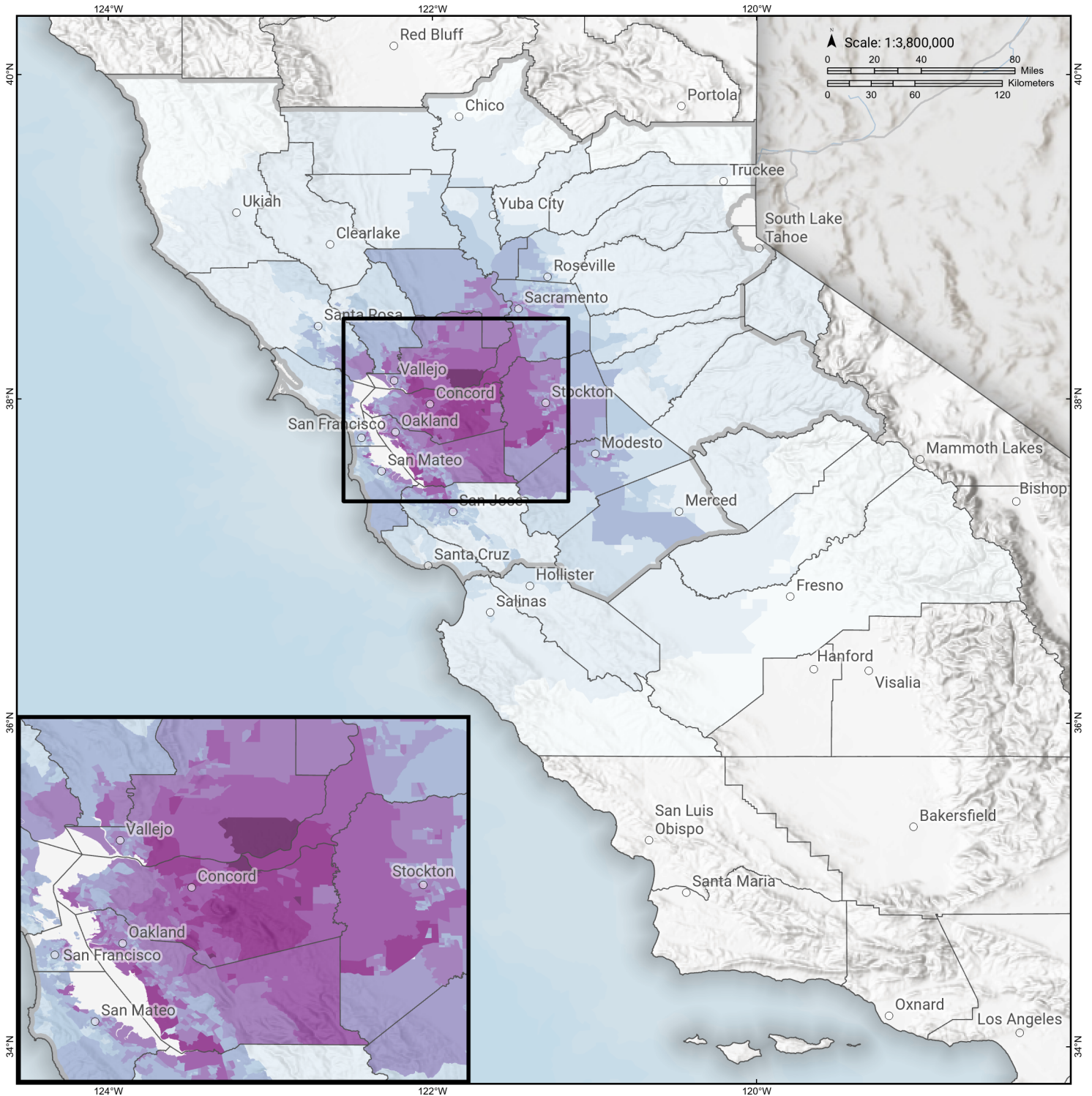


**Loss Ratio** (ratio of building related economic loss to exposed value of buildings)



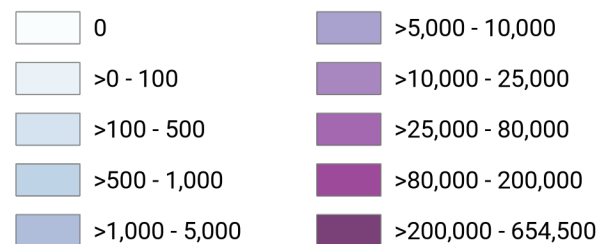
# Great Valley 06 Midland alt2

## Total Building Related Economic Loss by Census Tract



**Study Region:** Great Valley 06 Midland alt2  
**Scenario:** greatvalley06midland\_m7p12\_se

**Economic Loss** (in thousands of USD \$)



## Building Damage by Count by General Occupancy

April 04, 2024

	# of Buildings					Total
	None	Slight	Moderate	Extensive	Complete	
<b>California</b>						
<b>Alameda</b>						
<i>Government</i>	8,005	2,016	477	29	1	10,528
<i>Agriculture</i>	290	94	32	5	0	422
<i>Commercial</i>	21,836	7,281	2,599	267	6	31,989
<i>Religion</i>	1,351	444	172	18	0	1,986
<i>Single Family</i>	276,922	65,142	2,105	4	0	344,173
<i>Other Residential</i>	45,829	12,465	2,807	291	5	61,396
<i>Education</i>	926	136	50	6	0	1,117
<i>Industrial</i>	6,940	2,330	840	93	2	10,205
<b>Alpine</b>						
<i>Education</i>	5	0	0	0	0	5
<i>Commercial</i>	48	0	0	0	0	48
<i>Government</i>	4	0	0	0	0	4
<i>Agriculture</i>	0	0	0	0	0	0
<i>Religion</i>	1	0	0	0	0	1
<i>Industrial</i>	14	0	0	0	0	14
<i>Single Family</i>	842	0	0	0	0	842
<i>Other Residential</i>	97	0	0	0	0	97
<b>Amador</b>						

	# of Buildings					Total
	None	Slight	Moderate	Extensive	Complete	
<i>Industrial</i>	234	0	0	0	0	235
<i>Single Family</i>	14,956	6	0	0	0	14,962
<i>Other Residential</i>	1,027	10	1	0	0	1,037
<i>Education</i>	23	0	0	0	0	23
<i>Government</i>	32	0	0	0	0	32
<i>Agriculture</i>	44	0	0	0	0	44
<i>Religion</i>	45	0	0	0	0	45
<i>Commercial</i>	1,365	3	0	0	0	1,368
<b>Butte</b>						
<i>Government</i>	147	0	0	0	0	147
<i>Religion</i>	531	0	0	0	0	531
<i>Agriculture</i>	509	0	0	0	0	510
<i>Commercial</i>	6,384	1	0	0	0	6,385
<i>Industrial</i>	1,521	1	0	0	0	1,522
<i>Single Family</i>	50,282	1	0	0	0	50,283
<i>Other Residential</i>	21,491	7	0	0	0	21,498
<i>Education</i>	172	0	0	0	0	172
<b>Calaveras</b>						
<i>Government</i>	84	0	0	0	0	84
<i>Other Residential</i>	2,550	8	0	0	0	2,559
<i>Education</i>	35	0	0	0	0	35
<i>Religion</i>	130	0	0	0	0	130
<i>Agriculture</i>	2,200	6	1	0	0	2,207
<i>Commercial</i>	1,410	2	0	0	0	1,413
<i>Industrial</i>	465	1	0	0	0	466

	# of Buildings					Total
	None	Slight	Moderate	Extensive	Complete	
<b>Colusa</b>						
Single Family	22,142	6	0	0	0	22,148
Agriculture	142	0	0	0	0	142
Religion	58	0	0	0	0	58
Commercial	791	3	0	0	0	794
Industrial	113	0	0	0	0	113
Other Residential	950	4	0	0	0	954
Single Family	5,948	6	0	0	0	5,954
Government	32	0	0	0	0	32
Education	33	0	0	0	0	33
<b>Contra Costa</b>						
Commercial	7,503	6,008	3,510	736	234	17,991
Agriculture	254	260	159	50	26	749
Religion	546	350	233	70	27	1,226
Single Family	126,892	126,257	28,371	410	6	281,935
Other Residential	13,356	9,993	3,655	1,578	542	29,124
Industrial	1,960	1,495	990	233	71	4,749
Government	2,074	1,578	1,077	218	76	5,024
Education	400	180	64	7	2	653
<b>El Dorado</b>						
Other Residential	10,410	10	0	0	0	10,420
Industrial	1,199	0	0	0	0	1,199
Education	128	0	0	0	0	128
Single Family	71,421	3	0	0	0	71,424
Commercial	4,767	1	0	0	0	4,768

	# of Buildings					Total
	None	Slight	Moderate	Extensive	Complete	
<i>Government</i>	100	0	0	0	0	100
<i>Religion</i>	180	0	0	0	0	180
<i>Agriculture</i>	161	0	0	0	0	161
<b>Fresno</b>						
<i>Commercial</i>	21,054	0	0	0	0	21,054
<i>Religion</i>	1,507	0	0	0	0	1,507
<i>Agriculture</i>	3,421	0	0	0	0	3,421
<i>Industrial</i>	5,348	0	0	0	0	5,348
<i>Government</i>	291	0	0	0	0	291
<i>Other Residential</i>	40,973	0	0	0	0	40,973
<i>Single Family</i>	226,425	0	0	0	0	226,425
<i>Education</i>	602	0	0	0	0	602
<b>Glenn</b>						
<i>Other Residential</i>	2,150	2	0	0	0	2,152
<i>Government</i>	99	0	0	0	0	99
<i>Education</i>	35	0	0	0	0	35
<i>Industrial</i>	254	0	0	0	0	254
<i>Single Family</i>	7,417	0	0	0	0	7,417
<i>Commercial</i>	885	0	0	0	0	885
<i>Agriculture</i>	1,364	1	0	0	0	1,365
<i>Religion</i>	89	0	0	0	0	89
<b>Lake</b>						
<i>Agriculture</i>	161	0	0	0	0	161
<i>Single Family</i>	21,633	0	0	0	0	21,633
<i>Other Residential</i>	14,588	13	0	0	0	14,601

	# of Buildings					Total
	None	Slight	Moderate	Extensive	Complete	
<i>Education</i>	68	0	0	0	0	68
<i>Industrial</i>	354	0	0	0	0	354
<i>Commercial</i>	2,091	0	0	0	0	2,091
<i>Religion</i>	140	0	0	0	0	140
<i>Government</i>	78	0	0	0	0	78
<b>Madera</b>						
<i>Commercial</i>	2,904	0	0	0	0	2,905
<i>Religion</i>	119	0	0	0	0	119
<i>Government</i>	111	0	0	0	0	111
<i>Agriculture</i>	634	0	0	0	0	634
<i>Other Residential</i>	6,634	1	0	0	0	6,635
<i>Single Family</i>	38,912	0	0	0	0	38,912
<i>Education</i>	115	0	0	0	0	115
<i>Industrial</i>	903	0	0	0	0	903
<b>Marin</b>						
<i>Other Residential</i>	7,715	157	18	0	0	7,890
<i>Government</i>	140	3	0	0	0	143
<i>Education</i>	272	2	0	0	0	274
<i>Commercial</i>	8,023	225	22	0	0	8,270
<i>Religion</i>	312	6	0	0	0	319
<i>Agriculture</i>	183	6	1	0	0	190
<i>Single Family</i>	76,005	716	4	0	0	76,724
<i>Industrial</i>	1,446	78	11	0	0	1,535
<b>Mariposa</b>						
<i>Single Family</i>	8,084	0	0	0	0	8,084

	# of Buildings					Total
	None	Slight	Moderate	Extensive	Complete	
<i>Other Residential</i>	307	0	0	0	0	307
<i>Education</i>	27	0	0	0	0	27
<i>Industrial</i>	94	0	0	0	0	94
<i>Commercial</i>	689	0	0	0	0	689
<i>Agriculture</i>	29	0	0	0	0	29
<i>Religion</i>	36	0	0	0	0	36
<i>Government</i>	33	0	0	0	0	33
<b>Mendocino</b>						
<i>Commercial</i>	3,436	0	0	0	0	3,436
<i>Religion</i>	216	0	0	0	0	216
<i>Agriculture</i>	184	0	0	0	0	184
<i>Single Family</i>	25,969	0	0	0	0	25,969
<i>Other Residential</i>	7,060	0	0	0	0	7,060
<i>Government</i>	83	0	0	0	0	83
<i>Education</i>	101	0	0	0	0	101
<i>Industrial</i>	869	0	0	0	0	869
<b>Merced</b>						
<i>Education</i>	163	0	0	0	0	163
<i>Government</i>	170	1	0	0	0	171
<i>Commercial</i>	4,739	14	1	0	0	4,754
<i>Agriculture</i>	7,557	83	13	0	0	7,653
<i>Religion</i>	344	1	0	0	0	345
<i>Industrial</i>	1,018	4	0	0	0	1,022
<i>Single Family</i>	63,537	61	0	0	0	63,598

	# of Buildings					Total
	None	Slight	Moderate	Extensive	Complete	
<i>Other Residential</i>	10,727	56	3	0	0	10,787
<b>Monterey</b>						
<i>Single Family</i>	90,873	3	0	0	0	90,876
<i>Industrial</i>	1,849	1	0	0	0	1,850
<i>Other Residential</i>	19,787	21	1	0	0	19,809
<i>Education</i>	239	0	0	0	0	239
<i>Government</i>	185	0	0	0	0	185
<i>Agriculture</i>	1,815	0	0	0	0	1,815
<i>Commercial</i>	9,241	5	0	0	0	9,246
<i>Religion</i>	580	0	0	0	0	580
<b>Napa</b>						
<i>Commercial</i>	3,513	419	84	5	0	4,021
<i>Agriculture</i>	320	23	5	0	0	349
<i>Religion</i>	130	15	3	0	0	148
<i>Single Family</i>	35,784	2,936	41	0	0	38,761
<i>Other Residential</i>	6,023	815	135	4	0	6,978
<i>Government</i>	89	12	3	0	0	103
<i>Education</i>	122	8	2	0	0	132
<i>Industrial</i>	1,187	149	30	1	0	1,367
<b>Nevada</b>						
<i>Commercial</i>	2,835	0	0	0	0	2,835
<i>Religion</i>	189	0	0	0	0	189
<i>Government</i>	60	0	0	0	0	60
<i>Agriculture</i>	132	0	0	0	0	132
<i>Single Family</i>	43,280	0	0	0	0	43,280

	# of Buildings					Total
	None	Slight	Moderate	Extensive	Complete	
<b>Placer</b>						
<i>Other Residential</i>	6,384	0	0	0	0	6,384
<i>Education</i>	108	0	0	0	0	108
<i>Industrial</i>	1,161	0	0	0	0	1,161
<i>Education</i>	231	0	0	0	0	231
<i>Commercial</i>	8,509	27	2	0	0	8,538
<i>Government</i>	376	1	0	0	0	377
<i>Agriculture</i>	257	1	0	0	0	258
<i>Religion</i>	381	1	0	0	0	382
<i>Industrial</i>	2,692	10	1	0	0	2,703
<i>Other Residential</i>	14,790	50	3	0	0	14,843
<i>Single Family</i>	134,525	194	0	0	0	134,719
<b>Sacramento</b>						
<i>Single Family</i>	369,409	17,133	296	2	0	386,840
<i>Industrial</i>	6,324	361	60	8	3	6,756
<i>Other Residential</i>	52,955	2,964	310	101	83	56,413
<i>Education</i>	811	16	2	0	0	829
<i>Agriculture</i>	584	29	6	2	1	621
<i>Religion</i>	1,560	117	22	2	1	1,702
<i>Government</i>	533	68	16	1	0	619
<i>Commercial</i>	24,452	1,516	261	37	28	26,295
<b>San Benito</b>						
<i>Other Residential</i>	1,372	3	0	0	0	1,375
<i>Single Family</i>	14,723	3	0	0	0	14,726
<i>Industrial</i>	325	0	0	0	0	326

	# of Buildings					Total
	None	Slight	Moderate	Extensive	Complete	
<i>Education</i>	42	0	0	0	0	42
<i>Government</i>	45	0	0	0	0	45
<i>Commercial</i>	1,077	3	0	0	0	1,080
<i>Religion</i>	64	0	0	0	0	64
<i>Agriculture</i>	253	0	0	0	0	253
<b>San Francisco</b>						
<i>Single Family</i>	145,229	4,993	468	13	0	150,703
<i>Other Residential</i>	40,099	3,722	692	16	0	44,529
<i>Government</i>	228	49	12	1	0	289
<i>Education</i>	528	35	9	0	0	572
<i>Industrial</i>	3,341	415	100	4	0	3,860
<i>Commercial</i>	18,048	2,656	620	20	0	21,344
<i>Religion</i>	1,210	113	21	1	0	1,345
<i>Agriculture</i>	147	12	2	0	0	162
<b>San Joaquin</b>						
<i>Commercial</i>	10,055	2,257	524	27	0	12,864
<i>Agriculture</i>	601	120	30	2	0	753
<i>Religion</i>	690	149	37	2	0	877
<i>Government</i>	241	47	15	1	0	304
<i>Single Family</i>	150,419	33,758	4,364	366	14	188,922
<i>Other Residential</i>	16,259	4,337	1,114	93	2	21,805
<i>Education</i>	357	33	6	0	0	395
<i>Industrial</i>	3,843	854	217	13	0	4,928
<b>San Mateo</b>						
<i>Religion</i>	686	44	6	0	0	736

	# of Buildings					Total
	None	Slight	Moderate	Extensive	Complete	
<i>Agriculture</i>	508	25	6	0	0	539
<i>Government</i>	277	20	2	0	0	299
<i>Commercial</i>	13,391	889	113	2	0	14,395
<i>Industrial</i>	4,086	331	53	1	0	4,472
<i>Other Residential</i>	21,021	1,289	139	3	0	22,453
<i>Single Family</i>	154,913	4,963	55	0	0	159,931
<i>Education</i>	478	10	1	0	0	489
<b>Santa Clara</b>						
<i>Other Residential</i>	56,514	2,397	247	2	0	59,160
<i>Single Family</i>	419,777	7,404	37	0	0	427,219
<i>Government</i>	473	25	3	0	0	502
<i>Education</i>	1,158	13	2	0	0	1,173
<i>Industrial</i>	8,957	425	50	1	0	9,433
<i>Commercial</i>	33,995	1,327	144	3	0	35,469
<i>Religion</i>	1,481	54	6	0	0	1,540
<i>Agriculture</i>	866	25	4	0	0	895
<b>Santa Cruz</b>						
<i>Religion</i>	358	1	0	0	0	359
<i>Agriculture</i>	836	4	0	0	0	840
<i>Single Family</i>	68,837	33	0	0	0	68,870
<i>Other Residential</i>	14,832	57	3	0	0	14,892
<i>Industrial</i>	1,812	7	0	0	0	1,819
<i>Education</i>	225	0	0	0	0	225
<i>Commercial</i>	6,671	22	1	0	0	6,694
<i>Government</i>	127	0	0	0	0	127

	# of Buildings					Total
	None	Slight	Moderate	Extensive	Complete	
<b>Sierra</b>						
<i>Single Family</i>	1,858	0	0	0	0	1,858
<i>Other Residential</i>	153	0	0	0	0	153
<i>Industrial</i>	66	0	0	0	0	66
<i>Education</i>	14	0	0	0	0	14
<i>Commercial</i>	141	0	0	0	0	141
<i>Religion</i>	12	0	0	0	0	12
<i>Agriculture</i>	7	0	0	0	0	7
<i>Government</i>	16	0	0	0	0	16
<b>Solano</b>						
<i>Religion</i>	287	116	39	8	3	454
<i>Agriculture</i>	133	61	33	15	3	245
<i>Government</i>	93	40	14	3	1	152
<i>Commercial</i>	4,579	1,942	611	106	30	7,268
<i>Single Family</i>	83,740	35,223	1,991	14	0	120,968
<i>Industrial</i>	1,153	625	269	46	8	2,101
<i>Other Residential</i>	7,806	3,437	901	152	22	12,317
<i>Education</i>	182	35	7	1	1	225
<b>Sonoma</b>						
<i>Other Residential</i>	24,643	357	33	1	0	25,033
<i>Government</i>	313	5	1	0	0	319
<i>Education</i>	366	1	0	0	0	367
<i>Religion</i>	569	6	1	0	0	576
<i>Commercial</i>	11,939	154	17	0	0	12,110
<i>Agriculture</i>	1,269	28	6	0	0	1,304

	# of Buildings					Total
	None	Slight	Moderate	Extensive	Complete	
<i>Single Family</i>	141,359	668	1	0	0	142,028
<i>Industrial</i>	3,756	60	8	0	0	3,825
<b>Stanislaus</b>						
<i>Other Residential</i>	18,882	620	66	1	0	19,569
<i>Single Family</i>	140,221	2,494	9	0	0	142,724
<i>Education</i>	305	2	0	0	0	307
<i>Government</i>	660	19	2	0	0	680
<i>Industrial</i>	3,324	134	17	0	0	3,475
<i>Commercial</i>	9,969	359	41	1	0	10,369
<i>Religion</i>	438	16	2	0	0	456
<i>Agriculture</i>	1,201	32	6	0	0	1,239
<b>Sutter</b>						
<i>Other Residential</i>	3,091	21	1	0	0	3,113
<i>Industrial</i>	633	3	0	0	0	636
<i>Education</i>	62	0	0	0	0	62
<i>Government</i>	77	0	0	0	0	77
<i>Single Family</i>	24,481	31	0	0	0	24,512
<i>Commercial</i>	2,045	7	0	0	0	2,052
<i>Agriculture</i>	1,111	13	2	0	0	1,125
<i>Religion</i>	154	0	0	0	0	154
<b>Tuolumne</b>						
<i>Education</i>	57	0	0	0	0	57
<i>Government</i>	143	0	0	0	0	143
<i>Commercial</i>	1,576	0	0	0	0	1,576
<i>Religion</i>	121	0	0	0	0	121

	# of Buildings					Total
	None	Slight	Moderate	Extensive	Complete	
<i>Agriculture</i>	82	0	0	0	0	82
<i>Industrial</i>	383	0	0	0	0	383
<i>Other Residential</i>	4,962	0	0	0	0	4,962
<i>Single Family</i>	21,645	0	0	0	0	21,645
<b>Yolo</b>						
<i>Industrial</i>	1,002	98	17	0	0	1,117
<i>Other Residential</i>	9,022	769	68	1	0	9,861
<i>Education</i>	126	4	1	0	0	131
<i>Government</i>	99	10	2	0	0	111
<i>Single Family</i>	39,768	2,779	42	0	0	42,589
<i>Commercial</i>	3,818	349	56	2	0	4,225
<i>Agriculture</i>	261	16	4	0	0	281
<i>Religion</i>	222	17	2	0	0	242
<b>Yuba</b>						
<i>Government</i>	591	0	0	0	0	591
<i>Education</i>	54	0	0	0	0	54
<i>Other Residential</i>	6,999	21	1	0	0	7,021
<i>Religion</i>	98	0	0	0	0	98
<i>Commercial</i>	1,195	3	0	0	0	1,199
<i>Agriculture</i>	92	0	0	0	0	92
<i>Single Family</i>	18,855	12	0	0	0	18,867
<i>Industrial</i>	403	1	0	0	0	404
<b>Total</b>	<b>4,039,658</b>	<b>387,952</b>	<b>61,877</b>	<b>5,107</b>	<b>1,201</b>	<b>4,495,795</b>

	# of Buildings					Total
	None	Slight	Moderate	Extensive	Complete	
<b>Region Total</b>	<b>4,039,658</b>	<b>387,952</b>	<b>61,877</b>	<b>5,107</b>	<b>1,201</b>	<b>4,495,795</b>

*Totals only reflect data for those census tracts/blocks included in the user's study region and will reflect the entire county/state only if all of the census blocks for that county/states were selected at the time of study region creation.*

## Building Damage by Count by General Occupancy

April 15, 2024

	# of Buildings					Total
	None	Slight	Moderate	Extensive	Complete	
<b>California</b>						
<b>Alameda</b>						
<i>Government</i>	8,005	2,016	477	29	1	10,528
<i>Agriculture</i>	290	94	32	5	0	422
<i>Commercial</i>	21,836	7,281	2,599	267	6	31,989
<i>Religion</i>	1,351	444	172	18	0	1,986
<i>Single Family</i>	276,922	65,142	2,105	4	0	344,173
<i>Other Residential</i>	45,829	12,465	2,807	291	5	61,396
<i>Education</i>	926	136	50	6	0	1,117
<i>Industrial</i>	6,940	2,330	840	93	2	10,205
<b>Alpine</b>						
<i>Education</i>	5	0	0	0	0	5
<i>Commercial</i>	48	0	0	0	0	48
<i>Government</i>	4	0	0	0	0	4
<i>Agriculture</i>	0	0	0	0	0	0
<i>Religion</i>	1	0	0	0	0	1
<i>Industrial</i>	14	0	0	0	0	14
<i>Single Family</i>	842	0	0	0	0	842
<i>Other Residential</i>	97	0	0	0	0	97
<b>Amador</b>						

	# of Buildings					Total
	None	Slight	Moderate	Extensive	Complete	
<i>Industrial</i>	234	0	0	0	0	235
<i>Single Family</i>	14,956	6	0	0	0	14,962
<i>Other Residential</i>	1,027	10	1	0	0	1,037
<i>Education</i>	23	0	0	0	0	23
<i>Government</i>	32	0	0	0	0	32
<i>Agriculture</i>	44	0	0	0	0	44
<i>Religion</i>	45	0	0	0	0	45
<i>Commercial</i>	1,365	3	0	0	0	1,368
<b>Butte</b>						
<i>Government</i>	147	0	0	0	0	147
<i>Religion</i>	531	0	0	0	0	531
<i>Agriculture</i>	509	0	0	0	0	510
<i>Commercial</i>	6,384	1	0	0	0	6,385
<i>Industrial</i>	1,521	1	0	0	0	1,522
<i>Single Family</i>	50,282	1	0	0	0	50,283
<i>Other Residential</i>	21,491	7	0	0	0	21,498
<i>Education</i>	172	0	0	0	0	172
<b>Calaveras</b>						
<i>Government</i>	84	0	0	0	0	84
<i>Other Residential</i>	2,550	8	0	0	0	2,559
<i>Education</i>	35	0	0	0	0	35
<i>Religion</i>	130	0	0	0	0	130
<i>Agriculture</i>	2,200	6	1	0	0	2,207
<i>Commercial</i>	1,410	2	0	0	0	1,413
<i>Industrial</i>	465	1	0	0	0	466

	# of Buildings					Total
	None	Slight	Moderate	Extensive	Complete	
<b>Colusa</b>						
Single Family	22,142	6	0	0	0	22,148
Agriculture	142	0	0	0	0	142
Religion	58	0	0	0	0	58
Commercial	791	3	0	0	0	794
Industrial	113	0	0	0	0	113
Other Residential	950	4	0	0	0	954
Single Family	5,948	6	0	0	0	5,954
Government	32	0	0	0	0	32
Education	33	0	0	0	0	33
<b>Contra Costa</b>						
Commercial	7,503	6,008	3,510	736	234	17,991
Agriculture	254	260	159	50	26	749
Religion	546	350	233	70	27	1,226
Single Family	126,892	126,257	28,371	410	6	281,935
Other Residential	13,356	9,993	3,655	1,578	542	29,124
Industrial	1,960	1,495	990	233	71	4,749
Government	2,074	1,578	1,077	218	76	5,024
Education	400	180	64	7	2	653
<b>El Dorado</b>						
Other Residential	10,410	10	0	0	0	10,420
Industrial	1,199	0	0	0	0	1,199
Education	128	0	0	0	0	128
Single Family	71,421	3	0	0	0	71,424
Commercial	4,767	1	0	0	0	4,768

	# of Buildings					Total
	None	Slight	Moderate	Extensive	Complete	
<i>Government</i>	100	0	0	0	0	100
<i>Religion</i>	180	0	0	0	0	180
<i>Agriculture</i>	161	0	0	0	0	161
<b>Fresno</b>						
<i>Commercial</i>	21,054	0	0	0	0	21,054
<i>Religion</i>	1,507	0	0	0	0	1,507
<i>Agriculture</i>	3,421	0	0	0	0	3,421
<i>Industrial</i>	5,348	0	0	0	0	5,348
<i>Government</i>	291	0	0	0	0	291
<i>Other Residential</i>	40,973	0	0	0	0	40,973
<i>Single Family</i>	226,425	0	0	0	0	226,425
<i>Education</i>	602	0	0	0	0	602
<b>Glenn</b>						
<i>Other Residential</i>	2,150	2	0	0	0	2,152
<i>Government</i>	99	0	0	0	0	99
<i>Education</i>	35	0	0	0	0	35
<i>Industrial</i>	254	0	0	0	0	254
<i>Single Family</i>	7,417	0	0	0	0	7,417
<i>Commercial</i>	885	0	0	0	0	885
<i>Agriculture</i>	1,364	1	0	0	0	1,365
<i>Religion</i>	89	0	0	0	0	89
<b>Lake</b>						
<i>Agriculture</i>	161	0	0	0	0	161
<i>Single Family</i>	21,633	0	0	0	0	21,633
<i>Other Residential</i>	14,588	13	0	0	0	14,601

	# of Buildings					Total
	None	Slight	Moderate	Extensive	Complete	
<i>Education</i>	68	0	0	0	0	68
<i>Industrial</i>	354	0	0	0	0	354
<i>Commercial</i>	2,091	0	0	0	0	2,091
<i>Religion</i>	140	0	0	0	0	140
<i>Government</i>	78	0	0	0	0	78
<b>Madera</b>						
<i>Commercial</i>	2,904	0	0	0	0	2,905
<i>Religion</i>	119	0	0	0	0	119
<i>Government</i>	111	0	0	0	0	111
<i>Agriculture</i>	634	0	0	0	0	634
<i>Other Residential</i>	6,634	1	0	0	0	6,635
<i>Single Family</i>	38,912	0	0	0	0	38,912
<i>Education</i>	115	0	0	0	0	115
<i>Industrial</i>	903	0	0	0	0	903
<b>Marin</b>						
<i>Other Residential</i>	7,715	157	18	0	0	7,890
<i>Government</i>	140	3	0	0	0	143
<i>Education</i>	272	2	0	0	0	274
<i>Commercial</i>	8,023	225	22	0	0	8,270
<i>Religion</i>	312	6	0	0	0	319
<i>Agriculture</i>	183	6	1	0	0	190
<i>Single Family</i>	76,005	716	4	0	0	76,724
<i>Industrial</i>	1,446	78	11	0	0	1,535
<b>Mariposa</b>						
<i>Single Family</i>	8,084	0	0	0	0	8,084

	# of Buildings					Total
	None	Slight	Moderate	Extensive	Complete	
<i>Other Residential</i>	307	0	0	0	0	307
<i>Education</i>	27	0	0	0	0	27
<i>Industrial</i>	94	0	0	0	0	94
<i>Commercial</i>	689	0	0	0	0	689
<i>Agriculture</i>	29	0	0	0	0	29
<i>Religion</i>	36	0	0	0	0	36
<i>Government</i>	33	0	0	0	0	33
<b>Mendocino</b>						
<i>Commercial</i>	3,436	0	0	0	0	3,436
<i>Religion</i>	216	0	0	0	0	216
<i>Agriculture</i>	184	0	0	0	0	184
<i>Single Family</i>	25,969	0	0	0	0	25,969
<i>Other Residential</i>	7,060	0	0	0	0	7,060
<i>Government</i>	83	0	0	0	0	83
<i>Education</i>	101	0	0	0	0	101
<i>Industrial</i>	869	0	0	0	0	869
<b>Merced</b>						
<i>Education</i>	163	0	0	0	0	163
<i>Government</i>	170	1	0	0	0	171
<i>Commercial</i>	4,739	14	1	0	0	4,754
<i>Agriculture</i>	7,557	83	13	0	0	7,653
<i>Religion</i>	344	1	0	0	0	345
<i>Industrial</i>	1,018	4	0	0	0	1,022
<i>Single Family</i>	63,537	61	0	0	0	63,598

	# of Buildings					Total
	None	Slight	Moderate	Extensive	Complete	
<i>Other Residential</i>	10,727	56	3	0	0	10,787
<b>Monterey</b>						
<i>Single Family</i>	90,873	3	0	0	0	90,876
<i>Industrial</i>	1,849	1	0	0	0	1,850
<i>Other Residential</i>	19,787	21	1	0	0	19,809
<i>Education</i>	239	0	0	0	0	239
<i>Government</i>	185	0	0	0	0	185
<i>Agriculture</i>	1,815	0	0	0	0	1,815
<i>Commercial</i>	9,241	5	0	0	0	9,246
<i>Religion</i>	580	0	0	0	0	580
<b>Napa</b>						
<i>Commercial</i>	3,513	419	84	5	0	4,021
<i>Agriculture</i>	320	23	5	0	0	349
<i>Religion</i>	130	15	3	0	0	148
<i>Single Family</i>	35,784	2,936	41	0	0	38,761
<i>Other Residential</i>	6,023	815	135	4	0	6,978
<i>Government</i>	89	12	3	0	0	103
<i>Education</i>	122	8	2	0	0	132
<i>Industrial</i>	1,187	149	30	1	0	1,367
<b>Nevada</b>						
<i>Commercial</i>	2,835	0	0	0	0	2,835
<i>Religion</i>	189	0	0	0	0	189
<i>Government</i>	60	0	0	0	0	60
<i>Agriculture</i>	132	0	0	0	0	132
<i>Single Family</i>	43,280	0	0	0	0	43,280

	# of Buildings					Total
	None	Slight	Moderate	Extensive	Complete	
<b>Placer</b>						
<i>Other Residential</i>	6,384	0	0	0	0	6,384
<i>Education</i>	108	0	0	0	0	108
<i>Industrial</i>	1,161	0	0	0	0	1,161
<i>Education</i>	231	0	0	0	0	231
<i>Commercial</i>	8,509	27	2	0	0	8,538
<i>Government</i>	376	1	0	0	0	377
<i>Agriculture</i>	257	1	0	0	0	258
<i>Religion</i>	381	1	0	0	0	382
<i>Industrial</i>	2,692	10	1	0	0	2,703
<i>Other Residential</i>	14,790	50	3	0	0	14,843
<i>Single Family</i>	134,525	194	0	0	0	134,719
<b>Sacramento</b>						
<i>Single Family</i>	369,409	17,133	296	2	0	386,840
<i>Industrial</i>	6,324	361	60	8	3	6,756
<i>Other Residential</i>	52,955	2,964	310	101	83	56,413
<i>Education</i>	811	16	2	0	0	829
<i>Agriculture</i>	584	29	6	2	1	621
<i>Religion</i>	1,560	117	22	2	1	1,702
<i>Government</i>	533	68	16	1	0	619
<i>Commercial</i>	24,452	1,516	261	37	28	26,295
<b>San Benito</b>						
<i>Other Residential</i>	1,372	3	0	0	0	1,375
<i>Single Family</i>	14,723	3	0	0	0	14,726
<i>Industrial</i>	325	0	0	0	0	326

	# of Buildings					Total
	None	Slight	Moderate	Extensive	Complete	
<i>Education</i>	42	0	0	0	0	42
<i>Government</i>	45	0	0	0	0	45
<i>Commercial</i>	1,077	3	0	0	0	1,080
<i>Religion</i>	64	0	0	0	0	64
<i>Agriculture</i>	253	0	0	0	0	253
<b>San Francisco</b>						
<i>Single Family</i>	145,229	4,993	468	13	0	150,703
<i>Other Residential</i>	40,099	3,722	692	16	0	44,529
<i>Government</i>	228	49	12	1	0	289
<i>Education</i>	528	35	9	0	0	572
<i>Industrial</i>	3,341	415	100	4	0	3,860
<i>Commercial</i>	18,048	2,656	620	20	0	21,344
<i>Religion</i>	1,210	113	21	1	0	1,345
<i>Agriculture</i>	147	12	2	0	0	162
<b>San Joaquin</b>						
<i>Commercial</i>	10,055	2,257	524	27	0	12,864
<i>Agriculture</i>	601	120	30	2	0	753
<i>Religion</i>	690	149	37	2	0	877
<i>Government</i>	241	47	15	1	0	304
<i>Single Family</i>	150,419	33,758	4,364	366	14	188,922
<i>Other Residential</i>	16,259	4,337	1,114	93	2	21,805
<i>Education</i>	357	33	6	0	0	395
<i>Industrial</i>	3,843	854	217	13	0	4,928
<b>San Mateo</b>						
<i>Religion</i>	686	44	6	0	0	736

	# of Buildings					Total
	None	Slight	Moderate	Extensive	Complete	
<i>Agriculture</i>	508	25	6	0	0	539
<i>Government</i>	277	20	2	0	0	299
<i>Commercial</i>	13,391	889	113	2	0	14,395
<i>Industrial</i>	4,086	331	53	1	0	4,472
<i>Other Residential</i>	21,021	1,289	139	3	0	22,453
<i>Single Family</i>	154,913	4,963	55	0	0	159,931
<i>Education</i>	478	10	1	0	0	489
<b>Santa Clara</b>						
<i>Other Residential</i>	56,514	2,397	247	2	0	59,160
<i>Single Family</i>	419,777	7,404	37	0	0	427,219
<i>Government</i>	473	25	3	0	0	502
<i>Education</i>	1,158	13	2	0	0	1,173
<i>Industrial</i>	8,957	425	50	1	0	9,433
<i>Commercial</i>	33,995	1,327	144	3	0	35,469
<i>Religion</i>	1,481	54	6	0	0	1,540
<i>Agriculture</i>	866	25	4	0	0	895
<b>Santa Cruz</b>						
<i>Religion</i>	358	1	0	0	0	359
<i>Agriculture</i>	836	4	0	0	0	840
<i>Single Family</i>	68,837	33	0	0	0	68,870
<i>Other Residential</i>	14,832	57	3	0	0	14,892
<i>Industrial</i>	1,812	7	0	0	0	1,819
<i>Education</i>	225	0	0	0	0	225
<i>Commercial</i>	6,671	22	1	0	0	6,694
<i>Government</i>	127	0	0	0	0	127

	# of Buildings					Total
	None	Slight	Moderate	Extensive	Complete	
<b>Sierra</b>						
<i>Single Family</i>	1,858	0	0	0	0	1,858
<i>Other Residential</i>	153	0	0	0	0	153
<i>Industrial</i>	66	0	0	0	0	66
<i>Education</i>	14	0	0	0	0	14
<i>Commercial</i>	141	0	0	0	0	141
<i>Religion</i>	12	0	0	0	0	12
<i>Agriculture</i>	7	0	0	0	0	7
<i>Government</i>	16	0	0	0	0	16
<b>Solano</b>						
<i>Religion</i>	287	116	39	8	3	454
<i>Agriculture</i>	133	61	33	15	3	245
<i>Government</i>	93	40	14	3	1	152
<i>Commercial</i>	4,579	1,942	611	106	30	7,268
<i>Single Family</i>	83,740	35,223	1,991	14	0	120,968
<i>Industrial</i>	1,153	625	269	46	8	2,101
<i>Other Residential</i>	7,806	3,437	901	152	22	12,317
<i>Education</i>	182	35	7	1	1	225
<b>Sonoma</b>						
<i>Other Residential</i>	24,643	357	33	1	0	25,033
<i>Government</i>	313	5	1	0	0	319
<i>Education</i>	366	1	0	0	0	367
<i>Religion</i>	569	6	1	0	0	576
<i>Commercial</i>	11,939	154	17	0	0	12,110
<i>Agriculture</i>	1,269	28	6	0	0	1,304

	# of Buildings					Total
	None	Slight	Moderate	Extensive	Complete	
<i>Single Family</i>	141,359	668	1	0	0	142,028
<i>Industrial</i>	3,756	60	8	0	0	3,825
<b>Stanislaus</b>						
<i>Other Residential</i>	18,882	620	66	1	0	19,569
<i>Single Family</i>	140,221	2,494	9	0	0	142,724
<i>Education</i>	305	2	0	0	0	307
<i>Government</i>	660	19	2	0	0	680
<i>Industrial</i>	3,324	134	17	0	0	3,475
<i>Commercial</i>	9,969	359	41	1	0	10,369
<i>Religion</i>	438	16	2	0	0	456
<i>Agriculture</i>	1,201	32	6	0	0	1,239
<b>Sutter</b>						
<i>Other Residential</i>	3,091	21	1	0	0	3,113
<i>Industrial</i>	633	3	0	0	0	636
<i>Education</i>	62	0	0	0	0	62
<i>Government</i>	77	0	0	0	0	77
<i>Single Family</i>	24,481	31	0	0	0	24,512
<i>Commercial</i>	2,045	7	0	0	0	2,052
<i>Agriculture</i>	1,111	13	2	0	0	1,125
<i>Religion</i>	154	0	0	0	0	154
<b>Tuolumne</b>						
<i>Education</i>	57	0	0	0	0	57
<i>Government</i>	143	0	0	0	0	143
<i>Commercial</i>	1,576	0	0	0	0	1,576
<i>Religion</i>	121	0	0	0	0	121

	# of Buildings					Total
	None	Slight	Moderate	Extensive	Complete	
<i>Agriculture</i>	82	0	0	0	0	82
<i>Industrial</i>	383	0	0	0	0	383
<i>Other Residential</i>	4,962	0	0	0	0	4,962
<i>Single Family</i>	21,645	0	0	0	0	21,645
<b>Yolo</b>						
<i>Industrial</i>	1,002	98	17	0	0	1,117
<i>Other Residential</i>	9,022	769	68	1	0	9,861
<i>Education</i>	126	4	1	0	0	131
<i>Government</i>	99	10	2	0	0	111
<i>Single Family</i>	39,768	2,779	42	0	0	42,589
<i>Commercial</i>	3,818	349	56	2	0	4,225
<i>Agriculture</i>	261	16	4	0	0	281
<i>Religion</i>	222	17	2	0	0	242
<b>Yuba</b>						
<i>Government</i>	591	0	0	0	0	591
<i>Education</i>	54	0	0	0	0	54
<i>Other Residential</i>	6,999	21	1	0	0	7,021
<i>Religion</i>	98	0	0	0	0	98
<i>Commercial</i>	1,195	3	0	0	0	1,199
<i>Agriculture</i>	92	0	0	0	0	92
<i>Single Family</i>	18,855	12	0	0	0	18,867
<i>Industrial</i>	403	1	0	0	0	404
<b>Total</b>	<b>4,039,658</b>	<b>387,952</b>	<b>61,877</b>	<b>5,107</b>	<b>1,201</b>	<b>4,495,795</b>

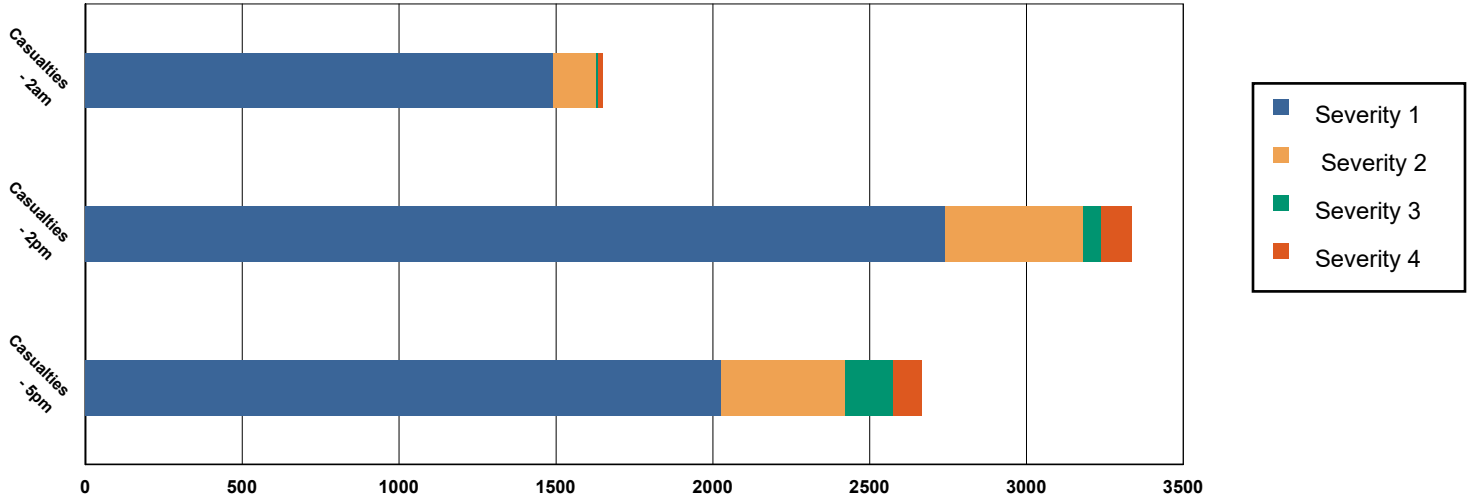
	# of Buildings					Total
	None	Slight	Moderate	Extensive	Complete	
<b>Region Total</b>	<b>4,039,658</b>	<b>387,952</b>	<b>61,877</b>	<b>5,107</b>	<b>1,201</b>	<b>4,495,795</b>

*Totals only reflect data for those census tracts/blocks included in the user's study region and will reflect the entire county/state only if all of the census blocks for that county/states were selected at the time of study region creation.*

## Casualties Summary Report

April 15, 2024

### Region Total Casualties



### Injury Severity Level

Severity 1	Severity 2	Severity 3	Severity 4	Total
------------	------------	------------	------------	-------

#### California

##### Alameda

##### Casualties - 2am

	Severity 1	Severity 2	Severity 3	Severity 4	Total
Single Family	108	2	0	0	110
Hotels	0	0	0	0	0
Commuting	0	0	0	0	0
Educational	0	0	0	0	0
Industrial	5	0	0	0	5
Commercial	5	0	0	0	5
Other-Residential	141	10	0	0	152
<b>Total Casualties - 2am</b>	<b>259</b>	<b>13</b>	<b>0</b>	<b>1</b>	<b>273</b>

##### Casualties - 2pm

Industrial	35	3	0	0	38
Educational	59	5	0	0	63
Other-Residential	44	3	0	0	48
Single Family	29	1	0	0	29
Hotels	0	0	0	0	0
Commuting	0	0	0	0	1
Commercial	317	27	1	1	346

	Injury Severity Level				Total
	Severity 1	Severity 2	Severity 3	Severity 4	
<b>California</b>					
<b>Alameda</b>					
<b>Total Casualties - 2pm</b>	<b>483</b>	<b>39</b>	<b>1</b>	<b>2</b>	<b>525</b>
<b>Casualties - 5pm</b>					
<i>Commuting</i>	2	3	5	1	11
<i>Single Family</i>	39	1	0	0	39
<i>Commercial</i>	221	19	1	1	241
<i>Hotels</i>	0	0	0	0	0
<i>Educational</i>	8	0	0	0	8
<i>Industrial</i>	22	2	0	0	24
<i>Other-Residential</i>	53	4	0	0	57
<b>Total Casualties - 5pm</b>	<b>344</b>	<b>29</b>	<b>6</b>	<b>2</b>	<b>381</b>
<b>Alpine</b>					
<b>Casualties - 2am</b>					
<i>Industrial</i>	0	0	0	0	0
<i>Single Family</i>	0	0	0	0	0
<i>Commercial</i>	0	0	0	0	0
<i>Other-Residential</i>	0	0	0	0	0
<i>Hotels</i>	0	0	0	0	0
<i>Commuting</i>	0	0	0	0	0
<i>Educational</i>	0	0	0	0	0
<b>Total Casualties - 2am</b>	<b>0</b>	<b>0</b>	<b>0</b>	<b>0</b>	<b>0</b>
<b>Casualties - 2pm</b>					
<i>Educational</i>	0	0	0	0	0
<i>Other-Residential</i>	0	0	0	0	0
<i>Single Family</i>	0	0	0	0	0
<i>Hotels</i>	0	0	0	0	0
<i>Commercial</i>	0	0	0	0	0
<i>Commuting</i>	0	0	0	0	0
<i>Industrial</i>	0	0	0	0	0
<b>Total Casualties - 2pm</b>	<b>0</b>	<b>0</b>	<b>0</b>	<b>0</b>	<b>0</b>
<b>Casualties - 5pm</b>					
<i>Industrial</i>	0	0	0	0	0
<i>Other-Residential</i>	0	0	0	0	0
<i>Commuting</i>	0	0	0	0	0
<i>Commercial</i>	0	0	0	0	0
<i>Single Family</i>	0	0	0	0	0
<i>Educational</i>	0	0	0	0	0
<i>Hotels</i>	0	0	0	0	0
<b>Total Casualties - 5pm</b>	<b>0</b>	<b>0</b>	<b>0</b>	<b>0</b>	<b>0</b>
<b>Amador</b>					
<b>Casualties - 2am</b>					
<i>Commercial</i>	0	0	0	0	0

	Injury Severity Level				Total
	Severity 1	Severity 2	Severity 3	Severity 4	
<b>California</b>					
<b>Amador</b>					
<b>Casualties - 2am</b>					
Other-Residential	0	0	0	0	0
Commuting	0	0	0	0	0
Educational	0	0	0	0	0
Single Family	0	0	0	0	0
Hotels	0	0	0	0	0
Industrial	0	0	0	0	0
<b>Total Casualties - 2am</b>	<b>0</b>	<b>0</b>	<b>0</b>	<b>0</b>	<b>0</b>
<b>Casualties - 2pm</b>					
Single Family	0	0	0	0	0
Hotels	0	0	0	0	0
Educational	0	0	0	0	0
Commuting	0	0	0	0	0
Commercial	0	0	0	0	0
Other-Residential	0	0	0	0	0
Industrial	0	0	0	0	0
<b>Total Casualties - 2pm</b>	<b>0</b>	<b>0</b>	<b>0</b>	<b>0</b>	<b>0</b>
<b>Casualties - 5pm</b>					
Commercial	0	0	0	0	0
Commuting	0	0	0	0	0
Other-Residential	0	0	0	0	0
Single Family	0	0	0	0	0
Educational	0	0	0	0	0
Hotels	0	0	0	0	0
Industrial	0	0	0	0	0
<b>Total Casualties - 5pm</b>	<b>0</b>	<b>0</b>	<b>0</b>	<b>0</b>	<b>0</b>
<b>Butte</b>					
<b>Casualties - 2am</b>					
Industrial	0	0	0	0	0
Commercial	0	0	0	0	0
Other-Residential	0	0	0	0	0
Single Family	0	0	0	0	0
Commuting	0	0	0	0	0
Educational	0	0	0	0	0
Hotels	0	0	0	0	0
<b>Total Casualties - 2am</b>	<b>0</b>	<b>0</b>	<b>0</b>	<b>0</b>	<b>0</b>
<b>Casualties - 2pm</b>					
Single Family	0	0	0	0	0
Educational	0	0	0	0	0
Commuting	0	0	0	0	0
Other-Residential	0	0	0	0	0
Hotels	0	0	0	0	0

	Injury Severity Level				Total
	Severity 1	Severity 2	Severity 3	Severity 4	
<b>California</b>					
<b>Butte</b>					
<b>Casualties - 2pm</b>					
Commercial	0	0	0	0	0
Industrial	0	0	0	0	0
<b>Total Casualties - 2pm</b>	<b>0</b>	<b>0</b>	<b>0</b>	<b>0</b>	<b>0</b>
<b>Casualties - 5pm</b>					
Industrial	0	0	0	0	0
Other-Residential	0	0	0	0	0
Single Family	0	0	0	0	0
Commercial	0	0	0	0	0
Commuting	0	0	0	0	0
Hotels	0	0	0	0	0
Educational	0	0	0	0	0
<b>Total Casualties - 5pm</b>	<b>0</b>	<b>0</b>	<b>0</b>	<b>0</b>	<b>0</b>
<b>Calaveras</b>					
<b>Casualties - 2am</b>					
Other-Residential	0	0	0	0	0
Commuting	0	0	0	0	0
Commercial	0	0	0	0	0
Single Family	0	0	0	0	0
Hotels	0	0	0	0	0
Educational	0	0	0	0	0
Industrial	0	0	0	0	0
<b>Total Casualties - 2am</b>	<b>0</b>	<b>0</b>	<b>0</b>	<b>0</b>	<b>0</b>
<b>Casualties - 2pm</b>					
Hotels	0	0	0	0	0
Single Family	0	0	0	0	0
Educational	0	0	0	0	0
Commuting	0	0	0	0	0
Commercial	0	0	0	0	0
Industrial	0	0	0	0	0
Other-Residential	0	0	0	0	0
<b>Total Casualties - 2pm</b>	<b>0</b>	<b>0</b>	<b>0</b>	<b>0</b>	<b>0</b>
<b>Casualties - 5pm</b>					
Industrial	0	0	0	0	0
Commercial	0	0	0	0	0
Other-Residential	0	0	0	0	0
Educational	0	0	0	0	0
Hotels	0	0	0	0	0
Commuting	0	0	0	0	0
Single Family	0	0	0	0	0
<b>Total Casualties - 5pm</b>	<b>0</b>	<b>0</b>	<b>0</b>	<b>0</b>	<b>0</b>

	Injury Severity Level				Total
	Severity 1	Severity 2	Severity 3	Severity 4	
<b>California</b>					
<b>Colusa</b>					
<b>Casualties - 2am</b>					
Other-Residential	0	0	0	0	0
Industrial	0	0	0	0	0
Single Family	0	0	0	0	0
Commercial	0	0	0	0	0
Educational	0	0	0	0	0
Commuting	0	0	0	0	0
Hotels	0	0	0	0	0
<b>Total Casualties - 2am</b>	<b>0</b>	<b>0</b>	<b>0</b>	<b>0</b>	<b>0</b>
<b>Casualties - 2pm</b>					
Hotels	0	0	0	0	0
Single Family	0	0	0	0	0
Educational	0	0	0	0	0
Commercial	0	0	0	0	0
Commuting	0	0	0	0	0
Other-Residential	0	0	0	0	0
Industrial	0	0	0	0	0
<b>Total Casualties - 2pm</b>	<b>0</b>	<b>0</b>	<b>0</b>	<b>0</b>	<b>0</b>
<b>Casualties - 5pm</b>					
Industrial	0	0	0	0	0
Commercial	0	0	0	0	0
Other-Residential	0	0	0	0	0
Commuting	0	0	0	0	0
Single Family	0	0	0	0	0
Educational	0	0	0	0	0
Hotels	0	0	0	0	0
<b>Total Casualties - 5pm</b>	<b>0</b>	<b>0</b>	<b>0</b>	<b>0</b>	<b>0</b>
<b>Contra Costa</b>					
<b>Casualties - 2am</b>					
Educational	0	0	0	0	0
Hotels	0	0	0	0	0
Industrial	11	2	0	1	14
Other-Residential	325	60	6	11	402
Single Family	425	28	0	0	452
Commercial	14	3	0	1	19
Commuting	0	0	1	0	1
<b>Total Casualties - 2am</b>	<b>775</b>	<b>93</b>	<b>7</b>	<b>12</b>	<b>888</b>
<b>Casualties - 2pm</b>					
Other-Residential	99	18	2	3	123
Industrial	79	17	2	4	103
Hotels	0	0	0	0	0
Single Family	122	8	0	0	130

	Injury Severity Level				Total
	Severity 1	Severity 2	Severity 3	Severity 4	
<b>California</b>					
<b>Contra Costa</b>					
<b>Casualties - 2pm</b>					
<i>Educational</i>	243	48	6	12	308
<i>Commuting</i>	2	4	5	1	12
<i>Commercial</i>	1,089	245	34	67	1,435
<b>Total Casualties - 2pm</b>	<b>1,634</b>	<b>339</b>	<b>50</b>	<b>87</b>	<b>2,111</b>
<b>Casualties - 5pm</b>					
<i>Educational</i>	14	1	0	0	15
<i>Commuting</i>	41	75	102	21	238
<i>Single Family</i>	157	11	0	0	168
<i>Hotels</i>	0	0	0	0	0
<i>Industrial</i>	50	10	1	3	64
<i>Other-Residential</i>	121	23	2	4	150
<i>Commercial</i>	858	196	28	54	1,136
<b>Total Casualties - 5pm</b>	<b>1,241</b>	<b>316</b>	<b>133</b>	<b>82</b>	<b>1,772</b>
<b>El Dorado</b>					
<b>Casualties - 2am</b>					
<i>Commuting</i>	0	0	0	0	0
<i>Educational</i>	0	0	0	0	0
<i>Single Family</i>	0	0	0	0	0
<i>Hotels</i>	0	0	0	0	0
<i>Other-Residential</i>	0	0	0	0	0
<i>Industrial</i>	0	0	0	0	0
<i>Commercial</i>	0	0	0	0	0
<b>Total Casualties - 2am</b>	<b>0</b>	<b>0</b>	<b>0</b>	<b>0</b>	<b>0</b>
<b>Casualties - 2pm</b>					
<i>Industrial</i>	0	0	0	0	0
<i>Other-Residential</i>	0	0	0	0	0
<i>Single Family</i>	0	0	0	0	0
<i>Hotels</i>	0	0	0	0	0
<i>Educational</i>	0	0	0	0	0
<i>Commuting</i>	0	0	0	0	0
<i>Commercial</i>	0	0	0	0	0
<b>Total Casualties - 2pm</b>	<b>0</b>	<b>0</b>	<b>0</b>	<b>0</b>	<b>0</b>
<b>Casualties - 5pm</b>					
<i>Commercial</i>	0	0	0	0	0
<i>Commuting</i>	0	0	0	0	0
<i>Single Family</i>	0	0	0	0	0
<i>Educational</i>	0	0	0	0	0
<i>Hotels</i>	0	0	0	0	0
<i>Industrial</i>	0	0	0	0	0
<i>Other-Residential</i>	0	0	0	0	0

	Injury Severity Level				Total
	Severity 1	Severity 2	Severity 3	Severity 4	
<b>California</b>					
<b>El Dorado</b>					
<b>Total Casualties - 5pm</b>	<b>0</b>	<b>0</b>	<b>0</b>	<b>0</b>	<b>0</b>
<b>Fresno</b>					
<b>Casualties - 2am</b>					
<i>Hotels</i>	0	0	0	0	0
<i>Educational</i>	0	0	0	0	0
<i>Industrial</i>	0	0	0	0	0
<i>Commercial</i>	0	0	0	0	0
<i>Other-Residential</i>	0	0	0	0	0
<i>Single Family</i>	0	0	0	0	0
<i>Commuting</i>	0	0	0	0	0
<b>Total Casualties - 2am</b>	<b>0</b>	<b>0</b>	<b>0</b>	<b>0</b>	<b>0</b>
<b>Casualties - 2pm</b>					
<i>Commercial</i>	0	0	0	0	0
<i>Other-Residential</i>	0	0	0	0	0
<i>Industrial</i>	0	0	0	0	0
<i>Single Family</i>	0	0	0	0	0
<i>Hotels</i>	0	0	0	0	0
<i>Commuting</i>	0	0	0	0	0
<i>Educational</i>	0	0	0	0	0
<b>Total Casualties - 2pm</b>	<b>0</b>	<b>0</b>	<b>0</b>	<b>0</b>	<b>0</b>
<b>Casualties - 5pm</b>					
<i>Educational</i>	0	0	0	0	0
<i>Commuting</i>	0	0	0	0	0
<i>Hotels</i>	0	0	0	0	0
<i>Industrial</i>	0	0	0	0	0
<i>Single Family</i>	0	0	0	0	0
<i>Other-Residential</i>	0	0	0	0	0
<i>Commercial</i>	0	0	0	0	0
<b>Total Casualties - 5pm</b>	<b>0</b>	<b>0</b>	<b>0</b>	<b>0</b>	<b>0</b>
<b>Glenn</b>					
<b>Casualties - 2am</b>					
<i>Hotels</i>	0	0	0	0	0
<i>Educational</i>	0	0	0	0	0
<i>Industrial</i>	0	0	0	0	0
<i>Other-Residential</i>	0	0	0	0	0
<i>Commercial</i>	0	0	0	0	0
<i>Commuting</i>	0	0	0	0	0
<i>Single Family</i>	0	0	0	0	0
<b>Total Casualties - 2am</b>	<b>0</b>	<b>0</b>	<b>0</b>	<b>0</b>	<b>0</b>
<b>Casualties - 2pm</b>					
<i>Industrial</i>	0	0	0	0	0

	Injury Severity Level				Total
	Severity 1	Severity 2	Severity 3	Severity 4	
<b>California</b>					
<b>Glenn</b>					
<b>Casualties - 2pm</b>					
<i>Other-Residential</i>	0	0	0	0	0
<i>Commuting</i>	0	0	0	0	0
<i>Commercial</i>	0	0	0	0	0
<i>Hotels</i>	0	0	0	0	0
<i>Single Family</i>	0	0	0	0	0
<i>Educational</i>	0	0	0	0	0
<b>Total Casualties - 2pm</b>	<b>0</b>	<b>0</b>	<b>0</b>	<b>0</b>	<b>0</b>
<b>Casualties - 5pm</b>					
<i>Educational</i>	0	0	0	0	0
<i>Commuting</i>	0	0	0	0	0
<i>Hotels</i>	0	0	0	0	0
<i>Single Family</i>	0	0	0	0	0
<i>Industrial</i>	0	0	0	0	0
<i>Commercial</i>	0	0	0	0	0
<i>Other-Residential</i>	0	0	0	0	0
<b>Total Casualties - 5pm</b>	<b>0</b>	<b>0</b>	<b>0</b>	<b>0</b>	<b>0</b>
<b>Lake</b>					
<b>Casualties - 2am</b>					
<i>Hotels</i>	0	0	0	0	0
<i>Industrial</i>	0	0	0	0	0
<i>Other-Residential</i>	0	0	0	0	0
<i>Commuting</i>	0	0	0	0	0
<i>Educational</i>	0	0	0	0	0
<i>Single Family</i>	0	0	0	0	0
<i>Commercial</i>	0	0	0	0	0
<b>Total Casualties - 2am</b>	<b>0</b>	<b>0</b>	<b>0</b>	<b>0</b>	<b>0</b>
<b>Casualties - 2pm</b>					
<i>Industrial</i>	0	0	0	0	0
<i>Single Family</i>	0	0	0	0	0
<i>Commercial</i>	0	0	0	0	0
<i>Other-Residential</i>	0	0	0	0	0
<i>Hotels</i>	0	0	0	0	0
<i>Educational</i>	0	0	0	0	0
<i>Commuting</i>	0	0	0	0	0
<b>Total Casualties - 2pm</b>	<b>0</b>	<b>0</b>	<b>0</b>	<b>0</b>	<b>0</b>
<b>Casualties - 5pm</b>					
<i>Other-Residential</i>	0	0	0	0	0
<i>Industrial</i>	0	0	0	0	0
<i>Commercial</i>	0	0	0	0	0
<i>Educational</i>	0	0	0	0	0
<i>Commuting</i>	0	0	0	0	0

	Injury Severity Level				Total
	Severity 1	Severity 2	Severity 3	Severity 4	
<b>California</b>					
<b>Lake</b>					
<b>Casualties - 5pm</b>					
Single Family	0	0	0	0	0
Hotels	0	0	0	0	0
<b>Total Casualties - 5pm</b>	<b>0</b>	<b>0</b>	<b>0</b>	<b>0</b>	<b>0</b>
<b>Madera</b>					
<b>Casualties - 2am</b>					
Hotels	0	0	0	0	0
Educational	0	0	0	0	0
Single Family	0	0	0	0	0
Commuting	0	0	0	0	0
Industrial	0	0	0	0	0
Commercial	0	0	0	0	0
Other-Residential	0	0	0	0	0
<b>Total Casualties - 2am</b>	<b>0</b>	<b>0</b>	<b>0</b>	<b>0</b>	<b>0</b>
<b>Casualties - 2pm</b>					
Industrial	0	0	0	0	0
Commercial	0	0	0	0	0
Other-Residential	0	0	0	0	0
Commuting	0	0	0	0	0
Single Family	0	0	0	0	0
Hotels	0	0	0	0	0
Educational	0	0	0	0	0
<b>Total Casualties - 2pm</b>	<b>0</b>	<b>0</b>	<b>0</b>	<b>0</b>	<b>0</b>
<b>Casualties - 5pm</b>					
Industrial	0	0	0	0	0
Commercial	0	0	0	0	0
Single Family	0	0	0	0	0
Educational	0	0	0	0	0
Other-Residential	0	0	0	0	0
Commuting	0	0	0	0	0
Hotels	0	0	0	0	0
<b>Total Casualties - 5pm</b>	<b>0</b>	<b>0</b>	<b>0</b>	<b>0</b>	<b>0</b>
<b>Marin</b>					
<b>Casualties - 2am</b>					
Commercial	0	0	0	0	0
Commuting	0	0	0	0	0
Other-Residential	1	0	0	0	1
Educational	0	0	0	0	0
Single Family	1	0	0	0	1
Hotels	0	0	0	0	0
Industrial	0	0	0	0	0

	Injury Severity Level				Total
	Severity 1	Severity 2	Severity 3	Severity 4	
<b>California</b>					
<b>Marin</b>					
<b>Total Casualties - 2am</b>	<b>2</b>	<b>0</b>	<b>0</b>	<b>0</b>	<b>2</b>
<b>Casualties - 2pm</b>					
<i>Hotels</i>	0	0	0	0	0
<i>Commuting</i>	0	0	0	0	0
<i>Educational</i>	0	0	0	0	0
<i>Industrial</i>	0	0	0	0	0
<i>Other-Residential</i>	0	0	0	0	0
<i>Commercial</i>	2	0	0	0	2
<i>Single Family</i>	0	0	0	0	0
<b>Total Casualties - 2pm</b>	<b>3</b>	<b>0</b>	<b>0</b>	<b>0</b>	<b>3</b>
<b>Casualties - 5pm</b>					
<i>Commuting</i>	0	0	0	0	0
<i>Commercial</i>	1	0	0	0	1
<i>Other-Residential</i>	0	0	0	0	0
<i>Single Family</i>	0	0	0	0	0
<i>Industrial</i>	0	0	0	0	0
<i>Educational</i>	0	0	0	0	0
<i>Hotels</i>	0	0	0	0	0
<b>Total Casualties - 5pm</b>	<b>2</b>	<b>0</b>	<b>0</b>	<b>0</b>	<b>2</b>
<b>Mariposa</b>					
<b>Casualties - 2am</b>					
<i>Commuting</i>	0	0	0	0	0
<i>Single Family</i>	0	0	0	0	0
<i>Commercial</i>	0	0	0	0	0
<i>Hotels</i>	0	0	0	0	0
<i>Educational</i>	0	0	0	0	0
<i>Industrial</i>	0	0	0	0	0
<i>Other-Residential</i>	0	0	0	0	0
<b>Total Casualties - 2am</b>	<b>0</b>	<b>0</b>	<b>0</b>	<b>0</b>	<b>0</b>
<b>Casualties - 2pm</b>					
<i>Hotels</i>	0	0	0	0	0
<i>Industrial</i>	0	0	0	0	0
<i>Commercial</i>	0	0	0	0	0
<i>Other-Residential</i>	0	0	0	0	0
<i>Educational</i>	0	0	0	0	0
<i>Commuting</i>	0	0	0	0	0
<i>Single Family</i>	0	0	0	0	0
<b>Total Casualties - 2pm</b>	<b>0</b>	<b>0</b>	<b>0</b>	<b>0</b>	<b>0</b>
<b>Casualties - 5pm</b>					
<i>Other-Residential</i>	0	0	0	0	0
<i>Educational</i>	0	0	0	0	0

	Injury Severity Level				Total
	Severity 1	Severity 2	Severity 3	Severity 4	
<b>California</b>					
<b>Mariposa</b>					
<b>Casualties - 5pm</b>					
<i>Commuting</i>	0	0	0	0	0
<i>Hotels</i>	0	0	0	0	0
<i>Single Family</i>	0	0	0	0	0
<i>Commercial</i>	0	0	0	0	0
<i>Industrial</i>	0	0	0	0	0
<b>Total Casualties - 5pm</b>	<b>0</b>	<b>0</b>	<b>0</b>	<b>0</b>	<b>0</b>
<b>Mendocino</b>					
<b>Casualties - 2am</b>					
<i>Educational</i>	0	0	0	0	0
<i>Hotels</i>	0	0	0	0	0
<i>Commuting</i>	0	0	0	0	0
<i>Industrial</i>	0	0	0	0	0
<i>Other-Residential</i>	0	0	0	0	0
<i>Single Family</i>	0	0	0	0	0
<i>Commercial</i>	0	0	0	0	0
<b>Total Casualties - 2am</b>	<b>0</b>	<b>0</b>	<b>0</b>	<b>0</b>	<b>0</b>
<b>Casualties - 2pm</b>					
<i>Industrial</i>	0	0	0	0	0
<i>Other-Residential</i>	0	0	0	0	0
<i>Commercial</i>	0	0	0	0	0
<i>Single Family</i>	0	0	0	0	0
<i>Commuting</i>	0	0	0	0	0
<i>Hotels</i>	0	0	0	0	0
<i>Educational</i>	0	0	0	0	0
<b>Total Casualties - 2pm</b>	<b>0</b>	<b>0</b>	<b>0</b>	<b>0</b>	<b>0</b>
<b>Casualties - 5pm</b>					
<i>Hotels</i>	0	0	0	0	0
<i>Single Family</i>	0	0	0	0	0
<i>Educational</i>	0	0	0	0	0
<i>Commuting</i>	0	0	0	0	0
<i>Commercial</i>	0	0	0	0	0
<i>Other-Residential</i>	0	0	0	0	0
<i>Industrial</i>	0	0	0	0	0
<b>Total Casualties - 5pm</b>	<b>0</b>	<b>0</b>	<b>0</b>	<b>0</b>	<b>0</b>
<b>Merced</b>					
<b>Casualties - 2am</b>					
<i>Hotels</i>	0	0	0	0	0
<i>Industrial</i>	0	0	0	0	0
<i>Commercial</i>	0	0	0	0	0
<i>Single Family</i>	0	0	0	0	0
<i>Other-Residential</i>	0	0	0	0	0

	Injury Severity Level				Total
	Severity 1	Severity 2	Severity 3	Severity 4	
<b>California</b>					
<b>Merced</b>					
<b>Casualties - 2am</b>					
<i>Educational</i>	0	0	0	0	0
<i>Commuting</i>	0	0	0	0	0
<b>Total Casualties - 2am</b>	<b>0</b>	<b>0</b>	<b>0</b>	<b>0</b>	<b>0</b>
<b>Casualties - 2pm</b>					
<i>Other-Residential</i>	0	0	0	0	0
<i>Industrial</i>	0	0	0	0	0
<i>Commercial</i>	1	0	0	0	1
<i>Commuting</i>	0	0	0	0	0
<i>Hotels</i>	0	0	0	0	0
<i>Educational</i>	0	0	0	0	0
<i>Single Family</i>	0	0	0	0	0
<b>Total Casualties - 2pm</b>	<b>1</b>	<b>0</b>	<b>0</b>	<b>0</b>	<b>1</b>
<b>Casualties - 5pm</b>					
<i>Industrial</i>	0	0	0	0	0
<i>Hotels</i>	0	0	0	0	0
<i>Educational</i>	0	0	0	0	0
<i>Commuting</i>	0	0	0	0	0
<i>Single Family</i>	0	0	0	0	0
<i>Commercial</i>	1	0	0	0	1
<i>Other-Residential</i>	0	0	0	0	0
<b>Total Casualties - 5pm</b>	<b>1</b>	<b>0</b>	<b>0</b>	<b>0</b>	<b>1</b>
<b>Monterey</b>					
<b>Casualties - 2am</b>					
<i>Other-Residential</i>	0	0	0	0	0
<i>Commuting</i>	0	0	0	0	0
<i>Commercial</i>	0	0	0	0	0
<i>Single Family</i>	0	0	0	0	0
<i>Hotels</i>	0	0	0	0	0
<i>Educational</i>	0	0	0	0	0
<i>Industrial</i>	0	0	0	0	0
<b>Total Casualties - 2am</b>	<b>0</b>	<b>0</b>	<b>0</b>	<b>0</b>	<b>0</b>
<b>Casualties - 2pm</b>					
<i>Commuting</i>	0	0	0	0	0
<i>Commercial</i>	0	0	0	0	0
<i>Single Family</i>	0	0	0	0	0
<i>Hotels</i>	0	0	0	0	0
<i>Educational</i>	0	0	0	0	0
<i>Industrial</i>	0	0	0	0	0
<i>Other-Residential</i>	0	0	0	0	0
<b>Total Casualties - 2pm</b>	<b>0</b>	<b>0</b>	<b>0</b>	<b>0</b>	<b>0</b>

	Injury Severity Level				Total
	Severity 1	Severity 2	Severity 3	Severity 4	
<b>California</b>					
<b>Monterey</b>					
<b>Casualties - 5pm</b>					
Commercial	0	0	0	0	0
Other-Residential	0	0	0	0	0
Industrial	0	0	0	0	0
Hotels	0	0	0	0	0
Educational	0	0	0	0	0
Commuting	0	0	0	0	0
Single Family	0	0	0	0	0
<b>Total Casualties - 5pm</b>	<b>0</b>	<b>0</b>	<b>0</b>	<b>0</b>	<b>0</b>
<b>Napa</b>					
<b>Casualties - 2am</b>					
Commercial	0	0	0	0	0
Other-Residential	3	0	0	0	3
Educational	0	0	0	0	0
Single Family	4	0	0	0	4
Commuting	0	0	0	0	0
Hotels	0	0	0	0	0
Industrial	0	0	0	0	0
<b>Total Casualties - 2am</b>	<b>8</b>	<b>0</b>	<b>0</b>	<b>0</b>	<b>8</b>
<b>Casualties - 2pm</b>					
Educational	2	0	0	0	2
Hotels	0	0	0	0	0
Commuting	0	0	0	0	0
Industrial	1	0	0	0	1
Other-Residential	1	0	0	0	1
Single Family	1	0	0	0	1
Commercial	7	0	0	0	8
<b>Total Casualties - 2pm</b>	<b>12</b>	<b>1</b>	<b>0</b>	<b>0</b>	<b>13</b>
<b>Casualties - 5pm</b>					
Commercial	4	0	0	0	5
Single Family	2	0	0	0	2
Other-Residential	1	0	0	0	1
Commuting	0	0	0	0	0
Industrial	1	0	0	0	1
Educational	0	0	0	0	0
Hotels	0	0	0	0	0
<b>Total Casualties - 5pm</b>	<b>8</b>	<b>0</b>	<b>0</b>	<b>0</b>	<b>9</b>
<b>Nevada</b>					
<b>Casualties - 2am</b>					
Single Family	0	0	0	0	0
Commercial	0	0	0	0	0
Commuting	0	0	0	0	0

	Injury Severity Level				Total
	Severity 1	Severity 2	Severity 3	Severity 4	
<b>California</b>					
<b>Nevada</b>					
<b>Casualties - 2am</b>					
<i>Hotels</i>	0	0	0	0	0
<i>Educational</i>	0	0	0	0	0
<i>Industrial</i>	0	0	0	0	0
<i>Other-Residential</i>	0	0	0	0	0
<b>Total Casualties - 2am</b>	<b>0</b>	<b>0</b>	<b>0</b>	<b>0</b>	<b>0</b>
<b>Casualties - 2pm</b>					
<i>Hotels</i>	0	0	0	0	0
<i>Industrial</i>	0	0	0	0	0
<i>Commercial</i>	0	0	0	0	0
<i>Single Family</i>	0	0	0	0	0
<i>Other-Residential</i>	0	0	0	0	0
<i>Educational</i>	0	0	0	0	0
<i>Commuting</i>	0	0	0	0	0
<b>Total Casualties - 2pm</b>	<b>0</b>	<b>0</b>	<b>0</b>	<b>0</b>	<b>0</b>
<b>Casualties - 5pm</b>					
<i>Commuting</i>	0	0	0	0	0
<i>Hotels</i>	0	0	0	0	0
<i>Other-Residential</i>	0	0	0	0	0
<i>Educational</i>	0	0	0	0	0
<i>Single Family</i>	0	0	0	0	0
<i>Commercial</i>	0	0	0	0	0
<i>Industrial</i>	0	0	0	0	0
<b>Total Casualties - 5pm</b>	<b>0</b>	<b>0</b>	<b>0</b>	<b>0</b>	<b>0</b>
<b>Placer</b>					
<b>Casualties - 2am</b>					
<i>Hotels</i>	0	0	0	0	0
<i>Educational</i>	0	0	0	0	0
<i>Industrial</i>	0	0	0	0	0
<i>Other-Residential</i>	0	0	0	0	0
<i>Commercial</i>	0	0	0	0	0
<i>Single Family</i>	0	0	0	0	0
<i>Commuting</i>	0	0	0	0	0
<b>Total Casualties - 2am</b>	<b>0</b>	<b>0</b>	<b>0</b>	<b>0</b>	<b>0</b>
<b>Casualties - 2pm</b>					
<i>Other-Residential</i>	0	0	0	0	0
<i>Industrial</i>	0	0	0	0	0
<i>Commercial</i>	0	0	0	0	0
<i>Single Family</i>	0	0	0	0	0
<i>Educational</i>	0	0	0	0	0
<i>Commuting</i>	0	0	0	0	0
<i>Hotels</i>	0	0	0	0	0

	Injury Severity Level				Total
	Severity 1	Severity 2	Severity 3	Severity 4	
<b>California</b>					
<b>Placer</b>					
<b>Total Casualties - 2pm</b>	<b>0</b>	<b>0</b>	<b>0</b>	<b>0</b>	<b>0</b>
<b>Casualties - 5pm</b>					
Single Family	0	0	0	0	0
Hotels	0	0	0	0	0
Commuting	0	0	0	0	0
Educational	0	0	0	0	0
Commercial	0	0	0	0	0
Industrial	0	0	0	0	0
Other-Residential	0	0	0	0	0
<b>Total Casualties - 5pm</b>	<b>0</b>	<b>0</b>	<b>0</b>	<b>0</b>	<b>0</b>
<b>Sacramento</b>					
<b>Casualties - 2am</b>					
Industrial	1	0	0	0	1
Other-Residential	32	5	0	1	38
Commercial	1	0	0	0	1
Single Family	28	0	0	0	28
Hotels	0	0	0	0	0
Commuting	0	0	0	0	0
Educational	0	0	0	0	0
<b>Total Casualties - 2am</b>	<b>61</b>	<b>5</b>	<b>0</b>	<b>1</b>	<b>68</b>
<b>Casualties - 2pm</b>					
Other-Residential	12	2	0	0	15
Commuting	0	0	0	0	0
Single Family	8	0	0	0	8
Commercial	74	10	1	2	87
Hotels	0	0	0	0	0
Educational	6	0	0	0	7
Industrial	4	0	0	0	5
<b>Total Casualties - 2pm</b>	<b>104</b>	<b>13</b>	<b>1</b>	<b>2</b>	<b>121</b>
<b>Casualties - 5pm</b>					
Industrial	3	0	0	0	3
Educational	1	0	0	0	1
Hotels	0	0	0	0	0
Commercial	44	6	1	1	52
Commuting	0	1	1	0	2
Other-Residential	11	2	0	0	14
Single Family	10	0	0	0	10
<b>Total Casualties - 5pm</b>	<b>70</b>	<b>9</b>	<b>2</b>	<b>2</b>	<b>82</b>
<b>San Benito</b>					
<b>Casualties - 2am</b>					
Other-Residential	0	0	0	0	0

	Injury Severity Level				Total
	Severity 1	Severity 2	Severity 3	Severity 4	
<b>California</b>					
<b>San Benito</b>					
<b>Casualties - 2am</b>					
Commercial	0	0	0	0	0
Commuting	0	0	0	0	0
Hotels	0	0	0	0	0
Educational	0	0	0	0	0
Single Family	0	0	0	0	0
Industrial	0	0	0	0	0
<b>Total Casualties - 2am</b>	<b>0</b>	<b>0</b>	<b>0</b>	<b>0</b>	<b>0</b>
<b>Casualties - 2pm</b>					
Hotels	0	0	0	0	0
Educational	0	0	0	0	0
Industrial	0	0	0	0	0
Other-Residential	0	0	0	0	0
Commercial	0	0	0	0	0
Commuting	0	0	0	0	0
Single Family	0	0	0	0	0
<b>Total Casualties - 2pm</b>	<b>0</b>	<b>0</b>	<b>0</b>	<b>0</b>	<b>0</b>
<b>Casualties - 5pm</b>					
Commuting	0	0	0	0	0
Commercial	0	0	0	0	0
Other-Residential	0	0	0	0	0
Single Family	0	0	0	0	0
Industrial	0	0	0	0	0
Educational	0	0	0	0	0
Hotels	0	0	0	0	0
<b>Total Casualties - 5pm</b>	<b>0</b>	<b>0</b>	<b>0</b>	<b>0</b>	<b>0</b>
<b>San Francisco</b>					
<b>Casualties - 2am</b>					
Industrial	1	0	0	0	1
Hotels	0	0	0	0	0
Commercial	2	0	0	0	2
Other-Residential	56	4	0	0	60
Commuting	0	0	0	0	0
Educational	0	0	0	0	0
Single Family	10	0	0	0	11
<b>Total Casualties - 2am</b>	<b>69</b>	<b>4</b>	<b>0</b>	<b>0</b>	<b>74</b>
<b>Casualties - 2pm</b>					
Commercial	88	6	0	0	94
Industrial	5	0	0	0	5
Other-Residential	18	1	0	0	19
Single Family	3	0	0	0	3
Hotels	0	0	0	0	0

	Injury Severity Level				Total
	Severity 1	Severity 2	Severity 3	Severity 4	
<b>California</b>					
<b>San Francisco</b>					
<b>Casualties - 2pm</b>					
<i>Commuting</i>	0	0	0	0	0
<i>Educational</i>	10	1	0	0	11
<b>Total Casualties - 2pm</b>	<b>124</b>	<b>9</b>	<b>0</b>	<b>0</b>	<b>133</b>
<b>Casualties - 5pm</b>					
<i>Educational</i>	4	0	0	0	4
<i>Hotels</i>	0	0	0	0	0
<i>Industrial</i>	3	0	0	0	3
<i>Commuting</i>	0	0	0	0	0
<i>Commercial</i>	50	4	0	0	53
<i>Other-Residential</i>	22	2	0	0	23
<i>Single Family</i>	4	0	0	0	4
<b>Total Casualties - 5pm</b>	<b>82</b>	<b>6</b>	<b>0</b>	<b>0</b>	<b>88</b>
<b>San Joaquin</b>					
<b>Casualties - 2am</b>					
<i>Educational</i>	0	0	0	0	0
<i>Commuting</i>	0	0	0	0	0
<i>Hotels</i>	0	0	0	0	0
<i>Commercial</i>	1	0	0	0	1
<i>Single Family</i>	121	9	0	1	131
<i>Industrial</i>	1	0	0	0	1
<i>Other-Residential</i>	36	3	0	0	39
<b>Total Casualties - 2am</b>	<b>159</b>	<b>12</b>	<b>1</b>	<b>1</b>	<b>172</b>
<b>Casualties - 2pm</b>					
<i>Industrial</i>	10	1	0	0	11
<i>Other-Residential</i>	12	1	0	0	13
<i>Educational</i>	14	1	0	0	15
<i>Single Family</i>	41	3	0	0	45
<i>Hotels</i>	0	0	0	0	0
<i>Commuting</i>	0	0	0	0	0
<i>Commercial</i>	56	4	0	0	61
<b>Total Casualties - 2pm</b>	<b>133</b>	<b>10</b>	<b>0</b>	<b>1</b>	<b>145</b>
<b>Casualties - 5pm</b>					
<i>Commuting</i>	1	1	2	0	4
<i>Single Family</i>	47	4	0	0	51
<i>Educational</i>	2	0	0	0	2
<i>Hotels</i>	0	0	0	0	0
<i>Industrial</i>	6	0	0	0	7
<i>Commercial</i>	38	3	0	0	40
<i>Other-Residential</i>	13	1	0	0	14
<b>Total Casualties - 5pm</b>	<b>106</b>	<b>9</b>	<b>2</b>	<b>1</b>	<b>118</b>

	Injury Severity Level				Total
	Severity 1	Severity 2	Severity 3	Severity 4	
<b>California</b>					
<b>San Mateo</b>					
<b>Casualties - 2am</b>					
<i>Industrial</i>	0	0	0	0	0
<i>Other-Residential</i>	8	0	0	0	9
<i>Single Family</i>	8	0	0	0	9
<i>Commercial</i>	0	0	0	0	0
<i>Educational</i>	0	0	0	0	0
<i>Commuting</i>	0	0	0	0	0
<i>Hotels</i>	0	0	0	0	0
<b>Total Casualties - 2am</b>	<b>18</b>	<b>0</b>	<b>0</b>	<b>0</b>	<b>18</b>
<b>Casualties - 2pm</b>					
<i>Other-Residential</i>	2	0	0	0	3
<i>Single Family</i>	2	0	0	0	2
<i>Commuting</i>	0	0	0	0	0
<i>Commercial</i>	18	1	0	0	19
<i>Educational</i>	2	0	0	0	2
<i>Hotels</i>	0	0	0	0	0
<i>Industrial</i>	3	0	0	0	3
<b>Total Casualties - 2pm</b>	<b>28</b>	<b>1</b>	<b>0</b>	<b>0</b>	<b>29</b>
<b>Casualties - 5pm</b>					
<i>Commercial</i>	12	1	0	0	12
<i>Industrial</i>	2	0	0	0	2
<i>Other-Residential</i>	3	0	0	0	3
<i>Single Family</i>	3	0	0	0	3
<i>Educational</i>	0	0	0	0	0
<i>Commuting</i>	0	0	0	0	1
<i>Hotels</i>	0	0	0	0	0
<b>Total Casualties - 5pm</b>	<b>20</b>	<b>1</b>	<b>0</b>	<b>0</b>	<b>21</b>
<b>Santa Clara</b>					
<b>Casualties - 2am</b>					
<i>Commuting</i>	0	0	0	0	0
<i>Educational</i>	0	0	0	0	0
<i>Single Family</i>	12	0	0	0	12
<i>Hotels</i>	0	0	0	0	0
<i>Industrial</i>	1	0	0	0	1
<i>Commercial</i>	0	0	0	0	0
<i>Other-Residential</i>	12	0	0	0	12
<b>Total Casualties - 2am</b>	<b>25</b>	<b>0</b>	<b>0</b>	<b>0</b>	<b>25</b>
<b>Casualties - 2pm</b>					
<i>Industrial</i>	5	0	0	0	5
<i>Commercial</i>	21	1	0	0	22
<i>Single Family</i>	3	0	0	0	3
<i>Commuting</i>	0	0	0	0	0

	Injury Severity Level				Total
	Severity 1	Severity 2	Severity 3	Severity 4	
<b>California</b>					
<b>Santa Clara</b>					
<b>Casualties - 2pm</b>					
<i>Hotels</i>	0	0	0	0	0
<i>Other-Residential</i>	3	0	0	0	4
<i>Educational</i>	4	0	0	0	4
<b>Total Casualties - 2pm</b>	<b>36</b>	<b>1</b>	<b>0</b>	<b>0</b>	<b>37</b>
<b>Casualties - 5pm</b>					
<i>Industrial</i>	3	0	0	0	3
<i>Hotels</i>	0	0	0	0	0
<i>Other-Residential</i>	4	0	0	0	4
<i>Commercial</i>	13	1	0	0	14
<i>Commuting</i>	0	0	0	0	0
<i>Single Family</i>	4	0	0	0	4
<i>Educational</i>	1	0	0	0	1
<b>Total Casualties - 5pm</b>	<b>26</b>	<b>1</b>	<b>0</b>	<b>0</b>	<b>27</b>
<b>Santa Cruz</b>					
<b>Casualties - 2am</b>					
<i>Hotels</i>	0	0	0	0	0
<i>Educational</i>	0	0	0	0	0
<i>Industrial</i>	0	0	0	0	0
<i>Other-Residential</i>	0	0	0	0	0
<i>Single Family</i>	0	0	0	0	0
<i>Commercial</i>	0	0	0	0	0
<i>Commuting</i>	0	0	0	0	0
<b>Total Casualties - 2am</b>	<b>0</b>	<b>0</b>	<b>0</b>	<b>0</b>	<b>0</b>
<b>Casualties - 2pm</b>					
<i>Industrial</i>	0	0	0	0	0
<i>Other-Residential</i>	0	0	0	0	0
<i>Commercial</i>	0	0	0	0	0
<i>Commuting</i>	0	0	0	0	0
<i>Educational</i>	0	0	0	0	0
<i>Single Family</i>	0	0	0	0	0
<i>Hotels</i>	0	0	0	0	0
<b>Total Casualties - 2pm</b>	<b>0</b>	<b>0</b>	<b>0</b>	<b>0</b>	<b>0</b>
<b>Casualties - 5pm</b>					
<i>Industrial</i>	0	0	0	0	0
<i>Other-Residential</i>	0	0	0	0	0
<i>Commercial</i>	0	0	0	0	0
<i>Commuting</i>	0	0	0	0	0
<i>Single Family</i>	0	0	0	0	0
<i>Hotels</i>	0	0	0	0	0
<i>Educational</i>	0	0	0	0	0

	Injury Severity Level				Total
	Severity 1	Severity 2	Severity 3	Severity 4	
<b>California</b>					
<b>Santa Cruz</b>					
<b>Total Casualties - 5pm</b>	<b>0</b>	<b>0</b>	<b>0</b>	<b>0</b>	<b>0</b>
<b>Sierra</b>					
<b>Casualties - 2am</b>					
<i>Other-Residential</i>	0	0	0	0	0
<i>Commercial</i>	0	0	0	0	0
<i>Commuting</i>	0	0	0	0	0
<i>Hotels</i>	0	0	0	0	0
<i>Single Family</i>	0	0	0	0	0
<i>Educational</i>	0	0	0	0	0
<i>Industrial</i>	0	0	0	0	0
<b>Total Casualties - 2am</b>	<b>0</b>	<b>0</b>	<b>0</b>	<b>0</b>	<b>0</b>
<b>Casualties - 2pm</b>					
<i>Hotels</i>	0	0	0	0	0
<i>Educational</i>	0	0	0	0	0
<i>Industrial</i>	0	0	0	0	0
<i>Other-Residential</i>	0	0	0	0	0
<i>Commuting</i>	0	0	0	0	0
<i>Single Family</i>	0	0	0	0	0
<i>Commercial</i>	0	0	0	0	0
<b>Total Casualties - 2pm</b>	<b>0</b>	<b>0</b>	<b>0</b>	<b>0</b>	<b>0</b>
<b>Casualties - 5pm</b>					
<i>Educational</i>	0	0	0	0	0
<i>Hotels</i>	0	0	0	0	0
<i>Commuting</i>	0	0	0	0	0
<i>Industrial</i>	0	0	0	0	0
<i>Other-Residential</i>	0	0	0	0	0
<i>Commercial</i>	0	0	0	0	0
<i>Single Family</i>	0	0	0	0	0
<b>Total Casualties - 5pm</b>	<b>0</b>	<b>0</b>	<b>0</b>	<b>0</b>	<b>0</b>
<b>Solano</b>					
<b>Casualties - 2am</b>					
<i>Industrial</i>	2	0	0	0	2
<i>Other-Residential</i>	34	4	0	1	39
<i>Commercial</i>	1	0	0	0	2
<i>Educational</i>	0	0	0	0	0
<i>Commuting</i>	0	0	0	0	0
<i>Single Family</i>	61	2	0	0	62
<i>Hotels</i>	0	0	0	0	0
<b>Total Casualties - 2am</b>	<b>98</b>	<b>6</b>	<b>0</b>	<b>1</b>	<b>105</b>
<b>Casualties - 2pm</b>					
<i>Single Family</i>	17	0	0	0	17

## Injury Severity Level

	Severity 1	Severity 2	Severity 3	Severity 4	Total
--	------------	------------	------------	------------	-------

### California

#### Solano

##### Casualties - 2pm

<i>Other-Residential</i>	11	1	0	0	12
<i>Commercial</i>	91	16	2	4	113
<i>Educational</i>	26	5	1	1	33
<i>Commuting</i>	0	0	0	0	1
<i>Hotels</i>	0	0	0	0	0
<i>Industrial</i>	13	2	0	0	15
<b>Total Casualties - 2pm</b>	<b>157</b>	<b>26</b>	<b>4</b>	<b>6</b>	<b>192</b>

##### Casualties - 5pm

<i>Commercial</i>	63	11	1	3	79
<i>Other-Residential</i>	13	2	0	0	14
<i>Single Family</i>	22	1	0	0	23
<i>Educational</i>	1	0	0	0	1
<i>Commuting</i>	4	5	9	2	20
<i>Hotels</i>	0	0	0	0	0
<i>Industrial</i>	8	1	0	0	10
<b>Total Casualties - 5pm</b>	<b>111</b>	<b>20</b>	<b>11</b>	<b>5</b>	<b>146</b>

#### Sonoma

##### Casualties - 2am

<i>Single Family</i>	1	0	0	0	1
<i>Other-Residential</i>	1	0	0	0	1
<i>Commercial</i>	0	0	0	0	0
<i>Commuting</i>	0	0	0	0	0
<i>Hotels</i>	0	0	0	0	0
<i>Educational</i>	0	0	0	0	0
<i>Industrial</i>	0	0	0	0	0
<b>Total Casualties - 2am</b>	<b>2</b>	<b>0</b>	<b>0</b>	<b>0</b>	<b>2</b>

##### Casualties - 2pm

<i>Single Family</i>	0	0	0	0	0
<i>Commuting</i>	0	0	0	0	0
<i>Educational</i>	0	0	0	0	0
<i>Hotels</i>	0	0	0	0	0
<i>Industrial</i>	0	0	0	0	0
<i>Other-Residential</i>	0	0	0	0	0
<i>Commercial</i>	2	0	0	0	2
<b>Total Casualties - 2pm</b>	<b>3</b>	<b>0</b>	<b>0</b>	<b>0</b>	<b>3</b>

##### Casualties - 5pm

<i>Single Family</i>	0	0	0	0	0
<i>Commercial</i>	1	0	0	0	1
<i>Commuting</i>	0	0	0	0	0
<i>Hotels</i>	0	0	0	0	0
<i>Educational</i>	0	0	0	0	0

	Injury Severity Level				Total
	Severity 1	Severity 2	Severity 3	Severity 4	
<b>California</b>					
<b>Sonoma</b>					
<b>Casualties - 5pm</b>					
<i>Industrial</i>	0	0	0	0	0
<i>Other-Residential</i>	0	0	0	0	0
<b>Total Casualties - 5pm</b>	<b>2</b>	<b>0</b>	<b>0</b>	<b>0</b>	<b>2</b>
<b>Stanislaus</b>					
<b>Casualties - 2am</b>					
<i>Hotels</i>	0	0	0	0	0
<i>Industrial</i>	0	0	0	0	0
<i>Commercial</i>	0	0	0	0	0
<i>Single Family</i>	4	0	0	0	4
<i>Other-Residential</i>	3	0	0	0	3
<i>Commuting</i>	0	0	0	0	0
<i>Educational</i>	0	0	0	0	0
<b>Total Casualties - 2am</b>	<b>6</b>	<b>0</b>	<b>0</b>	<b>0</b>	<b>6</b>
<b>Casualties - 2pm</b>					
<i>Industrial</i>	1	0	0	0	1
<i>Other-Residential</i>	1	0	0	0	1
<i>Commercial</i>	5	0	0	0	5
<i>Commuting</i>	0	0	0	0	0
<i>Educational</i>	1	0	0	0	1
<i>Single Family</i>	1	0	0	0	1
<i>Hotels</i>	0	0	0	0	0
<b>Total Casualties - 2pm</b>	<b>8</b>	<b>0</b>	<b>0</b>	<b>0</b>	<b>9</b>
<b>Casualties - 5pm</b>					
<i>Industrial</i>	1	0	0	0	1
<i>Other-Residential</i>	1	0	0	0	1
<i>Commuting</i>	0	0	0	0	0
<i>Single Family</i>	1	0	0	0	1
<i>Commercial</i>	3	0	0	0	3
<i>Hotels</i>	0	0	0	0	0
<i>Educational</i>	0	0	0	0	0
<b>Total Casualties - 5pm</b>	<b>6</b>	<b>0</b>	<b>0</b>	<b>0</b>	<b>6</b>
<b>Sutter</b>					
<b>Casualties - 2am</b>					
<i>Educational</i>	0	0	0	0	0
<i>Commuting</i>	0	0	0	0	0
<i>Hotels</i>	0	0	0	0	0
<i>Industrial</i>	0	0	0	0	0
<i>Other-Residential</i>	0	0	0	0	0
<i>Single Family</i>	0	0	0	0	0
<i>Commercial</i>	0	0	0	0	0

	Injury Severity Level				Total
	Severity 1	Severity 2	Severity 3	Severity 4	
<b>California</b>					
<b>Sutter</b>					
<b>Total Casualties - 2am</b>	<b>0</b>	<b>0</b>	<b>0</b>	<b>0</b>	<b>0</b>
<b>Casualties - 2pm</b>					
<i>Industrial</i>	0	0	0	0	0
<i>Commuting</i>	0	0	0	0	0
<i>Other-Residential</i>	0	0	0	0	0
<i>Single Family</i>	0	0	0	0	0
<i>Commercial</i>	0	0	0	0	0
<i>Hotels</i>	0	0	0	0	0
<i>Educational</i>	0	0	0	0	0
<b>Total Casualties - 2pm</b>	<b>0</b>	<b>0</b>	<b>0</b>	<b>0</b>	<b>0</b>
<b>Casualties - 5pm</b>					
<i>Commuting</i>	0	0	0	0	0
<i>Commercial</i>	0	0	0	0	0
<i>Educational</i>	0	0	0	0	0
<i>Single Family</i>	0	0	0	0	0
<i>Hotels</i>	0	0	0	0	0
<i>Industrial</i>	0	0	0	0	0
<i>Other-Residential</i>	0	0	0	0	0
<b>Total Casualties - 5pm</b>	<b>0</b>	<b>0</b>	<b>0</b>	<b>0</b>	<b>0</b>
<b>Tuolumne</b>					
<b>Casualties - 2am</b>					
<i>Other-Residential</i>	0	0	0	0	0
<i>Industrial</i>	0	0	0	0	0
<i>Commercial</i>	0	0	0	0	0
<i>Commuting</i>	0	0	0	0	0
<i>Single Family</i>	0	0	0	0	0
<i>Educational</i>	0	0	0	0	0
<i>Hotels</i>	0	0	0	0	0
<b>Total Casualties - 2am</b>	<b>0</b>	<b>0</b>	<b>0</b>	<b>0</b>	<b>0</b>
<b>Casualties - 2pm</b>					
<i>Other-Residential</i>	0	0	0	0	0
<i>Commercial</i>	0	0	0	0	0
<i>Single Family</i>	0	0	0	0	0
<i>Educational</i>	0	0	0	0	0
<i>Commuting</i>	0	0	0	0	0
<i>Industrial</i>	0	0	0	0	0
<i>Hotels</i>	0	0	0	0	0
<b>Total Casualties - 2pm</b>	<b>0</b>	<b>0</b>	<b>0</b>	<b>0</b>	<b>0</b>
<b>Casualties - 5pm</b>					
<i>Industrial</i>	0	0	0	0	0
<i>Other-Residential</i>	0	0	0	0	0

	Injury Severity Level				Total
	Severity 1	Severity 2	Severity 3	Severity 4	
<b>California</b>					
<b>Tuolumne</b>					
<b>Casualties - 5pm</b>					
Commercial	0	0	0	0	0
Hotels	0	0	0	0	0
Commuting	0	0	0	0	0
Educational	0	0	0	0	0
Single Family	0	0	0	0	0
<b>Total Casualties - 5pm</b>	<b>0</b>	<b>0</b>	<b>0</b>	<b>0</b>	<b>0</b>
<b>Yolo</b>					
<b>Casualties - 2am</b>					
Single Family	5	0	0	0	5
Other-Residential	4	0	0	0	4
Commercial	0	0	0	0	0
Educational	0	0	0	0	0
Commuting	0	0	0	0	0
Hotels	0	0	0	0	0
Industrial	0	0	0	0	0
<b>Total Casualties - 2am</b>	<b>9</b>	<b>0</b>	<b>0</b>	<b>0</b>	<b>9</b>
<b>Casualties - 2pm</b>					
Industrial	1	0	0	0	1
Hotels	0	0	0	0	0
Educational	2	0	0	0	3
Commuting	0	0	0	0	0
Commercial	6	0	0	0	6
Other-Residential	1	0	0	0	1
Single Family	1	0	0	0	1
<b>Total Casualties - 2pm</b>	<b>12</b>	<b>0</b>	<b>0</b>	<b>0</b>	<b>12</b>
<b>Casualties - 5pm</b>					
Other-Residential	1	0	0	0	1
Single Family	2	0	0	0	2
Commuting	0	0	0	0	0
Commercial	4	0	0	0	4
Hotels	0	0	0	0	0
Educational	1	0	0	0	1
Industrial	1	0	0	0	1
<b>Total Casualties - 5pm</b>	<b>8</b>	<b>0</b>	<b>0</b>	<b>0</b>	<b>9</b>
<b>Yuba</b>					
<b>Casualties - 2am</b>					
Industrial	0	0	0	0	0
Other-Residential	0	0	0	0	0
Commercial	0	0	0	0	0
Educational	0	0	0	0	0
Single Family	0	0	0	0	0

	Injury Severity Level				Total
	Severity 1	Severity 2	Severity 3	Severity 4	
<b>California</b>					
<b>Yuba</b>					
<b>Casualties - 2am</b>					
Commuting	0	0	0	0	0
Hotels	0	0	0	0	0
<b>Total Casualties - 2am</b>	<b>0</b>	<b>0</b>	<b>0</b>	<b>0</b>	<b>0</b>
<b>Casualties - 2pm</b>					
Commercial	0	0	0	0	0
Commuting	0	0	0	0	0
Single Family	0	0	0	0	0
Other-Residential	0	0	0	0	0
Industrial	0	0	0	0	0
Hotels	0	0	0	0	0
Educational	0	0	0	0	0
<b>Total Casualties - 2pm</b>	<b>0</b>	<b>0</b>	<b>0</b>	<b>0</b>	<b>0</b>
<b>Casualties - 5pm</b>					
Hotels	0	0	0	0	0
Educational	0	0	0	0	0
Industrial	0	0	0	0	0
Other-Residential	0	0	0	0	0
Single Family	0	0	0	0	0
Commercial	0	0	0	0	0
Commuting	0	0	0	0	0
<b>Total Casualties - 5pm</b>	<b>0</b>	<b>0</b>	<b>0</b>	<b>0</b>	<b>0</b>
<b>Region Total</b>	<b>NA</b>	<b>NA</b>	<b>NA</b>	<b>NA</b>	<b>NA</b>

Totals only reflect data for those census tracts/blocks included in the user's study region and will reflect the entire county/state only if all of the census blocks for that county/states were selected at the time of study region creation.

## Debris Summary Report

April 15, 2024

All values are in thousands of tons.

	Brick, Wood & Others	Concrete & Steel	Total
<b>California</b>			
Alameda	263	341	604
Alpine	0	0	0
Amador	0	0	0
Butte	0	0	0
Calaveras	0	0	0
Colusa	0	0	0
Contra Costa	533	846	1,379
El Dorado	0	0	0
Fresno	0	0	0
Glenn	0	0	0
Lake	0	0	0
Madera	0	0	0
Marin	2	2	4
Mariposa	0	0	0
Mendocino	0	0	0
Merced	1	1	1
Monterey	0	0	0
Napa	9	11	19
Nevada	0	0	0

	Brick, Wood & Others	Concrete & Steel	Total
Placer	1	0	1
Sacramento	48	55	103
San Benito	0	0	0
San Francisco	122	42	164
San Joaquin	160	101	260
San Mateo	15	15	30
Santa Clara	24	19	43
Santa Cruz	0	0	1
Sierra	0	0	0
Solano	82	126	208
Sonoma	3	3	6
Stanislaus	8	6	14
Sutter	0	0	0
Tuolumne	0	0	0
Yolo	8	9	16
Yuba	0	0	0
<b>Total</b>	<b>1,280</b>	<b>1,575</b>	<b>2,855</b>
<b>Region Total</b>	<b>1,280</b>	<b>1,575</b>	<b>2,855</b>

*Totals only reflect data for those census tracts/blocks included in the user's study region and will reflect the entire county/state only if all of the census blocks for that county/states were selected at the time of study region creation.*

## Direct Economic Losses For Buildings

April 15, 2024

All values are in thousands of dollars

	Capital Stock Losses				Loss Ratio %	Income Losses				Total Loss
	Cost Structural Damage	Cost Non-struct. Damage	Cost Contents Damage	Inventory Loss		Relocation Loss	Capital Related Loss	Wages Losses	Rental Income Loss	
<b>California</b>										
Contra Costa	1,359,302	7,540,823	3,196,179	210,455	4.07	602,708	258,792	351,307	288,039	13,807,605
Mendocino	0	48	33	5	0.00	0	0	0	0	86
Napa	19,235	138,592	69,532	7,174	0.47	5,100	3,772	4,687	4,178	252,269
Colusa	51	583	343	64	0.01	9	17	19	15	1,101
Alameda	550,500	3,107,703	1,487,028	110,297	1.10	197,769	131,004	177,321	136,442	5,898,065
Nevada	0	47	34	3	0.00	0	0	0	0	85
San Joaquin	218,861	1,228,903	630,704	68,940	1.04	81,747	39,618	45,612	42,475	2,356,860
Tuolumne	0	61	41	3	0.00	0	0	0	0	105
Madera	16	427	280	53	0.00	1	1	1	3	781

	Capital Stock Losses				Loss Ratio %	Income Losses				Total Loss
	Cost Structural Damage	Cost Non-struct. Damage	Cost Contents Damage	Inventory Loss		Relocation Loss	Capital Related Loss	Wages Losses	Rental Income Loss	
<b>Butte</b>	37	452	306	55	0.00	5	3	4	6	868
<b>Fresno</b>	2	85	56	12	0.00	0	0	0	0	156
<b>Solano</b>	204,355	1,186,160	545,513	48,457	1.69	65,501	42,905	54,583	40,222	2,187,696
<b>San Mateo</b>	37,965	336,542	166,416	12,943	0.24	7,143	6,362	7,563	9,580	584,514
<b>Yolo</b>	18,354	159,604	87,814	8,831	0.42	3,962	3,366	4,018	3,787	289,736
<b>Glenn</b>	13	157	112	39	0.00	1	1	1	1	325
<b>San Benito</b>	41	543	294	33	0.00	6	9	10	9	946
<b>San Francisco</b>	113,352	342,508	178,421	11,059	0.29	42,356	27,862	32,009	47,203	794,771
<b>Stanislaus</b>	14,052	133,840	72,990	9,748	0.15	2,526	1,737	1,979	2,720	239,593
<b>Sutter</b>	329	3,147	1,771	465	0.02	35	20	24	33	5,825
<b>Santa Clara</b>	50,573	485,583	255,767	21,165	0.14	8,192	9,112	10,468	11,293	852,154
<b>Sonoma</b>	5,427	53,147	28,837	3,776	0.06	1,031	1,137	1,262	1,000	95,619
<b>Calaveras</b>	111	1,259	862	295	0.01	14	31	28	14	2,614
<b>Yuba</b>	83	1,278	666	77	0.01	11	18	18	19	2,171
<b>Alpine</b>	0	0	0	0	0.00	0	0	0	0	0
<b>Merced</b>	1,972	8,501	5,566	2,549	0.02	210	70	66	90	19,024
<b>Placer</b>	910	17,742	10,139	898	0.02	91	114	128	157	30,179
<b>Marin</b>	4,758	54,328	28,947	2,219	0.09	769	870	934	1,024	93,849

	Capital Stock Losses				Loss Ratio %	Income Losses				Total Loss
	Cost Structural Damage	Cost Non-struct. Damage	Cost Contents Damage	Inventory Loss		Relocation Loss	Capital Related Loss	Wages Losses	Rental Income Loss	
El Dorado	24	1,074	643	38	0.00	1	3	4	4	1,792
Lake	11	282	143	12	0.00	1	1	1	2	453
Sierra	0	0	0	0	0.00	0	0	0	0	0
Santa Cruz	442	5,274	2,816	436	0.01	66	96	116	104	9,349
Mariposa	0	3	2	0	0.00	0	0	0	0	5
Amador	40	940	564	66	0.01	6	12	10	12	1,650
Sacramento	93,302	709,185	351,491	31,652	0.30	25,087	22,008	27,417	22,028	1,282,170
Monterey	79	1,577	1,002	164	0.00	10	10	10	20	2,873
<b>Total</b>	<b>2,694,199</b>	<b>15,520,397</b>	<b>7,125,315</b>	<b>551,985</b>	<b>0.29</b>	<b>1,044,360</b>	<b>548,954</b>	<b>719,600</b>	<b>610,481</b>	<b>28,815,290</b>
<b>Region Total</b>	<b>2,694,199</b>	<b>15,520,397</b>	<b>7,125,315</b>	<b>551,985</b>	<b>0.29</b>	<b>1,044,360</b>	<b>548,954</b>	<b>719,600</b>	<b>610,481</b>	<b>28,815,290</b>

Totals only reflect data for those census tracts/blocks included in the user's study region and will reflect the entire county/state only if all of the census blocks for that county/states were selected at the time of study region creation.

## Direct Economic Loss For Transportation

April 15, 2024

All values are in thousands of dollars

	Highway	Railway	Light Rail	Bus Facility	Ports	Ferries	Airport	Total
<b>California</b>								
<b>Alameda</b>								
Segments	0	0	0					0
Bridges	22,614	1,882	12					24,507
Tunnels	548	0	0					548
Facilities		5,214	0	257	19,693	442	42,706	68,312
<b>Total</b>	<b>23,162</b>	<b>7,095</b>	<b>12</b>	<b>257</b>	<b>19,693</b>	<b>442</b>	<b>42,706</b>	<b>93,367</b>
<b>Alpine</b>								
Segments	0	0	0					0
Bridges	0	0	0					0
Tunnels	0	0	0					0
Facilities		0	0	0	0	0	6	6
<b>Total</b>	<b>0</b>	<b>0</b>	<b>0</b>	<b>0</b>	<b>0</b>	<b>0</b>	<b>6</b>	<b>6</b>
<b>Amador</b>								
Segments	0	0	0					0
Bridges	0	0	0					0
Tunnels	0	0	0					0
Facilities		0	0	0	0	0	51	51

	Highway	Railway	Light Rail	Bus Facility	Ports	Ferries	Airport	Total
<b>Total</b>	<b>0</b>	<b>0</b>	<b>0</b>	<b>0</b>	<b>0</b>	<b>0</b>	<b>51</b>	<b>51</b>
<b>Butte</b>								
Segments	0	0	0					0
Bridges	1	0	0					1
Tunnels	0	0	0					0
Facilities		3	0	0	0	0	57	60
<b>Total</b>	<b>1</b>	<b>3</b>	<b>0</b>	<b>0</b>	<b>0</b>	<b>0</b>	<b>57</b>	<b>60</b>
<b>Calaveras</b>								
Segments	0	0	0					0
Bridges	0	0	0					0
Tunnels	0	0	0					0
Facilities		0	0	0	0	0	102	102
<b>Total</b>	<b>0</b>	<b>0</b>	<b>0</b>	<b>0</b>	<b>0</b>	<b>0</b>	<b>102</b>	<b>102</b>
<b>Colusa</b>								
Segments	0	0	0					0
Bridges	12	0	0					12
Tunnels	0	0	0					0
Facilities		0	0	0	0	0	51	51
<b>Total</b>	<b>12</b>	<b>0</b>	<b>0</b>	<b>0</b>	<b>0</b>	<b>0</b>	<b>51</b>	<b>64</b>
<b>Contra Costa</b>								
Segments	0	0	0					0
Bridges	161,353	44,016	23					205,391
Tunnels	980	35	0					1,014
Facilities		4,203	8,250	0	52,077	1,368	6,997	72,894

	Highway	Railway	Light Rail	Bus Facility	Ports	Ferries	Airport	Total
<b>Total</b>	<b>162,332</b>	<b>48,254</b>	<b>8,273</b>	<b>0</b>	<b>52,077</b>	<b>1,368</b>	<b>6,997</b>	<b>279,300</b>
<b>El Dorado</b>								
Segments	0	0	0					0
Bridges	0	0	0					0
Tunnels	0	0	0					0
Facilities		0	0	45	0	0	236	281
<b>Total</b>	<b>0</b>	<b>0</b>	<b>0</b>	<b>45</b>	<b>0</b>	<b>0</b>	<b>236</b>	<b>282</b>
<b>Fresno</b>								
Segments	0	0	0					0
Bridges	2	0	0					2
Tunnels	0	0	0					0
Facilities		23	0	2	0	0	195	220
<b>Total</b>	<b>2</b>	<b>23</b>	<b>0</b>	<b>2</b>	<b>0</b>	<b>0</b>	<b>195</b>	<b>221</b>
<b>Glenn</b>								
Segments	0	0	0					0
Bridges	0	0	0					0
Tunnels	0	0	0					0
Facilities		0	0	0	37	0	102	139
<b>Total</b>	<b>0</b>	<b>0</b>	<b>0</b>	<b>0</b>	<b>37</b>	<b>0</b>	<b>102</b>	<b>139</b>
<b>Lake</b>								
Segments	0	0	0					0
Bridges	0	0	0					0
Tunnels	0	0	0					0
Facilities		0	0	0	0	0	102	102

	Highway	Railway	Light Rail	Bus Facility	Ports	Ferries	Airport	Total
<b>Total</b>	<b>0</b>	<b>0</b>	<b>0</b>	<b>0</b>	<b>0</b>	<b>0</b>	<b>102</b>	<b>102</b>
<b>Madera</b>								
Segments	0	0	0					0
Bridges	0	0	0					0
Tunnels	0	0	0					0
Facilities		26	0	21	0	0	102	149
<b>Total</b>	<b>0</b>	<b>26</b>	<b>0</b>	<b>21</b>	<b>0</b>	<b>0</b>	<b>102</b>	<b>149</b>
<b>Marin</b>								
Segments	0	0	0					0
Bridges	1,637	0	0					1,637
Tunnels	3	0	0					3
Facilities		0	0	474	4,946	273	400	6,092
<b>Total</b>	<b>1,641</b>	<b>0</b>	<b>0</b>	<b>474</b>	<b>4,946</b>	<b>273</b>	<b>400</b>	<b>7,733</b>
<b>Mariposa</b>								
Segments	0	0	0					0
Bridges	0	0	0					0
Tunnels	0	0	0					0
Facilities		0	0	5	0	0	6	10
<b>Total</b>	<b>0</b>	<b>0</b>	<b>0</b>	<b>5</b>	<b>0</b>	<b>0</b>	<b>6</b>	<b>11</b>
<b>Mendocino</b>								
Segments	0	0	0					0
Bridges	0	0	0					0
Tunnels	0	0	0					0
Facilities		0	0	48	4	0	113	165

	Highway	Railway	Light Rail	Bus Facility	Ports	Ferries	Airport	Total
<b>Total</b>	<b>0</b>	<b>0</b>	<b>0</b>	<b>48</b>	<b>4</b>	<b>0</b>	<b>113</b>	<b>165</b>
<b>Merced</b>								
Segments	0	0	0					0
Bridges	48	0	0					48
Tunnels	0	0	0					0
Facilities		51	0	21	0	0	410	483
<b>Total</b>	<b>48</b>	<b>51</b>	<b>0</b>	<b>21</b>	<b>0</b>	<b>0</b>	<b>410</b>	<b>531</b>
<b>Monterey</b>								
Segments	0	0	0					0
Bridges	3	0	0					3
Tunnels	0	0	0					0
Facilities		26	0	152	110	0	336	623
<b>Total</b>	<b>3</b>	<b>26</b>	<b>0</b>	<b>152</b>	<b>110</b>	<b>0</b>	<b>336</b>	<b>626</b>
<b>Napa</b>								
Segments	0	0	0					0
Bridges	378	190	0					568
Tunnels	0	0	0					0
Facilities		0	0	251	1,266	0	1,696	3,212
<b>Total</b>	<b>378</b>	<b>190</b>	<b>0</b>	<b>251</b>	<b>1,266</b>	<b>0</b>	<b>1,696</b>	<b>3,780</b>
<b>Nevada</b>								
Segments	0	0	0					0
Bridges	0	0	0					0
Tunnels	0	0	0					0
Facilities		3	0	0	0	0	57	60

	Highway	Railway	Light Rail	Bus Facility	Ports	Ferries	Airport	Total
<b>Total</b>	<b>0</b>	<b>3</b>	<b>0</b>	<b>0</b>	<b>0</b>	<b>0</b>	<b>57</b>	<b>60</b>
<b>Placer</b>								
Segments	0	0	0					0
Bridges	9	0	0					9
Tunnels	0	0	0					0
Facilities		186	0	21	0	0	159	366
<b>Total</b>	<b>9</b>	<b>186</b>	<b>0</b>	<b>21</b>	<b>0</b>	<b>0</b>	<b>159</b>	<b>376</b>
<b>Sacramento</b>								
Segments	0	0	0					0
Bridges	8,663	145	0					8,808
Tunnels	0	0	0					0
Facilities		201	19,765	334	17,855	301	18,709	57,165
<b>Total</b>	<b>8,663</b>	<b>346</b>	<b>19,765</b>	<b>334</b>	<b>17,855</b>	<b>301</b>	<b>18,709</b>	<b>65,973</b>
<b>San Benito</b>								
Segments	0	0	0					0
Bridges	0	0	0					0
Tunnels	0	0	0					0
Facilities		0	0	0	0	0	102	102
<b>Total</b>	<b>0</b>	<b>0</b>	<b>0</b>	<b>0</b>	<b>0</b>	<b>0</b>	<b>102</b>	<b>102</b>
<b>San Francisco</b>								
Segments	0	0	0					0
Bridges	7,216	4	0					7,220
Tunnels	41	0	0					41
Facilities		0	199,835	381	15,689	356	1,773	218,034

	Highway	Railway	Light Rail	Bus Facility	Ports	Ferries	Airport	Total
<b>Total</b>	<b>7,257</b>	<b>4</b>	<b>199,835</b>	<b>381</b>	<b>15,689</b>	<b>356</b>	<b>1,773</b>	<b>225,295</b>
<b>San Joaquin</b>								
Segments	0	0	0					0
Bridges	15,923	1,743	0					17,666
Tunnels	0	0	0					0
Facilities		4,340	0	247	25,879	1,099	4,598	36,162
<b>Total</b>	<b>15,923</b>	<b>6,083</b>	<b>0</b>	<b>247</b>	<b>25,879</b>	<b>1,099</b>	<b>4,598</b>	<b>53,828</b>
<b>San Mateo</b>								
Segments	0	0	0					0
Bridges	9,467	14	0					9,481
Tunnels	8	0	0					8
Facilities		0	0	0	5,046	0	68,687	73,733
<b>Total</b>	<b>9,475</b>	<b>14</b>	<b>0</b>	<b>0</b>	<b>5,046</b>	<b>0</b>	<b>68,687</b>	<b>83,222</b>
<b>Santa Clara</b>								
Segments	0	0	0					0
Bridges	1,514	35	0					1,549
Tunnels	0	0	0					0
Facilities		437	29,749	122	1,438	0	15,805	47,552
<b>Total</b>	<b>1,514</b>	<b>472</b>	<b>29,749</b>	<b>122</b>	<b>1,438</b>	<b>0</b>	<b>15,805</b>	<b>49,101</b>
<b>Santa Cruz</b>								
Segments	0	0	0					0
Bridges	25	0	0					25
Tunnels	0	0	0					0
Facilities		0	0	45	37	0	257	339

	Highway	Railway	Light Rail	Bus Facility	Ports	Ferries	Airport	Total
<b>Total</b>	<b>25</b>	<b>0</b>	<b>0</b>	<b>45</b>	<b>37</b>	<b>0</b>	<b>257</b>	<b>364</b>
<b>Sierra</b>								
Segments	0	0	0					0
Bridges	0	0	0					0
Tunnels	0	0	0					0
Facilities		0	0	0	0	0	6	6
<b>Total</b>	<b>0</b>	<b>0</b>	<b>0</b>	<b>0</b>	<b>0</b>	<b>0</b>	<b>6</b>	<b>6</b>
<b>Solano</b>								
Segments	0	0	0					0
Bridges	20,727	9,085	0					29,812
Tunnels	0	0	0					0
Facilities		1,394	0	1,859	32,491	1,262	4,885	41,891
<b>Total</b>	<b>20,727</b>	<b>10,480</b>	<b>0</b>	<b>1,859</b>	<b>32,491</b>	<b>1,262</b>	<b>4,885</b>	<b>71,703</b>
<b>Sonoma</b>								
Segments	0	0	0					0
Bridges	472	93	0					566
Tunnels	0	0	0					0
Facilities		0	0	97	508	0	833	1,437
<b>Total</b>	<b>472</b>	<b>93</b>	<b>0</b>	<b>97</b>	<b>508</b>	<b>0</b>	<b>833</b>	<b>2,003</b>
<b>Stanislaus</b>								
Segments	0	0	0					0
Bridges	523	8	0					532
Tunnels	0	0	0					0
Facilities		655	0	183	0	0	983	1,821

	Highway	Railway	Light Rail	Bus Facility	Ports	Ferries	Airport	Total
<b>Total</b>	<b>523</b>	<b>664</b>	<b>0</b>	<b>183</b>	<b>0</b>	<b>0</b>	<b>983</b>	<b>2,353</b>
<b>Sutter</b>								
Segments	0	0	0					0
Bridges	53	1	0					54
Tunnels	0	0	0					0
Facilities		0	0	0	0	0	129	129
<b>Total</b>	<b>53</b>	<b>1</b>	<b>0</b>	<b>0</b>	<b>0</b>	<b>0</b>	<b>129</b>	<b>182</b>
<b>Tuolumne</b>								
Segments	0	0	0					0
Bridges	0	0	0					0
Tunnels	0	0	0					0
Facilities		0	0	0	0	0	153	153
<b>Total</b>	<b>0</b>	<b>0</b>	<b>0</b>	<b>0</b>	<b>0</b>	<b>0</b>	<b>153</b>	<b>153</b>
<b>Yolo</b>								
Segments	0	0	0					0
Bridges	5,693	55	0					5,748
Tunnels	0	0	0					0
Facilities		821	0	0	5,166	0	1,017	7,005
<b>Total</b>	<b>5,693</b>	<b>876</b>	<b>0</b>	<b>0</b>	<b>5,166</b>	<b>0</b>	<b>1,017</b>	<b>12,753</b>
<b>Yuba</b>								
Segments	0	0	0					0
Bridges	1	0	0					1
Tunnels	0	0	0					0
Facilities		0	0	22	0	0	102	124

	Highway	Railway	Light Rail	Bus Facility	Ports	Ferries	Airport	Total
<b>Total</b>	1	0	0	22	0	0	102	125
<b>Total</b>	<b>257,918</b>	<b>74,889</b>	<b>257,634</b>	<b>4,585</b>	<b>182,241</b>	<b>5,100</b>	<b>171,920</b>	<b>954,287</b>
<b>Region Total</b>	<b>257,918</b>	<b>74,889</b>	<b>257,634</b>	<b>4,585</b>	<b>182,241</b>	<b>5,100</b>	<b>171,920</b>	<b>954,287</b>

*Totals only reflect data for those census tracts/blocks included in the user's study region and will reflect the entire county/state only if all of the census blocks for that county/states were selected at the time of study region creation.*

## Direct Economic Loss For Utilities

April 15, 2024

All values are in thousands of dollars

	Potable Water	Waste Water	Oil Systems	Natural Gas	Electric Power	Communication	Total
<b>California</b>							
<b>Alameda</b>							
<i>Facilities</i>	4,804	153,432	0	0	731,070	254	889,559
<i>Pipelines</i>	2,158	1,084	0	0			3,242
<b>Total</b>	<b>6,962</b>	<b>154,516</b>	<b>0</b>	<b>0</b>	<b>731,070</b>	<b>254</b>	<b>892,801</b>
<b>Alpine</b>							
<i>Facilities</i>	0	123	0	0	0	0	123
<i>Pipelines</i>	2	1	0	0			2
<b>Total</b>	<b>2</b>	<b>124</b>	<b>0</b>	<b>0</b>	<b>0</b>	<b>0</b>	<b>125</b>
<b>Amador</b>							
<i>Facilities</i>	0	123	0	0	12,522	0	12,645
<i>Pipelines</i>	24	12	0	0			36
<b>Total</b>	<b>24</b>	<b>135</b>	<b>0</b>	<b>0</b>	<b>12,522</b>	<b>0</b>	<b>12,681</b>
<b>Butte</b>							
<i>Facilities</i>	0	492	0	0	2,556	0	3,048

	Potable Water	Waste Water	Oil Systems	Natural Gas	Electric Power	Communication	Total
<i>Pipelines</i>	42	21	0	0			63
<b>Total</b>	42	513	0	0	2,556	0	3,111
<b>Calaveras</b>							
<i>Facilities</i>	28	492	0	0	25,137	1	25,658
<i>Pipelines</i>	52	26	0	0			78
<b>Total</b>	80	518	0	0	25,137	1	25,735
<b>Colusa</b>							
<i>Facilities</i>	0	369	0	75	6,525	0	6,969
<i>Pipelines</i>	33	16	0	0			49
<b>Total</b>	33	385	0	75	6,525	0	7,018
<b>Contra Costa</b>							
<i>Facilities</i>	19,496	330,165	128	0	5,329,712	421	5,679,922
<i>Pipelines</i>	14,631	7,349	0	0			21,980
<b>Total</b>	34,127	337,514	128	0	5,329,712	421	5,701,902
<b>El Dorado</b>							
<i>Facilities</i>	28	492	0	0	29,319	1	29,840
<i>Pipelines</i>	72	36	0	0			108
<b>Total</b>	100	528	0	0	29,319	1	29,948
<b>Fresno</b>							
<i>Facilities</i>	0	8	0	0	9,976	0	9,984
<i>Pipelines</i>	173	87	0	0			260

	Potable Water	Waste Water	Oil Systems	Natural Gas	Electric Power	Communication	Total
<b>Total</b>	173	95	0	0	9,976	0	10,244
<b>Glenn</b>							
<i>Facilities</i>	0	123	0	0	2	0	125
<i>Pipelines</i>	30	15	0	0			45
<b>Total</b>	30	138	0	0	2	0	171
<b>Lake</b>							
<i>Facilities</i>	56	0	0	0	5,226	1	5,283
<i>Pipelines</i>	50	25	0	0			75
<b>Total</b>	106	25	0	0	5,226	1	5,358
<b>Madera</b>							
<i>Facilities</i>	0	0	0	0	628	0	629
<i>Pipelines</i>	58	29	0	0			86
<b>Total</b>	58	29	0	0	628	0	715
<b>Marin</b>							
<i>Facilities</i>	348	23,757	0	0	770	24	24,899
<i>Pipelines</i>	78	39	0	0			117
<b>Total</b>	426	23,796	0	0	770	24	25,016
<b>Mariposa</b>							
<i>Facilities</i>	0	8	0	0	2,808	0	2,816
<i>Pipelines</i>	13	6	0	0			19
<b>Total</b>	13	14	0	0	2,808	0	2,835

	Potable Water	Waste Water	Oil Systems	Natural Gas	Electric Power	Communication	Total
<b>Mendocino</b>							
<i>Facilities</i>	0	133	0	0	99	0	232
<i>Pipelines</i>	48	24	0	0			72
<b>Total</b>	48	157	0	0	99	0	304
<b>Merced</b>							
<i>Facilities</i>	0	615	0	0	21,946	2	22,564
<i>Pipelines</i>	101	51	0	0			151
<b>Total</b>	101	665	0	0	21,946	2	22,715
<b>Monterey</b>							
<i>Facilities</i>	0	1,107	0	0	12,113	5	13,225
<i>Pipelines</i>	77	39	0	0			116
<b>Total</b>	77	1,145	0	0	12,113	5	13,341
<b>Napa</b>							
<i>Facilities</i>	0	22,548	0	0	11,727	17	34,292
<i>Pipelines</i>	135	68	0	0			203
<b>Total</b>	135	22,616	0	0	11,727	17	34,495
<b>Nevada</b>							
<i>Facilities</i>	0	740	0	0	2,222	1	2,963
<i>Pipelines</i>	39	20	0	0			59
<b>Total</b>	39	760	0	0	2,222	1	3,021
<b>Placer</b>							

	Potable Water	Waste Water	Oil Systems	Natural Gas	Electric Power	Communication	Total
<i>Facilities</i>	0	5,434	0	0	33,301	7	38,742
<i>Pipelines</i>	77	39	0	0			116
<b>Total</b>	<b>77</b>	<b>5,472</b>	<b>0</b>	<b>0</b>	<b>33,301</b>	<b>7</b>	<b>38,858</b>
<b>Sacramento</b>							
<i>Facilities</i>	0	51,035	0	0	168,809	339	220,184
<i>Pipelines</i>	1,575	791	0	0			2,365
<b>Total</b>	<b>1,575</b>	<b>51,826</b>	<b>0</b>	<b>0</b>	<b>168,809</b>	<b>339</b>	<b>222,549</b>
<b>San Benito</b>							
<i>Facilities</i>	0	246	0	0	0	1	246
<i>Pipelines</i>	31	16	0	0			47
<b>Total</b>	<b>31</b>	<b>262</b>	<b>0</b>	<b>0</b>	<b>0</b>	<b>1</b>	<b>293</b>
<b>San Francisco</b>							
<i>Facilities</i>	0	25,123	0	0	1,493	65	26,681
<i>Pipelines</i>	110	55	0	0			165
<b>Total</b>	<b>110</b>	<b>25,178</b>	<b>0</b>	<b>0</b>	<b>1,493</b>	<b>65</b>	<b>26,847</b>
<b>San Joaquin</b>							
<i>Facilities</i>	5,501	82,812	12	0	396,397	135	484,857
<i>Pipelines</i>	1,818	913	0	0			2,732
<b>Total</b>	<b>7,319</b>	<b>83,725</b>	<b>12</b>	<b>0</b>	<b>396,397</b>	<b>135</b>	<b>487,589</b>
<b>San Mateo</b>							
<i>Facilities</i>	0	45,831	0	0	9,831	60	55,723

	Potable Water	Waste Water	Oil Systems	Natural Gas	Electric Power	Communication	Total
<i>Pipelines</i>	253	127	0	0			380
<b>Total</b>	253	45,958	0	0	9,831	60	56,103
<b>Santa Clara</b>							
<i>Facilities</i>	1,357	13,245	0	0	143,896	33	158,531
<i>Pipelines</i>	455	229	0	0			684
<b>Total</b>	1,812	13,473	0	0	143,896	33	159,215
<b>Santa Cruz</b>							
<i>Facilities</i>	0	492	0	0	65	1	558
<i>Pipelines</i>	43	22	0	0			65
<b>Total</b>	43	514	0	0	65	1	623
<b>Sierra</b>							
<i>Facilities</i>	0	0	0	0	10	0	10
<i>Pipelines</i>	10	5	0	0			15
<b>Total</b>	10	5	0	0	10	0	25
<b>Solano</b>							
<i>Facilities</i>	0	168,441	30	0	2,131,109	159	2,299,739
<i>Pipelines</i>	4,274	2,147	0	0			6,421
<b>Total</b>	4,274	170,588	30	0	2,131,109	159	2,306,160
<b>Sonoma</b>							
<i>Facilities</i>	0	12,739	0	0	40,012	14	52,765
<i>Pipelines</i>	181	91	0	0			272

	Potable Water	Waste Water	Oil Systems	Natural Gas	Electric Power	Communication	Total
<b>Total</b>	181	12,830	0	0	40,012	14	53,037
<b>Stanislaus</b>							
<i>Facilities</i>	0	6,097	0	0	66,941	43	73,081
<i>Pipelines</i>	243	122	0	0			365
<b>Total</b>	243	6,220	0	0	66,941	43	73,447
<b>Sutter</b>							
<i>Facilities</i>	0	246	0	0	6,808	6	7,060
<i>Pipelines</i>	55	28	0	0			83
<b>Total</b>	55	273	0	0	6,808	6	7,142
<b>Tuolumne</b>							
<i>Facilities</i>	0	123	0	0	17,126	1	17,250
<i>Pipelines</i>	42	21	0	0			62
<b>Total</b>	42	144	0	0	17,126	1	17,312
<b>Yolo</b>							
<i>Facilities</i>	0	14,769	0	0	9,596	36	24,401
<i>Pipelines</i>	279	140	0	0			419
<b>Total</b>	279	14,909	0	0	9,596	36	24,820
<b>Yuba</b>							
<i>Facilities</i>	0	492	0	0	15,532	0	16,024
<i>Pipelines</i>	26	13	0	0			40
<b>Total</b>	26	505	0	0	15,532	0	16,064

	Potable Water	Waste Water	Oil Systems	Natural Gas	Electric Power	Communication	Total
<b>Total</b>	58,906	975,556	171	75	9,245,283	1,628	10,281,620
<b>Region Total</b>	58,906	975,556	171	75	9,245,283	1,628	10,281,620

*Totals only reflect data for those census tracts/blocks included in the user's study region and will reflect the entire county/state only if all of the census blocks for that county/states were selected at the time of study region creation.*

## Hazus Quick Assessment Report

### Estimated Economic Loss (\$ Billions)

Category	Description	Range
General Building Stock	Building Damage	9.10 - 36.40
	Building Contents	1.10 - 4.50
	Business Interruption	1.50 - 5.80
Infrastructure	Lifelines Damage	
<b>Total</b>		14.40 - 57.60

### Preliminary Damage Assessment (PDA) Estimates

Description	Residential	Commercial	Other	Total
Affected	348,400	25,500	13,200	387,100
Minor	48,000	8,600	4,900	61,500
Major	3,100	1,200	850	5,150
Destroyed	670	300	230	1,200
<b>Total</b>	400,170	35,600	19,180	454,950

### Estimated Casualties : Night Time

Severity Level	Description	# Persons
Level 1	Medical Aid	700 - 3,000
Level 2	Hospital Care	70 - 300
Level 3	Life-threatening	0 - 20
Level 4	Fatalities	10 - 30

### Estimated Shelter Needs

Type	Households	People
Displaced Households	1,900 - 8,000	4,750 - 20,000
Public Shelter	870	2,180

Comments :

\*Hazus damage estimates are presented using FEMA Preliminary Damage Assessment (PDA) categories. These estimates should be used for planning purposes and may not reflect actual observed damages from the PDA process.

**Disclaimer:**

The estimates of social and economic impacts contained in this report were produced using HAZUS loss estimation methodology software which is based on current scientific and engineering knowledge. There are uncertainties inherent in any loss estimation technique. Therefore, there may be significant differences between the modeled results contained in this report and the actual social and economic losses following a specific earthquake. These results can be improved by using enhanced inventory, geotechnical, and observed ground motion data.

### Earthquake Information

Location :

Origin Time:

Magnitude : 7.12

Epicenter Latitude/Longitude :  
/

Depth & Type : /U

Name :  
NA

Ground Motion /Attenuation :

Maximum PGA: 1.00

Information Sources:

Comments :

### Population and Building Exposure

Population: 14,583,907

### Building Exposure : (\$ Millions)

Residential	1,849,796
Commercial	496,631
Other	432,777
<b>Total</b>	<b>2,779,204</b>

Counties : See Appendix

Major Metro Area :

## Hazus Quick Assessment Report

### Estimated Economic Loss (\$ Billions)

Category	Description	Range
General Building Stock	Building Damage	9.10 - 36.40
	Building Contents	1.10 - 4.50
	Business Interruption	1.50 - 5.80
Infrastructure	Lifelines Damage	
<b>Total</b>		14.40 - 57.60

### Preliminary Damage Assessment (PDA) Estimates

Description	Residential	Commercial	Other	Total
Affected	348,400	25,500	13,200	387,100
Minor	48,000	8,600	4,900	61,500
Major	3,100	1,200	850	5,150
Destroyed	670	300	230	1,200
<b>Total</b>	400,170	35,600	19,180	454,950

### Estimated Casualties : Day Time

Severity Level	Description	# Persons
Level 1	Medical Aid	1,400 - 5,000
Level 2	Hospital Care	200 - 900
Level 3	Life-threatening	30 - 110
Level 4	Fatalities	50 - 200

### Estimated Shelter Needs

Type	Households	People
Displaced Households	1,900 - 8,000	4,750 - 20,000
Public Shelter	870	2,180

Comments :

\*Hazus damage estimates are presented using FEMA Preliminary Damage Assessment (PDA) categories. These estimates should be used for planning purposes and may not reflect actual observed damages from the PDA process.

#### Disclaimer:

The estimates of social and economic impacts contained in this report were produced using HAZUS loss estimation methodology software which is based on current scientific and engineering knowledge. There are uncertainties inherent in any loss estimation technique. Therefore, there may be significant differences between the modeled results contained in this report and the actual social and economic losses following a specific earthquake. These results can be improved by using enhanced inventory, geotechnical, and observed ground motion data.

### Earthquake Information

Location :

Origin Time:

Magnitude : 7.12

Epicenter Latitude/Longitude :  
/

Depth & Type : /U

Name :  
NA

Ground Motion /Attenuation :

Maximum PGA: 1.00

Information Sources:

Comments :

### Population and Building Exposure

Population: 14,583,907

### Building Exposure : (\$ Millions)

Residential	1,849,796
Commercial	496,631
Other	432,777
<b>Total</b>	<b>2,779,204</b>

Counties : See Appendix

Major Metro Area :

## Hazus Quick Assessment Report

### Estimated Economic Loss (\$ Billions)

Category	Description	Range
General Building Stock	Building Damage	9.10 - 36.40
	Building Contents	1.10 - 4.50
	Business Interruption	1.50 - 5.80
Infrastructure	Lifelines Damage	
<b>Total</b>		14.40 - 57.60

### Preliminary Damage Assessment (PDA) Estimates

Description	Residential	Commercial	Other	Total
Affected	348,400	25,500	13,200	387,100
Minor	48,000	8,600	4,900	61,500
Major	3,100	1,200	850	5,150
Destroyed	670	300	230	1,200
<b>Total</b>	400,170	35,600	19,180	454,950

### Estimated Casualties : Commute Time

Severity Level	Description	# Persons
Level 1	Medical Aid	1,000 - 4,000
Level 2	Hospital Care	200 - 800
Level 3	Life-threatening	80 - 300
Level 4	Fatalities	50 - 180

### Estimated Shelter Needs

Type	Households	People
Displaced Households	1,900 - 8,000	4,750 - 20,000
Public Shelter	870	2,180

Comments :

\*Hazus damage estimates are presented using FEMA Preliminary Damage Assessment (PDA) categories. These estimates should be used for planning purposes and may not reflect actual observed damages from the PDA process.

#### Disclaimer:

The estimates of social and economic impacts contained in this report were produced using HAZUS loss estimation methodology software which is based on current scientific and engineering knowledge. There are uncertainties inherent in any loss estimation technique. Therefore, there may be significant differences between the modeled results contained in this report and the actual social and economic losses following a specific earthquake. These results can be improved by using enhanced inventory, geotechnical, and observed ground motion data.

### Earthquake Information

Location :

Origin Time:

Magnitude : 7.12

Epicenter Latitude/Longitude :  
/

Depth & Type : /U

Name :  
NA

Ground Motion /Attenuation :

Maximum PGA: 1.00

Information Sources:

Comments :

### Population and Building Exposure

Population: 14,583,907

#### Building Exposure : (\$ Millions)

Residential	1,849,796
Commercial	496,631
Other	432,777
<b>Total</b>	<b>2,779,204</b>

Counties : See Appendix

Major Metro Area :

## Shelter Summary Report

April 15, 2024

	# of Displaced Households	# of People Needing Short Term Shelter
<b>California</b>		
Alameda	881	476
Alpine	0	0
Amador	0	0
Butte	0	0
Calaveras	0	0
Colusa	0	0
Contra Costa	2,371	1,371
El Dorado	0	0
Fresno	0	0
Glenn	0	0
Lake	0	0
Madera	0	0
Marin	0	0
Mariposa	0	0
Mendocino	0	0
Merced	0	0
Monterey	0	0
Napa	7	4
Nevada	0	0
Placer	0	0
Sacramento	38	20
San Benito	0	0
San Francisco	155	64
San Joaquin	181	122
San Mateo	8	4
Santa Clara	5	3
Santa Cruz	0	0
Sierra	0	0
Solano	211	109
Sonoma	0	0
Stanislaus	1	1
Sutter	0	0

	# of Displaced Households	# of People Needing Short Term Shelter
Tuolumne	0	0
Yolo	2	1
Yuba	0	0
<b>Total</b>	<b>3,862</b>	<b>2,175</b>
<b>Region Total</b>	<b>3,862</b>	<b>2,175</b>

*Totals only reflect data for those census tracts/blocks included in the user's study region and will reflect the entire county/state only if all of the census blocks for that county/states were selected at the time of study region creation.*