
Hazus: Earthquake Global Risk Report

Region Name: GreatVly06MidALT2

Earthquake Scenario: greatvalley06midland_m7p12_se

Print Date: April 15, 2024

Disclaimer:

Totals only reflect data for those census tracts/blocks included in the user's study region.

The estimates of social and economic impacts contained in this report were produced using Hazus loss estimation methodology software which is based on current scientific and engineering knowledge. There are uncertainties inherent in any loss estimation technique. Therefore, there may be significant differences between the modeled results contained in this report and the actual social and economic losses following a specific earthquake. These results can be improved by using enhanced inventory, geotechnical, and observed ground motion data.

Table of Contents

Section	Page #
General Description of the Region	3
Building and Lifeline Inventory	4
Building Inventory	
Critical Facility Inventory	
Transportation and Utility Lifeline Inventory	
Earthquake Scenario Parameters	7
Direct Earthquake Damage	8
Buildings Damage	
Essential Facilities Damage	
Transportation and Utility Lifeline Damage	
Induced Earthquake Damage	14
Fire Following Earthquake	
Debris Generation	
Social Impact	15
Shelter Requirements	
Casualties	
Economic Loss	17
Building Related Losses	
Transportation and Utility Lifeline Losses	
Appendix A: County Listing for the Region	
Appendix B: Regional Population and Building Value Data	

General Description of the Region

Hazus-MH is a regional earthquake loss estimation model that was developed by the Federal Emergency Management Agency (FEMA) and the National Institute of Building Sciences. The primary purpose of Hazus is to provide a methodology and software application to develop multi-hazard losses at a regional scale. These loss estimates would be used primarily by local, state and regional officials to plan and stimulate efforts to reduce risks from multi-hazards and to prepare for emergency response and recovery.

The earthquake loss estimates provided in this report was based on a region that includes 35 county(ies) from the following state(s):

California

Note:

Appendix A contains a complete listing of the counties contained in the region.

The geographical size of the region is 48,953.76 square miles and contains 3,345 census tracts. There are over 5,109 thousand households in the region which has a total population of 14,583,907 people. The distribution of population by Total Region and County is provided in Appendix B.

There are an estimated 4,495 thousand buildings in the region with a total building replacement value (excluding contents) of (millions of dollars). Approximately 90.00 % of the buildings (and % of the building value) are associated with residential housing.

The replacement value of the transportation and utility lifeline systems is estimated to be 229,195 and 170,238 (millions of dollars) , respectively.

Building and Lifeline Inventory

Building Inventory

Hazus estimates that there are 4,495 thousand buildings in the region which have an aggregate total replacement value of (millions of dollars) . Appendix B provides a general distribution of the building value by Total Region and County.

In terms of building construction types found in the region, wood frame construction makes up 87% of the building inventory. The remaining percentage is distributed between the other general building types.

Critical Facility Inventory

Hazus breaks critical facilities into two (2) groups: essential facilities and high potential loss facilities (HPL). Essential facilities include hospitals, medical clinics, schools, fire stations, police stations and emergency operations facilities. High potential loss facilities include dams, levees, military installations, nuclear power plants and hazardous material sites.

For essential facilities, there are 247 hospitals in the region with a total bed capacity of 36,901 beds. There are 5,391 schools, 1,452 fire stations, 475 police stations and 89 emergency operation facilities. With respect to high potential loss facilities (HPL), there are no dams identified within the inventory. The inventory also includes no hazardous material sites, no military installations and no nuclear power plants.

Transportation and Utility Lifeline Inventory

Within Hazus, the lifeline inventory is divided between transportation and utility lifeline systems. There are seven (7) transportation systems that include highways, railways, light rail, bus, ports, ferry and airports. There are six (6) utility systems that include potable water, wastewater, natural gas, crude & refined oil, electric power and communications. The lifeline inventory data are provided in Tables 1 and 2.

The total value of the lifeline inventory is over 399,433.00 (millions of dollars). This inventory includes over 9,788.46 miles of highways, 11,169 bridges, 218,581.54 miles of pipes.

Table 1: Transportation System Lifeline Inventory

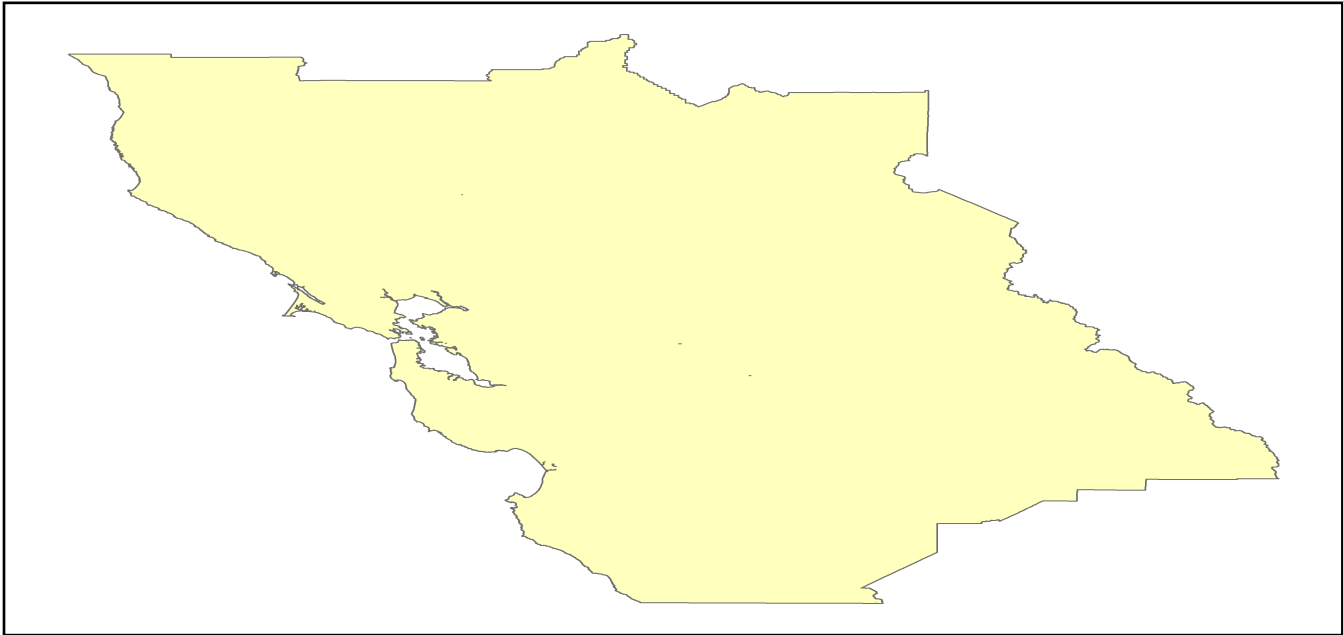
System	Component	# Locations/ # Segments	Replacement value (millions of dollars)
Highway	Bridges	11,169	57128.5190
	Segments	6,809	85631.8239
	Tunnels	47	985.3863
	Subtotal		143745.7292
Railways	Bridges	1,609	9155.2100
	Facilities	81	215.7030
	Segments	2,965	60896.1021
	Tunnels	3	1.8495
	Subtotal		70268.8646
Light Rail	Bridges	112	15.3529
	Facilities	255	4154.0000
	Segments	15	5403.2756
	Tunnels	0	0.0000
	Subtotal		9572.6285
Bus	Facilities	45	102.6914
	Subtotal		102.6914
Ferry	Facilities	25	33.2750
	Subtotal		33.2750
Port	Facilities	362	1379.8878
	Subtotal		1379.8878
Airport	Facilities	104	2794.1008
	Runways	147	1298.3841
	Subtotal		4092.4849
		Total	229,195.60

Table 2: Utility System Lifeline Inventory

System	Component	# Locations / Segments	Replacement value (millions of dollars)
Potable Water	Distribution Lines	NA	4347.2114
	Facilities	22	864.4680
	Pipelines	0	0.0000
		Subtotal	5211.6794
Waste Water	Distribution Lines	NA	2608.3268
	Facilities	183	31467.1794
	Pipelines	0	0.0000
		Subtotal	34075.5062
Natural Gas	Distribution Lines	NA	1738.8845
	Facilities	2	59.4451
	Pipelines	967	14075.6045
		Subtotal	15873.9341
Oil Systems	Facilities	17	2.0060
	Pipelines	0	0.0000
		Subtotal	2.0060
Electrical Power	Facilities	345	115027.2149
		Subtotal	115027.2149
Communication	Facilities	410	48.3800
		Subtotal	48.3800
	Total		170,238.70

Earthquake Scenario

Hazus uses the following set of information to define the earthquake parameters used for the earthquake loss estimate provided in this report.



Scenario Name	greatvalley06midland_m7p12_se
Type of Earthquake	User-defined
Fault Name	NA
Historical Epicenter ID #	NA
Probabilistic Return Period	NA
Longitude of Epicenter	NA
Latitude of Epicenter	NA
Earthquake Magnitude	7.12
Depth (km)	NA
Rupture Length (Km)	NA
Rupture Orientation (degrees)	NA
Attenuation Function	NA

Direct Earthquake Damage

Building Damage

Hazus estimates that about 68,185 buildings will be at least moderately damaged. This is over 2.00 % of the buildings in the region. There are an estimated 1,201 buildings that will be damaged beyond repair. The definition of the 'damage states' is provided in Volume 1: Chapter 5 of the Hazus technical manual. Table 3 below summarizes the expected damage by general occupancy for the buildings in the region. Table 4 below summarizes the expected damage by general building type.

Damage Categories by General Occupancy Type

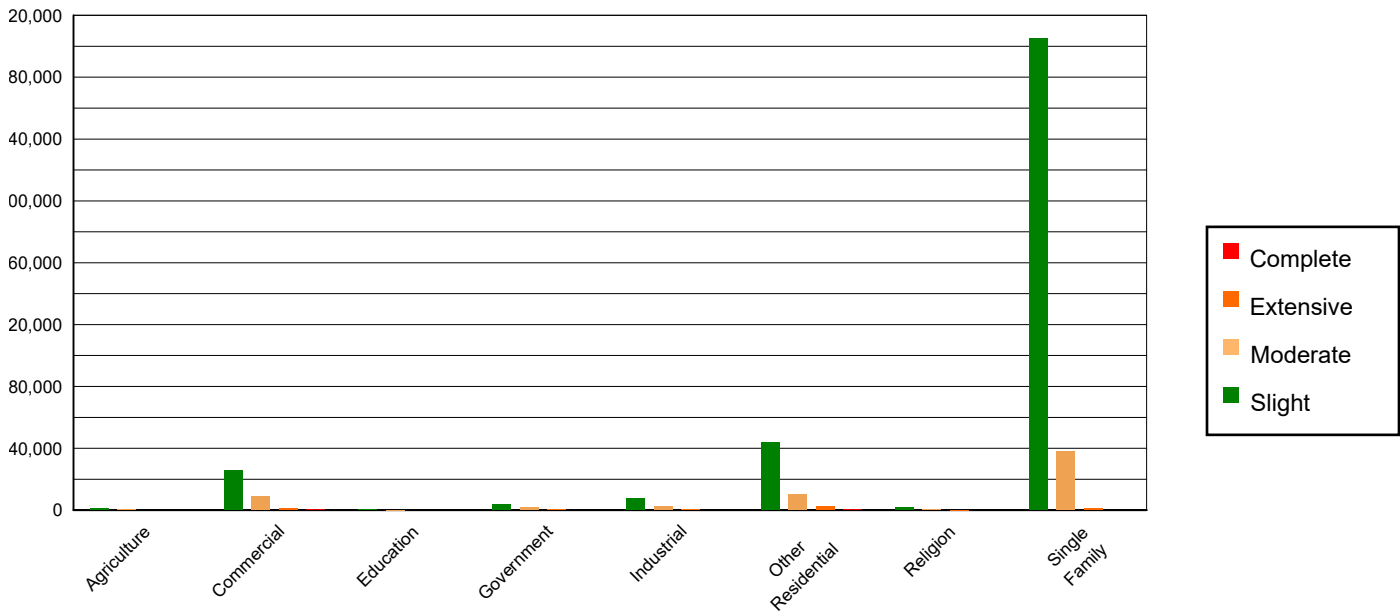


Table 3: Expected Building Damage by Occupancy

	None		Slight		Moderate		Extensive		Complete	
	Count	(%)	Count	(%)	Count	(%)	Count	(%)	Count	(%)
Agriculture	27605.05	0.68	842.77	0.22	309.27	0.50	76.77	1.50	30.14	2.51
Commercial	254974.62	6.31	25472.96	6.57	8608.59	13.91	1206.27	23.62	298.56	24.85
Education	8568.49	0.21	473.35	0.12	143.48	0.23	14.37	0.28	3.32	0.28
Government	16107.56	0.40	3893.38	1.00	1626.05	2.63	253.96	4.97	78.05	6.50
Industrial	69029.55	1.71	7384.62	1.90	2663.62	4.30	401.85	7.87	84.36	7.02
Other Residential	511457.02	12.66	43606.44	11.24	10198.56	16.48	2243.85	43.93	654.12	54.44
Religion	14832.40	0.37	1452.93	0.37	543.84	0.88	101.69	1.99	32.14	2.68
Single Family	3137083.04	77.66	304825.15	78.57	37783.30	61.06	808.71	15.83	20.79	1.73
Total	4,039,658		387,952		61,877		5,107		1,201	

Table 4: Expected Building Damage by Building Type (All Design Levels)

	None		Slight		Moderate		Extensive		Complete	
	Count	(%)	Count	(%)	Count	(%)	Count	(%)	Count	(%)
Wood	3530970.00	87.41	330313.62	85.14	37074.20	59.92	548.79	10.74	29.03	2.42
Steel	85821.93	2.12	10704.66	2.76	5417.27	8.75	943.87	18.48	194.81	16.21
Concrete	98645.05	2.44	11815.17	3.05	4274.32	6.91	711.32	13.93	217.32	18.09
Precast	52122.15	1.29	5706.90	1.47	2302.03	3.72	252.00	4.93	31.39	2.61
RM	159233.08	3.94	10517.67	2.71	3177.17	5.13	339.57	6.65	23.61	1.96
URM	25716.92	0.64	12613.83	3.25	6063.08	9.80	705.89	13.82	168.91	14.06
MH	87148.60	2.16	6279.77	1.62	3568.63	5.77	1606.05	31.44	536.41	44.65
Total	4,039,658		387,952		61,877		5,107		1,201	

*Note:

- RM Reinforced Masonry
- URM Unreinforced Masonry
- MH Manufactured Housing

Essential Facility Damage

Before the earthquake, the region had 36,901 hospital beds available for use. On the day of the earthquake, the model estimates that only 32,925 hospital beds (89.00%) are available for use by patients already in the hospital and those injured by the earthquake. After one week, 96.00% of the beds will be back in service. By 30 days, 99.00% will be operational.

Table 5: Expected Damage to Essential Facilities

Classification	Total	# Facilities		
		At Least Moderate Damage > 50%	Complete Damage > 50%	With Functionality > 50% on day 1
Hospitals	247	2	0	230
Schools	5,391	88	5	5,020
EOCs	89	2	0	85
PoliceStations	475	10	0	448
FireStations	1,452	11	1	1,386

Transportation Lifeline Damage

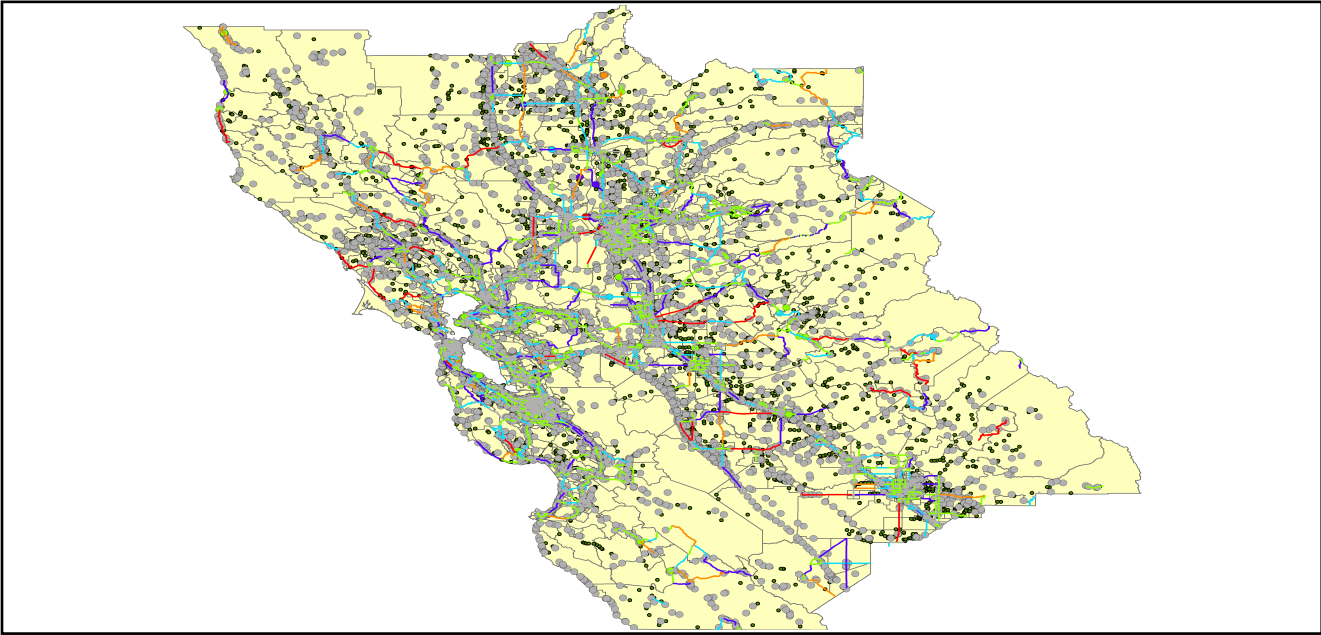


Table 6: Expected Damage to the Transportation Systems

System	Component	Number of Locations_				
		Locations/ Segments	With at Least Mod. Damage	With Complete Damage	With Functionality > 50 %	
					After Day 1	After Day 7
Highway	Segments	6,809	0	0	6,809	6,809
	Bridges	11,169	14	0	11,155	11,166
	Tunnels	47	0	0	47	47
Railways	Segments	2,965	0	0	2,965	2,965
	Bridges	1,609	0	0	1,609	1,609
	Tunnels	3	0	0	3	3
	Facilities	81	2	0	80	81
Light Rail	Segments	15	0	0	15	15
	Bridges	112	0	0	112	112
	Tunnels	0	0	0	0	0
	Facilities	255	3	0	253	255
Bus	Facilities	45	1	0	45	45
Ferry	Facilities	25	0	0	25	25
Port	Facilities	362	16	0	360	362
Airport	Facilities	104	1	0	104	104
	Runways	147	0	0	147	147

Table 6 provides damage estimates for the transportation system.

Note: Roadway segments, railroad tracks and light rail tracks are assumed to be damaged by ground failure only. If ground failure maps are not provided, damage estimates to these components will not be computed.

Tables 7-9 provide information on the damage to the utility lifeline systems. Table 7 provides damage to the utility system facilities. Table 8 provides estimates on the number of leaks and breaks by the pipelines of the utility systems. For electric power and potable water, Hazus performs a simplified system performance analysis. Table 9 provides a summary of the system performance information.

Table 7 : Expected Utility System Facility Damage

System	# of Locations				
	Total #	With at Least Moderate Damage	With Complete Damage	with Functionality > 50 %	
				After Day 1	After Day 7
Potable Water	22	0	0	20	22
Waste Water	183	6	0	164	183
Natural Gas	2	0	0	2	2
Oil Systems	17	1	0	13	16
Electrical Power	345	43	2	307	330
Communication	410	7	0	403	410

Table 8 : Expected Utility System Pipeline Damage (Site Specific)

System	Total Pipelines Length (miles)	Number of Leaks	Number of Breaks
Potable Water	135,062	6064	1516
Waste Water	81,037	3046	761
Natural Gas	2,483	0	0
Oil	0	0	0

Table 9: Expected Potable Water and Electric Power System Performance

	Total # of Households	Number of Households without Service				
		At Day 1	At Day 3	At Day 7	At Day 30	At Day 90
Potable Water	5,109,667	183,504	161,094	126,788	300	0
Electric Power		199,521	140,321	68,173	9,774	253

Induced Earthquake Damage

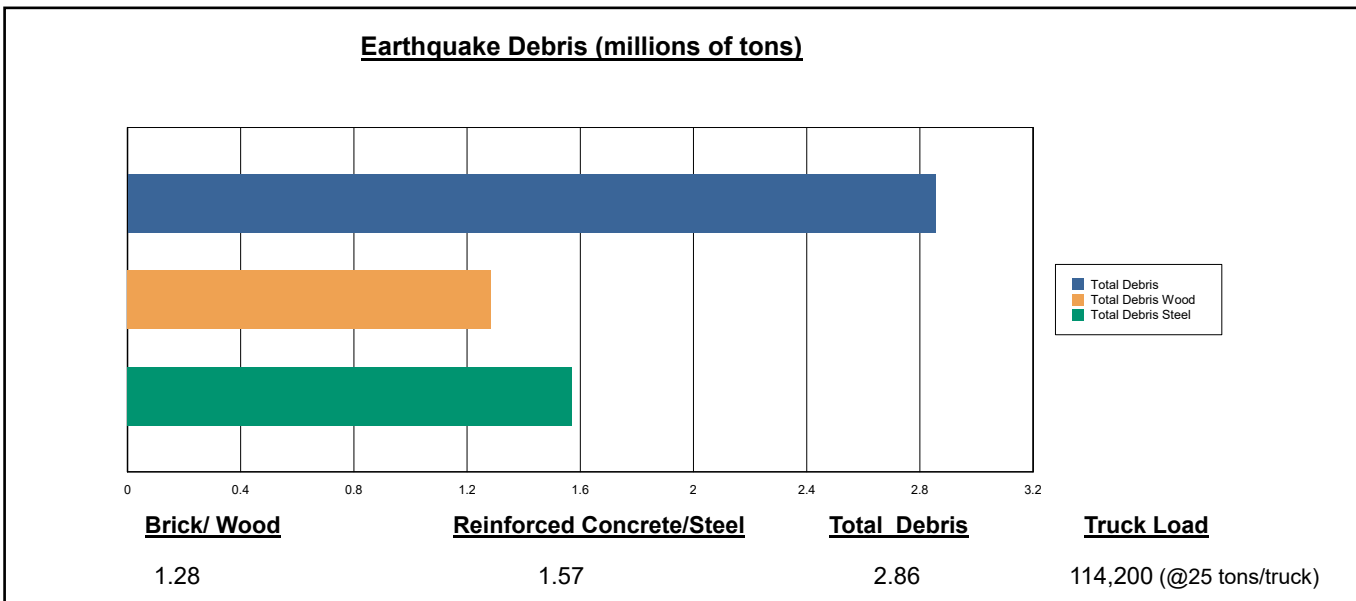
Fire Following Earthquake

Fires often occur after an earthquake. Because of the number of fires and the lack of water to fight the fires, they can often burn out of control. Hazus uses a Monte Carlo simulation model to estimate the number of ignitions and the amount of burnt area. For this scenario, the model estimates that there will be 71 ignitions that will burn about 1.31 sq. mi (0.00 % of the region's total area.) The model also estimates that the fires will displace about 14,845 people and burn about 1,892 (millions of dollars) of building value.

Debris Generation

Hazus estimates the amount of debris that will be generated by the earthquake. The model breaks the debris into two general categories: a) Brick/Wood and b) Reinforced Concrete/Steel. This distinction is made because of the different types of material handling equipment required to handle the debris.

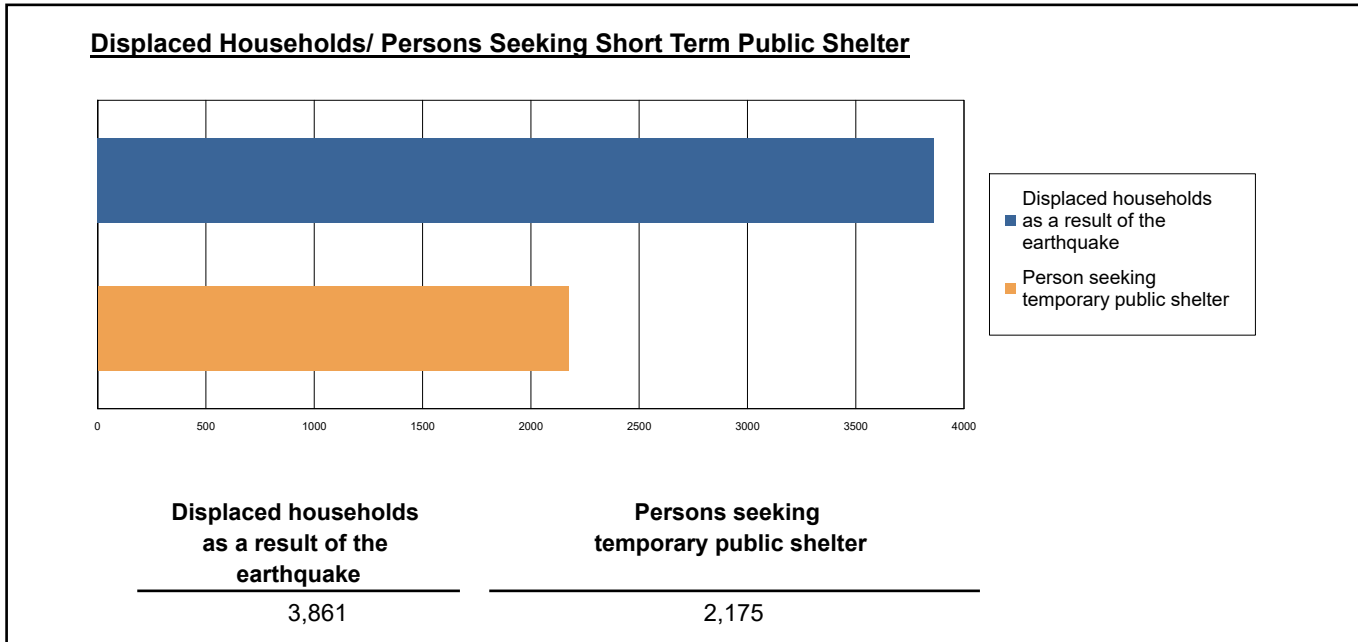
The model estimates that a total of 2,855,000 tons of debris will be generated. Of the total amount, Brick/Wood comprises 45.00% of the total, with the remainder being Reinforced Concrete/Steel. If the debris tonnage is converted to an estimated number of truckloads, it will require 114,200 truckloads (@25 tons/truck) to remove the debris generated by the earthquake.



Social Impact

Shelter Requirement

Hazus estimates the number of households that are expected to be displaced from their homes due to the earthquake and the number of displaced people that will require accommodations in temporary public shelters. The model estimates 3,861 households to be displaced due to the earthquake. Of these, 2,175 people (out of a total population of 14,583,907) will seek temporary shelter in public shelters.



Casualties

Hazus estimates the number of people that will be injured and killed by the earthquake. The casualties are broken down into four (4) severity levels that describe the extent of the injuries. The levels are described as follows;

- Severity Level 1: Injuries will require medical attention but hospitalization is not needed.
- Severity Level 2: Injuries will require hospitalization but are not considered life-threatening
- Severity Level 3: Injuries will require hospitalization and can become life threatening if not promptly treated.
- Severity Level 4: Victims are killed by the earthquake.

The casualty estimates are provided for three (3) times of day: 2:00 AM, 2:00 PM and 5:00 PM. These times represent the periods of the day that different sectors of the community are at their peak occupancy loads. The 2:00 AM estimate considers that the residential occupancy load is maximum, the 2:00 PM estimate considers that the educational, commercial and industrial sector loads are maximum and 5:00 PM represents peak commute time.

Table 10 provides a summary of the casualties estimated for this earthquake

Table 10: Casualty Estimates

		Level 1	Level 2	Level 3	Level 4
2 AM	Commercial	24.89	4.16	0.49	0.97
	Commuting	0.28	0.49	0.69	0.14
	Educational	0.00	0.00	0.00	0.00
	Hotels	0.88	0.08	0.00	0.01
	Industrial	21.53	3.26	0.35	0.69
	Other-Residential	655.23	86.92	6.85	12.77
	Single Family	787.46	41.15	0.52	0.89
	Total	1,490	136	9	15
	2 PM	Commercial	1776.00	311.58	38.43
Commuting		2.52	4.43	6.18	1.26
Educational		370.21	59.47	6.88	13.37
Hotels		0.17	0.02	0.00	0.00
Industrial		157.63	23.98	2.60	5.04
Other-Residential		205.17	27.63	2.24	4.06
Single Family		229.23	12.82	0.22	0.36
Total		2,741	440	57	99
5 PM		Commercial	1314.45	240.87	30.83
	Commuting	48.52	85.00	118.91	24.27
	Educational	31.26	2.35	0.03	0.06
	Hotels	0.26	0.02	0.00	0.00
	Industrial	98.52	14.99	1.62	3.15
	Other-Residential	244.62	33.00	2.71	4.91
	Single Family	290.92	15.90	0.24	0.38
	Total	2,029	392	154	92

Economic Loss

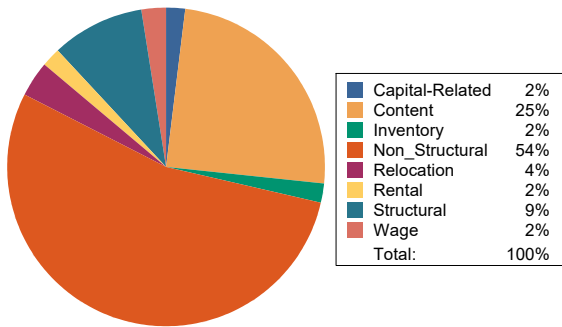
The total economic loss estimated for the earthquake is 40,055.90 (millions of dollars), which includes building and lifeline related losses based on the region's available inventory. The following three sections provide more detailed information about these losses.

Building-Related Losses

The building losses are broken into two categories: direct building losses and business interruption losses. The direct building losses are the estimated costs to repair or replace the damage caused to the building and its contents. The business interruption losses are the losses associated with inability to operate a business because of the damage sustained during the earthquake. Business interruption losses also include the temporary living expenses for those people displaced from their homes because of the earthquake.

The total building-related losses were 28,815.29 (millions of dollars); 10 % of the estimated losses were related to the business interruption of the region. By far, the largest loss was sustained by the residential occupancies which made up over 51 % of the total loss. Table 11 below provides a summary of the losses associated with the building damage.

Earthquake Losses by Loss Type (\$ millions)



Earthquake Losses by Occupancy Type (\$ millions)

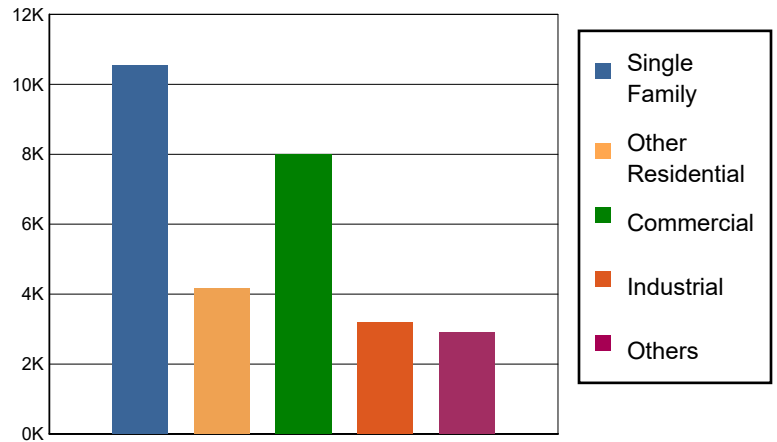


Table 11: Building-Related Economic Loss Estimates
(Millions of dollars)

Category	Area	Single Family	Other Residential	Commercial	Industrial	Others	Total
Income Losses							
	Wage	0.0000	51.9555	548.1796	30.4827	88.9815	719.5993
	Capital-Related	0.0000	22.0911	495.8567	18.4814	12.5242	548.9534
	Rental	90.8676	172.4332	284.3047	16.0991	46.7764	610.4810
	Relocation	288.6002	114.8435	368.0013	73.8971	199.0174	1,044.3595
	Subtotal	379.4678	361.3233	1696.3423	138.9603	347.2995	2923.3932
Capital Stock Losses							
	Structural	1034.7869	359.7262	743.4046	275.5130	280.7685	2,694.1992
	Non_Structural	6621.9301	2664.0578	3271.1996	1532.3405	1430.8688	15,520.3968
	Content	2505.4632	778.6673	1943.9695	1092.0235	805.1907	7,125.3142
	Inventory	0.0000	0.0000	350.7178	164.5790	36.6879	551.9847
	Subtotal	10162.1802	3802.4513	6309.2915	3064.4560	2553.5159	25891.8949
	Total	10541.65	4163.77	8005.63	3203.42	2900.82	28815.29

Transportation and Utility Lifeline Losses

For the transportation and utility lifeline systems, Hazus computes the direct repair cost for each component only. There are no losses computed by Hazus for business interruption due to lifeline outages. Tables 12 & 13 provide a detailed breakdown in the expected lifeline losses.

Table 12: Transportation System Economic Losses
(Millions of dollars)

System	Component	Inventory Value	Economic Loss	Loss Ratio (%)
Highway	Segments	85631.8239	0.0000	0.00
	Bridges	57128.5190	256.3377	0.45
	Tunnels	985.3863	1.5798	0.16
	Subtotal	143745.7292	257.9175	
Railways	Segments	60896.1021	0.0000	0.00
	Bridges	9155.2100	57.2710	0.63
	Tunnels	1.8495	0.0345	1.87
	Facilities	215.7030	17.5832	8.15
	Subtotal	70268.8646	74.8887	
Light Rail	Segments	5403.2756	0.0000	0.00
	Bridges	15.3529	0.0343	0.22
	Tunnels	0.0000	0.0000	0.00
	Facilities	4154.0000	257.6000	6.20
	Subtotal	9572.6285	257.6343	
Bus	Facilities	102.6914	4.5852	4.47
	Subtotal	102.6914	4.5852	
Ferry	Facilities	33.2750	5.1005	15.33
	Subtotal	33.2750	5.1005	
Port	Facilities	1379.8878	182.2406	13.21
	Subtotal	1379.8878	182.2406	
Airport	Facilities	2794.1008	171.9205	6.15
	Runways	1298.3841	0.0000	0.00
	Subtotal	4092.4849	171.9205	
Total		229,195.56	954.29	

Table 13: Utility System Economic Losses

(Millions of dollars)

System	Component	Inventory Value	Economic Loss	Loss Ratio (%)
Potable Water	Pipelines	0.0000	0.0000	0.00
	Facilities	864.4680	31.6191	3.66
	Distribution Lines	4347.2114	27.2869	0.63
	Subtotal	5211.6794	58.9060	
Waste Water	Pipelines	0.0000	0.0000	0.00
	Facilities	31467.1794	961.8494	3.06
	Distribution Lines	2608.3268	13.7069	0.53
	Subtotal	34075.5062	975.5563	
Natural Gas	Pipelines	14075.6045	0.0000	0.00
	Facilities	59.4451	0.0751	0.13
	Distribution Lines	1738.8845	4.6959	0.27
	Subtotal	15873.9341	4.7710	
Oil Systems	Pipelines	0.0000	0.0000	0.00
	Facilities	2.0060	0.1711	8.53
	Subtotal	2.0060	0.1711	
Electrical Power	Facilities	115027.2149	9245.2831	8.04
	Subtotal	115027.2149	9245.2831	
Communication	Facilities	48.3800	1.6282	3.37
	Subtotal	48.3800	1.6282	
	Total	170,238.72	10,286.32	

Appendix A: County Listing for the Region

Alameda,CA

Alpine,CA

Amador,CA

Butte,CA

Calaveras,CA

Colusa,CA

Contra Costa,CA

El Dorado,CA

Fresno,CA

Glenn,CA

Lake,CA

Madera,CA

Marin,CA

Mariposa,CA

Mendocino,CA

Merced,CA

Monterey,CA

Napa,CA

Nevada,CA

Placer,CA

Sacramento,CA

San Benito,CA

San Francisco,CA

San Joaquin,CA

San Mateo,CA

Santa Clara,CA

Santa Cruz,CA

Sierra,CA

Solano,CA

Sonoma, CA

Stanislaus, CA

Sutter, CA

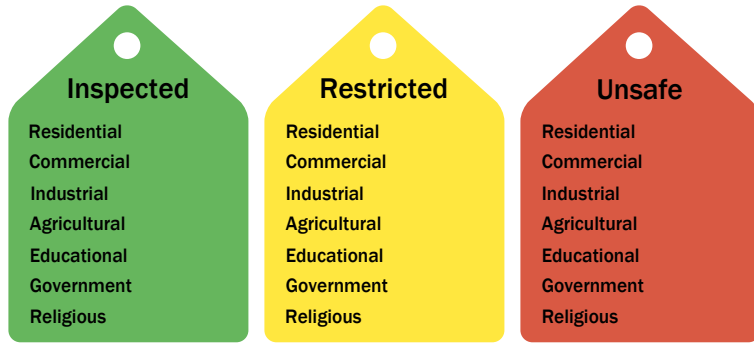
Tuolumne, CA

Yolo, CA

Yuba, CA

Appendix B: Regional Population and Building Value Data

State	County Name	Population	Building Value (millions of dollars)		
			Residential	Non-Residential	Total
California	Alameda	1,682,353	209,951	122,639	332,590
	Alpine	1,204	721	139	861
	Amador	40,474	5,608	2,517	8,125
	Butte	211,632	25,875	16,639	42,514
	Calaveras	45,292	8,305	4,893	13,199
	Colusa	21,839	2,244	2,024	4,268
	Contra Costa	1,165,927	158,118	60,339	218,458
	El Dorado	191,185	34,907	9,704	44,611
	Fresno	1,008,654	98,532	61,772	160,304
	Glenn	28,917	2,791	3,717	6,508
	Lake	68,163	9,699	4,530	14,229
	Madera	156,255	18,025	9,641	27,667
	Marin	262,321	47,738	15,030	62,769
	Mariposa	17,131	3,299	1,141	4,441
	Mendocino	91,601	14,237	8,510	22,748
	Merced	281,202	25,194	26,098	51,292
	Monterey	439,035	47,655	28,750	76,405
	Napa	138,019	20,517	13,045	33,563
	Nevada	102,241	17,908	6,108	24,016
	Placer	404,739	69,985	24,193	94,179
	Sacramento	1,585,055	179,811	83,911	263,723
	San Benito	64,209	9,440	3,799	13,239
	San Francisco	873,965	108,848	46,020	154,869
	San Joaquin	779,233	82,706	56,882	139,589
	San Mateo	764,442	110,372	44,995	155,368
	Santa Clara	1,936,259	261,111	120,471	381,582
	Santa Cruz	270,861	36,147	18,805	54,952
	Sierra	3,236	596	419	1,015
	Solano	453,491	55,802	26,393	82,195
	Sonoma	488,863	68,827	35,781	104,609
	Stanislaus	552,878	62,937	37,511	100,449
	Sutter	99,633	10,618	6,448	17,066
Tuolumne	55,620	8,964	3,507	12,471	
Yolo	216,403	24,130	18,343	42,473	
Yuba	81,575	8,161	4,677	12,839	
Total Region		14,583,907	1,849,779	929,391	2,779,186

Building Inspection Tagging (Counts)

Total Economic Loss
Total:

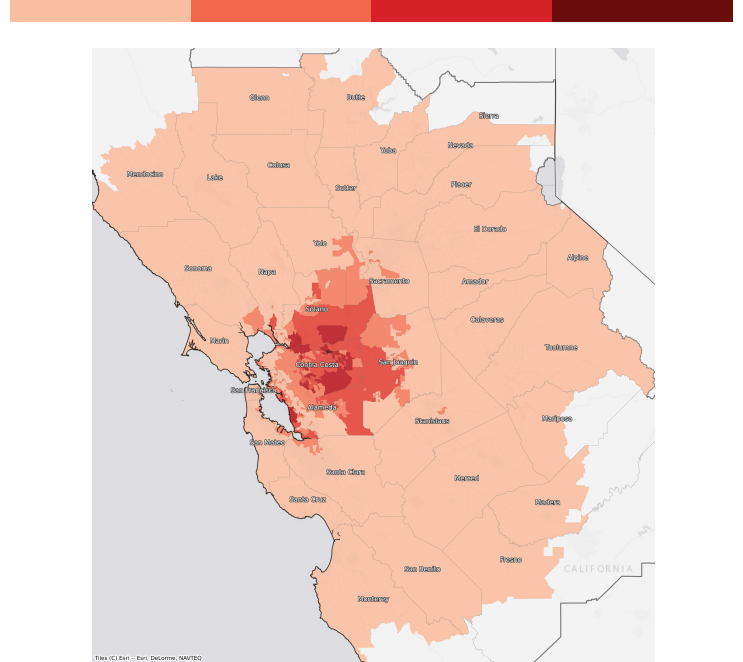
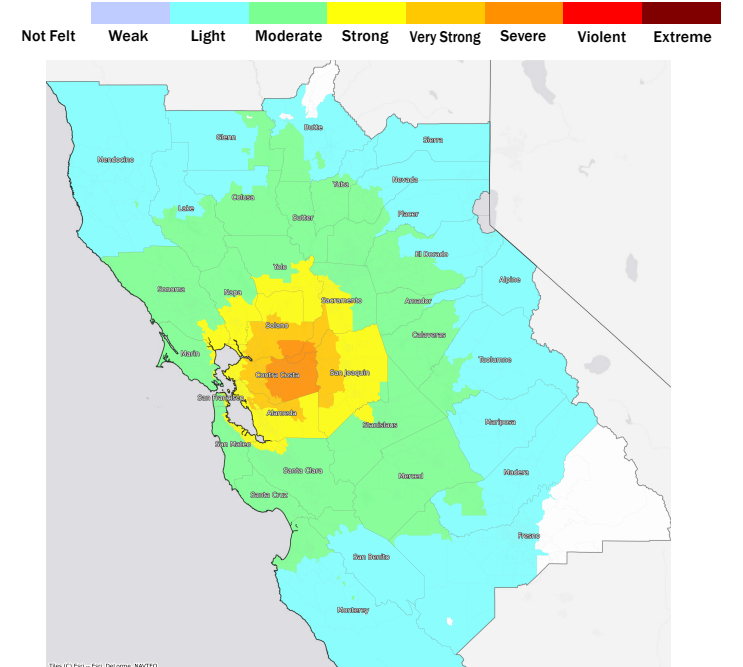
Top Counties	State	Total

Injuries & Fatalities
**Total Day:
Total Night:**

Top Counties	State	Injuries (day/night)	Fatalities (day/night)

Displaced Households & Short-Term Shelter Needs
**Total Displaced:
Total Needing Shelter:**

Top Counties	State	Displaced	Needing Shelter

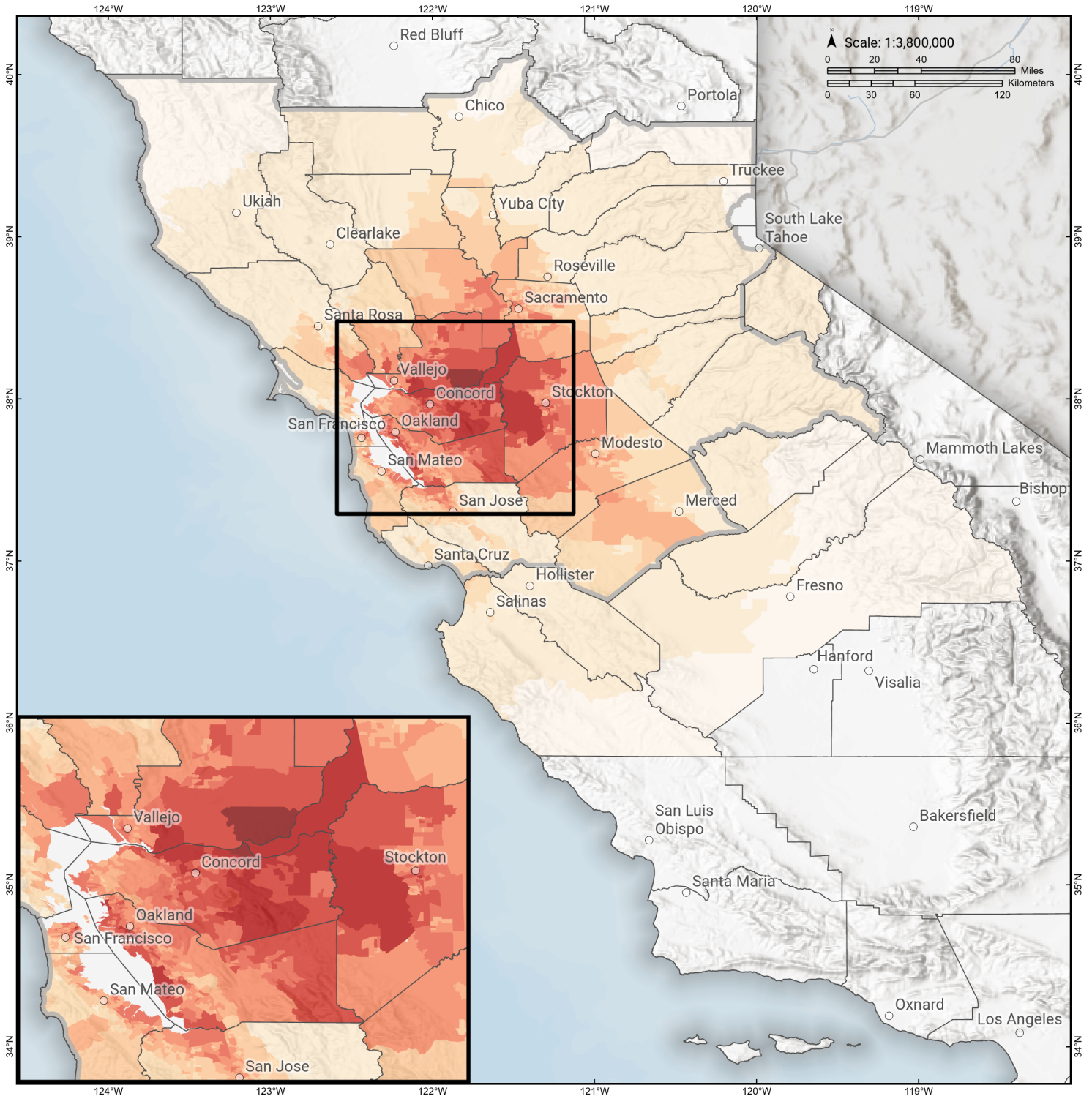
Economic Impacts by Census Tract

Ground Shaking

Debris
**Total Tons:
Total Truckloads:**

Type	Tons

The estimates of social and economic impacts contained in this report were produced using Hazus loss estimation methodology software which is based on current scientific and engineering knowledge. There are uncertainties inherent in any loss estimation technique. Therefore, there may be significant differences between the modeled results contained in this report and the actual social and economic losses following a specific earthquake.

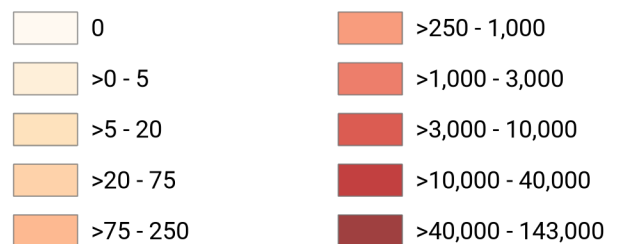
Great Valley 06 Midland alt2

Debris Generated by Census Tract



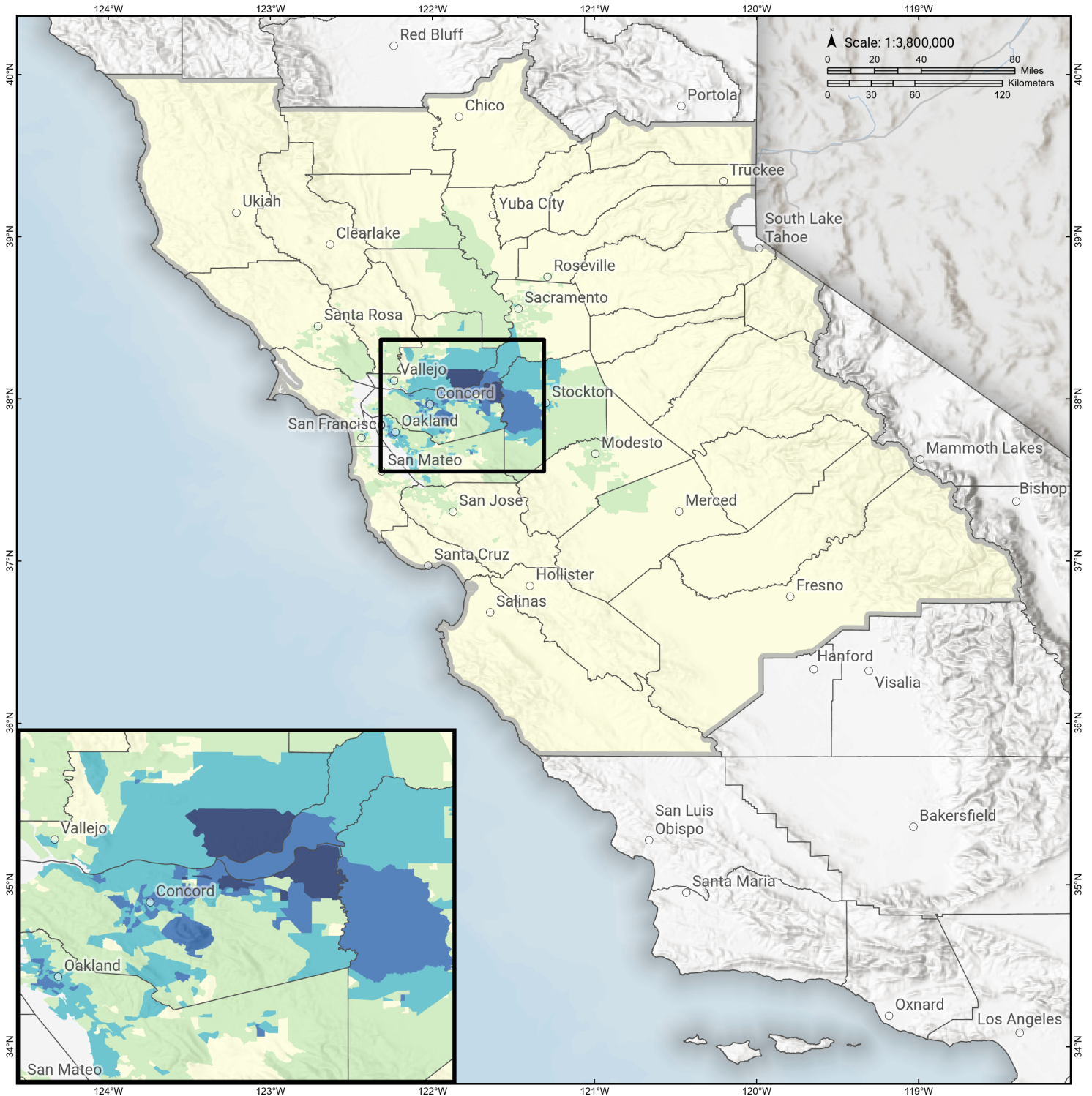
Study Region: Great Valley 06 Midland alt2
Scenario: greatvalley06midland_m7p12_se

Debris Generated (in tons)



Great Valley 06 Midland alt2

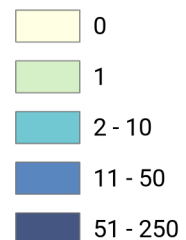
Displaced Households by Census Tract



Study Region: Great Valley 06 Midland alt2
Scenario: greatvalley06midland_m7p12_se

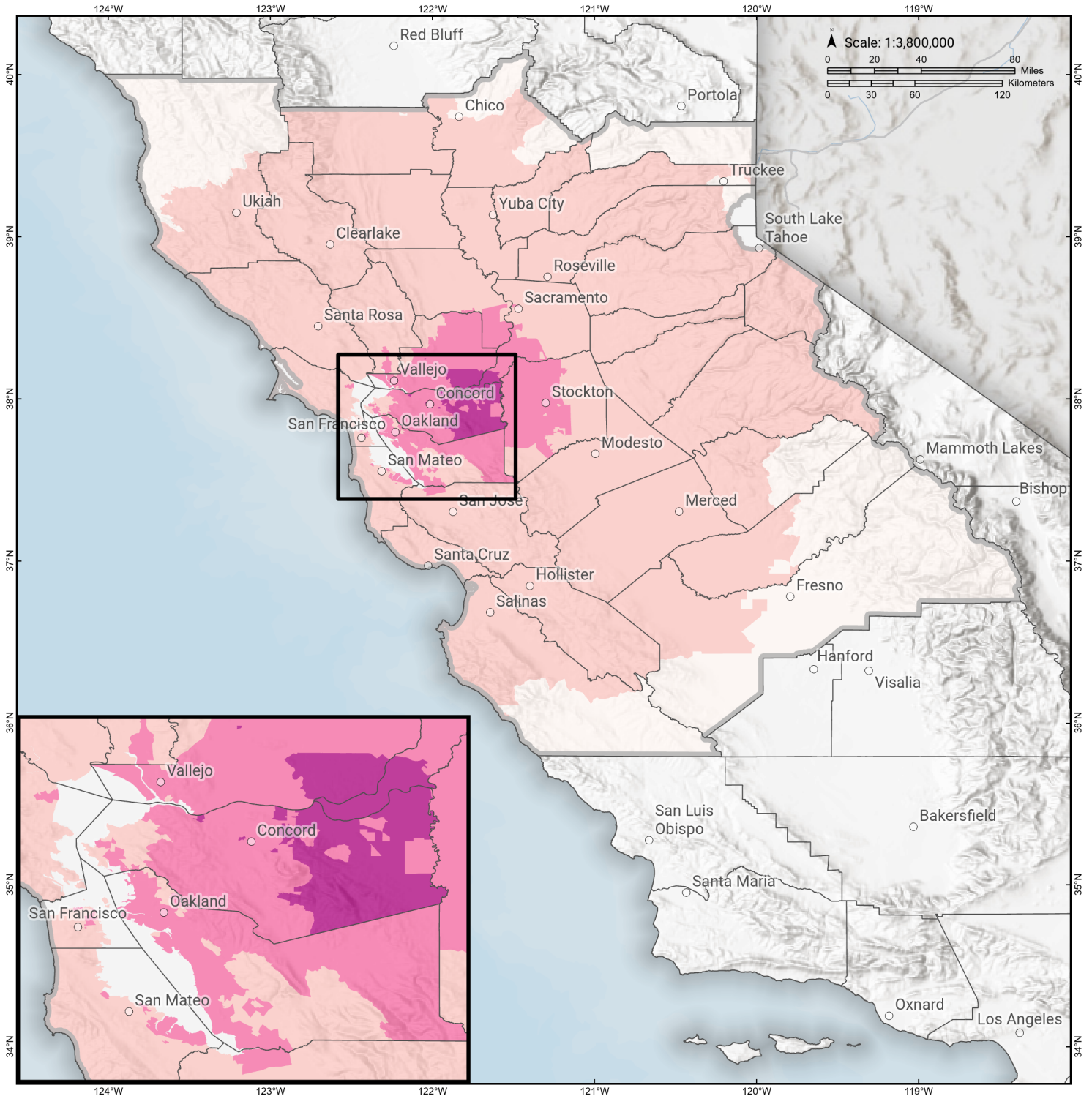


Displaced Households



Great Valley 06 Midland alt2

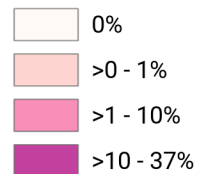
Loss Ratio by Census Tract



Study Region: Great Valley 06 Midland alt2
Scenario: greatvalley06midland_m7p12_se

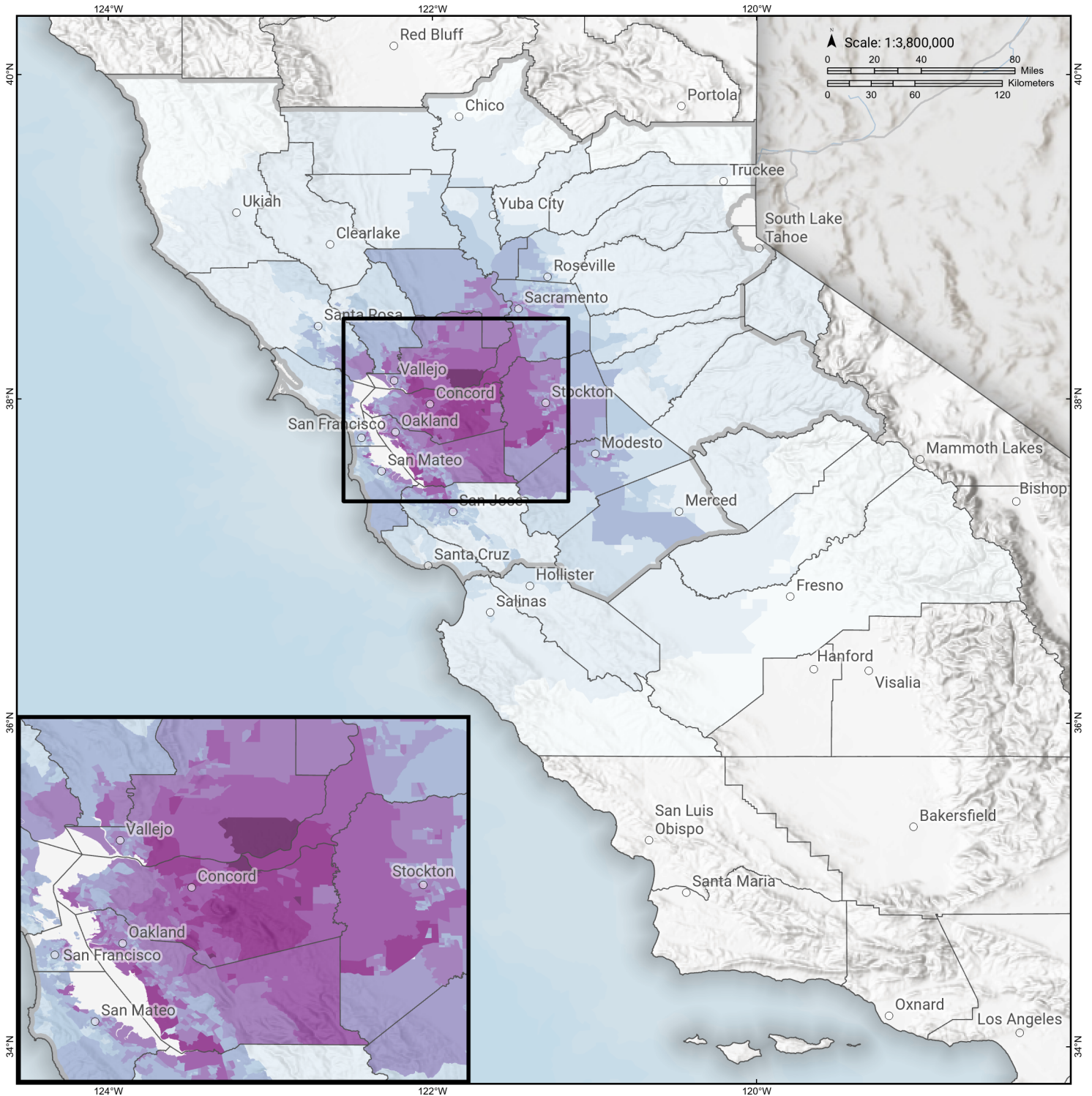


Loss Ratio (ratio of building related economic loss to exposed value of buildings)



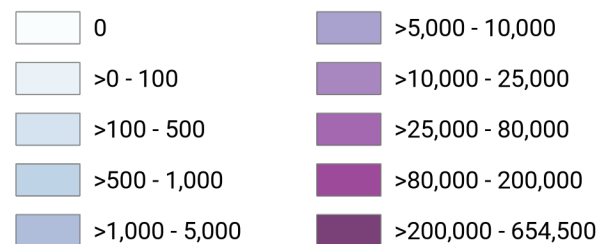
Great Valley 06 Midland alt2

Total Building Related Economic Loss by Census Tract



Study Region: Great Valley 06 Midland alt2
Scenario: greatvalley06midland_m7p12_se

Economic Loss (in thousands of USD \$)



Building Damage by Count by General Occupancy

April 04, 2024

	# of Buildings					Total
	None	Slight	Moderate	Extensive	Complete	
California						
Alameda						
<i>Government</i>	8,005	2,016	477	29	1	10,528
<i>Agriculture</i>	290	94	32	5	0	422
<i>Commercial</i>	21,836	7,281	2,599	267	6	31,989
<i>Religion</i>	1,351	444	172	18	0	1,986
<i>Single Family</i>	276,922	65,142	2,105	4	0	344,173
<i>Other Residential</i>	45,829	12,465	2,807	291	5	61,396
<i>Education</i>	926	136	50	6	0	1,117
<i>Industrial</i>	6,940	2,330	840	93	2	10,205
Alpine						
<i>Education</i>	5	0	0	0	0	5
<i>Commercial</i>	48	0	0	0	0	48
<i>Government</i>	4	0	0	0	0	4
<i>Agriculture</i>	0	0	0	0	0	0
<i>Religion</i>	1	0	0	0	0	1
<i>Industrial</i>	14	0	0	0	0	14
<i>Single Family</i>	842	0	0	0	0	842
<i>Other Residential</i>	97	0	0	0	0	97
Amador						

	# of Buildings					Total
	None	Slight	Moderate	Extensive	Complete	
<i>Industrial</i>	234	0	0	0	0	235
<i>Single Family</i>	14,956	6	0	0	0	14,962
<i>Other Residential</i>	1,027	10	1	0	0	1,037
<i>Education</i>	23	0	0	0	0	23
<i>Government</i>	32	0	0	0	0	32
<i>Agriculture</i>	44	0	0	0	0	44
<i>Religion</i>	45	0	0	0	0	45
<i>Commercial</i>	1,365	3	0	0	0	1,368
Butte						
<i>Government</i>	147	0	0	0	0	147
<i>Religion</i>	531	0	0	0	0	531
<i>Agriculture</i>	509	0	0	0	0	510
<i>Commercial</i>	6,384	1	0	0	0	6,385
<i>Industrial</i>	1,521	1	0	0	0	1,522
<i>Single Family</i>	50,282	1	0	0	0	50,283
<i>Other Residential</i>	21,491	7	0	0	0	21,498
<i>Education</i>	172	0	0	0	0	172
Calaveras						
<i>Government</i>	84	0	0	0	0	84
<i>Other Residential</i>	2,550	8	0	0	0	2,559
<i>Education</i>	35	0	0	0	0	35
<i>Religion</i>	130	0	0	0	0	130
<i>Agriculture</i>	2,200	6	1	0	0	2,207
<i>Commercial</i>	1,410	2	0	0	0	1,413
<i>Industrial</i>	465	1	0	0	0	466

	# of Buildings					Total
	None	Slight	Moderate	Extensive	Complete	
Colusa						
Single Family	22,142	6	0	0	0	22,148
Agriculture	142	0	0	0	0	142
Religion	58	0	0	0	0	58
Commercial	791	3	0	0	0	794
Industrial	113	0	0	0	0	113
Other Residential	950	4	0	0	0	954
Single Family	5,948	6	0	0	0	5,954
Government	32	0	0	0	0	32
Education	33	0	0	0	0	33
Contra Costa						
Commercial	7,503	6,008	3,510	736	234	17,991
Agriculture	254	260	159	50	26	749
Religion	546	350	233	70	27	1,226
Single Family	126,892	126,257	28,371	410	6	281,935
Other Residential	13,356	9,993	3,655	1,578	542	29,124
Industrial	1,960	1,495	990	233	71	4,749
Government	2,074	1,578	1,077	218	76	5,024
Education	400	180	64	7	2	653
El Dorado						
Other Residential	10,410	10	0	0	0	10,420
Industrial	1,199	0	0	0	0	1,199
Education	128	0	0	0	0	128
Single Family	71,421	3	0	0	0	71,424
Commercial	4,767	1	0	0	0	4,768

	# of Buildings					Total
	None	Slight	Moderate	Extensive	Complete	
<i>Government</i>	100	0	0	0	0	100
<i>Religion</i>	180	0	0	0	0	180
<i>Agriculture</i>	161	0	0	0	0	161
Fresno						
<i>Commercial</i>	21,054	0	0	0	0	21,054
<i>Religion</i>	1,507	0	0	0	0	1,507
<i>Agriculture</i>	3,421	0	0	0	0	3,421
<i>Industrial</i>	5,348	0	0	0	0	5,348
<i>Government</i>	291	0	0	0	0	291
<i>Other Residential</i>	40,973	0	0	0	0	40,973
<i>Single Family</i>	226,425	0	0	0	0	226,425
<i>Education</i>	602	0	0	0	0	602
Glenn						
<i>Other Residential</i>	2,150	2	0	0	0	2,152
<i>Government</i>	99	0	0	0	0	99
<i>Education</i>	35	0	0	0	0	35
<i>Industrial</i>	254	0	0	0	0	254
<i>Single Family</i>	7,417	0	0	0	0	7,417
<i>Commercial</i>	885	0	0	0	0	885
<i>Agriculture</i>	1,364	1	0	0	0	1,365
<i>Religion</i>	89	0	0	0	0	89
Lake						
<i>Agriculture</i>	161	0	0	0	0	161
<i>Single Family</i>	21,633	0	0	0	0	21,633
<i>Other Residential</i>	14,588	13	0	0	0	14,601

	# of Buildings					Total
	None	Slight	Moderate	Extensive	Complete	
<i>Education</i>	68	0	0	0	0	68
<i>Industrial</i>	354	0	0	0	0	354
<i>Commercial</i>	2,091	0	0	0	0	2,091
<i>Religion</i>	140	0	0	0	0	140
<i>Government</i>	78	0	0	0	0	78
Madera						
<i>Commercial</i>	2,904	0	0	0	0	2,905
<i>Religion</i>	119	0	0	0	0	119
<i>Government</i>	111	0	0	0	0	111
<i>Agriculture</i>	634	0	0	0	0	634
<i>Other Residential</i>	6,634	1	0	0	0	6,635
<i>Single Family</i>	38,912	0	0	0	0	38,912
<i>Education</i>	115	0	0	0	0	115
<i>Industrial</i>	903	0	0	0	0	903
Marin						
<i>Other Residential</i>	7,715	157	18	0	0	7,890
<i>Government</i>	140	3	0	0	0	143
<i>Education</i>	272	2	0	0	0	274
<i>Commercial</i>	8,023	225	22	0	0	8,270
<i>Religion</i>	312	6	0	0	0	319
<i>Agriculture</i>	183	6	1	0	0	190
<i>Single Family</i>	76,005	716	4	0	0	76,724
<i>Industrial</i>	1,446	78	11	0	0	1,535
Mariposa						
<i>Single Family</i>	8,084	0	0	0	0	8,084

	# of Buildings					Total
	None	Slight	Moderate	Extensive	Complete	
<i>Other Residential</i>	307	0	0	0	0	307
<i>Education</i>	27	0	0	0	0	27
<i>Industrial</i>	94	0	0	0	0	94
<i>Commercial</i>	689	0	0	0	0	689
<i>Agriculture</i>	29	0	0	0	0	29
<i>Religion</i>	36	0	0	0	0	36
<i>Government</i>	33	0	0	0	0	33
Mendocino						
<i>Commercial</i>	3,436	0	0	0	0	3,436
<i>Religion</i>	216	0	0	0	0	216
<i>Agriculture</i>	184	0	0	0	0	184
<i>Single Family</i>	25,969	0	0	0	0	25,969
<i>Other Residential</i>	7,060	0	0	0	0	7,060
<i>Government</i>	83	0	0	0	0	83
<i>Education</i>	101	0	0	0	0	101
<i>Industrial</i>	869	0	0	0	0	869
Merced						
<i>Education</i>	163	0	0	0	0	163
<i>Government</i>	170	1	0	0	0	171
<i>Commercial</i>	4,739	14	1	0	0	4,754
<i>Agriculture</i>	7,557	83	13	0	0	7,653
<i>Religion</i>	344	1	0	0	0	345
<i>Industrial</i>	1,018	4	0	0	0	1,022
<i>Single Family</i>	63,537	61	0	0	0	63,598

	# of Buildings					Total
	None	Slight	Moderate	Extensive	Complete	
<i>Other Residential</i>	10,727	56	3	0	0	10,787
Monterey						
<i>Single Family</i>	90,873	3	0	0	0	90,876
<i>Industrial</i>	1,849	1	0	0	0	1,850
<i>Other Residential</i>	19,787	21	1	0	0	19,809
<i>Education</i>	239	0	0	0	0	239
<i>Government</i>	185	0	0	0	0	185
<i>Agriculture</i>	1,815	0	0	0	0	1,815
<i>Commercial</i>	9,241	5	0	0	0	9,246
<i>Religion</i>	580	0	0	0	0	580
Napa						
<i>Commercial</i>	3,513	419	84	5	0	4,021
<i>Agriculture</i>	320	23	5	0	0	349
<i>Religion</i>	130	15	3	0	0	148
<i>Single Family</i>	35,784	2,936	41	0	0	38,761
<i>Other Residential</i>	6,023	815	135	4	0	6,978
<i>Government</i>	89	12	3	0	0	103
<i>Education</i>	122	8	2	0	0	132
<i>Industrial</i>	1,187	149	30	1	0	1,367
Nevada						
<i>Commercial</i>	2,835	0	0	0	0	2,835
<i>Religion</i>	189	0	0	0	0	189
<i>Government</i>	60	0	0	0	0	60
<i>Agriculture</i>	132	0	0	0	0	132
<i>Single Family</i>	43,280	0	0	0	0	43,280

	# of Buildings					Total
	None	Slight	Moderate	Extensive	Complete	
Placer						
<i>Other Residential</i>	6,384	0	0	0	0	6,384
<i>Education</i>	108	0	0	0	0	108
<i>Industrial</i>	1,161	0	0	0	0	1,161
<i>Education</i>	231	0	0	0	0	231
<i>Commercial</i>	8,509	27	2	0	0	8,538
<i>Government</i>	376	1	0	0	0	377
<i>Agriculture</i>	257	1	0	0	0	258
<i>Religion</i>	381	1	0	0	0	382
<i>Industrial</i>	2,692	10	1	0	0	2,703
<i>Other Residential</i>	14,790	50	3	0	0	14,843
<i>Single Family</i>	134,525	194	0	0	0	134,719
Sacramento						
<i>Single Family</i>	369,409	17,133	296	2	0	386,840
<i>Industrial</i>	6,324	361	60	8	3	6,756
<i>Other Residential</i>	52,955	2,964	310	101	83	56,413
<i>Education</i>	811	16	2	0	0	829
<i>Agriculture</i>	584	29	6	2	1	621
<i>Religion</i>	1,560	117	22	2	1	1,702
<i>Government</i>	533	68	16	1	0	619
<i>Commercial</i>	24,452	1,516	261	37	28	26,295
San Benito						
<i>Other Residential</i>	1,372	3	0	0	0	1,375
<i>Single Family</i>	14,723	3	0	0	0	14,726
<i>Industrial</i>	325	0	0	0	0	326

	# of Buildings					Total
	None	Slight	Moderate	Extensive	Complete	
<i>Education</i>	42	0	0	0	0	42
<i>Government</i>	45	0	0	0	0	45
<i>Commercial</i>	1,077	3	0	0	0	1,080
<i>Religion</i>	64	0	0	0	0	64
<i>Agriculture</i>	253	0	0	0	0	253
San Francisco						
<i>Single Family</i>	145,229	4,993	468	13	0	150,703
<i>Other Residential</i>	40,099	3,722	692	16	0	44,529
<i>Government</i>	228	49	12	1	0	289
<i>Education</i>	528	35	9	0	0	572
<i>Industrial</i>	3,341	415	100	4	0	3,860
<i>Commercial</i>	18,048	2,656	620	20	0	21,344
<i>Religion</i>	1,210	113	21	1	0	1,345
<i>Agriculture</i>	147	12	2	0	0	162
San Joaquin						
<i>Commercial</i>	10,055	2,257	524	27	0	12,864
<i>Agriculture</i>	601	120	30	2	0	753
<i>Religion</i>	690	149	37	2	0	877
<i>Government</i>	241	47	15	1	0	304
<i>Single Family</i>	150,419	33,758	4,364	366	14	188,922
<i>Other Residential</i>	16,259	4,337	1,114	93	2	21,805
<i>Education</i>	357	33	6	0	0	395
<i>Industrial</i>	3,843	854	217	13	0	4,928
San Mateo						
<i>Religion</i>	686	44	6	0	0	736

	# of Buildings					Total
	None	Slight	Moderate	Extensive	Complete	
<i>Agriculture</i>	508	25	6	0	0	539
<i>Government</i>	277	20	2	0	0	299
<i>Commercial</i>	13,391	889	113	2	0	14,395
<i>Industrial</i>	4,086	331	53	1	0	4,472
<i>Other Residential</i>	21,021	1,289	139	3	0	22,453
<i>Single Family</i>	154,913	4,963	55	0	0	159,931
<i>Education</i>	478	10	1	0	0	489
Santa Clara						
<i>Other Residential</i>	56,514	2,397	247	2	0	59,160
<i>Single Family</i>	419,777	7,404	37	0	0	427,219
<i>Government</i>	473	25	3	0	0	502
<i>Education</i>	1,158	13	2	0	0	1,173
<i>Industrial</i>	8,957	425	50	1	0	9,433
<i>Commercial</i>	33,995	1,327	144	3	0	35,469
<i>Religion</i>	1,481	54	6	0	0	1,540
<i>Agriculture</i>	866	25	4	0	0	895
Santa Cruz						
<i>Religion</i>	358	1	0	0	0	359
<i>Agriculture</i>	836	4	0	0	0	840
<i>Single Family</i>	68,837	33	0	0	0	68,870
<i>Other Residential</i>	14,832	57	3	0	0	14,892
<i>Industrial</i>	1,812	7	0	0	0	1,819
<i>Education</i>	225	0	0	0	0	225
<i>Commercial</i>	6,671	22	1	0	0	6,694
<i>Government</i>	127	0	0	0	0	127

	# of Buildings					Total
	None	Slight	Moderate	Extensive	Complete	
Sierra						
<i>Single Family</i>	1,858	0	0	0	0	1,858
<i>Other Residential</i>	153	0	0	0	0	153
<i>Industrial</i>	66	0	0	0	0	66
<i>Education</i>	14	0	0	0	0	14
<i>Commercial</i>	141	0	0	0	0	141
<i>Religion</i>	12	0	0	0	0	12
<i>Agriculture</i>	7	0	0	0	0	7
<i>Government</i>	16	0	0	0	0	16
Solano						
<i>Religion</i>	287	116	39	8	3	454
<i>Agriculture</i>	133	61	33	15	3	245
<i>Government</i>	93	40	14	3	1	152
<i>Commercial</i>	4,579	1,942	611	106	30	7,268
<i>Single Family</i>	83,740	35,223	1,991	14	0	120,968
<i>Industrial</i>	1,153	625	269	46	8	2,101
<i>Other Residential</i>	7,806	3,437	901	152	22	12,317
<i>Education</i>	182	35	7	1	1	225
Sonoma						
<i>Other Residential</i>	24,643	357	33	1	0	25,033
<i>Government</i>	313	5	1	0	0	319
<i>Education</i>	366	1	0	0	0	367
<i>Religion</i>	569	6	1	0	0	576
<i>Commercial</i>	11,939	154	17	0	0	12,110
<i>Agriculture</i>	1,269	28	6	0	0	1,304

	# of Buildings					Total
	None	Slight	Moderate	Extensive	Complete	
<i>Single Family</i>	141,359	668	1	0	0	142,028
<i>Industrial</i>	3,756	60	8	0	0	3,825
Stanislaus						
<i>Other Residential</i>	18,882	620	66	1	0	19,569
<i>Single Family</i>	140,221	2,494	9	0	0	142,724
<i>Education</i>	305	2	0	0	0	307
<i>Government</i>	660	19	2	0	0	680
<i>Industrial</i>	3,324	134	17	0	0	3,475
<i>Commercial</i>	9,969	359	41	1	0	10,369
<i>Religion</i>	438	16	2	0	0	456
<i>Agriculture</i>	1,201	32	6	0	0	1,239
Sutter						
<i>Other Residential</i>	3,091	21	1	0	0	3,113
<i>Industrial</i>	633	3	0	0	0	636
<i>Education</i>	62	0	0	0	0	62
<i>Government</i>	77	0	0	0	0	77
<i>Single Family</i>	24,481	31	0	0	0	24,512
<i>Commercial</i>	2,045	7	0	0	0	2,052
<i>Agriculture</i>	1,111	13	2	0	0	1,125
<i>Religion</i>	154	0	0	0	0	154
Tuolumne						
<i>Education</i>	57	0	0	0	0	57
<i>Government</i>	143	0	0	0	0	143
<i>Commercial</i>	1,576	0	0	0	0	1,576
<i>Religion</i>	121	0	0	0	0	121

		# of Buildings					
		None	Slight	Moderate	Extensive	Complete	Total
Yolo	<i>Agriculture</i>	82	0	0	0	0	82
	<i>Industrial</i>	383	0	0	0	0	383
	<i>Other Residential</i>	4,962	0	0	0	0	4,962
	<i>Single Family</i>	21,645	0	0	0	0	21,645
	<i>Industrial</i>	1,002	98	17	0	0	1,117
	<i>Other Residential</i>	9,022	769	68	1	0	9,861
	<i>Education</i>	126	4	1	0	0	131
	<i>Government</i>	99	10	2	0	0	111
	<i>Single Family</i>	39,768	2,779	42	0	0	42,589
	<i>Commercial</i>	3,818	349	56	2	0	4,225
Yuba	<i>Agriculture</i>	261	16	4	0	0	281
	<i>Religion</i>	222	17	2	0	0	242
	<i>Government</i>	591	0	0	0	0	591
	<i>Education</i>	54	0	0	0	0	54
	<i>Other Residential</i>	6,999	21	1	0	0	7,021
	<i>Religion</i>	98	0	0	0	0	98
	<i>Commercial</i>	1,195	3	0	0	0	1,199
	<i>Agriculture</i>	92	0	0	0	0	92
	<i>Single Family</i>	18,855	12	0	0	0	18,867
	<i>Industrial</i>	403	1	0	0	0	404
Total	4,039,658	387,952	61,877	5,107	1,201	4,495,795	

	# of Buildings					Total
	None	Slight	Moderate	Extensive	Complete	
Region Total	4,039,658	387,952	61,877	5,107	1,201	4,495,795

Totals only reflect data for those census tracts/blocks included in the user's study region and will reflect the entire county/state only if all of the census blocks for that county/states were selected at the time of study region creation.

Building Damage by Count by General Occupancy

April 15, 2024

	# of Buildings					Total
	None	Slight	Moderate	Extensive	Complete	
California						
Alameda						
<i>Government</i>	8,005	2,016	477	29	1	10,528
<i>Agriculture</i>	290	94	32	5	0	422
<i>Commercial</i>	21,836	7,281	2,599	267	6	31,989
<i>Religion</i>	1,351	444	172	18	0	1,986
<i>Single Family</i>	276,922	65,142	2,105	4	0	344,173
<i>Other Residential</i>	45,829	12,465	2,807	291	5	61,396
<i>Education</i>	926	136	50	6	0	1,117
<i>Industrial</i>	6,940	2,330	840	93	2	10,205
Alpine						
<i>Education</i>	5	0	0	0	0	5
<i>Commercial</i>	48	0	0	0	0	48
<i>Government</i>	4	0	0	0	0	4
<i>Agriculture</i>	0	0	0	0	0	0
<i>Religion</i>	1	0	0	0	0	1
<i>Industrial</i>	14	0	0	0	0	14
<i>Single Family</i>	842	0	0	0	0	842
<i>Other Residential</i>	97	0	0	0	0	97
Amador						

	# of Buildings					Total
	None	Slight	Moderate	Extensive	Complete	
<i>Industrial</i>	234	0	0	0	0	235
<i>Single Family</i>	14,956	6	0	0	0	14,962
<i>Other Residential</i>	1,027	10	1	0	0	1,037
<i>Education</i>	23	0	0	0	0	23
<i>Government</i>	32	0	0	0	0	32
<i>Agriculture</i>	44	0	0	0	0	44
<i>Religion</i>	45	0	0	0	0	45
<i>Commercial</i>	1,365	3	0	0	0	1,368
Butte						
<i>Government</i>	147	0	0	0	0	147
<i>Religion</i>	531	0	0	0	0	531
<i>Agriculture</i>	509	0	0	0	0	510
<i>Commercial</i>	6,384	1	0	0	0	6,385
<i>Industrial</i>	1,521	1	0	0	0	1,522
<i>Single Family</i>	50,282	1	0	0	0	50,283
<i>Other Residential</i>	21,491	7	0	0	0	21,498
<i>Education</i>	172	0	0	0	0	172
Calaveras						
<i>Government</i>	84	0	0	0	0	84
<i>Other Residential</i>	2,550	8	0	0	0	2,559
<i>Education</i>	35	0	0	0	0	35
<i>Religion</i>	130	0	0	0	0	130
<i>Agriculture</i>	2,200	6	1	0	0	2,207
<i>Commercial</i>	1,410	2	0	0	0	1,413
<i>Industrial</i>	465	1	0	0	0	466

	# of Buildings					Total
	None	Slight	Moderate	Extensive	Complete	
Colusa						
Single Family	22,142	6	0	0	0	22,148
Agriculture	142	0	0	0	0	142
Religion	58	0	0	0	0	58
Commercial	791	3	0	0	0	794
Industrial	113	0	0	0	0	113
Other Residential	950	4	0	0	0	954
Single Family	5,948	6	0	0	0	5,954
Government	32	0	0	0	0	32
Education	33	0	0	0	0	33
Contra Costa						
Commercial	7,503	6,008	3,510	736	234	17,991
Agriculture	254	260	159	50	26	749
Religion	546	350	233	70	27	1,226
Single Family	126,892	126,257	28,371	410	6	281,935
Other Residential	13,356	9,993	3,655	1,578	542	29,124
Industrial	1,960	1,495	990	233	71	4,749
Government	2,074	1,578	1,077	218	76	5,024
Education	400	180	64	7	2	653
El Dorado						
Other Residential	10,410	10	0	0	0	10,420
Industrial	1,199	0	0	0	0	1,199
Education	128	0	0	0	0	128
Single Family	71,421	3	0	0	0	71,424
Commercial	4,767	1	0	0	0	4,768

	# of Buildings					Total
	None	Slight	Moderate	Extensive	Complete	
<i>Government</i>	100	0	0	0	0	100
<i>Religion</i>	180	0	0	0	0	180
<i>Agriculture</i>	161	0	0	0	0	161
Fresno						
<i>Commercial</i>	21,054	0	0	0	0	21,054
<i>Religion</i>	1,507	0	0	0	0	1,507
<i>Agriculture</i>	3,421	0	0	0	0	3,421
<i>Industrial</i>	5,348	0	0	0	0	5,348
<i>Government</i>	291	0	0	0	0	291
<i>Other Residential</i>	40,973	0	0	0	0	40,973
<i>Single Family</i>	226,425	0	0	0	0	226,425
<i>Education</i>	602	0	0	0	0	602
Glenn						
<i>Other Residential</i>	2,150	2	0	0	0	2,152
<i>Government</i>	99	0	0	0	0	99
<i>Education</i>	35	0	0	0	0	35
<i>Industrial</i>	254	0	0	0	0	254
<i>Single Family</i>	7,417	0	0	0	0	7,417
<i>Commercial</i>	885	0	0	0	0	885
<i>Agriculture</i>	1,364	1	0	0	0	1,365
<i>Religion</i>	89	0	0	0	0	89
Lake						
<i>Agriculture</i>	161	0	0	0	0	161
<i>Single Family</i>	21,633	0	0	0	0	21,633
<i>Other Residential</i>	14,588	13	0	0	0	14,601

	# of Buildings					Total
	None	Slight	Moderate	Extensive	Complete	
<i>Education</i>	68	0	0	0	0	68
<i>Industrial</i>	354	0	0	0	0	354
<i>Commercial</i>	2,091	0	0	0	0	2,091
<i>Religion</i>	140	0	0	0	0	140
<i>Government</i>	78	0	0	0	0	78
Madera						
<i>Commercial</i>	2,904	0	0	0	0	2,905
<i>Religion</i>	119	0	0	0	0	119
<i>Government</i>	111	0	0	0	0	111
<i>Agriculture</i>	634	0	0	0	0	634
<i>Other Residential</i>	6,634	1	0	0	0	6,635
<i>Single Family</i>	38,912	0	0	0	0	38,912
<i>Education</i>	115	0	0	0	0	115
<i>Industrial</i>	903	0	0	0	0	903
Marin						
<i>Other Residential</i>	7,715	157	18	0	0	7,890
<i>Government</i>	140	3	0	0	0	143
<i>Education</i>	272	2	0	0	0	274
<i>Commercial</i>	8,023	225	22	0	0	8,270
<i>Religion</i>	312	6	0	0	0	319
<i>Agriculture</i>	183	6	1	0	0	190
<i>Single Family</i>	76,005	716	4	0	0	76,724
<i>Industrial</i>	1,446	78	11	0	0	1,535
Mariposa						
<i>Single Family</i>	8,084	0	0	0	0	8,084

	# of Buildings					Total
	None	Slight	Moderate	Extensive	Complete	
<i>Other Residential</i>	307	0	0	0	0	307
<i>Education</i>	27	0	0	0	0	27
<i>Industrial</i>	94	0	0	0	0	94
<i>Commercial</i>	689	0	0	0	0	689
<i>Agriculture</i>	29	0	0	0	0	29
<i>Religion</i>	36	0	0	0	0	36
<i>Government</i>	33	0	0	0	0	33
Mendocino						
<i>Commercial</i>	3,436	0	0	0	0	3,436
<i>Religion</i>	216	0	0	0	0	216
<i>Agriculture</i>	184	0	0	0	0	184
<i>Single Family</i>	25,969	0	0	0	0	25,969
<i>Other Residential</i>	7,060	0	0	0	0	7,060
<i>Government</i>	83	0	0	0	0	83
<i>Education</i>	101	0	0	0	0	101
<i>Industrial</i>	869	0	0	0	0	869
Merced						
<i>Education</i>	163	0	0	0	0	163
<i>Government</i>	170	1	0	0	0	171
<i>Commercial</i>	4,739	14	1	0	0	4,754
<i>Agriculture</i>	7,557	83	13	0	0	7,653
<i>Religion</i>	344	1	0	0	0	345
<i>Industrial</i>	1,018	4	0	0	0	1,022
<i>Single Family</i>	63,537	61	0	0	0	63,598

	# of Buildings					Total
	None	Slight	Moderate	Extensive	Complete	
<i>Other Residential</i>	10,727	56	3	0	0	10,787
Monterey						
<i>Single Family</i>	90,873	3	0	0	0	90,876
<i>Industrial</i>	1,849	1	0	0	0	1,850
<i>Other Residential</i>	19,787	21	1	0	0	19,809
<i>Education</i>	239	0	0	0	0	239
<i>Government</i>	185	0	0	0	0	185
<i>Agriculture</i>	1,815	0	0	0	0	1,815
<i>Commercial</i>	9,241	5	0	0	0	9,246
<i>Religion</i>	580	0	0	0	0	580
Napa						
<i>Commercial</i>	3,513	419	84	5	0	4,021
<i>Agriculture</i>	320	23	5	0	0	349
<i>Religion</i>	130	15	3	0	0	148
<i>Single Family</i>	35,784	2,936	41	0	0	38,761
<i>Other Residential</i>	6,023	815	135	4	0	6,978
<i>Government</i>	89	12	3	0	0	103
<i>Education</i>	122	8	2	0	0	132
<i>Industrial</i>	1,187	149	30	1	0	1,367
Nevada						
<i>Commercial</i>	2,835	0	0	0	0	2,835
<i>Religion</i>	189	0	0	0	0	189
<i>Government</i>	60	0	0	0	0	60
<i>Agriculture</i>	132	0	0	0	0	132
<i>Single Family</i>	43,280	0	0	0	0	43,280

	# of Buildings					Total
	None	Slight	Moderate	Extensive	Complete	
Placer						
<i>Other Residential</i>	6,384	0	0	0	0	6,384
<i>Education</i>	108	0	0	0	0	108
<i>Industrial</i>	1,161	0	0	0	0	1,161
<i>Education</i>	231	0	0	0	0	231
<i>Commercial</i>	8,509	27	2	0	0	8,538
<i>Government</i>	376	1	0	0	0	377
<i>Agriculture</i>	257	1	0	0	0	258
<i>Religion</i>	381	1	0	0	0	382
<i>Industrial</i>	2,692	10	1	0	0	2,703
<i>Other Residential</i>	14,790	50	3	0	0	14,843
<i>Single Family</i>	134,525	194	0	0	0	134,719
Sacramento						
<i>Single Family</i>	369,409	17,133	296	2	0	386,840
<i>Industrial</i>	6,324	361	60	8	3	6,756
<i>Other Residential</i>	52,955	2,964	310	101	83	56,413
<i>Education</i>	811	16	2	0	0	829
<i>Agriculture</i>	584	29	6	2	1	621
<i>Religion</i>	1,560	117	22	2	1	1,702
<i>Government</i>	533	68	16	1	0	619
<i>Commercial</i>	24,452	1,516	261	37	28	26,295
San Benito						
<i>Other Residential</i>	1,372	3	0	0	0	1,375
<i>Single Family</i>	14,723	3	0	0	0	14,726
<i>Industrial</i>	325	0	0	0	0	326

	# of Buildings					Total
	None	Slight	Moderate	Extensive	Complete	
<i>Education</i>	42	0	0	0	0	42
<i>Government</i>	45	0	0	0	0	45
<i>Commercial</i>	1,077	3	0	0	0	1,080
<i>Religion</i>	64	0	0	0	0	64
<i>Agriculture</i>	253	0	0	0	0	253
San Francisco						
<i>Single Family</i>	145,229	4,993	468	13	0	150,703
<i>Other Residential</i>	40,099	3,722	692	16	0	44,529
<i>Government</i>	228	49	12	1	0	289
<i>Education</i>	528	35	9	0	0	572
<i>Industrial</i>	3,341	415	100	4	0	3,860
<i>Commercial</i>	18,048	2,656	620	20	0	21,344
<i>Religion</i>	1,210	113	21	1	0	1,345
<i>Agriculture</i>	147	12	2	0	0	162
San Joaquin						
<i>Commercial</i>	10,055	2,257	524	27	0	12,864
<i>Agriculture</i>	601	120	30	2	0	753
<i>Religion</i>	690	149	37	2	0	877
<i>Government</i>	241	47	15	1	0	304
<i>Single Family</i>	150,419	33,758	4,364	366	14	188,922
<i>Other Residential</i>	16,259	4,337	1,114	93	2	21,805
<i>Education</i>	357	33	6	0	0	395
<i>Industrial</i>	3,843	854	217	13	0	4,928
San Mateo						
<i>Religion</i>	686	44	6	0	0	736

	# of Buildings					Total
	None	Slight	Moderate	Extensive	Complete	
<i>Agriculture</i>	508	25	6	0	0	539
<i>Government</i>	277	20	2	0	0	299
<i>Commercial</i>	13,391	889	113	2	0	14,395
<i>Industrial</i>	4,086	331	53	1	0	4,472
<i>Other Residential</i>	21,021	1,289	139	3	0	22,453
<i>Single Family</i>	154,913	4,963	55	0	0	159,931
<i>Education</i>	478	10	1	0	0	489
Santa Clara						
<i>Other Residential</i>	56,514	2,397	247	2	0	59,160
<i>Single Family</i>	419,777	7,404	37	0	0	427,219
<i>Government</i>	473	25	3	0	0	502
<i>Education</i>	1,158	13	2	0	0	1,173
<i>Industrial</i>	8,957	425	50	1	0	9,433
<i>Commercial</i>	33,995	1,327	144	3	0	35,469
<i>Religion</i>	1,481	54	6	0	0	1,540
<i>Agriculture</i>	866	25	4	0	0	895
Santa Cruz						
<i>Religion</i>	358	1	0	0	0	359
<i>Agriculture</i>	836	4	0	0	0	840
<i>Single Family</i>	68,837	33	0	0	0	68,870
<i>Other Residential</i>	14,832	57	3	0	0	14,892
<i>Industrial</i>	1,812	7	0	0	0	1,819
<i>Education</i>	225	0	0	0	0	225
<i>Commercial</i>	6,671	22	1	0	0	6,694
<i>Government</i>	127	0	0	0	0	127

	# of Buildings					Total
	None	Slight	Moderate	Extensive	Complete	
Sierra						
<i>Single Family</i>	1,858	0	0	0	0	1,858
<i>Other Residential</i>	153	0	0	0	0	153
<i>Industrial</i>	66	0	0	0	0	66
<i>Education</i>	14	0	0	0	0	14
<i>Commercial</i>	141	0	0	0	0	141
<i>Religion</i>	12	0	0	0	0	12
<i>Agriculture</i>	7	0	0	0	0	7
<i>Government</i>	16	0	0	0	0	16
Solano						
<i>Religion</i>	287	116	39	8	3	454
<i>Agriculture</i>	133	61	33	15	3	245
<i>Government</i>	93	40	14	3	1	152
<i>Commercial</i>	4,579	1,942	611	106	30	7,268
<i>Single Family</i>	83,740	35,223	1,991	14	0	120,968
<i>Industrial</i>	1,153	625	269	46	8	2,101
<i>Other Residential</i>	7,806	3,437	901	152	22	12,317
<i>Education</i>	182	35	7	1	1	225
Sonoma						
<i>Other Residential</i>	24,643	357	33	1	0	25,033
<i>Government</i>	313	5	1	0	0	319
<i>Education</i>	366	1	0	0	0	367
<i>Religion</i>	569	6	1	0	0	576
<i>Commercial</i>	11,939	154	17	0	0	12,110
<i>Agriculture</i>	1,269	28	6	0	0	1,304

	# of Buildings					Total
	None	Slight	Moderate	Extensive	Complete	
<i>Single Family</i>	141,359	668	1	0	0	142,028
<i>Industrial</i>	3,756	60	8	0	0	3,825
Stanislaus						
<i>Other Residential</i>	18,882	620	66	1	0	19,569
<i>Single Family</i>	140,221	2,494	9	0	0	142,724
<i>Education</i>	305	2	0	0	0	307
<i>Government</i>	660	19	2	0	0	680
<i>Industrial</i>	3,324	134	17	0	0	3,475
<i>Commercial</i>	9,969	359	41	1	0	10,369
<i>Religion</i>	438	16	2	0	0	456
<i>Agriculture</i>	1,201	32	6	0	0	1,239
Sutter						
<i>Other Residential</i>	3,091	21	1	0	0	3,113
<i>Industrial</i>	633	3	0	0	0	636
<i>Education</i>	62	0	0	0	0	62
<i>Government</i>	77	0	0	0	0	77
<i>Single Family</i>	24,481	31	0	0	0	24,512
<i>Commercial</i>	2,045	7	0	0	0	2,052
<i>Agriculture</i>	1,111	13	2	0	0	1,125
<i>Religion</i>	154	0	0	0	0	154
Tuolumne						
<i>Education</i>	57	0	0	0	0	57
<i>Government</i>	143	0	0	0	0	143
<i>Commercial</i>	1,576	0	0	0	0	1,576
<i>Religion</i>	121	0	0	0	0	121

		# of Buildings					
		None	Slight	Moderate	Extensive	Complete	Total
Yolo	<i>Agriculture</i>	82	0	0	0	0	82
	<i>Industrial</i>	383	0	0	0	0	383
	<i>Other Residential</i>	4,962	0	0	0	0	4,962
	<i>Single Family</i>	21,645	0	0	0	0	21,645
	<i>Industrial</i>	1,002	98	17	0	0	1,117
	<i>Other Residential</i>	9,022	769	68	1	0	9,861
	<i>Education</i>	126	4	1	0	0	131
	<i>Government</i>	99	10	2	0	0	111
	<i>Single Family</i>	39,768	2,779	42	0	0	42,589
	<i>Commercial</i>	3,818	349	56	2	0	4,225
Yuba	<i>Agriculture</i>	261	16	4	0	0	281
	<i>Religion</i>	222	17	2	0	0	242
	<i>Government</i>	591	0	0	0	0	591
	<i>Education</i>	54	0	0	0	0	54
	<i>Other Residential</i>	6,999	21	1	0	0	7,021
	<i>Religion</i>	98	0	0	0	0	98
	<i>Commercial</i>	1,195	3	0	0	0	1,199
	<i>Agriculture</i>	92	0	0	0	0	92
	<i>Single Family</i>	18,855	12	0	0	0	18,867
	<i>Industrial</i>	403	1	0	0	0	404
Total	4,039,658	387,952	61,877	5,107	1,201	4,495,795	

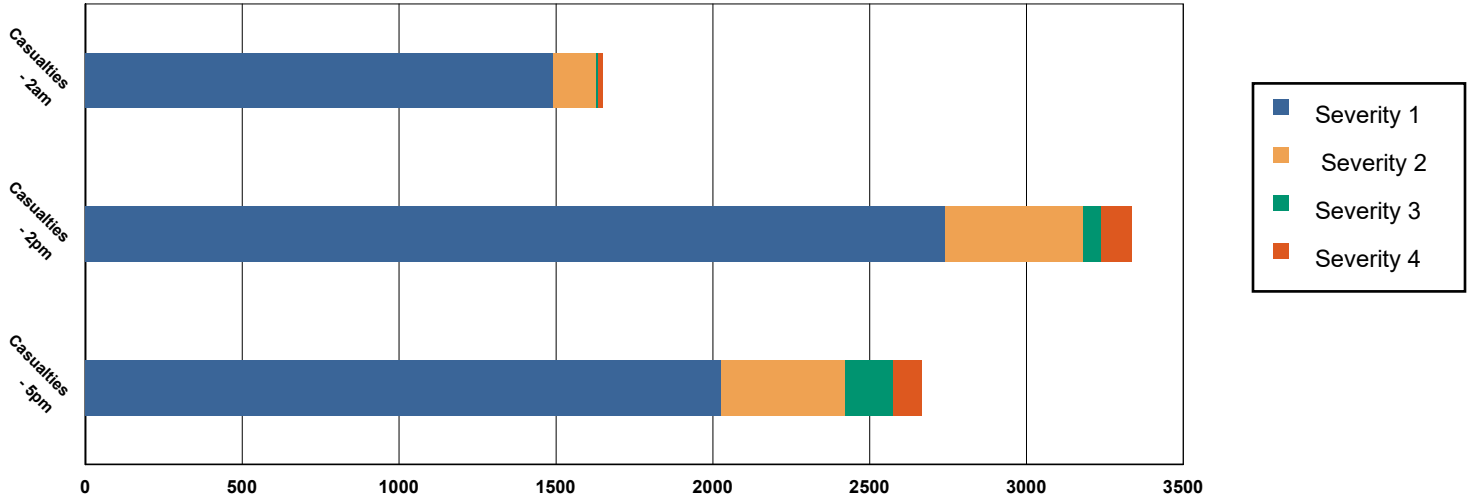
	# of Buildings					Total
	None	Slight	Moderate	Extensive	Complete	
Region Total	4,039,658	387,952	61,877	5,107	1,201	4,495,795

Totals only reflect data for those census tracts/blocks included in the user's study region and will reflect the entire county/state only if all of the census blocks for that county/states were selected at the time of study region creation.

Casualties Summary Report

April 15, 2024

Region Total Casualties



Injury Severity Level

Severity 1	Severity 2	Severity 3	Severity 4	Total
------------	------------	------------	------------	-------

California

Alameda

Casualties - 2am

	Severity 1	Severity 2	Severity 3	Severity 4	Total
Single Family	108	2	0	0	110
Hotels	0	0	0	0	0
Commuting	0	0	0	0	0
Educational	0	0	0	0	0
Industrial	5	0	0	0	5
Commercial	5	0	0	0	5
Other-Residential	141	10	0	0	152
Total Casualties - 2am	259	13	0	1	273

Casualties - 2pm

Industrial	35	3	0	0	38
Educational	59	5	0	0	63
Other-Residential	44	3	0	0	48
Single Family	29	1	0	0	29
Hotels	0	0	0	0	0
Commuting	0	0	0	0	1
Commercial	317	27	1	1	346

	Injury Severity Level				Total
	Severity 1	Severity 2	Severity 3	Severity 4	
California					
Alameda					
Total Casualties - 2pm	483	39	1	2	525
Casualties - 5pm					
<i>Commuting</i>	2	3	5	1	11
<i>Single Family</i>	39	1	0	0	39
<i>Commercial</i>	221	19	1	1	241
<i>Hotels</i>	0	0	0	0	0
<i>Educational</i>	8	0	0	0	8
<i>Industrial</i>	22	2	0	0	24
<i>Other-Residential</i>	53	4	0	0	57
Total Casualties - 5pm	344	29	6	2	381
Alpine					
Casualties - 2am					
<i>Industrial</i>	0	0	0	0	0
<i>Single Family</i>	0	0	0	0	0
<i>Commercial</i>	0	0	0	0	0
<i>Other-Residential</i>	0	0	0	0	0
<i>Hotels</i>	0	0	0	0	0
<i>Commuting</i>	0	0	0	0	0
<i>Educational</i>	0	0	0	0	0
Total Casualties - 2am	0	0	0	0	0
Casualties - 2pm					
<i>Educational</i>	0	0	0	0	0
<i>Other-Residential</i>	0	0	0	0	0
<i>Single Family</i>	0	0	0	0	0
<i>Hotels</i>	0	0	0	0	0
<i>Commercial</i>	0	0	0	0	0
<i>Commuting</i>	0	0	0	0	0
<i>Industrial</i>	0	0	0	0	0
Total Casualties - 2pm	0	0	0	0	0
Casualties - 5pm					
<i>Industrial</i>	0	0	0	0	0
<i>Other-Residential</i>	0	0	0	0	0
<i>Commuting</i>	0	0	0	0	0
<i>Commercial</i>	0	0	0	0	0
<i>Single Family</i>	0	0	0	0	0
<i>Educational</i>	0	0	0	0	0
<i>Hotels</i>	0	0	0	0	0
Total Casualties - 5pm	0	0	0	0	0
Amador					
Casualties - 2am					
<i>Commercial</i>	0	0	0	0	0

	Injury Severity Level				Total
	Severity 1	Severity 2	Severity 3	Severity 4	
California					
Amador					
Casualties - 2am					
Other-Residential	0	0	0	0	0
Commuting	0	0	0	0	0
Educational	0	0	0	0	0
Single Family	0	0	0	0	0
Hotels	0	0	0	0	0
Industrial	0	0	0	0	0
Total Casualties - 2am	0	0	0	0	0
Casualties - 2pm					
Single Family	0	0	0	0	0
Hotels	0	0	0	0	0
Educational	0	0	0	0	0
Commuting	0	0	0	0	0
Commercial	0	0	0	0	0
Other-Residential	0	0	0	0	0
Industrial	0	0	0	0	0
Total Casualties - 2pm	0	0	0	0	0
Casualties - 5pm					
Commercial	0	0	0	0	0
Commuting	0	0	0	0	0
Other-Residential	0	0	0	0	0
Single Family	0	0	0	0	0
Educational	0	0	0	0	0
Hotels	0	0	0	0	0
Industrial	0	0	0	0	0
Total Casualties - 5pm	0	0	0	0	0
Butte					
Casualties - 2am					
Industrial	0	0	0	0	0
Commercial	0	0	0	0	0
Other-Residential	0	0	0	0	0
Single Family	0	0	0	0	0
Commuting	0	0	0	0	0
Educational	0	0	0	0	0
Hotels	0	0	0	0	0
Total Casualties - 2am	0	0	0	0	0
Casualties - 2pm					
Single Family	0	0	0	0	0
Educational	0	0	0	0	0
Commuting	0	0	0	0	0
Other-Residential	0	0	0	0	0
Hotels	0	0	0	0	0

	Injury Severity Level				Total
	Severity 1	Severity 2	Severity 3	Severity 4	
California					
Butte					
Casualties - 2pm					
Commercial	0	0	0	0	0
Industrial	0	0	0	0	0
Total Casualties - 2pm	0	0	0	0	0
Casualties - 5pm					
Industrial	0	0	0	0	0
Other-Residential	0	0	0	0	0
Single Family	0	0	0	0	0
Commercial	0	0	0	0	0
Commuting	0	0	0	0	0
Hotels	0	0	0	0	0
Educational	0	0	0	0	0
Total Casualties - 5pm	0	0	0	0	0
Calaveras					
Casualties - 2am					
Other-Residential	0	0	0	0	0
Commuting	0	0	0	0	0
Commercial	0	0	0	0	0
Single Family	0	0	0	0	0
Hotels	0	0	0	0	0
Educational	0	0	0	0	0
Industrial	0	0	0	0	0
Total Casualties - 2am	0	0	0	0	0
Casualties - 2pm					
Hotels	0	0	0	0	0
Single Family	0	0	0	0	0
Educational	0	0	0	0	0
Commuting	0	0	0	0	0
Commercial	0	0	0	0	0
Industrial	0	0	0	0	0
Other-Residential	0	0	0	0	0
Total Casualties - 2pm	0	0	0	0	0
Casualties - 5pm					
Industrial	0	0	0	0	0
Commercial	0	0	0	0	0
Other-Residential	0	0	0	0	0
Educational	0	0	0	0	0
Hotels	0	0	0	0	0
Commuting	0	0	0	0	0
Single Family	0	0	0	0	0
Total Casualties - 5pm	0	0	0	0	0

	Injury Severity Level				Total
	Severity 1	Severity 2	Severity 3	Severity 4	
California					
Colusa					
Casualties - 2am					
<i>Other-Residential</i>	0	0	0	0	0
<i>Industrial</i>	0	0	0	0	0
<i>Single Family</i>	0	0	0	0	0
<i>Commercial</i>	0	0	0	0	0
<i>Educational</i>	0	0	0	0	0
<i>Commuting</i>	0	0	0	0	0
<i>Hotels</i>	0	0	0	0	0
Total Casualties - 2am	0	0	0	0	0
Casualties - 2pm					
<i>Hotels</i>	0	0	0	0	0
<i>Single Family</i>	0	0	0	0	0
<i>Educational</i>	0	0	0	0	0
<i>Commercial</i>	0	0	0	0	0
<i>Commuting</i>	0	0	0	0	0
<i>Other-Residential</i>	0	0	0	0	0
<i>Industrial</i>	0	0	0	0	0
Total Casualties - 2pm	0	0	0	0	0
Casualties - 5pm					
<i>Industrial</i>	0	0	0	0	0
<i>Commercial</i>	0	0	0	0	0
<i>Other-Residential</i>	0	0	0	0	0
<i>Commuting</i>	0	0	0	0	0
<i>Single Family</i>	0	0	0	0	0
<i>Educational</i>	0	0	0	0	0
<i>Hotels</i>	0	0	0	0	0
Total Casualties - 5pm	0	0	0	0	0
Contra Costa					
Casualties - 2am					
<i>Educational</i>	0	0	0	0	0
<i>Hotels</i>	0	0	0	0	0
<i>Industrial</i>	11	2	0	1	14
<i>Other-Residential</i>	325	60	6	11	402
<i>Single Family</i>	425	28	0	0	452
<i>Commercial</i>	14	3	0	1	19
<i>Commuting</i>	0	0	1	0	1
Total Casualties - 2am	775	93	7	12	888
Casualties - 2pm					
<i>Other-Residential</i>	99	18	2	3	123
<i>Industrial</i>	79	17	2	4	103
<i>Hotels</i>	0	0	0	0	0
<i>Single Family</i>	122	8	0	0	130

Injury Severity Level

	Severity 1	Severity 2	Severity 3	Severity 4	Total
--	------------	------------	------------	------------	-------

California

Contra Costa

Casualties - 2pm

<i>Educational</i>	243	48	6	12	308
<i>Commuting</i>	2	4	5	1	12
<i>Commercial</i>	1,089	245	34	67	1,435
Total Casualties - 2pm	1,634	339	50	87	2,111

Casualties - 5pm

<i>Educational</i>	14	1	0	0	15
<i>Commuting</i>	41	75	102	21	238
<i>Single Family</i>	157	11	0	0	168
<i>Hotels</i>	0	0	0	0	0
<i>Industrial</i>	50	10	1	3	64
<i>Other-Residential</i>	121	23	2	4	150
<i>Commercial</i>	858	196	28	54	1,136
Total Casualties - 5pm	1,241	316	133	82	1,772

El Dorado

Casualties - 2am

<i>Commuting</i>	0	0	0	0	0
<i>Educational</i>	0	0	0	0	0
<i>Single Family</i>	0	0	0	0	0
<i>Hotels</i>	0	0	0	0	0
<i>Other-Residential</i>	0	0	0	0	0
<i>Industrial</i>	0	0	0	0	0
<i>Commercial</i>	0	0	0	0	0
Total Casualties - 2am	0	0	0	0	0

Casualties - 2pm

<i>Industrial</i>	0	0	0	0	0
<i>Other-Residential</i>	0	0	0	0	0
<i>Single Family</i>	0	0	0	0	0
<i>Hotels</i>	0	0	0	0	0
<i>Educational</i>	0	0	0	0	0
<i>Commuting</i>	0	0	0	0	0
<i>Commercial</i>	0	0	0	0	0
Total Casualties - 2pm	0	0	0	0	0

Casualties - 5pm

<i>Commercial</i>	0	0	0	0	0
<i>Commuting</i>	0	0	0	0	0
<i>Single Family</i>	0	0	0	0	0
<i>Educational</i>	0	0	0	0	0
<i>Hotels</i>	0	0	0	0	0
<i>Industrial</i>	0	0	0	0	0
<i>Other-Residential</i>	0	0	0	0	0

	Injury Severity Level				Total
	Severity 1	Severity 2	Severity 3	Severity 4	
California					
El Dorado					
Total Casualties - 5pm	0	0	0	0	0
Fresno					
Casualties - 2am					
<i>Hotels</i>	0	0	0	0	0
<i>Educational</i>	0	0	0	0	0
<i>Industrial</i>	0	0	0	0	0
<i>Commercial</i>	0	0	0	0	0
<i>Other-Residential</i>	0	0	0	0	0
<i>Single Family</i>	0	0	0	0	0
<i>Commuting</i>	0	0	0	0	0
Total Casualties - 2am	0	0	0	0	0
Casualties - 2pm					
<i>Commercial</i>	0	0	0	0	0
<i>Other-Residential</i>	0	0	0	0	0
<i>Industrial</i>	0	0	0	0	0
<i>Single Family</i>	0	0	0	0	0
<i>Hotels</i>	0	0	0	0	0
<i>Commuting</i>	0	0	0	0	0
<i>Educational</i>	0	0	0	0	0
Total Casualties - 2pm	0	0	0	0	0
Casualties - 5pm					
<i>Educational</i>	0	0	0	0	0
<i>Commuting</i>	0	0	0	0	0
<i>Hotels</i>	0	0	0	0	0
<i>Industrial</i>	0	0	0	0	0
<i>Single Family</i>	0	0	0	0	0
<i>Other-Residential</i>	0	0	0	0	0
<i>Commercial</i>	0	0	0	0	0
Total Casualties - 5pm	0	0	0	0	0
Glenn					
Casualties - 2am					
<i>Hotels</i>	0	0	0	0	0
<i>Educational</i>	0	0	0	0	0
<i>Industrial</i>	0	0	0	0	0
<i>Other-Residential</i>	0	0	0	0	0
<i>Commercial</i>	0	0	0	0	0
<i>Commuting</i>	0	0	0	0	0
<i>Single Family</i>	0	0	0	0	0
Total Casualties - 2am	0	0	0	0	0
Casualties - 2pm					
<i>Industrial</i>	0	0	0	0	0

	Injury Severity Level				Total
	Severity 1	Severity 2	Severity 3	Severity 4	
California					
Glenn					
Casualties - 2pm					
Other-Residential	0	0	0	0	0
Commuting	0	0	0	0	0
Commercial	0	0	0	0	0
Hotels	0	0	0	0	0
Single Family	0	0	0	0	0
Educational	0	0	0	0	0
Total Casualties - 2pm	0	0	0	0	0
Casualties - 5pm					
Educational	0	0	0	0	0
Commuting	0	0	0	0	0
Hotels	0	0	0	0	0
Single Family	0	0	0	0	0
Industrial	0	0	0	0	0
Commercial	0	0	0	0	0
Other-Residential	0	0	0	0	0
Total Casualties - 5pm	0	0	0	0	0
Lake					
Casualties - 2am					
Hotels	0	0	0	0	0
Industrial	0	0	0	0	0
Other-Residential	0	0	0	0	0
Commuting	0	0	0	0	0
Educational	0	0	0	0	0
Single Family	0	0	0	0	0
Commercial	0	0	0	0	0
Total Casualties - 2am	0	0	0	0	0
Casualties - 2pm					
Industrial	0	0	0	0	0
Single Family	0	0	0	0	0
Commercial	0	0	0	0	0
Other-Residential	0	0	0	0	0
Hotels	0	0	0	0	0
Educational	0	0	0	0	0
Commuting	0	0	0	0	0
Total Casualties - 2pm	0	0	0	0	0
Casualties - 5pm					
Other-Residential	0	0	0	0	0
Industrial	0	0	0	0	0
Commercial	0	0	0	0	0
Educational	0	0	0	0	0
Commuting	0	0	0	0	0

	Injury Severity Level				Total
	Severity 1	Severity 2	Severity 3	Severity 4	
California					
Lake					
Casualties - 5pm					
Single Family	0	0	0	0	0
Hotels	0	0	0	0	0
Total Casualties - 5pm	0	0	0	0	0
Madera					
Casualties - 2am					
Hotels	0	0	0	0	0
Educational	0	0	0	0	0
Single Family	0	0	0	0	0
Commuting	0	0	0	0	0
Industrial	0	0	0	0	0
Commercial	0	0	0	0	0
Other-Residential	0	0	0	0	0
Total Casualties - 2am	0	0	0	0	0
Casualties - 2pm					
Industrial	0	0	0	0	0
Commercial	0	0	0	0	0
Other-Residential	0	0	0	0	0
Commuting	0	0	0	0	0
Single Family	0	0	0	0	0
Hotels	0	0	0	0	0
Educational	0	0	0	0	0
Total Casualties - 2pm	0	0	0	0	0
Casualties - 5pm					
Industrial	0	0	0	0	0
Commercial	0	0	0	0	0
Single Family	0	0	0	0	0
Educational	0	0	0	0	0
Other-Residential	0	0	0	0	0
Commuting	0	0	0	0	0
Hotels	0	0	0	0	0
Total Casualties - 5pm	0	0	0	0	0
Marin					
Casualties - 2am					
Commercial	0	0	0	0	0
Commuting	0	0	0	0	0
Other-Residential	1	0	0	0	1
Educational	0	0	0	0	0
Single Family	1	0	0	0	1
Hotels	0	0	0	0	0
Industrial	0	0	0	0	0

	Injury Severity Level				Total
	Severity 1	Severity 2	Severity 3	Severity 4	
California					
Marin					
Total Casualties - 2am	2	0	0	0	2
Casualties - 2pm					
<i>Hotels</i>	0	0	0	0	0
<i>Commuting</i>	0	0	0	0	0
<i>Educational</i>	0	0	0	0	0
<i>Industrial</i>	0	0	0	0	0
<i>Other-Residential</i>	0	0	0	0	0
<i>Commercial</i>	2	0	0	0	2
<i>Single Family</i>	0	0	0	0	0
Total Casualties - 2pm	3	0	0	0	3
Casualties - 5pm					
<i>Commuting</i>	0	0	0	0	0
<i>Commercial</i>	1	0	0	0	1
<i>Other-Residential</i>	0	0	0	0	0
<i>Single Family</i>	0	0	0	0	0
<i>Industrial</i>	0	0	0	0	0
<i>Educational</i>	0	0	0	0	0
<i>Hotels</i>	0	0	0	0	0
Total Casualties - 5pm	2	0	0	0	2
Mariposa					
Casualties - 2am					
<i>Commuting</i>	0	0	0	0	0
<i>Single Family</i>	0	0	0	0	0
<i>Commercial</i>	0	0	0	0	0
<i>Hotels</i>	0	0	0	0	0
<i>Educational</i>	0	0	0	0	0
<i>Industrial</i>	0	0	0	0	0
<i>Other-Residential</i>	0	0	0	0	0
Total Casualties - 2am	0	0	0	0	0
Casualties - 2pm					
<i>Hotels</i>	0	0	0	0	0
<i>Industrial</i>	0	0	0	0	0
<i>Commercial</i>	0	0	0	0	0
<i>Other-Residential</i>	0	0	0	0	0
<i>Educational</i>	0	0	0	0	0
<i>Commuting</i>	0	0	0	0	0
<i>Single Family</i>	0	0	0	0	0
Total Casualties - 2pm	0	0	0	0	0
Casualties - 5pm					
<i>Other-Residential</i>	0	0	0	0	0
<i>Educational</i>	0	0	0	0	0

	Injury Severity Level				Total
	Severity 1	Severity 2	Severity 3	Severity 4	
California					
Mariposa					
Casualties - 5pm					
<i>Commuting</i>	0	0	0	0	0
<i>Hotels</i>	0	0	0	0	0
<i>Single Family</i>	0	0	0	0	0
<i>Commercial</i>	0	0	0	0	0
<i>Industrial</i>	0	0	0	0	0
Total Casualties - 5pm	0	0	0	0	0
Mendocino					
Casualties - 2am					
<i>Educational</i>	0	0	0	0	0
<i>Hotels</i>	0	0	0	0	0
<i>Commuting</i>	0	0	0	0	0
<i>Industrial</i>	0	0	0	0	0
<i>Other-Residential</i>	0	0	0	0	0
<i>Single Family</i>	0	0	0	0	0
<i>Commercial</i>	0	0	0	0	0
Total Casualties - 2am	0	0	0	0	0
Casualties - 2pm					
<i>Industrial</i>	0	0	0	0	0
<i>Other-Residential</i>	0	0	0	0	0
<i>Commercial</i>	0	0	0	0	0
<i>Single Family</i>	0	0	0	0	0
<i>Commuting</i>	0	0	0	0	0
<i>Hotels</i>	0	0	0	0	0
<i>Educational</i>	0	0	0	0	0
Total Casualties - 2pm	0	0	0	0	0
Casualties - 5pm					
<i>Hotels</i>	0	0	0	0	0
<i>Single Family</i>	0	0	0	0	0
<i>Educational</i>	0	0	0	0	0
<i>Commuting</i>	0	0	0	0	0
<i>Commercial</i>	0	0	0	0	0
<i>Other-Residential</i>	0	0	0	0	0
<i>Industrial</i>	0	0	0	0	0
Total Casualties - 5pm	0	0	0	0	0
Merced					
Casualties - 2am					
<i>Hotels</i>	0	0	0	0	0
<i>Industrial</i>	0	0	0	0	0
<i>Commercial</i>	0	0	0	0	0
<i>Single Family</i>	0	0	0	0	0
<i>Other-Residential</i>	0	0	0	0	0

	Injury Severity Level				Total
	Severity 1	Severity 2	Severity 3	Severity 4	
California					
Merced					
Casualties - 2am					
<i>Educational</i>	0	0	0	0	0
<i>Commuting</i>	0	0	0	0	0
Total Casualties - 2am	0	0	0	0	0
Casualties - 2pm					
<i>Other-Residential</i>	0	0	0	0	0
<i>Industrial</i>	0	0	0	0	0
<i>Commercial</i>	1	0	0	0	1
<i>Commuting</i>	0	0	0	0	0
<i>Hotels</i>	0	0	0	0	0
<i>Educational</i>	0	0	0	0	0
<i>Single Family</i>	0	0	0	0	0
Total Casualties - 2pm	1	0	0	0	1
Casualties - 5pm					
<i>Industrial</i>	0	0	0	0	0
<i>Hotels</i>	0	0	0	0	0
<i>Educational</i>	0	0	0	0	0
<i>Commuting</i>	0	0	0	0	0
<i>Single Family</i>	0	0	0	0	0
<i>Commercial</i>	1	0	0	0	1
<i>Other-Residential</i>	0	0	0	0	0
Total Casualties - 5pm	1	0	0	0	1
Monterey					
Casualties - 2am					
<i>Other-Residential</i>	0	0	0	0	0
<i>Commuting</i>	0	0	0	0	0
<i>Commercial</i>	0	0	0	0	0
<i>Single Family</i>	0	0	0	0	0
<i>Hotels</i>	0	0	0	0	0
<i>Educational</i>	0	0	0	0	0
<i>Industrial</i>	0	0	0	0	0
Total Casualties - 2am	0	0	0	0	0
Casualties - 2pm					
<i>Commuting</i>	0	0	0	0	0
<i>Commercial</i>	0	0	0	0	0
<i>Single Family</i>	0	0	0	0	0
<i>Hotels</i>	0	0	0	0	0
<i>Educational</i>	0	0	0	0	0
<i>Industrial</i>	0	0	0	0	0
<i>Other-Residential</i>	0	0	0	0	0
Total Casualties - 2pm	0	0	0	0	0

	Injury Severity Level				Total
	Severity 1	Severity 2	Severity 3	Severity 4	
California					
Monterey					
Casualties - 5pm					
Commercial	0	0	0	0	0
Other-Residential	0	0	0	0	0
Industrial	0	0	0	0	0
Hotels	0	0	0	0	0
Educational	0	0	0	0	0
Commuting	0	0	0	0	0
Single Family	0	0	0	0	0
Total Casualties - 5pm	0	0	0	0	0
Napa					
Casualties - 2am					
Commercial	0	0	0	0	0
Other-Residential	3	0	0	0	3
Educational	0	0	0	0	0
Single Family	4	0	0	0	4
Commuting	0	0	0	0	0
Hotels	0	0	0	0	0
Industrial	0	0	0	0	0
Total Casualties - 2am	8	0	0	0	8
Casualties - 2pm					
Educational	2	0	0	0	2
Hotels	0	0	0	0	0
Commuting	0	0	0	0	0
Industrial	1	0	0	0	1
Other-Residential	1	0	0	0	1
Single Family	1	0	0	0	1
Commercial	7	0	0	0	8
Total Casualties - 2pm	12	1	0	0	13
Casualties - 5pm					
Commercial	4	0	0	0	5
Single Family	2	0	0	0	2
Other-Residential	1	0	0	0	1
Commuting	0	0	0	0	0
Industrial	1	0	0	0	1
Educational	0	0	0	0	0
Hotels	0	0	0	0	0
Total Casualties - 5pm	8	0	0	0	9
Nevada					
Casualties - 2am					
Single Family	0	0	0	0	0
Commercial	0	0	0	0	0
Commuting	0	0	0	0	0

	Injury Severity Level				Total
	Severity 1	Severity 2	Severity 3	Severity 4	
California					
Nevada					
Casualties - 2am					
<i>Hotels</i>	0	0	0	0	0
<i>Educational</i>	0	0	0	0	0
<i>Industrial</i>	0	0	0	0	0
<i>Other-Residential</i>	0	0	0	0	0
Total Casualties - 2am	0	0	0	0	0
Casualties - 2pm					
<i>Hotels</i>	0	0	0	0	0
<i>Industrial</i>	0	0	0	0	0
<i>Commercial</i>	0	0	0	0	0
<i>Single Family</i>	0	0	0	0	0
<i>Other-Residential</i>	0	0	0	0	0
<i>Educational</i>	0	0	0	0	0
<i>Commuting</i>	0	0	0	0	0
Total Casualties - 2pm	0	0	0	0	0
Casualties - 5pm					
<i>Commuting</i>	0	0	0	0	0
<i>Hotels</i>	0	0	0	0	0
<i>Other-Residential</i>	0	0	0	0	0
<i>Educational</i>	0	0	0	0	0
<i>Single Family</i>	0	0	0	0	0
<i>Commercial</i>	0	0	0	0	0
<i>Industrial</i>	0	0	0	0	0
Total Casualties - 5pm	0	0	0	0	0
Placer					
Casualties - 2am					
<i>Hotels</i>	0	0	0	0	0
<i>Educational</i>	0	0	0	0	0
<i>Industrial</i>	0	0	0	0	0
<i>Other-Residential</i>	0	0	0	0	0
<i>Commercial</i>	0	0	0	0	0
<i>Single Family</i>	0	0	0	0	0
<i>Commuting</i>	0	0	0	0	0
Total Casualties - 2am	0	0	0	0	0
Casualties - 2pm					
<i>Other-Residential</i>	0	0	0	0	0
<i>Industrial</i>	0	0	0	0	0
<i>Commercial</i>	0	0	0	0	0
<i>Single Family</i>	0	0	0	0	0
<i>Educational</i>	0	0	0	0	0
<i>Commuting</i>	0	0	0	0	0
<i>Hotels</i>	0	0	0	0	0

	Injury Severity Level				Total
	Severity 1	Severity 2	Severity 3	Severity 4	
California					
Placer					
Total Casualties - 2pm	0	0	0	0	0
Casualties - 5pm					
Single Family	0	0	0	0	0
Hotels	0	0	0	0	0
Commuting	0	0	0	0	0
Educational	0	0	0	0	0
Commercial	0	0	0	0	0
Industrial	0	0	0	0	0
Other-Residential	0	0	0	0	0
Total Casualties - 5pm	0	0	0	0	0
Sacramento					
Casualties - 2am					
Industrial	1	0	0	0	1
Other-Residential	32	5	0	1	38
Commercial	1	0	0	0	1
Single Family	28	0	0	0	28
Hotels	0	0	0	0	0
Commuting	0	0	0	0	0
Educational	0	0	0	0	0
Total Casualties - 2am	61	5	0	1	68
Casualties - 2pm					
Other-Residential	12	2	0	0	15
Commuting	0	0	0	0	0
Single Family	8	0	0	0	8
Commercial	74	10	1	2	87
Hotels	0	0	0	0	0
Educational	6	0	0	0	7
Industrial	4	0	0	0	5
Total Casualties - 2pm	104	13	1	2	121
Casualties - 5pm					
Industrial	3	0	0	0	3
Educational	1	0	0	0	1
Hotels	0	0	0	0	0
Commercial	44	6	1	1	52
Commuting	0	1	1	0	2
Other-Residential	11	2	0	0	14
Single Family	10	0	0	0	10
Total Casualties - 5pm	70	9	2	2	82
San Benito					
Casualties - 2am					
Other-Residential	0	0	0	0	0

	Injury Severity Level				Total
	Severity 1	Severity 2	Severity 3	Severity 4	
California					
San Benito					
Casualties - 2am					
Commercial	0	0	0	0	0
Commuting	0	0	0	0	0
Hotels	0	0	0	0	0
Educational	0	0	0	0	0
Single Family	0	0	0	0	0
Industrial	0	0	0	0	0
Total Casualties - 2am	0	0	0	0	0
Casualties - 2pm					
Hotels	0	0	0	0	0
Educational	0	0	0	0	0
Industrial	0	0	0	0	0
Other-Residential	0	0	0	0	0
Commercial	0	0	0	0	0
Commuting	0	0	0	0	0
Single Family	0	0	0	0	0
Total Casualties - 2pm	0	0	0	0	0
Casualties - 5pm					
Commuting	0	0	0	0	0
Commercial	0	0	0	0	0
Other-Residential	0	0	0	0	0
Single Family	0	0	0	0	0
Industrial	0	0	0	0	0
Educational	0	0	0	0	0
Hotels	0	0	0	0	0
Total Casualties - 5pm	0	0	0	0	0
San Francisco					
Casualties - 2am					
Industrial	1	0	0	0	1
Hotels	0	0	0	0	0
Commercial	2	0	0	0	2
Other-Residential	56	4	0	0	60
Commuting	0	0	0	0	0
Educational	0	0	0	0	0
Single Family	10	0	0	0	11
Total Casualties - 2am	69	4	0	0	74
Casualties - 2pm					
Commercial	88	6	0	0	94
Industrial	5	0	0	0	5
Other-Residential	18	1	0	0	19
Single Family	3	0	0	0	3
Hotels	0	0	0	0	0

	Injury Severity Level				Total
	Severity 1	Severity 2	Severity 3	Severity 4	
California					
San Francisco					
Casualties - 2pm					
<i>Commuting</i>	0	0	0	0	0
<i>Educational</i>	10	1	0	0	11
Total Casualties - 2pm	124	9	0	0	133
Casualties - 5pm					
<i>Educational</i>	4	0	0	0	4
<i>Hotels</i>	0	0	0	0	0
<i>Industrial</i>	3	0	0	0	3
<i>Commuting</i>	0	0	0	0	0
<i>Commercial</i>	50	4	0	0	53
<i>Other-Residential</i>	22	2	0	0	23
<i>Single Family</i>	4	0	0	0	4
Total Casualties - 5pm	82	6	0	0	88
San Joaquin					
Casualties - 2am					
<i>Educational</i>	0	0	0	0	0
<i>Commuting</i>	0	0	0	0	0
<i>Hotels</i>	0	0	0	0	0
<i>Commercial</i>	1	0	0	0	1
<i>Single Family</i>	121	9	0	1	131
<i>Industrial</i>	1	0	0	0	1
<i>Other-Residential</i>	36	3	0	0	39
Total Casualties - 2am	159	12	1	1	172
Casualties - 2pm					
<i>Industrial</i>	10	1	0	0	11
<i>Other-Residential</i>	12	1	0	0	13
<i>Educational</i>	14	1	0	0	15
<i>Single Family</i>	41	3	0	0	45
<i>Hotels</i>	0	0	0	0	0
<i>Commuting</i>	0	0	0	0	0
<i>Commercial</i>	56	4	0	0	61
Total Casualties - 2pm	133	10	0	1	145
Casualties - 5pm					
<i>Commuting</i>	1	1	2	0	4
<i>Single Family</i>	47	4	0	0	51
<i>Educational</i>	2	0	0	0	2
<i>Hotels</i>	0	0	0	0	0
<i>Industrial</i>	6	0	0	0	7
<i>Commercial</i>	38	3	0	0	40
<i>Other-Residential</i>	13	1	0	0	14
Total Casualties - 5pm	106	9	2	1	118

	Injury Severity Level				Total
	Severity 1	Severity 2	Severity 3	Severity 4	
California					
San Mateo					
Casualties - 2am					
<i>Industrial</i>	0	0	0	0	0
<i>Other-Residential</i>	8	0	0	0	9
<i>Single Family</i>	8	0	0	0	9
<i>Commercial</i>	0	0	0	0	0
<i>Educational</i>	0	0	0	0	0
<i>Commuting</i>	0	0	0	0	0
<i>Hotels</i>	0	0	0	0	0
Total Casualties - 2am	18	0	0	0	18
Casualties - 2pm					
<i>Other-Residential</i>	2	0	0	0	3
<i>Single Family</i>	2	0	0	0	2
<i>Commuting</i>	0	0	0	0	0
<i>Commercial</i>	18	1	0	0	19
<i>Educational</i>	2	0	0	0	2
<i>Hotels</i>	0	0	0	0	0
<i>Industrial</i>	3	0	0	0	3
Total Casualties - 2pm	28	1	0	0	29
Casualties - 5pm					
<i>Commercial</i>	12	1	0	0	12
<i>Industrial</i>	2	0	0	0	2
<i>Other-Residential</i>	3	0	0	0	3
<i>Single Family</i>	3	0	0	0	3
<i>Educational</i>	0	0	0	0	0
<i>Commuting</i>	0	0	0	0	1
<i>Hotels</i>	0	0	0	0	0
Total Casualties - 5pm	20	1	0	0	21
Santa Clara					
Casualties - 2am					
<i>Commuting</i>	0	0	0	0	0
<i>Educational</i>	0	0	0	0	0
<i>Single Family</i>	12	0	0	0	12
<i>Hotels</i>	0	0	0	0	0
<i>Industrial</i>	1	0	0	0	1
<i>Commercial</i>	0	0	0	0	0
<i>Other-Residential</i>	12	0	0	0	12
Total Casualties - 2am	25	0	0	0	25
Casualties - 2pm					
<i>Industrial</i>	5	0	0	0	5
<i>Commercial</i>	21	1	0	0	22
<i>Single Family</i>	3	0	0	0	3
<i>Commuting</i>	0	0	0	0	0

	Injury Severity Level				Total
	Severity 1	Severity 2	Severity 3	Severity 4	
California					
Santa Clara					
Casualties - 2pm					
<i>Hotels</i>	0	0	0	0	0
<i>Other-Residential</i>	3	0	0	0	4
<i>Educational</i>	4	0	0	0	4
Total Casualties - 2pm	36	1	0	0	37
Casualties - 5pm					
<i>Industrial</i>	3	0	0	0	3
<i>Hotels</i>	0	0	0	0	0
<i>Other-Residential</i>	4	0	0	0	4
<i>Commercial</i>	13	1	0	0	14
<i>Commuting</i>	0	0	0	0	0
<i>Single Family</i>	4	0	0	0	4
<i>Educational</i>	1	0	0	0	1
Total Casualties - 5pm	26	1	0	0	27
Santa Cruz					
Casualties - 2am					
<i>Hotels</i>	0	0	0	0	0
<i>Educational</i>	0	0	0	0	0
<i>Industrial</i>	0	0	0	0	0
<i>Other-Residential</i>	0	0	0	0	0
<i>Single Family</i>	0	0	0	0	0
<i>Commercial</i>	0	0	0	0	0
<i>Commuting</i>	0	0	0	0	0
Total Casualties - 2am	0	0	0	0	0
Casualties - 2pm					
<i>Industrial</i>	0	0	0	0	0
<i>Other-Residential</i>	0	0	0	0	0
<i>Commercial</i>	0	0	0	0	0
<i>Commuting</i>	0	0	0	0	0
<i>Educational</i>	0	0	0	0	0
<i>Single Family</i>	0	0	0	0	0
<i>Hotels</i>	0	0	0	0	0
Total Casualties - 2pm	0	0	0	0	0
Casualties - 5pm					
<i>Industrial</i>	0	0	0	0	0
<i>Other-Residential</i>	0	0	0	0	0
<i>Commercial</i>	0	0	0	0	0
<i>Commuting</i>	0	0	0	0	0
<i>Single Family</i>	0	0	0	0	0
<i>Hotels</i>	0	0	0	0	0
<i>Educational</i>	0	0	0	0	0

	Injury Severity Level				Total
	Severity 1	Severity 2	Severity 3	Severity 4	
California					
Santa Cruz					
Total Casualties - 5pm	0	0	0	0	0
Sierra					
Casualties - 2am					
<i>Other-Residential</i>	0	0	0	0	0
<i>Commercial</i>	0	0	0	0	0
<i>Commuting</i>	0	0	0	0	0
<i>Hotels</i>	0	0	0	0	0
<i>Single Family</i>	0	0	0	0	0
<i>Educational</i>	0	0	0	0	0
<i>Industrial</i>	0	0	0	0	0
Total Casualties - 2am	0	0	0	0	0
Casualties - 2pm					
<i>Hotels</i>	0	0	0	0	0
<i>Educational</i>	0	0	0	0	0
<i>Industrial</i>	0	0	0	0	0
<i>Other-Residential</i>	0	0	0	0	0
<i>Commuting</i>	0	0	0	0	0
<i>Single Family</i>	0	0	0	0	0
<i>Commercial</i>	0	0	0	0	0
Total Casualties - 2pm	0	0	0	0	0
Casualties - 5pm					
<i>Educational</i>	0	0	0	0	0
<i>Hotels</i>	0	0	0	0	0
<i>Commuting</i>	0	0	0	0	0
<i>Industrial</i>	0	0	0	0	0
<i>Other-Residential</i>	0	0	0	0	0
<i>Commercial</i>	0	0	0	0	0
<i>Single Family</i>	0	0	0	0	0
Total Casualties - 5pm	0	0	0	0	0
Solano					
Casualties - 2am					
<i>Industrial</i>	2	0	0	0	2
<i>Other-Residential</i>	34	4	0	1	39
<i>Commercial</i>	1	0	0	0	2
<i>Educational</i>	0	0	0	0	0
<i>Commuting</i>	0	0	0	0	0
<i>Single Family</i>	61	2	0	0	62
<i>Hotels</i>	0	0	0	0	0
Total Casualties - 2am	98	6	0	1	105
Casualties - 2pm					
<i>Single Family</i>	17	0	0	0	17

Injury Severity Level

	Severity 1	Severity 2	Severity 3	Severity 4	Total
--	------------	------------	------------	------------	-------

California

Solano

Casualties - 2pm

<i>Other-Residential</i>	11	1	0	0	12
<i>Commercial</i>	91	16	2	4	113
<i>Educational</i>	26	5	1	1	33
<i>Commuting</i>	0	0	0	0	1
<i>Hotels</i>	0	0	0	0	0
<i>Industrial</i>	13	2	0	0	15
Total Casualties - 2pm	157	26	4	6	192

Casualties - 5pm

<i>Commercial</i>	63	11	1	3	79
<i>Other-Residential</i>	13	2	0	0	14
<i>Single Family</i>	22	1	0	0	23
<i>Educational</i>	1	0	0	0	1
<i>Commuting</i>	4	5	9	2	20
<i>Hotels</i>	0	0	0	0	0
<i>Industrial</i>	8	1	0	0	10
Total Casualties - 5pm	111	20	11	5	146

Sonoma

Casualties - 2am

<i>Single Family</i>	1	0	0	0	1
<i>Other-Residential</i>	1	0	0	0	1
<i>Commercial</i>	0	0	0	0	0
<i>Commuting</i>	0	0	0	0	0
<i>Hotels</i>	0	0	0	0	0
<i>Educational</i>	0	0	0	0	0
<i>Industrial</i>	0	0	0	0	0
Total Casualties - 2am	2	0	0	0	2

Casualties - 2pm

<i>Single Family</i>	0	0	0	0	0
<i>Commuting</i>	0	0	0	0	0
<i>Educational</i>	0	0	0	0	0
<i>Hotels</i>	0	0	0	0	0
<i>Industrial</i>	0	0	0	0	0
<i>Other-Residential</i>	0	0	0	0	0
<i>Commercial</i>	2	0	0	0	2
Total Casualties - 2pm	3	0	0	0	3

Casualties - 5pm

<i>Single Family</i>	0	0	0	0	0
<i>Commercial</i>	1	0	0	0	1
<i>Commuting</i>	0	0	0	0	0
<i>Hotels</i>	0	0	0	0	0
<i>Educational</i>	0	0	0	0	0

	Injury Severity Level				Total
	Severity 1	Severity 2	Severity 3	Severity 4	
California					
Sonoma					
Casualties - 5pm					
<i>Industrial</i>	0	0	0	0	0
<i>Other-Residential</i>	0	0	0	0	0
Total Casualties - 5pm	2	0	0	0	2
Stanislaus					
Casualties - 2am					
<i>Hotels</i>	0	0	0	0	0
<i>Industrial</i>	0	0	0	0	0
<i>Commercial</i>	0	0	0	0	0
<i>Single Family</i>	4	0	0	0	4
<i>Other-Residential</i>	3	0	0	0	3
<i>Commuting</i>	0	0	0	0	0
<i>Educational</i>	0	0	0	0	0
Total Casualties - 2am	6	0	0	0	6
Casualties - 2pm					
<i>Industrial</i>	1	0	0	0	1
<i>Other-Residential</i>	1	0	0	0	1
<i>Commercial</i>	5	0	0	0	5
<i>Commuting</i>	0	0	0	0	0
<i>Educational</i>	1	0	0	0	1
<i>Single Family</i>	1	0	0	0	1
<i>Hotels</i>	0	0	0	0	0
Total Casualties - 2pm	8	0	0	0	9
Casualties - 5pm					
<i>Industrial</i>	1	0	0	0	1
<i>Other-Residential</i>	1	0	0	0	1
<i>Commuting</i>	0	0	0	0	0
<i>Single Family</i>	1	0	0	0	1
<i>Commercial</i>	3	0	0	0	3
<i>Hotels</i>	0	0	0	0	0
<i>Educational</i>	0	0	0	0	0
Total Casualties - 5pm	6	0	0	0	6
Sutter					
Casualties - 2am					
<i>Educational</i>	0	0	0	0	0
<i>Commuting</i>	0	0	0	0	0
<i>Hotels</i>	0	0	0	0	0
<i>Industrial</i>	0	0	0	0	0
<i>Other-Residential</i>	0	0	0	0	0
<i>Single Family</i>	0	0	0	0	0
<i>Commercial</i>	0	0	0	0	0

	Injury Severity Level				Total
	Severity 1	Severity 2	Severity 3	Severity 4	
California					
Sutter					
Total Casualties - 2am	0	0	0	0	0
Casualties - 2pm					
<i>Industrial</i>	0	0	0	0	0
<i>Commuting</i>	0	0	0	0	0
<i>Other-Residential</i>	0	0	0	0	0
<i>Single Family</i>	0	0	0	0	0
<i>Commercial</i>	0	0	0	0	0
<i>Hotels</i>	0	0	0	0	0
<i>Educational</i>	0	0	0	0	0
Total Casualties - 2pm	0	0	0	0	0
Casualties - 5pm					
<i>Commuting</i>	0	0	0	0	0
<i>Commercial</i>	0	0	0	0	0
<i>Educational</i>	0	0	0	0	0
<i>Single Family</i>	0	0	0	0	0
<i>Hotels</i>	0	0	0	0	0
<i>Industrial</i>	0	0	0	0	0
<i>Other-Residential</i>	0	0	0	0	0
Total Casualties - 5pm	0	0	0	0	0
Tuolumne					
Casualties - 2am					
<i>Other-Residential</i>	0	0	0	0	0
<i>Industrial</i>	0	0	0	0	0
<i>Commercial</i>	0	0	0	0	0
<i>Commuting</i>	0	0	0	0	0
<i>Single Family</i>	0	0	0	0	0
<i>Educational</i>	0	0	0	0	0
<i>Hotels</i>	0	0	0	0	0
Total Casualties - 2am	0	0	0	0	0
Casualties - 2pm					
<i>Other-Residential</i>	0	0	0	0	0
<i>Commercial</i>	0	0	0	0	0
<i>Single Family</i>	0	0	0	0	0
<i>Educational</i>	0	0	0	0	0
<i>Commuting</i>	0	0	0	0	0
<i>Industrial</i>	0	0	0	0	0
<i>Hotels</i>	0	0	0	0	0
Total Casualties - 2pm	0	0	0	0	0
Casualties - 5pm					
<i>Industrial</i>	0	0	0	0	0
<i>Other-Residential</i>	0	0	0	0	0

	Injury Severity Level				Total
	Severity 1	Severity 2	Severity 3	Severity 4	
California					
Tuolumne					
Casualties - 5pm					
Commercial	0	0	0	0	0
Hotels	0	0	0	0	0
Commuting	0	0	0	0	0
Educational	0	0	0	0	0
Single Family	0	0	0	0	0
Total Casualties - 5pm	0	0	0	0	0
Yolo					
Casualties - 2am					
Single Family	5	0	0	0	5
Other-Residential	4	0	0	0	4
Commercial	0	0	0	0	0
Educational	0	0	0	0	0
Commuting	0	0	0	0	0
Hotels	0	0	0	0	0
Industrial	0	0	0	0	0
Total Casualties - 2am	9	0	0	0	9
Casualties - 2pm					
Industrial	1	0	0	0	1
Hotels	0	0	0	0	0
Educational	2	0	0	0	3
Commuting	0	0	0	0	0
Commercial	6	0	0	0	6
Other-Residential	1	0	0	0	1
Single Family	1	0	0	0	1
Total Casualties - 2pm	12	0	0	0	12
Casualties - 5pm					
Other-Residential	1	0	0	0	1
Single Family	2	0	0	0	2
Commuting	0	0	0	0	0
Commercial	4	0	0	0	4
Hotels	0	0	0	0	0
Educational	1	0	0	0	1
Industrial	1	0	0	0	1
Total Casualties - 5pm	8	0	0	0	9
Yuba					
Casualties - 2am					
Industrial	0	0	0	0	0
Other-Residential	0	0	0	0	0
Commercial	0	0	0	0	0
Educational	0	0	0	0	0
Single Family	0	0	0	0	0

	Injury Severity Level				Total
	Severity 1	Severity 2	Severity 3	Severity 4	
California					
Yuba					
Casualties - 2am					
Commuting	0	0	0	0	0
Hotels	0	0	0	0	0
Total Casualties - 2am	0	0	0	0	0
Casualties - 2pm					
Commercial	0	0	0	0	0
Commuting	0	0	0	0	0
Single Family	0	0	0	0	0
Other-Residential	0	0	0	0	0
Industrial	0	0	0	0	0
Hotels	0	0	0	0	0
Educational	0	0	0	0	0
Total Casualties - 2pm	0	0	0	0	0
Casualties - 5pm					
Hotels	0	0	0	0	0
Educational	0	0	0	0	0
Industrial	0	0	0	0	0
Other-Residential	0	0	0	0	0
Single Family	0	0	0	0	0
Commercial	0	0	0	0	0
Commuting	0	0	0	0	0
Total Casualties - 5pm	0	0	0	0	0
Region Total	NA	NA	NA	NA	NA

Totals only reflect data for those census tracts/blocks included in the user's study region and will reflect the entire county/state only if all of the census blocks for that county/states were selected at the time of study region creation.

Debris Summary Report

April 15, 2024

All values are in thousands of tons.

	Brick, Wood & Others	Concrete & Steel	Total
California			
Alameda	263	341	604
Alpine	0	0	0
Amador	0	0	0
Butte	0	0	0
Calaveras	0	0	0
Colusa	0	0	0
Contra Costa	533	846	1,379
El Dorado	0	0	0
Fresno	0	0	0
Glenn	0	0	0
Lake	0	0	0
Madera	0	0	0
Marin	2	2	4
Mariposa	0	0	0
Mendocino	0	0	0
Merced	1	1	1
Monterey	0	0	0
Napa	9	11	19
Nevada	0	0	0

	Brick, Wood & Others	Concrete & Steel	Total
Placer	1	0	1
Sacramento	48	55	103
San Benito	0	0	0
San Francisco	122	42	164
San Joaquin	160	101	260
San Mateo	15	15	30
Santa Clara	24	19	43
Santa Cruz	0	0	1
Sierra	0	0	0
Solano	82	126	208
Sonoma	3	3	6
Stanislaus	8	6	14
Sutter	0	0	0
Tuolumne	0	0	0
Yolo	8	9	16
Yuba	0	0	0
Total	1,280	1,575	2,855
Region Total	1,280	1,575	2,855

Totals only reflect data for those census tracts/blocks included in the user's study region and will reflect the entire county/state only if all of the census blocks for that county/states were selected at the time of study region creation.

Direct Economic Losses For Buildings

April 15, 2024

All values are in thousands of dollars

	Capital Stock Losses				Loss Ratio %	Income Losses				Total Loss
	Cost Structural Damage	Cost Non-struct. Damage	Cost Contents Damage	Inventory Loss		Relocation Loss	Capital Related Loss	Wages Losses	Rental Income Loss	
California										
Contra Costa	1,359,302	7,540,823	3,196,179	210,455	4.07	602,708	258,792	351,307	288,039	13,807,605
Mendocino	0	48	33	5	0.00	0	0	0	0	86
Napa	19,235	138,592	69,532	7,174	0.47	5,100	3,772	4,687	4,178	252,269
Colusa	51	583	343	64	0.01	9	17	19	15	1,101
Alameda	550,500	3,107,703	1,487,028	110,297	1.10	197,769	131,004	177,321	136,442	5,898,065
Nevada	0	47	34	3	0.00	0	0	0	0	85
San Joaquin	218,861	1,228,903	630,704	68,940	1.04	81,747	39,618	45,612	42,475	2,356,860
Tuolumne	0	61	41	3	0.00	0	0	0	0	105
Madera	16	427	280	53	0.00	1	1	1	3	781

	Capital Stock Losses				Loss Ratio %	Income Losses				Total Loss
	Cost Structural Damage	Cost Non-struct. Damage	Cost Contents Damage	Inventory Loss		Relocation Loss	Capital Related Loss	Wages Losses	Rental Income Loss	
Butte	37	452	306	55	0.00	5	3	4	6	868
Fresno	2	85	56	12	0.00	0	0	0	0	156
Solano	204,355	1,186,160	545,513	48,457	1.69	65,501	42,905	54,583	40,222	2,187,696
San Mateo	37,965	336,542	166,416	12,943	0.24	7,143	6,362	7,563	9,580	584,514
Yolo	18,354	159,604	87,814	8,831	0.42	3,962	3,366	4,018	3,787	289,736
Glenn	13	157	112	39	0.00	1	1	1	1	325
San Benito	41	543	294	33	0.00	6	9	10	9	946
San Francisco	113,352	342,508	178,421	11,059	0.29	42,356	27,862	32,009	47,203	794,771
Stanislaus	14,052	133,840	72,990	9,748	0.15	2,526	1,737	1,979	2,720	239,593
Sutter	329	3,147	1,771	465	0.02	35	20	24	33	5,825
Santa Clara	50,573	485,583	255,767	21,165	0.14	8,192	9,112	10,468	11,293	852,154
Sonoma	5,427	53,147	28,837	3,776	0.06	1,031	1,137	1,262	1,000	95,619
Calaveras	111	1,259	862	295	0.01	14	31	28	14	2,614
Yuba	83	1,278	666	77	0.01	11	18	18	19	2,171
Alpine	0	0	0	0	0.00	0	0	0	0	0
Merced	1,972	8,501	5,566	2,549	0.02	210	70	66	90	19,024
Placer	910	17,742	10,139	898	0.02	91	114	128	157	30,179
Marin	4,758	54,328	28,947	2,219	0.09	769	870	934	1,024	93,849

	Capital Stock Losses				Loss Ratio %	Income Losses				Total Loss
	Cost Structural Damage	Cost Non-struct. Damage	Cost Contents Damage	Inventory Loss		Relocation Loss	Capital Related Loss	Wages Losses	Rental Income Loss	
El Dorado	24	1,074	643	38	0.00	1	3	4	4	1,792
Lake	11	282	143	12	0.00	1	1	1	2	453
Sierra	0	0	0	0	0.00	0	0	0	0	0
Santa Cruz	442	5,274	2,816	436	0.01	66	96	116	104	9,349
Mariposa	0	3	2	0	0.00	0	0	0	0	5
Amador	40	940	564	66	0.01	6	12	10	12	1,650
Sacramento	93,302	709,185	351,491	31,652	0.30	25,087	22,008	27,417	22,028	1,282,170
Monterey	79	1,577	1,002	164	0.00	10	10	10	20	2,873
Total	2,694,199	15,520,397	7,125,315	551,985	0.29	1,044,360	548,954	719,600	610,481	28,815,290
Region Total	2,694,199	15,520,397	7,125,315	551,985	0.29	1,044,360	548,954	719,600	610,481	28,815,290

Totals only reflect data for those census tracts/blocks included in the user's study region and will reflect the entire county/state only if all of the census blocks for that county/states were selected at the time of study region creation.

Direct Economic Loss For Transportation

April 15, 2024

All values are in thousands of dollars

	Highway	Railway	Light Rail	Bus Facility	Ports	Ferries	Airport	Total
California								
Alameda								
Segments	0	0	0					0
Bridges	22,614	1,882	12					24,507
Tunnels	548	0	0					548
Facilities		5,214	0	257	19,693	442	42,706	68,312
Total	23,162	7,095	12	257	19,693	442	42,706	93,367
Alpine								
Segments	0	0	0					0
Bridges	0	0	0					0
Tunnels	0	0	0					0
Facilities		0	0	0	0	0	6	6
Total	0	0	0	0	0	0	6	6
Amador								
Segments	0	0	0					0
Bridges	0	0	0					0
Tunnels	0	0	0					0
Facilities		0	0	0	0	0	51	51

	Highway	Railway	Light Rail	Bus Facility	Ports	Ferries	Airport	Total
Total	0	0	0	0	0	0	51	51
Butte								
Segments	0	0	0					0
Bridges	1	0	0					1
Tunnels	0	0	0					0
Facilities		3	0	0	0	0	57	60
Total	1	3	0	0	0	0	57	60
Calaveras								
Segments	0	0	0					0
Bridges	0	0	0					0
Tunnels	0	0	0					0
Facilities		0	0	0	0	0	102	102
Total	0	0	0	0	0	0	102	102
Colusa								
Segments	0	0	0					0
Bridges	12	0	0					12
Tunnels	0	0	0					0
Facilities		0	0	0	0	0	51	51
Total	12	0	0	0	0	0	51	64
Contra Costa								
Segments	0	0	0					0
Bridges	161,353	44,016	23					205,391
Tunnels	980	35	0					1,014
Facilities		4,203	8,250	0	52,077	1,368	6,997	72,894

	Highway	Railway	Light Rail	Bus Facility	Ports	Ferries	Airport	Total
Total	162,332	48,254	8,273	0	52,077	1,368	6,997	279,300
El Dorado								
Segments	0	0	0					0
Bridges	0	0	0					0
Tunnels	0	0	0					0
Facilities		0	0	45	0	0	236	281
Total	0	0	0	45	0	0	236	282
Fresno								
Segments	0	0	0					0
Bridges	2	0	0					2
Tunnels	0	0	0					0
Facilities		23	0	2	0	0	195	220
Total	2	23	0	2	0	0	195	221
Glenn								
Segments	0	0	0					0
Bridges	0	0	0					0
Tunnels	0	0	0					0
Facilities		0	0	0	37	0	102	139
Total	0	0	0	0	37	0	102	139
Lake								
Segments	0	0	0					0
Bridges	0	0	0					0
Tunnels	0	0	0					0
Facilities		0	0	0	0	0	102	102

	Highway	Railway	Light Rail	Bus Facility	Ports	Ferries	Airport	Total
Total	0	0	0	0	0	0	102	102
Madera								
Segments	0	0	0					0
Bridges	0	0	0					0
Tunnels	0	0	0					0
Facilities		26	0	21	0	0	102	149
Total	0	26	0	21	0	0	102	149
Marin								
Segments	0	0	0					0
Bridges	1,637	0	0					1,637
Tunnels	3	0	0					3
Facilities		0	0	474	4,946	273	400	6,092
Total	1,641	0	0	474	4,946	273	400	7,733
Mariposa								
Segments	0	0	0					0
Bridges	0	0	0					0
Tunnels	0	0	0					0
Facilities		0	0	5	0	0	6	10
Total	0	0	0	5	0	0	6	11
Mendocino								
Segments	0	0	0					0
Bridges	0	0	0					0
Tunnels	0	0	0					0
Facilities		0	0	48	4	0	113	165

	Highway	Railway	Light Rail	Bus Facility	Ports	Ferries	Airport	Total
Total	0	0	0	48	4	0	113	165
Merced								
Segments	0	0	0					0
Bridges	48	0	0					48
Tunnels	0	0	0					0
Facilities		51	0	21	0	0	410	483
Total	48	51	0	21	0	0	410	531
Monterey								
Segments	0	0	0					0
Bridges	3	0	0					3
Tunnels	0	0	0					0
Facilities		26	0	152	110	0	336	623
Total	3	26	0	152	110	0	336	626
Napa								
Segments	0	0	0					0
Bridges	378	190	0					568
Tunnels	0	0	0					0
Facilities		0	0	251	1,266	0	1,696	3,212
Total	378	190	0	251	1,266	0	1,696	3,780
Nevada								
Segments	0	0	0					0
Bridges	0	0	0					0
Tunnels	0	0	0					0
Facilities		3	0	0	0	0	57	60

	Highway	Railway	Light Rail	Bus Facility	Ports	Ferries	Airport	Total
Total	0	3	0	0	0	0	57	60
Placer								
Segments	0	0	0					0
Bridges	9	0	0					9
Tunnels	0	0	0					0
Facilities		186	0	21	0	0	159	366
Total	9	186	0	21	0	0	159	376
Sacramento								
Segments	0	0	0					0
Bridges	8,663	145	0					8,808
Tunnels	0	0	0					0
Facilities		201	19,765	334	17,855	301	18,709	57,165
Total	8,663	346	19,765	334	17,855	301	18,709	65,973
San Benito								
Segments	0	0	0					0
Bridges	0	0	0					0
Tunnels	0	0	0					0
Facilities		0	0	0	0	0	102	102
Total	0	0	0	0	0	0	102	102
San Francisco								
Segments	0	0	0					0
Bridges	7,216	4	0					7,220
Tunnels	41	0	0					41
Facilities		0	199,835	381	15,689	356	1,773	218,034

	Highway	Railway	Light Rail	Bus Facility	Ports	Ferries	Airport	Total
Total	7,257	4	199,835	381	15,689	356	1,773	225,295
San Joaquin								
Segments	0	0	0					0
Bridges	15,923	1,743	0					17,666
Tunnels	0	0	0					0
Facilities		4,340	0	247	25,879	1,099	4,598	36,162
Total	15,923	6,083	0	247	25,879	1,099	4,598	53,828
San Mateo								
Segments	0	0	0					0
Bridges	9,467	14	0					9,481
Tunnels	8	0	0					8
Facilities		0	0	0	5,046	0	68,687	73,733
Total	9,475	14	0	0	5,046	0	68,687	83,222
Santa Clara								
Segments	0	0	0					0
Bridges	1,514	35	0					1,549
Tunnels	0	0	0					0
Facilities		437	29,749	122	1,438	0	15,805	47,552
Total	1,514	472	29,749	122	1,438	0	15,805	49,101
Santa Cruz								
Segments	0	0	0					0
Bridges	25	0	0					25
Tunnels	0	0	0					0
Facilities		0	0	45	37	0	257	339

	Highway	Railway	Light Rail	Bus Facility	Ports	Ferries	Airport	Total
Total	25	0	0	45	37	0	257	364
Sierra								
Segments	0	0	0					0
Bridges	0	0	0					0
Tunnels	0	0	0					0
Facilities		0	0	0	0	0	6	6
Total	0	0	0	0	0	0	6	6
Solano								
Segments	0	0	0					0
Bridges	20,727	9,085	0					29,812
Tunnels	0	0	0					0
Facilities		1,394	0	1,859	32,491	1,262	4,885	41,891
Total	20,727	10,480	0	1,859	32,491	1,262	4,885	71,703
Sonoma								
Segments	0	0	0					0
Bridges	472	93	0					566
Tunnels	0	0	0					0
Facilities		0	0	97	508	0	833	1,437
Total	472	93	0	97	508	0	833	2,003
Stanislaus								
Segments	0	0	0					0
Bridges	523	8	0					532
Tunnels	0	0	0					0
Facilities		655	0	183	0	0	983	1,821

	Highway	Railway	Light Rail	Bus Facility	Ports	Ferries	Airport	Total
Total	523	664	0	183	0	0	983	2,353
Sutter								
Segments	0	0	0					0
Bridges	53	1	0					54
Tunnels	0	0	0					0
Facilities		0	0	0	0	0	129	129
Total	53	1	0	0	0	0	129	182
Tuolumne								
Segments	0	0	0					0
Bridges	0	0	0					0
Tunnels	0	0	0					0
Facilities		0	0	0	0	0	153	153
Total	0	0	0	0	0	0	153	153
Yolo								
Segments	0	0	0					0
Bridges	5,693	55	0					5,748
Tunnels	0	0	0					0
Facilities		821	0	0	5,166	0	1,017	7,005
Total	5,693	876	0	0	5,166	0	1,017	12,753
Yuba								
Segments	0	0	0					0
Bridges	1	0	0					1
Tunnels	0	0	0					0
Facilities		0	0	22	0	0	102	124

	Highway	Railway	Light Rail	Bus Facility	Ports	Ferries	Airport	Total
Total	1	0	0	22	0	0	102	125
Total	257,918	74,889	257,634	4,585	182,241	5,100	171,920	954,287
Region Total	257,918	74,889	257,634	4,585	182,241	5,100	171,920	954,287

Totals only reflect data for those census tracts/blocks included in the user's study region and will reflect the entire county/state only if all of the census blocks for that county/states were selected at the time of study region creation.

Direct Economic Loss For Utilities

April 15, 2024

All values are in thousands of dollars

	Potable Water	Waste Water	Oil Systems	Natural Gas	Electric Power	Communication	Total
California							
Alameda							
<i>Facilities</i>	4,804	153,432	0	0	731,070	254	889,559
<i>Pipelines</i>	2,158	1,084	0	0			3,242
Total	6,962	154,516	0	0	731,070	254	892,801
Alpine							
<i>Facilities</i>	0	123	0	0	0	0	123
<i>Pipelines</i>	2	1	0	0			2
Total	2	124	0	0	0	0	125
Amador							
<i>Facilities</i>	0	123	0	0	12,522	0	12,645
<i>Pipelines</i>	24	12	0	0			36
Total	24	135	0	0	12,522	0	12,681
Butte							
<i>Facilities</i>	0	492	0	0	2,556	0	3,048

	Potable Water	Waste Water	Oil Systems	Natural Gas	Electric Power	Communication	Total
<i>Pipelines</i>	42	21	0	0			63
Total	42	513	0	0	2,556	0	3,111
Calaveras							
<i>Facilities</i>	28	492	0	0	25,137	1	25,658
<i>Pipelines</i>	52	26	0	0			78
Total	80	518	0	0	25,137	1	25,735
Colusa							
<i>Facilities</i>	0	369	0	75	6,525	0	6,969
<i>Pipelines</i>	33	16	0	0			49
Total	33	385	0	75	6,525	0	7,018
Contra Costa							
<i>Facilities</i>	19,496	330,165	128	0	5,329,712	421	5,679,922
<i>Pipelines</i>	14,631	7,349	0	0			21,980
Total	34,127	337,514	128	0	5,329,712	421	5,701,902
El Dorado							
<i>Facilities</i>	28	492	0	0	29,319	1	29,840
<i>Pipelines</i>	72	36	0	0			108
Total	100	528	0	0	29,319	1	29,948
Fresno							
<i>Facilities</i>	0	8	0	0	9,976	0	9,984
<i>Pipelines</i>	173	87	0	0			260

	Potable Water	Waste Water	Oil Systems	Natural Gas	Electric Power	Communication	Total
Total	173	95	0	0	9,976	0	10,244
Glenn							
<i>Facilities</i>	0	123	0	0	2	0	125
<i>Pipelines</i>	30	15	0	0			45
Total	30	138	0	0	2	0	171
Lake							
<i>Facilities</i>	56	0	0	0	5,226	1	5,283
<i>Pipelines</i>	50	25	0	0			75
Total	106	25	0	0	5,226	1	5,358
Madera							
<i>Facilities</i>	0	0	0	0	628	0	629
<i>Pipelines</i>	58	29	0	0			86
Total	58	29	0	0	628	0	715
Marin							
<i>Facilities</i>	348	23,757	0	0	770	24	24,899
<i>Pipelines</i>	78	39	0	0			117
Total	426	23,796	0	0	770	24	25,016
Mariposa							
<i>Facilities</i>	0	8	0	0	2,808	0	2,816
<i>Pipelines</i>	13	6	0	0			19
Total	13	14	0	0	2,808	0	2,835

	Potable Water	Waste Water	Oil Systems	Natural Gas	Electric Power	Communication	Total
Mendocino							
<i>Facilities</i>	0	133	0	0	99	0	232
<i>Pipelines</i>	48	24	0	0			72
Total	48	157	0	0	99	0	304
Merced							
<i>Facilities</i>	0	615	0	0	21,946	2	22,564
<i>Pipelines</i>	101	51	0	0			151
Total	101	665	0	0	21,946	2	22,715
Monterey							
<i>Facilities</i>	0	1,107	0	0	12,113	5	13,225
<i>Pipelines</i>	77	39	0	0			116
Total	77	1,145	0	0	12,113	5	13,341
Napa							
<i>Facilities</i>	0	22,548	0	0	11,727	17	34,292
<i>Pipelines</i>	135	68	0	0			203
Total	135	22,616	0	0	11,727	17	34,495
Nevada							
<i>Facilities</i>	0	740	0	0	2,222	1	2,963
<i>Pipelines</i>	39	20	0	0			59
Total	39	760	0	0	2,222	1	3,021
Placer							

	Potable Water	Waste Water	Oil Systems	Natural Gas	Electric Power	Communication	Total
<i>Facilities</i>	0	5,434	0	0	33,301	7	38,742
<i>Pipelines</i>	77	39	0	0			116
Total	77	5,472	0	0	33,301	7	38,858
Sacramento							
<i>Facilities</i>	0	51,035	0	0	168,809	339	220,184
<i>Pipelines</i>	1,575	791	0	0			2,365
Total	1,575	51,826	0	0	168,809	339	222,549
San Benito							
<i>Facilities</i>	0	246	0	0	0	1	246
<i>Pipelines</i>	31	16	0	0			47
Total	31	262	0	0	0	1	293
San Francisco							
<i>Facilities</i>	0	25,123	0	0	1,493	65	26,681
<i>Pipelines</i>	110	55	0	0			165
Total	110	25,178	0	0	1,493	65	26,847
San Joaquin							
<i>Facilities</i>	5,501	82,812	12	0	396,397	135	484,857
<i>Pipelines</i>	1,818	913	0	0			2,732
Total	7,319	83,725	12	0	396,397	135	487,589
San Mateo							
<i>Facilities</i>	0	45,831	0	0	9,831	60	55,723

	Potable Water	Waste Water	Oil Systems	Natural Gas	Electric Power	Communication	Total
<i>Pipelines</i>	253	127	0	0			380
Total	253	45,958	0	0	9,831	60	56,103
Santa Clara							
<i>Facilities</i>	1,357	13,245	0	0	143,896	33	158,531
<i>Pipelines</i>	455	229	0	0			684
Total	1,812	13,473	0	0	143,896	33	159,215
Santa Cruz							
<i>Facilities</i>	0	492	0	0	65	1	558
<i>Pipelines</i>	43	22	0	0			65
Total	43	514	0	0	65	1	623
Sierra							
<i>Facilities</i>	0	0	0	0	10	0	10
<i>Pipelines</i>	10	5	0	0			15
Total	10	5	0	0	10	0	25
Solano							
<i>Facilities</i>	0	168,441	30	0	2,131,109	159	2,299,739
<i>Pipelines</i>	4,274	2,147	0	0			6,421
Total	4,274	170,588	30	0	2,131,109	159	2,306,160
Sonoma							
<i>Facilities</i>	0	12,739	0	0	40,012	14	52,765
<i>Pipelines</i>	181	91	0	0			272

	Potable Water	Waste Water	Oil Systems	Natural Gas	Electric Power	Communication	Total
Total	181	12,830	0	0	40,012	14	53,037
Stanislaus							
<i>Facilities</i>	0	6,097	0	0	66,941	43	73,081
<i>Pipelines</i>	243	122	0	0			365
Total	243	6,220	0	0	66,941	43	73,447
Sutter							
<i>Facilities</i>	0	246	0	0	6,808	6	7,060
<i>Pipelines</i>	55	28	0	0			83
Total	55	273	0	0	6,808	6	7,142
Tuolumne							
<i>Facilities</i>	0	123	0	0	17,126	1	17,250
<i>Pipelines</i>	42	21	0	0			62
Total	42	144	0	0	17,126	1	17,312
Yolo							
<i>Facilities</i>	0	14,769	0	0	9,596	36	24,401
<i>Pipelines</i>	279	140	0	0			419
Total	279	14,909	0	0	9,596	36	24,820
Yuba							
<i>Facilities</i>	0	492	0	0	15,532	0	16,024
<i>Pipelines</i>	26	13	0	0			40
Total	26	505	0	0	15,532	0	16,064

	Potable Water	Waste Water	Oil Systems	Natural Gas	Electric Power	Communication	Total
Total	58,906	975,556	171	75	9,245,283	1,628	10,281,620
Region Total	58,906	975,556	171	75	9,245,283	1,628	10,281,620

Totals only reflect data for those census tracts/blocks included in the user's study region and will reflect the entire county/state only if all of the census blocks for that county/states were selected at the time of study region creation.

Hazus Quick Assessment Report

Estimated Economic Loss (\$ Billions)

Category	Description	Range
General Building Stock	Building Damage	9.10 - 36.40
	Building Contents	1.10 - 4.50
	Business Interruption	1.50 - 5.80
Infrastructure	Lifelines Damage	
Total		14.40 - 57.60

Preliminary Damage Assessment (PDA) Estimates

Description	Residential	Commercial	Other	Total
Affected	348,400	25,500	13,200	387,100
Minor	48,000	8,600	4,900	61,500
Major	3,100	1,200	850	5,150
Destroyed	670	300	230	1,200
Total	400,170	35,600	19,180	454,950

Estimated Casualties : Night Time

Severity Level	Description	# Persons
Level 1	Medical Aid	700 - 3,000
Level 2	Hospital Care	70 - 300
Level 3	Life-threatening	0 - 20
Level 4	Fatalities	10 - 30

Estimated Shelter Needs

Type	Households	People
Displaced Households	1,900 - 8,000	4,750 - 20,000
Public Shelter	870	2,180

Comments :

*Hazus damage estimates are presented using FEMA Preliminary Damage Assessment (PDA) categories. These estimates should be used for planning purposes and may not reflect actual observed damages from the PDA process.

Disclaimer:

The estimates of social and economic impacts contained in this report were produced using HAZUS loss estimation methodology software which is based on current scientific and engineering knowledge. There are uncertainties inherent in any loss estimation technique. Therefore, there may be significant differences between the modeled results contained in this report and the actual social and economic losses following a specific earthquake. These results can be improved by using enhanced inventory, geotechnical, and observed ground motion data.

Earthquake Information

Location :

Origin Time:

Magnitude : 7.12

Epicenter Latitude/Longitude :
/

Depth & Type : /U

Name :
NA

Ground Motion /Attenuation :

Maximum PGA: 1.00

Information Sources:

Comments :

Population and Building Exposure

Population: 14,583,907

Building Exposure : (\$ Millions)

Residential	1,849,796
Commercial	496,631
Other	432,777
Total	2,779,204

Counties : See Appendix

Major Metro Area :

Hazus Quick Assessment Report

Estimated Economic Loss (\$ Billions)

Category	Description	Range
General Building Stock	Building Damage	9.10 - 36.40
	Building Contents	1.10 - 4.50
	Business Interruption	1.50 - 5.80
Infrastructure	Lifelines Damage	
Total		14.40 - 57.60

Preliminary Damage Assessment (PDA) Estimates

Description	Residential	Commercial	Other	Total
Affected	348,400	25,500	13,200	387,100
Minor	48,000	8,600	4,900	61,500
Major	3,100	1,200	850	5,150
Destroyed	670	300	230	1,200
Total	400,170	35,600	19,180	454,950

Estimated Casualties : Day Time

Severity Level	Description	# Persons
Level 1	Medical Aid	1,400 - 5,000
Level 2	Hospital Care	200 - 900
Level 3	Life-threatening	30 - 110
Level 4	Fatalities	50 - 200

Estimated Shelter Needs

Type	Households	People
Displaced Households	1,900 - 8,000	4,750 - 20,000
Public Shelter	870	2,180

Comments :

*Hazus damage estimates are presented using FEMA Preliminary Damage Assessment (PDA) categories. These estimates should be used for planning purposes and may not reflect actual observed damages from the PDA process.

Disclaimer:

The estimates of social and economic impacts contained in this report were produced using HAZUS loss estimation methodology software which is based on current scientific and engineering knowledge. There are uncertainties inherent in any loss estimation technique. Therefore, there may be significant differences between the modeled results contained in this report and the actual social and economic losses following a specific earthquake. These results can be improved by using enhanced inventory, geotechnical, and observed ground motion data.

Earthquake Information

Location :

Origin Time:

Magnitude : 7.12

Epicenter Latitude/Longitude :
/

Depth & Type : /U

Name :
NA

Ground Motion /Attenuation :

Maximum PGA: 1.00

Information Sources:

Comments :

Population and Building Exposure

Population: 14,583,907

Building Exposure : (\$ Millions)

Residential	1,849,796
Commercial	496,631
Other	432,777
Total	2,779,204

Counties : See Appendix

Major Metro Area :

Hazus Quick Assessment Report

Estimated Economic Loss (\$ Billions)

Category	Description	Range
General Building Stock	Building Damage	9.10 - 36.40
	Building Contents	1.10 - 4.50
	Business Interruption	1.50 - 5.80
Infrastructure	Lifelines Damage	
Total		14.40 - 57.60

Preliminary Damage Assessment (PDA) Estimates

Description	Residential	Commercial	Other	Total
Affected	348,400	25,500	13,200	387,100
Minor	48,000	8,600	4,900	61,500
Major	3,100	1,200	850	5,150
Destroyed	670	300	230	1,200
Total	400,170	35,600	19,180	454,950

Estimated Casualties : Commute Time

Severity Level	Description	# Persons
Level 1	Medical Aid	1,000 - 4,000
Level 2	Hospital Care	200 - 800
Level 3	Life-threatening	80 - 300
Level 4	Fatalities	50 - 180

Estimated Shelter Needs

Type	Households	People
Displaced Households	1,900 - 8,000	4,750 - 20,000
Public Shelter	870	2,180

Comments :

*Hazus damage estimates are presented using FEMA Preliminary Damage Assessment (PDA) categories. These estimates should be used for planning purposes and may not reflect actual observed damages from the PDA process.

Disclaimer:

The estimates of social and economic impacts contained in this report were produced using HAZUS loss estimation methodology software which is based on current scientific and engineering knowledge. There are uncertainties inherent in any loss estimation technique. Therefore, there may be significant differences between the modeled results contained in this report and the actual social and economic losses following a specific earthquake. These results can be improved by using enhanced inventory, geotechnical, and observed ground motion data.

Earthquake Information

Location :

Origin Time:

Magnitude : 7.12

Epicenter Latitude/Longitude :
/

Depth & Type : /U

Name :
NA

Ground Motion /Attenuation :

Maximum PGA: 1.00

Information Sources:

Comments :

Population and Building Exposure

Population: 14,583,907

Building Exposure : (\$ Millions)

Residential	1,849,796
Commercial	496,631
Other	432,777
Total	2,779,204

Counties : See Appendix

Major Metro Area :

Shelter Summary Report

April 15, 2024

	# of Displaced Households	# of People Needing Short Term Shelter
California		
Alameda	881	476
Alpine	0	0
Amador	0	0
Butte	0	0
Calaveras	0	0
Colusa	0	0
Contra Costa	2,371	1,371
El Dorado	0	0
Fresno	0	0
Glenn	0	0
Lake	0	0
Madera	0	0
Marin	0	0
Mariposa	0	0
Mendocino	0	0
Merced	0	0
Monterey	0	0
Napa	7	4
Nevada	0	0
Placer	0	0
Sacramento	38	20
San Benito	0	0
San Francisco	155	64
San Joaquin	181	122
San Mateo	8	4
Santa Clara	5	3
Santa Cruz	0	0
Sierra	0	0
Solano	211	109
Sonoma	0	0
Stanislaus	1	1
Sutter	0	0

	# of Displaced Households	# of People Needing Short Term Shelter
Tuolumne	0	0
Yolo	2	1
Yuba	0	0
Total	3,862	2,175
Region Total	3,862	2,175

Totals only reflect data for those census tracts/blocks included in the user's study region and will reflect the entire county/state only if all of the census blocks for that county/states were selected at the time of study region creation.