
Hazus: Earthquake Global Risk Report

Region Name: GreatValley04a

Earthquake Scenario: greatvalley04atroutc_m6p6_se

Print Date: May 24, 2024

Disclaimer:

Totals only reflect data for those census tracts/blocks included in the user's study region.

The estimates of social and economic impacts contained in this report were produced using Hazus loss estimation methodology software which is based on current scientific and engineering knowledge. There are uncertainties inherent in any loss estimation technique. Therefore, there may be significant differences between the modeled results contained in this report and the actual social and economic losses following a specific earthquake. These results can be improved by using enhanced inventory, geotechnical, and observed ground motion data.

Table of Contents

Section	Page #
General Description of the Region	3
Building and Lifeline Inventory	4
Building Inventory	
Critical Facility Inventory	
Transportation and Utility Lifeline Inventory	
Earthquake Scenario Parameters	7
Direct Earthquake Damage	8
Buildings Damage	
Essential Facilities Damage	
Transportation and Utility Lifeline Damage	
Induced Earthquake Damage	14
Fire Following Earthquake	
Debris Generation	
Social Impact	15
Shelter Requirements	
Casualties	
Economic Loss	17
Building Related Losses	
Transportation and Utility Lifeline Losses	
Appendix A: County Listing for the Region	
Appendix B: Regional Population and Building Value Data	

General Description of the Region

Hazus-MH is a regional earthquake loss estimation model that was developed by the Federal Emergency Management Agency (FEMA) and the National Institute of Building Sciences. The primary purpose of Hazus is to provide a methodology and software application to develop multi-hazard losses at a regional scale. These loss estimates would be used primarily by local, state and regional officials to plan and stimulate efforts to reduce risks from multi-hazards and to prepare for emergency response and recovery.

The earthquake loss estimates provided in this report was based on a region that includes 27 county(ies) from the following state(s):

California

Note:

Appendix A contains a complete listing of the counties contained in the region.

The geographical size of the region is 31,135.65 square miles and contains 2,877 census tracts. There are over 4,466 thousand households in the region which has a total population of 12,570,938 people. The distribution of population by Total Region and County is provided in Appendix B.

There are an estimated 3,870 thousand buildings in the region with a total building replacement value (excluding contents) of (millions of dollars). Approximately 90.00 % of the buildings (and % of the building value) are associated with residential housing.

The replacement value of the transportation and utility lifeline systems is estimated to be 200,017 and 122,635 (millions of dollars) , respectively.

Building and Lifeline Inventory

Building Inventory

Hazus estimates that there are 3,870 thousand buildings in the region which have an aggregate total replacement value of (millions of dollars) . Appendix B provides a general distribution of the building value by Total Region and County.

In terms of building construction types found in the region, wood frame construction makes up 87% of the building inventory. The remaining percentage is distributed between the other general building types.

Critical Facility Inventory

Hazus breaks critical facilities into two (2) groups: essential facilities and high potential loss facilities (HPL). Essential facilities include hospitals, medical clinics, schools, fire stations, police stations and emergency operations facilities. High potential loss facilities include dams, levees, military installations, nuclear power plants and hazardous material sites.

For essential facilities, there are 208 hospitals in the region with a total bed capacity of 31,255 beds. There are 4,530 schools, 1,211 fire stations, 397 police stations and 72 emergency operation facilities. With respect to high potential loss facilities (HPL), there are no dams identified within the inventory. The inventory also includes no hazardous material sites, no military installations and no nuclear power plants.

Transportation and Utility Lifeline Inventory

Within Hazus, the lifeline inventory is divided between transportation and utility lifeline systems. There are seven (7) transportation systems that include highways, railways, light rail, bus, ports, ferry and airports. There are six (6) utility systems that include potable water, wastewater, natural gas, crude & refined oil, electric power and communications. The lifeline inventory data are provided in Tables 1 and 2.

The total value of the lifeline inventory is over 322,652.00 (millions of dollars). This inventory includes over 7,453.35 miles of highways, 9,114 bridges, 160,134.76 miles of pipes.

Table 1: Transportation System Lifeline Inventory

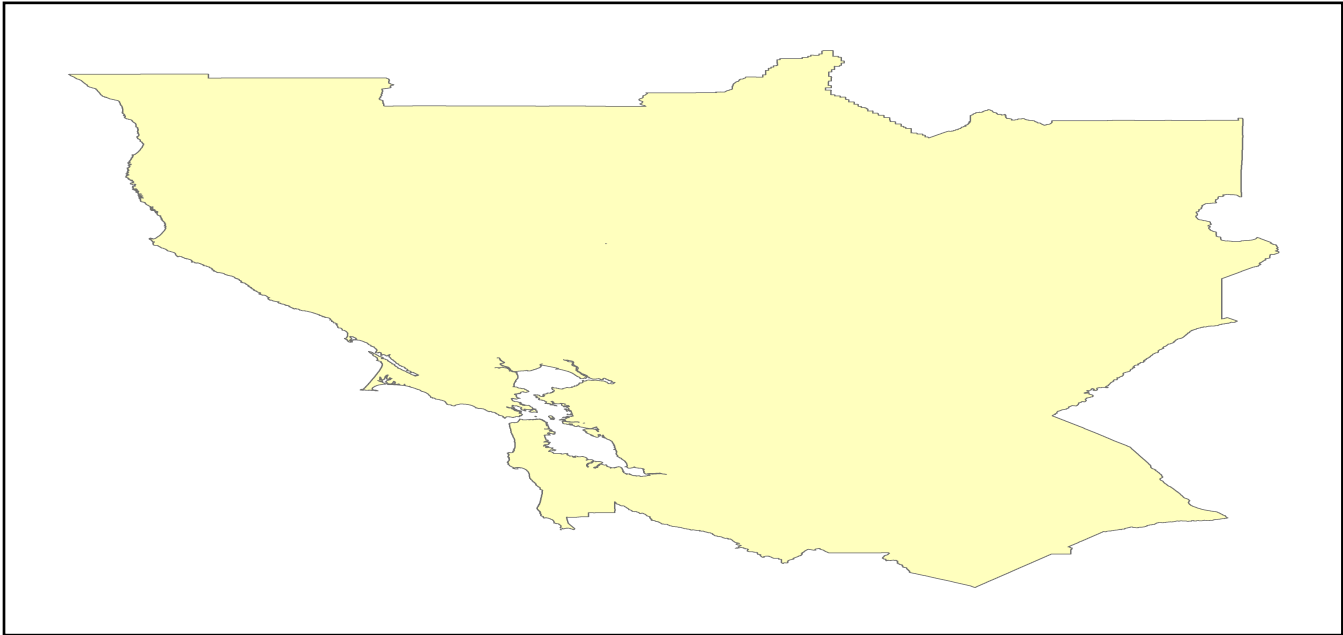
System	Component	# Locations/ # Segments	Replacement value (millions of dollars)
Highway	Bridges	9,114	51515.5388
	Segments	5,771	68046.0523
	Tunnels	40	851.2123
	Subtotal		120412.8034
Railways	Bridges	1,376	7829.4400
	Facilities	70	186.4100
	Segments	2,695	56906.6337
	Tunnels	3	1.8495
	Subtotal		64924.3332
Light Rail	Bridges	112	15.3529
	Facilities	255	4154.0000
	Segments	15	5403.2756
	Tunnels	0	0.0000
	Subtotal		9572.6285
Bus	Facilities	28	64.5548
	Subtotal		64.5548
Ferry	Facilities	25	33.2750
	Subtotal		33.2750
Port	Facilities	358	1364.6404
	Subtotal		1364.6404
Airport	Facilities	79	2550.5813
	Runways	116	1095.0121
	Subtotal		3645.5934
		Total	200,017.80

Table 2: Utility System Lifeline Inventory

System	Component	# Locations / Segments	Replacement value (millions of dollars)
Potable Water	Distribution Lines	NA	3181.7189
	Facilities	22	864.4680
	Pipelines	0	0.0000
		Subtotal	4046.1869
Waste Water	Distribution Lines	NA	1909.0313
	Facilities	158	27168.3844
	Pipelines	0	0.0000
		Subtotal	29077.4157
Natural Gas	Distribution Lines	NA	1272.6875
	Facilities	1	41.2435
	Pipelines	844	11181.9134
		Subtotal	12495.8444
Oil Systems	Facilities	16	1.8880
	Pipelines	0	0.0000
		Subtotal	1.8880
Electrical Power	Facilities	251	76980.3037
		Subtotal	76980.3037
Communication	Facilities	289	34.1020
		Subtotal	34.1020
	Total		122,635.70

Earthquake Scenario

Hazus uses the following set of information to define the earthquake parameters used for the earthquake loss estimate provided in this report.



Scenario Name	greatvalley04atroutc_m6p6_se
Type of Earthquake	User-defined
Fault Name	NA
Historical Epicenter ID #	NA
Probabilistic Return Period	NA
Longitude of Epicenter	NA
Latitude of Epicenter	NA
Earthquake Magnitude	6.60
Depth (km)	NA
Rupture Length (Km)	NA
Rupture Orientation (degrees)	NA
Attenuation Function	NA

Direct Earthquake Damage

Building Damage

Hazus estimates that about 3,733 buildings will be at least moderately damaged. This is over 0.00 % of the buildings in the region. There are an estimated 4 buildings that will be damaged beyond repair. The definition of the 'damage states' is provided in Volume 1: Chapter 5 of the Hazus technical manual. Table 3 below summarizes the expected damage by general occupancy for the buildings in the region. Table 4 below summarizes the expected damage by general building type.

Damage Categories by General Occupancy Type

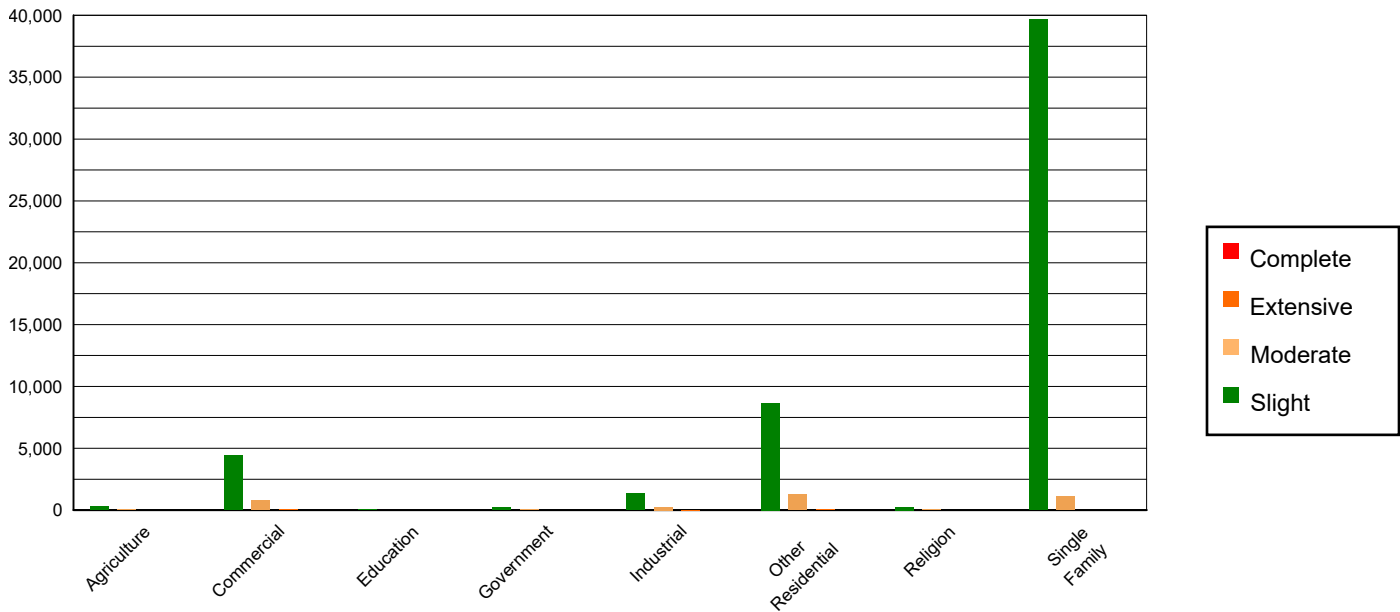


Table 3: Expected Building Damage by Occupancy

	None		Slight		Moderate		Extensive		Complete	
	Count	(%)	Count	(%)	Count	(%)	Count	(%)	Count	(%)
Agriculture	21436.48	0.56	283.34	0.52	64.69	1.80	5.22	4.05	0.26	5.81
Commercial	242008.16	6.35	4445.08	8.10	770.44	21.40	43.09	33.45	2.23	48.89
Education	7821.06	0.21	59.41	0.11	9.79	0.27	0.73	0.56	0.02	0.33
Government	20781.03	0.55	209.11	0.38	29.04	0.81	0.81	0.63	0.01	0.13
Industrial	67241.01	1.76	1316.46	2.40	255.13	7.09	13.79	10.70	0.62	13.66
Other Residential	469082.25	12.31	8671.95	15.79	1296.02	36.00	58.76	45.60	1.02	22.30
Religion	13879.82	0.36	249.54	0.45	42.67	1.19	3.56	2.77	0.40	8.87
Single Family	2969337.31	77.90	39668.81	72.25	1132.00	31.45	2.88	2.23	0.00	0.01
Total	3,811,587		54,904		3,600		129		5	

Table 4: Expected Building Damage by Building Type (All Design Levels)

	None		Slight		Moderate		Extensive		Complete	
	Count	(%)	Count	(%)	Count	(%)	Count	(%)	Count	(%)
Wood	3309516.33	86.83	43829.71	79.83	1177.97	32.72	2.63	2.04	0.02	0.51
Steel	85418.58	2.24	1951.69	3.55	500.02	13.89	33.56	26.05	1.53	33.56
Concrete	97365.11	2.55	1655.35	3.02	278.35	7.73	21.97	17.06	1.00	22.00
Precast	48696.51	1.28	1170.60	2.13	249.07	6.92	7.77	6.03	0.08	1.76
RM	153018.69	4.01	1070.87	1.95	176.84	4.91	5.10	3.96	0.01	0.30
URM	40604.00	1.07	2281.67	4.16	340.99	9.47	17.69	13.73	1.63	35.78
MH	76967.90	2.02	2943.80	5.36	876.52	24.35	40.11	31.13	0.28	6.09
Total	3,811,587		54,904		3,600		129		5	

*Note:

- RM Reinforced Masonry
- URM Unreinforced Masonry
- MH Manufactured Housing

Essential Facility Damage

Before the earthquake, the region had 31,255 hospital beds available for use. On the day of the earthquake, the model estimates that only 30,599 hospital beds (98.00%) are available for use by patients already in the hospital and those injured by the earthquake. After one week, 100.00% of the beds will be back in service. By 30 days, 100.00% will be operational.

Table 5: Expected Damage to Essential Facilities

Classification	Total	# Facilities		
		At Least Moderate Damage > 50%	Complete Damage > 50%	With Functionality > 50% on day 1
Hospitals	208	0	0	207
Schools	4,530	3	0	4,510
EOCs	72	0	0	72
PoliceStations	397	0	0	396
FireStations	1,211	0	0	1,200

Transportation Lifeline Damage

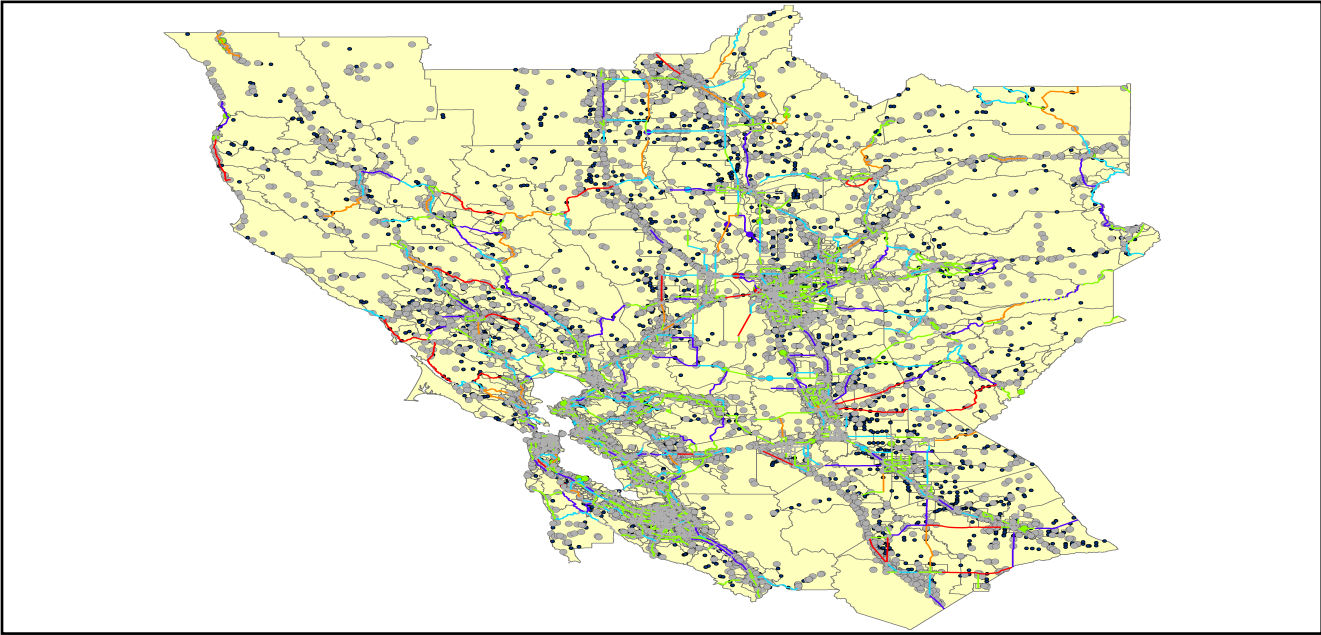


Table 6: Expected Damage to the Transportation Systems

System	Component	Number of Locations_				
		Locations/ Segments	With at Least Mod. Damage	With Complete Damage	With Functionality > 50 %	
					After Day 1	After Day 7
Highway	Segments	5,771	0	0	5,771	5,771
	Bridges	9,114	0	0	9,114	9,114
	Tunnels	40	0	0	40	40
Railways	Segments	2,695	0	0	2,695	2,695
	Bridges	1,376	0	0	1,376	1,376
	Tunnels	3	0	0	3	3
	Facilities	70	0	0	70	70
Light Rail	Segments	15	0	0	15	15
	Bridges	112	0	0	112	112
	Tunnels	0	0	0	0	0
	Facilities	255	0	0	255	255
Bus	Facilities	28	0	0	28	28
Ferry	Facilities	25	0	0	25	25
Port	Facilities	358	0	0	358	358
Airport	Facilities	79	0	0	79	79
	Runways	116	0	0	116	116

Table 6 provides damage estimates for the transportation system.

Note: Roadway segments, railroad tracks and light rail tracks are assumed to be damaged by ground failure only. If ground failure maps are not provided, damage estimates to these components will not be computed.

Tables 7-9 provide information on the damage to the utility lifeline systems. Table 7 provides damage to the utility system facilities. Table 8 provides estimates on the number of leaks and breaks by the pipelines of the utility systems. For electric power and potable water, Hazus performs a simplified system performance analysis. Table 9 provides a summary of the system performance information.

Table 7 : Expected Utility System Facility Damage

System	# of Locations				
	Total #	With at Least Moderate Damage	With Complete Damage	with Functionality > 50 %	
				After Day 1	After Day 7
Potable Water	22	0	0	22	22
Waste Water	158	0	0	157	158
Natural Gas	1	0	0	1	1
Oil Systems	16	0	0	16	16
Electrical Power	251	4	0	250	251
Communication	289	0	0	289	289

Table 8 : Expected Utility System Pipeline Damage (Site Specific)

System	Total Pipelines Length (miles)	Number of Leaks	Number of Breaks
Potable Water	98,851	678	170
Waste Water	59,311	341	85
Natural Gas	1,973	0	0
Oil	0	0	0

Table 9: Expected Potable Water and Electric Power System Performance

	Total # of Households	Number of Households without Service				
		At Day 1	At Day 3	At Day 7	At Day 30	At Day 90
Potable Water	4,466,617	35	0	0	0	0
Electric Power		3,180	1,842	646	40	5

Induced Earthquake Damage

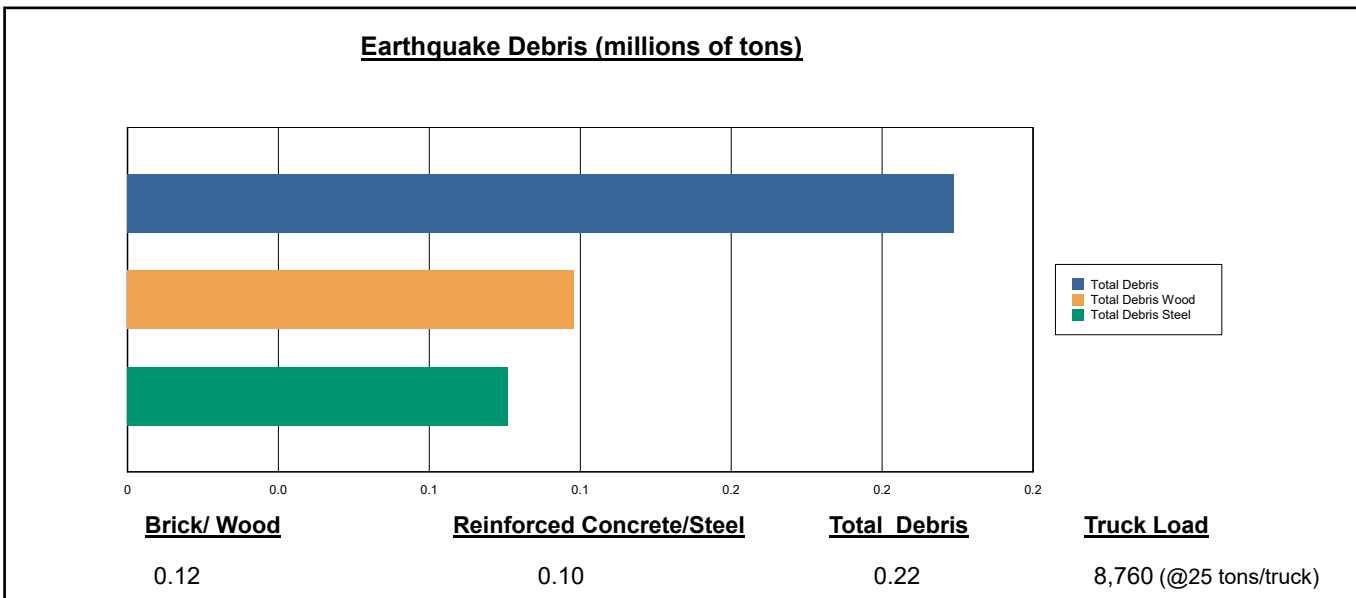
Fire Following Earthquake

Fires often occur after an earthquake. Because of the number of fires and the lack of water to fight the fires, they can often burn out of control. Hazus uses a Monte Carlo simulation model to estimate the number of ignitions and the amount of burnt area. For this scenario, the model estimates that there will be 16 ignitions that will burn about 0.16 sq. mi (0.00 % of the region's total area.) The model also estimates that the fires will displace about 1,476 people and burn about 166 (millions of dollars) of building value.

Debris Generation

Hazus estimates the amount of debris that will be generated by the earthquake. The model breaks the debris into two general categories: a) Brick/Wood and b) Reinforced Concrete/Steel. This distinction is made because of the different types of material handling equipment required to handle the debris.

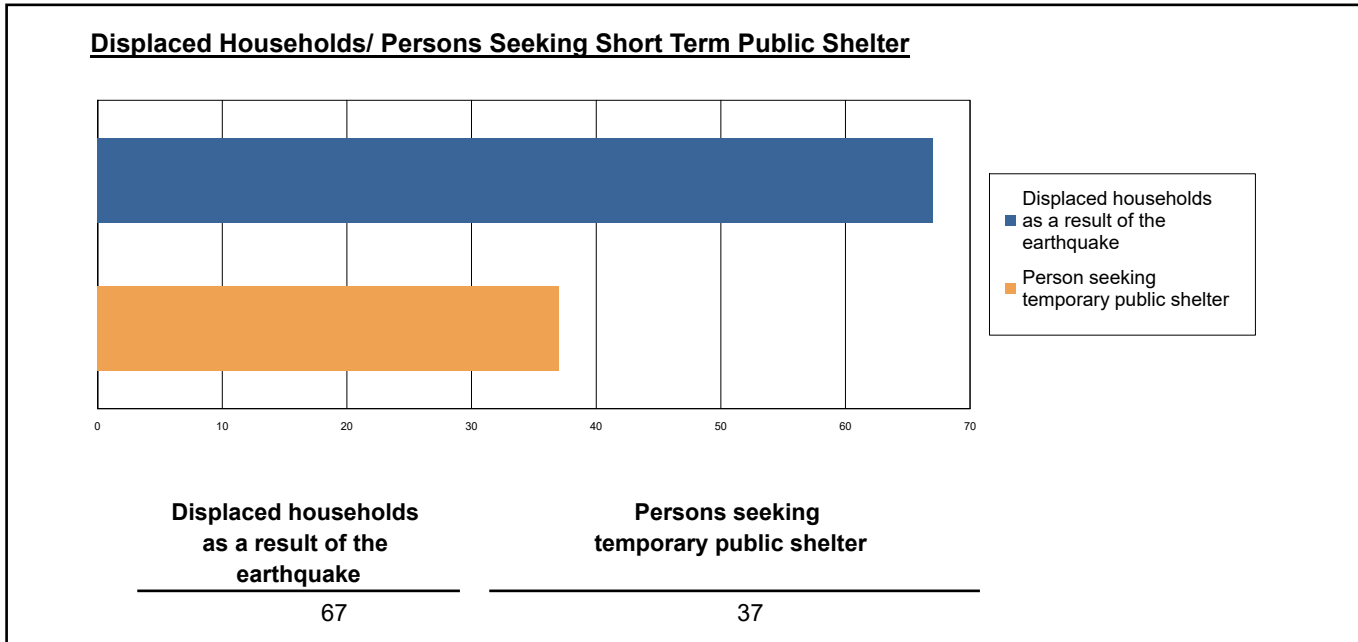
The model estimates that a total of 219,000 tons of debris will be generated. Of the total amount, Brick/Wood comprises 54.00% of the total, with the remainder being Reinforced Concrete/Steel. If the debris tonnage is converted to an estimated number of truckloads, it will require 8,760 truckloads (@25 tons/truck) to remove the debris generated by the earthquake.



Social Impact

Shelter Requirement

Hazus estimates the number of households that are expected to be displaced from their homes due to the earthquake and the number of displaced people that will require accommodations in temporary public shelters. The model estimates 67 households to be displaced due to the earthquake. Of these, 37 people (out of a total population of 12,570,938) will seek temporary shelter in public shelters.



Casualties

Hazus estimates the number of people that will be injured and killed by the earthquake. The casualties are broken down into four (4) severity levels that describe the extent of the injuries. The levels are described as follows;

- Severity Level 1: Injuries will require medical attention but hospitalization is not needed.
- Severity Level 2: Injuries will require hospitalization but are not considered life-threatening
- Severity Level 3: Injuries will require hospitalization and can become life threatening if not promptly treated.
- Severity Level 4: Victims are killed by the earthquake.

The casualty estimates are provided for three (3) times of day: 2:00 AM, 2:00 PM and 5:00 PM. These times represent the periods of the day that different sectors of the community are at their peak occupancy loads. The 2:00 AM estimate considers that the residential occupancy load is maximum, the 2:00 PM estimate considers that the educational, commercial and industrial sector loads are maximum and 5:00 PM represents peak commute time.

Table 10 provides a summary of the casualties estimated for this earthquake

Table 10: Casualty Estimates

		Level 1	Level 2	Level 3	Level 4
2 AM	Commercial	1.56	0.11	0.00	0.01
	Commuting	0.01	0.01	0.01	0.00
	Educational	0.00	0.00	0.00	0.00
	Hotels	0.07	0.00	0.00	0.00
	Industrial	1.48	0.10	0.00	0.00
	Other-Residential	43.79	2.12	0.03	0.05
	Single Family	64.56	1.04	0.00	0.00
	Total	111	3	0	0
2 PM	Commercial	97.89	6.82	0.27	0.50
	Commuting	0.05	0.07	0.12	0.02
	Educational	22.68	1.19	0.03	0.04
	Hotels	0.01	0.00	0.00	0.00
	Industrial	10.80	0.74	0.02	0.03
	Other-Residential	14.08	0.71	0.01	0.02
	Single Family	18.62	0.33	0.00	0.00
	Total	164	10	0	1
5 PM	Commercial	62.64	4.41	0.18	0.33
	Commuting	1.07	1.39	2.40	0.46
	Educational	4.08	0.12	0.00	0.00
	Hotels	0.02	0.00	0.00	0.00
	Industrial	6.75	0.46	0.01	0.02
	Other-Residential	15.87	0.79	0.01	0.02
	Single Family	23.15	0.40	0.00	0.00
	Total	114	8	3	1

Economic Loss

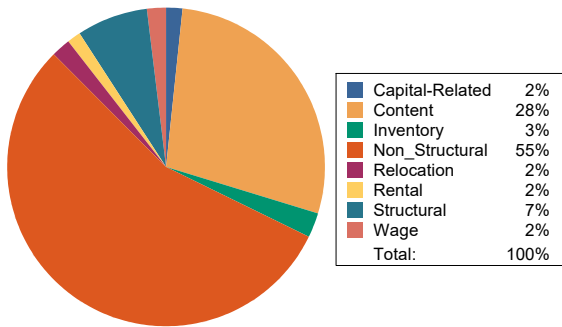
The total economic loss estimated for the earthquake is 5,059.62 (millions of dollars), which includes building and lifeline related losses based on the region's available inventory. The following three sections provide more detailed information about these losses.

Building-Related Losses

The building losses are broken into two categories: direct building losses and business interruption losses. The direct building losses are the estimated costs to repair or replace the damage caused to the building and its contents. The business interruption losses are the losses associated with inability to operate a business because of the damage sustained during the earthquake. Business interruption losses also include the temporary living expenses for those people displaced from their homes because of the earthquake.

The total building-related losses were 3,205.50 (millions of dollars); 7 % of the estimated losses were related to the business interruption of the region. By far, the largest loss was sustained by the residential occupancies which made up over 44 % of the total loss. Table 11 below provides a summary of the losses associated with the building damage.

Earthquake Losses by Loss Type (\$ millions)



Earthquake Losses by Occupancy Type (\$ millions)

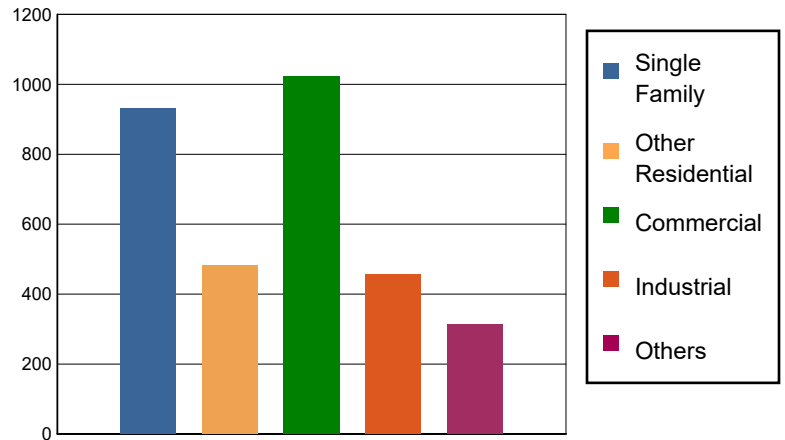


Table 11: Building-Related Economic Loss Estimates
(Millions of dollars)

Category	Area	Single Family	Other Residential	Commercial	Industrial	Others	Total
Income Losses							
	Wage	0.0000	2.1449	50.8960	2.2288	6.8576	62.1273
	Capital-Related	0.0000	0.9118	45.3160	1.3623	1.5140	49.1041
	Rental	4.5643	12.4192	28.6257	1.5775	2.1889	49.3756
	Relocation	7.8556	6.8246	27.8867	7.2507	10.1946	60.0122
	Subtotal	12.4199	22.3005	152.7244	12.4193	20.7551	220.6192
Capital Stock Losses							
	Structural	81.9615	31.6237	66.5927	27.8925	21.0608	229.1312
	Non_Structural	602.6697	324.3106	455.5512	227.6752	158.5610	1,768.7677
	Content	234.6380	102.7031	295.0426	162.9943	106.0511	901.4291
	Inventory	0.0000	0.0000	52.2553	25.5364	7.7565	85.5482
	Subtotal	919.2692	458.6374	869.4418	444.0984	293.4294	2984.8762
	Total	931.69	480.94	1022.17	456.52	314.18	3205.50

Transportation and Utility Lifeline Losses

For the transportation and utility lifeline systems, Hazus computes the direct repair cost for each component only. There are no losses computed by Hazus for business interruption due to lifeline outages. Tables 12 & 13 provide a detailed breakdown in the expected lifeline losses.

Table 12: Transportation System Economic Losses
(Millions of dollars)

System	Component	Inventory Value	Economic Loss	Loss Ratio (%)
Highway	Segments	68046.0523	0.0000	0.00
	Bridges	51515.5388	16.6286	0.03
	Tunnels	851.2123	0.0007	0.00
	Subtotal	120412.8034	16.6293	
Railways	Segments	56906.6337	0.0000	0.00
	Bridges	7829.4400	0.4822	0.01
	Tunnels	1.8495	0.0000	0.00
	Facilities	186.4100	4.1745	2.24
	Subtotal	64924.3332	4.6567	
Light Rail	Segments	5403.2756	0.0000	0.00
	Bridges	15.3529	0.0000	0.00
	Tunnels	0.0000	0.0000	0.00
	Facilities	4154.0000	44.2433	1.07
	Subtotal	9572.6285	44.2433	
Bus	Facilities	64.5548	1.5811	2.45
	Subtotal	64.5548	1.5811	
Ferry	Facilities	33.2750	0.9634	2.90
	Subtotal	33.2750	0.9634	
Port	Facilities	1364.6404	40.0769	2.94
	Subtotal	1364.6404	40.0769	
Airport	Facilities	2550.5813	56.1924	2.20
	Runways	1095.0121	0.0000	0.00
	Subtotal	3645.5934	56.1924	
Total		200,017.83	164.34	

Table 13: Utility System Economic Losses

(Millions of dollars)

System	Component	Inventory Value	Economic Loss	Loss Ratio (%)
Potable Water	Pipelines	0.0000	0.0000	0.00
	Facilities	864.4680	1.4945	0.17
	Distribution Lines	3181.7189	3.0522	0.10
	Subtotal	4046.1869	4.5467	
Waste Water	Pipelines	0.0000	0.0000	0.00
	Facilities	27168.3844	176.9143	0.65
	Distribution Lines	1909.0313	1.5332	0.08
	Subtotal	29077.4157	178.4475	
Natural Gas	Pipelines	11181.9134	0.0000	0.00
	Facilities	41.2435	0.0749	0.18
	Distribution Lines	1272.6875	0.5253	0.04
	Subtotal	12495.8444	0.6002	
Oil Systems	Pipelines	0.0000	0.0000	0.00
	Facilities	1.8880	0.0138	0.73
	Subtotal	1.8880	0.0138	
Electrical Power	Facilities	76980.3037	1505.8320	1.96
	Subtotal	76980.3037	1505.8320	
Communication	Facilities	34.1020	0.3381	0.99
	Subtotal	34.1020	0.3381	
	Total	122,635.74	1,689.78	

Appendix A: County Listing for the Region

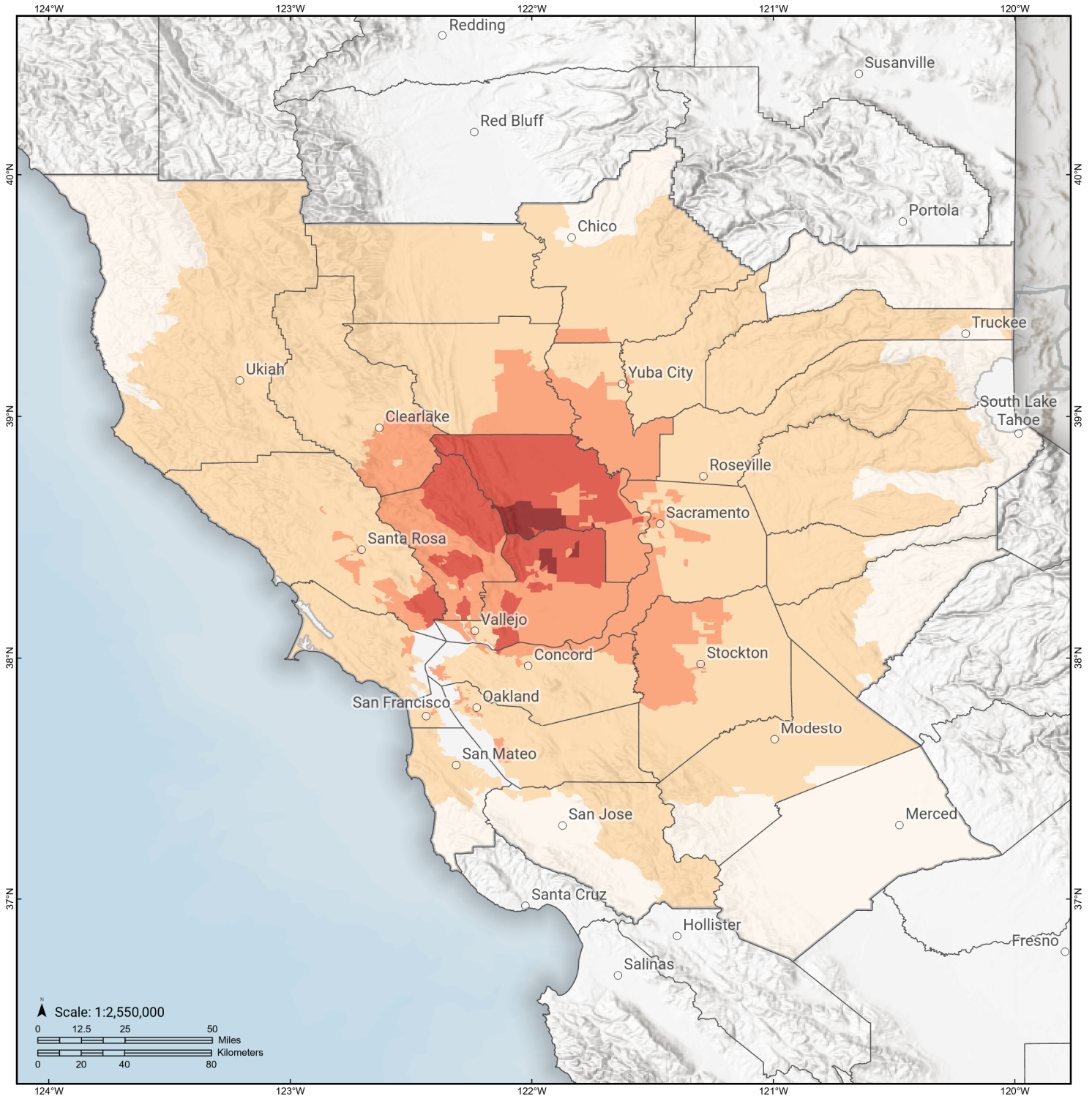
Alameda,CA
Amador,CA
Butte,CA
Calaveras,CA
Colusa,CA
Contra Costa,CA
El Dorado,CA
Glenn,CA
Lake,CA
Marin,CA
Mendocino,CA
Merced,CA
Napa,CA
Nevada,CA
Placer,CA
Sacramento,CA
San Francisco,CA
San Joaquin,CA
San Mateo,CA
Santa Clara,CA
Sierra,CA
Solano,CA
Sonoma,CA
Stanislaus,CA
Sutter,CA
Yolo,CA
Yuba,CA

Appendix B: Regional Population and Building Value Data

State	County Name	Population	Building Value (millions of dollars)		
			Residential	Non-Residential	Total
California	Alameda	1,682,353	209,951	122,639	332,590
	Amador	40,474	5,608	2,517	8,125
	Butte	211,632	25,875	16,639	42,514
	Calaveras	45,292	8,305	4,893	13,199
	Colusa	21,839	2,244	2,024	4,268
	Contra Costa	1,165,927	158,118	60,339	218,458
	El Dorado	191,185	34,907	9,704	44,611
	Glenn	28,917	2,791	3,717	6,508
	Lake	68,163	9,699	4,530	14,229
	Marin	262,321	47,738	15,030	62,769
	Mendocino	91,601	14,237	8,510	22,748
	Merced	281,202	25,194	26,098	51,292
	Napa	138,019	20,517	13,045	33,563
	Nevada	102,241	17,908	6,108	24,016
	Placer	404,739	69,985	24,193	94,179
	Sacramento	1,585,055	179,811	83,911	263,723
	San Francisco	873,965	108,848	46,020	154,869
	San Joaquin	779,233	82,706	56,882	139,589
	San Mateo	764,442	110,372	44,995	155,368
	Santa Clara	1,936,259	261,111	120,471	381,582
	Sierra	3,236	596	419	1,015
Solano	453,491	55,802	26,393	82,195	
Sonoma	488,863	68,827	35,781	104,609	
Stanislaus	552,878	62,937	37,511	100,449	
Sutter	99,633	10,618	6,448	17,066	
Yolo	216,403	24,130	18,343	42,473	
Yuba	81,575	8,161	4,677	12,839	
Total Region		12,570,938	1,626,996	801,837	2,428,846

Great Valley 04a Trout Creek

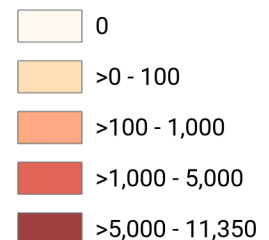
Debris Generated by Census Tract



Study Region: Great Valley 04a Trout Creek
Scenario: greatvalley04atroutc_m6p6_se

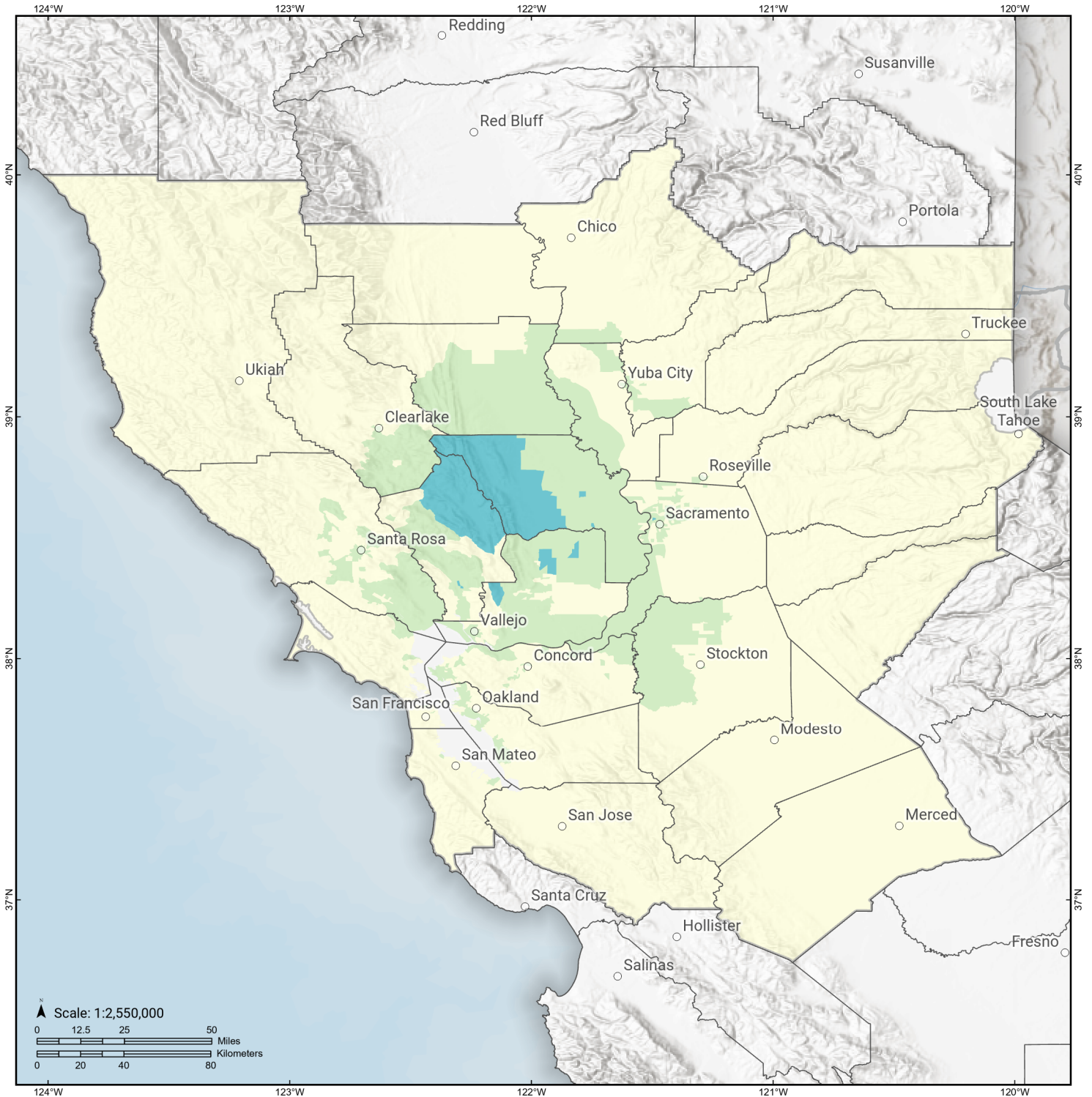


Debris Generated (in tons)



Great Valley 04a Trout Creek

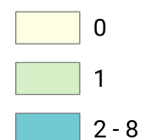
Displaced Households by Census Tract



Study Region: Great Valley 04a Trout Creek
Scenario: greatvalley04atroutc_m6p6_se

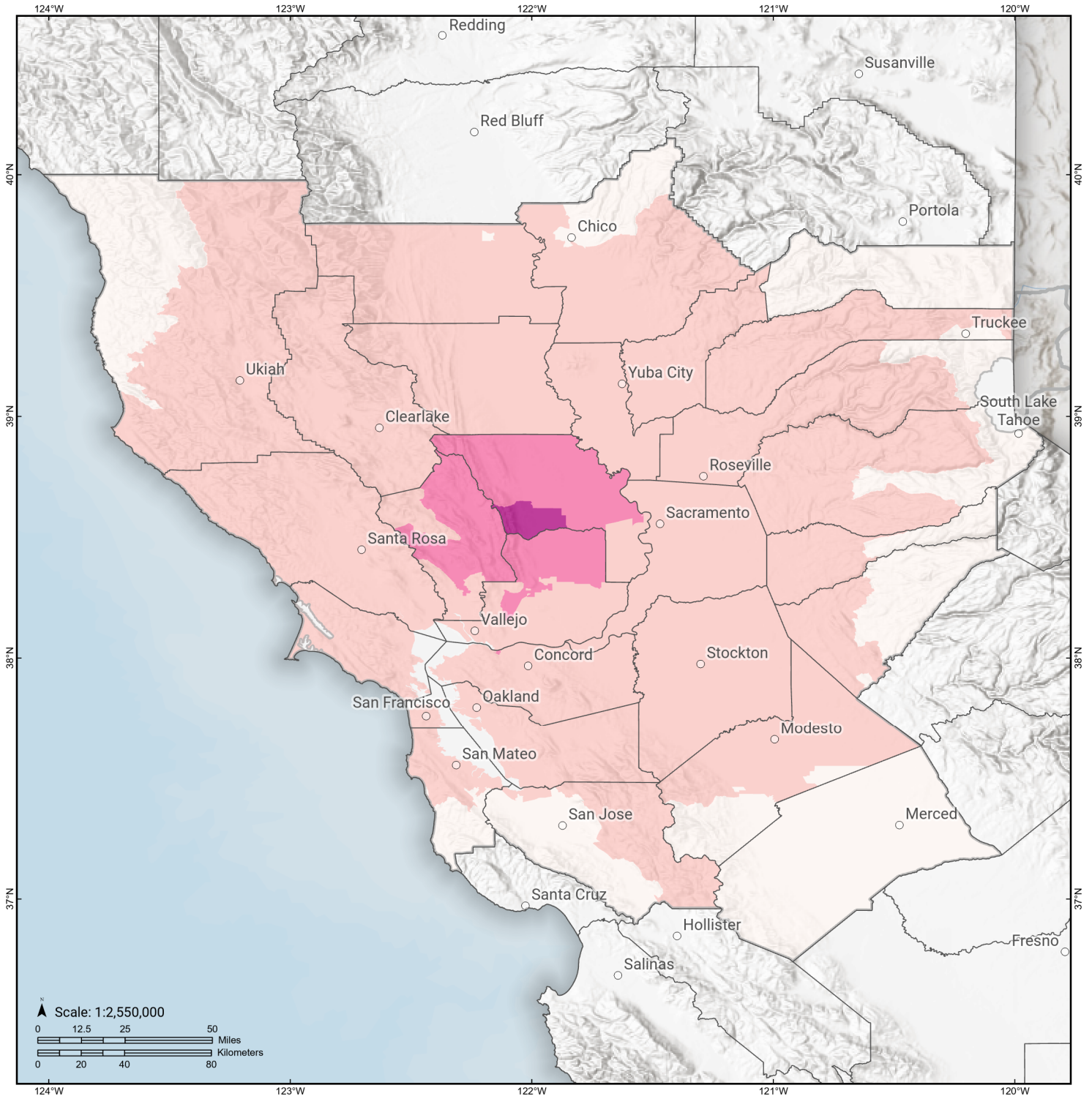


Displaced Households



Great Valley 04a Trout Creek

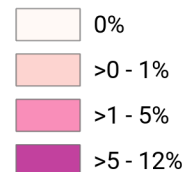
Loss Ratio by Census Tract



Study Region: Great Valley 04a Trout Creek
Scenario: greatvalley04atroutc_m6p6_se

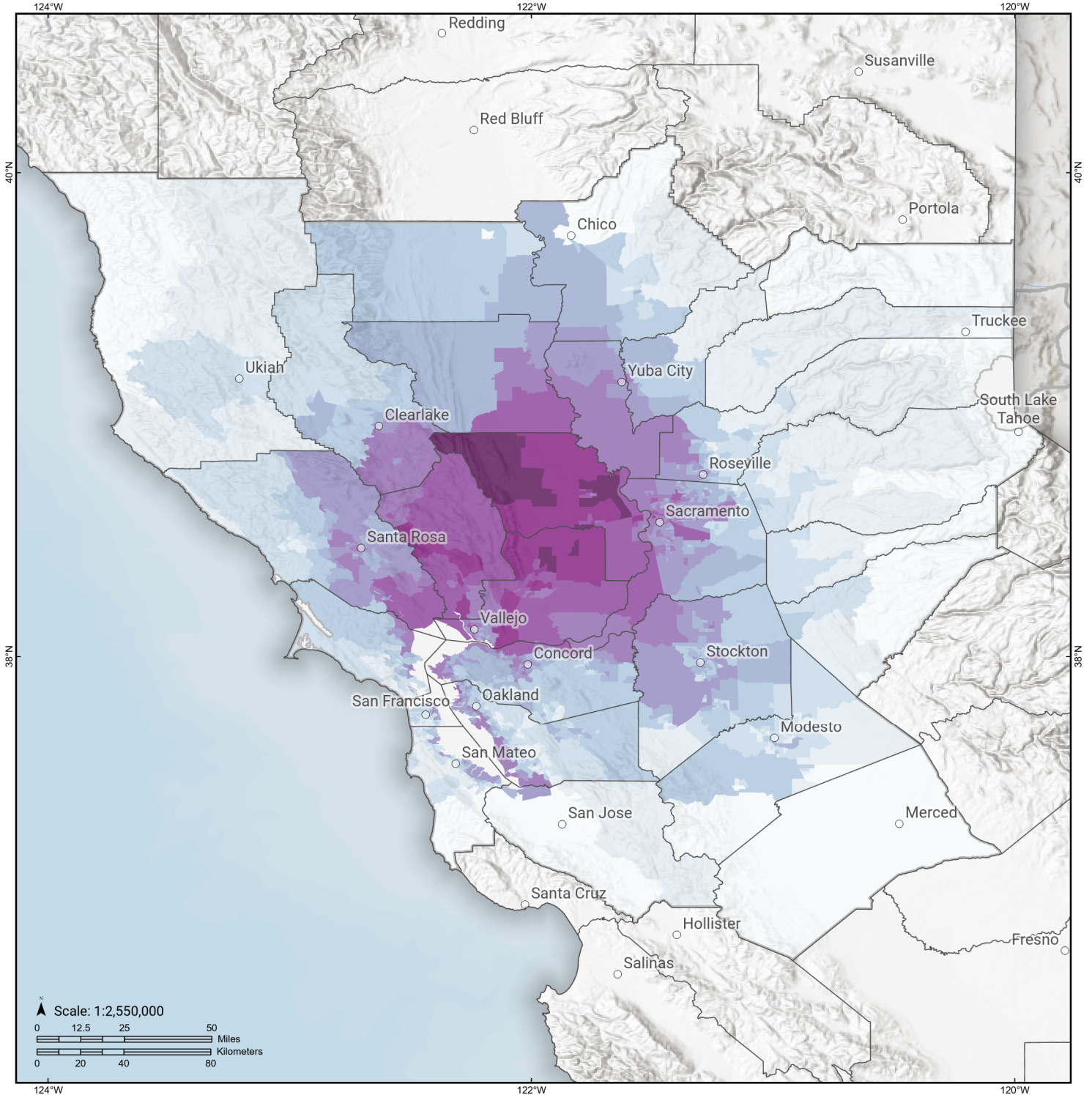


Loss Ratio (ratio of building related economic loss to exposed value of buildings)



Great Valley 04a Trout Creek

Total Building Related Economic Loss by Census Tract



Study Region: Great Valley 04a Trout Creek
Scenario: greatvalley04atroutc_m6p6_se



Economic Loss (in thousands of USD \$)



Building Damage by Count by General Occupancy

May 24, 2024

	# of Buildings					Total
	None	Slight	Moderate	Extensive	Complete	
California						
Alameda						
<i>Agriculture</i>	418	3	1	0	0	422
<i>Commercial</i>	31,660	301	27	0	0	31,989
<i>Education</i>	1,110	6	1	0	0	1,117
<i>Government</i>	10,487	39	2	0	0	10,528
<i>Industrial</i>	10,110	87	8	0	0	10,205
<i>Religion</i>	1,967	18	1	0	0	1,986
<i>Other Residential</i>	61,050	323	23	0	0	61,396
<i>Single Family</i>	343,881	291	1	0	0	344,173
Amador						
<i>Agriculture</i>	44	0	0	0	0	44
<i>Commercial</i>	1,368	0	0	0	0	1,368
<i>Education</i>	23	0	0	0	0	23
<i>Government</i>	32	0	0	0	0	32
<i>Industrial</i>	235	0	0	0	0	235
<i>Religion</i>	45	0	0	0	0	45
<i>Other Residential</i>	1,037	0	0	0	0	1,037
<i>Single Family</i>	14,962	0	0	0	0	14,962
Butte						

	# of Buildings					Total
	None	Slight	Moderate	Extensive	Complete	
<i>Agriculture</i>	507	2	0	0	0	510
<i>Commercial</i>	6,378	6	0	0	0	6,385
<i>Education</i>	172	0	0	0	0	172
<i>Government</i>	147	0	0	0	0	147
<i>Industrial</i>	1,519	3	0	0	0	1,522
<i>Religion</i>	530	1	0	0	0	531
<i>Other Residential</i>	21,459	37	2	0	0	21,498
<i>Single Family</i>	50,273	10	0	0	0	50,283
Calaveras						
<i>Agriculture</i>	2,207	0	0	0	0	2,207
<i>Commercial</i>	1,413	0	0	0	0	1,413
<i>Education</i>	35	0	0	0	0	35
<i>Government</i>	84	0	0	0	0	84
<i>Industrial</i>	466	0	0	0	0	466
<i>Religion</i>	130	0	0	0	0	130
<i>Other Residential</i>	2,558	1	0	0	0	2,559
<i>Single Family</i>	22,148	0	0	0	0	22,148
Colusa						
<i>Agriculture</i>	135	6	1	0	0	142
<i>Commercial</i>	759	30	5	0	0	794
<i>Education</i>	33	0	0	0	0	33
<i>Government</i>	31	1	0	0	0	32
<i>Industrial</i>	108	5	1	0	0	113
<i>Religion</i>	55	3	0	0	0	58
<i>Other Residential</i>	909	40	5	0	0	954

	# of Buildings					Total
	None	Slight	Moderate	Extensive	Complete	
<i>Single Family</i>	5,790	162	2	0	0	5,954
Contra Costa						
<i>Agriculture</i>	737	11	2	0	0	749
<i>Commercial</i>	17,737	228	25	1	0	17,991
<i>Education</i>	650	2	0	0	0	653
<i>Government</i>	4,954	64	6	0	0	5,024
<i>Industrial</i>	4,630	106	13	0	0	4,749
<i>Religion</i>	1,201	22	3	0	0	1,226
<i>Other Residential</i>	28,592	489	43	0	0	29,124
<i>Single Family</i>	280,506	1,428	2	0	0	281,935
El Dorado						
<i>Agriculture</i>	161	0	0	0	0	161
<i>Commercial</i>	4,768	0	0	0	0	4,768
<i>Education</i>	128	0	0	0	0	128
<i>Government</i>	100	0	0	0	0	100
<i>Industrial</i>	1,199	0	0	0	0	1,199
<i>Religion</i>	180	0	0	0	0	180
<i>Other Residential</i>	10,418	2	0	0	0	10,420
<i>Single Family</i>	71,424	0	0	0	0	71,424
Glenn						
<i>Agriculture</i>	1,361	4	0	0	0	1,365
<i>Commercial</i>	883	2	0	0	0	885
<i>Education</i>	35	0	0	0	0	35
<i>Government</i>	99	0	0	0	0	99
<i>Industrial</i>	254	0	0	0	0	254

		# of Buildings					
		None	Slight	Moderate	Extensive	Complete	Total
Lake	<i>Religion</i>	89	0	0	0	0	89
	<i>Other Residential</i>	2,145	6	0	0	0	2,152
	<i>Single Family</i>	7,415	2	0	0	0	7,417
	<i>Agriculture</i>	160	1	0	0	0	161
	<i>Commercial</i>	2,076	15	1	0	0	2,091
	<i>Education</i>	68	0	0	0	0	68
	<i>Government</i>	78	0	0	0	0	78
	<i>Industrial</i>	351	3	0	0	0	354
	<i>Religion</i>	139	1	0	0	0	140
	<i>Other Residential</i>	14,185	384	33	0	0	14,601
Marin	<i>Single Family</i>	21,551	82	0	0	0	21,633
	<i>Agriculture</i>	187	2	0	0	0	190
	<i>Commercial</i>	8,197	68	5	0	0	8,270
	<i>Education</i>	274	0	0	0	0	274
	<i>Government</i>	142	1	0	0	0	143
	<i>Industrial</i>	1,497	34	4	0	0	1,535
	<i>Religion</i>	317	2	0	0	0	319
	<i>Other Residential</i>	7,831	54	5	0	0	7,890
	<i>Single Family</i>	76,531	192	1	0	0	76,724
	Mendocino	<i>Agriculture</i>	184	0	0	0	0
<i>Commercial</i>		3,436	0	0	0	0	3,436
<i>Education</i>		101	0	0	0	0	101

	# of Buildings					Total
	None	Slight	Moderate	Extensive	Complete	
<i>Government</i>	83	0	0	0	0	83
<i>Industrial</i>	869	0	0	0	0	869
<i>Religion</i>	216	0	0	0	0	216
<i>Other Residential</i>	7,058	2	0	0	0	7,060
<i>Single Family</i>	25,969	0	0	0	0	25,969
Merced						
<i>Agriculture</i>	7,653	0	0	0	0	7,653
<i>Commercial</i>	4,754	0	0	0	0	4,754
<i>Education</i>	163	0	0	0	0	163
<i>Government</i>	171	0	0	0	0	171
<i>Industrial</i>	1,022	0	0	0	0	1,022
<i>Religion</i>	345	0	0	0	0	345
<i>Other Residential</i>	10,787	0	0	0	0	10,787
<i>Single Family</i>	63,598	0	0	0	0	63,598
Napa						
<i>Agriculture</i>	281	55	12	1	0	349
<i>Commercial</i>	3,264	621	129	7	0	4,021
<i>Education</i>	118	11	3	0	0	132
<i>Government</i>	85	15	3	0	0	103
<i>Industrial</i>	1,105	211	48	2	0	1,367
<i>Religion</i>	121	22	5	0	0	148
<i>Other Residential</i>	5,374	1,273	319	12	0	6,978
<i>Single Family</i>	33,620	5,032	109	0	0	38,761
Nevada						
<i>Agriculture</i>	132	0	0	0	0	132

	# of Buildings					Total
	None	Slight	Moderate	Extensive	Complete	
<i>Commercial</i>	2,835	0	0	0	0	2,835
<i>Education</i>	108	0	0	0	0	108
<i>Government</i>	60	0	0	0	0	60
<i>Industrial</i>	1,161	0	0	0	0	1,161
<i>Religion</i>	189	0	0	0	0	189
<i>Other Residential</i>	6,383	1	0	0	0	6,384
<i>Single Family</i>	43,280	0	0	0	0	43,280
Placer						
<i>Agriculture</i>	257	1	0	0	0	258
<i>Commercial</i>	8,514	22	2	0	0	8,538
<i>Education</i>	231	0	0	0	0	231
<i>Government</i>	376	1	0	0	0	377
<i>Industrial</i>	2,693	9	1	0	0	2,703
<i>Religion</i>	381	1	0	0	0	382
<i>Other Residential</i>	14,802	39	2	0	0	14,843
<i>Single Family</i>	134,552	167	0	0	0	134,719
Sacramento						
<i>Agriculture</i>	609	11	2	0	0	621
<i>Commercial</i>	25,512	696	86	2	0	26,295
<i>Education</i>	823	6	1	0	0	829
<i>Government</i>	578	36	5	0	0	619
<i>Industrial</i>	6,595	144	17	0	0	6,756
<i>Religion</i>	1,640	55	7	0	0	1,702
<i>Other Residential</i>	55,143	1,202	68	0	0	56,413

	# of Buildings					Total
	None	Slight	Moderate	Extensive	Complete	
<i>Single Family</i>	381,652	5,151	37	1	0	386,840
San Francisco						
<i>Agriculture</i>	161	0	0	0	0	162
<i>Commercial</i>	21,114	217	13	0	0	21,344
<i>Education</i>	569	3	0	0	0	572
<i>Government</i>	285	4	0	0	0	289
<i>Industrial</i>	3,823	35	3	0	0	3,860
<i>Religion</i>	1,340	5	0	0	0	1,345
<i>Other Residential</i>	44,286	233	11	0	0	44,529
<i>Single Family</i>	150,386	297	20	0	0	150,703
San Joaquin						
<i>Agriculture</i>	748	5	0	0	0	753
<i>Commercial</i>	12,802	58	4	0	0	12,864
<i>Education</i>	395	0	0	0	0	395
<i>Government</i>	302	2	0	0	0	304
<i>Industrial</i>	4,905	22	1	0	0	4,928
<i>Religion</i>	873	3	0	0	0	877
<i>Other Residential</i>	21,599	191	15	0	0	21,805
<i>Single Family</i>	187,935	913	73	0	0	188,922
San Mateo						
<i>Agriculture</i>	538	1	0	0	0	539
<i>Commercial</i>	14,376	19	1	0	0	14,395
<i>Education</i>	489	0	0	0	0	489
<i>Government</i>	299	0	0	0	0	299
<i>Industrial</i>	4,464	8	0	0	0	4,472

	# of Buildings					Total
	None	Slight	Moderate	Extensive	Complete	
<i>Religion</i>	735	1	0	0	0	736
<i>Other Residential</i>	22,420	31	1	0	0	22,453
<i>Single Family</i>	159,885	46	0	0	0	159,931
Santa Clara						
<i>Agriculture</i>	895	0	0	0	0	895
<i>Commercial</i>	35,467	2	0	0	0	35,469
<i>Education</i>	1,173	0	0	0	0	1,173
<i>Government</i>	502	0	0	0	0	502
<i>Industrial</i>	9,432	1	0	0	0	9,433
<i>Religion</i>	1,540	0	0	0	0	1,540
<i>Other Residential</i>	59,156	4	0	0	0	59,160
<i>Single Family</i>	427,219	0	0	0	0	427,219
Sierra						
<i>Agriculture</i>	7	0	0	0	0	7
<i>Commercial</i>	141	0	0	0	0	141
<i>Education</i>	14	0	0	0	0	14
<i>Government</i>	16	0	0	0	0	16
<i>Industrial</i>	66	0	0	0	0	66
<i>Religion</i>	12	0	0	0	0	12
<i>Other Residential</i>	153	0	0	0	0	153
<i>Single Family</i>	1,858	0	0	0	0	1,858
Solano						
<i>Agriculture</i>	184	48	13	1	0	245
<i>Commercial</i>	5,947	1,104	207	10	0	7,268
<i>Education</i>	208	15	2	0	0	225

	# of Buildings					Total
	None	Slight	Moderate	Extensive	Complete	
<i>Government</i>	126	22	4	0	0	152
<i>Industrial</i>	1,682	341	75	3	0	2,101
<i>Religion</i>	383	59	11	1	0	454
<i>Other Residential</i>	10,172	1,725	397	24	0	12,317
<i>Single Family</i>	103,963	16,588	417	0	0	120,968
Sonoma						
<i>Agriculture</i>	1,263	34	7	0	0	1,304
<i>Commercial</i>	11,808	272	30	1	0	12,110
<i>Education</i>	365	2	0	0	0	367
<i>Government</i>	312	6	1	0	0	319
<i>Industrial</i>	3,718	96	11	0	0	3,825
<i>Religion</i>	564	11	1	0	0	576
<i>Other Residential</i>	24,328	649	56	0	0	25,033
<i>Single Family</i>	140,634	1,391	3	0	0	142,028
Stanislaus						
<i>Agriculture</i>	1,239	0	0	0	0	1,239
<i>Commercial</i>	10,365	4	0	0	0	10,369
<i>Education</i>	307	0	0	0	0	307
<i>Government</i>	680	0	0	0	0	680
<i>Industrial</i>	3,474	1	0	0	0	3,475
<i>Religion</i>	456	0	0	0	0	456
<i>Other Residential</i>	19,562	7	0	0	0	19,569
<i>Single Family</i>	142,724	0	0	0	0	142,724
Sutter						
<i>Agriculture</i>	1,077	40	8	0	0	1,125

	# of Buildings					Total
	None	Slight	Moderate	Extensive	Complete	
<i>Commercial</i>	2,009	39	4	0	0	2,052
<i>Education</i>	62	0	0	0	0	62
<i>Government</i>	75	2	0	0	0	77
<i>Industrial</i>	618	16	2	0	0	636
<i>Religion</i>	151	3	0	0	0	154
<i>Other Residential</i>	3,013	93	8	0	0	3,113
<i>Single Family</i>	24,246	266	0	0	0	24,512
Yolo						
<i>Agriculture</i>	202	58	19	2	0	281
<i>Commercial</i>	3,239	731	231	22	2	4,225
<i>Education</i>	115	12	3	0	0	131
<i>Government</i>	88	17	6	0	0	111
<i>Industrial</i>	846	192	71	7	1	1,117
<i>Religion</i>	184	42	13	2	0	242
<i>Other Residential</i>	7,723	1,811	304	21	1	9,861
<i>Single Family</i>	34,536	7,584	467	2	0	42,589
Yuba						
<i>Agriculture</i>	91	1	0	0	0	92
<i>Commercial</i>	1,187	11	1	0	0	1,199
<i>Education</i>	54	0	0	0	0	54
<i>Government</i>	591	0	0	0	0	591
<i>Industrial</i>	400	3	0	0	0	404
<i>Religion</i>	98	0	0	0	0	98
<i>Other Residential</i>	6,942	75	5	0	0	7,021
<i>Single Family</i>	18,799	68	0	0	0	18,867

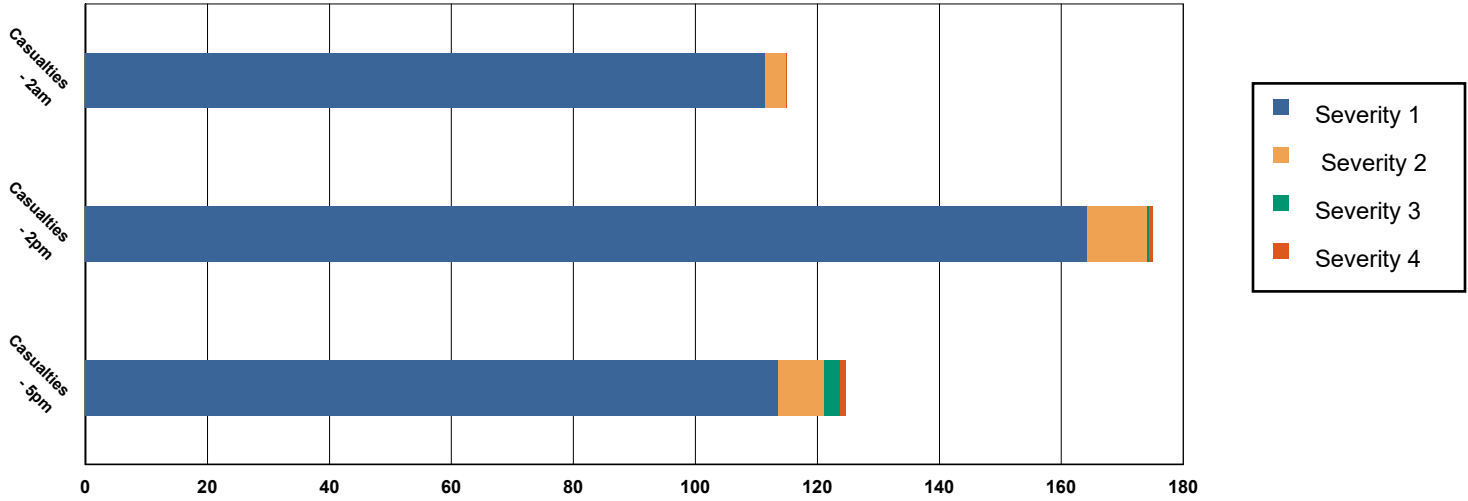
	# of Buildings					Total
	None	Slight	Moderate	Extensive	Complete	
Total	3,811,587	54,904	3,600	129	5	3,870,224
Region Total	3,811,587	54,904	3,600	129	5	3,870,224

Totals only reflect data for those census tracts/blocks included in the user's study region and will reflect the entire county/state only if all of the census blocks for that county/states were selected at the time of study region creation.

Casualties Summary Report

May 24, 2024

Region Total Casualties



Injury Severity Level

Severity 1	Severity 2	Severity 3	Severity 4	Total
------------	------------	------------	------------	-------

California

Alameda

Casualties - 2am

	Severity 1	Severity 2	Severity 3	Severity 4	Total
Single Family	0	0	0	0	0
Hotels	0	0	0	0	0
Commuting	0	0	0	0	0
Educational	0	0	0	0	0
Industrial	0	0	0	0	0
Commercial	0	0	0	0	0
Other-Residential	2	0	0	0	2
Total Casualties - 2am	3	0	0	0	3

Casualties - 2pm

Industrial	1	0	0	0	1
Educational	1	0	0	0	1
Other-Residential	1	0	0	0	1
Single Family	0	0	0	0	0
Hotels	0	0	0	0	0
Commuting	0	0	0	0	0
Commercial	5	0	0	0	5

	Injury Severity Level				Total
	Severity 1	Severity 2	Severity 3	Severity 4	
California					
Alameda					
Total Casualties - 2pm	7	0	0	0	7
Casualties - 5pm					
<i>Commuting</i>	0	0	0	0	0
<i>Single Family</i>	0	0	0	0	0
<i>Commercial</i>	3	0	0	0	3
<i>Hotels</i>	0	0	0	0	0
<i>Educational</i>	0	0	0	0	0
<i>Industrial</i>	0	0	0	0	0
<i>Other-Residential</i>	1	0	0	0	1
Total Casualties - 5pm	4	0	0	0	5
Amador					
Casualties - 2am					
<i>Commercial</i>	0	0	0	0	0
<i>Other-Residential</i>	0	0	0	0	0
<i>Commuting</i>	0	0	0	0	0
<i>Educational</i>	0	0	0	0	0
<i>Single Family</i>	0	0	0	0	0
<i>Hotels</i>	0	0	0	0	0
<i>Industrial</i>	0	0	0	0	0
Total Casualties - 2am	0	0	0	0	0
Casualties - 2pm					
<i>Single Family</i>	0	0	0	0	0
<i>Hotels</i>	0	0	0	0	0
<i>Educational</i>	0	0	0	0	0
<i>Commuting</i>	0	0	0	0	0
<i>Commercial</i>	0	0	0	0	0
<i>Other-Residential</i>	0	0	0	0	0
<i>Industrial</i>	0	0	0	0	0
Total Casualties - 2pm	0	0	0	0	0
Casualties - 5pm					
<i>Commercial</i>	0	0	0	0	0
<i>Commuting</i>	0	0	0	0	0
<i>Other-Residential</i>	0	0	0	0	0
<i>Single Family</i>	0	0	0	0	0
<i>Educational</i>	0	0	0	0	0
<i>Hotels</i>	0	0	0	0	0
<i>Industrial</i>	0	0	0	0	0
Total Casualties - 5pm	0	0	0	0	0
Butte					
Casualties - 2am					
<i>Industrial</i>	0	0	0	0	0

	Injury Severity Level				Total
	Severity 1	Severity 2	Severity 3	Severity 4	
California					
Butte					
Casualties - 2am					
Commercial	0	0	0	0	0
Other-Residential	0	0	0	0	0
Single Family	0	0	0	0	0
Commuting	0	0	0	0	0
Educational	0	0	0	0	0
Hotels	0	0	0	0	0
Total Casualties - 2am	0	0	0	0	0
Casualties - 2pm					
Single Family	0	0	0	0	0
Educational	0	0	0	0	0
Commuting	0	0	0	0	0
Other-Residential	0	0	0	0	0
Hotels	0	0	0	0	0
Commercial	0	0	0	0	0
Industrial	0	0	0	0	0
Total Casualties - 2pm	0	0	0	0	0
Casualties - 5pm					
Industrial	0	0	0	0	0
Other-Residential	0	0	0	0	0
Single Family	0	0	0	0	0
Commercial	0	0	0	0	0
Commuting	0	0	0	0	0
Hotels	0	0	0	0	0
Educational	0	0	0	0	0
Total Casualties - 5pm	0	0	0	0	0
Calaveras					
Casualties - 2am					
Other-Residential	0	0	0	0	0
Commuting	0	0	0	0	0
Commercial	0	0	0	0	0
Single Family	0	0	0	0	0
Hotels	0	0	0	0	0
Educational	0	0	0	0	0
Industrial	0	0	0	0	0
Total Casualties - 2am	0	0	0	0	0
Casualties - 2pm					
Hotels	0	0	0	0	0
Single Family	0	0	0	0	0
Educational	0	0	0	0	0
Commuting	0	0	0	0	0
Commercial	0	0	0	0	0

	Injury Severity Level				Total
	Severity 1	Severity 2	Severity 3	Severity 4	
California					
Calaveras					
Casualties - 2pm					
<i>Industrial</i>	0	0	0	0	0
<i>Other-Residential</i>	0	0	0	0	0
Total Casualties - 2pm	0	0	0	0	0
Casualties - 5pm					
<i>Industrial</i>	0	0	0	0	0
<i>Commercial</i>	0	0	0	0	0
<i>Other-Residential</i>	0	0	0	0	0
<i>Educational</i>	0	0	0	0	0
<i>Hotels</i>	0	0	0	0	0
<i>Commuting</i>	0	0	0	0	0
<i>Single Family</i>	0	0	0	0	0
Total Casualties - 5pm	0	0	0	0	0
Colusa					
Casualties - 2am					
<i>Other-Residential</i>	0	0	0	0	0
<i>Industrial</i>	0	0	0	0	0
<i>Single Family</i>	0	0	0	0	0
<i>Commercial</i>	0	0	0	0	0
<i>Educational</i>	0	0	0	0	0
<i>Commuting</i>	0	0	0	0	0
<i>Hotels</i>	0	0	0	0	0
Total Casualties - 2am	0	0	0	0	0
Casualties - 2pm					
<i>Hotels</i>	0	0	0	0	0
<i>Single Family</i>	0	0	0	0	0
<i>Educational</i>	0	0	0	0	0
<i>Commercial</i>	0	0	0	0	0
<i>Commuting</i>	0	0	0	0	0
<i>Other-Residential</i>	0	0	0	0	0
<i>Industrial</i>	0	0	0	0	0
Total Casualties - 2pm	1	0	0	0	1
Casualties - 5pm					
<i>Industrial</i>	0	0	0	0	0
<i>Commercial</i>	0	0	0	0	0
<i>Other-Residential</i>	0	0	0	0	0
<i>Commuting</i>	0	0	0	0	0
<i>Single Family</i>	0	0	0	0	0
<i>Educational</i>	0	0	0	0	0
<i>Hotels</i>	0	0	0	0	0
Total Casualties - 5pm	0	0	0	0	0

	Injury Severity Level				Total
	Severity 1	Severity 2	Severity 3	Severity 4	
California					
Contra Costa					
Casualties - 2am					
<i>Educational</i>	0	0	0	0	0
<i>Hotels</i>	0	0	0	0	0
<i>Industrial</i>	0	0	0	0	0
<i>Other-Residential</i>	2	0	0	0	2
<i>Single Family</i>	2	0	0	0	2
<i>Commercial</i>	0	0	0	0	0
<i>Commuting</i>	0	0	0	0	0
Total Casualties - 2am	4	0	0	0	4
Casualties - 2pm					
<i>Other-Residential</i>	1	0	0	0	1
<i>Industrial</i>	1	0	0	0	1
<i>Hotels</i>	0	0	0	0	0
<i>Single Family</i>	1	0	0	0	1
<i>Educational</i>	1	0	0	0	1
<i>Commuting</i>	0	0	0	0	0
<i>Commercial</i>	5	0	0	0	5
Total Casualties - 2pm	7	0	0	0	7
Casualties - 5pm					
<i>Educational</i>	0	0	0	0	0
<i>Commuting</i>	0	0	0	0	0
<i>Single Family</i>	1	0	0	0	1
<i>Hotels</i>	0	0	0	0	0
<i>Industrial</i>	0	0	0	0	0
<i>Other-Residential</i>	1	0	0	0	1
<i>Commercial</i>	3	0	0	0	3
Total Casualties - 5pm	5	0	0	0	5
El Dorado					
Casualties - 2am					
<i>Commuting</i>	0	0	0	0	0
<i>Educational</i>	0	0	0	0	0
<i>Single Family</i>	0	0	0	0	0
<i>Hotels</i>	0	0	0	0	0
<i>Other-Residential</i>	0	0	0	0	0
<i>Industrial</i>	0	0	0	0	0
<i>Commercial</i>	0	0	0	0	0
Total Casualties - 2am	0	0	0	0	0
Casualties - 2pm					
<i>Industrial</i>	0	0	0	0	0
<i>Other-Residential</i>	0	0	0	0	0
<i>Single Family</i>	0	0	0	0	0
<i>Hotels</i>	0	0	0	0	0

	Injury Severity Level				Total
	Severity 1	Severity 2	Severity 3	Severity 4	
California					
El Dorado					
Casualties - 2pm					
<i>Educational</i>	0	0	0	0	0
<i>Commuting</i>	0	0	0	0	0
<i>Commercial</i>	0	0	0	0	0
Total Casualties - 2pm	0	0	0	0	0
Casualties - 5pm					
<i>Commercial</i>	0	0	0	0	0
<i>Commuting</i>	0	0	0	0	0
<i>Single Family</i>	0	0	0	0	0
<i>Educational</i>	0	0	0	0	0
<i>Hotels</i>	0	0	0	0	0
<i>Industrial</i>	0	0	0	0	0
<i>Other-Residential</i>	0	0	0	0	0
Total Casualties - 5pm	0	0	0	0	0
Glenn					
Casualties - 2am					
<i>Hotels</i>	0	0	0	0	0
<i>Educational</i>	0	0	0	0	0
<i>Industrial</i>	0	0	0	0	0
<i>Other-Residential</i>	0	0	0	0	0
<i>Commercial</i>	0	0	0	0	0
<i>Commuting</i>	0	0	0	0	0
<i>Single Family</i>	0	0	0	0	0
Total Casualties - 2am	0	0	0	0	0
Casualties - 2pm					
<i>Industrial</i>	0	0	0	0	0
<i>Other-Residential</i>	0	0	0	0	0
<i>Commuting</i>	0	0	0	0	0
<i>Commercial</i>	0	0	0	0	0
<i>Hotels</i>	0	0	0	0	0
<i>Single Family</i>	0	0	0	0	0
<i>Educational</i>	0	0	0	0	0
Total Casualties - 2pm	0	0	0	0	0
Casualties - 5pm					
<i>Educational</i>	0	0	0	0	0
<i>Commuting</i>	0	0	0	0	0
<i>Hotels</i>	0	0	0	0	0
<i>Single Family</i>	0	0	0	0	0
<i>Industrial</i>	0	0	0	0	0
<i>Commercial</i>	0	0	0	0	0
<i>Other-Residential</i>	0	0	0	0	0

	Injury Severity Level				Total
	Severity 1	Severity 2	Severity 3	Severity 4	
California					
Glenn					
Total Casualties - 5pm	0	0	0	0	0
Lake					
Casualties - 2am					
<i>Hotels</i>	0	0	0	0	0
<i>Industrial</i>	0	0	0	0	0
<i>Other-Residential</i>	1	0	0	0	1
<i>Commuting</i>	0	0	0	0	0
<i>Educational</i>	0	0	0	0	0
<i>Single Family</i>	0	0	0	0	0
<i>Commercial</i>	0	0	0	0	0
Total Casualties - 2am	1	0	0	0	1
Casualties - 2pm					
<i>Industrial</i>	0	0	0	0	0
<i>Single Family</i>	0	0	0	0	0
<i>Commercial</i>	0	0	0	0	0
<i>Other-Residential</i>	0	0	0	0	0
<i>Hotels</i>	0	0	0	0	0
<i>Educational</i>	0	0	0	0	0
<i>Commuting</i>	0	0	0	0	0
Total Casualties - 2pm	0	0	0	0	0
Casualties - 5pm					
<i>Other-Residential</i>	0	0	0	0	0
<i>Industrial</i>	0	0	0	0	0
<i>Commercial</i>	0	0	0	0	0
<i>Educational</i>	0	0	0	0	0
<i>Commuting</i>	0	0	0	0	0
<i>Single Family</i>	0	0	0	0	0
<i>Hotels</i>	0	0	0	0	0
Total Casualties - 5pm	0	0	0	0	0
Marin					
Casualties - 2am					
<i>Commercial</i>	0	0	0	0	0
<i>Commuting</i>	0	0	0	0	0
<i>Other-Residential</i>	0	0	0	0	0
<i>Educational</i>	0	0	0	0	0
<i>Single Family</i>	0	0	0	0	0
<i>Hotels</i>	0	0	0	0	0
<i>Industrial</i>	0	0	0	0	0
Total Casualties - 2am	0	0	0	0	0
Casualties - 2pm					
<i>Hotels</i>	0	0	0	0	0

	Injury Severity Level				Total
	Severity 1	Severity 2	Severity 3	Severity 4	
California					
Marin					
Casualties - 2pm					
<i>Commuting</i>	0	0	0	0	0
<i>Educational</i>	0	0	0	0	0
<i>Industrial</i>	0	0	0	0	0
<i>Other-Residential</i>	0	0	0	0	0
<i>Commercial</i>	1	0	0	0	1
<i>Single Family</i>	0	0	0	0	0
Total Casualties - 2pm	1	0	0	0	1
Casualties - 5pm					
<i>Commuting</i>	0	0	0	0	0
<i>Commercial</i>	0	0	0	0	0
<i>Other-Residential</i>	0	0	0	0	0
<i>Single Family</i>	0	0	0	0	0
<i>Industrial</i>	0	0	0	0	0
<i>Educational</i>	0	0	0	0	0
<i>Hotels</i>	0	0	0	0	0
Total Casualties - 5pm	1	0	0	0	1
Mendocino					
Casualties - 2am					
<i>Educational</i>	0	0	0	0	0
<i>Hotels</i>	0	0	0	0	0
<i>Commuting</i>	0	0	0	0	0
<i>Industrial</i>	0	0	0	0	0
<i>Other-Residential</i>	0	0	0	0	0
<i>Single Family</i>	0	0	0	0	0
<i>Commercial</i>	0	0	0	0	0
Total Casualties - 2am	0	0	0	0	0
Casualties - 2pm					
<i>Industrial</i>	0	0	0	0	0
<i>Other-Residential</i>	0	0	0	0	0
<i>Commercial</i>	0	0	0	0	0
<i>Single Family</i>	0	0	0	0	0
<i>Commuting</i>	0	0	0	0	0
<i>Hotels</i>	0	0	0	0	0
<i>Educational</i>	0	0	0	0	0
Total Casualties - 2pm	0	0	0	0	0
Casualties - 5pm					
<i>Hotels</i>	0	0	0	0	0
<i>Single Family</i>	0	0	0	0	0
<i>Educational</i>	0	0	0	0	0
<i>Commuting</i>	0	0	0	0	0
<i>Commercial</i>	0	0	0	0	0

	Injury Severity Level				Total
	Severity 1	Severity 2	Severity 3	Severity 4	
California					
Mendocino					
Casualties - 5pm					
Other-Residential	0	0	0	0	0
Industrial	0	0	0	0	0
Total Casualties - 5pm	0	0	0	0	0
Merced					
Casualties - 2am					
Hotels	0	0	0	0	0
Industrial	0	0	0	0	0
Commercial	0	0	0	0	0
Single Family	0	0	0	0	0
Other-Residential	0	0	0	0	0
Educational	0	0	0	0	0
Commuting	0	0	0	0	0
Total Casualties - 2am	0	0	0	0	0
Casualties - 2pm					
Other-Residential	0	0	0	0	0
Industrial	0	0	0	0	0
Commercial	0	0	0	0	0
Commuting	0	0	0	0	0
Hotels	0	0	0	0	0
Educational	0	0	0	0	0
Single Family	0	0	0	0	0
Total Casualties - 2pm	0	0	0	0	0
Casualties - 5pm					
Industrial	0	0	0	0	0
Hotels	0	0	0	0	0
Educational	0	0	0	0	0
Commuting	0	0	0	0	0
Single Family	0	0	0	0	0
Commercial	0	0	0	0	0
Other-Residential	0	0	0	0	0
Total Casualties - 5pm	0	0	0	0	0
Napa					
Casualties - 2am					
Commercial	0	0	0	0	0
Other-Residential	6	0	0	0	6
Educational	0	0	0	0	0
Single Family	7	0	0	0	7
Commuting	0	0	0	0	0
Hotels	0	0	0	0	0
Industrial	0	0	0	0	0

	Injury Severity Level				Total
	Severity 1	Severity 2	Severity 3	Severity 4	
California					
Napa					
Total Casualties - 2am	13	0	0	0	14
Casualties - 2pm					
<i>Educational</i>	4	0	0	0	4
<i>Hotels</i>	0	0	0	0	0
<i>Commuting</i>	0	0	0	0	0
<i>Industrial</i>	2	0	0	0	2
<i>Other-Residential</i>	2	0	0	0	2
<i>Single Family</i>	2	0	0	0	2
<i>Commercial</i>	11	1	0	0	11
Total Casualties - 2pm	20	1	0	0	21
Casualties - 5pm					
<i>Commercial</i>	7	0	0	0	7
<i>Single Family</i>	3	0	0	0	3
<i>Other-Residential</i>	2	0	0	0	2
<i>Commuting</i>	0	0	0	0	0
<i>Industrial</i>	1	0	0	0	1
<i>Educational</i>	0	0	0	0	0
<i>Hotels</i>	0	0	0	0	0
Total Casualties - 5pm	13	1	0	0	14
Nevada					
Casualties - 2am					
<i>Single Family</i>	0	0	0	0	0
<i>Commercial</i>	0	0	0	0	0
<i>Commuting</i>	0	0	0	0	0
<i>Hotels</i>	0	0	0	0	0
<i>Educational</i>	0	0	0	0	0
<i>Industrial</i>	0	0	0	0	0
<i>Other-Residential</i>	0	0	0	0	0
Total Casualties - 2am	0	0	0	0	0
Casualties - 2pm					
<i>Hotels</i>	0	0	0	0	0
<i>Industrial</i>	0	0	0	0	0
<i>Commercial</i>	0	0	0	0	0
<i>Single Family</i>	0	0	0	0	0
<i>Other-Residential</i>	0	0	0	0	0
<i>Educational</i>	0	0	0	0	0
<i>Commuting</i>	0	0	0	0	0
Total Casualties - 2pm	0	0	0	0	0
Casualties - 5pm					
<i>Commuting</i>	0	0	0	0	0
<i>Hotels</i>	0	0	0	0	0

	Injury Severity Level				Total
	Severity 1	Severity 2	Severity 3	Severity 4	
California					
Nevada					
Casualties - 5pm					
<i>Other-Residential</i>	0	0	0	0	0
<i>Educational</i>	0	0	0	0	0
<i>Single Family</i>	0	0	0	0	0
<i>Commercial</i>	0	0	0	0	0
<i>Industrial</i>	0	0	0	0	0
Total Casualties - 5pm	0	0	0	0	0
Placer					
Casualties - 2am					
<i>Hotels</i>	0	0	0	0	0
<i>Educational</i>	0	0	0	0	0
<i>Industrial</i>	0	0	0	0	0
<i>Other-Residential</i>	0	0	0	0	0
<i>Commercial</i>	0	0	0	0	0
<i>Single Family</i>	0	0	0	0	0
<i>Commuting</i>	0	0	0	0	0
Total Casualties - 2am	0	0	0	0	0
Casualties - 2pm					
<i>Other-Residential</i>	0	0	0	0	0
<i>Industrial</i>	0	0	0	0	0
<i>Commercial</i>	0	0	0	0	0
<i>Single Family</i>	0	0	0	0	0
<i>Educational</i>	0	0	0	0	0
<i>Commuting</i>	0	0	0	0	0
<i>Hotels</i>	0	0	0	0	0
Total Casualties - 2pm	0	0	0	0	0
Casualties - 5pm					
<i>Single Family</i>	0	0	0	0	0
<i>Hotels</i>	0	0	0	0	0
<i>Commuting</i>	0	0	0	0	0
<i>Educational</i>	0	0	0	0	0
<i>Commercial</i>	0	0	0	0	0
<i>Industrial</i>	0	0	0	0	0
<i>Other-Residential</i>	0	0	0	0	0
Total Casualties - 5pm	0	0	0	0	0
Sacramento					
Casualties - 2am					
<i>Industrial</i>	0	0	0	0	0
<i>Other-Residential</i>	5	0	0	0	5
<i>Commercial</i>	0	0	0	0	0
<i>Single Family</i>	8	0	0	0	8
<i>Hotels</i>	0	0	0	0	0

	Injury Severity Level				Total
	Severity 1	Severity 2	Severity 3	Severity 4	
California					
Sacramento					
Casualties - 2am					
Commuting	0	0	0	0	0
Educational	0	0	0	0	0
Total Casualties - 2am	13	0	0	0	14
Casualties - 2pm					
Other-Residential	2	0	0	0	2
Commuting	0	0	0	0	0
Single Family	2	0	0	0	2
Commercial	23	1	0	0	24
Hotels	0	0	0	0	0
Educational	2	0	0	0	2
Industrial	1	0	0	0	1
Total Casualties - 2pm	30	1	0	0	32
Casualties - 5pm					
Industrial	1	0	0	0	1
Educational	0	0	0	0	0
Hotels	0	0	0	0	0
Commercial	13	1	0	0	14
Commuting	0	0	0	0	0
Other-Residential	2	0	0	0	2
Single Family	3	0	0	0	3
Total Casualties - 5pm	19	1	0	0	20
San Francisco					
Casualties - 2am					
Industrial	0	0	0	0	0
Hotels	0	0	0	0	0
Commercial	0	0	0	0	0
Other-Residential	2	0	0	0	2
Commuting	0	0	0	0	0
Educational	0	0	0	0	0
Single Family	1	0	0	0	1
Total Casualties - 2am	3	0	0	0	3
Casualties - 2pm					
Commercial	4	0	0	0	4
Industrial	0	0	0	0	0
Other-Residential	1	0	0	0	1
Single Family	0	0	0	0	0
Hotels	0	0	0	0	0
Commuting	0	0	0	0	0
Educational	0	0	0	0	0
Total Casualties - 2pm	5	0	0	0	5

	Injury Severity Level				Total
	Severity 1	Severity 2	Severity 3	Severity 4	
California					
San Francisco					
Casualties - 5pm					
<i>Educational</i>	0	0	0	0	0
<i>Hotels</i>	0	0	0	0	0
<i>Industrial</i>	0	0	0	0	0
<i>Commuting</i>	0	0	0	0	0
<i>Commercial</i>	2	0	0	0	2
<i>Other-Residential</i>	1	0	0	0	1
<i>Single Family</i>	0	0	0	0	0
Total Casualties - 5pm	3	0	0	0	3
San Joaquin					
Casualties - 2am					
<i>Educational</i>	0	0	0	0	0
<i>Commuting</i>	0	0	0	0	0
<i>Hotels</i>	0	0	0	0	0
<i>Commercial</i>	0	0	0	0	0
<i>Single Family</i>	2	0	0	0	2
<i>Industrial</i>	0	0	0	0	0
<i>Other-Residential</i>	1	0	0	0	1
Total Casualties - 2am	3	0	0	0	3
Casualties - 2pm					
<i>Industrial</i>	0	0	0	0	0
<i>Other-Residential</i>	0	0	0	0	0
<i>Educational</i>	0	0	0	0	0
<i>Single Family</i>	1	0	0	0	1
<i>Hotels</i>	0	0	0	0	0
<i>Commuting</i>	0	0	0	0	0
<i>Commercial</i>	1	0	0	0	1
Total Casualties - 2pm	2	0	0	0	2
Casualties - 5pm					
<i>Commuting</i>	0	0	0	0	0
<i>Single Family</i>	1	0	0	0	1
<i>Educational</i>	0	0	0	0	0
<i>Hotels</i>	0	0	0	0	0
<i>Industrial</i>	0	0	0	0	0
<i>Commercial</i>	1	0	0	0	1
<i>Other-Residential</i>	0	0	0	0	0
Total Casualties - 5pm	2	0	0	0	2
San Mateo					
Casualties - 2am					
<i>Industrial</i>	0	0	0	0	0
<i>Other-Residential</i>	0	0	0	0	0
<i>Single Family</i>	0	0	0	0	0

	Injury Severity Level				Total
	Severity 1	Severity 2	Severity 3	Severity 4	
California					
San Mateo					
Casualties - 2am					
Commercial	0	0	0	0	0
Educational	0	0	0	0	0
Commuting	0	0	0	0	0
Hotels	0	0	0	0	0
Total Casualties - 2am	0	0	0	0	0
Casualties - 2pm					
Other-Residential	0	0	0	0	0
Single Family	0	0	0	0	0
Commuting	0	0	0	0	0
Commercial	0	0	0	0	0
Educational	0	0	0	0	0
Hotels	0	0	0	0	0
Industrial	0	0	0	0	0
Total Casualties - 2pm	0	0	0	0	0
Casualties - 5pm					
Commercial	0	0	0	0	0
Industrial	0	0	0	0	0
Other-Residential	0	0	0	0	0
Single Family	0	0	0	0	0
Educational	0	0	0	0	0
Commuting	0	0	0	0	0
Hotels	0	0	0	0	0
Total Casualties - 5pm	0	0	0	0	0
Santa Clara					
Casualties - 2am					
Commuting	0	0	0	0	0
Educational	0	0	0	0	0
Single Family	0	0	0	0	0
Hotels	0	0	0	0	0
Industrial	0	0	0	0	0
Commercial	0	0	0	0	0
Other-Residential	0	0	0	0	0
Total Casualties - 2am	0	0	0	0	0
Casualties - 2pm					
Industrial	0	0	0	0	0
Commercial	0	0	0	0	0
Single Family	0	0	0	0	0
Commuting	0	0	0	0	0
Hotels	0	0	0	0	0
Other-Residential	0	0	0	0	0
Educational	0	0	0	0	0

	Injury Severity Level				Total
	Severity 1	Severity 2	Severity 3	Severity 4	
California					
Santa Clara					
Total Casualties - 2pm	0	0	0	0	0
Casualties - 5pm					
<i>Industrial</i>	0	0	0	0	0
<i>Hotels</i>	0	0	0	0	0
<i>Other-Residential</i>	0	0	0	0	0
<i>Commercial</i>	0	0	0	0	0
<i>Commuting</i>	0	0	0	0	0
<i>Single Family</i>	0	0	0	0	0
<i>Educational</i>	0	0	0	0	0
Total Casualties - 5pm	0	0	0	0	0
Sierra					
Casualties - 2am					
<i>Other-Residential</i>	0	0	0	0	0
<i>Commercial</i>	0	0	0	0	0
<i>Commuting</i>	0	0	0	0	0
<i>Hotels</i>	0	0	0	0	0
<i>Single Family</i>	0	0	0	0	0
<i>Educational</i>	0	0	0	0	0
<i>Industrial</i>	0	0	0	0	0
Total Casualties - 2am	0	0	0	0	0
Casualties - 2pm					
<i>Hotels</i>	0	0	0	0	0
<i>Educational</i>	0	0	0	0	0
<i>Industrial</i>	0	0	0	0	0
<i>Other-Residential</i>	0	0	0	0	0
<i>Commuting</i>	0	0	0	0	0
<i>Single Family</i>	0	0	0	0	0
<i>Commercial</i>	0	0	0	0	0
Total Casualties - 2pm	0	0	0	0	0
Casualties - 5pm					
<i>Educational</i>	0	0	0	0	0
<i>Hotels</i>	0	0	0	0	0
<i>Commuting</i>	0	0	0	0	0
<i>Industrial</i>	0	0	0	0	0
<i>Other-Residential</i>	0	0	0	0	0
<i>Commercial</i>	0	0	0	0	0
<i>Single Family</i>	0	0	0	0	0
Total Casualties - 5pm	0	0	0	0	0
Solano					
Casualties - 2am					
<i>Industrial</i>	0	0	0	0	0

	Injury Severity Level				Total
	Severity 1	Severity 2	Severity 3	Severity 4	
California					
Solano					
Casualties - 2am					
<i>Other-Residential</i>	10	0	0	0	10
<i>Commercial</i>	0	0	0	0	0
<i>Educational</i>	0	0	0	0	0
<i>Commuting</i>	0	0	0	0	0
<i>Single Family</i>	25	0	0	0	26
<i>Hotels</i>	0	0	0	0	0
Total Casualties - 2am	36	1	0	0	37
Casualties - 2pm					
<i>Single Family</i>	7	0	0	0	7
<i>Other-Residential</i>	3	0	0	0	3
<i>Commercial</i>	21	1	0	0	22
<i>Educational</i>	4	0	0	0	4
<i>Commuting</i>	0	0	0	0	0
<i>Hotels</i>	0	0	0	0	0
<i>Industrial</i>	3	0	0	0	3
Total Casualties - 2pm	37	2	0	0	39
Casualties - 5pm					
<i>Commercial</i>	14	1	0	0	15
<i>Other-Residential</i>	3	0	0	0	4
<i>Single Family</i>	9	0	0	0	9
<i>Educational</i>	0	0	0	0	0
<i>Commuting</i>	1	1	2	0	4
<i>Hotels</i>	0	0	0	0	0
<i>Industrial</i>	2	0	0	0	2
Total Casualties - 5pm	29	2	2	0	34
Sonoma					
Casualties - 2am					
<i>Single Family</i>	2	0	0	0	2
<i>Other-Residential</i>	2	0	0	0	2
<i>Commercial</i>	0	0	0	0	0
<i>Commuting</i>	0	0	0	0	0
<i>Hotels</i>	0	0	0	0	0
<i>Educational</i>	0	0	0	0	0
<i>Industrial</i>	0	0	0	0	0
Total Casualties - 2am	4	0	0	0	4
Casualties - 2pm					
<i>Single Family</i>	0	0	0	0	1
<i>Commuting</i>	0	0	0	0	0
<i>Educational</i>	1	0	0	0	1
<i>Hotels</i>	0	0	0	0	0
<i>Industrial</i>	1	0	0	0	1

	Injury Severity Level				Total
	Severity 1	Severity 2	Severity 3	Severity 4	
California					
Sonoma					
Casualties - 2pm					
Other-Residential	1	0	0	0	1
Commercial	3	0	0	0	3
Total Casualties - 2pm	5	0	0	0	5
Casualties - 5pm					
Single Family	1	0	0	0	1
Commercial	2	0	0	0	2
Commuting	0	0	0	0	0
Hotels	0	0	0	0	0
Educational	0	0	0	0	0
Industrial	0	0	0	0	0
Other-Residential	1	0	0	0	1
Total Casualties - 5pm	4	0	0	0	4
Stanislaus					
Casualties - 2am					
Hotels	0	0	0	0	0
Industrial	0	0	0	0	0
Commercial	0	0	0	0	0
Single Family	0	0	0	0	0
Other-Residential	0	0	0	0	0
Commuting	0	0	0	0	0
Educational	0	0	0	0	0
Total Casualties - 2am	0	0	0	0	0
Casualties - 2pm					
Industrial	0	0	0	0	0
Other-Residential	0	0	0	0	0
Commercial	0	0	0	0	0
Commuting	0	0	0	0	0
Educational	0	0	0	0	0
Single Family	0	0	0	0	0
Hotels	0	0	0	0	0
Total Casualties - 2pm	0	0	0	0	0
Casualties - 5pm					
Industrial	0	0	0	0	0
Other-Residential	0	0	0	0	0
Commuting	0	0	0	0	0
Single Family	0	0	0	0	0
Commercial	0	0	0	0	0
Hotels	0	0	0	0	0
Educational	0	0	0	0	0
Total Casualties - 5pm	0	0	0	0	0

	Injury Severity Level				Total
	Severity 1	Severity 2	Severity 3	Severity 4	
California					
Sutter					
Casualties - 2am					
<i>Educational</i>	0	0	0	0	0
<i>Commuting</i>	0	0	0	0	0
<i>Hotels</i>	0	0	0	0	0
<i>Industrial</i>	0	0	0	0	0
<i>Other-Residential</i>	0	0	0	0	0
<i>Single Family</i>	0	0	0	0	0
<i>Commercial</i>	0	0	0	0	0
Total Casualties - 2am	1	0	0	0	1
Casualties - 2pm					
<i>Industrial</i>	0	0	0	0	0
<i>Commuting</i>	0	0	0	0	0
<i>Other-Residential</i>	0	0	0	0	0
<i>Single Family</i>	0	0	0	0	0
<i>Commercial</i>	1	0	0	0	1
<i>Hotels</i>	0	0	0	0	0
<i>Educational</i>	0	0	0	0	0
Total Casualties - 2pm	1	0	0	0	1
Casualties - 5pm					
<i>Commuting</i>	0	0	0	0	0
<i>Commercial</i>	1	0	0	0	1
<i>Educational</i>	0	0	0	0	0
<i>Single Family</i>	0	0	0	0	0
<i>Hotels</i>	0	0	0	0	0
<i>Industrial</i>	0	0	0	0	0
<i>Other-Residential</i>	0	0	0	0	0
Total Casualties - 5pm	1	0	0	0	1
Yolo					
Casualties - 2am					
<i>Single Family</i>	16	0	0	0	16
<i>Other-Residential</i>	13	1	0	0	14
<i>Commercial</i>	0	0	0	0	0
<i>Educational</i>	0	0	0	0	0
<i>Commuting</i>	0	0	0	0	0
<i>Hotels</i>	0	0	0	0	0
<i>Industrial</i>	0	0	0	0	0
Total Casualties - 2am	30	1	0	0	31
Casualties - 2pm					
<i>Industrial</i>	3	0	0	0	3
<i>Hotels</i>	0	0	0	0	0
<i>Educational</i>	10	1	0	0	11
<i>Commuting</i>	0	0	0	0	0

	Injury Severity Level				Total
	Severity 1	Severity 2	Severity 3	Severity 4	
California					
Yolo					
Casualties - 2pm					
Commercial	24	3	0	0	28
Other-Residential	5	0	0	0	5
Single Family	5	0	0	0	5
Total Casualties - 2pm	47	4	0	0	52
Casualties - 5pm					
Other-Residential	5	0	0	0	5
Single Family	6	0	0	0	6
Commuting	0	0	1	0	1
Commercial	16	2	0	0	19
Hotels	0	0	0	0	0
Educational	3	0	0	0	3
Industrial	2	0	0	0	2
Total Casualties - 5pm	32	3	1	0	36
Yuba					
Casualties - 2am					
Industrial	0	0	0	0	0
Other-Residential	0	0	0	0	0
Commercial	0	0	0	0	0
Educational	0	0	0	0	0
Single Family	0	0	0	0	0
Commuting	0	0	0	0	0
Hotels	0	0	0	0	0
Total Casualties - 2am	0	0	0	0	0
Casualties - 2pm					
Commercial	0	0	0	0	0
Commuting	0	0	0	0	0
Single Family	0	0	0	0	0
Other-Residential	0	0	0	0	0
Industrial	0	0	0	0	0
Hotels	0	0	0	0	0
Educational	0	0	0	0	0
Total Casualties - 2pm	0	0	0	0	0
Casualties - 5pm					
Hotels	0	0	0	0	0
Educational	0	0	0	0	0
Industrial	0	0	0	0	0
Other-Residential	0	0	0	0	0
Single Family	0	0	0	0	0
Commercial	0	0	0	0	0
Commuting	0	0	0	0	0

	Injury Severity Level				Total
	Severity 1	Severity 2	Severity 3	Severity 4	
California					
Yuba					
Total Casualties - 5pm	0	0	0	0	0
Region Total	NA	NA	NA	NA	NA

Totals only reflect data for those census tracts/blocks included in the user's study region and will reflect the entire county/state only if all of the census blocks for that county/states were selected at the time of study region creation.

Debris Summary Report

May 24, 2024

All values are in thousands of tons.

	Brick, Wood & Others	Concrete & Steel	Total
California			
Butte	0	0	0
Alameda	7	2	9
Solano	31	30	61
San Mateo	0	0	0
San Joaquin	5	1	6
Nevada	0	0	0
Colusa	1	0	1
Napa	14	14	28
Mendocino	0	0	0
Contra Costa	5	4	9
El Dorado	0	0	0
Amador	0	0	0
Sierra	0	0	0
Lake	1	0	1
Sacramento	15	10	24
Yolo	25	33	59
Calaveras	0	0	0
Yuba	0	0	0
Glenn	0	0	0

	Brick, Wood & Others	Concrete & Steel	Total
Stanislaus	0	0	0
Sonoma	5	4	9
Santa Clara	0	0	0
San Francisco	7	1	8
Merced	0	0	0
Placer	1	0	1
Marin	1	1	1
Sutter	1	1	2
Total	119	101	220
Region Total	119	101	220

Totals only reflect data for those census tracts/blocks included in the user's study region and will reflect the entire county/state only if all of the census blocks for that county/states were selected at the time of study region creation.

Direct Economic Losses For Buildings

May 24, 2024

All values are in thousands of dollars

	Capital Stock Losses				Loss Ratio %	Income Losses				Total Loss
	Cost Structural Damage	Cost Non-struct. Damage	Cost Contents Damage	Inventory Loss		Relocation Loss	Capital Related Loss	Wages Losses	Rental Income Loss	
California										
Colusa	920	7,204	4,045	711	0.19	235	356	360	225	14,057
Contra Costa	8,768	106,637	58,149	5,780	0.05	1,578	1,459	2,010	1,740	186,121
Mendocino	2	212	134	17	0.00	0	0	0	0	366
Napa	29,410	207,254	102,296	10,056	0.71	7,888	6,004	7,097	6,247	376,253
Alameda	6,475	52,974	29,118	2,754	0.02	1,387	1,576	2,139	1,903	98,327
Butte	197	1,586	943	157	0.00	39	17	23	29	2,989
Nevada	2	147	100	8	0.00	0	0	1	0	259
San Joaquin	3,167	23,580	12,744	1,595	0.02	735	347	421	574	43,163
Solano	75,415	540,164	260,936	23,291	0.75	18,261	13,143	19,576	13,691	964,476

	Capital Stock Losses				Loss Ratio %	Income Losses				Total Loss
	Cost Structural Damage	Cost Non-struct. Damage	Cost Contents Damage	Inventory Loss		Relocation Loss	Capital Related Loss	Wages Losses	Rental Income Loss	
San Mateo	546	8,408	4,413	396	0.01	35	73	73	157	14,101
Yolo	59,981	398,893	206,378	19,106	1.08	21,143	17,521	19,738	13,889	756,648
Calaveras	6	91	67	21	0.00	0	1	1	1	190
Yuba	349	4,703	2,468	286	0.04	51	63	67	70	8,058
Glenn	66	467	308	105	0.01	7	5	6	6	970
San Francisco	5,053	15,526	8,835	615	0.01	816	775	838	1,722	34,180
Merced	0	0	0	0	0.00	0	0	0	0	0
Stanislaus	69	2,235	1,490	211	0.00	7	9	8	18	4,047
Sutter	1,850	17,167	9,612	1,958	0.11	261	154	181	233	31,416
Santa Clara	64	765	486	59	0.00	6	11	9	18	1,419
Sonoma	8,676	86,237	44,960	5,304	0.09	1,526	1,622	1,889	1,710	151,925
Placer	765	11,614	6,073	519	0.01	77	89	101	130	19,369
Marin	1,359	15,087	7,779	695	0.03	183	189	202	270	25,765
El Dorado	4	493	325	18	0.00	0	1	1	1	842
Amador	2	102	70	7	0.00	0	1	1	1	183
Sacramento	25,463	261,427	137,071	11,679	0.11	5,678	5,635	7,334	6,656	460,944
Lake	524	5,796	2,628	197	0.04	98	52	50	82	9,428
Sierra	0	0	0	0	0.00	0	0	0	0	0

	Capital Stock Losses					Income Losses				Total Loss
	Cost Structural Damage	Cost Non-struct. Damage	Cost Contents Damage	Inventory Loss	Loss Ratio %	Relocation Loss	Capital Related Loss	Wages Losses	Rental Income Loss	
Total	229,131	1,768,768	901,429	85,548	0.12	60,012	49,104	62,127	49,376	3,205,497
Region Total	229,131	1,768,768	901,429	85,548	0.12	60,012	49,104	62,127	49,376	3,205,497

Totals only reflect data for those census tracts/blocks included in the user's study region and will reflect the entire county/state only if all of the census blocks for that county/states were selected at the time of study region creation.

Direct Economic Loss For Transportation

May 24, 2024

All values are in thousands of dollars

	Highway	Railway	Light Rail	Bus Facility	Ports	Ferries	Airport	Total
California								
Alameda								
Segments	0	0	0					0
Bridges	84	0	0					84
Tunnels	0	0	0					0
Facilities		603	0	22	2,563	38	3,593	6,820
Total	84	603	0	22	2,563	38	3,593	6,904
Amador								
Segments	0	0	0					0
Bridges	0	0	0					0
Tunnels	0	0	0					0
Facilities		0	0	0	0	0	51	51
Total	0	0	0	0	0	0	51	51
Butte								
Segments	0	0	0					0
Bridges	6	0	0					6
Tunnels	0	0	0					0
Facilities		0	0	0	0	0	102	102

	Highway	Railway	Light Rail	Bus Facility	Ports	Ferries	Airport	Total
Total	6	0	0	0	0	0	102	108
Calaveras								
Segments	0	0	0					0
Bridges	0	0	0					0
Tunnels	0	0	0					0
Facilities		0	0	0	0	0	0	0
Total	0	0	0	0	0	0	0	0
Colusa								
Segments	0	0	0					0
Bridges	39	5	0					44
Tunnels	0	0	0					0
Facilities		0	0	0	0	0	217	217
Total	39	5	0	0	0	0	217	261
Contra Costa								
Segments	0	0	0					0
Bridges	559	23	0					582
Tunnels	1	0	0					1
Facilities		925	703	0	11,450	218	816	14,112
Total	560	949	703	0	11,450	218	816	14,695
El Dorado								
Segments	0	0	0					0
Bridges	0	0	0					0
Tunnels	0	0	0					0
Facilities		0	0	21	0	0	231	252

	Highway	Railway	Light Rail	Bus Facility	Ports	Ferries	Airport	Total
Total	0	0	0	21	0	0	231	252
Glenn								
Segments	0	0	0					0
Bridges	16	0	0					16
Tunnels	0	0	0					0
Facilities		0	0	0	37	0	51	88
Total	16	0	0	0	37	0	51	104
Lake								
Segments	0	0	0					0
Bridges	1	0	0					1
Tunnels	0	0	0					0
Facilities		0	0	0	0	0	102	102
Total	1	0	0	0	0	0	102	103
Marin								
Segments	0	0	0					0
Bridges	718	0	0					718
Tunnels	0	0	0					0
Facilities		0	0	242	2,078	64	217	2,601
Total	718	0	0	242	2,078	64	217	3,319
Mendocino								
Segments	0	0	0					0
Bridges	0	0	0					0
Tunnels	0	0	0					0
Facilities		0	0	48	0	0	108	155

	Highway	Railway	Light Rail	Bus Facility	Ports	Ferries	Airport	Total
Total	0	0	0	48	0	0	108	156
Merced								
Segments	0	0	0					0
Bridges	0	0	0					0
Tunnels	0	0	0					0
Facilities		0	0	0	0	0	0	0
Total	0	0	0	0	0	0	0	0
Napa								
Segments	0	0	0					0
Bridges	1,294	87	0					1,382
Tunnels	0	0	0					0
Facilities		0	0	251	1,131	0	1,594	2,977
Total	1,294	87	0	251	1,131	0	1,594	4,358
Nevada								
Segments	0	0	0					0
Bridges	0	0	0					0
Tunnels	0	0	0					0
Facilities		0	0	0	0	0	51	51
Total	0	0	0	0	0	0	51	51
Placer								
Segments	0	0	0					0
Bridges	6	0	0					6
Tunnels	0	0	0					0
Facilities		103	0	21	0	0	159	283

	Highway	Railway	Light Rail	Bus Facility	Ports	Ferries	Airport	Total
Total	6	103	0	21	0	0	159	289
Sacramento								
<i>Segments</i>	0	0	0					0
<i>Bridges</i>	1,813	3	0					1,816
<i>Tunnels</i>	0	0	0					0
<i>Facilities</i>		109	12,165	181	3,052	100	32,067	47,675
Total	1,813	112	12,165	181	3,052	100	32,067	49,491
San Francisco								
<i>Segments</i>	0	0	0					0
<i>Bridges</i>	14	0	0					14
<i>Tunnels</i>	0	0	0					0
<i>Facilities</i>		0	31,375	49	3,335	51	308	35,118
Total	14	0	31,375	49	3,335	51	308	35,132
San Joaquin								
<i>Segments</i>	0	0	0					0
<i>Bridges</i>	181	0	0					182
<i>Tunnels</i>	0	0	0					0
<i>Facilities</i>		410	0	21	3,613	135	584	4,763
Total	181	411	0	21	3,613	135	584	4,945
San Mateo								
<i>Segments</i>	0	0	0					0
<i>Bridges</i>	32	0	0					32
<i>Tunnels</i>	0	0	0					0
<i>Facilities</i>		0	0	0	661	0	8,789	9,450

	Highway	Railway	Light Rail	Bus Facility	Ports	Ferries	Airport	Total
Total	32	0	0	0	661	0	8,789	9,481
Santa Clara								
Segments	0	0	0					0
Bridges	0	0	0					0
Tunnels	0	0	0					0
Facilities		0	0	0	0	0	0	0
Total	0	0	0	0	0	0	0	0
Sierra								
Segments	0	0	0					0
Bridges	0	0	0					0
Tunnels	0	0	0					0
Facilities		0	0	0	0	0	0	0
Total	0	0	0	0	0	0	0	0
Solano								
Segments	0	0	0					0
Bridges	6,439	265	0					6,704
Tunnels	0	0	0					0
Facilities		699	0	512	7,023	356	2,592	11,182
Total	6,439	964	0	512	7,023	356	2,592	17,887
Sonoma								
Segments	0	0	0					0
Bridges	191	40	0					231
Tunnels	0	0	0					0
Facilities		0	0	97	508	0	1,596	2,200

	Highway	Railway	Light Rail	Bus Facility	Ports	Ferries	Airport	Total
Total	191	40	0	97	508	0	1,596	2,431
Stanislaus								
Segments	0	0	0					0
Bridges	1	0	0					1
Tunnels	0	0	0					0
Facilities		131	0	24	0	0	180	335
Total	1	131	0	24	0	0	180	335
Sutter								
Segments	0	0	0					0
Bridges	136	1	0					137
Tunnels	0	0	0					0
Facilities		0	0	0	0	0	548	548
Total	136	1	0	0	0	0	548	685
Yolo								
Segments	0	0	0					0
Bridges	5,097	57	0					5,154
Tunnels	0	0	0					0
Facilities		1,194	0	0	4,627	0	1,967	7,789
Total	5,097	1,252	0	0	4,627	0	1,967	12,943
Yuba								
Segments	0	0	0					0
Bridges	1	0	0					1
Tunnels	0	0	0					0
Facilities		0	0	92	0	0	268	360

	Highway	Railway	Light Rail	Bus Facility	Ports	Ferries	Airport	Total
Total	1	0	0	92	0	0	268	362
Total	16,629	4,657	44,243	1,581	40,077	963	56,192	164,343
Region Total	16,629	4,657	44,243	1,581	40,077	963	56,192	164,343

Totals only reflect data for those census tracts/blocks included in the user's study region and will reflect the entire county/state only if all of the census blocks for that county/states were selected at the time of study region creation.

Direct Economic Loss For Utilities

May 24, 2024

All values are in thousands of dollars

	Potable Water	Waste Water	Oil Systems	Natural Gas	Electric Power	Communication	Total
California							
Alameda							
Facilities	84	8,851	0	0	16,913	15	25,863
Pipelines	105	53	0	0			158
Total	190	8,904	0	0	16,913	15	26,022
Amador							
Facilities	0	0	0	0	953	0	954
Pipelines	5	3	0	0			8
Total	5	3	0	0	953	0	962
Butte							
Facilities	0	492	0	0	34,995	0	35,487
Pipelines	32	16	0	0			47
Total	32	508	0	0	34,995	0	35,534
Calaveras							
Facilities	28	0	0	0	81	0	109

	Potable Water	Waste Water	Oil Systems	Natural Gas	Electric Power	Communication	Total
<i>Pipelines</i>	3	2	0	0			5
Total	32	2	0	0	81	0	115
Colusa							
<i>Facilities</i>	0	4,573	0	75	11,633	0	16,281
<i>Pipelines</i>	85	43	0	0			128
Total	85	4,616	0	75	11,633	0	16,409
Contra Costa							
<i>Facilities</i>	809	15,735	11	0	358,443	10	375,009
<i>Pipelines</i>	140	70	0	0			210
Total	949	15,806	11	0	358,443	10	375,219
El Dorado							
<i>Facilities</i>	28	492	0	0	12,321	1	12,841
<i>Pipelines</i>	18	9	0	0			27
Total	46	501	0	0	12,321	1	12,868
Glenn							
<i>Facilities</i>	0	123	0	0	136	0	259
<i>Pipelines</i>	31	15	0	0			46
Total	31	138	0	0	136	0	305
Lake							
<i>Facilities</i>	56	0	0	0	31,788	1	31,845
<i>Pipelines</i>	67	33	0	0			100

	Potable Water	Waste Water	Oil Systems	Natural Gas	Electric Power	Communication	Total
Total	123	33	0	0	31,788	1	31,945
Marin							
<i>Facilities</i>	348	6,589	0	0	770	4	7,711
<i>Pipelines</i>	44	22	0	0			66
Total	392	6,611	0	0	770	4	7,777
Mendocino							
<i>Facilities</i>	0	246	0	0	350	1	596
<i>Pipelines</i>	40	20	0	0			60
Total	40	266	0	0	350	1	657
Merced							
<i>Facilities</i>	0	0	0	0	0	0	0
<i>Pipelines</i>	1	0	0	0			1
Total	1	0	0	0	0	0	1
Napa							
<i>Facilities</i>	0	29,328	0	0	54,116	33	83,477
<i>Pipelines</i>	201	101	0	0			302
Total	201	29,429	0	0	54,116	33	83,779
Nevada							
<i>Facilities</i>	0	617	0	0	308	1	926
<i>Pipelines</i>	14	7	0	0			21
Total	14	624	0	0	308	1	947

	Potable Water	Waste Water	Oil Systems	Natural Gas	Electric Power	Communication	Total
Placer							
<i>Facilities</i>	0	4,032	0	0	12,696	3	16,731
<i>Pipelines</i>	44	22	0	0			66
Total	44	4,054	0	0	12,696	3	16,797
Sacramento							
<i>Facilities</i>	0	11,127	0	0	61,199	75	72,401
<i>Pipelines</i>	226	113	0	0			339
Total	226	11,240	0	0	61,199	75	72,741
San Francisco							
<i>Facilities</i>	0	2,262	0	0	108	4	2,374
<i>Pipelines</i>	22	11	0	0			33
Total	22	2,273	0	0	108	4	2,406
San Joaquin							
<i>Facilities</i>	140	861	0	0	9,393	2	10,396
<i>Pipelines</i>	93	47	0	0			139
Total	233	907	0	0	9,393	2	10,536
San Mateo							
<i>Facilities</i>	0	1,598	0	0	159	3	1,760
<i>Pipelines</i>	29	15	0	0			44
Total	29	1,613	0	0	159	3	1,804
Santa Clara							

	Potable Water	Waste Water	Oil Systems	Natural Gas	Electric Power	Communication	Total
<i>Facilities</i>	0	0	0	0	0	0	0
<i>Pipelines</i>	5	2	0	0			7
Total	5	2	0	0	0	0	7
Sierra							
<i>Facilities</i>	0	0	0	0	0	0	0
<i>Pipelines</i>	8	4	0	0			12
Total	8	4	0	0	0	0	12
Solano							
<i>Facilities</i>	0	38,526	3	0	510,235	41	548,805
<i>Pipelines</i>	942	473	0	0			1,416
Total	942	38,999	3	0	510,235	41	550,221
Sonoma							
<i>Facilities</i>	0	16,943	0	0	279,827	29	296,800
<i>Pipelines</i>	140	70	0	0			210
Total	140	17,014	0	0	279,827	29	297,010
Stanislaus							
<i>Facilities</i>	0	248	0	0	5,301	2	5,551
<i>Pipelines</i>	48	24	0	0			72
Total	48	273	0	0	5,301	2	5,623
Sutter							
<i>Facilities</i>	0	1,647	0	0	56,980	10	58,637

	Potable Water	Waste Water	Oil Systems	Natural Gas	Electric Power	Communication	Total
<i>Pipelines</i>	73	37	0	0			110
Total	73	1,684	0	0	56,980	10	58,747
Yolo							
<i>Facilities</i>	0	29,328	0	0	31,596	100	61,024
<i>Pipelines</i>	614	308	0	0			922
Total	614	29,636	0	0	31,596	100	61,946
Yuba							
<i>Facilities</i>	0	3,295	0	0	15,532	2	18,829
<i>Pipelines</i>	23	11	0	0			34
Total	23	3,306	0	0	15,532	2	18,863
Total	4,547	178,448	14	75	1,505,832	338	1,689,253
Region Total	4,547	178,448	14	75	1,505,832	338	1,689,253

Totals only reflect data for those census tracts/blocks included in the user's study region and will reflect the entire county/state only if all of the census blocks for that county/states were selected at the time of study region creation.

Hazus Quick Assessment Report

Estimated Economic Loss (\$ Billions)

Category	Description	Range
General Building Stock	Building Damage	1.00 - 4.00
	Building Contents	0.20 - 0.70
	Business Interruption	0.10 - 0.40
Infrastructure	Lifelines Damage	
Total		1.60 - 6.40

Preliminary Damage Assessment (PDA) Estimates

Description	Residential	Commercial	Other	Total
Affected	48,300	4,400	2,000	54,700
Minor	2,400	770	380	3,550
Major	60	40	20	120
Destroyed	< 10	< 10	< 10	< 10
Total	50,760	5,210	2,400	58,370

Estimated Casualties : Night Time

Severity Level	Description	# Persons
Level 1	Medical Aid	60 - 200
Level 2	Hospital Care	< 10
Level 3	Life-threatening	< 10
Level 4	Fatalities	< 10

Estimated Shelter Needs

Type	Households	People
Displaced Households	30 - 140	75 - 350
Public Shelter	20	40

Comments :

*Hazus damage estimates are presented using FEMA Preliminary Damage Assessment (PDA) categories. These estimates should be used for planning purposes and may not reflect actual observed damages from the PDA process.

Disclaimer:

The estimates of social and economic impacts contained in this report were produced using HAZUS loss estimation methodology software which is based on current scientific and engineering knowledge. There are uncertainties inherent in any loss estimation technique. Therefore, there may be significant differences between the modeled results contained in this report and the actual social and economic losses following a specific earthquake. These results can be improved by using enhanced inventory, geotechnical, and observed ground motion data.

Earthquake Information

Location :

Origin Time:

Magnitude : 6.60

Epicenter Latitude/Longitude :

/

Depth & Type : /U

Name :

NA

Ground Motion /Attenuation :

Maximum PGA: 0.00

Information Sources:

Comments :

Population and Building Exposure

Population: 12,570,938

Building Exposure : (\$ Millions)

Residential	1,627,009
Commercial	429,798
Other	372,052
Total	2,428,859

Counties : See Appendix

Major Metro Area :

Hazus Quick Assessment Report

Estimated Economic Loss (\$ Billions)

Category	Description	Range
General Building Stock	Building Damage	1.00 - 4.00
	Building Contents	0.20 - 0.70
	Business Interruption	0.10 - 0.40
Infrastructure	Lifelines Damage	
Total		1.60 - 6.40

Preliminary Damage Assessment (PDA) Estimates

Description	Residential	Commercial	Other	Total
Affected	48,300	4,400	2,000	54,700
Minor	2,400	770	380	3,550
Major	60	40	20	120
Destroyed	< 10	< 10	< 10	< 10
Total	50,760	5,210	2,400	58,370

Estimated Casualties : Day Time

Severity Level	Description	# Persons
Level 1	Medical Aid	80 - 300
Level 2	Hospital Care	10 - 20
Level 3	Life-threatening	< 10
Level 4	Fatalities	< 10

Estimated Shelter Needs

Type	Households	People
Displaced Households	30 - 140	75 - 350
Public Shelter	20	40

Comments :

*Hazus damage estimates are presented using FEMA Preliminary Damage Assessment (PDA) categories. These estimates should be used for planning purposes and may not reflect actual observed damages from the PDA process.

Disclaimer:

The estimates of social and economic impacts contained in this report were produced using HAZUS loss estimation methodology software which is based on current scientific and engineering knowledge. There are uncertainties inherent in any loss estimation technique. Therefore, there may be significant differences between the modeled results contained in this report and the actual social and economic losses following a specific earthquake. These results can be improved by using enhanced inventory, geotechnical, and observed ground motion data.

Earthquake Information

Location :

Origin Time:

Magnitude : 6.60

Epicenter Latitude/Longitude :
/

Depth & Type : /U

Name :
NA

Ground Motion /Attenuation :

Maximum PGA: 0.00

Information Sources:

Comments :

Population and Building Exposure

Population: 12,570,938

Building Exposure : (\$ Millions)

Residential	1,627,009
Commercial	429,798
Other	372,052
Total	2,428,859

Counties : See Appendix

Major Metro Area :

Hazus Quick Assessment Report

Estimated Economic Loss (\$ Billions)

Category	Description	Range
General Building Stock	Building Damage	1.00 - 4.00
	Building Contents	0.20 - 0.70
	Business Interruption	0.10 - 0.40
Infrastructure	Lifelines Damage	
Total		1.60 - 6.40

Preliminary Damage Assessment (PDA) Estimates

Description	Residential	Commercial	Other	Total
Affected	48,300	4,400	2,000	54,700
Minor	2,400	770	380	3,550
Major	60	40	20	120
Destroyed	< 10	< 10	< 10	< 10
Total	50,760	5,210	2,400	58,370

Estimated Casualties : Commute Time

Severity Level	Description	# Persons
Level 1	Medical Aid	60 - 200
Level 2	Hospital Care	0 - 20
Level 3	Life-threatening	< 10
Level 4	Fatalities	< 10

Estimated Shelter Needs

Type	Households	People
Displaced Households	30 - 140	75 - 350
Public Shelter	20	40

Comments :

*Hazus damage estimates are presented using FEMA Preliminary Damage Assessment (PDA) categories. These estimates should be used for planning purposes and may not reflect actual observed damages from the PDA process.

Disclaimer:

The estimates of social and economic impacts contained in this report were produced using HAZUS loss estimation methodology software which is based on current scientific and engineering knowledge. There are uncertainties inherent in any loss estimation technique. Therefore, there may be significant differences between the modeled results contained in this report and the actual social and economic losses following a specific earthquake. These results can be improved by using enhanced inventory, geotechnical, and observed ground motion data.

Earthquake Information

Location :

Origin Time:

Magnitude : 6.60

Epicenter Latitude/Longitude :
/

Depth & Type : /U

Name :
NA

Ground Motion /Attenuation :

Maximum PGA: 0.00

Information Sources:

Comments :

Population and Building Exposure

Population: 12,570,938

Building Exposure : (\$ Millions)

Residential	1,627,009
Commercial	429,798
Other	372,052
Total	2,428,859

Counties : See Appendix

Major Metro Area :

Shelter Summary Report

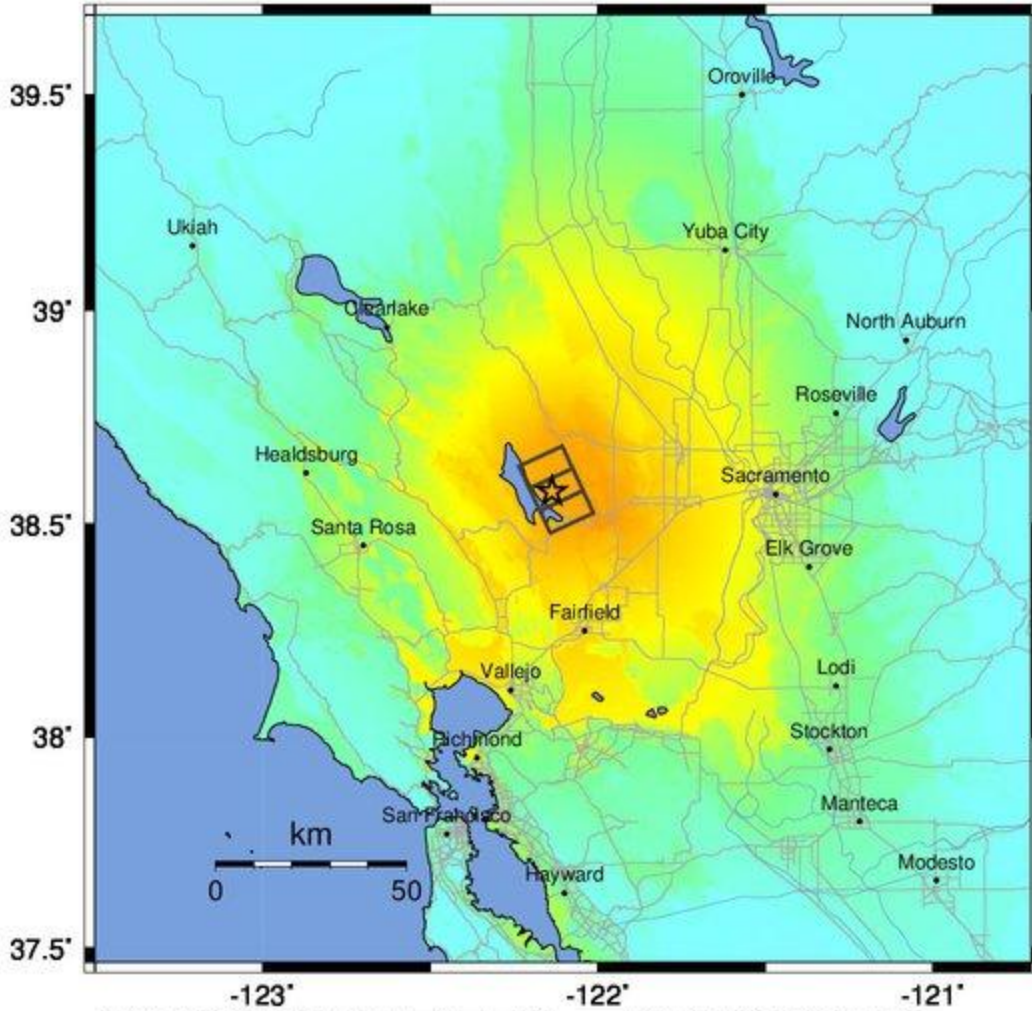
May 24, 2024

	# of Displaced Households	# of People Needing Short Term Shelter
California		
Butte	0	0
Alameda	1	0
Solano	16	8
San Mateo	0	0
San Joaquin	0	0
Nevada	0	0
Colusa	0	0
Napa	12	6
Mendocino	0	0
Contra Costa	0	0
El Dorado	0	0
Amador	0	0
Sierra	0	0
Lake	0	0
Sacramento	3	1
Yolo	35	22
Calaveras	0	0
Yuba	0	0
Glenn	0	0
Stanislaus	0	0
Sonoma	1	0
Santa Clara	0	0
San Francisco	0	0
Merced	0	0
Placer	0	0
Marin	0	0
Sutter	0	0
Total	68	38
Region Total	68	38

# of Displaced Households	# of People Needing Short Term Shelter
------------------------------	---

Totals only reflect data for those census tracts/blocks included in the user's study region and will reflect the entire county/state only if all of the census blocks for that county/states were selected at the time of study region creation.

-- Earthquake Planning Scenario --
ShakeMap for Great Valley 04a Trout Creek - Median ground motions Scenario
 Scenario Date: May 16, 2017 08:31:55 AM MDT M 6.6 N38.58 W122.14 Depth: 12.2km



PLANNING SCENARIO ONLY -- Map Version 10 Processed 2017-05-16 05:59:33 PM MDT

PERCEIVED SHAKING	Not felt	Weak	Light	Moderate	Strong	Very strong	Severe	Violent	Extreme
POTENTIAL DAMAGE	none	none	none	Very light	Light	Moderate	Mod./Heavy	Heavy	Very Heavy
PEAK ACC.(%g)	<0.05	0.3	2.8	6.2	12	22	40	75	>139
PEAK VEL.(cm/s)	<0.02	0.1	1.4	4.7	9.6	20	41	86	>178
INSTRUMENTAL INTENSITY	I	II-III	IV	V	VI	VII	VIII	IX	X+

Scale based upon Worden et al. (2012)