
Hazus: Earthquake Global Risk Report

Region Name: GreatValley03aDunn

Earthquake Scenario: greatvalley03adunnig_m6p53_se

Print Date: April 22, 2024

Disclaimer:

Totals only reflect data for those census tracts/blocks included in the user's study region.

The estimates of social and economic impacts contained in this report were produced using Hazus loss estimation methodology software which is based on current scientific and engineering knowledge. There are uncertainties inherent in any loss estimation technique. Therefore, there may be significant differences between the modeled results contained in this report and the actual social and economic losses following a specific earthquake. These results can be improved by using enhanced inventory, geotechnical, and observed ground motion data.

Table of Contents

Section	Page #
General Description of the Region	3
Building and Lifeline Inventory	4
Building Inventory	
Critical Facility Inventory	
Transportation and Utility Lifeline Inventory	
Earthquake Scenario Parameters	7
Direct Earthquake Damage	8
Buildings Damage	
Essential Facilities Damage	
Transportation and Utility Lifeline Damage	
Induced Earthquake Damage	14
Fire Following Earthquake	
Debris Generation	
Social Impact	15
Shelter Requirements	
Casualties	
Economic Loss	17
Building Related Losses	
Transportation and Utility Lifeline Losses	
Appendix A: County Listing for the Region	
Appendix B: Regional Population and Building Value Data	

General Description of the Region

Hazus-MH is a regional earthquake loss estimation model that was developed by the Federal Emergency Management Agency (FEMA) and the National Institute of Building Sciences. The primary purpose of Hazus is to provide a methodology and software application to develop multi-hazard losses at a regional scale. These loss estimates would be used primarily by local, state and regional officials to plan and stimulate efforts to reduce risks from multi-hazards and to prepare for emergency response and recovery.

The earthquake loss estimates provided in this report was based on a region that includes 27 county(ies) from the following state(s):

California

Note:

Appendix A contains a complete listing of the counties contained in the region.

The geographical size of the region is 33,099.90 square miles and contains 2,438 census tracts. There are over 3,774 thousand households in the region which has a total population of 10,474,926 people. The distribution of population by Total Region and County is provided in Appendix B.

There are an estimated 3,302 thousand buildings in the region with a total building replacement value (excluding contents) of 2,021,274 (millions of dollars). Approximately 90.00 % of the buildings (and 67.00% of the building value) are associated with residential housing.

The replacement value of the transportation and utility lifeline systems is estimated to be 174,040 and 121,476 (millions of dollars) , respectively.

Building and Lifeline Inventory

Building Inventory

Hazus estimates that there are 3,302 thousand buildings in the region which have an aggregate total replacement value of 2,021,274 (millions of dollars). Appendix B provides a general distribution of the building value by Total Region and County.

In terms of building construction types found in the region, wood frame construction makes up 86% of the building inventory. The remaining percentage is distributed between the other general building types.

Critical Facility Inventory

Hazus breaks critical facilities into two (2) groups: essential facilities and high potential loss facilities (HPL). Essential facilities include hospitals, medical clinics, schools, fire stations, police stations and emergency operations facilities. High potential loss facilities include dams, levees, military installations, nuclear power plants and hazardous material sites.

For essential facilities, there are 190 hospitals in the region with a total bed capacity of 26,707 beds. There are 3,853 schools, 1,132 fire stations, 357 police stations and 66 emergency operation facilities. With respect to high potential loss facilities (HPL), there are no dams identified within the inventory. The inventory also includes no hazardous material sites, no military installations and no nuclear power plants.

Transportation and Utility Lifeline Inventory

Within Hazus, the lifeline inventory is divided between transportation and utility lifeline systems. There are seven (7) transportation systems that include highways, railways, light rail, bus, ports, ferry and airports. There are six (6) utility systems that include potable water, wastewater, natural gas, crude & refined oil, electric power and communications. The lifeline inventory data are provided in Tables 1 and 2.

The total value of the lifeline inventory is over 295,516.00 (millions of dollars). This inventory includes over 6,955.63 miles of highways, 8,196 bridges, 155,660.27 miles of pipes.

Table 1: Transportation System Lifeline Inventory

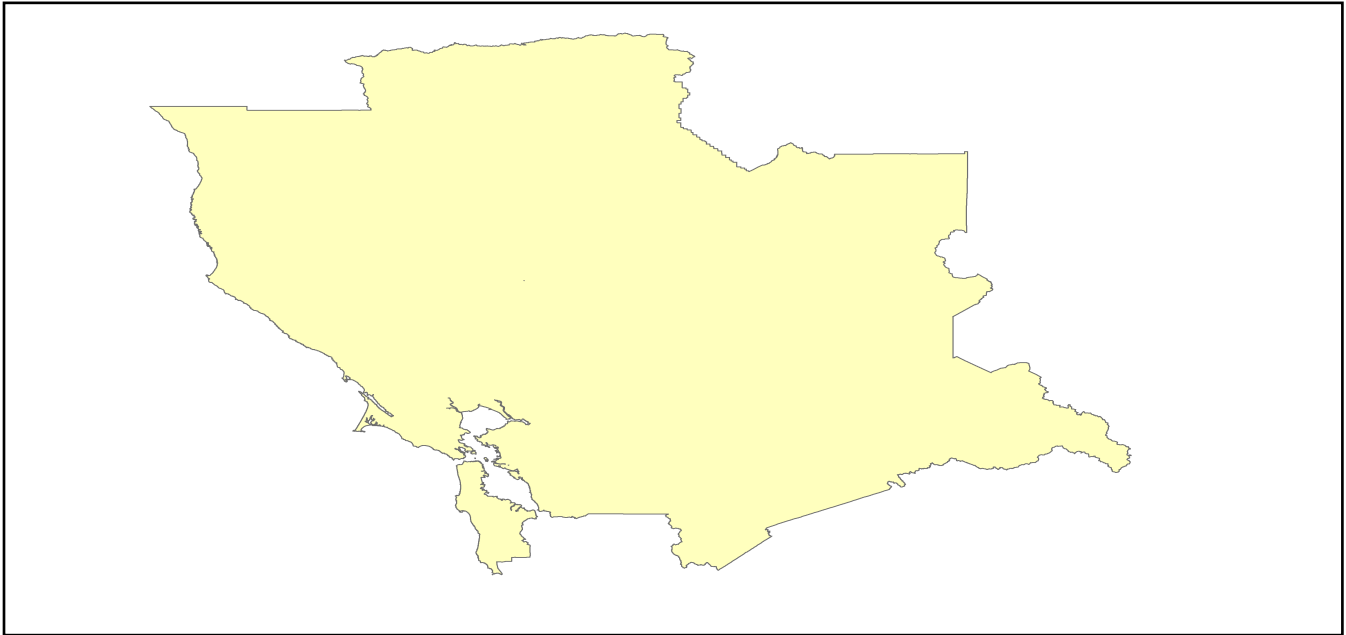
System	Component	# Locations/ # Segments	Replacement value (millions of dollars)
Highway	Bridges	8,196	46114.6538
	Segments	4,998	60932.4512
	Tunnels	39	842.4337
	Subtotal		107889.5387
Railways	Bridges	1,296	7374.2400
	Facilities	64	170.4320
	Segments	2,526	46608.1337
	Tunnels	3	1.8495
	Subtotal		54154.6552
Light Rail	Bridges	100	13.0980
	Facilities	194	3589.2500
	Segments	12	3867.6380
	Tunnels	0	0.0000
	Subtotal		7469.9860
Bus	Facilities	25	57.5106
	Subtotal		57.5106
Ferry	Facilities	25	33.2750
	Subtotal		33.2750
Port	Facilities	353	1345.5812
	Subtotal		1345.5812
Airport	Facilities	73	2161.3813
	Runways	107	928.7561
	Subtotal		3090.1374
		Total	174,040.70

Table 2: Utility System Lifeline Inventory

System	Component	# Locations / Segments	Replacement value (millions of dollars)
Potable Water	Distribution Lines	NA	3091.0504
	Facilities	20	785.8800
	Pipelines	0	0.0000
		Subtotal	3876.9304
Waste Water	Distribution Lines	NA	1854.6302
	Facilities	154	26480.5772
	Pipelines	0	0.0000
		Subtotal	28335.2074
Natural Gas	Distribution Lines	NA	1236.4202
	Facilities	2	82.4870
	Pipelines	856	11366.9381
		Subtotal	12685.8453
Oil Systems	Facilities	16	1.8880
	Pipelines	0	0.0000
		Subtotal	1.8880
Electrical Power	Facilities	234	76545.9815
		Subtotal	76545.9815
Communication	Facilities	261	30.7980
		Subtotal	30.7980
	Total		121,476.70

Earthquake Scenario

Hazus uses the following set of information to define the earthquake parameters used for the earthquake loss estimate provided in this report.



Scenario Name	greatvalley03adunnig_m6p53_se
Type of Earthquake	User-defined
Fault Name	NA
Historical Epicenter ID #	NA
Probabilistic Return Period	NA
Longitude of Epicenter	NA
Latitude of Epicenter	NA
Earthquake Magnitude	6.53
Depth (km)	NA
Rupture Length (Km)	NA
Rupture Orientation (degrees)	NA
Attenuation Function	NA

Direct Earthquake Damage

Building Damage

Hazus estimates that about 8,358 buildings will be at least moderately damaged. This is over 0.00 % of the buildings in the region. There are an estimated 164 buildings that will be damaged beyond repair. The definition of the 'damage states' is provided in Volume 1: Chapter 5 of the Hazus technical manual. Table 3 below summarizes the expected damage by general occupancy for the buildings in the region. Table 4 below summarizes the expected damage by general building type.

Damage Categories by General Occupancy Type

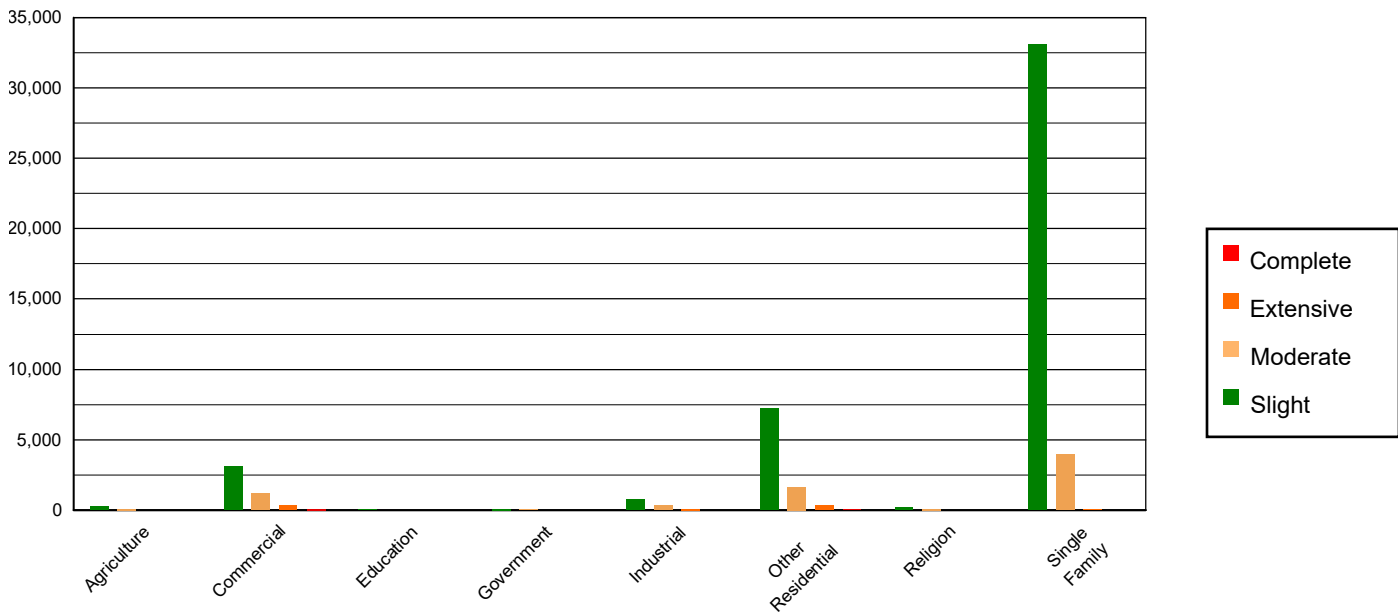


Table 3: Expected Building Damage by Occupancy

	None		Slight		Moderate		Extensive		Complete	
	Count	(%)	Count	(%)	Count	(%)	Count	(%)	Count	(%)
Agriculture	13236.19	0.41	259.63	0.58	101.57	1.39	20.54	2.37	5.07	3.09
Commercial	205212.93	6.31	3084.79	6.89	1184.68	16.17	330.84	38.20	78.75	47.95
Education	6602.33	0.20	47.15	0.11	15.47	0.21	2.51	0.29	1.54	0.94
Government	20368.53	0.63	115.26	0.26	42.69	0.58	11.90	1.37	1.62	0.99
Industrial	58108.02	1.79	773.51	1.73	319.14	4.35	90.09	10.40	16.24	9.89
Other Residential	408879.95	12.58	7231.59	16.15	1618.53	22.09	328.25	37.90	57.68	35.12
Religion	12213.23	0.38	201.40	0.45	80.55	1.10	23.75	2.74	3.07	1.87
Single Family	2525109.02	77.70	33057.72	73.84	3965.89	54.12	58.10	6.71	0.27	0.17
Total	3,249,730		44,771		7,329		866		164	

Table 4: Expected Building Damage by Building Type (All Design Levels)

	None		Slight		Moderate		Extensive		Complete	
	Count	(%)	Count	(%)	Count	(%)	Count	(%)	Count	(%)
Wood	2808883.13	86.43	38139.75	85.19	4813.17	65.68	100.13	11.56	3.30	2.01
Steel	72533.72	2.23	1214.03	2.71	607.36	8.29	199.85	23.08	52.07	31.70
Concrete	83193.43	2.56	1087.88	2.43	460.23	6.28	155.25	17.93	37.06	22.56
Precast	40726.30	1.25	756.54	1.69	349.95	4.78	95.14	10.99	9.12	5.56
RM	131554.93	4.05	919.41	2.05	511.10	6.97	135.12	15.60	4.57	2.78
URM	40513.33	1.25	1062.74	2.37	182.71	2.49	37.49	4.33	37.30	22.71
MH	72325.35	2.23	1590.69	3.55	404.00	5.51	143.01	16.51	20.83	12.68
Total	3,249,730		44,771		7,329		866		164	

*Note:

- RM Reinforced Masonry
- URM Unreinforced Masonry
- MH Manufactured Housing

Essential Facility Damage

Before the earthquake, the region had 26,707 hospital beds available for use. On the day of the earthquake, the model estimates that only 26,152 hospital beds (98.00%) are available for use by patients already in the hospital and those injured by the earthquake. After one week, 99.00% of the beds will be back in service. By 30 days, 99.00% will be operational.

Table 5: Expected Damage to Essential Facilities

Classification	Total	# Facilities		
		At Least Moderate Damage > 50%	Complete Damage > 50%	With Functionality > 50% on day 1
Hospitals	190	1	0	188
Schools	3,853	35	0	3,802
EOCs	66	1	0	65
PoliceStations	357	1	0	355
FireStations	1,132	7	0	1,119

Transportation Lifeline Damage

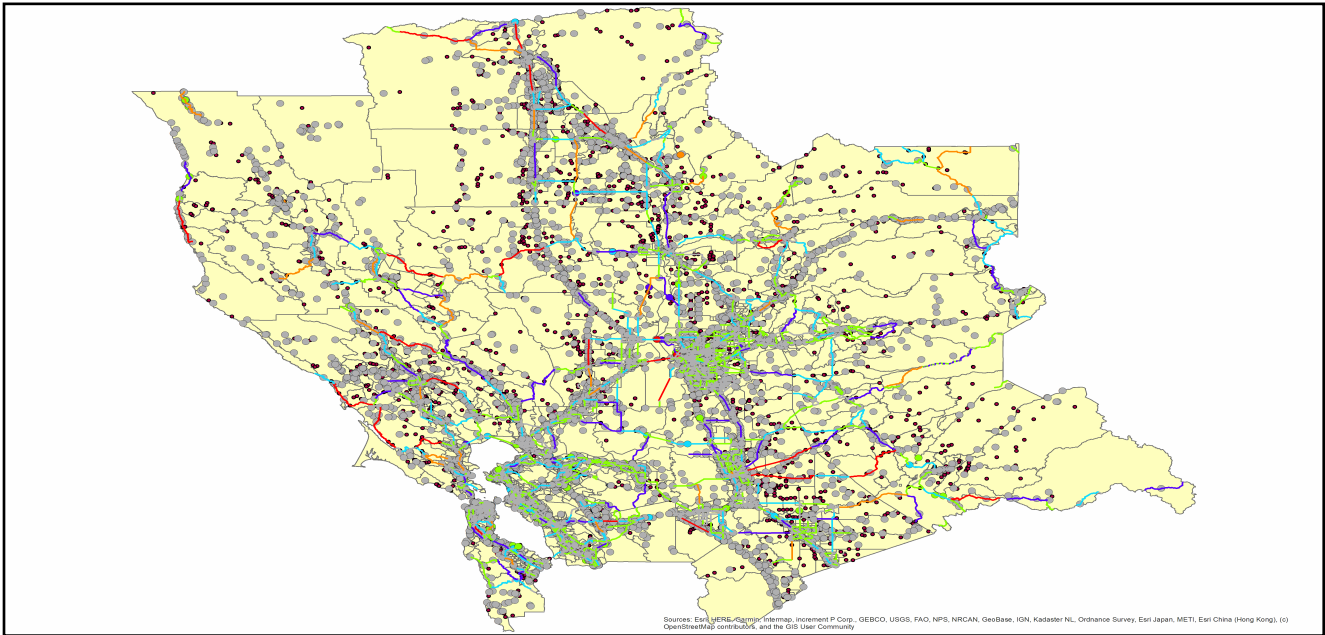


Table 6: Expected Damage to the Transportation Systems

System	Component	Locations/ Segments	Number of Locations			
			With at Least Mod. Damage	With Complete Damage	With Functionality > 50 %	
					After Day 1	After Day 7
Highway	Segments	4,998	0	0	4,998	4,998
	Bridges	8,196	7	0	8,193	8,195
	Tunnels	39	0	0	39	39
Railways	Segments	2,526	0	0	2,526	2,526
	Bridges	1,296	0	0	1,296	1,296
	Tunnels	3	0	0	3	3
	Facilities	64	2	0	64	64
Light Rail	Segments	12	0	0	12	12
	Bridges	100	0	0	100	100
	Tunnels	0	0	0	0	0
	Facilities	194	0	0	194	194
Bus	Facilities	25	0	0	25	25
Ferry	Facilities	25	0	0	25	25
Port	Facilities	353	0	0	353	353
Airport	Facilities	73	0	0	73	73
	Runways	107	0	0	107	107

Table 6 provides damage estimates for the transportation system.

Note: Roadway segments, railroad tracks and light rail tracks are assumed to be damaged by ground failure only. If ground failure maps are not provided, damage estimates to these components will not be computed.

Tables 7-9 provide information on the damage to the utility lifeline systems. Table 7 provides damage to the utility system facilities. Table 8 provides estimates on the number of leaks and breaks by the pipelines of the utility systems. For electric power and potable water, Hazus performs a simplified system performance analysis. Table 9 provides a summary of the system performance information.

Table 7 : Expected Utility System Facility Damage

System	# of Locations				
	Total #	With at Least Moderate Damage	With Complete Damage	with Functionality > 50 %	
				After Day 1	After Day 7
Potable Water	20	0	0	20	20
Waste Water	154	1	0	151	154
Natural Gas	2	0	0	2	2
Oil Systems	16	0	0	16	16
Electrical Power	234	2	0	232	234
Communication	261	4	0	260	261

Table 8 : Expected Utility System Pipeline Damage (Site Specific)

System	Total Pipelines Length (miles)	Number of Leaks	Number of Breaks
Potable Water	96,034	1002	251
Waste Water	57,621	503	126
Natural Gas	2,005	0	0
Oil	0	0	0

Table 9: Expected Potable Water and Electric Power System Performance

	Total # of Households	Number of Households without Service				
		At Day 1	At Day 3	At Day 7	At Day 30	At Day 90
Potable Water	3,774,711	9,664	2,795	0	0	0
Electric Power		19,666	14,146	6,884	878	24

Induced Earthquake Damage

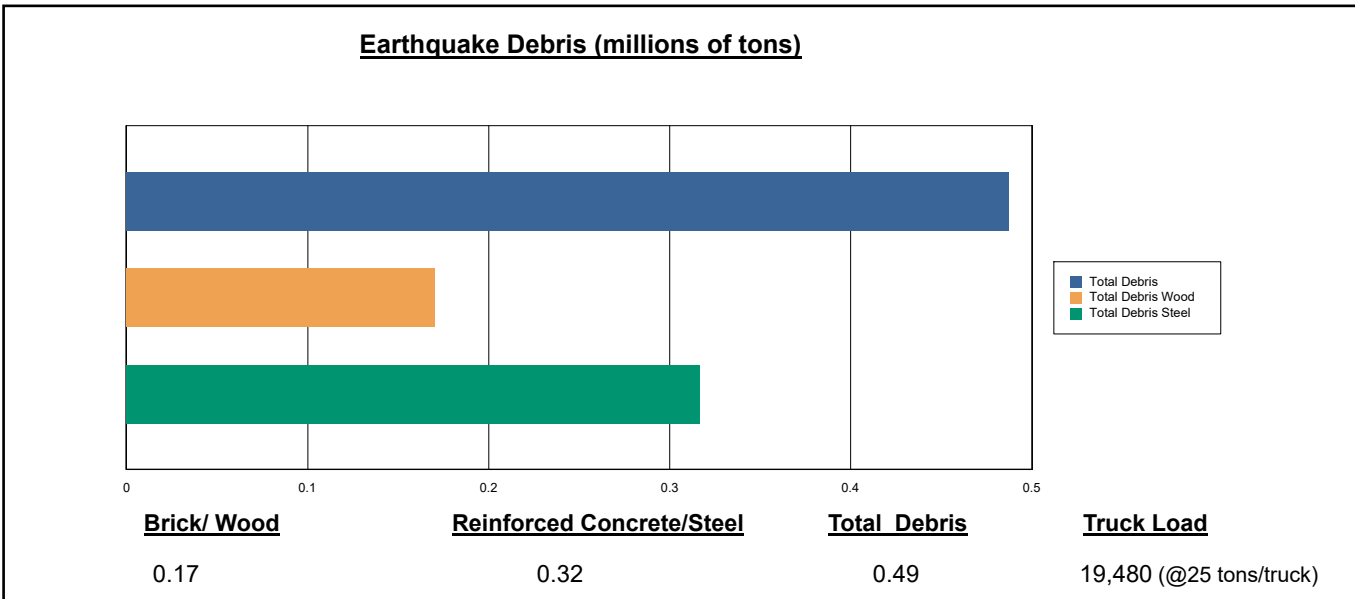
Fire Following Earthquake

Fires often occur after an earthquake. Because of the number of fires and the lack of water to fight the fires, they can often burn out of control. Hazus uses a Monte Carlo simulation model to estimate the number of ignitions and the amount of burnt area. For this scenario, the model estimates that there will be 10 ignitions that will burn about 0.13 sq. mi (0.00 % of the region's total area.) The model also estimates that the fires will displace about 1,118 people and burn about 129 (millions of dollars) of building value.

Debris Generation

Hazus estimates the amount of debris that will be generated by the earthquake. The model breaks the debris into two general categories: a) Brick/Wood and b) Reinforced Concrete/Steel. This distinction is made because of the different types of material handling equipment required to handle the debris.

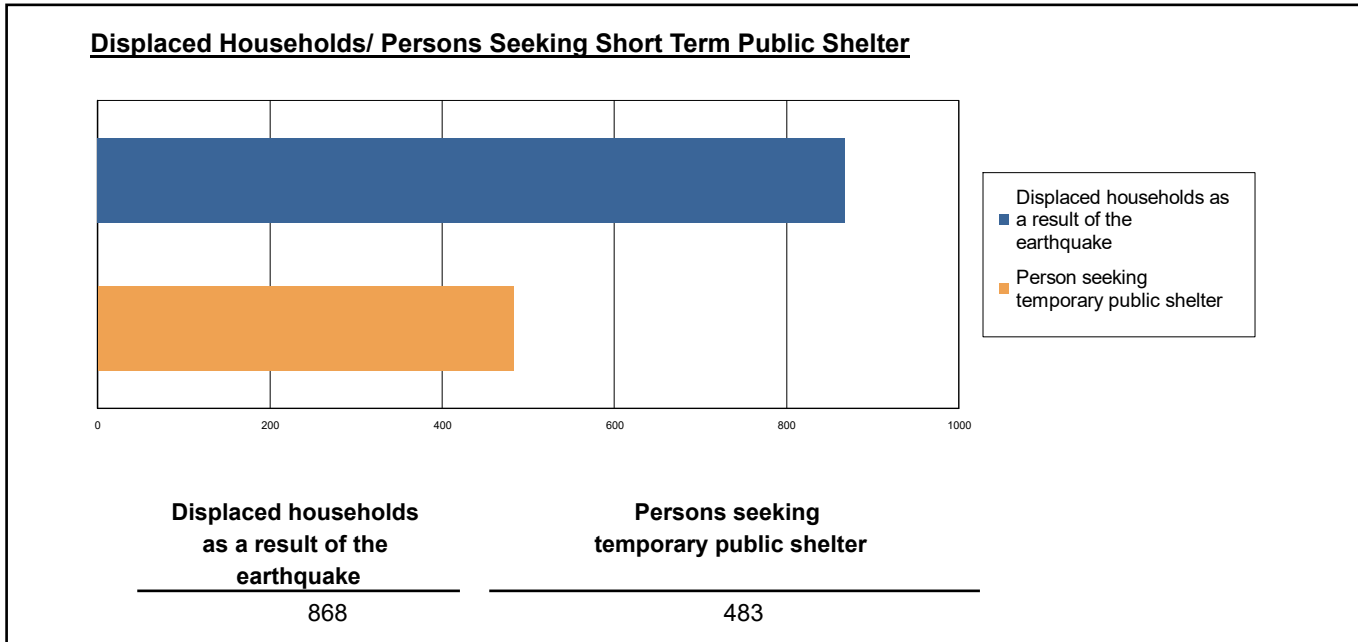
The model estimates that a total of 487,000 tons of debris will be generated. Of the total amount, Brick/Wood comprises 35.00% of the total, with the remainder being Reinforced Concrete/Steel. If the debris tonnage is converted to an estimated number of truckloads, it will require 19,480 truckloads (@25 tons/truck) to remove the debris generated by the earthquake.



Social Impact

Shelter Requirement

Hazus estimates the number of households that are expected to be displaced from their homes due to the earthquake and the number of displaced people that will require accommodations in temporary public shelters. The model estimates 868 households to be displaced due to the earthquake. Of these, 483 people (out of a total population of 10,474,926) will seek temporary shelter in public shelters.



Casualties

Hazus estimates the number of people that will be injured and killed by the earthquake. The casualties are broken down into four (4) severity levels that describe the extent of the injuries. The levels are described as follows;

- Severity Level 1: Injuries will require medical attention but hospitalization is not needed.
- Severity Level 2: Injuries will require hospitalization but are not considered life-threatening
- Severity Level 3: Injuries will require hospitalization and can become life threatening if not promptly treated.
- Severity Level 4: Victims are killed by the earthquake.

The casualty estimates are provided for three (3) times of day: 2:00 AM, 2:00 PM and 5:00 PM. These times represent the periods of the day that different sectors of the community are at their peak occupancy loads. The 2:00 AM estimate considers that the residential occupancy load is maximum, the 2:00 PM estimate considers that the educational, commercial and industrial sector loads are maximum and 5:00 PM represents peak commute time.

Table 10 provides a summary of the casualties estimated for this earthquake

Table 10: Casualty Estimates

		Level 1	Level 2	Level 3	Level 4
2 AM	Commercial	3.86	0.67	0.08	0.15
	Commuting	0.03	0.03	0.06	0.01
	Educational	0.00	0.00	0.00	0.00
	Hotels	0.04	0.00	0.00	0.00
	Industrial	3.68	0.62	0.07	0.13
	Other-Residential	117.75	19.50	2.21	4.31
	Single Family	81.99	3.94	0.01	0.01
	Total	207	25	2	5
2 PM	Commercial	259.97	46.48	5.64	10.96
	Commuting	0.24	0.30	0.54	0.10
	Educational	76.03	14.29	1.87	3.66
	Hotels	0.01	0.00	0.00	0.00
	Industrial	26.96	4.56	0.48	0.93
	Other-Residential	40.56	7.02	0.84	1.59
	Single Family	25.14	1.26	0.01	0.01
	Total	429	74	9	17
5 PM	Commercial	174.84	31.89	3.92	7.54
	Commuting	4.53	5.63	10.00	1.91
	Educational	6.60	0.35	0.00	0.01
	Hotels	0.01	0.00	0.00	0.00
	Industrial	16.85	2.85	0.30	0.58
	Other-Residential	44.64	7.61	0.89	1.68
	Single Family	30.07	1.50	0.01	0.01
	Total	278	50	15	12

Economic Loss

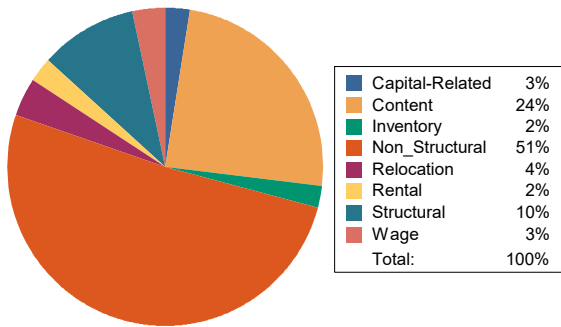
The total economic loss estimated for the earthquake is 5,371.51 (millions of dollars), which includes building and lifeline related losses based on the region's available inventory. The following three sections provide more detailed information about these losses.

Building-Related Losses

The building losses are broken into two categories: direct building losses and business interruption losses. The direct building losses are the estimated costs to repair or replace the damage caused to the building and its contents. The business interruption losses are the losses associated with inability to operate a business because of the damage sustained during the earthquake. Business interruption losses also include the temporary living expenses for those people displaced from their homes because of the earthquake.

The total building-related losses were 4,236.44 (millions of dollars); 12 % of the estimated losses were related to the business interruption of the region. By far, the largest loss was sustained by the residential occupancies which made up over 41 % of the total loss. Table 11 below provides a summary of the losses associated with the building damage.

Earthquake Losses by Loss Type (\$ millions)



Earthquake Losses by Occupancy Type (\$ millions)

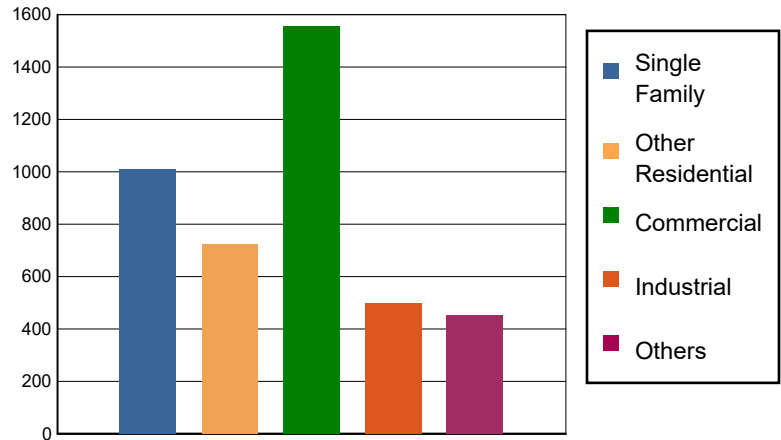


Table 11: Building-Related Economic Loss Estimates
(Millions of dollars)

Category	Area	Single Family	Other Residential	Commercial	Industrial	Others	Total
Income Losses							
	Wage	0.0000	11.1501	115.7298	5.2213	11.1288	143.2300
	Capital-Related	0.0000	4.7444	101.0326	3.2164	2.6476	111.6410
	Rental	9.0113	30.6298	56.6682	2.8231	4.7578	103.8902
	Relocation	28.2961	18.3491	79.3805	14.9572	28.2838	169.2667
	Subtotal	37.3074	64.8734	352.8111	26.2180	46.8180	528.0279
Capital Stock Losses							
	Structural	92.5487	65.0095	162.9149	50.3529	47.6436	418.4696
	Non_Structural	626.2065	462.7422	624.4148	233.8460	213.4457	2,160.6552
	Content	252.5416	129.3745	348.2479	164.3861	130.9560	1,025.5061
	Inventory	0.0000	0.0000	66.5131	25.6549	11.6167	103.7847
	Subtotal	971.2968	657.1262	1202.0907	474.2399	403.6620	3708.4156
	Total	1008.60	722.00	1554.90	500.46	450.48	4236.44

Transportation and Utility Lifeline Losses

For the transportation and utility lifeline systems, Hazus computes the direct repair cost for each component only. There are no losses computed by Hazus for business interruption due to lifeline outages. Tables 12 & 13 provide a detailed breakdown in the expected lifeline losses.

Table 12: Transportation System Economic Losses
(Millions of dollars)

System	Component	Inventory Value	Economic Loss	Loss Ratio (%)
Highway	Segments	60932.4512	0.0000	0.00
	Bridges	46114.6538	52.6292	0.11
	Tunnels	842.4337	0.0005	0.00
	Subtotal	107889.5387	52.6297	
Railways	Segments	46608.1337	0.0000	0.00
	Bridges	7374.2400	6.9327	0.09
	Tunnels	1.8495	0.0000	0.00
	Facilities	170.4320	4.7985	2.82
	Subtotal	54154.6552	11.7312	
Light Rail	Segments	3867.6380	0.0000	0.00
	Bridges	13.0980	0.0000	0.00
	Tunnels	0.0000	0.0000	0.00
	Facilities	3589.2500	44.7768	1.25
	Subtotal	7469.9860	44.7768	
Bus	Facilities	57.5106	0.9790	1.70
	Subtotal	57.5106	0.9790	
Ferry	Facilities	33.2750	0.6015	1.81
	Subtotal	33.2750	0.6015	
Port	Facilities	1345.5812	26.0595	1.94
	Subtotal	1345.5812	26.0595	
Airport	Facilities	2161.3813	74.3839	3.44
	Runways	928.7561	0.0000	0.00
	Subtotal	3090.1374	74.3839	
Total		174,040.68	211.16	

Table 13: Utility System Economic Losses
(Millions of dollars)

System	Component	Inventory Value	Economic Loss	Loss Ratio (%)
Potable Water	Pipelines	0.0000	0.0000	0.00
	Facilities	785.8800	0.4782	0.06
	Distribution Lines	3091.0504	4.5104	0.15
	Subtotal	3876.9304	4.9886	
Waste Water	Pipelines	0.0000	0.0000	0.00
	Facilities	26480.5772	129.0129	0.49
	Distribution Lines	1854.6302	2.2657	0.12
	Subtotal	28335.2074	131.2786	
Natural Gas	Pipelines	11366.9381	0.0000	0.00
	Facilities	82.4870	0.0749	0.09
	Distribution Lines	1236.4202	0.7762	0.06
	Subtotal	12685.8453	0.8511	
Oil Systems	Pipelines	0.0000	0.0000	0.00
	Facilities	1.8880	0.0013	0.07
	Subtotal	1.8880	0.0013	
Electrical Power	Facilities	76545.9815	786.3375	1.03
	Subtotal	76545.9815	786.3375	
Communication	Facilities	30.7980	0.4464	1.45
	Subtotal	30.7980	0.4464	
	Total	121,476.65	923.90	

Appendix A: County Listing for the Region

Alameda,CA

Amador,CA

Butte,CA

Calaveras,CA

Colusa,CA

Contra Costa,CA

El Dorado,CA

Glenn,CA

Lake,CA

Marin,CA

Mendocino,CA

Napa,CA

Nevada,CA

Placer,CA

Sacramento,CA

San Francisco,CA

San Joaquin,CA

San Mateo,CA

Sierra,CA

Solano,CA

Sonoma,CA

Stanislaus,CA

Sutter,CA

Tehama,CA

Tuolumne,CA

Yolo,CA

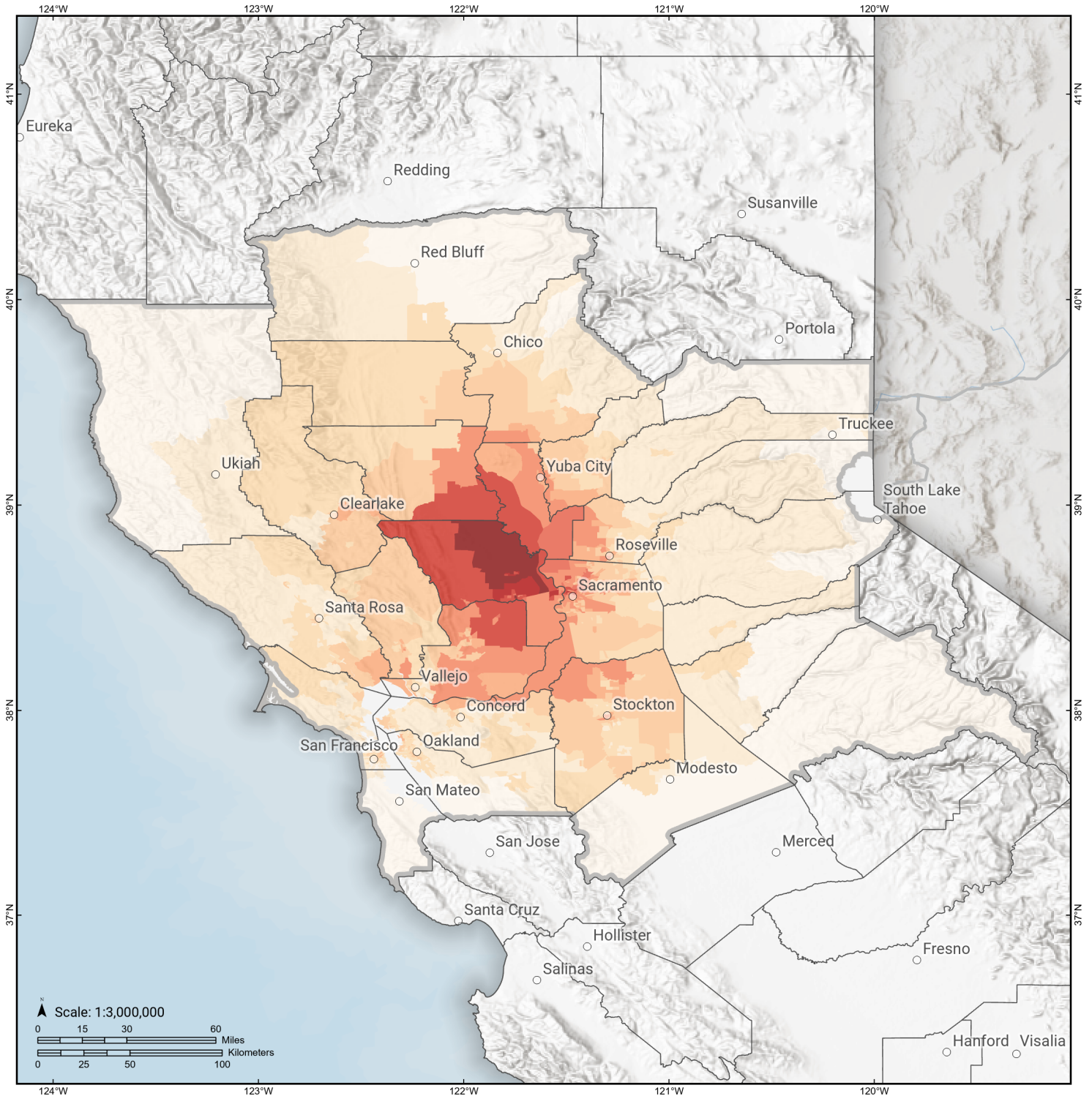
Yuba,CA

Appendix B: Regional Population and Building Value Data

State	County Name	Population	Building Value (millions of dollars)		
			Residential	Non-Residential	Total
California	Alameda	1,682,353	209,951	122,639	332,590
	Amador	40,474	5,608	2,517	8,125
	Butte	211,632	25,875	16,639	42,514
	Calaveras	45,292	8,305	4,893	13,199
	Colusa	21,839	2,244	2,024	4,268
	Contra Costa	1,165,927	158,118	60,339	218,458
	El Dorado	191,185	34,907	9,704	44,611
	Glenn	28,917	2,791	3,717	6,508
	Lake	68,163	9,699	4,530	14,229
	Marin	262,321	47,738	15,030	62,769
	Mendocino	91,601	14,237	8,510	22,748
	Napa	138,019	20,517	13,045	33,563
	Nevada	102,241	17,908	6,108	24,016
	Placer	404,739	69,985	24,193	94,179
	Sacramento	1,585,055	179,811	83,911	263,723
	San Francisco	873,965	108,848	46,020	154,869
	San Joaquin	779,233	82,706	56,882	139,589
	San Mateo	764,442	110,372	44,995	155,368
	Sierra	3,236	596	419	1,015
	Solano	453,491	55,802	26,393	82,195
	Sonoma	488,863	68,827	35,781	104,609
	Stanislaus	552,878	62,937	37,511	100,449
	Sutter	99,633	10,618	6,448	17,066
	Tehama	65,829	7,705	5,113	12,818
	Tuolumne	55,620	8,964	3,507	12,471
	Yolo	216,403	24,130	18,343	42,473
	Yuba	81,575	8,161	4,677	12,839
Total Region		10,474,926	1,357,360	663,888	2,021,261

Great Valley 03a Dunnigan Hills

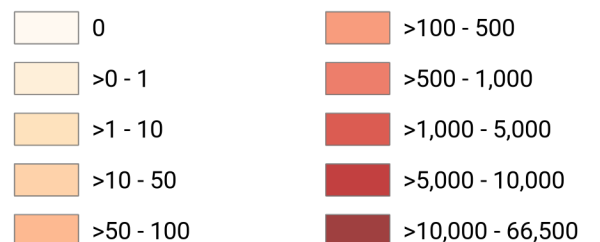
Debris Generated by Census Tract



Study Region: Great Valley 03a Dunnigan Hills
Scenario: greatvalley03adunnig_m6p53_se

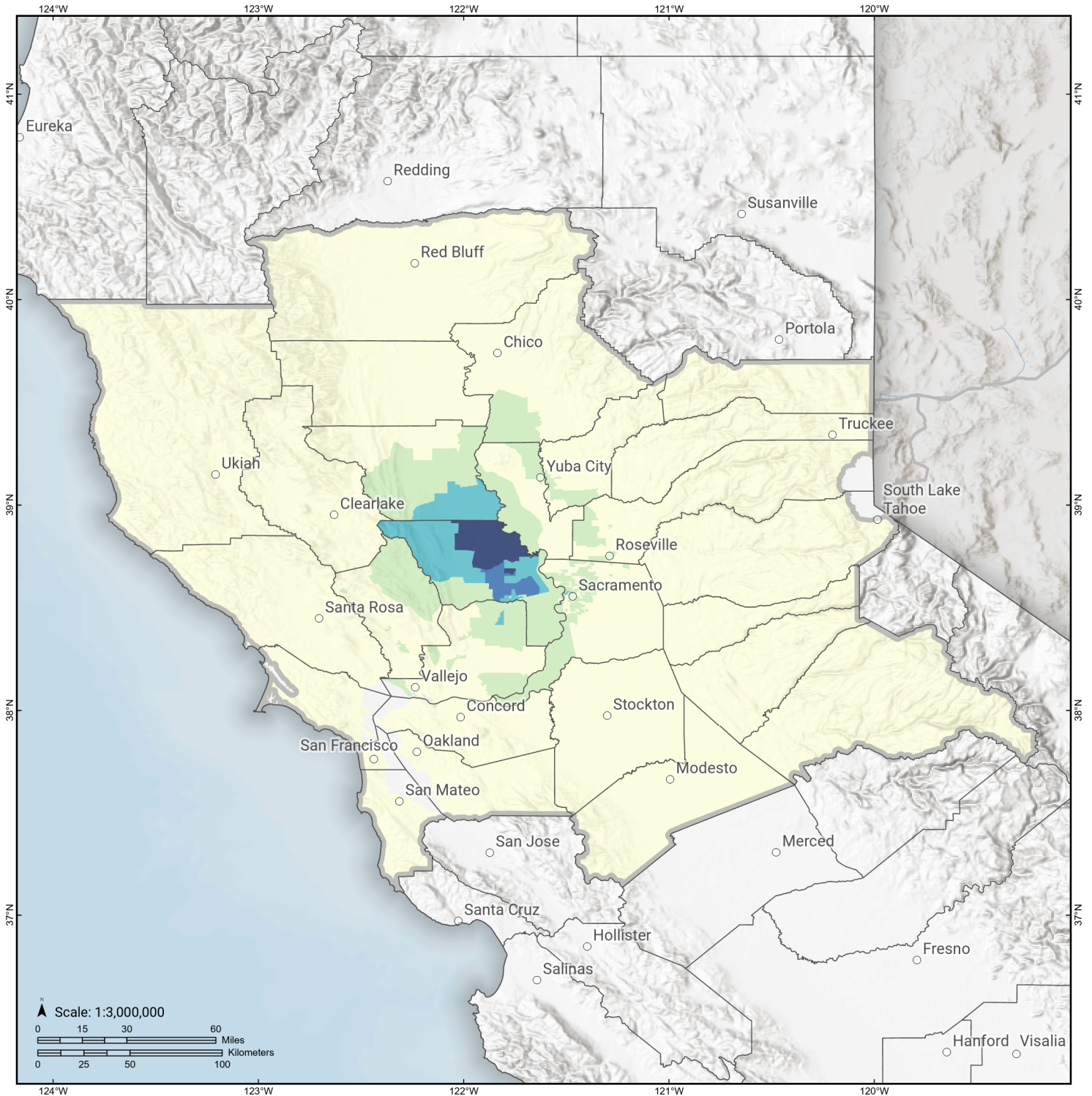


Debris Generated (in tons)



Great Valley 03a Dunnigan Hills

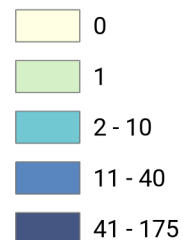
Displaced Households by Census Tract



Study Region: Great Valley 03a Dunnigan Hills
Scenario: greatvalley03adunnig_m6p53_se

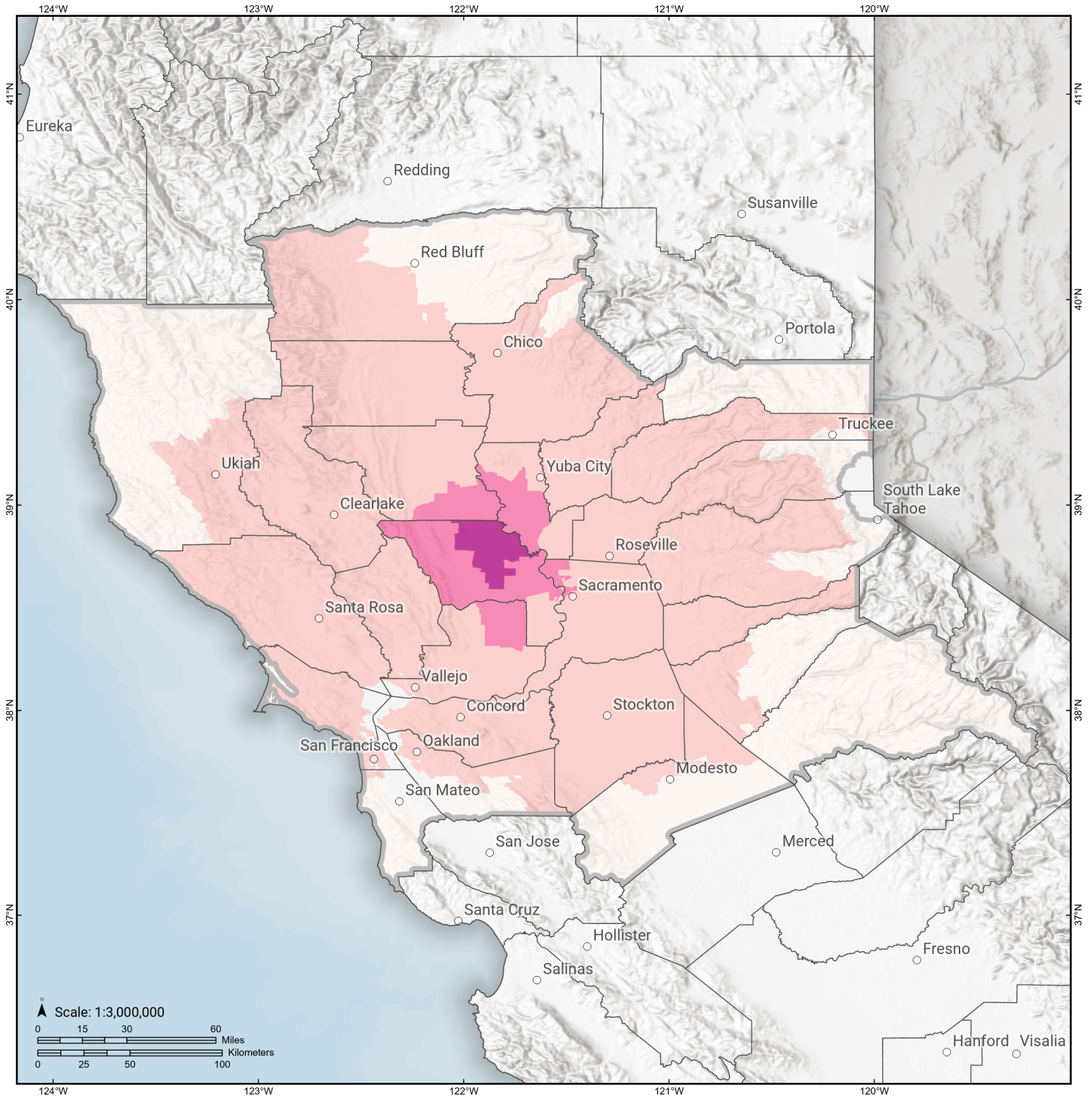


Displaced Households



Great Valley 03a Dunnigan Hills

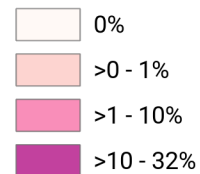
Loss Ratio by Census Tract



Study Region: Great Valley 03a Dunnigan Hills
Scenario: greatvalley03adunnig_m6p53_se

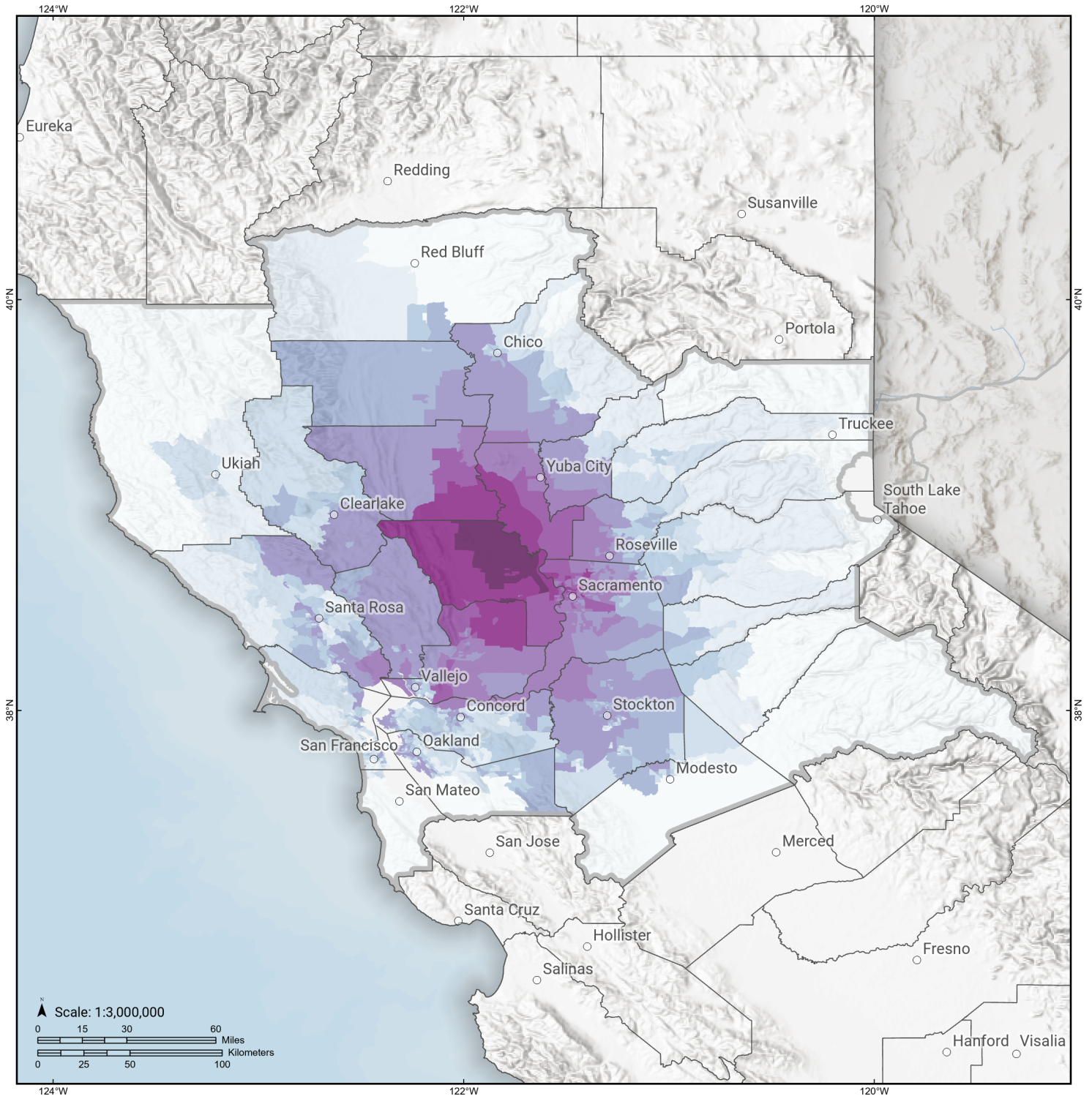


Loss Ratio (ratio of building related economic loss to exposed value of buildings)



Great Valley 03a Dunnigan Hills

Total Building Related Economic Loss by Census Tract



Study Region: Great Valley 03a Dunnigan Hills
Scenario: greatvalley03adunnig_m6p53_se

Economic Loss (in thousands of USD \$)



Building Damage by Count by General Occupancy



April 22, 2024

	# of Buildings					Total
	None	Slight	Moderate	Extensive	Complete	
California						
Alameda						
<i>Agriculture</i>	422	0	0	0	0	422
<i>Commercial</i>	31,956	31	1	0	0	31,989
<i>Education</i>	1,116	1	0	0	0	1,117
<i>Government</i>	10,525	3	0	0	0	10,528
<i>Industrial</i>	10,198	7	0	0	0	10,205
<i>Religion</i>	1,984	2	0	0	0	1,986
<i>Other Residential</i>	61,365	30	1	0	0	61,396
<i>Single Family</i>	344,170	2	0	0	0	344,173
Amador						
<i>Agriculture</i>	44	0	0	0	0	44
<i>Commercial</i>	1,368	0	0	0	0	1,368
<i>Education</i>	23	0	0	0	0	23
<i>Government</i>	32	0	0	0	0	32
<i>Industrial</i>	235	0	0	0	0	235
<i>Religion</i>	45	0	0	0	0	45
<i>Other Residential</i>	1,037	0	0	0	0	1,037
<i>Single Family</i>	14,962	0	0	0	0	14,962
Butte						

	# of Buildings					Total
	None	Slight	Moderate	Extensive	Complete	
<i>Agriculture</i>	506	3	1	0	0	510
<i>Commercial</i>	6,372	12	1	0	0	6,385
<i>Education</i>	172	0	0	0	0	172
<i>Government</i>	146	1	0	0	0	147
<i>Industrial</i>	1,516	5	1	0	0	1,522
<i>Religion</i>	528	2	0	0	0	531
<i>Other Residential</i>	21,433	61	4	0	0	21,498
<i>Single Family</i>	50,261	22	0	0	0	50,283
Calaveras						
<i>Agriculture</i>	2,207	0	0	0	0	2,207
<i>Commercial</i>	1,413	0	0	0	0	1,413
<i>Education</i>	35	0	0	0	0	35
<i>Government</i>	84	0	0	0	0	84
<i>Industrial</i>	466	0	0	0	0	466
<i>Religion</i>	130	0	0	0	0	130
<i>Other Residential</i>	2,558	1	0	0	0	2,559
<i>Single Family</i>	22,148	0	0	0	0	22,148
Colusa						
<i>Agriculture</i>	123	15	4	0	0	142
<i>Commercial</i>	712	61	19	2	0	794
<i>Education</i>	32	1	0	0	0	33
<i>Government</i>	30	2	0	0	0	32
<i>Industrial</i>	99	12	3	0	0	113
<i>Religion</i>	50	6	2	0	0	58
<i>Other Residential</i>	837	93	23	2	0	954

	# of Buildings					Total
	None	Slight	Moderate	Extensive	Complete	
<i>Single Family</i>	5,404	529	21	0	0	5,954
Contra Costa						
<i>Agriculture</i>	747	2	0	0	0	749
<i>Commercial</i>	17,958	30	2	0	0	17,991
<i>Education</i>	652	1	0	0	0	653
<i>Government</i>	5,015	9	0	0	0	5,024
<i>Industrial</i>	4,733	15	1	0	0	4,749
<i>Religion</i>	1,223	3	0	0	0	1,226
<i>Other Residential</i>	29,038	81	5	0	0	29,124
<i>Single Family</i>	281,839	96	0	0	0	281,935
El Dorado						
<i>Agriculture</i>	161	0	0	0	0	161
<i>Commercial</i>	4,768	0	0	0	0	4,768
<i>Education</i>	128	0	0	0	0	128
<i>Government</i>	100	0	0	0	0	100
<i>Industrial</i>	1,199	0	0	0	0	1,199
<i>Religion</i>	180	0	0	0	0	180
<i>Other Residential</i>	10,416	4	0	0	0	10,420
<i>Single Family</i>	71,424	0	0	0	0	71,424
Glenn						
<i>Agriculture</i>	1,360	5	1	0	0	1,365
<i>Commercial</i>	883	2	0	0	0	885
<i>Education</i>	35	0	0	0	0	35
<i>Government</i>	99	0	0	0	0	99
<i>Industrial</i>	254	0	0	0	0	254

		# of Buildings					
		None	Slight	Moderate	Extensive	Complete	Total
Lake	<i>Religion</i>	89	0	0	0	0	89
	<i>Other Residential</i>	2,144	7	0	0	0	2,152
	<i>Single Family</i>	7,415	2	0	0	0	7,417
	<i>Agriculture</i>	161	0	0	0	0	161
	<i>Commercial</i>	2,089	2	0	0	0	2,091
	<i>Education</i>	68	0	0	0	0	68
	<i>Government</i>	78	0	0	0	0	78
	<i>Industrial</i>	354	0	0	0	0	354
	<i>Religion</i>	140	0	0	0	0	140
	<i>Other Residential</i>	14,480	115	6	0	0	14,601
Marin	<i>Single Family</i>	21,627	6	0	0	0	21,633
	<i>Agriculture</i>	190	0	0	0	0	190
	<i>Commercial</i>	8,265	5	0	0	0	8,270
	<i>Education</i>	274	0	0	0	0	274
	<i>Government</i>	143	0	0	0	0	143
	<i>Industrial</i>	1,532	3	0	0	0	1,535
	<i>Religion</i>	319	0	0	0	0	319
	<i>Other Residential</i>	7,884	6	0	0	0	7,890
	<i>Single Family</i>	76,719	5	0	0	0	76,724
	Mendocino	<i>Agriculture</i>	184	0	0	0	0
<i>Commercial</i>		3,436	0	0	0	0	3,436
<i>Education</i>		101	0	0	0	0	101

		# of Buildings					
		None	Slight	Moderate	Extensive	Complete	Total
Napa	<i>Government</i>	83	0	0	0	0	83
	<i>Industrial</i>	869	0	0	0	0	869
	<i>Religion</i>	216	0	0	0	0	216
	<i>Other Residential</i>	7,059	1	0	0	0	7,060
	<i>Single Family</i>	25,969	0	0	0	0	25,969
	<i>Agriculture</i>	345	3	0	0	0	349
	<i>Commercial</i>	3,976	41	3	0	0	4,021
	<i>Education</i>	131	1	0	0	0	132
	<i>Government</i>	102	1	0	0	0	103
	<i>Industrial</i>	1,351	15	1	0	0	1,367
Nevada	<i>Religion</i>	146	2	0	0	0	148
	<i>Other Residential</i>	6,870	100	7	0	0	6,978
	<i>Single Family</i>	38,640	121	0	0	0	38,761
	<i>Agriculture</i>	132	0	0	0	0	132
	<i>Commercial</i>	2,835	0	0	0	0	2,835
	<i>Education</i>	108	0	0	0	0	108
	<i>Government</i>	60	0	0	0	0	60
	<i>Industrial</i>	1,161	0	0	0	0	1,161
	<i>Religion</i>	189	0	0	0	0	189
	<i>Other Residential</i>	6,382	2	0	0	0	6,384
Placer	<i>Single Family</i>	43,280	0	0	0	0	43,280
	<i>Agriculture</i>	255	2	0	0	0	258

	# of Buildings					Total
	None	Slight	Moderate	Extensive	Complete	
<i>Commercial</i>	8,493	41	3	0	0	8,538
<i>Education</i>	231	0	0	0	0	231
<i>Government</i>	376	1	0	0	0	377
<i>Industrial</i>	2,682	19	2	0	0	2,703
<i>Religion</i>	380	2	0	0	0	382
<i>Other Residential</i>	14,754	83	6	0	0	14,843
<i>Single Family</i>	134,190	529	0	0	0	134,719
Sacramento						
<i>Agriculture</i>	599	19	3	0	0	621
<i>Commercial</i>	24,754	1,314	220	7	0	26,295
<i>Education</i>	814	13	2	0	0	829
<i>Government</i>	540	64	15	0	0	619
<i>Industrial</i>	6,442	271	41	1	0	6,756
<i>Religion</i>	1,580	102	19	1	0	1,702
<i>Other Residential</i>	53,918	2,337	156	2	0	56,413
<i>Single Family</i>	375,172	11,486	180	2	0	386,840
San Francisco						
<i>Agriculture</i>	162	0	0	0	0	162
<i>Commercial</i>	21,295	48	1	0	0	21,344
<i>Education</i>	571	1	0	0	0	572
<i>Government</i>	288	1	0	0	0	289
<i>Industrial</i>	3,854	6	0	0	0	3,860
<i>Religion</i>	1,344	1	0	0	0	1,345
<i>Other Residential</i>	44,464	64	1	0	0	44,529

	# of Buildings					Total
	None	Slight	Moderate	Extensive	Complete	
<i>Single Family</i>	150,652	49	2	0	0	150,703
San Joaquin						
<i>Agriculture</i>	751	2	0	0	0	753
<i>Commercial</i>	12,839	24	1	0	0	12,864
<i>Education</i>	395	0	0	0	0	395
<i>Government</i>	304	0	0	0	0	304
<i>Industrial</i>	4,920	8	0	0	0	4,928
<i>Religion</i>	876	1	0	0	0	877
<i>Other Residential</i>	21,715	85	5	0	0	21,805
<i>Single Family</i>	188,408	477	37	0	0	188,922
San Mateo						
<i>Agriculture</i>	539	0	0	0	0	539
<i>Commercial</i>	14,395	0	0	0	0	14,395
<i>Education</i>	489	0	0	0	0	489
<i>Government</i>	299	0	0	0	0	299
<i>Industrial</i>	4,472	0	0	0	0	4,472
<i>Religion</i>	736	0	0	0	0	736
<i>Other Residential</i>	22,453	0	0	0	0	22,453
<i>Single Family</i>	159,931	0	0	0	0	159,931
Sierra						
<i>Agriculture</i>	7	0	0	0	0	7
<i>Commercial</i>	141	0	0	0	0	141
<i>Education</i>	14	0	0	0	0	14
<i>Government</i>	16	0	0	0	0	16
<i>Industrial</i>	66	0	0	0	0	66

	# of Buildings					Total
	None	Slight	Moderate	Extensive	Complete	
<i>Religion</i>	12	0	0	0	0	12
<i>Other Residential</i>	153	0	0	0	0	153
<i>Single Family</i>	1,858	0	0	0	0	1,858
Solano						
<i>Agriculture</i>	225	17	3	0	0	245
<i>Commercial</i>	6,960	269	37	1	0	7,268
<i>Education</i>	222	2	0	0	0	225
<i>Government</i>	145	6	1	0	0	152
<i>Industrial</i>	1,988	97	16	0	0	2,101
<i>Religion</i>	439	13	2	0	0	454
<i>Other Residential</i>	11,801	455	60	1	0	12,317
<i>Single Family</i>	117,782	3,144	41	0	0	120,968
Sonoma						
<i>Agriculture</i>	1,301	3	0	0	0	1,304
<i>Commercial</i>	12,091	18	1	0	0	12,110
<i>Education</i>	367	0	0	0	0	367
<i>Government</i>	319	0	0	0	0	319
<i>Industrial</i>	3,819	6	0	0	0	3,825
<i>Religion</i>	575	1	0	0	0	576
<i>Other Residential</i>	24,989	43	2	0	0	25,033
<i>Single Family</i>	142,005	23	0	0	0	142,028
Stanislaus						
<i>Agriculture</i>	1,239	0	0	0	0	1,239
<i>Commercial</i>	10,369	0	0	0	0	10,369
<i>Education</i>	307	0	0	0	0	307

	# of Buildings					Total
	None	Slight	Moderate	Extensive	Complete	
<i>Government</i>	680	0	0	0	0	680
<i>Industrial</i>	3,475	0	0	0	0	3,475
<i>Religion</i>	456	0	0	0	0	456
<i>Other Residential</i>	19,568	1	0	0	0	19,569
<i>Single Family</i>	142,724	0	0	0	0	142,724
Sutter						
<i>Agriculture</i>	993	101	28	3	0	1,125
<i>Commercial</i>	1,945	94	13	0	0	2,052
<i>Education</i>	61	1	0	0	0	62
<i>Government</i>	73	3	1	0	0	77
<i>Industrial</i>	589	40	7	0	0	636
<i>Religion</i>	146	6	1	0	0	154
<i>Other Residential</i>	2,866	215	32	0	0	3,113
<i>Single Family</i>	23,668	835	9	0	0	24,512
Tehama						
<i>Agriculture</i>	299	0	0	0	0	299
<i>Commercial</i>	1,270	0	0	0	0	1,270
<i>Education</i>	57	0	0	0	0	57
<i>Government</i>	50	0	0	0	0	50
<i>Industrial</i>	552	0	0	0	0	552
<i>Religion</i>	110	0	0	0	0	110
<i>Other Residential</i>	3,990	1	0	0	0	3,991
<i>Single Family</i>	21,222	0	0	0	0	21,222
Tuolumne						
<i>Agriculture</i>	82	0	0	0	0	82

	# of Buildings					Total
	None	Slight	Moderate	Extensive	Complete	
<i>Commercial</i>	1,576	0	0	0	0	1,576
<i>Education</i>	57	0	0	0	0	57
<i>Government</i>	143	0	0	0	0	143
<i>Industrial</i>	383	0	0	0	0	383
<i>Religion</i>	121	0	0	0	0	121
<i>Other Residential</i>	4,962	0	0	0	0	4,962
<i>Single Family</i>	21,645	0	0	0	0	21,645
Yolo						
<i>Agriculture</i>	114	84	61	17	5	281
<i>Commercial</i>	1,884	1,065	877	320	79	4,225
<i>Education</i>	88	26	13	2	2	131
<i>Government</i>	50	23	25	12	2	111
<i>Industrial</i>	505	261	246	88	16	1,117
<i>Religion</i>	102	59	55	23	3	242
<i>Other Residential</i>	4,895	3,290	1,296	323	58	9,861
<i>Single Family</i>	23,364	15,494	3,674	56	0	42,589
Yuba						
<i>Agriculture</i>	90	2	0	0	0	92
<i>Commercial</i>	1,171	25	3	0	0	1,199
<i>Education</i>	54	0	0	0	0	54
<i>Government</i>	590	1	0	0	0	591
<i>Industrial</i>	395	8	1	0	0	404
<i>Religion</i>	97	1	0	0	0	98
<i>Other Residential</i>	6,849	159	13	0	0	7,021
<i>Single Family</i>	18,631	235	1	0	0	18,867

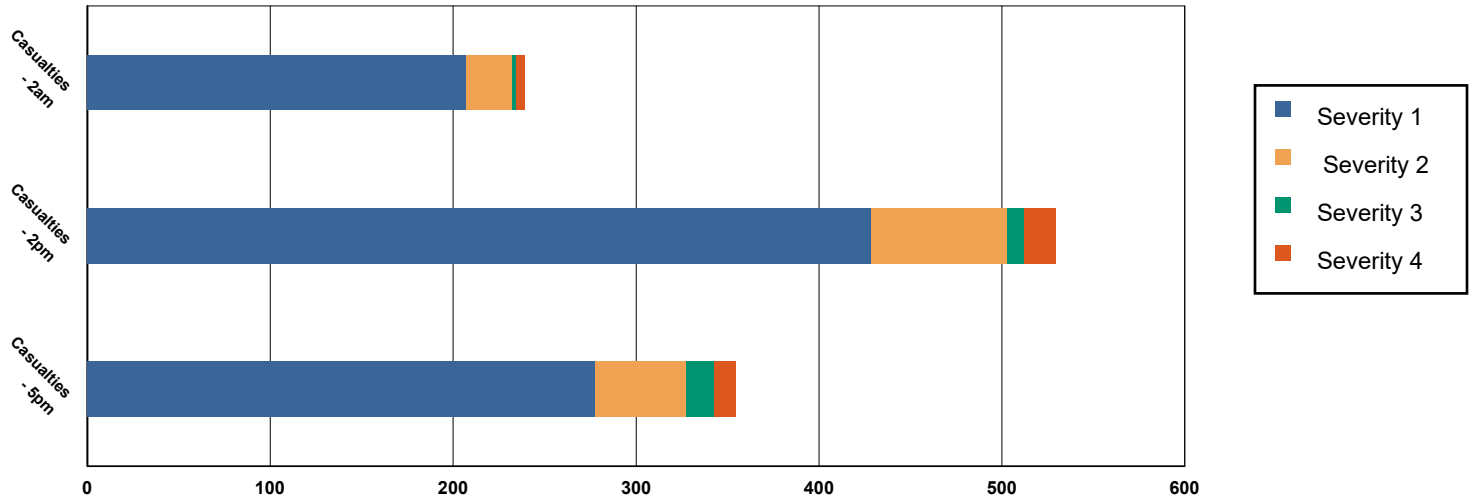
	# of Buildings					Total
	None	Slight	Moderate	Extensive	Complete	
Total	3,249,730	44,771	7,329	866	164	3,302,860
Region Total	3,249,730	44,771	7,329	866	164	3,302,860

Totals only reflect data for those census tracts/blocks included in the user's study region and will reflect the entire county/state only if all of the census blocks for that county/states were selected at the time of study region creation.

Casualties Summary Report

April 22, 2024

Region Total Casualties



Injury Severity Level

Severity 1	Severity 2	Severity 3	Severity 4	Total
------------	------------	------------	------------	-------

California

Alameda

Casualties - 2am

	Severity 1	Severity 2	Severity 3	Severity 4	Total
Single Family	0	0	0	0	0
Hotels	0	0	0	0	0
Commuting	0	0	0	0	0
Educational	0	0	0	0	0
Industrial	0	0	0	0	0
Commercial	0	0	0	0	0
Other-Residential	0	0	0	0	0
Total Casualties - 2am	0	0	0	0	0

Casualties - 2pm

Industrial	0	0	0	0	0
Educational	0	0	0	0	0
Other-Residential	0	0	0	0	0
Single Family	0	0	0	0	0
Hotels	0	0	0	0	0
Commuting	0	0	0	0	0
Commercial	0	0	0	0	0

	Injury Severity Level				Total
	Severity 1	Severity 2	Severity 3	Severity 4	
California					
Alameda					
Total Casualties - 2pm	1	0	0	0	1
Casualties - 5pm					
<i>Commuting</i>	0	0	0	0	0
<i>Single Family</i>	0	0	0	0	0
<i>Commercial</i>	0	0	0	0	0
<i>Hotels</i>	0	0	0	0	0
<i>Educational</i>	0	0	0	0	0
<i>Industrial</i>	0	0	0	0	0
<i>Other-Residential</i>	0	0	0	0	0
Total Casualties - 5pm	0	0	0	0	0
Amador					
Casualties - 2am					
<i>Commercial</i>	0	0	0	0	0
<i>Other-Residential</i>	0	0	0	0	0
<i>Commuting</i>	0	0	0	0	0
<i>Educational</i>	0	0	0	0	0
<i>Single Family</i>	0	0	0	0	0
<i>Hotels</i>	0	0	0	0	0
<i>Industrial</i>	0	0	0	0	0
Total Casualties - 2am	0	0	0	0	0
Casualties - 2pm					
<i>Single Family</i>	0	0	0	0	0
<i>Hotels</i>	0	0	0	0	0
<i>Educational</i>	0	0	0	0	0
<i>Commuting</i>	0	0	0	0	0
<i>Commercial</i>	0	0	0	0	0
<i>Other-Residential</i>	0	0	0	0	0
<i>Industrial</i>	0	0	0	0	0
Total Casualties - 2pm	0	0	0	0	0
Casualties - 5pm					
<i>Commercial</i>	0	0	0	0	0
<i>Commuting</i>	0	0	0	0	0
<i>Other-Residential</i>	0	0	0	0	0
<i>Single Family</i>	0	0	0	0	0
<i>Educational</i>	0	0	0	0	0
<i>Hotels</i>	0	0	0	0	0
<i>Industrial</i>	0	0	0	0	0
Total Casualties - 5pm	0	0	0	0	0
Butte					
Casualties - 2am					
<i>Industrial</i>	0	0	0	0	0

	Injury Severity Level				Total
	Severity 1	Severity 2	Severity 3	Severity 4	
California					
Butte					
Casualties - 2am					
Commercial	0	0	0	0	0
Other-Residential	0	0	0	0	0
Single Family	0	0	0	0	0
Commuting	0	0	0	0	0
Educational	0	0	0	0	0
Hotels	0	0	0	0	0
Total Casualties - 2am	0	0	0	0	0
Casualties - 2pm					
Single Family	0	0	0	0	0
Educational	0	0	0	0	0
Commuting	0	0	0	0	0
Other-Residential	0	0	0	0	0
Hotels	0	0	0	0	0
Commercial	0	0	0	0	0
Industrial	0	0	0	0	0
Total Casualties - 2pm	0	0	0	0	0
Casualties - 5pm					
Industrial	0	0	0	0	0
Other-Residential	0	0	0	0	0
Single Family	0	0	0	0	0
Commercial	0	0	0	0	0
Commuting	0	0	0	0	0
Hotels	0	0	0	0	0
Educational	0	0	0	0	0
Total Casualties - 5pm	0	0	0	0	0
Calaveras					
Casualties - 2am					
Other-Residential	0	0	0	0	0
Commuting	0	0	0	0	0
Commercial	0	0	0	0	0
Single Family	0	0	0	0	0
Hotels	0	0	0	0	0
Educational	0	0	0	0	0
Industrial	0	0	0	0	0
Total Casualties - 2am	0	0	0	0	0
Casualties - 2pm					
Hotels	0	0	0	0	0
Single Family	0	0	0	0	0
Educational	0	0	0	0	0
Commuting	0	0	0	0	0
Commercial	0	0	0	0	0

	Injury Severity Level				Total
	Severity 1	Severity 2	Severity 3	Severity 4	
California					
Calaveras					
Casualties - 2pm					
<i>Industrial</i>	0	0	0	0	0
<i>Other-Residential</i>	0	0	0	0	0
Total Casualties - 2pm	0	0	0	0	0
Casualties - 5pm					
<i>Industrial</i>	0	0	0	0	0
<i>Commercial</i>	0	0	0	0	0
<i>Other-Residential</i>	0	0	0	0	0
<i>Educational</i>	0	0	0	0	0
<i>Hotels</i>	0	0	0	0	0
<i>Commuting</i>	0	0	0	0	0
<i>Single Family</i>	0	0	0	0	0
Total Casualties - 5pm	0	0	0	0	0
Colusa					
Casualties - 2am					
<i>Other-Residential</i>	0	0	0	0	1
<i>Industrial</i>	0	0	0	0	0
<i>Single Family</i>	1	0	0	0	1
<i>Commercial</i>	0	0	0	0	0
<i>Educational</i>	0	0	0	0	0
<i>Commuting</i>	0	0	0	0	0
<i>Hotels</i>	0	0	0	0	0
Total Casualties - 2am	1	0	0	0	1
Casualties - 2pm					
<i>Hotels</i>	0	0	0	0	0
<i>Single Family</i>	0	0	0	0	0
<i>Educational</i>	0	0	0	0	0
<i>Commercial</i>	1	0	0	0	1
<i>Commuting</i>	0	0	0	0	0
<i>Other-Residential</i>	0	0	0	0	0
<i>Industrial</i>	0	0	0	0	0
Total Casualties - 2pm	2	0	0	0	2
Casualties - 5pm					
<i>Industrial</i>	0	0	0	0	0
<i>Commercial</i>	1	0	0	0	1
<i>Other-Residential</i>	0	0	0	0	0
<i>Commuting</i>	0	0	0	0	0
<i>Single Family</i>	0	0	0	0	0
<i>Educational</i>	0	0	0	0	0
<i>Hotels</i>	0	0	0	0	0
Total Casualties - 5pm	2	0	0	0	2

	Injury Severity Level				Total
	Severity 1	Severity 2	Severity 3	Severity 4	
California					
Contra Costa					
Casualties - 2am					
<i>Educational</i>	0	0	0	0	0
<i>Hotels</i>	0	0	0	0	0
<i>Industrial</i>	0	0	0	0	0
<i>Other-Residential</i>	0	0	0	0	0
<i>Single Family</i>	0	0	0	0	0
<i>Commercial</i>	0	0	0	0	0
<i>Commuting</i>	0	0	0	0	0
Total Casualties - 2am	0	0	0	0	0
Casualties - 2pm					
<i>Other-Residential</i>	0	0	0	0	0
<i>Industrial</i>	0	0	0	0	0
<i>Hotels</i>	0	0	0	0	0
<i>Single Family</i>	0	0	0	0	0
<i>Educational</i>	0	0	0	0	0
<i>Commuting</i>	0	0	0	0	0
<i>Commercial</i>	1	0	0	0	1
Total Casualties - 2pm	1	0	0	0	1
Casualties - 5pm					
<i>Educational</i>	0	0	0	0	0
<i>Commuting</i>	0	0	0	0	0
<i>Single Family</i>	0	0	0	0	0
<i>Hotels</i>	0	0	0	0	0
<i>Industrial</i>	0	0	0	0	0
<i>Other-Residential</i>	0	0	0	0	0
<i>Commercial</i>	0	0	0	0	0
Total Casualties - 5pm	1	0	0	0	1
El Dorado					
Casualties - 2am					
<i>Commuting</i>	0	0	0	0	0
<i>Educational</i>	0	0	0	0	0
<i>Single Family</i>	0	0	0	0	0
<i>Hotels</i>	0	0	0	0	0
<i>Other-Residential</i>	0	0	0	0	0
<i>Industrial</i>	0	0	0	0	0
<i>Commercial</i>	0	0	0	0	0
Total Casualties - 2am	0	0	0	0	0
Casualties - 2pm					
<i>Industrial</i>	0	0	0	0	0
<i>Other-Residential</i>	0	0	0	0	0
<i>Single Family</i>	0	0	0	0	0
<i>Hotels</i>	0	0	0	0	0

	Injury Severity Level				Total
	Severity 1	Severity 2	Severity 3	Severity 4	
California					
El Dorado					
Casualties - 2pm					
<i>Educational</i>	0	0	0	0	0
<i>Commuting</i>	0	0	0	0	0
<i>Commercial</i>	0	0	0	0	0
Total Casualties - 2pm	0	0	0	0	0
Casualties - 5pm					
<i>Commercial</i>	0	0	0	0	0
<i>Commuting</i>	0	0	0	0	0
<i>Single Family</i>	0	0	0	0	0
<i>Educational</i>	0	0	0	0	0
<i>Hotels</i>	0	0	0	0	0
<i>Industrial</i>	0	0	0	0	0
<i>Other-Residential</i>	0	0	0	0	0
Total Casualties - 5pm	0	0	0	0	0
Glenn					
Casualties - 2am					
<i>Hotels</i>	0	0	0	0	0
<i>Educational</i>	0	0	0	0	0
<i>Industrial</i>	0	0	0	0	0
<i>Other-Residential</i>	0	0	0	0	0
<i>Commercial</i>	0	0	0	0	0
<i>Commuting</i>	0	0	0	0	0
<i>Single Family</i>	0	0	0	0	0
Total Casualties - 2am	0	0	0	0	0
Casualties - 2pm					
<i>Industrial</i>	0	0	0	0	0
<i>Other-Residential</i>	0	0	0	0	0
<i>Commuting</i>	0	0	0	0	0
<i>Commercial</i>	0	0	0	0	0
<i>Hotels</i>	0	0	0	0	0
<i>Single Family</i>	0	0	0	0	0
<i>Educational</i>	0	0	0	0	0
Total Casualties - 2pm	0	0	0	0	0
Casualties - 5pm					
<i>Educational</i>	0	0	0	0	0
<i>Commuting</i>	0	0	0	0	0
<i>Hotels</i>	0	0	0	0	0
<i>Single Family</i>	0	0	0	0	0
<i>Industrial</i>	0	0	0	0	0
<i>Commercial</i>	0	0	0	0	0
<i>Other-Residential</i>	0	0	0	0	0

	Injury Severity Level				Total
	Severity 1	Severity 2	Severity 3	Severity 4	
California					
Glenn					
Total Casualties - 5pm	0	0	0	0	0
Lake					
Casualties - 2am					
<i>Hotels</i>	0	0	0	0	0
<i>Industrial</i>	0	0	0	0	0
<i>Other-Residential</i>	0	0	0	0	0
<i>Commuting</i>	0	0	0	0	0
<i>Educational</i>	0	0	0	0	0
<i>Single Family</i>	0	0	0	0	0
<i>Commercial</i>	0	0	0	0	0
Total Casualties - 2am	0	0	0	0	0
Casualties - 2pm					
<i>Industrial</i>	0	0	0	0	0
<i>Single Family</i>	0	0	0	0	0
<i>Commercial</i>	0	0	0	0	0
<i>Other-Residential</i>	0	0	0	0	0
<i>Hotels</i>	0	0	0	0	0
<i>Educational</i>	0	0	0	0	0
<i>Commuting</i>	0	0	0	0	0
Total Casualties - 2pm	0	0	0	0	0
Casualties - 5pm					
<i>Other-Residential</i>	0	0	0	0	0
<i>Industrial</i>	0	0	0	0	0
<i>Commercial</i>	0	0	0	0	0
<i>Educational</i>	0	0	0	0	0
<i>Commuting</i>	0	0	0	0	0
<i>Single Family</i>	0	0	0	0	0
<i>Hotels</i>	0	0	0	0	0
Total Casualties - 5pm	0	0	0	0	0
Marin					
Casualties - 2am					
<i>Commercial</i>	0	0	0	0	0
<i>Commuting</i>	0	0	0	0	0
<i>Other-Residential</i>	0	0	0	0	0
<i>Educational</i>	0	0	0	0	0
<i>Single Family</i>	0	0	0	0	0
<i>Hotels</i>	0	0	0	0	0
<i>Industrial</i>	0	0	0	0	0
Total Casualties - 2am	0	0	0	0	0
Casualties - 2pm					
<i>Hotels</i>	0	0	0	0	0

	Injury Severity Level				Total
	Severity 1	Severity 2	Severity 3	Severity 4	
California					
Marin					
Casualties - 2pm					
<i>Commuting</i>	0	0	0	0	0
<i>Educational</i>	0	0	0	0	0
<i>Industrial</i>	0	0	0	0	0
<i>Other-Residential</i>	0	0	0	0	0
<i>Commercial</i>	0	0	0	0	0
<i>Single Family</i>	0	0	0	0	0
Total Casualties - 2pm	0	0	0	0	0
Casualties - 5pm					
<i>Commuting</i>	0	0	0	0	0
<i>Commercial</i>	0	0	0	0	0
<i>Other-Residential</i>	0	0	0	0	0
<i>Single Family</i>	0	0	0	0	0
<i>Industrial</i>	0	0	0	0	0
<i>Educational</i>	0	0	0	0	0
<i>Hotels</i>	0	0	0	0	0
Total Casualties - 5pm	0	0	0	0	0
Mendocino					
Casualties - 2am					
<i>Educational</i>	0	0	0	0	0
<i>Hotels</i>	0	0	0	0	0
<i>Commuting</i>	0	0	0	0	0
<i>Industrial</i>	0	0	0	0	0
<i>Other-Residential</i>	0	0	0	0	0
<i>Single Family</i>	0	0	0	0	0
<i>Commercial</i>	0	0	0	0	0
Total Casualties - 2am	0	0	0	0	0
Casualties - 2pm					
<i>Industrial</i>	0	0	0	0	0
<i>Other-Residential</i>	0	0	0	0	0
<i>Commercial</i>	0	0	0	0	0
<i>Single Family</i>	0	0	0	0	0
<i>Commuting</i>	0	0	0	0	0
<i>Hotels</i>	0	0	0	0	0
<i>Educational</i>	0	0	0	0	0
Total Casualties - 2pm	0	0	0	0	0
Casualties - 5pm					
<i>Hotels</i>	0	0	0	0	0
<i>Single Family</i>	0	0	0	0	0
<i>Educational</i>	0	0	0	0	0
<i>Commuting</i>	0	0	0	0	0
<i>Commercial</i>	0	0	0	0	0

	Injury Severity Level				Total
	Severity 1	Severity 2	Severity 3	Severity 4	
California					
Mendocino					
Casualties - 5pm					
Other-Residential	0	0	0	0	0
Industrial	0	0	0	0	0
Total Casualties - 5pm	0	0	0	0	0
Napa					
Casualties - 2am					
Commercial	0	0	0	0	0
Other-Residential	0	0	0	0	0
Educational	0	0	0	0	0
Single Family	0	0	0	0	0
Commuting	0	0	0	0	0
Hotels	0	0	0	0	0
Industrial	0	0	0	0	0
Total Casualties - 2am	0	0	0	0	0
Casualties - 2pm					
Educational	0	0	0	0	0
Hotels	0	0	0	0	0
Commuting	0	0	0	0	0
Industrial	0	0	0	0	0
Other-Residential	0	0	0	0	0
Single Family	0	0	0	0	0
Commercial	0	0	0	0	0
Total Casualties - 2pm	1	0	0	0	1
Casualties - 5pm					
Commercial	0	0	0	0	0
Single Family	0	0	0	0	0
Other-Residential	0	0	0	0	0
Commuting	0	0	0	0	0
Industrial	0	0	0	0	0
Educational	0	0	0	0	0
Hotels	0	0	0	0	0
Total Casualties - 5pm	0	0	0	0	0
Nevada					
Casualties - 2am					
Single Family	0	0	0	0	0
Commercial	0	0	0	0	0
Commuting	0	0	0	0	0
Hotels	0	0	0	0	0
Educational	0	0	0	0	0
Industrial	0	0	0	0	0
Other-Residential	0	0	0	0	0

	Injury Severity Level				Total
	Severity 1	Severity 2	Severity 3	Severity 4	
California					
Nevada					
Total Casualties - 2am	0	0	0	0	0
Casualties - 2pm					
<i>Hotels</i>	0	0	0	0	0
<i>Industrial</i>	0	0	0	0	0
<i>Commercial</i>	0	0	0	0	0
<i>Single Family</i>	0	0	0	0	0
<i>Other-Residential</i>	0	0	0	0	0
<i>Educational</i>	0	0	0	0	0
<i>Commuting</i>	0	0	0	0	0
Total Casualties - 2pm	0	0	0	0	0
Casualties - 5pm					
<i>Commuting</i>	0	0	0	0	0
<i>Hotels</i>	0	0	0	0	0
<i>Other-Residential</i>	0	0	0	0	0
<i>Educational</i>	0	0	0	0	0
<i>Single Family</i>	0	0	0	0	0
<i>Commercial</i>	0	0	0	0	0
<i>Industrial</i>	0	0	0	0	0
Total Casualties - 5pm	0	0	0	0	0
Placer					
Casualties - 2am					
<i>Hotels</i>	0	0	0	0	0
<i>Educational</i>	0	0	0	0	0
<i>Industrial</i>	0	0	0	0	0
<i>Other-Residential</i>	0	0	0	0	0
<i>Commercial</i>	0	0	0	0	0
<i>Single Family</i>	1	0	0	0	1
<i>Commuting</i>	0	0	0	0	0
Total Casualties - 2am	1	0	0	0	1
Casualties - 2pm					
<i>Other-Residential</i>	0	0	0	0	0
<i>Industrial</i>	0	0	0	0	0
<i>Commercial</i>	0	0	0	0	1
<i>Single Family</i>	0	0	0	0	0
<i>Educational</i>	0	0	0	0	0
<i>Commuting</i>	0	0	0	0	0
<i>Hotels</i>	0	0	0	0	0
Total Casualties - 2pm	1	0	0	0	1
Casualties - 5pm					
<i>Single Family</i>	0	0	0	0	0
<i>Hotels</i>	0	0	0	0	0

	Injury Severity Level				Total
	Severity 1	Severity 2	Severity 3	Severity 4	
California					
Placer					
Casualties - 5pm					
<i>Commuting</i>	0	0	0	0	0
<i>Educational</i>	0	0	0	0	0
<i>Commercial</i>	0	0	0	0	0
<i>Industrial</i>	0	0	0	0	0
<i>Other-Residential</i>	0	0	0	0	0
Total Casualties - 5pm	1	0	0	0	1
Sacramento					
Casualties - 2am					
<i>Industrial</i>	0	0	0	0	0
<i>Other-Residential</i>	11	0	0	0	12
<i>Commercial</i>	1	0	0	0	1
<i>Single Family</i>	18	0	0	0	18
<i>Hotels</i>	0	0	0	0	0
<i>Commuting</i>	0	0	0	0	0
<i>Educational</i>	0	0	0	0	0
Total Casualties - 2am	30	1	0	0	31
Casualties - 2pm					
<i>Other-Residential</i>	4	0	0	0	4
<i>Commuting</i>	0	0	0	0	0
<i>Single Family</i>	5	0	0	0	5
<i>Commercial</i>	53	4	0	0	56
<i>Hotels</i>	0	0	0	0	0
<i>Educational</i>	5	0	0	0	5
<i>Industrial</i>	3	0	0	0	3
Total Casualties - 2pm	69	4	0	0	73
Casualties - 5pm					
<i>Industrial</i>	2	0	0	0	2
<i>Educational</i>	1	0	0	0	1
<i>Hotels</i>	0	0	0	0	0
<i>Commercial</i>	30	2	0	0	32
<i>Commuting</i>	0	0	0	0	0
<i>Other-Residential</i>	4	0	0	0	4
<i>Single Family</i>	6	0	0	0	6
Total Casualties - 5pm	43	2	0	0	45
San Francisco					
Casualties - 2am					
<i>Industrial</i>	0	0	0	0	0
<i>Hotels</i>	0	0	0	0	0
<i>Commercial</i>	0	0	0	0	0
<i>Other-Residential</i>	1	0	0	0	1
<i>Commuting</i>	0	0	0	0	0

	Injury Severity Level				Total
	Severity 1	Severity 2	Severity 3	Severity 4	
California					
San Francisco					
Casualties - 2am					
<i>Educational</i>	0	0	0	0	0
<i>Single Family</i>	0	0	0	0	0
Total Casualties - 2am	1	0	0	0	1
Casualties - 2pm					
<i>Commercial</i>	1	0	0	0	1
<i>Industrial</i>	0	0	0	0	0
<i>Other-Residential</i>	0	0	0	0	0
<i>Single Family</i>	0	0	0	0	0
<i>Hotels</i>	0	0	0	0	0
<i>Commuting</i>	0	0	0	0	0
<i>Educational</i>	0	0	0	0	0
Total Casualties - 2pm	1	0	0	0	1
Casualties - 5pm					
<i>Educational</i>	0	0	0	0	0
<i>Hotels</i>	0	0	0	0	0
<i>Industrial</i>	0	0	0	0	0
<i>Commuting</i>	0	0	0	0	0
<i>Commercial</i>	0	0	0	0	0
<i>Other-Residential</i>	0	0	0	0	0
<i>Single Family</i>	0	0	0	0	0
Total Casualties - 5pm	1	0	0	0	1
San Joaquin					
Casualties - 2am					
<i>Educational</i>	0	0	0	0	0
<i>Commuting</i>	0	0	0	0	0
<i>Hotels</i>	0	0	0	0	0
<i>Commercial</i>	0	0	0	0	0
<i>Single Family</i>	1	0	0	0	1
<i>Industrial</i>	0	0	0	0	0
<i>Other-Residential</i>	0	0	0	0	0
Total Casualties - 2am	1	0	0	0	1
Casualties - 2pm					
<i>Industrial</i>	0	0	0	0	0
<i>Other-Residential</i>	0	0	0	0	0
<i>Educational</i>	0	0	0	0	0
<i>Single Family</i>	0	0	0	0	0
<i>Hotels</i>	0	0	0	0	0
<i>Commuting</i>	0	0	0	0	0
<i>Commercial</i>	0	0	0	0	0
Total Casualties - 2pm	1	0	0	0	1

	Injury Severity Level				Total
	Severity 1	Severity 2	Severity 3	Severity 4	
California					
San Joaquin					
Casualties - 5pm					
<i>Commuting</i>	0	0	0	0	0
<i>Single Family</i>	0	0	0	0	0
<i>Educational</i>	0	0	0	0	0
<i>Hotels</i>	0	0	0	0	0
<i>Industrial</i>	0	0	0	0	0
<i>Commercial</i>	0	0	0	0	0
<i>Other-Residential</i>	0	0	0	0	0
Total Casualties - 5pm	1	0	0	0	1
San Mateo					
Casualties - 2am					
<i>Industrial</i>	0	0	0	0	0
<i>Other-Residential</i>	0	0	0	0	0
<i>Single Family</i>	0	0	0	0	0
<i>Commercial</i>	0	0	0	0	0
<i>Educational</i>	0	0	0	0	0
<i>Commuting</i>	0	0	0	0	0
<i>Hotels</i>	0	0	0	0	0
Total Casualties - 2am	0	0	0	0	0
Casualties - 2pm					
<i>Other-Residential</i>	0	0	0	0	0
<i>Single Family</i>	0	0	0	0	0
<i>Commuting</i>	0	0	0	0	0
<i>Commercial</i>	0	0	0	0	0
<i>Educational</i>	0	0	0	0	0
<i>Hotels</i>	0	0	0	0	0
<i>Industrial</i>	0	0	0	0	0
Total Casualties - 2pm	0	0	0	0	0
Casualties - 5pm					
<i>Commercial</i>	0	0	0	0	0
<i>Industrial</i>	0	0	0	0	0
<i>Other-Residential</i>	0	0	0	0	0
<i>Single Family</i>	0	0	0	0	0
<i>Educational</i>	0	0	0	0	0
<i>Commuting</i>	0	0	0	0	0
<i>Hotels</i>	0	0	0	0	0
Total Casualties - 5pm	0	0	0	0	0
Sierra					
Casualties - 2am					
<i>Other-Residential</i>	0	0	0	0	0
<i>Commercial</i>	0	0	0	0	0
<i>Commuting</i>	0	0	0	0	0

	Injury Severity Level				Total
	Severity 1	Severity 2	Severity 3	Severity 4	
California					
Sierra					
Casualties - 2am					
<i>Hotels</i>	0	0	0	0	0
<i>Single Family</i>	0	0	0	0	0
<i>Educational</i>	0	0	0	0	0
<i>Industrial</i>	0	0	0	0	0
Total Casualties - 2am	0	0	0	0	0
Casualties - 2pm					
<i>Hotels</i>	0	0	0	0	0
<i>Educational</i>	0	0	0	0	0
<i>Industrial</i>	0	0	0	0	0
<i>Other-Residential</i>	0	0	0	0	0
<i>Commuting</i>	0	0	0	0	0
<i>Single Family</i>	0	0	0	0	0
<i>Commercial</i>	0	0	0	0	0
Total Casualties - 2pm	0	0	0	0	0
Casualties - 5pm					
<i>Educational</i>	0	0	0	0	0
<i>Hotels</i>	0	0	0	0	0
<i>Commuting</i>	0	0	0	0	0
<i>Industrial</i>	0	0	0	0	0
<i>Other-Residential</i>	0	0	0	0	0
<i>Commercial</i>	0	0	0	0	0
<i>Single Family</i>	0	0	0	0	0
Total Casualties - 5pm	0	0	0	0	0
Solano					
Casualties - 2am					
<i>Industrial</i>	0	0	0	0	0
<i>Other-Residential</i>	2	0	0	0	2
<i>Commercial</i>	0	0	0	0	0
<i>Educational</i>	0	0	0	0	0
<i>Commuting</i>	0	0	0	0	0
<i>Single Family</i>	5	0	0	0	5
<i>Hotels</i>	0	0	0	0	0
Total Casualties - 2am	7	0	0	0	7
Casualties - 2pm					
<i>Single Family</i>	1	0	0	0	1
<i>Other-Residential</i>	1	0	0	0	1
<i>Commercial</i>	4	0	0	0	4
<i>Educational</i>	1	0	0	0	1
<i>Commuting</i>	0	0	0	0	0
<i>Hotels</i>	0	0	0	0	0
<i>Industrial</i>	1	0	0	0	1

	Injury Severity Level				Total
	Severity 1	Severity 2	Severity 3	Severity 4	
California					
Solano					
Total Casualties - 2pm	7	0	0	0	7
Casualties - 5pm					
Commercial	3	0	0	0	3
Other-Residential	1	0	0	0	1
Single Family	2	0	0	0	2
Educational	0	0	0	0	0
Commuting	0	0	1	0	1
Hotels	0	0	0	0	0
Industrial	0	0	0	0	0
Total Casualties - 5pm	6	0	1	0	7
Sonoma					
Casualties - 2am					
Single Family	0	0	0	0	0
Other-Residential	0	0	0	0	0
Commercial	0	0	0	0	0
Commuting	0	0	0	0	0
Hotels	0	0	0	0	0
Educational	0	0	0	0	0
Industrial	0	0	0	0	0
Total Casualties - 2am	0	0	0	0	0
Casualties - 2pm					
Single Family	0	0	0	0	0
Commuting	0	0	0	0	0
Educational	0	0	0	0	0
Hotels	0	0	0	0	0
Industrial	0	0	0	0	0
Other-Residential	0	0	0	0	0
Commercial	0	0	0	0	0
Total Casualties - 2pm	0	0	0	0	0
Casualties - 5pm					
Single Family	0	0	0	0	0
Commercial	0	0	0	0	0
Commuting	0	0	0	0	0
Hotels	0	0	0	0	0
Educational	0	0	0	0	0
Industrial	0	0	0	0	0
Other-Residential	0	0	0	0	0
Total Casualties - 5pm	0	0	0	0	0
Stanislaus					
Casualties - 2am					
Hotels	0	0	0	0	0

	Injury Severity Level				Total
	Severity 1	Severity 2	Severity 3	Severity 4	
California					
Stanislaus					
Casualties - 2am					
<i>Industrial</i>	0	0	0	0	0
<i>Commercial</i>	0	0	0	0	0
<i>Single Family</i>	0	0	0	0	0
<i>Other-Residential</i>	0	0	0	0	0
<i>Commuting</i>	0	0	0	0	0
<i>Educational</i>	0	0	0	0	0
Total Casualties - 2am	0	0	0	0	0
Casualties - 2pm					
<i>Industrial</i>	0	0	0	0	0
<i>Other-Residential</i>	0	0	0	0	0
<i>Commercial</i>	0	0	0	0	0
<i>Commuting</i>	0	0	0	0	0
<i>Educational</i>	0	0	0	0	0
<i>Single Family</i>	0	0	0	0	0
<i>Hotels</i>	0	0	0	0	0
Total Casualties - 2pm	0	0	0	0	0
Casualties - 5pm					
<i>Industrial</i>	0	0	0	0	0
<i>Other-Residential</i>	0	0	0	0	0
<i>Commuting</i>	0	0	0	0	0
<i>Single Family</i>	0	0	0	0	0
<i>Commercial</i>	0	0	0	0	0
<i>Hotels</i>	0	0	0	0	0
<i>Educational</i>	0	0	0	0	0
Total Casualties - 5pm	0	0	0	0	0
Sutter					
Casualties - 2am					
<i>Educational</i>	0	0	0	0	0
<i>Commuting</i>	0	0	0	0	0
<i>Hotels</i>	0	0	0	0	0
<i>Industrial</i>	0	0	0	0	0
<i>Other-Residential</i>	1	0	0	0	1
<i>Single Family</i>	1	0	0	0	1
<i>Commercial</i>	0	0	0	0	0
Total Casualties - 2am	2	0	0	0	2
Casualties - 2pm					
<i>Industrial</i>	0	0	0	0	0
<i>Commuting</i>	0	0	0	0	0
<i>Other-Residential</i>	0	0	0	0	0
<i>Single Family</i>	0	0	0	0	0
<i>Commercial</i>	2	0	0	0	2

	Injury Severity Level				Total
	Severity 1	Severity 2	Severity 3	Severity 4	
California					
Sutter					
Casualties - 2pm					
<i>Hotels</i>	0	0	0	0	0
<i>Educational</i>	0	0	0	0	0
Total Casualties - 2pm	4	0	0	0	4
Casualties - 5pm					
<i>Commuting</i>	0	0	0	0	0
<i>Commercial</i>	2	0	0	0	2
<i>Educational</i>	0	0	0	0	0
<i>Single Family</i>	0	0	0	0	0
<i>Hotels</i>	0	0	0	0	0
<i>Industrial</i>	0	0	0	0	0
<i>Other-Residential</i>	0	0	0	0	0
Total Casualties - 5pm	3	0	0	0	3
Tehama					
Casualties - 2am					
<i>Hotels</i>	0	0	0	0	0
<i>Industrial</i>	0	0	0	0	0
<i>Commercial</i>	0	0	0	0	0
<i>Other-Residential</i>	0	0	0	0	0
<i>Educational</i>	0	0	0	0	0
<i>Commuting</i>	0	0	0	0	0
<i>Single Family</i>	0	0	0	0	0
Total Casualties - 2am	0	0	0	0	0
Casualties - 2pm					
<i>Other-Residential</i>	0	0	0	0	0
<i>Commercial</i>	0	0	0	0	0
<i>Industrial</i>	0	0	0	0	0
<i>Single Family</i>	0	0	0	0	0
<i>Educational</i>	0	0	0	0	0
<i>Commuting</i>	0	0	0	0	0
<i>Hotels</i>	0	0	0	0	0
Total Casualties - 2pm	0	0	0	0	0
Casualties - 5pm					
<i>Hotels</i>	0	0	0	0	0
<i>Educational</i>	0	0	0	0	0
<i>Industrial</i>	0	0	0	0	0
<i>Single Family</i>	0	0	0	0	0
<i>Commercial</i>	0	0	0	0	0
<i>Commuting</i>	0	0	0	0	0
<i>Other-Residential</i>	0	0	0	0	0
Total Casualties - 5pm	0	0	0	0	0

	Injury Severity Level				Total
	Severity 1	Severity 2	Severity 3	Severity 4	
California					
Tuolumne					
Casualties - 2am					
<i>Other-Residential</i>	0	0	0	0	0
<i>Industrial</i>	0	0	0	0	0
<i>Commercial</i>	0	0	0	0	0
<i>Commuting</i>	0	0	0	0	0
<i>Single Family</i>	0	0	0	0	0
<i>Educational</i>	0	0	0	0	0
<i>Hotels</i>	0	0	0	0	0
Total Casualties - 2am	0	0	0	0	0
Casualties - 2pm					
<i>Other-Residential</i>	0	0	0	0	0
<i>Commercial</i>	0	0	0	0	0
<i>Single Family</i>	0	0	0	0	0
<i>Educational</i>	0	0	0	0	0
<i>Commuting</i>	0	0	0	0	0
<i>Industrial</i>	0	0	0	0	0
<i>Hotels</i>	0	0	0	0	0
Total Casualties - 2pm	0	0	0	0	0
Casualties - 5pm					
<i>Industrial</i>	0	0	0	0	0
<i>Other-Residential</i>	0	0	0	0	0
<i>Commercial</i>	0	0	0	0	0
<i>Hotels</i>	0	0	0	0	0
<i>Commuting</i>	0	0	0	0	0
<i>Educational</i>	0	0	0	0	0
<i>Single Family</i>	0	0	0	0	0
Total Casualties - 5pm	0	0	0	0	0
Yolo					
Casualties - 2am					
<i>Single Family</i>	55	4	0	0	59
<i>Other-Residential</i>	101	19	2	4	127
<i>Commercial</i>	3	1	0	0	4
<i>Educational</i>	0	0	0	0	0
<i>Commuting</i>	0	0	0	0	0
<i>Hotels</i>	0	0	0	0	0
<i>Industrial</i>	3	1	0	0	4
Total Casualties - 2am	162	24	2	5	193
Casualties - 2pm					
<i>Industrial</i>	23	4	0	1	29
<i>Hotels</i>	0	0	0	0	0
<i>Educational</i>	69	14	2	4	89
<i>Commuting</i>	0	0	1	0	1

Injury Severity Level

	Severity 1	Severity 2	Severity 3	Severity 4	Total
--	------------	------------	------------	------------	-------

California

Yolo

Casualties - 2pm

<i>Commercial</i>	196	42	6	11	255
<i>Other-Residential</i>	35	7	1	2	44
<i>Single Family</i>	17	1	0	0	19
Total Casualties - 2pm	341	69	9	17	437

Casualties - 5pm

<i>Other-Residential</i>	39	7	1	2	49
<i>Single Family</i>	20	1	0	0	22
<i>Commuting</i>	4	5	9	2	21
<i>Commercial</i>	137	30	4	8	178
<i>Hotels</i>	0	0	0	0	0
<i>Educational</i>	6	0	0	0	6
<i>Industrial</i>	14	3	0	1	18
Total Casualties - 5pm	221	47	14	12	293

Yuba

Casualties - 2am

<i>Industrial</i>	0	0	0	0	0
<i>Other-Residential</i>	0	0	0	0	0
<i>Commercial</i>	0	0	0	0	0
<i>Educational</i>	0	0	0	0	0
<i>Single Family</i>	0	0	0	0	0
<i>Commuting</i>	0	0	0	0	0
<i>Hotels</i>	0	0	0	0	0
Total Casualties - 2am	1	0	0	0	1

Casualties - 2pm

<i>Commercial</i>	0	0	0	0	0
<i>Commuting</i>	0	0	0	0	0
<i>Single Family</i>	0	0	0	0	0
<i>Other-Residential</i>	0	0	0	0	0
<i>Industrial</i>	0	0	0	0	0
<i>Hotels</i>	0	0	0	0	0
<i>Educational</i>	0	0	0	0	0
Total Casualties - 2pm	1	0	0	0	1

Casualties - 5pm

<i>Hotels</i>	0	0	0	0	0
<i>Educational</i>	0	0	0	0	0
<i>Industrial</i>	0	0	0	0	0
<i>Other-Residential</i>	0	0	0	0	0
<i>Single Family</i>	0	0	0	0	0
<i>Commercial</i>	0	0	0	0	0
<i>Commuting</i>	0	0	0	0	0

	Injury Severity Level				Total
	Severity 1	Severity 2	Severity 3	Severity 4	
California					
Yuba					
Total Casualties - 5pm	1	0	0	0	1
Region Total	NA	NA	NA	NA	NA

Totals only reflect data for those census tracts/blocks included in the user's study region and will reflect the entire county/state only if all of the census blocks for that county/states were selected at the time of study region creation.

Debris Summary Report

April 22, 2024

All values are in thousands of tons.

	Brick, Wood & Others	Concrete & Steel	Total
California			
Alameda	1	0	1
Amador	0	0	0
Butte	0	0	1
Calaveras	0	0	0
Colusa	2	2	4
Contra Costa	1	0	1
El Dorado	0	0	0
Glenn	0	0	0
Lake	0	0	0
Marin	0	0	0
Mendocino	0	0	0
Napa	1	0	1
Nevada	0	0	0
Placer	1	1	2
Sacramento	30	25	55
San Francisco	2	0	2
San Joaquin	3	0	3
San Mateo	0	0	0
Sierra	0	0	0

	Brick, Wood & Others	Concrete & Steel	Total
Solano	7	6	13
Sonoma	0	0	0
Stanislaus	0	0	0
Sutter	2	3	5
Tehama	0	0	0
Tuolumne	0	0	0
Yolo	122	278	400
Yuba	1	0	1
Total	172	316	488
Region Total	172	316	488

Totals only reflect data for those census tracts/blocks included in the user's study region and will reflect the entire county/state only if all of the census blocks for that county/states were selected at the time of study region creation.

Direct Economic Losses For Buildings

April 22, 2024

All values are in thousands of dollars

	Capital Stock Losses				Loss Ratio %	Income Losses				Total Loss
	Cost Structural Damage	Cost Non-struct. Damage	Cost Contents Damage	Inventory Loss		Relocation Loss	Capital Related Loss	Wages Losses	Rental Income Loss	
California										
Colusa	3,336	18,527	9,792	1,605	0.51	1,194	1,522	1,468	795	38,239
Contra Costa	872	13,796	7,807	855	0.01	128	151	212	184	24,004
Mendocino	1	128	85	12	0.00	0	0	0	0	226
Napa	988	13,232	7,320	817	0.04	161	171	204	221	23,114
Tehama	2	68	43	7	0.00	0	0	0	0	121
Alameda	462	6,503	4,325	372	0.00	61	96	131	145	12,095
Butte	360	3,476	2,155	315	0.01	79	36	49	56	6,526
Nevada	3	174	115	9	0.00	0	0	1	1	303
San Joaquin	1,351	10,011	5,850	704	0.01	303	116	130	227	18,693

	Capital Stock Losses				Loss Ratio %	Income Losses				Total Loss
	Cost Structural Damage	Cost Non-struct. Damage	Cost Contents Damage	Inventory Loss		Relocation Loss	Capital Related Loss	Wages Losses	Rental Income Loss	
Tuolumne	0	0	0	0	0.00	0	0	0	0	0
Solano	14,705	124,482	63,094	6,117	0.17	3,012	2,569	3,700	2,599	220,278
San Mateo	1	74	50	4	0.00	0	0	0	0	130
Yolo	326,894	1,369,897	611,434	63,953	3.99	146,212	91,732	117,950	82,366	2,810,438
Calaveras	4	48	36	12	0.00	0	1	1	1	102
Yuba	1,033	11,566	5,988	640	0.10	162	159	174	190	19,912
Glenn	82	555	363	120	0.01	9	7	8	8	1,152
San Francisco	959	3,790	2,474	162	0.00	76	111	121	326	8,021
Stanislaus	8	379	242	46	0.00	0	1	1	1	677
Sutter	6,174	37,756	19,826	4,358	0.26	1,092	572	681	745	71,205
Sonoma	332	5,005	2,882	399	0.01	43	57	66	76	8,859
Placer	2,156	30,991	16,880	1,448	0.04	193	183	213	289	52,351
Marin	69	1,374	799	73	0.00	6	10	10	16	2,357
El Dorado	5	556	361	21	0.00	0	1	1	1	945
Amador	2	87	59	6	0.00	0	1	1	1	156
Sacramento	58,580	506,954	263,004	21,689	0.21	16,519	14,139	18,104	15,630	914,619
Lake	93	1,227	525	40	0.01	15	5	5	12	1,923
Sierra	0	0	0	0	0.00	0	0	0	0	0

	Capital Stock Losses				Loss Ratio %	Income Losses				Total Loss
	Cost Structural Damage	Cost Non-struct. Damage	Cost Contents Damage	Inventory Loss		Relocation Loss	Capital Related Loss	Wages Losses	Rental Income Loss	
Total	418,470	2,160,656	1,025,506	103,785	0.20	169,267	111,641	143,230	103,890	4,236,446
Region Total	418,470	2,160,656	1,025,506	103,785	0.20	169,267	111,641	143,230	103,890	4,236,446

Totals only reflect data for those census tracts/blocks included in the user's study region and will reflect the entire county/state only if all of the census blocks for that county/states were selected at the time of study region creation.

Direct Economic Loss For Transportation

April 22, 2024

All values are in thousands of dollars

	Highway	Railway	Light Rail	Bus Facility	Ports	Ferries	Airport	Total
California								
Alameda								
Segments	0	0	0					0
Bridges	2	0	0					2
Tunnels	0	0	0					0
Facilities		359	0	22	1,578	38	3,464	5,463
Total	2	359	0	22	1,578	38	3,464	5,464
Amador								
Segments	0	0	0					0
Bridges	0	0	0					0
Tunnels	0	0	0					0
Facilities		0	0	0	0	0	51	51
Total	0	0	0	0	0	0	51	51
Butte								
Segments	0	0	0					0
Bridges	10	0	0					10
Tunnels	0	0	0					0
Facilities		26	0	0	0	0	231	256

	Highway	Railway	Light Rail	Bus Facility	Ports	Ferries	Airport	Total
Total	10	26	0	0	0	0	231	267
Calaveras								
Segments	0	0	0					0
Bridges	0	0	0					0
Tunnels	0	0	0					0
Facilities		0	0	0	0	0	11	11
Total	0	0	0	0	0	0	11	11
Colusa								
Segments	0	0	0					0
Bridges	338	110	0					447
Tunnels	0	0	0					0
Facilities		0	0	0	0	0	400	400
Total	338	110	0	0	0	0	400	847
Contra Costa								
Segments	0	0	0					0
Bridges	29	1	0					30
Tunnels	0	0	0					0
Facilities		256	165	0	4,861	177	231	5,689
Total	29	257	165	0	4,861	177	231	5,719
El Dorado								
Segments	0	0	0					0
Bridges	0	0	0					0
Tunnels	0	0	0					0
Facilities		0	0	21	0	0	231	252

	Highway	Railway	Light Rail	Bus Facility	Ports	Ferries	Airport	Total
Total	0	0	0	21	0	0	231	252
Glenn								
Segments	0	0	0					0
Bridges	16	0	0					16
Tunnels	0	0	0					0
Facilities		0	0	0	37	0	102	139
Total	16	0	0	0	37	0	102	155
Lake								
Segments	0	0	0					0
Bridges	0	0	0					0
Tunnels	0	0	0					0
Facilities		0	0	0	0	0	102	102
Total	0	0	0	0	0	0	102	102
Marin								
Segments	0	0	0					0
Bridges	49	0	0					49
Tunnels	0	0	0					0
Facilities		0	0	51	750	53	51	905
Total	49	0	0	51	750	53	51	955
Mendocino								
Segments	0	0	0					0
Bridges	0	0	0					0
Tunnels	0	0	0					0
Facilities		0	0	45	0	0	51	96

	Highway	Railway	Light Rail	Bus Facility	Ports	Ferries	Airport	Total
Total	0	0	0	45	0	0	51	96
Napa								
Segments	0	0	0					0
Bridges	17	0	0					17
Tunnels	0	0	0					0
Facilities		0	0	93	469	0	180	742
Total	17	0	0	93	469	0	180	759
Nevada								
Segments	0	0	0					0
Bridges	0	0	0					0
Tunnels	0	0	0					0
Facilities		0	0	0	0	0	51	51
Total	0	0	0	0	0	0	51	51
Placer								
Segments	0	0	0					0
Bridges	13	0	0					13
Tunnels	0	0	0					0
Facilities		186	0	21	0	0	325	533
Total	13	186	0	21	0	0	325	546
Sacramento								
Segments	0	0	0					0
Bridges	6,049	20	0					6,069
Tunnels	0	0	0					0
Facilities		201	19,175	334	3,078	55	62,355	85,197

	Highway	Railway	Light Rail	Bus Facility	Ports	Ferries	Airport	Total
Total	6,049	221	19,175	334	3,078	55	62,355	91,267
San Francisco								
<i>Segments</i>	0	0	0					0
<i>Bridges</i>	13	0	0					13
<i>Tunnels</i>	0	0	0					0
<i>Facilities</i>		0	25,437	49	2,019	51	308	27,864
Total	13	0	25,437	49	2,019	51	308	27,877
San Joaquin								
<i>Segments</i>	0	0	0					0
<i>Bridges</i>	13	0	0					13
<i>Tunnels</i>	0	0	0					0
<i>Facilities</i>		410	0	21	2,177	51	367	3,026
Total	13	410	0	21	2,177	51	367	3,039
San Mateo								
<i>Segments</i>	0	0	0					0
<i>Bridges</i>	0	0	0					0
<i>Tunnels</i>	0	0	0					0
<i>Facilities</i>		0	0	0	0	0	0	0
Total	0	0	0	0	0	0	0	0
Sierra								
<i>Segments</i>	0	0	0					0
<i>Bridges</i>	0	0	0					0
<i>Tunnels</i>	0	0	0					0
<i>Facilities</i>		0	0	0	0	0	0	0

	Highway	Railway	Light Rail	Bus Facility	Ports	Ferries	Airport	Total
Total	0	0	0	0	0	0	0	0
Solano								
Segments	0	0	0					0
Bridges	3,297	68	0					3,365
Tunnels	0	0	0					0
Facilities		244	0	207	4,479	177	1,443	6,549
Total	3,297	312	0	207	4,479	177	1,443	9,914
Sonoma								
Segments	0	0	0					0
Bridges	16	0	0					16
Tunnels	0	0	0					0
Facilities		0	0	23	377	0	414	813
Total	16	0	0	23	377	0	414	829
Stanislaus								
Segments	0	0	0					0
Bridges	0	0	0					0
Tunnels	0	0	0					0
Facilities		0	0	0	0	0	6	6
Total	0	0	0	0	0	0	6	6
Sutter								
Segments	0	0	0					0
Bridges	858	12	0					870
Tunnels	0	0	0					0
Facilities		0	0	0	0	0	548	548

	Highway	Railway	Light Rail	Bus Facility	Ports	Ferries	Airport	Total
Total	858	12	0	0	0	0	548	1,418
Tehama								
Segments	0	0	0					0
Bridges	0	0	0					0
Tunnels	0	0	0					0
Facilities		0	0	0	0	0	0	0
Total	0	0	0	0	0	0	0	0
Tuolumne								
Segments	0	0	0					0
Bridges	0	0	0					0
Tunnels	0	0	0					0
Facilities		0	0	0	0	0	0	0
Total	0	0	0	0	0	0	0	0
Yolo								
Segments	0	0	0					0
Bridges	41,907	6,721	0					48,628
Tunnels	0	0	0					0
Facilities		3,116	0	0	6,235	0	3,195	12,546
Total	41,907	9,837	0	0	6,235	0	3,195	61,173
Yuba								
Segments	0	0	0					0
Bridges	2	1	0					3
Tunnels	0	0	0					0
Facilities		0	0	92	0	0	268	360

	Highway	Railway	Light Rail	Bus Facility	Ports	Ferries	Airport	Total
Total	2	1	0	92	0	0	268	363
Total	52,630	11,731	44,777	979	26,060	602	74,384	211,162
Region Total	52,630	11,731	44,777	979	26,060	602	74,384	211,162

Totals only reflect data for those census tracts/blocks included in the user's study region and will reflect the entire county/state only if all of the census blocks for that county/states were selected at the time of study region creation.

Direct Economic Loss For Utilities

April 22, 2024

All values are in thousands of dollars

	Potable Water	Waste Water	Oil Systems	Natural Gas	Electric Power	Communication	Total
California							
Alameda							
<i>Facilities</i>	56	1,598	0	0	9,279	2	10,935
<i>Pipelines</i>	52	26	0	0			79
Total	109	1,625	0	0	9,279	2	11,014
Amador							
<i>Facilities</i>	0	0	0	0	1,205	0	1,205
<i>Pipelines</i>	7	4	0	0			11
Total	7	4	0	0	1,205	0	1,215
Butte							
<i>Facilities</i>	0	492	0	0	36,499	1	36,992
<i>Pipelines</i>	44	22	0	0			66
Total	44	514	0	0	36,499	1	37,058
Calaveras							
<i>Facilities</i>	1	5	0	0	1	0	7

	Potable Water	Waste Water	Oil Systems	Natural Gas	Electric Power	Communication	Total
<i>Pipelines</i>	8	4	0	0			12
Total	9	9	0	0	1	0	19
Colusa							
<i>Facilities</i>	0	4,573	0	75	21,094	0	25,742
<i>Pipelines</i>	238	120	0	0			357
Total	238	4,693	0	75	21,094	0	26,099
Contra Costa							
<i>Facilities</i>	169	1,721	1	0	51,571	2	53,463
<i>Pipelines</i>	118	59	0	0			177
Total	286	1,780	1	0	51,571	2	53,640
El Dorado							
<i>Facilities</i>	28	492	0	0	12,329	1	12,850
<i>Pipelines</i>	23	12	0	0			35
Total	51	504	0	0	12,329	1	12,885
Glenn							
<i>Facilities</i>	0	123	0	0	136	0	259
<i>Pipelines</i>	29	15	0	0			44
Total	29	138	0	0	136	0	303
Lake							
<i>Facilities</i>	56	0	0	0	5,226	1	5,283
<i>Pipelines</i>	47	24	0	0			71

	Potable Water	Waste Water	Oil Systems	Natural Gas	Electric Power	Communication	Total
Total	103	24	0	0	5,226	1	5,354
Marin							
<i>Facilities</i>	28	863	0	0	56	1	948
<i>Pipelines</i>	13	6	0	0			19
Total	41	870	0	0	56	1	967
Mendocino							
<i>Facilities</i>	0	123	0	0	99	0	222
<i>Pipelines</i>	14	7	0	0			21
Total	14	130	0	0	99	0	242
Napa							
<i>Facilities</i>	0	4,696	0	0	11,727	3	16,426
<i>Pipelines</i>	27	13	0	0			40
Total	27	4,709	0	0	11,727	3	16,467
Nevada							
<i>Facilities</i>	0	738	0	0	1,492	1	2,231
<i>Pipelines</i>	16	8	0	0			24
Total	16	746	0	0	1,492	1	2,254
Placer							
<i>Facilities</i>	0	9,638	0	0	28,795	7	38,440
<i>Pipelines</i>	62	31	0	0			94
Total	62	9,669	0	0	28,795	7	38,534

	Potable Water	Waste Water	Oil Systems	Natural Gas	Electric Power	Communication	Total
Sacramento							
<i>Facilities</i>	0	11,127	0	0	81,378	142	92,647
<i>Pipelines</i>	404	203	0	0			607
Total	404	11,330	0	0	81,378	142	93,254
San Francisco							
<i>Facilities</i>	0	740	0	0	40	1	781
<i>Pipelines</i>	11	6	0	0			17
Total	11	746	0	0	40	1	798
San Joaquin							
<i>Facilities</i>	140	861	0	0	9,393	2	10,396
<i>Pipelines</i>	86	43	0	0			130
Total	227	904	0	0	9,393	2	10,525
San Mateo							
<i>Facilities</i>	0	123	0	0	0	0	123
<i>Pipelines</i>	1	0	0	0			1
Total	1	123	0	0	0	0	124
Sierra							
<i>Facilities</i>	0	0	0	0	4	0	4
<i>Pipelines</i>	8	4	0	0			12
Total	8	4	0	0	4	0	16
Solano							

	Potable Water	Waste Water	Oil Systems	Natural Gas	Electric Power	Communication	Total
<i>Facilities</i>	0	12,160	0	0	267,733	7	279,900
<i>Pipelines</i>	364	183	0	0			547
Total	364	12,342	0	0	267,733	7	280,447
Sonoma							
<i>Facilities</i>	0	1,352	0	0	39,226	3	40,581
<i>Pipelines</i>	76	38	0	0			114
Total	76	1,391	0	0	39,226	3	40,695
Stanislaus							
<i>Facilities</i>	0	0	0	0	217	0	217
<i>Pipelines</i>	11	6	0	0			17
Total	11	6	0	0	217	0	234
Sutter							
<i>Facilities</i>	0	3,049	0	0	116,239	29	119,316
<i>Pipelines</i>	219	110	0	0			330
Total	219	3,159	0	0	116,239	29	119,646
Tehama							
<i>Facilities</i>	0	0	0	0	0	0	0
<i>Pipelines</i>	17	9	0	0			26
Total	17	9	0	0	0	0	26
Tuolumne							
<i>Facilities</i>	0	0	0	0	10	0	10

	Potable Water	Waste Water	Oil Systems	Natural Gas	Electric Power	Communication	Total
<i>Pipelines</i>	2	1	0	0			3
Total	2	1	0	0	10	0	13
Yolo							
<i>Facilities</i>	0	71,245	0	0	76,432	242	147,919
<i>Pipelines</i>	2,573	1,292	0	0			3,865
Total	2,573	72,537	0	0	76,432	242	151,783
Yuba							
<i>Facilities</i>	0	3,295	0	0	16,157	2	19,454
<i>Pipelines</i>	39	19	0	0			58
Total	39	3,314	0	0	16,157	2	19,512
Total	4,989	131,279	1	75	786,337	446	923,127
Region Total	4,989	131,279	1	75	786,337	446	923,127

Totals only reflect data for those census tracts/blocks included in the user's study region and will reflect the entire county/state only if all of the census blocks for that county/states were selected at the time of study region creation.

Hazus Quick Assessment Report

Estimated Economic Loss (\$ Billions)

Category	Description	Range
General Building Stock	Building Damage	1.30 - 5.20
	Building Contents	0.20 - 0.80
	Business Interruption	0.30 - 1.10
Infrastructure	Lifelines Damage	
Total		2.10 - 8.50

Preliminary Damage Assessment (PDA) Estimates

Description	Residential	Commercial	Other	Total
Affected	40,300	3,100	1,300	44,700
Minor	5,600	1,200	530	7,330
Major	390	330	150	870
Destroyed	60	80	30	170
Total	46,350	4,710	2,010	53,070

Estimated Casualties : Night Time

Severity Level	Description	# Persons
Level 1	Medical Aid	100 - 400
Level 2	Hospital Care	10 - 50
Level 3	Life-threatening	< 10
Level 4	Fatalities	< 10

Estimated Shelter Needs

Type	Households	People
Displaced Households	400 - 1,700	1,000 - 4,250
Public Shelter	190	480

Comments :

*Hazus damage estimates are presented using FEMA Preliminary Damage Assessment (PDA) categories. These estimates should be used for planning purposes and may not reflect actual observed damages from the PDA process.

Disclaimer:

The estimates of social and economic impacts contained in this report were produced using HAZUS loss estimation methodology software which is based on current scientific and engineering knowledge. There are uncertainties inherent in any loss estimation technique. Therefore, there may be significant differences between the modeled results contained in this report and the actual social and economic losses following a specific earthquake. These results can be improved by using enhanced inventory, geotechnical, and observed ground motion data.

Earthquake Information

Location :

Origin Time:

Magnitude : 6.53

Epicenter Latitude/Longitude :
/

Depth & Type : /U

Name :
NA

Ground Motion /Attenuation :

Maximum PGA: 1.00

Information Sources:

Comments :

Population and Building Exposure

Population: 10,474,926

Building Exposure : (\$ Millions)

Residential	1,357,372
Commercial	356,693
Other	307,208
Total	2,021,273

Counties : See Appendix

Major Metro Area :

Hazus Quick Assessment Report

Estimated Economic Loss (\$ Billions)

Category	Description	Range
General Building Stock	Building Damage	1.30 - 5.20
	Building Contents	0.20 - 0.80
	Business Interruption	0.30 - 1.10
Infrastructure	Lifelines Damage	
Total		2.10 - 8.50

Preliminary Damage Assessment (PDA) Estimates

Description	Residential	Commercial	Other	Total
Affected	40,300	3,100	1,300	44,700
Minor	5,600	1,200	530	7,330
Major	390	330	150	870
Destroyed	60	80	30	170
Total	46,350	4,710	2,010	53,070

Estimated Casualties : Day Time

Severity Level	Description	# Persons
Level 1	Medical Aid	200 - 900
Level 2	Hospital Care	40 - 150
Level 3	Life-threatening	0 - 20
Level 4	Fatalities	10 - 30

Estimated Shelter Needs

Type	Households	People
Displaced Households	400 - 1,700	1,000 - 4,250
Public Shelter	190	480

Earthquake Information

Location :

Origin Time:

Magnitude : 6.53

Epicenter Latitude/Longitude :
/

Depth & Type : /U

Name :
NA

Ground Motion /Attenuation :

Maximum PGA: 1.00

Information Sources:

Comments :

Population and Building Exposure

Population: 10,474,926

Building Exposure : (\$ Millions)

Residential	1,357,372
Commercial	356,693
Other	307,208
Total	2,021,273

Counties : See Appendix

Comments :

Major Metro Area :

*Hazus damage estimates are presented using FEMA Preliminary Damage Assessment (PDA) categories. These estimates should be used for planning purposes and may not reflect actual observed damages from the PDA process.

Disclaimer:

The estimates of social and economic impacts contained in this report were produced using HAZUS loss estimation methodology software which is based on current scientific and engineering knowledge. There are uncertainties inherent in any loss estimation technique. Therefore, there may be significant differences between the modeled results contained in this report and the actual social and economic losses following a specific earthquake. These results can be improved by using enhanced inventory, geotechnical, and observed ground motion data.

Hazus Quick Assessment Report

Estimated Economic Loss (\$ Billions)

Category	Description	Range
General Building Stock	Building Damage	1.30 - 5.20
	Building Contents	0.20 - 0.80
	Business Interruption	0.30 - 1.10
Infrastructure	Lifelines Damage	
Total		2.10 - 8.50

Preliminary Damage Assessment (PDA) Estimates

Description	Residential	Commercial	Other	Total
Affected	40,300	3,100	1,300	44,700
Minor	5,600	1,200	530	7,330
Major	390	330	150	870
Destroyed	60	80	30	170
Total	46,350	4,710	2,010	53,070

Estimated Casualties : Commute Time

Severity Level	Description	# Persons
Level 1	Medical Aid	140 - 600
Level 2	Hospital Care	30 - 100
Level 3	Life-threatening	10 - 30
Level 4	Fatalities	10 - 20

Estimated Shelter Needs

Type	Households	People
Displaced Households	400 - 1,700	1,000 - 4,250
Public Shelter	190	480

Comments :

*Hazus damage estimates are presented using FEMA Preliminary Damage Assessment (PDA) categories. These estimates should be used for planning purposes and may not reflect actual observed damages from the PDA process.

Disclaimer:

The estimates of social and economic impacts contained in this report were produced using HAZUS loss estimation methodology software which is based on current scientific and engineering knowledge. There are uncertainties inherent in any loss estimation technique. Therefore, there may be significant differences between the modeled results contained in this report and the actual social and economic losses following a specific earthquake. These results can be improved by using enhanced inventory, geotechnical, and observed ground motion data.

Earthquake Information

Location :

Origin Time:

Magnitude : 6.53

Epicenter Latitude/Longitude :
/

Depth & Type : /U

Name :
NA

Ground Motion /Attenuation :

Maximum PGA: 1.00

Information Sources:

Comments :

Population and Building Exposure

Population: 10,474,926

Building Exposure : (\$ Millions)

Residential	1,357,372
Commercial	356,693
Other	307,208
Total	2,021,273

Counties : See Appendix

Major Metro Area :

Shelter Summary Report

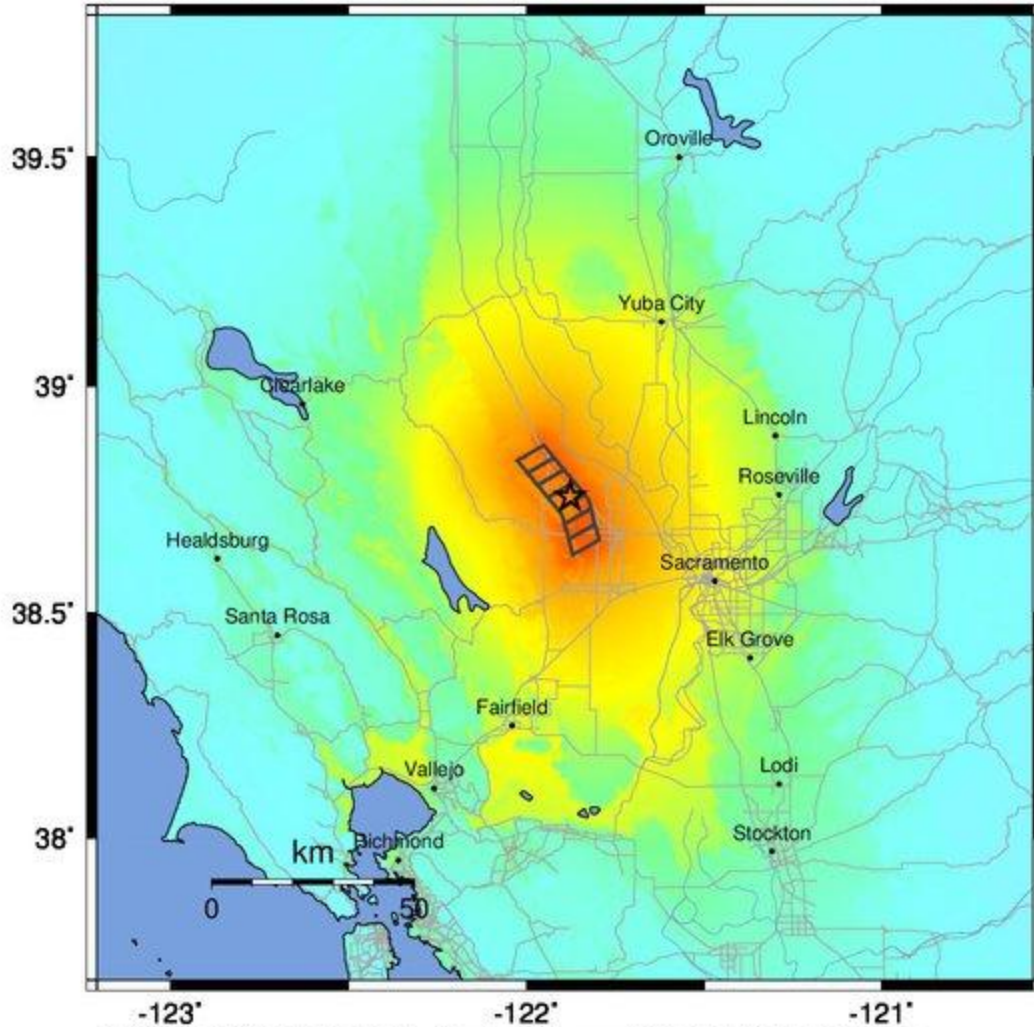
April 22, 2024

	# of Displaced Households	# of People Needing Short Term Shelter
California		
Alameda	0	0
Amador	0	0
Butte	0	0
Calaveras	0	0
Colusa	3	2
Contra Costa	0	0
El Dorado	0	0
Glenn	0	0
Lake	0	0
Marin	0	0
Mendocino	0	0
Napa	0	0
Nevada	0	0
Placer	0	0
Sacramento	14	7
San Francisco	0	0
San Joaquin	0	0
San Mateo	0	0
Sierra	0	0
Solano	3	2
Sonoma	0	0
Stanislaus	0	0
Sutter	0	0
Tehama	0	0
Tuolumne	0	0
Yolo	848	473
Yuba	0	0
Total	868	484
Region Total	868	484

# of Displaced Households	# of People Needing Short Term Shelter
------------------------------	---

Totals only reflect data for those census tracts/blocks included in the user's study region and will reflect the entire county/state only if all of the census blocks for that county/states were selected at the time of study region creation.

-- Earthquake Planning Scenario --
ShakeMap for Great Valley 03a Dunnigan Hills - Median ground motions Scenario
 Scenario Date: May 16, 2017 08:32:02 AM MDT M 6.5 N38.76 W121.88 Depth: 4.9km



PLANNING SCENARIO ONLY -- Map Version 10 Processed 2017-05-16 05:54:48 PM MDT

PERCEIVED SHAKING	Not felt	Weak	Light	Moderate	Strong	Very strong	Severe	Violent	Extreme
POTENTIAL DAMAGE	none	none	none	Very light	Light	Moderate	Mod./Heavy	Heavy	Very Heavy
PEAK ACC.(%g)	<0.05	0.3	2.8	6.2	12	22	40	75	>139
PEAK VEL.(cm/s)	<0.02	0.1	1.4	4.7	9.6	20	41	86	>178
INSTRUMENTAL INTENSITY	I	II-III	IV	V	VI	VII	VIII	IX	X+

Scale based upon Worden et al. (2012)