
Hazus: Earthquake Global Risk Report

Region Name: GreatValley03

Earthquake Scenario: greatvalley03mysteri_m7p03_se

Print Date: May 23, 2024

Disclaimer:

Totals only reflect data for those census tracts/blocks included in the user's study region.

The estimates of social and economic impacts contained in this report were produced using Hazus loss estimation methodology software which is based on current scientific and engineering knowledge. There are uncertainties inherent in any loss estimation technique. Therefore, there may be significant differences between the modeled results contained in this report and the actual social and economic losses following a specific earthquake. These results can be improved by using enhanced inventory, geotechnical, and observed ground motion data.

Table of Contents

Section	Page #
General Description of the Region	3
Building and Lifeline Inventory	4
Building Inventory	
Critical Facility Inventory	
Transportation and Utility Lifeline Inventory	
Earthquake Scenario Parameters	7
Direct Earthquake Damage	8
Buildings Damage	
Essential Facilities Damage	
Transportation and Utility Lifeline Damage	
Induced Earthquake Damage	14
Fire Following Earthquake	
Debris Generation	
Social Impact	15
Shelter Requirements	
Casualties	
Economic Loss	17
Building Related Losses	
Transportation and Utility Lifeline Losses	
Appendix A: County Listing for the Region	
Appendix B: Regional Population and Building Value Data	

General Description of the Region

Hazus-MH is a regional earthquake loss estimation model that was developed by the Federal Emergency Management Agency (FEMA) and the National Institute of Building Sciences. The primary purpose of Hazus is to provide a methodology and software application to develop multi-hazard losses at a regional scale. These loss estimates would be used primarily by local, state and regional officials to plan and stimulate efforts to reduce risks from multi-hazards and to prepare for emergency response and recovery.

The earthquake loss estimates provided in this report was based on a region that includes 35 county(ies) from the following state(s):

California

Note:

Appendix A contains a complete listing of the counties contained in the region.

The geographical size of the region is 54,878.91 square miles and contains 3,083 census tracts. There are over 4,765 thousand households in the region which has a total population of 13,350,498 people. The distribution of population by Total Region and County is provided in Appendix B.

There are an estimated 4,192 thousand buildings in the region with a total building replacement value (excluding contents) of (millions of dollars). Approximately 90.00 % of the buildings (and % of the building value) are associated with residential housing.

The replacement value of the transportation and utility lifeline systems is estimated to be 225,621 and 166,441 (millions of dollars) , respectively.

Building and Lifeline Inventory

Building Inventory

Hazus estimates that there are 4,192 thousand buildings in the region which have an aggregate total replacement value of (millions of dollars) . Appendix B provides a general distribution of the building value by Total Region and County.

In terms of building construction types found in the region, wood frame construction makes up 86% of the building inventory. The remaining percentage is distributed between the other general building types.

Critical Facility Inventory

Hazus breaks critical facilities into two (2) groups: essential facilities and high potential loss facilities (HPL). Essential facilities include hospitals, medical clinics, schools, fire stations, police stations and emergency operations facilities. High potential loss facilities include dams, levees, military installations, nuclear power plants and hazardous material sites.

For essential facilities, there are 240 hospitals in the region with a total bed capacity of 33,097 beds. There are 5,001 schools, 1,472 fire stations, 448 police stations and 80 emergency operation facilities. With respect to high potential loss facilities (HPL), there are no dams identified within the inventory. The inventory also includes no hazardous material sites, no military installations and no nuclear power plants.

Transportation and Utility Lifeline Inventory

Within Hazus, the lifeline inventory is divided between transportation and utility lifeline systems. There are seven (7) transportation systems that include highways, railways, light rail, bus, ports, ferry and airports. There are six (6) utility systems that include potable water, wastewater, natural gas, crude & refined oil, electric power and communications. The lifeline inventory data are provided in Tables 1 and 2.

The total value of the lifeline inventory is over 392,062.00 (millions of dollars). This inventory includes over 9,714.51 miles of highways, 11,236 bridges, 229,250.48 miles of pipes.

Table 1: Transportation System Lifeline Inventory

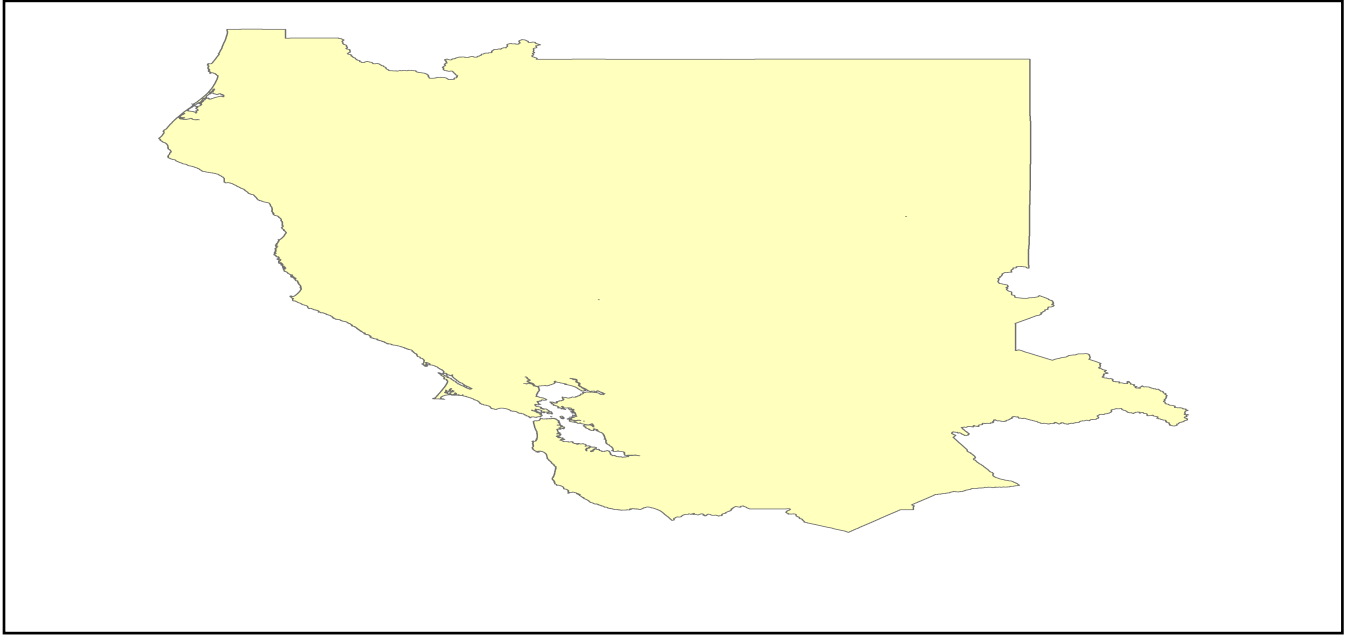
System	Component	# Locations/ # Segments	Replacement value (millions of dollars)
Highway	Bridges	11,236	56777.3006
	Segments	6,380	82975.1398
	Tunnels	42	867.4722
	Subtotal		140619.9126
Railways	Bridges	1,694	9638.8600
	Facilities	71	189.0730
	Segments	3,078	59969.7576
	Tunnels	3	1.8495
	Subtotal		69799.5401
Light Rail	Bridges	112	15.3529
	Facilities	255	4154.0000
	Segments	15	5403.2756
	Tunnels	0	0.0000
	Subtotal		9572.6285
Bus	Facilities	33	76.0368
	Subtotal		76.0368
Ferry	Facilities	25	33.2750
	Subtotal		33.2750
Port	Facilities	381	1452.3128
	Subtotal		1452.3128
Airport	Facilities	116	2773.7355
	Runways	152	1293.6408
	Subtotal		4067.3763
		Total	225,621.10

Table 2: Utility System Lifeline Inventory

System	Component	# Locations / Segments	Replacement value (millions of dollars)
Potable Water	Distribution Lines	NA	4562.0197
	Facilities	25	982.3500
	Pipelines	0	0.0000
		Subtotal	5544.3697
Waste Water	Distribution Lines	NA	2737.2118
	Facilities	190	32670.8420
	Pipelines	0	0.0000
		Subtotal	35408.0538
Natural Gas	Distribution Lines	NA	1824.8079
	Facilities	3	123.7305
	Pipelines	936	14023.1199
		Subtotal	15971.6583
Oil Systems	Facilities	16	1.8880
	Pipelines	0	0.0000
		Subtotal	1.8880
Electrical Power	Facilities	326	109472.3638
		Subtotal	109472.3638
Communication	Facilities	365	43.0700
		Subtotal	43.0700
	Total		166,441.40

Earthquake Scenario

Hazus uses the following set of information to define the earthquake parameters used for the earthquake loss estimate provided in this report.



Scenario Name	greatvalley03mysteri_m7p03_se
Type of Earthquake	User-defined
Fault Name	NA
Historical Epicenter ID #	NA
Probabilistic Return Period	NA
Longitude of Epicenter	NA
Latitude of Epicenter	NA
Earthquake Magnitude	7.03
Depth (km)	NA
Rupture Length (Km)	NA
Rupture Orientation (degrees)	NA
Attenuation Function	NA

Direct Earthquake Damage

Building Damage

Hazus estimates that about 7,166 buildings will be at least moderately damaged. This is over 0.00 % of the buildings in the region. There are an estimated 11 buildings that will be damaged beyond repair. The definition of the 'damage states' is provided in Volume 1: Chapter 5 of the Hazus technical manual. Table 3 below summarizes the expected damage by general occupancy for the buildings in the region. Table 4 below summarizes the expected damage by general building type.

Damage Categories by General Occupancy Type

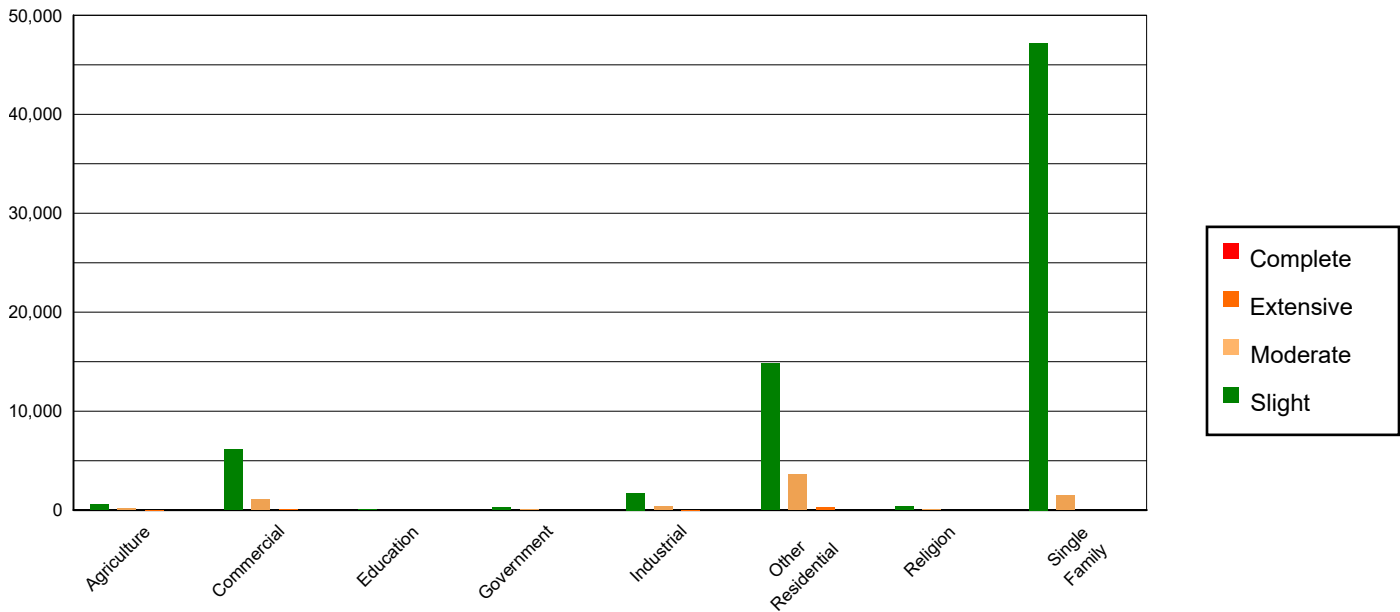


Table 3: Expected Building Damage by Occupancy

	None		Slight		Moderate		Extensive		Complete	
	Count	(%)	Count	(%)	Count	(%)	Count	(%)	Count	(%)
Agriculture	25739.88	0.63	582.34	0.82	177.69	2.62	20.12	5.31	0.97	8.58
Commercial	261051.85	6.35	6090.76	8.56	1093.83	16.14	73.39	19.39	4.17	36.71
Education	8494.67	0.21	76.91	0.11	12.50	0.18	0.91	0.24	0.02	0.19
Government	21241.96	0.52	296.73	0.42	48.55	0.72	1.74	0.46	0.03	0.24
Industrial	71648.34	1.74	1728.36	2.43	339.73	5.01	23.19	6.13	1.37	12.06
Other Residential	522322.33	12.70	14831.99	20.84	3570.46	52.69	245.83	64.94	4.39	38.68
Religion	14589.65	0.35	371.16	0.52	72.28	1.07	5.51	1.46	0.40	3.53
Single Family	3189107.02	77.51	47208.38	66.32	1461.72	21.57	7.88	2.08	0.00	0.00
Total	4,114,196		71,187		6,777		379		11	

Table 4: Expected Building Damage by Building Type (All Design Levels)

	None		Slight		Moderate		Extensive		Complete	
	Count	(%)	Count	(%)	Count	(%)	Count	(%)	Count	(%)
Wood	3570120.11	86.78	52591.47	73.88	1484.95	21.91	6.71	1.77	0.04	0.34
Steel	91880.03	2.23	2894.60	4.07	783.93	11.57	64.14	16.94	3.02	26.63
Concrete	104485.45	2.54	2393.56	3.36	428.15	6.32	39.19	10.35	2.30	20.27
Precast	53065.00	1.29	1536.01	2.16	319.90	4.72	12.64	3.34	0.30	2.61
RM	162534.69	3.95	1470.44	2.07	247.34	3.65	7.71	2.04	0.04	0.34
URM	40436.40	0.98	3344.21	4.70	552.26	8.15	34.50	9.11	3.45	30.36
MH	91674.02	2.23	6956.34	9.77	2960.22	43.68	213.67	56.44	2.21	19.44
Total	4,114,196		71,187		6,777		379		11	

*Note:

- RM Reinforced Masonry
- URM Unreinforced Masonry
- MH Manufactured Housing

Essential Facility Damage

Before the earthquake, the region had 33,097 hospital beds available for use. On the day of the earthquake, the model estimates that only 32,147 hospital beds (97.00%) are available for use by patients already in the hospital and those injured by the earthquake. After one week, 99.00% of the beds will be back in service. By 30 days, 100.00% will be operational.

Table 5: Expected Damage to Essential Facilities

Classification	Total	# Facilities		
		At Least Moderate Damage > 50%	Complete Damage > 50%	With Functionality > 50% on day 1
Hospitals	240	1	0	237
Schools	5,001	16	0	4,948
EOCs	80	0	0	79
PoliceStations	448	0	0	445
FireStations	1,472	4	0	1,459

Transportation Lifeline Damage

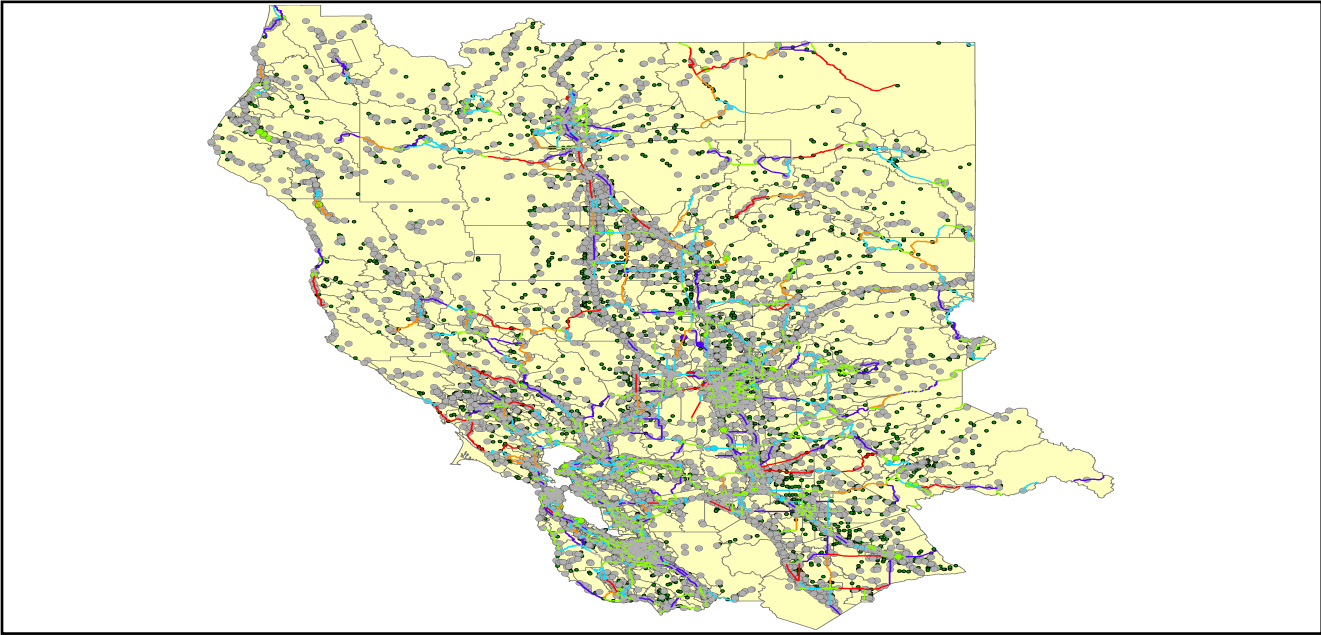


Table 6: Expected Damage to the Transportation Systems

System	Component	Number of Locations_				
		Locations/ Segments	With at Least Mod. Damage	With Complete Damage	With Functionality > 50 %	
					After Day 1	After Day 7
Highway	Segments	6,380	0	0	6,380	6,380
	Bridges	11,236	0	0	11,236	11,236
	Tunnels	42	0	0	42	42
Railways	Segments	3,078	0	0	3,078	3,078
	Bridges	1,694	0	0	1,694	1,694
	Tunnels	3	0	0	3	3
	Facilities	71	0	0	71	71
Light Rail	Segments	15	0	0	15	15
	Bridges	112	0	0	112	112
	Tunnels	0	0	0	0	0
	Facilities	255	0	0	255	255
Bus	Facilities	33	0	0	33	33
Ferry	Facilities	25	0	0	25	25
Port	Facilities	381	0	0	381	381
Airport	Facilities	116	0	0	116	116
	Runways	152	0	0	152	152

Table 6 provides damage estimates for the transportation system.

Note: Roadway segments, railroad tracks and light rail tracks are assumed to be damaged by ground failure only. If ground failure maps are not provided, damage estimates to these components will not be computed.

Tables 7-9 provide information on the damage to the utility lifeline systems. Table 7 provides damage to the utility system facilities. Table 8 provides estimates on the number of leaks and breaks by the pipelines of the utility systems. For electric power and potable water, Hazus performs a simplified system performance analysis. Table 9 provides a summary of the system performance information.

Table 7 : Expected Utility System Facility Damage

System	# of Locations				
	Total #	With at Least Moderate Damage	With Complete Damage	with Functionality > 50 %	
				After Day 1	After Day 7
Potable Water	25	0	0	25	25
Waste Water	190	0	0	186	190
Natural Gas	3	0	0	3	3
Oil Systems	16	0	0	16	16
Electrical Power	326	3	0	324	326
Communication	365	1	0	364	365

Table 8 : Expected Utility System Pipeline Damage (Site Specific)

System	Total Pipelines Length (miles)	Number of Leaks	Number of Breaks
Potable Water	141,735	1640	410
Waste Water	85,041	824	206
Natural Gas	2,474	0	0
Oil	0	0	0

Table 9: Expected Potable Water and Electric Power System Performance

	Total # of Households	Number of Households without Service				
		At Day 1	At Day 3	At Day 7	At Day 30	At Day 90
Potable Water	4,765,151	1,468	0	0	0	0
Electric Power		3,837	2,337	892	67	6

Induced Earthquake Damage

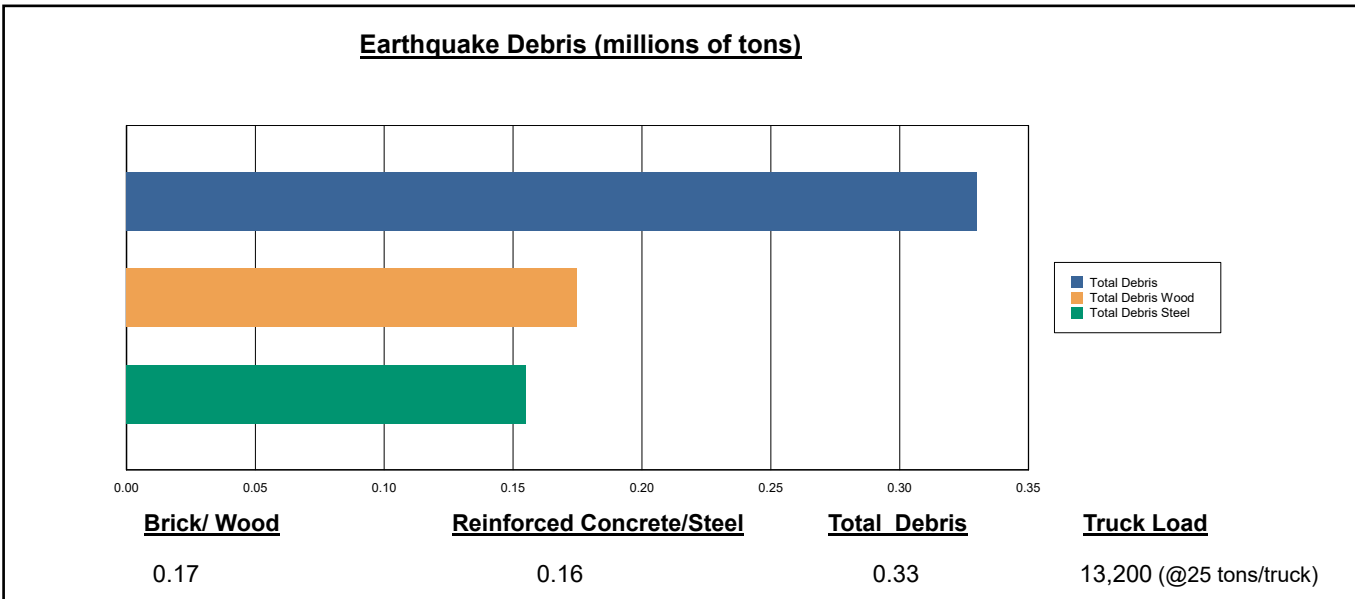
Fire Following Earthquake

Fires often occur after an earthquake. Because of the number of fires and the lack of water to fight the fires, they can often burn out of control. Hazus uses a Monte Carlo simulation model to estimate the number of ignitions and the amount of burnt area. For this scenario, the model estimates that there will be 20 ignitions that will burn about 0.15 sq. mi (0.00 % of the region's total area.) The model also estimates that the fires will displace about 1,411 people and burn about 201 (millions of dollars) of building value.

Debris Generation

Hazus estimates the amount of debris that will be generated by the earthquake. The model breaks the debris into two general categories: a) Brick/Wood and b) Reinforced Concrete/Steel. This distinction is made because of the different types of material handling equipment required to handle the debris.

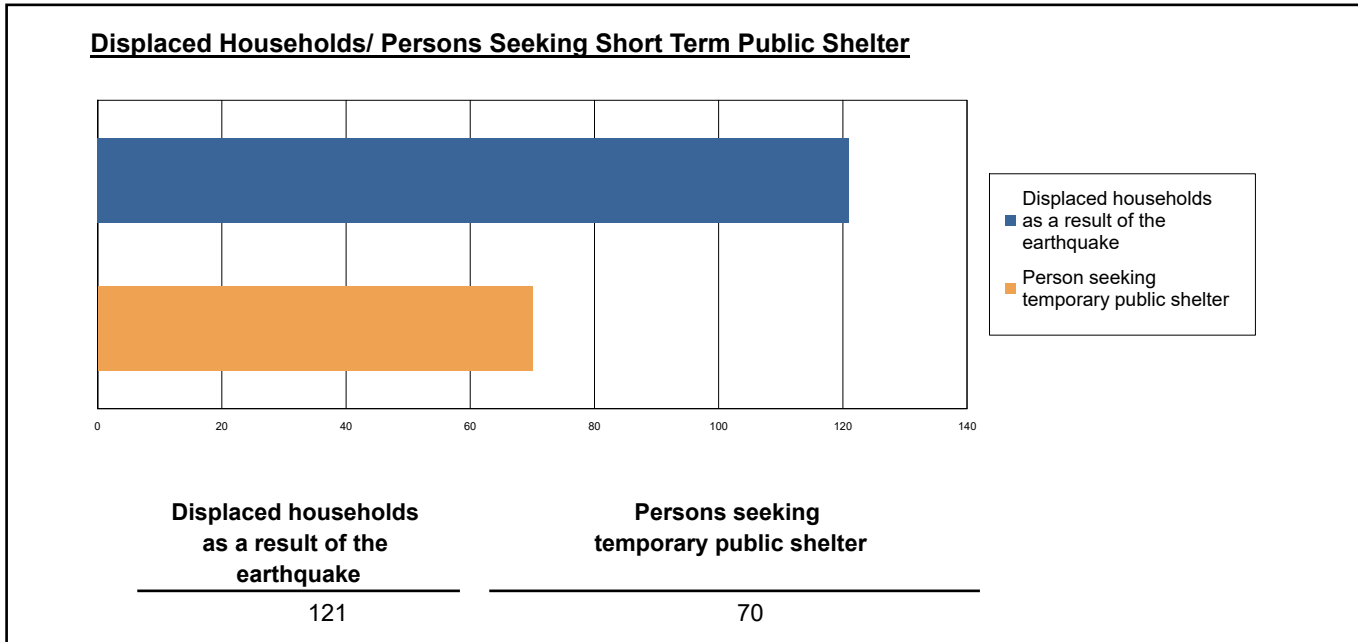
The model estimates that a total of 330,000 tons of debris will be generated. Of the total amount, Brick/Wood comprises 53.00% of the total, with the remainder being Reinforced Concrete/Steel. If the debris tonnage is converted to an estimated number of truckloads, it will require 13,200 truckloads (@25 tons/truck) to remove the debris generated by the earthquake.



Social Impact

Shelter Requirement

Hazus estimates the number of households that are expected to be displaced from their homes due to the earthquake and the number of displaced people that will require accommodations in temporary public shelters. The model estimates 121 households to be displaced due to the earthquake. Of these, 70 people (out of a total population of 13,350,498) will seek temporary shelter in public shelters.



Casualties

Hazus estimates the number of people that will be injured and killed by the earthquake. The casualties are broken down into four (4) severity levels that describe the extent of the injuries. The levels are described as follows;

- Severity Level 1: Injuries will require medical attention but hospitalization is not needed.
- Severity Level 2: Injuries will require hospitalization but are not considered life-threatening
- Severity Level 3: Injuries will require hospitalization and can become life threatening if not promptly treated.
- Severity Level 4: Victims are killed by the earthquake.

The casualty estimates are provided for three (3) times of day: 2:00 AM, 2:00 PM and 5:00 PM. These times represent the periods of the day that different sectors of the community are at their peak occupancy loads. The 2:00 AM estimate considers that the residential occupancy load is maximum, the 2:00 PM estimate considers that the educational, commercial and industrial sector loads are maximum and 5:00 PM represents peak commute time.

Table 10 provides a summary of the casualties estimated for this earthquake

Table 10: Casualty Estimates

		Level 1	Level 2	Level 3	Level 4
2 AM	Commercial	2.60	0.21	0.01	0.02
	Commuting	0.01	0.01	0.02	0.00
	Educational	0.00	0.00	0.00	0.00
	Hotels	0.13	0.01	0.00	0.00
	Industrial	2.03	0.14	0.00	0.01
	Other-Residential	77.90	5.01	0.13	0.23
	Single Family	77.26	1.39	0.01	0.01
	Total	160	7	0	0
2 PM	Commercial	159.86	12.90	0.60	1.13
	Commuting	0.07	0.09	0.15	0.03
	Educational	29.44	1.73	0.06	0.10
	Hotels	0.02	0.00	0.00	0.00
	Industrial	14.77	1.05	0.03	0.06
	Other-Residential	26.15	1.79	0.05	0.09
	Single Family	23.18	0.48	0.00	0.00
	Total	254	18	1	1
5 PM	Commercial	100.17	8.11	0.39	0.73
	Commuting	1.29	1.70	2.90	0.56
	Educational	4.66	0.13	0.00	0.00
	Hotels	0.04	0.00	0.00	0.00
	Industrial	9.23	0.65	0.02	0.04
	Other-Residential	28.28	1.87	0.05	0.09
	Single Family	27.78	0.54	0.00	0.00
	Total	171	13	3	1

Economic Loss

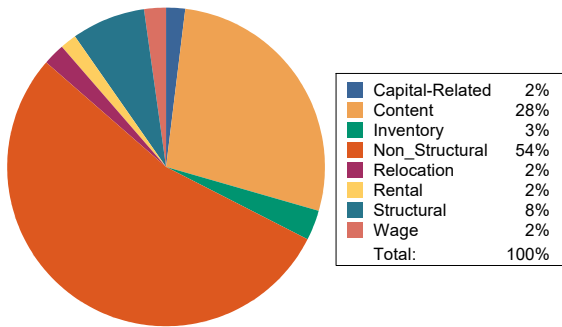
The total economic loss estimated for the earthquake is 6,990.60 (millions of dollars), which includes building and lifeline related losses based on the region's available inventory. The following three sections provide more detailed information about these losses.

Building-Related Losses

The building losses are broken into two categories: direct building losses and business interruption losses. The direct building losses are the estimated costs to repair or replace the damage caused to the building and its contents. The business interruption losses are the losses associated with inability to operate a business because of the damage sustained during the earthquake. Business interruption losses also include the temporary living expenses for those people displaced from their homes because of the earthquake.

The total building-related losses were 4,232.45 (millions of dollars); 8 % of the estimated losses were related to the business interruption of the region. By far, the largest loss was sustained by the residential occupancies which made up over 42 % of the total loss. Table 11 below provides a summary of the losses associated with the building damage.

Earthquake Losses by Loss Type (\$ millions)



Earthquake Losses by Occupancy Type (\$ millions)

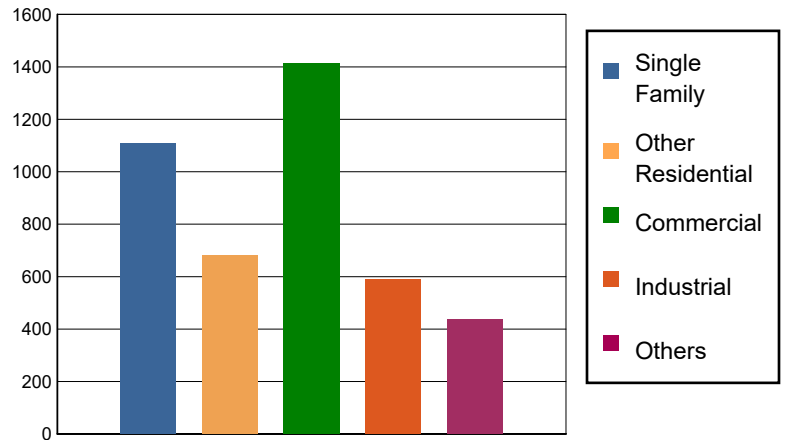


Table 11: Building-Related Economic Loss Estimates
(Millions of dollars)

Category	Area	Single Family	Other Residential	Commercial	Industrial	Others	Total
Income Losses							
	Wage	0.0000	3.9644	78.4179	3.0420	9.6783	95.1026
	Capital-Related	0.0000	1.6844	77.5938	1.9989	1.9361	83.2132
	Rental	5.5286	19.5994	41.4867	2.1279	3.3469	72.0895
	Relocation	10.1125	14.5627	41.7986	9.7638	15.1838	91.4214
	Subtotal	15.6411	39.8109	239.2970	16.9326	30.1451	341.8267
Capital Stock Losses							
	Structural	92.7591	52.3618	97.1902	38.1016	37.3025	317.7152
	Non_Structural	713.5007	450.7220	615.6180	293.4531	211.3001	2,284.5939
	Content	287.5592	139.9289	390.2277	209.3935	141.3442	1,168.4535
	Inventory	0.0000	0.0000	70.1447	32.5371	17.1748	119.8566
	Subtotal	1093.8190	643.0127	1173.1806	573.4853	407.1216	3890.6192
	Total	1109.46	682.82	1412.48	590.42	437.27	4232.45

Transportation and Utility Lifeline Losses

For the transportation and utility lifeline systems, Hazus computes the direct repair cost for each component only. There are no losses computed by Hazus for business interruption due to lifeline outages. Tables 12 & 13 provide a detailed breakdown in the expected lifeline losses.

Table 12: Transportation System Economic Losses
(Millions of dollars)

System	Component	Inventory Value	Economic Loss	Loss Ratio (%)
Highway	Segments	82975.1398	0.0000	0.00
	Bridges	56777.3006	35.2798	0.06
	Tunnels	867.4722	0.0014	0.00
	Subtotal	140619.9126	35.2812	
Railways	Segments	59969.7576	0.0000	0.00
	Bridges	9638.8600	3.5018	0.04
	Tunnels	1.8495	0.0001	0.01
	Facilities	189.0730	5.3640	2.84
	Subtotal	69799.5401	8.8659	
Light Rail	Segments	5403.2756	0.0000	0.00
	Bridges	15.3529	0.0000	0.00
	Tunnels	0.0000	0.0000	0.00
	Facilities	4154.0000	55.7084	1.34
	Subtotal	9572.6285	55.7084	
Bus	Facilities	76.0368	1.7895	2.35
	Subtotal	76.0368	1.7895	
Ferry	Facilities	33.2750	1.0887	3.27
	Subtotal	33.2750	1.0887	
Port	Facilities	1452.3128	45.3167	3.12
	Subtotal	1452.3128	45.3167	
Airport	Facilities	2773.7355	64.3258	2.32
	Runways	1293.6408	0.0000	0.00
	Subtotal	4067.3763	64.3258	
Total		225,621.08	212.38	

Table 13: Utility System Economic Losses

(Millions of dollars)

System	Component	Inventory Value	Economic Loss	Loss Ratio (%)
Potable Water	Pipelines	0.0000	0.0000	0.00
	Facilities	982.3500	6.1271	0.62
	Distribution Lines	4562.0197	7.3793	0.16
	Subtotal	5544.3697	13.5064	
Waste Water	Pipelines	0.0000	0.0000	0.00
	Facilities	32670.8420	269.3238	0.82
	Distribution Lines	2737.2118	3.7068	0.14
	Subtotal	35408.0538	273.0306	
Natural Gas	Pipelines	14023.1199	0.0000	0.00
	Facilities	123.7305	2.6982	2.18
	Distribution Lines	1824.8079	1.2699	0.07
	Subtotal	15971.6583	3.9681	
Oil Systems	Pipelines	0.0000	0.0000	0.00
	Facilities	1.8880	0.0148	0.78
	Subtotal	1.8880	0.0148	
Electrical Power	Facilities	109472.3638	2254.6511	2.06
	Subtotal	109472.3638	2254.6511	
Communication	Facilities	43.0700	0.6089	1.41
	Subtotal	43.0700	0.6089	
	Total	166,441.40	2,545.78	

Appendix A: County Listing for the Region

Alameda,CA
Amador,CA
Butte,CA
Calaveras,CA
Colusa,CA
Contra Costa,CA
El Dorado,CA
Glenn,CA
Humboldt,CA
Lake,CA
Lassen,CA
Marin,CA
Mendocino,CA
Merced,CA
Napa,CA
Nevada,CA
Placer,CA
Plumas,CA
Sacramento,CA
San Francisco,CA
San Joaquin,CA
San Mateo,CA
Santa Clara,CA
Santa Cruz,CA
Shasta,CA
Sierra,CA
Solano,CA
Sonoma,CA
Stanislaus,CA

Sutter, CA

Tehama, CA

Trinity, CA

Tuolumne, CA

Yolo, CA

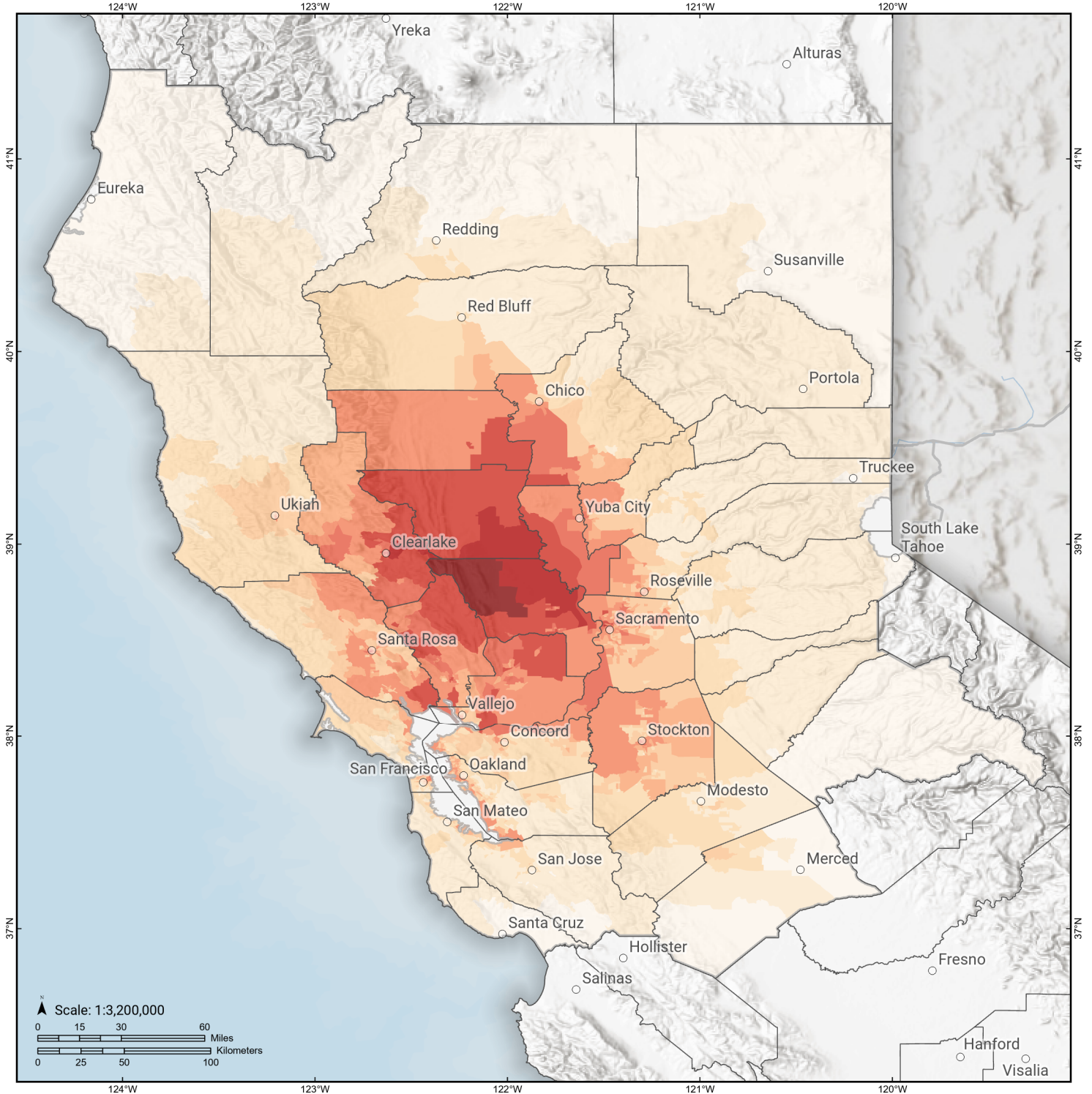
Yuba, CA

Appendix B: Regional Population and Building Value Data

State	County Name	Population	Building Value (millions of dollars)			
			Residential	Non-Residential	Total	
California	Alameda	1,682,353	209,951	122,639	332,590	
	Amador	40,474	5,608	2,517	8,125	
	Butte	211,632	25,875	16,639	42,514	
	Calaveras	45,292	8,305	4,893	13,199	
	Colusa	21,839	2,244	2,024	4,268	
	Contra Costa	1,165,927	158,118	60,339	218,458	
	El Dorado	191,185	34,907	9,704	44,611	
	Glenn	28,917	2,791	3,717	6,508	
	Humboldt	136,463	19,361	8,683	28,044	
	Lake	68,163	9,699	4,530	14,229	
	Lassen	32,730	4,033	2,008	6,042	
	Marin	262,321	47,738	15,030	62,769	
	Mendocino	91,601	14,237	8,510	22,748	
	Merced	281,202	25,194	26,098	51,292	
	Napa	138,019	20,517	13,045	33,563	
	Nevada	102,241	17,908	6,108	24,016	
	Placer	404,739	69,985	24,193	94,179	
	Plumas	19,790	6,128	2,276	8,405	
	Sacramento	1,585,055	179,811	83,911	263,723	
	San Francisco	873,965	108,848	46,020	154,869	
	San Joaquin	779,233	82,706	56,882	139,589	
	San Mateo	764,442	110,372	44,995	155,368	
	Santa Clara	1,936,259	261,111	120,471	381,582	
	Santa Cruz	270,861	36,147	18,805	54,952	
	Shasta	182,155	21,572	15,715	37,288	
	Sierra	3,236	596	419	1,015	
	Solano	453,491	55,802	26,393	82,195	
	Sonoma	488,863	68,827	35,781	104,609	
	Stanislaus	552,878	62,937	37,511	100,449	
	Sutter	99,633	10,618	6,448	17,066	
	Tehama	65,829	7,705	5,113	12,818	
	Trinity	16,112	2,209	1,485	3,694	
	Tuolumne	55,620	8,964	3,507	12,471	
	Yolo	216,403	24,130	18,343	42,473	
	Yuba	81,575	8,161	4,677	12,839	
	Total Region		13,350,498	1,733,115	859,429	2,592,560

Great Valley 03 Mysterious Ridge

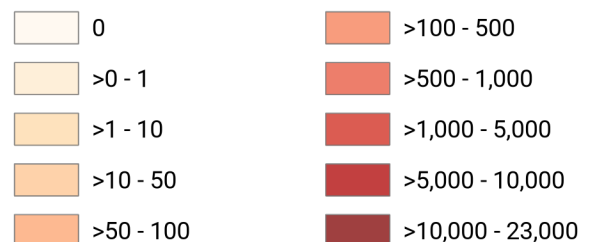
Debris Generated by Census Tract



Study Region: Great Valley 03 Mysterious Ridge
Scenario: greatvalley03mysteri_m7p03_se

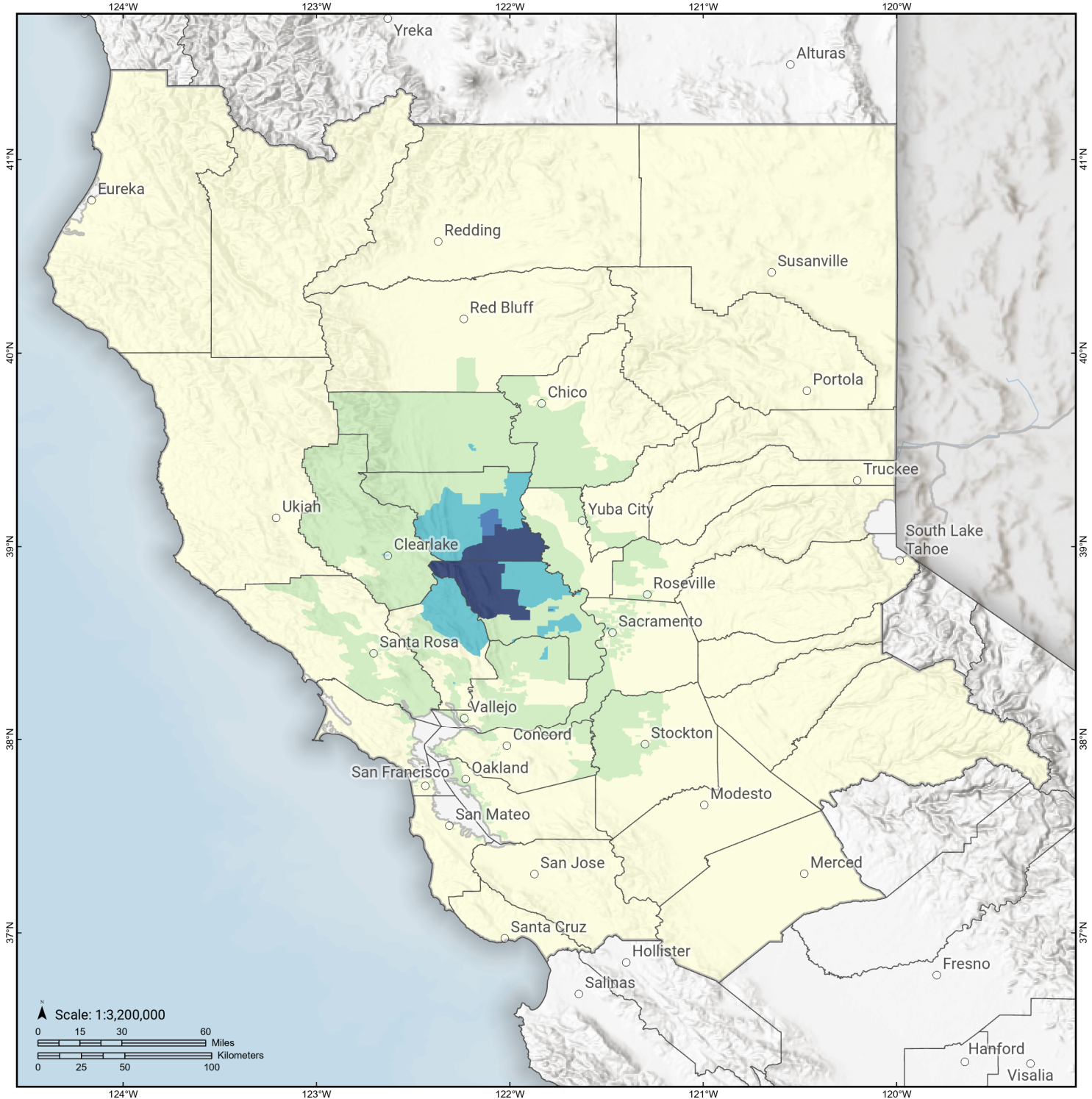


Debris Generated (in tons)



Great Valley 03 Mysterious Ridge

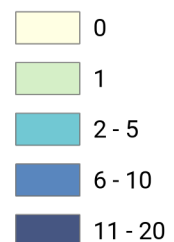
Displaced Households by Census Tract



Study Region: Great Valley 03 Mysterious Ridge
Scenario: greatvalley03mysteri_m7p03_se

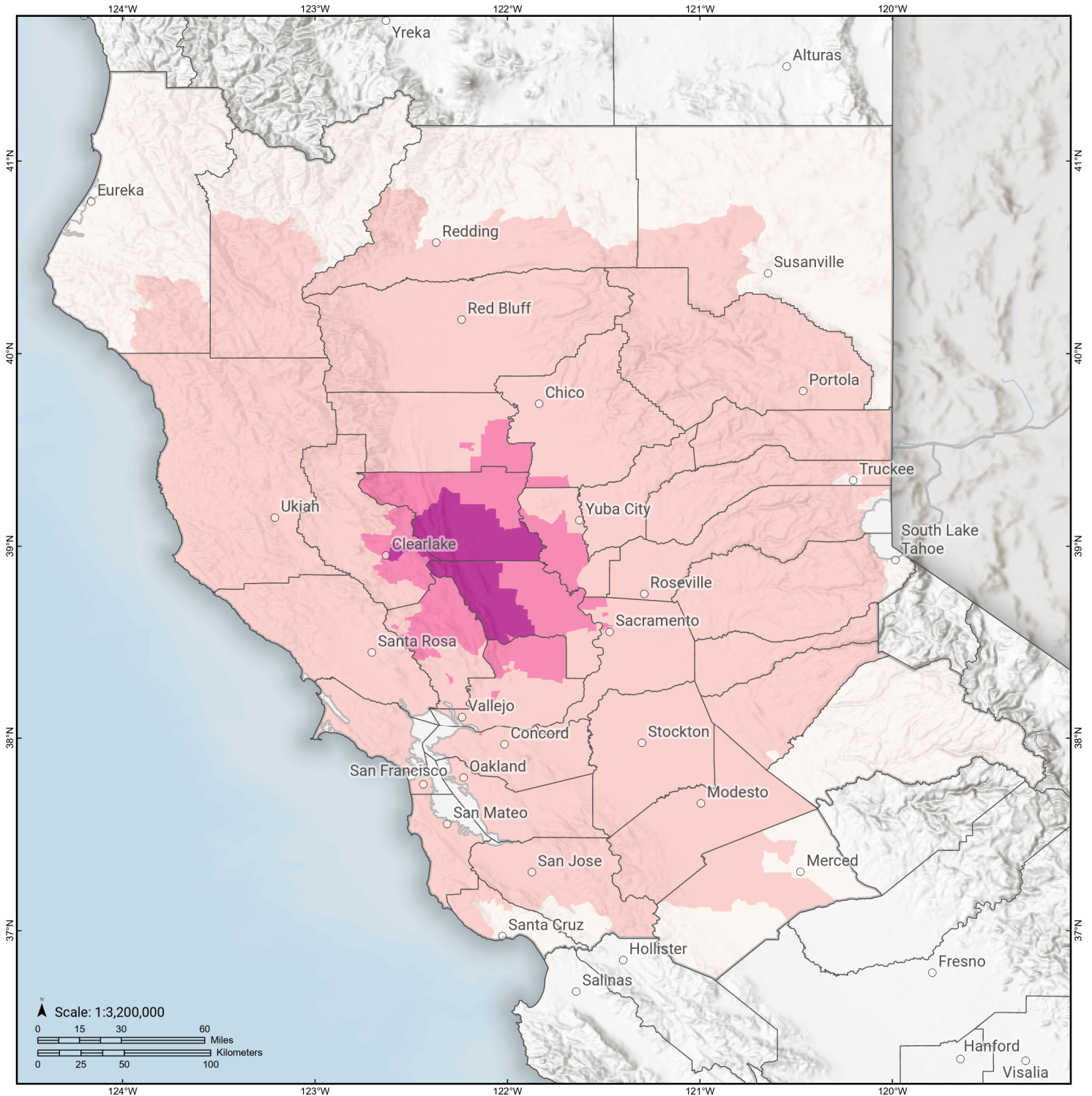


Displaced Households



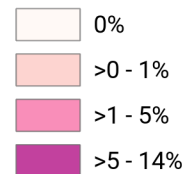
Great Valley 03 Mysterious Ridge

Loss Ratio by Census Tract



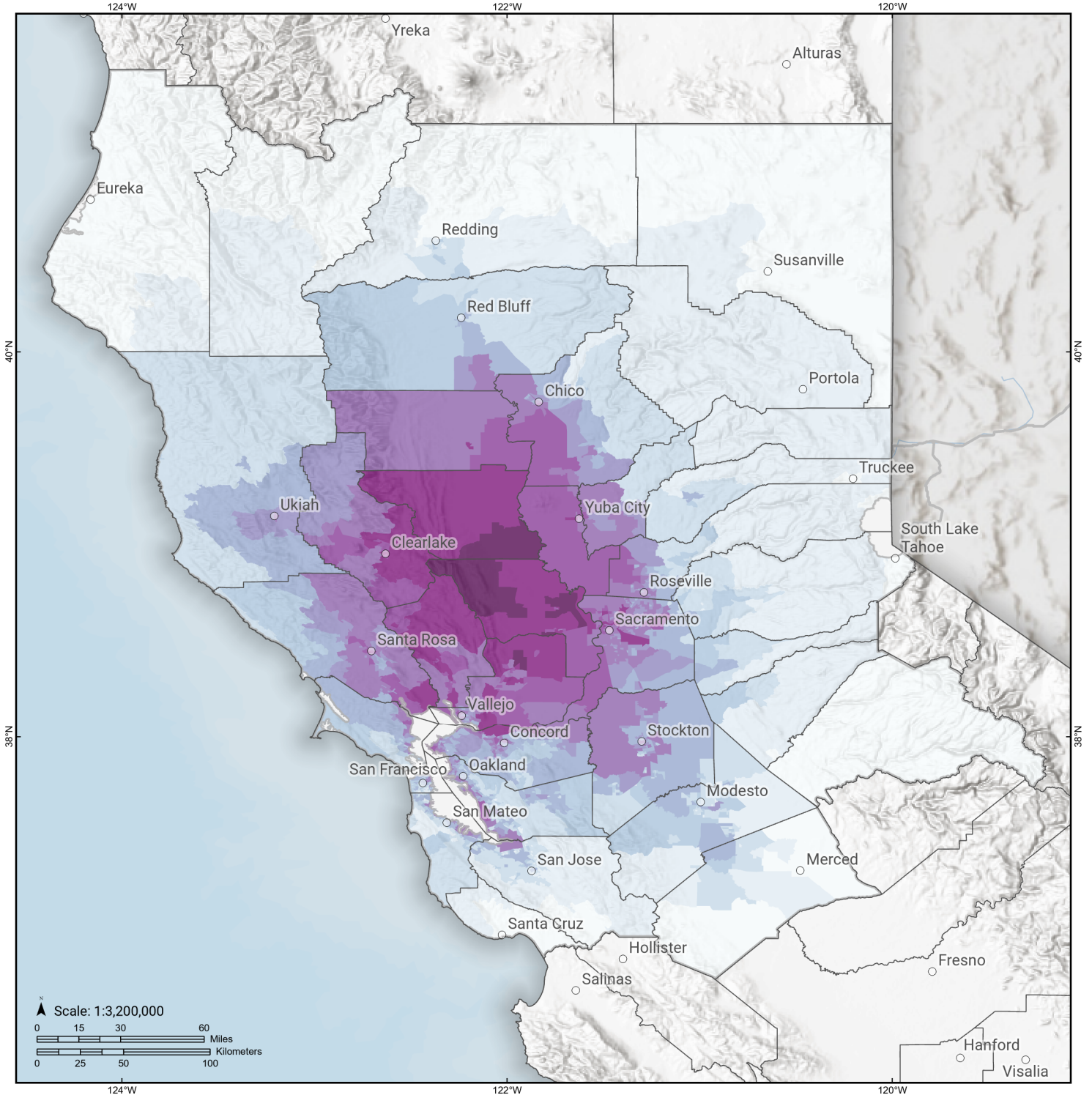
Study Region: Great Valley 03 Mysterious Ridge
Scenario: greatvalley03mysteri_m7p03_se

Loss Ratio (ratio of building related economic loss to exposed value of buildings)



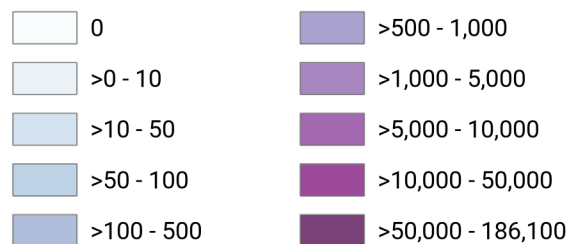
Great Valley 03 Mysterious Ridge

Total Building Related Economic Loss by Census Tract



Study Region: Great Valley 03 Mysterious Ridge
Scenario: greatvalley03mysteri_m7p03_se

Economic Loss (in thousands of USD \$)



Building Damage by Count by General Occupancy

May 23, 2024

	# of Buildings					Total
	None	Slight	Moderate	Extensive	Complete	
California						
Alameda						
<i>Government</i>	10,467	58	4	0	0	10,528
<i>Agriculture</i>	417	4	1	0	0	422
<i>Commercial</i>	31,558	394	37	0	0	31,989
<i>Religion</i>	1,960	24	2	0	0	1,986
<i>Single Family</i>	343,724	448	1	0	0	344,173
<i>Other Residential</i>	60,939	426	31	0	0	61,396
<i>Education</i>	1,109	7	1	0	0	1,117
<i>Industrial</i>	10,075	118	12	0	0	10,205
Amador						
<i>Industrial</i>	235	0	0	0	0	235
<i>Single Family</i>	14,962	0	0	0	0	14,962
<i>Other Residential</i>	1,036	1	0	0	0	1,037
<i>Education</i>	23	0	0	0	0	23
<i>Government</i>	32	0	0	0	0	32
<i>Agriculture</i>	44	0	0	0	0	44
<i>Religion</i>	45	0	0	0	0	45
<i>Commercial</i>	1,368	0	0	0	0	1,368
Butte						

	# of Buildings					Total
	None	Slight	Moderate	Extensive	Complete	
<i>Government</i>	141	5	1	0	0	147
<i>Religion</i>	513	15	3	0	0	531
<i>Agriculture</i>	480	22	7	1	0	510
<i>Commercial</i>	6,252	117	16	0	0	6,385
<i>Industrial</i>	1,465	46	10	0	0	1,522
<i>Single Family</i>	49,872	408	3	0	0	50,283
<i>Other Residential</i>	20,983	444	70	1	0	21,498
<i>Education</i>	171	1	0	0	0	172
Calaveras						
<i>Government</i>	84	0	0	0	0	84
<i>Other Residential</i>	2,559	0	0	0	0	2,559
<i>Education</i>	35	0	0	0	0	35
<i>Religion</i>	130	0	0	0	0	130
<i>Agriculture</i>	2,207	0	0	0	0	2,207
<i>Commercial</i>	1,413	0	0	0	0	1,413
<i>Industrial</i>	466	0	0	0	0	466
<i>Single Family</i>	22,148	0	0	0	0	22,148
Colusa						
<i>Agriculture</i>	67	48	24	3	0	142
<i>Religion</i>	31	16	9	2	0	58
<i>Commercial</i>	447	216	109	20	2	794
<i>Industrial</i>	56	37	18	2	0	113
<i>Other Residential</i>	522	295	113	21	2	954
<i>Single Family</i>	3,616	2,095	241	2	0	5,954
<i>Government</i>	20	7	4	0	0	32

	# of Buildings					Total
	None	Slight	Moderate	Extensive	Complete	
<i>Education</i>	25	6	2	0	0	33
Contra Costa						
<i>Commercial</i>	17,723	242	26	1	0	17,991
<i>Agriculture</i>	735	12	2	0	0	749
<i>Religion</i>	1,200	23	3	0	0	1,226
<i>Single Family</i>	280,415	1,518	2	0	0	281,935
<i>Other Residential</i>	28,577	504	43	0	0	29,124
<i>Industrial</i>	4,625	110	13	0	0	4,749
<i>Government</i>	4,948	69	7	0	0	5,024
<i>Education</i>	650	3	0	0	0	653
El Dorado						
<i>Other Residential</i>	10,412	8	0	0	0	10,420
<i>Industrial</i>	1,199	0	0	0	0	1,199
<i>Education</i>	128	0	0	0	0	128
<i>Single Family</i>	71,423	1	0	0	0	71,424
<i>Commercial</i>	4,767	1	0	0	0	4,768
<i>Government</i>	100	0	0	0	0	100
<i>Religion</i>	180	0	0	0	0	180
<i>Agriculture</i>	161	0	0	0	0	161
Glenn						
<i>Other Residential</i>	1,895	218	38	1	0	2,152
<i>Government</i>	92	6	1	0	0	99
<i>Education</i>	34	0	0	0	0	35
<i>Industrial</i>	237	14	3	0	0	254
<i>Single Family</i>	7,120	293	4	0	0	7,417

	# of Buildings					Total
	None	Slight	Moderate	Extensive	Complete	
<i>Commercial</i>	805	65	14	0	0	885
<i>Agriculture</i>	1,244	92	26	2	0	1,365
<i>Religion</i>	81	7	1	0	0	89
Humboldt						
<i>Government</i>	87	0	0	0	0	87
<i>Agriculture</i>	150	0	0	0	0	150
<i>Religion</i>	61	0	0	0	0	61
<i>Commercial</i>	3,118	0	0	0	0	3,118
<i>Single Family</i>	38,359	0	0	0	0	38,359
<i>Other Residential</i>	12,058	0	0	0	0	12,058
<i>Education</i>	127	0	0	0	0	127
<i>Industrial</i>	740	0	0	0	0	740
Lake						
<i>Agriculture</i>	144	15	3	0	0	161
<i>Single Family</i>	19,028	2,528	77	0	0	21,633
<i>Other Residential</i>	9,019	3,496	1,952	134	0	14,601
<i>Education</i>	64	4	0	0	0	68
<i>Industrial</i>	310	37	6	0	0	354
<i>Commercial</i>	1,782	264	43	1	0	2,091
<i>Religion</i>	122	16	2	0	0	140
<i>Government</i>	69	7	2	0	0	78
Lassen						
<i>Other Residential</i>	2,627	0	0	0	0	2,627
<i>Education</i>	40	0	0	0	0	40
<i>Government</i>	22	0	0	0	0	22

	# of Buildings					Total
	None	Slight	Moderate	Extensive	Complete	
<i>Industrial</i>	140	0	0	0	0	140
<i>Commercial</i>	913	0	0	0	0	913
<i>Religion</i>	71	0	0	0	0	71
<i>Agriculture</i>	37	0	0	0	0	37
<i>Single Family</i>	9,562	0	0	0	0	9,562
Marin						
<i>Other Residential</i>	7,815	68	7	0	0	7,890
<i>Government</i>	142	1	0	0	0	143
<i>Education</i>	273	1	0	0	0	274
<i>Commercial</i>	8,175	88	7	0	0	8,270
<i>Religion</i>	317	2	0	0	0	319
<i>Agriculture</i>	187	3	1	0	0	190
<i>Single Family</i>	76,465	258	1	0	0	76,724
<i>Industrial</i>	1,490	40	5	0	0	1,535
Mendocino						
<i>Commercial</i>	3,421	14	1	0	0	3,436
<i>Religion</i>	215	1	0	0	0	216
<i>Agriculture</i>	184	0	0	0	0	184
<i>Single Family</i>	25,936	33	0	0	0	25,969
<i>Other Residential</i>	7,002	55	3	0	0	7,060
<i>Government</i>	83	0	0	0	0	83
<i>Education</i>	101	0	0	0	0	101
<i>Industrial</i>	866	3	0	0	0	869
Merced						
<i>Education</i>	163	0	0	0	0	163

	# of Buildings					Total
	None	Slight	Moderate	Extensive	Complete	
<i>Government</i>	171	0	0	0	0	171
<i>Commercial</i>	4,754	0	0	0	0	4,754
<i>Agriculture</i>	7,650	3	0	0	0	7,653
<i>Religion</i>	345	0	0	0	0	345
<i>Industrial</i>	1,022	0	0	0	0	1,022
<i>Single Family</i>	63,598	0	0	0	0	63,598
<i>Other Residential</i>	10,786	1	0	0	0	10,787
Napa						
<i>Commercial</i>	3,414	501	101	5	0	4,021
<i>Agriculture</i>	287	50	11	1	0	349
<i>Religion</i>	125	19	4	0	0	148
<i>Single Family</i>	34,971	3,719	72	0	0	38,761
<i>Other Residential</i>	5,619	1,045	297	17	0	6,978
<i>Government</i>	90	11	2	0	0	103
<i>Education</i>	121	9	2	0	0	132
<i>Industrial</i>	1,142	182	41	2	0	1,367
Nevada						
<i>Commercial</i>	2,834	1	0	0	0	2,835
<i>Religion</i>	189	0	0	0	0	189
<i>Government</i>	60	0	0	0	0	60
<i>Agriculture</i>	132	0	0	0	0	132
<i>Single Family</i>	43,280	0	0	0	0	43,280
<i>Other Residential</i>	6,377	7	0	0	0	6,384
<i>Education</i>	108	0	0	0	0	108

	# of Buildings					Total
	None	Slight	Moderate	Extensive	Complete	
Placer						
<i>Industrial</i>	1,161	0	0	0	0	1,161
<i>Education</i>	231	0	0	0	0	231
<i>Commercial</i>	8,464	68	6	0	0	8,538
<i>Government</i>	375	2	0	0	0	377
<i>Agriculture</i>	255	3	0	0	0	258
<i>Religion</i>	379	3	0	0	0	382
<i>Industrial</i>	2,672	28	3	0	0	2,703
<i>Other Residential</i>	14,710	124	9	0	0	14,843
<i>Single Family</i>	133,957	761	1	0	0	134,719
Plumas						
<i>Commercial</i>	1,215	0	0	0	0	1,215
<i>Religion</i>	30	0	0	0	0	30
<i>Agriculture</i>	84	0	0	0	0	84
<i>Other Residential</i>	5,032	0	0	0	0	5,032
<i>Single Family</i>	9,877	0	0	0	0	9,877
<i>Government</i>	45	0	0	0	0	45
<i>Education</i>	26	0	0	0	0	26
<i>Industrial</i>	184	0	0	0	0	184
Sacramento						
<i>Single Family</i>	376,304	10,427	108	1	0	386,840
<i>Industrial</i>	6,449	269	37	1	0	6,756
<i>Other Residential</i>	54,100	2,172	140	1	0	56,413
<i>Education</i>	816	11	1	0	0	829
<i>Agriculture</i>	599	19	3	0	0	621

	# of Buildings					Total
	None	Slight	Moderate	Extensive	Complete	
<i>Religion</i>	1,585	99	17	0	0	1,702
<i>Government</i>	541	63	14	0	0	619
<i>Commercial</i>	24,828	1,260	200	6	0	26,295
San Francisco						
<i>Single Family</i>	150,260	413	30	0	0	150,703
<i>Other Residential</i>	44,021	477	31	0	0	44,529
<i>Government</i>	280	8	1	0	0	289
<i>Education</i>	567	5	0	0	0	572
<i>Industrial</i>	3,798	57	5	0	0	3,860
<i>Commercial</i>	20,898	414	33	0	0	21,344
<i>Religion</i>	1,332	12	1	0	0	1,345
<i>Agriculture</i>	161	1	0	0	0	162
San Joaquin						
<i>Commercial</i>	12,754	102	8	0	0	12,864
<i>Agriculture</i>	745	7	1	0	0	753
<i>Religion</i>	870	6	0	0	0	877
<i>Government</i>	301	3	0	0	0	304
<i>Single Family</i>	187,290	1,484	147	2	0	188,922
<i>Other Residential</i>	21,502	279	24	0	0	21,805
<i>Education</i>	394	1	0	0	0	395
<i>Industrial</i>	4,888	37	3	0	0	4,928
San Mateo						
<i>Religion</i>	734	2	0	0	0	736
<i>Agriculture</i>	538	1	0	0	0	539
<i>Government</i>	298	1	0	0	0	299

	# of Buildings					Total
	None	Slight	Moderate	Extensive	Complete	
<i>Commercial</i>	14,352	42	2	0	0	14,395
<i>Industrial</i>	4,457	15	1	0	0	4,472
<i>Other Residential</i>	22,390	60	3	0	0	22,453
<i>Single Family</i>	159,841	90	0	0	0	159,931
<i>Education</i>	489	0	0	0	0	489
Santa Clara						
<i>Other Residential</i>	59,134	25	1	0	0	59,160
<i>Single Family</i>	427,212	7	0	0	0	427,219
<i>Government</i>	502	0	0	0	0	502
<i>Education</i>	1,173	0	0	0	0	1,173
<i>Industrial</i>	9,429	4	0	0	0	9,433
<i>Commercial</i>	35,454	15	1	0	0	35,469
<i>Religion</i>	1,539	1	0	0	0	1,540
<i>Agriculture</i>	895	0	0	0	0	895
Santa Cruz						
<i>Religion</i>	359	0	0	0	0	359
<i>Agriculture</i>	840	0	0	0	0	840
<i>Single Family</i>	68,870	0	0	0	0	68,870
<i>Other Residential</i>	14,892	0	0	0	0	14,892
<i>Industrial</i>	1,819	0	0	0	0	1,819
<i>Education</i>	225	0	0	0	0	225
<i>Commercial</i>	6,694	0	0	0	0	6,694
<i>Government</i>	127	0	0	0	0	127
Shasta						
<i>Agriculture</i>	3,235	0	0	0	0	3,235

	# of Buildings					Total
	None	Slight	Moderate	Extensive	Complete	
<i>Religion</i>	66	0	0	0	0	66
<i>Commercial</i>	5,254	0	0	0	0	5,254
<i>Single Family</i>	51,815	0	0	0	0	51,815
<i>Industrial</i>	1,038	0	0	0	0	1,038
<i>Other Residential</i>	16,942	7	0	0	0	16,949
<i>Education</i>	136	0	0	0	0	136
<i>Government</i>	87	0	0	0	0	87
Sierra						
<i>Single Family</i>	1,858	0	0	0	0	1,858
<i>Other Residential</i>	153	0	0	0	0	153
<i>Industrial</i>	66	0	0	0	0	66
<i>Education</i>	14	0	0	0	0	14
<i>Commercial</i>	141	0	0	0	0	141
<i>Religion</i>	12	0	0	0	0	12
<i>Agriculture</i>	7	0	0	0	0	7
<i>Government</i>	16	0	0	0	0	16
Solano						
<i>Religion</i>	412	36	6	0	0	454
<i>Agriculture</i>	209	30	6	0	0	245
<i>Government</i>	137	13	2	0	0	152
<i>Commercial</i>	6,497	673	96	3	0	7,268
<i>Single Family</i>	112,432	8,441	95	0	0	120,968
<i>Industrial</i>	1,833	229	38	1	0	2,101
<i>Other Residential</i>	11,027	1,120	167	4	0	12,317
<i>Education</i>	217	7	1	0	0	225

	# of Buildings					Total
	None	Slight	Moderate	Extensive	Complete	
Sonoma						
<i>Other Residential</i>	23,718	1,193	121	1	0	25,033
<i>Government</i>	307	10	1	0	0	319
<i>Education</i>	362	4	1	0	0	367
<i>Religion</i>	551	23	3	0	0	576
<i>Commercial</i>	11,532	511	65	1	0	12,110
<i>Agriculture</i>	1,232	58	13	1	0	1,304
<i>Single Family</i>	139,100	2,918	10	0	0	142,028
<i>Industrial</i>	3,619	181	24	1	0	3,825
Stanislaus						
<i>Other Residential</i>	19,561	8	0	0	0	19,569
<i>Single Family</i>	142,724	0	0	0	0	142,724
<i>Education</i>	307	0	0	0	0	307
<i>Government</i>	680	0	0	0	0	680
<i>Industrial</i>	3,474	1	0	0	0	3,475
<i>Commercial</i>	10,364	5	0	0	0	10,369
<i>Religion</i>	456	0	0	0	0	456
<i>Agriculture</i>	1,238	1	0	0	0	1,239
Sutter						
<i>Other Residential</i>	2,726	338	49	0	0	3,113
<i>Industrial</i>	563	62	11	0	0	636
<i>Education</i>	60	2	0	0	0	62
<i>Government</i>	71	5	1	0	0	77
<i>Single Family</i>	22,920	1,571	21	0	0	24,512
<i>Commercial</i>	1,873	155	23	0	0	2,052

	# of Buildings					Total
	None	Slight	Moderate	Extensive	Complete	
<i>Agriculture</i>	951	132	38	4	0	1,125
<i>Religion</i>	141	11	2	0	0	154
Tehama						
<i>Religion</i>	110	0	0	0	0	110
<i>Agriculture</i>	298	0	0	0	0	299
<i>Industrial</i>	550	2	0	0	0	552
<i>Other Residential</i>	3,950	39	2	0	0	3,991
<i>Single Family</i>	21,193	28	1	0	0	21,222
<i>Education</i>	57	0	0	0	0	57
<i>Commercial</i>	1,265	5	0	0	0	1,270
<i>Government</i>	50	0	0	0	0	50
Trinity						
<i>Religion</i>	45	0	0	0	0	45
<i>Commercial</i>	1,005	0	0	0	0	1,005
<i>Agriculture</i>	4	0	0	0	0	4
<i>Single Family</i>	6,294	0	0	0	0	6,294
<i>Industrial</i>	58	0	0	0	0	58
<i>Other Residential</i>	1,354	0	0	0	0	1,354
<i>Education</i>	26	0	0	0	0	26
<i>Government</i>	8	0	0	0	0	8
Tuolumne						
<i>Education</i>	57	0	0	0	0	57
<i>Government</i>	143	0	0	0	0	143
<i>Commercial</i>	1,576	0	0	0	0	1,576
<i>Religion</i>	121	0	0	0	0	121

		# of Buildings					
		None	Slight	Moderate	Extensive	Complete	Total
Yolo	<i>Agriculture</i>	82	0	0	0	0	82
	<i>Industrial</i>	383	0	0	0	0	383
	<i>Other Residential</i>	4,962	0	0	0	0	4,962
	<i>Single Family</i>	21,645	0	0	0	0	21,645
	<i>Industrial</i>	755	239	107	14	1	1,117
	<i>Other Residential</i>	7,230	2,126	438	64	2	9,861
	<i>Education</i>	113	14	4	0	0	131
	<i>Government</i>	80	22	8	1	0	111
	<i>Single Family</i>	32,624	9,317	645	3	0	42,589
	<i>Commercial</i>	3,002	887	300	33	2	4,225
Yuba	<i>Agriculture</i>	156	75	41	8	1	281
	<i>Religion</i>	168	53	18	2	0	242
	<i>Government</i>	587	4	0	0	0	591
	<i>Education</i>	53	1	0	0	0	54
	<i>Other Residential</i>	6,693	296	31	0	0	7,021
	<i>Religion</i>	95	2	0	0	0	98
	<i>Commercial</i>	1,142	50	7	0	0	1,199
	<i>Agriculture</i>	88	3	1	0	0	92
	<i>Single Family</i>	18,414	451	3	0	0	18,867
	<i>Industrial</i>	385	17	3	0	0	404
Total	4,114,196	71,187	6,777	379	11	4,192,549	

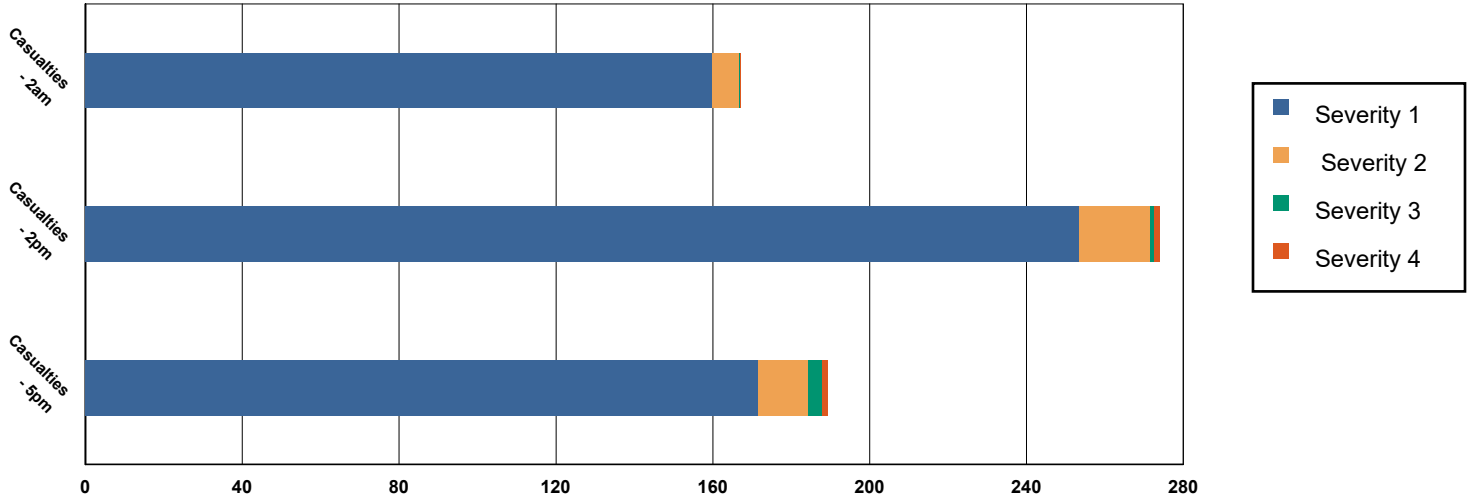
	# of Buildings					Total
	None	Slight	Moderate	Extensive	Complete	
Region Total	4,114,196	71,187	6,777	379	11	4,192,549

Totals only reflect data for those census tracts/blocks included in the user's study region and will reflect the entire county/state only if all of the census blocks for that county/states were selected at the time of study region creation.

Casualties Summary Report

May 23, 2024

Region Total Casualties



Injury Severity Level

Severity 1	Severity 2	Severity 3	Severity 4	Total
------------	------------	------------	------------	-------

California

Alameda

Casualties - 2am

	Severity 1	Severity 2	Severity 3	Severity 4	Total
Single Family	1	0	0	0	1
Hotels	0	0	0	0	0
Commuting	0	0	0	0	0
Educational	0	0	0	0	0
Industrial	0	0	0	0	0
Commercial	0	0	0	0	0
Other-Residential	3	0	0	0	3
Total Casualties - 2am	4	0	0	0	4

Casualties - 2pm

Industrial	1	0	0	0	1
Educational	1	0	0	0	1
Other-Residential	1	0	0	0	1
Single Family	0	0	0	0	0
Hotels	0	0	0	0	0
Commuting	0	0	0	0	0
Commercial	7	0	0	0	7

	Injury Severity Level				Total
	Severity 1	Severity 2	Severity 3	Severity 4	
California					
Alameda					
Total Casualties - 2pm	10	0	0	0	10
Casualties - 5pm					
<i>Commuting</i>	0	0	0	0	0
<i>Single Family</i>	0	0	0	0	0
<i>Commercial</i>	4	0	0	0	5
<i>Hotels</i>	0	0	0	0	0
<i>Educational</i>	0	0	0	0	0
<i>Industrial</i>	0	0	0	0	0
<i>Other-Residential</i>	1	0	0	0	1
Total Casualties - 5pm	6	0	0	0	7
Amador					
Casualties - 2am					
<i>Commercial</i>	0	0	0	0	0
<i>Other-Residential</i>	0	0	0	0	0
<i>Commuting</i>	0	0	0	0	0
<i>Educational</i>	0	0	0	0	0
<i>Single Family</i>	0	0	0	0	0
<i>Hotels</i>	0	0	0	0	0
<i>Industrial</i>	0	0	0	0	0
Total Casualties - 2am	0	0	0	0	0
Casualties - 2pm					
<i>Single Family</i>	0	0	0	0	0
<i>Hotels</i>	0	0	0	0	0
<i>Educational</i>	0	0	0	0	0
<i>Commuting</i>	0	0	0	0	0
<i>Commercial</i>	0	0	0	0	0
<i>Other-Residential</i>	0	0	0	0	0
<i>Industrial</i>	0	0	0	0	0
Total Casualties - 2pm	0	0	0	0	0
Casualties - 5pm					
<i>Commercial</i>	0	0	0	0	0
<i>Commuting</i>	0	0	0	0	0
<i>Other-Residential</i>	0	0	0	0	0
<i>Single Family</i>	0	0	0	0	0
<i>Educational</i>	0	0	0	0	0
<i>Hotels</i>	0	0	0	0	0
<i>Industrial</i>	0	0	0	0	0
Total Casualties - 5pm	0	0	0	0	0
Butte					
Casualties - 2am					
<i>Industrial</i>	0	0	0	0	0

Injury Severity Level

Severity 1 Severity 2 Severity 3 Severity 4 Total

California

Butte

Casualties - 2am

<i>Commercial</i>	0	0	0	0	0
<i>Other-Residential</i>	1	0	0	0	1
<i>Single Family</i>	1	0	0	0	1
<i>Commuting</i>	0	0	0	0	0
<i>Educational</i>	0	0	0	0	0
<i>Hotels</i>	0	0	0	0	0
Total Casualties - 2am	2	0	0	0	2

Casualties - 2pm

<i>Single Family</i>	0	0	0	0	0
<i>Educational</i>	0	0	0	0	0
<i>Commuting</i>	0	0	0	0	0
<i>Other-Residential</i>	0	0	0	0	0
<i>Hotels</i>	0	0	0	0	0
<i>Commercial</i>	2	0	0	0	2
<i>Industrial</i>	0	0	0	0	0
Total Casualties - 2pm	3	0	0	0	3

Casualties - 5pm

<i>Industrial</i>	0	0	0	0	0
<i>Other-Residential</i>	0	0	0	0	0
<i>Single Family</i>	0	0	0	0	0
<i>Commercial</i>	1	0	0	0	1
<i>Commuting</i>	0	0	0	0	0
<i>Hotels</i>	0	0	0	0	0
<i>Educational</i>	0	0	0	0	0
Total Casualties - 5pm	2	0	0	0	2

Calaveras

Casualties - 2am

<i>Other-Residential</i>	0	0	0	0	0
<i>Commuting</i>	0	0	0	0	0
<i>Commercial</i>	0	0	0	0	0
<i>Single Family</i>	0	0	0	0	0
<i>Hotels</i>	0	0	0	0	0
<i>Educational</i>	0	0	0	0	0
<i>Industrial</i>	0	0	0	0	0
Total Casualties - 2am	0	0	0	0	0

Casualties - 2pm

<i>Hotels</i>	0	0	0	0	0
<i>Single Family</i>	0	0	0	0	0
<i>Educational</i>	0	0	0	0	0
<i>Commuting</i>	0	0	0	0	0
<i>Commercial</i>	0	0	0	0	0

	Injury Severity Level				Total
	Severity 1	Severity 2	Severity 3	Severity 4	
California					
Calaveras					
Casualties - 2pm					
<i>Industrial</i>	0	0	0	0	0
<i>Other-Residential</i>	0	0	0	0	0
Total Casualties - 2pm	0	0	0	0	0
Casualties - 5pm					
<i>Industrial</i>	0	0	0	0	0
<i>Commercial</i>	0	0	0	0	0
<i>Other-Residential</i>	0	0	0	0	0
<i>Educational</i>	0	0	0	0	0
<i>Hotels</i>	0	0	0	0	0
<i>Commuting</i>	0	0	0	0	0
<i>Single Family</i>	0	0	0	0	0
Total Casualties - 5pm	0	0	0	0	0
Colusa					
Casualties - 2am					
<i>Other-Residential</i>	4	0	0	0	4
<i>Industrial</i>	0	0	0	0	0
<i>Single Family</i>	5	0	0	0	5
<i>Commercial</i>	0	0	0	0	0
<i>Educational</i>	0	0	0	0	0
<i>Commuting</i>	0	0	0	0	0
<i>Hotels</i>	0	0	0	0	0
Total Casualties - 2am	9	1	0	0	10
Casualties - 2pm					
<i>Hotels</i>	0	0	0	0	0
<i>Single Family</i>	1	0	0	0	1
<i>Educational</i>	2	0	0	0	2
<i>Commercial</i>	10	1	0	0	12
<i>Commuting</i>	0	0	0	0	0
<i>Other-Residential</i>	1	0	0	0	1
<i>Industrial</i>	1	0	0	0	1
Total Casualties - 2pm	15	2	0	0	18
Casualties - 5pm					
<i>Industrial</i>	0	0	0	0	0
<i>Commercial</i>	7	1	0	0	9
<i>Other-Residential</i>	1	0	0	0	2
<i>Commuting</i>	0	0	1	0	2
<i>Single Family</i>	2	0	0	0	2
<i>Educational</i>	0	0	0	0	0
<i>Hotels</i>	0	0	0	0	0
Total Casualties - 5pm	11	2	1	0	14

	Injury Severity Level				Total
	Severity 1	Severity 2	Severity 3	Severity 4	
California					
Contra Costa					
Casualties - 2am					
<i>Educational</i>	0	0	0	0	0
<i>Hotels</i>	0	0	0	0	0
<i>Industrial</i>	0	0	0	0	0
<i>Other-Residential</i>	2	0	0	0	2
<i>Single Family</i>	2	0	0	0	2
<i>Commercial</i>	0	0	0	0	0
<i>Commuting</i>	0	0	0	0	0
Total Casualties - 2am	4	0	0	0	4
Casualties - 2pm					
<i>Other-Residential</i>	1	0	0	0	1
<i>Industrial</i>	1	0	0	0	1
<i>Hotels</i>	0	0	0	0	0
<i>Single Family</i>	1	0	0	0	1
<i>Educational</i>	1	0	0	0	1
<i>Commuting</i>	0	0	0	0	0
<i>Commercial</i>	5	0	0	0	5
Total Casualties - 2pm	7	0	0	0	7
Casualties - 5pm					
<i>Educational</i>	0	0	0	0	0
<i>Commuting</i>	0	0	0	0	0
<i>Single Family</i>	1	0	0	0	1
<i>Hotels</i>	0	0	0	0	0
<i>Industrial</i>	0	0	0	0	0
<i>Other-Residential</i>	1	0	0	0	1
<i>Commercial</i>	3	0	0	0	3
Total Casualties - 5pm	5	0	0	0	5
El Dorado					
Casualties - 2am					
<i>Commuting</i>	0	0	0	0	0
<i>Educational</i>	0	0	0	0	0
<i>Single Family</i>	0	0	0	0	0
<i>Hotels</i>	0	0	0	0	0
<i>Other-Residential</i>	0	0	0	0	0
<i>Industrial</i>	0	0	0	0	0
<i>Commercial</i>	0	0	0	0	0
Total Casualties - 2am	0	0	0	0	0
Casualties - 2pm					
<i>Industrial</i>	0	0	0	0	0
<i>Other-Residential</i>	0	0	0	0	0
<i>Single Family</i>	0	0	0	0	0
<i>Hotels</i>	0	0	0	0	0

	Injury Severity Level				Total
	Severity 1	Severity 2	Severity 3	Severity 4	
California					
El Dorado					
Casualties - 2pm					
<i>Educational</i>	0	0	0	0	0
<i>Commuting</i>	0	0	0	0	0
<i>Commercial</i>	0	0	0	0	0
Total Casualties - 2pm	0	0	0	0	0
Casualties - 5pm					
<i>Commercial</i>	0	0	0	0	0
<i>Commuting</i>	0	0	0	0	0
<i>Single Family</i>	0	0	0	0	0
<i>Educational</i>	0	0	0	0	0
<i>Hotels</i>	0	0	0	0	0
<i>Industrial</i>	0	0	0	0	0
<i>Other-Residential</i>	0	0	0	0	0
Total Casualties - 5pm	0	0	0	0	0
Glenn					
Casualties - 2am					
<i>Hotels</i>	0	0	0	0	0
<i>Educational</i>	0	0	0	0	0
<i>Industrial</i>	0	0	0	0	0
<i>Other-Residential</i>	1	0	0	0	1
<i>Commercial</i>	0	0	0	0	0
<i>Commuting</i>	0	0	0	0	0
<i>Single Family</i>	0	0	0	0	0
Total Casualties - 2am	1	0	0	0	1
Casualties - 2pm					
<i>Industrial</i>	0	0	0	0	0
<i>Other-Residential</i>	0	0	0	0	0
<i>Commuting</i>	0	0	0	0	0
<i>Commercial</i>	2	0	0	0	3
<i>Hotels</i>	0	0	0	0	0
<i>Single Family</i>	0	0	0	0	0
<i>Educational</i>	0	0	0	0	0
Total Casualties - 2pm	3	0	0	0	3
Casualties - 5pm					
<i>Educational</i>	0	0	0	0	0
<i>Commuting</i>	0	0	0	0	0
<i>Hotels</i>	0	0	0	0	0
<i>Single Family</i>	0	0	0	0	0
<i>Industrial</i>	0	0	0	0	0
<i>Commercial</i>	2	0	0	0	2
<i>Other-Residential</i>	0	0	0	0	0

	Injury Severity Level				Total
	Severity 1	Severity 2	Severity 3	Severity 4	
California					
Glenn					
Total Casualties - 5pm	2	0	0	0	2
Humboldt					
Casualties - 2am					
Single Family	0	0	0	0	0
Commercial	0	0	0	0	0
Commuting	0	0	0	0	0
Hotels	0	0	0	0	0
Educational	0	0	0	0	0
Industrial	0	0	0	0	0
Other-Residential	0	0	0	0	0
Total Casualties - 2am	0	0	0	0	0
Casualties - 2pm					
Industrial	0	0	0	0	0
Hotels	0	0	0	0	0
Commercial	0	0	0	0	0
Other-Residential	0	0	0	0	0
Single Family	0	0	0	0	0
Educational	0	0	0	0	0
Commuting	0	0	0	0	0
Total Casualties - 2pm	0	0	0	0	0
Casualties - 5pm					
Commercial	0	0	0	0	0
Other-Residential	0	0	0	0	0
Commuting	0	0	0	0	0
Hotels	0	0	0	0	0
Single Family	0	0	0	0	0
Educational	0	0	0	0	0
Industrial	0	0	0	0	0
Total Casualties - 5pm	0	0	0	0	0
Lake					
Casualties - 2am					
Hotels	0	0	0	0	0
Industrial	0	0	0	0	0
Other-Residential	15	1	0	0	16
Commuting	0	0	0	0	0
Educational	0	0	0	0	0
Single Family	2	0	0	0	2
Commercial	0	0	0	0	0
Total Casualties - 2am	17	1	0	0	18
Casualties - 2pm					
Industrial	0	0	0	0	0

	Injury Severity Level				Total
	Severity 1	Severity 2	Severity 3	Severity 4	
California					
Lake					
Casualties - 2pm					
Single Family	1	0	0	0	1
Commercial	3	0	0	0	3
Other-Residential	5	0	0	0	6
Hotels	0	0	0	0	0
Educational	1	0	0	0	1
Commuting	0	0	0	0	0
Total Casualties - 2pm	10	1	0	0	10
Casualties - 5pm					
Other-Residential	5	0	0	0	6
Industrial	0	0	0	0	0
Commercial	2	0	0	0	2
Educational	0	0	0	0	0
Commuting	0	0	0	0	0
Single Family	1	0	0	0	1
Hotels	0	0	0	0	0
Total Casualties - 5pm	8	1	0	0	9
Lassen					
Casualties - 2am					
Hotels	0	0	0	0	0
Industrial	0	0	0	0	0
Educational	0	0	0	0	0
Single Family	0	0	0	0	0
Commercial	0	0	0	0	0
Commuting	0	0	0	0	0
Other-Residential	0	0	0	0	0
Total Casualties - 2am	0	0	0	0	0
Casualties - 2pm					
Industrial	0	0	0	0	0
Other-Residential	0	0	0	0	0
Commercial	0	0	0	0	0
Commuting	0	0	0	0	0
Single Family	0	0	0	0	0
Hotels	0	0	0	0	0
Educational	0	0	0	0	0
Total Casualties - 2pm	0	0	0	0	0
Casualties - 5pm					
Industrial	0	0	0	0	0
Single Family	0	0	0	0	0
Commercial	0	0	0	0	0
Hotels	0	0	0	0	0
Other-Residential	0	0	0	0	0

	Injury Severity Level				Total
	Severity 1	Severity 2	Severity 3	Severity 4	
California					
Lassen					
Casualties - 5pm					
<i>Commuting</i>	0	0	0	0	0
<i>Educational</i>	0	0	0	0	0
Total Casualties - 5pm	0	0	0	0	0
Marin					
Casualties - 2am					
<i>Commercial</i>	0	0	0	0	0
<i>Commuting</i>	0	0	0	0	0
<i>Other-Residential</i>	0	0	0	0	0
<i>Educational</i>	0	0	0	0	0
<i>Single Family</i>	0	0	0	0	0
<i>Hotels</i>	0	0	0	0	0
<i>Industrial</i>	0	0	0	0	0
Total Casualties - 2am	1	0	0	0	1
Casualties - 2pm					
<i>Hotels</i>	0	0	0	0	0
<i>Commuting</i>	0	0	0	0	0
<i>Educational</i>	0	0	0	0	0
<i>Industrial</i>	0	0	0	0	0
<i>Other-Residential</i>	0	0	0	0	0
<i>Commercial</i>	1	0	0	0	1
<i>Single Family</i>	0	0	0	0	0
Total Casualties - 2pm	1	0	0	0	1
Casualties - 5pm					
<i>Commuting</i>	0	0	0	0	0
<i>Commercial</i>	0	0	0	0	0
<i>Other-Residential</i>	0	0	0	0	0
<i>Single Family</i>	0	0	0	0	0
<i>Industrial</i>	0	0	0	0	0
<i>Educational</i>	0	0	0	0	0
<i>Hotels</i>	0	0	0	0	0
Total Casualties - 5pm	1	0	0	0	1
Mendocino					
Casualties - 2am					
<i>Educational</i>	0	0	0	0	0
<i>Hotels</i>	0	0	0	0	0
<i>Commuting</i>	0	0	0	0	0
<i>Industrial</i>	0	0	0	0	0
<i>Other-Residential</i>	0	0	0	0	0
<i>Single Family</i>	0	0	0	0	0
<i>Commercial</i>	0	0	0	0	0

	Injury Severity Level				Total
	Severity 1	Severity 2	Severity 3	Severity 4	
California					
Mendocino					
Total Casualties - 2am	0	0	0	0	0
Casualties - 2pm					
<i>Industrial</i>	0	0	0	0	0
<i>Other-Residential</i>	0	0	0	0	0
<i>Commercial</i>	0	0	0	0	0
<i>Single Family</i>	0	0	0	0	0
<i>Commuting</i>	0	0	0	0	0
<i>Hotels</i>	0	0	0	0	0
<i>Educational</i>	0	0	0	0	0
Total Casualties - 2pm	0	0	0	0	0
Casualties - 5pm					
<i>Hotels</i>	0	0	0	0	0
<i>Single Family</i>	0	0	0	0	0
<i>Educational</i>	0	0	0	0	0
<i>Commuting</i>	0	0	0	0	0
<i>Commercial</i>	0	0	0	0	0
<i>Other-Residential</i>	0	0	0	0	0
<i>Industrial</i>	0	0	0	0	0
Total Casualties - 5pm	0	0	0	0	0
Merced					
Casualties - 2am					
<i>Hotels</i>	0	0	0	0	0
<i>Industrial</i>	0	0	0	0	0
<i>Commercial</i>	0	0	0	0	0
<i>Single Family</i>	0	0	0	0	0
<i>Other-Residential</i>	0	0	0	0	0
<i>Educational</i>	0	0	0	0	0
<i>Commuting</i>	0	0	0	0	0
Total Casualties - 2am	0	0	0	0	0
Casualties - 2pm					
<i>Other-Residential</i>	0	0	0	0	0
<i>Industrial</i>	0	0	0	0	0
<i>Commercial</i>	0	0	0	0	0
<i>Commuting</i>	0	0	0	0	0
<i>Hotels</i>	0	0	0	0	0
<i>Educational</i>	0	0	0	0	0
<i>Single Family</i>	0	0	0	0	0
Total Casualties - 2pm	0	0	0	0	0
Casualties - 5pm					
<i>Industrial</i>	0	0	0	0	0
<i>Hotels</i>	0	0	0	0	0

	Injury Severity Level				Total
	Severity 1	Severity 2	Severity 3	Severity 4	
California					
Merced					
Casualties - 5pm					
<i>Educational</i>	0	0	0	0	0
<i>Commuting</i>	0	0	0	0	0
<i>Single Family</i>	0	0	0	0	0
<i>Commercial</i>	0	0	0	0	0
<i>Other-Residential</i>	0	0	0	0	0
Total Casualties - 5pm	0	0	0	0	0
Napa					
Casualties - 2am					
<i>Commercial</i>	0	0	0	0	0
<i>Other-Residential</i>	5	0	0	0	5
<i>Educational</i>	0	0	0	0	0
<i>Single Family</i>	5	0	0	0	5
<i>Commuting</i>	0	0	0	0	0
<i>Hotels</i>	0	0	0	0	0
<i>Industrial</i>	0	0	0	0	0
Total Casualties - 2am	10	0	0	0	11
Casualties - 2pm					
<i>Educational</i>	2	0	0	0	2
<i>Hotels</i>	0	0	0	0	0
<i>Commuting</i>	0	0	0	0	0
<i>Industrial</i>	2	0	0	0	2
<i>Other-Residential</i>	1	0	0	0	2
<i>Single Family</i>	1	0	0	0	1
<i>Commercial</i>	8	1	0	0	9
Total Casualties - 2pm	15	1	0	0	16
Casualties - 5pm					
<i>Commercial</i>	5	0	0	0	6
<i>Single Family</i>	2	0	0	0	2
<i>Other-Residential</i>	2	0	0	0	2
<i>Commuting</i>	0	0	0	0	0
<i>Industrial</i>	1	0	0	0	1
<i>Educational</i>	0	0	0	0	0
<i>Hotels</i>	0	0	0	0	0
Total Casualties - 5pm	10	1	0	0	11
Nevada					
Casualties - 2am					
<i>Single Family</i>	0	0	0	0	0
<i>Commercial</i>	0	0	0	0	0
<i>Commuting</i>	0	0	0	0	0
<i>Hotels</i>	0	0	0	0	0
<i>Educational</i>	0	0	0	0	0

	Injury Severity Level				Total
	Severity 1	Severity 2	Severity 3	Severity 4	
California					
Nevada					
Casualties - 2am					
<i>Industrial</i>	0	0	0	0	0
<i>Other-Residential</i>	0	0	0	0	0
Total Casualties - 2am	0	0	0	0	0
Casualties - 2pm					
<i>Hotels</i>	0	0	0	0	0
<i>Industrial</i>	0	0	0	0	0
<i>Commercial</i>	0	0	0	0	0
<i>Single Family</i>	0	0	0	0	0
<i>Other-Residential</i>	0	0	0	0	0
<i>Educational</i>	0	0	0	0	0
<i>Commuting</i>	0	0	0	0	0
Total Casualties - 2pm	0	0	0	0	0
Casualties - 5pm					
<i>Commuting</i>	0	0	0	0	0
<i>Hotels</i>	0	0	0	0	0
<i>Other-Residential</i>	0	0	0	0	0
<i>Educational</i>	0	0	0	0	0
<i>Single Family</i>	0	0	0	0	0
<i>Commercial</i>	0	0	0	0	0
<i>Industrial</i>	0	0	0	0	0
Total Casualties - 5pm	0	0	0	0	0
Placer					
Casualties - 2am					
<i>Hotels</i>	0	0	0	0	0
<i>Educational</i>	0	0	0	0	0
<i>Industrial</i>	0	0	0	0	0
<i>Other-Residential</i>	0	0	0	0	0
<i>Commercial</i>	0	0	0	0	0
<i>Single Family</i>	1	0	0	0	1
<i>Commuting</i>	0	0	0	0	0
Total Casualties - 2am	1	0	0	0	1
Casualties - 2pm					
<i>Other-Residential</i>	0	0	0	0	0
<i>Industrial</i>	0	0	0	0	0
<i>Commercial</i>	1	0	0	0	1
<i>Single Family</i>	0	0	0	0	0
<i>Educational</i>	0	0	0	0	0
<i>Commuting</i>	0	0	0	0	0
<i>Hotels</i>	0	0	0	0	0
Total Casualties - 2pm	1	0	0	0	1

	Injury Severity Level				Total
	Severity 1	Severity 2	Severity 3	Severity 4	
California					
Placer					
Casualties - 5pm					
Single Family	0	0	0	0	0
Hotels	0	0	0	0	0
Commuting	0	0	0	0	0
Educational	0	0	0	0	0
Commercial	1	0	0	0	1
Industrial	0	0	0	0	0
Other-Residential	0	0	0	0	0
Total Casualties - 5pm	1	0	0	0	1
Plumas					
Casualties - 2am					
Educational	0	0	0	0	0
Single Family	0	0	0	0	0
Commuting	0	0	0	0	0
Hotels	0	0	0	0	0
Industrial	0	0	0	0	0
Other-Residential	0	0	0	0	0
Commercial	0	0	0	0	0
Total Casualties - 2am	0	0	0	0	0
Casualties - 2pm					
Industrial	0	0	0	0	0
Single Family	0	0	0	0	0
Commercial	0	0	0	0	0
Other-Residential	0	0	0	0	0
Hotels	0	0	0	0	0
Educational	0	0	0	0	0
Commuting	0	0	0	0	0
Total Casualties - 2pm	0	0	0	0	0
Casualties - 5pm					
Other-Residential	0	0	0	0	0
Single Family	0	0	0	0	0
Educational	0	0	0	0	0
Hotels	0	0	0	0	0
Commuting	0	0	0	0	0
Commercial	0	0	0	0	0
Industrial	0	0	0	0	0
Total Casualties - 5pm	0	0	0	0	0
Sacramento					
Casualties - 2am					
Industrial	0	0	0	0	0
Other-Residential	10	0	0	0	11
Commercial	1	0	0	0	1

Injury Severity Level

	Severity 1	Severity 2	Severity 3	Severity 4	Total
California					
Sacramento					
Casualties - 2am					
Single Family	16	0	0	0	16
Hotels	0	0	0	0	0
Commuting	0	0	0	0	0
Educational	0	0	0	0	0
Total Casualties - 2am	27	1	0	0	28
Casualties - 2pm					
Other-Residential	4	0	0	0	4
Commuting	0	0	0	0	0
Single Family	5	0	0	0	5
Commercial	50	3	0	0	54
Hotels	0	0	0	0	0
Educational	4	0	0	0	5
Industrial	2	0	0	0	3
Total Casualties - 2pm	65	4	0	0	69
Casualties - 5pm					
Industrial	2	0	0	0	2
Educational	1	0	0	0	1
Hotels	0	0	0	0	0
Commercial	28	2	0	0	30
Commuting	0	0	0	0	0
Other-Residential	4	0	0	0	4
Single Family	6	0	0	0	6
Total Casualties - 5pm	40	2	0	0	42
San Francisco					
Casualties - 2am					
Industrial	0	0	0	0	0
Hotels	0	0	0	0	0
Commercial	0	0	0	0	0
Other-Residential	5	0	0	0	5
Commuting	0	0	0	0	0
Educational	0	0	0	0	0
Single Family	1	0	0	0	1
Total Casualties - 2am	6	0	0	0	6
Casualties - 2pm					
Commercial	9	0	0	0	9
Industrial	0	0	0	0	0
Other-Residential	2	0	0	0	2
Single Family	0	0	0	0	0
Hotels	0	0	0	0	0
Commuting	0	0	0	0	0
Educational	1	0	0	0	1

	Injury Severity Level				Total
	Severity 1	Severity 2	Severity 3	Severity 4	
California					
San Francisco					
Total Casualties - 2pm	12	0	0	0	12
Casualties - 5pm					
<i>Educational</i>	0	0	0	0	0
<i>Hotels</i>	0	0	0	0	0
<i>Industrial</i>	0	0	0	0	0
<i>Commuting</i>	0	0	0	0	0
<i>Commercial</i>	5	0	0	0	5
<i>Other-Residential</i>	2	0	0	0	2
<i>Single Family</i>	0	0	0	0	0
Total Casualties - 5pm	8	0	0	0	8
San Joaquin					
Casualties - 2am					
<i>Educational</i>	0	0	0	0	0
<i>Commuting</i>	0	0	0	0	0
<i>Hotels</i>	0	0	0	0	0
<i>Commercial</i>	0	0	0	0	0
<i>Single Family</i>	4	0	0	0	4
<i>Industrial</i>	0	0	0	0	0
<i>Other-Residential</i>	1	0	0	0	1
Total Casualties - 2am	5	0	0	0	6
Casualties - 2pm					
<i>Industrial</i>	0	0	0	0	0
<i>Other-Residential</i>	0	0	0	0	0
<i>Educational</i>	0	0	0	0	0
<i>Single Family</i>	1	0	0	0	2
<i>Hotels</i>	0	0	0	0	0
<i>Commuting</i>	0	0	0	0	0
<i>Commercial</i>	2	0	0	0	2
Total Casualties - 2pm	4	0	0	0	4
Casualties - 5pm					
<i>Commuting</i>	0	0	0	0	0
<i>Single Family</i>	2	0	0	0	2
<i>Educational</i>	0	0	0	0	0
<i>Hotels</i>	0	0	0	0	0
<i>Industrial</i>	0	0	0	0	0
<i>Commercial</i>	1	0	0	0	1
<i>Other-Residential</i>	0	0	0	0	0
Total Casualties - 5pm	3	0	0	0	3
San Mateo					
Casualties - 2am					
<i>Industrial</i>	0	0	0	0	0

	Injury Severity Level				Total
	Severity 1	Severity 2	Severity 3	Severity 4	
California					
San Mateo					
Casualties - 2am					
Other-Residential	0	0	0	0	0
Single Family	0	0	0	0	0
Commercial	0	0	0	0	0
Educational	0	0	0	0	0
Commuting	0	0	0	0	0
Hotels	0	0	0	0	0
Total Casualties - 2am	0	0	0	0	0
Casualties - 2pm					
Other-Residential	0	0	0	0	0
Single Family	0	0	0	0	0
Commuting	0	0	0	0	0
Commercial	1	0	0	0	1
Educational	0	0	0	0	0
Hotels	0	0	0	0	0
Industrial	0	0	0	0	0
Total Casualties - 2pm	1	0	0	0	1
Casualties - 5pm					
Commercial	1	0	0	0	1
Industrial	0	0	0	0	0
Other-Residential	0	0	0	0	0
Single Family	0	0	0	0	0
Educational	0	0	0	0	0
Commuting	0	0	0	0	0
Hotels	0	0	0	0	0
Total Casualties - 5pm	1	0	0	0	1
Santa Clara					
Casualties - 2am					
Commuting	0	0	0	0	0
Educational	0	0	0	0	0
Single Family	0	0	0	0	0
Hotels	0	0	0	0	0
Industrial	0	0	0	0	0
Commercial	0	0	0	0	0
Other-Residential	0	0	0	0	0
Total Casualties - 2am	0	0	0	0	0
Casualties - 2pm					
Industrial	0	0	0	0	0
Commercial	0	0	0	0	0
Single Family	0	0	0	0	0
Commuting	0	0	0	0	0
Hotels	0	0	0	0	0

	Injury Severity Level				Total
	Severity 1	Severity 2	Severity 3	Severity 4	
California					
Santa Clara					
Casualties - 2pm					
Other-Residential	0	0	0	0	0
Educational	0	0	0	0	0
Total Casualties - 2pm	0	0	0	0	0
Casualties - 5pm					
Industrial	0	0	0	0	0
Hotels	0	0	0	0	0
Other-Residential	0	0	0	0	0
Commercial	0	0	0	0	0
Commuting	0	0	0	0	0
Single Family	0	0	0	0	0
Educational	0	0	0	0	0
Total Casualties - 5pm	0	0	0	0	0
Santa Cruz					
Casualties - 2am					
Hotels	0	0	0	0	0
Educational	0	0	0	0	0
Industrial	0	0	0	0	0
Other-Residential	0	0	0	0	0
Single Family	0	0	0	0	0
Commercial	0	0	0	0	0
Commuting	0	0	0	0	0
Total Casualties - 2am	0	0	0	0	0
Casualties - 2pm					
Industrial	0	0	0	0	0
Other-Residential	0	0	0	0	0
Commercial	0	0	0	0	0
Commuting	0	0	0	0	0
Educational	0	0	0	0	0
Single Family	0	0	0	0	0
Hotels	0	0	0	0	0
Total Casualties - 2pm	0	0	0	0	0
Casualties - 5pm					
Industrial	0	0	0	0	0
Other-Residential	0	0	0	0	0
Commercial	0	0	0	0	0
Commuting	0	0	0	0	0
Single Family	0	0	0	0	0
Hotels	0	0	0	0	0
Educational	0	0	0	0	0
Total Casualties - 5pm	0	0	0	0	0

	Injury Severity Level				Total
	Severity 1	Severity 2	Severity 3	Severity 4	
California					
Shasta					
Casualties - 2am					
Other-Residential	0	0	0	0	0
Single Family	0	0	0	0	0
Commuting	0	0	0	0	0
Commercial	0	0	0	0	0
Hotels	0	0	0	0	0
Educational	0	0	0	0	0
Industrial	0	0	0	0	0
Total Casualties - 2am	0	0	0	0	0
Casualties - 2pm					
Commuting	0	0	0	0	0
Educational	0	0	0	0	0
Single Family	0	0	0	0	0
Hotels	0	0	0	0	0
Other-Residential	0	0	0	0	0
Industrial	0	0	0	0	0
Commercial	0	0	0	0	0
Total Casualties - 2pm	0	0	0	0	0
Casualties - 5pm					
Hotels	0	0	0	0	0
Commercial	0	0	0	0	0
Commuting	0	0	0	0	0
Single Family	0	0	0	0	0
Educational	0	0	0	0	0
Industrial	0	0	0	0	0
Other-Residential	0	0	0	0	0
Total Casualties - 5pm	0	0	0	0	0
Sierra					
Casualties - 2am					
Other-Residential	0	0	0	0	0
Commercial	0	0	0	0	0
Commuting	0	0	0	0	0
Hotels	0	0	0	0	0
Single Family	0	0	0	0	0
Educational	0	0	0	0	0
Industrial	0	0	0	0	0
Total Casualties - 2am	0	0	0	0	0
Casualties - 2pm					
Hotels	0	0	0	0	0
Educational	0	0	0	0	0
Industrial	0	0	0	0	0
Other-Residential	0	0	0	0	0

Injury Severity Level

Severity 1 Severity 2 Severity 3 Severity 4 Total

California

Sierra

Casualties - 2pm

<i>Commuting</i>	0	0	0	0	0
<i>Single Family</i>	0	0	0	0	0
<i>Commercial</i>	0	0	0	0	0

Total Casualties - 2pm 0 0 0 0 0

Casualties - 5pm

<i>Educational</i>	0	0	0	0	0
<i>Hotels</i>	0	0	0	0	0
<i>Commuting</i>	0	0	0	0	0
<i>Industrial</i>	0	0	0	0	0
<i>Other-Residential</i>	0	0	0	0	0
<i>Commercial</i>	0	0	0	0	0
<i>Single Family</i>	0	0	0	0	0

Total Casualties - 5pm 0 0 0 0 0

Solano

Casualties - 2am

<i>Industrial</i>	0	0	0	0	0
<i>Other-Residential</i>	5	0	0	0	5
<i>Commercial</i>	0	0	0	0	0
<i>Educational</i>	0	0	0	0	0
<i>Commuting</i>	0	0	0	0	0
<i>Single Family</i>	12	0	0	0	12
<i>Hotels</i>	0	0	0	0	0

Total Casualties - 2am 17 0 0 0 18

Casualties - 2pm

<i>Single Family</i>	3	0	0	0	3
<i>Other-Residential</i>	1	0	0	0	1
<i>Commercial</i>	10	0	0	0	10
<i>Educational</i>	2	0	0	0	2
<i>Commuting</i>	0	0	0	0	0
<i>Hotels</i>	0	0	0	0	0
<i>Industrial</i>	1	0	0	0	1

Total Casualties - 2pm 18 1 0 0 19

Casualties - 5pm

<i>Commercial</i>	7	0	0	0	7
<i>Other-Residential</i>	2	0	0	0	2
<i>Single Family</i>	4	0	0	0	4
<i>Educational</i>	0	0	0	0	0
<i>Commuting</i>	0	0	1	0	2
<i>Hotels</i>	0	0	0	0	0
<i>Industrial</i>	1	0	0	0	1

	Injury Severity Level				Total
	Severity 1	Severity 2	Severity 3	Severity 4	
California					
Solano					
Total Casualties - 5pm	14	1	1	0	16
Sonoma					
Casualties - 2am					
Single Family	4	0	0	0	4
Other-Residential	4	0	0	0	4
Commercial	0	0	0	0	0
Commuting	0	0	0	0	0
Hotels	0	0	0	0	0
Educational	0	0	0	0	0
Industrial	0	0	0	0	0
Total Casualties - 2am	8	0	0	0	8
Casualties - 2pm					
Single Family	1	0	0	0	1
Commuting	0	0	0	0	0
Educational	2	0	0	0	2
Hotels	0	0	0	0	0
Industrial	1	0	0	0	1
Other-Residential	1	0	0	0	1
Commercial	6	0	0	0	6
Total Casualties - 2pm	11	0	0	0	12
Casualties - 5pm					
Single Family	1	0	0	0	1
Commercial	4	0	0	0	4
Commuting	0	0	0	0	0
Hotels	0	0	0	0	0
Educational	1	0	0	0	1
Industrial	1	0	0	0	1
Other-Residential	1	0	0	0	1
Total Casualties - 5pm	8	0	0	0	8
Stanislaus					
Casualties - 2am					
Hotels	0	0	0	0	0
Industrial	0	0	0	0	0
Commercial	0	0	0	0	0
Single Family	0	0	0	0	0
Other-Residential	0	0	0	0	0
Commuting	0	0	0	0	0
Educational	0	0	0	0	0
Total Casualties - 2am	0	0	0	0	0
Casualties - 2pm					
Industrial	0	0	0	0	0

	Injury Severity Level				Total
	Severity 1	Severity 2	Severity 3	Severity 4	
California					
Stanislaus					
Casualties - 2pm					
<i>Other-Residential</i>	0	0	0	0	0
<i>Commercial</i>	0	0	0	0	0
<i>Commuting</i>	0	0	0	0	0
<i>Educational</i>	0	0	0	0	0
<i>Single Family</i>	0	0	0	0	0
<i>Hotels</i>	0	0	0	0	0
Total Casualties - 2pm	0	0	0	0	0
Casualties - 5pm					
<i>Industrial</i>	0	0	0	0	0
<i>Other-Residential</i>	0	0	0	0	0
<i>Commuting</i>	0	0	0	0	0
<i>Single Family</i>	0	0	0	0	0
<i>Commercial</i>	0	0	0	0	0
<i>Hotels</i>	0	0	0	0	0
<i>Educational</i>	0	0	0	0	0
Total Casualties - 5pm	0	0	0	0	0
Sutter					
Casualties - 2am					
<i>Educational</i>	0	0	0	0	0
<i>Commuting</i>	0	0	0	0	0
<i>Hotels</i>	0	0	0	0	0
<i>Industrial</i>	0	0	0	0	0
<i>Other-Residential</i>	1	0	0	0	1
<i>Single Family</i>	2	0	0	0	2
<i>Commercial</i>	0	0	0	0	0
Total Casualties - 2am	4	0	0	0	4
Casualties - 2pm					
<i>Industrial</i>	0	0	0	0	0
<i>Commuting</i>	0	0	0	0	0
<i>Other-Residential</i>	0	0	0	0	0
<i>Single Family</i>	1	0	0	0	1
<i>Commercial</i>	4	0	0	0	4
<i>Hotels</i>	0	0	0	0	0
<i>Educational</i>	1	0	0	0	1
Total Casualties - 2pm	6	0	0	0	6
Casualties - 5pm					
<i>Commuting</i>	0	0	0	0	0
<i>Commercial</i>	3	0	0	0	3
<i>Educational</i>	0	0	0	0	0
<i>Single Family</i>	1	0	0	0	1
<i>Hotels</i>	0	0	0	0	0

	Injury Severity Level				Total
	Severity 1	Severity 2	Severity 3	Severity 4	
California					
Sutter					
Casualties - 5pm					
<i>Industrial</i>	0	0	0	0	0
<i>Other-Residential</i>	0	0	0	0	0
Total Casualties - 5pm	4	0	0	0	5
Tehama					
Casualties - 2am					
<i>Hotels</i>	0	0	0	0	0
<i>Industrial</i>	0	0	0	0	0
<i>Commercial</i>	0	0	0	0	0
<i>Other-Residential</i>	0	0	0	0	0
<i>Educational</i>	0	0	0	0	0
<i>Commuting</i>	0	0	0	0	0
<i>Single Family</i>	0	0	0	0	0
Total Casualties - 2am	0	0	0	0	0
Casualties - 2pm					
<i>Other-Residential</i>	0	0	0	0	0
<i>Commercial</i>	0	0	0	0	0
<i>Industrial</i>	0	0	0	0	0
<i>Single Family</i>	0	0	0	0	0
<i>Educational</i>	0	0	0	0	0
<i>Commuting</i>	0	0	0	0	0
<i>Hotels</i>	0	0	0	0	0
Total Casualties - 2pm	0	0	0	0	0
Casualties - 5pm					
<i>Hotels</i>	0	0	0	0	0
<i>Educational</i>	0	0	0	0	0
<i>Industrial</i>	0	0	0	0	0
<i>Single Family</i>	0	0	0	0	0
<i>Commercial</i>	0	0	0	0	0
<i>Commuting</i>	0	0	0	0	0
<i>Other-Residential</i>	0	0	0	0	0
Total Casualties - 5pm	0	0	0	0	0
Trinity					
Casualties - 2am					
<i>Commercial</i>	0	0	0	0	0
<i>Educational</i>	0	0	0	0	0
<i>Other-Residential</i>	0	0	0	0	0
<i>Single Family</i>	0	0	0	0	0
<i>Commuting</i>	0	0	0	0	0
<i>Hotels</i>	0	0	0	0	0
<i>Industrial</i>	0	0	0	0	0

	Injury Severity Level				Total
	Severity 1	Severity 2	Severity 3	Severity 4	
California					
Trinity					
Total Casualties - 2am	0	0	0	0	0
Casualties - 2pm					
<i>Educational</i>	0	0	0	0	0
<i>Commuting</i>	0	0	0	0	0
<i>Hotels</i>	0	0	0	0	0
<i>Single Family</i>	0	0	0	0	0
<i>Commercial</i>	0	0	0	0	0
<i>Industrial</i>	0	0	0	0	0
<i>Other-Residential</i>	0	0	0	0	0
Total Casualties - 2pm	0	0	0	0	0
Casualties - 5pm					
<i>Single Family</i>	0	0	0	0	0
<i>Commercial</i>	0	0	0	0	0
<i>Other-Residential</i>	0	0	0	0	0
<i>Commuting</i>	0	0	0	0	0
<i>Hotels</i>	0	0	0	0	0
<i>Educational</i>	0	0	0	0	0
<i>Industrial</i>	0	0	0	0	0
Total Casualties - 5pm	0	0	0	0	0
Tuolumne					
Casualties - 2am					
<i>Other-Residential</i>	0	0	0	0	0
<i>Industrial</i>	0	0	0	0	0
<i>Commercial</i>	0	0	0	0	0
<i>Commuting</i>	0	0	0	0	0
<i>Single Family</i>	0	0	0	0	0
<i>Educational</i>	0	0	0	0	0
<i>Hotels</i>	0	0	0	0	0
Total Casualties - 2am	0	0	0	0	0
Casualties - 2pm					
<i>Other-Residential</i>	0	0	0	0	0
<i>Commercial</i>	0	0	0	0	0
<i>Single Family</i>	0	0	0	0	0
<i>Educational</i>	0	0	0	0	0
<i>Commuting</i>	0	0	0	0	0
<i>Industrial</i>	0	0	0	0	0
<i>Hotels</i>	0	0	0	0	0
Total Casualties - 2pm	0	0	0	0	0
Casualties - 5pm					
<i>Industrial</i>	0	0	0	0	0
<i>Other-Residential</i>	0	0	0	0	0

	Injury Severity Level				Total
	Severity 1	Severity 2	Severity 3	Severity 4	
California					
Tuolumne					
Casualties - 5pm					
Commercial	0	0	0	0	0
Hotels	0	0	0	0	0
Commuting	0	0	0	0	0
Educational	0	0	0	0	0
Single Family	0	0	0	0	0
Total Casualties - 5pm	0	0	0	0	0
Yolo					
Casualties - 2am					
Single Family	20	1	0	0	21
Other-Residential	20	2	0	0	22
Commercial	1	0	0	0	1
Educational	0	0	0	0	0
Commuting	0	0	0	0	0
Hotels	0	0	0	0	0
Industrial	1	0	0	0	1
Total Casualties - 2am	41	2	0	0	43
Casualties - 2pm					
Industrial	4	0	0	0	4
Hotels	0	0	0	0	0
Educational	11	1	0	0	12
Commuting	0	0	0	0	0
Commercial	40	5	0	1	46
Other-Residential	7	1	0	0	8
Single Family	7	0	0	0	7
Total Casualties - 2pm	69	7	1	1	78
Casualties - 5pm					
Other-Residential	7	1	0	0	8
Single Family	7	0	0	0	7
Commuting	0	1	1	0	2
Commercial	25	3	0	0	29
Hotels	0	0	0	0	0
Educational	2	0	0	0	2
Industrial	2	0	0	0	3
Total Casualties - 5pm	45	5	1	1	52
Yuba					
Casualties - 2am					
Industrial	0	0	0	0	0
Other-Residential	1	0	0	0	1
Commercial	0	0	0	0	0
Educational	0	0	0	0	0
Single Family	1	0	0	0	1

	Injury Severity Level				Total
	Severity 1	Severity 2	Severity 3	Severity 4	
California					
Yuba					
Casualties - 2am					
<i>Commuting</i>	0	0	0	0	0
<i>Hotels</i>	0	0	0	0	0
Total Casualties - 2am	1	0	0	0	1
Casualties - 2pm					
<i>Commercial</i>	1	0	0	0	1
<i>Commuting</i>	0	0	0	0	0
<i>Single Family</i>	0	0	0	0	0
<i>Other-Residential</i>	0	0	0	0	0
<i>Industrial</i>	0	0	0	0	0
<i>Hotels</i>	0	0	0	0	0
<i>Educational</i>	0	0	0	0	0
Total Casualties - 2pm	1	0	0	0	2
Casualties - 5pm					
<i>Hotels</i>	0	0	0	0	0
<i>Educational</i>	0	0	0	0	0
<i>Industrial</i>	0	0	0	0	0
<i>Other-Residential</i>	0	0	0	0	0
<i>Single Family</i>	0	0	0	0	0
<i>Commercial</i>	1	0	0	0	1
<i>Commuting</i>	0	0	0	0	0
Total Casualties - 5pm	1	0	0	0	1
Region Total	NA	NA	NA	NA	NA

Totals only reflect data for those census tracts/blocks included in the user's study region and will reflect the entire county/state only if all of the census blocks for that county/states were selected at the time of study region creation.

Debris Summary Report

May 23, 2024

All values are in thousands of tons.

	Brick, Wood & Others	Concrete & Steel	Total
California			
Butte	3	3	6
Alameda	9	4	13
Humboldt	0	0	0
Solano	16	14	30
San Mateo	1	0	1
Tuolumne	0	0	0
San Joaquin	8	1	10
Nevada	0	0	0
Colusa	9	15	25
Plumas	0	0	0
Shasta	0	0	0
Napa	12	12	23
Mendocino	0	0	0
Contra Costa	5	4	9
Tehama	0	0	0
Trinity	0	0	0
El Dorado	0	0	0
Amador	0	0	0
Santa Cruz	0	0	0

	Brick, Wood & Others	Concrete & Steel	Total
Sierra	0	0	0
Lake	14	6	20
Sacramento	28	23	50
Yolo	36	55	92
Calaveras	0	0	0
Yuba	1	1	2
Glenn	2	2	4
Stanislaus	0	0	0
Sonoma	9	8	17
Santa Clara	0	0	0
San Francisco	13	2	16
Merced	0	0	0
Placer	2	1	3
Marin	1	1	2
Lassen	0	0	0
Sutter	4	4	8
Total	174	156	330
Region Total	174	156	330

Totals only reflect data for those census tracts/blocks included in the user's study region and will reflect the entire county/state only if all of the census blocks for that county/states were selected at the time of study region creation.

Direct Economic Losses For Buildings

May 23, 2024

All values are in thousands of dollars

	Capital Stock Losses				Loss Ratio %	Income Losses				Total Loss
	Cost Structural Damage	Cost Non-struct. Damage	Cost Contents Damage	Inventory Loss		Relocation Loss	Capital Related Loss	Wages Losses	Rental Income Loss	
California										
Colusa	21,192	87,157	42,290	6,600	2.54	9,161	7,978	9,250	5,361	188,989
Contra Costa	9,223	113,656	61,680	6,006	0.06	1,663	1,542	2,143	1,834	197,748
Mendocino	292	5,772	3,307	417	0.03	38	48	54	65	9,994
Napa	23,203	169,981	86,359	8,942	0.58	6,204	5,002	5,626	4,924	310,241
Shasta	11	516	335	60	0.00	0	0	0	1	924
Trinity	0	0	0	0	0.00	0	0	0	0	0
Tehama	162	2,541	1,471	219	0.02	24	16	16	25	4,473
Plumas	0	10	7	0	0.00	0	0	0	0	18
Alameda	9,491	79,534	44,003	4,075	0.03	2,102	2,204	3,075	2,781	147,267

	Capital Stock Losses				Loss Ratio %	Income Losses				Total Loss
	Cost Structural Damage	Cost Non-struct. Damage	Cost Contents Damage	Inventory Loss		Relocation Loss	Capital Related Loss	Wages Losses	Rental Income Loss	
Butte	4,528	36,179	21,329	2,721	0.10	1,336	630	783	788	68,296
Humboldt	0	0	0	0	0.00	0	0	0	0	0
Nevada	11	413	252	21	0.00	1	1	2	2	703
San Joaquin	5,441	39,012	21,444	2,621	0.03	1,433	632	792	1,026	72,401
Tuolumne	0	0	0	0	0.00	0	0	0	0	0
Solano	36,531	290,030	141,794	13,378	0.40	7,133	6,040	8,710	6,508	510,124
San Mateo	1,198	13,972	6,918	614	0.01	114	185	202	422	23,625
Yolo	87,982	507,089	256,206	25,705	1.40	31,465	36,332	36,719	20,477	1,001,975
Calaveras	5	93	69	23	0.00	0	1	1	1	194
Yuba	2,122	20,015	10,134	1,126	0.17	436	392	445	431	35,103
Glenn	4,038	17,698	10,283	2,721	0.33	899	602	665	527	37,431
Lassen	0	0	0	0	0.00	0	0	0	0	1
San Francisco	10,592	26,766	14,565	1,023	0.02	2,153	1,859	2,050	4,126	63,135
Merced	46	215	173	107	0.00	3	1	0	1	546
Stanislaus	85	2,779	1,845	264	0.00	9	12	11	23	5,028
Sutter	9,576	64,656	34,468	6,531	0.43	1,771	1,020	1,160	1,249	120,431
Santa Clara	254	7,235	4,620	408	0.00	23	47	54	73	12,713
Sonoma	17,540	161,534	82,839	9,356	0.17	3,442	3,435	4,078	3,537	285,761

	Capital Stock Losses				Loss Ratio %	Income Losses				Total Loss
	Cost Structural Damage	Cost Non-struct. Damage	Cost Contents Damage	Inventory Loss		Relocation Loss	Capital Related Loss	Wages Losses	Rental Income Loss	
Placer	3,148	42,994	23,230	2,063	0.05	329	322	372	469	72,927
Marin	1,772	20,884	10,992	937	0.04	242	266	284	361	35,738
El Dorado	13	803	499	31	0.00	1	2	3	3	1,353
Amador	4	158	102	11	0.00	0	2	1	2	281
Sacramento	53,276	477,760	247,192	21,043	0.20	14,641	13,044	16,821	14,406	858,183
Lake	15,980	95,140	40,044	2,833	0.78	6,798	1,596	1,784	2,666	166,840
Sierra	0	2	1	0	0.00	0	0	0	0	3
Santa Cruz	0	1	1	0	0.00	0	0	0	0	2
Total	317,715	2,284,594	1,168,454	119,857	0.21	91,422	83,213	95,103	72,090	4,232,448
Region Total	317,715	2,284,594	1,168,454	119,857	0.21	91,422	83,213	95,103	72,090	4,232,448

Totals only reflect data for those census tracts/blocks included in the user's study region and will reflect the entire county/state only if all of the census blocks for that county/states were selected at the time of study region creation.

Direct Economic Loss For Transportation

May 23, 2024

All values are in thousands of dollars

	Highway	Railway	Light Rail	Bus Facility	Ports	Ferries	Airport	Total
California								
Alameda								
Segments	0	0	0					0
Bridges	191	1	0					192
Tunnels	0	0	0					0
Facilities		1,188	0	22	6,033	80	3,593	10,917
Total	192	1,189	0	22	6,033	80	3,593	11,109
Amador								
Segments	0	0	0					0
Bridges	0	0	0					0
Tunnels	0	0	0					0
Facilities		0	0	0	0	0	51	51
Total	0	0	0	0	0	0	51	51
Butte								
Segments	0	0	0					0
Bridges	124	4	0					128
Tunnels	0	0	0					0
Facilities		109	0	0	0	0	816	926

	Highway	Railway	Light Rail	Bus Facility	Ports	Ferries	Airport	Total
Total	124	113	0	0	0	0	816	1,053
Calaveras								
Segments	0	0	0					0
Bridges	0	0	0					0
Tunnels	0	0	0					0
Facilities		0	0	0	0	0	102	102
Total	0	0	0	0	0	0	102	102
Colusa								
Segments	0	0	0					0
Bridges	5,953	2,552	0					8,505
Tunnels	0	0	0					0
Facilities		0	0	0	0	0	784	784
Total	5,953	2,552	0	0	0	0	784	9,289
Contra Costa								
Segments	0	0	0					0
Bridges	726	30	0					757
Tunnels	1	0	0					1
Facilities		925	703	0	11,569	218	816	14,232
Total	727	956	703	0	11,569	218	816	14,990
El Dorado								
Segments	0	0	0					0
Bridges	0	0	0					0
Tunnels	0	0	0					0
Facilities		0	0	21	0	0	231	252

	Highway	Railway	Light Rail	Bus Facility	Ports	Ferries	Airport	Total
Total	0	0	0	21	0	0	231	252
Glenn								
Segments	0	0	0					0
Bridges	464	59	0					523
Tunnels	0	0	0					0
Facilities		0	0	0	288	0	617	905
Total	464	59	0	0	288	0	617	1,428
Humboldt								
Segments	0	0	0					0
Bridges	1	0	0					1
Tunnels	0	0	0					0
Facilities		0	0	0	0	0	68	68
Total	1	0	0	0	0	0	68	69
Lake								
Segments	0	0	0					0
Bridges	280	0	0					280
Tunnels	0	0	0					0
Facilities		0	0	0	0	0	617	617
Total	280	0	0	0	0	0	617	898
Lassen								
Segments	0	0	0					0
Bridges	0	0	0					0
Tunnels	0	0	0					0
Facilities		0	0	0	0	0	17	17

	Highway	Railway	Light Rail	Bus Facility	Ports	Ferries	Airport	Total
Total	0	0	0	0	0	0	17	17
Marin								
Segments	0	0	0					0
Bridges	797	0	0					797
Tunnels	0	0	0					0
Facilities		0	0	242	2,436	148	400	3,226
Total	797	0	0	242	2,436	148	400	4,023
Mendocino								
Segments	0	0	0					0
Bridges	12	0	0					12
Tunnels	0	0	0					0
Facilities		0	0	215	37	0	422	673
Total	12	0	0	215	37	0	422	685
Merced								
Segments	0	0	0					0
Bridges	0	0	0					0
Tunnels	0	0	0					0
Facilities		6	0	2	0	0	85	93
Total	0	6	0	2	0	0	85	94
Napa								
Segments	0	0	0					0
Bridges	1,377	102	0					1,479
Tunnels	0	0	0					0
Facilities		0	0	171	863	0	1,594	2,628

	Highway	Railway	Light Rail	Bus Facility	Ports	Ferries	Airport	Total
Total	1,377	102	0	171	863	0	1,594	4,107
Nevada								
Segments	0	0	0					0
Bridges	0	0	0					0
Tunnels	0	0	0					0
Facilities		3	0	0	0	0	57	60
Total	0	3	0	0	0	0	57	60
Placer								
Segments	0	0	0					0
Bridges	20	0	0					21
Tunnels	0	0	0					0
Facilities		186	0	21	0	0	371	578
Total	21	186	0	21	0	0	371	599
Plumas								
Segments	0	0	0					0
Bridges	0	0	0					0
Tunnels	0	0	0					0
Facilities		0	0	0	0	0	312	312
Total	0	0	0	0	0	0	312	312
Sacramento								
Segments	0	0	0					0
Bridges	5,417	20	0					5,437
Tunnels	0	0	0					0
Facilities		201	18,192	334	3,183	100	32,527	54,537

	Highway	Railway	Light Rail	Bus Facility	Ports	Ferries	Airport	Total
Total	5,417	221	18,192	334	3,183	100	32,527	59,974
San Francisco								
<i>Segments</i>	0	0	0					0
<i>Bridges</i>	403	0	0					403
<i>Tunnels</i>	0	0	0					0
<i>Facilities</i>		0	31,375	49	3,335	51	308	35,118
Total	403	0	31,375	49	3,335	51	308	35,521
San Joaquin								
<i>Segments</i>	0	0	0					0
<i>Bridges</i>	244	0	0					244
<i>Tunnels</i>	0	0	0					0
<i>Facilities</i>		494	0	21	3,852	135	584	5,086
Total	244	494	0	21	3,852	135	584	5,331
San Mateo								
<i>Segments</i>	0	0	0					0
<i>Bridges</i>	318	0	0					318
<i>Tunnels</i>	0	0	0					0
<i>Facilities</i>		0	0	0	661	0	8,789	9,450
Total	318	0	0	0	661	0	8,789	9,768
Santa Clara								
<i>Segments</i>	0	0	0					0
<i>Bridges</i>	13	0	0					13
<i>Tunnels</i>	0	0	0					0
<i>Facilities</i>		103	5,439	23	184	0	3,464	9,212

	Highway	Railway	Light Rail	Bus Facility	Ports	Ferries	Airport	Total
Total	13	103	5,439	23	184	0	3,464	9,225
Santa Cruz								
Segments	0	0	0					0
Bridges	0	0	0					0
Tunnels	0	0	0					0
Facilities		0	0	0	0	0	0	0
Total	0	0	0	0	0	0	0	0
Shasta								
Segments	0	0	0					0
Bridges	0	0	0					0
Tunnels	0	0	0					0
Facilities		0	0	0	0	0	178	178
Total	0	0	0	0	0	0	178	178
Sierra								
Segments	0	0	0					0
Bridges	0	0	0					0
Tunnels	0	0	0					0
Facilities		0	0	0	0	0	51	51
Total	0	0	0	0	0	0	51	51
Solano								
Segments	0	0	0					0
Bridges	3,751	184	0					3,936
Tunnels	0	0	0					0
Facilities		511	0	355	6,892	356	2,095	10,209

	Highway	Railway	Light Rail	Bus Facility	Ports	Ferries	Airport	Total
Total	3,751	695	0	355	6,892	356	2,095	14,145
Sonoma								
<i>Segments</i>	0	0	0					0
<i>Bridges</i>	542	49	0					591
<i>Tunnels</i>	0	0	0					0
<i>Facilities</i>		0	0	178	1,226	0	1,762	3,165
Total	542	49	0	178	1,226	0	1,762	3,757
Stanislaus								
<i>Segments</i>	0	0	0					0
<i>Bridges</i>	24	0	0					24
<i>Tunnels</i>	0	0	0					0
<i>Facilities</i>		154	0	43	0	0	231	427
Total	24	154	0	43	0	0	231	452
Sutter								
<i>Segments</i>	0	0	0					0
<i>Bridges</i>	861	16	0					877
<i>Tunnels</i>	0	0	0					0
<i>Facilities</i>		0	0	0	0	0	1,008	1,008
Total	861	16	0	0	0	0	1,008	1,885
Tehama								
<i>Segments</i>	0	0	0					0
<i>Bridges</i>	33	0	0					33
<i>Tunnels</i>	0	0	0					0
<i>Facilities</i>		0	0	0	0	0	102	102

	Highway	Railway	Light Rail	Bus Facility	Ports	Ferries	Airport	Total
Total	33	0	0	0	0	0	102	135
Trinity								
Segments	0	0	0					0
Bridges	0	0	0					0
Tunnels	0	0	0					0
Facilities		0	0	0	0	0	57	57
Total	0	0	0	0	0	0	57	57
Tuolumne								
Segments	0	0	0					0
Bridges	0	0	0					0
Tunnels	0	0	0					0
Facilities		0	0	0	0	0	11	11
Total	0	0	0	0	0	0	11	11
Yolo								
Segments	0	0	0					0
Bridges	13,707	479	0					14,186
Tunnels	0	0	0					0
Facilities		1,484	0	0	4,759	0	1,770	8,013
Total	13,707	1,963	0	0	4,759	0	1,770	22,199
Yuba								
Segments	0	0	0					0
Bridges	19	4	0					24
Tunnels	0	0	0					0
Facilities		0	0	92	0	0	435	527

	Highway	Railway	Light Rail	Bus Facility	Ports	Ferries	Airport	Total
Total	19	4	0	92	0	0	435	550
Total	35,281	8,866	55,708	1,789	45,317	1,089	64,326	212,376
Region Total	35,281	8,866	55,708	1,789	45,317	1,089	64,326	212,376

Totals only reflect data for those census tracts/blocks included in the user's study region and will reflect the entire county/state only if all of the census blocks for that county/states were selected at the time of study region creation.

Direct Economic Loss For Utilities

May 23, 2024

All values are in thousands of dollars

	Potable Water	Waste Water	Oil Systems	Natural Gas	Electric Power	Communication	Total
California							
Alameda							
Facilities	405	11,654	0	0	22,437	19	34,515
Pipelines	129	65	0	0			193
Total	533	11,719	0	0	22,437	19	34,708
Amador							
Facilities	0	3	0	0	7,382	0	7,384
Pipelines	20	10	0	0			30
Total	20	12	0	0	7,382	0	7,414
Butte							
Facilities	28	6,097	1	0	51,692	7	57,826
Pipelines	148	74	0	0			222
Total	176	6,172	1	0	51,692	7	58,048
Calaveras							
Facilities	28	131	0	0	1,439	0	1,598

	Potable Water	Waste Water	Oil Systems	Natural Gas	Electric Power	Communication	Total
<i>Pipelines</i>	18	9	0	0			27
Total	46	140	0	0	1,439	0	1,626
Colusa							
<i>Facilities</i>	0	54,778	0	2,623	216,829	22	274,251
<i>Pipelines</i>	1,450	728	0	0			2,178
Total	1,450	55,506	0	2,623	216,829	22	276,429
Contra Costa							
<i>Facilities</i>	1,129	17,137	11	0	358,443	10	376,730
<i>Pipelines</i>	203	102	0	0			306
Total	1,333	17,239	11	0	358,443	10	377,036
El Dorado							
<i>Facilities</i>	28	492	0	0	28,371	1	28,891
<i>Pipelines</i>	63	32	0	0			95
Total	91	524	0	0	28,371	1	28,986
Glenn							
<i>Facilities</i>	0	4,415	0	0	1,876	7	6,298
<i>Pipelines</i>	185	93	0	0			278
Total	185	4,508	0	0	1,876	7	6,575
Humboldt							
<i>Facilities</i>	0	128	0	0	7	0	135
<i>Pipelines</i>	16	8	0	0			24

	Potable Water	Waste Water	Oil Systems	Natural Gas	Electric Power	Communication	Total
Total	16	136	0	0	7	0	159
Lake							
<i>Facilities</i>	3,963	0	0	0	103,130	39	107,132
<i>Pipelines</i>	608	305	0	0			913
Total	4,571	305	0	0	103,130	39	108,045
Lassen							
<i>Facilities</i>	0	3	0	0	10	0	13
<i>Pipelines</i>	38	19	0	0			56
Total	38	21	0	0	10	0	69
Marin							
<i>Facilities</i>	348	6,589	0	0	770	13	7,720
<i>Pipelines</i>	54	27	0	0			81
Total	403	6,616	0	0	770	13	7,802
Mendocino							
<i>Facilities</i>	0	2,139	0	0	4,839	7	6,985
<i>Pipelines</i>	142	71	0	0			213
Total	142	2,210	0	0	4,839	7	7,199
Merced							
<i>Facilities</i>	0	133	0	0	4	0	137
<i>Pipelines</i>	70	35	0	0			105
Total	70	168	0	0	4	0	242

	Potable Water	Waste Water	Oil Systems	Natural Gas	Electric Power	Communication	Total
Napa							
<i>Facilities</i>	0	30,063	0	0	33,735	36	63,834
<i>Pipelines</i>	257	129	0	0			387
Total	257	30,192	0	0	33,735	36	64,221
Nevada							
<i>Facilities</i>	0	740	0	0	2,927	1	3,668
<i>Pipelines</i>	54	27	0	0			81
Total	54	767	0	0	2,927	1	3,749
Placer							
<i>Facilities</i>	0	11,039	0	0	36,729	7	47,776
<i>Pipelines</i>	121	61	0	0			182
Total	121	11,100	0	0	36,729	7	47,958
Plumas							
<i>Facilities</i>	1	371	0	0	21,286	1	21,659
<i>Pipelines</i>	40	20	0	0			60
Total	40	391	0	0	21,286	1	21,719
Sacramento							
<i>Facilities</i>	0	18,134	0	0	85,060	131	103,325
<i>Pipelines</i>	510	256	0	0			767
Total	510	18,390	0	0	85,060	131	104,092
San Francisco							

	Potable Water	Waste Water	Oil Systems	Natural Gas	Electric Power	Communication	Total
<i>Facilities</i>	0	2,262	0	0	108	4	2,374
<i>Pipelines</i>	24	12	0	0			36
Total	24	2,274	0	0	108	4	2,409
San Joaquin							
<i>Facilities</i>	140	2,262	0	0	29,852	2	32,257
<i>Pipelines</i>	104	52	0	0			156
Total	244	2,314	0	0	29,852	2	32,413
San Mateo							
<i>Facilities</i>	0	1,598	0	0	362	3	1,963
<i>Pipelines</i>	60	30	0	0			90
Total	60	1,628	0	0	362	3	2,053
Santa Clara							
<i>Facilities</i>	56	369	0	0	11,878	2	12,305
<i>Pipelines</i>	105	53	0	0			158
Total	161	422	0	0	11,878	2	12,463
Santa Cruz							
<i>Facilities</i>	0	3	0	0	0	0	3
<i>Pipelines</i>	10	5	0	0			15
Total	10	8	0	0	0	0	18
Shasta							
<i>Facilities</i>	0	615	0	0	3,255	1	3,870

	Potable Water	Waste Water	Oil Systems	Natural Gas	Electric Power	Communication	Total
<i>Pipelines</i>	44	22	0	0			66
Total	44	637	0	0	3,255	1	3,936
Sierra							
<i>Facilities</i>	0	0	0	0	8	0	8
<i>Pipelines</i>	16	8	0	0			24
Total	16	8	0	0	8	0	33
Solano							
<i>Facilities</i>	0	26,122	3	0	357,573	21	383,720
<i>Pipelines</i>	695	349	0	0			1,044
Total	695	26,471	3	0	357,573	21	384,764
Sonoma							
<i>Facilities</i>	0	24,038	0	0	665,506	65	689,609
<i>Pipelines</i>	298	150	0	0			447
Total	298	24,188	0	0	665,506	65	690,056
Stanislaus							
<i>Facilities</i>	0	492	0	0	8,652	3	9,146
<i>Pipelines</i>	58	29	0	0			87
Total	58	521	0	0	8,652	3	9,233
Sutter							
<i>Facilities</i>	0	8,830	0	0	139,923	58	148,811
<i>Pipelines</i>	258	130	0	0			388

	Potable Water	Waste Water	Oil Systems	Natural Gas	Electric Power	Communication	Total
Total	258	8,959	0	0	139,923	58	149,199
Tehama							
<i>Facilities</i>	0	1,770	0	75	2,916	1	4,762
<i>Pipelines</i>	96	48	0	0			144
Total	96	1,818	0	75	2,916	1	4,906
Trinity							
<i>Facilities</i>	0	0	0	0	2	0	2
<i>Pipelines</i>	14	7	0	0			20
Total	14	7	0	0	2	0	22
Tuolumne							
<i>Facilities</i>	0	3	0	0	721	0	724
<i>Pipelines</i>	14	7	0	0			22
Total	14	10	0	0	721	0	745
Yolo							
<i>Facilities</i>	0	29,328	0	0	40,772	146	70,247
<i>Pipelines</i>	1,369	688	0	0			2,057
Total	1,369	30,016	0	0	40,772	146	72,304
Yuba							
<i>Facilities</i>	0	7,587	0	0	16,157	2	23,746
<i>Pipelines</i>	88	44	0	0			132
Total	88	7,631	0	0	16,157	2	23,878

	Potable Water	Waste Water	Oil Systems	Natural Gas	Electric Power	Communication	Total
Total	13,506	273,031	15	2,698	2,254,651	609	2,544,510
Region Total	13,506	273,031	15	2,698	2,254,651	609	2,544,510

Totals only reflect data for those census tracts/blocks included in the user's study region and will reflect the entire county/state only if all of the census blocks for that county/states were selected at the time of study region creation.

Hazus Quick Assessment Report

Estimated Economic Loss (\$ Billions)

Category	Description	Range
General Building Stock	Building Damage	1.30 - 5.20
	Building Contents	0.20 - 0.90
	Business Interruption	0.20 - 0.70
Infrastructure	Lifelines Damage	
Total		2.10 - 8.50

Preliminary Damage Assessment (PDA) Estimates

Description	Residential	Commercial	Other	Total
Affected	62,000	6,100	2,900	71,000
Minor	5,000	1,100	620	6,720
Major	250	70	50	370
Destroyed	< 10	< 10	< 10	< 10
Total	67,250	7,270	3,570	78,090

Estimated Casualties : Night Time

Severity Level	Description	# Persons
Level 1	Medical Aid	80 - 300
Level 2	Hospital Care	< 10
Level 3	Life-threatening	< 10
Level 4	Fatalities	< 10

Estimated Shelter Needs

Type	Households	People
Displaced Households	60 - 200	150 - 500
Public Shelter	30	70

Comments :

*Hazus damage estimates are presented using FEMA Preliminary Damage Assessment (PDA) categories. These estimates should be used for planning purposes and may not reflect actual observed damages from the PDA process.

Disclaimer:

The estimates of social and economic impacts contained in this report were produced using HAZUS loss estimation methodology software which is based on current scientific and engineering knowledge. There are uncertainties inherent in any loss estimation technique. Therefore, there may be significant differences between the modeled results contained in this report and the actual social and economic losses following a specific earthquake. These results can be improved by using enhanced inventory, geotechnical, and observed ground motion data.

Earthquake Information

Location :

Origin Time:

Magnitude : 7.03

Epicenter Latitude/Longitude :
/

Depth & Type : /U

Name :
NA

Ground Motion /Attenuation :

Maximum PGA: 0.00

Information Sources:

Comments :

Population and Building Exposure

Population: 13,350,498

Building Exposure : (\$ Millions)

Residential	1,733,133
Commercial	460,361
Other	399,083
Total	2,592,577

Counties : See Appendix

Major Metro Area :

Hazus Quick Assessment Report

Estimated Economic Loss (\$ Billions)

Category	Description	Range
General Building Stock	Building Damage	1.30 - 5.20
	Building Contents	0.20 - 0.90
	Business Interruption	0.20 - 0.70
Infrastructure	Lifelines Damage	
Total		2.10 - 8.50

Preliminary Damage Assessment (PDA) Estimates

Description	Residential	Commercial	Other	Total
Affected	62,000	6,100	2,900	71,000
Minor	5,000	1,100	620	6,720
Major	250	70	50	370
Destroyed	< 10	< 10	< 10	< 10
Total	67,250	7,270	3,570	78,090

Estimated Casualties : Day Time

Severity Level	Description	# Persons
Level 1	Medical Aid	130 - 500
Level 2	Hospital Care	10 - 40
Level 3	Life-threatening	< 10
Level 4	Fatalities	< 10

Estimated Shelter Needs

Type	Households	People
Displaced Households	60 - 200	150 - 500
Public Shelter	30	70

Comments :

*Hazus damage estimates are presented using FEMA Preliminary Damage Assessment (PDA) categories. These estimates should be used for planning purposes and may not reflect actual observed damages from the PDA process.

Disclaimer:

The estimates of social and economic impacts contained in this report were produced using HAZUS loss estimation methodology software which is based on current scientific and engineering knowledge. There are uncertainties inherent in any loss estimation technique. Therefore, there may be significant differences between the modeled results contained in this report and the actual social and economic losses following a specific earthquake. These results can be improved by using enhanced inventory, geotechnical, and observed ground motion data.

Earthquake Information

Location :

Origin Time:

Magnitude : 7.03

Epicenter Latitude/Longitude :

/

Depth & Type : /U

Name :

NA

Ground Motion /Attenuation :

Maximum PGA: 0.00

Information Sources:

Comments :

Population and Building Exposure

Population: 13,350,498

Building Exposure : (\$ Millions)

Residential	1,733,133
Commercial	460,361
Other	399,083
Total	2,592,577

Counties : See Appendix

Major Metro Area :

Hazus Quick Assessment Report

Estimated Economic Loss (\$ Billions)

Category	Description	Range
General Building Stock	Building Damage	1.30 - 5.20
	Building Contents	0.20 - 0.90
	Business Interruption	0.20 - 0.70
Infrastructure	Lifelines Damage	
Total		2.10 - 8.50

Preliminary Damage Assessment (PDA) Estimates

Description	Residential	Commercial	Other	Total
Affected	62,000	6,100	2,900	71,000
Minor	5,000	1,100	620	6,720
Major	250	70	50	370
Destroyed	< 10	< 10	< 10	< 10
Total	67,250	7,270	3,570	78,090

Estimated Casualties : Commute Time

Severity Level	Description	# Persons
Level 1	Medical Aid	90 - 300
Level 2	Hospital Care	10 - 30
Level 3	Life-threatening	< 10
Level 4	Fatalities	< 10

Estimated Shelter Needs

Type	Households	People
Displaced Households	60 - 200	150 - 500
Public Shelter	30	70

Comments :

**Hazus damage estimates are presented using FEMA Preliminary Damage Assessment (PDA) categories. These estimates should be used for planning purposes and may not reflect actual observed damages from the PDA process.*

Disclaimer:

The estimates of social and economic impacts contained in this report were produced using HAZUS loss estimation methodology software which is based on current scientific and engineering knowledge. There are uncertainties inherent in any loss estimation technique. Therefore, there may be significant differences between the modeled results contained in this report and the actual social and economic losses following a specific earthquake. These results can be improved by using enhanced inventory, geotechnical, and observed ground motion data.

Earthquake Information

Location :

Origin Time:

Magnitude : 7.03

Epicenter Latitude/Longitude :
/

Depth & Type : /U

Name :
NA

Ground Motion /Attenuation :

Maximum PGA: 0.00

Information Sources:

Comments :

Population and Building Exposure

Population: 13,350,498

Building Exposure : (\$ Millions)

Residential	1,733,133
Commercial	460,361
Other	399,083
Total	2,592,577

Counties : See Appendix

Major Metro Area :

Shelter Summary Report

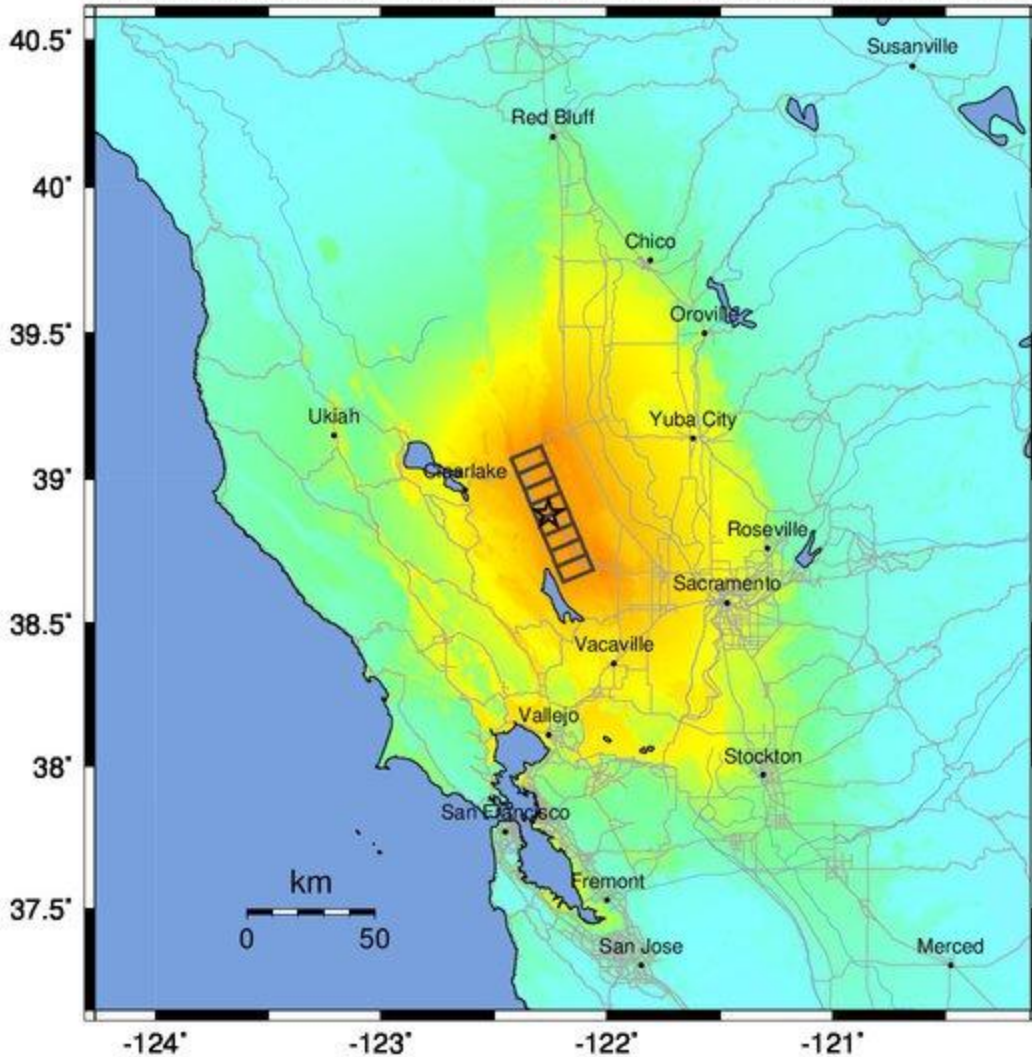
May 23, 2024

	# of Displaced Households	# of People Needing Short Term Shelter
California		
Butte	1	0
Alameda	1	1
Humboldt	0	0
Solano	6	3
San Mateo	0	0
Tuolumne	0	0
San Joaquin	1	0
Nevada	0	0
Colusa	24	15
Plumas	0	0
Shasta	0	0
Napa	9	4
Mendocino	0	0
Contra Costa	0	0
Tehama	0	0
Trinity	0	0
El Dorado	0	0
Amador	0	0
Santa Cruz	0	0
Sierra	0	0
Lake	4	2
Sacramento	13	6
Yolo	57	34
Calaveras	0	0
Yuba	0	0
Glenn	1	1
Stanislaus	0	0
Sonoma	3	1
Santa Clara	0	0
San Francisco	1	1
Merced	0	0
Placer	0	0

	# of Displaced Households	# of People Needing Short Term Shelter
Marin	0	0
Lassen	0	0
Sutter	0	0
Total	122	70
Region Total	122	70

Totals only reflect data for those census tracts/blocks included in the user's study region and will reflect the entire county/state only if all of the census blocks for that county/states were selected at the time of study region creation.

-- Earthquake Planning Scenario --
ShakeMap for Great Valley 03 Mysterious Ridge - Median ground motions Scenario
 Scenario Date: May 16, 2017 08:31:55 AM MDT M 7.0 N38.88 W122.26 Depth: 12.2km



PLANNING SCENARIO ONLY -- Map Version 10 Processed 2017-05-16 05:57:19 PM MDT

PERCEIVED SHAKING	Not felt	Weak	Light	Moderate	Strong	Very strong	Severe	Violent	Extreme
POTENTIAL DAMAGE	none	none	none	Very light	Light	Moderate	Mod./Heavy	Heavy	Very Heavy
PEAK ACC.(%g)	<0.05	0.3	2.8	6.2	12	22	40	75	>139
PEAK VEL.(cm/s)	<0.02	0.1	1.4	4.7	9.6	20	41	86	>178
INSTRUMENTAL INTENSITY	I	II-III	IV	V	VI	VII	VIII	IX	X+

Scale based upon Worden et al. (2012)