

---

## Hazus: Earthquake Global Risk Report

---

**Region Name:** ElsinoreJTsGIW

**Earthquake Scenario:** elsinorejtsgiwshaw09\_m7p72\_se

**Print Date:** April 22, 2024

**Disclaimer:**

*Totals only reflect data for those census tracts/blocks included in the user's study region.*

*The estimates of social and economic impacts contained in this report were produced using Hazus loss estimation methodology software which is based on current scientific and engineering knowledge. There are uncertainties inherent in any loss estimation technique. Therefore, there may be significant differences between the modeled results contained in this report and the actual social and economic losses following a specific earthquake. These results can be improved by using enhanced inventory, geotechnical, and observed ground motion data.*

## Table of Contents

<b>Section</b>	<b>Page #</b>
<b>General Description of the Region</b>	<b>3</b>
<b>Building and Lifeline Inventory</b>	<b>4</b>
Building Inventory	
Critical Facility Inventory	
Transportation and Utility Lifeline Inventory	
<b>Earthquake Scenario Parameters</b>	<b>7</b>
<b>Direct Earthquake Damage</b>	<b>8</b>
Buildings Damage	
Essential Facilities Damage	
Transportation and Utility Lifeline Damage	
<b>Induced Earthquake Damage</b>	<b>14</b>
Fire Following Earthquake	
Debris Generation	
<b>Social Impact</b>	<b>15</b>
Shelter Requirements	
Casualties	
<b>Economic Loss</b>	<b>17</b>
Building Related Losses	
Transportation and Utility Lifeline Losses	
<b>Appendix A: County Listing for the Region</b>	
<b>Appendix B: Regional Population and Building Value Data</b>	

## General Description of the Region

Hazus-MH is a regional earthquake loss estimation model that was developed by the Federal Emergency Management Agency (FEMA) and the National Institute of Building Sciences. The primary purpose of Hazus is to provide a methodology and software application to develop multi-hazard losses at a regional scale. These loss estimates would be used primarily by local, state and regional officials to plan and stimulate efforts to reduce risks from multi-hazards and to prepare for emergency response and recovery.

The earthquake loss estimates provided in this report was based on a region that includes 13 county(ies) from the following state(s):

California

Note:

Appendix A contains a complete listing of the counties contained in the region.

The geographical size of the region is 73,530.68 square miles and contains 5,610 census tracts. There are over 8,148 thousand households in the region which has a total population of 24,407,523 people. The distribution of population by Total Region and County is provided in Appendix B.

There are an estimated 6,951 thousand buildings in the region with a total building replacement value (excluding contents) of (millions of dollars). Approximately 90.00 % of the buildings (and % of the building value) are associated with residential housing.

The replacement value of the transportation and utility lifeline systems is estimated to be 295,097 and 194,066 (millions of dollars) , respectively.

## Building and Lifeline Inventory

### Building Inventory

Hazus estimates that there are 6,951 thousand buildings in the region which have an aggregate total replacement value of (millions of dollars) . Appendix B provides a general distribution of the building value by Total Region and County.

In terms of building construction types found in the region, wood frame construction makes up 87% of the building inventory. The remaining percentage is distributed between the other general building types.

### Critical Facility Inventory

Hazus breaks critical facilities into two (2) groups: essential facilities and high potential loss facilities (HPL). Essential facilities include hospitals, medical clinics, schools, fire stations, police stations and emergency operations facilities. High potential loss facilities include dams, levees, military installations, nuclear power plants and hazardous material sites.

For essential facilities, there are 345 hospitals in the region with a total bed capacity of 63,645 beds. There are 7,824 schools, 1,397 fire stations, 472 police stations and 123 emergency operation facilities. With respect to high potential loss facilities (HPL), there are no dams identified within the inventory. The inventory also includes no hazardous material sites, no military installations and no nuclear power plants.

### Transportation and Utility Lifeline Inventory

Within Hazus, the lifeline inventory is divided between transportation and utility lifeline systems. There are seven (7) transportation systems that include highways, railways, light rail, bus, ports, ferry and airports. There are six (6) utility systems that include potable water, wastewater, natural gas, crude & refined oil, electric power and communications. The lifeline inventory data are provided in Tables 1 and 2.

The total value of the lifeline inventory is over 489,163.00 (millions of dollars). This inventory includes over 12,749.29 miles of highways, 12,131 bridges, 267,256.02 miles of pipes.

**Table 1: Transportation System Lifeline Inventory**

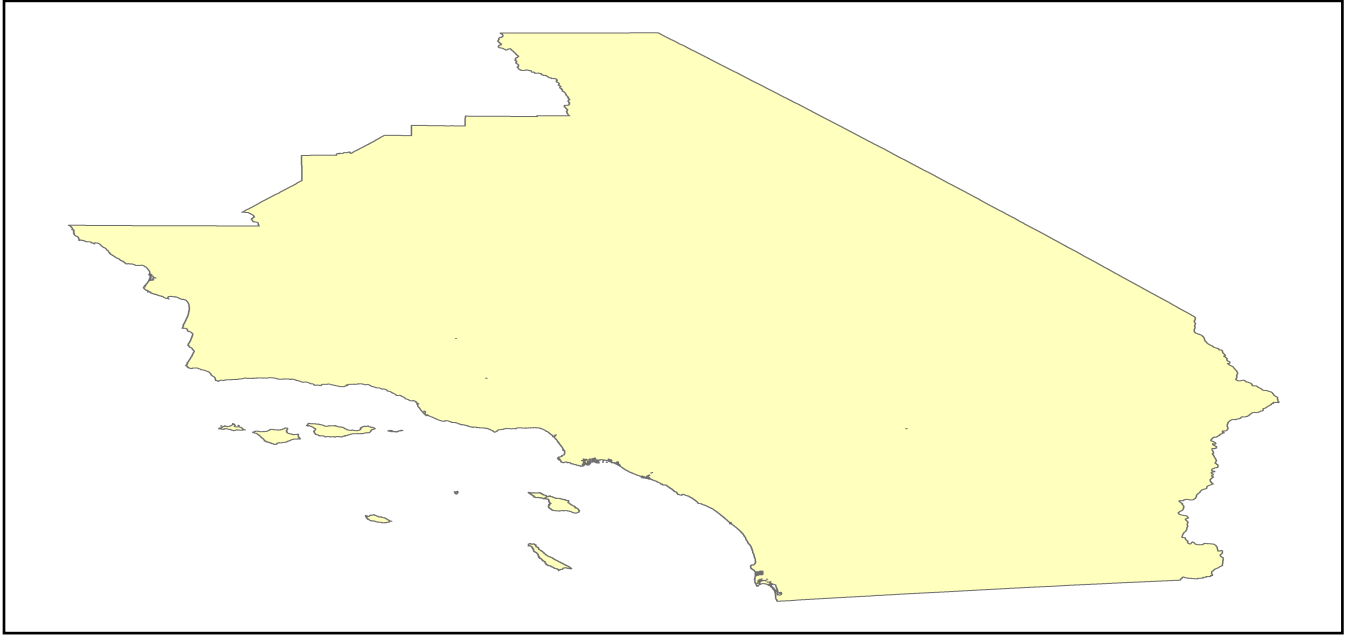
System	Component	# Locations/ # Segments	Replacement value (millions of dollars)
<b>Highway</b>	Bridges	12,131	68183.0231
	Segments	10,189	129524.7356
	Tunnels	62	553.5147
	<b>Subtotal</b>		<b>198261.2734</b>
<b>Railways</b>	Bridges	2,182	12415.5800
	Facilities	116	308.9080
	Segments	2,017	67063.3892
	Tunnels	0	0.0000
	<b>Subtotal</b>		<b>79787.8772</b>
<b>Light Rail</b>	Bridges	51	13.2750
	Facilities	149	3200.8000
	Segments	8	5399.1047
	Tunnels	0	0.0000
	<b>Subtotal</b>		<b>8613.1797</b>
<b>Bus</b>	Facilities	45	97.2975
	<b>Subtotal</b>		<b>97.2975</b>
<b>Ferry</b>	Facilities	22	29.2820
	<b>Subtotal</b>		<b>29.2820</b>
<b>Port</b>	Facilities	354	1349.3930
	<b>Subtotal</b>		<b>1349.3930</b>
<b>Airport</b>	Facilities	167	4844.7583
	Runways	188	2114.4318
	<b>Subtotal</b>		<b>6959.1901</b>
		<b>Total</b>	<b>295,097.50</b>

**Table 2: Utility System Lifeline Inventory**

System	Component	# Locations / Segments	Replacement value (millions of dollars)
<b>Potable Water</b>	Distribution Lines	NA	5307.8476
	Facilities	53	2082.5820
	Pipelines	0	0.0000
		<b>Subtotal</b>	<b>7390.4296</b>
<b>Waste Water</b>	Distribution Lines	NA	3184.7085
	Facilities	136	23385.4448
	Pipelines	0	0.0000
		<b>Subtotal</b>	<b>26570.1533</b>
<b>Natural Gas</b>	Distribution Lines	NA	2123.1390
	Facilities	44	1599.3257
	Pipelines	362	19300.5635
		<b>Subtotal</b>	<b>23023.0282</b>
<b>Oil Systems</b>	Facilities	68	8.0240
	Pipelines	0	0.0000
		<b>Subtotal</b>	<b>8.0240</b>
<b>Electrical Power</b>	Facilities	635	137018.3076
		<b>Subtotal</b>	<b>137018.3076</b>
<b>Communication</b>	Facilities	476	56.1680
		<b>Subtotal</b>	<b>56.1680</b>
	<b>Total</b>		<b>194,066.10</b>

## Earthquake Scenario

Hazus uses the following set of information to define the earthquake parameters used for the earthquake loss estimate provided in this report.



<b>Scenario Name</b>	elsinorejtsgiwshaw09_m7p72_se
<b>Type of Earthquake</b>	User-defined
<b>Fault Name</b>	NA
<b>Historical Epicenter ID #</b>	NA
<b>Probabilistic Return Period</b>	NA
<b>Longitude of Epicenter</b>	NA
<b>Latitude of Epicenter</b>	NA
<b>Earthquake Magnitude</b>	7.72
<b>Depth (km)</b>	NA
<b>Rupture Length (Km)</b>	NA
<b>Rupture Orientation (degrees)</b>	NA
<b>Attenuation Function</b>	NA

## Direct Earthquake Damage

### Building Damage

Hazus estimates that about 447,590 buildings will be at least moderately damaged. This is over 6.00 % of the buildings in the region. There are an estimated 19,987 buildings that will be damaged beyond repair. The definition of the 'damage states' is provided in Volume 1: Chapter 5 of the Hazus technical manual. Table 3 below summarizes the expected damage by general occupancy for the buildings in the region. Table 4 below summarizes the expected damage by general building type.

### Damage Categories by General Occupancy Type

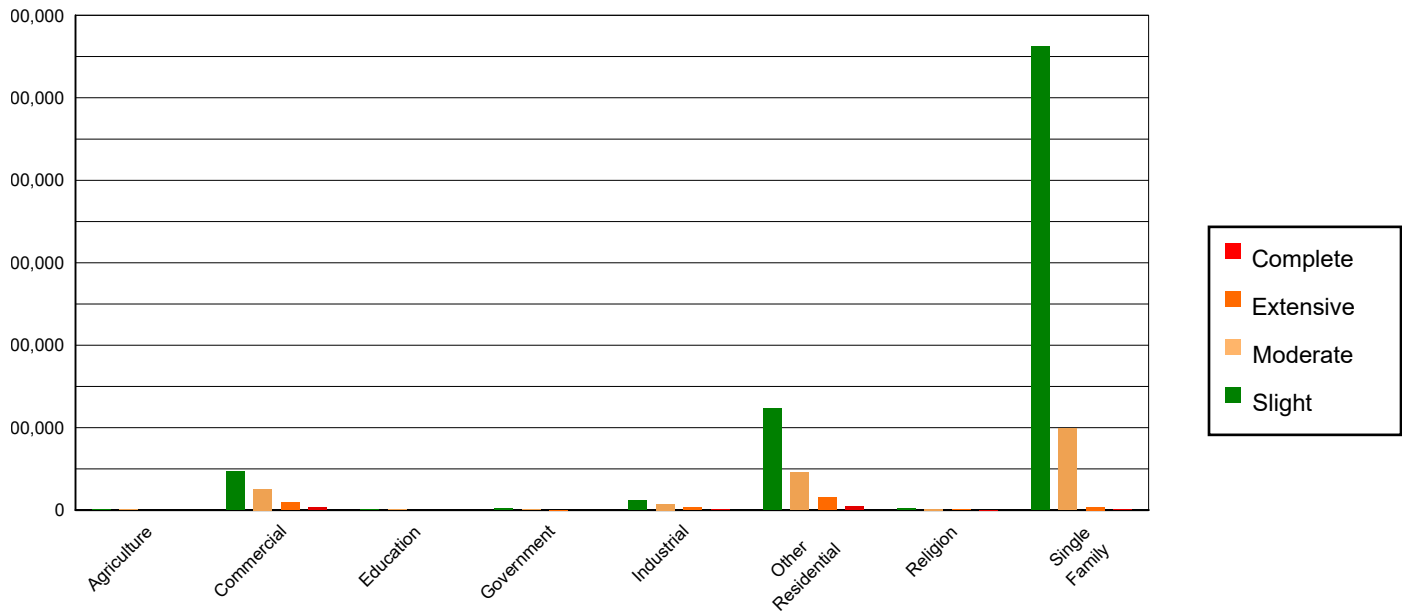


Table 3: Expected Building Damage by Occupancy

	None		Slight		Moderate		Extensive		Complete	
	Count	(%)	Count	(%)	Count	(%)	Count	(%)	Count	(%)
<b>Agriculture</b>	15905.60	0.32	1976.52	0.13	813.73	0.22	249.01	0.39	99.13	0.50
<b>Commercial</b>	303657.89	6.07	94083.16	6.26	51429.43	14.14	18088.16	28.30	5982.35	29.93
<b>Education</b>	10481.92	0.21	1795.27	0.12	722.66	0.20	183.37	0.29	51.77	0.26
<b>Government</b>	28582.84	0.57	4809.68	0.32	1860.82	0.51	386.52	0.60	82.15	0.41
<b>Industrial</b>	76206.92	1.52	22881.47	1.52	15389.48	4.23	6564.40	10.27	2154.72	10.78
<b>Other Residential</b>	698567.19	13.97	247185.88	16.45	91901.21	25.27	29878.00	46.74	9977.71	49.92
<b>Religion</b>	15933.06	0.32	4429.21	0.29	2715.07	0.75	1056.87	1.65	356.79	1.79
<b>Single Family</b>	3852074.41	77.02	1125330.57	74.90	198852.79	54.68	7511.28	11.75	1282.94	6.42
<b>Total</b>	<b>5,001,410</b>		<b>1,502,492</b>		<b>363,685</b>		<b>63,918</b>		<b>19,988</b>	

**Table 4: Expected Building Damage by Building Type (All Design Levels)**

	None		Slight		Moderate		Extensive		Complete	
	Count	(%)	Count	(%)	Count	(%)	Count	(%)	Count	(%)
<b>Wood</b>	4476129.61	89.50	1355851.99	90.24	236833.45	65.12	7817.49	12.23	623.71	3.12
<b>Steel</b>	70072.46	1.40	22390.89	1.49	22156.05	6.09	10602.86	16.59	3665.29	18.34
<b>Concrete</b>	73605.26	1.47	25137.42	1.67	17022.77	4.68	7617.03	11.92	2698.00	13.50
<b>Precast</b>	37632.37	0.75	11216.25	0.75	8259.42	2.27	2222.55	3.48	569.83	2.85
<b>RM</b>	224380.34	4.49	48824.70	3.25	27127.03	7.46	6989.30	10.93	1038.66	5.20
<b>URM</b>	5313.29	0.11	4214.42	0.28	9084.11	2.50	8178.33	12.80	4510.05	22.56
<b>MH</b>	114276.51	2.28	34856.10	2.32	43202.39	11.88	20490.06	32.06	6882.01	34.43
<b>Total</b>	<b>5,001,410</b>		<b>1,502,492</b>		<b>363,685</b>		<b>63,918</b>		<b>19,988</b>	

\*Note:

- RM Reinforced Masonry
- URM Unreinforced Masonry
- MH Manufactured Housing

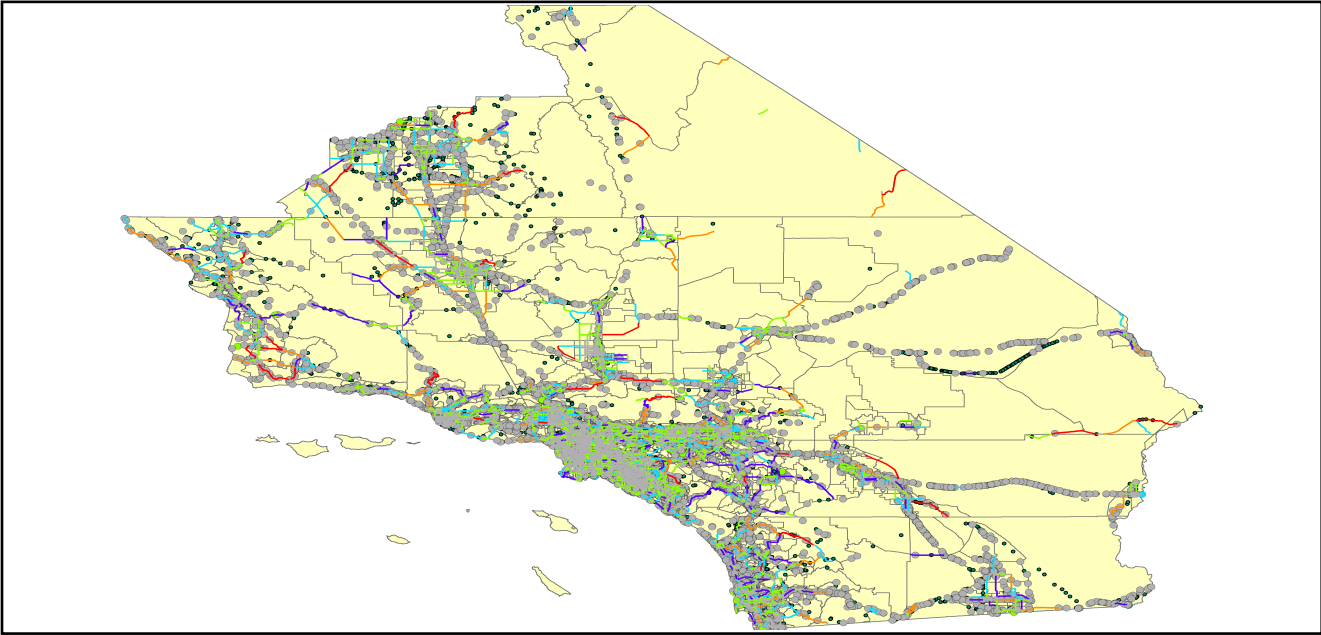
## Essential Facility Damage

Before the earthquake, the region had 63,645 hospital beds available for use. On the day of the earthquake, the model estimates that only 41,104 hospital beds (65.00%) are available for use by patients already in the hospital and those injured by the earthquake. After one week, 77.00% of the beds will be back in service. By 30 days, 90.00% will be operational.

**Table 5: Expected Damage to Essential Facilities**

Classification	Total	# Facilities		
		At Least Moderate Damage > 50%	Complete Damage > 50%	With Functionality > 50% on day 1
Hospitals	345	72	3	231
Schools	7,824	1,966	109	5,098
EOCs	123	34	2	79
PoliceStations	472	86	3	349
FireStations	1,397	213	16	1,059

Transportation Lifeline Damage



**Table 6: Expected Damage to the Transportation Systems**

System	Component	Number of Locations_				
		Locations/ Segments	With at Least Mod. Damage	With Complete Damage	With Functionality > 50 %	
					After Day 1	After Day 7
Highway	Segments	10,189	0	0	10,189	10,189
	Bridges	12,131	152	7	11,994	12,086
	Tunnels	62	0	0	62	62
Railways	Segments	2,017	0	0	2,017	2,017
	Bridges	2,182	0	0	2,182	2,182
	Tunnels	0	0	0	0	0
	Facilities	116	4	0	116	116
Light Rail	Segments	8	0	0	8	8
	Bridges	51	0	0	51	51
	Tunnels	0	0	0	0	0
	Facilities	149	0	0	149	149
Bus	Facilities	45	1	0	44	45
Ferry	Facilities	22	0	0	22	22
Port	Facilities	354	0	0	354	354
Airport	Facilities	167	4	0	167	167
	Runways	188	0	0	188	188

Table 6 provides damage estimates for the transportation system.

Note: Roadway segments, railroad tracks and light rail tracks are assumed to be damaged by ground failure only. If ground failure maps are not provided, damage estimates to these components will not be computed.

Tables 7-9 provide information on the damage to the utility lifeline systems. Table 7 provides damage to the utility system facilities. Table 8 provides estimates on the number of leaks and breaks by the pipelines of the utility systems. For electric power and potable water, Hazus performs a simplified system performance analysis. Table 9 provides a summary of the system performance information.

**Table 7 : Expected Utility System Facility Damage**

System	# of Locations				
	Total #	With at Least Moderate Damage	With Complete Damage	with Functionality > 50 %	
				After Day 1	After Day 7
Potable Water	53	7	0	42	53
Waste Water	136	16	0	97	136
Natural Gas	44	3	0	41	44
Oil Systems	68	8	0	54	68
Electrical Power	635	98	0	575	625
Communication	476	33	0	464	476

**Table 8 : Expected Utility System Pipeline Damage (Site Specific)**

System	Total Pipelines Length (miles)	Number of Leaks	Number of Breaks
Potable Water	164,907	27924	6981
Waste Water	98,944	14027	3507
Natural Gas	3,405	0	0
Oil	0	0	0

**Table 9: Expected Potable Water and Electric Power System Performance**

	Total # of Households	Number of Households without Service				
		At Day 1	At Day 3	At Day 7	At Day 30	At Day 90
Potable Water	8,148,162	1,613,961	1,555,566	1,441,400	817,173	17,706
Electric Power		1,028,869	670,193	287,153	30,449	1,365

## Induced Earthquake Damage

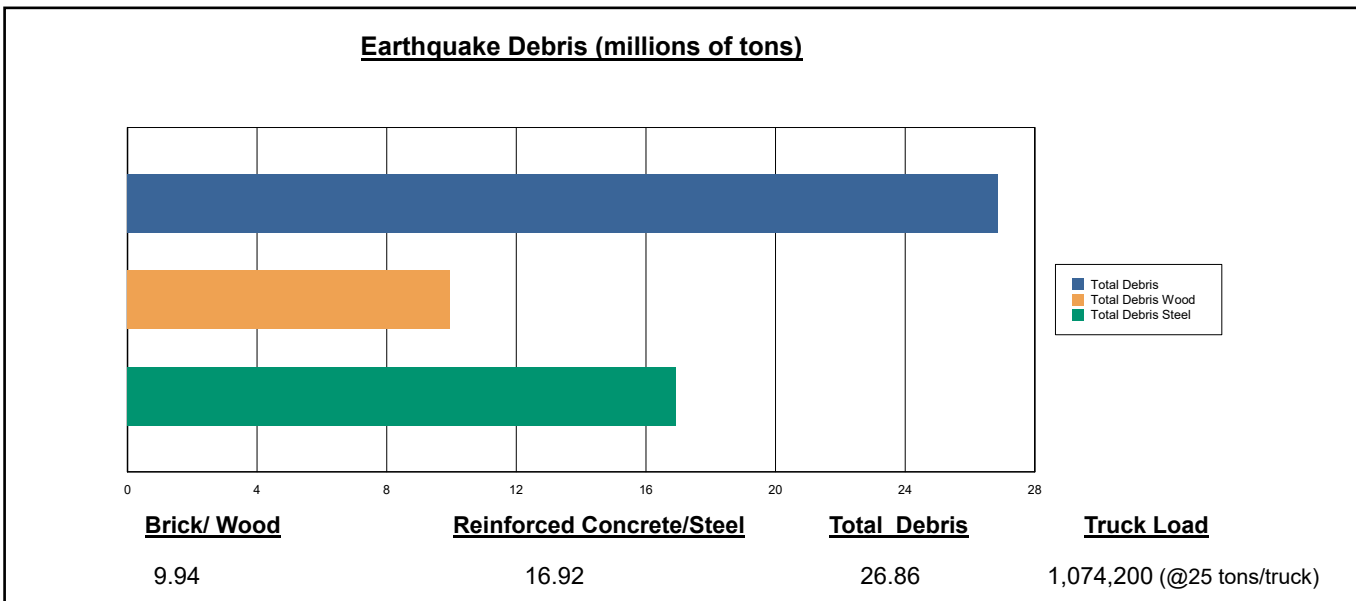
### Fire Following Earthquake

Fires often occur after an earthquake. Because of the number of fires and the lack of water to fight the fires, they can often burn out of control. Hazus uses a Monte Carlo simulation model to estimate the number of ignitions and the amount of burnt area. For this scenario, the model estimates that there will be 110 ignitions that will burn about 1.19 sq. mi 0.00 % of the region's total area.) The model also estimates that the fires will displace about 12,828 people and burn about 1,362 (millions of dollars) of building value.

### Debris Generation

Hazus estimates the amount of debris that will be generated by the earthquake. The model breaks the debris into two general categories: a) Brick/Wood and b) Reinforced Concrete/Steel. This distinction is made because of the different types of material handling equipment required to handle the debris.

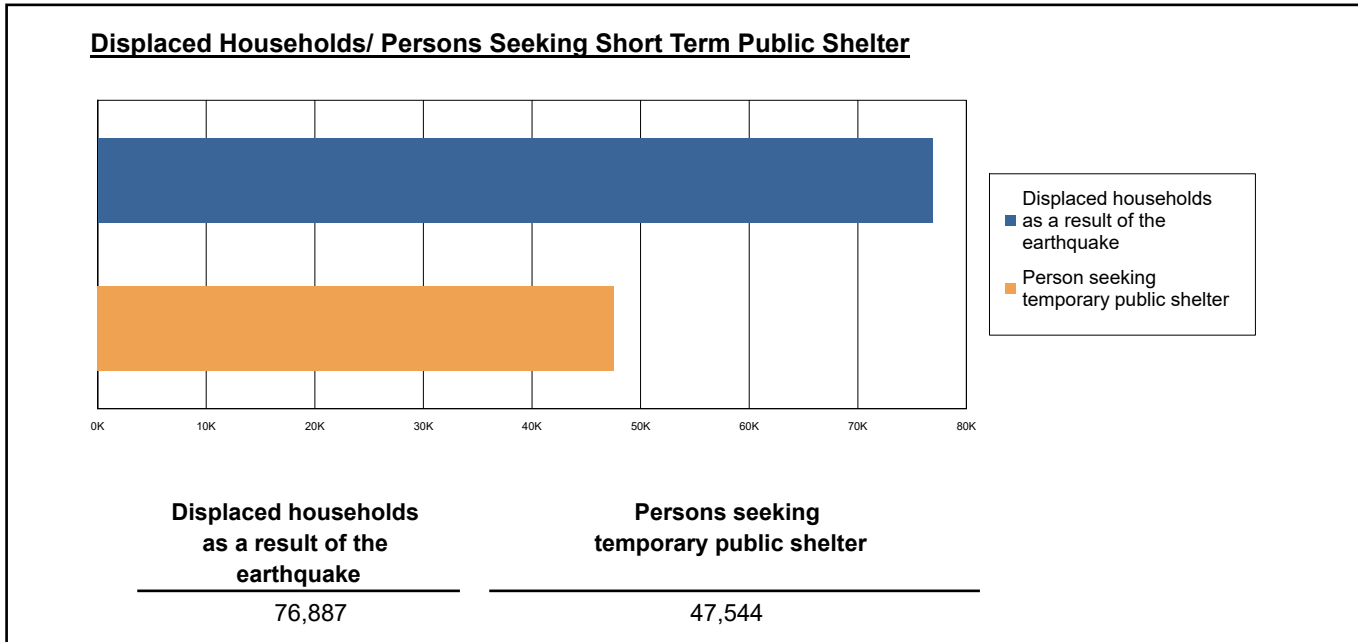
The model estimates that a total of 26,855,000 tons of debris will be generated. Of the total amount, Brick/Wood comprises 37.00% of the total, with the remainder being Reinforced Concrete/Steel. If the debris tonnage is converted to an estimated number of truckloads, it will require 1,074,200 truckloads (@25 tons/truck) to remove the debris generated by the earthquake.



## Social Impact

### Shelter Requirement

Hazus estimates the number of households that are expected to be displaced from their homes due to the earthquake and the number of displaced people that will require accommodations in temporary public shelters. The model estimates 76,887 households to be displaced due to the earthquake. Of these, 47,544 people (out of a total population of 24,407,523) will seek temporary shelter in public shelters.



### Casualties

Hazus estimates the number of people that will be injured and killed by the earthquake. The casualties are broken down into four (4) severity levels that describe the extent of the injuries. The levels are described as follows;

- Severity Level 1: Injuries will require medical attention but hospitalization is not needed.
- Severity Level 2: Injuries will require hospitalization but are not considered life-threatening
- Severity Level 3: Injuries will require hospitalization and can become life threatening if not promptly treated.
- Severity Level 4: Victims are killed by the earthquake.

The casualty estimates are provided for three (3) times of day: 2:00 AM, 2:00 PM and 5:00 PM. These times represent the periods of the day that different sectors of the community are at their peak occupancy loads. The 2:00 AM estimate considers that the residential occupancy load is maximum, the 2:00 PM estimate considers that the educational, commercial and industrial sector loads are maximum and 5:00 PM represents peak commute time.

Table 10 provides a summary of the casualties estimated for this earthquake

**Table 10: Casualty Estimates**

		Level 1	Level 2	Level 3	Level 4
<b>2 AM</b>	Commercial	239.68	54.42	7.47	14.67
	Commuting	1.73	2.53	3.99	0.79
	Educational	0.00	0.00	0.00	0.00
	Hotels	7.25	1.23	0.12	0.24
	Industrial	327.09	76.81	10.33	20.17
	Other-Residential	9187.22	1777.12	191.34	367.43
	Single Family	4356.38	406.81	29.06	57.01
	<b>Total</b>	<b>14,119</b>	<b>2,319</b>	<b>242</b>	<b>460</b>
<b>2 PM</b>	Commercial	16423.29	3769.92	523.78	1018.95
	Commuting	15.53	22.76	35.94	7.09
	Educational	6347.37	1404.27	195.19	375.19
	Hotels	1.40	0.24	0.02	0.05
	Industrial	2409.13	567.17	76.84	148.59
	Other-Residential	2805.08	553.84	63.49	116.86
	Single Family	1233.44	121.85	9.64	18.00
	<b>Total</b>	<b>29,235</b>	<b>6,440</b>	<b>905</b>	<b>1,685</b>
<b>5 PM</b>	Commercial	11886.90	2765.24	390.76	747.83
	Commuting	303.61	443.89	702.15	138.36
	Educational	1414.97	328.29	48.02	91.30
	Hotels	2.17	0.37	0.04	0.07
	Industrial	1505.70	354.48	48.02	92.87
	Other-Residential	3506.22	692.77	78.98	145.34
	Single Family	1633.46	160.86	12.49	23.31
	<b>Total</b>	<b>20,253</b>	<b>4,746</b>	<b>1,280</b>	<b>1,239</b>

## Economic Loss

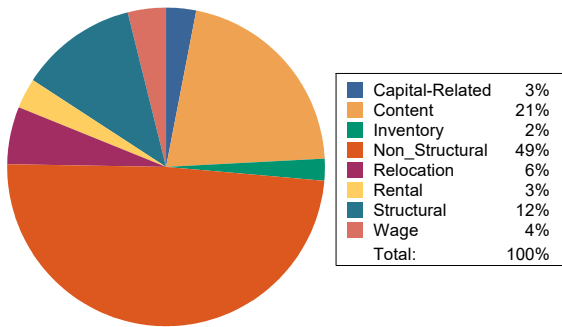
The total economic loss estimated for the earthquake is 177,802.55 (millions of dollars), which includes building and lifeline related losses based on the region's available inventory. The following three sections provide more detailed information about these losses.

## Building-Related Losses

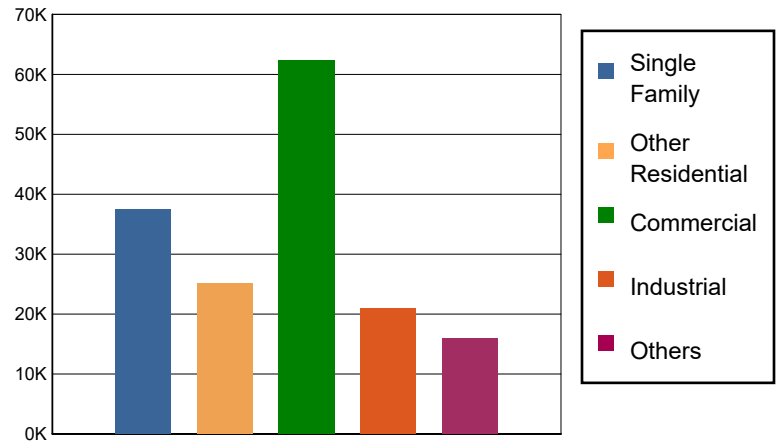
The building losses are broken into two categories: direct building losses and business interruption losses. The direct building losses are the estimated costs to repair or replace the damage caused to the building and its contents. The business interruption losses are the losses associated with inability to operate a business because of the damage sustained during the earthquake. Business interruption losses also include the temporary living expenses for those people displaced from their homes because of the earthquake.

The total building-related losses were 161,606.65 (millions of dollars); 16 % of the estimated losses were related to the business interruption of the region. By far, the largest loss was sustained by the residential occupancies which made up over 39 % of the total loss. Table 11 below provides a summary of the losses associated with the building damage.

Earthquake Losses by Loss Type (\$ millions)



Earthquake Losses by Occupancy Type (\$ millions)



**Table 11: Building-Related Economic Loss Estimates**  
(Millions of dollars)

Category	Area	Single Family	Other Residential	Commercial	Industrial	Others	Total
<b>Income Losses</b>							
	Wage	0.0000	740.1906	4883.7851	293.8628	495.0214	6,412.8599
	Capital-Related	0.0000	314.8608	4394.9201	183.8779	148.9674	5,042.6262
	Rental	443.5964	1451.9282	2656.9712	150.6825	251.9530	4,955.1313
	Relocation	1508.3398	1060.1495	3925.6986	714.5320	1971.3426	9,180.0625
	<b>Subtotal</b>	<b>1951.9362</b>	<b>3567.1291</b>	<b>15861.3750</b>	<b>1342.9552</b>	<b>2867.2844</b>	<b>25590.6799</b>
<b>Capital Stock Losses</b>							
	Structural	3976.7819	2787.8269	8049.5407	2694.2765	1721.9948	19,230.4208
	Non_Structural	23254.6813	15077.9175	23799.2764	9500.8247	7730.6675	79,363.3674
	Content	8241.9107	3604.8428	12181.6426	6433.7262	3543.9675	34,006.0898
	Inventory	0.0000	0.0000	2367.7547	949.7781	98.5553	3,416.0881
	<b>Subtotal</b>	<b>35473.3739</b>	<b>21470.5872</b>	<b>46398.2144</b>	<b>19578.6055</b>	<b>13095.1851</b>	<b>136015.9661</b>
	<b>Total</b>	<b>37425.31</b>	<b>25037.72</b>	<b>62259.59</b>	<b>20921.56</b>	<b>15962.47</b>	<b>161606.65</b>

### Transportation and Utility Lifeline Losses

For the transportation and utility lifeline systems, Hazus computes the direct repair cost for each component only. There are no losses computed by Hazus for business interruption due to lifeline outages. Tables 12 & 13 provide a detailed breakdown in the expected lifeline losses.

**Table 12: Transportation System Economic Losses**  
(Millions of dollars)

System	Component	Inventory Value	Economic Loss	Loss Ratio (%)
Highway	Segments	129524.7356	0.0000	0.00
	Bridges	68183.0231	1600.2190	2.35
	Tunnels	553.5147	3.9967	0.72
	<b>Subtotal</b>	<b>198261.2734</b>	<b>1604.2157</b>	
Railways	Segments	67063.3892	0.0000	0.00
	Bridges	12415.5800	112.7068	0.91
	Tunnels	0.0000	0.0000	0.00
	Facilities	308.9080	43.8560	14.20
	<b>Subtotal</b>	<b>79787.8772</b>	<b>156.5628</b>	
Light Rail	Segments	5399.1047	0.0000	0.00
	Bridges	13.2750	0.1294	0.97
	Tunnels	0.0000	0.0000	0.00
	Facilities	3200.8000	509.7093	15.92
	<b>Subtotal</b>	<b>8613.1797</b>	<b>509.8387</b>	
Bus	Facilities	97.2975	10.9541	11.26
	<b>Subtotal</b>	<b>97.2975</b>	<b>10.9541</b>	
Ferry	Facilities	29.2820	2.6255	8.97
	<b>Subtotal</b>	<b>29.2820</b>	<b>2.6255</b>	
Port	Facilities	1349.3930	132.1323	9.79
	<b>Subtotal</b>	<b>1349.3930</b>	<b>132.1323</b>	
Airport	Facilities	4844.7583	530.9521	10.96
	Runways	2114.4318	0.0000	0.00
	<b>Subtotal</b>	<b>6959.1901</b>	<b>530.9521</b>	
<b>Total</b>		<b>295,097.49</b>	<b>2,947.28</b>	

**Table 13: Utility System Economic Losses**

(Millions of dollars)

System	Component	Inventory Value	Economic Loss	Loss Ratio (%)
Potable Water	Pipelines	0.0000	0.0000	0.00
	Facilities	2082.5820	152.0100	7.30
	Distribution Lines	5307.8476	125.6598	2.37
	<b>Subtotal</b>	<b>7390.4296</b>	<b>277.6698</b>	
Waste Water	Pipelines	0.0000	0.0000	0.00
	Facilities	23385.4448	1441.5820	6.16
	Distribution Lines	3184.7085	63.1221	1.98
	<b>Subtotal</b>	<b>26570.1533</b>	<b>1504.7041</b>	
Natural Gas	Pipelines	19300.5635	0.0000	0.00
	Facilities	1599.3257	34.7978	2.18
	Distribution Lines	2123.1390	21.6252	1.02
	<b>Subtotal</b>	<b>23023.0282</b>	<b>56.4230</b>	
Oil Systems	Pipelines	0.0000	0.0000	0.00
	Facilities	8.0240	0.5801	7.23
	<b>Subtotal</b>	<b>8.0240</b>	<b>0.5801</b>	
Electrical Power	Facilities	137018.3076	11405.4718	8.32
	<b>Subtotal</b>	<b>137018.3076</b>	<b>11405.4718</b>	
Communication	Facilities	56.1680	3.8158	6.79
	<b>Subtotal</b>	<b>56.1680</b>	<b>3.8158</b>	
	<b>Total</b>	<b>194,066.11</b>	<b>13,248.66</b>	

---

## Appendix A: County Listing for the Region

Imperial,CA

Inyo,CA

Kern,CA

Kings,CA

Los Angeles,CA

Orange,CA

Riverside,CA

San Bernardino,CA

San Diego,CA

San Luis Obispo,CA

Santa Barbara,CA

Tulare,CA

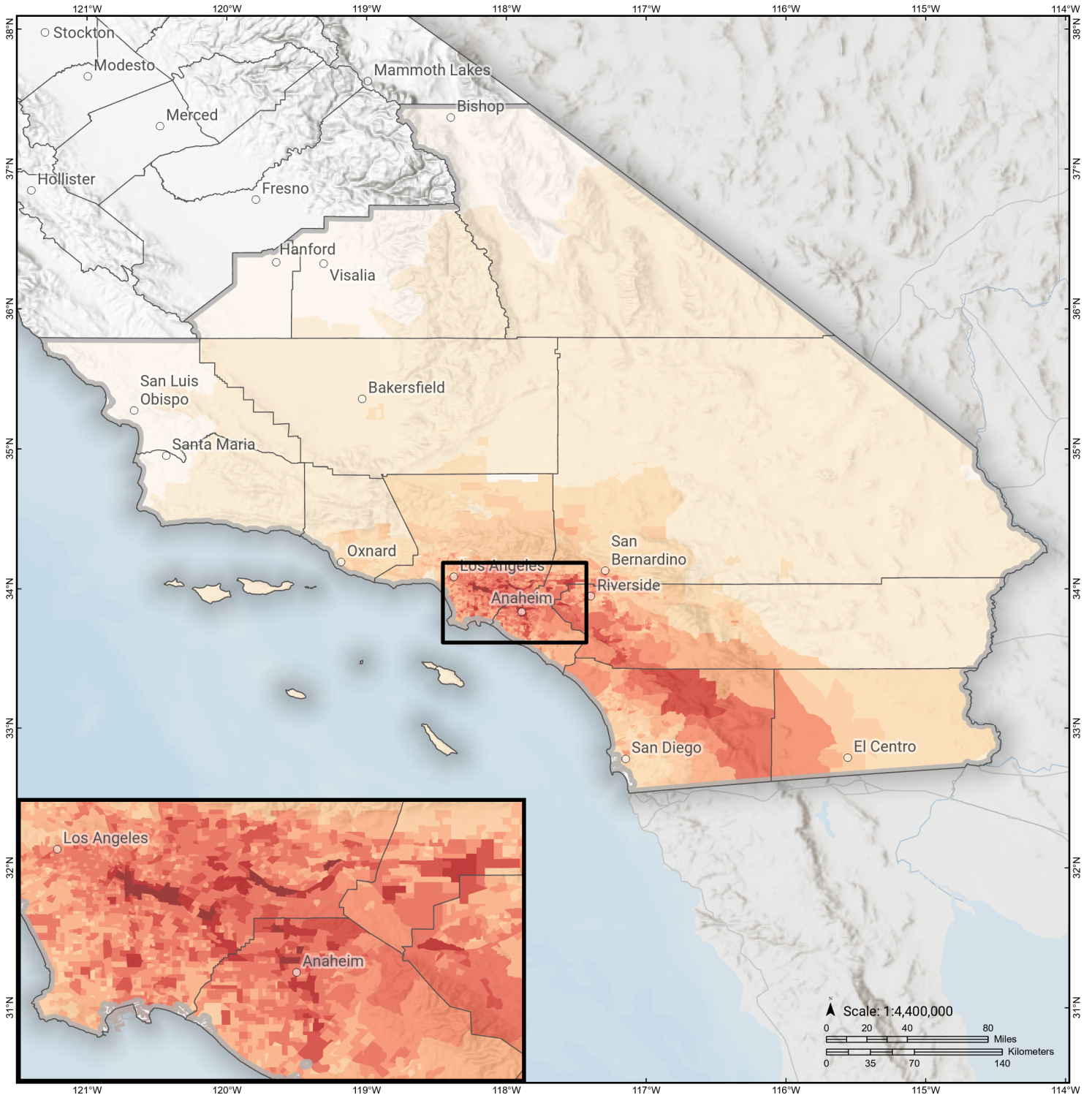
Ventura,CA

## Appendix B: Regional Population and Building Value Data

State	County Name	Population	Building Value (millions of dollars)		
			Residential	Non-Residential	Total
California	Imperial	179,702	20,945	12,603	33,548
	Inyo	19,016	2,951	1,970	4,921
	Kern	909,235	87,567	59,168	146,736
	Kings	152,486	13,719	7,861	21,581
	Los Angeles	10,014,009	950,697	566,995	1,517,692
	Orange	3,186,989	363,381	176,806	540,188
	Riverside	2,418,185	281,482	137,249	418,731
	San Bernardino	2,181,654	225,045	152,557	377,602
	San Diego	3,298,634	375,834	193,238	569,072
	San Luis Obispo	282,424	41,720	20,896	62,616
	Santa Barbara	448,229	49,971	28,481	78,452
	Tulare	473,117	43,262	31,210	74,472
	Ventura	843,843	99,299	52,072	151,371
<b>Total Region</b>		<b>24,407,523</b>	<b>2,555,873</b>	<b>1,441,106</b>	<b>3,996,982</b>

# Elsinore: J+T+s+GI+W

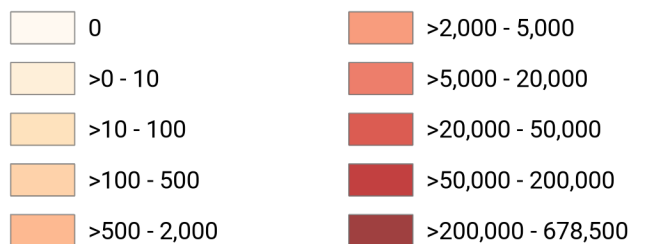
## Debris Generated by Census Tract



**Study Region:** Elsinore: J+T+s+GI+W  
**Scenario:** elsinorejtsgiwshaw09\_m7p72\_se

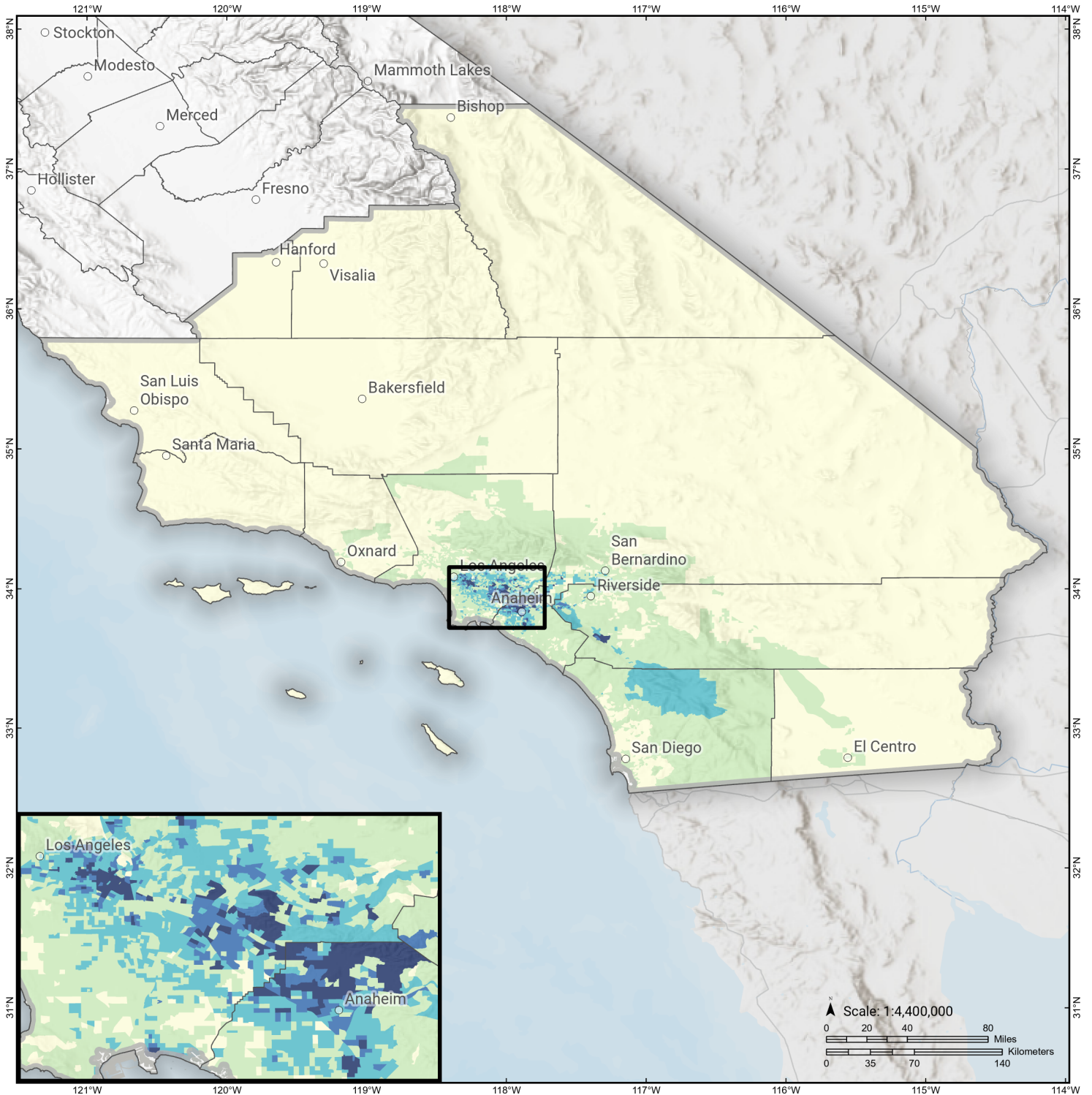


### Debris Generated (in tons)

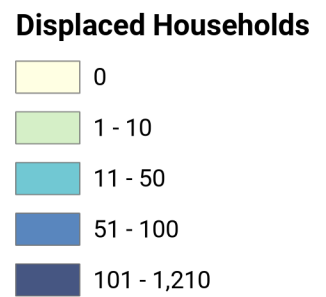


# Elsinore: J+T+s+GI+W

## Displaced Households by Census Tract

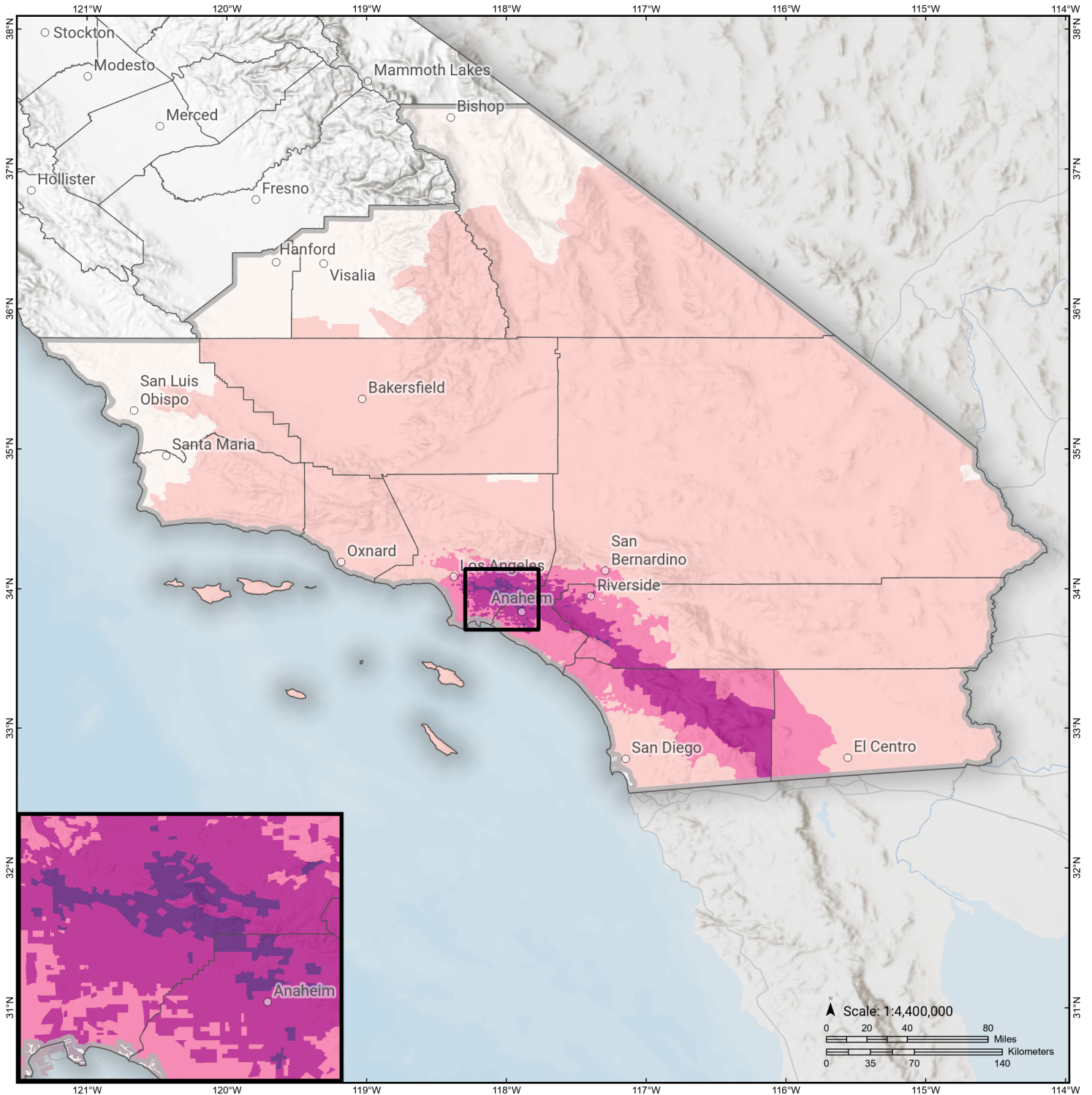


**Study Region:** Elsinore: J+T+s+GI+W  
**Scenario:** elsinorejtsgiwshaw09\_m7p72\_se



# Elsinore: J+T+s+GI+W

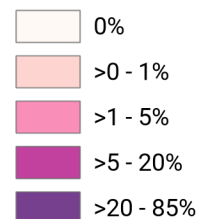
## Loss Ratio by Census Tract



**Study Region:** Elsinore: J+T+s+GI+W  
**Scenario:** elsinorejtsgiwshaw09\_m7p72\_se

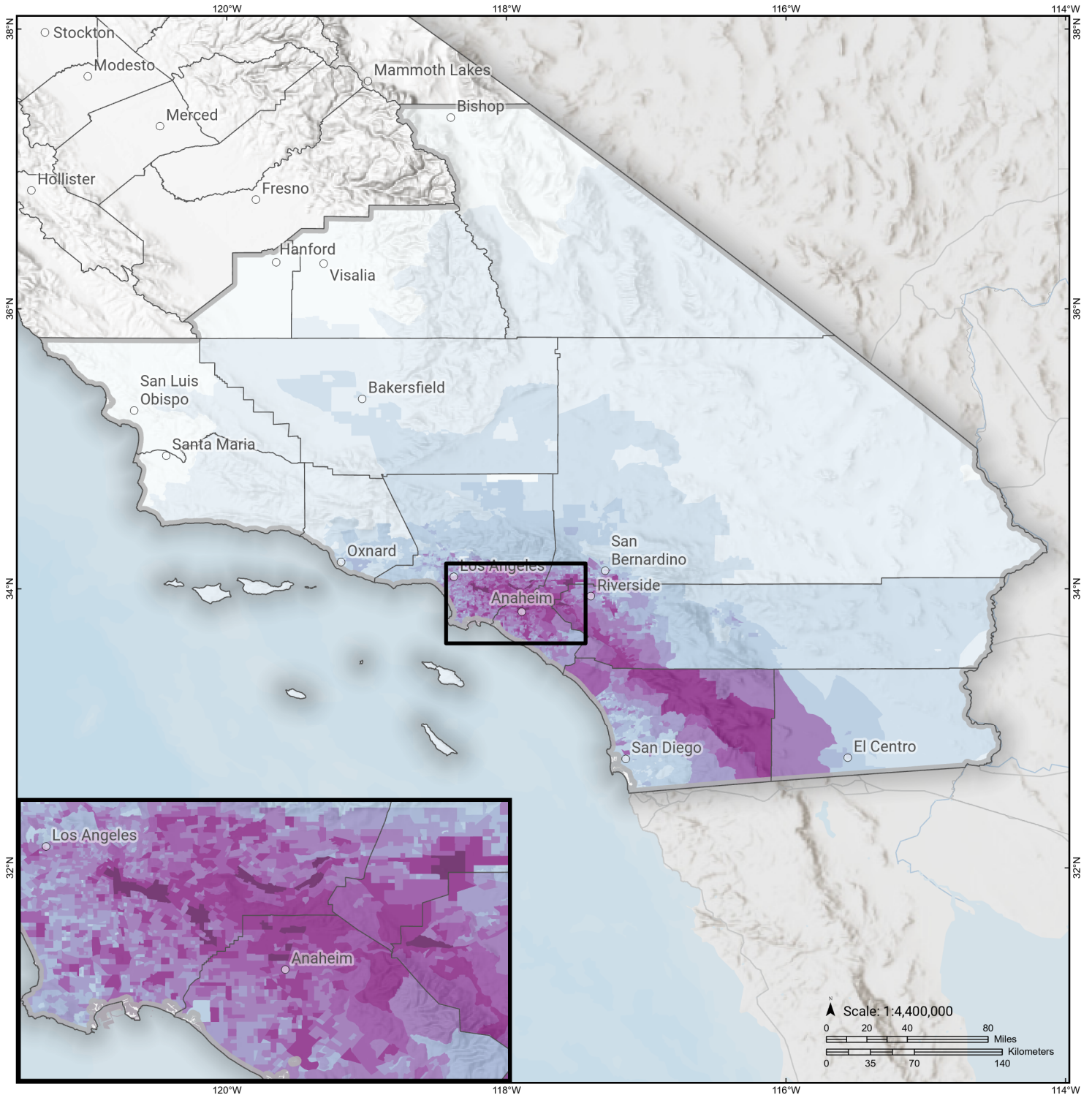


**Loss Ratio** (ratio of building related economic loss to exposed value of buildings)



# Elsinore: J+T+s+GI+W

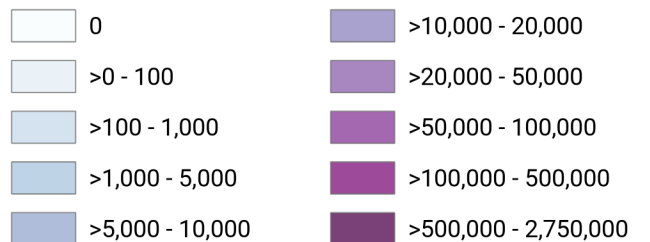
## Total Building Related Economic Loss by Census Tract



**Study Region:** Elsinore: J+T+s+GI+W  
**Scenario:** elsinorejtsgiwshaw09\_m7p72\_se



### Economic Loss (in thousands of USD \$)



## Building Damage by Count by General Occupancy

April 22, 2024

	# of Buildings					Total
	None	Slight	Moderate	Extensive	Complete	
<b>California</b>						
<b>Imperial</b>						
<i>Agriculture</i>	129	8	1	0	0	138
<i>Commercial</i>	3,445	187	15	0	0	3,646
<i>Education</i>	98	1	0	0	0	99
<i>Government</i>	194	7	1	0	0	202
<i>Industrial</i>	537	39	4	0	0	580
<i>Religion</i>	281	13	1	0	0	295
<i>Other Residential</i>	6,260	1,010	244	4	0	7,518
<i>Single Family</i>	34,099	1,302	4	0	0	35,405
<b>Inyo</b>						
<i>Agriculture</i>	32	0	0	0	0	32
<i>Commercial</i>	721	0	0	0	0	721
<i>Education</i>	41	0	0	0	0	41
<i>Government</i>	101	0	0	0	0	101
<i>Industrial</i>	257	0	0	0	0	257
<i>Religion</i>	57	0	0	0	0	57
<i>Other Residential</i>	4,050	0	0	0	0	4,050
<i>Single Family</i>	4,446	0	0	0	0	4,446
<b>Kern</b>						

	# of Buildings					Total
	None	Slight	Moderate	Extensive	Complete	
<i>Agriculture</i>	4,642	3	0	0	0	4,645
<i>Commercial</i>	15,556	11	0	0	0	15,567
<i>Education</i>	462	0	0	0	0	462
<i>Government</i>	443	0	0	0	0	443
<i>Industrial</i>	6,042	5	0	0	0	6,047
<i>Religion</i>	1,522	2	0	0	0	1,524
<i>Other Residential</i>	54,375	137	8	0	0	54,520
<i>Single Family</i>	205,105	34	0	0	0	205,139
<b>Kings</b>						
<i>Agriculture</i>	306	0	0	0	0	306
<i>Commercial</i>	2,318	0	0	0	0	2,318
<i>Education</i>	103	0	0	0	0	103
<i>Government</i>	72	0	0	0	0	72
<i>Industrial</i>	555	0	0	0	0	555
<i>Religion</i>	210	0	0	0	0	210
<i>Other Residential</i>	4,342	0	0	0	0	4,342
<i>Single Family</i>	36,245	0	0	0	0	36,245
<b>Los Angeles</b>						
<i>Agriculture</i>	1,280	388	222	103	39	2,032
<i>Commercial</i>	95,389	48,455	30,694	12,379	3,945	190,861
<i>Education</i>	3,892	951	460	144	38	5,486
<i>Government</i>	1,426	774	564	212	55	3,031
<i>Industrial</i>	25,345	11,946	9,538	4,699	1,597	53,126
<i>Religion</i>	4,770	2,801	1,966	839	275	10,651
<i>Other Residential</i>	269,100	158,533	39,931	10,418	3,690	481,671

	# of Buildings					Total
	None	Slight	Moderate	Extensive	Complete	
<b>Orange</b>						
<i>Single Family</i>	1,183,528	507,504	106,901	4,511	696	1,803,140
<i>Agriculture</i>	433	346	227	89	40	1,135
<i>Commercial</i>	27,098	21,284	13,493	4,636	1,829	68,340
<i>Education</i>	1,233	442	170	31	13	1,890
<i>Government</i>	244	187	151	51	17	650
<i>Industrial</i>	6,487	5,691	4,382	1,698	537	18,795
<i>Religion</i>	731	627	452	173	74	2,057
<i>Other Residential</i>	34,670	26,085	14,116	8,157	2,690	85,718
<i>Single Family</i>	378,186	278,360	47,704	1,609	353	706,212
<b>Riverside</b>						
<i>Agriculture</i>	1,298	319	84	10	2	1,713
<i>Commercial</i>	28,654	11,865	4,883	793	162	46,357
<i>Education</i>	679	236	68	7	1	990
<i>Government</i>	5,624	966	486	88	10	7,175
<i>Industrial</i>	3,516	2,032	756	93	11	6,409
<i>Religion</i>	802	341	143	27	6	1,319
<i>Other Residential</i>	56,853	29,123	24,792	8,673	3,358	122,799
<i>Single Family</i>	375,554	192,172	36,423	1,124	182	605,455
<b>San Bernardino</b>						
<i>Agriculture</i>	970	574	216	38	17	1,815
<i>Commercial</i>	30,504	7,450	1,798	246	42	40,041
<i>Education</i>	867	100	18	1	0	985
<i>Government</i>	995	197	43	3	0	1,238
<i>Industrial</i>	6,859	1,970	570	66	9	9,474

	# of Buildings					Total
	None	Slight	Moderate	Extensive	Complete	
<i>Religion</i>	1,825	369	108	15	2	2,320
<i>Other Residential</i>	74,476	16,320	6,193	1,631	201	98,821
<i>Single Family</i>	428,908	90,143	6,129	153	33	525,367
<b>San Diego</b>						
<i>Agriculture</i>	1,789	328	64	8	1	2,190
<i>Commercial</i>	57,187	4,614	530	34	4	62,369
<i>Education</i>	1,863	63	6	0	0	1,932
<i>Government</i>	17,611	2,665	615	33	0	20,924
<i>Industrial</i>	13,075	1,097	133	7	0	14,313
<i>Religion</i>	2,753	264	44	2	0	3,063
<i>Other Residential</i>	104,512	15,439	6,573	996	38	127,559
<i>Single Family</i>	707,064	54,133	1,692	114	18	763,020
<b>San Luis Obispo</b>						
<i>Agriculture</i>	421	0	0	0	0	421
<i>Commercial</i>	9,375	0	0	0	0	9,375
<i>Education</i>	182	0	0	0	0	182
<i>Government</i>	185	0	0	0	0	185
<i>Industrial</i>	2,556	0	0	0	0	2,556
<i>Religion</i>	360	0	0	0	0	360
<i>Other Residential</i>	20,216	0	0	0	0	20,216
<i>Single Family</i>	85,639	0	0	0	0	85,639
<b>Santa Barbara</b>						
<i>Agriculture</i>	464	0	0	0	0	464
<i>Commercial</i>	9,818	2	0	0	0	9,820
<i>Education</i>	299	0	0	0	0	299

	# of Buildings					Total
	None	Slight	Moderate	Extensive	Complete	
<i>Government</i>	239	0	0	0	0	239
<i>Industrial</i>	2,839	1	0	0	0	2,840
<i>Religion</i>	621	0	0	0	0	621
<i>Other Residential</i>	24,100	11	0	0	0	24,111
<i>Single Family</i>	98,981	1	0	0	0	98,982
<b>Tulare</b>						
<i>Agriculture</i>	3,555	0	0	0	0	3,555
<i>Commercial</i>	8,873	0	0	0	0	8,873
<i>Education</i>	269	0	0	0	0	269
<i>Government</i>	461	0	0	0	0	461
<i>Industrial</i>	2,148	0	0	0	0	2,148
<i>Religion</i>	827	0	0	0	0	827
<i>Other Residential</i>	20,022	0	0	0	0	20,022
<i>Single Family</i>	112,034	0	0	0	0	112,034
<b>Ventura</b>						
<i>Agriculture</i>	587	10	1	0	0	598
<i>Commercial</i>	14,721	216	15	0	0	14,953
<i>Education</i>	495	2	0	0	0	497
<i>Government</i>	987	13	1	0	0	1,001
<i>Industrial</i>	5,990	99	7	0	0	6,097
<i>Religion</i>	1,173	13	1	0	0	1,187
<i>Other Residential</i>	25,592	528	43	0	0	26,163
<i>Single Family</i>	202,285	1,682	1	0	0	203,968
<b>Total</b>	<b>5,001,410</b>	<b>1,502,492</b>	<b>363,685</b>	<b>63,918</b>	<b>19,988</b>	<b>6,951,492</b>

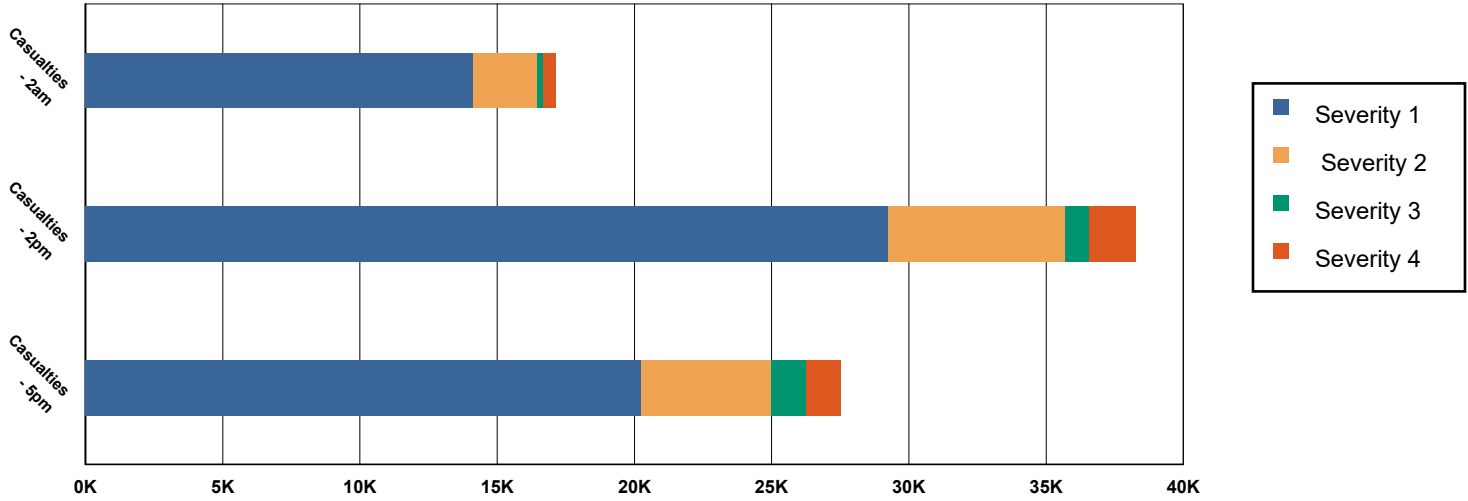
	# of Buildings					Total
	None	Slight	Moderate	Extensive	Complete	
<b>Region Total</b>	<b>5,001,410</b>	<b>1,502,492</b>	<b>363,685</b>	<b>63,918</b>	<b>19,988</b>	<b>6,951,492</b>

*Totals only reflect data for those census tracts/blocks included in the user's study region and will reflect the entire county/state only if all of the census blocks for that county/states were selected at the time of study region creation.*

## Casualties Summary Report

April 22, 2024

### Region Total Casualties



### Injury Severity Level

Severity 1      Severity 2      Severity 3      Severity 4      Total

#### California

##### Imperial

##### Casualties - 2am

	Severity 1	Severity 2	Severity 3	Severity 4	Total
Commercial	0	0	0	0	0
Other-Residential	2	0	0	0	3
Educational	0	0	0	0	0
Single Family	2	0	0	0	2
Commuting	0	0	0	0	0
Hotels	0	0	0	0	0
Industrial	0	0	0	0	0
<b>Total Casualties - 2am</b>	<b>5</b>	<b>0</b>	<b>0</b>	<b>0</b>	<b>5</b>

##### Casualties - 2pm

Educational	1	0	0	0	1
Industrial	0	0	0	0	0
Hotels	0	0	0	0	0
Other-Residential	1	0	0	0	1
Single Family	1	0	0	0	1
Commercial	3	0	0	0	3
Commuting	0	0	0	0	0

	Injury Severity Level				Total
	Severity 1	Severity 2	Severity 3	Severity 4	
<b>California</b>					
<b>Imperial</b>					
<b>Total Casualties - 2pm</b>	<b>5</b>	<b>0</b>	<b>0</b>	<b>0</b>	<b>6</b>
<b>Casualties - 5pm</b>					
Single Family	1	0	0	0	1
Other-Residential	1	0	0	0	1
Commercial	2	0	0	0	2
Commuting	0	0	0	0	0
Educational	0	0	0	0	0
Hotels	0	0	0	0	0
Industrial	0	0	0	0	0
<b>Total Casualties - 5pm</b>	<b>4</b>	<b>0</b>	<b>0</b>	<b>0</b>	<b>4</b>
<b>Inyo</b>					
<b>Casualties - 2am</b>					
Single Family	0	0	0	0	0
Commercial	0	0	0	0	0
Commuting	0	0	0	0	0
Educational	0	0	0	0	0
Hotels	0	0	0	0	0
Other-Residential	0	0	0	0	0
Industrial	0	0	0	0	0
<b>Total Casualties - 2am</b>	<b>0</b>	<b>0</b>	<b>0</b>	<b>0</b>	<b>0</b>
<b>Casualties - 2pm</b>					
Industrial	0	0	0	0	0
Hotels	0	0	0	0	0
Commercial	0	0	0	0	0
Other-Residential	0	0	0	0	0
Single Family	0	0	0	0	0
Commuting	0	0	0	0	0
Educational	0	0	0	0	0
<b>Total Casualties - 2pm</b>	<b>0</b>	<b>0</b>	<b>0</b>	<b>0</b>	<b>0</b>
<b>Casualties - 5pm</b>					
Other-Residential	0	0	0	0	0
Single Family	0	0	0	0	0
Commercial	0	0	0	0	0
Educational	0	0	0	0	0
Hotels	0	0	0	0	0
Commuting	0	0	0	0	0
Industrial	0	0	0	0	0
<b>Total Casualties - 5pm</b>	<b>0</b>	<b>0</b>	<b>0</b>	<b>0</b>	<b>0</b>
<b>Kern</b>					
<b>Casualties - 2am</b>					
Commercial	0	0	0	0	0

	Injury Severity Level				Total
	Severity 1	Severity 2	Severity 3	Severity 4	
<b>California</b>					
<b>Kern</b>					
<b>Casualties - 2am</b>					
<i>Commuting</i>	0	0	0	0	0
<i>Educational</i>	0	0	0	0	0
<i>Single Family</i>	0	0	0	0	0
<i>Other-Residential</i>	0	0	0	0	0
<i>Hotels</i>	0	0	0	0	0
<i>Industrial</i>	0	0	0	0	0
<b>Total Casualties - 2am</b>	<b>0</b>	<b>0</b>	<b>0</b>	<b>0</b>	<b>0</b>
<b>Casualties - 2pm</b>					
<i>Educational</i>	0	0	0	0	0
<i>Commuting</i>	0	0	0	0	0
<i>Single Family</i>	0	0	0	0	0
<i>Hotels</i>	0	0	0	0	0
<i>Other-Residential</i>	0	0	0	0	0
<i>Commercial</i>	0	0	0	0	0
<i>Industrial</i>	0	0	0	0	0
<b>Total Casualties - 2pm</b>	<b>0</b>	<b>0</b>	<b>0</b>	<b>0</b>	<b>0</b>
<b>Casualties - 5pm</b>					
<i>Single Family</i>	0	0	0	0	0
<i>Commercial</i>	0	0	0	0	0
<i>Other-Residential</i>	0	0	0	0	0
<i>Commuting</i>	0	0	0	0	0
<i>Educational</i>	0	0	0	0	0
<i>Hotels</i>	0	0	0	0	0
<i>Industrial</i>	0	0	0	0	0
<b>Total Casualties - 5pm</b>	<b>0</b>	<b>0</b>	<b>0</b>	<b>0</b>	<b>0</b>
<b>Kings</b>					
<b>Casualties - 2am</b>					
<i>Industrial</i>	0	0	0	0	0
<i>Other-Residential</i>	0	0	0	0	0
<i>Educational</i>	0	0	0	0	0
<i>Commuting</i>	0	0	0	0	0
<i>Commercial</i>	0	0	0	0	0
<i>Single Family</i>	0	0	0	0	0
<i>Hotels</i>	0	0	0	0	0
<b>Total Casualties - 2am</b>	<b>0</b>	<b>0</b>	<b>0</b>	<b>0</b>	<b>0</b>
<b>Casualties - 2pm</b>					
<i>Single Family</i>	0	0	0	0	0
<i>Other-Residential</i>	0	0	0	0	0
<i>Commercial</i>	0	0	0	0	0
<i>Educational</i>	0	0	0	0	0
<i>Commuting</i>	0	0	0	0	0

	Injury Severity Level				Total
	Severity 1	Severity 2	Severity 3	Severity 4	
<b>California</b>					
<b>Kings</b>					
<b>Casualties - 2pm</b>					
<i>Hotels</i>	0	0	0	0	0
<i>Industrial</i>	0	0	0	0	0
<b>Total Casualties - 2pm</b>	<b>0</b>	<b>0</b>	<b>0</b>	<b>0</b>	<b>0</b>
<b>Casualties - 5pm</b>					
<i>Single Family</i>	0	0	0	0	0
<i>Commercial</i>	0	0	0	0	0
<i>Commuting</i>	0	0	0	0	0
<i>Other-Residential</i>	0	0	0	0	0
<i>Educational</i>	0	0	0	0	0
<i>Hotels</i>	0	0	0	0	0
<i>Industrial</i>	0	0	0	0	0
<b>Total Casualties - 5pm</b>	<b>0</b>	<b>0</b>	<b>0</b>	<b>0</b>	<b>0</b>
<b>Los Angeles</b>					
<b>Casualties - 2am</b>					
<i>Hotels</i>	5	1	0	0	6
<i>Industrial</i>	213	51	7	13	285
<i>Educational</i>	0	0	0	0	0
<i>Single Family</i>	2,278	227	16	31	2,551
<i>Commuting</i>	1	1	2	0	4
<i>Other-Residential</i>	5,834	1,149	138	270	7,391
<i>Commercial</i>	161	37	5	10	212
<b>Total Casualties - 2am</b>	<b>8,492</b>	<b>1,466</b>	<b>168</b>	<b>324</b>	<b>10,449</b>
<b>Casualties - 2pm</b>					
<i>Industrial</i>	1,573	379	51	99	2,102
<i>Other-Residential</i>	1,850	376	48	89	2,363
<i>Commercial</i>	11,197	2,605	357	692	14,851
<i>Commuting</i>	7	11	17	3	39
<i>Educational</i>	4,083	924	129	246	5,382
<i>Single Family</i>	653	69	5	10	736
<i>Hotels</i>	1	0	0	0	1
<b>Total Casualties - 2pm</b>	<b>19,365</b>	<b>4,362</b>	<b>607</b>	<b>1,140</b>	<b>25,474</b>
<b>Casualties - 5pm</b>					
<i>Other-Residential</i>	2,274	460	58	108	2,901
<i>Industrial</i>	983	237	32	62	1,314
<i>Commuting</i>	145	206	332	65	748
<i>Single Family</i>	859	90	7	13	968
<i>Commercial</i>	8,147	1,923	269	513	10,852
<i>Hotels</i>	2	0	0	0	2
<i>Educational</i>	900	217	32	61	1,210
<b>Total Casualties - 5pm</b>	<b>13,309</b>	<b>3,132</b>	<b>731</b>	<b>822</b>	<b>17,995</b>

## Injury Severity Level

Severity 1      Severity 2      Severity 3      Severity 4      Total

### California

#### Orange

##### Casualties - 2am

	Severity 1	Severity 2	Severity 3	Severity 4	Total
<i>Hotels</i>	2	0	0	0	2
<i>Commuting</i>	1	1	1	0	3
<i>Educational</i>	0	0	0	0	0
<i>Industrial</i>	99	24	3	6	133
<i>Other-Residential</i>	1,821	373	39	74	2,308
<i>Commercial</i>	59	15	2	4	80
<i>Single Family</i>	1,064	105	9	17	1,196
<b>Total Casualties - 2am</b>	<b>3,045</b>	<b>518</b>	<b>55</b>	<b>103</b>	<b>3,721</b>

##### Casualties - 2pm

<i>Industrial</i>	728	174	24	47	974
<i>Other-Residential</i>	504	104	11	21	640
<i>Commuting</i>	5	7	11	2	24
<i>Commercial</i>	3,880	983	150	293	5,306
<i>Single Family</i>	288	30	3	5	326
<i>Hotels</i>	0	0	0	0	0
<i>Educational</i>	1,965	450	64	125	2,604
<b>Total Casualties - 2pm</b>	<b>7,370</b>	<b>1,747</b>	<b>263</b>	<b>494</b>	<b>9,874</b>

##### Casualties - 5pm

<i>Hotels</i>	0	0	0	0	1
<i>Educational</i>	491	110	16	30	647
<i>Commuting</i>	95	138	220	43	496
<i>Single Family</i>	399	42	4	7	451
<i>Commercial</i>	2,819	716	110	211	3,856
<i>Other-Residential</i>	681	141	15	28	866
<i>Industrial</i>	455	109	15	30	609
<b>Total Casualties - 5pm</b>	<b>4,941</b>	<b>1,255</b>	<b>379</b>	<b>350</b>	<b>6,926</b>

#### Riverside

##### Casualties - 2am

<i>Industrial</i>	9	1	0	0	11
<i>Commercial</i>	10	2	0	0	12
<i>Other-Residential</i>	1,167	215	12	20	1,414
<i>Educational</i>	0	0	0	0	0
<i>Commuting</i>	0	1	1	0	2
<i>Single Family</i>	701	60	4	7	772
<i>Hotels</i>	0	0	0	0	0
<b>Total Casualties - 2am</b>	<b>1,888</b>	<b>279</b>	<b>17</b>	<b>28</b>	<b>2,211</b>

##### Casualties - 2pm

<i>Commercial</i>	680	113	12	23	829
<i>Other-Residential</i>	344	62	4	6	415
<i>Educational</i>	207	25	2	3	236
<i>Single Family</i>	204	19	1	2	227

## Injury Severity Level

Severity 1      Severity 2      Severity 3      Severity 4      Total

### California

#### Riverside

##### Casualties - 2pm

<i>Commuting</i>	3	5	7	1	16
<i>Hotels</i>	0	0	0	0	0
<i>Industrial</i>	67	10	1	2	80
<b>Total Casualties - 2pm</b>	<b>1,505</b>	<b>233</b>	<b>26</b>	<b>38</b>	<b>1,802</b>

##### Casualties - 5pm

<i>Industrial</i>	42	6	1	1	50
<i>Other-Residential</i>	419	77	4	7	508
<i>Educational</i>	14	1	0	0	15
<i>Single Family</i>	262	24	2	3	290
<i>Hotels</i>	0	0	0	0	0
<i>Commercial</i>	489	80	8	16	593
<i>Commuting</i>	53	85	127	25	291
<b>Total Casualties - 5pm</b>	<b>1,279</b>	<b>273</b>	<b>142</b>	<b>53</b>	<b>1,747</b>

#### San Bernardino

##### Casualties - 2am

<i>Hotels</i>	0	0	0	0	0
<i>Single Family</i>	213	12	1	2	227
<i>Commercial</i>	4	0	0	0	4
<i>Commuting</i>	0	0	0	0	0
<i>Educational</i>	0	0	0	0	0
<i>Other-Residential</i>	244	30	2	3	279
<i>Industrial</i>	4	1	0	0	5
<b>Total Casualties - 2am</b>	<b>465</b>	<b>43</b>	<b>3</b>	<b>5</b>	<b>515</b>

##### Casualties - 2pm

<i>Industrial</i>	31	4	0	1	36
<i>Hotels</i>	0	0	0	0	0
<i>Commuting</i>	0	1	1	0	2
<i>Other-Residential</i>	68	9	1	1	78
<i>Educational</i>	60	5	0	0	66
<i>Single Family</i>	57	3	0	0	61
<i>Commercial</i>	245	36	4	7	291
<b>Total Casualties - 2pm</b>	<b>462</b>	<b>57</b>	<b>6</b>	<b>9</b>	<b>534</b>

##### Casualties - 5pm

<i>Other-Residential</i>	89	11	1	1	102
<i>Commercial</i>	181	27	3	5	215
<i>Single Family</i>	78	5	0	1	84
<i>Educational</i>	5	0	0	0	5
<i>Hotels</i>	0	0	0	0	0
<i>Commuting</i>	8	12	19	4	44
<i>Industrial</i>	19	3	0	0	22

	Injury Severity Level				Total
	Severity 1	Severity 2	Severity 3	Severity 4	
<b>California</b>					
<b>San Bernardino</b>					
<b>Total Casualties - 5pm</b>	<b>381</b>	<b>58</b>	<b>23</b>	<b>11</b>	<b>473</b>
<b>San Diego</b>					
<b>Casualties - 2am</b>					
<i>Commercial</i>	7	1	0	0	7
<i>Other-Residential</i>	117	10	0	0	127
<i>Commuting</i>	0	0	0	0	0
<i>Educational</i>	0	0	0	0	0
<i>Single Family</i>	95	3	0	0	98
<i>Industrial</i>	1	0	0	0	1
<i>Hotels</i>	0	0	0	0	0
<b>Total Casualties - 2am</b>	<b>220</b>	<b>13</b>	<b>0</b>	<b>1</b>	<b>234</b>
<b>Casualties - 2pm</b>					
<i>Hotels</i>	0	0	0	0	0
<i>Educational</i>	30	2	0	0	32
<i>Commuting</i>	0	0	0	0	0
<i>Commercial</i>	414	33	2	3	452
<i>Other-Residential</i>	39	3	0	0	43
<i>Single Family</i>	30	1	0	0	32
<i>Industrial</i>	9	0	0	0	9
<b>Total Casualties - 2pm</b>	<b>522</b>	<b>40</b>	<b>2</b>	<b>4</b>	<b>569</b>
<b>Casualties - 5pm</b>					
<i>Other-Residential</i>	42	3	0	0	45
<i>Commercial</i>	246	20	1	2	269
<i>Commuting</i>	2	2	4	1	9
<i>Single Family</i>	34	1	0	0	36
<i>Educational</i>	5	0	0	0	5
<i>Hotels</i>	0	0	0	0	0
<i>Industrial</i>	6	0	0	0	6
<b>Total Casualties - 5pm</b>	<b>335</b>	<b>27</b>	<b>5</b>	<b>3</b>	<b>370</b>
<b>San Luis Obispo</b>					
<b>Casualties - 2am</b>					
<i>Commercial</i>	0	0	0	0	0
<i>Other-Residential</i>	0	0	0	0	0
<i>Industrial</i>	0	0	0	0	0
<i>Single Family</i>	0	0	0	0	0
<i>Commuting</i>	0	0	0	0	0
<i>Educational</i>	0	0	0	0	0
<i>Hotels</i>	0	0	0	0	0
<b>Total Casualties - 2am</b>	<b>0</b>	<b>0</b>	<b>0</b>	<b>0</b>	<b>0</b>
<b>Casualties - 2pm</b>					
<i>Single Family</i>	0	0	0	0	0

	Injury Severity Level				Total
	Severity 1	Severity 2	Severity 3	Severity 4	
<b>California</b>					
<b>San Luis Obispo</b>					
<b>Casualties - 2pm</b>					
<i>Educational</i>	0	0	0	0	0
<i>Other-Residential</i>	0	0	0	0	0
<i>Hotels</i>	0	0	0	0	0
<i>Commuting</i>	0	0	0	0	0
<i>Commercial</i>	0	0	0	0	0
<i>Industrial</i>	0	0	0	0	0
<b>Total Casualties - 2pm</b>	<b>0</b>	<b>0</b>	<b>0</b>	<b>0</b>	<b>0</b>
<b>Casualties - 5pm</b>					
<i>Industrial</i>	0	0	0	0	0
<i>Other-Residential</i>	0	0	0	0	0
<i>Commuting</i>	0	0	0	0	0
<i>Single Family</i>	0	0	0	0	0
<i>Commercial</i>	0	0	0	0	0
<i>Hotels</i>	0	0	0	0	0
<i>Educational</i>	0	0	0	0	0
<b>Total Casualties - 5pm</b>	<b>0</b>	<b>0</b>	<b>0</b>	<b>0</b>	<b>0</b>
<b>Santa Barbara</b>					
<b>Casualties - 2am</b>					
<i>Industrial</i>	0	0	0	0	0
<i>Commercial</i>	0	0	0	0	0
<i>Other-Residential</i>	0	0	0	0	0
<i>Commuting</i>	0	0	0	0	0
<i>Educational</i>	0	0	0	0	0
<i>Single Family</i>	0	0	0	0	0
<i>Hotels</i>	0	0	0	0	0
<b>Total Casualties - 2am</b>	<b>0</b>	<b>0</b>	<b>0</b>	<b>0</b>	<b>0</b>
<b>Casualties - 2pm</b>					
<i>Commercial</i>	0	0	0	0	0
<i>Single Family</i>	0	0	0	0	0
<i>Other-Residential</i>	0	0	0	0	0
<i>Commuting</i>	0	0	0	0	0
<i>Educational</i>	0	0	0	0	0
<i>Hotels</i>	0	0	0	0	0
<i>Industrial</i>	0	0	0	0	0
<b>Total Casualties - 2pm</b>	<b>0</b>	<b>0</b>	<b>0</b>	<b>0</b>	<b>0</b>
<b>Casualties - 5pm</b>					
<i>Other-Residential</i>	0	0	0	0	0
<i>Single Family</i>	0	0	0	0	0
<i>Commercial</i>	0	0	0	0	0
<i>Commuting</i>	0	0	0	0	0
<i>Educational</i>	0	0	0	0	0

	Injury Severity Level				Total
	Severity 1	Severity 2	Severity 3	Severity 4	
<b>California</b>					
<b>Santa Barbara</b>					
<b>Casualties - 5pm</b>					
<i>Industrial</i>	0	0	0	0	0
<i>Hotels</i>	0	0	0	0	0
<b>Total Casualties - 5pm</b>	<b>0</b>	<b>0</b>	<b>0</b>	<b>0</b>	<b>0</b>
<b>Tulare</b>					
<b>Casualties - 2am</b>					
<i>Commercial</i>	0	0	0	0	0
<i>Commuting</i>	0	0	0	0	0
<i>Single Family</i>	0	0	0	0	0
<i>Educational</i>	0	0	0	0	0
<i>Hotels</i>	0	0	0	0	0
<i>Industrial</i>	0	0	0	0	0
<i>Other-Residential</i>	0	0	0	0	0
<b>Total Casualties - 2am</b>	<b>0</b>	<b>0</b>	<b>0</b>	<b>0</b>	<b>0</b>
<b>Casualties - 2pm</b>					
<i>Industrial</i>	0	0	0	0	0
<i>Hotels</i>	0	0	0	0	0
<i>Commercial</i>	0	0	0	0	0
<i>Other-Residential</i>	0	0	0	0	0
<i>Educational</i>	0	0	0	0	0
<i>Commuting</i>	0	0	0	0	0
<i>Single Family</i>	0	0	0	0	0
<b>Total Casualties - 2pm</b>	<b>0</b>	<b>0</b>	<b>0</b>	<b>0</b>	<b>0</b>
<b>Casualties - 5pm</b>					
<i>Other-Residential</i>	0	0	0	0	0
<i>Commercial</i>	0	0	0	0	0
<i>Single Family</i>	0	0	0	0	0
<i>Hotels</i>	0	0	0	0	0
<i>Commuting</i>	0	0	0	0	0
<i>Educational</i>	0	0	0	0	0
<i>Industrial</i>	0	0	0	0	0
<b>Total Casualties - 5pm</b>	<b>0</b>	<b>0</b>	<b>0</b>	<b>0</b>	<b>0</b>
<b>Ventura</b>					
<b>Casualties - 2am</b>					
<i>Educational</i>	0	0	0	0	0
<i>Commuting</i>	0	0	0	0	0
<i>Single Family</i>	3	0	0	0	3
<i>Hotels</i>	0	0	0	0	0
<i>Industrial</i>	0	0	0	0	0
<i>Commercial</i>	0	0	0	0	0
<i>Other-Residential</i>	2	0	0	0	2

	Injury Severity Level				Total
	Severity 1	Severity 2	Severity 3	Severity 4	
<b>California</b>					
<b>Ventura</b>					
<b>Total Casualties - 2am</b>	<b>5</b>	<b>0</b>	<b>0</b>	<b>0</b>	<b>5</b>
<b>Casualties - 2pm</b>					
<i>Industrial</i>	1	0	0	0	1
<i>Educational</i>	1	0	0	0	1
<i>Commuting</i>	0	0	0	0	0
<i>Hotels</i>	0	0	0	0	0
<i>Other-Residential</i>	1	0	0	0	1
<i>Commercial</i>	3	0	0	0	3
<i>Single Family</i>	1	0	0	0	1
<b>Total Casualties - 2pm</b>	<b>6</b>	<b>0</b>	<b>0</b>	<b>0</b>	<b>6</b>
<b>Casualties - 5pm</b>					
<i>Commuting</i>	0	0	0	0	0
<i>Other-Residential</i>	1	0	0	0	1
<i>Commercial</i>	2	0	0	0	2
<i>Hotels</i>	0	0	0	0	0
<i>Educational</i>	0	0	0	0	0
<i>Single Family</i>	1	0	0	0	1
<i>Industrial</i>	0	0	0	0	0
<b>Total Casualties - 5pm</b>	<b>4</b>	<b>0</b>	<b>0</b>	<b>0</b>	<b>4</b>
<b>Region Total</b>	<b>NA</b>	<b>NA</b>	<b>NA</b>	<b>NA</b>	<b>NA</b>

Totals only reflect data for those census tracts/blocks included in the user's study region and will reflect the entire county/state only if all of the census blocks for that county/states were selected at the time of study region creation.

## Debris Summary Report

April 22, 2024

All values are in thousands of tons.

	Brick, Wood & Others	Concrete & Steel	Total
<b>California</b>			
Imperial	5	5	10
Inyo	0	0	0
Kern	0	0	0
Kings	0	0	0
Los Angeles	6,349	10,968	17,316
Orange	1,733	4,741	6,474
Riverside	1,152	834	1,986
San Bernardino	459	328	788
San Diego	161	114	275
San Luis Obispo	0	0	0
Santa Barbara	0	0	0
Tulare	0	0	0
Ventura	4	3	7
<b>Total</b>	<b>9,864</b>	<b>16,992</b>	<b>26,855</b>
<b>Region Total</b>	<b>9,864</b>	<b>16,992</b>	<b>26,855</b>

---

---

**Brick, Wood & Others**

**Concrete & Steel**

**Total**

---

*Totals only reflect data for those census tracts/blocks included in the user's study region and will reflect the entire county/state only if all of the census blocks for that county/states were selected at the time of study region creation.*

---

## Direct Economic Losses For Buildings

April 22, 2024

All values are in thousands of dollars

	Capital Stock Losses				Loss Ratio %	Income Losses				Total Loss
	Cost Structural Damage	Cost Non-struct. Damage	Cost Contents Damage	Inventory Loss		Relocation Loss	Capital Related Loss	Wages Losses	Rental Income Loss	
<b>California</b>										
Inyo	0	1	0	0	0.00	0	0	0	0	1
Imperial	11,145	76,275	38,458	9,188	0.26	1,682	1,164	1,240	1,315	140,468
San Bernardino	771,058	4,278,225	2,067,989	296,951	1.34	276,212	107,250	145,855	182,665	8,126,204
Riverside	1,779,363	10,058,815	4,101,316	250,812	2.83	850,456	308,308	346,072	400,676	18,095,818
Kings	0	0	0	0	0.00	0	0	0	0	0
San Luis Obispo	0	0	0	0	0.00	0	0	0	0	1
Tulare	0	2	1	1	0.00	0	0	0	0	3
Santa Barbara	36	1,298	784	104	0.00	4	4	5	9	2,245
Kern	370	5,962	3,303	505	0.00	47	33	39	60	10,319

	Capital Stock Losses				Loss Ratio %	Income Losses				Total Loss
	Cost Structural Damage	Cost Non-struct. Damage	Cost Contents Damage	Inventory Loss		Relocation Loss	Capital Related Loss	Wages Losses	Rental Income Loss	
Ventura	7,901	101,905	53,085	6,595	0.07	925	1,263	1,436	1,352	174,461
Orange	4,506,162	18,910,954	7,618,240	705,446	4.33	2,236,307	1,319,103	1,586,908	1,109,559	37,992,679
San Diego	291,205	2,440,109	1,204,202	89,726	0.48	93,615	30,493	63,305	60,509	4,273,165
Los Angeles	11,863,182	43,489,821	18,918,710	2,056,760	3.65	5,720,815	3,275,008	4,268,000	3,198,987	92,791,284
<b>Total</b>	<b>19,230,421</b>	<b>79,363,368</b>	<b>34,006,090</b>	<b>3,416,088</b>	<b>1.00</b>	<b>9,180,063</b>	<b>5,042,626</b>	<b>6,412,860</b>	<b>4,955,132</b>	<b>161,606,648</b>
<b>Region Total</b>	<b>19,230,421</b>	<b>79,363,368</b>	<b>34,006,090</b>	<b>3,416,088</b>	<b>1.00</b>	<b>9,180,063</b>	<b>5,042,626</b>	<b>6,412,860</b>	<b>4,955,132</b>	<b>161,606,648</b>

Totals only reflect data for those census tracts/blocks included in the user's study region and will reflect the entire county/state only if all of the census blocks for that county/states were selected at the time of study region creation.

## Direct Economic Loss For Transportation

April 22, 2024

All values are in thousands of dollars

	Highway	Railway	Light Rail	Bus Facility	Ports	Ferries	Airport	Total
<b>California</b>								
<b>Imperial</b>								
Segments	0	0	0					0
Bridges	796	208	0					1,004
Tunnels	0	0	0					0
Facilities		419	0	0	0	0	2,973	3,392
<b>Total</b>	<b>796</b>	<b>628</b>	<b>0</b>	<b>0</b>	<b>0</b>	<b>0</b>	<b>2,973</b>	<b>4,397</b>
<b>Inyo</b>								
Segments	0	0	0					0
Bridges	0	0	0					0
Tunnels	0	0	0					0
Facilities		0	0	0	0	0	57	57
<b>Total</b>	<b>0</b>	<b>0</b>	<b>0</b>	<b>0</b>	<b>0</b>	<b>0</b>	<b>57</b>	<b>57</b>
<b>Kern</b>								
Segments	0	0	0					0
Bridges	70	0	0					71
Tunnels	0	0	0					0
Facilities		180	0	83	0	0	1,416	1,678

	Highway	Railway	Light Rail	Bus Facility	Ports	Ferries	Airport	Total
<b>Total</b>	<b>70</b>	<b>180</b>	<b>0</b>	<b>83</b>	<b>0</b>	<b>0</b>	<b>1,416</b>	<b>1,749</b>
<b>Kings</b>								
Segments	0	0	0					0
Bridges	0	0	0					0
Tunnels	0	0	0					0
Facilities		14	0	5	0	0	40	59
<b>Total</b>	<b>0</b>	<b>14</b>	<b>0</b>	<b>5</b>	<b>0</b>	<b>0</b>	<b>40</b>	<b>59</b>
<b>Los Angeles</b>								
Segments	0	0	0					0
Bridges	842,966	75,256	129					918,351
Tunnels	2,914	0	0					2,914
Facilities		27,735	437,044	6,589	96,151	1,492	316,048	885,060
<b>Total</b>	<b>845,880</b>	<b>102,992</b>	<b>437,173</b>	<b>6,589</b>	<b>96,151</b>	<b>1,492</b>	<b>316,048</b>	<b>1,806,325</b>
<b>Orange</b>								
Segments	0	0	0					0
Bridges	426,269	27,200	0					453,469
Tunnels	1,060	0	0					1,060
Facilities		4,832	0	0	8,593	738	67,891	82,054
<b>Total</b>	<b>427,329</b>	<b>32,032</b>	<b>0</b>	<b>0</b>	<b>8,593</b>	<b>738</b>	<b>67,891</b>	<b>536,583</b>
<b>Riverside</b>								
Segments	0	0	0					0
Bridges	262,959	7,739	0					270,698
Tunnels	0	0	0					0
Facilities		2,593	0	3,404	0	0	23,597	29,594

	Highway	Railway	Light Rail	Bus Facility	Ports	Ferries	Airport	Total
<b>Total</b>	<b>262,959</b>	<b>10,332</b>	<b>0</b>	<b>3,404</b>	<b>0</b>	<b>0</b>	<b>23,597</b>	<b>300,292</b>
<b>San Bernardino</b>								
Segments	0	0	0					0
Bridges	55,264	2,140	0					57,404
Tunnels	2	0	0					2
Facilities		5,610	0	655	0	0	45,261	51,526
<b>Total</b>	<b>55,266</b>	<b>7,749</b>	<b>0</b>	<b>655</b>	<b>0</b>	<b>0</b>	<b>45,261</b>	<b>108,932</b>
<b>San Diego</b>								
Segments	0	0	0					0
Bridges	11,583	159	0					11,742
Tunnels	21	0	0					21
Facilities		1,920	72,665	89	24,438	301	70,903	170,316
<b>Total</b>	<b>11,604</b>	<b>2,078</b>	<b>72,665</b>	<b>89</b>	<b>24,438</b>	<b>301</b>	<b>70,903</b>	<b>182,079</b>
<b>San Luis Obispo</b>								
Segments	0	0	0					0
Bridges	1	0	0					1
Tunnels	0	0	0					0
Facilities		9	0	5	8	0	50	71
<b>Total</b>	<b>1</b>	<b>9</b>	<b>0</b>	<b>5</b>	<b>8</b>	<b>0</b>	<b>50</b>	<b>73</b>
<b>Santa Barbara</b>								
Segments	0	0	0					0
Bridges	1	0	0					1
Tunnels	0	0	0					0
Facilities		83	0	27	330	27	455	923

	Highway	Railway	Light Rail	Bus Facility	Ports	Ferries	Airport	Total
<b>Total</b>	<b>1</b>	<b>83</b>	<b>0</b>	<b>27</b>	<b>330</b>	<b>27</b>	<b>455</b>	<b>924</b>
<b>Tulare</b>								
Segments	0	0	0					0
Bridges	1	0	0					1
Tunnels	0	0	0					0
Facilities		0	0	9	0	0	17	26
<b>Total</b>	<b>1</b>	<b>0</b>	<b>0</b>	<b>9</b>	<b>0</b>	<b>0</b>	<b>17</b>	<b>27</b>
<b>Ventura</b>								
Segments	0	0	0					0
Bridges	308	5	0					313
Tunnels	0	0	0					0
Facilities		463	0	89	2,612	67	2,242	5,473
<b>Total</b>	<b>308</b>	<b>467</b>	<b>0</b>	<b>89</b>	<b>2,612</b>	<b>67</b>	<b>2,242</b>	<b>5,786</b>
<b>Total</b>	<b>1,604,216</b>	<b>156,563</b>	<b>509,839</b>	<b>10,954</b>	<b>132,132</b>	<b>2,626</b>	<b>530,952</b>	<b>2,947,281</b>
<b>Region Total</b>	<b>1,604,216</b>	<b>156,563</b>	<b>509,839</b>	<b>10,954</b>	<b>132,132</b>	<b>2,626</b>	<b>530,952</b>	<b>2,947,281</b>

Totals only reflect data for those census tracts/blocks included in the user's study region and will reflect the entire county/state only if all of the census blocks for that county/states were selected at the time of study region creation.

## Direct Economic Loss For Utilities

April 22, 2024

All values are in thousands of dollars

	Potable Water	Waste Water	Oil Systems	Natural Gas	Electric Power	Communication	Total
<b>California</b>							
<b>Imperial</b>							
<i>Facilities</i>	2,018	54,661	0	0	907,989	68	964,736
<i>Pipelines</i>	1,032	519	0	0			1,551
<b>Total</b>	<b>3,050</b>	<b>55,179</b>	<b>0</b>	<b>0</b>	<b>907,989</b>	<b>68</b>	<b>966,287</b>
<b>Inyo</b>							
<i>Facilities</i>	0	0	0	0	316	0	316
<i>Pipelines</i>	63	32	0	0			95
<b>Total</b>	<b>63</b>	<b>32</b>	<b>0</b>	<b>0</b>	<b>316</b>	<b>0</b>	<b>411</b>
<b>Kern</b>							
<i>Facilities</i>	112	369	1	253	244,404	17	245,157
<i>Pipelines</i>	653	328	0	0			981
<b>Total</b>	<b>765</b>	<b>697</b>	<b>1</b>	<b>253</b>	<b>244,404</b>	<b>17</b>	<b>246,138</b>
<b>Kings</b>							
<i>Facilities</i>	0	0	0	4	209	0	213

	Potable Water	Waste Water	Oil Systems	Natural Gas	Electric Power	Communication	Total
<i>Pipelines</i>	77	38	0	0			115
<b>Total</b>	77	38	0	4	209	0	328
<b>Los Angeles</b>							
<i>Facilities</i>	56,991	330,572	542	13,110	5,402,564	1,874	5,805,653
<i>Pipelines</i>	50,518	25,377	0	0			75,895
<b>Total</b>	107,509	355,949	542	13,110	5,402,564	1,874	5,881,549
<b>Orange</b>							
<i>Facilities</i>	22,095	128,845	34	7,350	714,093	420	872,838
<i>Pipelines</i>	28,019	14,075	0	0			42,093
<b>Total</b>	50,114	142,920	34	7,350	714,093	420	914,931
<b>Riverside</b>							
<i>Facilities</i>	59,026	501,268	0	2,698	1,085,726	591	1,649,309
<i>Pipelines</i>	28,153	14,142	0	0			42,294
<b>Total</b>	87,178	515,410	0	2,698	1,085,726	591	1,691,603
<b>San Bernardino</b>							
<i>Facilities</i>	7,761	248,281	0	910	1,866,122	386	2,123,460
<i>Pipelines</i>	7,487	3,761	0	0			11,248
<b>Total</b>	15,247	252,042	0	910	1,866,122	386	2,134,708
<b>San Diego</b>							
<i>Facilities</i>	2,907	158,287	3	10,155	1,032,430	416	1,204,198
<i>Pipelines</i>	8,897	4,469	0	0			13,367

	Potable Water	Waste Water	Oil Systems	Natural Gas	Electric Power	Communication	Total
<b>Total</b>	11,804	162,756	3	10,155	1,032,430	416	1,217,564
<b>San Luis Obispo</b>							
<i>Facilities</i>	0	15	0	0	869	0	885
<i>Pipelines</i>	109	55	0	0			164
<b>Total</b>	109	70	0	0	869	0	1,049
<b>Santa Barbara</b>							
<i>Facilities</i>	0	740	0	151	1,016	4	1,911
<i>Pipelines</i>	95	48	0	0			142
<b>Total</b>	95	788	0	151	1,016	4	2,054
<b>Tulare</b>							
<i>Facilities</i>	0	5	0	0	295	0	300
<i>Pipelines</i>	106	53	0	0			160
<b>Total</b>	106	59	0	0	295	0	460
<b>Ventura</b>							
<i>Facilities</i>	1,101	18,538	0	165	149,437	40	169,281
<i>Pipelines</i>	450	226	0	0			677
<b>Total</b>	1,552	18,764	0	165	149,437	40	169,958
<b>Total</b>	<b>277,670</b>	<b>1,504,704</b>	<b>580</b>	<b>34,798</b>	<b>11,405,472</b>	<b>3,816</b>	<b>13,227,039</b>
<b>Region Total</b>	<b>277,670</b>	<b>1,504,704</b>	<b>580</b>	<b>34,798</b>	<b>11,405,472</b>	<b>3,816</b>	<b>13,227,039</b>

---

---

**Potable Water**

**Waste Water**

**Oil Systems**

**Natural Gas**

**Electric Power**

**Communication**

**Total**

---

*Totals only reflect data for those census tracts/blocks included in the user's study region and will reflect the entire county/state only if all of the census blocks for that county/states were selected at the time of study region creation.*

## Hazus Quick Assessment Report

### Estimated Economic Loss (\$ Billions)

Category	Description	Range
General Building Stock	Building Damage	49.30 - 197.20
	Building Contents	7.00 - 30.00
	Business Interruption	12.80 - 51.20
Infrastructure	Lifelines Damage	
<b>Total</b>		80.80 - 323.20

### Preliminary Damage Assessment (PDA) Estimates

Description	Residential	Commercial	Other	Total
Affected		94,100	33,300	
Minor	290,800	51,400	19,400	361,600
Major	37,400	18,100	8,400	63,900
Destroyed	11,300	6,000	2,700	20,000
<b>Total</b>		169,600	63,800	

### Estimated Casualties : Night Time

Severity Level	Description	# Persons
Level 1	Medical Aid	7,000 - 28,000
Level 2	Hospital Care	1,200 - 5,000
Level 3	Life-threatening	120 - 500
Level 4	Fatalities	200 - 900

### Estimated Shelter Needs

Type	Households	People
Displaced Households	38,000 - 154,000	95,000 - 385,000
Public Shelter	19,020	47,540

Comments :

\*Hazus damage estimates are presented using FEMA Preliminary Damage Assessment (PDA) categories. These estimates should be used for planning purposes and may not reflect actual observed damages from the PDA process.

**Disclaimer:**

The estimates of social and economic impacts contained in this report were produced using HAZUS loss estimation methodology software which is based on current scientific and engineering knowledge. There are uncertainties inherent in any loss estimation technique. Therefore, there may be significant differences between the modeled results contained in this report and the actual social and economic losses following a specific earthquake. These results can be improved by using enhanced inventory, geotechnical, and observed ground motion data.

### Earthquake Information

Location :

Origin Time:

Magnitude : 7.72

Epicenter Latitude/Longitude :  
/

Depth & Type : /U

Name :  
NA

Ground Motion /Attenuation :

Maximum PGA: 1.00

Information Sources:

Comments :

### Population and Building Exposure

Population: 24,407,523

### Building Exposure : (\$ Millions)

Residential	
Commercial	825,275
Other	615,836
Total	

Counties : See Appendix

Major Metro Area :

## Hazus Quick Assessment Report

### Estimated Economic Loss (\$ Billions)

Category	Description	Range
General Building Stock	Building Damage	49.30 - 197.20
	Building Contents	7.00 - 30.00
	Business Interruption	12.80 - 51.20
Infrastructure	Lifelines Damage	
<b>Total</b>		80.80 - 323.20

### Preliminary Damage Assessment (PDA) Estimates

Description	Residential	Commercial	Other	Total
Affected		94,100	33,300	
Minor	290,800	51,400	19,400	361,600
Major	37,400	18,100	8,400	63,900
Destroyed	11,300	6,000	2,700	20,000
<b>Total</b>		169,600	63,800	

### Estimated Casualties : Day Time

Severity Level	Description	# Persons
Level 1	Medical Aid	15,000 - 58,000
Level 2	Hospital Care	3,000 - 13,000
Level 3	Life-threatening	500 - 1,800
Level 4	Fatalities	800 - 3,000

### Estimated Shelter Needs

Type	Households	People
Displaced Households	38,000 - 154,000	95,000 - 385,000
Public Shelter	19,020	47,540

Comments :

\*Hazus damage estimates are presented using FEMA Preliminary Damage Assessment (PDA) categories. These estimates should be used for planning purposes and may not reflect actual observed damages from the PDA process.

#### Disclaimer:

The estimates of social and economic impacts contained in this report were produced using HAZUS loss estimation methodology software which is based on current scientific and engineering knowledge. There are uncertainties inherent in any loss estimation technique. Therefore, there may be significant differences between the modeled results contained in this report and the actual social and economic losses following a specific earthquake. These results can be improved by using enhanced inventory, geotechnical, and observed ground motion data.

### Earthquake Information

Location :

Origin Time:

Magnitude : 7.72

Epicenter Latitude/Longitude :  
/

Depth & Type : /U

Name :  
NA

Ground Motion /Attenuation :

Maximum PGA: 1.00

Information Sources:

Comments :

### Population and Building Exposure

Population: 24,407,523

### Building Exposure : (\$ Millions)

Residential	
Commercial	825,275
Other	615,836
Total	

Counties : See Appendix

Major Metro Area :

## Hazus Quick Assessment Report

### Estimated Economic Loss (\$ Billions)

Category	Description	Range
General Building Stock	Building Damage	49.30 - 197.20
	Building Contents	7.00 - 30.00
	Business Interruption	12.80 - 51.20
Infrastructure	Lifelines Damage	
<b>Total</b>		80.80 - 323.20

### Preliminary Damage Assessment (PDA) Estimates

Description	Residential	Commercial	Other	Total
Affected		94,100	33,300	
Minor	290,800	51,400	19,400	361,600
Major	37,400	18,100	8,400	63,900
Destroyed	11,300	6,000	2,700	20,000
<b>Total</b>		169,600	63,800	

### Estimated Casualties : Commute Time

Severity Level	Description	# Persons
Level 1	Medical Aid	10,000 - 41,000
Level 2	Hospital Care	2,000 - 9,000
Level 3	Life-threatening	600 - 3,000
Level 4	Fatalities	600 - 2,000

### Estimated Shelter Needs

Type	Households	People
Displaced Households	38,000 - 154,000	95,000 - 385,000
Public Shelter	19,020	47,540

Comments :

\*Hazus damage estimates are presented using FEMA Preliminary Damage Assessment (PDA) categories. These estimates should be used for planning purposes and may not reflect actual observed damages from the PDA process.

#### Disclaimer:

The estimates of social and economic impacts contained in this report were produced using HAZUS loss estimation methodology software which is based on current scientific and engineering knowledge. There are uncertainties inherent in any loss estimation technique. Therefore, there may be significant differences between the modeled results contained in this report and the actual social and economic losses following a specific earthquake. These results can be improved by using enhanced inventory, geotechnical, and observed ground motion data.

### Earthquake Information

Location :

Origin Time:

Magnitude : 7.72

Epicenter Latitude/Longitude :  
/

Depth & Type : /U

Name :  
NA

Ground Motion /Attenuation :

Maximum PGA: 1.00

Information Sources:

Comments :

### Population and Building Exposure

Population: 24,407,523

### Building Exposure : (\$ Millions)

Residential	
Commercial	825,275
Other	615,836
Total	

Counties : See Appendix

Major Metro Area :

## Shelter Summary Report

April 22, 2024

	# of Displaced Households	# of People Needing Short Term Shelter
<b>California</b>		
Imperial	0	0
Inyo	0	0
Kern	0	0
Kings	0	0
Los Angeles	54,355	34,002
Orange	17,824	10,442
Riverside	2,279	1,615
San Bernardino	2,124	1,323
San Diego	304	162
San Luis Obispo	0	0
Santa Barbara	0	0
Tulare	0	0
Ventura	1	0
<b>Total</b>	<b>76,887</b>	<b>47,544</b>
<b>Region Total</b>	<b>76,887</b>	<b>47,544</b>

Totals only reflect data for those census tracts/blocks included in the user's study region and will reflect the entire county/state only if all of the census blocks for that county/states were selected at the time of study region creation.