
Hazus: Earthquake Global Risk Report

Region Name: EatonRoughs

Earthquake Scenario: eatonroughs2011cfmsh_m7p36_se

Print Date: May 21, 2024

Disclaimer:

Totals only reflect data for those census tracts/blocks included in the user's study region.

The estimates of social and economic impacts contained in this report were produced using Hazus loss estimation methodology software which is based on current scientific and engineering knowledge. There are uncertainties inherent in any loss estimation technique. Therefore, there may be significant differences between the modeled results contained in this report and the actual social and economic losses following a specific earthquake. These results can be improved by using enhanced inventory, geotechnical, and observed ground motion data.

Table of Contents

Section	Page #
General Description of the Region	3
Building and Lifeline Inventory	4
Building Inventory	
Critical Facility Inventory	
Transportation and Utility Lifeline Inventory	
Earthquake Scenario Parameters	7
Direct Earthquake Damage	8
Buildings Damage	
Essential Facilities Damage	
Transportation and Utility Lifeline Damage	
Induced Earthquake Damage	14
Fire Following Earthquake	
Debris Generation	
Social Impact	15
Shelter Requirements	
Casualties	
Economic Loss	17
Building Related Losses	
Transportation and Utility Lifeline Losses	
Appendix A: County Listing for the Region	
Appendix B: Regional Population and Building Value Data	

General Description of the Region

Hazus-MH is a regional earthquake loss estimation model that was developed by the Federal Emergency Management Agency (FEMA) and the National Institute of Building Sciences. The primary purpose of Hazus is to provide a methodology and software application to develop multi-hazard losses at a regional scale. These loss estimates would be used primarily by local, state and regional officials to plan and stimulate efforts to reduce risks from multi-hazards and to prepare for emergency response and recovery.

The earthquake loss estimates provided in this report was based on a region that includes 22 county(ies) from the following state(s):

California

Note:

Appendix A contains a complete listing of the counties contained in the region.

The geographical size of the region is 45,979.45 square miles and contains 1,125 census tracts. There are over 1,723 thousand households in the region which has a total population of 4,677,149 people. The distribution of population by Total Region and County is provided in Appendix B.

There are an estimated 1,651 thousand buildings in the region with a total building replacement value (excluding contents) of 918,480 (millions of dollars). Approximately 91.00 % of the buildings (and 67.00% of the building value) are associated with residential housing.

The replacement value of the transportation and utility lifeline systems is estimated to be 93,151 and 99,173 (millions of dollars) , respectively.

Building and Lifeline Inventory

Building Inventory

Hazus estimates that there are 1,651 thousand buildings in the region which have an aggregate total replacement value of 918,480 (millions of dollars) . Appendix B provides a general distribution of the building value by Total Region and County.

In terms of building construction types found in the region, wood frame construction makes up 87% of the building inventory. The remaining percentage is distributed between the other general building types.

Critical Facility Inventory

Hazus breaks critical facilities into two (2) groups: essential facilities and high potential loss facilities (HPL). Essential facilities include hospitals, medical clinics, schools, fire stations, police stations and emergency operations facilities. High potential loss facilities include dams, levees, military installations, nuclear power plants and hazardous material sites.

For essential facilities, there are 101 hospitals in the region with a total bed capacity of 10,710 beds. There are 2,024 schools, 803 fire stations, 229 police stations and 37 emergency operation facilities. With respect to high potential loss facilities (HPL), there are no dams identified within the inventory. The inventory also includes no hazardous material sites, no military installations and no nuclear power plants.

Transportation and Utility Lifeline Inventory

Within Hazus, the lifeline inventory is divided between transportation and utility lifeline systems. There are seven (7) transportation systems that include highways, railways, light rail, bus, ports, ferry and airports. There are six (6) utility systems that include potable water, wastewater, natural gas, crude & refined oil, electric power and communications. The lifeline inventory data are provided in Tables 1 and 2.

The total value of the lifeline inventory is over 192,324.00 (millions of dollars). This inventory includes over 5,810.44 miles of highways, 6,606 bridges, 161,370.05 miles of pipes.

Table 1: Transportation System Lifeline Inventory

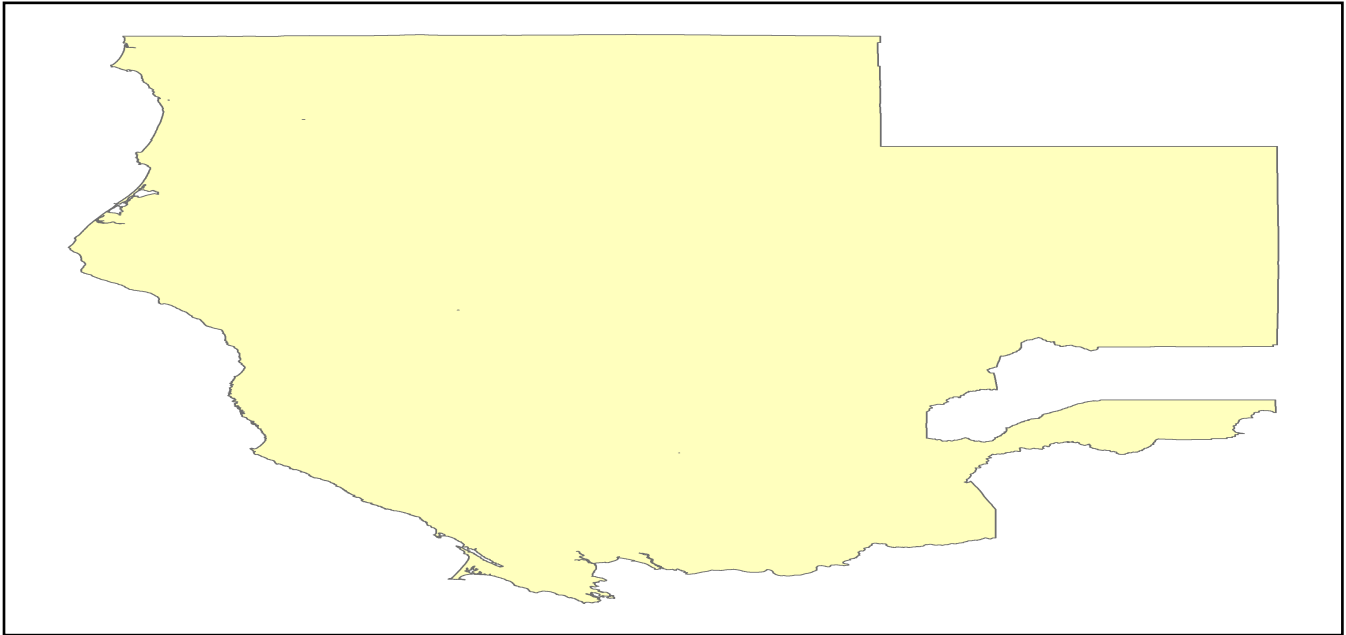
System	Component	# Locations/ # Segments	Replacement value (millions of dollars)
Highway	Bridges	6,606	22053.2312
	Segments	2,686	44836.3583
	Tunnels	11	153.1245
	Subtotal		67042.7140
Railways	Bridges	1,000	5690.0000
	Facilities	16	42.6080
	Segments	1,342	16338.3497
	Tunnels	0	0.0000
	Subtotal		22070.9577
Light Rail	Bridges	0	0.0000
	Facilities	55	314.0500
	Segments	3	1508.4477
	Tunnels	0	0.0000
	Subtotal		1822.4977
Bus	Facilities	21	48.1992
	Subtotal		48.1992
Ferry	Facilities	10	13.3100
	Subtotal		13.3100
Port	Facilities	136	518.4108
	Subtotal		518.4108
Airport	Facilities	79	898.3060
	Runways	103	736.9223
	Subtotal		1635.2283
		Total	93,151.30

Table 2: Utility System Lifeline Inventory

System	Component	# Locations / Segments	Replacement value (millions of dollars)
Potable Water	Distribution Lines	NA	3211.4956
	Facilities	7	275.0580
	Pipelines	0	0.0000
		Subtotal	3486.5536
Waste Water	Distribution Lines	NA	1926.8974
	Facilities	104	17882.9872
	Pipelines	0	0.0000
		Subtotal	19809.8846
Natural Gas	Distribution Lines	NA	1284.5983
	Facilities	3	123.7305
	Pipelines	634	9793.7702
		Subtotal	11202.0990
Oil Systems	Facilities	4	0.4720
	Pipelines	0	0.0000
		Subtotal	0.4720
Electrical Power	Facilities	179	64650.1747
		Subtotal	64650.1747
Communication	Facilities	204	24.0720
		Subtotal	24.0720
	Total		99,173.30

Earthquake Scenario

Hazus uses the following set of information to define the earthquake parameters used for the earthquake loss estimate provided in this report.



Scenario Name	eatonroughs2011cfmsh_m7p36_se
Type of Earthquake	User-defined
Fault Name	NA
Historical Epicenter ID #	NA
Probabilistic Return Period	NA
Longitude of Epicenter	NA
Latitude of Epicenter	NA
Earthquake Magnitude	7.36
Depth (km)	NA
Rupture Length (Km)	NA
Rupture Orientation (degrees)	NA
Attenuation Function	NA

Direct Earthquake Damage

Building Damage

Hazus estimates that about 1,895 buildings will be at least moderately damaged. This is over 0.00 % of the buildings in the region. There are an estimated 6 buildings that will be damaged beyond repair. The definition of the 'damage states' is provided in Volume 1: Chapter 5 of the Hazus technical manual. Table 3 below summarizes the expected damage by general occupancy for the buildings in the region. Table 4 below summarizes the expected damage by general building type.

Damage Categories by General Occupancy Type

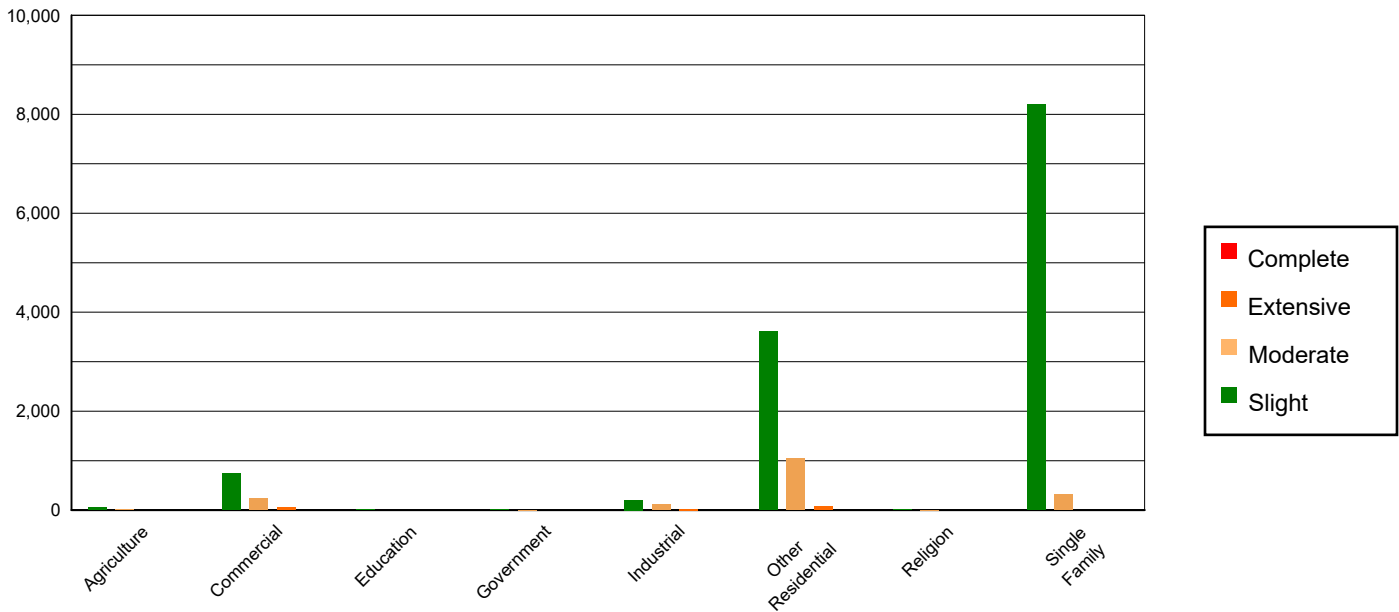


Table 3: Expected Building Damage by Occupancy

	None		Slight		Moderate		Extensive		Complete	
	Count	(%)	Count	(%)	Count	(%)	Count	(%)	Count	(%)
Agriculture	10913.44	0.67	49.45	0.38	7.82	0.45	0.29	0.19	0.00	0.01
Commercial	101637.98	6.21	741.98	5.77	236.10	13.60	45.19	29.54	2.75	41.39
Education	3218.45	0.20	12.86	0.10	1.65	0.10	0.03	0.02	0.00	0.00
Government	3470.98	0.21	14.39	0.11	5.13	0.30	1.40	0.92	0.09	1.34
Industrial	26460.79	1.62	208.70	1.62	113.99	6.57	23.68	15.48	1.84	27.66
Other Residential	235961.08	14.41	3611.58	28.08	1045.39	60.23	81.02	52.95	1.93	29.03
Religion	5646.12	0.34	20.55	0.16	4.94	0.28	0.37	0.24	0.02	0.23
Single Family	1249779.16	76.34	8203.03	63.77	320.76	18.48	1.02	0.67	0.02	0.34
Total	1,637,088		12,863		1,736		153		7	

Table 4: Expected Building Damage by Building Type (All Design Levels)

	None		Slight		Moderate		Extensive		Complete	
	Count	(%)	Count	(%)	Count	(%)	Count	(%)	Count	(%)
Wood	1431966.97	87.47	10150.10	78.91	420.53	24.23	2.30	1.51	0.05	0.69
Steel	32202.89	1.97	319.94	2.49	169.19	9.75	32.47	21.22	3.14	47.37
Concrete	34975.22	2.14	342.23	2.66	151.95	8.75	48.45	31.66	2.40	36.13
Precast	21877.70	1.34	173.76	1.35	60.04	3.46	3.30	2.16	0.10	1.46
RM	46342.26	2.83	224.66	1.75	50.19	2.89	0.76	0.49	0.00	0.00
URM	4246.24	0.26	97.11	0.75	68.69	3.96	13.47	8.80	0.75	11.34
MH	65476.72	4.00	1554.77	12.09	815.20	46.96	52.26	34.16	0.20	3.00
Total	1,637,088		12,863		1,736		153		7	

*Note:

- RM Reinforced Masonry
- URM Unreinforced Masonry
- MH Manufactured Housing

Essential Facility Damage

Before the earthquake, the region had 10,710 hospital beds available for use. On the day of the earthquake, the model estimates that only 10,168 hospital beds (95.00%) are available for use by patients already in the hospital and those injured by the earthquake. After one week, 99.00% of the beds will be back in service. By 30 days, 100.00% will be operational.

Table 5: Expected Damage to Essential Facilities

Classification	Total	# Facilities		
		At Least Moderate Damage > 50%	Complete Damage > 50%	With Functionality > 50% on day 1
Hospitals	101	0	0	95
Schools	2,024	1	0	1,971
EOCs	37	0	0	37
PoliceStations	229	0	0	229
FireStations	803	0	0	800

Transportation Lifeline Damage

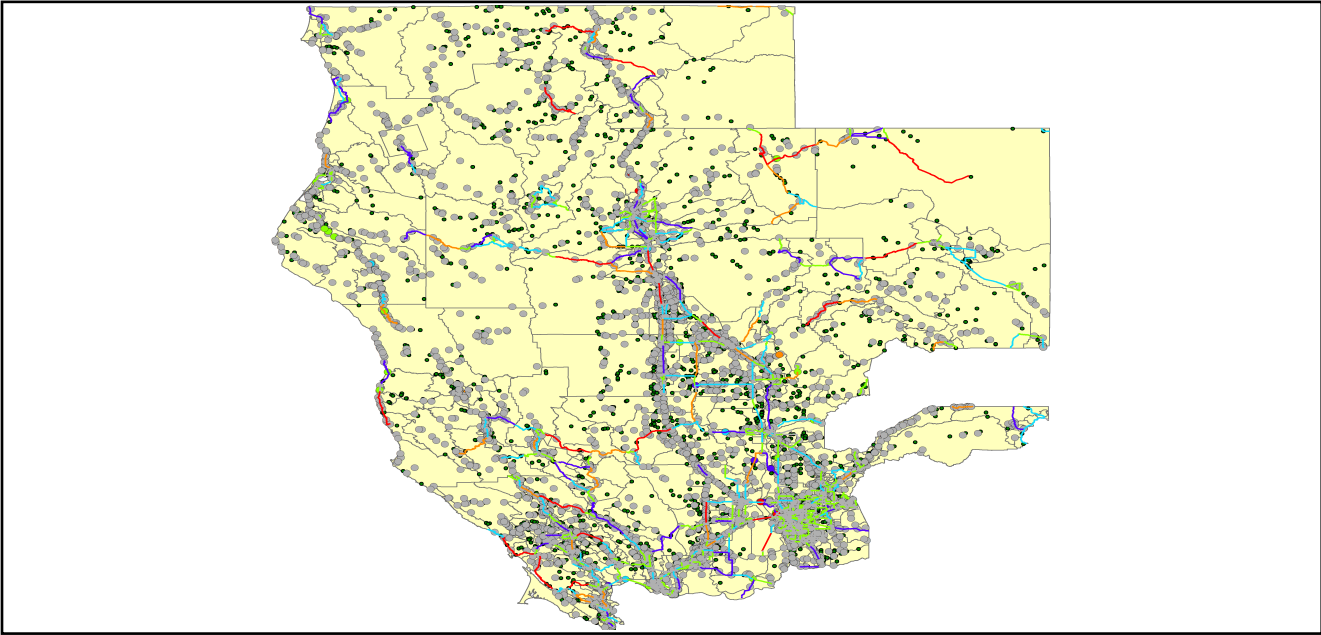


Table 6: Expected Damage to the Transportation Systems

System	Component	Number of Locations_				
		Locations/ Segments	With at Least Mod. Damage	With Complete Damage	With Functionality > 50 %	
					After Day 1	After Day 7
Highway	Segments	2,686	0	0	2,686	2,686
	Bridges	6,606	0	0	6,606	6,606
	Tunnels	11	0	0	11	11
Railways	Segments	1,342	0	0	1,342	1,342
	Bridges	1,000	0	0	1,000	1,000
	Tunnels	0	0	0	0	0
	Facilities	16	0	0	16	16
Light Rail	Segments	3	0	0	3	3
	Bridges	0	0	0	0	0
	Tunnels	0	0	0	0	0
	Facilities	55	0	0	55	55
Bus	Facilities	21	0	0	21	21
Ferry	Facilities	10	0	0	10	10
Port	Facilities	136	0	0	136	136
Airport	Facilities	79	1	0	79	79
	Runways	103	0	0	103	103

Table 6 provides damage estimates for the transportation system.

Note: Roadway segments, railroad tracks and light rail tracks are assumed to be damaged by ground failure only. If ground failure maps are not provided, damage estimates to these components will not be computed.

Tables 7-9 provide information on the damage to the utility lifeline systems. Table 7 provides damage to the utility system facilities. Table 8 provides estimates on the number of leaks and breaks by the pipelines of the utility systems. For electric power and potable water, Hazus performs a simplified system performance analysis. Table 9 provides a summary of the system performance information.

Table 7 : Expected Utility System Facility Damage

System	# of Locations				
	Total #	With at Least Moderate Damage	With Complete Damage	with Functionality > 50 %	
				After Day 1	After Day 7
Potable Water	7	0	0	7	7
Waste Water	104	0	0	98	104
Natural Gas	3	0	0	3	3
Oil Systems	4	0	0	4	4
Electrical Power	179	4	0	177	179
Communication	204	10	0	204	204

Table 8 : Expected Utility System Pipeline Damage (Site Specific)

System	Total Pipelines Length (miles)	Number of Leaks	Number of Breaks
Potable Water	99,777	1289	322
Waste Water	59,866	648	162
Natural Gas	1,728	0	0
Oil	0	0	0

Table 9: Expected Potable Water and Electric Power System Performance

	Total # of Households	Number of Households without Service				
		At Day 1	At Day 3	At Day 7	At Day 30	At Day 90
Potable Water	1,723,902	343	77	0	0	0
Electric Power		2,670	1,540	529	29	4

Induced Earthquake Damage

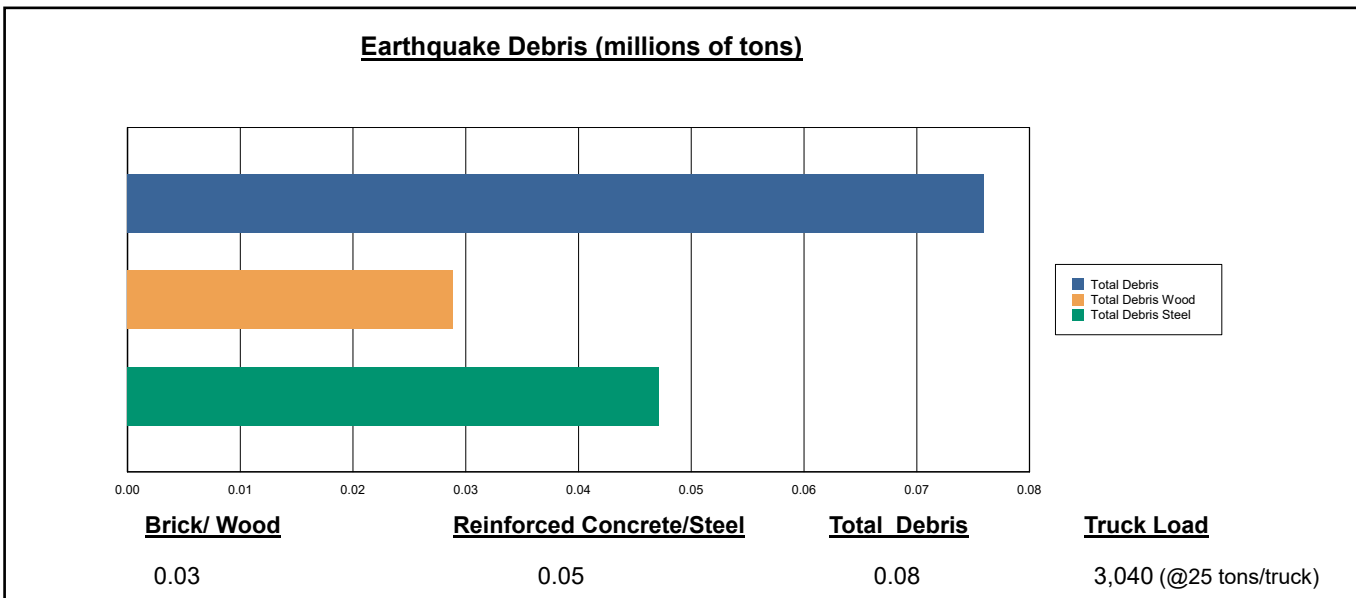
Fire Following Earthquake

Fires often occur after an earthquake. Because of the number of fires and the lack of water to fight the fires, they can often burn out of control. Hazus uses a Monte Carlo simulation model to estimate the number of ignitions and the amount of burnt area. For this scenario, the model estimates that there will be 0 ignitions that will burn about 0.00 sq. mi 0.00 % of the region's total area.) The model also estimates that the fires will displace about 0 people and burn about 0 (millions of dollars) of building value.

Debris Generation

Hazus estimates the amount of debris that will be generated by the earthquake. The model breaks the debris into two general categories: a) Brick/Wood and b) Reinforced Concrete/Steel. This distinction is made because of the different types of material handling equipment required to handle the debris.

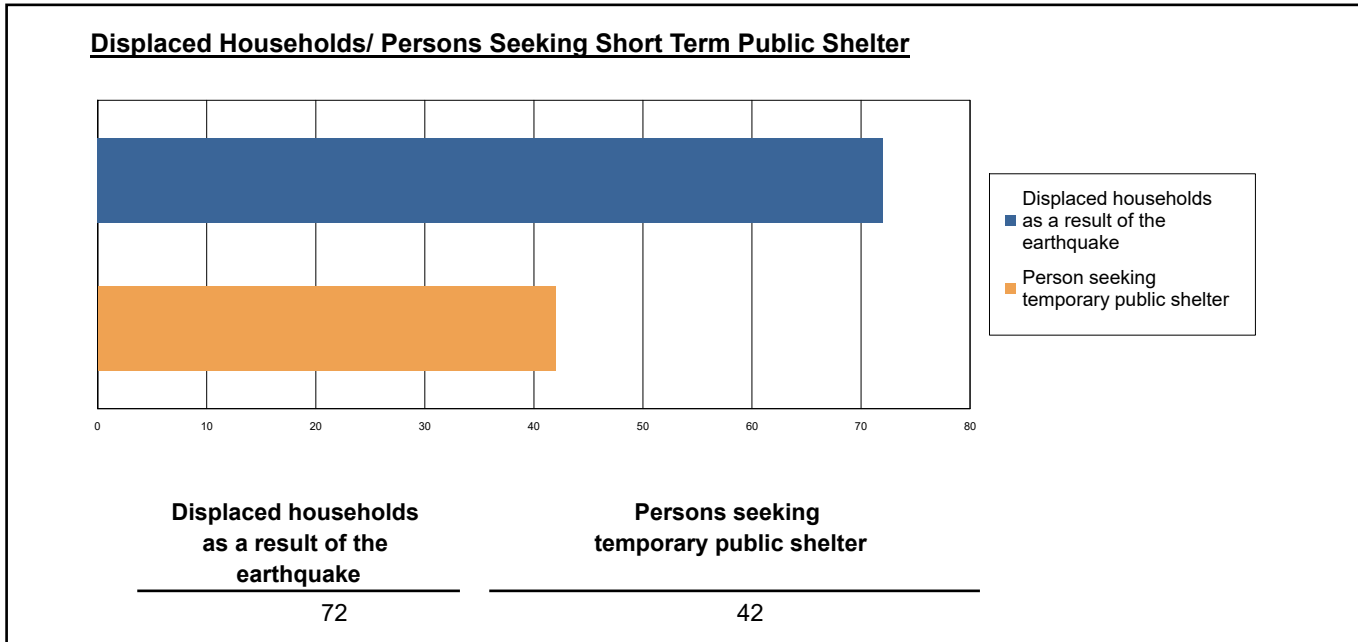
The model estimates that a total of 76,000 tons of debris will be generated. Of the total amount, Brick/Wood comprises 38.00% of the total, with the remainder being Reinforced Concrete/Steel. If the debris tonnage is converted to an estimated number of truckloads, it will require 3,040 truckloads (@25 tons/truck) to remove the debris generated by the earthquake.



Social Impact

Shelter Requirement

Hazus estimates the number of households that are expected to be displaced from their homes due to the earthquake and the number of displaced people that will require accommodations in temporary public shelters. The model estimates 72 households to be displaced due to the earthquake. Of these, 42 people (out of a total population of 4,677,149) will seek temporary shelter in public shelters.



Casualties

Hazus estimates the number of people that will be injured and killed by the earthquake. The casualties are broken down into four (4) severity levels that describe the extent of the injuries. The levels are described as follows;

- Severity Level 1: Injuries will require medical attention but hospitalization is not needed.
- Severity Level 2: Injuries will require hospitalization but are not considered life-threatening
- Severity Level 3: Injuries will require hospitalization and can become life threatening if not promptly treated.
- Severity Level 4: Victims are killed by the earthquake.

The casualty estimates are provided for three (3) times of day: 2:00 AM, 2:00 PM and 5:00 PM. These times represent the periods of the day that different sectors of the community are at their peak occupancy loads. The 2:00 AM estimate considers that the residential occupancy load is maximum, the 2:00 PM estimate considers that the educational, commercial and industrial sector loads are maximum and 5:00 PM represents peak commute time.

Table 10 provides a summary of the casualties estimated for this earthquake

Table 10: Casualty Estimates

		Level 1	Level 2	Level 3	Level 4
2 AM	Commercial	0.20	0.02	0.00	0.00
	Commuting	0.00	0.00	0.01	0.00
	Educational	0.00	0.00	0.00	0.00
	Hotels	0.01	0.00	0.00	0.00
	Industrial	0.29	0.04	0.00	0.00
	Other-Residential	13.68	1.18	0.05	0.09
	Single Family	12.10	0.24	0.00	0.00
	Total	26	1	0	0
2 PM	Commercial	14.59	1.63	0.11	0.21
	Commuting	0.02	0.03	0.06	0.01
	Educational	7.04	0.56	0.01	0.01
	Hotels	0.00	0.00	0.00	0.00
	Industrial	2.09	0.26	0.02	0.03
	Other-Residential	4.71	0.42	0.02	0.03
	Single Family	4.02	0.09	0.00	0.00
	Total	32	3	0	0
5 PM	Commercial	9.98	1.08	0.07	0.13
	Commuting	0.41	0.58	0.94	0.18
	Educational	2.29	0.19	0.00	0.00
	Hotels	0.00	0.00	0.00	0.00
	Industrial	1.30	0.16	0.01	0.02
	Other-Residential	4.99	0.44	0.02	0.03
	Single Family	4.34	0.09	0.00	0.00
	Total	23	3	1	0

Economic Loss

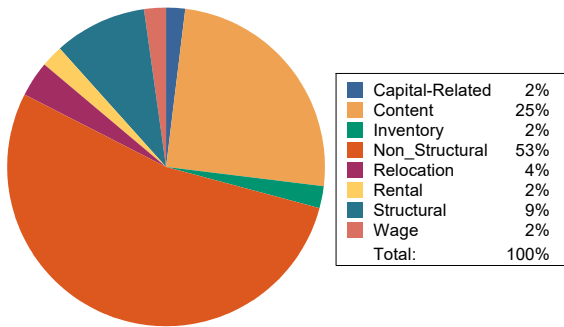
The total economic loss estimated for the earthquake is 1,167.53 (millions of dollars), which includes building and lifeline related losses based on the region's available inventory. The following three sections provide more detailed information about these losses.

Building-Related Losses

The building losses are broken into two categories: direct building losses and business interruption losses. The direct building losses are the estimated costs to repair or replace the damage caused to the building and its contents. The business interruption losses are the losses associated with inability to operate a business because of the damage sustained during the earthquake. Business interruption losses also include the temporary living expenses for those people displaced from their homes because of the earthquake.

The total building-related losses were 667.74 (millions of dollars); 10 % of the estimated losses were related to the business interruption of the region. By far, the largest loss was sustained by the residential occupancies which made up over 47 % of the total loss. Table 11 below provides a summary of the losses associated with the building damage.

Earthquake Losses by Loss Type (\$ millions)



Earthquake Losses by Occupancy Type (\$ millions)

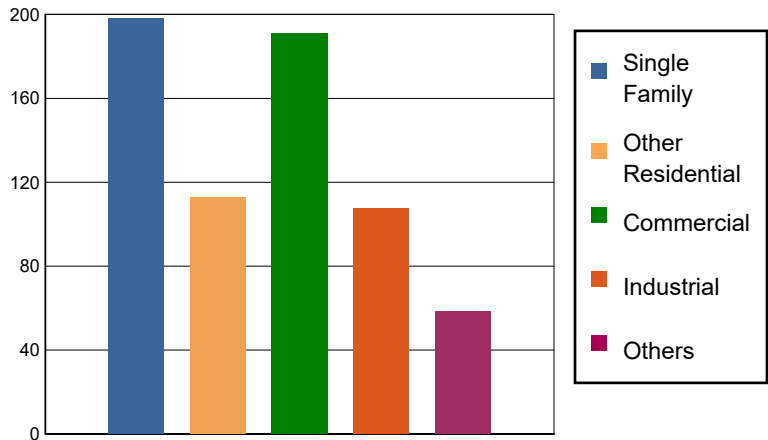


Table 11: Building-Related Economic Loss Estimates
(Millions of dollars)

Category	Area	Single Family	Other Residential	Commercial	Industrial	Others	Total
Income Losses							
	Wage	0.0000	1.0117	10.2386	1.6848	1.6415	14.5766
	Capital-Related	0.0000	0.4301	10.5313	1.0482	0.4075	12.4171
	Rental	1.3023	3.8264	8.0520	0.7749	0.6833	14.6389
	Relocation	2.6916	3.7127	9.6987	3.7559	4.6719	24.5308
	Subtotal	3.9939	8.9809	38.5206	7.2638	7.4042	66.1634
Capital Stock Losses							
	Structural	17.6692	9.5217	18.9654	13.0649	4.0885	63.3097
	Non_Structural	125.3181	72.9692	79.1247	48.0051	31.3356	356.7527
	Content	51.3403	21.1358	46.9239	34.4539	13.9435	167.7974
	Inventory	0.0000	0.0000	7.4766	4.7542	1.4890	13.7198
	Subtotal	194.3276	103.6267	152.4906	100.2781	50.8566	601.5796
	Total	198.32	112.61	191.01	107.54	58.26	667.74

Transportation and Utility Lifeline Losses

For the transportation and utility lifeline systems, Hazus computes the direct repair cost for each component only. There are no losses computed by Hazus for business interruption due to lifeline outages. Tables 12 & 13 provide a detailed breakdown in the expected lifeline losses.

Table 12: Transportation System Economic Losses
(Millions of dollars)

System	Component	Inventory Value	Economic Loss	Loss Ratio (%)
Highway	Segments	44836.3583	0.0000	0.00
	Bridges	22053.2312	7.1704	0.03
	Tunnels	153.1245	0.0000	0.00
	Subtotal	67042.7140	7.1704	
Railways	Segments	16338.3497	0.0000	0.00
	Bridges	5690.0000	0.0716	0.00
	Tunnels	0.0000	0.0000	0.00
	Facilities	42.6080	0.1140	0.27
	Subtotal	22070.9577	0.1856	
Light Rail	Segments	1508.4477	0.0000	0.00
	Bridges	0.0000	0.0000	0.00
	Tunnels	0.0000	0.0000	0.00
	Facilities	314.0500	0.3360	0.11
	Subtotal	1822.4977	0.3360	
Bus	Facilities	48.1992	0.9386	1.95
	Subtotal	48.1992	0.9386	
Ferry	Facilities	13.3100	0.0071	0.05
	Subtotal	13.3100	0.0071	
Port	Facilities	518.4108	12.1139	2.34
	Subtotal	518.4108	12.1139	
Airport	Facilities	898.3060	14.7750	1.64
	Runways	736.9223	0.0000	0.00
	Subtotal	1635.2283	14.7750	
Total		93,151.32	35.53	

Table 13: Utility System Economic Losses
(Millions of dollars)

System	Component	Inventory Value	Economic Loss	Loss Ratio (%)
Potable Water	Pipelines	0.0000	0.0000	0.00
	Facilities	275.0580	0.1411	0.05
	Distribution Lines	3211.4956	5.8013	0.18
	Subtotal	3486.5536	5.9424	
Waste Water	Pipelines	0.0000	0.0000	0.00
	Facilities	17882.9872	128.2090	0.72
	Distribution Lines	1926.8974	2.9141	0.15
	Subtotal	19809.8846	131.1231	
Natural Gas	Pipelines	9793.7702	0.0000	0.00
	Facilities	123.7305	0.1524	0.12
	Distribution Lines	1284.5983	0.9984	0.08
	Subtotal	11202.0990	1.1508	
Oil Systems	Pipelines	0.0000	0.0000	0.00
	Facilities	0.4720	0.0001	0.02
	Subtotal	0.4720	0.0001	
Electrical Power	Facilities	64650.1747	325.2999	0.50
	Subtotal	64650.1747	325.2999	
Communication	Facilities	24.0720	0.7419	3.08
	Subtotal	24.0720	0.7419	
	Total	99,173.26	464.26	

Appendix A: County Listing for the Region

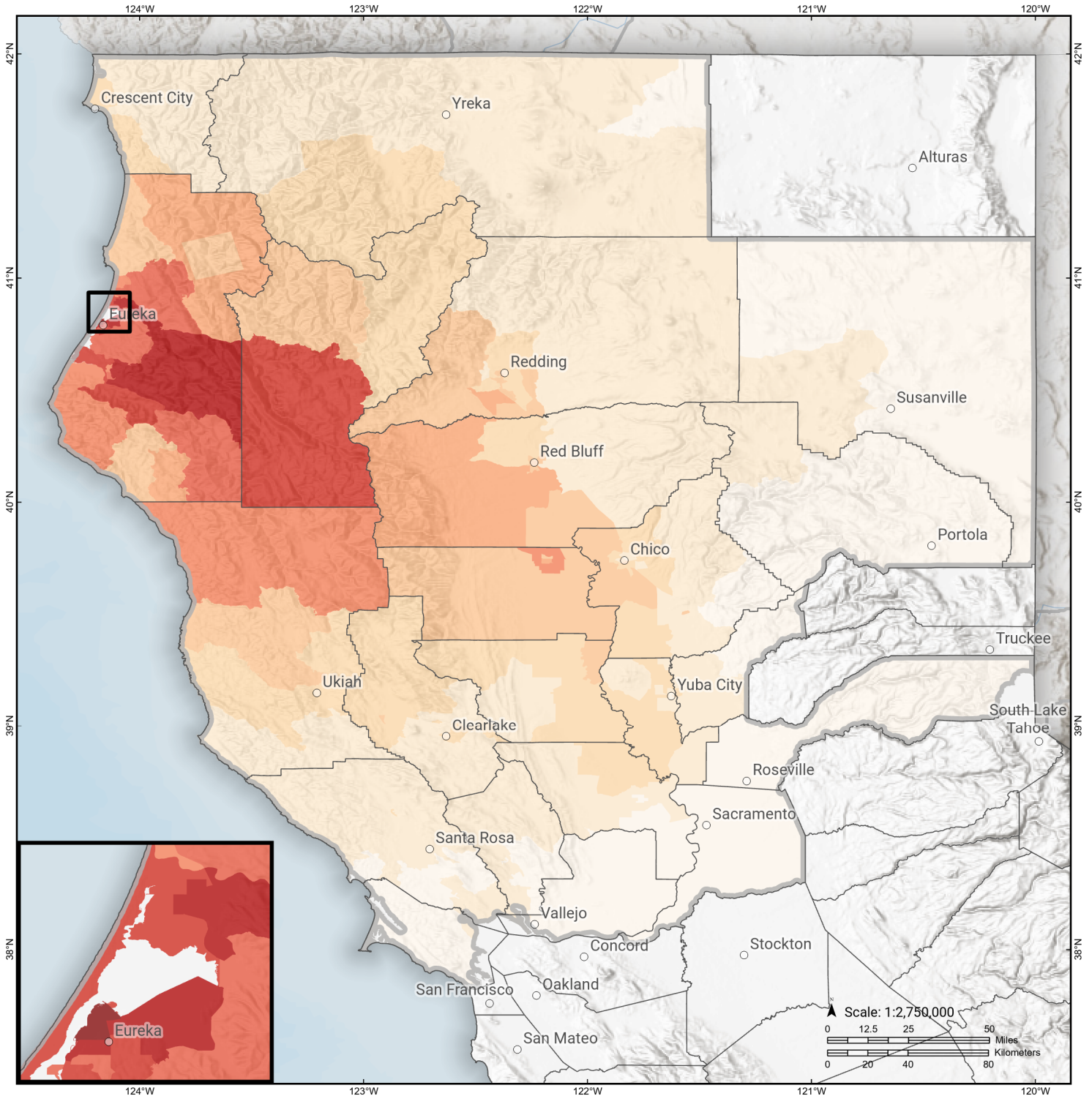
Butte,CA
Colusa,CA
Del Norte,CA
Glenn,CA
Humboldt,CA
Lake,CA
Lassen,CA
Marin,CA
Mendocino,CA
Napa,CA
Placer,CA
Plumas,CA
Sacramento,CA
Shasta,CA
Siskiyou,CA
Solano,CA
Sonoma,CA
Sutter,CA
Tehama,CA
Trinity,CA
Yolo,CA
Yuba,CA

Appendix B: Regional Population and Building Value Data

State	County Name	Population	Building Value (millions of dollars)		
			Residential	Non-Residential	Total
California	Butte	211,632	25,875	16,639	42,514
	Colusa	21,839	2,244	2,024	4,268
	Del Norte	27,743	5,004	1,876	6,881
	Glenn	28,917	2,791	3,717	6,508
	Humboldt	136,463	19,361	8,683	28,044
	Lake	68,163	9,699	4,530	14,229
	Lassen	32,730	4,033	2,008	6,042
	Marin	262,321	47,738	15,030	62,769
	Mendocino	91,601	14,237	8,510	22,748
	Napa	138,019	20,517	13,045	33,563
	Placer	404,739	69,985	24,193	94,179
	Plumas	19,790	6,128	2,276	8,405
	Sacramento	1,585,055	179,811	83,911	263,723
	Shasta	182,155	21,572	15,715	37,288
	Siskiyou	44,076	6,856	4,758	11,615
	Solano	453,491	55,802	26,393	82,195
	Sonoma	488,863	68,827	35,781	104,609
	Sutter	99,633	10,618	6,448	17,066
	Tehama	65,829	7,705	5,113	12,818
	Trinity	16,112	2,209	1,485	3,694
Yolo	216,403	24,130	18,343	42,473	
Yuba	81,575	8,161	4,677	12,839	
Total Region		4,677,149	613,303	305,155	918,470

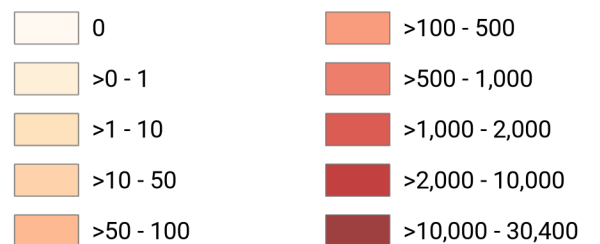
Eaton Roughs

Debris Generated by Census Tract



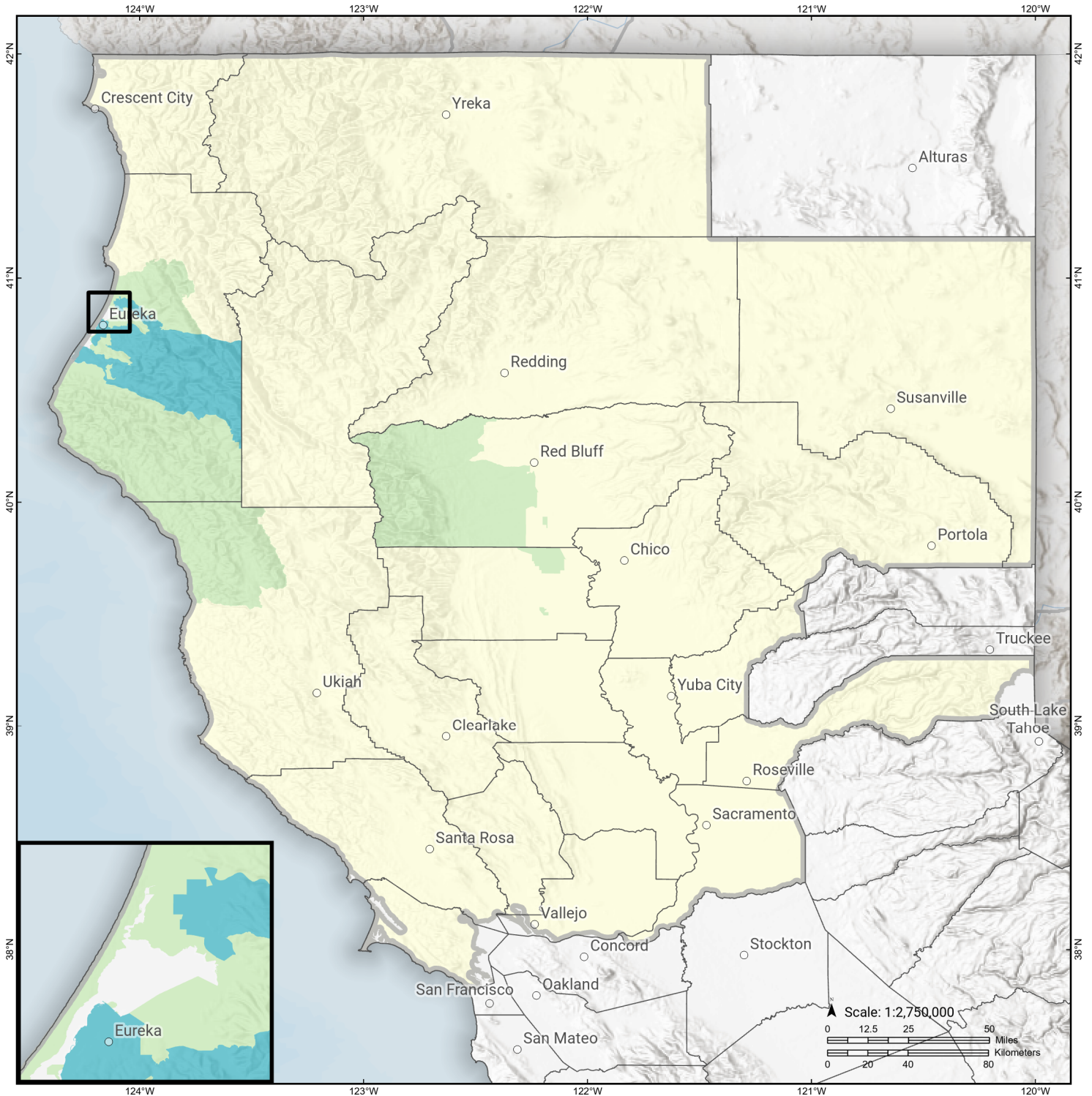
Study Region: Eaton Roughs
Scenario: eatonroughs2011cfmsh_m7p36_se

Debris Generated (in tons)



Eaton Roughs

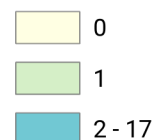
Displaced Households by Census Tract



Study Region: Eaton Roughs
Scenario: eatonroughs2011cfmsh_m7p36_se

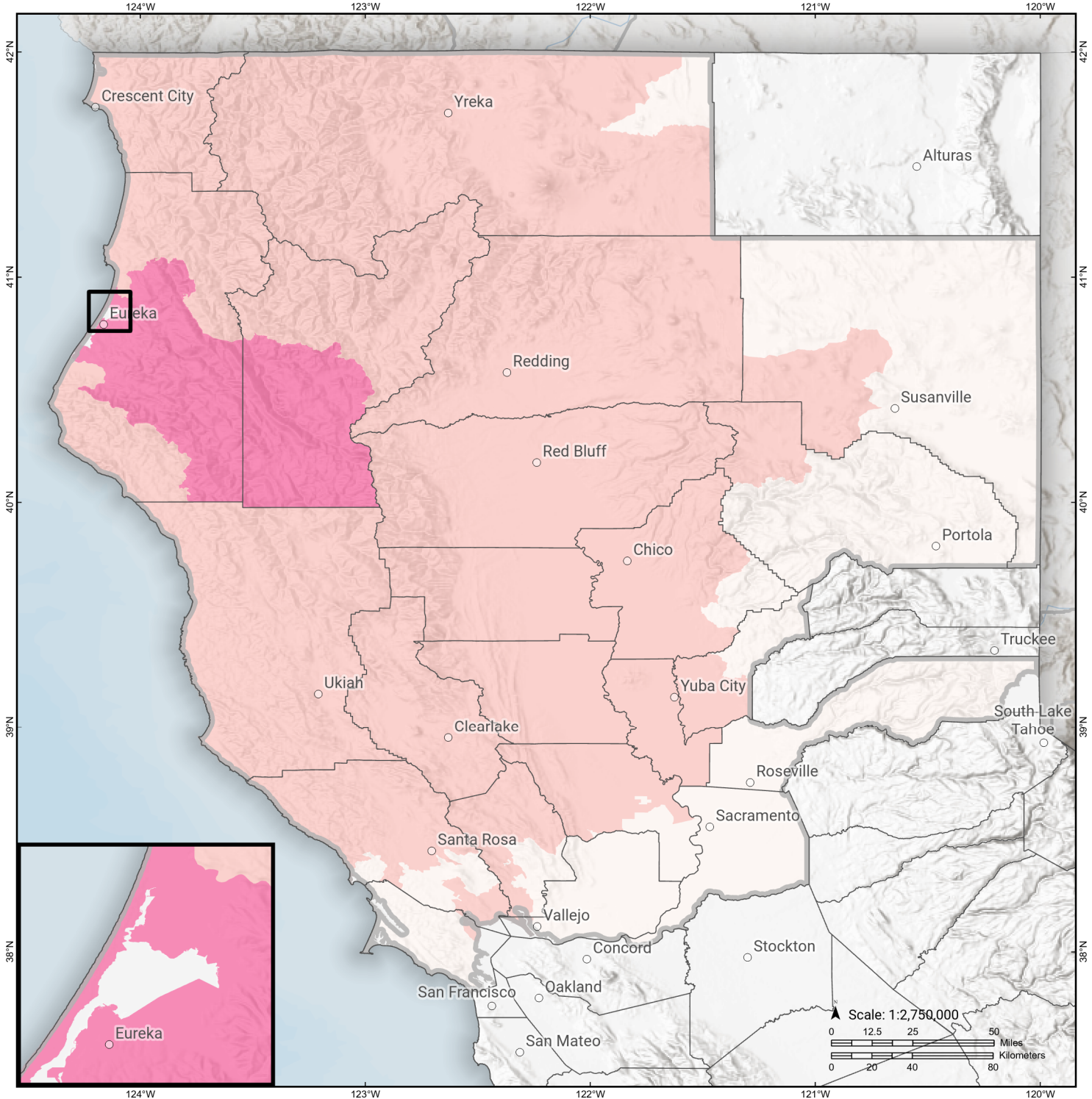


Displaced Households



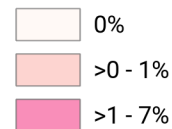
Eaton Roughs

Loss Ratio by Census Tract



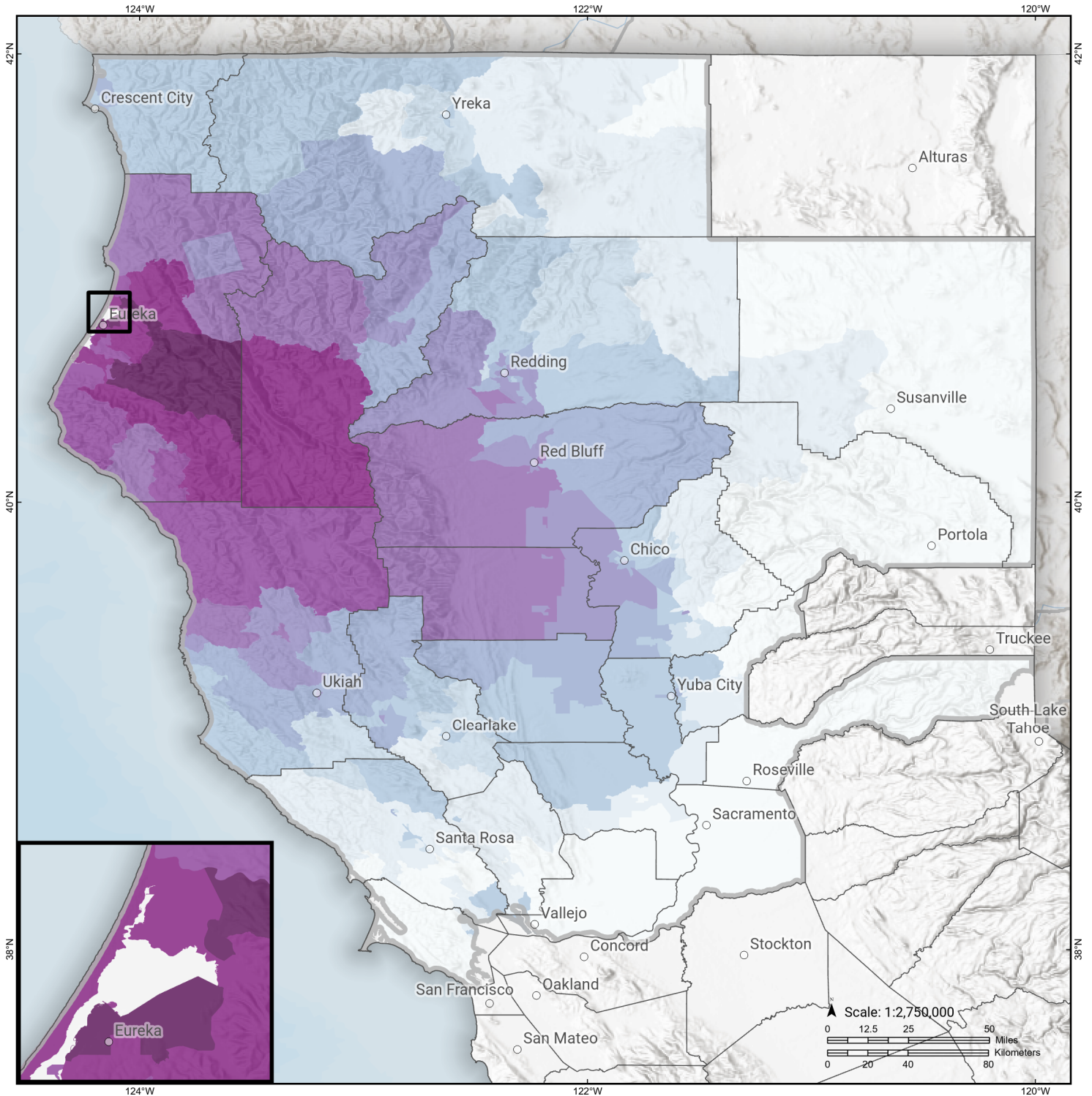
Study Region: Eaton Roughs
Scenario: eatonroughs2011cfmsh_m7p36_se

Loss Ratio (ratio of building related economic loss to exposed value of buildings)



Eaton Roughs

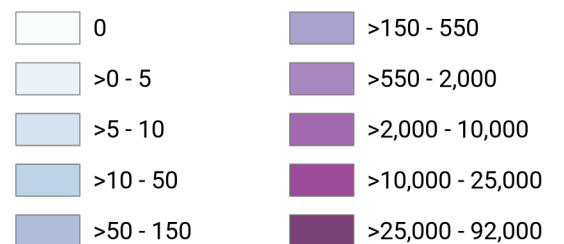
Total Building Related Economic Loss by Census Tract



Study Region: Eaton Roughs
Scenario: eatonroughs2011cfmsh_m7p36_se



Economic Loss (in thousands of USD \$)



Building Damage by Count by General Occupancy

May 21, 2024

	# of Buildings					Total
	None	Slight	Moderate	Extensive	Complete	
California						
Butte						
<i>Agriculture</i>	509	1	0	0	0	510
<i>Commercial</i>	6,380	5	0	0	0	6,385
<i>Education</i>	172	0	0	0	0	172
<i>Government</i>	147	0	0	0	0	147
<i>Industrial</i>	1,520	2	0	0	0	1,522
<i>Religion</i>	530	1	0	0	0	531
<i>Other Residential</i>	21,479	18	1	0	0	21,498
<i>Single Family</i>	50,280	3	0	0	0	50,283
Colusa						
<i>Agriculture</i>	142	0	0	0	0	142
<i>Commercial</i>	793	1	0	0	0	794
<i>Education</i>	33	0	0	0	0	33
<i>Government</i>	32	0	0	0	0	32
<i>Industrial</i>	113	0	0	0	0	113
<i>Religion</i>	58	0	0	0	0	58
<i>Other Residential</i>	953	1	0	0	0	954
<i>Single Family</i>	5,953	1	0	0	0	5,954
Del Norte						

	# of Buildings					Total
	None	Slight	Moderate	Extensive	Complete	
<i>Agriculture</i>	134	0	0	0	0	134
<i>Commercial</i>	729	0	0	0	0	729
<i>Education</i>	31	0	0	0	0	31
<i>Government</i>	18	0	0	0	0	18
<i>Industrial</i>	61	0	0	0	0	61
<i>Religion</i>	53	0	0	0	0	53
<i>Other Residential</i>	3,856	5	0	0	0	3,861
<i>Single Family</i>	6,117	0	0	0	0	6,117
Glenn						
<i>Agriculture</i>	1,350	13	2	0	0	1,365
<i>Commercial</i>	877	7	1	0	0	885
<i>Education</i>	35	0	0	0	0	35
<i>Government</i>	98	1	0	0	0	99
<i>Industrial</i>	252	2	0	0	0	254
<i>Religion</i>	88	1	0	0	0	89
<i>Other Residential</i>	2,106	43	3	0	0	2,152
<i>Single Family</i>	7,400	17	0	0	0	7,417
Humboldt						
<i>Agriculture</i>	119	26	5	0	0	150
<i>Commercial</i>	2,196	645	229	45	3	3,118
<i>Education</i>	114	11	2	0	0	127
<i>Government</i>	67	13	5	1	0	87
<i>Industrial</i>	416	187	112	24	2	740
<i>Religion</i>	44	13	4	0	0	61
<i>Other Residential</i>	8,104	2,968	906	78	2	12,058

		# of Buildings					
		None	Slight	Moderate	Extensive	Complete	Total
Lake	<i>Single Family</i>	30,454	7,589	315	1	0	38,359
	<i>Agriculture</i>	161	0	0	0	0	161
	<i>Commercial</i>	2,090	1	0	0	0	2,091
	<i>Education</i>	68	0	0	0	0	68
	<i>Government</i>	78	0	0	0	0	78
	<i>Industrial</i>	354	0	0	0	0	354
	<i>Religion</i>	140	0	0	0	0	140
	<i>Other Residential</i>	14,581	20	0	0	0	14,601
	<i>Single Family</i>	21,632	1	0	0	0	21,633
Lassen	<i>Agriculture</i>	37	0	0	0	0	37
	<i>Commercial</i>	913	0	0	0	0	913
	<i>Education</i>	40	0	0	0	0	40
	<i>Government</i>	22	0	0	0	0	22
	<i>Industrial</i>	140	0	0	0	0	140
	<i>Religion</i>	71	0	0	0	0	71
	<i>Other Residential</i>	2,627	0	0	0	0	2,627
	<i>Single Family</i>	9,562	0	0	0	0	9,562
	Marin	<i>Agriculture</i>	190	0	0	0	0
<i>Commercial</i>		8,270	0	0	0	0	8,270
<i>Education</i>		274	0	0	0	0	274
<i>Government</i>		143	0	0	0	0	143
<i>Industrial</i>		1,535	0	0	0	0	1,535

	# of Buildings					Total
	None	Slight	Moderate	Extensive	Complete	
<i>Religion</i>	319	0	0	0	0	319
<i>Other Residential</i>	7,890	0	0	0	0	7,890
<i>Single Family</i>	76,724	0	0	0	0	76,724
Mendocino						
<i>Agriculture</i>	183	1	0	0	0	184
<i>Commercial</i>	3,416	18	1	0	0	3,436
<i>Education</i>	101	0	0	0	0	101
<i>Government</i>	83	0	0	0	0	83
<i>Industrial</i>	863	6	0	0	0	869
<i>Religion</i>	214	2	0	0	0	216
<i>Other Residential</i>	6,904	141	14	0	0	7,060
<i>Single Family</i>	25,866	103	0	0	0	25,969
Napa						
<i>Agriculture</i>	349	0	0	0	0	349
<i>Commercial</i>	4,021	0	0	0	0	4,021
<i>Education</i>	132	0	0	0	0	132
<i>Government</i>	103	0	0	0	0	103
<i>Industrial</i>	1,367	0	0	0	0	1,367
<i>Religion</i>	148	0	0	0	0	148
<i>Other Residential</i>	6,978	0	0	0	0	6,978
<i>Single Family</i>	38,761	0	0	0	0	38,761
Placer						
<i>Agriculture</i>	258	0	0	0	0	258
<i>Commercial</i>	8,538	0	0	0	0	8,538
<i>Education</i>	231	0	0	0	0	231

	# of Buildings					Total
	None	Slight	Moderate	Extensive	Complete	
<i>Government</i>	377	0	0	0	0	377
<i>Industrial</i>	2,703	0	0	0	0	2,703
<i>Religion</i>	382	0	0	0	0	382
<i>Other Residential</i>	14,843	0	0	0	0	14,843
<i>Single Family</i>	134,719	0	0	0	0	134,719
Plumas						
<i>Agriculture</i>	84	0	0	0	0	84
<i>Commercial</i>	1,215	0	0	0	0	1,215
<i>Education</i>	26	0	0	0	0	26
<i>Government</i>	45	0	0	0	0	45
<i>Industrial</i>	184	0	0	0	0	184
<i>Religion</i>	30	0	0	0	0	30
<i>Other Residential</i>	5,032	0	0	0	0	5,032
<i>Single Family</i>	9,877	0	0	0	0	9,877
Sacramento						
<i>Agriculture</i>	621	0	0	0	0	621
<i>Commercial</i>	26,295	0	0	0	0	26,295
<i>Education</i>	829	0	0	0	0	829
<i>Government</i>	619	0	0	0	0	619
<i>Industrial</i>	6,756	0	0	0	0	6,756
<i>Religion</i>	1,702	0	0	0	0	1,702
<i>Other Residential</i>	56,413	0	0	0	0	56,413
<i>Single Family</i>	386,840	0	0	0	0	386,840
Shasta						
<i>Agriculture</i>	3,229	6	0	0	0	3,235

	# of Buildings					Total
	None	Slight	Moderate	Extensive	Complete	
<i>Commercial</i>	5,246	7	0	0	0	5,254
<i>Education</i>	136	0	0	0	0	136
<i>Government</i>	87	0	0	0	0	87
<i>Industrial</i>	1,036	2	0	0	0	1,038
<i>Religion</i>	66	0	0	0	0	66
<i>Other Residential</i>	16,824	118	6	0	0	16,949
<i>Single Family</i>	51,786	29	0	0	0	51,815
Siskiyou						
<i>Agriculture</i>	201	0	0	0	0	201
<i>Commercial</i>	1,591	0	0	0	0	1,591
<i>Education</i>	76	0	0	0	0	76
<i>Government</i>	244	0	0	0	0	244
<i>Industrial</i>	480	0	0	0	0	480
<i>Religion</i>	127	0	0	0	0	127
<i>Other Residential</i>	5,094	1	0	0	0	5,095
<i>Single Family</i>	17,794	0	0	0	0	17,794
Solano						
<i>Agriculture</i>	245	0	0	0	0	245
<i>Commercial</i>	7,268	0	0	0	0	7,268
<i>Education</i>	225	0	0	0	0	225
<i>Government</i>	152	0	0	0	0	152
<i>Industrial</i>	2,101	0	0	0	0	2,101
<i>Religion</i>	454	0	0	0	0	454
<i>Other Residential</i>	12,317	0	0	0	0	12,317

	# of Buildings					Total
	None	Slight	Moderate	Extensive	Complete	
<i>Single Family</i>	120,968	0	0	0	0	120,968
Sonoma						
<i>Agriculture</i>	1,304	0	0	0	0	1,304
<i>Commercial</i>	12,110	0	0	0	0	12,110
<i>Education</i>	367	0	0	0	0	367
<i>Government</i>	319	0	0	0	0	319
<i>Industrial</i>	3,825	0	0	0	0	3,825
<i>Religion</i>	576	0	0	0	0	576
<i>Other Residential</i>	25,033	0	0	0	0	25,033
<i>Single Family</i>	142,028	0	0	0	0	142,028
Sutter						
<i>Agriculture</i>	1,124	1	0	0	0	1,125
<i>Commercial</i>	2,051	1	0	0	0	2,052
<i>Education</i>	62	0	0	0	0	62
<i>Government</i>	77	0	0	0	0	77
<i>Industrial</i>	636	0	0	0	0	636
<i>Religion</i>	154	0	0	0	0	154
<i>Other Residential</i>	3,111	2	0	0	0	3,113
<i>Single Family</i>	24,512	0	0	0	0	24,512
Tehama						
<i>Agriculture</i>	298	1	0	0	0	299
<i>Commercial</i>	1,262	7	0	0	0	1,270
<i>Education</i>	57	0	0	0	0	57
<i>Government</i>	50	0	0	0	0	50
<i>Industrial</i>	549	3	0	0	0	552

		# of Buildings					
		None	Slight	Moderate	Extensive	Complete	Total
Trinity	<i>Religion</i>	109	1	0	0	0	110
	<i>Other Residential</i>	3,933	55	3	0	0	3,991
	<i>Single Family</i>	21,172	49	1	0	0	21,222
	<i>Agriculture</i>	4	0	0	0	0	4
	<i>Commercial</i>	952	48	5	0	0	1,005
	<i>Education</i>	24	1	0	0	0	26
	<i>Government</i>	8	0	0	0	0	8
	<i>Industrial</i>	49	7	2	0	0	58
	<i>Religion</i>	41	4	0	0	0	45
Yolo	<i>Other Residential</i>	1,002	239	110	3	0	1,354
	<i>Single Family</i>	5,878	412	5	0	0	6,294
	<i>Agriculture</i>	281	0	0	0	0	281
	<i>Commercial</i>	4,225	0	0	0	0	4,225
	<i>Education</i>	131	0	0	0	0	131
	<i>Government</i>	111	0	0	0	0	111
	<i>Industrial</i>	1,117	0	0	0	0	1,117
	<i>Religion</i>	242	0	0	0	0	242
	<i>Other Residential</i>	9,861	0	0	0	0	9,861
Yuba	<i>Single Family</i>	42,589	0	0	0	0	42,589
	<i>Agriculture</i>	92	0	0	0	0	92
	<i>Commercial</i>	1,199	0	0	0	0	1,199
	<i>Education</i>	54	0	0	0	0	54

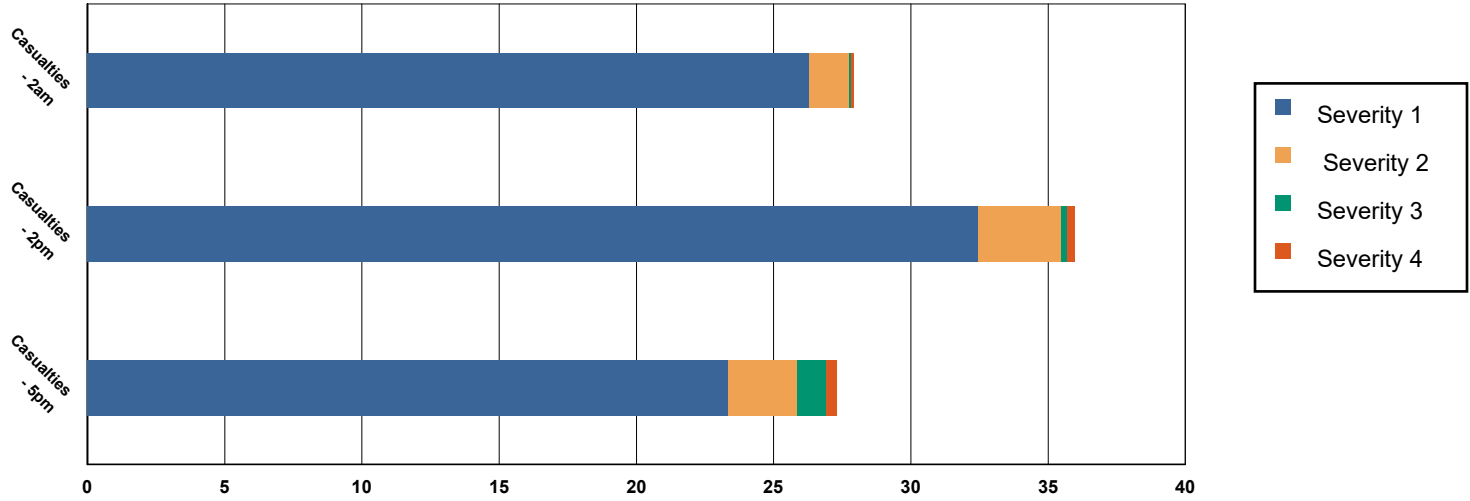
	# of Buildings					Total
	None	Slight	Moderate	Extensive	Complete	
<i>Government</i>	591	0	0	0	0	591
<i>Industrial</i>	404	0	0	0	0	404
<i>Religion</i>	98	0	0	0	0	98
<i>Other Residential</i>	7,021	0	0	0	0	7,021
<i>Single Family</i>	18,867	0	0	0	0	18,867
Total	1,637,088	12,863	1,736	153	7	1,651,846
Region Total	1,637,088	12,863	1,736	153	7	1,651,846

Totals only reflect data for those census tracts/blocks included in the user's study region and will reflect the entire county/state only if all of the census blocks for that county/states were selected at the time of study region creation.

Casualties Summary Report

May 21, 2024

Region Total Casualties



Injury Severity Level

Severity 1	Severity 2	Severity 3	Severity 4	Total
------------	------------	------------	------------	-------

California

Butte

Casualties - 2am

	Severity 1	Severity 2	Severity 3	Severity 4	Total
Commuting	0	0	0	0	0
Commercial	0	0	0	0	0
Educational	0	0	0	0	0
Hotels	0	0	0	0	0
Industrial	0	0	0	0	0
Other-Residential	0	0	0	0	0
Single Family	0	0	0	0	0

Total Casualties - 2am

0	0	0	0	0
---	---	---	---	---

Casualties - 2pm

	Severity 1	Severity 2	Severity 3	Severity 4	Total
Commuting	0	0	0	0	0
Commercial	0	0	0	0	0
Educational	0	0	0	0	0
Hotels	0	0	0	0	0
Industrial	0	0	0	0	0
Other-Residential	0	0	0	0	0
Single Family	0	0	0	0	0

	Injury Severity Level				Total
	Severity 1	Severity 2	Severity 3	Severity 4	
California					
Butte					
Total Casualties - 2pm	0	0	0	0	0
Casualties - 5pm					
<i>Commuting</i>	0	0	0	0	0
<i>Commercial</i>	0	0	0	0	0
<i>Educational</i>	0	0	0	0	0
<i>Hotels</i>	0	0	0	0	0
<i>Industrial</i>	0	0	0	0	0
<i>Other-Residential</i>	0	0	0	0	0
<i>Single Family</i>	0	0	0	0	0
Total Casualties - 5pm	0	0	0	0	0
Colusa					
Casualties - 2am					
<i>Commuting</i>	0	0	0	0	0
<i>Commercial</i>	0	0	0	0	0
<i>Educational</i>	0	0	0	0	0
<i>Hotels</i>	0	0	0	0	0
<i>Industrial</i>	0	0	0	0	0
<i>Other-Residential</i>	0	0	0	0	0
<i>Single Family</i>	0	0	0	0	0
Total Casualties - 2am	0	0	0	0	0
Casualties - 2pm					
<i>Commuting</i>	0	0	0	0	0
<i>Commercial</i>	0	0	0	0	0
<i>Educational</i>	0	0	0	0	0
<i>Hotels</i>	0	0	0	0	0
<i>Industrial</i>	0	0	0	0	0
<i>Other-Residential</i>	0	0	0	0	0
<i>Single Family</i>	0	0	0	0	0
Total Casualties - 2pm	0	0	0	0	0
Casualties - 5pm					
<i>Commuting</i>	0	0	0	0	0
<i>Commercial</i>	0	0	0	0	0
<i>Educational</i>	0	0	0	0	0
<i>Hotels</i>	0	0	0	0	0
<i>Industrial</i>	0	0	0	0	0
<i>Other-Residential</i>	0	0	0	0	0
<i>Single Family</i>	0	0	0	0	0
Total Casualties - 5pm	0	0	0	0	0
Del Norte					
Casualties - 2am					
<i>Commuting</i>	0	0	0	0	0

	Injury Severity Level				Total
	Severity 1	Severity 2	Severity 3	Severity 4	
California					
Del Norte					
Casualties - 2am					
<i>Commercial</i>	0	0	0	0	0
<i>Educational</i>	0	0	0	0	0
<i>Hotels</i>	0	0	0	0	0
<i>Industrial</i>	0	0	0	0	0
<i>Other-Residential</i>	0	0	0	0	0
<i>Single Family</i>	0	0	0	0	0
Total Casualties - 2am	0	0	0	0	0
Casualties - 2pm					
<i>Commuting</i>	0	0	0	0	0
<i>Commercial</i>	0	0	0	0	0
<i>Educational</i>	0	0	0	0	0
<i>Hotels</i>	0	0	0	0	0
<i>Industrial</i>	0	0	0	0	0
<i>Other-Residential</i>	0	0	0	0	0
<i>Single Family</i>	0	0	0	0	0
Total Casualties - 2pm	0	0	0	0	0
Casualties - 5pm					
<i>Commuting</i>	0	0	0	0	0
<i>Commercial</i>	0	0	0	0	0
<i>Educational</i>	0	0	0	0	0
<i>Hotels</i>	0	0	0	0	0
<i>Industrial</i>	0	0	0	0	0
<i>Other-Residential</i>	0	0	0	0	0
<i>Single Family</i>	0	0	0	0	0
Total Casualties - 5pm	0	0	0	0	0
Glenn					
Casualties - 2am					
<i>Commuting</i>	0	0	0	0	0
<i>Commercial</i>	0	0	0	0	0
<i>Educational</i>	0	0	0	0	0
<i>Hotels</i>	0	0	0	0	0
<i>Industrial</i>	0	0	0	0	0
<i>Other-Residential</i>	0	0	0	0	0
<i>Single Family</i>	0	0	0	0	0
Total Casualties - 2am	0	0	0	0	0
Casualties - 2pm					
<i>Commuting</i>	0	0	0	0	0
<i>Commercial</i>	0	0	0	0	0
<i>Educational</i>	0	0	0	0	0
<i>Hotels</i>	0	0	0	0	0
<i>Industrial</i>	0	0	0	0	0

	Injury Severity Level				Total
	Severity 1	Severity 2	Severity 3	Severity 4	
California					
Glenn					
Casualties - 2pm					
Other-Residential	0	0	0	0	0
Single Family	0	0	0	0	0
Total Casualties - 2pm	0	0	0	0	0
Casualties - 5pm					
Commuting	0	0	0	0	0
Commercial	0	0	0	0	0
Educational	0	0	0	0	0
Hotels	0	0	0	0	0
Industrial	0	0	0	0	0
Other-Residential	0	0	0	0	0
Single Family	0	0	0	0	0
Total Casualties - 5pm	0	0	0	0	0
Humboldt					
Casualties - 2am					
Commuting	0	0	0	0	0
Commercial	0	0	0	0	0
Educational	0	0	0	0	0
Hotels	0	0	0	0	0
Industrial	0	0	0	0	0
Other-Residential	12	1	0	0	14
Single Family	11	0	0	0	12
Total Casualties - 2am	24	1	0	0	26
Casualties - 2pm					
Commuting	0	0	0	0	0
Commercial	14	2	0	0	16
Educational	7	1	0	0	7
Hotels	0	0	0	0	0
Industrial	2	0	0	0	2
Other-Residential	4	0	0	0	5
Single Family	4	0	0	0	4
Total Casualties - 2pm	31	3	0	0	34
Casualties - 5pm					
Commuting	0	1	1	0	2
Commercial	10	1	0	0	11
Educational	2	0	0	0	2
Hotels	0	0	0	0	0
Industrial	1	0	0	0	1
Other-Residential	5	0	0	0	5
Single Family	4	0	0	0	4
Total Casualties - 5pm	22	2	1	0	26

	Injury Severity Level				Total
	Severity 1	Severity 2	Severity 3	Severity 4	
California					
Lake					
Casualties - 2am					
<i>Commuting</i>	0	0	0	0	0
<i>Commercial</i>	0	0	0	0	0
<i>Educational</i>	0	0	0	0	0
<i>Hotels</i>	0	0	0	0	0
<i>Industrial</i>	0	0	0	0	0
<i>Other-Residential</i>	0	0	0	0	0
<i>Single Family</i>	0	0	0	0	0
Total Casualties - 2am	0	0	0	0	0
Casualties - 2pm					
<i>Commuting</i>	0	0	0	0	0
<i>Commercial</i>	0	0	0	0	0
<i>Educational</i>	0	0	0	0	0
<i>Hotels</i>	0	0	0	0	0
<i>Industrial</i>	0	0	0	0	0
<i>Other-Residential</i>	0	0	0	0	0
<i>Single Family</i>	0	0	0	0	0
Total Casualties - 2pm	0	0	0	0	0
Casualties - 5pm					
<i>Commuting</i>	0	0	0	0	0
<i>Commercial</i>	0	0	0	0	0
<i>Educational</i>	0	0	0	0	0
<i>Hotels</i>	0	0	0	0	0
<i>Industrial</i>	0	0	0	0	0
<i>Other-Residential</i>	0	0	0	0	0
<i>Single Family</i>	0	0	0	0	0
Total Casualties - 5pm	0	0	0	0	0
Lassen					
Casualties - 2am					
<i>Commuting</i>	0	0	0	0	0
<i>Commercial</i>	0	0	0	0	0
<i>Educational</i>	0	0	0	0	0
<i>Hotels</i>	0	0	0	0	0
<i>Industrial</i>	0	0	0	0	0
<i>Other-Residential</i>	0	0	0	0	0
<i>Single Family</i>	0	0	0	0	0
Total Casualties - 2am	0	0	0	0	0
Casualties - 2pm					
<i>Commuting</i>	0	0	0	0	0
<i>Commercial</i>	0	0	0	0	0
<i>Educational</i>	0	0	0	0	0
<i>Hotels</i>	0	0	0	0	0

	Injury Severity Level				Total
	Severity 1	Severity 2	Severity 3	Severity 4	
California					
Lassen					
Casualties - 2pm					
<i>Industrial</i>	0	0	0	0	0
<i>Other-Residential</i>	0	0	0	0	0
<i>Single Family</i>	0	0	0	0	0
Total Casualties - 2pm	0	0	0	0	0
Casualties - 5pm					
<i>Commuting</i>	0	0	0	0	0
<i>Commercial</i>	0	0	0	0	0
<i>Educational</i>	0	0	0	0	0
<i>Hotels</i>	0	0	0	0	0
<i>Industrial</i>	0	0	0	0	0
<i>Other-Residential</i>	0	0	0	0	0
<i>Single Family</i>	0	0	0	0	0
Total Casualties - 5pm	0	0	0	0	0
Marin					
Casualties - 2am					
<i>Commuting</i>	0	0	0	0	0
<i>Commercial</i>	0	0	0	0	0
<i>Educational</i>	0	0	0	0	0
<i>Hotels</i>	0	0	0	0	0
<i>Industrial</i>	0	0	0	0	0
<i>Other-Residential</i>	0	0	0	0	0
<i>Single Family</i>	0	0	0	0	0
Total Casualties - 2am	0	0	0	0	0
Casualties - 2pm					
<i>Commuting</i>	0	0	0	0	0
<i>Commercial</i>	0	0	0	0	0
<i>Educational</i>	0	0	0	0	0
<i>Hotels</i>	0	0	0	0	0
<i>Industrial</i>	0	0	0	0	0
<i>Other-Residential</i>	0	0	0	0	0
<i>Single Family</i>	0	0	0	0	0
Total Casualties - 2pm	0	0	0	0	0
Casualties - 5pm					
<i>Commuting</i>	0	0	0	0	0
<i>Commercial</i>	0	0	0	0	0
<i>Educational</i>	0	0	0	0	0
<i>Hotels</i>	0	0	0	0	0
<i>Industrial</i>	0	0	0	0	0
<i>Other-Residential</i>	0	0	0	0	0
<i>Single Family</i>	0	0	0	0	0

	Injury Severity Level				Total
	Severity 1	Severity 2	Severity 3	Severity 4	
California					
Marin					
Total Casualties - 5pm	0	0	0	0	0
Mendocino					
Casualties - 2am					
<i>Commuting</i>	0	0	0	0	0
<i>Commercial</i>	0	0	0	0	0
<i>Educational</i>	0	0	0	0	0
<i>Hotels</i>	0	0	0	0	0
<i>Industrial</i>	0	0	0	0	0
<i>Other-Residential</i>	0	0	0	0	0
<i>Single Family</i>	0	0	0	0	0
Total Casualties - 2am	0	0	0	0	0
Casualties - 2pm					
<i>Commuting</i>	0	0	0	0	0
<i>Commercial</i>	0	0	0	0	0
<i>Educational</i>	0	0	0	0	0
<i>Hotels</i>	0	0	0	0	0
<i>Industrial</i>	0	0	0	0	0
<i>Other-Residential</i>	0	0	0	0	0
<i>Single Family</i>	0	0	0	0	0
Total Casualties - 2pm	0	0	0	0	0
Casualties - 5pm					
<i>Commuting</i>	0	0	0	0	0
<i>Commercial</i>	0	0	0	0	0
<i>Educational</i>	0	0	0	0	0
<i>Hotels</i>	0	0	0	0	0
<i>Industrial</i>	0	0	0	0	0
<i>Other-Residential</i>	0	0	0	0	0
<i>Single Family</i>	0	0	0	0	0
Total Casualties - 5pm	0	0	0	0	0
Napa					
Casualties - 2am					
<i>Commuting</i>	0	0	0	0	0
<i>Commercial</i>	0	0	0	0	0
<i>Educational</i>	0	0	0	0	0
<i>Hotels</i>	0	0	0	0	0
<i>Industrial</i>	0	0	0	0	0
<i>Other-Residential</i>	0	0	0	0	0
<i>Single Family</i>	0	0	0	0	0
Total Casualties - 2am	0	0	0	0	0
Casualties - 2pm					
<i>Commuting</i>	0	0	0	0	0

	Injury Severity Level				Total
	Severity 1	Severity 2	Severity 3	Severity 4	
California					
Napa					
Casualties - 2pm					
Commercial	0	0	0	0	0
Educational	0	0	0	0	0
Hotels	0	0	0	0	0
Industrial	0	0	0	0	0
Other-Residential	0	0	0	0	0
Single Family	0	0	0	0	0
Total Casualties - 2pm	0	0	0	0	0
Casualties - 5pm					
Commuting	0	0	0	0	0
Commercial	0	0	0	0	0
Educational	0	0	0	0	0
Hotels	0	0	0	0	0
Industrial	0	0	0	0	0
Other-Residential	0	0	0	0	0
Single Family	0	0	0	0	0
Total Casualties - 5pm	0	0	0	0	0
Placer					
Casualties - 2am					
Commuting	0	0	0	0	0
Commercial	0	0	0	0	0
Educational	0	0	0	0	0
Hotels	0	0	0	0	0
Industrial	0	0	0	0	0
Other-Residential	0	0	0	0	0
Single Family	0	0	0	0	0
Total Casualties - 2am	0	0	0	0	0
Casualties - 2pm					
Commuting	0	0	0	0	0
Commercial	0	0	0	0	0
Educational	0	0	0	0	0
Hotels	0	0	0	0	0
Industrial	0	0	0	0	0
Other-Residential	0	0	0	0	0
Single Family	0	0	0	0	0
Total Casualties - 2pm	0	0	0	0	0
Casualties - 5pm					
Commuting	0	0	0	0	0
Commercial	0	0	0	0	0
Educational	0	0	0	0	0
Hotels	0	0	0	0	0
Industrial	0	0	0	0	0

	Injury Severity Level				Total
	Severity 1	Severity 2	Severity 3	Severity 4	
California					
Placer					
Casualties - 5pm					
<i>Other-Residential</i>	0	0	0	0	0
<i>Single Family</i>	0	0	0	0	0
Total Casualties - 5pm	0	0	0	0	0
Plumas					
Casualties - 2am					
<i>Commuting</i>	0	0	0	0	0
<i>Commercial</i>	0	0	0	0	0
<i>Educational</i>	0	0	0	0	0
<i>Hotels</i>	0	0	0	0	0
<i>Industrial</i>	0	0	0	0	0
<i>Other-Residential</i>	0	0	0	0	0
<i>Single Family</i>	0	0	0	0	0
Total Casualties - 2am	0	0	0	0	0
Casualties - 2pm					
<i>Commuting</i>	0	0	0	0	0
<i>Commercial</i>	0	0	0	0	0
<i>Educational</i>	0	0	0	0	0
<i>Hotels</i>	0	0	0	0	0
<i>Industrial</i>	0	0	0	0	0
<i>Other-Residential</i>	0	0	0	0	0
<i>Single Family</i>	0	0	0	0	0
Total Casualties - 2pm	0	0	0	0	0
Casualties - 5pm					
<i>Commuting</i>	0	0	0	0	0
<i>Commercial</i>	0	0	0	0	0
<i>Educational</i>	0	0	0	0	0
<i>Hotels</i>	0	0	0	0	0
<i>Industrial</i>	0	0	0	0	0
<i>Other-Residential</i>	0	0	0	0	0
<i>Single Family</i>	0	0	0	0	0
Total Casualties - 5pm	0	0	0	0	0
Sacramento					
Casualties - 2am					
<i>Commuting</i>	0	0	0	0	0
<i>Commercial</i>	0	0	0	0	0
<i>Educational</i>	0	0	0	0	0
<i>Hotels</i>	0	0	0	0	0
<i>Industrial</i>	0	0	0	0	0
<i>Other-Residential</i>	0	0	0	0	0
<i>Single Family</i>	0	0	0	0	0

	Injury Severity Level				Total
	Severity 1	Severity 2	Severity 3	Severity 4	
California					
Sacramento					
Total Casualties - 2am	0	0	0	0	0
Casualties - 2pm					
<i>Commuting</i>	0	0	0	0	0
<i>Commercial</i>	0	0	0	0	0
<i>Educational</i>	0	0	0	0	0
<i>Hotels</i>	0	0	0	0	0
<i>Industrial</i>	0	0	0	0	0
<i>Other-Residential</i>	0	0	0	0	0
<i>Single Family</i>	0	0	0	0	0
Total Casualties - 2pm	0	0	0	0	0
Casualties - 5pm					
<i>Commuting</i>	0	0	0	0	0
<i>Commercial</i>	0	0	0	0	0
<i>Educational</i>	0	0	0	0	0
<i>Hotels</i>	0	0	0	0	0
<i>Industrial</i>	0	0	0	0	0
<i>Other-Residential</i>	0	0	0	0	0
<i>Single Family</i>	0	0	0	0	0
Total Casualties - 5pm	0	0	0	0	0
Shasta					
Casualties - 2am					
<i>Commuting</i>	0	0	0	0	0
<i>Commercial</i>	0	0	0	0	0
<i>Educational</i>	0	0	0	0	0
<i>Hotels</i>	0	0	0	0	0
<i>Industrial</i>	0	0	0	0	0
<i>Other-Residential</i>	0	0	0	0	0
<i>Single Family</i>	0	0	0	0	0
Total Casualties - 2am	0	0	0	0	0
Casualties - 2pm					
<i>Commuting</i>	0	0	0	0	0
<i>Commercial</i>	0	0	0	0	0
<i>Educational</i>	0	0	0	0	0
<i>Hotels</i>	0	0	0	0	0
<i>Industrial</i>	0	0	0	0	0
<i>Other-Residential</i>	0	0	0	0	0
<i>Single Family</i>	0	0	0	0	0
Total Casualties - 2pm	0	0	0	0	0
Casualties - 5pm					
<i>Commuting</i>	0	0	0	0	0
<i>Commercial</i>	0	0	0	0	0

	Injury Severity Level				Total
	Severity 1	Severity 2	Severity 3	Severity 4	
California					
Shasta					
Casualties - 5pm					
<i>Educational</i>	0	0	0	0	0
<i>Hotels</i>	0	0	0	0	0
<i>Industrial</i>	0	0	0	0	0
<i>Other-Residential</i>	0	0	0	0	0
<i>Single Family</i>	0	0	0	0	0
Total Casualties - 5pm	0	0	0	0	0
Siskiyou					
Casualties - 2am					
<i>Commuting</i>	0	0	0	0	0
<i>Commercial</i>	0	0	0	0	0
<i>Educational</i>	0	0	0	0	0
<i>Hotels</i>	0	0	0	0	0
<i>Industrial</i>	0	0	0	0	0
<i>Other-Residential</i>	0	0	0	0	0
<i>Single Family</i>	0	0	0	0	0
Total Casualties - 2am	0	0	0	0	0
Casualties - 2pm					
<i>Commuting</i>	0	0	0	0	0
<i>Commercial</i>	0	0	0	0	0
<i>Educational</i>	0	0	0	0	0
<i>Hotels</i>	0	0	0	0	0
<i>Industrial</i>	0	0	0	0	0
<i>Other-Residential</i>	0	0	0	0	0
<i>Single Family</i>	0	0	0	0	0
Total Casualties - 2pm	0	0	0	0	0
Casualties - 5pm					
<i>Commuting</i>	0	0	0	0	0
<i>Commercial</i>	0	0	0	0	0
<i>Educational</i>	0	0	0	0	0
<i>Hotels</i>	0	0	0	0	0
<i>Industrial</i>	0	0	0	0	0
<i>Other-Residential</i>	0	0	0	0	0
<i>Single Family</i>	0	0	0	0	0
Total Casualties - 5pm	0	0	0	0	0
Solano					
Casualties - 2am					
<i>Commuting</i>	0	0	0	0	0
<i>Commercial</i>	0	0	0	0	0
<i>Educational</i>	0	0	0	0	0
<i>Hotels</i>	0	0	0	0	0
<i>Industrial</i>	0	0	0	0	0

	Injury Severity Level				Total
	Severity 1	Severity 2	Severity 3	Severity 4	
California					
Solano					
Casualties - 2am					
Other-Residential	0	0	0	0	0
Single Family	0	0	0	0	0
Total Casualties - 2am	0	0	0	0	0
Casualties - 2pm					
Commuting	0	0	0	0	0
Commercial	0	0	0	0	0
Educational	0	0	0	0	0
Hotels	0	0	0	0	0
Industrial	0	0	0	0	0
Other-Residential	0	0	0	0	0
Single Family	0	0	0	0	0
Total Casualties - 2pm	0	0	0	0	0
Casualties - 5pm					
Commuting	0	0	0	0	0
Commercial	0	0	0	0	0
Educational	0	0	0	0	0
Hotels	0	0	0	0	0
Industrial	0	0	0	0	0
Other-Residential	0	0	0	0	0
Single Family	0	0	0	0	0
Total Casualties - 5pm	0	0	0	0	0
Sonoma					
Casualties - 2am					
Commuting	0	0	0	0	0
Commercial	0	0	0	0	0
Educational	0	0	0	0	0
Hotels	0	0	0	0	0
Industrial	0	0	0	0	0
Other-Residential	0	0	0	0	0
Single Family	0	0	0	0	0
Total Casualties - 2am	0	0	0	0	0
Casualties - 2pm					
Commuting	0	0	0	0	0
Commercial	0	0	0	0	0
Educational	0	0	0	0	0
Hotels	0	0	0	0	0
Industrial	0	0	0	0	0
Other-Residential	0	0	0	0	0
Single Family	0	0	0	0	0
Total Casualties - 2pm	0	0	0	0	0

	Injury Severity Level				Total
	Severity 1	Severity 2	Severity 3	Severity 4	
California					
Sonoma					
Casualties - 5pm					
<i>Commuting</i>	0	0	0	0	0
<i>Commercial</i>	0	0	0	0	0
<i>Educational</i>	0	0	0	0	0
<i>Hotels</i>	0	0	0	0	0
<i>Industrial</i>	0	0	0	0	0
<i>Other-Residential</i>	0	0	0	0	0
<i>Single Family</i>	0	0	0	0	0
Total Casualties - 5pm	0	0	0	0	0
Sutter					
Casualties - 2am					
<i>Commuting</i>	0	0	0	0	0
<i>Commercial</i>	0	0	0	0	0
<i>Educational</i>	0	0	0	0	0
<i>Hotels</i>	0	0	0	0	0
<i>Industrial</i>	0	0	0	0	0
<i>Other-Residential</i>	0	0	0	0	0
<i>Single Family</i>	0	0	0	0	0
Total Casualties - 2am	0	0	0	0	0
Casualties - 2pm					
<i>Commuting</i>	0	0	0	0	0
<i>Commercial</i>	0	0	0	0	0
<i>Educational</i>	0	0	0	0	0
<i>Hotels</i>	0	0	0	0	0
<i>Industrial</i>	0	0	0	0	0
<i>Other-Residential</i>	0	0	0	0	0
<i>Single Family</i>	0	0	0	0	0
Total Casualties - 2pm	0	0	0	0	0
Casualties - 5pm					
<i>Commuting</i>	0	0	0	0	0
<i>Commercial</i>	0	0	0	0	0
<i>Educational</i>	0	0	0	0	0
<i>Hotels</i>	0	0	0	0	0
<i>Industrial</i>	0	0	0	0	0
<i>Other-Residential</i>	0	0	0	0	0
<i>Single Family</i>	0	0	0	0	0
Total Casualties - 5pm	0	0	0	0	0
Tehama					
Casualties - 2am					
<i>Commuting</i>	0	0	0	0	0
<i>Commercial</i>	0	0	0	0	0
<i>Educational</i>	0	0	0	0	0

	Injury Severity Level				Total
	Severity 1	Severity 2	Severity 3	Severity 4	
California					
Tehama					
Casualties - 2am					
<i>Hotels</i>	0	0	0	0	0
<i>Industrial</i>	0	0	0	0	0
<i>Other-Residential</i>	0	0	0	0	0
<i>Single Family</i>	0	0	0	0	0
Total Casualties - 2am	0	0	0	0	0
Casualties - 2pm					
<i>Commuting</i>	0	0	0	0	0
<i>Commercial</i>	0	0	0	0	0
<i>Educational</i>	0	0	0	0	0
<i>Hotels</i>	0	0	0	0	0
<i>Industrial</i>	0	0	0	0	0
<i>Other-Residential</i>	0	0	0	0	0
<i>Single Family</i>	0	0	0	0	0
Total Casualties - 2pm	0	0	0	0	0
Casualties - 5pm					
<i>Commuting</i>	0	0	0	0	0
<i>Commercial</i>	0	0	0	0	0
<i>Educational</i>	0	0	0	0	0
<i>Hotels</i>	0	0	0	0	0
<i>Industrial</i>	0	0	0	0	0
<i>Other-Residential</i>	0	0	0	0	0
<i>Single Family</i>	0	0	0	0	0
Total Casualties - 5pm	0	0	0	0	0
Trinity					
Casualties - 2am					
<i>Commuting</i>	0	0	0	0	0
<i>Commercial</i>	0	0	0	0	0
<i>Educational</i>	0	0	0	0	0
<i>Hotels</i>	0	0	0	0	0
<i>Industrial</i>	0	0	0	0	0
<i>Other-Residential</i>	1	0	0	0	1
<i>Single Family</i>	0	0	0	0	0
Total Casualties - 2am	1	0	0	0	1
Casualties - 2pm					
<i>Commuting</i>	0	0	0	0	0
<i>Commercial</i>	0	0	0	0	0
<i>Educational</i>	0	0	0	0	0
<i>Hotels</i>	0	0	0	0	0
<i>Industrial</i>	0	0	0	0	0
<i>Other-Residential</i>	0	0	0	0	0
<i>Single Family</i>	0	0	0	0	0

	Injury Severity Level				Total
	Severity 1	Severity 2	Severity 3	Severity 4	
California					
Trinity					
Total Casualties - 2pm	1	0	0	0	1
Casualties - 5pm					
<i>Commuting</i>	0	0	0	0	0
<i>Commercial</i>	0	0	0	0	0
<i>Educational</i>	0	0	0	0	0
<i>Hotels</i>	0	0	0	0	0
<i>Industrial</i>	0	0	0	0	0
<i>Other-Residential</i>	0	0	0	0	0
<i>Single Family</i>	0	0	0	0	0
Total Casualties - 5pm	1	0	0	0	1
Yolo					
Casualties - 2am					
<i>Commuting</i>	0	0	0	0	0
<i>Commercial</i>	0	0	0	0	0
<i>Educational</i>	0	0	0	0	0
<i>Hotels</i>	0	0	0	0	0
<i>Industrial</i>	0	0	0	0	0
<i>Other-Residential</i>	0	0	0	0	0
<i>Single Family</i>	0	0	0	0	0
Total Casualties - 2am	0	0	0	0	0
Casualties - 2pm					
<i>Commuting</i>	0	0	0	0	0
<i>Commercial</i>	0	0	0	0	0
<i>Educational</i>	0	0	0	0	0
<i>Hotels</i>	0	0	0	0	0
<i>Industrial</i>	0	0	0	0	0
<i>Other-Residential</i>	0	0	0	0	0
<i>Single Family</i>	0	0	0	0	0
Total Casualties - 2pm	0	0	0	0	0
Casualties - 5pm					
<i>Commuting</i>	0	0	0	0	0
<i>Commercial</i>	0	0	0	0	0
<i>Educational</i>	0	0	0	0	0
<i>Hotels</i>	0	0	0	0	0
<i>Industrial</i>	0	0	0	0	0
<i>Other-Residential</i>	0	0	0	0	0
<i>Single Family</i>	0	0	0	0	0
Total Casualties - 5pm	0	0	0	0	0
Yuba					
Casualties - 2am					
<i>Commuting</i>	0	0	0	0	0

	Injury Severity Level				Total
	Severity 1	Severity 2	Severity 3	Severity 4	
California					
Yuba					
Casualties - 2am					
<i>Commercial</i>	0	0	0	0	0
<i>Educational</i>	0	0	0	0	0
<i>Hotels</i>	0	0	0	0	0
<i>Industrial</i>	0	0	0	0	0
<i>Other-Residential</i>	0	0	0	0	0
<i>Single Family</i>	0	0	0	0	0
Total Casualties - 2am	0	0	0	0	0
Casualties - 2pm					
<i>Commuting</i>	0	0	0	0	0
<i>Commercial</i>	0	0	0	0	0
<i>Educational</i>	0	0	0	0	0
<i>Hotels</i>	0	0	0	0	0
<i>Industrial</i>	0	0	0	0	0
<i>Other-Residential</i>	0	0	0	0	0
<i>Single Family</i>	0	0	0	0	0
Total Casualties - 2pm	0	0	0	0	0
Casualties - 5pm					
<i>Commuting</i>	0	0	0	0	0
<i>Commercial</i>	0	0	0	0	0
<i>Educational</i>	0	0	0	0	0
<i>Hotels</i>	0	0	0	0	0
<i>Industrial</i>	0	0	0	0	0
<i>Other-Residential</i>	0	0	0	0	0
<i>Single Family</i>	0	0	0	0	0
Total Casualties - 5pm	0	0	0	0	0
Region Total	NA	NA	NA	NA	NA

Totals only reflect data for those census tracts/blocks included in the user's study region and will reflect the entire county/state only if all of the census blocks for that county/states were selected at the time of study region creation.

Debris Summary Report

May 21, 2024

All values are in thousands of tons.

	Brick, Wood & Others	Concrete & Steel	Total
California			
Butte	0	0	0
Colusa	0	0	0
Del Norte	0	0	0
Glenn	0	0	0
Humboldt	26	47	73
Lake	0	0	0
Lassen	0	0	0
Marin	0	0	0
Mendocino	0	0	1
Napa	0	0	0
Placer	0	0	0
Plumas	0	0	0
Sacramento	0	0	0
Shasta	0	0	0
Siskiyou	0	0	0
Solano	0	0	0
Sonoma	0	0	0
Sutter	0	0	0
Tehama	0	0	0

	Brick, Wood & Others	Concrete & Steel	Total
Trinity	1	0	2
Yolo	0	0	0
Yuba	0	0	0
Total	29	48	77

Region Total	29	48	77
---------------------	-----------	-----------	-----------

Totals only reflect data for those census tracts/blocks included in the user's study region and will reflect the entire county/state only if all of the census blocks for that county/states were selected at the time of study region creation.

Direct Economic Losses For Buildings

May 21, 2024

All values are in thousands of dollars

	Capital Stock Losses				Loss Ratio %	Income Losses				Total Loss
	Cost Structural Damage	Cost Non-struct. Damage	Cost Contents Damage	Inventory Loss		Relocation Loss	Capital Related Loss	Wages Losses	Rental Income Loss	
California										
Butte	95	1,577	1,032	144	0.00	13	15	15	20	2,911
Colusa	16	263	168	30	0.01	2	5	6	5	494
Del Norte	3	198	106	4	0.00	0	0	0	0	312
Glenn	303	1,838	1,077	329	0.03	44	34	34	37	3,695
Humboldt	60,286	324,705	150,370	11,159	1.37	23,887	12,145	14,307	14,180	611,041
Lake	26	464	228	21	0.00	3	4	4	8	757
Lassen	0	0	0	0	0.00	0	0	0	0	0
Marin	0	20	13	2	0.00	0	0	0	0	35
Mendocino	508	8,529	4,742	484	0.04	69	81	78	87	14,578

	Capital Stock Losses				Loss Ratio %	Income Losses				Total Loss
	Cost Structural Damage	Cost Non-struct. Damage	Cost Contents Damage	Inventory Loss		Relocation Loss	Capital Related Loss	Wages Losses	Rental Income Loss	
Napa	1	26	18	3	0.00	0	0	0	0	48
Placer	0	0	0	0	0.00	0	0	0	0	0
Plumas	0	1	0	0	0.00	0	0	0	0	1
Sacramento	0	0	0	0	0.00	0	0	0	0	0
Shasta	262	4,075	2,221	395	0.01	29	23	24	37	7,067
Siskiyou	1	89	61	6	0.00	0	0	0	0	157
Solano	0	8	6	1	0.00	0	0	0	0	15
Sonoma	5	168	121	18	0.00	0	1	1	1	314
Sutter	13	414	272	57	0.00	1	1	1	2	760
Tehama	244	3,314	1,833	305	0.03	36	25	29	42	5,828
Trinity	1,543	10,938	5,443	751	0.34	446	82	76	217	19,496
Yolo	1	22	15	2	0.00	0	0	0	0	41
Yuba	3	105	72	11	0.00	0	1	1	1	194
Total	63,310	356,753	167,798	13,720	0.08	24,531	12,417	14,577	14,639	667,745
Region Total	63,310	356,753	167,798	13,720	0.08	24,531	12,417	14,577	14,639	667,745

Totals only reflect data for those census tracts/blocks included in the user's study region and will reflect the entire county/state only if all of the census blocks for that county/states were selected at the time of study region creation.

Direct Economic Loss For Transportation

May 21, 2024

All values are in thousands of dollars

	Highway	Railway	Light Rail	Bus Facility	Ports	Ferries	Airport	Total
California								
Butte								
Segments	0	0	0					0
Bridges	16	0	0					16
Tunnels	0	0	0					0
Facilities		26	0	0	0	0	185	211
Total	16	26	0	0	0	0	185	227
Colusa								
Segments	0	0	0					0
Bridges	14	0	0					14
Tunnels	0	0	0					0
Facilities		0	0	0	0	0	51	51
Total	14	0	0	0	0	0	51	65
Del Norte								
Segments	0	0	0					0
Bridges	3	0	0					3
Tunnels	0	0	0					0
Facilities		0	0	22	37	0	153	212

	Highway	Railway	Light Rail	Bus Facility	Ports	Ferries	Airport	Total
Total	3	0	0	22	37	0	153	215
Glenn								
Segments	0	0	0					0
Bridges	22	0	0					22
Tunnels	0	0	0					0
Facilities		0	0	0	37	0	102	139
Total	22	0	0	0	37	0	102	161
Humboldt								
Segments	0	0	0					0
Bridges	5,836	71	0					5,907
Tunnels	0	0	0					0
Facilities		0	0	671	11,550	0	7,928	20,148
Total	5,836	71	0	671	11,550	0	7,928	26,056
Lake								
Segments	0	0	0					0
Bridges	5	0	0					5
Tunnels	0	0	0					0
Facilities		0	0	0	0	0	268	268
Total	5	0	0	0	0	0	268	273
Lassen								
Segments	0	0	0					0
Bridges	0	0	0					0
Tunnels	0	0	0					0
Facilities		0	0	0	0	0	11	11

	Highway	Railway	Light Rail	Bus Facility	Ports	Ferries	Airport	Total
Total	0	0	0	0	0	0	11	11
Marin								
Segments	0	0	0					0
Bridges	44	0	0					44
Tunnels	0	0	0					0
Facilities		0	0	0	41	0	51	92
Total	44	0	0	0	41	0	51	135
Mendocino								
Segments	0	0	0					0
Bridges	225	0	0					225
Tunnels	0	0	0					0
Facilities		0	0	141	156	0	1,154	1,452
Total	225	0	0	141	156	0	1,154	1,677
Napa								
Segments	0	0	0					0
Bridges	0	0	0					0
Tunnels	0	0	0					0
Facilities		0	0	2	45	0	65	113
Total	0	0	0	2	45	0	65	113
Placer								
Segments	0	0	0					0
Bridges	0	0	0					0
Tunnels	0	0	0					0
Facilities		11	0	2	0	0	17	31

	Highway	Railway	Light Rail	Bus Facility	Ports	Ferries	Airport	Total
Total	0	11	0	2	0	0	17	31
Plumas								
Segments	0	0	0					0
Bridges	0	0	0					0
Tunnels	0	0	0					0
Facilities		0	0	0	0	0	125	125
Total	0	0	0	0	0	0	125	125
Sacramento								
Segments	0	0	0					0
Bridges	5	0	0					5
Tunnels	0	0	0					0
Facilities		3	336	5	33	1	466	844
Total	5	3	336	5	33	1	466	849
Shasta								
Segments	0	0	0					0
Bridges	16	0	0					16
Tunnels	0	0	0					0
Facilities		26	0	22	0	0	184	231
Total	16	26	0	22	0	0	184	247
Siskiyou								
Segments	0	0	0					0
Bridges	1	0	0					1
Tunnels	0	0	0					0
Facilities		26	0	22	0	0	312	360

	Highway	Railway	Light Rail	Bus Facility	Ports	Ferries	Airport	Total
Total	1	26	0	22	0	0	312	360
Solano								
Segments	0	0	0					0
Bridges	1	0	0					1
Tunnels	0	0	0					0
Facilities		9	0	7	86	6	26	133
Total	1	9	0	7	86	6	26	134
Sonoma								
Segments	0	0	0					0
Bridges	2	0	0					2
Tunnels	0	0	0					0
Facilities		0	0	23	61	0	299	383
Total	2	0	0	23	61	0	299	385
Sutter								
Segments	0	0	0					0
Bridges	0	0	0					0
Tunnels	0	0	0					0
Facilities		0	0	0	0	0	129	129
Total	0	0	0	0	0	0	129	129
Tehama								
Segments	0	0	0					0
Bridges	47	0	0					47
Tunnels	0	0	0					0
Facilities		0	0	0	0	0	102	102

	Highway	Railway	Light Rail	Bus Facility	Ports	Ferries	Airport	Total
Total	47	0	0	0	0	0	102	149
Trinity								
Segments	0	0	0					0
Bridges	929	0	0					929
Tunnels	0	0	0					0
Facilities		0	0	0	0	0	3,072	3,072
Total	929	0	0	0	0	0	3,072	4,001
Yolo								
Segments	0	0	0					0
Bridges	5	0	0					5
Tunnels	0	0	0					0
Facilities		14	0	0	69	0	17	101
Total	5	14	0	0	69	0	17	105
Yuba								
Segments	0	0	0					0
Bridges	0	0	0					0
Tunnels	0	0	0					0
Facilities		0	0	22	0	0	57	78
Total	0	0	0	22	0	0	57	78
Total	7,170	186	336	939	12,114	7	14,775	35,527
Region Total	7,170	186	336	939	12,114	7	14,775	35,527

Totals only reflect data for those census tracts/blocks included in the user's study region and will reflect the entire county/state only if all of the census blocks for that county/states were selected at the time of study region creation.

Direct Economic Loss For Utilities

May 21, 2024

All values are in thousands of dollars

	Potable Water	Waste Water	Oil Systems	Natural Gas	Electric Power	Communication	Total
California							
Butte							
Facilities	28	492	0	0	8,716	3	9,239
Pipelines	64	32	0	0			96
Total	92	524	0	0	8,716	3	9,334
Colusa							
Facilities	0	369	0	75	6,525	0	6,969
Pipelines	35	17	0	0			52
Total	35	386	0	75	6,525	0	7,021
Del Norte							
Facilities	0	123	0	0	0	1	124
Pipelines	38	19	0	0			57
Total	38	142	0	0	0	1	180
Glenn							
Facilities	0	123	0	0	136	0	259

	Potable Water	Waste Water	Oil Systems	Natural Gas	Electric Power	Communication	Total
<i>Pipelines</i>	66	33	0	0			99
Total	66	156	0	0	136	0	357
Humboldt							
<i>Facilities</i>	0	107,692	0	0	128,699	695	237,085
<i>Pipelines</i>	3,034	1,524	0	0			4,558
Total	3,034	109,216	0	0	128,699	695	241,643
Lake							
<i>Facilities</i>	56	0	0	0	5,226	1	5,284
<i>Pipelines</i>	74	37	0	0			112
Total	131	37	0	0	5,226	1	5,396
Lassen							
<i>Facilities</i>	0	0	0	0	17	0	17
<i>Pipelines</i>	26	13	0	0			39
Total	26	13	0	0	17	0	56
Marin							
<i>Facilities</i>	1	5	0	0	1	0	7
<i>Pipelines</i>	7	3	0	0			10
Total	7	9	0	0	1	0	17
Mendocino							
<i>Facilities</i>	0	16,347	0	0	3,621	25	19,993
<i>Pipelines</i>	480	241	0	0			721

	Potable Water	Waste Water	Oil Systems	Natural Gas	Electric Power	Communication	Total
Total	480	16,588	0	0	3,621	25	20,714
Napa							
<i>Facilities</i>	0	131	0	0	5	0	136
<i>Pipelines</i>	14	7	0	0			21
Total	14	138	0	0	5	0	157
Placer							
<i>Facilities</i>	0	26	0	0	170	0	196
<i>Pipelines</i>	30	15	0	0			45
Total	30	41	0	0	170	0	241
Plumas							
<i>Facilities</i>	0	126	0	0	1,145	0	1,270
<i>Pipelines</i>	22	11	0	0			33
Total	22	137	0	0	1,145	0	1,304
Sacramento							
<i>Facilities</i>	0	26	0	0	997	0	1,023
<i>Pipelines</i>	101	51	0	0			152
Total	101	77	0	0	997	0	1,175
Shasta							
<i>Facilities</i>	56	984	0	3	88,530	3	89,576
<i>Pipelines</i>	128	64	0	0			192
Total	184	1,048	0	3	88,530	3	89,768

	Potable Water	Waste Water	Oil Systems	Natural Gas	Electric Power	Communication	Total
Siskiyou							
<i>Facilities</i>	0	126	0	0	350	1	477
<i>Pipelines</i>	157	79	0	0			236
Total	157	204	0	0	350	1	712
Solano							
<i>Facilities</i>	0	15	0	0	1,255	0	1,270
<i>Pipelines</i>	62	31	0	0			93
Total	62	46	0	0	1,255	0	1,363
Sonoma							
<i>Facilities</i>	0	751	0	0	39,078	1	39,829
<i>Pipelines</i>	82	41	0	0			123
Total	82	792	0	0	39,078	1	39,952
Sutter							
<i>Facilities</i>	0	246	0	0	6,808	1	7,055
<i>Pipelines</i>	30	15	0	0			45
Total	30	261	0	0	6,808	1	7,100
Tehama							
<i>Facilities</i>	0	369	0	75	793	10	1,247
<i>Pipelines</i>	178	89	0	0			267
Total	178	458	0	75	793	10	1,514
Trinity							

	Potable Water	Waste Water	Oil Systems	Natural Gas	Electric Power	Communication	Total
<i>Facilities</i>	0	0	0	0	32,428	0	32,428
<i>Pipelines</i>	1,116	560	0	0			1,676
Total	1,116	560	0	0	32,428	0	34,104
Yolo							
<i>Facilities</i>	0	10	0	0	8	0	18
<i>Pipelines</i>	37	19	0	0			56
Total	37	29	0	0	8	0	74
Yuba							
<i>Facilities</i>	0	251	0	0	793	0	1,044
<i>Pipelines</i>	21	11	0	0			32
Total	21	262	0	0	793	0	1,076
Total	5,942	131,123	0	152	325,300	742	463,260
Region Total	5,942	131,123	0	152	325,300	742	463,260

Totals only reflect data for those census tracts/blocks included in the user's study region and will reflect the entire county/state only if all of the census blocks for that county/states were selected at the time of study region creation.

Hazus Quick Assessment Report

Estimated Economic Loss (\$ Billions)

Category	Description	Range
General Building Stock	Building Damage	0.20 - 0.80
	Building Contents	0.00 - 0.10
	Business Interruption	0.00 - 0.10
Infrastructure	Lifelines Damage	
Total		0.30 - 1.30

Preliminary Damage Assessment (PDA) Estimates

Description	Residential	Commercial	Other	Total
Affected	11,800	740	270	12,810
Minor	1,400	240	110	1,750
Major	80	50	30	160
Destroyed	< 10	< 10	< 10	< 10
Total	13,280	1,030	410	14,720

Estimated Casualties : Night Time

Severity Level	Description	# Persons
Level 1	Medical Aid	10 - 50
Level 2	Hospital Care	< 10
Level 3	Life-threatening	< 10
Level 4	Fatalities	< 10

Estimated Shelter Needs

Type	Households	People
Displaced Households	40 - 150	100 - 375
Public Shelter	20	40

Comments :

**Hazus damage estimates are presented using FEMA Preliminary Damage Assessment (PDA) categories. These estimates should be used for planning purposes and may not reflect actual observed damages from the PDA process.*

Disclaimer:

The estimates of social and economic impacts contained in this report were produced using HAZUS loss estimation methodology software which is based on current scientific and engineering knowledge. There are uncertainties inherent in any loss estimation technique. Therefore, there may be significant differences between the modeled results contained in this report and the actual social and economic losses following a specific earthquake. These results can be improved by using enhanced inventory, geotechnical, and observed ground motion data.

Earthquake Information

Location :

Origin Time:

Magnitude : 7.36

Epicenter Latitude/Longitude :
/

Depth & Type : /U

Name :
NA

Ground Motion /Attenuation :

Maximum PGA: 0.00

Information Sources:

Comments :

Population and Building Exposure

Population: 4,677,149

Building Exposure : (\$ Millions)

Residential	613,315
Commercial	169,712
Other	135,453
Total	918,480

Counties : See Appendix

Major Metro Area :

Hazus Quick Assessment Report

Estimated Economic Loss (\$ Billions)

Category	Description	Range
General Building Stock	Building Damage	0.20 - 0.80
	Building Contents	0.00 - 0.10
	Business Interruption	0.00 - 0.10
Infrastructure	Lifelines Damage	
Total		0.30 - 1.30

Preliminary Damage Assessment (PDA) Estimates

Description	Residential	Commercial	Other	Total
Affected	11,800	740	270	12,810
Minor	1,400	240	110	1,750
Major	80	50	30	160
Destroyed	< 10	< 10	< 10	< 10
Total	13,280	1,030	410	14,720

Estimated Casualties : Day Time

Severity Level	Description	# Persons
Level 1	Medical Aid	20 - 60
Level 2	Hospital Care	< 10
Level 3	Life-threatening	< 10
Level 4	Fatalities	< 10

Estimated Shelter Needs

Type	Households	People
Displaced Households	40 - 150	100 - 375
Public Shelter	20	40

Comments :

*Hazus damage estimates are presented using FEMA Preliminary Damage Assessment (PDA) categories. These estimates should be used for planning purposes and may not reflect actual observed damages from the PDA process.

Disclaimer:

The estimates of social and economic impacts contained in this report were produced using HAZUS loss estimation methodology software which is based on current scientific and engineering knowledge. There are uncertainties inherent in any loss estimation technique. Therefore, there may be significant differences between the modeled results contained in this report and the actual social and economic losses following a specific earthquake. These results can be improved by using enhanced inventory, geotechnical, and observed ground motion data.

Earthquake Information

Location :

Origin Time:

Magnitude : 7.36

Epicenter Latitude/Longitude :
/

Depth & Type : /U

Name :
NA

Ground Motion /Attenuation :

Maximum PGA: 0.00

Information Sources:

Comments :

Population and Building Exposure

Population: 4,677,149

Building Exposure : (\$ Millions)

Residential	613,315
Commercial	169,712
Other	135,453
Total	918,480

Counties : See Appendix

Major Metro Area :

Hazus Quick Assessment Report

Estimated Economic Loss (\$ Billions)

Category	Description	Range
General Building Stock	Building Damage	0.20 - 0.80
	Building Contents	0.00 - 0.10
	Business Interruption	0.00 - 0.10
Infrastructure	Lifelines Damage	
Total		0.30 - 1.30

Preliminary Damage Assessment (PDA) Estimates

Description	Residential	Commercial	Other	Total
Affected	11,800	740	270	12,810
Minor	1,400	240	110	1,750
Major	80	50	30	160
Destroyed	< 10	< 10	< 10	< 10
Total	13,280	1,030	410	14,720

Estimated Casualties : Commute Time

Severity Level	Description	# Persons
Level 1	Medical Aid	10 - 50
Level 2	Hospital Care	< 10
Level 3	Life-threatening	< 10
Level 4	Fatalities	< 10

Estimated Shelter Needs

Type	Households	People
Displaced Households	40 - 150	100 - 375
Public Shelter	20	40

Comments :

*Hazus damage estimates are presented using FEMA Preliminary Damage Assessment (PDA) categories. These estimates should be used for planning purposes and may not reflect actual observed damages from the PDA process.

Disclaimer:

The estimates of social and economic impacts contained in this report were produced using HAZUS loss estimation methodology software which is based on current scientific and engineering knowledge. There are uncertainties inherent in any loss estimation technique. Therefore, there may be significant differences between the modeled results contained in this report and the actual social and economic losses following a specific earthquake. These results can be improved by using enhanced inventory, geotechnical, and observed ground motion data.

Earthquake Information

Location :

Origin Time:

Magnitude : 7.36

Epicenter Latitude/Longitude :
/

Depth & Type : /U

Name :
NA

Ground Motion /Attenuation :

Maximum PGA: 0.00

Information Sources:

Comments :

Population and Building Exposure

Population: 4,677,149

Building Exposure : (\$ Millions)

Residential	613,315
Commercial	169,712
Other	135,453
Total	918,480

Counties : See Appendix

Major Metro Area :

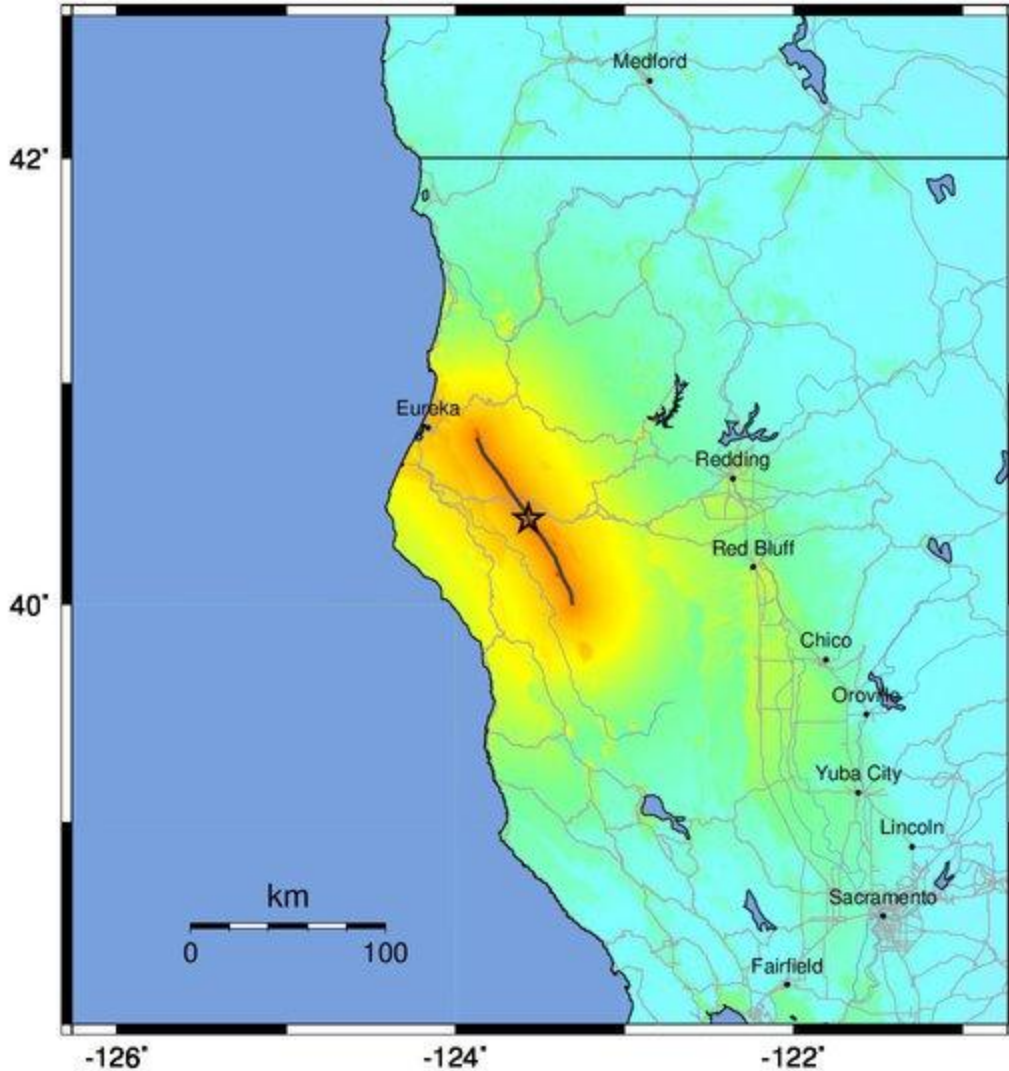
Shelter Summary Report

May 21, 2024

	# of Displaced Households	# of People Needing Short Term Shelter
California		
Butte	0	0
Colusa	0	0
Del Norte	0	0
Glenn	0	0
Humboldt	73	42
Lake	0	0
Lassen	0	0
Marin	0	0
Mendocino	0	0
Napa	0	0
Placer	0	0
Plumas	0	0
Sacramento	0	0
Shasta	0	0
Siskiyou	0	0
Solano	0	0
Sonoma	0	0
Sutter	0	0
Tehama	0	0
Trinity	0	0
Yolo	0	0
Yuba	0	0
Total	73	42
Region Total	73	42

Totals only reflect data for those census tracts/blocks included in the user's study region and will reflect the entire county/state only if all of the census blocks for that county/states were selected at the time of study region creation.

-- Earthquake Planning Scenario --
ShakeMap for Eaton Roughs - Median ground motions Scenario
 Scenario Date: May 16, 2017 08:32:07 AM MDT M 7.4 N40.39 W123.57 Depth: 9.6km



-126° -124° -122°
 PLANNING SCENARIO ONLY -- Map Version 14 Processed 2017-05-16 03:52:09 PM MDT

PERCEIVED SHAKING	Not felt	Weak	Light	Moderate	Strong	Very strong	Severe	Violent	Extreme
POTENTIAL DAMAGE	none	none	none	Very light	Light	Moderate	Mod./Heavy	Heavy	Very Heavy
PEAK ACC.(%g)	<0.05	0.3	2.8	6.2	12	22	40	75	>139
PEAK VEL.(cm/s)	<0.02	0.1	1.4	4.7	9.6	20	41	86	>178
INSTRUMENTAL INTENSITY	I	II-III	IV	V	VI	VII	VIII	IX	X+

Scale based upon Worden et al. (2012)