

Hazus: Earthquake Global Risk Report

Region Name: CascadiaMegathrus

Earthquake Scenario: cascadia_sub0_m9p34_se

Print Date: May 20, 2024

Disclaimer:

Totals only reflect data for those census tracts/blocks included in the user's study region.

The estimates of social and economic impacts contained in this report were produced using Hazus loss estimation methodology software which is based on current scientific and engineering knowledge. There are uncertainties inherent in any loss estimation technique. Therefore, there may be significant differences between the modeled results contained in this report and the actual social and economic losses following a specific earthquake. These results can be improved by using enhanced inventory, geotechnical, and observed ground motion data.

Table of Contents

Section	Page #
General Description of the Region	3
Building and Lifeline Inventory	4
Building Inventory	
Critical Facility Inventory	
Transportation and Utility Lifeline Inventory	
Earthquake Scenario Parameters	7
Direct Earthquake Damage	8
Buildings Damage	
Essential Facilities Damage	
Transportation and Utility Lifeline Damage	
Induced Earthquake Damage	14
Fire Following Earthquake	
Debris Generation	
Social Impact	15
Shelter Requirements	
Casualties	
Economic Loss	17
Building Related Losses	
Transportation and Utility Lifeline Losses	
Appendix A: County Listing for the Region	
Appendix B: Regional Population and Building Value Data	

General Description of the Region

Hazus-MH is a regional earthquake loss estimation model that was developed by the Federal Emergency Management Agency (FEMA) and the National Institute of Building Sciences. The primary purpose of Hazus is to provide a methodology and software application to develop multi-hazard losses at a regional scale. These loss estimates would be used primarily by local, state and regional officials to plan and stimulate efforts to reduce risks from multi-hazards and to prepare for emergency response and recovery.

The earthquake loss estimates provided in this report was based on a region that includes 46 county(ies) from the following state(s):

California

Note:

Appendix A contains a complete listing of the counties contained in the region.

The geographical size of the region is 94,923.40 square miles and contains 3,502 census tracts. There are over 5,335 thousand households in the region which has a total population of 15,149,716 people. The distribution of population by Total Region and County is provided in Appendix B.

There are an estimated 4,758 thousand buildings in the region with a total building replacement value (excluding contents) of (millions of dollars). Approximately 90.00 % of the buildings (and % of the building value) are associated with residential housing.

The replacement value of the transportation and utility lifeline systems is estimated to be 265,813 and 214,285 (millions of dollars) , respectively.

Building and Lifeline Inventory

Building Inventory

Hazus estimates that there are 4,758 thousand buildings in the region which have an aggregate total replacement value of (millions of dollars) . Appendix B provides a general distribution of the building value by Total Region and County.

In terms of building construction types found in the region, wood frame construction makes up 86% of the building inventory. The remaining percentage is distributed between the other general building types.

Critical Facility Inventory

Hazus breaks critical facilities into two (2) groups: essential facilities and high potential loss facilities (HPL). Essential facilities include hospitals, medical clinics, schools, fire stations, police stations and emergency operations facilities. High potential loss facilities include dams, levees, military installations, nuclear power plants and hazardous material sites.

For essential facilities, there are 277 hospitals in the region with a total bed capacity of 38,518 beds. There are 5,840 schools, 1,768 fire stations, 544 police stations and 101 emergency operation facilities. With respect to high potential loss facilities (HPL), there are no dams identified within the inventory. The inventory also includes no hazardous material sites, no military installations and no nuclear power plants.

Transportation and Utility Lifeline Inventory

Within Hazus, the lifeline inventory is divided between transportation and utility lifeline systems. There are seven (7) transportation systems that include highways, railways, light rail, bus, ports, ferry and airports. There are six (6) utility systems that include potable water, wastewater, natural gas, crude & refined oil, electric power and communications. The lifeline inventory data are provided in Tables 1 and 2.

The total value of the lifeline inventory is over 480,098.00 (millions of dollars). This inventory includes over 13,375.63 miles of highways, 13,671 bridges, 323,910.76 miles of pipes.

Table 1: Transportation System Lifeline Inventory

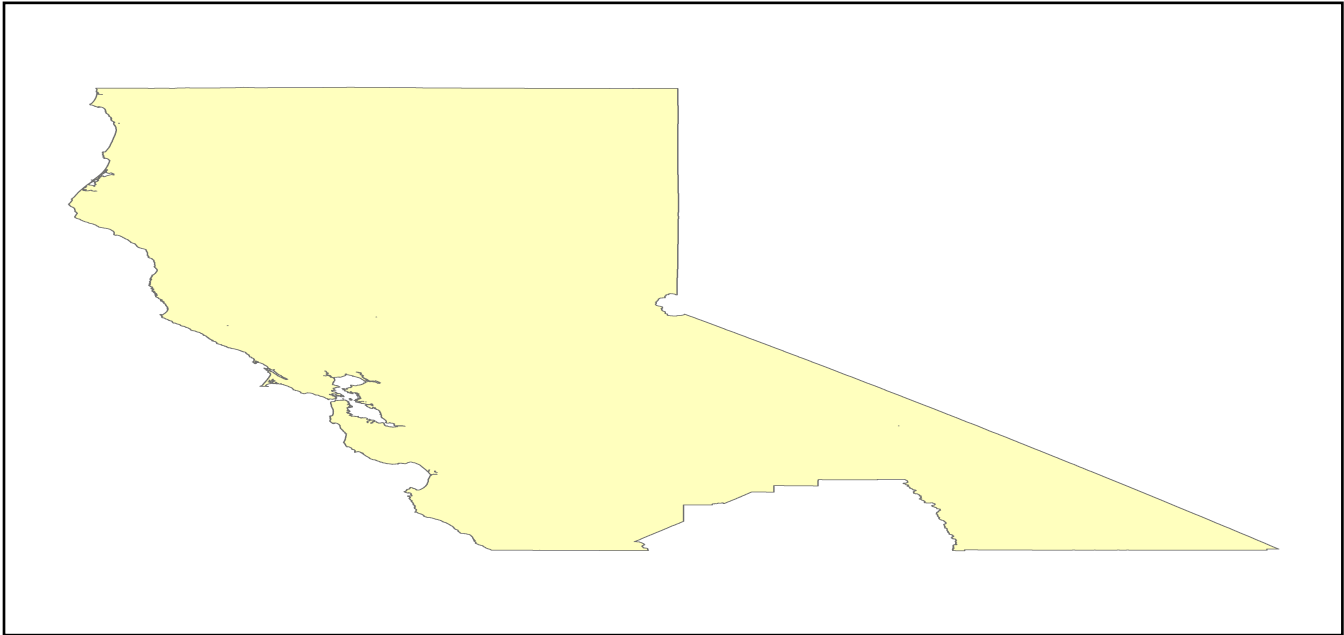
System	Component	# Locations/ # Segments	Replacement value (millions of dollars)
Highway	Bridges	13,671	62701.4503
	Segments	7,447	109894.3309
	Tunnels	51	1028.6732
	Subtotal		173624.4544
Railways	Bridges	2,016	11471.0400
	Facilities	83	221.0290
	Segments	3,539	64551.1864
	Tunnels	3	1.8495
	Subtotal		76245.1049
Light Rail	Bridges	112	15.3529
	Facilities	255	4154.0000
	Segments	15	5403.2756
	Tunnels	0	0.0000
	Subtotal		9572.6285
Bus	Facilities	52	118.3116
	Subtotal		118.3116
Ferry	Facilities	25	33.2750
	Subtotal		33.2750
Port	Facilities	385	1467.5602
	Subtotal		1467.5602
Airport	Facilities	165	3128.3430
	Runways	211	1623.6748
	Subtotal		4752.0178
		Total	265,813.40

Table 2: Utility System Lifeline Inventory

System	Component	# Locations / Segments	Replacement value (millions of dollars)
Potable Water	Distribution Lines	NA	6453.1801
	Facilities	25	982.3500
	Pipelines	0	0.0000
		Subtotal	7435.5301
Waste Water	Distribution Lines	NA	3871.9081
	Facilities	214	36797.6852
	Pipelines	0	0.0000
		Subtotal	40669.5933
Natural Gas	Distribution Lines	NA	2581.2720
	Facilities	5	183.1757
	Pipelines	1,062	17715.2438
		Subtotal	20479.6915
Oil Systems	Facilities	17	2.0060
	Pipelines	0	0.0000
		Subtotal	2.0060
Electrical Power	Facilities	431	145640.3438
		Subtotal	145640.3438
Communication	Facilities	493	58.1740
		Subtotal	58.1740
	Total		214,285.30

Earthquake Scenario

Hazus uses the following set of information to define the earthquake parameters used for the earthquake loss estimate provided in this report.



Scenario Name	cascadia_sub0_m9p34_se
Type of Earthquake	User-defined
Fault Name	NA
Historical Epicenter ID #	NA
Probabilistic Return Period	NA
Longitude of Epicenter	NA
Latitude of Epicenter	NA
Earthquake Magnitude	9.34
Depth (km)	NA
Rupture Length (Km)	NA
Rupture Orientation (degrees)	NA
Attenuation Function	NA

Direct Earthquake Damage

Building Damage

Hazus estimates that about 57,981 buildings will be at least moderately damaged. This is over 1.00 % of the buildings in the region. There are an estimated 3,140 buildings that will be damaged beyond repair. The definition of the 'damage states' is provided in Volume 1: Chapter 5 of the Hazus technical manual. Table 3 below summarizes the expected damage by general occupancy for the buildings in the region. Table 4 below summarizes the expected damage by general building type.

Damage Categories by General Occupancy Type

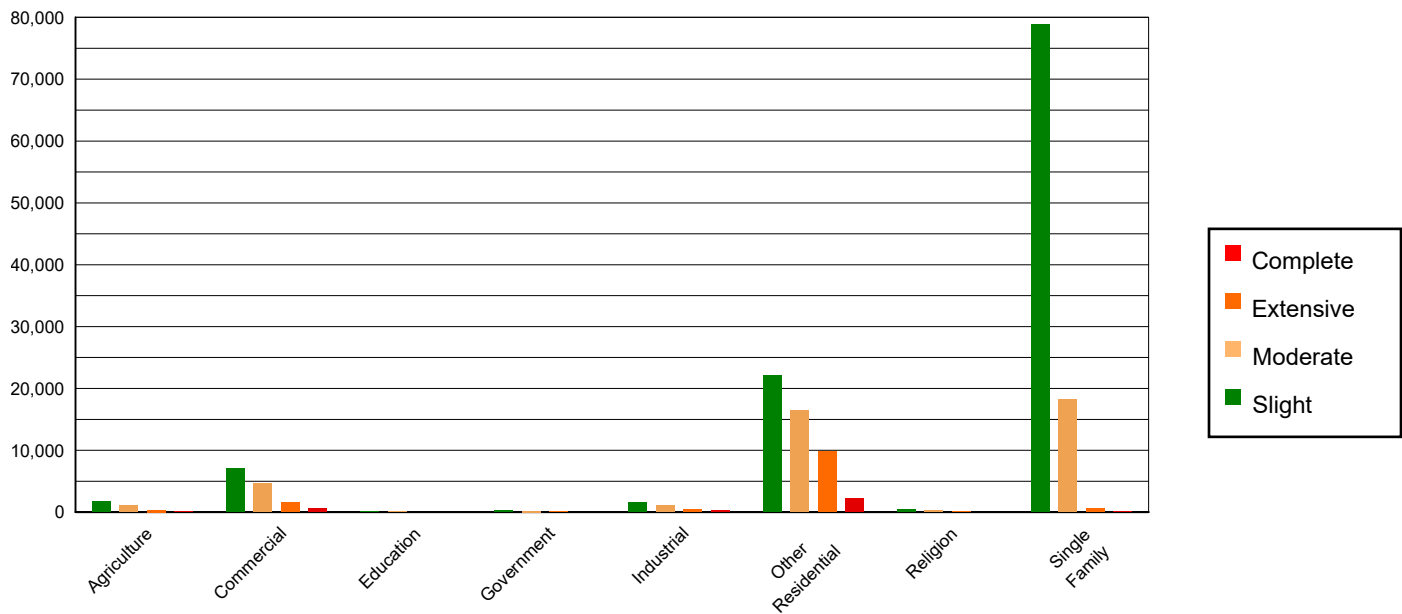


Table 3: Expected Building Damage by Occupancy

	None		Slight		Moderate		Extensive		Complete	
	Count	(%)	Count	(%)	Count	(%)	Count	(%)	Count	(%)
Agriculture	30415.36	0.66	1711.53	1.53	1079.44	2.58	338.85	2.59	88.83	2.83
Commercial	293771.69	6.40	7025.56	6.27	4572.77	10.94	1622.79	12.43	570.18	18.16
Education	9554.79	0.21	165.14	0.15	69.11	0.17	12.25	0.09	2.71	0.09
Government	22102.58	0.48	309.98	0.28	177.97	0.43	51.83	0.40	12.63	0.40
Industrial	80004.04	1.74	1510.03	1.35	1063.42	2.55	474.02	3.63	206.50	6.58
Other Residential	576430.08	12.56	22052.31	19.69	16440.78	39.35	9836.33	75.32	2170.50	69.11
Religion	16973.70	0.37	367.60	0.33	209.69	0.50	82.23	0.63	17.78	0.57
Single Family	3559741.05	77.57	78828.65	70.40	18168.34	43.48	641.56	4.91	71.40	2.27
Total	4,588,993		111,971		41,781		13,060		3,141	

Table 4: Expected Building Damage by Building Type (All Design Levels)

	None		Slight		Moderate		Extensive		Complete	
	Count	(%)	Count	(%)	Count	(%)	Count	(%)	Count	(%)
Wood	3993373.00	87.02	92309.94	82.44	22523.82	53.91	885.83	6.78	98.61	3.14
Steel	102289.34	2.23	2953.37	2.64	2525.04	6.04	1191.30	9.12	420.94	13.40
Concrete	116292.52	2.53	2415.04	2.16	1891.22	4.53	966.31	7.40	427.85	13.62
Precast	61068.45	1.33	1521.40	1.36	1334.51	3.19	425.26	3.26	87.27	2.78
RM	176919.64	3.86	2251.84	2.01	1736.76	4.16	683.18	5.23	124.26	3.96
URM	43650.23	0.95	1550.95	1.39	381.12	0.91	183.95	1.41	248.12	7.90
MH	95400.13	2.08	8968.27	8.01	11389.03	27.26	8724.02	66.80	1733.50	55.20
Total	4,588,993		111,971		41,781		13,060		3,141	

*Note:

- RM Reinforced Masonry
- URM Unreinforced Masonry
- MH Manufactured Housing

Essential Facility Damage

Before the earthquake, the region had 38,518 hospital beds available for use. On the day of the earthquake, the model estimates that only 34,344 hospital beds (89.00%) are available for use by patients already in the hospital and those injured by the earthquake. After one week, 92.00% of the beds will be back in service. By 30 days, 96.00% will be operational.

Table 5: Expected Damage to Essential Facilities

Classification	Total	# Facilities		
		At Least Moderate Damage > 50%	Complete Damage > 50%	With Functionality > 50% on day 1
Hospitals	277	20	2	248
Schools	5,840	342	18	5,380
EOCs	101	3	0	95
PoliceStations	544	25	1	499
FireStations	1,768	63	1	1,603

Transportation Lifeline Damage

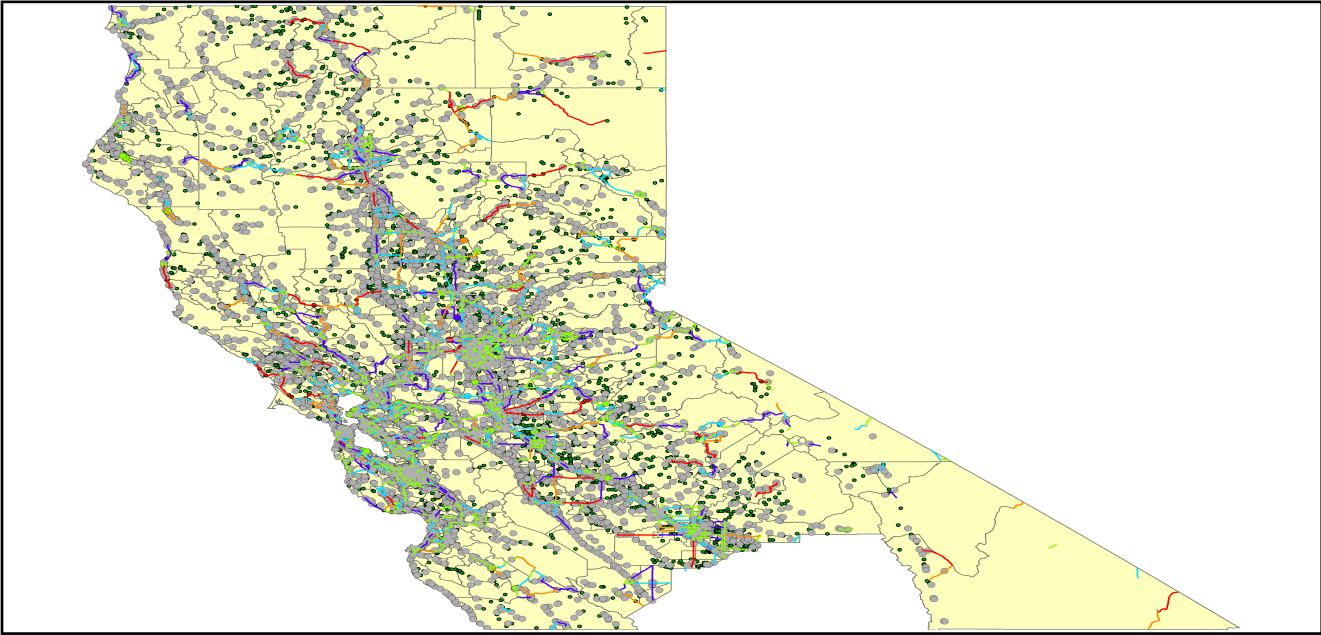


Table 6: Expected Damage to the Transportation Systems

System	Component	Number of Locations_				
		Locations/ Segments	With at Least Mod. Damage	With Complete Damage	With Functionality > 50 %	
					After Day 1	After Day 7
Highway	Segments	7,447	0	0	7,447	7,447
	Bridges	13,671	36	1	13,618	13,663
	Tunnels	51	0	0	51	51
Railways	Segments	3,539	0	0	3,539	3,539
	Bridges	2,016	0	0	2,016	2,016
	Tunnels	3	0	0	3	3
	Facilities	83	0	0	83	83
Light Rail	Segments	15	0	0	15	15
	Bridges	112	0	0	112	112
	Tunnels	0	0	0	0	0
	Facilities	255	0	0	255	255
Bus	Facilities	52	3	0	52	52
Ferry	Facilities	25	0	0	25	25
Port	Facilities	385	23	0	379	385
Airport	Facilities	165	14	0	162	165
	Runways	211	0	0	211	211

Table 6 provides damage estimates for the transportation system.

Note: Roadway segments, railroad tracks and light rail tracks are assumed to be damaged by ground failure only. If ground failure maps are not provided, damage estimates to these components will not be computed.

Tables 7-9 provide information on the damage to the utility lifeline systems. Table 7 provides damage to the utility system facilities. Table 8 provides estimates on the number of leaks and breaks by the pipelines of the utility systems. For electric power and potable water, Hazus performs a simplified system performance analysis. Table 9 provides a summary of the system performance information.

Table 7 : Expected Utility System Facility Damage

System	# of Locations				
	Total #	With at Least Moderate Damage	With Complete Damage	with Functionality > 50 %	
				After Day 1	After Day 7
Potable Water	25	1	0	23	25
Waste Water	214	18	0	186	214
Natural Gas	5	1	0	4	5
Oil Systems	17	0	0	17	17
Electrical Power	431	36	0	408	425
Communication	493	50	0	462	493

Table 8 : Expected Utility System Pipeline Damage (Site Specific)

System	Total Pipelines Length (miles)	Number of Leaks	Number of Breaks
Potable Water	200,491	14879	3720
Waste Water	120,295	7474	1868
Natural Gas	3,125	0	0
Oil	0	0	0

Table 9: Expected Potable Water and Electric Power System Performance

	Total # of Households	Number of Households without Service				
		At Day 1	At Day 3	At Day 7	At Day 30	At Day 90
Potable Water	5,335,507	39,256	33,824	25,594	7,084	0
Electric Power		103,993	70,689	32,714	4,208	134

Induced Earthquake Damage

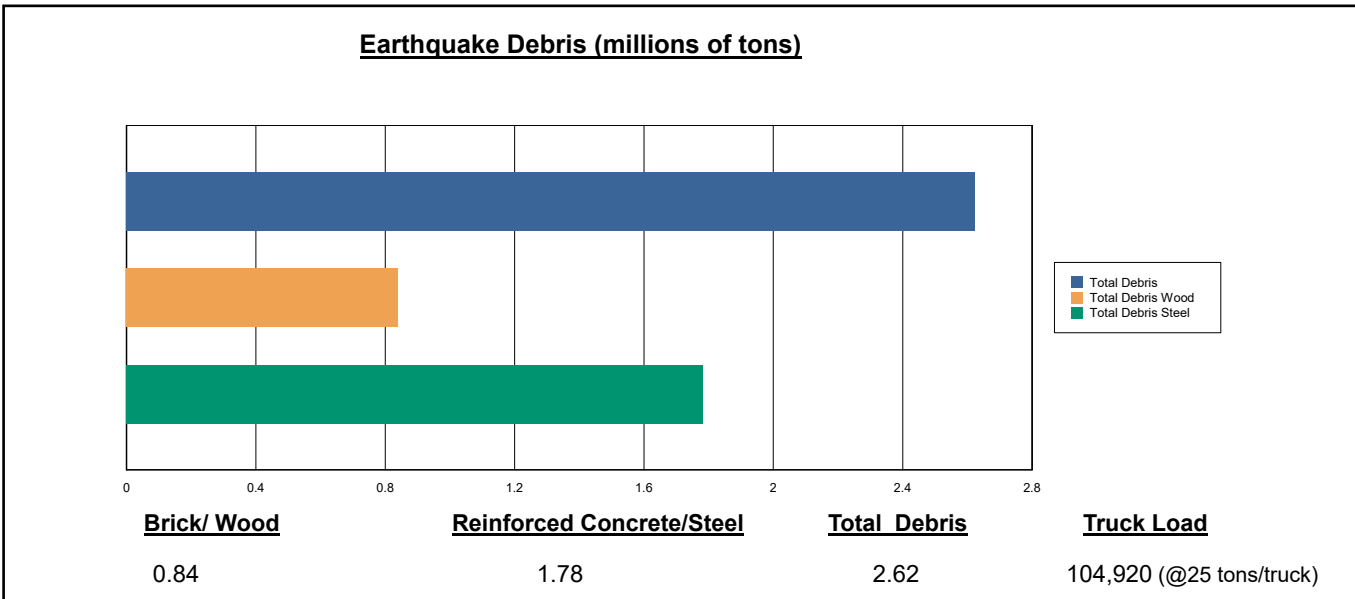
Fire Following Earthquake

Fires often occur after an earthquake. Because of the number of fires and the lack of water to fight the fires, they can often burn out of control. Hazus uses a Monte Carlo simulation model to estimate the number of ignitions and the amount of burnt area. For this scenario, the model estimates that there will be 14 ignitions that will burn about 0.17 sq. mi (0.00 % of the region's total area.) The model also estimates that the fires will displace about 1,468 people and burn about 171 (millions of dollars) of building value.

Debris Generation

Hazus estimates the amount of debris that will be generated by the earthquake. The model breaks the debris into two general categories: a) Brick/Wood and b) Reinforced Concrete/Steel. This distinction is made because of the different types of material handling equipment required to handle the debris.

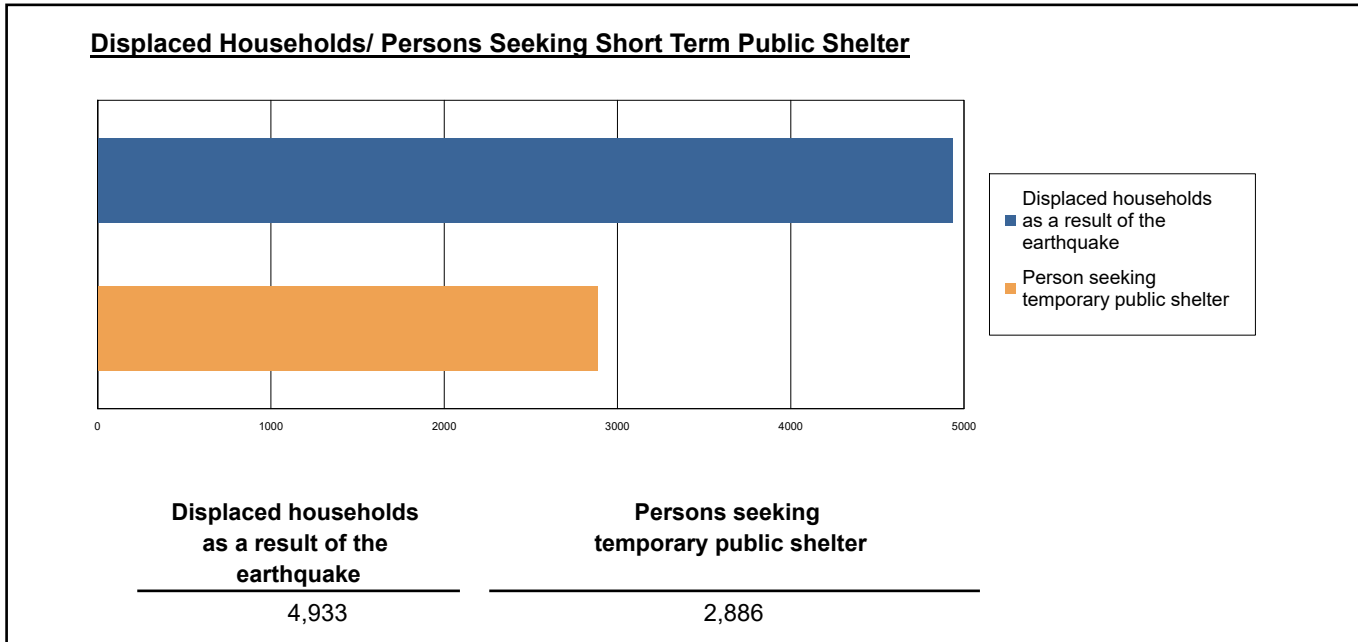
The model estimates that a total of 2,623,000 tons of debris will be generated. Of the total amount, Brick/Wood comprises 32.00% of the total, with the remainder being Reinforced Concrete/Steel. If the debris tonnage is converted to an estimated number of truckloads, it will require 104,920 truckloads (@25 tons/truck) to remove the debris generated by the earthquake.



Social Impact

Shelter Requirement

Hazus estimates the number of households that are expected to be displaced from their homes due to the earthquake and the number of displaced people that will require accommodations in temporary public shelters. The model estimates 4,933 households to be displaced due to the earthquake. Of these, 2,886 people (out of a total population of 15,149,716) will seek temporary shelter in public shelters.



Casualties

Hazus estimates the number of people that will be injured and killed by the earthquake. The casualties are broken down into four (4) severity levels that describe the extent of the injuries. The levels are described as follows;

- Severity Level 1: Injuries will require medical attention but hospitalization is not needed.
- Severity Level 2: Injuries will require hospitalization but are not considered life-threatening
- Severity Level 3: Injuries will require hospitalization and can become life threatening if not promptly treated.
- Severity Level 4: Victims are killed by the earthquake.

The casualty estimates are provided for three (3) times of day: 2:00 AM, 2:00 PM and 5:00 PM. These times represent the periods of the day that different sectors of the community are at their peak occupancy loads. The 2:00 AM estimate considers that the residential occupancy load is maximum, the 2:00 PM estimate considers that the educational, commercial and industrial sector loads are maximum and 5:00 PM represents peak commute time.

Table 10 provides a summary of the casualties estimated for this earthquake

Table 10: Casualty Estimates

		Level 1	Level 2	Level 3	Level 4
2 AM	Commercial	12.72	2.95	0.42	0.82
	Commuting	0.16	0.21	0.36	0.07
	Educational	0.00	0.00	0.00	0.00
	Hotels	0.66	0.15	0.02	0.04
	Industrial	12.91	3.16	0.45	0.89
	Other-Residential	702.68	135.44	12.60	23.59
	Single Family	236.55	20.19	0.80	1.55
	Total	966	162	15	27
	2 PM	Commercial	982.17	225.18	31.50
Commuting		1.42	1.90	3.21	0.62
Educational		404.63	90.68	12.44	24.02
Hotels		0.13	0.03	0.00	0.01
Industrial		94.87	23.19	3.33	6.47
Other-Residential		242.22	47.15	4.57	8.37
Single Family		80.86	7.15	0.31	0.56
Total		1,806	395	55	101
5 PM		Commercial	684.62	156.86	22.00
	Commuting	24.43	32.48	54.95	10.63
	Educational	104.11	24.55	3.51	6.74
	Hotels	0.20	0.04	0.01	0.01
	Industrial	59.29	14.49	2.08	4.04
	Other-Residential	258.17	50.33	4.88	8.93
	Single Family	88.76	7.88	0.35	0.64
	Total	1,220	287	88	73

Economic Loss

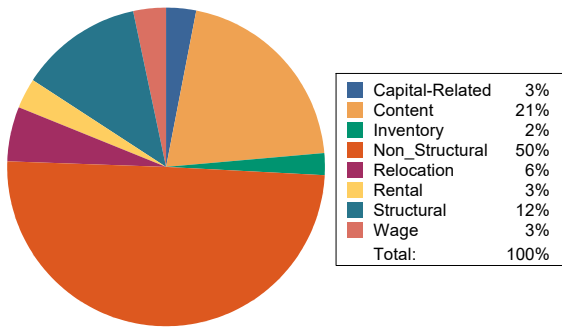
The total economic loss estimated for the earthquake is 25,585.59 (millions of dollars), which includes building and lifeline related losses based on the region's available inventory. The following three sections provide more detailed information about these losses.

Building-Related Losses

The building losses are broken into two categories: direct building losses and business interruption losses. The direct building losses are the estimated costs to repair or replace the damage caused to the building and its contents. The business interruption losses are the losses associated with inability to operate a business because of the damage sustained during the earthquake. Business interruption losses also include the temporary living expenses for those people displaced from their homes because of the earthquake.

The total building-related losses were 14,623.14 (millions of dollars); 15 % of the estimated losses were related to the business interruption of the region. By far, the largest loss was sustained by the residential occupancies which made up over 41 % of the total loss. Table 11 below provides a summary of the losses associated with the building damage.

Earthquake Losses by Loss Type (\$ millions)



Earthquake Losses by Occupancy Type (\$ millions)

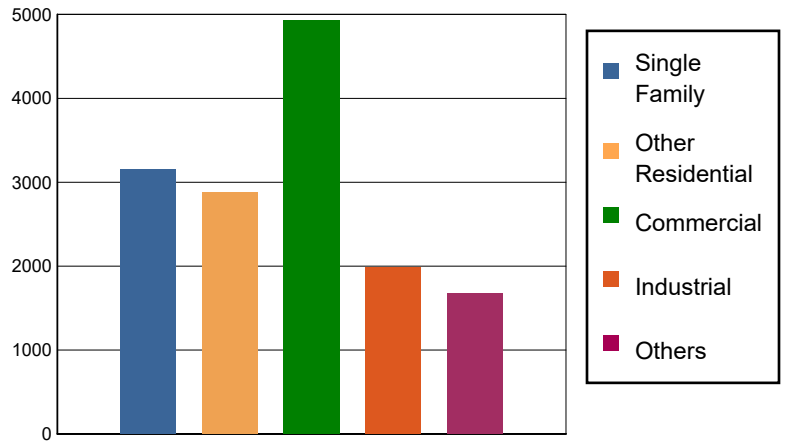


Table 11: Building-Related Economic Loss Estimates
(Millions of dollars)

Category	Area	Single Family	Other Residential	Commercial	Industrial	Others	Total
Income Losses							
	Wage	0.0000	66.3432	364.1970	26.7905	44.7009	502.0316
	Capital-Related	0.0000	28.2059	374.3411	16.6575	12.0435	431.2480
	Rental	44.9508	140.9783	210.7887	13.6122	22.0198	432.3498
	Relocation	161.8412	149.8002	300.9474	59.9760	155.3764	827.9412
	Subtotal	206.7920	385.3276	1250.2742	117.0362	234.1406	2193.5706
Capital Stock Losses							
	Structural	311.2214	361.8659	609.4858	253.7721	274.3290	1,810.6742
	Non_Structural	1898.5099	1749.8058	1960.7551	914.9405	733.2819	7,257.2932
	Content	738.1842	377.6626	945.8878	617.6377	349.6760	3,029.0483
	Inventory	0.0000	0.0000	159.6543	87.8081	85.0955	332.5579
	Subtotal	2947.9155	2489.3343	3675.7830	1874.1584	1442.3824	12429.5736
	Total	3154.71	2874.66	4926.06	1991.19	1676.52	14623.14

Transportation and Utility Lifeline Losses

For the transportation and utility lifeline systems, Hazus computes the direct repair cost for each component only. There are no losses computed by Hazus for business interruption due to lifeline outages. Tables 12 & 13 provide a detailed breakdown in the expected lifeline losses.

Table 12: Transportation System Economic Losses
(Millions of dollars)

System	Component	Inventory Value	Economic Loss	Loss Ratio (%)
Highway	Segments	109894.3309	0.0000	0.00
	Bridges	62701.4503	289.4514	0.46
	Tunnels	1028.6732	2.0189	0.20
	Subtotal	173624.4544	291.4703	
Railways	Segments	64551.1864	0.0000	0.00
	Bridges	11471.0400	19.5071	0.17
	Tunnels	1.8495	0.0000	0.00
	Facilities	221.0290	4.5810	2.07
	Subtotal	76245.1049	24.0881	
Light Rail	Segments	5403.2756	0.0000	0.00
	Bridges	15.3529	0.0001	0.00
	Tunnels	0.0000	0.0000	0.00
	Facilities	4154.0000	49.8610	1.20
	Subtotal	9572.6285	49.8611	
Bus	Facilities	118.3116	6.6369	5.61
	Subtotal	118.3116	6.6369	
Ferry	Facilities	33.2750	0.7382	2.22
	Subtotal	33.2750	0.7382	
Port	Facilities	1467.5602	69.0344	4.70
	Subtotal	1467.5602	69.0344	
Airport	Facilities	3128.3430	112.7181	3.60
	Runways	1623.6748	0.0000	0.00
	Subtotal	4752.0178	112.7181	
Total		265,813.35	554.55	

Table 13: Utility System Economic Losses
(Millions of dollars)

System	Component	Inventory Value	Economic Loss	Loss Ratio (%)
Potable Water	Pipelines	0.0000	0.0000	0.00
	Facilities	982.3500	16.4345	1.67
	Distribution Lines	6453.1801	66.9533	1.04
	Subtotal	7435.5301	83.3878	
Waste Water	Pipelines	0.0000	0.0000	0.00
	Facilities	36797.6852	1254.5337	3.41
	Distribution Lines	3871.9081	33.6324	0.87
	Subtotal	40669.5933	1288.1661	
Natural Gas	Pipelines	17715.2438	0.0000	0.00
	Facilities	183.1757	11.6866	6.38
	Distribution Lines	2581.2720	11.5222	0.45
	Subtotal	20479.6915	23.2088	
Oil Systems	Pipelines	0.0000	0.0000	0.00
	Facilities	2.0060	0.0127	0.63
	Subtotal	2.0060	0.0127	
Electrical Power	Facilities	145640.3438	9008.9482	6.19
	Subtotal	145640.3438	9008.9482	
Communication	Facilities	58.1740	4.1689	7.17
	Subtotal	58.1740	4.1689	
	Total	214,285.34	10,407.89	

Appendix A: County Listing for the Region

Alameda,CA
Alpine,CA
Amador,CA
Butte,CA
Calaveras,CA
Colusa,CA
Contra Costa,CA
Del Norte,CA
El Dorado,CA
Fresno,CA
Glenn,CA
Humboldt,CA
Inyo,CA
Lake,CA
Lassen,CA
Madera,CA
Marin,CA
Mariposa,CA
Mendocino,CA
Merced,CA
Modoc,CA
Mono,CA
Monterey,CA
Napa,CA
Nevada,CA
Placer,CA
Plumas,CA
Sacramento,CA
San Benito,CA

San Francisco,CA

San Joaquin,CA

San Mateo,CA

Santa Clara,CA

Santa Cruz,CA

Shasta,CA

Sierra,CA

Siskiyou,CA

Solano,CA

Sonoma,CA

Stanislaus,CA

Sutter,CA

Tehama,CA

Trinity,CA

Tuolumne,CA

Yolo,CA

Yuba,CA

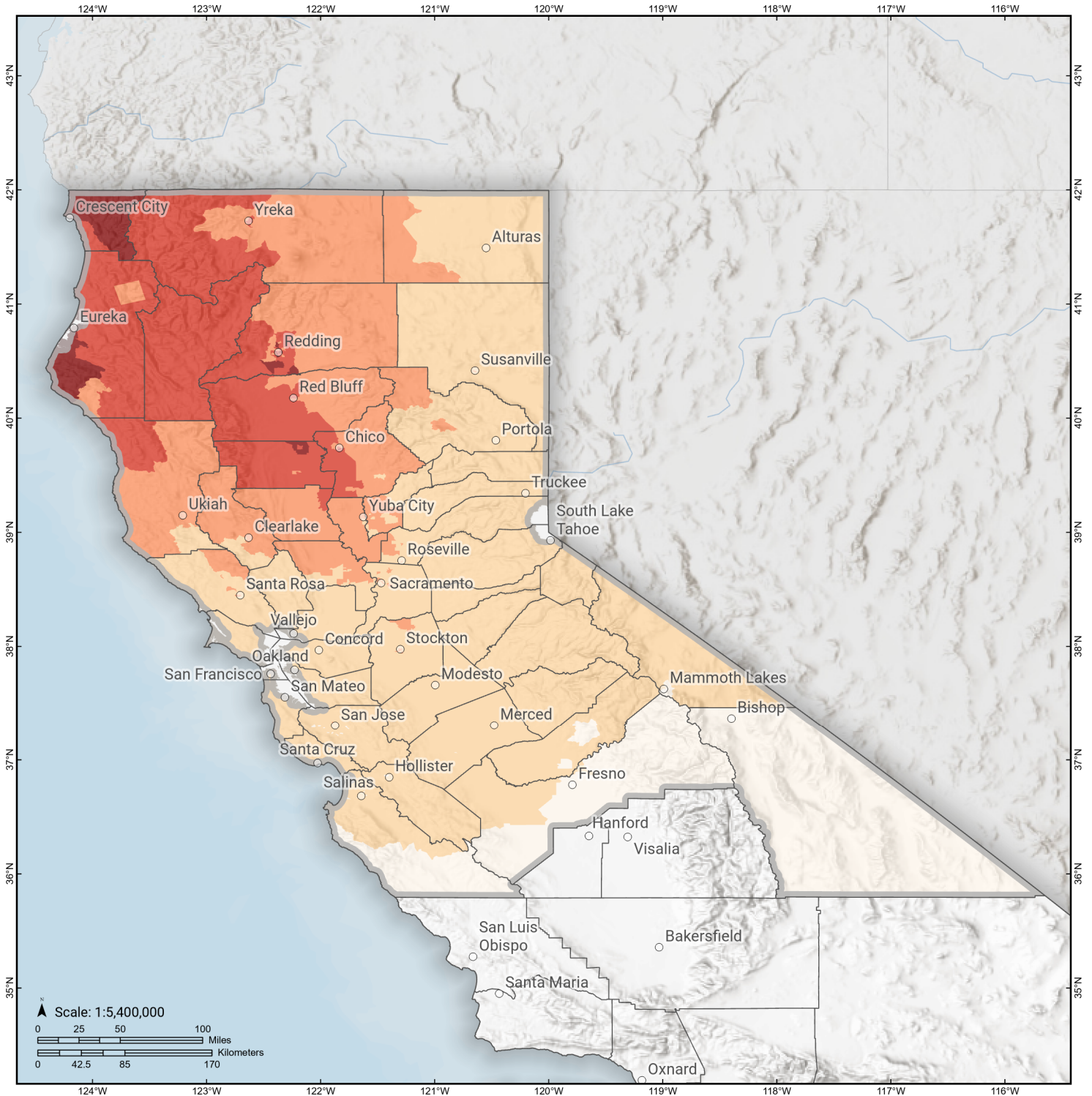
Appendix B: Regional Population and Building Value Data

State	County Name	Population	Building Value (millions of dollars)		
			Residential	Non-Residential	Total
California	Alameda	1,682,353	209,951	122,639	332,590
	Alpine	1,204	721	139	861
	Amador	40,474	5,608	2,517	8,125
	Butte	211,632	25,875	16,639	42,514
	Calaveras	45,292	8,305	4,893	13,199
	Colusa	21,839	2,244	2,024	4,268
	Contra Costa	1,165,927	158,118	60,339	218,458
	Del Norte	27,743	5,004	1,876	6,881
	El Dorado	191,185	34,907	9,704	44,611
	Fresno	1,008,654	98,532	61,772	160,304
	Glenn	28,917	2,791	3,717	6,508
	Humboldt	136,463	19,361	8,683	28,044
	Inyo	19,016	2,951	1,970	4,921
	Lake	68,163	9,699	4,530	14,229
	Lassen	32,730	4,033	2,008	6,042
	Madera	156,255	18,025	9,641	27,667
	Marin	262,321	47,738	15,030	62,769
	Mariposa	17,131	3,299	1,141	4,441
	Mendocino	91,601	14,237	8,510	22,748
	Merced	281,202	25,194	26,098	51,292
	Modoc	8,700	1,435	1,468	2,904
	Mono	13,195	3,293	1,083	4,377
	Monterey	439,035	47,655	28,750	76,405
	Napa	138,019	20,517	13,045	33,563
	Nevada	102,241	17,908	6,108	24,016
	Placer	404,739	69,985	24,193	94,179
	Plumas	19,790	6,128	2,276	8,405
	Sacramento	1,585,055	179,811	83,911	263,723
	San Benito	64,209	9,440	3,799	13,239
	San Francisco	873,965	108,848	46,020	154,869
	San Joaquin	779,233	82,706	56,882	139,589
	San Mateo	764,442	110,372	44,995	155,368
	Santa Clara	1,936,259	261,111	120,471	381,582
Santa Cruz	270,861	36,147	18,805	54,952	
Shasta	182,155	21,572	15,715	37,288	
Sierra	3,236	596	419	1,015	
Siskiyou	44,076	6,856	4,758	11,615	
Solano	453,491	55,802	26,393	82,195	
Sonoma	488,863	68,827	35,781	104,609	

	Stanislaus	552,878	62,937	37,511	100,449
	Sutter	99,633	10,618	6,448	17,066
	Tehama	65,829	7,705	5,113	12,818
	Trinity	16,112	2,209	1,485	3,694
	Tuolumne	55,620	8,964	3,507	12,471
	Yolo	216,403	24,130	18,343	42,473
	Yuba	81,575	8,161	4,677	12,839
Total Region		15,149,716	1,930,326	975,826	2,906,175

Cascadia Megathrust

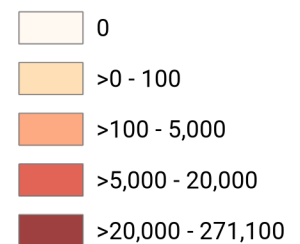
Debris Generated by Census Tract



Study Region: Cascadia Megathrust - whole CSZ Characteristic largest M branch
Scenario: cascadia_sub0_m9p34_se

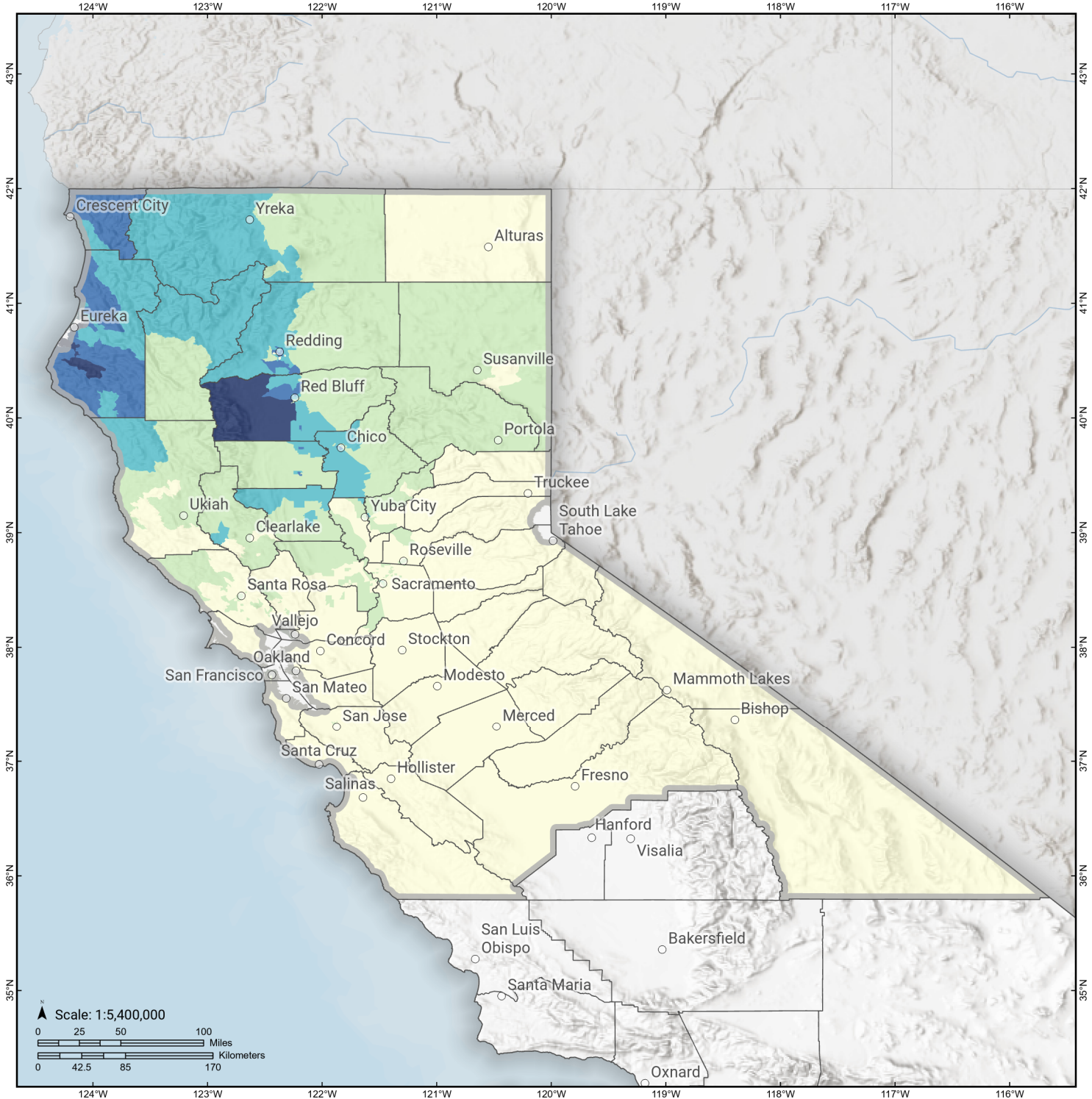


Debris Generated (in tons)



Cascadia Megathrust

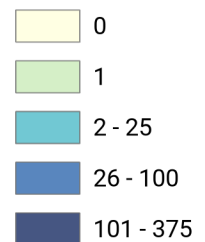
Displaced Households by Census Tract



Study Region: Cascadia Megathrust - whole CSZ Characteristic largest M branch
Scenario: cascadia_sub0_m9p34_se

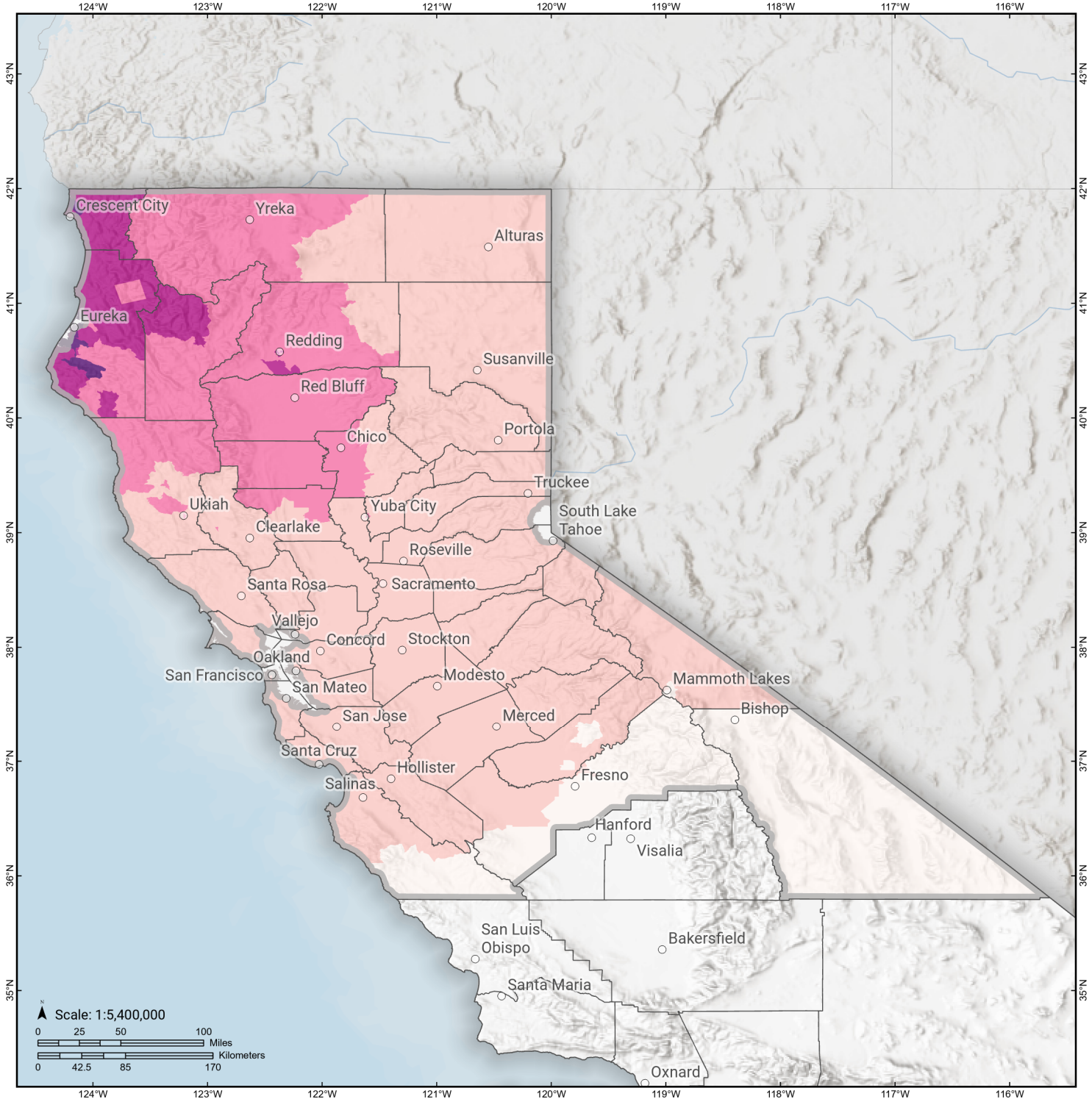


Displaced Households



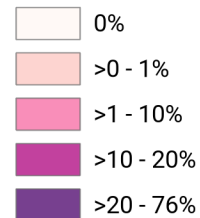
Cascadia Megathrust

Loss Ratio by Census Tract



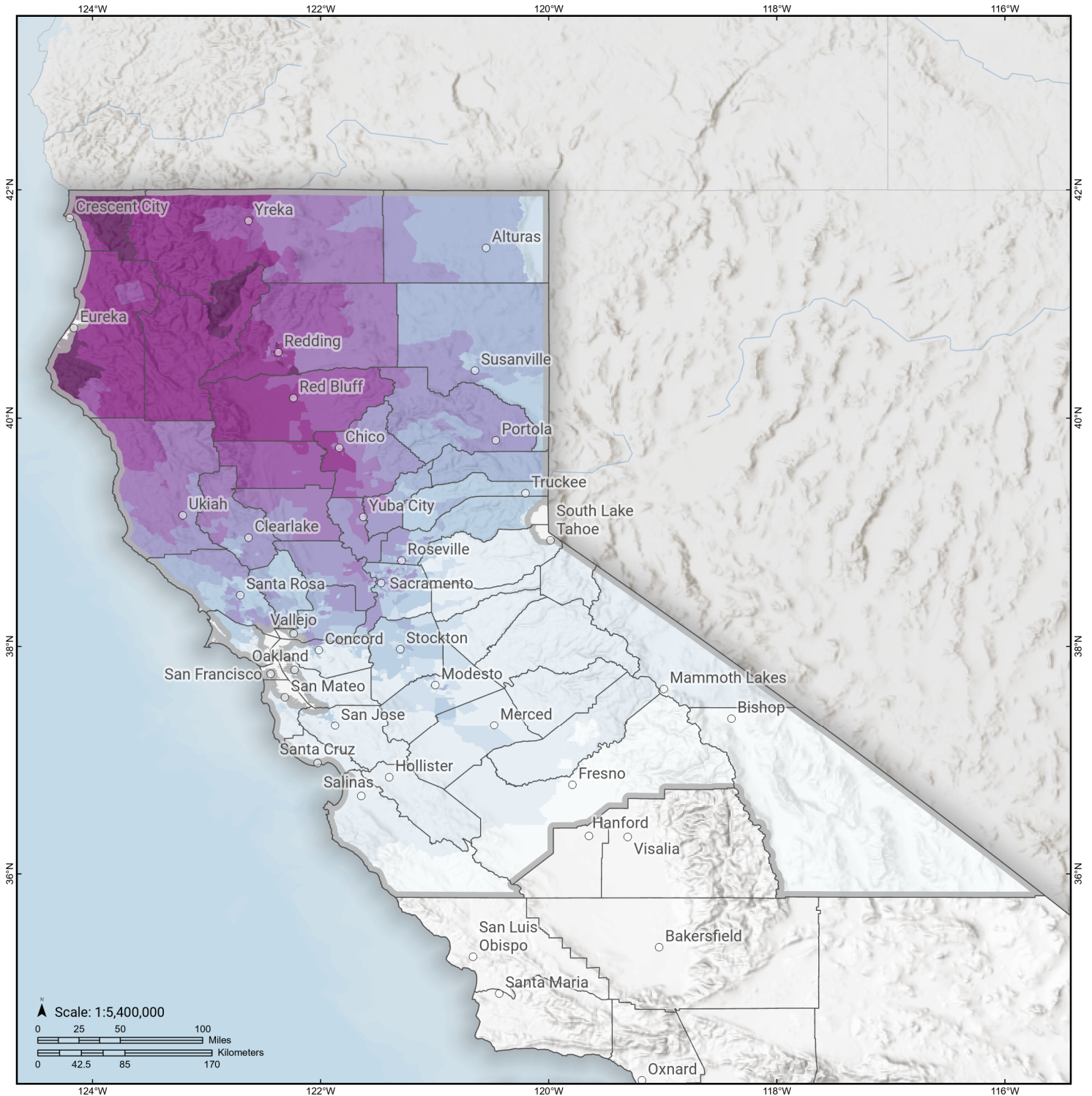
Study Region: Cascadia Megathrust - whole CSZ Characteristic largest M branch
Scenario: cascadia_sub0_m9p34_se

Loss Ratio (ratio of building related economic loss to exposed value of buildings)



Cascadia Megathrust

Total Building Related Economic Loss by Census Tract



Study Region: Cascadia Megathrust - whole CSZ Characteristic largest M branch
Scenario: cascadia_sub0_m9p34_se



Economic Loss (in thousands of USD \$)

0	>1,000 - 5,000
>0 - 50	>5,000 - 20,000
>50 - 100	>20,000 - 50,000
>100 - 500	>50,000 - 100,000
>500 - 1,000	>100,000 - 1,000,000

Building Damage by Count by General Occupancy

May 20, 2024

	# of Buildings					Total
	None	Slight	Moderate	Extensive	Complete	
California						
Alameda						
<i>Government</i>	10,504	22	2	0	0	10,528
<i>Agriculture</i>	421	1	0	0	0	422
<i>Commercial</i>	31,814	159	15	0	0	31,989
<i>Religion</i>	1,973	12	2	0	0	1,986
<i>Single Family</i>	344,131	41	0	0	0	344,173
<i>Other Residential</i>	61,249	136	10	0	0	61,396
<i>Education</i>	1,114	3	0	0	0	1,117
<i>Industrial</i>	10,167	35	3	0	0	10,205
Alpine						
<i>Education</i>	5	0	0	0	0	5
<i>Commercial</i>	48	0	0	0	0	48
<i>Government</i>	4	0	0	0	0	4
<i>Agriculture</i>	0	0	0	0	0	0
<i>Religion</i>	1	0	0	0	0	1
<i>Industrial</i>	14	0	0	0	0	14
<i>Single Family</i>	842	0	0	0	0	842
<i>Other Residential</i>	97	0	0	0	0	97
Amador						

	# of Buildings					Total
	None	Slight	Moderate	Extensive	Complete	
<i>Industrial</i>	235	0	0	0	0	235
<i>Single Family</i>	14,962	0	0	0	0	14,962
<i>Other Residential</i>	1,036	1	0	0	0	1,037
<i>Education</i>	23	0	0	0	0	23
<i>Government</i>	32	0	0	0	0	32
<i>Agriculture</i>	44	0	0	0	0	44
<i>Religion</i>	45	0	0	0	0	45
<i>Commercial</i>	1,367	1	0	0	0	1,368
Butte						
<i>Government</i>	95	23	20	8	1	147
<i>Religion</i>	374	84	48	22	3	531
<i>Agriculture</i>	345	84	50	24	7	510
<i>Commercial</i>	4,786	978	446	155	20	6,385
<i>Industrial</i>	1,034	254	154	70	10	1,522
<i>Single Family</i>	44,697	5,398	184	5	0	50,283
<i>Other Residential</i>	16,194	3,345	1,570	351	38	21,498
<i>Education</i>	158	11	3	1	0	172
Calaveras						
<i>Government</i>	84	0	0	0	0	84
<i>Other Residential</i>	2,558	1	0	0	0	2,559
<i>Education</i>	35	0	0	0	0	35
<i>Religion</i>	130	0	0	0	0	130
<i>Agriculture</i>	2,206	1	0	0	0	2,207
<i>Commercial</i>	1,413	0	0	0	0	1,413
<i>Industrial</i>	466	0	0	0	0	466

	# of Buildings					Total
	None	Slight	Moderate	Extensive	Complete	
Colusa						
<i>Single Family</i>	22,148	0	0	0	0	22,148
<i>Agriculture</i>	122	15	4	1	0	142
<i>Religion</i>	48	8	2	0	0	58
<i>Commercial</i>	640	94	45	15	1	794
<i>Industrial</i>	96	12	4	1	0	113
<i>Other Residential</i>	795	120	33	6	1	954
<i>Single Family</i>	5,534	414	6	0	0	5,954
<i>Government</i>	26	4	2	1	0	32
<i>Education</i>	30	2	1	0	0	33
Contra Costa						
<i>Commercial</i>	17,956	33	2	0	0	17,991
<i>Agriculture</i>	747	2	0	0	0	749
<i>Religion</i>	1,222	4	0	0	0	1,226
<i>Single Family</i>	281,851	84	0	0	0	281,935
<i>Other Residential</i>	29,055	66	3	0	0	29,124
<i>Industrial</i>	4,737	12	1	0	0	4,749
<i>Government</i>	5,014	10	1	0	0	5,024
<i>Education</i>	652	1	0	0	0	653
Del Norte						
<i>Commercial</i>	32	173	353	161	10	729
<i>Agriculture</i>	8	37	59	28	2	134
<i>Government</i>	1	3	8	5	0	18
<i>Religion</i>	1	10	27	14	1	53
<i>Other Residential</i>	111	529	1,041	1,738	442	3,861

	# of Buildings					Total
	None	Slight	Moderate	Extensive	Complete	
<i>Education</i>	8	13	9	1	0	31
<i>Industrial</i>	2	12	29	17	2	61
<i>Single Family</i>	719	3,307	2,008	81	1	6,117
El Dorado						
<i>Other Residential</i>	10,406	14	0	0	0	10,420
<i>Industrial</i>	1,199	0	0	0	0	1,199
<i>Education</i>	128	0	0	0	0	128
<i>Single Family</i>	71,423	1	0	0	0	71,424
<i>Commercial</i>	4,767	1	0	0	0	4,768
<i>Government</i>	100	0	0	0	0	100
<i>Religion</i>	180	0	0	0	0	180
<i>Agriculture</i>	161	0	0	0	0	161
Fresno						
<i>Commercial</i>	21,054	0	0	0	0	21,054
<i>Religion</i>	1,507	0	0	0	0	1,507
<i>Agriculture</i>	3,421	0	0	0	0	3,421
<i>Industrial</i>	5,348	0	0	0	0	5,348
<i>Government</i>	291	0	0	0	0	291
<i>Other Residential</i>	40,973	0	0	0	0	40,973
<i>Single Family</i>	226,425	0	0	0	0	226,425
<i>Education</i>	602	0	0	0	0	602
Glenn						
<i>Other Residential</i>	732	436	650	305	29	2,152
<i>Government</i>	56	27	13	2	1	99
<i>Education</i>	30	4	1	0	0	35

	# of Buildings					Total
	None	Slight	Moderate	Extensive	Complete	
<i>Industrial</i>	145	61	31	11	5	254
<i>Single Family</i>	5,486	1,836	95	0	0	7,417
<i>Commercial</i>	472	222	119	54	17	885
<i>Agriculture</i>	724	323	192	87	40	1,365
<i>Religion</i>	44	22	13	7	3	89
Humboldt						
<i>Government</i>	7	21	28	21	10	87
<i>Agriculture</i>	16	46	48	32	8	150
<i>Religion</i>	3	10	19	21	8	61
<i>Commercial</i>	199	726	970	762	462	3,118
<i>Single Family</i>	5,030	21,578	11,237	477	38	38,359
<i>Other Residential</i>	890	4,265	3,439	2,221	1,242	12,058
<i>Education</i>	33	50	33	8	2	127
<i>Industrial</i>	23	82	204	251	180	740
Inyo						
<i>Commercial</i>	721	0	0	0	0	721
<i>Religion</i>	57	0	0	0	0	57
<i>Agriculture</i>	32	0	0	0	0	32
<i>Other Residential</i>	4,050	0	0	0	0	4,050
<i>Education</i>	41	0	0	0	0	41
<i>Government</i>	101	0	0	0	0	101
<i>Industrial</i>	257	0	0	0	0	257
<i>Single Family</i>	4,446	0	0	0	0	4,446
Lake						
<i>Agriculture</i>	149	9	2	1	0	161

	# of Buildings					Total
	None	Slight	Moderate	Extensive	Complete	
<i>Single Family</i>	21,140	491	2	0	0	21,633
<i>Other Residential</i>	12,233	1,995	365	7	0	14,601
<i>Education</i>	68	0	0	0	0	68
<i>Industrial</i>	332	18	4	0	0	354
<i>Commercial</i>	1,963	97	25	5	0	2,091
<i>Religion</i>	131	7	2	0	0	140
<i>Government</i>	74	3	1	0	0	78
Lassen						
<i>Other Residential</i>	2,570	53	4	0	0	2,627
<i>Education</i>	40	0	0	0	0	40
<i>Government</i>	22	0	0	0	0	22
<i>Industrial</i>	138	2	0	0	0	140
<i>Commercial</i>	891	19	3	0	0	913
<i>Religion</i>	69	1	0	0	0	71
<i>Agriculture</i>	37	0	0	0	0	37
<i>Single Family</i>	9,515	47	0	0	0	9,562
Madera						
<i>Commercial</i>	2,905	0	0	0	0	2,905
<i>Religion</i>	119	0	0	0	0	119
<i>Government</i>	111	0	0	0	0	111
<i>Agriculture</i>	634	0	0	0	0	634
<i>Other Residential</i>	6,635	0	0	0	0	6,635
<i>Single Family</i>	38,912	0	0	0	0	38,912
<i>Education</i>	115	0	0	0	0	115

	# of Buildings					Total
	None	Slight	Moderate	Extensive	Complete	
Marin						
<i>Industrial</i>	903	0	0	0	0	903
<i>Other Residential</i>	7,881	9	0	0	0	7,890
<i>Government</i>	143	0	0	0	0	143
<i>Education</i>	274	0	0	0	0	274
<i>Commercial</i>	8,259	10	0	0	0	8,270
<i>Religion</i>	319	0	0	0	0	319
<i>Agriculture</i>	189	1	0	0	0	190
<i>Single Family</i>	76,711	13	0	0	0	76,724
<i>Industrial</i>	1,531	4	0	0	0	1,535
Mariposa						
<i>Single Family</i>	8,084	0	0	0	0	8,084
<i>Other Residential</i>	307	0	0	0	0	307
<i>Education</i>	27	0	0	0	0	27
<i>Industrial</i>	94	0	0	0	0	94
<i>Commercial</i>	689	0	0	0	0	689
<i>Agriculture</i>	29	0	0	0	0	29
<i>Religion</i>	36	0	0	0	0	36
<i>Government</i>	33	0	0	0	0	33
Mendocino						
<i>Commercial</i>	2,908	437	89	3	0	3,436
<i>Religion</i>	179	30	6	0	0	216
<i>Agriculture</i>	158	22	3	0	0	184
<i>Single Family</i>	23,073	2,841	55	0	0	25,969
<i>Other Residential</i>	4,222	1,672	1,035	129	1	7,060

		# of Buildings					
		None	Slight	Moderate	Extensive	Complete	Total
	<i>Government</i>	72	9	2	0	0	83
	<i>Education</i>	95	6	0	0	0	101
	<i>Industrial</i>	718	121	30	1	0	869
Merced							
	<i>Education</i>	163	0	0	0	0	163
	<i>Government</i>	171	0	0	0	0	171
	<i>Commercial</i>	4,754	0	0	0	0	4,754
	<i>Agriculture</i>	7,650	3	0	0	0	7,653
	<i>Religion</i>	345	0	0	0	0	345
	<i>Industrial</i>	1,022	0	0	0	0	1,022
	<i>Single Family</i>	63,598	0	0	0	0	63,598
	<i>Other Residential</i>	10,786	1	0	0	0	10,787
Modoc							
	<i>Single Family</i>	3,727	13	0	0	0	3,740
	<i>Industrial</i>	75	1	0	0	0	76
	<i>Other Residential</i>	1,931	58	5	0	0	1,994
	<i>Education</i>	20	0	0	0	0	20
	<i>Religion</i>	36	0	0	0	0	36
	<i>Agriculture</i>	442	6	1	0	0	449
	<i>Government</i>	16	0	0	0	0	16
	<i>Commercial</i>	528	4	0	0	0	532
Mono							
	<i>Government</i>	18	0	0	0	0	18
	<i>Education</i>	21	0	0	0	0	21
	<i>Religion</i>	32	0	0	0	0	32

	# of Buildings					Total
	None	Slight	Moderate	Extensive	Complete	
<i>Agriculture</i>	145	0	0	0	0	145
<i>Commercial</i>	654	0	0	0	0	654
<i>Single Family</i>	7,704	0	0	0	0	7,704
<i>Industrial</i>	108	0	0	0	0	108
<i>Other Residential</i>	1,759	0	0	0	0	1,759
Monterey						
<i>Single Family</i>	90,876	0	0	0	0	90,876
<i>Industrial</i>	1,850	0	0	0	0	1,850
<i>Other Residential</i>	19,809	0	0	0	0	19,809
<i>Education</i>	239	0	0	0	0	239
<i>Government</i>	185	0	0	0	0	185
<i>Agriculture</i>	1,815	0	0	0	0	1,815
<i>Commercial</i>	9,246	0	0	0	0	9,246
<i>Religion</i>	580	0	0	0	0	580
Napa						
<i>Commercial</i>	3,987	31	3	0	0	4,021
<i>Agriculture</i>	345	3	0	0	0	349
<i>Religion</i>	147	1	0	0	0	148
<i>Single Family</i>	38,682	79	0	0	0	38,761
<i>Other Residential</i>	6,831	127	21	0	0	6,978
<i>Government</i>	102	1	0	0	0	103
<i>Education</i>	131	1	0	0	0	132
<i>Industrial</i>	1,352	14	2	0	0	1,367
Nevada						
<i>Commercial</i>	2,827	8	0	0	0	2,835

	# of Buildings					Total
	None	Slight	Moderate	Extensive	Complete	
<i>Religion</i>	189	0	0	0	0	189
<i>Government</i>	60	0	0	0	0	60
<i>Agriculture</i>	131	1	0	0	0	132
<i>Single Family</i>	43,251	29	0	0	0	43,280
<i>Other Residential</i>	6,311	70	4	0	0	6,384
<i>Education</i>	108	0	0	0	0	108
<i>Industrial</i>	1,157	4	0	0	0	1,161
Placer						
<i>Education</i>	231	0	0	0	0	231
<i>Commercial</i>	8,490	44	4	0	0	8,538
<i>Government</i>	376	1	0	0	0	377
<i>Agriculture</i>	256	2	0	0	0	258
<i>Religion</i>	380	2	0	0	0	382
<i>Industrial</i>	2,678	21	4	0	0	2,703
<i>Other Residential</i>	14,753	84	6	0	0	14,843
<i>Single Family</i>	134,420	299	0	0	0	134,719
Plumas						
<i>Commercial</i>	1,186	24	4	0	0	1,215
<i>Religion</i>	29	1	0	0	0	30
<i>Agriculture</i>	82	2	0	0	0	84
<i>Other Residential</i>	4,941	82	9	1	0	5,032
<i>Single Family</i>	9,787	90	0	0	0	9,877
<i>Government</i>	45	0	0	0	0	45
<i>Education</i>	26	0	0	0	0	26
<i>Industrial</i>	179	4	1	0	0	184

	# of Buildings					Total
	None	Slight	Moderate	Extensive	Complete	
Sacramento						
<i>Single Family</i>	385,666	1,170	4	0	0	386,840
<i>Industrial</i>	6,699	51	6	0	0	6,756
<i>Other Residential</i>	55,998	389	25	1	0	56,413
<i>Education</i>	827	2	0	0	0	829
<i>Agriculture</i>	617	4	0	0	0	621
<i>Religion</i>	1,668	27	6	1	0	1,702
<i>Government</i>	568	40	11	0	0	619
<i>Commercial</i>	25,928	309	55	3	0	26,295
San Benito						
<i>Other Residential</i>	1,375	0	0	0	0	1,375
<i>Single Family</i>	14,726	0	0	0	0	14,726
<i>Industrial</i>	326	0	0	0	0	326
<i>Education</i>	42	0	0	0	0	42
<i>Government</i>	45	0	0	0	0	45
<i>Commercial</i>	1,080	0	0	0	0	1,080
<i>Religion</i>	64	0	0	0	0	64
<i>Agriculture</i>	253	0	0	0	0	253
San Francisco						
<i>Single Family</i>	150,596	102	5	0	0	150,703
<i>Other Residential</i>	44,180	314	34	1	0	44,529
<i>Government</i>	279	9	1	0	0	289
<i>Education</i>	570	1	0	0	0	572
<i>Industrial</i>	3,841	17	2	0	0	3,860
<i>Commercial</i>	21,061	256	27	0	0	21,344

	# of Buildings					Total
	None	Slight	Moderate	Extensive	Complete	
<i>Religion</i>	1,333	11	1	0	0	1,345
<i>Agriculture</i>	161	1	0	0	0	162
San Joaquin						
<i>Commercial</i>	12,828	34	2	0	0	12,864
<i>Agriculture</i>	751	2	0	0	0	753
<i>Religion</i>	875	2	0	0	0	877
<i>Government</i>	302	1	0	0	0	304
<i>Single Family</i>	188,304	572	46	0	0	188,922
<i>Other Residential</i>	21,709	90	6	0	0	21,805
<i>Education</i>	395	0	0	0	0	395
<i>Industrial</i>	4,916	11	1	0	0	4,928
San Mateo						
<i>Religion</i>	735	1	0	0	0	736
<i>Agriculture</i>	539	0	0	0	0	539
<i>Government</i>	298	1	0	0	0	299
<i>Commercial</i>	14,382	12	0	0	0	14,395
<i>Industrial</i>	4,470	2	0	0	0	4,472
<i>Other Residential</i>	22,441	12	0	0	0	22,453
<i>Single Family</i>	159,929	2	0	0	0	159,931
<i>Education</i>	489	0	0	0	0	489
Santa Clara						
<i>Other Residential</i>	59,134	26	1	0	0	59,160
<i>Single Family</i>	427,217	2	0	0	0	427,219
<i>Government</i>	499	3	0	0	0	502
<i>Education</i>	1,173	0	0	0	0	1,173

	# of Buildings					Total
	None	Slight	Moderate	Extensive	Complete	
<i>Industrial</i>	9,430	3	0	0	0	9,433
<i>Commercial</i>	35,442	26	2	0	0	35,469
<i>Religion</i>	1,539	1	0	0	0	1,540
<i>Agriculture</i>	895	0	0	0	0	895
Santa Cruz						
<i>Religion</i>	359	0	0	0	0	359
<i>Agriculture</i>	840	0	0	0	0	840
<i>Single Family</i>	68,870	0	0	0	0	68,870
<i>Other Residential</i>	14,892	0	0	0	0	14,892
<i>Industrial</i>	1,819	0	0	0	0	1,819
<i>Education</i>	225	0	0	0	0	225
<i>Commercial</i>	6,694	0	0	0	0	6,694
<i>Government</i>	127	0	0	0	0	127
Shasta						
<i>Agriculture</i>	1,651	850	569	136	30	3,235
<i>Religion</i>	25	18	18	4	0	66
<i>Commercial</i>	1,810	1,597	1,502	306	38	5,254
<i>Single Family</i>	26,988	21,983	2,832	12	0	51,815
<i>Industrial</i>	343	277	332	80	6	1,038
<i>Other Residential</i>	3,955	4,324	4,864	3,472	333	16,949
<i>Education</i>	90	34	12	1	0	136
<i>Government</i>	43	22	18	3	0	87
Sierra						
<i>Single Family</i>	1,857	1	0	0	0	1,858
<i>Other Residential</i>	152	1	0	0	0	153

	# of Buildings					Total
	None	Slight	Moderate	Extensive	Complete	
<i>Industrial</i>	66	0	0	0	0	66
<i>Education</i>	14	0	0	0	0	14
<i>Commercial</i>	141	0	0	0	0	141
<i>Religion</i>	12	0	0	0	0	12
<i>Agriculture</i>	7	0	0	0	0	7
<i>Government</i>	16	0	0	0	0	16
Siskiyou						
<i>Commercial</i>	846	458	250	36	2	1,591
<i>Religion</i>	69	32	22	3	0	127
<i>Agriculture</i>	98	60	39	5	0	201
<i>Single Family</i>	12,675	4,700	417	3	0	17,794
<i>Industrial</i>	279	120	74	8	0	480
<i>Government</i>	109	68	57	10	0	244
<i>Other Residential</i>	1,843	1,263	1,478	492	18	5,095
<i>Education</i>	59	13	4	0	0	76
Solano						
<i>Religion</i>	451	2	0	0	0	454
<i>Agriculture</i>	243	2	0	0	0	245
<i>Government</i>	151	1	0	0	0	152
<i>Commercial</i>	7,229	37	2	0	0	7,268
<i>Single Family</i>	120,769	199	0	0	0	120,968
<i>Industrial</i>	2,086	14	1	0	0	2,101
<i>Other Residential</i>	12,240	73	4	0	0	12,317
<i>Education</i>	225	0	0	0	0	225
Sonoma						

	# of Buildings					Total
	None	Slight	Moderate	Extensive	Complete	
<i>Other Residential</i>	24,678	326	29	0	0	25,033
<i>Government</i>	316	2	0	0	0	319
<i>Education</i>	366	1	0	0	0	367
<i>Religion</i>	568	7	1	0	0	576
<i>Commercial</i>	11,961	133	16	0	0	12,110
<i>Agriculture</i>	1,279	21	4	0	0	1,304
<i>Single Family</i>	141,599	429	0	0	0	142,028
<i>Industrial</i>	3,767	51	7	0	0	3,825
Stanislaus						
<i>Other Residential</i>	19,561	8	0	0	0	19,569
<i>Single Family</i>	142,724	0	0	0	0	142,724
<i>Education</i>	307	0	0	0	0	307
<i>Government</i>	680	0	0	0	0	680
<i>Industrial</i>	3,473	2	0	0	0	3,475
<i>Commercial</i>	10,363	5	0	0	0	10,369
<i>Religion</i>	456	0	0	0	0	456
<i>Agriculture</i>	1,238	1	0	0	0	1,239
Sutter						
<i>Other Residential</i>	2,705	342	64	1	0	3,113
<i>Industrial</i>	580	47	8	1	0	636
<i>Education</i>	61	1	0	0	0	62
<i>Government</i>	71	4	1	0	0	77
<i>Single Family</i>	23,446	1,057	9	0	0	24,512
<i>Commercial</i>	1,888	135	27	2	0	2,052
<i>Agriculture</i>	984	86	37	17	2	1,125

		# of Buildings					
		None	Slight	Moderate	Extensive	Complete	Total
Tehama	<i>Religion</i>	143	10	2	0	0	154
	<i>Religion</i>	40	38	23	7	2	110
	<i>Agriculture</i>	115	112	63	8	0	299
	<i>Industrial</i>	195	193	135	27	2	552
	<i>Other Residential</i>	1,204	999	1,064	680	44	3,991
	<i>Single Family</i>	12,147	8,113	868	62	32	21,222
	<i>Education</i>	43	12	3	0	0	57
	<i>Commercial</i>	489	431	273	62	15	1,270
Trinity	<i>Government</i>	21	18	10	1	0	50
	<i>Religion</i>	11	17	14	2	0	45
	<i>Commercial</i>	247	387	311	55	5	1,005
	<i>Agriculture</i>	1	2	1	0	0	4
	<i>Single Family</i>	2,712	3,181	398	3	0	6,294
	<i>Industrial</i>	12	20	21	4	0	58
	<i>Other Residential</i>	108	198	597	430	22	1,354
	<i>Education</i>	16	8	2	0	0	26
Tuolumne	<i>Government</i>	3	3	2	0	0	8
	<i>Education</i>	57	0	0	0	0	57
	<i>Government</i>	143	0	0	0	0	143
	<i>Commercial</i>	1,576	0	0	0	0	1,576
	<i>Religion</i>	121	0	0	0	0	121
<i>Agriculture</i>	82	0	0	0	0	82	

		# of Buildings					
		None	Slight	Moderate	Extensive	Complete	Total
Yolo	<i>Industrial</i>	383	0	0	0	0	383
	<i>Other Residential</i>	4,962	0	0	0	0	4,962
	<i>Single Family</i>	21,645	0	0	0	0	21,645
	<i>Industrial</i>	1,088	25	3	0	0	1,117
	<i>Other Residential</i>	9,693	154	13	0	0	9,861
	<i>Education</i>	130	1	0	0	0	131
	<i>Government</i>	108	3	0	0	0	111
	<i>Single Family</i>	42,231	358	0	0	0	42,589
	<i>Commercial</i>	4,128	86	11	0	0	4,225
Yuba	<i>Agriculture</i>	269	8	3	0	0	281
	<i>Religion</i>	238	4	0	0	0	242
	<i>Government</i>	582	9	1	0	0	591
	<i>Education</i>	53	1	0	0	0	54
	<i>Other Residential</i>	6,484	469	66	2	0	7,021
	<i>Religion</i>	94	3	1	0	0	98
	<i>Commercial</i>	1,124	58	15	2	0	1,199
	<i>Agriculture</i>	86	4	2	0	0	92
	<i>Single Family</i>	18,467	399	2	0	0	18,867
	<i>Industrial</i>	375	21	7	1	0	404
Total	4,588,993	111,971	41,781	13,060	3,141	4,758,946	
Region Total	4,588,993	111,971	41,781	13,060	3,141	4,758,946	

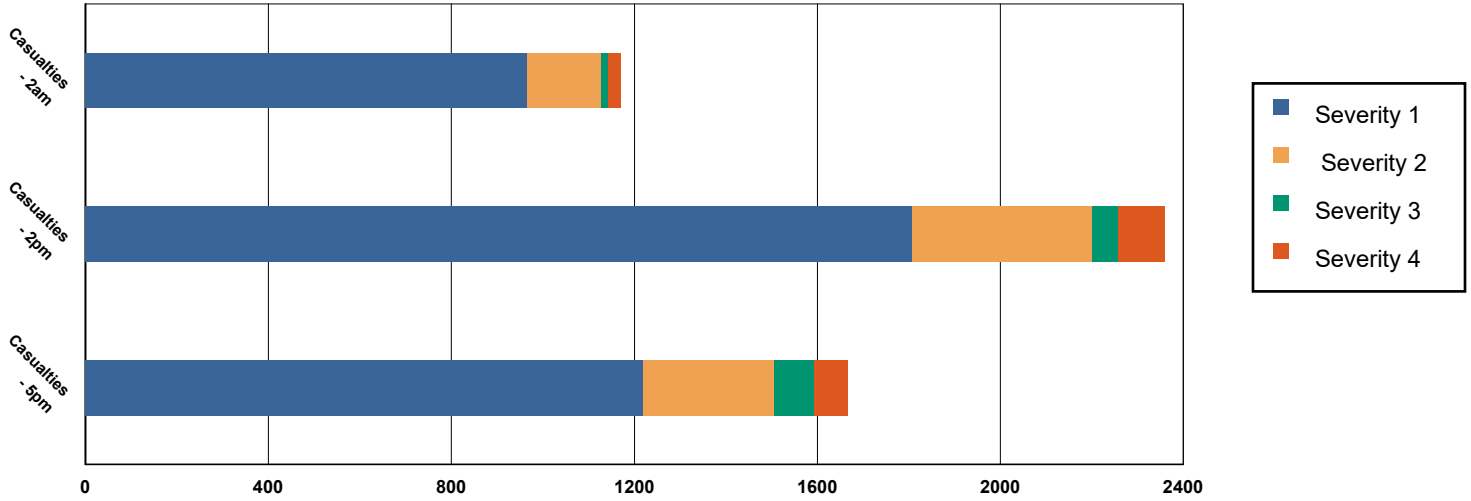
# of Buildings					
None	Slight	Moderate	Extensive	Complete	Total

Totals only reflect data for those census tracts/blocks included in the user's study region and will reflect the entire county/state only if all of the census blocks for that county/states were selected at the time of study region creation.

Casualties Summary Report

May 20, 2024

Region Total Casualties



Injury Severity Level

Severity 1 Severity 2 Severity 3 Severity 4 Total

California

Alameda

Casualties - 2am

	Severity 1	Severity 2	Severity 3	Severity 4	Total
Single Family	0	0	0	0	0
Hotels	0	0	0	0	0
Commuting	0	0	0	0	0
Educational	0	0	0	0	0
Industrial	0	0	0	0	0
Commercial	0	0	0	0	0
Other-Residential	2	0	0	0	2
Total Casualties - 2am	2	0	0	0	2

Casualties - 2pm

Industrial	0	0	0	0	0
Educational	0	0	0	0	0
Other-Residential	1	0	0	0	1
Single Family	0	0	0	0	0
Hotels	0	0	0	0	0
Commuting	0	0	0	0	0
Commercial	4	0	0	0	4

	Injury Severity Level				Total
	Severity 1	Severity 2	Severity 3	Severity 4	
California					
Alameda					
Total Casualties - 2pm	5	0	0	0	5
Casualties - 5pm					
<i>Commuting</i>	0	0	0	0	0
<i>Single Family</i>	0	0	0	0	0
<i>Commercial</i>	2	0	0	0	2
<i>Hotels</i>	0	0	0	0	0
<i>Educational</i>	0	0	0	0	0
<i>Industrial</i>	0	0	0	0	0
<i>Other-Residential</i>	1	0	0	0	1
Total Casualties - 5pm	3	0	0	0	3
Alpine					
Casualties - 2am					
<i>Industrial</i>	0	0	0	0	0
<i>Single Family</i>	0	0	0	0	0
<i>Commercial</i>	0	0	0	0	0
<i>Other-Residential</i>	0	0	0	0	0
<i>Hotels</i>	0	0	0	0	0
<i>Commuting</i>	0	0	0	0	0
<i>Educational</i>	0	0	0	0	0
Total Casualties - 2am	0	0	0	0	0
Casualties - 2pm					
<i>Educational</i>	0	0	0	0	0
<i>Other-Residential</i>	0	0	0	0	0
<i>Single Family</i>	0	0	0	0	0
<i>Hotels</i>	0	0	0	0	0
<i>Commercial</i>	0	0	0	0	0
<i>Commuting</i>	0	0	0	0	0
<i>Industrial</i>	0	0	0	0	0
Total Casualties - 2pm	0	0	0	0	0
Casualties - 5pm					
<i>Industrial</i>	0	0	0	0	0
<i>Other-Residential</i>	0	0	0	0	0
<i>Commuting</i>	0	0	0	0	0
<i>Commercial</i>	0	0	0	0	0
<i>Single Family</i>	0	0	0	0	0
<i>Educational</i>	0	0	0	0	0
<i>Hotels</i>	0	0	0	0	0
Total Casualties - 5pm	0	0	0	0	0
Amador					
Casualties - 2am					
<i>Commercial</i>	0	0	0	0	0

	Injury Severity Level				Total
	Severity 1	Severity 2	Severity 3	Severity 4	
California					
Amador					
Casualties - 2am					
Other-Residential	0	0	0	0	0
Commuting	0	0	0	0	0
Educational	0	0	0	0	0
Single Family	0	0	0	0	0
Hotels	0	0	0	0	0
Industrial	0	0	0	0	0
Total Casualties - 2am	0	0	0	0	0
Casualties - 2pm					
Single Family	0	0	0	0	0
Hotels	0	0	0	0	0
Educational	0	0	0	0	0
Commuting	0	0	0	0	0
Commercial	0	0	0	0	0
Other-Residential	0	0	0	0	0
Industrial	0	0	0	0	0
Total Casualties - 2pm	0	0	0	0	0
Casualties - 5pm					
Commercial	0	0	0	0	0
Commuting	0	0	0	0	0
Other-Residential	0	0	0	0	0
Single Family	0	0	0	0	0
Educational	0	0	0	0	0
Hotels	0	0	0	0	0
Industrial	0	0	0	0	0
Total Casualties - 5pm	0	0	0	0	0
Butte					
Casualties - 2am					
Industrial	2	0	0	0	2
Commercial	1	0	0	0	2
Other-Residential	38	5	0	1	45
Single Family	8	0	0	0	8
Commuting	0	0	0	0	0
Educational	0	0	0	0	0
Hotels	0	0	0	0	0
Total Casualties - 2am	49	6	0	1	57
Casualties - 2pm					
Single Family	2	0	0	0	2
Educational	27	5	1	1	34
Commuting	0	0	0	0	0
Other-Residential	13	2	0	0	15
Hotels	0	0	0	0	0

	Injury Severity Level				Total
	Severity 1	Severity 2	Severity 3	Severity 4	
California					
Butte					
Casualties - 2pm					
<i>Commercial</i>	79	14	2	3	97
<i>Industrial</i>	12	2	0	1	16
Total Casualties - 2pm	133	23	3	5	164
Casualties - 5pm					
<i>Industrial</i>	8	1	0	0	10
<i>Other-Residential</i>	14	2	0	0	16
<i>Single Family</i>	3	0	0	0	3
<i>Commercial</i>	49	9	1	2	61
<i>Commuting</i>	1	1	2	0	3
<i>Hotels</i>	0	0	0	0	0
<i>Educational</i>	8	2	0	0	11
Total Casualties - 5pm	83	15	3	3	104
Calaveras					
Casualties - 2am					
<i>Other-Residential</i>	0	0	0	0	0
<i>Commuting</i>	0	0	0	0	0
<i>Commercial</i>	0	0	0	0	0
<i>Single Family</i>	0	0	0	0	0
<i>Hotels</i>	0	0	0	0	0
<i>Educational</i>	0	0	0	0	0
<i>Industrial</i>	0	0	0	0	0
Total Casualties - 2am	0	0	0	0	0
Casualties - 2pm					
<i>Hotels</i>	0	0	0	0	0
<i>Single Family</i>	0	0	0	0	0
<i>Educational</i>	0	0	0	0	0
<i>Commuting</i>	0	0	0	0	0
<i>Commercial</i>	0	0	0	0	0
<i>Industrial</i>	0	0	0	0	0
<i>Other-Residential</i>	0	0	0	0	0
Total Casualties - 2pm	0	0	0	0	0
Casualties - 5pm					
<i>Industrial</i>	0	0	0	0	0
<i>Commercial</i>	0	0	0	0	0
<i>Other-Residential</i>	0	0	0	0	0
<i>Educational</i>	0	0	0	0	0
<i>Hotels</i>	0	0	0	0	0
<i>Commuting</i>	0	0	0	0	0
<i>Single Family</i>	0	0	0	0	0
Total Casualties - 5pm	0	0	0	0	0

Injury Severity Level

Severity 1 Severity 2 Severity 3 Severity 4 Total

California

Colusa

Casualties - 2am

<i>Other-Residential</i>	1	0	0	0	1
<i>Industrial</i>	0	0	0	0	0
<i>Single Family</i>	1	0	0	0	1
<i>Commercial</i>	0	0	0	0	0
<i>Educational</i>	0	0	0	0	0
<i>Commuting</i>	0	0	0	0	0
<i>Hotels</i>	0	0	0	0	0
Total Casualties - 2am	2	0	0	0	2

Casualties - 2pm

<i>Hotels</i>	0	0	0	0	0
<i>Single Family</i>	0	0	0	0	0
<i>Educational</i>	1	0	0	0	1
<i>Commercial</i>	5	1	0	0	6
<i>Commuting</i>	0	0	0	0	0
<i>Other-Residential</i>	0	0	0	0	0
<i>Industrial</i>	0	0	0	0	0
Total Casualties - 2pm	7	1	0	0	8

Casualties - 5pm

<i>Industrial</i>	0	0	0	0	0
<i>Commercial</i>	3	0	0	0	4
<i>Other-Residential</i>	0	0	0	0	1
<i>Commuting</i>	0	0	0	0	1
<i>Single Family</i>	0	0	0	0	0
<i>Educational</i>	0	0	0	0	0
<i>Hotels</i>	0	0	0	0	0
Total Casualties - 5pm	4	1	0	0	5

Contra Costa

Casualties - 2am

<i>Educational</i>	0	0	0	0	0
<i>Hotels</i>	0	0	0	0	0
<i>Industrial</i>	0	0	0	0	0
<i>Other-Residential</i>	0	0	0	0	0
<i>Single Family</i>	0	0	0	0	0
<i>Commercial</i>	0	0	0	0	0
<i>Commuting</i>	0	0	0	0	0
Total Casualties - 2am	0	0	0	0	0

Casualties - 2pm

<i>Other-Residential</i>	0	0	0	0	0
<i>Industrial</i>	0	0	0	0	0
<i>Hotels</i>	0	0	0	0	0
<i>Single Family</i>	0	0	0	0	0

	Injury Severity Level				Total
	Severity 1	Severity 2	Severity 3	Severity 4	
California					
Contra Costa					
Casualties - 2pm					
<i>Educational</i>	0	0	0	0	0
<i>Commuting</i>	0	0	0	0	0
<i>Commercial</i>	1	0	0	0	1
Total Casualties - 2pm	1	0	0	0	1
Casualties - 5pm					
<i>Educational</i>	0	0	0	0	0
<i>Commuting</i>	0	0	0	0	0
<i>Single Family</i>	0	0	0	0	0
<i>Hotels</i>	0	0	0	0	0
<i>Industrial</i>	0	0	0	0	0
<i>Other-Residential</i>	0	0	0	0	0
<i>Commercial</i>	0	0	0	0	0
Total Casualties - 5pm	1	0	0	0	1
Del Norte					
Casualties - 2am					
<i>Hotels</i>	0	0	0	0	0
<i>Industrial</i>	0	0	0	0	0
<i>Commercial</i>	1	0	0	0	1
<i>Single Family</i>	18	2	0	0	20
<i>Other-Residential</i>	77	14	1	1	94
<i>Educational</i>	0	0	0	0	0
<i>Commuting</i>	0	0	0	0	0
Total Casualties - 2am	97	16	1	1	115
Casualties - 2pm					
<i>Commercial</i>	79	14	1	2	96
<i>Industrial</i>	1	0	0	0	2
<i>Other-Residential</i>	29	5	0	1	35
<i>Single Family</i>	7	1	0	0	7
<i>Educational</i>	13	2	0	0	15
<i>Commuting</i>	0	0	0	0	0
<i>Hotels</i>	0	0	0	0	0
Total Casualties - 2pm	128	22	2	3	155
Casualties - 5pm					
<i>Hotels</i>	0	0	0	0	0
<i>Educational</i>	0	0	0	0	0
<i>Industrial</i>	1	0	0	0	1
<i>Single Family</i>	7	1	0	0	8
<i>Other-Residential</i>	28	5	0	0	34
<i>Commuting</i>	1	1	2	0	4
<i>Commercial</i>	51	9	1	2	62

	Injury Severity Level				Total
	Severity 1	Severity 2	Severity 3	Severity 4	
California					
Del Norte					
Total Casualties - 5pm	88	16	3	2	109
El Dorado					
Casualties - 2am					
<i>Commuting</i>	0	0	0	0	0
<i>Educational</i>	0	0	0	0	0
<i>Single Family</i>	0	0	0	0	0
<i>Hotels</i>	0	0	0	0	0
<i>Other-Residential</i>	0	0	0	0	0
<i>Industrial</i>	0	0	0	0	0
<i>Commercial</i>	0	0	0	0	0
Total Casualties - 2am	0	0	0	0	0
Casualties - 2pm					
<i>Industrial</i>	0	0	0	0	0
<i>Other-Residential</i>	0	0	0	0	0
<i>Single Family</i>	0	0	0	0	0
<i>Hotels</i>	0	0	0	0	0
<i>Educational</i>	0	0	0	0	0
<i>Commuting</i>	0	0	0	0	0
<i>Commercial</i>	0	0	0	0	0
Total Casualties - 2pm	0	0	0	0	0
Casualties - 5pm					
<i>Commercial</i>	0	0	0	0	0
<i>Commuting</i>	0	0	0	0	0
<i>Single Family</i>	0	0	0	0	0
<i>Educational</i>	0	0	0	0	0
<i>Hotels</i>	0	0	0	0	0
<i>Industrial</i>	0	0	0	0	0
<i>Other-Residential</i>	0	0	0	0	0
Total Casualties - 5pm	0	0	0	0	0
Fresno					
Casualties - 2am					
<i>Hotels</i>	0	0	0	0	0
<i>Educational</i>	0	0	0	0	0
<i>Industrial</i>	0	0	0	0	0
<i>Commercial</i>	0	0	0	0	0
<i>Other-Residential</i>	0	0	0	0	0
<i>Single Family</i>	0	0	0	0	0
<i>Commuting</i>	0	0	0	0	0
Total Casualties - 2am	0	0	0	0	0
Casualties - 2pm					
<i>Commercial</i>	0	0	0	0	0

	Injury Severity Level				Total
	Severity 1	Severity 2	Severity 3	Severity 4	
California					
Fresno					
Casualties - 2pm					
<i>Other-Residential</i>	0	0	0	0	0
<i>Industrial</i>	0	0	0	0	0
<i>Single Family</i>	0	0	0	0	0
<i>Hotels</i>	0	0	0	0	0
<i>Commuting</i>	0	0	0	0	0
<i>Educational</i>	0	0	0	0	0
Total Casualties - 2pm	0	0	0	0	0
Casualties - 5pm					
<i>Educational</i>	0	0	0	0	0
<i>Commuting</i>	0	0	0	0	0
<i>Hotels</i>	0	0	0	0	0
<i>Industrial</i>	0	0	0	0	0
<i>Single Family</i>	0	0	0	0	0
<i>Other-Residential</i>	0	0	0	0	0
<i>Commercial</i>	0	0	0	0	0
Total Casualties - 5pm	0	0	0	0	0
Glenn					
Casualties - 2am					
<i>Hotels</i>	0	0	0	0	0
<i>Educational</i>	0	0	0	0	0
<i>Industrial</i>	1	0	0	0	1
<i>Other-Residential</i>	20	4	0	1	25
<i>Commercial</i>	1	0	0	0	1
<i>Commuting</i>	0	0	0	0	0
<i>Single Family</i>	3	0	0	0	3
Total Casualties - 2am	25	4	0	1	30
Casualties - 2pm					
<i>Industrial</i>	4	1	0	0	5
<i>Other-Residential</i>	6	1	0	0	7
<i>Commuting</i>	0	0	0	0	0
<i>Commercial</i>	70	16	2	4	93
<i>Hotels</i>	0	0	0	0	0
<i>Single Family</i>	1	0	0	0	1
<i>Educational</i>	4	1	0	0	5
Total Casualties - 2pm	85	19	2	5	111
Casualties - 5pm					
<i>Educational</i>	0	0	0	0	0
<i>Commuting</i>	0	0	1	0	2
<i>Hotels</i>	0	0	0	0	0
<i>Single Family</i>	1	0	0	0	1
<i>Industrial</i>	2	1	0	0	3

	Injury Severity Level				Total
	Severity 1	Severity 2	Severity 3	Severity 4	
California					
Glenn					
Casualties - 5pm					
Commercial	51	12	2	3	67
Other-Residential	7	1	0	0	9
Total Casualties - 5pm	62	14	2	3	82
Humboldt					
Casualties - 2am					
Single Family	114	11	0	0	126
Commercial	6	2	0	1	9
Commuting	0	0	0	0	0
Hotels	0	0	0	0	1
Educational	0	0	0	0	0
Industrial	8	2	0	1	12
Other-Residential	309	76	9	17	412
Total Casualties - 2am	438	92	10	19	559
Casualties - 2pm					
Industrial	59	17	3	5	85
Hotels	0	0	0	0	0
Commercial	478	138	22	44	683
Other-Residential	109	27	3	6	145
Single Family	40	4	0	0	44
Educational	296	74	11	21	402
Commuting	1	1	2	0	4
Total Casualties - 2pm	983	262	41	77	1,363
Casualties - 5pm					
Commercial	337	96	16	30	479
Other-Residential	116	29	4	7	155
Commuting	15	21	34	7	77
Hotels	0	0	0	0	0
Single Family	43	4	0	0	48
Educational	88	22	3	6	120
Industrial	37	11	2	3	53
Total Casualties - 5pm	637	183	59	53	932
Inyo					
Casualties - 2am					
Single Family	0	0	0	0	0
Commercial	0	0	0	0	0
Commuting	0	0	0	0	0
Educational	0	0	0	0	0
Hotels	0	0	0	0	0
Other-Residential	0	0	0	0	0
Industrial	0	0	0	0	0

	Injury Severity Level				Total
	Severity 1	Severity 2	Severity 3	Severity 4	
California					
Inyo					
Total Casualties - 2am	0	0	0	0	0
Casualties - 2pm					
<i>Industrial</i>	0	0	0	0	0
<i>Hotels</i>	0	0	0	0	0
<i>Commercial</i>	0	0	0	0	0
<i>Other-Residential</i>	0	0	0	0	0
<i>Single Family</i>	0	0	0	0	0
<i>Commuting</i>	0	0	0	0	0
<i>Educational</i>	0	0	0	0	0
Total Casualties - 2pm	0	0	0	0	0
Casualties - 5pm					
<i>Other-Residential</i>	0	0	0	0	0
<i>Single Family</i>	0	0	0	0	0
<i>Commercial</i>	0	0	0	0	0
<i>Educational</i>	0	0	0	0	0
<i>Hotels</i>	0	0	0	0	0
<i>Commuting</i>	0	0	0	0	0
<i>Industrial</i>	0	0	0	0	0
Total Casualties - 5pm	0	0	0	0	0
Lake					
Casualties - 2am					
<i>Hotels</i>	0	0	0	0	0
<i>Industrial</i>	0	0	0	0	0
<i>Other-Residential</i>	4	0	0	0	4
<i>Commuting</i>	0	0	0	0	0
<i>Educational</i>	0	0	0	0	0
<i>Single Family</i>	0	0	0	0	0
<i>Commercial</i>	0	0	0	0	0
Total Casualties - 2am	4	0	0	0	5
Casualties - 2pm					
<i>Industrial</i>	0	0	0	0	0
<i>Single Family</i>	0	0	0	0	0
<i>Commercial</i>	2	0	0	0	2
<i>Other-Residential</i>	1	0	0	0	1
<i>Hotels</i>	0	0	0	0	0
<i>Educational</i>	0	0	0	0	0
<i>Commuting</i>	0	0	0	0	0
Total Casualties - 2pm	3	0	0	0	4
Casualties - 5pm					
<i>Other-Residential</i>	1	0	0	0	1
<i>Industrial</i>	0	0	0	0	0

	Injury Severity Level				Total
	Severity 1	Severity 2	Severity 3	Severity 4	
California					
Lake					
Casualties - 5pm					
<i>Commercial</i>	1	0	0	0	1
<i>Educational</i>	0	0	0	0	0
<i>Commuting</i>	0	0	0	0	0
<i>Single Family</i>	0	0	0	0	0
<i>Hotels</i>	0	0	0	0	0
Total Casualties - 5pm	3	0	0	0	3
Lassen					
Casualties - 2am					
<i>Hotels</i>	0	0	0	0	0
<i>Industrial</i>	0	0	0	0	0
<i>Educational</i>	0	0	0	0	0
<i>Single Family</i>	0	0	0	0	0
<i>Commercial</i>	0	0	0	0	0
<i>Commuting</i>	0	0	0	0	0
<i>Other-Residential</i>	0	0	0	0	0
Total Casualties - 2am	0	0	0	0	0
Casualties - 2pm					
<i>Industrial</i>	0	0	0	0	0
<i>Other-Residential</i>	0	0	0	0	0
<i>Commercial</i>	0	0	0	0	0
<i>Commuting</i>	0	0	0	0	0
<i>Single Family</i>	0	0	0	0	0
<i>Hotels</i>	0	0	0	0	0
<i>Educational</i>	0	0	0	0	0
Total Casualties - 2pm	0	0	0	0	0
Casualties - 5pm					
<i>Industrial</i>	0	0	0	0	0
<i>Single Family</i>	0	0	0	0	0
<i>Commercial</i>	0	0	0	0	0
<i>Hotels</i>	0	0	0	0	0
<i>Other-Residential</i>	0	0	0	0	0
<i>Commuting</i>	0	0	0	0	0
<i>Educational</i>	0	0	0	0	0
Total Casualties - 5pm	0	0	0	0	0
Madera					
Casualties - 2am					
<i>Hotels</i>	0	0	0	0	0
<i>Educational</i>	0	0	0	0	0
<i>Single Family</i>	0	0	0	0	0
<i>Commuting</i>	0	0	0	0	0
<i>Industrial</i>	0	0	0	0	0

	Injury Severity Level				Total
	Severity 1	Severity 2	Severity 3	Severity 4	
California					
Madera					
Casualties - 2am					
Commercial	0	0	0	0	0
Other-Residential	0	0	0	0	0
Total Casualties - 2am	0	0	0	0	0
Casualties - 2pm					
Industrial	0	0	0	0	0
Commercial	0	0	0	0	0
Other-Residential	0	0	0	0	0
Commuting	0	0	0	0	0
Single Family	0	0	0	0	0
Hotels	0	0	0	0	0
Educational	0	0	0	0	0
Total Casualties - 2pm	0	0	0	0	0
Casualties - 5pm					
Industrial	0	0	0	0	0
Commercial	0	0	0	0	0
Single Family	0	0	0	0	0
Educational	0	0	0	0	0
Other-Residential	0	0	0	0	0
Commuting	0	0	0	0	0
Hotels	0	0	0	0	0
Total Casualties - 5pm	0	0	0	0	0
Marin					
Casualties - 2am					
Commercial	0	0	0	0	0
Commuting	0	0	0	0	0
Other-Residential	0	0	0	0	0
Educational	0	0	0	0	0
Single Family	0	0	0	0	0
Hotels	0	0	0	0	0
Industrial	0	0	0	0	0
Total Casualties - 2am	0	0	0	0	0
Casualties - 2pm					
Hotels	0	0	0	0	0
Commuting	0	0	0	0	0
Educational	0	0	0	0	0
Industrial	0	0	0	0	0
Other-Residential	0	0	0	0	0
Commercial	0	0	0	0	0
Single Family	0	0	0	0	0
Total Casualties - 2pm	0	0	0	0	0

	Injury Severity Level				Total
	Severity 1	Severity 2	Severity 3	Severity 4	
California					
Marin					
Casualties - 5pm					
Commuting	0	0	0	0	0
Commercial	0	0	0	0	0
Other-Residential	0	0	0	0	0
Single Family	0	0	0	0	0
Industrial	0	0	0	0	0
Educational	0	0	0	0	0
Hotels	0	0	0	0	0
Total Casualties - 5pm	0	0	0	0	0
Mariposa					
Casualties - 2am					
Commuting	0	0	0	0	0
Single Family	0	0	0	0	0
Commercial	0	0	0	0	0
Hotels	0	0	0	0	0
Educational	0	0	0	0	0
Industrial	0	0	0	0	0
Other-Residential	0	0	0	0	0
Total Casualties - 2am	0	0	0	0	0
Casualties - 2pm					
Hotels	0	0	0	0	0
Industrial	0	0	0	0	0
Commercial	0	0	0	0	0
Other-Residential	0	0	0	0	0
Educational	0	0	0	0	0
Commuting	0	0	0	0	0
Single Family	0	0	0	0	0
Total Casualties - 2pm	0	0	0	0	0
Casualties - 5pm					
Other-Residential	0	0	0	0	0
Educational	0	0	0	0	0
Commuting	0	0	0	0	0
Hotels	0	0	0	0	0
Single Family	0	0	0	0	0
Commercial	0	0	0	0	0
Industrial	0	0	0	0	0
Total Casualties - 5pm	0	0	0	0	0
Mendocino					
Casualties - 2am					
Educational	0	0	0	0	0
Hotels	0	0	0	0	0
Commuting	0	0	0	0	0

	Injury Severity Level				Total
	Severity 1	Severity 2	Severity 3	Severity 4	
California					
Mendocino					
Casualties - 2am					
<i>Industrial</i>	0	0	0	0	0
<i>Other-Residential</i>	9	1	0	0	10
<i>Single Family</i>	4	0	0	0	4
<i>Commercial</i>	0	0	0	0	0
Total Casualties - 2am	13	1	0	0	14
Casualties - 2pm					
<i>Industrial</i>	1	0	0	0	1
<i>Other-Residential</i>	3	0	0	0	4
<i>Commercial</i>	4	0	0	0	5
<i>Single Family</i>	1	0	0	0	1
<i>Commuting</i>	0	0	0	0	0
<i>Hotels</i>	0	0	0	0	0
<i>Educational</i>	1	0	0	0	1
Total Casualties - 2pm	11	1	0	0	12
Casualties - 5pm					
<i>Hotels</i>	0	0	0	0	0
<i>Single Family</i>	1	0	0	0	1
<i>Educational</i>	0	0	0	0	0
<i>Commuting</i>	0	0	0	0	1
<i>Commercial</i>	3	0	0	0	3
<i>Other-Residential</i>	3	0	0	0	4
<i>Industrial</i>	0	0	0	0	0
Total Casualties - 5pm	8	1	0	0	9
Merced					
Casualties - 2am					
<i>Hotels</i>	0	0	0	0	0
<i>Industrial</i>	0	0	0	0	0
<i>Commercial</i>	0	0	0	0	0
<i>Single Family</i>	0	0	0	0	0
<i>Other-Residential</i>	0	0	0	0	0
<i>Educational</i>	0	0	0	0	0
<i>Commuting</i>	0	0	0	0	0
Total Casualties - 2am	0	0	0	0	0
Casualties - 2pm					
<i>Other-Residential</i>	0	0	0	0	0
<i>Industrial</i>	0	0	0	0	0
<i>Commercial</i>	0	0	0	0	0
<i>Commuting</i>	0	0	0	0	0
<i>Hotels</i>	0	0	0	0	0
<i>Educational</i>	0	0	0	0	0
<i>Single Family</i>	0	0	0	0	0

	Injury Severity Level				Total
	Severity 1	Severity 2	Severity 3	Severity 4	
California					
Merced					
Total Casualties - 2pm	0	0	0	0	0
Casualties - 5pm					
<i>Industrial</i>	0	0	0	0	0
<i>Hotels</i>	0	0	0	0	0
<i>Educational</i>	0	0	0	0	0
<i>Commuting</i>	0	0	0	0	0
<i>Single Family</i>	0	0	0	0	0
<i>Commercial</i>	0	0	0	0	0
<i>Other-Residential</i>	0	0	0	0	0
Total Casualties - 5pm	0	0	0	0	0
Modoc					
Casualties - 2am					
<i>Industrial</i>	0	0	0	0	0
<i>Other-Residential</i>	0	0	0	0	0
<i>Commuting</i>	0	0	0	0	0
<i>Commercial</i>	0	0	0	0	0
<i>Single Family</i>	0	0	0	0	0
<i>Hotels</i>	0	0	0	0	0
<i>Educational</i>	0	0	0	0	0
Total Casualties - 2am	0	0	0	0	0
Casualties - 2pm					
<i>Commercial</i>	0	0	0	0	0
<i>Commuting</i>	0	0	0	0	0
<i>Educational</i>	0	0	0	0	0
<i>Single Family</i>	0	0	0	0	0
<i>Other-Residential</i>	0	0	0	0	0
<i>Hotels</i>	0	0	0	0	0
<i>Industrial</i>	0	0	0	0	0
Total Casualties - 2pm	0	0	0	0	0
Casualties - 5pm					
<i>Industrial</i>	0	0	0	0	0
<i>Educational</i>	0	0	0	0	0
<i>Commuting</i>	0	0	0	0	0
<i>Other-Residential</i>	0	0	0	0	0
<i>Hotels</i>	0	0	0	0	0
<i>Single Family</i>	0	0	0	0	0
<i>Commercial</i>	0	0	0	0	0
Total Casualties - 5pm	0	0	0	0	0
Mono					
Casualties - 2am					
<i>Other-Residential</i>	0	0	0	0	0

	Injury Severity Level				Total
	Severity 1	Severity 2	Severity 3	Severity 4	
California					
Mono					
Casualties - 2am					
<i>Industrial</i>	0	0	0	0	0
<i>Commercial</i>	0	0	0	0	0
<i>Single Family</i>	0	0	0	0	0
<i>Educational</i>	0	0	0	0	0
<i>Commuting</i>	0	0	0	0	0
<i>Hotels</i>	0	0	0	0	0
Total Casualties - 2am	0	0	0	0	0
Casualties - 2pm					
<i>Commercial</i>	0	0	0	0	0
<i>Commuting</i>	0	0	0	0	0
<i>Other-Residential</i>	0	0	0	0	0
<i>Educational</i>	0	0	0	0	0
<i>Single Family</i>	0	0	0	0	0
<i>Hotels</i>	0	0	0	0	0
<i>Industrial</i>	0	0	0	0	0
Total Casualties - 2pm	0	0	0	0	0
Casualties - 5pm					
<i>Industrial</i>	0	0	0	0	0
<i>Commuting</i>	0	0	0	0	0
<i>Hotels</i>	0	0	0	0	0
<i>Other-Residential</i>	0	0	0	0	0
<i>Educational</i>	0	0	0	0	0
<i>Single Family</i>	0	0	0	0	0
<i>Commercial</i>	0	0	0	0	0
Total Casualties - 5pm	0	0	0	0	0
Monterey					
Casualties - 2am					
<i>Other-Residential</i>	0	0	0	0	0
<i>Commuting</i>	0	0	0	0	0
<i>Commercial</i>	0	0	0	0	0
<i>Single Family</i>	0	0	0	0	0
<i>Hotels</i>	0	0	0	0	0
<i>Educational</i>	0	0	0	0	0
<i>Industrial</i>	0	0	0	0	0
Total Casualties - 2am	0	0	0	0	0
Casualties - 2pm					
<i>Commuting</i>	0	0	0	0	0
<i>Commercial</i>	0	0	0	0	0
<i>Single Family</i>	0	0	0	0	0
<i>Hotels</i>	0	0	0	0	0
<i>Educational</i>	0	0	0	0	0

	Injury Severity Level				Total
	Severity 1	Severity 2	Severity 3	Severity 4	
California					
Monterey					
Casualties - 2pm					
<i>Industrial</i>	0	0	0	0	0
<i>Other-Residential</i>	0	0	0	0	0
Total Casualties - 2pm	0	0	0	0	0
Casualties - 5pm					
<i>Commercial</i>	0	0	0	0	0
<i>Other-Residential</i>	0	0	0	0	0
<i>Industrial</i>	0	0	0	0	0
<i>Hotels</i>	0	0	0	0	0
<i>Educational</i>	0	0	0	0	0
<i>Commuting</i>	0	0	0	0	0
<i>Single Family</i>	0	0	0	0	0
Total Casualties - 5pm	0	0	0	0	0
Napa					
Casualties - 2am					
<i>Commercial</i>	0	0	0	0	0
<i>Other-Residential</i>	0	0	0	0	0
<i>Educational</i>	0	0	0	0	0
<i>Single Family</i>	0	0	0	0	0
<i>Commuting</i>	0	0	0	0	0
<i>Hotels</i>	0	0	0	0	0
<i>Industrial</i>	0	0	0	0	0
Total Casualties - 2am	0	0	0	0	0
Casualties - 2pm					
<i>Educational</i>	0	0	0	0	0
<i>Hotels</i>	0	0	0	0	0
<i>Commuting</i>	0	0	0	0	0
<i>Industrial</i>	0	0	0	0	0
<i>Other-Residential</i>	0	0	0	0	0
<i>Single Family</i>	0	0	0	0	0
<i>Commercial</i>	0	0	0	0	0
Total Casualties - 2pm	1	0	0	0	1
Casualties - 5pm					
<i>Commercial</i>	0	0	0	0	0
<i>Single Family</i>	0	0	0	0	0
<i>Other-Residential</i>	0	0	0	0	0
<i>Commuting</i>	0	0	0	0	0
<i>Industrial</i>	0	0	0	0	0
<i>Educational</i>	0	0	0	0	0
<i>Hotels</i>	0	0	0	0	0
Total Casualties - 5pm	0	0	0	0	1

	Injury Severity Level				Total
	Severity 1	Severity 2	Severity 3	Severity 4	
California					
Nevada					
Casualties - 2am					
Single Family	0	0	0	0	0
Commercial	0	0	0	0	0
Commuting	0	0	0	0	0
Hotels	0	0	0	0	0
Educational	0	0	0	0	0
Industrial	0	0	0	0	0
Other-Residential	0	0	0	0	0
Total Casualties - 2am	0	0	0	0	0
Casualties - 2pm					
Hotels	0	0	0	0	0
Industrial	0	0	0	0	0
Commercial	0	0	0	0	0
Single Family	0	0	0	0	0
Other-Residential	0	0	0	0	0
Educational	0	0	0	0	0
Commuting	0	0	0	0	0
Total Casualties - 2pm	0	0	0	0	0
Casualties - 5pm					
Commuting	0	0	0	0	0
Hotels	0	0	0	0	0
Other-Residential	0	0	0	0	0
Educational	0	0	0	0	0
Single Family	0	0	0	0	0
Commercial	0	0	0	0	0
Industrial	0	0	0	0	0
Total Casualties - 5pm	0	0	0	0	0
Placer					
Casualties - 2am					
Hotels	0	0	0	0	0
Educational	0	0	0	0	0
Industrial	0	0	0	0	0
Other-Residential	0	0	0	0	0
Commercial	0	0	0	0	0
Single Family	0	0	0	0	0
Commuting	0	0	0	0	0
Total Casualties - 2am	1	0	0	0	1
Casualties - 2pm					
Other-Residential	0	0	0	0	0
Industrial	0	0	0	0	0
Commercial	0	0	0	0	0
Single Family	0	0	0	0	0

	Injury Severity Level				Total
	Severity 1	Severity 2	Severity 3	Severity 4	
California					
Placer					
Casualties - 2pm					
<i>Educational</i>	0	0	0	0	0
<i>Commuting</i>	0	0	0	0	0
<i>Hotels</i>	0	0	0	0	0
Total Casualties - 2pm	1	0	0	0	1
Casualties - 5pm					
<i>Single Family</i>	0	0	0	0	0
<i>Hotels</i>	0	0	0	0	0
<i>Commuting</i>	0	0	0	0	0
<i>Educational</i>	0	0	0	0	0
<i>Commercial</i>	0	0	0	0	0
<i>Industrial</i>	0	0	0	0	0
<i>Other-Residential</i>	0	0	0	0	0
Total Casualties - 5pm	1	0	0	0	1
Plumas					
Casualties - 2am					
<i>Educational</i>	0	0	0	0	0
<i>Single Family</i>	0	0	0	0	0
<i>Commuting</i>	0	0	0	0	0
<i>Hotels</i>	0	0	0	0	0
<i>Industrial</i>	0	0	0	0	0
<i>Other-Residential</i>	0	0	0	0	0
<i>Commercial</i>	0	0	0	0	0
Total Casualties - 2am	0	0	0	0	0
Casualties - 2pm					
<i>Industrial</i>	0	0	0	0	0
<i>Single Family</i>	0	0	0	0	0
<i>Commercial</i>	0	0	0	0	0
<i>Other-Residential</i>	0	0	0	0	0
<i>Hotels</i>	0	0	0	0	0
<i>Educational</i>	0	0	0	0	0
<i>Commuting</i>	0	0	0	0	0
Total Casualties - 2pm	0	0	0	0	0
Casualties - 5pm					
<i>Other-Residential</i>	0	0	0	0	0
<i>Single Family</i>	0	0	0	0	0
<i>Educational</i>	0	0	0	0	0
<i>Hotels</i>	0	0	0	0	0
<i>Commuting</i>	0	0	0	0	0
<i>Commercial</i>	0	0	0	0	0
<i>Industrial</i>	0	0	0	0	0

	Injury Severity Level				Total
	Severity 1	Severity 2	Severity 3	Severity 4	
California					
Plumas					
Total Casualties - 5pm	0	0	0	0	0
Sacramento					
Casualties - 2am					
<i>Industrial</i>	0	0	0	0	0
<i>Other-Residential</i>	3	0	0	0	3
<i>Commercial</i>	1	0	0	0	1
<i>Single Family</i>	2	0	0	0	2
<i>Hotels</i>	0	0	0	0	0
<i>Commuting</i>	0	0	0	0	0
<i>Educational</i>	0	0	0	0	0
Total Casualties - 2am	5	0	0	0	5
Casualties - 2pm					
<i>Other-Residential</i>	1	0	0	0	1
<i>Commuting</i>	0	0	0	0	0
<i>Single Family</i>	0	0	0	0	0
<i>Commercial</i>	28	2	0	0	30
<i>Hotels</i>	0	0	0	0	0
<i>Educational</i>	1	0	0	0	1
<i>Industrial</i>	1	0	0	0	1
Total Casualties - 2pm	30	2	0	0	33
Casualties - 5pm					
<i>Industrial</i>	0	0	0	0	0
<i>Educational</i>	0	0	0	0	0
<i>Hotels</i>	0	0	0	0	0
<i>Commercial</i>	14	1	0	0	16
<i>Commuting</i>	0	0	0	0	0
<i>Other-Residential</i>	1	0	0	0	1
<i>Single Family</i>	1	0	0	0	1
Total Casualties - 5pm	17	1	0	0	18
San Benito					
Casualties - 2am					
<i>Other-Residential</i>	0	0	0	0	0
<i>Commercial</i>	0	0	0	0	0
<i>Commuting</i>	0	0	0	0	0
<i>Hotels</i>	0	0	0	0	0
<i>Educational</i>	0	0	0	0	0
<i>Single Family</i>	0	0	0	0	0
<i>Industrial</i>	0	0	0	0	0
Total Casualties - 2am	0	0	0	0	0
Casualties - 2pm					
<i>Hotels</i>	0	0	0	0	0

	Injury Severity Level				Total
	Severity 1	Severity 2	Severity 3	Severity 4	
California					
San Benito					
Casualties - 2pm					
<i>Educational</i>	0	0	0	0	0
<i>Industrial</i>	0	0	0	0	0
<i>Other-Residential</i>	0	0	0	0	0
<i>Commercial</i>	0	0	0	0	0
<i>Commuting</i>	0	0	0	0	0
<i>Single Family</i>	0	0	0	0	0
Total Casualties - 2pm	0	0	0	0	0
Casualties - 5pm					
<i>Commuting</i>	0	0	0	0	0
<i>Commercial</i>	0	0	0	0	0
<i>Other-Residential</i>	0	0	0	0	0
<i>Single Family</i>	0	0	0	0	0
<i>Industrial</i>	0	0	0	0	0
<i>Educational</i>	0	0	0	0	0
<i>Hotels</i>	0	0	0	0	0
Total Casualties - 5pm	0	0	0	0	0
San Francisco					
Casualties - 2am					
<i>Industrial</i>	0	0	0	0	0
<i>Hotels</i>	0	0	0	0	0
<i>Commercial</i>	0	0	0	0	0
<i>Other-Residential</i>	4	0	0	0	4
<i>Commuting</i>	0	0	0	0	0
<i>Educational</i>	0	0	0	0	0
<i>Single Family</i>	0	0	0	0	0
Total Casualties - 2am	5	0	0	0	5
Casualties - 2pm					
<i>Commercial</i>	7	0	0	0	7
<i>Industrial</i>	0	0	0	0	0
<i>Other-Residential</i>	1	0	0	0	1
<i>Single Family</i>	0	0	0	0	0
<i>Hotels</i>	0	0	0	0	0
<i>Commuting</i>	0	0	0	0	0
<i>Educational</i>	0	0	0	0	0
Total Casualties - 2pm	9	0	0	0	9
Casualties - 5pm					
<i>Educational</i>	0	0	0	0	0
<i>Hotels</i>	0	0	0	0	0
<i>Industrial</i>	0	0	0	0	0
<i>Commuting</i>	0	0	0	0	0
<i>Commercial</i>	4	0	0	0	4

	Injury Severity Level				Total
	Severity 1	Severity 2	Severity 3	Severity 4	
California					
San Francisco					
Casualties - 5pm					
Other-Residential	2	0	0	0	2
Single Family	0	0	0	0	0
Total Casualties - 5pm	6	0	0	0	6
San Joaquin					
Casualties - 2am					
Educational	0	0	0	0	0
Commuting	0	0	0	0	0
Hotels	0	0	0	0	0
Commercial	0	0	0	0	0
Single Family	1	0	0	0	2
Industrial	0	0	0	0	0
Other-Residential	0	0	0	0	0
Total Casualties - 2am	2	0	0	0	2
Casualties - 2pm					
Industrial	0	0	0	0	0
Other-Residential	0	0	0	0	0
Educational	0	0	0	0	0
Single Family	1	0	0	0	1
Hotels	0	0	0	0	0
Commuting	0	0	0	0	0
Commercial	1	0	0	0	1
Total Casualties - 2pm	1	0	0	0	1
Casualties - 5pm					
Commuting	0	0	0	0	0
Single Family	1	0	0	0	1
Educational	0	0	0	0	0
Hotels	0	0	0	0	0
Industrial	0	0	0	0	0
Commercial	0	0	0	0	0
Other-Residential	0	0	0	0	0
Total Casualties - 5pm	1	0	0	0	1
San Mateo					
Casualties - 2am					
Industrial	0	0	0	0	0
Other-Residential	0	0	0	0	0
Single Family	0	0	0	0	0
Commercial	0	0	0	0	0
Educational	0	0	0	0	0
Commuting	0	0	0	0	0
Hotels	0	0	0	0	0

	Injury Severity Level				Total
	Severity 1	Severity 2	Severity 3	Severity 4	
California					
San Mateo					
Total Casualties - 2am	0	0	0	0	0
Casualties - 2pm					
Other-Residential	0	0	0	0	0
Single Family	0	0	0	0	0
Commuting	0	0	0	0	0
Commercial	0	0	0	0	0
Educational	0	0	0	0	0
Hotels	0	0	0	0	0
Industrial	0	0	0	0	0
Total Casualties - 2pm	0	0	0	0	0
Casualties - 5pm					
Commercial	0	0	0	0	0
Industrial	0	0	0	0	0
Other-Residential	0	0	0	0	0
Single Family	0	0	0	0	0
Educational	0	0	0	0	0
Commuting	0	0	0	0	0
Hotels	0	0	0	0	0
Total Casualties - 5pm	0	0	0	0	0
Santa Clara					
Casualties - 2am					
Commuting	0	0	0	0	0
Educational	0	0	0	0	0
Single Family	0	0	0	0	0
Hotels	0	0	0	0	0
Industrial	0	0	0	0	0
Commercial	0	0	0	0	0
Other-Residential	0	0	0	0	0
Total Casualties - 2am	0	0	0	0	0
Casualties - 2pm					
Industrial	0	0	0	0	0
Commercial	1	0	0	0	1
Single Family	0	0	0	0	0
Commuting	0	0	0	0	0
Hotels	0	0	0	0	0
Other-Residential	0	0	0	0	0
Educational	0	0	0	0	0
Total Casualties - 2pm	1	0	0	0	1
Casualties - 5pm					
Industrial	0	0	0	0	0
Hotels	0	0	0	0	0

	Injury Severity Level				Total
	Severity 1	Severity 2	Severity 3	Severity 4	
California					
Santa Clara					
Casualties - 5pm					
<i>Other-Residential</i>	0	0	0	0	0
<i>Commercial</i>	0	0	0	0	0
<i>Commuting</i>	0	0	0	0	0
<i>Single Family</i>	0	0	0	0	0
<i>Educational</i>	0	0	0	0	0
Total Casualties - 5pm	0	0	0	0	0
Santa Cruz					
Casualties - 2am					
<i>Hotels</i>	0	0	0	0	0
<i>Educational</i>	0	0	0	0	0
<i>Industrial</i>	0	0	0	0	0
<i>Other-Residential</i>	0	0	0	0	0
<i>Single Family</i>	0	0	0	0	0
<i>Commercial</i>	0	0	0	0	0
<i>Commuting</i>	0	0	0	0	0
Total Casualties - 2am	0	0	0	0	0
Casualties - 2pm					
<i>Industrial</i>	0	0	0	0	0
<i>Other-Residential</i>	0	0	0	0	0
<i>Commercial</i>	0	0	0	0	0
<i>Commuting</i>	0	0	0	0	0
<i>Educational</i>	0	0	0	0	0
<i>Single Family</i>	0	0	0	0	0
<i>Hotels</i>	0	0	0	0	0
Total Casualties - 2pm	0	0	0	0	0
Casualties - 5pm					
<i>Industrial</i>	0	0	0	0	0
<i>Other-Residential</i>	0	0	0	0	0
<i>Commercial</i>	0	0	0	0	0
<i>Commuting</i>	0	0	0	0	0
<i>Single Family</i>	0	0	0	0	0
<i>Hotels</i>	0	0	0	0	0
<i>Educational</i>	0	0	0	0	0
Total Casualties - 5pm	0	0	0	0	0
Shasta					
Casualties - 2am					
<i>Other-Residential</i>	166	26	2	3	197
<i>Single Family</i>	43	2	0	0	45
<i>Commuting</i>	0	0	0	0	0
<i>Commercial</i>	2	0	0	0	2
<i>Hotels</i>	0	0	0	0	0

	Injury Severity Level				Total
	Severity 1	Severity 2	Severity 3	Severity 4	
California					
Shasta					
Casualties - 2am					
<i>Educational</i>	0	0	0	0	0
<i>Industrial</i>	1	0	0	0	1
Total Casualties - 2am	212	29	2	3	246
Casualties - 2pm					
<i>Commuting</i>	0	0	1	0	1
<i>Educational</i>	43	6	0	1	51
<i>Single Family</i>	14	1	0	0	15
<i>Hotels</i>	0	0	0	0	0
<i>Other-Residential</i>	55	9	1	1	65
<i>Industrial</i>	9	1	0	0	11
<i>Commercial</i>	138	24	3	5	169
Total Casualties - 2pm	259	41	4	7	312
Casualties - 5pm					
<i>Hotels</i>	0	0	0	0	0
<i>Commercial</i>	104	18	2	4	128
<i>Commuting</i>	4	5	9	2	21
<i>Single Family</i>	16	1	0	0	17
<i>Educational</i>	6	1	0	0	7
<i>Industrial</i>	6	1	0	0	7
<i>Other-Residential</i>	60	10	1	1	71
Total Casualties - 5pm	196	35	12	7	250
Sierra					
Casualties - 2am					
<i>Other-Residential</i>	0	0	0	0	0
<i>Commercial</i>	0	0	0	0	0
<i>Commuting</i>	0	0	0	0	0
<i>Hotels</i>	0	0	0	0	0
<i>Single Family</i>	0	0	0	0	0
<i>Educational</i>	0	0	0	0	0
<i>Industrial</i>	0	0	0	0	0
Total Casualties - 2am	0	0	0	0	0
Casualties - 2pm					
<i>Hotels</i>	0	0	0	0	0
<i>Educational</i>	0	0	0	0	0
<i>Industrial</i>	0	0	0	0	0
<i>Other-Residential</i>	0	0	0	0	0
<i>Commuting</i>	0	0	0	0	0
<i>Single Family</i>	0	0	0	0	0
<i>Commercial</i>	0	0	0	0	0
Total Casualties - 2pm	0	0	0	0	0

	Injury Severity Level				Total
	Severity 1	Severity 2	Severity 3	Severity 4	
California					
Sierra					
Casualties - 5pm					
<i>Educational</i>	0	0	0	0	0
<i>Hotels</i>	0	0	0	0	0
<i>Commuting</i>	0	0	0	0	0
<i>Industrial</i>	0	0	0	0	0
<i>Other-Residential</i>	0	0	0	0	0
<i>Commercial</i>	0	0	0	0	0
<i>Single Family</i>	0	0	0	0	0
Total Casualties - 5pm	0	0	0	0	0
Siskiyou					
Casualties - 2am					
<i>Commuting</i>	0	0	0	0	0
<i>Educational</i>	0	0	0	0	0
<i>Hotels</i>	0	0	0	0	0
<i>Single Family</i>	6	0	0	0	7
<i>Industrial</i>	0	0	0	0	0
<i>Other-Residential</i>	19	2	0	0	22
<i>Commercial</i>	0	0	0	0	0
Total Casualties - 2am	26	3	0	0	29
Casualties - 2pm					
<i>Industrial</i>	1	0	0	0	1
<i>Single Family</i>	2	0	0	0	2
<i>Other-Residential</i>	7	1	0	0	8
<i>Commercial</i>	17	2	0	0	20
<i>Educational</i>	4	0	0	0	5
<i>Commuting</i>	0	0	0	0	0
<i>Hotels</i>	0	0	0	0	0
Total Casualties - 2pm	32	4	0	0	36
Casualties - 5pm					
<i>Hotels</i>	0	0	0	0	0
<i>Industrial</i>	1	0	0	0	1
<i>Commercial</i>	12	1	0	0	13
<i>Other-Residential</i>	7	1	0	0	8
<i>Single Family</i>	2	0	0	0	2
<i>Educational</i>	0	0	0	0	0
<i>Commuting</i>	0	0	1	0	1
Total Casualties - 5pm	22	3	1	0	26
Solano					
Casualties - 2am					
<i>Industrial</i>	0	0	0	0	0
<i>Other-Residential</i>	0	0	0	0	0
<i>Commercial</i>	0	0	0	0	0

	Injury Severity Level				Total
	Severity 1	Severity 2	Severity 3	Severity 4	
California					
Solano					
Casualties - 2am					
<i>Educational</i>	0	0	0	0	0
<i>Commuting</i>	0	0	0	0	0
<i>Single Family</i>	0	0	0	0	0
<i>Hotels</i>	0	0	0	0	0
Total Casualties - 2am	0	0	0	0	0
Casualties - 2pm					
<i>Single Family</i>	0	0	0	0	0
<i>Other-Residential</i>	0	0	0	0	0
<i>Commercial</i>	0	0	0	0	0
<i>Educational</i>	0	0	0	0	0
<i>Commuting</i>	0	0	0	0	0
<i>Hotels</i>	0	0	0	0	0
<i>Industrial</i>	0	0	0	0	0
Total Casualties - 2pm	1	0	0	0	1
Casualties - 5pm					
<i>Commercial</i>	0	0	0	0	0
<i>Other-Residential</i>	0	0	0	0	0
<i>Single Family</i>	0	0	0	0	0
<i>Educational</i>	0	0	0	0	0
<i>Commuting</i>	0	0	0	0	0
<i>Hotels</i>	0	0	0	0	0
<i>Industrial</i>	0	0	0	0	0
Total Casualties - 5pm	1	0	0	0	1
Sonoma					
Casualties - 2am					
<i>Single Family</i>	1	0	0	0	1
<i>Other-Residential</i>	1	0	0	0	1
<i>Commercial</i>	0	0	0	0	0
<i>Commuting</i>	0	0	0	0	0
<i>Hotels</i>	0	0	0	0	0
<i>Educational</i>	0	0	0	0	0
<i>Industrial</i>	0	0	0	0	0
Total Casualties - 2am	1	0	0	0	2
Casualties - 2pm					
<i>Single Family</i>	0	0	0	0	0
<i>Commuting</i>	0	0	0	0	0
<i>Educational</i>	1	0	0	0	1
<i>Hotels</i>	0	0	0	0	0
<i>Industrial</i>	0	0	0	0	0
<i>Other-Residential</i>	0	0	0	0	0
<i>Commercial</i>	2	0	0	0	2

	Injury Severity Level				Total
	Severity 1	Severity 2	Severity 3	Severity 4	
California					
Sonoma					
Total Casualties - 2pm	3	0	0	0	3
Casualties - 5pm					
<i>Single Family</i>	0	0	0	0	0
<i>Commercial</i>	1	0	0	0	1
<i>Commuting</i>	0	0	0	0	0
<i>Hotels</i>	0	0	0	0	0
<i>Educational</i>	0	0	0	0	0
<i>Industrial</i>	0	0	0	0	0
<i>Other-Residential</i>	0	0	0	0	0
Total Casualties - 5pm	2	0	0	0	2
Stanislaus					
Casualties - 2am					
<i>Hotels</i>	0	0	0	0	0
<i>Industrial</i>	0	0	0	0	0
<i>Commercial</i>	0	0	0	0	0
<i>Single Family</i>	0	0	0	0	0
<i>Other-Residential</i>	0	0	0	0	0
<i>Commuting</i>	0	0	0	0	0
<i>Educational</i>	0	0	0	0	0
Total Casualties - 2am	0	0	0	0	0
Casualties - 2pm					
<i>Industrial</i>	0	0	0	0	0
<i>Other-Residential</i>	0	0	0	0	0
<i>Commercial</i>	0	0	0	0	0
<i>Commuting</i>	0	0	0	0	0
<i>Educational</i>	0	0	0	0	0
<i>Single Family</i>	0	0	0	0	0
<i>Hotels</i>	0	0	0	0	0
Total Casualties - 2pm	0	0	0	0	0
Casualties - 5pm					
<i>Industrial</i>	0	0	0	0	0
<i>Other-Residential</i>	0	0	0	0	0
<i>Commuting</i>	0	0	0	0	0
<i>Single Family</i>	0	0	0	0	0
<i>Commercial</i>	0	0	0	0	0
<i>Hotels</i>	0	0	0	0	0
<i>Educational</i>	0	0	0	0	0
Total Casualties - 5pm	0	0	0	0	0
Sutter					
Casualties - 2am					
<i>Educational</i>	0	0	0	0	0

	Injury Severity Level				Total
	Severity 1	Severity 2	Severity 3	Severity 4	
California					
Sutter					
Casualties - 2am					
<i>Commuting</i>	0	0	0	0	0
<i>Hotels</i>	0	0	0	0	0
<i>Industrial</i>	0	0	0	0	0
<i>Other-Residential</i>	1	0	0	0	1
<i>Single Family</i>	2	0	0	0	2
<i>Commercial</i>	0	0	0	0	0
Total Casualties - 2am	3	0	0	0	3
Casualties - 2pm					
<i>Industrial</i>	0	0	0	0	0
<i>Commuting</i>	0	0	0	0	0
<i>Other-Residential</i>	0	0	0	0	0
<i>Single Family</i>	0	0	0	0	0
<i>Commercial</i>	5	1	0	0	6
<i>Hotels</i>	0	0	0	0	0
<i>Educational</i>	1	0	0	0	1
Total Casualties - 2pm	8	1	0	0	9
Casualties - 5pm					
<i>Commuting</i>	0	0	0	0	0
<i>Commercial</i>	4	1	0	0	5
<i>Educational</i>	0	0	0	0	0
<i>Single Family</i>	1	0	0	0	1
<i>Hotels</i>	0	0	0	0	0
<i>Industrial</i>	0	0	0	0	0
<i>Other-Residential</i>	0	0	0	0	1
Total Casualties - 5pm	6	1	0	0	7
Tehama					
Casualties - 2am					
<i>Hotels</i>	0	0	0	0	0
<i>Industrial</i>	0	0	0	0	1
<i>Commercial</i>	1	0	0	0	1
<i>Other-Residential</i>	31	4	0	0	36
<i>Educational</i>	0	0	0	0	0
<i>Commuting</i>	0	0	0	0	0
<i>Single Family</i>	27	4	1	1	33
Total Casualties - 2am	59	9	1	1	70
Casualties - 2pm					
<i>Other-Residential</i>	10	1	0	0	11
<i>Commercial</i>	48	10	1	2	62
<i>Industrial</i>	3	0	0	0	4
<i>Single Family</i>	9	1	0	0	11
<i>Educational</i>	9	1	0	0	10

	Injury Severity Level				Total
	Severity 1	Severity 2	Severity 3	Severity 4	
California					
Tehama					
Casualties - 2pm					
<i>Commuting</i>	0	0	0	0	1
<i>Hotels</i>	0	0	0	0	0
Total Casualties - 2pm	79	14	2	3	99
Casualties - 5pm					
<i>Hotels</i>	0	0	0	0	0
<i>Educational</i>	0	0	0	0	0
<i>Industrial</i>	2	0	0	0	2
<i>Single Family</i>	10	2	0	0	13
<i>Commercial</i>	37	7	1	2	47
<i>Commuting</i>	2	3	5	1	10
<i>Other-Residential</i>	11	2	0	0	13
Total Casualties - 5pm	63	14	6	3	86
Trinity					
Casualties - 2am					
<i>Commercial</i>	0	0	0	0	0
<i>Educational</i>	0	0	0	0	0
<i>Other-Residential</i>	11	1	0	0	13
<i>Single Family</i>	5	0	0	0	5
<i>Commuting</i>	0	0	0	0	0
<i>Hotels</i>	0	0	0	0	0
<i>Industrial</i>	0	0	0	0	0
Total Casualties - 2am	16	2	0	0	18
Casualties - 2pm					
<i>Educational</i>	1	0	0	0	2
<i>Commuting</i>	0	0	0	0	0
<i>Hotels</i>	0	0	0	0	0
<i>Single Family</i>	2	0	0	0	2
<i>Commercial</i>	10	2	0	0	12
<i>Industrial</i>	1	0	0	0	1
<i>Other-Residential</i>	4	1	0	0	5
Total Casualties - 2pm	19	3	0	0	23
Casualties - 5pm					
<i>Single Family</i>	2	0	0	0	2
<i>Commercial</i>	6	1	0	0	8
<i>Other-Residential</i>	4	1	0	0	5
<i>Commuting</i>	0	0	1	0	1
<i>Hotels</i>	0	0	0	0	0
<i>Educational</i>	0	0	0	0	0
<i>Industrial</i>	1	0	0	0	1
Total Casualties - 5pm	13	2	1	0	16

	Injury Severity Level				Total
	Severity 1	Severity 2	Severity 3	Severity 4	
California					
Tuolumne					
Casualties - 2am					
<i>Other-Residential</i>	0	0	0	0	0
<i>Industrial</i>	0	0	0	0	0
<i>Commercial</i>	0	0	0	0	0
<i>Commuting</i>	0	0	0	0	0
<i>Single Family</i>	0	0	0	0	0
<i>Educational</i>	0	0	0	0	0
<i>Hotels</i>	0	0	0	0	0
Total Casualties - 2am	0	0	0	0	0
Casualties - 2pm					
<i>Other-Residential</i>	0	0	0	0	0
<i>Commercial</i>	0	0	0	0	0
<i>Single Family</i>	0	0	0	0	0
<i>Educational</i>	0	0	0	0	0
<i>Commuting</i>	0	0	0	0	0
<i>Industrial</i>	0	0	0	0	0
<i>Hotels</i>	0	0	0	0	0
Total Casualties - 2pm	0	0	0	0	0
Casualties - 5pm					
<i>Industrial</i>	0	0	0	0	0
<i>Other-Residential</i>	0	0	0	0	0
<i>Commercial</i>	0	0	0	0	0
<i>Hotels</i>	0	0	0	0	0
<i>Commuting</i>	0	0	0	0	0
<i>Educational</i>	0	0	0	0	0
<i>Single Family</i>	0	0	0	0	0
Total Casualties - 5pm	0	0	0	0	0
Yolo					
Casualties - 2am					
<i>Single Family</i>	1	0	0	0	1
<i>Other-Residential</i>	1	0	0	0	1
<i>Commercial</i>	0	0	0	0	0
<i>Educational</i>	0	0	0	0	0
<i>Commuting</i>	0	0	0	0	0
<i>Hotels</i>	0	0	0	0	0
<i>Industrial</i>	0	0	0	0	0
Total Casualties - 2am	1	0	0	0	1
Casualties - 2pm					
<i>Industrial</i>	0	0	0	0	0
<i>Hotels</i>	0	0	0	0	0
<i>Educational</i>	0	0	0	0	1
<i>Commuting</i>	0	0	0	0	0

	Injury Severity Level				Total
	Severity 1	Severity 2	Severity 3	Severity 4	
California					
Yolo					
Casualties - 2pm					
Commercial	1	0	0	0	2
Other-Residential	0	0	0	0	0
Single Family	0	0	0	0	0
Total Casualties - 2pm	3	0	0	0	3
Casualties - 5pm					
Other-Residential	0	0	0	0	0
Single Family	0	0	0	0	0
Commuting	0	0	0	0	0
Commercial	1	0	0	0	1
Hotels	0	0	0	0	0
Educational	0	0	0	0	0
Industrial	0	0	0	0	0
Total Casualties - 5pm	2	0	0	0	2
Yuba					
Casualties - 2am					
Industrial	0	0	0	0	0
Other-Residential	1	0	0	0	1
Commercial	0	0	0	0	0
Educational	0	0	0	0	0
Single Family	1	0	0	0	1
Commuting	0	0	0	0	0
Hotels	0	0	0	0	0
Total Casualties - 2am	2	0	0	0	2
Casualties - 2pm					
Commercial	1	0	0	0	2
Commuting	0	0	0	0	0
Single Family	0	0	0	0	0
Other-Residential	0	0	0	0	0
Industrial	0	0	0	0	0
Hotels	0	0	0	0	0
Educational	0	0	0	0	0
Total Casualties - 2pm	3	0	0	0	3
Casualties - 5pm					
Hotels	0	0	0	0	0
Educational	0	0	0	0	0
Industrial	0	0	0	0	0
Other-Residential	0	0	0	0	0
Single Family	0	0	0	0	0
Commercial	1	0	0	0	1
Commuting	0	0	0	0	0

	Injury Severity Level				Total
	Severity 1	Severity 2	Severity 3	Severity 4	
California					
Yuba					
Total Casualties - 5pm	2	0	0	0	2
Region Total	NA	NA	NA	NA	NA

Totals only reflect data for those census tracts/blocks included in the user's study region and will reflect the entire county/state only if all of the census blocks for that county/states were selected at the time of study region creation.

Debris Summary Report

May 20, 2024

All values are in thousands of tons.

	Brick, Wood & Others	Concrete & Steel	Total
California			
Alameda	3	2	5
Alpine	0	0	0
Amador	0	0	0
Butte	51	146	197
Calaveras	0	0	0
Colusa	3	10	13
Contra Costa	1	0	1
Del Norte	98	139	237
El Dorado	0	0	0
Fresno	0	0	0
Glenn	25	73	97
Humboldt	344	936	1,280
Inyo	0	0	0
Lake	4	4	8
Lassen	0	0	0
Madera	0	0	0
Marin	0	0	0
Mariposa	0	0	0
Mendocino	11	10	21

	Brick, Wood & Others	Concrete & Steel	Total
Merced	0	0	0
Modoc	0	0	0
Mono	0	0	0
Monterey	0	0	0
Napa	1	0	1
Nevada	0	0	0
Placer	1	1	2
Plumas	0	0	1
Sacramento	6	7	13
San Benito	0	0	0
San Francisco	5	3	8
San Joaquin	3	0	3
San Mateo	0	0	0
Santa Clara	0	0	1
Santa Cruz	0	0	0
Shasta	176	308	485
Sierra	0	0	0
Siskiyou	26	38	64
Solano	1	0	1
Sonoma	2	2	4
Stanislaus	0	0	0
Sutter	3	6	9
Tehama	51	64	115
Trinity	20	27	48
Tuolumne	0	0	0
Yolo	2	2	4

	Brick, Wood & Others	Concrete & Steel	Total
Yuba	2	2	4
Total	842	1,781	2,623
Region Total	842	1,781	2,623

Totals only reflect data for those census tracts/blocks included in the user's study region and will reflect the entire county/state only if all of the census blocks for that county/states were selected at the time of study region creation.

Direct Economic Losses For Buildings

May 20, 2024

All values are in thousands of dollars

	Capital Stock Losses				Loss Ratio %	Income Losses				Total Loss
	Cost Structural Damage	Cost Non-struct. Damage	Cost Contents Damage	Inventory Loss		Relocation Loss	Capital Related Loss	Wages Losses	Rental Income Loss	
California										
Inyo	0	0	0	0	0.00	0	0	0	0	0
Contra Costa	806	15,140	8,550	898	0.01	137	145	229	191	26,097
Mendocino	19,745	150,766	75,246	7,325	0.75	6,562	5,819	5,739	3,890	275,091
Napa	939	14,483	8,640	992	0.05	213	246	281	209	26,003
Siskiyou	50,358	236,482	111,273	9,599	2.47	25,579	8,934	10,394	12,623	465,242
Plumas	772	9,615	5,109	209	0.12	231	215	239	312	16,702
Colusa	8,980	28,574	13,497	2,282	0.88	3,712	2,886	3,783	2,127	65,841
Shasta	359,125	1,269,246	529,144	77,691	4.37	161,883	96,982	114,546	80,027	2,688,644
Trinity	35,464	147,030	65,225	8,325	4.94	19,692	6,649	5,067	10,161	297,613

	Capital Stock Losses				Loss Ratio %	Income Losses				Total Loss
	Cost Structural Damage	Cost Non-struct. Damage	Cost Contents Damage	Inventory Loss		Relocation Loss	Capital Related Loss	Wages Losses	Rental Income Loss	
Tehama	88,987	354,770	156,975	19,407	3.46	37,964	19,101	25,475	17,448	720,128
Alameda	4,473	23,690	13,022	1,101	0.01	1,179	999	1,442	1,523	47,429
Humboldt	809,656	3,310,663	1,307,996	119,241	14.69	394,689	200,141	236,000	204,080	6,582,467
Del Norte	170,903	634,302	195,984	6,637	11.70	86,192	23,281	25,147	46,270	1,188,715
Nevada	185	5,765	3,558	257	0.02	27	24	33	30	9,880
San Joaquin	1,747	12,256	7,123	901	0.01	416	168	249	323	23,184
Tuolumne	0	38	27	2	0.00	0	0	0	0	67
Madera	1	62	44	9	0.00	0	0	0	0	115
Butte	125,710	433,142	197,775	23,697	1.31	53,470	39,184	42,983	28,273	944,235
Fresno	0	20	15	4	0.00	0	0	0	0	39
Solano	1,065	25,144	15,096	1,541	0.03	121	165	209	209	43,550
San Mateo	377	4,212	2,208	180	0.00	50	70	112	257	7,467
Yolo	3,667	43,426	26,158	3,091	0.11	818	1,032	1,195	813	80,200
Glenn	78,380	157,637	76,335	26,118	3.63	20,147	13,455	14,030	8,511	394,613
San Benito	0	15	12	2	0.00	0	0	0	0	29
Lassen	361	4,957	2,746	180	0.09	108	82	66	127	8,629
San Francisco	8,467	13,670	5,485	293	0.01	2,157	1,593	1,872	4,332	37,869
Stanislaus	123	2,905	1,909	273	0.00	12	15	17	38	5,290

	Capital Stock Losses				Loss Ratio %	Income Losses				Total Loss
	Cost Structural Damage	Cost Non-struct. Damage	Cost Contents Damage	Inventory Loss		Relocation Loss	Capital Related Loss	Wages Losses	Rental Income Loss	
Sutter	10,718	53,408	28,795	5,498	0.38	2,002	1,105	1,196	1,210	103,932
Santa Clara	661	6,408	3,747	333	0.00	122	164	247	333	12,014
Sonoma	4,059	51,786	28,918	3,544	0.05	973	1,256	1,518	882	92,935
Calaveras	9	171	127	37	0.00	1	2	2	1	350
Yuba	3,394	27,513	14,794	1,641	0.24	1,134	1,316	1,554	790	52,137
Alpine	0	3	2	0	0.00	0	0	0	0	5
Merced	46	386	313	157	0.00	3	1	1	1	907
Mono	0	3	2	0	0.00	0	0	0	0	5
Placer	1,883	35,393	21,413	1,974	0.04	262	290	378	307	61,899
Marin	123	3,699	2,242	162	0.01	13	27	26	33	6,326
El Dorado	18	1,151	708	46	0.00	1	3	4	4	1,935
Lake	5,821	36,159	15,922	1,275	0.30	2,168	1,465	1,598	1,685	66,092
Sierra	7	332	216	20	0.03	1	1	1	1	580
Santa Cruz	2	129	96	16	0.00	0	0	0	0	243
Mariposa	0	10	7	0	0.00	0	0	0	0	17
Amador	6	233	151	14	0.00	1	2	2	2	410
Sacramento	13,455	140,107	80,879	7,175	0.06	5,872	4,416	6,386	5,304	263,594
Monterey	1	151	116	16	0.00	0	0	0	1	286

	Capital Stock Losses				Loss Ratio %	Income Losses				Total Loss
	Cost Structural Damage	Cost Non-struct. Damage	Cost Contents Damage	Inventory Loss		Relocation Loss	Capital Related Loss	Wages Losses	Rental Income Loss	
Modoc	181	2,241	1,451	394	0.08	28	14	11	20	4,339
Total	1,810,675	7,257,293	3,029,049	332,558	1.08	827,941	431,248	502,032	432,350	14,623,146
Region Total	1,810,675	7,257,293	3,029,049	332,558	1.08	827,941	431,248	502,032	432,350	14,623,146

Totals only reflect data for those census tracts/blocks included in the user's study region and will reflect the entire county/state only if all of the census blocks for that county/states were selected at the time of study region creation.

Direct Economic Loss For Transportation

May 20, 2024

All values are in thousands of dollars

	Highway	Railway	Light Rail	Bus Facility	Ports	Ferries	Airport	Total
California								
Alameda								
Segments	0	0	0					0
Bridges	391	4	0					395
Tunnels	0	0	0					0
Facilities		436	0	22	1,725	38	3,593	5,815
Total	391	440	0	22	1,725	38	3,593	6,210
Alpine								
Segments	0	0	0					0
Bridges	0	0	0					0
Tunnels	0	0	0					0
Facilities		0	0	0	0	0	51	51
Total	0	0	0	0	0	0	51	51
Amador								
Segments	0	0	0					0
Bridges	0	0	0					0
Tunnels	0	0	0					0
Facilities		0	0	0	0	0	51	51

	Highway	Railway	Light Rail	Bus Facility	Ports	Ferries	Airport	Total
Total	0	0	0	0	0	0	51	51
Butte								
Segments	0	0	0					0
Bridges	5,468	1,007	0					6,475
Tunnels	2	0	0					2
Facilities		295	0	0	0	0	2,775	3,070
Total	5,470	1,301	0	0	0	0	2,775	9,546
Calaveras								
Segments	0	0	0					0
Bridges	0	0	0					0
Tunnels	0	0	0					0
Facilities		0	0	0	0	0	102	102
Total	0	0	0	0	0	0	102	102
Colusa								
Segments	0	0	0					0
Bridges	2,034	652	0					2,687
Tunnels	0	0	0					0
Facilities		0	0	0	0	0	400	400
Total	2,034	652	0	0	0	0	400	3,087
Contra Costa								
Segments	0	0	0					0
Bridges	1,121	31	0					1,152
Tunnels	0	0	0					0
Facilities		507	165	0	6,296	177	231	7,376

	Highway	Railway	Light Rail	Bus Facility	Ports	Ferries	Airport	Total
Total	1,121	538	165	0	6,296	177	231	8,528
Del Norte								
Segments	0	0	0					0
Bridges	15,155	0	0					15,155
Tunnels	2,007	0	0					2,007
Facilities		0	0	1,021	1,716	0	7,149	9,887
Total	17,163	0	0	1,021	1,716	0	7,149	27,049
El Dorado								
Segments	0	0	0					0
Bridges	17	0	0					17
Tunnels	0	0	0					0
Facilities		0	0	64	0	0	282	346
Total	17	0	0	64	0	0	282	363
Fresno								
Segments	0	0	0					0
Bridges	2	0	0					2
Tunnels	0	0	0					0
Facilities		26	0	2	0	0	217	245
Total	2	26	0	2	0	0	217	247
Glenn								
Segments	0	0	0					0
Bridges	7,458	1,894	0					9,352
Tunnels	0	0	0					0
Facilities		0	0	0	422	0	1,567	1,989

	Highway	Railway	Light Rail	Bus Facility	Ports	Ferries	Airport	Total
Total	7,458	1,894	0	0	422	0	1,567	11,341
Humboldt								
<i>Segments</i>	0	0	0					0
<i>Bridges</i>	136,850	1,280	0					138,129
<i>Tunnels</i>	0	0	0					0
<i>Facilities</i>		0	0	2,042	38,491	0	21,434	61,967
Total	136,850	1,280	0	2,042	38,491	0	21,434	200,097
Inyo								
<i>Segments</i>	0	0	0					0
<i>Bridges</i>	0	0	0					0
<i>Tunnels</i>	0	0	0					0
<i>Facilities</i>		0	0	0	0	0	45	45
Total	0	0	0	0	0	0	45	45
Lake								
<i>Segments</i>	0	0	0					0
<i>Bridges</i>	328	0	0					328
<i>Tunnels</i>	0	0	0					0
<i>Facilities</i>		0	0	0	0	0	1,184	1,184
Total	328	0	0	0	0	0	1,184	1,512
Lassen								
<i>Segments</i>	0	0	0					0
<i>Bridges</i>	58	11	0					69
<i>Tunnels</i>	0	0	0					0
<i>Facilities</i>		0	0	0	0	0	1,487	1,487

	Highway	Railway	Light Rail	Bus Facility	Ports	Ferries	Airport	Total
Total	58	11	0	0	0	0	1,487	1,556
Madera								
Segments	0	0	0					0
Bridges	0	0	0					0
Tunnels	0	0	0					0
Facilities		26	0	21	0	0	102	149
Total	0	26	0	21	0	0	102	149
Marin								
Segments	0	0	0					0
Bridges	820	0	0					820
Tunnels	0	0	0					0
Facilities		0	0	167	1,838	64	217	2,286
Total	820	0	0	167	1,838	64	217	3,106
Mariposa								
Segments	0	0	0					0
Bridges	0	0	0					0
Tunnels	0	0	0					0
Facilities		0	0	86	0	0	51	137
Total	0	0	0	86	0	0	51	137
Mendocino								
Segments	0	0	0					0
Bridges	8,313	997	0					9,310
Tunnels	0	0	0					0
Facilities		0	0	865	564	0	3,359	4,788

	Highway	Railway	Light Rail	Bus Facility	Ports	Ferries	Airport	Total
Total	8,313	997	0	865	564	0	3,359	14,098
Merced								
<i>Segments</i>	0	0	0					0
<i>Bridges</i>	3	0	0					3
<i>Tunnels</i>	0	0	0					0
<i>Facilities</i>		51	0	21	0	0	410	483
Total	3	51	0	21	0	0	410	486
Modoc								
<i>Segments</i>	0	0	0					0
<i>Bridges</i>	19	298	0					317
<i>Tunnels</i>	0	0	0					0
<i>Facilities</i>		0	0	0	0	0	1,154	1,154
Total	19	298	0	0	0	0	1,154	1,471
Mono								
<i>Segments</i>	0	0	0					0
<i>Bridges</i>	0	0	0					0
<i>Tunnels</i>	0	0	0					0
<i>Facilities</i>		0	0	23	0	0	210	233
Total	0	0	0	23	0	0	210	233
Monterey								
<i>Segments</i>	0	0	0					0
<i>Bridges</i>	1	0	0					1
<i>Tunnels</i>	0	0	0					0
<i>Facilities</i>		26	0	156	110	0	353	645

	Highway	Railway	Light Rail	Bus Facility	Ports	Ferries	Airport	Total
Total	1	26	0	156	110	0	353	646
Napa								
<i>Segments</i>	0	0	0					0
<i>Bridges</i>	133	18	0					151
<i>Tunnels</i>	0	0	0					0
<i>Facilities</i>		0	0	93	469	0	765	1,327
Total	133	18	0	93	469	0	765	1,479
Nevada								
<i>Segments</i>	0	0	0					0
<i>Bridges</i>	33	0	0					33
<i>Tunnels</i>	0	0	0					0
<i>Facilities</i>		26	0	0	0	0	268	294
Total	33	26	0	0	0	0	268	327
Placer								
<i>Segments</i>	0	0	0					0
<i>Bridges</i>	172	10	0					183
<i>Tunnels</i>	1	0	0					1
<i>Facilities</i>		437	0	91	0	0	870	1,397
Total	173	447	0	91	0	0	870	1,581
Plumas								
<i>Segments</i>	0	0	0					0
<i>Bridges</i>	279	44	0					323
<i>Tunnels</i>	9	0	0					9
<i>Facilities</i>		0	0	0	0	0	2,069	2,069

	Highway	Railway	Light Rail	Bus Facility	Ports	Ferries	Airport	Total
Total	288	44	0	0	0	0	2,069	2,402
Sacramento								
<i>Segments</i>	0	0	0					0
<i>Bridges</i>	4,661	28	0					4,689
<i>Tunnels</i>	0	0	0					0
<i>Facilities</i>		109	12,882	181	2,658	55	17,880	33,766
Total	4,661	137	12,882	181	2,658	55	17,880	38,454
San Benito								
<i>Segments</i>	0	0	0					0
<i>Bridges</i>	0	0	0					0
<i>Tunnels</i>	0	0	0					0
<i>Facilities</i>		0	0	0	0	0	102	102
Total	0	0	0	0	0	0	102	102
San Francisco								
<i>Segments</i>	0	0	0					0
<i>Bridges</i>	963	0	0					963
<i>Tunnels</i>	0	0	0					0
<i>Facilities</i>		0	31,375	49	2,019	51	308	33,802
Total	963	0	31,375	49	2,019	51	308	34,766
San Joaquin								
<i>Segments</i>	0	0	0					0
<i>Bridges</i>	423	4	0					427
<i>Tunnels</i>	0	0	0					0
<i>Facilities</i>		410	0	21	2,895	135	418	3,879

	Highway	Railway	Light Rail	Bus Facility	Ports	Ferries	Airport	Total
Total	423	415	0	21	2,895	135	418	4,306
San Mateo								
Segments	0	0	0					0
Bridges	433	0	0					433
Tunnels	0	0	0					0
Facilities		0	0	0	661	0	8,789	9,450
Total	433	0	0	0	661	0	8,789	9,883
Santa Clara								
Segments	0	0	0					0
Bridges	195	0	0					195
Tunnels	0	0	0					0
Facilities		103	5,439	47	184	0	3,593	9,364
Total	195	103	5,439	47	184	0	3,593	9,559
Santa Cruz								
Segments	0	0	0					0
Bridges	0	0	0					0
Tunnels	0	0	0					0
Facilities		0	0	45	37	0	257	339
Total	0	0	0	45	37	0	257	339
Shasta								
Segments	0	0	0					0
Bridges	30,959	4,491	0					35,450
Tunnels	0	0	0					0
Facilities		709	0	609	0	0	5,321	6,638

	Highway	Railway	Light Rail	Bus Facility	Ports	Ferries	Airport	Total
Total	30,959	5,200	0	609	0	0	5,321	42,088
Sierra								
Segments	0	0	0					0
Bridges	6	0	0					6
Tunnels	0	0	0					0
Facilities		0	0	0	0	0	217	217
Total	6	0	0	0	0	0	217	224
Siskiyou								
Segments	0	0	0					0
Bridges	18,967	2,478	0					21,445
Tunnels	0	0	0					0
Facilities		394	0	426	0	0	8,180	8,999
Total	18,967	2,871	0	426	0	0	8,180	30,444
Solano								
Segments	0	0	0					0
Bridges	1,403	60	0					1,463
Tunnels	0	0	0					0
Facilities		328	0	278	5,197	218	983	7,003
Total	1,403	387	0	278	5,197	218	983	8,466
Sonoma								
Segments	0	0	0					0
Bridges	737	46	0					783
Tunnels	0	0	0					0
Facilities		0	0	97	1,095	0	1,944	3,136

	Highway	Railway	Light Rail	Bus Facility	Ports	Ferries	Airport	Total
Total	737	46	0	97	1,095	0	1,944	3,918
Stanislaus								
Segments	0	0	0					0
Bridges	60	0	0					60
Tunnels	0	0	0					0
Facilities		154	0	43	0	0	231	427
Total	60	154	0	43	0	0	231	488
Sutter								
Segments	0	0	0					0
Bridges	1,670	82	0					1,752
Tunnels	0	0	0					0
Facilities		0	0	0	0	0	1,008	1,008
Total	1,670	82	0	0	0	0	1,008	2,760
Tehama								
Segments	0	0	0					0
Bridges	31,868	5,899	0					37,767
Tunnels	0	0	0					0
Facilities		0	0	0	0	0	2,188	2,188
Total	31,868	5,899	0	0	0	0	2,188	39,955
Trinity								
Segments	0	0	0					0
Bridges	12,192	0	0					12,192
Tunnels	0	0	0					0
Facilities		0	0	0	0	0	9,478	9,478

	Highway	Railway	Light Rail	Bus Facility	Ports	Ferries	Airport	Total
Total	12,192	0	0	0	0	0	9,478	21,671
Tuolumne								
Segments	0	0	0					0
Bridges	0	0	0					0
Tunnels	0	0	0					0
Facilities		0	0	0	0	0	153	153
Total	0	0	0	0	0	0	153	153
Yolo								
Segments	0	0	0					0
Bridges	5,985	48	0					6,033
Tunnels	0	0	0					0
Facilities		546	0	0	2,658	0	652	3,857
Total	5,985	594	0	0	2,658	0	652	9,889
Yuba								
Segments	0	0	0					0
Bridges	272	124	0					396
Tunnels	0	0	0					0
Facilities		0	0	169	0	0	617	786
Total	272	124	0	169	0	0	617	1,183
Total	291,470	24,088	49,861	6,637	69,034	738	112,718	554,547
Region Total	291,470	24,088	49,861	6,637	69,034	738	112,718	554,547

Totals only reflect data for those census tracts/blocks included in the user's study region and will reflect the entire county/state only if all of the census blocks for that county/states were selected at the time of study region creation.

Direct Economic Loss For Utilities

May 20, 2024

All values are in thousands of dollars

	Potable Water	Waste Water	Oil Systems	Natural Gas	Electric Power	Communication	Total
California							
Alameda							
Facilities	84	1,844	0	0	14,913	4	16,845
Pipelines	264	133	0	0			397
Total	349	1,977	0	0	14,913	4	17,242
Alpine							
Facilities	0	123	0	0	0	0	123
Pipelines	7	3	0	0			10
Total	7	126	0	0	0	0	133
Amador							
Facilities	0	123	0	0	8,504	0	8,627
Pipelines	26	13	0	0			39
Total	26	136	0	0	8,504	0	8,666
Butte							
Facilities	1,009	30,063	6	0	880,337	213	911,628

	Potable Water	Waste Water	Oil Systems	Natural Gas	Electric Power	Communication	Total
<i>Pipelines</i>	1,484	745	0	0			2,229
Total	2,493	30,809	6	0	880,337	213	913,857
Calaveras							
<i>Facilities</i>	28	492	0	0	25,137	1	25,658
<i>Pipelines</i>	55	27	0	0			82
Total	83	519	0	0	25,137	1	25,740
Colusa							
<i>Facilities</i>	0	21,024	0	2,623	180,727	14	204,388
<i>Pipelines</i>	719	361	0	0			1,081
Total	719	21,385	0	2,623	180,727	14	205,469
Contra Costa							
<i>Facilities</i>	169	3,123	5	0	94,024	2	97,322
<i>Pipelines</i>	307	154	0	0			461
Total	476	3,277	5	0	94,024	2	97,783
Del Norte							
<i>Facilities</i>	0	60,024	0	0	0	345	60,369
<i>Pipelines</i>	4,506	2,264	0	0			6,770
Total	4,506	62,288	0	0	0	345	67,138
El Dorado							
<i>Facilities</i>	28	1,893	0	0	31,299	6	33,226
<i>Pipelines</i>	85	43	0	0			128

	Potable Water	Waste Water	Oil Systems	Natural Gas	Electric Power	Communication	Total
Total	113	1,936	0	0	31,299	6	33,353
Fresno							
<i>Facilities</i>	0	10	0	0	16,544	0	16,555
<i>Pipelines</i>	184	93	0	0			277
Total	184	103	0	0	16,544	0	16,832
Glenn							
<i>Facilities</i>	0	12,929	0	0	11,736	22	24,686
<i>Pipelines</i>	1,701	854	0	0			2,555
Total	1,701	13,783	0	0	11,736	22	27,242
Humboldt							
<i>Facilities</i>	0	641,607	0	0	441,175	1,740	1,084,522
<i>Pipelines</i>	21,771	10,936	0	0			32,706
Total	21,771	652,543	0	0	441,175	1,740	1,117,229
Inyo							
<i>Facilities</i>	0	0	0	0	346	0	346
<i>Pipelines</i>	26	13	0	0			39
Total	26	13	0	0	346	0	385
Lake							
<i>Facilities</i>	2,018	0	0	0	42,369	58	44,445
<i>Pipelines</i>	688	346	0	0			1,033
Total	2,706	346	0	0	42,369	58	45,478

	Potable Water	Waste Water	Oil Systems	Natural Gas	Electric Power	Communication	Total
Lassen							
<i>Facilities</i>	0	1,524	0	0	49,343	7	50,875
<i>Pipelines</i>	575	289	0	0			863
Total	575	1,813	0	0	49,343	7	51,738
Madera							
<i>Facilities</i>	0	0	0	0	1,347	0	1,347
<i>Pipelines</i>	57	29	0	0			85
Total	57	29	0	0	1,347	0	1,432
Marin							
<i>Facilities</i>	348	5,188	0	0	770	4	6,310
<i>Pipelines</i>	68	34	0	0			102
Total	417	5,222	0	0	770	4	6,412
Mariposa							
<i>Facilities</i>	0	492	0	0	2,808	2	3,301
<i>Pipelines</i>	25	12	0	0			37
Total	25	504	0	0	2,808	2	3,338
Mendocino							
<i>Facilities</i>	0	70,618	0	0	22,040	243	92,901
<i>Pipelines</i>	3,582	1,799	0	0			5,381
Total	3,582	72,417	0	0	22,040	243	98,282
Merced							

	Potable Water	Waste Water	Oil Systems	Natural Gas	Electric Power	Communication	Total
<i>Facilities</i>	0	615	0	0	21,946	2	22,564
<i>Pipelines</i>	87	44	0	0			131
Total	87	658	0	0	21,946	2	22,694
Modoc							
<i>Facilities</i>	0	1,524	0	658	0	5	2,187
<i>Pipelines</i>	480	241	0	0			721
Total	480	1,766	0	658	0	5	2,908
Mono							
<i>Facilities</i>	0	0	0	0	436	0	436
<i>Pipelines</i>	26	13	0	0			39
Total	26	13	0	0	436	0	476
Monterey							
<i>Facilities</i>	0	1,107	0	0	12,187	4	13,297
<i>Pipelines</i>	66	33	0	0			99
Total	66	1,140	0	0	12,187	4	13,396
Napa							
<i>Facilities</i>	0	6,097	0	0	4,314	10	10,421
<i>Pipelines</i>	105	53	0	0			157
Total	105	6,150	0	0	4,314	10	10,578
Nevada							
<i>Facilities</i>	0	10,670	0	0	40,476	10	51,156

	Potable Water	Waste Water	Oil Systems	Natural Gas	Electric Power	Communication	Total
<i>Pipelines</i>	209	105	0	0			314
Total	209	10,776	0	0	40,476	10	51,470
Placer							
<i>Facilities</i>	0	15,244	0	0	102,052	12	117,307
<i>Pipelines</i>	205	103	0	0			308
Total	205	15,346	0	0	102,052	12	117,615
Plumas							
<i>Facilities</i>	348	8,988	0	0	499,429	29	508,794
<i>Pipelines</i>	600	301	0	0			902
Total	948	9,289	0	0	499,429	29	509,696
Sacramento							
<i>Facilities</i>	0	9,638	0	0	67,937	68	77,643
<i>Pipelines</i>	618	310	0	0			928
Total	618	9,948	0	0	67,937	68	78,571
San Benito							
<i>Facilities</i>	0	246	0	0	0	1	246
<i>Pipelines</i>	24	12	0	0			36
Total	24	258	0	0	0	1	283
San Francisco							
<i>Facilities</i>	0	861	0	0	108	4	972
<i>Pipelines</i>	25	12	0	0			37

	Potable Water	Waste Water	Oil Systems	Natural Gas	Electric Power	Communication	Total
Total	25	873	0	0	108	4	1,009
San Joaquin							
<i>Facilities</i>	140	861	0	0	9,393	2	10,396
<i>Pipelines</i>	336	169	0	0			505
Total	477	1,030	0	0	9,393	2	10,902
San Mateo							
<i>Facilities</i>	0	1,598	0	0	362	3	1,963
<i>Pipelines</i>	85	43	0	0			127
Total	85	1,641	0	0	362	3	2,090
Santa Clara							
<i>Facilities</i>	56	369	0	0	14,198	5	14,628
<i>Pipelines</i>	147	74	0	0			221
Total	203	443	0	0	14,198	5	14,849
Santa Cruz							
<i>Facilities</i>	0	492	0	0	65	1	558
<i>Pipelines</i>	43	22	0	0			65
Total	43	514	0	0	65	1	623
Shasta							
<i>Facilities</i>	12,206	214,718	0	2,623	4,796,694	818	5,027,058
<i>Pipelines</i>	5,869	2,948	0	0			8,818
Total	18,075	217,666	0	2,623	4,796,694	818	5,035,876

	Potable Water	Waste Water	Oil Systems	Natural Gas	Electric Power	Communication	Total
Sierra							
<i>Facilities</i>	0	0	0	0	7,699	0	7,699
<i>Pipelines</i>	125	63	0	0			188
Total	125	63	0	0	7,699	0	7,887
Siskiyou							
<i>Facilities</i>	0	22,527	0	0	221,425	220	244,172
<i>Pipelines</i>	8,742	4,391	0	0			13,133
Total	8,742	26,919	0	0	221,425	220	257,305
Solano							
<i>Facilities</i>	0	10,670	2	0	167,865	10	178,548
<i>Pipelines</i>	473	238	0	0			711
Total	473	10,908	2	0	167,865	10	179,259
Sonoma							
<i>Facilities</i>	0	19,658	0	0	289,351	41	309,050
<i>Pipelines</i>	515	259	0	0			773
Total	515	19,917	0	0	289,351	41	309,823
Stanislaus							
<i>Facilities</i>	0	492	0	0	8,978	3	9,473
<i>Pipelines</i>	65	33	0	0			98
Total	65	525	0	0	8,978	3	9,571
Sutter							

	Potable Water	Waste Water	Oil Systems	Natural Gas	Electric Power	Communication	Total
<i>Facilities</i>	0	8,830	0	0	139,923	48	148,801
<i>Pipelines</i>	513	258	0	0			771
Total	513	9,088	0	0	139,923	48	149,572
Tehama							
<i>Facilities</i>	0	50,153	0	5,782	82,225	192	138,352
<i>Pipelines</i>	5,270	2,647	0	0			7,918
Total	5,270	52,801	0	5,782	82,225	192	146,270
Trinity							
<i>Facilities</i>	0	0	0	0	542,499	0	542,499
<i>Pipelines</i>	5,481	2,753	0	0			8,234
Total	5,481	2,753	0	0	542,499	0	550,733
Tuolumne							
<i>Facilities</i>	0	123	0	0	30,829	1	30,953
<i>Pipelines</i>	66	33	0	0			100
Total	66	156	0	0	30,829	1	31,052
Yolo							
<i>Facilities</i>	0	6,097	0	0	6,937	17	13,051
<i>Pipelines</i>	353	177	0	0			530
Total	353	6,275	0	0	6,937	17	13,581
Yuba							
<i>Facilities</i>	0	11,878	0	0	118,203	7	130,088

	Potable Water	Waste Water	Oil Systems	Natural Gas	Electric Power	Communication	Total
<i>Pipelines</i>	295	148	0	0			444
Total	295	12,027	0	0	118,203	7	130,532
Total	83,388	1,288,166	13	11,687	9,008,948	4,169	10,396,370
Region Total	83,388	1,288,166	13	11,687	9,008,948	4,169	10,396,370

Totals only reflect data for those census tracts/blocks included in the user's study region and will reflect the entire county/state only if all of the census blocks for that county/states were selected at the time of study region creation.

Hazus Quick Assessment Report

Estimated Economic Loss (\$ Billions)

Category	Description	Range
General Building Stock	Building Damage	4.50 - 18.10
	Building Contents	0.60 - 2.60
	Business Interruption	1.10 - 4.40
Infrastructure	Lifelines Damage	
Total		7.30 - 29.20

Preliminary Damage Assessment (PDA) Estimates

Description	Residential	Commercial	Other	Total
Affected	100,900	7,000	3,900	111,800
Minor	34,600	4,600	2,500	41,700
Major	10,500	1,600	960	13,060
Destroyed	2,200	570	330	3,100
Total	148,200	13,770	7,690	169,660

Estimated Casualties : Night Time

Severity Level	Description	# Persons
Level 1	Medical Aid	500 - 1,900
Level 2	Hospital Care	80 - 300
Level 3	Life-threatening	10 - 30
Level 4	Fatalities	10 - 50

Estimated Shelter Needs

Type	Households	People
Displaced Households	2,000 - 10,000	5,000 - 25,000
Public Shelter	1,150	2,890

Comments :

*Hazus damage estimates are presented using FEMA Preliminary Damage Assessment (PDA) categories. These estimates should be used for planning purposes and may not reflect actual observed damages from the PDA process.

Disclaimer:

The estimates of social and economic impacts contained in this report were produced using HAZUS loss estimation methodology software which is based on current scientific and engineering knowledge. There are uncertainties inherent in any loss estimation technique. Therefore, there may be significant differences between the modeled results contained in this report and the actual social and economic losses following a specific earthquake. These results can be improved by using enhanced inventory, geotechnical, and observed ground motion data.

Earthquake Information

Location :

Origin Time:

Magnitude : 9.34

Epicenter Latitude/Longitude :
/

Depth & Type : /U

Name :
NA

Ground Motion /Attenuation :

Maximum PGA: 1.00

Information Sources:

Comments :

Population and Building Exposure

Population: 15,149,716

Building Exposure : (\$ Millions)

Residential	1,930,350
Commercial	521,007
Other	454,841
Total	2,906,198

Counties : See Appendix

Major Metro Area :

Hazus Quick Assessment Report

Estimated Economic Loss (\$ Billions)

Category	Description	Range
General Building Stock	Building Damage	4.50 - 18.10
	Building Contents	0.60 - 2.60
	Business Interruption	1.10 - 4.40
Infrastructure	Lifelines Damage	
Total		7.30 - 29.20

Preliminary Damage Assessment (PDA) Estimates

Description	Residential	Commercial	Other	Total
Affected	100,900	7,000	3,900	111,800
Minor	34,600	4,600	2,500	41,700
Major	10,500	1,600	960	13,060
Destroyed	2,200	570	330	3,100
Total	148,200	13,770	7,690	169,660

Estimated Casualties : Day Time

Severity Level	Description	# Persons
Level 1	Medical Aid	900 - 4,000
Level 2	Hospital Care	200 - 800
Level 3	Life-threatening	30 - 110
Level 4	Fatalities	50 - 200

Estimated Shelter Needs

Type	Households	People
Displaced Households	2,000 - 10,000	5,000 - 25,000
Public Shelter	1,150	2,890

Comments :

**Hazus damage estimates are presented using FEMA Preliminary Damage Assessment (PDA) categories. These estimates should be used for planning purposes and may not reflect actual observed damages from the PDA process.*

Disclaimer:

The estimates of social and economic impacts contained in this report were produced using HAZUS loss estimation methodology software which is based on current scientific and engineering knowledge. There are uncertainties inherent in any loss estimation technique. Therefore, there may be significant differences between the modeled results contained in this report and the actual social and economic losses following a specific earthquake. These results can be improved by using enhanced inventory, geotechnical, and observed ground motion data.

Earthquake Information

Location :

Origin Time:

Magnitude : 9.34

Epicenter Latitude/Longitude :
/

Depth & Type : /U

Name :
NA

Ground Motion /Attenuation :

Maximum PGA: 1.00

Information Sources:

Comments :

Population and Building Exposure

Population: 15,149,716

Building Exposure : (\$ Millions)

Residential	1,930,350
Commercial	521,007
Other	454,841
Total	2,906,198

Counties : See Appendix

Major Metro Area :

Hazus Quick Assessment Report

Estimated Economic Loss (\$ Billions)

Category	Description	Range
General Building Stock	Building Damage	4.50 - 18.10
	Building Contents	0.60 - 2.60
	Business Interruption	1.10 - 4.40
Infrastructure	Lifelines Damage	
Total		7.30 - 29.20

Preliminary Damage Assessment (PDA) Estimates

Description	Residential	Commercial	Other	Total
Affected	100,900	7,000	3,900	111,800
Minor	34,600	4,600	2,500	41,700
Major	10,500	1,600	960	13,060
Destroyed	2,200	570	330	3,100
Total	148,200	13,770	7,690	169,660

Estimated Casualties : Commute Time

Severity Level	Description	# Persons
Level 1	Medical Aid	600 - 2,000
Level 2	Hospital Care	140 - 600
Level 3	Life-threatening	40 - 180
Level 4	Fatalities	40 - 150

Estimated Shelter Needs

Type	Households	People
Displaced Households	2,000 - 10,000	5,000 - 25,000
Public Shelter	1,150	2,890

Comments :

*Hazus damage estimates are presented using FEMA Preliminary Damage Assessment (PDA) categories. These estimates should be used for planning purposes and may not reflect actual observed damages from the PDA process.

Disclaimer:

The estimates of social and economic impacts contained in this report were produced using HAZUS loss estimation methodology software which is based on current scientific and engineering knowledge. There are uncertainties inherent in any loss estimation technique. Therefore, there may be significant differences between the modeled results contained in this report and the actual social and economic losses following a specific earthquake. These results can be improved by using enhanced inventory, geotechnical, and observed ground motion data.

Earthquake Information

Location :

Origin Time:

Magnitude : 9.34

Epicenter Latitude/Longitude :
/

Depth & Type : /U

Name :
NA

Ground Motion /Attenuation :

Maximum PGA: 1.00

Information Sources:

Comments :

Population and Building Exposure

Population: 15,149,716

Building Exposure : (\$ Millions)

Residential	1,930,350
Commercial	521,007
Other	454,841
Total	2,906,198

Counties : See Appendix

Major Metro Area :

Shelter Summary Report

May 20, 2024

	# of Displaced Households	# of People Needing Short Term Shelter
California		
Alameda	4	2
Alpine	0	0
Amador	0	0
Butte	250	149
Calaveras	0	0
Colusa	11	6
Contra Costa	0	0
Del Norte	427	275
El Dorado	0	0
Fresno	0	0
Glenn	127	80
Humboldt	2,845	1,662
Inyo	0	0
Lake	5	3
Lassen	0	0
Madera	0	0
Marin	0	0
Mariposa	0	0
Mendocino	3	2
Merced	0	0
Modoc	0	0
Mono	0	0
Monterey	0	0
Napa	0	0
Nevada	0	0
Placer	0	0
Plumas	0	0
Sacramento	12	6
San Benito	0	0
San Francisco	6	2
San Joaquin	0	0
San Mateo	0	0

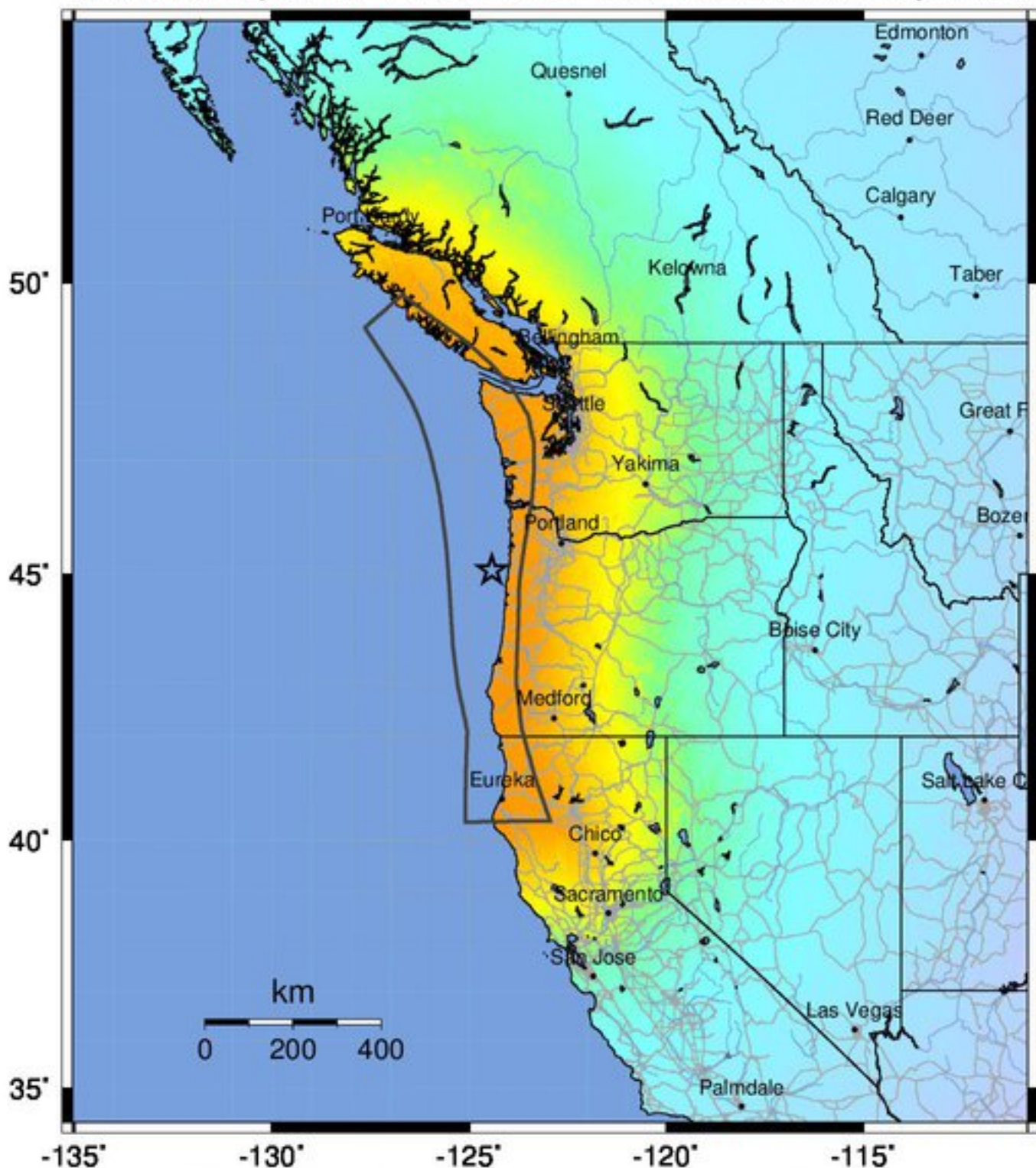
	# of Displaced Households	# of People Needing Short Term Shelter
Santa Clara	0	0
Santa Cruz	0	0
Shasta	851	469
Sierra	0	0
Siskiyou	63	34
Solano	0	0
Sonoma	1	0
Stanislaus	0	0
Sutter	4	3
Tehama	285	171
Trinity	36	19
Tuolumne	0	0
Yolo	1	1
Yuba	2	2
Total	4,934	2,886
Region Total	4,934	2,886

Totals only reflect data for those census tracts/blocks included in the user's study region and will reflect the entire county/state only if all of the census blocks for that county/states were selected at the time of study region creation.

-- Earthquake Planning Scenario --

for Cascadia Megathrust - whole CSZ Characteristic largest M branch - Median ground motion

Scenario Date: May 24, 2017 12:58:20 PM MDT M 9.3 N45.06 W124.42 Depth: 21.4km



PLANNING SCENARIO ONLY -- Map Version 1 Processed 2017-05-24 01:42:50 PM MDT

PERCEIVED SHAKING	Not felt	Weak	Light	Moderate	Strong	Very strong	Severe	Violent	Extreme
POTENTIAL DAMAGE	none	none	none	Very light	Light	Moderate	Mod./Heavy	Heavy	Very Heavy
PEAK ACC.(%g)	<0.05	0.3	2.8	6.2	12	22	40	75	>139
PEAK VEL.(cm/s)	<0.02	0.1	1.4	4.7	9.6	20	41	86	>178
INSTRUMENTAL INTENSITY	I	II-III	IV	V	VI	VII	VIII	IX	X+

Scale based upon Worden et al. (2012)