

Hazus: Earthquake Global Risk Report

Region Name: CarsonRngKingsCyn

Earthquake Scenario: CarsonRngKingsCynFlt_1285_1654_m7p23_se

Print Date: May 06, 2024

Disclaimer:

Totals only reflect data for those census tracts/blocks included in the user's study region.

The estimates of social and economic impacts contained in this report were produced using Hazus loss estimation methodology software which is based on current scientific and engineering knowledge. There are uncertainties inherent in any loss estimation technique. Therefore, there may be significant differences between the modeled results contained in this report and the actual social and economic losses following a specific earthquake. These results can be improved by using enhanced inventory, geotechnical, and observed ground motion data.

Table of Contents

Section	Page #
General Description of the Region	3
Building and Lifeline Inventory	4
Building Inventory	
Critical Facility Inventory	
Transportation and Utility Lifeline Inventory	
Earthquake Scenario Parameters	7
Direct Earthquake Damage	8
Buildings Damage	
Essential Facilities Damage	
Transportation and Utility Lifeline Damage	
Induced Earthquake Damage	14
Fire Following Earthquake	
Debris Generation	
Social Impact	15
Shelter Requirements	
Casualties	
Economic Loss	17
Building Related Losses	
Transportation and Utility Lifeline Losses	
Appendix A: County Listing for the Region	
Appendix B: Regional Population and Building Value Data	

General Description of the Region

Hazus-MH is a regional earthquake loss estimation model that was developed by the Federal Emergency Management Agency (FEMA) and the National Institute of Building Sciences. The primary purpose of Hazus is to provide a methodology and software application to develop multi-hazard losses at a regional scale. These loss estimates would be used primarily by local, state and regional officials to plan and stimulate efforts to reduce risks from multi-hazards and to prepare for emergency response and recovery.

The earthquake loss estimates provided in this report was based on a region that includes 26 county(ies) from the following state(s):

California

Note:

Appendix A contains a complete listing of the counties contained in the region.

The geographical size of the region is 52,787.85 square miles and contains 1,712 census tracts. There are over 2,590 thousand households in the region which has a total population of 7,559,630 people. The distribution of population by Total Region and County is provided in Appendix B.

There are an estimated 2,464 thousand buildings in the region with a total building replacement value (excluding contents) of 1,389,513 (millions of dollars). Approximately 91.00 % of the buildings (and 66.00% of the building value) are associated with residential housing.

The replacement value of the transportation and utility lifeline systems is estimated to be 130,364 and 142,223 (millions of dollars) , respectively.

Building and Lifeline Inventory

Building Inventory

Hazus estimates that there are 2,464 thousand buildings in the region which have an aggregate total replacement value of 1,389,513 (millions of dollars). Appendix B provides a general distribution of the building value by Total Region and County.

In terms of building construction types found in the region, wood frame construction makes up 87% of the building inventory. The remaining percentage is distributed between the other general building types.

Critical Facility Inventory

Hazus breaks critical facilities into two (2) groups: essential facilities and high potential loss facilities (HPL). Essential facilities include hospitals, medical clinics, schools, fire stations, police stations and emergency operations facilities. High potential loss facilities include dams, levees, military installations, nuclear power plants and hazardous material sites.

For essential facilities, there are 131 hospitals in the region with a total bed capacity of 15,780 beds. There are 2,908 schools, 910 fire stations, 262 police stations and 48 emergency operation facilities. With respect to high potential loss facilities (HPL), there are no dams identified within the inventory. The inventory also includes no hazardous material sites, no military installations and no nuclear power plants.

Transportation and Utility Lifeline Inventory

Within Hazus, the lifeline inventory is divided between transportation and utility lifeline systems. There are seven (7) transportation systems that include highways, railways, light rail, bus, ports, ferry and airports. There are six (6) utility systems that include potable water, wastewater, natural gas, crude & refined oil, electric power and communications. The lifeline inventory data are provided in Tables 1 and 2.

The total value of the lifeline inventory is over 272,587.00 (millions of dollars). This inventory includes over 7,621.74 miles of highways, 7,106 bridges, 168,880.56 miles of pipes.

Table 1: Transportation System Lifeline Inventory

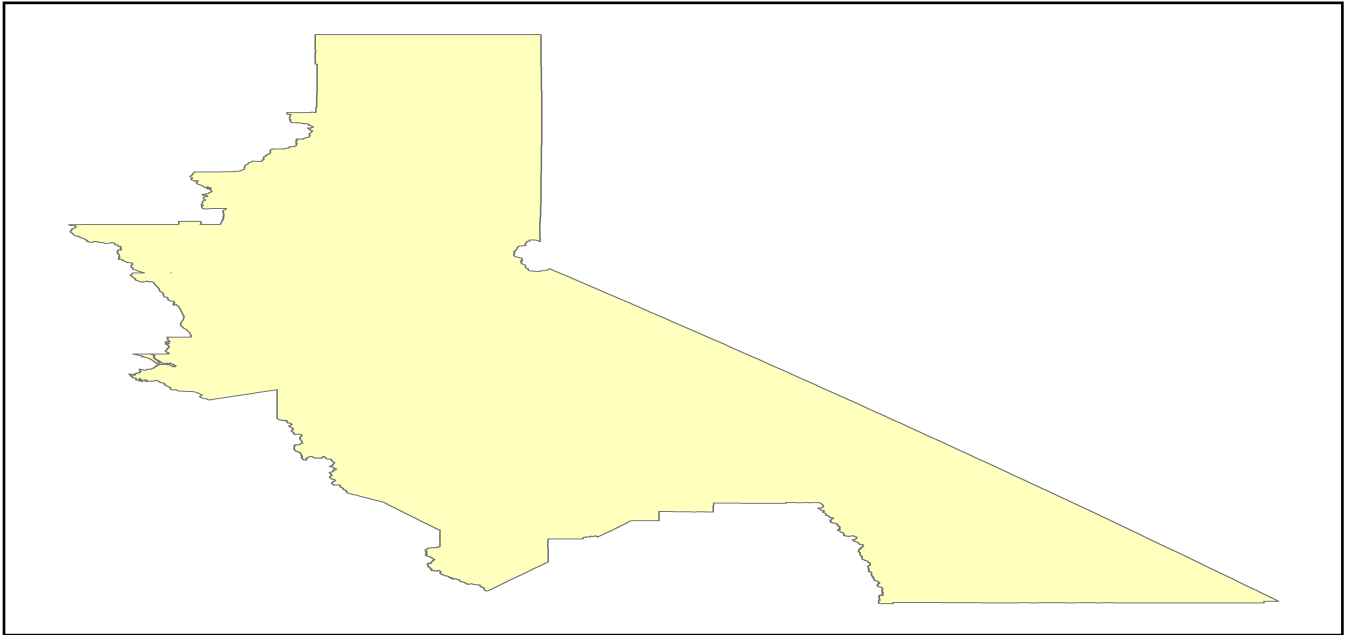
System	Component	# Locations/ # Segments	Replacement value (millions of dollars)
Highway	Bridges	7,106	27700.1065
	Segments	3,919	61169.3110
	Tunnels	17	236.8357
	Subtotal		89106.2532
Railways	Bridges	1,172	6668.6800
	Facilities	59	157.1170
	Segments	2,356	29683.3590
	Tunnels	2	1.7557
	Subtotal		36510.9117
Light Rail	Bridges	26	3.3240
	Facilities	58	331.1800
	Segments	4	1771.6066
	Tunnels	0	0.0000
	Subtotal		2106.1106
Bus	Facilities	22	48.6349
	Subtotal		48.6349
Ferry	Facilities	13	17.3030
	Subtotal		17.3030
Port	Facilities	188	716.6268
	Subtotal		716.6268
Airport	Facilities	88	1038.3833
	Runways	113	820.3305
	Subtotal		1858.7138
		Total	130,364.60

Table 2: Utility System Lifeline Inventory

System	Component	# Locations / Segments	Replacement value (millions of dollars)
Potable Water	Distribution Lines	NA	3361.1156
	Facilities	15	589.4100
	Pipelines	0	0.0000
		Subtotal	3950.5256
Waste Water	Distribution Lines	NA	2016.6694
	Facilities	105	18054.9390
	Pipelines	0	0.0000
		Subtotal	20071.6084
Natural Gas	Distribution Lines	NA	1344.4462
	Facilities	2	59.4451
	Pipelines	783	10207.7765
		Subtotal	11611.6678
Oil Systems	Facilities	17	2.0060
	Pipelines	0	0.0000
		Subtotal	2.0060
Electrical Power	Facilities	309	106561.0542
		Subtotal	106561.0542
Communication	Facilities	228	26.9040
		Subtotal	26.9040
	Total		142,223.80

Earthquake Scenario

Hazus uses the following set of information to define the earthquake parameters used for the earthquake loss estimate provided in this report.



Scenario Name	CarsonRngKingsCynFlt_1285_1654_m7p23_se
Type of Earthquake	User-defined
Fault Name	NA
Historical Epicenter ID #	NA
Probabilistic Return Period	NA
Longitude of Epicenter	NA
Latitude of Epicenter	NA
Earthquake Magnitude	7.23
Depth (km)	NA
Rupture Length (Km)	NA
Rupture Orientation (degrees)	NA
Attenuation Function	NA

Direct Earthquake Damage

Building Damage

Hazus estimates that about 713 buildings will be at least moderately damaged. This is over 0.00 % of the buildings in the region. There are an estimated 0 buildings that will be damaged beyond repair. The definition of the 'damage states' is provided in Volume 1: Chapter 5 of the Hazus technical manual. Table 3 below summarizes the expected damage by general occupancy for the buildings in the region. Table 4 below summarizes the expected damage by general building type.

Damage Categories by General Occupancy Type

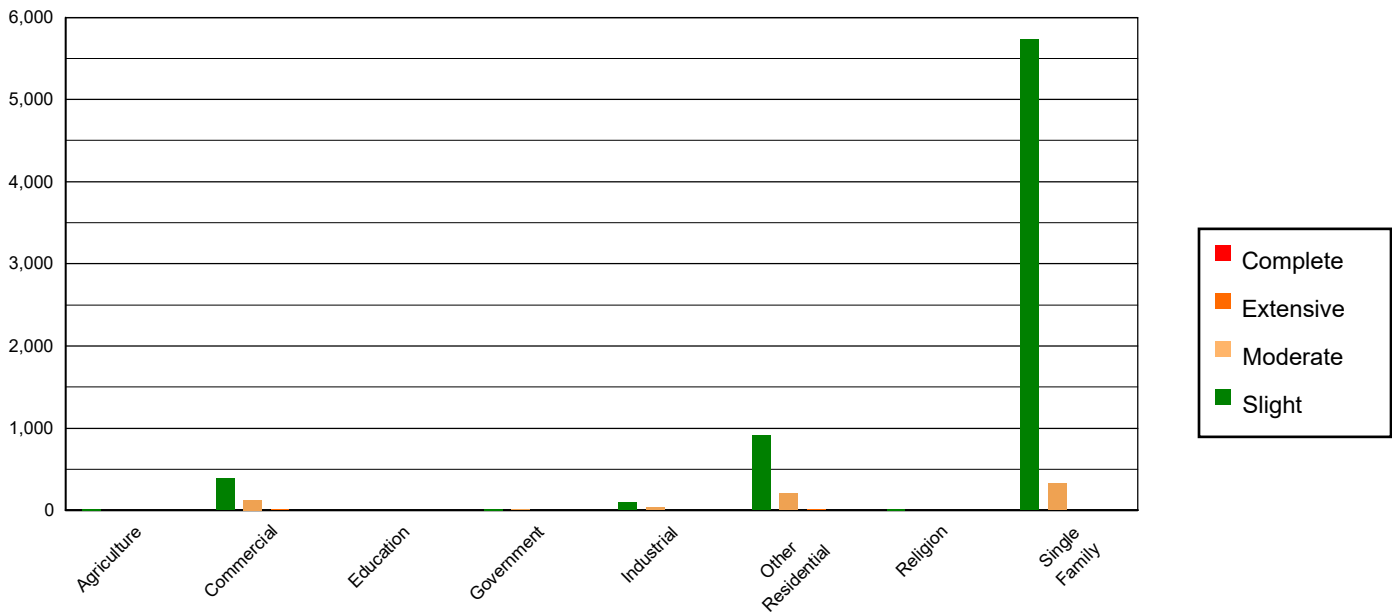


Table 3: Expected Building Damage by Occupancy

	None		Slight		Moderate		Extensive		Complete	
	Count	(%)	Count	(%)	Count	(%)	Count	(%)	Count	(%)
Agriculture	20665.81	0.84	14.85	0.21	2.28	0.33	0.05	0.24	0.00	0.00
Commercial	142512.94	5.80	392.16	5.46	121.35	17.48	7.36	37.54	0.19	82.24
Education	4492.44	0.18	3.88	0.05	0.67	0.10	0.01	0.04	0.00	0.00
Government	9322.00	0.38	17.05	0.24	5.63	0.81	0.32	1.63	0.00	0.51
Industrial	39958.87	1.63	94.81	1.32	28.84	4.16	1.47	7.51	0.00	1.63
Other Residential	293172.17	11.94	912.69	12.71	205.00	29.53	10.10	51.50	0.04	15.44
Religion	9035.69	0.37	14.63	0.20	4.48	0.65	0.19	0.95	0.00	0.17
Single Family	1937023.63	78.86	5730.40	79.81	325.86	46.95	0.11	0.57	0.00	0.00
Total	2,456,184		7,180		694		20		0	

Table 4: Expected Building Damage by Building Type (All Design Levels)

	None		Slight		Moderate		Extensive		Complete	
	Count	(%)	Count	(%)	Count	(%)	Count	(%)	Count	(%)
Wood	2148655.19	87.48	6279.61	87.45	369.42	53.22	0.16	0.80	0.00	0.00
Steel	48731.54	1.98	141.30	1.97	83.64	12.05	7.42	37.86	0.10	44.59
Concrete	51584.18	2.10	157.50	2.19	42.14	6.07	2.58	13.16	0.08	36.25
Precast	32692.08	1.33	81.15	1.13	34.75	5.01	1.44	7.35	0.01	2.67
RM	91227.31	3.71	119.89	1.67	41.15	5.93	1.03	5.23	0.00	0.00
URM	20360.75	0.83	187.22	2.61	12.38	1.78	0.40	2.03	0.03	14.26
MH	62932.49	2.56	213.81	2.98	110.65	15.94	6.58	33.56	0.01	2.22
Total	2,456,184		7,180		694		20		0	

*Note:

- RM Reinforced Masonry
- URM Unreinforced Masonry
- MH Manufactured Housing

Essential Facility Damage

Before the earthquake, the region had 15,780 hospital beds available for use. On the day of the earthquake, the model estimates that only 15,644 hospital beds (99.00%) are available for use by patients already in the hospital and those injured by the earthquake. After one week, 100.00% of the beds will be back in service. By 30 days, 100.00% will be operational.

Table 5: Expected Damage to Essential Facilities

Classification	Total	# Facilities		
		At Least Moderate Damage > 50%	Complete Damage > 50%	With Functionality > 50% on day 1
Hospitals	131	1	0	130
Schools	2,908	8	0	2,898
EOCs	48	0	0	47
PoliceStations	262	0	0	260
FireStations	910	0	0	905

Transportation Lifeline Damage

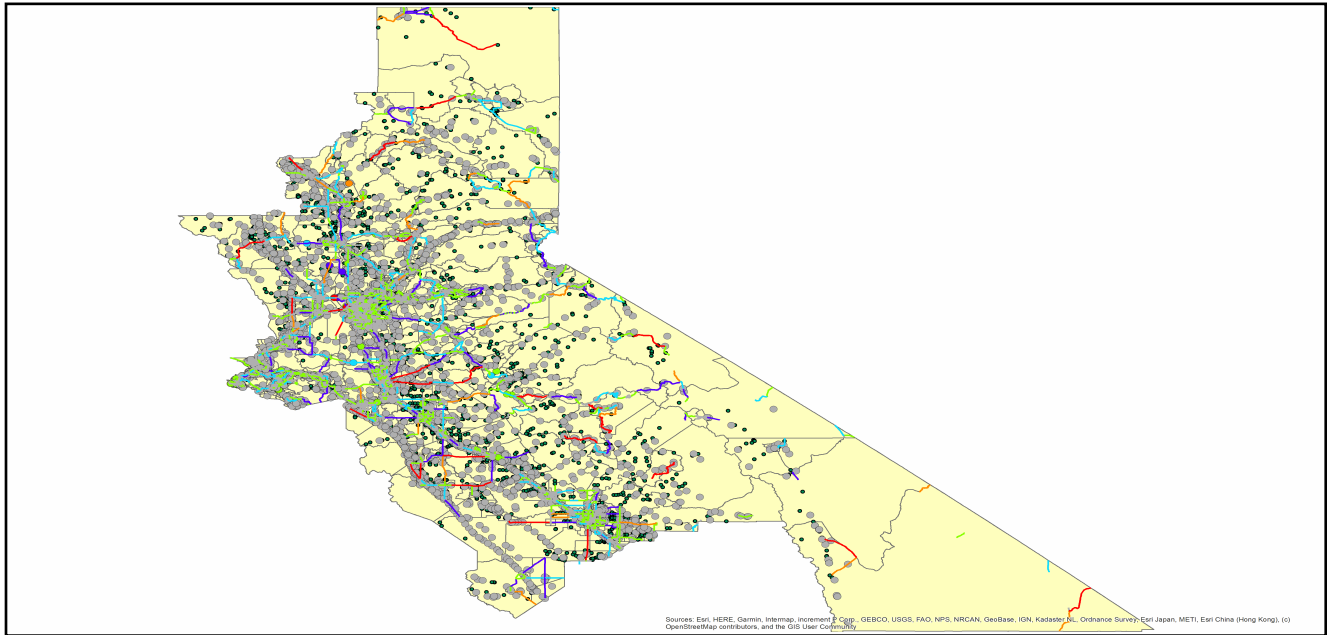


Table 6: Expected Damage to the Transportation Systems

System	Component	Number of Locations_				
		Locations/ Segments	With at Least Mod. Damage	With Complete Damage	With Functionality > 50 %	
					After Day 1	After Day 7
Highway	Segments	3,919	0	0	3,919	3,919
	Bridges	7,106	0	0	7,106	7,106
	Tunnels	17	0	0	17	17
Railways	Segments	2,356	0	0	2,356	2,356
	Bridges	1,172	0	0	1,172	1,172
	Tunnels	2	0	0	2	2
	Facilities	59	0	0	59	59
Light Rail	Segments	4	0	0	4	4
	Bridges	26	0	0	26	26
	Tunnels	0	0	0	0	0
	Facilities	58	0	0	58	58
Bus	Facilities	22	0	0	22	22
Ferry	Facilities	13	0	0	13	13
Port	Facilities	188	0	0	188	188
Airport	Facilities	88	1	0	88	88
	Runways	113	0	0	113	113

Table 6 provides damage estimates for the transportation system.

Note: Roadway segments, railroad tracks and light rail tracks are assumed to be damaged by ground failure only. If ground failure maps are not provided, damage estimates to these components will not be computed.

Tables 7-9 provide information on the damage to the utility lifeline systems. Table 7 provides damage to the utility system facilities. Table 8 provides estimates on the number of leaks and breaks by the pipelines of the utility systems. For electric power and potable water, Hazus performs a simplified system performance analysis. Table 9 provides a summary of the system performance information.

Table 7 : Expected Utility System Facility Damage

System	# of Locations				
	Total #	With at Least Moderate Damage	With Complete Damage	with Functionality > 50 %	
				After Day 1	After Day 7
Potable Water	15	0	0	15	15
Waste Water	105	0	0	105	105
Natural Gas	2	0	0	2	2
Oil Systems	17	0	0	17	17
Electrical Power	309	0	0	309	309
Communication	228	1	0	228	228

Table 8 : Expected Utility System Pipeline Damage (Site Specific)

System	Total Pipelines Length (miles)	Number of Leaks	Number of Breaks
Potable Water	104,425	417	104
Waste Water	62,655	210	52
Natural Gas	1,801	0	0
Oil	0	0	0

Table 9: Expected Potable Water and Electric Power System Performance

	Total # of Households	Number of Households without Service				
		At Day 1	At Day 3	At Day 7	At Day 30	At Day 90
Potable Water	2,590,105	0	0	0	0	0
Electric Power		0	0	0	0	0

Induced Earthquake Damage

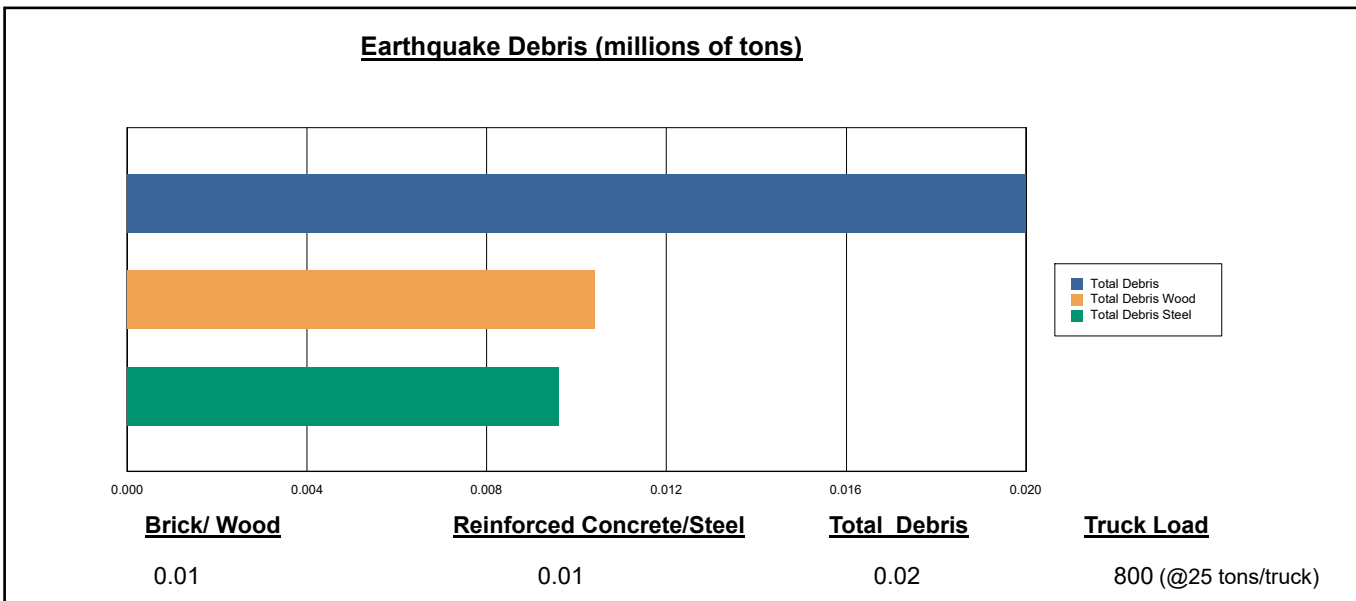
Fire Following Earthquake

Fires often occur after an earthquake. Because of the number of fires and the lack of water to fight the fires, they can often burn out of control. Hazus uses a Monte Carlo simulation model to estimate the number of ignitions and the amount of burnt area. For this scenario, the model estimates that there will be 0 ignitions that will burn about 0.00 sq. mi (0.00 % of the region's total area.) The model also estimates that the fires will displace about 0 people and burn about 0 (millions of dollars) of building value.

Debris Generation

Hazus estimates the amount of debris that will be generated by the earthquake. The model breaks the debris into two general categories: a) Brick/Wood and b) Reinforced Concrete/Steel. This distinction is made because of the different types of material handling equipment required to handle the debris.

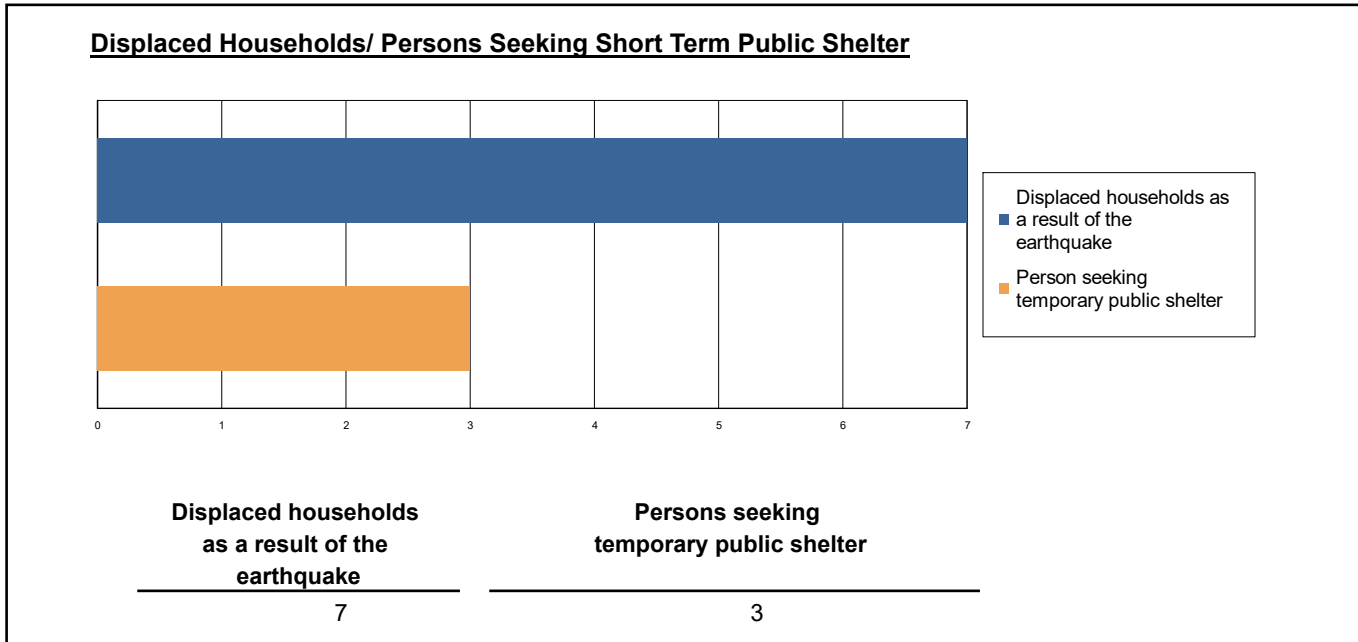
The model estimates that a total of 20,000 tons of debris will be generated. Of the total amount, Brick/Wood comprises 52.00% of the total, with the remainder being Reinforced Concrete/Steel. If the debris tonnage is converted to an estimated number of truckloads, it will require 800 truckloads (@25 tons/truck) to remove the debris generated by the earthquake.



Social Impact

Shelter Requirement

Hazus estimates the number of households that are expected to be displaced from their homes due to the earthquake and the number of displaced people that will require accommodations in temporary public shelters. The model estimates 7 households to be displaced due to the earthquake. Of these, 3 people (out of a total population of 7,559,630) will seek temporary shelter in public shelters.



Casualties

Hazus estimates the number of people that will be injured and killed by the earthquake. The casualties are broken down into four (4) severity levels that describe the extent of the injuries. The levels are described as follows;

- Severity Level 1: Injuries will require medical attention but hospitalization is not needed.
- Severity Level 2: Injuries will require hospitalization but are not considered life-threatening
- Severity Level 3: Injuries will require hospitalization and can become life threatening if not promptly treated.
- Severity Level 4: Victims are killed by the earthquake.

The casualty estimates are provided for three (3) times of day: 2:00 AM, 2:00 PM and 5:00 PM. These times represent the periods of the day that different sectors of the community are at their peak occupancy loads. The 2:00 AM estimate considers that the residential occupancy load is maximum, the 2:00 PM estimate considers that the educational, commercial and industrial sector loads are maximum and 5:00 PM represents peak commute time.

Table 10 provides a summary of the casualties estimated for this earthquake

Table 10: Casualty Estimates

		Level 1	Level 2	Level 3	Level 4
2 AM	Commercial	0.11	0.01	0.00	0.00
	Commuting	0.00	0.00	0.00	0.00
	Educational	0.00	0.00	0.00	0.00
	Hotels	0.05	0.00	0.00	0.00
	Industrial	0.10	0.01	0.00	0.00
	Other-Residential	3.65	0.21	0.00	0.00
	Single Family	5.18	0.14	0.00	0.00
	Total	9	0	0	0
2 PM	Commercial	7.29	0.59	0.01	0.02
	Commuting	0.01	0.01	0.02	0.00
	Educational	2.18	0.18	0.01	0.01
	Hotels	0.01	0.00	0.00	0.00
	Industrial	0.70	0.05	0.00	0.00
	Other-Residential	1.11	0.06	0.00	0.00
	Single Family	1.57	0.04	0.00	0.00
	Total	13	1	0	0
5 PM	Commercial	4.82	0.40	0.01	0.02
	Commuting	0.20	0.25	0.44	0.08
	Educational	0.63	0.06	0.00	0.00
	Hotels	0.02	0.00	0.00	0.00
	Industrial	0.44	0.03	0.00	0.00
	Other-Residential	1.32	0.08	0.00	0.00
	Single Family	1.87	0.05	0.00	0.00
	Total	9	1	0	0

Economic Loss

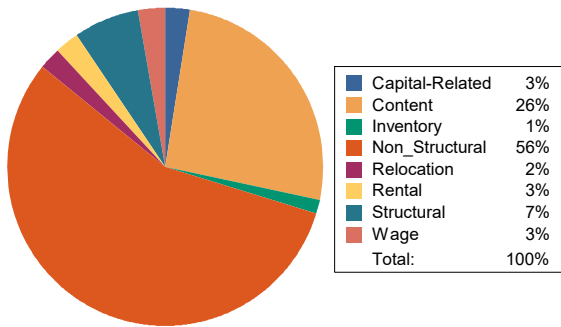
The total economic loss estimated for the earthquake is 648.45 (millions of dollars), which includes building and lifeline related losses based on the region's available inventory. The following three sections provide more detailed information about these losses.

Building-Related Losses

The building losses are broken into two categories: direct building losses and business interruption losses. The direct building losses are the estimated costs to repair or replace the damage caused to the building and its contents. The business interruption losses are the losses associated with inability to operate a business because of the damage sustained during the earthquake. Business interruption losses also include the temporary living expenses for those people displaced from their homes because of the earthquake.

The total building-related losses were 351.62 (millions of dollars); 10 % of the estimated losses were related to the business interruption of the region. By far, the largest loss was sustained by the residential occupancies which made up over 63 % of the total loss. Table 11 below provides a summary of the losses associated with the building damage.

Earthquake Losses by Loss Type (\$ millions)



Earthquake Losses by Occupancy Type (\$ millions)

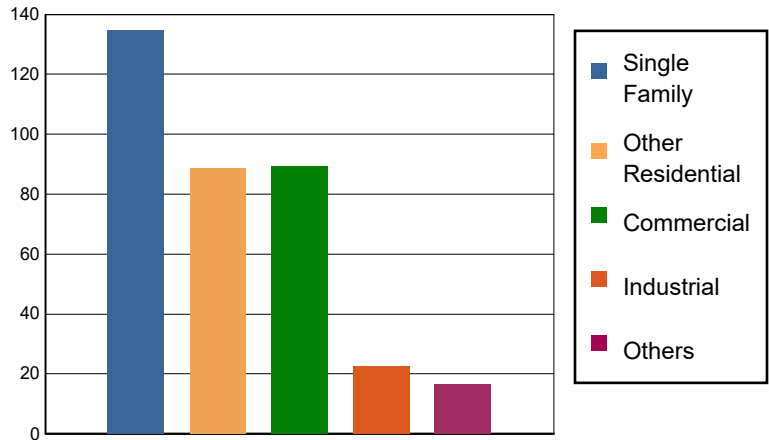


Table 11: Building-Related Economic Loss Estimates
(Millions of dollars)

Category	Area	Single Family	Other Residential	Commercial	Industrial	Others	Total
Income Losses							
	Wage	0.0000	2.1499	7.3430	0.0870	0.4442	10.0241
	Capital-Related	0.0000	0.9125	8.1980	0.0517	0.0646	9.2268
	Rental	0.8514	5.2387	2.7032	0.0691	0.2157	9.0781
	Relocation	2.0438	1.4036	3.0320	0.3452	0.8761	7.7007
	Subtotal	2.8952	9.7047	21.2762	0.5530	1.6006	36.0297
Capital Stock Losses							
	Structural	11.1815	4.9161	5.1926	1.0095	1.0228	23.3225
	Non_Structural	83.6362	56.4723	36.7729	11.4072	8.4922	196.7808
	Content	36.8156	17.5294	22.8514	8.1303	5.3218	90.6485
	Inventory	0.0000	0.0000	3.2876	1.2306	0.3201	4.8383
	Subtotal	131.6333	78.9178	68.1045	21.7776	15.1569	315.5901
	Total	134.53	88.62	89.38	22.33	16.76	351.62

Transportation and Utility Lifeline Losses

For the transportation and utility lifeline systems, Hazus computes the direct repair cost for each component only. There are no losses computed by Hazus for business interruption due to lifeline outages. Tables 12 & 13 provide a detailed breakdown in the expected lifeline losses.

Table 12: Transportation System Economic Losses
(Millions of dollars)

System	Component	Inventory Value	Economic Loss	Loss Ratio (%)
Highway	Segments	61169.3110	0.0000	0.00
	Bridges	27700.1065	1.1140	0.00
	Tunnels	236.8357	0.0001	0.00
	Subtotal	89106.2532	1.1141	
Railways	Segments	29683.3590	0.0000	0.00
	Bridges	6668.6800	0.0012	0.00
	Tunnels	1.7557	0.0000	0.00
	Facilities	157.1170	0.9242	0.59
	Subtotal	36510.9117	0.9254	
Light Rail	Segments	1771.6066	0.0000	0.00
	Bridges	3.3240	0.0000	0.00
	Tunnels	0.0000	0.0000	0.00
	Facilities	331.1800	3.0426	0.92
	Subtotal	2106.1106	3.0426	
Bus	Facilities	48.6349	1.2163	2.50
	Subtotal	48.6349	1.2163	
Ferry	Facilities	17.3030	0.1182	0.68
	Subtotal	17.3030	0.1182	
Port	Facilities	716.6268	3.1528	0.44
	Subtotal	716.6268	3.1528	
Airport	Facilities	1038.3833	11.0463	1.06
	Runways	820.3305	0.0000	0.00
	Subtotal	1858.7138	11.0463	
Total		130,364.55	20.62	

Table 13: Utility System Economic Losses
(Millions of dollars)

System	Component	Inventory Value	Economic Loss	Loss Ratio (%)
Potable Water	Pipelines	0.0000	0.0000	0.00
	Facilities	589.4100	0.2254	0.04
	Distribution Lines	3361.1156	1.8769	0.06
	Subtotal	3950.5256	2.1023	
Waste Water	Pipelines	0.0000	0.0000	0.00
	Facilities	18054.9390	14.2952	0.08
	Distribution Lines	2016.6694	0.9428	0.05
	Subtotal	20071.6084	15.2380	
Natural Gas	Pipelines	10207.7765	0.0000	0.00
	Facilities	59.4451	0.0000	0.00
	Distribution Lines	1344.4462	0.3230	0.02
	Subtotal	11611.6678	0.3230	
Oil Systems	Pipelines	0.0000	0.0000	0.00
	Facilities	2.0060	0.0000	0.00
	Subtotal	2.0060	0.0000	
Electrical Power	Facilities	106561.0542	258.4622	0.24
	Subtotal	106561.0542	258.4622	
Communication	Facilities	26.9040	0.0875	0.33
	Subtotal	26.9040	0.0875	
	Total	142,223.77	276.21	

Appendix A: County Listing for the Region

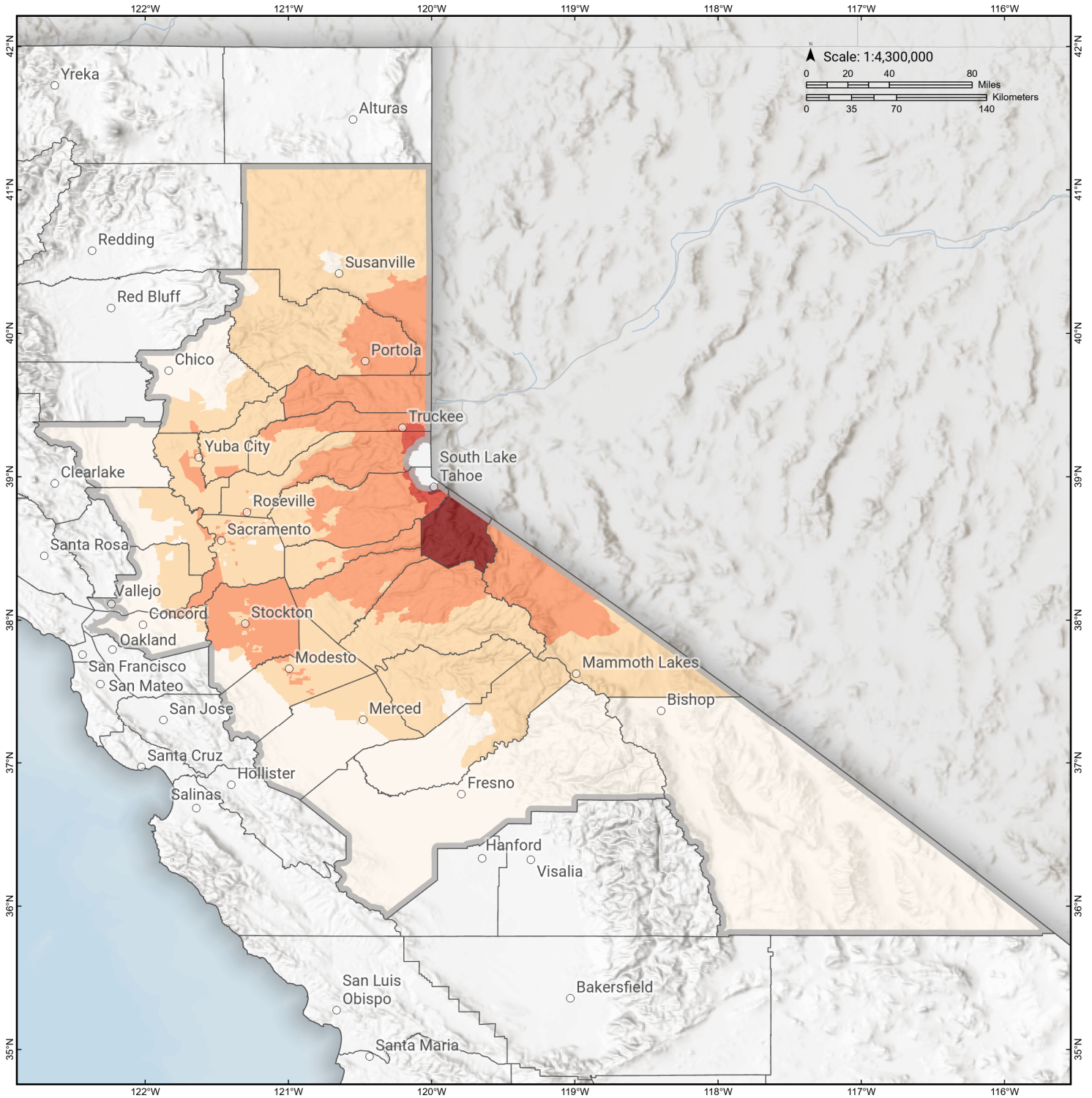
Alpine,CA
Amador,CA
Butte,CA
Calaveras,CA
Colusa,CA
Contra Costa,CA
El Dorado,CA
Fresno,CA
Inyo,CA
Lassen,CA
Madera,CA
Mariposa,CA
Merced,CA
Mono,CA
Nevada,CA
Placer,CA
Plumas,CA
Sacramento,CA
San Joaquin,CA
Sierra,CA
Solano,CA
Stanislaus,CA
Sutter,CA
Tuolumne,CA
Yolo,CA
Yuba,CA

Appendix B: Regional Population and Building Value Data

State	County Name	Population	Building Value (millions of dollars)		
			Residential	Non-Residential	Total
California	Alpine	1,204	721	139	861
	Amador	40,474	5,608	2,517	8,125
	Butte	211,632	25,875	16,639	42,514
	Calaveras	45,292	8,305	4,893	13,199
	Colusa	21,839	2,244	2,024	4,268
	Contra Costa	1,165,927	158,118	60,339	218,458
	El Dorado	191,185	34,907	9,704	44,611
	Fresno	1,008,654	98,532	61,772	160,304
	Inyo	19,016	2,951	1,970	4,921
	Lassen	32,730	4,033	2,008	6,042
	Madera	156,255	18,025	9,641	27,667
	Mariposa	17,131	3,299	1,141	4,441
	Merced	281,202	25,194	26,098	51,292
	Mono	13,195	3,293	1,083	4,377
	Nevada	102,241	17,908	6,108	24,016
	Placer	404,739	69,985	24,193	94,179
	Plumas	19,790	6,128	2,276	8,405
	Sacramento	1,585,055	179,811	83,911	263,723
	San Joaquin	779,233	82,706	56,882	139,589
	Sierra	3,236	596	419	1,015
Solano	453,491	55,802	26,393	82,195	
Stanislaus	552,878	62,937	37,511	100,449	
Sutter	99,633	10,618	6,448	17,066	
Tuolumne	55,620	8,964	3,507	12,471	
Yolo	216,403	24,130	18,343	42,473	
Yuba	81,575	8,161	4,677	12,839	
Total Region		7,559,630	918,851	470,636	1,389,500

Carson Range-Kings Canyon fault

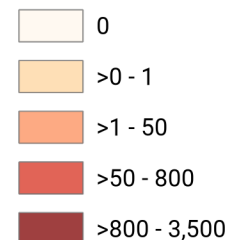
Debris Generated by Census Tract



Study Region: Carson Range-Kings Canyon fault
Scenario: 1285_1654_m7p23_se



Debris Generated (in tons)

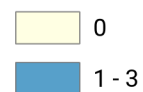


Carson Range-Kings Canyon fault Displaced Households by Census Tract



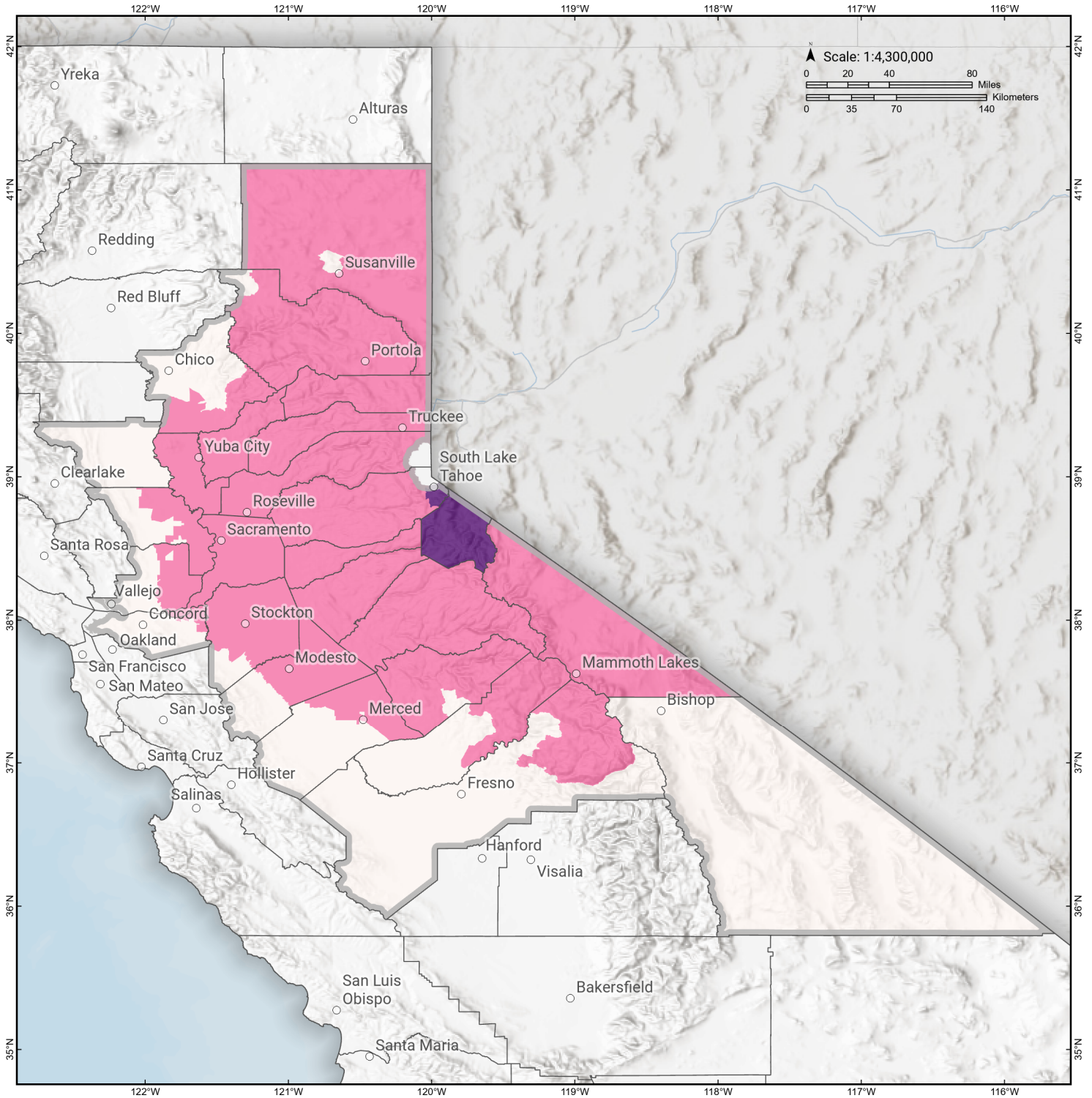
Study Region: Carson Range-Kings Canyon fault
Scenario: 1285_1654_m7p23_se

Displaced Households



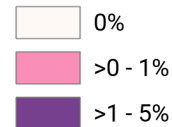
Carson Range-Kings Canyon fault

Loss Ratio by Census Tract



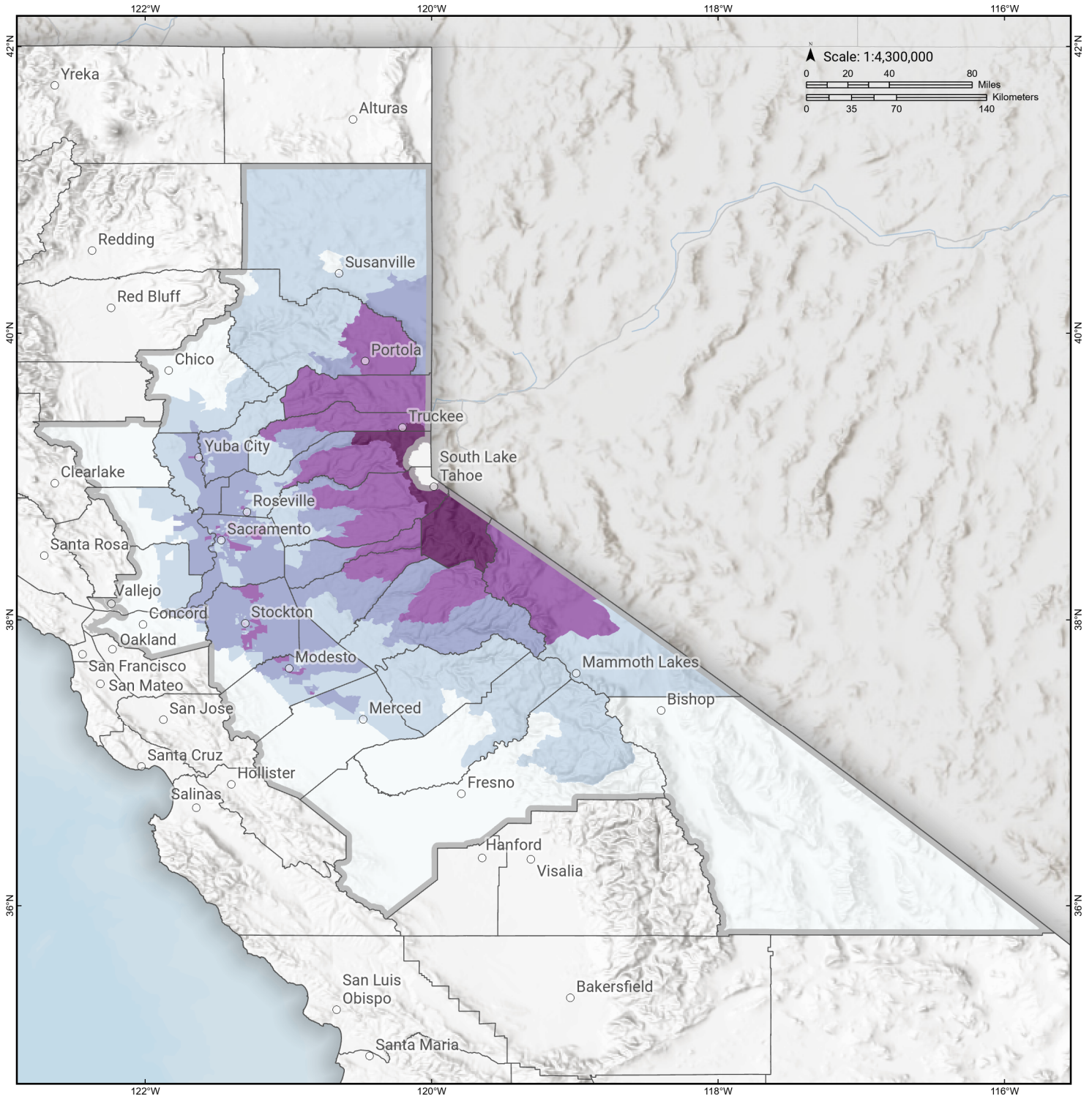
Study Region: Carson Range-Kings Canyon fault
Scenario: 1285_1654_m7p23_se

Loss Ratio (ratio of building related economic loss to exposed value of buildings)



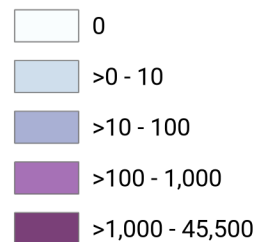
Carson Range-Kings Canyon fault

Total Building Related Economic Loss by Census Tract



Study Region: Carson Range-Kings Canyon fault
Scenario: 1285_1654_m7p23_se

Economic Loss (in thousands of USD \$)



Building Damage by Count by General Occupancy



May 06, 2024

	# of Buildings					Total
	None	Slight	Moderate	Extensive	Complete	
California						
Alpine						
<i>Agriculture</i>	0	0	0	0	0	0
<i>Commercial</i>	34	11	3	0	0	48
<i>Education</i>	4	0	0	0	0	5
<i>Government</i>	2	1	0	0	0	4
<i>Industrial</i>	10	3	0	0	0	14
<i>Religion</i>	1	0	0	0	0	1
<i>Other Residential</i>	60	28	9	0	0	97
<i>Single Family</i>	620	212	9	0	0	842
Amador						
<i>Agriculture</i>	44	0	0	0	0	44
<i>Commercial</i>	1,367	1	0	0	0	1,368
<i>Education</i>	23	0	0	0	0	23
<i>Government</i>	32	0	0	0	0	32
<i>Industrial</i>	235	0	0	0	0	235
<i>Religion</i>	45	0	0	0	0	45
<i>Other Residential</i>	1,036	1	0	0	0	1,037
<i>Single Family</i>	14,956	6	0	0	0	14,962
Butte						

	# of Buildings					Total
	None	Slight	Moderate	Extensive	Complete	
<i>Agriculture</i>	510	0	0	0	0	510
<i>Commercial</i>	6,385	0	0	0	0	6,385
<i>Education</i>	172	0	0	0	0	172
<i>Government</i>	147	0	0	0	0	147
<i>Industrial</i>	1,522	0	0	0	0	1,522
<i>Religion</i>	531	0	0	0	0	531
<i>Other Residential</i>	21,497	1	0	0	0	21,498
<i>Single Family</i>	50,283	0	0	0	0	50,283
Calaveras						
<i>Agriculture</i>	2,205	2	0	0	0	2,207
<i>Commercial</i>	1,411	2	0	0	0	1,413
<i>Education</i>	35	0	0	0	0	35
<i>Government</i>	84	0	0	0	0	84
<i>Industrial</i>	465	1	0	0	0	466
<i>Religion</i>	130	0	0	0	0	130
<i>Other Residential</i>	2,556	3	0	0	0	2,559
<i>Single Family</i>	22,144	4	0	0	0	22,148
Colusa						
<i>Agriculture</i>	142	0	0	0	0	142
<i>Commercial</i>	794	0	0	0	0	794
<i>Education</i>	33	0	0	0	0	33
<i>Government</i>	32	0	0	0	0	32
<i>Industrial</i>	113	0	0	0	0	113
<i>Religion</i>	58	0	0	0	0	58
<i>Other Residential</i>	954	0	0	0	0	954

	# of Buildings					Total
	None	Slight	Moderate	Extensive	Complete	
<i>Single Family</i>	5,954	0	0	0	0	5,954
Contra Costa						
<i>Agriculture</i>	749	0	0	0	0	749
<i>Commercial</i>	17,991	0	0	0	0	17,991
<i>Education</i>	653	0	0	0	0	653
<i>Government</i>	5,024	0	0	0	0	5,024
<i>Industrial</i>	4,749	0	0	0	0	4,749
<i>Religion</i>	1,226	0	0	0	0	1,226
<i>Other Residential</i>	29,124	0	0	0	0	29,124
<i>Single Family</i>	281,935	0	0	0	0	281,935
El Dorado						
<i>Agriculture</i>	151	9	2	0	0	161
<i>Commercial</i>	4,350	300	110	7	0	4,768
<i>Education</i>	124	3	1	0	0	128
<i>Government</i>	85	10	5	0	0	100
<i>Industrial</i>	1,108	63	26	1	0	1,199
<i>Religion</i>	165	11	4	0	0	180
<i>Other Residential</i>	9,493	732	185	10	0	10,420
<i>Single Family</i>	66,302	4,816	306	0	0	71,424
Fresno						
<i>Agriculture</i>	3,421	0	0	0	0	3,421
<i>Commercial</i>	21,054	0	0	0	0	21,054
<i>Education</i>	602	0	0	0	0	602
<i>Government</i>	291	0	0	0	0	291
<i>Industrial</i>	5,348	0	0	0	0	5,348

		# of Buildings					
		None	Slight	Moderate	Extensive	Complete	Total
Inyo	<i>Religion</i>	1,507	0	0	0	0	1,507
	<i>Other Residential</i>	40,973	0	0	0	0	40,973
	<i>Single Family</i>	226,425	0	0	0	0	226,425
	<i>Agriculture</i>	32	0	0	0	0	32
	<i>Commercial</i>	721	0	0	0	0	721
	<i>Education</i>	41	0	0	0	0	41
	<i>Government</i>	101	0	0	0	0	101
	<i>Industrial</i>	257	0	0	0	0	257
	<i>Religion</i>	57	0	0	0	0	57
	<i>Other Residential</i>	4,050	0	0	0	0	4,050
Lassen	<i>Single Family</i>	4,446	0	0	0	0	4,446
	<i>Agriculture</i>	37	0	0	0	0	37
	<i>Commercial</i>	913	0	0	0	0	913
	<i>Education</i>	40	0	0	0	0	40
	<i>Government</i>	22	0	0	0	0	22
	<i>Industrial</i>	140	0	0	0	0	140
	<i>Religion</i>	71	0	0	0	0	71
	<i>Other Residential</i>	2,626	1	0	0	0	2,627
	<i>Single Family</i>	9,562	0	0	0	0	9,562
	Madera	<i>Agriculture</i>	634	0	0	0	0
<i>Commercial</i>		2,905	0	0	0	0	2,905
<i>Education</i>		115	0	0	0	0	115

	# of Buildings					Total
	None	Slight	Moderate	Extensive	Complete	
<i>Government</i>	111	0	0	0	0	111
<i>Industrial</i>	903	0	0	0	0	903
<i>Religion</i>	119	0	0	0	0	119
<i>Other Residential</i>	6,635	0	0	0	0	6,635
<i>Single Family</i>	38,912	0	0	0	0	38,912
Mariposa						
<i>Agriculture</i>	29	0	0	0	0	29
<i>Commercial</i>	689	0	0	0	0	689
<i>Education</i>	27	0	0	0	0	27
<i>Government</i>	33	0	0	0	0	33
<i>Industrial</i>	94	0	0	0	0	94
<i>Religion</i>	36	0	0	0	0	36
<i>Other Residential</i>	307	0	0	0	0	307
<i>Single Family</i>	8,084	0	0	0	0	8,084
Merced						
<i>Agriculture</i>	7,653	0	0	0	0	7,653
<i>Commercial</i>	4,754	0	0	0	0	4,754
<i>Education</i>	163	0	0	0	0	163
<i>Government</i>	171	0	0	0	0	171
<i>Industrial</i>	1,022	0	0	0	0	1,022
<i>Religion</i>	345	0	0	0	0	345
<i>Other Residential</i>	10,787	0	0	0	0	10,787
<i>Single Family</i>	63,598	0	0	0	0	63,598
Mono						
<i>Agriculture</i>	144	1	0	0	0	145

	# of Buildings					Total
	None	Slight	Moderate	Extensive	Complete	
<i>Commercial</i>	653	1	0	0	0	654
<i>Education</i>	21	0	0	0	0	21
<i>Government</i>	18	0	0	0	0	18
<i>Industrial</i>	108	0	0	0	0	108
<i>Religion</i>	32	0	0	0	0	32
<i>Other Residential</i>	1,751	8	0	0	0	1,759
<i>Single Family</i>	7,703	1	0	0	0	7,704
Nevada						
<i>Agriculture</i>	131	1	0	0	0	132
<i>Commercial</i>	2,815	18	2	0	0	2,835
<i>Education</i>	108	0	0	0	0	108
<i>Government</i>	60	0	0	0	0	60
<i>Industrial</i>	1,151	9	1	0	0	1,161
<i>Religion</i>	188	1	0	0	0	189
<i>Other Residential</i>	6,340	40	4	0	0	6,384
<i>Single Family</i>	43,117	163	1	0	0	43,280
Placer						
<i>Agriculture</i>	256	1	0	0	0	258
<i>Commercial</i>	8,492	40	5	0	0	8,538
<i>Education</i>	231	0	0	0	0	231
<i>Government</i>	372	4	0	0	0	377
<i>Industrial</i>	2,688	13	2	0	0	2,703
<i>Religion</i>	381	1	0	0	0	382
<i>Other Residential</i>	14,780	57	5	0	0	14,843

	# of Buildings					Total
	None	Slight	Moderate	Extensive	Complete	
<i>Single Family</i>	134,331	385	3	0	0	134,719
Plumas						
<i>Agriculture</i>	84	0	0	0	0	84
<i>Commercial</i>	1,215	0	0	0	0	1,215
<i>Education</i>	26	0	0	0	0	26
<i>Government</i>	45	0	0	0	0	45
<i>Industrial</i>	184	0	0	0	0	184
<i>Religion</i>	30	0	0	0	0	30
<i>Other Residential</i>	5,031	1	0	0	0	5,032
<i>Single Family</i>	9,877	0	0	0	0	9,877
Sacramento						
<i>Agriculture</i>	621	0	0	0	0	621
<i>Commercial</i>	26,288	7	0	0	0	26,295
<i>Education</i>	829	0	0	0	0	829
<i>Government</i>	619	0	0	0	0	619
<i>Industrial</i>	6,755	1	0	0	0	6,756
<i>Religion</i>	1,701	1	0	0	0	1,702
<i>Other Residential</i>	56,403	10	0	0	0	56,413
<i>Single Family</i>	386,837	3	0	0	0	386,840
San Joaquin						
<i>Agriculture</i>	752	1	0	0	0	753
<i>Commercial</i>	12,858	6	0	0	0	12,864
<i>Education</i>	395	0	0	0	0	395
<i>Government</i>	304	0	0	0	0	304
<i>Industrial</i>	4,926	2	0	0	0	4,928

	# of Buildings					Total
	None	Slight	Moderate	Extensive	Complete	
<i>Religion</i>	877	0	0	0	0	877
<i>Other Residential</i>	21,786	18	1	0	0	21,805
<i>Single Family</i>	188,777	138	7	0	0	188,922
Sierra						
<i>Agriculture</i>	7	0	0	0	0	7
<i>Commercial</i>	141	0	0	0	0	141
<i>Education</i>	14	0	0	0	0	14
<i>Government</i>	16	0	0	0	0	16
<i>Industrial</i>	66	0	0	0	0	66
<i>Religion</i>	12	0	0	0	0	12
<i>Other Residential</i>	153	0	0	0	0	153
<i>Single Family</i>	1,858	0	0	0	0	1,858
Solano						
<i>Agriculture</i>	245	0	0	0	0	245
<i>Commercial</i>	7,268	0	0	0	0	7,268
<i>Education</i>	225	0	0	0	0	225
<i>Government</i>	152	0	0	0	0	152
<i>Industrial</i>	2,101	0	0	0	0	2,101
<i>Religion</i>	454	0	0	0	0	454
<i>Other Residential</i>	12,317	0	0	0	0	12,317
<i>Single Family</i>	120,968	0	0	0	0	120,968
Stanislaus						
<i>Agriculture</i>	1,239	0	0	0	0	1,239
<i>Commercial</i>	10,365	4	0	0	0	10,369
<i>Education</i>	307	0	0	0	0	307

	# of Buildings					Total
	None	Slight	Moderate	Extensive	Complete	
<i>Government</i>	680	0	0	0	0	680
<i>Industrial</i>	3,474	1	0	0	0	3,475
<i>Religion</i>	456	0	0	0	0	456
<i>Other Residential</i>	19,562	6	0	0	0	19,569
<i>Single Family</i>	142,724	0	0	0	0	142,724
Sutter						
<i>Agriculture</i>	1,124	1	0	0	0	1,125
<i>Commercial</i>	2,052	0	0	0	0	2,052
<i>Education</i>	62	0	0	0	0	62
<i>Government</i>	77	0	0	0	0	77
<i>Industrial</i>	636	0	0	0	0	636
<i>Religion</i>	154	0	0	0	0	154
<i>Other Residential</i>	3,111	2	0	0	0	3,113
<i>Single Family</i>	24,512	0	0	0	0	24,512
Tuolumne						
<i>Agriculture</i>	82	0	0	0	0	82
<i>Commercial</i>	1,576	0	0	0	0	1,576
<i>Education</i>	57	0	0	0	0	57
<i>Government</i>	143	0	0	0	0	143
<i>Industrial</i>	383	0	0	0	0	383
<i>Religion</i>	121	0	0	0	0	121
<i>Other Residential</i>	4,959	3	0	0	0	4,962
<i>Single Family</i>	21,644	1	0	0	0	21,645
Yolo						
<i>Agriculture</i>	281	0	0	0	0	281

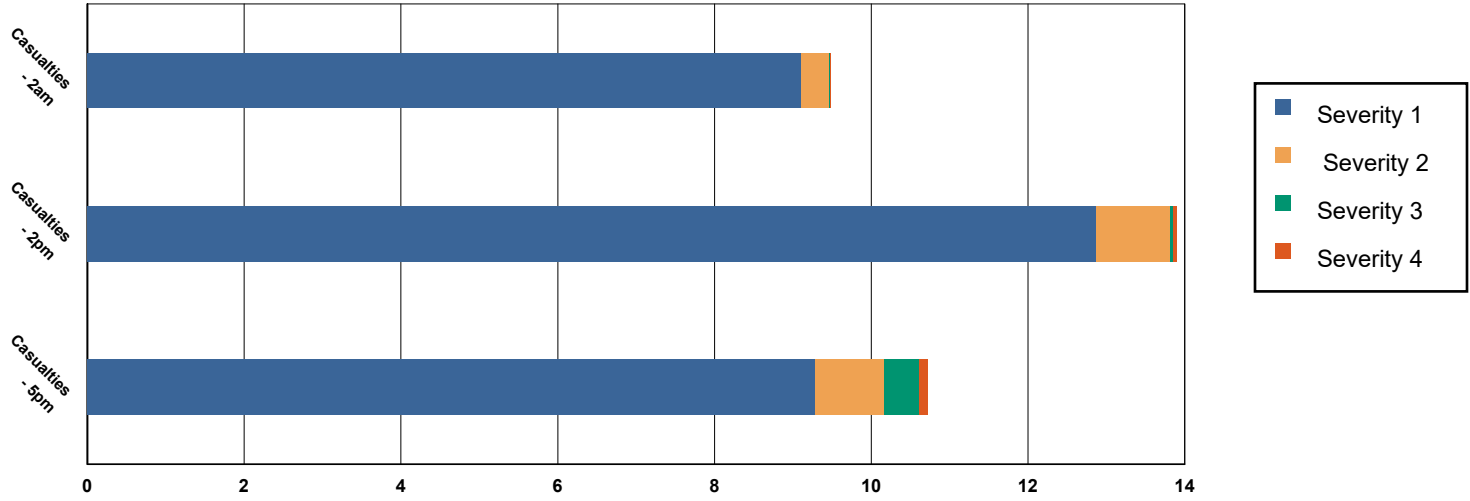
	# of Buildings					Total
	None	Slight	Moderate	Extensive	Complete	
<i>Commercial</i>	4,225	0	0	0	0	4,225
<i>Education</i>	131	0	0	0	0	131
<i>Government</i>	111	0	0	0	0	111
<i>Industrial</i>	1,117	0	0	0	0	1,117
<i>Religion</i>	242	0	0	0	0	242
<i>Other Residential</i>	9,860	1	0	0	0	9,861
<i>Single Family</i>	42,589	0	0	0	0	42,589
Yuba						
<i>Agriculture</i>	92	0	0	0	0	92
<i>Commercial</i>	1,199	0	0	0	0	1,199
<i>Education</i>	54	0	0	0	0	54
<i>Government</i>	591	0	0	0	0	591
<i>Industrial</i>	404	0	0	0	0	404
<i>Religion</i>	98	0	0	0	0	98
<i>Other Residential</i>	7,020	1	0	0	0	7,021
<i>Single Family</i>	18,867	0	0	0	0	18,867
Total	2,456,184	7,180	694	20	0	2,464,078
Region Total	2,456,184	7,180	694	20	0	2,464,078

Totals only reflect data for those census tracts/blocks included in the user's study region and will reflect the entire county/state only if all of the census blocks for that county/states were selected at the time of study region creation.

Casualties Summary Report

May 06, 2024

Region Total Casualties



Injury Severity Level

Severity 1	Severity 2	Severity 3	Severity 4	Total
------------	------------	------------	------------	-------

California

Alpine

Casualties - 2am

	Severity 1	Severity 2	Severity 3	Severity 4	Total
Commuting	0	0	0	0	0
Commercial	0	0	0	0	0
Educational	0	0	0	0	0
Hotels	0	0	0	0	0
Industrial	0	0	0	0	0
Other-Residential	0	0	0	0	0
Single Family	0	0	0	0	0

Total Casualties - 2am

0	0	0	0	0
---	---	---	---	---

Casualties - 2pm

	Severity 1	Severity 2	Severity 3	Severity 4	Total
Commuting	0	0	0	0	0
Commercial	0	0	0	0	0
Educational	0	0	0	0	0
Hotels	0	0	0	0	0
Industrial	0	0	0	0	0
Other-Residential	0	0	0	0	0
Single Family	0	0	0	0	0

	Injury Severity Level				Total
	Severity 1	Severity 2	Severity 3	Severity 4	
California					
Alpine					
Total Casualties - 2pm	0	0	0	0	0
Casualties - 5pm					
<i>Commuting</i>	0	0	0	0	0
<i>Commercial</i>	0	0	0	0	0
<i>Educational</i>	0	0	0	0	0
<i>Hotels</i>	0	0	0	0	0
<i>Industrial</i>	0	0	0	0	0
<i>Other-Residential</i>	0	0	0	0	0
<i>Single Family</i>	0	0	0	0	0
Total Casualties - 5pm	0	0	0	0	0
Amador					
Casualties - 2am					
<i>Commuting</i>	0	0	0	0	0
<i>Commercial</i>	0	0	0	0	0
<i>Educational</i>	0	0	0	0	0
<i>Hotels</i>	0	0	0	0	0
<i>Industrial</i>	0	0	0	0	0
<i>Other-Residential</i>	0	0	0	0	0
<i>Single Family</i>	0	0	0	0	0
Total Casualties - 2am	0	0	0	0	0
Casualties - 2pm					
<i>Commuting</i>	0	0	0	0	0
<i>Commercial</i>	0	0	0	0	0
<i>Educational</i>	0	0	0	0	0
<i>Hotels</i>	0	0	0	0	0
<i>Industrial</i>	0	0	0	0	0
<i>Other-Residential</i>	0	0	0	0	0
<i>Single Family</i>	0	0	0	0	0
Total Casualties - 2pm	0	0	0	0	0
Casualties - 5pm					
<i>Commuting</i>	0	0	0	0	0
<i>Commercial</i>	0	0	0	0	0
<i>Educational</i>	0	0	0	0	0
<i>Hotels</i>	0	0	0	0	0
<i>Industrial</i>	0	0	0	0	0
<i>Other-Residential</i>	0	0	0	0	0
<i>Single Family</i>	0	0	0	0	0
Total Casualties - 5pm	0	0	0	0	0
Butte					
Casualties - 2am					
<i>Commuting</i>	0	0	0	0	0

	Injury Severity Level				Total
	Severity 1	Severity 2	Severity 3	Severity 4	
California					
Butte					
Casualties - 2am					
Commercial	0	0	0	0	0
Educational	0	0	0	0	0
Hotels	0	0	0	0	0
Industrial	0	0	0	0	0
Other-Residential	0	0	0	0	0
Single Family	0	0	0	0	0
Total Casualties - 2am	0	0	0	0	0
Casualties - 2pm					
Commuting	0	0	0	0	0
Commercial	0	0	0	0	0
Educational	0	0	0	0	0
Hotels	0	0	0	0	0
Industrial	0	0	0	0	0
Other-Residential	0	0	0	0	0
Single Family	0	0	0	0	0
Total Casualties - 2pm	0	0	0	0	0
Casualties - 5pm					
Commuting	0	0	0	0	0
Commercial	0	0	0	0	0
Educational	0	0	0	0	0
Hotels	0	0	0	0	0
Industrial	0	0	0	0	0
Other-Residential	0	0	0	0	0
Single Family	0	0	0	0	0
Total Casualties - 5pm	0	0	0	0	0
Calaveras					
Casualties - 2am					
Commuting	0	0	0	0	0
Commercial	0	0	0	0	0
Educational	0	0	0	0	0
Hotels	0	0	0	0	0
Industrial	0	0	0	0	0
Other-Residential	0	0	0	0	0
Single Family	0	0	0	0	0
Total Casualties - 2am	0	0	0	0	0
Casualties - 2pm					
Commuting	0	0	0	0	0
Commercial	0	0	0	0	0
Educational	0	0	0	0	0
Hotels	0	0	0	0	0
Industrial	0	0	0	0	0

	Injury Severity Level				Total
	Severity 1	Severity 2	Severity 3	Severity 4	
California					
Calaveras					
Casualties - 2pm					
Other-Residential	0	0	0	0	0
Single Family	0	0	0	0	0
Total Casualties - 2pm	0	0	0	0	0
Casualties - 5pm					
Commuting	0	0	0	0	0
Commercial	0	0	0	0	0
Educational	0	0	0	0	0
Hotels	0	0	0	0	0
Industrial	0	0	0	0	0
Other-Residential	0	0	0	0	0
Single Family	0	0	0	0	0
Total Casualties - 5pm	0	0	0	0	0
Colusa					
Casualties - 2am					
Commuting	0	0	0	0	0
Commercial	0	0	0	0	0
Educational	0	0	0	0	0
Hotels	0	0	0	0	0
Industrial	0	0	0	0	0
Other-Residential	0	0	0	0	0
Single Family	0	0	0	0	0
Total Casualties - 2am	0	0	0	0	0
Casualties - 2pm					
Commuting	0	0	0	0	0
Commercial	0	0	0	0	0
Educational	0	0	0	0	0
Hotels	0	0	0	0	0
Industrial	0	0	0	0	0
Other-Residential	0	0	0	0	0
Single Family	0	0	0	0	0
Total Casualties - 2pm	0	0	0	0	0
Casualties - 5pm					
Commuting	0	0	0	0	0
Commercial	0	0	0	0	0
Educational	0	0	0	0	0
Hotels	0	0	0	0	0
Industrial	0	0	0	0	0
Other-Residential	0	0	0	0	0
Single Family	0	0	0	0	0
Total Casualties - 5pm	0	0	0	0	0

	Injury Severity Level				Total
	Severity 1	Severity 2	Severity 3	Severity 4	
California					
Contra Costa					
Casualties - 2am					
<i>Commuting</i>	0	0	0	0	0
<i>Commercial</i>	0	0	0	0	0
<i>Educational</i>	0	0	0	0	0
<i>Hotels</i>	0	0	0	0	0
<i>Industrial</i>	0	0	0	0	0
<i>Other-Residential</i>	0	0	0	0	0
<i>Single Family</i>	0	0	0	0	0
Total Casualties - 2am	0	0	0	0	0
Casualties - 2pm					
<i>Commuting</i>	0	0	0	0	0
<i>Commercial</i>	0	0	0	0	0
<i>Educational</i>	0	0	0	0	0
<i>Hotels</i>	0	0	0	0	0
<i>Industrial</i>	0	0	0	0	0
<i>Other-Residential</i>	0	0	0	0	0
<i>Single Family</i>	0	0	0	0	0
Total Casualties - 2pm	0	0	0	0	0
Casualties - 5pm					
<i>Commuting</i>	0	0	0	0	0
<i>Commercial</i>	0	0	0	0	0
<i>Educational</i>	0	0	0	0	0
<i>Hotels</i>	0	0	0	0	0
<i>Industrial</i>	0	0	0	0	0
<i>Other-Residential</i>	0	0	0	0	0
<i>Single Family</i>	0	0	0	0	0
Total Casualties - 5pm	0	0	0	0	0
El Dorado					
Casualties - 2am					
<i>Commuting</i>	0	0	0	0	0
<i>Commercial</i>	0	0	0	0	0
<i>Educational</i>	0	0	0	0	0
<i>Hotels</i>	0	0	0	0	0
<i>Industrial</i>	0	0	0	0	0
<i>Other-Residential</i>	3	0	0	0	3
<i>Single Family</i>	4	0	0	0	5
Total Casualties - 2am	8	0	0	0	8
Casualties - 2pm					
<i>Commuting</i>	0	0	0	0	0
<i>Commercial</i>	6	1	0	0	7
<i>Educational</i>	2	0	0	0	2
<i>Hotels</i>	0	0	0	0	0

Injury Severity Level

	Severity 1	Severity 2	Severity 3	Severity 4	Total
--	------------	------------	------------	------------	-------

California

El Dorado

Casualties - 2pm

<i>Industrial</i>	1	0	0	0	1
<i>Other-Residential</i>	1	0	0	0	1
<i>Single Family</i>	1	0	0	0	1
Total Casualties - 2pm	11	1	0	0	12

Casualties - 5pm

<i>Commuting</i>	0	0	0	0	1
<i>Commercial</i>	4	0	0	0	5
<i>Educational</i>	1	0	0	0	1
<i>Hotels</i>	0	0	0	0	0
<i>Industrial</i>	0	0	0	0	0
<i>Other-Residential</i>	1	0	0	0	1
<i>Single Family</i>	2	0	0	0	2
Total Casualties - 5pm	8	1	0	0	9

Fresno

Casualties - 2am

<i>Commuting</i>	0	0	0	0	0
<i>Commercial</i>	0	0	0	0	0
<i>Educational</i>	0	0	0	0	0
<i>Hotels</i>	0	0	0	0	0
<i>Industrial</i>	0	0	0	0	0
<i>Other-Residential</i>	0	0	0	0	0
<i>Single Family</i>	0	0	0	0	0
Total Casualties - 2am	0	0	0	0	0

Casualties - 2pm

<i>Commuting</i>	0	0	0	0	0
<i>Commercial</i>	0	0	0	0	0
<i>Educational</i>	0	0	0	0	0
<i>Hotels</i>	0	0	0	0	0
<i>Industrial</i>	0	0	0	0	0
<i>Other-Residential</i>	0	0	0	0	0
<i>Single Family</i>	0	0	0	0	0
Total Casualties - 2pm	0	0	0	0	0

Casualties - 5pm

<i>Commuting</i>	0	0	0	0	0
<i>Commercial</i>	0	0	0	0	0
<i>Educational</i>	0	0	0	0	0
<i>Hotels</i>	0	0	0	0	0
<i>Industrial</i>	0	0	0	0	0
<i>Other-Residential</i>	0	0	0	0	0
<i>Single Family</i>	0	0	0	0	0

	Injury Severity Level				Total
	Severity 1	Severity 2	Severity 3	Severity 4	
California					
Fresno					
Total Casualties - 5pm	0	0	0	0	0
Inyo					
Casualties - 2am					
<i>Commuting</i>	0	0	0	0	0
<i>Commercial</i>	0	0	0	0	0
<i>Educational</i>	0	0	0	0	0
<i>Hotels</i>	0	0	0	0	0
<i>Industrial</i>	0	0	0	0	0
<i>Other-Residential</i>	0	0	0	0	0
<i>Single Family</i>	0	0	0	0	0
Total Casualties - 2am	0	0	0	0	0
Casualties - 2pm					
<i>Commuting</i>	0	0	0	0	0
<i>Commercial</i>	0	0	0	0	0
<i>Educational</i>	0	0	0	0	0
<i>Hotels</i>	0	0	0	0	0
<i>Industrial</i>	0	0	0	0	0
<i>Other-Residential</i>	0	0	0	0	0
<i>Single Family</i>	0	0	0	0	0
Total Casualties - 2pm	0	0	0	0	0
Casualties - 5pm					
<i>Commuting</i>	0	0	0	0	0
<i>Commercial</i>	0	0	0	0	0
<i>Educational</i>	0	0	0	0	0
<i>Hotels</i>	0	0	0	0	0
<i>Industrial</i>	0	0	0	0	0
<i>Other-Residential</i>	0	0	0	0	0
<i>Single Family</i>	0	0	0	0	0
Total Casualties - 5pm	0	0	0	0	0
Lassen					
Casualties - 2am					
<i>Commuting</i>	0	0	0	0	0
<i>Commercial</i>	0	0	0	0	0
<i>Educational</i>	0	0	0	0	0
<i>Hotels</i>	0	0	0	0	0
<i>Industrial</i>	0	0	0	0	0
<i>Other-Residential</i>	0	0	0	0	0
<i>Single Family</i>	0	0	0	0	0
Total Casualties - 2am	0	0	0	0	0
Casualties - 2pm					
<i>Commuting</i>	0	0	0	0	0

	Injury Severity Level				Total
	Severity 1	Severity 2	Severity 3	Severity 4	
California					
Lassen					
Casualties - 2pm					
<i>Commercial</i>	0	0	0	0	0
<i>Educational</i>	0	0	0	0	0
<i>Hotels</i>	0	0	0	0	0
<i>Industrial</i>	0	0	0	0	0
<i>Other-Residential</i>	0	0	0	0	0
<i>Single Family</i>	0	0	0	0	0
Total Casualties - 2pm	0	0	0	0	0
Casualties - 5pm					
<i>Commuting</i>	0	0	0	0	0
<i>Commercial</i>	0	0	0	0	0
<i>Educational</i>	0	0	0	0	0
<i>Hotels</i>	0	0	0	0	0
<i>Industrial</i>	0	0	0	0	0
<i>Other-Residential</i>	0	0	0	0	0
<i>Single Family</i>	0	0	0	0	0
Total Casualties - 5pm	0	0	0	0	0
Madera					
Casualties - 2am					
<i>Commuting</i>	0	0	0	0	0
<i>Commercial</i>	0	0	0	0	0
<i>Educational</i>	0	0	0	0	0
<i>Hotels</i>	0	0	0	0	0
<i>Industrial</i>	0	0	0	0	0
<i>Other-Residential</i>	0	0	0	0	0
<i>Single Family</i>	0	0	0	0	0
Total Casualties - 2am	0	0	0	0	0
Casualties - 2pm					
<i>Commuting</i>	0	0	0	0	0
<i>Commercial</i>	0	0	0	0	0
<i>Educational</i>	0	0	0	0	0
<i>Hotels</i>	0	0	0	0	0
<i>Industrial</i>	0	0	0	0	0
<i>Other-Residential</i>	0	0	0	0	0
<i>Single Family</i>	0	0	0	0	0
Total Casualties - 2pm	0	0	0	0	0
Casualties - 5pm					
<i>Commuting</i>	0	0	0	0	0
<i>Commercial</i>	0	0	0	0	0
<i>Educational</i>	0	0	0	0	0
<i>Hotels</i>	0	0	0	0	0
<i>Industrial</i>	0	0	0	0	0

	Injury Severity Level				Total
	Severity 1	Severity 2	Severity 3	Severity 4	
California					
Madera					
Casualties - 5pm					
Other-Residential	0	0	0	0	0
Single Family	0	0	0	0	0
Total Casualties - 5pm	0	0	0	0	0
Mariposa					
Casualties - 2am					
Commuting	0	0	0	0	0
Commercial	0	0	0	0	0
Educational	0	0	0	0	0
Hotels	0	0	0	0	0
Industrial	0	0	0	0	0
Other-Residential	0	0	0	0	0
Single Family	0	0	0	0	0
Total Casualties - 2am	0	0	0	0	0
Casualties - 2pm					
Commuting	0	0	0	0	0
Commercial	0	0	0	0	0
Educational	0	0	0	0	0
Hotels	0	0	0	0	0
Industrial	0	0	0	0	0
Other-Residential	0	0	0	0	0
Single Family	0	0	0	0	0
Total Casualties - 2pm	0	0	0	0	0
Casualties - 5pm					
Commuting	0	0	0	0	0
Commercial	0	0	0	0	0
Educational	0	0	0	0	0
Hotels	0	0	0	0	0
Industrial	0	0	0	0	0
Other-Residential	0	0	0	0	0
Single Family	0	0	0	0	0
Total Casualties - 5pm	0	0	0	0	0
Merced					
Casualties - 2am					
Commuting	0	0	0	0	0
Commercial	0	0	0	0	0
Educational	0	0	0	0	0
Hotels	0	0	0	0	0
Industrial	0	0	0	0	0
Other-Residential	0	0	0	0	0
Single Family	0	0	0	0	0

	Injury Severity Level				Total
	Severity 1	Severity 2	Severity 3	Severity 4	
California					
Merced					
Total Casualties - 2am	0	0	0	0	0
Casualties - 2pm					
<i>Commuting</i>	0	0	0	0	0
<i>Commercial</i>	0	0	0	0	0
<i>Educational</i>	0	0	0	0	0
<i>Hotels</i>	0	0	0	0	0
<i>Industrial</i>	0	0	0	0	0
<i>Other-Residential</i>	0	0	0	0	0
<i>Single Family</i>	0	0	0	0	0
Total Casualties - 2pm	0	0	0	0	0
Casualties - 5pm					
<i>Commuting</i>	0	0	0	0	0
<i>Commercial</i>	0	0	0	0	0
<i>Educational</i>	0	0	0	0	0
<i>Hotels</i>	0	0	0	0	0
<i>Industrial</i>	0	0	0	0	0
<i>Other-Residential</i>	0	0	0	0	0
<i>Single Family</i>	0	0	0	0	0
Total Casualties - 5pm	0	0	0	0	0
Mono					
Casualties - 2am					
<i>Commuting</i>	0	0	0	0	0
<i>Commercial</i>	0	0	0	0	0
<i>Educational</i>	0	0	0	0	0
<i>Hotels</i>	0	0	0	0	0
<i>Industrial</i>	0	0	0	0	0
<i>Other-Residential</i>	0	0	0	0	0
<i>Single Family</i>	0	0	0	0	0
Total Casualties - 2am	0	0	0	0	0
Casualties - 2pm					
<i>Commuting</i>	0	0	0	0	0
<i>Commercial</i>	0	0	0	0	0
<i>Educational</i>	0	0	0	0	0
<i>Hotels</i>	0	0	0	0	0
<i>Industrial</i>	0	0	0	0	0
<i>Other-Residential</i>	0	0	0	0	0
<i>Single Family</i>	0	0	0	0	0
Total Casualties - 2pm	0	0	0	0	0
Casualties - 5pm					
<i>Commuting</i>	0	0	0	0	0
<i>Commercial</i>	0	0	0	0	0

	Injury Severity Level				Total
	Severity 1	Severity 2	Severity 3	Severity 4	
California					
Mono					
Casualties - 5pm					
<i>Educational</i>	0	0	0	0	0
<i>Hotels</i>	0	0	0	0	0
<i>Industrial</i>	0	0	0	0	0
<i>Other-Residential</i>	0	0	0	0	0
<i>Single Family</i>	0	0	0	0	0
Total Casualties - 5pm	0	0	0	0	0
Nevada					
Casualties - 2am					
<i>Commuting</i>	0	0	0	0	0
<i>Commercial</i>	0	0	0	0	0
<i>Educational</i>	0	0	0	0	0
<i>Hotels</i>	0	0	0	0	0
<i>Industrial</i>	0	0	0	0	0
<i>Other-Residential</i>	0	0	0	0	0
<i>Single Family</i>	0	0	0	0	0
Total Casualties - 2am	0	0	0	0	0
Casualties - 2pm					
<i>Commuting</i>	0	0	0	0	0
<i>Commercial</i>	0	0	0	0	0
<i>Educational</i>	0	0	0	0	0
<i>Hotels</i>	0	0	0	0	0
<i>Industrial</i>	0	0	0	0	0
<i>Other-Residential</i>	0	0	0	0	0
<i>Single Family</i>	0	0	0	0	0
Total Casualties - 2pm	0	0	0	0	0
Casualties - 5pm					
<i>Commuting</i>	0	0	0	0	0
<i>Commercial</i>	0	0	0	0	0
<i>Educational</i>	0	0	0	0	0
<i>Hotels</i>	0	0	0	0	0
<i>Industrial</i>	0	0	0	0	0
<i>Other-Residential</i>	0	0	0	0	0
<i>Single Family</i>	0	0	0	0	0
Total Casualties - 5pm	0	0	0	0	0
Placer					
Casualties - 2am					
<i>Commuting</i>	0	0	0	0	0
<i>Commercial</i>	0	0	0	0	0
<i>Educational</i>	0	0	0	0	0
<i>Hotels</i>	0	0	0	0	0
<i>Industrial</i>	0	0	0	0	0

	Injury Severity Level				Total
	Severity 1	Severity 2	Severity 3	Severity 4	
California					
Placer					
Casualties - 2am					
Other-Residential	0	0	0	0	0
Single Family	0	0	0	0	0
Total Casualties - 2am	0	0	0	0	0
Casualties - 2pm					
Commuting	0	0	0	0	0
Commercial	0	0	0	0	0
Educational	0	0	0	0	0
Hotels	0	0	0	0	0
Industrial	0	0	0	0	0
Other-Residential	0	0	0	0	0
Single Family	0	0	0	0	0
Total Casualties - 2pm	1	0	0	0	1
Casualties - 5pm					
Commuting	0	0	0	0	0
Commercial	0	0	0	0	0
Educational	0	0	0	0	0
Hotels	0	0	0	0	0
Industrial	0	0	0	0	0
Other-Residential	0	0	0	0	0
Single Family	0	0	0	0	0
Total Casualties - 5pm	0	0	0	0	0
Plumas					
Casualties - 2am					
Commuting	0	0	0	0	0
Commercial	0	0	0	0	0
Educational	0	0	0	0	0
Hotels	0	0	0	0	0
Industrial	0	0	0	0	0
Other-Residential	0	0	0	0	0
Single Family	0	0	0	0	0
Total Casualties - 2am	0	0	0	0	0
Casualties - 2pm					
Commuting	0	0	0	0	0
Commercial	0	0	0	0	0
Educational	0	0	0	0	0
Hotels	0	0	0	0	0
Industrial	0	0	0	0	0
Other-Residential	0	0	0	0	0
Single Family	0	0	0	0	0
Total Casualties - 2pm	0	0	0	0	0

Injury Severity Level

	Severity 1	Severity 2	Severity 3	Severity 4	Total
--	------------	------------	------------	------------	-------

California

Plumas

Casualties - 5pm

<i>Commuting</i>	0	0	0	0	0
<i>Commercial</i>	0	0	0	0	0
<i>Educational</i>	0	0	0	0	0
<i>Hotels</i>	0	0	0	0	0
<i>Industrial</i>	0	0	0	0	0
<i>Other-Residential</i>	0	0	0	0	0
<i>Single Family</i>	0	0	0	0	0
Total Casualties - 5pm	0	0	0	0	0

Sacramento

Casualties - 2am

<i>Commuting</i>	0	0	0	0	0
<i>Commercial</i>	0	0	0	0	0
<i>Educational</i>	0	0	0	0	0
<i>Hotels</i>	0	0	0	0	0
<i>Industrial</i>	0	0	0	0	0
<i>Other-Residential</i>	0	0	0	0	0
<i>Single Family</i>	0	0	0	0	0
Total Casualties - 2am	0	0	0	0	0

Casualties - 2pm

<i>Commuting</i>	0	0	0	0	0
<i>Commercial</i>	0	0	0	0	0
<i>Educational</i>	0	0	0	0	0
<i>Hotels</i>	0	0	0	0	0
<i>Industrial</i>	0	0	0	0	0
<i>Other-Residential</i>	0	0	0	0	0
<i>Single Family</i>	0	0	0	0	0
Total Casualties - 2pm	0	0	0	0	0

Casualties - 5pm

<i>Commuting</i>	0	0	0	0	0
<i>Commercial</i>	0	0	0	0	0
<i>Educational</i>	0	0	0	0	0
<i>Hotels</i>	0	0	0	0	0
<i>Industrial</i>	0	0	0	0	0
<i>Other-Residential</i>	0	0	0	0	0
<i>Single Family</i>	0	0	0	0	0
Total Casualties - 5pm	0	0	0	0	0

San Joaquin

Casualties - 2am

<i>Commuting</i>	0	0	0	0	0
<i>Commercial</i>	0	0	0	0	0
<i>Educational</i>	0	0	0	0	0

	Injury Severity Level				Total
	Severity 1	Severity 2	Severity 3	Severity 4	
California					
San Joaquin					
Casualties - 2am					
<i>Hotels</i>	0	0	0	0	0
<i>Industrial</i>	0	0	0	0	0
<i>Other-Residential</i>	0	0	0	0	0
<i>Single Family</i>	0	0	0	0	0
Total Casualties - 2am	0	0	0	0	0
Casualties - 2pm					
<i>Commuting</i>	0	0	0	0	0
<i>Commercial</i>	0	0	0	0	0
<i>Educational</i>	0	0	0	0	0
<i>Hotels</i>	0	0	0	0	0
<i>Industrial</i>	0	0	0	0	0
<i>Other-Residential</i>	0	0	0	0	0
<i>Single Family</i>	0	0	0	0	0
Total Casualties - 2pm	0	0	0	0	0
Casualties - 5pm					
<i>Commuting</i>	0	0	0	0	0
<i>Commercial</i>	0	0	0	0	0
<i>Educational</i>	0	0	0	0	0
<i>Hotels</i>	0	0	0	0	0
<i>Industrial</i>	0	0	0	0	0
<i>Other-Residential</i>	0	0	0	0	0
<i>Single Family</i>	0	0	0	0	0
Total Casualties - 5pm	0	0	0	0	0
Sierra					
Casualties - 2am					
<i>Commuting</i>	0	0	0	0	0
<i>Commercial</i>	0	0	0	0	0
<i>Educational</i>	0	0	0	0	0
<i>Hotels</i>	0	0	0	0	0
<i>Industrial</i>	0	0	0	0	0
<i>Other-Residential</i>	0	0	0	0	0
<i>Single Family</i>	0	0	0	0	0
Total Casualties - 2am	0	0	0	0	0
Casualties - 2pm					
<i>Commuting</i>	0	0	0	0	0
<i>Commercial</i>	0	0	0	0	0
<i>Educational</i>	0	0	0	0	0
<i>Hotels</i>	0	0	0	0	0
<i>Industrial</i>	0	0	0	0	0
<i>Other-Residential</i>	0	0	0	0	0
<i>Single Family</i>	0	0	0	0	0

	Injury Severity Level				Total
	Severity 1	Severity 2	Severity 3	Severity 4	
California					
Sierra					
Total Casualties - 2pm	0	0	0	0	0
Casualties - 5pm					
<i>Commuting</i>	0	0	0	0	0
<i>Commercial</i>	0	0	0	0	0
<i>Educational</i>	0	0	0	0	0
<i>Hotels</i>	0	0	0	0	0
<i>Industrial</i>	0	0	0	0	0
<i>Other-Residential</i>	0	0	0	0	0
<i>Single Family</i>	0	0	0	0	0
Total Casualties - 5pm	0	0	0	0	0
Solano					
Casualties - 2am					
<i>Commuting</i>	0	0	0	0	0
<i>Commercial</i>	0	0	0	0	0
<i>Educational</i>	0	0	0	0	0
<i>Hotels</i>	0	0	0	0	0
<i>Industrial</i>	0	0	0	0	0
<i>Other-Residential</i>	0	0	0	0	0
<i>Single Family</i>	0	0	0	0	0
Total Casualties - 2am	0	0	0	0	0
Casualties - 2pm					
<i>Commuting</i>	0	0	0	0	0
<i>Commercial</i>	0	0	0	0	0
<i>Educational</i>	0	0	0	0	0
<i>Hotels</i>	0	0	0	0	0
<i>Industrial</i>	0	0	0	0	0
<i>Other-Residential</i>	0	0	0	0	0
<i>Single Family</i>	0	0	0	0	0
Total Casualties - 2pm	0	0	0	0	0
Casualties - 5pm					
<i>Commuting</i>	0	0	0	0	0
<i>Commercial</i>	0	0	0	0	0
<i>Educational</i>	0	0	0	0	0
<i>Hotels</i>	0	0	0	0	0
<i>Industrial</i>	0	0	0	0	0
<i>Other-Residential</i>	0	0	0	0	0
<i>Single Family</i>	0	0	0	0	0
Total Casualties - 5pm	0	0	0	0	0
Stanislaus					
Casualties - 2am					
<i>Commuting</i>	0	0	0	0	0

	Injury Severity Level				Total
	Severity 1	Severity 2	Severity 3	Severity 4	
California					
Stanislaus					
Casualties - 2am					
<i>Commercial</i>	0	0	0	0	0
<i>Educational</i>	0	0	0	0	0
<i>Hotels</i>	0	0	0	0	0
<i>Industrial</i>	0	0	0	0	0
<i>Other-Residential</i>	0	0	0	0	0
<i>Single Family</i>	0	0	0	0	0
Total Casualties - 2am	0	0	0	0	0
Casualties - 2pm					
<i>Commuting</i>	0	0	0	0	0
<i>Commercial</i>	0	0	0	0	0
<i>Educational</i>	0	0	0	0	0
<i>Hotels</i>	0	0	0	0	0
<i>Industrial</i>	0	0	0	0	0
<i>Other-Residential</i>	0	0	0	0	0
<i>Single Family</i>	0	0	0	0	0
Total Casualties - 2pm	0	0	0	0	0
Casualties - 5pm					
<i>Commuting</i>	0	0	0	0	0
<i>Commercial</i>	0	0	0	0	0
<i>Educational</i>	0	0	0	0	0
<i>Hotels</i>	0	0	0	0	0
<i>Industrial</i>	0	0	0	0	0
<i>Other-Residential</i>	0	0	0	0	0
<i>Single Family</i>	0	0	0	0	0
Total Casualties - 5pm	0	0	0	0	0
Sutter					
Casualties - 2am					
<i>Commuting</i>	0	0	0	0	0
<i>Commercial</i>	0	0	0	0	0
<i>Educational</i>	0	0	0	0	0
<i>Hotels</i>	0	0	0	0	0
<i>Industrial</i>	0	0	0	0	0
<i>Other-Residential</i>	0	0	0	0	0
<i>Single Family</i>	0	0	0	0	0
Total Casualties - 2am	0	0	0	0	0
Casualties - 2pm					
<i>Commuting</i>	0	0	0	0	0
<i>Commercial</i>	0	0	0	0	0
<i>Educational</i>	0	0	0	0	0
<i>Hotels</i>	0	0	0	0	0
<i>Industrial</i>	0	0	0	0	0

	Injury Severity Level				Total
	Severity 1	Severity 2	Severity 3	Severity 4	
California					
Sutter					
Casualties - 2pm					
Other-Residential	0	0	0	0	0
Single Family	0	0	0	0	0
Total Casualties - 2pm	0	0	0	0	0
Casualties - 5pm					
Commuting	0	0	0	0	0
Commercial	0	0	0	0	0
Educational	0	0	0	0	0
Hotels	0	0	0	0	0
Industrial	0	0	0	0	0
Other-Residential	0	0	0	0	0
Single Family	0	0	0	0	0
Total Casualties - 5pm	0	0	0	0	0
Tuolumne					
Casualties - 2am					
Commuting	0	0	0	0	0
Commercial	0	0	0	0	0
Educational	0	0	0	0	0
Hotels	0	0	0	0	0
Industrial	0	0	0	0	0
Other-Residential	0	0	0	0	0
Single Family	0	0	0	0	0
Total Casualties - 2am	0	0	0	0	0
Casualties - 2pm					
Commuting	0	0	0	0	0
Commercial	0	0	0	0	0
Educational	0	0	0	0	0
Hotels	0	0	0	0	0
Industrial	0	0	0	0	0
Other-Residential	0	0	0	0	0
Single Family	0	0	0	0	0
Total Casualties - 2pm	0	0	0	0	0
Casualties - 5pm					
Commuting	0	0	0	0	0
Commercial	0	0	0	0	0
Educational	0	0	0	0	0
Hotels	0	0	0	0	0
Industrial	0	0	0	0	0
Other-Residential	0	0	0	0	0
Single Family	0	0	0	0	0
Total Casualties - 5pm	0	0	0	0	0

	Injury Severity Level				Total
	Severity 1	Severity 2	Severity 3	Severity 4	
California					
Yolo					
Casualties - 2am					
Commuting	0	0	0	0	0
Commercial	0	0	0	0	0
Educational	0	0	0	0	0
Hotels	0	0	0	0	0
Industrial	0	0	0	0	0
Other-Residential	0	0	0	0	0
Single Family	0	0	0	0	0
Total Casualties - 2am	0	0	0	0	0
Casualties - 2pm					
Commuting	0	0	0	0	0
Commercial	0	0	0	0	0
Educational	0	0	0	0	0
Hotels	0	0	0	0	0
Industrial	0	0	0	0	0
Other-Residential	0	0	0	0	0
Single Family	0	0	0	0	0
Total Casualties - 2pm	0	0	0	0	0
Casualties - 5pm					
Commuting	0	0	0	0	0
Commercial	0	0	0	0	0
Educational	0	0	0	0	0
Hotels	0	0	0	0	0
Industrial	0	0	0	0	0
Other-Residential	0	0	0	0	0
Single Family	0	0	0	0	0
Total Casualties - 5pm	0	0	0	0	0
Yuba					
Casualties - 2am					
Commuting	0	0	0	0	0
Commercial	0	0	0	0	0
Educational	0	0	0	0	0
Hotels	0	0	0	0	0
Industrial	0	0	0	0	0
Other-Residential	0	0	0	0	0
Single Family	0	0	0	0	0
Total Casualties - 2am	0	0	0	0	0
Casualties - 2pm					
Commuting	0	0	0	0	0
Commercial	0	0	0	0	0
Educational	0	0	0	0	0
Hotels	0	0	0	0	0

	Injury Severity Level				Total
	Severity 1	Severity 2	Severity 3	Severity 4	
California					
Yuba					
Casualties - 2pm					
<i>Industrial</i>	0	0	0	0	0
<i>Other-Residential</i>	0	0	0	0	0
<i>Single Family</i>	0	0	0	0	0
Total Casualties - 2pm	0	0	0	0	0
Casualties - 5pm					
<i>Commuting</i>	0	0	0	0	0
<i>Commercial</i>	0	0	0	0	0
<i>Educational</i>	0	0	0	0	0
<i>Hotels</i>	0	0	0	0	0
<i>Industrial</i>	0	0	0	0	0
<i>Other-Residential</i>	0	0	0	0	0
<i>Single Family</i>	0	0	0	0	0
Total Casualties - 5pm	0	0	0	0	0
Region Total	NA	NA	NA	NA	NA

Totals only reflect data for those census tracts/blocks included in the user's study region and will reflect the entire county/state only if all of the census blocks for that county/states were selected at the time of study region creation.

Debris Summary Report

May 06, 2024

All values are in thousands of tons.

	Brick, Wood & Others	Concrete & Steel	Total
California			
Alpine	1	0	1
Amador	0	0	0
Butte	0	0	0
Calaveras	0	0	0
Colusa	0	0	0
Contra Costa	0	0	0
El Dorado	8	9	17
Fresno	0	0	0
Inyo	0	0	0
Lassen	0	0	0
Madera	0	0	0
Mariposa	0	0	0
Merced	0	0	0
Mono	0	0	0
Nevada	0	0	0
Placer	1	0	1
Plumas	0	0	0
Sacramento	0	0	0
San Joaquin	1	0	1

	Brick, Wood & Others	Concrete & Steel	Total
Sierra	0	0	0
Solano	0	0	0
Stanislaus	0	0	0
Sutter	0	0	0
Tuolumne	0	0	0
Yolo	0	0	0
Yuba	0	0	0
Total	11	10	20
Region Total	11	10	20

Totals only reflect data for those census tracts/blocks included in the user's study region and will reflect the entire county/state only if all of the census blocks for that county/states were selected at the time of study region creation.

Direct Economic Losses For Buildings

May 6, 2024

All values are in thousands of dollars

	Capital Stock Losses				Loss Ratio %	Income Losses				Total Loss
	Cost Structural Damage	Cost Non-struct. Damage	Cost Contents Damage	Inventory Loss		Relocation Loss	Capital Related Loss	Wages Losses	Rental Income Loss	
California										
Inyo	0	0	0	0	0.00	0	0	0	0	0
Colusa	0	0	0	0	0.00	0	0	0	0	0
Contra Costa	0	10	6	0	0.00	0	0	0	0	16
Plumas	2	89	53	3	0.00	0	1	1	1	150
Butte	1	18	12	3	0.00	0	0	0	0	35
Fresno	0	0	0	0	0.00	0	0	0	0	0
Nevada	564	7,870	4,264	313	0.04	64	68	71	87	13,301
San Joaquin	325	3,352	2,252	300	0.00	53	17	25	49	6,372
Tuolumne	8	396	240	15	0.00	1	0	2	2	664

	Capital Stock Losses				Loss Ratio %	Income Losses				Total Loss
	Cost Structural Damage	Cost Non-struct. Damage	Cost Contents Damage	Inventory Loss		Relocation Loss	Capital Related Loss	Wages Losses	Rental Income Loss	
Solano	0	2	2	0	0.00	0	0	0	0	4
Madera	0	4	2	0	0.00	0	0	0	0	7
Yolo	6	397	277	47	0.00	0	1	1	1	729
Calaveras	38	581	387	78	0.00	4	9	8	8	1,114
Yuba	2	105	72	10	0.00	0	1	0	1	191
Alpine	1,221	12,303	5,171	216	1.57	306	354	593	1,009	21,172
Lassen	1	31	18	1	0.00	0	0	0	0	53
Merced	3	73	56	16	0.00	0	0	0	0	149
Stanislaus	62	2,279	1,514	194	0.00	6	10	9	19	4,093
Sutter	11	395	259	53	0.00	1	1	1	2	722
Mono	19	241	130	30	0.01	3	1	1	3	428
Placer	1,334	18,277	9,533	555	0.02	191	227	261	392	30,769
El Dorado	19,607	144,404	62,477	2,623	0.37	7,059	8,512	9,014	7,463	261,159
Amador	16	427	255	16	0.01	1	3	2	4	726
Sacramento	100	5,438	3,611	359	0.00	10	23	34	36	9,611
Sierra	1	84	55	5	0.01	0	0	0	0	146
Mariposa	0	6	3	0	0.00	0	0	0	0	9

	Capital Stock Losses				Loss Ratio %	Income Losses				Total Loss
	Cost Structural Damage	Cost Non-struct. Damage	Cost Contents Damage	Inventory Loss		Relocation Loss	Capital Related Loss	Wages Losses	Rental Income Loss	
Total	23,323	196,781	90,649	4,838	0.08	7,701	9,227	10,024	9,078	351,621
Region Total	23,323	196,781	90,649	4,838	0.08	7,701	9,227	10,024	9,078	351,621

Totals only reflect data for those census tracts/blocks included in the user's study region and will reflect the entire county/state only if all of the census blocks for that county/states were selected at the time of study region creation.

Direct Economic Loss For Transportation

May 06, 2024

All values are in thousands of dollars

	Highway	Railway	Light Rail	Bus Facility	Ports	Ferries	Airport	Total
California								
Alpine								
Segments	0	0	0					0
Bridges	818	0	0					818
Tunnels	0	0	0					0
Facilities		0	0	0	0	0	2,386	2,386
Total	818	0	0	0	0	0	2,386	3,204
Amador								
Segments	0	0	0					0
Bridges	0	0	0					0
Tunnels	0	0	0					0
Facilities		0	0	0	0	0	51	51
Total	0	0	0	0	0	0	51	51
Butte								
Segments	0	0	0					0
Bridges	1	0	0					1
Tunnels	0	0	0					0
Facilities		3	0	0	0	0	26	28

	Highway	Railway	Light Rail	Bus Facility	Ports	Ferries	Airport	Total
Total	1	3	0	0	0	0	26	29
Calaveras								
Segments	0	0	0					0
Bridges	0	0	0					0
Tunnels	0	0	0					0
Facilities		0	0	0	0	0	102	102
Total	0	0	0	0	0	0	102	102
Colusa								
Segments	0	0	0					0
Bridges	0	0	0					0
Tunnels	0	0	0					0
Facilities		0	0	0	0	0	6	6
Total	0	0	0	0	0	0	6	6
Contra Costa								
Segments	0	0	0					0
Bridges	0	0	0					0
Tunnels	0	0	0					0
Facilities		6	18	0	290	38	11	363
Total	0	6	18	0	290	38	11	363
El Dorado								
Segments	0	0	0					0
Bridges	229	0	0					229
Tunnels	0	0	0					0
Facilities		0	0	933	0	0	1,219	2,152

	Highway	Railway	Light Rail	Bus Facility	Ports	Ferries	Airport	Total
Total	229	0	0	933	0	0	1,219	2,381
Fresno								
Segments	0	0	0					0
Bridges	0	0	0					0
Tunnels	0	0	0					0
Facilities		0	0	0	0	0	0	0
Total	0	0	0	0	0	0	0	0
Inyo								
Segments	0	0	0					0
Bridges	0	0	0					0
Tunnels	0	0	0					0
Facilities		0	0	0	0	0	11	11
Total	0	0	0	0	0	0	11	11
Lassen								
Segments	0	0	0					0
Bridges	0	0	0					0
Tunnels	0	0	0					0
Facilities		0	0	0	0	0	164	164
Total	0	0	0	0	0	0	164	164
Madera								
Segments	0	0	0					0
Bridges	0	0	0					0
Tunnels	0	0	0					0
Facilities		3	0	2	0	0	11	17

	Highway	Railway	Light Rail	Bus Facility	Ports	Ferries	Airport	Total
Total	0	3	0	2	0	0	11	17
Mariposa								
Segments	0	0	0					0
Bridges	0	0	0					0
Tunnels	0	0	0					0
Facilities		0	0	86	0	0	6	91
Total	0	0	0	86	0	0	6	92
Merced								
Segments	0	0	0					0
Bridges	1	0	0					1
Tunnels	0	0	0					0
Facilities		51	0	2	0	0	91	145
Total	1	51	0	2	0	0	91	146
Mono								
Segments	0	0	0					0
Bridges	2	0	0					2
Tunnels	0	0	0					0
Facilities		0	0	41	0	0	754	795
Total	2	0	0	41	0	0	754	797
Nevada								
Segments	0	0	0					0
Bridges	19	1	0					21
Tunnels	0	0	0					0
Facilities		109	0	0	0	0	451	560

	Highway	Railway	Light Rail	Bus Facility	Ports	Ferries	Airport	Total
Total	19	110	0	0	0	0	451	581
Placer								
Segments	0	0	0					0
Bridges	20	0	0					20
Tunnels	0	0	0					0
Facilities		103	0	21	0	0	204	328
Total	20	103	0	21	0	0	204	348
Plumas								
Segments	0	0	0					0
Bridges	5	0	0					5
Tunnels	0	0	0					0
Facilities		0	0	0	0	0	221	221
Total	5	0	0	0	0	0	221	226
Sacramento								
Segments	0	0	0					0
Bridges	9	0	0					9
Tunnels	0	0	0					0
Facilities		26	3,024	43	363	13	4,198	7,666
Total	9	26	3,024	43	363	13	4,198	7,675
San Joaquin								
Segments	0	0	0					0
Bridges	2	0	0					2
Tunnels	0	0	0					0
Facilities		410	0	21	1,481	28	258	2,199

	Highway	Railway	Light Rail	Bus Facility	Ports	Ferries	Airport	Total
Total	2	410	0	21	1,481	28	258	2,201
Sierra								
Segments	0	0	0					0
Bridges	0	0	0					0
Tunnels	0	0	0					0
Facilities		0	0	0	0	0	217	217
Total	0	0	0	0	0	0	217	217
Solano								
Segments	0	0	0					0
Bridges	1	0	0					1
Tunnels	0	0	0					0
Facilities		0	0	2	396	38	26	462
Total	1	0	0	2	396	38	26	463
Stanislaus								
Segments	0	0	0					0
Bridges	1	0	0					1
Tunnels	0	0	0					0
Facilities		154	0	43	0	0	185	382
Total	1	154	0	43	0	0	185	383
Sutter								
Segments	0	0	0					0
Bridges	0	0	0					0
Tunnels	0	0	0					0
Facilities		0	0	0	0	0	129	129

	Highway	Railway	Light Rail	Bus Facility	Ports	Ferries	Airport	Total
Total	0	0	0	0	0	0	129	129
Tuolumne								
Segments	0	0	0					0
Bridges	1	0	0					1
Tunnels	0	0	0					0
Facilities		0	0	0	0	0	153	153
Total	1	0	0	0	0	0	153	154
Yolo								
Segments	0	0	0					0
Bridges	5	0	0					5
Tunnels	0	0	0					0
Facilities		60	0	0	624	0	62	746
Total	5	60	0	0	624	0	62	751
Yuba								
Segments	0	0	0					0
Bridges	0	0	0					0
Tunnels	0	0	0					0
Facilities		0	0	22	0	0	102	124
Total	0	0	0	22	0	0	102	124
Total	1,114	925	3,043	1,216	3,153	118	11,046	20,616
Region Total	1,114	925	3,043	1,216	3,153	118	11,046	20,616

Totals only reflect data for those census tracts/blocks included in the user's study region and will reflect the entire county/state only if all of the census blocks for that county/states were selected at the time of study region creation.

Direct Economic Loss For Utilities

May 06, 2024

All values are in thousands of dollars

	Potable Water	Waste Water	Oil Systems	Natural Gas	Electric Power	Communication	Total
California							
Alpine							
Facilities	0	4,415	0	0	0	0	4,415
Pipelines	206	104	0	0			310
Total	206	4,518	0	0	0	0	4,724
Amador							
Facilities	0	1,524	0	0	23,120	0	24,644
Pipelines	38	19	0	0			57
Total	38	1,543	0	0	23,120	0	24,701
Butte							
Facilities	1	10	0	0	2,639	0	2,650
Pipelines	40	20	0	0			61
Total	41	31	0	0	2,639	0	2,711
Calaveras							
Facilities	28	492	0	0	25,137	5	25,662

	Potable Water	Waste Water	Oil Systems	Natural Gas	Electric Power	Communication	Total
<i>Pipelines</i>	65	33	0	0			98
Total	93	524	0	0	25,137	5	25,760
Colusa							
<i>Facilities</i>	0	0	0	0	0	0	0
<i>Pipelines</i>	26	13	0	0			39
Total	26	13	0	0	0	0	39
Contra Costa							
<i>Facilities</i>	0	10	0	0	2,424	0	2,434
<i>Pipelines</i>	34	17	0	0			51
Total	34	27	0	0	2,424	0	2,485
El Dorado							
<i>Facilities</i>	28	492	0	0	69,439	67	70,026
<i>Pipelines</i>	356	179	0	0			536
Total	385	671	0	0	69,439	67	70,562
Fresno							
<i>Facilities</i>	0	0	0	0	4,564	0	4,564
<i>Pipelines</i>	21	11	0	0			32
Total	21	11	0	0	4,564	0	4,596
Inyo							
<i>Facilities</i>	0	0	0	0	30	0	30
<i>Pipelines</i>	28	14	0	0			42

	Potable Water	Waste Water	Oil Systems	Natural Gas	Electric Power	Communication	Total
Total	28	14	0	0	30	0	71
Lassen							
<i>Facilities</i>	0	3	0	0	552	0	555
<i>Pipelines</i>	53	27	0	0			80
Total	53	29	0	0	552	0	635
Madera							
<i>Facilities</i>	0	0	0	0	728	0	728
<i>Pipelines</i>	56	28	0	0			84
Total	56	28	0	0	728	0	812
Mariposa							
<i>Facilities</i>	0	371	0	0	42	0	414
<i>Pipelines</i>	22	11	0	0			33
Total	22	382	0	0	42	0	447
Merced							
<i>Facilities</i>	0	13	0	0	1,234	0	1,247
<i>Pipelines</i>	77	39	0	0			116
Total	77	52	0	0	1,234	0	1,363
Mono							
<i>Facilities</i>	0	0	0	0	1,599	0	1,599
<i>Pipelines</i>	54	27	0	0			81
Total	54	27	0	0	1,599	0	1,680

	Potable Water	Waste Water	Oil Systems	Natural Gas	Electric Power	Communication	Total
Nevada							
<i>Facilities</i>	0	2,262	0	0	2,927	1	5,190
<i>Pipelines</i>	98	49	0	0			147
Total	98	2,311	0	0	2,927	1	5,337
Placer							
<i>Facilities</i>	0	1,229	0	0	26,059	1	27,290
<i>Pipelines</i>	129	65	0	0			193
Total	129	1,294	0	0	26,059	1	27,483
Plumas							
<i>Facilities</i>	28	371	0	0	1,357	1	1,758
<i>Pipelines</i>	62	31	0	0			92
Total	90	402	0	0	1,357	1	1,850
Sacramento							
<i>Facilities</i>	0	1,229	0	0	19,839	6	21,074
<i>Pipelines</i>	117	59	0	0			176
Total	117	1,288	0	0	19,839	6	21,250
San Joaquin							
<i>Facilities</i>	140	620	0	0	6,344	2	7,106
<i>Pipelines</i>	87	44	0	0			131
Total	228	664	0	0	6,344	2	7,237
Sierra							

	Potable Water	Waste Water	Oil Systems	Natural Gas	Electric Power	Communication	Total
<i>Facilities</i>	0	0	0	0	5,472	0	5,472
<i>Pipelines</i>	48	24	0	0			72
Total	48	24	0	0	5,472	0	5,544
Solano							
<i>Facilities</i>	0	10	0	0	1,247	0	1,258
<i>Pipelines</i>	40	20	0	0			60
Total	40	30	0	0	1,247	0	1,318
Stanislaus							
<i>Facilities</i>	0	251	0	0	8,479	2	8,732
<i>Pipelines</i>	59	30	0	0			89
Total	59	281	0	0	8,479	2	8,821
Sutter							
<i>Facilities</i>	0	246	0	0	6,808	1	7,054
<i>Pipelines</i>	29	14	0	0			43
Total	29	260	0	0	6,808	1	7,098
Tuolumne							
<i>Facilities</i>	0	123	0	0	32,882	1	33,006
<i>Pipelines</i>	73	37	0	0			110
Total	73	160	0	0	32,882	1	33,116
Yolo							
<i>Facilities</i>	0	251	0	0	8	0	259

	Potable Water	Waste Water	Oil Systems	Natural Gas	Electric Power	Communication	Total
<i>Pipelines</i>	34	17	0	0			51
Total	34	268	0	0	8	0	310
Yuba							
<i>Facilities</i>	0	371	0	0	15,532	0	15,904
<i>Pipelines</i>	25	12	0	0			37
Total	25	384	0	0	15,532	0	15,941
Total	2,102	15,238	0	0	258,462	88	275,890
Region Total	2,102	15,238	0	0	258,462	88	275,890

Totals only reflect data for those census tracts/blocks included in the user's study region and will reflect the entire county/state only if all of the census blocks for that county/states were selected at the time of study region creation.

Hazus Quick Assessment Report

Estimated Economic Loss (\$ Billions)

Category	Description	Range
General Building Stock	Building Damage	0.10 - 0.40
	Building Contents	< 0.1
	Business Interruption	0.00 - 0.10
Infrastructure	Lifelines Damage	
Total		0.20 - 0.70

Preliminary Damage Assessment (PDA) Estimates

Description	Residential	Commercial	Other	Total
Affected	6,600	390	140	7,130
Minor	530	120	40	690
Major	10	< 10	< 10	10
Destroyed	0	0	0	0
Total	7,140	510	180	7,830

Estimated Casualties : Night Time

Severity Level	Description	# Persons
Level 1	Medical Aid	0 - 20
Level 2	Hospital Care	< 10
Level 3	Life-threatening	< 10
Level 4	Fatalities	< 10

Estimated Shelter Needs

Type	Households	People
Displaced Households	0 - 20	0 - 50
Public Shelter	0	0

Comments :

*Hazus damage estimates are presented using FEMA Preliminary Damage Assessment (PDA) categories. These estimates should be used for planning purposes and may not reflect actual observed damages from the PDA process.

Disclaimer:

The estimates of social and economic impacts contained in this report were produced using HAZUS loss estimation methodology software which is based on current scientific and engineering knowledge. There are uncertainties inherent in any loss estimation technique. Therefore, there may be significant differences between the modeled results contained in this report and the actual social and economic losses following a specific earthquake. These results can be improved by using enhanced inventory, geotechnical, and observed ground motion data.

Earthquake Information

Location :

Origin Time:

Magnitude : 7.23

Epicenter Latitude/Longitude :
/

Depth & Type : /U

Name :
NA

Ground Motion /Attenuation :

Maximum PGA: 0.00

Information Sources:

Comments :

Population and Building Exposure

Population: 7,559,630

Building Exposure : (\$ Millions)

Residential	918,864
Commercial	242,640
Other	228,008
Total	1,389,512

Counties : See Appendix

Major Metro Area :

Hazus Quick Assessment Report

Estimated Economic Loss (\$ Billions)

Category	Description	Range
General Building Stock	Building Damage	0.10 - 0.40
	Building Contents	< 0.1
	Business Interruption	0.00 - 0.10
Infrastructure	Lifelines Damage	
Total		0.20 - 0.70

Preliminary Damage Assessment (PDA) Estimates

Description	Residential	Commercial	Other	Total
Affected	6,600	390	140	7,130
Minor	530	120	40	690
Major	10	< 10	< 10	10
Destroyed	0	0	0	0
Total	7,140	510	180	7,830

Estimated Casualties : Day Time

Severity Level	Description	# Persons
Level 1	Medical Aid	10 - 30
Level 2	Hospital Care	< 10
Level 3	Life-threatening	< 10
Level 4	Fatalities	< 10

Estimated Shelter Needs

Type	Households	People
Displaced Households	0 - 20	0 - 50
Public Shelter	0	0

Comments :

*Hazus damage estimates are presented using FEMA Preliminary Damage Assessment (PDA) categories. These estimates should be used for planning purposes and may not reflect actual observed damages from the PDA process.

Disclaimer:

The estimates of social and economic impacts contained in this report were produced using HAZUS loss estimation methodology software which is based on current scientific and engineering knowledge. There are uncertainties inherent in any loss estimation technique. Therefore, there may be significant differences between the modeled results contained in this report and the actual social and economic losses following a specific earthquake. These results can be improved by using enhanced inventory, geotechnical, and observed ground motion data.

Earthquake Information

Location :

Origin Time:

Magnitude : 7.23

Epicenter Latitude/Longitude :
/

Depth & Type : /U

Name :
NA

Ground Motion /Attenuation :

Maximum PGA: 0.00

Information Sources:

Comments :

Population and Building Exposure

Population: 7,559,630

Building Exposure : (\$ Millions)

Residential	918,864
Commercial	242,640
Other	228,008
Total	1,389,512

Counties : See Appendix

Major Metro Area :

Hazus Quick Assessment Report

Estimated Economic Loss (\$ Billions)

Category	Description	Range
General Building Stock	Building Damage	0.10 - 0.40
	Building Contents	< 0.1
	Business Interruption	0.00 - 0.10
Infrastructure	Lifelines Damage	
Total		0.20 - 0.70

Preliminary Damage Assessment (PDA) Estimates

Description	Residential	Commercial	Other	Total
Affected	6,600	390	140	7,130
Minor	530	120	40	690
Major	10	< 10	< 10	10
Destroyed	0	0	0	0
Total	7,140	510	180	7,830

Estimated Casualties : Commute Time

Severity Level	Description	# Persons
Level 1	Medical Aid	0 - 20
Level 2	Hospital Care	< 10
Level 3	Life-threatening	< 10
Level 4	Fatalities	< 10

Estimated Shelter Needs

Type	Households	People
Displaced Households	0 - 20	0 - 50
Public Shelter	0	0

Comments :

*Hazus damage estimates are presented using FEMA Preliminary Damage Assessment (PDA) categories. These estimates should be used for planning purposes and may not reflect actual observed damages from the PDA process.

Disclaimer:

The estimates of social and economic impacts contained in this report were produced using HAZUS loss estimation methodology software which is based on current scientific and engineering knowledge. There are uncertainties inherent in any loss estimation technique. Therefore, there may be significant differences between the modeled results contained in this report and the actual social and economic losses following a specific earthquake. These results can be improved by using enhanced inventory, geotechnical, and observed ground motion data.

Earthquake Information

Location :

Origin Time:

Magnitude : 7.23

Epicenter Latitude/Longitude :
/

Depth & Type : /U

Name :
NA

Ground Motion /Attenuation :

Maximum PGA: 0.00

Information Sources:

Comments :

Population and Building Exposure

Population: 7,559,630

Building Exposure : (\$ Millions)

Residential	918,864
Commercial	242,640
Other	228,008
Total	1,389,512

Counties : See Appendix

Major Metro Area :

Shelter Summary Report

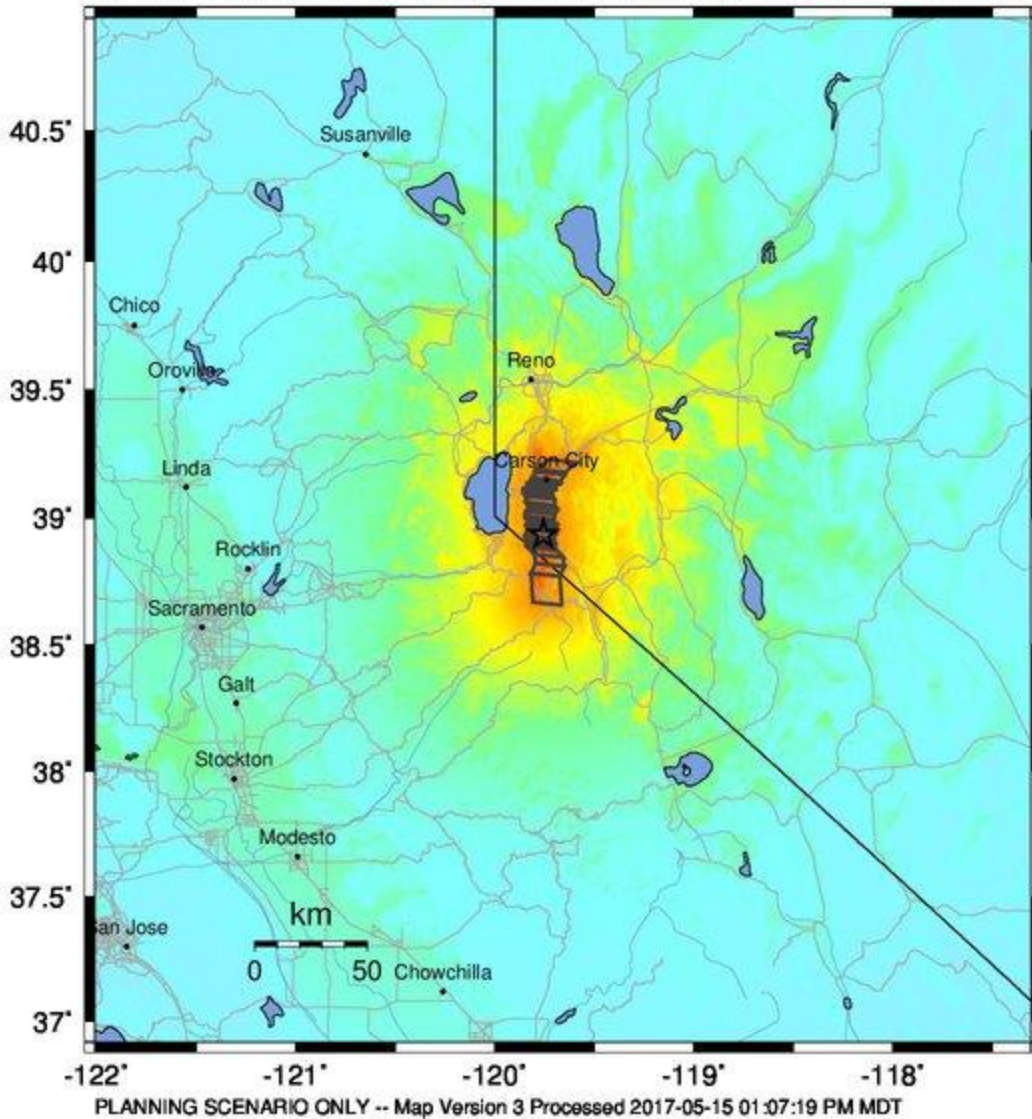
May 06, 2024

	# of Displaced Households	# of People Needing Short Term Shelter
California		
Alpine	0	0
Amador	0	0
Butte	0	0
Calaveras	0	0
Colusa	0	0
Contra Costa	0	0
El Dorado	8	4
Fresno	0	0
Inyo	0	0
Lassen	0	0
Madera	0	0
Mariposa	0	0
Merced	0	0
Mono	0	0
Nevada	0	0
Placer	0	0
Plumas	0	0
Sacramento	0	0
San Joaquin	0	0
Sierra	0	0
Solano	0	0
Stanislaus	0	0
Sutter	0	0
Tuolumne	0	0
Yolo	0	0
Yuba	0	0
Total	8	4
Region Total	8	4

# of Displaced Households	# of People Needing Short Term Shelter
------------------------------	---

Totals only reflect data for those census tracts/blocks included in the user's study region and will reflect the entire county/state only if all of the census blocks for that county/states were selected at the time of study region creation.

-- Earthquake Planning Scenario --
ShakeMap for Carson Range-Kings Canyon fault - Median ground motions Scenario
 Scenario Date: May 12, 2017 02:14:09 PM MDT M 7.2 N38.93 W119.76 Depth: 9.0km



PERCEIVED SHAKING	Not felt	Weak	Light	Moderate	Strong	Very strong	Severe	Violent	Extreme
POTENTIAL DAMAGE	none	none	none	Very light	Light	Moderate	Mod./Heavy	Heavy	Very Heavy
PEAK ACC.(%g)	<0.05	0.3	2.8	6.2	12	22	40	75	>139
PEAK VEL.(cm/s)	<0.02	0.1	1.4	4.7	9.6	20	41	86	>178
INSTRUMENTAL INTENSITY	I	II-III	IV	V	VI	VII	VIII	IX	X+

Scale based upon Worden et al. (2012)